



Horse Population Report

Updated on 31 May 2026



Introduction

Welcome to the latest update on the Racehorse Population from the British Horseracing Authority.

The aim of this document is to give stakeholders and the wider Public an insight into the current state of the Horse Population in Great Britain. It is hoped that this transparency will ensure that all decision makers have access to the key data required to help British Racing deliver a Competitive and Compelling product to stakeholders, racegoers and the wider public.

If you have any questions regarding the content of this report or suggestions for how it could be improved further, please contact Joe Yates – jyates@britishhorseracing.com

Definitions

This report uses the Horses in Training returns from the Weatherby's Racing Administration System, this is completed by trainers and should be updated whenever a horse enters or leaves training in their care as part of the conditions of their licence.

Horses in Training

Unless otherwise stated, snapshots of Horses in Training will be from the 15th day of the month in question and year to date figures will be up to and including the date titled at the front of the report.

Horses' ratings will be taken from the most recently published ratings by the BHA Handicapping Team, which is currently at 7am each Tuesday morning. For example, if looking at the Horses in a particular rating band for July 2011, the horses in training number will be from Friday 15th July 2011 and ratings, where possible, will be assigned to each horse from the ratings published by the BHA Handicappers on Tuesday 12th July 2011.

The Gender of a horse will be taken from the reporting date in question, regardless of whether this has since changed.

In the case of YTD reporting, where a horse's gender or training type has changed in the year-to-date period, the most recent is taken.

This report does not count any horses that are temporarily racing abroad for GB Trainers at the time of reporting.

Yearlings are not included in total counts of flat and/or dual horses but will be sometimes shown separately for information purposes.

Yearlings and two-year-olds are not included in total counts of jump horses or counts of jump horses that include dual horses but will be sometimes shown separately for information purposes.

Yearlings, two-year-olds and three-year-olds are not included in total counts of Hunter Chasers but will be sometimes shown separately for information purposes.

Yearlings and two-year-olds in training that are recorded as dual horses have been re-coded as flat horses.

Hunter Chasers are not included in any counts of Jump Horses or Total figures but will be sometimes shown separately for information purposes.

Horses' training locations are defined by the trainers' primary training location. Training regions are defined the same as regions for the Fixture List; 'North' is north of latitude 53.42911, 'South' is south of latitude 51.88002 and 'Midlands' is anywhere in between. Training centres are defined by postcodes and surrounding areas.

Runners

Unless otherwise specified, Total Runners and Individual Runners metrics only counts runners that ran in GB races including any voided races. Withdrawn horses are not included.

Hunter Chases are not included in this section but will be sometimes shown separately for information purposes.

Total Runners is a count of all runners in races, whilst individual runners only counts each individual horse once.

Monthly Horses in Training

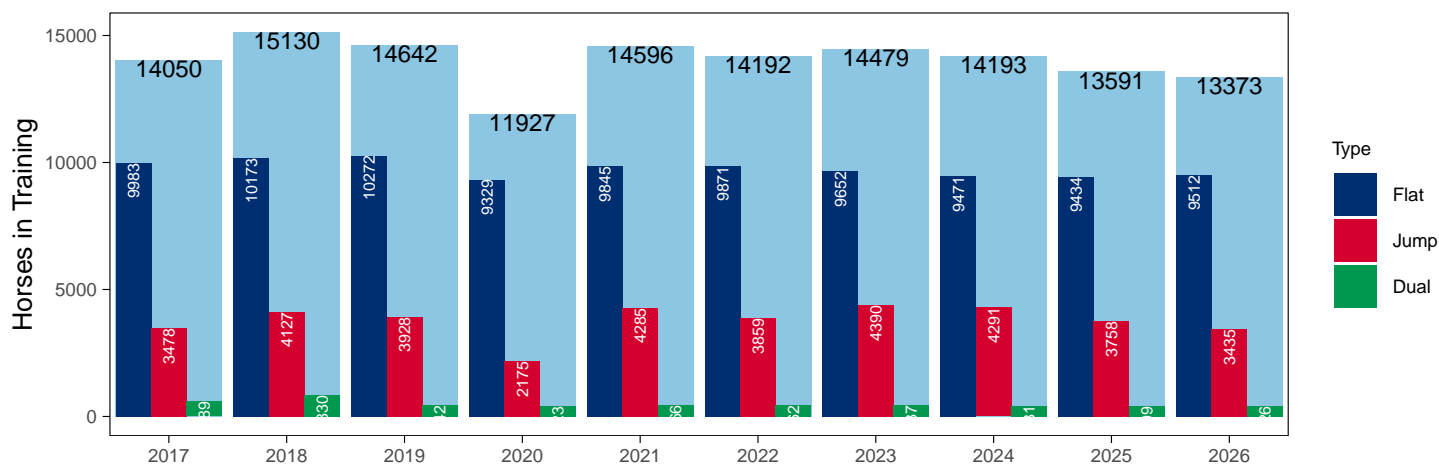
May 2026 Horses in Training Snapshot versus Previous Years

Type	2017	2018	2019	2020	2021	2022	2023	2024	2025	2026	vs. Last Year	vs. Pre-Covid
Flat	9983	10173	10272	9329	9845	9871	9652	9471	9434	9512	+78 / +0.8%	-760 / -7.4%
Jump	3478	4127	3928	2175	4285	3859	4390	4291	3758	3435	-323 / -8.6%	-493 / -12.6%
Dual	589	830	442	423	466	462	437	431	399	426	+27 / +6.8%	-16 / -3.6%
Hunter	1957	1797	1710	1446	1201	1312	1250	1424	1130	1055	-75 / -6.6%	-655 / -38.3%
Total	14050	15130	14642	11927	14596	14192	14479	14193	13591	13373	-218 / -1.6%	-1269 / -8.7%

'vs. Pre-Covid' is comparison between 2026 and 2019

Snapshot of Total Horses in Training in May

Horses in Training in May, shown by Training Type



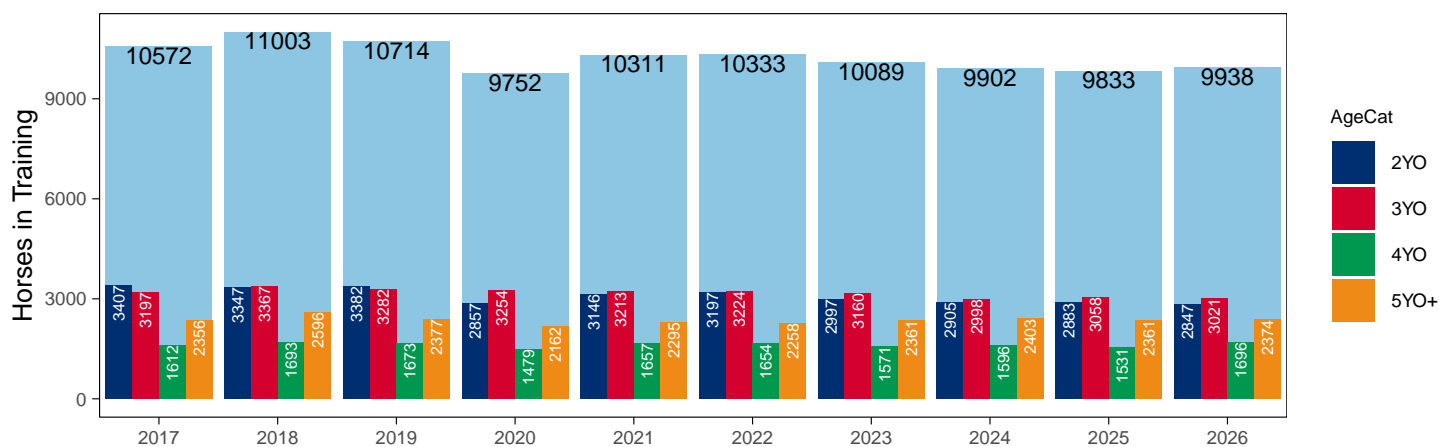
Flat (including Dual)

AgeCat	2017	2018	2019	2020	2021	2022	2023	2024	2025	2026	vs. Last Year	vs. Pre-Covid
2YO	3407	3347	3382	2857	3146	3197	2997	2905	2883	2847	-36 / -1.2%	-535 / -15.8%
3YO	3197	3367	3282	3254	3213	3224	3160	2998	3058	3021	-37 / -1.2%	-261 / -8.0%
4YO	1612	1693	1673	1479	1657	1654	1571	1596	1531	1696	+165 / +10.8%	+23 / +1.4%
5YO+	2356	2596	2377	2162	2295	2258	2361	2403	2361	2374	+13 / +0.6%	-3 / -0.1%
Total	10572	11003	10714	9752	10311	10333	10089	9902	9833	9938	+105 / +1.1%	-776 / -7.2%

'vs. Pre-Covid' is comparison between 2026 and 2019

Snapshot of Flat Horses in Training in May

Flat Horses in Training in May, shown by Age



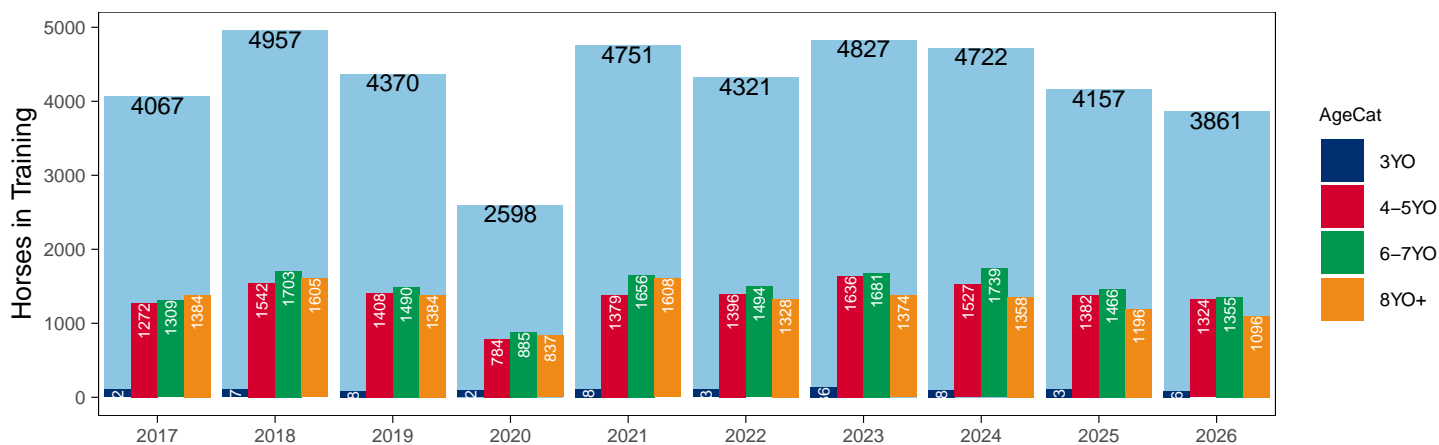
Jump (including Dual)

AgeCat	2017	2018	2019	2020	2021	2022	2023	2024	2025	2026	vs. Last Year	vs. Pre-Covid
3YO	102	107	88	92	108	103	136	98	113	86	-27 / -23.9%	-2 / -2.3%
4-5YO	1272	1542	1408	784	1379	1396	1636	1527	1382	1324	-58 / -4.2%	-84 / -6.0%
6-7YO	1309	1703	1490	885	1656	1494	1681	1739	1466	1355	-111 / -7.6%	-135 / -9.1%
8YO+	1384	1605	1384	837	1608	1328	1374	1358	1196	1096	-100 / -8.4%	-288 / -20.8%
Total	4067	4957	4370	2598	4751	4321	4827	4722	4157	3861	-296 / -7.1%	-509 / -11.6%

'vs. Pre-Covid' is comparison between 2026 and 2019

Snapshot of Jump Horses in Training in May

Jump Horses in Training in May, shown by Age



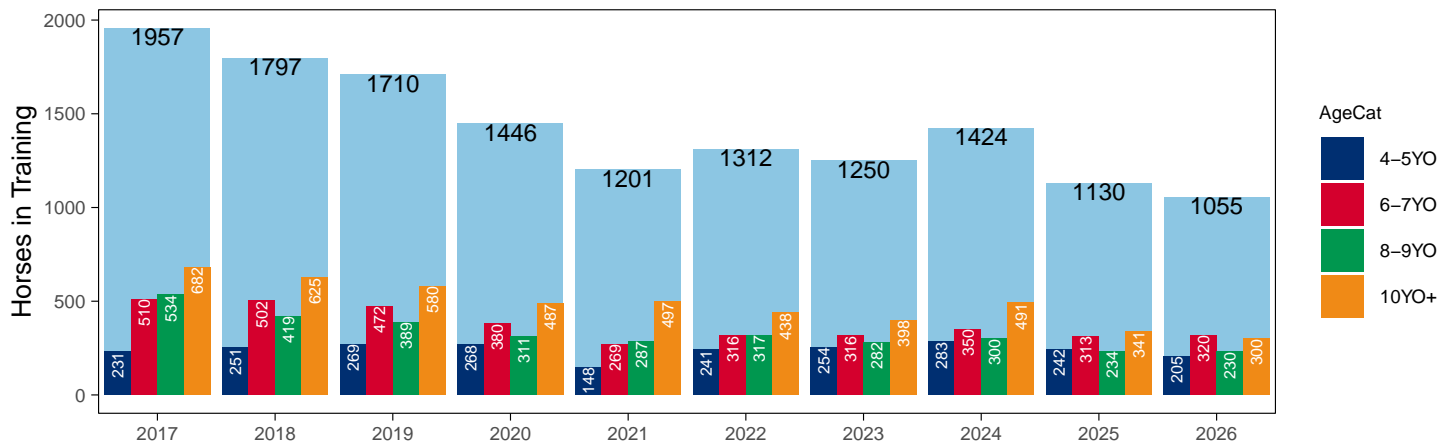
Hunter Chasers

AgeCat	2017	2018	2019	2020	2021	2022	2023	2024	2025	2026	vs. Last Year	vs. Pre-Covid
4-5YO	231	251	269	268	148	241	254	283	242	205	-37 / -15.3%	-64 / -23.8%
6-7YO	510	502	472	380	269	316	316	350	313	320	+7 / +2.2%	-152 / -32.2%
8-9YO	534	419	389	311	287	317	282	300	234	230	-4 / -1.7%	-159 / -40.9%
10YO+	682	625	580	487	497	438	398	491	341	300	-41 / -12.0%	-280 / -48.3%
Total	1957	1797	1710	1446	1201	1312	1250	1424	1130	1055	-75 / -6.6%	-655 / -38.3%

'vs. Pre-Covid' is comparison between 2026 and 2019

Snapshot of Hunter Chasers in Training in May

Hunter Chasers in Training in May, shown by Age



2026 Horses in Training versus Previous Years

Type	Period	Jan	Feb	Mar	Apr	May	Jun	Jul	Aug	Sep	Oct	Nov	Dec
Flat	2026	7935	8487	8981	9219	9512							
	2025	8088	8503	8874	9166	9434	9458	9206	9106	8925	8381	6822	6386
	Pre-Covid	8526	9043	9607	10061	10272	10292	9999	9665	9366	8667	6925	6476
Jump	2026	5397	5355	5292	4889	3435							
	2025	5528	5498	5453	5006	3758	3077	3656	4498	4982	5284	5450	5406
	Pre-Covid	5626	5674	5647	5243	3928	3026	3510	4700	5207	5625	5858	5850
Dual	2026	433	417	421	443	426							
	2025	395	394	414	424	399	383	388	406	421	426	418	423
	Pre-Covid	474	457	454	477	442	437	450	457	450	509	538	505
Hunter	2026	673	799	948	1047	1055							
	2025	680	899	1028	1131	1130	1071						
	Pre-Covid	1006	1390	1585	1716	1710	1653						
Total	2026	13765	14259	14694	14551	13373							
	2025	14011	14395	14741	14596	13591	12918	13250	14010	14328	14091	12690	12215
	Pre-Covid	14626	15174	15708	15781	14642	13755	13959	14822	15023	14801	13321	12831

'Pre-Covid' is 2019 values

Monthly Horses in Training

2026 against 2025 and Pre-Covid, shown with % Difference

Period — Pre-Covid — 2025 — 2026



'Pre-Covid' is 2019 values

Flat (including Dual)

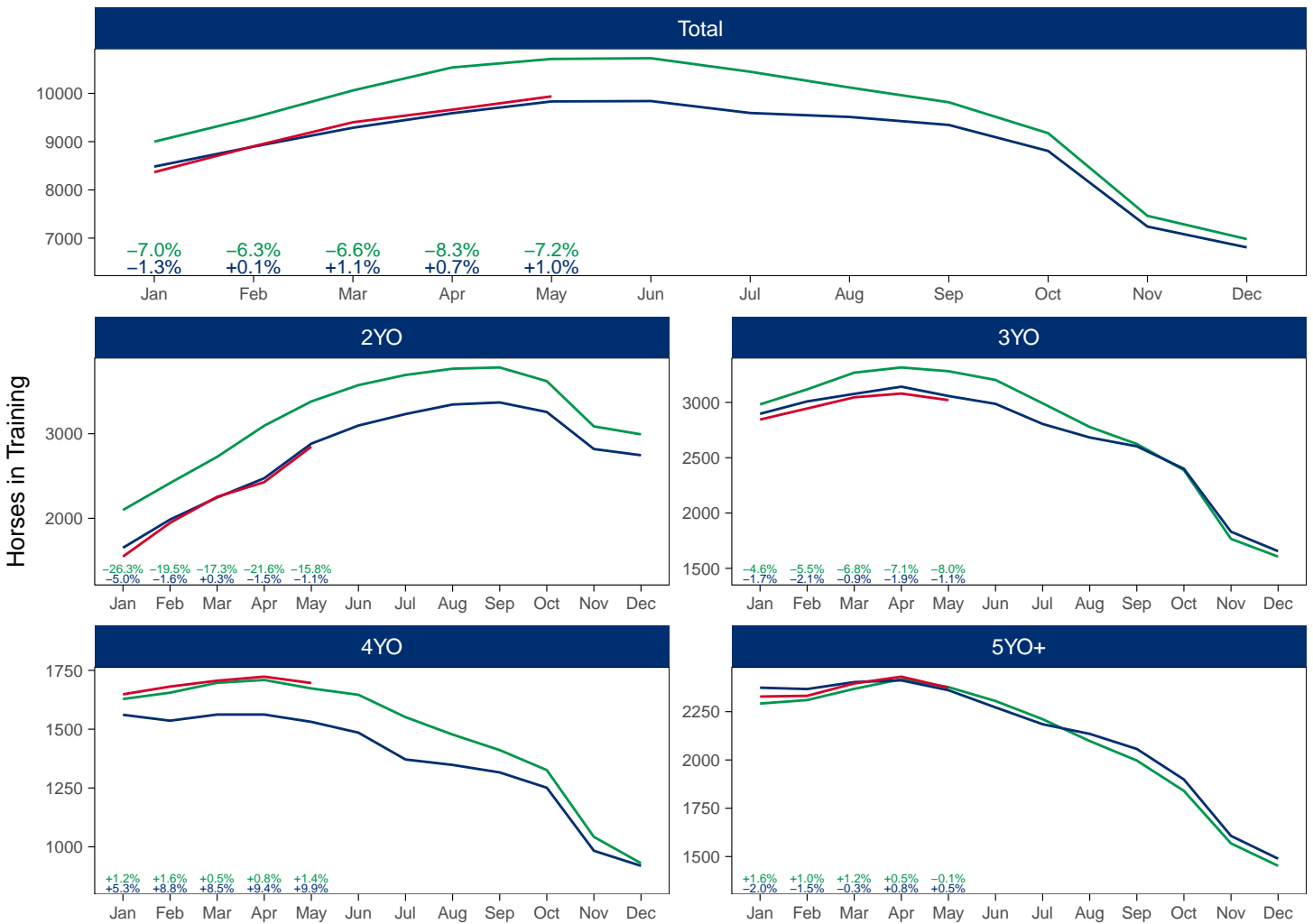
AgeCat	Period	Jan	Feb	Mar	Apr	May	Jun	Jul	Aug	Sep	Oct	Nov	Dec
2YO	2026	1547	1946	2254	2428	2847							
	2025	1651	1985	2246	2474	2883	3097	3233	3346	3370	3257	2819	2746
	Pre-Covid	2098	2417	2727	3095	3382	3575	3695	3769	3784	3622	3087	2993
3YO	2026	2845	2945	3046	3080	3021							
	2025	2897	3009	3077	3142	3058	2987	2805	2683	2603	2400	1831	1655
	Pre-Covid	2982	3118	3269	3316	3282	3203	2992	2778	2624	2388	1766	1606
4YO	2026	1648	1681	1706	1723	1696							
	2025	1561	1536	1562	1562	1531	1485	1371	1348	1316	1251	983	919
	Pre-Covid	1628	1655	1697	1709	1673	1646	1551	1477	1411	1326	1042	930
5YO+	2026	2328	2332	2396	2431	2374							
	2025	2374	2367	2403	2412	2361	2272	2185	2135	2057	1899	1607	1489
	Pre-Covid	2292	2310	2368	2418	2377	2305	2211	2098	1997	1840	1568	1452
Total	2026	8368	8904	9402	9662	9938							
	2025	8483	8897	9288	9590	9833	9841	9594	9512	9346	8807	7240	6809
	Pre-Covid	9000	9500	10061	10538	10714	10729	10449	10122	9816	9176	7463	6981

'Pre-Covid' is 2019 values

Monthly Flat Horses in Training

2026 against 2025 and Pre-Covid, shown with % Difference

Period — Pre-Covid — 2025 — 2026



'Pre-Covid' is 2019 values

Jump (including Dual)

AgeCat	Period	Jan	Feb	Mar	Apr	May	Jun	Jul	Aug	Sep	Oct	Nov	Dec
3YO	2026	39	41	49	68	86							
	2025	38	60	67	92	113	145	230	324	422	519	621	693
	Pre-Covid	31	43	57	72	88	115	167	248	356	493	587	648
4-5YO	2026	1867	1932	1978	1883	1324							
	2025	1825	1883	1926	1799	1382	1155	1434	1892	2103	2234	2348	2345
	Pre-Covid	1855	1930	1963	1876	1408	1083	1352	1977	2232	2415	2558	2559
6-7YO	2026	2165	2116	2083	1912	1355							
	2025	2249	2208	2165	1988	1466	1177	1359	1578	1716	1785	1759	1714
	Pre-Covid	2229	2211	2178	2021	1490	1154	1308	1682	1782	1891	1908	1853
8YO+	2026	1759	1683	1603	1469	1096							
	2025	1811	1741	1709	1551	1196	983	1021	1110	1162	1172	1140	1077
	Pre-Covid	1985	1947	1903	1751	1384	1111	1133	1250	1287	1335	1343	1295
Total	2026	5830	5772	5713	5332	3861							
	2025	5923	5892	5867	5430	4157	3460	4044	4904	5403	5710	5868	5829
	Pre-Covid	6100	6131	6101	5720	4370	3463	3960	5157	5657	6134	6396	6355

'Pre-Covid' is 2019 values

Monthly Jump Horses in Training

2026 against 2025 and Pre-Covid, shown with % Difference

Period — Pre-Covid — 2025 — 2026



Hunter Chasers

AgeCat	Period	Jan	Feb	Mar	Apr	May	Jun	Jul	Aug	Sep	Oct	Nov	Dec
4-5YO	2026	88	118	172	211	205							
	2025	94	150	200	243	242	220						
	Pre-Covid	93	171	214	268	269	264						
6-7YO	2026	212	247	279	308	320							
	2025	210	265	293	310	313	298						
	Pre-Covid	296	402	451	471	472	462						
8-9YO	2026	158	181	212	226	230							
	2025	145	194	214	238	234	220						
	Pre-Covid	244	329	369	392	389	369						
10YO+	2026	215	253	285	302	300							
	2025	231	290	321	340	341	333						
	Pre-Covid	373	488	551	585	580	558						
Total	2026	673	799	948	1047	1055							
	2025	680	899	1028	1131	1130	1071						
	Pre-Covid	1006	1390	1585	1716	1710	1653						

'Pre-Covid' is 2019 values

Monthly Hunter Chasers in Training

2026 against 2025 and Pre-Covid, shown with % Difference

Period — Pre-Covid — 2025 — 2026



'Pre-Covid' is 2019 values

May 2026 Horses in Training by Rating Band Snapshot versus Previous Years

Flat (including Dual)

AgeCat	RatBand	2017	2018	2019	2020	2021	2022	2023	2024	2025	2026
2YO	Unrated	3,407 (100.0%)	3,347 (100.0%)	3,382 (100.0%)	2,857 (100.0%)	3,146 (100.0%)	3,197 (100.0%)	2,997 (100.0%)	2,905 (100.0%)	2,883 (100.0%)	2,847 (100.0%)
	Subtotal	3,407 (100.0%)	3,347 (100.0%)	3,382 (100.0%)	2,857 (100.0%)	3,146 (100.0%)	3,197 (100.0%)	2,997 (100.0%)	2,905 (100.0%)	2,883 (100.0%)	2,847 (100.0%)
3YO	Unrated	1,234 (38.6%)	1,514 (45.0%)	1,364 (41.6%)	1,929 (59.3%)	1,393 (43.4%)	1,341 (41.6%)	1,349 (42.7%)	1,228 (41.0%)	1,241 (40.6%)	1,217 (40.3%)
	0-50	146 (4.6%)	131 (3.9%)	178 (5.4%)	108 (3.3%)	154 (4.8%)	161 (5.0%)	165 (5.2%)	147 (4.9%)	144 (4.7%)	159 (5.3%)
	51-60	305 (9.5%)	273 (8.1%)	355 (10.8%)	207 (6.4%)	317 (9.9%)	312 (9.7%)	291 (9.2%)	298 (9.9%)	295 (9.6%)	302 (10.0%)
	61-70	463 (14.5%)	461 (13.7%)	424 (12.9%)	314 (9.6%)	437 (13.6%)	448 (13.9%)	441 (14.0%)	422 (14.1%)	429 (14.0%)	409 (13.5%)
	71-80	520 (16.3%)	491 (14.6%)	462 (14.1%)	345 (10.6%)	461 (14.3%)	496 (15.4%)	446 (14.1%)	435 (14.5%)	463 (15.1%)	433 (14.3%)
	81-90	338 (10.6%)	290 (8.6%)	275 (8.4%)	193 (5.9%)	250 (7.8%)	256 (7.9%)	277 (8.8%)	270 (9.0%)	267 (8.7%)	274 (9.1%)
	91-100	107 (3.3%)	107 (3.2%)	135 (4.1%)	97 (3.0%)	115 (3.6%)	116 (3.6%)	111 (3.5%)	107 (3.6%)	132 (4.3%)	138 (4.6%)
	101+	84 (2.6%)	100 (3.0%)	89 (2.7%)	61 (1.9%)	86 (2.7%)	94 (2.9%)	80 (2.5%)	91 (3.0%)	87 (2.8%)	89 (2.9%)
	Subtotal	3,197 (100.0%)	3,367 (100.0%)	3,282 (100.0%)	3,254 (100.0%)	3,213 (100.0%)	3,224 (100.0%)	3,160 (100.0%)	2,998 (100.0%)	3,058 (100.0%)	3,021 (100.0%)
	4YO	Unrated	188 (11.7%)	302 (17.8%)	226 (13.5%)	375 (25.4%)	286 (17.3%)	243 (14.7%)	236 (15.0%)	201 (12.6%)	199 (13.0%)
0-50		147 (9.1%)	172 (10.2%)	176 (10.5%)	145 (9.8%)	159 (9.6%)	175 (10.6%)	187 (11.9%)	159 (10.0%)	152 (9.9%)	167 (9.8%)
51-60		202 (12.5%)	183 (10.8%)	241 (14.4%)	165 (11.2%)	227 (13.7%)	227 (13.7%)	214 (13.6%)	271 (17.0%)	222 (14.5%)	241 (14.2%)
61-70		263 (16.3%)	282 (16.7%)	255 (15.2%)	210 (14.2%)	289 (17.4%)	277 (16.7%)	262 (16.7%)	271 (17.0%)	249 (16.3%)	294 (17.3%)
71-80		325 (20.2%)	306 (18.1%)	307 (18.4%)	204 (13.8%)	283 (17.1%)	307 (18.6%)	285 (18.1%)	305 (19.1%)	250 (16.3%)	277 (16.3%)
81-90		242 (15.0%)	218 (12.9%)	208 (12.4%)	175 (11.8%)	193 (11.6%)	211 (12.8%)	192 (12.2%)	190 (11.9%)	225 (14.7%)	248 (14.6%)
91-100		128 (7.9%)	134 (7.9%)	152 (9.1%)	125 (8.5%)	141 (8.5%)	119 (7.2%)	95 (6.0%)	112 (7.0%)	118 (7.7%)	146 (8.6%)
101+		117 (7.3%)	96 (5.7%)	108 (6.5%)	80 (5.4%)	79 (4.8%)	95 (5.7%)	100 (6.4%)	87 (5.5%)	116 (7.6%)	99 (5.8%)
Subtotal		1,612 (100.0%)	1,693 (100.0%)	1,673 (100.0%)	1,479 (100.0%)	1,657 (100.0%)	1,654 (100.0%)	1,571 (100.0%)	1,596 (100.0%)	1,531 (100.0%)	1,696 (100.0%)
5YO+		Unrated	260 (11.0%)	490 (18.9%)	273 (11.5%)	503 (23.3%)	314 (13.7%)	352 (15.6%)	279 (11.8%)	289 (12.0%)	260 (11.0%)
	0-50	238 (10.1%)	283 (10.9%)	341 (14.3%)	227 (10.5%)	299 (13.0%)	291 (12.9%)	301 (12.7%)	309 (12.9%)	317 (13.4%)	304 (12.8%)
	51-60	341 (14.5%)	376 (14.5%)	380 (16.0%)	278 (12.9%)	394 (17.2%)	349 (15.5%)	403 (17.1%)	446 (18.6%)	427 (18.1%)	431 (18.2%)
	61-70	424 (18.0%)	397 (15.3%)	407 (17.1%)	334 (15.4%)	392 (17.1%)	382 (16.9%)	440 (18.6%)	445 (18.5%)	422 (17.9%)	401 (16.9%)
	71-80	386 (16.4%)	369 (14.2%)	360 (15.1%)	307 (14.2%)	316 (13.8%)	309 (13.7%)	366 (15.5%)	360 (15.0%)	374 (15.8%)	418 (17.6%)
	81-90	309 (13.1%)	324 (12.5%)	277 (11.7%)	234 (10.8%)	245 (10.7%)	253 (11.2%)	257 (10.9%)	276 (11.5%)	285 (12.1%)	263 (11.1%)
	91-100	205 (8.7%)	189 (7.3%)	181 (7.6%)	144 (6.7%)	165 (7.2%)	170 (7.5%)	168 (7.1%)	152 (6.3%)	135 (5.7%)	147 (6.2%)
	101+	193 (8.2%)	168 (6.5%)	158 (6.6%)	135 (6.2%)	170 (7.4%)	152 (6.7%)	147 (6.2%)	126 (5.2%)	141 (6.0%)	168 (7.1%)
	Subtotal	2,356 (100.0%)	2,596 (100.0%)	2,377 (100.0%)	2,162 (100.0%)	2,295 (100.0%)	2,258 (100.0%)	2,361 (100.0%)	2,403 (100.0%)	2,361 (100.0%)	2,374 (100.0%)
	Overall	Unrated	5,089 (48.1%)	5,653 (51.4%)	5,245 (49.0%)	5,664 (58.1%)	5,139 (49.8%)	5,133 (49.7%)	4,861 (48.2%)	4,623 (46.7%)	4,583 (46.6%)
0-50		531 (5.0%)	586 (5.3%)	695 (6.5%)	480 (4.9%)	612 (5.9%)	627 (6.1%)	653 (6.5%)	615 (6.2%)	613 (6.2%)	630 (6.3%)
51-60		848 (8.0%)	832 (7.6%)	976 (9.1%)	650 (6.7%)	938 (9.1%)	888 (8.6%)	908 (9.0%)	1,015 (10.3%)	944 (9.6%)	974 (9.8%)
61-70		1,150 (10.9%)	1,140 (10.4%)	1,086 (10.1%)	858 (8.8%)	1,118 (10.8%)	1,107 (10.7%)	1,143 (11.3%)	1,138 (11.5%)	1,100 (11.2%)	1,104 (11.1%)
71-80		1,231 (11.6%)	1,166 (10.6%)	1,129 (10.5%)	856 (8.8%)	1,060 (10.3%)	1,112 (10.8%)	1,097 (10.9%)	1,100 (11.1%)	1,087 (11.1%)	1,128 (11.4%)
81-90		889 (8.4%)	832 (7.6%)	760 (7.1%)	602 (6.2%)	688 (6.7%)	720 (7.0%)	726 (7.2%)	736 (7.4%)	777 (7.9%)	785 (7.9%)
91-100		440 (4.2%)	430 (3.9%)	468 (4.4%)	366 (3.8%)	421 (4.1%)	405 (3.9%)	374 (3.7%)	371 (3.7%)	385 (3.9%)	431 (4.3%)
101+	394 (3.7%)	364 (3.3%)	355 (3.3%)	276 (2.8%)	335 (3.2%)	341 (3.3%)	327 (3.2%)	304 (3.1%)	344 (3.5%)	356 (3.6%)	
Total	10,572 (100.0%)	11,003 (100.0%)	10,714 (100.0%)	9,752 (100.0%)	10,311 (100.0%)	10,333 (100.0%)	10,089 (100.0%)	9,902 (100.0%)	9,833 (100.0%)	9,938 (100.0%)	

Where a horse has more than one published rating (published Flat Turf and published Flat AWT mark), the higher of the two is taken.

Jump (including Dual)

AgeCat	RatBand	2017	2018	2019	2020	2021	2022	2023	2024	2025	2026
3YO	Unrated	102 (100.0%)	107 (100.0%)	88 (100.0%)	92 (100.0%)	108 (100.0%)	103 (100.0%)	136 (100.0%)	98 (100.0%)	113 (100.0%)	86 (100.0%)
	Subtotal	102 (100.0%)	107 (100.0%)	88 (100.0%)	92 (100.0%)	108 (100.0%)	103 (100.0%)	136 (100.0%)	98 (100.0%)	113 (100.0%)	86 (100.0%)
4-5YO	Unrated	870 (68.4%)	1,058 (68.6%)	967 (68.7%)	552 (70.4%)	1,002 (72.7%)	976 (69.9%)	1,155 (70.6%)	1,062 (69.5%)	925 (66.9%)	871 (65.8%)
	0-100	150 (11.8%)	159 (10.3%)	151 (10.7%)	102 (13.0%)	190 (13.8%)	241 (17.3%)	286 (17.5%)	282 (18.5%)	265 (19.2%)	265 (20.0%)
	101-110	78 (6.1%)	120 (7.8%)	96 (6.8%)	46 (5.9%)	67 (4.9%)	85 (6.1%)	99 (6.1%)	91 (6.0%)	90 (6.5%)	89 (6.7%)
	111-120	87 (6.8%)	105 (6.8%)	89 (6.3%)	44 (5.6%)	69 (5.0%)	62 (4.4%)	64 (3.9%)	55 (3.6%)	69 (5.0%)	57 (4.3%)
	121-130	52 (4.1%)	61 (4.0%)	69 (4.9%)	32 (4.1%)	36 (2.6%)	26 (1.9%)	25 (1.5%)	24 (1.6%)	23 (1.7%)	29 (2.2%)
	131-140	26 (2.0%)	26 (1.7%)	21 (1.5%)	7 (0.9%)	11 (0.8%)	5 (0.4%)	6 (0.4%)	9 (0.6%)	5 (0.4%)	9 (0.7%)
	141-150	7 (0.6%)	8 (0.5%)	12 (0.9%)	1 (0.1%)	3 (0.2%)	1 (0.1%)	1 (0.1%)	3 (0.2%)	3 (0.2%)	4 (0.3%)
	151+	2 (0.2%)	5 (0.3%)	3 (0.2%)	NA (-)	1 (0.1%)	NA (-)	NA (-)	1 (0.1%)	2 (0.1%)	NA (-)
Subtotal	1,272 (100.0%)	1,542 (100.0%)	1,408 (100.0%)	784 (100.0%)	1,379 (100.0%)	1,396 (100.0%)	1,636 (100.0%)	1,527 (100.0%)	1,382 (100.0%)	1,324 (100.0%)	
6-7YO	Unrated	323 (24.7%)	441 (25.9%)	339 (22.8%)	296 (33.4%)	401 (24.2%)	412 (27.6%)	424 (25.2%)	441 (25.4%)	330 (22.5%)	307 (22.7%)
	0-100	351 (26.8%)	418 (24.5%)	399 (26.8%)	217 (24.5%)	538 (32.5%)	508 (34.0%)	602 (35.8%)	677 (38.9%)	546 (37.2%)	505 (37.3%)
	101-110	193 (14.7%)	242 (14.2%)	201 (13.5%)	129 (14.6%)	208 (12.6%)	223 (14.9%)	247 (14.7%)	279 (16.0%)	249 (17.0%)	213 (15.7%)
	111-120	192 (14.7%)	253 (14.9%)	228 (15.3%)	111 (12.5%)	213 (12.9%)	158 (10.6%)	220 (13.1%)	184 (10.6%)	194 (13.2%)	183 (13.5%)
	121-130	131 (10.0%)	201 (11.8%)	174 (11.7%)	74 (8.4%)	183 (11.1%)	114 (7.6%)	122 (7.3%)	101 (5.8%)	74 (5.0%)	95 (7.0%)
	131-140	87 (6.6%)	102 (6.0%)	111 (7.4%)	46 (5.2%)	87 (5.3%)	62 (4.1%)	49 (2.9%)	46 (2.6%)	59 (4.0%)	34 (2.5%)
	141-150	24 (1.8%)	34 (2.0%)	21 (1.4%)	8 (0.9%)	21 (1.3%)	14 (0.9%)	13 (0.8%)	8 (0.5%)	11 (0.8%)	12 (0.9%)
	151+	8 (0.6%)	12 (0.7%)	17 (1.1%)	4 (0.5%)	5 (0.3%)	3 (0.2%)	4 (0.2%)	3 (0.2%)	3 (0.2%)	6 (0.4%)
Subtotal	1,309 (100.0%)	1,703 (100.0%)	1,490 (100.0%)	885 (100.0%)	1,656 (100.0%)	1,494 (100.0%)	1,681 (100.0%)	1,739 (100.0%)	1,466 (100.0%)	1,355 (100.0%)	
8YO+	Unrated	156 (11.3%)	217 (13.5%)	179 (12.9%)	202 (24.1%)	182 (11.3%)	239 (18.0%)	223 (16.2%)	229 (16.9%)	175 (14.6%)	147 (13.4%)
	0-100	508 (36.7%)	530 (33.0%)	463 (33.5%)	250 (29.9%)	574 (35.7%)	430 (32.4%)	437 (31.8%)	464 (34.2%)	446 (37.3%)	414 (37.8%)
	101-110	210 (15.2%)	256 (16.0%)	213 (15.4%)	100 (11.9%)	234 (14.6%)	176 (13.3%)	219 (15.9%)	198 (14.6%)	174 (14.5%)	167 (15.2%)
	111-120	194 (14.0%)	198 (12.3%)	214 (15.5%)	98 (11.7%)	231 (14.4%)	196 (14.8%)	190 (13.8%)	203 (14.9%)	175 (14.6%)	156 (14.2%)
	121-130	160 (11.6%)	207 (12.9%)	147 (10.6%)	90 (10.8%)	208 (12.9%)	141 (10.6%)	162 (11.8%)	162 (11.9%)	139 (11.6%)	119 (10.9%)
	131-140	106 (7.7%)	129 (8.0%)	106 (7.7%)	66 (7.9%)	127 (7.9%)	99 (7.5%)	98 (7.1%)	72 (5.3%)	98 (7.1%)	63 (5.7%)
	141-150	35 (2.5%)	55 (3.4%)	44 (3.2%)	21 (2.5%)	40 (2.5%)	36 (2.7%)	34 (2.5%)	21 (1.5%)	25 (2.1%)	24 (2.2%)
	151+	15 (1.1%)	13 (0.8%)	18 (1.3%)	10 (1.2%)	12 (0.7%)	11 (0.8%)	11 (0.8%)	9 (0.7%)	9 (0.8%)	6 (0.5%)
Subtotal	1,384 (100.0%)	1,605 (100.0%)	1,384 (100.0%)	837 (100.0%)	1,608 (100.0%)	1,328 (100.0%)	1,374 (100.0%)	1,358 (100.0%)	1,196 (100.0%)	1,096 (100.0%)	
Overall	Unrated	1,451 (35.7%)	1,823 (36.8%)	1,573 (36.0%)	1,142 (44.0%)	1,693 (35.6%)	1,730 (40.0%)	1,938 (40.1%)	1,830 (38.8%)	1,543 (37.1%)	1,411 (36.5%)
	0-100	1,009 (24.8%)	1,107 (22.3%)	1,013 (23.2%)	569 (21.9%)	1,302 (27.4%)	1,179 (27.3%)	1,325 (27.4%)	1,423 (30.1%)	1,257 (30.2%)	1,184 (30.7%)
	101-110	481 (11.8%)	618 (12.5%)	510 (11.7%)	275 (10.6%)	509 (10.7%)	484 (11.2%)	565 (11.7%)	568 (12.0%)	513 (12.3%)	469 (12.1%)
	111-120	473 (11.6%)	556 (11.2%)	531 (12.2%)	253 (9.7%)	513 (10.8%)	416 (9.6%)	474 (9.8%)	442 (9.4%)	438 (10.5%)	396 (10.3%)
	121-130	343 (8.4%)	469 (9.5%)	390 (8.9%)	196 (7.5%)	427 (9.0%)	281 (6.5%)	309 (6.4%)	287 (6.1%)	236 (5.7%)	243 (6.3%)
	131-140	219 (5.4%)	257 (5.2%)	238 (5.4%)	119 (4.6%)	225 (4.7%)	166 (3.8%)	153 (3.2%)	127 (2.7%)	117 (2.8%)	106 (2.7%)
	141-150	66 (1.6%)	97 (2.0%)	77 (1.8%)	30 (1.2%)	64 (1.3%)	51 (1.2%)	48 (1.0%)	32 (0.7%)	39 (0.9%)	40 (1.0%)
151+	25 (0.6%)	30 (0.6%)	38 (0.9%)	14 (0.5%)	18 (0.4%)	14 (0.3%)	15 (0.3%)	13 (0.3%)	14 (0.3%)	12 (0.3%)	
Total	4,067 (100.0%)	4,957 (100.0%)	4,370 (100.0%)	2,598 (100.0%)	4,751 (100.0%)	4,321 (100.0%)	4,827 (100.0%)	4,722 (100.0%)	4,157 (100.0%)	3,861 (100.0%)	

Where a horse has more than one published rating (published Hurdle and published Chase mark), the higher of the two is taken.

Young Horses Entering Training

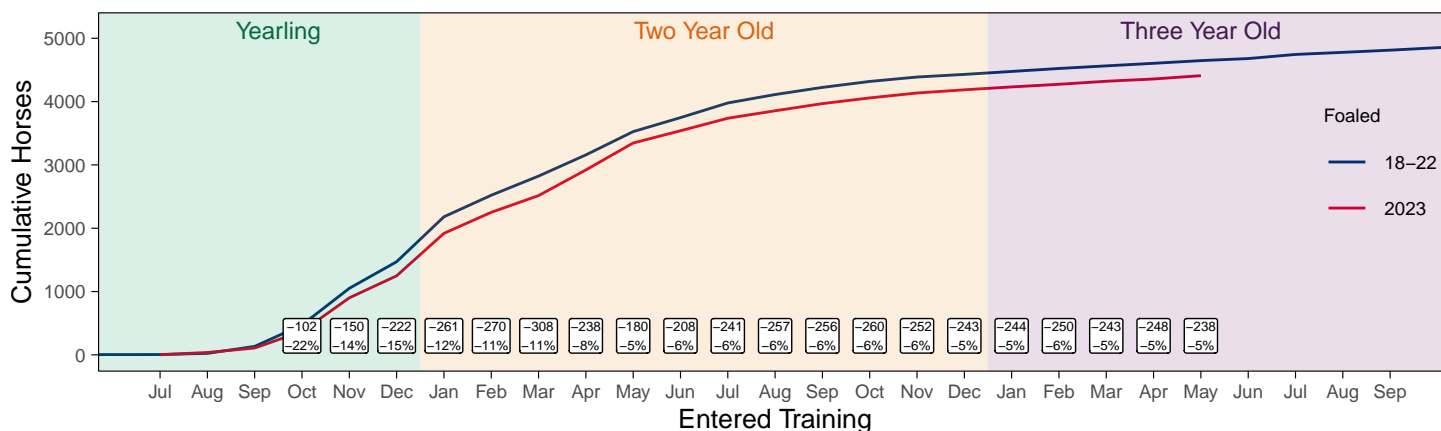
Flat Yearlings in Training versus Previous Years

Period	Jan	Feb	Mar	Apr	May	Jun	Jul	Aug	Sep	Oct	Nov	Dec
2026	1	1	1	1	1							
2025	0	0	0	1	1	1	1	1	56	177	583	1144
5YrAvg	0	0	0	1	1	1	1	2	53	172	525	908

Foals Entering Training for the First Time

2023 Foals Entering Training Over Time

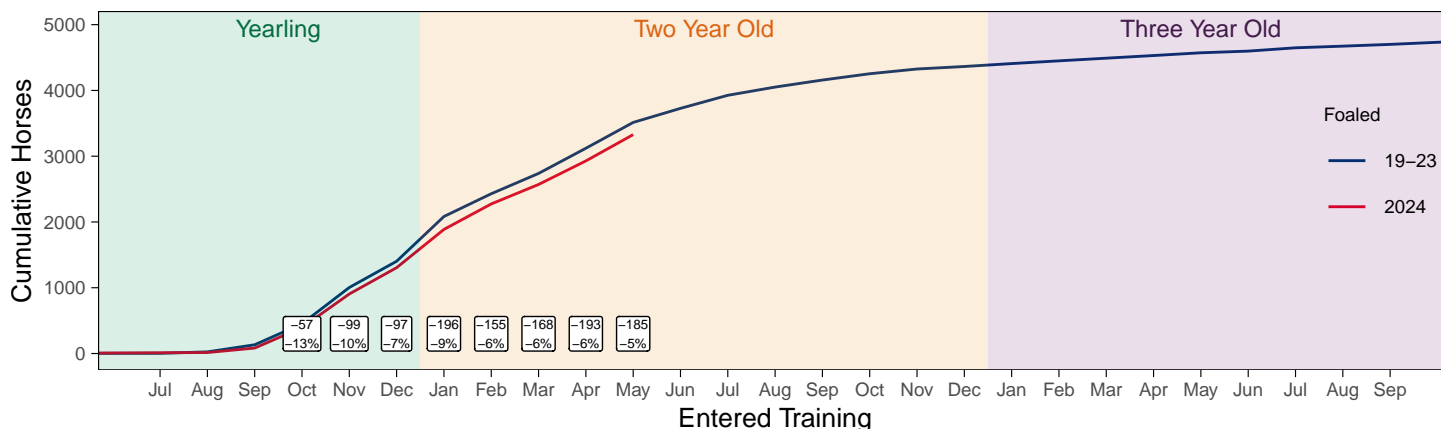
Cumulative Flat Horses foaled in 2023 shown by first in training notification against trend



Cumulative individual horses entering training for the first time by the end of each month.

2024 Foals Entering Training Over Time

Cumulative Flat Horses foaled in 2024 shown by first in training notification against trend



Cumulative individual horses entering training for the first time by the end of each month.

Year to Date Horses in Training

Type	2017	2018	2019	2020	2021	2022	2023	2024	2025	2026	vs. Last Year	vs. Pre-Covid
Flat	12180	12100	12274	11830	11868	11784	11612	11488	11421	11421	0 / 0.0%	-853 / -6.9%
Jump	6679	6445	7097	6733	7736	7225	7225	7102	6822	6526	-296 / -4.3%	-571 / -8.0%
Dual	835	1263	776	781	778	771	655	702	623	717	+94 / +15.1%	-59 / -7.6%
Hunter	1963	1795	1727	1474	1197	1315	1266	1421	1121	1044	-77 / -6.9%	-683 / -39.5%
Total	19694	19808	20147	19344	20382	19780	19492	19292	18866	18664	-202 / -1.1%	-1483 / -7.4%

'vs. Pre-Covid' is comparison between 2026 and 2019

Flat

AgeCat	2017	2018	2019	2020	2021	2022	2023	2024	2025	2026	vs. Last Year	vs. Pre-Covid
2YO	3900	3826	3866	3381	3581	3569	3494	3375	3310	3285	-25 / -0.8%	-581 / -15.0%
3YO	3817	3948	3884	3931	3791	3765	3666	3575	3636	3563	-73 / -2.0%	-321 / -8.3%
4YO	1889	1827	1944	1893	1972	1965	1886	1904	1830	1938	+108 / +5.9%	-6 / -0.3%
5YO+	2574	2499	2580	2625	2524	2485	2566	2634	2645	2635	-10 / -0.4%	+55 / +2.1%
Total	12180	12100	12274	11830	11868	11784	11612	11488	11421	11421	0 / 0.0%	-853 / -6.9%

'vs. Pre-Covid' is comparison between 2026 and 2019

Jump

AgeCat	2017	2018	2019	2020	2021	2022	2023	2024	2025	2026	vs. Last Year	vs. Pre-Covid
3YO	56	67	68	47	87	89	98	107	99	74	-25 / -25.3%	+6 / +8.8%
4-5YO	2132	1932	2229	2115	2228	2303	2409	2302	2221	2217	-4 / -0.2%	-12 / -0.5%
6-7YO	2216	2270	2498	2417	2788	2550	2550	2594	2450	2327	-123 / -5.0%	-171 / -6.8%
8YO+	2275	2176	2302	2154	2633	2283	2168	2099	2052	1908	-144 / -7.0%	-394 / -17.1%
Total	6679	6445	7097	6733	7736	7225	7225	7102	6822	6526	-296 / -4.3%	-571 / -8.0%

'vs. Pre-Covid' is comparison between 2026 and 2019

Dual

AgeCat	2017	2018	2019	2020	2021	2022	2023	2024	2025	2026	vs. Last Year	vs. Pre-Covid
3YO	107	91	71	91	98	132	89	99	93	105	+12 / +12.9%	+34 / +47.9%
4YO	217	323	213	201	232	197	186	194	166	205	+39 / +23.5%	-8 / -3.8%
5YO+	511	849	492	489	448	442	380	409	364	407	+43 / +11.8%	-85 / -17.3%
Total	835	1263	776	781	778	771	655	702	623	717	+94 / +15.1%	-59 / -7.6%

'vs. Pre-Covid' is comparison between 2026 and 2019

Hunter Chasers

AgeCat	2017	2018	2019	2020	2021	2022	2023	2024	2025	2026	vs. Last Year	vs. Pre-Covid
4-5YO	225	245	282	272	146	242	261	289	236	199	-37 / -15.7%	-83 / -29.4%
6-7YO	519	501	481	391	265	318	317	341	309	316	+7 / +2.3%	-165 / -34.3%
8-9YO	537	419	384	314	291	318	285	299	232	223	-9 / -3.9%	-161 / -41.9%
10YO+	682	630	580	497	495	437	403	492	344	306	-38 / -11.0%	-274 / -47.2%
Total	1963	1795	1727	1474	1197	1315	1266	1421	1121	1044	-77 / -6.9%	-683 / -39.5%

'vs. Pre-Covid' is comparison between 2026 and 2019

Year to Date Runners

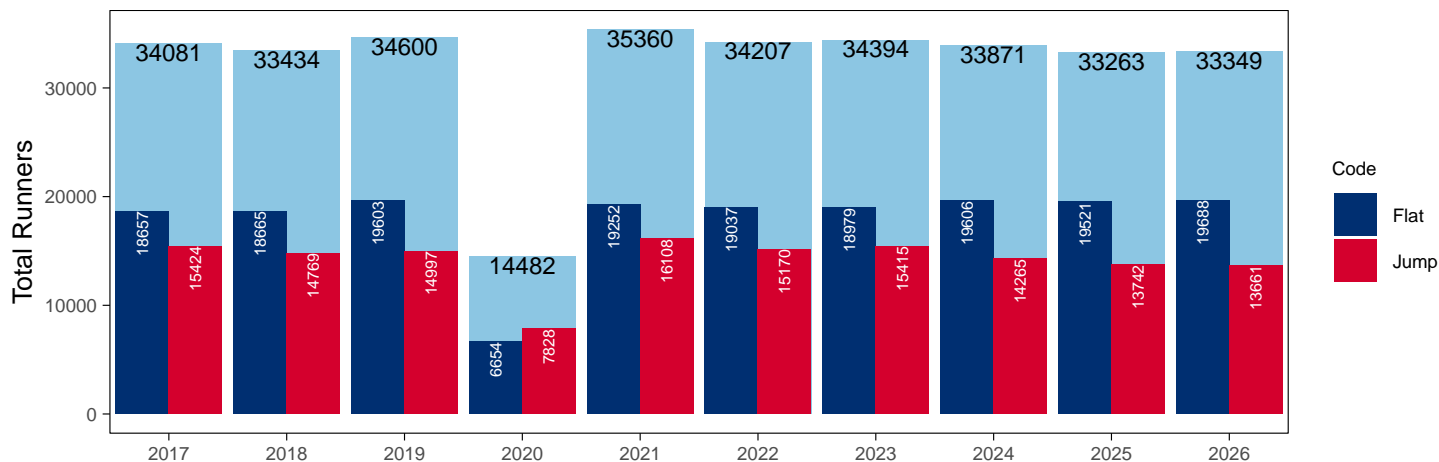
Year to Date Total Runners

Code	2017	2018	2019	2020	2021	2022	2023	2024	2025	2026	vs. Last Year	vs. Pre-Covid
Flat	18657	18665	19603	6654	19252	19037	18979	19606	19521	19688	+167 / +0.9%	+85 / +0.4%
Jump	15424	14769	14997	7828	16108	15170	15415	14265	13742	13661	-81 / -0.6%	-1336 / -8.9%
Total	34081	33434	34600	14482	35360	34207	34394	33871	33263	33349	+86 / +0.3%	-1251 / -3.6%

'vs. Pre-Covid' is comparison between 2026 and 2019

YTD Total Runners

Total Runners in GB Races, shown by Code and Total



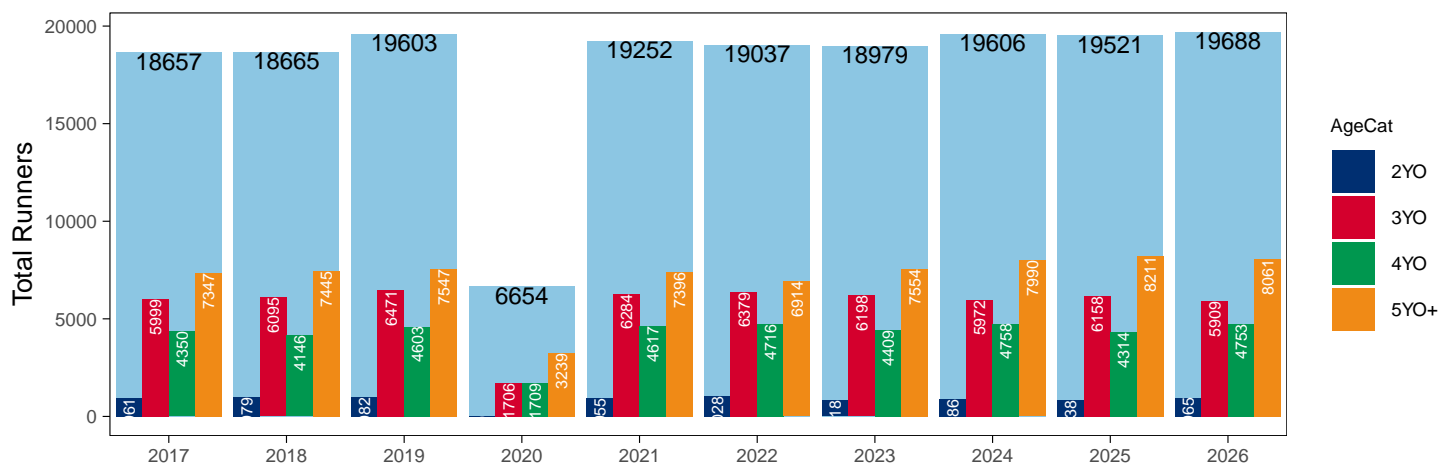
Flat

AgeCat	2017	2018	2019	2020	2021	2022	2023	2024	2025	2026	vs. Last Year	vs. Pre-Covid
2YO	961	979	982		955	1028	818	886	838	965	+127 / +15.2%	-17 / -1.7%
3YO	5999	6095	6471	1706	6284	6379	6198	5972	6158	5909	-249 / -4.0%	-562 / -8.7%
4YO	4350	4146	4603	1709	4617	4716	4409	4758	4314	4753	+439 / +10.2%	+150 / +3.3%
5YO+	7347	7445	7547	3239	7396	6914	7554	7990	8211	8061	-150 / -1.8%	+514 / +6.8%
Total	18657	18665	19603	6654	19252	19037	18979	19606	19521	19688	+167 / +0.9%	+85 / +0.4%

'vs. Pre-Covid' is comparison between 2026 and 2019

YTD Total Flat Runners by Age

Total Runners in GB Flat Races, shown by Age Category and Total



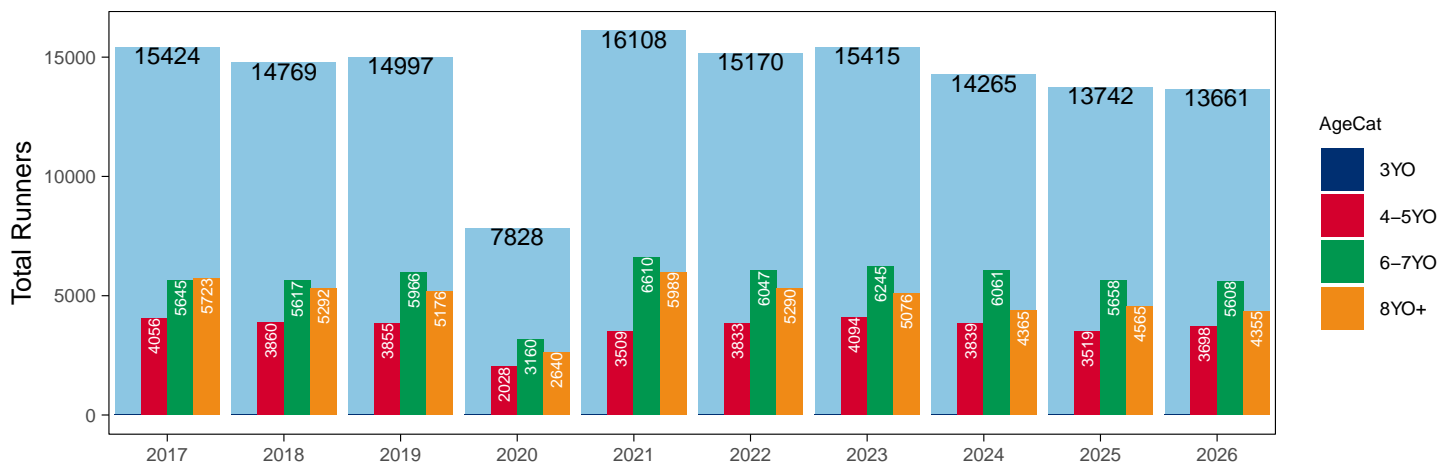
Jump

AgeCat	2017	2018	2019	2020	2021	2022	2023	2024	2025	2026	vs. Last Year	vs. Pre-Covid
3YO											NA / NA	0 / NA
4-5YO	4056	3860	3855	2028	3509	3833	4094	3839	3519	3698	+179 / +5.1%	-157 / -4.1%
6-7YO	5645	5617	5966	3160	6610	6047	6245	6061	5658	5608	-50 / -0.9%	-358 / -6.0%
8YO+	5723	5292	5176	2640	5989	5290	5076	4365	4565	4355	-210 / -4.6%	-821 / -15.9%
Total	15424	14769	14997	7828	16108	15170	15415	14265	13742	13661	-81 / -0.6%	-1336 / -8.9%

'vs. Pre-Covid' is comparison between 2026 and 2019

YTD Total Jump Runners by Age

Total Runners in GB Jump Races, shown by Age Category and Total



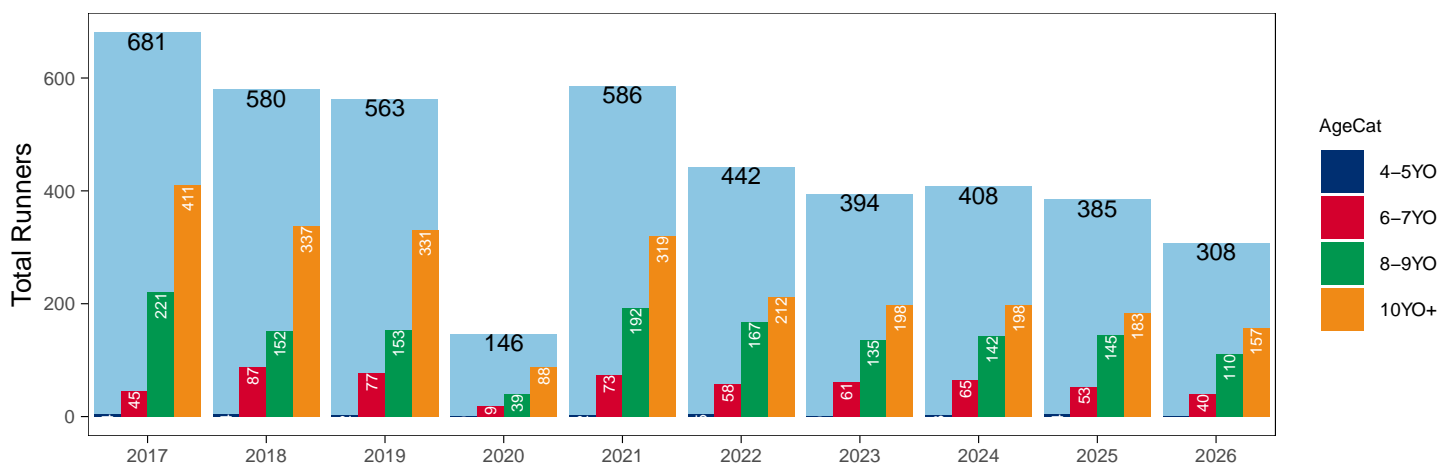
Hunter Chases

AgeCat	2017	2018	2019	2020	2021	2022	2023	2024	2025	2026	vs. Last Year	vs. Pre-Covid
4-5YO	4	4	2		2	5		3	4	1	-3 / -75.0%	-1 / -50.0%
6-7YO	45	87	77	19	73	58	61	65	53	40	-13 / -24.5%	-37 / -48.1%
8-9YO	221	152	153	39	192	167	135	142	145	110	-35 / -24.1%	-43 / -28.1%
10YO+	411	337	331	88	319	212	198	198	183	157	-26 / -14.2%	-174 / -52.6%
Total	681	580	563	146	586	442	394	408	385	308	-77 / -20.0%	-255 / -45.3%

'vs. Pre-Covid' is comparison between 2026 and 2019

YTD Total Hunter Chase Runners by Age

Total Runners in GB Hunter Chases shown by Age Category and Total



Year to Date Total Runners by Country Trained

Code	Country	2017	2018	2019	2020	2021	2022	2023	2024	2025	2026
Flat	GB	18450	18465	19398	6574	19199	18963	18873	19439	19397	19552
	IRE	189	187	189	76	49	63	101	152	116	131
	Other	18	13	16	4	4	11	5	15	8	5
Jump	GB	14962	14411	14549	7561	15805	14656	14829	13732	13140	13129
	IRE	450	349	441	257	300	512	583	530	596	519
	Other	12	9	7	10	3	2	3	3	6	13
Overall	GB	33412	32876	33947	14135	35004	33619	33702	33171	32537	32681
	IRE	639	536	630	333	349	575	684	682	712	650
	Other	30	22	23	14	7	13	8	18	14	18

Year to Date GB Trained Runners Racing Abroad

Code	Country	2017	2018	2019	2020	2021	2022	2023	2024	2025	2026
Flat	IRE	33	29	30	2	6	10	16	14	24	25
	FR	86	74	138	27	34	52	62	66	115	59
	GNY	4	8	12			3	7	13	5	10
	UAE	278	276	303	281	248	276	272	214	228	383
	BAH						41	23	50	89	80
	KSA				15	21	22	15	11	10	13
	Other	45	45	38	26	7	18	41	40	40	36
	Total		446	432	521	351	316	422	436	408	511
Jump	IRE	66	44	57	5	19	26	17	43	83	61
	FR	17	7	15	3	59	55	44	25	13	9
	Other	2	1	1			5		1		
	Total	85	52	73	8	78	86	61	69	96	70

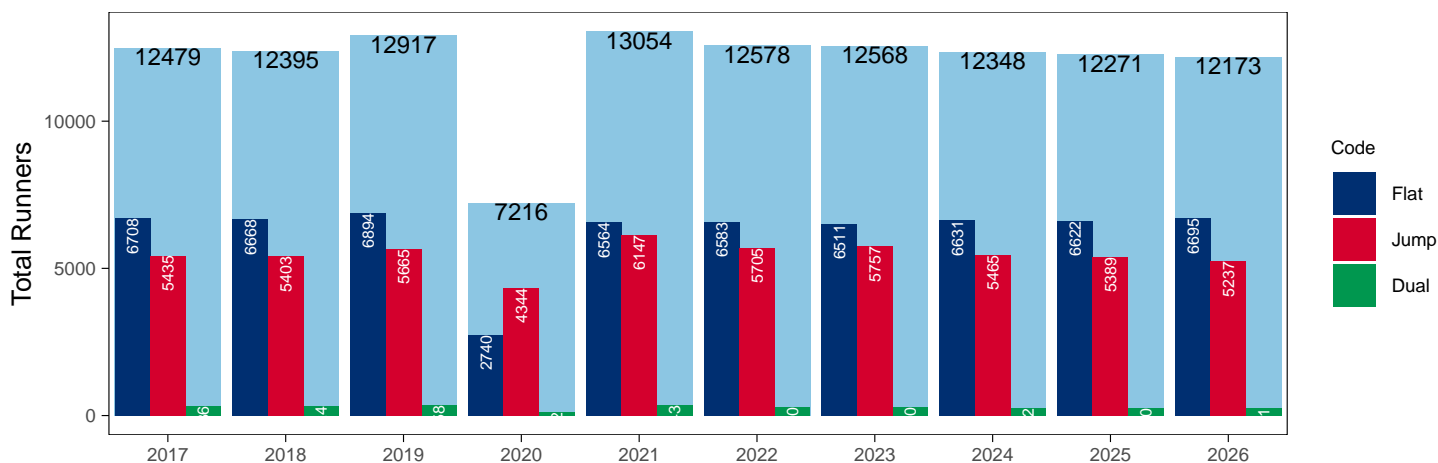
Year to Date Individual Runners

Code	2017	2018	2019	2020	2021	2022	2023	2024	2025	2026	vs. Last Year	vs. Pre-Covid
Flat	6708	6668	6894	2740	6564	6583	6511	6631	6622	6695	+73 / +1.1%	-199 / -2.9%
Jump	5435	5403	5665	4344	6147	5705	5757	5465	5389	5237	-152 / -2.8%	-428 / -7.6%
Dual	336	324	358	132	343	290	300	252	260	241	-19 / -7.3%	-117 / -32.7%
Overall	12479	12395	12917	7216	13054	12578	12568	12348	12271	12173	-98 / -0.8%	-744 / -5.8%

'vs. Pre-Covid' is comparison between 2026 and 2019

YTD Individual Runners

Individual Runners in GB Races, shown by Code and Total



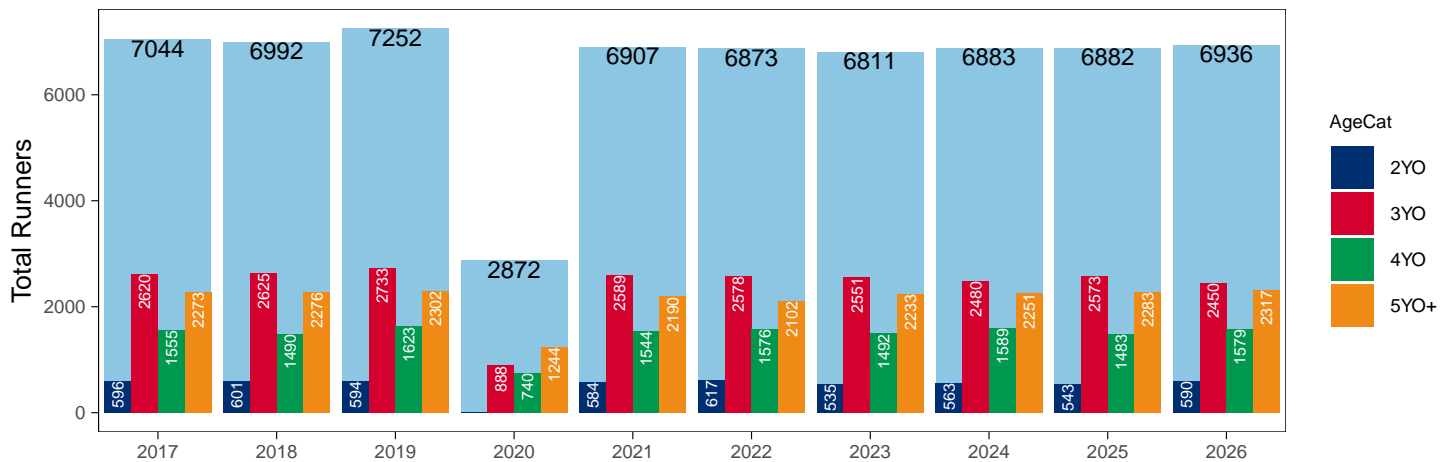
Flat

AgeCat	2017	2018	2019	2020	2021	2022	2023	2024	2025	2026	vs. Last Year	vs. Pre-Covid
2YO	596	601	594		584	617	535	563	543	590	+47 / +8.7%	-4 / -0.7%
3YO	2620	2625	2733	888	2589	2578	2551	2480	2573	2450	-123 / -4.8%	-283 / -10.4%
4YO	1555	1490	1623	740	1544	1576	1492	1589	1483	1579	+96 / +6.5%	-44 / -2.7%
5YO+	2273	2276	2302	1244	2190	2102	2233	2251	2283	2317	+34 / +1.5%	+15 / +0.7%
Total	7044	6992	7252	2872	6907	6873	6811	6883	6882	6936	+54 / +0.8%	-316 / -4.4%

'vs. Pre-Covid' is comparison between 2026 and 2019

YTD Individual Flat Runners by Age

Individual Runners in GB Flat Races, shown by Age Category and Total



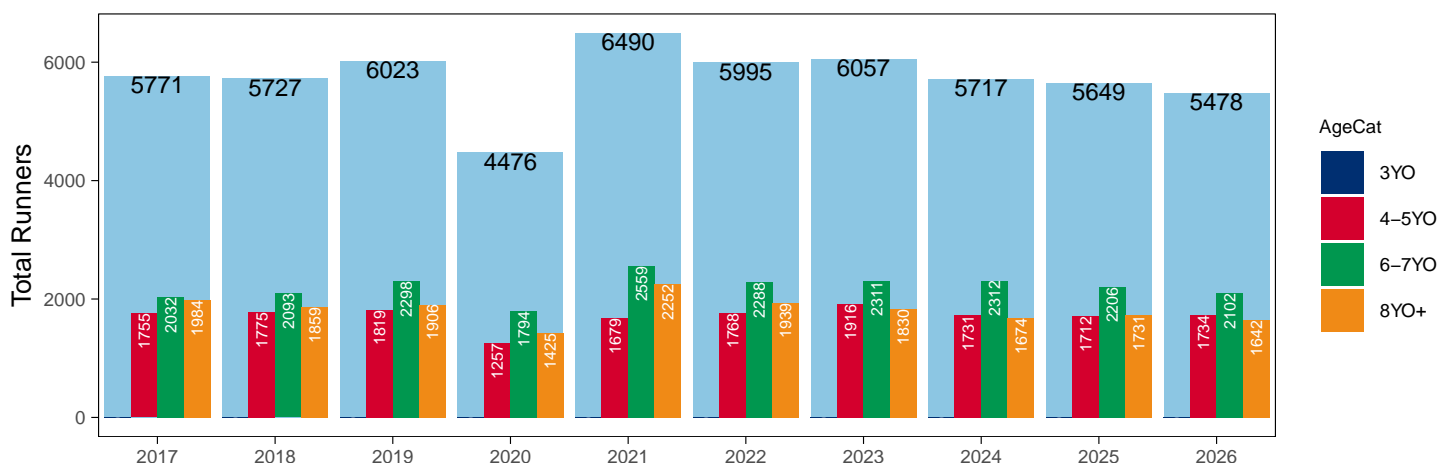
Jump

AgeCat	2017	2018	2019	2020	2021	2022	2023	2024	2025	2026	vs. Last Year	vs. Pre-Covid
3YO											NA / NA	0 / NA
4-5YO	1755	1775	1819	1257	1679	1768	1916	1731	1712	1734	+22 / +1.3%	-85 / -4.7%
6-7YO	2032	2093	2298	1794	2559	2288	2311	2312	2206	2102	-104 / -4.7%	-196 / -8.5%
8YO+	1984	1859	1906	1425	2252	1939	1830	1674	1731	1642	-89 / -5.1%	-264 / -13.9%
Total	5771	5727	6023	4476	6490	5995	6057	5717	5649	5478	-171 / -3.0%	-545 / -9.0%

'vs. Pre-Covid' is comparison between 2026 and 2019

YTD Individual Jump Runners by Age

Individual Runners in GB Jump Races, shown by Age Category and Total



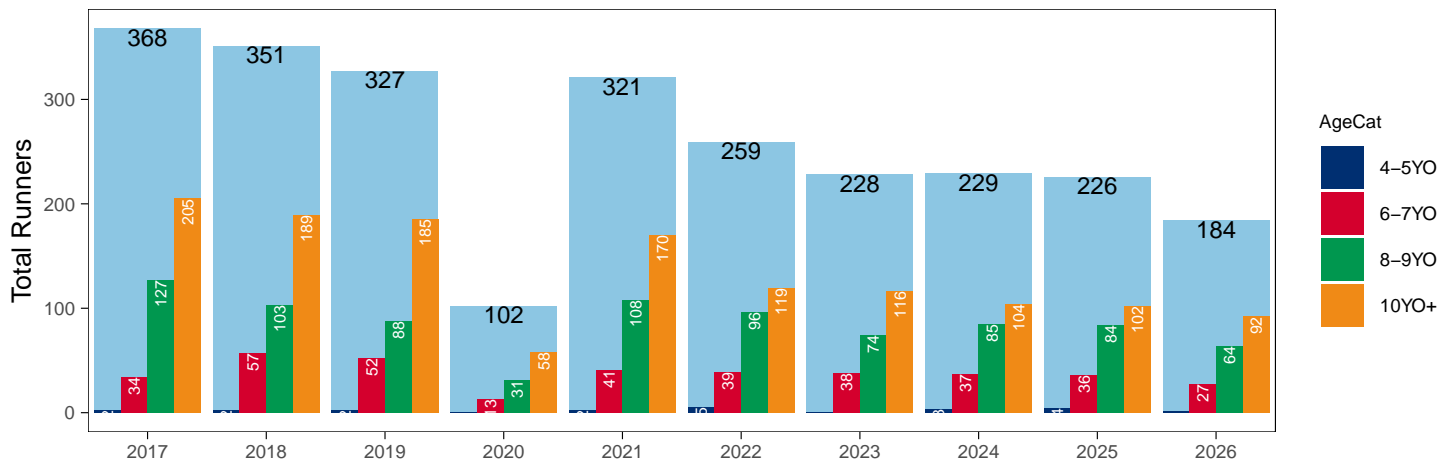
Hunter Chases

AgeCat	2017	2018	2019	2020	2021	2022	2023	2024	2025	2026	vs. Last Year	vs. Pre-Covid
4-5YO	2	2	2		2	5		3	4	1	-3 / -75.0%	-1 / -50.0%
6-7YO	34	57	52	13	41	39	38	37	36	27	-9 / -25.0%	-25 / -48.1%
8-9YO	127	103	88	31	108	96	74	85	84	64	-20 / -23.8%	-24 / -27.3%
10YO+	205	189	185	58	170	119	116	104	102	92	-10 / -9.8%	-93 / -50.3%
Total	368	351	327	102	321	259	228	229	226	184	-42 / -18.6%	-143 / -43.7%

'vs. Pre-Covid' is comparison between 2026 and 2019

YTD Individual Hunter Chase Runners by Age

Individual Runners in GB Hunter Chases shown by Age Category and Total



Year to Date Individual Runners by Country Trained

Code	Country	2017	2018	2019	2020	2021	2022	2023	2024	2025	2026
Flat	GB	6568	6520	6732	2678	6515	6519	6423	6511	6524	6591
	IRE	127	143	149	61	45	56	87	108	92	106
	Other	16	11	14	4	4	10	5	15	8	5
Jump	GB	5105	5124	5326	4104	5888	5301	5319	5070	4934	4803
	IRE	326	275	338	232	256	408	440	398	458	428
	Other	8	8	6	10	3	2	2	2	5	11
Dual	GB	332	320	353	130	342	288	295	249	256	235
	IRE	2	3	5	2	1	1	4	2	3	3
	Other	2									
Overall	GB	12005	11964	12411	6912	12745	12108	12037	11830	11714	11629
	IRE	455	421	492	295	302	465	531	508	553	537
	Other	26	19	20	14	7	12	7	17	13	16

Individual horses may appear under multiple countries.

Year to Date Total Runners by Rating Band

Flat

RatBand	2017	2018	2019	2020	2021	2022	2023	2024	2025	2026
3YO										
Unrated	2,065 (34.4%)	2,228 (36.6%)	2,358 (36.4%)	768 (45.0%)	2,334 (37.1%)	2,269 (35.6%)	2,175 (35.1%)	2,138 (35.8%)	2,231 (36.2%)	2,066 (35.0%)
0-50	305 (5.1%)	272 (4.5%)	401 (6.2%)	154 (9.0%)	385 (6.1%)	402 (6.3%)	393 (6.3%)	399 (6.7%)	364 (5.9%)	385 (6.5%)
51-60	762 (12.7%)	631 (10.4%)	943 (14.6%)	245 (14.4%)	860 (13.7%)	879 (13.8%)	893 (14.4%)	863 (14.5%)	802 (13.0%)	895 (15.1%)
61-70	1,091 (18.2%)	1,099 (18.0%)	1,016 (15.7%)	290 (17.0%)	1,107 (17.6%)	1,130 (17.7%)	1,133 (18.3%)	1,029 (17.2%)	1,073 (17.4%)	1,003 (17.0%)
71-80	973 (16.2%)	1,029 (16.9%)	929 (14.4%)	192 (11.3%)	860 (13.7%)	986 (15.5%)	912 (14.7%)	836 (14.0%)	975 (15.8%)	831 (14.1%)
81-90	521 (8.7%)	501 (8.2%)	468 (7.2%)	44 (2.6%)	414 (6.6%)	440 (6.9%)	422 (6.8%)	438 (7.3%)	449 (7.3%)	443 (7.5%)
91-100	154 (2.6%)	192 (3.2%)	222 (3.4%)	10 (0.6%)	199 (3.2%)	166 (2.6%)	156 (2.5%)	157 (2.6%)	160 (2.6%)	176 (3.0%)
101+	128 (2.1%)	143 (2.3%)	134 (2.1%)	3 (0.2%)	125 (2.0%)	107 (1.7%)	114 (1.8%)	112 (1.9%)	104 (1.7%)	110 (1.9%)
4YO+										
Unrated	298 (2.5%)	375 (3.2%)	410 (3.4%)	183 (3.7%)	399 (3.3%)	352 (3.0%)	317 (2.6%)	345 (2.7%)	350 (2.8%)	334 (2.6%)
0-50	1,368 (11.7%)	1,629 (14.1%)	1,854 (15.3%)	973 (19.7%)	1,824 (15.2%)	1,878 (16.1%)	2,005 (16.8%)	2,035 (16.0%)	2,192 (17.5%)	2,030 (15.8%)
51-60	2,246 (19.2%)	2,287 (19.7%)	2,372 (19.5%)	1,209 (24.4%)	2,461 (20.5%)	2,405 (20.7%)	2,699 (22.6%)	3,041 (23.9%)	2,819 (22.5%)	2,888 (22.5%)
61-70	2,557 (21.9%)	2,395 (20.7%)	2,633 (21.7%)	1,127 (22.8%)	2,774 (23.1%)	2,583 (22.2%)	2,549 (21.3%)	2,842 (22.3%)	2,739 (21.9%)	2,804 (21.9%)
71-80	2,393 (20.5%)	2,110 (18.2%)	2,180 (17.9%)	785 (15.9%)	2,138 (17.8%)	2,022 (17.4%)	2,194 (18.3%)	2,185 (17.1%)	2,151 (17.2%)	2,352 (18.4%)
81-90	1,547 (13.2%)	1,539 (13.3%)	1,395 (11.5%)	433 (8.8%)	1,310 (10.9%)	1,396 (12.0%)	1,241 (10.4%)	1,390 (10.9%)	1,406 (11.2%)	1,408 (11.0%)
91-100	788 (6.7%)	803 (6.9%)	856 (7.0%)	172 (3.5%)	703 (5.9%)	587 (5.0%)	580 (4.8%)	569 (4.5%)	514 (4.1%)	603 (4.7%)
101+	500 (4.3%)	453 (3.9%)	450 (3.7%)	66 (1.3%)	404 (3.4%)	407 (3.5%)	378 (3.2%)	341 (2.7%)	354 (2.8%)	395 (3.1%)

Jump

RatBand	2017	2018	2019	2020	2021	2022	2023	2024	2025	2026
Hurdle										
Unrated	2,378 (26.4%)	2,342 (27.0%)	2,400 (26.8%)	1,376 (29.6%)	2,416 (26.6%)	2,207 (24.7%)	2,453 (26.7%)	2,369 (27.2%)	1,938 (23.4%)	2,156 (25.5%)
0-100	2,210 (24.5%)	1,983 (22.8%)	2,085 (23.3%)	966 (20.8%)	2,540 (28.0%)	2,726 (30.5%)	2,789 (30.4%)	2,759 (31.6%)	2,803 (33.9%)	2,648 (31.3%)
101-110	1,339 (14.8%)	1,221 (14.1%)	1,275 (14.2%)	615 (13.2%)	1,208 (13.3%)	1,354 (15.1%)	1,349 (14.7%)	1,255 (14.4%)	1,255 (15.2%)	1,236 (14.6%)
111-120	1,283 (14.2%)	1,242 (14.3%)	1,298 (14.5%)	618 (13.3%)	1,157 (12.7%)	1,200 (13.4%)	1,194 (13.0%)	1,113 (12.8%)	1,103 (13.3%)	1,219 (14.4%)
121-130	923 (10.2%)	976 (11.2%)	1,010 (11.3%)	490 (10.5%)	978 (10.8%)	780 (8.7%)	831 (9.1%)	722 (8.3%)	653 (7.9%)	700 (8.3%)
131-140	614 (6.8%)	618 (7.1%)	584 (6.5%)	374 (8.0%)	511 (5.6%)	444 (5.0%)	354 (3.9%)	330 (3.8%)	364 (4.4%)	359 (4.2%)
141-150	196 (2.2%)	233 (2.7%)	219 (2.4%)	141 (3.0%)	196 (2.2%)	176 (2.0%)	146 (1.6%)	121 (1.4%)	109 (1.3%)	101 (1.2%)
151+	74 (0.8%)	73 (0.8%)	91 (1.0%)	73 (1.6%)	79 (0.9%)	52 (0.6%)	60 (0.7%)	51 (0.6%)	40 (0.5%)	52 (0.6%)
Chase										
Unrated	47 (0.9%)	33 (0.7%)	28 (0.6%)	10 (0.4%)	26 (0.5%)	9 (0.2%)	1 (0.0%)	NA (-)	NA (-)	4 (0.1%)
0-100	1,265 (25.1%)	1,191 (25.9%)	1,315 (28.1%)	599 (24.9%)	1,450 (29.7%)	1,491 (30.3%)	1,593 (33.0%)	1,491 (34.1%)	1,544 (35.7%)	1,387 (33.9%)
101-110	784 (15.6%)	654 (14.2%)	716 (15.3%)	351 (14.6%)	719 (14.7%)	736 (14.9%)	805 (16.7%)	736 (16.8%)	704 (16.3%)	668 (16.3%)
111-120	867 (17.2%)	757 (16.5%)	707 (15.1%)	332 (13.8%)	815 (16.7%)	845 (17.2%)	782 (16.2%)	748 (17.1%)	688 (15.9%)	695 (17.0%)
121-130	770 (15.3%)	800 (17.4%)	744 (15.9%)	398 (16.6%)	745 (15.3%)	772 (15.7%)	697 (14.5%)	576 (13.2%)	606 (14.0%)	594 (14.5%)
131-140	740 (14.7%)	627 (13.7%)	638 (13.6%)	362 (15.1%)	602 (12.3%)	594 (12.1%)	521 (10.8%)	429 (9.8%)	383 (8.9%)	394 (9.6%)
141-150	369 (7.3%)	364 (7.9%)	343 (7.3%)	227 (9.5%)	315 (6.5%)	305 (6.2%)	257 (5.3%)	235 (5.4%)	232 (5.4%)	200 (4.9%)
151+	192 (3.8%)	164 (3.6%)	197 (4.2%)	122 (5.1%)	208 (4.3%)	174 (3.5%)	166 (3.4%)	153 (3.5%)	170 (3.9%)	144 (3.5%)

Year to Date Total GB-Trained Runners by Rating Band

Flat

RatBand	2017	2018	2019	2020	2021	2022	2023	2024	2025	2026
3YO										
Unrated	2,051 (34.5%)	2,211 (36.7%)	2,348 (36.6%)	765 (45.5%)	2,329 (37.2%)	2,260 (35.6%)	2,167 (35.1%)	2,129 (35.9%)	2,220 (36.3%)	2,061 (35.1%)
0-50	301 (5.1%)	270 (4.5%)	396 (6.2%)	149 (8.9%)	385 (6.2%)	402 (6.3%)	392 (6.4%)	399 (6.7%)	362 (5.9%)	385 (6.6%)
51-60	756 (12.7%)	624 (10.3%)	938 (14.6%)	237 (14.1%)	860 (13.8%)	879 (13.8%)	892 (14.5%)	862 (14.5%)	801 (13.1%)	893 (15.2%)
61-70	1,091 (18.4%)	1,092 (18.1%)	1,009 (15.7%)	288 (17.1%)	1,107 (17.7%)	1,130 (17.8%)	1,133 (18.4%)	1,027 (17.3%)	1,073 (17.5%)	1,002 (17.1%)
71-80	969 (16.3%)	1,024 (17.0%)	927 (14.5%)	190 (11.3%)	860 (13.8%)	984 (15.5%)	912 (14.8%)	834 (14.1%)	974 (15.9%)	829 (14.1%)
81-90	514 (8.7%)	499 (8.3%)	465 (7.3%)	41 (2.4%)	411 (6.6%)	437 (6.9%)	419 (6.8%)	432 (7.3%)	445 (7.3%)	442 (7.5%)
91-100	152 (2.6%)	182 (3.0%)	215 (3.4%)	10 (0.6%)	192 (3.1%)	158 (2.5%)	150 (2.4%)	146 (2.5%)	152 (2.5%)	170 (2.9%)
101+	108 (1.8%)	127 (2.1%)	111 (1.7%)	3 (0.2%)	109 (1.7%)	99 (1.6%)	103 (1.7%)	96 (1.6%)	88 (1.4%)	85 (1.4%)
4YO+										
Unrated	298 (2.6%)	373 (3.3%)	406 (3.4%)	182 (3.7%)	399 (3.3%)	351 (3.0%)	316 (2.7%)	345 (2.7%)	350 (2.8%)	333 (2.6%)
0-50	1,334 (11.5%)	1,613 (14.1%)	1,818 (15.1%)	960 (19.6%)	1,824 (15.2%)	1,878 (16.2%)	1,992 (16.8%)	2,019 (16.0%)	2,184 (17.5%)	2,019 (15.9%)
51-60	2,211 (19.1%)	2,246 (19.6%)	2,332 (19.4%)	1,183 (24.2%)	2,461 (20.5%)	2,405 (20.8%)	2,690 (22.6%)	3,022 (23.9%)	2,805 (22.5%)	2,885 (22.7%)
61-70	2,531 (21.9%)	2,381 (20.8%)	2,614 (21.8%)	1,121 (22.9%)	2,774 (23.1%)	2,581 (22.3%)	2,544 (21.4%)	2,830 (22.4%)	2,727 (21.9%)	2,799 (22.0%)
71-80	2,380 (20.6%)	2,096 (18.3%)	2,174 (18.1%)	778 (15.9%)	2,134 (17.8%)	2,016 (17.4%)	2,183 (18.4%)	2,172 (17.2%)	2,144 (17.2%)	2,342 (18.4%)
81-90	1,541 (13.3%)	1,535 (13.4%)	1,388 (11.6%)	433 (8.9%)	1,308 (10.9%)	1,392 (12.0%)	1,234 (10.4%)	1,373 (10.9%)	1,395 (11.2%)	1,384 (10.9%)
91-100	773 (6.7%)	796 (6.9%)	847 (7.1%)	170 (3.5%)	701 (5.8%)	578 (5.0%)	568 (4.8%)	556 (4.4%)	501 (4.0%)	586 (4.6%)
101+	482 (4.2%)	424 (3.7%)	434 (3.6%)	64 (1.3%)	390 (3.3%)	387 (3.3%)	364 (3.1%)	315 (2.5%)	340 (2.7%)	379 (3.0%)

Jump

RatBand	2017	2018	2019	2020	2021	2022	2023	2024	2025	2026
Hurdle										
Unrated	2,332 (26.6%)	2,305 (27.2%)	2,353 (27.1%)	1,353 (30.1%)	2,387 (26.8%)	2,134 (24.7%)	2,387 (27.0%)	2,317 (27.5%)	1,882 (23.7%)	2,100 (25.6%)
0-100	2,178 (24.9%)	1,951 (23.0%)	2,058 (23.7%)	956 (21.3%)	2,526 (28.3%)	2,716 (31.4%)	2,765 (31.2%)	2,740 (32.6%)	2,788 (35.1%)	2,638 (32.2%)
101-110	1,304 (14.9%)	1,206 (14.2%)	1,251 (14.4%)	612 (13.6%)	1,201 (13.5%)	1,340 (15.5%)	1,334 (15.1%)	1,239 (14.7%)	1,241 (15.6%)	1,219 (14.9%)
111-120	1,262 (14.4%)	1,232 (14.5%)	1,270 (14.6%)	614 (13.7%)	1,147 (12.9%)	1,180 (13.7%)	1,163 (13.1%)	1,094 (13.0%)	1,079 (13.6%)	1,206 (14.7%)
121-130	892 (10.2%)	960 (11.3%)	985 (11.3%)	478 (10.6%)	962 (10.8%)	746 (8.6%)	788 (8.9%)	662 (7.9%)	602 (7.6%)	672 (8.2%)
131-140	575 (6.6%)	582 (6.9%)	534 (6.1%)	333 (7.4%)	472 (5.3%)	376 (4.4%)	299 (3.4%)	266 (3.2%)	275 (3.5%)	275 (3.4%)
141-150	162 (1.8%)	191 (2.3%)	178 (2.0%)	100 (2.2%)	158 (1.8%)	117 (1.4%)	88 (1.0%)	77 (0.9%)	63 (0.8%)	63 (0.8%)
151+	57 (0.7%)	58 (0.7%)	66 (0.8%)	47 (1.0%)	59 (0.7%)	30 (0.3%)	33 (0.4%)	21 (0.2%)	15 (0.2%)	28 (0.3%)
Chase										
Unrated	45 (0.9%)	33 (0.7%)	28 (0.6%)	10 (0.4%)	26 (0.5%)	8 (0.2%)	1 (0.0%)	NA (-)	NA (-)	4 (0.1%)
0-100	1,238 (25.5%)	1,183 (26.5%)	1,307 (28.7%)	596 (25.7%)	1,449 (30.3%)	1,487 (31.2%)	1,586 (34.4%)	1,490 (35.7%)	1,537 (37.7%)	1,380 (35.7%)
101-110	776 (16.0%)	652 (14.6%)	714 (15.7%)	349 (15.0%)	715 (15.0%)	731 (15.4%)	801 (17.4%)	731 (17.5%)	697 (17.1%)	662 (17.1%)
111-120	858 (17.6%)	752 (16.9%)	704 (15.5%)	327 (14.1%)	814 (17.0%)	838 (17.6%)	772 (16.7%)	739 (17.7%)	678 (16.6%)	679 (17.6%)
121-130	749 (15.4%)	781 (17.5%)	730 (16.1%)	396 (17.1%)	742 (15.5%)	753 (15.8%)	681 (14.8%)	556 (13.3%)	580 (14.2%)	562 (14.5%)
131-140	709 (14.6%)	608 (13.6%)	612 (13.5%)	347 (15.0%)	595 (12.4%)	570 (12.0%)	479 (10.4%)	399 (9.6%)	317 (7.8%)	343 (8.9%)
141-150	327 (6.7%)	326 (7.3%)	304 (6.7%)	203 (8.7%)	278 (5.8%)	257 (5.4%)	196 (4.2%)	170 (4.1%)	175 (4.3%)	152 (3.9%)
151+	160 (3.3%)	124 (2.8%)	148 (3.3%)	93 (4.0%)	162 (3.4%)	117 (2.5%)	97 (2.1%)	92 (2.2%)	95 (2.3%)	85 (2.2%)

Frequency of Runs

Year to Date Average Runs per Horse

Code	2017	2018	2019	2020	2021	2022	2023	2024	2025	2026
Flat	2.67	2.69	2.73	2.35	2.82	2.80	2.82	2.87	2.85	2.86
Jump	2.69	2.60	2.51	1.76	2.49	2.54	2.56	2.52	2.44	2.51
Dual Overall	4.59	4.31	4.35	3.05	4.47	4.36	4.37	4.23	4.69	4.47
Dual (Flat)	2.16	2.16	2.10	1.67	2.16	2.06	2.14	2.21	2.39	2.29
Dual (Jump)	2.43	2.16	2.25	1.38	2.31	2.30	2.23	2.01	2.30	2.19
All	2.73	2.70	2.68	2.01	2.71	2.72	2.74	2.74	2.71	2.74

Year to Date Proportion of Horses by Count of Runs

Runs	2017	2018	2019	2020	2021	2022	2023	2024	2025	2026
Flat										
1	2,222 (31.5%)	2,232 (31.9%)	2,197 (30.3%)	1,018 (35.4%)	1,988 (28.8%)	1,997 (29.1%)	2,017 (29.6%)	2,018 (29.3%)	2,051 (29.8%)	2,056 (29.6%)
2	1,958 (27.8%)	1,919 (27.4%)	2,011 (27.7%)	787 (27.4%)	1,858 (26.9%)	1,822 (26.5%)	1,832 (26.9%)	1,765 (25.6%)	1,771 (25.7%)	1,802 (26.0%)
3	1,273 (18.1%)	1,198 (17.1%)	1,305 (18.0%)	546 (19.0%)	1,276 (18.5%)	1,257 (18.3%)	1,212 (17.8%)	1,227 (17.8%)	1,252 (18.2%)	1,230 (17.7%)
4	635 (9.0%)	652 (9.3%)	697 (9.6%)	320 (11.1%)	697 (10.1%)	760 (11.1%)	678 (10.0%)	711 (10.3%)	661 (9.6%)	664 (9.6%)
5+	956 (13.6%)	991 (14.2%)	1,042 (14.4%)	201 (7.0%)	1,088 (15.8%)	1,037 (15.1%)	1,072 (15.7%)	1,162 (16.9%)	1,147 (16.7%)	1,184 (17.1%)
Jump										
1	1,614 (28.0%)	1,713 (29.9%)	1,867 (31.0%)	2,108 (47.1%)	1,926 (29.7%)	1,845 (30.8%)	1,827 (30.2%)	1,723 (30.1%)	1,739 (30.8%)	1,646 (30.0%)
2	1,376 (23.8%)	1,379 (24.1%)	1,596 (26.5%)	1,571 (35.1%)	1,773 (27.3%)	1,486 (24.8%)	1,511 (24.9%)	1,477 (25.8%)	1,580 (28.0%)	1,383 (25.2%)
3	1,231 (21.3%)	1,210 (21.1%)	1,210 (20.1%)	638 (14.3%)	1,378 (21.2%)	1,254 (20.9%)	1,276 (21.1%)	1,205 (21.1%)	1,192 (21.1%)	1,237 (22.6%)
4	829 (14.4%)	805 (14.1%)	782 (13.0%)	135 (3.0%)	825 (12.7%)	810 (13.5%)	799 (13.2%)	818 (14.3%)	664 (11.8%)	731 (13.3%)
5+	721 (12.5%)	620 (10.8%)	568 (9.4%)	24 (0.5%)	588 (9.1%)	600 (10.0%)	644 (10.6%)	494 (8.6%)	474 (8.4%)	481 (8.8%)
All Races										
1	3,569 (28.6%)	3,667 (29.6%)	3,768 (29.2%)	2,961 (41.0%)	3,635 (27.8%)	3,597 (28.6%)	3,604 (28.7%)	3,519 (28.5%)	3,594 (29.3%)	3,510 (28.8%)
2	3,197 (25.6%)	3,184 (25.7%)	3,460 (26.8%)	2,337 (32.4%)	3,513 (26.9%)	3,205 (25.5%)	3,230 (25.7%)	3,148 (25.5%)	3,244 (26.4%)	3,081 (25.3%)
3	2,478 (19.9%)	2,355 (19.0%)	2,480 (19.2%)	1,207 (16.7%)	2,591 (19.8%)	2,467 (19.6%)	2,431 (19.3%)	2,419 (19.6%)	2,397 (19.5%)	2,439 (20.0%)
4	1,453 (11.6%)	1,486 (12.0%)	1,499 (11.6%)	477 (6.6%)	1,534 (11.8%)	1,591 (12.6%)	1,491 (11.9%)	1,541 (12.5%)	1,340 (10.9%)	1,404 (11.5%)
5+	1,782 (14.3%)	1,703 (13.7%)	1,710 (13.2%)	234 (3.2%)	1,781 (13.6%)	1,718 (13.7%)	1,812 (14.4%)	1,721 (13.9%)	1,696 (13.8%)	1,739 (14.3%)

Year to Date Median Days Between Runs

Code/RatBand	2017	2018	2019	2020	2021	2022	2023	2024	2025	2026
All Runners	27	28	28	28	28	27	28	28	28	28
Flat										
Unrated	24	27	27	27	27	25	27	27	27	27
0-50	22	22	23	20	21	21	20	19	19	19
51-60	22	21	22	19	21	21	20	21	20	20
61-70	23	22	23	21	22	22	23	22	22	22
71-80	26	25	23	22	24	24	25	26	25	25
81-90	26	26	27	22	26	26	29	28	28	29
91-100	28	29	28	22	30	33	33	35	35	35
101+	42	38	38	36	37	42	55	61	62	55
All Flat Runners	24	24	24	21	23	23	24	24	23	24
Jump										
Unrated	34	38	37	36	39	35	40	40	40	37
0-100	26	28	27	32	30	28	30	32	30	29
101-110	28	30	30	31	31	29	32	33	31	32
111-120	29	32	32	34	33	30	33	33	32	32
121-130	30	31	32	34	33	32	34	36	34	34
131-140	33	34	33	36	35	35	36	35	35	36
141-150	35	38	37	41	40	36	39	36	40	37
151+	34	38	38	42	40	40	42	42	40	40
All Jump Runners	30	32	32	34	34	31	34	35	33	33

Horses Population by Gender

May 2026 Horses in Training Snapshot by Gender versus Previous Years

All Horses

Sex	2017	2018	2019	2020	2021	2022	2023	2024	2025	2026
Colt/Entire	2,637 (18.8%)	2,653 (17.5%)	2,536 (17.3%)	2,289 (19.2%)	2,256 (15.5%)	2,248 (15.8%)	2,180 (15.1%)	2,063 (14.5%)	2,031 (14.9%)	2,015 (15.1%)
Gelding	6,953 (49.4%)	7,689 (50.8%)	7,291 (49.8%)	5,585 (46.8%)	7,563 (51.8%)	7,210 (50.8%)	7,498 (51.8%)	7,461 (52.5%)	6,988 (51.4%)	6,805 (50.9%)
Filly/Mare	4,468 (31.8%)	4,795 (31.7%)	4,820 (32.9%)	4,057 (34.0%)	4,777 (32.7%)	4,743 (33.4%)	4,805 (33.2%)	4,677 (32.9%)	4,576 (33.7%)	4,561 (34.1%)
Rig	4 (0.0%)	1 (0.0%)	2 (0.0%)	1 (0.0%)	2 (0.0%)	1 (0.0%)	1 (0.0%)	0 (0.0%)	0 (0.0%)	1 (0.0%)
Total	14,062 (100.0%)	15,138 (100.0%)	14,649 (100.0%)	11,932 (100.0%)	14,598 (100.0%)	14,202 (100.0%)	14,484 (100.0%)	14,201 (100.0%)	13,595 (100.0%)	13,382 (100.0%)

Flat (including Dual)

Sex	2017	2018	2019	2020	2021	2022	2023	2024	2025	2026
Colt/Entire	2,616 (24.7%)	2,632 (23.9%)	2,521 (23.5%)	2,278 (23.4%)	2,236 (21.7%)	2,234 (21.6%)	2,156 (21.4%)	2,050 (20.7%)	2,010 (20.4%)	1,999 (20.1%)
Gelding	4,175 (39.5%)	4,469 (40.6%)	4,267 (39.8%)	3,952 (40.5%)	4,284 (41.5%)	4,263 (41.3%)	4,203 (41.7%)	4,250 (42.9%)	4,195 (42.7%)	4,240 (42.7%)
Filly/Mare	3,777 (35.7%)	3,901 (35.5%)	3,924 (36.6%)	3,521 (36.1%)	3,790 (36.8%)	3,836 (37.1%)	3,730 (37.0%)	3,602 (36.4%)	3,628 (36.9%)	3,698 (37.2%)
Rig	4 (0.0%)	1 (0.0%)	2 (0.0%)	1 (0.0%)	1 (0.0%)	0 (0.0%)	0 (0.0%)	0 (0.0%)	0 (0.0%)	1 (0.0%)
Total	10,572 (100.0%)	11,003 (100.0%)	10,714 (100.0%)	9,752 (100.0%)	10,311 (100.0%)	10,333 (100.0%)	10,089 (100.0%)	9,902 (100.0%)	9,833 (100.0%)	9,938 (100.0%)

Jump (including Dual)

Sex	2017	2018	2019	2020	2021	2022	2023	2024	2025	2026
Colt/Entire	25 (0.6%)	29 (0.6%)	24 (0.5%)	13 (0.5%)	29 (0.6%)	24 (0.6%)	27 (0.6%)	14 (0.3%)	26 (0.6%)	26 (0.7%)
Gelding	3,238 (79.6%)	3,869 (78.1%)	3,350 (76.7%)	1,947 (74.9%)	3,626 (76.3%)	3,290 (76.1%)	3,625 (75.1%)	3,527 (74.7%)	3,072 (73.9%)	2,860 (74.1%)
Filly/Mare	804 (19.8%)	1,059 (21.4%)	996 (22.8%)	638 (24.6%)	1,095 (23.0%)	1,006 (23.3%)	1,174 (24.3%)	1,181 (25.0%)	1,059 (25.5%)	975 (25.3%)
Rig	0 (0.0%)	0 (0.0%)	0 (0.0%)	0 (0.0%)	1 (0.0%)	1 (0.0%)	1 (0.0%)	0 (0.0%)	0 (0.0%)	0 (0.0%)
Total	4,067 (100.0%)	4,957 (100.0%)	4,370 (100.0%)	2,598 (100.0%)	4,751 (100.0%)	4,321 (100.0%)	4,827 (100.0%)	4,722 (100.0%)	4,157 (100.0%)	3,861 (100.0%)

Hunter Chasers

Sex	2017	2018	2019	2020	2021	2022	2023	2024	2025	2026
Colt/Entire	5 (0.3%)	2 (0.1%)	1 (0.1%)	1 (0.1%)	3 (0.2%)	6 (0.5%)	10 (0.8%)	5 (0.4%)	4 (0.4%)	6 (0.6%)
Gelding	1,591 (81.3%)	1,454 (80.9%)	1,357 (79.4%)	1,179 (81.5%)	994 (82.8%)	1,063 (81.0%)	1,021 (81.7%)	1,171 (82.2%)	906 (80.2%)	838 (79.4%)
Filly/Mare	361 (18.4%)	341 (19.0%)	352 (20.6%)	266 (18.4%)	204 (17.0%)	243 (18.5%)	219 (17.5%)	248 (17.4%)	220 (19.5%)	211 (20.0%)
Rig	0 (0.0%)	0 (0.0%)	0 (0.0%)	0 (0.0%)	0 (0.0%)	0 (0.0%)	0 (0.0%)	0 (0.0%)	0 (0.0%)	0 (0.0%)
Total	1,957 (100.0%)	1,797 (100.0%)	1,710 (100.0%)	1,446 (100.0%)	1,201 (100.0%)	1,312 (100.0%)	1,250 (100.0%)	1,424 (100.0%)	1,130 (100.0%)	1,055 (100.0%)

Year to Date Total Runners by Gender

Sex	2017	2018	2019	2020	2021	2022	2023	2024	2025	2026
All Races										
Colt/Entire	2,396 (7.0%)	2,440 (7.3%)	2,434 (7.0%)	578 (4.0%)	2,365 (6.7%)	2,134 (6.2%)	1,923 (5.6%)	1,808 (5.3%)	1,813 (5.5%)	1,790 (5.4%)
Gelding	23,473 (68.9%)	22,638 (67.7%)	23,095 (66.7%)	10,306 (71.2%)	23,810 (67.3%)	23,034 (67.3%)	23,257 (67.6%)	23,080 (68.1%)	22,578 (67.9%)	22,271 (66.8%)
Filly/Mare	8,211 (24.1%)	8,352 (25.0%)	9,064 (26.2%)	3,595 (24.8%)	9,179 (26.0%)	9,035 (26.4%)	9,211 (26.8%)	8,983 (26.5%)	8,872 (26.7%)	9,284 (27.8%)
Rig	1 (0.0%)	4 (0.0%)	7 (0.0%)	3 (0.0%)	6 (0.0%)	4 (0.0%)	3 (0.0%)	0 (0.0%)	0 (0.0%)	4 (0.0%)
Flat										
Colt/Entire	2,369 (12.7%)	2,420 (13.0%)	2,409 (12.3%)	564 (8.5%)	2,346 (12.2%)	2,116 (11.1%)	1,890 (10.0%)	1,798 (9.2%)	1,800 (9.2%)	1,780 (9.0%)
Gelding	10,785 (57.8%)	10,785 (57.8%)	11,226 (57.3%)	4,134 (62.1%)	11,195 (58.1%)	11,015 (57.9%)	11,220 (59.1%)	12,016 (61.3%)	12,049 (61.7%)	11,837 (60.1%)
Filly/Mare	5,502 (29.5%)	5,456 (29.2%)	5,965 (30.4%)	1,956 (29.4%)	5,709 (29.7%)	5,906 (31.0%)	5,869 (30.9%)	5,792 (29.5%)	5,672 (29.1%)	6,067 (30.8%)
Rig	1 (0.0%)	4 (0.0%)	3 (0.0%)	0 (0.0%)	2 (0.0%)	0 (0.0%)	0 (0.0%)	0 (0.0%)	0 (0.0%)	4 (0.0%)
All Jump										
Colt/Entire	27 (0.2%)	20 (0.1%)	25 (0.2%)	14 (0.2%)	19 (0.1%)	18 (0.1%)	33 (0.2%)	10 (0.1%)	13 (0.1%)	10 (0.1%)
Gelding	12,688 (82.3%)	11,853 (80.3%)	11,869 (79.1%)	6,172 (78.8%)	12,615 (78.3%)	12,019 (79.2%)	12,037 (78.1%)	11,064 (77.6%)	10,529 (76.6%)	10,434 (76.4%)
Filly/Mare	2,709 (17.6%)	2,896 (19.6%)	3,099 (20.7%)	1,639 (20.9%)	3,470 (21.5%)	3,129 (20.6%)	3,342 (21.7%)	3,191 (22.4%)	3,200 (23.3%)	3,217 (23.5%)
Rig	0 (0.0%)	0 (0.0%)	4 (0.0%)	3 (0.0%)	4 (0.0%)	4 (0.0%)	3 (0.0%)	0 (0.0%)	0 (0.0%)	0 (0.0%)
Chase										
Gelding	4,673 (92.8%)	4,176 (91.0%)	4,223 (90.1%)	2,169 (90.3%)	4,365 (89.4%)	4,404 (89.4%)	4,306 (89.3%)	3,906 (89.4%)	3,776 (87.3%)	3,586 (87.8%)
Filly/Mare	361 (7.2%)	414 (9.0%)	463 (9.9%)	229 (9.5%)	511 (10.5%)	518 (10.5%)	514 (10.7%)	462 (10.6%)	551 (12.7%)	500 (12.2%)
Rig	0 (0.0%)	0 (0.0%)	2 (0.0%)	3 (0.1%)	4 (0.1%)	4 (0.1%)	2 (0.0%)	0 (0.0%)	0 (0.0%)	0 (0.0%)
Hurdle										
Colt/Entire	22 (0.2%)	14 (0.2%)	17 (0.2%)	7 (0.2%)	16 (0.2%)	12 (0.1%)	24 (0.3%)	7 (0.1%)	5 (0.1%)	9 (0.1%)
Gelding	7,099 (78.7%)	6,706 (77.2%)	6,813 (76.0%)	3,477 (74.7%)	6,757 (74.4%)	6,808 (76.2%)	6,879 (75.0%)	6,408 (73.5%)	6,036 (73.0%)	6,181 (73.0%)
Filly/Mare	1,896 (21.0%)	1,968 (22.7%)	2,130 (23.8%)	1,169 (25.1%)	2,312 (25.4%)	2,119 (23.7%)	2,272 (24.8%)	2,305 (26.4%)	2,224 (26.9%)	2,281 (26.9%)
Rig	0 (0.0%)	0 (0.0%)	2 (0.0%)	0 (0.0%)	0 (0.0%)	0 (0.0%)	1 (0.0%)	0 (0.0%)	0 (0.0%)	0 (0.0%)
NHF										
Colt/Entire	5 (0.4%)	6 (0.4%)	8 (0.6%)	7 (0.9%)	3 (0.1%)	6 (0.5%)	9 (0.6%)	3 (0.3%)	8 (0.7%)	1 (0.1%)
Gelding	916 (66.7%)	971 (65.1%)	833 (61.8%)	526 (68.0%)	1,493 (69.7%)	807 (61.8%)	852 (60.1%)	750 (63.7%)	717 (62.3%)	667 (60.4%)
Filly/Mare	452 (32.9%)	514 (34.5%)	506 (37.6%)	241 (31.1%)	647 (30.2%)	492 (37.7%)	556 (39.2%)	424 (36.0%)	425 (37.0%)	436 (39.5%)
Hunter										
Gelding	648 (95.2%)	542 (93.4%)	522 (92.7%)	142 (97.3%)	548 (93.5%)	420 (95.0%)	370 (93.9%)	379 (92.9%)	354 (91.9%)	279 (90.6%)
Filly/Mare	33 (4.8%)	38 (6.6%)	41 (7.3%)	4 (2.7%)	38 (6.5%)	22 (5.0%)	24 (6.1%)	29 (7.1%)	31 (8.1%)	29 (9.4%)

Year to Date Individual Runners by Gender

Sex	2017	2018	2019	2020	2021	2022	2023	2024	2025	2026
All Races										
Male	9,137 (73.2%)	8,988 (72.5%)	9,250 (71.6%)	5,369 (74.4%)	9,432 (72.3%)	8,998 (71.5%)	8,876 (70.6%)	8,790 (71.2%)	8,721 (71.1%)	8,539 (70.1%)
Female	3,342 (26.8%)	3,407 (27.5%)	3,667 (28.4%)	1,847 (25.6%)	3,622 (27.7%)	3,580 (28.5%)	3,692 (29.4%)	3,558 (28.8%)	3,550 (28.9%)	3,634 (29.9%)
Flat										
Male	4,730 (67.1%)	4,708 (67.3%)	4,809 (66.3%)	1,953 (68.0%)	4,640 (67.2%)	4,514 (65.7%)	4,435 (65.1%)	4,587 (66.6%)	4,602 (66.9%)	4,547 (65.6%)
Female	2,314 (32.9%)	2,284 (32.7%)	2,443 (33.7%)	919 (32.0%)	2,267 (32.8%)	2,359 (34.3%)	2,376 (34.9%)	2,296 (33.4%)	2,280 (33.1%)	2,389 (34.4%)
All Jump										
Male	4,680 (81.1%)	4,546 (79.4%)	4,728 (78.5%)	3,522 (78.7%)	5,066 (78.1%)	4,710 (78.6%)	4,671 (77.1%)	4,392 (76.8%)	4,310 (76.3%)	4,184 (76.4%)
Female	1,091 (18.9%)	1,181 (20.6%)	1,295 (21.5%)	954 (21.3%)	1,424 (21.9%)	1,285 (21.4%)	1,386 (22.9%)	1,325 (23.2%)	1,339 (23.7%)	1,294 (23.6%)
Chase										
Male	1,809 (92.2%)	1,660 (90.2%)	1,717 (89.8%)	1,269 (90.0%)	1,873 (89.3%)	1,756 (88.7%)	1,704 (88.1%)	1,589 (88.7%)	1,588 (86.8%)	1,493 (86.9%)
Female	154 (7.8%)	180 (9.8%)	194 (10.2%)	141 (10.0%)	225 (10.7%)	224 (11.3%)	231 (11.9%)	202 (11.3%)	241 (13.2%)	225 (13.1%)
Hurdle										
Male	2,852 (78.8%)	2,806 (77.7%)	2,935 (76.7%)	2,054 (75.0%)	3,035 (75.1%)	2,906 (77.2%)	2,861 (75.3%)	2,761 (74.0%)	2,610 (73.2%)	2,624 (74.1%)
Female	766 (21.2%)	805 (22.3%)	893 (23.3%)	684 (25.0%)	1,007 (24.9%)	858 (22.8%)	938 (24.7%)	972 (26.0%)	955 (26.8%)	919 (25.9%)
NHF										
Male	634 (68.1%)	712 (67.2%)	616 (64.5%)	440 (68.9%)	1,100 (70.8%)	601 (64.5%)	626 (62.7%)	539 (65.2%)	541 (64.6%)	507 (62.1%)
Female	297 (31.9%)	347 (32.8%)	339 (35.5%)	199 (31.1%)	453 (29.2%)	331 (35.5%)	373 (37.3%)	288 (34.8%)	297 (35.4%)	310 (37.9%)
Hunter										
Male	346 (94.0%)	323 (92.0%)	301 (92.0%)	98 (96.1%)	295 (91.9%)	240 (92.7%)	212 (93.0%)	212 (92.6%)	207 (91.6%)	167 (90.8%)
Female	22 (6.0%)	28 (8.0%)	26 (8.0%)	4 (3.9%)	26 (8.1%)	19 (7.3%)	16 (7.0%)	17 (7.4%)	19 (8.4%)	17 (9.2%)

Horses Population by Breeding

May 2026 Horses in Training Snapshot by Breeding versus Previous Years

Flat (including Dual)

Bred	Sex	2017	2018	2019	2020	2021	2022	2023	2024	2025	2026
GB	Male	3,196 (30.2%)	3,343 (30.4%)	3,228 (30.1%)	2,984 (30.6%)	3,088 (29.9%)	3,059 (29.6%)	2,936 (29.1%)	2,887 (29.2%)	2,853 (29.0%)	2,833 (28.5%)
	Female	2,107 (19.9%)	2,164 (19.7%)	2,195 (20.5%)	1,994 (20.4%)	2,139 (20.7%)	2,147 (20.8%)	2,067 (20.5%)	1,977 (20.0%)	2,036 (20.7%)	2,035 (20.5%)
	Subtotal	5,303 (50.2%)	5,507 (50.0%)	5,423 (50.6%)	4,978 (51.0%)	5,227 (50.7%)	5,206 (50.4%)	5,003 (49.6%)	4,864 (49.1%)	4,889 (49.7%)	4,868 (49.0%)
IRE	Male	2,919 (27.6%)	3,049 (27.7%)	2,878 (26.9%)	2,657 (27.2%)	2,874 (27.9%)	2,954 (28.6%)	2,960 (29.3%)	2,917 (29.5%)	2,901 (29.5%)	2,941 (29.6%)
	Female	1,401 (13.3%)	1,452 (13.2%)	1,440 (13.4%)	1,278 (13.1%)	1,433 (13.9%)	1,509 (14.6%)	1,496 (14.8%)	1,449 (14.6%)	1,426 (14.5%)	1,492 (15.0%)
	Subtotal	4,320 (40.9%)	4,501 (40.9%)	4,318 (40.3%)	3,935 (40.4%)	4,307 (41.8%)	4,463 (43.2%)	4,456 (44.2%)	4,366 (44.1%)	4,327 (44.0%)	4,433 (44.6%)
FR	Male	242 (2.3%)	305 (2.8%)	313 (2.9%)	301 (3.1%)	300 (2.9%)	311 (3.0%)	302 (3.0%)	344 (3.5%)	308 (3.1%)	310 (3.1%)
	Female	102 (1.0%)	112 (1.0%)	124 (1.2%)	127 (1.3%)	124 (1.2%)	120 (1.2%)	108 (1.1%)	125 (1.3%)	111 (1.1%)	124 (1.2%)
	Subtotal	344 (3.3%)	417 (3.8%)	437 (4.1%)	428 (4.4%)	424 (4.1%)	431 (4.2%)	410 (4.1%)	469 (4.7%)	419 (4.3%)	434 (4.4%)
USA	Male	342 (3.2%)	311 (2.8%)	291 (2.7%)	222 (2.3%)	187 (1.8%)	123 (1.2%)	101 (1.0%)	96 (1.0%)	77 (0.8%)	74 (0.7%)
	Female	141 (1.3%)	143 (1.3%)	134 (1.3%)	89 (0.9%)	67 (0.6%)	37 (0.4%)	38 (0.4%)	28 (0.3%)	31 (0.3%)	26 (0.3%)
	Subtotal	483 (4.6%)	454 (4.1%)	425 (4.0%)	311 (3.2%)	254 (2.5%)	160 (1.5%)	139 (1.4%)	124 (1.3%)	108 (1.1%)	100 (1.0%)
GNY	Male	68 (0.6%)	70 (0.6%)	57 (0.5%)	54 (0.6%)	54 (0.5%)	37 (0.4%)	47 (0.5%)	42 (0.4%)	54 (0.5%)	60 (0.6%)
	Female	11 (0.1%)	17 (0.2%)	19 (0.2%)	28 (0.3%)	23 (0.2%)	19 (0.2%)	16 (0.2%)	18 (0.2%)	18 (0.2%)	13 (0.1%)
	Subtotal	79 (0.7%)	87 (0.8%)	76 (0.7%)	82 (0.8%)	77 (0.7%)	56 (0.5%)	63 (0.6%)	60 (0.6%)	72 (0.7%)	73 (0.7%)
Other	Male	28 (0.3%)	24 (0.2%)	23 (0.2%)	13 (0.1%)	18 (0.2%)	13 (0.1%)	13 (0.1%)	14 (0.1%)	12 (0.1%)	22 (0.2%)
	Female	15 (0.1%)	13 (0.1%)	12 (0.1%)	5 (0.1%)	4 (0.0%)	4 (0.0%)	5 (0.0%)	5 (0.1%)	6 (0.1%)	8 (0.1%)
	Subtotal	43 (0.4%)	37 (0.3%)	35 (0.3%)	18 (0.2%)	22 (0.2%)	17 (0.2%)	18 (0.2%)	19 (0.2%)	18 (0.2%)	30 (0.3%)

Jump (including Dual)

Bred	Sex	2017	2018	2019	2020	2021	2022	2023	2024	2025	2026
GB	Male	1,028 (25.3%)	1,171 (23.6%)	929 (21.3%)	591 (22.7%)	1,023 (21.5%)	870 (20.1%)	944 (19.6%)	946 (20.0%)	825 (19.8%)	778 (20.2%)
	Female	445 (10.9%)	570 (11.5%)	487 (11.1%)	302 (11.6%)	548 (11.5%)	492 (11.4%)	570 (11.8%)	536 (11.4%)	467 (11.2%)	449 (11.6%)
	Subtotal	1,473 (36.2%)	1,741 (35.1%)	1,416 (32.4%)	893 (34.4%)	1,571 (33.1%)	1,362 (31.5%)	1,514 (31.4%)	1,482 (31.4%)	1,292 (31.1%)	1,227 (31.8%)
IRE	Male	1,745 (42.9%)	2,129 (42.9%)	1,860 (42.6%)	1,058 (40.7%)	1,981 (41.7%)	1,763 (40.8%)	1,913 (39.6%)	1,889 (40.0%)	1,590 (38.2%)	1,467 (38.0%)
	Female	314 (7.7%)	429 (8.7%)	425 (9.7%)	282 (10.9%)	460 (9.7%)	435 (10.1%)	493 (10.2%)	530 (11.2%)	472 (11.4%)	426 (11.0%)
	Subtotal	2,059 (50.6%)	2,558 (51.6%)	2,285 (52.3%)	1,340 (51.6%)	2,441 (51.4%)	2,198 (50.9%)	2,406 (49.8%)	2,419 (51.2%)	2,062 (49.6%)	1,893 (49.0%)
FR	Male	407 (10.0%)	510 (10.3%)	506 (11.6%)	263 (10.1%)	570 (12.0%)	602 (13.9%)	722 (15.0%)	653 (13.8%)	644 (15.5%)	603 (15.6%)
	Female	41 (1.0%)	56 (1.1%)	76 (1.7%)	49 (1.9%)	81 (1.7%)	70 (1.6%)	106 (2.2%)	107 (2.3%)	112 (2.7%)	94 (2.4%)
	Subtotal	448 (11.0%)	566 (11.4%)	582 (13.3%)	312 (12.0%)	651 (13.7%)	672 (15.6%)	828 (17.2%)	760 (16.1%)	756 (18.2%)	697 (18.1%)
USA	Male	35 (0.9%)	37 (0.7%)	30 (0.7%)	22 (0.8%)	34 (0.7%)	30 (0.7%)	20 (0.4%)	10 (0.2%)	7 (0.2%)	8 (0.2%)
	Female	2 (0.0%)	1 (0.0%)	3 (0.1%)	2 (0.1%)	1 (0.0%)	1 (0.0%)	NA (-)	2 (0.0%)	1 (0.0%)	2 (0.1%)
	Subtotal	37 (0.9%)	38 (0.8%)	33 (0.8%)	24 (0.9%)	35 (0.7%)	31 (0.7%)	20 (0.4%)	12 (0.3%)	8 (0.2%)	10 (0.3%)
GNY	Male	41 (1.0%)	46 (0.9%)	45 (1.0%)	26 (1.0%)	45 (0.9%)	49 (1.1%)	53 (1.1%)	39 (0.8%)	29 (0.7%)	26 (0.7%)
	Female	1 (0.0%)	1 (0.0%)	4 (0.1%)	3 (0.1%)	5 (0.1%)	7 (0.2%)	5 (0.1%)	5 (0.1%)	5 (0.1%)	2 (0.1%)
	Subtotal	42 (1.0%)	47 (0.9%)	49 (1.1%)	29 (1.1%)	50 (1.1%)	56 (1.3%)	58 (1.2%)	44 (0.9%)	34 (0.8%)	28 (0.7%)
Other	Male	7 (0.2%)	5 (0.1%)	4 (0.1%)	NA (-)	3 (0.1%)	1 (0.0%)	1 (0.0%)	4 (0.1%)	3 (0.1%)	4 (0.1%)
	Female	1 (0.0%)	2 (0.0%)	1 (0.0%)	NA (-)	NA (-)	1 (0.0%)	NA (-)	1 (0.0%)	2 (0.0%)	2 (0.1%)
	Subtotal	8 (0.2%)	7 (0.1%)	5 (0.1%)	NA (-)	3 (0.1%)	2 (0.0%)	1 (0.0%)	5 (0.1%)	5 (0.1%)	6 (0.2%)

Year to Date Total Runners by Breeding

Flat

Bred	Sex	2017	2018	2019	2020	2021	2022	2023	2024	2025	2026
GB	Male	6,157 (33.0%)	6,132 (32.9%)	6,263 (31.9%)	2,185 (32.8%)	6,192 (32.2%)	6,081 (31.9%)	5,902 (31.1%)	6,245 (31.9%)	6,300 (32.3%)	6,230 (31.6%)
	Female	2,999 (16.1%)	2,923 (15.7%)	3,320 (16.9%)	1,079 (16.2%)	3,246 (16.9%)	3,317 (17.4%)	3,226 (17.0%)	3,060 (15.6%)	3,040 (15.6%)	3,236 (16.4%)
	Subtotal	9,156 (49.1%)	9,055 (48.5%)	9,583 (48.9%)	3,264 (49.1%)	9,438 (49.0%)	9,398 (49.4%)	9,128 (48.1%)	9,305 (47.5%)	9,340 (47.8%)	9,466 (48.1%)
IRE	Male	5,771 (30.9%)	5,840 (31.3%)	6,057 (30.9%)	2,045 (30.7%)	6,175 (32.1%)	6,092 (32.0%)	6,264 (33.0%)	6,576 (33.5%)	6,636 (34.0%)	6,578 (33.4%)
	Female	2,200 (11.8%)	2,206 (11.8%)	2,242 (11.4%)	768 (11.5%)	2,133 (11.1%)	2,277 (12.0%)	2,326 (12.3%)	2,445 (12.5%)	2,352 (12.0%)	2,588 (13.1%)
	Subtotal	7,971 (42.7%)	8,046 (43.1%)	8,299 (42.3%)	2,813 (42.3%)	8,308 (43.2%)	8,369 (44.0%)	8,590 (45.3%)	9,021 (46.0%)	8,988 (46.0%)	9,166 (46.6%)
FR	Male	405 (2.2%)	437 (2.3%)	570 (2.9%)	203 (3.1%)	556 (2.9%)	540 (2.8%)	617 (3.3%)	655 (3.3%)	632 (3.2%)	611 (3.1%)
	Female	111 (0.6%)	151 (0.8%)	166 (0.8%)	51 (0.8%)	175 (0.9%)	174 (0.9%)	210 (1.1%)	195 (1.0%)	172 (0.9%)	174 (0.9%)
	Subtotal	516 (2.8%)	588 (3.2%)	736 (3.8%)	254 (3.8%)	731 (3.8%)	714 (3.8%)	827 (4.4%)	850 (4.3%)	804 (4.1%)	785 (4.0%)
USA	Male	644 (3.5%)	629 (3.4%)	591 (3.0%)	216 (3.2%)	428 (2.2%)	334 (1.8%)	243 (1.3%)	236 (1.2%)	173 (0.9%)	70 (0.4%)
	Female	150 (0.8%)	142 (0.8%)	180 (0.9%)	52 (0.8%)	102 (0.5%)	90 (0.5%)	85 (0.4%)	64 (0.3%)	66 (0.3%)	33 (0.2%)
	Subtotal	794 (4.3%)	771 (4.1%)	771 (3.9%)	268 (4.0%)	530 (2.8%)	424 (2.2%)	328 (1.7%)	300 (1.5%)	239 (1.2%)	103 (0.5%)
GNY	Male	121 (0.6%)	110 (0.6%)	98 (0.5%)	36 (0.5%)	142 (0.7%)	62 (0.3%)	73 (0.4%)	95 (0.5%)	89 (0.5%)	87 (0.4%)
	Female	22 (0.1%)	27 (0.1%)	35 (0.2%)	5 (0.1%)	45 (0.2%)	38 (0.2%)	18 (0.1%)	18 (0.1%)	33 (0.2%)	30 (0.2%)
	Subtotal	143 (0.8%)	137 (0.7%)	133 (0.7%)	41 (0.6%)	187 (1.0%)	100 (0.5%)	91 (0.5%)	113 (0.6%)	122 (0.6%)	117 (0.6%)
Other	Male	57 (0.3%)	61 (0.3%)	59 (0.3%)	13 (0.2%)	50 (0.3%)	22 (0.1%)	11 (0.1%)	7 (0.0%)	19 (0.1%)	45 (0.2%)
	Female	20 (0.1%)	7 (0.0%)	22 (0.1%)	1 (0.0%)	8 (0.0%)	10 (0.1%)	4 (0.0%)	10 (0.1%)	9 (0.0%)	6 (0.0%)
	Subtotal	77 (0.4%)	68 (0.4%)	81 (0.4%)	14 (0.2%)	58 (0.3%)	32 (0.2%)	15 (0.1%)	17 (0.1%)	28 (0.1%)	51 (0.3%)

Jump

Bred	Sex	2017	2018	2019	2020	2021	2022	2023	2024	2025	2026
GB	Male	3,391 (22.0%)	3,073 (20.8%)	3,051 (20.3%)	1,486 (19.0%)	3,019 (18.7%)	2,677 (17.6%)	2,672 (17.3%)	2,560 (17.9%)	2,571 (18.7%)	2,353 (17.2%)
	Female	1,351 (8.8%)	1,381 (9.4%)	1,387 (9.2%)	668 (8.5%)	1,528 (9.5%)	1,390 (9.2%)	1,472 (9.5%)	1,303 (9.1%)	1,218 (8.9%)	1,264 (9.3%)
	Subtotal	4,742 (30.7%)	4,454 (30.2%)	4,438 (29.6%)	2,154 (27.5%)	4,547 (28.2%)	4,067 (26.8%)	4,144 (26.9%)	3,863 (27.1%)	3,789 (27.6%)	3,617 (26.5%)
IRE	Male	7,027 (45.6%)	6,650 (45.0%)	6,566 (43.8%)	3,404 (43.5%)	6,931 (43.0%)	6,502 (42.9%)	6,469 (42.0%)	5,831 (40.9%)	5,525 (40.2%)	5,577 (40.8%)
	Female	1,157 (7.5%)	1,333 (9.0%)	1,444 (9.6%)	784 (10.0%)	1,563 (9.7%)	1,373 (9.1%)	1,466 (9.5%)	1,555 (10.9%)	1,551 (11.3%)	1,527 (11.2%)
	Subtotal	8,184 (53.1%)	7,983 (54.1%)	8,010 (53.4%)	4,188 (53.5%)	8,494 (52.7%)	7,875 (51.9%)	7,935 (51.5%)	7,386 (51.8%)	7,076 (51.5%)	7,104 (52.0%)
FR	Male	2,011 (13.0%)	1,904 (12.9%)	2,014 (13.4%)	1,163 (14.9%)	2,394 (14.9%)	2,597 (17.1%)	2,686 (17.4%)	2,499 (17.5%)	2,316 (16.9%)	2,370 (17.3%)
	Female	183 (1.2%)	162 (1.1%)	241 (1.6%)	177 (2.3%)	349 (2.2%)	334 (2.2%)	387 (2.5%)	322 (2.3%)	418 (3.0%)	413 (3.0%)
	Subtotal	2,194 (14.2%)	2,066 (14.0%)	2,255 (15.0%)	1,340 (17.1%)	2,743 (17.0%)	2,931 (19.3%)	3,073 (19.9%)	2,821 (19.8%)	2,734 (19.9%)	2,783 (20.4%)
USA	Male	111 (0.7%)	101 (0.7%)	71 (0.5%)	48 (0.6%)	85 (0.5%)	60 (0.4%)	48 (0.3%)	20 (0.1%)	17 (0.1%)	22 (0.2%)
	Female	4 (0.0%)	5 (0.0%)	9 (0.1%)	4 (0.1%)	5 (0.0%)	6 (0.0%)	0 (0.0%)	3 (0.0%)	5 (0.0%)	4 (0.0%)
	Subtotal	115 (0.7%)	106 (0.7%)	80 (0.5%)	52 (0.7%)	90 (0.6%)	66 (0.4%)	48 (0.3%)	23 (0.2%)	22 (0.2%)	26 (0.2%)
GNY	Male	160 (1.0%)	124 (0.8%)	174 (1.2%)	83 (1.1%)	199 (1.2%)	200 (1.3%)	194 (1.3%)	153 (1.1%)	104 (0.8%)	106 (0.8%)
	Female	9 (0.1%)	10 (0.1%)	16 (0.1%)	5 (0.1%)	25 (0.2%)	23 (0.2%)	17 (0.1%)	5 (0.0%)	8 (0.1%)	9 (0.1%)
	Subtotal	169 (1.1%)	134 (0.9%)	190 (1.3%)	88 (1.1%)	224 (1.4%)	223 (1.5%)	211 (1.4%)	158 (1.1%)	112 (0.8%)	115 (0.8%)
Other	Male	15 (0.1%)	21 (0.1%)	22 (0.1%)	5 (0.1%)	10 (0.1%)	5 (0.0%)	4 (0.0%)	11 (0.1%)	9 (0.1%)	16 (0.1%)
	Female	5 (0.0%)	5 (0.0%)	2 (0.0%)	1 (0.0%)	0 (0.0%)	3 (0.0%)	0 (0.0%)	3 (0.0%)	0 (0.0%)	0 (0.0%)
	Subtotal	20 (0.1%)	26 (0.2%)	24 (0.2%)	6 (0.1%)	10 (0.1%)	8 (0.1%)	4 (0.0%)	14 (0.1%)	9 (0.1%)	16 (0.1%)

Year to Date Individual Runners by Breeding

Flat

Bred	Sex	2017	2018	2019	2020	2021	2022	2023	2024	2025	2026
GB	Male	2,162 (30.7%)	2,177 (31.1%)	2,213 (30.5%)	911 (31.7%)	2,120 (30.7%)	2,105 (30.6%)	2,024 (29.7%)	2,052 (29.8%)	2,069 (30.1%)	2,058 (29.7%)
	Female	1,268 (18.0%)	1,210 (17.3%)	1,336 (18.4%)	502 (17.5%)	1,261 (18.3%)	1,315 (19.1%)	1,275 (18.7%)	1,201 (17.4%)	1,237 (18.0%)	1,283 (18.5%)
	Subtotal	3,430 (48.7%)	3,387 (48.4%)	3,549 (48.9%)	1,413 (49.2%)	3,381 (49.0%)	3,420 (49.8%)	3,299 (48.4%)	3,253 (47.3%)	3,306 (48.0%)	3,341 (48.2%)
IRE	Male	2,102 (29.8%)	2,069 (29.6%)	2,107 (29.1%)	835 (29.1%)	2,095 (30.3%)	2,072 (30.1%)	2,085 (30.6%)	2,188 (31.8%)	2,200 (32.0%)	2,195 (31.6%)
	Female	896 (12.7%)	930 (13.3%)	931 (12.8%)	360 (12.5%)	875 (12.7%)	918 (13.4%)	969 (14.2%)	975 (14.2%)	936 (13.6%)	1,008 (14.5%)
	Subtotal	2,998 (42.6%)	2,999 (42.9%)	3,038 (41.9%)	1,195 (41.6%)	2,970 (43.0%)	2,990 (43.5%)	3,054 (44.8%)	3,163 (46.0%)	3,136 (45.6%)	3,203 (46.2%)
FR	Male	150 (2.1%)	186 (2.7%)	212 (2.9%)	94 (3.3%)	220 (3.2%)	200 (2.9%)	212 (3.1%)	236 (3.4%)	231 (3.4%)	210 (3.0%)
	Female	58 (0.8%)	66 (0.9%)	77 (1.1%)	26 (0.9%)	73 (1.1%)	76 (1.1%)	91 (1.3%)	83 (1.2%)	68 (1.0%)	68 (1.0%)
	Subtotal	208 (3.0%)	252 (3.6%)	289 (4.0%)	120 (4.2%)	293 (4.2%)	276 (4.0%)	303 (4.4%)	319 (4.6%)	299 (4.3%)	278 (4.0%)
USA	Male	242 (3.4%)	217 (3.1%)	216 (3.0%)	88 (3.1%)	146 (2.1%)	101 (1.5%)	76 (1.1%)	74 (1.1%)	60 (0.9%)	30 (0.4%)
	Female	70 (1.0%)	62 (0.9%)	79 (1.1%)	27 (0.9%)	40 (0.6%)	32 (0.5%)	29 (0.4%)	22 (0.3%)	20 (0.3%)	16 (0.2%)
	Subtotal	312 (4.4%)	279 (4.0%)	295 (4.1%)	115 (4.0%)	186 (2.7%)	133 (1.9%)	105 (1.5%)	96 (1.4%)	80 (1.2%)	46 (0.7%)
GNY	Male	51 (0.7%)	44 (0.6%)	43 (0.6%)	17 (0.6%)	45 (0.7%)	29 (0.4%)	33 (0.5%)	33 (0.5%)	35 (0.5%)	38 (0.5%)
	Female	10 (0.1%)	12 (0.2%)	12 (0.2%)	3 (0.1%)	15 (0.2%)	16 (0.2%)	9 (0.1%)	11 (0.2%)	15 (0.2%)	11 (0.2%)
	Subtotal	61 (0.9%)	56 (0.8%)	55 (0.8%)	20 (0.7%)	60 (0.9%)	45 (0.7%)	42 (0.6%)	44 (0.6%)	50 (0.7%)	49 (0.7%)
Other	Male	23 (0.3%)	15 (0.2%)	18 (0.2%)	8 (0.3%)	14 (0.2%)	7 (0.1%)	5 (0.1%)	4 (0.1%)	7 (0.1%)	16 (0.2%)
	Female	12 (0.2%)	4 (0.1%)	8 (0.1%)	1 (0.0%)	3 (0.0%)	2 (0.0%)	3 (0.0%)	4 (0.1%)	4 (0.1%)	3 (0.0%)
	Subtotal	35 (0.5%)	19 (0.3%)	26 (0.4%)	9 (0.3%)	17 (0.2%)	9 (0.1%)	8 (0.1%)	8 (0.1%)	11 (0.2%)	19 (0.3%)

Jump

Bred	Sex	2017	2018	2019	2020	2021	2022	2023	2024	2025	2026
GB	Male	1,241 (21.5%)	1,177 (20.6%)	1,211 (20.1%)	831 (18.6%)	1,221 (18.8%)	1,079 (18.0%)	1,072 (17.7%)	1,017 (17.8%)	1,021 (18.1%)	965 (17.6%)
	Female	543 (9.4%)	573 (10.0%)	582 (9.7%)	388 (8.7%)	623 (9.6%)	574 (9.6%)	582 (9.6%)	554 (9.7%)	534 (9.5%)	506 (9.2%)
	Subtotal	1,784 (30.9%)	1,750 (30.6%)	1,793 (29.8%)	1,219 (27.2%)	1,844 (28.4%)	1,653 (27.6%)	1,654 (27.3%)	1,571 (27.5%)	1,555 (27.5%)	1,471 (26.9%)
IRE	Male	2,576 (44.6%)	2,537 (44.3%)	2,616 (43.4%)	1,958 (43.7%)	2,750 (42.4%)	2,533 (42.3%)	2,493 (41.2%)	2,340 (40.9%)	2,255 (39.9%)	2,183 (39.9%)
	Female	467 (8.1%)	521 (9.1%)	588 (9.8%)	452 (10.1%)	649 (10.0%)	556 (9.3%)	631 (10.4%)	622 (10.9%)	625 (11.1%)	603 (11.0%)
	Subtotal	3,043 (52.7%)	3,058 (53.4%)	3,204 (53.2%)	2,410 (53.8%)	3,399 (52.4%)	3,089 (51.5%)	3,124 (51.6%)	2,962 (51.8%)	2,880 (51.0%)	2,786 (50.9%)
FR	Male	753 (13.0%)	743 (13.0%)	802 (13.3%)	654 (14.6%)	991 (15.3%)	1,000 (16.7%)	1,021 (16.9%)	967 (16.9%)	979 (17.3%)	986 (18.0%)
	Female	73 (1.3%)	81 (1.4%)	115 (1.9%)	106 (2.4%)	141 (2.2%)	142 (2.4%)	163 (2.7%)	143 (2.5%)	175 (3.1%)	180 (3.3%)
	Subtotal	826 (14.3%)	824 (14.4%)	917 (15.2%)	760 (17.0%)	1,132 (17.4%)	1,142 (19.0%)	1,184 (19.5%)	1,110 (19.4%)	1,154 (20.4%)	1,166 (21.3%)
USA	Male	45 (0.8%)	39 (0.7%)	31 (0.5%)	25 (0.6%)	34 (0.5%)	27 (0.5%)	18 (0.3%)	10 (0.2%)	7 (0.1%)	8 (0.1%)
	Female	1 (0.0%)	2 (0.0%)	4 (0.1%)	3 (0.1%)	2 (0.0%)	2 (0.0%)	0 (0.0%)	1 (0.0%)	1 (0.0%)	2 (0.0%)
	Subtotal	46 (0.8%)	41 (0.7%)	35 (0.6%)	28 (0.6%)	36 (0.6%)	29 (0.5%)	18 (0.3%)	11 (0.2%)	8 (0.1%)	10 (0.2%)
GNY	Male	59 (1.0%)	44 (0.8%)	59 (1.0%)	49 (1.1%)	67 (1.0%)	69 (1.2%)	64 (1.1%)	55 (1.0%)	44 (0.8%)	36 (0.7%)
	Female	5 (0.1%)	2 (0.0%)	5 (0.1%)	4 (0.1%)	9 (0.1%)	9 (0.2%)	10 (0.2%)	4 (0.1%)	4 (0.1%)	3 (0.1%)
	Subtotal	64 (1.1%)	46 (0.8%)	64 (1.1%)	53 (1.2%)	76 (1.2%)	78 (1.3%)	74 (1.2%)	59 (1.0%)	48 (0.8%)	39 (0.7%)
Other	Male	6 (0.1%)	6 (0.1%)	9 (0.1%)	5 (0.1%)	3 (0.0%)	2 (0.0%)	3 (0.0%)	3 (0.1%)	4 (0.1%)	6 (0.1%)
	Female	2 (0.0%)	2 (0.0%)	1 (0.0%)	1 (0.0%)	0 (0.0%)	2 (0.0%)	0 (0.0%)	1 (0.0%)	0 (0.0%)	0 (0.0%)
	Subtotal	8 (0.1%)	8 (0.1%)	10 (0.2%)	6 (0.1%)	3 (0.0%)	4 (0.1%)	3 (0.0%)	4 (0.1%)	4 (0.1%)	6 (0.1%)

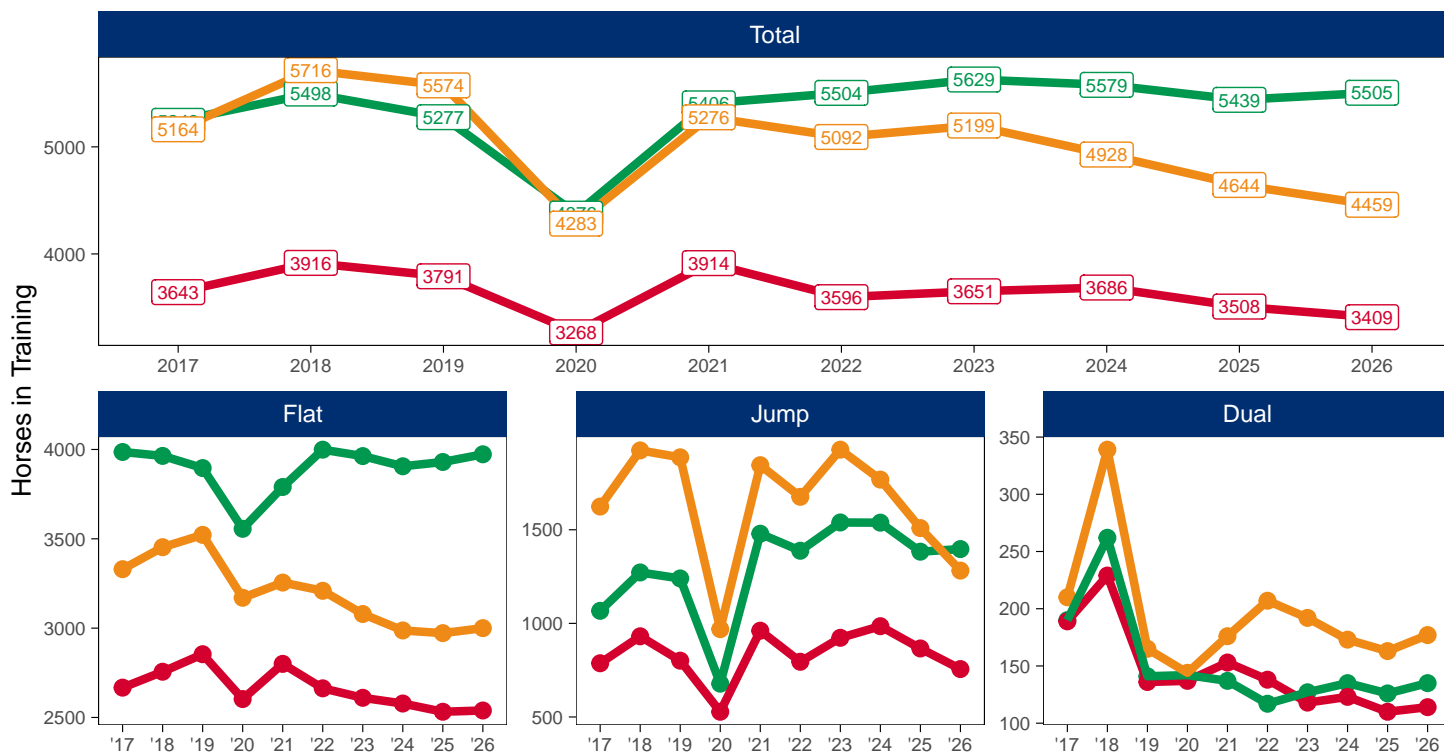
Horse Population by Location

May 2026 Horses in Training Snapshot by Region versus Previous Years

Snapshot of Total Horses in Training in May by Region

Horses in Training in May, shown by Training Type and Region

Region ● North ● Midlands ● South



North

AgeCat	2017	2018	2019	2020	2021	2022	2023	2024	2025	2026	vs. Last Year	vs. Pre-Covid
Flat Horses in Training												
2YO	760	828	894	733	850	794	749	679	694	624	-70 / -10.1%	-270 / -30.2%
3YO	757	760	774	800	825	761	710	717	664	712	+48 / +7.2%	-62 / -8.0%
4YO	431	424	434	403	409	429	408	437	421	432	+11 / +2.6%	-2 / -0.5%
5YO+	719	744	752	667	716	679	743	745	753	771	+18 / +2.4%	+19 / +2.5%
Subtotal	2667	2756	2854	2603	2800	2663	2610	2578	2532	2539	+7 / +0.3%	-315 / -11.0%
Jump Horses in Training												
3YO	6	9	11	9	7	18	13	4	7	1	-6 / -85.7%	-10 / -90.9%
4-5YO	192	194	197	118	213	193	226	255	201	164	-37 / -18.4%	-33 / -16.8%
6-7YO	242	334	274	192	321	281	345	350	322	290	-32 / -9.9%	+16 / +5.8%
8YO+	347	394	319	209	420	303	339	376	336	301	-35 / -10.4%	-18 / -5.6%
Subtotal	787	931	801	528	961	795	923	985	866	756	-110 / -12.7%	-45 / -5.6%
Dual Horses in Training												
3YO	27	23	11	26	18	23	13	13	13	14	+1 / +7.7%	+3 / +27.3%
4YO	47	57	33	32	39	21	26	25	30	32	+2 / +6.7%	-1 / -3.0%
5YO+	115	149	92	79	96	94	79	85	67	68	+1 / +1.5%	-24 / -26.1%
Subtotal	189	229	136	137	153	138	118	123	110	114	+4 / +3.6%	-22 / -16.2%
Total Horses in Training												
	3643	3916	3791	3268	3914	3596	3651	3686	3508	3409	-99 / -2.8%	-382 / -10.1%

'vs. Pre-Covid' is comparison between 2026 and 2019

Midlands

AgeCat	2017	2018	2019	2020	2021	2022	2023	2024	2025	2026	vs. Last Year	vs. Pre-Covid
Flat Horses in Training												
2YO	1377	1285	1223	1059	1181	1276	1176	1161	1173	1214	+41 / +3.5%	-9 / -0.7%
3YO	1345	1400	1340	1311	1279	1389	1402	1322	1330	1275	-55 / -4.1%	-65 / -4.9%
4YO	586	596	597	532	632	620	641	627	623	676	+53 / +8.5%	+79 / +13.2%
5YO+	678	683	736	654	698	714	744	796	804	808	+4 / +0.5%	+72 / +9.8%
Subtotal	3986	3964	3896	3556	3790	3999	3963	3906	3930	3973	+43 / +1.1%	+77 / +2.0%
Jump Horses in Training												
3YO	9	16	14	6	19	8	28	22	17	19	+2 / +11.8%	+5 / +35.7%
4-5YO	291	372	368	208	445	439	508	486	461	473	+12 / +2.6%	+105 / +28.5%
6-7YO	372	441	433	235	536	521	554	582	495	515	+20 / +4.0%	+82 / +18.9%
8YO+	395	443	425	229	479	420	449	448	410	390	-20 / -4.9%	-35 / -8.2%
Subtotal	1067	1272	1240	678	1479	1388	1539	1538	1383	1397	+14 / +1.0%	+157 / +12.7%
Dual Horses in Training												
3YO	18	17	15	11	11	11	19	12	12	17	+5 / +41.7%	+2 / +13.3%
4YO	54	68	43	31	38	35	29	34	26	38	+12 / +46.2%	-5 / -11.6%
5YO+	118	177	83	100	88	71	79	89	88	80	-8 / -9.1%	-3 / -3.6%
Subtotal	190	262	141	142	137	117	127	135	126	135	+9 / +7.1%	-6 / -4.3%
Total Horses in Training												
	5243	5498	5277	4376	5406	5504	5629	5579	5439	5505	+66 / +1.2%	+228 / +4.3%

'vs. Pre-Covid' is comparison between 2026 and 2019

South

AgeCat	2017	2018	2019	2020	2021	2022	2023	2024	2025	2026	vs. Last Year	vs. Pre-Covid
Flat Horses in Training												
2YO	1270	1234	1265	1065	1115	1127	1072	1065	1016	1009	-7 / -0.7%	-256 / -20.2%
3YO	1022	1144	1128	1082	1057	1013	986	919	1009	984	-25 / -2.5%	-144 / -12.8%
4YO	441	475	524	455	489	490	411	419	390	464	+74 / +19.0%	-60 / -11.5%
5YO+	597	600	605	568	594	579	610	584	557	543	-14 / -2.5%	-62 / -10.2%
Subtotal	3330	3453	3522	3170	3255	3209	3079	2987	2972	3000	+28 / +0.9%	-522 / -14.8%
Jump Horses in Training												
3YO	14	19	23	16	30	16	33	32	34	16	-18 / -52.9%	-7 / -30.4%
4-5YO	520	582	628	273	504	542	698	583	529	470	-59 / -11.2%	-158 / -25.2%
6-7YO	540	701	664	346	673	581	667	675	541	443	-98 / -18.1%	-221 / -33.3%
8YO+	550	622	572	334	638	537	530	478	405	353	-52 / -12.8%	-219 / -38.3%
Subtotal	1624	1924	1887	969	1845	1676	1928	1768	1509	1282	-227 / -15.0%	-605 / -32.1%
Dual Horses in Training												
3YO	28	23	14	24	23	27	30	15	30	19	-11 / -36.7%	+5 / +35.7%
4YO	53	73	42	26	50	59	56	54	41	54	+13 / +31.7%	+12 / +28.6%
5YO+	129	243	109	94	103	121	106	104	92	104	+12 / +13.0%	-5 / -4.6%
Subtotal	210	339	165	144	176	207	192	173	163	177	+14 / +8.6%	+12 / +7.3%
Total Horses in Training												
	5164	5716	5574	4283	5276	5092	5199	4928	4644	4459	-185 / -4.0%	-1115 / -20.0%

'vs. Pre-Covid' is comparison between 2026 and 2019

May 2026 Horses in Training Snapshot by Country versus Previous Years

Type	2017	2018	2019	2020	2021	2022	2023	2024	2025	2026	vs. Last Year	vs. Pre-Covid
England												
Flat	9586	9758	9878	8980	9479	9476	9284	9132	9073	9158	+85 / +0.9%	-720 / -7.3%
Jump	3019	3556	3372	1899	3688	3355	3862	3729	3275	2967	-308 / -9.4%	-405 / -12.0%
Dual	511	737	390	391	410	415	404	388	361	380	+19 / +5.3%	-10 / -2.6%
Overall	13116	14051	13640	11270	13577	13246	13550	13249	12709	12505	-204 / -1.6%	-1135 / -8.3%
Scotland												
Flat	228	245	216	196	213	237	221	203	217	197	-20 / -9.2%	-19 / -8.8%
Jump	213	265	210	115	271	221	255	280	250	199	-51 / -20.4%	-11 / -5.2%
Dual	39	48	30	24	30	24	22	26	19	24	+5 / +26.3%	-6 / -20.0%
Overall	480	558	456	335	514	482	498	509	486	420	-66 / -13.6%	-36 / -7.9%
Wales												
Flat	169	170	178	153	153	158	147	136	144	157	+13 / +9.0%	-21 / -11.8%
Jump	246	306	346	161	326	283	273	282	233	269	+36 / +15.5%	-77 / -22.3%
Dual	39	45	22	8	26	23	11	17	19	22	+3 / +15.8%	0 / 0.0%
Overall	454	521	546	322	505	464	431	435	396	448	+52 / +13.1%	-98 / -17.9%

'vs. Pre-Covid' is comparison between 2026 and 2019

May 2026 Horses in Training Snapshot by Training Centre versus Previous Years

Type	2017	2018	2019	2020	2021	2022	2023	2024	2025	2026	vs. Last Year	vs. Pre-Covid
Cheltenham (GL54)												
Flat	21	18	16	22	23	16	17	15	20	27	+7 / +35.0%	+11 / +68.8%
Jump	214	283	211	137	286	289	402	327	232	260	+28 / +12.1%	+49 / +23.2%
Dual	25	40	12	10	12	17	12	18	14	21	+7 / +50.0%	+9 / +75.0%
Overall	260	341	239	169	321	322	431	360	266	308	+42 / +15.8%	+69 / +28.9%
Lambourn (RG17)												
Flat	989	1042	1076	951	941	901	958	945	966	994	+28 / +2.9%	-82 / -7.6%
Jump	232	282	283	84	237	222	261	234	252	175	-77 / -30.6%	-108 / -38.2%
Dual	22	32	17	26	21	24	29	24	31	25	-6 / -19.4%	+8 / +47.1%
Overall	1243	1356	1376	1061	1199	1147	1248	1203	1249	1194	-55 / -4.4%	-182 / -13.2%
Malton (YO17)												
Flat	708	725	767	720	754	737	738	754	717	747	+30 / +4.2%	-20 / -2.6%
Jump	88	121	75	79	89	79	79	59	59	53	-6 / -10.2%	-22 / -29.3%
Dual	42	44	19	34	39	40	26	29	23	19	-4 / -17.4%	0 / 0.0%
Overall	838	890	861	833	882	856	843	842	799	819	+20 / +2.5%	-42 / -4.9%
Marlborough (SN8)												
Flat	551	569	562	521	524	503	457	476	444	420	-24 / -5.4%	-142 / -25.3%
Jump	42	74	64	16	45	39	54	61	49	33	-16 / -32.7%	-31 / -48.4%
Dual	2	0	4	2	0	2	1	2	2	0	-2 / -100.0%	-4 / -100.0%
Overall	595	643	630	539	569	544	512	539	495	453	-42 / -8.5%	-177 / -28.1%
Middleham (DL8)												
Flat	552	567	633	613	622	531	569	549	540	533	-7 / -1.3%	-100 / -15.8%
Jump	67	78	84	49	86	82	107	97	99	57	-42 / -42.4%	-27 / -32.1%
Dual	30	21	25	19	25	16	11	19	22	14	-8 / -36.4%	-11 / -44.0%
Overall	649	666	742	681	733	629	687	665	661	604	-57 / -8.6%	-138 / -18.6%
Newbury (RG20)												
Flat	444	466	476	424	469	507	451	406	391	410	+19 / +4.9%	-66 / -13.9%
Jump	17	18	17	4	8	5	34	19	65	25	-40 / -61.5%	+8 / +47.1%
Dual	8	12	7	7	9	7	6	2	4	3	-1 / -25.0%	-4 / -57.1%
Overall	469	496	500	435	486	519	491	427	460	438	-22 / -4.8%	-62 / -12.4%
Newmarket (CB8)												
Flat	2880	2898	2796	2624	2798	2866	2917	2837	2786	2780	-6 / -0.2%	-16 / -0.6%
Jump	37	46	52	19	46	31	52	48	57	41	-16 / -28.1%	-11 / -21.2%
Dual	34	35	19	23	28	26	27	32	43	39	-4 / -9.3%	+20 / +105.3%
Overall	2951	2979	2867	2666	2872	2923	2996	2917	2886	2860	-26 / -0.9%	-7 / -0.2%

'vs. Pre-Covid' is comparison between 2026 and 2019