



Horse Population Report

Updated on 30 April 2026



Introduction

Welcome to the latest update on the Racehorse Population from the British Horseracing Authority.

The aim of this document is to give stakeholders and the wider Public an insight into the current state of the Horse Population in Great Britain. It is hoped that this transparency will ensure that all decision makers have access to the key data required to help British Racing deliver a Competitive and Compelling product to stakeholders, racegoers and the wider public.

If you have any questions regarding the content of this report or suggestions for how it could be improved further, please contact Joe Yates – jyates@britishhorseracing.com

Definitions

This report uses the Horses in Training returns from the Weatherby's Racing Administration System, this is completed by trainers and should be updated whenever a horse enters or leaves training in their care as part of the conditions of their licence.

Horses in Training

Unless otherwise stated, snapshots of Horses in Training will be from the 15th day of the month in question and year to date figures will be up to and including the date titled at the front of the report.

Horses' ratings will be taken from the most recently published ratings by the BHA Handicapping Team, which is currently at 7am each Tuesday morning. For example, if looking at the Horses in a particular rating band for July 2011, the horses in training number will be from Friday 15th July 2011 and ratings, where possible, will be assigned to each horse from the ratings published by the BHA Handicappers on Tuesday 12th July 2011.

The Gender of a horse will be taken from the reporting date in question, regardless of whether this has since changed.

In the case of YTD reporting, where a horse's gender or training type has changed in the year-to-date period, the most recent is taken.

This report does not count any horses that are temporarily racing abroad for GB Trainers at the time of reporting.

Yearlings are not included in total counts of flat and/or dual horses but will be sometimes shown separately for information purposes.

Yearlings and two-year-olds are not included in total counts of jump horses or counts of jump horses that include dual horses but will be sometimes shown separately for information purposes.

Yearlings, two-year-olds and three-year-olds are not included in total counts of Hunter Chasers but will be sometimes shown separately for information purposes.

Yearlings and two-year-olds in training that are recorded as dual horses have been re-coded as flat horses.

Hunter Chasers are not included in any counts of Jump Horses or Total figures but will be sometimes shown separately for information purposes.

Horses' training locations are defined by the trainers' primary training location. Training regions are defined the same as regions for the Fixture List; 'North' is north of latitude 53.42911, 'South' is south of latitude 51.88002 and 'Midlands' is anywhere in between. Training centres are defined by postcodes and surrounding areas.

Runners

Unless otherwise specified, Total Runners and Individual Runners metrics only counts runners that ran in GB races including any voided races. Withdrawn horses are not included.

Hunter Chases are not included in this section but will be sometimes shown separately for information purposes.

Total Runners is a count of all runners in races, whilst individual runners only counts each individual horse once.

Monthly Horses in Training

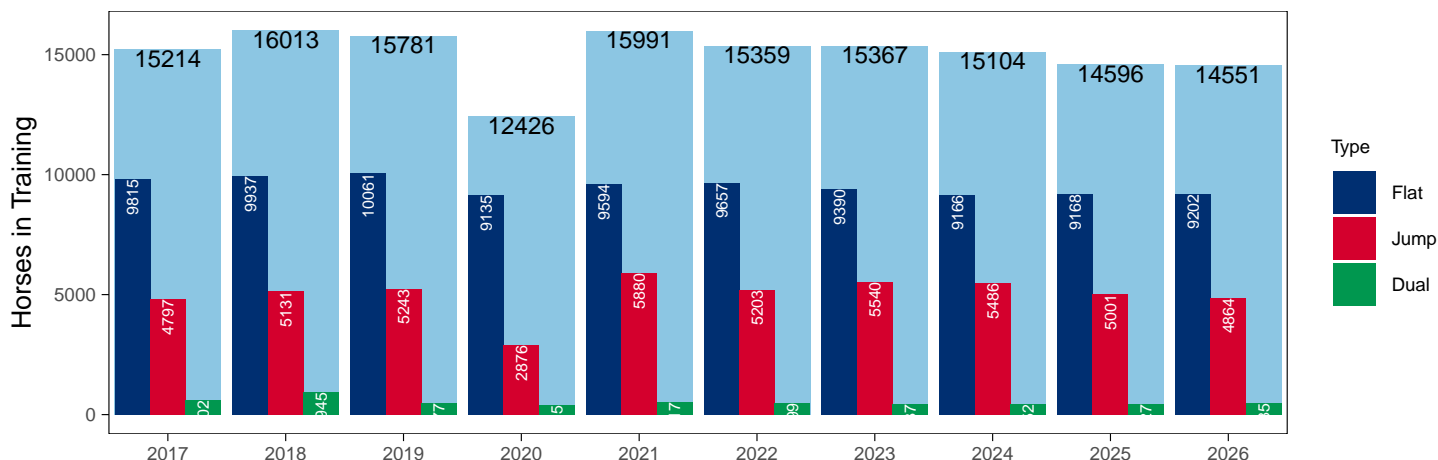
April 2026 Horses in Training Snapshot versus Previous Years

Type	2017	2018	2019	2020	2021	2022	2023	2024	2025	2026	vs. Last Year	vs. Pre-Covid
Flat	9815	9937	10061	9135	9594	9657	9390	9166	9168	9202	+34 / +0.4%	-859 / -8.5%
Jump	4797	5131	5243	2876	5880	5203	5540	5486	5001	4864	-137 / -2.7%	-379 / -7.2%
Dual	602	945	477	415	517	499	437	452	427	485	+58 / +13.6%	+8 / +1.7%
Hunter	1933	1749	1716	1457	1174	1312	1242	1378	1131	1047	-84 / -7.4%	-669 / -39.0%
Total	15214	16013	15781	12426	15991	15359	15367	15104	14596	14551	-45 / -0.3%	-1230 / -7.8%

'vs. Pre-Covid' is comparison between 2026 and 2019

Snapshot of Total Horses in Training in April

Horses in Training in April, shown by Training Type



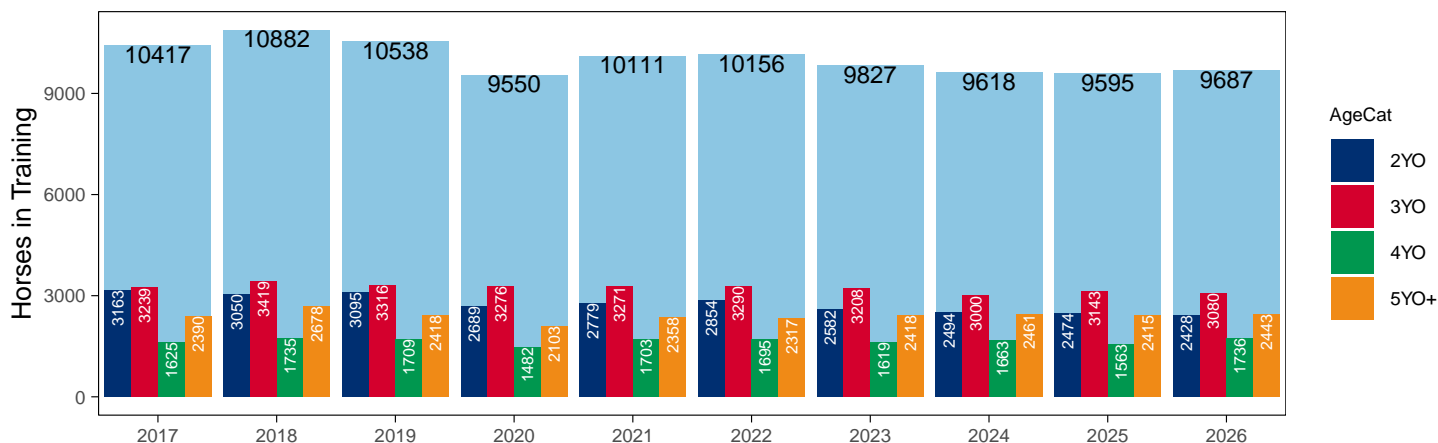
Flat (including Dual)

AgeCat	2017	2018	2019	2020	2021	2022	2023	2024	2025	2026	vs. Last Year	vs. Pre-Covid
2YO	3163	3050	3095	2689	2779	2854	2582	2494	2474	2428	-46 / -1.9%	-667 / -21.6%
3YO	3239	3419	3316	3276	3271	3290	3208	3000	3143	3080	-63 / -2.0%	-236 / -7.1%
4YO	1625	1735	1709	1482	1703	1695	1619	1663	1563	1736	+173 / +11.1%	+27 / +1.6%
5YO+	2390	2678	2418	2103	2358	2317	2418	2461	2415	2443	+28 / +1.2%	+25 / +1.0%
Total	10417	10882	10538	9550	10111	10156	9827	9618	9595	9687	+92 / +1.0%	-851 / -8.1%

'vs. Pre-Covid' is comparison between 2026 and 2019

Snapshot of Flat Horses in Training in April

Flat Horses in Training in April, shown by Age



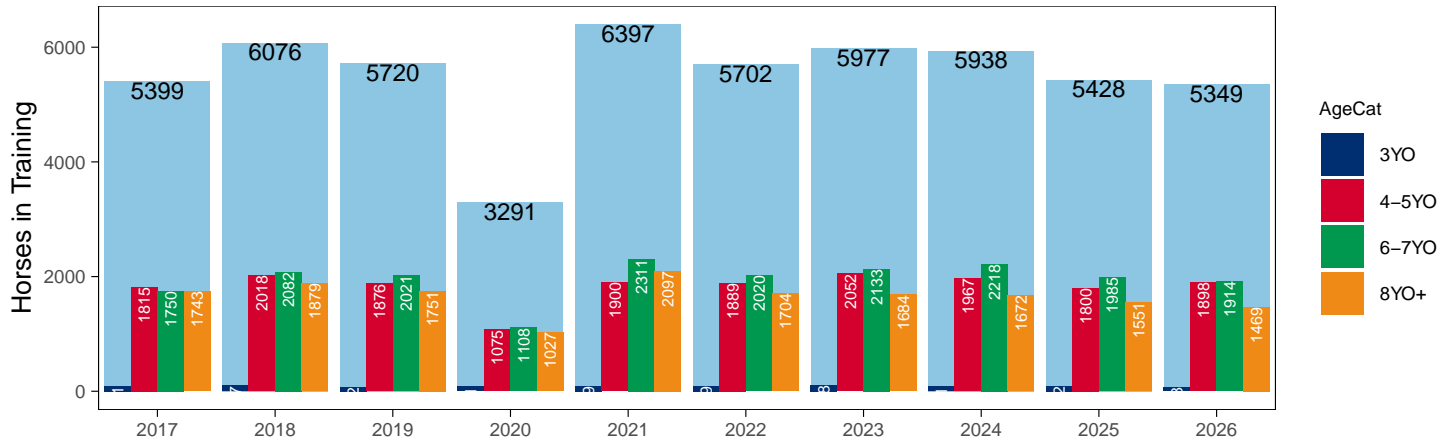
Jump (including Dual)

AgeCat	2017	2018	2019	2020	2021	2022	2023	2024	2025	2026	vs. Last Year	vs. Pre-Covid
3YO	91	97	72	81	89	89	108	81	92	68	-24 / -26.1%	-4 / -5.6%
4-5YO	1815	2018	1876	1075	1900	1889	2052	1967	1800	1898	+98 / +5.4%	+22 / +1.2%
6-7YO	1750	2082	2021	1108	2311	2020	2133	2218	1985	1914	-71 / -3.6%	-107 / -5.3%
8YO+	1743	1879	1751	1027	2097	1704	1684	1672	1551	1469	-82 / -5.3%	-282 / -16.1%
Total	5399	6076	5720	3291	6397	5702	5977	5938	5428	5349	-79 / -1.5%	-371 / -6.5%

'vs. Pre-Covid' is comparison between 2026 and 2019

Snapshot of Jump Horses in Training in April

Jump Horses in Training in April, shown by Age



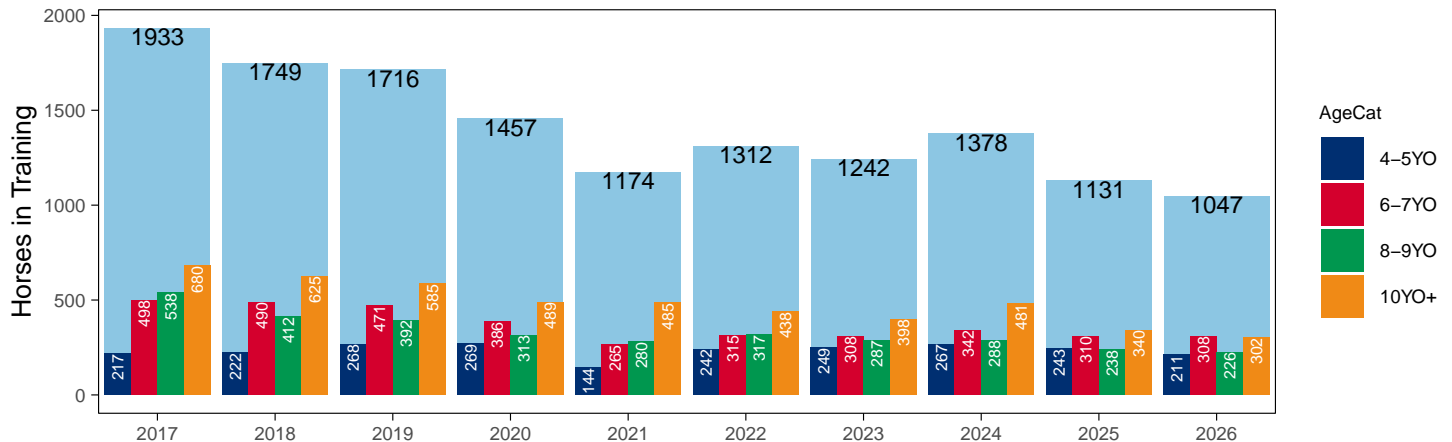
Hunter Chasers

AgeCat	2017	2018	2019	2020	2021	2022	2023	2024	2025	2026	vs. Last Year	vs. Pre-Covid
4-5YO	217	222	268	269	144	242	249	267	243	211	-32 / -13.2%	-57 / -21.3%
6-7YO	498	490	471	386	265	315	308	342	310	308	-2 / -0.6%	-163 / -34.6%
8-9YO	538	412	392	313	280	317	287	288	238	226	-12 / -5.0%	-166 / -42.3%
10YO+	680	625	585	489	485	438	398	481	340	302	-38 / -11.2%	-283 / -48.4%
Total	1933	1749	1716	1457	1174	1312	1242	1378	1131	1047	-84 / -7.4%	-669 / -39.0%

'vs. Pre-Covid' is comparison between 2026 and 2019

Snapshot of Hunter Chasers in Training in April

Hunter Chasers in Training in April, shown by Age



2026 Horses in Training versus Previous Years

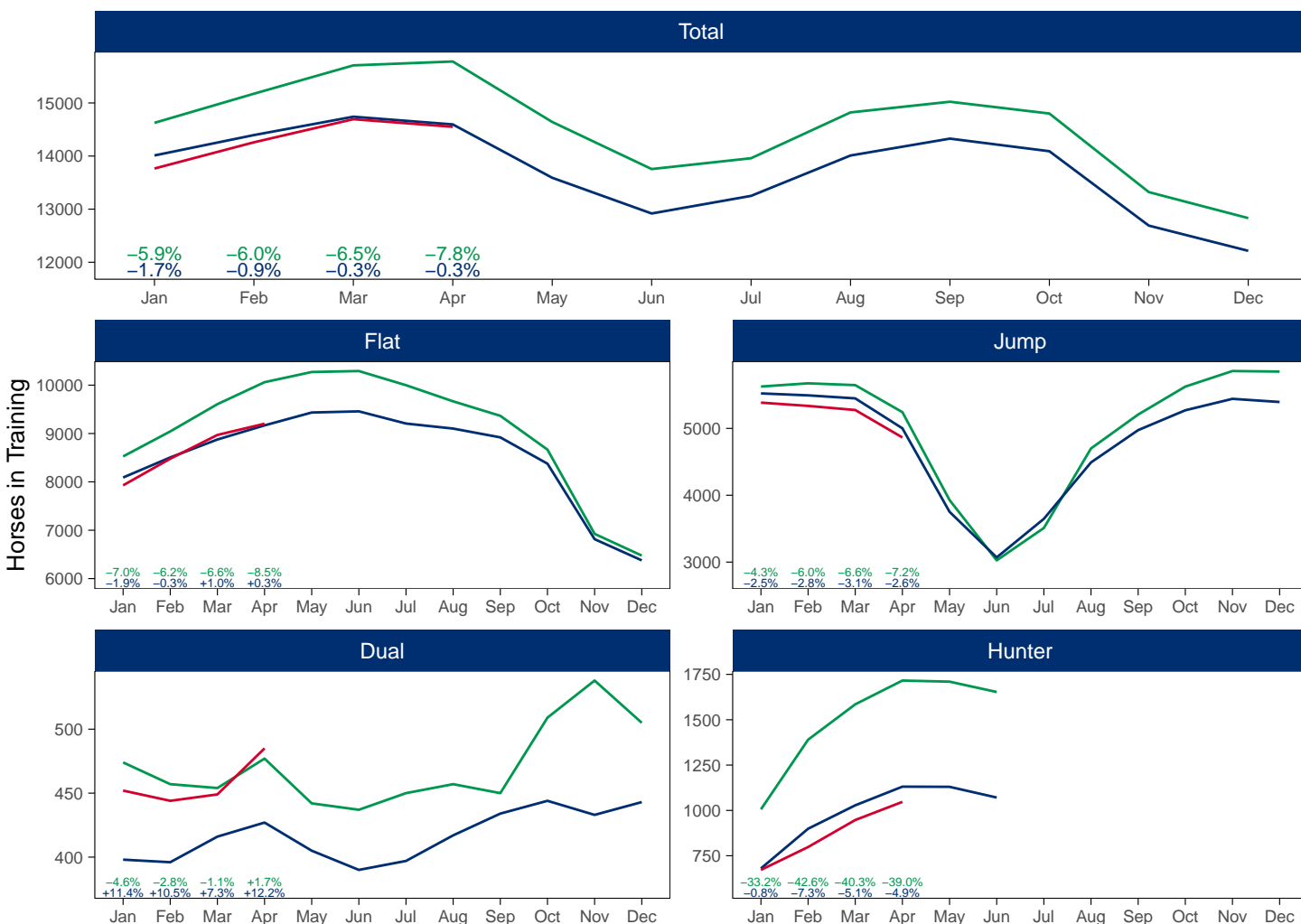
Type	Period	Jan	Feb	Mar	Apr	May	Jun	Jul	Aug	Sep	Oct	Nov	Dec
Flat	2026	7928	8479	8970	9202								
	2025	8090	8505	8876	9168	9434	9458	9206	9102	8920	8376	6815	6377
	Pre-Covid	8526	9043	9607	10061	10272	10292	9999	9665	9366	8667	6925	6476
Jump	2026	5385	5336	5275	4864								
	2025	5523	5494	5449	5001	3752	3070	3647	4491	4974	5271	5442	5395
	Pre-Covid	5626	5674	5647	5243	3928	3026	3510	4700	5207	5625	5858	5850
Dual	2026	452	444	449	485								
	2025	398	396	416	427	405	390	397	417	434	444	433	443
	Pre-Covid	474	457	454	477	442	437	450	457	450	509	538	505
Hunter	2026	672	798	947	1047								
	2025	680	899	1028	1131	1130	1071						
	Pre-Covid	1006	1390	1585	1716	1710	1653						
Total	2026	13765	14259	14694	14551								
	2025	14011	14395	14741	14596	13591	12918	13250	14010	14328	14091	12690	12215
	Pre-Covid	14626	15174	15708	15781	14642	13755	13959	14822	15023	14801	13321	12831

'Pre-Covid' is 2019 values

Monthly Horses in Training

2026 against 2025 and Pre-Covid, shown with % Difference

Period — Pre-Covid — 2025 — 2026



'Pre-Covid' is 2019 values

Flat (including Dual)

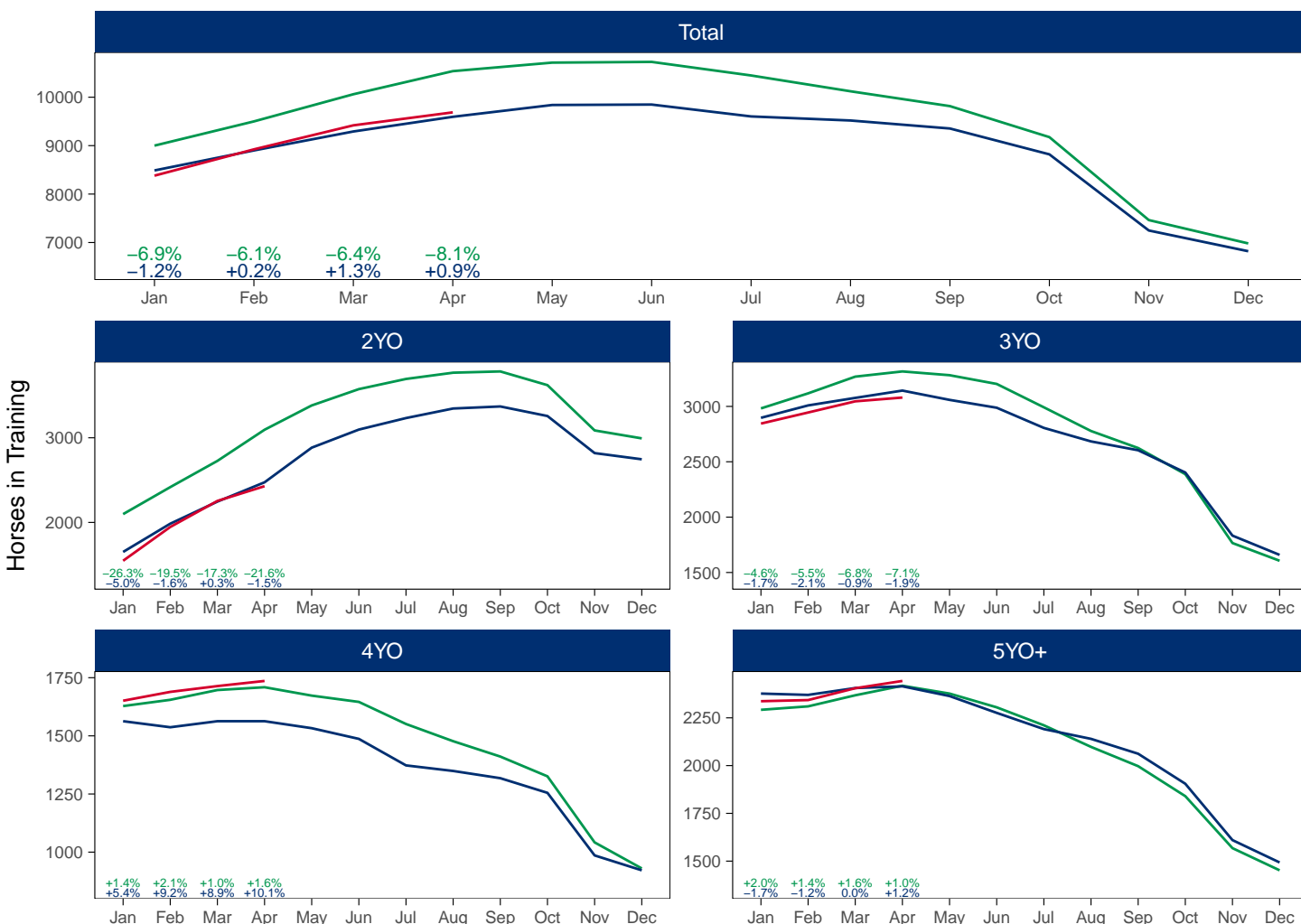
AgeCat	Period	Jan	Feb	Mar	Apr	May	Jun	Jul	Aug	Sep	Oct	Nov	Dec
2YO	2026	1547	1946	2254	2428								
	2025	1651	1985	2246	2474	2883	3097	3233	3346	3370	3257	2819	2746
	Pre-Covid	2098	2417	2727	3095	3382	3575	3695	3769	3784	3622	3087	2993
3YO	2026	2845	2945	3046	3080								
	2025	2897	3009	3077	3143	3059	2988	2806	2684	2604	2403	1833	1659
	Pre-Covid	2982	3118	3269	3316	3282	3203	2992	2778	2624	2388	1766	1606
4YO	2026	1651	1689	1714	1736								
	2025	1563	1537	1563	1563	1533	1487	1373	1349	1318	1255	986	922
	Pre-Covid	1628	1655	1697	1709	1673	1646	1551	1477	1411	1326	1042	930
5YO+	2026	2337	2343	2405	2443								
	2025	2377	2370	2406	2415	2364	2276	2191	2140	2062	1905	1610	1493
	Pre-Covid	2292	2310	2368	2418	2377	2305	2211	2098	1997	1840	1568	1452
Total	2026	8380	8923	9419	9687								
	2025	8488	8901	9292	9595	9839	9848	9603	9519	9354	8820	7248	6820
	Pre-Covid	9000	9500	10061	10538	10714	10729	10449	10122	9816	9176	7463	6981

'Pre-Covid' is 2019 values

Monthly Flat Horses in Training

2026 against 2025 and Pre-Covid, shown with % Difference

Period — Pre-Covid — 2025 — 2026



'Pre-Covid' is 2019 values

Jump (including Dual)

AgeCat	Period	Jan	Feb	Mar	Apr	May	Jun	Jul	Aug	Sep	Oct	Nov	Dec
3YO	2026	37	39	47	68								
	2025	38	60	67	92	113	145	230	326	424	521	625	697
	Pre-Covid	31	43	57	72	88	115	167	248	356	493	587	648
4-5YO	2026	1875	1942	1991	1898								
	2025	1826	1884	1927	1800	1383	1156	1435	1893	2105	2236	2350	2349
	Pre-Covid	1855	1930	1963	1876	1408	1083	1352	1977	2232	2415	2558	2559
6-7YO	2026	2168	2119	2086	1914								
	2025	2246	2205	2162	1985	1465	1176	1358	1578	1716	1785	1759	1714
	Pre-Covid	2229	2211	2178	2021	1490	1154	1308	1682	1782	1891	1908	1853
8YO+	2026	1757	1680	1600	1469								
	2025	1811	1741	1709	1551	1196	983	1021	1111	1163	1173	1141	1078
	Pre-Covid	1985	1947	1903	1751	1384	1111	1133	1250	1287	1335	1343	1295
Total	2026	5837	5780	5724	5349								
	2025	5921	5890	5865	5428	4157	3460	4044	4908	5408	5715	5875	5838
	Pre-Covid	6100	6131	6101	5720	4370	3463	3960	5157	5657	6134	6396	6355

'Pre-Covid' is 2019 values

Monthly Jump Horses in Training

2026 against 2025 and Pre-Covid, shown with % Difference

Period — Pre-Covid — 2025 — 2026



Hunter Chasers

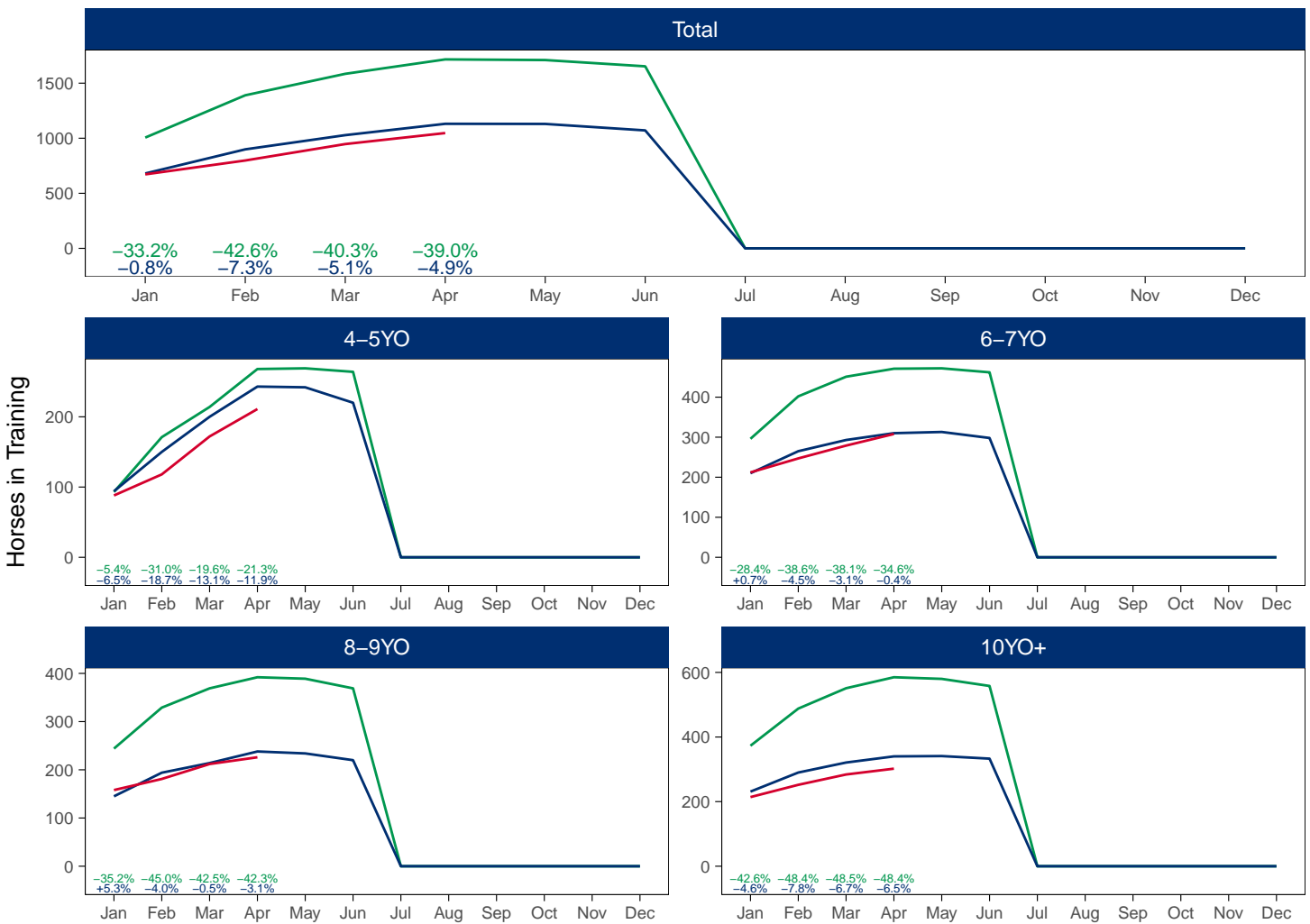
AgeCat	Period	Jan	Feb	Mar	Apr	May	Jun	Jul	Aug	Sep	Oct	Nov	Dec
4-5YO	2026	88	118	172	211								
	2025	94	150	200	243	242	220						
	Pre-Covid	93	171	214	268	269	264						
6-7YO	2026	212	247	279	308								
	2025	210	265	293	310	313	298						
	Pre-Covid	296	402	451	471	472	462						
8-9YO	2026	158	181	212	226								
	2025	145	194	214	238	234	220						
	Pre-Covid	244	329	369	392	389	369						
10YO+	2026	214	252	284	302								
	2025	231	290	321	340	341	333						
	Pre-Covid	373	488	551	585	580	558						
Total	2026	672	798	947	1047								
	2025	680	899	1028	1131	1130	1071						
	Pre-Covid	1006	1390	1585	1716	1710	1653						

'Pre-Covid' is 2019 values

Monthly Hunter Chasers in Training

2026 against 2025 and Pre-Covid, shown with % Difference

Period — Pre-Covid — 2025 — 2026



'Pre-Covid' is 2019 values

April 2026 Horses in Training by Rating Band Snapshot versus Previous Years

Flat (including Dual)

AgeCat	RatBand	2017	2018	2019	2020	2021	2022	2023	2024	2025	2026
2YO	Unrated	3,163 (100.0%)	3,050 (100.0%)	3,095 (100.0%)	2,689 (100.0%)	2,779 (100.0%)	2,854 (100.0%)	2,582 (100.0%)	2,494 (100.0%)	2,474 (100.0%)	2,428 (100.0%)
	Subtotal	3,163 (100.0%)	3,050 (100.0%)	3,095 (100.0%)	2,689 (100.0%)	2,779 (100.0%)	2,854 (100.0%)	2,582 (100.0%)	2,494 (100.0%)	2,474 (100.0%)	2,428 (100.0%)
3YO	Unrated	1,521 (47.0%)	1,855 (54.3%)	1,680 (50.7%)	1,941 (59.2%)	1,689 (51.6%)	1,617 (49.1%)	1,591 (49.6%)	1,474 (49.1%)	1,517 (48.3%)	1,515 (49.2%)
	0-50	128 (4.0%)	100 (2.9%)	143 (4.3%)	114 (3.5%)	137 (4.2%)	142 (4.3%)	142 (4.4%)	123 (4.1%)	125 (4.0%)	148 (4.8%)
	51-60	265 (8.2%)	222 (6.5%)	303 (9.1%)	214 (6.5%)	278 (8.5%)	296 (9.0%)	249 (7.8%)	260 (8.7%)	273 (8.7%)	275 (8.9%)
	61-70	419 (12.9%)	407 (11.9%)	400 (12.1%)	316 (9.6%)	402 (12.3%)	405 (12.3%)	421 (13.1%)	369 (12.3%)	393 (12.5%)	366 (11.9%)
	71-80	459 (14.2%)	444 (13.0%)	386 (11.6%)	346 (10.6%)	385 (11.8%)	457 (13.9%)	420 (13.1%)	393 (13.1%)	430 (13.7%)	367 (11.9%)
	81-90	292 (9.0%)	230 (6.7%)	240 (7.2%)	191 (5.8%)	216 (6.6%)	218 (6.6%)	234 (7.3%)	224 (7.5%)	232 (7.4%)	241 (7.8%)
	91-100	92 (2.8%)	89 (2.6%)	105 (3.2%)	92 (2.8%)	97 (3.0%)	87 (2.6%)	87 (2.7%)	88 (2.9%)	109 (3.5%)	107 (3.5%)
	101+	63 (1.9%)	72 (2.1%)	59 (1.8%)	62 (1.9%)	67 (2.0%)	68 (2.1%)	64 (2.0%)	69 (2.3%)	64 (2.0%)	61 (2.0%)
	Subtotal	3,239 (100.0%)	3,419 (100.0%)	3,316 (100.0%)	3,276 (100.0%)	3,271 (100.0%)	3,290 (100.0%)	3,208 (100.0%)	3,000 (100.0%)	3,143 (100.0%)	3,080 (100.0%)
	4YO	Unrated	257 (15.8%)	372 (21.4%)	304 (17.8%)	316 (21.3%)	327 (19.2%)	294 (17.3%)	275 (17.0%)	265 (15.9%)	245 (15.7%)
0-50		137 (8.4%)	174 (10.0%)	179 (10.5%)	161 (10.9%)	165 (9.7%)	169 (10.0%)	188 (11.6%)	165 (9.9%)	148 (9.5%)	157 (9.0%)
51-60		190 (11.7%)	188 (10.8%)	223 (13.0%)	177 (11.9%)	227 (13.3%)	237 (14.0%)	214 (13.2%)	257 (15.5%)	209 (13.4%)	243 (14.0%)
61-70		265 (16.3%)	277 (16.0%)	271 (15.9%)	226 (15.2%)	284 (16.7%)	284 (16.8%)	269 (16.6%)	297 (17.9%)	261 (16.7%)	305 (17.6%)
71-80		320 (19.7%)	296 (17.1%)	277 (16.2%)	211 (14.2%)	302 (17.7%)	304 (17.9%)	276 (17.0%)	294 (17.7%)	255 (16.3%)	282 (16.2%)
81-90		236 (14.5%)	220 (12.7%)	220 (12.9%)	182 (12.3%)	179 (10.5%)	226 (13.3%)	214 (13.2%)	198 (11.9%)	231 (14.8%)	249 (14.3%)
91-100		118 (7.3%)	131 (7.6%)	149 (8.7%)	127 (8.6%)	146 (8.6%)	110 (6.5%)	90 (5.6%)	112 (6.7%)	108 (6.9%)	136 (7.8%)
101+		102 (6.3%)	77 (4.4%)	86 (5.0%)	82 (5.5%)	73 (4.3%)	71 (4.2%)	93 (5.7%)	75 (4.5%)	106 (6.8%)	87 (5.0%)
Subtotal		1,625 (100.0%)	1,735 (100.0%)	1,709 (100.0%)	1,482 (100.0%)	1,703 (100.0%)	1,695 (100.0%)	1,619 (100.0%)	1,663 (100.0%)	1,563 (100.0%)	1,563 (100.0%)
5YO+		Unrated	318 (13.3%)	576 (21.5%)	329 (13.6%)	421 (20.0%)	336 (14.2%)	396 (17.1%)	326 (13.5%)	379 (15.4%)	311 (12.9%)
	0-50	219 (9.2%)	302 (11.3%)	348 (14.4%)	252 (12.0%)	291 (12.3%)	298 (12.9%)	298 (12.3%)	294 (11.9%)	304 (12.6%)	318 (13.0%)
	51-60	336 (14.1%)	373 (13.9%)	381 (15.8%)	291 (13.8%)	409 (17.3%)	352 (15.2%)	407 (16.8%)	451 (18.3%)	445 (18.4%)	425 (17.4%)
	61-70	421 (17.6%)	394 (14.7%)	415 (17.2%)	343 (16.3%)	413 (17.5%)	381 (16.4%)	437 (18.1%)	440 (17.9%)	433 (17.9%)	433 (17.7%)
	71-80	395 (16.5%)	374 (14.0%)	327 (13.5%)	295 (14.0%)	332 (14.1%)	316 (13.6%)	387 (16.0%)	356 (14.5%)	376 (15.6%)	420 (17.2%)
	81-90	319 (13.3%)	320 (11.9%)	282 (11.7%)	238 (11.3%)	250 (10.6%)	260 (11.2%)	264 (10.9%)	275 (11.2%)	283 (11.7%)	268 (11.0%)
	91-100	199 (8.3%)	181 (6.8%)	189 (7.8%)	145 (6.9%)	171 (7.3%)	184 (7.9%)	164 (6.8%)	146 (5.9%)	132 (5.5%)	143 (5.9%)
	101+	183 (7.7%)	158 (5.9%)	147 (6.1%)	118 (5.6%)	156 (6.6%)	130 (5.6%)	135 (5.6%)	120 (4.9%)	131 (5.4%)	163 (6.7%)
	Subtotal	2,390 (100.0%)	2,678 (100.0%)	2,418 (100.0%)	2,103 (100.0%)	2,358 (100.0%)	2,317 (100.0%)	2,418 (100.0%)	2,461 (100.0%)	2,415 (100.0%)	2,443 (100.0%)
	Overall	Unrated	5,259 (50.5%)	5,853 (53.8%)	5,408 (51.3%)	5,367 (56.2%)	5,131 (50.7%)	5,161 (50.8%)	4,774 (48.6%)	4,612 (48.0%)	4,547 (47.4%)
0-50		484 (4.6%)	576 (5.3%)	670 (6.4%)	527 (5.5%)	593 (5.9%)	609 (6.0%)	628 (6.4%)	582 (6.1%)	577 (6.0%)	623 (6.4%)
51-60		791 (7.6%)	783 (7.2%)	907 (8.6%)	682 (7.1%)	914 (9.0%)	885 (8.7%)	870 (8.9%)	968 (10.1%)	927 (9.7%)	943 (9.7%)
61-70		1,105 (10.6%)	1,078 (9.9%)	1,086 (10.3%)	885 (9.3%)	1,099 (10.9%)	1,070 (10.5%)	1,127 (11.5%)	1,106 (11.5%)	1,087 (11.3%)	1,104 (11.4%)
71-80		1,174 (11.3%)	1,114 (10.2%)	990 (9.4%)	852 (8.9%)	1,019 (10.1%)	1,077 (10.6%)	1,083 (11.0%)	1,043 (10.8%)	1,061 (11.1%)	1,069 (11.0%)
81-90		847 (8.1%)	770 (7.1%)	742 (7.0%)	611 (6.4%)	645 (6.4%)	704 (6.9%)	712 (7.2%)	697 (7.2%)	746 (7.8%)	758 (7.8%)
91-100		409 (3.9%)	401 (3.7%)	443 (4.2%)	364 (3.8%)	414 (4.1%)	381 (3.8%)	341 (3.5%)	346 (3.6%)	349 (3.6%)	386 (4.0%)
101+	348 (3.3%)	307 (2.8%)	292 (2.8%)	262 (2.7%)	296 (2.9%)	269 (2.6%)	292 (3.0%)	264 (2.7%)	301 (3.1%)	311 (3.2%)	
Total	10,417 (100.0%)	10,882 (100.0%)	10,538 (100.0%)	9,550 (100.0%)	10,111 (100.0%)	10,156 (100.0%)	9,827 (100.0%)	9,618 (100.0%)	9,595 (100.0%)	9,687 (100.0%)	

Where a horse has more than one published rating (published Flat Turf and published Flat AWT mark), the higher of the two is taken.

Jump (including Dual)

AgeCat	RatBand	2017	2018	2019	2020	2021	2022	2023	2024	2025	2026
3YO	Unrated	91 (100.0%)	97 (100.0%)	72 (100.0%)	81 (100.0%)	89 (100.0%)	89 (100.0%)	108 (100.0%)	81 (100.0%)	92 (100.0%)	68 (100.0%)
	Subtotal	91 (100.0%)	97 (100.0%)	72 (100.0%)	81 (100.0%)	89 (100.0%)	89 (100.0%)	108 (100.0%)	81 (100.0%)	92 (100.0%)	68 (100.0%)
4-5YO	Unrated	1,249 (68.8%)	1,469 (72.8%)	1,342 (71.5%)	782 (72.7%)	1,417 (74.6%)	1,337 (70.8%)	1,465 (71.4%)	1,386 (70.5%)	1,266 (70.3%)	1,311 (69.1%)
	0-100	175 (9.6%)	139 (6.9%)	134 (7.1%)	119 (11.1%)	205 (10.8%)	257 (13.6%)	285 (13.9%)	301 (15.3%)	272 (15.1%)	290 (15.3%)
	101-110	106 (5.8%)	134 (6.6%)	114 (6.1%)	53 (4.9%)	73 (3.8%)	124 (6.6%)	120 (5.8%)	118 (6.0%)	118 (6.6%)	121 (6.4%)
	111-120	122 (6.7%)	109 (5.4%)	126 (6.7%)	55 (5.1%)	99 (5.2%)	95 (5.0%)	112 (5.5%)	100 (5.1%)	87 (4.8%)	111 (5.8%)
	121-130	86 (4.7%)	94 (4.7%)	90 (4.8%)	42 (3.9%)	63 (3.3%)	49 (2.6%)	53 (2.6%)	41 (2.1%)	43 (2.4%)	45 (2.4%)
	131-140	59 (3.3%)	57 (2.8%)	47 (2.5%)	13 (1.2%)	32 (1.7%)	19 (1.0%)	16 (0.8%)	17 (0.9%)	8 (0.4%)	13 (0.7%)
	141-150	15 (0.8%)	12 (0.6%)	20 (1.1%)	7 (0.7%)	6 (0.3%)	6 (0.3%)	1 (0.0%)	4 (0.2%)	4 (0.2%)	6 (0.3%)
	151+	3 (0.2%)	4 (0.2%)	3 (0.2%)	4 (0.4%)	5 (0.3%)	2 (0.1%)	NA (-)	NA (-)	2 (0.1%)	1 (0.1%)
Subtotal	1,815 (100.0%)	2,018 (100.0%)	1,876 (100.0%)	1,075 (100.0%)	1,900 (100.0%)	1,889 (100.0%)	2,052 (100.0%)	1,967 (100.0%)	1,800 (100.0%)	1,898 (100.0%)	
6-7YO	Unrated	394 (22.5%)	586 (28.1%)	470 (23.3%)	333 (30.1%)	557 (24.1%)	502 (24.9%)	531 (24.9%)	570 (25.7%)	434 (21.9%)	407 (21.3%)
	0-100	386 (22.1%)	404 (19.4%)	422 (20.9%)	278 (25.1%)	626 (27.1%)	591 (29.3%)	650 (30.5%)	718 (32.4%)	644 (32.4%)	609 (31.8%)
	101-110	245 (14.0%)	251 (12.1%)	288 (14.3%)	156 (14.1%)	279 (12.1%)	298 (14.8%)	318 (14.9%)	327 (14.7%)	338 (17.0%)	296 (15.5%)
	111-120	260 (14.9%)	308 (14.8%)	291 (14.4%)	142 (12.8%)	305 (13.2%)	252 (12.5%)	300 (14.1%)	283 (12.8%)	277 (14.0%)	298 (15.6%)
	121-130	219 (12.5%)	256 (12.3%)	254 (12.6%)	99 (8.9%)	294 (12.7%)	220 (10.9%)	194 (9.1%)	197 (8.9%)	167 (8.4%)	179 (9.4%)
	131-140	157 (9.0%)	179 (8.6%)	212 (10.5%)	68 (6.1%)	150 (6.5%)	108 (5.3%)	98 (4.6%)	82 (3.7%)	96 (4.8%)	74 (3.9%)
	141-150	62 (3.5%)	68 (3.3%)	53 (2.6%)	21 (1.9%)	74 (3.2%)	34 (1.7%)	30 (1.4%)	32 (1.4%)	20 (1.0%)	33 (1.7%)
	151+	27 (1.5%)	30 (1.4%)	31 (1.5%)	11 (1.0%)	26 (1.1%)	15 (0.7%)	12 (0.6%)	9 (0.4%)	9 (0.5%)	18 (0.9%)
Subtotal	1,750 (100.0%)	2,082 (100.0%)	2,021 (100.0%)	1,108 (100.0%)	2,311 (100.0%)	2,020 (100.0%)	2,133 (100.0%)	2,218 (100.0%)	1,985 (100.0%)	1,914 (100.0%)	
8YO+	Unrated	198 (11.4%)	275 (14.6%)	198 (11.3%)	207 (20.2%)	211 (10.1%)	244 (14.3%)	231 (13.7%)	257 (15.4%)	215 (13.9%)	184 (12.5%)
	0-100	531 (30.5%)	509 (27.1%)	525 (30.0%)	320 (31.2%)	672 (32.0%)	484 (28.4%)	474 (28.1%)	513 (30.7%)	512 (33.0%)	485 (33.0%)
	101-110	255 (14.6%)	268 (14.3%)	252 (14.4%)	132 (12.9%)	290 (13.8%)	222 (13.0%)	251 (14.9%)	225 (13.5%)	214 (13.8%)	216 (14.7%)
	111-120	257 (14.7%)	251 (13.4%)	250 (14.3%)	124 (12.1%)	289 (13.8%)	270 (15.8%)	252 (15.0%)	230 (13.8%)	230 (14.8%)	213 (14.5%)
	121-130	207 (11.9%)	245 (13.0%)	215 (12.3%)	111 (10.8%)	274 (13.1%)	213 (12.5%)	228 (13.5%)	218 (13.0%)	197 (12.7%)	179 (12.2%)
	131-140	187 (10.7%)	187 (10.0%)	177 (10.1%)	78 (7.6%)	209 (10.0%)	159 (9.3%)	146 (8.7%)	140 (8.4%)	106 (6.8%)	114 (7.8%)
	141-150	73 (4.2%)	110 (5.9%)	86 (4.9%)	32 (3.1%)	92 (4.4%)	79 (4.6%)	68 (4.0%)	55 (3.3%)	53 (3.4%)	52 (3.5%)
	151+	35 (2.0%)	34 (1.8%)	48 (2.7%)	23 (2.2%)	60 (2.9%)	33 (1.9%)	34 (2.0%)	34 (2.0%)	24 (1.5%)	26 (1.8%)
Subtotal	1,743 (100.0%)	1,879 (100.0%)	1,751 (100.0%)	1,027 (100.0%)	2,097 (100.0%)	1,704 (100.0%)	1,684 (100.0%)	1,672 (100.0%)	1,551 (100.0%)	1,469 (100.0%)	
Overall	Unrated	1,932 (35.8%)	2,427 (39.9%)	2,082 (36.4%)	1,403 (42.6%)	2,274 (35.5%)	2,172 (38.1%)	2,335 (39.1%)	2,294 (38.6%)	2,007 (37.0%)	1,970 (36.8%)
	0-100	1,092 (20.2%)	1,052 (17.3%)	1,081 (18.9%)	717 (21.8%)	1,503 (23.5%)	1,332 (23.4%)	1,409 (23.6%)	1,532 (25.8%)	1,428 (26.3%)	1,384 (25.9%)
	101-110	606 (11.2%)	653 (10.7%)	654 (11.4%)	341 (10.4%)	642 (10.0%)	644 (11.3%)	689 (11.5%)	670 (11.3%)	670 (12.3%)	633 (11.8%)
	111-120	639 (11.8%)	668 (11.0%)	667 (11.7%)	321 (9.8%)	693 (10.8%)	617 (10.8%)	664 (11.1%)	613 (10.3%)	594 (10.9%)	622 (11.6%)
	121-130	512 (9.5%)	595 (9.8%)	559 (9.8%)	252 (7.7%)	631 (9.9%)	482 (8.5%)	475 (7.9%)	456 (7.7%)	407 (7.5%)	403 (7.5%)
	131-140	403 (7.5%)	423 (7.0%)	436 (7.6%)	159 (4.8%)	391 (6.1%)	286 (5.0%)	260 (4.4%)	239 (4.0%)	210 (3.9%)	201 (3.8%)
141-150	150 (2.8%)	190 (3.1%)	159 (2.8%)	60 (1.8%)	172 (2.7%)	119 (2.1%)	99 (1.7%)	91 (1.5%)	77 (1.4%)	91 (1.7%)	
151+	65 (1.2%)	68 (1.1%)	82 (1.4%)	38 (1.2%)	91 (1.4%)	50 (0.9%)	46 (0.8%)	43 (0.7%)	35 (0.6%)	45 (0.8%)	
Total	5,399 (100.0%)	6,076 (100.0%)	5,720 (100.0%)	3,291 (100.0%)	6,397 (100.0%)	5,702 (100.0%)	5,977 (100.0%)	5,938 (100.0%)	5,428 (100.0%)	5,349 (100.0%)	

Where a horse has more than one published rating (published Hurdle and published Chase mark), the higher of the two is taken.

Young Horses Entering Training

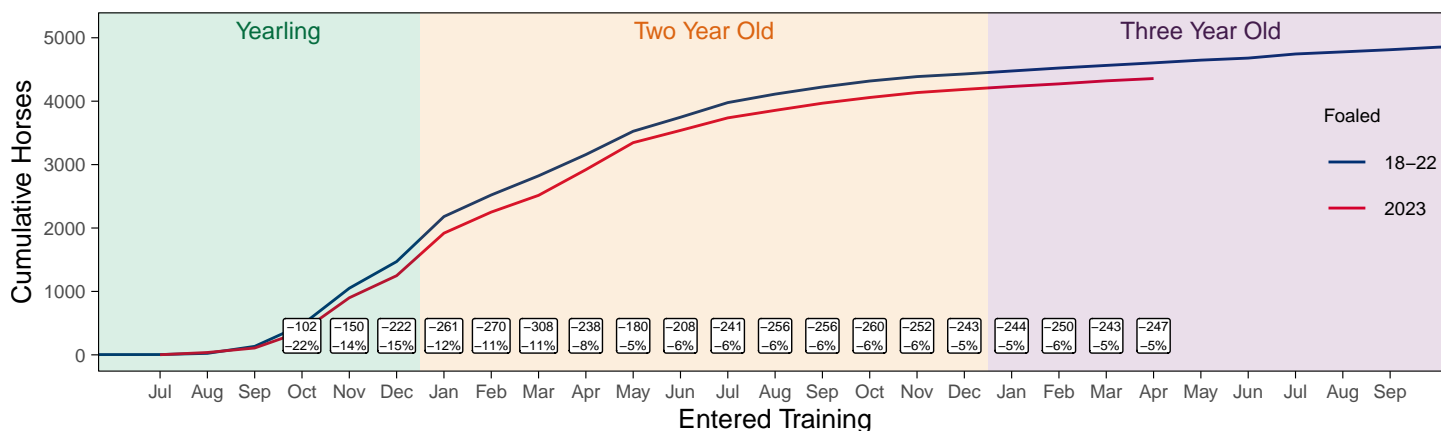
Flat Yearlings in Training versus Previous Years

Period	Jan	Feb	Mar	Apr	May	Jun	Jul	Aug	Sep	Oct	Nov	Dec
2026	1	1	1	1								
2025	0	0	0	1	1	1	1	1	56	177	583	1144
5YrAvg	0	0	0	1	1	1	1	2	53	172	525	908

Foals Entering Training for the First Time

2023 Foals Entering Training Over Time

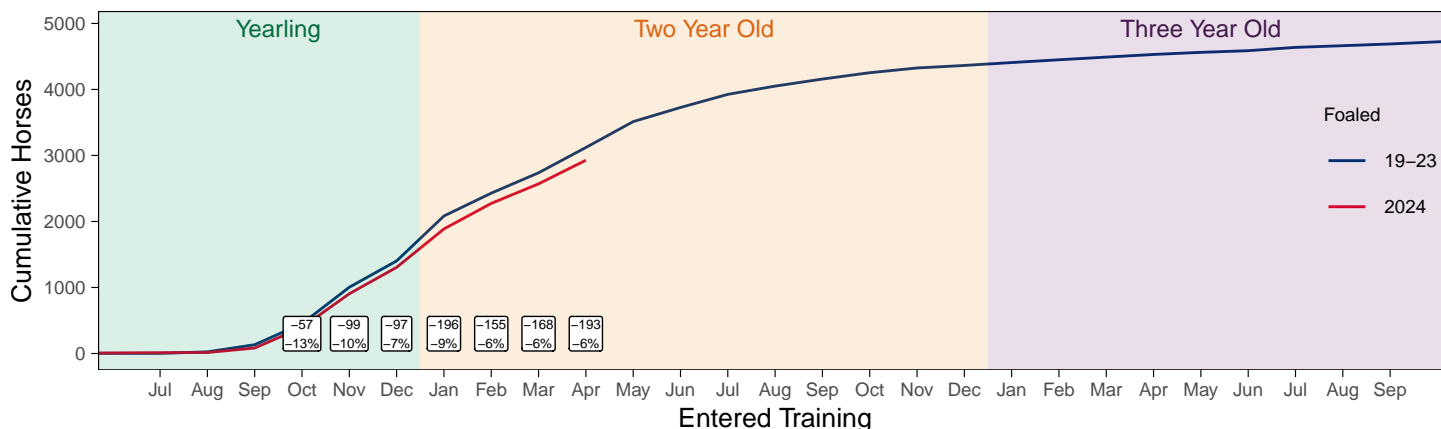
Cumulative Flat Horses foaled in 2023 shown by first in training notification against trend



Cumulative individual horses entering training for the first time by the end of each month.

2024 Foals Entering Training Over Time

Cumulative Flat Horses foaled in 2024 shown by first in training notification against trend



Cumulative individual horses entering training for the first time by the end of each month.

Year to Date Horses in Training

Type	2017	2018	2019	2020	2021	2022	2023	2024	2025	2026	vs. Last Year	vs. Pre-Covid
Flat	11651	11624	11750	11323	11402	11365	11027	10937	10865	10879	+14 / +0.1%	-871 / -7.4%
Jump	6419	6170	6864	6671	7489	6961	6986	6806	6580	6298	-282 / -4.3%	-566 / -8.2%
Dual	780	1219	704	754	712	695	606	646	583	696	+113 / +19.4%	-8 / -1.1%
Hunter	1989	1827	1762	1482	1213	1330	1276	1435	1154	1072	-82 / -7.1%	-690 / -39.2%
Total	18850	19013	19318	18748	19603	19021	18619	18389	18028	17873	-155 / -0.9%	-1445 / -7.5%

'vs. Pre-Covid' is comparison between 2026 and 2019

Flat

AgeCat	2017	2018	2019	2020	2021	2022	2023	2024	2025	2026	vs. Last Year	vs. Pre-Covid
2YO	3549	3485	3490	3076	3261	3275	3011	2960	2882	2887	+5 / +0.2%	-603 / -17.3%
3YO	3744	3897	3810	3845	3719	3708	3607	3510	3584	3501	-83 / -2.3%	-309 / -8.1%
4YO	1849	1797	1916	1849	1938	1937	1871	1874	1801	1902	+101 / +5.6%	-14 / -0.7%
5YO+	2509	2445	2534	2553	2484	2445	2538	2593	2598	2589	-9 / -0.3%	+55 / +2.2%
Total	11651	11624	11750	11323	11402	11365	11027	10937	10865	10879	+14 / +0.1%	-871 / -7.4%

'vs. Pre-Covid' is comparison between 2026 and 2019

Jump

AgeCat	2017	2018	2019	2020	2021	2022	2023	2024	2025	2026	vs. Last Year	vs. Pre-Covid
3YO	37	47	49	32	58	51	72	71	57	49	-8 / -14.0%	0 / 0.0%
4-5YO	2018	1826	2133	2093	2096	2173	2281	2150	2096	2088	-8 / -0.4%	-45 / -2.1%
6-7YO	2150	2193	2453	2406	2738	2492	2500	2533	2411	2287	-124 / -5.1%	-166 / -6.8%
8YO+	2214	2104	2229	2140	2597	2245	2133	2052	2016	1874	-142 / -7.0%	-355 / -15.9%
Total	6419	6170	6864	6671	7489	6961	6986	6806	6580	6298	-282 / -4.3%	-566 / -8.2%

'vs. Pre-Covid' is comparison between 2026 and 2019

Dual

AgeCat	2017	2018	2019	2020	2021	2022	2023	2024	2025	2026	vs. Last Year	vs. Pre-Covid
3YO	77	80	53	80	70	95	72	72	81	79	-2 / -2.5%	+26 / +49.1%
4YO	208	312	199	204	217	182	171	186	153	208	+55 / +35.9%	+9 / +4.5%
5YO+	495	827	452	470	425	418	363	388	349	409	+60 / +17.2%	-43 / -9.5%
Total	780	1219	704	754	712	695	606	646	583	696	+113 / +19.4%	-8 / -1.1%

'vs. Pre-Covid' is comparison between 2026 and 2019

Hunter Chasers

AgeCat	2017	2018	2019	2020	2021	2022	2023	2024	2025	2026	vs. Last Year	vs. Pre-Covid
4-5YO	228	256	279	273	150	243	263	283	252	212	-40 / -15.9%	-67 / -24.0%
6-7YO	522	506	484	394	274	324	319	356	317	320	+3 / +0.9%	-164 / -33.9%
8-9YO	545	422	401	316	292	321	288	300	240	231	-9 / -3.8%	-170 / -42.4%
10YO+	694	643	598	499	497	442	406	496	345	309	-36 / -10.4%	-289 / -48.3%
Total	1989	1827	1762	1482	1213	1330	1276	1435	1154	1072	-82 / -7.1%	-690 / -39.2%

'vs. Pre-Covid' is comparison between 2026 and 2019

Year to Date Runners

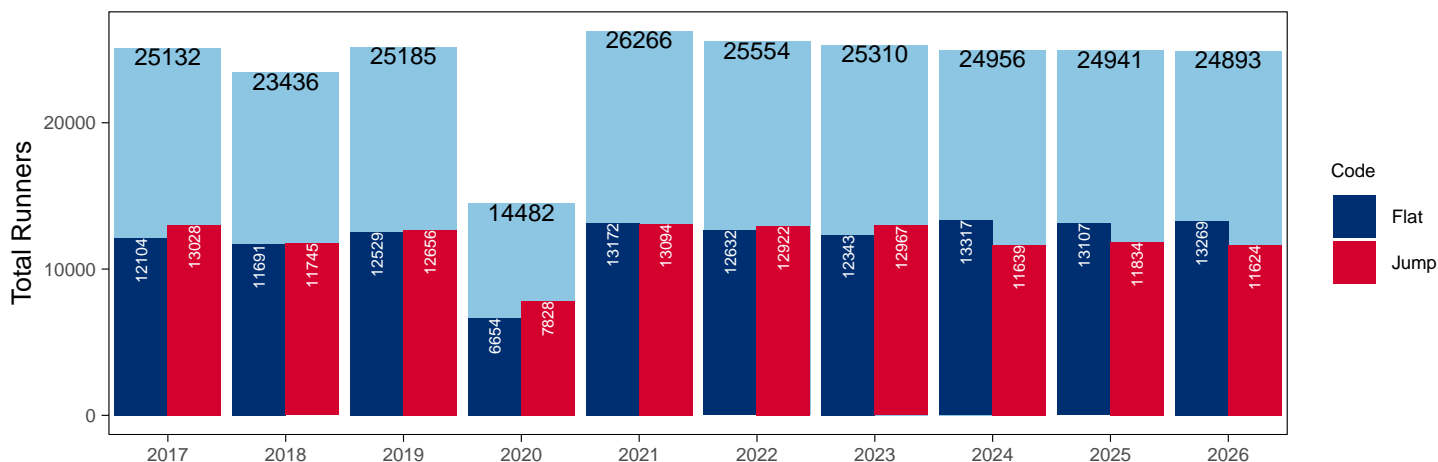
Year to Date Total Runners

Code	2017	2018	2019	2020	2021	2022	2023	2024	2025	2026	vs. Last Year	vs. Pre-Covid
Flat	12104	11691	12529	6654	13172	12632	12343	13317	13107	13269	+162 / +1.2%	+740 / +5.9%
Jump	13028	11745	12656	7828	13094	12922	12967	11639	11834	11624	-210 / -1.8%	-1032 / -8.2%
Total	25132	23436	25185	14482	26266	25554	25310	24956	24941	24893	-48 / -0.2%	-292 / -1.2%

'vs. Pre-Covid' is comparison between 2026 and 2019

YTD Total Runners

Total Runners in GB Races, shown by Code and Total



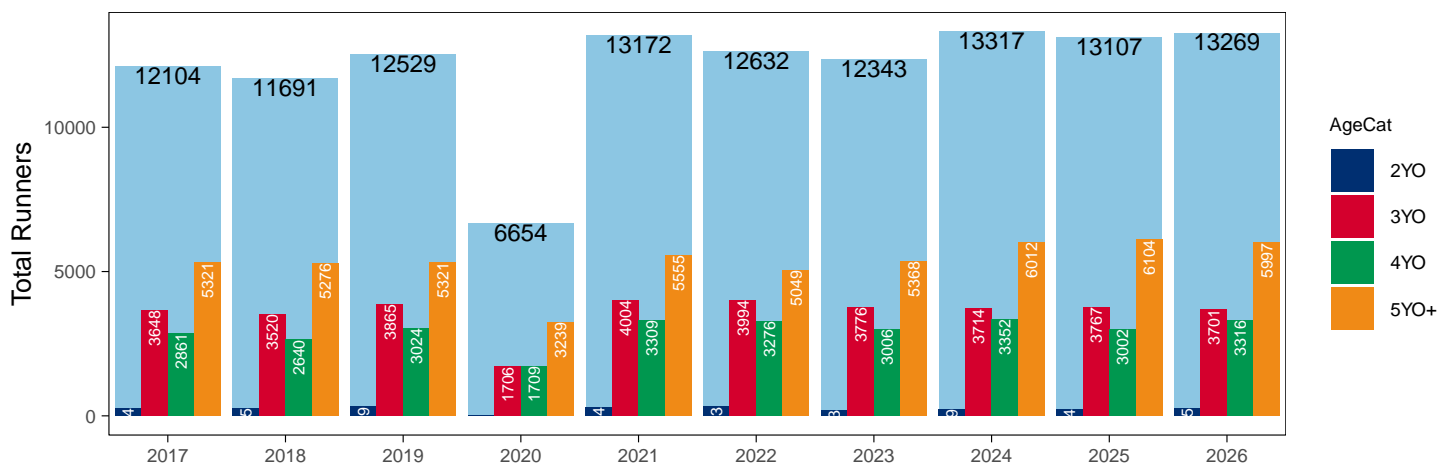
Flat

AgeCat	2017	2018	2019	2020	2021	2022	2023	2024	2025	2026	vs. Last Year	vs. Pre-Covid
2YO	274	255	319		304	313	193	239	234	255	+21 / +9.0%	-64 / -20.1%
3YO	3648	3520	3865	1706	4004	3994	3776	3714	3767	3701	-66 / -1.8%	-164 / -4.2%
4YO	2861	2640	3024	1709	3309	3276	3006	3352	3002	3316	+314 / +10.5%	+292 / +9.7%
5YO+	5321	5276	5321	3239	5555	5049	5368	6012	6104	5997	-107 / -1.8%	+676 / +12.7%
Total	12104	11691	12529	6654	13172	12632	12343	13317	13107	13269	+162 / +1.2%	+740 / +5.9%

'vs. Pre-Covid' is comparison between 2026 and 2019

YTD Total Flat Runners by Age

Total Runners in GB Flat Races, shown by Age Category and Total



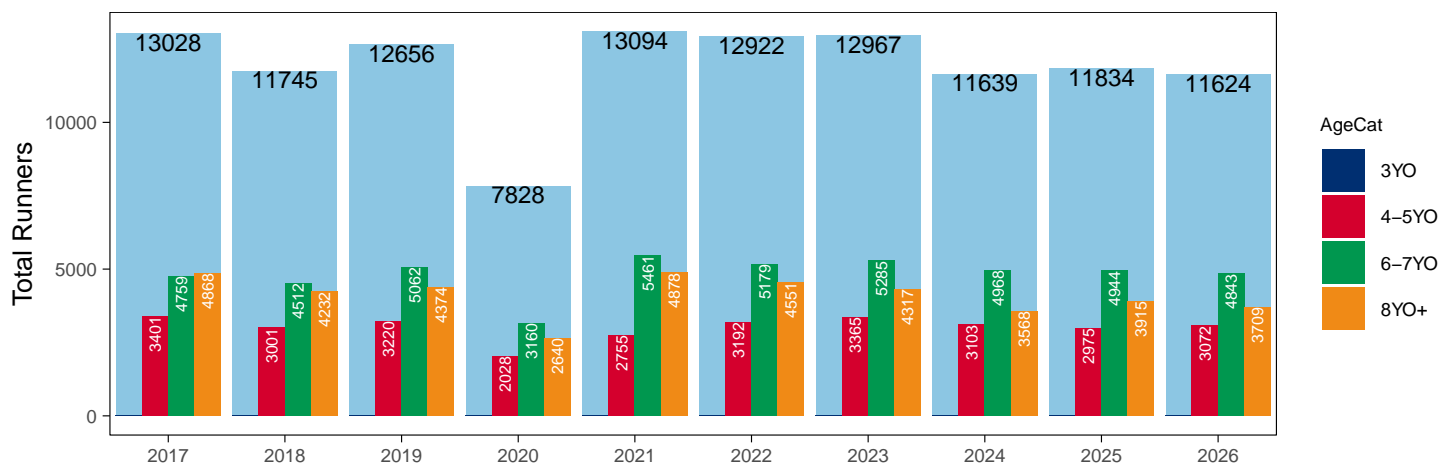
Jump

AgeCat	2017	2018	2019	2020	2021	2022	2023	2024	2025	2026	vs. Last Year	vs. Pre-Covid
3YO											NA / NA	0 / NA
4-5YO	3401	3001	3220	2028	2755	3192	3365	3103	2975	3072	+97 / +3.3%	-148 / -4.6%
6-7YO	4759	4512	5062	3160	5461	5179	5285	4968	4944	4843	-101 / -2.0%	-219 / -4.3%
8YO+	4868	4232	4374	2640	4878	4551	4317	3568	3915	3709	-206 / -5.3%	-665 / -15.2%
Total	13028	11745	12656	7828	13094	12922	12967	11639	11834	11624	-210 / -1.8%	-1032 / -8.2%

'vs. Pre-Covid' is comparison between 2026 and 2019

YTD Total Jump Runners by Age

Total Runners in GB Jump Races, shown by Age Category and Total



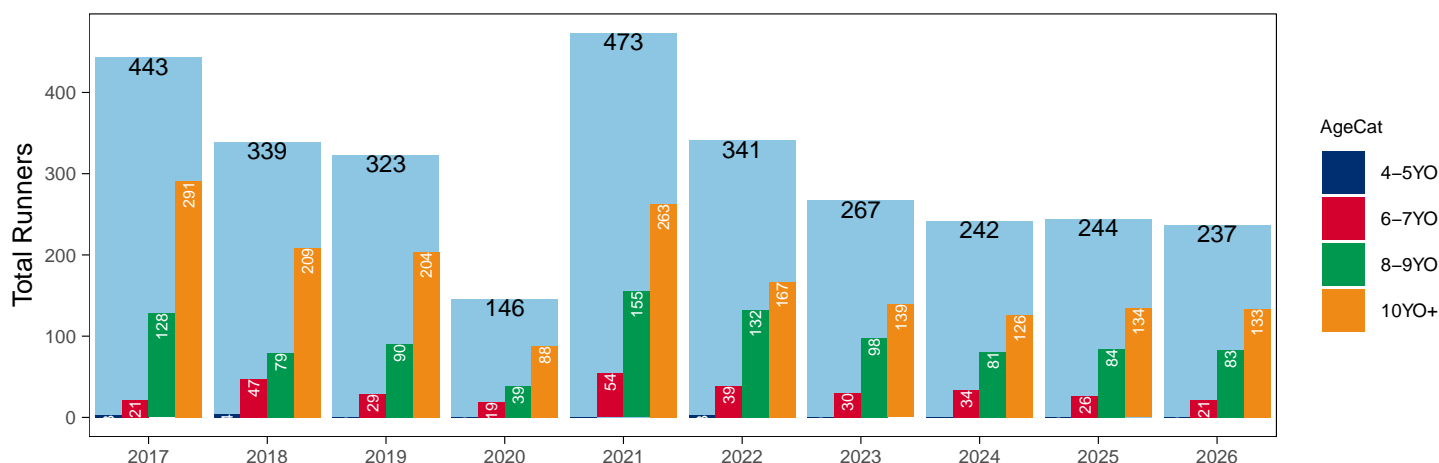
Hunter Chases

AgeCat	2017	2018	2019	2020	2021	2022	2023	2024	2025	2026	vs. Last Year	vs. Pre-Covid
4-5YO	3	4			1	3		1			NA / NA	0 / NA
6-7YO	21	47	29	19	54	39	30	34	26	21	-5 / -19.2%	-8 / -27.6%
8-9YO	128	79	90	39	155	132	98	81	84	83	-1 / -1.2%	-7 / -7.8%
10YO+	291	209	204	88	263	167	139	126	134	133	-1 / -0.7%	-71 / -34.8%
Total	443	339	323	146	473	341	267	242	244	237	-7 / -2.9%	-86 / -26.6%

'vs. Pre-Covid' is comparison between 2026 and 2019

YTD Total Hunter Chase Runners by Age

Total Runners in GB Hunter Chases shown by Age Category and Total



Year to Date Total Runners by Country Trained

Code	Country	2017	2018	2019	2020	2021	2022	2023	2024	2025	2026
Flat	GB	11998	11586	12430	6574	13160	12597	12300	13216	13029	13202
	IRE	99	97	88	76	10	27	42	96	74	65
	Other	7	8	11	4	2	8	1	5	4	2
Jump	GB	12609	11425	12240	7561	12829	12458	12422	11130	11253	11132
	IRE	407	311	409	257	262	462	542	506	575	479
	Other	12	9	7	10	3	2	3	3	6	13
Overall	GB	24607	23011	24670	14135	25989	25055	24722	24346	24282	24334
	IRE	506	408	497	333	272	489	584	602	649	544
	Other	19	17	18	14	5	10	4	8	10	15

Year to Date GB Trained Runners Racing Abroad

Code	Country	2017	2018	2019	2020	2021	2022	2023	2024	2025	2026
Flat	IRE	17	15	12	2	2	1	2	2	4	6
	FR	55	40	83	27	22	25	41	40	88	26
	GNV	2	2	3				1	1	2	3
	UAE	278	276	303	281	248	276	272	214	228	383
	BAH						41	23	50	89	74
	KSA				15	21	22	15	11	10	13
	Other	33	25	19	24	6	11	36	23	34	27
	Total		385	358	420	349	299	376	390	341	455
Jump	IRE	64	44	16	5	14	26	17	18	39	36
	FR	7	1	5	3	37	33	38	18	5	4
	Other	1	1				1				
	Total	72	46	21	8	51	60	55	36	44	40

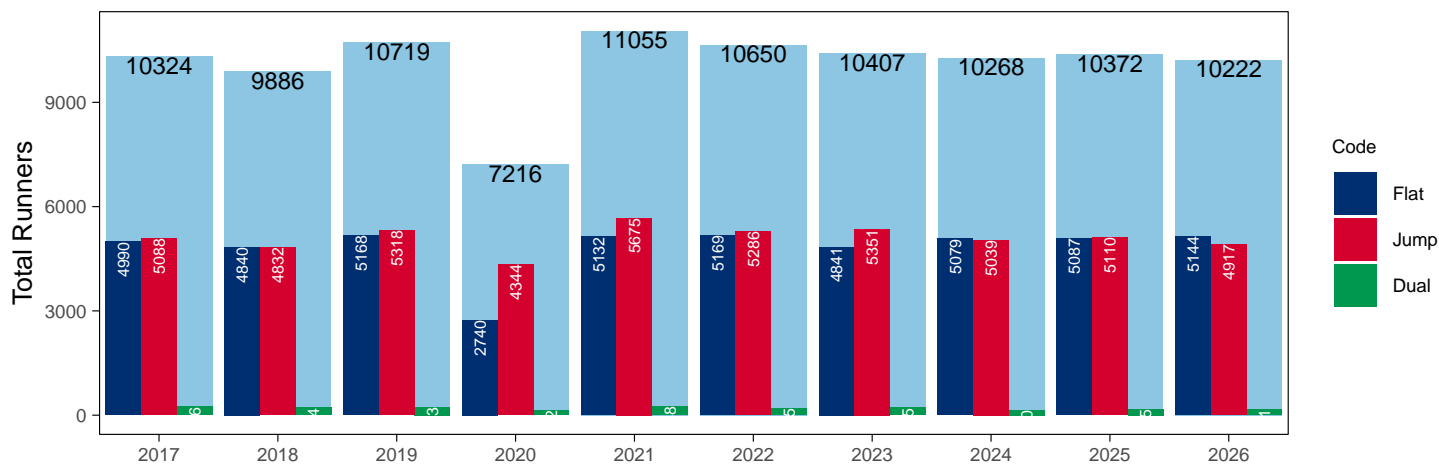
Year to Date Individual Runners

Code	2017	2018	2019	2020	2021	2022	2023	2024	2025	2026	vs. Last Year	vs. Pre-Covid
Flat	4990	4840	5168	2740	5132	5169	4841	5079	5087	5144	+57 / +1.1%	-24 / -0.5%
Jump	5088	4832	5318	4344	5675	5286	5351	5039	5110	4917	-193 / -3.8%	-401 / -7.5%
Dual	246	214	233	132	248	195	215	150	175	161	-14 / -8.0%	-72 / -30.9%
Overall	10324	9886	10719	7216	11055	10650	10407	10268	10372	10222	-150 / -1.4%	-497 / -4.6%

'vs. Pre-Covid' is comparison between 2026 and 2019

YTD Individual Runners

Individual Runners in GB Races, shown by Code and Total



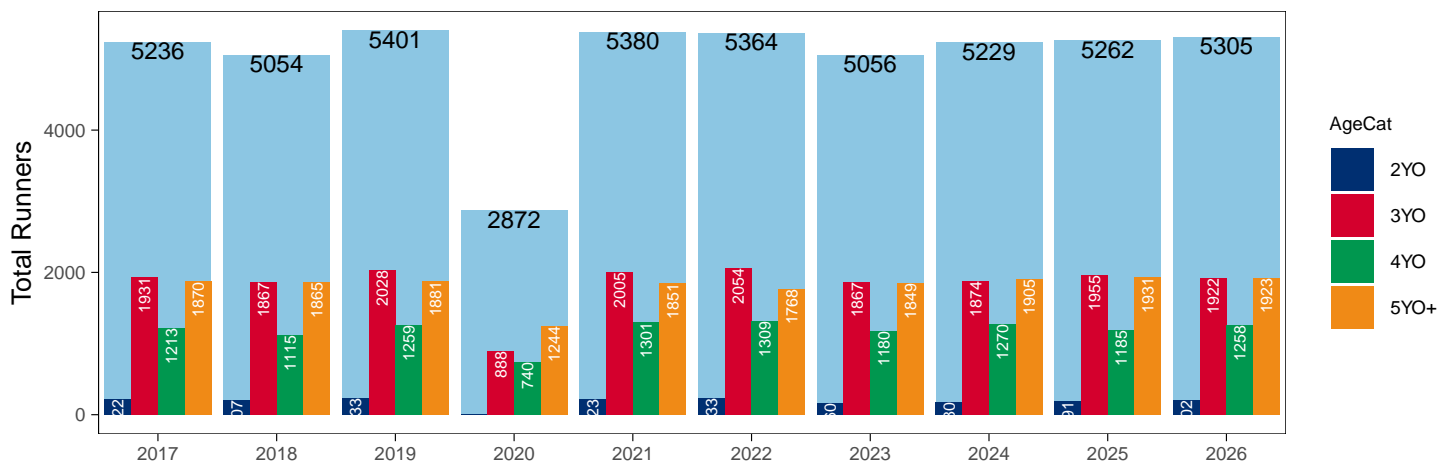
Flat

AgeCat	2017	2018	2019	2020	2021	2022	2023	2024	2025	2026	vs. Last Year	vs. Pre-Covid
2YO	222	207	233		223	233	160	180	191	202	+11 / +5.8%	-31 / -13.3%
3YO	1931	1867	2028	888	2005	2054	1867	1874	1955	1922	-33 / -1.7%	-106 / -5.2%
4YO	1213	1115	1259	740	1301	1309	1180	1270	1185	1258	+73 / +6.2%	-1 / -0.1%
5YO+	1870	1865	1881	1244	1851	1768	1849	1905	1931	1923	-8 / -0.4%	+42 / +2.2%
Total	5236	5054	5401	2872	5380	5364	5056	5229	5262	5305	+43 / +0.8%	-96 / -1.8%

'vs. Pre-Covid' is comparison between 2026 and 2019

YTD Individual Flat Runners by Age

Individual Runners in GB Flat Races, shown by Age Category and Total



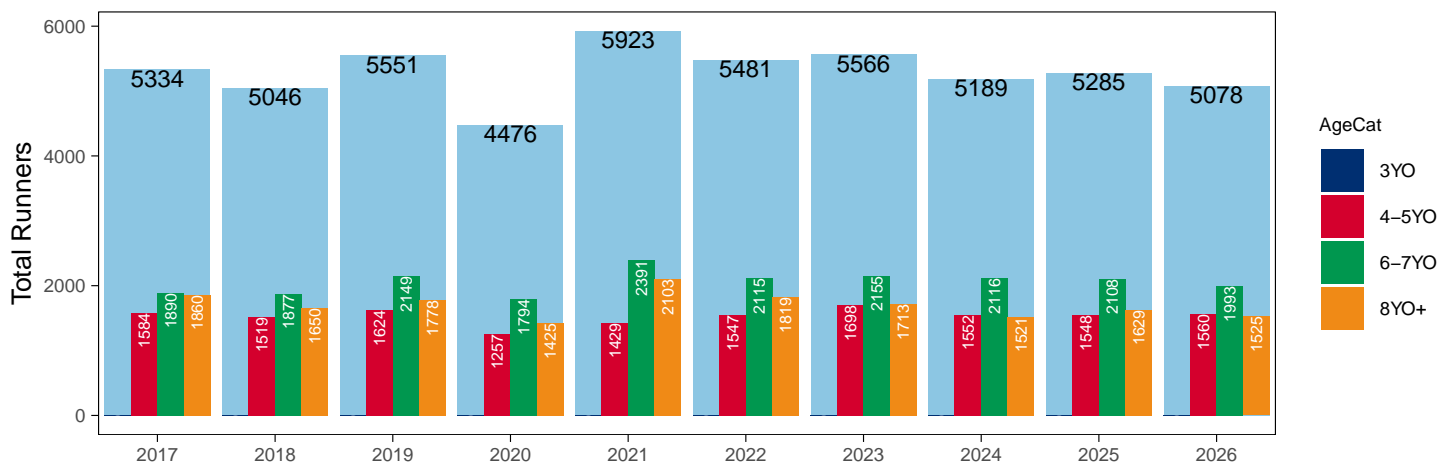
Jump

AgeCat	2017	2018	2019	2020	2021	2022	2023	2024	2025	2026	vs. Last Year	vs. Pre-Covid
3YO											NA / NA	0 / NA
4-5YO	1584	1519	1624	1257	1429	1547	1698	1552	1548	1560	+12 / +0.8%	-64 / -3.9%
6-7YO	1890	1877	2149	1794	2391	2115	2155	2116	2108	1993	-115 / -5.5%	-156 / -7.3%
8YO+	1860	1650	1778	1425	2103	1819	1713	1521	1629	1525	-104 / -6.4%	-253 / -14.2%
Total	5334	5046	5551	4476	5923	5481	5566	5189	5285	5078	-207 / -3.9%	-473 / -8.5%

'vs. Pre-Covid' is comparison between 2026 and 2019

YTD Individual Jump Runners by Age

Individual Runners in GB Jump Races, shown by Age Category and Total



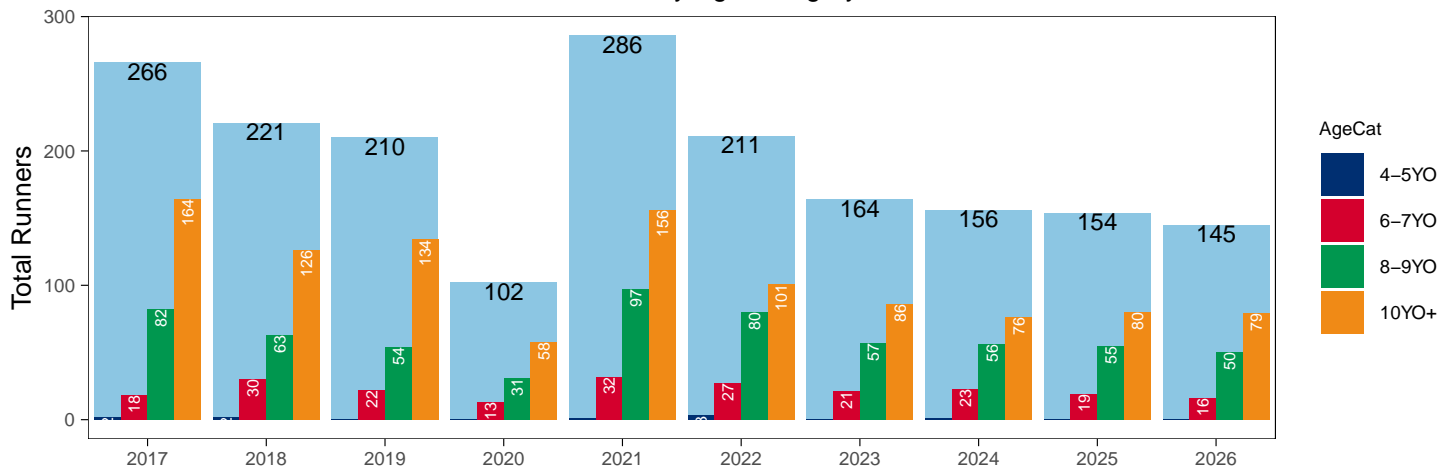
Hunter Chases

AgeCat	2017	2018	2019	2020	2021	2022	2023	2024	2025	2026	vs. Last Year	vs. Pre-Covid
4-5YO	2	2			1	3		1			NA / NA	0 / NA
6-7YO	18	30	22	13	32	27	21	23	19	16	-3 / -15.8%	-6 / -27.3%
8-9YO	82	63	54	31	97	80	57	56	55	50	-5 / -9.1%	-4 / -7.4%
10YO+	164	126	134	58	156	101	86	76	80	79	-1 / -1.2%	-55 / -41.0%
Total	266	221	210	102	286	211	164	156	154	145	-9 / -5.8%	-65 / -31.0%

'vs. Pre-Covid' is comparison between 2026 and 2019

YTD Individual Hunter Chase Runners by Age

Individual Runners in GB Hunter Chases shown by Age Category and Total



Year to Date Individual Runners by Country Trained

Code	Country	2017	2018	2019	2020	2021	2022	2023	2024	2025	2026
Flat	GB	4921	4759	5089	2678	5120	5138	4807	5009	5028	5091
	IRE	66	80	71	61	10	25	36	67	55	54
	Other	5	7	9	4	2	7	1	5	4	2
Jump	GB	4779	4565	4993	4104	5442	4914	4930	4651	4665	4507
	IRE	305	264	322	232	230	372	421	387	445	400
	Other	8	8	6	10	3	2	2	2	5	11
Dual	GB	244	212	231	130	248	194	214	150	174	161
	IRE			2	2					1	
	Other	2									
Overall	GB	9944	9536	10313	6912	10810	10246	9951	9810	9867	9759
	IRE	371	344	395	295	240	397	457	454	501	454
	Other	15	15	15	14	5	9	3	7	9	13

Individual horses may appear under multiple countries.

Year to Date Total Runners by Rating Band

Flat

RatBand	2017	2018	2019	2020	2021	2022	2023	2024	2025	2026
3YO										
Unrated	1,433 (39.3%)	1,438 (40.9%)	1,583 (41.0%)	768 (45.0%)	1,640 (41.0%)	1,619 (40.5%)	1,474 (39.0%)	1,477 (39.8%)	1,548 (41.1%)	1,476 (39.9%)
0-50	193 (5.3%)	169 (4.8%)	250 (6.5%)	154 (9.0%)	272 (6.8%)	268 (6.7%)	263 (7.0%)	263 (7.1%)	234 (6.2%)	249 (6.7%)
51-60	502 (13.8%)	382 (10.9%)	594 (15.4%)	245 (14.4%)	587 (14.7%)	554 (13.9%)	589 (15.6%)	560 (15.1%)	530 (14.1%)	617 (16.7%)
61-70	631 (17.3%)	618 (17.6%)	603 (15.6%)	290 (17.0%)	706 (17.6%)	653 (16.3%)	674 (17.8%)	630 (17.0%)	647 (17.2%)	640 (17.3%)
71-80	535 (14.7%)	544 (15.5%)	483 (12.5%)	192 (11.3%)	457 (11.4%)	537 (13.4%)	498 (13.2%)	467 (12.6%)	510 (13.5%)	422 (11.4%)
81-90	235 (6.4%)	227 (6.4%)	233 (6.0%)	44 (2.6%)	185 (4.6%)	221 (5.5%)	184 (4.9%)	221 (6.0%)	203 (5.4%)	199 (5.4%)
91-100	72 (2.0%)	93 (2.6%)	82 (2.1%)	10 (0.6%)	103 (2.6%)	79 (2.0%)	62 (1.6%)	66 (1.8%)	56 (1.5%)	68 (1.8%)
101+	47 (1.3%)	49 (1.4%)	37 (1.0%)	3 (0.2%)	54 (1.3%)	63 (1.6%)	32 (0.8%)	30 (0.8%)	39 (1.0%)	30 (0.8%)
4YO+										
Unrated	219 (2.7%)	263 (3.3%)	309 (3.7%)	183 (3.7%)	331 (3.7%)	273 (3.3%)	247 (2.9%)	284 (3.0%)	274 (3.0%)	273 (2.9%)
0-50	1,043 (12.7%)	1,241 (15.7%)	1,398 (16.8%)	973 (19.7%)	1,478 (16.7%)	1,461 (17.5%)	1,580 (18.9%)	1,694 (18.1%)	1,824 (20.0%)	1,693 (18.2%)
51-60	1,710 (20.9%)	1,685 (21.3%)	1,716 (20.6%)	1,209 (24.4%)	1,925 (21.7%)	1,812 (21.8%)	1,973 (23.6%)	2,333 (24.9%)	2,132 (23.4%)	2,235 (24.0%)
61-70	1,859 (22.7%)	1,669 (21.1%)	1,849 (22.2%)	1,127 (22.8%)	2,115 (23.9%)	1,870 (22.5%)	1,851 (22.1%)	2,167 (23.1%)	2,058 (22.6%)	2,099 (22.5%)
71-80	1,607 (19.6%)	1,390 (17.6%)	1,440 (17.3%)	785 (15.9%)	1,532 (17.3%)	1,361 (16.3%)	1,459 (17.4%)	1,516 (16.2%)	1,456 (16.0%)	1,633 (17.5%)
81-90	1,000 (12.2%)	936 (11.8%)	868 (10.4%)	433 (8.8%)	840 (9.5%)	947 (11.4%)	764 (9.1%)	877 (9.4%)	897 (9.9%)	863 (9.3%)
91-100	480 (5.9%)	492 (6.2%)	523 (6.3%)	172 (3.5%)	416 (4.7%)	370 (4.4%)	331 (4.0%)	330 (3.5%)	300 (3.3%)	344 (3.7%)
101+	264 (3.2%)	240 (3.0%)	242 (2.9%)	66 (1.3%)	227 (2.6%)	231 (2.8%)	169 (2.0%)	163 (1.7%)	165 (1.8%)	173 (1.9%)

Jump

RatBand	2017	2018	2019	2020	2021	2022	2023	2024	2025	2026
Hurdle										
Unrated	2,067 (27.3%)	1,906 (27.8%)	2,065 (27.5%)	1,376 (29.6%)	1,984 (27.4%)	1,949 (25.7%)	2,122 (27.8%)	1,992 (28.3%)	1,693 (24.0%)	1,872 (26.1%)
0-100	1,706 (22.5%)	1,383 (20.2%)	1,589 (21.1%)	966 (20.8%)	1,800 (24.8%)	2,146 (28.3%)	2,129 (27.9%)	1,982 (28.2%)	2,240 (31.7%)	2,070 (28.9%)
101-110	1,091 (14.4%)	906 (13.2%)	1,026 (13.6%)	615 (13.2%)	941 (13.0%)	1,126 (14.8%)	1,088 (14.2%)	1,000 (14.2%)	1,065 (15.1%)	1,025 (14.3%)
111-120	1,058 (14.0%)	965 (14.1%)	1,088 (14.5%)	618 (13.3%)	949 (13.1%)	1,031 (13.6%)	1,008 (13.2%)	936 (13.3%)	967 (13.7%)	1,074 (15.0%)
121-130	819 (10.8%)	829 (12.1%)	911 (12.1%)	490 (10.5%)	837 (11.5%)	708 (9.3%)	754 (9.9%)	648 (9.2%)	603 (8.5%)	636 (8.9%)
131-140	580 (7.6%)	577 (8.4%)	537 (7.1%)	374 (8.0%)	473 (6.5%)	414 (5.5%)	334 (4.4%)	312 (4.4%)	345 (4.9%)	345 (4.8%)
141-150	187 (2.5%)	221 (3.2%)	211 (2.8%)	141 (3.0%)	190 (2.6%)	170 (2.2%)	144 (1.9%)	118 (1.7%)	109 (1.5%)	98 (1.4%)
151+	74 (1.0%)	72 (1.0%)	90 (1.2%)	73 (1.6%)	79 (1.1%)	52 (0.7%)	60 (0.8%)	51 (0.7%)	40 (0.6%)	52 (0.7%)
Chase										
Unrated	37 (0.9%)	30 (0.8%)	27 (0.7%)	10 (0.4%)	22 (0.6%)	8 (0.2%)	1 (0.0%)	NA (-)	NA (-)	4 (0.1%)
0-100	981 (22.9%)	874 (23.9%)	1,043 (26.1%)	599 (24.9%)	1,098 (27.7%)	1,218 (28.7%)	1,281 (31.1%)	1,126 (31.1%)	1,261 (33.4%)	1,103 (31.5%)
101-110	653 (15.3%)	477 (13.0%)	597 (14.9%)	351 (14.6%)	558 (14.1%)	590 (13.9%)	655 (15.9%)	590 (16.3%)	609 (16.1%)	550 (15.7%)
111-120	727 (17.0%)	606 (16.5%)	592 (14.8%)	332 (13.8%)	637 (16.1%)	733 (17.3%)	666 (16.2%)	632 (17.5%)	591 (15.7%)	604 (17.3%)
121-130	669 (15.6%)	636 (17.4%)	652 (16.3%)	398 (16.6%)	610 (15.4%)	678 (16.0%)	612 (14.9%)	497 (13.7%)	552 (14.6%)	525 (15.0%)
131-140	671 (15.7%)	541 (14.8%)	564 (14.1%)	362 (15.1%)	544 (13.7%)	547 (12.9%)	482 (11.7%)	393 (10.9%)	364 (9.7%)	375 (10.7%)
141-150	352 (8.2%)	340 (9.3%)	331 (8.3%)	227 (9.5%)	289 (7.3%)	293 (6.9%)	253 (6.1%)	227 (6.3%)	226 (6.0%)	194 (5.5%)
151+	190 (4.4%)	160 (4.4%)	195 (4.9%)	122 (5.1%)	208 (5.2%)	174 (4.1%)	166 (4.0%)	152 (4.2%)	169 (4.5%)	144 (4.1%)

Year to Date Total GB-Trained Runners by Rating Band

Flat

RatBand	2017	2018	2019	2020	2021	2022	2023	2024	2025	2026
3YO										
Unrated	1,428 (39.4%)	1,429 (40.9%)	1,577 (41.0%)	765 (45.5%)	1,637 (41.0%)	1,615 (40.5%)	1,473 (39.1%)	1,474 (39.9%)	1,541 (41.1%)	1,473 (40.0%)
0-50	190 (5.2%)	167 (4.8%)	248 (6.5%)	149 (8.9%)	272 (6.8%)	268 (6.7%)	262 (6.9%)	263 (7.1%)	233 (6.2%)	249 (6.8%)
51-60	499 (13.8%)	376 (10.8%)	591 (15.4%)	237 (14.1%)	587 (14.7%)	554 (13.9%)	589 (15.6%)	559 (15.1%)	529 (14.1%)	616 (16.7%)
61-70	631 (17.4%)	615 (17.6%)	598 (15.6%)	288 (17.1%)	706 (17.7%)	653 (16.4%)	674 (17.9%)	628 (17.0%)	647 (17.3%)	640 (17.4%)
71-80	534 (14.7%)	540 (15.5%)	482 (12.5%)	190 (11.3%)	457 (11.4%)	535 (13.4%)	498 (13.2%)	465 (12.6%)	509 (13.6%)	420 (11.4%)
81-90	232 (6.4%)	227 (6.5%)	232 (6.0%)	41 (2.4%)	185 (4.6%)	221 (5.5%)	182 (4.8%)	220 (6.0%)	201 (5.4%)	198 (5.4%)
91-100	72 (2.0%)	90 (2.6%)	81 (2.1%)	10 (0.6%)	101 (2.5%)	76 (1.9%)	60 (1.6%)	61 (1.7%)	55 (1.5%)	67 (1.8%)
101+	42 (1.2%)	48 (1.4%)	34 (0.9%)	3 (0.2%)	51 (1.3%)	61 (1.5%)	32 (0.8%)	25 (0.7%)	35 (0.9%)	24 (0.7%)
4YO+										
Unrated	219 (2.7%)	261 (3.3%)	306 (3.7%)	182 (3.7%)	331 (3.7%)	273 (3.3%)	247 (3.0%)	284 (3.1%)	274 (3.0%)	272 (2.9%)
0-50	1,019 (12.6%)	1,230 (15.7%)	1,372 (16.6%)	960 (19.6%)	1,478 (16.7%)	1,461 (17.6%)	1,570 (18.8%)	1,678 (18.1%)	1,816 (20.1%)	1,682 (18.2%)
51-60	1,682 (20.8%)	1,656 (21.1%)	1,693 (20.5%)	1,183 (24.2%)	1,925 (21.7%)	1,812 (21.8%)	1,967 (23.6%)	2,318 (25.0%)	2,119 (23.4%)	2,235 (24.1%)
61-70	1,842 (22.8%)	1,661 (21.2%)	1,837 (22.2%)	1,121 (22.9%)	2,115 (23.9%)	1,869 (22.5%)	1,849 (22.2%)	2,157 (23.2%)	2,050 (22.7%)	2,096 (22.6%)
71-80	1,604 (19.8%)	1,385 (17.7%)	1,439 (17.4%)	778 (15.9%)	1,531 (17.3%)	1,357 (16.3%)	1,453 (17.4%)	1,506 (16.2%)	1,450 (16.0%)	1,626 (17.6%)
81-90	999 (12.3%)	932 (11.9%)	866 (10.5%)	433 (8.9%)	840 (9.5%)	943 (11.4%)	760 (9.1%)	864 (9.3%)	887 (9.8%)	847 (9.1%)
91-100	471 (5.8%)	488 (6.2%)	518 (6.3%)	170 (3.5%)	415 (4.7%)	366 (4.4%)	327 (3.9%)	321 (3.5%)	292 (3.2%)	335 (3.6%)
101+	260 (3.2%)	227 (2.9%)	237 (2.9%)	64 (1.3%)	225 (2.5%)	220 (2.7%)	164 (2.0%)	154 (1.7%)	158 (1.7%)	169 (1.8%)

Jump

RatBand	2017	2018	2019	2020	2021	2022	2023	2024	2025	2026
Hurdle										
Unrated	2,029 (27.6%)	1,876 (28.1%)	2,024 (27.8%)	1,353 (30.1%)	1,967 (27.7%)	1,891 (25.8%)	2,066 (28.1%)	1,944 (28.8%)	1,640 (24.3%)	1,821 (26.3%)
0-100	1,680 (22.9%)	1,365 (20.4%)	1,570 (21.6%)	956 (21.3%)	1,795 (25.2%)	2,138 (29.2%)	2,107 (28.7%)	1,965 (29.1%)	2,228 (33.0%)	2,063 (29.8%)
101-110	1,058 (14.4%)	894 (13.4%)	1,007 (13.8%)	612 (13.6%)	935 (13.2%)	1,113 (15.2%)	1,077 (14.7%)	985 (14.6%)	1,052 (15.6%)	1,014 (14.6%)
111-120	1,040 (14.2%)	958 (14.3%)	1,066 (14.7%)	614 (13.7%)	941 (13.2%)	1,015 (13.9%)	984 (13.4%)	920 (13.6%)	945 (14.0%)	1,066 (15.4%)
121-130	790 (10.7%)	814 (12.2%)	886 (12.2%)	478 (10.6%)	824 (11.6%)	679 (9.3%)	715 (9.7%)	592 (8.8%)	554 (8.2%)	611 (8.8%)
131-140	542 (7.4%)	543 (8.1%)	487 (6.7%)	333 (7.4%)	436 (6.1%)	347 (4.7%)	280 (3.8%)	249 (3.7%)	256 (3.8%)	262 (3.8%)
141-150	153 (2.1%)	179 (2.7%)	170 (2.3%)	100 (2.2%)	153 (2.2%)	111 (1.5%)	86 (1.2%)	74 (1.1%)	63 (0.9%)	62 (0.9%)
151+	57 (0.8%)	57 (0.9%)	65 (0.9%)	47 (1.0%)	59 (0.8%)	30 (0.4%)	33 (0.4%)	21 (0.3%)	15 (0.2%)	28 (0.4%)
Chase										
Unrated	36 (0.9%)	30 (0.8%)	27 (0.7%)	10 (0.4%)	22 (0.6%)	7 (0.2%)	1 (0.0%)	NA (-)	NA (-)	4 (0.1%)
0-100	961 (23.3%)	868 (24.5%)	1,035 (26.8%)	596 (25.7%)	1,097 (28.4%)	1,214 (29.7%)	1,276 (32.6%)	1,126 (32.8%)	1,257 (35.6%)	1,100 (33.5%)
101-110	648 (15.7%)	475 (13.4%)	595 (15.4%)	349 (15.0%)	556 (14.4%)	588 (14.4%)	651 (16.6%)	587 (17.1%)	603 (17.1%)	545 (16.6%)
111-120	721 (17.5%)	601 (17.0%)	590 (15.3%)	327 (14.1%)	636 (16.4%)	729 (17.8%)	657 (16.8%)	624 (18.2%)	581 (16.5%)	591 (18.0%)
121-130	650 (15.8%)	620 (17.5%)	639 (16.5%)	396 (17.1%)	607 (15.7%)	663 (16.2%)	598 (15.3%)	477 (13.9%)	526 (14.9%)	493 (15.0%)
131-140	640 (15.5%)	523 (14.8%)	538 (13.9%)	347 (15.0%)	537 (13.9%)	523 (12.8%)	441 (11.3%)	363 (10.6%)	299 (8.5%)	324 (9.9%)
141-150	310 (7.5%)	302 (8.5%)	292 (7.6%)	203 (8.7%)	252 (6.5%)	245 (6.0%)	192 (4.9%)	163 (4.8%)	169 (4.8%)	146 (4.4%)
151+	158 (3.8%)	120 (3.4%)	146 (3.8%)	93 (4.0%)	162 (4.2%)	117 (2.9%)	97 (2.5%)	91 (2.7%)	94 (2.7%)	85 (2.6%)

Frequency of Runs

Year to Date Average Runs per Horse

Code	2017	2018	2019	2020	2021	2022	2023	2024	2025	2026
Flat	2.33	2.33	2.34	2.35	2.47	2.38	2.47	2.57	2.51	2.52
Jump	2.46	2.35	2.29	1.76	2.22	2.37	2.34	2.25	2.25	2.30
Dual Overall	3.99	3.80	3.80	3.05	4.01	3.76	3.84	3.77	4.01	3.96
Dual (Flat)	1.89	1.91	1.84	1.67	1.94	1.76	1.88	1.92	2.01	2.02
Dual (Jump)	2.10	1.89	1.96	1.38	2.06	2.00	1.96	1.85	2.01	1.94
All	2.43	2.37	2.35	2.01	2.38	2.40	2.43	2.43	2.40	2.44

Year to Date Proportion of Horses by Count of Runs

Runs	2017	2018	2019	2020	2021	2022	2023	2024	2025	2026
Flat										
1	2,335 (44.6%)	2,268 (44.9%)	2,344 (43.4%)	1,018 (35.4%)	2,222 (41.3%)	2,243 (41.8%)	2,106 (41.7%)	2,103 (40.2%)	2,161 (41.1%)	2,164 (40.8%)
2	1,190 (22.7%)	1,157 (22.9%)	1,323 (24.5%)	787 (27.4%)	1,259 (23.4%)	1,339 (25.0%)	1,168 (23.1%)	1,123 (21.5%)	1,260 (23.9%)	1,227 (23.1%)
3	699 (13.3%)	661 (13.1%)	680 (12.6%)	546 (19.0%)	726 (13.5%)	697 (13.0%)	680 (13.4%)	774 (14.8%)	676 (12.8%)	728 (13.7%)
4	419 (8.0%)	401 (7.9%)	450 (8.3%)	320 (11.1%)	445 (8.3%)	495 (9.2%)	433 (8.6%)	479 (9.2%)	439 (8.3%)	455 (8.6%)
5+	593 (11.3%)	567 (11.2%)	604 (11.2%)	201 (7.0%)	728 (13.5%)	590 (11.0%)	669 (13.2%)	750 (14.3%)	726 (13.8%)	731 (13.8%)
Jump										
1	1,644 (30.8%)	1,752 (34.7%)	1,862 (33.5%)	2,108 (47.1%)	1,986 (33.5%)	1,792 (32.7%)	1,851 (33.3%)	1,804 (34.8%)	1,794 (33.9%)	1,629 (32.1%)
2	1,396 (26.2%)	1,322 (26.2%)	1,625 (29.3%)	1,571 (35.1%)	1,819 (30.7%)	1,436 (26.2%)	1,482 (26.6%)	1,474 (28.4%)	1,549 (29.3%)	1,478 (29.1%)
3	1,168 (21.9%)	1,007 (20.0%)	1,129 (20.3%)	638 (14.3%)	1,287 (21.7%)	1,226 (22.4%)	1,244 (22.3%)	1,068 (20.6%)	1,139 (21.6%)	1,129 (22.2%)
4	710 (13.3%)	628 (12.4%)	642 (11.6%)	135 (3.0%)	595 (10.0%)	680 (12.4%)	647 (11.6%)	612 (11.8%)	558 (10.6%)	602 (11.9%)
5+	416 (7.8%)	337 (6.7%)	293 (5.3%)	24 (0.5%)	236 (4.0%)	347 (6.3%)	342 (6.1%)	231 (4.5%)	245 (4.6%)	240 (4.7%)
All Races										
1	3,756 (36.4%)	3,805 (38.5%)	3,964 (37.0%)	2,961 (41.0%)	3,976 (36.0%)	3,844 (36.1%)	3,758 (36.1%)	3,752 (36.5%)	3,797 (36.6%)	3,647 (35.7%)
2	2,484 (24.1%)	2,407 (24.3%)	2,889 (27.0%)	2,337 (32.4%)	3,004 (27.2%)	2,705 (25.4%)	2,567 (24.7%)	2,569 (25.0%)	2,742 (26.4%)	2,634 (25.8%)
3	1,861 (18.0%)	1,666 (16.9%)	1,802 (16.8%)	1,207 (16.7%)	1,974 (17.9%)	1,923 (18.1%)	1,909 (18.3%)	1,821 (17.7%)	1,806 (17.4%)	1,849 (18.1%)
4	1,154 (11.2%)	1,068 (10.8%)	1,120 (10.4%)	477 (6.6%)	1,081 (9.8%)	1,199 (11.3%)	1,112 (10.7%)	1,107 (10.8%)	1,010 (9.7%)	1,086 (10.6%)
5+	1,069 (10.4%)	940 (9.5%)	944 (8.8%)	234 (3.2%)	1,020 (9.2%)	979 (9.2%)	1,061 (10.2%)	1,019 (9.9%)	1,017 (9.8%)	1,006 (9.8%)

Year to Date Median Days Between Runs

Code/RatBand	2017	2018	2019	2020	2021	2022	2023	2024	2025	2026
All Runners	28	30	29	28	29	29	30	29	29	29
Flat										
Unrated	28	35	33	27	31	30	32	30	31	33
0-50	21	21	23	20	20	21	19	18	18	19
51-60	21	21	22	19	20	21	21	20	20	20
61-70	22	23	25	21	22	23	23	22	21	22
71-80	27	27	26	22	24	27	27	27	26	27
81-90	29	29	34	22	28	31	33	30	32	32
91-100	33	36	38	22	42	42	44	44	50	52
101+	50	49	55	36	55	64	67	133	132	134
All Flat Runners	24	25	26	21	24	25	24	24	23	24
Jump										
Unrated	34	39	37	36	39	35	40	41	41	38
0-100	27	29	28	32	31	28	30	32	31	29
101-110	28	31	30	31	31	29	32	33	31	32
111-120	29	32	32	34	34	31	33	33	33	32
121-130	30	31	32	34	34	32	34	36	34	35
131-140	33	35	33	36	35	35	37	35	35	36
141-150	35	39	37	41	41	37	39	37	40	38
151+	34	39	38	42	40	40	42	42	40	40
All Jump Runners	30	33	32	34	35	31	34	35	34	33

Horses Population by Gender

April 2026 Horses in Training Snapshot by Gender versus Previous Years

All Horses

Sex	2017	2018	2019	2020	2021	2022	2023	2024	2025	2026
Colt/Entire	2,589 (17.0%)	2,606 (16.3%)	2,502 (15.8%)	2,292 (18.4%)	2,202 (13.8%)	2,207 (14.4%)	2,046 (13.3%)	1,961 (13.0%)	1,954 (13.4%)	1,923 (13.2%)
Gelding	7,975 (52.4%)	8,501 (53.1%)	8,289 (52.5%)	6,024 (48.5%)	8,769 (54.8%)	8,290 (54.0%)	8,419 (54.8%)	8,334 (55.2%)	7,932 (54.3%)	7,873 (54.1%)
Filly/Mare	4,659 (30.6%)	4,908 (30.6%)	4,995 (31.6%)	4,111 (33.1%)	5,020 (31.4%)	4,867 (31.7%)	4,904 (31.9%)	4,811 (31.8%)	4,715 (32.3%)	4,758 (32.7%)
Rig	4 (0.0%)	3 (0.0%)	3 (0.0%)	1 (0.0%)	2 (0.0%)	1 (0.0%)	1 (0.0%)	0 (0.0%)	0 (0.0%)	1 (0.0%)
Total	15,227 (100.0%)	16,018 (100.0%)	15,789 (100.0%)	12,428 (100.0%)	15,993 (100.0%)	15,365 (100.0%)	15,370 (100.0%)	15,106 (100.0%)	14,601 (100.0%)	14,555 (100.0%)

Flat (including Dual)

Sex	2017	2018	2019	2020	2021	2022	2023	2024	2025	2026
Colt/Entire	2,566 (24.6%)	2,587 (23.8%)	2,491 (23.6%)	2,278 (23.9%)	2,186 (21.6%)	2,183 (21.5%)	2,025 (20.6%)	1,944 (20.2%)	1,924 (20.1%)	1,900 (19.6%)
Gelding	4,115 (39.5%)	4,466 (41.0%)	4,198 (39.8%)	3,827 (40.1%)	4,203 (41.6%)	4,229 (41.6%)	4,174 (42.5%)	4,168 (43.3%)	4,166 (43.4%)	4,216 (43.5%)
Filly/Mare	3,732 (35.8%)	3,826 (35.2%)	3,847 (36.5%)	3,444 (36.1%)	3,721 (36.8%)	3,744 (36.9%)	3,628 (36.9%)	3,506 (36.5%)	3,505 (36.5%)	3,570 (36.9%)
Rig	4 (0.0%)	3 (0.0%)	2 (0.0%)	1 (0.0%)	1 (0.0%)	0 (0.0%)	0 (0.0%)	0 (0.0%)	0 (0.0%)	1 (0.0%)
Total	10,417 (100.0%)	10,882 (100.0%)	10,538 (100.0%)	9,550 (100.0%)	10,111 (100.0%)	10,156 (100.0%)	9,827 (100.0%)	9,618 (100.0%)	9,595 (100.0%)	9,687 (100.0%)

Jump (including Dual)

Sex	2017	2018	2019	2020	2021	2022	2023	2024	2025	2026
Colt/Entire	27 (0.5%)	28 (0.5%)	20 (0.3%)	20 (0.6%)	26 (0.4%)	37 (0.6%)	24 (0.4%)	17 (0.3%)	35 (0.6%)	32 (0.6%)
Gelding	4,333 (80.3%)	4,767 (78.5%)	4,446 (77.7%)	2,506 (76.1%)	4,953 (77.4%)	4,427 (77.6%)	4,577 (76.6%)	4,494 (75.7%)	4,074 (75.1%)	3,995 (74.7%)
Filly/Mare	1,039 (19.2%)	1,281 (21.1%)	1,253 (21.9%)	765 (23.2%)	1,417 (22.2%)	1,237 (21.7%)	1,375 (23.0%)	1,427 (24.0%)	1,319 (24.3%)	1,322 (24.7%)
Rig	0 (0.0%)	0 (0.0%)	1 (0.0%)	0 (0.0%)	1 (0.0%)	1 (0.0%)	1 (0.0%)	0 (0.0%)	0 (0.0%)	0 (0.0%)
Total	5,399 (100.0%)	6,076 (100.0%)	5,720 (100.0%)	3,291 (100.0%)	6,397 (100.0%)	5,702 (100.0%)	5,977 (100.0%)	5,938 (100.0%)	5,428 (100.0%)	5,349 (100.0%)

Hunter Chasers

Sex	2017	2018	2019	2020	2021	2022	2023	2024	2025	2026
Colt/Entire	5 (0.3%)	3 (0.2%)	1 (0.1%)	1 (0.1%)	4 (0.3%)	7 (0.5%)	10 (0.8%)	8 (0.6%)	5 (0.4%)	8 (0.8%)
Gelding	1,576 (81.5%)	1,423 (81.4%)	1,366 (79.6%)	1,189 (81.6%)	975 (83.0%)	1,067 (81.3%)	1,014 (81.6%)	1,128 (81.9%)	902 (79.8%)	832 (79.5%)
Filly/Mare	352 (18.2%)	323 (18.5%)	349 (20.3%)	267 (18.3%)	195 (16.6%)	238 (18.1%)	218 (17.6%)	242 (17.6%)	224 (19.8%)	207 (19.8%)
Rig	0 (0.0%)	0 (0.0%)	0 (0.0%)	0 (0.0%)	0 (0.0%)	0 (0.0%)	0 (0.0%)	0 (0.0%)	0 (0.0%)	0 (0.0%)
Total	1,933 (100.0%)	1,749 (100.0%)	1,716 (100.0%)	1,457 (100.0%)	1,174 (100.0%)	1,312 (100.0%)	1,242 (100.0%)	1,378 (100.0%)	1,131 (100.0%)	1,047 (100.0%)

Year to Date Total Runners by Gender

Sex	2017	2018	2019	2020	2021	2022	2023	2024	2025	2026
All Races										
Colt/Entire	1,374 (5.5%)	1,300 (5.5%)	1,408 (5.6%)	578 (4.0%)	1,451 (5.5%)	1,261 (4.9%)	1,044 (4.1%)	995 (4.0%)	1,002 (4.0%)	975 (3.9%)
Gelding	18,076 (71.9%)	16,690 (71.2%)	17,559 (69.7%)	10,306 (71.2%)	18,189 (69.2%)	17,931 (70.2%)	17,797 (70.3%)	17,703 (70.9%)	17,684 (70.9%)	17,316 (69.6%)
Filly/Mare	5,681 (22.6%)	5,442 (23.2%)	6,213 (24.7%)	3,595 (24.8%)	6,622 (25.2%)	6,360 (24.9%)	6,468 (25.6%)	6,258 (25.1%)	6,255 (25.1%)	6,600 (26.5%)
Rig	1 (0.0%)	4 (0.0%)	5 (0.0%)	3 (0.0%)	4 (0.0%)	2 (0.0%)	1 (0.0%)	0 (0.0%)	0 (0.0%)	2 (0.0%)
Flat										
Colt/Entire	1,348 (11.1%)	1,283 (11.0%)	1,387 (11.1%)	564 (8.5%)	1,436 (10.9%)	1,248 (9.9%)	1,014 (8.2%)	987 (7.4%)	993 (7.6%)	965 (7.3%)
Gelding	7,316 (60.4%)	7,195 (61.5%)	7,508 (59.9%)	4,134 (62.1%)	7,898 (60.0%)	7,627 (60.4%)	7,610 (61.7%)	8,584 (64.5%)	8,507 (64.9%)	8,357 (63.0%)
Filly/Mare	3,439 (28.4%)	3,209 (27.4%)	3,632 (29.0%)	1,956 (29.4%)	3,837 (29.1%)	3,757 (29.7%)	3,719 (30.1%)	3,746 (28.1%)	3,607 (27.5%)	3,945 (29.7%)
Rig	1 (0.0%)	4 (0.0%)	2 (0.0%)	0 (0.0%)	1 (0.0%)	0 (0.0%)	0 (0.0%)	0 (0.0%)	0 (0.0%)	2 (0.0%)
All Jump										
Colt/Entire	26 (0.2%)	17 (0.1%)	21 (0.2%)	14 (0.2%)	15 (0.1%)	13 (0.1%)	30 (0.2%)	8 (0.1%)	9 (0.1%)	10 (0.1%)
Gelding	10,760 (82.6%)	9,495 (80.8%)	10,051 (79.4%)	6,172 (78.8%)	10,291 (78.6%)	10,304 (79.7%)	10,187 (78.6%)	9,119 (78.3%)	9,177 (77.5%)	8,959 (77.1%)
Filly/Mare	2,242 (17.2%)	2,233 (19.0%)	2,581 (20.4%)	1,639 (20.9%)	2,785 (21.3%)	2,603 (20.1%)	2,749 (21.2%)	2,512 (21.6%)	2,648 (22.4%)	2,655 (22.8%)
Rig	0 (0.0%)	0 (0.0%)	3 (0.0%)	3 (0.0%)	3 (0.0%)	2 (0.0%)	1 (0.0%)	0 (0.0%)	0 (0.0%)	0 (0.0%)
Chase										
Gelding	3,975 (92.9%)	3,343 (91.2%)	3,609 (90.2%)	2,169 (90.3%)	3,533 (89.1%)	3,782 (89.2%)	3,682 (89.5%)	3,242 (89.6%)	3,308 (87.7%)	3,078 (88.0%)
Filly/Mare	305 (7.1%)	321 (8.8%)	391 (9.8%)	229 (9.5%)	430 (10.8%)	457 (10.8%)	434 (10.5%)	375 (10.4%)	464 (12.3%)	421 (12.0%)
Rig	0 (0.0%)	0 (0.0%)	1 (0.0%)	3 (0.1%)	3 (0.1%)	2 (0.0%)	0 (0.0%)	0 (0.0%)	0 (0.0%)	0 (0.0%)
Hurdle										
Colt/Entire	22 (0.3%)	13 (0.2%)	15 (0.2%)	7 (0.2%)	13 (0.2%)	10 (0.1%)	21 (0.3%)	7 (0.1%)	4 (0.1%)	9 (0.1%)
Gelding	5,996 (79.1%)	5,332 (77.7%)	5,735 (76.3%)	3,477 (74.7%)	5,438 (75.0%)	5,833 (76.8%)	5,760 (75.4%)	5,230 (74.3%)	5,225 (74.0%)	5,300 (73.9%)
Filly/Mare	1,564 (20.6%)	1,514 (22.1%)	1,765 (23.5%)	1,169 (25.1%)	1,802 (24.8%)	1,753 (23.1%)	1,857 (24.3%)	1,802 (25.6%)	1,833 (26.0%)	1,863 (26.0%)
Rig	0 (0.0%)	0 (0.0%)	2 (0.0%)	0 (0.0%)	0 (0.0%)	0 (0.0%)	1 (0.0%)	0 (0.0%)	0 (0.0%)	0 (0.0%)
NHF										
Colt/Entire	4 (0.3%)	4 (0.3%)	6 (0.5%)	7 (0.9%)	2 (0.1%)	3 (0.3%)	9 (0.7%)	1 (0.1%)	5 (0.5%)	1 (0.1%)
Gelding	789 (67.7%)	820 (67.1%)	707 (62.1%)	526 (68.0%)	1,320 (70.4%)	689 (63.5%)	745 (61.5%)	647 (65.8%)	644 (64.4%)	581 (61.0%)
Filly/Mare	373 (32.0%)	398 (32.6%)	425 (37.3%)	241 (31.1%)	553 (29.5%)	393 (36.2%)	458 (37.8%)	335 (34.1%)	351 (35.1%)	371 (38.9%)
Hunter										
Gelding	431 (97.3%)	328 (96.8%)	305 (94.4%)	142 (97.3%)	440 (93.0%)	324 (95.0%)	255 (95.5%)	223 (92.1%)	226 (92.6%)	222 (93.7%)
Filly/Mare	12 (2.7%)	11 (3.2%)	18 (5.6%)	4 (2.7%)	33 (7.0%)	17 (5.0%)	12 (4.5%)	19 (7.9%)	18 (7.4%)	15 (6.3%)

Year to Date Individual Runners by Gender

Sex	2017	2018	2019	2020	2021	2022	2023	2024	2025	2026
All Races										
Male	7,782 (75.4%)	7,384 (74.7%)	7,868 (73.4%)	5,369 (74.4%)	8,159 (73.8%)	7,809 (73.3%)	7,522 (72.3%)	7,472 (72.8%)	7,547 (72.8%)	7,315 (71.6%)
Female	2,542 (24.6%)	2,502 (25.3%)	2,851 (26.6%)	1,847 (25.6%)	2,896 (26.2%)	2,841 (26.7%)	2,885 (27.7%)	2,796 (27.2%)	2,825 (27.2%)	2,907 (28.4%)
Flat										
Male	3,621 (69.2%)	3,519 (69.6%)	3,679 (68.1%)	1,953 (68.0%)	3,694 (68.7%)	3,619 (67.5%)	3,357 (66.4%)	3,562 (68.1%)	3,615 (68.7%)	3,541 (66.7%)
Female	1,615 (30.8%)	1,535 (30.4%)	1,722 (31.9%)	919 (32.0%)	1,686 (31.3%)	1,745 (32.5%)	1,699 (33.6%)	1,667 (31.9%)	1,647 (31.3%)	1,764 (33.3%)
All Jump										
Male	4,359 (81.7%)	4,039 (80.0%)	4,372 (78.8%)	3,522 (78.7%)	4,665 (78.8%)	4,348 (79.3%)	4,332 (77.8%)	4,014 (77.4%)	4,064 (76.9%)	3,896 (76.7%)
Female	975 (18.3%)	1,007 (20.0%)	1,179 (21.2%)	954 (21.3%)	1,258 (21.2%)	1,133 (20.7%)	1,234 (22.2%)	1,175 (22.6%)	1,221 (23.1%)	1,182 (23.3%)
Chase										
Male	1,630 (92.5%)	1,405 (90.6%)	1,559 (89.7%)	1,269 (90.0%)	1,683 (89.6%)	1,598 (88.6%)	1,534 (88.6%)	1,398 (89.1%)	1,481 (87.6%)	1,372 (87.2%)
Female	133 (7.5%)	145 (9.4%)	179 (10.3%)	141 (10.0%)	196 (10.4%)	206 (11.4%)	198 (11.4%)	171 (10.9%)	210 (12.4%)	201 (12.8%)
Hurdle										
Male	2,634 (79.4%)	2,435 (78.1%)	2,664 (76.8%)	2,054 (75.0%)	2,707 (75.7%)	2,655 (77.9%)	2,600 (75.8%)	2,452 (74.2%)	2,428 (73.7%)	2,410 (74.7%)
Female	682 (20.6%)	683 (21.9%)	806 (23.2%)	684 (25.0%)	868 (24.3%)	752 (22.1%)	830 (24.2%)	853 (25.8%)	866 (26.3%)	818 (25.3%)
NHF										
Male	555 (69.1%)	616 (69.1%)	537 (65.2%)	440 (68.9%)	991 (71.7%)	511 (65.3%)	553 (63.6%)	481 (66.3%)	489 (66.1%)	450 (62.7%)
Female	248 (30.9%)	276 (30.9%)	286 (34.8%)	199 (31.1%)	392 (28.3%)	271 (34.7%)	317 (36.4%)	244 (33.7%)	251 (33.9%)	268 (37.3%)
Hunter										
Male	255 (95.9%)	211 (95.5%)	197 (93.8%)	98 (96.1%)	263 (92.0%)	195 (92.4%)	155 (94.5%)	143 (91.7%)	142 (92.2%)	136 (93.8%)
Female	11 (4.1%)	10 (4.5%)	13 (6.2%)	4 (3.9%)	23 (8.0%)	16 (7.6%)	9 (5.5%)	13 (8.3%)	12 (7.8%)	9 (6.2%)

Horses Population by Breeding

April 2026 Horses in Training Snapshot by Breeding versus Previous Years

Flat (including Dual)

Bred	Sex	2017	2018	2019	2020	2021	2022	2023	2024	2025	2026
GB	Male	3,149 (30.2%)	3,293 (30.3%)	3,184 (30.2%)	2,908 (30.5%)	3,015 (29.8%)	3,034 (29.9%)	2,886 (29.4%)	2,821 (29.3%)	2,832 (29.5%)	2,832 (29.2%)
	Female	2,105 (20.2%)	2,124 (19.5%)	2,149 (20.4%)	1,954 (20.5%)	2,132 (21.1%)	2,108 (20.8%)	2,028 (20.6%)	1,951 (20.3%)	1,984 (20.7%)	1,988 (20.5%)
	Subtotal	5,254 (50.4%)	5,417 (49.8%)	5,333 (50.6%)	4,862 (50.9%)	5,147 (50.9%)	5,142 (50.6%)	4,914 (50.0%)	4,772 (49.6%)	4,816 (50.2%)	4,820 (49.8%)
IRE	Male	2,881 (27.7%)	3,054 (28.1%)	2,853 (27.1%)	2,618 (27.4%)	2,805 (27.7%)	2,894 (28.5%)	2,862 (29.1%)	2,814 (29.3%)	2,830 (29.5%)	2,843 (29.3%)
	Female	1,365 (13.1%)	1,422 (13.1%)	1,422 (13.5%)	1,261 (13.2%)	1,381 (13.7%)	1,456 (14.3%)	1,428 (14.5%)	1,378 (14.3%)	1,350 (14.1%)	1,414 (14.6%)
	Subtotal	4,246 (40.8%)	4,476 (41.1%)	4,275 (40.6%)	3,879 (40.6%)	4,186 (41.4%)	4,350 (42.8%)	4,290 (43.7%)	4,192 (43.6%)	4,180 (43.6%)	4,257 (43.9%)
FR	Male	236 (2.3%)	317 (2.9%)	304 (2.9%)	298 (3.1%)	306 (3.0%)	307 (3.0%)	292 (3.0%)	336 (3.5%)	306 (3.2%)	302 (3.1%)
	Female	98 (0.9%)	116 (1.1%)	120 (1.1%)	123 (1.3%)	118 (1.2%)	121 (1.2%)	114 (1.2%)	128 (1.3%)	119 (1.2%)	121 (1.2%)
	Subtotal	334 (3.2%)	433 (4.0%)	424 (4.0%)	421 (4.4%)	424 (4.2%)	428 (4.2%)	406 (4.1%)	464 (4.8%)	425 (4.4%)	423 (4.4%)
USA	Male	320 (3.1%)	299 (2.7%)	276 (2.6%)	217 (2.3%)	187 (1.8%)	126 (1.2%)	99 (1.0%)	86 (0.9%)	63 (0.7%)	61 (0.6%)
	Female	137 (1.3%)	136 (1.2%)	128 (1.2%)	75 (0.8%)	64 (0.6%)	37 (0.4%)	38 (0.4%)	25 (0.3%)	29 (0.3%)	25 (0.3%)
	Subtotal	457 (4.4%)	435 (4.0%)	404 (3.8%)	292 (3.1%)	251 (2.5%)	163 (1.6%)	137 (1.4%)	111 (1.2%)	92 (1.0%)	86 (0.9%)
GNY	Male	71 (0.7%)	70 (0.6%)	53 (0.5%)	51 (0.5%)	58 (0.6%)	38 (0.4%)	46 (0.5%)	42 (0.4%)	49 (0.5%)	62 (0.6%)
	Female	10 (0.1%)	16 (0.1%)	16 (0.2%)	26 (0.3%)	22 (0.2%)	19 (0.2%)	15 (0.2%)	18 (0.2%)	18 (0.2%)	16 (0.2%)
	Subtotal	81 (0.8%)	86 (0.8%)	69 (0.7%)	77 (0.8%)	80 (0.8%)	57 (0.6%)	61 (0.6%)	60 (0.6%)	67 (0.7%)	78 (0.8%)
Other	Male	28 (0.3%)	23 (0.2%)	21 (0.2%)	14 (0.1%)	19 (0.2%)	13 (0.1%)	14 (0.1%)	13 (0.1%)	10 (0.1%)	17 (0.2%)
	Female	17 (0.2%)	12 (0.1%)	12 (0.1%)	5 (0.1%)	4 (0.0%)	3 (0.0%)	5 (0.1%)	6 (0.1%)	5 (0.1%)	6 (0.1%)
	Subtotal	45 (0.4%)	35 (0.3%)	33 (0.3%)	19 (0.2%)	23 (0.2%)	16 (0.2%)	19 (0.2%)	19 (0.2%)	15 (0.2%)	23 (0.2%)

Jump (including Dual)

Bred	Sex	2017	2018	2019	2020	2021	2022	2023	2024	2025	2026
GB	Male	1,270 (23.5%)	1,370 (22.5%)	1,204 (21.0%)	700 (21.3%)	1,273 (19.9%)	1,136 (19.9%)	1,149 (19.2%)	1,147 (19.3%)	1,058 (19.5%)	1,042 (19.5%)
	Female	577 (10.7%)	666 (11.0%)	594 (10.4%)	358 (10.9%)	682 (10.7%)	590 (10.3%)	659 (11.0%)	642 (10.8%)	572 (10.5%)	580 (10.8%)
	Subtotal	1,847 (34.2%)	2,036 (33.5%)	1,798 (31.4%)	1,058 (32.1%)	1,955 (30.6%)	1,726 (30.3%)	1,808 (30.2%)	1,789 (30.1%)	1,630 (30.0%)	1,622 (30.3%)
IRE	Male	2,362 (43.7%)	2,624 (43.2%)	2,476 (43.3%)	1,399 (42.5%)	2,697 (42.2%)	2,353 (41.3%)	2,402 (40.2%)	2,358 (39.7%)	2,125 (39.1%)	2,057 (38.5%)
	Female	401 (7.4%)	527 (8.7%)	548 (9.6%)	346 (10.5%)	597 (9.3%)	525 (9.2%)	571 (9.6%)	636 (10.7%)	581 (10.7%)	578 (10.8%)
	Subtotal	2,763 (51.2%)	3,151 (51.9%)	3,024 (52.9%)	1,745 (53.0%)	3,294 (51.5%)	2,878 (50.5%)	2,973 (49.7%)	2,994 (50.4%)	2,706 (49.9%)	2,635 (49.3%)
FR	Male	628 (11.6%)	701 (11.5%)	693 (12.1%)	374 (11.4%)	904 (14.1%)	878 (15.4%)	959 (16.0%)	937 (15.8%)	875 (16.1%)	878 (16.4%)
	Female	57 (1.1%)	80 (1.3%)	99 (1.7%)	56 (1.7%)	127 (2.0%)	112 (2.0%)	140 (2.3%)	140 (2.4%)	155 (2.9%)	154 (2.9%)
	Subtotal	685 (12.7%)	781 (12.9%)	792 (13.8%)	430 (13.1%)	1,031 (16.1%)	990 (17.4%)	1,099 (18.4%)	1,077 (18.1%)	1,030 (19.0%)	1,032 (19.3%)
USA	Male	38 (0.7%)	41 (0.7%)	35 (0.6%)	24 (0.7%)	35 (0.5%)	34 (0.6%)	22 (0.4%)	14 (0.2%)	7 (0.1%)	8 (0.1%)
	Female	2 (0.0%)	4 (0.1%)	5 (0.1%)	2 (0.1%)	1 (0.0%)	1 (0.0%)	NA (-)	2 (0.0%)	2 (0.0%)	3 (0.1%)
	Subtotal	40 (0.7%)	45 (0.7%)	40 (0.7%)	26 (0.8%)	36 (0.6%)	35 (0.6%)	22 (0.4%)	16 (0.3%)	9 (0.2%)	11 (0.2%)
GNY	Male	55 (1.0%)	51 (0.8%)	53 (0.9%)	29 (0.9%)	67 (1.0%)	62 (1.1%)	69 (1.2%)	51 (0.9%)	40 (0.7%)	36 (0.7%)
	Female	1 (0.0%)	2 (0.0%)	5 (0.1%)	3 (0.1%)	9 (0.1%)	8 (0.1%)	5 (0.1%)	6 (0.1%)	7 (0.1%)	5 (0.1%)
	Subtotal	56 (1.0%)	53 (0.9%)	58 (1.0%)	32 (1.0%)	76 (1.2%)	70 (1.2%)	74 (1.2%)	57 (1.0%)	47 (0.9%)	41 (0.8%)
Other	Male	7 (0.1%)	8 (0.1%)	6 (0.1%)	NA (-)	4 (0.1%)	2 (0.0%)	1 (0.0%)	4 (0.1%)	4 (0.1%)	6 (0.1%)
	Female	1 (0.0%)	2 (0.0%)	2 (0.0%)	NA (-)	1 (0.0%)	1 (0.0%)	NA (-)	1 (0.0%)	2 (0.0%)	2 (0.0%)
	Subtotal	8 (0.1%)	10 (0.2%)	8 (0.1%)	NA (-)	5 (0.1%)	3 (0.1%)	1 (0.0%)	5 (0.1%)	6 (0.1%)	8 (0.1%)

Year to Date Total Runners by Breeding

Flat

Bred	Sex	2017	2018	2019	2020	2021	2022	2023	2024	2025	2026
GB	Male	4,036 (33.3%)	3,935 (33.7%)	4,075 (32.5%)	2,185 (32.8%)	4,225 (32.1%)	4,098 (32.4%)	3,863 (31.3%)	4,367 (32.8%)	4,286 (32.7%)	4,313 (32.5%)
	Female	1,863 (15.4%)	1,736 (14.8%)	2,012 (16.1%)	1,079 (16.2%)	2,251 (17.1%)	2,130 (16.9%)	2,070 (16.8%)	1,976 (14.8%)	1,904 (14.5%)	2,102 (15.8%)
	Subtotal	5,899 (48.7%)	5,671 (48.5%)	6,087 (48.6%)	3,264 (49.1%)	6,476 (49.2%)	6,228 (49.3%)	5,933 (48.1%)	6,343 (47.6%)	6,190 (47.2%)	6,415 (48.3%)
IRE	Male	3,799 (31.4%)	3,717 (31.8%)	3,932 (31.4%)	2,045 (30.7%)	4,271 (32.4%)	4,088 (32.4%)	4,114 (33.3%)	4,517 (33.9%)	4,580 (34.9%)	4,465 (33.6%)
	Female	1,381 (11.4%)	1,262 (10.8%)	1,354 (10.8%)	768 (11.5%)	1,360 (10.3%)	1,423 (11.3%)	1,443 (11.7%)	1,577 (11.8%)	1,506 (11.5%)	1,667 (12.6%)
	Subtotal	5,180 (42.8%)	4,979 (42.6%)	5,286 (42.2%)	2,813 (42.3%)	5,631 (42.7%)	5,511 (43.6%)	5,557 (45.0%)	6,094 (45.8%)	6,086 (46.4%)	6,132 (46.2%)
FR	Male	264 (2.2%)	270 (2.3%)	381 (3.0%)	203 (3.1%)	378 (2.9%)	378 (3.0%)	415 (3.4%)	426 (3.2%)	436 (3.3%)	410 (3.1%)
	Female	68 (0.6%)	99 (0.8%)	106 (0.8%)	51 (0.8%)	113 (0.9%)	106 (0.8%)	130 (1.1%)	128 (1.0%)	120 (0.9%)	128 (1.0%)
	Subtotal	332 (2.7%)	369 (3.2%)	487 (3.9%)	254 (3.8%)	491 (3.7%)	484 (3.8%)	545 (4.4%)	554 (4.2%)	556 (4.2%)	538 (4.1%)
USA	Male	443 (3.7%)	445 (3.8%)	408 (3.3%)	216 (3.2%)	325 (2.5%)	260 (2.1%)	183 (1.5%)	191 (1.4%)	127 (1.0%)	44 (0.3%)
	Female	99 (0.8%)	95 (0.8%)	124 (1.0%)	52 (0.8%)	76 (0.6%)	64 (0.5%)	62 (0.5%)	48 (0.4%)	53 (0.4%)	20 (0.2%)
	Subtotal	542 (4.5%)	540 (4.6%)	532 (4.2%)	268 (4.0%)	401 (3.0%)	324 (2.6%)	245 (2.0%)	239 (1.8%)	180 (1.4%)	64 (0.5%)
GNY	Male	84 (0.7%)	69 (0.6%)	56 (0.4%)	36 (0.5%)	95 (0.7%)	36 (0.3%)	42 (0.3%)	65 (0.5%)	58 (0.4%)	56 (0.4%)
	Female	15 (0.1%)	14 (0.1%)	22 (0.2%)	5 (0.1%)	31 (0.2%)	28 (0.2%)	11 (0.1%)	12 (0.1%)	19 (0.1%)	25 (0.2%)
	Subtotal	99 (0.8%)	83 (0.7%)	78 (0.6%)	41 (0.6%)	126 (1.0%)	64 (0.5%)	53 (0.4%)	77 (0.6%)	77 (0.6%)	81 (0.6%)
Other	Male	39 (0.3%)	46 (0.4%)	45 (0.4%)	13 (0.2%)	41 (0.3%)	15 (0.1%)	7 (0.1%)	5 (0.0%)	13 (0.1%)	36 (0.3%)
	Female	13 (0.1%)	3 (0.0%)	14 (0.1%)	1 (0.0%)	6 (0.0%)	6 (0.0%)	3 (0.0%)	5 (0.0%)	5 (0.0%)	3 (0.0%)
	Subtotal	52 (0.4%)	49 (0.4%)	59 (0.5%)	14 (0.2%)	47 (0.4%)	21 (0.2%)	10 (0.1%)	10 (0.1%)	18 (0.1%)	39 (0.3%)

Jump

Bred	Sex	2017	2018	2019	2020	2021	2022	2023	2024	2025	2026
GB	Male	2,847 (21.9%)	2,408 (20.5%)	2,547 (20.1%)	1,486 (19.0%)	2,382 (18.2%)	2,294 (17.8%)	2,234 (17.2%)	2,077 (17.8%)	2,234 (18.9%)	1,991 (17.1%)
	Female	1,107 (8.5%)	1,055 (9.0%)	1,152 (9.1%)	668 (8.5%)	1,217 (9.3%)	1,138 (8.8%)	1,184 (9.1%)	1,012 (8.7%)	986 (8.3%)	1,037 (8.9%)
	Subtotal	3,954 (30.4%)	3,463 (29.5%)	3,699 (29.2%)	2,154 (27.5%)	3,599 (27.5%)	3,432 (26.6%)	3,418 (26.4%)	3,089 (26.5%)	3,220 (27.2%)	3,028 (26.0%)
IRE	Male	5,950 (45.7%)	5,322 (45.3%)	5,558 (43.9%)	3,404 (43.5%)	5,664 (43.3%)	5,540 (42.9%)	5,447 (42.0%)	4,763 (40.9%)	4,758 (40.2%)	4,757 (40.9%)
	Female	959 (7.4%)	1,028 (8.8%)	1,197 (9.5%)	784 (10.0%)	1,247 (9.5%)	1,139 (8.8%)	1,215 (9.4%)	1,218 (10.5%)	1,293 (10.9%)	1,253 (10.8%)
	Subtotal	6,909 (53.0%)	6,350 (54.1%)	6,755 (53.4%)	4,188 (53.5%)	6,911 (52.8%)	6,679 (51.7%)	6,662 (51.4%)	5,981 (51.4%)	6,051 (51.1%)	6,010 (51.7%)
FR	Male	1,748 (13.4%)	1,590 (13.5%)	1,747 (13.8%)	1,163 (14.9%)	2,031 (15.5%)	2,259 (17.5%)	2,332 (18.0%)	2,142 (18.4%)	2,083 (17.6%)	2,105 (18.1%)
	Female	159 (1.2%)	134 (1.1%)	209 (1.7%)	177 (2.3%)	297 (2.3%)	297 (2.3%)	335 (2.6%)	272 (2.3%)	359 (3.0%)	353 (3.0%)
	Subtotal	1,907 (14.6%)	1,724 (14.7%)	1,956 (15.5%)	1,340 (17.1%)	2,328 (17.8%)	2,556 (19.8%)	2,667 (20.6%)	2,414 (20.7%)	2,442 (20.6%)	2,458 (21.1%)
USA	Male	96 (0.7%)	76 (0.6%)	52 (0.4%)	48 (0.6%)	58 (0.4%)	43 (0.3%)	39 (0.3%)	12 (0.1%)	11 (0.1%)	16 (0.1%)
	Female	4 (0.0%)	5 (0.0%)	9 (0.1%)	4 (0.1%)	3 (0.0%)	6 (0.0%)	0 (0.0%)	3 (0.0%)	4 (0.0%)	4 (0.0%)
	Subtotal	100 (0.8%)	81 (0.7%)	61 (0.5%)	52 (0.7%)	61 (0.5%)	49 (0.4%)	39 (0.3%)	15 (0.1%)	15 (0.1%)	20 (0.2%)
GNY	Male	136 (1.0%)	98 (0.8%)	152 (1.2%)	83 (1.1%)	165 (1.3%)	180 (1.4%)	165 (1.3%)	124 (1.1%)	92 (0.8%)	87 (0.7%)
	Female	8 (0.1%)	9 (0.1%)	12 (0.1%)	5 (0.1%)	21 (0.2%)	22 (0.2%)	15 (0.1%)	5 (0.0%)	6 (0.1%)	8 (0.1%)
	Subtotal	144 (1.1%)	107 (0.9%)	164 (1.3%)	88 (1.1%)	186 (1.4%)	202 (1.6%)	180 (1.4%)	129 (1.1%)	98 (0.8%)	95 (0.8%)
Other	Male	9 (0.1%)	18 (0.2%)	19 (0.2%)	5 (0.1%)	9 (0.1%)	3 (0.0%)	1 (0.0%)	9 (0.1%)	8 (0.1%)	13 (0.1%)
	Female	5 (0.0%)	2 (0.0%)	2 (0.0%)	1 (0.0%)	0 (0.0%)	0 (0.0%)	0 (0.0%)	2 (0.0%)	0 (0.0%)	0 (0.0%)
	Subtotal	14 (0.1%)	20 (0.2%)	21 (0.2%)	6 (0.1%)	9 (0.1%)	4 (0.0%)	1 (0.0%)	11 (0.1%)	8 (0.1%)	13 (0.1%)

Year to Date Individual Runners by Breeding

Flat

Bred	Sex	2017	2018	2019	2020	2021	2022	2023	2024	2025	2026
GB	Male	1,633 (31.2%)	1,623 (32.1%)	1,667 (30.9%)	911 (31.7%)	1,675 (31.1%)	1,676 (31.2%)	1,501 (29.7%)	1,614 (30.9%)	1,613 (30.7%)	1,633 (30.8%)
	Female	890 (17.0%)	821 (16.2%)	943 (17.5%)	502 (17.5%)	951 (17.7%)	990 (18.5%)	925 (18.3%)	872 (16.7%)	885 (16.8%)	959 (18.1%)
	Subtotal	2,523 (48.2%)	2,444 (48.4%)	2,610 (48.3%)	1,413 (49.2%)	2,626 (48.8%)	2,666 (49.7%)	2,426 (48.0%)	2,486 (47.5%)	2,498 (47.5%)	2,592 (48.9%)
IRE	Male	1,622 (31.0%)	1,539 (30.5%)	1,636 (30.3%)	835 (29.1%)	1,672 (31.1%)	1,663 (31.0%)	1,594 (31.5%)	1,673 (32.0%)	1,743 (33.1%)	1,689 (31.8%)
	Female	620 (11.8%)	615 (12.2%)	649 (12.0%)	360 (12.5%)	635 (11.8%)	660 (12.3%)	679 (13.4%)	708 (13.5%)	678 (12.9%)	726 (13.7%)
	Subtotal	2,242 (42.8%)	2,154 (42.6%)	2,285 (42.3%)	1,195 (41.6%)	2,307 (42.9%)	2,323 (43.3%)	2,273 (45.0%)	2,381 (45.5%)	2,421 (46.0%)	2,415 (45.5%)
FR	Male	118 (2.3%)	137 (2.7%)	165 (3.1%)	94 (3.3%)	172 (3.2%)	164 (3.1%)	169 (3.3%)	183 (3.5%)	181 (3.4%)	157 (3.0%)
	Female	39 (0.7%)	46 (0.9%)	58 (1.1%)	26 (0.9%)	51 (0.9%)	53 (1.0%)	62 (1.2%)	60 (1.1%)	54 (1.0%)	57 (1.1%)
	Subtotal	157 (3.0%)	183 (3.6%)	223 (4.1%)	120 (4.2%)	223 (4.1%)	217 (4.0%)	231 (4.6%)	243 (4.6%)	235 (4.5%)	214 (4.0%)
USA	Male	193 (3.7%)	173 (3.4%)	167 (3.1%)	88 (3.1%)	123 (2.3%)	89 (1.7%)	67 (1.3%)	63 (1.2%)	47 (0.9%)	20 (0.4%)
	Female	50 (1.0%)	44 (0.9%)	58 (1.1%)	27 (0.9%)	34 (0.6%)	25 (0.5%)	24 (0.5%)	17 (0.3%)	19 (0.4%)	10 (0.2%)
	Subtotal	243 (4.6%)	217 (4.3%)	225 (4.2%)	115 (4.0%)	157 (2.9%)	114 (2.1%)	91 (1.8%)	80 (1.5%)	66 (1.3%)	30 (0.6%)
GNY	Male	38 (0.7%)	33 (0.7%)	30 (0.6%)	17 (0.6%)	38 (0.7%)	20 (0.4%)	23 (0.5%)	26 (0.5%)	25 (0.5%)	27 (0.5%)
	Female	7 (0.1%)	7 (0.1%)	9 (0.2%)	3 (0.1%)	13 (0.2%)	15 (0.3%)	6 (0.1%)	8 (0.2%)	9 (0.2%)	10 (0.2%)
	Subtotal	45 (0.9%)	40 (0.8%)	39 (0.7%)	20 (0.7%)	51 (0.9%)	35 (0.7%)	29 (0.6%)	34 (0.7%)	34 (0.6%)	37 (0.7%)
Other	Male	17 (0.3%)	14 (0.3%)	14 (0.3%)	8 (0.3%)	14 (0.3%)	7 (0.1%)	3 (0.1%)	3 (0.1%)	6 (0.1%)	15 (0.3%)
	Female	9 (0.2%)	2 (0.0%)	5 (0.1%)	1 (0.0%)	2 (0.0%)	2 (0.0%)	3 (0.1%)	2 (0.0%)	2 (0.0%)	2 (0.0%)
	Subtotal	26 (0.5%)	16 (0.3%)	19 (0.4%)	9 (0.3%)	16 (0.3%)	9 (0.2%)	6 (0.1%)	5 (0.1%)	8 (0.2%)	17 (0.3%)

Jump

Bred	Sex	2017	2018	2019	2020	2021	2022	2023	2024	2025	2026
GB	Male	1,141 (21.4%)	1,009 (20.0%)	1,104 (19.9%)	831 (18.6%)	1,103 (18.6%)	977 (17.8%)	975 (17.5%)	911 (17.6%)	952 (18.0%)	891 (17.5%)
	Female	486 (9.1%)	480 (9.5%)	526 (9.5%)	388 (8.7%)	546 (9.2%)	494 (9.0%)	517 (9.3%)	492 (9.5%)	476 (9.0%)	454 (8.9%)
	Subtotal	1,627 (30.5%)	1,489 (29.5%)	1,630 (29.4%)	1,219 (27.2%)	1,649 (27.8%)	1,471 (26.8%)	1,492 (26.8%)	1,403 (27.0%)	1,428 (27.0%)	1,345 (26.5%)
IRE	Male	2,393 (44.9%)	2,260 (44.8%)	2,421 (43.6%)	1,958 (43.7%)	2,538 (42.8%)	2,338 (42.7%)	2,317 (41.6%)	2,126 (41.0%)	2,128 (40.3%)	2,022 (39.8%)
	Female	414 (7.8%)	449 (8.9%)	534 (9.6%)	452 (10.1%)	575 (9.7%)	497 (9.1%)	557 (10.0%)	545 (10.5%)	576 (10.9%)	551 (10.9%)
	Subtotal	2,807 (52.6%)	2,709 (53.7%)	2,955 (53.2%)	2,410 (53.8%)	3,113 (52.6%)	2,835 (51.7%)	2,874 (51.6%)	2,671 (51.5%)	2,704 (51.2%)	2,573 (50.7%)
FR	Male	726 (13.6%)	692 (13.7%)	755 (13.6%)	654 (14.6%)	933 (15.8%)	945 (17.2%)	962 (17.3%)	918 (17.7%)	934 (17.7%)	934 (18.4%)
	Female	67 (1.3%)	72 (1.4%)	109 (2.0%)	106 (2.4%)	128 (2.2%)	130 (2.4%)	150 (2.7%)	132 (2.5%)	164 (3.1%)	172 (3.4%)
	Subtotal	793 (14.9%)	764 (15.1%)	864 (15.6%)	760 (17.0%)	1,061 (17.9%)	1,075 (19.6%)	1,112 (20.0%)	1,050 (20.2%)	1,098 (20.8%)	1,106 (21.8%)
USA	Male	42 (0.8%)	36 (0.7%)	26 (0.5%)	25 (0.6%)	26 (0.4%)	21 (0.4%)	17 (0.3%)	6 (0.1%)	6 (0.1%)	8 (0.2%)
	Female	1 (0.0%)	2 (0.0%)	4 (0.1%)	3 (0.1%)	2 (0.0%)	0 (0.0%)	0 (0.0%)	1 (0.0%)	1 (0.0%)	2 (0.0%)
	Subtotal	43 (0.8%)	38 (0.8%)	30 (0.5%)	28 (0.6%)	28 (0.5%)	23 (0.4%)	17 (0.3%)	7 (0.1%)	7 (0.1%)	10 (0.2%)
GNY	Male	52 (1.0%)	36 (0.7%)	57 (1.0%)	49 (1.1%)	62 (1.0%)	65 (1.2%)	60 (1.1%)	50 (1.0%)	40 (0.8%)	35 (0.7%)
	Female	5 (0.1%)	2 (0.0%)	5 (0.1%)	4 (0.1%)	7 (0.1%)	9 (0.2%)	10 (0.2%)	4 (0.1%)	4 (0.1%)	3 (0.1%)
	Subtotal	57 (1.1%)	38 (0.8%)	62 (1.1%)	53 (1.2%)	69 (1.2%)	74 (1.4%)	70 (1.3%)	54 (1.0%)	44 (0.8%)	38 (0.7%)
Other	Male	5 (0.1%)	6 (0.1%)	9 (0.2%)	5 (0.1%)	3 (0.1%)	2 (0.0%)	1 (0.0%)	3 (0.1%)	4 (0.1%)	6 (0.1%)
	Female	2 (0.0%)	2 (0.0%)	1 (0.0%)	1 (0.0%)	0 (0.0%)	1 (0.0%)	0 (0.0%)	1 (0.0%)	0 (0.0%)	0 (0.0%)
	Subtotal	7 (0.1%)	8 (0.2%)	10 (0.2%)	6 (0.1%)	3 (0.1%)	3 (0.1%)	1 (0.0%)	4 (0.1%)	4 (0.1%)	6 (0.1%)

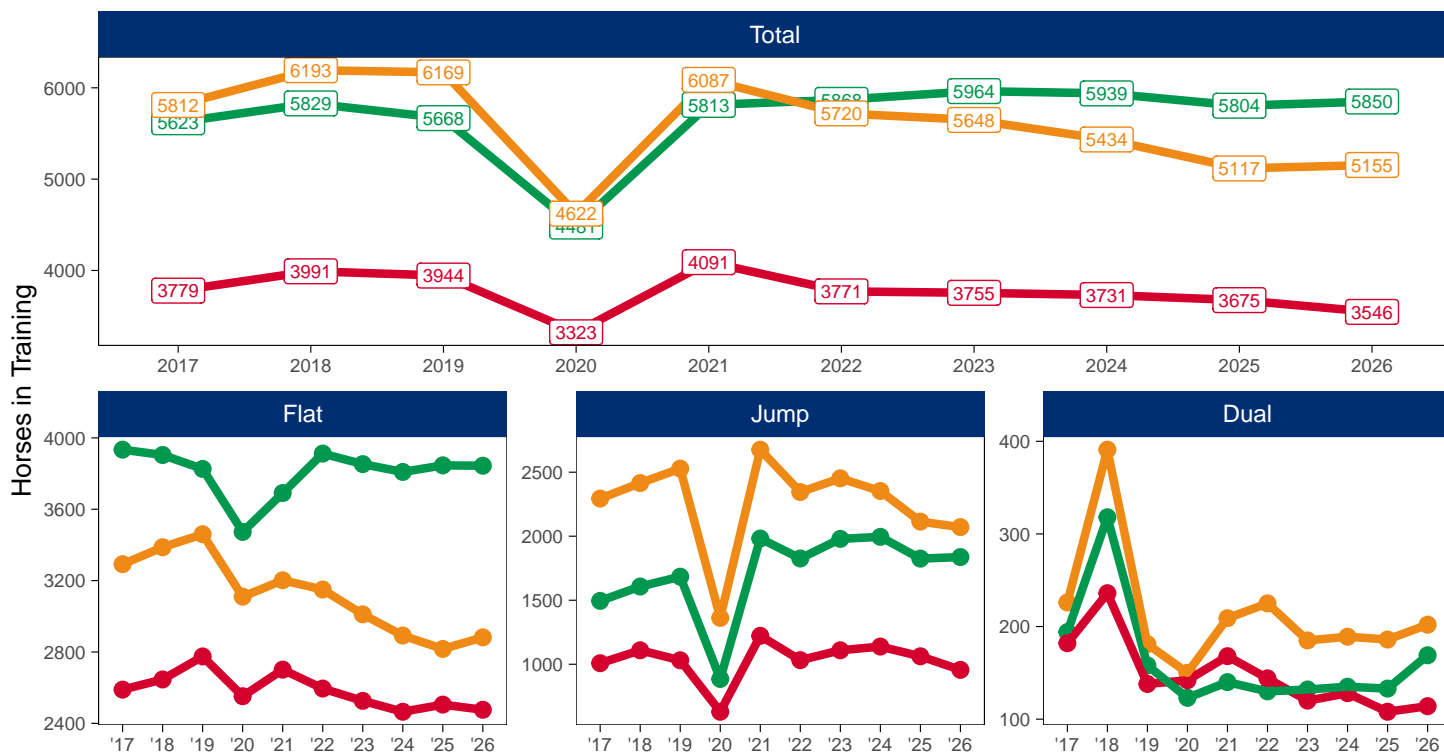
Horse Population by Location

April 2026 Horses in Training Snapshot by Region versus Previous Years

Snapshot of Total Horses in Training in April by Region

Horses in Training in April, shown by Training Type and Region

Region ● North ● Midlands ● South



North

AgeCat	2017	2018	2019	2020	2021	2022	2023	2024	2025	2026	vs. Last Year	vs. Pre-Covid
Flat Horses in Training												
2YO	719	743	814	712	740	711	641	570	623	524	-99 / -15.9%	-290 / -35.6%
3YO	747	755	771	795	821	780	726	702	679	720	+41 / +6.0%	-51 / -6.6%
4YO	417	417	432	401	412	425	410	439	425	436	+11 / +2.6%	+4 / +0.9%
5YO+	706	731	758	644	728	679	749	754	778	796	+18 / +2.3%	+38 / +5.0%
Subtotal	2589	2646	2775	2552	2701	2595	2526	2465	2505	2476	-29 / -1.2%	-299 / -10.8%
Jump Horses in Training												
3YO	4	6	10	5	7	13	11	1	4	1	-3 / -75.0%	-9 / -90.0%
4-5YO	266	251	255	149	278	260	280	300	251	230	-21 / -8.4%	-25 / -9.8%
6-7YO	310	395	365	223	425	369	417	415	403	362	-41 / -10.2%	-3 / -0.8%
8YO+	428	457	401	252	512	390	401	422	404	363	-41 / -10.1%	-38 / -9.5%
Subtotal	1008	1109	1031	629	1222	1032	1109	1138	1062	956	-106 / -10.0%	-75 / -7.3%
Dual Horses in Training												
3YO	25	22	9	27	17	22	11	12	13	9	-4 / -30.8%	0 / 0.0%
4YO	44	62	34	35	42	22	27	32	26	37	+11 / +42.3%	+3 / +8.8%
5YO+	113	152	95	80	109	100	82	84	69	68	-1 / -1.4%	-27 / -28.4%
Subtotal	182	236	138	142	168	144	120	128	108	114	+6 / +5.6%	-24 / -17.4%
Total Horses in Training												
	3779	3991	3944	3323	4091	3771	3755	3731	3675	3546	-129 / -3.5%	-398 / -10.1%

'vs. Pre-Covid' is comparison between 2026 and 2019

Midlands

AgeCat	2017	2018	2019	2020	2021	2022	2023	2024	2025	2026	vs. Last Year	vs. Pre-Covid
Flat Horses in Training												
2YO	1245	1147	1101	975	999	1111	976	993	996	1012	+16 / +1.6%	-89 / -8.1%
3YO	1394	1461	1366	1343	1331	1434	1437	1324	1395	1333	-62 / -4.4%	-33 / -2.4%
4YO	604	590	606	524	649	636	661	665	636	678	+42 / +6.6%	+72 / +11.9%
5YO+	691	706	753	631	712	731	779	827	819	821	+2 / +0.2%	+68 / +9.0%
Subtotal	3934	3904	3826	3473	3691	3912	3853	3809	3846	3844	-2 / -0.1%	+18 / +0.5%
Jump Horses in Training												
3YO	11	15	14	4	12	7	27	22	14	6	-8 / -57.1%	-8 / -57.1%
4-5YO	460	491	529	286	608	578	658	620	613	637	+24 / +3.9%	+108 / +20.4%
6-7YO	508	572	603	302	720	693	732	776	671	676	+5 / +0.7%	+73 / +12.1%
8YO+	516	529	538	293	642	548	562	577	527	518	-9 / -1.7%	-20 / -3.7%
Subtotal	1495	1607	1684	885	1982	1826	1979	1995	1825	1837	+12 / +0.7%	+153 / +9.1%
Dual Horses in Training												
3YO	14	15	13	9	10	9	15	10	10	16	+6 / +60.0%	+3 / +23.1%
4YO	56	91	53	32	41	42	34	39	32	50	+18 / +56.2%	-3 / -5.7%
5YO+	124	212	92	82	89	79	83	86	91	103	+12 / +13.2%	+11 / +12.0%
Subtotal	194	318	158	123	140	130	132	135	133	169	+36 / +27.1%	+11 / +7.0%
Total Horses in Training												
	5623	5829	5668	4481	5813	5868	5964	5939	5804	5850	+46 / +0.8%	+182 / +3.2%

'vs. Pre-Covid' is comparison between 2026 and 2019

South

AgeCat	2017	2018	2019	2020	2021	2022	2023	2024	2025	2026	vs. Last Year	vs. Pre-Covid
Flat Horses in Training												
2YO	1199	1160	1180	1002	1040	1032	965	931	855	892	+37 / +4.3%	-288 / -24.4%
3YO	1036	1148	1148	1078	1070	1021	998	945	1019	985	-34 / -3.3%	-163 / -14.2%
4YO	442	474	527	456	489	500	433	427	392	471	+79 / +20.2%	-56 / -10.6%
5YO+	615	605	605	574	603	597	615	589	551	534	-17 / -3.1%	-71 / -11.7%
Subtotal	3292	3387	3460	3110	3202	3150	3011	2892	2817	2882	+65 / +2.3%	-578 / -16.7%
Jump Horses in Training												
3YO	14	21	17	12	21	14	23	29	24	19	-5 / -20.8%	+2 / +11.8%
4-5YO	806	780	838	443	768	803	903	818	717	761	+44 / +6.1%	-77 / -9.2%
6-7YO	768	869	930	481	1026	831	860	890	800	758	-42 / -5.2%	-172 / -18.5%
8YO+	706	745	743	426	861	697	666	616	573	533	-40 / -7.0%	-210 / -28.3%
Subtotal	2294	2415	2528	1362	2676	2345	2452	2353	2114	2071	-43 / -2.0%	-457 / -18.1%
Dual Horses in Training												
3YO	23	18	9	24	22	24	21	7	27	17	-10 / -37.0%	+8 / +88.9%
4YO	62	101	57	34	70	70	54	61	52	64	+12 / +23.1%	+7 / +12.3%
5YO+	141	272	115	92	117	131	110	121	107	121	+14 / +13.1%	+6 / +5.2%
Subtotal	226	391	181	150	209	225	185	189	186	202	+16 / +8.6%	+21 / +11.6%
Total Horses in Training												
	5812	6193	6169	4622	6087	5720	5648	5434	5117	5155	+38 / +0.7%	-1014 / -16.4%

'vs. Pre-Covid' is comparison between 2026 and 2019

April 2026 Horses in Training Snapshot by Country versus Previous Years

Type	2017	2018	2019	2020	2021	2022	2023	2024	2025	2026	vs. Last Year	vs. Pre-Covid
England												
Flat	9420	9562	9685	8808	9258	9278	9020	8834	8822	8865	+43 / +0.5%	-820 / -8.5%
Jump	4173	4453	4584	2542	5102	4593	4893	4776	4350	4237	-113 / -2.6%	-347 / -7.6%
Dual	530	841	429	386	463	452	406	407	391	435	+44 / +11.3%	+6 / +1.4%
Overall	14123	14856	14698	11736	14823	14323	14319	14017	13563	13537	-26 / -0.2%	-1161 / -7.9%
Scotland												
Flat	222	222	204	177	197	223	224	195	204	199	-5 / -2.5%	-5 / -2.5%
Jump	296	325	293	154	387	294	357	373	339	291	-48 / -14.2%	-2 / -0.7%
Dual	33	50	28	21	29	22	20	26	17	22	+5 / +29.4%	-6 / -21.4%
Overall	551	597	525	352	613	539	601	594	560	512	-48 / -8.6%	-13 / -2.5%
Wales												
Flat	173	153	172	150	139	156	146	137	142	138	-4 / -2.8%	-34 / -19.8%
Jump	328	353	366	180	391	316	290	337	312	336	+24 / +7.7%	-30 / -8.2%
Dual	39	54	20	8	25	25	11	19	19	28	+9 / +47.4%	+8 / +40.0%
Overall	540	560	558	338	555	497	447	493	473	502	+29 / +6.1%	-56 / -10.0%

'vs. Pre-Covid' is comparison between 2026 and 2019

April 2026 Horses in Training Snapshot by Training Centre versus Previous Years

Type	2017	2018	2019	2020	2021	2022	2023	2024	2025	2026	vs. Last Year	vs. Pre-Covid
Cheltenham (GL54)												
Flat	19	19	15	22	22	17	17	15	21	29	+8 / +38.1%	+14 / +93.3%
Jump	422	419	442	225	521	482	533	503	481	465	-16 / -3.3%	+23 / +5.2%
Dual	27	80	29	7	13	16	12	17	15	28	+13 / +86.7%	-1 / -3.4%
Overall	468	518	486	254	556	515	562	535	517	522	+5 / +1.0%	+36 / +7.4%
Lambourn (RG17)												
Flat	972	1034	1062	940	930	882	933	896	888	951	+63 / +7.1%	-111 / -10.5%
Jump	339	339	370	170	341	297	305	266	262	288	+26 / +9.9%	-82 / -22.2%
Dual	22	40	15	22	19	26	29	27	30	27	-3 / -10.0%	+12 / +80.0%
Overall	1333	1413	1447	1132	1290	1205	1267	1189	1180	1266	+86 / +7.3%	-181 / -12.5%
Malton (YO17)												
Flat	685	678	756	708	710	692	681	723	696	700	+4 / +0.6%	-56 / -7.4%
Jump	116	136	107	81	108	93	86	70	72	60	-12 / -16.7%	-47 / -43.9%
Dual	40	42	18	33	44	41	26	30	22	17	-5 / -22.7%	-1 / -5.6%
Overall	841	856	881	822	862	826	793	823	790	777	-13 / -1.6%	-104 / -11.8%
Marlborough (SN8)												
Flat	552	559	564	515	521	493	452	453	428	422	-6 / -1.4%	-142 / -25.2%
Jump	68	78	76	9	81	83	82	79	74	76	+2 / +2.7%	0 / 0.0%
Dual	2	1	4	1	1	2	1	2	3	0	-3 / -100.0%	-4 / -100.0%
Overall	622	638	644	525	603	578	535	534	505	498	-7 / -1.4%	-146 / -22.7%
Middleham (DL8)												
Flat	537	557	620	620	632	533	578	540	532	528	-4 / -0.8%	-92 / -14.8%
Jump	93	95	103	53	107	103	113	109	108	77	-31 / -28.7%	-26 / -25.2%
Dual	30	23	26	18	30	15	18	16	20	19	-1 / -5.0%	-7 / -26.9%
Overall	660	675	749	691	769	651	709	665	660	624	-36 / -5.5%	-125 / -16.7%
Newbury (RG20)												
Flat	432	461	471	422	460	498	436	413	380	395	+15 / +3.9%	-76 / -16.1%
Jump	19	19	23	5	12	9	37	57	73	70	-3 / -4.1%	+47 / +204.3%
Dual	10	12	7	7	9	8	4	5	4	6	+2 / +50.0%	-1 / -14.3%
Overall	461	492	501	434	481	515	477	475	457	471	+14 / +3.1%	-30 / -6.0%
Newmarket (CB8)												
Flat	2835	2839	2739	2560	2724	2804	2808	2739	2724	2710	-14 / -0.5%	-29 / -1.1%
Jump	60	66	58	46	62	55	70	69	62	50	-12 / -19.4%	-8 / -13.8%
Dual	35	37	19	22	27	27	28	36	42	53	+11 / +26.2%	+34 / +178.9%
Overall	2930	2942	2816	2628	2813	2886	2906	2844	2828	2813	-15 / -0.5%	-3 / -0.1%

'vs. Pre-Covid' is comparison between 2026 and 2019