



Horse Population Report

Updated on 31 March 2026



Introduction

Welcome to the latest update on the Racehorse Population from the British Horseracing Authority.

The aim of this document is to give stakeholders and the wider Public an insight into the current state of the Horse Population in Great Britain. It is hoped that this transparency will ensure that all decision makers have access to the key data required to help British Racing deliver a Competitive and Compelling product to stakeholders, racegoers and the wider public.

If you have any questions regarding the content of this report or suggestions for how it could be improved further, please contact Joe Yates – jyates@britishhorseracing.com

Definitions

This report uses the Horses in Training returns from the Weatherby's Racing Administration System, this is completed by trainers and should be updated whenever a horse enters or leaves training in their care as part of the conditions of their licence.

Horses in Training

Unless otherwise stated, snapshots of Horses in Training will be from the 15th day of the month in question and year to date figures will be up to and including the date titled at the front of the report.

Horses' ratings will be taken from the most recently published ratings by the BHA Handicapping Team, which is currently at 7am each Tuesday morning. For example, if looking at the Horses in a particular rating band for July 2011, the horses in training number will be from Friday 15th July 2011 and ratings, where possible, will be assigned to each horse from the ratings published by the BHA Handicappers on Tuesday 12th July 2011.

The Gender of a horse will be taken from the reporting date in question, regardless of whether this has since changed.

In the case of YTD reporting, where a horse's gender or training type has changed in the year-to-date period, the most recent is taken.

This report does not count any horses that are temporarily racing abroad for GB Trainers at the time of reporting.

Yearlings are not included in total counts of flat and/or dual horses but will be sometimes shown separately for information purposes.

Yearlings and two-year-olds are not included in total counts of jump horses or counts of jump horses that include dual horses but will be sometimes shown separately for information purposes.

Yearlings, two-year-olds and three-year-olds are not included in total counts of Hunter Chasers but will be sometimes shown separately for information purposes.

Yearlings and two-year-olds in training that are recorded as dual horses have been re-coded as flat horses.

Hunter Chasers are not included in any counts of Jump Horses or Total figures but will be sometimes shown separately for information purposes.

Horses' training locations are defined by the trainers' primary training location. Training regions are defined the same as regions for the Fixture List; 'North' is north of latitude 53.42911, 'South' is south of latitude 51.88002 and 'Midlands' is anywhere in between. Training centres are defined by postcodes and surrounding areas.

Runners

Unless otherwise specified, Total Runners and Individual Runners metrics only counts runners that ran in GB races including any voided races. Withdrawn horses are not included.

Hunter Chases are not included in this section but will be sometimes shown separately for information purposes.

Total Runners is a count of all runners in races, whilst individual runners only counts each individual horse once.

Monthly Horses in Training

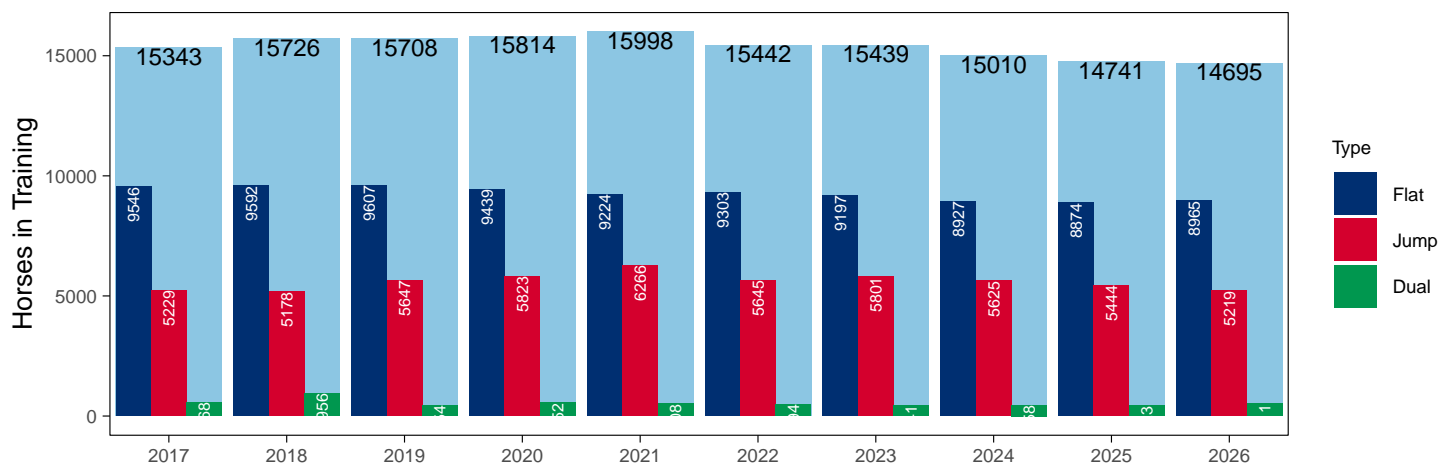
March 2026 Horses in Training Snapshot versus Previous Years

Type	2017	2018	2019	2020	2021	2022	2023	2024	2025	2026	vs. Last Year	vs. Pre-Covid
Flat	9546	9592	9607	9439	9224	9303	9197	8927	8874	8965	+91 / +1.0%	-642 / -6.7%
Jump	5229	5178	5647	5823	6266	5645	5801	5625	5444	5219	-225 / -4.1%	-428 / -7.6%
Dual	568	956	454	552	508	494	441	458	423	511	+88 / +20.8%	+57 / +12.6%
Hunter	1799	1586	1585	1490	875	1215	1148	1312	1027	947	-80 / -7.8%	-638 / -40.3%
Total	15343	15726	15708	15814	15998	15442	15439	15010	14741	14695	-46 / -0.3%	-1013 / -6.4%

'vs. Pre-Covid' is comparison between 2026 and 2019

Snapshot of Total Horses in Training in March

Horses in Training in March, shown by Training Type



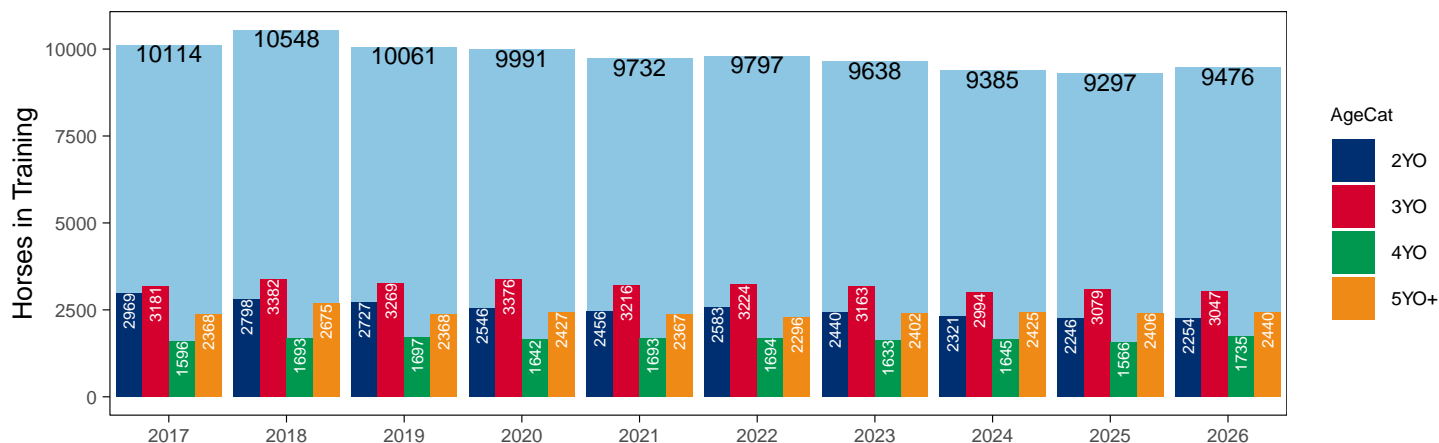
Flat (including Dual)

AgeCat	2017	2018	2019	2020	2021	2022	2023	2024	2025	2026	vs. Last Year	vs. Pre-Covid
2YO	2969	2798	2727	2546	2456	2583	2440	2321	2246	2254	+8 / +0.4%	-473 / -17.3%
3YO	3181	3382	3269	3376	3216	3224	3163	2994	3079	3047	-32 / -1.0%	-222 / -6.8%
4YO	1596	1693	1697	1642	1693	1694	1633	1645	1566	1735	+169 / +10.8%	+38 / +2.2%
5YO+	2368	2675	2368	2427	2367	2296	2402	2425	2406	2440	+34 / +1.4%	+72 / +3.0%
Total	10114	10548	10061	9991	9732	9797	9638	9385	9297	9476	+179 / +1.9%	-585 / -5.8%

'vs. Pre-Covid' is comparison between 2026 and 2019

Snapshot of Flat Horses in Training in March

Flat Horses in Training in March, shown by Age



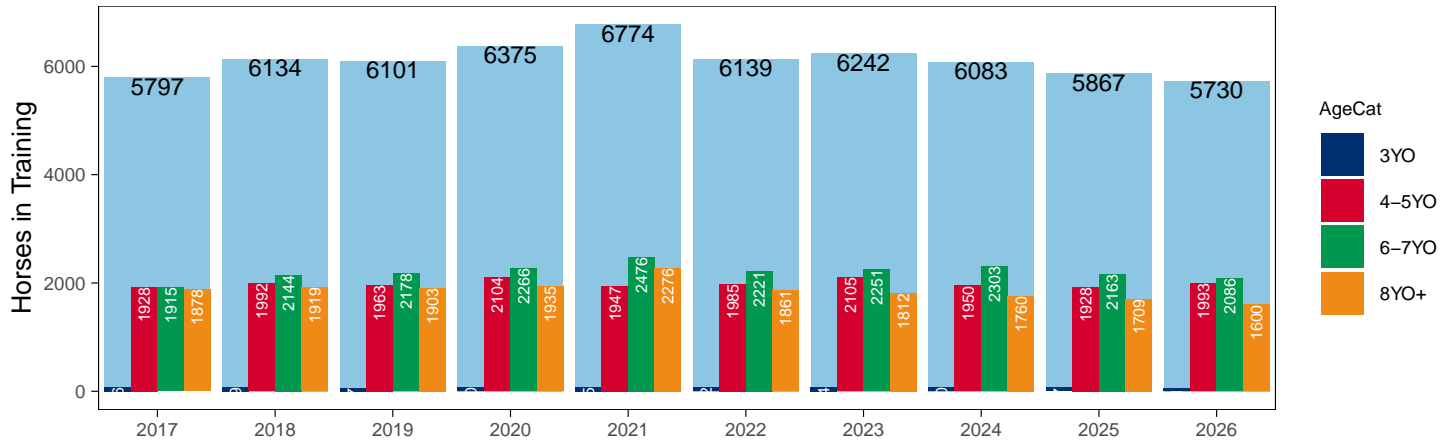
Jump (including Dual)

AgeCat	2017	2018	2019	2020	2021	2022	2023	2024	2025	2026	vs. Last Year	vs. Pre-Covid
3YO	76	79	57	70	75	72	74	70	67	51	-16 / -23.9%	-6 / -10.5%
4-5YO	1928	1992	1963	2104	1947	1985	2105	1950	1928	1993	+65 / +3.4%	+30 / +1.5%
6-7YO	1915	2144	2178	2266	2476	2221	2251	2303	2163	2086	-77 / -3.6%	-92 / -4.2%
8YO+	1878	1919	1903	1935	2276	1861	1812	1760	1709	1600	-109 / -6.4%	-303 / -15.9%
Total	5797	6134	6101	6375	6774	6139	6242	6083	5867	5730	-137 / -2.3%	-371 / -6.1%

'vs. Pre-Covid' is comparison between 2026 and 2019

Snapshot of Jump Horses in Training in March

Jump Horses in Training in March, shown by Age



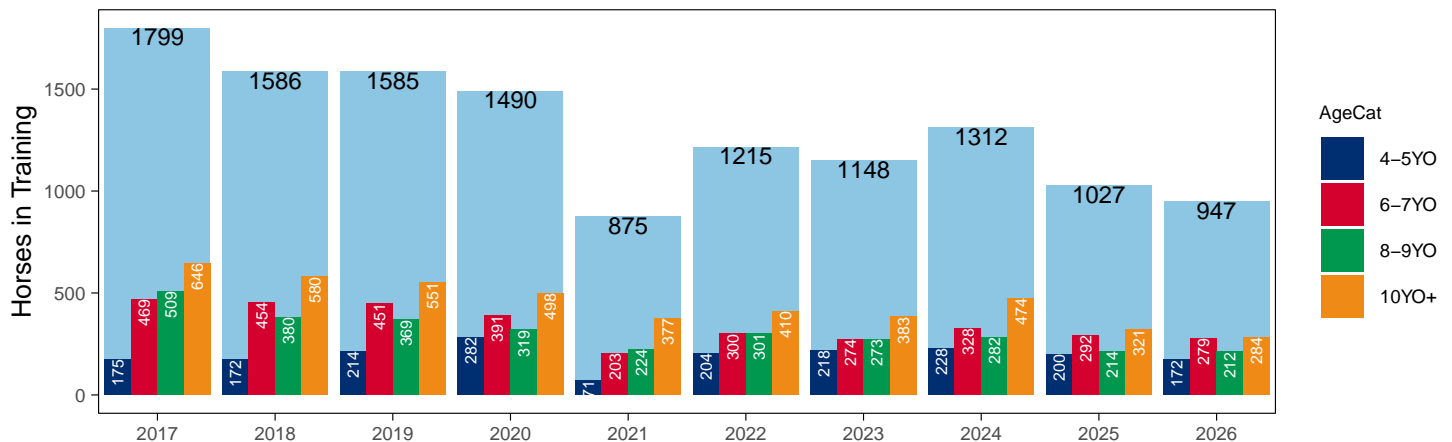
Hunter Chasers

AgeCat	2017	2018	2019	2020	2021	2022	2023	2024	2025	2026	vs. Last Year	vs. Pre-Covid
4-5YO	175	172	214	282	71	204	218	228	200	172	-28 / -14.0%	-42 / -19.6%
6-7YO	469	454	451	391	203	300	274	328	292	279	-13 / -4.5%	-172 / -38.1%
8-9YO	509	380	369	319	224	301	273	282	214	212	-2 / -0.9%	-157 / -42.5%
10YO+	646	580	551	498	377	410	383	474	321	284	-37 / -11.5%	-267 / -48.5%
Total	1799	1586	1585	1490	875	1215	1148	1312	1027	947	-80 / -7.8%	-638 / -40.3%

'vs. Pre-Covid' is comparison between 2026 and 2019

Snapshot of Hunter Chasers in Training in March

Hunter Chasers in Training in March, shown by Age



2026 Horses in Training versus Previous Years

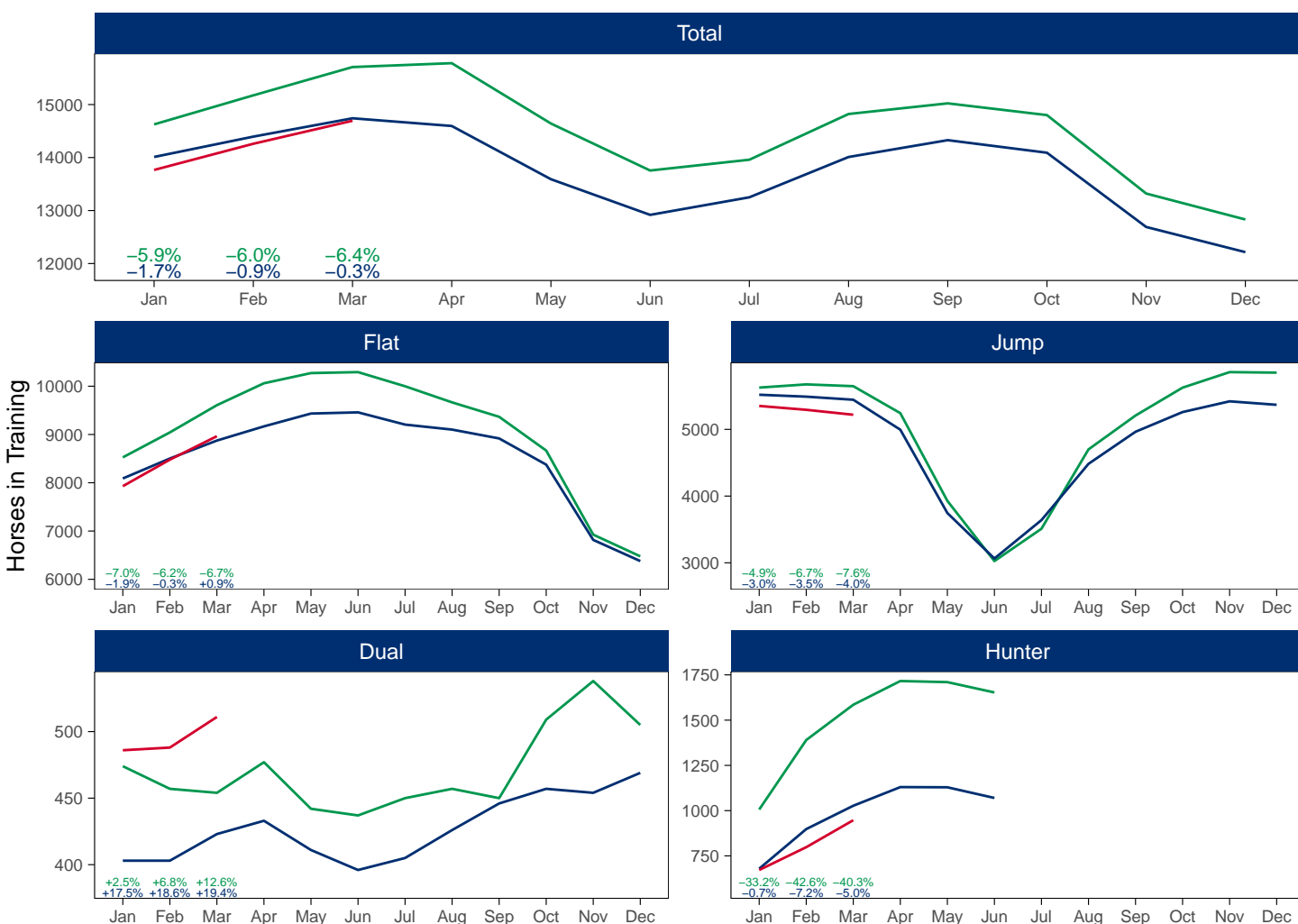
Type	Period	Jan	Feb	Mar	Apr	May	Jun	Jul	Aug	Sep	Oct	Nov	Dec
Flat	2026	7929	8479	8965									
	2025	8089	8502	8874	9168	9434	9458	9205	9101	8918	8375	6816	6378
	Pre-Covid	8526	9043	9607	10061	10272	10292	9999	9665	9366	8667	6925	6476
Jump	2026	5351	5293	5219									
	2025	5519	5490	5444	4995	3746	3064	3640	4483	4964	5259	5420	5368
	Pre-Covid	5626	5674	5647	5243	3928	3026	3510	4700	5207	5625	5858	5850
Dual	2026	486	488	511									
	2025	403	403	423	433	411	396	405	426	446	457	454	469
	Pre-Covid	474	457	454	477	442	437	450	457	450	509	538	505
Hunter	2026	672	798	947									
	2025	679	898	1027	1130	1129	1070						
	Pre-Covid	1006	1390	1585	1716	1710	1653						
Total	2026	13766	14260	14695									
	2025	14011	14395	14741	14596	13591	12918	13250	14010	14328	14091	12690	12215
	Pre-Covid	14626	15174	15708	15781	14642	13755	13959	14822	15023	14801	13321	12831

'Pre-Covid' is 2019 values

Monthly Horses in Training

2026 against 2025 and Pre-Covid, shown with % Difference

Period — Pre-Covid — 2025 — 2026



'Pre-Covid' is 2019 values

Flat (including Dual)

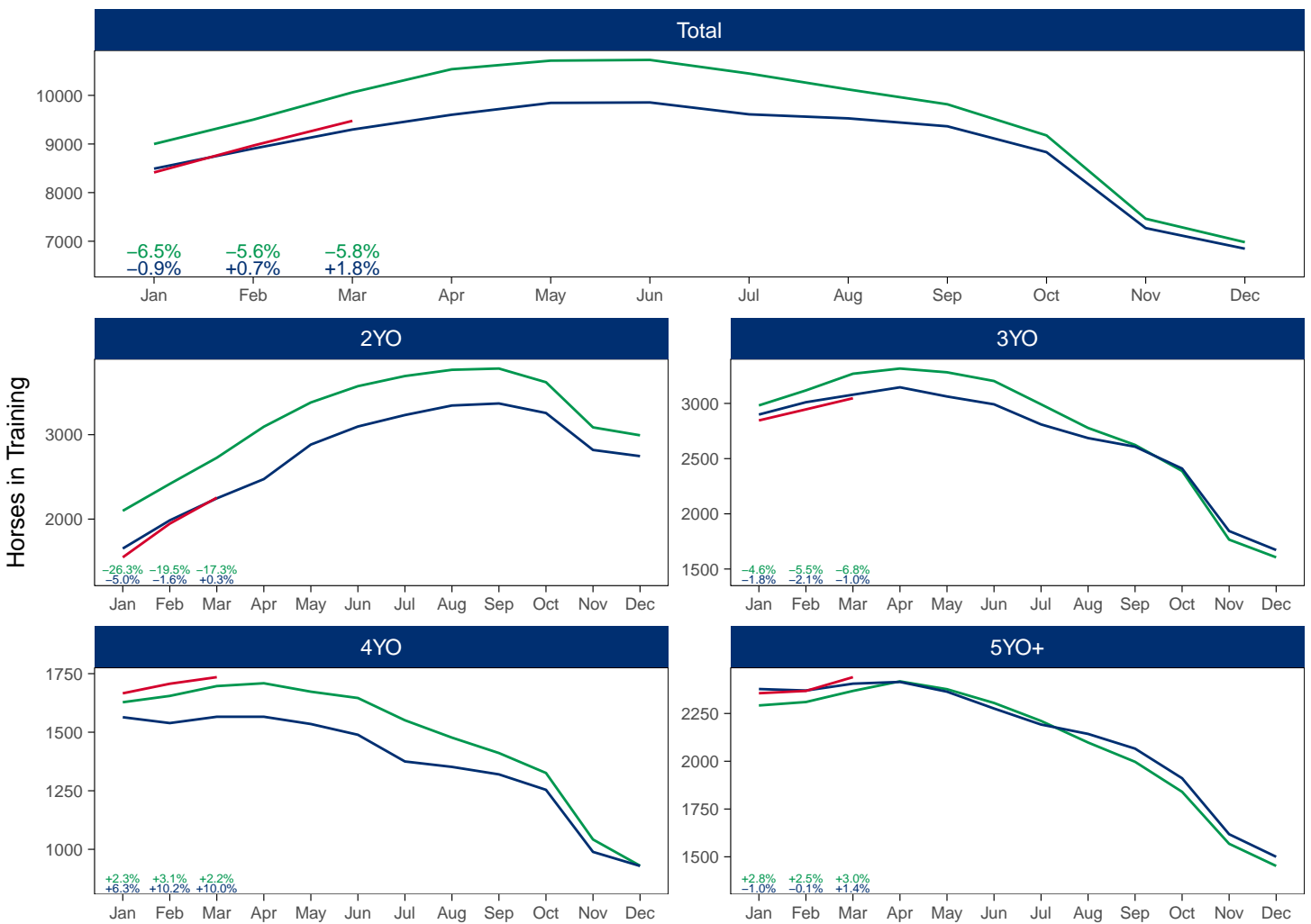
AgeCat	Period	Jan	Feb	Mar	Apr	May	Jun	Jul	Aug	Sep	Oct	Nov	Dec
2YO	2026	1547	1946	2254									
	2025	1651	1985	2246	2474	2883	3097	3233	3346	3370	3257	2819	2746
	Pre-Covid	2098	2417	2727	3095	3382	3575	3695	3769	3784	3622	3087	2993
3YO	2026	2846	2946	3047									
	2025	2899	3011	3079	3146	3063	2992	2810	2686	2608	2410	1844	1672
	Pre-Covid	2982	3118	3269	3316	3282	3203	2992	2778	2624	2388	1766	1606
4YO	2026	1666	1707	1735									
	2025	1564	1539	1566	1566	1535	1489	1375	1352	1320	1254	989	929
	Pre-Covid	1628	1655	1697	1709	1673	1646	1551	1477	1411	1326	1042	930
5YO+	2026	2356	2368	2440									
	2025	2378	2370	2406	2415	2364	2276	2192	2143	2066	1911	1618	1500
	Pre-Covid	2292	2310	2368	2418	2377	2305	2211	2098	1997	1840	1568	1452
Total	2026	8415	8967	9476									
	2025	8492	8905	9297	9601	9845	9854	9610	9527	9364	8832	7270	6847
	Pre-Covid	9000	9500	10061	10538	10714	10729	10449	10122	9816	9176	7463	6981

'Pre-Covid' is 2019 values

Monthly Flat Horses in Training

2026 against 2025 and Pre-Covid, shown with % Difference

Period — Pre-Covid — 2025 — 2026



'Pre-Covid' is 2019 values

Jump (including Dual)

AgeCat	Period	Jan	Feb	Mar	Apr	May	Jun	Jul	Aug	Sep	Oct	Nov	Dec
3YO	2026	38	42	51									
	2025	38	60	67	91	112	144	230	327	425	522	624	696
	Pre-Covid	31	43	57	72	88	115	167	248	356	493	587	648
4-5YO	2026	1875	1940	1993									
	2025	1826	1886	1928	1801	1384	1157	1435	1892	2105	2237	2351	2350
	Pre-Covid	1855	1930	1963	1876	1408	1083	1352	1977	2232	2415	2558	2559
6-7YO	2026	2168	2119	2086									
	2025	2247	2206	2163	1986	1466	1177	1359	1579	1717	1784	1758	1713
	Pre-Covid	2229	2211	2178	2021	1490	1154	1308	1682	1782	1891	1908	1853
8YO+	2026	1756	1680	1600									
	2025	1811	1741	1709	1550	1195	982	1021	1111	1163	1173	1141	1078
	Pre-Covid	1985	1947	1903	1751	1384	1111	1133	1250	1287	1335	1343	1295
Total	2026	5837	5781	5730									
	2025	5922	5893	5867	5428	4157	3460	4045	4909	5410	5716	5874	5837
	Pre-Covid	6100	6131	6101	5720	4370	3463	3960	5157	5657	6134	6396	6355

'Pre-Covid' is 2019 values

Monthly Jump Horses in Training

2026 against 2025 and Pre-Covid, shown with % Difference

Period — Pre-Covid — 2025 — 2026



'Pre-Covid' is 2019 values

Hunter Chasers

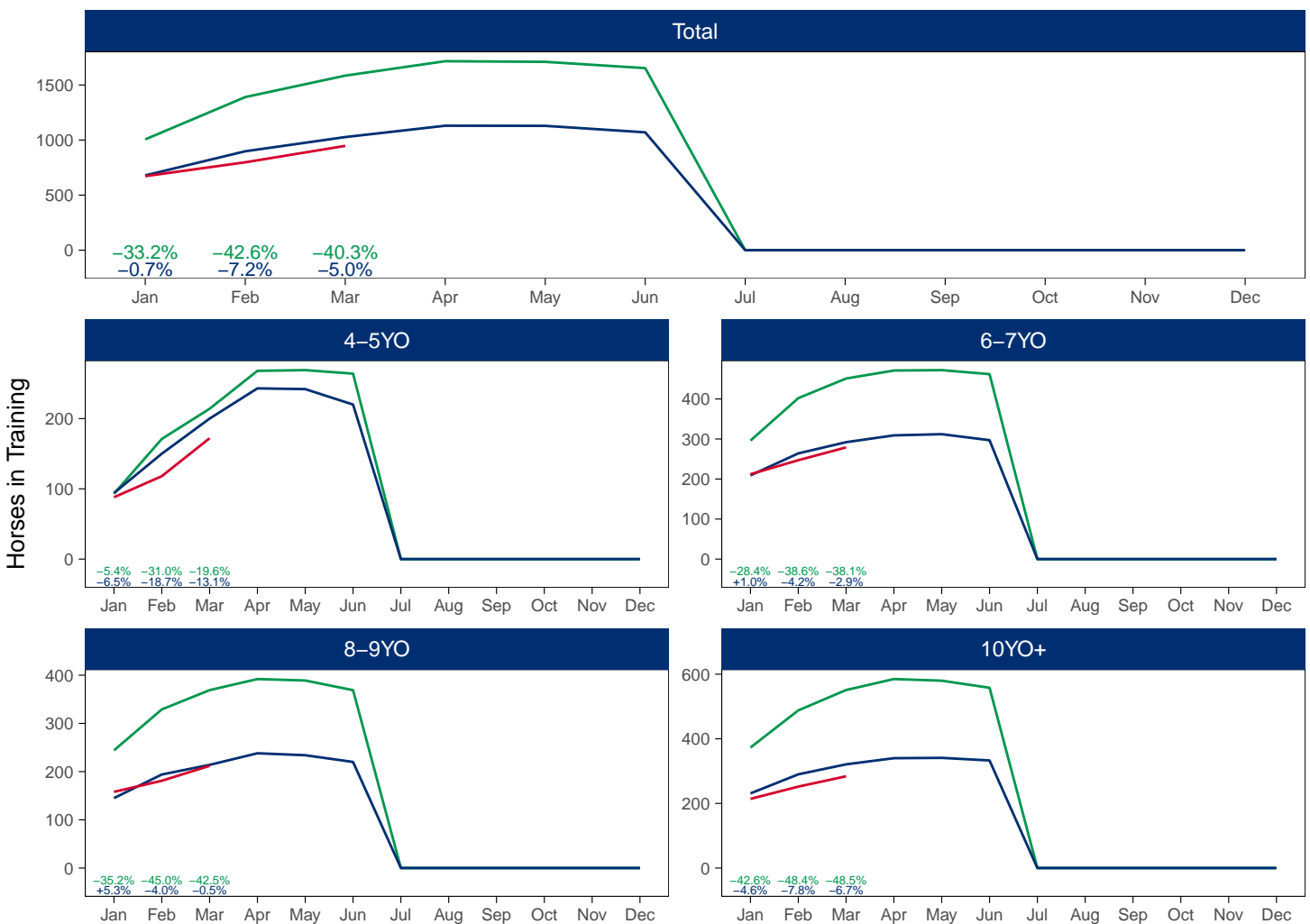
AgeCat	Period	Jan	Feb	Mar	Apr	May	Jun	Jul	Aug	Sep	Oct	Nov	Dec
4-5YO	2026	88	118	172									
	2025	94	150	200	243	242	220						
	Pre-Covid	93	171	214	268	269	264						
6-7YO	2026	212	247	279									
	2025	209	264	292	309	312	297						
	Pre-Covid	296	402	451	471	472	462						
8-9YO	2026	158	181	212									
	2025	145	194	214	238	234	220						
	Pre-Covid	244	329	369	392	389	369						
10YO+	2026	214	252	284									
	2025	231	290	321	340	341	333						
	Pre-Covid	373	488	551	585	580	558						
Total	2026	672	798	947									
	2025	679	898	1027	1130	1129	1070						
	Pre-Covid	1006	1390	1585	1716	1710	1653						

'Pre-Covid' is 2019 values

Monthly Hunter Chasers in Training

2026 against 2025 and Pre-Covid, shown with % Difference

Period — Pre-Covid — 2025 — 2026



'Pre-Covid' is 2019 values

March 2026 Horses in Training by Rating Band Snapshot versus Previous Years

Flat (including Dual)

AgeCat	RatBand	2017	2018	2019	2020	2021	2022	2023	2024	2025	2026
2YO	Unrated	2,969 (100.0%)	2,798 (100.0%)	2,727 (100.0%)	2,546 (100.0%)	2,456 (100.0%)	2,583 (100.0%)	2,440 (100.0%)	2,321 (100.0%)	2,246 (100.0%)	2,254 (100.0%)
	Subtotal	2,969 (100.0%)	2,798 (100.0%)	2,727 (100.0%)	2,546 (100.0%)	2,456 (100.0%)	2,583 (100.0%)	2,440 (100.0%)	2,321 (100.0%)	2,246 (100.0%)	2,254 (100.0%)
3YO	Unrated	1,611 (50.6%)	1,960 (58.0%)	1,791 (54.8%)	1,990 (58.9%)	1,821 (56.6%)	1,700 (52.7%)	1,666 (52.7%)	1,595 (53.3%)	1,703 (55.3%)	1,681 (55.2%)
	0-50	117 (3.7%)	85 (2.5%)	125 (3.8%)	127 (3.8%)	113 (3.5%)	128 (4.0%)	134 (4.2%)	116 (3.9%)	106 (3.4%)	122 (4.0%)
	51-60	241 (7.6%)	198 (5.9%)	271 (8.3%)	223 (6.6%)	224 (7.0%)	266 (8.3%)	234 (7.4%)	246 (8.2%)	214 (7.0%)	244 (8.0%)
	61-70	378 (11.9%)	369 (10.9%)	349 (10.7%)	326 (9.7%)	386 (12.0%)	377 (11.7%)	388 (12.3%)	332 (11.1%)	352 (11.4%)	328 (10.8%)
	71-80	425 (13.4%)	414 (12.2%)	349 (10.7%)	352 (10.4%)	340 (10.6%)	405 (12.6%)	391 (12.4%)	368 (12.3%)	357 (11.6%)	321 (10.5%)
	81-90	264 (8.3%)	209 (6.2%)	223 (6.8%)	202 (6.0%)	180 (5.6%)	204 (6.3%)	211 (6.7%)	193 (6.4%)	197 (6.4%)	203 (6.7%)
	91-100	86 (2.7%)	79 (2.3%)	99 (3.0%)	91 (2.7%)	93 (2.9%)	75 (2.3%)	80 (2.5%)	79 (2.6%)	94 (3.1%)	90 (3.0%)
	101+	59 (1.9%)	68 (2.0%)	62 (1.9%)	65 (1.9%)	59 (1.8%)	69 (2.1%)	59 (1.9%)	65 (2.2%)	56 (1.8%)	58 (1.9%)
	Subtotal	3,181 (100.0%)	3,382 (100.0%)	3,269 (100.0%)	3,376 (100.0%)	3,216 (100.0%)	3,224 (100.0%)	3,163 (100.0%)	2,994 (100.0%)	3,079 (100.0%)	3,047 (100.0%)
	4YO	Unrated	259 (16.2%)	362 (21.4%)	328 (19.3%)	330 (20.1%)	360 (21.3%)	299 (17.7%)	281 (17.2%)	272 (16.5%)	280 (17.9%)
0-50		136 (8.5%)	168 (9.9%)	183 (10.8%)	197 (12.0%)	161 (9.5%)	182 (10.7%)	202 (12.4%)	168 (10.2%)	145 (9.3%)	151 (8.7%)
51-60		192 (12.0%)	202 (11.9%)	208 (12.3%)	205 (12.5%)	220 (13.0%)	232 (13.7%)	211 (12.9%)	253 (15.4%)	210 (13.4%)	245 (14.1%)
61-70		268 (16.8%)	256 (15.1%)	271 (16.0%)	262 (16.0%)	283 (16.7%)	287 (16.9%)	275 (16.8%)	303 (18.4%)	250 (16.0%)	296 (17.1%)
71-80		309 (19.4%)	301 (17.8%)	271 (16.0%)	237 (14.4%)	287 (17.0%)	302 (17.8%)	284 (17.4%)	286 (17.4%)	266 (17.0%)	283 (16.3%)
81-90		222 (13.9%)	208 (12.3%)	223 (13.1%)	198 (12.1%)	195 (11.5%)	218 (12.9%)	202 (12.4%)	197 (12.0%)	221 (14.1%)	239 (13.8%)
91-100		118 (7.4%)	125 (7.4%)	130 (7.7%)	130 (7.9%)	123 (7.3%)	106 (6.3%)	90 (5.5%)	94 (5.7%)	100 (6.4%)	123 (7.1%)
101+		92 (5.8%)	71 (4.2%)	83 (4.9%)	83 (5.1%)	64 (3.8%)	68 (4.0%)	88 (5.4%)	72 (4.4%)	94 (6.0%)	89 (5.1%)
Subtotal		1,596 (100.0%)	1,693 (100.0%)	1,697 (100.0%)	1,642 (100.0%)	1,693 (100.0%)	1,694 (100.0%)	1,633 (100.0%)	1,645 (100.0%)	1,566 (100.0%)	1,735 (100.0%)
5YO+		Unrated	348 (14.7%)	596 (22.3%)	325 (13.7%)	428 (17.6%)	365 (15.4%)	400 (17.4%)	339 (14.1%)	353 (14.6%)	335 (13.9%)
	0-50	236 (10.0%)	316 (11.8%)	337 (14.2%)	325 (13.4%)	295 (12.5%)	317 (13.8%)	300 (12.5%)	317 (13.1%)	341 (14.2%)	344 (14.1%)
	51-60	333 (14.1%)	373 (13.9%)	367 (15.5%)	359 (14.8%)	396 (16.7%)	358 (15.6%)	408 (17.0%)	440 (18.1%)	420 (17.5%)	420 (17.2%)
	61-70	398 (16.8%)	387 (14.5%)	417 (17.6%)	410 (16.9%)	424 (17.9%)	381 (16.6%)	440 (18.3%)	442 (18.2%)	449 (18.7%)	433 (17.7%)
	71-80	384 (16.2%)	365 (13.6%)	315 (13.3%)	345 (14.2%)	341 (14.4%)	308 (13.4%)	374 (15.6%)	348 (14.4%)	347 (14.4%)	401 (16.4%)
	81-90	313 (13.2%)	307 (11.5%)	287 (12.1%)	277 (11.4%)	252 (10.6%)	252 (11.0%)	264 (11.0%)	268 (11.1%)	265 (11.0%)	252 (10.3%)
	91-100	190 (8.0%)	182 (6.8%)	180 (7.6%)	160 (6.6%)	157 (6.6%)	158 (6.9%)	153 (6.4%)	142 (5.9%)	129 (5.4%)	139 (5.7%)
Subtotal	2,368 (100.0%)	2,675 (100.0%)	2,368 (100.0%)	2,427 (100.0%)	2,367 (100.0%)	2,296 (100.0%)	2,402 (100.0%)	2,425 (100.0%)	2,406 (100.0%)	2,440 (100.0%)	
Overall	Unrated	5,187 (51.3%)	5,716 (54.2%)	5,171 (51.4%)	5,294 (53.0%)	5,002 (51.4%)	4,982 (50.9%)	4,726 (49.0%)	4,541 (48.4%)	4,564 (49.1%)	4,552 (48.0%)
	0-50	489 (4.8%)	569 (5.4%)	645 (6.4%)	649 (6.5%)	569 (5.8%)	627 (6.4%)	636 (6.6%)	601 (6.4%)	592 (6.4%)	617 (6.5%)
	51-60	766 (7.6%)	773 (7.3%)	846 (8.4%)	787 (7.9%)	840 (8.6%)	856 (8.7%)	853 (8.9%)	939 (10.0%)	844 (9.1%)	909 (9.6%)
	61-70	1,044 (10.3%)	1,012 (9.6%)	1,037 (10.3%)	998 (10.0%)	1,093 (11.2%)	1,045 (10.7%)	1,103 (11.4%)	1,077 (11.5%)	1,051 (11.3%)	1,057 (11.2%)
	71-80	1,118 (11.1%)	1,080 (10.2%)	935 (9.3%)	934 (9.3%)	968 (9.9%)	1,015 (10.4%)	1,049 (10.9%)	1,002 (10.7%)	970 (10.4%)	1,005 (10.6%)
	81-90	799 (7.9%)	724 (6.9%)	733 (7.3%)	677 (6.8%)	627 (6.4%)	674 (6.9%)	677 (7.0%)	658 (7.0%)	683 (7.3%)	694 (7.3%)
	91-100	394 (3.9%)	386 (3.7%)	409 (4.1%)	381 (3.8%)	373 (3.8%)	339 (3.5%)	323 (3.4%)	315 (3.4%)	323 (3.5%)	352 (3.7%)
	101+	317 (3.1%)	288 (2.7%)	285 (2.8%)	271 (2.7%)	260 (2.7%)	259 (2.6%)	271 (2.8%)	252 (2.7%)	270 (2.9%)	290 (3.1%)
Total	10,114 (100.0%)	10,548 (100.0%)	10,061 (100.0%)	9,991 (100.0%)	9,732 (100.0%)	9,797 (100.0%)	9,638 (100.0%)	9,385 (100.0%)	9,297 (100.0%)	9,476 (100.0%)	

Where a horse has more than one published rating (published Flat Turf and published Flat AWT mark), the higher of the two is taken.

Jump (including Dual)

AgeCat	RatBand	2017	2018	2019	2020	2021	2022	2023	2024	2025	2026
3YO	Unrated	76 (100.0%)	79 (100.0%)	57 (100.0%)	70 (100.0%)	75 (100.0%)	72 (100.0%)	74 (100.0%)	70 (100.0%)	67 (100.0%)	51 (100.0%)
	Subtotal	76 (100.0%)	79 (100.0%)	57 (100.0%)	70 (100.0%)	75 (100.0%)	72 (100.0%)	74 (100.0%)	70 (100.0%)	67 (100.0%)	51 (100.0%)
4-5YO	Unrated	1,379 (71.5%)	1,472 (73.9%)	1,438 (73.3%)	1,524 (72.4%)	1,520 (78.1%)	1,421 (71.6%)	1,548 (73.5%)	1,417 (72.7%)	1,405 (72.9%)	1,461 (73.3%)
	0-100	149 (7.7%)	120 (6.0%)	125 (6.4%)	191 (9.1%)	146 (7.5%)	240 (12.1%)	247 (11.7%)	267 (13.7%)	242 (12.6%)	237 (11.9%)
	101-110	104 (5.4%)	123 (6.2%)	97 (4.9%)	104 (4.9%)	75 (3.9%)	130 (6.5%)	126 (6.0%)	112 (5.7%)	124 (6.4%)	105 (5.3%)
	111-120	122 (6.3%)	114 (5.7%)	123 (6.3%)	112 (5.3%)	93 (4.8%)	105 (5.3%)	113 (5.4%)	88 (4.5%)	90 (4.7%)	117 (5.9%)
	121-130	85 (4.4%)	90 (4.5%)	104 (5.3%)	100 (4.8%)	68 (3.5%)	59 (3.0%)	51 (2.4%)	45 (2.3%)	56 (2.9%)	53 (2.7%)
	131-140	70 (3.6%)	54 (2.7%)	53 (2.7%)	48 (2.3%)	31 (1.6%)	21 (1.1%)	19 (0.9%)	17 (0.9%)	6 (0.3%)	18 (0.9%)
	141-150	16 (0.8%)	15 (0.8%)	20 (1.0%)	19 (0.9%)	10 (0.5%)	8 (0.4%)	1 (0.0%)	4 (0.2%)	3 (0.2%)	1 (0.1%)
	151+	3 (0.2%)	4 (0.2%)	3 (0.2%)	6 (0.3%)	4 (0.2%)	1 (0.1%)	NA (-)	NA (-)	2 (0.1%)	1 (0.1%)
Subtotal	1,928 (100.0%)	1,992 (100.0%)	1,963 (100.0%)	2,104 (100.0%)	1,947 (100.0%)	1,985 (100.0%)	2,105 (100.0%)	1,950 (100.0%)	1,928 (100.0%)	1,993 (100.0%)	
6-7YO	Unrated	501 (26.2%)	632 (29.5%)	570 (26.2%)	579 (25.6%)	683 (27.6%)	561 (25.3%)	621 (27.6%)	668 (29.0%)	524 (24.2%)	502 (24.1%)
	0-100	390 (20.4%)	402 (18.8%)	431 (19.8%)	472 (20.8%)	583 (23.5%)	633 (28.5%)	652 (29.0%)	689 (29.9%)	656 (30.3%)	589 (28.2%)
	101-110	247 (12.9%)	264 (12.3%)	296 (13.6%)	318 (14.0%)	313 (12.6%)	317 (14.3%)	328 (14.6%)	337 (14.6%)	348 (16.1%)	323 (15.5%)
	111-120	268 (14.0%)	294 (13.7%)	307 (14.1%)	305 (13.5%)	328 (13.2%)	287 (12.9%)	313 (13.9%)	284 (12.3%)	304 (14.1%)	345 (16.5%)
	121-130	224 (11.7%)	250 (11.7%)	278 (12.8%)	284 (12.5%)	294 (11.9%)	228 (10.3%)	193 (8.6%)	204 (8.9%)	194 (9.0%)	196 (9.4%)
	131-140	181 (9.5%)	188 (8.8%)	193 (8.9%)	207 (9.1%)	173 (7.0%)	132 (5.9%)	102 (4.5%)	81 (3.5%)	103 (4.8%)	93 (4.5%)
	141-150	73 (3.8%)	85 (4.0%)	73 (3.4%)	69 (3.0%)	76 (3.1%)	47 (2.1%)	31 (1.4%)	33 (1.4%)	24 (1.1%)	26 (1.2%)
	151+	31 (1.6%)	29 (1.4%)	30 (1.4%)	32 (1.4%)	26 (1.1%)	16 (0.7%)	11 (0.5%)	7 (0.3%)	10 (0.5%)	12 (0.6%)
Subtotal	1,915 (100.0%)	2,144 (100.0%)	2,178 (100.0%)	2,266 (100.0%)	2,476 (100.0%)	2,221 (100.0%)	2,251 (100.0%)	2,303 (100.0%)	2,163 (100.0%)	2,086 (100.0%)	
8YO+	Unrated	241 (12.8%)	282 (14.7%)	219 (11.5%)	271 (14.0%)	253 (11.1%)	251 (13.5%)	227 (12.5%)	292 (16.6%)	238 (13.9%)	210 (13.1%)
	0-100	516 (27.5%)	514 (26.8%)	545 (28.6%)	540 (27.9%)	692 (30.4%)	528 (28.4%)	517 (28.5%)	507 (28.8%)	545 (31.9%)	516 (32.2%)
	101-110	281 (15.0%)	267 (13.9%)	261 (13.7%)	259 (13.4%)	302 (13.3%)	233 (12.5%)	250 (13.8%)	221 (12.6%)	232 (13.6%)	225 (14.1%)
	111-120	267 (14.2%)	269 (14.0%)	285 (15.0%)	258 (13.3%)	314 (13.8%)	297 (16.0%)	270 (14.9%)	265 (15.1%)	253 (14.8%)	230 (14.4%)
	121-130	222 (11.8%)	245 (12.8%)	225 (11.8%)	230 (11.9%)	304 (13.4%)	238 (12.8%)	251 (13.9%)	228 (13.0%)	208 (12.2%)	193 (12.1%)
	131-140	210 (11.2%)	197 (10.3%)	202 (10.6%)	196 (10.1%)	202 (10.1%)	181 (9.7%)	174 (9.6%)	156 (8.9%)	139 (8.1%)	136 (8.5%)
	141-150	90 (4.8%)	102 (5.3%)	104 (5.5%)	118 (6.1%)	110 (4.8%)	94 (5.1%)	79 (4.4%)	58 (3.3%)	65 (3.8%)	59 (3.7%)
	151+	51 (2.7%)	43 (2.2%)	62 (3.3%)	63 (3.3%)	70 (3.1%)	39 (2.1%)	44 (2.4%)	33 (1.9%)	29 (1.7%)	31 (1.9%)
Subtotal	1,878 (100.0%)	1,919 (100.0%)	1,903 (100.0%)	1,935 (100.0%)	2,276 (100.0%)	1,861 (100.0%)	1,812 (100.0%)	1,760 (100.0%)	1,709 (100.0%)	1,600 (100.0%)	
Overall	Unrated	2,197 (37.9%)	2,465 (40.2%)	2,284 (37.4%)	2,444 (38.3%)	2,531 (37.4%)	2,305 (37.5%)	2,470 (39.6%)	2,447 (40.2%)	2,234 (38.1%)	2,224 (38.8%)
	0-100	1,055 (18.2%)	1,036 (16.9%)	1,101 (18.0%)	1,203 (18.9%)	1,421 (21.0%)	1,401 (22.8%)	1,416 (22.7%)	1,463 (24.1%)	1,443 (24.6%)	1,342 (23.4%)
	101-110	632 (10.9%)	654 (10.7%)	654 (10.7%)	681 (10.7%)	690 (10.2%)	680 (11.1%)	704 (11.3%)	670 (11.0%)	704 (12.0%)	653 (11.4%)
	111-120	657 (11.3%)	677 (11.0%)	715 (11.7%)	675 (10.6%)	735 (10.9%)	689 (11.2%)	696 (11.2%)	637 (10.5%)	647 (11.0%)	692 (12.1%)
	121-130	531 (9.2%)	585 (9.5%)	607 (9.9%)	614 (9.6%)	666 (9.8%)	525 (8.6%)	495 (7.9%)	477 (7.8%)	458 (7.8%)	442 (7.7%)
	131-140	461 (8.0%)	439 (7.2%)	448 (7.3%)	451 (7.1%)	435 (6.4%)	334 (5.4%)	295 (4.7%)	254 (4.2%)	248 (4.2%)	247 (4.3%)
141-150	179 (3.1%)	202 (3.3%)	197 (3.2%)	206 (3.2%)	196 (2.9%)	149 (2.4%)	111 (1.8%)	95 (1.6%)	92 (1.6%)	86 (1.5%)	
151+	85 (1.5%)	76 (1.2%)	95 (1.6%)	101 (1.6%)	100 (1.5%)	56 (0.9%)	55 (0.9%)	40 (0.7%)	41 (0.7%)	44 (0.8%)	
Total	5,797 (100.0%)	6,134 (100.0%)	6,101 (100.0%)	6,375 (100.0%)	6,774 (100.0%)	6,139 (100.0%)	6,242 (100.0%)	6,083 (100.0%)	5,867 (100.0%)	5,730 (100.0%)	

Where a horse has more than one published rating (published Hurdle and published Chase mark), the higher of the two is taken.

Young Horses Entering Training

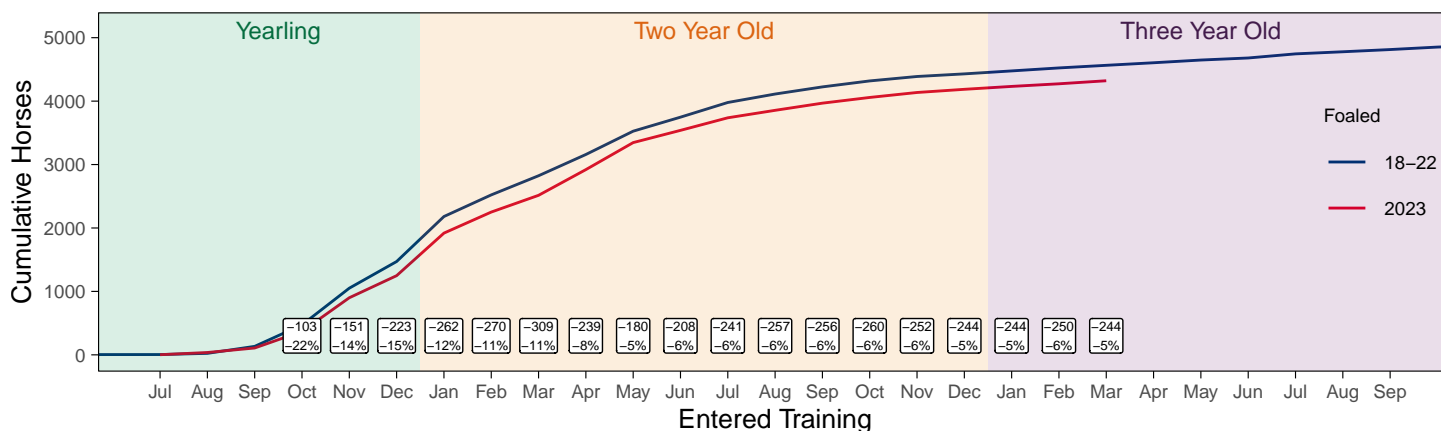
Flat Yearlings in Training versus Previous Years

Period	Jan	Feb	Mar	Apr	May	Jun	Jul	Aug	Sep	Oct	Nov	Dec
2026	1	1	1									
2025	0	0	0	1	1	1	1	1	56	177	583	1144
5YrAvg	0	0	0	1	1	1	1	2	53	172	526	908

Foals Entering Training for the First Time

2023 Foals Entering Training Over Time

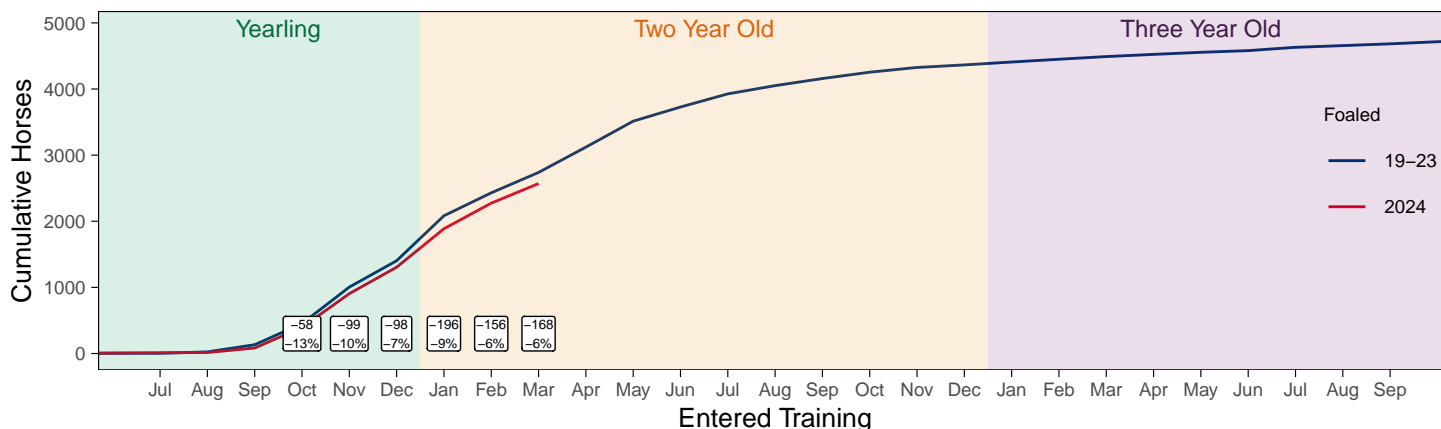
Cumulative Flat Horses foaled in 2023 shown by first in training notification against trend



Cumulative individual horses entering training for the first time by the end of each month.

2024 Foals Entering Training Over Time

Cumulative Flat Horses foaled in 2024 shown by first in training notification against trend



Cumulative individual horses entering training for the first time by the end of each month.

Year to Date Horses in Training

Type	2017	2018	2019	2020	2021	2022	2023	2024	2025	2026	vs. Last Year	vs. Pre-Covid
Flat	11044	10938	11054	10982	10805	10736	10502	10264	10275	10309	+34 / +0.3%	-745 / -6.7%
Jump	6243	5938	6643	6630	7286	6723	6786	6570	6386	6070	-316 / -4.9%	-573 / -8.6%
Dual	723	1179	655	725	673	644	576	606	551	691	+140 / +25.4%	+36 / +5.5%
Hunter	1904	1690	1669	1486	1109	1279	1242	1360	1108	1028	-80 / -7.2%	-641 / -38.4%
Total	18010	18055	18352	18337	18764	18103	17864	17440	17212	17070	-142 / -0.8%	-1282 / -7.0%

'vs. Pre-Covid' is comparison between 2026 and 2019

Flat

AgeCat	2017	2018	2019	2020	2021	2022	2023	2024	2025	2026	vs. Last Year	vs. Pre-Covid
2YO	3215	3069	3109	2905	2872	2876	2690	2551	2477	2527	+50 / +2.0%	-582 / -18.7%
3YO	3639	3771	3678	3783	3623	3611	3531	3409	3494	3399	-95 / -2.7%	-279 / -7.6%
4YO	1777	1727	1841	1811	1889	1890	1816	1804	1759	1861	+102 / +5.8%	+20 / +1.1%
5YO+	2413	2371	2426	2483	2421	2359	2465	2500	2545	2522	-23 / -0.9%	+96 / +4.0%
Total	11044	10938	11054	10982	10805	10736	10502	10264	10275	10309	+34 / +0.3%	-745 / -6.7%

'vs. Pre-Covid' is comparison between 2026 and 2019

Jump

AgeCat	2017	2018	2019	2020	2021	2022	2023	2024	2025	2026	vs. Last Year	vs. Pre-Covid
3YO	30	39	41	22	46	39	54	58	30	32	+2 / +6.7%	-9 / -22.0%
4-5YO	1945	1719	2018	2067	1974	2016	2168	2004	1974	1961	-13 / -0.7%	-57 / -2.8%
6-7YO	2103	2137	2402	2403	2698	2452	2463	2494	2388	2246	-142 / -5.9%	-156 / -6.5%
8YO+	2165	2043	2182	2138	2568	2216	2101	2014	1994	1831	-163 / -8.2%	-351 / -16.1%
Total	6243	5938	6643	6630	7286	6723	6786	6570	6386	6070	-316 / -4.9%	-573 / -8.6%

'vs. Pre-Covid' is comparison between 2026 and 2019

Dual

AgeCat	2017	2018	2019	2020	2021	2022	2023	2024	2025	2026	vs. Last Year	vs. Pre-Covid
3YO	63	68	47	73	58	85	54	65	74	69	-5 / -6.8%	+22 / +46.8%
4YO	193	297	192	205	202	176	169	175	148	203	+55 / +37.2%	+11 / +5.7%
5YO+	467	814	416	447	413	383	353	366	329	419	+90 / +27.4%	+3 / +0.7%
Total	723	1179	655	725	673	644	576	606	551	691	+140 / +25.4%	+36 / +5.5%

'vs. Pre-Covid' is comparison between 2026 and 2019

Hunter Chasers

AgeCat	2017	2018	2019	2020	2021	2022	2023	2024	2025	2026	vs. Last Year	vs. Pre-Covid
4-5YO	200	200	248	275	125	232	242	247	233	201	-32 / -13.7%	-47 / -19.0%
6-7YO	494	482	465	395	252	309	315	339	309	297	-12 / -3.9%	-168 / -36.1%
8-9YO	534	398	385	316	275	311	285	289	232	229	-3 / -1.3%	-156 / -40.5%
10YO+	676	610	571	500	457	427	400	485	334	301	-33 / -9.9%	-270 / -47.3%
Total	1904	1690	1669	1486	1109	1279	1242	1360	1108	1028	-80 / -7.2%	-641 / -38.4%

'vs. Pre-Covid' is comparison between 2026 and 2019

Year to Date Runners

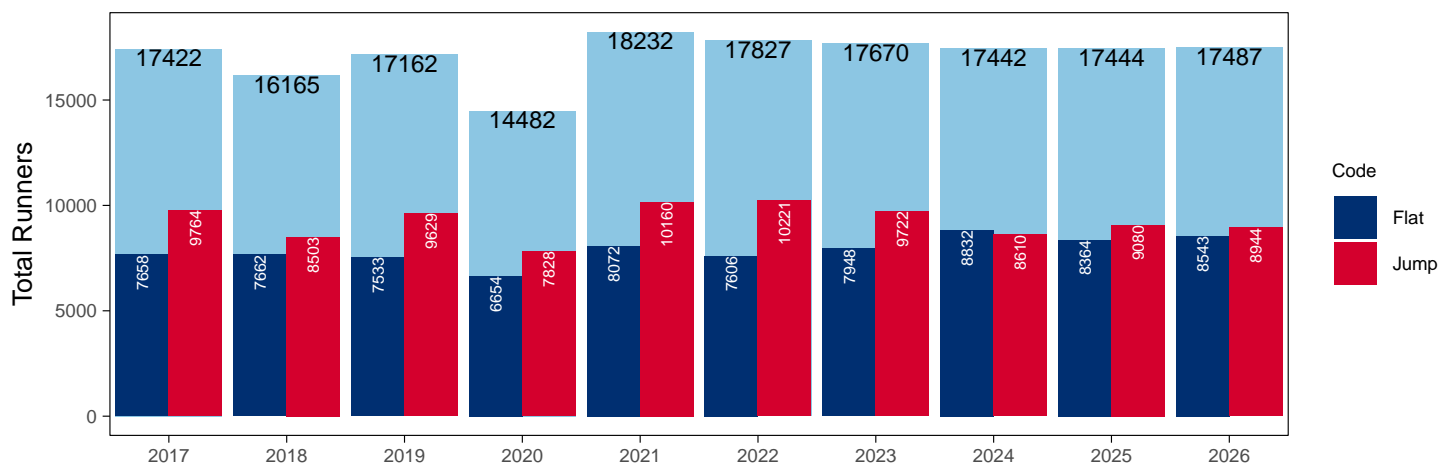
Year to Date Total Runners

Code	2017	2018	2019	2020	2021	2022	2023	2024	2025	2026	vs. Last Year	vs. Pre-Covid
Flat	7658	7662	7533	6654	8072	7606	7948	8832	8364	8543	+179 / +2.1%	+1010 / +13.4%
Jump	9764	8503	9629	7828	10160	10221	9722	8610	9080	8944	-136 / -1.5%	-685 / -7.1%
Total	17422	16165	17162	14482	18232	17827	17670	17442	17444	17487	+43 / +0.2%	+325 / +1.9%

'vs. Pre-Covid' is comparison between 2026 and 2019

YTD Total Runners

Total Runners in GB Races, shown by Code and Total



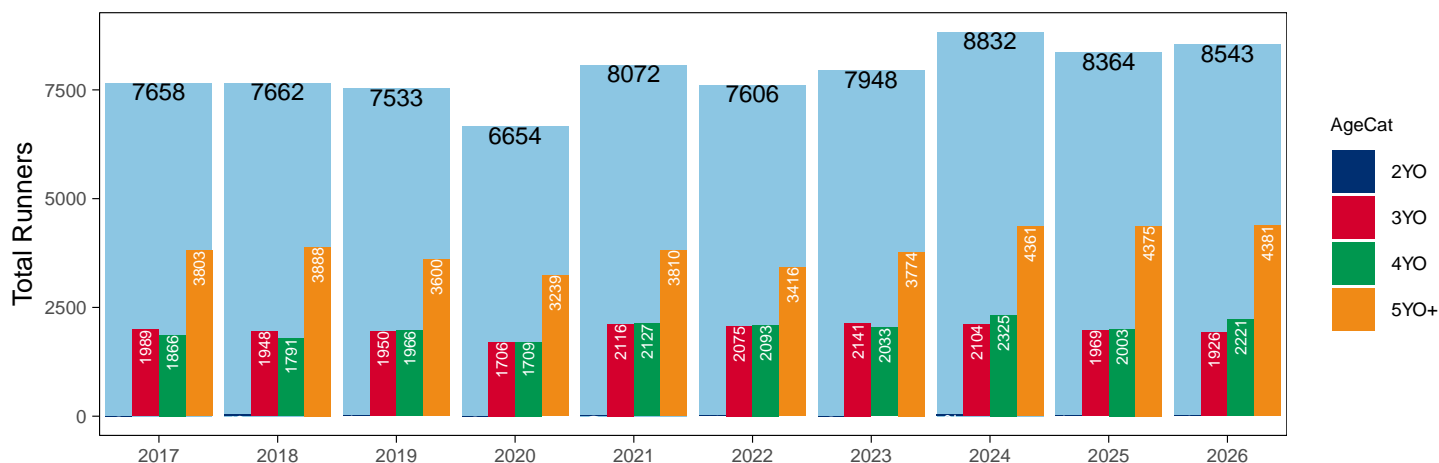
Flat

AgeCat	2017	2018	2019	2020	2021	2022	2023	2024	2025	2026	vs. Last Year	vs. Pre-Covid
2YO		35	17		19	22		42	17	15	-2 / -11.8%	-2 / -11.8%
3YO	1989	1948	1950	1706	2116	2075	2141	2104	1969	1926	-43 / -2.2%	-24 / -1.2%
4YO	1866	1791	1966	1709	2127	2093	2033	2325	2003	2221	+218 / +10.9%	+255 / +13.0%
5YO+	3803	3888	3600	3239	3810	3416	3774	4361	4375	4381	+6 / +0.1%	+781 / +21.7%
Total	7658	7662	7533	6654	8072	7606	7948	8832	8364	8543	+179 / +2.1%	+1010 / +13.4%

'vs. Pre-Covid' is comparison between 2026 and 2019

YTD Total Flat Runners by Age

Total Runners in GB Flat Races, shown by Age Category and Total



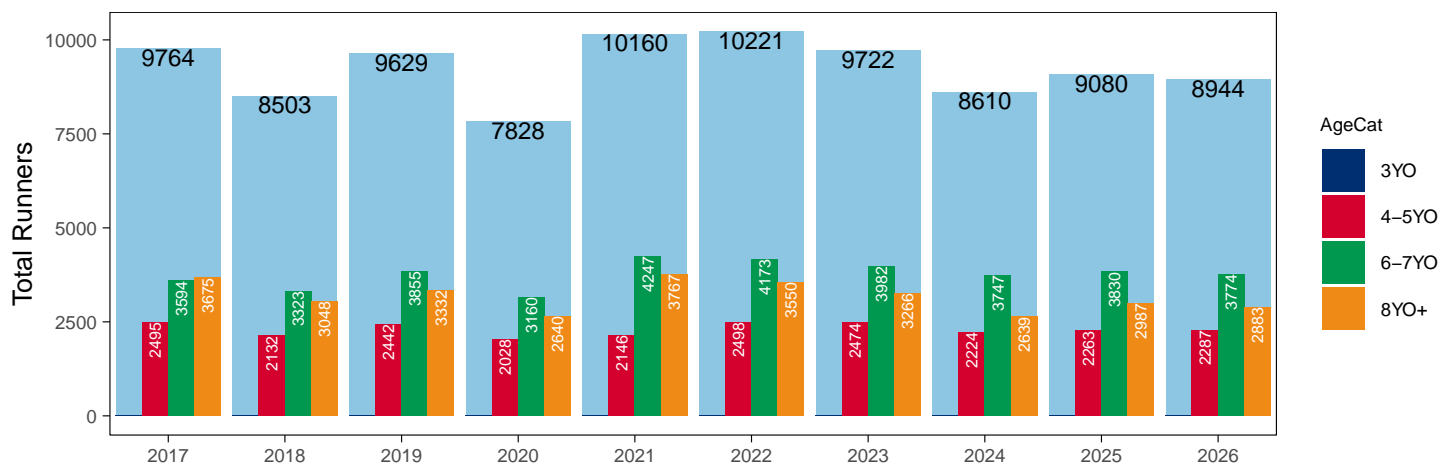
Jump

AgeCat	2017	2018	2019	2020	2021	2022	2023	2024	2025	2026	vs. Last Year	vs. Pre-Covid
3YO											NA / NA	0 / NA
4-5YO	2495	2132	2442	2028	2146	2498	2474	2224	2263	2287	+24 / +1.1%	-155 / -6.3%
6-7YO	3594	3323	3855	3160	4247	4173	3982	3747	3830	3774	-56 / -1.5%	-81 / -2.1%
8YO+	3675	3048	3332	2640	3767	3550	3266	2639	2987	2883	-104 / -3.5%	-449 / -13.5%
Total	9764	8503	9629	7828	10160	10221	9722	8610	9080	8944	-136 / -1.5%	-685 / -7.1%

'vs. Pre-Covid' is comparison between 2026 and 2019

YTD Total Jump Runners by Age

Total Runners in GB Jump Races, shown by Age Category and Total



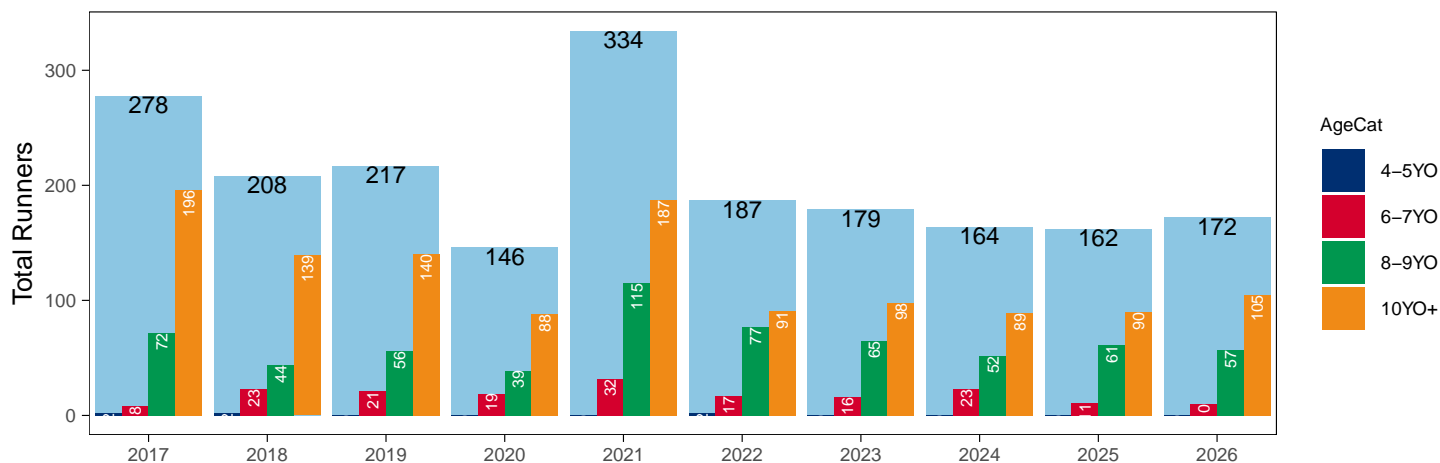
Hunter Chases

AgeCat	2017	2018	2019	2020	2021	2022	2023	2024	2025	2026	vs. Last Year	vs. Pre-Covid
4-5YO	2	2				2					NA / NA	0 / NA
6-7YO	8	23	21	19	32	17	16	23	11	10	-1 / -9.1%	-11 / -52.4%
8-9YO	72	44	56	39	115	77	65	52	61	57	-4 / -6.6%	+1 / +1.8%
10YO+	196	139	140	88	187	91	98	89	90	105	+15 / +16.7%	-35 / -25.0%
Total	278	208	217	146	334	187	179	164	162	172	+10 / +6.2%	-45 / -20.7%

'vs. Pre-Covid' is comparison between 2026 and 2019

YTD Total Hunter Chase Runners by Age

Total Runners in GB Hunter Chases shown by Age Category and Total



Year to Date Total Runners by Country Trained

Code	Country	2017	2018	2019	2020	2021	2022	2023	2024	2025	2026
Flat	GB	7589	7585	7465	6574	8072	7601	7926	8768	8321	8505
	IRE	67	71	65	76		4	22	62	43	37
	Other	2	6	3	4		1		2		1
Jump	GB	9441	8274	9330	7561	9969	9883	9336	8260	8701	8581
	IRE	312	223	292	257	188	337	383	347	373	353
	Other	11	6	7	10	3	1	3	3	6	10
Overall	GB	17030	15859	16795	14135	18041	17484	17262	17028	17022	17086
	IRE	379	294	357	333	188	341	405	409	416	390
	Other	13	12	10	14	3	2	3	5	6	11

Year to Date GB Trained Runners Racing Abroad

Code	Country	2017	2018	2019	2020	2021	2022	2023	2024	2025	2026
Flat	IRE	15	8	9	2	1		2	1	3	3
	FR	38	21	40	27	12	10	19	17	62	11
	GNY	2									
	UAE	278	276	301	281	247	276	272	214	209	383
	BAH						41	23	50	89	63
	KSA				15	21	22	15	11	10	13
	Other	24	16	12	22	3	8	31	13	18	22
	Total		357	321	362	347	284	357	362	306	391
Jump	IRE	6	11	6	5		2	4	7	5	2
	FR	1		1	3	19	14	28	11	3	1
	Total	7	11	7	8	19	16	32	18	8	3

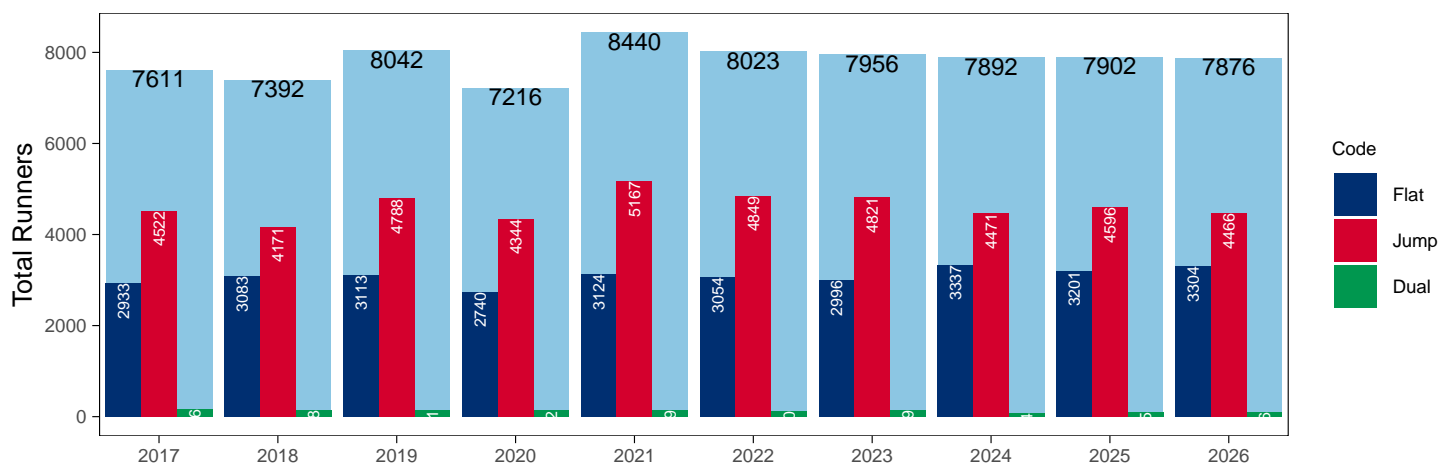
Year to Date Individual Runners

Code	2017	2018	2019	2020	2021	2022	2023	2024	2025	2026	vs. Last Year	vs. Pre-Covid
Flat	2933	3083	3113	2740	3124	3054	2996	3337	3201	3304	+103 / +3.2%	+191 / +6.1%
Jump	4522	4171	4788	4344	5167	4849	4821	4471	4596	4466	-130 / -2.8%	-322 / -6.7%
Dual	156	138	141	132	149	120	139	84	105	106	+1 / +1.0%	-35 / -24.8%
Overall	7611	7392	8042	7216	8440	8023	7956	7892	7902	7876	-26 / -0.3%	-166 / -2.1%

'vs. Pre-Covid' is comparison between 2026 and 2019

YTD Individual Runners

Individual Runners in GB Races, shown by Code and Total



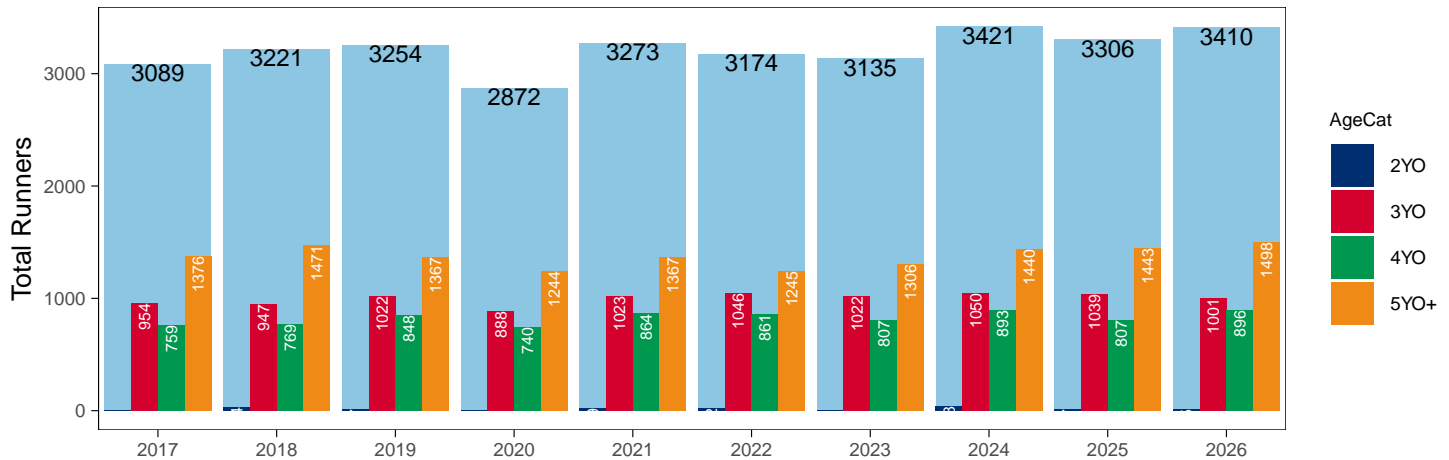
Flat

AgeCat	2017	2018	2019	2020	2021	2022	2023	2024	2025	2026	vs. Last Year	vs. Pre-Covid
2YO		34	17		19	22		38	17	15	-2 / -11.8%	-2 / -11.8%
3YO	954	947	1022	888	1023	1046	1022	1050	1039	1001	-38 / -3.7%	-21 / -2.1%
4YO	759	769	848	740	864	861	807	893	807	896	+89 / +11.0%	+48 / +5.7%
5YO+	1376	1471	1367	1244	1367	1245	1306	1440	1443	1498	+55 / +3.8%	+131 / +9.6%
Total	3089	3221	3254	2872	3273	3174	3135	3421	3306	3410	+104 / +3.1%	+156 / +4.8%

'vs. Pre-Covid' is comparison between 2026 and 2019

YTD Individual Flat Runners by Age

Individual Runners in GB Flat Races, shown by Age Category and Total



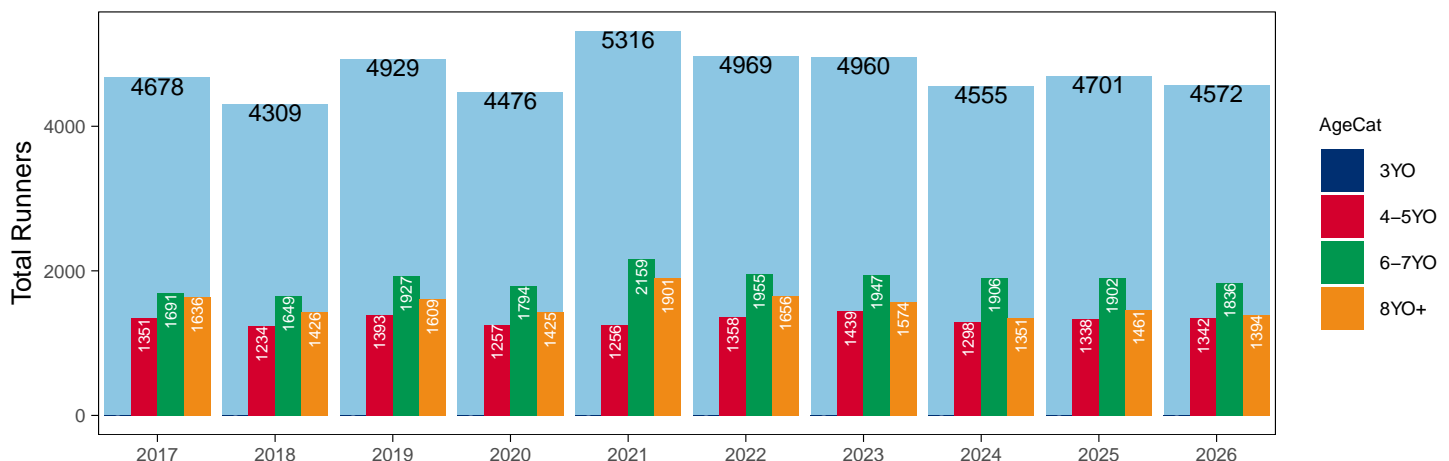
Jump

AgeCat	2017	2018	2019	2020	2021	2022	2023	2024	2025	2026	vs. Last Year	vs. Pre-Covid
3YO											NA / NA	0 / NA
4-5YO	1351	1234	1393	1257	1256	1358	1439	1298	1338	1342	+4 / +0.3%	-51 / -3.7%
6-7YO	1691	1649	1927	1794	2159	1955	1947	1906	1902	1836	-66 / -3.5%	-91 / -4.7%
8YO+	1636	1426	1609	1425	1901	1656	1574	1351	1461	1394	-67 / -4.6%	-215 / -13.4%
Total	4678	4309	4929	4476	5316	4969	4960	4555	4701	4572	-129 / -2.7%	-357 / -7.2%

'vs. Pre-Covid' is comparison between 2026 and 2019

YTD Individual Jump Runners by Age

Individual Runners in GB Jump Races, shown by Age Category and Total



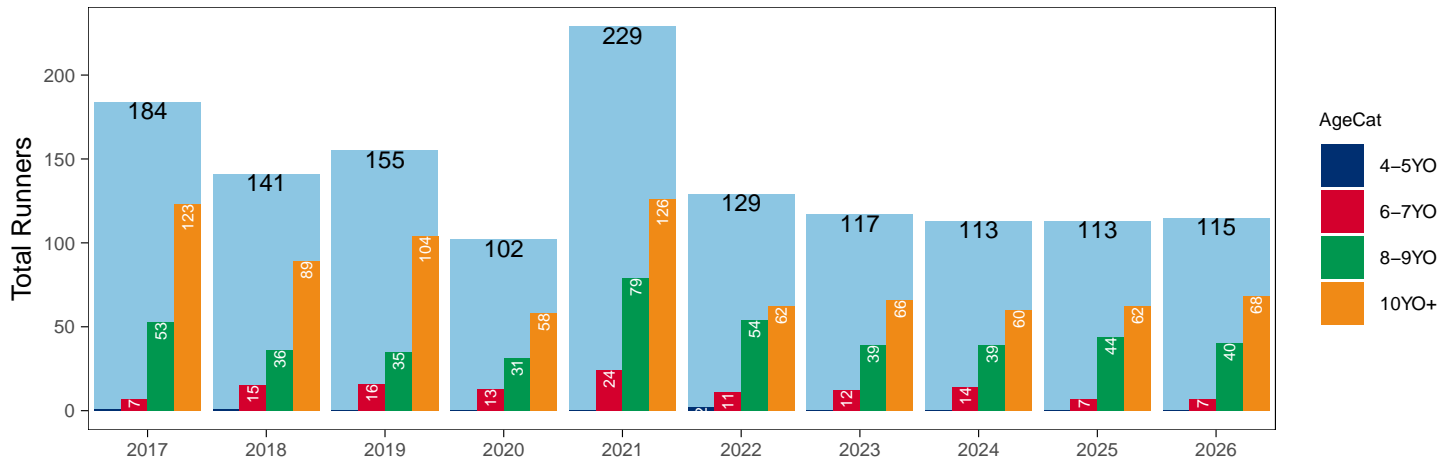
Hunter Chases

AgeCat	2017	2018	2019	2020	2021	2022	2023	2024	2025	2026	vs. Last Year	vs. Pre-Covid
4-5YO	1	1				2					NA / NA	0 / NA
6-7YO	7	15	16	13	24	11	12	14	7	7	0 / 0.0%	-9 / -56.2%
8-9YO	53	36	35	31	79	54	39	39	44	40	-4 / -9.1%	+5 / +14.3%
10YO+	123	89	104	58	126	62	66	60	62	68	+6 / +9.7%	-36 / -34.6%
Total	184	141	155	102	229	129	117	113	113	115	+2 / +1.8%	-40 / -25.8%

'vs. Pre-Covid' is comparison between 2026 and 2019

YTD Individual Hunter Chase Runners by Age

Individual Runners in GB Hunter Chases shown by Age Category and Total



Year to Date Individual Runners by Country Trained

Code	Country	2017	2018	2019	2020	2021	2022	2023	2024	2025	2026
Flat	GB	2894	3019	3061	2678	3124	3050	2979	3289	3168	3272
	IRE	41	61	50	61		3	19	47	33	32
	Other		5	2	4		1		2		1
Jump	GB	4260	3963	4525	4104	4981	4545	4486	4163	4263	4136
	IRE	258	203	258	232	183	303	333	306	332	322
	Other	7	6	6	10	3	1	2	2	5	9
Dual	GB	154	138	139	130	149	120	139	84	105	106
	IRE			2	2						
	Other	2									
Overall	GB	7308	7120	7725	6912	8254	7715	7604	7536	7536	7514
	IRE	299	264	310	295	183	306	352	353	365	354
	Other	9	11	8	14	3	2	2	4	5	10

Individual horses may appear under multiple countries.

Year to Date Total Runners by Rating Band

Flat

RatBand	2017	2018	2019	2020	2021	2022	2023	2024	2025	2026
3YO										
Unrated	775 (39.0%)	800 (41.1%)	864 (44.3%)	768 (45.0%)	906 (42.8%)	877 (42.3%)	900 (42.0%)	869 (41.3%)	858 (43.6%)	782 (40.6%)
0-50	127 (6.4%)	116 (6.0%)	155 (7.9%)	154 (9.0%)	167 (7.9%)	189 (9.1%)	175 (8.2%)	181 (8.6%)	148 (7.5%)	161 (8.4%)
51-60	330 (16.6%)	227 (11.7%)	352 (18.1%)	245 (14.4%)	348 (16.4%)	323 (15.6%)	379 (17.7%)	336 (16.0%)	317 (16.1%)	379 (19.7%)
61-70	410 (20.6%)	361 (18.5%)	314 (16.1%)	290 (17.0%)	398 (18.8%)	371 (17.9%)	364 (17.0%)	363 (17.3%)	338 (17.2%)	327 (17.0%)
71-80	266 (13.4%)	284 (14.6%)	188 (9.6%)	192 (11.3%)	222 (10.5%)	214 (10.3%)	249 (11.6%)	250 (11.9%)	231 (11.7%)	198 (10.3%)
81-90	60 (3.0%)	105 (5.4%)	56 (2.9%)	44 (2.6%)	43 (2.0%)	76 (3.7%)	59 (2.8%)	83 (3.9%)	61 (3.1%)	61 (3.2%)
91-100	16 (0.8%)	37 (1.9%)	18 (0.9%)	10 (0.6%)	26 (1.2%)	20 (1.0%)	11 (0.5%)	19 (0.9%)	16 (0.8%)	15 (0.8%)
101+	5 (0.3%)	18 (0.9%)	3 (0.2%)	3 (0.2%)	6 (0.3%)	5 (0.2%)	4 (0.2%)	3 (0.1%)	NA (-)	3 (0.2%)
4YO+										
Unrated	164 (2.9%)	176 (3.1%)	227 (4.1%)	183 (3.7%)	224 (3.8%)	207 (3.8%)	184 (3.2%)	209 (3.1%)	203 (3.2%)	194 (2.9%)
0-50	889 (15.7%)	985 (17.3%)	1,059 (19.0%)	973 (19.7%)	1,118 (18.8%)	1,121 (20.3%)	1,352 (23.3%)	1,362 (20.4%)	1,501 (23.5%)	1,422 (21.5%)
51-60	1,307 (23.1%)	1,293 (22.8%)	1,193 (21.4%)	1,209 (24.4%)	1,318 (22.2%)	1,283 (23.3%)	1,422 (24.5%)	1,723 (25.8%)	1,525 (23.9%)	1,639 (24.8%)
61-70	1,317 (23.2%)	1,189 (20.9%)	1,261 (22.7%)	1,127 (22.8%)	1,453 (24.5%)	1,288 (23.4%)	1,291 (22.2%)	1,536 (23.0%)	1,463 (22.9%)	1,481 (22.4%)
71-80	1,075 (19.0%)	947 (16.7%)	938 (16.9%)	785 (15.9%)	973 (16.4%)	821 (14.9%)	910 (15.7%)	1,029 (15.4%)	916 (14.4%)	1,064 (16.1%)
81-90	595 (10.5%)	618 (10.9%)	497 (8.9%)	433 (8.8%)	517 (8.7%)	510 (9.3%)	423 (7.3%)	552 (8.3%)	534 (8.4%)	515 (7.8%)
91-100	234 (4.1%)	322 (5.7%)	278 (5.0%)	172 (3.5%)	219 (3.7%)	175 (3.2%)	153 (2.6%)	188 (2.8%)	163 (2.6%)	204 (3.1%)
101+	88 (1.6%)	149 (2.6%)	113 (2.0%)	66 (1.3%)	115 (1.9%)	104 (1.9%)	72 (1.2%)	87 (1.3%)	73 (1.1%)	83 (1.3%)

Jump

RatBand	2017	2018	2019	2020	2021	2022	2023	2024	2025	2026
Hurdle										
Unrated	1,714 (29.9%)	1,505 (30.0%)	1,727 (29.9%)	1,376 (29.6%)	1,656 (29.9%)	1,703 (28.0%)	1,764 (30.4%)	1,652 (31.4%)	1,429 (26.2%)	1,561 (28.3%)
0-100	1,228 (21.4%)	975 (19.4%)	1,185 (20.5%)	966 (20.8%)	1,281 (23.1%)	1,664 (27.4%)	1,560 (26.9%)	1,409 (26.8%)	1,686 (30.9%)	1,505 (27.2%)
101-110	794 (13.9%)	636 (12.7%)	760 (13.1%)	615 (13.2%)	690 (12.5%)	876 (14.4%)	812 (14.0%)	732 (13.9%)	795 (14.6%)	772 (14.0%)
111-120	775 (13.5%)	697 (13.9%)	808 (14.0%)	618 (13.3%)	717 (13.0%)	813 (13.4%)	718 (12.4%)	654 (12.4%)	746 (13.7%)	825 (14.9%)
121-130	596 (10.4%)	594 (11.8%)	687 (11.9%)	490 (10.5%)	619 (11.2%)	535 (8.8%)	544 (9.4%)	473 (9.0%)	448 (8.2%)	485 (8.8%)
131-140	422 (7.4%)	400 (8.0%)	395 (6.8%)	374 (8.0%)	371 (6.7%)	313 (5.1%)	250 (4.3%)	228 (4.3%)	238 (4.4%)	266 (4.8%)
141-150	141 (2.5%)	166 (3.3%)	154 (2.7%)	141 (3.0%)	147 (2.7%)	136 (2.2%)	107 (1.8%)	83 (1.6%)	85 (1.6%)	74 (1.3%)
151+	55 (1.0%)	51 (1.0%)	65 (1.1%)	73 (1.6%)	54 (1.0%)	42 (0.7%)	46 (0.8%)	33 (0.6%)	28 (0.5%)	36 (0.7%)
Chase										
Unrated	35 (1.1%)	22 (0.8%)	26 (0.9%)	10 (0.4%)	21 (0.7%)	8 (0.2%)	1 (0.0%)	NA (-)	NA (-)	3 (0.1%)
0-100	702 (22.1%)	612 (23.3%)	777 (25.8%)	599 (24.9%)	789 (26.4%)	955 (29.0%)	968 (31.5%)	857 (31.9%)	962 (33.4%)	868 (31.8%)
101-110	495 (15.6%)	327 (12.5%)	449 (14.9%)	351 (14.6%)	440 (14.7%)	456 (13.8%)	474 (15.4%)	435 (16.2%)	485 (16.9%)	449 (16.5%)
111-120	563 (17.7%)	459 (17.5%)	465 (15.4%)	332 (13.8%)	490 (16.4%)	603 (18.3%)	515 (16.7%)	490 (18.2%)	476 (16.6%)	488 (17.9%)
121-130	492 (15.5%)	478 (18.2%)	506 (16.8%)	398 (16.6%)	483 (16.1%)	527 (16.0%)	468 (15.2%)	375 (14.0%)	429 (14.9%)	410 (15.0%)
131-140	508 (16.0%)	391 (14.9%)	421 (14.0%)	362 (15.1%)	422 (14.1%)	425 (12.9%)	362 (11.8%)	291 (10.8%)	270 (9.4%)	287 (10.5%)
141-150	249 (7.8%)	221 (8.4%)	242 (8.0%)	227 (9.5%)	204 (6.8%)	202 (6.1%)	175 (5.7%)	151 (5.6%)	158 (5.5%)	135 (4.9%)
151+	135 (4.2%)	114 (4.3%)	128 (4.2%)	122 (5.1%)	145 (4.8%)	117 (3.6%)	114 (3.7%)	88 (3.3%)	96 (3.3%)	88 (3.2%)

Year to Date Total GB-Trained Runners by Rating Band

Flat

RatBand	2017	2018	2019	2020	2021	2022	2023	2024	2025	2026
3YO										
Unrated	775 (39.0%)	797 (41.3%)	862 (44.5%)	765 (45.5%)	906 (42.8%)	876 (42.2%)	900 (42.1%)	867 (41.3%)	856 (43.6%)	780 (40.6%)
0-50	125 (6.3%)	114 (5.9%)	153 (7.9%)	149 (8.9%)	167 (7.9%)	189 (9.1%)	174 (8.1%)	181 (8.6%)	147 (7.5%)	161 (8.4%)
51-60	328 (16.5%)	222 (11.5%)	351 (18.1%)	237 (14.1%)	348 (16.4%)	323 (15.6%)	379 (17.7%)	335 (16.0%)	316 (16.1%)	378 (19.7%)
61-70	410 (20.7%)	358 (18.5%)	309 (15.9%)	288 (17.1%)	398 (18.8%)	371 (17.9%)	364 (17.0%)	363 (17.3%)	338 (17.2%)	327 (17.0%)
71-80	266 (13.4%)	282 (14.6%)	187 (9.6%)	190 (11.3%)	222 (10.5%)	214 (10.3%)	249 (11.6%)	248 (11.8%)	231 (11.8%)	196 (10.2%)
81-90	60 (3.0%)	105 (5.4%)	56 (2.9%)	41 (2.4%)	43 (2.0%)	76 (3.7%)	59 (2.8%)	83 (4.0%)	60 (3.1%)	60 (3.1%)
91-100	16 (0.8%)	36 (1.9%)	18 (0.9%)	10 (0.6%)	26 (1.2%)	20 (1.0%)	11 (0.5%)	18 (0.9%)	15 (0.8%)	15 (0.8%)
101+	5 (0.3%)	18 (0.9%)	3 (0.2%)	3 (0.2%)	6 (0.3%)	5 (0.2%)	4 (0.2%)	3 (0.1%)	NA (-)	3 (0.2%)
4YO+										
Unrated	164 (2.9%)	174 (3.1%)	226 (4.1%)	182 (3.7%)	224 (3.8%)	207 (3.8%)	184 (3.2%)	209 (3.2%)	203 (3.2%)	193 (2.9%)
0-50	867 (15.5%)	975 (17.4%)	1,037 (18.8%)	960 (19.6%)	1,118 (18.8%)	1,121 (20.4%)	1,342 (23.2%)	1,351 (20.4%)	1,495 (23.6%)	1,411 (21.5%)
51-60	1,284 (22.9%)	1,268 (22.6%)	1,174 (21.3%)	1,183 (24.2%)	1,318 (22.2%)	1,283 (23.3%)	1,418 (24.5%)	1,713 (25.8%)	1,514 (23.9%)	1,639 (24.9%)
61-70	1,301 (23.2%)	1,181 (21.0%)	1,252 (22.7%)	1,121 (22.9%)	1,453 (24.5%)	1,288 (23.4%)	1,289 (22.3%)	1,529 (23.1%)	1,459 (23.0%)	1,479 (22.5%)
71-80	1,073 (19.1%)	943 (16.8%)	937 (17.0%)	778 (15.9%)	973 (16.4%)	819 (14.9%)	908 (15.7%)	1,022 (15.4%)	911 (14.4%)	1,060 (16.1%)
81-90	595 (10.6%)	616 (11.0%)	496 (9.0%)	433 (8.9%)	517 (8.7%)	509 (9.2%)	423 (7.3%)	543 (8.2%)	528 (8.3%)	508 (7.7%)
91-100	232 (4.1%)	319 (5.7%)	274 (5.0%)	170 (3.5%)	219 (3.7%)	175 (3.2%)	151 (2.6%)	182 (2.7%)	160 (2.5%)	200 (3.0%)
101+	88 (1.6%)	142 (2.5%)	113 (2.1%)	64 (1.3%)	115 (1.9%)	103 (1.9%)	71 (1.2%)	79 (1.2%)	71 (1.1%)	82 (1.2%)

Jump

RatBand	2017	2018	2019	2020	2021	2022	2023	2024	2025	2026
Hurdle										
Unrated	1,683 (30.4%)	1,482 (30.3%)	1,689 (30.2%)	1,353 (30.1%)	1,643 (30.3%)	1,659 (28.3%)	1,721 (30.9%)	1,610 (31.9%)	1,384 (26.4%)	1,514 (28.4%)
0-100	1,210 (21.8%)	966 (19.8%)	1,173 (21.0%)	956 (21.3%)	1,279 (23.6%)	1,657 (28.2%)	1,542 (27.6%)	1,393 (27.6%)	1,679 (32.0%)	1,500 (28.2%)
101-110	771 (13.9%)	628 (12.8%)	753 (13.5%)	612 (13.6%)	688 (12.7%)	868 (14.8%)	802 (14.4%)	718 (14.2%)	789 (15.0%)	764 (14.3%)
111-120	761 (13.7%)	691 (14.1%)	797 (14.2%)	614 (13.7%)	716 (13.2%)	803 (13.7%)	702 (12.6%)	642 (12.7%)	731 (13.9%)	819 (15.4%)
121-130	576 (10.4%)	583 (11.9%)	669 (12.0%)	478 (10.6%)	611 (11.3%)	515 (8.8%)	517 (9.3%)	433 (8.6%)	414 (7.9%)	469 (8.8%)
131-140	387 (7.0%)	373 (7.6%)	351 (6.3%)	333 (7.4%)	337 (6.2%)	258 (4.4%)	206 (3.7%)	182 (3.6%)	186 (3.5%)	198 (3.7%)
141-150	109 (2.0%)	129 (2.6%)	120 (2.1%)	100 (2.2%)	114 (2.1%)	85 (1.4%)	62 (1.1%)	51 (1.0%)	48 (0.9%)	43 (0.8%)
151+	41 (0.7%)	38 (0.8%)	46 (0.8%)	47 (1.0%)	37 (0.7%)	24 (0.4%)	25 (0.4%)	13 (0.3%)	12 (0.2%)	18 (0.3%)
Chase										
Unrated	34 (1.1%)	22 (0.9%)	26 (0.9%)	10 (0.4%)	21 (0.7%)	7 (0.2%)	1 (0.0%)	NA (-)	NA (-)	3 (0.1%)
0-100	687 (22.4%)	608 (23.9%)	770 (26.4%)	596 (25.7%)	788 (26.9%)	952 (29.8%)	963 (32.7%)	857 (33.2%)	959 (35.2%)	865 (33.4%)
101-110	491 (16.0%)	327 (12.9%)	448 (15.3%)	349 (15.0%)	440 (15.0%)	455 (14.2%)	470 (16.0%)	432 (16.7%)	483 (17.7%)	446 (17.2%)
111-120	559 (18.2%)	455 (17.9%)	464 (15.9%)	327 (14.1%)	489 (16.7%)	600 (18.8%)	507 (17.2%)	485 (18.8%)	469 (17.2%)	478 (18.5%)
121-130	479 (15.6%)	468 (18.4%)	500 (17.1%)	396 (17.1%)	482 (16.4%)	519 (16.2%)	459 (15.6%)	359 (13.9%)	410 (15.0%)	390 (15.1%)
131-140	483 (15.8%)	379 (14.9%)	400 (13.7%)	347 (15.0%)	416 (14.2%)	410 (12.8%)	333 (11.3%)	276 (10.7%)	228 (8.4%)	250 (9.7%)
141-150	221 (7.2%)	199 (7.8%)	215 (7.4%)	203 (8.7%)	184 (6.3%)	172 (5.4%)	138 (4.7%)	114 (4.4%)	122 (4.5%)	100 (3.9%)
151+	110 (3.6%)	85 (3.3%)	98 (3.4%)	93 (4.0%)	113 (3.9%)	81 (2.5%)	72 (2.4%)	59 (2.3%)	56 (2.1%)	56 (2.2%)

Frequency of Runs

Year to Date Average Runs per Horse

Code	2017	2018	2019	2020	2021	2022	2023	2024	2025	2026
Flat	2.52	2.41	2.34	2.35	2.49	2.43	2.58	2.60	2.56	2.54
Jump	2.10	1.98	1.97	1.76	1.92	2.07	1.97	1.90	1.93	1.97
Dual Overall	3.38	3.32	3.18	3.05	3.63	3.22	3.34	3.30	3.46	2.94
Dual (Flat)	1.69	1.68	1.66	1.67	1.89	1.61	1.67	1.74	1.67	1.46
Dual (Jump)	1.69	1.64	1.52	1.38	1.74	1.62	1.67	1.56	1.79	1.48
All	2.29	2.19	2.13	2.01	2.16	2.22	2.22	2.21	2.21	2.22

Year to Date Proportion of Horses by Count of Runs

Runs	2017	2018	2019	2020	2021	2022	2023	2024	2025	2026
Flat										
1	1,026 (33.2%)	1,250 (38.8%)	1,243 (38.2%)	1,018 (35.4%)	1,183 (36.1%)	1,145 (36.1%)	1,080 (34.4%)	1,193 (34.9%)	1,196 (36.2%)	1,296 (38.0%)
2	808 (26.2%)	788 (24.5%)	821 (25.2%)	787 (27.4%)	747 (22.8%)	798 (25.1%)	775 (24.7%)	780 (22.8%)	805 (24.3%)	760 (22.3%)
3	587 (19.0%)	525 (16.3%)	591 (18.2%)	546 (19.0%)	611 (18.7%)	608 (19.2%)	545 (17.4%)	609 (17.8%)	554 (16.8%)	598 (17.5%)
4	331 (10.7%)	330 (10.2%)	316 (9.7%)	320 (11.1%)	367 (11.2%)	318 (10.0%)	365 (11.6%)	402 (11.8%)	337 (10.2%)	325 (9.5%)
5+	337 (10.9%)	328 (10.2%)	283 (8.7%)	201 (7.0%)	365 (11.2%)	305 (9.6%)	370 (11.8%)	437 (12.8%)	414 (12.5%)	431 (12.6%)
Jump										
1	1,725 (36.9%)	1,796 (41.7%)	1,991 (40.4%)	2,108 (47.1%)	2,166 (40.7%)	1,881 (37.9%)	1,995 (40.2%)	1,980 (43.5%)	1,908 (40.6%)	1,802 (39.4%)
2	1,480 (31.6%)	1,324 (30.7%)	1,652 (33.5%)	1,571 (35.1%)	1,838 (34.6%)	1,531 (30.8%)	1,654 (33.3%)	1,453 (31.9%)	1,568 (33.4%)	1,554 (34.0%)
3	965 (20.6%)	797 (18.5%)	913 (18.5%)	638 (14.3%)	985 (18.5%)	1,074 (21.6%)	915 (18.4%)	823 (18.1%)	931 (19.8%)	882 (19.3%)
4	382 (8.2%)	310 (7.2%)	297 (6.0%)	135 (3.0%)	278 (5.2%)	381 (7.7%)	317 (6.4%)	253 (5.6%)	237 (5.0%)	287 (6.3%)
5+	126 (2.7%)	82 (1.9%)	76 (1.5%)	24 (0.5%)	49 (0.9%)	102 (2.1%)	79 (1.6%)	46 (1.0%)	57 (1.2%)	47 (1.0%)
All Races										
1	2,579 (33.9%)	2,885 (39.0%)	3,062 (38.1%)	2,961 (41.0%)	3,198 (37.9%)	2,888 (36.0%)	2,918 (36.7%)	3,077 (39.0%)	2,992 (37.9%)	2,958 (37.6%)
2	2,233 (29.3%)	2,082 (28.2%)	2,448 (30.4%)	2,337 (32.4%)	2,535 (30.0%)	2,297 (28.6%)	2,399 (30.2%)	2,215 (28.1%)	2,337 (29.6%)	2,305 (29.3%)
3	1,586 (20.8%)	1,332 (18.0%)	1,524 (19.0%)	1,207 (16.7%)	1,596 (18.9%)	1,698 (21.2%)	1,464 (18.4%)	1,435 (18.2%)	1,505 (19.0%)	1,499 (19.0%)
4	730 (9.6%)	673 (9.1%)	637 (7.9%)	477 (6.6%)	670 (7.9%)	719 (9.0%)	704 (8.8%)	670 (8.5%)	579 (7.3%)	632 (8.0%)
5+	483 (6.3%)	420 (5.7%)	371 (4.6%)	234 (3.2%)	441 (5.2%)	421 (5.2%)	471 (5.9%)	495 (6.3%)	489 (6.2%)	482 (6.1%)

Year to Date Median Days Between Runs

Code/RatBand	2017	2018	2019	2020	2021	2022	2023	2024	2025	2026
All Runners	27	28	29	28	29	28	29	28	28	28
Flat										
Unrated	25	29	32	27	28	27	28	28	27	30
0-50	20	20	22	20	19	20	17	17	17	17
51-60	20	20	21	19	19	20	19	19	18	18
61-70	21	21	23	21	20	21	20	20	20	21
71-80	23	23	23	22	22	23	22	24	22	24
81-90	21	24	27	22	24	25	26	27	28	29
91-100	25	31	28	22	28	31	32	31	40	41
101+	35	38	30	36	42	40	40	52	86	84
All Flat Runners	21	22	23	21	21	22	21	21	21	21
Jump										
Unrated	34	37	37	36	41	35	41	40	40	39
0-100	27	27	28	32	34	28	30	32	31	30
101-110	27	31	31	31	33	29	34	34	31	33
111-120	29	31	32	34	36	31	34	33	32	32
121-130	30	31	32	34	35	32	35	36	34	34
131-140	34	35	35	36	37	35	37	35	37	37
141-150	36	40	40	41	42	39	44	39	42	41
151+	42	40	42	42	42	42	46	45	42	41
All Jump Runners	30	33	33	34	37	32	35	35	34	34

Horses Population by Gender

March 2026 Horses in Training Snapshot by Gender versus Previous Years

All Horses

Sex	2017	2018	2019	2020	2021	2022	2023	2024	2025	2026
Colt/Entire	2,550 (16.6%)	2,543 (16.2%)	2,431 (15.5%)	2,298 (14.5%)	2,149 (13.4%)	2,174 (14.1%)	2,043 (13.2%)	1,980 (13.2%)	1,945 (13.2%)	1,942 (13.2%)
Gelding	8,165 (53.2%)	8,405 (53.4%)	8,422 (53.6%)	8,650 (54.7%)	8,927 (55.8%)	8,464 (54.8%)	8,509 (55.1%)	8,323 (55.4%)	8,165 (55.4%)	8,022 (54.6%)
Filly/Mare	4,635 (30.2%)	4,779 (30.4%)	4,860 (30.9%)	4,865 (30.8%)	4,922 (30.8%)	4,809 (31.1%)	4,888 (31.7%)	4,707 (31.4%)	4,634 (31.4%)	4,733 (32.2%)
Rig	4 (0.0%)	3 (0.0%)	3 (0.0%)	3 (0.0%)	2 (0.0%)	1 (0.0%)	1 (0.0%)	1 (0.0%)	0 (0.0%)	1 (0.0%)
Total	15,354 (100.0%)	15,730 (100.0%)	15,716 (100.0%)	15,816 (100.0%)	16,000 (100.0%)	15,448 (100.0%)	15,441 (100.0%)	15,011 (100.0%)	14,744 (100.0%)	14,698 (100.0%)

Flat (including Dual)

Sex	2017	2018	2019	2020	2021	2022	2023	2024	2025	2026
Colt/Entire	2,526 (25.0%)	2,520 (23.9%)	2,415 (24.0%)	2,280 (22.8%)	2,128 (21.9%)	2,148 (21.9%)	2,021 (21.0%)	1,955 (20.8%)	1,912 (20.6%)	1,921 (20.3%)
Gelding	3,944 (39.0%)	4,313 (40.9%)	4,016 (39.9%)	4,117 (41.2%)	4,082 (41.9%)	4,056 (41.4%)	4,061 (42.1%)	4,049 (43.1%)	4,033 (43.4%)	4,059 (42.8%)
Filly/Mare	3,640 (36.0%)	3,712 (35.2%)	3,628 (36.1%)	3,592 (36.0%)	3,521 (36.2%)	3,593 (36.7%)	3,556 (36.9%)	3,381 (36.0%)	3,352 (36.1%)	3,495 (36.9%)
Rig	4 (0.0%)	3 (0.0%)	2 (0.0%)	2 (0.0%)	1 (0.0%)	0 (0.0%)	0 (0.0%)	0 (0.0%)	0 (0.0%)	1 (0.0%)
Total	10,114 (100.0%)	10,548 (100.0%)	10,061 (100.0%)	9,991 (100.0%)	9,732 (100.0%)	9,797 (100.0%)	9,638 (100.0%)	9,385 (100.0%)	9,297 (100.0%)	9,476 (100.0%)

Jump (including Dual)

Sex	2017	2018	2019	2020	2021	2022	2023	2024	2025	2026
Colt/Entire	29 (0.5%)	33 (0.5%)	24 (0.4%)	27 (0.4%)	32 (0.5%)	41 (0.7%)	26 (0.4%)	27 (0.4%)	43 (0.7%)	30 (0.5%)
Gelding	4,664 (80.5%)	4,830 (78.7%)	4,745 (77.8%)	4,950 (77.6%)	5,233 (77.3%)	4,769 (77.7%)	4,778 (76.5%)	4,606 (75.7%)	4,440 (75.7%)	4,322 (75.4%)
Filly/Mare	1,104 (19.0%)	1,271 (20.7%)	1,331 (21.8%)	1,397 (21.9%)	1,508 (22.3%)	1,328 (21.6%)	1,437 (23.0%)	1,449 (23.8%)	1,384 (23.6%)	1,377 (24.0%)
Rig	0 (0.0%)	0 (0.0%)	1 (0.0%)	1 (0.0%)	1 (0.0%)	1 (0.0%)	1 (0.0%)	1 (0.0%)	0 (0.0%)	1 (0.0%)
Total	5,797 (100.0%)	6,134 (100.0%)	6,101 (100.0%)	6,375 (100.0%)	6,774 (100.0%)	6,139 (100.0%)	6,242 (100.0%)	6,083 (100.0%)	5,867 (100.0%)	5,730 (100.0%)

Hunter Chasers

Sex	2017	2018	2019	2020	2021	2022	2023	2024	2025	2026
Colt/Entire	5 (0.3%)	3 (0.2%)	1 (0.1%)	1 (0.1%)	4 (0.5%)	10 (0.8%)	8 (0.7%)	3 (0.2%)	7 (0.7%)	8 (0.8%)
Gelding	1,471 (81.8%)	1,302 (82.1%)	1,275 (80.4%)	1,215 (81.5%)	731 (83.5%)	979 (80.6%)	949 (82.7%)	1,086 (82.8%)	824 (80.2%)	766 (80.9%)
Filly/Mare	323 (18.0%)	281 (17.7%)	309 (19.5%)	274 (18.4%)	140 (16.0%)	226 (18.6%)	191 (16.6%)	223 (17.0%)	196 (19.1%)	173 (18.3%)
Rig	0 (0.0%)	0 (0.0%)	0 (0.0%)	0 (0.0%)	0 (0.0%)	0 (0.0%)	0 (0.0%)	0 (0.0%)	0 (0.0%)	0 (0.0%)
Total	1,799 (100.0%)	1,586 (100.0%)	1,585 (100.0%)	1,490 (100.0%)	875 (100.0%)	1,215 (100.0%)	1,148 (100.0%)	1,312 (100.0%)	1,027 (100.0%)	947 (100.0%)

Year to Date Total Runners by Gender

Sex	2017	2018	2019	2020	2021	2022	2023	2024	2025	2026
All Races										
Colt/Entire	631 (3.6%)	692 (4.3%)	664 (3.9%)	578 (4.0%)	726 (4.0%)	559 (3.1%)	553 (3.1%)	549 (3.1%)	468 (2.7%)	481 (2.8%)
Gelding	12,878 (73.9%)	11,740 (72.6%)	12,433 (72.4%)	10,306 (71.2%)	12,981 (71.2%)	12,914 (72.4%)	12,683 (71.8%)	12,644 (72.5%)	12,785 (73.3%)	12,582 (72.0%)
Filly/Mare	3,913 (22.5%)	3,731 (23.1%)	4,063 (23.7%)	3,595 (24.8%)	4,522 (24.8%)	4,353 (24.4%)	4,434 (25.1%)	4,249 (24.4%)	4,191 (24.0%)	4,423 (25.3%)
Rig	0 (0.0%)	2 (0.0%)	2 (0.0%)	3 (0.0%)	3 (0.0%)	1 (0.0%)	0 (0.0%)	0 (0.0%)	0 (0.0%)	1 (0.0%)
Flat										
Colt/Entire	610 (8.0%)	679 (8.9%)	647 (8.6%)	564 (8.5%)	712 (8.8%)	551 (7.2%)	529 (6.7%)	543 (6.1%)	459 (5.5%)	472 (5.5%)
Gelding	4,796 (62.6%)	4,880 (63.7%)	4,726 (62.7%)	4,134 (62.1%)	5,004 (62.0%)	4,781 (62.9%)	5,024 (63.2%)	5,893 (66.7%)	5,720 (68.4%)	5,649 (66.1%)
Filly/Mare	2,252 (29.4%)	2,101 (27.4%)	2,160 (28.7%)	1,956 (29.4%)	2,356 (29.2%)	2,274 (29.9%)	2,395 (30.1%)	2,396 (27.1%)	2,185 (26.1%)	2,421 (28.3%)
Rig	0 (0.0%)	2 (0.0%)	0 (0.0%)	0 (0.0%)	0 (0.0%)	0 (0.0%)	0 (0.0%)	0 (0.0%)	0 (0.0%)	1 (0.0%)
All Jump										
Colt/Entire	21 (0.2%)	13 (0.2%)	17 (0.2%)	14 (0.2%)	14 (0.1%)	8 (0.1%)	24 (0.2%)	6 (0.1%)	9 (0.1%)	9 (0.1%)
Gelding	8,082 (82.8%)	6,860 (80.7%)	7,707 (80.0%)	6,172 (78.8%)	7,977 (78.5%)	8,133 (79.6%)	7,659 (78.8%)	6,751 (78.4%)	7,065 (77.8%)	6,933 (77.5%)
Filly/Mare	1,661 (17.0%)	1,630 (19.2%)	1,903 (19.8%)	1,639 (20.9%)	2,166 (21.3%)	2,079 (20.3%)	2,039 (21.0%)	1,853 (21.5%)	2,006 (22.1%)	2,002 (22.4%)
Rig	0 (0.0%)	0 (0.0%)	2 (0.0%)	3 (0.0%)	3 (0.0%)	1 (0.0%)	0 (0.0%)	0 (0.0%)	0 (0.0%)	0 (0.0%)
Chase										
Gelding	2,947 (92.7%)	2,382 (90.8%)	2,725 (90.4%)	2,169 (90.3%)	2,663 (88.9%)	2,923 (88.8%)	2,754 (89.5%)	2,414 (89.8%)	2,514 (87.4%)	2,394 (87.8%)
Filly/Mare	232 (7.3%)	242 (9.2%)	289 (9.6%)	229 (9.5%)	328 (11.0%)	369 (11.2%)	323 (10.5%)	273 (10.2%)	362 (12.6%)	334 (12.2%)
Rig	0 (0.0%)	0 (0.0%)	0 (0.0%)	3 (0.1%)	3 (0.1%)	1 (0.0%)	0 (0.0%)	0 (0.0%)	0 (0.0%)	0 (0.0%)
Hurdle										
Colt/Entire	18 (0.3%)	11 (0.2%)	13 (0.2%)	7 (0.2%)	12 (0.2%)	8 (0.1%)	16 (0.3%)	6 (0.1%)	4 (0.1%)	9 (0.2%)
Gelding	4,543 (79.4%)	3,902 (77.7%)	4,450 (77.0%)	3,477 (74.7%)	4,142 (74.8%)	4,663 (76.7%)	4,397 (75.8%)	3,904 (74.2%)	4,063 (74.5%)	4,107 (74.3%)
Filly/Mare	1,164 (20.3%)	1,111 (22.1%)	1,316 (22.8%)	1,169 (25.1%)	1,381 (25.0%)	1,411 (23.2%)	1,388 (23.9%)	1,354 (25.7%)	1,388 (25.4%)	1,408 (25.5%)
Rig	0 (0.0%)	0 (0.0%)	2 (0.0%)	0 (0.0%)	0 (0.0%)	0 (0.0%)	0 (0.0%)	0 (0.0%)	0 (0.0%)	0 (0.0%)
NHF										
Colt/Entire	3 (0.3%)	2 (0.2%)	4 (0.5%)	7 (0.9%)	2 (0.1%)	0 (0.0%)	8 (0.9%)	0 (0.0%)	5 (0.7%)	0 (0.0%)
Gelding	592 (68.8%)	576 (67.4%)	532 (63.8%)	526 (68.0%)	1,172 (71.9%)	547 (64.7%)	508 (60.2%)	433 (65.7%)	488 (65.2%)	432 (62.4%)
Filly/Mare	265 (30.8%)	277 (32.4%)	298 (35.7%)	241 (31.1%)	457 (28.0%)	299 (35.3%)	328 (38.9%)	226 (34.3%)	256 (34.2%)	260 (37.6%)
Hunter										
Gelding	271 (97.5%)	205 (98.6%)	207 (95.4%)	142 (97.3%)	314 (94.0%)	181 (96.8%)	175 (97.8%)	151 (92.1%)	149 (92.0%)	162 (94.2%)
Filly/Mare	7 (2.5%)	3 (1.4%)	10 (4.6%)	4 (2.7%)	20 (6.0%)	6 (3.2%)	4 (2.2%)	13 (7.9%)	13 (8.0%)	10 (5.8%)

Year to Date Individual Runners by Gender

Sex	2017	2018	2019	2020	2021	2022	2023	2024	2025	2026
All Races										
Male	5,832 (76.6%)	5,600 (75.8%)	6,055 (75.3%)	5,369 (74.4%)	6,336 (75.1%)	6,010 (74.9%)	5,861 (73.7%)	5,867 (74.3%)	5,893 (74.6%)	5,808 (73.7%)
Female	1,779 (23.4%)	1,792 (24.2%)	1,987 (24.7%)	1,847 (25.6%)	2,104 (24.9%)	2,013 (25.1%)	2,095 (26.3%)	2,025 (25.7%)	2,009 (25.4%)	2,068 (26.3%)
Flat										
Male	2,119 (68.6%)	2,253 (69.9%)	2,250 (69.1%)	1,953 (68.0%)	2,260 (69.0%)	2,159 (68.0%)	2,093 (66.8%)	2,386 (69.7%)	2,326 (70.4%)	2,360 (69.2%)
Female	970 (31.4%)	968 (30.1%)	1,004 (30.9%)	919 (32.0%)	1,013 (31.0%)	1,015 (32.0%)	1,042 (33.2%)	1,035 (30.3%)	980 (29.6%)	1,050 (30.8%)
All Jump										
Male	3,835 (82.0%)	3,457 (80.2%)	3,915 (79.4%)	3,522 (78.7%)	4,199 (79.0%)	3,952 (79.5%)	3,875 (78.1%)	3,536 (77.6%)	3,649 (77.6%)	3,529 (77.2%)
Female	843 (18.0%)	852 (19.8%)	1,014 (20.6%)	954 (21.3%)	1,117 (21.0%)	1,017 (20.5%)	1,085 (21.9%)	1,019 (22.4%)	1,052 (22.4%)	1,043 (22.8%)
Chase										
Male	1,423 (92.2%)	1,195 (90.8%)	1,389 (90.2%)	1,269 (90.0%)	1,486 (89.4%)	1,429 (88.6%)	1,377 (88.7%)	1,237 (89.5%)	1,314 (87.4%)	1,237 (87.4%)
Female	121 (7.8%)	121 (9.2%)	151 (9.8%)	141 (10.0%)	177 (10.6%)	184 (11.4%)	176 (11.3%)	145 (10.5%)	189 (12.6%)	178 (12.6%)
Hurdle										
Male	2,286 (79.7%)	2,072 (78.2%)	2,374 (77.4%)	2,054 (75.0%)	2,377 (75.6%)	2,403 (78.0%)	2,324 (76.0%)	2,152 (74.2%)	2,168 (74.7%)	2,162 (74.7%)
Female	584 (20.3%)	579 (21.8%)	693 (22.6%)	684 (25.0%)	766 (24.4%)	677 (22.0%)	734 (24.0%)	748 (25.8%)	736 (25.3%)	731 (25.3%)
NHF										
Male	452 (69.4%)	468 (68.9%)	423 (64.9%)	440 (68.9%)	912 (72.9%)	426 (64.9%)	422 (62.2%)	358 (66.1%)	408 (66.9%)	364 (63.9%)
Female	199 (30.6%)	211 (31.1%)	229 (35.1%)	199 (31.1%)	339 (27.1%)	230 (35.1%)	257 (37.8%)	184 (33.9%)	202 (33.1%)	206 (36.1%)
Hunter										
Male	178 (96.7%)	138 (97.9%)	148 (95.5%)	98 (96.1%)	212 (92.6%)	124 (96.1%)	115 (98.3%)	105 (92.9%)	104 (92.0%)	109 (94.8%)
Female	6 (3.3%)	3 (2.1%)	7 (4.5%)	4 (3.9%)	17 (7.4%)	5 (3.9%)	2 (1.7%)	8 (7.1%)	9 (8.0%)	6 (5.2%)

Horses Population by Breeding

March 2026 Horses in Training Snapshot by Breeding versus Previous Years

Flat (including Dual)

Bred	Sex	2017	2018	2019	2020	2021	2022	2023	2024	2025	2026
GB	Male	3,065 (30.3%)	3,178 (30.1%)	3,041 (30.2%)	3,007 (30.1%)	2,930 (30.1%)	2,914 (29.7%)	2,829 (29.4%)	2,770 (29.5%)	2,743 (29.5%)	2,759 (29.1%)
	Female	2,081 (20.6%)	2,047 (19.4%)	2,007 (19.9%)	2,024 (20.3%)	2,008 (20.6%)	2,015 (20.6%)	1,975 (20.5%)	1,854 (19.8%)	1,886 (20.3%)	1,942 (20.5%)
	Subtotal	5,146 (50.9%)	5,225 (49.5%)	5,048 (50.2%)	5,031 (50.4%)	4,938 (50.7%)	4,929 (50.3%)	4,804 (49.8%)	4,624 (49.3%)	4,629 (49.8%)	4,701 (49.6%)
IRE	Male	2,774 (27.4%)	2,967 (28.1%)	2,764 (27.5%)	2,766 (27.7%)	2,736 (28.1%)	2,823 (28.8%)	2,819 (29.2%)	2,755 (29.4%)	2,786 (30.0%)	2,805 (29.6%)
	Female	1,315 (13.0%)	1,400 (13.3%)	1,358 (13.5%)	1,337 (13.4%)	1,325 (13.6%)	1,407 (14.4%)	1,405 (14.6%)	1,357 (14.5%)	1,297 (14.0%)	1,389 (14.7%)
	Subtotal	4,089 (40.4%)	4,367 (41.4%)	4,122 (41.0%)	4,103 (41.1%)	4,061 (41.7%)	4,230 (43.2%)	4,224 (43.8%)	4,112 (43.8%)	4,083 (43.9%)	4,194 (44.3%)
FR	Male	229 (2.3%)	313 (3.0%)	289 (2.9%)	315 (3.2%)	299 (3.1%)	293 (3.0%)	286 (3.0%)	334 (3.6%)	299 (3.2%)	293 (3.1%)
	Female	90 (0.9%)	116 (1.1%)	118 (1.2%)	117 (1.2%)	107 (1.1%)	111 (1.1%)	118 (1.2%)	124 (1.3%)	114 (1.2%)	119 (1.3%)
	Subtotal	319 (3.2%)	429 (4.1%)	407 (4.0%)	432 (4.3%)	406 (4.2%)	404 (4.1%)	404 (4.2%)	458 (4.9%)	413 (4.4%)	412 (4.3%)
USA	Male	312 (3.1%)	287 (2.7%)	268 (2.7%)	237 (2.4%)	171 (1.8%)	125 (1.3%)	97 (1.0%)	89 (0.9%)	61 (0.7%)	52 (0.5%)
	Female	127 (1.3%)	120 (1.1%)	120 (1.2%)	83 (0.8%)	56 (0.6%)	37 (0.4%)	35 (0.4%)	21 (0.2%)	31 (0.3%)	25 (0.3%)
	Subtotal	439 (4.3%)	407 (3.9%)	388 (3.9%)	320 (3.2%)	227 (2.3%)	162 (1.7%)	132 (1.4%)	110 (1.2%)	92 (1.0%)	77 (0.8%)
GNY	Male	69 (0.7%)	71 (0.7%)	52 (0.5%)	55 (0.6%)	56 (0.6%)	40 (0.4%)	41 (0.4%)	46 (0.5%)	47 (0.5%)	56 (0.6%)
	Female	12 (0.1%)	17 (0.2%)	15 (0.1%)	26 (0.3%)	21 (0.2%)	20 (0.2%)	19 (0.2%)	20 (0.2%)	20 (0.2%)	16 (0.2%)
	Subtotal	81 (0.8%)	88 (0.8%)	67 (0.7%)	81 (0.8%)	77 (0.8%)	60 (0.6%)	60 (0.6%)	66 (0.7%)	67 (0.7%)	72 (0.8%)
Other	Male	25 (0.2%)	20 (0.2%)	19 (0.2%)	19 (0.2%)	19 (0.2%)	9 (0.1%)	10 (0.1%)	10 (0.1%)	9 (0.1%)	16 (0.2%)
	Female	15 (0.1%)	12 (0.1%)	10 (0.1%)	5 (0.1%)	4 (0.0%)	3 (0.0%)	4 (0.0%)	5 (0.1%)	4 (0.0%)	4 (0.0%)
	Subtotal	40 (0.4%)	32 (0.3%)	29 (0.3%)	24 (0.2%)	23 (0.2%)	12 (0.1%)	14 (0.1%)	15 (0.2%)	13 (0.1%)	20 (0.2%)

Jump (including Dual)

Bred	Sex	2017	2018	2019	2020	2021	2022	2023	2024	2025	2026
GB	Male	1,325 (22.9%)	1,374 (22.4%)	1,284 (21.0%)	1,255 (19.7%)	1,331 (19.6%)	1,196 (19.5%)	1,188 (19.0%)	1,164 (19.1%)	1,135 (19.3%)	1,114 (19.4%)
	Female	613 (10.6%)	664 (10.8%)	639 (10.5%)	622 (9.8%)	721 (10.6%)	638 (10.4%)	660 (10.6%)	661 (10.9%)	607 (10.3%)	607 (10.6%)
	Subtotal	1,938 (33.4%)	2,038 (33.2%)	1,923 (31.5%)	1,877 (29.4%)	2,052 (30.3%)	1,834 (29.9%)	1,848 (29.6%)	1,825 (30.0%)	1,742 (29.7%)	1,721 (30.0%)
IRE	Male	2,556 (44.1%)	2,654 (43.3%)	2,628 (43.1%)	2,780 (43.6%)	2,869 (42.4%)	2,561 (41.7%)	2,511 (40.2%)	2,424 (39.8%)	2,316 (39.5%)	2,222 (38.8%)
	Female	419 (7.2%)	524 (8.5%)	585 (9.6%)	647 (10.1%)	633 (9.3%)	554 (9.0%)	620 (9.9%)	633 (10.4%)	599 (10.2%)	598 (10.4%)
	Subtotal	2,975 (51.3%)	3,178 (51.8%)	3,213 (52.7%)	3,427 (53.8%)	3,502 (51.7%)	3,115 (50.7%)	3,131 (50.2%)	3,057 (50.3%)	2,915 (49.7%)	2,820 (49.2%)
FR	Male	704 (12.1%)	731 (11.9%)	764 (12.5%)	832 (13.1%)	965 (14.2%)	953 (15.5%)	1,015 (16.3%)	971 (16.0%)	976 (16.6%)	965 (16.8%)
	Female	65 (1.1%)	75 (1.2%)	98 (1.6%)	120 (1.9%)	141 (2.1%)	127 (2.1%)	151 (2.4%)	147 (2.4%)	169 (2.9%)	163 (2.8%)
	Subtotal	769 (13.3%)	806 (13.1%)	862 (14.1%)	952 (14.9%)	1,106 (16.3%)	1,080 (17.6%)	1,166 (18.7%)	1,118 (18.4%)	1,145 (19.5%)	1,128 (19.7%)
USA	Male	42 (0.7%)	41 (0.7%)	33 (0.5%)	38 (0.6%)	30 (0.4%)	30 (0.5%)	19 (0.3%)	16 (0.3%)	6 (0.1%)	9 (0.2%)
	Female	2 (0.0%)	4 (0.1%)	3 (0.0%)	3 (0.0%)	1 (0.0%)	1 (0.0%)	NA (-)	2 (0.0%)	2 (0.0%)	3 (0.1%)
	Subtotal	44 (0.8%)	45 (0.7%)	36 (0.6%)	41 (0.6%)	31 (0.5%)	31 (0.5%)	19 (0.3%)	18 (0.3%)	8 (0.1%)	12 (0.2%)
GNY	Male	59 (1.0%)	55 (0.9%)	53 (0.9%)	69 (1.1%)	67 (1.0%)	68 (1.1%)	70 (1.1%)	55 (0.9%)	46 (0.8%)	37 (0.6%)
	Female	4 (0.1%)	2 (0.0%)	4 (0.1%)	5 (0.1%)	11 (0.2%)	8 (0.1%)	6 (0.1%)	5 (0.1%)	6 (0.1%)	5 (0.1%)
	Subtotal	63 (1.1%)	57 (0.9%)	57 (0.9%)	74 (1.2%)	78 (1.2%)	76 (1.2%)	76 (1.2%)	60 (1.0%)	52 (0.9%)	42 (0.7%)
Other	Male	7 (0.1%)	8 (0.1%)	8 (0.1%)	4 (0.1%)	4 (0.1%)	3 (0.0%)	2 (0.0%)	4 (0.1%)	4 (0.1%)	6 (0.1%)
	Female	1 (0.0%)	2 (0.0%)	2 (0.0%)	NA (-)	1 (0.0%)	NA (-)	NA (-)	1 (0.0%)	1 (0.0%)	1 (0.0%)
	Subtotal	8 (0.1%)	10 (0.2%)	10 (0.2%)	4 (0.1%)	5 (0.1%)	3 (0.0%)	2 (0.0%)	5 (0.1%)	5 (0.1%)	7 (0.1%)

Year to Date Total Runners by Breeding

Flat

Bred	Sex	2017	2018	2019	2020	2021	2022	2023	2024	2025	2026
GB	Male	2,553 (33.3%)	2,618 (34.2%)	2,477 (32.9%)	2,185 (32.8%)	2,607 (32.3%)	2,470 (32.5%)	2,490 (31.3%)	2,947 (33.4%)	2,814 (33.6%)	2,847 (33.3%)
	Female	1,208 (15.8%)	1,129 (14.7%)	1,201 (15.9%)	1,079 (16.2%)	1,398 (17.3%)	1,304 (17.1%)	1,376 (17.3%)	1,267 (14.3%)	1,143 (13.7%)	1,280 (15.0%)
	Subtotal	3,761 (49.1%)	3,747 (48.9%)	3,678 (48.8%)	3,264 (49.1%)	4,005 (49.6%)	3,774 (49.6%)	3,866 (48.6%)	4,214 (47.7%)	3,957 (47.3%)	4,127 (48.3%)
IRE	Male	2,325 (30.4%)	2,387 (31.2%)	2,351 (31.2%)	2,045 (30.7%)	2,599 (32.2%)	2,416 (31.8%)	2,657 (33.4%)	3,023 (34.2%)	2,957 (35.4%)	2,912 (34.1%)
	Female	916 (12.0%)	826 (10.8%)	788 (10.5%)	768 (11.5%)	817 (10.1%)	845 (11.1%)	892 (11.2%)	1,000 (11.3%)	916 (11.0%)	1,018 (11.9%)
	Subtotal	3,241 (42.3%)	3,213 (41.9%)	3,139 (41.7%)	2,813 (42.3%)	3,416 (42.3%)	3,261 (42.9%)	3,549 (44.7%)	4,023 (45.6%)	3,873 (46.3%)	3,930 (46.0%)
FR	Male	163 (2.1%)	165 (2.2%)	218 (2.9%)	203 (3.1%)	218 (2.7%)	229 (3.0%)	253 (3.2%)	279 (3.2%)	284 (3.4%)	280 (3.3%)
	Female	46 (0.6%)	74 (1.0%)	62 (0.8%)	51 (0.8%)	73 (0.9%)	62 (0.8%)	78 (1.0%)	81 (0.9%)	71 (0.8%)	85 (1.0%)
	Subtotal	209 (2.7%)	239 (3.1%)	280 (3.7%)	254 (3.8%)	291 (3.6%)	291 (3.8%)	331 (4.2%)	360 (4.1%)	355 (4.2%)	365 (4.3%)
USA	Male	286 (3.7%)	310 (4.0%)	267 (3.5%)	216 (3.2%)	207 (2.6%)	185 (2.4%)	128 (1.6%)	141 (1.6%)	83 (1.0%)	28 (0.3%)
	Female	62 (0.8%)	60 (0.8%)	89 (1.2%)	52 (0.8%)	46 (0.6%)	41 (0.5%)	40 (0.5%)	38 (0.4%)	40 (0.5%)	15 (0.2%)
	Subtotal	348 (4.5%)	370 (4.8%)	356 (4.7%)	268 (4.0%)	253 (3.1%)	226 (3.0%)	168 (2.1%)	179 (2.0%)	123 (1.5%)	43 (0.5%)
GNY	Male	53 (0.7%)	45 (0.6%)	32 (0.4%)	36 (0.5%)	61 (0.8%)	24 (0.3%)	22 (0.3%)	43 (0.5%)	34 (0.4%)	32 (0.4%)
	Female	13 (0.2%)	10 (0.1%)	13 (0.2%)	5 (0.1%)	18 (0.2%)	17 (0.2%)	7 (0.1%)	6 (0.1%)	11 (0.1%)	20 (0.2%)
	Subtotal	66 (0.9%)	55 (0.7%)	45 (0.6%)	41 (0.6%)	79 (1.0%)	41 (0.5%)	29 (0.4%)	49 (0.6%)	45 (0.5%)	52 (0.6%)
Other	Male	26 (0.3%)	36 (0.5%)	28 (0.4%)	13 (0.2%)	24 (0.3%)	8 (0.1%)	3 (0.0%)	3 (0.0%)	7 (0.1%)	23 (0.3%)
	Female	7 (0.1%)	2 (0.0%)	7 (0.1%)	1 (0.0%)	4 (0.0%)	5 (0.1%)	2 (0.0%)	4 (0.0%)	4 (0.0%)	3 (0.0%)
	Subtotal	33 (0.4%)	38 (0.5%)	35 (0.5%)	14 (0.2%)	28 (0.3%)	13 (0.2%)	5 (0.1%)	7 (0.1%)	11 (0.1%)	26 (0.3%)

Jump

Bred	Sex	2017	2018	2019	2020	2021	2022	2023	2024	2025	2026
GB	Male	2,135 (21.9%)	1,770 (20.8%)	1,958 (20.3%)	1,486 (19.0%)	1,835 (18.1%)	1,821 (17.8%)	1,710 (17.6%)	1,532 (17.8%)	1,758 (19.4%)	1,537 (17.2%)
	Female	803 (8.2%)	775 (9.1%)	846 (8.8%)	668 (8.5%)	949 (9.3%)	912 (8.9%)	873 (9.0%)	748 (8.7%)	748 (8.2%)	776 (8.7%)
	Subtotal	2,938 (30.1%)	2,545 (29.9%)	2,804 (29.1%)	2,154 (27.5%)	2,784 (27.4%)	2,733 (26.7%)	2,583 (26.6%)	2,280 (26.5%)	2,506 (27.6%)	2,313 (25.9%)
IRE	Male	4,453 (45.6%)	3,826 (45.0%)	4,231 (43.9%)	3,404 (43.5%)	4,394 (43.2%)	4,362 (42.7%)	4,085 (42.0%)	3,541 (41.1%)	3,654 (40.2%)	3,661 (40.9%)
	Female	718 (7.4%)	735 (8.6%)	890 (9.2%)	784 (10.0%)	962 (9.5%)	900 (8.8%)	906 (9.3%)	894 (10.4%)	978 (10.8%)	944 (10.6%)
	Subtotal	5,171 (53.0%)	4,561 (53.6%)	5,121 (53.2%)	4,188 (53.5%)	5,356 (52.7%)	5,262 (51.5%)	4,991 (51.3%)	4,435 (51.5%)	4,632 (51.0%)	4,605 (51.5%)
FR	Male	1,331 (13.6%)	1,139 (13.4%)	1,369 (14.2%)	1,163 (14.9%)	1,594 (15.7%)	1,778 (17.4%)	1,730 (17.8%)	1,574 (18.3%)	1,578 (17.4%)	1,653 (18.5%)
	Female	123 (1.3%)	106 (1.2%)	152 (1.6%)	177 (2.3%)	237 (2.3%)	241 (2.4%)	248 (2.6%)	203 (2.4%)	273 (3.0%)	274 (3.1%)
	Subtotal	1,454 (14.9%)	1,245 (14.6%)	1,521 (15.8%)	1,340 (17.1%)	1,831 (18.0%)	2,019 (19.8%)	1,978 (20.3%)	1,777 (20.6%)	1,851 (20.4%)	1,927 (21.5%)
USA	Male	73 (0.7%)	55 (0.6%)	38 (0.4%)	48 (0.6%)	41 (0.4%)	35 (0.3%)	32 (0.3%)	9 (0.1%)	7 (0.1%)	13 (0.1%)
	Female	4 (0.0%)	5 (0.1%)	7 (0.1%)	4 (0.1%)	2 (0.0%)	6 (0.1%)	0 (0.0%)	3 (0.0%)	3 (0.0%)	3 (0.0%)
	Subtotal	77 (0.8%)	60 (0.7%)	45 (0.5%)	52 (0.7%)	43 (0.4%)	41 (0.4%)	32 (0.3%)	12 (0.1%)	10 (0.1%)	16 (0.2%)
GNY	Male	104 (1.1%)	73 (0.9%)	116 (1.2%)	83 (1.1%)	126 (1.2%)	145 (1.4%)	125 (1.3%)	95 (1.1%)	71 (0.8%)	68 (0.8%)
	Female	8 (0.1%)	7 (0.1%)	7 (0.1%)	5 (0.1%)	16 (0.2%)	20 (0.2%)	12 (0.1%)	4 (0.0%)	4 (0.0%)	5 (0.1%)
	Subtotal	112 (1.1%)	80 (0.9%)	123 (1.3%)	88 (1.1%)	142 (1.4%)	165 (1.6%)	137 (1.4%)	99 (1.1%)	75 (0.8%)	73 (0.8%)
Other	Male	7 (0.1%)	10 (0.1%)	14 (0.1%)	5 (0.1%)	4 (0.0%)	1 (0.0%)	1 (0.0%)	6 (0.1%)	6 (0.1%)	10 (0.1%)
	Female	5 (0.1%)	2 (0.0%)	1 (0.0%)	1 (0.0%)	0 (0.0%)	0 (0.0%)	0 (0.0%)	1 (0.0%)	0 (0.0%)	0 (0.0%)
	Subtotal	12 (0.1%)	12 (0.1%)	15 (0.2%)	6 (0.1%)	4 (0.0%)	1 (0.0%)	1 (0.0%)	7 (0.1%)	6 (0.1%)	10 (0.1%)

Year to Date Individual Runners by Breeding

Flat

Bred	Sex	2017	2018	2019	2020	2021	2022	2023	2024	2025	2026
GB	Male	971 (31.4%)	1,054 (32.7%)	1,014 (31.2%)	911 (31.7%)	1,035 (31.6%)	990 (31.2%)	941 (30.0%)	1,084 (31.7%)	1,022 (30.9%)	1,092 (32.0%)
	Female	529 (17.1%)	508 (15.8%)	557 (17.1%)	502 (17.5%)	586 (17.9%)	580 (18.3%)	594 (18.9%)	545 (15.9%)	510 (15.4%)	559 (16.4%)
	Subtotal	1,500 (48.6%)	1,562 (48.5%)	1,571 (48.3%)	1,413 (49.2%)	1,621 (49.5%)	1,570 (49.5%)	1,535 (49.0%)	1,629 (47.6%)	1,532 (46.3%)	1,651 (48.4%)
IRE	Male	928 (30.0%)	959 (29.8%)	1,000 (30.7%)	835 (29.1%)	1,008 (30.8%)	985 (31.0%)	984 (31.4%)	1,105 (32.3%)	1,139 (34.5%)	1,118 (32.8%)
	Female	378 (12.2%)	394 (12.2%)	362 (11.1%)	360 (12.5%)	358 (10.9%)	374 (11.8%)	392 (12.5%)	430 (12.6%)	410 (12.4%)	438 (12.8%)
	Subtotal	1,306 (42.3%)	1,353 (42.0%)	1,362 (41.9%)	1,195 (41.6%)	1,366 (41.7%)	1,359 (42.8%)	1,376 (43.9%)	1,535 (44.9%)	1,549 (46.9%)	1,556 (45.6%)
FR	Male	73 (2.4%)	81 (2.5%)	97 (3.0%)	94 (3.3%)	100 (3.1%)	98 (3.1%)	108 (3.4%)	124 (3.6%)	113 (3.4%)	107 (3.1%)
	Female	23 (0.7%)	32 (1.0%)	33 (1.0%)	26 (0.9%)	37 (1.1%)	31 (1.0%)	37 (1.2%)	40 (1.2%)	38 (1.1%)	37 (1.1%)
	Subtotal	96 (3.1%)	113 (3.5%)	130 (4.0%)	120 (4.2%)	137 (4.2%)	129 (4.1%)	145 (4.6%)	164 (4.8%)	151 (4.6%)	144 (4.2%)
USA	Male	112 (3.6%)	129 (4.0%)	110 (3.4%)	88 (3.1%)	85 (2.6%)	69 (2.2%)	46 (1.5%)	52 (1.5%)	34 (1.0%)	15 (0.4%)
	Female	29 (0.9%)	29 (0.9%)	41 (1.3%)	27 (0.9%)	24 (0.7%)	18 (0.6%)	14 (0.4%)	14 (0.4%)	16 (0.5%)	8 (0.2%)
	Subtotal	141 (4.6%)	158 (4.9%)	151 (4.6%)	115 (4.0%)	109 (3.3%)	87 (2.7%)	60 (1.9%)	66 (1.9%)	50 (1.5%)	23 (0.7%)
GNY	Male	25 (0.8%)	21 (0.7%)	20 (0.6%)	17 (0.6%)	24 (0.7%)	14 (0.4%)	12 (0.4%)	19 (0.6%)	13 (0.4%)	16 (0.5%)
	Female	6 (0.2%)	4 (0.1%)	8 (0.2%)	3 (0.1%)	7 (0.2%)	10 (0.3%)	3 (0.1%)	4 (0.1%)	4 (0.1%)	6 (0.2%)
	Subtotal	31 (1.0%)	25 (0.8%)	28 (0.9%)	20 (0.7%)	31 (0.9%)	24 (0.8%)	15 (0.5%)	23 (0.7%)	17 (0.5%)	22 (0.6%)
Other	Male	10 (0.3%)	9 (0.3%)	9 (0.3%)	8 (0.3%)	8 (0.2%)	3 (0.1%)	2 (0.1%)	2 (0.1%)	5 (0.2%)	12 (0.4%)
	Female	5 (0.2%)	1 (0.0%)	3 (0.1%)	1 (0.0%)	1 (0.0%)	2 (0.1%)	2 (0.1%)	2 (0.1%)	2 (0.1%)	2 (0.1%)
	Subtotal	15 (0.5%)	10 (0.3%)	12 (0.4%)	9 (0.3%)	9 (0.3%)	5 (0.2%)	4 (0.1%)	4 (0.1%)	7 (0.2%)	14 (0.4%)

Jump

Bred	Sex	2017	2018	2019	2020	2021	2022	2023	2024	2025	2026
GB	Male	992 (21.2%)	870 (20.2%)	978 (19.8%)	831 (18.6%)	967 (18.2%)	871 (17.5%)	877 (17.7%)	793 (17.4%)	872 (18.5%)	790 (17.3%)
	Female	412 (8.8%)	407 (9.4%)	450 (9.1%)	388 (8.7%)	490 (9.2%)	451 (9.1%)	451 (9.1%)	418 (9.2%)	401 (8.5%)	402 (8.8%)
	Subtotal	1,404 (30.0%)	1,277 (29.6%)	1,428 (29.0%)	1,219 (27.2%)	1,457 (27.4%)	1,322 (26.6%)	1,328 (26.8%)	1,211 (26.6%)	1,273 (27.1%)	1,192 (26.1%)
IRE	Male	2,103 (45.0%)	1,918 (44.5%)	2,157 (43.8%)	1,958 (43.7%)	2,292 (43.1%)	2,131 (42.9%)	2,062 (41.6%)	1,867 (41.0%)	1,903 (40.5%)	1,829 (40.0%)
	Female	363 (7.8%)	376 (8.7%)	463 (9.4%)	452 (10.1%)	500 (9.4%)	435 (8.8%)	487 (9.8%)	480 (10.5%)	503 (10.7%)	482 (10.5%)
	Subtotal	2,466 (52.7%)	2,294 (53.2%)	2,620 (53.2%)	2,410 (53.8%)	2,792 (52.5%)	2,566 (51.6%)	2,549 (51.4%)	2,347 (51.5%)	2,406 (51.2%)	2,311 (50.5%)
FR	Male	652 (13.9%)	604 (14.0%)	698 (14.2%)	654 (14.6%)	858 (16.1%)	871 (17.5%)	861 (17.4%)	822 (18.0%)	830 (17.7%)	867 (19.0%)
	Female	60 (1.3%)	63 (1.5%)	93 (1.9%)	106 (2.4%)	118 (2.2%)	120 (2.4%)	138 (2.8%)	115 (2.5%)	145 (3.1%)	154 (3.4%)
	Subtotal	712 (15.2%)	667 (15.5%)	791 (16.0%)	760 (17.0%)	976 (18.4%)	991 (19.9%)	999 (20.1%)	937 (20.6%)	975 (20.7%)	1,021 (22.3%)
USA	Male	36 (0.8%)	29 (0.7%)	21 (0.4%)	25 (0.6%)	22 (0.4%)	18 (0.4%)	15 (0.3%)	5 (0.1%)	3 (0.1%)	8 (0.2%)
	Female	1 (0.0%)	2 (0.0%)	3 (0.1%)	3 (0.1%)	2 (0.0%)	2 (0.0%)	0 (0.0%)	1 (0.0%)	1 (0.0%)	2 (0.0%)
	Subtotal	37 (0.8%)	31 (0.7%)	24 (0.5%)	28 (0.6%)	24 (0.5%)	20 (0.4%)	15 (0.3%)	6 (0.1%)	4 (0.1%)	10 (0.2%)
GNY	Male	48 (1.0%)	31 (0.7%)	53 (1.1%)	49 (1.1%)	57 (1.1%)	60 (1.2%)	59 (1.2%)	46 (1.0%)	37 (0.8%)	30 (0.7%)
	Female	5 (0.1%)	2 (0.0%)	4 (0.1%)	4 (0.1%)	7 (0.1%)	9 (0.2%)	9 (0.2%)	4 (0.1%)	2 (0.0%)	3 (0.1%)
	Subtotal	53 (1.1%)	33 (0.8%)	57 (1.2%)	53 (1.2%)	64 (1.2%)	69 (1.4%)	68 (1.4%)	50 (1.1%)	39 (0.8%)	33 (0.7%)
Other	Male	4 (0.1%)	5 (0.1%)	8 (0.2%)	5 (0.1%)	3 (0.1%)	1 (0.0%)	3 (0.1%)	4 (0.1%)	4 (0.1%)	5 (0.1%)
	Female	2 (0.0%)	2 (0.0%)	1 (0.0%)	1 (0.0%)	0 (0.0%)	0 (0.0%)	0 (0.0%)	1 (0.0%)	0 (0.0%)	0 (0.0%)
	Subtotal	6 (0.1%)	7 (0.2%)	9 (0.2%)	6 (0.1%)	3 (0.1%)	1 (0.0%)	1 (0.0%)	4 (0.1%)	4 (0.1%)	5 (0.1%)

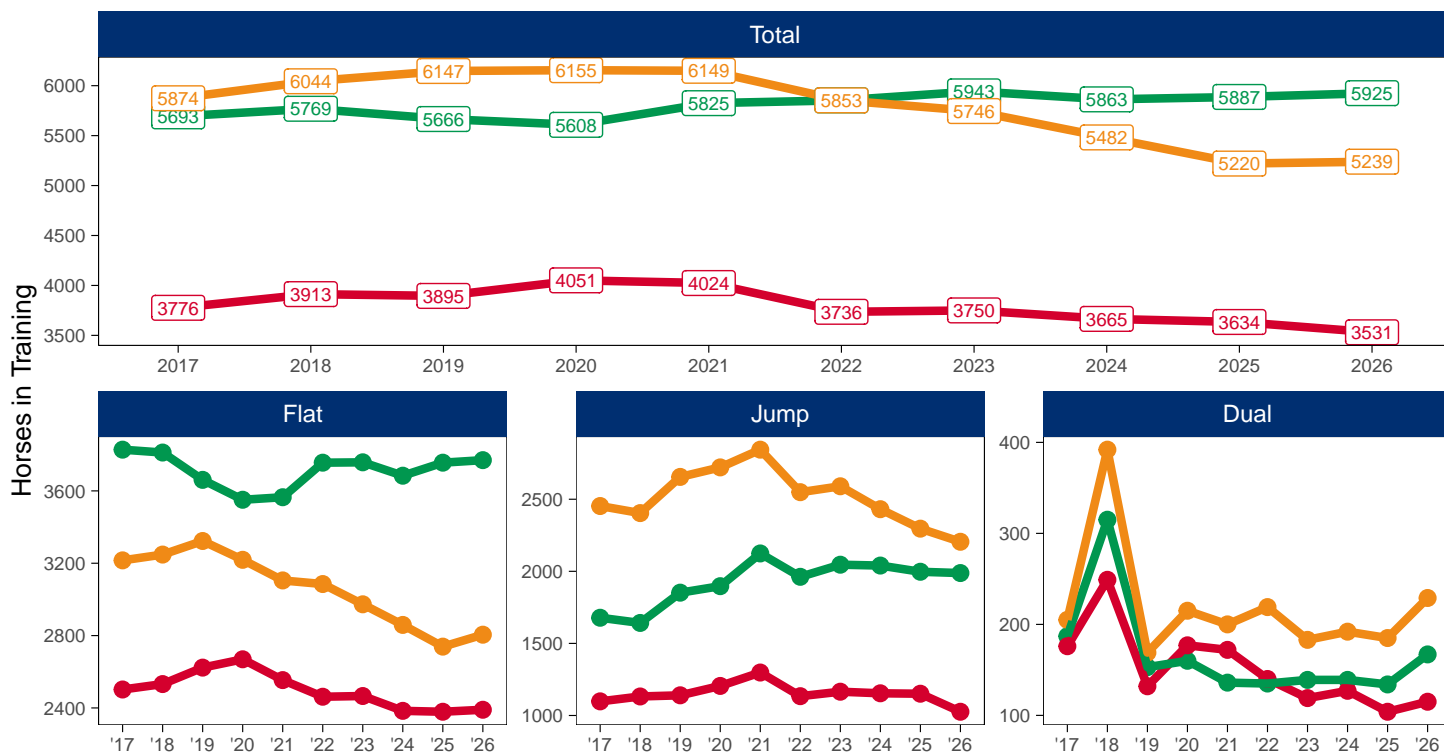
Horse Population by Location

March 2026 Horses in Training Snapshot by Region versus Previous Years

Snapshot of Total Horses in Training in March by Region

Horses in Training in March, shown by Training Type and Region

Region ● North ● Midlands ● South



North

AgeCat	2017	2018	2019	2020	2021	2022	2023	2024	2025	2026	vs. Last Year	vs. Pre-Covid
Flat Horses in Training												
2YO	668	673	713	675	600	619	594	533	558	493	-65 / -11.6%	-220 / -30.9%
3YO	742	728	737	825	805	750	723	682	638	689	+51 / +8.0%	-48 / -6.5%
4YO	402	415	432	427	422	427	414	423	417	427	+10 / +2.4%	-5 / -1.2%
5YO+	690	716	741	742	727	666	735	746	766	781	+15 / +2.0%	+40 / +5.4%
Subtotal	2502	2532	2623	2669	2554	2462	2466	2384	2379	2390	+11 / +0.5%	-233 / -8.9%
Jump Horses in Training												
3YO	4	6	9	5	7	10	9	0	1	0	-1 / -100.0%	-9 / -100.0%
4-5YO	295	256	299	304	288	270	291	297	270	237	-33 / -12.2%	-62 / -20.7%
6-7YO	341	398	393	421	457	415	444	429	441	399	-42 / -9.5%	+6 / +1.5%
8YO+	458	472	439	475	546	439	421	428	439	390	-49 / -11.2%	-49 / -11.2%
Subtotal	1098	1132	1140	1205	1298	1134	1165	1154	1151	1026	-125 / -10.9%	-114 / -10.0%
Dual Horses in Training												
3YO	22	19	8	26	11	17	9	11	11	7	-4 / -36.4%	-1 / -12.5%
4YO	42	61	31	40	41	23	31	35	29	37	+8 / +27.6%	+6 / +19.4%
5YO+	112	169	93	111	120	100	79	81	64	71	+7 / +10.9%	-22 / -23.7%
Subtotal	176	249	132	177	172	140	119	127	104	115	+11 / +10.6%	-17 / -12.9%
Total Horses in Training												
	3776	3913	3895	4051	4024	3736	3750	3665	3634	3531	-103 / -2.8%	-364 / -9.3%

'vs. Pre-Covid' is comparison between 2026 and 2019

Midlands

AgeCat	2017	2018	2019	2020	2021	2022	2023	2024	2025	2026	vs. Last Year	vs. Pre-Covid
Flat Horses in Training												
2YO	1168	1070	945	897	891	990	923	911	896	929	+33 / +3.7%	-16 / -1.7%
3YO	1369	1475	1381	1383	1317	1422	1411	1319	1391	1339	-52 / -3.7%	-42 / -3.0%
4YO	593	568	608	556	635	625	655	647	634	678	+44 / +6.9%	+70 / +11.5%
5YO+	698	699	727	715	722	719	769	807	835	824	-11 / -1.3%	+97 / +13.3%
Subtotal	3828	3812	3661	3551	3565	3756	3758	3684	3756	3770	+14 / +0.4%	+109 / +3.0%
Jump Horses in Training												
3YO	13	12	9	3	12	9	15	13	4	6	+2 / +50.0%	-3 / -33.3%
4-5YO	541	491	577	652	621	606	670	610	678	680	+2 / +0.3%	+103 / +17.9%
6-7YO	557	603	675	670	781	762	758	799	728	733	+5 / +0.7%	+58 / +8.6%
8YO+	567	536	591	572	710	585	603	618	587	569	-18 / -3.1%	-22 / -3.7%
Subtotal	1678	1642	1852	1897	2124	1962	2046	2040	1997	1988	-9 / -0.5%	+136 / +7.3%
Dual Horses in Training												
3YO	11	15	12	10	7	10	14	10	9	12	+3 / +33.3%	0 / 0.0%
4YO	57	86	49	47	44	46	43	40	33	52	+19 / +57.6%	+3 / +6.1%
5YO+	119	214	92	103	85	79	82	89	92	103	+11 / +12.0%	+11 / +12.0%
Subtotal	187	315	153	160	136	135	139	139	134	167	+33 / +24.6%	+14 / +9.2%
Total Horses in Training												
	5693	5769	5666	5608	5825	5853	5943	5863	5887	5925	+38 / +0.6%	+259 / +4.6%

'vs. Pre-Covid' is comparison between 2026 and 2019

South

AgeCat	2017	2018	2019	2020	2021	2022	2023	2024	2025	2026	vs. Last Year	vs. Pre-Covid
Flat Horses in Training												
2YO	1133	1055	1069	974	965	974	923	877	792	832	+40 / +5.1%	-237 / -22.2%
3YO	1020	1130	1123	1116	1056	1008	993	964	1005	984	-21 / -2.1%	-139 / -12.4%
4YO	445	463	523	497	481	502	433	439	399	470	+71 / +17.8%	-53 / -10.1%
5YO+	618	600	608	632	603	601	624	579	543	519	-24 / -4.4%	-89 / -14.6%
Subtotal	3216	3248	3323	3219	3105	3085	2973	2859	2739	2805	+66 / +2.4%	-518 / -15.6%
Jump Horses in Training												
3YO	9	12	11	10	18	9	14	28	17	10	-7 / -41.2%	-1 / -9.1%
4-5YO	823	750	851	853	793	855	922	808	763	783	+20 / +2.6%	-68 / -8.0%
6-7YO	863	882	993	1041	1095	919	922	947	882	829	-53 / -6.0%	-164 / -16.5%
8YO+	758	760	800	817	938	766	732	648	634	583	-51 / -8.0%	-217 / -27.1%
Subtotal	2453	2404	2655	2721	2844	2549	2590	2431	2296	2205	-91 / -4.0%	-450 / -16.9%
Dual Horses in Training												
3YO	17	15	8	16	20	17	13	8	25	16	-9 / -36.0%	+8 / +100.0%
4YO	57	100	54	75	70	71	57	61	54	71	+17 / +31.5%	+17 / +31.5%
5YO+	131	277	107	124	110	131	113	123	106	142	+36 / +34.0%	+35 / +32.7%
Subtotal	205	392	169	215	200	219	183	192	185	229	+44 / +23.8%	+60 / +35.5%
Total Horses in Training												
	5874	6044	6147	6155	6149	5853	5746	5482	5220	5239	+19 / +0.4%	-908 / -14.8%

'vs. Pre-Covid' is comparison between 2026 and 2019

March 2026 Horses in Training Snapshot by Country versus Previous Years

Type	2017	2018	2019	2020	2021	2022	2023	2024	2025	2026	vs. Last Year	vs. Pre-Covid
England												
Flat	9170	9228	9256	9085	8914	8955	8848	8619	8545	8642	+97 / +1.1%	-614 / -6.6%
Jump	4506	4501	4932	5073	5456	4980	5128	4911	4726	4564	-162 / -3.4%	-368 / -7.5%
Dual	506	844	403	510	450	454	410	414	389	452	+63 / +16.2%	+49 / +12.2%
Overall	14182	14573	14591	14668	14820	14389	14386	13944	13660	13658	-2 / 0.0%	-933 / -6.4%
Scotland												
Flat	217	217	190	191	176	209	206	180	190	198	+8 / +4.2%	+8 / +4.2%
Jump	326	339	337	349	411	349	379	375	399	323	-76 / -19.0%	-14 / -4.2%
Dual	30	58	30	31	31	21	19	25	16	18	+2 / +12.5%	-12 / -40.0%
Overall	573	614	557	571	618	579	604	580	605	539	-66 / -10.9%	-18 / -3.2%
Wales												
Flat	159	147	161	163	134	139	143	128	139	125	-14 / -10.1%	-36 / -22.4%
Jump	397	338	378	401	399	316	294	339	319	332	+13 / +4.1%	-46 / -12.2%
Dual	32	54	21	11	27	19	12	19	18	41	+23 / +127.8%	+20 / +95.2%
Overall	588	539	560	575	560	474	449	486	476	498	+22 / +4.6%	-62 / -11.1%

'vs. Pre-Covid' is comparison between 2026 and 2019

March 2026 Horses in Training Snapshot by Training Centre versus Previous Years

Type	2017	2018	2019	2020	2021	2022	2023	2024	2025	2026	vs. Last Year	vs. Pre-Covid
Cheltenham (GL54)												
Flat	16	19	21	23	21	19	17	13	19	30	+11 / +57.9%	+9 / +42.9%
Jump	434	436	449	523	557	528	534	511	504	493	-11 / -2.2%	+44 / +9.8%
Dual	25	77	27	13	11	14	12	18	17	29	+12 / +70.6%	+2 / +7.4%
Overall	475	532	497	559	589	561	563	542	540	552	+12 / +2.2%	+55 / +11.1%
Lambourn (RG17)												
Flat	952	1009	1026	948	904	863	913	899	858	911	+53 / +6.2%	-115 / -11.2%
Jump	340	339	358	363	371	318	313	270	275	276	+1 / +0.4%	-82 / -22.9%
Dual	21	42	13	30	18	29	32	26	34	33	-1 / -2.9%	+20 / +153.8%
Overall	1313	1390	1397	1341	1293	1210	1258	1195	1167	1220	+53 / +4.5%	-177 / -12.7%
Malton (YO17)												
Flat	650	613	681	743	613	655	668	687	674	630	-44 / -6.5%	-51 / -7.5%
Jump	122	134	117	115	115	94	93	75	73	51	-22 / -30.1%	-66 / -56.4%
Dual	34	39	15	38	46	40	27	31	26	23	-3 / -11.5%	+8 / +53.3%
Overall	806	786	813	896	774	789	788	793	773	704	-69 / -8.9%	-109 / -13.4%
Marlborough (SN8)												
Flat	535	548	560	523	501	468	444	462	413	416	+3 / +0.7%	-144 / -25.7%
Jump	70	77	78	75	83	84	82	81	77	81	+4 / +5.2%	+3 / +3.8%
Dual	2	1	4	6	0	2	2	3	3	1	-2 / -66.7%	-3 / -75.0%
Overall	607	626	642	604	584	554	528	546	493	498	+5 / +1.0%	-144 / -22.4%
Middleham (DL8)												
Flat	520	556	603	623	611	504	569	530	534	532	-2 / -0.4%	-71 / -11.8%
Jump	91	100	116	111	121	115	118	113	111	87	-24 / -21.6%	-29 / -25.0%
Dual	23	33	23	21	30	16	21	14	17	17	0 / 0.0%	-6 / -26.1%
Overall	634	689	742	755	762	635	708	657	662	636	-26 / -3.9%	-106 / -14.3%
Newbury (RG20)												
Flat	427	411	466	445	456	500	430	414	376	399	+23 / +6.1%	-67 / -14.4%
Jump	22	16	22	10	12	11	38	56	85	76	-9 / -10.6%	+54 / +245.5%
Dual	11	12	7	9	10	7	4	4	1	5	+4 / +400.0%	-2 / -28.6%
Overall	460	439	495	464	478	518	472	474	462	480	+18 / +3.9%	-15 / -3.0%
Newmarket (CB8)												
Flat	2771	2780	2610	2609	2610	2650	2703	2642	2631	2622	-9 / -0.3%	+12 / +0.5%
Jump	59	58	67	56	71	57	74	70	72	73	+1 / +1.4%	+6 / +9.0%
Dual	34	41	20	30	25	25	32	38	35	50	+15 / +42.9%	+30 / +150.0%
Overall	2864	2879	2697	2695	2706	2732	2809	2750	2738	2745	+7 / +0.3%	+48 / +1.8%

'vs. Pre-Covid' is comparison between 2026 and 2019