



# Horse Population Report

Updated on 28 February 2026



# Introduction

Welcome to the latest update on the Racehorse Population from the British Horseracing Authority.

The aim of this document is to give stakeholders and the wider Public an insight into the current state of the Horse Population in Great Britain. It is hoped that this transparency will ensure that all decision makers have access to the key data required to help British Racing deliver a Competitive and Compelling product to stakeholders, racegoers and the wider public.

If you have any questions regarding the content of this report or suggestions for how it could be improved further, please contact Joe Yates – jyates@britishhorseracing.com

## Definitions

This report uses the Horses in Training returns from the Weatherby's Racing Administration System, this is completed by trainers and should be updated whenever a horse enters or leaves training in their care as part of the conditions of their licence.

## Horses in Training

Unless otherwise stated, snapshots of Horses in Training will be from the 15th day of the month in question and year to date figures will be up to and including the date titled at the front of the report.

Horses' ratings will be taken from the most recently published ratings by the BHA Handicapping Team, which is currently at 7am each Tuesday morning. For example, if looking at the Horses in a particular rating band for July 2011, the horses in training number will be from Friday 15th July 2011 and ratings, where possible, will be assigned to each horse from the ratings published by the BHA Handicappers on Tuesday 12th July 2011.

The Gender of a horse will be taken from the reporting date in question, regardless of whether this has since changed.

In the case of YTD reporting, where a horse's gender or training type has changed in the year-to-date period, the most recent is taken.

This report does not count any horses that are temporarily racing abroad for GB Trainers at the time of reporting.

Yearlings are not included in total counts of flat and/or dual horses but will be sometimes shown separately for information purposes.

Yearlings and two-year-olds are not included in total counts of jump horses or counts of jump horses that include dual horses but will be sometimes shown separately for information purposes.

Yearlings, two-year-olds and three-year-olds are not included in total counts of Hunter Chasers but will be sometimes shown separately for information purposes.

Yearlings and two-year-olds in training that are recorded as dual horses have been re-coded as flat horses.

Hunter Chasers are not included in any counts of Jump Horses or Total figures but will be sometimes shown separately for information purposes.

Horses' training locations are defined by the trainers' primary training location. Training regions are defined the same as regions for the Fixture List; 'North' is north of latitude 53.42911, 'South' is south of latitude 51.88002 and 'Midlands' is anywhere in between. Training centres are defined by postcodes and surrounding areas.

## Runners

Unless otherwise specified, Total Runners and Individual Runners metrics only counts runners that ran in GB races including any voided races. Withdrawn horses are not included.

Hunter Chases are not included in this section but will be sometimes shown separately for information purposes.

Total Runners is a count of all runners in races, whilst individual runners only counts each individual horse once.

# Monthly Horses in Training

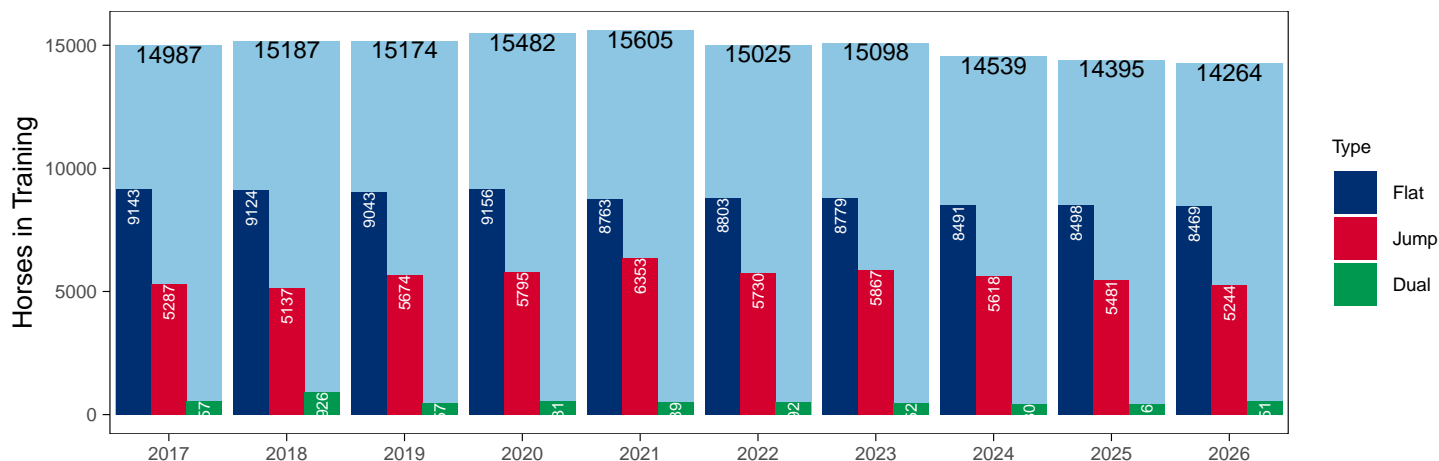
## February 2026 Horses in Training Snapshot versus Previous Years

Type	2017	2018	2019	2020	2021	2022	2023	2024	2025	2026	vs. Last Year	vs. Pre-Covid
Flat	9143	9124	9043	9156	8763	8803	8779	8491	8498	8469	-29 / -0.3%	-574 / -6.3%
Jump	5287	5137	5674	5795	6353	5730	5867	5618	5481	5244	-237 / -4.3%	-430 / -7.6%
Dual	557	926	457	531	489	492	452	430	416	551	+135 / +32.5%	+94 / +20.6%
Hunter	1550	1404	1390	1347	799	1059	959	1200	898	793	-105 / -11.7%	-597 / -42.9%
<b>Total</b>	<b>14987</b>	<b>15187</b>	<b>15174</b>	<b>15482</b>	<b>15605</b>	<b>15025</b>	<b>15098</b>	<b>14539</b>	<b>14395</b>	<b>14264</b>	<b>-131 / -0.9%</b>	<b>-910 / -6.0%</b>

'vs. Pre-Covid' is comparison between 2026 and 2019

### Snapshot of Total Horses in Training in February

Horses in Training in February, shown by Training Type



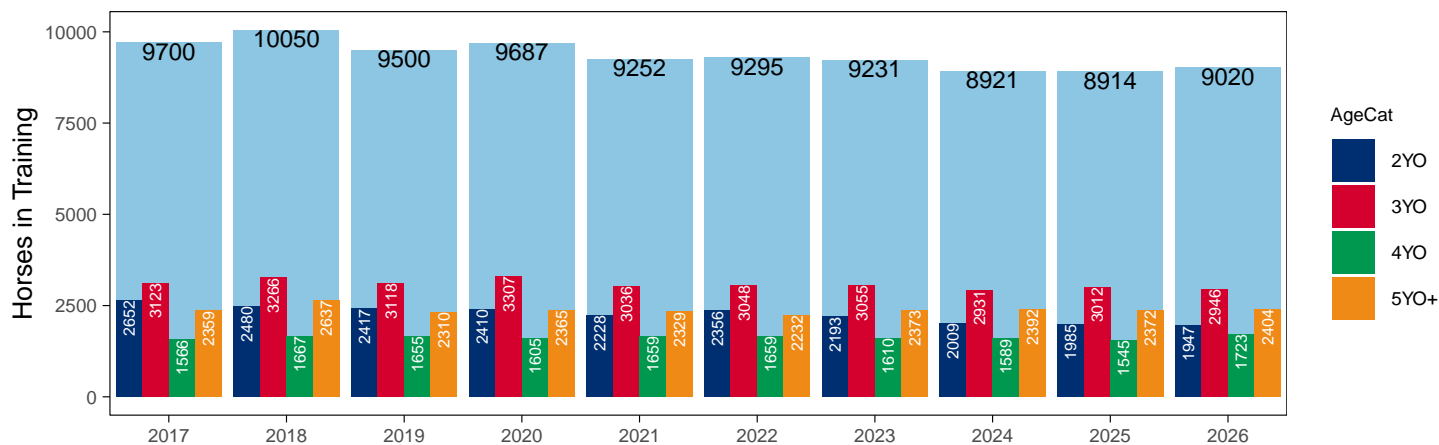
### Flat (including Dual)

AgeCat	2017	2018	2019	2020	2021	2022	2023	2024	2025	2026	vs. Last Year	vs. Pre-Covid
2YO	2652	2480	2417	2410	2228	2356	2193	2009	1985	1947	-38 / -1.9%	-470 / -19.4%
3YO	3123	3266	3118	3307	3036	3048	3055	2931	3012	2946	-66 / -2.2%	-172 / -5.5%
4YO	1566	1667	1655	1605	1659	1659	1610	1589	1545	1723	+178 / +11.5%	+68 / +4.1%
5YO+	2359	2637	2310	2365	2329	2232	2373	2392	2372	2404	+32 / +1.3%	+94 / +4.1%
<b>Total</b>	<b>9700</b>	<b>10050</b>	<b>9500</b>	<b>9687</b>	<b>9252</b>	<b>9295</b>	<b>9231</b>	<b>8921</b>	<b>8914</b>	<b>9020</b>	<b>+106 / +1.2%</b>	<b>-480 / -5.1%</b>

'vs. Pre-Covid' is comparison between 2026 and 2019

### Snapshot of Flat Horses in Training in February

Flat Horses in Training in February, shown by Age



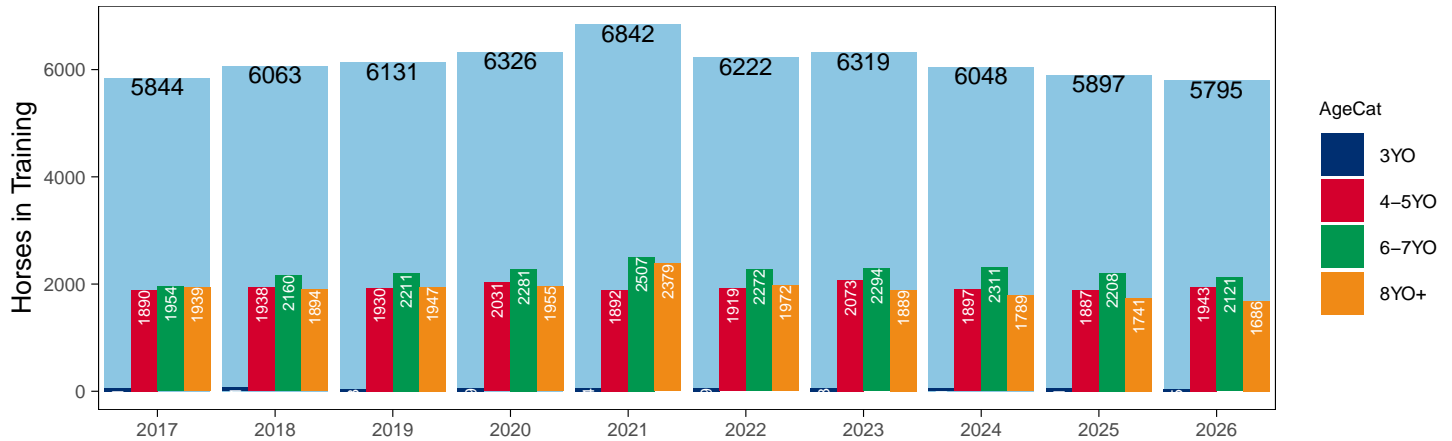
## Jump (including Dual)

AgeCat	2017	2018	2019	2020	2021	2022	2023	2024	2025	2026	vs. Last Year	vs. Pre-Covid
3YO	61	71	43	59	64	59	63	51	61	45	-16 / -26.2%	+2 / +4.7%
4-5YO	1890	1938	1930	2031	1892	1919	2073	1897	1887	1943	+56 / +3.0%	+13 / +0.7%
6-7YO	1954	2160	2211	2281	2507	2272	2294	2311	2208	2121	-87 / -3.9%	-90 / -4.1%
8YO+	1939	1894	1947	1955	2379	1972	1889	1789	1741	1686	-55 / -3.2%	-261 / -13.4%
<b>Total</b>	<b>5844</b>	<b>6063</b>	<b>6131</b>	<b>6326</b>	<b>6842</b>	<b>6222</b>	<b>6319</b>	<b>6048</b>	<b>5897</b>	<b>5795</b>	<b>-102 / -1.7%</b>	<b>-336 / -5.5%</b>

'vs. Pre-Covid' is comparison between 2026 and 2019

### Snapshot of Jump Horses in Training in February

Jump Horses in Training in February, shown by Age



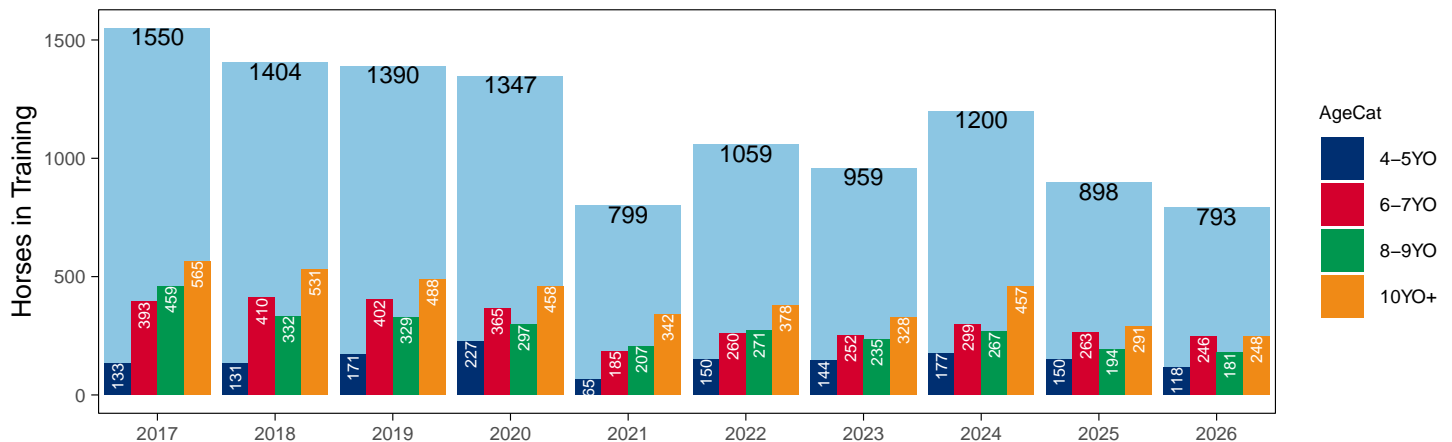
## Hunter Chasers

AgeCat	2017	2018	2019	2020	2021	2022	2023	2024	2025	2026	vs. Last Year	vs. Pre-Covid
4-5YO	133	131	171	227	65	150	144	177	150	118	-32 / -21.3%	-53 / -31.0%
6-7YO	393	410	402	365	185	260	252	299	263	246	-17 / -6.5%	-156 / -38.8%
8-9YO	459	332	329	297	207	271	235	267	194	181	-13 / -6.7%	-148 / -45.0%
10YO+	565	531	488	458	342	378	328	457	291	248	-43 / -14.8%	-240 / -49.2%
<b>Total</b>	<b>1550</b>	<b>1404</b>	<b>1390</b>	<b>1347</b>	<b>799</b>	<b>1059</b>	<b>959</b>	<b>1200</b>	<b>898</b>	<b>793</b>	<b>-105 / -11.7%</b>	<b>-597 / -42.9%</b>

'vs. Pre-Covid' is comparison between 2026 and 2019

### Snapshot of Hunter Chasers in Training in February

Hunter Chasers in Training in February, shown by Age



## 2026 Horses in Training versus Previous Years

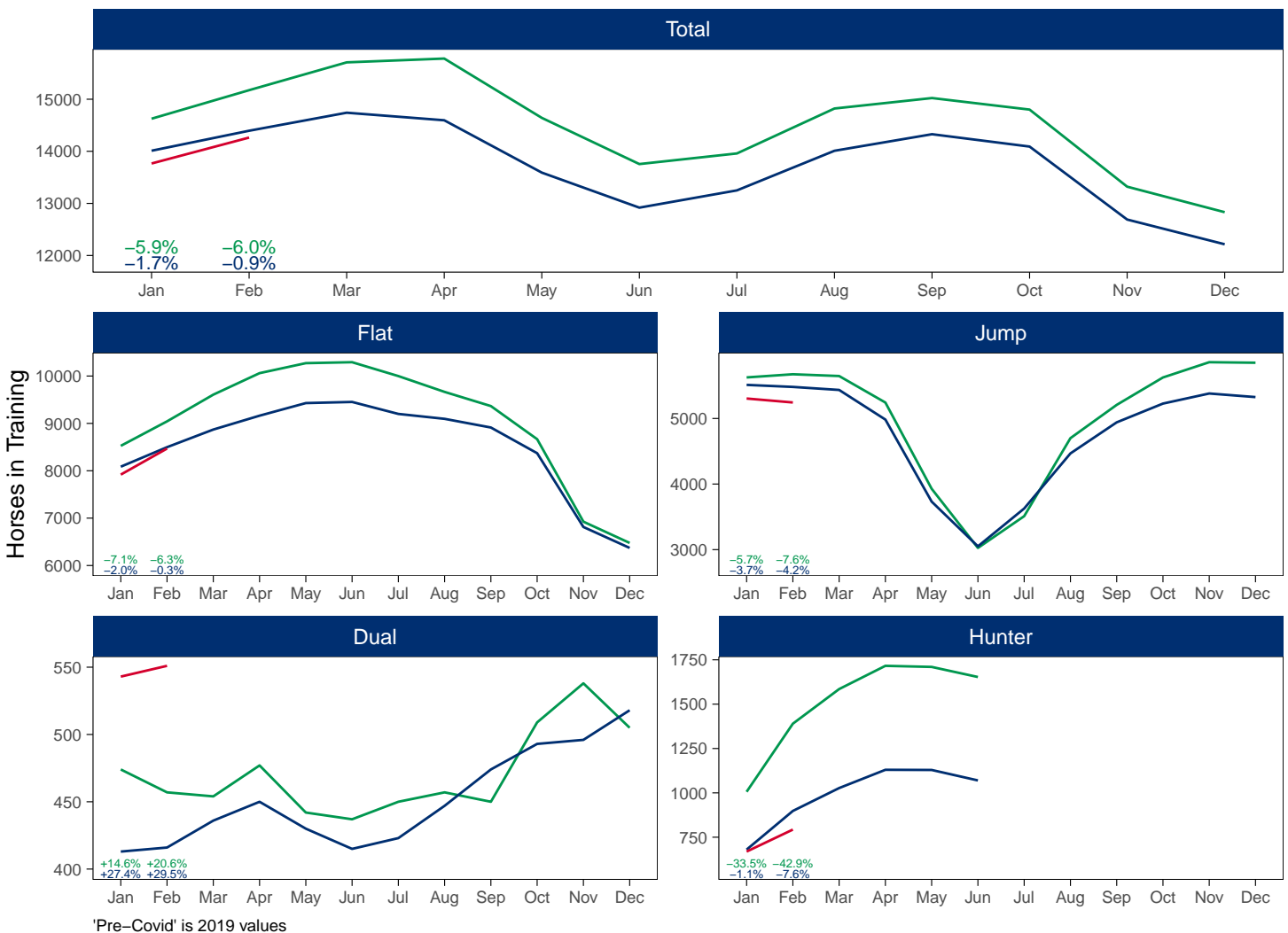
Type	Period	Jan	Feb	Mar	Apr	May	Jun	Jul	Aug	Sep	Oct	Nov	Dec
Flat	2026	7919	8469										
	2025	8086	8498	8870	9163	9429	9453	9200	9096	8913	8371	6813	6371
	Pre-Covid	8526	9043	9607	10061	10272	10292	9999	9665	9366	8667	6925	6476
Jump	2026	5304	5244										
	2025	5512	5481	5435	4983	3732	3050	3627	4467	4941	5227	5381	5326
	Pre-Covid	5626	5674	5647	5243	3928	3026	3510	4700	5207	5625	5858	5850
Dual	2026	543	551										
	2025	413	416	436	450	430	415	423	447	474	493	496	518
	Pre-Covid	474	457	454	477	442	437	450	457	450	509	538	505
Hunter	2026	669	793										
	2025	680	898	1027	1130	1129	1070						
	Pre-Covid	1006	1390	1585	1716	1710	1653						
<b>Total</b>	<b>2026</b>	<b>13766</b>	<b>14264</b>										
	<b>2025</b>	<b>14011</b>	<b>14395</b>	<b>14741</b>	<b>14596</b>	<b>13591</b>	<b>12918</b>	<b>13250</b>	<b>14010</b>	<b>14328</b>	<b>14091</b>	<b>12690</b>	<b>12215</b>
	<b>Pre-Covid</b>	<b>14626</b>	<b>15174</b>	<b>15708</b>	<b>15781</b>	<b>14642</b>	<b>13755</b>	<b>13959</b>	<b>14822</b>	<b>15023</b>	<b>14801</b>	<b>13321</b>	<b>12831</b>

'Pre-Covid' is 2019 values

### Monthly Horses in Training

2026 against 2025 and Pre-Covid, shown with % Difference

Period — Pre-Covid — 2025 — 2026



## Flat (including Dual)

AgeCat	Period	Jan	Feb	Mar	Apr	May	Jun	Jul	Aug	Sep	Oct	Nov	Dec
2YO	2026	1547	1947										
	2025	1651	1985	2246	2474	2883	3097	3233	3346	3370	3257	2819	2746
	Pre-Covid	2098	2417	2727	3095	3382	3575	3695	3769	3784	3622	3087	2993
3YO	2026	2846	2946										
	2025	2900	3012	3080	3147	3065	2994	2812	2688	2614	2423	1860	1689
	Pre-Covid	2982	3118	3269	3316	3282	3203	2992	2778	2624	2388	1766	1606
4YO	2026	1683	1723										
	2025	1568	1545	1572	1573	1542	1496	1382	1360	1330	1265	1000	941
	Pre-Covid	1628	1655	1697	1709	1673	1646	1551	1477	1411	1326	1042	930
5YO+	2026	2386	2404										
	2025	2380	2372	2408	2419	2369	2281	2196	2149	2073	1919	1630	1513
	Pre-Covid	2292	2310	2368	2418	2377	2305	2211	2098	1997	1840	1568	1452
<b>Total</b>	<b>2026</b>	<b>8462</b>	<b>9020</b>										
	<b>2025</b>	<b>8499</b>	<b>8914</b>	<b>9306</b>	<b>9613</b>	<b>9859</b>	<b>9868</b>	<b>9623</b>	<b>9543</b>	<b>9387</b>	<b>8864</b>	<b>7309</b>	<b>6889</b>
	<b>Pre-Covid</b>	<b>9000</b>	<b>9500</b>	<b>10061</b>	<b>10538</b>	<b>10714</b>	<b>10729</b>	<b>10449</b>	<b>10122</b>	<b>9816</b>	<b>9176</b>	<b>7463</b>	<b>6981</b>

'Pre-Covid' is 2019 values

## Monthly Flat Horses in Training

2026 against 2025 and Pre-Covid, shown with % Difference

Period — Pre-Covid — 2025 — 2026



'Pre-Covid' is 2019 values

## Jump (including Dual)

AgeCat	Period	Jan	Feb	Mar	Apr	May	Jun	Jul	Aug	Sep	Oct	Nov	Dec
3YO	2026	41	45										
	2025	39	61	68	92	113	145	232	329	427	524	624	697
	Pre-Covid	31	43	57	72	88	115	167	248	356	493	587	648
4-5YO	2026	1876	1943										
	2025	1827	1887	1929	1802	1385	1158	1435	1892	2105	2237	2352	2352
	Pre-Covid	1855	1930	1963	1876	1408	1083	1352	1977	2232	2415	2558	2559
6-7YO	2026	2171	2121										
	2025	2248	2208	2165	1988	1468	1179	1361	1581	1719	1785	1759	1714
	Pre-Covid	2229	2211	2178	2021	1490	1154	1308	1682	1782	1891	1908	1853
8YO+	2026	1759	1686										
	2025	1811	1741	1709	1551	1196	983	1022	1112	1164	1174	1142	1081
	Pre-Covid	1985	1947	1903	1751	1384	1111	1133	1250	1287	1335	1343	1295
<b>Total</b>	<b>2026</b>	<b>5847</b>	<b>5795</b>										
	<b>2025</b>	<b>5925</b>	<b>5897</b>	<b>5871</b>	<b>5433</b>	<b>4162</b>	<b>3465</b>	<b>4050</b>	<b>4914</b>	<b>5415</b>	<b>5720</b>	<b>5877</b>	<b>5844</b>
	<b>Pre-Covid</b>	<b>6100</b>	<b>6131</b>	<b>6101</b>	<b>5720</b>	<b>4370</b>	<b>3463</b>	<b>3960</b>	<b>5157</b>	<b>5657</b>	<b>6134</b>	<b>6396</b>	<b>6355</b>

'Pre-Covid' is 2019 values

## Monthly Jump Horses in Training

2026 against 2025 and Pre-Covid, shown with % Difference

Period — Pre-Covid — 2025 — 2026



'Pre-Covid' is 2019 values

## Hunter Chasers

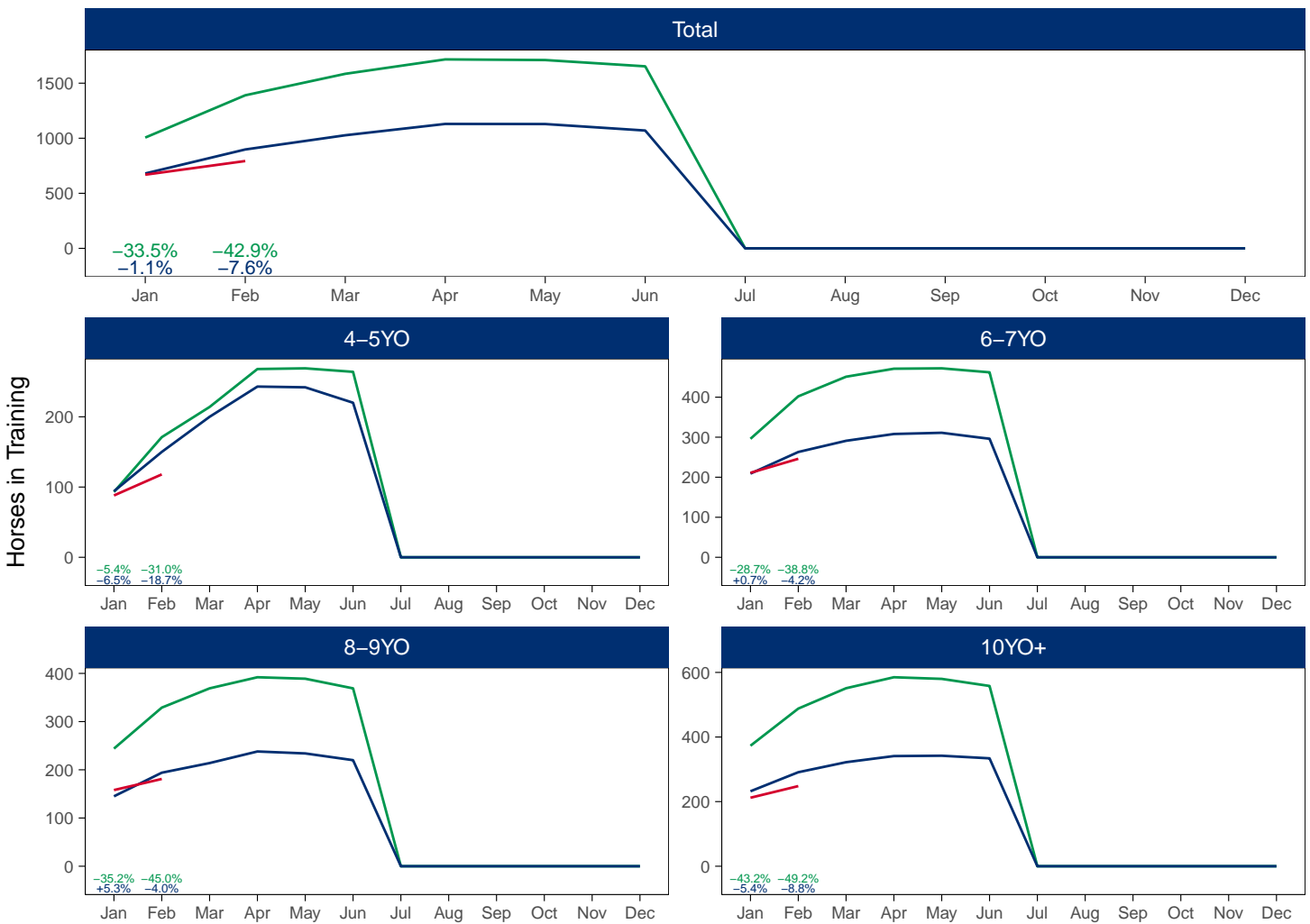
AgeCat	Period	Jan	Feb	Mar	Apr	May	Jun	Jul	Aug	Sep	Oct	Nov	Dec
4-5YO	2026	88	118										
	2025	94	150	200	243	242	220						
	Pre-Covid	93	171	214	268	269	264						
6-7YO	2026	211	246										
	2025	209	263	291	308	311	296						
	Pre-Covid	296	402	451	471	472	462						
8-9YO	2026	158	181										
	2025	145	194	214	238	234	220						
	Pre-Covid	244	329	369	392	389	369						
10YO+	2026	212	248										
	2025	232	291	322	341	342	334						
	Pre-Covid	373	488	551	585	580	558						
<b>Total</b>	<b>2026</b>	<b>669</b>	<b>793</b>										
	<b>2025</b>	<b>680</b>	<b>898</b>	<b>1027</b>	<b>1130</b>	<b>1129</b>	<b>1070</b>						
	<b>Pre-Covid</b>	<b>1006</b>	<b>1390</b>	<b>1585</b>	<b>1716</b>	<b>1710</b>	<b>1653</b>						

'Pre-Covid' is 2019 values

## Monthly Hunter Chasers in Training

2026 against 2025 and Pre-Covid, shown with % Difference

Period — Pre-Covid — 2025 — 2026



'Pre-Covid' is 2019 values

# February 2026 Horses in Training by Rating Band Snapshot versus Previous Years

## Flat (including Dual)

AgeCat	RatBand	2017	2018	2019	2020	2021	2022	2023	2024	2025	2026
2YO	Unrated	2,652 (100.0%)	2,480 (100.0%)	2,417 (100.0%)	2,410 (100.0%)	2,228 (100.0%)	2,356 (100.0%)	2,193 (100.0%)	2,009 (100.0%)	1,985 (100.0%)	1,947 (100.0%)
	<b>Subtotal</b>	<b>2,652 (100.0%)</b>	<b>2,480 (100.0%)</b>	<b>2,417 (100.0%)</b>	<b>2,410 (100.0%)</b>	<b>2,228 (100.0%)</b>	<b>2,356 (100.0%)</b>	<b>2,193 (100.0%)</b>	<b>2,009 (100.0%)</b>	<b>1,985 (100.0%)</b>	<b>1,947 (100.0%)</b>
3YO	Unrated	1,640 (52.5%)	1,972 (60.4%)	1,791 (57.4%)	2,005 (60.6%)	1,796 (59.2%)	1,707 (56.0%)	1,754 (57.4%)	1,649 (56.3%)	1,751 (58.1%)	1,709 (58.0%)
	0-50	103 (3.3%)	85 (2.6%)	103 (3.3%)	124 (3.7%)	99 (3.3%)	122 (4.0%)	104 (3.4%)	100 (3.4%)	90 (3.0%)	100 (3.4%)
	51-60	227 (7.3%)	178 (5.5%)	254 (8.1%)	203 (6.1%)	213 (7.0%)	220 (7.2%)	203 (6.6%)	223 (7.6%)	215 (7.1%)	219 (7.4%)
	61-70	361 (11.6%)	334 (10.2%)	299 (9.6%)	309 (9.3%)	326 (10.7%)	317 (10.4%)	325 (10.6%)	301 (10.3%)	311 (10.3%)	298 (10.1%)
	71-80	393 (12.6%)	373 (11.4%)	322 (10.3%)	336 (10.2%)	308 (10.1%)	359 (11.8%)	341 (11.2%)	336 (11.5%)	324 (10.8%)	296 (10.0%)
	81-90	264 (8.5%)	179 (5.5%)	199 (6.4%)	182 (5.5%)	160 (5.3%)	189 (6.2%)	192 (6.3%)	184 (6.3%)	177 (5.9%)	184 (6.2%)
	91-100	79 (2.5%)	78 (2.4%)	90 (2.9%)	82 (2.5%)	78 (2.6%)	68 (2.2%)	77 (2.5%)	78 (2.7%)	90 (3.0%)	82 (2.8%)
	101+	56 (1.8%)	67 (2.1%)	60 (1.9%)	66 (2.0%)	56 (1.8%)	66 (2.2%)	59 (1.9%)	60 (2.0%)	54 (1.8%)	58 (2.0%)
<b>Subtotal</b>	<b>3,123 (100.0%)</b>	<b>3,266 (100.0%)</b>	<b>3,118 (100.0%)</b>	<b>3,307 (100.0%)</b>	<b>3,036 (100.0%)</b>	<b>3,048 (100.0%)</b>	<b>3,055 (100.0%)</b>	<b>2,931 (100.0%)</b>	<b>3,012 (100.0%)</b>	<b>2,946 (100.0%)</b>	
4YO	Unrated	246 (15.7%)	351 (21.1%)	320 (19.3%)	298 (18.6%)	373 (22.5%)	296 (17.8%)	296 (18.4%)	260 (16.4%)	291 (18.8%)	332 (19.3%)
	0-50	133 (8.5%)	163 (9.8%)	185 (11.2%)	190 (11.8%)	178 (10.7%)	186 (11.2%)	184 (11.4%)	164 (10.3%)	157 (10.2%)	158 (9.2%)
	51-60	200 (12.8%)	214 (12.8%)	189 (11.4%)	210 (13.1%)	215 (13.0%)	222 (13.4%)	232 (14.4%)	239 (15.0%)	202 (13.1%)	234 (13.6%)
	61-70	257 (16.4%)	251 (15.1%)	274 (16.6%)	267 (16.6%)	260 (15.7%)	279 (16.8%)	260 (16.1%)	291 (18.3%)	230 (14.9%)	298 (17.3%)
	71-80	314 (20.1%)	288 (17.3%)	256 (15.5%)	221 (13.8%)	273 (16.5%)	288 (17.4%)	268 (16.6%)	282 (17.7%)	264 (17.1%)	275 (16.0%)
	81-90	217 (13.9%)	204 (12.2%)	218 (13.2%)	202 (12.6%)	179 (10.8%)	210 (12.7%)	194 (12.0%)	188 (11.8%)	209 (13.5%)	219 (12.7%)
	91-100	108 (6.9%)	128 (7.7%)	130 (7.9%)	121 (7.5%)	116 (7.0%)	106 (6.4%)	81 (5.0%)	94 (5.9%)	98 (6.3%)	120 (7.0%)
	101+	91 (5.8%)	68 (4.1%)	83 (5.0%)	96 (6.0%)	65 (3.9%)	72 (4.3%)	95 (5.9%)	71 (4.5%)	94 (6.1%)	87 (5.0%)
<b>Subtotal</b>	<b>1,566 (100.0%)</b>	<b>1,667 (100.0%)</b>	<b>1,655 (100.0%)</b>	<b>1,605 (100.0%)</b>	<b>1,659 (100.0%)</b>	<b>1,659 (100.0%)</b>	<b>1,610 (100.0%)</b>	<b>1,589 (100.0%)</b>	<b>1,545 (100.0%)</b>	<b>1,723 (100.0%)</b>	
5YO+	Unrated	331 (14.0%)	586 (22.2%)	287 (12.4%)	351 (14.8%)	354 (15.2%)	362 (16.2%)	326 (13.7%)	322 (13.5%)	301 (12.7%)	323 (13.4%)
	0-50	246 (10.4%)	322 (12.2%)	364 (15.8%)	317 (13.4%)	296 (12.7%)	321 (14.4%)	318 (13.4%)	311 (13.0%)	340 (14.3%)	354 (14.7%)
	51-60	330 (14.0%)	354 (13.4%)	342 (14.8%)	373 (15.8%)	385 (16.5%)	359 (16.1%)	392 (16.5%)	439 (18.4%)	422 (17.8%)	409 (17.0%)
	61-70	414 (17.5%)	395 (15.0%)	396 (17.1%)	400 (16.9%)	422 (18.1%)	376 (16.8%)	422 (17.8%)	440 (18.4%)	451 (19.0%)	406 (16.9%)
	71-80	367 (15.6%)	355 (13.5%)	329 (14.2%)	362 (15.3%)	338 (14.5%)	295 (13.2%)	372 (15.7%)	351 (14.7%)	352 (14.8%)	385 (16.0%)
	81-90	323 (13.7%)	305 (11.6%)	274 (11.9%)	280 (11.8%)	238 (10.2%)	236 (10.6%)	249 (10.5%)	259 (10.8%)	262 (11.0%)	247 (10.3%)
	91-100	185 (7.8%)	177 (6.7%)	180 (7.8%)	155 (6.6%)	154 (6.6%)	146 (6.5%)	154 (6.5%)	146 (6.1%)	118 (5.0%)	134 (5.6%)
	101+	163 (6.9%)	143 (5.4%)	138 (6.0%)	127 (5.4%)	142 (6.1%)	137 (6.1%)	140 (5.9%)	124 (5.2%)	126 (5.3%)	146 (6.1%)
<b>Subtotal</b>	<b>2,359 (100.0%)</b>	<b>2,637 (100.0%)</b>	<b>2,310 (100.0%)</b>	<b>2,365 (100.0%)</b>	<b>2,329 (100.0%)</b>	<b>2,232 (100.0%)</b>	<b>2,373 (100.0%)</b>	<b>2,392 (100.0%)</b>	<b>2,372 (100.0%)</b>	<b>2,404 (100.0%)</b>	
Overall	Unrated	4,869 (50.2%)	5,389 (53.6%)	4,815 (50.7%)	5,064 (52.3%)	4,751 (51.4%)	4,721 (50.8%)	4,569 (49.5%)	4,240 (47.5%)	4,328 (48.6%)	4,311 (47.8%)
	0-50	482 (5.0%)	570 (5.7%)	652 (6.9%)	631 (6.5%)	573 (6.2%)	629 (6.8%)	606 (6.6%)	575 (6.4%)	587 (6.6%)	612 (6.8%)
	51-60	757 (7.8%)	746 (7.4%)	785 (8.3%)	786 (8.1%)	813 (8.8%)	801 (8.6%)	827 (9.0%)	901 (10.1%)	839 (9.4%)	862 (9.6%)
	61-70	1,032 (10.6%)	980 (9.8%)	969 (10.2%)	976 (10.1%)	1,008 (10.9%)	972 (10.5%)	1,007 (10.9%)	1,032 (11.6%)	992 (11.1%)	1,002 (11.1%)
	71-80	1,074 (11.1%)	1,016 (10.1%)	907 (9.5%)	919 (9.5%)	919 (9.9%)	942 (10.1%)	981 (10.6%)	969 (10.9%)	940 (10.5%)	956 (10.6%)
	81-90	804 (8.3%)	688 (6.8%)	691 (7.3%)	664 (6.9%)	577 (6.2%)	635 (6.8%)	635 (6.9%)	631 (7.1%)	648 (7.3%)	650 (7.2%)
	91-100	372 (3.8%)	383 (3.8%)	400 (4.2%)	358 (3.7%)	348 (3.8%)	320 (3.4%)	312 (3.4%)	318 (3.6%)	306 (3.4%)	336 (3.7%)
101+	310 (3.2%)	278 (2.8%)	281 (3.0%)	289 (3.0%)	263 (2.8%)	275 (3.0%)	294 (3.2%)	255 (2.9%)	274 (3.1%)	291 (3.2%)	
<b>Total</b>	<b>9,700 (100.0%)</b>	<b>10,050 (100.0%)</b>	<b>9,500 (100.0%)</b>	<b>9,687 (100.0%)</b>	<b>9,252 (100.0%)</b>	<b>9,295 (100.0%)</b>	<b>9,231 (100.0%)</b>	<b>8,921 (100.0%)</b>	<b>8,914 (100.0%)</b>	<b>9,020 (100.0%)</b>	

Where a horse has more than one published rating (published Flat Turf and published Flat AWT mark), the higher of the two is taken.

Jump (including Dual)

AgeCat	RatBand	2017	2018	2019	2020	2021	2022	2023	2024	2025	2026
3YO	Unrated	61 (100.0%)	71 (100.0%)	43 (100.0%)	59 (100.0%)	64 (100.0%)	59 (100.0%)	63 (100.0%)	51 (100.0%)	61 (100.0%)	45 (100.0%)
	<b>Subtotal</b>	<b>61 (100.0%)</b>	<b>71 (100.0%)</b>	<b>43 (100.0%)</b>	<b>59 (100.0%)</b>	<b>64 (100.0%)</b>	<b>59 (100.0%)</b>	<b>63 (100.0%)</b>	<b>51 (100.0%)</b>	<b>61 (100.0%)</b>	<b>45 (100.0%)</b>
4-5YO	Unrated	1,428 (75.6%)	1,477 (76.2%)	1,484 (76.9%)	1,497 (73.7%)	1,531 (80.9%)	1,431 (74.6%)	1,599 (77.1%)	1,439 (75.9%)	1,443 (76.5%)	1,500 (77.2%)
	0-100	112 (5.9%)	94 (4.9%)	104 (5.4%)	165 (8.1%)	124 (6.6%)	206 (10.7%)	211 (10.2%)	227 (12.0%)	203 (10.8%)	187 (9.6%)
	101-110	87 (4.6%)	113 (5.8%)	82 (4.2%)	100 (4.9%)	62 (3.3%)	116 (6.0%)	108 (5.2%)	97 (5.1%)	101 (5.4%)	94 (4.8%)
	111-120	105 (5.6%)	97 (5.0%)	114 (5.9%)	108 (5.3%)	72 (3.8%)	81 (4.2%)	98 (4.7%)	78 (4.1%)	86 (4.6%)	98 (5.0%)
	121-130	80 (4.2%)	92 (4.7%)	80 (4.1%)	91 (4.5%)	64 (3.4%)	56 (2.9%)	43 (2.1%)	36 (1.9%)	44 (2.3%)	47 (2.4%)
	131-140	61 (3.2%)	46 (2.4%)	50 (2.6%)	52 (2.6%)	22 (1.2%)	20 (1.0%)	13 (0.6%)	16 (0.8%)	5 (0.3%)	15 (0.8%)
	141-150	14 (0.7%)	15 (0.8%)	15 (0.8%)	14 (0.7%)	13 (0.7%)	7 (0.4%)	1 (0.0%)	4 (0.2%)	3 (0.2%)	1 (0.1%)
	151+	3 (0.2%)	4 (0.2%)	1 (0.1%)	4 (0.2%)	4 (0.2%)	2 (0.1%)	NA (-)	NA (-)	2 (0.1%)	1 (0.1%)
<b>Subtotal</b>	<b>1,890 (100.0%)</b>	<b>1,938 (100.0%)</b>	<b>1,930 (100.0%)</b>	<b>2,031 (100.0%)</b>	<b>1,892 (100.0%)</b>	<b>1,919 (100.0%)</b>	<b>2,073 (100.0%)</b>	<b>1,897 (100.0%)</b>	<b>1,887 (100.0%)</b>	<b>1,943 (100.0%)</b>	
6-7YO	Unrated	575 (29.4%)	683 (31.6%)	657 (29.7%)	631 (27.7%)	816 (32.5%)	647 (28.5%)	716 (31.2%)	761 (32.9%)	626 (28.4%)	590 (27.8%)
	0-100	367 (18.8%)	378 (17.5%)	403 (18.2%)	457 (20.0%)	524 (20.9%)	610 (26.8%)	631 (27.5%)	656 (28.4%)	648 (29.3%)	544 (25.6%)
	101-110	244 (12.5%)	264 (12.2%)	294 (13.3%)	290 (12.7%)	304 (12.1%)	307 (13.5%)	313 (13.6%)	327 (14.1%)	329 (14.9%)	324 (15.3%)
	111-120	258 (13.2%)	295 (13.7%)	300 (13.6%)	319 (14.0%)	322 (12.8%)	307 (13.5%)	297 (12.9%)	263 (11.4%)	297 (13.5%)	341 (16.1%)
	121-130	235 (12.0%)	244 (11.3%)	282 (12.8%)	278 (12.2%)	276 (11.0%)	211 (9.3%)	199 (8.7%)	187 (8.1%)	182 (8.2%)	205 (9.7%)
	131-140	174 (8.9%)	182 (8.4%)	167 (7.6%)	206 (9.0%)	177 (7.1%)	130 (5.7%)	94 (4.1%)	79 (3.4%)	93 (4.2%)	80 (3.8%)
	141-150	71 (3.6%)	85 (3.9%)	80 (3.6%)	70 (3.1%)	65 (2.6%)	45 (2.0%)	32 (1.4%)	32 (1.4%)	23 (1.0%)	26 (1.2%)
	151+	30 (1.5%)	29 (1.3%)	28 (1.3%)	30 (1.3%)	23 (0.9%)	15 (0.7%)	12 (0.5%)	6 (0.3%)	10 (0.5%)	11 (0.5%)
<b>Subtotal</b>	<b>1,954 (100.0%)</b>	<b>2,160 (100.0%)</b>	<b>2,211 (100.0%)</b>	<b>2,281 (100.0%)</b>	<b>2,507 (100.0%)</b>	<b>2,272 (100.0%)</b>	<b>2,294 (100.0%)</b>	<b>2,311 (100.0%)</b>	<b>2,208 (100.0%)</b>	<b>2,121 (100.0%)</b>	
8YO+	Unrated	202 (10.4%)	269 (14.2%)	255 (13.1%)	278 (14.2%)	310 (13.0%)	273 (13.8%)	276 (14.6%)	324 (18.1%)	251 (14.4%)	243 (14.4%)
	0-100	550 (28.4%)	507 (26.8%)	536 (27.5%)	537 (27.5%)	699 (29.4%)	551 (27.9%)	519 (27.5%)	493 (27.6%)	550 (31.6%)	520 (30.8%)
	101-110	280 (14.4%)	268 (14.1%)	259 (13.3%)	257 (13.1%)	310 (13.0%)	239 (12.1%)	252 (13.3%)	222 (12.4%)	240 (13.8%)	257 (15.2%)
	111-120	293 (15.1%)	267 (14.1%)	260 (13.4%)	261 (13.4%)	313 (13.2%)	309 (15.7%)	288 (15.2%)	273 (15.3%)	252 (14.5%)	236 (14.0%)
	121-130	252 (13.0%)	233 (12.3%)	259 (13.3%)	236 (12.1%)	312 (13.1%)	261 (13.2%)	247 (13.1%)	217 (12.1%)	218 (12.5%)	194 (11.5%)
	131-140	214 (11.0%)	200 (10.6%)	212 (10.9%)	194 (9.9%)	242 (10.2%)	188 (9.5%)	180 (9.5%)	161 (9.0%)	136 (7.8%)	142 (8.4%)
	141-150	100 (5.2%)	105 (5.5%)	103 (5.3%)	127 (6.5%)	120 (5.0%)	106 (5.4%)	80 (4.2%)	62 (3.5%)	62 (3.6%)	58 (3.4%)
	151+	48 (2.5%)	45 (2.4%)	63 (3.2%)	65 (3.3%)	73 (3.1%)	45 (2.3%)	47 (2.5%)	37 (2.1%)	32 (1.8%)	36 (2.1%)
<b>Subtotal</b>	<b>1,939 (100.0%)</b>	<b>1,894 (100.0%)</b>	<b>1,947 (100.0%)</b>	<b>1,955 (100.0%)</b>	<b>2,379 (100.0%)</b>	<b>1,972 (100.0%)</b>	<b>1,889 (100.0%)</b>	<b>1,789 (100.0%)</b>	<b>1,741 (100.0%)</b>	<b>1,686 (100.0%)</b>	
Overall	Unrated	2,266 (38.8%)	2,500 (41.2%)	2,439 (39.8%)	2,465 (39.0%)	2,721 (39.8%)	2,410 (38.7%)	2,654 (42.0%)	2,575 (42.6%)	2,381 (40.4%)	2,378 (41.0%)
	0-100	1,029 (17.6%)	979 (16.1%)	1,043 (17.0%)	1,159 (18.3%)	1,347 (19.7%)	1,367 (22.0%)	1,361 (21.5%)	1,376 (22.8%)	1,401 (23.8%)	1,251 (21.6%)
	101-110	611 (10.5%)	645 (10.6%)	635 (10.4%)	647 (10.2%)	676 (9.9%)	662 (10.6%)	673 (10.7%)	646 (10.7%)	670 (11.4%)	675 (11.6%)
	111-120	656 (11.2%)	659 (10.9%)	674 (11.0%)	688 (10.9%)	707 (10.3%)	697 (11.2%)	683 (10.8%)	614 (10.2%)	635 (10.8%)	675 (11.6%)
	121-130	567 (9.7%)	569 (9.4%)	621 (10.1%)	605 (9.6%)	652 (9.5%)	528 (8.5%)	489 (7.7%)	440 (7.3%)	444 (7.5%)	446 (7.7%)
	131-140	449 (7.7%)	428 (7.1%)	429 (7.0%)	452 (7.1%)	441 (6.4%)	338 (5.4%)	287 (4.5%)	256 (4.2%)	234 (4.0%)	237 (4.1%)
141-150	185 (3.2%)	205 (3.4%)	198 (3.2%)	211 (3.3%)	198 (2.9%)	158 (2.5%)	113 (1.8%)	98 (1.6%)	88 (1.5%)	85 (1.5%)	
151+	81 (1.4%)	78 (1.3%)	92 (1.5%)	99 (1.6%)	100 (1.5%)	62 (1.0%)	59 (0.9%)	43 (0.7%)	44 (0.7%)	48 (0.8%)	
<b>Total</b>	<b>5,844 (100.0%)</b>	<b>6,063 (100.0%)</b>	<b>6,131 (100.0%)</b>	<b>6,326 (100.0%)</b>	<b>6,842 (100.0%)</b>	<b>6,222 (100.0%)</b>	<b>6,319 (100.0%)</b>	<b>6,048 (100.0%)</b>	<b>5,897 (100.0%)</b>	<b>5,795 (100.0%)</b>	

Where a horse has more than one published rating (published Hurdle and published Chase mark), the higher of the two is taken.

# Young Horses Entering Training

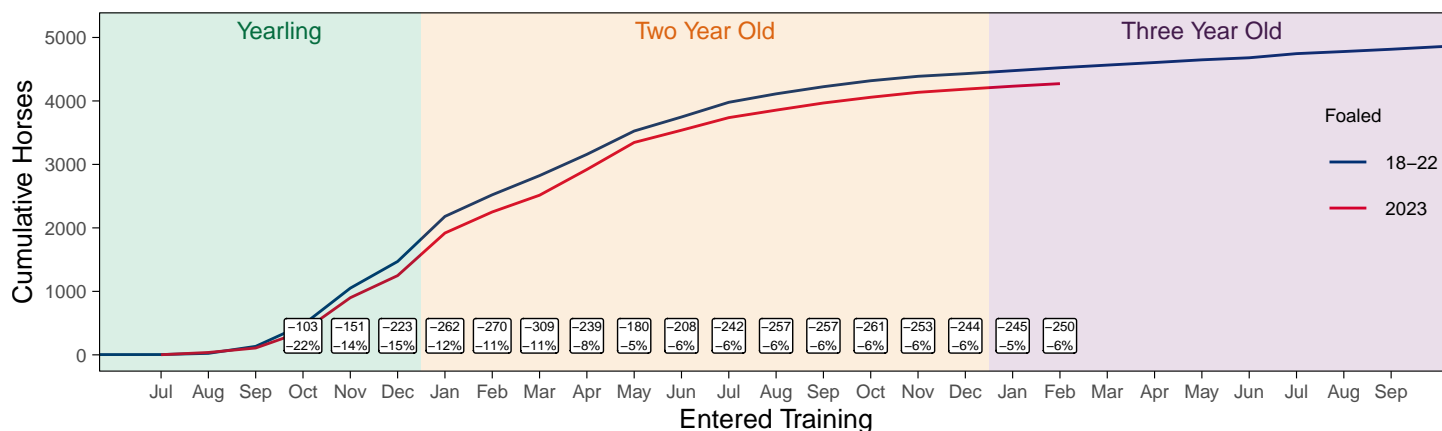
## Flat Yearlings in Training versus Previous Years

Period	Jan	Feb	Mar	Apr	May	Jun	Jul	Aug	Sep	Oct	Nov	Dec
2026	1	1										
2025	0	0	0	1	1	1	1	1	56	177	583	1144
5YrAvg	0	0	0	1	1	1	1	2	53	172	526	908

## Foals Entering Training for the First Time

### 2023 Foals Entering Training Over Time

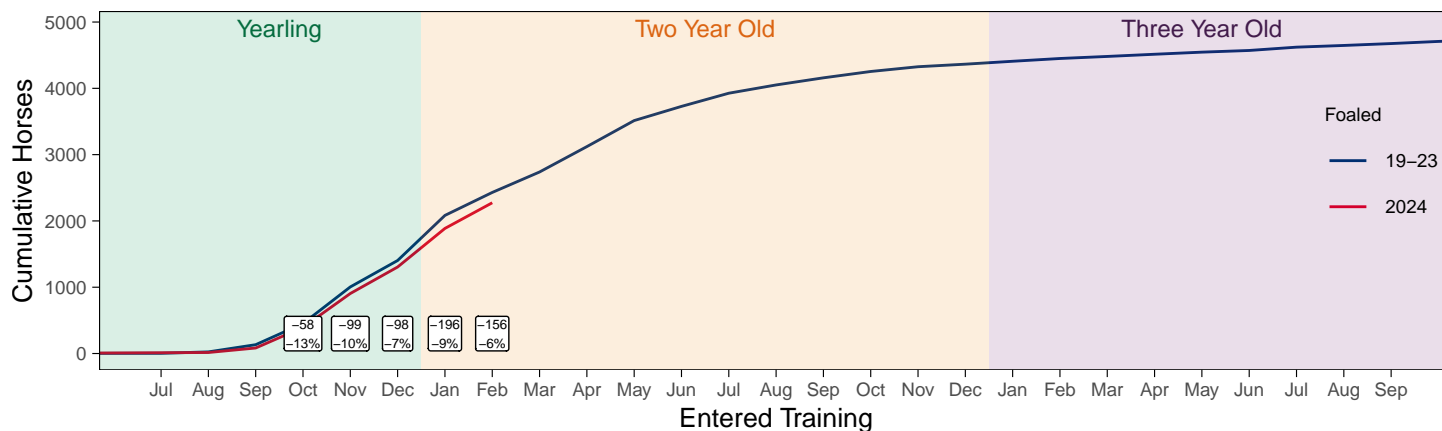
Cumulative Flat Horses foaled in 2023 shown by first in training notification against trend



Cumulative individual horses entering training for the first time by the end of each month.

### 2024 Foals Entering Training Over Time

Cumulative Flat Horses foaled in 2024 shown by first in training notification against trend



Cumulative individual horses entering training for the first time by the end of each month.

## Year to Date Horses in Training

Type	2017	2018	2019	2020	2021	2022	2023	2024	2025	2026	vs. Last Year	vs. Pre-Covid
Flat	10425	10333	10341	10439	9911	9993	9913	9655	9641	9603	-38 / -0.4%	-738 / -7.1%
Jump	6004	5743	6358	6414	7011	6476	6554	6314	6147	5826	-321 / -5.2%	-532 / -8.4%
Dual	662	1115	600	672	633	589	550	566	529	692	+163 / +30.8%	+92 / +15.3%
Hunter	1693	1504	1475	1439	791	1145	1067	1273	975	871	-104 / -10.7%	-604 / -40.9%
<b>Total</b>	<b>17091</b>	<b>17191</b>	<b>17299</b>	<b>17525</b>	<b>17555</b>	<b>17058</b>	<b>17017</b>	<b>16535</b>	<b>16317</b>	<b>16121</b>	<b>-196 / -1.2%</b>	<b>-1178 / -6.8%</b>

'vs. Pre-Covid' is comparison between 2026 and 2019

### Flat

AgeCat	2017	2018	2019	2020	2021	2022	2023	2024	2025	2026	vs. Last Year	vs. Pre-Covid
2YO	2955	2762	2739	2671	2452	2561	2418	2259	2213	2227	+14 / +0.6%	-512 / -18.7%
3YO	3467	3605	3509	3637	3393	3397	3373	3275	3314	3237	-77 / -2.3%	-272 / -7.8%
4YO	1684	1668	1768	1742	1758	1798	1745	1725	1686	1764	+78 / +4.6%	-4 / -0.2%
5YO+	2319	2298	2325	2389	2308	2237	2377	2396	2428	2375	-53 / -2.2%	+50 / +2.2%
<b>Total</b>	<b>10425</b>	<b>10333</b>	<b>10341</b>	<b>10439</b>	<b>9911</b>	<b>9993</b>	<b>9913</b>	<b>9655</b>	<b>9641</b>	<b>9603</b>	<b>-38 / -0.4%</b>	<b>-738 / -7.1%</b>

'vs. Pre-Covid' is comparison between 2026 and 2019

### Jump

AgeCat	2017	2018	2019	2020	2021	2022	2023	2024	2025	2026	vs. Last Year	vs. Pre-Covid
3YO	24	34	25	18	34	26	34	37	15	19	+4 / +26.7%	-6 / -24.0%
4-5YO	1834	1626	1877	1933	1829	1875	2039	1873	1853	1807	-46 / -2.5%	-70 / -3.7%
6-7YO	2045	2095	2333	2363	2623	2401	2408	2437	2322	2194	-128 / -5.5%	-139 / -6.0%
8YO+	2101	1988	2123	2100	2525	2174	2073	1967	1957	1806	-151 / -7.7%	-317 / -14.9%
<b>Total</b>	<b>6004</b>	<b>5743</b>	<b>6358</b>	<b>6414</b>	<b>7011</b>	<b>6476</b>	<b>6554</b>	<b>6314</b>	<b>6147</b>	<b>5826</b>	<b>-321 / -5.2%</b>	<b>-532 / -8.4%</b>

'vs. Pre-Covid' is comparison between 2026 and 2019

### Dual

AgeCat	2017	2018	2019	2020	2021	2022	2023	2024	2025	2026	vs. Last Year	vs. Pre-Covid
3YO	56	57	33	59	50	66	46	58	68	61	-7 / -10.3%	+28 / +84.8%
4YO	175	285	177	193	188	162	163	166	143	195	+52 / +36.4%	+18 / +10.2%
5YO+	431	773	390	420	395	361	341	342	318	436	+118 / +37.1%	+46 / +11.8%
<b>Total</b>	<b>662</b>	<b>1115</b>	<b>600</b>	<b>672</b>	<b>633</b>	<b>589</b>	<b>550</b>	<b>566</b>	<b>529</b>	<b>692</b>	<b>+163 / +30.8%</b>	<b>+92 / +15.3%</b>

'vs. Pre-Covid' is comparison between 2026 and 2019

### Hunter Chasers

AgeCat	2017	2018	2019	2020	2021	2022	2023	2024	2025	2026	vs. Last Year	vs. Pre-Covid
4-5YO	154	149	189	268	58	179	182	213	181	147	-34 / -18.8%	-42 / -22.2%
6-7YO	437	435	425	381	180	288	264	314	282	266	-16 / -5.7%	-159 / -37.4%
8-9YO	487	363	347	310	208	289	256	278	204	193	-11 / -5.4%	-154 / -44.4%
10YO+	615	557	514	480	345	389	365	468	308	265	-43 / -14.0%	-249 / -48.4%
<b>Total</b>	<b>1693</b>	<b>1504</b>	<b>1475</b>	<b>1439</b>	<b>791</b>	<b>1145</b>	<b>1067</b>	<b>1273</b>	<b>975</b>	<b>871</b>	<b>-104 / -10.7%</b>	<b>-604 / -40.9%</b>

'vs. Pre-Covid' is comparison between 2026 and 2019

## Year to Date Runners

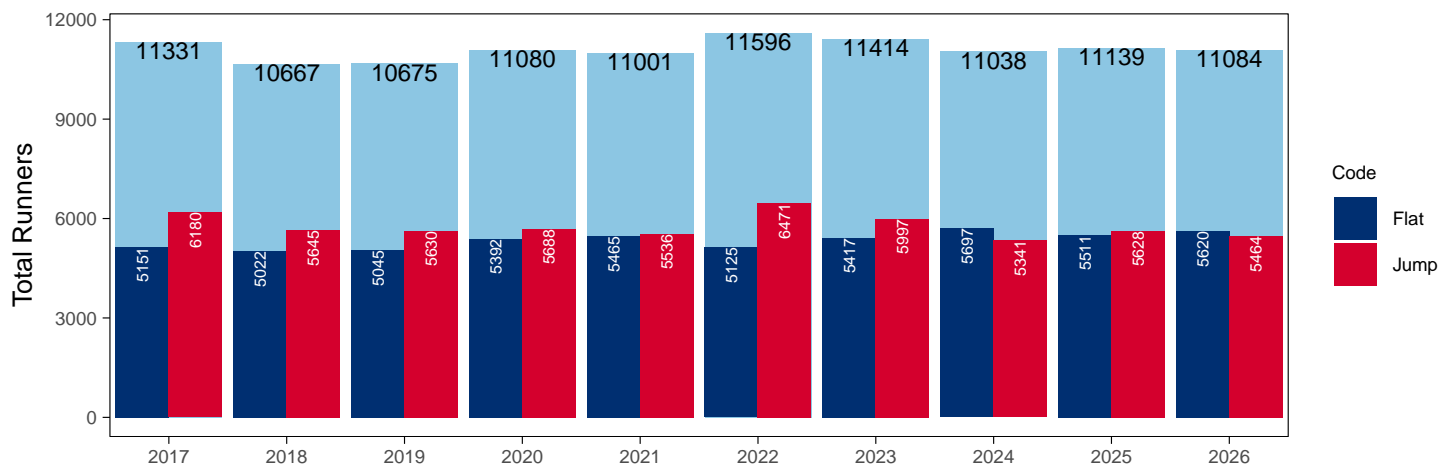
### Year to Date Total Runners

Code	2017	2018	2019	2020	2021	2022	2023	2024	2025	2026	vs. Last Year	vs. Pre-Covid
Flat	5151	5022	5045	5392	5465	5125	5417	5697	5511	5620	+109 / +2.0%	+575 / +11.4%
Jump	6180	5645	5630	5688	5536	6471	5997	5341	5628	5464	-164 / -2.9%	-166 / -2.9%
<b>Total</b>	<b>11331</b>	<b>10667</b>	<b>10675</b>	<b>11080</b>	<b>11001</b>	<b>11596</b>	<b>11414</b>	<b>11038</b>	<b>11139</b>	<b>11084</b>	<b>-55 / -0.5%</b>	<b>+409 / +3.8%</b>

'vs. Pre-Covid' is comparison between 2026 and 2019

### YTD Total Runners

Total Runners in GB Races, shown by Code and Total



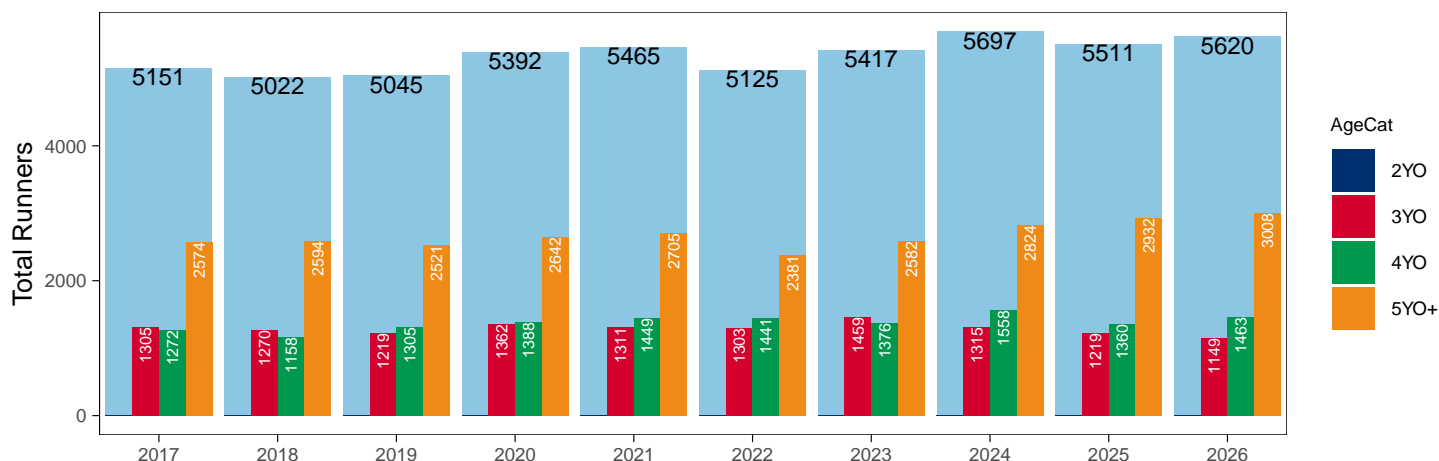
### Flat

AgeCat	2017	2018	2019	2020	2021	2022	2023	2024	2025	2026	vs. Last Year	vs. Pre-Covid
2YO											NA / NA	0 / NA
3YO	1305	1270	1219	1362	1311	1303	1459	1315	1219	1149	-70 / -5.7%	-70 / -5.7%
4YO	1272	1158	1305	1388	1449	1441	1376	1558	1360	1463	+103 / +7.6%	+158 / +12.1%
5YO+	2574	2594	2521	2642	2705	2381	2582	2824	2932	3008	+76 / +2.6%	+487 / +19.3%
<b>Total</b>	<b>5151</b>	<b>5022</b>	<b>5045</b>	<b>5392</b>	<b>5465</b>	<b>5125</b>	<b>5417</b>	<b>5697</b>	<b>5511</b>	<b>5620</b>	<b>+109 / +2.0%</b>	<b>+575 / +11.4%</b>

'vs. Pre-Covid' is comparison between 2026 and 2019

### YTD Total Flat Runners by Age

Total Runners in GB Flat Races, shown by Age Category and Total



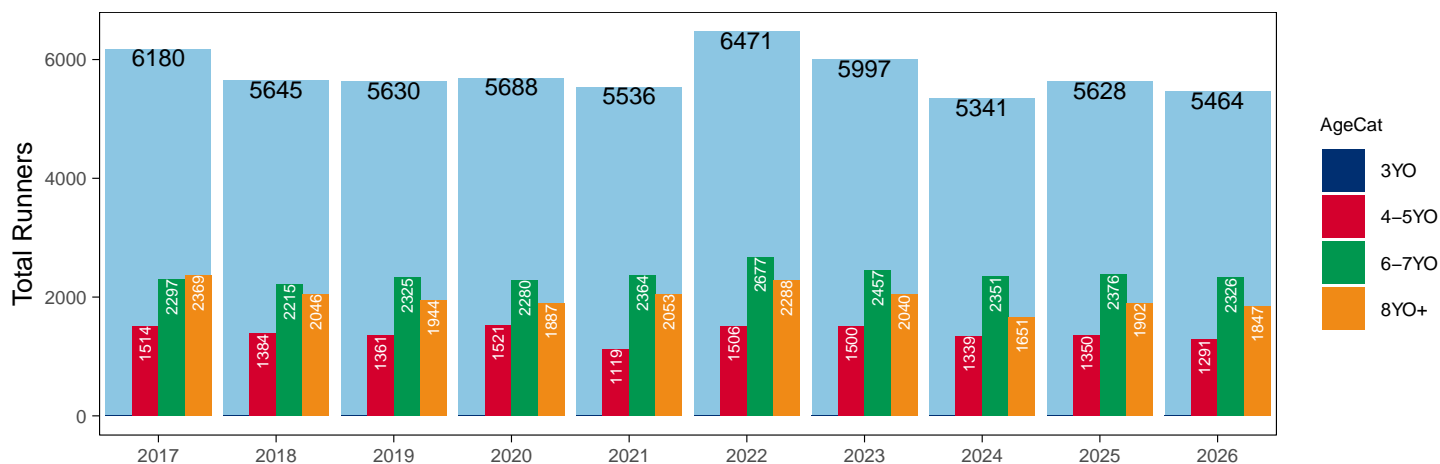
## Jump

AgeCat	2017	2018	2019	2020	2021	2022	2023	2024	2025	2026	vs. Last Year	vs. Pre-Covid
3YO											NA / NA	0 / NA
4-5YO	1514	1384	1361	1521	1119	1506	1500	1339	1350	1291	-59 / -4.4%	-70 / -5.1%
6-7YO	2297	2215	2325	2280	2364	2677	2457	2351	2376	2326	-50 / -2.1%	+1 / +0.0%
8YO+	2369	2046	1944	1887	2053	2288	2040	1651	1902	1847	-55 / -2.9%	-97 / -5.0%
<b>Total</b>	<b>6180</b>	<b>5645</b>	<b>5630</b>	<b>5688</b>	<b>5536</b>	<b>6471</b>	<b>5997</b>	<b>5341</b>	<b>5628</b>	<b>5464</b>	<b>-164 / -2.9%</b>	<b>-166 / -2.9%</b>

'vs. Pre-Covid' is comparison between 2026 and 2019

### YTD Total Jump Runners by Age

Total Runners in GB Jump Races, shown by Age Category and Total



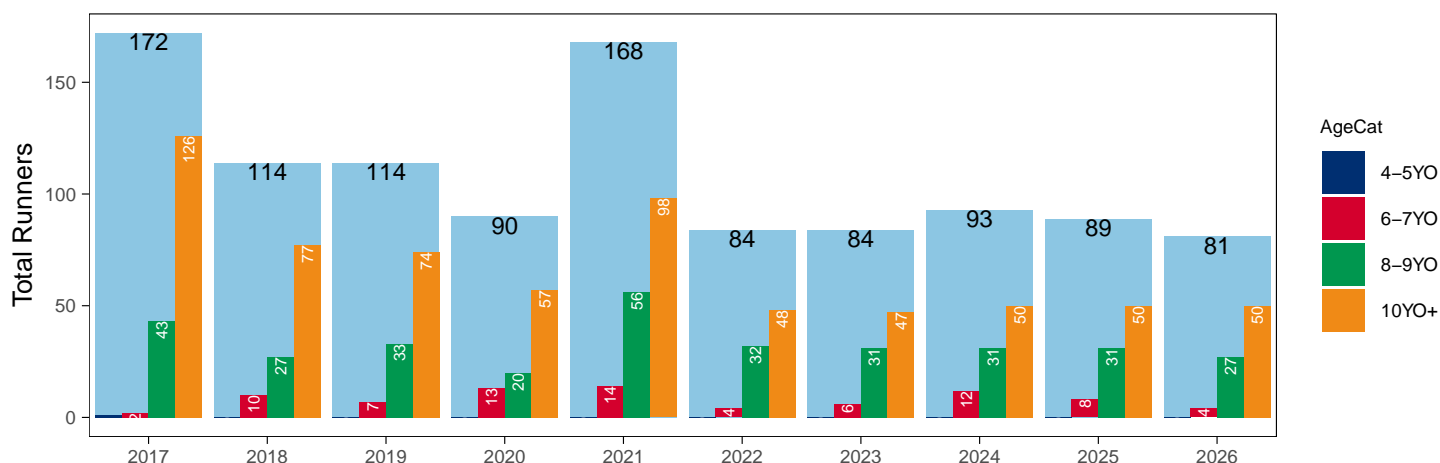
## Hunter Chases

AgeCat	2017	2018	2019	2020	2021	2022	2023	2024	2025	2026	vs. Last Year	vs. Pre-Covid
4-5YO	1										NA / NA	0 / NA
6-7YO	2	10	7	13	14	4	6	12	8	4	-4 / -50.0%	-3 / -42.9%
8-9YO	43	27	33	20	56	32	31	31	31	27	-4 / -12.9%	-6 / -18.2%
10YO+	126	77	74	57	98	48	47	50	50	50	0 / 0.0%	-24 / -32.4%
<b>Total</b>	<b>172</b>	<b>114</b>	<b>114</b>	<b>90</b>	<b>168</b>	<b>84</b>	<b>84</b>	<b>93</b>	<b>89</b>	<b>81</b>	<b>-8 / -9.0%</b>	<b>-33 / -28.9%</b>

'vs. Pre-Covid' is comparison between 2026 and 2019

### YTD Total Hunter Chase Runners by Age

Total Runners in GB Hunter Chases shown by Age Category and Total



## Year to Date Total Runners by Country Trained

Code	Country	2017	2018	2019	2020	2021	2022	2023	2024	2025	2026
Flat	GB	5109	4969	4991	5317	5465	5122	5408	5669	5486	5595
	IRE	40	51	52	72		3	9	28	25	24
	Other	2	2	2	3						1
Jump	GB	6067	5593	5550	5613	5525	6379	5884	5233	5520	5364
	IRE	105	51	77	70	9	91	112	106	105	93
	Other	8	1	3	5	2	1	1	2	3	7
Overall	GB	11176	10562	10541	10930	10990	11501	11292	10902	11006	10959
	IRE	145	102	129	142	9	94	121	134	130	117
	Other	10	3	5	8	2	1	1	2	3	8

## Year to Date GB Trained Runners Racing Abroad

Code	Country	2017	2018	2019	2020	2021	2022	2023	2024	2025	2026
Flat	IRE	2	2	4	2						
	FR	21	6	14	21	5		3	3	40	1
	UAE	220	186	253	245	186	211	221	148	163	303
	BAH						41	20	43	66	62
	KSA						21	22	15	11	10
	Other	22	16	11	20	1	8	28	13	17	22
	<b>Total</b>		<b>265</b>	<b>210</b>	<b>282</b>	<b>288</b>	<b>213</b>	<b>282</b>	<b>287</b>	<b>218</b>	<b>296</b>
Jump	IRE	4	10	4	4		2	3	4	4	2
	FR			1	1	5	4	19	6	2	1
	<b>Total</b>	<b>4</b>	<b>10</b>	<b>5</b>	<b>5</b>	<b>5</b>	<b>6</b>	<b>22</b>	<b>10</b>	<b>6</b>	<b>3</b>

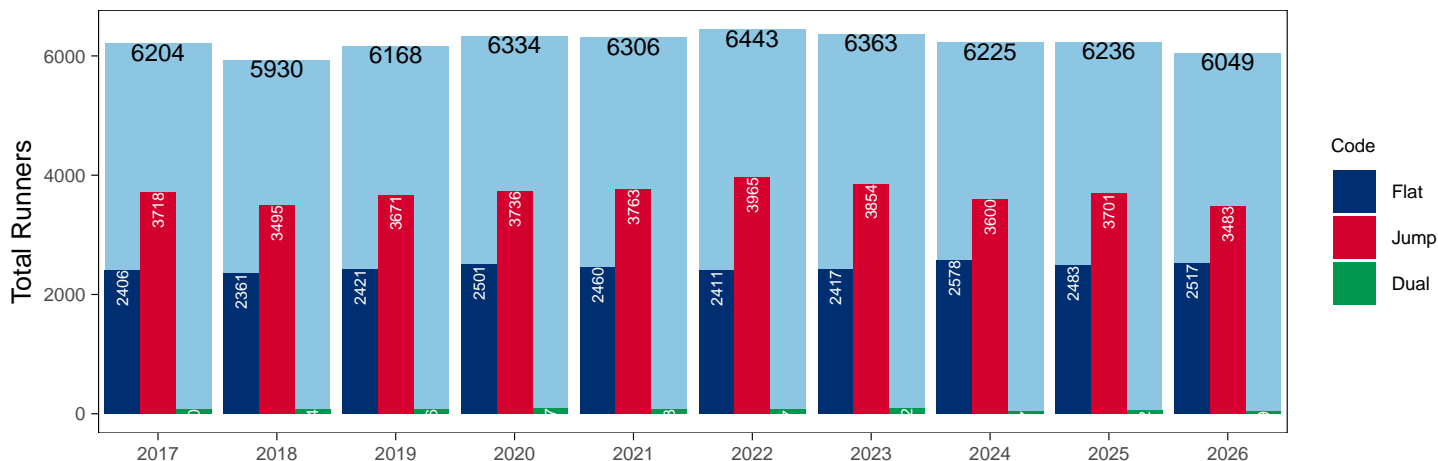
## Year to Date Individual Runners

Code	2017	2018	2019	2020	2021	2022	2023	2024	2025	2026	vs. Last Year	vs. Pre-Covid
Flat	2406	2361	2421	2501	2460	2411	2417	2578	2483	2517	+34 / +1.4%	+96 / +4.0%
Jump	3718	3495	3671	3736	3763	3965	3854	3600	3701	3483	-218 / -5.9%	-188 / -5.1%
Dual	80	74	76	97	83	67	92	47	52	49	-3 / -5.8%	-27 / -35.5%
<b>Overall</b>	<b>6204</b>	<b>5930</b>	<b>6168</b>	<b>6334</b>	<b>6306</b>	<b>6443</b>	<b>6363</b>	<b>6225</b>	<b>6236</b>	<b>6049</b>	<b>-187 / -3.0%</b>	<b>-119 / -1.9%</b>

'vs. Pre-Covid' is comparison between 2026 and 2019

## YTD Individual Runners

Individual Runners in GB Races, shown by Code and Total



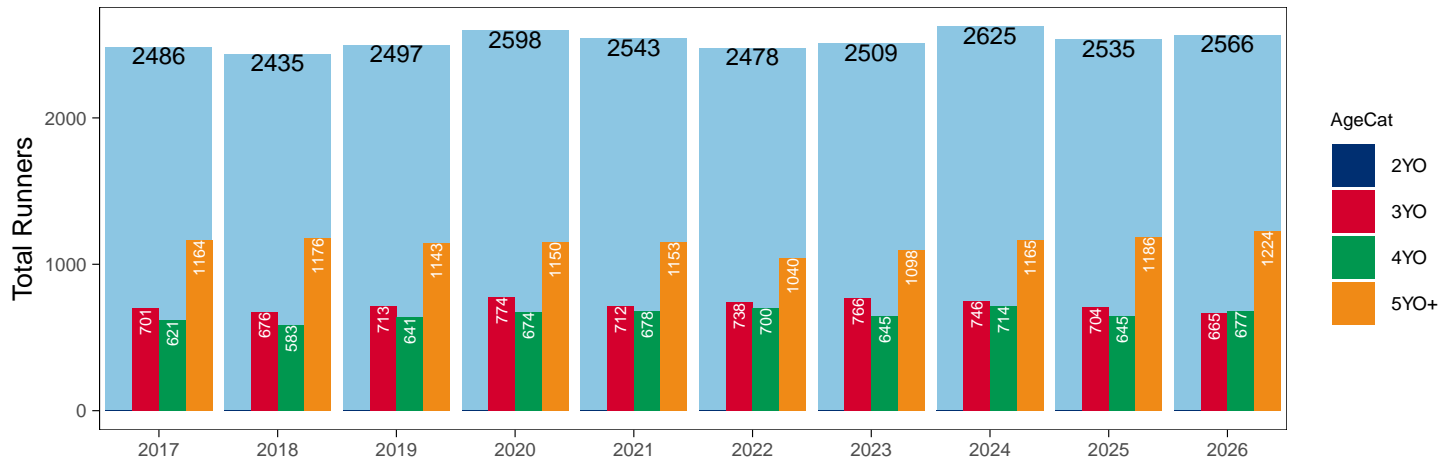
## Flat

AgeCat	2017	2018	2019	2020	2021	2022	2023	2024	2025	2026	vs. Last Year	vs. Pre-Covid
2YO											NA / NA	0 / NA
3YO	701	676	713	774	712	738	766	746	704	665	-39 / -5.5%	-48 / -6.7%
4YO	621	583	641	674	678	700	645	714	645	677	+32 / +5.0%	+36 / +5.6%
5YO+	1164	1176	1143	1150	1153	1040	1098	1165	1186	1224	+38 / +3.2%	+81 / +7.1%
<b>Total</b>	<b>2486</b>	<b>2435</b>	<b>2497</b>	<b>2598</b>	<b>2543</b>	<b>2478</b>	<b>2509</b>	<b>2625</b>	<b>2535</b>	<b>2566</b>	<b>+31 / +1.2%</b>	<b>+69 / +2.8%</b>

'vs. Pre-Covid' is comparison between 2026 and 2019

### YTD Individual Flat Runners by Age

Individual Runners in GB Flat Races, shown by Age Category and Total



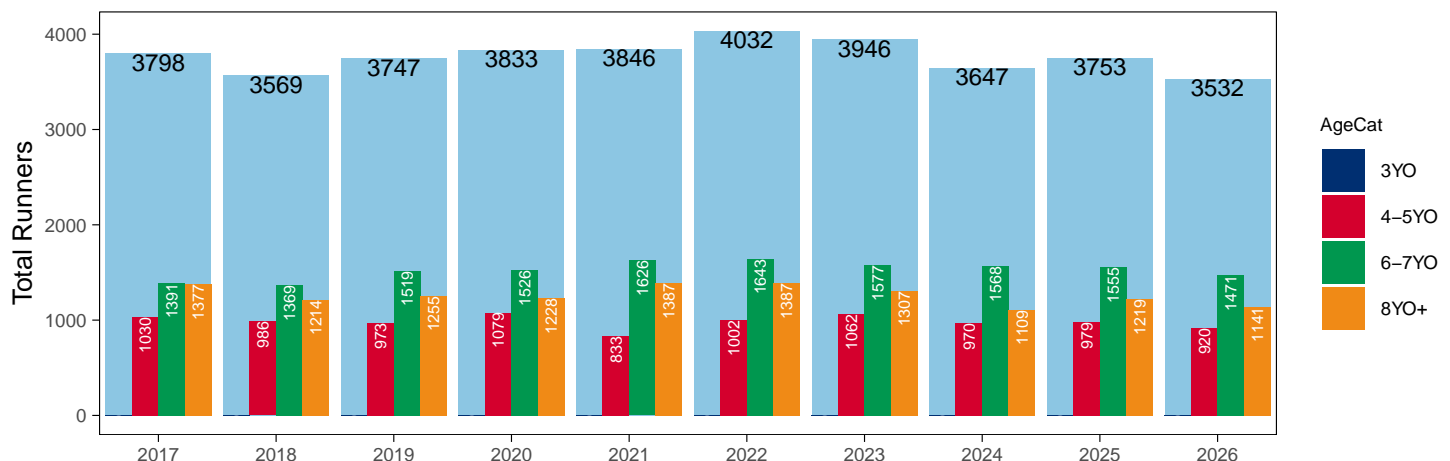
## Jump

AgeCat	2017	2018	2019	2020	2021	2022	2023	2024	2025	2026	vs. Last Year	vs. Pre-Covid
3YO											NA / NA	0 / NA
4-5YO	1030	986	973	1079	833	1002	1062	970	979	920	-59 / -6.0%	-53 / -5.4%
6-7YO	1391	1369	1519	1526	1626	1643	1577	1568	1555	1471	-84 / -5.4%	-48 / -3.2%
8YO+	1377	1214	1255	1228	1387	1387	1307	1109	1219	1141	-78 / -6.4%	-114 / -9.1%
<b>Total</b>	<b>3798</b>	<b>3569</b>	<b>3747</b>	<b>3833</b>	<b>3846</b>	<b>4032</b>	<b>3946</b>	<b>3647</b>	<b>3753</b>	<b>3532</b>	<b>-221 / -5.9%</b>	<b>-215 / -5.7%</b>

'vs. Pre-Covid' is comparison between 2026 and 2019

### YTD Individual Jump Runners by Age

Individual Runners in GB Jump Races, shown by Age Category and Total



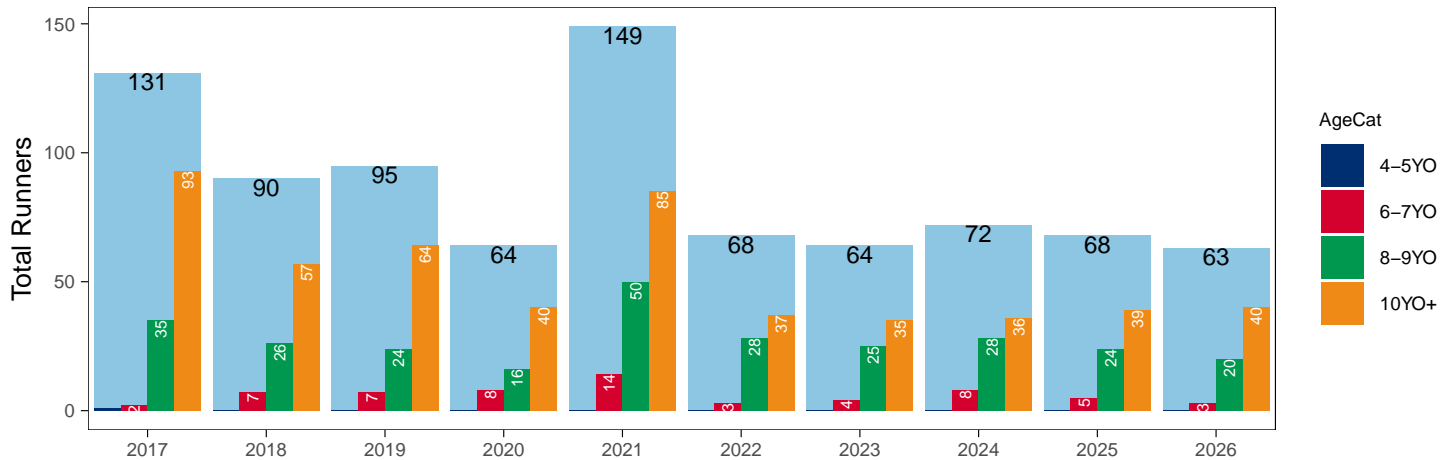
## Hunter Chases

AgeCat	2017	2018	2019	2020	2021	2022	2023	2024	2025	2026	vs. Last Year	vs. Pre-Covid
4-5YO	1										NA / NA	0 / NA
6-7YO	2	7	7	8	14	3	4	8	5	3	-2 / -40.0%	-4 / -57.1%
8-9YO	35	26	24	16	50	28	25	28	24	20	-4 / -16.7%	-4 / -16.7%
10YO+	93	57	64	40	85	37	35	36	39	40	+1 / +2.6%	-24 / -37.5%
<b>Total</b>	<b>131</b>	<b>90</b>	<b>95</b>	<b>64</b>	<b>149</b>	<b>68</b>	<b>64</b>	<b>72</b>	<b>68</b>	<b>63</b>	<b>-5 / -7.4%</b>	<b>-32 / -33.7%</b>

'vs. Pre-Covid' is comparison between 2026 and 2019

### YTD Individual Hunter Chase Runners by Age

Individual Runners in GB Hunter Chases shown by Age Category and Total



### Year to Date Individual Runners by Country Trained

Code	Country	2017	2018	2019	2020	2021	2022	2023	2024	2025	2026
Flat	GB	2382	2316	2376	2439	2460	2409	2408	2559	2463	2494
	IRE	26	44	43	59		2	9	19	20	22
	Other		2	2	3						1
Jump	GB	3630	3447	3605	3670	3752	3883	3758	3501	3602	3394
	IRE	85	47	63	61	9	81	95	97	97	83
	Other	4	1	3	5	2	1	1	2	3	7
Dual	GB	78	74	76	95	83	67	92	47	52	49
	IRE				2						
	Other	2									
<b>Overall</b>	<b>GB</b>	<b>6090</b>	<b>5837</b>	<b>6057</b>	<b>6204</b>	<b>6295</b>	<b>6359</b>	<b>6258</b>	<b>6107</b>	<b>6117</b>	<b>5937</b>
	<b>IRE</b>	<b>111</b>	<b>91</b>	<b>106</b>	<b>122</b>	<b>9</b>	<b>83</b>	<b>104</b>	<b>116</b>	<b>117</b>	<b>105</b>
	<b>Other</b>	<b>6</b>	<b>3</b>	<b>5</b>	<b>8</b>	<b>2</b>	<b>1</b>	<b>1</b>	<b>2</b>	<b>3</b>	<b>8</b>

Individual horses may appear under multiple countries.

## Year to Date Total Runners by Rating Band

## Flat

RatBand	2017	2018	2019	2020	2021	2022	2023	2024	2025	2026
<b>3YO</b>										
Unrated	499 (38.2%)	539 (42.4%)	526 (43.2%)	611 (44.9%)	578 (44.1%)	573 (44.0%)	627 (43.0%)	608 (46.2%)	524 (43.0%)	470 (40.9%)
0-50	88 (6.7%)	86 (6.8%)	113 (9.3%)	134 (9.8%)	116 (8.8%)	122 (9.4%)	124 (8.5%)	115 (8.7%)	105 (8.6%)	90 (7.8%)
51-60	219 (16.8%)	168 (13.2%)	247 (20.3%)	195 (14.3%)	236 (18.0%)	190 (14.6%)	263 (18.0%)	205 (15.6%)	222 (18.2%)	231 (20.1%)
61-70	276 (21.1%)	242 (19.1%)	197 (16.2%)	239 (17.5%)	220 (16.8%)	247 (19.0%)	253 (17.3%)	221 (16.8%)	191 (15.7%)	211 (18.4%)
71-80	178 (13.6%)	169 (13.3%)	96 (7.9%)	147 (10.8%)	127 (9.7%)	127 (9.7%)	153 (10.5%)	122 (9.3%)	135 (11.1%)	108 (9.4%)
81-90	33 (2.5%)	51 (4.0%)	30 (2.5%)	32 (2.3%)	20 (1.5%)	35 (2.7%)	35 (2.4%)	40 (3.0%)	37 (3.0%)	30 (2.6%)
91-100	9 (0.7%)	9 (0.7%)	8 (0.7%)	3 (0.2%)	12 (0.9%)	8 (0.6%)	3 (0.2%)	4 (0.3%)	5 (0.4%)	7 (0.6%)
101+	3 (0.2%)	6 (0.5%)	2 (0.2%)	1 (0.1%)	2 (0.2%)	1 (0.1%)	1 (0.1%)	NA (-)	NA (-)	2 (0.2%)
<b>4YO+</b>										
Unrated	118 (3.1%)	104 (2.8%)	148 (3.9%)	148 (3.7%)	143 (3.4%)	146 (3.8%)	132 (3.3%)	147 (3.4%)	140 (3.3%)	132 (3.0%)
0-50	596 (15.5%)	706 (18.8%)	768 (20.1%)	833 (20.7%)	849 (20.4%)	823 (21.5%)	950 (24.0%)	980 (22.4%)	1,053 (24.5%)	1,027 (23.0%)
51-60	919 (23.9%)	868 (23.1%)	873 (22.8%)	974 (24.2%)	947 (22.8%)	928 (24.3%)	974 (24.6%)	1,193 (27.2%)	1,052 (24.5%)	1,151 (25.7%)
61-70	896 (23.3%)	834 (22.2%)	859 (22.5%)	923 (22.9%)	1,043 (25.1%)	881 (23.1%)	883 (22.3%)	979 (22.3%)	976 (22.7%)	977 (21.9%)
71-80	689 (17.9%)	632 (16.8%)	656 (17.1%)	619 (15.4%)	656 (15.8%)	558 (14.6%)	599 (15.1%)	631 (14.4%)	631 (14.7%)	736 (16.5%)
81-90	416 (10.8%)	373 (9.9%)	314 (8.2%)	349 (8.7%)	326 (7.8%)	324 (8.5%)	264 (6.7%)	322 (7.3%)	314 (7.3%)	293 (6.6%)
91-100	153 (4.0%)	161 (4.3%)	150 (3.9%)	131 (3.3%)	128 (3.1%)	106 (2.8%)	108 (2.7%)	95 (2.2%)	89 (2.1%)	113 (2.5%)
101+	59 (1.5%)	74 (2.0%)	58 (1.5%)	53 (1.3%)	62 (1.5%)	56 (1.5%)	48 (1.2%)	35 (0.8%)	37 (0.9%)	42 (0.9%)

## Jump

RatBand	2017	2018	2019	2020	2021	2022	2023	2024	2025	2026
<b>Hurdle</b>										
Unrated	1,240 (34.0%)	1,132 (33.4%)	1,213 (35.0%)	1,120 (32.9%)	972 (35.2%)	1,239 (32.4%)	1,246 (34.7%)	1,186 (36.2%)	1,009 (29.7%)	1,080 (31.8%)
0-100	752 (20.6%)	645 (19.0%)	693 (20.0%)	696 (20.5%)	529 (19.2%)	996 (26.0%)	958 (26.7%)	879 (26.8%)	1,006 (29.6%)	869 (25.6%)
101-110	477 (13.1%)	436 (12.8%)	437 (12.6%)	449 (13.2%)	294 (10.7%)	510 (13.3%)	472 (13.2%)	421 (12.9%)	488 (14.4%)	458 (13.5%)
111-120	497 (13.6%)	456 (13.4%)	455 (13.1%)	464 (13.6%)	355 (12.9%)	490 (12.8%)	408 (11.4%)	370 (11.3%)	453 (13.4%)	510 (15.0%)
121-130	369 (10.1%)	399 (11.8%)	379 (10.9%)	358 (10.5%)	333 (12.1%)	340 (8.9%)	328 (9.1%)	261 (8.0%)	274 (8.1%)	317 (9.3%)
131-140	221 (6.1%)	225 (6.6%)	193 (5.6%)	218 (6.4%)	185 (6.7%)	173 (4.5%)	118 (3.3%)	111 (3.4%)	117 (3.4%)	123 (3.6%)
141-150	63 (1.7%)	80 (2.4%)	71 (2.0%)	64 (1.9%)	66 (2.4%)	62 (1.6%)	43 (1.2%)	38 (1.2%)	38 (1.1%)	31 (0.9%)
151+	26 (0.7%)	20 (0.6%)	26 (0.7%)	31 (0.9%)	24 (0.9%)	18 (0.5%)	16 (0.4%)	9 (0.3%)	8 (0.2%)	10 (0.3%)
<b>Chase</b>										
Unrated	26 (1.3%)	15 (0.9%)	17 (1.0%)	6 (0.4%)	9 (0.6%)	6 (0.3%)	1 (0.1%)	NA (-)	NA (-)	2 (0.1%)
0-100	406 (20.0%)	397 (22.9%)	452 (26.3%)	429 (25.5%)	376 (24.1%)	592 (27.9%)	604 (31.8%)	545 (32.7%)	613 (34.0%)	535 (31.3%)
101-110	337 (16.6%)	224 (12.9%)	263 (15.3%)	252 (15.0%)	207 (13.3%)	286 (13.5%)	296 (15.6%)	279 (16.7%)	317 (17.6%)	285 (16.7%)
111-120	369 (18.2%)	323 (18.6%)	252 (14.7%)	244 (14.5%)	257 (16.5%)	415 (19.5%)	325 (17.1%)	324 (19.4%)	319 (17.7%)	320 (18.7%)
121-130	337 (16.6%)	312 (18.0%)	326 (19.0%)	314 (18.7%)	281 (18.0%)	359 (16.9%)	302 (15.9%)	231 (13.8%)	272 (15.1%)	283 (16.5%)
131-140	342 (16.9%)	275 (15.9%)	226 (13.1%)	251 (14.9%)	242 (15.5%)	297 (14.0%)	233 (12.3%)	171 (10.2%)	149 (8.3%)	174 (10.2%)
141-150	138 (6.8%)	134 (7.7%)	127 (7.4%)	133 (7.9%)	119 (7.6%)	114 (5.4%)	95 (5.0%)	78 (4.7%)	88 (4.9%)	70 (4.1%)
151+	73 (3.6%)	55 (3.2%)	57 (3.3%)	53 (3.2%)	70 (4.5%)	56 (2.6%)	46 (2.4%)	41 (2.5%)	44 (2.4%)	41 (2.4%)

## Year to Date Total GB-Trained Runners by Rating Band

## Flat

RatBand	2017	2018	2019	2020	2021	2022	2023	2024	2025	2026
<b>3YO</b>										
Unrated	499 (38.3%)	537 (42.8%)	524 (43.4%)	608 (45.4%)	578 (44.1%)	573 (44.0%)	627 (43.0%)	606 (46.2%)	524 (43.1%)	468 (40.9%)
0-50	87 (6.7%)	84 (6.7%)	111 (9.2%)	129 (9.6%)	116 (8.8%)	122 (9.4%)	123 (8.4%)	115 (8.8%)	105 (8.6%)	90 (7.9%)
51-60	219 (16.8%)	163 (13.0%)	246 (20.4%)	187 (14.0%)	236 (18.0%)	190 (14.6%)	263 (18.0%)	204 (15.5%)	221 (18.2%)	230 (20.1%)
61-70	276 (21.2%)	239 (19.0%)	192 (15.9%)	237 (17.7%)	220 (16.8%)	247 (19.0%)	253 (17.4%)	221 (16.8%)	191 (15.7%)	211 (18.5%)
71-80	178 (13.7%)	167 (13.3%)	95 (7.9%)	145 (10.8%)	127 (9.7%)	127 (9.7%)	153 (10.5%)	122 (9.3%)	135 (11.1%)	106 (9.3%)
81-90	33 (2.5%)	51 (4.1%)	30 (2.5%)	30 (2.2%)	20 (1.5%)	35 (2.7%)	35 (2.4%)	40 (3.0%)	36 (3.0%)	29 (2.5%)
91-100	9 (0.7%)	9 (0.7%)	8 (0.7%)	3 (0.2%)	12 (0.9%)	8 (0.6%)	3 (0.2%)	4 (0.3%)	5 (0.4%)	7 (0.6%)
101+	3 (0.2%)	6 (0.5%)	2 (0.2%)	1 (0.1%)	2 (0.2%)	1 (0.1%)	1 (0.1%)	NA (-)	NA (-)	2 (0.2%)
<b>4YO+</b>										
Unrated	118 (3.1%)	102 (2.7%)	148 (3.9%)	147 (3.7%)	143 (3.4%)	146 (3.8%)	132 (3.3%)	147 (3.4%)	140 (3.3%)	131 (2.9%)
0-50	580 (15.2%)	698 (18.8%)	750 (19.8%)	820 (20.6%)	849 (20.4%)	823 (21.6%)	948 (24.0%)	972 (22.3%)	1,051 (24.6%)	1,019 (22.9%)
51-60	905 (23.8%)	850 (22.9%)	858 (22.7%)	950 (23.9%)	947 (22.8%)	928 (24.3%)	972 (24.6%)	1,185 (27.2%)	1,044 (24.5%)	1,151 (25.9%)
61-70	888 (23.3%)	829 (22.3%)	853 (22.5%)	917 (23.1%)	1,043 (25.1%)	881 (23.1%)	882 (22.3%)	976 (22.4%)	974 (22.8%)	976 (21.9%)
71-80	687 (18.1%)	629 (16.9%)	655 (17.3%)	614 (15.4%)	656 (15.8%)	556 (14.6%)	597 (15.1%)	628 (14.4%)	626 (14.7%)	734 (16.5%)
81-90	416 (10.9%)	373 (10.0%)	313 (8.3%)	349 (8.8%)	326 (7.8%)	323 (8.5%)	264 (6.7%)	321 (7.4%)	312 (7.3%)	290 (6.5%)
91-100	152 (4.0%)	161 (4.3%)	148 (3.9%)	129 (3.2%)	128 (3.1%)	106 (2.8%)	107 (2.7%)	95 (2.2%)	87 (2.0%)	110 (2.5%)
101+	59 (1.6%)	71 (1.9%)	58 (1.5%)	51 (1.3%)	62 (1.5%)	56 (1.5%)	48 (1.2%)	33 (0.8%)	35 (0.8%)	41 (0.9%)

## Jump

RatBand	2017	2018	2019	2020	2021	2022	2023	2024	2025	2026
<b>Hurdle</b>										
Unrated	1,224 (34.2%)	1,118 (33.3%)	1,192 (34.9%)	1,107 (33.0%)	968 (35.2%)	1,216 (32.3%)	1,226 (34.8%)	1,162 (36.3%)	995 (29.8%)	1,054 (31.5%)
0-100	739 (20.6%)	640 (19.1%)	685 (20.1%)	689 (20.5%)	529 (19.2%)	991 (26.3%)	948 (26.9%)	870 (27.2%)	1,002 (30.1%)	865 (25.9%)
101-110	466 (13.0%)	432 (12.9%)	434 (12.7%)	446 (13.3%)	294 (10.7%)	506 (13.4%)	466 (13.2%)	414 (12.9%)	483 (14.5%)	454 (13.6%)
111-120	488 (13.6%)	454 (13.5%)	449 (13.1%)	461 (13.7%)	355 (12.9%)	485 (12.9%)	399 (11.3%)	362 (11.3%)	443 (13.3%)	506 (15.1%)
121-130	358 (10.0%)	394 (11.7%)	370 (10.8%)	354 (10.6%)	331 (12.0%)	334 (8.9%)	319 (9.1%)	249 (7.8%)	260 (7.8%)	314 (9.4%)
131-140	218 (6.1%)	223 (6.6%)	191 (5.6%)	211 (6.3%)	184 (6.7%)	162 (4.3%)	111 (3.1%)	104 (3.2%)	111 (3.3%)	113 (3.4%)
141-150	61 (1.7%)	78 (2.3%)	70 (2.0%)	58 (1.7%)	65 (2.4%)	56 (1.5%)	39 (1.1%)	32 (1.0%)	32 (1.0%)	29 (0.9%)
151+	25 (0.7%)	20 (0.6%)	25 (0.7%)	29 (0.9%)	24 (0.9%)	15 (0.4%)	16 (0.5%)	8 (0.2%)	8 (0.2%)	10 (0.3%)
<b>Chase</b>										
Unrated	26 (1.3%)	15 (0.9%)	17 (1.0%)	6 (0.4%)	9 (0.6%)	6 (0.3%)	1 (0.1%)	NA (-)	NA (-)	2 (0.1%)
0-100	399 (20.1%)	395 (23.0%)	448 (26.3%)	427 (25.6%)	376 (24.1%)	591 (28.0%)	599 (32.2%)	545 (33.2%)	611 (34.7%)	532 (31.9%)
101-110	335 (16.9%)	224 (13.0%)	262 (15.4%)	250 (15.0%)	207 (13.3%)	285 (13.5%)	294 (15.8%)	277 (16.9%)	315 (17.9%)	283 (17.0%)
111-120	365 (18.4%)	321 (18.7%)	251 (14.7%)	240 (14.4%)	257 (16.5%)	413 (19.6%)	320 (17.2%)	320 (19.5%)	314 (17.9%)	312 (18.7%)
121-130	326 (16.4%)	307 (17.9%)	323 (19.0%)	312 (18.7%)	281 (18.0%)	354 (16.8%)	297 (16.0%)	220 (13.4%)	262 (14.9%)	267 (16.0%)
131-140	335 (16.9%)	271 (15.8%)	222 (13.0%)	250 (15.0%)	242 (15.5%)	294 (13.9%)	221 (11.9%)	168 (10.2%)	142 (8.1%)	169 (10.1%)
141-150	135 (6.8%)	133 (7.7%)	126 (7.4%)	130 (7.8%)	119 (7.6%)	112 (5.3%)	90 (4.8%)	74 (4.5%)	78 (4.4%)	65 (3.9%)
151+	67 (3.4%)	53 (3.1%)	55 (3.2%)	51 (3.1%)	70 (4.5%)	54 (2.6%)	40 (2.1%)	38 (2.3%)	37 (2.1%)	37 (2.2%)

## Frequency of Runs

### Year to Date Average Runs per Horse

Code	2017	2018	2019	2020	2021	2022	2023	2024	2025	2026
Flat	2.09	2.08	2.04	2.10	2.17	2.09	2.18	2.18	2.19	2.21
Jump	1.63	1.59	1.51	1.49	1.44	1.61	1.52	1.47	1.50	1.55
Dual Overall	2.83	2.68	2.53	2.85	2.82	2.67	2.79	2.68	2.85	2.35
Dual (Flat)	1.40	1.35	1.32	1.55	1.43	1.36	1.49	1.38	1.40	1.18
Dual (Jump)	1.43	1.32	1.21	1.30	1.39	1.31	1.30	1.30	1.44	1.16
<b>All</b>	<b>1.83</b>	<b>1.80</b>	<b>1.73</b>	<b>1.75</b>	<b>1.74</b>	<b>1.80</b>	<b>1.79</b>	<b>1.77</b>	<b>1.79</b>	<b>1.83</b>

### Year to Date Proportion of Horses by Count of Runs

Runs	2017	2018	2019	2020	2021	2022	2023	2024	2025	2026
<b>Flat</b>										
1	942 (37.9%)	969 (39.8%)	997 (39.9%)	1,022 (39.3%)	930 (36.6%)	952 (38.4%)	915 (36.5%)	961 (36.6%)	939 (37.0%)	974 (38.0%)
2	791 (31.8%)	755 (31.0%)	787 (31.5%)	793 (30.5%)	784 (30.8%)	813 (32.8%)	788 (31.4%)	786 (29.9%)	768 (30.3%)	752 (29.3%)
3	488 (19.6%)	429 (17.6%)	477 (19.1%)	499 (19.2%)	510 (20.1%)	431 (17.4%)	477 (19.0%)	530 (20.2%)	483 (19.1%)	466 (18.2%)
4	183 (7.4%)	191 (7.8%)	165 (6.6%)	191 (7.4%)	208 (8.2%)	202 (8.2%)	214 (8.5%)	223 (8.5%)	204 (8.0%)	210 (8.2%)
5+	82 (3.3%)	91 (3.7%)	71 (2.8%)	93 (3.6%)	111 (4.4%)	80 (3.2%)	115 (4.6%)	125 (4.8%)	141 (5.6%)	164 (6.4%)
<b>Jump</b>										
1	1,947 (51.3%)	1,924 (53.9%)	2,202 (58.8%)	2,302 (60.1%)	2,403 (62.5%)	2,091 (51.9%)	2,275 (57.7%)	2,208 (60.5%)	2,189 (58.3%)	1,949 (55.2%)
2	1,376 (36.2%)	1,261 (35.3%)	1,253 (33.4%)	1,234 (32.2%)	1,210 (31.5%)	1,496 (37.1%)	1,338 (33.9%)	1,199 (32.9%)	1,280 (34.1%)	1,260 (35.7%)
3	423 (11.1%)	339 (9.5%)	255 (6.8%)	271 (7.1%)	219 (5.7%)	394 (9.8%)	289 (7.3%)	226 (6.2%)	259 (6.9%)	298 (8.4%)
4	48 (1.3%)	43 (1.2%)	30 (0.8%)	25 (0.7%)	14 (0.4%)	49 (1.2%)	41 (1.0%)	13 (0.4%)	23 (0.6%)	24 (0.7%)
5+	4 (0.1%)	2 (0.1%)	7 (0.2%)	1 (0.0%)	NA (-)	2 (0.0%)	3 (0.1%)	1 (0.0%)	2 (0.1%)	1 (0.0%)
<b>All Races</b>										
1	2,784 (44.9%)	2,786 (47.0%)	3,079 (49.9%)	3,194 (50.4%)	3,219 (51.0%)	2,947 (45.7%)	3,062 (48.1%)	3,102 (49.8%)	3,060 (49.1%)	2,838 (46.9%)
2	2,153 (34.7%)	2,019 (34.0%)	2,057 (33.3%)	2,020 (31.9%)	1,995 (31.6%)	2,309 (35.8%)	2,125 (33.4%)	1,986 (31.9%)	2,041 (32.7%)	2,040 (33.7%)
3	937 (15.1%)	788 (13.3%)	757 (12.3%)	790 (12.5%)	741 (11.8%)	846 (13.1%)	787 (12.4%)	768 (12.3%)	756 (12.1%)	767 (12.7%)
4	241 (3.9%)	244 (4.1%)	195 (3.2%)	233 (3.7%)	236 (3.7%)	258 (4.0%)	269 (4.2%)	242 (3.9%)	233 (3.7%)	239 (4.0%)
5+	89 (1.4%)	93 (1.6%)	80 (1.3%)	97 (1.5%)	115 (1.8%)	83 (1.3%)	120 (1.9%)	127 (2.0%)	146 (2.3%)	165 (2.7%)

### Year to Date Median Days Between Runs

Code/RatBand	2017	2018	2019	2020	2021	2022	2023	2024	2025	2026
<b>All Runners</b>	<b>26</b>	<b>27</b>	<b>28</b>	<b>27</b>	<b>29</b>	<b>27</b>	<b>28</b>	<b>27</b>	<b>27</b>	<b>27</b>
<b>Flat</b>										
Unrated	24	27	29	28	25	26	26	26	26	30
0-50	20	20	21	20	19	19	17	17	16	17
51-60	19	19	21	19	18	20	19	18	17	17
61-70	21	20	21	21	19	19	20	19	19	19
71-80	21	21	21	22	21	21	21	22	21	23
81-90	20	23	24	23	22	22	24	23	23	26
91-100	26	28	27	24	22	28	34	33	32	32
101+	38	34	28	31	40	40	40	46	51	42
<b>All Flat Runners</b>	<b>21</b>	<b>21</b>	<b>22</b>	<b>21</b>	<b>20</b>	<b>21</b>	<b>21</b>	<b>20</b>	<b>20</b>	<b>20</b>
<b>Jump</b>										
Unrated	33	37	37	35	43	34	41	39	40	38
0-100	27	27	30	28	39	28	32	32	33	30
101-110	27	30	32	30	38	30	35	36	32	33
111-120	29	30	33	32	38	31	35	33	33	33
121-130	31	30	34	32	38	32	35	36	33	34
131-140	32	34	35	34	39	35	37	35	36	35
141-150	35	36	35	36	45	36	43	36	36	37
151+	38	39	37	38	42	42	45	35	42	42
<b>All Jump Runners</b>	<b>29</b>	<b>32</b>	<b>34</b>	<b>32</b>	<b>40</b>	<b>32</b>	<b>36</b>	<b>35</b>	<b>34</b>	<b>34</b>

# Horses Population by Gender

## February 2026 Horses in Training Snapshot by Gender versus Previous Years

### All Horses

Sex	2017	2018	2019	2020	2021	2022	2023	2024	2025	2026
Colt/Entire	2,483 (16.6%)	2,448 (16.1%)	2,306 (15.2%)	2,293 (14.8%)	2,112 (13.5%)	2,110 (14.0%)	2,006 (13.3%)	1,893 (13.0%)	1,902 (13.2%)	1,843 (12.9%)
Gelding	8,074 (53.8%)	8,199 (54.0%)	8,236 (54.3%)	8,474 (54.7%)	8,776 (56.2%)	8,288 (55.1%)	8,364 (55.4%)	8,156 (56.1%)	8,025 (55.7%)	7,865 (55.1%)
Filly/Mare	4,437 (29.6%)	4,541 (29.9%)	4,634 (30.5%)	4,714 (30.4%)	4,717 (30.2%)	4,632 (30.8%)	4,730 (31.3%)	4,490 (30.9%)	4,471 (31.1%)	4,559 (32.0%)
Rig	4 (0.0%)	3 (0.0%)	3 (0.0%)	3 (0.0%)	2 (0.0%)	1 (0.0%)	1 (0.0%)	0 (0.0%)	0 (0.0%)	0 (0.0%)
<b>Total</b>	<b>14,998 (100.0%)</b>	<b>15,191 (100.0%)</b>	<b>15,179 (100.0%)</b>	<b>15,484 (100.0%)</b>	<b>15,607 (100.0%)</b>	<b>15,031 (100.0%)</b>	<b>15,101 (100.0%)</b>	<b>14,539 (100.0%)</b>	<b>14,398 (100.0%)</b>	<b>14,267 (100.0%)</b>

### Flat (including Dual)

Sex	2017	2018	2019	2020	2021	2022	2023	2024	2025	2026
Colt/Entire	2,460 (25.4%)	2,423 (24.1%)	2,288 (24.1%)	2,273 (23.5%)	2,085 (22.5%)	2,090 (22.5%)	1,981 (21.5%)	1,870 (21.0%)	1,871 (21.0%)	1,822 (20.2%)
Gelding	3,804 (39.2%)	4,146 (41.3%)	3,794 (39.9%)	3,954 (40.8%)	3,855 (41.7%)	3,818 (41.1%)	3,868 (41.9%)	3,862 (43.3%)	3,853 (43.2%)	3,887 (43.1%)
Filly/Mare	3,432 (35.4%)	3,478 (34.6%)	3,416 (36.0%)	3,458 (35.7%)	3,311 (35.8%)	3,387 (36.4%)	3,382 (36.6%)	3,189 (35.7%)	3,190 (35.8%)	3,311 (36.7%)
Rig	4 (0.0%)	3 (0.0%)	2 (0.0%)	2 (0.0%)	1 (0.0%)	0 (0.0%)	0 (0.0%)	0 (0.0%)	0 (0.0%)	0 (0.0%)
<b>Total</b>	<b>9,700 (100.0%)</b>	<b>10,050 (100.0%)</b>	<b>9,500 (100.0%)</b>	<b>9,687 (100.0%)</b>	<b>9,252 (100.0%)</b>	<b>9,295 (100.0%)</b>	<b>9,231 (100.0%)</b>	<b>8,921 (100.0%)</b>	<b>8,914 (100.0%)</b>	<b>9,020 (100.0%)</b>

### Jump (including Dual)

Sex	2017	2018	2019	2020	2021	2022	2023	2024	2025	2026
Colt/Entire	27 (0.5%)	33 (0.5%)	29 (0.5%)	31 (0.5%)	38 (0.6%)	33 (0.5%)	30 (0.5%)	26 (0.4%)	45 (0.8%)	31 (0.5%)
Gelding	4,710 (80.6%)	4,768 (78.6%)	4,777 (77.9%)	4,917 (77.7%)	5,297 (77.4%)	4,832 (77.7%)	4,836 (76.5%)	4,606 (76.2%)	4,473 (75.9%)	4,377 (75.5%)
Filly/Mare	1,107 (18.9%)	1,262 (20.8%)	1,324 (21.6%)	1,377 (21.8%)	1,506 (22.0%)	1,356 (21.8%)	1,452 (23.0%)	1,416 (23.4%)	1,379 (23.4%)	1,387 (23.9%)
Rig	0 (0.0%)	0 (0.0%)	1 (0.0%)	1 (0.0%)	1 (0.0%)	1 (0.0%)	1 (0.0%)	0 (0.0%)	0 (0.0%)	0 (0.0%)
<b>Total</b>	<b>5,844 (100.0%)</b>	<b>6,063 (100.0%)</b>	<b>6,131 (100.0%)</b>	<b>6,326 (100.0%)</b>	<b>6,842 (100.0%)</b>	<b>6,222 (100.0%)</b>	<b>6,319 (100.0%)</b>	<b>6,048 (100.0%)</b>	<b>5,897 (100.0%)</b>	<b>5,795 (100.0%)</b>

### Hunter Chasers

Sex	2017	2018	2019	2020	2021	2022	2023	2024	2025	2026
Colt/Entire	5 (0.3%)	2 (0.1%)	2 (0.1%)	1 (0.1%)	1 (0.1%)	8 (0.8%)	7 (0.7%)	11 (0.9%)	6 (0.7%)	7 (0.9%)
Gelding	1,290 (83.2%)	1,161 (82.7%)	1,123 (80.8%)	1,103 (81.9%)	669 (83.7%)	868 (82.0%)	792 (82.6%)	985 (82.1%)	729 (81.2%)	645 (81.3%)
Filly/Mare	255 (16.5%)	241 (17.2%)	265 (19.1%)	243 (18.0%)	129 (16.1%)	183 (17.3%)	160 (16.7%)	204 (17.0%)	163 (18.2%)	141 (17.8%)
Rig	0 (0.0%)	0 (0.0%)	0 (0.0%)	0 (0.0%)	0 (0.0%)	0 (0.0%)	0 (0.0%)	0 (0.0%)	0 (0.0%)	0 (0.0%)
<b>Total</b>	<b>1,550 (100.0%)</b>	<b>1,404 (100.0%)</b>	<b>1,390 (100.0%)</b>	<b>1,347 (100.0%)</b>	<b>799 (100.0%)</b>	<b>1,059 (100.0%)</b>	<b>959 (100.0%)</b>	<b>1,200 (100.0%)</b>	<b>898 (100.0%)</b>	<b>793 (100.0%)</b>

## Year to Date Total Runners by Gender

Sex	2017	2018	2019	2020	2021	2022	2023	2024	2025	2026
<b>All Races</b>										
Colt/Entire	444 (3.9%)	423 (4.0%)	385 (3.6%)	467 (4.2%)	427 (3.9%)	349 (3.0%)	386 (3.4%)	346 (3.1%)	289 (2.6%)	294 (2.7%)
Gelding	8,346 (73.7%)	7,752 (72.7%)	7,661 (71.8%)	7,780 (70.2%)	7,800 (70.9%)	8,330 (71.8%)	8,077 (70.8%)	7,904 (71.6%)	8,138 (73.1%)	7,965 (71.9%)
Filly/Mare	2,541 (22.4%)	2,491 (23.4%)	2,628 (24.6%)	2,830 (25.5%)	2,772 (25.2%)	2,917 (25.2%)	2,951 (25.9%)	2,788 (25.3%)	2,712 (24.3%)	2,824 (25.5%)
Rig	0 (0.0%)	1 (0.0%)	1 (0.0%)	3 (0.0%)	2 (0.0%)	0 (0.0%)	0 (0.0%)	0 (0.0%)	0 (0.0%)	1 (0.0%)
<b>Flat</b>										
Colt/Entire	431 (8.4%)	416 (8.3%)	374 (7.4%)	458 (8.5%)	421 (7.7%)	345 (6.7%)	372 (6.9%)	344 (6.0%)	283 (5.1%)	288 (5.1%)
Gelding	3,188 (61.9%)	3,136 (62.4%)	3,166 (62.8%)	3,324 (61.6%)	3,421 (62.6%)	3,191 (62.3%)	3,344 (61.7%)	3,722 (65.3%)	3,747 (68.0%)	3,706 (65.9%)
Filly/Mare	1,532 (29.7%)	1,469 (29.3%)	1,505 (29.8%)	1,610 (29.9%)	1,623 (29.7%)	1,589 (31.0%)	1,701 (31.4%)	1,631 (28.6%)	1,481 (26.9%)	1,625 (28.9%)
Rig	0 (0.0%)	1 (0.0%)	0 (0.0%)	0 (0.0%)	0 (0.0%)	0 (0.0%)	0 (0.0%)	0 (0.0%)	0 (0.0%)	1 (0.0%)
<b>All Jump</b>										
Colt/Entire	13 (0.2%)	7 (0.1%)	11 (0.2%)	9 (0.2%)	6 (0.1%)	4 (0.1%)	14 (0.2%)	2 (0.0%)	6 (0.1%)	6 (0.1%)
Gelding	5,158 (83.5%)	4,616 (81.8%)	4,495 (79.8%)	4,456 (78.3%)	4,379 (79.1%)	5,139 (79.4%)	4,733 (78.9%)	4,182 (78.3%)	4,391 (78.0%)	4,259 (77.9%)
Filly/Mare	1,009 (16.3%)	1,022 (18.1%)	1,123 (19.9%)	1,220 (21.4%)	1,149 (20.8%)	1,328 (20.5%)	1,250 (20.8%)	1,157 (21.7%)	1,231 (21.9%)	1,199 (21.9%)
Rig	0 (0.0%)	0 (0.0%)	1 (0.0%)	3 (0.1%)	2 (0.0%)	0 (0.0%)	0 (0.0%)	0 (0.0%)	0 (0.0%)	0 (0.0%)
<b>Chase</b>										
Gelding	1,882 (92.8%)	1,580 (91.1%)	1,552 (90.2%)	1,524 (90.6%)	1,387 (88.9%)	1,878 (88.4%)	1,710 (89.9%)	1,507 (90.3%)	1,565 (86.8%)	1,493 (87.3%)
Filly/Mare	146 (7.2%)	155 (8.9%)	168 (9.8%)	155 (9.2%)	172 (11.0%)	247 (11.6%)	192 (10.1%)	162 (9.7%)	237 (13.2%)	217 (12.7%)
Rig	0 (0.0%)	0 (0.0%)	0 (0.0%)	3 (0.2%)	2 (0.1%)	0 (0.0%)	0 (0.0%)	0 (0.0%)	0 (0.0%)	0 (0.0%)
<b>Hurdle</b>										
Colt/Entire	12 (0.3%)	6 (0.2%)	9 (0.3%)	5 (0.1%)	4 (0.1%)	4 (0.1%)	9 (0.3%)	2 (0.1%)	3 (0.1%)	6 (0.2%)
Gelding	2,928 (80.3%)	2,694 (79.4%)	2,668 (77.0%)	2,521 (74.1%)	2,106 (76.4%)	2,932 (76.6%)	2,738 (76.3%)	2,414 (73.7%)	2,540 (74.9%)	2,548 (75.0%)
Filly/Mare	705 (19.3%)	693 (20.4%)	789 (22.8%)	874 (25.7%)	648 (23.5%)	892 (23.3%)	842 (23.5%)	859 (26.2%)	850 (25.1%)	844 (24.8%)
Rig	0 (0.0%)	0 (0.0%)	1 (0.0%)	0 (0.0%)	0 (0.0%)	0 (0.0%)	0 (0.0%)	0 (0.0%)	0 (0.0%)	0 (0.0%)
<b>NHF</b>										
Colt/Entire	1 (0.2%)	1 (0.2%)	2 (0.5%)	4 (0.7%)	2 (0.2%)	0 (0.0%)	5 (1.0%)	0 (0.0%)	3 (0.7%)	0 (0.0%)
Gelding	348 (68.6%)	342 (66.2%)	275 (62.1%)	411 (67.8%)	886 (72.8%)	329 (63.5%)	285 (56.3%)	261 (65.7%)	286 (66.1%)	218 (61.2%)
Filly/Mare	158 (31.2%)	174 (33.7%)	166 (37.5%)	191 (31.5%)	329 (27.0%)	189 (36.5%)	216 (42.7%)	136 (34.3%)	144 (33.3%)	138 (38.8%)
<b>Hunter</b>										
Gelding	169 (98.3%)	112 (98.2%)	110 (96.5%)	88 (97.8%)	155 (92.3%)	84 (100.0%)	82 (97.6%)	85 (91.4%)	81 (91.0%)	79 (97.5%)
Filly/Mare	3 (1.7%)	2 (1.8%)	4 (3.5%)	2 (2.2%)	13 (7.7%)	0 (0.0%)	2 (2.4%)	8 (8.6%)	8 (9.0%)	2 (2.5%)

## Year to Date Individual Runners by Gender

Sex	2017	2018	2019	2020	2021	2022	2023	2024	2025	2026
<b>All Races</b>										
Male	4,793 (77.3%)	4,512 (76.1%)	4,646 (75.3%)	4,692 (74.1%)	4,702 (74.6%)	4,824 (74.9%)	4,695 (73.8%)	4,620 (74.2%)	4,648 (74.5%)	4,477 (74.0%)
Female	1,411 (22.7%)	1,418 (23.9%)	1,522 (24.7%)	1,642 (25.9%)	1,604 (25.4%)	1,619 (25.1%)	1,668 (26.2%)	1,605 (25.8%)	1,588 (25.5%)	1,572 (26.0%)
<b>Flat</b>										
Male	1,711 (68.8%)	1,672 (68.7%)	1,710 (68.5%)	1,764 (67.9%)	1,737 (68.3%)	1,669 (67.4%)	1,674 (66.7%)	1,814 (69.1%)	1,763 (69.5%)	1,772 (69.1%)
Female	775 (31.2%)	763 (31.3%)	787 (31.5%)	834 (32.1%)	806 (31.7%)	809 (32.6%)	835 (33.3%)	811 (30.9%)	772 (30.5%)	794 (30.9%)
<b>All Jump</b>										
Male	3,150 (82.9%)	2,898 (81.2%)	2,996 (80.0%)	3,003 (78.3%)	3,035 (78.9%)	3,213 (79.7%)	3,092 (78.4%)	2,837 (77.8%)	2,927 (78.0%)	2,746 (77.7%)
Female	648 (17.1%)	671 (18.8%)	751 (20.0%)	830 (21.7%)	811 (21.1%)	819 (20.3%)	854 (21.6%)	810 (22.2%)	826 (22.0%)	786 (22.3%)
<b>Chase</b>										
Male	1,156 (92.3%)	986 (91.1%)	1,041 (90.4%)	1,065 (90.3%)	1,008 (89.3%)	1,167 (88.6%)	1,115 (88.8%)	1,007 (89.8%)	1,052 (87.2%)	972 (87.3%)
Female	97 (7.7%)	96 (8.9%)	111 (9.6%)	115 (9.7%)	121 (10.7%)	150 (11.4%)	140 (11.2%)	114 (10.2%)	155 (12.8%)	141 (12.7%)
<b>Hurdle</b>										
Male	1,867 (80.8%)	1,746 (79.4%)	1,841 (77.7%)	1,727 (74.6%)	1,537 (75.9%)	1,920 (77.8%)	1,847 (76.5%)	1,684 (73.7%)	1,732 (74.9%)	1,685 (75.2%)
Female	443 (19.2%)	454 (20.6%)	527 (22.3%)	589 (25.4%)	487 (24.1%)	549 (22.2%)	568 (23.5%)	601 (26.3%)	581 (25.1%)	557 (24.8%)
<b>NHF</b>										
Male	302 (68.3%)	296 (67.0%)	241 (62.8%)	372 (68.1%)	728 (72.8%)	289 (64.2%)	256 (58.0%)	239 (65.3%)	264 (66.2%)	201 (61.7%)
Female	140 (31.7%)	146 (33.0%)	143 (37.2%)	174 (31.9%)	272 (27.2%)	161 (35.8%)	185 (42.0%)	127 (34.7%)	135 (33.8%)	125 (38.3%)
<b>Hunter</b>										
Male	129 (98.5%)	88 (97.8%)	92 (96.8%)	62 (96.9%)	136 (91.3%)	68 (100.0%)	62 (96.9%)	65 (90.3%)	62 (91.2%)	61 (96.8%)
Female	2 (1.5%)	2 (2.2%)	3 (3.2%)	2 (3.1%)	13 (8.7%)	0 (0.0%)	2 (3.1%)	7 (9.7%)	6 (8.8%)	2 (3.2%)

# Horses Population by Breeding

## February 2026 Horses in Training Snapshot by Breeding versus Previous Years

### Flat (including Dual)

Bred	Sex	2017	2018	2019	2020	2021	2022	2023	2024	2025	2026
GB	Male	2,966 (30.6%)	3,037 (30.2%)	2,874 (30.3%)	2,949 (30.4%)	2,775 (30.0%)	2,746 (29.5%)	2,713 (29.4%)	2,628 (29.5%)	2,637 (29.6%)	2,590 (28.7%)
	Female	1,962 (20.2%)	1,898 (18.9%)	1,892 (19.9%)	1,962 (20.3%)	1,890 (20.4%)	1,894 (20.4%)	1,867 (20.2%)	1,729 (19.4%)	1,777 (19.9%)	1,799 (19.9%)
	<b>Subtotal</b>	<b>4,928 (50.8%)</b>	<b>4,935 (49.1%)</b>	<b>4,766 (50.2%)</b>	<b>4,911 (50.7%)</b>	<b>4,665 (50.4%)</b>	<b>4,640 (49.9%)</b>	<b>4,580 (49.6%)</b>	<b>4,357 (48.8%)</b>	<b>4,414 (49.5%)</b>	<b>4,389 (48.7%)</b>
IRE	Male	2,697 (27.8%)	2,851 (28.4%)	2,610 (27.5%)	2,673 (27.6%)	2,636 (28.5%)	2,711 (29.2%)	2,713 (29.4%)	2,628 (29.5%)	2,677 (30.0%)	2,723 (30.2%)
	Female	1,236 (12.7%)	1,329 (13.2%)	1,267 (13.3%)	1,270 (13.1%)	1,248 (13.5%)	1,328 (14.3%)	1,350 (14.6%)	1,288 (14.4%)	1,250 (14.0%)	1,343 (14.9%)
	<b>Subtotal</b>	<b>3,933 (40.5%)</b>	<b>4,180 (41.6%)</b>	<b>3,877 (40.8%)</b>	<b>3,943 (40.7%)</b>	<b>3,884 (42.0%)</b>	<b>4,039 (43.5%)</b>	<b>4,063 (44.0%)</b>	<b>3,916 (43.9%)</b>	<b>3,927 (44.1%)</b>	<b>4,066 (45.1%)</b>
FR	Male	216 (2.2%)	314 (3.1%)	274 (2.9%)	311 (3.2%)	284 (3.1%)	283 (3.0%)	277 (3.0%)	330 (3.7%)	295 (3.3%)	278 (3.1%)
	Female	87 (0.9%)	114 (1.1%)	114 (1.2%)	115 (1.2%)	99 (1.1%)	105 (1.1%)	111 (1.2%)	128 (1.4%)	105 (1.2%)	123 (1.4%)
	<b>Subtotal</b>	<b>303 (3.1%)</b>	<b>428 (4.3%)</b>	<b>388 (4.1%)</b>	<b>426 (4.4%)</b>	<b>383 (4.1%)</b>	<b>388 (4.2%)</b>	<b>388 (4.2%)</b>	<b>458 (5.1%)</b>	<b>400 (4.5%)</b>	<b>401 (4.4%)</b>
USA	Male	301 (3.1%)	280 (2.8%)	258 (2.7%)	223 (2.3%)	170 (1.8%)	120 (1.3%)	96 (1.0%)	89 (1.0%)	62 (0.7%)	53 (0.6%)
	Female	120 (1.2%)	111 (1.1%)	118 (1.2%)	82 (0.8%)	51 (0.6%)	39 (0.4%)	32 (0.3%)	21 (0.2%)	35 (0.4%)	25 (0.3%)
	<b>Subtotal</b>	<b>421 (4.3%)</b>	<b>391 (3.9%)</b>	<b>376 (4.0%)</b>	<b>305 (3.1%)</b>	<b>221 (2.4%)</b>	<b>159 (1.7%)</b>	<b>128 (1.4%)</b>	<b>110 (1.2%)</b>	<b>97 (1.1%)</b>	<b>78 (0.9%)</b>
GNY	Male	66 (0.7%)	70 (0.7%)	49 (0.5%)	53 (0.5%)	58 (0.6%)	39 (0.4%)	39 (0.4%)	48 (0.5%)	46 (0.5%)	52 (0.6%)
	Female	12 (0.1%)	15 (0.1%)	15 (0.2%)	25 (0.3%)	19 (0.2%)	18 (0.2%)	18 (0.2%)	18 (0.2%)	18 (0.2%)	16 (0.2%)
	<b>Subtotal</b>	<b>78 (0.8%)</b>	<b>85 (0.8%)</b>	<b>64 (0.7%)</b>	<b>78 (0.8%)</b>	<b>77 (0.8%)</b>	<b>57 (0.6%)</b>	<b>57 (0.6%)</b>	<b>66 (0.7%)</b>	<b>64 (0.7%)</b>	<b>68 (0.8%)</b>
Other	Male	22 (0.2%)	20 (0.2%)	19 (0.2%)	20 (0.2%)	18 (0.2%)	9 (0.1%)	11 (0.1%)	9 (0.1%)	7 (0.1%)	13 (0.1%)
	Female	15 (0.2%)	11 (0.1%)	10 (0.1%)	4 (0.0%)	4 (0.0%)	3 (0.0%)	4 (0.0%)	5 (0.1%)	5 (0.1%)	5 (0.1%)
	<b>Subtotal</b>	<b>37 (0.4%)</b>	<b>31 (0.3%)</b>	<b>29 (0.3%)</b>	<b>24 (0.2%)</b>	<b>22 (0.2%)</b>	<b>12 (0.1%)</b>	<b>15 (0.2%)</b>	<b>14 (0.2%)</b>	<b>12 (0.1%)</b>	<b>18 (0.2%)</b>

### Jump (including Dual)

Bred	Sex	2017	2018	2019	2020	2021	2022	2023	2024	2025	2026
GB	Male	1,330 (22.8%)	1,351 (22.3%)	1,287 (21.0%)	1,254 (19.8%)	1,321 (19.3%)	1,202 (19.3%)	1,214 (19.2%)	1,166 (19.3%)	1,158 (19.6%)	1,129 (19.5%)
	Female	609 (10.4%)	665 (11.0%)	633 (10.3%)	614 (9.7%)	720 (10.5%)	649 (10.4%)	684 (10.8%)	656 (10.8%)	594 (10.1%)	606 (10.5%)
	<b>Subtotal</b>	<b>1,939 (33.2%)</b>	<b>2,016 (33.3%)</b>	<b>1,920 (31.3%)</b>	<b>1,868 (29.5%)</b>	<b>2,041 (29.8%)</b>	<b>1,851 (29.7%)</b>	<b>1,898 (30.0%)</b>	<b>1,822 (30.1%)</b>	<b>1,752 (29.7%)</b>	<b>1,735 (29.9%)</b>
IRE	Male	2,593 (44.4%)	2,631 (43.4%)	2,656 (43.3%)	2,752 (43.5%)	2,937 (42.9%)	2,593 (41.7%)	2,535 (40.1%)	2,401 (39.7%)	2,326 (39.4%)	2,242 (38.7%)
	Female	428 (7.3%)	512 (8.4%)	578 (9.4%)	635 (10.0%)	641 (9.4%)	572 (9.2%)	617 (9.8%)	607 (10.0%)	612 (10.4%)	609 (10.5%)
	<b>Subtotal</b>	<b>3,021 (51.7%)</b>	<b>3,143 (51.8%)</b>	<b>3,234 (52.7%)</b>	<b>3,387 (53.5%)</b>	<b>3,578 (52.3%)</b>	<b>3,165 (50.9%)</b>	<b>3,152 (49.9%)</b>	<b>3,008 (49.7%)</b>	<b>2,938 (49.8%)</b>	<b>2,851 (49.2%)</b>
FR	Male	706 (12.1%)	714 (11.8%)	773 (12.6%)	837 (13.2%)	978 (14.3%)	969 (15.6%)	1,026 (16.2%)	988 (16.3%)	977 (16.6%)	990 (17.1%)
	Female	63 (1.1%)	76 (1.3%)	102 (1.7%)	120 (1.9%)	133 (1.9%)	126 (2.0%)	146 (2.3%)	145 (2.4%)	164 (2.8%)	162 (2.8%)
	<b>Subtotal</b>	<b>769 (13.2%)</b>	<b>790 (13.0%)</b>	<b>875 (14.3%)</b>	<b>957 (15.1%)</b>	<b>1,111 (16.2%)</b>	<b>1,095 (17.6%)</b>	<b>1,172 (18.5%)</b>	<b>1,133 (18.7%)</b>	<b>1,141 (19.3%)</b>	<b>1,152 (19.9%)</b>
USA	Male	43 (0.7%)	41 (0.7%)	30 (0.5%)	34 (0.5%)	28 (0.4%)	29 (0.5%)	19 (0.3%)	13 (0.2%)	8 (0.1%)	8 (0.1%)
	Female	2 (0.0%)	4 (0.1%)	3 (0.0%)	3 (0.0%)	1 (0.0%)	1 (0.0%)	NA (-)	2 (0.0%)	1 (0.0%)	2 (0.0%)
	<b>Subtotal</b>	<b>45 (0.8%)</b>	<b>45 (0.7%)</b>	<b>33 (0.5%)</b>	<b>37 (0.6%)</b>	<b>29 (0.4%)</b>	<b>30 (0.5%)</b>	<b>19 (0.3%)</b>	<b>15 (0.2%)</b>	<b>9 (0.2%)</b>	<b>10 (0.2%)</b>
GNY	Male	58 (1.0%)	57 (0.9%)	54 (0.9%)	68 (1.1%)	68 (1.0%)	70 (1.1%)	71 (1.1%)	60 (1.0%)	44 (0.7%)	33 (0.6%)
	Female	4 (0.1%)	3 (0.0%)	6 (0.1%)	5 (0.1%)	10 (0.1%)	8 (0.1%)	5 (0.1%)	5 (0.1%)	6 (0.1%)	7 (0.1%)
	<b>Subtotal</b>	<b>62 (1.1%)</b>	<b>60 (1.0%)</b>	<b>60 (1.0%)</b>	<b>73 (1.2%)</b>	<b>78 (1.1%)</b>	<b>78 (1.3%)</b>	<b>76 (1.2%)</b>	<b>65 (1.1%)</b>	<b>50 (0.8%)</b>	<b>40 (0.7%)</b>
Other	Male	7 (0.1%)	7 (0.1%)	7 (0.1%)	4 (0.1%)	4 (0.1%)	3 (0.0%)	2 (0.0%)	4 (0.1%)	5 (0.1%)	6 (0.1%)
	Female	1 (0.0%)	2 (0.0%)	2 (0.0%)	NA (-)	1 (0.0%)	NA (-)	NA (-)	1 (0.0%)	2 (0.0%)	1 (0.0%)
	<b>Subtotal</b>	<b>8 (0.1%)</b>	<b>9 (0.1%)</b>	<b>9 (0.1%)</b>	<b>4 (0.1%)</b>	<b>5 (0.1%)</b>	<b>3 (0.0%)</b>	<b>2 (0.0%)</b>	<b>5 (0.1%)</b>	<b>7 (0.1%)</b>	<b>7 (0.1%)</b>

## Year to Date Total Runners by Breeding

### Flat

Bred	Sex	2017	2018	2019	2020	2021	2022	2023	2024	2025	2026
GB	Male	1,707 (33.1%)	1,692 (33.7%)	1,625 (32.2%)	1,760 (32.6%)	1,747 (32.0%)	1,650 (32.2%)	1,643 (30.3%)	1,868 (32.8%)	1,851 (33.6%)	1,877 (33.4%)
	Female	828 (16.1%)	776 (15.5%)	828 (16.4%)	887 (16.5%)	976 (17.9%)	907 (17.7%)	971 (17.9%)	864 (15.2%)	765 (13.9%)	848 (15.1%)
	<b>Subtotal</b>	<b>2,535 (49.2%)</b>	<b>2,468 (49.1%)</b>	<b>2,453 (48.6%)</b>	<b>2,647 (49.1%)</b>	<b>2,723 (49.8%)</b>	<b>2,557 (49.9%)</b>	<b>2,614 (48.3%)</b>	<b>2,732 (48.0%)</b>	<b>2,616 (47.5%)</b>	<b>2,725 (48.5%)</b>
IRE	Male	1,564 (30.4%)	1,504 (29.9%)	1,545 (30.6%)	1,655 (30.7%)	1,747 (32.0%)	1,578 (30.8%)	1,809 (33.4%)	1,919 (33.7%)	1,912 (34.7%)	1,892 (33.7%)
	Female	614 (11.9%)	590 (11.7%)	555 (11.0%)	633 (11.7%)	561 (10.3%)	596 (11.6%)	642 (11.9%)	669 (11.7%)	636 (11.5%)	690 (12.3%)
	<b>Subtotal</b>	<b>2,178 (42.3%)</b>	<b>2,094 (41.7%)</b>	<b>2,100 (41.6%)</b>	<b>2,288 (42.4%)</b>	<b>2,308 (42.2%)</b>	<b>2,174 (42.4%)</b>	<b>2,451 (45.2%)</b>	<b>2,588 (45.4%)</b>	<b>2,548 (46.2%)</b>	<b>2,582 (45.9%)</b>
FR	Male	112 (2.2%)	110 (2.2%)	140 (2.8%)	158 (2.9%)	147 (2.7%)	160 (3.1%)	159 (2.9%)	168 (2.9%)	188 (3.4%)	177 (3.1%)
	Female	29 (0.6%)	53 (1.1%)	43 (0.9%)	43 (0.8%)	42 (0.8%)	42 (0.8%)	56 (1.0%)	58 (1.0%)	46 (0.8%)	59 (1.0%)
	<b>Subtotal</b>	<b>141 (2.7%)</b>	<b>163 (3.2%)</b>	<b>183 (3.6%)</b>	<b>201 (3.7%)</b>	<b>189 (3.5%)</b>	<b>202 (3.9%)</b>	<b>215 (4.0%)</b>	<b>226 (4.0%)</b>	<b>234 (4.2%)</b>	<b>236 (4.2%)</b>
USA	Male	186 (3.6%)	199 (4.0%)	191 (3.8%)	172 (3.2%)	143 (2.6%)	128 (2.5%)	86 (1.6%)	85 (1.5%)	53 (1.0%)	18 (0.3%)
	Female	46 (0.9%)	40 (0.8%)	65 (1.3%)	43 (0.8%)	30 (0.5%)	27 (0.5%)	25 (0.5%)	31 (0.5%)	23 (0.4%)	11 (0.2%)
	<b>Subtotal</b>	<b>232 (4.5%)</b>	<b>239 (4.8%)</b>	<b>256 (5.1%)</b>	<b>215 (4.0%)</b>	<b>173 (3.2%)</b>	<b>155 (3.0%)</b>	<b>111 (2.0%)</b>	<b>116 (2.0%)</b>	<b>76 (1.4%)</b>	<b>29 (0.5%)</b>
GNY	Male	34 (0.7%)	29 (0.6%)	20 (0.4%)	28 (0.5%)	40 (0.7%)	15 (0.3%)	16 (0.3%)	24 (0.4%)	22 (0.4%)	23 (0.4%)
	Female	10 (0.2%)	8 (0.2%)	7 (0.1%)	4 (0.1%)	12 (0.2%)	13 (0.3%)	6 (0.1%)	6 (0.1%)	8 (0.1%)	14 (0.2%)
	<b>Subtotal</b>	<b>44 (0.9%)</b>	<b>37 (0.7%)</b>	<b>27 (0.5%)</b>	<b>32 (0.6%)</b>	<b>52 (1.0%)</b>	<b>28 (0.5%)</b>	<b>22 (0.4%)</b>	<b>30 (0.5%)</b>	<b>30 (0.5%)</b>	<b>37 (0.7%)</b>
Other	Male	16 (0.3%)	19 (0.4%)	19 (0.4%)	9 (0.2%)	18 (0.3%)	5 (0.1%)	3 (0.1%)	2 (0.0%)	4 (0.1%)	8 (0.1%)
	Female	5 (0.1%)	2 (0.0%)	7 (0.1%)	0 (0.0%)	2 (0.0%)	4 (0.1%)	1 (0.0%)	3 (0.1%)	3 (0.1%)	3 (0.1%)
	<b>Subtotal</b>	<b>21 (0.4%)</b>	<b>21 (0.4%)</b>	<b>26 (0.5%)</b>	<b>9 (0.2%)</b>	<b>20 (0.4%)</b>	<b>9 (0.2%)</b>	<b>4 (0.1%)</b>	<b>5 (0.1%)</b>	<b>7 (0.1%)</b>	<b>11 (0.2%)</b>

## Jump

Bred	Sex	2017	2018	2019	2020	2021	2022	2023	2024	2025	2026
GB	Male	1,381 (22.3%)	1,225 (21.7%)	1,188 (21.1%)	1,105 (19.4%)	1,021 (18.4%)	1,142 (17.6%)	1,096 (18.3%)	970 (18.2%)	1,100 (19.5%)	946 (17.3%)
	Female	495 (8.0%)	491 (8.7%)	510 (9.1%)	512 (9.0%)	502 (9.1%)	584 (9.0%)	541 (9.0%)	477 (8.9%)	462 (8.2%)	461 (8.4%)
	<b>Subtotal</b>	<b>1,876 (30.4%)</b>	<b>1,716 (30.4%)</b>	<b>1,698 (30.2%)</b>	<b>1,617 (28.4%)</b>	<b>1,523 (27.5%)</b>	<b>1,726 (26.7%)</b>	<b>1,637 (27.3%)</b>	<b>1,447 (27.1%)</b>	<b>1,562 (27.8%)</b>	<b>1,407 (25.8%)</b>
IRE	Male	2,844 (46.0%)	2,570 (45.5%)	2,465 (43.8%)	2,460 (43.2%)	2,381 (43.0%)	2,759 (42.6%)	2,514 (41.9%)	2,163 (40.5%)	2,261 (40.2%)	2,236 (40.9%)
	Female	436 (7.1%)	462 (8.2%)	527 (9.4%)	571 (10.0%)	510 (9.2%)	569 (8.8%)	556 (9.3%)	552 (10.3%)	602 (10.7%)	573 (10.5%)
	<b>Subtotal</b>	<b>3,280 (53.1%)</b>	<b>3,032 (53.7%)</b>	<b>2,992 (53.1%)</b>	<b>3,031 (53.3%)</b>	<b>2,891 (52.2%)</b>	<b>3,328 (51.4%)</b>	<b>3,070 (51.2%)</b>	<b>2,715 (50.8%)</b>	<b>2,863 (50.9%)</b>	<b>2,809 (51.4%)</b>
FR	Male	832 (13.5%)	743 (13.2%)	765 (13.6%)	798 (14.0%)	887 (16.0%)	1,131 (17.5%)	1,034 (17.2%)	982 (18.4%)	985 (17.5%)	1,032 (18.9%)
	Female	66 (1.1%)	61 (1.1%)	76 (1.3%)	128 (2.3%)	128 (2.3%)	159 (2.5%)	147 (2.5%)	121 (2.3%)	163 (2.9%)	162 (3.0%)
	<b>Subtotal</b>	<b>898 (14.5%)</b>	<b>804 (14.2%)</b>	<b>841 (14.9%)</b>	<b>926 (16.3%)</b>	<b>1,015 (18.3%)</b>	<b>1,290 (19.9%)</b>	<b>1,181 (19.7%)</b>	<b>1,103 (20.7%)</b>	<b>1,148 (20.4%)</b>	<b>1,194 (21.9%)</b>
USA	Male	44 (0.7%)	33 (0.6%)	21 (0.4%)	38 (0.7%)	26 (0.5%)	21 (0.3%)	21 (0.4%)	5 (0.1%)	4 (0.1%)	5 (0.1%)
	Female	3 (0.0%)	2 (0.0%)	4 (0.1%)	3 (0.1%)	1 (0.0%)	2 (0.0%)	0 (0.0%)	2 (0.0%)	1 (0.0%)	0 (0.0%)
	<b>Subtotal</b>	<b>47 (0.8%)</b>	<b>35 (0.6%)</b>	<b>25 (0.4%)</b>	<b>41 (0.7%)</b>	<b>27 (0.5%)</b>	<b>23 (0.4%)</b>	<b>21 (0.4%)</b>	<b>7 (0.1%)</b>	<b>5 (0.1%)</b>	<b>5 (0.1%)</b>
GNY	Male	66 (1.1%)	49 (0.9%)	62 (1.1%)	62 (1.1%)	70 (1.3%)	89 (1.4%)	82 (1.4%)	60 (1.1%)	43 (0.8%)	38 (0.7%)
	Female	5 (0.1%)	4 (0.1%)	6 (0.1%)	5 (0.1%)	8 (0.1%)	14 (0.2%)	6 (0.1%)	4 (0.1%)	3 (0.1%)	3 (0.1%)
	<b>Subtotal</b>	<b>71 (1.1%)</b>	<b>53 (0.9%)</b>	<b>68 (1.2%)</b>	<b>67 (1.2%)</b>	<b>78 (1.4%)</b>	<b>103 (1.6%)</b>	<b>88 (1.5%)</b>	<b>64 (1.2%)</b>	<b>46 (0.8%)</b>	<b>41 (0.8%)</b>
Other	Male	4 (0.1%)	3 (0.1%)	6 (0.1%)	5 (0.1%)	2 (0.0%)	1 (0.0%)	0 (0.0%)	4 (0.1%)	4 (0.1%)	8 (0.1%)
	Female	4 (0.1%)	2 (0.0%)	0 (0.0%)	1 (0.0%)	0 (0.0%)	0 (0.0%)	0 (0.0%)	1 (0.0%)	0 (0.0%)	0 (0.0%)
	<b>Subtotal</b>	<b>8 (0.1%)</b>	<b>5 (0.1%)</b>	<b>6 (0.1%)</b>	<b>6 (0.1%)</b>	<b>2 (0.0%)</b>	<b>1 (0.0%)</b>	<b>NA (-)</b>	<b>5 (0.1%)</b>	<b>4 (0.1%)</b>	<b>8 (0.1%)</b>

## Year to Date Individual Runners by Breeding

### Flat

Bred	Sex	2017	2018	2019	2020	2021	2022	2023	2024	2025	2026
GB	Male	799 (32.1%)	787 (32.3%)	775 (31.0%)	828 (31.9%)	790 (31.1%)	774 (31.2%)	739 (29.5%)	836 (31.8%)	793 (31.3%)	835 (32.5%)
	Female	429 (17.3%)	400 (16.4%)	439 (17.6%)	454 (17.5%)	482 (19.0%)	463 (18.7%)	478 (19.1%)	436 (16.6%)	398 (15.7%)	419 (16.3%)
	<b>Subtotal</b>	<b>1,228 (49.4%)</b>	<b>1,187 (48.7%)</b>	<b>1,214 (48.6%)</b>	<b>1,282 (49.3%)</b>	<b>1,272 (50.0%)</b>	<b>1,237 (49.9%)</b>	<b>1,217 (48.5%)</b>	<b>1,272 (48.5%)</b>	<b>1,191 (47.0%)</b>	<b>1,254 (48.9%)</b>
IRE	Male	739 (29.7%)	707 (29.0%)	759 (30.4%)	754 (29.0%)	784 (30.8%)	744 (30.0%)	799 (31.8%)	834 (31.8%)	846 (33.4%)	833 (32.5%)
	Female	296 (11.9%)	308 (12.6%)	287 (11.5%)	329 (12.7%)	275 (10.8%)	299 (12.1%)	312 (12.4%)	326 (12.4%)	333 (13.1%)	332 (12.9%)
	<b>Subtotal</b>	<b>1,035 (41.6%)</b>	<b>1,015 (41.7%)</b>	<b>1,046 (41.9%)</b>	<b>1,083 (41.7%)</b>	<b>1,059 (41.6%)</b>	<b>1,043 (42.1%)</b>	<b>1,111 (44.3%)</b>	<b>1,160 (44.2%)</b>	<b>1,179 (46.5%)</b>	<b>1,165 (45.4%)</b>
FR	Male	59 (2.4%)	55 (2.3%)	66 (2.6%)	83 (3.2%)	74 (2.9%)	73 (2.9%)	84 (3.3%)	88 (3.4%)	88 (3.5%)	76 (3.0%)
	Female	17 (0.7%)	26 (1.1%)	22 (0.9%)	25 (1.0%)	27 (1.1%)	21 (0.8%)	31 (1.2%)	31 (1.2%)	26 (1.0%)	29 (1.1%)
	<b>Subtotal</b>	<b>76 (3.1%)</b>	<b>81 (3.3%)</b>	<b>88 (3.5%)</b>	<b>108 (4.2%)</b>	<b>101 (4.0%)</b>	<b>94 (3.8%)</b>	<b>115 (4.6%)</b>	<b>119 (4.5%)</b>	<b>114 (4.5%)</b>	<b>105 (4.1%)</b>
USA	Male	87 (3.5%)	98 (4.0%)	89 (3.6%)	80 (3.1%)	64 (2.5%)	64 (2.6%)	40 (1.6%)	41 (1.6%)	24 (0.9%)	10 (0.4%)
	Female	24 (1.0%)	24 (1.0%)	32 (1.3%)	23 (0.9%)	16 (0.6%)	15 (0.6%)	10 (0.4%)	12 (0.5%)	9 (0.4%)	7 (0.3%)
	<b>Subtotal</b>	<b>111 (4.5%)</b>	<b>122 (5.0%)</b>	<b>121 (4.8%)</b>	<b>103 (4.0%)</b>	<b>80 (3.1%)</b>	<b>79 (3.2%)</b>	<b>50 (2.0%)</b>	<b>53 (2.0%)</b>	<b>33 (1.3%)</b>	<b>17 (0.7%)</b>
GNY	Male	19 (0.8%)	17 (0.7%)	13 (0.5%)	14 (0.5%)	19 (0.7%)	11 (0.4%)	10 (0.4%)	14 (0.5%)	10 (0.4%)	12 (0.5%)
	Female	6 (0.2%)	4 (0.2%)	4 (0.2%)	3 (0.1%)	5 (0.2%)	10 (0.4%)	3 (0.1%)	4 (0.2%)	4 (0.2%)	5 (0.2%)
	<b>Subtotal</b>	<b>25 (1.0%)</b>	<b>21 (0.9%)</b>	<b>17 (0.7%)</b>	<b>17 (0.7%)</b>	<b>24 (0.9%)</b>	<b>21 (0.8%)</b>	<b>13 (0.5%)</b>	<b>18 (0.7%)</b>	<b>14 (0.6%)</b>	<b>17 (0.7%)</b>
Other	Male	8 (0.3%)	8 (0.3%)	8 (0.3%)	5 (0.2%)	6 (0.2%)	3 (0.1%)	2 (0.1%)	1 (0.0%)	2 (0.1%)	6 (0.2%)
	Female	3 (0.1%)	1 (0.0%)	3 (0.1%)	0 (0.0%)	1 (0.0%)	1 (0.0%)	1 (0.0%)	2 (0.1%)	2 (0.1%)	2 (0.1%)
	<b>Subtotal</b>	<b>11 (0.4%)</b>	<b>9 (0.4%)</b>	<b>11 (0.4%)</b>	<b>5 (0.2%)</b>	<b>7 (0.3%)</b>	<b>4 (0.2%)</b>	<b>3 (0.1%)</b>	<b>3 (0.1%)</b>	<b>4 (0.2%)</b>	<b>8 (0.3%)</b>

### Jump

Bred	Sex	2017	2018	2019	2020	2021	2022	2023	2024	2025	2026
GB	Male	827 (21.8%)	748 (21.0%)	777 (20.7%)	727 (19.0%)	703 (18.3%)	718 (17.8%)	729 (18.5%)	647 (17.7%)	723 (19.3%)	617 (17.5%)
	Female	326 (8.6%)	324 (9.1%)	342 (9.1%)	349 (9.1%)	357 (9.3%)	361 (9.0%)	359 (9.1%)	335 (9.2%)	316 (8.4%)	306 (8.7%)
	<b>Subtotal</b>	<b>1,153 (30.4%)</b>	<b>1,072 (30.0%)</b>	<b>1,119 (29.9%)</b>	<b>1,076 (28.1%)</b>	<b>1,060 (27.6%)</b>	<b>1,079 (26.8%)</b>	<b>1,088 (27.6%)</b>	<b>982 (26.9%)</b>	<b>1,039 (27.7%)</b>	<b>923 (26.1%)</b>
IRE	Male	1,731 (45.6%)	1,621 (45.4%)	1,659 (44.3%)	1,672 (43.6%)	1,658 (43.1%)	1,731 (42.9%)	1,629 (41.3%)	1,480 (40.6%)	1,499 (39.9%)	1,416 (40.1%)
	Female	274 (7.2%)	299 (8.4%)	346 (9.2%)	386 (10.1%)	359 (9.3%)	354 (8.8%)	384 (9.7%)	386 (10.6%)	401 (10.7%)	363 (10.3%)
	<b>Subtotal</b>	<b>2,005 (52.8%)</b>	<b>1,920 (53.8%)</b>	<b>2,005 (53.5%)</b>	<b>2,058 (53.7%)</b>	<b>2,017 (52.4%)</b>	<b>2,085 (51.7%)</b>	<b>2,013 (51.0%)</b>	<b>1,866 (51.2%)</b>	<b>1,900 (50.6%)</b>	<b>1,779 (50.4%)</b>
FR	Male	521 (13.7%)	478 (13.4%)	505 (13.5%)	534 (13.9%)	611 (15.9%)	699 (17.3%)	671 (17.0%)	662 (18.2%)	669 (17.8%)	678 (19.2%)
	Female	42 (1.1%)	43 (1.2%)	56 (1.5%)	87 (2.3%)	88 (2.3%)	95 (2.4%)	106 (2.7%)	83 (2.3%)	106 (2.8%)	115 (3.3%)
	<b>Subtotal</b>	<b>563 (14.8%)</b>	<b>521 (14.6%)</b>	<b>561 (15.0%)</b>	<b>621 (16.2%)</b>	<b>699 (18.2%)</b>	<b>794 (19.7%)</b>	<b>777 (19.7%)</b>	<b>745 (20.4%)</b>	<b>775 (20.7%)</b>	<b>793 (22.5%)</b>
USA	Male	30 (0.8%)	23 (0.6%)	15 (0.4%)	23 (0.6%)	18 (0.5%)	12 (0.3%)	14 (0.4%)	4 (0.1%)	3 (0.1%)	4 (0.1%)
	Female	1 (0.0%)	1 (0.0%)	3 (0.1%)	3 (0.1%)	1 (0.0%)	1 (0.0%)	0 (0.0%)	1 (0.0%)	1 (0.0%)	0 (0.0%)
	<b>Subtotal</b>	<b>31 (0.8%)</b>	<b>24 (0.7%)</b>	<b>18 (0.5%)</b>	<b>26 (0.7%)</b>	<b>19 (0.5%)</b>	<b>13 (0.3%)</b>	<b>14 (0.4%)</b>	<b>5 (0.1%)</b>	<b>4 (0.1%)</b>	<b>4 (0.1%)</b>
GNY	Male	38 (1.0%)	26 (0.7%)	36 (1.0%)	42 (1.1%)	43 (1.1%)	52 (1.3%)	49 (1.2%)	41 (1.1%)	30 (0.8%)	26 (0.7%)
	Female	3 (0.1%)	2 (0.1%)	4 (0.1%)	4 (0.1%)	6 (0.2%)	8 (0.2%)	5 (0.1%)	4 (0.1%)	2 (0.1%)	2 (0.1%)
	<b>Subtotal</b>	<b>41 (1.1%)</b>	<b>28 (0.8%)</b>	<b>40 (1.1%)</b>	<b>46 (1.2%)</b>	<b>49 (1.3%)</b>	<b>60 (1.5%)</b>	<b>54 (1.4%)</b>	<b>45 (1.2%)</b>	<b>32 (0.9%)</b>	<b>28 (0.8%)</b>
Other	Male	3 (0.1%)	2 (0.1%)	4 (0.1%)	5 (0.1%)	2 (0.1%)	1 (0.0%)	0 (0.0%)	3 (0.1%)	3 (0.1%)	5 (0.1%)
	Female	2 (0.1%)	2 (0.1%)	0 (0.0%)	1 (0.0%)	0 (0.0%)	0 (0.0%)	0 (0.0%)	1 (0.0%)	0 (0.0%)	0 (0.0%)
	<b>Subtotal</b>	<b>5 (0.1%)</b>	<b>4 (0.1%)</b>	<b>4 (0.1%)</b>	<b>6 (0.2%)</b>	<b>2 (0.1%)</b>	<b>1 (0.0%)</b>	<b>NA (-)</b>	<b>4 (0.1%)</b>	<b>3 (0.1%)</b>	<b>5 (0.1%)</b>

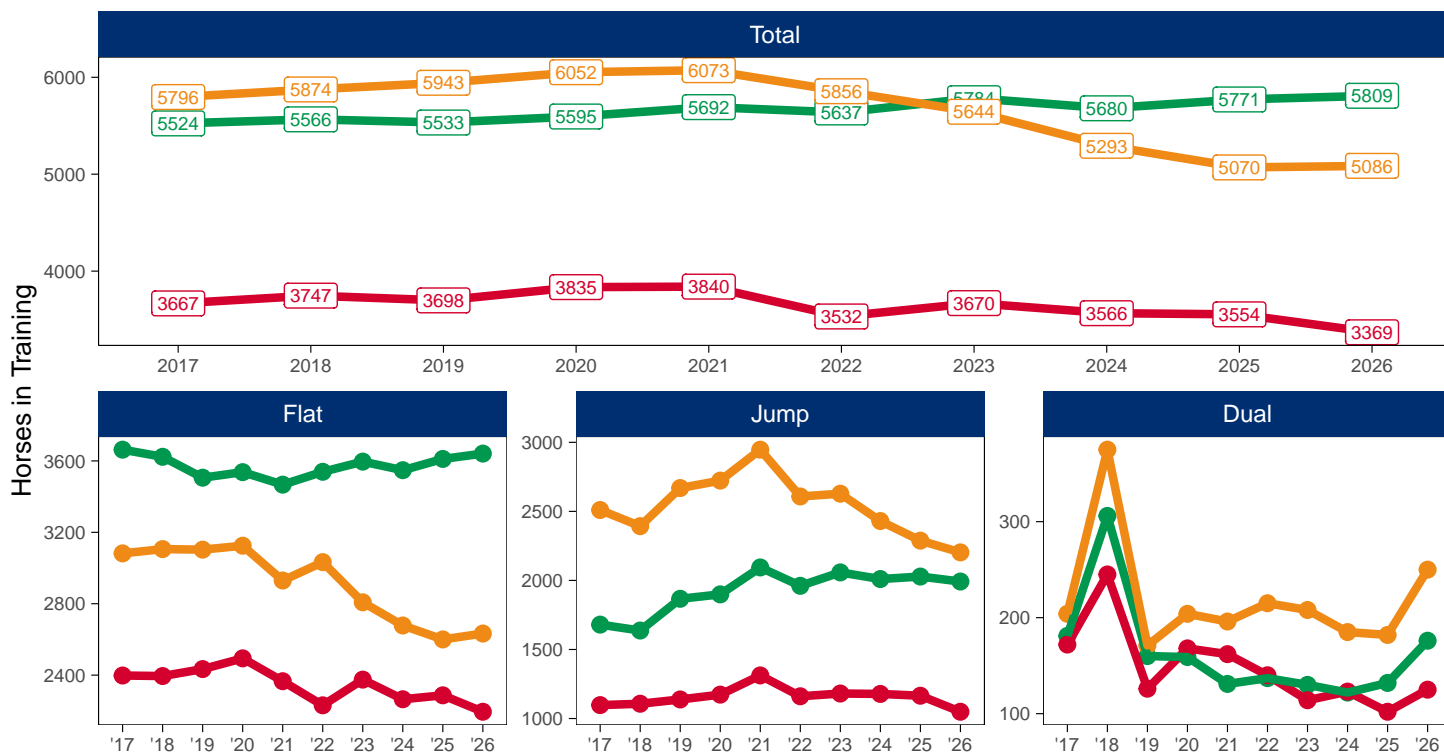
# Horse Population by Location

## February 2026 Horses in Training Snapshot by Region versus Previous Years

### Snapshot of Total Horses in Training in February by Region

Horses in Training in February, shown by Training Type and Region

Region ● North ● Midlands ● South



### North

AgeCat	2017	2018	2019	2020	2021	2022	2023	2024	2025	2026	vs. Last Year	vs. Pre-Covid
<b>Flat Horses in Training</b>												
2YO	603	616	622	639	538	573	561	447	507	413	-94 / -18.5%	-209 / -33.6%
3YO	725	686	698	792	728	666	692	671	617	644	+27 / +4.4%	-54 / -7.7%
4YO	398	409	410	394	389	393	403	406	405	423	+18 / +4.4%	+13 / +3.2%
5YO+	672	684	704	669	711	599	719	741	758	715	-43 / -5.7%	+11 / +1.6%
<b>Subtotal</b>	<b>2398</b>	<b>2395</b>	<b>2434</b>	<b>2494</b>	<b>2366</b>	<b>2231</b>	<b>2375</b>	<b>2265</b>	<b>2287</b>	<b>2195</b>	<b>-92 / -4.0%</b>	<b>-239 / -9.8%</b>
<b>Jump Horses in Training</b>												
3YO	2	5	6	5	4	2	9	0	1	0	-1 / -100.0%	-6 / -100.0%
4-5YO	293	238	274	288	270	258	287	293	261	240	-21 / -8.0%	-34 / -12.4%
6-7YO	335	406	406	418	459	427	444	434	446	411	-35 / -7.8%	+5 / +1.2%
8YO+	467	458	452	462	579	474	441	451	457	398	-59 / -12.9%	-54 / -11.9%
<b>Subtotal</b>	<b>1097</b>	<b>1107</b>	<b>1138</b>	<b>1173</b>	<b>1312</b>	<b>1161</b>	<b>1181</b>	<b>1178</b>	<b>1165</b>	<b>1049</b>	<b>-116 / -10.0%</b>	<b>-89 / -7.8%</b>
<b>Dual Horses in Training</b>												
3YO	19	12	6	23	10	16	8	9	10	5	-5 / -50.0%	-1 / -16.7%
4YO	43	64	32	37	41	20	28	37	30	35	+5 / +16.7%	+3 / +9.4%
5YO+	110	169	88	108	111	104	78	77	62	85	+23 / +37.1%	-3 / -3.4%
<b>Subtotal</b>	<b>172</b>	<b>245</b>	<b>126</b>	<b>168</b>	<b>162</b>	<b>140</b>	<b>114</b>	<b>123</b>	<b>102</b>	<b>125</b>	<b>+23 / +22.5%</b>	<b>-1 / -0.8%</b>
<b>Total Horses in Training</b>												
	<b>3667</b>	<b>3747</b>	<b>3698</b>	<b>3835</b>	<b>3840</b>	<b>3532</b>	<b>3670</b>	<b>3566</b>	<b>3554</b>	<b>3369</b>	<b>-185 / -5.2%</b>	<b>-329 / -8.9%</b>

'vs. Pre-Covid' is comparison between 2026 and 2019

## Midlands

AgeCat	2017	2018	2019	2020	2021	2022	2023	2024	2025	2026	vs. Last Year	vs. Pre-Covid
<b>Flat Horses in Training</b>												
2YO	1042	946	868	864	808	863	824	788	784	829	+45 / +5.7%	-39 / -4.5%
3YO	1341	1425	1331	1372	1289	1335	1356	1304	1355	1310	-45 / -3.3%	-21 / -1.6%
4YO	576	555	585	570	650	624	646	633	633	672	+39 / +6.2%	+87 / +14.9%
5YO+	704	697	722	731	720	717	770	823	839	830	-9 / -1.1%	+108 / +15.0%
<b>Subtotal</b>	<b>3663</b>	<b>3623</b>	<b>3506</b>	<b>3537</b>	<b>3467</b>	<b>3539</b>	<b>3596</b>	<b>3548</b>	<b>3611</b>	<b>3641</b>	<b>+30 / +0.8%</b>	<b>+135 / +3.9%</b>
<b>Jump Horses in Training</b>												
3YO	9	13	7	3	9	8	9	9	4	7	+3 / +75.0%	0 / 0.0%
4-5YO	525	480	573	630	599	569	654	579	665	638	-27 / -4.1%	+65 / +11.3%
6-7YO	573	608	685	682	786	777	765	798	760	746	-14 / -1.8%	+61 / +8.9%
8YO+	573	536	602	584	700	607	630	624	599	601	+2 / +0.3%	-1 / -0.2%
<b>Subtotal</b>	<b>1680</b>	<b>1637</b>	<b>1867</b>	<b>1899</b>	<b>2094</b>	<b>1961</b>	<b>2058</b>	<b>2010</b>	<b>2028</b>	<b>1992</b>	<b>-36 / -1.8%</b>	<b>+125 / +6.7%</b>
<b>Dual Horses in Training</b>												
3YO	10	13	8	8	5	11	11	7	12	12	0 / 0.0%	+4 / +50.0%
4YO	54	83	53	43	39	46	39	34	32	44	+12 / +37.5%	-9 / -17.0%
5YO+	117	210	99	108	87	80	80	81	88	120	+32 / +36.4%	+21 / +21.2%
<b>Subtotal</b>	<b>181</b>	<b>306</b>	<b>160</b>	<b>159</b>	<b>131</b>	<b>137</b>	<b>130</b>	<b>122</b>	<b>132</b>	<b>176</b>	<b>+44 / +33.3%</b>	<b>+16 / +10.0%</b>
<b>Total Horses in Training</b>												
	<b>5524</b>	<b>5566</b>	<b>5533</b>	<b>5595</b>	<b>5692</b>	<b>5637</b>	<b>5784</b>	<b>5680</b>	<b>5771</b>	<b>5809</b>	<b>+38 / +0.7%</b>	<b>+276 / +5.0%</b>

'vs. Pre-Covid' is comparison between 2026 and 2019

## South

AgeCat	2017	2018	2019	2020	2021	2022	2023	2024	2025	2026	vs. Last Year	vs. Pre-Covid
<b>Flat Horses in Training</b>												
2YO	1007	918	927	907	882	920	808	774	694	705	+11 / +1.6%	-222 / -23.9%
3YO	1014	1116	1069	1097	988	1006	976	935	992	963	-29 / -2.9%	-106 / -9.9%
4YO	444	462	517	488	473	503	425	414	389	461	+72 / +18.5%	-56 / -10.8%
5YO+	617	610	590	633	587	604	599	555	525	504	-21 / -4.0%	-86 / -14.6%
<b>Subtotal</b>	<b>3082</b>	<b>3106</b>	<b>3103</b>	<b>3125</b>	<b>2930</b>	<b>3033</b>	<b>2808</b>	<b>2678</b>	<b>2600</b>	<b>2633</b>	<b>+33 / +1.3%</b>	<b>-470 / -15.1%</b>
<b>Jump Horses in Training</b>												
3YO	7	14	10	5	20	8	14	21	8	9	+1 / +12.5%	-1 / -10.0%
4-5YO	810	728	840	829	791	843	898	795	740	753	+13 / +1.8%	-87 / -10.4%
6-7YO	896	895	999	1051	1121	947	956	959	897	825	-72 / -8.0%	-174 / -17.4%
8YO+	797	756	820	838	1015	810	760	655	643	616	-27 / -4.2%	-204 / -24.9%
<b>Subtotal</b>	<b>2510</b>	<b>2393</b>	<b>2669</b>	<b>2723</b>	<b>2947</b>	<b>2608</b>	<b>2628</b>	<b>2430</b>	<b>2288</b>	<b>2203</b>	<b>-85 / -3.7%</b>	<b>-466 / -17.5%</b>
<b>Dual Horses in Training</b>												
3YO	14	14	6	15	16	14	12	5	26	12	-14 / -53.8%	+6 / +100.0%
4YO	51	94	58	73	67	73	69	65	56	88	+32 / +57.1%	+30 / +51.7%
5YO+	139	267	107	116	113	128	127	115	100	150	+50 / +50.0%	+43 / +40.2%
<b>Subtotal</b>	<b>204</b>	<b>375</b>	<b>171</b>	<b>204</b>	<b>196</b>	<b>215</b>	<b>208</b>	<b>185</b>	<b>182</b>	<b>250</b>	<b>+68 / +37.4%</b>	<b>+79 / +46.2%</b>
<b>Total Horses in Training</b>												
	<b>5796</b>	<b>5874</b>	<b>5943</b>	<b>6052</b>	<b>6073</b>	<b>5856</b>	<b>5644</b>	<b>5293</b>	<b>5070</b>	<b>5086</b>	<b>+16 / +0.3%</b>	<b>-857 / -14.4%</b>

'vs. Pre-Covid' is comparison between 2026 and 2019

## February 2026 Horses in Training Snapshot by Country versus Previous Years

Type	2017	2018	2019	2020	2021	2022	2023	2024	2025	2026	vs. Last Year	vs. Pre-Covid
<b>England</b>												
Flat	8796	8787	8735	8820	8477	8492	8440	8190	8211	8169	-42 / -0.5%	-566 / -6.5%
Jump	4564	4491	4960	5051	5548	5018	5167	4907	4770	4580	-190 / -4.0%	-380 / -7.7%
Dual	489	822	402	489	435	455	425	390	385	496	+111 / +28.8%	+94 / +23.4%
<b>Overall</b>	<b>13849</b>	<b>14100</b>	<b>14097</b>	<b>14360</b>	<b>14460</b>	<b>13965</b>	<b>14032</b>	<b>13487</b>	<b>13366</b>	<b>13245</b>	<b>-121 / -0.9%</b>	<b>-852 / -6.0%</b>
<b>Scotland</b>												
Flat	199	196	161	174	162	180	207	182	184	192	+8 / +4.3%	+31 / +19.3%
Jump	315	326	339	347	409	371	385	387	400	340	-60 / -15.0%	+1 / +0.3%
Dual	33	51	33	33	31	23	15	23	17	19	+2 / +11.8%	-14 / -42.4%
<b>Overall</b>	<b>547</b>	<b>573</b>	<b>533</b>	<b>554</b>	<b>602</b>	<b>574</b>	<b>607</b>	<b>592</b>	<b>601</b>	<b>551</b>	<b>-50 / -8.3%</b>	<b>+18 / +3.4%</b>
<b>Wales</b>												
Flat	148	141	147	162	124	131	132	119	103	108	+5 / +4.9%	-39 / -26.5%
Jump	408	320	375	397	396	341	315	324	311	324	+13 / +4.2%	-51 / -13.6%
Dual	35	53	22	9	23	14	12	17	14	36	+22 / +157.1%	+14 / +63.6%
<b>Overall</b>	<b>591</b>	<b>514</b>	<b>544</b>	<b>568</b>	<b>543</b>	<b>486</b>	<b>459</b>	<b>460</b>	<b>428</b>	<b>468</b>	<b>+40 / +9.3%</b>	<b>-76 / -14.0%</b>

'vs. Pre-Covid' is comparison between 2026 and 2019

## February 2026 Horses in Training Snapshot by Training Centre versus Previous Years

Type	2017	2018	2019	2020	2021	2022	2023	2024	2025	2026	vs. Last Year	vs. Pre-Covid
<b>Cheltenham (GL54)</b>												
Flat	13	18	17	21	18	19	16	13	17	29	+12 / +70.6%	+12 / +70.6%
Jump	429	414	448	513	563	537	529	499	512	490	-22 / -4.3%	+42 / +9.4%
Dual	25	73	26	13	11	13	9	15	15	33	+18 / +120.0%	+7 / +26.9%
<b>Overall</b>	<b>467</b>	<b>505</b>	<b>491</b>	<b>547</b>	<b>592</b>	<b>569</b>	<b>554</b>	<b>527</b>	<b>544</b>	<b>552</b>	<b>+8 / +1.5%</b>	<b>+61 / +12.4%</b>
<b>Lambourn (RG17)</b>												
Flat	914	926	922	891	805	902	847	821	836	844	+8 / +1.0%	-78 / -8.5%
Jump	345	342	345	367	375	315	313	278	285	284	-1 / -0.4%	-61 / -17.7%
Dual	17	39	13	27	19	29	35	26	34	37	+3 / +8.8%	+24 / +184.6%
<b>Overall</b>	<b>1276</b>	<b>1307</b>	<b>1280</b>	<b>1285</b>	<b>1199</b>	<b>1246</b>	<b>1195</b>	<b>1125</b>	<b>1155</b>	<b>1165</b>	<b>+10 / +0.9%</b>	<b>-115 / -9.0%</b>
<b>Malton (YO17)</b>												
Flat	614	583	629	668	533	574	655	607	629	552	-77 / -12.2%	-77 / -12.2%
Jump	126	139	117	115	121	96	95	79	72	55	-17 / -23.6%	-62 / -53.0%
Dual	33	41	14	34	42	38	27	26	24	25	+1 / +4.2%	+11 / +78.6%
<b>Overall</b>	<b>773</b>	<b>763</b>	<b>760</b>	<b>817</b>	<b>696</b>	<b>708</b>	<b>777</b>	<b>712</b>	<b>725</b>	<b>632</b>	<b>-93 / -12.8%</b>	<b>-128 / -16.8%</b>
<b>Marlborough (SN8)</b>												
Flat	535	536	530	518	474	450	401	457	416	411	-5 / -1.2%	-119 / -22.5%
Jump	69	76	76	76	83	85	83	77	63	81	+18 / +28.6%	+5 / +6.6%
Dual	2	1	3	7	0	2	2	3	2	1	-1 / -50.0%	-2 / -66.7%
<b>Overall</b>	<b>606</b>	<b>613</b>	<b>609</b>	<b>601</b>	<b>557</b>	<b>537</b>	<b>486</b>	<b>537</b>	<b>481</b>	<b>493</b>	<b>+12 / +2.5%</b>	<b>-116 / -19.0%</b>
<b>Middleham (DL8)</b>												
Flat	511	525	549	590	595	476	565	515	527	532	+5 / +0.9%	-17 / -3.1%
Jump	89	86	106	105	119	116	122	108	116	90	-26 / -22.4%	-16 / -15.1%
Dual	23	31	17	20	30	17	22	15	18	21	+3 / +16.7%	+4 / +23.5%
<b>Overall</b>	<b>623</b>	<b>642</b>	<b>672</b>	<b>715</b>	<b>744</b>	<b>609</b>	<b>709</b>	<b>638</b>	<b>661</b>	<b>643</b>	<b>-18 / -2.7%</b>	<b>-29 / -4.3%</b>
<b>Newbury (RG20)</b>												
Flat	385	396	434	448	433	486	406	405	368	381	+13 / +3.5%	-53 / -12.2%
Jump	22	14	21	9	12	11	36	58	89	72	-17 / -19.1%	+51 / +242.9%
Dual	12	17	9	9	10	7	5	6	2	10	+8 / +400.0%	+1 / +11.1%
<b>Overall</b>	<b>419</b>	<b>427</b>	<b>464</b>	<b>466</b>	<b>455</b>	<b>504</b>	<b>447</b>	<b>469</b>	<b>459</b>	<b>463</b>	<b>+4 / +0.9%</b>	<b>-1 / -0.2%</b>
<b>Newmarket (CB8)</b>												
Flat	2662	2627	2483	2590	2529	2532	2570	2538	2515	2500	-15 / -0.6%	+17 / +0.7%
Jump	57	61	73	53	70	56	68	74	74	73	-1 / -1.4%	0 / 0.0%
Dual	33	37	20	30	25	26	28	28	37	49	+12 / +32.4%	+29 / +145.0%
<b>Overall</b>	<b>2752</b>	<b>2725</b>	<b>2576</b>	<b>2673</b>	<b>2624</b>	<b>2614</b>	<b>2666</b>	<b>2640</b>	<b>2626</b>	<b>2622</b>	<b>-4 / -0.2%</b>	<b>+46 / +1.8%</b>

'vs. Pre-Covid' is comparison between 2026 and 2019