



Horse Population Report

Updated on 31 January 2026



Introduction

Welcome to the latest update on the Racehorse Population from the British Horseracing Authority.

The aim of this document is to give stakeholders and the wider Public an insight into the current state of the Horse Population in Great Britain. It is hoped that this transparency will ensure that all decision makers have access to the key data required to help British Racing deliver a Competitive and Compelling product to stakeholders, racegoers and the wider public.

If you have any questions regarding the content of this report or suggestions for how it could be improved further, please contact Joe Yates – jyates@britishhorseracing.com

Definitions

This report uses the Horses in Training returns from the Weatherby's Racing Administration System, this is completed by trainers and should be updated whenever a horse enters or leaves training in their care as part of the conditions of their licence.

Horses in Training

Unless otherwise stated, snapshots of Horses in Training will be from the 15th day of the month in question and year to date figures will be up to and including the date titled at the front of the report.

Horses' ratings will be taken from the most recently published ratings by the BHA Handicapping Team, which is currently at 7am each Tuesday morning. For example, if looking at the Horses in a particular rating band for July 2011, the horses in training number will be from Friday 15th July 2011 and ratings, where possible, will be assigned to each horse from the ratings published by the BHA Handicappers on Tuesday 12th July 2011.

The Gender of a horse will be taken from the reporting date in question, regardless of whether this has since changed.

In the case of YTD reporting, where a horse's gender or training type has changed in the year-to-date period, the most recent is taken.

This report does not count any horses that are temporarily racing abroad for GB Trainers at the time of reporting.

Yearlings are not included in total counts of flat and/or dual horses but will be sometimes shown separately for information purposes.

Yearlings and two-year-olds are not included in total counts of jump horses or counts of jump horses that include dual horses but will be sometimes shown separately for information purposes.

Yearlings, two-year-olds and three-year-olds are not included in total counts of Hunter Chasers but will be sometimes shown separately for information purposes.

Yearlings and two-year-olds in training that are recorded as dual horses have been re-coded as flat horses.

Hunter Chasers are not included in any counts of Jump Horses or Total figures but will be sometimes shown separately for information purposes.

Horses' training locations are defined by the trainers' primary training location. Training regions are defined the same as regions for the Fixture List; 'North' is north of latitude 53.42911, 'South' is south of latitude 51.88002 and 'Midlands' is anywhere in between. Training centres are defined by postcodes and surrounding areas.

Runners

Unless otherwise specified, Total Runners and Individual Runners metrics only counts runners that ran in GB races including any voided races. Withdrawn horses are not included.

Hunter Chases are not included in this section but will be sometimes shown separately for information purposes.

Total Runners is a count of all runners in races, whilst individual runners only counts each individual horse once.

Monthly Horses in Training

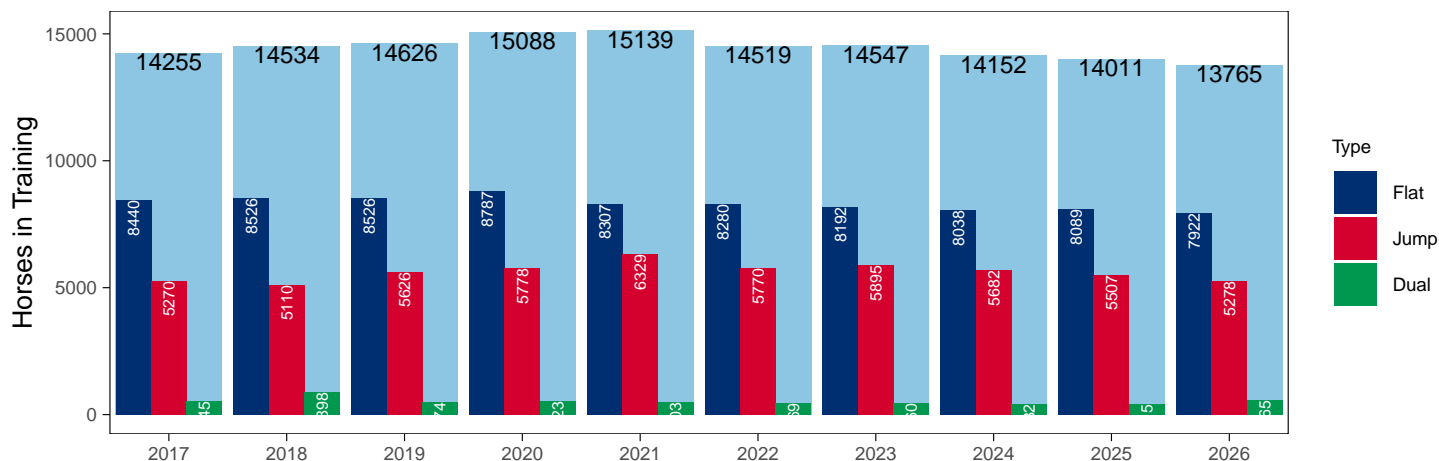
January 2026 Horses in Training Snapshot versus Previous Years

Type	2017	2018	2019	2020	2021	2022	2023	2024	2025	2026	vs. Last Year	vs. Pre-Covid
Flat	8440	8526	8526	8787	8307	8280	8192	8038	8089	7922	-167 / -2.1%	-604 / -7.1%
Jump	5270	5110	5626	5778	6329	5770	5895	5682	5507	5278	-229 / -4.2%	-348 / -6.2%
Dual	545	898	474	523	503	469	460	432	415	565	+150 / +36.1%	+91 / +19.2%
Hunter	1107	1011	1006	967	803	833	734	1013	679	666	-13 / -1.9%	-340 / -33.8%
Total	14255	14534	14626	15088	15139	14519	14547	14152	14011	13765	-246 / -1.8%	-861 / -5.9%

'vs. Pre-Covid' is comparison between 2026 and 2019

Snapshot of Total Horses in Training in January

Horses in Training in January, shown by Training Type



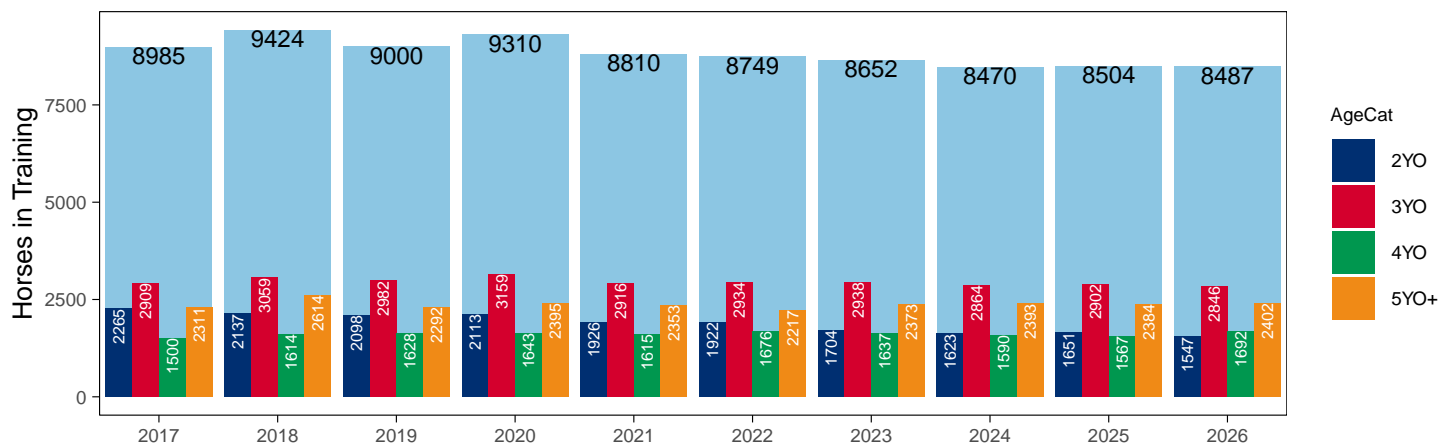
Flat (including Dual)

AgeCat	2017	2018	2019	2020	2021	2022	2023	2024	2025	2026	vs. Last Year	vs. Pre-Covid
2YO	2265	2137	2098	2113	1926	1922	1704	1623	1651	1547	-104 / -6.3%	-551 / -26.3%
3YO	2909	3059	2982	3159	2916	2934	2938	2864	2902	2846	-56 / -1.9%	-136 / -4.6%
4YO	1500	1614	1628	1643	1615	1676	1637	1590	1567	1692	+125 / +8.0%	+64 / +3.9%
5YO+	2311	2614	2292	2395	2353	2217	2373	2393	2384	2402	+18 / +0.8%	+110 / +4.8%
Total	8985	9424	9000	9310	8810	8749	8652	8470	8504	8487	-17 / -0.2%	-513 / -5.7%

'vs. Pre-Covid' is comparison between 2026 and 2019

Snapshot of Flat Horses in Training in January

Flat Horses in Training in January, shown by Age



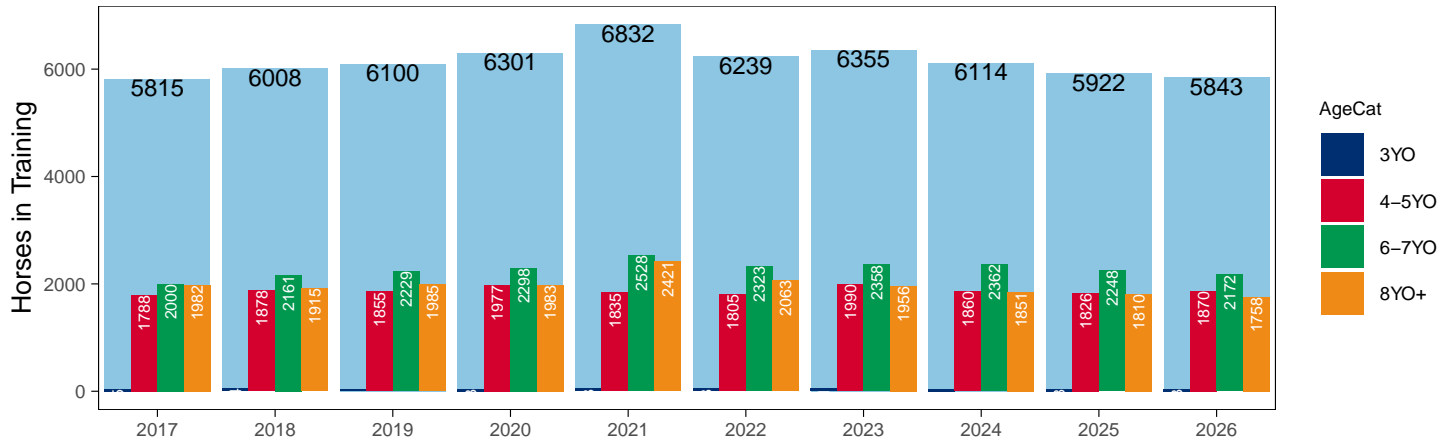
Jump (including Dual)

AgeCat	2017	2018	2019	2020	2021	2022	2023	2024	2025	2026	vs. Last Year	vs. Pre-Covid
3YO	45	54	31	43	48	48	51	41	38	43	+5 / +13.2%	+12 / +38.7%
4-5YO	1788	1878	1855	1977	1835	1805	1990	1860	1826	1870	+44 / +2.4%	+15 / +0.8%
6-7YO	2000	2161	2229	2298	2528	2323	2358	2362	2248	2172	-76 / -3.4%	-57 / -2.6%
8YO+	1982	1915	1985	1983	2421	2063	1956	1851	1810	1758	-52 / -2.9%	-227 / -11.4%
Total	5815	6008	6100	6301	6832	6239	6355	6114	5922	5843	-79 / -1.3%	-257 / -4.2%

'vs. Pre-Covid' is comparison between 2026 and 2019

Snapshot of Jump Horses in Training in January

Jump Horses in Training in January, shown by Age



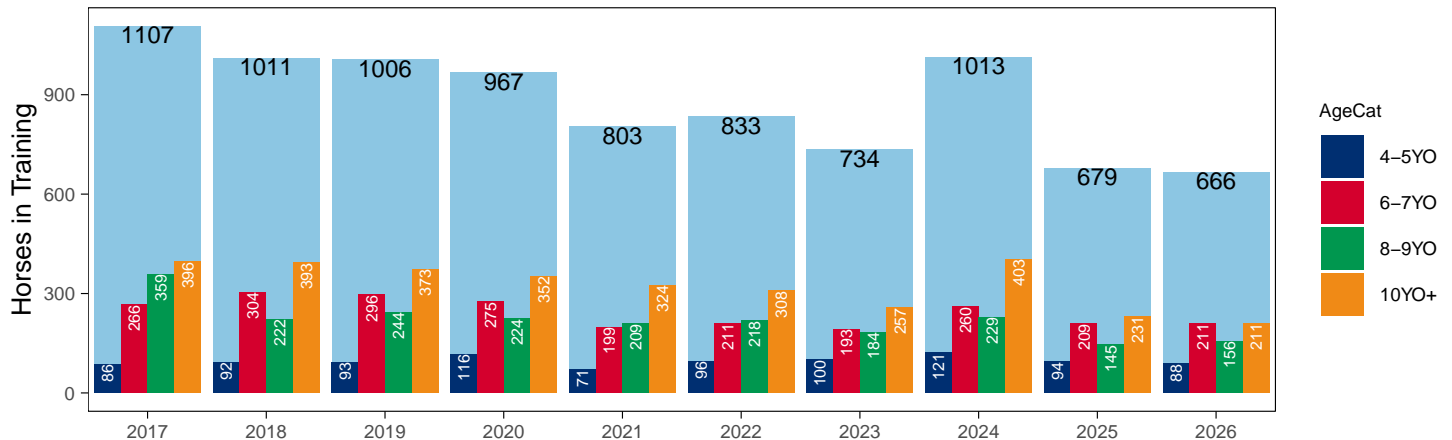
Hunter Chasers

AgeCat	2017	2018	2019	2020	2021	2022	2023	2024	2025	2026	vs. Last Year	vs. Pre-Covid
4-5YO	86	92	93	116	71	96	100	121	94	88	-6 / -6.4%	-5 / -5.4%
6-7YO	266	304	296	275	199	211	193	260	209	211	+2 / +1.0%	-85 / -28.7%
8-9YO	359	222	244	224	209	218	184	229	145	156	+11 / +7.6%	-88 / -36.1%
10YO+	396	393	373	352	324	308	257	403	231	211	-20 / -8.7%	-162 / -43.4%
Total	1107	1011	1006	967	803	833	734	1013	679	666	-13 / -1.9%	-340 / -33.8%

'vs. Pre-Covid' is comparison between 2026 and 2019

Snapshot of Hunter Chasers in Training in January

Hunter Chasers in Training in January, shown by Age



2026 Horses in Training versus Previous Years

Type	Period	Jan	Feb	Mar	Apr	May	Jun	Jul	Aug	Sep	Oct	Nov	Dec
Flat	2026	7922											
	2025	8089	8502	8874	9168	9435	9459	9206	9104	8920	8379	6819	6377
	Pre-Covid	8526	9043	9607	10061	10272	10292	9999	9666	9367	8668	6926	6477
Jump	2026	5278											
	2025	5507	5475	5428	4974	3722	3038	3615	4457	4927	5216	5363	5306
	Pre-Covid	5626	5674	5647	5243	3928	3026	3510	4700	5207	5625	5858	5850
Dual	2026	565											
	2025	415	418	439	453	433	420	428	448	480	495	507	531
	Pre-Covid	474	457	454	477	442	437	450	456	449	508	537	504
Hunter	2026	666											
	2025	679	897	1027	1130	1129	1070						
	Pre-Covid	1006	1390	1585	1716	1710	1653						
Total	2026	13765											
	2025	14011	14395	14741	14595	13590	12917	13249	14009	14327	14090	12689	12214
	Pre-Covid	14626	15174	15708	15781	14642	13755	13959	14822	15023	14801	13321	12831

'Pre-Covid' is 2019 values

Monthly Horses in Training

2026 against 2025 and Pre-Covid, shown with % Difference

Period — Pre-Covid — 2025 — 2026



Flat (including Dual)

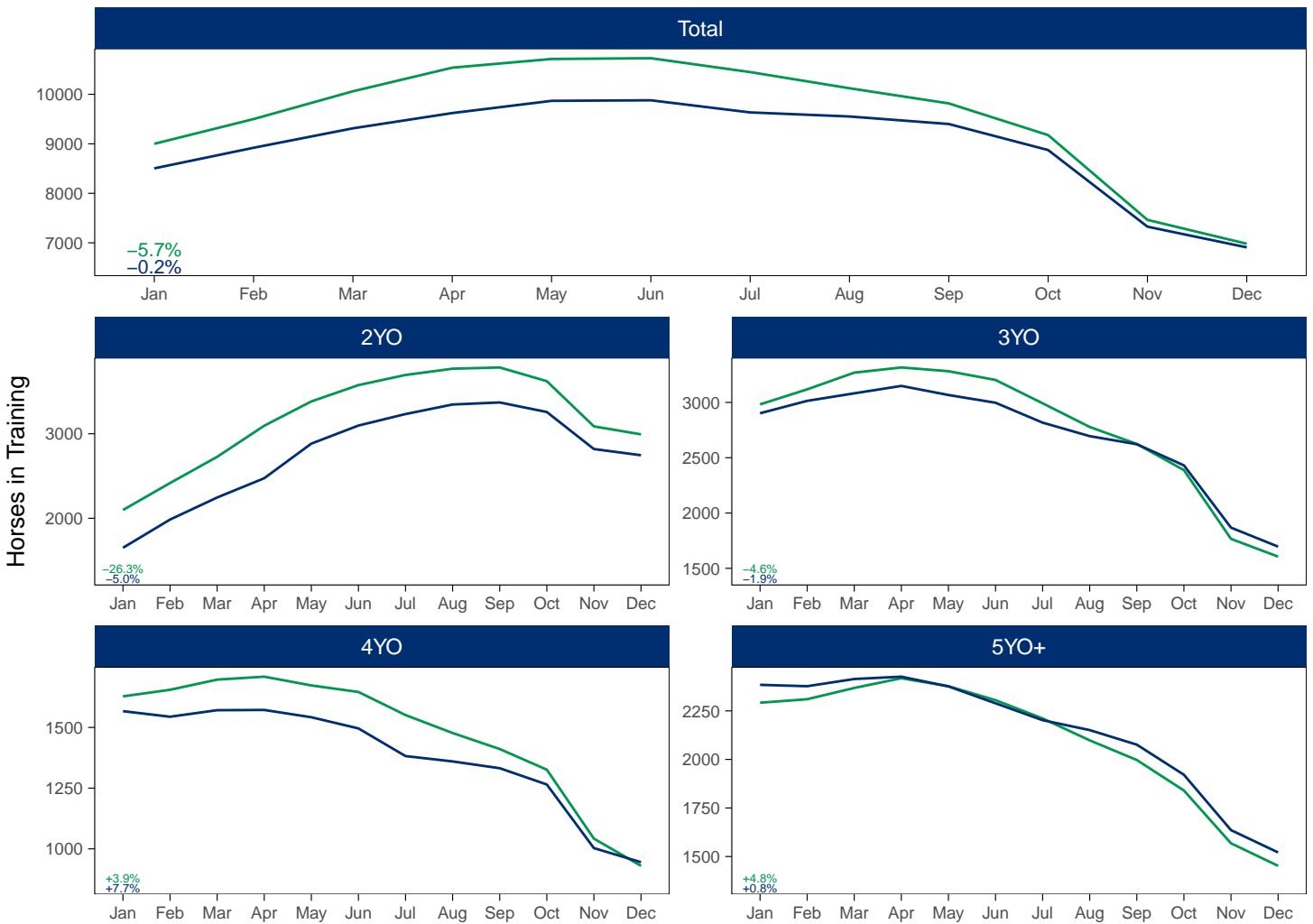
AgeCat	Period	Jan	Feb	Mar	Apr	May	Jun	Jul	Aug	Sep	Oct	Nov	Dec
2YO	2026	1547											
	2025	1651	1985	2246	2474	2883	3097	3233	3346	3370	3257	2819	2746
	Pre-Covid	2098	2417	2727	3095	3382	3575	3695	3769	3784	3622	3087	2993
3YO	2026	2846											
	2025	2902	3014	3082	3149	3067	2997	2817	2695	2622	2431	1868	1696
	Pre-Covid	2982	3118	3269	3316	3282	3203	2992	2778	2624	2388	1766	1606
4YO	2026	1692											
	2025	1567	1544	1571	1572	1542	1496	1382	1360	1332	1265	1003	945
	Pre-Covid	1628	1655	1697	1709	1673	1646	1551	1477	1411	1326	1042	930
5YO+	2026	2402											
	2025	2384	2377	2414	2426	2376	2289	2202	2151	2076	1921	1636	1521
	Pre-Covid	2292	2310	2368	2418	2377	2305	2211	2098	1997	1840	1568	1452
Total	2026	8487											
	2025	8504	8920	9313	9621	9868	9879	9634	9552	9400	8874	7326	6908
	Pre-Covid	9000	9500	10061	10538	10714	10729	10449	10122	9816	9176	7463	6981

'Pre-Covid' is 2019 values

Monthly Flat Horses in Training

2026 against 2025 and Pre-Covid, shown with % Difference

Period — Pre-Covid — 2025 — 2026



'Pre-Covid' is 2019 values

Jump (including Dual)

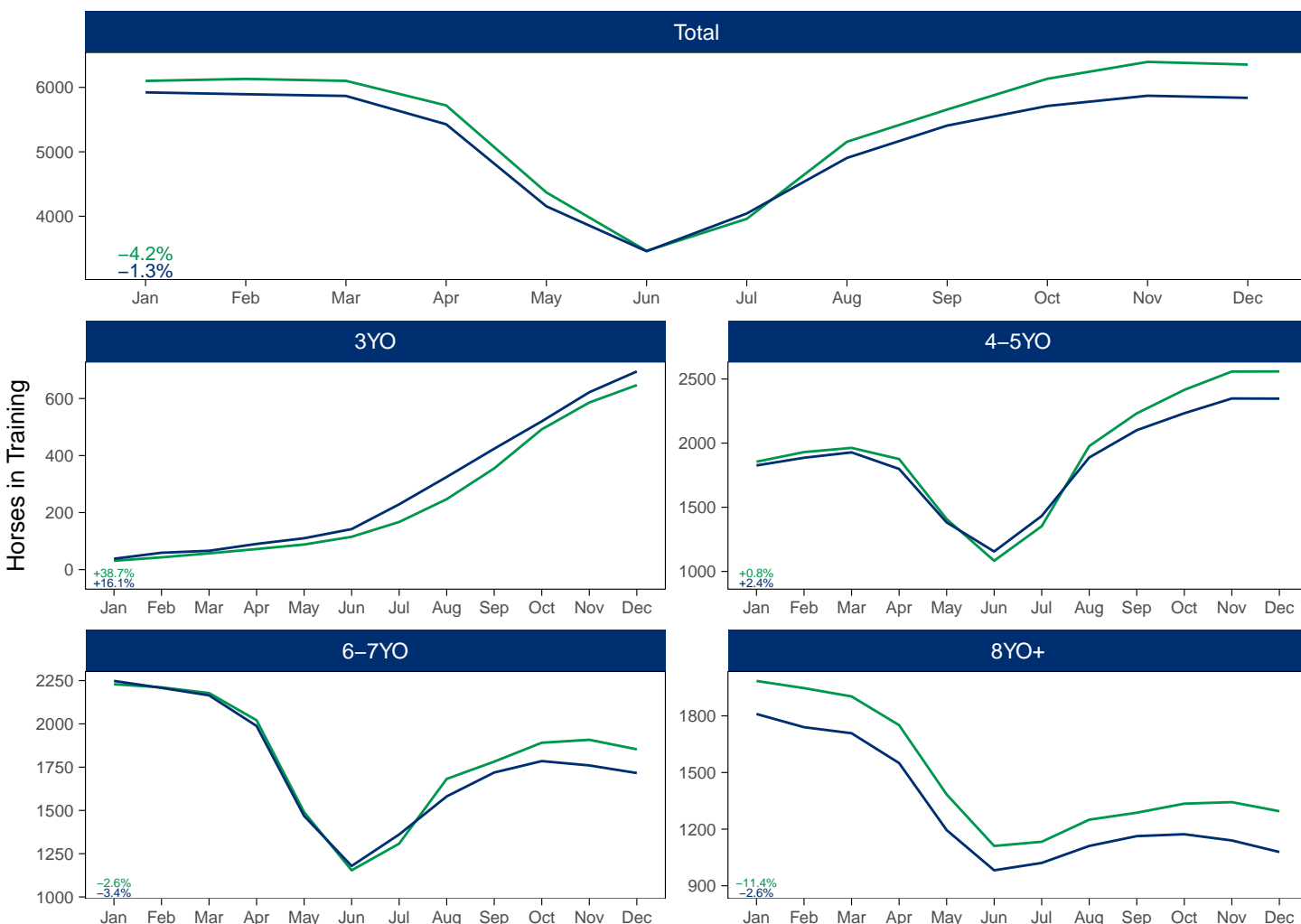
AgeCat	Period	Jan	Feb	Mar	Apr	May	Jun	Jul	Aug	Sep	Oct	Nov	Dec
3YO	2026	43											
	2025	38	59	66	90	110	142	229	325	424	520	622	695
	Pre-Covid	31	43	57	72	88	115	167	247	355	492	586	647
4-5YO	2026	1870											
	2025	1826	1886	1928	1799	1382	1155	1432	1888	2101	2233	2348	2347
	Pre-Covid	1855	1930	1963	1876	1408	1083	1352	1977	2232	2415	2558	2559
6-7YO	2026	2172											
	2025	2248	2208	2165	1988	1468	1179	1361	1581	1719	1785	1760	1716
	Pre-Covid	2229	2211	2178	2021	1490	1154	1308	1682	1782	1891	1908	1853
8YO+	2026	1758											
	2025	1810	1740	1708	1550	1195	982	1021	1111	1163	1173	1140	1079
	Pre-Covid	1985	1947	1903	1751	1384	1111	1133	1250	1287	1335	1343	1295
Total	2026	5843											
	2025	5922	5893	5867	5427	4155	3458	4043	4905	5407	5711	5870	5837
	Pre-Covid	6100	6131	6101	5720	4370	3463	3960	5156	5656	6133	6395	6354

'Pre-Covid' is 2019 values

Monthly Jump Horses in Training

2026 against 2025 and Pre-Covid, shown with % Difference

Period — Pre-Covid — 2025 — 2026



'Pre-Covid' is 2019 values

Hunter Chasers

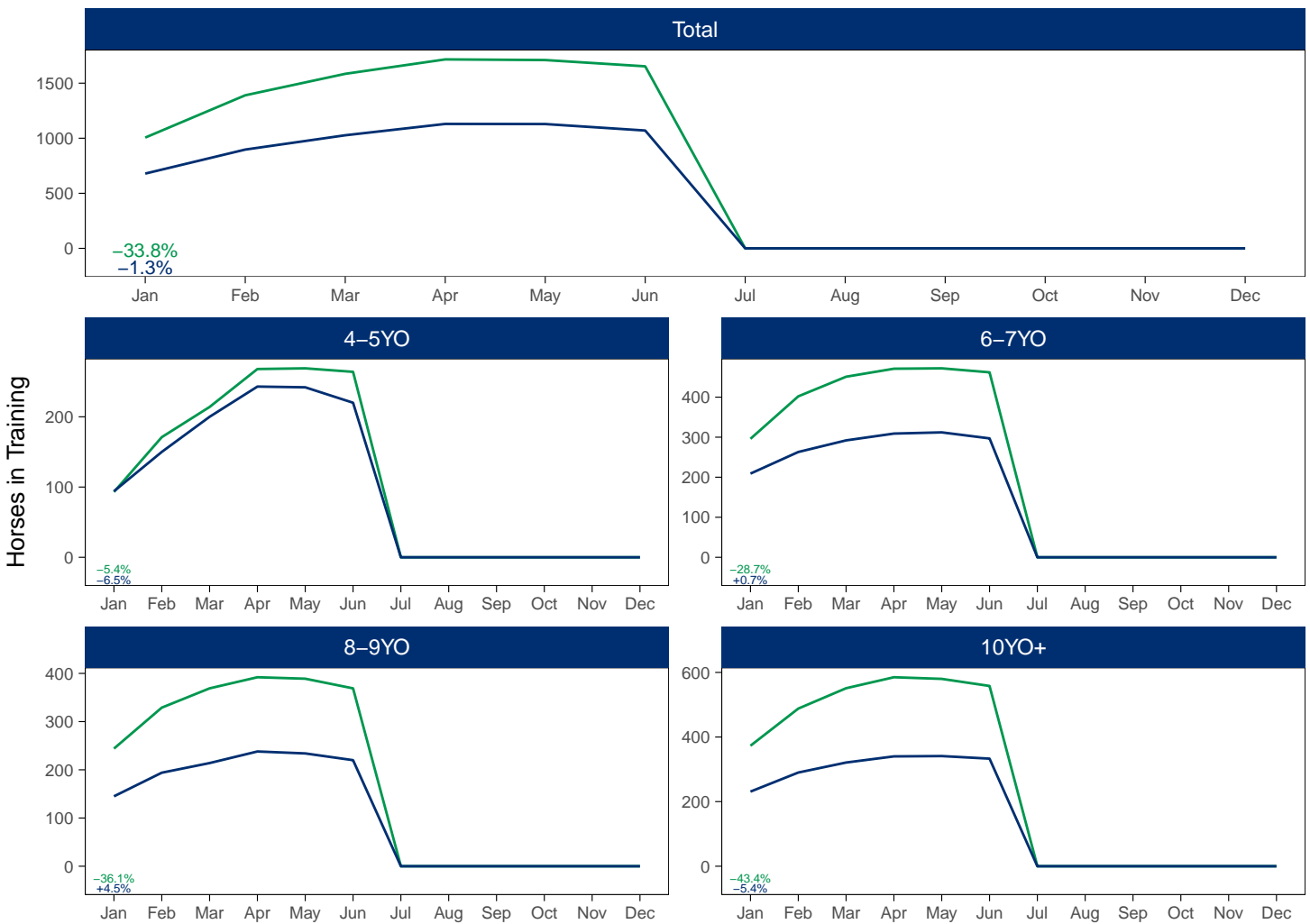
AgeCat	Period	Jan	Feb	Mar	Apr	May	Jun	Jul	Aug	Sep	Oct	Nov	Dec
4-5YO	2026	88											
	2025	94	150	200	243	242	220						
	Pre-Covid	93	171	214	268	269	264						
6-7YO	2026	211											
	2025	209	263	292	309	312	297						
	Pre-Covid	296	402	451	471	472	462						
8-9YO	2026	156											
	2025	145	194	214	238	234	220						
	Pre-Covid	244	329	369	392	389	369						
10YO+	2026	211											
	2025	231	290	321	340	341	333						
	Pre-Covid	373	488	551	585	580	558						
Total	2026	666											
	2025	679	897	1027	1130	1129	1070						
	Pre-Covid	1006	1390	1585	1716	1710	1653						

'Pre-Covid' is 2019 values

Monthly Hunter Chasers in Training

2026 against 2025 and Pre-Covid, shown with % Difference

Period — Pre-Covid — 2025 — 2026



'Pre-Covid' is 2019 values

January 2026 Horses in Training by Rating Band Snapshot versus Previous Years

Flat (including Dual)

AgeCat	RatBand	2017	2018	2019	2020	2021	2022	2023	2024	2025	2026
2YO	Unrated	2,265 (100.0%)	2,137 (100.0%)	2,098 (100.0%)	2,113 (100.0%)	1,926 (100.0%)	1,922 (100.0%)	1,704 (100.0%)	1,623 (100.0%)	1,651 (100.0%)	1,547 (100.0%)
	Subtotal	2,265 (100.0%)	2,137 (100.0%)	2,098 (100.0%)	2,113 (100.0%)	1,926 (100.0%)	1,922 (100.0%)	1,704 (100.0%)	1,623 (100.0%)	1,651 (100.0%)	1,547 (100.0%)
3YO	Unrated	1,602 (55.1%)	1,937 (63.3%)	1,767 (59.3%)	1,990 (63.0%)	1,808 (62.0%)	1,750 (59.6%)	1,757 (59.8%)	1,705 (59.5%)	1,747 (60.2%)	1,718 (60.4%)
	0-50	82 (2.8%)	75 (2.5%)	102 (3.4%)	112 (3.5%)	92 (3.2%)	110 (3.7%)	101 (3.4%)	100 (3.5%)	87 (3.0%)	81 (2.8%)
	51-60	202 (6.9%)	151 (4.9%)	230 (7.7%)	192 (6.1%)	208 (7.1%)	187 (6.4%)	196 (6.7%)	202 (7.1%)	198 (6.8%)	201 (7.1%)
	61-70	318 (10.9%)	303 (9.9%)	283 (9.5%)	273 (8.6%)	263 (9.0%)	300 (10.2%)	290 (9.9%)	262 (9.1%)	284 (9.8%)	286 (10.0%)
	71-80	339 (11.7%)	311 (10.2%)	291 (9.8%)	304 (9.6%)	272 (9.3%)	304 (10.4%)	299 (10.2%)	306 (10.7%)	290 (10.0%)	270 (9.5%)
	81-90	234 (8.0%)	154 (5.0%)	174 (5.8%)	161 (5.1%)	145 (5.0%)	159 (5.4%)	172 (5.9%)	166 (5.8%)	162 (5.6%)	158 (5.6%)
	91-100	78 (2.7%)	70 (2.3%)	81 (2.7%)	70 (2.2%)	71 (2.4%)	61 (2.1%)	71 (2.4%)	68 (2.4%)	82 (2.8%)	76 (2.7%)
	101+	54 (1.9%)	58 (1.9%)	54 (1.8%)	57 (1.8%)	57 (2.0%)	63 (2.1%)	52 (1.8%)	55 (1.9%)	52 (1.8%)	56 (2.0%)
Subtotal	2,909 (100.0%)	3,059 (100.0%)	2,982 (100.0%)	3,159 (100.0%)	2,916 (100.0%)	2,934 (100.0%)	2,938 (100.0%)	2,938 (100.0%)	2,864 (100.0%)	2,902 (100.0%)	2,846 (100.0%)
4YO	Unrated	243 (16.2%)	336 (20.8%)	325 (20.0%)	319 (19.4%)	400 (24.8%)	331 (19.7%)	330 (20.2%)	295 (18.6%)	294 (18.8%)	344 (20.3%)
	0-50	134 (8.9%)	145 (9.0%)	189 (11.6%)	204 (12.4%)	178 (11.0%)	193 (11.5%)	191 (11.7%)	172 (10.8%)	181 (11.6%)	174 (10.3%)
	51-60	199 (13.3%)	226 (14.0%)	208 (12.8%)	226 (13.8%)	208 (12.9%)	248 (14.8%)	241 (14.7%)	240 (15.1%)	223 (14.2%)	238 (14.1%)
	61-70	265 (17.7%)	252 (15.6%)	266 (16.3%)	281 (17.1%)	256 (15.9%)	288 (17.2%)	280 (17.1%)	275 (17.3%)	254 (16.2%)	278 (16.4%)
	71-80	292 (19.5%)	272 (16.9%)	250 (15.4%)	221 (13.5%)	261 (16.2%)	268 (16.0%)	243 (14.8%)	285 (17.9%)	237 (15.1%)	258 (15.2%)
	81-90	187 (12.5%)	198 (12.3%)	191 (11.7%)	187 (11.4%)	159 (9.8%)	200 (11.9%)	181 (11.1%)	174 (10.9%)	199 (12.7%)	202 (11.9%)
	91-100	93 (6.2%)	118 (7.3%)	118 (7.2%)	111 (6.8%)	97 (6.0%)	84 (5.0%)	74 (4.5%)	82 (5.2%)	89 (5.7%)	112 (6.6%)
	101+	87 (5.8%)	67 (4.2%)	81 (5.0%)	94 (5.7%)	56 (3.5%)	64 (3.8%)	97 (5.9%)	67 (4.2%)	90 (5.7%)	86 (5.1%)
Subtotal	1,500 (100.0%)	1,614 (100.0%)	1,628 (100.0%)	1,643 (100.0%)	1,615 (100.0%)	1,676 (100.0%)	1,637 (100.0%)	1,590 (100.0%)	1,567 (100.0%)	1,567 (100.0%)	1,692 (100.0%)
5YO+	Unrated	354 (15.3%)	576 (22.0%)	293 (12.8%)	342 (14.3%)	377 (16.0%)	359 (16.2%)	356 (15.0%)	344 (14.4%)	301 (12.6%)	293 (12.2%)
	0-50	252 (10.9%)	334 (12.8%)	384 (16.8%)	369 (15.4%)	343 (14.6%)	327 (14.7%)	335 (14.1%)	328 (13.7%)	384 (16.1%)	374 (15.6%)
	51-60	339 (14.7%)	357 (13.7%)	346 (15.1%)	376 (15.7%)	372 (15.8%)	362 (16.3%)	379 (16.0%)	457 (19.1%)	418 (17.5%)	404 (16.8%)
	61-70	393 (17.0%)	387 (14.8%)	395 (17.2%)	404 (16.9%)	443 (18.8%)	375 (16.9%)	411 (17.3%)	419 (17.5%)	442 (18.5%)	426 (17.7%)
	71-80	357 (15.4%)	351 (13.4%)	330 (14.4%)	351 (14.7%)	318 (13.5%)	300 (13.5%)	378 (15.9%)	347 (14.5%)	363 (15.2%)	383 (15.9%)
	81-90	290 (12.5%)	298 (11.4%)	252 (11.0%)	261 (10.9%)	222 (9.4%)	221 (10.0%)	233 (9.8%)	245 (10.2%)	239 (10.0%)	247 (10.3%)
	91-100	177 (7.7%)	159 (6.1%)	168 (7.3%)	160 (6.7%)	143 (6.1%)	146 (6.6%)	146 (6.2%)	133 (5.6%)	111 (4.7%)	139 (5.8%)
	101+	149 (6.4%)	152 (5.8%)	124 (5.4%)	132 (5.5%)	135 (5.7%)	127 (5.7%)	135 (5.7%)	120 (5.0%)	126 (5.3%)	136 (5.7%)
Subtotal	2,311 (100.0%)	2,614 (100.0%)	2,292 (100.0%)	2,395 (100.0%)	2,353 (100.0%)	2,217 (100.0%)	2,373 (100.0%)	2,393 (100.0%)	2,384 (100.0%)	2,384 (100.0%)	2,402 (100.0%)
Overall	Unrated	4,464 (49.7%)	4,986 (52.9%)	4,483 (49.8%)	4,764 (51.2%)	4,511 (51.2%)	4,362 (49.9%)	4,147 (47.9%)	3,967 (46.8%)	3,993 (47.0%)	3,902 (46.0%)
	0-50	468 (5.2%)	554 (5.9%)	675 (7.5%)	685 (7.4%)	613 (7.0%)	630 (7.2%)	627 (7.2%)	600 (7.1%)	652 (7.7%)	629 (7.4%)
	51-60	740 (8.2%)	734 (7.8%)	784 (8.7%)	794 (8.5%)	788 (8.9%)	797 (9.1%)	816 (9.4%)	899 (10.6%)	839 (9.9%)	843 (9.9%)
	61-70	976 (10.9%)	942 (10.0%)	944 (10.5%)	958 (10.3%)	962 (10.9%)	963 (11.0%)	981 (11.3%)	956 (11.3%)	980 (11.5%)	990 (11.7%)
	71-80	988 (11.0%)	934 (9.9%)	871 (9.7%)	876 (9.4%)	851 (9.7%)	872 (10.0%)	920 (10.6%)	938 (11.1%)	890 (10.5%)	911 (10.7%)
	81-90	711 (7.9%)	650 (6.9%)	617 (6.9%)	609 (6.5%)	526 (6.0%)	580 (6.6%)	586 (6.8%)	585 (6.9%)	600 (7.1%)	607 (7.2%)
	91-100	348 (3.9%)	347 (3.7%)	367 (4.1%)	341 (3.7%)	311 (3.5%)	291 (3.3%)	291 (3.4%)	283 (3.3%)	282 (3.3%)	327 (3.9%)
101+	290 (3.2%)	277 (2.9%)	259 (2.9%)	283 (3.0%)	248 (2.8%)	254 (2.9%)	284 (3.3%)	242 (2.9%)	268 (3.2%)	278 (3.3%)	
Total	8,985 (100.0%)	9,424 (100.0%)	9,000 (100.0%)	9,310 (100.0%)	8,810 (100.0%)	8,749 (100.0%)	8,652 (100.0%)	8,470 (100.0%)	8,504 (100.0%)	8,504 (100.0%)	8,487 (100.0%)

Where a horse has more than one published rating (published Flat Turf and published Flat AWT mark), the higher of the two is taken.

Jump (including Dual)

AgeCat	RatBand	2017	2018	2019	2020	2021	2022	2023	2024	2025	2026
3YO	Unrated	45 (100.0%)	54 (100.0%)	31 (100.0%)	43 (100.0%)	48 (100.0%)	48 (100.0%)	51 (100.0%)	41 (100.0%)	38 (100.0%)	43 (100.0%)
	Subtotal	45 (100.0%)	54 (100.0%)	31 (100.0%)	43 (100.0%)	48 (100.0%)	48 (100.0%)	51 (100.0%)	41 (100.0%)	38 (100.0%)	43 (100.0%)
4-5YO	Unrated	1,438 (80.4%)	1,536 (81.8%)	1,487 (80.2%)	1,531 (77.4%)	1,497 (81.6%)	1,451 (80.4%)	1,629 (81.9%)	1,518 (81.6%)	1,452 (79.5%)	1,534 (82.0%)
	0-100	87 (4.9%)	79 (4.2%)	91 (4.9%)	143 (7.2%)	117 (6.4%)	147 (8.1%)	154 (7.7%)	168 (9.0%)	179 (9.8%)	136 (7.3%)
	101-110	62 (3.5%)	78 (4.2%)	73 (3.9%)	73 (3.7%)	57 (3.1%)	65 (3.6%)	86 (4.3%)	73 (3.9%)	81 (4.4%)	67 (3.6%)
	111-120	84 (4.7%)	73 (3.9%)	93 (5.0%)	98 (5.0%)	71 (3.9%)	73 (4.0%)	65 (3.3%)	60 (3.2%)	69 (3.8%)	85 (4.5%)
	121-130	57 (3.2%)	63 (3.4%)	63 (3.4%)	77 (3.9%)	54 (2.9%)	45 (2.5%)	45 (2.3%)	26 (1.4%)	34 (1.9%)	35 (1.9%)
	131-140	42 (2.3%)	36 (1.9%)	35 (1.9%)	39 (2.0%)	24 (1.3%)	17 (0.9%)	9 (0.5%)	13 (0.7%)	7 (0.4%)	10 (0.5%)
	141-150	14 (0.8%)	11 (0.6%)	12 (0.6%)	15 (0.8%)	12 (0.7%)	5 (0.3%)	2 (0.1%)	2 (0.1%)	2 (0.1%)	2 (0.1%)
	151+	4 (0.2%)	2 (0.1%)	1 (0.1%)	1 (0.1%)	3 (0.2%)	2 (0.1%)	NA (-)	NA (-)	2 (0.1%)	1 (0.1%)
Subtotal	1,788 (100.0%)	1,878 (100.0%)	1,855 (100.0%)	1,977 (100.0%)	1,835 (100.0%)	1,805 (100.0%)	1,990 (100.0%)	1,860 (100.0%)	1,826 (100.0%)	1,870 (100.0%)	
6-7YO	Unrated	741 (37.0%)	803 (37.2%)	742 (33.3%)	730 (31.8%)	912 (36.1%)	847 (36.5%)	896 (38.0%)	909 (38.5%)	737 (32.8%)	731 (33.7%)
	0-100	325 (16.2%)	351 (16.2%)	362 (16.2%)	425 (18.5%)	517 (20.5%)	531 (22.9%)	585 (24.8%)	617 (26.1%)	644 (28.6%)	519 (23.9%)
	101-110	221 (11.1%)	236 (10.9%)	296 (13.3%)	280 (12.2%)	282 (11.2%)	274 (11.8%)	293 (12.4%)	306 (13.0%)	302 (13.4%)	296 (13.6%)
	111-120	264 (13.2%)	281 (13.0%)	295 (13.2%)	304 (13.2%)	306 (12.1%)	288 (12.4%)	256 (10.9%)	262 (11.1%)	278 (12.4%)	317 (14.6%)
	121-130	206 (10.3%)	237 (11.0%)	284 (12.7%)	284 (12.4%)	269 (10.6%)	203 (8.7%)	199 (8.4%)	164 (6.9%)	170 (7.6%)	208 (9.6%)
	131-140	158 (7.9%)	153 (7.1%)	146 (6.6%)	186 (8.1%)	163 (6.4%)	126 (5.4%)	90 (3.8%)	68 (2.9%)	86 (3.8%)	68 (3.1%)
	141-150	63 (3.1%)	70 (3.2%)	80 (3.6%)	64 (2.8%)	56 (2.2%)	39 (1.7%)	30 (1.3%)	32 (1.4%)	21 (0.9%)	26 (1.2%)
	151+	22 (1.1%)	30 (1.4%)	24 (1.1%)	25 (1.1%)	23 (0.9%)	15 (0.6%)	9 (0.4%)	4 (0.2%)	10 (0.4%)	7 (0.3%)
Subtotal	2,000 (100.0%)	2,161 (100.0%)	2,229 (100.0%)	2,298 (100.0%)	2,528 (100.0%)	2,323 (100.0%)	2,358 (100.0%)	2,362 (100.0%)	2,248 (100.0%)	2,172 (100.0%)	
8YO+	Unrated	287 (14.5%)	304 (15.9%)	287 (14.5%)	284 (14.3%)	366 (15.1%)	349 (16.9%)	320 (16.4%)	360 (19.4%)	284 (15.7%)	285 (16.2%)
	0-100	527 (26.6%)	486 (25.4%)	535 (27.0%)	539 (27.2%)	690 (28.5%)	554 (26.9%)	540 (27.6%)	507 (27.4%)	542 (29.9%)	533 (30.3%)
	101-110	273 (13.8%)	276 (14.4%)	263 (13.2%)	267 (13.5%)	311 (12.8%)	240 (11.6%)	241 (12.3%)	228 (12.3%)	265 (14.6%)	252 (14.3%)
	111-120	297 (15.0%)	246 (12.8%)	261 (13.1%)	266 (13.4%)	321 (13.3%)	295 (14.3%)	291 (14.9%)	272 (14.7%)	268 (14.8%)	259 (14.7%)
	121-130	235 (11.9%)	246 (12.8%)	266 (13.4%)	250 (12.6%)	312 (12.9%)	275 (13.3%)	253 (12.9%)	224 (12.1%)	215 (11.9%)	196 (11.1%)
	131-140	216 (10.9%)	207 (10.8%)	207 (10.4%)	196 (9.9%)	231 (9.5%)	199 (9.6%)	183 (9.4%)	153 (8.3%)	133 (7.3%)	140 (8.0%)
	141-150	95 (4.8%)	101 (5.3%)	104 (5.2%)	116 (5.8%)	120 (5.0%)	101 (4.9%)	81 (4.1%)	68 (3.7%)	68 (3.8%)	57 (3.2%)
	151+	52 (2.6%)	49 (2.6%)	62 (3.1%)	65 (3.3%)	70 (2.9%)	50 (2.4%)	47 (2.4%)	39 (2.1%)	35 (1.9%)	36 (2.0%)
Subtotal	1,982 (100.0%)	1,915 (100.0%)	1,985 (100.0%)	1,983 (100.0%)	2,421 (100.0%)	2,063 (100.0%)	1,956 (100.0%)	1,851 (100.0%)	1,810 (100.0%)	1,758 (100.0%)	
Overall	Unrated	2,511 (43.2%)	2,697 (44.9%)	2,547 (41.8%)	2,588 (41.1%)	2,823 (41.3%)	2,695 (43.2%)	2,896 (45.6%)	2,828 (46.3%)	2,511 (42.4%)	2,593 (44.4%)
	0-100	939 (16.1%)	916 (15.2%)	988 (16.2%)	1,107 (17.6%)	1,324 (19.4%)	1,232 (19.7%)	1,279 (20.1%)	1,292 (21.1%)	1,365 (23.0%)	1,188 (20.3%)
	101-110	556 (9.6%)	590 (9.8%)	632 (10.4%)	620 (9.8%)	650 (9.5%)	579 (9.3%)	620 (9.8%)	607 (9.9%)	648 (10.9%)	615 (10.5%)
	111-120	645 (11.1%)	600 (10.0%)	649 (10.6%)	668 (10.6%)	698 (10.2%)	656 (10.5%)	612 (9.6%)	594 (9.7%)	615 (10.4%)	661 (11.3%)
	121-130	498 (8.6%)	546 (9.1%)	613 (10.0%)	611 (9.7%)	635 (9.3%)	523 (8.4%)	497 (7.8%)	414 (6.8%)	419 (7.1%)	439 (7.5%)
	131-140	416 (7.2%)	396 (6.6%)	388 (6.4%)	421 (6.7%)	418 (6.1%)	342 (5.5%)	282 (4.4%)	234 (3.8%)	226 (3.8%)	218 (3.7%)
141-150	172 (3.0%)	182 (3.0%)	196 (3.2%)	195 (3.1%)	188 (2.8%)	145 (2.3%)	113 (1.8%)	102 (1.7%)	91 (1.5%)	85 (1.5%)	
151+	78 (1.3%)	81 (1.3%)	87 (1.4%)	91 (1.4%)	96 (1.4%)	67 (1.1%)	56 (0.9%)	43 (0.7%)	47 (0.8%)	44 (0.8%)	
Total	5,815 (100.0%)	6,008 (100.0%)	6,100 (100.0%)	6,301 (100.0%)	6,832 (100.0%)	6,239 (100.0%)	6,355 (100.0%)	6,114 (100.0%)	5,922 (100.0%)	5,843 (100.0%)	

Where a horse has more than one published rating (published Hurdle and published Chase mark), the higher of the two is taken.

Young Horses Entering Training

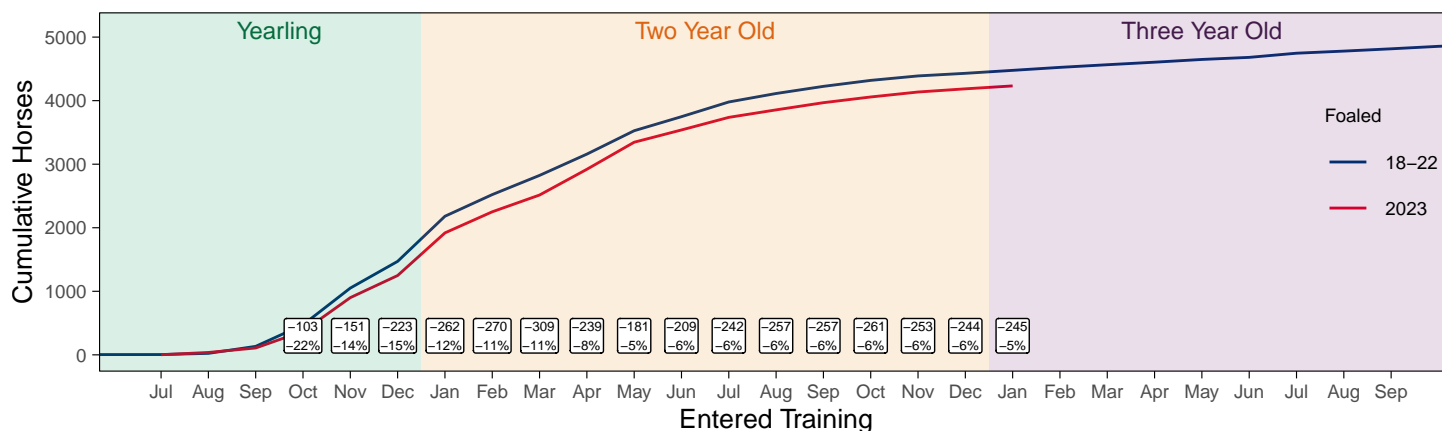
Flat Yearlings in Training versus Previous Years

Period	Jan	Feb	Mar	Apr	May	Jun	Jul	Aug	Sep	Oct	Nov	Dec
2026	1											
2025	0	0	0	1	1	1	1	1	56	177	583	1144
5YrAvg	0	0	0	1	1	1	1	2	53	172	526	908

Foals Entering Training for the First Time

2023 Foals Entering Training Over Time

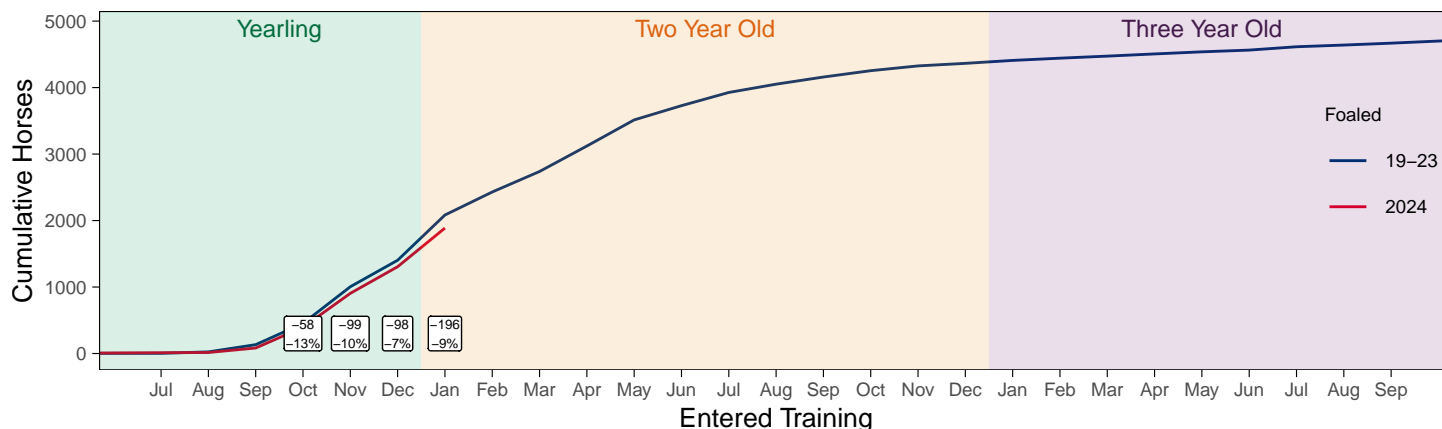
Cumulative Flat Horses foaled in 2023 shown by first in training notification against trend



Cumulative individual horses entering training for the first time by the end of each month.

2024 Foals Entering Training Over Time

Cumulative Flat Horses foaled in 2024 shown by first in training notification against trend



Cumulative individual horses entering training for the first time by the end of each month.

Year to Date Horses in Training

Type	2017	2018	2019	2020	2021	2022	2023	2024	2025	2026	vs. Last Year	vs. Pre-Covid
Flat	9481	9506	9431	9603	9109	9191	8954	8817	8844	8733	-111 / -1.3%	-698 / -7.4%
Jump	5723	5470	6069	6139	6706	6209	6275	6035	5867	5564	-303 / -5.2%	-505 / -8.3%
Dual	610	1043	554	627	575	540	514	504	483	673	+190 / +39.3%	+119 / +21.5%
Hunter	1358	1220	1219	1191	800	940	853	1097	797	733	-64 / -8.0%	-486 / -39.9%
Total	15814	16019	16054	16369	16390	15940	15743	15356	15194	14970	-224 / -1.5%	-1084 / -6.8%

'vs. Pre-Covid' is comparison between 2026 and 2019

Flat

AgeCat	2017	2018	2019	2020	2021	2022	2023	2024	2025	2026	vs. Last Year	vs. Pre-Covid
2YO	2566	2433	2402	2362	2163	2231	2013	1856	1877	1833	-44 / -2.3%	-569 / -23.7%
3YO	3193	3334	3228	3392	3161	3147	3121	3110	3104	3024	-80 / -2.6%	-204 / -6.3%
4YO	1563	1566	1624	1626	1622	1702	1615	1600	1574	1655	+81 / +5.1%	+31 / +1.9%
5YO+	2159	2173	2177	2223	2163	2111	2205	2251	2289	2221	-68 / -3.0%	+44 / +2.0%
Total	9481	9506	9431	9603	9109	9191	8954	8817	8844	8733	-111 / -1.3%	-698 / -7.4%

'vs. Pre-Covid' is comparison between 2026 and 2019

Jump

AgeCat	2017	2018	2019	2020	2021	2022	2023	2024	2025	2026	vs. Last Year	vs. Pre-Covid
3YO	15	29	18	12	31	19	31	30	8	14	+6 / +75.0%	-4 / -22.2%
4-5YO	1709	1490	1744	1808	1688	1734	1886	1743	1719	1662	-57 / -3.3%	-82 / -4.7%
6-7YO	1973	2034	2248	2278	2534	2335	2339	2359	2254	2117	-137 / -6.1%	-131 / -5.8%
8YO+	2026	1917	2059	2041	2453	2121	2019	1903	1886	1771	-115 / -6.1%	-288 / -14.0%
Total	5723	5470	6069	6139	6706	6209	6275	6035	5867	5564	-303 / -5.2%	-505 / -8.3%

'vs. Pre-Covid' is comparison between 2026 and 2019

Dual

AgeCat	2017	2018	2019	2020	2021	2022	2023	2024	2025	2026	vs. Last Year	vs. Pre-Covid
3YO	47	49	25	53	39	59	32	40	55	51	-4 / -7.3%	+26 / +104.0%
4YO	158	261	166	176	169	150	150	154	135	197	+62 / +45.9%	+31 / +18.7%
5YO+	405	733	363	398	367	331	332	310	293	425	+132 / +45.1%	+62 / +17.1%
Total	610	1043	554	627	575	540	514	504	483	673	+190 / +39.3%	+119 / +21.5%

'vs. Pre-Covid' is comparison between 2026 and 2019

Hunter Chasers

AgeCat	2017	2018	2019	2020	2021	2022	2023	2024	2025	2026	vs. Last Year	vs. Pre-Covid
4-5YO	108	109	124	187	67	119	127	139	119	102	-17 / -14.3%	-22 / -17.7%
6-7YO	341	355	361	328	189	238	226	280	239	233	-6 / -2.5%	-128 / -35.5%
8-9YO	415	289	298	263	206	243	212	246	172	168	-4 / -2.3%	-130 / -43.6%
10YO+	494	467	436	413	338	340	288	432	267	230	-37 / -13.9%	-206 / -47.2%
Total	1358	1220	1219	1191	800	940	853	1097	797	733	-64 / -8.0%	-486 / -39.9%

'vs. Pre-Covid' is comparison between 2026 and 2019

Year to Date Runners

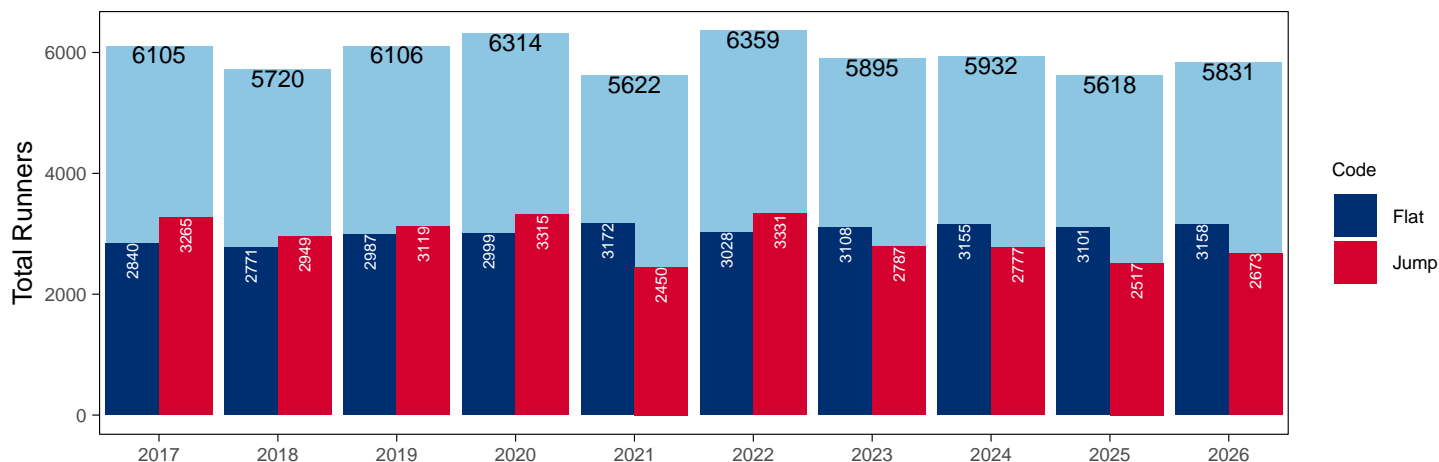
Year to Date Total Runners

Code	2017	2018	2019	2020	2021	2022	2023	2024	2025	2026	vs. Last Year	vs. Pre-Covid
Flat	2840	2771	2987	2999	3172	3028	3108	3155	3101	3158	+57 / +1.8%	+171 / +5.7%
Jump	3265	2949	3119	3315	2450	3331	2787	2777	2517	2673	+156 / +6.2%	-446 / -14.3%
Total	6105	5720	6106	6314	5622	6359	5895	5932	5618	5831	+213 / +3.8%	-275 / -4.5%

'vs. Pre-Covid' is comparison between 2026 and 2019

YTD Total Runners

Total Runners in GB Races, shown by Code and Total



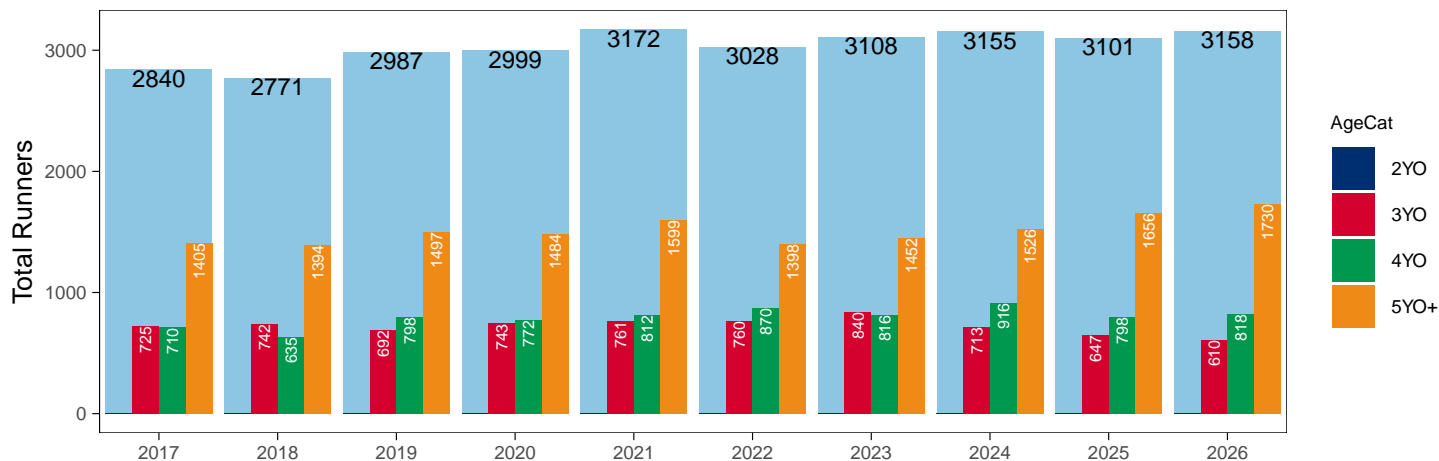
Flat

AgeCat	2017	2018	2019	2020	2021	2022	2023	2024	2025	2026	vs. Last Year	vs. Pre-Covid
2YO											NA / NA	0 / NA
3YO	725	742	692	743	761	760	840	713	647	610	-37 / -5.7%	-82 / -11.8%
4YO	710	635	798	772	812	870	816	916	798	818	+20 / +2.5%	+20 / +2.5%
5YO+	1405	1394	1497	1484	1599	1398	1452	1526	1656	1730	+74 / +4.5%	+233 / +15.6%
Total	2840	2771	2987	2999	3172	3028	3108	3155	3101	3158	+57 / +1.8%	+171 / +5.7%

'vs. Pre-Covid' is comparison between 2026 and 2019

YTD Total Flat Runners by Age

Total Runners in GB Flat Races, shown by Age Category and Total



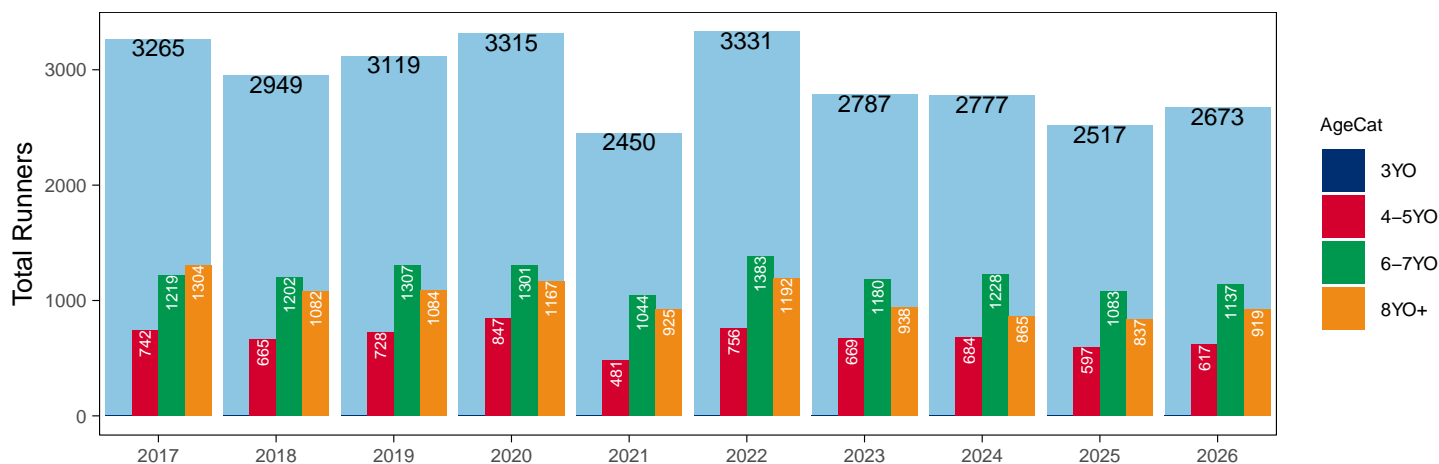
Jump

AgeCat	2017	2018	2019	2020	2021	2022	2023	2024	2025	2026	vs. Last Year	vs. Pre-Covid
3YO											NA / NA	0 / NA
4-5YO	742	665	728	847	481	756	669	684	597	617	+20 / +3.4%	-111 / -15.2%
6-7YO	1219	1202	1307	1301	1044	1383	1180	1228	1083	1137	+54 / +5.0%	-170 / -13.0%
8YO+	1304	1082	1084	1167	925	1192	938	865	837	919	+82 / +9.8%	-165 / -15.2%
Total	3265	2949	3119	3315	2450	3331	2787	2777	2517	2673	+156 / +6.2%	-446 / -14.3%

'vs. Pre-Covid' is comparison between 2026 and 2019

YTD Total Jump Runners by Age

Total Runners in GB Jump Races, shown by Age Category and Total



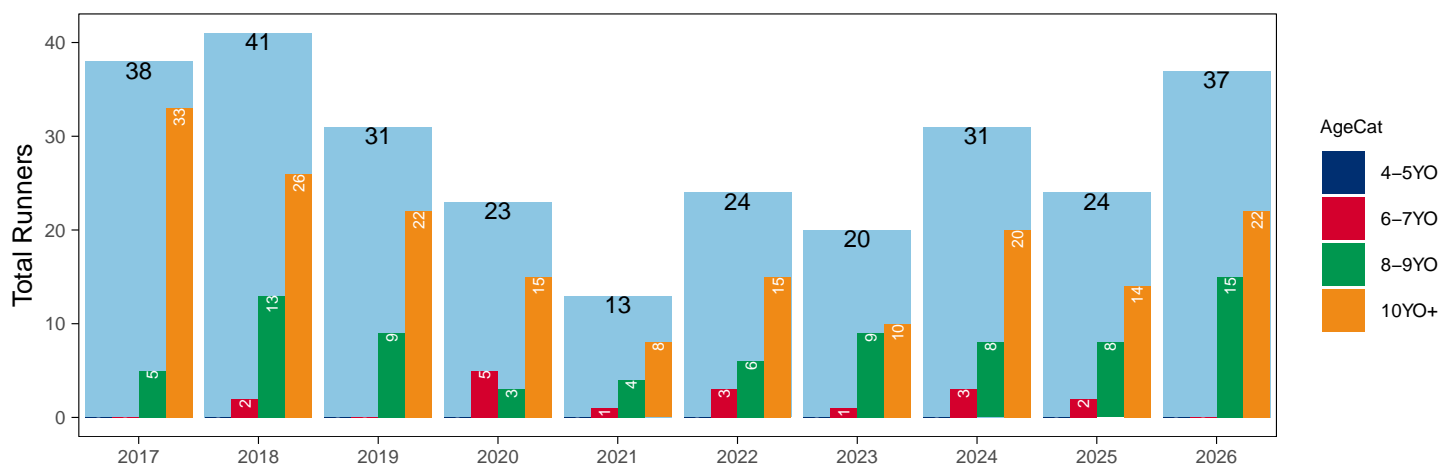
Hunter Chases

AgeCat	2017	2018	2019	2020	2021	2022	2023	2024	2025	2026	vs. Last Year	vs. Pre-Covid
4-5YO											NA / NA	0 / NA
6-7YO		2		5	1	3	1	3	2		NA / NA	0 / NA
8-9YO	5	13	9	3	4	6	9	8	8	15	+7 / +87.5%	+6 / +66.7%
10YO+	33	26	22	15	8	15	10	20	14	22	+8 / +57.1%	0 / 0.0%
Total	38	41	31	23	13	24	20	31	24	37	+13 / +54.2%	+6 / +19.4%

'vs. Pre-Covid' is comparison between 2026 and 2019

YTD Total Hunter Chase Runners by Age

Total Runners in GB Hunter Chases shown by Age Category and Total



Year to Date Total Runners by Country Trained

Code	Country	2017	2018	2019	2020	2021	2022	2023	2024	2025	2026
Flat	GB	2816	2743	2946	2950	3172	3026	3102	3146	3091	3152
	IRE	24	27	40	48		2	6	9	10	6
	Other		1	1	1						
Jump	GB	3202	2922	3066	3258	2448	3286	2729	2724	2474	2622
	IRE	61	27	52	54	2	44	57	51	41	46
	Other	2		1	3		1	1	2	2	5
Overall	GB	6018	5665	6012	6208	5620	6312	5831	5870	5565	5774
	IRE	85	54	92	102	2	46	63	60	51	52
	Other	2	1	2	4		1	1	2	2	5

Year to Date GB Trained Runners Racing Abroad

Code	Country	2017	2018	2019	2020	2021	2022	2023	2024	2025	2026
Flat	IRE	1	2	3	1						
	FR	8	2	9	7	4		2	1	16	
	UAE	87	83	141	133	88	112	113	70	112	180
	BAH						17	8	9	46	46
	KSA										1
	Other	1	1								2
	Total		97	88	153	141	92	129	123	80	177
Jump	IRE	1	2		1						1
	FR					2		6	3	1	
	Total	1	2		1	2		6	3	1	1

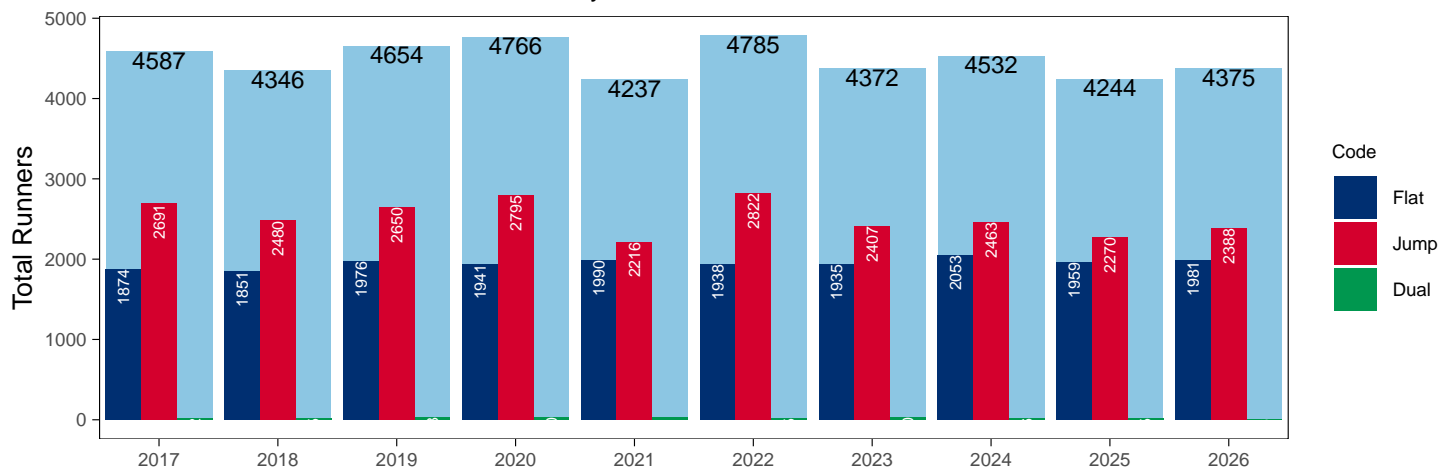
Year to Date Individual Runners

Code	2017	2018	2019	2020	2021	2022	2023	2024	2025	2026	vs. Last Year	vs. Pre-Covid
Flat	1874	1851	1976	1941	1990	1938	1935	2053	1959	1981	+22 / +1.1%	+5 / +0.3%
Jump	2691	2480	2650	2795	2216	2822	2407	2463	2270	2388	+118 / +5.2%	-262 / -9.9%
Dual	22	15	28	30	31	25	30	16	15	6	-9 / -60.0%	-22 / -78.6%
Overall	4587	4346	4654	4766	4237	4785	4372	4532	4244	4375	+131 / +3.1%	-279 / -6.0%

'vs. Pre-Covid' is comparison between 2026 and 2019

YTD Individual Runners

Individual Runners in GB Races, shown by Code and Total



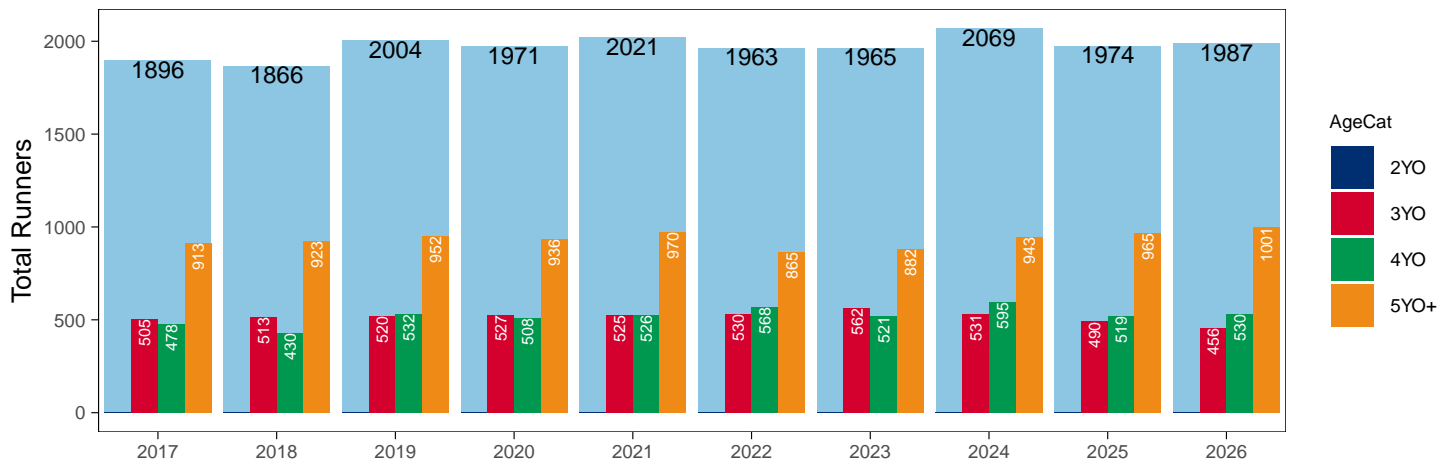
Flat

AgeCat	2017	2018	2019	2020	2021	2022	2023	2024	2025	2026	vs. Last Year	vs. Pre-Covid
2YO											NA / NA	0 / NA
3YO	505	513	520	527	525	530	562	531	490	456	-34 / -6.9%	-64 / -12.3%
4YO	478	430	532	508	526	568	521	595	519	530	+11 / +2.1%	-2 / -0.4%
5YO+	913	923	952	936	970	865	882	943	965	1001	+36 / +3.7%	+49 / +5.1%
Total	1896	1866	2004	1971	2021	1963	1965	2069	1974	1987	+13 / +0.7%	-17 / -0.8%

'vs. Pre-Covid' is comparison between 2026 and 2019

YTD Individual Flat Runners by Age

Individual Runners in GB Flat Races, shown by Age Category and Total



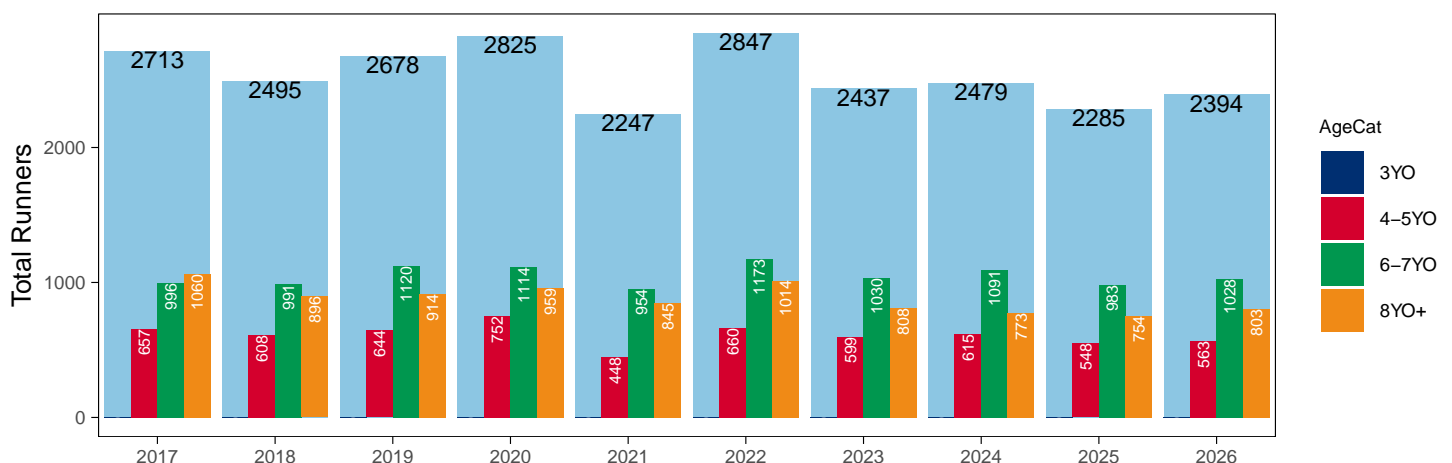
Jump

AgeCat	2017	2018	2019	2020	2021	2022	2023	2024	2025	2026	vs. Last Year	vs. Pre-Covid
3YO											NA / NA	0 / NA
4-5YO	657	608	644	752	448	660	599	615	548	563	+15 / +2.7%	-81 / -12.6%
6-7YO	996	991	1120	1114	954	1173	1030	1091	983	1028	+45 / +4.6%	-92 / -8.2%
8YO+	1060	896	914	959	845	1014	808	773	754	803	+49 / +6.5%	-111 / -12.1%
Total	2713	2495	2678	2825	2247	2847	2437	2479	2285	2394	+109 / +4.8%	-284 / -10.6%

'vs. Pre-Covid' is comparison between 2026 and 2019

YTD Individual Jump Runners by Age

Individual Runners in GB Jump Races, shown by Age Category and Total



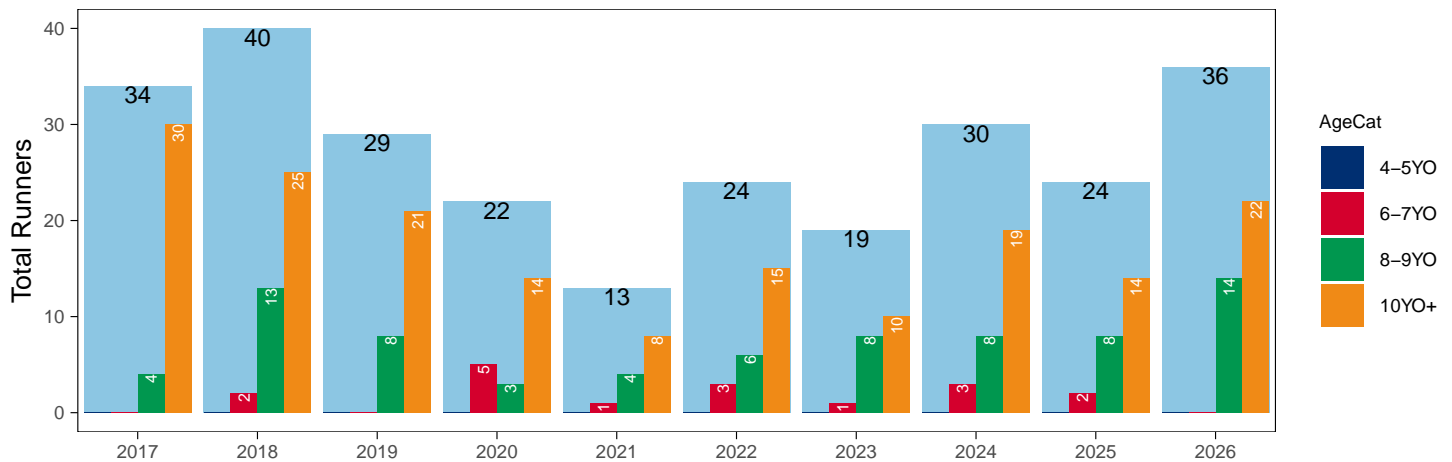
Hunter Chases

AgeCat	2017	2018	2019	2020	2021	2022	2023	2024	2025	2026	vs. Last Year	vs. Pre-Covid
4-5YO											NA / NA	0 / NA
6-7YO		2		5	1	3	1	3	2		NA / NA	0 / NA
8-9YO	4	13	8	3	4	6	8	8	8	14	+6 / +75.0%	+6 / +75.0%
10YO+	30	25	21	14	8	15	10	19	14	22	+8 / +57.1%	+1 / +4.8%
Total	34	40	29	22	13	24	19	30	24	36	+12 / +50.0%	+7 / +24.1%

'vs. Pre-Covid' is comparison between 2026 and 2019

YTD Individual Hunter Chase Runners by Age

Individual Runners in GB Hunter Chases shown by Age Category and Total



Year to Date Individual Runners by Country Trained

Code	Country	2017	2018	2019	2020	2021	2022	2023	2024	2025	2026
Flat	GB	1858	1825	1940	1899	1990	1936	1929	2046	1952	1975
	IRE	17	25	35	41		2	6	7	7	6
	Other		1	1	1						
Jump	GB	2633	2456	2604	2742	2214	2779	2350	2410	2228	2340
	IRE	57	24	45	50	2	42	56	51	40	43
	Other	2		1	3		1	1	2	2	5
Dual	GB	22	15	28	29	31	25	30	16	15	6
	IRE				1						
Overall	GB	4513	4296	4572	4670	4235	4740	4309	4472	4195	4321
	IRE	74	49	80	92	2	44	62	58	47	49
	Other	2	1	2	4		1	1	2	2	5

Individual horses may appear under multiple countries.

Year to Date Total Runners by Rating Band

Flat

RatBand	2017	2018	2019	2020	2021	2022	2023	2024	2025	2026
3YO										
Unrated	273 (37.7%)	317 (42.7%)	303 (43.8%)	341 (45.9%)	345 (45.3%)	329 (43.3%)	347 (41.3%)	339 (47.5%)	298 (46.1%)	254 (41.6%)
0-50	43 (5.9%)	59 (8.0%)	56 (8.1%)	73 (9.8%)	64 (8.4%)	69 (9.1%)	83 (9.9%)	59 (8.3%)	55 (8.5%)	46 (7.5%)
51-60	121 (16.7%)	97 (13.1%)	134 (19.4%)	106 (14.3%)	143 (18.8%)	111 (14.6%)	145 (17.3%)	111 (15.6%)	100 (15.5%)	120 (19.7%)
61-70	167 (23.0%)	141 (19.0%)	118 (17.1%)	131 (17.6%)	121 (15.9%)	154 (20.3%)	149 (17.7%)	121 (17.0%)	101 (15.6%)	121 (19.8%)
71-80	99 (13.7%)	90 (12.1%)	56 (8.1%)	77 (10.4%)	71 (9.3%)	75 (9.9%)	93 (11.1%)	63 (8.8%)	75 (11.6%)	52 (8.5%)
81-90	15 (2.1%)	32 (4.3%)	21 (3.0%)	14 (1.9%)	11 (1.4%)	18 (2.4%)	20 (2.4%)	17 (2.4%)	17 (2.6%)	14 (2.3%)
91-100	6 (0.8%)	3 (0.4%)	3 (0.4%)	1 (0.1%)	4 (0.5%)	4 (0.5%)	2 (0.2%)	3 (0.4%)	1 (0.2%)	3 (0.5%)
101+	1 (0.1%)	3 (0.4%)	1 (0.1%)	NA (-)	2 (0.3%)	NA (-)	1 (0.1%)	NA (-)	NA (-)	NA (-)
4YO+										
Unrated	59 (2.8%)	52 (2.6%)	96 (4.2%)	64 (2.8%)	73 (3.0%)	78 (3.4%)	83 (3.7%)	88 (3.6%)	81 (3.3%)	62 (2.4%)
0-50	315 (14.9%)	348 (17.2%)	465 (20.3%)	481 (21.3%)	541 (22.4%)	506 (22.3%)	560 (24.7%)	576 (23.6%)	645 (26.3%)	629 (24.7%)
51-60	539 (25.5%)	481 (23.7%)	542 (23.6%)	560 (24.8%)	558 (23.1%)	562 (24.8%)	564 (24.9%)	634 (26.0%)	614 (25.0%)	674 (26.5%)
61-70	509 (24.1%)	479 (23.6%)	526 (22.9%)	543 (24.1%)	631 (26.2%)	532 (23.5%)	501 (22.1%)	537 (22.0%)	552 (22.5%)	534 (21.0%)
71-80	366 (17.3%)	348 (17.2%)	394 (17.2%)	353 (15.6%)	340 (14.1%)	340 (15.0%)	356 (15.7%)	362 (14.8%)	343 (14.0%)	417 (16.4%)
81-90	229 (10.8%)	211 (10.4%)	168 (7.3%)	172 (7.6%)	175 (7.3%)	167 (7.4%)	133 (5.9%)	180 (7.4%)	160 (6.5%)	156 (6.1%)
91-100	77 (3.6%)	81 (4.0%)	81 (3.5%)	64 (2.8%)	69 (2.9%)	61 (2.7%)	53 (2.3%)	51 (2.1%)	46 (1.9%)	57 (2.2%)
101+	21 (1.0%)	29 (1.4%)	23 (1.0%)	19 (0.8%)	24 (1.0%)	22 (1.0%)	18 (0.8%)	14 (0.6%)	13 (0.5%)	19 (0.7%)

Jump

RatBand	2017	2018	2019	2020	2021	2022	2023	2024	2025	2026
Hurdle										
Unrated	734 (37.8%)	659 (36.5%)	742 (38.1%)	710 (35.2%)	456 (34.9%)	695 (35.4%)	673 (40.2%)	690 (40.1%)	490 (31.9%)	582 (35.0%)
0-100	406 (20.9%)	337 (18.6%)	374 (19.2%)	438 (21.7%)	288 (22.0%)	486 (24.7%)	418 (25.0%)	462 (26.9%)	452 (29.4%)	416 (25.0%)
101-110	242 (12.5%)	232 (12.8%)	247 (12.7%)	265 (13.1%)	143 (10.9%)	241 (12.3%)	191 (11.4%)	185 (10.8%)	200 (13.0%)	198 (11.9%)
111-120	265 (13.6%)	235 (13.0%)	257 (13.2%)	248 (12.3%)	162 (12.4%)	231 (11.8%)	145 (8.7%)	182 (10.6%)	204 (13.3%)	227 (13.7%)
121-130	169 (8.7%)	196 (10.8%)	180 (9.3%)	195 (9.7%)	138 (10.6%)	178 (9.1%)	158 (9.4%)	121 (7.0%)	118 (7.7%)	152 (9.1%)
131-140	88 (4.5%)	103 (5.7%)	96 (4.9%)	108 (5.4%)	79 (6.0%)	89 (4.5%)	57 (3.4%)	49 (2.9%)	42 (2.7%)	60 (3.6%)
141-150	22 (1.1%)	32 (1.8%)	33 (1.7%)	36 (1.8%)	31 (2.4%)	35 (1.8%)	22 (1.3%)	23 (1.3%)	24 (1.6%)	20 (1.2%)
151+	17 (0.9%)	13 (0.7%)	16 (0.8%)	18 (0.9%)	11 (0.8%)	10 (0.5%)	9 (0.5%)	7 (0.4%)	6 (0.4%)	8 (0.5%)
Chase										
Unrated	17 (1.5%)	5 (0.6%)	10 (1.1%)	NA (-)	5 (0.8%)	3 (0.3%)	1 (0.1%)	NA (-)	NA (-)	1 (0.1%)
0-100	231 (20.9%)	194 (21.4%)	246 (25.9%)	276 (27.1%)	153 (23.0%)	290 (26.2%)	285 (31.6%)	261 (30.4%)	240 (30.8%)	249 (29.5%)
101-110	192 (17.4%)	122 (13.5%)	155 (16.3%)	157 (15.4%)	75 (11.3%)	143 (12.9%)	141 (15.6%)	138 (16.1%)	149 (19.1%)	137 (16.3%)
111-120	206 (18.7%)	175 (19.3%)	151 (15.9%)	143 (14.0%)	119 (17.9%)	220 (19.9%)	148 (16.4%)	175 (20.4%)	127 (16.3%)	158 (18.7%)
121-130	163 (14.8%)	171 (18.9%)	160 (16.9%)	194 (19.0%)	118 (17.7%)	198 (17.9%)	142 (15.7%)	126 (14.7%)	130 (16.7%)	140 (16.6%)
131-140	172 (15.6%)	139 (15.3%)	113 (11.9%)	156 (15.3%)	105 (15.8%)	165 (14.9%)	108 (12.0%)	90 (10.5%)	66 (8.5%)	95 (11.3%)
141-150	80 (7.3%)	70 (7.7%)	81 (8.5%)	66 (6.5%)	60 (9.0%)	55 (5.0%)	53 (5.9%)	43 (5.0%)	46 (5.9%)	38 (4.5%)
151+	42 (3.8%)	30 (3.3%)	33 (3.5%)	28 (2.7%)	31 (4.7%)	31 (2.8%)	25 (2.8%)	25 (2.9%)	22 (2.8%)	25 (3.0%)

Year to Date Total GB-Trained Runners by Rating Band

Flat

RatBand	2017	2018	2019	2020	2021	2022	2023	2024	2025	2026
3YO										
Unrated	273 (37.7%)	315 (42.9%)	302 (44.1%)	338 (46.3%)	345 (45.3%)	329 (43.3%)	347 (41.3%)	338 (47.5%)	298 (46.1%)	253 (41.6%)
0-50	43 (5.9%)	57 (7.8%)	55 (8.0%)	70 (9.6%)	64 (8.4%)	69 (9.1%)	83 (9.9%)	59 (8.3%)	55 (8.5%)	46 (7.6%)
51-60	121 (16.7%)	95 (12.9%)	133 (19.4%)	101 (13.8%)	143 (18.8%)	111 (14.6%)	145 (17.3%)	111 (15.6%)	99 (15.3%)	119 (19.6%)
61-70	167 (23.0%)	141 (19.2%)	115 (16.8%)	131 (17.9%)	121 (15.9%)	154 (20.3%)	149 (17.7%)	121 (17.0%)	101 (15.6%)	121 (19.9%)
71-80	99 (13.7%)	89 (12.1%)	55 (8.0%)	75 (10.3%)	71 (9.3%)	75 (9.9%)	93 (11.1%)	63 (8.8%)	75 (11.6%)	52 (8.6%)
81-90	15 (2.1%)	32 (4.4%)	21 (3.1%)	14 (1.9%)	11 (1.4%)	18 (2.4%)	20 (2.4%)	17 (2.4%)	17 (2.6%)	14 (2.3%)
91-100	6 (0.8%)	3 (0.4%)	3 (0.4%)	1 (0.1%)	4 (0.5%)	4 (0.5%)	2 (0.2%)	3 (0.4%)	1 (0.2%)	3 (0.5%)
101+	1 (0.1%)	3 (0.4%)	1 (0.1%)	NA (-)	2 (0.3%)	NA (-)	1 (0.1%)	NA (-)	NA (-)	NA (-)
4YO+										
Unrated	59 (2.8%)	52 (2.6%)	96 (4.2%)	64 (2.9%)	73 (3.0%)	78 (3.4%)	83 (3.7%)	88 (3.6%)	81 (3.3%)	62 (2.4%)
0-50	307 (14.7%)	343 (17.1%)	451 (19.9%)	474 (21.4%)	541 (22.4%)	506 (22.3%)	559 (24.7%)	573 (23.5%)	644 (26.3%)	628 (24.7%)
51-60	532 (25.4%)	472 (23.5%)	529 (23.4%)	540 (24.3%)	558 (23.1%)	562 (24.8%)	562 (24.8%)	632 (26.0%)	607 (24.8%)	674 (26.5%)
61-70	502 (24.0%)	475 (23.7%)	521 (23.0%)	539 (24.3%)	631 (26.2%)	532 (23.5%)	501 (22.1%)	535 (22.0%)	551 (22.5%)	533 (21.0%)
71-80	365 (17.5%)	346 (17.2%)	394 (17.4%)	350 (15.8%)	340 (14.1%)	338 (14.9%)	354 (15.6%)	361 (14.8%)	343 (14.0%)	416 (16.4%)
81-90	229 (11.0%)	211 (10.5%)	167 (7.4%)	172 (7.7%)	175 (7.3%)	167 (7.4%)	133 (5.9%)	180 (7.4%)	160 (6.5%)	155 (6.1%)
91-100	76 (3.6%)	81 (4.0%)	80 (3.5%)	64 (2.9%)	69 (2.9%)	61 (2.7%)	52 (2.3%)	51 (2.1%)	46 (1.9%)	57 (2.2%)
101+	21 (1.0%)	28 (1.4%)	23 (1.0%)	17 (0.8%)	24 (1.0%)	22 (1.0%)	18 (0.8%)	14 (0.6%)	13 (0.5%)	19 (0.7%)

Jump

RatBand	2017	2018	2019	2020	2021	2022	2023	2024	2025	2026
Hurdle										
Unrated	727 (38.2%)	652 (36.5%)	726 (38.1%)	700 (35.3%)	456 (34.9%)	681 (35.3%)	658 (40.1%)	677 (40.2%)	484 (32.0%)	568 (34.6%)
0-100	395 (20.7%)	334 (18.7%)	367 (19.2%)	431 (21.7%)	288 (22.0%)	484 (25.1%)	412 (25.1%)	457 (27.1%)	451 (29.8%)	415 (25.3%)
101-110	233 (12.2%)	229 (12.8%)	245 (12.8%)	262 (13.2%)	143 (10.9%)	239 (12.4%)	189 (11.5%)	184 (10.9%)	199 (13.2%)	198 (12.1%)
111-120	259 (13.6%)	234 (13.1%)	253 (13.3%)	246 (12.4%)	162 (12.4%)	228 (11.8%)	143 (8.7%)	179 (10.6%)	198 (13.1%)	226 (13.8%)
121-130	166 (8.7%)	193 (10.8%)	175 (9.2%)	192 (9.7%)	138 (10.6%)	175 (9.1%)	156 (9.5%)	115 (6.8%)	113 (7.5%)	151 (9.2%)
131-140	88 (4.6%)	102 (5.7%)	94 (4.9%)	104 (5.2%)	79 (6.0%)	85 (4.4%)	53 (3.2%)	46 (2.7%)	42 (2.8%)	58 (3.5%)
141-150	21 (1.1%)	31 (1.7%)	32 (1.7%)	31 (1.6%)	30 (2.3%)	30 (1.6%)	21 (1.3%)	20 (1.2%)	20 (1.3%)	18 (1.1%)
151+	16 (0.8%)	13 (0.7%)	15 (0.8%)	16 (0.8%)	11 (0.8%)	8 (0.4%)	9 (0.5%)	6 (0.4%)	6 (0.4%)	8 (0.5%)
Chase										
Unrated	17 (1.6%)	5 (0.6%)	10 (1.1%)	NA (-)	5 (0.8%)	3 (0.3%)	1 (0.1%)	NA (-)	NA (-)	1 (0.1%)
0-100	228 (21.1%)	193 (21.5%)	245 (26.0%)	274 (27.1%)	153 (23.0%)	290 (26.3%)	283 (32.1%)	261 (31.0%)	240 (31.5%)	247 (30.3%)
101-110	191 (17.7%)	122 (13.6%)	154 (16.4%)	157 (15.5%)	75 (11.3%)	143 (13.0%)	139 (15.8%)	138 (16.4%)	149 (19.5%)	137 (16.8%)
111-120	203 (18.8%)	173 (19.2%)	150 (15.9%)	141 (14.0%)	119 (17.9%)	220 (20.0%)	147 (16.7%)	172 (20.4%)	124 (16.3%)	153 (18.8%)
121-130	159 (14.7%)	170 (18.9%)	159 (16.9%)	192 (19.0%)	118 (17.7%)	197 (17.9%)	140 (15.9%)	119 (14.1%)	127 (16.6%)	130 (16.0%)
131-140	167 (15.5%)	138 (15.4%)	112 (11.9%)	155 (15.3%)	105 (15.8%)	164 (14.9%)	101 (11.5%)	90 (10.7%)	61 (8.0%)	92 (11.3%)
141-150	78 (7.2%)	69 (7.7%)	80 (8.5%)	64 (6.3%)	60 (9.0%)	55 (5.0%)	49 (5.6%)	40 (4.8%)	44 (5.8%)	34 (4.2%)
151+	36 (3.3%)	29 (3.2%)	31 (3.3%)	27 (2.7%)	31 (4.7%)	30 (2.7%)	21 (2.4%)	22 (2.6%)	18 (2.4%)	21 (2.6%)

Frequency of Runs

Year to Date Average Runs per Horse

Code	2017	2018	2019	2020	2021	2022	2023	2024	2025	2026
Flat	1.50	1.49	1.50	1.53	1.57	1.55	1.59	1.53	1.57	1.59
Jump	1.20	1.18	1.17	1.17	1.09	1.17	1.14	1.12	1.10	1.12
Dual Overall	2.23	2.20	2.14	2.23	2.29	2.20	2.33	2.25	2.40	2.33
Dual (Flat)	1.14	1.20	1.07	1.17	1.23	1.16	1.23	1.25	1.33	1.17
Dual (Jump)	1.09	1.00	1.07	1.07	1.06	1.04	1.10	1.00	1.07	1.17
All	1.33	1.32	1.31	1.32	1.33	1.33	1.35	1.31	1.32	1.33

Year to Date Proportion of Horses by Count of Runs

Runs	2017	2018	2019	2020	2021	2022	2023	2024	2025	2026
Flat										
1	1,141 (60.2%)	1,143 (61.3%)	1,213 (60.5%)	1,174 (59.6%)	1,145 (56.7%)	1,120 (57.1%)	1,104 (56.2%)	1,216 (58.8%)	1,110 (56.2%)	1,116 (56.2%)
2	590 (31.1%)	561 (30.1%)	629 (31.4%)	610 (30.9%)	652 (32.3%)	646 (32.9%)	631 (32.1%)	650 (31.4%)	637 (32.3%)	629 (31.7%)
3	145 (7.6%)	146 (7.8%)	134 (6.7%)	152 (7.7%)	182 (9.0%)	174 (8.9%)	184 (9.4%)	176 (8.5%)	195 (9.9%)	198 (10.0%)
4	17 (0.9%)	13 (0.7%)	26 (1.3%)	27 (1.4%)	34 (1.7%)	21 (1.1%)	40 (2.0%)	24 (1.2%)	28 (1.4%)	34 (1.7%)
5+	3 (0.2%)	3 (0.2%)	2 (0.1%)	8 (0.4%)	8 (0.4%)	2 (0.1%)	6 (0.3%)	3 (0.1%)	4 (0.2%)	10 (0.5%)
Jump										
1	2,184 (80.5%)	2,054 (82.3%)	2,261 (84.4%)	2,356 (83.4%)	2,049 (91.2%)	2,377 (83.5%)	2,098 (86.1%)	2,188 (88.3%)	2,058 (90.1%)	2,121 (88.6%)
2	506 (18.7%)	428 (17.2%)	393 (14.7%)	448 (15.9%)	193 (8.6%)	456 (16.0%)	328 (13.5%)	284 (11.5%)	222 (9.7%)	267 (11.2%)
3	23 (0.8%)	13 (0.5%)	24 (0.9%)	21 (0.7%)	5 (0.2%)	14 (0.5%)	11 (0.5%)	7 (0.3%)	5 (0.2%)	6 (0.3%)
All Races										
1	3,286 (71.6%)	3,170 (72.9%)	3,422 (73.5%)	3,477 (73.0%)	3,140 (74.1%)	3,452 (72.1%)	3,152 (72.1%)	3,376 (74.5%)	3,144 (74.1%)	3,227 (73.8%)
2	1,108 (24.2%)	998 (23.0%)	1,042 (22.4%)	1,074 (22.5%)	861 (20.3%)	1,117 (23.3%)	969 (22.2%)	942 (20.8%)	862 (20.3%)	898 (20.5%)
3	173 (3.8%)	162 (3.7%)	162 (3.5%)	180 (3.8%)	193 (4.6%)	193 (4.0%)	205 (4.7%)	187 (4.1%)	206 (4.9%)	206 (4.7%)
4	17 (0.4%)	13 (0.3%)	26 (0.6%)	27 (0.6%)	35 (0.8%)	21 (0.4%)	40 (0.9%)	24 (0.5%)	28 (0.7%)	34 (0.8%)
5+	3 (0.1%)	3 (0.1%)	2 (0.0%)	8 (0.2%)	8 (0.2%)	2 (0.0%)	6 (0.1%)	3 (0.1%)	4 (0.1%)	10 (0.2%)

Year to Date Median Days Between Runs

Code/RatBand	2017	2018	2019	2020	2021	2022	2023	2024	2025	2026
All Runners	25	27	25	27	27	26	29	27	27	27
Flat										
Unrated	24	27	29	28	25	27	26	28	26	30
0-50	21	21	21	20	19	20	16	18	17	18
51-60	19	19	20	20	18	20	18	19	17	17
61-70	20	20	20	21	19	20	19	20	18	21
71-80	21	20	20	22	22	20	21	22	22	23
81-90	18	22	21	22	23	22	26	23	23	26
91-100	24	24	22	21	21	30	39	30	27	32
101+	48	38	27	30	44	38	39	35	46	64
All Flat Runners	21	21	21	22	20	21	20	20	19	20
Jump										
Unrated	31	36	31	34	40	33	39	36	38	39
0-100	27	27	26	27	36	28	34	33	34	32
101-110	27	30	27	30	34	29	37	35	32	34
111-120	28	30	27	30	39	31	34	32	33	31
121-130	29	30	28	30	35	31	35	33	33	32
131-140	32	31	28	30	36	32	36	35	36	35
141-150	33	32	31	35	38	34	38	36	34	34
151+	42	35	35	34	35	42	39	36	38	41
All Jump Runners	29	31	28	30	37	30	36	34	34	34

Horses Population by Gender

January 2026 Horses in Training Snapshot by Gender versus Previous Years

All Horses

Sex	2017	2018	2019	2020	2021	2022	2023	2024	2025	2026
Colt/Entire	2,356 (16.5%)	2,394 (16.5%)	2,274 (15.5%)	2,291 (15.2%)	2,053 (13.6%)	1,961 (13.5%)	1,853 (12.7%)	1,823 (12.9%)	1,790 (12.8%)	1,779 (12.9%)
Gelding	7,771 (54.5%)	7,838 (53.9%)	7,978 (54.5%)	8,289 (54.9%)	8,585 (56.7%)	8,069 (55.6%)	8,224 (56.5%)	8,006 (56.6%)	7,936 (56.6%)	7,690 (55.9%)
Filly/Mare	4,131 (29.0%)	4,303 (29.6%)	4,376 (29.9%)	4,507 (29.9%)	4,498 (29.7%)	4,491 (30.9%)	4,471 (30.7%)	4,323 (30.5%)	4,285 (30.6%)	4,298 (31.2%)
Rig	4 (0.0%)	3 (0.0%)	3 (0.0%)	3 (0.0%)	3 (0.0%)	1 (0.0%)	0 (0.0%)	0 (0.0%)	0 (0.0%)	1 (0.0%)
Total	14,262 (100.0%)	14,538 (100.0%)	14,631 (100.0%)	15,090 (100.0%)	15,139 (100.0%)	14,522 (100.0%)	14,548 (100.0%)	14,152 (100.0%)	14,011 (100.0%)	13,768 (100.0%)

Flat (including Dual)

Sex	2017	2018	2019	2020	2021	2022	2023	2024	2025	2026
Colt/Entire	2,332 (26.0%)	2,371 (25.2%)	2,254 (25.0%)	2,268 (24.4%)	2,031 (23.1%)	1,940 (22.2%)	1,828 (21.1%)	1,798 (21.2%)	1,761 (20.7%)	1,749 (20.6%)
Gelding	3,500 (39.0%)	3,806 (40.4%)	3,565 (39.6%)	3,781 (40.6%)	3,673 (41.7%)	3,575 (40.9%)	3,697 (42.7%)	3,671 (43.3%)	3,753 (44.1%)	3,691 (43.5%)
Filly/Mare	3,149 (35.0%)	3,244 (34.4%)	3,179 (35.3%)	3,259 (35.0%)	3,104 (35.2%)	3,234 (37.0%)	3,127 (36.1%)	3,001 (35.4%)	2,990 (35.2%)	3,046 (35.9%)
Rig	4 (0.0%)	3 (0.0%)	2 (0.0%)	2 (0.0%)	2 (0.0%)	0 (0.0%)	0 (0.0%)	0 (0.0%)	0 (0.0%)	1 (0.0%)
Total	8,985 (100.0%)	9,424 (100.0%)	9,000 (100.0%)	9,310 (100.0%)	8,810 (100.0%)	8,749 (100.0%)	8,652 (100.0%)	8,470 (100.0%)	8,504 (100.0%)	8,487 (100.0%)

Jump (including Dual)

Sex	2017	2018	2019	2020	2021	2022	2023	2024	2025	2026
Colt/Entire	28 (0.5%)	32 (0.5%)	29 (0.5%)	35 (0.6%)	34 (0.5%)	35 (0.6%)	31 (0.5%)	28 (0.5%)	41 (0.7%)	43 (0.7%)
Gelding	4,704 (80.9%)	4,715 (78.5%)	4,771 (78.2%)	4,913 (78.0%)	5,296 (77.5%)	4,842 (77.6%)	4,868 (76.6%)	4,646 (76.0%)	4,482 (75.7%)	4,393 (75.2%)
Filly/Mare	1,083 (18.6%)	1,261 (21.0%)	1,299 (21.3%)	1,352 (21.5%)	1,501 (22.0%)	1,361 (21.8%)	1,456 (22.9%)	1,440 (23.6%)	1,399 (23.6%)	1,406 (24.1%)
Rig	0 (0.0%)	0 (0.0%)	1 (0.0%)	1 (0.0%)	1 (0.0%)	1 (0.0%)	0 (0.0%)	0 (0.0%)	0 (0.0%)	1 (0.0%)
Total	5,815 (100.0%)	6,008 (100.0%)	6,100 (100.0%)	6,301 (100.0%)	6,832 (100.0%)	6,239 (100.0%)	6,355 (100.0%)	6,114 (100.0%)	5,922 (100.0%)	5,843 (100.0%)

Hunter Chasers

Sex	2017	2018	2019	2020	2021	2022	2023	2024	2025	2026
Colt/Entire	2 (0.2%)	2 (0.2%)	1 (0.1%)	1 (0.1%)	1 (0.1%)	2 (0.2%)	6 (0.8%)	10 (1.0%)	6 (0.9%)	5 (0.8%)
Gelding	938 (84.7%)	846 (83.7%)	819 (81.4%)	804 (83.1%)	667 (83.1%)	702 (84.3%)	603 (82.2%)	834 (82.3%)	556 (81.9%)	541 (81.2%)
Filly/Mare	167 (15.1%)	163 (16.1%)	186 (18.5%)	162 (16.8%)	135 (16.8%)	129 (15.5%)	125 (17.0%)	169 (16.7%)	117 (17.2%)	120 (18.0%)
Rig	0 (0.0%)	0 (0.0%)	0 (0.0%)	0 (0.0%)	0 (0.0%)	0 (0.0%)	0 (0.0%)	0 (0.0%)	0 (0.0%)	0 (0.0%)
Total	1,107 (100.0%)	1,011 (100.0%)	1,006 (100.0%)	967 (100.0%)	803 (100.0%)	833 (100.0%)	734 (100.0%)	1,013 (100.0%)	679 (100.0%)	666 (100.0%)

Year to Date Total Runners by Gender

Sex	2017	2018	2019	2020	2021	2022	2023	2024	2025	2026
All Races										
Colt/Entire	249 (4.1%)	247 (4.3%)	224 (3.7%)	269 (4.3%)	270 (4.8%)	212 (3.3%)	231 (3.9%)	194 (3.3%)	171 (3.0%)	164 (2.8%)
Gelding	4,454 (73.0%)	4,112 (71.9%)	4,363 (71.5%)	4,422 (70.0%)	3,854 (68.6%)	4,505 (70.8%)	4,093 (69.4%)	4,178 (70.4%)	4,032 (71.8%)	4,161 (71.4%)
Filly/Mare	1,402 (23.0%)	1,360 (23.8%)	1,519 (24.9%)	1,622 (25.7%)	1,497 (26.6%)	1,642 (25.8%)	1,571 (26.6%)	1,560 (26.3%)	1,415 (25.2%)	1,505 (25.8%)
Rig	0 (0.0%)	1 (0.0%)	0 (0.0%)	1 (0.0%)	1 (0.0%)	0 (0.0%)	0 (0.0%)	0 (0.0%)	0 (0.0%)	1 (0.0%)
Flat										
Colt/Entire	245 (8.6%)	243 (8.8%)	216 (7.2%)	264 (8.8%)	268 (8.4%)	209 (6.9%)	223 (7.2%)	192 (6.1%)	167 (5.4%)	161 (5.1%)
Gelding	1,724 (60.7%)	1,701 (61.4%)	1,855 (62.1%)	1,808 (60.3%)	1,929 (60.8%)	1,855 (61.3%)	1,859 (59.8%)	2,031 (64.4%)	2,079 (67.0%)	2,058 (65.2%)
Filly/Mare	871 (30.7%)	826 (29.8%)	916 (30.7%)	927 (30.9%)	975 (30.7%)	964 (31.8%)	1,026 (33.0%)	932 (29.5%)	855 (27.6%)	938 (29.7%)
Rig	0 (0.0%)	1 (0.0%)	0 (0.0%)	0 (0.0%)	0 (0.0%)	0 (0.0%)	0 (0.0%)	0 (0.0%)	0 (0.0%)	1 (0.0%)
All Jump										
Colt/Entire	4 (0.1%)	4 (0.1%)	8 (0.3%)	5 (0.2%)	2 (0.1%)	3 (0.1%)	8 (0.3%)	2 (0.1%)	4 (0.2%)	3 (0.1%)
Gelding	2,730 (83.6%)	2,411 (81.8%)	2,508 (80.4%)	2,614 (78.9%)	1,925 (78.6%)	2,650 (79.6%)	2,234 (80.2%)	2,147 (77.3%)	1,953 (77.6%)	2,103 (78.7%)
Filly/Mare	531 (16.3%)	534 (18.1%)	603 (19.3%)	695 (21.0%)	522 (21.3%)	678 (20.4%)	545 (19.6%)	628 (22.6%)	560 (22.2%)	567 (21.2%)
Rig	0 (0.0%)	0 (0.0%)	0 (0.0%)	1 (0.0%)	1 (0.0%)	0 (0.0%)	0 (0.0%)	0 (0.0%)	0 (0.0%)	0 (0.0%)
Chase										
Gelding	1,025 (92.9%)	833 (91.9%)	843 (88.8%)	930 (91.2%)	599 (89.9%)	969 (87.7%)	821 (90.9%)	781 (91.0%)	682 (87.4%)	742 (88.0%)
Filly/Mare	78 (7.1%)	73 (8.1%)	106 (11.2%)	89 (8.7%)	66 (9.9%)	136 (12.3%)	82 (9.1%)	77 (9.0%)	98 (12.6%)	101 (12.0%)
Rig	0 (0.0%)	0 (0.0%)	0 (0.0%)	1 (0.1%)	1 (0.2%)	0 (0.0%)	0 (0.0%)	0 (0.0%)	0 (0.0%)	0 (0.0%)
Hurdle										
Colt/Entire	4 (0.2%)	3 (0.2%)	6 (0.3%)	3 (0.1%)	1 (0.1%)	3 (0.2%)	5 (0.3%)	2 (0.1%)	2 (0.1%)	3 (0.2%)
Gelding	1,557 (80.1%)	1,432 (79.2%)	1,526 (78.5%)	1,511 (74.9%)	1,010 (77.2%)	1,523 (77.5%)	1,290 (77.1%)	1,242 (72.3%)	1,151 (74.9%)	1,262 (75.9%)
Filly/Mare	382 (19.7%)	372 (20.6%)	413 (21.2%)	504 (25.0%)	297 (22.7%)	439 (22.3%)	378 (22.6%)	475 (27.6%)	383 (24.9%)	398 (23.9%)
NHF										
Colt/Entire	0 (0.0%)	1 (0.4%)	2 (0.9%)	2 (0.7%)	1 (0.2%)	0 (0.0%)	3 (1.4%)	0 (0.0%)	2 (1.0%)	0 (0.0%)
Gelding	148 (67.6%)	146 (61.9%)	139 (61.8%)	173 (62.5%)	316 (66.4%)	158 (60.5%)	123 (58.3%)	124 (62.0%)	120 (59.7%)	99 (59.3%)
Filly/Mare	71 (32.4%)	89 (37.7%)	84 (37.3%)	102 (36.8%)	159 (33.4%)	103 (39.5%)	85 (40.3%)	76 (38.0%)	79 (39.3%)	68 (40.7%)
Hunter										
Gelding	37 (97.4%)	41 (100.0%)	30 (96.8%)	22 (95.7%)	12 (92.3%)	24 (100.0%)	19 (95.0%)	29 (93.5%)	23 (95.8%)	37 (100.0%)
Filly/Mare	1 (2.6%)	0 (0.0%)	1 (3.2%)	1 (4.3%)	1 (7.7%)	0 (0.0%)	1 (5.0%)	2 (6.5%)	1 (4.2%)	0 (0.0%)

Year to Date Individual Runners by Gender

Sex	2017	2018	2019	2020	2021	2022	2023	2024	2025	2026
All Races										
Male	3,543 (77.2%)	3,305 (76.0%)	3,512 (75.5%)	3,535 (74.2%)	3,124 (73.7%)	3,581 (74.8%)	3,214 (73.5%)	3,342 (73.7%)	3,160 (74.5%)	3,251 (74.3%)
Female	1,044 (22.8%)	1,041 (24.0%)	1,142 (24.5%)	1,231 (25.8%)	1,113 (26.3%)	1,204 (25.2%)	1,158 (26.5%)	1,190 (26.3%)	1,084 (25.5%)	1,124 (25.7%)
Flat										
Male	1,301 (68.6%)	1,287 (69.0%)	1,380 (68.9%)	1,340 (68.0%)	1,388 (68.7%)	1,329 (67.7%)	1,292 (65.8%)	1,438 (69.5%)	1,386 (70.2%)	1,374 (69.1%)
Female	595 (31.4%)	579 (31.0%)	624 (31.1%)	631 (32.0%)	633 (31.3%)	634 (32.3%)	673 (34.2%)	631 (30.5%)	588 (29.8%)	613 (30.9%)
All Jump										
Male	2,259 (83.3%)	2,031 (81.4%)	2,155 (80.5%)	2,222 (78.7%)	1,764 (78.5%)	2,274 (79.9%)	1,943 (79.7%)	1,911 (77.1%)	1,786 (78.2%)	1,881 (78.6%)
Female	454 (16.7%)	464 (18.6%)	523 (19.5%)	603 (21.3%)	483 (21.5%)	573 (20.1%)	494 (20.3%)	568 (22.9%)	499 (21.8%)	513 (21.4%)
Chase										
Male	861 (92.3%)	706 (91.9%)	727 (89.1%)	800 (91.5%)	566 (90.3%)	828 (88.2%)	711 (90.8%)	699 (90.5%)	627 (87.8%)	668 (87.7%)
Female	72 (7.7%)	62 (8.1%)	89 (10.9%)	74 (8.5%)	61 (9.7%)	111 (11.8%)	72 (9.2%)	73 (9.5%)	87 (12.2%)	94 (12.3%)
Hurdle										
Male	1,309 (80.3%)	1,217 (79.1%)	1,323 (78.5%)	1,287 (74.4%)	939 (77.1%)	1,320 (78.1%)	1,139 (76.9%)	1,103 (72.2%)	1,058 (75.7%)	1,134 (76.1%)
Female	321 (19.7%)	321 (20.9%)	362 (21.5%)	442 (25.6%)	279 (22.9%)	371 (21.9%)	342 (23.1%)	424 (27.8%)	339 (24.3%)	357 (23.9%)
NHF										
Male	143 (67.5%)	142 (62.3%)	137 (63.4%)	171 (63.1%)	296 (66.4%)	157 (61.8%)	122 (59.5%)	122 (62.9%)	118 (61.1%)	99 (59.3%)
Female	69 (32.5%)	86 (37.7%)	79 (36.6%)	100 (36.9%)	150 (33.6%)	97 (38.2%)	83 (40.5%)	72 (37.1%)	75 (38.9%)	68 (40.7%)
Hunter										
Male	33 (97.1%)	40 (100.0%)	28 (96.6%)	21 (95.5%)	12 (92.3%)	24 (100.0%)	18 (94.7%)	28 (93.3%)	23 (95.8%)	36 (100.0%)
Female	1 (2.9%)	0 (0.0%)	1 (3.4%)	1 (4.5%)	1 (7.7%)	0 (0.0%)	1 (5.3%)	2 (6.7%)	1 (4.2%)	0 (0.0%)

Horses Population by Breeding

January 2026 Horses in Training Snapshot by Breeding versus Previous Years

Flat (including Dual)

Bred	Sex	2017	2018	2019	2020	2021	2022	2023	2024	2025	2026
GB	Male	2,744 (30.5%)	2,842 (30.2%)	2,720 (30.2%)	2,863 (30.8%)	2,660 (30.2%)	2,539 (29.0%)	2,532 (29.3%)	2,495 (29.5%)	2,525 (29.7%)	2,458 (29.0%)
	Female	1,782 (19.8%)	1,744 (18.5%)	1,749 (19.4%)	1,809 (19.4%)	1,746 (19.8%)	1,806 (20.6%)	1,712 (19.8%)	1,628 (19.2%)	1,640 (19.3%)	1,658 (19.5%)
	Subtotal	4,526 (50.4%)	4,586 (48.7%)	4,469 (49.7%)	4,672 (50.2%)	4,406 (50.0%)	4,345 (49.7%)	4,244 (49.1%)	4,123 (48.7%)	4,165 (49.0%)	4,116 (48.5%)
IRE	Male	2,498 (27.8%)	2,662 (28.2%)	2,510 (27.9%)	2,603 (28.0%)	2,522 (28.6%)	2,542 (29.1%)	2,586 (29.9%)	2,524 (29.8%)	2,574 (30.3%)	2,585 (30.5%)
	Female	1,151 (12.8%)	1,259 (13.4%)	1,175 (13.1%)	1,233 (13.2%)	1,185 (13.5%)	1,266 (14.5%)	1,251 (14.5%)	1,212 (14.3%)	1,192 (14.0%)	1,223 (14.4%)
	Subtotal	3,649 (40.6%)	3,921 (41.6%)	3,685 (40.9%)	3,836 (41.2%)	3,707 (42.1%)	3,808 (43.5%)	3,837 (44.3%)	3,736 (44.1%)	3,766 (44.3%)	3,808 (44.9%)
FR	Male	205 (2.3%)	303 (3.2%)	262 (2.9%)	292 (3.1%)	278 (3.2%)	266 (3.0%)	260 (3.0%)	314 (3.7%)	295 (3.5%)	279 (3.3%)
	Female	78 (0.9%)	109 (1.2%)	109 (1.2%)	106 (1.1%)	96 (1.1%)	98 (1.1%)	118 (1.4%)	118 (1.4%)	104 (1.2%)	117 (1.4%)
	Subtotal	283 (3.1%)	412 (4.4%)	371 (4.1%)	398 (4.3%)	374 (4.2%)	364 (4.2%)	378 (4.4%)	432 (5.1%)	399 (4.7%)	396 (4.7%)
USA	Male	305 (3.4%)	284 (3.0%)	259 (2.9%)	222 (2.4%)	174 (2.0%)	123 (1.4%)	99 (1.1%)	88 (1.0%)	62 (0.7%)	52 (0.6%)
	Female	114 (1.3%)	109 (1.2%)	125 (1.4%)	85 (0.9%)	55 (0.6%)	42 (0.5%)	29 (0.3%)	20 (0.2%)	33 (0.4%)	25 (0.3%)
	Subtotal	419 (4.7%)	393 (4.2%)	384 (4.3%)	307 (3.3%)	229 (2.6%)	165 (1.9%)	128 (1.5%)	108 (1.3%)	95 (1.1%)	77 (0.9%)
GNY	Male	61 (0.7%)	66 (0.7%)	47 (0.5%)	51 (0.5%)	55 (0.6%)	38 (0.4%)	37 (0.4%)	40 (0.5%)	47 (0.6%)	53 (0.6%)
	Female	13 (0.1%)	13 (0.1%)	13 (0.1%)	22 (0.2%)	18 (0.2%)	19 (0.2%)	13 (0.2%)	16 (0.2%)	16 (0.2%)	17 (0.2%)
	Subtotal	74 (0.8%)	79 (0.8%)	60 (0.7%)	73 (0.8%)	73 (0.8%)	57 (0.7%)	50 (0.6%)	56 (0.7%)	63 (0.7%)	70 (0.8%)
Other	Male	23 (0.3%)	23 (0.2%)	23 (0.3%)	20 (0.2%)	17 (0.2%)	7 (0.1%)	11 (0.1%)	8 (0.1%)	11 (0.1%)	14 (0.2%)
	Female	11 (0.1%)	10 (0.1%)	8 (0.1%)	4 (0.0%)	4 (0.0%)	3 (0.0%)	4 (0.0%)	7 (0.1%)	5 (0.1%)	6 (0.1%)
	Subtotal	34 (0.4%)	33 (0.4%)	31 (0.3%)	24 (0.3%)	21 (0.2%)	10 (0.1%)	15 (0.2%)	15 (0.2%)	16 (0.2%)	20 (0.2%)

Jump (including Dual)

Bred	Sex	2017	2018	2019	2020	2021	2022	2023	2024	2025	2026
GB	Male	1,323 (22.8%)	1,353 (22.5%)	1,293 (21.2%)	1,267 (20.1%)	1,310 (19.2%)	1,204 (19.3%)	1,226 (19.3%)	1,178 (19.3%)	1,164 (19.7%)	1,152 (19.7%)
	Female	602 (10.4%)	662 (11.0%)	625 (10.2%)	612 (9.7%)	711 (10.4%)	648 (10.4%)	700 (11.0%)	659 (10.8%)	604 (10.2%)	625 (10.7%)
	Subtotal	1,925 (33.1%)	2,015 (33.5%)	1,918 (31.4%)	1,879 (29.8%)	2,021 (29.6%)	1,852 (29.7%)	1,926 (30.3%)	1,837 (30.0%)	1,768 (29.9%)	1,777 (30.4%)
IRE	Male	2,596 (44.6%)	2,600 (43.3%)	2,646 (43.4%)	2,751 (43.7%)	2,938 (43.0%)	2,605 (41.8%)	2,563 (40.3%)	2,410 (39.4%)	2,307 (39.0%)	2,245 (38.4%)
	Female	410 (7.1%)	511 (8.5%)	562 (9.2%)	614 (9.7%)	651 (9.5%)	575 (9.2%)	601 (9.5%)	622 (10.2%)	629 (10.6%)	610 (10.4%)
	Subtotal	3,006 (51.7%)	3,111 (51.8%)	3,208 (52.6%)	3,365 (53.4%)	3,589 (52.5%)	3,180 (51.0%)	3,164 (49.8%)	3,032 (49.6%)	2,936 (49.6%)	2,855 (48.9%)
FR	Male	703 (12.1%)	692 (11.5%)	773 (12.7%)	827 (13.1%)	983 (14.4%)	976 (15.6%)	1,015 (16.0%)	1,009 (16.5%)	995 (16.8%)	991 (17.0%)
	Female	63 (1.1%)	79 (1.3%)	102 (1.7%)	119 (1.9%)	127 (1.9%)	129 (2.1%)	148 (2.3%)	151 (2.5%)	157 (2.7%)	161 (2.8%)
	Subtotal	766 (13.2%)	771 (12.8%)	875 (14.3%)	946 (15.0%)	1,110 (16.2%)	1,105 (17.7%)	1,163 (18.3%)	1,160 (19.0%)	1,152 (19.5%)	1,152 (19.7%)
USA	Male	41 (0.7%)	45 (0.7%)	30 (0.5%)	34 (0.5%)	30 (0.4%)	26 (0.4%)	20 (0.3%)	13 (0.2%)	9 (0.2%)	8 (0.1%)
	Female	2 (0.0%)	4 (0.1%)	3 (0.0%)	2 (0.0%)	1 (0.0%)	1 (0.0%)	NA (-)	2 (0.0%)	2 (0.0%)	2 (0.0%)
	Subtotal	43 (0.7%)	49 (0.8%)	33 (0.5%)	36 (0.6%)	31 (0.5%)	27 (0.4%)	20 (0.3%)	15 (0.2%)	11 (0.2%)	10 (0.2%)
GNY	Male	62 (1.1%)	50 (0.8%)	51 (0.8%)	64 (1.0%)	66 (1.0%)	65 (1.0%)	73 (1.1%)	60 (1.0%)	44 (0.7%)	36 (0.6%)
	Female	4 (0.1%)	3 (0.0%)	6 (0.1%)	5 (0.1%)	8 (0.1%)	8 (0.1%)	7 (0.1%)	5 (0.1%)	5 (0.1%)	7 (0.1%)
	Subtotal	66 (1.1%)	53 (0.9%)	57 (0.9%)	69 (1.1%)	76 (1.1%)	73 (1.2%)	80 (1.3%)	65 (1.1%)	49 (0.8%)	43 (0.7%)
Other	Male	7 (0.1%)	7 (0.1%)	8 (0.1%)	6 (0.1%)	4 (0.1%)	2 (0.0%)	2 (0.0%)	4 (0.1%)	4 (0.1%)	5 (0.1%)
	Female	2 (0.0%)	2 (0.0%)	1 (0.0%)	NA (-)	1 (0.0%)	NA (-)	1 (0.0%)	1 (0.0%)	2 (0.0%)	1 (0.0%)
	Subtotal	9 (0.2%)	9 (0.1%)	9 (0.1%)	6 (0.1%)	5 (0.1%)	2 (0.0%)	2 (0.0%)	5 (0.1%)	6 (0.1%)	6 (0.1%)

Year to Date Total Runners by Breeding

Flat

Bred	Sex	2017	2018	2019	2020	2021	2022	2023	2024	2025	2026
GB	Male	921 (32.4%)	924 (33.3%)	934 (31.3%)	984 (32.8%)	997 (31.4%)	982 (32.4%)	905 (29.1%)	1,005 (31.9%)	1,027 (33.1%)	1,061 (33.6%)
	Female	466 (16.4%)	433 (15.6%)	500 (16.7%)	508 (16.9%)	588 (18.5%)	559 (18.5%)	585 (18.8%)	477 (15.1%)	449 (14.5%)	476 (15.1%)
	Subtotal	1,387 (48.8%)	1,357 (49.0%)	1,434 (48.0%)	1,492 (49.7%)	1,585 (50.0%)	1,541 (50.9%)	1,490 (47.9%)	1,482 (47.0%)	1,476 (47.6%)	1,537 (48.7%)
IRE	Male	858 (30.2%)	825 (29.8%)	916 (30.7%)	900 (30.0%)	992 (31.3%)	907 (30.0%)	1,019 (32.8%)	1,057 (33.5%)	1,069 (34.5%)	1,039 (32.9%)
	Female	354 (12.5%)	335 (12.1%)	342 (11.4%)	365 (12.2%)	332 (10.5%)	354 (11.7%)	389 (12.5%)	398 (12.6%)	361 (11.6%)	414 (13.1%)
	Subtotal	1,212 (42.7%)	1,160 (41.9%)	1,258 (42.1%)	1,265 (42.2%)	1,324 (41.7%)	1,261 (41.6%)	1,408 (45.3%)	1,455 (46.1%)	1,430 (46.1%)	1,453 (46.0%)
FR	Male	58 (2.0%)	58 (2.1%)	83 (2.8%)	77 (2.6%)	90 (2.8%)	93 (3.1%)	92 (3.0%)	98 (3.1%)	102 (3.3%)	93 (2.9%)
	Female	18 (0.6%)	32 (1.2%)	22 (0.7%)	30 (1.0%)	27 (0.9%)	21 (0.7%)	34 (1.1%)	36 (1.1%)	25 (0.8%)	36 (1.1%)
	Subtotal	76 (2.7%)	90 (3.2%)	105 (3.5%)	107 (3.6%)	117 (3.7%)	114 (3.8%)	126 (4.1%)	134 (4.2%)	127 (4.1%)	129 (4.1%)
USA	Male	109 (3.8%)	112 (4.0%)	116 (3.9%)	95 (3.2%)	87 (2.7%)	72 (2.4%)	53 (1.7%)	48 (1.5%)	32 (1.0%)	10 (0.3%)
	Female	25 (0.9%)	22 (0.8%)	44 (1.5%)	22 (0.7%)	21 (0.7%)	18 (0.6%)	14 (0.5%)	16 (0.5%)	14 (0.5%)	4 (0.1%)
	Subtotal	134 (4.7%)	134 (4.8%)	160 (5.4%)	117 (3.9%)	108 (3.4%)	90 (3.0%)	67 (2.2%)	64 (2.0%)	46 (1.5%)	14 (0.4%)
GNY	Male	14 (0.5%)	17 (0.6%)	11 (0.4%)	13 (0.4%)	21 (0.7%)	8 (0.3%)	10 (0.3%)	13 (0.4%)	12 (0.4%)	14 (0.4%)
	Female	5 (0.2%)	3 (0.1%)	3 (0.1%)	2 (0.1%)	6 (0.2%)	9 (0.3%)	3 (0.1%)	3 (0.1%)	4 (0.1%)	7 (0.2%)
	Subtotal	19 (0.7%)	20 (0.7%)	14 (0.5%)	15 (0.5%)	27 (0.9%)	17 (0.6%)	13 (0.4%)	16 (0.5%)	16 (0.5%)	21 (0.7%)
Other	Male	9 (0.3%)	9 (0.3%)	11 (0.4%)	3 (0.1%)	10 (0.3%)	2 (0.1%)	3 (0.1%)	2 (0.1%)	4 (0.1%)	3 (0.1%)
	Female	3 (0.1%)	1 (0.0%)	5 (0.2%)	0 (0.0%)	1 (0.0%)	3 (0.1%)	1 (0.0%)	2 (0.1%)	2 (0.1%)	1 (0.0%)
	Subtotal	12 (0.4%)	10 (0.4%)	16 (0.5%)	3 (0.1%)	11 (0.3%)	5 (0.2%)	4 (0.1%)	4 (0.1%)	6 (0.2%)	4 (0.1%)

Jump

Bred	Sex	2017	2018	2019	2020	2021	2022	2023	2024	2025	2026
GB	Male	738 (22.6%)	650 (22.0%)	700 (22.4%)	651 (19.6%)	463 (18.9%)	582 (17.5%)	511 (18.3%)	504 (18.1%)	490 (19.5%)	459 (17.2%)
	Female	264 (8.1%)	247 (8.4%)	275 (8.8%)	300 (9.0%)	232 (9.5%)	285 (8.6%)	236 (8.5%)	260 (9.4%)	209 (8.3%)	217 (8.1%)
	Subtotal	1,002 (30.7%)	897 (30.4%)	975 (31.3%)	951 (28.7%)	695 (28.4%)	867 (26.0%)	747 (26.8%)	764 (27.5%)	699 (27.8%)	676 (25.3%)
IRE	Male	1,528 (46.8%)	1,338 (45.4%)	1,356 (43.5%)	1,458 (44.0%)	1,040 (42.4%)	1,434 (43.1%)	1,185 (42.5%)	1,116 (40.2%)	994 (39.5%)	1,087 (40.7%)
	Female	226 (6.9%)	244 (8.3%)	284 (9.1%)	329 (9.9%)	232 (9.5%)	292 (8.8%)	238 (8.5%)	294 (10.6%)	281 (11.2%)	267 (10.0%)
	Subtotal	1,754 (53.7%)	1,582 (53.6%)	1,640 (52.6%)	1,787 (53.9%)	1,272 (51.9%)	1,726 (51.8%)	1,423 (51.1%)	1,410 (50.8%)	1,275 (50.7%)	1,354 (50.7%)
FR	Male	408 (12.5%)	381 (12.9%)	411 (13.2%)	456 (13.8%)	380 (15.5%)	580 (17.4%)	493 (17.7%)	497 (17.9%)	447 (17.8%)	532 (19.9%)
	Female	35 (1.1%)	37 (1.3%)	39 (1.3%)	62 (1.9%)	55 (2.2%)	92 (2.8%)	68 (2.4%)	71 (2.6%)	69 (2.7%)	82 (3.1%)
	Subtotal	443 (13.6%)	418 (14.2%)	450 (14.4%)	518 (15.6%)	435 (17.8%)	672 (20.2%)	561 (20.1%)	568 (20.5%)	516 (20.5%)	614 (23.0%)
USA	Male	30 (0.9%)	17 (0.6%)	12 (0.4%)	21 (0.6%)	13 (0.5%)	9 (0.3%)	10 (0.4%)	1 (0.0%)	2 (0.1%)	3 (0.1%)
	Female	2 (0.1%)	1 (0.0%)	1 (0.0%)	1 (0.0%)	1 (0.0%)	1 (0.0%)	0 (0.0%)	0 (0.0%)	0 (0.0%)	0 (0.0%)
	Subtotal	32 (1.0%)	18 (0.6%)	13 (0.4%)	22 (0.7%)	14 (0.6%)	10 (0.3%)	10 (0.4%)	1 (0.0%)	2 (0.1%)	3 (0.1%)
GNY	Male	29 (0.9%)	26 (0.9%)	34 (1.1%)	31 (0.9%)	32 (1.3%)	47 (1.4%)	43 (1.5%)	29 (1.0%)	22 (0.9%)	21 (0.8%)
	Female	3 (0.1%)	3 (0.1%)	4 (0.1%)	3 (0.1%)	2 (0.1%)	8 (0.2%)	3 (0.1%)	2 (0.1%)	1 (0.0%)	1 (0.0%)
	Subtotal	32 (1.0%)	29 (1.0%)	38 (1.2%)	34 (1.0%)	34 (1.4%)	55 (1.7%)	46 (1.7%)	31 (1.1%)	23 (0.9%)	22 (0.8%)
Other	Male	1 (0.0%)	3 (0.1%)	3 (0.1%)	3 (0.1%)	0 (0.0%)	1 (0.0%)	0 (0.0%)	2 (0.1%)	2 (0.1%)	4 (0.1%)
	Female	1 (0.0%)	2 (0.1%)	0 (0.0%)	0 (0.0%)	0 (0.0%)	0 (0.0%)	0 (0.0%)	1 (0.0%)	0 (0.0%)	0 (0.0%)
	Subtotal	2 (0.1%)	5 (0.2%)	3 (0.1%)	3 (0.1%)	NA (-)	1 (0.0%)	NA (-)	3 (0.1%)	2 (0.1%)	4 (0.1%)

Year to Date Individual Runners by Breeding

Flat

Bred	Sex	2017	2018	2019	2020	2021	2022	2023	2024	2025	2026
GB	Male	607 (32.0%)	607 (32.5%)	622 (31.0%)	650 (33.0%)	619 (30.6%)	631 (32.1%)	558 (28.4%)	663 (32.0%)	623 (31.6%)	664 (33.4%)
	Female	332 (17.5%)	299 (16.0%)	344 (17.2%)	341 (17.3%)	377 (18.7%)	361 (18.4%)	389 (19.8%)	325 (15.7%)	313 (15.9%)	317 (16.0%)
	Subtotal	939 (49.5%)	906 (48.6%)	966 (48.2%)	991 (50.3%)	996 (49.3%)	992 (50.5%)	947 (48.2%)	988 (47.8%)	936 (47.4%)	981 (49.4%)
IRE	Male	566 (29.9%)	549 (29.4%)	613 (30.6%)	571 (29.0%)	640 (31.7%)	586 (29.9%)	626 (31.9%)	666 (32.2%)	666 (33.7%)	631 (31.8%)
	Female	227 (12.0%)	239 (12.8%)	228 (11.4%)	253 (12.8%)	216 (10.7%)	237 (12.1%)	248 (12.6%)	267 (12.9%)	245 (12.4%)	266 (13.4%)
	Subtotal	793 (41.8%)	788 (42.2%)	841 (42.0%)	824 (41.8%)	856 (42.4%)	823 (41.9%)	874 (44.5%)	933 (45.1%)	911 (46.1%)	897 (45.1%)
FR	Male	37 (2.0%)	39 (2.1%)	57 (2.8%)	54 (2.7%)	58 (2.9%)	57 (2.9%)	66 (3.4%)	65 (3.1%)	68 (3.4%)	59 (3.0%)
	Female	14 (0.7%)	22 (1.2%)	18 (0.9%)	19 (1.0%)	22 (1.1%)	15 (0.8%)	23 (1.2%)	24 (1.2%)	17 (0.9%)	23 (1.2%)
	Subtotal	51 (2.7%)	61 (3.3%)	75 (3.7%)	73 (3.7%)	80 (4.0%)	72 (3.7%)	89 (4.5%)	89 (4.3%)	85 (4.3%)	82 (4.1%)
USA	Male	71 (3.7%)	73 (3.9%)	71 (3.5%)	54 (2.7%)	53 (2.6%)	46 (2.3%)	34 (1.7%)	33 (1.6%)	19 (1.0%)	7 (0.4%)
	Female	16 (0.8%)	16 (0.9%)	28 (1.4%)	16 (0.8%)	13 (0.6%)	11 (0.6%)	9 (0.5%)	10 (0.5%)	8 (0.4%)	3 (0.2%)
	Subtotal	87 (4.6%)	89 (4.8%)	99 (4.9%)	70 (3.6%)	66 (3.3%)	57 (2.9%)	43 (2.2%)	43 (2.1%)	27 (1.4%)	10 (0.5%)
GNY	Male	13 (0.7%)	13 (0.7%)	10 (0.5%)	8 (0.4%)	13 (0.6%)	8 (0.4%)	6 (0.3%)	10 (0.5%)	8 (0.4%)	11 (0.6%)
	Female	3 (0.2%)	2 (0.1%)	3 (0.1%)	2 (0.1%)	4 (0.2%)	9 (0.5%)	3 (0.2%)	3 (0.1%)	4 (0.2%)	3 (0.2%)
	Subtotal	16 (0.8%)	15 (0.8%)	13 (0.6%)	10 (0.5%)	17 (0.8%)	17 (0.9%)	9 (0.5%)	13 (0.6%)	12 (0.6%)	14 (0.7%)
Other	Male	7 (0.4%)	6 (0.3%)	7 (0.3%)	3 (0.2%)	5 (0.2%)	1 (0.1%)	2 (0.1%)	1 (0.0%)	2 (0.1%)	2 (0.1%)
	Female	3 (0.2%)	1 (0.1%)	3 (0.1%)	0 (0.0%)	1 (0.0%)	1 (0.1%)	1 (0.1%)	2 (0.1%)	1 (0.1%)	1 (0.1%)
	Subtotal	10 (0.5%)	7 (0.4%)	10 (0.5%)	3 (0.2%)	6 (0.3%)	2 (0.1%)	3 (0.2%)	3 (0.1%)	3 (0.2%)	3 (0.2%)

Jump

Bred	Sex	2017	2018	2019	2020	2021	2022	2023	2024	2025	2026
GB	Male	605 (22.3%)	536 (21.5%)	590 (22.0%)	554 (19.6%)	421 (18.7%)	505 (17.7%)	446 (18.3%)	441 (17.8%)	451 (19.7%)	413 (17.3%)
	Female	221 (8.1%)	216 (8.7%)	242 (9.0%)	258 (9.1%)	214 (9.5%)	249 (8.7%)	214 (8.8%)	239 (9.6%)	192 (8.4%)	192 (8.0%)
	Subtotal	826 (30.4%)	752 (30.1%)	832 (31.1%)	812 (28.7%)	635 (28.3%)	754 (26.5%)	660 (27.1%)	680 (27.4%)	643 (28.1%)	605 (25.3%)
IRE	Male	1,251 (46.1%)	1,135 (45.5%)	1,173 (43.8%)	1,236 (43.8%)	957 (42.6%)	1,226 (43.1%)	1,019 (41.8%)	989 (39.9%)	902 (39.5%)	964 (40.3%)
	Female	198 (7.3%)	209 (8.4%)	239 (8.9%)	289 (10.2%)	213 (9.5%)	243 (8.5%)	218 (8.9%)	262 (10.6%)	249 (10.9%)	243 (10.2%)
	Subtotal	1,449 (53.4%)	1,344 (53.9%)	1,412 (52.7%)	1,525 (54.0%)	1,170 (52.1%)	1,469 (51.6%)	1,237 (50.8%)	1,251 (50.5%)	1,151 (50.4%)	1,207 (50.4%)
FR	Male	352 (13.0%)	324 (13.0%)	352 (13.1%)	388 (13.7%)	347 (15.4%)	494 (17.4%)	432 (17.7%)	453 (18.3%)	410 (17.9%)	478 (20.0%)
	Female	31 (1.1%)	34 (1.4%)	37 (1.4%)	52 (1.8%)	53 (2.4%)	74 (2.6%)	59 (2.4%)	64 (2.6%)	57 (2.5%)	77 (3.2%)
	Subtotal	383 (14.1%)	358 (14.3%)	389 (14.5%)	440 (15.6%)	400 (17.8%)	568 (20.0%)	491 (20.1%)	517 (20.9%)	467 (20.4%)	555 (23.2%)
USA	Male	26 (1.0%)	15 (0.6%)	11 (0.4%)	15 (0.5%)	12 (0.5%)	9 (0.3%)	8 (0.3%)	1 (0.0%)	1 (0.0%)	3 (0.1%)
	Female	1 (0.0%)	1 (0.0%)	1 (0.0%)	1 (0.0%)	1 (0.0%)	1 (0.0%)	0 (0.0%)	0 (0.0%)	0 (0.0%)	0 (0.0%)
	Subtotal	27 (1.0%)	16 (0.6%)	12 (0.4%)	16 (0.6%)	13 (0.6%)	10 (0.4%)	8 (0.3%)	1 (0.0%)	1 (0.0%)	3 (0.1%)
GNY	Male	24 (0.9%)	19 (0.8%)	26 (1.0%)	26 (0.9%)	27 (1.2%)	39 (1.4%)	38 (1.6%)	25 (1.0%)	20 (0.9%)	19 (0.8%)
	Female	2 (0.1%)	2 (0.1%)	4 (0.1%)	3 (0.1%)	2 (0.1%)	6 (0.2%)	3 (0.1%)	2 (0.1%)	1 (0.0%)	1 (0.0%)
	Subtotal	26 (1.0%)	21 (0.8%)	30 (1.1%)	29 (1.0%)	29 (1.3%)	45 (1.6%)	41 (1.7%)	27 (1.1%)	21 (0.9%)	20 (0.8%)
Other	Male	1 (0.0%)	2 (0.1%)	3 (0.1%)	3 (0.1%)	0 (0.0%)	1 (0.0%)	0 (0.0%)	2 (0.1%)	2 (0.1%)	4 (0.2%)
	Female	1 (0.0%)	2 (0.1%)	0 (0.0%)	0 (0.0%)	0 (0.0%)	0 (0.0%)	0 (0.0%)	1 (0.0%)	0 (0.0%)	0 (0.0%)
	Subtotal	2 (0.1%)	4 (0.2%)	3 (0.1%)	3 (0.1%)	NA (-)	1 (0.0%)	NA (-)	3 (0.1%)	2 (0.1%)	4 (0.2%)

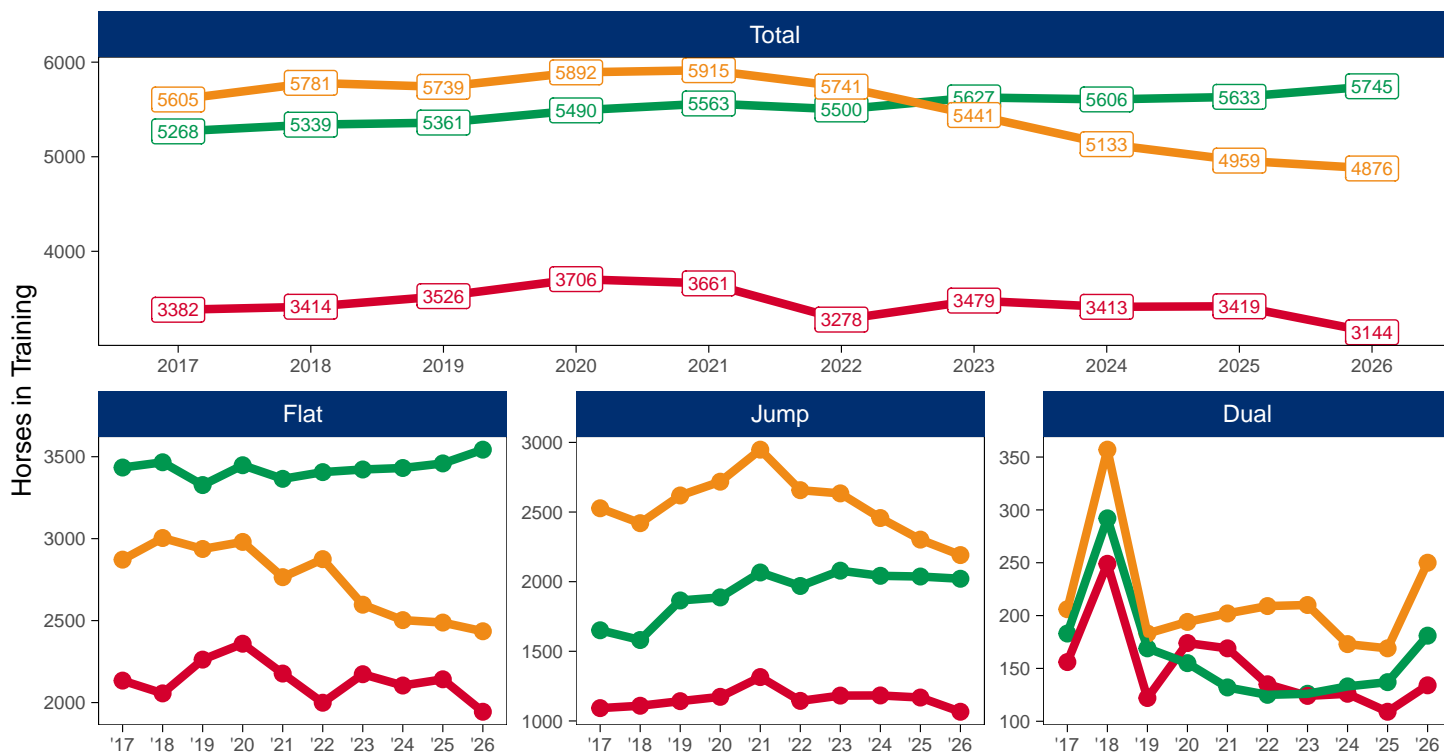
Horse Population by Location

January 2026 Horses in Training Snapshot by Region versus Previous Years

Snapshot of Total Horses in Training in January by Region

Horses in Training in January, shown by Training Type and Region

Region ● North ● Midlands ● South



North

AgeCat	2017	2018	2019	2020	2021	2022	2023	2024	2025	2026	vs. Last Year	vs. Pre-Covid
Flat Horses in Training												
2YO	520	518	568	582	456	456	465	362	442	273	-169 / -38.2%	-295 / -51.9%
3YO	616	572	637	734	666	609	628	641	583	589	+6 / +1.0%	-48 / -7.5%
4YO	374	353	389	386	373	373	385	390	399	403	+4 / +1.0%	+14 / +3.6%
5YO+	624	613	668	657	682	561	695	711	718	679	-39 / -5.4%	+11 / +1.6%
Subtotal	2134	2056	2262	2359	2177	1999	2173	2104	2142	1944	-198 / -9.2%	-318 / -14.1%
Jump Horses in Training												
3YO	2	4	5	5	0	3	9	0	0	0	0 / NA	-5 / -100.0%
4-5YO	287	237	271	278	255	230	277	277	258	225	-33 / -12.8%	-46 / -17.0%
6-7YO	339	411	408	417	471	429	443	442	452	425	-27 / -6.0%	+17 / +4.2%
8YO+	464	457	458	473	589	482	453	464	458	416	-42 / -9.2%	-42 / -9.2%
Subtotal	1092	1109	1142	1173	1315	1144	1182	1183	1168	1066	-102 / -8.7%	-76 / -6.7%
Dual Horses in Training												
3YO	13	9	5	15	11	10	6	8	10	5	-5 / -50.0%	0 / 0.0%
4YO	33	63	30	44	39	22	31	38	31	39	+8 / +25.8%	+9 / +30.0%
5YO+	110	177	87	115	119	103	87	80	68	90	+22 / +32.4%	+3 / +3.4%
Subtotal	156	249	122	174	169	135	124	126	109	134	+25 / +22.9%	+12 / +9.8%
Total Horses in Training												
	3382	3414	3526	3706	3661	3278	3479	3413	3419	3144	-275 / -8.0%	-382 / -10.8%

'vs. Pre-Covid' is comparison between 2026 and 2019

Midlands

AgeCat	2017	2018	2019	2020	2021	2022	2023	2024	2025	2026	vs. Last Year	vs. Pre-Covid
Flat Horses in Training												
2YO	879	796	728	732	724	685	632	635	656	718	+62 / +9.5%	-10 / -1.4%
3YO	1290	1380	1298	1336	1267	1325	1324	1299	1299	1304	+5 / +0.4%	+6 / +0.5%
4YO	568	569	581	603	637	659	680	653	634	672	+38 / +6.0%	+91 / +15.7%
5YO+	697	721	720	777	737	737	786	844	870	849	-21 / -2.4%	+129 / +17.9%
Subtotal	3434	3466	3327	3448	3365	3406	3422	3431	3459	3543	+84 / +2.4%	+216 / +6.5%
Jump Horses in Training												
3YO	6	11	5	3	7	7	9	8	3	4	+1 / +33.3%	-1 / -20.0%
4-5YO	471	430	540	592	568	527	615	562	620	629	+9 / +1.5%	+89 / +16.5%
6-7YO	589	597	689	697	782	812	799	825	768	755	-13 / -1.7%	+66 / +9.6%
8YO+	585	543	631	595	709	623	656	647	646	633	-13 / -2.0%	+2 / +0.3%
Subtotal	1651	1581	1865	1887	2066	1969	2079	2042	2037	2021	-16 / -0.8%	+156 / +8.4%
Dual Horses in Training												
3YO	9	11	4	6	4	9	6	5	7	15	+8 / +114.3%	+11 / +275.0%
4YO	51	73	58	43	43	42	36	41	35	41	+6 / +17.1%	-17 / -29.3%
5YO+	123	208	107	106	85	74	84	87	95	125	+30 / +31.6%	+18 / +16.8%
Subtotal	183	292	169	155	132	125	126	133	137	181	+44 / +32.1%	+12 / +7.1%
Total Horses in Training												
	5268	5339	5361	5490	5563	5500	5627	5606	5633	5745	+112 / +2.0%	+384 / +7.2%

'vs. Pre-Covid' is comparison between 2026 and 2019

South

AgeCat	2017	2018	2019	2020	2021	2022	2023	2024	2025	2026	vs. Last Year	vs. Pre-Covid
Flat Horses in Training												
2YO	866	823	802	799	746	781	607	626	553	556	+3 / +0.5%	-246 / -30.7%
3YO	973	1080	1033	1057	957	968	965	908	987	922	-65 / -6.6%	-111 / -10.7%
4YO	423	463	507	503	459	512	436	406	413	448	+35 / +8.5%	-59 / -11.6%
5YO+	610	638	595	621	603	614	589	563	535	509	-26 / -4.9%	-86 / -14.5%
Subtotal	2872	3004	2937	2980	2765	2875	2597	2503	2488	2435	-53 / -2.1%	-502 / -17.1%
Jump Horses in Training												
3YO	7	12	7	3	15	6	12	17	2	8	+6 / +300.0%	+1 / +14.3%
4-5YO	787	720	779	822	767	811	860	782	722	708	-14 / -1.9%	-71 / -9.1%
6-7YO	909	908	1011	1045	1132	965	976	977	918	842	-76 / -8.3%	-169 / -16.7%
8YO+	824	780	822	848	1034	875	786	681	660	633	-27 / -4.1%	-189 / -23.0%
Subtotal	2527	2420	2619	2718	2948	2657	2634	2457	2302	2191	-111 / -4.8%	-428 / -16.3%
Dual Horses in Training												
3YO	8	7	5	11	11	13	9	3	16	11	-5 / -31.2%	+6 / +120.0%
4YO	51	93	63	64	64	68	69	62	55	89	+34 / +61.8%	+26 / +41.3%
5YO+	147	257	115	119	127	128	132	108	98	150	+52 / +53.1%	+35 / +30.4%
Subtotal	206	357	183	194	202	209	210	173	169	250	+81 / +47.9%	+67 / +36.6%
Total Horses in Training												
	5605	5781	5739	5892	5915	5741	5441	5133	4959	4876	-83 / -1.7%	-863 / -15.0%

'vs. Pre-Covid' is comparison between 2026 and 2019

January 2026 Horses in Training Snapshot by Country versus Previous Years

Type	2017	2018	2019	2020	2021	2022	2023	2024	2025	2026	vs. Last Year	vs. Pre-Covid
England												
Flat	8123	8221	8252	8471	8047	8020	7893	7746	7807	7628	-179 / -2.3%	-624 / -7.6%
Jump	4550	4440	4921	5032	5532	5050	5174	4979	4773	4600	-173 / -3.6%	-321 / -6.5%
Dual	477	796	421	480	449	431	429	391	386	505	+119 / +30.8%	+84 / +20.0%
Overall	13150	13457	13594	13983	14028	13501	13496	13116	12966	12733	-233 / -1.8%	-861 / -6.3%
Scotland												
Flat	165	164	138	153	145	144	184	180	177	179	+2 / +1.1%	+41 / +29.7%
Jump	315	331	349	355	407	365	389	379	413	345	-68 / -16.5%	-4 / -1.1%
Dual	33	52	30	33	32	23	17	24	17	23	+6 / +35.3%	-7 / -23.3%
Overall	513	547	517	541	584	532	590	583	607	547	-60 / -9.9%	+30 / +5.8%
Wales												
Flat	152	141	136	163	115	116	115	112	105	115	+10 / +9.5%	-21 / -15.4%
Jump	405	339	356	391	390	355	332	324	321	333	+12 / +3.7%	-23 / -6.5%
Dual	35	50	23	10	22	15	14	17	12	37	+25 / +208.3%	+14 / +60.9%
Overall	592	530	515	564	527	486	461	453	438	485	+47 / +10.7%	-30 / -5.8%

'vs. Pre-Covid' is comparison between 2026 and 2019

January 2026 Horses in Training Snapshot by Training Centre versus Previous Years

Type	2017	2018	2019	2020	2021	2022	2023	2024	2025	2026	vs. Last Year	vs. Pre-Covid
Cheltenham (GL54)												
Flat	13	18	12	20	18	20	11	13	15	27	+12 / +80.0%	+15 / +125.0%
Jump	433	434	447	504	566	528	534	489	510	508	-2 / -0.4%	+61 / +13.6%
Dual	25	80	29	17	13	13	10	15	15	27	+12 / +80.0%	-2 / -6.9%
Overall	471	532	488	541	597	561	555	517	540	562	+22 / +4.1%	+74 / +15.2%
Lambourn (RG17)												
Flat	813	910	847	837	764	813	739	741	778	745	-33 / -4.2%	-102 / -12.0%
Jump	344	334	339	361	378	319	324	278	285	270	-15 / -5.3%	-69 / -20.4%
Dual	20	39	18	24	29	27	39	26	32	32	0 / 0.0%	+14 / +77.8%
Overall	1177	1283	1204	1222	1171	1159	1102	1045	1095	1047	-48 / -4.4%	-157 / -13.0%
Malton (YO17)												
Flat	555	504	607	616	483	515	590	582	619	445	-174 / -28.1%	-162 / -26.7%
Jump	133	142	119	111	113	96	93	92	70	61	-9 / -12.9%	-58 / -48.7%
Dual	28	37	18	32	43	38	32	27	30	23	-7 / -23.3%	+5 / +27.8%
Overall	716	683	744	759	639	649	715	701	719	529	-190 / -26.4%	-215 / -28.9%
Marlborough (SN8)												
Flat	501	536	506	515	452	456	396	429	406	405	-1 / -0.2%	-101 / -20.0%
Jump	70	81	75	77	81	84	84	83	77	80	+3 / +3.9%	+5 / +6.7%
Dual	4	1	2	5	0	2	2	4	3	1	-2 / -66.7%	-1 / -50.0%
Overall	575	618	583	597	533	542	482	516	486	486	0 / 0.0%	-97 / -16.6%
Middleham (DL8)												
Flat	460	441	524	567	549	410	481	486	457	472	+15 / +3.3%	-52 / -9.9%
Jump	82	71	93	106	126	110	122	112	96	95	-1 / -1.0%	+2 / +2.2%
Dual	21	39	13	22	33	22	25	16	16	21	+5 / +31.2%	+8 / +61.5%
Overall	563	551	630	695	708	542	628	614	569	588	+19 / +3.3%	-42 / -6.7%
Newbury (RG20)												
Flat	372	382	425	425	417	457	388	375	344	357	+13 / +3.8%	-68 / -16.0%
Jump	28	16	24	12	15	11	36	62	89	73	-16 / -18.0%	+49 / +204.2%
Dual	9	16	7	9	10	7	5	4	1	7	+6 / +600.0%	0 / 0.0%
Overall	409	414	456	446	442	475	429	441	434	437	+3 / +0.7%	-19 / -4.2%
Newmarket (CB8)												
Flat	2493	2529	2361	2495	2433	2444	2418	2422	2378	2434	+56 / +2.4%	+73 / +3.1%
Jump	60	59	73	51	66	59	66	72	73	82	+9 / +12.3%	+9 / +12.3%
Dual	39	38	18	30	26	27	32	36	40	57	+17 / +42.5%	+39 / +216.7%
Overall	2592	2626	2452	2576	2525	2530	2516	2530	2491	2573	+82 / +3.3%	+121 / +4.9%

'vs. Pre-Covid' is comparison between 2026 and 2019