

Horse Population Report

Updated on 31 December 2025



Introduction

Welcome to the latest update on the Racehorse Population from the British Horseracing Authority.

The aim of this document is to give stakeholders and the wider Public an insight into the current state of the Horse Population in Great Britain. It is hoped that this transparency will ensure that all decision makers have access to the key data required to help British Racing deliver a Competitive and Compelling product to stakeholders, racegoers and the wider public.

If you have any questions regarding the content of this report or suggestions for how it could be improved further, please contact Joe Yates – jyates@britishhorseracing.com

Definitions

This report uses the Horses in Training returns from the Weatherby's Racing Administration System, this is completed by trainers and should be updated whenever a horse enters or leaves training in their care as part of the conditions of their licence.

Horses in Training

Unless otherwise stated, snapshots of Horses in Training will be from the 15th day of the month in question and year to date figures will be up to and including the date titled at the front of the report.

Horses' ratings will be taken from the most recently published ratings by the BHA Handicapping Team, which is currently at 7am each Tuesday morning. For example, if looking at the Horses in a particular rating band for July 2011, the horses in training number will be from Friday 15th July 2011 and ratings, where possible, will be assigned to each horse from the ratings published by the BHA Handicappers on Tuesday 12th July 2011.

The Gender of a horse will be taken from the reporting date in question, regardless of whether this has since changed.

In the case of YTD reporting, where a horse's gender or training type has changed in the year-to-date period, the most recent is taken.

This report does not count any horses that are temporarily racing abroad for GB Trainers at the time of reporting.

Yearlings are not included in total counts of flat and/or dual horses but will be sometimes shown separately for information purposes.

Yearlings and two-year-olds are not included in total counts of jump horses or counts of jump horses that include dual horses but will be sometimes shown separately for information purposes.

Yearlings, two-year-olds and three-year-olds are not included in total counts of Hunter Chasers but will be sometimes shown separately for information purposes.

Yearlings and two-year-olds in training that are recorded as dual horses have been re-coded as flat horses.

Hunter Chasers are not included in any counts of Jump Horses or Total figures but will be sometimes shown separately for information purposes.

Horses' training locations are defined by the trainers' primary training location. Training regions are defined the same as regions for the Fixture List; 'North' is north of latitude 53.42911, 'South' is south of latitude 51.88002 and 'Midlands' is anywhere in between. Training centres are defined by postcodes and surrounding areas.

Runners

Unless otherwise specified, Total Runners and Individual Runners metrics only counts runners that ran in GB races including any voided races. Withdrawn horses are not included.

Hunter Chases are not included in this section but will be sometimes shown separately for information purposes.

Total Runners is a count of all runners in races, whilst individual runners only counts each individual horse once.

Monthly Horses in Training

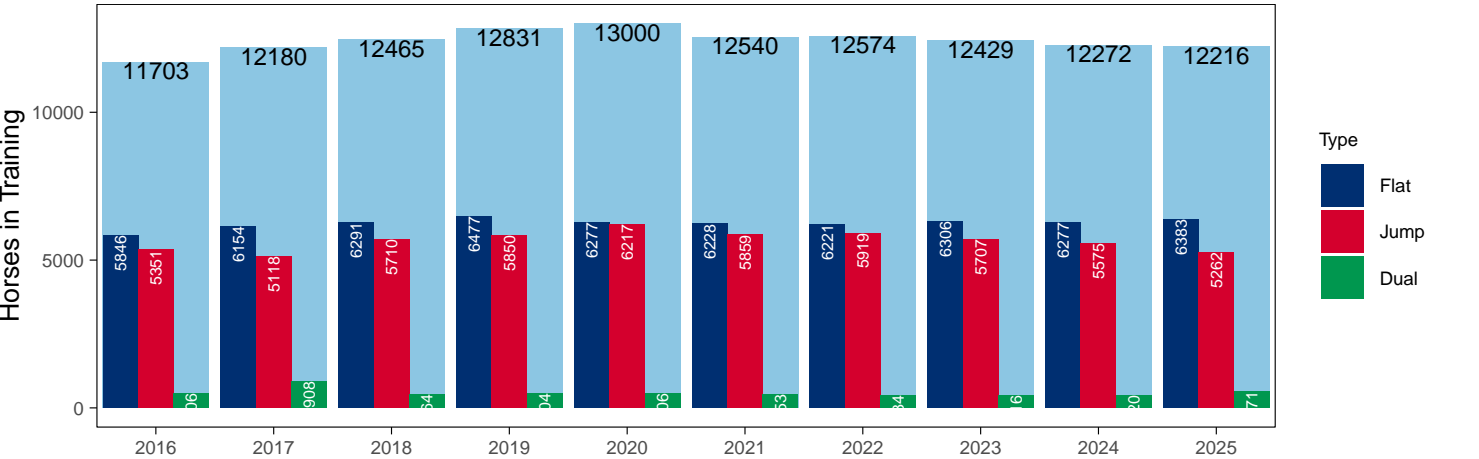
December 2025 Horses in Training Snapshot versus Previous Years

Type	2016	2017	2018	2019	2020	2021	2022	2023	2024	2025	vs. Last Year	vs. Pre-Covid
Flat	5846	6154	6291	6477	6277	6228	6221	6306	6277	6383	+106 / +1.7%	-94 / -1.5%
Jump	5351	5118	5710	5850	6217	5859	5919	5707	5575	5262	-313 / -5.6%	-588 / -10.1%
Dual	506	908	464	504	506	453	434	416	420	571	+151 / +36.0%	+67 / +13.3%
Total	11703	12180	12465	12831	13000	12540	12574	12429	12272	12216	-56 / -0.5%	-615 / -4.8%

'vs. Pre-Covid' is comparison between 2025 and 2019

Snapshot of Total Horses in Training in December

Horses in Training in December, shown by Training Type



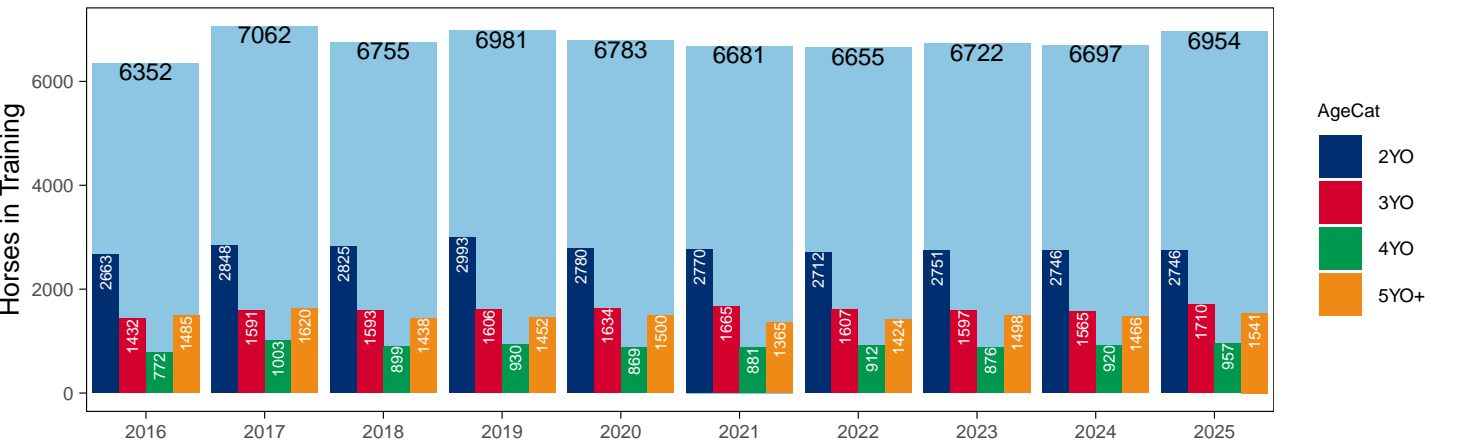
Flat (including Dual)

AgeCat	2016	2017	2018	2019	2020	2021	2022	2023	2024	2025	vs. Last Year	vs. Pre-Covid
2YO	2663	2848	2825	2993	2780	2770	2712	2751	2746	2746	0 / 0.0%	-247 / -8.3%
3YO	1432	1591	1593	1606	1634	1665	1607	1597	1565	1710	+145 / +9.3%	+104 / +6.5%
4YO	772	1003	899	930	869	881	912	876	920	957	+37 / +4.0%	+27 / +2.9%
5YO+	1485	1620	1438	1452	1500	1365	1424	1498	1466	1541	+75 / +5.1%	+89 / +6.1%
Total	6352	7062	6755	6981	6783	6681	6655	6722	6697	6954	+257 / +3.8%	-27 / -0.4%

'vs. Pre-Covid' is comparison between 2025 and 2019

Snapshot of Flat Horses in Training in December

Flat Horses in Training in December, shown by Age



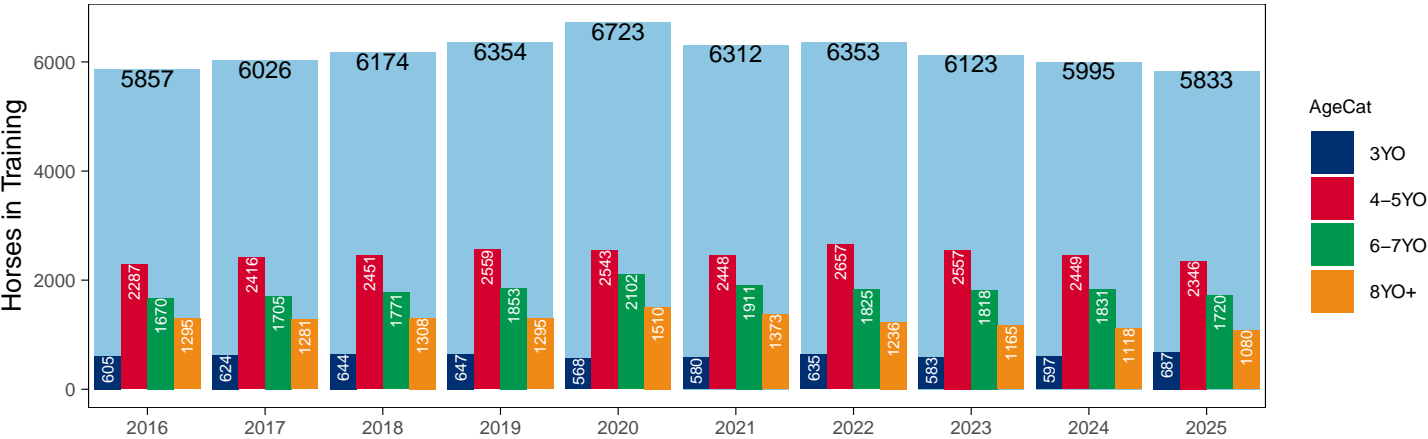
Jump (including Dual)

AgeCat	2016	2017	2018	2019	2020	2021	2022	2023	2024	2025	vs. Last Year	vs. Pre-Covid
3YO	605	624	644	647	568	580	635	583	597	687	+90 / +15.1%	+40 / +6.2%
4-5YO	2287	2416	2451	2559	2543	2448	2657	2557	2449	2346	-103 / -4.2%	-213 / -8.3%
6-7YO	1670	1705	1771	1853	2102	1911	1825	1818	1831	1720	-111 / -6.1%	-133 / -7.2%
8YO+	1295	1281	1308	1295	1510	1373	1236	1165	1118	1080	-38 / -3.4%	-215 / -16.6%
Total	5857	6026	6174	6354	6723	6312	6353	6123	5995	5833	-162 / -2.7%	-521 / -8.2%

'vs. Pre-Covid' is comparison between 2025 and 2019

Snapshot of Jump Horses in Training in December

Jump Horses in Training in December, shown by Age



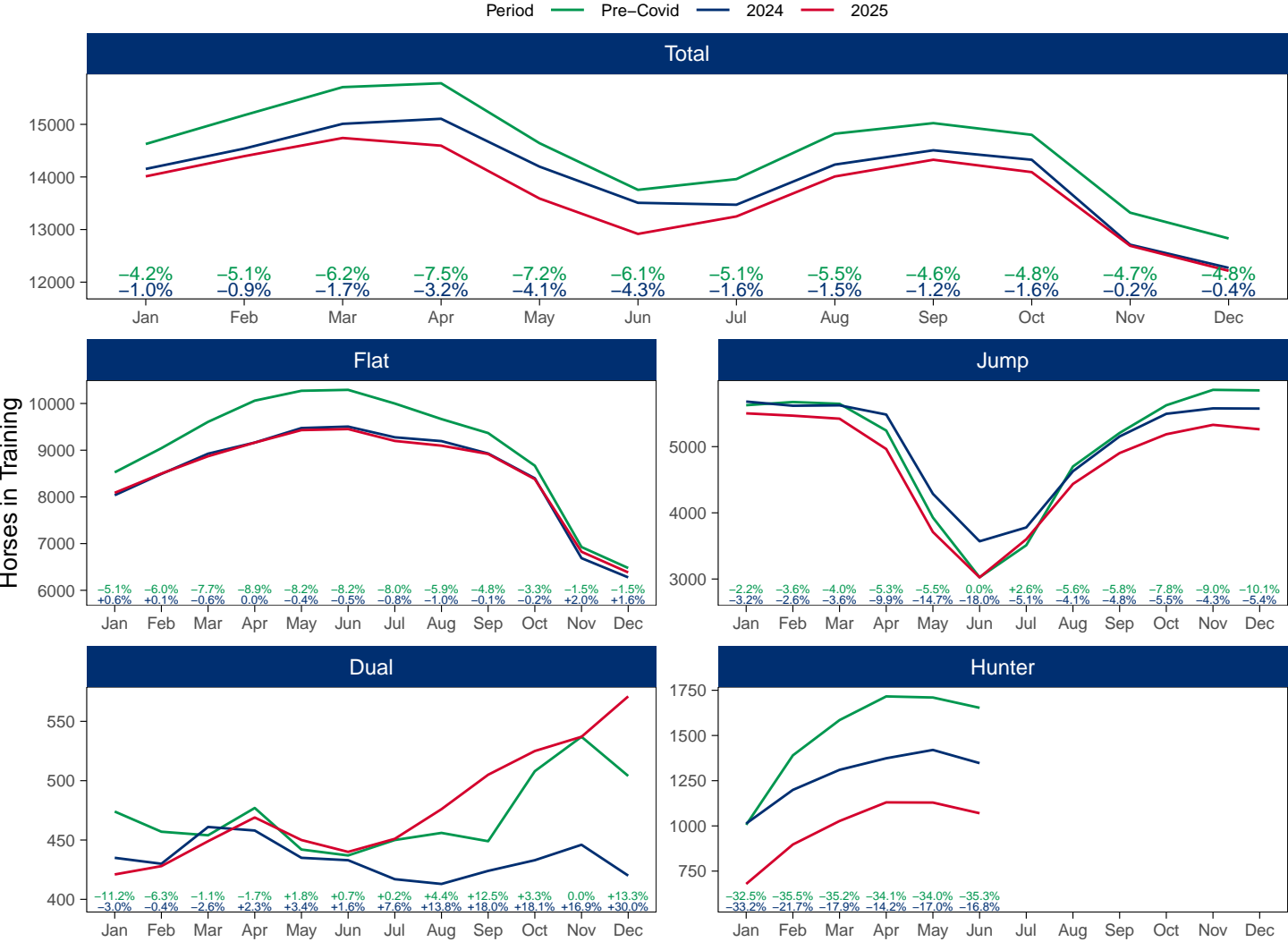
2025 Horses in Training versus Previous Years

Type	Period	Jan	Feb	Mar	Apr	May	Jun	Jul	Aug	Sep	Oct	Nov	Dec
Flat	2025	8087	8499	8870	9162	9430	9452	9198	9097	8919	8380	6825	6383
	2024	8036	8491	8925	9163	9474	9505	9276	9194	8929	8398	6688	6277
	Pre-Covid	8526	9043	9607	10061	10272	10292	9999	9666	9367	8668	6926	6477
Jump	2025	5503	5468	5422	4964	3710	3025	3600	4436	4903	5187	5329	5262
	2024	5681	5618	5624	5485	4287	3570	3779	4628	5154	5496	5578	5575
	Pre-Covid	5626	5674	5647	5243	3928	3026	3510	4700	5207	5625	5858	5850
Dual	2025	421	428	449	469	450	440	451	476	505	525	537	571
	2024	435	430	461	458	435	433	417	413	424	433	446	420
	Pre-Covid	474	457	454	477	442	437	450	456	449	508	537	504
Hunter	2025	679	897	1027	1130	1129	1070						
	2024	1013	1199	1310	1374	1420	1347						
	Pre-Covid	1006	1390	1585	1716	1710	1653						
Total	2025	14011	14395	14741	14595	13590	12917	13249	14009	14327	14092	12691	12216
	2024	14152	14539	15010	15106	14196	13508	13472	14235	14507	14327	12712	12272
	Pre-Covid	14626	15174	15708	15781	14642	13755	13959	14822	15023	14801	13321	12831

'Pre-Covid' is 2019 values

Monthly Horses in Training

2025 against 2024 and Pre-Covid, shown with % Difference



'Pre-Covid' is 2019 values

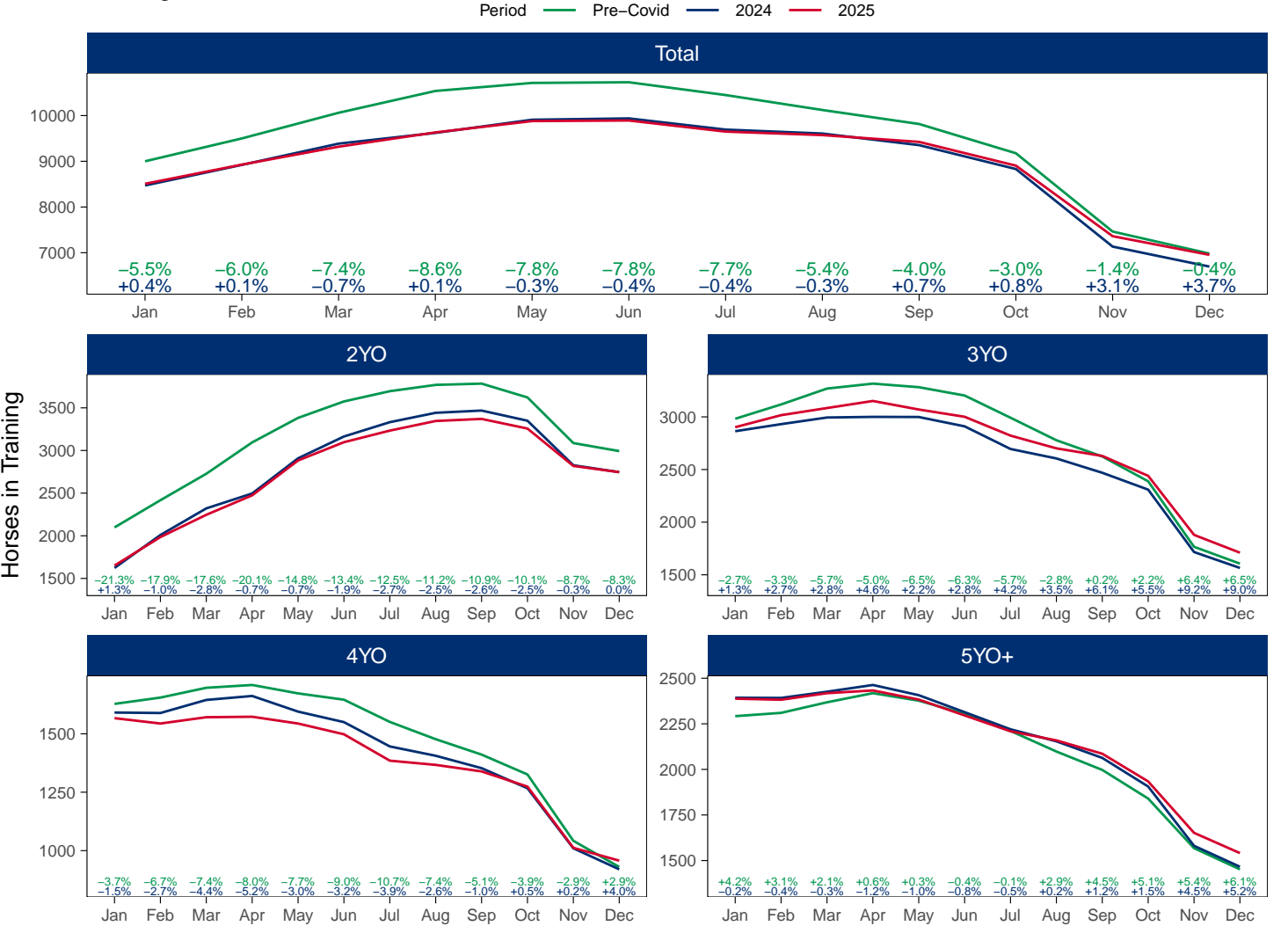
Flat (including Dual)

AgeCat	Period	Jan	Feb	Mar	Apr	May	Jun	Jul	Aug	Sep	Oct	Nov	Dec
2YO	2025	1651	1985	2246	2474	2883	3097	3233	3346	3370	3257	2819	2746
	2024	1623	2009	2321	2496	2908	3164	3332	3442	3468	3349	2827	2746
	Pre-Covid	2098	2417	2727	3095	3382	3575	3695	3769	3784	3622	3087	2993
3YO	2025	2902	3016	3084	3151	3070	3001	2822	2701	2629	2440	1879	1710
	2024	2864	2931	2994	3000	2999	2910	2695	2605	2469	2309	1716	1565
	Pre-Covid	2982	3118	3269	3316	3282	3203	2992	2778	2624	2388	1766	1606
4YO	2025	1567	1544	1571	1573	1544	1498	1385	1367	1339	1274	1012	957
	2024	1591	1589	1645	1662	1595	1550	1446	1406	1353	1267	1010	920
	Pre-Covid	1628	1655	1697	1709	1673	1646	1551	1477	1411	1326	1042	930
5YO+	2025	2388	2382	2418	2433	2383	2296	2209	2159	2086	1934	1652	1541
	2024	2393	2392	2426	2463	2407	2314	2220	2154	2063	1906	1581	1466
	Pre-Covid	2292	2310	2368	2418	2377	2305	2211	2098	1997	1840	1568	1452
Total	2025	8508	8927	9319	9631	9880	9892	9649	9573	9424	8905	7362	6954
	2024	8471	8921	9386	9621	9909	9938	9693	9607	9353	8831	7134	6697
	Pre-Covid	9000	9500	10061	10538	10714	10729	10449	10122	9816	9176	7463	6981

'Pre-Covid' is 2019 values

Monthly Flat Horses in Training

2025 against 2024 and Pre-Covid, shown with % Difference



'Pre-Covid' is 2019 values

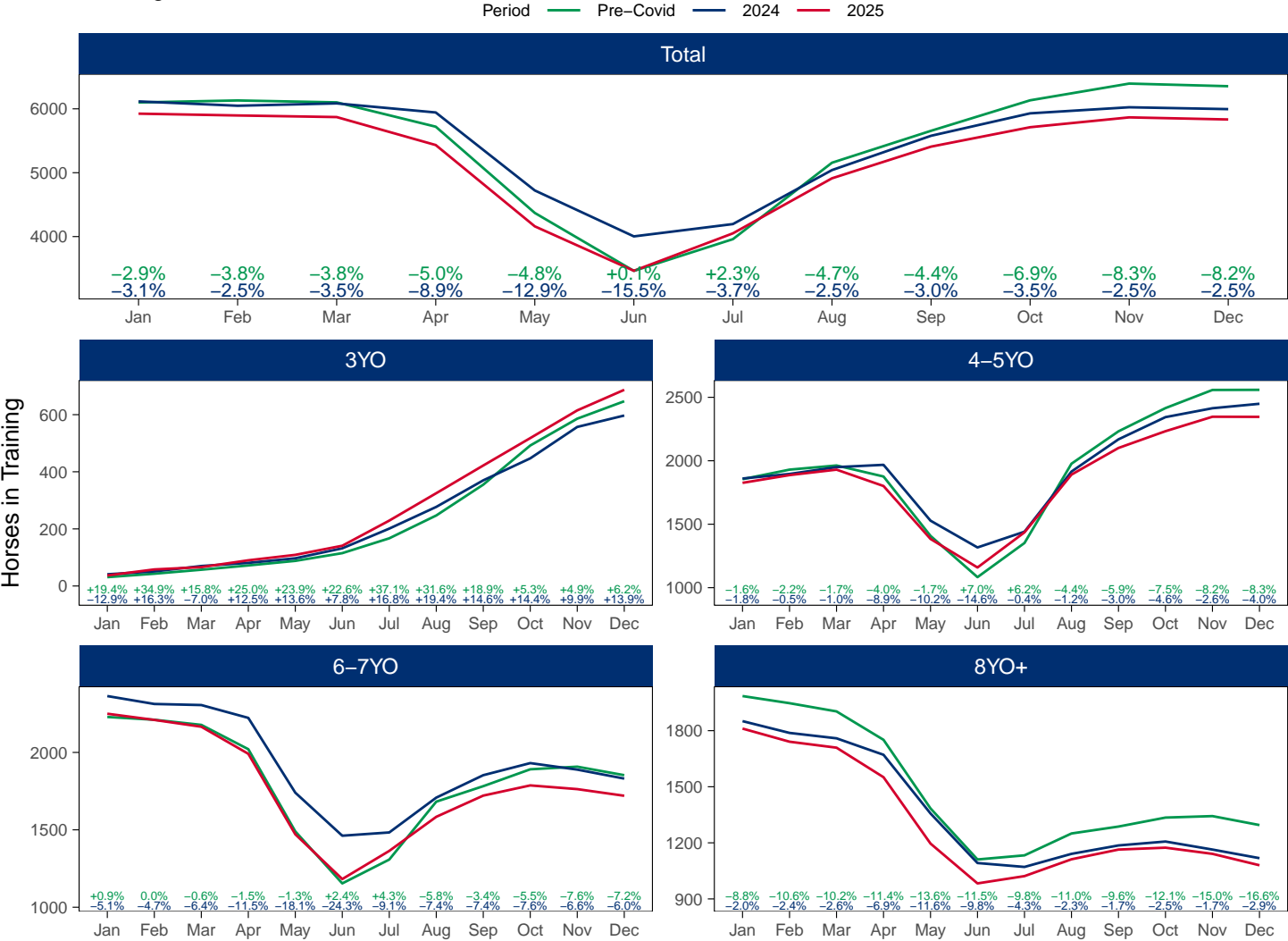
Jump (including Dual)

AgeCat	Period	Jan	Feb	Mar	Apr	May	Jun	Jul	Aug	Sep	Oct	Nov	Dec
3YO	2025	37	58	66	90	109	141	229	325	422	518	615	687
	2024	41	51	70	81	97	132	201	277	370	447	557	597
	Pre-Covid	31	43	57	72	88	115	167	247	355	492	586	647
4-5YO	2025	1826	1887	1930	1801	1384	1159	1436	1891	2101	2233	2347	2346
	2024	1860	1896	1950	1968	1528	1317	1441	1915	2169	2344	2414	2449
	Pre-Covid	1855	1930	1963	1876	1408	1083	1352	1977	2232	2415	2558	2559
6-7YO	2025	2250	2210	2166	1991	1471	1182	1364	1584	1721	1787	1763	1720
	2024	2364	2313	2306	2223	1740	1462	1483	1708	1853	1931	1889	1831
	Pre-Covid	2229	2211	2178	2021	1490	1154	1308	1682	1782	1891	1908	1853
8YO+	2025	1811	1741	1709	1551	1196	983	1022	1112	1164	1174	1141	1080
	2024	1851	1788	1759	1671	1357	1092	1071	1141	1186	1207	1164	1118
	Pre-Covid	1985	1947	1903	1751	1384	1111	1133	1250	1287	1335	1343	1295
Total	2025	5924	5896	5871	5433	4160	3465	4051	4912	5408	5712	5866	5833
	2024	6116	6048	6085	5943	4722	4003	4196	5041	5578	5929	6024	5995
	Pre-Covid	6100	6131	6101	5720	4370	3463	3960	5156	5656	6133	6395	6354

'Pre-Covid' is 2019 values

Monthly Jump Horses in Training

2025 against 2024 and Pre-Covid, shown with % Difference



'Pre-Covid' is 2019 values

December 2025 Horses in Training by Rating Band Snapshot versus Previous Years

Flat (including Dual)

AgeCat	RatBand	2016	2017	2018	2019	2020	2021	2022	2023	2024	2025
2YO	Unrated	1,669 (62.7%)	1,888 (66.3%)	1,806 (63.9%)	2,027 (67.7%)	1,691 (60.8%)	1,770 (63.9%)	1,750 (64.5%)	1,775 (64.5%)	1,819 (66.2%)	1,780 (64.8%)
	0-50	81 (3.0%)	64 (2.2%)	76 (2.7%)	98 (3.3%)	92 (3.3%)	102 (3.3%)	82 (3.0%)	83 (3.0%)	72 (2.6%)	69 (2.5%)
	51-60	159 (6.0%)	136 (4.8%)	200 (7.1%)	157 (5.2%)	177 (6.4%)	154 (5.6%)	172 (6.3%)	168 (6.1%)	143 (5.2%)	183 (6.7%)
	61-70	245 (9.2%)	250 (8.8%)	238 (8.4%)	225 (7.5%)	254 (9.1%)	263 (9.5%)	234 (8.6%)	217 (7.9%)	227 (8.3%)	225 (8.2%)
	71-80	277 (10.4%)	266 (9.3%)	246 (8.7%)	250 (8.4%)	296 (10.6%)	246 (8.9%)	240 (8.8%)	260 (9.5%)	235 (8.6%)	231 (8.4%)
	81-90	144 (5.4%)	128 (4.5%)	149 (5.3%)	130 (4.3%)	157 (5.6%)	129 (4.7%)	135 (5.0%)	138 (5.0%)	137 (5.0%)	143 (5.2%)
	91-100	46 (1.7%)	61 (2.1%)	65 (2.3%)	61 (2.0%)	58 (2.1%)	51 (1.8%)	54 (2.0%)	60 (2.2%)	67 (2.4%)	64 (2.3%)
	101+	42 (1.6%)	55 (1.9%)	45 (1.6%)	45 (1.5%)	55 (2.0%)	55 (2.0%)	45 (1.7%)	50 (1.8%)	46 (1.7%)	51 (1.9%)
Subtotal		2,663 (100.0%)	2,848 (100.0%)	2,825 (100.0%)	2,993 (100.0%)	2,780 (100.0%)	2,770 (100.0%)	2,712 (100.0%)	2,751 (100.0%)	2,746 (100.0%)	2,746 (100.0%)
3YO	Unrated	280 (19.6%)	351 (22.1%)	345 (21.7%)	336 (20.9%)	397 (24.3%)	350 (21.0%)	351 (21.8%)	337 (21.1%)	337 (21.5%)	354 (20.7%)
	0-50	128 (8.9%)	170 (10.7%)	169 (10.6%)	219 (13.6%)	181 (11.1%)	191 (11.5%)	193 (12.0%)	181 (11.3%)	171 (10.9%)	171 (10.0%)
	51-60	195 (13.6%)	228 (14.3%)	213 (13.4%)	222 (13.8%)	236 (14.4%)	251 (15.1%)	256 (15.9%)	252 (15.8%)	228 (14.6%)	253 (14.8%)
	61-70	263 (18.4%)	251 (15.8%)	267 (16.8%)	281 (17.5%)	279 (17.1%)	304 (18.3%)	291 (18.1%)	265 (16.6%)	256 (16.4%)	300 (17.5%)
	71-80	242 (16.9%)	266 (16.7%)	258 (16.2%)	219 (13.6%)	253 (15.5%)	249 (15.0%)	217 (13.5%)	260 (16.3%)	247 (15.8%)	270 (15.8%)
	81-90	166 (11.6%)	157 (9.9%)	173 (10.9%)	152 (9.5%)	153 (9.4%)	183 (11.0%)	155 (9.6%)	163 (10.2%)	180 (11.5%)	183 (10.7%)
	91-100	81 (5.7%)	101 (6.3%)	95 (6.0%)	94 (5.9%)	86 (5.3%)	76 (4.6%)	62 (3.9%)	77 (4.8%)	71 (4.5%)	103 (6.0%)
	101+	77 (5.4%)	67 (4.2%)	73 (4.6%)	83 (5.2%)	49 (3.0%)	61 (3.7%)	82 (5.1%)	62 (3.9%)	75 (4.8%)	76 (4.4%)
Subtotal		1,432 (100.0%)	1,591 (100.0%)	1,593 (100.0%)	1,606 (100.0%)	1,634 (100.0%)	1,665 (100.0%)	1,607 (100.0%)	1,597 (100.0%)	1,565 (100.0%)	1,710 (100.0%)
4YO	Unrated	132 (17.1%)	238 (23.7%)	119 (13.2%)	131 (14.1%)	144 (16.6%)	138 (15.7%)	126 (13.8%)	126 (14.4%)	120 (13.0%)	142 (14.8%)
	0-50	83 (10.8%)	136 (13.6%)	130 (14.5%)	143 (15.4%)	106 (12.2%)	123 (14.0%)	136 (14.9%)	123 (14.0%)	129 (14.0%)	137 (14.3%)
	51-60	112 (14.5%)	133 (13.3%)	130 (14.5%)	148 (15.9%)	128 (14.7%)	145 (16.5%)	150 (16.4%)	164 (18.7%)	160 (17.4%)	139 (14.5%)
	61-70	131 (17.0%)	141 (14.1%)	175 (19.5%)	168 (18.1%)	163 (18.8%)	155 (17.6%)	162 (17.8%)	147 (16.8%)	168 (18.3%)	161 (16.8%)
	71-80	110 (14.2%)	125 (12.5%)	131 (14.6%)	138 (14.8%)	137 (15.8%)	131 (14.9%)	156 (17.1%)	133 (15.2%)	151 (16.4%)	156 (16.3%)
	81-90	90 (11.7%)	117 (11.7%)	90 (10.0%)	86 (9.2%)	82 (9.4%)	84 (9.5%)	78 (8.6%)	80 (9.1%)	96 (10.4%)	100 (10.4%)
	91-100	52 (6.7%)	56 (5.6%)	76 (8.5%)	76 (8.2%)	55 (6.3%)	59 (6.7%)	52 (5.7%)	49 (5.6%)	53 (5.8%)	57 (6.0%)
	101+	62 (8.0%)	57 (5.7%)	48 (5.3%)	40 (4.3%)	54 (6.2%)	46 (5.2%)	52 (5.7%)	54 (6.2%)	43 (4.7%)	65 (6.8%)
Subtotal		772 (100.0%)	1,003 (100.0%)	899 (100.0%)	930 (100.0%)	869 (100.0%)	881 (100.0%)	912 (100.0%)	876 (100.0%)	920 (100.0%)	957 (100.0%)
5YO+	Unrated	215 (14.5%)	355 (21.9%)	193 (13.4%)	206 (14.2%)	270 (18.0%)	214 (15.7%)	235 (16.5%)	202 (13.5%)	180 (12.3%)	153 (9.9%)
	0-50	169 (11.4%)	199 (12.3%)	238 (16.6%)	245 (16.9%)	221 (14.7%)	211 (15.5%)	207 (14.5%)	225 (15.0%)	226 (15.4%)	240 (15.6%)
	51-60	230 (15.5%)	236 (14.6%)	240 (16.7%)	232 (16.0%)	285 (19.0%)	232 (17.0%)	238 (16.7%)	288 (19.2%)	291 (19.8%)	294 (19.1%)
	61-70	269 (18.1%)	265 (16.4%)	235 (16.3%)	247 (17.0%)	269 (17.9%)	243 (17.8%)	253 (17.8%)	277 (18.5%)	285 (19.4%)	307 (19.9%)
	71-80	234 (15.8%)	220 (13.6%)	214 (14.9%)	207 (14.3%)	191 (12.7%)	161 (11.8%)	198 (13.9%)	209 (14.0%)	218 (14.9%)	253 (16.4%)
	81-90	185 (12.5%)	172 (10.6%)	156 (10.8%)	157 (10.8%)	125 (8.3%)	137 (10.0%)	136 (9.6%)	155 (10.3%)	137 (9.3%)	144 (9.3%)
	91-100	108 (7.3%)	91 (5.6%)	87 (6.1%)	91 (6.3%)	73 (4.9%)	91 (6.7%)	87 (6.1%)	78 (5.2%)	63 (4.3%)	82 (5.3%)
	101+	75 (5.1%)	82 (5.1%)	75 (5.2%)	67 (4.6%)	66 (4.4%)	76 (5.6%)	70 (4.9%)	64 (4.3%)	66 (4.5%)	68 (4.4%)
Subtotal		1,485 (100.0%)	1,620 (100.0%)	1,438 (100.0%)	1,452 (100.0%)	1,500 (100.0%)	1,365 (100.0%)	1,424 (100.0%)	1,498 (100.0%)	1,466 (100.0%)	1,541 (100.0%)
Overall	Unrated	2,296 (36.1%)	2,832 (40.1%)	2,463 (36.5%)	2,700 (38.7%)	2,502 (36.9%)	2,472 (37.0%)	2,462 (37.0%)	2,440 (36.3%)	2,456 (36.7%)	2,429 (34.9%)
	0-50	461 (7.3%)	569 (8.1%)	613 (9.1%)	705 (10.1%)	600 (8.8%)	627 (9.4%)	618 (9.3%)	612 (9.1%)	598 (8.9%)	617 (8.9%)
	51-60	696 (11.0%)	733 (10.4%)	783 (11.6%)	759 (10.9%)	826 (12.2%)	782 (11.7%)	816 (12.3%)	872 (13.0%)	822 (12.3%)	869 (12.5%)
	61-70	908 (14.3%)	907 (12.8%)	915 (13.5%)	921 (13.2%)	965 (14.2%)	965 (14.4%)	940 (14.1%)	906 (13.5%)	936 (14.0%)	993 (14.3%)
	71-80	863 (13.6%)	877 (12.4%)	849 (12.6%)	814 (11.7%)	877 (12.9%)	787 (11.8%)	811 (12.2%)	862 (12.8%)	851 (12.7%)	910 (13.1%)
	81-90	585 (9.2%)	574 (8.1%)	568 (8.4%)	525 (7.5%)	517 (7.6%)	533 (8.0%)	504 (7.6%)	536 (8.0%)	550 (8.2%)	570 (8.2%)
	91-100	287 (4.5%)	309 (4.4%)	323 (4.8%)	322 (4.6%)	272 (4.0%)	277 (4.1%)	255 (3.8%)	264 (3.9%)	254 (3.8%)	306 (4.4%)
	101+	256 (4.0%)	261 (3.7%)	241 (3.6%)	235 (3.4%)	224 (3.3%)	238 (3.6%)	249 (3.7%)	230 (3.4%)	230 (3.4%)	260 (3.7%)
Total		6,352 (100.0%)	7,062 (100.0%)	6,755 (100.0%)	6,981 (100.0%)	6,783 (100.0%)	6,681 (100.0%)	6,655 (100.0%)	6,722 (100.0%)	6,697 (100.0%)	6,954 (100.0%)

Where a horse has more than one published rating (published Flat Turf and published Flat AWT mark), the higher of the two is taken.

Jump (including Dual)

AgeCat	RatBand	2016	2017	2018	2019	2020	2021	2022	2023	2024	2025
3YO	Unrated	563 (93.1%)	589 (94.4%)	596 (92.5%)	597 (92.3%)	514 (90.5%)	517 (89.1%)	597 (94.0%)	542 (93.0%)	555 (93.0%)	649 (94.5%)
	0-100	10 (1.7%)	4 (0.6%)	15 (2.3%)	10 (1.5%)	8 (1.4%)	23 (4.0%)	12 (1.9%)	24 (4.1%)	20 (3.4%)	14 (2.0%)
	101-110	12 (2.0%)	15 (2.4%)	14 (2.2%)	15 (2.3%)	20 (3.5%)	12 (2.1%)	14 (2.2%)	7 (1.2%)	9 (1.5%)	7 (1.0%)
	111-120	6 (1.0%)	7 (1.1%)	4 (0.6%)	11 (1.7%)	11 (1.9%)	14 (2.4%)	7 (1.1%)	5 (0.9%)	6 (1.0%)	10 (1.5%)
	121-130	6 (1.0%)	5 (0.8%)	8 (1.2%)	11 (1.7%)	7 (1.2%)	11 (1.9%)	5 (0.8%)	4 (0.7%)	6 (1.0%)	5 (0.7%)
	131-140	5 (0.8%)	3 (0.5%)	5 (0.8%)	2 (0.3%)	7 (1.2%)	3 (0.5%)	NA (-)	1 (0.2%)	1 (0.2%)	2 (0.3%)
	141-150	3 (0.5%)	1 (0.2%)	2 (0.3%)	1 (0.2%)	1 (0.2%)	NA (-)	NA (-)	NA (-)	NA (-)	NA (-)
Subtotal		605 (100.0%)	624 (100.0%)	644 (100.0%)	647 (100.0%)	568 (100.0%)	580 (100.0%)	635 (100.0%)	583 (100.0%)	597 (100.0%)	687 (100.0%)
4-5YO	Unrated	1,509 (66.0%)	1,565 (64.8%)	1,595 (65.1%)	1,665 (65.1%)	1,613 (63.4%)	1,646 (67.2%)	1,793 (67.5%)	1,744 (68.2%)	1,613 (65.9%)	1,533 (65.3%)
	0-100	207 (9.1%)	228 (9.4%)	201 (8.2%)	242 (9.5%)	312 (12.3%)	324 (13.2%)	387 (14.6%)	383 (15.0%)	401 (16.4%)	325 (13.9%)
	101-110	148 (6.5%)	161 (6.7%)	188 (7.7%)	177 (6.9%)	172 (6.8%)	155 (6.3%)	191 (7.2%)	193 (7.5%)	166 (6.8%)	178 (7.6%)
	111-120	164 (7.2%)	175 (7.2%)	186 (7.6%)	191 (7.5%)	179 (7.0%)	153 (6.2%)	128 (4.8%)	128 (5.0%)	144 (5.9%)	185 (7.9%)
	121-130	133 (5.8%)	166 (6.9%)	164 (6.7%)	164 (6.4%)	154 (6.1%)	108 (4.4%)	116 (4.4%)	75 (2.9%)	81 (3.3%)	95 (4.0%)
	131-140	88 (3.8%)	83 (3.4%)	87 (3.5%)	80 (3.1%)	77 (3.0%)	46 (1.9%)	29 (1.1%)	25 (1.0%)	35 (1.4%)	18 (0.8%)
	141-150	30 (1.3%)	30 (1.2%)	22 (0.9%)	29 (1.1%)	29 (1.1%)	11 (0.4%)	11 (0.4%)	9 (0.4%)	8 (0.3%)	9 (0.4%)
	151+	8 (0.3%)	8 (0.3%)	8 (0.3%)	11 (0.4%)	7 (0.3%)	5 (0.2%)	2 (0.1%)	NA (-)	1 (0.0%)	3 (0.1%)
Subtotal		2,287 (100.0%)	2,416 (100.0%)	2,451 (100.0%)	2,559 (100.0%)	2,543 (100.0%)	2,448 (100.0%)	2,657 (100.0%)	2,557 (100.0%)	2,449 (100.0%)	2,346 (100.0%)
6-7YO	Unrated	402 (24.1%)	400 (23.5%)	389 (22.0%)	421 (22.7%)	438 (20.8%)	465 (24.3%)	469 (25.7%)	485 (26.7%)	409 (22.3%)	419 (24.4%)
	0-100	324 (19.4%)	346 (20.3%)	374 (21.1%)	373 (20.1%)	513 (24.4%)	467 (24.4%)	452 (24.8%)	517 (28.4%)	561 (30.6%)	478 (27.8%)
	101-110	221 (13.2%)	240 (14.1%)	227 (12.8%)	233 (12.6%)	283 (13.5%)	232 (12.1%)	255 (14.0%)	250 (13.8%)	282 (15.4%)	251 (14.6%)
	111-120	251 (15.0%)	232 (13.6%)	243 (13.7%)	243 (13.1%)	295 (14.0%)	273 (14.3%)	244 (13.4%)	242 (13.3%)	248 (13.5%)	276 (16.0%)
	121-130	202 (12.1%)	207 (12.1%)	239 (13.5%)	273 (14.7%)	276 (13.1%)	236 (12.3%)	202 (11.1%)	177 (9.7%)	183 (10.0%)	163 (9.5%)
	131-140	170 (10.2%)	167 (9.8%)	168 (9.5%)	199 (10.7%)	187 (8.9%)	153 (8.0%)	130 (7.1%)	89 (4.9%)	99 (5.4%)	88 (5.1%)
	141-150	71 (4.3%)	75 (4.4%)	99 (5.6%)	68 (3.7%)	76 (3.6%)	57 (3.0%)	53 (2.9%)	45 (2.5%)	35 (1.9%)	31 (1.8%)
	151+	29 (1.7%)	38 (2.2%)	32 (1.8%)	43 (2.3%)	34 (1.6%)	28 (1.5%)	20 (1.1%)	13 (0.7%)	14 (0.8%)	14 (0.8%)
Subtotal		1,670 (100.0%)	1,705 (100.0%)	1,771 (100.0%)	1,853 (100.0%)	2,102 (100.0%)	1,911 (100.0%)	1,825 (100.0%)	1,818 (100.0%)	1,831 (100.0%)	1,720 (100.0%)
8YO+	Unrated	177 (13.7%)	140 (10.9%)	211 (16.1%)	190 (14.7%)	235 (15.6%)	270 (19.7%)	233 (18.9%)	248 (21.3%)	202 (18.1%)	192 (17.8%)
	0-100	370 (28.6%)	352 (27.5%)	338 (25.8%)	357 (27.6%)	441 (29.2%)	345 (25.1%)	333 (26.9%)	296 (25.4%)	298 (26.7%)	331 (30.6%)
	101-110	171 (13.2%)	180 (14.1%)	191 (14.6%)	179 (13.8%)	196 (13.0%)	152 (11.1%)	141 (11.4%)	131 (11.2%)	154 (13.8%)	123 (11.4%)
	111-120	195 (15.1%)	193 (15.1%)	170 (13.0%)	152 (11.7%)	180 (11.9%)	190 (13.8%)	172 (13.9%)	159 (13.6%)	154 (13.8%)	154 (14.3%)
	121-130	146 (11.3%)	175 (13.7%)	151 (11.5%)	155 (12.0%)	175 (11.6%)	174 (12.7%)	167 (13.5%)	141 (12.1%)	145 (13.0%)	117 (10.8%)
	131-140	140 (10.8%)	138 (10.8%)	132 (10.1%)	141 (10.9%)	143 (9.5%)	126 (9.2%)	96 (7.8%)	114 (9.8%)	84 (7.5%)	87 (8.1%)
	141-150	55 (4.2%)	67 (5.2%)	80 (6.1%)	83 (6.4%)	87 (5.8%)	83 (6.0%)	64 (5.2%)	45 (3.9%)	55 (4.9%)	50 (4.6%)
	151+	41 (3.2%)	36 (2.8%)	35 (2.7%)	38 (2.9%)	53 (3.5%)	33 (2.4%)	30 (2.4%)	31 (2.7%)	26 (2.3%)	26 (2.4%)
Subtotal		1,295 (100.0%)	1,281 (100.0%)	1,308 (100.0%)	1,295 (100.0%)	1,510 (100.0%)	1,373 (100.0%)	1,236 (100.0%)	1,165 (100.0%)	1,118 (100.0%)	1,080 (100.0%)
Overall	Unrated	2,651 (45.3%)	2,694 (44.7%)	2,791 (45.2%)	2,873 (45.2%)	2,800 (41.6%)	2,898 (45.9%)	3,092 (48.7%)	3,019 (49.3%)	2,779 (46.4%)	2,793 (47.9%)
	0-100	911 (15.6%)	930 (15.4%)	928 (15.0%)	982 (15.5%)	1,274 (18.9%)	1,159 (18.4%)	1,184 (18.6%)	1,220 (19.9%)	1,280 (21.4%)	1,148 (19.7%)
	101-110	552 (9.4%)	596 (9.9%)	620 (10.0%)	604 (9.5%)	671 (10.0%)	551 (8.7%)	601 (9.5%)	581 (9.5%)	611 (10.2%)	559 (9.6%)
	111-120	616 (10.5%)	607 (10.1%)	603 (9.8%)	597 (9.4%)	665 (9.9%)	630 (10.0%)	551 (8.7%)	534 (8.7%)	552 (9.2%)	625 (10.7%)
	121-130	487 (8.3%)	553 (9.2%)	562 (9.1%)	603 (9.5%)	612 (9.1%)	529 (8.4%)	490 (7.7%)	397 (6.5%)	415 (6.9%)	380 (6.5%)
	131-140	403 (6.9%)	391 (6.5%)	392 (6.3%)	422 (6.6%)	414 (6.2%)	328 (5.2%)	255 (4.0%)	229 (3.7%)	219 (3.7%)	195 (3.3%)
	141-150	159 (2.7%)	173 (2.9%)	203 (3.3%)	181 (2.8%)	193 (2.9%)	151 (2.4%)	128 (2.0%)	99 (1.6%)	98 (1.6%)	90 (1.5%)
	151+	78 (1.3%)	82 (1.4%)	75 (1.2%)	92 (1.4%)	94 (1.4%)	66 (1.0%)	52 (0.8%)	44 (0.7%)	41 (0.7%)	43 (0.7%)
Total		5,857 (100.0%)	6,026 (100.0%)	6,174 (100.0%)	6,354 (100.0%)	6,723 (100.0%)	6,312 (100.0%)	6,353 (100.0%)	6,123 (100.0%)	5,995 (100.0%)	5,833 (100.0%)

Where a horse has more than one published rating (published Hurdle and published Chase mark), the higher of the two is taken.

Young Horses Entering Training

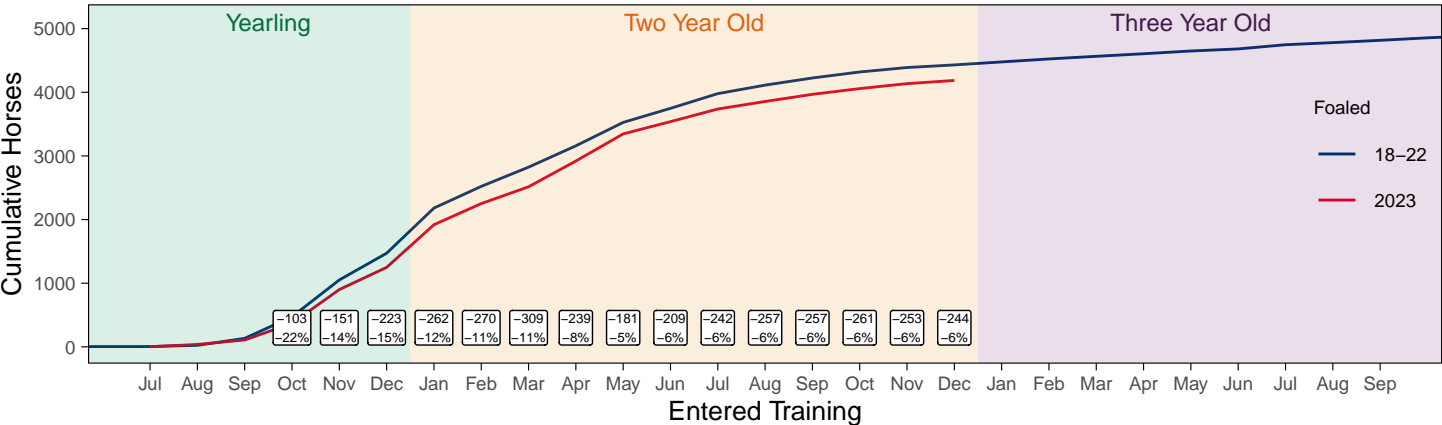
Flat Yearlings in Training versus Previous Years

Period	Jan	Feb	Mar	Apr	May	Jun	Jul	Aug	Sep	Oct	Nov	Dec
2025	0	0	0	1	1	1	1	1	56	177	583	1144
2024	0	0	0	0	0	0	2	3	72	186	620	1068
5YrAvg	0	0	0	0	1	1	1	3	58	200	552	1209

Foals Entering Training for the First Time

2023 Foals Entering Training Over Time

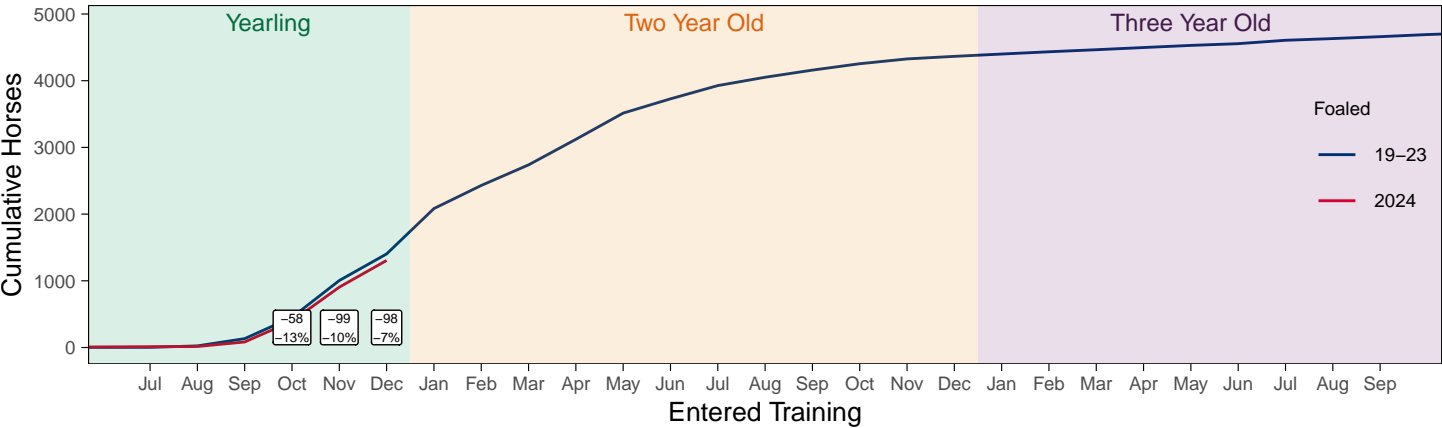
Cumulative Flat Horses foaled in 2023 shown by first in training notification against trend



Cumulative individual horses entering training for the first time by the end of each month.

2024 Foals Entering Training Over Time

Cumulative Flat Horses foaled in 2024 shown by first in training notification against trend



Cumulative individual horses entering training for the first time by the end of each month.

Annual Horses in Training

Type	2016	2017	2018	2019	2020	2021	2022	2023	2024	2025	vs. Last Year	vs. Pre-Covid
Flat	12806	12983	13009	13131	13178	13022	12672	12717	12621	12438	-183 / -1.4%	-693 / -5.3%
Jump	8631	8183	8607	8947	8816	9446	9111	8888	8716	8299	-417 / -4.8%	-648 / -7.2%
Dual	945	1446	1239	1078	1043	1021	963	884	900	991	+91 / +10.1%	-87 / -8.1%
Hunter	2163	2123	1983	1908	1576	1474	1491	1394	1516	1272	-244 / -16.1%	-636 / -33.3%
Total	22382	22612	22855	23156	23037	23489	22746	22489	22237	21728	-509 / -2.3%	-1428 / -6.2%

'vs. Pre-Covid' is comparison between 2025 and 2019

Flat

AgeCat	2016	2017	2018	2019	2020	2021	2022	2023	2024	2025	vs. Last Year	vs. Pre-Covid
2YO	4536	4588	4602	4639	4475	4483	4294	4342	4271	4141	-130 / -3.0%	-498 / -10.7%
3YO	3804	3857	3973	3929	4042	3913	3830	3785	3689	3740	+51 / +1.4%	-189 / -4.8%
4YO	1828	1882	1866	1963	1952	2030	2006	1946	1952	1861	-91 / -4.7%	-102 / -5.2%
5YO+	2638	2656	2568	2600	2709	2596	2542	2644	2709	2696	-13 / -0.5%	+96 / +3.7%
Total	12806	12983	13009	13131	13178	13022	12672	12717	12621	12438	-183 / -1.4%	-693 / -5.3%

'vs. Pre-Covid' is comparison between 2025 and 2019

Jump

AgeCat	2016	2017	2018	2019	2020	2021	2022	2023	2024	2025	vs. Last Year	vs. Pre-Covid
3YO	588	473	581	580	523	551	627	566	565	589	+24 / +4.2%	+9 / +1.6%
4-5YO	2955	2813	2985	3137	3109	3141	3266	3230	3104	2959	-145 / -4.7%	-178 / -5.7%
6-7YO	2634	2462	2641	2777	2794	3010	2836	2815	2824	2632	-192 / -6.8%	-145 / -5.2%
8YO+	2454	2435	2400	2453	2390	2744	2382	2277	2223	2119	-104 / -4.7%	-334 / -13.6%
Total	8631	8183	8607	8947	8816	9446	9111	8888	8716	8299	-417 / -4.8%	-648 / -7.2%

'vs. Pre-Covid' is comparison between 2025 and 2019

Dual

AgeCat	2016	2017	2018	2019	2020	2021	2022	2023	2024	2025	vs. Last Year	vs. Pre-Covid
3YO	214	318	237	249	252	264	263	228	224	272	+48 / +21.4%	+23 / +9.2%
4YO	203	383	288	258	235	241	221	215	227	242	+15 / +6.6%	-16 / -6.2%
5YO+	528	745	714	571	556	516	479	441	449	477	+28 / +6.2%	-94 / -16.5%
Total	945	1446	1239	1078	1043	1021	963	884	900	991	+91 / +10.1%	-87 / -8.1%

'vs. Pre-Covid' is comparison between 2025 and 2019

Hunter Chasers

AgeCat	2016	2017	2018	2019	2020	2021	2022	2023	2024	2025	vs. Last Year	vs. Pre-Covid
4-5YO	260	271	322	317	280	244	273	292	311	283	-28 / -9.0%	-34 / -10.7%
6-7YO	569	563	538	537	402	345	373	335	359	349	-10 / -2.8%	-188 / -35.0%
8-9YO	595	567	461	429	362	355	366	329	331	273	-58 / -17.5%	-156 / -36.4%
10YO+	739	722	662	625	532	530	479	438	515	367	-148 / -28.7%	-258 / -41.3%
Total	2163	2123	1983	1908	1576	1474	1491	1394	1516	1272	-244 / -16.1%	-636 / -33.3%

'vs. Pre-Covid' is comparison between 2025 and 2019

Annual Runners

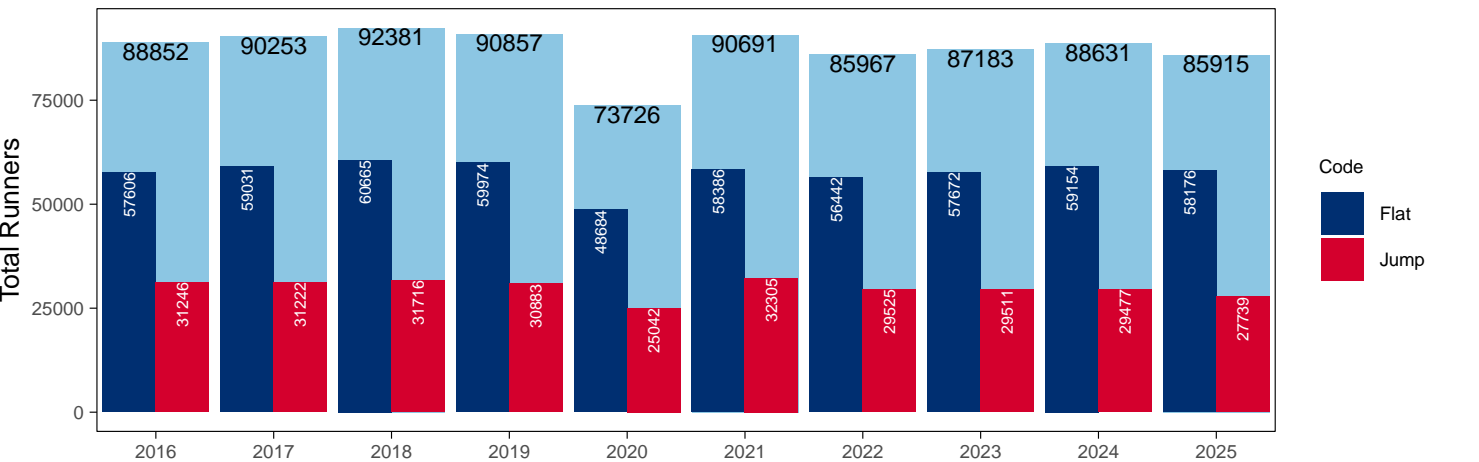
Annual Total Runners

Code	2016	2017	2018	2019	2020	2021	2022	2023	2024	2025	vs. Last Year	vs. Pre-Covid
Flat	57606	59031	60665	59974	48684	58386	56442	57672	59154	58176	-978 / -1.7%	-1798 / -3.0%
Jump	31246	31222	31716	30883	25042	32305	29525	29511	29477	27739	-1738 / -5.9%	-3144 / -10.2%
Total	88852	90253	92381	90857	73726	90691	85967	87183	88631	85915	-2716 / -3.1%	-4942 / -5.4%

'vs. Pre-Covid' is comparison between 2025 and 2019

YTD Total Runners

Total Runners in GB Races, shown by Code and Total



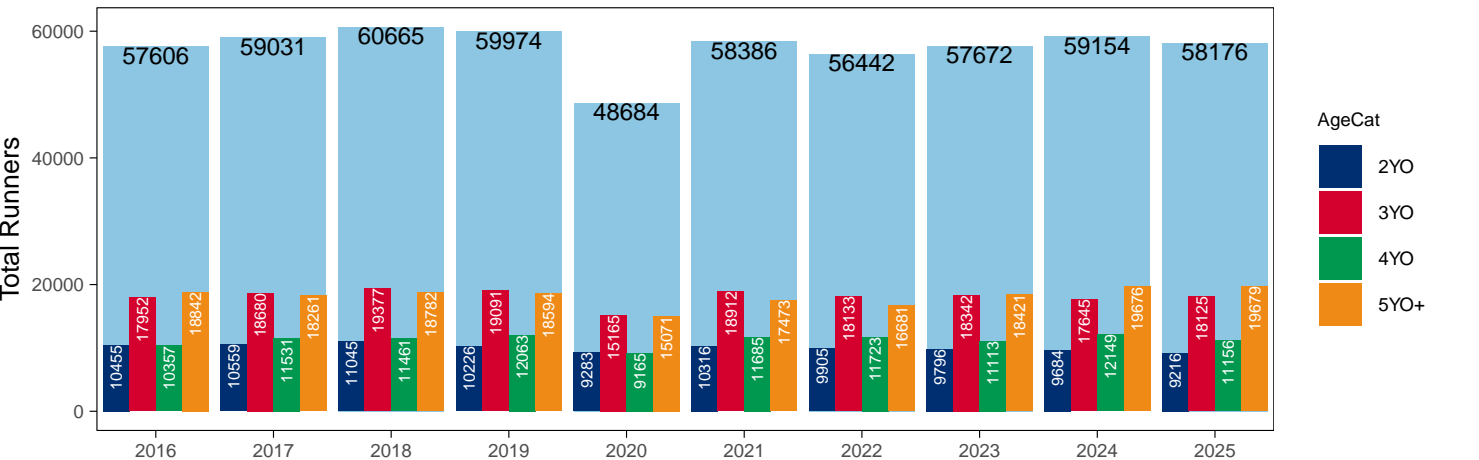
Flat

AgeCat	2016	2017	2018	2019	2020	2021	2022	2023	2024	2025	vs. Last Year	vs. Pre-Covid
2YO	10455	10559	11045	10226	9283	10316	9905	9796	9684	9216	-468 / -4.8%	-1010 / -9.9%
3YO	17952	18680	19377	19091	15165	18912	18133	18342	17645	18125	+480 / +2.7%	-966 / -5.1%
4YO	10357	11531	11461	12063	9165	11685	11723	11113	12149	11156	-993 / -8.2%	-907 / -7.5%
5YO+	18842	18261	18782	18594	15071	17473	16681	18421	19676	19679	+3 / +0.0%	+1085 / +5.8%
Total	57606	59031	60665	59974	48684	58386	56442	57672	59154	58176	-978 / -1.7%	-1798 / -3.0%

'vs. Pre-Covid' is comparison between 2025 and 2019

Annual Total Flat Runners by Age

Total Runners in GB Flat Races, shown by Age Category and Total

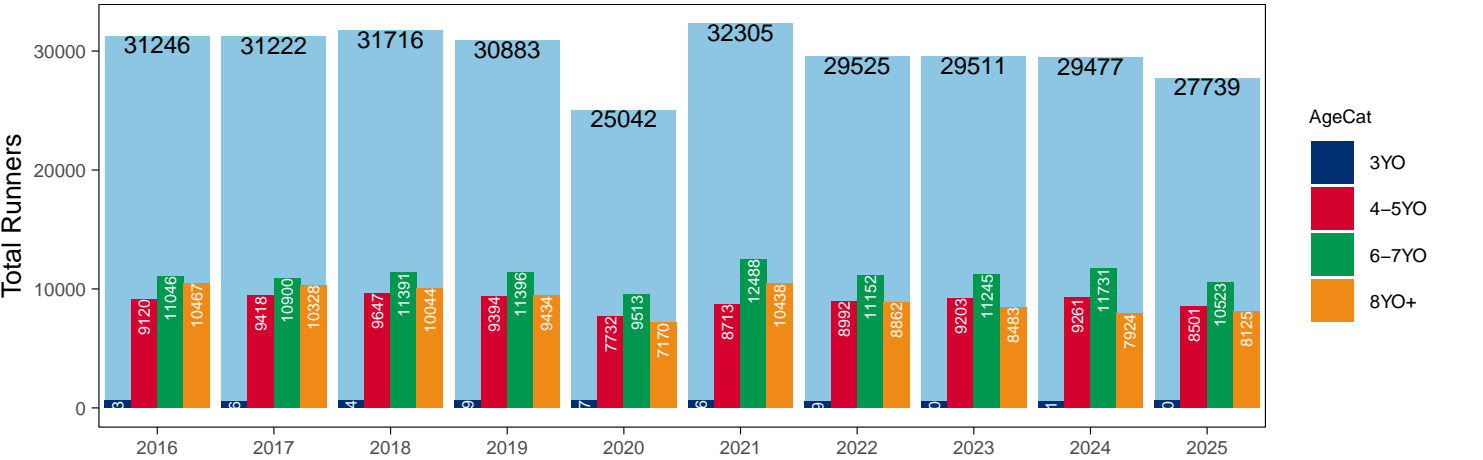


AgeCat	2016	2017	2018	2019	2020	2021	2022	2023	2024	2025	vs. Last Year	vs. Pre-Covid
3YO	613	576	634	659	627	666	519	580	561	590	+29 / +5.2%	-69 / -10.5%
4-5YO	9120	9418	9647	9394	7732	8713	8992	9203	9261	8501	-760 / -8.2%	-893 / -9.5%
6-7YO	11046	10900	11391	11396	9513	12488	11152	11245	11731	10523	-1208 / -10.3%	-873 / -7.7%
8YO+	10467	10328	10044	9434	7170	10438	8862	8483	7924	8125	+201 / +2.5%	-1309 / -13.9%
Total	31246	31222	31716	30883	25042	32305	29525	29511	29477	27739	-1738 / -5.9%	-3144 / -10.2%

'vs. Pre-Covid' is comparison between 2025 and 2019

Annual Total Jump Runners by Age

Total Runners in GB Jump Races, shown by Age Category and Total



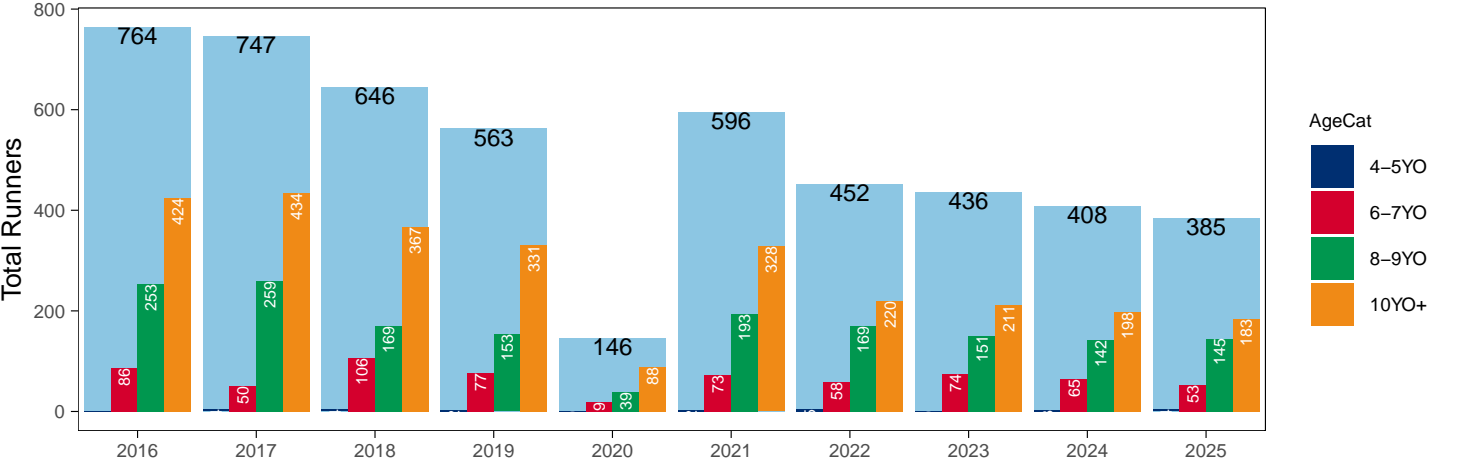
Hunter Chases

AgeCat	2016	2017	2018	2019	2020	2021	2022	2023	2024	2025	vs. Last Year	vs. Pre-Covid
4-5YO	1	4	4	2		2	5		3	4	+1 / +33.3%	+2 / +100.0%
6-7YO	86	50	106	77	19	73	58	74	65	53	-12 / -18.5%	-24 / -31.2%
8-9YO	253	259	169	153	39	193	169	151	142	145	+3 / +2.1%	-8 / -5.2%
10YO+	424	434	367	331	88	328	220	211	198	183	-15 / -7.6%	-148 / -44.7%
Total	764	747	646	563	146	596	452	436	408	385	-23 / -5.6%	-178 / -31.6%

'vs. Pre-Covid' is comparison between 2025 and 2019

Annual Total Hunter Chase Runners by Age

Total Runners in GB Hunter Chases shown by Age Category and Total



Annual Total Runners by Country Trained

Code	Country	2016	2017	2018	2019	2020	2021	2022	2023	2024	2025
Flat	GB	57006	58268	59820	59109	48405	57987	56074	57166	58490	57558
	IRE	518	679	780	792	251	364	304	454	580	535
	Other	82	84	65	73	28	35	64	52	84	83
Jump	GB	30290	30374	30994	30126	24692	31694	28642	28497	28582	26739
	IRE	941	830	709	741	338	606	880	1006	872	984
	Other	15	18	13	16	12	5	3	8	23	16
Overall	GB	87296	88642	90814	89235	73097	89681	84716	85663	87072	84297
	IRE	1459	1509	1489	1533	589	970	1184	1460	1452	1519
	Other	97	102	78	89	40	40	67	60	107	99

Annual GB Trained Runners Racing Abroad

Code	Country	2016	2017	2018	2019	2020	2021	2022	2023	2024	2025
Flat	IRE	193	188	156	164	60	57	99	101	130	132
	FR	424	487	534	562	306	236	273	354	379	402
	GNV	25	30	37	50	24	12	19	23	41	39
	UAE	220	298	276	303	286	248	292	316	237	286
	BAH				6	7	23	65	64	73	111
	KSA					15	21	22	15	12	10
	Other	144	141	172	152	62	84	94	112	162	135
	Total	1006	1144	1175	1237	760	681	864	985	1034	1115
Jump	IRE	103	91	61	83	8	24	31	22	66	92
	FR	63	32	20	56	93	139	135	94	43	22
	Other	12	8	7	10		8	14	5	13	2
	Total	178	131	88	149	101	171	180	121	122	116

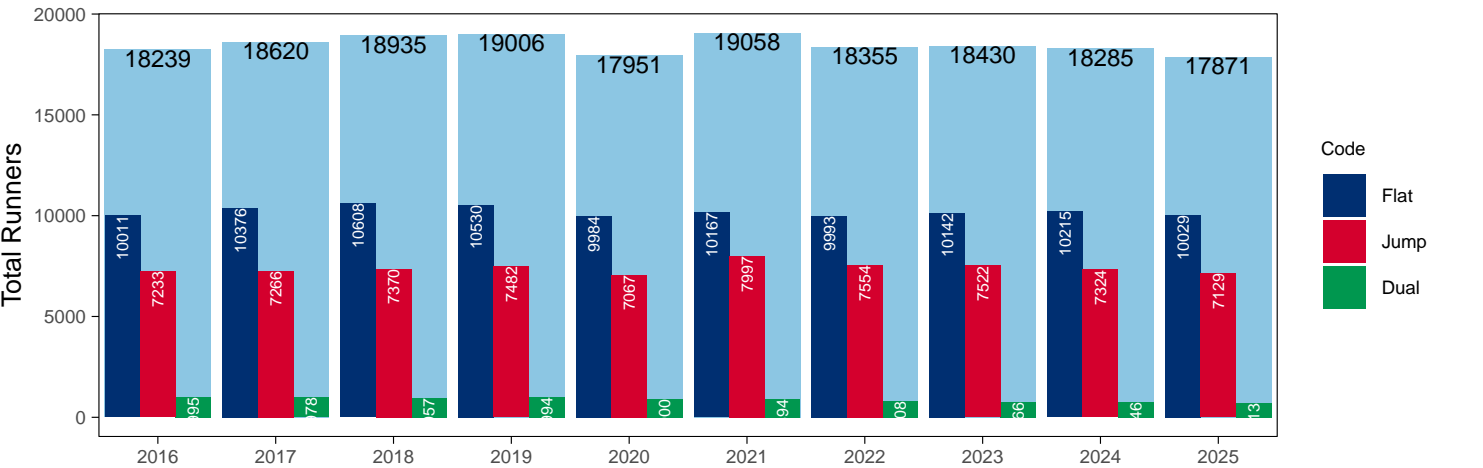
Annual Individual Runners

Code	2016	2017	2018	2019	2020	2021	2022	2023	2024	2025	vs. Last Year	vs. Pre-Covid
Flat	10011	10376	10608	10530	9984	10167	9993	10142	10215	10029	-186 / -1.8%	-501 / -4.8%
Jump	7233	7266	7370	7482	7067	7997	7554	7522	7324	7129	-195 / -2.7%	-353 / -4.7%
Dual	995	978	957	994	900	894	808	766	746	713	-33 / -4.4%	-281 / -28.3%
Overall	18239	18620	18935	19006	17951	19058	18355	18430	18285	17871	-414 / -2.3%	-1135 / -6.0%

'vs. Pre-Covid' is comparison between 2025 and 2019

Annual Individual Runners

Individual Runners in GB Races, shown by Code and Total

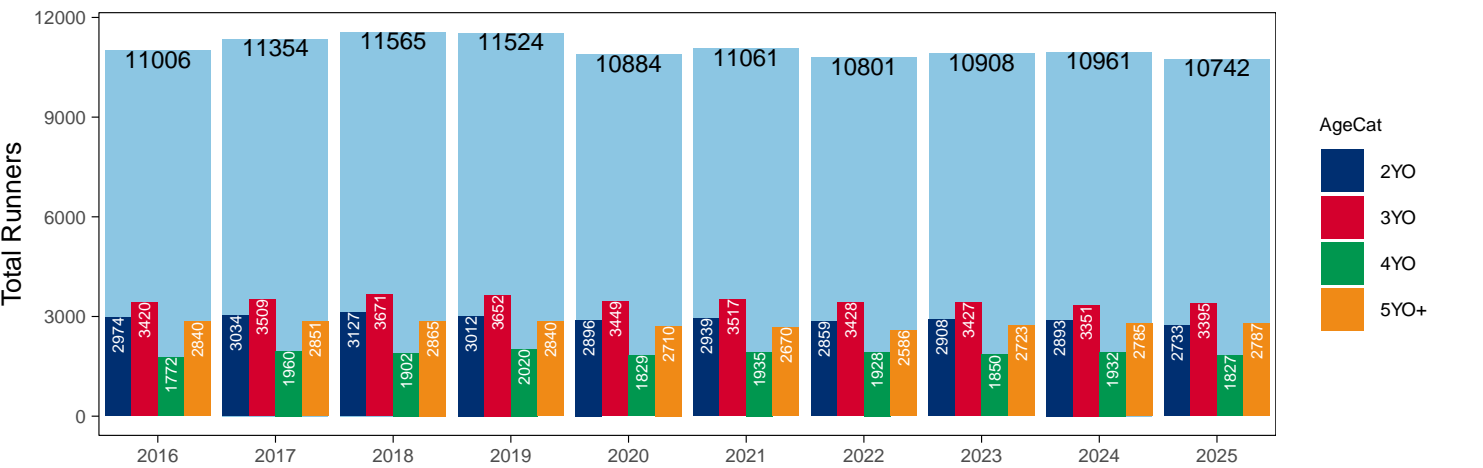


Flat

AgeCat	2016	2017	2018	2019	2020	2021	2022	2023	2024	2025	vs. Last Year	vs. Pre-Covid
2YO	2974	3034	3127	3012	2896	2939	2859	2908	2893	2733	-160 / -5.5%	-279 / -9.3%
3YO	3420	3509	3671	3652	3449	3517	3428	3427	3351	3395	+44 / +1.3%	-257 / -7.0%
4YO	1772	1960	1902	2020	1829	1935	1928	1850	1932	1827	-105 / -5.4%	-193 / -9.6%
5YO+	2840	2851	2865	2840	2710	2670	2586	2723	2785	2787	+2 / +0.1%	-53 / -1.9%
Total	11006	11354	11565	11524	10884	11061	10801	10908	10961	10742	-219 / -2.0%	-782 / -6.8%

'vs. Pre-Covid' is comparison between 2025 and 2019

Annual Individual Flat Runners by Age
Individual Runners in GB Flat Races, shown by Age Category and Total

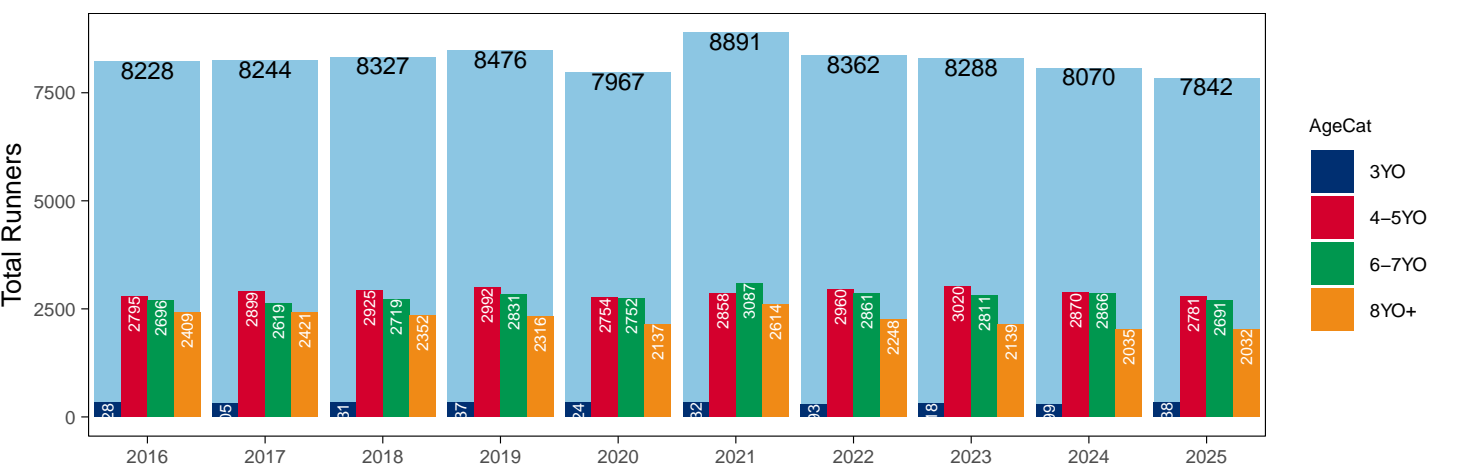


Jump

AgeCat	2016	2017	2018	2019	2020	2021	2022	2023	2024	2025	vs. Last Year	vs. Pre-Covid
3YO	328	305	331	337	324	332	293	318	299	338	+39 / +13.0%	+1 / +0.3%
4-5YO	2795	2899	2925	2992	2754	2858	2960	3020	2870	2781	-89 / -3.1%	-211 / -7.1%
6-7YO	2696	2619	2719	2831	2752	3087	2861	2811	2866	2691	-175 / -6.1%	-140 / -4.9%
8YO+	2409	2421	2352	2316	2137	2614	2248	2139	2035	2032	-3 / -0.1%	-284 / -12.3%
Total	8228	8244	8327	8476	7967	8891	8362	8288	8070	7842	-228 / -2.8%	-634 / -7.5%

'vs. Pre-Covid' is comparison between 2025 and 2019

Annual Individual Jump Runners by Age
Individual Runners in GB Jump Races, shown by Age Category and Total



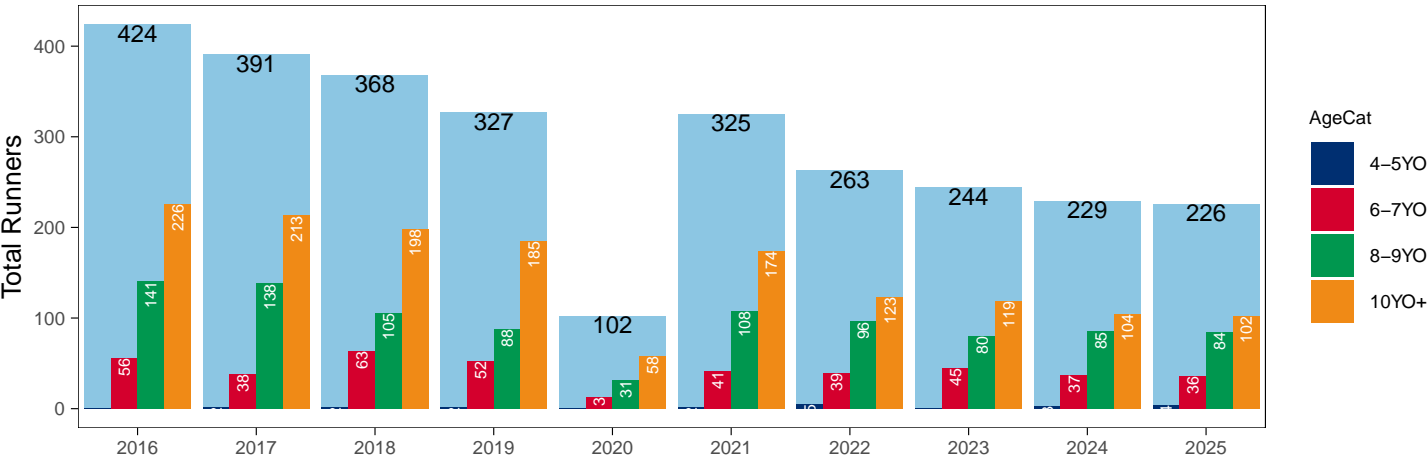
Hunter Chases

AgeCat	2016	2017	2018	2019	2020	2021	2022	2023	2024	2025	vs. Last Year	vs. Pre-Covid
4-5YO	1	2	2	2		2	5		3	4	+1 / +33.3%	+2 / +100.0%
6-7YO	56	38	63	52	13	41	39	45	37	36	-1 / -2.7%	-16 / -30.8%
8-9YO	141	138	105	88	31	108	96	80	85	84	-1 / -1.2%	-4 / -4.5%
10YO+	226	213	198	185	58	174	123	119	104	102	-2 / -1.9%	-83 / -44.9%
Total	424	391	368	327	102	325	263	244	229	226	-3 / -1.3%	-101 / -30.9%

'vs. Pre-Covid' is comparison between 2025 and 2019

Annual Individual Hunter Chase Runners by Age

Individual Runners in GB Hunter Chases shown by Age Category and Total



Annual Individual Runners by Country Trained

Code	Country	2016	2017	2018	2019	2020	2021	2022	2023	2024	2025
Flat	GB	9696	9973	10172	10044	9791	9905	9738	9822	9837	9655
	IRE	281	364	400	451	179	246	212	300	339	340
	Other	64	67	58	61	23	30	55	41	58	58
Jump	GB	6742	6806	6929	7012	6785	7585	6980	6893	6783	6503
	IRE	527	480	459	492	287	433	603	670	559	656
	Other	15	13	12	13	11	5	3	6	19	11
Dual	GB	972	955	935	977	894	885	795	745	722	682
	IRE	13	15	20	14	5	6	11	15	20	24
	Other		2								1
Overall	GB	17410	17734	18036	18033	17470	18375	17513	17460	17342	16840
	IRE	821	859	879	957	471	685	826	985	918	1020
	Other	79	82	70	74	34	35	58	47	77	70

Individual horses may appear under multiple countries.

Annual Total Runners by Rating Band

Flat

RatBand	2016	2017	2018	2019	2020	2021	2022	2023	2024	2025
2YO										
Unrated	6,950 (66.5%)	7,265 (68.8%)	7,570 (68.5%)	7,123 (69.7%)	6,123 (66.0%)	6,997 (67.8%)	6,790 (68.6%)	6,728 (68.7%)	6,697 (69.2%)	6,349 (68.9%)
0-50	180 (1.7%)	177 (1.7%)	180 (1.6%)	239 (2.3%)	182 (2.0%)	223 (2.2%)	209 (2.1%)	247 (2.5%)	233 (2.4%)	195 (2.1%)
51-60	562 (5.4%)	544 (5.2%)	635 (5.7%)	582 (5.7%)	584 (6.3%)	511 (5.0%)	529 (5.3%)	556 (5.7%)	533 (5.5%)	552 (6.0%)
61-70	1,014 (9.7%)	942 (8.9%)	900 (8.1%)	789 (7.7%)	829 (8.9%)	917 (8.9%)	813 (8.2%)	832 (8.5%)	804 (8.3%)	774 (8.4%)
71-80	1,079 (10.3%)	971 (9.2%)	946 (8.6%)	860 (8.4%)	933 (10.1%)	913 (8.9%)	837 (8.5%)	833 (8.5%)	829 (8.6%)	730 (7.9%)
81-90	437 (4.2%)	378 (3.6%)	493 (4.5%)	373 (3.6%)	377 (4.1%)	464 (4.5%)	442 (4.5%)	399 (4.1%)	371 (3.8%)	389 (4.2%)
91-100	159 (1.5%)	168 (1.6%)	214 (1.9%)	174 (1.7%)	168 (1.8%)	188 (1.8%)	204 (2.1%)	129 (1.3%)	144 (1.5%)	162 (1.8%)
101+	74 (0.7%)	114 (1.1%)	107 (1.0%)	86 (0.8%)	87 (0.9%)	103 (1.0%)	81 (0.8%)	72 (0.7%)	73 (0.8%)	65 (0.7%)
3YO+										
Unrated	4,019 (8.5%)	4,142 (8.5%)	4,994 (10.1%)	4,752 (9.6%)	3,970 (10.1%)	4,847 (10.1%)	4,424 (9.5%)	4,366 (9.1%)	4,344 (8.8%)	4,379 (8.9%)
0-50	3,977 (8.4%)	4,623 (9.5%)	5,345 (10.8%)	6,227 (12.5%)	4,476 (11.4%)	5,582 (11.6%)	5,465 (11.7%)	5,905 (12.3%)	5,978 (12.1%)	5,960 (12.2%)
51-60	8,005 (17.0%)	8,300 (17.1%)	8,176 (16.5%)	9,035 (18.2%)	7,062 (17.9%)	8,755 (18.2%)	8,456 (18.2%)	9,412 (19.7%)	9,842 (19.9%)	9,420 (19.2%)
61-70	10,265 (21.8%)	10,084 (20.8%)	10,231 (20.6%)	9,979 (20.1%)	8,233 (20.9%)	10,212 (21.2%)	9,949 (21.4%)	10,162 (21.2%)	10,934 (22.1%)	10,501 (21.4%)
71-80	9,561 (20.3%)	9,665 (19.9%)	9,418 (19.0%)	8,879 (17.8%)	7,383 (18.7%)	8,620 (17.9%)	8,617 (18.5%)	8,790 (18.4%)	9,056 (18.3%)	9,137 (18.7%)
81-90	6,220 (13.2%)	6,457 (13.3%)	6,272 (12.6%)	5,794 (11.6%)	4,619 (11.7%)	5,453 (11.3%)	5,277 (11.3%)	5,129 (10.7%)	5,430 (11.0%)	5,525 (11.3%)
91-100	3,086 (6.5%)	3,076 (6.3%)	3,256 (6.6%)	3,244 (6.5%)	2,200 (5.6%)	2,793 (5.8%)	2,553 (5.5%)	2,463 (5.1%)	2,264 (4.6%)	2,469 (5.0%)
101+	2,018 (4.3%)	2,125 (4.4%)	1,928 (3.9%)	1,838 (3.7%)	1,458 (3.7%)	1,808 (3.8%)	1,796 (3.9%)	1,649 (3.4%)	1,622 (3.3%)	1,569 (3.2%)

Jump

RatBand	2016	2017	2018	2019	2020	2021	2022	2023	2024	2025
Hurdle										
Unrated	5,360 (29.0%)	5,369 (29.1%)	5,590 (29.7%)	5,672 (30.7%)	4,805 (32.4%)	5,503 (29.4%)	5,183 (29.5%)	5,349 (30.1%)	5,390 (29.8%)	4,661 (27.5%)
0-100	4,742 (25.6%)	4,628 (25.1%)	4,523 (24.0%)	4,364 (23.6%)	3,491 (23.5%)	5,456 (29.2%)	5,326 (30.3%)	5,533 (31.2%)	6,032 (33.3%)	5,756 (33.9%)
101-110	2,712 (14.7%)	2,710 (14.7%)	2,764 (14.7%)	2,615 (14.1%)	2,094 (14.1%)	2,475 (13.2%)	2,589 (14.7%)	2,582 (14.5%)	2,582 (14.3%)	2,515 (14.8%)
111-120	2,564 (13.9%)	2,562 (13.9%)	2,551 (13.5%)	2,553 (13.8%)	1,837 (12.4%)	2,313 (12.4%)	2,155 (12.3%)	2,104 (11.9%)	2,113 (11.7%)	2,156 (12.7%)
121-130	1,697 (9.2%)	1,748 (9.5%)	1,910 (10.1%)	1,898 (10.3%)	1,473 (9.9%)	1,703 (9.1%)	1,362 (7.7%)	1,377 (7.8%)	1,242 (6.9%)	1,133 (6.7%)
131-140	971 (5.3%)	985 (5.3%)	1,048 (5.6%)	955 (5.2%)	778 (5.2%)	852 (4.6%)	667 (3.8%)	539 (3.0%)	511 (2.8%)	523 (3.1%)
141-150	320 (1.7%)	307 (1.7%)	348 (1.8%)	313 (1.7%)	249 (1.7%)	299 (1.6%)	233 (1.3%)	194 (1.1%)	166 (0.9%)	161 (0.9%)
151+	127 (0.7%)	111 (0.6%)	110 (0.6%)	129 (0.7%)	126 (0.8%)	112 (0.6%)	76 (0.4%)	76 (0.4%)	63 (0.3%)	60 (0.4%)
Chase										
Unrated	82 (0.8%)	88 (0.9%)	79 (0.8%)	61 (0.6%)	32 (0.4%)	37 (0.4%)	14 (0.1%)	9 (0.1%)	8 (0.1%)	5 (0.1%)
0-100	2,742 (27.0%)	2,596 (25.6%)	2,676 (26.4%)	2,745 (27.8%)	2,272 (28.2%)	3,046 (29.8%)	2,945 (31.0%)	3,200 (34.4%)	3,293 (35.8%)	3,152 (36.4%)
101-110	1,505 (14.8%)	1,585 (15.6%)	1,575 (15.6%)	1,536 (15.6%)	1,183 (14.7%)	1,511 (14.8%)	1,517 (15.9%)	1,493 (16.0%)	1,605 (17.5%)	1,378 (15.9%)
111-120	1,826 (18.0%)	1,747 (17.2%)	1,687 (16.7%)	1,562 (15.8%)	1,305 (16.2%)	1,789 (17.5%)	1,683 (17.7%)	1,646 (17.7%)	1,575 (17.1%)	1,493 (17.2%)
121-130	1,602 (15.8%)	1,676 (16.5%)	1,752 (17.3%)	1,586 (16.1%)	1,360 (16.9%)	1,650 (16.2%)	1,512 (15.9%)	1,384 (14.9%)	1,272 (13.8%)	1,235 (14.2%)
131-140	1,418 (13.9%)	1,434 (14.2%)	1,365 (13.5%)	1,365 (13.8%)	1,057 (13.1%)	1,210 (11.9%)	1,062 (11.2%)	904 (9.7%)	799 (8.7%)	747 (8.6%)
141-150	656 (6.5%)	663 (6.5%)	704 (7.0%)	672 (6.8%)	581 (7.2%)	638 (6.3%)	514 (5.4%)	425 (4.6%)	399 (4.3%)	403 (4.6%)
151+	338 (3.3%)	341 (3.4%)	290 (2.9%)	340 (3.4%)	261 (3.2%)	326 (3.2%)	265 (2.8%)	252 (2.7%)	246 (2.7%)	255 (2.9%)

Annual Total GB-Trained Runners by Rating Band

Flat

RatBand	2016	2017	2018	2019	2020	2021	2022	2023	2024	2025
2YO										
Unrated	6,867 (66.2%)	7,186 (68.8%)	7,492 (68.6%)	7,004 (69.6%)	6,075 (65.8%)	6,954 (67.9%)	6,754 (68.6%)	6,653 (68.6%)	6,601 (69.0%)	6,272 (68.7%)
0-50	180 (1.7%)	177 (1.7%)	180 (1.6%)	238 (2.4%)	182 (2.0%)	223 (2.2%)	209 (2.1%)	247 (2.5%)	233 (2.4%)	195 (2.1%)
51-60	561 (5.4%)	544 (5.2%)	633 (5.8%)	579 (5.8%)	584 (6.3%)	511 (5.0%)	529 (5.4%)	556 (5.7%)	533 (5.6%)	552 (6.1%)
61-70	1,014 (9.8%)	942 (9.0%)	900 (8.2%)	787 (7.8%)	829 (9.0%)	917 (8.9%)	813 (8.3%)	832 (8.6%)	804 (8.4%)	774 (8.5%)
71-80	1,079 (10.4%)	970 (9.3%)	946 (8.7%)	860 (8.5%)	933 (10.1%)	912 (8.9%)	837 (8.5%)	833 (8.6%)	829 (8.7%)	730 (8.0%)
81-90	437 (4.2%)	372 (3.6%)	489 (4.5%)	371 (3.7%)	376 (4.1%)	461 (4.5%)	440 (4.5%)	397 (4.1%)	370 (3.9%)	388 (4.3%)
91-100	159 (1.5%)	159 (1.5%)	207 (1.9%)	158 (1.6%)	166 (1.8%)	178 (1.7%)	193 (2.0%)	124 (1.3%)	140 (1.5%)	160 (1.8%)
101+	74 (0.7%)	91 (0.9%)	80 (0.7%)	62 (0.6%)	82 (0.9%)	93 (0.9%)	69 (0.7%)	63 (0.6%)	60 (0.6%)	52 (0.6%)
3YO+										
Unrated	3,994 (8.6%)	4,114 (8.6%)	4,966 (10.2%)	4,726 (9.6%)	3,961 (10.1%)	4,839 (10.1%)	4,413 (9.5%)	4,347 (9.2%)	4,330 (8.9%)	4,359 (9.0%)
0-50	3,931 (8.4%)	4,545 (9.5%)	5,257 (10.8%)	6,116 (12.5%)	4,458 (11.4%)	5,582 (11.7%)	5,465 (11.8%)	5,875 (12.4%)	5,946 (12.2%)	5,931 (12.2%)
51-60	7,955 (17.1%)	8,193 (17.1%)	8,040 (16.4%)	8,911 (18.2%)	7,028 (17.9%)	8,754 (18.3%)	8,455 (18.3%)	9,383 (19.8%)	9,806 (20.0%)	9,388 (19.4%)
61-70	10,200 (21.9%)	10,016 (20.9%)	10,139 (20.7%)	9,911 (20.2%)	8,224 (21.0%)	10,209 (21.4%)	9,942 (21.5%)	10,146 (21.4%)	10,907 (22.3%)	10,459 (21.6%)
71-80	9,526 (20.4%)	9,596 (20.1%)	9,372 (19.2%)	8,842 (18.0%)	7,372 (18.8%)	8,597 (18.0%)	8,601 (18.6%)	8,755 (18.4%)	9,011 (18.4%)	9,114 (18.8%)
81-90	6,187 (13.3%)	6,424 (13.4%)	6,236 (12.8%)	5,755 (11.7%)	4,608 (11.8%)	5,411 (11.3%)	5,240 (11.3%)	5,092 (10.7%)	5,353 (10.9%)	5,455 (11.3%)
91-100	3,022 (6.5%)	3,009 (6.3%)	3,179 (6.5%)	3,164 (6.5%)	2,184 (5.6%)	2,724 (5.7%)	2,488 (5.4%)	2,379 (5.0%)	2,159 (4.4%)	2,341 (4.8%)
101+	1,820 (3.9%)	1,930 (4.0%)	1,704 (3.5%)	1,625 (3.3%)	1,343 (3.4%)	1,622 (3.4%)	1,626 (3.5%)	1,484 (3.1%)	1,408 (2.9%)	1,388 (2.9%)

Jump

RatBand	2016	2017	2018	2019	2020	2021	2022	2023	2024	2025
Hurdle										
Unrated	5,259 (29.3%)	5,288 (29.4%)	5,514 (29.9%)	5,585 (30.9%)	4,767 (32.5%)	5,439 (29.6%)	5,050 (29.6%)	5,217 (30.4%)	5,281 (30.0%)	4,547 (27.7%)
0-100	4,652 (25.9%)	4,523 (25.2%)	4,439 (24.1%)	4,307 (23.8%)	3,477 (23.7%)	5,425 (29.5%)	5,291 (31.0%)	5,460 (31.8%)	5,972 (34.0%)	5,707 (34.7%)
101-110	2,647 (14.7%)	2,646 (14.7%)	2,715 (14.7%)	2,562 (14.2%)	2,090 (14.3%)	2,430 (13.2%)	2,550 (14.9%)	2,531 (14.7%)	2,550 (14.5%)	2,471 (15.0%)
111-120	2,504 (13.9%)	2,514 (14.0%)	2,504 (13.6%)	2,501 (13.8%)	1,831 (12.5%)	2,278 (12.4%)	2,092 (12.3%)	2,036 (11.8%)	2,064 (11.7%)	2,102 (12.8%)
121-130	1,642 (9.1%)	1,693 (9.4%)	1,860 (10.1%)	1,854 (10.3%)	1,455 (9.9%)	1,657 (9.0%)	1,277 (7.5%)	1,294 (7.5%)	1,143 (6.5%)	1,059 (6.4%)
131-140	905 (5.0%)	940 (5.2%)	997 (5.4%)	896 (5.0%)	727 (5.0%)	796 (4.3%)	589 (3.4%)	464 (2.7%)	433 (2.5%)	414 (2.5%)
141-150	253 (1.4%)	269 (1.5%)	303 (1.6%)	262 (1.4%)	205 (1.4%)	250 (1.4%)	170 (1.0%)	132 (0.8%)	113 (0.6%)	111 (0.7%)
151+	104 (0.6%)	92 (0.5%)	94 (0.5%)	104 (0.6%)	100 (0.7%)	90 (0.5%)	54 (0.3%)	49 (0.3%)	29 (0.2%)	30 (0.2%)
Chase										
Unrated	82 (0.8%)	85 (0.9%)	78 (0.8%)	60 (0.6%)	32 (0.4%)	36 (0.4%)	13 (0.1%)	8 (0.1%)	7 (0.1%)	5 (0.1%)
0-100	2,680 (27.3%)	2,529 (25.8%)	2,641 (26.7%)	2,720 (28.3%)	2,267 (28.5%)	3,040 (30.4%)	2,938 (31.8%)	3,173 (35.4%)	3,278 (36.9%)	3,128 (37.9%)
101-110	1,465 (14.9%)	1,561 (15.9%)	1,563 (15.8%)	1,529 (15.9%)	1,180 (14.9%)	1,499 (15.0%)	1,502 (16.3%)	1,473 (16.4%)	1,593 (17.9%)	1,362 (16.5%)
111-120	1,791 (18.2%)	1,717 (17.5%)	1,664 (16.8%)	1,544 (16.0%)	1,296 (16.3%)	1,772 (17.7%)	1,654 (17.9%)	1,606 (17.9%)	1,552 (17.5%)	1,461 (17.7%)
121-130	1,575 (16.0%)	1,628 (16.6%)	1,714 (17.3%)	1,549 (16.1%)	1,354 (17.0%)	1,631 (16.3%)	1,461 (15.8%)	1,335 (14.9%)	1,232 (13.9%)	1,169 (14.2%)
131-140	1,359 (13.8%)	1,382 (14.1%)	1,328 (13.4%)	1,325 (13.8%)	1,038 (13.1%)	1,185 (11.8%)	1,007 (10.9%)	847 (9.5%)	747 (8.4%)	642 (7.8%)
141-150	593 (6.0%)	607 (6.2%)	657 (6.6%)	617 (6.4%)	551 (6.9%)	578 (5.8%)	452 (4.9%)	348 (3.9%)	313 (3.5%)	326 (3.9%)
151+	288 (2.9%)	301 (3.1%)	243 (2.5%)	283 (2.9%)	225 (2.8%)	262 (2.6%)	202 (2.2%)	166 (1.9%)	160 (1.8%)	161 (2.0%)

Frequency of Runs

Annual Average Runs per Horse

Code	2016	2017	2018	2019	2020	2021	2022	2023	2024	2025
Flat	5.32	5.28	5.33	5.28	4.57	5.38	5.32	5.37	5.46	5.47
Jump	3.83	3.84	3.86	3.69	3.17	3.66	3.56	3.60	3.70	3.57
Dual Overall	7.89	7.73	7.76	7.72	6.34	7.58	7.28	7.34	7.71	7.78
Dual (Flat)	4.34	4.31	4.35	4.45	3.44	4.17	4.03	4.15	4.51	4.62
Dual (Jump)	3.55	3.42	3.41	3.26	2.90	3.41	3.25	3.19	3.20	3.16
All	4.87	4.85	4.88	4.78	4.11	4.76	4.68	4.73	4.85	4.81

Annual Proportion of Horses by Count of Runs

Runs	2016	2017	2018	2019	2020	2021	2022	2023	2024	2025
Flat										
1	1,579 (14.3%)	1,660 (14.6%)	1,693 (14.6%)	1,700 (14.8%)	1,761 (16.2%)	1,533 (13.9%)	1,530 (14.2%)	1,572 (14.4%)	1,559 (14.2%)	1,506 (14.0%)
2	1,403 (12.7%)	1,485 (13.1%)	1,464 (12.7%)	1,600 (13.9%)	1,718 (15.8%)	1,372 (12.4%)	1,355 (12.5%)	1,375 (12.6%)	1,404 (12.8%)	1,336 (12.4%)
3	1,481 (13.5%)	1,555 (13.7%)	1,613 (13.9%)	1,550 (13.5%)	1,686 (15.5%)	1,501 (13.6%)	1,463 (13.5%)	1,432 (13.1%)	1,430 (13.0%)	1,462 (13.6%)
4	1,202 (10.9%)	1,192 (10.5%)	1,276 (11.0%)	1,249 (10.8%)	1,333 (12.2%)	1,216 (11.0%)	1,233 (11.4%)	1,237 (11.3%)	1,225 (11.2%)	1,150 (10.7%)
5+	5,341 (48.5%)	5,462 (48.1%)	5,519 (47.7%)	5,425 (47.1%)	4,386 (40.3%)	5,439 (49.2%)	5,220 (48.3%)	5,292 (48.5%)	5,343 (48.7%)	5,288 (49.2%)
Jump										
1	1,856 (22.6%)	1,901 (23.1%)	1,820 (21.9%)	1,919 (22.6%)	1,915 (24.0%)	1,973 (22.2%)	2,014 (24.1%)	2,036 (24.6%)	1,883 (23.3%)	1,895 (24.2%)
2	1,448 (17.6%)	1,460 (17.7%)	1,395 (16.8%)	1,577 (18.6%)	1,616 (20.3%)	1,632 (18.4%)	1,553 (18.6%)	1,480 (17.9%)	1,452 (18.0%)	1,517 (19.3%)
3	1,182 (14.4%)	1,124 (13.6%)	1,205 (14.5%)	1,274 (15.0%)	1,421 (17.8%)	1,391 (15.6%)	1,258 (15.0%)	1,227 (14.8%)	1,152 (14.3%)	1,120 (14.3%)
4	979 (11.9%)	929 (11.3%)	1,072 (12.9%)	1,045 (12.3%)	1,213 (15.2%)	1,134 (12.8%)	1,075 (12.9%)	971 (11.7%)	991 (12.3%)	951 (12.1%)
5+	2,763 (33.6%)	2,830 (34.3%)	2,835 (34.0%)	2,661 (31.4%)	1,802 (22.6%)	2,761 (31.1%)	2,462 (29.4%)	2,574 (31.1%)	2,592 (32.1%)	2,359 (30.1%)
All Races										
1	2,957 (16.2%)	3,041 (16.3%)	3,045 (16.1%)	3,149 (16.6%)	3,164 (17.6%)	3,071 (16.1%)	3,124 (17.0%)	3,182 (17.3%)	3,055 (16.7%)	3,042 (17.0%)
2	2,560 (14.0%)	2,683 (14.4%)	2,568 (13.6%)	2,863 (15.1%)	3,015 (16.8%)	2,718 (14.3%)	2,645 (14.4%)	2,632 (14.3%)	2,646 (14.5%)	2,629 (14.7%)
3	2,429 (13.3%)	2,471 (13.3%)	2,610 (13.8%)	2,579 (13.6%)	2,924 (16.3%)	2,695 (14.1%)	2,563 (14.0%)	2,518 (13.7%)	2,421 (13.2%)	2,435 (13.6%)
4	2,065 (11.3%)	2,024 (10.9%)	2,207 (11.7%)	2,159 (11.4%)	2,441 (13.6%)	2,234 (11.7%)	2,203 (12.0%)	2,127 (11.5%)	2,119 (11.6%)	2,017 (11.3%)
5+	8,228 (45.1%)	8,401 (45.1%)	8,505 (44.9%)	8,256 (43.4%)	6,407 (35.7%)	8,340 (43.8%)	7,820 (42.6%)	7,971 (43.3%)	8,044 (44.0%)	7,748 (43.4%)

Annual Median Days Between Runs

Code/RatBand	2016	2017	2018	2019	2020	2021	2022	2023	2024	2025
All Runners	24	24	24	25	25	25	25	25	25	25
Flat										
Unrated	22	23	23	23	22	23	24	23	24	24
0-50	21	21	20	21	20	20	21	20	19	19
51-60	20	20	20	20	20	20	20	20	20	20
61-70	20	21	20	21	21	21	21	21	21	21
71-80	21	22	21	21	22	22	22	22	22	22
81-90	22	22	22	22	22	23	23	25	24	25
91-100	24	25	24	24	24	25	27	27	28	28
101+	28	28	28	28	28	29	31	33	33	34
All Flat Runners	21	22	21	22	21	22	22	22	22	22
Jump										
Unrated	35	33	35	35	35	38	36	38	38	38
0-100	26	26	26	27	30	28	28	30	30	29
101-110	29	28	29	29	30	30	30	32	32	31
111-120	29	29	30	31	33	32	32	33	33	32
121-130	31	30	30	32	33	34	33	34	36	34
131-140	33	33	34	35	36	35	35	36	35	35
141-150	34	35	37	37	41	39	39	40	37	39
151+	35	34	39	40	43	42	40	44	42	40
All Jump Runners	30	29	30	31	33	33	32	33	33	33

Horses Population by Gender

December 2025 Horses in Training Snapshot by Gender versus Previous Years

All Horses

Sex	2016	2017	2018	2019	2020	2021	2022	2023	2024	2025
Colt/Entire	2,146 (16.0%)	2,162 (15.7%)	1,915 (13.9%)	2,027 (14.2%)	1,872 (13.0%)	1,749 (12.6%)	1,634 (11.9%)	1,678 (12.3%)	1,536 (11.5%)	1,618 (12.1%)
Gelding	7,554 (56.3%)	7,638 (55.5%)	7,867 (57.2%)	8,076 (56.7%)	8,341 (58.0%)	7,990 (57.7%)	7,993 (58.2%)	7,867 (57.7%)	7,798 (58.4%)	7,654 (57.2%)
Filly/Mare	3,710 (27.7%)	3,952 (28.7%)	3,973 (28.9%)	4,146 (29.1%)	4,170 (29.0%)	4,099 (29.6%)	4,114 (29.9%)	4,091 (30.0%)	4,008 (30.0%)	4,097 (30.6%)
Rig	4 (0.0%)	3 (0.0%)	3 (0.0%)	3 (0.0%)	3 (0.0%)	1 (0.0%)	0 (0.0%)	0 (0.0%)	0 (0.0%)	1 (0.0%)
Total	13,414 (100.0%)	13,755 (100.0%)	13,758 (100.0%)	14,252 (100.0%)	14,386 (100.0%)	13,839 (100.0%)	13,741 (100.0%)	13,636 (100.0%)	13,342 (100.0%)	13,370 (100.0%)

Flat (including Dual)

Sex	2016	2017	2018	2019	2020	2021	2022	2023	2024	2025
Colt/Entire	1,112 (17.5%)	1,213 (17.2%)	1,137 (16.8%)	1,153 (16.5%)	1,112 (16.4%)	998 (14.9%)	964 (14.5%)	957 (14.2%)	912 (13.6%)	939 (13.5%)
Gelding	3,167 (49.9%)	3,540 (50.1%)	3,350 (49.6%)	3,462 (49.6%)	3,436 (50.7%)	3,394 (50.8%)	3,389 (50.9%)	3,460 (51.5%)	3,545 (52.9%)	3,654 (52.5%)
Filly/Mare	2,069 (32.6%)	2,306 (32.7%)	2,266 (33.5%)	2,364 (33.9%)	2,233 (32.9%)	2,289 (34.3%)	2,302 (34.6%)	2,305 (34.3%)	2,240 (33.4%)	2,360 (33.9%)
Rig	4 (0.1%)	3 (0.0%)	2 (0.0%)	2 (0.0%)	2 (0.0%)	0 (0.0%)	0 (0.0%)	0 (0.0%)	0 (0.0%)	1 (0.0%)
Total	6,352 (100.0%)	7,062 (100.0%)	6,755 (100.0%)	6,981 (100.0%)	6,783 (100.0%)	6,681 (100.0%)	6,655 (100.0%)	6,722 (100.0%)	6,697 (100.0%)	6,954 (100.0%)

Jump (including Dual)

Sex	2016	2017	2018	2019	2020	2021	2022	2023	2024	2025
Colt/Entire	22 (0.4%)	21 (0.3%)	31 (0.5%)	26 (0.4%)	30 (0.4%)	36 (0.6%)	33 (0.5%)	24 (0.4%)	37 (0.6%)	37 (0.6%)
Gelding	4,756 (81.2%)	4,744 (78.7%)	4,824 (78.1%)	4,955 (78.0%)	5,230 (77.8%)	4,897 (77.6%)	4,864 (76.6%)	4,670 (76.3%)	4,538 (75.7%)	4,396 (75.4%)
Filly/Mare	1,079 (18.4%)	1,261 (20.9%)	1,318 (21.3%)	1,372 (21.6%)	1,462 (21.7%)	1,378 (21.8%)	1,456 (22.9%)	1,429 (23.3%)	1,420 (23.7%)	1,399 (24.0%)
Rig	0 (0.0%)	0 (0.0%)	1 (0.0%)	1 (0.0%)	1 (0.0%)	1 (0.0%)	0 (0.0%)	0 (0.0%)	0 (0.0%)	1 (0.0%)
Total	5,857 (100.0%)	6,026 (100.0%)	6,174 (100.0%)	6,354 (100.0%)	6,723 (100.0%)	6,312 (100.0%)	6,353 (100.0%)	6,123 (100.0%)	5,995 (100.0%)	5,833 (100.0%)

Annual Total Runners by Gender

Sex	2016	2017	2018	2019	2020	2021	2022	2023	2024	2025
All Races										
Colt/Entire	9,042 (10.2%)	9,078 (10.1%)	9,560 (10.3%)	8,638 (9.5%)	7,503 (10.2%)	8,280 (9.1%)	7,452 (8.7%)	7,431 (8.5%)	6,797 (7.7%)	6,511 (7.6%)
Gelding	55,935 (63.0%)	56,714 (62.8%)	57,118 (61.8%)	56,142 (61.8%)	45,230 (61.3%)	56,664 (62.5%)	53,829 (62.6%)	54,273 (62.3%)	56,444 (63.7%)	54,441 (63.4%)
Filly/Mare	23,856 (26.8%)	24,448 (27.1%)	25,689 (27.8%)	26,058 (28.7%)	20,987 (28.5%)	25,737 (28.4%)	24,676 (28.7%)	25,475 (29.2%)	25,390 (28.6%)	24,959 (29.1%)
Rig	19 (0.0%)	13 (0.0%)	14 (0.0%)	19 (0.0%)	6 (0.0%)	10 (0.0%)	10 (0.0%)	4 (0.0%)	0 (0.0%)	4 (0.0%)
Flat										
Colt/Entire	8,992 (15.6%)	9,026 (15.3%)	9,505 (15.7%)	8,600 (14.3%)	7,460 (15.3%)	8,195 (14.0%)	7,413 (13.1%)	7,375 (12.8%)	6,772 (11.4%)	6,481 (11.1%)
Gelding	30,194 (52.4%)	31,173 (52.8%)	31,804 (52.4%)	31,815 (53.0%)	25,509 (52.4%)	31,183 (53.4%)	30,499 (54.0%)	31,262 (54.2%)	33,745 (57.0%)	33,175 (57.0%)
Filly/Mare	18,401 (31.9%)	18,819 (31.9%)	19,342 (31.9%)	19,547 (32.6%)	15,714 (32.3%)	19,005 (32.6%)	18,530 (32.8%)	19,035 (33.0%)	18,637 (31.5%)	18,518 (31.8%)
Rig	19 (0.0%)	13 (0.0%)	14 (0.0%)	12 (0.0%)	1 (0.0%)	3 (0.0%)	0 (0.0%)	0 (0.0%)	0 (0.0%)	2 (0.0%)
All Jump										
Colt/Entire	50 (0.2%)	52 (0.2%)	55 (0.2%)	38 (0.1%)	43 (0.2%)	85 (0.3%)	39 (0.1%)	56 (0.2%)	25 (0.1%)	30 (0.1%)
Gelding	25,741 (82.4%)	25,541 (81.8%)	25,314 (79.8%)	24,327 (78.8%)	19,721 (78.8%)	25,481 (78.9%)	23,330 (79.0%)	23,011 (78.0%)	22,699 (77.0%)	21,266 (76.7%)
Filly/Mare	5,455 (17.5%)	5,629 (18.0%)	6,347 (20.0%)	6,511 (21.1%)	5,273 (21.1%)	6,732 (20.8%)	6,146 (20.8%)	6,440 (21.8%)	6,753 (22.9%)	6,441 (23.2%)
Rig	0 (0.0%)	0 (0.0%)	0 (0.0%)	7 (0.0%)	5 (0.0%)	7 (0.0%)	10 (0.0%)	4 (0.0%)	0 (0.0%)	2 (0.0%)
Chase										
Colt/Entire	1 (0.0%)	0 (0.0%)	1 (0.0%)	0 (0.0%)	0 (0.0%)	0 (0.0%)	0 (0.0%)	0 (0.0%)	0 (0.0%)	0 (0.0%)
Gelding	9,420 (92.6%)	9,332 (92.1%)	9,177 (90.6%)	8,896 (90.2%)	7,255 (90.1%)	9,147 (89.6%)	8,514 (89.5%)	8,312 (89.3%)	8,179 (88.9%)	7,550 (87.1%)
Filly/Mare	748 (7.4%)	798 (7.9%)	950 (9.4%)	966 (9.8%)	791 (9.8%)	1,053 (10.3%)	988 (10.4%)	998 (10.7%)	1,018 (11.1%)	1,118 (12.9%)
Rig	0 (0.0%)	0 (0.0%)	0 (0.0%)	5 (0.1%)	5 (0.1%)	7 (0.1%)	10 (0.1%)	3 (0.0%)	0 (0.0%)	0 (0.0%)
Hurdle										
Colt/Entire	45 (0.2%)	41 (0.2%)	43 (0.2%)	26 (0.1%)	28 (0.2%)	74 (0.4%)	26 (0.1%)	45 (0.3%)	15 (0.1%)	16 (0.1%)
Gelding	14,622 (79.1%)	14,487 (78.6%)	14,433 (76.6%)	13,867 (75.0%)	11,075 (74.6%)	14,032 (75.0%)	13,315 (75.7%)	13,209 (74.4%)	13,162 (72.7%)	12,440 (73.3%)
Filly/Mare	3,826 (20.7%)	3,892 (21.1%)	4,368 (23.2%)	4,604 (24.9%)	3,750 (25.2%)	4,607 (24.6%)	4,250 (24.2%)	4,499 (25.3%)	4,922 (27.2%)	4,509 (26.6%)
Rig	0 (0.0%)	0 (0.0%)	0 (0.0%)	2 (0.0%)	0 (0.0%)	0 (0.0%)	0 (0.0%)	1 (0.0%)	0 (0.0%)	0 (0.0%)
NHF										
Colt/Entire	4 (0.2%)	11 (0.4%)	11 (0.4%)	12 (0.5%)	15 (0.7%)	11 (0.3%)	13 (0.5%)	11 (0.5%)	10 (0.5%)	14 (0.7%)
Gelding	1,699 (65.8%)	1,722 (64.4%)	1,704 (62.1%)	1,564 (62.1%)	1,391 (65.1%)	2,302 (68.0%)	1,501 (62.0%)	1,490 (61.0%)	1,358 (62.3%)	1,276 (60.6%)
Filly/Mare	881 (34.1%)	939 (35.1%)	1,029 (37.5%)	941 (37.4%)	732 (34.2%)	1,072 (31.7%)	908 (37.5%)	943 (38.6%)	813 (37.3%)	814 (38.7%)
Rig	0 (0.0%)	0 (0.0%)	0 (0.0%)	0 (0.0%)	0 (0.0%)	0 (0.0%)	0 (0.0%)	0 (0.0%)	0 (0.0%)	2 (0.1%)
Hunter										
Gelding	720 (94.2%)	709 (94.9%)	603 (93.3%)	522 (92.7%)	142 (97.3%)	557 (93.5%)	429 (94.9%)	408 (93.6%)	379 (92.9%)	354 (91.9%)
Filly/Mare	44 (5.8%)	38 (5.1%)	43 (6.7%)	41 (7.3%)	4 (2.7%)	39 (6.5%)	23 (5.1%)	28 (6.4%)	29 (7.1%)	31 (8.1%)

Annual Individual Runners by Gender

Sex	2016	2017	2018	2019	2020	2021	2022	2023	2024	2025
All Races										
Male	12,871 (70.6%)	13,068 (70.2%)	13,168 (69.5%)	13,162 (69.3%)	12,445 (69.3%)	13,236 (69.5%)	12,669 (69.0%)	12,589 (68.3%)	12,530 (68.5%)	12,158 (68.0%)
Female	5,368 (29.4%)	5,552 (29.8%)	5,767 (30.5%)	5,844 (30.7%)	5,506 (30.7%)	5,822 (30.5%)	5,686 (31.0%)	5,841 (31.7%)	5,755 (31.5%)	5,713 (32.0%)
Flat										
Male	7,047 (64.0%)	7,277 (64.1%)	7,421 (64.2%)	7,377 (64.0%)	6,962 (64.0%)	7,035 (63.6%)	6,824 (63.2%)	6,846 (62.8%)	6,990 (63.8%)	6,803 (63.3%)
Female	3,959 (36.0%)	4,077 (35.9%)	4,144 (35.8%)	4,147 (36.0%)	3,922 (36.0%)	4,026 (36.4%)	3,977 (36.8%)	4,062 (37.2%)	3,971 (36.2%)	3,939 (36.7%)
All Jump										
Male	6,634 (80.6%)	6,587 (79.9%)	6,502 (78.1%)	6,571 (77.5%)	6,187 (77.7%)	6,909 (77.7%)	6,475 (77.4%)	6,341 (76.5%)	6,119 (75.8%)	5,908 (75.3%)
Female	1,594 (19.4%)	1,657 (20.1%)	1,825 (21.9%)	1,905 (22.5%)	1,780 (22.3%)	1,982 (22.3%)	1,887 (22.6%)	1,947 (23.5%)	1,951 (24.2%)	1,934 (24.7%)
Chase										
Male	2,705 (91.4%)	2,665 (90.6%)	2,680 (89.6%)	2,636 (88.9%)	2,482 (88.2%)	2,783 (87.7%)	2,582 (87.9%)	2,542 (87.8%)	2,455 (87.2%)	2,342 (85.5%)
Female	253 (8.6%)	276 (9.4%)	311 (10.4%)	329 (11.1%)	332 (11.8%)	391 (12.3%)	356 (12.1%)	353 (12.2%)	361 (12.8%)	397 (14.5%)
Hurdle										
Male	4,672 (80.0%)	4,588 (79.1%)	4,605 (77.3%)	4,640 (76.3%)	4,217 (75.8%)	4,751 (76.0%)	4,583 (76.7%)	4,455 (75.1%)	4,312 (73.6%)	4,116 (73.7%)
Female	1,169 (20.0%)	1,215 (20.9%)	1,356 (22.7%)	1,441 (23.7%)	1,348 (24.2%)	1,504 (24.0%)	1,394 (23.3%)	1,477 (24.9%)	1,550 (26.4%)	1,470 (26.3%)
NHF										
Male	1,125 (67.9%)	1,136 (67.0%)	1,153 (65.4%)	1,068 (64.8%)	1,043 (67.5%)	1,609 (70.3%)	1,053 (64.4%)	1,037 (63.7%)	950 (64.4%)	910 (63.1%)
Female	532 (32.1%)	560 (33.0%)	609 (34.6%)	581 (35.2%)	502 (32.5%)	681 (29.7%)	581 (35.6%)	591 (36.3%)	525 (35.6%)	532 (36.9%)
Hunter										
Male	395 (93.2%)	366 (93.6%)	339 (92.1%)	301 (92.0%)	98 (96.1%)	299 (92.0%)	243 (92.4%)	228 (93.4%)	212 (92.6%)	207 (91.6%)
Female	29 (6.8%)	25 (6.4%)	29 (7.9%)	26 (8.0%)	4 (3.9%)	26 (8.0%)	20 (7.6%)	16 (6.6%)	17 (7.4%)	19 (8.4%)

Horses Population by Breeding

December 2025 Horses in Training Snapshot by Breeding versus Previous Years

Flat (including Dual)

Bred	Sex	2016	2017	2018	2019	2020	2021	2022	2023	2024	2025
GB	Male	1,983 (31.2%)	2,221 (31.5%)	2,112 (31.3%)	2,197 (31.5%)	2,089 (30.8%)	2,022 (30.3%)	2,000 (30.1%)	2,017 (30.0%)	2,050 (30.6%)	2,106 (30.3%)
	Female	1,178 (18.5%)	1,284 (18.2%)	1,250 (18.5%)	1,310 (18.8%)	1,255 (18.5%)	1,288 (19.3%)	1,287 (19.3%)	1,266 (18.8%)	1,216 (18.2%)	1,289 (18.5%)
	Subtotal	3,161 (49.8%)	3,505 (49.6%)	3,362 (49.8%)	3,507 (50.2%)	3,344 (49.3%)	3,310 (49.5%)	3,287 (49.4%)	3,283 (48.8%)	3,266 (48.8%)	3,395 (48.8%)
IRE	Male	1,822 (28.7%)	1,985 (28.1%)	1,905 (28.2%)	1,934 (27.7%)	1,975 (29.1%)	1,968 (29.5%)	2,001 (30.1%)	2,023 (30.1%)	2,039 (30.4%)	2,141 (30.8%)
	Female	747 (11.8%)	846 (12.0%)	824 (12.2%)	874 (12.5%)	832 (12.3%)	862 (12.9%)	892 (13.4%)	917 (13.6%)	895 (13.4%)	940 (13.5%)
	Subtotal	2,569 (40.4%)	2,831 (40.1%)	2,729 (40.4%)	2,808 (40.2%)	2,807 (41.4%)	2,830 (42.4%)	2,893 (43.5%)	2,940 (43.7%)	2,934 (43.8%)	3,081 (44.3%)
FR	Male	158 (2.5%)	233 (3.3%)	196 (2.9%)	230 (3.3%)	247 (3.6%)	239 (3.6%)	214 (3.2%)	256 (3.8%)	265 (4.0%)	248 (3.6%)
	Female	50 (0.8%)	72 (1.0%)	76 (1.1%)	77 (1.1%)	70 (1.0%)	79 (1.2%)	87 (1.3%)	86 (1.3%)	86 (1.3%)	94 (1.4%)
	Subtotal	208 (3.3%)	305 (4.3%)	272 (4.0%)	307 (4.4%)	317 (4.7%)	318 (4.8%)	301 (4.5%)	342 (5.1%)	351 (5.2%)	342 (4.9%)
USA	Male	257 (4.0%)	241 (3.4%)	219 (3.2%)	198 (2.8%)	176 (2.6%)	126 (1.9%)	92 (1.4%)	86 (1.3%)	59 (0.9%)	44 (0.6%)
	Female	77 (1.2%)	83 (1.2%)	96 (1.4%)	82 (1.2%)	56 (0.8%)	41 (0.6%)	24 (0.4%)	17 (0.3%)	27 (0.4%)	22 (0.3%)
	Subtotal	334 (5.3%)	324 (4.6%)	315 (4.7%)	280 (4.0%)	232 (3.4%)	167 (2.5%)	116 (1.7%)	103 (1.5%)	86 (1.3%)	66 (0.9%)
GNY	Male	45 (0.7%)	55 (0.8%)	36 (0.5%)	41 (0.6%)	47 (0.7%)	31 (0.5%)	34 (0.5%)	28 (0.4%)	33 (0.5%)	43 (0.6%)
	Female	10 (0.2%)	11 (0.2%)	12 (0.2%)	16 (0.2%)	16 (0.2%)	17 (0.3%)	10 (0.2%)	13 (0.2%)	12 (0.2%)	10 (0.1%)
	Subtotal	55 (0.9%)	66 (0.9%)	48 (0.7%)	57 (0.8%)	63 (0.9%)	48 (0.7%)	44 (0.7%)	41 (0.6%)	45 (0.7%)	53 (0.8%)
Other	Male	18 (0.3%)	21 (0.3%)	21 (0.3%)	17 (0.2%)	16 (0.2%)	6 (0.1%)	12 (0.2%)	7 (0.1%)	11 (0.2%)	12 (0.2%)
	Female	7 (0.1%)	10 (0.1%)	8 (0.1%)	5 (0.1%)	4 (0.1%)	2 (0.0%)	2 (0.0%)	6 (0.1%)	4 (0.1%)	5 (0.1%)
	Subtotal	25 (0.4%)	31 (0.4%)	29 (0.4%)	22 (0.3%)	20 (0.3%)	8 (0.1%)	14 (0.2%)	13 (0.2%)	15 (0.2%)	17 (0.2%)

Jump (including Dual)

Bred	Sex	2016	2017	2018	2019	2020	2021	2022	2023	2024	2025
GB	Male	1,318 (22.5%)	1,344 (22.3%)	1,277 (20.7%)	1,282 (20.2%)	1,301 (19.4%)	1,218 (19.3%)	1,221 (19.2%)	1,183 (19.3%)	1,162 (19.4%)	1,146 (19.6%)
	Female	601 (10.3%)	666 (11.1%)	639 (10.3%)	616 (9.7%)	671 (10.0%)	655 (10.4%)	698 (11.0%)	651 (10.6%)	603 (10.1%)	599 (10.3%)
	Subtotal	1,919 (32.8%)	2,010 (33.4%)	1,916 (31.0%)	1,898 (29.9%)	1,972 (29.3%)	1,873 (29.7%)	1,919 (30.2%)	1,834 (30.0%)	1,765 (29.4%)	1,745 (29.9%)
IRE	Male	2,635 (45.0%)	2,627 (43.6%)	2,721 (44.1%)	2,769 (43.6%)	2,880 (42.8%)	2,627 (41.6%)	2,570 (40.5%)	2,433 (39.7%)	2,352 (39.2%)	2,245 (38.5%)
	Female	409 (7.0%)	509 (8.4%)	569 (9.2%)	623 (9.8%)	654 (9.7%)	586 (9.3%)	604 (9.5%)	624 (10.2%)	649 (10.8%)	631 (10.8%)
	Subtotal	3,044 (52.0%)	3,136 (52.0%)	3,290 (53.3%)	3,392 (53.4%)	3,534 (52.6%)	3,213 (50.9%)	3,174 (50.0%)	3,057 (49.9%)	3,001 (50.1%)	2,876 (49.3%)
FR	Male	719 (12.3%)	691 (11.5%)	769 (12.5%)	828 (13.0%)	978 (14.5%)	988 (15.7%)	1,011 (15.9%)	1,000 (16.3%)	1,004 (16.7%)	998 (17.1%)
	Female	61 (1.0%)	77 (1.3%)	101 (1.6%)	126 (2.0%)	125 (1.9%)	128 (2.0%)	145 (2.3%)	148 (2.4%)	159 (2.7%)	159 (2.7%)
	Subtotal	780 (13.3%)	768 (12.7%)	870 (14.1%)	954 (15.0%)	1,103 (16.4%)	1,116 (17.7%)	1,156 (18.2%)	1,148 (18.7%)	1,163 (19.4%)	1,157 (19.8%)
USA	Male	44 (0.8%)	44 (0.7%)	31 (0.5%)	32 (0.5%)	31 (0.5%)	28 (0.4%)	20 (0.3%)	13 (0.2%)	9 (0.2%)	5 (0.1%)
	Female	1 (0.0%)	3 (0.0%)	2 (0.0%)	3 (0.0%)	1 (0.0%)	1 (0.0%)	NA (-)	2 (0.0%)	1 (0.0%)	1 (0.0%)
	Subtotal	45 (0.8%)	47 (0.8%)	33 (0.5%)	35 (0.6%)	32 (0.5%)	29 (0.5%)	20 (0.3%)	15 (0.2%)	10 (0.2%)	6 (0.1%)
GNY	Male	55 (0.9%)	51 (0.8%)	51 (0.8%)	66 (1.0%)	66 (1.0%)	71 (1.1%)	72 (1.1%)	61 (1.0%)	44 (0.7%)	35 (0.6%)
	Female	5 (0.1%)	4 (0.1%)	6 (0.1%)	4 (0.1%)	10 (0.1%)	8 (0.1%)	8 (0.1%)	3 (0.0%)	6 (0.1%)	7 (0.1%)
	Subtotal	60 (1.0%)	55 (0.9%)	57 (0.9%)	70 (1.1%)	76 (1.1%)	79 (1.3%)	80 (1.3%)	64 (1.0%)	50 (0.8%)	42 (0.7%)
Other	Male	7 (0.1%)	8 (0.1%)	7 (0.1%)	5 (0.1%)	5 (0.1%)	2 (0.0%)	3 (0.0%)	4 (0.1%)	4 (0.1%)	5 (0.1%)
	Female	2 (0.0%)	2 (0.0%)	1 (0.0%)	NA (-)	1 (0.0%)	NA (-)	1 (0.0%)	1 (0.0%)	2 (0.0%)	2 (0.0%)
	Subtotal	9 (0.2%)	10 (0.2%)	8 (0.1%)	5 (0.1%)	6 (0.1%)	2 (0.0%)	4 (0.1%)	5 (0.1%)	6 (0.1%)	7 (0.1%)

Annual Total Runners by Breeding

Flat

Bred	Sex	2016	2017	2018	2019	2020	2021	2022	2023	2024	2025
GB	Male	18,432 (32.0%)	19,021 (32.2%)	19,096 (31.5%)	18,590 (31.0%)	15,549 (31.9%)	18,351 (31.4%)	17,504 (31.0%)	17,601 (30.5%)	18,268 (30.9%)	18,115 (31.1%)
	Female	10,183 (17.7%)	10,254 (17.4%)	10,640 (17.5%)	10,799 (18.0%)	8,747 (18.0%)	10,643 (18.2%)	10,103 (17.9%)	10,227 (17.7%)	9,891 (16.7%)	9,970 (17.1%)
	Subtotal	28,615 (49.7%)	29,275 (49.6%)	29,736 (49.0%)	29,389 (49.0%)	24,296 (49.9%)	28,994 (49.7%)	27,607 (48.9%)	27,828 (48.3%)	28,159 (47.6%)	28,085 (48.3%)
IRE	Male	17,309 (30.0%)	17,542 (29.7%)	18,454 (30.4%)	18,016 (30.0%)	14,466 (29.7%)	17,817 (30.5%)	17,845 (31.6%)	18,324 (31.8%)	19,430 (32.8%)	18,985 (32.6%)
	Female	7,253 (12.6%)	7,522 (12.7%)	7,510 (12.4%)	7,506 (12.5%)	6,103 (12.5%)	7,315 (12.5%)	7,501 (13.3%)	7,890 (13.7%)	7,907 (13.4%)	7,750 (13.3%)
	Subtotal	24,562 (42.6%)	25,064 (42.5%)	25,964 (42.8%)	25,522 (42.6%)	20,569 (42.3%)	25,132 (43.0%)	25,346 (44.9%)	26,214 (45.5%)	27,337 (46.2%)	26,735 (46.0%)
FR	Male	1,120 (1.9%)	1,302 (2.2%)	1,502 (2.5%)	1,701 (2.8%)	1,425 (2.9%)	1,655 (2.8%)	1,521 (2.7%)	1,762 (3.1%)	1,928 (3.3%)	1,809 (3.1%)
	Female	378 (0.7%)	416 (0.7%)	496 (0.8%)	564 (0.9%)	449 (0.9%)	580 (1.0%)	544 (1.0%)	619 (1.1%)	558 (0.9%)	508 (0.9%)
	Subtotal	1,498 (2.6%)	1,718 (2.9%)	1,998 (3.3%)	2,265 (3.8%)	1,874 (3.8%)	2,235 (3.8%)	2,065 (3.7%)	2,381 (4.1%)	2,486 (4.2%)	2,317 (4.0%)
USA	Male	1,846 (3.2%)	1,820 (3.1%)	1,794 (3.0%)	1,667 (2.8%)	1,175 (2.4%)	1,106 (1.9%)	771 (1.4%)	662 (1.1%)	573 (1.0%)	395 (0.7%)
	Female	454 (0.8%)	516 (0.9%)	568 (0.9%)	497 (0.8%)	297 (0.6%)	324 (0.6%)	253 (0.4%)	225 (0.4%)	172 (0.3%)	171 (0.3%)
	Subtotal	2,300 (4.0%)	2,336 (4.0%)	2,362 (3.9%)	2,164 (3.6%)	1,472 (3.0%)	1,430 (2.4%)	1,024 (1.8%)	887 (1.5%)	745 (1.3%)	566 (1.0%)
GNY	Male	334 (0.6%)	346 (0.6%)	306 (0.5%)	309 (0.5%)	274 (0.6%)	360 (0.6%)	198 (0.4%)	240 (0.4%)	266 (0.4%)	281 (0.5%)
	Female	63 (0.1%)	45 (0.1%)	81 (0.1%)	117 (0.2%)	98 (0.2%)	121 (0.2%)	103 (0.2%)	59 (0.1%)	77 (0.1%)	89 (0.2%)
	Subtotal	397 (0.7%)	391 (0.7%)	387 (0.6%)	426 (0.7%)	372 (0.8%)	481 (0.8%)	301 (0.5%)	299 (0.5%)	343 (0.6%)	370 (0.6%)
Other	Male	164 (0.3%)	181 (0.3%)	171 (0.3%)	144 (0.2%)	81 (0.2%)	92 (0.2%)	73 (0.1%)	48 (0.1%)	52 (0.1%)	73 (0.1%)
	Female	70 (0.1%)	66 (0.1%)	47 (0.1%)	64 (0.1%)	20 (0.0%)	22 (0.0%)	26 (0.0%)	15 (0.0%)	32 (0.1%)	30 (0.1%)
	Subtotal	234 (0.4%)	247 (0.4%)	218 (0.4%)	208 (0.3%)	101 (0.2%)	114 (0.2%)	99 (0.2%)	63 (0.1%)	84 (0.1%)	103 (0.2%)

Jump

Bred	Sex	2016	2017	2018	2019	2020	2021	2022	2023	2024	2025
GB	Male	7,008 (22.4%)	6,688 (21.4%)	6,499 (20.5%)	6,148 (19.9%)	4,797 (19.2%)	6,163 (19.1%)	5,358 (18.1%)	5,149 (17.4%)	5,259 (17.8%)	5,155 (18.6%)
	Female	2,833 (9.1%)	2,763 (8.8%)	2,999 (9.5%)	2,759 (8.9%)	2,194 (8.8%)	2,904 (9.0%)	2,639 (8.9%)	2,742 (9.3%)	2,681 (9.1%)	2,453 (8.8%)
	Subtotal	9,841 (31.5%)	9,451 (30.3%)	9,498 (29.9%)	8,907 (28.8%)	6,991 (27.9%)	9,067 (28.1%)	7,997 (27.1%)	7,891 (26.7%)	7,940 (26.9%)	7,608 (27.4%)
IRE	Male	14,501 (46.4%)	14,509 (46.5%)	14,349 (45.2%)	13,710 (44.4%)	11,081 (44.2%)	14,118 (43.7%)	12,674 (42.9%)	12,514 (42.4%)	12,283 (41.7%)	11,341 (40.9%)
	Female	2,295 (7.3%)	2,481 (7.9%)	2,928 (9.2%)	3,167 (10.3%)	2,484 (9.9%)	3,085 (9.5%)	2,783 (9.4%)	2,972 (10.1%)	3,388 (11.5%)	3,152 (11.4%)
	Subtotal	16,796 (53.8%)	16,990 (54.4%)	17,277 (54.5%)	16,877 (54.6%)	13,565 (54.2%)	17,203 (53.3%)	15,457 (52.4%)	15,486 (52.5%)	15,671 (53.2%)	14,493 (52.2%)
FR	Male	3,619 (11.6%)	3,837 (12.3%)	3,961 (12.5%)	3,924 (12.7%)	3,449 (13.8%)	4,693 (14.5%)	4,829 (16.4%)	4,958 (16.8%)	4,842 (16.4%)	4,525 (16.3%)
	Female	272 (0.9%)	352 (1.1%)	376 (1.2%)	536 (1.7%)	542 (2.2%)	686 (2.1%)	662 (2.2%)	693 (2.3%)	656 (2.2%)	806 (2.9%)
	Subtotal	3,891 (12.5%)	4,189 (13.4%)	4,337 (13.7%)	4,460 (14.4%)	3,991 (15.9%)	5,379 (16.7%)	5,491 (18.6%)	5,651 (19.1%)	5,498 (18.7%)	5,331 (19.2%)
USA	Male	318 (1.0%)	213 (0.7%)	211 (0.7%)	186 (0.6%)	143 (0.6%)	172 (0.5%)	120 (0.4%)	102 (0.3%)	50 (0.2%)	51 (0.2%)
	Female	6 (0.0%)	10 (0.0%)	13 (0.0%)	20 (0.1%)	27 (0.1%)	6 (0.0%)	6 (0.0%)	1 (0.0%)	3 (0.0%)	9 (0.0%)
	Subtotal	324 (1.0%)	223 (0.7%)	224 (0.7%)	206 (0.7%)	170 (0.7%)	178 (0.6%)	126 (0.4%)	103 (0.3%)	53 (0.2%)	60 (0.2%)
GNY	Male	309 (1.0%)	313 (1.0%)	299 (0.9%)	370 (1.2%)	278 (1.1%)	409 (1.3%)	385 (1.3%)	334 (1.1%)	274 (0.9%)	208 (0.7%)
	Female	28 (0.1%)	12 (0.0%)	21 (0.1%)	27 (0.1%)	24 (0.1%)	48 (0.1%)	47 (0.2%)	27 (0.1%)	21 (0.1%)	19 (0.1%)
	Subtotal	337 (1.1%)	325 (1.0%)	320 (1.0%)	397 (1.3%)	302 (1.2%)	457 (1.4%)	432 (1.5%)	361 (1.2%)	295 (1.0%)	227 (0.8%)
Other	Male	36 (0.1%)	33 (0.1%)	50 (0.2%)	34 (0.1%)	21 (0.1%)	18 (0.1%)	13 (0.0%)	14 (0.0%)	16 (0.1%)	18 (0.1%)
	Female	21 (0.1%)	11 (0.0%)	10 (0.0%)	2 (0.0%)	2 (0.0%)	3 (0.0%)	9 (0.0%)	5 (0.0%)	4 (0.0%)	2 (0.0%)
	Subtotal	57 (0.2%)	44 (0.1%)	60 (0.2%)	36 (0.1%)	23 (0.1%)	21 (0.1%)	22 (0.1%)	19 (0.1%)	20 (0.1%)	20 (0.1%)

Annual Individual Runners by Breeding

Flat

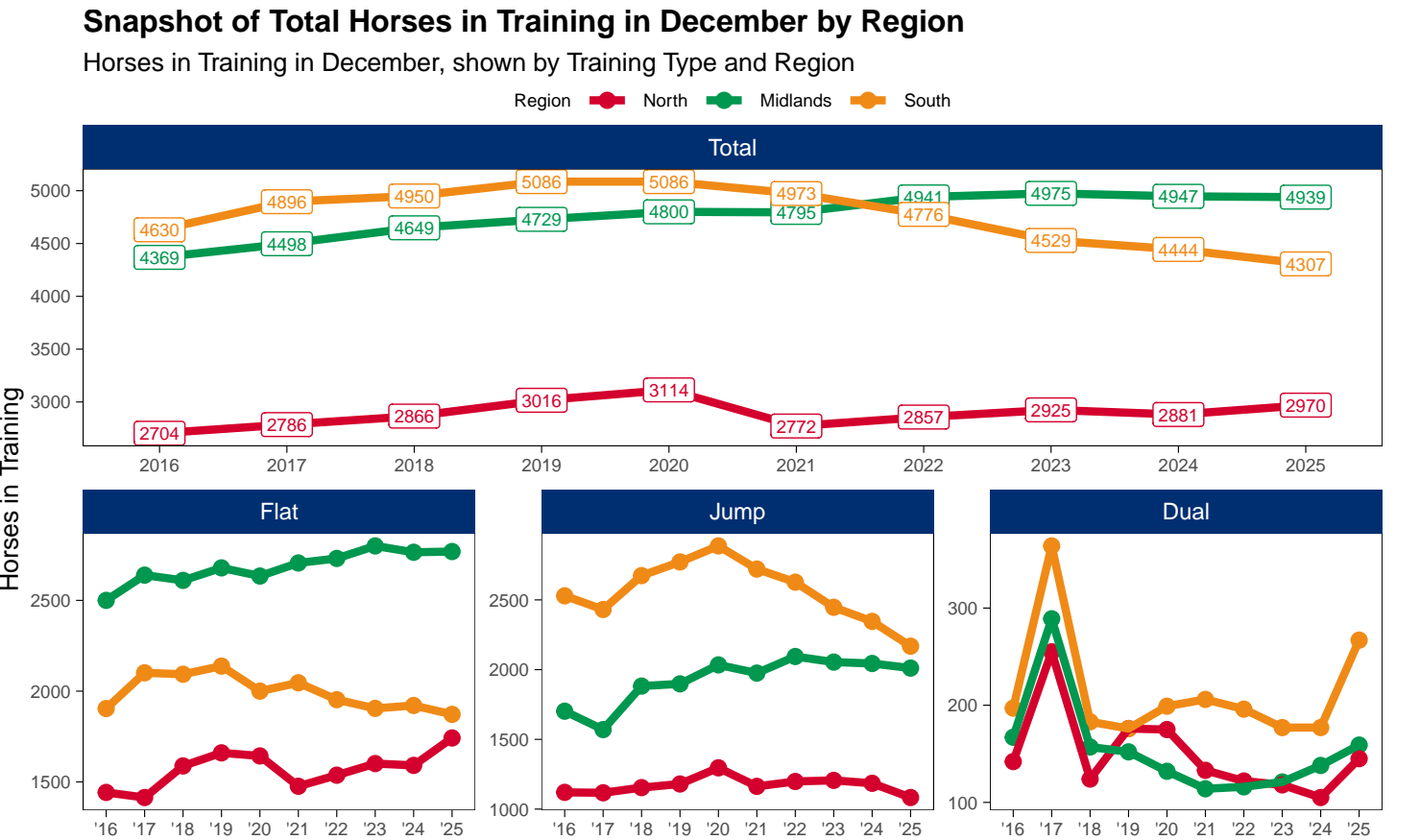
Bred	Sex	2016	2017	2018	2019	2020	2021	2022	2023	2024	2025
GB	Male	3,208 (29.1%)	3,322 (29.3%)	3,398 (29.4%)	3,384 (29.4%)	3,224 (29.6%)	3,204 (29.0%)	3,094 (28.6%)	3,040 (27.9%)	3,102 (28.3%)	3,036 (28.3%)
	Female	2,155 (19.6%)	2,194 (19.3%)	2,210 (19.1%)	2,223 (19.3%)	2,133 (19.6%)	2,219 (20.1%)	2,160 (20.0%)	2,120 (19.4%)	2,093 (19.1%)	2,114 (19.7%)
	Subtotal	5,363 (48.7%)	5,516 (48.6%)	5,608 (48.5%)	5,607 (48.7%)	5,357 (49.2%)	5,423 (49.0%)	5,254 (48.6%)	5,160 (47.3%)	5,195 (47.4%)	5,150 (47.9%)
IRE	Male	3,090 (28.1%)	3,155 (27.8%)	3,224 (27.9%)	3,179 (27.6%)	3,028 (27.8%)	3,182 (28.8%)	3,179 (29.4%)	3,255 (29.8%)	3,310 (30.2%)	3,235 (30.1%)
	Female	1,546 (14.0%)	1,582 (13.9%)	1,617 (14.0%)	1,611 (14.0%)	1,527 (14.0%)	1,559 (14.1%)	1,595 (14.8%)	1,709 (15.7%)	1,665 (15.2%)	1,618 (15.1%)
	Subtotal	4,636 (42.1%)	4,737 (41.7%)	4,841 (41.9%)	4,790 (41.6%)	4,555 (41.9%)	4,741 (42.9%)	4,774 (44.2%)	4,964 (45.5%)	4,975 (45.4%)	4,853 (45.2%)
FR	Male	242 (2.2%)	277 (2.4%)	331 (2.9%)	369 (3.2%)	360 (3.3%)	347 (3.1%)	332 (3.1%)	348 (3.2%)	388 (3.5%)	368 (3.4%)
	Female	96 (0.9%)	114 (1.0%)	132 (1.1%)	143 (1.2%)	131 (1.2%)	138 (1.2%)	138 (1.3%)	155 (1.4%)	146 (1.3%)	129 (1.2%)
	Subtotal	338 (3.1%)	391 (3.4%)	463 (4.0%)	512 (4.4%)	491 (4.5%)	485 (4.4%)	470 (4.4%)	503 (4.6%)	534 (4.9%)	497 (4.6%)
USA	Male	397 (3.6%)	405 (3.6%)	366 (3.2%)	342 (3.0%)	267 (2.5%)	218 (2.0%)	145 (1.3%)	136 (1.2%)	127 (1.2%)	90 (0.8%)
	Female	130 (1.2%)	152 (1.3%)	152 (1.3%)	132 (1.1%)	97 (0.9%)	77 (0.7%)	52 (0.5%)	53 (0.5%)	42 (0.4%)	47 (0.4%)
	Subtotal	527 (4.8%)	557 (4.9%)	518 (4.5%)	474 (4.1%)	364 (3.3%)	295 (2.7%)	197 (1.8%)	189 (1.7%)	169 (1.5%)	137 (1.3%)
GNY	Male	80 (0.7%)	83 (0.7%)	69 (0.6%)	69 (0.6%)	65 (0.6%)	66 (0.6%)	53 (0.5%)	52 (0.5%)	52 (0.5%)	57 (0.5%)
	Female	16 (0.1%)	16 (0.1%)	20 (0.2%)	25 (0.2%)	26 (0.2%)	28 (0.3%)	26 (0.2%)	17 (0.2%)	19 (0.2%)	22 (0.2%)
	Subtotal	96 (0.9%)	99 (0.9%)	89 (0.8%)	94 (0.8%)	91 (0.8%)	94 (0.8%)	79 (0.7%)	69 (0.6%)	71 (0.6%)	79 (0.7%)
Other	Male	30 (0.3%)	35 (0.3%)	33 (0.3%)	34 (0.3%)	18 (0.2%)	18 (0.2%)	21 (0.2%)	15 (0.1%)	11 (0.1%)	17 (0.2%)
	Female	16 (0.1%)	19 (0.2%)	13 (0.1%)	13 (0.1%)	8 (0.1%)	5 (0.0%)	6 (0.1%)	8 (0.1%)	6 (0.1%)	9 (0.1%)
	Subtotal	46 (0.4%)	54 (0.5%)	46 (0.4%)	47 (0.4%)	26 (0.2%)	23 (0.2%)	27 (0.2%)	23 (0.2%)	17 (0.2%)	26 (0.2%)

Jump

Bred	Sex	2016	2017	2018	2019	2020	2021	2022	2023	2024	2025
GB	Male	1,853 (22.5%)	1,737 (21.1%)	1,687 (20.3%)	1,679 (19.8%)	1,519 (19.1%)	1,714 (19.3%)	1,504 (18.0%)	1,488 (18.0%)	1,464 (18.1%)	1,422 (18.1%)
	Female	840 (10.2%)	820 (9.9%)	849 (10.2%)	816 (9.6%)	754 (9.5%)	878 (9.9%)	812 (9.7%)	818 (9.9%)	799 (9.9%)	761 (9.7%)
	Subtotal	2,693 (32.7%)	2,557 (31.0%)	2,536 (30.5%)	2,495 (29.4%)	2,273 (28.5%)	2,592 (29.2%)	2,316 (27.7%)	2,306 (27.8%)	2,263 (28.0%)	2,183 (27.8%)
IRE	Male	3,665 (44.5%)	3,688 (44.7%)	3,663 (44.0%)	3,680 (43.4%)	3,437 (43.1%)	3,755 (42.2%)	3,528 (42.2%)	3,415 (41.2%)	3,258 (40.4%)	3,106 (39.6%)
	Female	649 (7.9%)	715 (8.7%)	826 (9.9%)	900 (10.6%)	823 (10.3%)	900 (10.1%)	853 (10.2%)	902 (10.9%)	930 (11.5%)	921 (11.7%)
	Subtotal	4,314 (52.4%)	4,403 (53.4%)	4,489 (53.9%)	4,580 (54.0%)	4,260 (53.5%)	4,655 (52.4%)	4,381 (52.4%)	4,317 (52.1%)	4,188 (51.9%)	4,027 (51.4%)
FR	Male	936 (11.4%)	1,012 (12.3%)	1,018 (12.2%)	1,062 (12.5%)	1,094 (13.7%)	1,298 (14.6%)	1,309 (15.7%)	1,317 (15.9%)	1,300 (16.1%)	1,304 (16.6%)
	Female	88 (1.1%)	109 (1.3%)	137 (1.6%)	174 (2.1%)	186 (2.3%)	189 (2.1%)	203 (2.4%)	211 (2.5%)	211 (2.6%)	240 (3.1%)
	Subtotal	1,024 (12.4%)	1,121 (13.6%)	1,155 (13.9%)	1,236 (14.6%)	1,280 (16.1%)	1,487 (16.7%)	1,512 (18.1%)	1,528 (18.4%)	1,511 (18.7%)	1,544 (19.7%)
USA	Male	82 (1.0%)	60 (0.7%)	55 (0.7%)	56 (0.7%)	44 (0.6%)	48 (0.5%)	39 (0.5%)	31 (0.4%)	19 (0.2%)	10 (0.1%)
	Female	3 (0.0%)	3 (0.0%)	5 (0.1%)	7 (0.1%)	6 (0.1%)	2 (0.0%)	2 (0.0%)	1 (0.0%)	1 (0.0%)	3 (0.0%)
	Subtotal	85 (1.0%)	63 (0.8%)	60 (0.7%)	63 (0.7%)	50 (0.6%)	50 (0.6%)	41 (0.5%)	32 (0.4%)	20 (0.2%)	13 (0.2%)
GNY	Male	90 (1.1%)	81 (1.0%)	71 (0.9%)	84 (1.0%)	85 (1.1%)	90 (1.0%)	92 (1.1%)	85 (1.0%)	74 (0.9%)	58 (0.7%)
	Female	9 (0.1%)	6 (0.1%)	5 (0.1%)	7 (0.1%)	9 (0.1%)	12 (0.1%)	15 (0.2%)	14 (0.2%)	8 (0.1%)	8 (0.1%)
	Subtotal	99 (1.2%)	87 (1.1%)	76 (0.9%)	91 (1.1%)	94 (1.2%)	102 (1.1%)	107 (1.3%)	99 (1.2%)	82 (1.0%)	66 (0.8%)
Other	Male	8 (0.1%)	9 (0.1%)	8 (0.1%)	10 (0.1%)	8 (0.1%)	4 (0.0%)	3 (0.0%)	5 (0.1%)	4 (0.0%)	8 (0.1%)
	Female	5 (0.1%)	4 (0.0%)	3 (0.0%)	1 (0.0%)	2 (0.0%)	1 (0.0%)	2 (0.0%)	1 (0.0%)	2 (0.0%)	1 (0.0%)
	Subtotal	13 (0.2%)	13 (0.2%)	11 (0.1%)	11 (0.1%)	10 (0.1%)	5 (0.1%)	5 (0.1%)	6 (0.1%)	6 (0.1%)	9 (0.1%)

Horse Population by Location

December 2025 Horses in Training Snapshot by Region versus Previous Years



North

AgeCat	2016	2017	2018	2019	2020	2021	2022	2023	2024	2025	vs. Last Year	vs. Pre-Covid
Flat Horses in Training												
2YO	533	501	569	678	596	549	523	574	523	599	+76 / +14.5%	-79 / -11.7%
3YO	338	330	361	357	381	364	360	362	386	414	+28 / +7.3%	+57 / +16.0%
4YO	191	231	246	238	226	203	236	218	253	266	+13 / +5.1%	+28 / +11.8%
5YO+	380	352	412	387	440	360	418	447	429	463	+34 / +7.9%	+76 / +19.6%
Subtotal	1442	1414	1588	1660	1643	1476	1537	1601	1591	1742	+151 / +9.5%	+82 / +4.9%
Jump Horses in Training												
3YO	95	66	79	68	58	63	97	68	70	51	-19 / -27.1%	-17 / -25.0%
4-5YO	385	397	394	421	421	385	416	440	421	391	-30 / -7.1%	-30 / -7.1%
6-7YO	314	324	350	365	425	383	378	394	405	358	-47 / -11.6%	-7 / -1.9%
8YO+	326	330	331	326	392	332	307	304	289	283	-6 / -2.1%	-43 / -13.2%
Subtotal	1120	1117	1154	1180	1296	1163	1198	1206	1185	1083	-102 / -8.6%	-97 / -8.2%
Dual Horses in Training												
3YO	34	65	31	50	46	28	33	37	32	43	+11 / +34.4%	-7 / -14.0%
4YO	30	70	34	41	39	36	30	28	24	32	+8 / +33.3%	-9 / -22.0%
5YO+	78	120	59	85	90	69	59	53	49	70	+21 / +42.9%	-15 / -17.6%
Subtotal	142	255	124	176	175	133	122	118	105	145	+40 / +38.1%	-31 / -17.6%
Total Horses in Training												
	2704	2786	2866	3016	3114	2772	2857	2925	2881	2970	+89 / +3.1%	-46 / -1.5%

'vs. Pre-Covid' is comparison between 2025 and 2019

Midlands

AgeCat	2016	2017	2018	2019	2020	2021	2022	2023	2024	2025	vs. Last Year	vs. Pre-Covid
Flat Horses in Training												
2YO	1243	1332	1264	1281	1250	1295	1274	1277	1242	1252	+10 / +0.8%	-29 / -2.3%
3YO	558	583	588	603	641	657	680	667	650	656	+6 / +0.9%	+53 / +8.8%
4YO	248	275	309	314	291	337	337	346	333	345	+12 / +3.6%	+31 / +9.9%
5YO+	451	449	449	481	452	417	440	510	540	516	-24 / -4.4%	+35 / +7.3%
Subtotal	2500	2639	2610	2679	2634	2706	2731	2800	2765	2769	+4 / +0.1%	+90 / +3.4%
Jump Horses in Training												
3YO	149	118	168	146	138	127	165	141	175	218	+43 / +24.6%	+72 / +49.3%
4-5YO	664	620	748	792	828	823	885	874	838	809	-29 / -3.5%	+17 / +2.1%
6-7YO	510	454	555	569	620	602	634	637	626	599	-27 / -4.3%	+30 / +5.3%
8YO+	379	378	411	391	448	423	410	402	405	385	-20 / -4.9%	-6 / -1.5%
Subtotal	1702	1570	1882	1898	2034	1975	2094	2054	2044	2011	-33 / -1.6%	+113 / +6.0%
Dual Horses in Training												
3YO	52	73	57	45	40	42	32	34	36	41	+5 / +13.9%	-4 / -8.9%
4YO	36	84	37	39	25	22	28	36	41	49	+8 / +19.5%	+10 / +25.6%
5YO+	79	132	63	68	67	50	56	51	61	69	+8 / +13.1%	+1 / +1.5%
Subtotal	167	289	157	152	132	114	116	121	138	159	+21 / +15.2%	+7 / +4.6%
Total Horses in Training												
	4369	4498	4649	4729	4800	4795	4941	4975	4947	4939	-8 / -0.2%	+210 / +4.4%

'vs. Pre-Covid' is comparison between 2025 and 2019

South

AgeCat	2016	2017	2018	2019	2020	2021	2022	2023	2024	2025	vs. Last Year	vs. Pre-Covid
Flat Horses in Training												
2YO	887	1015	992	1034	934	926	915	900	981	895	-86 / -8.8%	-139 / -13.4%
3YO	405	449	494	493	463	504	440	433	403	458	+55 / +13.6%	-35 / -7.1%
4YO	230	240	236	247	241	237	239	211	220	195	-25 / -11.4%	-52 / -21.1%
5YO+	382	397	371	364	362	379	359	361	317	324	+7 / +2.2%	-40 / -11.0%
Subtotal	1904	2101	2093	2138	2000	2046	1953	1905	1921	1872	-49 / -2.6%	-266 / -12.4%
Jump Horses in Training												
3YO	230	211	247	280	223	250	246	239	226	236	+10 / +4.4%	-44 / -15.7%
4-5YO	1044	986	1120	1136	1097	1064	1165	1076	999	910	-89 / -8.9%	-226 / -19.9%
6-7YO	725	749	782	816	949	835	733	705	719	654	-65 / -9.0%	-162 / -19.9%
8YO+	530	485	525	540	618	572	483	427	402	368	-34 / -8.5%	-172 / -31.9%
Subtotal	2529	2431	2674	2772	2887	2721	2627	2447	2346	2168	-178 / -7.6%	-604 / -21.8%
Dual Horses in Training												
3YO	45	91	62	58	63	70	62	64	58	98	+40 / +69.0%	+40 / +69.0%
4YO	37	103	37	51	47	46	42	37	49	70	+21 / +42.9%	+19 / +37.3%
5YO+	115	170	84	67	89	90	92	76	70	99	+29 / +41.4%	+32 / +47.8%
Subtotal	197	364	183	176	199	206	196	177	177	267	+90 / +50.8%	+91 / +51.7%
Total Horses in Training												
	4630	4896	4950	5086	5086	4973	4776	4529	4444	4307	-137 / -3.1%	-779 / -15.3%

'vs. Pre-Covid' is comparison between 2025 and 2019

December 2025 Horses in Training Snapshot by Country versus Previous Years

Type	2016	2017	2018	2019	2020	2021	2022	2023	2024	2025	vs. Last Year	vs. Pre-Covid
England												
Flat	5616	5909	6060	6232	6045	6010	5954	6042	6012	6108	+96 / +1.6%	-124 / -2.0%
Jump	4644	4449	4996	5132	5419	5127	5180	4986	4830	4592	-238 / -4.9%	-540 / -10.5%
Dual	444	802	411	463	446	405	399	379	389	506	+117 / +30.1%	+43 / +9.3%
Overall	10704	11160	11467	11827	11910	11542	11533	11407	11231	11206	-25 / -0.2%	-621 / -5.3%
Scotland												
Flat	115	135	113	113	129	116	168	160	162	177	+15 / +9.3%	+64 / +56.6%
Jump	309	331	350	346	406	356	401	395	407	344	-63 / -15.5%	-2 / -0.6%
Dual	31	56	28	29	35	28	20	19	17	25	+8 / +47.1%	-4 / -13.8%
Overall	455	522	491	488	570	500	589	574	586	546	-40 / -6.8%	+58 / +11.9%
Wales												
Flat	115	110	118	132	103	102	99	104	103	98	-5 / -4.9%	-34 / -25.8%
Jump	398	338	364	372	392	376	338	326	338	326	-12 / -3.6%	-46 / -12.4%
Dual	31	50	25	12	25	20	15	18	14	40	+26 / +185.7%	+28 / +233.3%
Overall	544	498	507	516	520	498	452	448	455	464	+9 / +2.0%	-52 / -10.1%

'vs. Pre-Covid' is comparison between 2025 and 2019

December 2025 Horses in Training Snapshot by Training Centre versus Previous Years

Type	2016	2017	2018	2019	2020	2021	2022	2023	2024	2025	vs. Last Year	vs. Pre-Covid
Cheltenham (GL54)												
Flat	8	18	12	19	19	20	12	12	19	24	+5 / +26.3%	+5 / +26.3%
Jump	450	432	481	506	596	521	523	480	510	511	+1 / +0.2%	+5 / +1.0%
Dual	21	66	28	15	11	12	9	15	18	24	+6 / +33.3%	+9 / +60.0%
Overall	479	516	521	540	626	553	544	507	547	559	+12 / +2.2%	+19 / +3.5%
Lambourn (RG17)												
Flat	487	604	555	581	537	519	561	543	583	576	-7 / -1.2%	-5 / -0.9%
Jump	347	346	372	414	368	339	321	278	282	267	-15 / -5.3%	-147 / -35.5%
Dual	18	38	18	24	28	27	37	22	25	29	+4 / +16.0%	+5 / +20.8%
Overall	852	988	945	1019	933	885	919	843	890	872	-18 / -2.0%	-147 / -14.4%
Malton (YO17)												
Flat	353	332	406	466	431	369	405	446	423	487	+64 / +15.1%	+21 / +4.5%
Jump	142	138	113	109	110	101	95	93	66	64	-2 / -3.0%	-45 / -41.3%
Dual	21	38	21	31	43	38	32	26	24	23	-1 / -4.2%	-8 / -25.8%
Overall	516	508	540	606	584	508	532	565	513	574	+61 / +11.9%	-32 / -5.3%
Marlborough (SN8)												
Flat	283	307	312	312	285	267	232	246	262	240	-22 / -8.4%	-72 / -23.1%
Jump	72	82	75	74	76	89	84	80	77	81	+4 / +5.2%	+7 / +9.5%
Dual	3	1	2	6	2	2	2	5	3	2	-1 / -33.3%	-4 / -66.7%
Overall	358	390	389	392	363	358	318	331	342	323	-19 / -5.6%	-69 / -17.6%
Middleham (DL8)												
Flat	281	252	292	334	339	290	274	313	299	358	+59 / +19.7%	+24 / +7.2%
Jump	84	81	103	111	124	117	120	115	115	99	-16 / -13.9%	-12 / -10.8%
Dual	21	40	16	36	35	18	21	14	18	20	+2 / +11.1%	-16 / -44.4%
Overall	386	373	411	481	498	425	415	442	432	477	+45 / +10.4%	-4 / -0.8%
Newbury (RG20)												
Flat	248	263	285	266	286	308	287	293	275	267	-8 / -2.9%	+1 / +0.4%
Jump	25	16	25	14	16	10	35	65	89	81	-8 / -9.0%	+67 / +478.6%
Dual	8	13	7	8	6	5	3	6	2	8	+6 / +300.0%	0 / 0.0%
Overall	281	292	317	288	308	323	325	364	366	356	-10 / -2.7%	+68 / +23.6%
Newmarket (CB8)												
Flat	1695	1772	1722	1798	1784	1834	1821	1929	1832	1792	-40 / -2.2%	-6 / -0.3%
Jump	55	49	67	58	65	57	60	77	80	79	-1 / -1.2%	+21 / +36.2%
Dual	35	41	15	26	27	20	27	32	42	51	+9 / +21.4%	+25 / +96.2%
Overall	1785	1862	1804	1882	1876	1911	1908	2038	1954	1922	-32 / -1.6%	+40 / +2.1%

'vs. Pre-Covid' is comparison between 2025 and 2019