

Horse Population Report

Updated on 30 November 2025



Introduction

Welcome to the latest update on the Racehorse Population from the British Horseracing Authority.

The aim of this document is to give stakeholders and the wider Public an insight into the current state of the Horse Population in Great Britain. It is hoped that this transparency will ensure that all decision makers have access to the key data required to help British Racing deliver a Competitive and Compelling product to stakeholders, racegoers and the wider public.

If you have any questions regarding the content of this report or suggestions for how it could be improved further, please contact Joe Yates – jyates@britishhorseracing.com

Definitions

This report uses the Horses in Training returns from the Weatherby's Racing Administration System, this is completed by trainers and should be updated whenever a horse enters or leaves training in their care as part of the conditions of their licence.

Horses in Training

Unless otherwise stated, snapshots of Horses in Training will be from the 15th day of the month in question and year to date figures will be up to and including the date titled at the front of the report.

Horses' ratings will be taken from the most recently published ratings by the BHA Handicapping Team, which is currently at 7am each Tuesday morning. For example, if looking at the Horses in a particular rating band for July 2011, the horses in training number will be from Friday 15th July 2011 and ratings, where possible, will be assigned to each horse from the ratings published by the BHA Handicappers on Tuesday 12th July 2011.

The Gender of a horse will be taken from the reporting date in question, regardless of whether this has since changed.

In the case of YTD reporting, where a horse's gender or training type has changed in the year-to-date period, the most recent is taken.

This report does not count any horses that are temporarily racing abroad for GB Trainers at the time of reporting.

Yearlings are not included in total counts of flat and/or dual horses but will be sometimes shown separately for information purposes.

Yearlings and two-year-olds are not included in total counts of jump horses or counts of jump horses that include dual horses but will be sometimes shown separately for information purposes.

Yearlings, two-year-olds and three-year-olds are not included in total counts of Hunter Chasers but will be sometimes shown separately for information purposes.

Yearlings and two-year-olds in training that are recorded as dual horses have been re-coded as flat horses.

Hunter Chasers are not included in any counts of Jump Horses or Total figures but will be sometimes shown separately for information purposes.

Horses' training locations are defined by the trainers' primary training location. Training regions are defined the same as regions for the Fixture List; 'North' is north of latitude 53.42911, 'South' is south of latitude 51.88002 and 'Midlands' is anywhere in between. Training centres are defined by postcodes and surrounding areas.

Runners

Unless otherwise specified, Total Runners and Individual Runners metrics only counts runners that ran in GB races including any voided races. Withdrawn horses are not included.

Hunter Chases are not included in this section but will be sometimes shown separately for information purposes.

Total Runners is a count of all runners in races, whilst individual runners only counts each individual horse once.

Monthly Horses in Training

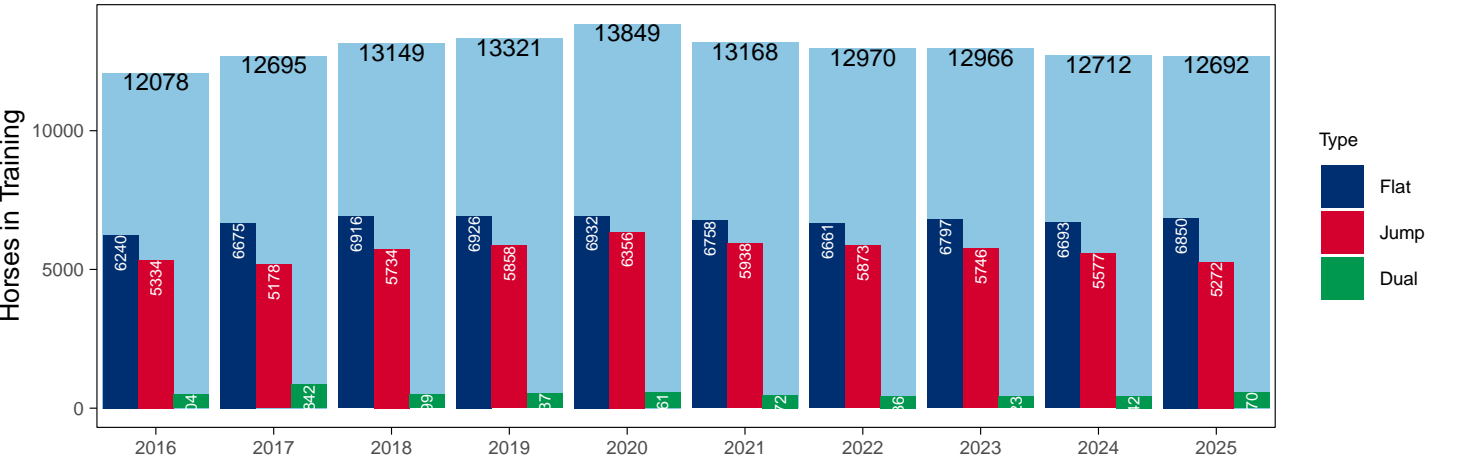
November 2025 Horses in Training Snapshot versus Previous Years

Type	2016	2017	2018	2019	2020	2021	2022	2023	2024	2025	vs. Last Year	vs. Pre-Covid
Flat	6240	6675	6916	6926	6932	6758	6661	6797	6693	6850	+157 / +2.3%	-76 / -1.1%
Jump	5334	5178	5734	5858	6356	5938	5873	5746	5577	5272	-305 / -5.5%	-586 / -10.0%
Dual	504	842	499	537	561	472	436	423	442	570	+128 / +29.0%	+33 / +6.1%
Total	12078	12695	13149	13321	13849	13168	12970	12966	12712	12692	-20 / -0.2%	-629 / -4.7%

'vs. Pre-Covid' is comparison between 2025 and 2019

Snapshot of Total Horses in Training in November

Horses in Training in November, shown by Training Type



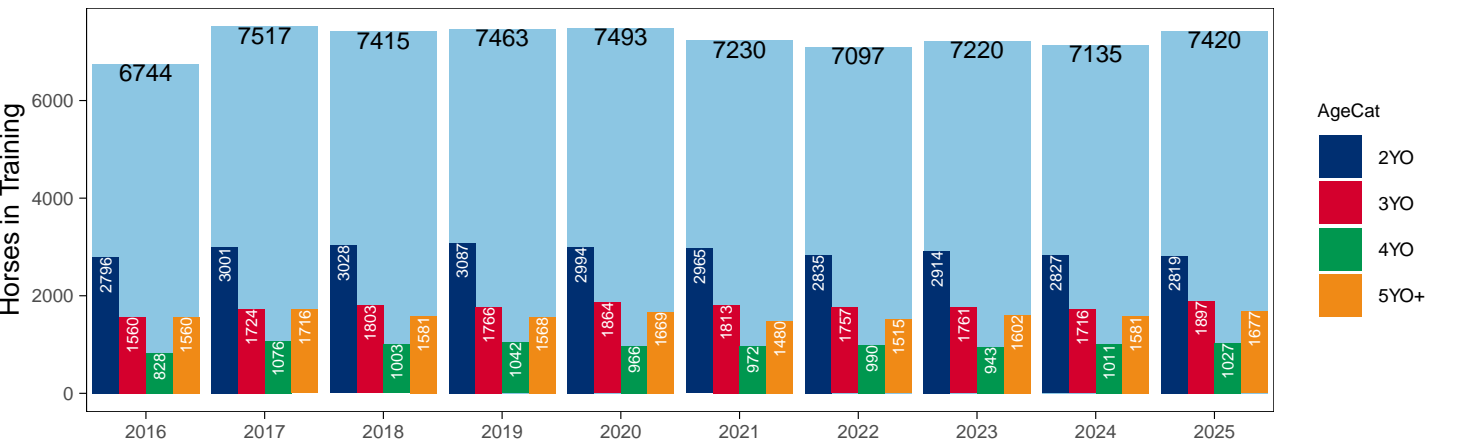
Flat (including Dual)

AgeCat	2016	2017	2018	2019	2020	2021	2022	2023	2024	2025	vs. Last Year	vs. Pre-Covid
2YO	2796	3001	3028	3087	2994	2965	2835	2914	2827	2819	-8 / -0.3%	-268 / -8.7%
3YO	1560	1724	1803	1766	1864	1813	1757	1761	1716	1897	+181 / +10.5%	+131 / +7.4%
4YO	828	1076	1003	1042	966	972	990	943	1011	1027	+16 / +1.6%	-15 / -1.4%
5YO+	1560	1716	1581	1568	1669	1480	1515	1602	1581	1677	+96 / +6.1%	+109 / +7.0%
Total	6744	7517	7415	7463	7493	7230	7097	7220	7135	7420	+285 / +4.0%	-43 / -0.6%

'vs. Pre-Covid' is comparison between 2025 and 2019

Snapshot of Flat Horses in Training in November

Flat Horses in Training in November, shown by Age



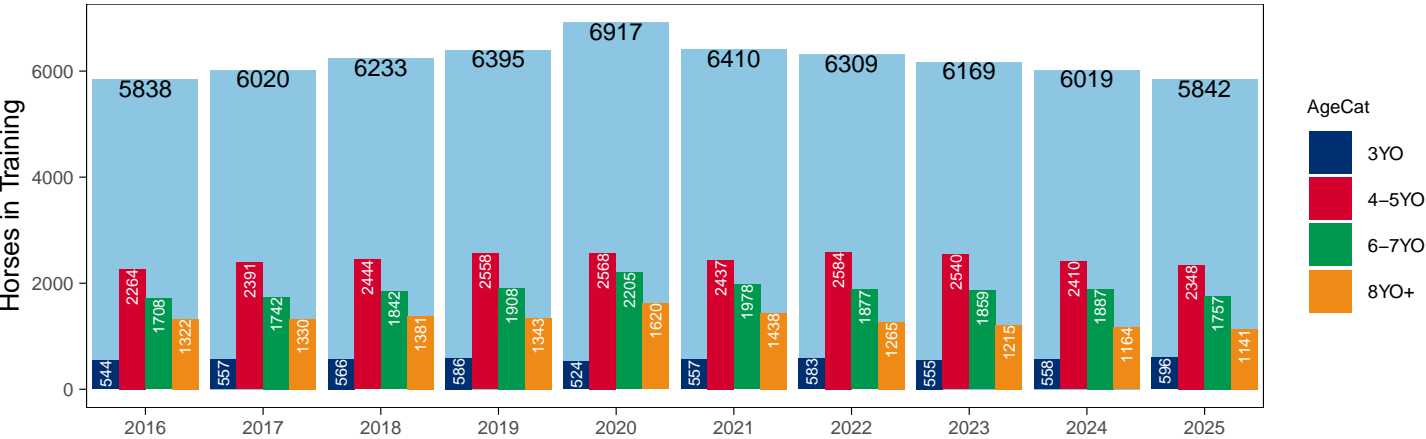
Jump (including Dual)

AgeCat	2016	2017	2018	2019	2020	2021	2022	2023	2024	2025	vs. Last Year		vs. Pre-Covid	
3YO	544	557	566	586	524	557	583	555	558	596	+38	+6.8%	+10	+1.7%
4-5YO	2264	2391	2444	2558	2568	2437	2584	2540	2410	2348	-62	-2.6%	-210	-8.2%
6-7YO	1708	1742	1842	1908	2205	1978	1877	1859	1887	1757	-130	-6.9%	-151	-7.9%
8YO+	1322	1330	1381	1343	1620	1438	1265	1215	1164	1141	-23	-2.0%	-202	-15.0%
Total	5838	6020	6233	6395	6917	6410	6309	6169	6019	5842	-177	-2.9%	-553	-8.6%

'vs. Pre-Covid' is comparison between 2025 and 2019

Snapshot of Jump Horses in Training in November

Jump Horses in Training in November, shown by Age



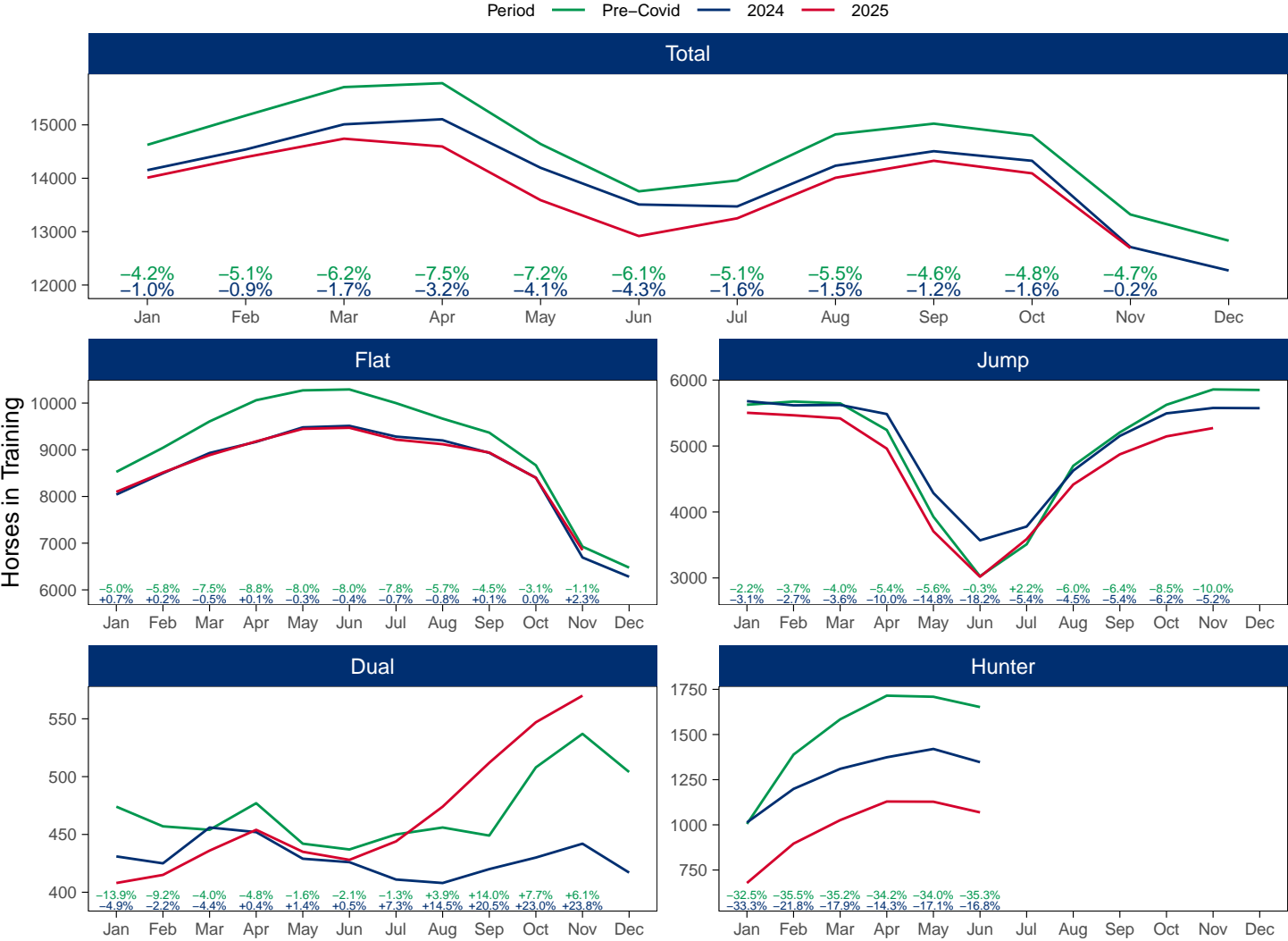
2025 Horses in Training versus Previous Years

Type	Period	Jan	Feb	Mar	Apr	May	Jun	Jul	Aug	Sep	Oct	Nov	Dec
Flat	2025	8099	8514	8886	9180	9448	9471	9217	9119	8941	8399	6850	
	2024	8041	8497	8931	9169	9480	9512	9282	9200	8934	8402	6693	6281
	Pre-Covid	8526	9043	9607	10061	10272	10292	9999	9666	9367	8668	6926	6477
Jump	2025	5504	5466	5419	4961	3707	3018	3588	4416	4874	5146	5272	
	2024	5680	5617	5623	5485	4287	3570	3779	4627	5153	5495	5577	5574
	Pre-Covid	5626	5674	5647	5243	3928	3026	3510	4700	5207	5625	5858	5850
Dual	2025	408	415	436	454	435	428	444	474	512	547	570	
	2024	431	425	456	452	429	426	411	408	420	430	442	417
	Pre-Covid	474	457	454	477	442	437	450	456	449	508	537	504
Hunter	2025	678	896	1026	1129	1128	1069						
	2024	1013	1199	1310	1374	1420	1347						
	Pre-Covid	1005	1389	1584	1715	1709	1652						
Total	2025	14011	14395	14741	14595	13590	12917	13249	14009	14327	14092	12692	
	2024	14152	14539	15010	15106	14196	13508	13472	14235	14507	14327	12712	12272
	Pre-Covid	14626	15174	15708	15781	14642	13755	13959	14822	15023	14801	13321	12831

'Pre-Covid' is 2019 values

Monthly Horses in Training

2025 against 2024 and Pre-Covid, shown with % Difference



'Pre-Covid' is 2019 values

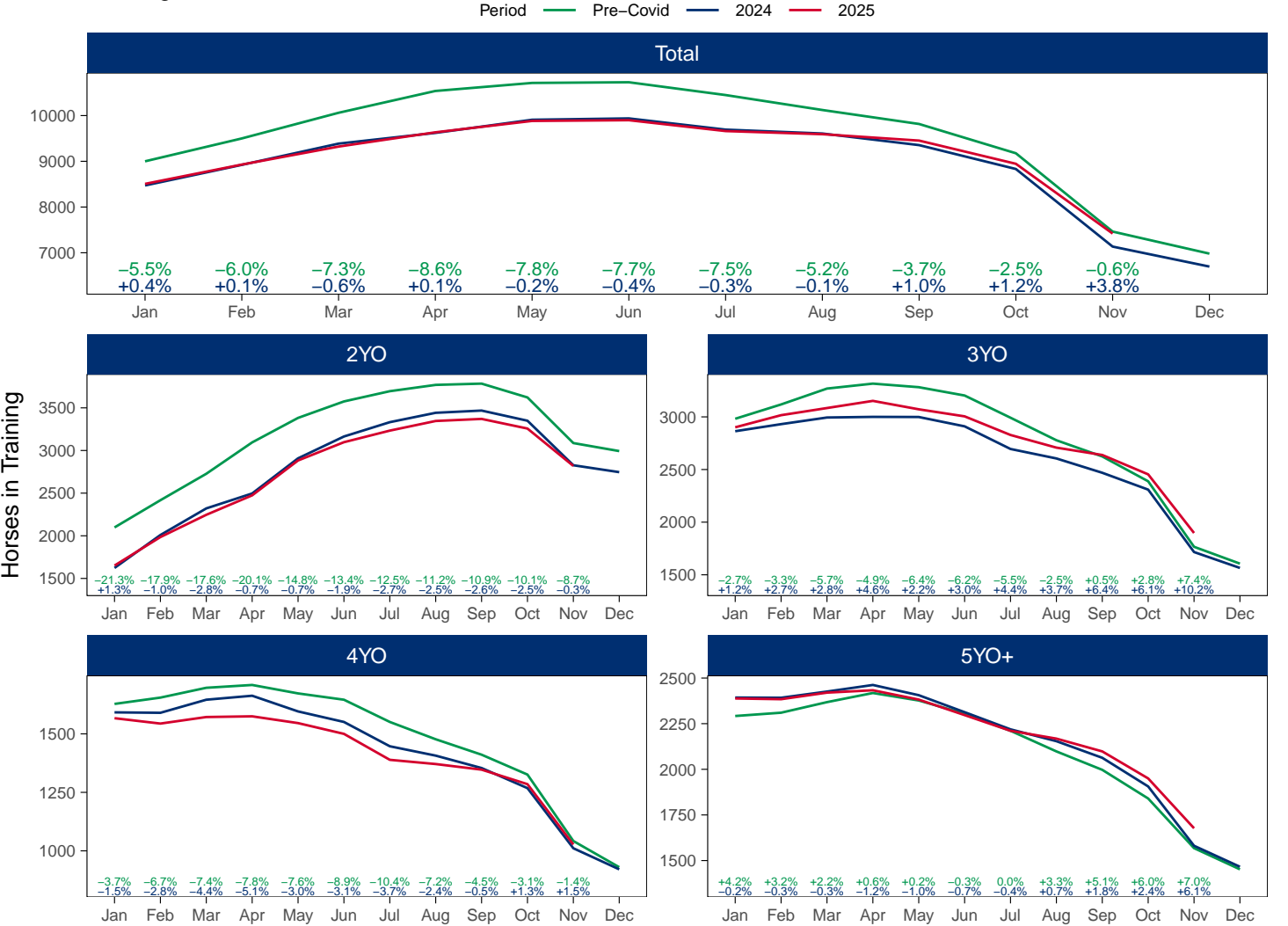
Flat (including Dual)

AgeCat	Period	Jan	Feb	Mar	Apr	May	Jun	Jul	Aug	Sep	Oct	Nov	Dec
2YO	2025	1651	1985	2246	2474	2883	3097	3233	3346	3370	3257	2819	
	2024	1623	2009	2321	2496	2908	3164	3332	3442	3468	3349	2827	2746
	Pre-Covid	2098	2417	2727	3095	3382	3575	3695	3769	3784	3622	3087	2993
3YO	2025	2901	3016	3084	3152	3072	3005	2828	2708	2638	2454	1897	
	2024	2864	2931	2994	3000	2999	2910	2695	2605	2469	2309	1716	1565
	Pre-Covid	2982	3118	3269	3316	3282	3203	2992	2778	2624	2388	1766	1606
4YO	2025	1567	1544	1572	1575	1546	1500	1389	1371	1347	1285	1027	
	2024	1592	1590	1646	1663	1596	1551	1447	1407	1354	1268	1011	921
	Pre-Covid	1628	1655	1697	1709	1673	1646	1551	1477	1411	1326	1042	930
5YO+	2025	2388	2384	2420	2433	2382	2297	2211	2168	2098	1950	1677	
	2024	2393	2392	2426	2462	2406	2313	2219	2154	2063	1906	1581	1466
	Pre-Covid	2292	2310	2368	2418	2377	2305	2211	2098	1997	1840	1568	1452
Total	2025	8507	8929	9322	9634	9883	9899	9661	9593	9453	8946	7420	
	2024	8472	8922	9387	9621	9909	9938	9693	9608	9354	8832	7135	6698
	Pre-Covid	9000	9500	10061	10538	10714	10729	10449	10122	9816	9176	7463	6981

'Pre-Covid' is 2019 values

Monthly Flat Horses in Training

2025 against 2024 and Pre-Covid, shown with % Difference



'Pre-Covid' is 2019 values

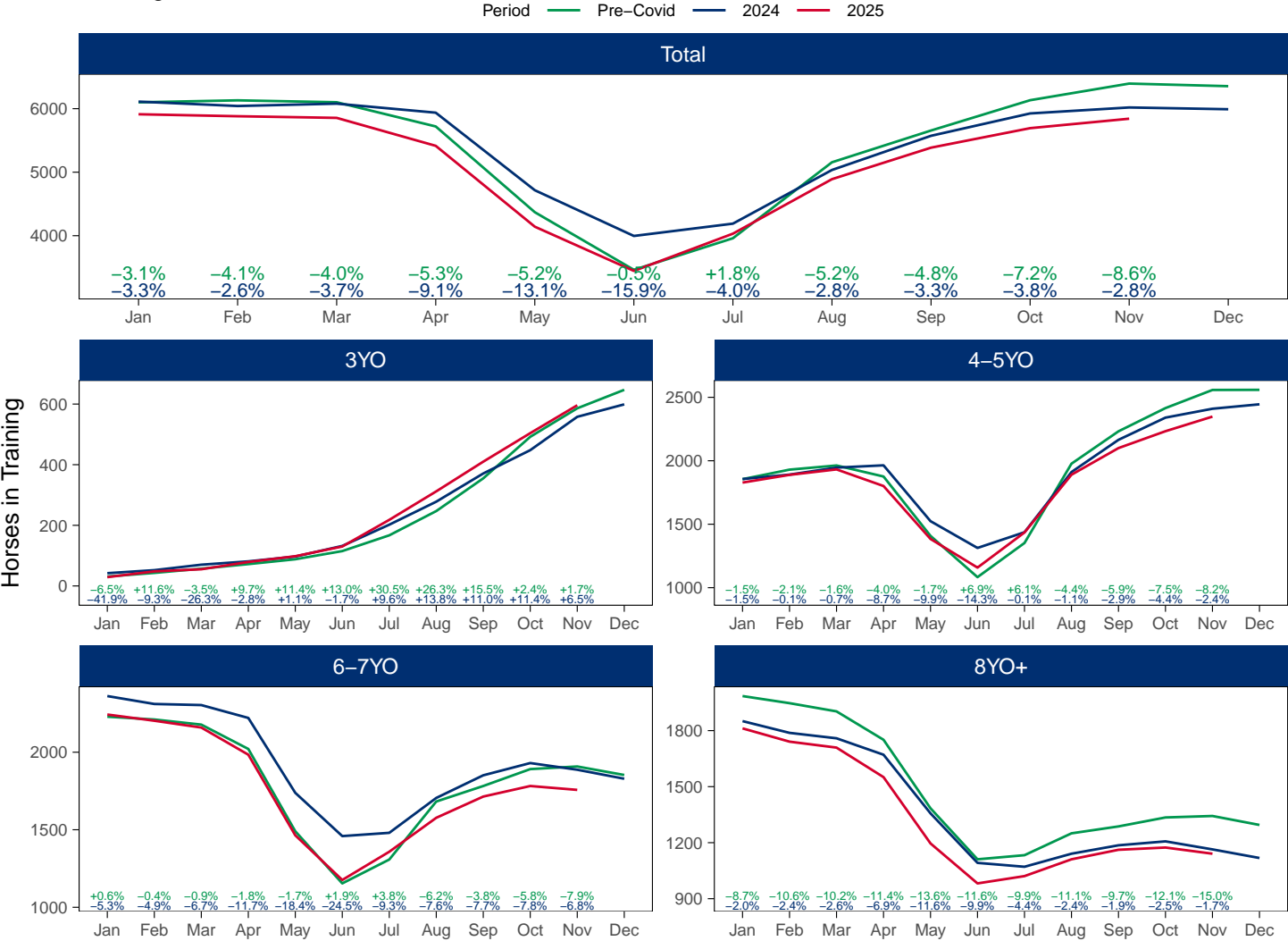
Jump (including Dual)

AgeCat	Period	Jan	Feb	Mar	Apr	May	Jun	Jul	Aug	Sep	Oct	Nov	Dec
3YO	2025	29	48	55	79	98	130	218	312	410	504	596	
	2024	42	52	70	81	97	132	202	278	371	448	558	599
	Pre-Covid	31	43	57	72	88	115	167	247	355	492	586	647
4-5YO	2025	1828	1889	1932	1801	1384	1158	1435	1890	2100	2233	2348	
	2024	1856	1891	1946	1964	1524	1313	1437	1911	2165	2340	2410	2445
	Pre-Covid	1855	1930	1963	1876	1408	1083	1352	1977	2232	2415	2558	2559
6-7YO	2025	2243	2203	2159	1984	1464	1176	1358	1577	1714	1782	1757	
	2024	2362	2311	2304	2221	1738	1459	1480	1705	1851	1930	1887	1829
	Pre-Covid	2229	2211	2178	2021	1490	1154	1308	1682	1782	1891	1908	1853
8YO+	2025	1812	1741	1709	1551	1196	982	1021	1111	1162	1174	1141	
	2024	1851	1788	1759	1671	1357	1092	1071	1141	1186	1207	1164	1118
	Pre-Covid	1985	1947	1903	1751	1384	1111	1133	1250	1287	1335	1343	1295
Total	2025	5912	5881	5855	5415	4142	3446	4032	4890	5386	5693	5842	
	2024	6111	6042	6079	5937	4716	3996	4190	5035	5573	5925	6019	5991
	Pre-Covid	6100	6131	6101	5720	4370	3463	3960	5156	5656	6133	6395	6354

'Pre-Covid' is 2019 values

Monthly Jump Horses in Training

2025 against 2024 and Pre-Covid, shown with % Difference



'Pre-Covid' is 2019 values

November 2025 Horses in Training by Rating Band Snapshot versus Previous Years

Flat (including Dual)

AgeCat	RatBand	2016	2017	2018	2019	2020	2021	2022	2023	2024	2025
2YO	Unrated	1,818 (65.0%)	2,067 (68.9%)	1,996 (65.9%)	2,154 (69.8%)	1,971 (65.8%)	2,000 (67.5%)	1,918 (67.7%)	1,964 (67.4%)	1,947 (68.9%)	1,908 (67.7%)
	0-50	76 (2.7%)	64 (2.1%)	85 (2.8%)	96 (3.1%)	81 (2.8%)	83 (2.8%)	80 (2.8%)	69 (2.4%)	71 (2.5%)	65 (2.3%)
	51-60	149 (5.3%)	144 (4.8%)	182 (6.0%)	153 (5.0%)	169 (5.6%)	148 (5.0%)	156 (5.5%)	156 (5.4%)	135 (4.8%)	165 (5.9%)
	61-70	255 (9.1%)	237 (7.9%)	245 (8.1%)	213 (6.9%)	242 (8.1%)	236 (8.0%)	214 (7.5%)	210 (7.2%)	226 (8.0%)	202 (7.2%)
	71-80	271 (9.7%)	254 (8.5%)	239 (7.9%)	233 (7.5%)	288 (9.6%)	257 (8.7%)	229 (8.1%)	263 (9.0%)	215 (7.6%)	220 (7.8%)
	81-90	142 (5.1%)	113 (3.8%)	166 (5.5%)	126 (4.1%)	127 (4.2%)	128 (4.3%)	137 (4.8%)	138 (4.7%)	123 (4.4%)	148 (5.3%)
	91-100	49 (1.8%)	65 (2.2%)	66 (2.2%)	66 (2.1%)	65 (2.2%)	53 (1.8%)	57 (2.0%)	64 (2.2%)	64 (2.3%)	62 (2.2%)
	101+	36 (1.3%)	57 (1.9%)	49 (1.6%)	46 (1.5%)	51 (1.7%)	60 (2.0%)	44 (1.6%)	50 (1.7%)	46 (1.6%)	49 (1.7%)
Subtotal		2,796 (100.0%)	3,001 (100.0%)	3,028 (100.0%)	3,087 (100.0%)	2,994 (100.0%)	2,965 (100.0%)	2,835 (100.0%)	2,914 (100.0%)	2,827 (100.0%)	2,819 (100.0%)
3YO	Unrated	302 (19.4%)	363 (21.1%)	408 (22.6%)	366 (20.7%)	454 (24.4%)	433 (23.9%)	396 (22.5%)	383 (21.7%)	372 (21.7%)	418 (22.0%)
	0-50	146 (9.4%)	190 (11.0%)	190 (10.5%)	218 (12.3%)	203 (10.9%)	187 (10.3%)	193 (11.0%)	184 (10.4%)	170 (9.9%)	181 (9.5%)
	51-60	216 (13.8%)	238 (13.8%)	226 (12.5%)	256 (14.5%)	255 (13.7%)	256 (14.1%)	255 (14.5%)	255 (14.5%)	239 (13.9%)	273 (14.4%)
	61-70	274 (17.6%)	266 (15.4%)	285 (15.8%)	303 (17.2%)	304 (16.3%)	316 (17.4%)	308 (17.5%)	300 (17.0%)	292 (17.0%)	329 (17.3%)
	71-80	281 (18.0%)	299 (17.3%)	300 (16.6%)	235 (13.3%)	315 (16.9%)	273 (15.1%)	270 (15.4%)	281 (16.0%)	276 (16.1%)	307 (16.2%)
	81-90	163 (10.4%)	178 (10.3%)	204 (11.3%)	186 (10.5%)	174 (9.3%)	200 (11.0%)	174 (9.9%)	185 (10.5%)	213 (12.4%)	213 (11.2%)
	91-100	101 (6.5%)	116 (6.7%)	110 (6.1%)	119 (6.7%)	104 (5.6%)	83 (4.6%)	72 (4.1%)	101 (5.7%)	77 (4.5%)	101 (5.3%)
	101+	77 (4.9%)	74 (4.3%)	80 (4.4%)	83 (4.7%)	55 (3.0%)	65 (3.6%)	89 (5.1%)	72 (4.1%)	77 (4.5%)	75 (4.0%)
Subtotal		1,560 (100.0%)	1,724 (100.0%)	1,803 (100.0%)	1,766 (100.0%)	1,864 (100.0%)	1,813 (100.0%)	1,757 (100.0%)	1,761 (100.0%)	1,716 (100.0%)	1,897 (100.0%)
4YO	Unrated	115 (13.9%)	225 (20.9%)	135 (13.5%)	148 (14.2%)	162 (16.8%)	148 (15.2%)	131 (13.2%)	129 (13.7%)	129 (12.8%)	146 (14.2%)
	0-50	88 (10.6%)	137 (12.7%)	142 (14.2%)	153 (14.7%)	106 (11.0%)	124 (12.8%)	126 (12.7%)	132 (14.0%)	136 (13.5%)	141 (13.7%)
	51-60	125 (15.1%)	138 (12.8%)	145 (14.5%)	167 (16.0%)	157 (16.3%)	164 (16.9%)	156 (15.8%)	166 (17.6%)	178 (17.6%)	139 (13.5%)
	61-70	149 (18.0%)	162 (15.1%)	184 (18.3%)	176 (16.9%)	180 (18.6%)	172 (17.7%)	187 (18.9%)	167 (17.7%)	193 (19.1%)	164 (16.0%)
	71-80	127 (15.3%)	141 (13.1%)	153 (15.3%)	152 (14.6%)	143 (14.8%)	157 (16.2%)	165 (16.7%)	139 (14.7%)	153 (15.1%)	181 (17.6%)
	81-90	94 (11.4%)	131 (12.2%)	106 (10.6%)	105 (10.1%)	99 (10.2%)	99 (10.2%)	101 (10.2%)	89 (9.4%)	110 (10.9%)	116 (11.3%)
	91-100	62 (7.5%)	69 (6.4%)	81 (8.1%)	83 (8.0%)	58 (6.0%)	63 (6.5%)	65 (6.6%)	61 (6.5%)	57 (5.6%)	70 (6.8%)
	101+	68 (8.2%)	73 (6.8%)	57 (5.7%)	58 (5.6%)	61 (6.3%)	45 (4.6%)	59 (6.0%)	60 (6.4%)	55 (5.4%)	70 (6.8%)
Subtotal		828 (100.0%)	1,076 (100.0%)	1,003 (100.0%)	1,042 (100.0%)	966 (100.0%)	972 (100.0%)	990 (100.0%)	943 (100.0%)	1,011 (100.0%)	1,027 (100.0%)
5YO+	Unrated	204 (13.1%)	337 (19.6%)	220 (13.9%)	222 (14.2%)	302 (18.1%)	218 (14.7%)	226 (14.9%)	194 (12.1%)	189 (12.0%)	183 (10.9%)
	0-50	174 (11.2%)	204 (11.9%)	255 (16.1%)	270 (17.2%)	238 (14.3%)	214 (14.5%)	227 (15.0%)	235 (14.7%)	239 (15.1%)	231 (13.8%)
	51-60	234 (15.0%)	249 (14.5%)	254 (16.1%)	245 (15.6%)	278 (16.7%)	255 (17.2%)	250 (16.5%)	299 (18.7%)	311 (19.7%)	328 (19.6%)
	61-70	294 (18.8%)	294 (17.1%)	252 (15.9%)	270 (17.2%)	310 (18.6%)	258 (17.4%)	271 (17.9%)	298 (18.6%)	310 (19.6%)	315 (18.8%)
	71-80	238 (15.3%)	233 (13.6%)	231 (14.6%)	217 (13.8%)	234 (14.0%)	191 (12.9%)	212 (14.0%)	227 (14.2%)	224 (14.2%)	286 (17.1%)
	81-90	218 (14.0%)	190 (11.1%)	174 (11.0%)	171 (10.9%)	147 (8.8%)	149 (10.1%)	149 (9.8%)	178 (11.1%)	162 (10.2%)	161 (9.6%)
	91-100	106 (6.8%)	108 (6.3%)	101 (6.4%)	105 (6.7%)	86 (5.2%)	107 (7.2%)	101 (6.7%)	90 (5.6%)	72 (4.6%)	98 (5.8%)
	101+	92 (5.9%)	101 (5.9%)	94 (5.9%)	68 (4.3%)	74 (4.4%)	88 (5.9%)	79 (5.2%)	81 (5.1%)	74 (4.7%)	75 (4.5%)
Subtotal		1,560 (100.0%)	1,716 (100.0%)	1,581 (100.0%)	1,568 (100.0%)	1,669 (100.0%)	1,480 (100.0%)	1,515 (100.0%)	1,602 (100.0%)	1,581 (100.0%)	1,677 (100.0%)
Overall	Unrated	2,439 (36.2%)	2,992 (39.8%)	2,759 (37.2%)	2,890 (38.7%)	2,889 (38.6%)	2,799 (38.7%)	2,671 (37.6%)	2,670 (37.0%)	2,637 (37.0%)	2,655 (35.8%)
	0-50	484 (7.2%)	595 (7.9%)	672 (9.1%)	737 (9.9%)	628 (8.4%)	608 (8.4%)	626 (8.8%)	620 (8.6%)	616 (8.6%)	618 (8.3%)
	51-60	724 (10.7%)	769 (10.2%)	807 (10.9%)	821 (11.0%)	859 (11.5%)	823 (11.4%)	817 (11.5%)	876 (12.1%)	863 (12.1%)	905 (12.2%)
	61-70	972 (14.4%)	959 (12.8%)	966 (13.0%)	962 (12.9%)	1,036 (13.8%)	982 (13.6%)	980 (13.8%)	975 (13.5%)	1,021 (14.3%)	1,010 (13.6%)
	71-80	917 (13.6%)	927 (12.3%)	923 (12.4%)	837 (11.2%)	980 (13.1%)	878 (12.1%)	876 (12.3%)	910 (12.6%)	868 (12.2%)	994 (13.4%)
	81-90	617 (9.1%)	612 (8.1%)	650 (8.8%)	588 (7.9%)	547 (7.3%)	576 (8.0%)	561 (7.9%)	590 (8.2%)	608 (8.5%)	638 (8.6%)
	91-100	318 (4.7%)	358 (4.8%)	358 (4.8%)	373 (5.0%)	313 (4.2%)	306 (4.2%)	295 (4.2%)	316 (4.4%)	270 (3.8%)	331 (4.5%)
	101+	273 (4.0%)	305 (4.1%)	280 (3.8%)	255 (3.4%)	241 (3.2%)	258 (3.6%)	271 (3.8%)	263 (3.6%)	252 (3.5%)	269 (3.6%)
Total		6,744 (100.0%)	7,517 (100.0%)	7,415 (100.0%)	7,463 (100.0%)	7,493 (100.0%)	7,230 (100.0%)	7,097 (100.0%)	7,220 (100.0%)	7,135 (100.0%)	7,420 (100.0%)

Where a horse has more than one published rating (published Flat Turf and published Flat AWT mark), the higher of the two is taken.

Jump (including Dual)

AgeCat	RatBand	2016	2017	2018	2019	2020	2021	2022	2023	2024	2025
3YO	Unrated	520 (95.6%)	531 (95.3%)	537 (94.9%)	550 (93.9%)	495 (94.5%)	516 (92.6%)	556 (95.4%)	530 (95.5%)	536 (96.1%)	576 (96.6%)
	0-100	7 (1.3%)	3 (0.5%)	7 (1.2%)	7 (1.2%)	6 (1.1%)	16 (2.9%)	12 (2.1%)	15 (2.7%)	13 (2.3%)	10 (1.7%)
	101-110	12 (2.2%)	10 (1.8%)	9 (1.6%)	13 (2.2%)	11 (2.1%)	10 (1.8%)	5 (0.9%)	6 (1.1%)	5 (0.9%)	3 (0.5%)
	111-120	1 (0.2%)	7 (1.3%)	6 (1.1%)	10 (1.7%)	6 (1.1%)	10 (1.8%)	6 (1.0%)	4 (0.7%)	2 (0.4%)	4 (0.7%)
	121-130	2 (0.4%)	3 (0.5%)	4 (0.7%)	6 (1.0%)	4 (0.8%)	3 (0.5%)	4 (0.7%)	NA (-)	2 (0.4%)	3 (0.5%)
	131-140	2 (0.4%)	2 (0.4%)	3 (0.5%)	NA (-)	2 (0.4%)	2 (0.4%)	NA (-)	NA (-)	NA (-)	NA (-)
	141-150	NA (-)	1 (0.2%)	NA (-)	NA (-)	NA (-)	NA (-)	NA (-)	NA (-)	NA (-)	NA (-)
Subtotal		544 (100.0%)	557 (100.0%)	566 (100.0%)	586 (100.0%)	524 (100.0%)	557 (100.0%)	583 (100.0%)	555 (100.0%)	558 (100.0%)	596 (100.0%)
4-5YO	Unrated	1,575 (69.6%)	1,695 (70.9%)	1,693 (69.3%)	1,795 (70.2%)	1,795 (69.9%)	1,849 (75.9%)	1,873 (72.5%)	1,865 (73.4%)	1,684 (69.9%)	1,675 (71.3%)
	0-100	186 (8.2%)	197 (8.2%)	183 (7.5%)	223 (8.7%)	269 (10.5%)	252 (10.3%)	324 (12.5%)	341 (13.4%)	372 (15.4%)	315 (13.4%)
	101-110	133 (5.9%)	132 (5.5%)	163 (6.7%)	143 (5.6%)	145 (5.6%)	113 (4.6%)	163 (6.3%)	149 (5.9%)	152 (6.3%)	140 (6.0%)
	111-120	148 (6.5%)	141 (5.9%)	154 (6.3%)	168 (6.6%)	146 (5.7%)	107 (4.4%)	114 (4.4%)	99 (3.9%)	120 (5.0%)	144 (6.1%)
	121-130	109 (4.8%)	128 (5.4%)	157 (6.4%)	134 (5.2%)	124 (4.8%)	76 (3.1%)	78 (3.0%)	59 (2.3%)	59 (2.4%)	58 (2.5%)
	131-140	81 (3.6%)	69 (2.9%)	65 (2.7%)	68 (2.7%)	59 (2.3%)	29 (1.2%)	20 (0.8%)	22 (0.9%)	21 (0.9%)	10 (0.4%)
	141-150	25 (1.1%)	25 (1.0%)	21 (0.9%)	23 (0.9%)	25 (1.0%)	8 (0.3%)	11 (0.4%)	5 (0.2%)	2 (0.1%)	4 (0.2%)
	151+	7 (0.3%)	4 (0.2%)	8 (0.3%)	4 (0.2%)	5 (0.2%)	3 (0.1%)	1 (0.0%)	NA (-)	NA (-)	2 (0.1%)
Subtotal		2,264 (100.0%)	2,391 (100.0%)	2,444 (100.0%)	2,558 (100.0%)	2,568 (100.0%)	2,437 (100.0%)	2,584 (100.0%)	2,540 (100.0%)	2,410 (100.0%)	2,348 (100.0%)
6-7YO	Unrated	438 (25.6%)	453 (26.0%)	457 (24.8%)	476 (24.9%)	555 (25.2%)	649 (32.8%)	600 (32.0%)	574 (30.9%)	531 (28.1%)	544 (31.0%)
	0-100	328 (19.2%)	330 (18.9%)	352 (19.1%)	387 (20.3%)	495 (22.4%)	416 (21.0%)	431 (23.0%)	490 (26.4%)	557 (29.5%)	453 (25.8%)
	101-110	216 (12.6%)	244 (14.0%)	225 (12.2%)	216 (11.3%)	304 (13.8%)	211 (10.7%)	228 (12.1%)	244 (13.1%)	277 (14.7%)	240 (13.7%)
	111-120	243 (14.2%)	236 (13.5%)	260 (14.1%)	262 (13.7%)	278 (12.6%)	261 (13.2%)	246 (13.1%)	259 (13.9%)	226 (12.0%)	246 (14.0%)
	121-130	222 (13.0%)	211 (12.1%)	243 (13.2%)	256 (13.4%)	287 (13.0%)	220 (11.1%)	193 (10.3%)	168 (9.0%)	172 (9.1%)	156 (8.9%)
	131-140	167 (9.8%)	161 (9.2%)	194 (10.5%)	202 (10.6%)	180 (8.2%)	135 (6.8%)	113 (6.0%)	81 (4.4%)	83 (4.4%)	71 (4.0%)
	141-150	61 (3.6%)	75 (4.3%)	78 (4.2%)	70 (3.7%)	75 (3.4%)	63 (3.2%)	47 (2.5%)	32 (1.7%)	31 (1.6%)	35 (2.0%)
	151+	33 (1.9%)	32 (1.8%)	33 (1.8%)	39 (2.0%)	31 (1.4%)	23 (1.2%)	19 (1.0%)	11 (0.6%)	10 (0.5%)	12 (0.7%)
Subtotal		1,708 (100.0%)	1,742 (100.0%)	1,842 (100.0%)	1,908 (100.0%)	2,205 (100.0%)	1,978 (100.0%)	1,877 (100.0%)	1,859 (100.0%)	1,887 (100.0%)	1,757 (100.0%)
8YO+	Unrated	191 (14.4%)	184 (13.8%)	230 (16.7%)	210 (15.6%)	307 (19.0%)	410 (28.5%)	304 (24.0%)	305 (25.1%)	277 (23.8%)	283 (24.8%)
	0-100	363 (27.5%)	348 (26.2%)	351 (25.4%)	369 (27.5%)	427 (26.4%)	313 (21.8%)	303 (24.0%)	308 (25.3%)	293 (25.2%)	324 (28.4%)
	101-110	178 (13.5%)	180 (13.5%)	197 (14.3%)	175 (13.0%)	202 (12.5%)	152 (10.6%)	137 (10.8%)	132 (10.9%)	143 (12.3%)	116 (10.2%)
	111-120	201 (15.2%)	198 (14.9%)	175 (12.7%)	160 (11.9%)	209 (12.9%)	178 (12.4%)	175 (13.8%)	150 (12.3%)	163 (14.0%)	140 (12.3%)
	121-130	148 (11.2%)	186 (14.0%)	173 (12.5%)	159 (11.8%)	191 (11.8%)	166 (11.5%)	146 (11.5%)	141 (11.6%)	135 (11.6%)	122 (10.7%)
	131-140	142 (10.7%)	126 (9.5%)	137 (9.9%)	146 (10.9%)	145 (9.0%)	114 (7.9%)	98 (7.7%)	105 (8.6%)	84 (7.2%)	82 (7.2%)
	141-150	58 (4.4%)	71 (5.3%)	83 (6.0%)	79 (5.9%)	83 (5.1%)	77 (5.4%)	73 (5.8%)	42 (3.5%)	42 (3.6%)	51 (4.5%)
	151+	41 (3.1%)	37 (2.8%)	35 (2.5%)	45 (3.4%)	56 (3.5%)	28 (1.9%)	29 (2.3%)	32 (2.6%)	27 (2.3%)	23 (2.0%)
Subtotal		1,322 (100.0%)	1,330 (100.0%)	1,381 (100.0%)	1,343 (100.0%)	1,620 (100.0%)	1,438 (100.0%)	1,265 (100.0%)	1,215 (100.0%)	1,164 (100.0%)	1,141 (100.0%)
Overall	Unrated	2,724 (46.7%)	2,863 (47.6%)	2,917 (46.8%)	3,031 (47.4%)	3,152 (45.6%)	3,424 (53.4%)	3,333 (52.8%)	3,274 (53.1%)	3,028 (50.3%)	3,078 (52.7%)
	0-100	884 (15.1%)	878 (14.6%)	893 (14.3%)	986 (15.4%)	1,197 (17.3%)	997 (15.6%)	1,070 (17.0%)	1,154 (18.7%)	1,235 (20.5%)	1,102 (18.9%)
	101-110	539 (9.2%)	566 (9.4%)	594 (9.5%)	547 (8.6%)	662 (9.6%)	486 (7.6%)	533 (8.4%)	531 (8.6%)	577 (9.6%)	499 (8.5%)
	111-120	593 (10.2%)	582 (9.7%)	595 (9.5%)	600 (9.4%)	639 (9.2%)	556 (8.7%)	541 (8.6%)	512 (8.3%)	511 (8.5%)	534 (9.1%)
	121-130	481 (8.2%)	528 (8.8%)	577 (9.3%)	555 (8.7%)	606 (8.8%)	465 (7.3%)	421 (6.7%)	368 (6.0%)	368 (6.1%)	339 (5.8%)
	131-140	392 (6.7%)	358 (5.9%)	399 (6.4%)	416 (6.5%)	386 (5.6%)	280 (4.4%)	231 (3.7%)	208 (3.4%)	188 (3.1%)	163 (2.8%)
	141-150	144 (2.5%)	172 (2.9%)	182 (2.9%)	172 (2.7%)	183 (2.6%)	148 (2.3%)	131 (2.1%)	79 (1.3%)	75 (1.2%)	90 (1.5%)
	151+	81 (1.4%)	73 (1.2%)	76 (1.2%)	88 (1.4%)	92 (1.3%)	54 (0.8%)	49 (0.8%)	43 (0.7%)	37 (0.6%)	37 (0.6%)
Total		5,838 (100.0%)	6,020 (100.0%)	6,233 (100.0%)	6,395 (100.0%)	6,917 (100.0%)	6,410 (100.0%)	6,309 (100.0%)	6,169 (100.0%)	6,019 (100.0%)	5,842 (100.0%)

Where a horse has more than one published rating (published Hurdle and published Chase mark), the higher of the two is taken.

Young Horses Entering Training

Flat Yearlings in Training versus Previous Years

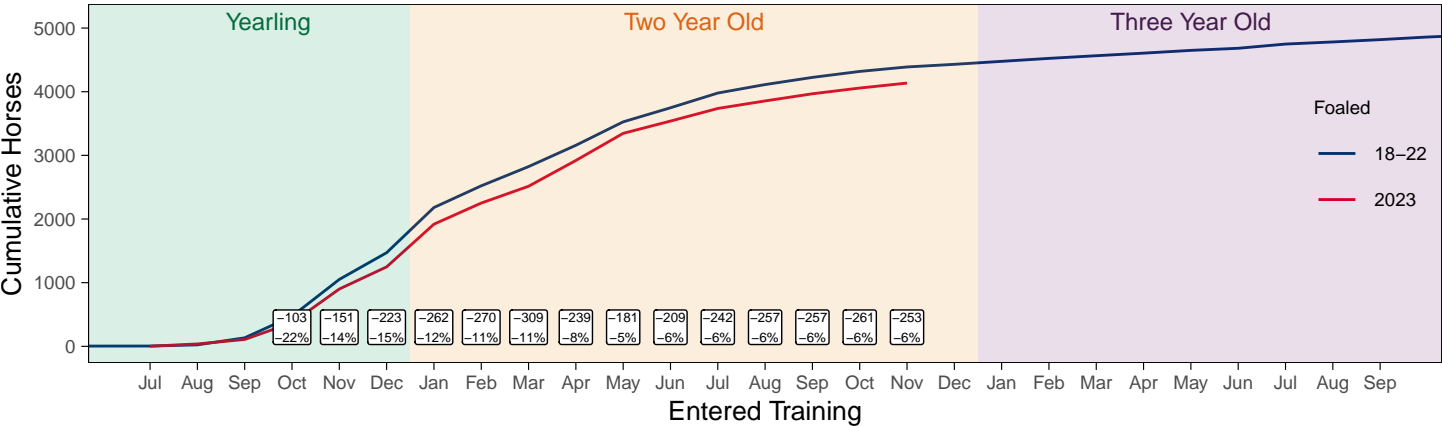
Period	Jan	Feb	Mar	Apr	May	Jun	Jul	Aug	Sep	Oct	Nov	Dec
2025	0	0	0	1	1	1	1	1	56	177	583	
2024	0	0	0	0	0	0	2	3	72	186	620	1068
5YrAvg	0	0	0	0	1	1	1	3	58	200	694	936

Foals Entering Training for the First Time

Warning: A numeric 'legend.position' argument in 'theme()' was deprecated in ggplot2
3.5.0.
i Please use the 'legend.position.inside' argument of 'theme()' instead.
This warning is displayed once every 8 hours.
Call 'lifecycle::last_lifecycle_warnings()' to see where this warning was
generated.

2023 Foals Entering Training Over Time

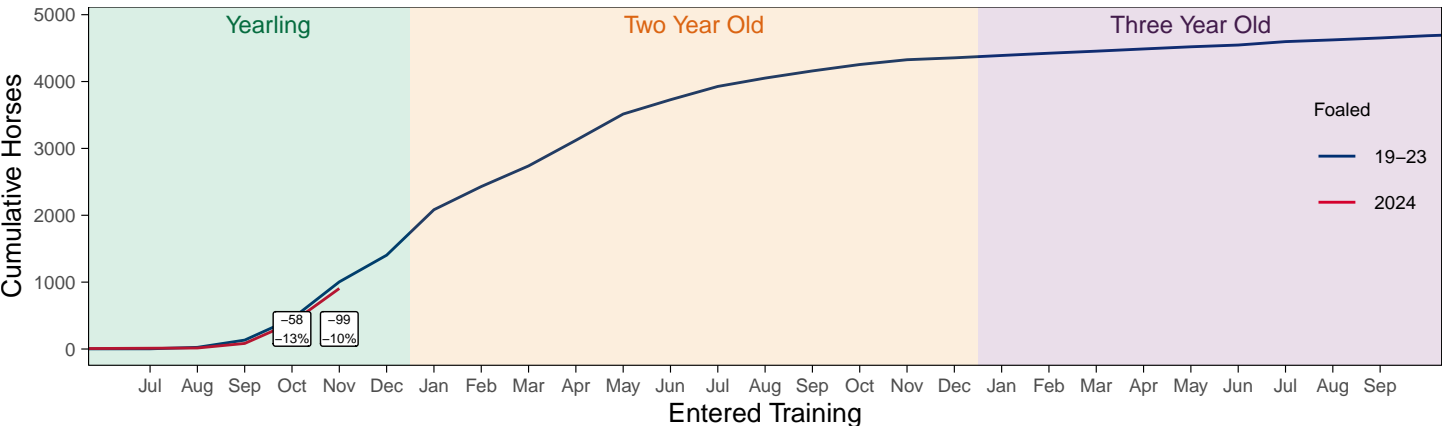
Cumulative Flat Horses foaled in 2023 shown by first in training notification against trend



Cumulative individual horses entering training for the first time by the end of each month.

2024 Foals Entering Training Over Time

Cumulative Flat Horses foaled in 2024 shown by first in training notification against trend



Cumulative individual horses entering training for the first time by the end of each month.

Year to Date Horses in Training

Type	2016	2017	2018	2019	2020	2021	2022	2023	2024	2025	vs. Last Year	vs. Pre-Covid
Flat	12752	12966	12977	13100	13092	12954	12667	12671	12582	12414	-168 / -1.3%	-686 / -5.2%
Jump	8527	8106	8444	8821	8628	9289	8919	8772	8544	8125	-419 / -4.9%	-696 / -7.9%
Dual	905	1365	1221	1054	1021	1004	940	872	873	981	+108 / +12.4%	-73 / -6.9%
Hunter	1993	1987	1840	1768	1498	1349	1421	1321	1429	1186	-243 / -17.0%	-582 / -32.9%
Total	22184	22437	22642	22975	22741	23247	22526	22315	21999	21520	-479 / -2.2%	-1455 / -6.3%

'vs. Pre-Covid' is comparison between 2025 and 2019

Flat

AgeCat	2016	2017	2018	2019	2020	2021	2022	2023	2024	2025	vs. Last Year	vs. Pre-Covid
2YO	4499	4561	4558	4605	4413	4432	4272	4316	4239	4093	-146 / -3.4%	-512 / -11.1%
3YO	3800	3865	3978	3920	4034	3906	3844	3774	3687	3754	+67 / +1.8%	-166 / -4.2%
4YO	1821	1887	1872	1972	1951	2029	2010	1945	1950	1865	-85 / -4.4%	-107 / -5.4%
5YO+	2632	2653	2569	2603	2694	2587	2541	2636	2706	2702	-4 / -0.1%	+99 / +3.8%
Total	12752	12966	12977	13100	13092	12954	12667	12671	12582	12414	-168 / -1.3%	-686 / -5.2%

'vs. Pre-Covid' is comparison between 2025 and 2019

Jump

AgeCat	2016	2017	2018	2019	2020	2021	2022	2023	2024	2025	vs. Last Year	vs. Pre-Covid
3YO	522	434	510	535	472	503	570	532	520	509	-11 / -2.1%	-26 / -4.9%
4-5YO	2902	2766	2902	3036	2990	3026	3147	3164	2990	2879	-111 / -3.7%	-157 / -5.2%
6-7YO	2620	2458	2625	2775	2777	3008	2824	2791	2811	2615	-196 / -7.0%	-160 / -5.8%
8YO+	2483	2448	2407	2475	2389	2752	2378	2285	2223	2122	-101 / -4.5%	-353 / -14.3%
Total	8527	8106	8444	8821	8628	9289	8919	8772	8544	8125	-419 / -4.9%	-696 / -7.9%

'vs. Pre-Covid' is comparison between 2025 and 2019

Dual

AgeCat	2016	2017	2018	2019	2020	2021	2022	2023	2024	2025	vs. Last Year	vs. Pre-Covid
3YO	201	286	225	231	234	250	254	225	207	257	+50 / +24.2%	+26 / +11.3%
4YO	190	361	276	252	231	241	213	207	220	243	+23 / +10.5%	-9 / -3.6%
5YO+	514	718	720	571	556	513	473	440	446	481	+35 / +7.8%	-90 / -15.8%
Total	905	1365	1221	1054	1021	1004	940	872	873	981	+108 / +12.4%	-73 / -6.9%

'vs. Pre-Covid' is comparison between 2025 and 2019

Hunter Chasers

AgeCat	2016	2017	2018	2019	2020	2021	2022	2023	2024	2025	vs. Last Year	vs. Pre-Covid
4-5YO	206	222	268	271	259	185	257	267	276	244	-32 / -11.6%	-27 / -10.0%
6-7YO	538	527	497	494	385	314	348	323	343	333	-10 / -2.9%	-161 / -32.6%
8-9YO	541	541	437	405	341	334	352	315	313	255	-58 / -18.5%	-150 / -37.0%
10YO+	708	697	638	598	513	516	464	416	497	354	-143 / -28.8%	-244 / -40.8%
Total	1993	1987	1840	1768	1498	1349	1421	1321	1429	1186	-243 / -17.0%	-582 / -32.9%

'vs. Pre-Covid' is comparison between 2025 and 2019

Year to Date Runners

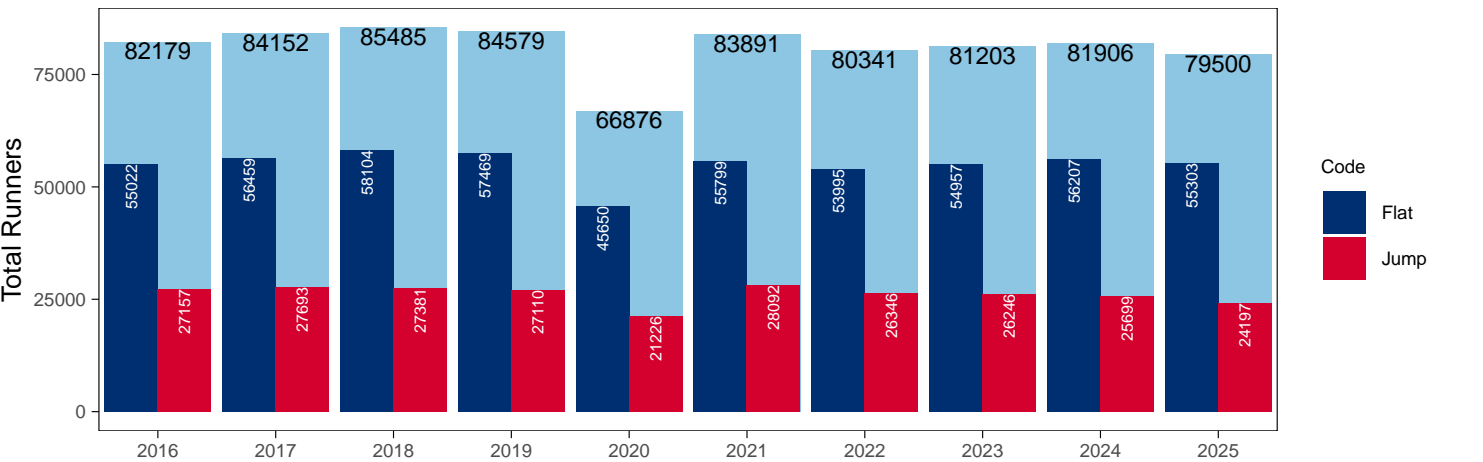
Year to Date Total Runners

Code	2016	2017	2018	2019	2020	2021	2022	2023	2024	2025	vs. Last Year	vs. Pre-Covid
Flat	55022	56459	58104	57469	45650	55799	53995	54957	56207	55303	-904 / -1.6%	-2166 / -3.8%
Jump	27157	27693	27381	27110	21226	28092	26346	26246	25699	24197	-1502 / -5.8%	-2913 / -10.7%
Total	82179	84152	85485	84579	66876	83891	80341	81203	81906	79500	-2406 / -2.9%	-5079 / -6.0%

'vs. Pre-Covid' is comparison between 2025 and 2019

YTD Total Runners

Total Runners in GB Races, shown by Code and Total



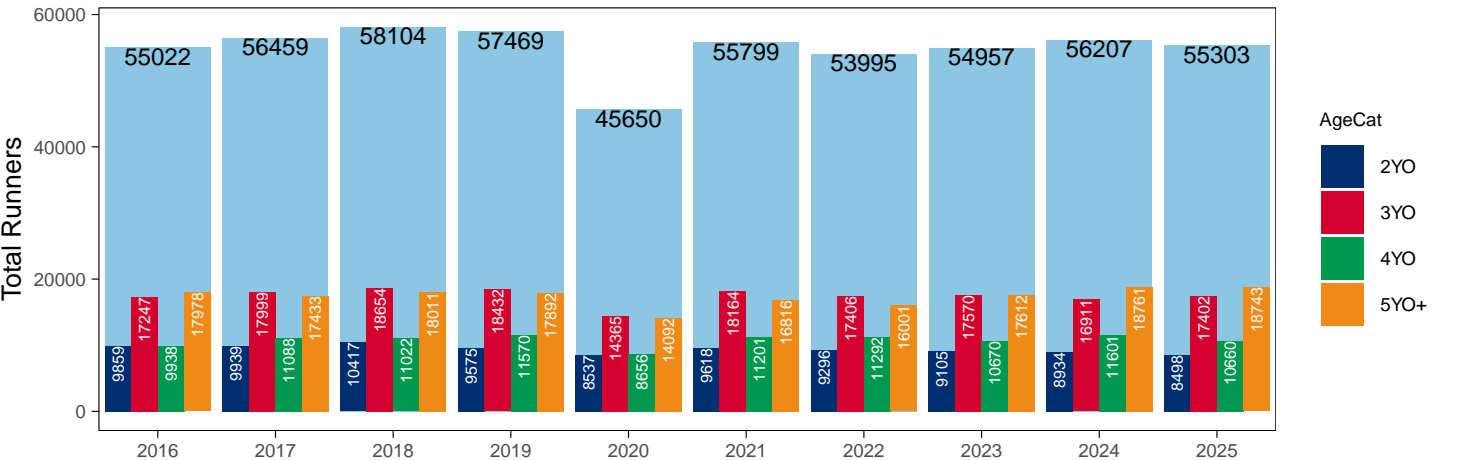
Flat

AgeCat	2016	2017	2018	2019	2020	2021	2022	2023	2024	2025	vs. Last Year	vs. Pre-Covid
2YO	9859	9939	10417	9575	8537	9618	9296	9105	8934	8498	-436 / -4.9%	-1077 / -11.2%
3YO	17247	17999	18654	18432	14365	18164	17406	17570	16911	17402	+491 / +2.9%	-1030 / -5.6%
4YO	9938	11088	11022	11570	8656	11201	11292	10670	11601	10660	-941 / -8.1%	-910 / -7.9%
5YO+	17978	17433	18011	17892	14092	16816	16001	17612	18761	18743	-18 / -0.1%	+851 / +4.8%
Total	55022	56459	58104	57469	45650	55799	53995	54957	56207	55303	-904 / -1.6%	-2166 / -3.8%

'vs. Pre-Covid' is comparison between 2025 and 2019

YTD Total Flat Runners by Age

Total Runners in GB Flat Races, shown by Age Category and Total



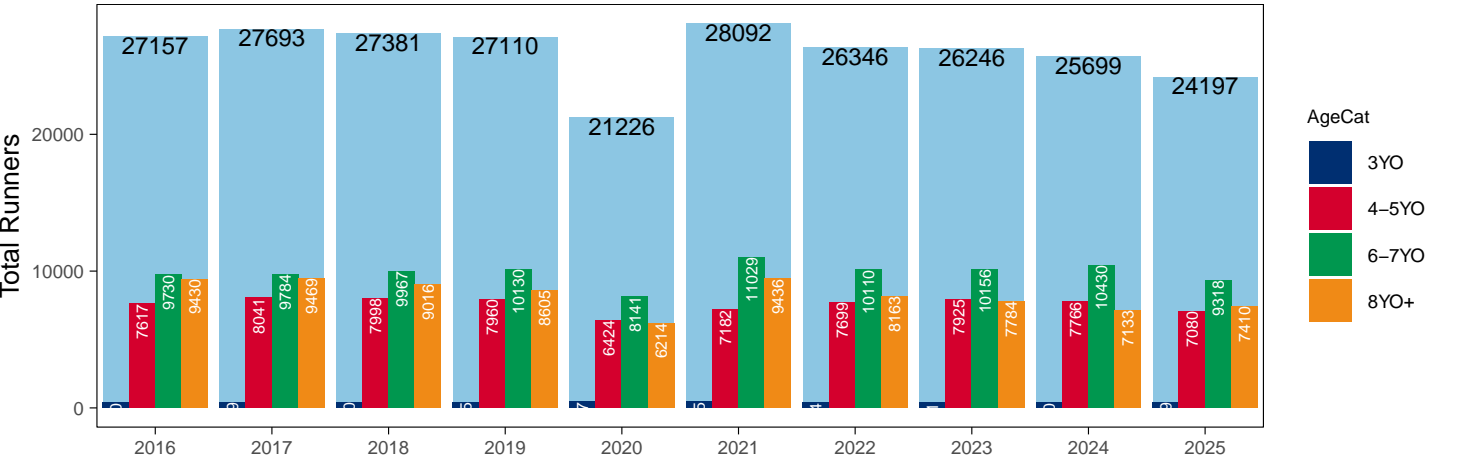
Jump

AgeCat	2016	2017	2018	2019	2020	2021	2022	2023	2024	2025	vs. Last Year	vs. Pre-Covid
3YO	380	399	400	415	447	445	374	381	370	389	+19 / +5.1%	-26 / -6.3%
4-5YO	7617	8041	7998	7960	6424	7182	7699	7925	7766	7080	-686 / -8.8%	-880 / -11.1%
6-7YO	9730	9784	9967	10130	8141	11029	10110	10156	10430	9318	-1112 / -10.7%	-812 / -8.0%
8YO+	9430	9469	9016	8605	6214	9436	8163	7784	7133	7410	+277 / +3.9%	-1195 / -13.9%
Total	27157	27693	27381	27110	21226	28092	26346	26246	25699	24197	-1502 / -5.8%	-2913 / -10.7%

'vs. Pre-Covid' is comparison between 2025 and 2019

YTD Total Jump Runners by Age

Total Runners in GB Jump Races, shown by Age Category and Total



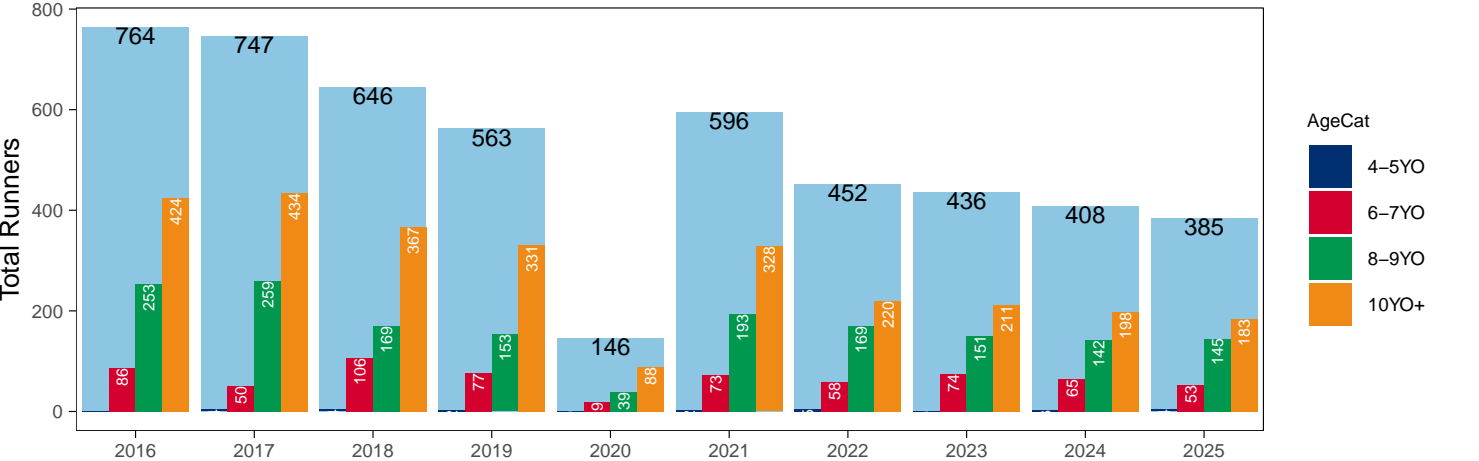
Hunter Chases

AgeCat	2016	2017	2018	2019	2020	2021	2022	2023	2024	2025	vs. Last Year	vs. Pre-Covid
4-5YO	1	4	4	2		2	5		3	4	+1 / +33.3%	+2 / +100.0%
6-7YO	86	50	106	77	19	73	58	74	65	53	-12 / -18.5%	-24 / -31.2%
8-9YO	253	259	169	153	39	193	169	151	142	145	+3 / +2.1%	-8 / -5.2%
10YO+	424	434	367	331	88	328	220	211	198	183	-15 / -7.6%	-148 / -44.7%
Total	764	747	646	563	146	596	452	436	408	385	-23 / -5.6%	-178 / -31.6%

'vs. Pre-Covid' is comparison between 2025 and 2019

YTD Total Hunter Chase Runners by Age

Total Runners in GB Hunter Chases shown by Age Category and Total



Year to Date Total Runners by Country Trained

Code	Country	2016	2017	2018	2019	2020	2021	2022	2023	2024	2025
Flat	GB	54428	55722	57277	56641	45376	55401	53628	54456	55544	54690
	IRE	512	653	763	756	247	363	303	449	579	530
	Other	82	84	64	72	27	35	64	52	84	83
Jump	GB	26277	26891	26716	26401	20910	27546	25501	25299	24875	23278
	IRE	869	785	655	699	304	541	843	941	809	908
	Other	11	17	10	10	12	5	2	6	15	11
Overall	GB	80705	82613	83993	83042	66286	82947	79129	79755	80419	77968
	IRE	1381	1438	1418	1455	551	904	1146	1390	1388	1438
	Other	93	101	74	82	39	40	66	58	99	94

Year to Date GB Trained Runners Racing Abroad

Code	Country	2016	2017	2018	2019	2020	2021	2022	2023	2024	2025
Flat	IRE	192	187	156	164	60	57	99	100	130	132
	FR	414	480	517	548	288	230	267	346	369	393
	GNV	25	30	37	50	24	12	19	23	41	39
	UAE	208	290	276	303	281	248	277	279	214	236
	BAH				6	7	7	44	30	54	94
	KSA					15	21	22	15	11	10
	Other	139	133	161	143	58	77	91	104	155	122
	Total	978	1120	1147	1214	733	652	819	897	974	1026
Jump	IRE	97	85	59	77	7	24	31	22	65	90
	FR	63	30	20	55	86	132	124	92	43	22
	Other	12	8	7	10		8	14	5	13	2
	Total	172	123	86	142	93	164	169	119	121	114

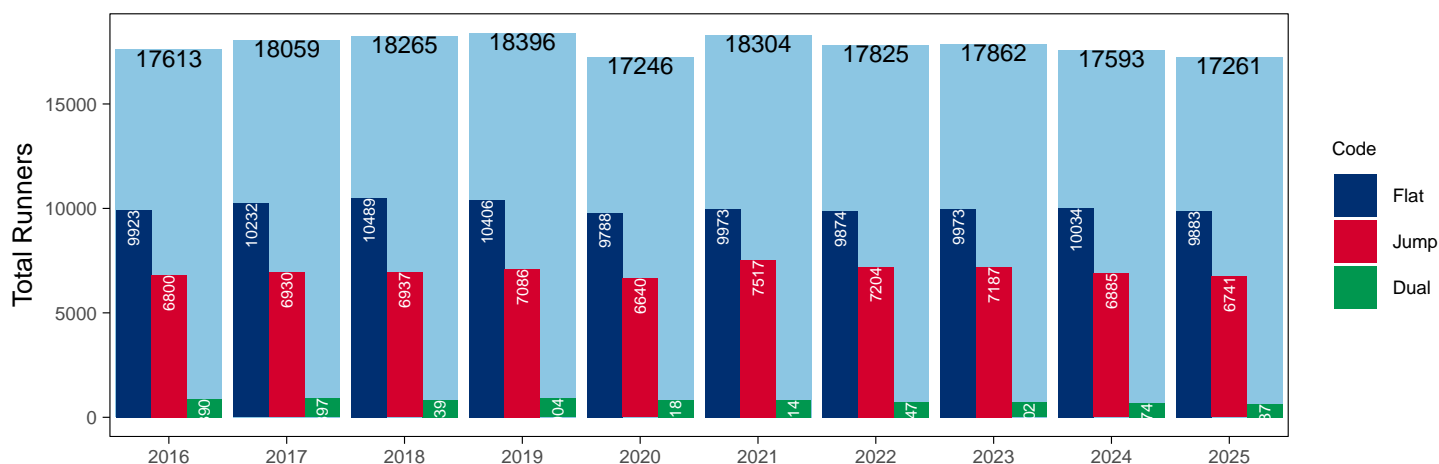
Year to Date Individual Runners

Code	2016	2017	2018	2019	2020	2021	2022	2023	2024	2025	vs. Last Year	vs. Pre-Covid
Flat	9923	10232	10489	10406	9788	9973	9874	9973	10034	9883	-151 / -1.5%	-523 / -5.0%
Jump	6800	6930	6937	7086	6640	7517	7204	7187	6885	6741	-144 / -2.1%	-345 / -4.9%
Dual	890	897	839	904	818	814	747	702	674	637	-37 / -5.5%	-267 / -29.5%
Overall	17613	18059	18265	18396	17246	18304	17825	17862	17593	17261	-332 / -1.9%	-1135 / -6.2%

'vs. Pre-Covid' is comparison between 2025 and 2019

YTD Individual Runners

Individual Runners in GB Races, shown by Code and Total



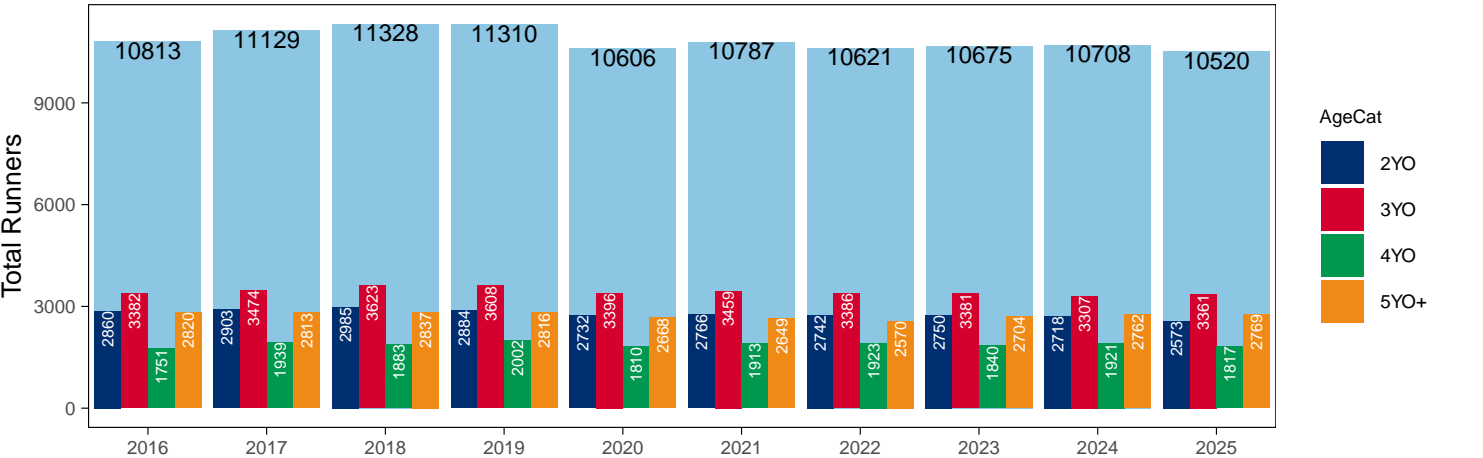
Flat

AgeCat	2016	2017	2018	2019	2020	2021	2022	2023	2024	2025	vs. Last Year	vs. Pre-Covid
2YO	2860	2903	2985	2884	2732	2766	2742	2750	2718	2573	-145 / -5.3%	-311 / -10.8%
3YO	3382	3474	3623	3608	3396	3459	3386	3381	3307	3361	+54 / +1.6%	-247 / -6.8%
4YO	1751	1939	1883	2002	1810	1913	1923	1840	1921	1817	-104 / -5.4%	-185 / -9.2%
5YO+	2820	2813	2837	2816	2668	2649	2570	2704	2762	2769	+7 / +0.3%	-47 / -1.7%
Total	10813	11129	11328	11310	10606	10787	10621	10675	10708	10520	-188 / -1.8%	-790 / -7.0%

'vs. Pre-Covid' is comparison between 2025 and 2019

YTD Individual Flat Runners by Age

Individual Runners in GB Flat Races, shown by Age Category and Total



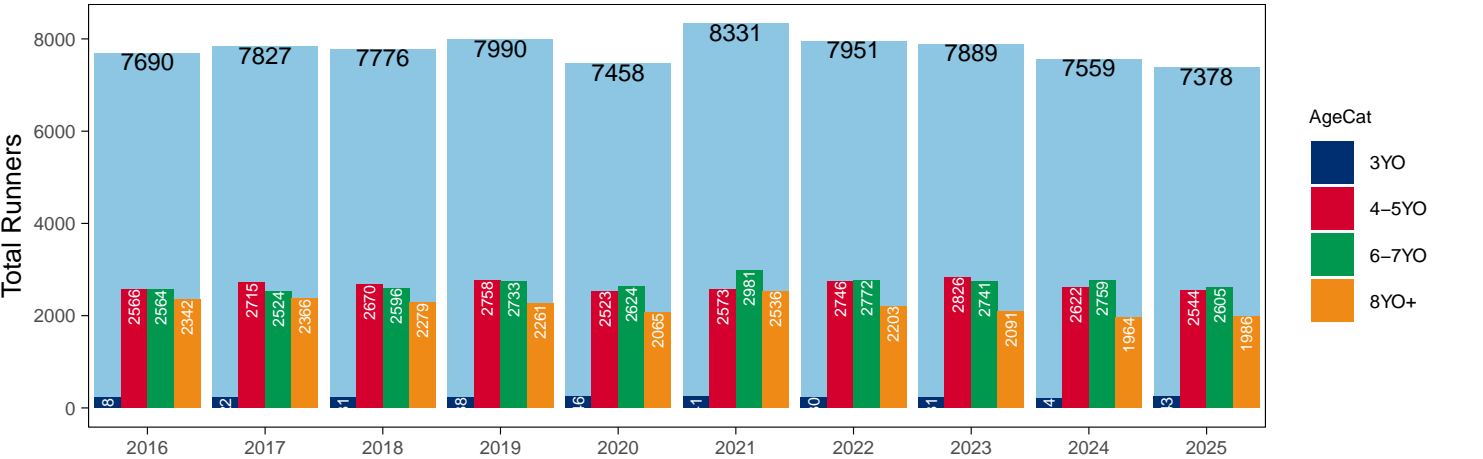
Jump

AgeCat	2016	2017	2018	2019	2020	2021	2022	2023	2024	2025	vs. Last Year	vs. Pre-Covid
3YO	218	222	231	238	246	241	230	231	214	243	+29 / +13.6%	+5 / +2.1%
4-5YO	2566	2715	2670	2758	2523	2573	2746	2826	2622	2544	-78 / -3.0%	-214 / -7.8%
6-7YO	2564	2524	2596	2733	2624	2981	2772	2741	2759	2605	-154 / -5.6%	-128 / -4.7%
8YO+	2342	2366	2279	2261	2065	2536	2203	2091	1964	1986	+22 / +1.1%	-275 / -12.2%
Total	7690	7827	7776	7990	7458	8331	7951	7889	7559	7378	-181 / -2.4%	-612 / -7.7%

'vs. Pre-Covid' is comparison between 2025 and 2019

YTD Individual Jump Runners by Age

Individual Runners in GB Jump Races, shown by Age Category and Total



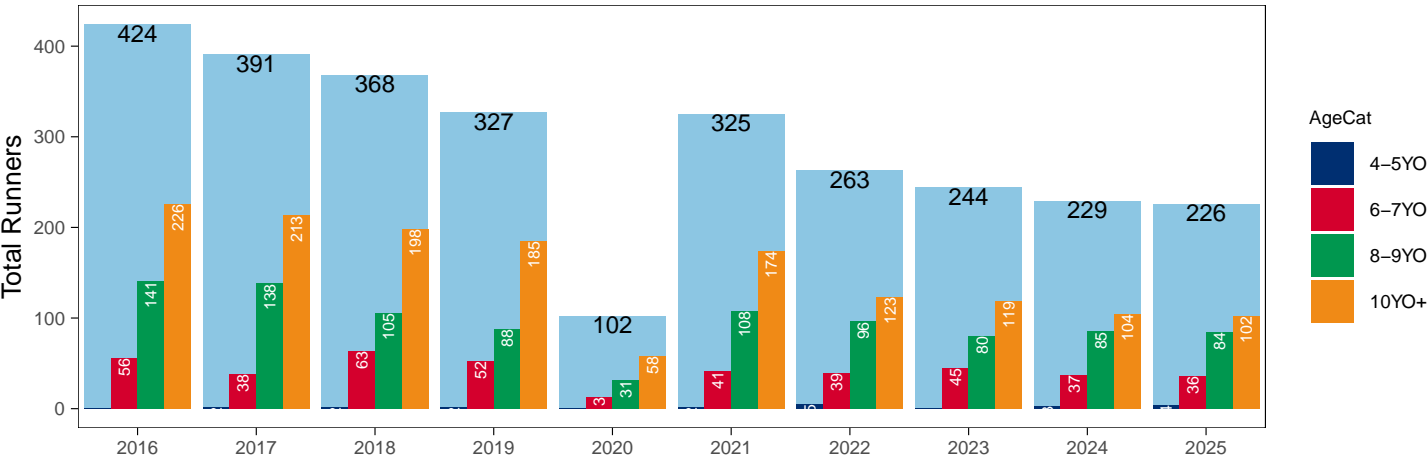
Hunter Chases

AgeCat	2016	2017	2018	2019	2020	2021	2022	2023	2024	2025	vs. Last Year	vs. Pre-Covid
4-5YO	1	2	2	2		2	5		3	4	+1 / +33.3%	+2 / +100.0%
6-7YO	56	38	63	52	13	41	39	45	37	36	-1 / -2.7%	-16 / -30.8%
8-9YO	141	138	105	88	31	108	96	80	85	84	-1 / -1.2%	-4 / -4.5%
10YO+	226	213	198	185	58	174	123	119	104	102	-2 / -1.9%	-83 / -44.9%
Total	424	391	368	327	102	325	263	244	229	226	-3 / -1.3%	-101 / -30.9%

'vs. Pre-Covid' is comparison between 2025 and 2019

YTD Individual Hunter Chase Runners by Age

Individual Runners in GB Hunter Chases shown by Age Category and Total



Year to Date Individual Runners by Country Trained

Code	Country	2016	2017	2018	2019	2020	2021	2022	2023	2024	2025
Flat	GB	9601	9838	10057	9934	9599	9706	9619	9653	9654	9513
	IRE	281	349	396	432	175	247	212	298	339	336
	Other	64	67	57	60	23	30	55	41	58	58
Jump	GB	6337	6483	6521	6640	6381	7127	6649	6581	6365	6148
	IRE	495	464	432	467	263	400	584	640	540	619
	Other	11	12	9	8	11	5	2	4	12	8
Dual	GB	875	878	819	888	812	808	734	682	650	606
	IRE	9	13	18	14	5	5	11	15	20	24
	Other		2								1
Overall	GB	16813	17199	17397	17462	16792	17641	17002	16916	16669	16267
	IRE	785	826	846	913	443	652	807	953	899	979
	Other	75	81	66	68	34	35	57	45	70	67

Individual horses may appear under multiple countries.

Year to Date Total Runners by Rating Band

Flat

RatBand	2016	2017	2018	2019	2020	2021	2022	2023	2024	2025
2YO										
Unrated	6,629 (67.2%)	6,905 (69.5%)	7,184 (69.0%)	6,731 (70.3%)	5,707 (66.9%)	6,575 (68.4%)	6,429 (69.2%)	6,305 (69.2%)	6,233 (69.8%)	5,903 (69.5%)
0-50	156 (1.6%)	154 (1.5%)	145 (1.4%)	204 (2.1%)	143 (1.7%)	191 (2.0%)	184 (2.0%)	213 (2.3%)	201 (2.2%)	175 (2.1%)
51-60	504 (5.1%)	486 (4.9%)	569 (5.5%)	512 (5.3%)	488 (5.7%)	438 (4.6%)	463 (5.0%)	480 (5.3%)	457 (5.1%)	470 (5.5%)
61-70	906 (9.2%)	852 (8.6%)	829 (8.0%)	709 (7.4%)	719 (8.4%)	817 (8.5%)	726 (7.8%)	745 (8.2%)	700 (7.8%)	673 (7.9%)
71-80	1,003 (10.2%)	906 (9.1%)	891 (8.6%)	804 (8.4%)	865 (10.1%)	857 (8.9%)	787 (8.5%)	776 (8.5%)	768 (8.6%)	676 (8.0%)
81-90	430 (4.4%)	359 (3.6%)	481 (4.6%)	357 (3.7%)	365 (4.3%)	451 (4.7%)	423 (4.6%)	385 (4.2%)	359 (4.0%)	374 (4.4%)
91-100	158 (1.6%)	166 (1.7%)	212 (2.0%)	172 (1.8%)	165 (1.9%)	186 (1.9%)	203 (2.2%)	129 (1.4%)	143 (1.6%)	162 (1.9%)
101+	73 (0.7%)	111 (1.1%)	106 (1.0%)	86 (0.9%)	85 (1.0%)	103 (1.1%)	81 (0.9%)	72 (0.8%)	73 (0.8%)	65 (0.8%)
3YO+										
Unrated	3,923 (8.7%)	4,065 (8.7%)	4,900 (10.3%)	4,661 (9.7%)	3,860 (10.4%)	4,740 (10.3%)	4,337 (9.7%)	4,264 (9.3%)	4,223 (8.9%)	4,299 (9.2%)
0-50	3,728 (8.3%)	4,276 (9.2%)	5,023 (10.5%)	5,891 (12.3%)	4,132 (11.1%)	5,311 (11.5%)	5,185 (11.6%)	5,628 (12.3%)	5,723 (12.1%)	5,651 (12.1%)
51-60	7,553 (16.7%)	7,861 (16.9%)	7,714 (16.2%)	8,553 (17.9%)	6,516 (17.6%)	8,320 (18.0%)	7,967 (17.8%)	8,878 (19.4%)	9,216 (19.5%)	8,843 (18.9%)
61-70	9,769 (21.6%)	9,632 (20.7%)	9,779 (20.5%)	9,591 (20.0%)	7,668 (20.7%)	9,690 (21.0%)	9,470 (21.2%)	9,667 (21.1%)	10,392 (22.0%)	9,934 (21.2%)
71-80	9,191 (20.4%)	9,325 (20.0%)	9,088 (19.1%)	8,586 (17.9%)	6,969 (18.8%)	8,330 (18.0%)	8,290 (18.5%)	8,433 (18.4%)	8,635 (18.3%)	8,729 (18.6%)
81-90	6,007 (13.3%)	6,266 (13.5%)	6,111 (12.8%)	5,632 (11.8%)	4,419 (11.9%)	5,278 (11.4%)	5,163 (11.6%)	4,946 (10.8%)	5,257 (11.1%)	5,375 (11.5%)
91-100	2,999 (6.6%)	3,001 (6.5%)	3,172 (6.7%)	3,168 (6.6%)	2,120 (5.7%)	2,729 (5.9%)	2,508 (5.6%)	2,408 (5.3%)	2,222 (4.7%)	2,422 (5.2%)
101+	1,993 (4.4%)	2,094 (4.5%)	1,900 (4.0%)	1,812 (3.8%)	1,429 (3.9%)	1,783 (3.9%)	1,779 (4.0%)	1,628 (3.6%)	1,605 (3.4%)	1,552 (3.3%)

Jump

RatBand	2016	2017	2018	2019	2020	2021	2022	2023	2024	2025
Hurdle										
Unrated	4,454 (27.6%)	4,633 (28.3%)	4,621 (28.3%)	4,784 (29.4%)	4,026 (31.7%)	4,607 (28.2%)	4,386 (27.9%)	4,544 (28.6%)	4,559 (28.7%)	3,881 (26.1%)
0-100	4,198 (26.0%)	4,245 (25.9%)	4,033 (24.7%)	3,976 (24.4%)	3,019 (23.8%)	4,901 (30.0%)	4,934 (31.4%)	5,165 (32.6%)	5,465 (34.4%)	5,201 (35.0%)
101-110	2,444 (15.2%)	2,454 (15.0%)	2,450 (15.0%)	2,343 (14.4%)	1,816 (14.3%)	2,202 (13.5%)	2,360 (15.0%)	2,342 (14.8%)	2,259 (14.2%)	2,227 (15.0%)
111-120	2,274 (14.1%)	2,305 (14.1%)	2,242 (13.7%)	2,279 (14.0%)	1,577 (12.4%)	2,013 (12.3%)	1,922 (12.2%)	1,874 (11.8%)	1,858 (11.7%)	1,887 (12.7%)
121-130	1,488 (9.2%)	1,535 (9.4%)	1,672 (10.2%)	1,659 (10.2%)	1,242 (9.8%)	1,481 (9.1%)	1,214 (7.7%)	1,222 (7.7%)	1,085 (6.8%)	980 (6.6%)
131-140	869 (5.4%)	852 (5.2%)	913 (5.6%)	850 (5.2%)	675 (5.3%)	751 (4.6%)	608 (3.9%)	479 (3.0%)	451 (2.8%)	474 (3.2%)
141-150	290 (1.8%)	273 (1.7%)	302 (1.9%)	280 (1.7%)	222 (1.8%)	257 (1.6%)	221 (1.4%)	174 (1.1%)	147 (0.9%)	142 (1.0%)
151+	112 (0.7%)	88 (0.5%)	90 (0.6%)	114 (0.7%)	107 (0.8%)	101 (0.6%)	69 (0.4%)	64 (0.4%)	56 (0.4%)	52 (0.4%)
Chase										
Unrated	70 (0.8%)	82 (0.9%)	68 (0.8%)	54 (0.6%)	29 (0.4%)	35 (0.4%)	14 (0.2%)	8 (0.1%)	7 (0.1%)	3 (0.0%)
0-100	2,458 (28.0%)	2,357 (26.3%)	2,364 (27.3%)	2,492 (28.9%)	1,922 (28.6%)	2,684 (30.6%)	2,694 (31.9%)	2,897 (35.4%)	2,904 (36.7%)	2,795 (37.2%)
101-110	1,291 (14.7%)	1,418 (15.8%)	1,384 (16.0%)	1,341 (15.6%)	999 (14.9%)	1,327 (15.1%)	1,361 (16.1%)	1,343 (16.4%)	1,388 (17.6%)	1,215 (16.2%)
111-120	1,571 (17.9%)	1,547 (17.3%)	1,445 (16.7%)	1,380 (16.0%)	1,096 (16.3%)	1,530 (17.5%)	1,486 (17.6%)	1,430 (17.5%)	1,323 (16.7%)	1,249 (16.6%)
121-130	1,383 (15.8%)	1,447 (16.2%)	1,475 (17.1%)	1,336 (15.5%)	1,116 (16.6%)	1,383 (15.8%)	1,288 (15.2%)	1,172 (14.3%)	1,063 (13.4%)	1,046 (13.9%)
131-140	1,166 (13.3%)	1,252 (14.0%)	1,126 (13.0%)	1,168 (13.5%)	863 (12.9%)	999 (11.4%)	930 (11.0%)	768 (9.4%)	686 (8.7%)	643 (8.6%)
141-150	544 (6.2%)	563 (6.3%)	560 (6.5%)	565 (6.6%)	483 (7.2%)	530 (6.0%)	450 (5.3%)	341 (4.2%)	334 (4.2%)	332 (4.4%)
151+	281 (3.2%)	283 (3.2%)	226 (2.6%)	285 (3.3%)	205 (3.1%)	279 (3.2%)	224 (2.7%)	215 (2.6%)	202 (2.6%)	222 (3.0%)

Year to Date Total GB-Trained Runners by Rating Band

Flat

RatBand	2016	2017	2018	2019	2020	2021	2022	2023	2024	2025
2YO										
Unrated	6,546 (67.0%)	6,829 (69.5%)	7,107 (69.0%)	6,615 (70.3%)	5,660 (66.7%)	6,532 (68.4%)	6,393 (69.2%)	6,231 (69.1%)	6,137 (69.6%)	5,826 (69.3%)
0-50	156 (1.6%)	154 (1.6%)	145 (1.4%)	203 (2.2%)	143 (1.7%)	191 (2.0%)	184 (2.0%)	213 (2.4%)	201 (2.3%)	175 (2.1%)
51-60	503 (5.1%)	486 (4.9%)	567 (5.5%)	509 (5.4%)	488 (5.8%)	438 (4.6%)	463 (5.0%)	480 (5.3%)	457 (5.2%)	470 (5.6%)
61-70	906 (9.3%)	852 (8.7%)	829 (8.0%)	708 (7.5%)	719 (8.5%)	817 (8.6%)	726 (7.9%)	745 (8.3%)	700 (7.9%)	673 (8.0%)
71-80	1,003 (10.3%)	905 (9.2%)	891 (8.7%)	804 (8.5%)	865 (10.2%)	856 (9.0%)	787 (8.5%)	776 (8.6%)	768 (8.7%)	676 (8.0%)
81-90	430 (4.4%)	353 (3.6%)	477 (4.6%)	355 (3.8%)	364 (4.3%)	448 (4.7%)	421 (4.6%)	383 (4.2%)	358 (4.1%)	373 (4.4%)
91-100	158 (1.6%)	157 (1.6%)	205 (2.0%)	156 (1.7%)	163 (1.9%)	176 (1.8%)	192 (2.1%)	124 (1.4%)	139 (1.6%)	160 (1.9%)
101+	73 (0.7%)	88 (0.9%)	79 (0.8%)	62 (0.7%)	80 (0.9%)	93 (1.0%)	69 (0.7%)	63 (0.7%)	60 (0.7%)	52 (0.6%)
3YO+										
Unrated	3,898 (8.7%)	4,037 (8.8%)	4,873 (10.4%)	4,636 (9.8%)	3,851 (10.4%)	4,732 (10.3%)	4,326 (9.7%)	4,246 (9.3%)	4,209 (9.0%)	4,279 (9.2%)
0-50	3,686 (8.3%)	4,202 (9.2%)	4,943 (10.5%)	5,789 (12.3%)	4,114 (11.2%)	5,311 (11.6%)	5,185 (11.7%)	5,598 (12.3%)	5,692 (12.2%)	5,623 (12.1%)
51-60	7,503 (16.8%)	7,763 (16.9%)	7,583 (16.1%)	8,443 (17.9%)	6,482 (17.6%)	8,319 (18.1%)	7,966 (17.9%)	8,849 (19.5%)	9,180 (19.6%)	8,813 (19.0%)
61-70	9,705 (21.7%)	9,569 (20.8%)	9,689 (20.6%)	9,528 (20.2%)	7,660 (20.8%)	9,687 (21.1%)	9,463 (21.3%)	9,651 (21.2%)	10,365 (22.2%)	9,893 (21.4%)
71-80	9,157 (20.5%)	9,261 (20.2%)	9,042 (19.2%)	8,550 (18.1%)	6,958 (18.9%)	8,307 (18.1%)	8,274 (18.6%)	8,399 (18.5%)	8,590 (18.4%)	8,706 (18.8%)
81-90	5,974 (13.4%)	6,233 (13.6%)	6,075 (12.9%)	5,595 (11.8%)	4,409 (12.0%)	5,236 (11.4%)	5,126 (11.5%)	4,909 (10.8%)	5,180 (11.1%)	5,305 (11.5%)
91-100	2,935 (6.6%)	2,934 (6.4%)	3,095 (6.6%)	3,088 (6.5%)	2,105 (5.7%)	2,661 (5.8%)	2,443 (5.5%)	2,324 (5.1%)	2,117 (4.5%)	2,295 (5.0%)
101+	1,795 (4.0%)	1,899 (4.1%)	1,677 (3.6%)	1,600 (3.4%)	1,315 (3.6%)	1,597 (3.5%)	1,610 (3.6%)	1,465 (3.2%)	1,391 (3.0%)	1,371 (3.0%)

Jump

RatBand	2016	2017	2018	2019	2020	2021	2022	2023	2024	2025
Hurdle										
Unrated	4,363 (27.9%)	4,557 (28.6%)	4,552 (28.6%)	4,702 (29.6%)	3,993 (32.0%)	4,554 (28.5%)	4,265 (28.0%)	4,423 (28.9%)	4,457 (29.0%)	3,778 (26.3%)
0-100	4,110 (26.3%)	4,147 (26.0%)	3,956 (24.8%)	3,922 (24.7%)	3,006 (24.1%)	4,873 (30.5%)	4,902 (32.2%)	5,097 (33.3%)	5,409 (35.1%)	5,155 (35.9%)
101-110	2,386 (15.3%)	2,393 (15.0%)	2,404 (15.1%)	2,290 (14.4%)	1,813 (14.5%)	2,159 (13.5%)	2,323 (15.3%)	2,292 (15.0%)	2,227 (14.5%)	2,184 (15.2%)
111-120	2,217 (14.2%)	2,257 (14.1%)	2,197 (13.8%)	2,228 (14.0%)	1,572 (12.6%)	1,979 (12.4%)	1,860 (12.2%)	1,811 (11.8%)	1,809 (11.8%)	1,836 (12.8%)
121-130	1,439 (9.2%)	1,485 (9.3%)	1,626 (10.2%)	1,615 (10.2%)	1,227 (9.8%)	1,437 (9.0%)	1,134 (7.5%)	1,145 (7.5%)	993 (6.5%)	908 (6.3%)
131-140	807 (5.2%)	808 (5.1%)	864 (5.4%)	791 (5.0%)	627 (5.0%)	697 (4.4%)	531 (3.5%)	407 (2.7%)	375 (2.4%)	367 (2.6%)
141-150	225 (1.4%)	236 (1.5%)	257 (1.6%)	232 (1.5%)	178 (1.4%)	213 (1.3%)	158 (1.0%)	112 (0.7%)	97 (0.6%)	93 (0.6%)
151+	89 (0.6%)	70 (0.4%)	75 (0.5%)	89 (0.6%)	81 (0.6%)	80 (0.5%)	47 (0.3%)	37 (0.2%)	25 (0.2%)	24 (0.2%)
Chase										
Unrated	70 (0.8%)	79 (0.9%)	67 (0.8%)	53 (0.6%)	29 (0.4%)	35 (0.4%)	13 (0.2%)	7 (0.1%)	6 (0.1%)	3 (0.0%)
0-100	2,402 (28.4%)	2,293 (26.5%)	2,331 (27.6%)	2,468 (29.3%)	1,919 (29.0%)	2,678 (31.2%)	2,687 (32.9%)	2,871 (36.6%)	2,890 (37.9%)	2,777 (38.9%)
101-110	1,255 (14.8%)	1,395 (16.1%)	1,372 (16.3%)	1,334 (15.9%)	996 (15.1%)	1,315 (15.3%)	1,346 (16.5%)	1,324 (16.9%)	1,377 (18.0%)	1,201 (16.8%)
111-120	1,540 (18.2%)	1,519 (17.6%)	1,425 (16.9%)	1,364 (16.2%)	1,087 (16.4%)	1,517 (17.6%)	1,461 (17.9%)	1,392 (17.7%)	1,302 (17.1%)	1,220 (17.1%)
121-130	1,361 (16.1%)	1,401 (16.2%)	1,444 (17.1%)	1,307 (15.5%)	1,111 (16.8%)	1,368 (15.9%)	1,238 (15.1%)	1,133 (14.4%)	1,030 (13.5%)	993 (13.9%)
131-140	1,114 (13.2%)	1,204 (13.9%)	1,095 (13.0%)	1,134 (13.5%)	846 (12.8%)	982 (11.4%)	876 (10.7%)	712 (9.1%)	639 (8.4%)	547 (7.7%)
141-150	487 (5.8%)	512 (5.9%)	520 (6.2%)	515 (6.1%)	456 (6.9%)	477 (5.5%)	391 (4.8%)	272 (3.5%)	256 (3.4%)	262 (3.7%)
151+	234 (2.8%)	248 (2.9%)	184 (2.2%)	234 (2.8%)	172 (2.6%)	224 (2.6%)	165 (2.0%)	138 (1.8%)	132 (1.7%)	138 (1.9%)

Frequency of Runs

Year to Date Average Runs per Horse

Code	2016	2017	2018	2019	2020	2021	2022	2023	2024	2025
Flat	5.17	5.15	5.21	5.16	4.40	5.27	5.18	5.24	5.31	5.31
Jump	3.55	3.57	3.55	3.43	2.86	3.38	3.33	3.35	3.43	3.30
Dual Overall	7.55	7.43	7.35	7.30	5.96	7.27	6.98	7.03	7.33	7.51
Dual (Flat)	4.15	4.17	4.06	4.19	3.21	3.99	3.85	3.90	4.27	4.41
Dual (Jump)	3.40	3.26	3.29	3.11	2.75	3.28	3.13	3.13	3.07	3.10
All	4.67	4.66	4.68	4.60	3.88	4.58	4.51	4.55	4.66	4.61

Year to Date Proportion of Horses by Count of Runs

Runs	2016	2017	2018	2019	2020	2021	2022	2023	2024	2025
Flat										
1	1,575 (14.6%)	1,645 (14.8%)	1,679 (14.8%)	1,728 (15.3%)	1,755 (16.5%)	1,485 (13.8%)	1,553 (14.6%)	1,562 (14.6%)	1,543 (14.4%)	1,506 (14.3%)
2	1,421 (13.1%)	1,469 (13.2%)	1,445 (12.8%)	1,566 (13.8%)	1,710 (16.1%)	1,351 (12.5%)	1,339 (12.6%)	1,378 (12.9%)	1,405 (13.1%)	1,347 (12.8%)
3	1,438 (13.3%)	1,522 (13.7%)	1,579 (13.9%)	1,520 (13.4%)	1,658 (15.6%)	1,476 (13.7%)	1,454 (13.7%)	1,396 (13.1%)	1,356 (12.7%)	1,402 (13.3%)
4	1,213 (11.2%)	1,217 (10.9%)	1,270 (11.2%)	1,221 (10.8%)	1,339 (12.6%)	1,216 (11.3%)	1,211 (11.4%)	1,219 (11.4%)	1,229 (11.5%)	1,130 (10.7%)
5+	5,166 (47.8%)	5,276 (47.4%)	5,355 (47.3%)	5,275 (46.6%)	4,144 (39.1%)	5,259 (48.8%)	5,064 (47.7%)	5,120 (48.0%)	5,175 (48.3%)	5,135 (48.8%)
Jump										
1	1,854 (24.1%)	1,975 (25.2%)	1,844 (23.7%)	1,978 (24.8%)	2,003 (26.9%)	2,033 (24.4%)	2,116 (26.6%)	2,101 (26.6%)	1,877 (24.8%)	1,939 (26.3%)
2	1,430 (18.6%)	1,379 (17.6%)	1,383 (17.8%)	1,551 (19.4%)	1,718 (23.0%)	1,613 (19.4%)	1,512 (19.0%)	1,472 (18.7%)	1,423 (18.8%)	1,492 (20.2%)
3	1,162 (15.1%)	1,149 (14.7%)	1,197 (15.4%)	1,302 (16.3%)	1,461 (19.6%)	1,399 (16.8%)	1,222 (15.4%)	1,229 (15.6%)	1,145 (15.1%)	1,140 (15.5%)
4	970 (12.6%)	954 (12.2%)	1,059 (13.6%)	992 (12.4%)	1,030 (13.8%)	1,137 (13.6%)	1,101 (13.8%)	968 (12.3%)	1,016 (13.4%)	957 (13.0%)
5+	2,274 (29.6%)	2,370 (30.3%)	2,293 (29.5%)	2,167 (27.1%)	1,246 (16.7%)	2,149 (25.8%)	2,000 (25.2%)	2,119 (26.9%)	2,098 (27.8%)	1,850 (25.1%)
All Races										
1	2,974 (16.9%)	3,123 (17.3%)	3,092 (16.9%)	3,234 (17.6%)	3,256 (18.9%)	3,097 (16.9%)	3,248 (18.2%)	3,243 (18.2%)	3,058 (17.4%)	3,114 (18.0%)
2	2,581 (14.7%)	2,608 (14.4%)	2,570 (14.1%)	2,821 (15.3%)	3,129 (18.1%)	2,694 (14.7%)	2,622 (14.7%)	2,667 (14.9%)	2,620 (14.9%)	2,629 (15.2%)
3	2,402 (13.6%)	2,480 (13.7%)	2,575 (14.1%)	2,623 (14.3%)	2,971 (17.2%)	2,703 (14.8%)	2,536 (14.2%)	2,497 (14.0%)	2,364 (13.4%)	2,423 (14.0%)
4	2,079 (11.8%)	2,078 (11.5%)	2,230 (12.2%)	2,124 (11.5%)	2,297 (13.3%)	2,258 (12.3%)	2,211 (12.4%)	2,105 (11.8%)	2,170 (12.3%)	2,011 (11.7%)
5+	7,577 (43.0%)	7,770 (43.0%)	7,798 (42.7%)	7,594 (41.3%)	5,593 (32.4%)	7,552 (41.3%)	7,208 (40.4%)	7,350 (41.1%)	7,381 (42.0%)	7,084 (41.0%)

Year to Date Median Days Between Runs

Code/RatBand	2016	2017	2018	2019	2020	2021	2022	2023	2024	2025
All Runners	24	24	24	24	25	25	25	25	25	25
Flat										
Unrated	22	22	23	23	22	23	24	23	24	24
0-50	20	21	20	21	20	20	21	19	18	19
51-60	20	20	19	20	20	20	20	19	20	20
61-70	20	21	20	21	21	21	21	21	21	21
71-80	21	22	21	21	22	22	22	22	22	22
81-90	22	22	22	22	23	23	23	24	24	25
91-100	24	25	24	23	24	25	27	27	28	28
101+	28	28	28	28	28	28	31	33	33	34
All Flat Runners	21	22	21	22	22	22	22	22	22	22
Jump										
Unrated	36	33	37	36	36	39	37	40	40	40
0-100	26	26	27	27	31	29	28	30	30	30
101-110	29	28	29	29	31	31	30	32	33	32
111-120	29	29	31	31	34	32	32	33	33	33
121-130	32	30	31	33	35	34	33	35	36	35
131-140	34	34	35	35	38	36	35	38	36	37
141-150	35	36	39	39	43	41	39	44	39	41
151+	40	38	40	42	47	42	42	45	45	42
All Jump Runners	30	30	31	32	34	33	32	34	34	33

Horses Population by Gender

November 2025 Horses in Training Snapshot by Gender versus Previous Years

All Horses

Sex	2016	2017	2018	2019	2020	2021	2022	2023	2024	2025
Colt/Entire	1,822 (14.1%)	1,868 (13.9%)	1,717 (12.5%)	1,818 (12.9%)	1,756 (12.0%)	1,639 (11.8%)	1,538 (11.2%)	1,606 (11.7%)	1,444 (10.8%)	1,440 (10.8%)
Gelding	7,488 (57.9%)	7,672 (57.0%)	7,960 (58.1%)	8,110 (57.5%)	8,534 (58.6%)	8,121 (58.4%)	7,970 (58.2%)	7,877 (57.5%)	7,859 (58.9%)	7,765 (58.4%)
Filly/Mare	3,623 (28.0%)	3,915 (29.1%)	4,031 (29.4%)	4,172 (29.6%)	4,282 (29.4%)	4,135 (29.8%)	4,191 (30.6%)	4,225 (30.8%)	4,031 (30.2%)	4,080 (30.7%)
Rig	3 (0.0%)	3 (0.0%)	3 (0.0%)	3 (0.0%)	3 (0.0%)	1 (0.0%)	0 (0.0%)	0 (0.0%)	0 (0.0%)	1 (0.0%)
Total	12,936 (100.0%)	13,458 (100.0%)	13,711 (100.0%)	14,103 (100.0%)	14,575 (100.0%)	13,896 (100.0%)	13,699 (100.0%)	13,708 (100.0%)	13,334 (100.0%)	13,286 (100.0%)

Flat (including Dual)

Sex	2016	2017	2018	2019	2020	2021	2022	2023	2024	2025
Colt/Entire	1,307 (19.4%)	1,393 (18.5%)	1,383 (18.7%)	1,346 (18.0%)	1,343 (17.9%)	1,219 (16.9%)	1,122 (15.8%)	1,167 (16.2%)	1,053 (14.8%)	1,051 (14.2%)
Gelding	3,123 (46.3%)	3,541 (47.1%)	3,428 (46.2%)	3,500 (46.9%)	3,569 (47.6%)	3,477 (48.1%)	3,416 (48.1%)	3,479 (48.2%)	3,612 (50.6%)	3,767 (50.8%)
Filly/Mare	2,311 (34.3%)	2,580 (34.3%)	2,602 (35.1%)	2,615 (35.0%)	2,579 (34.4%)	2,534 (35.0%)	2,559 (36.1%)	2,574 (35.7%)	2,470 (34.6%)	2,601 (35.1%)
Rig	3 (0.0%)	3 (0.0%)	2 (0.0%)	2 (0.0%)	2 (0.0%)	0 (0.0%)	0 (0.0%)	0 (0.0%)	0 (0.0%)	1 (0.0%)
Total	6,744 (100.0%)	7,517 (100.0%)	7,415 (100.0%)	7,463 (100.0%)	7,493 (100.0%)	7,230 (100.0%)	7,097 (100.0%)	7,220 (100.0%)	7,135 (100.0%)	7,420 (100.0%)

Jump (including Dual)

Sex	2016	2017	2018	2019	2020	2021	2022	2023	2024	2025
Colt/Entire	27 (0.5%)	30 (0.5%)	29 (0.5%)	26 (0.4%)	31 (0.4%)	41 (0.6%)	34 (0.5%)	30 (0.5%)	34 (0.6%)	44 (0.8%)
Gelding	4,749 (81.3%)	4,755 (79.0%)	4,884 (78.4%)	4,995 (78.1%)	5,368 (77.6%)	4,971 (77.6%)	4,839 (76.7%)	4,673 (75.7%)	4,559 (75.7%)	4,397 (75.3%)
Filly/Mare	1,062 (18.2%)	1,235 (20.5%)	1,319 (21.2%)	1,373 (21.5%)	1,517 (21.9%)	1,397 (21.8%)	1,436 (22.8%)	1,466 (23.8%)	1,426 (23.7%)	1,400 (24.0%)
Rig	0 (0.0%)	0 (0.0%)	1 (0.0%)	1 (0.0%)	1 (0.0%)	1 (0.0%)	0 (0.0%)	0 (0.0%)	0 (0.0%)	1 (0.0%)
Total	5,838 (100.0%)	6,020 (100.0%)	6,233 (100.0%)	6,395 (100.0%)	6,917 (100.0%)	6,410 (100.0%)	6,309 (100.0%)	6,169 (100.0%)	6,019 (100.0%)	5,842 (100.0%)

Year to Date Total Runners by Gender

Sex	2016	2017	2018	2019	2020	2021	2022	2023	2024	2025
All Races										
Colt/Entire	8,756 (10.7%)	8,812 (10.5%)	9,291 (10.9%)	8,383 (9.9%)	7,169 (10.7%)	8,037 (9.6%)	7,228 (9.0%)	7,187 (8.9%)	6,559 (8.0%)	6,277 (7.9%)
Gelding	51,015 (62.1%)	52,340 (62.2%)	52,185 (61.0%)	51,780 (61.2%)	40,461 (60.5%)	51,852 (61.8%)	49,837 (62.0%)	50,011 (61.6%)	51,665 (63.1%)	49,885 (62.7%)
Filly/Mare	22,389 (27.2%)	22,987 (27.3%)	23,995 (28.1%)	24,397 (28.8%)	19,240 (28.8%)	23,993 (28.6%)	23,266 (29.0%)	24,001 (29.6%)	23,682 (28.9%)	23,335 (29.4%)
Rig	19 (0.0%)	13 (0.0%)	14 (0.0%)	19 (0.0%)	6 (0.0%)	9 (0.0%)	10 (0.0%)	4 (0.0%)	0 (0.0%)	3 (0.0%)
Flat										
Colt/Entire	8,716 (15.8%)	8,764 (15.5%)	9,249 (15.9%)	8,348 (14.5%)	7,134 (15.6%)	7,961 (14.3%)	7,196 (13.3%)	7,138 (13.0%)	6,536 (11.6%)	6,250 (11.3%)
Gelding	28,632 (52.0%)	29,684 (52.6%)	30,350 (52.2%)	30,396 (52.9%)	23,704 (51.9%)	29,725 (53.3%)	29,059 (53.8%)	29,593 (53.8%)	31,913 (56.8%)	31,380 (56.7%)
Filly/Mare	17,655 (32.1%)	17,998 (31.9%)	18,491 (31.8%)	18,713 (32.6%)	14,811 (32.4%)	18,110 (32.5%)	17,740 (32.9%)	18,226 (33.2%)	17,758 (31.6%)	17,672 (32.0%)
Rig	19 (0.0%)	13 (0.0%)	14 (0.0%)	12 (0.0%)	1 (0.0%)	3 (0.0%)	0 (0.0%)	0 (0.0%)	0 (0.0%)	1 (0.0%)
All Jump										
Colt/Entire	40 (0.1%)	48 (0.2%)	42 (0.2%)	35 (0.1%)	35 (0.2%)	76 (0.3%)	32 (0.1%)	49 (0.2%)	23 (0.1%)	27 (0.1%)
Gelding	22,383 (82.4%)	22,656 (81.8%)	21,835 (79.7%)	21,384 (78.9%)	16,757 (78.9%)	22,127 (78.8%)	20,778 (78.9%)	20,418 (77.8%)	19,752 (76.9%)	18,505 (76.5%)
Filly/Mare	4,734 (17.4%)	4,989 (18.0%)	5,504 (20.1%)	5,684 (21.0%)	4,429 (20.9%)	5,883 (20.9%)	5,526 (21.0%)	5,775 (22.0%)	5,924 (23.1%)	5,663 (23.4%)
Rig	0 (0.0%)	0 (0.0%)	0 (0.0%)	7 (0.0%)	5 (0.0%)	6 (0.0%)	10 (0.0%)	4 (0.0%)	0 (0.0%)	2 (0.0%)
Chase										
Colt/Entire	1 (0.0%)	0 (0.0%)	1 (0.0%)	0 (0.0%)	0 (0.0%)	0 (0.0%)	0 (0.0%)	0 (0.0%)	0 (0.0%)	0 (0.0%)
Gelding	8,136 (92.8%)	8,268 (92.4%)	7,846 (90.7%)	7,769 (90.1%)	6,068 (90.4%)	7,866 (89.7%)	7,555 (89.4%)	7,292 (89.2%)	7,046 (89.1%)	6,532 (87.0%)
Filly/Mare	627 (7.2%)	681 (7.6%)	801 (9.3%)	847 (9.8%)	640 (9.5%)	895 (10.2%)	882 (10.4%)	879 (10.8%)	861 (10.9%)	973 (13.0%)
Rig	0 (0.0%)	0 (0.0%)	0 (0.0%)	5 (0.1%)	5 (0.1%)	6 (0.1%)	10 (0.1%)	3 (0.0%)	0 (0.0%)	0 (0.0%)
Hurdle										
Colt/Entire	35 (0.2%)	37 (0.2%)	31 (0.2%)	24 (0.1%)	21 (0.2%)	66 (0.4%)	21 (0.1%)	39 (0.2%)	13 (0.1%)	13 (0.1%)
Gelding	12,761 (79.1%)	12,868 (78.5%)	12,503 (76.6%)	12,257 (75.3%)	9,484 (74.8%)	12,210 (74.8%)	11,872 (75.6%)	11,781 (74.3%)	11,523 (72.6%)	10,849 (73.1%)
Filly/Mare	3,333 (20.7%)	3,480 (21.2%)	3,789 (23.2%)	4,002 (24.6%)	3,179 (25.1%)	4,037 (24.7%)	3,821 (24.3%)	4,043 (25.5%)	4,344 (27.4%)	3,982 (26.8%)
Rig	0 (0.0%)	0 (0.0%)	0 (0.0%)	2 (0.0%)	0 (0.0%)	0 (0.0%)	0 (0.0%)	1 (0.0%)	0 (0.0%)	0 (0.0%)
NHF										
Colt/Entire	4 (0.2%)	11 (0.5%)	10 (0.4%)	11 (0.5%)	14 (0.8%)	10 (0.3%)	11 (0.5%)	10 (0.5%)	10 (0.5%)	14 (0.8%)
Gelding	1,486 (65.6%)	1,520 (64.4%)	1,486 (61.7%)	1,358 (61.6%)	1,205 (65.9%)	2,051 (68.1%)	1,351 (61.8%)	1,345 (60.9%)	1,183 (61.9%)	1,124 (60.8%)
Filly/Mare	774 (34.2%)	828 (35.1%)	914 (37.9%)	835 (37.9%)	610 (33.4%)	951 (31.6%)	823 (37.7%)	853 (38.6%)	719 (37.6%)	708 (38.3%)
Rig	0 (0.0%)	0 (0.0%)	0 (0.0%)	0 (0.0%)	0 (0.0%)	0 (0.0%)	0 (0.0%)	0 (0.0%)	0 (0.0%)	2 (0.1%)
Hunter										
Gelding	720 (94.2%)	709 (94.9%)	603 (93.3%)	522 (92.7%)	142 (97.3%)	557 (93.5%)	429 (94.9%)	408 (93.6%)	379 (92.9%)	354 (91.9%)
Filly/Mare	44 (5.8%)	38 (5.1%)	43 (6.7%)	41 (7.3%)	4 (2.7%)	39 (6.5%)	23 (5.1%)	28 (6.4%)	29 (7.1%)	31 (8.1%)

Year to Date Individual Runners by Gender

Sex	2016	2017	2018	2019	2020	2021	2022	2023	2024	2025
All Races										
Male	12,419 (70.5%)	12,681 (70.2%)	12,706 (69.6%)	12,756 (69.3%)	11,970 (69.4%)	12,727 (69.5%)	12,319 (69.1%)	12,195 (68.3%)	12,067 (68.6%)	11,758 (68.1%)
Female	5,194 (29.5%)	5,378 (29.8%)	5,559 (30.4%)	5,640 (30.7%)	5,276 (30.6%)	5,577 (30.5%)	5,506 (30.9%)	5,667 (31.7%)	5,526 (31.4%)	5,503 (31.9%)
Flat										
Male	6,927 (64.1%)	7,142 (64.2%)	7,294 (64.4%)	7,248 (64.1%)	6,802 (64.1%)	6,892 (63.9%)	6,733 (63.4%)	6,707 (62.8%)	6,851 (64.0%)	6,674 (63.4%)
Female	3,886 (35.9%)	3,987 (35.8%)	4,034 (35.6%)	4,062 (35.9%)	3,804 (35.9%)	3,895 (36.1%)	3,888 (36.6%)	3,968 (37.2%)	3,857 (36.0%)	3,846 (36.6%)
All Jump										
Male	6,218 (80.9%)	6,264 (80.0%)	6,076 (78.1%)	6,228 (77.9%)	5,813 (77.9%)	6,473 (77.7%)	6,171 (77.6%)	6,041 (76.6%)	5,736 (75.9%)	5,573 (75.5%)
Female	1,472 (19.1%)	1,563 (20.0%)	1,700 (21.9%)	1,762 (22.1%)	1,645 (22.1%)	1,858 (22.3%)	1,780 (22.4%)	1,848 (23.4%)	1,823 (24.1%)	1,805 (24.5%)
Chase										
Male	2,499 (92.1%)	2,548 (90.9%)	2,489 (89.7%)	2,507 (89.1%)	2,321 (88.4%)	2,594 (88.1%)	2,461 (88.0%)	2,400 (87.8%)	2,281 (87.0%)	2,188 (85.6%)
Female	214 (7.9%)	256 (9.1%)	286 (10.3%)	308 (10.9%)	304 (11.6%)	352 (11.9%)	337 (12.0%)	335 (12.2%)	341 (13.0%)	369 (14.4%)
Hurdle										
Male	4,301 (80.3%)	4,294 (78.9%)	4,237 (77.4%)	4,340 (76.9%)	3,896 (75.9%)	4,392 (75.8%)	4,303 (76.9%)	4,151 (75.0%)	4,003 (73.5%)	3,828 (73.9%)
Female	1,052 (19.7%)	1,146 (21.1%)	1,239 (22.6%)	1,306 (23.1%)	1,239 (24.1%)	1,399 (24.2%)	1,296 (23.1%)	1,380 (25.0%)	1,446 (26.5%)	1,355 (26.1%)
NHF										
Male	987 (67.1%)	1,019 (66.6%)	1,035 (65.1%)	954 (64.7%)	934 (68.3%)	1,459 (70.3%)	955 (64.4%)	959 (63.8%)	841 (64.3%)	826 (63.5%)
Female	485 (32.9%)	510 (33.4%)	554 (34.9%)	521 (35.3%)	434 (31.7%)	615 (29.7%)	527 (35.6%)	543 (36.2%)	466 (35.7%)	474 (36.5%)
Hunter										
Male	395 (93.2%)	366 (93.6%)	339 (92.1%)	301 (92.0%)	98 (96.1%)	299 (92.0%)	243 (92.4%)	228 (93.4%)	212 (92.6%)	207 (91.6%)
Female	29 (6.8%)	25 (6.4%)	29 (7.9%)	26 (8.0%)	4 (3.9%)	26 (8.0%)	20 (7.6%)	16 (6.6%)	17 (7.4%)	19 (8.4%)

Horses Population by Breeding

November 2025 Horses in Training Snapshot by Breeding versus Previous Years

Flat (including Dual)

Bred	Sex	2016	2017	2018	2019	2020	2021	2022	2023	2024	2025
GB	Male	2,071 (30.7%)	2,338 (31.1%)	2,258 (30.5%)	2,300 (30.8%)	2,278 (30.4%)	2,187 (30.2%)	2,095 (29.5%)	2,152 (29.8%)	2,112 (29.6%)	2,234 (30.1%)
	Female	1,305 (19.4%)	1,438 (19.1%)	1,443 (19.5%)	1,469 (19.7%)	1,447 (19.3%)	1,430 (19.8%)	1,408 (19.8%)	1,411 (19.5%)	1,363 (19.1%)	1,442 (19.4%)
	Subtotal	3,376 (50.1%)	3,776 (50.2%)	3,701 (49.9%)	3,769 (50.5%)	3,725 (49.7%)	3,617 (50.0%)	3,503 (49.4%)	3,563 (49.3%)	3,475 (48.7%)	3,676 (49.5%)
IRE	Male	1,886 (28.0%)	2,053 (27.3%)	2,043 (27.6%)	2,030 (27.2%)	2,122 (28.3%)	2,084 (28.8%)	2,081 (29.3%)	2,105 (29.2%)	2,165 (30.3%)	2,213 (29.8%)
	Female	841 (12.5%)	952 (12.7%)	946 (12.8%)	952 (12.8%)	964 (12.9%)	954 (13.2%)	1,017 (14.3%)	1,030 (14.3%)	971 (13.6%)	1,018 (13.7%)
	Subtotal	2,727 (40.4%)	3,005 (40.0%)	2,989 (40.3%)	2,982 (40.0%)	3,086 (41.2%)	3,038 (42.0%)	3,098 (43.7%)	3,135 (43.4%)	3,136 (44.0%)	3,231 (43.5%)
FR	Male	156 (2.3%)	230 (3.1%)	218 (2.9%)	242 (3.2%)	269 (3.6%)	255 (3.5%)	222 (3.1%)	263 (3.6%)	276 (3.9%)	259 (3.5%)
	Female	54 (0.8%)	77 (1.0%)	90 (1.2%)	81 (1.1%)	86 (1.1%)	88 (1.2%)	90 (1.3%)	97 (1.3%)	94 (1.3%)	96 (1.3%)
	Subtotal	210 (3.1%)	307 (4.1%)	308 (4.2%)	323 (4.3%)	355 (4.7%)	343 (4.7%)	312 (4.4%)	360 (5.0%)	370 (5.2%)	355 (4.8%)
USA	Male	255 (3.8%)	242 (3.2%)	236 (3.2%)	214 (2.9%)	174 (2.3%)	128 (1.8%)	89 (1.3%)	90 (1.2%)	63 (0.9%)	52 (0.7%)
	Female	91 (1.3%)	90 (1.2%)	104 (1.4%)	89 (1.2%)	64 (0.9%)	40 (0.6%)	32 (0.5%)	18 (0.2%)	26 (0.4%)	26 (0.4%)
	Subtotal	346 (5.1%)	332 (4.4%)	340 (4.6%)	303 (4.1%)	238 (3.2%)	168 (2.3%)	121 (1.7%)	108 (1.5%)	89 (1.2%)	78 (1.1%)
GNY	Male	49 (0.7%)	53 (0.7%)	37 (0.5%)	43 (0.6%)	54 (0.7%)	36 (0.5%)	39 (0.5%)	29 (0.4%)	36 (0.5%)	49 (0.7%)
	Female	11 (0.2%)	13 (0.2%)	11 (0.1%)	18 (0.2%)	15 (0.2%)	21 (0.3%)	10 (0.1%)	11 (0.2%)	12 (0.2%)	12 (0.2%)
	Subtotal	60 (0.9%)	66 (0.9%)	48 (0.6%)	61 (0.8%)	69 (0.9%)	57 (0.8%)	49 (0.7%)	40 (0.6%)	48 (0.7%)	61 (0.8%)
Other	Male	16 (0.2%)	21 (0.3%)	21 (0.3%)	19 (0.3%)	17 (0.2%)	6 (0.1%)	12 (0.2%)	7 (0.1%)	13 (0.2%)	12 (0.2%)
	Female	9 (0.1%)	10 (0.1%)	8 (0.1%)	6 (0.1%)	3 (0.0%)	1 (0.0%)	2 (0.0%)	7 (0.1%)	4 (0.1%)	7 (0.1%)
	Subtotal	25 (0.4%)	31 (0.4%)	29 (0.4%)	25 (0.3%)	20 (0.3%)	7 (0.1%)	14 (0.2%)	14 (0.2%)	17 (0.2%)	19 (0.3%)

Jump (including Dual)

Bred	Sex	2016	2017	2018	2019	2020	2021	2022	2023	2024	2025
GB	Male	1,338 (22.9%)	1,344 (22.3%)	1,312 (21.0%)	1,283 (20.1%)	1,336 (19.3%)	1,244 (19.4%)	1,222 (19.4%)	1,187 (19.2%)	1,175 (19.5%)	1,133 (19.4%)
	Female	590 (10.1%)	645 (10.7%)	643 (10.3%)	608 (9.5%)	694 (10.0%)	658 (10.3%)	683 (10.8%)	672 (10.9%)	608 (10.1%)	609 (10.4%)
	Subtotal	1,928 (33.0%)	1,989 (33.0%)	1,955 (31.4%)	1,891 (29.6%)	2,030 (29.3%)	1,902 (29.7%)	1,905 (30.2%)	1,859 (30.1%)	1,783 (29.6%)	1,742 (29.8%)
IRE	Male	2,629 (45.0%)	2,653 (44.1%)	2,729 (43.8%)	2,814 (44.0%)	2,965 (42.9%)	2,683 (41.9%)	2,564 (40.6%)	2,440 (39.6%)	2,370 (39.4%)	2,261 (38.7%)
	Female	404 (6.9%)	505 (8.4%)	561 (9.0%)	625 (9.8%)	668 (9.7%)	605 (9.4%)	598 (9.5%)	640 (10.4%)	654 (10.9%)	618 (10.6%)
	Subtotal	3,033 (52.0%)	3,158 (52.5%)	3,290 (52.8%)	3,439 (53.8%)	3,633 (52.5%)	3,288 (51.3%)	3,162 (50.1%)	3,080 (49.9%)	3,024 (50.2%)	2,879 (49.3%)
FR	Male	700 (12.0%)	687 (11.4%)	788 (12.6%)	827 (12.9%)	983 (14.2%)	983 (15.3%)	993 (15.7%)	992 (16.1%)	990 (16.4%)	1,000 (17.1%)
	Female	61 (1.0%)	79 (1.3%)	104 (1.7%)	132 (2.1%)	143 (2.1%)	125 (2.0%)	145 (2.3%)	148 (2.4%)	155 (2.6%)	164 (2.8%)
	Subtotal	761 (13.0%)	766 (12.7%)	892 (14.3%)	959 (15.0%)	1,126 (16.3%)	1,108 (17.3%)	1,138 (18.0%)	1,140 (18.5%)	1,145 (19.0%)	1,164 (19.9%)
USA	Male	46 (0.8%)	43 (0.7%)	34 (0.5%)	32 (0.5%)	34 (0.5%)	31 (0.5%)	21 (0.3%)	14 (0.2%)	10 (0.2%)	6 (0.1%)
	Female	1 (0.0%)	1 (0.0%)	4 (0.1%)	3 (0.0%)	2 (0.0%)	1 (0.0%)	NA (-)	2 (0.0%)	1 (0.0%)	1 (0.0%)
	Subtotal	47 (0.8%)	44 (0.7%)	38 (0.6%)	35 (0.5%)	36 (0.5%)	32 (0.5%)	21 (0.3%)	16 (0.3%)	11 (0.2%)	7 (0.1%)
GNY	Male	55 (0.9%)	50 (0.8%)	46 (0.7%)	61 (1.0%)	74 (1.1%)	70 (1.1%)	72 (1.1%)	67 (1.1%)	45 (0.7%)	38 (0.7%)
	Female	4 (0.1%)	4 (0.1%)	6 (0.1%)	5 (0.1%)	9 (0.1%)	7 (0.1%)	9 (0.1%)	3 (0.0%)	6 (0.1%)	6 (0.1%)
	Subtotal	59 (1.0%)	54 (0.9%)	52 (0.8%)	66 (1.0%)	83 (1.2%)	77 (1.2%)	81 (1.3%)	70 (1.1%)	51 (0.8%)	44 (0.8%)
Other	Male	8 (0.1%)	8 (0.1%)	5 (0.1%)	5 (0.1%)	8 (0.1%)	2 (0.0%)	1 (0.0%)	3 (0.0%)	3 (0.0%)	4 (0.1%)
	Female	2 (0.0%)	1 (0.0%)	1 (0.0%)	NA (-)	1 (0.0%)	1 (0.0%)	1 (0.0%)	1 (0.0%)	2 (0.0%)	2 (0.0%)
	Subtotal	10 (0.2%)	9 (0.1%)	6 (0.1%)	5 (0.1%)	9 (0.1%)	3 (0.0%)	2 (0.0%)	4 (0.1%)	5 (0.1%)	6 (0.1%)

Year to Date Total Runners by Breeding

Flat

Bred	Sex	2016	2017	2018	2019	2020	2021	2022	2023	2024	2025
GB	Male	17,569 (31.9%)	18,179 (32.2%)	18,317 (31.5%)	17,815 (31.0%)	14,593 (32.0%)	17,500 (31.4%)	16,722 (31.0%)	16,685 (30.4%)	17,309 (30.8%)	17,167 (31.0%)
	Female	9,742 (17.7%)	9,793 (17.3%)	10,162 (17.5%)	10,333 (18.0%)	8,204 (18.0%)	10,122 (18.1%)	9,673 (17.9%)	9,772 (17.8%)	9,430 (16.8%)	9,516 (17.2%)
	Subtotal	27,311 (49.6%)	27,972 (49.5%)	28,479 (49.0%)	28,148 (49.0%)	22,797 (49.9%)	27,622 (49.5%)	26,395 (48.9%)	26,457 (48.1%)	26,739 (47.6%)	26,683 (48.2%)
IRE	Male	16,524 (30.0%)	16,818 (29.8%)	17,697 (30.5%)	17,279 (30.1%)	13,497 (29.6%)	17,110 (30.7%)	17,080 (31.6%)	17,500 (31.8%)	18,457 (32.8%)	18,032 (32.6%)
	Female	6,988 (12.7%)	7,214 (12.8%)	7,203 (12.4%)	7,196 (12.5%)	5,795 (12.7%)	7,005 (12.6%)	7,181 (13.3%)	7,584 (13.8%)	7,539 (13.4%)	7,399 (13.4%)
	Subtotal	23,512 (42.7%)	24,032 (42.6%)	24,900 (42.9%)	24,475 (42.6%)	19,292 (42.3%)	24,115 (43.2%)	24,261 (44.9%)	25,084 (45.6%)	25,996 (46.3%)	25,431 (46.0%)
FR	Male	1,066 (1.9%)	1,249 (2.2%)	1,435 (2.5%)	1,628 (2.8%)	1,327 (2.9%)	1,582 (2.8%)	1,452 (2.7%)	1,662 (3.0%)	1,833 (3.3%)	1,724 (3.1%)
	Female	361 (0.7%)	394 (0.7%)	470 (0.8%)	535 (0.9%)	424 (0.9%)	548 (1.0%)	518 (1.0%)	586 (1.1%)	527 (0.9%)	480 (0.9%)
	Subtotal	1,427 (2.6%)	1,643 (2.9%)	1,905 (3.3%)	2,163 (3.8%)	1,751 (3.8%)	2,130 (3.8%)	1,970 (3.6%)	2,248 (4.1%)	2,360 (4.2%)	2,204 (4.0%)
USA	Male	1,737 (3.2%)	1,718 (3.0%)	1,707 (2.9%)	1,591 (2.8%)	1,093 (2.4%)	1,057 (1.9%)	739 (1.4%)	620 (1.1%)	555 (1.0%)	376 (0.7%)
	Female	434 (0.8%)	496 (0.9%)	534 (0.9%)	475 (0.8%)	277 (0.6%)	300 (0.5%)	245 (0.5%)	213 (0.4%)	163 (0.3%)	164 (0.3%)
	Subtotal	2,171 (3.9%)	2,214 (3.9%)	2,241 (3.9%)	2,066 (3.6%)	1,370 (3.0%)	1,357 (2.4%)	984 (1.8%)	833 (1.5%)	718 (1.3%)	540 (1.0%)
GNY	Male	318 (0.6%)	330 (0.6%)	294 (0.5%)	301 (0.5%)	256 (0.6%)	352 (0.6%)	193 (0.4%)	221 (0.4%)	247 (0.4%)	264 (0.5%)
	Female	62 (0.1%)	40 (0.1%)	77 (0.1%)	112 (0.2%)	92 (0.2%)	114 (0.2%)	98 (0.2%)	57 (0.1%)	69 (0.1%)	85 (0.2%)
	Subtotal	380 (0.7%)	370 (0.7%)	371 (0.6%)	413 (0.7%)	348 (0.8%)	466 (0.8%)	291 (0.5%)	278 (0.5%)	316 (0.6%)	349 (0.6%)
Other	Male	153 (0.3%)	167 (0.3%)	163 (0.3%)	142 (0.2%)	73 (0.2%)	88 (0.2%)	69 (0.1%)	43 (0.1%)	48 (0.1%)	68 (0.1%)
	Female	68 (0.1%)	61 (0.1%)	45 (0.1%)	62 (0.1%)	19 (0.0%)	21 (0.0%)	25 (0.0%)	14 (0.0%)	30 (0.1%)	28 (0.1%)
	Subtotal	221 (0.4%)	228 (0.4%)	208 (0.4%)	204 (0.4%)	92 (0.2%)	109 (0.2%)	94 (0.2%)	57 (0.1%)	78 (0.1%)	96 (0.2%)

Jump

Bred	Sex	2016	2017	2018	2019	2020	2021	2022	2023	2024	2025
GB	Male	6,084 (22.4%)	5,963 (21.5%)	5,666 (20.7%)	5,450 (20.1%)	4,126 (19.4%)	5,381 (19.2%)	4,776 (18.1%)	4,603 (17.5%)	4,565 (17.8%)	4,492 (18.6%)
	Female	2,454 (9.0%)	2,463 (8.9%)	2,600 (9.5%)	2,416 (8.9%)	1,846 (8.7%)	2,549 (9.1%)	2,395 (9.1%)	2,472 (9.4%)	2,371 (9.2%)	2,154 (8.9%)
	Subtotal	8,538 (31.4%)	8,426 (30.4%)	8,266 (30.2%)	7,866 (29.0%)	5,972 (28.1%)	7,930 (28.2%)	7,171 (27.2%)	7,075 (27.0%)	6,936 (27.0%)	6,646 (27.5%)
IRE	Male	12,648 (46.6%)	12,868 (46.5%)	12,367 (45.2%)	12,076 (44.5%)	9,436 (44.5%)	12,314 (43.8%)	11,309 (42.9%)	11,151 (42.5%)	10,718 (41.7%)	9,896 (40.9%)
	Female	2,014 (7.4%)	2,190 (7.9%)	2,556 (9.3%)	2,764 (10.2%)	2,088 (9.8%)	2,694 (9.6%)	2,501 (9.5%)	2,669 (10.2%)	2,985 (11.6%)	2,776 (11.5%)
	Subtotal	14,662 (54.0%)	15,058 (54.4%)	14,923 (54.5%)	14,840 (54.7%)	11,524 (54.3%)	15,008 (53.4%)	13,810 (52.4%)	13,820 (52.7%)	13,703 (53.3%)	12,672 (52.4%)
FR	Male	3,103 (11.4%)	3,363 (12.1%)	3,346 (12.2%)	3,372 (12.4%)	2,847 (13.4%)	3,978 (14.2%)	4,274 (16.2%)	4,315 (16.4%)	4,189 (16.3%)	3,899 (16.1%)
	Female	220 (0.8%)	308 (1.1%)	311 (1.1%)	460 (1.7%)	450 (2.1%)	589 (2.1%)	573 (2.2%)	603 (2.3%)	541 (2.1%)	706 (2.9%)
	Subtotal	3,323 (12.2%)	3,671 (13.3%)	3,657 (13.4%)	3,832 (14.1%)	3,297 (15.5%)	4,567 (16.3%)	4,847 (18.4%)	4,918 (18.7%)	4,730 (18.4%)	4,605 (19.0%)
USA	Male	290 (1.1%)	193 (0.7%)	190 (0.7%)	173 (0.6%)	128 (0.6%)	160 (0.6%)	105 (0.4%)	95 (0.4%)	45 (0.2%)	47 (0.2%)
	Female	5 (0.0%)	9 (0.0%)	10 (0.0%)	18 (0.1%)	24 (0.1%)	6 (0.0%)	6 (0.0%)	1 (0.0%)	3 (0.0%)	9 (0.0%)
	Subtotal	295 (1.1%)	202 (0.7%)	200 (0.7%)	191 (0.7%)	152 (0.7%)	166 (0.6%)	111 (0.4%)	96 (0.4%)	48 (0.2%)	56 (0.2%)
GNY	Male	265 (1.0%)	285 (1.0%)	261 (1.0%)	324 (1.2%)	242 (1.1%)	360 (1.3%)	345 (1.3%)	297 (1.1%)	244 (0.9%)	185 (0.8%)
	Female	23 (0.1%)	10 (0.0%)	18 (0.1%)	24 (0.1%)	19 (0.1%)	42 (0.1%)	42 (0.2%)	25 (0.1%)	20 (0.1%)	17 (0.1%)
	Subtotal	288 (1.1%)	295 (1.1%)	279 (1.0%)	348 (1.3%)	261 (1.2%)	402 (1.4%)	387 (1.5%)	322 (1.2%)	264 (1.0%)	202 (0.8%)
Other	Male	33 (0.1%)	32 (0.1%)	47 (0.2%)	31 (0.1%)	18 (0.1%)	16 (0.1%)	11 (0.0%)	10 (0.0%)	14 (0.1%)	15 (0.1%)
	Female	18 (0.1%)	9 (0.0%)	9 (0.0%)	2 (0.0%)	2 (0.0%)	3 (0.0%)	9 (0.0%)	5 (0.0%)	4 (0.0%)	1 (0.0%)
	Subtotal	51 (0.2%)	41 (0.1%)	56 (0.2%)	33 (0.1%)	20 (0.1%)	19 (0.1%)	20 (0.1%)	15 (0.1%)	18 (0.1%)	16 (0.1%)

Year to Date Individual Runners by Breeding

Flat

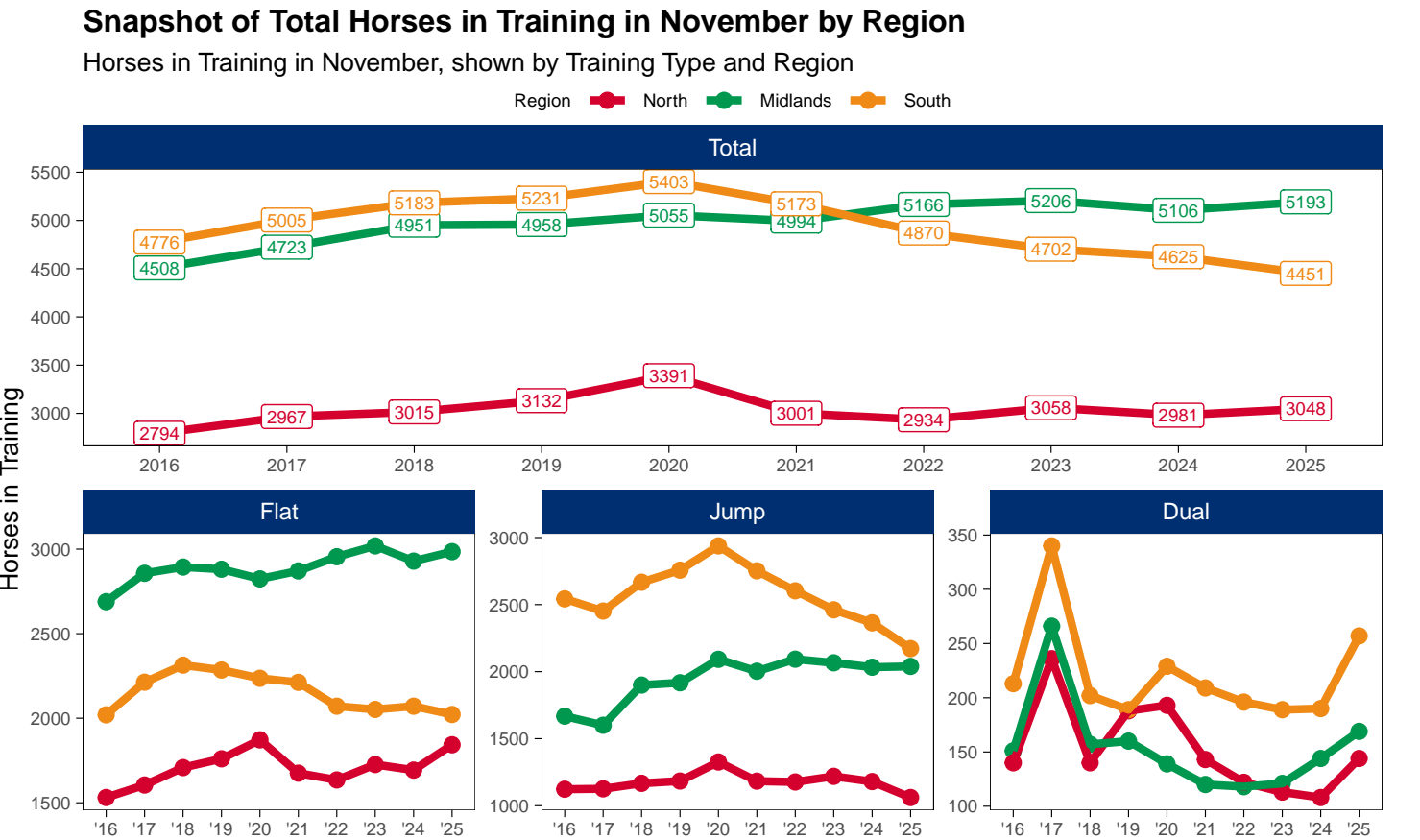
Bred	Sex	2016	2017	2018	2019	2020	2021	2022	2023	2024	2025
GB	Male	3,158 (29.2%)	3,255 (29.2%)	3,345 (29.5%)	3,327 (29.4%)	3,147 (29.7%)	3,139 (29.1%)	3,057 (28.8%)	2,982 (27.9%)	3,025 (28.2%)	2,979 (28.3%)
	Female	2,115 (19.6%)	2,150 (19.3%)	2,150 (19.0%)	2,177 (19.2%)	2,062 (19.4%)	2,141 (19.8%)	2,102 (19.8%)	2,072 (19.4%)	2,029 (18.9%)	2,067 (19.6%)
	Subtotal	5,273 (48.8%)	5,405 (48.6%)	5,495 (48.5%)	5,504 (48.7%)	5,209 (49.1%)	5,280 (48.9%)	5,159 (48.6%)	5,054 (47.3%)	5,054 (47.2%)	5,046 (48.0%)
IRE	Male	3,031 (28.0%)	3,105 (27.9%)	3,172 (28.0%)	3,124 (27.6%)	2,969 (28.0%)	3,118 (28.9%)	3,136 (29.5%)	3,192 (29.9%)	3,261 (30.5%)	3,173 (30.2%)
	Female	1,516 (14.0%)	1,545 (13.9%)	1,580 (13.9%)	1,577 (13.9%)	1,487 (14.0%)	1,510 (14.0%)	1,566 (14.7%)	1,673 (15.7%)	1,625 (15.2%)	1,575 (15.0%)
	Subtotal	4,547 (42.1%)	4,650 (41.8%)	4,752 (41.9%)	4,701 (41.6%)	4,456 (42.0%)	4,628 (42.9%)	4,702 (44.3%)	4,865 (45.6%)	4,886 (45.6%)	4,748 (45.1%)
FR	Male	239 (2.2%)	271 (2.4%)	325 (2.9%)	361 (3.2%)	345 (3.3%)	339 (3.1%)	324 (3.1%)	337 (3.2%)	378 (3.5%)	363 (3.5%)
	Female	96 (0.9%)	111 (1.0%)	126 (1.1%)	140 (1.2%)	127 (1.2%)	137 (1.3%)	136 (1.3%)	148 (1.4%)	139 (1.3%)	127 (1.2%)
	Subtotal	335 (3.1%)	382 (3.4%)	451 (4.0%)	501 (4.4%)	472 (4.5%)	476 (4.4%)	460 (4.3%)	485 (4.5%)	517 (4.8%)	490 (4.7%)
USA	Male	392 (3.6%)	396 (3.6%)	354 (3.1%)	334 (3.0%)	259 (2.4%)	214 (2.0%)	144 (1.4%)	130 (1.2%)	126 (1.2%)	89 (0.8%)
	Female	128 (1.2%)	146 (1.3%)	145 (1.3%)	130 (1.1%)	94 (0.9%)	76 (0.7%)	52 (0.5%)	51 (0.5%)	41 (0.4%)	46 (0.4%)
	Subtotal	520 (4.8%)	542 (4.9%)	499 (4.4%)	464 (4.1%)	353 (3.3%)	290 (2.7%)	196 (1.8%)	181 (1.7%)	167 (1.6%)	135 (1.3%)
GNY	Male	77 (0.7%)	81 (0.7%)	65 (0.6%)	68 (0.6%)	64 (0.6%)	64 (0.6%)	52 (0.5%)	51 (0.5%)	51 (0.5%)	54 (0.5%)
	Female	15 (0.1%)	16 (0.1%)	20 (0.2%)	25 (0.2%)	26 (0.2%)	26 (0.2%)	26 (0.2%)	17 (0.2%)	17 (0.2%)	22 (0.2%)
	Subtotal	92 (0.9%)	97 (0.9%)	85 (0.8%)	93 (0.8%)	90 (0.8%)	90 (0.8%)	78 (0.7%)	68 (0.6%)	68 (0.6%)	76 (0.7%)
Other	Male	30 (0.3%)	34 (0.3%)	33 (0.3%)	34 (0.3%)	18 (0.2%)	18 (0.2%)	20 (0.2%)	15 (0.1%)	10 (0.1%)	16 (0.2%)
	Female	16 (0.1%)	19 (0.2%)	13 (0.1%)	13 (0.1%)	8 (0.1%)	5 (0.0%)	6 (0.1%)	7 (0.1%)	6 (0.1%)	9 (0.1%)
	Subtotal	46 (0.4%)	53 (0.5%)	46 (0.4%)	47 (0.4%)	26 (0.2%)	23 (0.2%)	26 (0.2%)	22 (0.2%)	16 (0.1%)	25 (0.2%)

Jump

Bred	Sex	2016	2017	2018	2019	2020	2021	2022	2023	2024	2025
GB	Male	1,704 (22.2%)	1,640 (21.0%)	1,575 (20.3%)	1,585 (19.8%)	1,434 (19.2%)	1,579 (19.0%)	1,441 (18.1%)	1,405 (17.8%)	1,373 (18.2%)	1,344 (18.2%)
	Female	783 (10.2%)	771 (9.9%)	798 (10.3%)	754 (9.4%)	693 (9.3%)	822 (9.9%)	769 (9.7%)	769 (9.7%)	746 (9.9%)	711 (9.6%)
	Subtotal	2,487 (32.3%)	2,411 (30.8%)	2,373 (30.5%)	2,339 (29.3%)	2,127 (28.5%)	2,401 (28.8%)	2,210 (27.8%)	2,174 (27.6%)	2,119 (28.0%)	2,055 (27.9%)
IRE	Male	3,464 (45.0%)	3,519 (45.0%)	3,428 (44.1%)	3,501 (43.8%)	3,232 (43.3%)	3,544 (42.5%)	3,359 (42.2%)	3,267 (41.4%)	3,053 (40.4%)	2,928 (39.7%)
	Female	602 (7.8%)	678 (8.7%)	770 (9.9%)	840 (10.5%)	764 (10.2%)	844 (10.1%)	803 (10.1%)	861 (10.9%)	878 (11.6%)	858 (11.6%)
	Subtotal	4,066 (52.9%)	4,197 (53.6%)	4,198 (54.0%)	4,341 (54.3%)	3,996 (53.6%)	4,388 (52.7%)	4,162 (52.3%)	4,128 (52.3%)	3,931 (52.0%)	3,786 (51.3%)
FR	Male	880 (11.4%)	958 (12.2%)	950 (12.2%)	999 (12.5%)	1,015 (13.6%)	1,215 (14.6%)	1,244 (15.6%)	1,255 (15.9%)	1,221 (16.2%)	1,232 (16.7%)
	Female	72 (0.9%)	103 (1.3%)	120 (1.5%)	155 (1.9%)	172 (2.3%)	177 (2.1%)	189 (2.4%)	203 (2.6%)	188 (2.5%)	224 (3.0%)
	Subtotal	952 (12.4%)	1,061 (13.6%)	1,070 (13.8%)	1,154 (14.4%)	1,187 (15.9%)	1,392 (16.7%)	1,433 (18.0%)	1,458 (18.5%)	1,409 (18.6%)	1,456 (19.7%)
USA	Male	78 (1.0%)	58 (0.7%)	52 (0.7%)	51 (0.6%)	41 (0.5%)	44 (0.5%)	36 (0.5%)	30 (0.4%)	16 (0.2%)	8 (0.1%)
	Female	3 (0.0%)	3 (0.0%)	5 (0.1%)	6 (0.1%)	6 (0.1%)	2 (0.0%)	2 (0.0%)	1 (0.0%)	1 (0.0%)	3 (0.0%)
	Subtotal	81 (1.1%)	61 (0.8%)	57 (0.7%)	57 (0.7%)	47 (0.6%)	46 (0.6%)	38 (0.5%)	31 (0.4%)	17 (0.2%)	11 (0.1%)
GNY	Male	85 (1.1%)	80 (1.0%)	63 (0.8%)	82 (1.0%)	83 (1.1%)	87 (1.0%)	88 (1.1%)	79 (1.0%)	69 (0.9%)	55 (0.7%)
	Female	7 (0.1%)	5 (0.1%)	5 (0.1%)	6 (0.1%)	8 (0.1%)	12 (0.1%)	15 (0.2%)	13 (0.2%)	8 (0.1%)	8 (0.1%)
	Subtotal	92 (1.2%)	85 (1.1%)	68 (0.9%)	88 (1.1%)	91 (1.2%)	99 (1.2%)	103 (1.3%)	92 (1.2%)	77 (1.0%)	63 (0.9%)
Other	Male	7 (0.1%)	9 (0.1%)	8 (0.1%)	10 (0.1%)	8 (0.1%)	4 (0.0%)	3 (0.0%)	5 (0.1%)	4 (0.1%)	6 (0.1%)
	Female	5 (0.1%)	3 (0.0%)	2 (0.0%)	1 (0.0%)	2 (0.0%)	1 (0.0%)	2 (0.0%)	1 (0.0%)	2 (0.0%)	1 (0.0%)
	Subtotal	12 (0.2%)	12 (0.2%)	10 (0.1%)	11 (0.1%)	10 (0.1%)	5 (0.1%)	5 (0.1%)	6 (0.1%)	6 (0.1%)	7 (0.1%)

Horse Population by Location

November 2025 Horses in Training Snapshot by Region versus Previous Years



North

AgeCat	2016	2017	2018	2019	2020	2021	2022	2023	2024	2025	vs. Last Year	vs. Pre-Covid
Flat Horses in Training												
2YO	541	561	607	688	685	614	553	612	542	613	+71 / +13.1%	-75 / -10.9%
3YO	369	386	395	380	446	416	383	396	417	455	+38 / +9.1%	+75 / +19.7%
4YO	206	257	267	264	252	233	250	238	269	281	+12 / +4.5%	+17 / +6.4%
5YO+	415	401	439	428	489	412	449	480	465	494	+29 / +6.2%	+66 / +15.4%
Subtotal	1531	1605	1708	1760	1872	1675	1635	1726	1693	1843	+150 / +8.9%	+83 / +4.7%
Jump Horses in Training												
3YO	79	57	72	59	54	60	89	68	63	45	-18 / -28.6%	-14 / -23.7%
4-5YO	374	395	377	420	423	384	401	441	414	374	-40 / -9.7%	-46 / -11.0%
6-7YO	330	334	375	373	441	395	376	403	405	357	-48 / -11.9%	-16 / -4.3%
8YO+	340	340	343	332	408	344	311	307	298	285	-13 / -4.4%	-47 / -14.2%
Subtotal	1123	1126	1167	1184	1326	1183	1177	1219	1180	1061	-119 / -10.1%	-123 / -10.4%
Dual Horses in Training												
3YO	32	56	31	47	46	28	36	32	32	38	+6 / +18.8%	-9 / -19.1%
4YO	29	66	41	46	43	41	26	25	28	35	+7 / +25.0%	-11 / -23.9%
5YO+	79	114	68	95	104	74	60	56	48	71	+23 / +47.9%	-24 / -25.3%
Subtotal	140	236	140	188	193	143	122	113	108	144	+36 / +33.3%	-44 / -23.4%
Total Horses in Training												
	2794	2967	3015	3132	3391	3001	2934	3058	2981	3048	+67 / +2.2%	-84 / -2.7%

'vs. Pre-Covid' is comparison between 2025 and 2019

Midlands

AgeCat	2016	2017	2018	2019	2020	2021	2022	2023	2024	2025	vs. Last Year	vs. Pre-Covid
Flat Horses in Training												
2YO	1333	1397	1346	1324	1288	1370	1326	1351	1265	1283	+18 / +1.4%	-41 / -3.1%
3YO	617	652	703	696	727	699	769	763	720	761	+41 / +5.7%	+65 / +9.3%
4YO	277	322	355	355	317	359	382	371	374	376	+2 / +0.5%	+21 / +5.9%
5YO+	462	486	490	506	492	443	478	534	570	565	-5 / -0.9%	+59 / +11.7%
Subtotal	2689	2857	2894	2881	2824	2871	2955	3019	2929	2985	+56 / +1.9%	+104 / +3.6%
Jump Horses in Training												
3YO	138	99	140	134	121	126	154	131	161	181	+20 / +12.4%	+47 / +35.1%
4-5YO	644	636	732	792	836	808	856	865	816	835	+19 / +2.3%	+43 / +5.4%
6-7YO	509	474	583	576	653	620	665	650	640	608	-32 / -5.0%	+32 / +5.6%
8YO+	377	391	445	415	482	449	418	420	416	415	-1 / -0.2%	0 / 0.0%
Subtotal	1668	1600	1900	1917	2092	2003	2093	2066	2033	2039	+6 / +0.3%	+122 / +6.4%
Dual Horses in Training												
3YO	44	62	52	46	38	39	32	36	36	36	0 / 0.0%	-10 / -21.7%
4YO	34	78	37	39	28	26	30	29	40	48	+8 / +20.0%	+9 / +23.1%
5YO+	73	126	68	75	73	55	56	56	68	85	+17 / +25.0%	+10 / +13.3%
Subtotal	151	266	157	160	139	120	118	121	144	169	+25 / +17.4%	+9 / +5.6%
Total Horses in Training												
	4508	4723	4951	4958	5055	4994	5166	5206	5106	5193	+87 / +1.7%	+235 / +4.7%

'vs. Pre-Covid' is comparison between 2025 and 2019

South

AgeCat	2016	2017	2018	2019	2020	2021	2022	2023	2024	2025	vs. Last Year	vs. Pre-Covid
Flat Horses in Training												
2YO	922	1043	1075	1075	1021	981	956	951	1020	923	-97 / -9.5%	-152 / -14.1%
3YO	454	492	562	540	547	561	477	471	457	515	+58 / +12.7%	-25 / -4.6%
4YO	244	254	262	285	278	266	261	236	251	224	-27 / -10.8%	-61 / -21.4%
5YO+	400	424	415	385	390	404	377	394	343	360	+17 / +5.0%	-25 / -6.5%
Subtotal	2020	2213	2314	2285	2236	2212	2071	2052	2071	2022	-49 / -2.4%	-263 / -11.5%
Jump Horses in Training												
3YO	207	207	211	243	205	234	212	225	212	204	-8 / -3.8%	-39 / -16.0%
4-5YO	1050	978	1123	1115	1081	1057	1141	1067	982	897	-85 / -8.7%	-218 / -19.6%
6-7YO	747	759	790	844	985	870	754	721	750	680	-70 / -9.3%	-164 / -19.4%
8YO+	539	508	543	555	667	591	496	448	420	391	-29 / -6.9%	-164 / -29.5%
Subtotal	2543	2452	2667	2757	2938	2752	2603	2461	2364	2172	-192 / -8.1%	-585 / -21.2%
Dual Horses in Training												
3YO	44	76	60	57	60	70	60	63	54	92	+38 / +70.4%	+35 / +61.4%
4YO	38	99	41	53	48	47	41	44	49	63	+14 / +28.6%	+10 / +18.9%
5YO+	131	165	101	79	121	92	95	82	87	102	+15 / +17.2%	+23 / +29.1%
Subtotal	213	340	202	189	229	209	196	189	190	257	+67 / +35.3%	+68 / +36.0%
Total Horses in Training												
	4776	5005	5183	5231	5403	5173	4870	4702	4625	4451	-174 / -3.8%	-780 / -14.9%

'vs. Pre-Covid' is comparison between 2025 and 2019

November 2025 Horses in Training Snapshot by Country versus Previous Years

Type	2016	2017	2018	2019	2020	2021	2022	2023	2024	2025	vs. Last Year	vs. Pre-Covid
England												
Flat	5986	6397	6660	6653	6660	6503	6382	6513	6408	6560	+152 / +2.4%	-93 / -1.4%
Jump	4619	4484	4993	5130	5537	5187	5154	5010	4828	4587	-241 / -5.0%	-543 / -10.6%
Dual	439	741	441	486	499	419	400	389	403	503	+100 / +24.8%	+17 / +3.5%
Overall	11044	11622	12094	12269	12696	12109	11936	11912	11639	11650	+11 / +0.1%	-619 / -5.0%
Scotland												
Flat	128	164	123	131	148	145	174	170	170	189	+19 / +11.2%	+58 / +44.3%
Jump	312	337	360	355	410	367	384	399	407	342	-65 / -16.0%	-13 / -3.7%
Dual	30	50	29	35	36	32	21	17	18	25	+7 / +38.9%	-10 / -28.6%
Overall	470	551	512	521	594	544	579	586	595	556	-39 / -6.6%	+35 / +6.7%
Wales												
Flat	126	114	133	142	124	110	105	114	115	101	-14 / -12.2%	-41 / -28.9%
Jump	403	357	381	373	409	384	335	337	342	343	+1 / +0.3%	-30 / -8.0%
Dual	35	51	29	16	26	21	15	17	21	42	+21 / +100.0%	+26 / +162.5%
Overall	564	522	543	531	559	515	455	468	478	486	+8 / +1.7%	-45 / -8.5%

'vs. Pre-Covid' is comparison between 2025 and 2019

November 2025 Horses in Training Snapshot by Training Centre versus Previous Years

Type	2016	2017	2018	2019	2020	2021	2022	2023	2024	2025	vs. Last Year	vs. Pre-Covid
Cheltenham (GL54)												
Flat	9	16	15	14	18	23	12	12	20	25	+5 / +25.0%	+11 / +78.6%
Jump	428	427	485	483	600	545	522	493	499	500	+1 / +0.2%	+17 / +3.5%
Dual	20	61	24	21	12	12	8	14	18	26	+8 / +44.4%	+5 / +23.8%
Overall	457	504	524	518	630	580	542	519	537	551	+14 / +2.6%	+33 / +6.4%
Lambourn (RG17)												
Flat	508	640	653	634	615	567	577	559	642	641	-1 / -0.2%	+7 / +1.1%
Jump	348	341	381	405	396	330	321	292	290	271	-19 / -6.6%	-134 / -33.1%
Dual	17	36	20	25	28	25	34	27	24	29	+5 / +20.8%	+4 / +16.0%
Overall	873	1017	1054	1064	1039	922	932	878	956	941	-15 / -1.6%	-123 / -11.6%
Malton (YO17)												
Flat	377	384	453	495	555	467	445	504	457	534	+77 / +16.8%	+39 / +7.9%
Jump	144	135	110	107	118	98	96	95	64	58	-6 / -9.4%	-49 / -45.8%
Dual	21	35	27	36	51	37	30	25	22	21	-1 / -4.5%	-15 / -41.7%
Overall	542	554	590	638	724	602	571	624	543	613	+70 / +12.9%	-25 / -3.9%
Marlborough (SN8)												
Flat	309	312	343	329	321	277	248	275	278	263	-15 / -5.4%	-66 / -20.1%
Jump	62	80	72	75	78	98	82	82	77	79	+2 / +2.6%	+4 / +5.3%
Dual	2	1	1	6	4	4	2	4	3	2	-1 / -33.3%	-4 / -66.7%
Overall	373	393	416	410	403	379	332	361	358	344	-14 / -3.9%	-66 / -16.1%
Middleham (DL8)												
Flat	309	298	326	364	370	312	298	336	314	366	+52 / +16.6%	+2 / +0.5%
Jump	79	87	102	111	134	113	110	113	109	99	-10 / -9.2%	-12 / -10.8%
Dual	20	42	22	33	40	20	20	14	18	17	-1 / -5.6%	-16 / -48.5%
Overall	408	427	450	508	544	445	428	463	441	482	+41 / +9.3%	-26 / -5.1%
Newbury (RG20)												
Flat	270	285	309	299	320	337	314	309	295	293	-2 / -0.7%	-6 / -2.0%
Jump	26	14	23	16	18	10	16	68	88	80	-8 / -9.1%	+64 / +400.0%
Dual	8	10	8	7	7	5	2	4	2	8	+6 / +300.0%	+1 / +14.3%
Overall	304	309	340	322	345	352	332	381	385	381	-4 / -1.0%	+59 / +18.3%
Newmarket (CB8)												
Flat	1853	1907	1948	1960	1934	1969	1992	2081	1975	1985	+10 / +0.5%	+25 / +1.3%
Jump	55	48	62	58	65	55	50	77	75	76	+1 / +1.3%	+18 / +31.0%
Dual	31	40	16	22	23	24	21	29	48	55	+7 / +14.6%	+33 / +150.0%
Overall	1939	1995	2026	2040	2022	2048	2063	2187	2098	2116	+18 / +0.9%	+76 / +3.7%

'vs. Pre-Covid' is comparison between 2025 and 2019