

# Horse Population Report

Updated on 31 October 2025



# Introduction

Welcome to the latest update on the Racehorse Population from the British Horseracing Authority.

The aim of this document is to give stakeholders and the wider Public an insight into the current state of the Horse Population in Great Britain. It is hoped that this transparency will ensure that all decision makers have access to the key data required to help British Racing deliver a Competitive and Compelling product to stakeholders, racegoers and the wider public.

If you have any questions regarding the content of this report or suggestions for how it could be improved further, please contact Joe Yates – jyates@britishhorseracing.com

## Definitions

This report uses the Horses in Training returns from the Weatherby's Racing Administration System, this is completed by trainers and should be updated whenever a horse enters or leaves training in their care as part of the conditions of their licence.

## Horses in Training

Unless otherwise stated, snapshots of Horses in Training will be from the 15th day of the month in question and year to date figures will be up to and including the date titled at the front of the report.

Horses' ratings will be taken from the most recently published ratings by the BHA Handicapping Team, which is currently at 7am each Tuesday morning. For example, if looking at the Horses in a particular rating band for July 2011, the horses in training number will be from Friday 15th July 2011 and ratings, where possible, will be assigned to each horse from the ratings published by the BHA Handicappers on Tuesday 12th July 2011.

The Gender of a horse will be taken from the reporting date in question, regardless of whether this has since changed.

In the case of YTD reporting, where a horse's gender or training type has changed in the year-to-date period, the most recent is taken.

This report does not count any horses that are temporarily racing abroad for GB Trainers at the time of reporting.

Yearlings are not included in total counts of flat and/or dual horses but will be sometimes shown separately for information purposes.

Yearlings and two-year-olds are not included in total counts of jump horses or counts of jump horses that include dual horses but will be sometimes shown separately for information purposes.

Yearlings, two-year-olds and three-year-olds are not included in total counts of Hunter Chasers but will be sometimes shown separately for information purposes.

Yearlings and two-year-olds in training that are recorded as dual horses have been re-coded as flat horses.

Hunter Chasers are not included in any counts of Jump Horses or Total figures but will be sometimes shown separately for information purposes.

Horses' training locations are defined by the trainers' primary training location. Training regions are defined the same as regions for the Fixture List; 'North' is north of latitude 53.42911, 'South' is south of latitude 51.88002 and 'Midlands' is anywhere in between. Training centres are defined by postcodes and surrounding areas.

## Runners

Unless otherwise specified, Total Runners and Individual Runners metrics only counts runners that ran in GB races including any voided races. Withdrawn horses are not included.

Hunter Chases are not included in this section but will be sometimes shown separately for information purposes.

Total Runners is a count of all runners in races, whilst individual runners only counts each individual horse once.

# Monthly Horses in Training

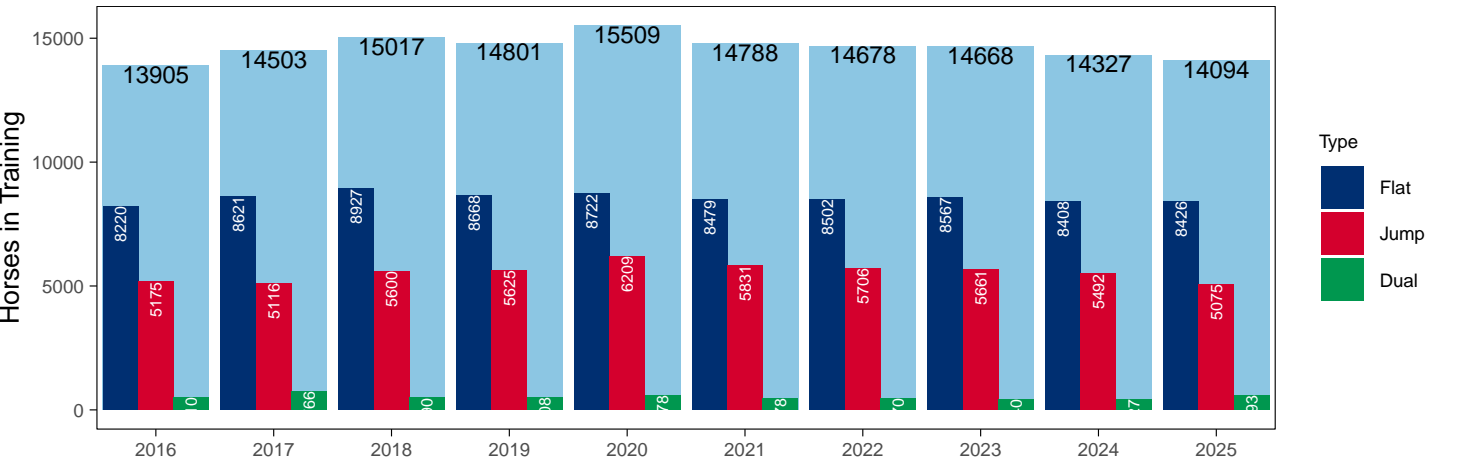
## October 2025 Horses in Training Snapshot versus Previous Years

Type	2016	2017	2018	2019	2020	2021	2022	2023	2024	2025	vs. Last Year	vs. Pre-Covid
Flat	8220	8621	8927	8668	8722	8479	8502	8567	8408	8426	+18 / +0.2%	-242 / -2.8%
Jump	5175	5116	5600	5625	6209	5831	5706	5661	5492	5075	-417 / -7.6%	-550 / -9.8%
Dual	510	766	490	508	578	478	470	440	427	593	+166 / +38.9%	+85 / +16.7%
Total	13905	14503	15017	14801	15509	14788	14678	14668	14327	14094	-233 / -1.6%	-707 / -4.8%

'vs. Pre-Covid' is comparison between 2025 and 2019

### Snapshot of Total Horses in Training in October

Horses in Training in October, shown by Training Type



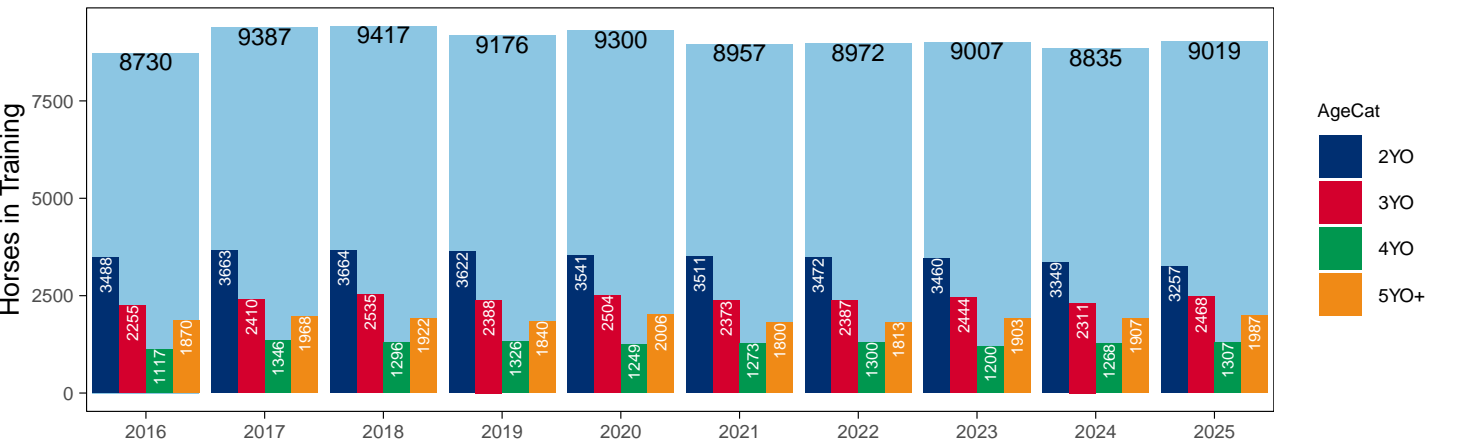
### Flat (including Dual)

AgeCat	2016	2017	2018	2019	2020	2021	2022	2023	2024	2025	vs. Last Year	vs. Pre-Covid
2YO	3488	3663	3664	3622	3541	3511	3472	3460	3349	3257	-92 / -2.7%	-365 / -10.1%
3YO	2255	2410	2535	2388	2504	2373	2387	2444	2311	2468	+157 / +6.8%	+80 / +3.4%
4YO	1117	1346	1296	1326	1249	1273	1300	1200	1268	1307	+39 / +3.1%	-19 / -1.4%
5YO+	1870	1968	1922	1840	2006	1800	1813	1903	1907	1987	+80 / +4.2%	+147 / +8.0%
Total	8730	9387	9417	9176	9300	8957	8972	9007	8835	9019	+184 / +2.1%	-157 / -1.7%

'vs. Pre-Covid' is comparison between 2025 and 2019

### Snapshot of Flat Horses in Training in October

Flat Horses in Training in October, shown by Age



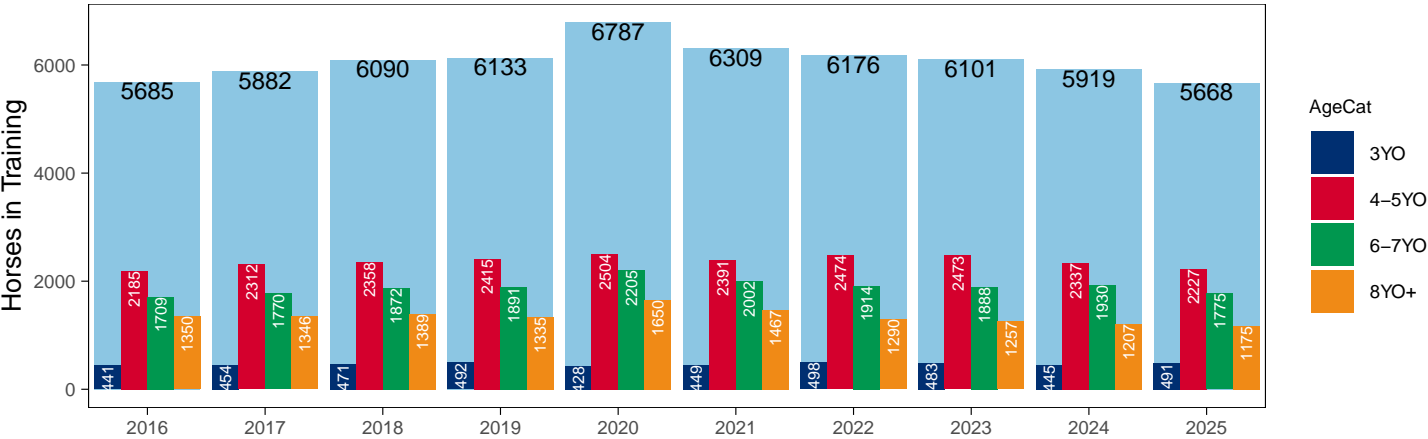
Jump (including Dual)

AgeCat	2016	2017	2018	2019	2020	2021	2022	2023	2024	2025	vs. Last Year	vs. Pre-Covid
3YO	441	454	471	492	428	449	498	483	445	491	+46 / +10.3%	-1 / -0.2%
4-5YO	2185	2312	2358	2415	2504	2391	2474	2473	2337	2227	-110 / -4.7%	-188 / -7.8%
6-7YO	1709	1770	1872	1891	2205	2002	1914	1888	1930	1775	-155 / -8.0%	-116 / -6.1%
8YO+	1350	1346	1389	1335	1650	1467	1290	1257	1207	1175	-32 / -2.7%	-160 / -12.0%
Total	5685	5882	6090	6133	6787	6309	6176	6101	5919	5668	-251 / -4.2%	-465 / -7.6%

'vs. Pre-Covid' is comparison between 2025 and 2019

Snapshot of Jump Horses in Training in October

Jump Horses in Training in October, shown by Age



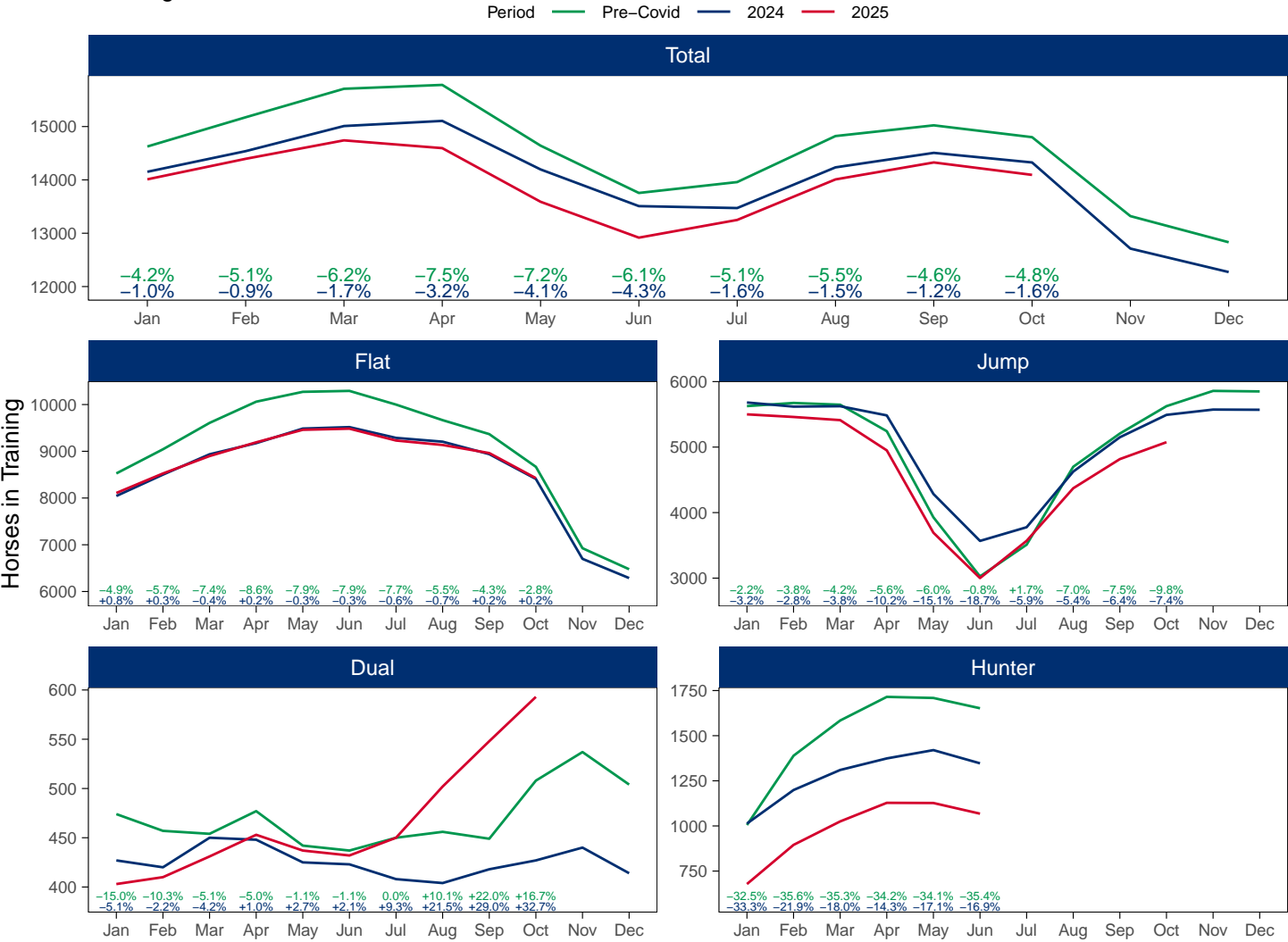
2025 Horses in Training versus Previous Years

Type	Period	Jan	Feb	Mar	Apr	May	Jun	Jul	Aug	Sep	Oct	Nov	Dec
Flat	2025	8108	8525	8898	9192	9460	9484	9230	9135	8962	8426		
	2024	8044	8501	8936	9174	9486	9517	9287	9205	8939	8408	6699	6288
	Pre-Covid	8526	9043	9607	10061	10272	10292	9999	9666	9367	8668	6926	6477
Jump	2025	5500	5460	5412	4950	3693	3001	3569	4372	4817	5075		
	2024	5681	5618	5624	5484	4285	3568	3777	4626	5150	5492	5573	5570
	Pre-Covid	5626	5674	5647	5243	3928	3026	3510	4700	5207	5625	5858	5850
Dual	2025	403	410	431	453	437	432	450	502	548	593		
	2024	427	420	450	448	425	423	408	404	418	427	440	414
	Pre-Covid	474	457	454	477	442	437	450	456	449	508	537	504
Hunter	2025	678	895	1025	1128	1127	1068						
	2024	1013	1199	1310	1374	1420	1347						
	Pre-Covid	1005	1389	1584	1715	1709	1652						
Total	2025	14011	14395	14741	14595	13590	12917	13249	14009	14327	14094		
	2024	14152	14539	15010	15106	14196	13508	13472	14235	14507	14327	12712	12272
	Pre-Covid	14626	15174	15708	15781	14642	13755	13959	14822	15023	14801	13321	12831

'Pre-Covid' is 2019 values

Monthly Horses in Training

2025 against 2024 and Pre-Covid, shown with % Difference



'Pre-Covid' is 2019 values

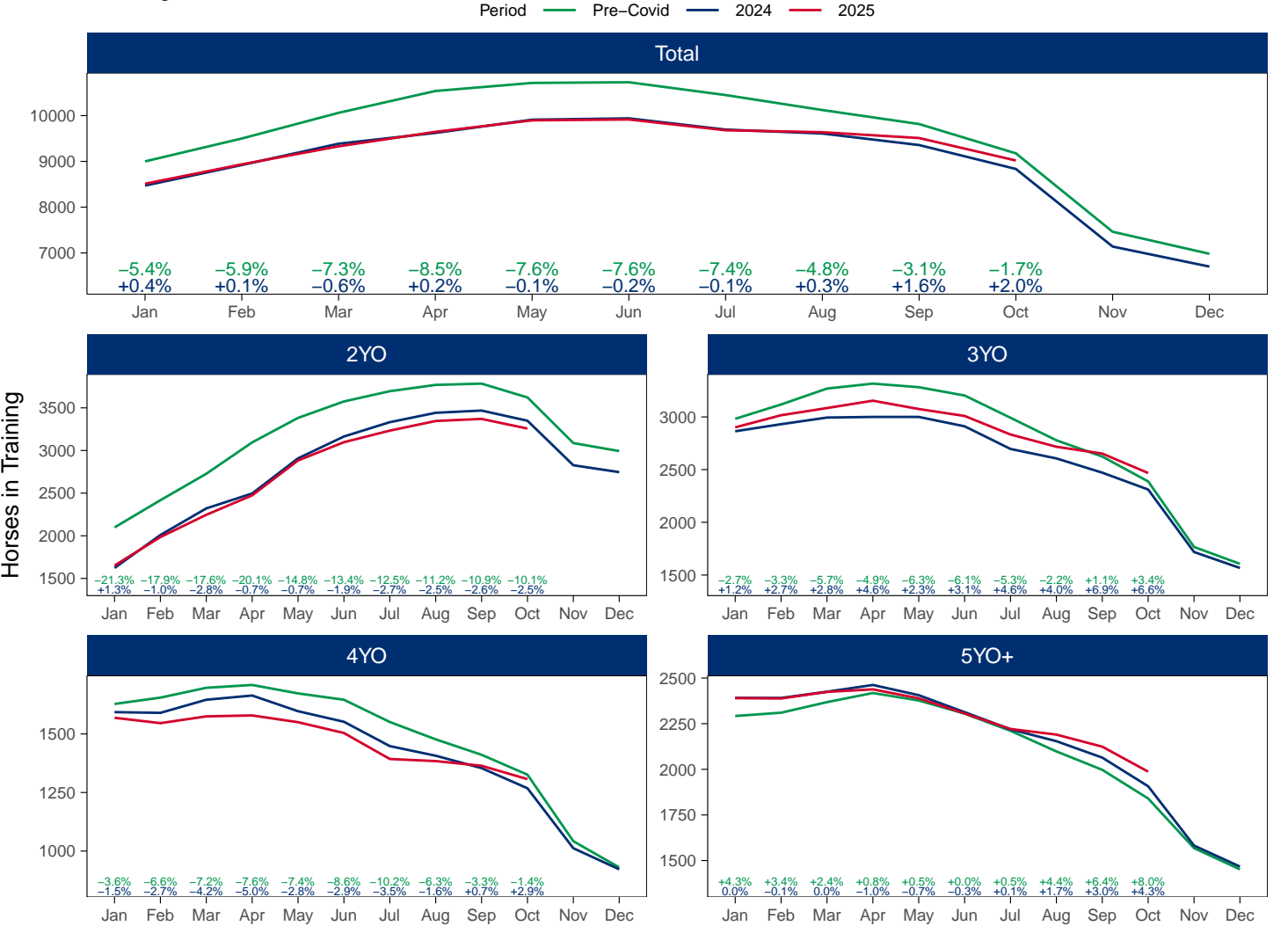
Flat (including Dual)

AgeCat	Period	Jan	Feb	Mar	Apr	May	Jun	Jul	Aug	Sep	Oct	Nov	Dec
2YO	2025	1651	1985	2246	2474	2883	3097	3233	3346	3370	3257		
	2024	1623	2009	2321	2496	2908	3164	3332	3442	3468	3349	2827	2746
	Pre-Covid	2098	2417	2727	3095	3382	3575	3695	3769	3784	3622	3087	2993
3YO	2025	2901	3016	3084	3154	3075	3009	2833	2717	2652	2468		
	2024	2864	2931	2994	3000	3000	2911	2696	2606	2471	2311	1718	1567
	Pre-Covid	2982	3118	3269	3316	3282	3203	2992	2778	2624	2388	1766	1606
4YO	2025	1569	1546	1575	1579	1550	1504	1393	1384	1364	1307		
	2024	1593	1590	1646	1664	1597	1552	1448	1407	1354	1268	1012	922
	Pre-Covid	1628	1655	1697	1709	1673	1646	1551	1477	1411	1326	1042	930
5YO+	2025	2390	2388	2424	2438	2389	2306	2221	2190	2124	1987		
	2024	2391	2391	2425	2462	2406	2313	2219	2154	2064	1907	1582	1467
	Pre-Covid	2292	2310	2368	2418	2377	2305	2211	2098	1997	1840	1568	1452
Total	2025	8511	8935	9329	9645	9897	9916	9680	9637	9510	9019		
	2024	8471	8921	9386	9622	9911	9940	9695	9609	9357	8835	7139	6702
	Pre-Covid	9000	9500	10061	10538	10714	10729	10449	10122	9816	9176	7463	6981

'Pre-Covid' is 2019 values

Monthly Flat Horses in Training

2025 against 2024 and Pre-Covid, shown with % Difference



'Pre-Covid' is 2019 values

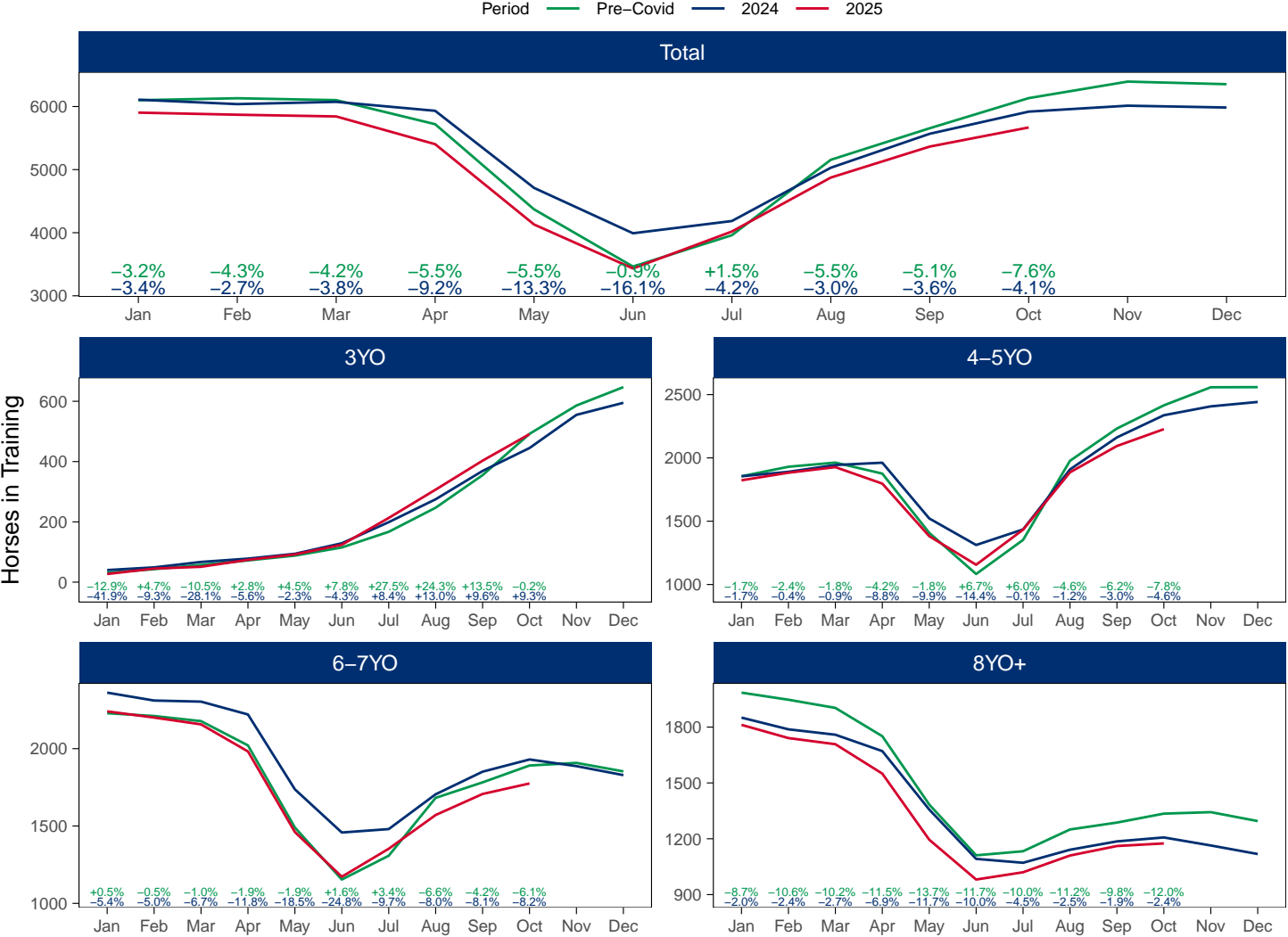
Jump (including Dual)

AgeCat	Period	Jan	Feb	Mar	Apr	May	Jun	Jul	Aug	Sep	Oct	Nov	Dec
3YO	2025	27	45	51	74	92	124	213	307	403	491		
	2024	40	49	67	78	94	129	199	275	369	445	555	595
	Pre-Covid	31	43	57	72	88	115	167	247	355	492	586	647
4-5YO	2025	1823	1883	1927	1797	1382	1156	1433	1886	2094	2227		
	2024	1855	1890	1944	1962	1522	1312	1435	1909	2162	2337	2407	2442
	Pre-Covid	1855	1930	1963	1876	1408	1083	1352	1977	2232	2415	2558	2559
6-7YO	2025	2241	2201	2157	1982	1461	1172	1353	1571	1707	1775		
	2024	2362	2311	2304	2221	1737	1458	1480	1705	1851	1930	1887	1829
	Pre-Covid	2229	2211	2178	2021	1490	1154	1308	1682	1782	1891	1908	1853
8YO+	2025	1812	1741	1708	1550	1195	981	1020	1110	1161	1175		
	2024	1851	1788	1759	1671	1357	1092	1071	1141	1186	1207	1164	1118
	Pre-Covid	1985	1947	1903	1751	1384	1111	1133	1250	1287	1335	1343	1295
Total	2025	5903	5870	5843	5403	4130	3433	4019	4874	5365	5668		
	2024	6108	6038	6074	5932	4710	3991	4185	5030	5568	5919	6013	5984
	Pre-Covid	6100	6131	6101	5720	4370	3463	3960	5156	5656	6133	6395	6354

'Pre-Covid' is 2019 values

Monthly Jump Horses in Training

2025 against 2024 and Pre-Covid, shown with % Difference



'Pre-Covid' is 2019 values

# October 2025 Horses in Training by Rating Band Snapshot versus Previous Years

## Flat (including Dual)

AgeCat	RatBand	2016	2017	2018	2019	2020	2021	2022	2023	2024	2025
2YO	Unrated	2,386 (68.4%)	2,598 (70.9%)	2,542 (69.4%)	2,534 (70.0%)	2,389 (67.5%)	2,378 (67.7%)	2,413 (69.5%)	2,359 (68.2%)	2,295 (68.5%)	2,234 (68.6%)
	0-50	69 (2.0%)	71 (1.9%)	77 (2.1%)	99 (2.7%)	75 (2.1%)	87 (2.5%)	83 (2.4%)	82 (2.4%)	77 (2.3%)	72 (2.2%)
	51-60	167 (4.8%)	171 (4.7%)	189 (5.2%)	174 (4.8%)	186 (5.3%)	166 (4.7%)	157 (4.5%)	175 (5.1%)	144 (4.3%)	167 (5.1%)
	61-70	287 (8.2%)	284 (7.8%)	264 (7.2%)	241 (6.7%)	273 (7.7%)	269 (7.7%)	245 (7.1%)	232 (6.7%)	259 (7.7%)	229 (7.0%)
	71-80	314 (9.0%)	286 (7.8%)	289 (7.9%)	275 (7.6%)	338 (9.5%)	315 (9.0%)	290 (8.4%)	312 (9.0%)	268 (8.0%)	257 (7.9%)
	81-90	151 (4.3%)	132 (3.6%)	162 (4.4%)	159 (4.4%)	147 (4.2%)	166 (4.7%)	155 (4.5%)	182 (5.3%)	169 (5.0%)	173 (5.3%)
	91-100	70 (2.0%)	69 (1.9%)	88 (2.4%)	84 (2.3%)	75 (2.1%)	65 (1.9%)	74 (2.1%)	72 (2.1%)	82 (2.4%)	72 (2.2%)
	101+	44 (1.3%)	52 (1.4%)	53 (1.4%)	56 (1.5%)	58 (1.6%)	65 (1.9%)	55 (1.6%)	46 (1.3%)	55 (1.6%)	53 (1.6%)
Subtotal		3,488 (100.0%)	3,663 (100.0%)	3,664 (100.0%)	3,622 (100.0%)	3,541 (100.0%)	3,511 (100.0%)	3,472 (100.0%)	3,460 (100.0%)	3,349 (100.0%)	3,257 (100.0%)
3YO	Unrated	405 (18.0%)	418 (17.3%)	518 (20.4%)	453 (19.0%)	583 (23.3%)	519 (21.9%)	486 (20.4%)	483 (19.8%)	442 (19.1%)	482 (19.5%)
	0-50	167 (7.4%)	217 (9.0%)	212 (8.4%)	262 (11.0%)	236 (9.4%)	208 (8.8%)	214 (9.0%)	214 (8.8%)	209 (9.0%)	209 (8.5%)
	51-60	281 (12.5%)	293 (12.2%)	283 (11.2%)	314 (13.1%)	294 (11.7%)	325 (13.7%)	341 (14.3%)	323 (13.2%)	309 (13.4%)	337 (13.7%)
	61-70	415 (18.4%)	423 (17.6%)	450 (17.8%)	417 (17.5%)	442 (17.7%)	424 (17.9%)	411 (17.2%)	448 (18.3%)	392 (17.0%)	443 (17.9%)
	71-80	458 (20.3%)	468 (19.4%)	469 (18.5%)	375 (15.7%)	447 (17.9%)	403 (17.0%)	425 (18.6%)	434 (17.8%)	422 (18.3%)	469 (19.0%)
	81-90	278 (12.3%)	324 (13.4%)	325 (12.8%)	273 (11.4%)	279 (11.1%)	276 (11.6%)	270 (11.3%)	291 (11.9%)	290 (12.5%)	292 (11.8%)
	91-100	146 (6.5%)	162 (6.7%)	160 (6.3%)	180 (7.5%)	146 (5.8%)	126 (5.3%)	127 (5.3%)	152 (6.2%)	138 (6.0%)	139 (5.6%)
	101+	105 (4.7%)	105 (4.4%)	118 (4.7%)	114 (4.8%)	77 (3.1%)	92 (3.9%)	113 (4.7%)	99 (4.1%)	109 (4.7%)	97 (3.9%)
Subtotal		2,255 (100.0%)	2,410 (100.0%)	2,535 (100.0%)	2,388 (100.0%)	2,504 (100.0%)	2,373 (100.0%)	2,387 (100.0%)	2,444 (100.0%)	2,311 (100.0%)	2,468 (100.0%)
4YO	Unrated	130 (11.6%)	213 (15.8%)	148 (11.4%)	147 (11.1%)	181 (14.5%)	164 (12.9%)	150 (11.5%)	147 (12.2%)	129 (10.2%)	168 (12.9%)
	0-50	106 (9.5%)	139 (10.3%)	151 (11.7%)	176 (13.3%)	135 (10.8%)	148 (11.6%)	157 (12.1%)	160 (13.3%)	163 (12.9%)	149 (11.4%)
	51-60	143 (12.8%)	181 (13.4%)	171 (13.2%)	192 (14.5%)	173 (13.9%)	202 (15.9%)	185 (14.2%)	185 (15.4%)	206 (16.2%)	182 (13.9%)
	61-70	177 (15.8%)	202 (15.0%)	231 (17.8%)	212 (16.0%)	235 (18.8%)	222 (17.4%)	242 (18.6%)	217 (18.1%)	242 (19.1%)	213 (16.3%)
	71-80	198 (17.7%)	211 (15.7%)	207 (16.0%)	224 (16.9%)	206 (16.5%)	212 (16.7%)	227 (17.5%)	191 (15.9%)	206 (16.2%)	225 (17.2%)
	81-90	156 (14.0%)	194 (14.4%)	152 (11.7%)	168 (12.7%)	131 (10.5%)	153 (12.0%)	153 (11.8%)	121 (10.1%)	158 (12.5%)	158 (12.1%)
	91-100	105 (9.4%)	99 (7.4%)	138 (10.6%)	117 (8.8%)	106 (8.5%)	99 (7.8%)	105 (8.1%)	87 (7.2%)	83 (6.5%)	105 (8.0%)
	101+	102 (9.1%)	107 (7.9%)	98 (7.6%)	90 (6.8%)	82 (6.6%)	73 (5.7%)	81 (6.2%)	92 (7.7%)	94 (7.4%)	107 (8.2%)
Subtotal		1,117 (100.0%)	1,346 (100.0%)	1,296 (100.0%)	1,326 (100.0%)	1,249 (100.0%)	1,273 (100.0%)	1,300 (100.0%)	1,200 (100.0%)	1,268 (100.0%)	1,307 (100.0%)
5YO+	Unrated	208 (11.1%)	288 (14.6%)	233 (12.1%)	212 (11.5%)	309 (15.4%)	238 (13.2%)	240 (13.2%)	194 (10.2%)	206 (10.8%)	210 (10.6%)
	0-50	192 (10.3%)	216 (11.0%)	277 (14.4%)	303 (16.5%)	271 (13.5%)	256 (14.2%)	243 (13.4%)	252 (13.2%)	265 (13.9%)	253 (12.7%)
	51-60	275 (14.7%)	294 (14.9%)	279 (14.5%)	282 (15.3%)	326 (16.3%)	303 (16.8%)	295 (16.3%)	352 (18.5%)	367 (19.2%)	369 (18.6%)
	61-70	342 (18.3%)	357 (18.1%)	329 (17.1%)	338 (18.4%)	369 (18.4%)	302 (16.8%)	330 (18.2%)	351 (18.4%)	377 (19.8%)	394 (19.8%)
	71-80	313 (16.7%)	284 (14.4%)	301 (15.7%)	255 (13.9%)	297 (14.8%)	249 (13.8%)	272 (15.0%)	297 (15.6%)	276 (14.5%)	332 (16.7%)
	81-90	256 (13.7%)	236 (12.0%)	242 (12.6%)	217 (11.8%)	216 (10.8%)	201 (11.2%)	199 (11.0%)	217 (11.4%)	198 (10.4%)	208 (10.5%)
	91-100	157 (8.4%)	155 (7.9%)	126 (6.6%)	120 (6.5%)	111 (5.5%)	130 (7.2%)	123 (6.8%)	129 (6.8%)	109 (5.7%)	113 (5.7%)
	101+	127 (6.8%)	138 (7.0%)	135 (7.0%)	113 (6.1%)	107 (5.3%)	121 (6.7%)	111 (6.1%)	111 (5.8%)	109 (5.7%)	108 (5.4%)
Subtotal		1,870 (100.0%)	1,968 (100.0%)	1,922 (100.0%)	1,840 (100.0%)	2,006 (100.0%)	1,800 (100.0%)	1,813 (100.0%)	1,903 (100.0%)	1,907 (100.0%)	1,987 (100.0%)
Overall	Unrated	3,129 (35.8%)	3,517 (37.5%)	3,441 (36.5%)	3,346 (36.5%)	3,462 (37.2%)	3,299 (36.8%)	3,289 (36.7%)	3,183 (35.3%)	3,072 (34.8%)	3,094 (34.3%)
	0-50	534 (6.1%)	643 (6.8%)	717 (7.6%)	840 (9.2%)	717 (7.7%)	699 (7.8%)	697 (7.8%)	708 (7.9%)	714 (8.1%)	683 (7.6%)
	51-60	866 (9.9%)	939 (10.0%)	922 (9.8%)	962 (10.5%)	979 (10.5%)	996 (11.1%)	978 (10.9%)	1,035 (11.5%)	1,026 (11.6%)	1,055 (11.7%)
	61-70	1,221 (14.0%)	1,266 (13.5%)	1,274 (13.5%)	1,208 (13.2%)	1,319 (14.2%)	1,217 (13.6%)	1,228 (13.7%)	1,248 (13.9%)	1,257 (14.2%)	1,279 (14.2%)
	71-80	1,283 (14.7%)	1,249 (13.3%)	1,266 (13.4%)	1,129 (12.3%)	1,288 (13.8%)	1,179 (13.2%)	1,214 (13.5%)	1,234 (13.7%)	1,172 (13.3%)	1,283 (14.2%)
	81-90	841 (9.6%)	886 (9.4%)	881 (9.4%)	817 (8.9%)	773 (8.3%)	796 (8.9%)	777 (8.7%)	811 (9.0%)	815 (9.2%)	831 (9.2%)
	91-100	478 (5.5%)	485 (5.2%)	512 (5.4%)	501 (5.5%)	438 (4.7%)	420 (4.7%)	429 (4.8%)	440 (4.9%)	412 (4.7%)	429 (4.8%)
	101+	378 (4.3%)	402 (4.3%)	404 (4.3%)	373 (4.1%)	324 (3.5%)	351 (3.9%)	360 (4.0%)	348 (3.9%)	367 (4.2%)	365 (4.0%)
Total		8,730 (100.0%)	9,387 (100.0%)	9,417 (100.0%)	9,176 (100.0%)	9,300 (100.0%)	8,957 (100.0%)	8,972 (100.0%)	9,007 (100.0%)	8,835 (100.0%)	9,019 (100.0%)

Where a horse has more than one published rating (published Flat Turf and published Flat AWT mark), the higher of the two is taken.



## Jump (including Dual)

AgeCat	RatBand	2016	2017	2018	2019	2020	2021	2022	2023	2024	2025
3YO	Unrated	425 (96.4%)	442 (97.4%)	454 (96.4%)	473 (96.1%)	410 (95.8%)	422 (94.0%)	486 (97.6%)	466 (96.5%)	432 (97.1%)	480 (97.8%)
	0-100	4 (0.9%)	3 (0.7%)	4 (0.8%)	3 (0.6%)	3 (0.7%)	12 (2.7%)	9 (1.8%)	9 (1.8%)	8 (1.8%)	8 (1.6%)
	101-110	5 (1.1%)	4 (0.9%)	6 (1.3%)	9 (1.8%)	9 (2.1%)	12 (2.7%)	3 (0.6%)	6 (1.2%)	4 (0.9%)	2 (0.4%)
	111-120	3 (0.7%)	3 (0.7%)	4 (0.8%)	6 (1.2%)	4 (0.9%)	1 (0.2%)	NA (-)	2 (0.4%)	1 (0.2%)	NA (-)
	121-130	3 (0.7%)	1 (0.2%)	2 (0.4%)	1 (0.2%)	1 (0.2%)	2 (0.4%)	NA (-)	NA (-)	NA (-)	1 (0.2%)
	131-140	1 (0.2%)	1 (0.2%)	1 (0.2%)	NA (-)	1 (0.2%)	NA (-)	NA (-)	NA (-)	NA (-)	NA (-)
Subtotal		441 (100.0%)	454 (100.0%)	471 (100.0%)	492 (100.0%)	428 (100.0%)	449 (100.0%)	498 (100.0%)	483 (100.0%)	445 (100.0%)	491 (100.0%)
4-5YO	Unrated	1,584 (72.5%)	1,691 (73.1%)	1,692 (71.8%)	1,737 (71.9%)	1,825 (72.9%)	1,896 (79.3%)	1,920 (77.6%)	1,889 (76.4%)	1,722 (73.7%)	1,681 (75.5%)
	0-100	175 (8.0%)	182 (7.9%)	162 (6.9%)	201 (8.3%)	245 (9.8%)	218 (9.1%)	261 (10.5%)	299 (12.1%)	335 (14.3%)	271 (12.2%)
	101-110	121 (5.5%)	126 (5.4%)	155 (6.6%)	130 (5.4%)	124 (5.0%)	94 (3.9%)	134 (5.4%)	123 (5.0%)	129 (5.5%)	116 (5.2%)
	111-120	111 (5.1%)	118 (5.1%)	133 (5.6%)	147 (6.1%)	139 (5.6%)	92 (3.8%)	78 (3.2%)	94 (3.8%)	92 (3.9%)	105 (4.7%)
	121-130	94 (4.3%)	106 (4.6%)	137 (5.8%)	124 (5.1%)	103 (4.1%)	57 (2.4%)	55 (2.2%)	46 (1.9%)	45 (1.9%)	42 (1.9%)
	131-140	73 (3.3%)	66 (2.9%)	56 (2.4%)	51 (2.1%)	44 (1.8%)	27 (1.1%)	18 (0.7%)	19 (0.8%)	11 (0.5%)	5 (0.2%)
	141-150	23 (1.1%)	19 (0.8%)	16 (0.7%)	21 (0.9%)	20 (0.8%)	5 (0.2%)	8 (0.3%)	3 (0.1%)	2 (0.1%)	5 (0.2%)
	151+	4 (0.2%)	4 (0.2%)	7 (0.3%)	4 (0.2%)	4 (0.2%)	2 (0.1%)	NA (-)	NA (-)	1 (0.0%)	2 (0.1%)
Subtotal		2,185 (100.0%)	2,312 (100.0%)	2,358 (100.0%)	2,415 (100.0%)	2,504 (100.0%)	2,391 (100.0%)	2,474 (100.0%)	2,473 (100.0%)	2,337 (100.0%)	2,227 (100.0%)
6-7YO	Unrated	487 (28.5%)	505 (28.5%)	529 (28.3%)	513 (27.1%)	629 (28.5%)	907 (45.3%)	814 (42.5%)	621 (32.9%)	574 (29.7%)	672 (37.9%)
	0-100	320 (18.7%)	320 (18.1%)	339 (18.1%)	360 (19.0%)	458 (20.8%)	395 (19.7%)	407 (21.3%)	508 (26.9%)	565 (29.3%)	436 (24.6%)
	101-110	207 (12.1%)	226 (12.8%)	224 (12.0%)	221 (11.7%)	288 (13.1%)	182 (9.1%)	208 (10.9%)	247 (13.1%)	286 (14.8%)	223 (12.6%)
	111-120	236 (13.8%)	227 (12.8%)	251 (13.4%)	251 (13.3%)	270 (12.2%)	202 (10.1%)	197 (10.3%)	245 (13.0%)	241 (12.5%)	202 (11.4%)
	121-130	220 (12.9%)	207 (11.7%)	241 (12.9%)	242 (12.8%)	282 (12.8%)	170 (8.5%)	150 (7.8%)	151 (8.0%)	164 (8.5%)	136 (7.7%)
	131-140	156 (9.1%)	178 (10.1%)	187 (10.0%)	207 (10.9%)	181 (8.2%)	97 (4.8%)	99 (5.2%)	77 (4.1%)	72 (3.7%)	71 (4.0%)
	141-150	53 (3.1%)	74 (4.2%)	74 (4.0%)	57 (3.0%)	66 (3.0%)	39 (1.9%)	27 (1.4%)	30 (1.6%)	21 (1.1%)	24 (1.4%)
	151+	30 (1.8%)	33 (1.9%)	27 (1.4%)	40 (2.1%)	31 (1.4%)	10 (0.5%)	12 (0.6%)	9 (0.5%)	7 (0.4%)	11 (0.6%)
Subtotal		1,709 (100.0%)	1,770 (100.0%)	1,872 (100.0%)	1,891 (100.0%)	2,205 (100.0%)	2,002 (100.0%)	1,914 (100.0%)	1,888 (100.0%)	1,930 (100.0%)	1,775 (100.0%)
8YO+	Unrated	241 (17.9%)	244 (18.1%)	276 (19.9%)	217 (16.3%)	364 (22.1%)	543 (37.0%)	433 (33.6%)	345 (27.4%)	309 (25.6%)	367 (31.2%)
	0-100	370 (27.4%)	347 (25.8%)	343 (24.7%)	371 (27.8%)	429 (26.0%)	317 (21.6%)	265 (20.5%)	309 (24.6%)	308 (25.5%)	330 (28.1%)
	101-110	168 (12.4%)	174 (12.9%)	195 (14.0%)	164 (12.3%)	183 (11.1%)	145 (9.9%)	135 (10.5%)	145 (11.5%)	145 (12.0%)	110 (9.4%)
	111-120	190 (14.1%)	191 (14.2%)	167 (12.0%)	169 (12.7%)	208 (12.6%)	154 (10.5%)	151 (11.7%)	142 (11.3%)	161 (13.3%)	128 (10.9%)
	121-130	158 (11.7%)	155 (11.5%)	173 (12.5%)	149 (11.2%)	186 (11.3%)	142 (9.7%)	121 (9.4%)	150 (11.9%)	144 (11.9%)	113 (9.6%)
	131-140	126 (9.3%)	127 (9.4%)	133 (9.6%)	140 (10.5%)	146 (8.8%)	101 (6.9%)	89 (6.9%)	97 (7.7%)	80 (6.6%)	71 (6.0%)
	141-150	63 (4.7%)	75 (5.6%)	74 (5.3%)	82 (6.1%)	84 (5.1%)	48 (3.3%)	65 (5.0%)	42 (3.3%)	34 (2.8%)	35 (3.0%)
	151+	34 (2.5%)	33 (2.5%)	28 (2.0%)	43 (3.2%)	50 (3.0%)	17 (1.2%)	31 (2.4%)	27 (2.1%)	26 (2.2%)	21 (1.8%)
Subtotal		1,350 (100.0%)	1,346 (100.0%)	1,389 (100.0%)	1,335 (100.0%)	1,650 (100.0%)	1,467 (100.0%)	1,290 (100.0%)	1,257 (100.0%)	1,207 (100.0%)	1,175 (100.0%)
Overall	Unrated	2,737 (48.1%)	2,882 (49.0%)	2,951 (48.5%)	2,940 (47.9%)	3,228 (47.6%)	3,768 (59.7%)	3,653 (59.1%)	3,321 (54.4%)	3,037 (51.3%)	3,200 (56.5%)
	0-100	869 (15.3%)	852 (14.5%)	848 (13.9%)	935 (15.2%)	1,135 (16.7%)	942 (14.9%)	942 (15.3%)	1,125 (18.4%)	1,216 (20.5%)	1,045 (18.4%)
	101-110	501 (8.8%)	530 (9.0%)	580 (9.5%)	524 (8.5%)	604 (8.9%)	433 (6.9%)	480 (7.8%)	521 (8.5%)	564 (9.5%)	451 (8.0%)
	111-120	540 (9.5%)	539 (9.2%)	555 (9.1%)	573 (9.3%)	621 (9.1%)	449 (7.1%)	426 (6.9%)	483 (7.9%)	495 (8.4%)	435 (7.7%)
	121-130	475 (8.4%)	469 (8.0%)	553 (9.1%)	516 (8.4%)	572 (8.4%)	371 (5.9%)	326 (5.3%)	347 (5.7%)	353 (6.0%)	292 (5.2%)
	131-140	356 (6.3%)	372 (6.3%)	377 (6.2%)	398 (6.5%)	372 (5.5%)	225 (3.6%)	206 (3.3%)	193 (3.2%)	163 (2.8%)	147 (2.6%)
	141-150	139 (2.4%)	168 (2.9%)	164 (2.7%)	160 (2.6%)	170 (2.5%)	92 (1.5%)	100 (1.6%)	75 (1.2%)	57 (1.0%)	64 (1.1%)
151+		68 (1.2%)	70 (1.2%)	62 (1.0%)	87 (1.4%)	85 (1.3%)	29 (0.5%)	43 (0.7%)	36 (0.6%)	34 (0.6%)	34 (0.6%)
Total		5,685 (100.0%)	5,882 (100.0%)	6,090 (100.0%)	6,133 (100.0%)	6,787 (100.0%)	6,309 (100.0%)	6,176 (100.0%)	6,101 (100.0%)	5,919 (100.0%)	5,668 (100.0%)

Where a horse has more than one published rating (published Hurdle and published Chase mark), the higher of the two is taken.

# Young Horses Entering Training

## Flat Yearlings in Training versus Previous Years

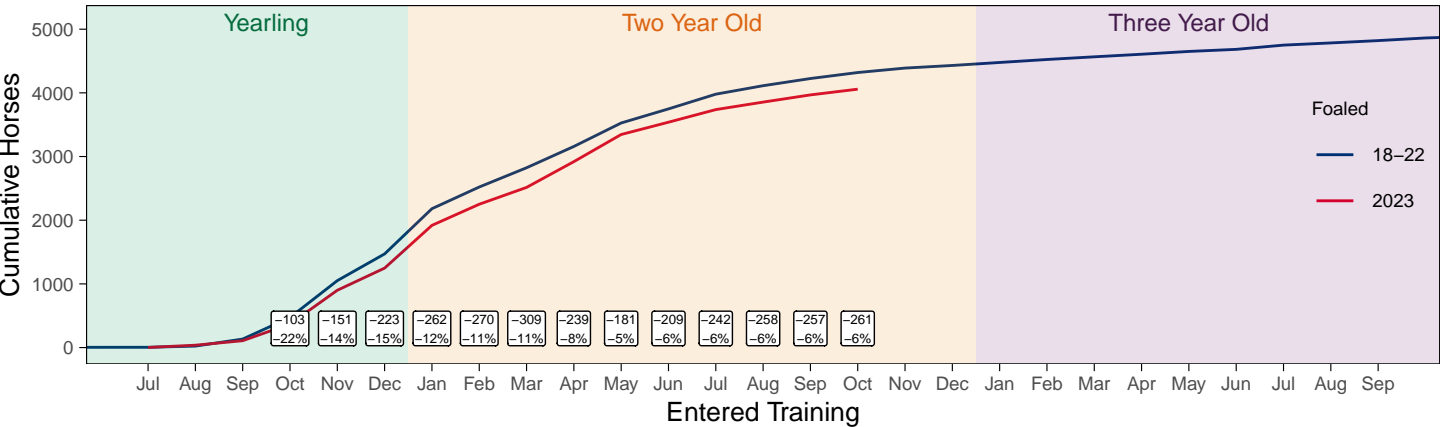
Period	Jan	Feb	Mar	Apr	May	Jun	Jul	Aug	Sep	Oct	Nov	Dec
2025	0	0	0	1	1	1	1	1	56	177		
2024	0	0	0	0	0	0	2	3	72	186	620	1068
5YrAvg	0	0	0	0	1	1	1	3	58	247	552	936

## Foals Entering Training for the First Time

## Warning: A numeric 'legend.position' argument in 'theme()' was deprecated in ggplot2 3.5.0.  
## i Please use the 'legend.position.inside' argument of 'theme()' instead.  
## This warning is displayed once every 8 hours.  
## Call 'lifecycle::last\_lifecycle\_warnings()' to see where this warning was generated.

### 2023 Foals Entering Training Over Time

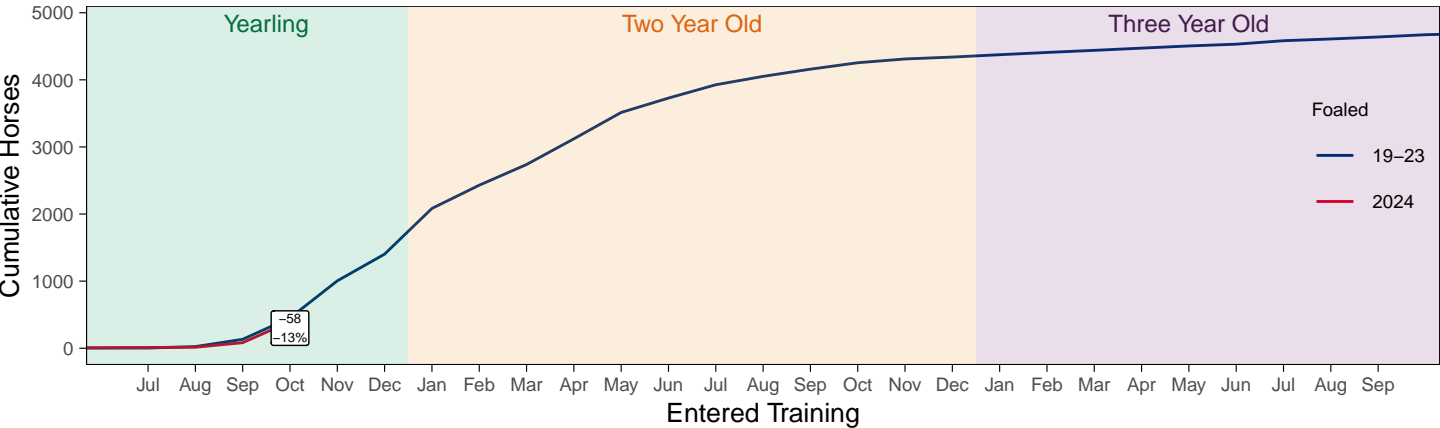
Cumulative Flat Horses foaled in 2023 shown by first in training notification against trend



Cumulative individual horses entering training for the first time by the end of each month.

### 2024 Foals Entering Training Over Time

Cumulative Flat Horses foaled in 2024 shown by first in training notification against trend



Cumulative individual horses entering training for the first time by the end of each month.

## Year to Date Horses in Training

Type	2016	2017	2018	2019	2020	2021	2022	2023	2024	2025	vs. Last Year	vs. Pre-Covid
Flat	12712	12941	12920	13045	13040	12876	12607	12602	12516	12333	-183 / -1.5%	-712 / -5.5%
Jump	8312	7997	8237	8648	8300	9099	8758	8615	8365	7867	-498 / -6.0%	-781 / -9.0%
Dual	863	1211	1202	1017	982	962	905	837	839	1017	+178 / +21.2%	0 / 0.0%
Hunter	1840	1806	1648	1611	1474	1207	1269	1211	1358	1082	-276 / -20.3%	-529 / -32.8%
<b>Total</b>	<b>21887</b>	<b>22149</b>	<b>22359</b>	<b>22710</b>	<b>22322</b>	<b>22937</b>	<b>22270</b>	<b>22054</b>	<b>21720</b>	<b>21217</b>	<b>-503 / -2.3%</b>	<b>-1493 / -6.6%</b>

'vs. Pre-Covid' is comparison between 2025 and 2019

### Flat

AgeCat	2016	2017	2018	2019	2020	2021	2022	2023	2024	2025	vs. Last Year	vs. Pre-Covid
2YO	4446	4503	4483	4524	4347	4362	4206	4259	4175	4013	-162 / -3.9%	-511 / -11.3%
3YO	3805	3889	3997	3931	4041	3902	3841	3775	3695	3744	+49 / +1.3%	-187 / -4.8%
4YO	1831	1901	1866	1979	1963	2023	2016	1944	1946	1871	-75 / -3.9%	-108 / -5.5%
5YO+	2630	2648	2574	2611	2689	2589	2544	2624	2700	2705	+5 / +0.2%	+94 / +3.6%
<b>Total</b>	<b>12712</b>	<b>12941</b>	<b>12920</b>	<b>13045</b>	<b>13040</b>	<b>12876</b>	<b>12607</b>	<b>12602</b>	<b>12516</b>	<b>12333</b>	<b>-183 / -1.5%</b>	<b>-712 / -5.5%</b>

'vs. Pre-Covid' is comparison between 2025 and 2019

### Jump

AgeCat	2016	2017	2018	2019	2020	2021	2022	2023	2024	2025	vs. Last Year	vs. Pre-Covid
3YO	426	365	429	464	379	445	510	472	441	428	-13 / -2.9%	-36 / -7.8%
4-5YO	2778	2695	2780	2930	2835	2904	3040	3074	2892	2727	-165 / -5.7%	-203 / -6.9%
6-7YO	2595	2454	2601	2755	2722	2991	2808	2777	2791	2586	-205 / -7.3%	-169 / -6.1%
8YO+	2513	2483	2427	2499	2364	2759	2400	2292	2241	2126	-115 / -5.1%	-373 / -14.9%
<b>Total</b>	<b>8312</b>	<b>7997</b>	<b>8237</b>	<b>8648</b>	<b>8300</b>	<b>9099</b>	<b>8758</b>	<b>8615</b>	<b>8365</b>	<b>7867</b>	<b>-498 / -6.0%</b>	<b>-781 / -9.0%</b>

'vs. Pre-Covid' is comparison between 2025 and 2019

### Dual

AgeCat	2016	2017	2018	2019	2020	2021	2022	2023	2024	2025	vs. Last Year	vs. Pre-Covid
3YO	179	218	199	212	210	220	236	200	184	263	+79 / +42.9%	+51 / +24.1%
4YO	184	326	278	238	219	240	206	205	215	246	+31 / +14.4%	+8 / +3.4%
5YO+	500	667	725	567	553	502	463	432	440	508	+68 / +15.5%	-59 / -10.4%
<b>Total</b>	<b>863</b>	<b>1211</b>	<b>1202</b>	<b>1017</b>	<b>982</b>	<b>962</b>	<b>905</b>	<b>837</b>	<b>839</b>	<b>1017</b>	<b>+178 / +21.2%</b>	<b>0 / 0.0%</b>

'vs. Pre-Covid' is comparison between 2025 and 2019

### Hunter Chasers

AgeCat	2016	2017	2018	2019	2020	2021	2022	2023	2024	2025	vs. Last Year	vs. Pre-Covid
4-5YO	171	173	192	228	262	134	202	218	248	210	-38 / -15.3%	-18 / -7.9%
6-7YO	493	477	459	456	375	272	307	300	332	303	-29 / -8.7%	-153 / -33.6%
8-9YO	501	496	396	366	328	305	322	291	298	227	-71 / -23.8%	-139 / -38.0%
10YO+	675	660	601	561	509	496	438	402	480	342	-138 / -28.8%	-219 / -39.0%
<b>Total</b>	<b>1840</b>	<b>1806</b>	<b>1648</b>	<b>1611</b>	<b>1474</b>	<b>1207</b>	<b>1269</b>	<b>1211</b>	<b>1358</b>	<b>1082</b>	<b>-276 / -20.3%</b>	<b>-529 / -32.8%</b>

'vs. Pre-Covid' is comparison between 2025 and 2019

# Year to Date Runners

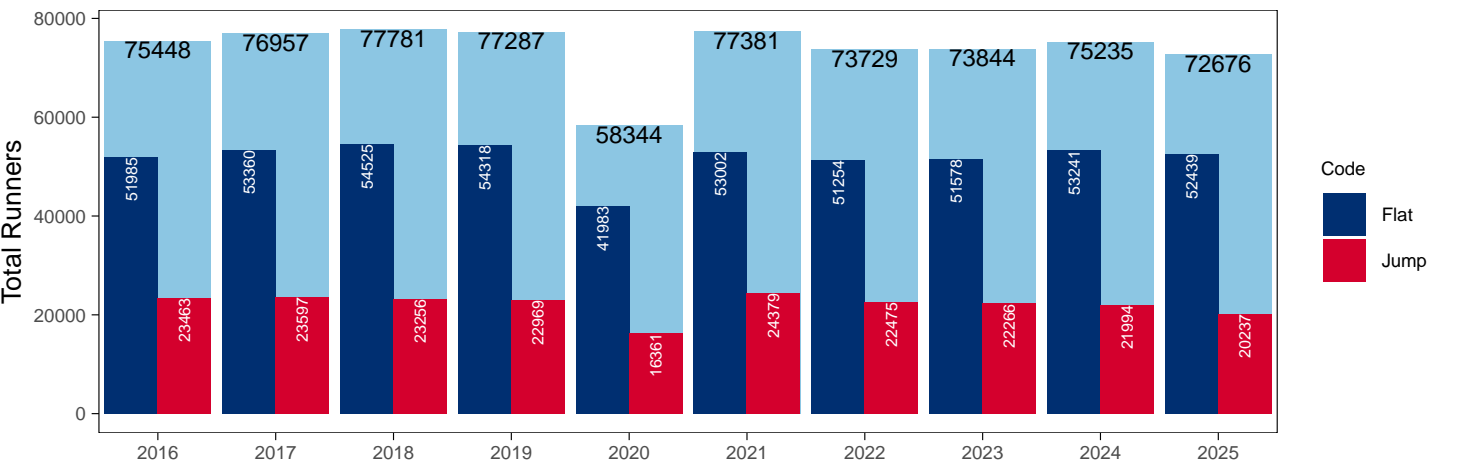
## Year to Date Total Runners

Code	2016	2017	2018	2019	2020	2021	2022	2023	2024	2025	vs. Last Year	vs. Pre-Covid
Flat	51985	53360	54525	54318	41983	53002	51254	51578	53241	52439	-802 / -1.5%	-1879 / -3.5%
Jump	23463	23597	23256	22969	16361	24379	22475	22266	21994	20237	-1757 / -8.0%	-2732 / -11.9%
Total	75448	76957	77781	77287	58344	77381	73729	73844	75235	72676	-2559 / -3.4%	-4611 / -6.0%

'vs. Pre-Covid' is comparison between 2025 and 2019

## YTD Total Runners

Total Runners in GB Races, shown by Code and Total



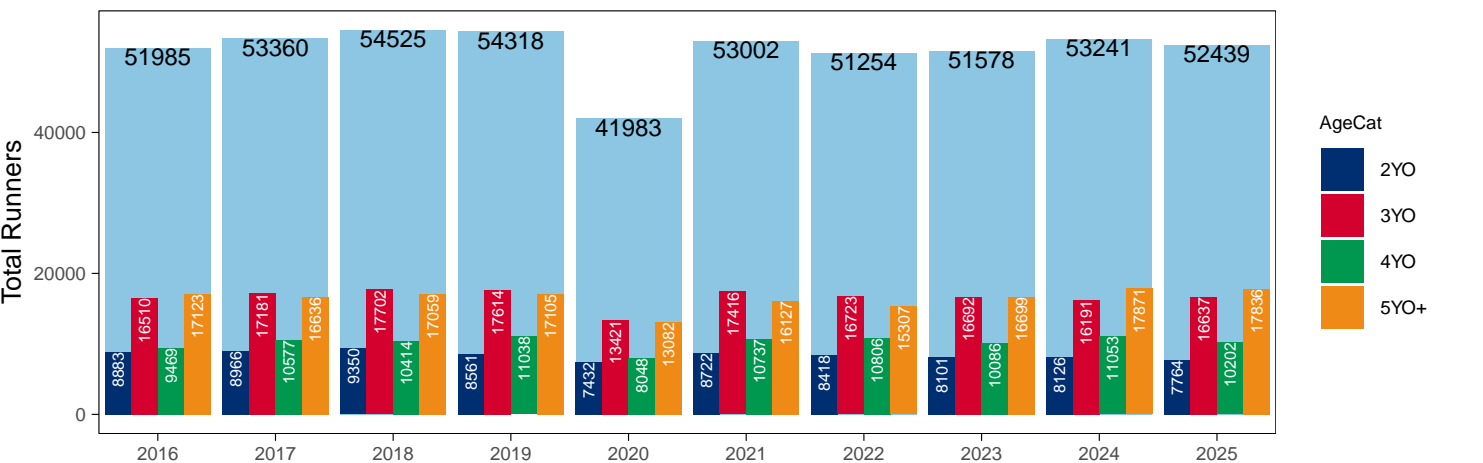
## Flat

AgeCat	2016	2017	2018	2019	2020	2021	2022	2023	2024	2025	vs. Last Year	vs. Pre-Covid
2YO	8883	8966	9350	8561	7432	8722	8418	8101	8126	7764	-362 / -4.5%	-797 / -9.3%
3YO	16510	17181	17702	17614	13421	17416	16723	16692	16191	16637	+446 / +2.8%	-977 / -5.5%
4YO	9469	10577	10414	11038	8048	10737	10806	10086	11053	10202	-851 / -7.7%	-836 / -7.6%
5YO+	17123	16636	17059	17105	13082	16127	15307	16699	17871	17836	-35 / -0.2%	+731 / +4.3%
Total	51985	53360	54525	54318	41983	53002	51254	51578	53241	52439	-802 / -1.5%	-1879 / -3.5%

'vs. Pre-Covid' is comparison between 2025 and 2019

## YTD Total Flat Runners by Age

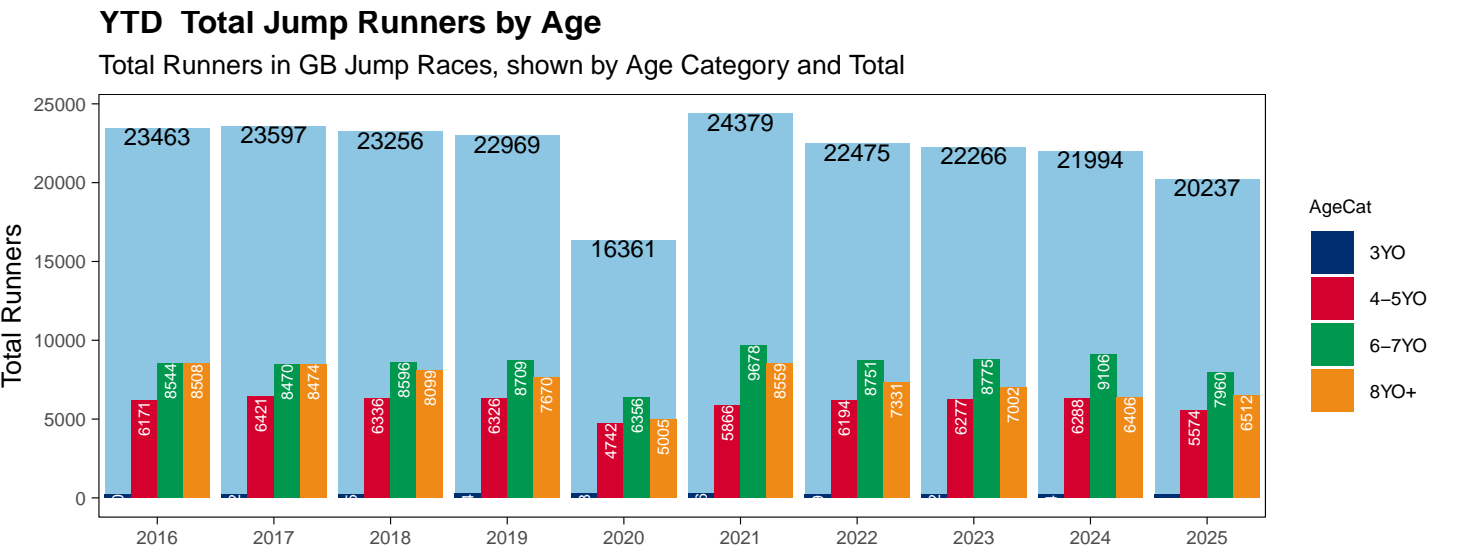
Total Runners in GB Flat Races, shown by Age Category and Total



Jump

AgeCat	2016	2017	2018	2019	2020	2021	2022	2023	2024	2025	vs. Last Year	vs. Pre-Covid
3YO	240	232	225	264	258	276	199	212	194	191	-3 / -1.5%	-73 / -27.7%
4-5YO	6171	6421	6336	6326	4742	5866	6194	6277	6288	5574	-714 / -11.4%	-752 / -11.9%
6-7YO	8544	8470	8596	8709	6356	9678	8751	8775	9106	7960	-1146 / -12.6%	-749 / -8.6%
8YO+	8508	8474	8099	7670	5005	8559	7331	7002	6406	6512	+106 / +1.7%	-1158 / -15.1%
Total	23463	23597	23256	22969	16361	24379	22475	22266	21994	20237	-1757 / -8.0%	-2732 / -11.9%

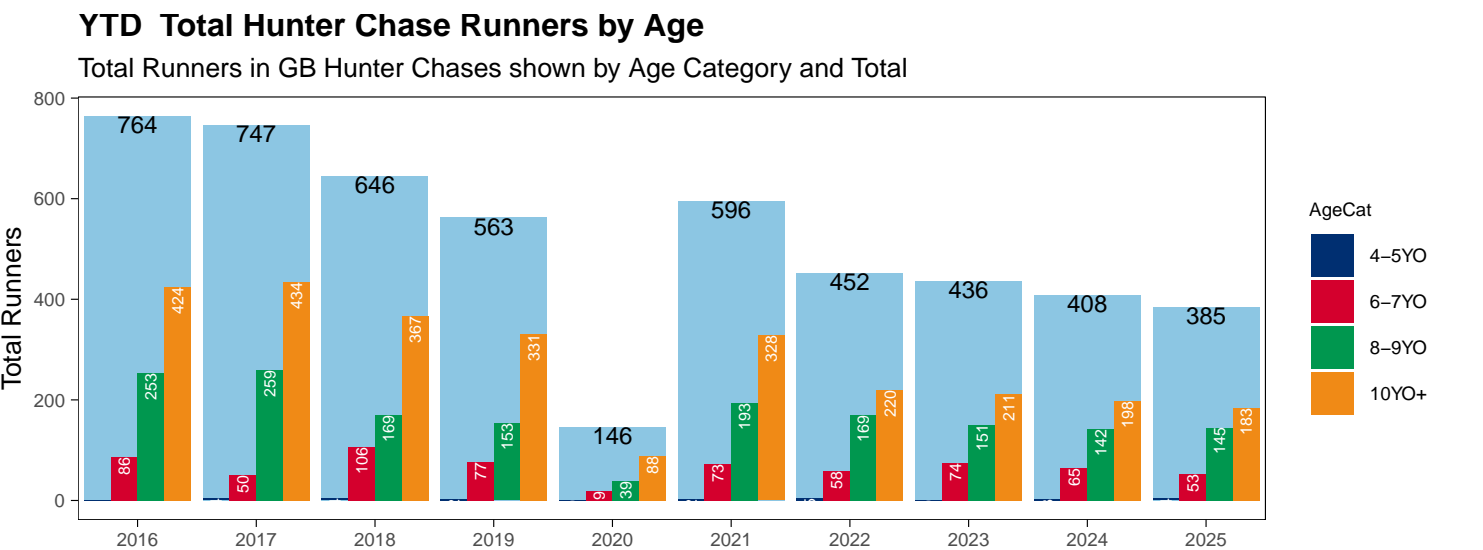
'vs. Pre-Covid' is comparison between 2025 and 2019



Hunter Chases

AgeCat	2016	2017	2018	2019	2020	2021	2022	2023	2024	2025	vs. Last Year	vs. Pre-Covid
4-5YO	1	4	4	2		2	5		3	4	+1 / +33.3%	+2 / +100.0%
6-7YO	86	50	106	77	19	73	58	74	65	53	-12 / -18.5%	-24 / -31.2%
8-9YO	253	259	169	153	39	193	169	151	142	145	+3 / +2.1%	-8 / -5.2%
10YO+	424	434	367	331	88	328	220	211	198	183	-15 / -7.6%	-148 / -44.7%
Total	764	747	646	563	146	596	452	436	408	385	-23 / -5.6%	-178 / -31.6%

'vs. Pre-Covid' is comparison between 2025 and 2019



Year to Date Total Runners by Country Trained

Code	Country	2016	2017	2018	2019	2020	2021	2022	2023	2024	2025
Flat	GB	51411	52656	53722	53536	41710	52610	50891	51084	52590	51836
	IRE	496	624	740	711	246	358	299	442	568	522
	Other	78	80	63	71	27	34	64	52	83	81
Jump	GB	22640	22870	22662	22303	16081	23904	21729	21420	21264	19434
	IRE	814	714	584	659	270	471	744	841	726	794
	Other	9	13	10	7	10	4	2	5	4	9
Overall	GB	74051	75526	76384	75839	57791	76514	72620	72504	73854	71270
	IRE	1310	1338	1324	1370	516	829	1043	1283	1294	1316
	Other	87	93	73	78	37	38	66	57	87	90

Year to Date GB Trained Runners Racing Abroad

Code	Country	2016	2017	2018	2019	2020	2021	2022	2023	2024	2025
Flat	IRE	188	187	155	164	56	57	98	98	125	132
	FR	370	448	481	521	265	216	253	318	345	365
	GNV	22	30	33	47	20	10	17	23	37	35
	UAE	208	278	276	303	281	248	276	272	214	228
	BAH							41	23	50	89
	KSA					15	21	22	15	11	10
	Other	118	105	120	119	42	56	65	83	125	101
	Total	906	1048	1065	1154	679	608	772	832	907	960
Jump	IRE	92	82	56	72	7	24	31	22	63	89
	FR	51	28	12	48	70	115	111	79	42	22
	Other	10	8	7	10		8	14	5	13	2
	Total	153	118	75	130	77	147	156	106	118	113

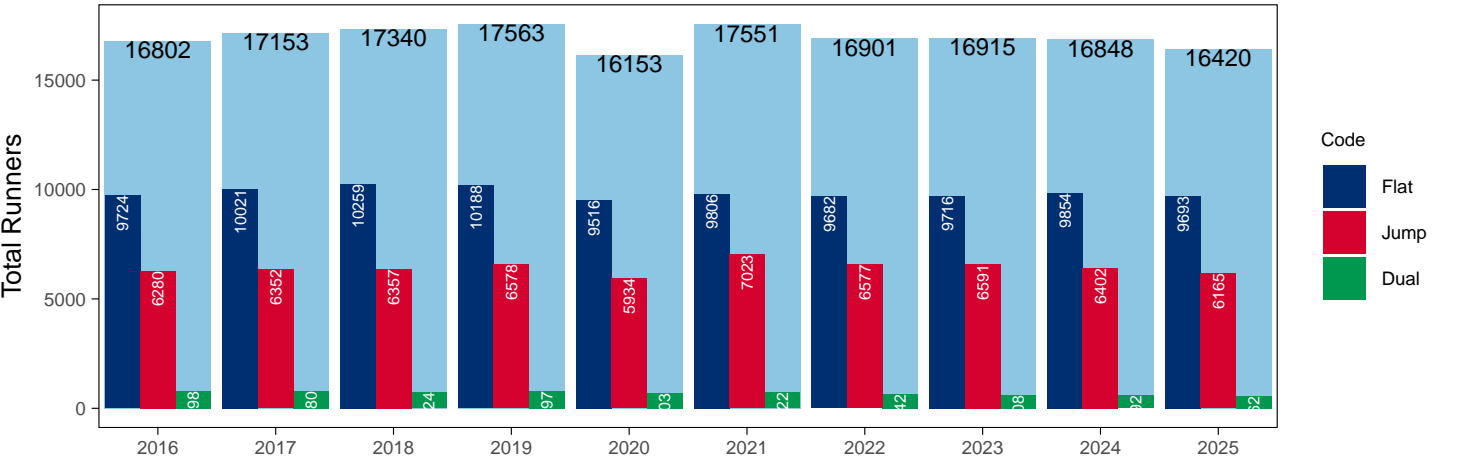
Year to Date Individual Runners

Code	2016	2017	2018	2019	2020	2021	2022	2023	2024	2025	vs. Last Year	vs. Pre-Covid
Flat	9724	10021	10259	10188	9516	9806	9682	9716	9854	9693	-161 / -1.6%	-495 / -4.9%
Jump	6280	6352	6357	6578	5934	7023	6577	6591	6402	6165	-237 / -3.7%	-413 / -6.3%
Dual	798	780	724	797	703	722	642	608	592	562	-30 / -5.1%	-235 / -29.5%
Overall	16802	17153	17340	17563	16153	17551	16901	16915	16848	16420	-428 / -2.5%	-1143 / -6.5%

'vs. Pre-Covid' is comparison between 2025 and 2019

YTD Individual Runners

Individual Runners in GB Races, shown by Code and Total



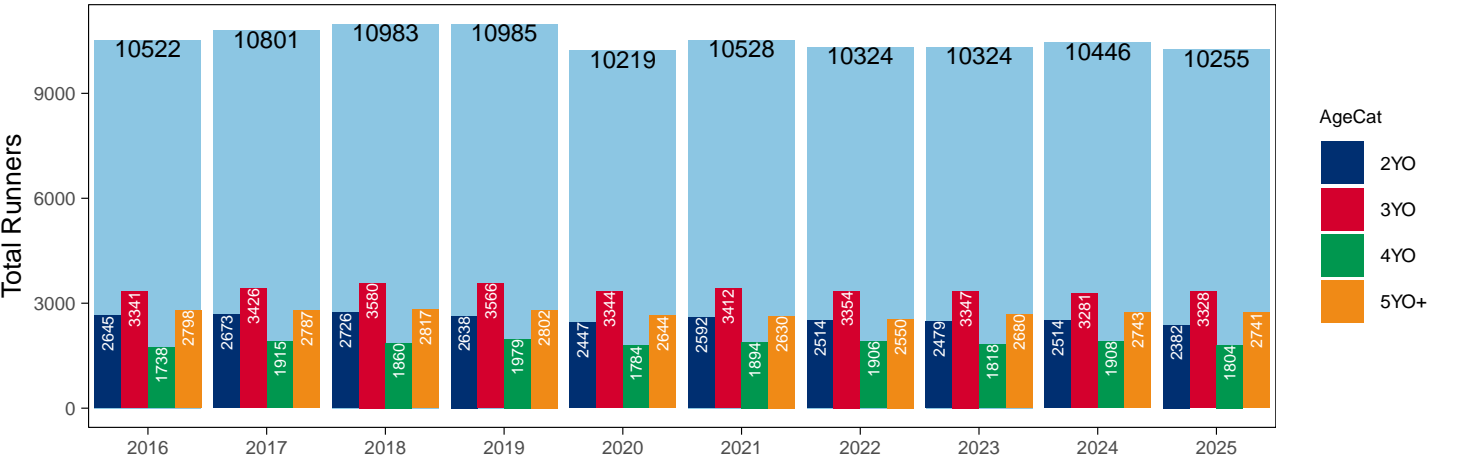
Flat

AgeCat	2016	2017	2018	2019	2020	2021	2022	2023	2024	2025	vs. Last Year	vs. Pre-Covid
2YO	2645	2673	2726	2638	2447	2592	2514	2479	2514	2382	-132 / -5.3%	-256 / -9.7%
3YO	3341	3426	3580	3566	3344	3412	3354	3347	3281	3328	+47 / +1.4%	-238 / -6.7%
4YO	1738	1915	1860	1979	1784	1894	1906	1818	1908	1804	-104 / -5.5%	-175 / -8.8%
5YO+	2798	2787	2817	2802	2644	2630	2550	2680	2743	2741	-2 / -0.1%	-61 / -2.2%
Total	10522	10801	10983	10985	10219	10528	10324	10324	10446	10255	-191 / -1.8%	-730 / -6.6%

'vs. Pre-Covid' is comparison between 2025 and 2019

YTD Individual Flat Runners by Age

Individual Runners in GB Flat Races, shown by Age Category and Total



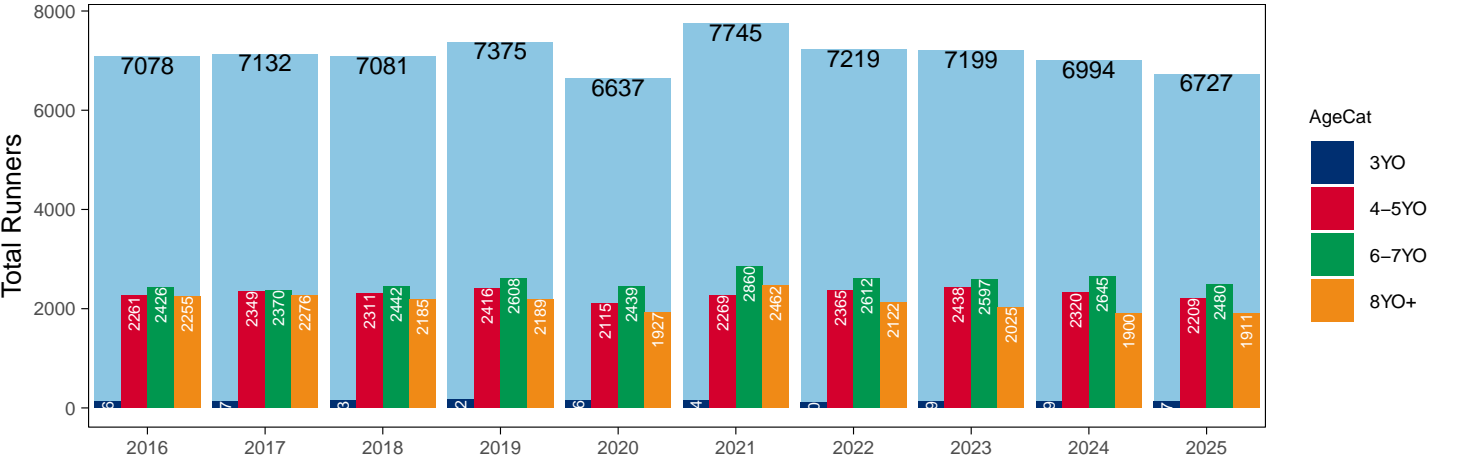
Jump

AgeCat	2016	2017	2018	2019	2020	2021	2022	2023	2024	2025	vs. Last Year	vs. Pre-Covid
3YO	136	137	143	162	156	154	120	139	129	127	-2 / -1.6%	-35 / -21.6%
4-5YO	2261	2349	2311	2416	2115	2269	2365	2438	2320	2209	-111 / -4.8%	-207 / -8.6%
6-7YO	2426	2370	2442	2608	2439	2860	2612	2597	2645	2480	-165 / -6.2%	-128 / -4.9%
8YO+	2255	2276	2185	2189	1927	2462	2122	2025	1900	1911	+11 / +0.6%	-278 / -12.7%
Total	7078	7132	7081	7375	6637	7745	7219	7199	6994	6727	-267 / -3.8%	-648 / -8.8%

'vs. Pre-Covid' is comparison between 2025 and 2019

YTD Individual Jump Runners by Age

Individual Runners in GB Jump Races, shown by Age Category and Total



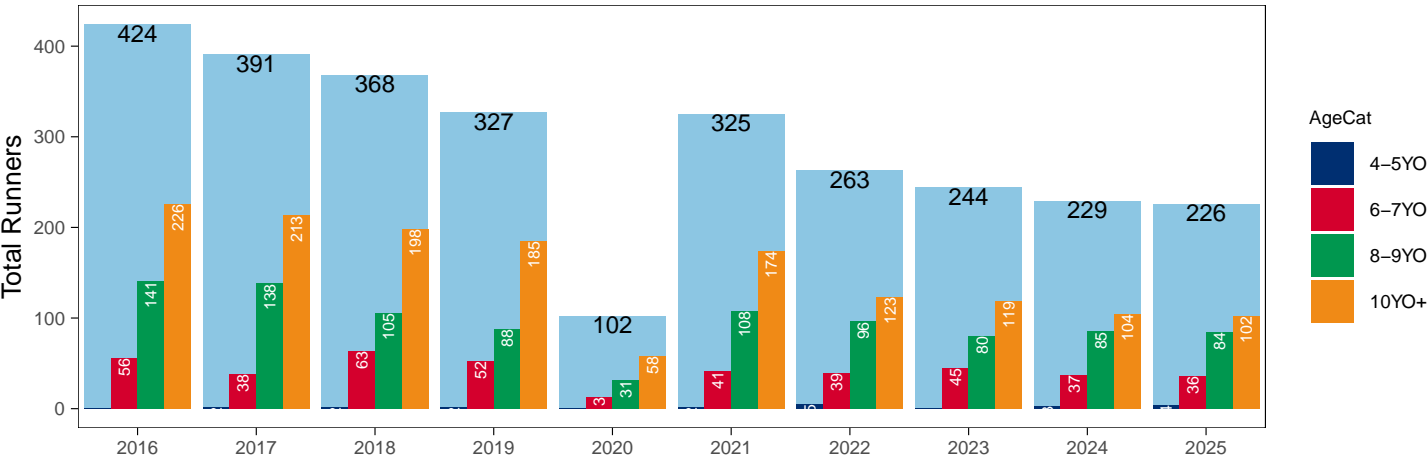
Hunter Chases

AgeCat	2016	2017	2018	2019	2020	2021	2022	2023	2024	2025	vs. Last Year	vs. Pre-Covid
4-5YO	1	2	2	2		2	5		3	4	+1 / +33.3%	+2 / +100.0%
6-7YO	56	38	63	52	13	41	39	45	37	36	-1 / -2.7%	-16 / -30.8%
8-9YO	141	138	105	88	31	108	96	80	85	84	-1 / -1.2%	-4 / -4.5%
10YO+	226	213	198	185	58	174	123	119	104	102	-2 / -1.9%	-83 / -44.9%
Total	424	391	368	327	102	325	263	244	229	226	-3 / -1.3%	-101 / -30.9%

'vs. Pre-Covid' is comparison between 2025 and 2019

YTD Individual Hunter Chase Runners by Age

Individual Runners in GB Hunter Chases shown by Age Category and Total



Year to Date Individual Runners by Country Trained

Code	Country	2016	2017	2018	2019	2020	2021	2022	2023	2024	2025
Flat	GB	9407	9645	9837	9746	9326	9543	9425	9399	9475	9322
	IRE	274	332	386	400	174	243	213	295	338	331
	Other	64	63	56	59	23	29	55	41	57	56
Jump	GB	5831	5947	5974	6149	5692	6678	6073	6038	5920	5618
	IRE	466	422	392	444	239	352	527	583	503	561
	Other	9	9	9	6	10	4	2	3	3	7
Dual	GB	783	762	703	782	697	715	632	588	575	536
	IRE	9	12	18	14	5	5	8	14	14	22
	Other		2								1
Overall	GB	16021	16354	16514	16677	15715	16936	16130	16025	15970	15476
	IRE	749	766	796	858	418	600	748	892	855	914
	Other	73	74	65	65	33	33	57	44	60	64

Individual horses may appear under multiple countries.



## Year to Date Total Runners by Rating Band

## Flat

RatBand	2016	2017	2018	2019	2020	2021	2022	2023	2024	2025
2YO										
Unrated	6,050 (68.1%)	6,290 (70.2%)	6,509 (69.6%)	6,078 (71.0%)	5,038 (67.8%)	6,006 (68.9%)	5,857 (69.6%)	5,682 (70.1%)	5,731 (70.5%)	5,432 (70.0%)
0-50	123 (1.4%)	121 (1.3%)	111 (1.2%)	162 (1.9%)	100 (1.3%)	157 (1.8%)	155 (1.8%)	168 (2.1%)	161 (2.0%)	151 (1.9%)
51-60	401 (4.5%)	388 (4.3%)	464 (5.0%)	424 (5.0%)	362 (4.9%)	371 (4.3%)	378 (4.5%)	381 (4.7%)	388 (4.8%)	388 (5.0%)
61-70	760 (8.6%)	735 (8.2%)	701 (7.5%)	617 (7.2%)	591 (8.0%)	694 (8.0%)	625 (7.4%)	630 (7.8%)	592 (7.3%)	598 (7.7%)
71-80	915 (10.3%)	820 (9.1%)	810 (8.7%)	719 (8.4%)	744 (10.0%)	776 (8.9%)	717 (8.5%)	689 (8.5%)	698 (8.6%)	619 (8.0%)
81-90	410 (4.6%)	341 (3.8%)	441 (4.7%)	325 (3.8%)	349 (4.7%)	430 (4.9%)	402 (4.8%)	360 (4.4%)	343 (4.2%)	349 (4.5%)
91-100	151 (1.7%)	160 (1.8%)	208 (2.2%)	159 (1.9%)	163 (2.2%)	186 (2.1%)	203 (2.4%)	119 (1.5%)	140 (1.7%)	162 (2.1%)
101+	73 (0.8%)	111 (1.2%)	106 (1.1%)	77 (0.9%)	85 (1.1%)	102 (1.2%)	81 (1.0%)	72 (0.9%)	73 (0.9%)	65 (0.8%)
3YO+										
Unrated	3,841 (8.9%)	3,955 (8.9%)	4,745 (10.5%)	4,554 (10.0%)	3,767 (10.9%)	4,620 (10.4%)	4,237 (9.9%)	4,151 (9.5%)	4,158 (9.2%)	4,200 (9.4%)
0-50	3,549 (8.2%)	4,014 (9.0%)	4,639 (10.3%)	5,575 (12.2%)	3,810 (11.0%)	5,089 (11.5%)	4,968 (11.6%)	5,362 (12.3%)	5,444 (12.1%)	5,395 (12.1%)
51-60	7,104 (16.5%)	7,431 (16.7%)	7,220 (16.0%)	8,058 (17.6%)	5,908 (17.1%)	7,876 (17.8%)	7,545 (17.6%)	8,318 (19.1%)	8,694 (19.3%)	8,334 (18.7%)
61-70	9,265 (21.5%)	9,145 (20.6%)	9,220 (20.4%)	9,116 (19.9%)	7,067 (20.5%)	9,247 (20.9%)	9,009 (21.0%)	9,118 (21.0%)	9,852 (21.8%)	9,452 (21.2%)
71-80	8,800 (20.4%)	8,959 (20.2%)	8,621 (19.1%)	8,216 (18.0%)	6,455 (18.7%)	8,002 (18.1%)	7,921 (18.5%)	7,978 (18.3%)	8,271 (18.3%)	8,331 (18.6%)
81-90	5,757 (13.4%)	6,014 (13.5%)	5,849 (12.9%)	5,415 (11.8%)	4,168 (12.1%)	5,087 (11.5%)	5,013 (11.7%)	4,665 (10.7%)	4,999 (11.1%)	5,147 (11.5%)
91-100	2,861 (6.6%)	2,858 (6.4%)	3,053 (6.8%)	3,060 (6.7%)	1,993 (5.8%)	2,623 (5.9%)	2,408 (5.6%)	2,304 (5.3%)	2,139 (4.7%)	2,309 (5.2%)
101+	1,925 (4.5%)	2,018 (4.5%)	1,828 (4.0%)	1,763 (3.9%)	1,383 (4.0%)	1,736 (3.9%)	1,735 (4.1%)	1,581 (3.6%)	1,558 (3.5%)	1,507 (3.4%)

## Jump

RatBand	2016	2017	2018	2019	2020	2021	2022	2023	2024	2025
Hurdle										
Unrated	3,629 (25.9%)	3,675 (26.3%)	3,640 (26.3%)	3,804 (27.4%)	3,042 (30.9%)	3,729 (26.4%)	3,410 (25.4%)	3,562 (26.4%)	3,708 (27.2%)	3,014 (24.3%)
0-100	3,792 (27.1%)	3,776 (27.0%)	3,560 (25.7%)	3,542 (25.5%)	2,355 (23.9%)	4,395 (31.1%)	4,415 (32.9%)	4,530 (33.6%)	4,835 (35.5%)	4,552 (36.6%)
101-110	2,171 (15.5%)	2,143 (15.3%)	2,132 (15.4%)	2,069 (14.9%)	1,398 (14.2%)	1,942 (13.7%)	2,072 (15.4%)	2,064 (15.3%)	1,974 (14.5%)	1,908 (15.4%)
111-120	1,993 (14.2%)	1,992 (14.3%)	1,947 (14.1%)	1,982 (14.3%)	1,267 (12.9%)	1,791 (12.7%)	1,689 (12.6%)	1,643 (12.2%)	1,632 (12.0%)	1,566 (12.6%)
121-130	1,304 (9.3%)	1,337 (9.6%)	1,419 (10.2%)	1,419 (10.2%)	978 (9.9%)	1,306 (9.2%)	1,056 (7.9%)	1,071 (7.9%)	924 (6.8%)	819 (6.6%)
131-140	761 (5.4%)	745 (5.3%)	814 (5.9%)	713 (5.1%)	553 (5.6%)	662 (4.7%)	542 (4.0%)	415 (3.1%)	380 (2.8%)	414 (3.3%)
141-150	259 (1.8%)	229 (1.6%)	258 (1.9%)	241 (1.7%)	174 (1.8%)	219 (1.6%)	194 (1.4%)	153 (1.1%)	128 (0.9%)	115 (0.9%)
151+	95 (0.7%)	76 (0.5%)	78 (0.6%)	96 (0.7%)	82 (0.8%)	85 (0.6%)	56 (0.4%)	61 (0.5%)	52 (0.4%)	40 (0.3%)
Chase										
Unrated	62 (0.8%)	72 (0.9%)	56 (0.8%)	48 (0.7%)	19 (0.4%)	35 (0.5%)	14 (0.2%)	2 (0.0%)	5 (0.1%)	1 (0.0%)
0-100	2,200 (29.1%)	2,085 (27.3%)	2,126 (28.9%)	2,185 (30.2%)	1,482 (29.1%)	2,392 (31.8%)	2,368 (33.0%)	2,517 (36.4%)	2,530 (37.7%)	2,405 (38.5%)
101-110	1,143 (15.1%)	1,242 (16.2%)	1,175 (16.0%)	1,152 (15.9%)	799 (15.7%)	1,152 (15.3%)	1,157 (16.1%)	1,146 (16.6%)	1,209 (18.0%)	1,029 (16.5%)
111-120	1,339 (17.7%)	1,334 (17.4%)	1,209 (16.5%)	1,164 (16.1%)	809 (15.9%)	1,290 (17.1%)	1,243 (17.3%)	1,172 (16.9%)	1,124 (16.7%)	1,019 (16.3%)
121-130	1,154 (15.3%)	1,179 (15.4%)	1,235 (16.8%)	1,096 (15.1%)	836 (16.4%)	1,164 (15.5%)	1,065 (14.8%)	959 (13.9%)	866 (12.9%)	841 (13.5%)
131-140	968 (12.8%)	1,051 (13.7%)	910 (12.4%)	938 (13.0%)	646 (12.7%)	836 (11.1%)	775 (10.8%)	651 (9.4%)	547 (8.2%)	513 (8.2%)
141-150	459 (6.1%)	461 (6.0%)	456 (6.2%)	434 (6.0%)	349 (6.9%)	417 (5.5%)	371 (5.2%)	293 (4.2%)	264 (3.9%)	259 (4.1%)
151+	227 (3.0%)	226 (3.0%)	180 (2.4%)	218 (3.0%)	153 (3.0%)	237 (3.2%)	191 (2.7%)	180 (2.6%)	166 (2.5%)	179 (2.9%)

## Year to Date Total GB-Trained Runners by Rating Band

## Flat

RatBand	2016	2017	2018	2019	2020	2021	2022	2023	2024	2025
2YO										
Unrated	5,967 (67.8%)	6,219 (70.2%)	6,434 (69.7%)	5,976 (71.0%)	4,991 (67.7%)	5,963 (68.9%)	5,821 (69.7%)	5,611 (70.0%)	5,638 (70.3%)	5,355 (69.8%)
0-50	123 (1.4%)	121 (1.4%)	111 (1.2%)	161 (1.9%)	100 (1.4%)	157 (1.8%)	155 (1.9%)	168 (2.1%)	161 (2.0%)	151 (2.0%)
51-60	400 (4.5%)	388 (4.4%)	463 (5.0%)	421 (5.0%)	362 (4.9%)	371 (4.3%)	378 (4.5%)	381 (4.8%)	388 (4.8%)	388 (5.1%)
61-70	760 (8.6%)	735 (8.3%)	701 (7.6%)	617 (7.3%)	591 (8.0%)	694 (8.0%)	625 (7.5%)	630 (7.9%)	592 (7.4%)	598 (7.8%)
71-80	915 (10.4%)	819 (9.2%)	810 (8.8%)	719 (8.5%)	744 (10.1%)	775 (9.0%)	717 (8.6%)	689 (8.6%)	698 (8.7%)	619 (8.1%)
81-90	410 (4.7%)	337 (3.8%)	438 (4.7%)	324 (3.8%)	348 (4.7%)	427 (4.9%)	400 (4.8%)	358 (4.5%)	342 (4.3%)	348 (4.5%)
91-100	151 (1.7%)	152 (1.7%)	201 (2.2%)	145 (1.7%)	161 (2.2%)	176 (2.0%)	192 (2.3%)	114 (1.4%)	136 (1.7%)	160 (2.1%)
101+	73 (0.8%)	88 (1.0%)	79 (0.9%)	57 (0.7%)	80 (1.1%)	92 (1.1%)	69 (0.8%)	63 (0.8%)	60 (0.7%)	52 (0.7%)
3YO+										
Unrated	3,816 (9.0%)	3,930 (9.0%)	4,718 (10.6%)	4,529 (10.0%)	3,758 (10.9%)	4,612 (10.5%)	4,226 (9.9%)	4,133 (9.6%)	4,144 (9.3%)	4,180 (9.5%)
0-50	3,513 (8.2%)	3,942 (9.0%)	4,560 (10.3%)	5,482 (12.2%)	3,792 (11.0%)	5,089 (11.6%)	4,968 (11.7%)	5,332 (12.4%)	5,413 (12.1%)	5,367 (12.2%)
51-60	7,057 (16.6%)	7,336 (16.8%)	7,094 (15.9%)	7,953 (17.6%)	5,874 (17.1%)	7,875 (17.9%)	7,544 (17.7%)	8,289 (19.2%)	8,658 (19.4%)	8,304 (18.8%)
61-70	9,203 (21.6%)	9,087 (20.7%)	9,133 (20.5%)	9,056 (20.1%)	7,059 (20.6%)	9,244 (21.0%)	9,002 (21.2%)	9,102 (21.1%)	9,825 (22.0%)	9,412 (21.3%)
71-80	8,769 (20.6%)	8,899 (20.3%)	8,575 (19.3%)	8,180 (18.1%)	6,444 (18.8%)	7,979 (18.2%)	7,905 (18.6%)	7,945 (18.4%)	8,226 (18.5%)	8,308 (18.8%)
81-90	5,726 (13.4%)	5,983 (13.7%)	5,817 (13.1%)	5,379 (11.9%)	4,158 (12.1%)	5,045 (11.5%)	4,977 (11.7%)	4,628 (10.7%)	4,924 (11.0%)	5,083 (11.5%)
91-100	2,799 (6.6%)	2,793 (6.4%)	2,978 (6.7%)	2,984 (6.6%)	1,978 (5.8%)	2,558 (5.8%)	2,343 (5.5%)	2,223 (5.2%)	2,039 (4.6%)	2,185 (4.9%)
101+	1,729 (4.1%)	1,827 (4.2%)	1,610 (3.6%)	1,553 (3.4%)	1,270 (3.7%)	1,553 (3.5%)	1,569 (3.7%)	1,418 (3.3%)	1,346 (3.0%)	1,326 (3.0%)

## Jump

RatBand	2016	2017	2018	2019	2020	2021	2022	2023	2024	2025
Hurdle										
Unrated	3,539 (26.1%)	3,608 (26.6%)	3,577 (26.5%)	3,728 (27.7%)	3,016 (31.2%)	3,679 (26.6%)	3,306 (25.4%)	3,450 (26.5%)	3,618 (27.4%)	2,929 (24.4%)
0-100	3,711 (27.4%)	3,687 (27.2%)	3,494 (25.9%)	3,489 (25.9%)	2,344 (24.2%)	4,368 (31.6%)	4,385 (33.7%)	4,467 (34.3%)	4,782 (36.2%)	4,512 (37.6%)
101-110	2,116 (15.6%)	2,086 (15.4%)	2,096 (15.5%)	2,019 (15.0%)	1,395 (14.4%)	1,903 (13.7%)	2,043 (15.7%)	2,024 (15.5%)	1,947 (14.8%)	1,869 (15.6%)
111-120	1,941 (14.3%)	1,949 (14.4%)	1,910 (14.1%)	1,934 (14.4%)	1,263 (13.0%)	1,761 (12.7%)	1,638 (12.6%)	1,592 (12.2%)	1,592 (12.1%)	1,526 (12.7%)
121-130	1,262 (9.3%)	1,293 (9.5%)	1,380 (10.2%)	1,381 (10.3%)	966 (10.0%)	1,271 (9.2%)	993 (7.6%)	1,010 (7.8%)	847 (6.4%)	755 (6.3%)
131-140	702 (5.2%)	702 (5.2%)	767 (5.7%)	656 (4.9%)	509 (5.3%)	615 (4.4%)	468 (3.6%)	347 (2.7%)	311 (2.4%)	312 (2.6%)
141-150	197 (1.5%)	195 (1.4%)	213 (1.6%)	194 (1.4%)	133 (1.4%)	180 (1.3%)	133 (1.0%)	95 (0.7%)	81 (0.6%)	69 (0.6%)
151+	73 (0.5%)	59 (0.4%)	63 (0.5%)	71 (0.5%)	56 (0.6%)	65 (0.5%)	34 (0.3%)	34 (0.3%)	22 (0.2%)	15 (0.1%)
Chase										
Unrated	62 (0.9%)	69 (0.9%)	56 (0.8%)	47 (0.7%)	19 (0.4%)	35 (0.5%)	13 (0.2%)	2 (0.0%)	4 (0.1%)	1 (0.0%)
0-100	2,148 (29.6%)	2,026 (27.5%)	2,094 (29.3%)	2,161 (30.7%)	1,479 (29.5%)	2,388 (32.3%)	2,362 (34.0%)	2,491 (37.6%)	2,516 (38.9%)	2,388 (40.3%)
101-110	1,108 (15.2%)	1,219 (16.5%)	1,165 (16.3%)	1,145 (16.3%)	796 (15.9%)	1,140 (15.4%)	1,144 (16.5%)	1,130 (17.0%)	1,199 (18.5%)	1,016 (17.1%)
111-120	1,312 (18.0%)	1,308 (17.7%)	1,193 (16.7%)	1,150 (16.3%)	803 (16.0%)	1,281 (17.4%)	1,220 (17.6%)	1,140 (17.2%)	1,108 (17.1%)	998 (16.8%)
121-130	1,134 (15.6%)	1,141 (15.5%)	1,205 (16.8%)	1,069 (15.2%)	834 (16.7%)	1,152 (15.6%)	1,024 (14.8%)	928 (14.0%)	837 (12.9%)	798 (13.5%)
131-140	918 (12.6%)	1,007 (13.6%)	882 (12.3%)	905 (12.9%)	630 (12.6%)	823 (11.1%)	727 (10.5%)	600 (9.1%)	507 (7.8%)	428 (7.2%)
141-150	405 (5.6%)	415 (5.6%)	417 (5.8%)	390 (5.5%)	324 (6.5%)	373 (5.1%)	318 (4.6%)	228 (3.4%)	194 (3.0%)	198 (3.3%)
151+	182 (2.5%)	193 (2.6%)	140 (2.0%)	169 (2.4%)	123 (2.5%)	190 (2.6%)	134 (1.9%)	109 (1.6%)	104 (1.6%)	104 (1.8%)

Frequency of Runs

Year to Date Average Runs per Horse

Code	2016	2017	2018	2019	2020	2021	2022	2023	2024	2025
Flat	5.02	5.03	5.05	5.03	4.20	5.13	5.06	5.09	5.17	5.16
Jump	3.32	3.33	3.30	3.13	2.46	3.15	3.11	3.10	3.17	3.02
Dual Overall	7.28	6.96	6.88	6.85	5.40	6.80	6.70	6.51	6.86	7.13
Dual (Flat)	3.97	3.83	3.77	3.86	2.91	3.69	3.57	3.53	3.94	4.23
Dual (Jump)	3.31	3.13	3.12	2.99	2.49	3.11	3.13	2.98	2.92	2.89
All	4.49	4.49	4.49	4.40	3.61	4.41	4.36	4.37	4.47	4.43

Year to Date Proportion of Horses by Count of Runs

Runs	2016	2017	2018	2019	2020	2021	2022	2023	2024	2025
Flat										
1	1,587 (15.1%)	1,615 (15.0%)	1,683 (15.3%)	1,754 (16.0%)	1,745 (17.1%)	1,518 (14.4%)	1,523 (14.8%)	1,526 (14.8%)	1,532 (14.7%)	1,501 (14.6%)
2	1,372 (13.0%)	1,472 (13.6%)	1,435 (13.1%)	1,506 (13.7%)	1,696 (16.6%)	1,350 (12.8%)	1,346 (13.0%)	1,341 (13.0%)	1,380 (13.2%)	1,309 (12.8%)
3	1,419 (13.5%)	1,448 (13.4%)	1,505 (13.7%)	1,444 (13.1%)	1,631 (16.0%)	1,402 (13.3%)	1,407 (13.6%)	1,385 (13.4%)	1,359 (13.0%)	1,388 (13.5%)
4	1,205 (11.5%)	1,238 (11.5%)	1,275 (11.6%)	1,228 (11.2%)	1,368 (13.4%)	1,209 (11.5%)	1,229 (11.9%)	1,201 (11.6%)	1,214 (11.6%)	1,142 (11.1%)
5+	4,939 (46.9%)	5,028 (46.6%)	5,085 (46.3%)	5,053 (46.0%)	3,779 (37.0%)	5,049 (48.0%)	4,819 (46.7%)	4,871 (47.2%)	4,961 (47.5%)	4,915 (47.9%)
Jump										
1	1,762 (24.9%)	1,848 (25.9%)	1,751 (24.7%)	2,020 (27.4%)	2,136 (32.2%)	1,990 (25.7%)	1,996 (27.6%)	2,027 (28.2%)	1,805 (25.8%)	1,913 (28.4%)
2	1,398 (19.8%)	1,349 (18.9%)	1,328 (18.8%)	1,585 (21.5%)	1,780 (26.8%)	1,646 (21.3%)	1,454 (20.1%)	1,440 (20.0%)	1,426 (20.4%)	1,461 (21.7%)
3	1,178 (16.6%)	1,150 (16.1%)	1,218 (17.2%)	1,222 (16.6%)	1,326 (20.0%)	1,406 (18.2%)	1,269 (17.6%)	1,223 (17.0%)	1,173 (16.8%)	1,214 (18.0%)
4	941 (13.3%)	975 (13.7%)	1,024 (14.5%)	933 (12.7%)	746 (11.2%)	1,010 (13.0%)	967 (13.4%)	942 (13.1%)	1,019 (14.6%)	809 (12.0%)
5+	1,799 (25.4%)	1,810 (25.4%)	1,760 (24.9%)	1,615 (21.9%)	649 (9.8%)	1,693 (21.9%)	1,533 (21.2%)	1,567 (21.8%)	1,571 (22.5%)	1,330 (19.8%)
All Races										
1	2,936 (17.5%)	3,013 (17.6%)	3,032 (17.5%)	3,325 (18.9%)	3,403 (21.1%)	3,097 (17.6%)	3,157 (18.7%)	3,170 (18.7%)	3,002 (17.8%)	3,096 (18.9%)
2	2,519 (15.0%)	2,602 (15.2%)	2,533 (14.6%)	2,826 (16.1%)	3,210 (19.9%)	2,769 (15.8%)	2,593 (15.3%)	2,622 (15.5%)	2,618 (15.5%)	2,590 (15.8%)
3	2,411 (14.3%)	2,431 (14.2%)	2,566 (14.8%)	2,505 (14.3%)	2,843 (17.6%)	2,663 (15.2%)	2,542 (15.0%)	2,487 (14.7%)	2,425 (14.4%)	2,493 (15.2%)
4	2,056 (12.2%)	2,116 (12.3%)	2,214 (12.8%)	2,090 (11.9%)	2,075 (12.8%)	2,123 (12.1%)	2,119 (12.5%)	2,078 (12.3%)	2,150 (12.8%)	1,894 (11.5%)
5+	6,880 (40.9%)	6,991 (40.8%)	6,995 (40.3%)	6,817 (38.8%)	4,622 (28.6%)	6,899 (39.3%)	6,490 (38.4%)	6,558 (38.8%)	6,653 (39.5%)	6,347 (38.7%)

Year to Date Median Days Between Runs

Code/RatBand	2016	2017	2018	2019	2020	2021	2022	2023	2024	2025
All Runners	24	24	24	24	25	25	25	25	25	25
Flat										
Unrated	22	22	23	23	22	23	23	23	24	24
0-50	20	21	20	21	20	20	21	19	18	19
51-60	19	20	19	20	20	20	20	19	20	20
61-70	20	21	20	21	21	20	21	21	21	21
71-80	21	22	21	21	22	21	22	22	22	22
81-90	22	22	22	22	22	22	23	24	24	25
91-100	24	25	23	23	24	25	27	27	28	28
101+	28	28	28	28	28	28	31	32	33	34
All Flat Runners	21	22	21	21	21	21	22	22	22	22
Jump										
Unrated	37	34	37	38	38	40	37	41	41	41
0-100	26	26	27	27	33	29	28	29	31	30
101-110	29	28	29	29	32	31	30	31	33	31
111-120	30	29	31	31	36	33	31	33	33	33
121-130	32	30	31	33	36	34	32	35	37	35
131-140	35	34	34	35	40	36	35	37	37	36
141-150	35	37	39	38	45	42	39	40	39	40
151+	41	38	39	40	47	42	42	43	44	40
All Jump Runners	30	30	31	32	36	34	31	33	34	33

# Horses Population by Gender

## October 2025 Horses in Training Snapshot by Gender versus Previous Years

### All Horses

Sex	2016	2017	2018	2019	2020	2021	2022	2023	2024	2025
Colt/Entire	2,010 (14.2%)	2,159 (14.5%)	1,996 (13.2%)	1,974 (13.1%)	1,981 (12.6%)	1,814 (12.0%)	1,764 (11.8%)	1,797 (12.1%)	1,604 (11.0%)	1,565 (11.0%)
Gelding	8,019 (56.7%)	8,259 (55.5%)	8,602 (56.7%)	8,497 (56.4%)	9,024 (57.3%)	8,681 (57.4%)	8,534 (57.0%)	8,445 (56.7%)	8,407 (57.9%)	8,158 (57.1%)
Filly/Mare	4,114 (29.1%)	4,455 (29.9%)	4,559 (30.1%)	4,593 (30.5%)	4,748 (30.1%)	4,620 (30.6%)	4,675 (31.2%)	4,665 (31.3%)	4,505 (31.0%)	4,557 (31.9%)
Rig	4 (0.0%)	4 (0.0%)	2 (0.0%)	3 (0.0%)	3 (0.0%)	1 (0.0%)	1 (0.0%)	0 (0.0%)	0 (0.0%)	1 (0.0%)
Total	14,147 (100.0%)	14,877 (100.0%)	15,159 (100.0%)	15,067 (100.0%)	15,756 (100.0%)	15,116 (100.0%)	14,974 (100.0%)	14,907 (100.0%)	14,516 (100.0%)	14,281 (100.0%)

### Flat (including Dual)

Sex	2016	2017	2018	2019	2020	2021	2022	2023	2024	2025
Colt/Entire	1,842 (21.1%)	1,910 (20.3%)	1,897 (20.1%)	1,806 (19.7%)	1,814 (19.5%)	1,616 (18.0%)	1,577 (17.6%)	1,647 (18.3%)	1,478 (16.7%)	1,430 (15.9%)
Gelding	3,779 (43.3%)	4,161 (44.3%)	4,163 (44.2%)	4,112 (44.8%)	4,190 (45.1%)	4,100 (45.8%)	4,118 (45.9%)	4,116 (45.7%)	4,217 (47.7%)	4,328 (48.0%)
Filly/Mare	3,105 (35.6%)	3,312 (35.3%)	3,355 (35.6%)	3,256 (35.5%)	3,294 (35.4%)	3,241 (36.2%)	3,277 (36.5%)	3,244 (36.0%)	3,140 (35.5%)	3,261 (36.2%)
Rig	4 (0.0%)	4 (0.0%)	2 (0.0%)	2 (0.0%)	2 (0.0%)	0 (0.0%)	0 (0.0%)	0 (0.0%)	0 (0.0%)	0 (0.0%)
Total	8,730 (100.0%)	9,387 (100.0%)	9,417 (100.0%)	9,176 (100.0%)	9,300 (100.0%)	8,957 (100.0%)	8,972 (100.0%)	9,007 (100.0%)	8,835 (100.0%)	9,019 (100.0%)

### Jump (including Dual)

Sex	2016	2017	2018	2019	2020	2021	2022	2023	2024	2025
Colt/Entire	24 (0.4%)	23 (0.4%)	28 (0.5%)	26 (0.4%)	33 (0.5%)	38 (0.6%)	34 (0.6%)	33 (0.5%)	28 (0.5%)	44 (0.8%)
Gelding	4,641 (81.6%)	4,675 (79.5%)	4,796 (78.8%)	4,755 (77.5%)	5,278 (77.8%)	4,916 (77.9%)	4,751 (76.9%)	4,638 (76.0%)	4,501 (76.0%)	4,245 (74.9%)
Filly/Mare	1,020 (17.9%)	1,184 (20.1%)	1,266 (20.8%)	1,351 (22.0%)	1,475 (21.7%)	1,354 (21.5%)	1,390 (22.5%)	1,430 (23.4%)	1,390 (23.5%)	1,378 (24.3%)
Rig	0 (0.0%)	0 (0.0%)	0 (0.0%)	1 (0.0%)	1 (0.0%)	1 (0.0%)	1 (0.0%)	0 (0.0%)	0 (0.0%)	1 (0.0%)
Total	5,685 (100.0%)	5,882 (100.0%)	6,090 (100.0%)	6,133 (100.0%)	6,787 (100.0%)	6,309 (100.0%)	6,176 (100.0%)	6,101 (100.0%)	5,919 (100.0%)	5,668 (100.0%)

Year to Date Total Runners by Gender

Sex	2016	2017	2018	2019	2020	2021	2022	2023	2024	2025
All Races										
Colt/Entire	8,278 (11.0%)	8,364 (10.9%)	8,777 (11.3%)	7,922 (10.3%)	6,652 (11.4%)	7,632 (9.9%)	6,875 (9.3%)	6,804 (9.2%)	6,279 (8.3%)	6,007 (8.3%)
Gelding	46,370 (61.5%)	47,482 (61.7%)	47,061 (60.5%)	46,896 (60.7%)	34,719 (59.5%)	47,394 (61.2%)	45,307 (61.5%)	45,162 (61.2%)	47,114 (62.6%)	45,163 (62.1%)
Filly/Mare	20,781 (27.5%)	21,099 (27.4%)	21,930 (28.2%)	22,452 (29.1%)	16,968 (29.1%)	22,348 (28.9%)	21,538 (29.2%)	21,874 (29.6%)	21,842 (29.0%)	21,504 (29.6%)
Rig	19 (0.0%)	12 (0.0%)	13 (0.0%)	17 (0.0%)	5 (0.0%)	7 (0.0%)	9 (0.0%)	4 (0.0%)	0 (0.0%)	2 (0.0%)
Flat										
Colt/Entire	8,243 (15.9%)	8,321 (15.6%)	8,744 (16.0%)	7,889 (14.5%)	6,624 (15.8%)	7,571 (14.3%)	6,846 (13.4%)	6,765 (13.1%)	6,260 (11.8%)	5,986 (11.4%)
Gelding	27,062 (52.1%)	28,151 (52.8%)	28,529 (52.3%)	28,835 (53.1%)	21,828 (52.0%)	28,246 (53.3%)	27,609 (53.9%)	27,806 (53.9%)	30,206 (56.7%)	29,740 (56.7%)
Filly/Mare	16,661 (32.0%)	16,876 (31.6%)	17,239 (31.6%)	17,582 (32.4%)	13,530 (32.2%)	17,182 (32.4%)	16,799 (32.8%)	17,007 (33.0%)	16,775 (31.5%)	16,713 (31.9%)
Rig	19 (0.0%)	12 (0.0%)	13 (0.0%)	12 (0.0%)	1 (0.0%)	3 (0.0%)	0 (0.0%)	0 (0.0%)	0 (0.0%)	0 (0.0%)
All Jump										
Colt/Entire	35 (0.1%)	43 (0.2%)	33 (0.1%)	33 (0.1%)	28 (0.2%)	61 (0.3%)	29 (0.1%)	39 (0.2%)	19 (0.1%)	21 (0.1%)
Gelding	19,308 (82.3%)	19,331 (81.9%)	18,532 (79.7%)	18,061 (78.6%)	12,891 (78.8%)	19,148 (78.5%)	17,698 (78.7%)	17,356 (77.9%)	16,908 (76.9%)	15,423 (76.2%)
Filly/Mare	4,120 (17.6%)	4,223 (17.9%)	4,691 (20.2%)	4,870 (21.2%)	3,438 (21.0%)	5,166 (21.2%)	4,739 (21.1%)	4,867 (21.9%)	5,067 (23.0%)	4,791 (23.7%)
Rig	0 (0.0%)	0 (0.0%)	0 (0.0%)	5 (0.0%)	4 (0.0%)	4 (0.0%)	9 (0.0%)	4 (0.0%)	0 (0.0%)	2 (0.0%)
Chase										
Colt/Entire	1 (0.0%)	0 (0.0%)	0 (0.0%)	0 (0.0%)	0 (0.0%)	0 (0.0%)	0 (0.0%)	0 (0.0%)	0 (0.0%)	0 (0.0%)
Gelding	7,012 (92.8%)	7,089 (92.7%)	6,668 (90.8%)	6,515 (90.0%)	4,590 (90.1%)	6,749 (89.7%)	6,426 (89.4%)	6,171 (89.2%)	5,993 (89.3%)	5,446 (87.2%)
Filly/Mare	539 (7.1%)	561 (7.3%)	679 (9.2%)	717 (9.9%)	499 (9.8%)	770 (10.2%)	749 (10.4%)	746 (10.8%)	718 (10.7%)	800 (12.8%)
Rig	0 (0.0%)	0 (0.0%)	0 (0.0%)	3 (0.0%)	4 (0.1%)	4 (0.1%)	9 (0.1%)	3 (0.0%)	0 (0.0%)	0 (0.0%)
Hurdle										
Colt/Entire	31 (0.2%)	35 (0.3%)	25 (0.2%)	23 (0.2%)	15 (0.2%)	52 (0.4%)	20 (0.1%)	30 (0.2%)	13 (0.1%)	10 (0.1%)
Gelding	11,051 (78.9%)	10,972 (78.5%)	10,589 (76.5%)	10,415 (75.1%)	7,375 (74.9%)	10,530 (74.5%)	10,129 (75.4%)	10,062 (74.5%)	9,891 (72.6%)	9,034 (72.7%)
Filly/Mare	2,922 (20.9%)	2,966 (21.2%)	3,234 (23.4%)	3,426 (24.7%)	2,459 (25.0%)	3,547 (25.1%)	3,285 (24.5%)	3,406 (25.2%)	3,729 (27.4%)	3,384 (27.2%)
Rig	0 (0.0%)	0 (0.0%)	0 (0.0%)	2 (0.0%)	0 (0.0%)	0 (0.0%)	0 (0.0%)	1 (0.0%)	0 (0.0%)	0 (0.0%)
NHF										
Colt/Entire	3 (0.2%)	8 (0.4%)	8 (0.4%)	10 (0.5%)	13 (0.9%)	9 (0.3%)	9 (0.5%)	9 (0.5%)	6 (0.4%)	11 (0.7%)
Gelding	1,245 (65.3%)	1,270 (64.3%)	1,275 (61.9%)	1,131 (60.5%)	926 (65.3%)	1,869 (68.5%)	1,143 (61.6%)	1,123 (60.8%)	1,024 (62.1%)	943 (60.3%)
Filly/Mare	659 (34.6%)	696 (35.3%)	778 (37.7%)	727 (38.9%)	480 (33.8%)	849 (31.1%)	705 (38.0%)	715 (38.7%)	620 (37.6%)	607 (38.8%)
Rig	0 (0.0%)	0 (0.0%)	0 (0.0%)	0 (0.0%)	0 (0.0%)	0 (0.0%)	0 (0.0%)	0 (0.0%)	0 (0.0%)	2 (0.1%)
Hunter										
Gelding	720 (94.2%)	709 (94.9%)	603 (93.3%)	522 (92.7%)	142 (97.3%)	557 (93.5%)	429 (94.9%)	408 (93.6%)	379 (92.9%)	354 (91.9%)
Filly/Mare	44 (5.8%)	38 (5.1%)	43 (6.7%)	41 (7.3%)	4 (2.7%)	39 (6.5%)	23 (5.1%)	28 (6.4%)	29 (7.1%)	31 (8.1%)

Year to Date Individual Runners by Gender

Sex	2016	2017	2018	2019	2020	2021	2022	2023	2024	2025
All Races										
Male	11,839 (70.5%)	12,045 (70.2%)	12,071 (69.6%)	12,187 (69.4%)	11,206 (69.4%)	12,201 (69.5%)	11,689 (69.2%)	11,573 (68.4%)	11,560 (68.6%)	11,180 (68.1%)
Female	4,963 (29.5%)	5,108 (29.8%)	5,269 (30.4%)	5,376 (30.6%)	4,947 (30.6%)	5,350 (30.5%)	5,212 (30.8%)	5,342 (31.6%)	5,288 (31.4%)	5,240 (31.9%)
Flat										
Male	6,761 (64.3%)	6,959 (64.4%)	7,109 (64.7%)	7,077 (64.4%)	6,587 (64.5%)	6,738 (64.0%)	6,573 (63.7%)	6,526 (63.2%)	6,704 (64.2%)	6,527 (63.6%)
Female	3,761 (35.7%)	3,842 (35.6%)	3,874 (35.3%)	3,908 (35.6%)	3,632 (35.5%)	3,790 (36.0%)	3,751 (36.3%)	3,798 (36.8%)	3,742 (35.8%)	3,728 (36.4%)
All Jump										
Male	5,735 (81.0%)	5,727 (80.3%)	5,549 (78.4%)	5,740 (77.8%)	5,177 (78.0%)	6,028 (77.8%)	5,614 (77.8%)	5,526 (76.8%)	5,316 (76.0%)	5,082 (75.5%)
Female	1,343 (19.0%)	1,405 (19.7%)	1,532 (21.6%)	1,635 (22.2%)	1,460 (22.0%)	1,717 (22.2%)	1,605 (22.2%)	1,673 (23.2%)	1,678 (24.0%)	1,645 (24.5%)
Chase										
Male	2,255 (92.3%)	2,301 (91.1%)	2,206 (89.7%)	2,266 (89.3%)	2,028 (88.7%)	2,351 (88.4%)	2,181 (88.2%)	2,119 (87.6%)	2,074 (87.3%)	1,927 (85.9%)
Female	187 (7.7%)	224 (8.9%)	252 (10.3%)	271 (10.7%)	259 (11.3%)	309 (11.6%)	291 (11.8%)	301 (12.4%)	301 (12.7%)	316 (14.1%)
Hurdle										
Male	3,832 (80.1%)	3,794 (79.0%)	3,702 (77.3%)	3,858 (76.6%)	3,382 (76.0%)	3,941 (75.7%)	3,768 (76.8%)	3,658 (75.2%)	3,591 (73.5%)	3,346 (73.5%)
Female	950 (19.9%)	1,007 (21.0%)	1,088 (22.7%)	1,176 (23.4%)	1,070 (24.0%)	1,265 (24.3%)	1,138 (23.2%)	1,206 (24.8%)	1,292 (26.5%)	1,208 (26.5%)
NHF										
Male	852 (67.0%)	861 (66.2%)	901 (65.5%)	803 (63.4%)	736 (67.0%)	1,337 (70.4%)	811 (64.1%)	809 (63.8%)	726 (64.3%)	692 (62.8%)
Female	419 (33.0%)	440 (33.8%)	475 (34.5%)	463 (36.6%)	362 (33.0%)	561 (29.6%)	455 (35.9%)	459 (36.2%)	403 (35.7%)	410 (37.2%)
Hunter										
Male	395 (93.2%)	366 (93.6%)	339 (92.1%)	301 (92.0%)	98 (96.1%)	299 (92.0%)	243 (92.4%)	228 (93.4%)	212 (92.6%)	207 (91.6%)
Female	29 (6.8%)	25 (6.4%)	29 (7.9%)	26 (8.0%)	4 (3.9%)	26 (8.0%)	20 (7.6%)	16 (6.6%)	17 (7.4%)	19 (8.4%)

# Horses Population by Breeding

## October 2025 Horses in Training Snapshot by Breeding versus Previous Years

### Flat (including Dual)

Bred	Sex	2016	2017	2018	2019	2020	2021	2022	2023	2024	2025
GB	Male	2,635 (30.2%)	2,857 (30.4%)	2,829 (30.0%)	2,804 (30.6%)	2,834 (30.5%)	2,684 (30.0%)	2,673 (29.8%)	2,650 (29.4%)	2,607 (29.5%)	2,654 (29.4%)
	Female	1,749 (20.0%)	1,836 (19.6%)	1,860 (19.8%)	1,825 (19.9%)	1,852 (19.9%)	1,810 (20.2%)	1,789 (19.9%)	1,768 (19.6%)	1,721 (19.5%)	1,813 (20.1%)
	Subtotal	4,384 (50.2%)	4,693 (50.0%)	4,689 (49.8%)	4,629 (50.4%)	4,686 (50.4%)	4,494 (50.2%)	4,462 (49.7%)	4,418 (49.1%)	4,328 (49.0%)	4,467 (49.5%)
IRE	Male	2,413 (27.6%)	2,573 (27.4%)	2,593 (27.5%)	2,499 (27.2%)	2,584 (27.8%)	2,519 (28.1%)	2,602 (29.0%)	2,663 (29.6%)	2,630 (29.8%)	2,678 (29.7%)
	Female	1,150 (13.2%)	1,241 (13.2%)	1,228 (13.0%)	1,195 (13.0%)	1,220 (13.1%)	1,240 (13.8%)	1,323 (14.7%)	1,312 (14.6%)	1,263 (14.3%)	1,278 (14.2%)
	Subtotal	3,563 (40.8%)	3,814 (40.6%)	3,821 (40.6%)	3,694 (40.3%)	3,804 (40.9%)	3,759 (42.0%)	3,925 (43.7%)	3,975 (44.1%)	3,893 (44.1%)	3,956 (43.9%)
FR	Male	198 (2.3%)	266 (2.8%)	282 (3.0%)	289 (3.1%)	303 (3.3%)	296 (3.3%)	270 (3.0%)	303 (3.4%)	321 (3.6%)	299 (3.3%)
	Female	76 (0.9%)	96 (1.0%)	107 (1.1%)	107 (1.2%)	113 (1.2%)	113 (1.3%)	107 (1.2%)	113 (1.3%)	107 (1.2%)	117 (1.3%)
	Subtotal	274 (3.1%)	362 (3.9%)	389 (4.1%)	396 (4.3%)	416 (4.5%)	409 (4.6%)	377 (4.2%)	416 (4.6%)	428 (4.8%)	416 (4.6%)
USA	Male	303 (3.5%)	294 (3.1%)	282 (3.0%)	260 (2.8%)	206 (2.2%)	158 (1.8%)	97 (1.1%)	99 (1.1%)	79 (0.9%)	63 (0.7%)
	Female	109 (1.2%)	115 (1.2%)	136 (1.4%)	99 (1.1%)	80 (0.9%)	52 (0.6%)	41 (0.5%)	29 (0.3%)	28 (0.3%)	33 (0.4%)
	Subtotal	412 (4.7%)	409 (4.4%)	418 (4.4%)	359 (3.9%)	286 (3.1%)	210 (2.3%)	138 (1.5%)	128 (1.4%)	107 (1.2%)	96 (1.1%)
GNY	Male	54 (0.6%)	60 (0.6%)	52 (0.6%)	50 (0.5%)	60 (0.6%)	49 (0.5%)	40 (0.4%)	39 (0.4%)	45 (0.5%)	50 (0.6%)
	Female	10 (0.1%)	13 (0.1%)	14 (0.1%)	19 (0.2%)	22 (0.2%)	24 (0.3%)	14 (0.2%)	16 (0.2%)	17 (0.2%)	14 (0.2%)
	Subtotal	64 (0.7%)	73 (0.8%)	66 (0.7%)	69 (0.8%)	82 (0.9%)	73 (0.8%)	54 (0.6%)	55 (0.6%)	62 (0.7%)	64 (0.7%)
Other	Male	22 (0.3%)	25 (0.3%)	24 (0.3%)	18 (0.2%)	19 (0.2%)	10 (0.1%)	13 (0.1%)	9 (0.1%)	13 (0.1%)	14 (0.2%)
	Female	11 (0.1%)	11 (0.1%)	10 (0.1%)	11 (0.1%)	7 (0.1%)	2 (0.0%)	3 (0.0%)	6 (0.1%)	4 (0.0%)	6 (0.1%)
	Subtotal	33 (0.4%)	36 (0.4%)	34 (0.4%)	29 (0.3%)	26 (0.3%)	12 (0.1%)	16 (0.2%)	15 (0.2%)	17 (0.2%)	20 (0.2%)

### Jump (including Dual)

Bred	Sex	2016	2017	2018	2019	2020	2021	2022	2023	2024	2025
GB	Male	1,280 (22.5%)	1,284 (21.8%)	1,265 (20.8%)	1,200 (19.6%)	1,320 (19.4%)	1,210 (19.2%)	1,185 (19.2%)	1,152 (18.9%)	1,116 (18.9%)	1,074 (18.9%)
	Female	559 (9.8%)	613 (10.4%)	610 (10.0%)	595 (9.7%)	670 (9.9%)	622 (9.9%)	658 (10.7%)	651 (10.7%)	591 (10.0%)	590 (10.4%)
	Subtotal	1,839 (32.3%)	1,897 (32.3%)	1,875 (30.8%)	1,795 (29.3%)	1,990 (29.3%)	1,832 (29.0%)	1,843 (29.8%)	1,803 (29.6%)	1,707 (28.8%)	1,664 (29.4%)
IRE	Male	2,588 (45.5%)	2,639 (44.9%)	2,697 (44.3%)	2,691 (43.9%)	2,928 (43.1%)	2,698 (42.8%)	2,538 (41.1%)	2,431 (39.8%)	2,367 (40.0%)	2,205 (38.9%)
	Female	400 (7.0%)	491 (8.3%)	548 (9.0%)	626 (10.2%)	654 (9.6%)	604 (9.6%)	585 (9.5%)	632 (10.4%)	634 (10.7%)	612 (10.8%)
	Subtotal	2,988 (52.6%)	3,130 (53.2%)	3,245 (53.3%)	3,317 (54.1%)	3,582 (52.8%)	3,302 (52.3%)	3,123 (50.6%)	3,063 (50.2%)	3,001 (50.7%)	2,817 (49.7%)
FR	Male	689 (12.1%)	673 (11.4%)	774 (12.7%)	795 (13.0%)	952 (14.0%)	945 (15.0%)	971 (15.7%)	1,005 (16.5%)	983 (16.6%)	959 (16.9%)
	Female	54 (0.9%)	73 (1.2%)	98 (1.6%)	122 (2.0%)	141 (2.1%)	121 (1.9%)	137 (2.2%)	143 (2.3%)	155 (2.6%)	167 (2.9%)
	Subtotal	743 (13.1%)	746 (12.7%)	872 (14.3%)	917 (15.0%)	1,093 (16.1%)	1,066 (16.9%)	1,108 (17.9%)	1,148 (18.8%)	1,138 (19.2%)	1,126 (19.9%)
USA	Male	42 (0.7%)	41 (0.7%)	37 (0.6%)	32 (0.5%)	35 (0.5%)	34 (0.5%)	24 (0.4%)	15 (0.2%)	10 (0.2%)	7 (0.1%)
	Female	1 (0.0%)	2 (0.0%)	4 (0.1%)	3 (0.0%)	2 (0.0%)	1 (0.0%)	NA (-)	1 (0.0%)	1 (0.0%)	1 (0.0%)
	Subtotal	43 (0.8%)	43 (0.7%)	41 (0.7%)	35 (0.6%)	37 (0.5%)	35 (0.6%)	24 (0.4%)	16 (0.3%)	11 (0.2%)	8 (0.1%)
GNY	Male	59 (1.0%)	53 (0.9%)	46 (0.8%)	59 (1.0%)	71 (1.0%)	65 (1.0%)	66 (1.1%)	65 (1.1%)	50 (0.8%)	43 (0.8%)
	Female	4 (0.1%)	3 (0.1%)	5 (0.1%)	5 (0.1%)	7 (0.1%)	5 (0.1%)	9 (0.1%)	2 (0.0%)	7 (0.1%)	6 (0.1%)
	Subtotal	63 (1.1%)	56 (1.0%)	51 (0.8%)	64 (1.0%)	78 (1.1%)	70 (1.1%)	75 (1.2%)	67 (1.1%)	57 (1.0%)	49 (0.9%)
Other	Male	7 (0.1%)	8 (0.1%)	5 (0.1%)	5 (0.1%)	6 (0.1%)	3 (0.0%)	2 (0.0%)	3 (0.0%)	3 (0.1%)	2 (0.0%)
	Female	2 (0.0%)	2 (0.0%)	1 (0.0%)	NA (-)	1 (0.0%)	1 (0.0%)	1 (0.0%)	1 (0.0%)	2 (0.0%)	2 (0.0%)
	Subtotal	9 (0.2%)	10 (0.2%)	6 (0.1%)	5 (0.1%)	7 (0.1%)	4 (0.1%)	3 (0.0%)	4 (0.1%)	5 (0.1%)	4 (0.1%)

## Year to Date Total Runners by Breeding

### Flat

Bred	Sex	2016	2017	2018	2019	2020	2021	2022	2023	2024	2025
GB	Male	16,608 (31.9%)	17,189 (32.2%)	17,261 (31.7%)	16,840 (31.0%)	13,488 (32.1%)	16,572 (31.3%)	15,849 (30.9%)	15,667 (30.4%)	16,388 (30.8%)	16,284 (31.1%)
	Female	9,180 (17.7%)	9,157 (17.2%)	9,454 (17.3%)	9,693 (17.8%)	7,468 (17.8%)	9,577 (18.1%)	9,139 (17.8%)	9,132 (17.7%)	8,908 (16.7%)	9,009 (17.2%)
	Subtotal	25,788 (49.6%)	26,346 (49.4%)	26,715 (49.0%)	26,533 (48.8%)	20,956 (49.9%)	26,149 (49.3%)	24,988 (48.8%)	24,799 (48.1%)	25,296 (47.5%)	25,293 (48.2%)
IRE	Male	15,665 (30.1%)	16,015 (30.0%)	16,665 (30.6%)	16,419 (30.2%)	12,443 (29.6%)	16,306 (30.8%)	16,268 (31.7%)	16,536 (32.1%)	17,522 (32.9%)	17,118 (32.6%)
	Female	6,612 (12.7%)	6,795 (12.7%)	6,756 (12.4%)	6,777 (12.5%)	5,330 (12.7%)	6,684 (12.6%)	6,828 (13.3%)	7,057 (13.7%)	7,127 (13.4%)	6,990 (13.3%)
	Subtotal	22,277 (42.9%)	22,810 (42.7%)	23,421 (43.0%)	23,196 (42.7%)	17,773 (42.3%)	22,990 (43.4%)	23,096 (45.1%)	23,593 (45.7%)	24,649 (46.3%)	24,108 (46.0%)
FR	Male	995 (1.9%)	1,178 (2.2%)	1,343 (2.5%)	1,553 (2.9%)	1,217 (2.9%)	1,510 (2.8%)	1,385 (2.7%)	1,547 (3.0%)	1,748 (3.3%)	1,649 (3.1%)
	Female	345 (0.7%)	364 (0.7%)	437 (0.8%)	503 (0.9%)	386 (0.9%)	512 (1.0%)	485 (0.9%)	546 (1.1%)	499 (0.9%)	450 (0.9%)
	Subtotal	1,340 (2.6%)	1,542 (2.9%)	1,780 (3.3%)	2,056 (3.8%)	1,603 (3.8%)	2,022 (3.8%)	1,870 (3.6%)	2,093 (4.1%)	2,247 (4.2%)	2,099 (4.0%)
USA	Male	1,615 (3.1%)	1,624 (3.0%)	1,586 (2.9%)	1,501 (2.8%)	998 (2.4%)	1,004 (1.9%)	705 (1.4%)	574 (1.1%)	528 (1.0%)	356 (0.7%)
	Female	404 (0.8%)	467 (0.9%)	482 (0.9%)	448 (0.8%)	248 (0.6%)	283 (0.5%)	232 (0.5%)	204 (0.4%)	153 (0.3%)	156 (0.3%)
	Subtotal	2,019 (3.9%)	2,091 (3.9%)	2,068 (3.8%)	1,949 (3.6%)	1,246 (3.0%)	1,287 (2.4%)	937 (1.8%)	778 (1.5%)	681 (1.3%)	512 (1.0%)
GNY	Male	300 (0.6%)	320 (0.6%)	279 (0.5%)	287 (0.5%)	240 (0.6%)	343 (0.6%)	186 (0.4%)	207 (0.4%)	235 (0.4%)	254 (0.5%)
	Female	58 (0.1%)	38 (0.1%)	70 (0.1%)	102 (0.2%)	80 (0.2%)	107 (0.2%)	90 (0.2%)	54 (0.1%)	60 (0.1%)	83 (0.2%)
	Subtotal	358 (0.7%)	358 (0.7%)	349 (0.6%)	389 (0.7%)	320 (0.8%)	450 (0.8%)	276 (0.5%)	261 (0.5%)	295 (0.6%)	337 (0.6%)
Other	Male	141 (0.3%)	158 (0.3%)	152 (0.3%)	136 (0.3%)	67 (0.2%)	85 (0.2%)	62 (0.1%)	40 (0.1%)	45 (0.1%)	65 (0.1%)
	Female	62 (0.1%)	55 (0.1%)	40 (0.1%)	59 (0.1%)	18 (0.0%)	19 (0.0%)	25 (0.0%)	14 (0.0%)	28 (0.1%)	25 (0.0%)
	Subtotal	203 (0.4%)	213 (0.4%)	192 (0.4%)	195 (0.4%)	85 (0.2%)	104 (0.2%)	87 (0.2%)	54 (0.1%)	73 (0.1%)	90 (0.2%)

Jump

Bred	Sex	2016	2017	2018	2019	2020	2021	2022	2023	2024	2025
GB	Male	5,295 (22.6%)	5,143 (21.8%)	4,866 (20.9%)	4,675 (20.4%)	3,199 (19.6%)	4,698 (19.3%)	4,058 (18.1%)	3,898 (17.5%)	3,935 (17.9%)	3,760 (18.6%)
	Female	2,135 (9.1%)	2,096 (8.9%)	2,236 (9.6%)	2,097 (9.1%)	1,437 (8.8%)	2,263 (9.3%)	2,080 (9.3%)	2,103 (9.4%)	2,046 (9.3%)	1,821 (9.0%)
	Subtotal	7,430 (31.7%)	7,239 (30.7%)	7,102 (30.5%)	6,772 (29.5%)	4,636 (28.3%)	6,961 (28.6%)	6,138 (27.3%)	6,001 (27.0%)	5,981 (27.2%)	5,581 (27.6%)
IRE	Male	10,910 (46.5%)	10,964 (46.5%)	10,483 (45.1%)	10,186 (44.3%)	7,273 (44.5%)	10,624 (43.6%)	9,665 (43.0%)	9,511 (42.7%)	9,166 (41.7%)	8,298 (41.0%)
	Female	1,754 (7.5%)	1,838 (7.8%)	2,163 (9.3%)	2,356 (10.3%)	1,628 (10.0%)	2,349 (9.6%)	2,129 (9.5%)	2,236 (10.0%)	2,529 (11.5%)	2,343 (11.6%)
	Subtotal	12,664 (54.0%)	12,802 (54.3%)	12,646 (54.4%)	12,542 (54.6%)	8,901 (54.4%)	12,973 (53.2%)	11,794 (52.5%)	11,747 (52.8%)	11,695 (53.2%)	10,641 (52.6%)
FR	Male	2,620 (11.2%)	2,827 (12.0%)	2,784 (12.0%)	2,797 (12.2%)	2,152 (13.2%)	3,419 (14.0%)	3,621 (16.1%)	3,641 (16.4%)	3,560 (16.2%)	3,176 (15.7%)
	Female	192 (0.8%)	265 (1.1%)	262 (1.1%)	375 (1.6%)	339 (2.1%)	510 (2.1%)	479 (2.1%)	504 (2.3%)	469 (2.1%)	606 (3.0%)
	Subtotal	2,812 (12.0%)	3,092 (13.1%)	3,046 (13.1%)	3,172 (13.8%)	2,491 (15.2%)	3,929 (16.1%)	4,100 (18.2%)	4,145 (18.6%)	4,029 (18.3%)	3,782 (18.7%)
USA	Male	254 (1.1%)	166 (0.7%)	173 (0.7%)	143 (0.6%)	102 (0.6%)	146 (0.6%)	93 (0.4%)	86 (0.4%)	39 (0.2%)	41 (0.2%)
	Female	4 (0.0%)	8 (0.0%)	8 (0.0%)	16 (0.1%)	21 (0.1%)	6 (0.0%)	6 (0.0%)	0 (0.0%)	3 (0.0%)	8 (0.0%)
	Subtotal	258 (1.1%)	174 (0.7%)	181 (0.8%)	159 (0.7%)	123 (0.8%)	152 (0.6%)	99 (0.4%)	86 (0.4%)	42 (0.2%)	49 (0.2%)
GNY	Male	233 (1.0%)	246 (1.0%)	218 (0.9%)	270 (1.2%)	186 (1.1%)	312 (1.3%)	290 (1.3%)	255 (1.1%)	214 (1.0%)	159 (0.8%)
	Female	20 (0.1%)	9 (0.0%)	13 (0.1%)	24 (0.1%)	11 (0.1%)	35 (0.1%)	37 (0.2%)	21 (0.1%)	16 (0.1%)	13 (0.1%)
	Subtotal	253 (1.1%)	255 (1.1%)	231 (1.0%)	294 (1.3%)	197 (1.2%)	347 (1.4%)	327 (1.5%)	276 (1.2%)	230 (1.0%)	172 (0.8%)
Other	Male	31 (0.1%)	28 (0.1%)	41 (0.2%)	28 (0.1%)	11 (0.1%)	14 (0.1%)	9 (0.0%)	8 (0.0%)	13 (0.1%)	12 (0.1%)
	Female	15 (0.1%)	7 (0.0%)	9 (0.0%)	2 (0.0%)	2 (0.0%)	3 (0.0%)	8 (0.0%)	3 (0.0%)	4 (0.0%)	0 (0.0%)
	Subtotal	46 (0.2%)	35 (0.1%)	50 (0.2%)	30 (0.1%)	13 (0.1%)	17 (0.1%)	17 (0.1%)	11 (0.0%)	17 (0.1%)	12 (0.1%)

Year to Date Individual Runners by Breeding

Flat

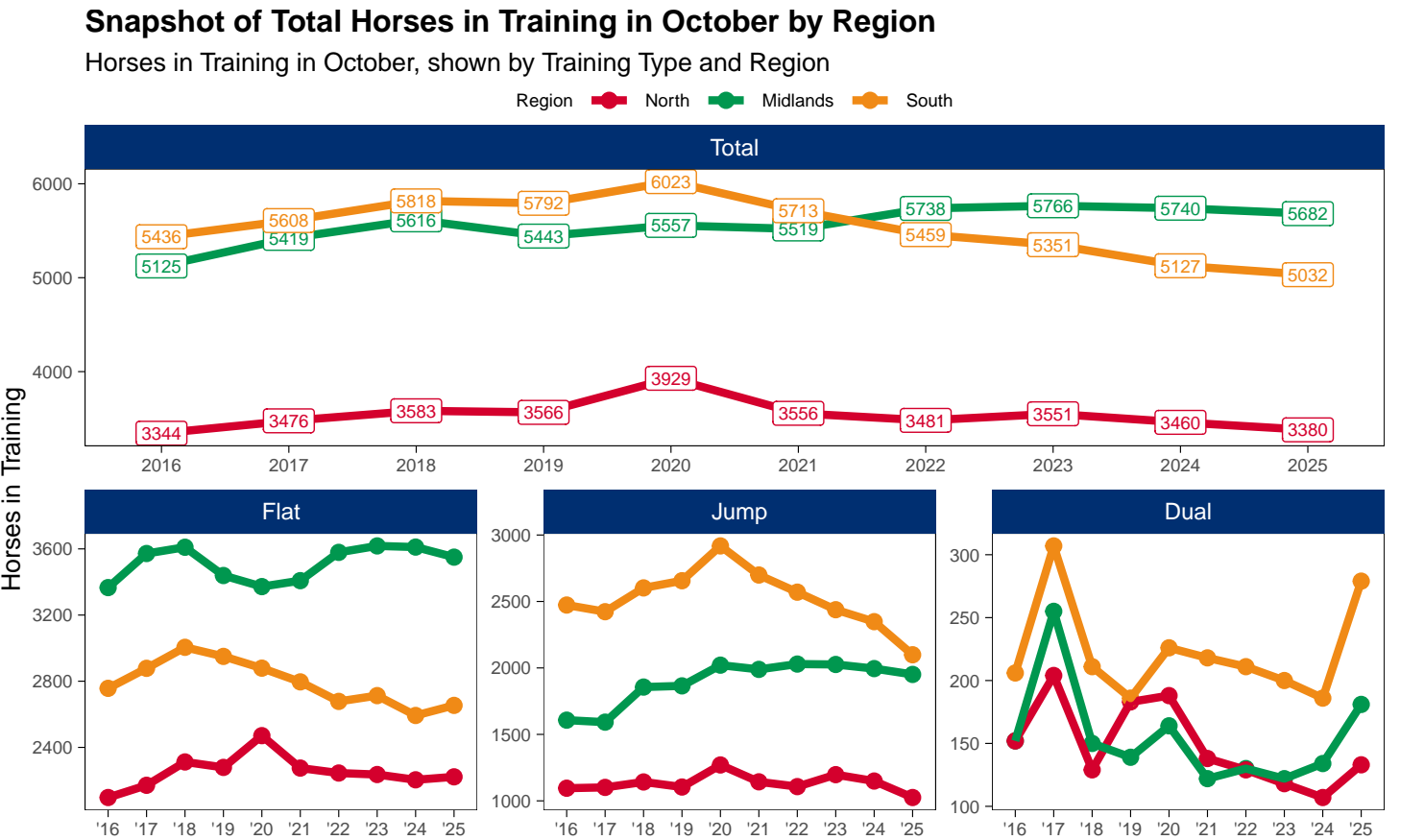
Bred	Sex	2016	2017	2018	2019	2020	2021	2022	2023	2024	2025
GB	Male	3,092 (29.4%)	3,166 (29.3%)	3,263 (29.7%)	3,239 (29.5%)	3,051 (29.9%)	3,066 (29.1%)	2,979 (28.9%)	2,888 (28.0%)	2,970 (28.4%)	2,911 (28.4%)
	Female	2,043 (19.4%)	2,072 (19.2%)	2,066 (18.8%)	2,088 (19.0%)	1,960 (19.2%)	2,077 (19.7%)	2,025 (19.6%)	1,979 (19.2%)	1,968 (18.8%)	2,003 (19.5%)
	Subtotal	5,135 (48.8%)	5,238 (48.5%)	5,329 (48.5%)	5,327 (48.5%)	5,011 (49.0%)	5,143 (48.9%)	5,004 (48.5%)	4,867 (47.1%)	4,938 (47.3%)	4,914 (47.9%)
IRE	Male	2,965 (28.2%)	3,041 (28.2%)	3,090 (28.1%)	3,062 (27.9%)	2,873 (28.1%)	3,046 (28.9%)	3,061 (29.6%)	3,126 (30.3%)	3,182 (30.5%)	3,105 (30.3%)
	Female	1,476 (14.0%)	1,492 (13.8%)	1,520 (13.8%)	1,519 (13.8%)	1,429 (14.0%)	1,476 (14.0%)	1,519 (14.7%)	1,603 (15.5%)	1,580 (15.1%)	1,527 (14.9%)
	Subtotal	4,441 (42.2%)	4,533 (42.0%)	4,610 (42.0%)	4,581 (41.7%)	4,302 (42.1%)	4,522 (43.0%)	4,580 (44.4%)	4,729 (45.8%)	4,762 (45.6%)	4,632 (45.2%)
FR	Male	227 (2.2%)	262 (2.4%)	321 (2.9%)	351 (3.2%)	333 (3.3%)	333 (3.2%)	319 (3.1%)	325 (3.1%)	373 (3.6%)	357 (3.5%)
	Female	93 (0.9%)	106 (1.0%)	120 (1.1%)	136 (1.2%)	121 (1.2%)	133 (1.3%)	125 (1.2%)	143 (1.4%)	133 (1.3%)	123 (1.2%)
	Subtotal	320 (3.0%)	368 (3.4%)	441 (4.0%)	487 (4.4%)	454 (4.4%)	466 (4.4%)	444 (4.3%)	468 (4.5%)	506 (4.8%)	480 (4.7%)
USA	Male	371 (3.5%)	379 (3.5%)	341 (3.1%)	325 (3.0%)	251 (2.5%)	213 (2.0%)	143 (1.4%)	122 (1.2%)	122 (1.2%)	86 (0.8%)
	Female	120 (1.1%)	141 (1.3%)	139 (1.3%)	128 (1.2%)	91 (0.9%)	73 (0.7%)	51 (0.5%)	51 (0.5%)	38 (0.4%)	45 (0.4%)
	Subtotal	491 (4.7%)	520 (4.8%)	480 (4.4%)	453 (4.1%)	342 (3.3%)	286 (2.7%)	194 (1.9%)	173 (1.7%)	160 (1.5%)	131 (1.3%)
GNY	Male	77 (0.7%)	78 (0.7%)	63 (0.6%)	67 (0.6%)	61 (0.6%)	63 (0.6%)	52 (0.5%)	51 (0.5%)	48 (0.5%)	53 (0.5%)
	Female	14 (0.1%)	14 (0.1%)	19 (0.2%)	24 (0.2%)	23 (0.2%)	26 (0.2%)	25 (0.2%)	15 (0.1%)	17 (0.2%)	21 (0.2%)
	Subtotal	91 (0.9%)	92 (0.9%)	82 (0.7%)	91 (0.8%)	84 (0.8%)	89 (0.8%)	77 (0.7%)	66 (0.6%)	65 (0.6%)	74 (0.7%)
Other	Male	29 (0.3%)	33 (0.3%)	31 (0.3%)	33 (0.3%)	18 (0.2%)	17 (0.2%)	19 (0.2%)	14 (0.1%)	9 (0.1%)	15 (0.1%)
	Female	15 (0.1%)	17 (0.2%)	10 (0.1%)	13 (0.1%)	8 (0.1%)	5 (0.0%)	6 (0.1%)	7 (0.1%)	6 (0.1%)	9 (0.1%)
	Subtotal	44 (0.4%)	50 (0.5%)	41 (0.4%)	46 (0.4%)	26 (0.3%)	22 (0.2%)	25 (0.2%)	21 (0.2%)	15 (0.1%)	24 (0.2%)

Jump

Bred	Sex	2016	2017	2018	2019	2020	2021	2022	2023	2024	2025
GB	Male	1,584 (22.4%)	1,506 (21.1%)	1,438 (20.3%)	1,466 (19.9%)	1,287 (19.4%)	1,482 (19.1%)	1,320 (18.3%)	1,296 (18.0%)	1,272 (18.2%)	1,238 (18.4%)
	Female	709 (10.0%)	697 (9.8%)	721 (10.2%)	704 (9.5%)	618 (9.3%)	767 (9.9%)	705 (9.8%)	693 (9.6%)	688 (9.8%)	646 (9.6%)
	Subtotal	2,293 (32.4%)	2,203 (30.9%)	2,159 (30.5%)	2,170 (29.4%)	1,905 (28.7%)	2,249 (29.0%)	2,025 (28.1%)	1,989 (27.6%)	1,960 (28.0%)	1,884 (28.0%)
IRE	Male	3,192 (45.1%)	3,206 (45.0%)	3,134 (44.3%)	3,226 (43.7%)	2,878 (43.4%)	3,287 (42.4%)	3,049 (42.2%)	2,979 (41.4%)	2,845 (40.7%)	2,675 (39.8%)
	Female	553 (7.8%)	608 (8.5%)	690 (9.7%)	777 (10.5%)	678 (10.2%)	775 (10.0%)	709 (9.8%)	783 (10.9%)	804 (11.5%)	779 (11.6%)
	Subtotal	3,745 (52.9%)	3,814 (53.5%)	3,824 (54.0%)	4,003 (54.3%)	3,556 (53.6%)	4,062 (52.4%)	3,758 (52.1%)	3,762 (52.3%)	3,649 (52.2%)	3,454 (51.3%)
FR	Male	800 (11.3%)	875 (12.3%)	864 (12.2%)	921 (12.5%)	890 (13.4%)	1,131 (14.6%)	1,131 (15.7%)	1,143 (15.9%)	1,115 (15.9%)	1,103 (16.4%)
	Female	68 (1.0%)	89 (1.2%)	110 (1.6%)	142 (1.9%)	152 (2.3%)	162 (2.1%)	174 (2.4%)	185 (2.6%)	176 (2.5%)	211 (3.1%)
	Subtotal	868 (12.3%)	964 (13.5%)	974 (13.8%)	1,063 (14.4%)	1,042 (15.7%)	1,293 (16.7%)	1,305 (18.1%)	1,328 (18.4%)	1,291 (18.5%)	1,314 (19.5%)
USA	Male	72 (1.0%)	54 (0.8%)	50 (0.7%)	45 (0.6%)	38 (0.6%)	41 (0.5%)	31 (0.4%)	30 (0.4%)	14 (0.2%)	8 (0.1%)
	Female	2 (0.0%)	3 (0.0%)	4 (0.1%)	5 (0.1%)	5 (0.1%)	2 (0.0%)	2 (0.0%)	0 (0.0%)	1 (0.0%)	3 (0.0%)
	Subtotal	74 (1.0%)	57 (0.8%)	54 (0.8%)	50 (0.7%)	43 (0.6%)	43 (0.6%)	33 (0.5%)	30 (0.4%)	15 (0.2%)	11 (0.2%)
GNY	Male	81 (1.1%)	78 (1.1%)	55 (0.8%)	72 (1.0%)	78 (1.2%)	83 (1.1%)	81 (1.1%)	73 (1.0%)	66 (0.9%)	53 (0.8%)
	Female	7 (0.1%)	5 (0.1%)	5 (0.1%)	6 (0.1%)	5 (0.1%)	10 (0.1%)	13 (0.2%)	11 (0.2%)	7 (0.1%)	6 (0.1%)
	Subtotal	88 (1.2%)	83 (1.2%)	60 (0.8%)	78 (1.1%)	83 (1.3%)	93 (1.2%)	94 (1.3%)	84 (1.2%)	73 (1.0%)	59 (0.9%)
Other	Male	6 (0.1%)	8 (0.1%)	8 (0.1%)	10 (0.1%)	6 (0.1%)	4 (0.1%)	2 (0.0%)	5 (0.1%)	4 (0.1%)	5 (0.1%)
	Female	4 (0.1%)	3 (0.0%)	2 (0.0%)	1 (0.0%)	2 (0.0%)	1 (0.0%)	2 (0.0%)	1 (0.0%)	2 (0.0%)	0 (0.0%)
	Subtotal	10 (0.1%)	11 (0.2%)	10 (0.1%)	11 (0.1%)	8 (0.1%)	5 (0.1%)	4 (0.1%)	6 (0.1%)	6 (0.1%)	5 (0.1%)

Horse Population by Location

October 2025 Horses in Training Snapshot by Region versus Previous Years



North

AgeCat	2016	2017	2018	2019	2020	2021	2022	2023	2024	2025	vs. Last Year	vs. Pre-Covid
Flat Horses in Training												
2YO	726	750	820	852	871	824	790	797	703	713	+10 / +1.4%	-139 / -16.3%
3YO	515	539	547	528	642	593	551	526	559	544	-15 / -2.7%	+16 / +3.0%
4YO	307	338	347	347	342	318	345	306	337	361	+24 / +7.1%	+14 / +4.0%
5YO+	549	544	598	552	616	540	559	607	605	604	-1 / -0.2%	+52 / +9.4%
Subtotal	2097	2171	2312	2279	2471	2275	2245	2236	2204	2222	+18 / +0.8%	-57 / -2.5%
Jump Horses in Training												
3YO	60	41	60	48	42	47	70	57	46	27	-19 / -41.3%	-21 / -43.8%
4-5YO	357	383	348	386	395	366	365	413	399	336	-63 / -15.8%	-50 / -13.0%
6-7YO	338	335	380	353	422	381	365	405	393	363	-30 / -7.6%	+10 / +2.8%
8YO+	340	342	354	317	411	349	307	322	311	299	-12 / -3.9%	-18 / -5.7%
Subtotal	1095	1101	1142	1104	1270	1143	1107	1197	1149	1025	-124 / -10.8%	-79 / -7.2%
Dual Horses in Training												
3YO	35	47	31	43	43	21	31	30	23	30	+7 / +30.4%	-13 / -30.2%
4YO	29	53	37	41	36	40	29	26	29	35	+6 / +20.7%	-6 / -14.6%
5YO+	88	104	61	99	109	77	69	62	55	68	+13 / +23.6%	-31 / -31.3%
Subtotal	152	204	129	183	188	138	129	118	107	133	+26 / +24.3%	-50 / -27.3%
Total Horses in Training												
	3344	3476	3583	3566	3929	3556	3481	3551	3460	3380	-80 / -2.3%	-186 / -5.2%

'vs. Pre-Covid' is comparison between 2025 and 2019



## Midlands

AgeCat	2016	2017	2018	2019	2020	2021	2022	2023	2024	2025	vs. Last Year	vs. Pre-Covid
<b>Flat Horses in Training</b>												
2YO	1578	1614	1521	1447	1430	1486	1516	1501	1475	1406	-69 / -4.7%	-41 / -2.8%
3YO	890	959	1027	961	954	907	1034	1042	1001	1019	+18 / +1.8%	+58 / +6.0%
4YO	372	447	473	454	410	473	473	482	487	481	-6 / -1.2%	+27 / +5.9%
5YO+	526	552	589	577	578	542	556	593	648	644	-4 / -0.6%	+67 / +11.6%
<b>Subtotal</b>	<b>3366</b>	<b>3572</b>	<b>3610</b>	<b>3439</b>	<b>3372</b>	<b>3408</b>	<b>3579</b>	<b>3618</b>	<b>3611</b>	<b>3550</b>	<b>-61 / -1.7%</b>	<b>+111 / +3.2%</b>
<b>Jump Horses in Training</b>												
3YO	109	74	114	117	92	104	127	118	137	148	+11 / +8.0%	+31 / +26.5%
4-5YO	612	617	701	749	798	784	809	824	764	782	+18 / +2.4%	+33 / +4.4%
6-7YO	497	491	595	581	652	639	674	662	661	604	-57 / -8.6%	+23 / +4.0%
8YO+	389	410	446	418	479	462	419	422	433	417	-16 / -3.7%	-1 / -0.2%
<b>Subtotal</b>	<b>1607</b>	<b>1592</b>	<b>1856</b>	<b>1865</b>	<b>2021</b>	<b>1989</b>	<b>2029</b>	<b>2026</b>	<b>1995</b>	<b>1951</b>	<b>-44 / -2.2%</b>	<b>+86 / +4.6%</b>
<b>Dual Horses in Training</b>												
3YO	40	48	46	33	34	28	30	31	33	33	0 / 0.0%	0 / 0.0%
4YO	35	78	34	33	37	34	36	31	35	44	+9 / +25.7%	+11 / +33.3%
5YO+	77	129	70	73	93	60	64	60	66	104	+38 / +57.6%	+31 / +42.5%
<b>Subtotal</b>	<b>152</b>	<b>255</b>	<b>150</b>	<b>139</b>	<b>164</b>	<b>122</b>	<b>130</b>	<b>122</b>	<b>134</b>	<b>181</b>	<b>+47 / +35.1%</b>	<b>+42 / +30.2%</b>
<b>Total Horses in Training</b>												
	<b>5125</b>	<b>5419</b>	<b>5616</b>	<b>5443</b>	<b>5557</b>	<b>5519</b>	<b>5738</b>	<b>5766</b>	<b>5740</b>	<b>5682</b>	<b>-58 / -1.0%</b>	<b>+239 / +4.4%</b>

'vs. Pre-Covid' is comparison between 2025 and 2019

## South

AgeCat	2016	2017	2018	2019	2020	2021	2022	2023	2024	2025	vs. Last Year	vs. Pre-Covid
<b>Flat Horses in Training</b>												
2YO	1184	1299	1323	1323	1240	1201	1166	1162	1171	1138	-33 / -2.8%	-185 / -14.0%
3YO	734	756	836	772	783	766	686	755	651	755	+104 / +16.0%	-17 / -2.2%
4YO	339	338	358	401	373	351	364	305	332	315	-17 / -5.1%	-86 / -21.4%
5YO+	500	485	488	454	483	478	462	491	439	446	+7 / +1.6%	-8 / -1.8%
<b>Subtotal</b>	<b>2757</b>	<b>2878</b>	<b>3005</b>	<b>2950</b>	<b>2879</b>	<b>2796</b>	<b>2678</b>	<b>2713</b>	<b>2593</b>	<b>2654</b>	<b>+61 / +2.4%</b>	<b>-296 / -10.0%</b>
<b>Jump Horses in Training</b>												
3YO	156	183	172	200	169	191	185	187	162	166	+4 / +2.5%	-34 / -17.0%
4-5YO	1018	959	1099	1065	1066	1028	1091	1058	978	836	-142 / -14.5%	-229 / -21.5%
6-7YO	750	773	800	842	993	880	779	728	777	694	-83 / -10.7%	-148 / -17.6%
8YO+	549	508	531	549	690	600	515	465	431	403	-28 / -6.5%	-146 / -26.6%
<b>Subtotal</b>	<b>2473</b>	<b>2423</b>	<b>2602</b>	<b>2656</b>	<b>2918</b>	<b>2699</b>	<b>2570</b>	<b>2438</b>	<b>2348</b>	<b>2099</b>	<b>-249 / -10.6%</b>	<b>-557 / -21.0%</b>
<b>Dual Horses in Training</b>												
3YO	41	61	48	51	48	58	55	60	44	87	+43 / +97.7%	+36 / +70.6%
4YO	35	92	47	50	51	57	53	50	48	71	+23 / +47.9%	+21 / +42.0%
5YO+	130	154	116	85	127	103	103	90	94	121	+27 / +28.7%	+36 / +42.4%
<b>Subtotal</b>	<b>206</b>	<b>307</b>	<b>211</b>	<b>186</b>	<b>226</b>	<b>218</b>	<b>211</b>	<b>200</b>	<b>186</b>	<b>279</b>	<b>+93 / +50.0%</b>	<b>+93 / +50.0%</b>
<b>Total Horses in Training</b>												
	<b>5436</b>	<b>5608</b>	<b>5818</b>	<b>5792</b>	<b>6023</b>	<b>5713</b>	<b>5459</b>	<b>5351</b>	<b>5127</b>	<b>5032</b>	<b>-95 / -1.9%</b>	<b>-760 / -13.1%</b>

'vs. Pre-Covid' is comparison between 2025 and 2019

## October 2025 Horses in Training Snapshot by Country versus Previous Years

Type	2016	2017	2018	2019	2020	2021	2022	2023	2024	2025	vs. Last Year	vs. Pre-Covid
<b>England</b>												
Flat	7919	8308	8574	8337	8386	8157	8171	8241	8079	8090	+11 / +0.1%	-247 / -3.0%
Jump	4460	4445	4850	4924	5416	5107	5031	4964	4782	4398	-384 / -8.0%	-526 / -10.7%
Dual	441	669	438	455	520	432	426	406	389	540	+151 / +38.8%	+85 / +18.7%
<b>Overall</b>	<b>12820</b>	<b>13422</b>	<b>13862</b>	<b>13716</b>	<b>14322</b>	<b>13696</b>	<b>13628</b>	<b>13611</b>	<b>13250</b>	<b>13028</b>	<b>-222 / -1.7%</b>	<b>-688 / -5.0%</b>
<b>Scotland</b>												
Flat	172	184	198	170	206	185	213	188	205	213	+8 / +3.9%	+43 / +25.3%
Jump	298	319	353	341	398	349	364	390	383	344	-39 / -10.2%	+3 / +0.9%
Dual	35	43	24	35	35	25	24	18	17	23	+6 / +35.3%	-12 / -34.3%
<b>Overall</b>	<b>505</b>	<b>546</b>	<b>575</b>	<b>546</b>	<b>639</b>	<b>559</b>	<b>601</b>	<b>596</b>	<b>605</b>	<b>580</b>	<b>-25 / -4.1%</b>	<b>+34 / +6.2%</b>
<b>Wales</b>												
Flat	129	129	155	161	130	137	118	138	124	123	-1 / -0.8%	-38 / -23.6%
Jump	417	352	397	360	395	375	311	307	327	333	+6 / +1.8%	-27 / -7.5%
Dual	34	54	28	18	23	21	20	16	21	30	+9 / +42.9%	+12 / +66.7%
<b>Overall</b>	<b>580</b>	<b>535</b>	<b>580</b>	<b>539</b>	<b>548</b>	<b>533</b>	<b>449</b>	<b>461</b>	<b>472</b>	<b>486</b>	<b>+14 / +3.0%</b>	<b>-53 / -9.8%</b>

'vs. Pre-Covid' is comparison between 2025 and 2019

## October 2025 Horses in Training Snapshot by Training Centre versus Previous Years

Type	2016	2017	2018	2019	2020	2021	2022	2023	2024	2025	vs. Last Year	vs. Pre-Covid
<b>Cheltenham (GL54)</b>												
Flat	10	19	17	15	18	22	12	13	16	22	+6 / +37.5%	+7 / +46.7%
Jump	417	395	464	464	568	524	476	489	496	490	-6 / -1.2%	+26 / +5.6%
Dual	22	64	21	19	17	14	12	18	18	26	+8 / +44.4%	+7 / +36.8%
<b>Overall</b>	<b>449</b>	<b>478</b>	<b>502</b>	<b>498</b>	<b>603</b>	<b>560</b>	<b>500</b>	<b>520</b>	<b>530</b>	<b>538</b>	<b>+8 / +1.5%</b>	<b>+40 / +8.0%</b>
<b>Lambourn (RG17)</b>												
Flat	736	880	924	880	841	790	767	821	799	867	+68 / +8.5%	-13 / -1.5%
Jump	351	334	363	383	409	330	330	295	284	268	-16 / -5.6%	-115 / -30.0%
Dual	19	33	26	21	25	29	39	26	20	30	+10 / +50.0%	+9 / +42.9%
<b>Overall</b>	<b>1106</b>	<b>1247</b>	<b>1313</b>	<b>1284</b>	<b>1275</b>	<b>1149</b>	<b>1136</b>	<b>1142</b>	<b>1103</b>	<b>1165</b>	<b>+62 / +5.6%</b>	<b>-119 / -9.3%</b>
<b>Malton (YO17)</b>												
Flat	515	552	598	618	694	601	624	644	605	639	+34 / +5.6%	+21 / +3.4%
Jump	146	136	116	100	105	95	83	96	64	52	-12 / -18.8%	-48 / -48.0%
Dual	21	39	26	38	52	39	27	26	25	20	-5 / -20.0%	-18 / -47.4%
<b>Overall</b>	<b>682</b>	<b>727</b>	<b>740</b>	<b>756</b>	<b>851</b>	<b>735</b>	<b>734</b>	<b>766</b>	<b>694</b>	<b>711</b>	<b>+17 / +2.4%</b>	<b>-45 / -6.0%</b>
<b>Marlborough (SN8)</b>												
Flat	469	443	483	452	449	413	360	379	347	371	+24 / +6.9%	-81 / -17.9%
Jump	53	81	79	72	81	104	85	83	75	74	-1 / -1.3%	+2 / +2.8%
Dual	1	1	0	7	2	3	1	2	1	1	0 / 0.0%	-6 / -85.7%
<b>Overall</b>	<b>523</b>	<b>525</b>	<b>562</b>	<b>531</b>	<b>532</b>	<b>520</b>	<b>446</b>	<b>464</b>	<b>423</b>	<b>446</b>	<b>+23 / +5.4%</b>	<b>-85 / -16.0%</b>
<b>Middleham (DL8)</b>												
Flat	452	439	467	508	544	473	472	482	474	480	+6 / +1.3%	-28 / -5.5%
Jump	71	76	104	92	116	100	93	106	112	91	-21 / -18.8%	-1 / -1.1%
Dual	24	39	16	31	39	21	23	14	18	18	0 / 0.0%	-13 / -41.9%
<b>Overall</b>	<b>547</b>	<b>554</b>	<b>587</b>	<b>631</b>	<b>699</b>	<b>594</b>	<b>588</b>	<b>602</b>	<b>604</b>	<b>589</b>	<b>-15 / -2.5%</b>	<b>-42 / -6.7%</b>
<b>Newbury (RG20)</b>												
Flat	344	353	381	388	383	399	409	406	385	365	-20 / -5.2%	-23 / -5.9%
Jump	11	22	20	12	16	7	16	68	89	80	-9 / -10.1%	+68 / +566.7%
Dual	5	11	7	7	7	5	2	4	3	10	+7 / +233.3%	+3 / +42.9%
<b>Overall</b>	<b>360</b>	<b>386</b>	<b>408</b>	<b>407</b>	<b>406</b>	<b>411</b>	<b>427</b>	<b>478</b>	<b>477</b>	<b>455</b>	<b>-22 / -4.6%</b>	<b>+48 / +11.8%</b>
<b>Newmarket (CB8)</b>												
Flat	2436	2531	2580	2435	2423	2444	2520	2636	2598	2501	-97 / -3.7%	+66 / +2.7%
Jump	52	46	63	60	59	60	47	69	76	69	-7 / -9.2%	+9 / +15.0%
Dual	36	34	14	17	26	21	24	28	40	65	+25 / +62.5%	+48 / +282.4%
<b>Overall</b>	<b>2524</b>	<b>2611</b>	<b>2657</b>	<b>2512</b>	<b>2508</b>	<b>2525</b>	<b>2591</b>	<b>2733</b>	<b>2714</b>	<b>2635</b>	<b>-79 / -2.9%</b>	<b>+123 / +4.9%</b>

'vs. Pre-Covid' is comparison between 2025 and 2019