

Horse Population Report

Updated on 30 September 2025



Introduction

Welcome to the latest update on the Racehorse Population from the British Horseracing Authority.

The aim of this document is to give stakeholders and the wider Public an insight into the current state of the Horse Population in Great Britain. It is hoped that this transparency will ensure that all decision makers have access to the key data required to help British Racing deliver a Competitive and Compelling product to stakeholders, racegoers and the wider public.

If you have any questions regarding the content of this report or suggestions for how it could be improved further, please contact Joe Yates – jyates@britishhorseracing.com

Definitions

This report uses the Horses in Training returns from the Weatherby's Racing Administration System, this is completed by trainers and should be updated whenever a horse enters or leaves training in their care as part of the conditions of their licence.

Horses in Training

Unless otherwise stated, snapshots of Horses in Training will be from the 15th day of the month in question and year to date figures will be up to and including the date titled at the front of the report.

Horses' ratings will be taken from the most recently published ratings by the BHA Handicapping Team, which is currently at 7am each Tuesday morning. For example, if looking at the Horses in a particular rating band for July 2011, the horses in training number will be from Friday 15th July 2011 and ratings, where possible, will be assigned to each horse from the ratings published by the BHA Handicappers on Tuesday 12th July 2011.

The Gender of a horse will be taken from the reporting date in question, regardless of whether this has since changed.

In the case of YTD reporting, where a horse's gender or training type has changed in the year-to-date period, the most recent is taken.

This report does not count any horses that are temporarily racing abroad for GB Trainers at the time of reporting.

Yearlings are not included in total counts of flat and/or dual horses but will be sometimes shown separately for information purposes.

Yearlings and two-year-olds are not included in total counts of jump horses or counts of jump horses that include dual horses but will be sometimes shown separately for information purposes.

Yearlings, two-year-olds and three-year-olds are not included in total counts of Hunter Chasers but will be sometimes shown separately for information purposes.

Yearlings and two-year-olds in training that are recorded as dual horses have been re-coded as flat horses.

Hunter Chasers are not included in any counts of Jump Horses or Total figures but will be sometimes shown separately for information purposes.

Horses' training locations are defined by the trainers' primary training location. Training regions are defined the same as regions for the Fixture List; 'North' is north of latitude 53.42911, 'South' is south of latitude 51.88002 and 'Midlands' is anywhere in between. Training centres are defined by postcodes and surrounding areas.

Runners

Unless otherwise specified, Total Runners and Individual Runners metrics only counts runners that ran in GB races including any voided races. Withdrawn horses are not included.

Hunter Chases are not included in this section but will be sometimes shown separately for information purposes.

Total Runners is a count of all runners in races, whilst individual runners only counts each individual horse once.

Monthly Horses in Training

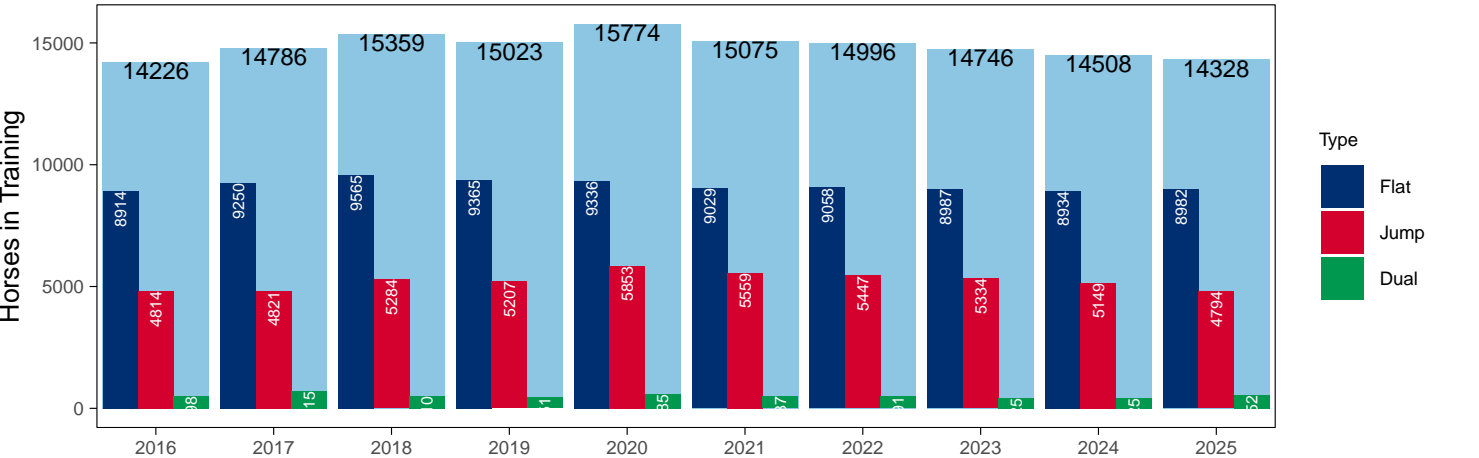
September 2025 Horses in Training Snapshot versus Previous Years

Type	2016	2017	2018	2019	2020	2021	2022	2023	2024	2025	vs. Last Year	vs. Pre-Covid
Flat	8914	9250	9565	9365	9336	9029	9058	8987	8934	8982	+48 / +0.5%	-383 / -4.1%
Jump	4814	4821	5284	5207	5853	5559	5447	5334	5149	4794	-355 / -6.9%	-413 / -7.9%
Dual	498	715	510	451	585	487	491	425	425	552	+127 / +29.9%	+101 / +22.4%
Total	14226	14786	15359	15023	15774	15075	14996	14746	14508	14328	-180 / -1.2%	-695 / -4.6%

'vs. Pre-Covid' is comparison between 2025 and 2019

Snapshot of Total Horses in Training in September

Horses in Training in September, shown by Training Type



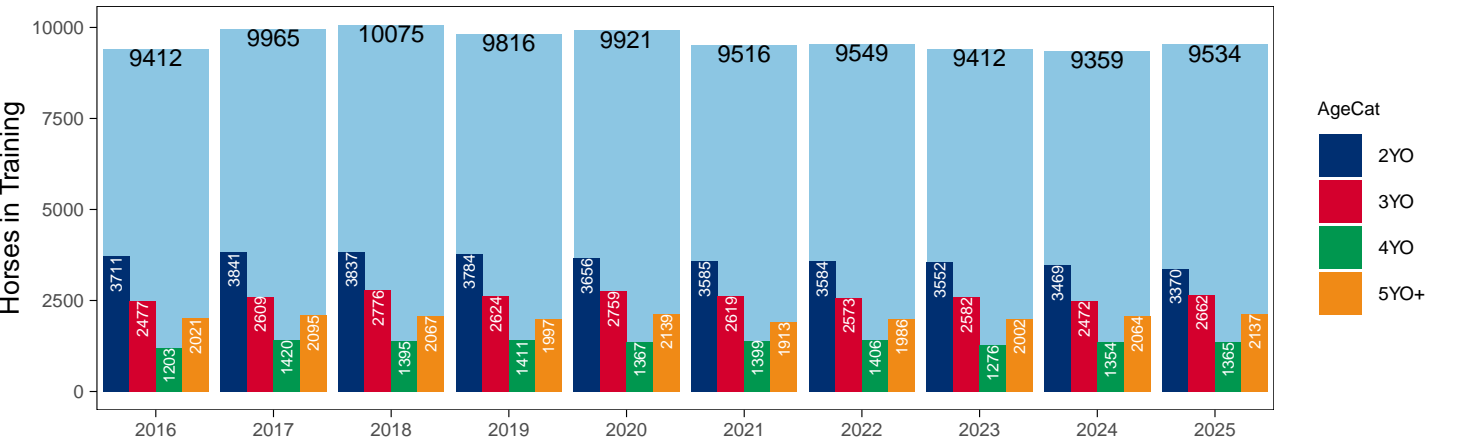
Flat (including Dual)

AgeCat	2016	2017	2018	2019	2020	2021	2022	2023	2024	2025	vs. Last Year	vs. Pre-Covid
2YO	3711	3841	3837	3784	3656	3585	3584	3552	3469	3370	-99 / -2.9%	-414 / -10.9%
3YO	2477	2609	2776	2624	2759	2619	2573	2582	2472	2662	+190 / +7.7%	+38 / +1.4%
4YO	1203	1420	1395	1411	1367	1399	1406	1276	1354	1365	+11 / +0.8%	-46 / -3.3%
5YO+	2021	2095	2067	1997	2139	1913	1986	2002	2064	2137	+73 / +3.5%	+140 / +7.0%
Total	9412	9965	10075	9816	9921	9516	9549	9412	9359	9534	+175 / +1.9%	-282 / -2.9%

'vs. Pre-Covid' is comparison between 2025 and 2019

Snapshot of Flat Horses in Training in September

Flat Horses in Training in September, shown by Age



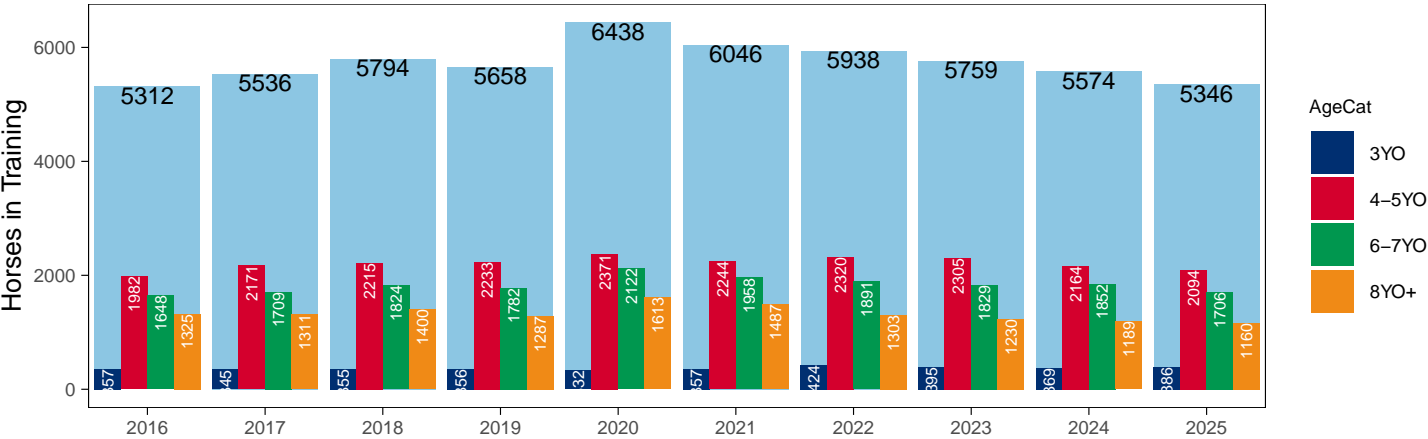
Jump (including Dual)

AgeCat	2016	2017	2018	2019	2020	2021	2022	2023	2024	2025	vs. Last Year		vs. Pre-Covid	
3YO	357	345	355	356	332	357	424	395	369	386	+17	+4.6%	+30	+8.4%
4-5YO	1982	2171	2215	2233	2371	2244	2320	2305	2164	2094	-70	-3.2%	-139	-6.2%
6-7YO	1648	1709	1824	1782	2122	1958	1891	1829	1852	1706	-146	-7.9%	-76	-4.3%
8YO+	1325	1311	1400	1287	1613	1487	1303	1230	1189	1160	-29	-2.4%	-127	-9.9%
Total	5312	5536	5794	5658	6438	6046	5938	5759	5574	5346	-228 / -4.1%		-312 / -5.5%	

'vs. Pre-Covid' is comparison between 2025 and 2019

Snapshot of Jump Horses in Training in September

Jump Horses in Training in September, shown by Age



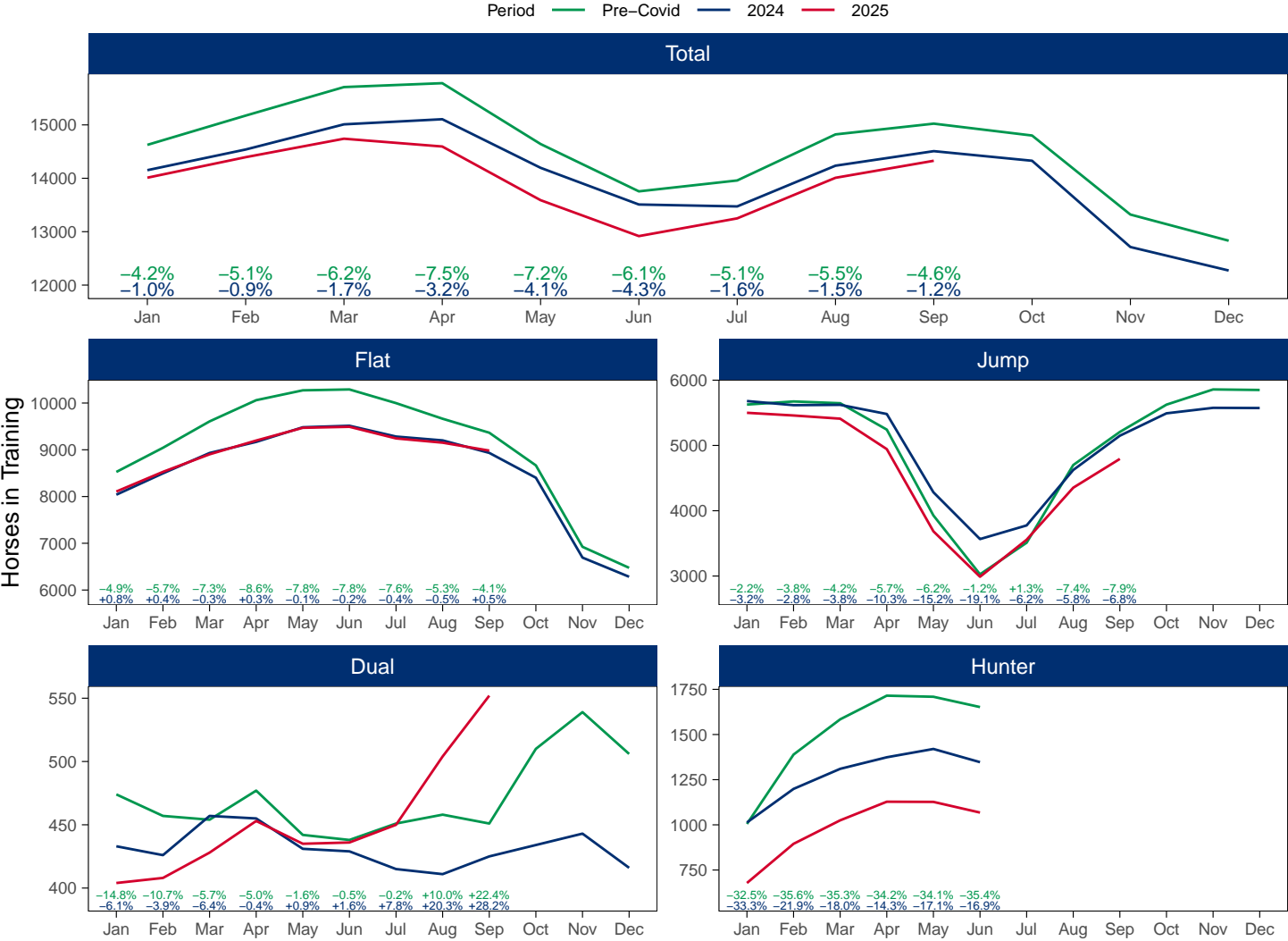
2025 Horses in Training versus Previous Years

Type	Period	Jan	Feb	Mar	Apr	May	Jun	Jul	Aug	Sep	Oct	Nov	Dec
Flat	2025	8107	8528	8903	9198	9470	9492	9243	9152	8982			
	2024	8039	8496	8931	9169	9482	9514	9283	9201	8934	8402	6694	6284
	Pre-Covid	8526	9043	9607	10061	10272	10291	9998	9664	9365	8666	6924	6475
Jump	2025	5500	5459	5410	4944	3685	2989	3556	4353	4794			
	2024	5680	5617	5622	5482	4283	3566	3775	4624	5149	5492	5576	5573
	Pre-Covid	5626	5674	5647	5243	3928	3026	3510	4700	5207	5625	5858	5850
Dual	2025	404	408	428	453	435	436	450	504	552			
	2024	433	426	457	455	431	429	415	411	425	434	443	416
	Pre-Covid	474	457	454	477	442	438	451	458	451	510	539	506
Hunter	2025	678	895	1025	1128	1127	1068						
	2024	1013	1199	1310	1374	1420	1347						
	Pre-Covid	1005	1389	1584	1715	1709	1652						
Total	2025	14011	14395	14741	14595	13590	12917	13249	14009	14328			
	2024	14152	14539	15010	15106	14196	13509	13473	14236	14508	14328	12713	12273
	Pre-Covid	14626	15174	15708	15781	14642	13755	13959	14822	15023	14801	13321	12831

'Pre-Covid' is 2019 values

Monthly Horses in Training

2025 against 2024 and Pre-Covid, shown with % Difference



'Pre-Covid' is 2019 values

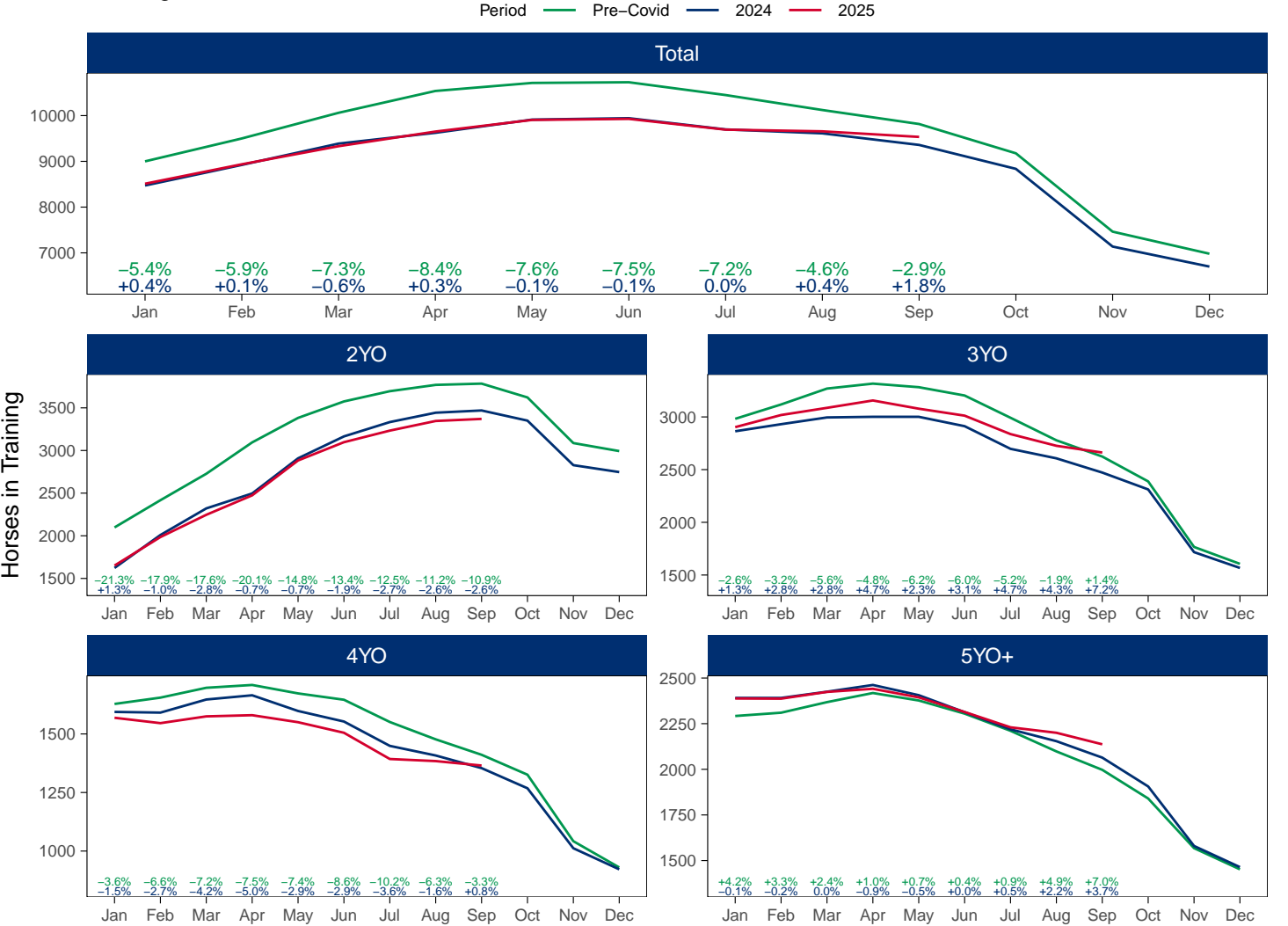
Flat (including Dual)

AgeCat	Period	Jan	Feb	Mar	Apr	May	Jun	Jul	Aug	Sep	Oct	Nov	Dec
2YO	2025	1651	1985	2246	2474	2883	3097	3233	3346	3370			
	2024	1623	2009	2321	2496	2908	3165	3333	3443	3469	3350	2828	2747
	Pre-Covid	2098	2417	2727	3095	3382	3575	3695	3769	3784	3622	3087	2993
3YO	2025	2903	3018	3086	3156	3078	3012	2837	2726	2662			
	2024	2864	2931	2995	3001	3001	2912	2697	2607	2472	2312	1717	1567
	Pre-Covid	2982	3118	3269	3316	3282	3203	2992	2778	2624	2388	1766	1606
4YO	2025	1569	1546	1575	1580	1550	1505	1393	1384	1365			
	2024	1594	1591	1647	1665	1598	1553	1449	1408	1354	1268	1012	922
	Pre-Covid	1628	1655	1697	1709	1673	1646	1551	1477	1411	1326	1042	930
5YO+	2025	2388	2387	2424	2441	2394	2314	2230	2200	2137			
	2024	2391	2391	2425	2462	2406	2313	2219	2154	2064	1906	1580	1464
	Pre-Covid	2292	2310	2368	2418	2377	2305	2211	2098	1997	1840	1568	1452
Total	2025	8511	8936	9331	9651	9905	9928	9693	9656	9534			
	2024	8472	8922	9388	9624	9913	9943	9698	9612	9359	8836	7137	6700
	Pre-Covid	9000	9500	10061	10538	10714	10729	10449	10122	9816	9176	7463	6981

'Pre-Covid' is 2019 values

Monthly Flat Horses in Training

2025 against 2024 and Pre-Covid, shown with % Difference



'Pre-Covid' is 2019 values

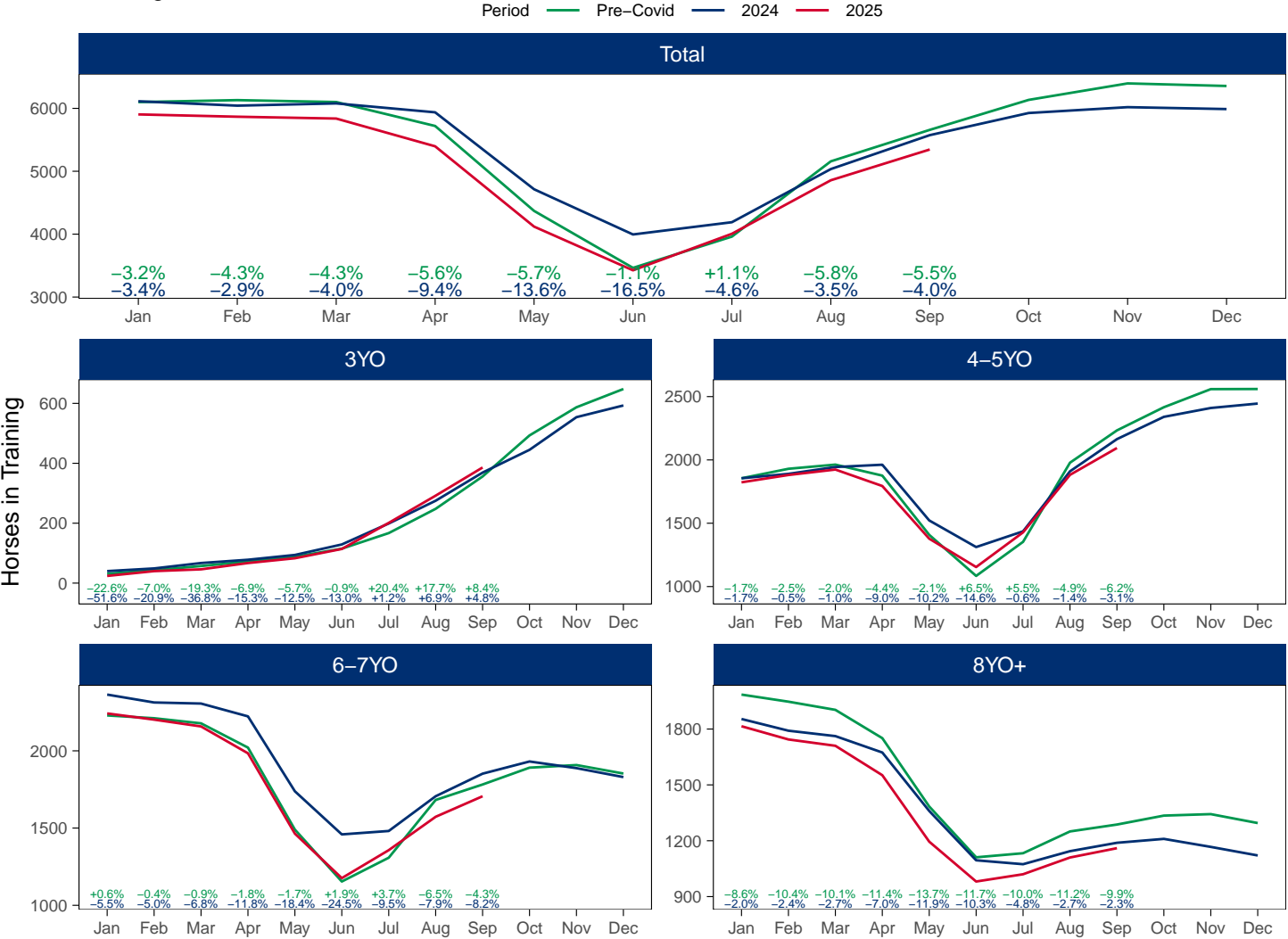
Jump (including Dual)

AgeCat	Period	Jan	Feb	Mar	Apr	May	Jun	Jul	Aug	Sep	Oct	Nov	Dec
3YO	2025	24	40	46	67	83	114	201	292	386			
	2024	40	49	67	78	94	129	199	275	369	445	554	593
	Pre-Covid	31	43	57	72	88	115	167	248	356	493	587	648
4-5YO	2025	1823	1881	1924	1794	1378	1154	1428	1882	2094			
	2024	1855	1890	1944	1962	1522	1312	1436	1910	2164	2340	2410	2445
	Pre-Covid	1855	1930	1963	1876	1408	1084	1353	1978	2233	2416	2559	2560
6-7YO	2025	2242	2202	2158	1984	1464	1176	1357	1573	1706			
	2024	2364	2313	2306	2223	1738	1459	1481	1706	1852	1931	1888	1830
	Pre-Covid	2229	2211	2178	2021	1490	1154	1308	1682	1782	1891	1908	1853
8YO+	2025	1815	1744	1710	1552	1195	981	1020	1110	1160			
	2024	1854	1791	1762	1674	1360	1095	1074	1144	1189	1210	1167	1121
	Pre-Covid	1985	1947	1903	1751	1384	1111	1133	1250	1287	1335	1343	1295
Total	2025	5904	5867	5838	5397	4120	3425	4006	4857	5346			
	2024	6113	6043	6079	5937	4714	3995	4190	5035	5574	5926	6019	5989
	Pre-Covid	6100	6131	6101	5720	4370	3464	3961	5158	5658	6135	6397	6356

'Pre-Covid' is 2019 values

Monthly Jump Horses in Training

2025 against 2024 and Pre-Covid, shown with % Difference



'Pre-Covid' is 2019 values

September 2025 Horses in Training by Rating Band Snapshot versus Previous Years

Flat (including Dual)

AgeCat	RatBand	2016	2017	2018	2019	2020	2021	2022	2023	2024	2025
2YO	Unrated	2,708 (73.0%)	2,885 (75.1%)	2,917 (76.0%)	2,926 (77.3%)	2,755 (75.4%)	2,629 (73.3%)	2,684 (74.9%)	2,665 (75.0%)	2,600 (74.9%)	2,596 (77.0%)
	0-50	62 (1.7%)	74 (1.9%)	59 (1.5%)	72 (1.9%)	58 (1.6%)	76 (2.1%)	65 (1.8%)	71 (2.0%)	58 (1.7%)	56 (1.7%)
	51-60	145 (3.9%)	154 (4.0%)	150 (3.9%)	147 (3.9%)	131 (3.6%)	130 (3.6%)	124 (3.5%)	132 (3.7%)	122 (3.5%)	113 (3.4%)
	61-70	255 (6.9%)	241 (6.3%)	204 (5.3%)	178 (4.7%)	211 (5.8%)	222 (6.2%)	229 (6.4%)	186 (5.2%)	206 (5.9%)	172 (5.1%)
	71-80	310 (8.4%)	268 (7.0%)	241 (6.3%)	230 (6.1%)	266 (7.3%)	268 (7.5%)	228 (6.4%)	244 (6.9%)	240 (6.9%)	196 (5.8%)
	81-90	131 (3.5%)	118 (3.1%)	144 (3.8%)	134 (3.5%)	122 (3.3%)	140 (3.9%)	145 (4.0%)	157 (4.4%)	137 (3.9%)	147 (4.4%)
	91-100	62 (1.7%)	64 (1.7%)	77 (2.0%)	56 (1.5%)	65 (1.8%)	71 (2.0%)	71 (2.0%)	65 (1.8%)	71 (2.0%)	63 (1.9%)
	101+	38 (1.0%)	37 (1.0%)	45 (1.2%)	41 (1.1%)	48 (1.3%)	49 (1.4%)	38 (1.1%)	32 (0.9%)	35 (1.0%)	27 (0.8%)
Subtotal		3,711 (100.0%)	3,841 (100.0%)	3,837 (100.0%)	3,784 (100.0%)	3,656 (100.0%)	3,585 (100.0%)	3,584 (100.0%)	3,552 (100.0%)	3,469 (100.0%)	3,370 (100.0%)
3YO	Unrated	485 (19.6%)	478 (18.3%)	633 (22.8%)	555 (21.2%)	753 (27.3%)	608 (23.2%)	575 (22.3%)	552 (21.4%)	555 (22.5%)	603 (22.7%)
	0-50	162 (6.5%)	218 (8.4%)	206 (7.4%)	258 (9.8%)	210 (7.6%)	220 (8.4%)	214 (8.3%)	203 (7.9%)	202 (8.2%)	202 (7.6%)
	51-60	297 (12.0%)	312 (12.0%)	314 (11.3%)	344 (13.1%)	339 (12.3%)	344 (13.1%)	344 (13.4%)	339 (13.1%)	273 (11.0%)	345 (13.0%)
	61-70	435 (17.6%)	439 (16.8%)	468 (16.9%)	431 (16.4%)	446 (16.2%)	446 (17.0%)	420 (16.3%)	450 (17.4%)	444 (18.0%)	455 (17.1%)
	71-80	488 (19.7%)	505 (19.4%)	492 (17.7%)	426 (16.2%)	481 (17.4%)	446 (17.0%)	454 (17.6%)	488 (18.9%)	444 (18.0%)	487 (18.3%)
	81-90	340 (13.7%)	368 (14.1%)	368 (13.3%)	305 (11.6%)	287 (10.4%)	306 (11.7%)	299 (11.6%)	291 (11.3%)	309 (12.5%)	307 (11.5%)
	91-100	160 (6.5%)	187 (7.2%)	170 (6.1%)	184 (7.0%)	147 (5.3%)	144 (5.5%)	150 (5.8%)	149 (5.8%)	140 (5.7%)	148 (5.6%)
	101+	110 (4.4%)	102 (3.9%)	125 (4.5%)	121 (4.6%)	96 (3.5%)	105 (4.0%)	117 (4.5%)	110 (4.3%)	105 (4.2%)	115 (4.3%)
Subtotal		2,477 (100.0%)	2,609 (100.0%)	2,776 (100.0%)	2,624 (100.0%)	2,759 (100.0%)	2,619 (100.0%)	2,573 (100.0%)	2,582 (100.0%)	2,472 (100.0%)	2,662 (100.0%)
4YO	Unrated	136 (11.3%)	219 (15.4%)	177 (12.7%)	166 (11.8%)	191 (14.0%)	195 (13.9%)	174 (12.4%)	162 (12.7%)	147 (10.9%)	171 (12.5%)
	0-50	105 (8.7%)	141 (9.9%)	167 (12.0%)	181 (12.8%)	147 (10.8%)	165 (11.8%)	162 (11.5%)	168 (13.2%)	163 (12.0%)	155 (11.4%)
	51-60	160 (13.3%)	173 (12.2%)	158 (11.3%)	189 (13.4%)	187 (13.7%)	221 (15.8%)	203 (14.4%)	184 (14.4%)	203 (15.0%)	176 (12.9%)
	61-70	180 (15.0%)	235 (16.5%)	250 (17.9%)	234 (16.6%)	242 (17.7%)	218 (15.6%)	256 (18.2%)	228 (17.9%)	242 (17.9%)	242 (17.7%)
	71-80	223 (18.5%)	223 (15.7%)	221 (15.8%)	228 (16.2%)	225 (16.5%)	229 (16.4%)	230 (16.4%)	210 (16.5%)	235 (17.4%)	229 (16.8%)
	81-90	177 (14.7%)	203 (14.3%)	182 (13.0%)	189 (13.4%)	151 (11.0%)	160 (11.4%)	174 (12.4%)	136 (10.7%)	156 (11.5%)	166 (12.2%)
	91-100	121 (10.1%)	117 (8.2%)	136 (9.7%)	127 (9.0%)	119 (8.7%)	123 (8.8%)	108 (7.7%)	85 (6.7%)	114 (8.4%)	114 (8.4%)
	101+	101 (8.4%)	109 (7.7%)	104 (7.5%)	97 (6.9%)	105 (7.7%)	88 (6.3%)	99 (7.0%)	103 (8.1%)	94 (6.9%)	112 (8.2%)
Subtotal		1,203 (100.0%)	1,420 (100.0%)	1,395 (100.0%)	1,411 (100.0%)	1,367 (100.0%)	1,399 (100.0%)	1,406 (100.0%)	1,276 (100.0%)	1,354 (100.0%)	1,365 (100.0%)
5YO+	Unrated	223 (11.0%)	298 (14.2%)	247 (11.9%)	224 (11.2%)	296 (13.8%)	231 (12.1%)	266 (13.4%)	212 (10.6%)	225 (10.9%)	244 (11.4%)
	0-50	195 (9.6%)	238 (11.4%)	293 (14.2%)	303 (15.2%)	290 (13.6%)	272 (14.2%)	264 (13.3%)	258 (12.9%)	271 (13.1%)	251 (11.7%)
	51-60	304 (15.0%)	298 (14.2%)	303 (14.7%)	315 (15.8%)	350 (16.4%)	320 (16.7%)	305 (15.4%)	361 (18.0%)	396 (19.2%)	394 (18.4%)
	61-70	364 (18.0%)	361 (17.2%)	363 (17.6%)	369 (18.5%)	378 (17.7%)	335 (17.5%)	362 (18.2%)	365 (18.2%)	400 (19.4%)	423 (19.8%)
	71-80	331 (16.4%)	312 (14.9%)	310 (15.0%)	291 (14.6%)	327 (15.3%)	270 (14.1%)	284 (14.3%)	307 (15.3%)	314 (15.2%)	354 (16.6%)
	81-90	277 (13.7%)	259 (12.4%)	265 (12.8%)	226 (11.3%)	235 (11.0%)	208 (10.9%)	225 (11.3%)	221 (11.0%)	221 (10.7%)	223 (10.4%)
	91-100	178 (8.8%)	174 (8.3%)	149 (7.2%)	145 (7.3%)	137 (6.4%)	148 (7.7%)	141 (7.1%)	153 (7.6%)	117 (5.7%)	134 (6.3%)
	101+	149 (7.4%)	155 (7.4%)	137 (6.6%)	124 (6.2%)	126 (5.9%)	129 (6.7%)	139 (7.0%)	125 (6.2%)	120 (5.8%)	114 (5.3%)
Subtotal		2,021 (100.0%)	2,095 (100.0%)	2,067 (100.0%)	1,997 (100.0%)	2,139 (100.0%)	1,913 (100.0%)	1,986 (100.0%)	2,002 (100.0%)	2,064 (100.0%)	2,137 (100.0%)
Overall	Unrated	3,552 (37.7%)	3,880 (38.9%)	3,974 (39.4%)	3,871 (39.4%)	3,995 (40.3%)	3,663 (38.5%)	3,699 (38.7%)	3,591 (38.2%)	3,527 (37.7%)	3,614 (37.9%)
	0-50	524 (5.6%)	671 (6.7%)	725 (7.2%)	814 (8.3%)	705 (7.1%)	733 (7.7%)	705 (7.4%)	700 (7.4%)	694 (7.4%)	664 (7.0%)
	51-60	906 (9.6%)	937 (9.4%)	925 (9.2%)	995 (10.1%)	1,007 (10.2%)	1,015 (10.7%)	976 (10.2%)	1,016 (10.8%)	994 (10.6%)	1,028 (10.8%)
	61-70	1,234 (13.1%)	1,276 (12.8%)	1,285 (12.8%)	1,212 (12.3%)	1,277 (12.9%)	1,221 (12.8%)	1,267 (13.3%)	1,229 (13.1%)	1,292 (13.8%)	1,292 (13.6%)
	71-80	1,352 (14.4%)	1,308 (13.1%)	1,264 (12.5%)	1,175 (12.0%)	1,299 (13.1%)	1,213 (12.7%)	1,196 (13.2%)	1,249 (13.3%)	1,233 (13.2%)	1,266 (13.3%)
	81-90	925 (9.8%)	948 (9.5%)	959 (9.5%)	854 (8.7%)	795 (8.0%)	814 (8.6%)	843 (8.8%)	805 (8.6%)	823 (8.8%)	843 (8.8%)
	91-100	521 (5.5%)	542 (5.4%)	532 (5.3%)	512 (5.2%)	468 (4.7%)	486 (5.1%)	470 (4.9%)	452 (4.8%)	442 (4.7%)	459 (4.8%)
	101+	398 (4.2%)	403 (4.0%)	411 (4.1%)	383 (3.9%)	375 (3.8%)	371 (3.9%)	393 (4.1%)	370 (3.9%)	354 (3.8%)	368 (3.9%)
Total		9,412 (100.0%)	9,965 (100.0%)	10,075 (100.0%)	9,816 (100.0%)	9,921 (100.0%)	9,516 (100.0%)	9,549 (100.0%)	9,412 (100.0%)	9,359 (100.0%)	9,534 (100.0%)

Where a horse has more than one published rating (published Flat Turf and published Flat AWT mark), the higher of the two is taken.

Jump (including Dual)

AgeCat	RatBand	2016	2017	2018	2019	2020	2021	2022	2023	2024	2025
3YO	Unrated	346 (96.9%)	345 (100.0%)	348 (98.0%)	345 (96.9%)	320 (96.4%)	341 (95.5%)	416 (98.1%)	386 (97.7%)	365 (98.9%)	384 (99.5%)
	0-100	3 (0.8%)	NA (-)	2 (0.6%)	4 (1.7%)	4 (1.2%)	6 (1.7%)	4 (0.9%)	4 (1.0%)	2 (0.5%)	1 (0.3%)
	101-110	4 (1.1%)	NA (-)	2 (0.6%)	3 (0.8%)	5 (1.5%)	6 (1.7%)	4 (0.9%)	4 (1.0%)	2 (0.5%)	1 (0.3%)
	111-120	4 (1.1%)	NA (-)	1 (0.3%)	3 (0.8%)	2 (0.6%)	4 (1.1%)	NA (-)	1 (0.3%)	NA (-)	NA (-)
	121-130	NA (-)	NA (-)	1 (0.3%)	NA (-)	1 (0.3%)	NA (-)	NA (-)	NA (-)	NA (-)	NA (-)
	131-140	NA (-)	NA (-)	1 (0.3%)	1 (0.3%)	NA (-)	NA (-)	NA (-)	NA (-)	NA (-)	NA (-)
Subtotal		357 (100.0%)	345 (100.0%)	355 (100.0%)	356 (100.0%)	332 (100.0%)	357 (100.0%)	424 (100.0%)	395 (100.0%)	369 (100.0%)	386 (100.0%)
4-5YO	Unrated	1,431 (72.2%)	1,578 (72.7%)	1,588 (71.7%)	1,631 (73.0%)	1,742 (73.5%)	1,718 (76.6%)	1,756 (75.7%)	1,743 (75.6%)	1,568 (72.5%)	1,563 (74.6%)
	0-100	159 (8.0%)	183 (8.4%)	158 (7.1%)	183 (8.2%)	234 (9.9%)	232 (10.3%)	270 (11.6%)	288 (12.5%)	333 (15.4%)	266 (12.7%)
	101-110	108 (5.4%)	110 (5.1%)	150 (6.8%)	112 (5.0%)	115 (4.9%)	87 (3.9%)	137 (5.9%)	124 (5.4%)	112 (5.2%)	106 (5.1%)
	111-120	114 (5.8%)	109 (5.0%)	136 (6.1%)	135 (6.0%)	127 (5.4%)	106 (4.7%)	78 (3.4%)	89 (3.9%)	89 (4.1%)	107 (5.1%)
	121-130	76 (3.8%)	107 (4.9%)	110 (5.0%)	104 (4.7%)	93 (3.9%)	59 (2.6%)	50 (2.2%)	41 (1.8%)	42 (1.9%)	42 (2.0%)
	131-140	69 (3.5%)	61 (2.8%)	52 (2.3%)	44 (2.0%)	40 (1.7%)	32 (1.4%)	20 (0.9%)	18 (0.8%)	14 (0.6%)	5 (0.2%)
	141-150	20 (1.0%)	19 (0.9%)	14 (0.6%)	19 (0.9%)	15 (0.6%)	5 (0.2%)	6 (0.3%)	2 (0.1%)	5 (0.2%)	3 (0.1%)
	151+	5 (0.3%)	4 (0.2%)	7 (0.3%)	5 (0.2%)	5 (0.2%)	5 (0.2%)	3 (0.1%)	NA (-)	1 (0.0%)	2 (0.1%)
	Subtotal	1,982 (100.0%)	2,171 (100.0%)	2,215 (100.0%)	2,233 (100.0%)	2,371 (100.0%)	2,244 (100.0%)	2,320 (100.0%)	2,305 (100.0%)	2,164 (100.0%)	2,094 (100.0%)
6-7YO	Unrated	463 (28.1%)	489 (28.6%)	522 (28.6%)	493 (27.7%)	642 (30.3%)	520 (26.6%)	693 (36.6%)	544 (29.7%)	539 (29.1%)	552 (32.4%)
	0-100	309 (18.8%)	324 (19.0%)	342 (18.8%)	346 (19.4%)	427 (20.1%)	465 (23.7%)	424 (22.4%)	523 (28.6%)	556 (30.0%)	464 (27.2%)
	101-110	200 (12.1%)	224 (13.1%)	210 (11.5%)	211 (11.8%)	282 (13.3%)	228 (11.6%)	226 (12.0%)	246 (13.4%)	275 (14.8%)	219 (12.8%)
	111-120	252 (15.3%)	216 (12.6%)	244 (13.4%)	244 (13.7%)	250 (11.8%)	260 (13.3%)	210 (11.1%)	239 (13.1%)	237 (12.8%)	213 (12.5%)
	121-130	202 (12.3%)	195 (11.4%)	234 (12.8%)	219 (12.3%)	263 (12.4%)	241 (12.3%)	175 (9.3%)	157 (8.6%)	147 (7.9%)	136 (8.0%)
	131-140	141 (8.6%)	160 (9.4%)	178 (9.8%)	184 (10.3%)	167 (7.9%)	141 (7.2%)	115 (6.1%)	78 (4.3%)	65 (3.5%)	84 (4.9%)
	141-150	52 (3.2%)	70 (4.1%)	64 (3.5%)	48 (2.7%)	60 (2.8%)	72 (3.7%)	33 (1.7%)	33 (1.8%)	26 (1.4%)	26 (1.5%)
	151+	29 (1.8%)	31 (1.8%)	30 (1.6%)	37 (2.1%)	31 (1.5%)	31 (1.6%)	15 (0.8%)	9 (0.5%)	7 (0.4%)	12 (0.7%)
	Subtotal	1,648 (100.0%)	1,709 (100.0%)	1,824 (100.0%)	1,782 (100.0%)	2,122 (100.0%)	1,958 (100.0%)	1,891 (100.0%)	1,829 (100.0%)	1,852 (100.0%)	1,706 (100.0%)
8YO+	Unrated	227 (17.1%)	224 (17.1%)	249 (17.8%)	213 (16.6%)	379 (23.5%)	226 (15.2%)	348 (26.7%)	273 (22.2%)	290 (24.4%)	291 (25.1%)
	0-100	377 (28.5%)	362 (27.6%)	378 (27.0%)	369 (28.7%)	416 (25.8%)	412 (27.7%)	308 (23.6%)	321 (26.1%)	317 (26.7%)	352 (30.3%)
	101-110	174 (13.1%)	185 (14.1%)	203 (14.5%)	167 (13.0%)	180 (11.2%)	183 (12.3%)	155 (11.9%)	145 (11.8%)	136 (11.4%)	128 (11.0%)
	111-120	181 (13.7%)	178 (13.6%)	165 (11.8%)	153 (11.9%)	187 (11.6%)	204 (13.7%)	169 (13.0%)	157 (12.8%)	165 (13.9%)	133 (11.5%)
	121-130	163 (12.3%)	135 (10.3%)	175 (12.5%)	143 (11.1%)	187 (11.6%)	196 (13.2%)	126 (9.7%)	151 (12.3%)	141 (11.9%)	111 (9.6%)
	131-140	113 (8.5%)	125 (9.5%)	131 (9.4%)	124 (9.6%)	133 (8.2%)	146 (9.8%)	100 (7.7%)	106 (8.6%)	78 (6.6%)	84 (7.2%)
	141-150	58 (4.4%)	71 (5.4%)	73 (5.2%)	81 (6.3%)	81 (5.0%)	70 (4.7%)	65 (5.0%)	45 (3.7%)	37 (3.1%)	39 (3.4%)
	151+	32 (2.4%)	31 (2.4%)	26 (1.9%)	37 (2.9%)	50 (3.1%)	50 (3.4%)	32 (2.5%)	32 (2.6%)	25 (2.1%)	22 (1.9%)
	Subtotal	1,325 (100.0%)	1,311 (100.0%)	1,400 (100.0%)	1,287 (100.0%)	1,613 (100.0%)	1,487 (100.0%)	1,303 (100.0%)	1,230 (100.0%)	1,189 (100.0%)	1,160 (100.0%)
Overall	Unrated	2,467 (46.4%)	2,636 (47.6%)	2,707 (46.7%)	2,682 (47.4%)	3,083 (47.9%)	2,805 (46.4%)	3,213 (54.1%)	2,946 (51.2%)	2,762 (49.6%)	2,790 (52.2%)
	0-100	848 (16.0%)	869 (15.7%)	880 (15.2%)	902 (15.9%)	1,081 (16.8%)	1,115 (18.4%)	1,006 (16.9%)	1,136 (19.7%)	1,208 (21.7%)	1,083 (20.3%)
	101-110	486 (9.1%)	519 (9.4%)	565 (9.8%)	493 (8.7%)	582 (9.0%)	504 (8.3%)	522 (8.8%)	519 (9.0%)	525 (9.4%)	454 (8.5%)
	111-120	551 (10.4%)	503 (9.1%)	546 (9.4%)	535 (9.5%)	566 (8.8%)	574 (9.5%)	457 (7.7%)	486 (8.4%)	491 (8.8%)	453 (8.5%)
	121-130	441 (8.3%)	437 (7.9%)	520 (9.0%)	466 (8.2%)	544 (8.4%)	496 (8.2%)	351 (5.9%)	349 (6.1%)	330 (5.9%)	289 (5.4%)
	131-140	323 (6.1%)	346 (6.2%)	362 (6.2%)	353 (6.2%)	340 (5.3%)	319 (5.3%)	235 (4.0%)	202 (3.5%)	157 (2.8%)	173 (3.2%)
	141-150	130 (2.4%)	160 (2.9%)	151 (2.6%)	148 (2.6%)	156 (2.4%)	147 (2.4%)	104 (1.8%)	80 (1.4%)	68 (1.2%)	68 (1.3%)
Total		5,312 (100.0%)	5,536 (100.0%)	5,794 (100.0%)	5,658 (100.0%)	6,438 (100.0%)	6,046 (100.0%)	5,938 (100.0%)	5,759 (100.0%)	5,574 (100.0%)	5,346 (100.0%)

Where a horse has more than one published rating (published Hurdle and published Chase mark), the higher of the two is taken.

Young Horses Entering Training

Flat Yearlings in Training versus Previous Years

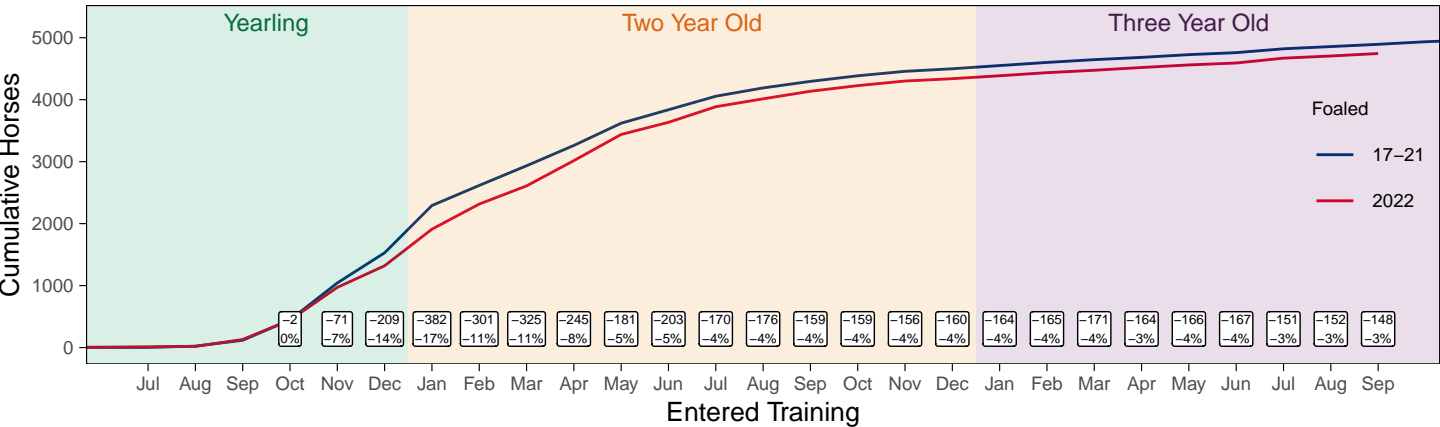
Period	Jan	Feb	Mar	Apr	May	Jun	Jul	Aug	Sep	Oct	Nov	Dec
2025	0	0	0	1	1	1	1	1	56			
2024	0	0	0	0	0	0	2	3	72	186	620	1068
5YrAvg	0	0	0	0	1	1	1	3	70	200	552	936

Foals Entering Training for the First Time

Warning: A numeric 'legend.position' argument in 'theme()' was deprecated in ggplot2 3.5.0.
i Please use the 'legend.position.inside' argument of 'theme()' instead.
This warning is displayed once every 8 hours.
Call 'lifecycle::last_lifecycle_warnings()' to see where this warning was generated.

2022 Foals Entering Training Over Time

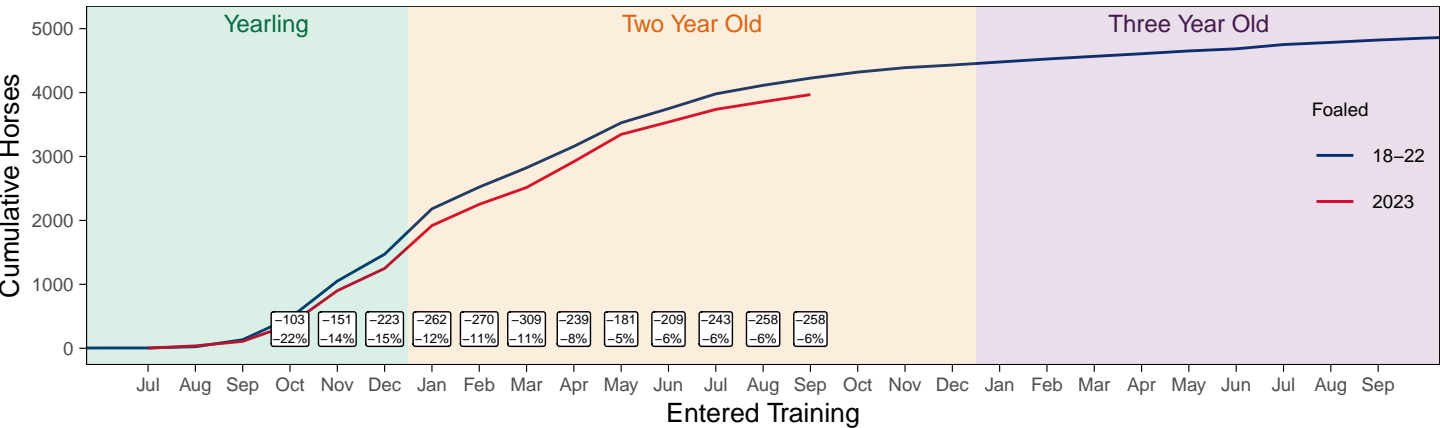
Cumulative Flat Horses foaled in 2022 shown by first in training notification against trend



Cumulative individual horses entering training for the first time by the end of each month.

2023 Foals Entering Training Over Time

Cumulative Flat Horses foaled in 2023 shown by first in training notification against trend



Cumulative individual horses entering training for the first time by the end of each month.

Year to Date Horses in Training

Type	2016	2017	2018	2019	2020	2021	2022	2023	2024	2025	vs. Last Year	vs. Pre-Covid
Flat	12674	12896	12912	13015	12941	12772	12522	12486	12427	12271	-156 / -1.3%	-744 / -5.7%
Jump	8043	7798	7924	8329	8063	8840	8478	8376	8121	7604	-517 / -6.4%	-725 / -8.7%
Dual	827	1098	1147	938	949	931	884	794	787	896	+109 / +13.9%	-42 / -4.5%
Hunter	1855	1817	1656	1616	1344	1127	1230	1167	1315	1054	-261 / -19.8%	-562 / -34.8%
Total	21544	21792	21983	22282	21953	22543	21884	21656	21335	20771	-564 / -2.6%	-1511 / -6.8%

'vs. Pre-Covid' is comparison between 2025 and 2019

Flat

AgeCat	2016	2017	2018	2019	2020	2021	2022	2023	2024	2025	vs. Last Year	vs. Pre-Covid
2YO	4391	4453	4414	4448	4268	4242	4132	4155	4089	3932	-157 / -3.8%	-516 / -11.6%
3YO	3812	3890	4022	3956	4036	3914	3837	3773	3689	3771	+82 / +2.2%	-185 / -4.7%
4YO	1840	1916	1879	1989	1960	2025	2009	1939	1947	1871	-76 / -3.9%	-118 / -5.9%
5YO+	2631	2637	2597	2622	2677	2591	2544	2619	2702	2697	-5 / -0.2%	+75 / +2.9%
Total	12674	12896	12912	13015	12941	12772	12522	12486	12427	12271	-156 / -1.3%	-744 / -5.7%

'vs. Pre-Covid' is comparison between 2025 and 2019

Jump

AgeCat	2016	2017	2018	2019	2020	2021	2022	2023	2024	2025	vs. Last Year	vs. Pre-Covid
3YO	351	310	339	371	297	343	414	382	348	322	-26 / -7.5%	-49 / -13.2%
4-5YO	2676	2591	2646	2792	2727	2780	2888	2968	2777	2599	-178 / -6.4%	-193 / -6.9%
6-7YO	2541	2440	2547	2706	2680	2971	2778	2744	2765	2565	-200 / -7.2%	-141 / -5.2%
8YO+	2475	2457	2392	2460	2359	2746	2398	2282	2231	2118	-113 / -5.1%	-342 / -13.9%
Total	8043	7798	7924	8329	8063	8840	8478	8376	8121	7604	-517 / -6.4%	-725 / -8.7%

'vs. Pre-Covid' is comparison between 2025 and 2019

Dual

AgeCat	2016	2017	2018	2019	2020	2021	2022	2023	2024	2025	vs. Last Year	vs. Pre-Covid
3YO	160	188	171	170	177	192	215	185	153	194	+41 / +26.8%	+24 / +14.1%
4YO	175	291	256	223	213	237	212	191	206	222	+16 / +7.8%	-1 / -0.4%
5YO+	492	619	720	545	559	502	457	418	428	480	+52 / +12.1%	-65 / -11.9%
Total	827	1098	1147	938	949	931	884	794	787	896	+109 / +13.9%	-42 / -4.5%

'vs. Pre-Covid' is comparison between 2025 and 2019

Hunter Chasers

AgeCat	2016	2017	2018	2019	2020	2021	2022	2023	2024	2025	vs. Last Year	vs. Pre-Covid
4-5YO	176	178	198	233	219	115	195	202	241	200	-41 / -17.0%	-33 / -14.2%
6-7YO	500	479	463	458	352	253	297	290	316	291	-25 / -7.9%	-167 / -36.5%
8-9YO	502	500	394	366	302	276	310	280	283	223	-60 / -21.2%	-143 / -39.1%
10YO+	677	660	601	559	471	483	428	395	475	340	-135 / -28.4%	-219 / -39.2%
Total	1855	1817	1656	1616	1344	1127	1230	1167	1315	1054	-261 / -19.8%	-562 / -34.8%

'vs. Pre-Covid' is comparison between 2025 and 2019

Year to Date Runners

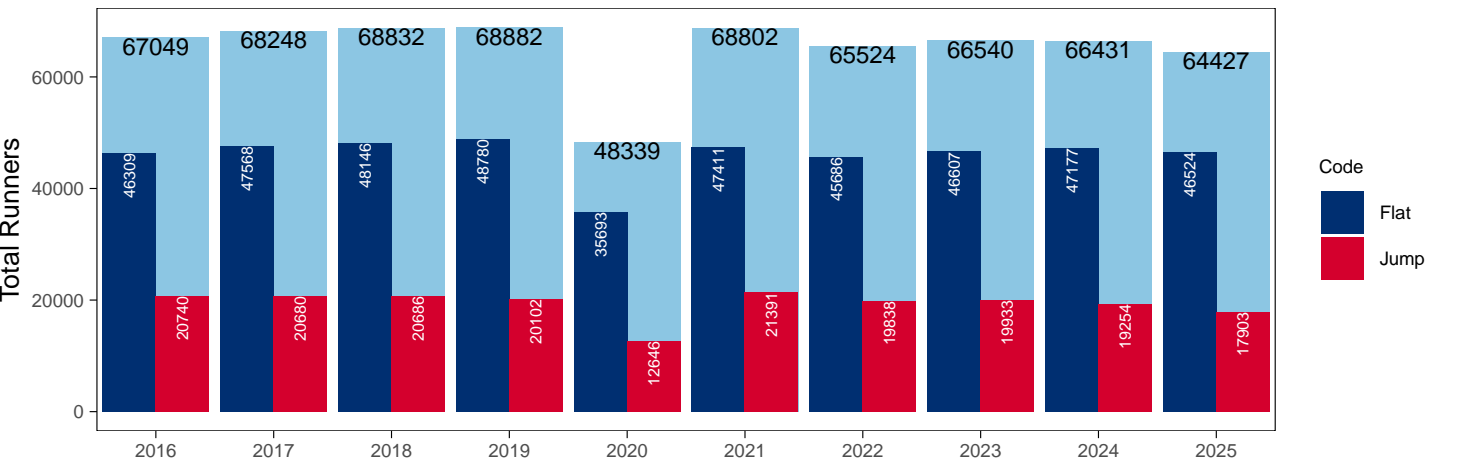
Year to Date Total Runners

Code	2016	2017	2018	2019	2020	2021	2022	2023	2024	2025	vs. Last Year	vs. Pre-Covid
Flat	46309	47568	48146	48780	35693	47411	45686	46607	47177	46524	-653 / -1.4%	-2256 / -4.6%
Jump	20740	20680	20686	20102	12646	21391	19838	19933	19254	17903	-1351 / -7.0%	-2199 / -10.9%
Total	67049	68248	68832	68882	48339	68802	65524	66540	66431	64427	-2004 / -3.0%	-4455 / -6.5%

'vs. Pre-Covid' is comparison between 2025 and 2019

YTD Total Runners

Total Runners in GB Races, shown by Code and Total



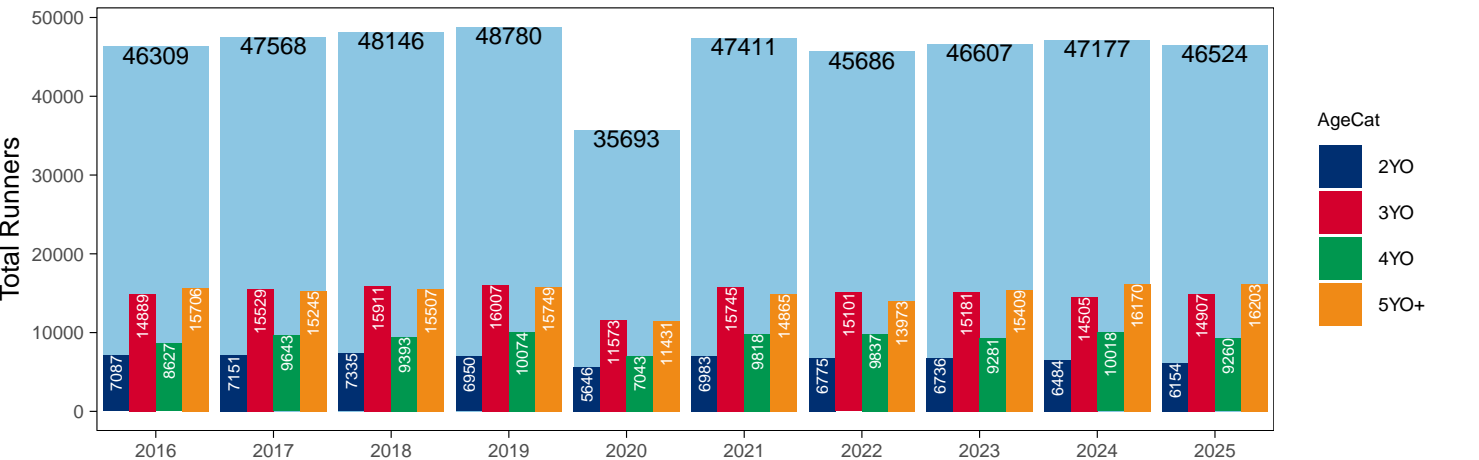
Flat

AgeCat	2016	2017	2018	2019	2020	2021	2022	2023	2024	2025	vs. Last Year	vs. Pre-Covid
2YO	7087	7151	7335	6950	5646	6983	6775	6736	6484	6154	-330 / -5.1%	-796 / -11.5%
3YO	14889	15529	15911	16007	11573	15745	15101	15181	14505	14907	+402 / +2.8%	-1100 / -6.9%
4YO	8627	9643	9393	10074	7043	9818	9837	9281	10018	9260	-758 / -7.6%	-814 / -8.1%
5YO+	15706	15245	15507	15749	11431	14865	13973	15409	16170	16203	+33 / +0.2%	+454 / +2.9%
Total	46309	47568	48146	48780	35693	47411	45686	46607	47177	46524	-653 / -1.4%	-2256 / -4.6%

'vs. Pre-Covid' is comparison between 2025 and 2019

YTD Total Flat Runners by Age

Total Runners in GB Flat Races, shown by Age Category and Total



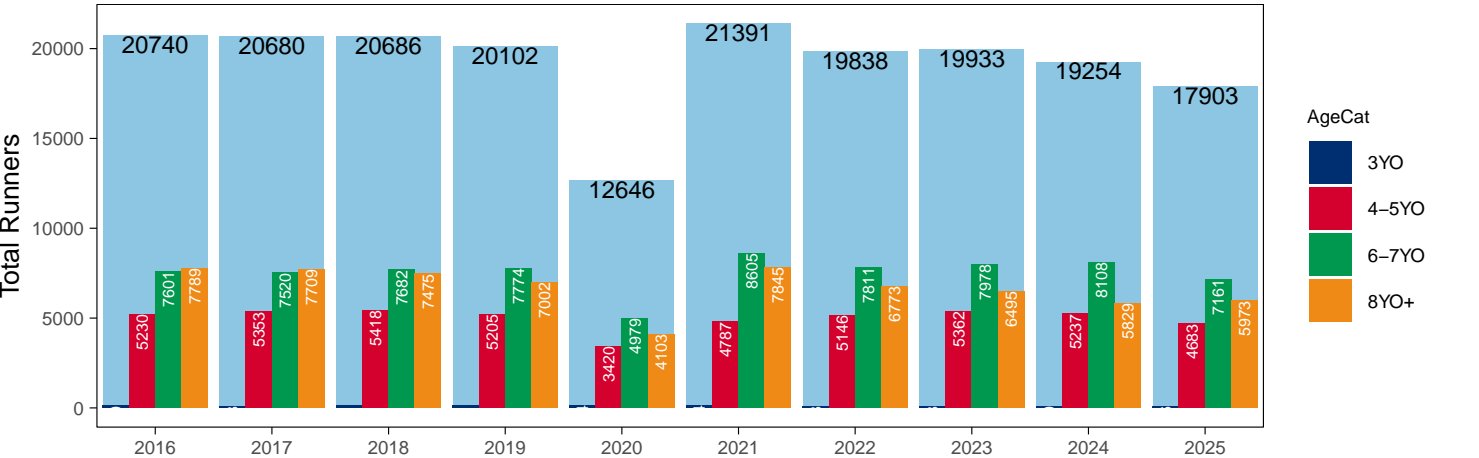
Jump

AgeCat	2016	2017	2018	2019	2020	2021	2022	2023	2024	2025	vs. Last Year	vs. Pre-Covid
3YO	120	98	111	121	144	154	108	98	80	86	+6 / +7.5%	-35 / -28.9%
4-5YO	5230	5353	5418	5205	3420	4787	5146	5362	5237	4683	-554 / -10.6%	-522 / -10.0%
6-7YO	7601	7520	7682	7774	4979	8605	7811	7978	8108	7161	-947 / -11.7%	-613 / -7.9%
8YO+	7789	7709	7475	7002	4103	7845	6773	6495	5829	5973	+144 / +2.5%	-1029 / -14.7%
Total	20740	20680	20686	20102	12646	21391	19838	19933	19254	17903	-1351 / -7.0%	-2199 / -10.9%

'vs. Pre-Covid' is comparison between 2025 and 2019

YTD Total Jump Runners by Age

Total Runners in GB Jump Races, shown by Age Category and Total



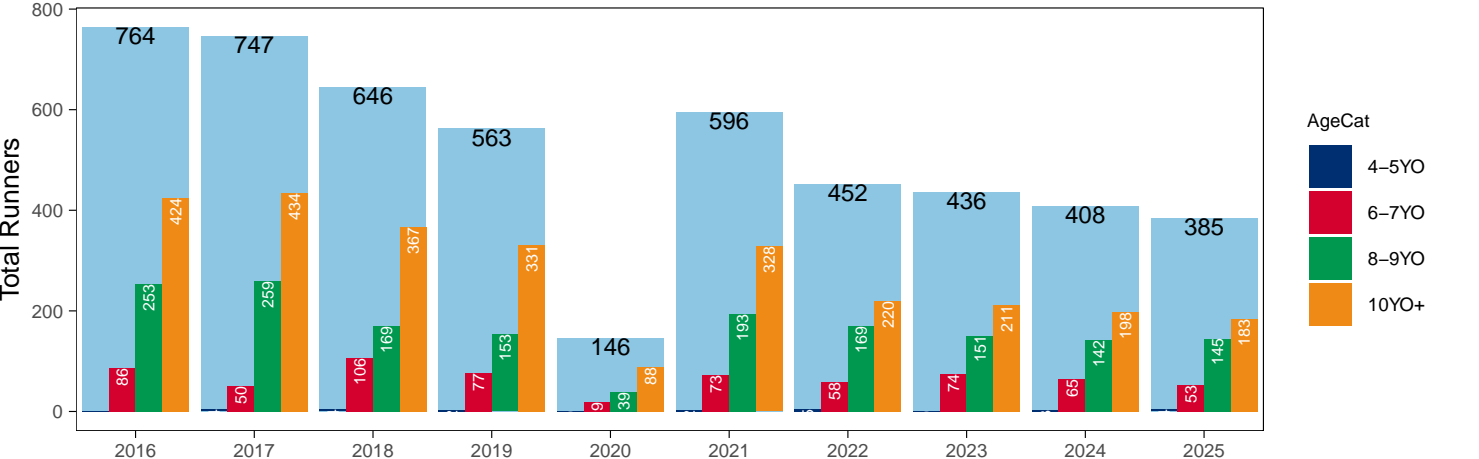
Hunter Chases

AgeCat	2016	2017	2018	2019	2020	2021	2022	2023	2024	2025	vs. Last Year	vs. Pre-Covid
4-5YO	1	4	4	2		2	5		3	4	+1 / +33.3%	+2 / +100.0%
6-7YO	86	50	106	77	19	73	58	74	65	53	-12 / -18.5%	-24 / -31.2%
8-9YO	253	259	169	153	39	193	169	151	142	145	+3 / +2.1%	-8 / -5.2%
10YO+	424	434	367	331	88	328	220	211	198	183	-15 / -7.6%	-148 / -44.7%
Total	764	747	646	563	146	596	452	436	408	385	-23 / -5.6%	-178 / -31.6%

'vs. Pre-Covid' is comparison between 2025 and 2019

YTD Total Hunter Chase Runners by Age

Total Runners in GB Hunter Chases shown by Age Category and Total



Year to Date Total Runners by Country Trained

Code	Country	2016	2017	2018	2019	2020	2021	2022	2023	2024	2025
Flat	GB	45803	46953	47461	48102	35475	47082	45367	46167	46592	45990
	IRE	442	546	630	615	195	299	260	394	509	467
	Other	64	69	55	63	23	30	59	46	76	67
Jump	GB	19986	20005	20155	19475	12379	20954	19167	19157	18583	17163
	IRE	746	662	522	620	257	434	669	773	668	733
	Other	8	13	9	7	10	3	2	3	3	7
Overall	GB	65789	66958	67616	67577	47854	68036	64534	65324	65175	63153
	IRE	1188	1208	1152	1235	452	733	929	1167	1177	1200
	Other	72	82	64	70	33	33	61	49	79	74

Year to Date GB Trained Runners Racing Abroad

Code	Country	2016	2017	2018	2019	2020	2021	2022	2023	2024	2025
Flat	IRE	160	175	142	152	53	53	96	91	119	123
	FR	261	372	357	436	212	150	180	238	248	276
	GNV	21	24	28	46	15	7	16	21	36	29
	UAE	208	278	276	303	281	248	276	272	214	228
	BAH							41	23	50	89
	KSA					15	21	22	15	11	10
	Other	93	87	94	94	36	53	61	70	112	78
	Total	743	936	897	1031	612	532	692	730	790	833
Jump	IRE	90	81	55	72	7	23	29	21	59	89
	FR	49	25	10	44	51	100	97	69	42	24
	Other	8	6	5	8		8	13	4	12	2
	Total	147	112	70	124	58	131	139	94	113	115

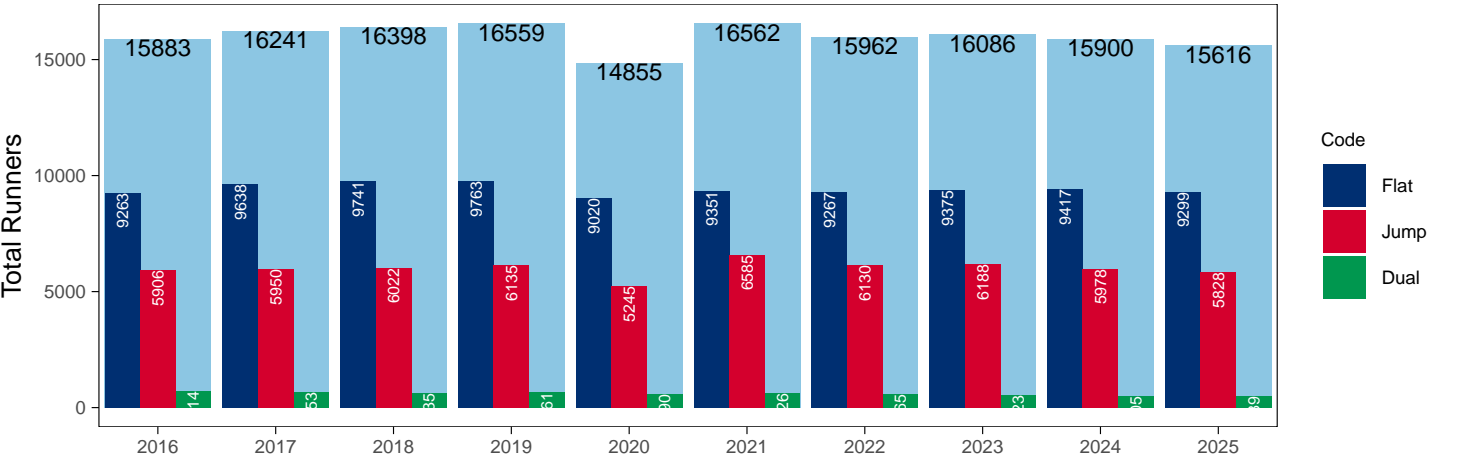
Year to Date Individual Runners

Code	2016	2017	2018	2019	2020	2021	2022	2023	2024	2025	vs. Last Year	vs. Pre-Covid
Flat	9263	9638	9741	9763	9020	9351	9267	9375	9417	9299	-118 / -1.3%	-464 / -4.8%
Jump	5906	5950	6022	6135	5245	6585	6130	6188	5978	5828	-150 / -2.5%	-307 / -5.0%
Dual	714	653	635	661	590	626	565	523	505	489	-16 / -3.2%	-172 / -26.0%
Overall	15883	16241	16398	16559	14855	16562	15962	16086	15900	15616	-284 / -1.8%	-943 / -5.7%

'vs. Pre-Covid' is comparison between 2025 and 2019

YTD Individual Runners

Individual Runners in GB Races, shown by Code and Total



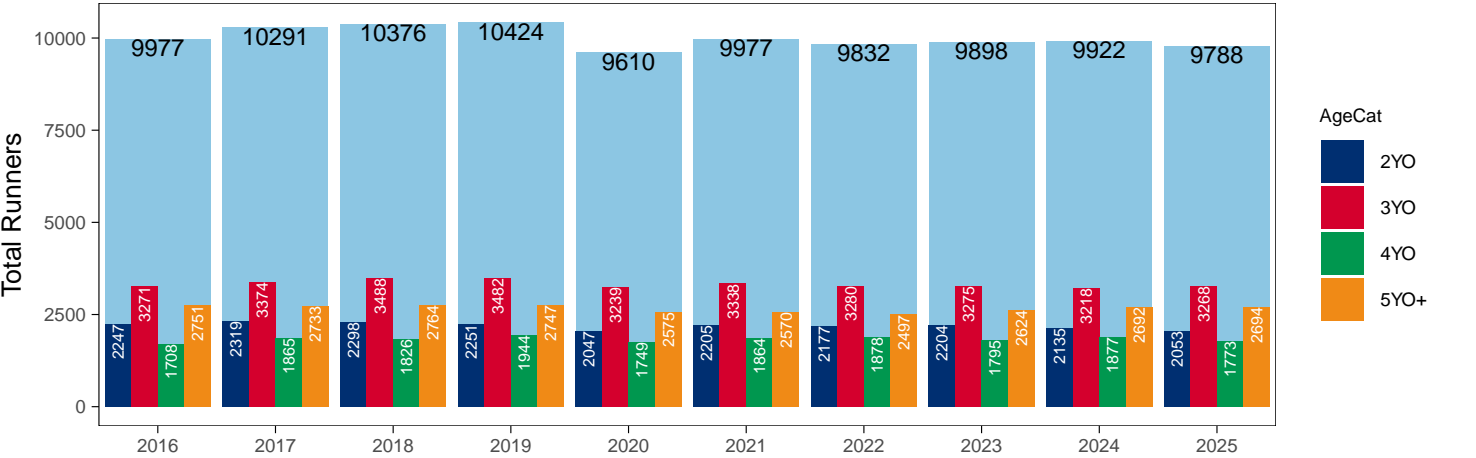
Flat

AgeCat	2016	2017	2018	2019	2020	2021	2022	2023	2024	2025	vs. Last Year	vs. Pre-Covid
2YO	2247	2319	2298	2251	2047	2205	2177	2204	2135	2053	-82 / -3.8%	-198 / -8.8%
3YO	3271	3374	3488	3482	3239	3338	3280	3275	3218	3268	+50 / +1.6%	-214 / -6.1%
4YO	1708	1865	1826	1944	1749	1864	1878	1795	1877	1773	-104 / -5.5%	-171 / -8.8%
5YO+	2751	2733	2764	2747	2575	2570	2497	2624	2692	2694	+2 / +0.1%	-53 / -1.9%
Total	9977	10291	10376	10424	9610	9977	9832	9898	9922	9788	-134 / -1.4%	-636 / -6.1%

'vs. Pre-Covid' is comparison between 2025 and 2019

YTD Individual Flat Runners by Age

Individual Runners in GB Flat Races, shown by Age Category and Total



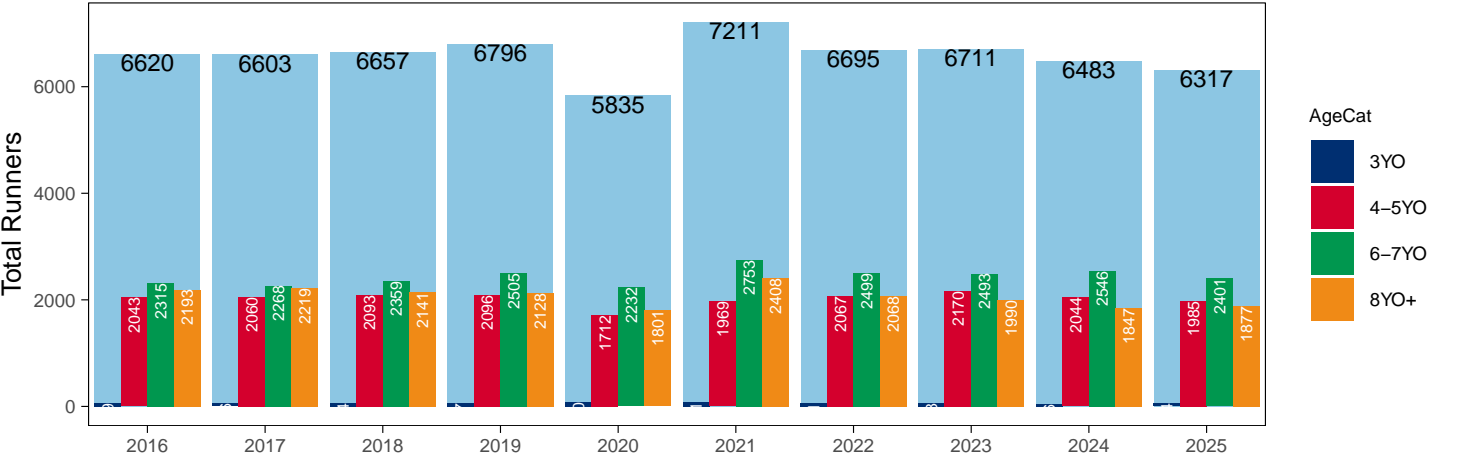
Jump

AgeCat	2016	2017	2018	2019	2020	2021	2022	2023	2024	2025	vs. Last Year	vs. Pre-Covid
3YO	69	56	64	67	90	81	61	58	46	54	+8 / +17.4%	-13 / -19.4%
4-5YO	2043	2060	2093	2096	1712	1969	2067	2170	2044	1985	-59 / -2.9%	-111 / -5.3%
6-7YO	2315	2268	2359	2505	2232	2753	2499	2493	2546	2401	-145 / -5.7%	-104 / -4.2%
8YO+	2193	2219	2141	2128	1801	2408	2068	1990	1847	1877	+30 / +1.6%	-251 / -11.8%
Total	6620	6603	6657	6796	5835	7211	6695	6711	6483	6317	-166 / -2.6%	-479 / -7.0%

'vs. Pre-Covid' is comparison between 2025 and 2019

YTD Individual Jump Runners by Age

Individual Runners in GB Jump Races, shown by Age Category and Total



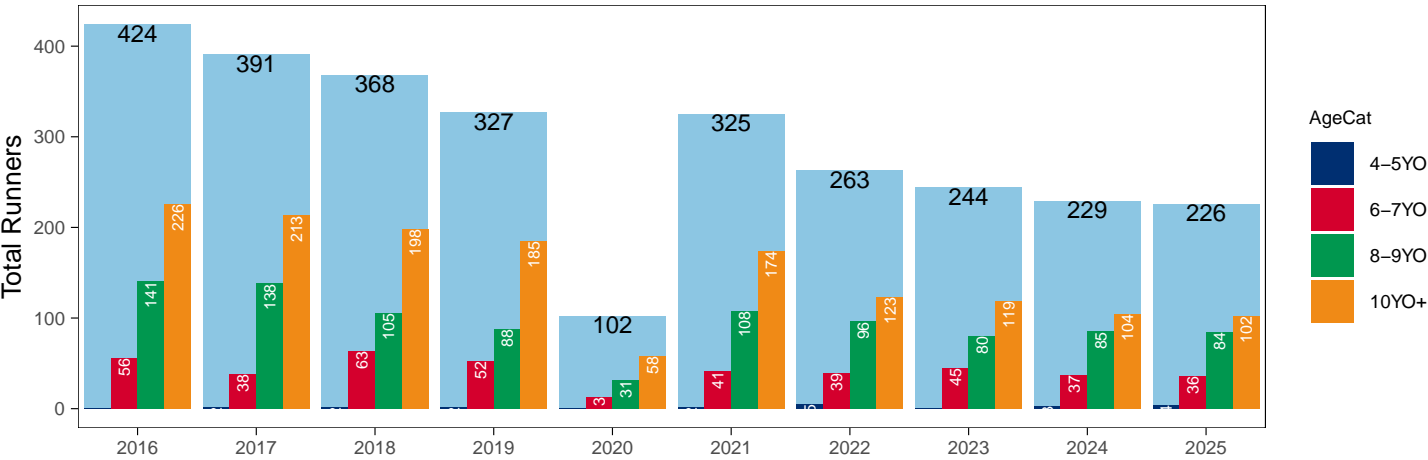
Hunter Chases

AgeCat	2016	2017	2018	2019	2020	2021	2022	2023	2024	2025	vs. Last Year	vs. Pre-Covid
4-5YO	1	2	2	2		2	5		3	4	+1 / +33.3%	+2 / +100.0%
6-7YO	56	38	63	52	13	41	39	45	37	36	-1 / -2.7%	-16 / -30.8%
8-9YO	141	138	105	88	31	108	96	80	85	84	-1 / -1.2%	-4 / -4.5%
10YO+	226	213	198	185	58	174	123	119	104	102	-2 / -1.9%	-83 / -44.9%
Total	424	391	368	327	102	325	263	244	229	226	-3 / -1.3%	-101 / -30.9%

'vs. Pre-Covid' is comparison between 2025 and 2019

YTD Individual Hunter Chase Runners by Age

Individual Runners in GB Hunter Chases shown by Age Category and Total



Year to Date Individual Runners by Country Trained

Code	Country	2016	2017	2018	2019	2020	2021	2022	2023	2024	2025
Flat	GB	8978	9302	9368	9366	8865	9129	9036	9079	9065	8946
	IRE	248	297	340	356	140	204	189	275	312	311
	Other	55	56	51	52	20	26	50	36	53	52
Jump	GB	5491	5559	5661	5727	5008	6256	5658	5669	5525	5306
	IRE	428	400	364	418	231	333	487	544	466	527
	Other	8	9	8	6	10	3	2	2	2	6
Dual	GB	698	639	618	648	586	620	555	509	492	470
	IRE	8	9	16	13	3	4	8	10	13	18
	Other		2								
Overall	GB	15167	15500	15647	15741	14459	16005	15249	15257	15082	14722
	IRE	684	706	720	787	374	541	684	829	791	856
	Other	63	67	59	58	30	29	52	38	55	58

Individual horses may appear under multiple countries.

Year to Date Total Runners by Rating Band

Flat

RatBand	2016	2017	2018	2019	2020	2021	2022	2023	2024	2025
2YO										
Unrated	5,036 (71.1%)	5,292 (74.0%)	5,361 (73.1%)	5,116 (73.6%)	4,068 (72.1%)	5,046 (72.3%)	4,929 (72.8%)	4,932 (73.2%)	4,782 (73.8%)	4,524 (73.5%)
0-50	95 (1.3%)	79 (1.1%)	67 (0.9%)	121 (1.7%)	61 (1.1%)	98 (1.4%)	111 (1.6%)	129 (1.9%)	114 (1.8%)	107 (1.7%)
51-60	279 (3.9%)	276 (3.9%)	302 (4.1%)	300 (4.3%)	212 (3.8%)	228 (3.3%)	275 (4.1%)	269 (4.0%)	270 (4.2%)	255 (4.1%)
61-70	546 (7.7%)	487 (6.8%)	450 (6.1%)	467 (6.7%)	389 (6.9%)	512 (7.3%)	467 (6.9%)	470 (7.0%)	389 (6.0%)	417 (6.8%)
71-80	659 (9.3%)	591 (8.3%)	585 (8.0%)	526 (7.6%)	497 (8.8%)	565 (8.1%)	496 (7.3%)	519 (7.7%)	520 (8.0%)	450 (7.3%)
81-90	313 (4.4%)	243 (3.4%)	333 (4.5%)	244 (3.5%)	248 (4.4%)	321 (4.6%)	301 (4.4%)	265 (3.9%)	251 (3.9%)	248 (4.0%)
91-100	114 (1.6%)	107 (1.5%)	158 (2.2%)	123 (1.8%)	116 (2.1%)	139 (2.0%)	145 (2.1%)	101 (1.5%)	107 (1.7%)	112 (1.8%)
101+	45 (0.6%)	76 (1.1%)	79 (1.1%)	53 (0.8%)	55 (1.0%)	74 (1.1%)	51 (0.8%)	51 (0.8%)	51 (0.8%)	41 (0.7%)
3YO+										
Unrated	3,644 (9.3%)	3,852 (9.5%)	4,520 (11.1%)	4,377 (10.5%)	3,541 (11.8%)	4,408 (10.9%)	4,030 (10.4%)	3,971 (10.0%)	3,965 (9.7%)	4,054 (10.0%)
0-50	3,224 (8.2%)	3,591 (8.9%)	4,153 (10.2%)	5,022 (12.0%)	3,263 (10.9%)	4,723 (11.7%)	4,560 (11.7%)	4,900 (12.3%)	4,889 (12.0%)	4,919 (12.2%)
51-60	6,452 (16.4%)	6,708 (16.6%)	6,423 (15.7%)	7,300 (17.5%)	5,065 (16.9%)	7,127 (17.6%)	6,840 (17.6%)	7,510 (18.8%)	7,768 (19.1%)	7,455 (18.5%)
61-70	8,468 (21.6%)	8,276 (20.5%)	8,244 (20.2%)	8,297 (19.8%)	6,024 (20.0%)	8,412 (20.8%)	8,115 (20.9%)	8,266 (20.7%)	8,815 (21.7%)	8,447 (20.9%)
71-80	7,971 (20.3%)	8,160 (20.2%)	7,772 (19.0%)	7,466 (17.8%)	5,580 (18.6%)	7,317 (18.1%)	7,116 (18.3%)	7,354 (18.4%)	7,408 (18.2%)	7,389 (18.3%)
81-90	5,202 (13.3%)	5,462 (13.5%)	5,284 (12.9%)	4,945 (11.8%)	3,654 (12.2%)	4,556 (11.3%)	4,553 (11.7%)	4,306 (10.8%)	4,516 (11.1%)	4,647 (11.5%)
91-100	2,548 (6.5%)	2,569 (6.4%)	2,762 (6.8%)	2,827 (6.8%)	1,722 (5.7%)	2,350 (5.8%)	2,169 (5.6%)	2,129 (5.3%)	1,942 (4.8%)	2,104 (5.2%)
101+	1,713 (4.4%)	1,799 (4.5%)	1,653 (4.1%)	1,596 (3.8%)	1,198 (4.0%)	1,535 (3.8%)	1,528 (3.9%)	1,435 (3.6%)	1,390 (3.4%)	1,355 (3.4%)

Jump

RatBand	2016	2017	2018	2019	2020	2021	2022	2023	2024	2025
Hurdle										
Unrated	3,112 (25.1%)	3,039 (24.8%)	3,178 (25.8%)	3,154 (26.0%)	2,230 (29.2%)	3,100 (25.1%)	2,831 (23.9%)	3,027 (25.0%)	3,110 (25.9%)	2,516 (22.9%)
0-100	3,367 (27.1%)	3,372 (27.6%)	3,194 (25.9%)	3,181 (26.2%)	1,908 (25.0%)	3,918 (31.7%)	3,965 (33.5%)	4,170 (34.4%)	4,312 (35.9%)	4,095 (37.3%)
101-110	1,957 (15.8%)	1,919 (15.7%)	1,911 (15.5%)	1,836 (15.1%)	1,085 (14.2%)	1,744 (14.1%)	1,873 (15.8%)	1,892 (15.6%)	1,764 (14.7%)	1,711 (15.6%)
111-120	1,800 (14.5%)	1,771 (14.5%)	1,744 (14.1%)	1,757 (14.5%)	1,015 (13.3%)	1,589 (12.9%)	1,522 (12.9%)	1,485 (12.3%)	1,451 (12.1%)	1,391 (12.7%)
121-130	1,168 (9.4%)	1,179 (9.6%)	1,257 (10.2%)	1,263 (10.4%)	744 (9.7%)	1,146 (9.3%)	930 (7.9%)	968 (8.0%)	840 (7.0%)	730 (6.7%)
131-140	673 (5.4%)	674 (5.5%)	728 (5.9%)	636 (5.2%)	444 (5.8%)	576 (4.7%)	482 (4.1%)	370 (3.1%)	347 (2.9%)	379 (3.5%)
141-150	241 (1.9%)	207 (1.7%)	242 (2.0%)	225 (1.9%)	147 (1.9%)	200 (1.6%)	179 (1.5%)	147 (1.2%)	121 (1.0%)	110 (1.0%)
151+	86 (0.7%)	74 (0.6%)	74 (0.6%)	92 (0.8%)	73 (1.0%)	79 (0.6%)	52 (0.4%)	60 (0.5%)	51 (0.4%)	40 (0.4%)
Chase										
Unrated	55 (0.8%)	66 (1.0%)	53 (0.8%)	45 (0.7%)	15 (0.4%)	32 (0.5%)	12 (0.2%)	1 (0.0%)	NA (-)	NA (-)
0-100	1,999 (30.0%)	1,893 (28.1%)	1,935 (29.6%)	1,967 (31.0%)	1,172 (30.0%)	2,171 (32.9%)	2,143 (33.6%)	2,268 (36.8%)	2,230 (38.2%)	2,144 (38.6%)
101-110	1,009 (15.1%)	1,110 (16.5%)	1,041 (15.9%)	1,028 (16.2%)	626 (16.0%)	1,017 (15.4%)	1,021 (16.0%)	1,043 (16.9%)	1,034 (17.7%)	930 (16.8%)
111-120	1,174 (17.6%)	1,162 (17.2%)	1,064 (16.3%)	994 (15.7%)	594 (15.2%)	1,090 (16.5%)	1,087 (17.0%)	1,011 (16.4%)	962 (16.5%)	898 (16.2%)
121-130	1,001 (15.0%)	1,017 (15.1%)	1,092 (16.7%)	949 (15.0%)	632 (16.2%)	1,009 (15.3%)	956 (15.0%)	832 (13.5%)	726 (12.4%)	728 (13.1%)
131-140	825 (12.4%)	893 (13.3%)	781 (11.9%)	783 (12.3%)	484 (12.4%)	712 (10.8%)	672 (10.5%)	586 (9.5%)	481 (8.2%)	443 (8.0%)
141-150	396 (5.9%)	398 (5.9%)	401 (6.1%)	379 (6.0%)	255 (6.5%)	349 (5.3%)	321 (5.0%)	264 (4.3%)	243 (4.2%)	235 (4.2%)
151+	203 (3.0%)	199 (3.0%)	169 (2.6%)	199 (3.1%)	124 (3.2%)	209 (3.2%)	174 (2.7%)	166 (2.7%)	156 (2.7%)	173 (3.1%)

Year to Date Total GB-Trained Runners by Rating Band

Flat

RatBand	2016	2017	2018	2019	2020	2021	2022	2023	2024	2025
2YO										
Unrated	4,968 (70.8%)	5,233 (74.0%)	5,300 (73.1%)	5,027 (73.6%)	4,037 (72.0%)	5,014 (72.3%)	4,898 (72.8%)	4,870 (73.1%)	4,706 (73.6%)	4,456 (73.3%)
0-50	95 (1.4%)	79 (1.1%)	67 (0.9%)	120 (1.8%)	61 (1.1%)	98 (1.4%)	111 (1.6%)	129 (1.9%)	114 (1.8%)	107 (1.8%)
51-60	279 (4.0%)	276 (3.9%)	302 (4.2%)	299 (4.4%)	212 (3.8%)	228 (3.3%)	275 (4.1%)	269 (4.0%)	270 (4.2%)	255 (4.2%)
61-70	546 (7.8%)	487 (6.9%)	450 (6.2%)	467 (6.8%)	389 (6.9%)	512 (7.4%)	467 (6.9%)	470 (7.1%)	389 (6.1%)	417 (6.9%)
71-80	659 (9.4%)	590 (8.3%)	585 (8.1%)	526 (7.7%)	497 (8.9%)	565 (8.1%)	496 (7.4%)	519 (7.8%)	520 (8.1%)	450 (7.4%)
81-90	313 (4.5%)	240 (3.4%)	331 (4.6%)	243 (3.6%)	248 (4.4%)	320 (4.6%)	299 (4.4%)	264 (4.0%)	250 (3.9%)	247 (4.1%)
91-100	114 (1.6%)	104 (1.5%)	153 (2.1%)	113 (1.7%)	114 (2.0%)	133 (1.9%)	139 (2.1%)	96 (1.4%)	104 (1.6%)	112 (1.8%)
101+	45 (0.6%)	65 (0.9%)	58 (0.8%)	38 (0.6%)	50 (0.9%)	67 (1.0%)	43 (0.6%)	46 (0.7%)	42 (0.7%)	37 (0.6%)
3YO+										
Unrated	3,620 (9.3%)	3,827 (9.6%)	4,495 (11.2%)	4,354 (10.6%)	3,532 (11.8%)	4,400 (11.0%)	4,019 (10.4%)	3,953 (10.0%)	3,951 (9.8%)	4,034 (10.1%)
0-50	3,191 (8.2%)	3,520 (8.8%)	4,087 (10.2%)	4,936 (12.0%)	3,245 (10.9%)	4,723 (11.8%)	4,560 (11.8%)	4,870 (12.3%)	4,858 (12.1%)	4,899 (12.3%)
51-60	6,406 (16.5%)	6,622 (16.6%)	6,313 (15.7%)	7,211 (17.5%)	5,031 (16.8%)	7,126 (17.8%)	6,839 (17.7%)	7,481 (18.9%)	7,732 (19.2%)	7,427 (18.6%)
61-70	8,411 (21.7%)	8,222 (20.6%)	8,165 (20.3%)	8,240 (20.0%)	6,016 (20.1%)	8,409 (20.9%)	8,108 (21.0%)	8,250 (20.9%)	8,788 (21.9%)	8,407 (21.1%)
71-80	7,943 (20.5%)	8,103 (20.3%)	7,734 (19.2%)	7,434 (18.0%)	5,571 (18.7%)	7,294 (18.2%)	7,101 (18.4%)	7,324 (18.5%)	7,365 (18.3%)	7,367 (18.5%)
81-90	5,177 (13.3%)	5,433 (13.6%)	5,258 (13.1%)	4,915 (11.9%)	3,647 (12.2%)	4,518 (11.3%)	4,522 (11.7%)	4,272 (10.8%)	4,447 (11.1%)	4,588 (11.5%)
91-100	2,491 (6.4%)	2,512 (6.3%)	2,696 (6.7%)	2,761 (6.7%)	1,713 (5.7%)	2,295 (5.7%)	2,109 (5.5%)	2,058 (5.2%)	1,849 (4.6%)	1,989 (5.0%)
101+	1,545 (4.0%)	1,640 (4.1%)	1,467 (3.6%)	1,418 (3.4%)	1,112 (3.7%)	1,380 (3.4%)	1,381 (3.6%)	1,296 (3.3%)	1,207 (3.0%)	1,198 (3.0%)

Jump

RatBand	2016	2017	2018	2019	2020	2021	2022	2023	2024	2025
Hurdle										
Unrated	3,027 (25.3%)	2,976 (25.1%)	3,120 (26.0%)	3,082 (26.2%)	2,207 (29.5%)	3,054 (25.3%)	2,734 (23.9%)	2,924 (25.0%)	3,030 (26.1%)	2,439 (23.1%)
0-100	3,296 (27.5%)	3,292 (27.7%)	3,136 (26.1%)	3,131 (26.6%)	1,898 (25.4%)	3,892 (32.2%)	3,939 (34.4%)	4,109 (35.2%)	4,264 (36.8%)	4,058 (38.4%)
101-110	1,907 (15.9%)	1,864 (15.7%)	1,879 (15.6%)	1,786 (15.2%)	1,082 (14.5%)	1,706 (14.1%)	1,845 (16.1%)	1,855 (15.9%)	1,737 (15.0%)	1,674 (15.8%)
111-120	1,752 (14.6%)	1,734 (14.6%)	1,712 (14.2%)	1,712 (14.5%)	1,011 (13.5%)	1,564 (12.9%)	1,478 (12.9%)	1,440 (12.3%)	1,416 (12.2%)	1,354 (12.8%)
121-130	1,134 (9.5%)	1,139 (9.6%)	1,223 (10.2%)	1,227 (10.4%)	732 (9.8%)	1,119 (9.3%)	883 (7.7%)	919 (7.9%)	769 (6.6%)	675 (6.4%)
131-140	617 (5.2%)	634 (5.3%)	687 (5.7%)	581 (4.9%)	403 (5.4%)	534 (4.4%)	413 (3.6%)	312 (2.7%)	282 (2.4%)	286 (2.7%)
141-150	179 (1.5%)	173 (1.5%)	199 (1.7%)	181 (1.5%)	106 (1.4%)	162 (1.3%)	120 (1.0%)	89 (0.8%)	77 (0.7%)	64 (0.6%)
151+	65 (0.5%)	57 (0.5%)	59 (0.5%)	67 (0.6%)	47 (0.6%)	59 (0.5%)	30 (0.3%)	33 (0.3%)	21 (0.2%)	15 (0.1%)
Chase										
Unrated	55 (0.9%)	63 (1.0%)	53 (0.8%)	44 (0.7%)	15 (0.4%)	32 (0.5%)	11 (0.2%)	1 (0.0%)	NA (-)	NA (-)
0-100	1,951 (30.5%)	1,838 (28.3%)	1,908 (30.0%)	1,944 (31.6%)	1,169 (30.6%)	2,167 (33.6%)	2,138 (34.7%)	2,244 (38.0%)	2,217 (39.5%)	2,129 (40.5%)
101-110	975 (15.2%)	1,088 (16.8%)	1,032 (16.2%)	1,021 (16.6%)	624 (16.3%)	1,005 (15.6%)	1,010 (16.4%)	1,027 (17.4%)	1,026 (18.3%)	917 (17.4%)
111-120	1,149 (17.9%)	1,138 (17.6%)	1,052 (16.6%)	982 (16.0%)	589 (15.4%)	1,083 (16.8%)	1,069 (17.3%)	987 (16.7%)	948 (16.9%)	878 (16.7%)
121-130	986 (15.4%)	982 (15.1%)	1,063 (16.7%)	924 (15.0%)	630 (16.5%)	998 (15.5%)	919 (14.9%)	806 (13.7%)	704 (12.5%)	695 (13.2%)
131-140	781 (12.2%)	854 (13.2%)	756 (11.9%)	752 (12.2%)	469 (12.3%)	702 (10.9%)	633 (10.3%)	538 (9.1%)	448 (8.0%)	368 (7.0%)
141-150	347 (5.4%)	354 (5.5%)	363 (5.7%)	337 (5.5%)	231 (6.0%)	308 (4.8%)	273 (4.4%)	202 (3.4%)	176 (3.1%)	178 (3.4%)
151+	160 (2.5%)	167 (2.6%)	129 (2.0%)	150 (2.4%)	95 (2.5%)	163 (2.5%)	117 (1.9%)	97 (1.6%)	95 (1.7%)	98 (1.9%)

Frequency of Runs

Year to Date Average Runs per Horse

Code	2016	2017	2018	2019	2020	2021	2022	2023	2024	2025
Flat	4.72	4.70	4.72	4.76	3.78	4.85	4.73	4.78	4.82	4.80
Jump	3.13	3.15	3.13	2.96	2.16	2.97	2.96	2.98	2.98	2.84
Dual Overall	6.74	6.52	6.28	6.43	4.93	6.30	6.23	6.25	6.31	6.66
Dual (Flat)	3.62	3.52	3.35	3.48	2.69	3.32	3.22	3.38	3.52	3.89
Dual (Jump)	3.12	3.00	2.93	2.95	2.24	2.98	3.01	2.87	2.79	2.78
All	4.22	4.20	4.20	4.16	3.25	4.15	4.10	4.14	4.18	4.13

Year to Date Proportion of Horses by Count of Runs

Runs	2016	2017	2018	2019	2020	2021	2022	2023	2024	2025
Flat										
1	1,564 (15.7%)	1,631 (15.8%)	1,636 (15.8%)	1,682 (16.1%)	1,790 (18.6%)	1,477 (14.8%)	1,566 (15.9%)	1,519 (15.3%)	1,502 (15.1%)	1,522 (15.5%)
2	1,389 (13.9%)	1,434 (13.9%)	1,511 (14.6%)	1,507 (14.5%)	1,789 (18.6%)	1,345 (13.5%)	1,348 (13.7%)	1,371 (13.9%)	1,393 (14.0%)	1,350 (13.8%)
3	1,367 (13.7%)	1,494 (14.5%)	1,473 (14.2%)	1,395 (13.4%)	1,618 (16.8%)	1,377 (13.8%)	1,363 (13.9%)	1,364 (13.8%)	1,371 (13.8%)	1,371 (14.0%)
4	1,239 (12.4%)	1,247 (12.1%)	1,243 (12.0%)	1,255 (12.0%)	1,377 (14.3%)	1,282 (12.8%)	1,266 (12.9%)	1,186 (12.0%)	1,238 (12.5%)	1,173 (12.0%)
5+	4,418 (44.3%)	4,485 (43.6%)	4,513 (43.5%)	4,585 (44.0%)	3,036 (31.6%)	4,496 (45.1%)	4,289 (43.6%)	4,458 (45.0%)	4,418 (44.5%)	4,372 (44.7%)
Jump										
1	1,650 (24.9%)	1,669 (25.3%)	1,641 (24.7%)	1,835 (27.0%)	2,173 (37.2%)	1,862 (25.8%)	1,837 (27.4%)	1,803 (26.9%)	1,641 (25.3%)	1,795 (28.4%)
2	1,411 (21.3%)	1,360 (20.6%)	1,372 (20.6%)	1,605 (23.6%)	1,826 (31.3%)	1,708 (23.7%)	1,483 (22.2%)	1,472 (21.9%)	1,433 (22.1%)	1,536 (24.3%)
3	1,205 (18.2%)	1,232 (18.7%)	1,242 (18.7%)	1,211 (17.8%)	1,047 (17.9%)	1,399 (19.4%)	1,259 (18.8%)	1,284 (19.1%)	1,260 (19.4%)	1,215 (19.2%)
4	921 (13.9%)	931 (14.1%)	981 (14.7%)	914 (13.4%)	456 (7.8%)	922 (12.8%)	910 (13.6%)	894 (13.3%)	986 (15.2%)	723 (11.4%)
5+	1,433 (21.6%)	1,411 (21.4%)	1,421 (21.3%)	1,231 (18.1%)	333 (5.7%)	1,320 (18.3%)	1,206 (18.0%)	1,258 (18.7%)	1,163 (17.9%)	1,048 (16.6%)
All Races										
1	2,819 (17.7%)	2,915 (17.9%)	2,909 (17.7%)	3,145 (19.0%)	3,520 (23.7%)	2,962 (17.9%)	3,060 (19.2%)	2,997 (18.6%)	2,850 (17.9%)	3,033 (19.4%)
2	2,564 (16.1%)	2,596 (16.0%)	2,658 (16.2%)	2,876 (17.4%)	3,394 (22.8%)	2,861 (17.3%)	2,644 (16.6%)	2,703 (16.8%)	2,654 (16.7%)	2,711 (17.4%)
3	2,403 (15.1%)	2,573 (15.8%)	2,578 (15.7%)	2,455 (14.8%)	2,569 (17.3%)	2,629 (15.9%)	2,513 (15.7%)	2,518 (15.7%)	2,522 (15.9%)	2,492 (16.0%)
4	2,090 (13.2%)	2,100 (12.9%)	2,160 (13.2%)	2,112 (12.8%)	1,838 (12.4%)	2,129 (12.9%)	2,129 (13.3%)	2,019 (12.6%)	2,165 (13.6%)	1,849 (11.8%)
5+	6,007 (37.8%)	6,057 (37.3%)	6,093 (37.2%)	5,971 (36.1%)	3,534 (23.8%)	5,981 (36.1%)	5,616 (35.2%)	5,849 (36.4%)	5,709 (35.9%)	5,531 (35.4%)

Year to Date Median Days Between Runs

Code/RatBand	2016	2017	2018	2019	2020	2021	2022	2023	2024	2025
All Runners	24	24	24	24	25	24	25	25	25	25
Flat										
Unrated	22	22	23	23	21	23	24	23	24	24
0-50	20	21	20	21	20	20	21	19	18	18
51-60	19	20	19	20	20	20	20	19	20	20
61-70	20	21	20	21	21	20	21	21	21	21
71-80	21	22	21	21	22	21	22	22	22	22
81-90	22	22	22	22	23	22	23	24	24	25
91-100	24	25	24	23	24	25	27	27	28	28
101+	28	29	28	28	28	29	32	33	33	34
All Flat Runners	21	21	21	21	22	21	22	22	22	22
Jump										
Unrated	35	33	36	35	37	38	35	38	39	39
0-100	26	26	27	27	32	29	27	29	30	30
101-110	29	27	29	29	31	30	29	30	32	31
111-120	29	29	30	30	34	32	30	32	32	32
121-130	31	29	30	32	34	32	31	34	35	34
131-140	33	33	33	33	37	35	35	36	35	35
141-150	34	35	38	36	41	40	36	39	36	40
151+	38	34	38	39	42	40	40	42	41	39
All Jump Runners	30	29	31	30	35	32	30	32	33	33

Horses Population by Gender

September 2025 Horses in Training Snapshot by Gender versus Previous Years

All Horses

Sex	2016	2017	2018	2019	2020	2021	2022	2023	2024	2025
Colt/Entire	2,111 (14.8%)	2,150 (14.5%)	2,125 (13.8%)	2,035 (13.5%)	2,050 (12.9%)	1,849 (12.2%)	1,807 (12.0%)	1,857 (12.5%)	1,695 (11.6%)	1,635 (11.4%)
Gelding	7,880 (55.2%)	8,149 (54.9%)	8,509 (55.2%)	8,358 (55.4%)	8,930 (56.4%)	8,636 (56.9%)	8,529 (56.5%)	8,258 (55.7%)	8,246 (56.5%)	8,076 (56.1%)
Filly/Mare	4,278 (30.0%)	4,549 (30.6%)	4,770 (31.0%)	4,679 (31.0%)	4,863 (30.7%)	4,680 (30.9%)	4,754 (31.5%)	4,705 (31.7%)	4,642 (31.8%)	4,679 (32.5%)
Rig	5 (0.0%)	4 (0.0%)	2 (0.0%)	3 (0.0%)	2 (0.0%)	1 (0.0%)	1 (0.0%)	0 (0.0%)	0 (0.0%)	1 (0.0%)
Total	14,274 (100.0%)	14,852 (100.0%)	15,406 (100.0%)	15,075 (100.0%)	15,845 (100.0%)	15,166 (100.0%)	15,091 (100.0%)	14,820 (100.0%)	14,583 (100.0%)	14,391 (100.0%)

Flat (including Dual)

Sex	2016	2017	2018	2019	2020	2021	2022	2023	2024	2025
Colt/Entire	2,061 (21.9%)	2,092 (21.0%)	2,085 (20.7%)	1,986 (20.2%)	1,989 (20.0%)	1,783 (18.7%)	1,728 (18.1%)	1,801 (19.1%)	1,637 (17.5%)	1,575 (16.5%)
Gelding	3,963 (42.1%)	4,292 (43.1%)	4,344 (43.1%)	4,282 (43.6%)	4,384 (44.2%)	4,276 (44.9%)	4,290 (44.9%)	4,172 (44.3%)	4,338 (46.4%)	4,475 (46.9%)
Filly/Mare	3,383 (35.9%)	3,577 (35.9%)	3,644 (36.2%)	3,546 (36.1%)	3,547 (35.8%)	3,457 (36.3%)	3,531 (37.0%)	3,439 (36.5%)	3,384 (36.2%)	3,484 (36.5%)
Rig	5 (0.1%)	4 (0.0%)	2 (0.0%)	2 (0.0%)	1 (0.0%)	0 (0.0%)	0 (0.0%)	0 (0.0%)	0 (0.0%)	0 (0.0%)
Total	9,412 (100.0%)	9,965 (100.0%)	10,075 (100.0%)	9,816 (100.0%)	9,921 (100.0%)	9,516 (100.0%)	9,549 (100.0%)	9,412 (100.0%)	9,359 (100.0%)	9,534 (100.0%)

Jump (including Dual)

Sex	2016	2017	2018	2019	2020	2021	2022	2023	2024	2025
Colt/Entire	28 (0.5%)	27 (0.5%)	26 (0.4%)	25 (0.4%)	35 (0.5%)	38 (0.6%)	37 (0.6%)	32 (0.6%)	28 (0.5%)	39 (0.7%)
Gelding	4,318 (81.3%)	4,388 (79.3%)	4,544 (78.4%)	4,411 (78.0%)	4,999 (77.6%)	4,711 (77.9%)	4,590 (77.3%)	4,398 (76.4%)	4,219 (75.7%)	3,992 (74.7%)
Filly/Mare	966 (18.2%)	1,121 (20.2%)	1,224 (21.1%)	1,221 (21.6%)	1,403 (21.8%)	1,296 (21.4%)	1,310 (22.1%)	1,329 (23.1%)	1,327 (23.8%)	1,314 (24.6%)
Rig	0 (0.0%)	0 (0.0%)	0 (0.0%)	1 (0.0%)	1 (0.0%)	1 (0.0%)	1 (0.0%)	0 (0.0%)	0 (0.0%)	1 (0.0%)
Total	5,312 (100.0%)	5,536 (100.0%)	5,794 (100.0%)	5,658 (100.0%)	6,438 (100.0%)	6,046 (100.0%)	5,938 (100.0%)	5,759 (100.0%)	5,574 (100.0%)	5,346 (100.0%)

Year to Date Total Runners by Gender

Sex	2016	2017	2018	2019	2020	2021	2022	2023	2024	2025
All Races										
Colt/Entire	7,208 (10.8%)	7,293 (10.7%)	7,586 (11.0%)	6,978 (10.1%)	5,554 (11.5%)	6,700 (9.7%)	6,016 (9.2%)	6,059 (9.1%)	5,513 (8.3%)	5,231 (8.1%)
Gelding	41,395 (61.7%)	42,263 (61.9%)	41,921 (60.9%)	41,849 (60.8%)	28,611 (59.2%)	42,172 (61.3%)	40,374 (61.6%)	40,742 (61.2%)	41,613 (62.6%)	40,196 (62.4%)
Filly/Mare	18,428 (27.5%)	18,682 (27.4%)	19,313 (28.1%)	20,039 (29.1%)	14,170 (29.3%)	19,923 (29.0%)	19,126 (29.2%)	19,735 (29.7%)	19,305 (29.1%)	18,998 (29.5%)
Rig	18 (0.0%)	10 (0.0%)	12 (0.0%)	16 (0.0%)	4 (0.0%)	7 (0.0%)	8 (0.0%)	4 (0.0%)	0 (0.0%)	2 (0.0%)
Flat										
Colt/Entire	7,175 (15.5%)	7,254 (15.2%)	7,559 (15.7%)	6,947 (14.2%)	5,534 (15.5%)	6,657 (14.0%)	5,993 (13.1%)	6,023 (12.9%)	5,495 (11.6%)	5,212 (11.2%)
Gelding	24,373 (52.6%)	25,345 (53.3%)	25,448 (52.9%)	26,068 (53.4%)	18,702 (52.4%)	25,452 (53.7%)	24,796 (54.3%)	25,282 (54.2%)	26,832 (56.9%)	26,614 (57.2%)
Filly/Mare	14,743 (31.8%)	14,959 (31.4%)	15,127 (31.4%)	15,754 (32.3%)	11,456 (32.1%)	15,299 (32.3%)	14,897 (32.6%)	15,302 (32.8%)	14,850 (31.5%)	14,698 (31.6%)
Rig	18 (0.0%)	10 (0.0%)	12 (0.0%)	11 (0.0%)	1 (0.0%)	3 (0.0%)	0 (0.0%)	0 (0.0%)	0 (0.0%)	0 (0.0%)
All Jump										
Colt/Entire	33 (0.2%)	39 (0.2%)	27 (0.1%)	31 (0.2%)	20 (0.2%)	43 (0.2%)	23 (0.1%)	36 (0.2%)	18 (0.1%)	19 (0.1%)
Gelding	17,022 (82.1%)	16,918 (81.8%)	16,473 (79.6%)	15,781 (78.5%)	9,909 (78.4%)	16,720 (78.2%)	15,578 (78.5%)	15,460 (77.6%)	14,781 (76.8%)	13,582 (75.9%)
Filly/Mare	3,685 (17.8%)	3,723 (18.0%)	4,186 (20.2%)	4,285 (21.3%)	2,714 (21.5%)	4,624 (21.6%)	4,229 (21.3%)	4,433 (22.2%)	4,455 (23.1%)	4,300 (24.0%)
Rig	0 (0.0%)	0 (0.0%)	0 (0.0%)	5 (0.0%)	3 (0.0%)	4 (0.0%)	8 (0.0%)	4 (0.0%)	0 (0.0%)	2 (0.0%)
Chase										
Colt/Entire	1 (0.0%)	0 (0.0%)	0 (0.0%)	0 (0.0%)	0 (0.0%)	0 (0.0%)	0 (0.0%)	0 (0.0%)	0 (0.0%)	0 (0.0%)
Gelding	6,190 (92.9%)	6,244 (92.7%)	5,930 (90.7%)	5,707 (90.0%)	3,521 (90.2%)	5,893 (89.4%)	5,706 (89.4%)	5,510 (89.3%)	5,225 (89.6%)	4,843 (87.2%)
Filly/Mare	471 (7.1%)	494 (7.3%)	606 (9.3%)	634 (10.0%)	378 (9.7%)	692 (10.5%)	672 (10.5%)	658 (10.7%)	607 (10.4%)	708 (12.8%)
Rig	0 (0.0%)	0 (0.0%)	0 (0.0%)	3 (0.0%)	3 (0.1%)	4 (0.1%)	8 (0.1%)	3 (0.0%)	0 (0.0%)	0 (0.0%)
Hurdle										
Colt/Entire	29 (0.2%)	32 (0.3%)	19 (0.2%)	22 (0.2%)	9 (0.1%)	37 (0.3%)	14 (0.1%)	27 (0.2%)	12 (0.1%)	9 (0.1%)
Gelding	9,760 (78.7%)	9,579 (78.3%)	9,420 (76.4%)	9,092 (74.9%)	5,685 (74.4%)	9,157 (74.1%)	8,892 (75.1%)	8,978 (74.1%)	8,680 (72.4%)	7,912 (72.1%)
Filly/Mare	2,615 (21.1%)	2,624 (21.4%)	2,889 (23.4%)	3,028 (24.9%)	1,952 (25.5%)	3,158 (25.6%)	2,928 (24.7%)	3,113 (25.7%)	3,304 (27.5%)	3,051 (27.8%)
Rig	0 (0.0%)	0 (0.0%)	0 (0.0%)	2 (0.0%)	0 (0.0%)	0 (0.0%)	0 (0.0%)	1 (0.0%)	0 (0.0%)	0 (0.0%)
NHF										
Colt/Entire	3 (0.2%)	7 (0.4%)	8 (0.4%)	9 (0.6%)	11 (1.0%)	6 (0.2%)	9 (0.6%)	9 (0.5%)	6 (0.4%)	10 (0.7%)
Gelding	1,072 (64.0%)	1,095 (64.1%)	1,123 (61.6%)	982 (60.8%)	703 (64.0%)	1,670 (68.2%)	980 (60.6%)	972 (59.2%)	876 (61.4%)	827 (59.9%)
Filly/Mare	599 (35.8%)	605 (35.4%)	691 (37.9%)	623 (38.6%)	384 (35.0%)	774 (31.6%)	629 (38.9%)	662 (40.3%)	544 (38.1%)	541 (39.2%)
Rig	0 (0.0%)	0 (0.0%)	0 (0.0%)	0 (0.0%)	0 (0.0%)	0 (0.0%)	0 (0.0%)	0 (0.0%)	0 (0.0%)	2 (0.1%)
Hunter										
Gelding	720 (94.2%)	709 (94.9%)	603 (93.3%)	522 (92.7%)	142 (97.3%)	557 (93.5%)	429 (94.9%)	408 (93.6%)	379 (92.9%)	354 (91.9%)
Filly/Mare	44 (5.8%)	38 (5.1%)	43 (6.7%)	41 (7.3%)	4 (2.7%)	39 (6.5%)	23 (5.1%)	28 (6.4%)	29 (7.1%)	31 (8.1%)

Year to Date Individual Runners by Gender

Sex	2016	2017	2018	2019	2020	2021	2022	2023	2024	2025
All Races										
Male	11,203 (70.5%)	11,438 (70.4%)	11,490 (70.1%)	11,516 (69.5%)	10,282 (69.2%)	11,508 (69.5%)	11,032 (69.1%)	10,998 (68.4%)	10,938 (68.8%)	10,662 (68.3%)
Female	4,680 (29.5%)	4,803 (29.6%)	4,908 (29.9%)	5,043 (30.5%)	4,573 (30.8%)	5,054 (30.5%)	4,930 (30.9%)	5,088 (31.6%)	4,962 (31.2%)	4,954 (31.7%)
Flat										
Male	6,436 (64.5%)	6,669 (64.8%)	6,770 (65.2%)	6,743 (64.7%)	6,209 (64.6%)	6,399 (64.1%)	6,279 (63.9%)	6,261 (63.3%)	6,399 (64.5%)	6,265 (64.0%)
Female	3,541 (35.5%)	3,622 (35.2%)	3,606 (34.8%)	3,681 (35.3%)	3,401 (35.4%)	3,578 (35.9%)	3,553 (36.1%)	3,637 (36.7%)	3,523 (35.5%)	3,523 (36.0%)
All Jump										
Male	5,353 (80.9%)	5,295 (80.2%)	5,236 (78.7%)	5,299 (78.0%)	4,543 (77.9%)	5,602 (77.7%)	5,190 (77.5%)	5,146 (76.7%)	4,932 (76.1%)	4,770 (75.5%)
Female	1,267 (19.1%)	1,308 (19.8%)	1,421 (21.3%)	1,497 (22.0%)	1,292 (22.1%)	1,609 (22.3%)	1,505 (22.5%)	1,565 (23.3%)	1,551 (23.9%)	1,547 (24.5%)
Chase										
Male	2,071 (92.5%)	2,096 (91.6%)	2,021 (89.9%)	2,022 (89.1%)	1,708 (89.1%)	2,133 (88.4%)	1,983 (88.4%)	1,918 (88.0%)	1,852 (88.1%)	1,778 (86.3%)
Female	168 (7.5%)	193 (8.4%)	228 (10.1%)	247 (10.9%)	208 (10.9%)	279 (11.6%)	260 (11.6%)	262 (12.0%)	249 (11.9%)	283 (13.7%)
Hurdle										
Male	3,484 (79.9%)	3,367 (78.4%)	3,396 (77.1%)	3,423 (76.4%)	2,842 (75.2%)	3,520 (75.2%)	3,331 (76.3%)	3,284 (75.0%)	3,226 (73.3%)	3,027 (72.9%)
Female	874 (20.1%)	928 (21.6%)	1,007 (22.9%)	1,059 (23.6%)	936 (24.8%)	1,160 (24.8%)	1,036 (23.7%)	1,095 (25.0%)	1,177 (26.7%)	1,126 (27.1%)
NHF										
Male	742 (65.5%)	739 (65.9%)	796 (65.2%)	694 (63.4%)	564 (65.8%)	1,194 (69.8%)	691 (62.8%)	697 (62.1%)	614 (63.5%)	607 (62.4%)
Female	390 (34.5%)	382 (34.1%)	424 (34.8%)	400 (36.6%)	293 (34.2%)	517 (30.2%)	410 (37.2%)	425 (37.9%)	353 (36.5%)	365 (37.6%)
Hunter										
Male	395 (93.2%)	366 (93.6%)	339 (92.1%)	301 (92.0%)	98 (96.1%)	299 (92.0%)	243 (92.4%)	228 (93.4%)	212 (92.6%)	207 (91.6%)
Female	29 (6.8%)	25 (6.4%)	29 (7.9%)	26 (8.0%)	4 (3.9%)	26 (8.0%)	20 (7.6%)	16 (6.6%)	17 (7.4%)	19 (8.4%)

Horses Population by Breeding

September 2025 Horses in Training Snapshot by Breeding versus Previous Years

Flat (including Dual)

Bred	Sex	2016	2017	2018	2019	2020	2021	2022	2023	2024	2025
GB	Male	2,810 (29.9%)	2,998 (30.1%)	3,013 (29.9%)	2,986 (30.4%)	3,020 (30.4%)	2,840 (29.8%)	2,803 (29.4%)	2,755 (29.3%)	2,738 (29.3%)	2,788 (29.2%)
	Female	1,901 (20.2%)	1,983 (19.9%)	2,011 (20.0%)	1,973 (20.1%)	1,979 (19.9%)	1,916 (20.1%)	1,930 (20.2%)	1,884 (20.0%)	1,853 (19.8%)	1,952 (20.5%)
	Subtotal	4,711 (50.1%)	4,981 (50.0%)	5,024 (49.9%)	4,959 (50.5%)	4,999 (50.4%)	4,756 (50.0%)	4,733 (49.6%)	4,639 (49.3%)	4,591 (49.1%)	4,740 (49.7%)
IRE	Male	2,608 (27.7%)	2,698 (27.1%)	2,734 (27.1%)	2,643 (26.9%)	2,728 (27.5%)	2,673 (28.1%)	2,756 (28.9%)	2,755 (29.3%)	2,772 (29.6%)	2,808 (29.5%)
	Female	1,250 (13.3%)	1,337 (13.4%)	1,343 (13.3%)	1,316 (13.4%)	1,328 (13.4%)	1,339 (14.1%)	1,425 (14.9%)	1,386 (14.7%)	1,369 (14.6%)	1,356 (14.2%)
	Subtotal	3,858 (41.0%)	4,035 (40.5%)	4,077 (40.5%)	3,959 (40.3%)	4,056 (40.9%)	4,012 (42.2%)	4,181 (43.8%)	4,141 (44.0%)	4,141 (44.2%)	4,164 (43.7%)
FR	Male	213 (2.3%)	276 (2.8%)	300 (3.0%)	301 (3.1%)	313 (3.2%)	308 (3.2%)	288 (3.0%)	312 (3.3%)	326 (3.5%)	319 (3.3%)
	Female	81 (0.9%)	105 (1.1%)	119 (1.2%)	115 (1.2%)	122 (1.2%)	115 (1.2%)	111 (1.2%)	114 (1.2%)	110 (1.2%)	120 (1.3%)
	Subtotal	294 (3.1%)	381 (3.8%)	419 (4.2%)	416 (4.2%)	435 (4.4%)	423 (4.4%)	399 (4.2%)	426 (4.5%)	436 (4.7%)	439 (4.6%)
USA	Male	319 (3.4%)	323 (3.2%)	307 (3.0%)	270 (2.8%)	230 (2.3%)	174 (1.8%)	114 (1.2%)	102 (1.1%)	83 (0.9%)	65 (0.7%)
	Female	128 (1.4%)	126 (1.3%)	144 (1.4%)	109 (1.1%)	88 (0.9%)	63 (0.7%)	46 (0.5%)	36 (0.4%)	31 (0.3%)	36 (0.4%)
	Subtotal	447 (4.7%)	449 (4.5%)	451 (4.5%)	379 (3.9%)	318 (3.2%)	237 (2.5%)	160 (1.7%)	138 (1.5%)	114 (1.2%)	101 (1.1%)
GNY	Male	54 (0.6%)	66 (0.7%)	53 (0.5%)	53 (0.5%)	62 (0.6%)	53 (0.6%)	43 (0.5%)	40 (0.4%)	41 (0.4%)	55 (0.6%)
	Female	9 (0.1%)	13 (0.1%)	15 (0.1%)	21 (0.2%)	24 (0.2%)	21 (0.2%)	15 (0.2%)	16 (0.2%)	17 (0.2%)	15 (0.2%)
	Subtotal	63 (0.7%)	79 (0.8%)	68 (0.7%)	74 (0.8%)	86 (0.9%)	74 (0.8%)	58 (0.6%)	56 (0.6%)	58 (0.6%)	70 (0.7%)
Other	Male	25 (0.3%)	27 (0.3%)	24 (0.2%)	17 (0.2%)	21 (0.2%)	11 (0.1%)	14 (0.1%)	9 (0.1%)	15 (0.2%)	15 (0.2%)
	Female	14 (0.1%)	13 (0.1%)	12 (0.1%)	12 (0.1%)	6 (0.1%)	3 (0.0%)	4 (0.0%)	3 (0.0%)	4 (0.0%)	5 (0.1%)
	Subtotal	39 (0.4%)	40 (0.4%)	36 (0.4%)	29 (0.3%)	27 (0.3%)	14 (0.1%)	18 (0.2%)	12 (0.1%)	19 (0.2%)	20 (0.2%)

Jump (including Dual)

Bred	Sex	2016	2017	2018	2019	2020	2021	2022	2023	2024	2025
GB	Male	1,199 (22.6%)	1,208 (21.8%)	1,215 (21.0%)	1,098 (19.4%)	1,274 (19.8%)	1,165 (19.3%)	1,143 (19.2%)	1,069 (18.6%)	1,041 (18.7%)	990 (18.5%)
	Female	541 (10.2%)	584 (10.5%)	593 (10.2%)	544 (9.6%)	626 (9.7%)	598 (9.9%)	623 (10.5%)	604 (10.5%)	564 (10.1%)	560 (10.5%)
	Subtotal	1,740 (32.8%)	1,792 (32.4%)	1,808 (31.2%)	1,642 (29.0%)	1,900 (29.5%)	1,763 (29.2%)	1,766 (29.7%)	1,673 (29.1%)	1,605 (28.8%)	1,550 (29.0%)
IRE	Male	2,403 (45.2%)	2,472 (44.7%)	2,533 (43.7%)	2,515 (44.5%)	2,774 (43.1%)	2,604 (43.1%)	2,456 (41.4%)	2,311 (40.1%)	2,230 (40.0%)	2,080 (38.9%)
	Female	377 (7.1%)	460 (8.3%)	531 (9.2%)	564 (10.0%)	641 (10.0%)	577 (9.5%)	550 (9.3%)	587 (10.2%)	607 (10.9%)	582 (10.9%)
	Subtotal	2,780 (52.3%)	2,932 (53.0%)	3,064 (52.9%)	3,079 (54.4%)	3,415 (53.0%)	3,181 (52.6%)	3,006 (50.6%)	2,898 (50.3%)	2,837 (50.9%)	2,662 (49.8%)
FR	Male	639 (12.0%)	634 (11.5%)	735 (12.7%)	738 (13.0%)	888 (13.8%)	883 (14.6%)	935 (15.7%)	965 (16.8%)	916 (16.4%)	912 (17.1%)
	Female	41 (0.8%)	69 (1.2%)	94 (1.6%)	106 (1.9%)	129 (2.0%)	113 (1.9%)	127 (2.1%)	135 (2.3%)	145 (2.6%)	160 (3.0%)
	Subtotal	680 (12.8%)	703 (12.7%)	829 (14.3%)	844 (14.9%)	1,017 (15.8%)	996 (16.5%)	1,062 (17.9%)	1,100 (19.1%)	1,061 (19.0%)	1,072 (20.1%)
USA	Male	47 (0.9%)	40 (0.7%)	38 (0.7%)	30 (0.5%)	31 (0.5%)	32 (0.5%)	26 (0.4%)	16 (0.3%)	7 (0.1%)	7 (0.1%)
	Female	1 (0.0%)	2 (0.0%)	4 (0.1%)	2 (0.0%)	1 (0.0%)	NA (-)	NA (-)	1 (0.0%)	1 (0.0%)	3 (0.1%)
	Subtotal	48 (0.9%)	42 (0.8%)	42 (0.7%)	32 (0.6%)	32 (0.5%)	32 (0.5%)	26 (0.4%)	17 (0.3%)	8 (0.1%)	10 (0.2%)
GNY	Male	53 (1.0%)	52 (0.9%)	43 (0.7%)	53 (0.9%)	64 (1.0%)	63 (1.0%)	65 (1.1%)	65 (1.1%)	50 (0.9%)	41 (0.8%)
	Female	4 (0.1%)	3 (0.1%)	1 (0.0%)	5 (0.1%)	5 (0.1%)	6 (0.1%)	8 (0.1%)	1 (0.0%)	8 (0.1%)	7 (0.1%)
	Subtotal	57 (1.1%)	55 (1.0%)	44 (0.8%)	58 (1.0%)	69 (1.1%)	69 (1.1%)	73 (1.2%)	66 (1.1%)	58 (1.0%)	48 (0.9%)
Other	Male	5 (0.1%)	9 (0.2%)	6 (0.1%)	3 (0.1%)	4 (0.1%)	3 (0.0%)	3 (0.1%)	4 (0.1%)	3 (0.1%)	2 (0.0%)
	Female	2 (0.0%)	3 (0.1%)	1 (0.0%)	NA (-)	1 (0.0%)	2 (0.0%)	2 (0.0%)	1 (0.0%)	2 (0.0%)	2 (0.0%)
	Subtotal	7 (0.1%)	12 (0.2%)	7 (0.1%)	3 (0.1%)	5 (0.1%)	5 (0.1%)	5 (0.1%)	5 (0.1%)	5 (0.1%)	4 (0.1%)

Year to Date Total Runners by Breeding

Flat

Bred	Sex	2016	2017	2018	2019	2020	2021	2022	2023	2024	2025
GB	Male	14,824 (32.0%)	15,369 (32.3%)	15,285 (31.7%)	15,102 (31.0%)	11,489 (32.2%)	14,806 (31.2%)	14,112 (30.9%)	14,168 (30.4%)	14,499 (30.7%)	14,437 (31.0%)
	Female	8,110 (17.5%)	8,125 (17.1%)	8,257 (17.1%)	8,623 (17.7%)	6,312 (17.7%)	8,507 (17.9%)	8,134 (17.8%)	8,204 (17.6%)	7,876 (16.7%)	7,917 (17.0%)
	Subtotal	22,934 (49.5%)	23,494 (49.4%)	23,542 (48.9%)	23,725 (48.6%)	17,801 (49.9%)	23,313 (49.2%)	22,246 (48.7%)	22,372 (48.0%)	22,375 (47.4%)	22,354 (48.0%)
IRE	Male	14,024 (30.3%)	14,343 (30.2%)	14,747 (30.6%)	14,813 (30.4%)	10,618 (29.7%)	14,689 (31.0%)	14,572 (31.9%)	14,976 (32.1%)	15,560 (33.0%)	15,302 (32.9%)
	Female	5,859 (12.7%)	6,021 (12.7%)	5,973 (12.4%)	6,139 (12.6%)	4,533 (12.7%)	5,962 (12.6%)	6,032 (13.2%)	6,359 (13.6%)	6,330 (13.4%)	6,157 (13.2%)
	Subtotal	19,883 (42.9%)	20,364 (42.8%)	20,720 (43.0%)	20,952 (43.0%)	15,151 (42.4%)	20,651 (43.6%)	20,604 (45.1%)	21,335 (45.8%)	21,890 (46.4%)	21,459 (46.1%)
FR	Male	874 (1.9%)	1,031 (2.2%)	1,187 (2.5%)	1,394 (2.9%)	1,008 (2.8%)	1,326 (2.8%)	1,237 (2.7%)	1,404 (3.0%)	1,542 (3.3%)	1,475 (3.2%)
	Female	307 (0.7%)	318 (0.7%)	384 (0.8%)	440 (0.9%)	321 (0.9%)	457 (1.0%)	429 (0.9%)	498 (1.1%)	434 (0.9%)	389 (0.8%)
	Subtotal	1,181 (2.6%)	1,349 (2.8%)	1,571 (3.3%)	1,834 (3.8%)	1,329 (3.7%)	1,783 (3.8%)	1,666 (3.6%)	1,902 (4.1%)	1,976 (4.2%)	1,864 (4.0%)
USA	Male	1,450 (3.1%)	1,429 (3.0%)	1,413 (2.9%)	1,337 (2.7%)	855 (2.4%)	903 (1.9%)	652 (1.4%)	529 (1.1%)	482 (1.0%)	327 (0.7%)
	Female	359 (0.8%)	406 (0.9%)	413 (0.9%)	410 (0.8%)	212 (0.6%)	258 (0.5%)	203 (0.4%)	185 (0.4%)	141 (0.3%)	140 (0.3%)
	Subtotal	1,809 (3.9%)	1,835 (3.9%)	1,826 (3.8%)	1,747 (3.6%)	1,067 (3.0%)	1,161 (2.4%)	855 (1.9%)	714 (1.5%)	623 (1.3%)	467 (1.0%)
GNY	Male	272 (0.6%)	291 (0.6%)	247 (0.5%)	258 (0.5%)	206 (0.6%)	307 (0.6%)	162 (0.4%)	192 (0.4%)	205 (0.4%)	226 (0.5%)
	Female	54 (0.1%)	38 (0.1%)	62 (0.1%)	90 (0.2%)	66 (0.2%)	98 (0.2%)	78 (0.2%)	45 (0.1%)	43 (0.1%)	72 (0.2%)
	Subtotal	326 (0.7%)	329 (0.7%)	309 (0.6%)	348 (0.7%)	272 (0.8%)	405 (0.9%)	240 (0.5%)	237 (0.5%)	248 (0.5%)	298 (0.6%)
Other	Male	122 (0.3%)	146 (0.3%)	140 (0.3%)	122 (0.3%)	61 (0.2%)	81 (0.2%)	54 (0.1%)	36 (0.1%)	39 (0.1%)	59 (0.1%)
	Female	54 (0.1%)	51 (0.1%)	38 (0.1%)	52 (0.1%)	12 (0.0%)	17 (0.0%)	21 (0.0%)	11 (0.0%)	26 (0.1%)	23 (0.0%)
	Subtotal	176 (0.4%)	197 (0.4%)	178 (0.4%)	174 (0.4%)	73 (0.2%)	98 (0.2%)	75 (0.2%)	47 (0.1%)	65 (0.1%)	82 (0.2%)

Jump

Bred	Sex	2016	2017	2018	2019	2020	2021	2022	2023	2024	2025
GB	Male	4,723 (22.8%)	4,537 (21.9%)	4,379 (21.2%)	4,148 (20.6%)	2,482 (19.6%)	4,098 (19.2%)	3,537 (17.8%)	3,434 (17.2%)	3,441 (17.9%)	3,313 (18.5%)
	Female	1,930 (9.3%)	1,850 (8.9%)	2,017 (9.8%)	1,861 (9.3%)	1,125 (8.9%)	2,047 (9.6%)	1,866 (9.4%)	1,925 (9.7%)	1,824 (9.5%)	1,649 (9.2%)
	Subtotal	6,653 (32.1%)	6,387 (30.9%)	6,396 (30.9%)	6,009 (29.9%)	3,607 (28.5%)	6,145 (28.7%)	5,403 (27.2%)	5,359 (26.9%)	5,265 (27.3%)	4,962 (27.7%)
IRE	Male	9,575 (46.2%)	9,553 (46.2%)	9,271 (44.8%)	8,837 (44.0%)	5,587 (44.2%)	9,284 (43.4%)	8,477 (42.7%)	8,485 (42.6%)	7,981 (41.5%)	7,288 (40.7%)
	Female	1,549 (7.5%)	1,617 (7.8%)	1,909 (9.2%)	2,056 (10.2%)	1,297 (10.3%)	2,084 (9.7%)	1,895 (9.6%)	2,023 (10.1%)	2,206 (11.5%)	2,094 (11.7%)
	Subtotal	11,124 (53.6%)	11,170 (54.0%)	11,180 (54.0%)	10,893 (54.2%)	6,884 (54.4%)	11,368 (53.1%)	10,372 (52.3%)	10,508 (52.7%)	10,187 (52.9%)	9,382 (52.4%)
FR	Male	2,305 (11.1%)	2,477 (12.0%)	2,473 (12.0%)	2,444 (12.2%)	1,632 (12.9%)	2,965 (13.9%)	3,241 (16.3%)	3,273 (16.4%)	3,136 (16.3%)	2,816 (15.7%)
	Female	173 (0.8%)	235 (1.1%)	235 (1.1%)	330 (1.6%)	266 (2.1%)	453 (2.1%)	421 (2.1%)	464 (2.3%)	404 (2.1%)	538 (3.0%)
	Subtotal	2,478 (11.9%)	2,712 (13.1%)	2,708 (13.1%)	2,774 (13.8%)	1,898 (15.0%)	3,418 (16.0%)	3,662 (18.5%)	3,737 (18.7%)	3,540 (18.4%)	3,354 (18.7%)
USA	Male	219 (1.1%)	153 (0.7%)	150 (0.7%)	129 (0.6%)	83 (0.7%)	132 (0.6%)	87 (0.4%)	68 (0.3%)	35 (0.2%)	34 (0.2%)
	Female	4 (0.0%)	6 (0.0%)	6 (0.0%)	14 (0.1%)	18 (0.1%)	6 (0.0%)	6 (0.0%)	0 (0.0%)	3 (0.0%)	8 (0.0%)
	Subtotal	223 (1.1%)	159 (0.8%)	156 (0.8%)	143 (0.7%)	101 (0.8%)	138 (0.6%)	93 (0.5%)	68 (0.3%)	38 (0.2%)	42 (0.2%)
GNY	Male	205 (1.0%)	212 (1.0%)	189 (0.9%)	235 (1.2%)	138 (1.1%)	274 (1.3%)	258 (1.3%)	234 (1.2%)	193 (1.0%)	141 (0.8%)
	Female	17 (0.1%)	9 (0.0%)	10 (0.0%)	22 (0.1%)	7 (0.1%)	32 (0.1%)	33 (0.2%)	20 (0.1%)	14 (0.1%)	11 (0.1%)
	Subtotal	222 (1.1%)	221 (1.1%)	199 (1.0%)	257 (1.3%)	145 (1.1%)	306 (1.4%)	291 (1.5%)	254 (1.3%)	207 (1.1%)	152 (0.8%)
Other	Male	28 (0.1%)	25 (0.1%)	38 (0.2%)	24 (0.1%)	10 (0.1%)	14 (0.1%)	9 (0.0%)	6 (0.0%)	13 (0.1%)	11 (0.1%)
	Female	12 (0.1%)	6 (0.0%)	9 (0.0%)	2 (0.0%)	1 (0.0%)	2 (0.0%)	8 (0.0%)	1 (0.0%)	4 (0.0%)	0 (0.0%)
	Subtotal	40 (0.2%)	31 (0.1%)	47 (0.2%)	26 (0.1%)	11 (0.1%)	16 (0.1%)	17 (0.1%)	7 (0.0%)	17 (0.1%)	11 (0.1%)

Year to Date Individual Runners by Breeding

Flat

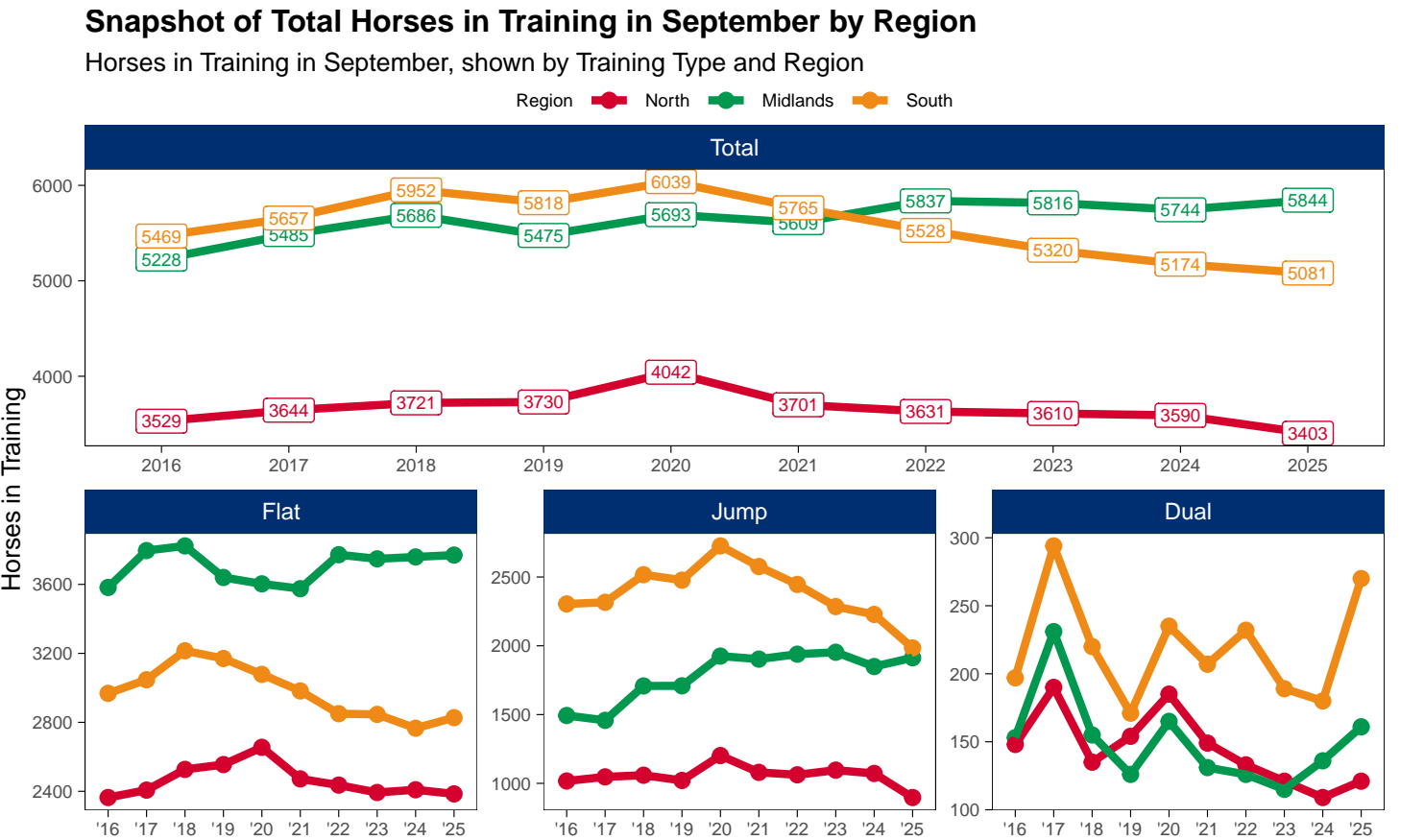
Bred	Sex	2016	2017	2018	2019	2020	2021	2022	2023	2024	2025
GB	Male	2,952 (29.6%)	3,041 (29.6%)	3,115 (30.0%)	3,075 (29.5%)	2,894 (30.1%)	2,906 (29.1%)	2,846 (28.9%)	2,782 (28.1%)	2,828 (28.5%)	2,781 (28.4%)
	Female	1,916 (19.2%)	1,954 (19.0%)	1,914 (18.4%)	1,961 (18.8%)	1,841 (19.2%)	1,952 (19.6%)	1,922 (19.5%)	1,892 (19.1%)	1,845 (18.6%)	1,892 (19.3%)
	Subtotal	4,868 (48.8%)	4,995 (48.5%)	5,029 (48.5%)	5,036 (48.3%)	4,735 (49.3%)	4,858 (48.7%)	4,768 (48.5%)	4,674 (47.2%)	4,673 (47.1%)	4,673 (47.7%)
IRE	Male	2,834 (28.4%)	2,922 (28.4%)	2,952 (28.5%)	2,939 (28.2%)	2,698 (28.1%)	2,895 (29.0%)	2,925 (29.7%)	2,993 (30.2%)	3,052 (30.8%)	2,996 (30.6%)
	Female	1,397 (14.0%)	1,410 (13.7%)	1,428 (13.8%)	1,440 (13.8%)	1,331 (13.9%)	1,403 (14.1%)	1,433 (14.6%)	1,539 (15.5%)	1,501 (15.1%)	1,447 (14.8%)
	Subtotal	4,231 (42.4%)	4,332 (42.1%)	4,380 (42.2%)	4,379 (42.0%)	4,029 (41.9%)	4,298 (43.1%)	4,358 (44.3%)	4,532 (45.8%)	4,553 (45.9%)	4,443 (45.4%)
FR	Male	210 (2.1%)	244 (2.4%)	294 (2.8%)	333 (3.2%)	308 (3.2%)	315 (3.2%)	305 (3.1%)	304 (3.1%)	349 (3.5%)	338 (3.5%)
	Female	85 (0.9%)	99 (1.0%)	110 (1.1%)	124 (1.2%)	115 (1.2%)	121 (1.2%)	119 (1.2%)	136 (1.4%)	120 (1.2%)	114 (1.2%)
	Subtotal	295 (3.0%)	343 (3.3%)	404 (3.9%)	457 (4.4%)	423 (4.4%)	436 (4.4%)	424 (4.3%)	440 (4.4%)	469 (4.7%)	452 (4.6%)
USA	Male	344 (3.4%)	355 (3.4%)	320 (3.1%)	305 (2.9%)	236 (2.5%)	206 (2.1%)	137 (1.4%)	120 (1.2%)	118 (1.2%)	83 (0.8%)
	Female	114 (1.1%)	128 (1.2%)	128 (1.2%)	123 (1.2%)	85 (0.9%)	73 (0.7%)	50 (0.5%)	49 (0.5%)	37 (0.4%)	43 (0.4%)
	Subtotal	458 (4.6%)	483 (4.7%)	448 (4.3%)	428 (4.1%)	321 (3.3%)	279 (2.8%)	187 (1.9%)	169 (1.7%)	155 (1.6%)	126 (1.3%)
GNY	Male	69 (0.7%)	75 (0.7%)	60 (0.6%)	59 (0.6%)	56 (0.6%)	61 (0.6%)	48 (0.5%)	49 (0.5%)	43 (0.4%)	52 (0.5%)
	Female	14 (0.1%)	14 (0.1%)	17 (0.2%)	21 (0.2%)	23 (0.2%)	25 (0.3%)	24 (0.2%)	15 (0.2%)	14 (0.1%)	19 (0.2%)
	Subtotal	83 (0.8%)	89 (0.9%)	77 (0.7%)	80 (0.8%)	79 (0.8%)	86 (0.9%)	72 (0.7%)	64 (0.6%)	57 (0.6%)	71 (0.7%)
Other	Male	27 (0.3%)	32 (0.3%)	29 (0.3%)	32 (0.3%)	17 (0.2%)	16 (0.2%)	18 (0.2%)	13 (0.1%)	9 (0.1%)	15 (0.2%)
	Female	15 (0.2%)	17 (0.2%)	9 (0.1%)	12 (0.1%)	6 (0.1%)	4 (0.0%)	5 (0.1%)	6 (0.1%)	6 (0.1%)	8 (0.1%)
	Subtotal	42 (0.4%)	49 (0.5%)	38 (0.4%)	44 (0.4%)	23 (0.2%)	20 (0.2%)	23 (0.2%)	19 (0.2%)	15 (0.2%)	23 (0.2%)

Jump

Bred	Sex	2016	2017	2018	2019	2020	2021	2022	2023	2024	2025
GB	Male	1,488 (22.5%)	1,406 (21.3%)	1,353 (20.3%)	1,356 (20.0%)	1,138 (19.5%)	1,370 (19.0%)	1,218 (18.2%)	1,198 (17.9%)	1,178 (18.2%)	1,149 (18.2%)
	Female	674 (10.2%)	653 (9.9%)	681 (10.2%)	658 (9.7%)	543 (9.3%)	725 (10.1%)	671 (10.0%)	652 (9.7%)	646 (10.0%)	615 (9.7%)
	Subtotal	2,162 (32.7%)	2,059 (31.2%)	2,034 (30.6%)	2,014 (29.6%)	1,681 (28.8%)	2,095 (29.1%)	1,889 (28.2%)	1,850 (27.6%)	1,824 (28.1%)	1,764 (27.9%)
IRE	Male	2,968 (44.8%)	2,945 (44.6%)	2,957 (44.4%)	2,967 (43.7%)	2,515 (43.1%)	3,066 (42.5%)	2,803 (41.9%)	2,772 (41.3%)	2,628 (40.5%)	2,510 (39.7%)
	Female	516 (7.8%)	563 (8.5%)	632 (9.5%)	694 (10.2%)	609 (10.4%)	721 (10.0%)	656 (9.8%)	726 (10.8%)	738 (11.4%)	728 (11.5%)
	Subtotal	3,484 (52.6%)	3,508 (53.1%)	3,589 (53.9%)	3,661 (53.9%)	3,124 (53.5%)	3,787 (52.5%)	3,459 (51.7%)	3,498 (52.1%)	3,366 (51.9%)	3,238 (51.3%)
FR	Male	751 (11.3%)	814 (12.3%)	818 (12.3%)	859 (12.6%)	787 (13.5%)	1,048 (14.5%)	1,063 (15.9%)	1,077 (16.0%)	1,049 (16.2%)	1,047 (16.6%)
	Female	64 (1.0%)	82 (1.2%)	101 (1.5%)	133 (2.0%)	129 (2.2%)	150 (2.1%)	163 (2.4%)	175 (2.6%)	158 (2.4%)	196 (3.1%)
	Subtotal	815 (12.3%)	896 (13.6%)	919 (13.8%)	992 (14.6%)	916 (15.7%)	1,198 (16.6%)	1,226 (18.3%)	1,252 (18.7%)	1,207 (18.6%)	1,243 (19.7%)
USA	Male	63 (1.0%)	51 (0.8%)	47 (0.7%)	41 (0.6%)	33 (0.6%)	39 (0.5%)	29 (0.4%)	24 (0.4%)	12 (0.2%)	8 (0.1%)
	Female	2 (0.0%)	2 (0.0%)	3 (0.0%)	5 (0.1%)	5 (0.1%)	2 (0.0%)	2 (0.0%)	0 (0.0%)	1 (0.0%)	3 (0.0%)
	Subtotal	65 (1.0%)	53 (0.8%)	50 (0.8%)	46 (0.7%)	38 (0.7%)	41 (0.6%)	31 (0.5%)	24 (0.4%)	13 (0.2%)	11 (0.2%)
GNY	Male	77 (1.2%)	71 (1.1%)	53 (0.8%)	67 (1.0%)	65 (1.1%)	75 (1.0%)	75 (1.1%)	71 (1.1%)	61 (0.9%)	51 (0.8%)
	Female	7 (0.1%)	5 (0.1%)	2 (0.0%)	6 (0.1%)	5 (0.1%)	10 (0.1%)	11 (0.2%)	11 (0.2%)	6 (0.1%)	5 (0.1%)
	Subtotal	84 (1.3%)	76 (1.2%)	55 (0.8%)	73 (1.1%)	70 (1.2%)	85 (1.2%)	86 (1.3%)	82 (1.2%)	67 (1.0%)	56 (0.9%)
Other	Male	6 (0.1%)	8 (0.1%)	8 (0.1%)	9 (0.1%)	5 (0.1%)	4 (0.1%)	2 (0.0%)	4 (0.1%)	4 (0.1%)	5 (0.1%)
	Female	4 (0.1%)	3 (0.0%)	2 (0.0%)	1 (0.0%)	1 (0.0%)	1 (0.0%)	2 (0.0%)	1 (0.0%)	2 (0.0%)	0 (0.0%)
	Subtotal	10 (0.2%)	11 (0.2%)	10 (0.2%)	10 (0.1%)	6 (0.1%)	5 (0.1%)	4 (0.1%)	5 (0.1%)	6 (0.1%)	5 (0.1%)

Horse Population by Location

September 2025 Horses in Training Snapshot by Region versus Previous Years



North

AgeCat	2016	2017	2018	2019	2020	2021	2022	2023	2024	2025	vs. Last Year	vs. Pre-Covid
Flat Horses in Training												
2YO	821	809	881	933	921	876	849	840	755	750	-5 / -0.7%	-183 / -19.6%
3YO	588	609	628	611	705	660	600	583	611	590	-21 / -3.4%	-21 / -3.4%
4YO	335	371	366	377	372	342	374	329	381	387	+6 / +1.6%	+10 / +2.7%
5YO+	620	618	652	634	657	594	613	641	662	658	-4 / -0.6%	+24 / +3.8%
Subtotal	2364	2407	2527	2555	2655	2472	2436	2393	2409	2385	-24 / -1.0%	-170 / -6.7%
Jump Horses in Training												
3YO	47	31	38	37	35	29	56	38	37	15	-22 / -59.5%	-22 / -59.5%
4-5YO	323	363	315	350	363	330	344	363	351	274	-77 / -21.9%	-76 / -21.7%
6-7YO	333	327	353	326	398	367	356	385	369	322	-47 / -12.7%	-4 / -1.2%
8YO+	314	326	353	308	406	354	306	310	315	286	-29 / -9.2%	-22 / -7.1%
Subtotal	1017	1047	1059	1021	1202	1080	1062	1096	1072	897	-175 / -16.3%	-124 / -12.1%
Dual Horses in Training												
3YO	31	44	31	23	41	24	29	28	20	23	+3 / +15.0%	0 / 0.0%
4YO	29	46	36	39	34	42	28	27	26	27	+1 / +3.8%	-12 / -30.8%
5YO+	88	100	68	92	110	83	76	66	63	71	+8 / +12.7%	-21 / -22.8%
Subtotal	148	190	135	154	185	149	133	121	109	121	+12 / +11.0%	-33 / -21.4%
Total Horses in Training												
	3529	3644	3721	3730	4042	3701	3631	3610	3590	3403	-187 / -5.2%	-327 / -8.8%

'vs. Pre-Covid' is comparison between 2025 and 2019

Midlands

AgeCat	2016	2017	2018	2019	2020	2021	2022	2023	2024	2025	vs. Last Year	vs. Pre-Covid
Flat Horses in Training												
2YO	1623	1665	1578	1480	1458	1454	1516	1526	1499	1452	-47 / -3.1%	-28 / -1.9%
3YO	971	1055	1113	1074	1070	1016	1123	1092	1067	1124	+57 / +5.3%	+50 / +4.7%
4YO	406	487	503	480	467	524	521	506	510	509	-1 / -0.2%	+29 / +6.0%
5YO+	582	589	629	606	608	581	612	624	683	685	+2 / +0.3%	+79 / +13.0%
Subtotal	3582	3796	3823	3640	3603	3575	3772	3748	3759	3770	+11 / +0.3%	+130 / +3.6%
Jump Horses in Training												
3YO	80	44	78	84	75	87	112	97	112	126	+14 / +12.5%	+42 / +50.0%
4-5YO	548	562	638	685	748	719	736	791	695	770	+75 / +10.8%	+85 / +12.4%
6-7YO	477	459	565	546	635	639	665	646	622	592	-30 / -4.8%	+46 / +8.4%
8YO+	388	393	427	394	467	458	426	419	420	425	+5 / +1.2%	+31 / +7.9%
Subtotal	1493	1458	1708	1709	1925	1903	1939	1953	1849	1913	+64 / +3.5%	+204 / +11.9%
Dual Horses in Training												
3YO	37	38	32	23	35	27	28	26	27	25	-2 / -7.4%	+2 / +8.7%
4YO	37	69	45	36	34	39	36	24	32	36	+4 / +12.5%	0 / 0.0%
5YO+	79	124	78	67	96	65	62	65	77	100	+23 / +29.9%	+33 / +49.3%
Subtotal	153	231	155	126	165	131	126	115	136	161	+25 / +18.4%	+35 / +27.8%
Total Horses in Training												
	5228	5485	5686	5475	5693	5609	5837	5816	5744	5844	+100 / +1.7%	+369 / +6.7%

'vs. Pre-Covid' is comparison between 2025 and 2019

South

AgeCat	2016	2017	2018	2019	2020	2021	2022	2023	2024	2025	vs. Last Year	vs. Pre-Covid
Flat Horses in Training												
2YO	1267	1367	1378	1371	1277	1255	1219	1186	1215	1168	-47 / -3.9%	-203 / -14.8%
3YO	810	812	926	854	868	838	739	804	705	826	+121 / +17.2%	-28 / -3.3%
4YO	366	357	398	435	403	395	392	341	356	336	-20 / -5.6%	-99 / -22.8%
5YO+	525	511	513	510	530	494	500	515	490	497	+7 / +1.4%	-13 / -2.5%
Subtotal	2968	3047	3215	3170	3078	2982	2850	2846	2766	2827	+61 / +2.2%	-343 / -10.8%
Jump Horses in Training												
3YO	122	137	130	150	106	136	145	157	131	123	-8 / -6.1%	-27 / -18.0%
4-5YO	921	913	1042	990	1011	972	1021	978	924	793	-131 / -14.2%	-197 / -19.9%
6-7YO	715	752	787	800	939	847	763	696	755	671	-84 / -11.1%	-129 / -16.1%
8YO+	546	514	558	537	670	621	517	454	418	397	-21 / -5.0%	-140 / -26.1%
Subtotal	2304	2316	2517	2477	2726	2576	2446	2285	2228	1984	-244 / -11.0%	-493 / -19.9%
Dual Horses in Training												
3YO	40	51	46	39	40	54	54	49	42	74	+32 / +76.2%	+35 / +89.7%
4YO	30	90	47	44	57	57	55	49	49	70	+21 / +42.9%	+26 / +59.1%
5YO+	127	153	127	88	138	96	123	91	89	126	+37 / +41.6%	+38 / +43.2%
Subtotal	197	294	220	171	235	207	232	189	180	270	+90 / +50.0%	+99 / +57.9%
Total Horses in Training												
	5469	5657	5952	5818	6039	5765	5528	5320	5174	5081	-93 / -1.8%	-737 / -12.7%

'vs. Pre-Covid' is comparison between 2025 and 2019

September 2025 Horses in Training Snapshot by Country versus Previous Years

Type	2016	2017	2018	2019	2020	2021	2022	2023	2024	2025	vs. Last Year	vs. Pre-Covid
England												
Flat	8588	8878	9178	8982	8963	8662	8675	8643	8587	8614	+27 / +0.3%	-368 / -4.1%
Jump	4153	4173	4568	4550	5098	4841	4811	4727	4511	4207	-304 / -6.7%	-343 / -7.5%
Dual	432	622	454	402	523	442	437	391	388	510	+122 / +31.4%	+108 / +26.9%
Overall	13173	13673	14200	13934	14584	13945	13923	13761	13486	13331	-155 / -1.1%	-603 / -4.3%
Scotland												
Flat	195	224	226	210	221	211	239	195	216	224	+8 / +3.7%	+14 / +6.7%
Jump	267	298	335	301	383	344	348	340	325	257	-68 / -20.9%	-44 / -14.6%
Dual	36	43	26	31	38	23	26	20	21	16	-5 / -23.8%	-15 / -48.4%
Overall	498	565	587	542	642	578	613	555	562	497	-65 / -11.6%	-45 / -8.3%
Wales												
Flat	131	148	161	173	152	156	144	149	131	144	+13 / +9.9%	-29 / -16.8%
Jump	394	350	381	356	372	374	288	267	313	330	+17 / +5.4%	-26 / -7.3%
Dual	30	50	30	18	24	22	28	14	16	26	+10 / +62.5%	+8 / +44.4%
Overall	555	548	572	547	548	552	460	430	460	500	+40 / +8.7%	-47 / -8.6%

'vs. Pre-Covid' is comparison between 2025 and 2019

September 2025 Horses in Training Snapshot by Training Centre versus Previous Years

Type	2016	2017	2018	2019	2020	2021	2022	2023	2024	2025	vs. Last Year	vs. Pre-Covid
Cheltenham (GL54)												
Flat	15	21	16	17	19	21	16	12	14	20	+6 / +42.9%	+3 / +17.6%
Jump	334	322	386	383	519	484	441	429	397	470	+73 / +18.4%	+87 / +22.7%
Dual	17	55	15	17	19	14	15	13	19	23	+4 / +21.1%	+6 / +35.3%
Overall	366	398	417	417	557	519	472	454	430	513	+83 / +19.3%	+96 / +23.0%
Lambourn (RG17)												
Flat	811	923	979	951	907	856	807	872	868	935	+67 / +7.7%	-16 / -1.7%
Jump	340	313	354	344	376	308	329	280	276	241	-35 / -12.7%	-103 / -29.9%
Dual	18	32	24	20	32	26	40	21	20	25	+5 / +25.0%	+5 / +25.0%
Overall	1169	1268	1357	1315	1315	1190	1176	1173	1164	1201	+37 / +3.2%	-114 / -8.7%
Malton (YO17)												
Flat	605	610	655	681	732	651	671	672	684	693	+9 / +1.3%	+12 / +1.8%
Jump	147	131	107	102	96	85	87	97	65	53	-12 / -18.5%	-49 / -48.0%
Dual	21	37	29	29	44	40	26	27	25	21	-4 / -16.0%	-8 / -27.6%
Overall	773	778	791	812	872	776	784	796	774	767	-7 / -0.9%	-45 / -5.5%
Marlborough (SN8)												
Flat	492	479	510	468	475	453	382	391	377	394	+17 / +4.5%	-74 / -15.8%
Jump	50	82	74	74	80	92	80	84	76	71	-5 / -6.6%	-3 / -4.1%
Dual	2	1	1	5	2	0	1	3	3	3	0 / 0.0%	-2 / -40.0%
Overall	544	562	585	547	557	545	463	478	456	468	+12 / +2.6%	-79 / -14.4%
Middleham (DL8)												
Flat	500	478	505	566	574	514	495	524	498	484	-14 / -2.8%	-82 / -14.5%
Jump	64	55	76	81	100	93	87	106	102	74	-28 / -27.5%	-7 / -8.6%
Dual	21	30	14	27	35	22	23	16	20	16	-4 / -20.0%	-11 / -40.7%
Overall	585	563	595	674	709	629	605	646	620	574	-46 / -7.4%	-100 / -14.8%
Newbury (RG20)												
Flat	350	362	398	418	393	412	433	425	394	378	-16 / -4.1%	-40 / -9.6%
Jump	10	23	18	8	16	5	14	67	82	73	-9 / -11.0%	+65 / +812.5%
Dual	5	9	8	6	7	5	3	3	4	8	+4 / +100.0%	+2 / +33.3%
Overall	365	394	424	432	416	422	450	495	480	459	-21 / -4.4%	+27 / +6.2%
Newmarket (CB8)												
Flat	2582	2704	2726	2588	2613	2564	2664	2764	2714	2676	-38 / -1.4%	+88 / +3.4%
Jump	45	41	55	55	54	54	42	60	67	62	-5 / -7.5%	+7 / +12.7%
Dual	39	34	16	17	30	26	22	22	37	43	+6 / +16.2%	+26 / +152.9%
Overall	2666	2779	2797	2660	2697	2644	2728	2846	2818	2781	-37 / -1.3%	+121 / +4.5%

'vs. Pre-Covid' is comparison between 2025 and 2019