



Horse Population Report

Updated on 31 August 2025



Introduction

Welcome to the latest update on the Racehorse Population from the British Horseracing Authority.

The aim of this document is to give stakeholders and the wider Public an insight into the current state of the Horse Population in Great Britain. It is hoped that this transparency will ensure that all decision makers have access to the key data required to help British Racing deliver a Competitive and Compelling product to stakeholders, racegoers and the wider public.

If you have any questions regarding the content of this report or suggestions for how it could be improved further, please contact Joe Yates – jyates@britishhorseracing.com

Definitions

This report uses the Horses in Training returns from the Weatherby's Racing Administration System, this is completed by trainers and should be updated whenever a horse enters or leaves training in their care as part of the conditions of their licence.

Horses in Training

Unless otherwise stated, snapshots of Horses in Training will be from the 15th day of the month in question and year to date figures will be up to and including the date titled at the front of the report.

Horses' ratings will be taken from the most recently published ratings by the BHA Handicapping Team, which is currently at 7am each Tuesday morning. For example, if looking at the Horses in a particular rating band for July 2011, the horses in training number will be from Friday 15th July 2011 and ratings, where possible, will be assigned to each horse from the ratings published by the BHA Handicappers on Tuesday 12th July 2011.

The Gender of a horse will be taken from the reporting date in question, regardless of whether this has since changed.

In the case of YTD reporting, where a horse's gender or training type has changed in the year-to-date period, the most recent is taken.

This report does not count any horses that are temporarily racing abroad for GB Trainers at the time of reporting.

Yearlings are not included in total counts of flat and/or dual horses but will be sometimes shown separately for information purposes.

Yearlings and two-year-olds are not included in total counts of jump horses or counts of jump horses that include dual horses but will be sometimes shown separately for information purposes.

Yearlings, two-year-olds and three-year-olds are not included in total counts of Hunter Chasers but will be sometimes shown separately for information purposes.

Yearlings and two-year-olds in training that are recorded as dual horses have been re-coded as flat horses.

Hunter Chasers are not included in any counts of Jump Horses or Total figures but will be sometimes shown separately for information purposes.

Horses' training locations are defined by the trainers' primary training location. Training regions are defined the same as regions for the Fixture List; 'North' is north of latitude 53.42911, 'South' is south of latitude 51.88002 and 'Midlands' is anywhere in between. Training centres are defined by postcodes and surrounding areas.

Runners

Unless otherwise specified, Total Runners and Individual Runners metrics only counts runners that ran in GB races including any voided races. Withdrawn horses are not included.

Hunter Chases are not included in this section but will be sometimes shown separately for information purposes.

Total Runners is a count of all runners in races, whilst individual runners only counts each individual horse once.

Monthly Horses in Training

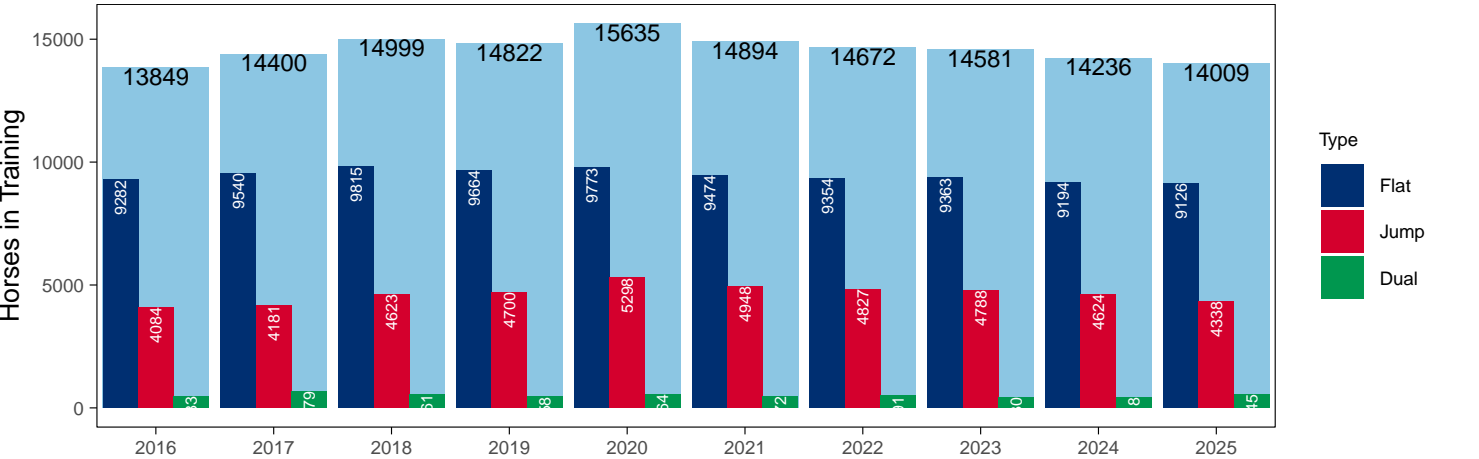
August 2025 Horses in Training Snapshot versus Previous Years

Type	2016	2017	2018	2019	2020	2021	2022	2023	2024	2025	vs. Last Year	vs. Pre-Covid
Flat	9282	9540	9815	9664	9773	9474	9354	9363	9194	9126	-68 / -0.7%	-538 / -5.6%
Jump	4084	4181	4623	4700	5298	4948	4827	4788	4624	4338	-286 / -6.2%	-362 / -7.7%
Dual	483	679	561	458	564	472	491	430	418	545	+127 / +30.4%	+87 / +19.0%
Total	13849	14400	14999	14822	15635	14894	14672	14581	14236	14009	-227 / -1.6%	-813 / -5.5%

'vs. Pre-Covid' is comparison between 2025 and 2019

Snapshot of Total Horses in Training in August

Horses in Training in August, shown by Training Type



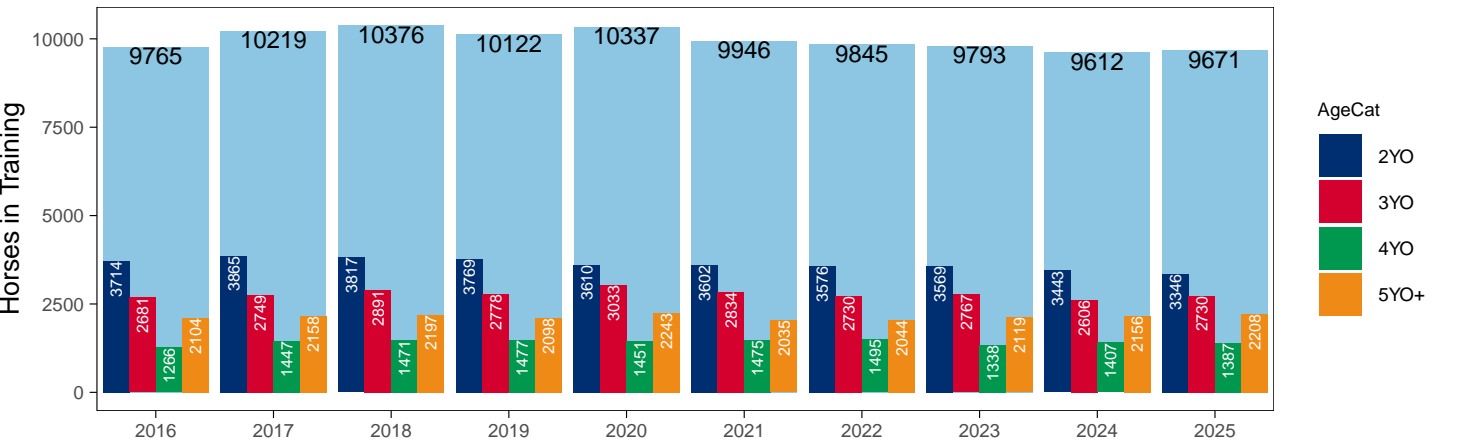
Flat (including Dual)

AgeCat	2016	2017	2018	2019	2020	2021	2022	2023	2024	2025	vs. Last Year	vs. Pre-Covid
2YO	3714	3865	3817	3769	3610	3602	3576	3569	3443	3346	-97 / -2.8%	-423 / -11.2%
3YO	2681	2749	2891	2778	3033	2834	2730	2767	2606	2730	+124 / +4.8%	-48 / -1.7%
4YO	1266	1447	1471	1477	1451	1475	1495	1338	1407	1387	-20 / -1.4%	-90 / -6.1%
5YO+	2104	2158	2197	2098	2243	2035	2044	2119	2156	2208	+52 / +2.4%	+110 / +5.2%
Total	9765	10219	10376	10122	10337	9946	9845	9793	9612	9671	+59 / +0.6%	-451 / -4.5%

'vs. Pre-Covid' is comparison between 2025 and 2019

Snapshot of Flat Horses in Training in August

Flat Horses in Training in August, shown by Age



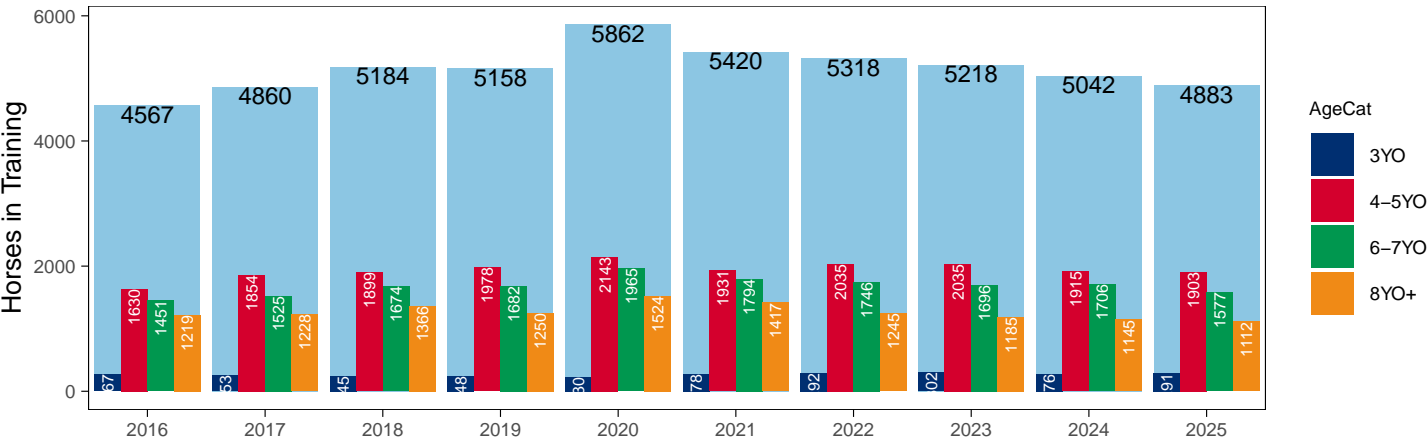
Jump (including Dual)

AgeCat	2016	2017	2018	2019	2020	2021	2022	2023	2024	2025	vs. Last Year		vs. Pre-Covid	
3YO	267	253	245	248	230	278	292	302	276	291	+15	+5.4%	+43	+17.3%
4-5YO	1630	1854	1899	1978	2143	1931	2035	2035	1915	1903	-12	-0.6%	-75	-3.8%
6-7YO	1451	1525	1674	1682	1965	1794	1746	1696	1706	1577	-129	-7.6%	-105	-6.2%
8YO+	1219	1228	1366	1250	1524	1417	1245	1185	1145	1112	-33	-2.9%	-138	-11.0%
Total	4567	4860	5184	5158	5862	5420	5318	5218	5042	4883	-159	-3.2%	-275	-5.3%

'vs. Pre-Covid' is comparison between 2025 and 2019

Snapshot of Jump Horses in Training in August

Jump Horses in Training in August, shown by Age



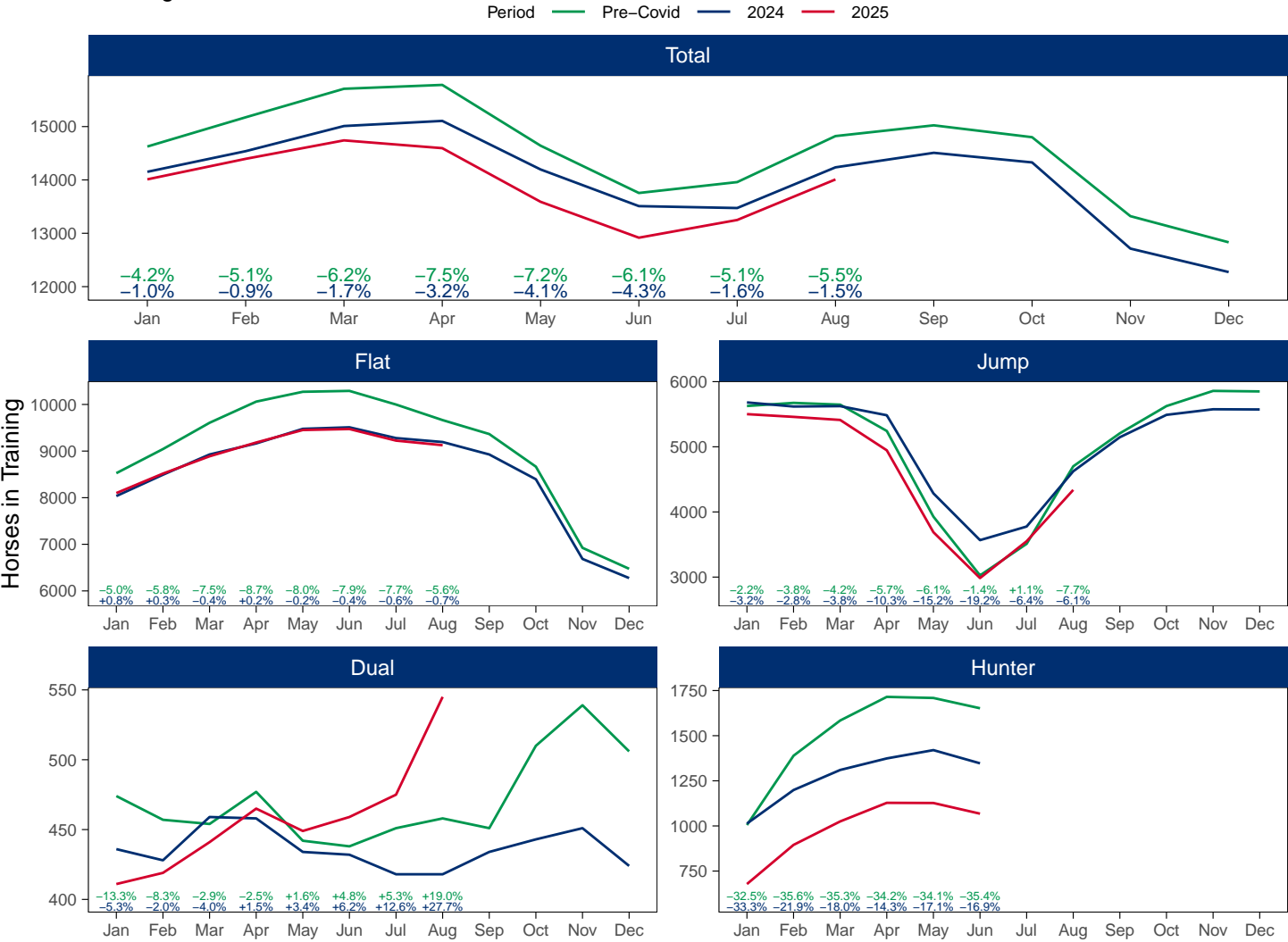
2025 Horses in Training versus Previous Years

Type	Period	Jan	Feb	Mar	Apr	May	Jun	Jul	Aug	Sep	Oct	Nov	Dec
Flat	2025	8099	8517	8888	9184	9452	9473	9224	9126				
	2024	8035	8493	8927	9164	9477	9510	9279	9194	8927	8395	6686	6276
	Pre-Covid	8526	9043	9607	10061	10272	10291	9998	9664	9365	8666	6924	6475
Jump	2025	5501	5459	5412	4946	3689	2985	3550	4338				
	2024	5681	5618	5624	5484	4285	3567	3776	4624	5147	5490	5576	5573
	Pre-Covid	5626	5674	5647	5243	3928	3026	3510	4700	5207	5625	5858	5850
Dual	2025	411	419	441	465	449	459	475	545				
	2024	436	428	459	458	434	432	418	418	434	443	451	424
	Pre-Covid	474	457	454	477	442	438	451	458	451	510	539	506
Hunter	2025	678	895	1025	1128	1127	1068						
	2024	1013	1199	1310	1374	1420	1347						
	Pre-Covid	1005	1389	1584	1715	1709	1652						
Total	2025	14011	14395	14741	14595	13590	12917	13249	14009				
	2024	14152	14539	15010	15106	14196	13509	13473	14236	14508	14328	12713	12273
	Pre-Covid	14626	15174	15708	15781	14642	13755	13959	14822	15023	14801	13321	12831

'Pre-Covid' is 2019 values

Monthly Horses in Training

2025 against 2024 and Pre-Covid, shown with % Difference



'Pre-Covid' is 2019 values

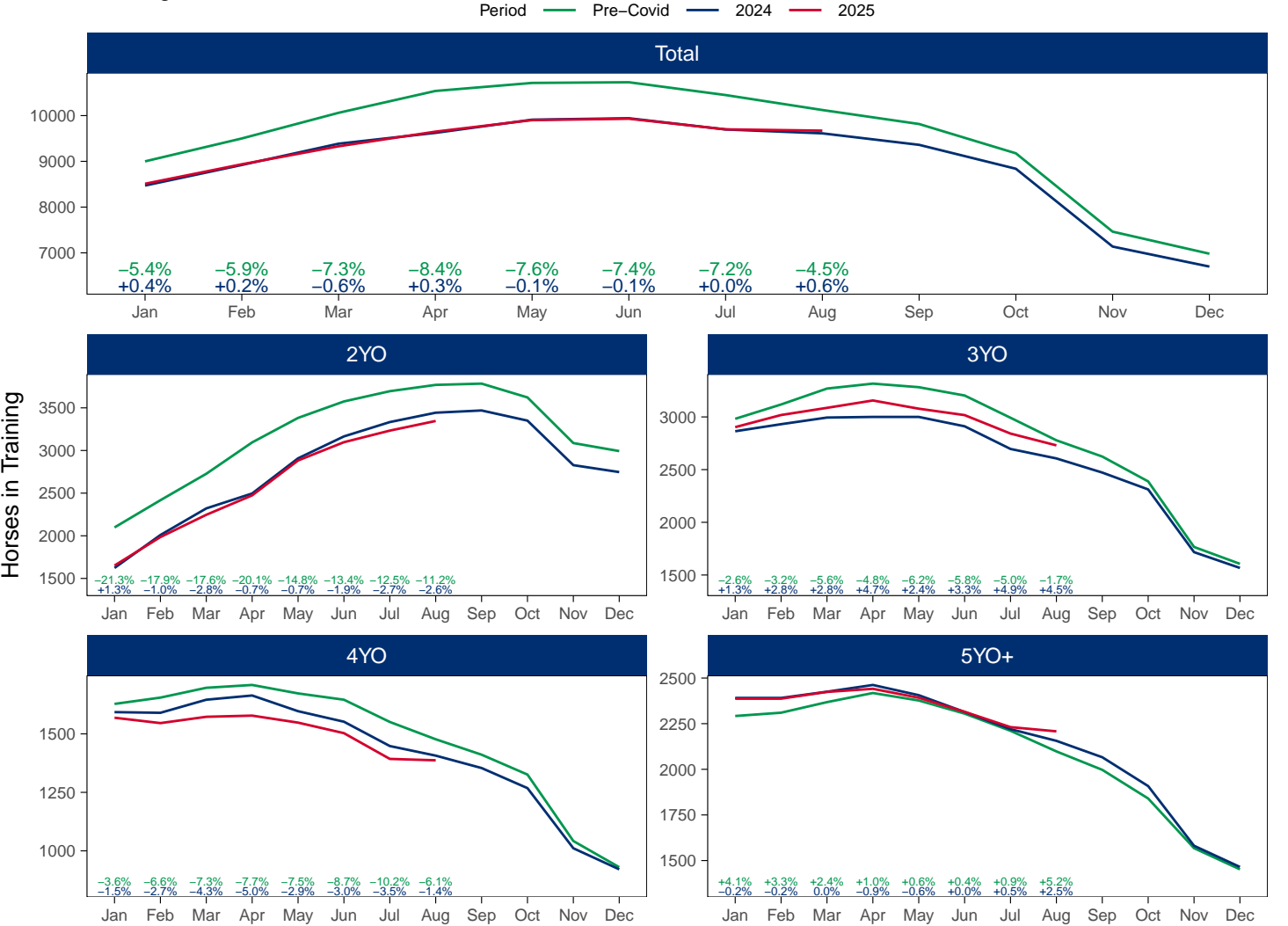
Flat (including Dual)

AgeCat	Period	Jan	Feb	Mar	Apr	May	Jun	Jul	Aug	Sep	Oct	Nov	Dec
2YO	2025	1651	1985	2246	2474	2883	3097	3233	3346				
	2024	1623	2009	2321	2496	2908	3165	3333	3443	3469	3350	2828	2747
	Pre-Covid	2098	2417	2727	3095	3382	3575	3695	3769	3784	3622	3087	2993
3YO	2025	2903	3018	3086	3156	3078	3017	2842	2730				
	2024	2864	2931	2994	3000	3000	2911	2696	2606	2472	2312	1717	1567
	Pre-Covid	2982	3118	3269	3316	3282	3203	2992	2778	2624	2388	1766	1606
4YO	2025	1569	1546	1573	1578	1548	1503	1393	1387				
	2024	1593	1590	1646	1664	1597	1552	1448	1407	1354	1268	1011	921
	Pre-Covid	1628	1655	1697	1709	1673	1646	1551	1477	1411	1326	1042	930
5YO+	2025	2387	2387	2424	2441	2392	2315	2231	2208				
	2024	2391	2391	2425	2462	2406	2314	2220	2156	2066	1908	1581	1465
	Pre-Covid	2292	2310	2368	2418	2377	2305	2211	2098	1997	1840	1568	1452
Total	2025	8510	8936	9329	9649	9901	9932	9699	9671				
	2024	8471	8921	9386	9622	9911	9942	9697	9612	9361	8838	7137	6700
	Pre-Covid	9000	9500	10061	10538	10714	10729	10449	10122	9816	9176	7463	6981

'Pre-Covid' is 2019 values

Monthly Flat Horses in Training

2025 against 2024 and Pre-Covid, shown with % Difference



'Pre-Covid' is 2019 values

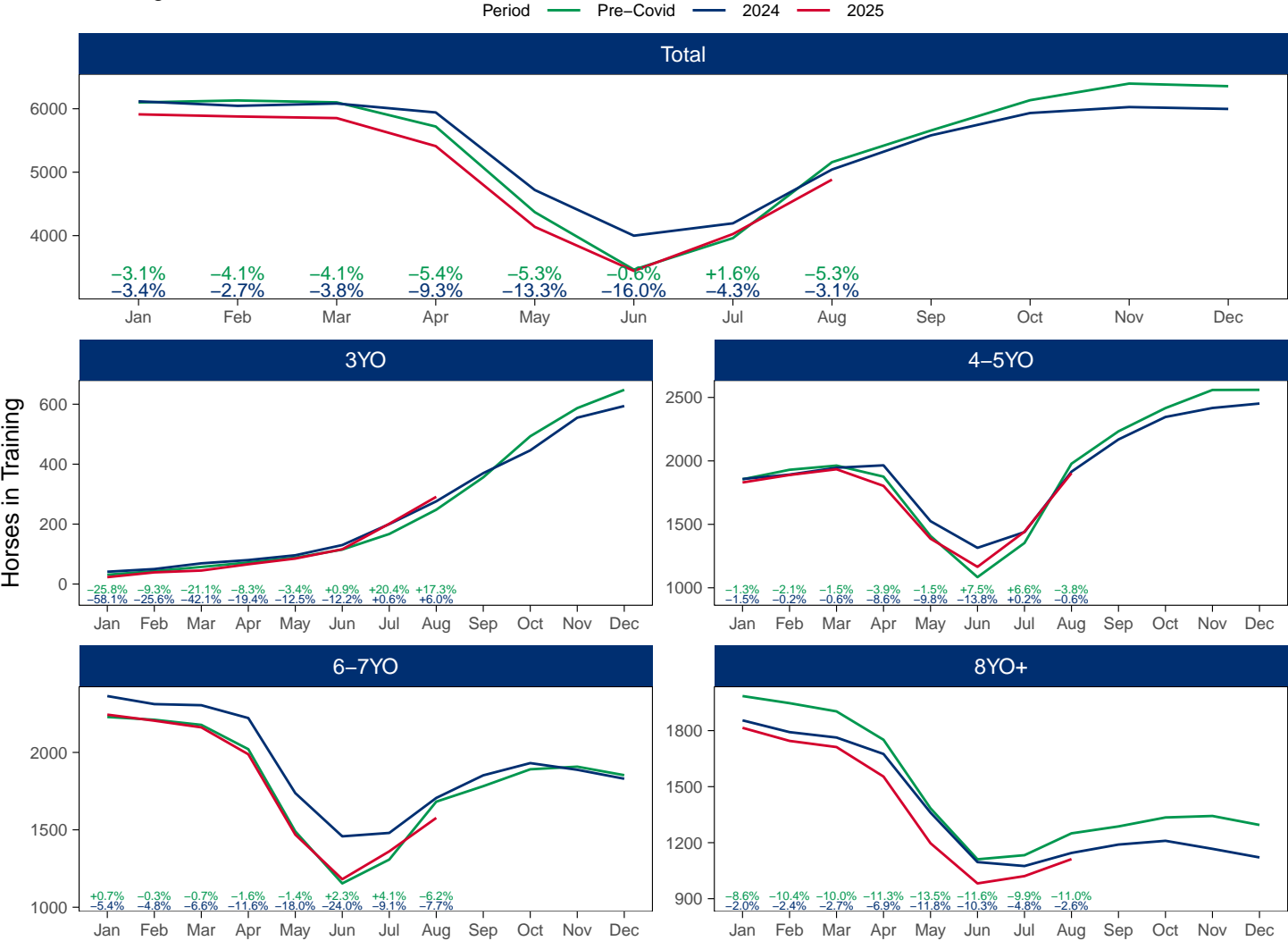
Jump (including Dual)

AgeCat	Period	Jan	Feb	Mar	Apr	May	Jun	Jul	Aug	Sep	Oct	Nov	Dec
3YO	2025	23	39	45	66	85	116	201	291				
	2024	41	50	69	80	96	130	200	276	370	446	555	594
	Pre-Covid	31	43	57	72	88	115	167	248	356	493	587	648
4-5YO	2025	1830	1889	1934	1803	1387	1165	1442	1903				
	2024	1857	1892	1946	1965	1525	1315	1439	1915	2169	2346	2417	2452
	Pre-Covid	1855	1930	1963	1876	1408	1084	1353	1978	2233	2416	2559	2560
6-7YO	2025	2244	2205	2162	1988	1469	1181	1361	1577				
	2024	2364	2312	2305	2222	1737	1458	1480	1706	1852	1931	1888	1830
	Pre-Covid	2229	2211	2178	2021	1490	1154	1308	1682	1782	1891	1908	1853
8YO+	2025	1815	1745	1712	1554	1197	982	1021	1112				
	2024	1855	1792	1763	1675	1361	1096	1075	1145	1190	1210	1167	1121
	Pre-Covid	1985	1947	1903	1751	1384	1111	1133	1250	1287	1335	1343	1295
Total	2025	5912	5878	5853	5411	4138	3444	4025	4883				
	2024	6117	6046	6083	5942	4719	3999	4194	5042	5581	5933	6027	5997
	Pre-Covid	6100	6131	6101	5720	4370	3464	3961	5158	5658	6135	6397	6356

'Pre-Covid' is 2019 values

Monthly Jump Horses in Training

2025 against 2024 and Pre-Covid, shown with % Difference



'Pre-Covid' is 2019 values

August 2025 Horses in Training by Rating Band Snapshot versus Previous Years

Flat (including Dual)

AgeCat	RatBand	2016	2017	2018	2019	2020	2021	2022	2023	2024	2025
2YO	Unrated	3,036 (81.7%)	3,170 (82.0%)	3,143 (82.3%)	3,151 (83.6%)	3,047 (84.4%)	2,941 (81.6%)	2,972 (83.1%)	2,929 (82.1%)	2,788 (81.0%)	2,787 (83.3%)
	0-50	38 (1.0%)	49 (1.3%)	43 (1.1%)	52 (1.4%)	27 (0.7%)	55 (1.5%)	37 (1.0%)	46 (1.3%)	44 (1.3%)	33 (1.0%)
	51-60	93 (2.5%)	114 (2.9%)	105 (2.8%)	100 (2.7%)	70 (1.9%)	78 (2.2%)	89 (2.5%)	82 (2.3%)	87 (2.5%)	89 (2.7%)
	61-70	174 (4.7%)	170 (4.4%)	151 (4.0%)	154 (4.1%)	141 (3.9%)	153 (4.2%)	140 (3.9%)	156 (4.4%)	150 (4.4%)	132 (3.9%)
	71-80	203 (5.5%)	209 (5.4%)	179 (4.7%)	161 (4.3%)	172 (4.8%)	195 (5.4%)	161 (4.5%)	184 (5.2%)	200 (5.8%)	145 (4.3%)
	81-90	110 (3.0%)	83 (2.1%)	112 (2.9%)	82 (2.2%)	90 (2.5%)	109 (3.0%)	103 (2.9%)	113 (3.2%)	96 (2.8%)	98 (2.9%)
	91-100	41 (1.1%)	41 (1.1%)	56 (1.5%)	46 (1.2%)	39 (1.1%)	42 (1.2%)	48 (1.3%)	34 (1.0%)	53 (1.5%)	44 (1.3%)
	101+	19 (0.5%)	29 (0.8%)	28 (0.7%)	23 (0.6%)	24 (0.7%)	29 (0.8%)	26 (0.7%)	25 (0.7%)	25 (0.7%)	18 (0.5%)
Subtotal		3,714 (100.0%)	3,865 (100.0%)	3,817 (100.0%)	3,769 (100.0%)	3,610 (100.0%)	3,602 (100.0%)	3,576 (100.0%)	3,569 (100.0%)	3,443 (100.0%)	3,346 (100.0%)
3YO	Unrated	609 (22.7%)	585 (21.3%)	771 (26.7%)	698 (25.1%)	977 (32.2%)	753 (26.6%)	679 (24.9%)	671 (24.3%)	652 (25.0%)	707 (25.9%)
	0-50	178 (6.6%)	202 (7.3%)	192 (6.6%)	261 (9.4%)	207 (6.8%)	226 (8.0%)	202 (7.4%)	215 (7.8%)	206 (7.9%)	185 (6.8%)
	51-60	310 (11.6%)	338 (12.3%)	307 (10.6%)	357 (12.9%)	335 (11.0%)	332 (11.7%)	350 (12.8%)	326 (11.8%)	278 (10.7%)	334 (12.2%)
	61-70	483 (18.0%)	437 (15.9%)	456 (15.8%)	442 (15.9%)	463 (15.3%)	466 (16.4%)	450 (16.5%)	486 (17.6%)	451 (17.3%)	453 (16.6%)
	71-80	502 (18.7%)	537 (19.5%)	517 (17.9%)	406 (14.6%)	508 (16.7%)	477 (16.8%)	475 (17.4%)	493 (17.8%)	447 (17.2%)	485 (17.8%)
	81-90	350 (13.1%)	372 (13.5%)	355 (12.3%)	325 (11.7%)	322 (10.6%)	325 (11.5%)	303 (11.1%)	313 (11.3%)	326 (12.5%)	309 (11.3%)
	91-100	142 (5.3%)	180 (6.5%)	178 (6.2%)	179 (6.4%)	137 (4.5%)	144 (5.1%)	158 (5.8%)	158 (5.7%)	138 (5.3%)	144 (5.3%)
	101+	107 (4.0%)	98 (3.6%)	115 (4.0%)	110 (4.0%)	84 (2.8%)	111 (3.9%)	113 (4.1%)	105 (3.8%)	108 (4.1%)	113 (4.1%)
Subtotal		2,681 (100.0%)	2,749 (100.0%)	2,891 (100.0%)	2,778 (100.0%)	3,033 (100.0%)	2,834 (100.0%)	2,730 (100.0%)	2,767 (100.0%)	2,606 (100.0%)	2,730 (100.0%)
4YO	Unrated	163 (12.9%)	206 (14.2%)	204 (13.9%)	183 (12.4%)	232 (16.0%)	224 (15.2%)	201 (13.4%)	162 (12.1%)	158 (11.2%)	177 (12.8%)
	0-50	110 (8.7%)	144 (10.0%)	175 (11.9%)	198 (13.4%)	136 (9.4%)	180 (12.2%)	181 (12.1%)	187 (14.0%)	161 (11.4%)	155 (11.2%)
	51-60	162 (12.8%)	197 (13.6%)	153 (10.4%)	191 (12.9%)	210 (14.5%)	215 (14.6%)	201 (13.4%)	191 (14.3%)	220 (15.6%)	181 (13.0%)
	61-70	190 (15.0%)	231 (16.0%)	269 (18.3%)	236 (16.0%)	233 (16.1%)	244 (16.5%)	269 (18.0%)	237 (17.7%)	260 (18.5%)	244 (17.6%)
	71-80	225 (17.8%)	240 (16.6%)	237 (16.1%)	247 (16.7%)	235 (16.2%)	238 (16.1%)	247 (16.5%)	228 (17.0%)	237 (16.8%)	225 (16.2%)
	81-90	186 (14.7%)	185 (12.8%)	190 (12.9%)	184 (12.5%)	174 (12.0%)	171 (11.6%)	187 (12.5%)	147 (11.0%)	172 (12.2%)	179 (12.9%)
	91-100	121 (9.6%)	132 (9.1%)	143 (9.7%)	133 (9.0%)	117 (8.1%)	119 (8.1%)	106 (7.1%)	88 (6.6%)	110 (7.8%)	120 (8.7%)
	101+	109 (8.6%)	112 (7.7%)	100 (6.8%)	105 (7.1%)	114 (7.9%)	84 (5.7%)	103 (6.9%)	98 (7.3%)	89 (6.3%)	106 (7.6%)
Subtotal		1,266 (100.0%)	1,447 (100.0%)	1,471 (100.0%)	1,477 (100.0%)	1,451 (100.0%)	1,475 (100.0%)	1,495 (100.0%)	1,338 (100.0%)	1,407 (100.0%)	1,387 (100.0%)
5YO+	Unrated	269 (12.8%)	315 (14.6%)	291 (13.2%)	247 (11.8%)	355 (15.8%)	269 (13.2%)	306 (15.0%)	247 (11.7%)	244 (11.3%)	264 (12.0%)
	0-50	200 (9.5%)	238 (11.0%)	290 (13.2%)	334 (15.9%)	294 (13.1%)	300 (14.7%)	269 (13.2%)	264 (12.5%)	298 (13.8%)	267 (12.1%)
	51-60	304 (14.4%)	302 (14.0%)	337 (15.3%)	336 (16.0%)	328 (14.6%)	326 (16.0%)	305 (14.9%)	365 (17.2%)	389 (18.0%)	408 (18.5%)
	61-70	355 (16.9%)	373 (17.3%)	362 (16.5%)	372 (17.7%)	383 (17.1%)	354 (17.4%)	370 (18.1%)	396 (18.7%)	422 (19.6%)	427 (19.3%)
	71-80	375 (17.8%)	309 (14.3%)	333 (15.2%)	302 (14.4%)	353 (15.7%)	277 (13.6%)	278 (13.6%)	327 (15.4%)	325 (15.1%)	345 (15.6%)
	81-90	260 (12.4%)	278 (12.9%)	276 (12.6%)	240 (11.4%)	251 (11.2%)	223 (11.0%)	229 (11.2%)	243 (11.5%)	231 (10.7%)	247 (11.2%)
	91-100	195 (9.3%)	184 (8.5%)	163 (7.4%)	137 (6.5%)	140 (6.2%)	144 (7.1%)	147 (7.2%)	144 (6.8%)	129 (6.0%)	142 (6.4%)
	101+	146 (6.9%)	159 (7.4%)	145 (6.6%)	130 (6.2%)	139 (6.2%)	142 (7.0%)	140 (6.8%)	133 (6.3%)	118 (5.5%)	108 (4.9%)
Subtotal		2,104 (100.0%)	2,158 (100.0%)	2,197 (100.0%)	2,098 (100.0%)	2,243 (100.0%)	2,035 (100.0%)	2,044 (100.0%)	2,119 (100.0%)	2,156 (100.0%)	2,208 (100.0%)
Overall	Unrated	4,077 (41.8%)	4,276 (41.8%)	4,409 (42.5%)	4,279 (42.3%)	4,611 (44.6%)	4,187 (42.1%)	4,158 (42.2%)	4,009 (40.9%)	3,842 (40.0%)	3,935 (40.7%)
	0-50	526 (5.4%)	633 (6.2%)	700 (6.7%)	845 (8.3%)	664 (6.4%)	761 (7.7%)	689 (7.0%)	712 (7.3%)	709 (7.4%)	640 (6.6%)
	51-60	869 (8.9%)	951 (9.3%)	902 (8.7%)	984 (9.7%)	943 (9.1%)	951 (9.6%)	945 (9.6%)	964 (9.8%)	974 (10.1%)	1,012 (10.5%)
	61-70	1,202 (12.3%)	1,211 (11.9%)	1,238 (11.9%)	1,204 (11.9%)	1,220 (11.8%)	1,217 (12.2%)	1,229 (12.5%)	1,275 (13.0%)	1,283 (13.3%)	1,256 (13.0%)
	71-80	1,305 (13.4%)	1,295 (12.7%)	1,266 (12.2%)	1,116 (11.0%)	1,268 (12.3%)	1,187 (11.9%)	1,161 (11.8%)	1,232 (12.6%)	1,209 (12.6%)	1,200 (12.4%)
	81-90	906 (9.3%)	918 (9.0%)	933 (9.0%)	831 (8.2%)	837 (8.1%)	828 (8.3%)	822 (8.3%)	816 (8.3%)	825 (8.6%)	833 (8.6%)
	91-100	499 (5.1%)	537 (5.3%)	540 (5.2%)	495 (4.9%)	433 (4.2%)	449 (4.5%)	459 (4.7%)	424 (4.3%)	430 (4.5%)	450 (4.7%)
	101+	381 (3.9%)	398 (3.9%)	388 (3.7%)	368 (3.6%)	361 (3.5%)	366 (3.7%)	382 (3.9%)	361 (3.7%)	340 (3.5%)	345 (3.6%)
Total		9,765 (100.0%)	10,219 (100.0%)	10,376 (100.0%)	10,122 (100.0%)	10,337 (100.0%)	9,946 (100.0%)	9,845 (100.0%)	9,793 (100.0%)	9,612 (100.0%)	9,671 (100.0%)

Where a horse has more than one published rating (published Flat Turf and published Flat AWT mark), the higher of the two is taken.

Jump (including Dual)

AgeCat	RatBand	2016	2017	2018	2019	2020	2021	2022	2023	2024	2025
3YO	Unrated	267 (100.0%)	253 (100.0%)	245 (100.0%)	247 (99.6%)	229 (99.6%)	269 (96.8%)	286 (97.9%)	292 (96.7%)	276 (100.0%)	289 (99.3%)
	0-100	NA (-)	NA (-)	NA (-)	1 (0.4%)	NA (-)	2 (0.7%)	2 (0.7%)	5 (1.7%)	NA (-)	2 (0.7%)
	101-110	NA (-)	NA (-)	NA (-)	NA (-)	NA (-)	4 (1.4%)	3 (1.0%)	5 (1.7%)	NA (-)	NA (-)
	111-120	NA (-)	NA (-)	NA (-)	NA (-)	NA (-)	3 (1.1%)	1 (0.3%)	NA (-)	NA (-)	NA (-)
	121-130	NA (-)	NA (-)	NA (-)	NA (-)	1 (0.4%)	NA (-)	NA (-)	NA (-)	NA (-)	NA (-)
Subtotal		267 (100.0%)	253 (100.0%)	245 (100.0%)	248 (100.0%)	230 (100.0%)	278 (100.0%)	292 (100.0%)	302 (100.0%)	276 (100.0%)	291 (100.0%)
4-5YO	Unrated	1,134 (69.6%)	1,336 (72.1%)	1,355 (71.4%)	1,423 (71.9%)	1,584 (73.9%)	1,453 (75.2%)	1,527 (75.0%)	1,493 (73.4%)	1,365 (71.3%)	1,377 (72.4%)
	0-100	155 (9.5%)	163 (8.8%)	141 (7.4%)	172 (8.7%)	192 (9.0%)	211 (10.9%)	237 (11.6%)	281 (13.8%)	309 (16.1%)	252 (13.2%)
	101-110	96 (5.9%)	106 (5.7%)	123 (6.5%)	106 (5.4%)	111 (5.2%)	80 (4.1%)	123 (6.0%)	117 (5.7%)	102 (5.3%)	125 (6.6%)
	111-120	105 (6.4%)	92 (5.0%)	116 (6.1%)	126 (6.4%)	109 (5.1%)	92 (4.8%)	74 (3.6%)	85 (4.2%)	84 (4.4%)	101 (5.3%)
	121-130	61 (3.7%)	89 (4.8%)	104 (5.5%)	89 (4.5%)	93 (4.3%)	54 (2.8%)	48 (2.4%)	40 (2.0%)	35 (1.8%)	37 (1.9%)
	131-140	55 (3.4%)	47 (2.5%)	48 (2.5%)	42 (2.1%)	36 (1.7%)	34 (1.8%)	18 (0.9%)	17 (0.8%)	14 (0.7%)	5 (0.3%)
	141-150	18 (1.1%)	17 (0.9%)	8 (0.4%)	15 (0.8%)	13 (0.6%)	3 (0.2%)	5 (0.2%)	2 (0.1%)	5 (0.3%)	4 (0.2%)
	151+	6 (0.4%)	4 (0.2%)	4 (0.2%)	5 (0.3%)	5 (0.2%)	4 (0.2%)	3 (0.1%)	NA (-)	1 (0.1%)	2 (0.1%)
Subtotal		1,630 (100.0%)	1,854 (100.0%)	1,899 (100.0%)	1,978 (100.0%)	2,143 (100.0%)	1,931 (100.0%)	2,035 (100.0%)	2,035 (100.0%)	1,915 (100.0%)	1,903 (100.0%)
6-7YO	Unrated	403 (27.8%)	431 (28.3%)	466 (27.8%)	418 (24.9%)	597 (30.4%)	446 (24.9%)	657 (37.6%)	455 (26.8%)	459 (26.9%)	407 (25.8%)
	0-100	293 (20.2%)	284 (18.6%)	339 (20.3%)	354 (21.0%)	388 (19.7%)	450 (25.1%)	407 (23.3%)	518 (30.5%)	538 (31.5%)	469 (29.7%)
	101-110	196 (13.5%)	209 (13.7%)	203 (12.1%)	204 (12.1%)	251 (12.8%)	212 (11.8%)	198 (11.3%)	227 (13.4%)	262 (15.4%)	238 (15.1%)
	111-120	207 (14.3%)	192 (12.6%)	220 (13.1%)	245 (14.6%)	246 (12.5%)	240 (13.4%)	190 (10.9%)	231 (13.6%)	213 (12.5%)	222 (14.1%)
	121-130	172 (11.9%)	191 (12.5%)	214 (12.8%)	216 (12.8%)	234 (11.9%)	221 (12.3%)	148 (8.5%)	156 (9.2%)	141 (8.3%)	131 (8.3%)
	131-140	112 (7.7%)	137 (9.0%)	157 (9.4%)	167 (9.9%)	160 (8.1%)	136 (7.6%)	103 (5.9%)	72 (4.2%)	64 (3.8%)	77 (4.9%)
	141-150	43 (3.0%)	57 (3.7%)	54 (3.2%)	43 (2.6%)	62 (3.2%)	62 (3.5%)	29 (1.7%)	28 (1.7%)	24 (1.4%)	23 (1.5%)
	151+	25 (1.7%)	24 (1.6%)	21 (1.3%)	35 (2.1%)	27 (1.4%)	27 (1.5%)	14 (0.8%)	9 (0.5%)	5 (0.3%)	10 (0.6%)
Subtotal		1,451 (100.0%)	1,525 (100.0%)	1,674 (100.0%)	1,682 (100.0%)	1,965 (100.0%)	1,794 (100.0%)	1,746 (100.0%)	1,696 (100.0%)	1,706 (100.0%)	1,577 (100.0%)
8YO+	Unrated	196 (16.1%)	189 (15.4%)	232 (17.0%)	191 (15.3%)	332 (21.8%)	192 (13.5%)	328 (26.3%)	228 (19.2%)	229 (20.0%)	193 (17.4%)
	0-100	387 (31.7%)	360 (29.3%)	390 (28.6%)	378 (30.2%)	404 (26.5%)	428 (30.2%)	317 (25.5%)	342 (28.9%)	343 (30.0%)	370 (33.3%)
	101-110	158 (13.0%)	172 (14.0%)	225 (16.5%)	168 (13.4%)	172 (11.3%)	181 (12.8%)	149 (12.0%)	138 (11.6%)	141 (12.3%)	140 (12.6%)
	111-120	160 (13.1%)	172 (14.0%)	157 (11.5%)	159 (12.7%)	173 (11.4%)	188 (13.3%)	153 (12.3%)	142 (12.0%)	167 (14.6%)	145 (13.0%)
	121-130	141 (11.6%)	133 (10.8%)	163 (11.9%)	132 (10.6%)	185 (12.1%)	192 (13.5%)	121 (9.7%)	155 (13.1%)	133 (11.6%)	120 (10.8%)
	131-140	104 (8.5%)	114 (9.3%)	122 (8.9%)	113 (9.0%)	125 (8.2%)	130 (9.2%)	94 (7.6%)	106 (8.9%)	78 (6.8%)	83 (7.5%)
	141-150	48 (3.9%)	61 (5.0%)	59 (4.3%)	75 (6.0%)	91 (6.0%)	61 (4.3%)	55 (4.4%)	45 (3.8%)	32 (2.8%)	40 (3.6%)
	151+	25 (2.1%)	27 (2.2%)	18 (1.3%)	34 (2.7%)	42 (2.8%)	45 (3.2%)	28 (2.2%)	29 (2.4%)	22 (1.9%)	21 (1.9%)
Subtotal		1,219 (100.0%)	1,228 (100.0%)	1,366 (100.0%)	1,250 (100.0%)	1,524 (100.0%)	1,417 (100.0%)	1,245 (100.0%)	1,185 (100.0%)	1,145 (100.0%)	1,112 (100.0%)
Overall	Unrated	2,000 (43.8%)	2,209 (45.5%)	2,298 (44.3%)	2,279 (44.2%)	2,742 (46.8%)	2,360 (43.5%)	2,798 (52.6%)	2,468 (47.3%)	2,329 (46.2%)	2,266 (46.4%)
	0-100	835 (18.3%)	807 (16.6%)	870 (16.8%)	905 (17.5%)	984 (16.8%)	1,091 (20.1%)	963 (18.1%)	1,146 (22.0%)	1,190 (23.6%)	1,093 (22.4%)
	101-110	450 (9.9%)	487 (10.0%)	551 (10.6%)	478 (9.3%)	534 (9.1%)	477 (8.8%)	473 (8.9%)	487 (9.3%)	505 (10.0%)	503 (10.3%)
	111-120	472 (10.3%)	456 (9.4%)	493 (9.5%)	530 (10.3%)	528 (9.0%)	523 (9.6%)	418 (7.9%)	458 (8.8%)	464 (9.2%)	468 (9.6%)
	121-130	374 (8.2%)	413 (8.5%)	481 (9.3%)	437 (8.5%)	513 (8.8%)	467 (8.6%)	317 (6.0%)	351 (6.7%)	309 (6.1%)	288 (5.9%)
	131-140	271 (5.9%)	298 (6.1%)	327 (6.3%)	322 (6.2%)	321 (5.5%)	300 (5.5%)	215 (4.0%)	195 (3.7%)	156 (3.1%)	165 (3.4%)
	141-150	109 (2.4%)	135 (2.8%)	121 (2.3%)	133 (2.6%)	166 (2.8%)	126 (2.3%)	89 (1.7%)	75 (1.4%)	61 (1.2%)	67 (1.4%)
Total		4,567 (100.0%)	4,860 (100.0%)	5,184 (100.0%)	5,158 (100.0%)	5,862 (100.0%)	5,420 (100.0%)	5,318 (100.0%)	5,218 (100.0%)	5,042 (100.0%)	4,883 (100.0%)

Where a horse has more than one published rating (published Hurdle and published Chase mark), the higher of the two is taken.

Young Horses Entering Training

Flat Yearlings in Training versus Previous Years

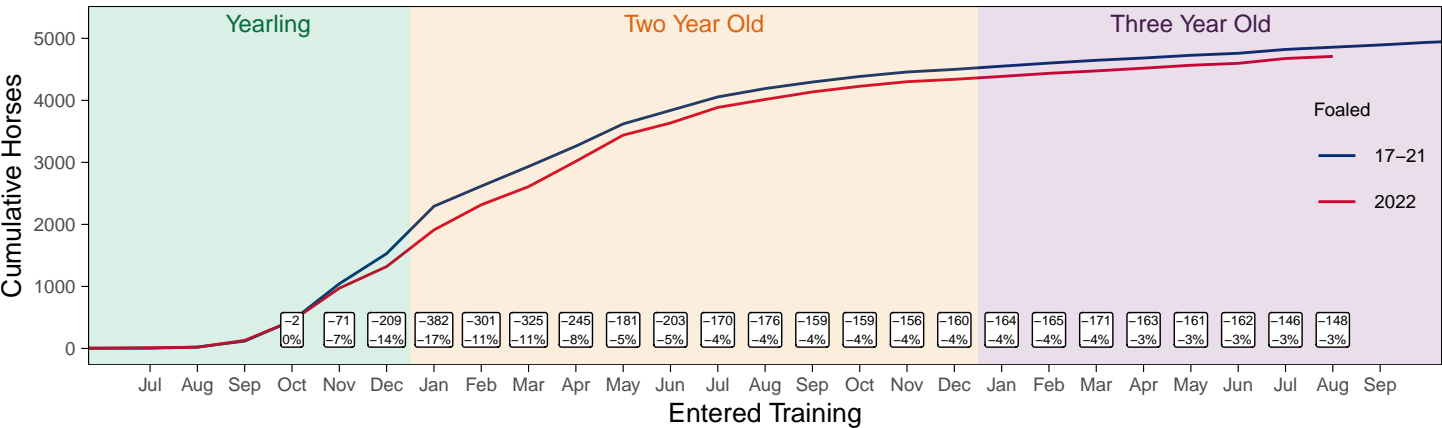
Period	Jan	Feb	Mar	Apr	May	Jun	Jul	Aug	Sep	Oct	Nov	Dec
2025	0	0	0	1	1	1	1	1				
2024	0	0	0	0	0	0	2	3	72	186	620	1068
5YrAvg	0	0	0	0	1	1	1	3	58	200	552	936

Foals Entering Training for the First Time

Warning: A numeric 'legend.position' argument in 'theme()' was deprecated in ggplot2 3.5.0.
i Please use the 'legend.position.inside' argument of 'theme()' instead.
This warning is displayed once every 8 hours.
Call 'lifecycle::last_lifecycle_warnings()' to see where this warning was generated.

2022 Foals Entering Training Over Time

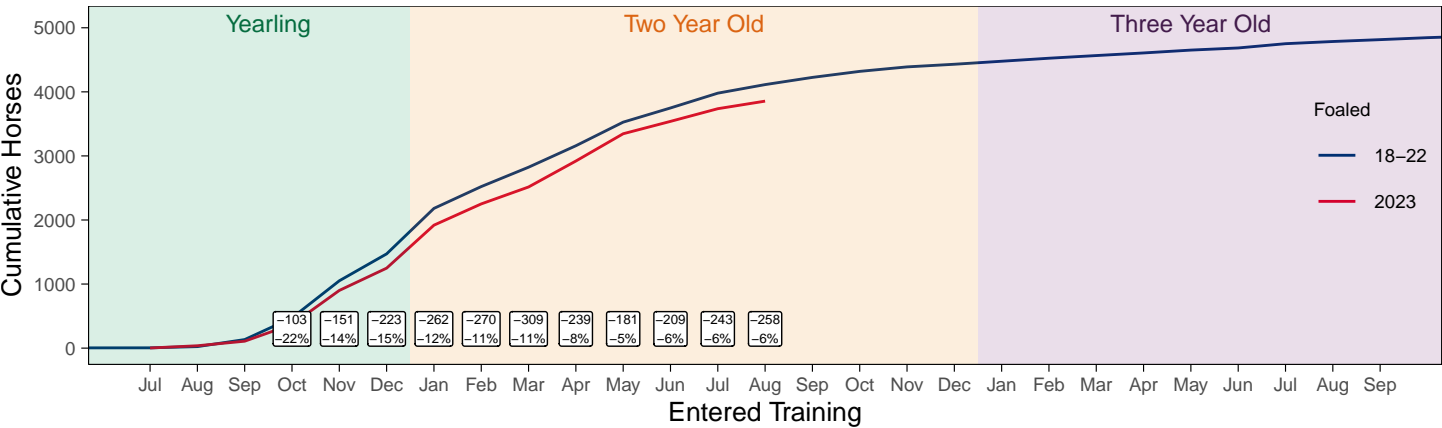
Cumulative Flat Horses foaled in 2022 shown by first in training notification against trend



Cumulative individual horses entering training for the first time by the end of each month.

2023 Foals Entering Training Over Time

Cumulative Flat Horses foaled in 2023 shown by first in training notification against trend



Cumulative individual horses entering training for the first time by the end of each month.

Year to Date Horses in Training

Type	2016	2017	2018	2019	2020	2021	2022	2023	2024	2025	vs. Last Year	vs. Pre-Covid
Flat	12594	12800	12811	12914	12771	12637	12381	12373	12299	12103	-196 / -1.6%	-811 / -6.3%
Jump	7721	7500	7505	8007	7686	8597	8120	8046	7881	7375	-506 / -6.4%	-632 / -7.9%
Dual	793	1026	1170	882	891	885	860	769	749	892	+143 / +19.1%	+10 / +1.1%
Hunter	1872	1836	1680	1632	1383	1131	1244	1178	1325	1067	-258 / -19.5%	-565 / -34.6%
Total	21108	21326	21486	21803	21348	22119	21361	21188	20929	20370	-559 / -2.7%	-1433 / -6.6%

'vs. Pre-Covid' is comparison between 2025 and 2019

Flat

AgeCat	2016	2017	2018	2019	2020	2021	2022	2023	2024	2025	vs. Last Year	vs. Pre-Covid
2YO	4320	4375	4323	4358	4131	4144	4017	4067	3972	3814	-158 / -4.0%	-544 / -12.5%
3YO	3814	3892	4035	3960	4033	3900	3827	3754	3693	3756	+63 / +1.7%	-204 / -5.2%
4YO	1835	1905	1873	1977	1945	2020	2004	1936	1936	1856	-80 / -4.1%	-121 / -6.1%
5YO+	2625	2628	2580	2619	2662	2573	2533	2616	2698	2677	-21 / -0.8%	+58 / +2.2%
Total	12594	12800	12811	12914	12771	12637	12381	12373	12299	12103	-196 / -1.6%	-811 / -6.3%

'vs. Pre-Covid' is comparison between 2025 and 2019

Jump

AgeCat	2016	2017	2018	2019	2020	2021	2022	2023	2024	2025	vs. Last Year	vs. Pre-Covid
3YO	257	198	206	259	199	268	282	278	279	250	-29 / -10.4%	-9 / -3.5%
4-5YO	2534	2491	2478	2660	2562	2670	2740	2827	2671	2492	-179 / -6.7%	-168 / -6.3%
6-7YO	2493	2388	2484	2661	2606	2935	2729	2681	2729	2533	-196 / -7.2%	-128 / -4.8%
8YO+	2437	2423	2337	2427	2319	2724	2369	2260	2202	2100	-102 / -4.6%	-327 / -13.5%
Total	7721	7500	7505	8007	7686	8597	8120	8046	7881	7375	-506 / -6.4%	-632 / -7.9%

'vs. Pre-Covid' is comparison between 2025 and 2019

Dual

AgeCat	2016	2017	2018	2019	2020	2021	2022	2023	2024	2025	vs. Last Year	vs. Pre-Covid
3YO	143	161	140	127	150	170	205	166	124	176	+52 / +41.9%	+49 / +38.6%
4YO	168	269	268	214	204	230	206	186	210	231	+21 / +10.0%	+17 / +7.9%
5YO+	482	596	762	541	537	485	449	417	415	485	+70 / +16.9%	-56 / -10.4%
Total	793	1026	1170	882	891	885	860	769	749	892	+143 / +19.1%	+10 / +1.1%

'vs. Pre-Covid' is comparison between 2025 and 2019

Hunter Chasers

AgeCat	2016	2017	2018	2019	2020	2021	2022	2023	2024	2025	vs. Last Year	vs. Pre-Covid
4-5YO	186	182	207	241	238	119	202	210	248	207	-41 / -16.5%	-34 / -14.1%
6-7YO	502	485	471	462	364	252	301	294	317	295	-22 / -6.9%	-167 / -36.1%
8-9YO	507	506	398	369	304	278	312	280	285	225	-60 / -21.1%	-144 / -39.0%
10YO+	677	663	604	560	477	482	429	394	475	340	-135 / -28.4%	-220 / -39.3%
Total	1872	1836	1680	1632	1383	1131	1244	1178	1325	1067	-258 / -19.5%	-565 / -34.6%

'vs. Pre-Covid' is comparison between 2025 and 2019

Year to Date Runners

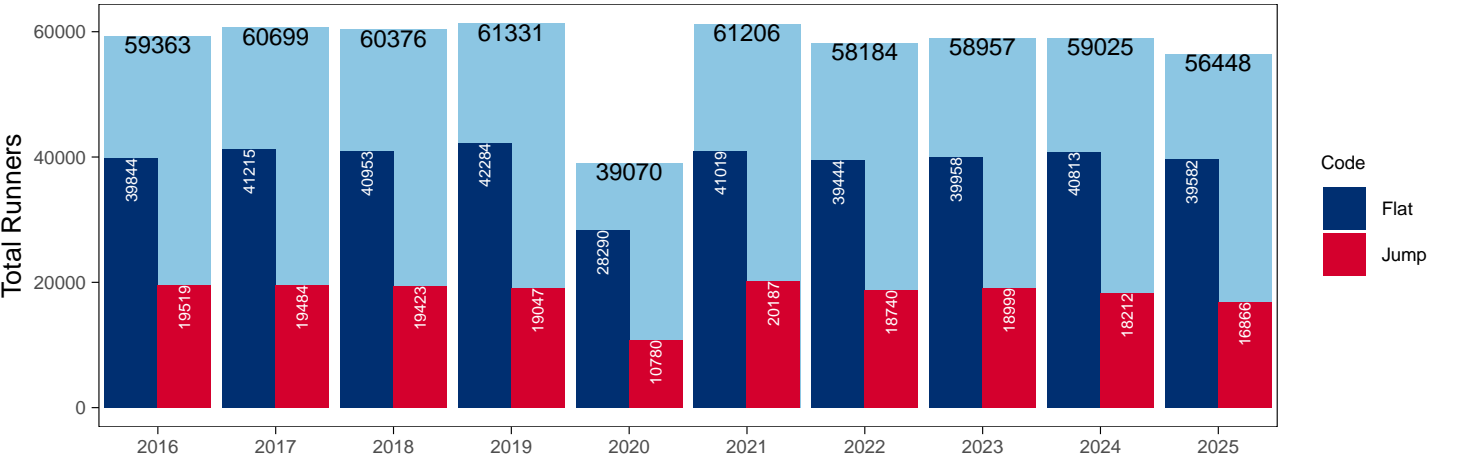
Year to Date Total Runners

Code	2016	2017	2018	2019	2020	2021	2022	2023	2024	2025	vs. Last Year	vs. Pre-Covid
Flat	39844	41215	40953	42284	28290	41019	39444	39958	40813	39582	-1231 / -3.0%	-2702 / -6.4%
Jump	19519	19484	19423	19047	10780	20187	18740	18999	18212	16866	-1346 / -7.4%	-2181 / -11.5%
Total	59363	60699	60376	61331	39070	61206	58184	58957	59025	56448	-2577 / -4.4%	-4883 / -8.0%

'vs. Pre-Covid' is comparison between 2025 and 2019

YTD Total Runners

Total Runners in GB Races, shown by Code and Total



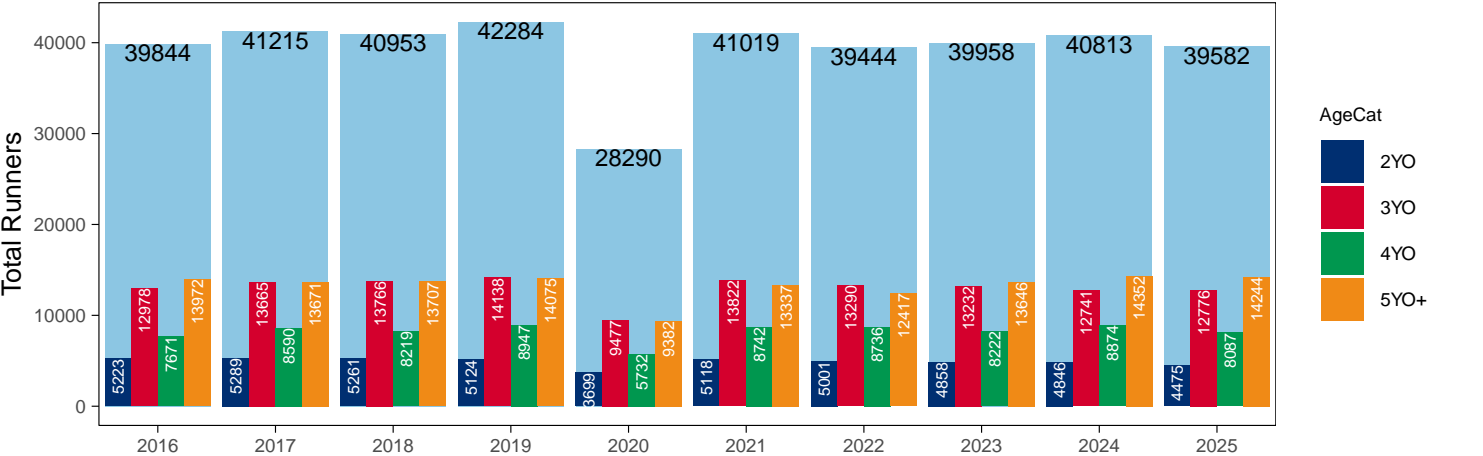
Flat

AgeCat	2016	2017	2018	2019	2020	2021	2022	2023	2024	2025	vs. Last Year	vs. Pre-Covid
2YO	5223	5289	5261	5124	3699	5118	5001	4858	4846	4475	-371 / -7.7%	-649 / -12.7%
3YO	12978	13665	13766	14138	9477	13822	13290	13232	12741	12776	+35 / +0.3%	-1362 / -9.6%
4YO	7671	8590	8219	8947	5732	8742	8736	8222	8874	8087	-787 / -8.9%	-860 / -9.6%
5YO+	13972	13671	13707	14075	9382	13337	12417	13646	14352	14244	-108 / -0.8%	+169 / +1.2%
Total	39844	41215	40953	42284	28290	41019	39444	39958	40813	39582	-1231 / -3.0%	-2702 / -6.4%

'vs. Pre-Covid' is comparison between 2025 and 2019

YTD Total Flat Runners by Age

Total Runners in GB Flat Races, shown by Age Category and Total



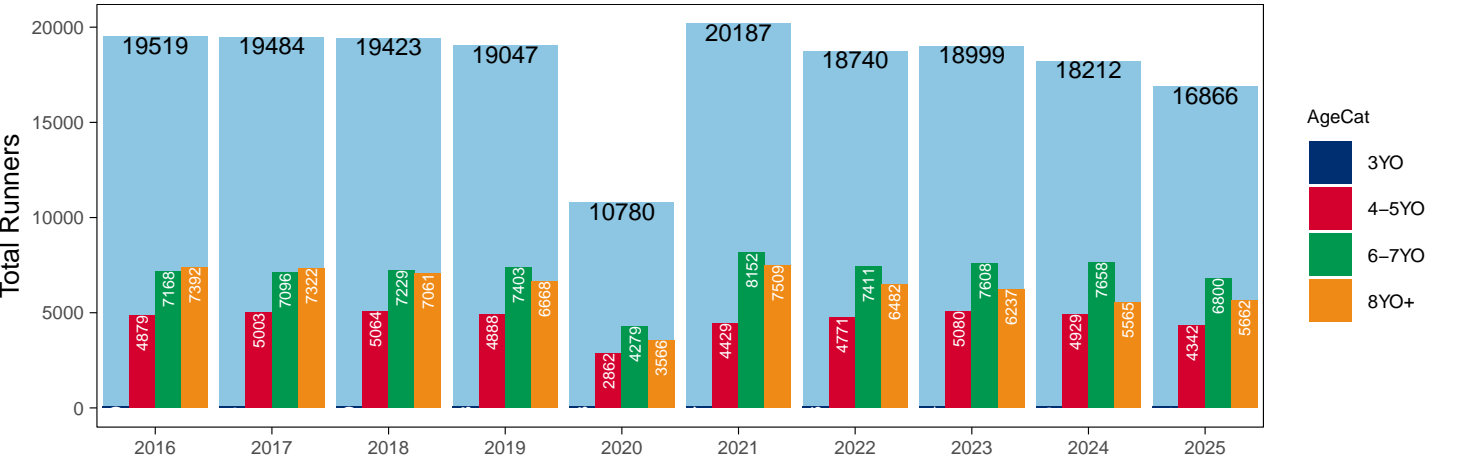
Jump

AgeCat	2016	2017	2018	2019	2020	2021	2022	2023	2024	2025	vs. Last Year	vs. Pre-Covid
3YO	80	63	69	88	73	97	76	74	60	62	+2 / +3.3%	-26 / -29.5%
4-5YO	4879	5003	5064	4888	2862	4429	4771	5080	4929	4342	-587 / -11.9%	-546 / -11.2%
6-7YO	7168	7096	7229	7403	4279	8152	7411	7608	7658	6800	-858 / -11.2%	-603 / -8.1%
8YO+	7392	7322	7061	6668	3566	7509	6482	6237	5565	5662	+97 / +1.7%	-1006 / -15.1%
Total	19519	19484	19423	19047	10780	20187	18740	18999	18212	16866	-1346 / -7.4%	-2181 / -11.5%

'vs. Pre-Covid' is comparison between 2025 and 2019

YTD Total Jump Runners by Age

Total Runners in GB Jump Races, shown by Age Category and Total



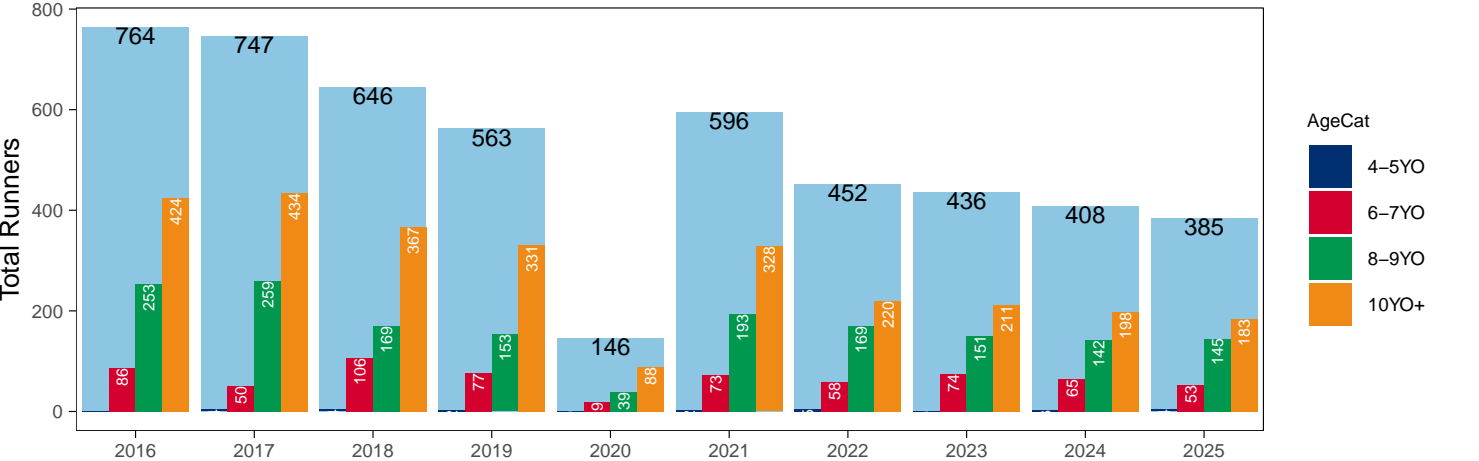
Hunter Chases

AgeCat	2016	2017	2018	2019	2020	2021	2022	2023	2024	2025	vs. Last Year	vs. Pre-Covid
4-5YO	1	4	4	2		2	5		3	4	+1 / +33.3%	+2 / +100.0%
6-7YO	86	50	106	77	19	73	58	74	65	53	-12 / -18.5%	-24 / -31.2%
8-9YO	253	259	169	153	39	193	169	151	142	145	+3 / +2.1%	-8 / -5.2%
10YO+	424	434	367	331	88	328	220	211	198	183	-15 / -7.6%	-148 / -44.7%
Total	764	747	646	563	146	596	452	436	408	385	-23 / -5.6%	-178 / -31.6%

'vs. Pre-Covid' is comparison between 2025 and 2019

YTD Total Hunter Chase Runners by Age

Total Runners in GB Hunter Chases shown by Age Category and Total



Year to Date Total Runners by Country Trained

Code	Country	2016	2017	2018	2019	2020	2021	2022	2023	2024	2025
Flat	GB	39398	40668	40382	41714	28097	40737	39160	39573	40280	39113
	IRE	386	481	516	511	170	256	226	342	459	409
	Other	60	66	55	59	23	26	58	43	74	60
Jump	GB	18824	18847	18969	18451	10513	19785	18091	18262	17580	16159
	IRE	689	624	445	589	257	399	647	734	629	700
	Other	6	13	9	7	10	3	2	3	3	7
Overall	GB	58222	59515	59351	60165	38610	60522	57251	57835	57860	55272
	IRE	1075	1105	961	1100	427	655	873	1076	1088	1109
	Other	66	79	64	66	33	29	60	46	77	67

Year to Date GB Trained Runners Racing Abroad

Code	Country	2016	2017	2018	2019	2020	2021	2022	2023	2024	2025
Flat	IRE	92	109	86	96	22	34	47	48	63	77
	FR	219	306	291	372	179	119	148	203	215	246
	GNV	15	17	16	30	8	3	12	13	29	19
	UAE	208	278	276	303	281	248	276	272	214	228
	BAH							41	23	50	89
	KSA					15	21	22	15	11	10
	Other	69	65	75	74	30	32	50	56	95	62
	Total	603	775	744	875	535	457	596	630	677	731
Jump	IRE	87	78	51	69	7	23	29	20	56	88
	FR	43	24	9	33	25	84	81	63	41	22
	Other	7	5	5	8		6	12	3	9	1
	Total	137	107	65	110	32	113	122	86	106	111

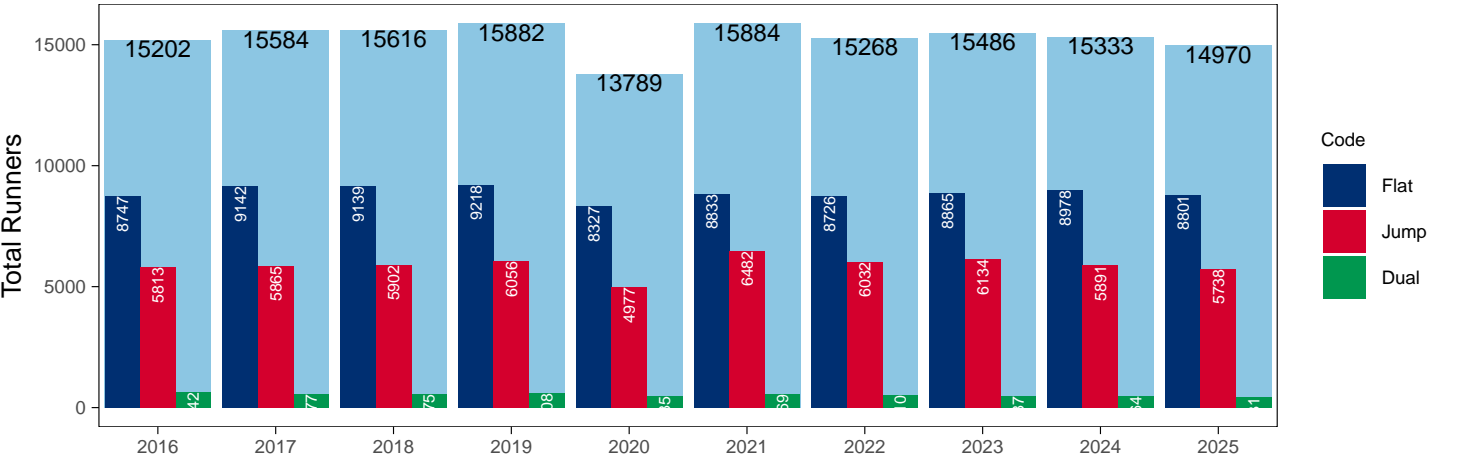
Year to Date Individual Runners

Code	2016	2017	2018	2019	2020	2021	2022	2023	2024	2025	vs. Last Year	vs. Pre-Covid
Flat	8747	9142	9139	9218	8327	8833	8726	8865	8978	8801	-177 / -2.0%	-417 / -4.5%
Jump	5813	5865	5902	6056	4977	6482	6032	6134	5891	5738	-153 / -2.6%	-318 / -5.3%
Dual	642	577	575	608	485	569	510	487	464	431	-33 / -7.1%	-177 / -29.1%
Overall	15202	15584	15616	15882	13789	15884	15268	15486	15333	14970	-363 / -2.4%	-912 / -5.7%

'vs. Pre-Covid' is comparison between 2025 and 2019

YTD Individual Runners

Individual Runners in GB Races, shown by Code and Total



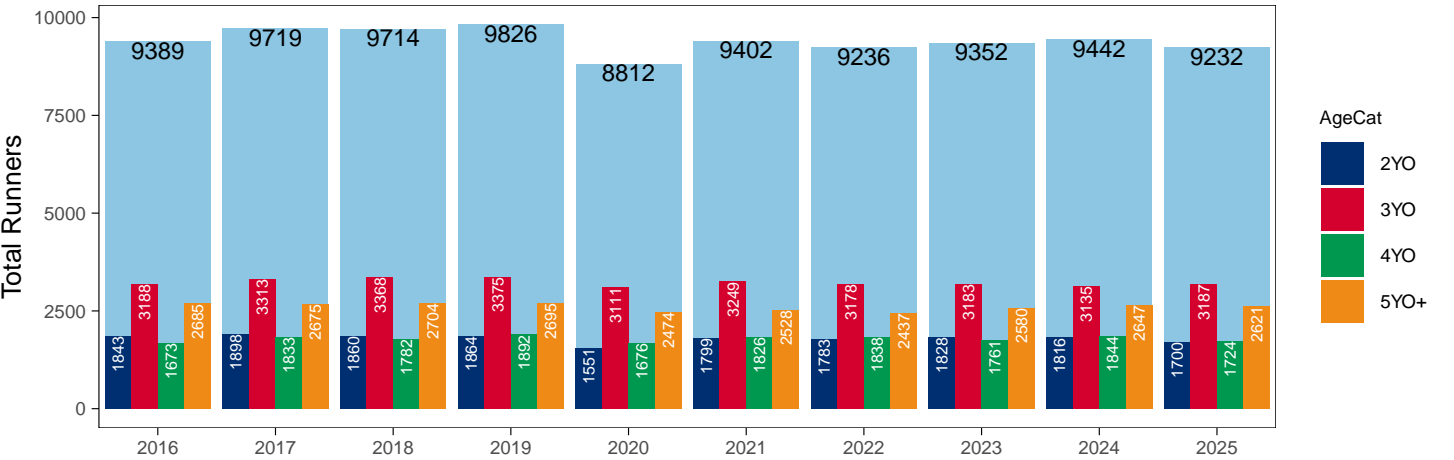
Flat

AgeCat	2016	2017	2018	2019	2020	2021	2022	2023	2024	2025	vs. Last Year	vs. Pre-Covid
2YO	1843	1898	1860	1864	1551	1799	1783	1828	1816	1700	-116 / -6.4%	-164 / -8.8%
3YO	3188	3313	3368	3375	3111	3249	3178	3183	3135	3187	+52 / +1.7%	-188 / -5.6%
4YO	1673	1833	1782	1892	1676	1826	1838	1761	1844	1724	-120 / -6.5%	-168 / -8.9%
5YO+	2685	2675	2704	2695	2474	2528	2437	2580	2647	2621	-26 / -1.0%	-74 / -2.7%
Total	9389	9719	9714	9826	8812	9402	9236	9352	9442	9232	-210 / -2.2%	-594 / -6.0%

'vs. Pre-Covid' is comparison between 2025 and 2019

YTD Individual Flat Runners by Age

Individual Runners in GB Flat Races, shown by Age Category and Total



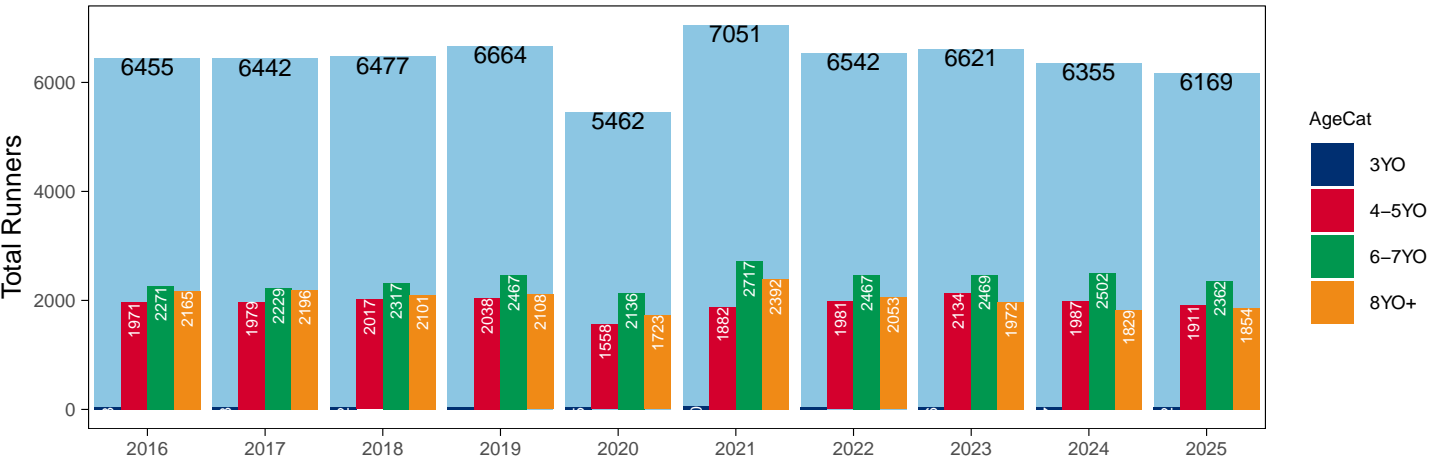
Jump

AgeCat	2016	2017	2018	2019	2020	2021	2022	2023	2024	2025	vs. Last Year	vs. Pre-Covid
3YO	48	38	42	51	45	60	41	46	37	42	+5 / +13.5%	-9 / -17.6%
4-5YO	1971	1979	2017	2038	1558	1882	1981	2134	1987	1911	-76 / -3.8%	-127 / -6.2%
6-7YO	2271	2229	2317	2467	2136	2717	2467	2469	2502	2362	-140 / -5.6%	-105 / -4.3%
8YO+	2165	2196	2101	2108	1723	2392	2053	1972	1829	1854	+25 / +1.4%	-254 / -12.0%
Total	6455	6442	6477	6664	5462	7051	6542	6621	6355	6169	-186 / -2.9%	-495 / -7.4%

'vs. Pre-Covid' is comparison between 2025 and 2019

YTD Individual Jump Runners by Age

Individual Runners in GB Jump Races, shown by Age Category and Total



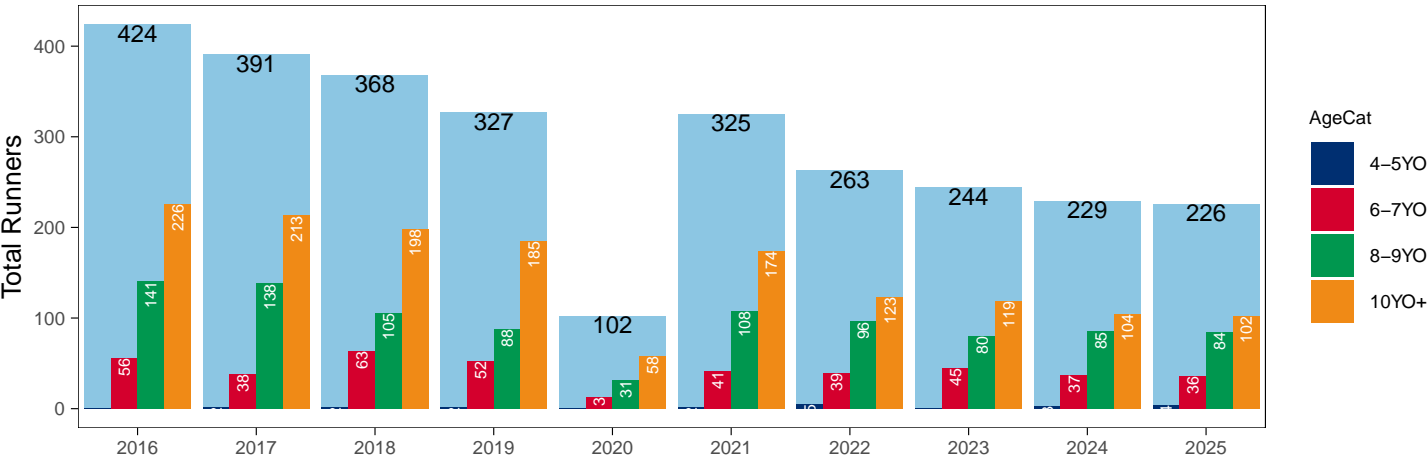
Hunter Chases

AgeCat	2016	2017	2018	2019	2020	2021	2022	2023	2024	2025	vs. Last Year	vs. Pre-Covid
4-5YO	1	2	2	2		2	5		3	4	+1 / +33.3%	+2 / +100.0%
6-7YO	56	38	63	52	13	41	39	45	37	36	-1 / -2.7%	-16 / -30.8%
8-9YO	141	138	105	88	31	108	96	80	85	84	-1 / -1.2%	-4 / -4.5%
10YO+	226	213	198	185	58	174	123	119	104	102	-2 / -1.9%	-83 / -44.9%
Total	424	391	368	327	102	325	263	244	229	226	-3 / -1.3%	-101 / -30.9%

'vs. Pre-Covid' is comparison between 2025 and 2019

YTD Individual Hunter Chase Runners by Age

Individual Runners in GB Hunter Chases shown by Age Category and Total



Year to Date Individual Runners by Country Trained

Code	Country	2016	2017	2018	2019	2020	2021	2022	2023	2024	2025
Flat	GB	8487	8830	8809	8867	8185	8643	8511	8594	8649	8480
	IRE	223	272	294	310	125	173	170	249	290	282
	Other	52	54	51	49	20	23	50	35	51	48
Jump	GB	5413	5479	5581	5661	4738	6172	5569	5632	5453	5235
	IRE	408	388	322	405	231	311	476	523	445	508
	Other	6	9	8	6	10	3	2	2	2	6
Dual	GB	627	566	560	597	482	565	502	473	452	413
	IRE	8	7	14	11	3	4	7	10	12	17
	Other		2								
Overall	GB	14527	14875	14950	15125	13405	15380	14582	14699	14554	14128
	IRE	639	667	630	726	359	488	653	782	747	807
	Other	58	65	59	55	30	26	52	37	53	54

Individual horses may appear under multiple countries.

Year to Date Total Runners by Rating Band

Flat

RatBand	2016	2017	2018	2019	2020	2021	2022	2023	2024	2025
2YO										
Unrated	4,007 (76.7%)	4,209 (79.6%)	4,147 (78.8%)	4,089 (79.8%)	2,924 (79.0%)	3,978 (77.7%)	3,891 (77.8%)	3,869 (79.6%)	3,869 (79.8%)	3,543 (79.2%)
0-50	46 (0.9%)	36 (0.7%)	33 (0.6%)	65 (1.3%)	28 (0.8%)	58 (1.1%)	55 (1.1%)	65 (1.3%)	46 (0.9%)	57 (1.3%)
51-60	135 (2.6%)	156 (2.9%)	166 (3.2%)	134 (2.6%)	73 (2.0%)	121 (2.4%)	161 (3.2%)	138 (2.8%)	141 (2.9%)	135 (3.0%)
61-70	329 (6.3%)	287 (5.4%)	250 (4.8%)	295 (5.8%)	197 (5.3%)	311 (6.1%)	276 (5.5%)	273 (5.6%)	234 (4.8%)	238 (5.3%)
71-80	408 (7.8%)	363 (6.9%)	355 (6.7%)	316 (6.2%)	271 (7.3%)	338 (6.6%)	312 (6.2%)	285 (5.9%)	314 (6.5%)	280 (6.3%)
81-90	214 (4.1%)	131 (2.5%)	198 (3.8%)	134 (2.6%)	128 (3.5%)	201 (3.9%)	201 (4.0%)	153 (3.1%)	160 (3.3%)	138 (3.1%)
91-100	63 (1.2%)	72 (1.4%)	85 (1.6%)	72 (1.4%)	61 (1.6%)	79 (1.5%)	82 (1.6%)	51 (1.0%)	57 (1.2%)	69 (1.5%)
101+	21 (0.4%)	35 (0.7%)	27 (0.5%)	19 (0.4%)	17 (0.5%)	32 (0.6%)	23 (0.5%)	24 (0.5%)	25 (0.5%)	15 (0.3%)
3YO+										
Unrated	3,449 (10.0%)	3,661 (10.2%)	4,212 (11.8%)	4,137 (11.1%)	3,250 (13.2%)	4,177 (11.6%)	3,814 (11.1%)	3,759 (10.7%)	3,740 (10.4%)	3,804 (10.8%)
0-50	2,904 (8.4%)	3,256 (9.1%)	3,694 (10.3%)	4,448 (12.0%)	2,714 (11.0%)	4,249 (11.8%)	4,152 (12.1%)	4,411 (12.6%)	4,345 (12.1%)	4,383 (12.5%)
51-60	5,778 (16.7%)	5,985 (16.7%)	5,694 (16.0%)	6,511 (17.5%)	4,104 (16.7%)	6,343 (17.7%)	6,109 (17.7%)	6,619 (18.9%)	6,873 (19.1%)	6,459 (18.4%)
61-70	7,510 (21.7%)	7,393 (20.6%)	7,184 (20.1%)	7,323 (19.7%)	4,845 (19.7%)	7,469 (20.8%)	7,100 (20.6%)	7,231 (20.6%)	7,681 (21.4%)	7,258 (20.7%)
71-80	6,931 (20.0%)	7,191 (20.0%)	6,688 (18.7%)	6,554 (17.6%)	4,464 (18.2%)	6,382 (17.8%)	6,153 (17.9%)	6,368 (18.1%)	6,468 (18.0%)	6,315 (18.0%)
81-90	4,402 (12.7%)	4,713 (13.1%)	4,471 (12.5%)	4,305 (11.6%)	2,843 (11.6%)	3,902 (10.9%)	3,910 (11.4%)	3,691 (10.5%)	3,945 (11.0%)	3,958 (11.3%)
91-100	2,150 (6.2%)	2,167 (6.0%)	2,321 (6.5%)	2,455 (6.6%)	1,380 (5.6%)	2,024 (5.6%)	1,855 (5.4%)	1,772 (5.0%)	1,697 (4.7%)	1,749 (5.0%)
101+	1,497 (4.3%)	1,560 (4.3%)	1,428 (4.0%)	1,427 (3.8%)	991 (4.0%)	1,355 (3.8%)	1,350 (3.9%)	1,249 (3.6%)	1,218 (3.4%)	1,181 (3.4%)

Jump

RatBand	2016	2017	2018	2019	2020	2021	2022	2023	2024	2025
Hurdle										
Unrated	2,913 (25.1%)	2,860 (24.9%)	2,979 (25.8%)	3,002 (26.1%)	1,912 (29.6%)	2,899 (25.0%)	2,668 (23.9%)	2,914 (25.4%)	2,977 (26.4%)	2,342 (22.8%)
0-100	3,122 (26.9%)	3,145 (27.4%)	2,958 (25.7%)	2,977 (25.9%)	1,500 (23.2%)	3,637 (31.4%)	3,713 (33.3%)	3,888 (33.8%)	3,962 (35.1%)	3,798 (37.0%)
101-110	1,837 (15.8%)	1,765 (15.4%)	1,784 (15.5%)	1,730 (15.0%)	899 (13.9%)	1,613 (13.9%)	1,735 (15.6%)	1,767 (15.4%)	1,651 (14.6%)	1,592 (15.5%)
111-120	1,652 (14.2%)	1,673 (14.6%)	1,628 (14.1%)	1,657 (14.4%)	867 (13.4%)	1,489 (12.9%)	1,445 (13.0%)	1,404 (12.2%)	1,371 (12.1%)	1,309 (12.7%)
121-130	1,104 (9.5%)	1,101 (9.6%)	1,179 (10.2%)	1,200 (10.4%)	654 (10.1%)	1,105 (9.5%)	884 (7.9%)	942 (8.2%)	813 (7.2%)	704 (6.9%)
131-140	662 (5.7%)	655 (5.7%)	689 (6.0%)	620 (5.4%)	421 (6.5%)	563 (4.9%)	474 (4.3%)	367 (3.2%)	344 (3.0%)	377 (3.7%)
141-150	239 (2.1%)	201 (1.8%)	239 (2.1%)	224 (1.9%)	144 (2.2%)	197 (1.7%)	178 (1.6%)	146 (1.3%)	121 (1.1%)	109 (1.1%)
151+	86 (0.7%)	74 (0.6%)	73 (0.6%)	91 (0.8%)	73 (1.1%)	79 (0.7%)	52 (0.5%)	60 (0.5%)	51 (0.5%)	40 (0.4%)
Chase										
Unrated	51 (0.8%)	61 (1.0%)	49 (0.8%)	39 (0.7%)	12 (0.4%)	30 (0.5%)	12 (0.2%)	1 (0.0%)	NA (-)	NA (-)
0-100	1,866 (29.7%)	1,775 (27.9%)	1,805 (29.4%)	1,840 (30.7%)	979 (29.2%)	2,035 (32.6%)	1,991 (32.8%)	2,143 (36.3%)	2,095 (37.8%)	2,017 (38.3%)
101-110	942 (15.0%)	1,036 (16.3%)	943 (15.4%)	958 (16.0%)	522 (15.6%)	945 (15.1%)	958 (15.8%)	998 (16.9%)	981 (17.7%)	883 (16.8%)
111-120	1,109 (17.6%)	1,091 (17.1%)	1,013 (16.5%)	942 (15.7%)	496 (14.8%)	1,041 (16.7%)	1,035 (17.1%)	974 (16.5%)	909 (16.4%)	841 (16.0%)
121-130	946 (15.0%)	970 (15.2%)	1,021 (16.6%)	899 (15.0%)	529 (15.8%)	959 (15.4%)	920 (15.2%)	795 (13.5%)	695 (12.5%)	702 (13.3%)
131-140	781 (12.4%)	852 (13.4%)	741 (12.1%)	751 (12.5%)	445 (13.3%)	679 (10.9%)	655 (10.8%)	571 (9.7%)	470 (8.5%)	419 (8.0%)
141-150	390 (6.2%)	386 (6.1%)	395 (6.4%)	370 (6.2%)	244 (7.3%)	344 (5.5%)	317 (5.2%)	262 (4.4%)	242 (4.4%)	234 (4.4%)
151+	203 (3.2%)	199 (3.1%)	167 (2.7%)	198 (3.3%)	122 (3.6%)	209 (3.3%)	174 (2.9%)	166 (2.8%)	156 (2.8%)	173 (3.3%)

Year to Date Total GB-Trained Runners by Rating Band

Flat

RatBand	2016	2017	2018	2019	2020	2021	2022	2023	2024	2025
2YO										
Unrated	3,956 (76.5%)	4,157 (79.4%)	4,092 (78.7%)	4,019 (79.6%)	2,900 (78.9%)	3,951 (77.6%)	3,862 (77.7%)	3,820 (79.5%)	3,807 (79.6%)	3,490 (78.9%)
0-50	46 (0.9%)	36 (0.7%)	33 (0.6%)	65 (1.3%)	28 (0.8%)	58 (1.1%)	55 (1.1%)	65 (1.4%)	46 (1.0%)	57 (1.3%)
51-60	135 (2.6%)	156 (3.0%)	166 (3.2%)	134 (2.7%)	73 (2.0%)	121 (2.4%)	161 (3.2%)	138 (2.9%)	141 (2.9%)	135 (3.1%)
61-70	329 (6.4%)	287 (5.5%)	250 (4.8%)	295 (5.8%)	197 (5.4%)	311 (6.1%)	276 (5.6%)	273 (5.7%)	234 (4.9%)	238 (5.4%)
71-80	408 (7.9%)	363 (6.9%)	355 (6.8%)	316 (6.3%)	271 (7.4%)	338 (6.6%)	312 (6.3%)	285 (5.9%)	314 (6.6%)	280 (6.3%)
81-90	214 (4.1%)	129 (2.5%)	197 (3.8%)	134 (2.7%)	128 (3.5%)	201 (3.9%)	200 (4.0%)	153 (3.2%)	160 (3.3%)	138 (3.1%)
91-100	63 (1.2%)	72 (1.4%)	83 (1.6%)	69 (1.4%)	61 (1.7%)	78 (1.5%)	80 (1.6%)	49 (1.0%)	56 (1.2%)	69 (1.6%)
101+	21 (0.4%)	34 (0.6%)	22 (0.4%)	18 (0.4%)	16 (0.4%)	32 (0.6%)	22 (0.4%)	24 (0.5%)	24 (0.5%)	15 (0.3%)
3YO+										
Unrated	3,427 (10.0%)	3,639 (10.3%)	4,189 (11.9%)	4,116 (11.2%)	3,242 (13.3%)	4,170 (11.7%)	3,803 (11.1%)	3,741 (10.8%)	3,726 (10.5%)	3,789 (10.9%)
0-50	2,874 (8.4%)	3,187 (9.0%)	3,641 (10.3%)	4,370 (11.9%)	2,696 (11.0%)	4,249 (11.9%)	4,152 (12.1%)	4,381 (12.6%)	4,314 (12.2%)	4,364 (12.6%)
51-60	5,733 (16.8%)	5,903 (16.7%)	5,612 (16.0%)	6,435 (17.6%)	4,070 (16.7%)	6,342 (17.8%)	6,108 (17.9%)	6,590 (19.0%)	6,837 (19.3%)	6,434 (18.5%)
61-70	7,461 (21.8%)	7,344 (20.7%)	7,119 (20.2%)	7,275 (19.8%)	4,837 (19.8%)	7,466 (20.9%)	7,096 (20.8%)	7,216 (20.8%)	7,656 (21.6%)	7,224 (20.8%)
71-80	6,909 (20.2%)	7,141 (20.2%)	6,654 (18.9%)	6,529 (17.8%)	4,455 (18.2%)	6,365 (17.9%)	6,138 (18.0%)	6,343 (18.2%)	6,429 (18.1%)	6,299 (18.2%)
81-90	4,382 (12.8%)	4,687 (13.2%)	4,453 (12.7%)	4,279 (11.7%)	2,836 (11.6%)	3,868 (10.9%)	3,885 (11.4%)	3,661 (10.5%)	3,880 (10.9%)	3,905 (11.3%)
91-100	2,100 (6.1%)	2,116 (6.0%)	2,258 (6.4%)	2,394 (6.5%)	1,372 (5.6%)	1,977 (5.5%)	1,799 (5.3%)	1,708 (4.9%)	1,607 (4.5%)	1,641 (4.7%)
101+	1,340 (3.9%)	1,417 (4.0%)	1,258 (3.6%)	1,266 (3.5%)	915 (3.7%)	1,210 (3.4%)	1,211 (3.5%)	1,126 (3.2%)	1,049 (3.0%)	1,035 (3.0%)

Jump

RatBand	2016	2017	2018	2019	2020	2021	2022	2023	2024	2025
Hurdle										
Unrated	2,833 (25.2%)	2,802 (25.2%)	2,930 (26.0%)	2,934 (26.3%)	1,889 (29.9%)	2,859 (25.2%)	2,575 (23.9%)	2,820 (25.5%)	2,902 (26.6%)	2,267 (22.9%)
0-100	3,063 (27.3%)	3,074 (27.6%)	2,905 (25.8%)	2,929 (26.3%)	1,490 (23.6%)	3,614 (31.8%)	3,687 (34.2%)	3,835 (34.6%)	3,925 (35.9%)	3,767 (38.1%)
101-110	1,795 (16.0%)	1,715 (15.4%)	1,761 (15.6%)	1,686 (15.1%)	896 (14.2%)	1,587 (14.0%)	1,709 (15.9%)	1,737 (15.7%)	1,626 (14.9%)	1,563 (15.8%)
111-120	1,616 (14.4%)	1,641 (14.7%)	1,607 (14.3%)	1,612 (14.5%)	863 (13.7%)	1,465 (12.9%)	1,407 (13.1%)	1,363 (12.3%)	1,341 (12.3%)	1,277 (12.9%)
121-130	1,076 (9.6%)	1,062 (9.5%)	1,155 (10.3%)	1,166 (10.5%)	642 (10.2%)	1,083 (9.5%)	838 (7.8%)	893 (8.1%)	748 (6.8%)	650 (6.6%)
131-140	606 (5.4%)	615 (5.5%)	652 (5.8%)	567 (5.1%)	380 (6.0%)	521 (4.6%)	405 (3.8%)	309 (2.8%)	280 (2.6%)	284 (2.9%)
141-150	177 (1.6%)	167 (1.5%)	197 (1.7%)	180 (1.6%)	103 (1.6%)	159 (1.4%)	119 (1.1%)	88 (0.8%)	77 (0.7%)	63 (0.6%)
151+	65 (0.6%)	57 (0.5%)	58 (0.5%)	66 (0.6%)	47 (0.7%)	59 (0.5%)	30 (0.3%)	33 (0.3%)	21 (0.2%)	15 (0.2%)
Chase										
Unrated	51 (0.8%)	58 (0.9%)	49 (0.8%)	38 (0.7%)	12 (0.4%)	30 (0.5%)	11 (0.2%)	1 (0.0%)	NA (-)	NA (-)
0-100	1,825 (30.2%)	1,722 (28.1%)	1,785 (29.9%)	1,818 (31.3%)	976 (29.9%)	2,032 (33.2%)	1,986 (33.9%)	2,123 (37.6%)	2,084 (39.1%)	2,003 (40.1%)
101-110	910 (15.1%)	1,015 (16.6%)	938 (15.7%)	951 (16.4%)	520 (15.9%)	933 (15.3%)	950 (16.2%)	982 (17.4%)	973 (18.2%)	871 (17.5%)
111-120	1,085 (18.0%)	1,071 (17.5%)	1,004 (16.8%)	931 (16.0%)	491 (15.0%)	1,036 (16.9%)	1,017 (17.4%)	952 (16.8%)	898 (16.8%)	824 (16.5%)
121-130	932 (15.4%)	937 (15.3%)	997 (16.7%)	876 (15.1%)	527 (16.1%)	948 (15.5%)	887 (15.2%)	772 (13.7%)	673 (12.6%)	670 (13.4%)
131-140	739 (12.2%)	815 (13.3%)	718 (12.0%)	721 (12.4%)	430 (13.2%)	670 (11.0%)	617 (10.5%)	523 (9.3%)	437 (8.2%)	347 (7.0%)
141-150	341 (5.6%)	343 (5.6%)	357 (6.0%)	331 (5.7%)	220 (6.7%)	305 (5.0%)	269 (4.6%)	200 (3.5%)	175 (3.3%)	177 (3.5%)
151+	160 (2.6%)	167 (2.7%)	127 (2.1%)	149 (2.6%)	93 (2.8%)	163 (2.7%)	117 (2.0%)	97 (1.7%)	95 (1.8%)	98 (2.0%)

Frequency of Runs

Year to Date Average Runs per Horse

Code	2016	2017	2018	2019	2020	2021	2022	2023	2024	2025
Flat	4.32	4.31	4.29	4.38	3.26	4.45	4.35	4.34	4.38	4.33
Jump	3.03	3.04	3.02	2.87	1.97	2.87	2.86	2.88	2.89	2.74
Dual Overall	6.24	6.08	5.82	5.99	4.33	5.86	5.84	5.84	5.75	6.12
Dual (Flat)	3.27	3.19	3.02	3.20	2.33	3.05	2.96	3.13	3.15	3.48
Dual (Jump)	2.97	2.89	2.80	2.79	2.00	2.81	2.87	2.70	2.60	2.63
All	3.90	3.89	3.87	3.86	2.83	3.85	3.81	3.81	3.85	3.77

Year to Date Proportion of Horses by Count of Runs

Runs	2016	2017	2018	2019	2020	2021	2022	2023	2024	2025
Flat										
1	1,558 (16.6%)	1,642 (16.9%)	1,684 (17.3%)	1,677 (17.1%)	1,884 (21.4%)	1,501 (16.0%)	1,526 (16.5%)	1,564 (16.7%)	1,589 (16.8%)	1,594 (17.3%)
2	1,413 (15.0%)	1,459 (15.0%)	1,536 (15.8%)	1,482 (15.1%)	1,876 (21.3%)	1,343 (14.3%)	1,416 (15.3%)	1,421 (15.2%)	1,411 (14.9%)	1,402 (15.2%)
3	1,472 (15.7%)	1,558 (16.0%)	1,502 (15.5%)	1,454 (14.8%)	1,757 (19.9%)	1,434 (15.3%)	1,390 (15.0%)	1,399 (15.0%)	1,435 (15.2%)	1,420 (15.4%)
4	1,284 (13.7%)	1,304 (13.4%)	1,258 (13.0%)	1,300 (13.2%)	1,385 (15.7%)	1,320 (14.0%)	1,274 (13.8%)	1,253 (13.4%)	1,258 (13.3%)	1,221 (13.2%)
5+	3,662 (39.0%)	3,756 (38.6%)	3,734 (38.4%)	3,913 (39.8%)	1,910 (21.7%)	3,804 (40.5%)	3,630 (39.3%)	3,715 (39.7%)	3,749 (39.7%)	3,595 (38.9%)
Jump										
1	1,635 (25.3%)	1,657 (25.7%)	1,630 (25.2%)	1,823 (27.4%)	2,193 (40.2%)	1,854 (26.3%)	1,815 (27.7%)	1,813 (27.4%)	1,636 (25.7%)	1,774 (28.8%)
2	1,408 (21.8%)	1,366 (21.2%)	1,354 (20.9%)	1,621 (24.3%)	1,899 (34.8%)	1,703 (24.2%)	1,477 (22.6%)	1,482 (22.4%)	1,445 (22.7%)	1,552 (25.2%)
3	1,231 (19.1%)	1,230 (19.1%)	1,269 (19.6%)	1,220 (18.3%)	904 (16.6%)	1,416 (20.1%)	1,284 (19.6%)	1,306 (19.7%)	1,287 (20.3%)	1,207 (19.6%)
4	900 (13.9%)	932 (14.5%)	983 (15.2%)	914 (13.7%)	317 (5.8%)	911 (12.9%)	896 (13.7%)	899 (13.6%)	970 (15.3%)	749 (12.1%)
5+	1,281 (19.8%)	1,257 (19.5%)	1,241 (19.2%)	1,086 (16.3%)	149 (2.7%)	1,167 (16.6%)	1,070 (16.4%)	1,121 (16.9%)	1,017 (16.0%)	887 (14.4%)
All Races										
1	2,826 (18.6%)	2,943 (18.9%)	2,951 (18.9%)	3,132 (19.7%)	3,688 (26.7%)	2,991 (18.8%)	3,024 (19.8%)	3,062 (19.8%)	2,933 (19.1%)	3,096 (20.7%)
2	2,598 (17.1%)	2,641 (16.9%)	2,687 (17.2%)	2,890 (18.2%)	3,556 (25.8%)	2,852 (18.0%)	2,706 (17.7%)	2,764 (17.8%)	2,691 (17.6%)	2,807 (18.8%)
3	2,533 (16.7%)	2,645 (17.0%)	2,654 (17.0%)	2,535 (16.0%)	2,617 (19.0%)	2,726 (17.2%)	2,581 (16.9%)	2,575 (16.6%)	2,622 (17.1%)	2,537 (16.9%)
4	2,131 (14.0%)	2,187 (14.0%)	2,191 (14.0%)	2,165 (13.6%)	1,741 (12.6%)	2,186 (13.8%)	2,132 (14.0%)	2,116 (13.7%)	2,192 (14.3%)	1,929 (12.9%)
5+	5,114 (33.6%)	5,168 (33.2%)	5,133 (32.9%)	5,160 (32.5%)	2,187 (15.9%)	5,129 (32.3%)	4,825 (31.6%)	4,969 (32.1%)	4,895 (31.9%)	4,601 (30.7%)

Year to Date Median Days Between Runs

Code/RatBand	2016	2017	2018	2019	2020	2021	2022	2023	2024	2025
All Runners	24	24	24	24	26	25	25	25	25	25
Flat										
Unrated	22	22	23	23	22	23	24	23	24	24
0-50	20	20	20	21	20	20	20	19	18	18
51-60	19	20	19	20	20	20	20	19	20	20
61-70	20	21	20	21	22	21	21	21	21	21
71-80	21	22	21	21	23	22	22	22	23	22
81-90	22	22	22	22	23	23	23	25	24	25
91-100	25	25	24	24	25	26	27	28	28	29
101+	28	30	28	28	28	31	32	33	34	35
All Flat Runners	21	21	21	22	22	22	22	22	22	22
Jump										
Unrated	35	32	36	36	36	38	34	39	38	39
0-100	26	26	27	27	33	29	27	29	30	30
101-110	29	27	29	29	31	30	29	30	32	30
111-120	29	29	30	30	34	32	30	32	32	32
121-130	31	29	30	32	34	32	31	33	35	34
131-140	33	33	33	33	36	35	34	36	35	35
141-150	34	35	38	36	41	40	36	39	36	40
151+	38	34	38	39	42	40	40	42	41	39
All Jump Runners	30	29	31	31	35	32	30	32	33	33

Horses Population by Gender

August 2025 Horses in Training Snapshot by Gender versus Previous Years

All Horses

Sex	2016	2017	2018	2019	2020	2021	2022	2023	2024	2025
Colt/Entire	2,250 (16.2%)	2,269 (15.7%)	2,276 (15.2%)	2,135 (14.4%)	2,174 (13.9%)	1,962 (13.2%)	1,909 (13.0%)	1,974 (13.5%)	1,807 (12.7%)	1,726 (12.3%)
Gelding	7,307 (52.7%)	7,639 (53.0%)	8,011 (53.4%)	7,991 (53.9%)	8,591 (54.9%)	8,269 (55.5%)	8,061 (54.9%)	7,927 (54.3%)	7,846 (55.1%)	7,720 (55.1%)
Filly/Mare	4,296 (31.0%)	4,507 (31.3%)	4,724 (31.5%)	4,705 (31.7%)	4,879 (31.2%)	4,676 (31.4%)	4,721 (32.1%)	4,692 (32.2%)	4,592 (32.2%)	4,570 (32.6%)
Rig	5 (0.0%)	4 (0.0%)	2 (0.0%)	3 (0.0%)	2 (0.0%)	2 (0.0%)	1 (0.0%)	0 (0.0%)	1 (0.0%)	1 (0.0%)
Total	13,858 (100.0%)	14,419 (100.0%)	15,013 (100.0%)	14,834 (100.0%)	15,646 (100.0%)	14,909 (100.0%)	14,692 (100.0%)	14,593 (100.0%)	14,246 (100.0%)	14,017 (100.0%)

Flat (including Dual)

Sex	2016	2017	2018	2019	2020	2021	2022	2023	2024	2025
Colt/Entire	2,228 (22.8%)	2,237 (21.9%)	2,261 (21.8%)	2,115 (20.9%)	2,150 (20.8%)	1,934 (19.4%)	1,887 (19.2%)	1,944 (19.9%)	1,788 (18.6%)	1,699 (17.6%)
Gelding	3,983 (40.8%)	4,283 (41.9%)	4,344 (41.9%)	4,318 (42.7%)	4,463 (43.2%)	4,390 (44.1%)	4,298 (43.7%)	4,256 (43.5%)	4,321 (45.0%)	4,436 (45.9%)
Filly/Mare	3,549 (36.3%)	3,695 (36.2%)	3,769 (36.3%)	3,687 (36.4%)	3,723 (36.0%)	3,621 (36.4%)	3,660 (37.2%)	3,593 (36.7%)	3,502 (36.4%)	3,536 (36.6%)
Rig	5 (0.1%)	4 (0.0%)	2 (0.0%)	2 (0.0%)	1 (0.0%)	1 (0.0%)	0 (0.0%)	0 (0.0%)	1 (0.0%)	0 (0.0%)
Total	9,765 (100.0%)	10,219 (100.0%)	10,376 (100.0%)	10,122 (100.0%)	10,337 (100.0%)	9,946 (100.0%)	9,845 (100.0%)	9,793 (100.0%)	9,612 (100.0%)	9,671 (100.0%)

Jump (including Dual)

Sex	2016	2017	2018	2019	2020	2021	2022	2023	2024	2025
Colt/Entire	30 (0.7%)	29 (0.6%)	21 (0.4%)	26 (0.5%)	26 (0.4%)	37 (0.7%)	29 (0.5%)	32 (0.6%)	20 (0.4%)	35 (0.7%)
Gelding	3,709 (81.2%)	3,878 (79.8%)	4,083 (78.8%)	4,015 (77.8%)	4,569 (77.9%)	4,222 (77.9%)	4,123 (77.5%)	3,992 (76.5%)	3,831 (76.0%)	3,673 (75.2%)
Filly/Mare	828 (18.1%)	953 (19.6%)	1,080 (20.8%)	1,116 (21.6%)	1,266 (21.6%)	1,160 (21.4%)	1,165 (21.9%)	1,194 (22.9%)	1,191 (23.6%)	1,174 (24.0%)
Rig	0 (0.0%)	0 (0.0%)	0 (0.0%)	1 (0.0%)	1 (0.0%)	1 (0.0%)	1 (0.0%)	0 (0.0%)	0 (0.0%)	1 (0.0%)
Total	4,567 (100.0%)	4,860 (100.0%)	5,184 (100.0%)	5,158 (100.0%)	5,862 (100.0%)	5,420 (100.0%)	5,318 (100.0%)	5,218 (100.0%)	5,042 (100.0%)	4,883 (100.0%)

Year to Date Total Runners by Gender

Sex	2016	2017	2018	2019	2020	2021	2022	2023	2024	2025
All Races										
Colt/Entire	6,028 (10.2%)	6,124 (10.1%)	6,232 (10.3%)	5,896 (9.6%)	4,267 (10.9%)	5,645 (9.2%)	5,075 (8.7%)	5,019 (8.5%)	4,669 (7.9%)	4,365 (7.7%)
Gelding	37,277 (62.8%)	38,180 (62.9%)	37,447 (62.0%)	37,812 (61.7%)	23,471 (60.1%)	38,021 (62.1%)	36,345 (62.5%)	36,736 (62.3%)	37,408 (63.4%)	35,654 (63.2%)
Filly/Mare	16,042 (27.0%)	16,389 (27.0%)	16,686 (27.6%)	17,610 (28.7%)	11,328 (29.0%)	17,533 (28.6%)	16,757 (28.8%)	17,198 (29.2%)	16,948 (28.7%)	16,428 (29.1%)
Rig	16 (0.0%)	6 (0.0%)	11 (0.0%)	13 (0.0%)	4 (0.0%)	7 (0.0%)	7 (0.0%)	4 (0.0%)	0 (0.0%)	1 (0.0%)
Flat										
Colt/Entire	5,997 (15.1%)	6,088 (14.8%)	6,207 (15.2%)	5,865 (13.9%)	4,248 (15.0%)	5,608 (13.7%)	5,054 (12.8%)	4,983 (12.5%)	4,654 (11.4%)	4,347 (11.0%)
Gelding	21,239 (53.3%)	22,221 (53.9%)	21,957 (53.6%)	22,846 (54.0%)	15,005 (53.0%)	22,223 (54.2%)	21,604 (54.8%)	21,961 (55.0%)	23,401 (57.3%)	22,867 (57.8%)
Filly/Mare	12,592 (31.6%)	12,900 (31.3%)	12,778 (31.2%)	13,564 (32.1%)	9,036 (31.9%)	13,185 (32.1%)	12,786 (32.4%)	13,014 (32.6%)	12,758 (31.3%)	12,368 (31.2%)
Rig	16 (0.0%)	6 (0.0%)	11 (0.0%)	9 (0.0%)	1 (0.0%)	3 (0.0%)	0 (0.0%)	0 (0.0%)	0 (0.0%)	0 (0.0%)
All Jump										
Colt/Entire	31 (0.2%)	36 (0.2%)	25 (0.1%)	31 (0.2%)	19 (0.2%)	37 (0.2%)	21 (0.1%)	36 (0.2%)	15 (0.1%)	18 (0.1%)
Gelding	16,038 (82.2%)	15,959 (81.9%)	15,490 (79.8%)	14,966 (78.6%)	8,466 (78.5%)	15,798 (78.3%)	14,741 (78.7%)	14,775 (77.8%)	14,007 (76.9%)	12,787 (75.8%)
Filly/Mare	3,450 (17.7%)	3,489 (17.3%)	3,908 (20.1%)	4,046 (21.2%)	2,292 (21.3%)	4,348 (21.5%)	3,971 (21.2%)	4,184 (22.0%)	4,190 (23.0%)	4,060 (24.1%)
Rig	0 (0.0%)	0 (0.0%)	0 (0.0%)	4 (0.0%)	3 (0.0%)	4 (0.0%)	7 (0.0%)	4 (0.0%)	0 (0.0%)	1 (0.0%)
Chase										
Colt/Entire	1 (0.0%)	0 (0.0%)	0 (0.0%)	0 (0.0%)	0 (0.0%)	0 (0.0%)	0 (0.0%)	0 (0.0%)	0 (0.0%)	0 (0.0%)
Gelding	5,845 (93.0%)	5,906 (92.7%)	5,569 (90.8%)	5,398 (90.0%)	3,024 (90.3%)	5,586 (89.5%)	5,415 (89.3%)	5,284 (89.4%)	4,969 (89.6%)	4,596 (87.2%)
Filly/Mare	442 (7.0%)	464 (7.3%)	565 (9.2%)	597 (10.0%)	322 (9.6%)	652 (10.4%)	640 (10.6%)	623 (10.5%)	579 (10.4%)	673 (12.8%)
Rig	0 (0.0%)	0 (0.0%)	0 (0.0%)	2 (0.0%)	3 (0.1%)	4 (0.1%)	7 (0.1%)	3 (0.1%)	0 (0.0%)	0 (0.0%)
Hurdle										
Colt/Entire	27 (0.2%)	30 (0.3%)	17 (0.1%)	22 (0.2%)	8 (0.1%)	33 (0.3%)	13 (0.1%)	27 (0.2%)	10 (0.1%)	8 (0.1%)
Gelding	9,152 (78.8%)	9,005 (78.5%)	8,828 (76.6%)	8,625 (75.0%)	4,823 (74.5%)	8,597 (74.2%)	8,402 (75.4%)	8,540 (74.3%)	8,191 (72.6%)	7,397 (72.0%)
Filly/Mare	2,436 (21.0%)	2,439 (21.3%)	2,684 (23.3%)	2,852 (24.8%)	1,639 (25.3%)	2,952 (25.5%)	2,734 (24.5%)	2,920 (25.4%)	3,089 (27.4%)	2,866 (27.9%)
Rig	0 (0.0%)	0 (0.0%)	0 (0.0%)	2 (0.0%)	0 (0.0%)	0 (0.0%)	0 (0.0%)	1 (0.0%)	0 (0.0%)	0 (0.0%)
NHF										
Colt/Entire	3 (0.2%)	6 (0.4%)	8 (0.5%)	9 (0.6%)	11 (1.1%)	4 (0.2%)	8 (0.5%)	9 (0.6%)	5 (0.4%)	10 (0.8%)
Gelding	1,041 (64.4%)	1,048 (63.9%)	1,093 (62.1%)	943 (60.9%)	619 (64.4%)	1,615 (68.3%)	924 (60.4%)	951 (59.4%)	847 (61.6%)	794 (59.9%)
Filly/Mare	572 (35.4%)	586 (35.7%)	659 (37.4%)	597 (38.5%)	331 (34.4%)	744 (31.5%)	597 (39.0%)	641 (40.0%)	522 (38.0%)	521 (39.3%)
Rig	0 (0.0%)	0 (0.0%)	0 (0.0%)	0 (0.0%)	0 (0.0%)	0 (0.0%)	0 (0.0%)	0 (0.0%)	0 (0.0%)	1 (0.1%)
Hunter										
Gelding	720 (94.2%)	709 (94.9%)	603 (93.3%)	522 (92.7%)	142 (97.3%)	557 (93.5%)	429 (94.9%)	408 (93.6%)	379 (92.9%)	354 (91.9%)
Filly/Mare	44 (5.8%)	38 (5.1%)	43 (6.7%)	41 (7.3%)	4 (2.7%)	39 (6.5%)	23 (5.1%)	28 (6.4%)	29 (7.1%)	31 (8.1%)

Year to Date Individual Runners by Gender

Sex	2016	2017	2018	2019	2020	2021	2022	2023	2024	2025
All Races										
Male	10,779 (70.9%)	11,022 (70.7%)	11,003 (70.5%)	11,092 (69.8%)	9,609 (69.7%)	11,109 (69.9%)	10,627 (69.6%)	10,644 (68.7%)	10,605 (69.2%)	10,283 (68.7%)
Female	4,423 (29.1%)	4,562 (29.3%)	4,613 (29.5%)	4,790 (30.2%)	4,180 (30.3%)	4,775 (30.1%)	4,641 (30.4%)	4,842 (31.3%)	4,728 (30.8%)	4,687 (31.3%)
Flat										
Male	6,076 (64.7%)	6,312 (64.9%)	6,369 (65.6%)	6,370 (64.8%)	5,729 (65.0%)	6,067 (64.5%)	5,946 (64.4%)	5,937 (63.5%)	6,122 (64.8%)	5,952 (64.5%)
Female	3,313 (35.3%)	3,407 (35.1%)	3,345 (34.4%)	3,456 (35.2%)	3,083 (35.0%)	3,335 (35.5%)	3,290 (35.6%)	3,415 (36.5%)	3,320 (35.2%)	3,280 (35.5%)
All Jump										
Male	5,231 (81.0%)	5,177 (80.4%)	5,106 (78.8%)	5,206 (78.1%)	4,270 (78.2%)	5,489 (77.8%)	5,079 (77.6%)	5,087 (76.8%)	4,845 (76.2%)	4,658 (75.5%)
Female	1,224 (19.0%)	1,265 (19.6%)	1,371 (21.2%)	1,458 (21.9%)	1,192 (21.8%)	1,562 (22.2%)	1,463 (22.4%)	1,534 (23.2%)	1,510 (23.8%)	1,511 (24.5%)
Chase										
Male	2,005 (92.5%)	2,042 (91.7%)	1,959 (90.0%)	1,975 (89.4%)	1,606 (89.4%)	2,071 (88.7%)	1,940 (88.5%)	1,877 (88.1%)	1,813 (88.3%)	1,727 (86.3%)
Female	163 (7.5%)	184 (8.3%)	218 (10.0%)	234 (10.6%)	190 (10.6%)	265 (11.3%)	252 (11.5%)	253 (11.9%)	241 (11.7%)	274 (13.7%)
Hurdle										
Male	3,349 (80.0%)	3,243 (78.7%)	3,268 (77.4%)	3,339 (76.5%)	2,606 (75.3%)	3,403 (75.2%)	3,234 (76.5%)	3,225 (75.2%)	3,138 (73.4%)	2,911 (72.9%)
Female	836 (20.0%)	880 (21.3%)	956 (22.6%)	1,028 (23.5%)	854 (24.7%)	1,120 (24.8%)	996 (23.5%)	1,064 (24.8%)	1,136 (26.6%)	1,084 (27.1%)
NHF										
Male	728 (66.0%)	711 (65.7%)	777 (65.6%)	676 (63.8%)	500 (65.5%)	1,163 (69.9%)	662 (62.9%)	688 (62.4%)	601 (63.7%)	588 (62.4%)
Female	375 (34.0%)	372 (34.3%)	407 (34.4%)	383 (36.2%)	263 (34.5%)	501 (30.1%)	391 (37.1%)	415 (37.6%)	343 (36.3%)	355 (37.6%)
Hunter										
Male	395 (93.2%)	366 (93.6%)	339 (92.1%)	301 (92.0%)	98 (96.1%)	299 (92.0%)	243 (92.4%)	228 (93.4%)	212 (92.6%)	207 (91.6%)
Female	29 (6.8%)	25 (6.4%)	29 (7.9%)	26 (8.0%)	4 (3.9%)	26 (8.0%)	20 (7.6%)	16 (6.6%)	17 (7.4%)	19 (8.4%)

Horses Population by Breeding

August 2025 Horses in Training Snapshot by Breeding versus Previous Years

Flat (including Dual)

Bred	Sex	2016	2017	2018	2019	2020	2021	2022	2023	2024	2025
GB	Male	2,882 (29.5%)	3,046 (29.8%)	3,098 (29.9%)	3,052 (30.2%)	3,142 (30.4%)	2,969 (29.9%)	2,867 (29.1%)	2,844 (29.0%)	2,790 (29.0%)	2,796 (28.9%)
	Female	1,986 (20.3%)	2,048 (20.0%)	2,091 (20.2%)	2,052 (20.3%)	2,078 (20.1%)	2,005 (20.2%)	2,029 (20.6%)	1,969 (20.1%)	1,916 (19.9%)	1,992 (20.6%)
	Subtotal	4,868 (49.9%)	5,094 (49.8%)	5,189 (50.0%)	5,104 (50.4%)	5,220 (50.5%)	4,974 (50.0%)	4,896 (49.7%)	4,813 (49.1%)	4,706 (49.0%)	4,788 (49.5%)
IRE	Male	2,708 (27.7%)	2,770 (27.1%)	2,816 (27.1%)	2,715 (26.8%)	2,831 (27.4%)	2,794 (28.1%)	2,840 (28.8%)	2,878 (29.4%)	2,842 (29.6%)	2,870 (29.7%)
	Female	1,316 (13.5%)	1,378 (13.5%)	1,388 (13.4%)	1,365 (13.5%)	1,393 (13.5%)	1,411 (14.2%)	1,456 (14.8%)	1,449 (14.8%)	1,423 (14.8%)	1,366 (14.1%)
	Subtotal	4,024 (41.2%)	4,148 (40.6%)	4,204 (40.5%)	4,080 (40.3%)	4,224 (40.9%)	4,205 (42.3%)	4,296 (43.6%)	4,327 (44.2%)	4,265 (44.4%)	4,236 (43.8%)
FR	Male	208 (2.1%)	277 (2.7%)	307 (3.0%)	312 (3.1%)	328 (3.2%)	312 (3.1%)	301 (3.1%)	319 (3.3%)	327 (3.4%)	330 (3.4%)
	Female	84 (0.9%)	106 (1.0%)	118 (1.1%)	119 (1.2%)	134 (1.3%)	117 (1.2%)	112 (1.1%)	119 (1.2%)	112 (1.2%)	118 (1.2%)
	Subtotal	292 (3.0%)	383 (3.7%)	425 (4.1%)	431 (4.3%)	462 (4.5%)	429 (4.3%)	413 (4.2%)	438 (4.5%)	439 (4.6%)	448 (4.6%)
USA	Male	338 (3.5%)	335 (3.3%)	310 (3.0%)	286 (2.8%)	235 (2.3%)	185 (1.9%)	117 (1.2%)	101 (1.0%)	90 (0.9%)	71 (0.7%)
	Female	136 (1.4%)	134 (1.3%)	145 (1.4%)	116 (1.1%)	88 (0.9%)	65 (0.7%)	42 (0.4%)	36 (0.4%)	29 (0.3%)	38 (0.4%)
	Subtotal	474 (4.9%)	469 (4.6%)	455 (4.4%)	402 (4.0%)	323 (3.1%)	250 (2.5%)	159 (1.6%)	137 (1.4%)	119 (1.2%)	109 (1.1%)
GNY	Male	58 (0.6%)	69 (0.7%)	51 (0.5%)	53 (0.5%)	59 (0.6%)	53 (0.5%)	46 (0.5%)	44 (0.4%)	43 (0.4%)	55 (0.6%)
	Female	8 (0.1%)	14 (0.1%)	15 (0.1%)	22 (0.2%)	24 (0.2%)	20 (0.2%)	16 (0.2%)	14 (0.1%)	17 (0.2%)	16 (0.2%)
	Subtotal	66 (0.7%)	83 (0.8%)	66 (0.6%)	75 (0.7%)	83 (0.8%)	73 (0.7%)	62 (0.6%)	58 (0.6%)	60 (0.6%)	71 (0.7%)
Other	Male	22 (0.2%)	27 (0.3%)	25 (0.2%)	17 (0.2%)	19 (0.2%)	12 (0.1%)	14 (0.1%)	14 (0.1%)	18 (0.2%)	13 (0.1%)
	Female	19 (0.2%)	15 (0.1%)	12 (0.1%)	13 (0.1%)	6 (0.1%)	3 (0.0%)	5 (0.1%)	6 (0.1%)	5 (0.1%)	6 (0.1%)
	Subtotal	41 (0.4%)	42 (0.4%)	37 (0.4%)	30 (0.3%)	25 (0.2%)	15 (0.2%)	19 (0.2%)	20 (0.2%)	23 (0.2%)	19 (0.2%)

Jump (including Dual)

Bred	Sex	2016	2017	2018	2019	2020	2021	2022	2023	2024	2025
GB	Male	1,056 (23.1%)	1,078 (22.2%)	1,116 (21.5%)	1,016 (19.7%)	1,151 (19.6%)	1,038 (19.2%)	1,031 (19.4%)	946 (18.1%)	927 (18.4%)	923 (18.9%)
	Female	470 (10.3%)	498 (10.2%)	525 (10.1%)	489 (9.5%)	552 (9.4%)	540 (10.0%)	551 (10.4%)	560 (10.7%)	491 (9.7%)	502 (10.3%)
	Subtotal	1,526 (33.4%)	1,576 (32.4%)	1,641 (31.7%)	1,505 (29.2%)	1,703 (29.1%)	1,578 (29.1%)	1,582 (29.7%)	1,506 (28.9%)	1,418 (28.1%)	1,425 (29.2%)
IRE	Male	2,046 (44.8%)	2,177 (44.8%)	2,278 (43.9%)	2,290 (44.4%)	2,568 (43.8%)	2,343 (43.2%)	2,188 (41.1%)	2,116 (40.6%)	2,026 (40.2%)	1,908 (39.1%)
	Female	318 (7.0%)	386 (7.9%)	478 (9.2%)	534 (10.4%)	590 (10.1%)	513 (9.5%)	499 (9.4%)	515 (9.9%)	566 (11.2%)	508 (10.4%)
	Subtotal	2,364 (51.8%)	2,563 (52.7%)	2,756 (53.2%)	2,824 (54.7%)	3,158 (53.9%)	2,856 (52.7%)	2,687 (50.5%)	2,631 (50.4%)	2,592 (51.4%)	2,416 (49.5%)
FR	Male	541 (11.8%)	556 (11.4%)	627 (12.1%)	654 (12.7%)	784 (13.4%)	786 (14.5%)	844 (15.9%)	884 (16.9%)	843 (16.7%)	835 (17.1%)
	Female	34 (0.7%)	62 (1.3%)	74 (1.4%)	86 (1.7%)	118 (2.0%)	98 (1.8%)	106 (2.0%)	114 (2.2%)	125 (2.5%)	151 (3.1%)
	Subtotal	575 (12.6%)	618 (12.7%)	701 (13.5%)	740 (14.3%)	902 (15.4%)	884 (16.3%)	950 (17.9%)	998 (19.1%)	968 (19.2%)	986 (20.2%)
USA	Male	44 (1.0%)	44 (0.9%)	37 (0.7%)	31 (0.6%)	28 (0.5%)	31 (0.6%)	26 (0.5%)	17 (0.3%)	6 (0.1%)	6 (0.1%)
	Female	1 (0.0%)	1 (0.0%)	2 (0.0%)	2 (0.0%)	2 (0.0%)	1 (0.0%)	NA (-)	1 (0.0%)	1 (0.0%)	3 (0.1%)
	Subtotal	45 (1.0%)	45 (0.9%)	39 (0.8%)	33 (0.6%)	30 (0.5%)	32 (0.6%)	26 (0.5%)	18 (0.3%)	7 (0.1%)	9 (0.2%)
GNY	Male	48 (1.1%)	43 (0.9%)	40 (0.8%)	48 (0.9%)	63 (1.1%)	60 (1.1%)	62 (1.2%)	59 (1.1%)	46 (0.9%)	34 (0.7%)
	Female	3 (0.1%)	3 (0.1%)	NA (-)	5 (0.1%)	4 (0.1%)	6 (0.1%)	7 (0.1%)	3 (0.1%)	7 (0.1%)	8 (0.2%)
	Subtotal	51 (1.1%)	46 (0.9%)	40 (0.8%)	53 (1.0%)	67 (1.1%)	66 (1.2%)	69 (1.3%)	62 (1.2%)	53 (1.1%)	42 (0.9%)
Other	Male	4 (0.1%)	9 (0.2%)	6 (0.1%)	3 (0.1%)	2 (0.0%)	2 (0.0%)	2 (0.0%)	2 (0.0%)	3 (0.1%)	3 (0.1%)
	Female	2 (0.0%)	3 (0.1%)	1 (0.0%)	NA (-)	NA (-)	2 (0.0%)	2 (0.0%)	1 (0.0%)	1 (0.0%)	2 (0.0%)
	Subtotal	6 (0.1%)	12 (0.2%)	7 (0.1%)	3 (0.1%)	2 (0.0%)	4 (0.1%)	4 (0.1%)	3 (0.1%)	4 (0.1%)	5 (0.1%)

Year to Date Total Runners by Breeding

Flat

Bred	Sex	2016	2017	2018	2019	2020	2021	2022	2023	2024	2025
GB	Male	12,776 (32.1%)	13,343 (32.4%)	13,008 (31.8%)	13,119 (31.0%)	9,103 (32.2%)	12,796 (31.2%)	12,203 (30.9%)	12,197 (30.5%)	12,585 (30.8%)	12,307 (31.1%)
	Female	6,937 (17.4%)	6,987 (17.0%)	6,974 (17.0%)	7,430 (17.6%)	4,989 (17.6%)	7,354 (17.9%)	7,000 (17.7%)	7,007 (17.5%)	6,765 (16.6%)	6,647 (16.8%)
	Subtotal	19,713 (49.5%)	20,330 (49.3%)	19,982 (48.8%)	20,549 (48.6%)	14,092 (49.8%)	20,150 (49.1%)	19,203 (48.7%)	19,204 (48.1%)	19,350 (47.4%)	18,954 (47.9%)
IRE	Male	12,109 (30.4%)	12,436 (30.2%)	12,609 (30.8%)	12,865 (30.4%)	8,422 (29.8%)	12,763 (31.1%)	12,594 (31.9%)	12,879 (32.2%)	13,481 (33.0%)	13,123 (33.2%)
	Female	4,999 (12.5%)	5,211 (12.6%)	5,069 (12.4%)	5,264 (12.4%)	3,572 (12.6%)	5,117 (12.5%)	5,157 (13.1%)	5,369 (13.4%)	5,428 (13.3%)	5,200 (13.1%)
	Subtotal	17,108 (42.9%)	17,647 (42.8%)	17,678 (43.2%)	18,129 (42.9%)	11,994 (42.4%)	17,880 (43.6%)	17,751 (45.0%)	18,248 (45.7%)	18,909 (46.3%)	18,323 (46.3%)
FR	Male	748 (1.9%)	895 (2.2%)	983 (2.4%)	1,227 (2.9%)	821 (2.9%)	1,146 (2.8%)	1,084 (2.7%)	1,209 (3.0%)	1,335 (3.3%)	1,256 (3.2%)
	Female	263 (0.7%)	270 (0.7%)	320 (0.8%)	385 (0.9%)	241 (0.9%)	398 (1.0%)	372 (0.9%)	430 (1.1%)	378 (0.9%)	328 (0.8%)
	Subtotal	1,011 (2.5%)	1,165 (2.8%)	1,303 (3.2%)	1,612 (3.8%)	1,062 (3.8%)	1,544 (3.8%)	1,456 (3.7%)	1,639 (4.1%)	1,713 (4.2%)	1,584 (4.0%)
USA	Male	1,276 (3.2%)	1,263 (3.1%)	1,237 (3.0%)	1,175 (2.8%)	691 (2.4%)	789 (1.9%)	594 (1.5%)	458 (1.1%)	431 (1.1%)	290 (0.7%)
	Female	299 (0.8%)	352 (0.9%)	326 (0.8%)	362 (0.9%)	173 (0.6%)	213 (0.5%)	171 (0.4%)	161 (0.4%)	128 (0.3%)	110 (0.3%)
	Subtotal	1,575 (4.0%)	1,615 (3.9%)	1,563 (3.8%)	1,537 (3.6%)	864 (3.1%)	1,002 (2.4%)	765 (1.9%)	619 (1.5%)	559 (1.4%)	400 (1.0%)
GNY	Male	235 (0.6%)	250 (0.6%)	213 (0.5%)	223 (0.5%)	166 (0.6%)	265 (0.6%)	134 (0.3%)	168 (0.4%)	188 (0.5%)	190 (0.5%)
	Female	49 (0.1%)	35 (0.1%)	59 (0.1%)	74 (0.2%)	52 (0.2%)	86 (0.2%)	67 (0.2%)	36 (0.1%)	34 (0.1%)	61 (0.2%)
	Subtotal	284 (0.7%)	285 (0.7%)	272 (0.7%)	297 (0.7%)	218 (0.8%)	351 (0.9%)	201 (0.5%)	204 (0.5%)	222 (0.5%)	251 (0.6%)
Other	Male	108 (0.3%)	128 (0.3%)	125 (0.3%)	111 (0.3%)	51 (0.2%)	75 (0.2%)	49 (0.1%)	33 (0.1%)	35 (0.1%)	48 (0.1%)
	Female	45 (0.1%)	45 (0.1%)	30 (0.1%)	49 (0.1%)	9 (0.0%)	17 (0.0%)	19 (0.0%)	11 (0.0%)	25 (0.1%)	22 (0.1%)
	Subtotal	153 (0.4%)	173 (0.4%)	155 (0.4%)	160 (0.4%)	60 (0.2%)	92 (0.2%)	68 (0.2%)	44 (0.1%)	60 (0.1%)	70 (0.2%)

Jump

Bred	Sex	2016	2017	2018	2019	2020	2021	2022	2023	2024	2025
GB	Male	4,455 (22.8%)	4,289 (22.0%)	4,102 (21.1%)	3,919 (20.6%)	2,094 (19.4%)	3,848 (19.1%)	3,347 (17.9%)	3,288 (17.3%)	3,267 (17.9%)	3,111 (18.4%)
	Female	1,806 (9.3%)	1,733 (8.9%)	1,889 (9.7%)	1,769 (9.3%)	947 (8.8%)	1,927 (9.5%)	1,746 (9.3%)	1,822 (9.6%)	1,716 (9.4%)	1,558 (9.2%)
	Subtotal	6,261 (32.1%)	6,022 (30.9%)	5,991 (30.8%)	5,688 (29.9%)	3,041 (28.2%)	5,775 (28.6%)	5,093 (27.2%)	5,110 (26.9%)	4,983 (27.4%)	4,669 (27.7%)
IRE	Male	8,962 (45.9%)	8,985 (46.1%)	8,708 (44.8%)	8,364 (43.9%)	4,752 (44.1%)	8,768 (43.4%)	7,991 (42.6%)	8,084 (42.5%)	7,523 (41.3%)	6,834 (40.5%)
	Female	1,446 (7.4%)	1,513 (7.8%)	1,778 (9.2%)	1,924 (10.1%)	1,092 (10.1%)	1,957 (9.7%)	1,780 (9.5%)	1,902 (10.0%)	2,063 (11.3%)	1,979 (11.7%)
	Subtotal	10,408 (53.3%)	10,498 (53.9%)	10,486 (54.0%)	10,288 (54.0%)	5,844 (54.2%)	10,725 (53.1%)	9,771 (52.1%)	9,986 (52.6%)	9,586 (52.6%)	8,813 (52.3%)
FR	Male	2,221 (11.4%)	2,354 (12.1%)	2,353 (12.1%)	2,355 (12.4%)	1,446 (13.4%)	2,826 (14.0%)	3,093 (16.5%)	3,148 (16.6%)	3,005 (16.5%)	2,689 (15.9%)
	Female	168 (0.9%)	223 (1.1%)	217 (1.1%)	316 (1.7%)	234 (2.2%)	426 (2.1%)	400 (2.1%)	440 (2.3%)	392 (2.2%)	505 (3.0%)
	Subtotal	2,389 (12.2%)	2,577 (13.2%)	2,570 (13.2%)	2,671 (14.0%)	1,680 (15.6%)	3,252 (16.1%)	3,493 (18.6%)	3,588 (18.9%)	3,397 (18.7%)	3,194 (18.9%)
USA	Male	205 (1.1%)	147 (0.8%)	145 (0.7%)	120 (0.6%)	70 (0.6%)	122 (0.6%)	82 (0.4%)	64 (0.3%)	31 (0.2%)	30 (0.2%)
	Female	4 (0.0%)	6 (0.0%)	5 (0.0%)	13 (0.1%)	12 (0.1%)	6 (0.0%)	6 (0.0%)	0 (0.0%)	3 (0.0%)	7 (0.0%)
	Subtotal	209 (1.1%)	153 (0.8%)	150 (0.8%)	133 (0.7%)	82 (0.8%)	128 (0.6%)	88 (0.5%)	64 (0.3%)	34 (0.2%)	37 (0.2%)
GNY	Male	199 (1.0%)	198 (1.0%)	174 (0.9%)	219 (1.1%)	118 (1.1%)	262 (1.3%)	248 (1.3%)	226 (1.2%)	184 (1.0%)	132 (0.8%)
	Female	15 (0.1%)	9 (0.0%)	10 (0.1%)	22 (0.1%)	6 (0.1%)	31 (0.2%)	33 (0.2%)	19 (0.1%)	12 (0.1%)	11 (0.1%)
	Subtotal	214 (1.1%)	207 (1.1%)	184 (0.9%)	241 (1.3%)	124 (1.2%)	293 (1.5%)	281 (1.5%)	245 (1.3%)	196 (1.1%)	143 (0.8%)
Other	Male	27 (0.1%)	22 (0.1%)	33 (0.2%)	24 (0.1%)	8 (0.1%)	13 (0.1%)	8 (0.0%)	5 (0.0%)	12 (0.1%)	10 (0.1%)
	Female	11 (0.1%)	5 (0.0%)	9 (0.0%)	2 (0.0%)	1 (0.0%)	1 (0.0%)	6 (0.0%)	1 (0.0%)	4 (0.0%)	0 (0.0%)
	Subtotal	38 (0.2%)	27 (0.1%)	42 (0.2%)	26 (0.1%)	9 (0.1%)	14 (0.1%)	14 (0.1%)	6 (0.0%)	16 (0.1%)	10 (0.1%)

Year to Date Individual Runners by Breeding

Flat

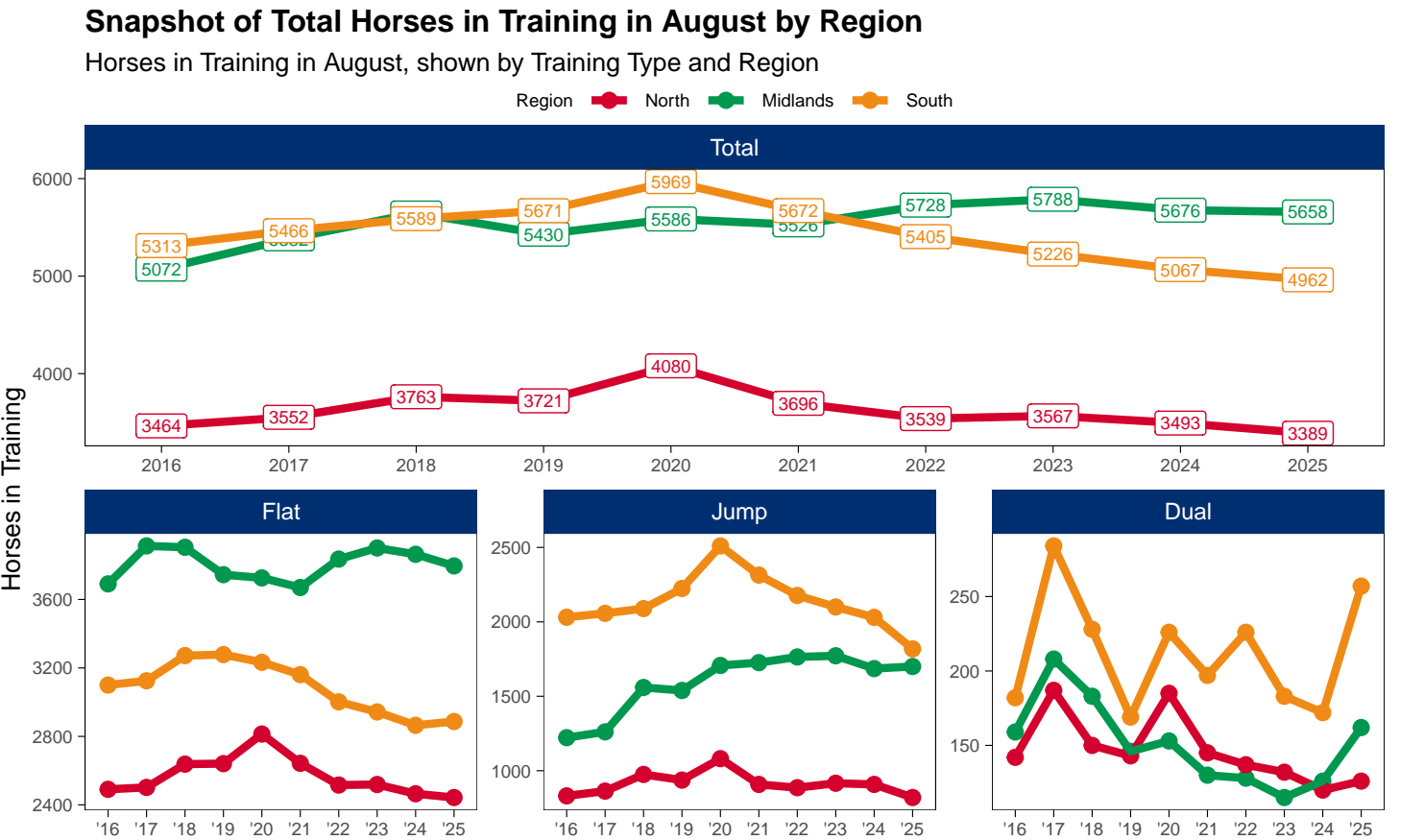
Bred	Sex	2016	2017	2018	2019	2020	2021	2022	2023	2024	2025
GB	Male	2,794 (29.8%)	2,871 (29.5%)	2,937 (30.2%)	2,903 (29.5%)	2,689 (30.5%)	2,751 (29.3%)	2,702 (29.3%)	2,647 (28.3%)	2,711 (28.7%)	2,645 (28.7%)
	Female	1,794 (19.1%)	1,842 (19.0%)	1,786 (18.4%)	1,844 (18.8%)	1,674 (19.0%)	1,823 (19.4%)	1,773 (19.2%)	1,775 (19.0%)	1,738 (18.4%)	1,765 (19.1%)
	Subtotal	4,588 (48.9%)	4,713 (48.5%)	4,723 (48.6%)	4,747 (48.3%)	4,363 (49.5%)	4,574 (48.6%)	4,475 (48.5%)	4,422 (47.3%)	4,449 (47.1%)	4,410 (47.8%)
IRE	Male	2,675 (28.5%)	2,776 (28.6%)	2,771 (28.5%)	2,777 (28.3%)	2,473 (28.1%)	2,754 (29.3%)	2,767 (30.0%)	2,840 (30.4%)	2,916 (30.9%)	2,851 (30.9%)
	Female	1,313 (14.0%)	1,323 (13.6%)	1,322 (13.6%)	1,351 (13.7%)	1,213 (13.8%)	1,306 (13.9%)	1,337 (14.5%)	1,450 (15.5%)	1,418 (15.0%)	1,357 (14.7%)
	Subtotal	3,988 (42.5%)	4,099 (42.2%)	4,093 (42.1%)	4,128 (42.0%)	3,686 (41.8%)	4,060 (43.2%)	4,104 (44.4%)	4,290 (45.9%)	4,334 (45.9%)	4,208 (45.6%)
FR	Male	193 (2.1%)	229 (2.4%)	278 (2.9%)	315 (3.2%)	278 (3.2%)	297 (3.2%)	288 (3.1%)	282 (3.0%)	331 (3.5%)	318 (3.4%)
	Female	77 (0.8%)	94 (1.0%)	100 (1.0%)	116 (1.2%)	97 (1.1%)	114 (1.2%)	108 (1.2%)	125 (1.3%)	110 (1.2%)	99 (1.1%)
	Subtotal	270 (2.9%)	323 (3.3%)	378 (3.9%)	431 (4.4%)	375 (4.3%)	411 (4.4%)	396 (4.3%)	407 (4.4%)	441 (4.7%)	417 (4.5%)
USA	Male	323 (3.4%)	337 (3.5%)	295 (3.0%)	287 (2.9%)	219 (2.5%)	191 (2.0%)	130 (1.4%)	109 (1.2%)	112 (1.2%)	77 (0.8%)
	Female	102 (1.1%)	117 (1.2%)	112 (1.2%)	115 (1.2%)	73 (0.8%)	64 (0.7%)	45 (0.5%)	46 (0.5%)	36 (0.4%)	33 (0.4%)
	Subtotal	425 (4.5%)	454 (4.7%)	407 (4.2%)	402 (4.1%)	292 (3.3%)	255 (2.7%)	175 (1.9%)	155 (1.7%)	148 (1.6%)	110 (1.2%)
GNY	Male	66 (0.7%)	68 (0.7%)	59 (0.6%)	58 (0.6%)	54 (0.6%)	60 (0.6%)	43 (0.5%)	47 (0.5%)	43 (0.5%)	47 (0.5%)
	Female	14 (0.1%)	14 (0.1%)	17 (0.2%)	18 (0.2%)	21 (0.2%)	24 (0.3%)	23 (0.2%)	13 (0.1%)	13 (0.1%)	18 (0.2%)
	Subtotal	80 (0.9%)	82 (0.8%)	76 (0.8%)	76 (0.8%)	75 (0.9%)	84 (0.9%)	66 (0.7%)	60 (0.6%)	56 (0.6%)	65 (0.7%)
Other	Male	25 (0.3%)	31 (0.3%)	29 (0.3%)	30 (0.3%)	16 (0.2%)	14 (0.1%)	16 (0.2%)	12 (0.1%)	9 (0.1%)	14 (0.2%)
	Female	13 (0.1%)	17 (0.2%)	8 (0.1%)	12 (0.1%)	5 (0.1%)	4 (0.0%)	4 (0.0%)	6 (0.1%)	5 (0.1%)	8 (0.1%)
	Subtotal	38 (0.4%)	48 (0.5%)	37 (0.4%)	42 (0.4%)	21 (0.2%)	18 (0.2%)	20 (0.2%)	18 (0.2%)	14 (0.1%)	22 (0.2%)

Jump

Bred	Sex	2016	2017	2018	2019	2020	2021	2022	2023	2024	2025
GB	Male	1,456 (22.6%)	1,376 (21.4%)	1,325 (20.5%)	1,327 (19.9%)	1,054 (19.3%)	1,339 (19.0%)	1,188 (18.2%)	1,180 (17.8%)	1,155 (18.2%)	1,110 (18.0%)
	Female	654 (10.1%)	633 (9.8%)	663 (10.2%)	644 (9.7%)	493 (9.0%)	701 (9.9%)	650 (9.9%)	641 (9.7%)	632 (9.9%)	598 (9.7%)
	Subtotal	2,110 (32.7%)	2,009 (31.2%)	1,988 (30.7%)	1,971 (29.6%)	1,547 (28.3%)	2,040 (28.9%)	1,838 (28.1%)	1,821 (27.5%)	1,787 (28.1%)	1,708 (27.7%)
IRE	Male	2,889 (44.8%)	2,879 (44.7%)	2,865 (44.2%)	2,915 (43.7%)	2,369 (43.4%)	2,997 (42.5%)	2,741 (41.9%)	2,739 (41.4%)	2,576 (40.5%)	2,450 (39.7%)
	Female	494 (7.7%)	543 (8.4%)	607 (9.4%)	670 (10.1%)	565 (10.3%)	701 (9.9%)	639 (9.8%)	709 (10.7%)	711 (11.2%)	714 (11.6%)
	Subtotal	3,383 (52.4%)	3,422 (53.1%)	3,472 (53.6%)	3,585 (53.8%)	2,934 (53.7%)	3,698 (52.4%)	3,380 (51.7%)	3,448 (52.1%)	3,287 (51.7%)	3,164 (51.3%)
FR	Male	744 (11.5%)	796 (12.4%)	809 (12.5%)	849 (12.7%)	751 (13.7%)	1,040 (14.7%)	1,046 (16.0%)	1,071 (16.2%)	1,038 (16.3%)	1,036 (16.8%)
	Female	63 (1.0%)	80 (1.2%)	95 (1.5%)	132 (2.0%)	124 (2.3%)	147 (2.1%)	159 (2.4%)	172 (2.6%)	158 (2.5%)	191 (3.1%)
	Subtotal	807 (12.5%)	876 (13.6%)	904 (14.0%)	981 (14.7%)	875 (16.0%)	1,187 (16.8%)	1,205 (18.4%)	1,243 (18.8%)	1,196 (18.8%)	1,227 (19.9%)
USA	Male	63 (1.0%)	51 (0.8%)	47 (0.7%)	40 (0.6%)	32 (0.6%)	37 (0.5%)	29 (0.4%)	24 (0.4%)	12 (0.2%)	8 (0.1%)
	Female	2 (0.0%)	2 (0.0%)	2 (0.0%)	5 (0.1%)	5 (0.1%)	2 (0.0%)	2 (0.0%)	0 (0.0%)	1 (0.0%)	3 (0.0%)
	Subtotal	65 (1.0%)	53 (0.8%)	49 (0.8%)	45 (0.7%)	37 (0.7%)	39 (0.6%)	31 (0.5%)	24 (0.4%)	13 (0.2%)	11 (0.2%)
GNY	Male	73 (1.1%)	67 (1.0%)	52 (0.8%)	66 (1.0%)	59 (1.1%)	73 (1.0%)	73 (1.1%)	69 (1.0%)	60 (0.9%)	49 (0.8%)
	Female	7 (0.1%)	5 (0.1%)	2 (0.0%)	6 (0.1%)	4 (0.1%)	10 (0.1%)	11 (0.2%)	11 (0.2%)	6 (0.1%)	5 (0.1%)
	Subtotal	80 (1.2%)	72 (1.1%)	54 (0.8%)	72 (1.1%)	63 (1.2%)	83 (1.2%)	84 (1.3%)	80 (1.2%)	66 (1.0%)	54 (0.9%)
Other	Male	6 (0.1%)	8 (0.1%)	8 (0.1%)	9 (0.1%)	5 (0.1%)	3 (0.0%)	2 (0.0%)	4 (0.1%)	4 (0.1%)	5 (0.1%)
	Female	4 (0.1%)	2 (0.0%)	2 (0.0%)	1 (0.0%)	1 (0.0%)	1 (0.0%)	2 (0.0%)	1 (0.0%)	2 (0.0%)	0 (0.0%)
	Subtotal	10 (0.2%)	10 (0.2%)	10 (0.2%)	10 (0.2%)	6 (0.1%)	4 (0.1%)	4 (0.1%)	5 (0.1%)	6 (0.1%)	5 (0.1%)

Horse Population by Location

August 2025 Horses in Training Snapshot by Region versus Previous Years



North

AgeCat	2016	2017	2018	2019	2020	2021	2022	2023	2024	2025	vs. Last Year	vs. Pre-Covid
Flat Horses in Training												
2YO	838	825	898	941	943	911	860	861	758	766	+8 / +1.1%	-175 / -18.6%
3YO	645	642	662	650	782	731	638	637	637	606	-31 / -4.9%	-44 / -6.8%
4YO	353	389	386	394	401	378	396	355	395	394	-1 / -0.3%	0 / 0.0%
5YO+	655	646	692	656	688	623	622	666	675	677	+2 / +0.3%	+21 / +3.2%
Subtotal	2491	2502	2638	2641	2814	2643	2516	2519	2465	2443	-22 / -0.9%	-198 / -7.5%
Jump Horses in Training												
3YO	34	25	30	31	29	20	43	28	29	11	-18 / -62.1%	-20 / -64.5%
4-5YO	238	276	275	310	308	254	257	268	272	235	-37 / -13.6%	-75 / -24.2%
6-7YO	274	273	319	313	369	304	308	334	321	300	-21 / -6.5%	-13 / -4.2%
8YO+	285	289	351	283	375	330	278	286	286	274	-12 / -4.2%	-9 / -3.2%
Subtotal	831	863	975	937	1081	908	886	916	908	820	-88 / -9.7%	-117 / -12.5%
Dual Horses in Training												
3YO	28	36	28	20	38	22	25	29	14	17	+3 / +21.4%	-3 / -15.0%
4YO	31	47	42	32	37	36	31	26	29	30	+1 / +3.4%	-2 / -6.2%
5YO+	83	104	80	91	110	87	81	77	77	79	+2 / +2.6%	-12 / -13.2%
Subtotal	142	187	150	143	185	145	137	132	120	126	+6 / +5.0%	-17 / -11.9%
Total Horses in Training												
	3464	3552	3763	3721	4080	3696	3539	3567	3493	3389	-104 / -3.0%	-332 / -8.9%

'vs. Pre-Covid' is comparison between 2025 and 2019

Midlands

AgeCat	2016	2017	2018	2019	2020	2021	2022	2023	2024	2025	vs. Last Year	vs. Pre-Covid
Flat Horses in Training												
2YO	1588	1662	1562	1450	1393	1411	1491	1513	1479	1410	-69 / -4.7%	-40 / -2.8%
3YO	1052	1130	1174	1151	1177	1094	1171	1173	1142	1163	+21 / +1.8%	+12 / +1.0%
4YO	433	506	528	509	502	543	552	547	530	520	-10 / -1.9%	+11 / +2.2%
5YO+	618	615	641	635	654	622	622	668	713	703	-10 / -1.4%	+68 / +10.7%
Subtotal	3691	3913	3905	3745	3726	3670	3836	3901	3864	3796	-68 / -1.8%	+51 / +1.4%
Jump Horses in Training												
3YO	58	27	52	48	36	63	56	67	76	91	+15 / +19.7%	+43 / +89.6%
4-5YO	405	476	562	600	666	622	656	701	632	678	+46 / +7.3%	+78 / +13.0%
6-7YO	409	396	525	503	581	598	618	602	572	529	-43 / -7.5%	+26 / +5.2%
8YO+	350	362	420	388	424	443	434	402	406	402	-4 / -1.0%	+14 / +3.6%
Subtotal	1222	1261	1559	1539	1707	1726	1764	1772	1686	1700	+14 / +0.8%	+161 / +10.5%
Dual Horses in Training												
3YO	37	32	31	23	22	24	25	28	18	24	+6 / +33.3%	+1 / +4.3%
4YO	39	54	51	39	29	36	36	20	35	31	-4 / -11.4%	-8 / -20.5%
5YO+	83	122	101	84	102	70	67	67	73	107	+34 / +46.6%	+23 / +27.4%
Subtotal	159	208	183	146	153	130	128	115	126	162	+36 / +28.6%	+16 / +11.0%
Total Horses in Training												
	5072	5382	5647	5430	5586	5526	5728	5788	5676	5658	-18 / -0.3%	+228 / +4.2%

'vs. Pre-Covid' is comparison between 2025 and 2019

South

AgeCat	2016	2017	2018	2019	2020	2021	2022	2023	2024	2025	vs. Last Year	vs. Pre-Covid
Flat Horses in Training												
2YO	1288	1378	1357	1378	1274	1280	1225	1195	1206	1170	-36 / -3.0%	-208 / -15.1%
3YO	884	863	962	906	981	916	820	855	760	855	+95 / +12.5%	-51 / -5.6%
4YO	384	365	416	457	429	428	428	344	370	344	-26 / -7.0%	-113 / -24.7%
5YO+	544	519	537	537	549	537	529	549	529	518	-11 / -2.1%	-19 / -3.5%
Subtotal	3100	3125	3272	3278	3233	3161	3002	2943	2865	2887	+22 / +0.8%	-391 / -11.9%
Jump Horses in Training												
3YO	75	87	70	98	72	102	92	105	104	83	-21 / -20.2%	-15 / -15.3%
4-5YO	801	791	818	861	921	852	900	900	819	733	-86 / -10.5%	-128 / -14.9%
6-7YO	649	682	688	748	866	780	708	647	699	629	-70 / -10.0%	-119 / -15.9%
8YO+	506	497	513	517	651	580	477	448	408	373	-35 / -8.6%	-144 / -27.9%
Subtotal	2031	2057	2089	2224	2510	2314	2177	2100	2030	1818	-212 / -10.4%	-406 / -18.3%
Dual Horses in Training												
3YO	35	46	34	28	33	47	51	45	35	65	+30 / +85.7%	+37 / +132.1%
4YO	26	86	48	46	53	54	52	46	48	68	+20 / +41.7%	+22 / +47.8%
5YO+	121	152	146	95	140	96	123	92	89	124	+35 / +39.3%	+29 / +30.5%
Subtotal	182	284	228	169	226	197	226	183	172	257	+85 / +49.4%	+88 / +52.1%
Total Horses in Training												
	5313	5466	5589	5671	5969	5672	5405	5226	5067	4962	-105 / -2.1%	-709 / -12.5%

'vs. Pre-Covid' is comparison between 2025 and 2019

August 2025 Horses in Training Snapshot by Country versus Previous Years

Type	2016	2017	2018	2019	2020	2021	2022	2023	2024	2025	vs. Last Year	vs. Pre-Covid
England												
Flat	8936	9133	9417	9254	9394	9085	8966	8989	8844	8759	-85 / -1.0%	-495 / -5.3%
Jump	3539	3647	3999	4057	4645	4377	4379	4316	4090	3800	-290 / -7.1%	-257 / -6.3%
Dual	422	588	492	407	503	430	438	397	382	502	+120 / +31.4%	+95 / +23.3%
Overall	12897	13368	13908	13718	14542	13892	13783	13702	13316	13061	-255 / -1.9%	-657 / -4.8%
Scotland												
Flat	196	246	230	213	225	226	243	207	212	213	+1 / +0.5%	0 / 0.0%
Jump	211	194	298	278	334	224	215	226	241	226	-15 / -6.2%	-52 / -18.7%
Dual	34	43	31	31	40	21	26	21	21	18	-3 / -14.3%	-13 / -41.9%
Overall	441	483	559	522	599	471	484	454	474	457	-17 / -3.6%	-65 / -12.5%
Wales												
Flat	150	161	168	197	154	163	145	167	138	154	+16 / +11.6%	-43 / -21.8%
Jump	334	340	326	365	319	347	233	246	293	312	+19 / +6.5%	-53 / -14.5%
Dual	27	48	38	20	21	21	27	12	15	25	+10 / +66.7%	+5 / +25.0%
Overall	511	549	532	582	494	531	405	425	446	491	+45 / +10.1%	-91 / -15.6%

'vs. Pre-Covid' is comparison between 2025 and 2019

August 2025 Horses in Training Snapshot by Training Centre versus Previous Years

Type	2016	2017	2018	2019	2020	2021	2022	2023	2024	2025	vs. Last Year	vs. Pre-Covid
Cheltenham (GL54)												
Flat	14	20	16	19	20	24	15	12	15	20	+5 / +33.3%	+1 / +5.3%
Jump	273	266	356	296	469	386	355	365	342	343	+1 / +0.3%	+47 / +15.9%
Dual	19	46	18	19	17	13	14	10	16	24	+8 / +50.0%	+5 / +26.3%
Overall	306	332	390	334	506	423	384	387	373	387	+14 / +3.8%	+53 / +15.9%
Lambourn (RG17)												
Flat	854	947	992	989	964	925	861	899	895	952	+57 / +6.4%	-37 / -3.7%
Jump	281	222	212	254	321	272	296	257	255	233	-22 / -8.6%	-21 / -8.3%
Dual	17	31	22	19	31	24	39	24	22	28	+6 / +27.3%	+9 / +47.4%
Overall	1152	1200	1226	1262	1316	1221	1196	1180	1172	1213	+41 / +3.5%	-49 / -3.9%
Malton (YO17)												
Flat	634	630	688	710	798	712	695	729	708	707	-1 / -0.1%	-3 / -0.4%
Jump	111	128	92	88	84	83	84	77	52	51	-1 / -1.9%	-37 / -42.0%
Dual	20	39	35	23	46	41	28	31	30	26	-4 / -13.3%	+3 / +13.0%
Overall	765	797	815	821	928	836	807	837	790	784	-6 / -0.8%	-37 / -4.5%
Marlborough (SN8)												
Flat	523	505	520	473	501	483	419	431	403	407	+4 / +1.0%	-66 / -14.0%
Jump	46	73	71	72	79	88	76	79	70	67	-3 / -4.3%	-5 / -6.9%
Dual	1	1	1	6	3	0	1	3	3	2	-1 / -33.3%	-4 / -66.7%
Overall	570	579	592	551	583	571	496	513	476	476	0 / 0.0%	-75 / -13.6%
Middleham (DL8)												
Flat	528	506	530	585	616	576	507	538	513	493	-20 / -3.9%	-92 / -15.7%
Jump	45	48	72	76	100	87	76	91	85	57	-28 / -32.9%	-19 / -25.0%
Dual	22	28	13	24	30	24	23	17	22	21	-1 / -4.5%	-3 / -12.5%
Overall	595	582	615	685	746	687	606	646	620	571	-49 / -7.9%	-114 / -16.6%
Newbury (RG20)												
Flat	376	374	413	428	415	434	456	430	398	372	-26 / -6.5%	-56 / -13.1%
Jump	12	15	19	11	6	4	10	54	71	76	+5 / +7.0%	+65 / +590.9%
Dual	3	7	9	7	6	7	4	3	4	3	-1 / -25.0%	-4 / -57.1%
Overall	391	396	441	446	427	445	470	487	473	451	-22 / -4.7%	+5 / +1.1%
Newmarket (CB8)												
Flat	2664	2802	2805	2639	2708	2648	2729	2855	2807	2697	-110 / -3.9%	+58 / +2.2%
Jump	30	31	36	34	45	43	27	56	62	42	-20 / -32.3%	+8 / +23.5%
Dual	34	33	25	20	25	28	23	26	35	49	+14 / +40.0%	+29 / +145.0%
Overall	2728	2866	2866	2693	2778	2719	2779	2937	2904	2788	-116 / -4.0%	+95 / +3.5%

'vs. Pre-Covid' is comparison between 2025 and 2019