



Horse Population Report

Updated on 31 July 2025



Introduction

Welcome to the latest update on the Racehorse Population from the British Horseracing Authority.

The aim of this document is to give stakeholders and the wider Public an insight into the current state of the Horse Population in Great Britain. It is hoped that this transparency will ensure that all decision makers have access to the key data required to help British Racing deliver a Competitive and Compelling product to stakeholders, racegoers and the wider public.

If you have any questions regarding the content of this report or suggestions for how it could be improved further, please contact Joe Yates – jyates@britishhorseracing.com

Definitions

This report uses the Horses in Training returns from the Weatherby's Racing Administration System, this is completed by trainers and should be updated whenever a horse enters or leaves training in their care as part of the conditions of their licence.

Horses in Training

Unless otherwise stated, snapshots of Horses in Training will be from the 15th day of the month in question and year to date figures will be up to and including the date titled at the front of the report.

Horses' ratings will be taken from the most recently published ratings by the BHA Handicapping Team, which is currently at 7am each Tuesday morning. For example, if looking at the Horses in a particular rating band for July 2011, the horses in training number will be from Friday 15th July 2011 and ratings, where possible, will be assigned to each horse from the ratings published by the BHA Handicappers on Tuesday 12th July 2011.

The Gender of a horse will be taken from the reporting date in question, regardless of whether this has since changed.

In the case of YTD reporting, where a horse's gender or training type has changed in the year-to-date period, the most recent is taken.

This report does not count any horses that are temporarily racing abroad for GB Trainers at the time of reporting.

Yearlings are not included in total counts of flat and/or dual horses but will be sometimes shown separately for information purposes.

Yearlings and two-year-olds are not included in total counts of jump horses or counts of jump horses that include dual horses but will be sometimes shown separately for information purposes.

Yearlings, two-year-olds and three-year-olds are not included in total counts of Hunter Chasers but will be sometimes shown separately for information purposes.

Yearlings and two-year-olds in training that are recorded as dual horses have been re-coded as flat horses.

Hunter Chasers are not included in any counts of Jump Horses or Total figures but will be sometimes shown separately for information purposes.

Horses' training locations are defined by the trainers' primary training location. Training regions are defined the same as regions for the Fixture List; 'North' is north of latitude 53.42911, 'South' is south of latitude 51.88002 and 'Midlands' is anywhere in between. Training centres are defined by postcodes and surrounding areas.

Runners

Unless otherwise specified, Total Runners and Individual Runners metrics only counts runners that ran in GB races including any voided races. Withdrawn horses are not included.

Hunter Chases are not included in this section but will be sometimes shown separately for information purposes.

Total Runners is a count of all runners in races, whilst individual runners only counts each individual horse once.

Monthly Horses in Training

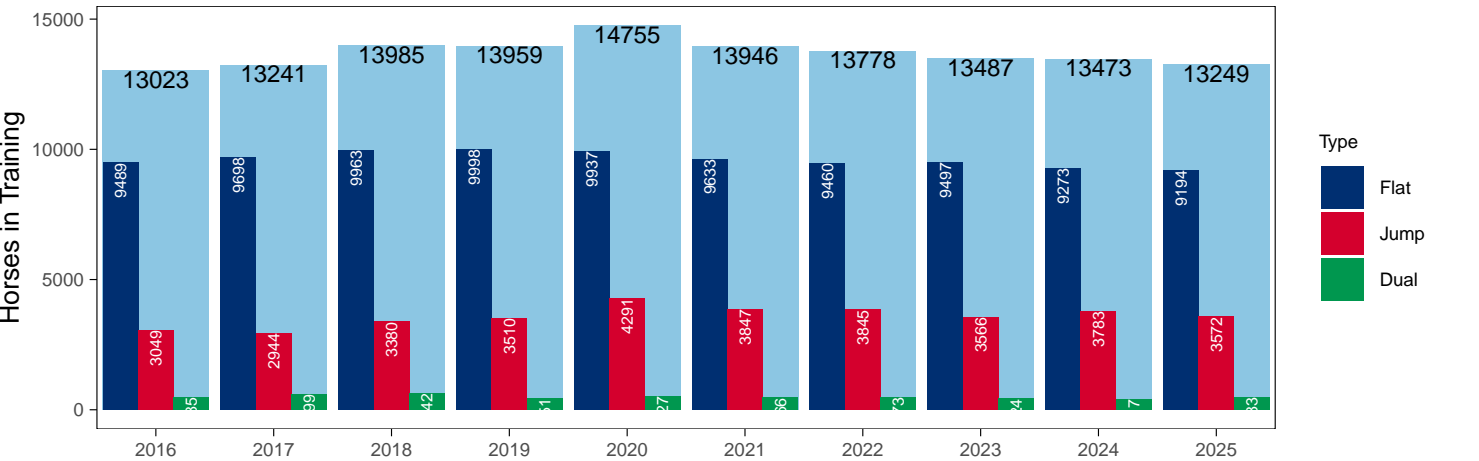
July 2025 Horses in Training Snapshot versus Previous Years

Type	2016	2017	2018	2019	2020	2021	2022	2023	2024	2025	vs. Last Year	vs. Pre-Covid
Flat	9489	9698	9963	9998	9937	9633	9460	9497	9273	9194	-79 / -0.9%	-804 / -8.0%
Jump	3049	2944	3380	3510	4291	3847	3845	3566	3783	3572	-211 / -5.6%	+62 / +1.8%
Dual	485	599	642	451	527	466	473	424	417	483	+66 / +15.8%	+32 / +7.1%
Total	13023	13241	13985	13959	14755	13946	13778	13487	13473	13249	-224 / -1.7%	-710 / -5.1%

'vs. Pre-Covid' is comparison between 2025 and 2019

Snapshot of Total Horses in Training in July

Horses in Training in July, shown by Training Type



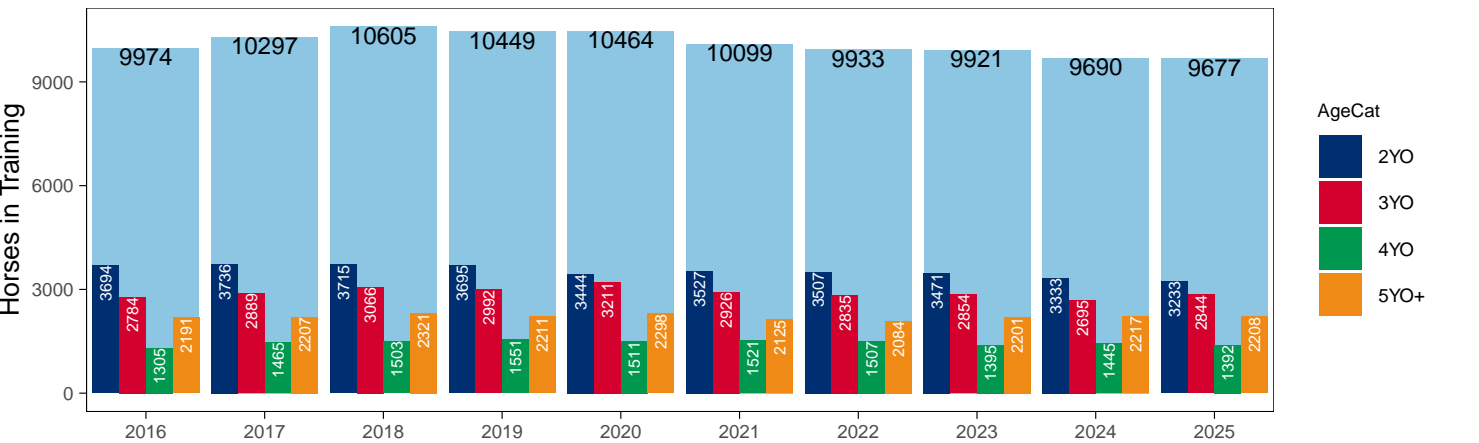
Flat (including Dual)

AgeCat	2016	2017	2018	2019	2020	2021	2022	2023	2024	2025	vs. Last Year	vs. Pre-Covid
2YO	3694	3736	3715	3695	3444	3527	3507	3471	3333	3233	-100 / -3.0%	-462 / -12.5%
3YO	2784	2889	3066	2992	3211	2926	2835	2854	2695	2844	+149 / +5.5%	-148 / -4.9%
4YO	1305	1465	1503	1551	1511	1521	1507	1395	1445	1392	-53 / -3.7%	-159 / -10.3%
5YO+	2191	2207	2321	2211	2298	2125	2084	2201	2217	2208	-9 / -0.4%	-3 / -0.1%
Total	9974	10297	10605	10449	10464	10099	9933	9921	9690	9677	-13 / -0.1%	-772 / -7.4%

'vs. Pre-Covid' is comparison between 2025 and 2019

Snapshot of Flat Horses in Training in July

Flat Horses in Training in July, shown by Age



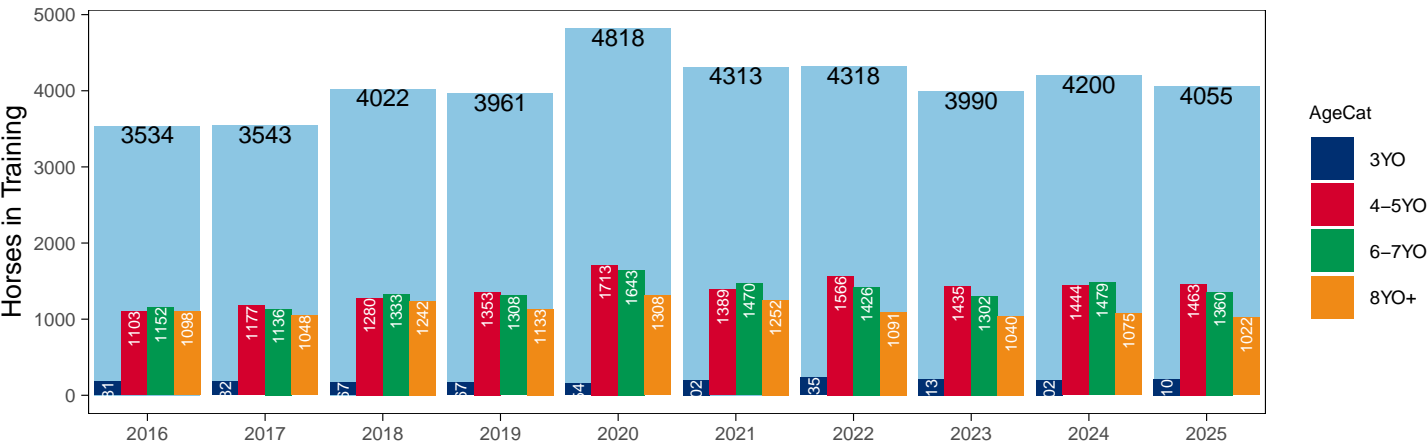
Jump (including Dual)

AgeCat	2016	2017	2018	2019	2020	2021	2022	2023	2024	2025	vs. Last Year	vs. Pre-Covid
3YO	181	182	167	167	154	202	235	213	202	210	+8 / +4.0%	+43 / +25.7%
4-5YO	1103	1177	1280	1353	1713	1389	1566	1435	1444	1463	+19 / +1.3%	+110 / +8.1%
6-7YO	1152	1136	1333	1308	1643	1470	1426	1302	1479	1360	-119 / -8.0%	+52 / +4.0%
8YO+	1098	1048	1242	1133	1308	1252	1091	1040	1075	1022	-53 / -4.9%	-111 / -9.8%
Total	3534	3543	4022	3961	4818	4313	4318	3990	4200	4055	-145 / -3.5%	+94 / +2.4%

'vs. Pre-Covid' is comparison between 2025 and 2019

Snapshot of Jump Horses in Training in July

Jump Horses in Training in July, shown by Age



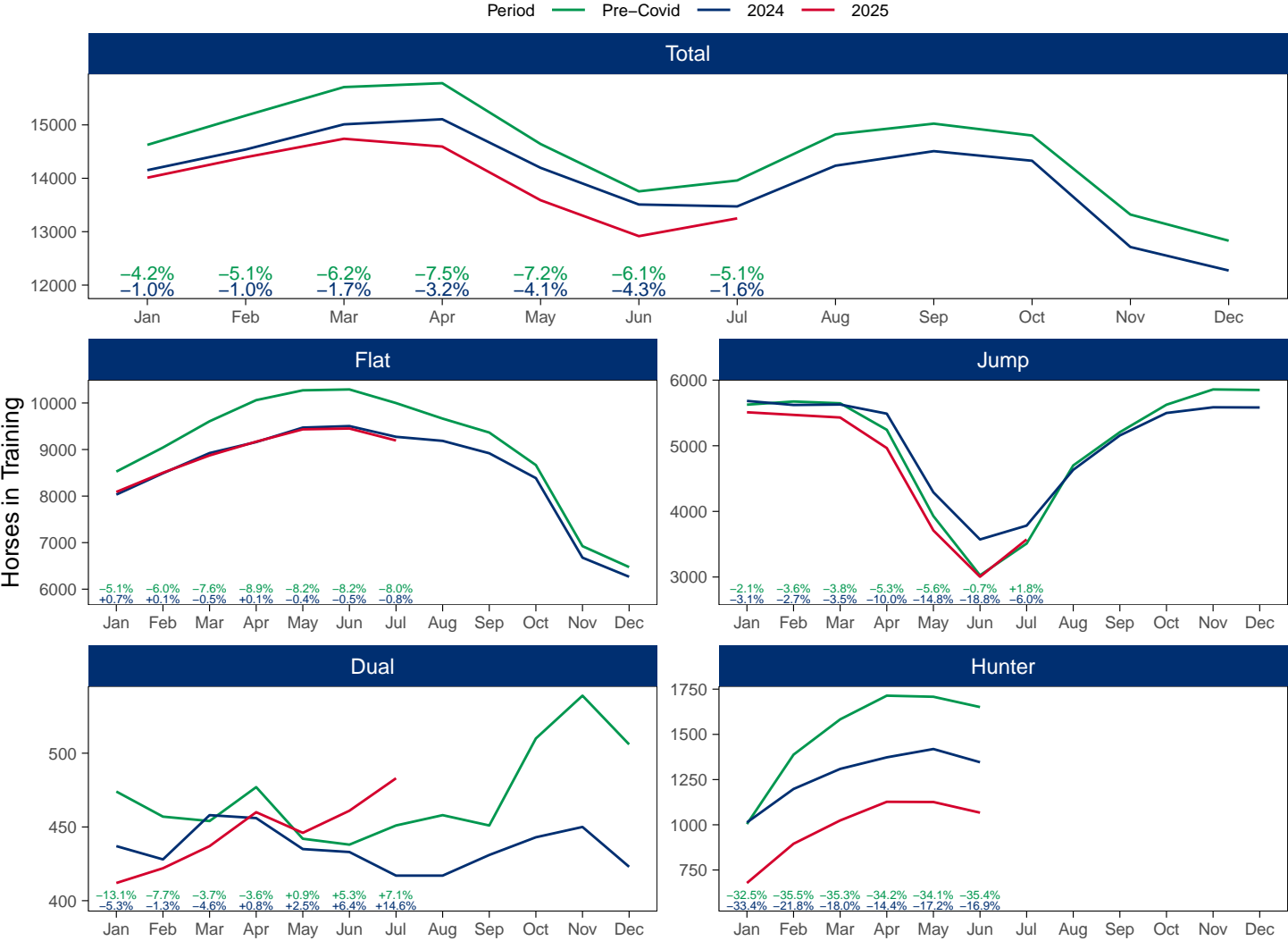
2025 Horses in Training versus Previous Years

Type	Period	Jan	Feb	Mar	Apr	May	Jun	Jul	Aug	Sep	Oct	Nov	Dec
Flat	2025	8089	8502	8873	9169	9434	9451	9194					
	2024	8032	8490	8924	9161	9471	9504	9273	9186	8920	8386	6677	6267
	Pre-Covid	8526	9043	9607	10061	10272	10291	9998	9664	9365	8666	6924	6475
Jump	2025	5510	5470	5430	4965	3709	3004	3572					
	2024	5683	5621	5628	5489	4290	3572	3783	4633	5157	5499	5586	5583
	Pre-Covid	5626	5674	5647	5243	3928	3026	3510	4700	5207	5625	5858	5850
Dual	2025	412	422	437	460	446	461	483					
	2024	437	428	458	456	435	433	417	417	431	443	450	423
	Pre-Covid	474	457	454	477	442	438	451	458	451	510	539	506
Hunter	2025	678	895	1024	1127	1126	1067						
	2024	1013	1198	1309	1373	1419	1346						
	Pre-Covid	1004	1388	1583	1714	1708	1651						
Total	2025	14011	14394	14740	14594	13589	12916	13249					
	2024	14152	14539	15010	15106	14196	13509	13473	14236	14508	14328	12713	12273
	Pre-Covid	14626	15174	15708	15781	14642	13755	13959	14822	15023	14801	13321	12831

'Pre-Covid' is 2019 values

Monthly Horses in Training

2025 against 2024 and Pre-Covid, shown with % Difference



'Pre-Covid' is 2019 values

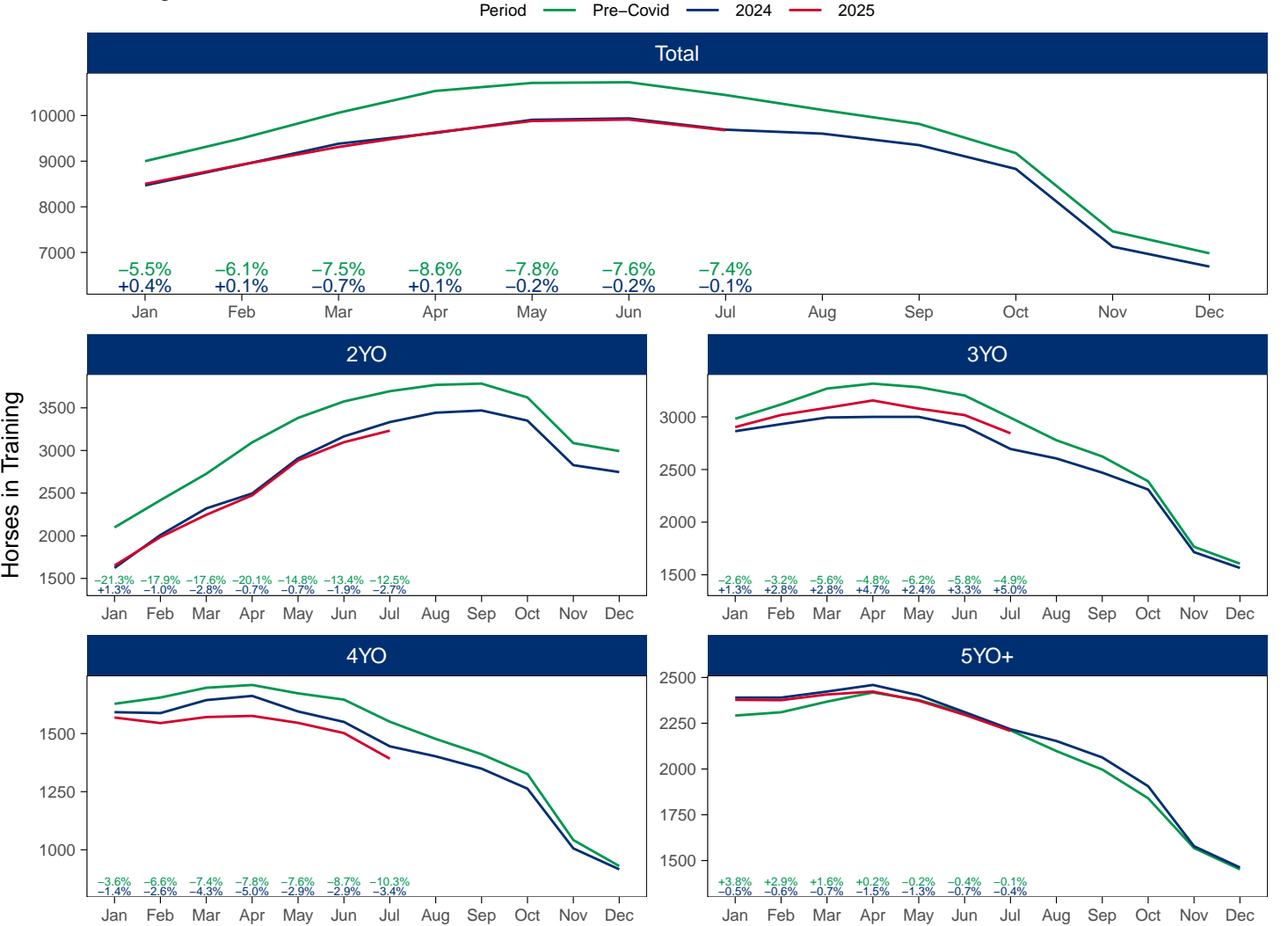
Flat (including Dual)

AgeCat	Period	Jan	Feb	Mar	Apr	May	Jun	Jul	Aug	Sep	Oct	Nov	Dec
2YO	2025	1651	1985	2246	2474	2883	3097	3233					
	2024	1623	2009	2321	2496	2908	3165	3333	3443	3469	3350	2828	2747
	Pre-Covid	2098	2417	2727	3095	3382	3575	3695	3769	3784	3622	3087	2993
3YO	2025	2903	3018	3086	3156	3078	3017	2844					
	2024	2864	2931	2994	3000	3000	2911	2695	2605	2470	2310	1715	1565
	Pre-Covid	2982	3118	3269	3316	3282	3203	2992	2778	2624	2388	1766	1606
4YO	2025	1569	1545	1571	1576	1546	1502	1392					
	2024	1592	1588	1644	1662	1595	1550	1445	1402	1349	1263	1006	916
	Pre-Covid	1628	1655	1697	1709	1673	1646	1551	1477	1411	1326	1042	930
5YO+	2025	2378	2376	2407	2423	2373	2296	2208					
	2024	2390	2390	2423	2459	2403	2311	2217	2153	2063	1906	1578	1462
	Pre-Covid	2292	2310	2368	2418	2377	2305	2211	2098	1997	1840	1568	1452
Total	2025	8501	8924	9310	9629	9880	9912	9677					
	2024	8469	8918	9382	9617	9906	9937	9690	9603	9351	8829	7127	6690
	Pre-Covid	9000	9500	10061	10538	10714	10729	10449	10122	9816	9176	7463	6981

'Pre-Covid' is 2019 values

Monthly Flat Horses in Training

2025 against 2024 and Pre-Covid, shown with % Difference



'Pre-Covid' is 2019 values

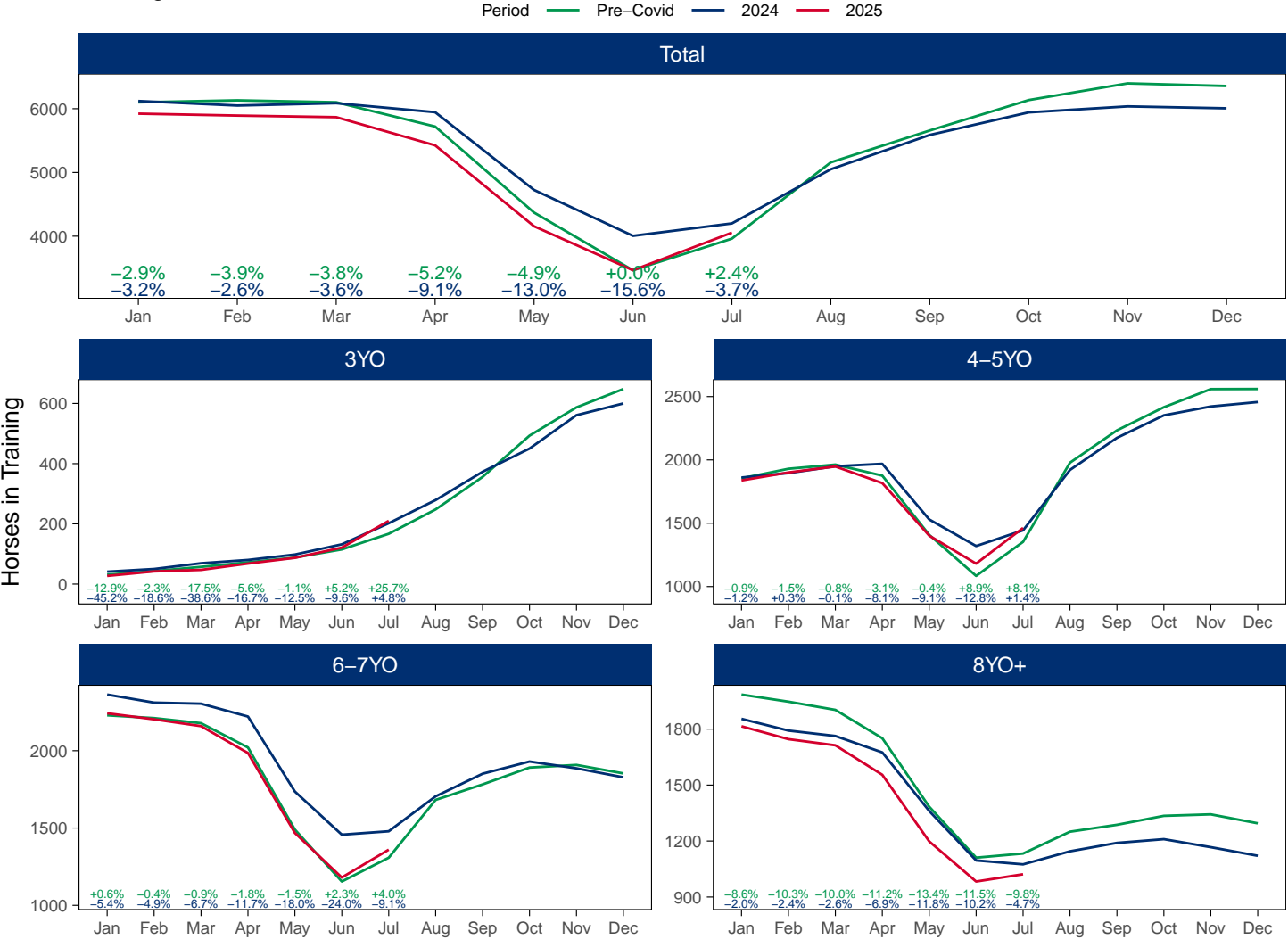
Jump (including Dual)

AgeCat	Period	Jan	Feb	Mar	Apr	May	Jun	Jul	Aug	Sep	Oct	Nov	Dec
3YO	2025	27	42	47	68	87	121	210					
	2024	41	50	69	80	98	132	202	279	373	450	561	600
	Pre-Covid	31	43	57	72	88	115	167	248	356	493	587	648
4-5YO	2025	1838	1901	1948	1817	1402	1181	1463					
	2024	1861	1896	1950	1969	1530	1320	1444	1921	2174	2352	2422	2457
	Pre-Covid	1855	1930	1963	1876	1408	1084	1353	1978	2233	2416	2559	2560
6-7YO	2025	2242	2203	2159	1985	1468	1180	1360					
	2024	2363	2311	2304	2221	1736	1457	1479	1705	1851	1930	1886	1828
	Pre-Covid	2229	2211	2178	2021	1490	1154	1308	1682	1782	1891	1908	1853
8YO+	2025	1815	1746	1713	1555	1198	983	1022					
	2024	1855	1792	1763	1675	1361	1096	1075	1145	1190	1210	1167	1121
	Pre-Covid	1985	1947	1903	1751	1384	1111	1133	1250	1287	1335	1343	1295
Total	2025	5922	5892	5867	5425	4155	3465	4055					
	2024	6120	6049	6086	5945	4725	4005	4200	5050	5588	5942	6036	6006
	Pre-Covid	6100	6131	6101	5720	4370	3464	3961	5158	5658	6135	6397	6356

'Pre-Covid' is 2019 values

Monthly Jump Horses in Training

2025 against 2024 and Pre-Covid, shown with % Difference



'Pre-Covid' is 2019 values

July 2025 Horses in Training by Rating Band Snapshot versus Previous Years

Flat (including Dual)

AgeCat	RatBand	2016	2017	2018	2019	2020	2021	2022	2023	2024	2025
2YO	Unrated	3,300 (89.3%)	3,396 (90.9%)	3,362 (90.5%)	3,372 (91.3%)	3,155 (91.6%)	3,121 (88.5%)	3,143 (89.6%)	3,130 (90.2%)	2,988 (89.6%)	2,885 (89.2%)
	0-50	18 (0.5%)	17 (0.5%)	20 (0.5%)	17 (0.5%)	6 (0.2%)	27 (0.8%)	26 (0.7%)	28 (0.8%)	18 (0.5%)	20 (0.6%)
	51-60	46 (1.2%)	47 (1.3%)	56 (1.5%)	44 (1.2%)	22 (0.6%)	46 (1.3%)	43 (1.2%)	38 (1.1%)	48 (1.4%)	43 (1.3%)
	61-70	108 (2.9%)	83 (2.2%)	79 (2.1%)	85 (2.3%)	67 (1.9%)	87 (2.5%)	86 (2.5%)	90 (2.6%)	69 (2.1%)	82 (2.5%)
	71-80	114 (3.1%)	111 (3.0%)	102 (2.7%)	99 (2.7%)	99 (2.9%)	122 (3.5%)	105 (3.0%)	95 (2.7%)	113 (3.4%)	95 (2.9%)
	81-90	77 (2.1%)	49 (1.3%)	62 (1.7%)	48 (1.3%)	55 (1.6%)	79 (2.2%)	56 (1.6%)	62 (1.8%)	60 (1.8%)	63 (1.9%)
	91-100	22 (0.6%)	20 (0.5%)	26 (0.7%)	20 (0.5%)	28 (0.8%)	25 (0.7%)	35 (1.0%)	20 (0.6%)	25 (0.8%)	36 (1.1%)
	101+	9 (0.2%)	13 (0.3%)	8 (0.2%)	9 (0.2%)	12 (0.3%)	20 (0.6%)	13 (0.4%)	8 (0.2%)	12 (0.4%)	9 (0.3%)
	Subtotal	3,694 (100.0%)	3,736 (100.0%)	3,715 (100.0%)	3,695 (100.0%)	3,444 (100.0%)	3,527 (100.0%)	3,507 (100.0%)	3,471 (100.0%)	3,333 (100.0%)	3,233 (100.0%)
3YO	Unrated	716 (25.7%)	754 (26.1%)	1,025 (33.4%)	892 (29.8%)	1,246 (38.8%)	896 (30.6%)	819 (28.9%)	826 (28.9%)	815 (30.2%)	819 (28.8%)
	0-50	168 (6.0%)	195 (6.7%)	176 (5.7%)	253 (8.5%)	173 (5.4%)	215 (7.3%)	208 (7.3%)	180 (6.3%)	183 (6.8%)	190 (6.7%)
	51-60	331 (11.9%)	335 (11.6%)	297 (9.7%)	371 (12.4%)	306 (9.5%)	314 (10.7%)	341 (12.0%)	315 (11.0%)	276 (10.2%)	334 (11.7%)
	61-70	454 (16.3%)	462 (16.0%)	464 (15.1%)	433 (14.5%)	438 (13.6%)	467 (16.0%)	434 (15.3%)	484 (17.0%)	442 (16.4%)	457 (16.1%)
	71-80	536 (19.3%)	539 (18.7%)	495 (16.1%)	447 (14.9%)	536 (16.7%)	485 (16.6%)	484 (17.1%)	470 (16.5%)	437 (16.2%)	483 (17.0%)
	81-90	330 (11.9%)	364 (12.6%)	335 (10.9%)	329 (11.0%)	302 (9.4%)	312 (10.7%)	299 (10.5%)	323 (11.3%)	315 (11.7%)	306 (10.8%)
	91-100	146 (5.2%)	144 (5.0%)	168 (5.5%)	156 (5.2%)	136 (4.2%)	135 (4.6%)	138 (4.9%)	159 (5.6%)	124 (4.6%)	161 (5.7%)
	101+	103 (3.7%)	96 (3.3%)	106 (3.5%)	111 (3.7%)	74 (2.3%)	102 (3.5%)	112 (4.0%)	97 (3.4%)	103 (3.8%)	94 (3.3%)
	Subtotal	2,784 (100.0%)	2,889 (100.0%)	3,066 (100.0%)	2,992 (100.0%)	3,211 (100.0%)	2,926 (100.0%)	2,835 (100.0%)	2,854 (100.0%)	2,695 (100.0%)	2,844 (100.0%)
4YO	Unrated	154 (11.8%)	174 (11.9%)	215 (14.3%)	201 (13.0%)	258 (17.1%)	248 (16.3%)	217 (14.4%)	181 (13.0%)	161 (11.1%)	161 (11.6%)
	0-50	114 (8.7%)	144 (9.8%)	172 (11.4%)	199 (12.8%)	147 (9.7%)	177 (11.6%)	174 (11.5%)	197 (14.1%)	142 (9.8%)	145 (10.4%)
	51-60	177 (13.6%)	205 (14.0%)	156 (10.4%)	213 (13.7%)	200 (13.2%)	216 (14.2%)	216 (14.3%)	187 (13.4%)	266 (18.4%)	204 (14.7%)
	61-70	197 (15.1%)	241 (16.5%)	282 (18.8%)	253 (16.3%)	254 (16.8%)	255 (16.8%)	258 (17.1%)	242 (17.3%)	255 (17.6%)	235 (16.9%)
	71-80	241 (18.5%)	259 (17.7%)	258 (17.2%)	247 (15.9%)	240 (15.9%)	236 (15.5%)	252 (16.7%)	237 (17.0%)	245 (17.0%)	237 (17.0%)
	81-90	203 (15.6%)	198 (13.5%)	186 (12.4%)	193 (12.4%)	180 (11.9%)	177 (11.6%)	181 (12.0%)	152 (10.9%)	180 (12.5%)	177 (12.7%)
	91-100	119 (9.1%)	124 (8.5%)	136 (9.0%)	140 (9.0%)	121 (8.0%)	135 (8.9%)	107 (7.1%)	96 (6.9%)	108 (7.5%)	115 (8.3%)
	101+	100 (7.7%)	120 (8.2%)	98 (6.5%)	105 (6.8%)	111 (7.3%)	77 (5.1%)	102 (6.8%)	103 (7.4%)	88 (6.1%)	118 (8.5%)
	Subtotal	1,305 (100.0%)	1,465 (100.0%)	1,503 (100.0%)	1,551 (100.0%)	1,511 (100.0%)	1,521 (100.0%)	1,507 (100.0%)	1,395 (100.0%)	1,445 (100.0%)	1,392 (100.0%)
5YO+	Unrated	244 (11.1%)	308 (14.0%)	377 (16.2%)	266 (12.0%)	393 (17.1%)	289 (13.6%)	322 (15.5%)	240 (10.9%)	265 (12.0%)	234 (10.6%)
	0-50	198 (9.0%)	223 (10.1%)	299 (12.9%)	349 (15.8%)	267 (11.6%)	301 (14.2%)	267 (12.8%)	282 (12.8%)	298 (13.4%)	287 (13.0%)
	51-60	321 (14.7%)	326 (14.8%)	348 (15.0%)	338 (15.3%)	344 (15.0%)	346 (16.3%)	326 (15.6%)	379 (17.2%)	392 (17.7%)	402 (18.2%)
	61-70	412 (18.8%)	362 (16.4%)	371 (16.0%)	380 (17.2%)	386 (16.8%)	367 (17.3%)	371 (17.8%)	405 (18.4%)	439 (19.8%)	407 (18.4%)
	71-80	379 (17.3%)	342 (15.5%)	321 (13.8%)	327 (14.8%)	361 (15.7%)	300 (14.1%)	276 (13.2%)	358 (16.3%)	322 (14.5%)	363 (16.4%)
	81-90	275 (12.6%)	303 (13.7%)	284 (12.2%)	246 (11.1%)	259 (11.3%)	222 (10.4%)	223 (10.7%)	236 (10.7%)	243 (11.0%)	257 (11.6%)
	91-100	212 (9.7%)	170 (7.7%)	177 (7.6%)	160 (7.2%)	142 (6.2%)	149 (7.0%)	155 (7.4%)	159 (7.2%)	131 (5.9%)	134 (6.1%)
	101+	150 (6.8%)	173 (7.8%)	144 (6.2%)	145 (6.6%)	146 (6.4%)	151 (7.1%)	144 (6.9%)	142 (6.5%)	127 (5.7%)	124 (5.6%)
	Subtotal	2,191 (100.0%)	2,207 (100.0%)	2,321 (100.0%)	2,211 (100.0%)	2,298 (100.0%)	2,125 (100.0%)	2,084 (100.0%)	2,201 (100.0%)	2,217 (100.0%)	2,208 (100.0%)
Overall	Unrated	4,414 (44.3%)	4,632 (45.0%)	4,979 (46.9%)	4,731 (45.3%)	5,052 (48.3%)	4,554 (45.1%)	4,501 (45.3%)	4,377 (44.1%)	4,229 (43.6%)	4,099 (42.4%)
	0-50	498 (5.0%)	579 (5.6%)	667 (6.3%)	819 (7.8%)	593 (5.7%)	720 (7.1%)	675 (6.8%)	687 (6.9%)	641 (6.6%)	642 (6.6%)
	51-60	875 (8.8%)	913 (8.9%)	857 (8.1%)	966 (9.2%)	872 (8.3%)	922 (9.1%)	926 (9.3%)	919 (9.3%)	982 (10.1%)	983 (10.2%)
	61-70	1,171 (11.7%)	1,148 (11.1%)	1,196 (11.3%)	1,151 (11.0%)	1,145 (10.9%)	1,176 (11.6%)	1,149 (11.6%)	1,221 (12.3%)	1,205 (12.4%)	1,181 (12.2%)
	71-80	1,270 (12.7%)	1,251 (12.1%)	1,176 (11.1%)	1,120 (10.7%)	1,236 (11.8%)	1,143 (11.3%)	1,117 (11.2%)	1,160 (11.7%)	1,117 (11.5%)	1,178 (12.2%)
	81-90	885 (8.9%)	914 (8.9%)	867 (8.2%)	816 (7.8%)	796 (7.6%)	790 (7.8%)	759 (7.6%)	773 (7.8%)	798 (8.2%)	803 (8.3%)
	91-100	499 (5.0%)	458 (4.4%)	507 (4.8%)	476 (4.6%)	427 (4.1%)	444 (4.4%)	435 (4.4%)	434 (4.4%)	388 (4.0%)	446 (4.6%)
	101+	362 (3.6%)	402 (3.9%)	356 (3.4%)	370 (3.5%)	343 (3.3%)	350 (3.5%)	371 (3.7%)	350 (3.5%)	330 (3.4%)	345 (3.6%)
Total		9,974 (100.0%)	10,297 (100.0%)	10,605 (100.0%)	10,449 (100.0%)	10,464 (100.0%)	10,099 (100.0%)	9,933 (100.0%)	9,921 (100.0%)	9,690 (100.0%)	9,677 (100.0%)

Where a horse has more than one published rating (published Flat Turf and published Flat AWT mark), the higher of the two is taken.

Jump (including Dual)

AgeCat	RatBand	2016	2017	2018	2019	2020	2021	2022	2023	2024	2025
3YO	Unrated	181 (100.0%)	182 (100.0%)	167 (100.0%)	167 (100.0%)	154 (100.0%)	202 (100.0%)	235 (100.0%)	213 (100.0%)	202 (100.0%)	210 (100.0%)
	Subtotal	181 (100.0%)	182 (100.0%)	167 (100.0%)	167 (100.0%)	154 (100.0%)	202 (100.0%)	235 (100.0%)	213 (100.0%)	202 (100.0%)	210 (100.0%)
4-5YO	Unrated	736 (66.7%)	800 (68.0%)	868 (67.8%)	929 (68.7%)	1,276 (74.5%)	985 (70.9%)	1,102 (70.4%)	1,000 (69.7%)	989 (68.5%)	991 (67.7%)
	0-100	142 (12.9%)	143 (12.1%)	131 (10.2%)	153 (11.3%)	146 (8.5%)	188 (13.5%)	223 (14.2%)	245 (17.1%)	265 (18.4%)	253 (17.3%)
	101-110	86 (7.8%)	76 (6.5%)	104 (8.1%)	87 (6.4%)	85 (5.0%)	72 (5.2%)	114 (7.3%)	86 (6.0%)	88 (6.1%)	106 (7.2%)
	111-120	72 (6.5%)	72 (6.1%)	88 (6.9%)	93 (6.9%)	82 (4.8%)	76 (5.5%)	63 (4.0%)	66 (4.6%)	59 (4.1%)	78 (5.3%)
	121-130	36 (3.3%)	52 (4.4%)	57 (4.5%)	63 (4.7%)	84 (4.9%)	39 (2.8%)	45 (2.9%)	26 (1.8%)	26 (1.8%)	30 (2.1%)
	131-140	27 (2.4%)	21 (1.8%)	25 (2.0%)	16 (1.2%)	25 (1.5%)	26 (1.9%)	12 (0.8%)	10 (0.7%)	11 (0.8%)	2 (0.1%)
	141-150	4 (0.4%)	12 (1.0%)	5 (0.4%)	11 (0.8%)	10 (0.6%)	1 (0.1%)	6 (0.4%)	2 (0.1%)	5 (0.3%)	2 (0.1%)
	151+	NA (-)	1 (0.1%)	2 (0.2%)	1 (0.1%)	5 (0.3%)	2 (0.1%)	1 (0.1%)	NA (-)	1 (0.1%)	1 (0.1%)
Subtotal		1,103 (100.0%)	1,177 (100.0%)	1,280 (100.0%)	1,353 (100.0%)	1,713 (100.0%)	1,389 (100.0%)	1,566 (100.0%)	1,435 (100.0%)	1,444 (100.0%)	1,463 (100.0%)
6-7YO	Unrated	327 (28.4%)	321 (28.3%)	379 (28.4%)	321 (24.5%)	496 (30.2%)	336 (22.9%)	455 (31.9%)	318 (24.4%)	376 (25.4%)	325 (23.9%)
	0-100	276 (24.0%)	264 (23.2%)	335 (25.1%)	325 (24.8%)	335 (20.4%)	443 (30.1%)	403 (28.3%)	477 (36.6%)	540 (36.5%)	435 (32.0%)
	101-110	185 (16.1%)	164 (14.4%)	171 (12.8%)	164 (12.5%)	206 (12.5%)	187 (12.7%)	170 (11.9%)	179 (13.7%)	239 (16.2%)	222 (16.3%)
	111-120	152 (13.2%)	154 (13.6%)	180 (13.5%)	200 (15.3%)	215 (13.1%)	191 (13.0%)	157 (11.0%)	157 (12.1%)	173 (11.7%)	188 (13.8%)
	121-130	116 (10.1%)	116 (10.2%)	147 (11.0%)	148 (11.3%)	191 (11.6%)	157 (10.7%)	122 (8.6%)	103 (7.9%)	89 (6.0%)	106 (7.8%)
	131-140	65 (5.6%)	85 (7.5%)	87 (6.5%)	105 (8.0%)	132 (8.0%)	99 (6.7%)	89 (6.2%)	43 (3.3%)	48 (3.2%)	58 (4.3%)
	141-150	26 (2.3%)	21 (1.8%)	29 (2.2%)	27 (2.1%)	47 (2.9%)	43 (2.9%)	21 (1.5%)	18 (1.4%)	11 (0.7%)	20 (1.5%)
	151+	5 (0.4%)	11 (1.0%)	5 (0.4%)	18 (1.4%)	21 (1.3%)	14 (1.0%)	9 (0.6%)	7 (0.5%)	3 (0.2%)	6 (0.4%)
Subtotal		1,152 (100.0%)	1,136 (100.0%)	1,333 (100.0%)	1,308 (100.0%)	1,643 (100.0%)	1,470 (100.0%)	1,426 (100.0%)	1,302 (100.0%)	1,479 (100.0%)	1,360 (100.0%)
8YO+	Unrated	169 (15.4%)	172 (16.4%)	204 (16.4%)	167 (14.7%)	293 (22.4%)	165 (13.2%)	225 (20.6%)	181 (17.4%)	209 (19.4%)	163 (15.9%)
	0-100	385 (35.1%)	376 (35.9%)	427 (34.4%)	386 (34.1%)	332 (25.4%)	444 (35.5%)	329 (30.2%)	349 (33.6%)	353 (32.8%)	377 (36.9%)
	101-110	165 (15.0%)	146 (13.9%)	199 (16.0%)	173 (15.3%)	145 (11.1%)	174 (13.9%)	143 (13.1%)	140 (13.5%)	140 (13.0%)	148 (14.5%)
	111-120	143 (13.0%)	138 (13.2%)	133 (10.7%)	144 (12.7%)	159 (12.2%)	166 (13.3%)	136 (12.5%)	133 (12.8%)	158 (14.7%)	131 (12.8%)
	121-130	114 (10.4%)	107 (10.2%)	140 (11.3%)	118 (10.4%)	160 (12.2%)	146 (11.7%)	114 (10.4%)	120 (11.5%)	123 (11.4%)	108 (10.6%)
	131-140	86 (7.8%)	66 (6.3%)	91 (7.3%)	84 (7.4%)	109 (8.3%)	97 (7.7%)	88 (8.1%)	68 (6.5%)	61 (5.7%)	57 (5.6%)
	141-150	24 (2.2%)	31 (3.0%)	37 (3.0%)	44 (3.9%)	75 (5.7%)	31 (2.5%)	36 (3.3%)	29 (2.8%)	19 (1.8%)	24 (2.3%)
	151+	12 (1.1%)	12 (1.1%)	11 (0.9%)	17 (1.5%)	35 (2.7%)	29 (2.3%)	20 (1.8%)	20 (1.9%)	12 (1.1%)	14 (1.4%)
Subtotal		1,098 (100.0%)	1,048 (100.0%)	1,242 (100.0%)	1,133 (100.0%)	1,308 (100.0%)	1,252 (100.0%)	1,091 (100.0%)	1,040 (100.0%)	1,075 (100.0%)	1,022 (100.0%)
Overall	Unrated	1,413 (40.0%)	1,475 (41.6%)	1,618 (40.2%)	1,584 (40.0%)	2,219 (46.1%)	1,688 (39.1%)	2,017 (46.7%)	1,712 (42.9%)	1,776 (42.3%)	1,689 (41.7%)
	0-100	803 (22.7%)	783 (22.1%)	893 (22.2%)	864 (21.8%)	813 (16.9%)	1,075 (24.9%)	955 (22.1%)	1,071 (26.8%)	1,158 (27.6%)	1,065 (26.3%)
	101-110	436 (12.3%)	386 (10.9%)	474 (11.8%)	424 (10.7%)	436 (9.0%)	433 (10.0%)	427 (9.9%)	405 (10.2%)	467 (11.1%)	476 (11.7%)
	111-120	367 (10.4%)	364 (10.3%)	401 (10.0%)	437 (11.0%)	456 (9.5%)	433 (10.0%)	356 (8.2%)	356 (8.9%)	390 (9.3%)	397 (9.8%)
	121-130	266 (7.5%)	275 (7.8%)	344 (8.6%)	329 (8.3%)	435 (9.0%)	342 (7.9%)	281 (6.5%)	249 (6.2%)	238 (5.7%)	244 (6.0%)
	131-140	178 (5.0%)	172 (4.9%)	203 (5.0%)	205 (5.2%)	266 (5.5%)	222 (5.1%)	189 (4.4%)	121 (3.0%)	120 (2.9%)	117 (2.9%)
	141-150	54 (1.5%)	64 (1.8%)	71 (1.8%)	82 (2.1%)	132 (2.7%)	75 (1.7%)	63 (1.5%)	49 (1.2%)	35 (0.8%)	46 (1.1%)
Total		3,534 (100.0%)	3,543 (100.0%)	4,022 (100.0%)	3,961 (100.0%)	4,818 (100.0%)	4,313 (100.0%)	4,318 (100.0%)	3,990 (100.0%)	4,200 (100.0%)	4,055 (100.0%)

Where a horse has more than one published rating (published Hurdle and published Chase mark), the higher of the two is taken.

Young Horses Entering Training

Flat Yearlings in Training versus Previous Years

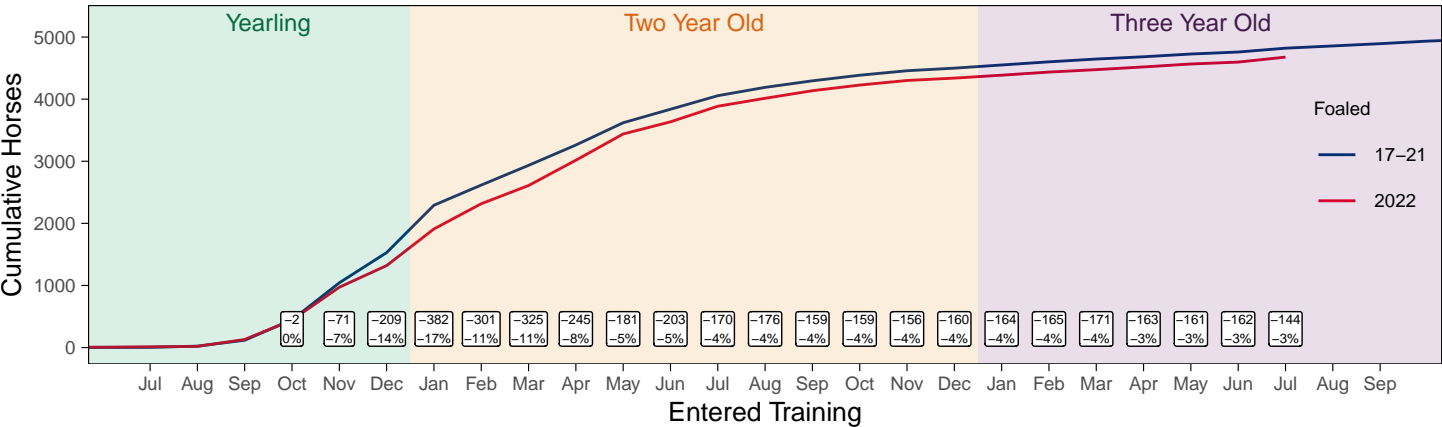
Period	Jan	Feb	Mar	Apr	May	Jun	Jul	Aug	Sep	Oct	Nov	Dec
2025	0	0	0	1	1	1	1					
2024	0	0	0	0	0	0	2	3	72	186	620	1068
5YrAvg	0	0	0	0	1	1	1	3	58	200	552	936

Foals Entering Training for the First Time

Warning: A numeric 'legend.position' argument in 'theme()' was deprecated in ggplot2 3.5.0.
i Please use the 'legend.position.inside' argument of 'theme()' instead.
This warning is displayed once every 8 hours.
Call 'lifecycle::last_lifecycle_warnings()' to see where this warning was generated.

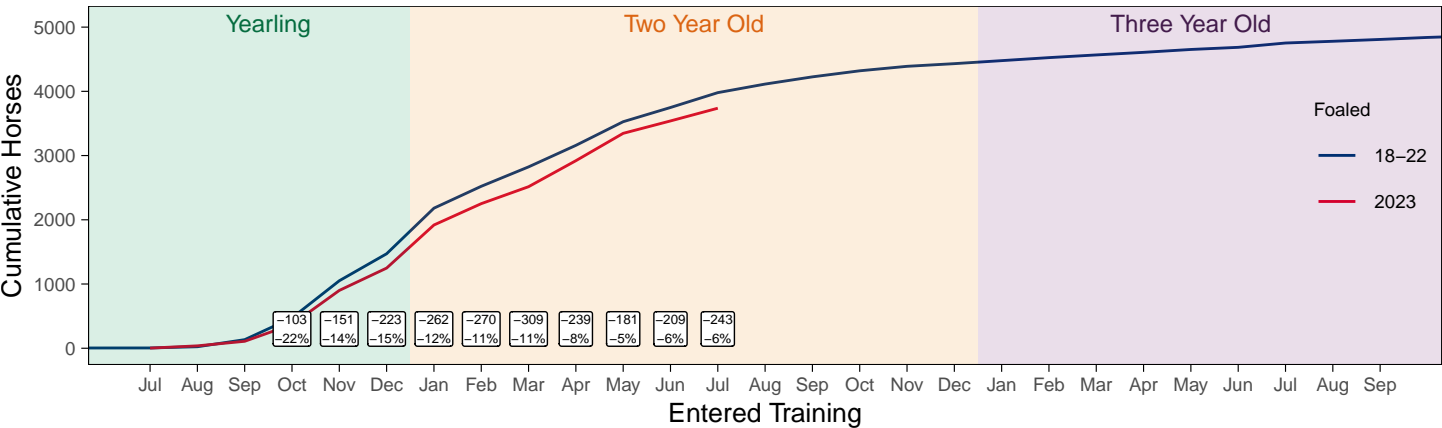
2022 Foals Entering Training Over Time

Cumulative Flat Horses foaled in 2022 shown by first in training notification against trend



2023 Foals Entering Training Over Time

Cumulative Flat Horses foaled in 2023 shown by first in training notification against trend



Year to Date Horses in Training

Type	2016	2017	2018	2019	2020	2021	2022	2023	2024	2025	vs. Last Year	vs. Pre-Covid
Flat	12461	12680	12643	12761	12560	12490	12228	12189	12119	11939	-180 / -1.5%	-822 / -6.4%
Jump	7347	7201	7090	7637	7357	8216	7767	7736	7639	7167	-472 / -6.2%	-470 / -6.2%
Dual	774	958	1218	830	835	869	830	744	742	858	+116 / +15.6%	+28 / +3.4%
Hunter	1893	1873	1699	1661	1407	1156	1267	1201	1346	1084	-262 / -19.5%	-577 / -34.7%
Total	20582	20839	20951	21228	20752	21575	20825	20669	20500	19964	-536 / -2.6%	-1264 / -6.0%

'vs. Pre-Covid' is comparison between 2025 and 2019

Flat

AgeCat	2016	2017	2018	2019	2020	2021	2022	2023	2024	2025	vs. Last Year	vs. Pre-Covid
2YO	4227	4276	4194	4223	3971	4032	3899	3923	3838	3698	-140 / -3.6%	-525 / -12.4%
3YO	3793	3884	4026	3950	4008	3884	3815	3737	3673	3738	+65 / +1.8%	-212 / -5.4%
4YO	1831	1900	1861	1975	1931	2012	1995	1926	1925	1843	-82 / -4.3%	-132 / -6.7%
5YO+	2610	2620	2562	2613	2650	2562	2519	2603	2683	2660	-23 / -0.9%	+47 / +1.8%
Total	12461	12680	12643	12761	12560	12490	12228	12189	12119	11939	-180 / -1.5%	-822 / -6.4%

'vs. Pre-Covid' is comparison between 2025 and 2019

Jump

AgeCat	2016	2017	2018	2019	2020	2021	2022	2023	2024	2025	vs. Last Year	vs. Pre-Covid
3YO	165	137	141	159	120	172	196	200	220	191	-29 / -13.2%	+32 / +20.1%
4-5YO	2354	2344	2251	2488	2395	2476	2556	2665	2553	2389	-164 / -6.4%	-99 / -4.0%
6-7YO	2436	2329	2416	2594	2553	2876	2674	2644	2688	2503	-185 / -6.9%	-91 / -3.5%
8YO+	2392	2391	2282	2396	2289	2692	2341	2227	2178	2084	-94 / -4.3%	-312 / -13.0%
Total	7347	7201	7090	7637	7357	8216	7767	7736	7639	7167	-472 / -6.2%	-470 / -6.2%

'vs. Pre-Covid' is comparison between 2025 and 2019

Dual

AgeCat	2016	2017	2018	2019	2020	2021	2022	2023	2024	2025	vs. Last Year	vs. Pre-Covid
3YO	125	137	128	106	124	154	188	143	119	163	+44 / +37.0%	+57 / +53.8%
4YO	167	248	291	201	187	230	202	188	207	223	+16 / +7.7%	+22 / +10.9%
5YO+	482	573	799	523	524	485	440	413	416	472	+56 / +13.5%	-51 / -9.8%
Total	774	958	1218	830	835	869	830	744	742	858	+116 / +15.6%	+28 / +3.4%

'vs. Pre-Covid' is comparison between 2025 and 2019

Hunter Chasers

AgeCat	2016	2017	2018	2019	2020	2021	2022	2023	2024	2025	vs. Last Year	vs. Pre-Covid
4-5YO	192	201	219	262	254	135	218	228	259	219	-40 / -15.4%	-43 / -16.4%
6-7YO	509	497	475	465	368	257	306	296	324	300	-24 / -7.4%	-165 / -35.5%
8-9YO	509	511	400	372	304	281	314	280	287	225	-62 / -21.6%	-147 / -39.5%
10YO+	683	664	605	562	481	483	429	397	476	340	-136 / -28.6%	-222 / -39.5%
Total	1893	1873	1699	1661	1407	1156	1267	1201	1346	1084	-262 / -19.5%	-577 / -34.7%

'vs. Pre-Covid' is comparison between 2025 and 2019

Year to Date Runners

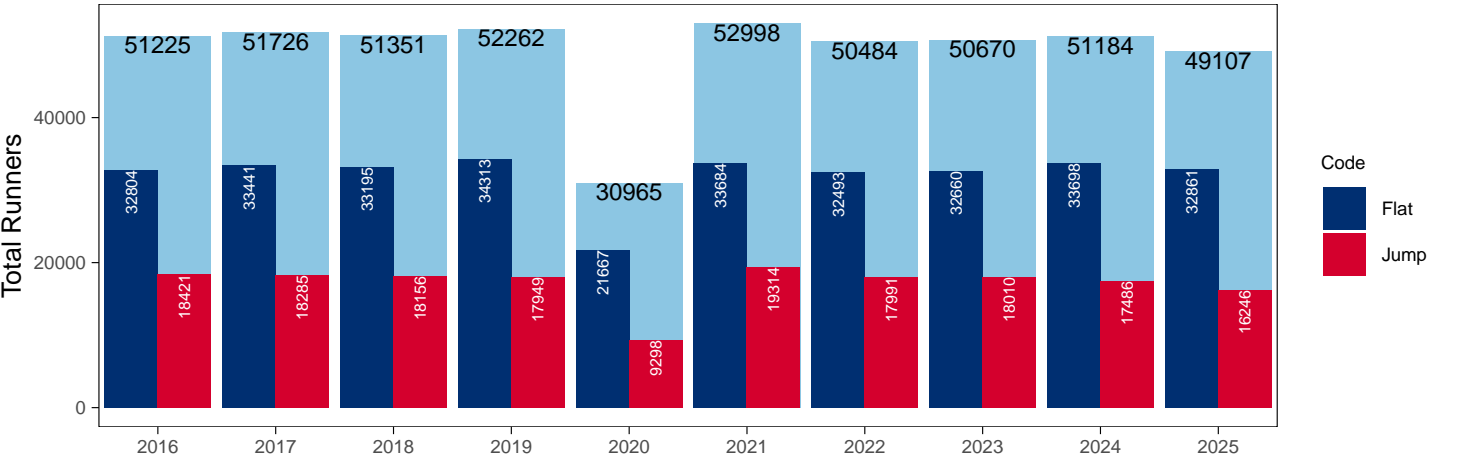
Year to Date Total Runners

Code	2016	2017	2018	2019	2020	2021	2022	2023	2024	2025	vs. Last Year	vs. Pre-Covid
Flat	32804	33441	33195	34313	21667	33684	32493	32660	33698	32861	-837 / -2.5%	-1452 / -4.2%
Jump	18421	18285	18156	17949	9298	19314	17991	18010	17486	16246	-1240 / -7.1%	-1703 / -9.5%
Total	51225	51726	51351	52262	30965	52998	50484	50670	51184	49107	-2077 / -4.1%	-3155 / -6.0%

'vs. Pre-Covid' is comparison between 2025 and 2019

YTD Total Runners

Total Runners in GB Races, shown by Code and Total



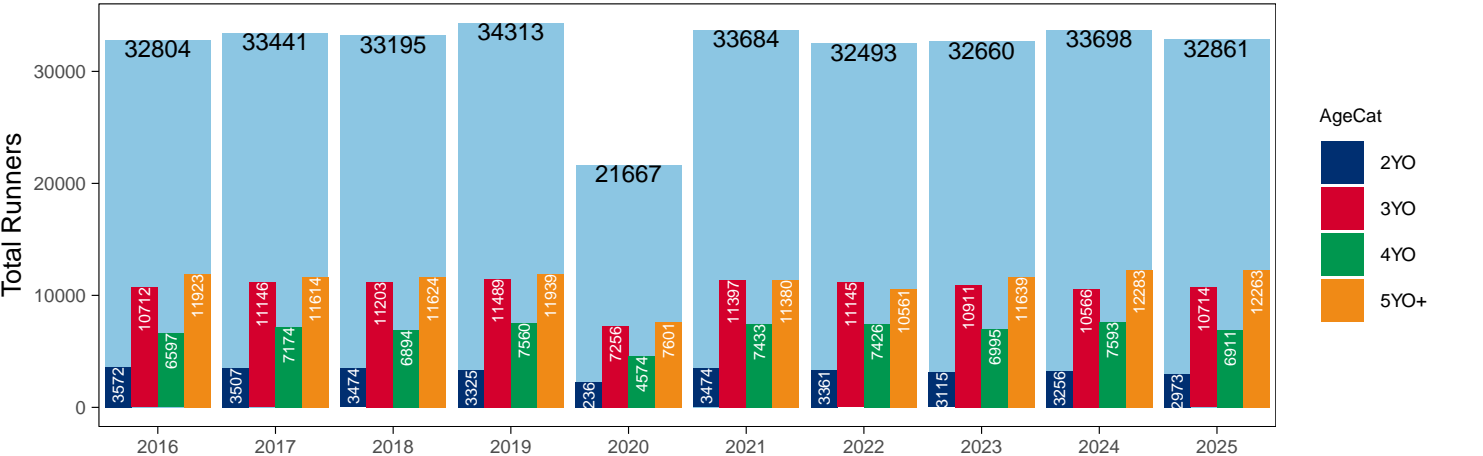
Flat

AgeCat	2016	2017	2018	2019	2020	2021	2022	2023	2024	2025	vs. Last Year	vs. Pre-Covid
2YO	3572	3507	3474	3325	2236	3474	3361	3115	3256	2973	-283 / -8.7%	-352 / -10.6%
3YO	10712	11146	11203	11489	7256	11397	11145	10911	10566	10714	+148 / +1.4%	-775 / -6.7%
4YO	6597	7174	6894	7560	4574	7433	7426	6995	7593	6911	-682 / -9.0%	-649 / -8.6%
5YO+	11923	11614	11624	11939	7601	11380	10561	11639	12283	12263	-20 / -0.2%	+324 / +2.7%
Total	32804	33441	33195	34313	21667	33684	32493	32660	33698	32861	-837 / -2.5%	-1452 / -4.2%

'vs. Pre-Covid' is comparison between 2025 and 2019

YTD Total Flat Runners by Age

Total Runners in GB Flat Races, shown by Age Category and Total



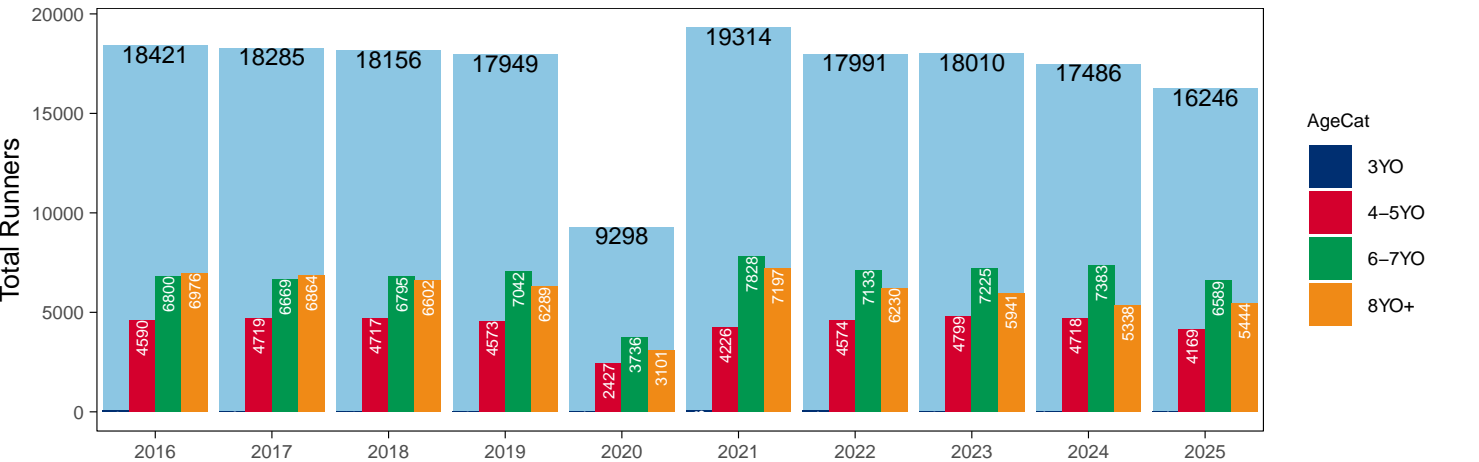
Jump

AgeCat	2016	2017	2018	2019	2020	2021	2022	2023	2024	2025	vs. Last Year	vs. Pre-Covid
3YO	55	33	42	45	34	63	54	45	47	44	-3 / -6.4%	-1 / -2.2%
4-5YO	4590	4719	4717	4573	2427	4226	4574	4799	4718	4169	-549 / -11.6%	-404 / -8.8%
6-7YO	6800	6669	6795	7042	3736	7828	7133	7225	7383	6589	-794 / -10.8%	-453 / -6.4%
8YO+	6976	6864	6602	6289	3101	7197	6230	5941	5338	5444	+106 / +2.0%	-845 / -13.4%
Total	18421	18285	18156	17949	9298	19314	17991	18010	17486	16246	-1240 / -7.1%	-1703 / -9.5%

'vs. Pre-Covid' is comparison between 2025 and 2019

YTD Total Jump Runners by Age

Total Runners in GB Jump Races, shown by Age Category and Total



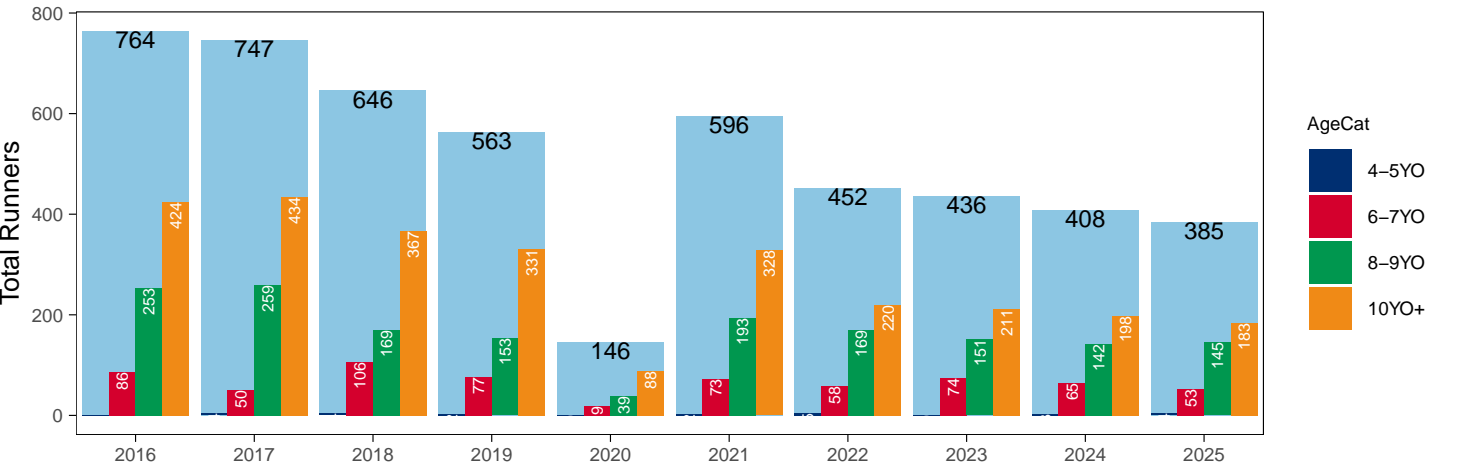
Hunter Chases

AgeCat	2016	2017	2018	2019	2020	2021	2022	2023	2024	2025	vs. Last Year	vs. Pre-Covid
4-5YO	1	4	4	2		2	5		3	4	+1 / +33.3%	+2 / +100.0%
6-7YO	86	50	106	77	19	73	58	74	65	53	-12 / -18.5%	-24 / -31.2%
8-9YO	253	259	169	153	39	193	169	151	142	145	+3 / +2.1%	-8 / -5.2%
10YO+	424	434	367	331	88	328	220	211	198	183	-15 / -7.6%	-148 / -44.7%
Total	764	747	646	563	146	596	452	436	408	385	-23 / -5.6%	-178 / -31.6%

'vs. Pre-Covid' is comparison between 2025 and 2019

YTD Total Hunter Chase Runners by Age

Total Runners in GB Hunter Chases shown by Age Category and Total



Year to Date Total Runners by Country Trained

Code	Country	2016	2017	2018	2019	2020	2021	2022	2023	2024	2025
Flat	GB	32425	32987	32752	33831	21486	33454	32247	32368	33280	32470
	IRE	320	396	394	431	160	206	192	258	356	338
	Other	59	58	49	51	21	24	54	34	62	53
Jump	GB	17769	17704	17737	17370	9031	18932	17373	17319	16876	15559
	IRE	646	568	410	572	257	379	616	688	607	680
	Other	6	13	9	7	10	3	2	3	3	7
Overall	GB	50194	50691	50489	51201	30517	52386	49620	49687	50156	48029
	IRE	966	964	804	1003	417	585	808	946	963	1018
	Other	65	71	58	58	31	27	56	37	65	60

Year to Date GB Trained Runners Racing Abroad

Code	Country	2016	2017	2018	2019	2020	2021	2022	2023	2024	2025
Flat	IRE	75	77	70	79	10	21	34	36	50	53
	FR	136	180	168	271	89	59	103	142	151	165
	GNV	9	10	12	21	5		7	11	18	10
	UAE	208	278	276	303	281	248	276	272	214	228
	BAH							41	23	50	89
	KSA					15	21	22	15	11	10
	Other	54	57	60	62	29	26	38	53	73	54
	Total	482	602	586	736	429	375	521	552	567	609
Jump	IRE	82	67	44	63	7	23	29	18	47	85
	FR	39	24	7	24	18	80	75	62	41	22
	Other	4	2	3	4		3	9	3	7	1
	Total	125	93	54	91	25	106	113	83	95	108

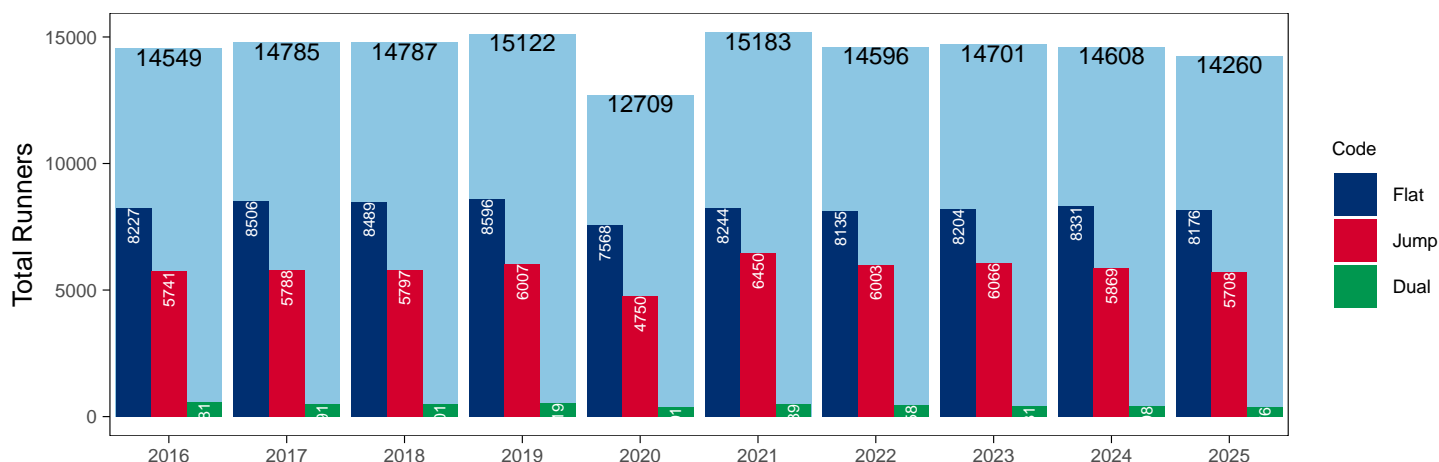
Year to Date Individual Runners

Code	2016	2017	2018	2019	2020	2021	2022	2023	2024	2025	vs. Last Year	vs. Pre-Covid
Flat	8227	8506	8489	8596	7568	8244	8135	8204	8331	8176	-155 / -1.9%	-420 / -4.9%
Jump	5741	5788	5797	6007	4750	6450	6003	6066	5869	5708	-161 / -2.7%	-299 / -5.0%
Dual	581	491	501	519	391	489	458	431	408	376	-32 / -7.8%	-143 / -27.6%
Overall	14549	14785	14787	15122	12709	15183	14596	14701	14608	14260	-348 / -2.4%	-862 / -5.7%

'vs. Pre-Covid' is comparison between 2025 and 2019

YTD Individual Runners

Individual Runners in GB Races, shown by Code and Total



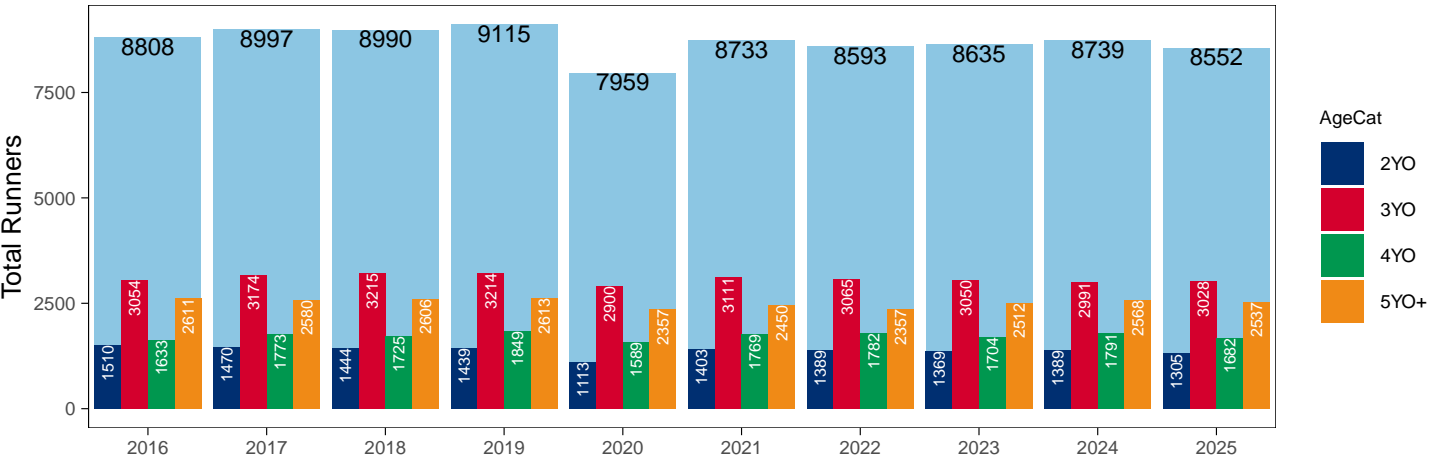
Flat

AgeCat	2016	2017	2018	2019	2020	2021	2022	2023	2024	2025	vs. Last Year	vs. Pre-Covid
2YO	1510	1470	1444	1439	1113	1403	1389	1369	1389	1305	-84 / -6.0%	-134 / -9.3%
3YO	3054	3174	3215	3214	2900	3111	3065	3050	2991	3028	+37 / +1.2%	-186 / -5.8%
4YO	1633	1773	1725	1849	1589	1769	1782	1704	1791	1682	-109 / -6.1%	-167 / -9.0%
5YO+	2611	2580	2606	2613	2357	2450	2357	2512	2568	2537	-31 / -1.2%	-76 / -2.9%
Total	8808	8997	8990	9115	7959	8733	8593	8635	8739	8552	-187 / -2.1%	-563 / -6.2%

'vs. Pre-Covid' is comparison between 2025 and 2019

YTD Individual Flat Runners by Age

Individual Runners in GB Flat Races, shown by Age Category and Total



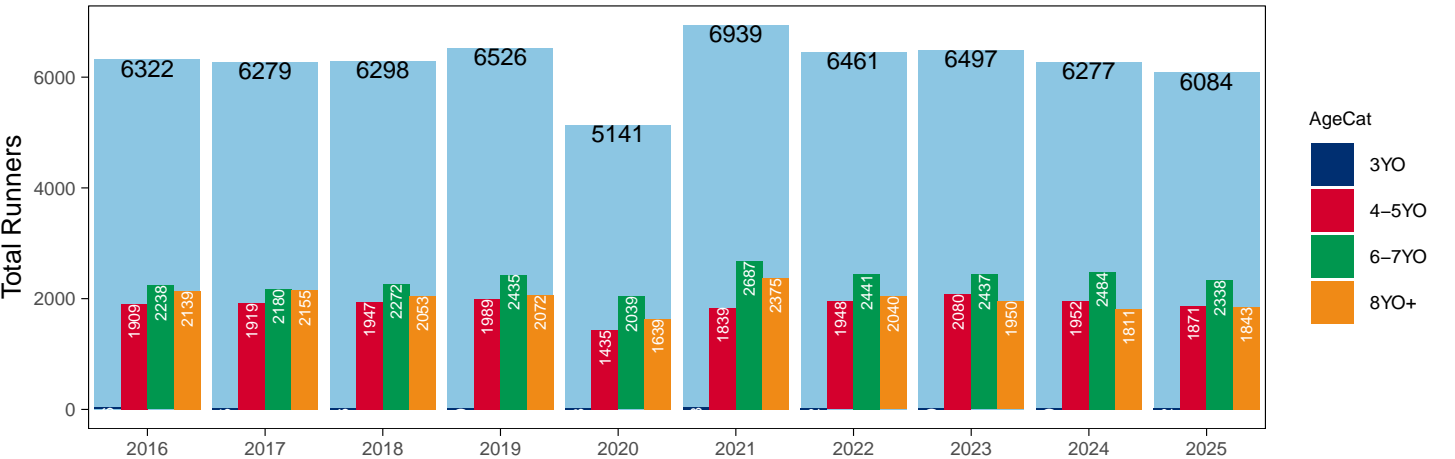
Jump

AgeCat	2016	2017	2018	2019	2020	2021	2022	2023	2024	2025	vs. Last Year	vs. Pre-Covid
3YO	36	25	26	30	28	38	32	30	30	32	+2 / +6.7%	+2 / +6.7%
4-5YO	1909	1919	1947	1989	1435	1839	1948	2080	1952	1871	-81 / -4.1%	-118 / -5.9%
6-7YO	2238	2180	2272	2435	2039	2687	2441	2437	2484	2338	-146 / -5.9%	-97 / -4.0%
8YO+	2139	2155	2053	2072	1639	2375	2040	1950	1811	1843	+32 / +1.8%	-229 / -11.1%
Total	6322	6279	6298	6526	5141	6939	6461	6497	6277	6084	-193 / -3.1%	-442 / -6.8%

'vs. Pre-Covid' is comparison between 2025 and 2019

YTD Individual Jump Runners by Age

Individual Runners in GB Jump Races, shown by Age Category and Total



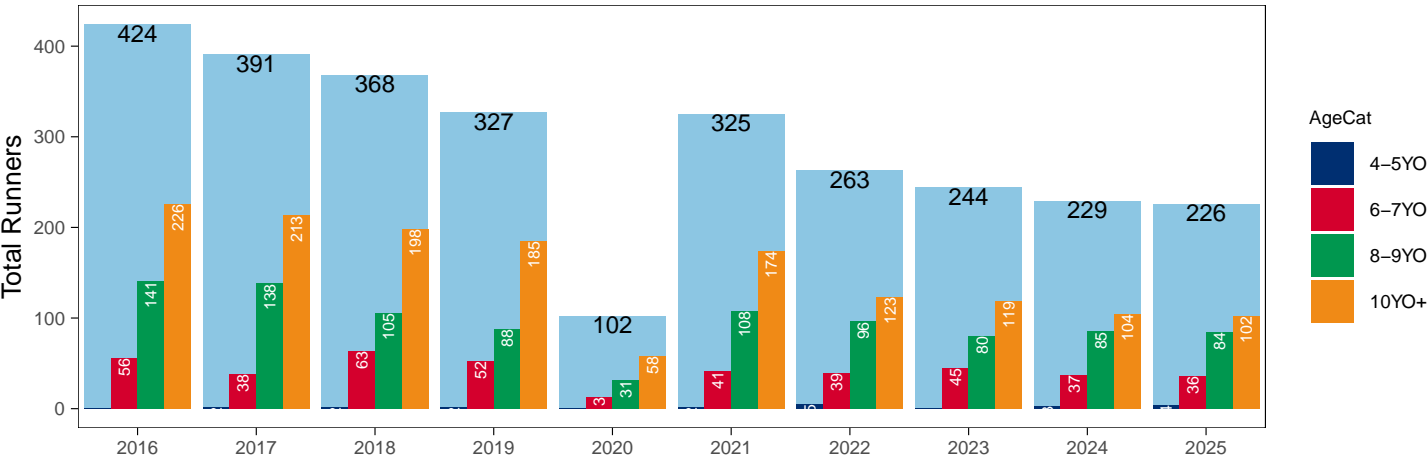
Hunter Chases

AgeCat	2016	2017	2018	2019	2020	2021	2022	2023	2024	2025	vs. Last Year	vs. Pre-Covid
4-5YO	1	2	2	2		2	5		3	4	+1 / +33.3%	+2 / +100.0%
6-7YO	56	38	63	52	13	41	39	45	37	36	-1 / -2.7%	-16 / -30.8%
8-9YO	141	138	105	88	31	108	96	80	85	84	-1 / -1.2%	-4 / -4.5%
10YO+	226	213	198	185	58	174	123	119	104	102	-2 / -1.9%	-83 / -44.9%
Total	424	391	368	327	102	325	263	244	229	226	-3 / -1.3%	-101 / -30.9%

'vs. Pre-Covid' is comparison between 2025 and 2019

YTD Individual Hunter Chase Runners by Age

Individual Runners in GB Hunter Chases shown by Age Category and Total



Year to Date Individual Runners by Country Trained

Code	Country	2016	2017	2018	2019	2020	2021	2022	2023	2024	2025
Flat	GB	7993	8229	8207	8283	7433	8075	7946	7980	8051	7894
	IRE	196	239	248	275	119	149	145	204	240	245
	Other	51	50	45	44	19	22	48	29	46	44
Jump	GB	5354	5417	5484	5613	4510	6149	5550	5578	5434	5212
	IRE	389	371	311	397	232	302	464	502	440	500
	Other	6	9	8	6	10	3	2	2	2	6
Dual	GB	568	484	492	509	389	486	451	420	400	361
	IRE	8	3	8	10	2	3	6	8	8	14
	Other		2								
Overall	GB	13915	14130	14183	14405	12332	14710	13947	13978	13885	13467
	IRE	593	613	567	682	353	454	615	714	688	759
	Other	57	61	53	50	29	25	50	31	48	50

Individual horses may appear under multiple countries.

Year to Date Total Runners by Rating Band

Flat

RatBand	2016	2017	2018	2019	2020	2021	2022	2023	2024	2025
2YO										
Unrated	3,007 (84.2%)	3,069 (87.5%)	3,047 (87.7%)	2,949 (88.7%)	1,972 (88.2%)	2,940 (84.6%)	2,840 (84.5%)	2,711 (87.0%)	2,845 (87.4%)	2,560 (86.1%)
0-50	10 (0.3%)	13 (0.4%)	13 (0.4%)	15 (0.5%)	2 (0.1%)	18 (0.5%)	23 (0.7%)	26 (0.8%)	10 (0.3%)	25 (0.8%)
51-60	39 (1.1%)	35 (1.0%)	47 (1.4%)	36 (1.1%)	6 (0.3%)	46 (1.3%)	63 (1.9%)	57 (1.8%)	61 (1.9%)	46 (1.5%)
61-70	142 (4.0%)	126 (3.6%)	88 (2.5%)	105 (3.2%)	63 (2.8%)	136 (3.9%)	114 (3.4%)	113 (3.6%)	104 (3.2%)	95 (3.2%)
71-80	217 (6.1%)	159 (4.5%)	148 (4.3%)	131 (3.9%)	98 (4.4%)	163 (4.7%)	152 (4.5%)	122 (3.9%)	129 (4.0%)	134 (4.5%)
81-90	121 (3.4%)	59 (1.7%)	86 (2.5%)	52 (1.6%)	56 (2.5%)	108 (3.1%)	114 (3.4%)	62 (2.0%)	70 (2.1%)	64 (2.2%)
91-100	28 (0.8%)	36 (1.0%)	37 (1.1%)	28 (0.8%)	31 (1.4%)	46 (1.3%)	45 (1.3%)	17 (0.5%)	26 (0.8%)	42 (1.4%)
101+	8 (0.2%)	10 (0.3%)	8 (0.2%)	9 (0.3%)	8 (0.4%)	17 (0.5%)	10 (0.3%)	7 (0.2%)	11 (0.3%)	7 (0.2%)
3YO+										
Unrated	3,159 (10.8%)	3,323 (11.1%)	3,824 (12.9%)	3,758 (12.1%)	2,822 (14.5%)	3,832 (12.7%)	3,529 (12.1%)	3,450 (11.7%)	3,428 (11.3%)	3,453 (11.6%)
0-50	2,390 (8.2%)	2,687 (9.0%)	3,039 (10.2%)	3,673 (11.9%)	2,133 (11.0%)	3,473 (11.5%)	3,418 (11.7%)	3,705 (12.5%)	3,688 (12.1%)	3,753 (12.6%)
51-60	4,780 (16.4%)	4,943 (16.5%)	4,752 (16.0%)	5,418 (17.5%)	3,277 (16.9%)	5,309 (17.6%)	5,104 (17.5%)	5,613 (19.0%)	5,973 (19.6%)	5,550 (18.6%)
61-70	6,288 (21.5%)	6,133 (20.5%)	5,918 (19.9%)	6,079 (19.6%)	3,762 (19.4%)	6,265 (20.7%)	5,912 (20.3%)	6,097 (20.6%)	6,460 (21.2%)	6,118 (20.5%)
71-80	5,810 (19.9%)	6,020 (20.1%)	5,540 (18.6%)	5,421 (17.5%)	3,443 (17.7%)	5,304 (17.6%)	5,156 (17.7%)	5,273 (17.8%)	5,339 (17.5%)	5,354 (17.9%)
81-90	3,738 (12.8%)	3,881 (13.0%)	3,622 (12.2%)	3,480 (11.2%)	2,159 (11.1%)	3,173 (10.5%)	3,304 (11.3%)	3,004 (10.2%)	3,215 (10.6%)	3,282 (11.0%)
91-100	1,784 (6.1%)	1,714 (5.7%)	1,862 (6.3%)	2,009 (6.5%)	1,066 (5.5%)	1,701 (5.6%)	1,552 (5.3%)	1,409 (4.8%)	1,356 (4.5%)	1,400 (4.7%)
101+	1,283 (4.4%)	1,233 (4.1%)	1,164 (3.9%)	1,150 (3.7%)	769 (4.0%)	1,153 (3.8%)	1,157 (4.0%)	994 (3.4%)	983 (3.2%)	978 (3.3%)

Jump

RatBand	2016	2017	2018	2019	2020	2021	2022	2023	2024	2025
Hurdle										
Unrated	2,777 (25.4%)	2,702 (25.2%)	2,806 (26.2%)	2,817 (26.2%)	1,653 (29.8%)	2,791 (25.3%)	2,570 (24.1%)	2,781 (25.7%)	2,876 (26.6%)	2,256 (22.9%)
0-100	2,835 (26.0%)	2,872 (26.8%)	2,681 (25.0%)	2,705 (25.1%)	1,205 (21.7%)	3,411 (30.9%)	3,532 (33.1%)	3,572 (33.0%)	3,751 (34.7%)	3,597 (36.5%)
101-110	1,710 (15.7%)	1,635 (15.2%)	1,620 (15.1%)	1,610 (15.0%)	758 (13.6%)	1,524 (13.8%)	1,645 (15.4%)	1,637 (15.1%)	1,574 (14.5%)	1,520 (15.4%)
111-120	1,561 (14.3%)	1,554 (14.5%)	1,522 (14.2%)	1,550 (14.4%)	742 (13.4%)	1,421 (12.9%)	1,384 (13.0%)	1,351 (12.5%)	1,306 (12.1%)	1,276 (12.9%)
121-130	1,064 (9.7%)	1,052 (9.8%)	1,119 (10.4%)	1,157 (10.7%)	577 (10.4%)	1,077 (9.7%)	854 (8.0%)	921 (8.5%)	802 (7.4%)	693 (7.0%)
131-140	642 (5.9%)	647 (6.0%)	670 (6.2%)	614 (5.7%)	403 (7.3%)	552 (5.0%)	465 (4.4%)	365 (3.4%)	341 (3.2%)	373 (3.8%)
141-150	238 (2.2%)	200 (1.9%)	239 (2.2%)	223 (2.1%)	144 (2.6%)	196 (1.8%)	178 (1.7%)	146 (1.3%)	121 (1.1%)	109 (1.1%)
151+	86 (0.8%)	74 (0.7%)	73 (0.7%)	91 (0.8%)	73 (1.3%)	79 (0.7%)	52 (0.5%)	60 (0.6%)	51 (0.5%)	40 (0.4%)
Chase										
Unrated	45 (0.8%)	56 (0.9%)	47 (0.8%)	37 (0.7%)	12 (0.4%)	30 (0.5%)	12 (0.2%)	1 (0.0%)	NA (-)	NA (-)
0-100	1,734 (29.1%)	1,629 (27.3%)	1,648 (28.7%)	1,696 (29.9%)	764 (26.5%)	1,915 (32.2%)	1,882 (32.3%)	1,983 (35.3%)	1,972 (37.0%)	1,919 (37.7%)
101-110	882 (14.8%)	955 (16.0%)	861 (15.0%)	895 (15.8%)	442 (15.3%)	891 (15.0%)	908 (15.6%)	955 (17.0%)	944 (17.7%)	849 (16.7%)
111-120	1,053 (17.7%)	1,022 (17.1%)	941 (16.4%)	888 (15.7%)	430 (14.9%)	984 (16.6%)	998 (17.2%)	924 (16.5%)	878 (16.5%)	818 (16.1%)
121-130	899 (15.1%)	914 (15.3%)	963 (16.8%)	863 (15.2%)	468 (16.2%)	922 (15.5%)	884 (15.2%)	768 (13.7%)	676 (12.7%)	680 (13.4%)
131-140	748 (12.6%)	820 (13.7%)	716 (12.5%)	724 (12.8%)	407 (14.1%)	659 (11.1%)	644 (11.1%)	555 (9.9%)	461 (8.7%)	412 (8.1%)
141-150	387 (6.5%)	381 (6.4%)	392 (6.8%)	366 (6.5%)	236 (8.2%)	335 (5.6%)	317 (5.4%)	261 (4.6%)	240 (4.5%)	234 (4.6%)
151+	203 (3.4%)	196 (3.3%)	166 (2.9%)	198 (3.5%)	122 (4.2%)	209 (3.5%)	174 (3.0%)	166 (3.0%)	155 (2.9%)	173 (3.4%)

Year to Date Total GB-Trained Runners by Rating Band

Flat

RatBand	2016	2017	2018	2019	2020	2021	2022	2023	2024	2025
2YO										
Unrated	2,965 (84.0%)	3,026 (87.4%)	3,003 (87.7%)	2,896 (88.6%)	1,949 (88.1%)	2,916 (84.5%)	2,813 (84.4%)	2,670 (86.9%)	2,803 (87.3%)	2,514 (85.9%)
0-50	10 (0.3%)	13 (0.4%)	13 (0.4%)	15 (0.5%)	2 (0.1%)	18 (0.5%)	23 (0.7%)	26 (0.8%)	10 (0.3%)	25 (0.9%)
51-60	39 (1.1%)	35 (1.0%)	47 (1.4%)	36 (1.1%)	6 (0.3%)	46 (1.3%)	63 (1.9%)	57 (1.9%)	61 (1.9%)	46 (1.6%)
61-70	142 (4.0%)	126 (3.6%)	88 (2.6%)	105 (3.2%)	63 (2.8%)	136 (3.9%)	114 (3.4%)	113 (3.7%)	104 (3.2%)	95 (3.2%)
71-80	217 (6.1%)	159 (4.6%)	148 (4.3%)	131 (4.0%)	98 (4.4%)	163 (4.7%)	152 (4.6%)	122 (4.0%)	129 (4.0%)	134 (4.6%)
81-90	121 (3.4%)	59 (1.7%)	86 (2.5%)	52 (1.6%)	56 (2.5%)	108 (3.1%)	114 (3.4%)	62 (2.0%)	70 (2.2%)	64 (2.2%)
91-100	28 (0.8%)	36 (1.0%)	35 (1.0%)	26 (0.8%)	31 (1.4%)	45 (1.3%)	45 (1.4%)	17 (0.6%)	25 (0.8%)	42 (1.4%)
101+	8 (0.2%)	10 (0.3%)	5 (0.1%)	8 (0.2%)	8 (0.4%)	17 (0.5%)	9 (0.3%)	7 (0.2%)	10 (0.3%)	7 (0.2%)
3YO+										
Unrated	3,138 (10.9%)	3,303 (11.2%)	3,803 (13.0%)	3,739 (12.2%)	2,814 (14.6%)	3,825 (12.7%)	3,519 (12.2%)	3,433 (11.7%)	3,417 (11.4%)	3,441 (11.6%)
0-50	2,366 (8.2%)	2,627 (8.9%)	3,002 (10.2%)	3,605 (11.8%)	2,115 (11.0%)	3,473 (11.6%)	3,418 (11.8%)	3,679 (12.6%)	3,666 (12.2%)	3,739 (12.7%)
51-60	4,742 (16.4%)	4,874 (16.5%)	4,693 (16.0%)	5,346 (17.5%)	3,243 (16.8%)	5,308 (17.7%)	5,103 (17.6%)	5,597 (19.1%)	5,944 (19.8%)	5,528 (18.7%)
61-70	6,247 (21.6%)	6,091 (20.6%)	5,874 (20.0%)	6,034 (19.7%)	3,754 (19.5%)	6,262 (20.9%)	5,910 (20.4%)	6,090 (20.8%)	6,440 (21.4%)	6,089 (20.6%)
71-80	5,792 (20.0%)	5,981 (20.3%)	5,514 (18.8%)	5,403 (17.7%)	3,434 (17.8%)	5,298 (17.7%)	5,145 (17.8%)	5,257 (17.9%)	5,311 (17.7%)	5,344 (18.1%)
81-90	3,724 (12.9%)	3,860 (13.1%)	3,609 (12.3%)	3,460 (11.3%)	2,152 (11.2%)	3,155 (10.5%)	3,284 (11.4%)	2,981 (10.2%)	3,169 (10.5%)	3,242 (11.0%)
91-100	1,742 (6.0%)	1,673 (5.7%)	1,807 (6.2%)	1,958 (6.4%)	1,059 (5.5%)	1,659 (5.5%)	1,503 (5.2%)	1,358 (4.6%)	1,272 (4.2%)	1,307 (4.4%)
101+	1,144 (4.0%)	1,114 (3.8%)	1,025 (3.5%)	1,017 (3.3%)	702 (3.6%)	1,025 (3.4%)	1,032 (3.6%)	899 (3.1%)	849 (2.8%)	853 (2.9%)

Jump

RatBand	2016	2017	2018	2019	2020	2021	2022	2023	2024	2025
Hurdle										
Unrated	2,704 (25.6%)	2,644 (25.4%)	2,760 (26.3%)	2,751 (26.4%)	1,630 (30.2%)	2,753 (25.4%)	2,481 (24.0%)	2,696 (25.8%)	2,808 (26.8%)	2,186 (23.0%)
0-100	2,789 (26.4%)	2,817 (27.0%)	2,635 (25.1%)	2,662 (25.6%)	1,195 (22.2%)	3,390 (31.3%)	3,512 (34.0%)	3,525 (33.7%)	3,717 (35.5%)	3,568 (37.6%)
101-110	1,669 (15.8%)	1,590 (15.3%)	1,601 (15.3%)	1,568 (15.1%)	755 (14.0%)	1,499 (13.8%)	1,622 (15.7%)	1,612 (15.4%)	1,551 (14.8%)	1,493 (15.7%)
111-120	1,532 (14.5%)	1,525 (14.6%)	1,506 (14.4%)	1,507 (14.5%)	738 (13.7%)	1,399 (12.9%)	1,348 (13.1%)	1,315 (12.6%)	1,280 (12.2%)	1,246 (13.1%)
121-130	1,038 (9.8%)	1,014 (9.7%)	1,098 (10.5%)	1,123 (10.8%)	565 (10.5%)	1,057 (9.8%)	811 (7.9%)	873 (8.4%)	738 (7.0%)	639 (6.7%)
131-140	588 (5.6%)	608 (5.8%)	634 (6.0%)	561 (5.4%)	362 (6.7%)	511 (4.7%)	397 (3.8%)	307 (2.9%)	277 (2.6%)	282 (3.0%)
141-150	176 (1.7%)	166 (1.6%)	197 (1.9%)	180 (1.7%)	103 (1.9%)	158 (1.5%)	119 (1.2%)	88 (0.8%)	77 (0.7%)	63 (0.7%)
151+	65 (0.6%)	57 (0.5%)	58 (0.6%)	66 (0.6%)	47 (0.9%)	59 (0.5%)	30 (0.3%)	33 (0.3%)	21 (0.2%)	15 (0.2%)
Chase										
Unrated	45 (0.8%)	54 (0.9%)	47 (0.8%)	36 (0.7%)	12 (0.4%)	30 (0.5%)	11 (0.2%)	1 (0.0%)	NA (-)	NA (-)
0-100	1,694 (29.6%)	1,581 (27.5%)	1,632 (29.2%)	1,675 (30.5%)	761 (27.2%)	1,912 (32.8%)	1,877 (33.4%)	1,970 (36.7%)	1,962 (38.4%)	1,907 (39.6%)
101-110	851 (14.9%)	941 (16.4%)	857 (15.4%)	889 (16.2%)	440 (15.7%)	880 (15.1%)	901 (16.0%)	943 (17.6%)	936 (18.3%)	837 (17.4%)
111-120	1,033 (18.1%)	1,007 (17.5%)	934 (16.7%)	877 (16.0%)	425 (15.2%)	981 (16.8%)	981 (17.5%)	903 (16.8%)	867 (17.0%)	801 (16.7%)
121-130	885 (15.5%)	884 (15.4%)	939 (16.8%)	840 (15.3%)	466 (16.6%)	912 (15.7%)	854 (15.2%)	747 (13.9%)	655 (12.8%)	649 (13.5%)
131-140	708 (12.4%)	786 (13.7%)	693 (12.4%)	695 (12.7%)	392 (14.0%)	652 (11.2%)	610 (10.9%)	507 (9.4%)	428 (8.4%)	341 (7.1%)
141-150	338 (5.9%)	338 (5.9%)	354 (6.3%)	327 (6.0%)	212 (7.6%)	297 (5.1%)	269 (4.8%)	200 (3.7%)	173 (3.4%)	177 (3.7%)
151+	160 (2.8%)	164 (2.8%)	126 (2.3%)	149 (2.7%)	93 (3.3%)	163 (2.8%)	117 (2.1%)	97 (1.8%)	94 (1.8%)	98 (2.0%)

Frequency of Runs

Year to Date Average Runs per Horse

Code	2016	2017	2018	2019	2020	2021	2022	2023	2024	2025
Flat	3.78	3.77	3.75	3.82	2.75	3.92	3.84	3.84	3.90	3.87
Jump	2.93	2.92	2.91	2.76	1.82	2.79	2.79	2.79	2.81	2.68
Dual Overall	5.76	5.64	5.31	5.41	3.79	5.41	5.33	5.31	5.33	5.72
Dual (Flat)	2.96	2.85	2.68	2.82	2.10	2.77	2.67	2.76	2.88	3.17
Dual (Jump)	2.80	2.79	2.62	2.59	1.69	2.64	2.66	2.55	2.45	2.55
All	3.52	3.50	3.47	3.46	2.44	3.49	3.46	3.45	3.50	3.44

Year to Date Proportion of Horses by Count of Runs

Runs	2016	2017	2018	2019	2020	2021	2022	2023	2024	2025
Flat										
1	1,679 (19.1%)	1,667 (18.5%)	1,751 (19.5%)	1,719 (18.9%)	2,008 (25.2%)	1,526 (17.5%)	1,557 (18.1%)	1,624 (18.8%)	1,568 (17.9%)	1,605 (18.8%)
2	1,569 (17.8%)	1,678 (18.7%)	1,649 (18.3%)	1,595 (17.5%)	2,192 (27.5%)	1,465 (16.8%)	1,544 (18.0%)	1,491 (17.3%)	1,503 (17.2%)	1,454 (17.0%)
3	1,556 (17.7%)	1,643 (18.3%)	1,674 (18.6%)	1,660 (18.2%)	1,834 (23.0%)	1,541 (17.6%)	1,468 (17.1%)	1,556 (18.0%)	1,553 (17.8%)	1,481 (17.3%)
4	1,267 (14.4%)	1,291 (14.3%)	1,274 (14.2%)	1,304 (14.3%)	945 (11.9%)	1,363 (15.6%)	1,287 (15.0%)	1,264 (14.6%)	1,285 (14.7%)	1,248 (14.6%)
5+	2,737 (31.1%)	2,718 (30.2%)	2,642 (29.4%)	2,837 (31.1%)	980 (12.3%)	2,838 (32.5%)	2,737 (31.9%)	2,700 (31.3%)	2,830 (32.4%)	2,764 (32.3%)
Jump										
1	1,631 (25.8%)	1,650 (26.3%)	1,642 (26.1%)	1,831 (28.1%)	2,348 (45.7%)	1,837 (26.5%)	1,835 (28.4%)	1,806 (27.8%)	1,662 (26.5%)	1,752 (28.8%)
2	1,441 (22.8%)	1,377 (21.9%)	1,355 (21.5%)	1,635 (25.1%)	1,765 (34.3%)	1,729 (24.9%)	1,467 (22.7%)	1,503 (23.1%)	1,468 (23.4%)	1,569 (25.8%)
3	1,250 (19.8%)	1,237 (19.7%)	1,263 (20.1%)	1,228 (18.8%)	763 (14.8%)	1,423 (20.5%)	1,296 (20.1%)	1,337 (20.6%)	1,284 (20.5%)	1,242 (20.4%)
4	892 (14.1%)	932 (14.8%)	980 (15.6%)	894 (13.7%)	214 (4.2%)	904 (13.0%)	903 (14.0%)	875 (13.5%)	944 (15.0%)	710 (11.7%)
5+	1,108 (17.5%)	1,083 (17.2%)	1,058 (16.8%)	938 (14.4%)	51 (1.0%)	1,046 (15.1%)	960 (14.9%)	976 (15.0%)	919 (14.6%)	811 (13.3%)
All Races										
1	2,951 (20.3%)	2,996 (20.3%)	3,040 (20.6%)	3,216 (21.3%)	3,972 (31.3%)	3,034 (20.0%)	3,068 (21.0%)	3,143 (21.4%)	2,958 (20.2%)	3,116 (21.9%)
2	2,785 (19.1%)	2,876 (19.5%)	2,834 (19.2%)	3,027 (20.0%)	3,830 (30.1%)	3,018 (19.9%)	2,865 (19.6%)	2,835 (19.3%)	2,815 (19.3%)	2,882 (20.2%)
3	2,681 (18.4%)	2,781 (18.8%)	2,833 (19.2%)	2,780 (18.4%)	2,584 (20.3%)	2,865 (18.9%)	2,680 (18.4%)	2,792 (19.0%)	2,749 (18.8%)	2,638 (18.5%)
4	2,116 (14.5%)	2,204 (14.9%)	2,228 (15.1%)	2,162 (14.3%)	1,215 (9.6%)	2,239 (14.7%)	2,156 (14.8%)	2,124 (14.4%)	2,210 (15.1%)	1,955 (13.7%)
5+	4,016 (27.6%)	3,928 (26.6%)	3,852 (26.0%)	3,937 (26.0%)	1,108 (8.7%)	4,027 (26.5%)	3,827 (26.2%)	3,807 (25.9%)	3,876 (26.5%)	3,669 (25.7%)

Year to Date Median Days Between Runs

Code/RatBand	2016	2017	2018	2019	2020	2021	2022	2023	2024	2025
All Runners	25	25	25	25	27	26	25	26	26	26
Flat										
Unrated	22	22	24	24	21	24	24	24	24	24
0-50	20	21	21	22	20	20	21	19	19	19
51-60	20	20	20	21	20	20	20	20	20	20
61-70	21	21	21	21	22	21	21	22	21	21
71-80	21	22	21	21	25	22	22	23	24	23
81-90	22	22	22	23	24	24	23	25	25	26
91-100	26	26	26	26	27	27	28	28	30	30
101+	29	31	29	30	31	31	34	34	34	35
All Flat Runners	22	22	22	22	23	22	22	22	22	22
Jump										
Unrated	36	33	36	36	37	38	34	39	38	39
0-100	26	26	27	27	35	28	27	28	30	29
101-110	29	27	29	29	32	30	29	30	32	30
111-120	29	29	30	30	36	32	30	32	32	32
121-130	31	29	30	32	35	32	31	34	35	34
131-140	33	32	33	33	37	35	34	36	35	35
141-150	34	35	38	36	41	40	36	39	36	40
151+	38	34	38	39	42	40	40	42	41	39
All Jump Runners	30	29	31	31	36	32	30	32	33	32

Horses Population by Gender

July 2025 Horses in Training Snapshot by Gender versus Previous Years

All Horses

Sex	2016	2017	2018	2019	2020	2021	2022	2023	2024	2025
Colt/Entire	2,382 (18.3%)	2,419 (18.2%)	2,432 (17.4%)	2,321 (16.6%)	2,284 (15.5%)	2,115 (15.2%)	2,022 (14.7%)	2,092 (15.5%)	1,915 (14.2%)	1,838 (13.9%)
Gelding	6,405 (49.2%)	6,486 (48.9%)	7,008 (50.1%)	6,998 (50.1%)	7,734 (52.4%)	7,339 (52.6%)	7,213 (52.3%)	6,940 (51.4%)	7,143 (53.0%)	7,017 (52.9%)
Filly/Mare	4,238 (32.5%)	4,347 (32.8%)	4,553 (32.5%)	4,646 (33.3%)	4,742 (32.1%)	4,501 (32.3%)	4,555 (33.0%)	4,463 (33.1%)	4,421 (32.8%)	4,399 (33.2%)
Rig	5 (0.0%)	4 (0.0%)	1 (0.0%)	2 (0.0%)	1 (0.0%)	1 (0.0%)	1 (0.0%)	1 (0.0%)	1 (0.0%)	0 (0.0%)
Total	13,030 (100.0%)	13,256 (100.0%)	13,994 (100.0%)	13,967 (100.0%)	14,761 (100.0%)	13,956 (100.0%)	13,791 (100.0%)	13,496 (100.0%)	13,480 (100.0%)	13,254 (100.0%)

Flat (including Dual)

Sex	2016	2017	2018	2019	2020	2021	2022	2023	2024	2025
Colt/Entire	2,369 (23.8%)	2,397 (23.3%)	2,419 (22.8%)	2,305 (22.1%)	2,264 (21.6%)	2,094 (20.7%)	2,005 (20.2%)	2,074 (20.9%)	1,903 (19.6%)	1,824 (18.8%)
Gelding	3,967 (39.8%)	4,163 (40.4%)	4,355 (41.1%)	4,295 (41.1%)	4,407 (42.1%)	4,336 (42.9%)	4,237 (42.7%)	4,204 (42.4%)	4,236 (43.7%)	4,319 (44.6%)
Filly/Mare	3,633 (36.4%)	3,733 (36.3%)	3,830 (36.1%)	3,847 (36.8%)	3,792 (36.2%)	3,668 (36.3%)	3,691 (37.2%)	3,643 (36.7%)	3,550 (36.6%)	3,534 (36.5%)
Rig	5 (0.1%)	4 (0.0%)	1 (0.0%)	2 (0.0%)	1 (0.0%)	1 (0.0%)	0 (0.0%)	0 (0.0%)	1 (0.0%)	0 (0.0%)
Total	9,974 (100.0%)	10,297 (100.0%)	10,605 (100.0%)	10,449 (100.0%)	10,464 (100.0%)	10,099 (100.0%)	9,933 (100.0%)	9,921 (100.0%)	9,690 (100.0%)	9,677 (100.0%)

Jump (including Dual)

Sex	2016	2017	2018	2019	2020	2021	2022	2023	2024	2025
Colt/Entire	22 (0.6%)	19 (0.5%)	25 (0.6%)	23 (0.6%)	23 (0.5%)	30 (0.7%)	27 (0.6%)	19 (0.5%)	14 (0.3%)	23 (0.6%)
Gelding	2,825 (79.9%)	2,786 (78.6%)	3,134 (77.9%)	3,042 (76.8%)	3,735 (77.5%)	3,344 (77.5%)	3,318 (76.8%)	3,058 (76.6%)	3,218 (76.6%)	3,039 (74.9%)
Filly/Mare	687 (19.4%)	738 (20.8%)	863 (21.5%)	896 (22.6%)	1,060 (22.0%)	939 (21.8%)	972 (22.5%)	912 (22.9%)	968 (23.0%)	993 (24.5%)
Rig	0 (0.0%)	0 (0.0%)	0 (0.0%)	0 (0.0%)	0 (0.0%)	0 (0.0%)	1 (0.0%)	1 (0.0%)	0 (0.0%)	0 (0.0%)
Total	3,534 (100.0%)	3,543 (100.0%)	4,022 (100.0%)	3,961 (100.0%)	4,818 (100.0%)	4,313 (100.0%)	4,318 (100.0%)	3,990 (100.0%)	4,200 (100.0%)	4,055 (100.0%)

Year to Date Total Runners by Gender

Sex	2016	2017	2018	2019	2020	2021	2022	2023	2024	2025
All Races										
Colt/Entire	4,945 (9.7%)	4,840 (9.4%)	4,959 (9.7%)	4,682 (9.0%)	3,145 (10.2%)	4,592 (8.7%)	4,151 (8.2%)	3,909 (7.7%)	3,692 (7.2%)	3,539 (7.2%)
Gelding	32,929 (64.3%)	33,334 (64.4%)	32,578 (63.4%)	32,934 (63.0%)	19,039 (61.5%)	33,568 (63.3%)	32,163 (63.7%)	32,314 (63.8%)	32,991 (64.5%)	31,555 (64.3%)
Filly/Mare	13,337 (26.0%)	13,549 (26.2%)	13,806 (26.9%)	14,635 (28.0%)	8,777 (28.3%)	14,831 (28.0%)	14,164 (28.1%)	14,443 (28.5%)	14,501 (28.3%)	14,013 (28.5%)
Rig	14 (0.0%)	3 (0.0%)	8 (0.0%)	11 (0.0%)	4 (0.0%)	7 (0.0%)	6 (0.0%)	4 (0.0%)	0 (0.0%)	0 (0.0%)
Flat										
Colt/Entire	4,916 (15.0%)	4,808 (14.4%)	4,937 (14.9%)	4,654 (13.6%)	3,127 (14.4%)	4,560 (13.5%)	4,131 (12.7%)	3,874 (11.9%)	3,677 (10.9%)	3,523 (10.7%)
Gelding	17,765 (54.2%)	18,329 (54.8%)	18,083 (54.5%)	18,797 (54.8%)	11,732 (54.1%)	18,461 (54.8%)	17,993 (55.4%)	18,287 (56.0%)	19,530 (58.0%)	19,217 (58.5%)
Filly/Mare	10,109 (30.8%)	10,301 (30.8%)	10,167 (30.6%)	10,855 (31.6%)	6,807 (31.4%)	10,660 (31.6%)	10,369 (31.9%)	10,499 (32.1%)	10,491 (31.1%)	10,121 (30.8%)
Rig	14 (0.0%)	3 (0.0%)	8 (0.0%)	7 (0.0%)	1 (0.0%)	3 (0.0%)	0 (0.0%)	0 (0.0%)	0 (0.0%)	0 (0.0%)
All Jump										
Colt/Entire	29 (0.2%)	32 (0.2%)	22 (0.1%)	28 (0.2%)	18 (0.2%)	32 (0.2%)	20 (0.1%)	35 (0.2%)	15 (0.1%)	16 (0.1%)
Gelding	15,164 (82.3%)	15,005 (82.1%)	14,495 (79.8%)	14,137 (78.8%)	7,307 (78.6%)	15,107 (78.2%)	14,170 (78.8%)	14,027 (77.9%)	13,461 (77.0%)	12,338 (75.9%)
Filly/Mare	3,228 (17.5%)	3,248 (17.8%)	3,639 (20.0%)	3,780 (21.1%)	1,970 (21.2%)	4,171 (21.6%)	3,795 (21.1%)	3,944 (21.9%)	4,010 (22.9%)	3,892 (24.0%)
Rig	0 (0.0%)	0 (0.0%)	0 (0.0%)	4 (0.0%)	3 (0.0%)	4 (0.0%)	6 (0.0%)	4 (0.0%)	0 (0.0%)	0 (0.0%)
Chase										
Colt/Entire	1 (0.0%)	0 (0.0%)	0 (0.0%)	0 (0.0%)	0 (0.0%)	0 (0.0%)	0 (0.0%)	0 (0.0%)	0 (0.0%)	0 (0.0%)
Gelding	5,539 (93.1%)	5,544 (92.8%)	5,208 (90.8%)	5,102 (90.0%)	2,600 (90.2%)	5,317 (89.4%)	5,202 (89.4%)	5,013 (89.3%)	4,769 (89.5%)	4,438 (87.3%)
Filly/Mare	411 (6.9%)	429 (7.2%)	526 (9.2%)	563 (9.9%)	278 (9.6%)	624 (10.5%)	611 (10.5%)	597 (10.6%)	557 (10.5%)	647 (12.7%)
Rig	0 (0.0%)	0 (0.0%)	0 (0.0%)	2 (0.0%)	3 (0.1%)	4 (0.1%)	6 (0.1%)	3 (0.1%)	0 (0.0%)	0 (0.0%)
Hurdle										
Colt/Entire	25 (0.2%)	26 (0.2%)	15 (0.1%)	19 (0.2%)	8 (0.1%)	29 (0.3%)	13 (0.1%)	26 (0.2%)	10 (0.1%)	7 (0.1%)
Gelding	8,617 (79.0%)	8,439 (78.6%)	8,226 (76.7%)	8,107 (75.3%)	4,138 (74.5%)	8,200 (74.2%)	8,063 (75.5%)	8,082 (74.6%)	7,861 (72.6%)	7,119 (72.2%)
Filly/Mare	2,271 (20.8%)	2,271 (21.2%)	2,489 (23.2%)	2,639 (24.5%)	1,409 (25.4%)	2,822 (25.5%)	2,604 (24.4%)	2,724 (25.1%)	2,951 (27.3%)	2,738 (27.8%)
Rig	0 (0.0%)	0 (0.0%)	0 (0.0%)	2 (0.0%)	0 (0.0%)	0 (0.0%)	0 (0.0%)	1 (0.0%)	0 (0.0%)	0 (0.0%)
NHF										
Colt/Entire	3 (0.2%)	6 (0.4%)	7 (0.4%)	9 (0.6%)	10 (1.2%)	3 (0.1%)	7 (0.5%)	9 (0.6%)	5 (0.4%)	9 (0.7%)
Gelding	1,008 (64.7%)	1,022 (64.8%)	1,061 (62.7%)	928 (61.3%)	569 (66.0%)	1,590 (68.6%)	905 (60.7%)	932 (59.6%)	831 (62.1%)	781 (60.2%)
Filly/Mare	546 (35.1%)	548 (34.8%)	624 (36.9%)	578 (38.2%)	283 (32.8%)	725 (31.3%)	580 (38.9%)	623 (39.8%)	502 (37.5%)	507 (39.1%)
Hunter										
Gelding	720 (94.2%)	709 (94.9%)	603 (93.3%)	522 (92.7%)	142 (97.3%)	557 (93.5%)	429 (94.9%)	408 (93.6%)	379 (92.9%)	354 (91.9%)
Filly/Mare	44 (5.8%)	38 (5.1%)	43 (6.7%)	41 (7.3%)	4 (2.7%)	39 (6.5%)	23 (5.1%)	28 (6.4%)	29 (7.1%)	31 (8.1%)

Year to Date Individual Runners by Gender

Sex	2016	2017	2018	2019	2020	2021	2022	2023	2024	2025
All Races										
Male	10,393 (71.4%)	10,562 (71.4%)	10,503 (71.0%)	10,634 (70.3%)	8,954 (70.5%)	10,685 (70.4%)	10,234 (70.1%)	10,190 (69.3%)	10,161 (69.6%)	9,889 (69.3%)
Female	4,156 (28.6%)	4,223 (28.6%)	4,284 (29.0%)	4,488 (29.7%)	3,755 (29.5%)	4,498 (29.6%)	4,362 (29.9%)	4,511 (30.7%)	4,447 (30.4%)	4,371 (30.7%)
Flat										
Male	5,743 (65.2%)	5,897 (65.5%)	5,940 (66.1%)	5,948 (65.3%)	5,235 (65.8%)	5,669 (64.9%)	5,568 (64.8%)	5,523 (64.0%)	5,687 (65.1%)	5,570 (65.1%)
Female	3,065 (34.8%)	3,100 (34.5%)	3,050 (33.9%)	3,167 (34.7%)	2,724 (34.2%)	3,064 (35.1%)	3,025 (35.2%)	3,112 (36.0%)	3,052 (34.9%)	2,982 (34.9%)
All Jump										
Male	5,129 (81.1%)	5,067 (80.7%)	4,972 (78.9%)	5,101 (78.2%)	4,035 (78.5%)	5,401 (77.8%)	5,022 (77.7%)	5,003 (77.0%)	4,793 (76.4%)	4,598 (75.6%)
Female	1,193 (18.9%)	1,212 (19.3%)	1,326 (21.1%)	1,425 (21.8%)	1,106 (21.5%)	1,538 (22.2%)	1,439 (22.3%)	1,494 (23.0%)	1,484 (23.6%)	1,486 (24.4%)
Chase										
Male	1,967 (92.7%)	1,981 (92.0%)	1,894 (90.0%)	1,920 (89.5%)	1,506 (89.5%)	2,025 (88.6%)	1,910 (88.5%)	1,835 (88.0%)	1,775 (88.4%)	1,711 (86.5%)
Female	156 (7.3%)	172 (8.0%)	211 (10.0%)	226 (10.5%)	176 (10.5%)	261 (11.4%)	247 (11.5%)	251 (12.0%)	234 (11.6%)	267 (13.5%)
Hurdle										
Male	3,259 (80.0%)	3,145 (78.8%)	3,140 (77.4%)	3,231 (76.5%)	2,392 (75.1%)	3,323 (75.2%)	3,171 (76.5%)	3,142 (75.4%)	3,098 (73.6%)	2,853 (72.8%)
Female	816 (20.0%)	844 (21.2%)	919 (22.6%)	993 (23.5%)	793 (24.9%)	1,097 (24.8%)	975 (23.5%)	1,026 (24.6%)	1,110 (26.4%)	1,066 (27.2%)
NHF										
Male	703 (66.1%)	698 (66.6%)	761 (66.1%)	668 (63.9%)	478 (67.5%)	1,146 (69.9%)	654 (63.0%)	675 (62.5%)	593 (64.0%)	577 (62.5%)
Female	361 (33.9%)	350 (33.4%)	391 (33.9%)	377 (36.1%)	230 (32.5%)	493 (30.1%)	384 (37.0%)	405 (37.5%)	334 (36.0%)	346 (37.5%)
Hunter										
Male	395 (93.2%)	366 (93.6%)	339 (92.1%)	301 (92.0%)	98 (96.1%)	299 (92.0%)	243 (92.4%)	228 (93.4%)	212 (92.6%)	207 (91.6%)
Female	29 (6.8%)	25 (6.4%)	29 (7.9%)	26 (8.0%)	4 (3.9%)	26 (8.0%)	20 (7.6%)	16 (6.6%)	17 (7.4%)	19 (8.4%)

Horses Population by Breeding

July 2025 Horses in Training Snapshot by Breeding versus Previous Years

Flat (including Dual)

Bred	Sex	2016	2017	2018	2019	2020	2021	2022	2023	2024	2025
GB	Male	2,939 (29.5%)	3,066 (29.8%)	3,196 (30.1%)	3,125 (29.9%)	3,187 (30.5%)	3,022 (29.9%)	2,913 (29.3%)	2,904 (29.3%)	2,806 (29.0%)	2,810 (29.0%)
	Female	2,021 (20.3%)	2,072 (20.1%)	2,132 (20.1%)	2,138 (20.5%)	2,136 (20.4%)	2,030 (20.1%)	2,040 (20.5%)	1,992 (20.1%)	1,949 (20.1%)	1,979 (20.5%)
	Subtotal	4,960 (49.7%)	5,138 (49.9%)	5,328 (50.2%)	5,263 (50.4%)	5,323 (50.9%)	5,052 (50.0%)	4,953 (49.9%)	4,896 (49.3%)	4,755 (49.1%)	4,789 (49.5%)
IRE	Male	2,785 (27.9%)	2,801 (27.2%)	2,873 (27.1%)	2,791 (26.7%)	2,856 (27.3%)	2,831 (28.0%)	2,834 (28.5%)	2,902 (29.3%)	2,851 (29.4%)	2,873 (29.7%)
	Female	1,358 (13.6%)	1,387 (13.5%)	1,401 (13.2%)	1,426 (13.6%)	1,390 (13.3%)	1,432 (14.2%)	1,466 (14.8%)	1,483 (14.9%)	1,428 (14.7%)	1,371 (14.2%)
	Subtotal	4,143 (41.5%)	4,188 (40.7%)	4,274 (40.3%)	4,217 (40.4%)	4,246 (40.6%)	4,263 (42.2%)	4,300 (43.3%)	4,385 (44.2%)	4,279 (44.2%)	4,244 (43.9%)
FR	Male	194 (1.9%)	261 (2.5%)	310 (2.9%)	318 (3.0%)	316 (3.0%)	318 (3.1%)	312 (3.1%)	301 (3.0%)	329 (3.4%)	323 (3.3%)
	Female	87 (0.9%)	107 (1.0%)	121 (1.1%)	122 (1.2%)	136 (1.3%)	118 (1.2%)	118 (1.2%)	109 (1.1%)	118 (1.2%)	120 (1.2%)
	Subtotal	281 (2.8%)	368 (3.6%)	431 (4.1%)	440 (4.2%)	452 (4.3%)	436 (4.3%)	430 (4.3%)	410 (4.1%)	447 (4.6%)	443 (4.6%)
USA	Male	338 (3.4%)	344 (3.3%)	318 (3.0%)	294 (2.8%)	239 (2.3%)	191 (1.9%)	124 (1.2%)	108 (1.1%)	94 (1.0%)	73 (0.8%)
	Female	142 (1.4%)	141 (1.4%)	148 (1.4%)	126 (1.2%)	99 (0.9%)	63 (0.6%)	45 (0.5%)	40 (0.4%)	34 (0.4%)	40 (0.4%)
	Subtotal	480 (4.8%)	485 (4.7%)	466 (4.4%)	420 (4.0%)	338 (3.2%)	254 (2.5%)	169 (1.7%)	148 (1.5%)	128 (1.3%)	113 (1.2%)
GNY	Male	63 (0.6%)	69 (0.7%)	52 (0.5%)	53 (0.5%)	57 (0.5%)	54 (0.5%)	46 (0.5%)	48 (0.5%)	44 (0.5%)	52 (0.5%)
	Female	7 (0.1%)	12 (0.1%)	15 (0.1%)	22 (0.2%)	25 (0.2%)	21 (0.2%)	17 (0.2%)	12 (0.1%)	16 (0.2%)	18 (0.2%)
	Subtotal	70 (0.7%)	81 (0.8%)	67 (0.6%)	75 (0.7%)	82 (0.8%)	75 (0.7%)	63 (0.6%)	60 (0.6%)	60 (0.6%)	70 (0.7%)
Other	Male	22 (0.2%)	23 (0.2%)	26 (0.2%)	21 (0.2%)	17 (0.2%)	15 (0.1%)	13 (0.1%)	15 (0.2%)	16 (0.2%)	12 (0.1%)
	Female	18 (0.2%)	14 (0.1%)	13 (0.1%)	13 (0.1%)	6 (0.1%)	4 (0.0%)	5 (0.1%)	7 (0.1%)	5 (0.1%)	6 (0.1%)
	Subtotal	40 (0.4%)	37 (0.4%)	39 (0.4%)	34 (0.3%)	23 (0.2%)	19 (0.2%)	18 (0.2%)	22 (0.2%)	21 (0.2%)	18 (0.2%)

Jump (including Dual)

Bred	Sex	2016	2017	2018	2019	2020	2021	2022	2023	2024	2025
GB	Male	901 (25.5%)	847 (23.9%)	945 (23.5%)	841 (21.2%)	963 (20.0%)	869 (20.1%)	830 (19.2%)	756 (18.9%)	823 (19.6%)	783 (19.3%)
	Female	402 (11.4%)	410 (11.6%)	458 (11.4%)	404 (10.2%)	471 (9.8%)	455 (10.5%)	451 (10.4%)	429 (10.8%)	398 (9.5%)	426 (10.5%)
	Subtotal	1,303 (36.9%)	1,257 (35.5%)	1,403 (34.9%)	1,245 (31.4%)	1,434 (29.8%)	1,324 (30.7%)	1,281 (29.7%)	1,185 (29.7%)	1,221 (29.1%)	1,209 (29.8%)
IRE	Male	1,536 (43.5%)	1,538 (43.4%)	1,725 (42.9%)	1,717 (43.3%)	2,080 (43.2%)	1,821 (42.2%)	1,771 (41.0%)	1,617 (40.5%)	1,699 (40.5%)	1,586 (39.1%)
	Female	258 (7.3%)	283 (8.0%)	352 (8.8%)	425 (10.7%)	487 (10.1%)	412 (9.6%)	434 (10.1%)	398 (10.0%)	473 (11.3%)	441 (10.9%)
	Subtotal	1,794 (50.8%)	1,821 (51.4%)	2,077 (51.6%)	2,142 (54.1%)	2,567 (53.3%)	2,233 (51.8%)	2,205 (51.1%)	2,015 (50.5%)	2,172 (51.7%)	2,027 (50.0%)
FR	Male	332 (9.4%)	341 (9.6%)	417 (10.4%)	439 (11.1%)	635 (13.2%)	600 (13.9%)	667 (15.4%)	636 (15.9%)	663 (15.8%)	657 (16.2%)
	Female	22 (0.6%)	40 (1.1%)	51 (1.3%)	62 (1.6%)	96 (2.0%)	65 (1.5%)	81 (1.9%)	82 (2.1%)	89 (2.1%)	117 (2.9%)
	Subtotal	354 (10.0%)	381 (10.8%)	468 (11.6%)	501 (12.6%)	731 (15.2%)	665 (15.4%)	748 (17.3%)	718 (18.0%)	752 (17.9%)	774 (19.1%)
USA	Male	37 (1.0%)	36 (1.0%)	34 (0.8%)	28 (0.7%)	26 (0.5%)	30 (0.7%)	23 (0.5%)	17 (0.4%)	9 (0.2%)	5 (0.1%)
	Female	1 (0.0%)	2 (0.1%)	1 (0.0%)	2 (0.1%)	2 (0.0%)	1 (0.0%)	NA (-)	1 (0.0%)	2 (0.0%)	NA (-)
	Subtotal	38 (1.1%)	38 (1.1%)	35 (0.9%)	30 (0.8%)	28 (0.6%)	31 (0.7%)	23 (0.5%)	18 (0.5%)	11 (0.3%)	5 (0.1%)
GNY	Male	38 (1.1%)	36 (1.0%)	33 (0.8%)	36 (0.9%)	53 (1.1%)	52 (1.2%)	53 (1.2%)	50 (1.3%)	36 (0.9%)	29 (0.7%)
	Female	1 (0.0%)	1 (0.0%)	NA (-)	2 (0.1%)	4 (0.1%)	5 (0.1%)	5 (0.1%)	2 (0.1%)	5 (0.1%)	7 (0.2%)
	Subtotal	39 (1.1%)	37 (1.0%)	33 (0.8%)	38 (1.0%)	57 (1.2%)	57 (1.3%)	58 (1.3%)	52 (1.3%)	41 (1.0%)	36 (0.9%)
Other	Male	3 (0.1%)	7 (0.2%)	5 (0.1%)	4 (0.1%)	1 (0.0%)	2 (0.0%)	2 (0.0%)	2 (0.1%)	2 (0.0%)	2 (0.0%)
	Female	3 (0.1%)	2 (0.1%)	1 (0.0%)	1 (0.0%)	NA (-)	1 (0.0%)	1 (0.0%)	NA (-)	1 (0.0%)	2 (0.0%)
	Subtotal	6 (0.2%)	9 (0.3%)	6 (0.1%)	5 (0.1%)	1 (0.0%)	3 (0.1%)	3 (0.1%)	2 (0.1%)	3 (0.1%)	4 (0.1%)

Year to Date Total Runners by Breeding

Flat

Bred	Sex	2016	2017	2018	2019	2020	2021	2022	2023	2024	2025
GB	Male	10,626 (32.4%)	10,883 (32.5%)	10,628 (32.0%)	10,728 (31.3%)	6,975 (32.2%)	10,552 (31.3%)	10,122 (31.2%)	10,011 (30.7%)	10,430 (31.0%)	10,304 (31.4%)
	Female	5,549 (16.9%)	5,588 (16.7%)	5,508 (16.6%)	5,935 (17.3%)	3,756 (17.3%)	5,948 (17.7%)	5,670 (17.4%)	5,682 (17.4%)	5,539 (16.4%)	5,413 (16.5%)
	Subtotal	16,175 (49.3%)	16,471 (49.3%)	16,136 (48.6%)	16,663 (48.6%)	10,731 (49.5%)	16,500 (49.0%)	15,792 (48.6%)	15,693 (48.0%)	15,969 (47.4%)	15,717 (47.8%)
IRE	Male	10,051 (30.6%)	10,143 (30.3%)	10,266 (30.9%)	10,487 (30.6%)	6,510 (30.0%)	10,564 (31.4%)	10,412 (32.0%)	10,587 (32.4%)	11,126 (33.0%)	10,933 (33.3%)
	Female	4,021 (12.3%)	4,144 (12.4%)	4,070 (12.3%)	4,226 (12.3%)	2,697 (12.4%)	4,129 (12.3%)	4,173 (12.8%)	4,291 (13.1%)	4,470 (13.3%)	4,261 (13.0%)
	Subtotal	14,072 (42.9%)	14,287 (42.7%)	14,336 (43.2%)	14,713 (42.9%)	9,207 (42.5%)	14,693 (43.6%)	14,585 (44.9%)	14,878 (45.6%)	15,596 (46.3%)	15,194 (46.2%)
FR	Male	635 (1.9%)	728 (2.2%)	800 (2.4%)	994 (2.9%)	637 (2.9%)	950 (2.8%)	920 (2.8%)	1,007 (3.1%)	1,098 (3.3%)	1,061 (3.2%)
	Female	215 (0.7%)	220 (0.7%)	260 (0.8%)	297 (0.9%)	172 (0.8%)	319 (0.9%)	311 (1.0%)	348 (1.1%)	321 (1.0%)	285 (0.9%)
	Subtotal	850 (2.6%)	948 (2.8%)	1,060 (3.2%)	1,291 (3.8%)	809 (3.7%)	1,269 (3.8%)	1,231 (3.8%)	1,355 (4.1%)	1,419 (4.2%)	1,346 (4.1%)
USA	Male	1,093 (3.3%)	1,075 (3.2%)	1,047 (3.2%)	974 (2.8%)	573 (2.6%)	666 (2.0%)	515 (1.6%)	390 (1.2%)	372 (1.1%)	249 (0.8%)
	Female	247 (0.8%)	282 (0.8%)	259 (0.8%)	298 (0.9%)	138 (0.6%)	178 (0.5%)	143 (0.4%)	141 (0.4%)	108 (0.3%)	93 (0.3%)
	Subtotal	1,340 (4.1%)	1,357 (4.1%)	1,306 (3.9%)	1,272 (3.7%)	711 (3.3%)	844 (2.5%)	658 (2.0%)	531 (1.6%)	480 (1.4%)	342 (1.0%)
GNY	Male	195 (0.6%)	209 (0.6%)	177 (0.5%)	181 (0.5%)	128 (0.6%)	226 (0.7%)	110 (0.3%)	140 (0.4%)	157 (0.5%)	155 (0.5%)
	Female	42 (0.1%)	31 (0.1%)	50 (0.2%)	60 (0.2%)	37 (0.2%)	71 (0.2%)	56 (0.2%)	28 (0.1%)	31 (0.1%)	54 (0.2%)
	Subtotal	237 (0.7%)	240 (0.7%)	227 (0.7%)	241 (0.7%)	165 (0.8%)	297 (0.9%)	166 (0.5%)	168 (0.5%)	188 (0.6%)	209 (0.6%)
Other	Male	95 (0.3%)	102 (0.3%)	110 (0.3%)	94 (0.3%)	37 (0.2%)	66 (0.2%)	45 (0.1%)	26 (0.1%)	24 (0.1%)	38 (0.1%)
	Female	35 (0.1%)	36 (0.1%)	20 (0.1%)	39 (0.1%)	7 (0.0%)	15 (0.0%)	16 (0.0%)	9 (0.0%)	22 (0.1%)	15 (0.0%)
	Subtotal	130 (0.4%)	138 (0.4%)	130 (0.4%)	133 (0.4%)	44 (0.2%)	81 (0.2%)	61 (0.2%)	35 (0.1%)	46 (0.1%)	53 (0.2%)

Jump

Bred	Sex	2016	2017	2018	2019	2020	2021	2022	2023	2024	2025
GB	Male	4,182 (22.7%)	4,035 (22.1%)	3,825 (21.1%)	3,671 (20.5%)	1,794 (19.3%)	3,663 (19.0%)	3,208 (17.8%)	3,128 (17.4%)	3,139 (18.0%)	2,999 (18.5%)
	Female	1,688 (9.2%)	1,616 (8.8%)	1,758 (9.7%)	1,661 (9.3%)	810 (8.7%)	1,855 (9.6%)	1,673 (9.3%)	1,726 (9.6%)	1,651 (9.4%)	1,494 (9.2%)
	Subtotal	5,870 (31.9%)	5,651 (30.9%)	5,583 (30.8%)	5,332 (29.7%)	2,604 (28.0%)	5,518 (28.6%)	4,881 (27.1%)	4,854 (27.0%)	4,790 (27.4%)	4,493 (27.7%)
IRE	Male	8,457 (45.9%)	8,404 (46.0%)	8,140 (44.8%)	7,908 (44.1%)	4,074 (43.8%)	8,375 (43.4%)	7,671 (42.6%)	7,622 (42.3%)	7,210 (41.2%)	6,576 (40.5%)
	Female	1,351 (7.3%)	1,406 (7.7%)	1,655 (9.1%)	1,792 (10.0%)	937 (10.1%)	1,870 (9.7%)	1,691 (9.4%)	1,778 (9.9%)	1,961 (11.2%)	1,900 (11.7%)
	Subtotal	9,808 (53.2%)	9,810 (53.7%)	9,795 (53.9%)	9,700 (54.0%)	5,011 (53.9%)	10,245 (53.0%)	9,362 (52.0%)	9,400 (52.2%)	9,171 (52.4%)	8,476 (52.2%)
FR	Male	2,151 (11.7%)	2,250 (12.3%)	2,235 (12.3%)	2,260 (12.6%)	1,300 (14.0%)	2,731 (14.1%)	2,993 (16.6%)	3,035 (16.9%)	2,908 (16.6%)	2,616 (16.1%)
	Female	163 (0.9%)	206 (1.1%)	203 (1.1%)	294 (1.6%)	209 (2.2%)	410 (2.1%)	387 (2.2%)	422 (2.3%)	380 (2.2%)	483 (3.0%)
	Subtotal	2,314 (12.6%)	2,456 (13.4%)	2,438 (13.4%)	2,554 (14.2%)	1,509 (16.2%)	3,141 (16.3%)	3,380 (18.8%)	3,457 (19.2%)	3,288 (18.8%)	3,099 (19.1%)
USA	Male	186 (1.0%)	143 (0.8%)	128 (0.7%)	101 (0.6%)	58 (0.6%)	112 (0.6%)	79 (0.4%)	61 (0.3%)	29 (0.2%)	28 (0.2%)
	Female	4 (0.0%)	6 (0.0%)	5 (0.0%)	12 (0.1%)	8 (0.1%)	6 (0.0%)	6 (0.0%)	0 (0.0%)	3 (0.0%)	6 (0.0%)
	Subtotal	190 (1.0%)	149 (0.8%)	133 (0.7%)	113 (0.6%)	66 (0.7%)	118 (0.6%)	85 (0.5%)	61 (0.3%)	32 (0.2%)	34 (0.2%)
GNY	Male	193 (1.0%)	185 (1.0%)	161 (0.9%)	205 (1.1%)	96 (1.0%)	250 (1.3%)	238 (1.3%)	215 (1.2%)	178 (1.0%)	126 (0.8%)
	Female	14 (0.1%)	9 (0.0%)	10 (0.1%)	19 (0.1%)	5 (0.1%)	30 (0.2%)	32 (0.2%)	18 (0.1%)	11 (0.1%)	9 (0.1%)
	Subtotal	207 (1.1%)	194 (1.1%)	171 (0.9%)	224 (1.2%)	101 (1.1%)	280 (1.4%)	270 (1.5%)	233 (1.3%)	189 (1.1%)	135 (0.8%)
Other	Male	24 (0.1%)	20 (0.1%)	28 (0.2%)	24 (0.1%)	6 (0.1%)	12 (0.1%)	7 (0.0%)	5 (0.0%)	12 (0.1%)	9 (0.1%)
	Female	8 (0.0%)	5 (0.0%)	8 (0.0%)	2 (0.0%)	1 (0.0%)	0 (0.0%)	6 (0.0%)	0 (0.0%)	4 (0.0%)	0 (0.0%)
	Subtotal	32 (0.2%)	25 (0.1%)	36 (0.2%)	26 (0.1%)	7 (0.1%)	12 (0.1%)	13 (0.1%)	5 (0.0%)	16 (0.1%)	9 (0.1%)

Year to Date Individual Runners by Breeding

Flat

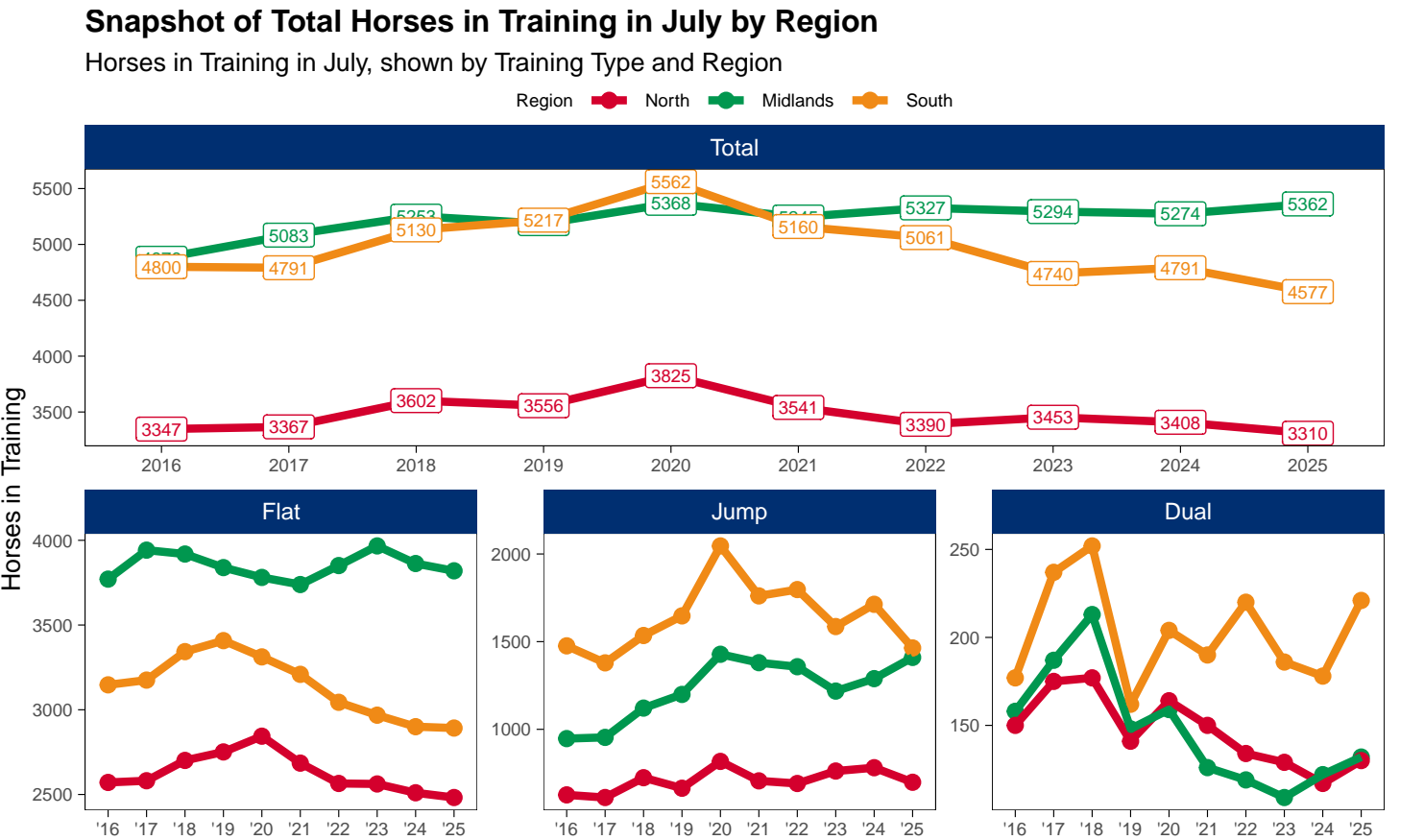
Bred	Sex	2016	2017	2018	2019	2020	2021	2022	2023	2024	2025
GB	Male	2,653 (30.1%)	2,688 (29.9%)	2,734 (30.4%)	2,696 (29.6%)	2,460 (30.9%)	2,572 (29.5%)	2,541 (29.6%)	2,487 (28.8%)	2,517 (28.8%)	2,479 (29.0%)
	Female	1,651 (18.7%)	1,675 (18.6%)	1,621 (18.0%)	1,699 (18.6%)	1,483 (18.6%)	1,673 (19.2%)	1,638 (19.1%)	1,640 (19.0%)	1,597 (18.3%)	1,599 (18.7%)
	Subtotal	4,304 (48.9%)	4,363 (48.5%)	4,355 (48.4%)	4,395 (48.2%)	3,943 (49.5%)	4,245 (48.6%)	4,179 (48.6%)	4,127 (47.8%)	4,114 (47.1%)	4,078 (47.7%)
IRE	Male	2,520 (28.6%)	2,602 (28.9%)	2,598 (28.9%)	2,609 (28.6%)	2,253 (28.3%)	2,570 (29.4%)	2,581 (30.0%)	2,623 (30.4%)	2,716 (31.1%)	2,672 (31.2%)
	Female	1,223 (13.9%)	1,210 (13.4%)	1,217 (13.5%)	1,234 (13.5%)	1,078 (13.5%)	1,207 (13.8%)	1,225 (14.3%)	1,305 (15.1%)	1,305 (14.9%)	1,241 (14.5%)
	Subtotal	3,743 (42.5%)	3,812 (42.4%)	3,815 (42.4%)	3,843 (42.2%)	3,331 (41.9%)	3,777 (43.2%)	3,806 (44.3%)	3,928 (45.5%)	4,021 (46.0%)	3,913 (45.8%)
FR	Male	180 (2.0%)	210 (2.3%)	254 (2.8%)	286 (3.1%)	252 (3.2%)	280 (3.2%)	265 (3.1%)	257 (3.0%)	304 (3.5%)	295 (3.4%)
	Female	73 (0.8%)	84 (0.9%)	89 (1.0%)	100 (1.1%)	81 (1.0%)	98 (1.1%)	97 (1.1%)	111 (1.3%)	100 (1.1%)	87 (1.0%)
	Subtotal	253 (2.9%)	294 (3.3%)	343 (3.8%)	386 (4.2%)	333 (4.2%)	378 (4.3%)	362 (4.2%)	368 (4.3%)	404 (4.6%)	382 (4.5%)
USA	Male	305 (3.5%)	305 (3.4%)	274 (3.0%)	273 (3.0%)	203 (2.6%)	176 (2.0%)	125 (1.5%)	99 (1.1%)	101 (1.2%)	70 (0.8%)
	Female	92 (1.0%)	104 (1.2%)	99 (1.1%)	105 (1.2%)	61 (0.8%)	60 (0.7%)	42 (0.5%)	41 (0.5%)	32 (0.4%)	30 (0.4%)
	Subtotal	397 (4.5%)	409 (4.5%)	373 (4.1%)	378 (4.1%)	264 (3.3%)	236 (2.7%)	167 (1.9%)	140 (1.6%)	133 (1.5%)	100 (1.2%)
GNY	Male	62 (0.7%)	63 (0.7%)	52 (0.6%)	56 (0.6%)	51 (0.6%)	57 (0.7%)	40 (0.5%)	45 (0.5%)	42 (0.5%)	41 (0.5%)
	Female	13 (0.1%)	11 (0.1%)	16 (0.2%)	17 (0.2%)	16 (0.2%)	22 (0.3%)	20 (0.2%)	10 (0.1%)	13 (0.1%)	18 (0.2%)
	Subtotal	75 (0.9%)	74 (0.8%)	68 (0.8%)	73 (0.8%)	67 (0.8%)	79 (0.9%)	60 (0.7%)	55 (0.6%)	55 (0.6%)	59 (0.7%)
Other	Male	23 (0.3%)	29 (0.3%)	28 (0.3%)	28 (0.3%)	16 (0.2%)	14 (0.2%)	16 (0.2%)	12 (0.1%)	7 (0.1%)	13 (0.2%)
	Female	13 (0.1%)	16 (0.2%)	8 (0.1%)	12 (0.1%)	5 (0.1%)	4 (0.0%)	3 (0.0%)	5 (0.1%)	5 (0.1%)	7 (0.1%)
	Subtotal	36 (0.4%)	45 (0.5%)	36 (0.4%)	40 (0.4%)	21 (0.3%)	18 (0.2%)	19 (0.2%)	17 (0.2%)	12 (0.1%)	20 (0.2%)

Jump

Bred	Sex	2016	2017	2018	2019	2020	2021	2022	2023	2024	2025
GB	Male	1,408 (22.3%)	1,352 (21.5%)	1,294 (20.5%)	1,300 (19.9%)	989 (19.2%)	1,308 (18.8%)	1,177 (18.2%)	1,155 (17.8%)	1,138 (18.1%)	1,090 (17.9%)
	Female	639 (10.1%)	604 (9.6%)	643 (10.2%)	631 (9.7%)	456 (8.9%)	686 (9.9%)	637 (9.9%)	625 (9.6%)	622 (9.9%)	588 (9.7%)
	Subtotal	2,047 (32.4%)	1,956 (31.2%)	1,937 (30.8%)	1,931 (29.6%)	1,445 (28.1%)	1,994 (28.7%)	1,814 (28.1%)	1,780 (27.4%)	1,760 (28.0%)	1,678 (27.6%)
IRE	Male	2,842 (45.0%)	2,806 (44.7%)	2,777 (44.1%)	2,854 (43.7%)	2,241 (43.6%)	2,950 (42.5%)	2,700 (41.8%)	2,691 (41.4%)	2,552 (40.7%)	2,417 (39.7%)
	Female	480 (7.6%)	523 (8.3%)	585 (9.3%)	656 (10.1%)	520 (10.1%)	694 (10.0%)	630 (9.8%)	688 (10.6%)	699 (11.1%)	703 (11.6%)
	Subtotal	3,322 (52.5%)	3,329 (53.0%)	3,362 (53.4%)	3,510 (53.8%)	2,761 (53.7%)	3,644 (52.5%)	3,330 (51.5%)	3,379 (52.0%)	3,251 (51.8%)	3,120 (51.3%)
FR	Male	738 (11.7%)	787 (12.5%)	800 (12.7%)	839 (12.9%)	717 (13.9%)	1,031 (14.9%)	1,041 (16.1%)	1,064 (16.4%)	1,027 (16.4%)	1,030 (16.9%)
	Female	62 (1.0%)	76 (1.2%)	92 (1.5%)	127 (1.9%)	121 (2.4%)	146 (2.1%)	157 (2.4%)	171 (2.6%)	155 (2.5%)	189 (3.1%)
	Subtotal	800 (12.7%)	863 (13.7%)	892 (14.2%)	966 (14.8%)	838 (16.3%)	1,177 (17.0%)	1,198 (18.5%)	1,235 (19.0%)	1,182 (18.8%)	1,219 (20.0%)
USA	Male	63 (1.0%)	50 (0.8%)	43 (0.7%)	35 (0.5%)	30 (0.6%)	37 (0.5%)	29 (0.4%)	22 (0.3%)	12 (0.2%)	8 (0.1%)
	Female	2 (0.0%)	2 (0.0%)	2 (0.0%)	5 (0.1%)	4 (0.1%)	2 (0.0%)	2 (0.0%)	0 (0.0%)	1 (0.0%)	2 (0.0%)
	Subtotal	65 (1.0%)	52 (0.8%)	45 (0.7%)	40 (0.6%)	34 (0.7%)	39 (0.6%)	31 (0.5%)	22 (0.3%)	13 (0.2%)	10 (0.2%)
GNY	Male	72 (1.1%)	64 (1.0%)	51 (0.8%)	64 (1.0%)	53 (1.0%)	72 (1.0%)	73 (1.1%)	67 (1.0%)	60 (1.0%)	49 (0.8%)
	Female	7 (0.1%)	5 (0.1%)	2 (0.0%)	5 (0.1%)	4 (0.1%)	10 (0.1%)	11 (0.2%)	10 (0.2%)	5 (0.1%)	4 (0.1%)
	Subtotal	79 (1.2%)	69 (1.1%)	53 (0.8%)	69 (1.1%)	57 (1.1%)	82 (1.2%)	84 (1.3%)	77 (1.2%)	65 (1.0%)	53 (0.9%)
Other	Male	6 (0.1%)	8 (0.1%)	7 (0.1%)	9 (0.1%)	5 (0.1%)	3 (0.0%)	2 (0.0%)	4 (0.1%)	4 (0.1%)	4 (0.1%)
	Female	3 (0.0%)	2 (0.0%)	2 (0.0%)	1 (0.0%)	1 (0.0%)	0 (0.0%)	2 (0.0%)	0 (0.0%)	2 (0.0%)	0 (0.0%)
	Subtotal	9 (0.1%)	10 (0.2%)	9 (0.1%)	10 (0.2%)	6 (0.1%)	3 (0.0%)	4 (0.1%)	4 (0.1%)	6 (0.1%)	4 (0.1%)

Horse Population by Location

July 2025 Horses in Training Snapshot by Region versus Previous Years



North

AgeCat	2016	2017	2018	2019	2020	2021	2022	2023	2024	2025	vs. Last Year	vs. Pre-Covid
Flat Horses in Training												
2YO	845	820	899	944	908	877	852	850	744	756	+12 / +1.6%	-188 / -19.9%
3YO	664	697	695	696	812	763	675	664	659	636	-23 / -3.5%	-60 / -8.6%
4YO	373	402	394	412	415	393	395	370	416	398	-18 / -4.3%	-14 / -3.4%
5YO+	689	662	713	699	709	652	643	678	691	692	+1 / +0.1%	-7 / -1.0%
Subtotal	2571	2581	2701	2751	2844	2685	2565	2562	2510	2482	-28 / -1.1%	-269 / -9.8%
Jump Horses in Training												
3YO	24	20	15	22	14	14	33	19	21	9	-12 / -57.1%	-13 / -59.1%
4-5YO	161	177	158	182	210	154	173	193	200	171	-29 / -14.5%	-11 / -6.0%
6-7YO	207	185	253	218	297	231	238	278	284	251	-33 / -11.6%	+33 / +15.1%
8YO+	234	229	298	242	296	307	247	272	276	267	-9 / -3.3%	+25 / +10.3%
Subtotal	626	611	724	664	817	706	691	762	781	698	-83 / -10.6%	+34 / +5.1%
Dual Horses in Training												
3YO	28	33	26	14	33	22	24	24	15	16	+1 / +6.7%	+2 / +14.3%
4YO	34	39	39	34	31	35	28	24	28	33	+5 / +17.9%	-1 / -2.9%
5YO+	88	103	112	93	100	93	82	81	74	81	+7 / +9.5%	-12 / -12.9%
Subtotal	150	175	177	141	164	150	134	129	117	130	+13 / +11.1%	-11 / -7.8%
Total Horses in Training												
	3347	3367	3602	3556	3825	3541	3390	3453	3408	3310	-98 / -2.9%	-246 / -6.9%

'vs. Pre-Covid' is comparison between 2025 and 2019

Midlands

AgeCat	2016	2017	2018	2019	2020	2021	2022	2023	2024	2025	vs. Last Year	vs. Pre-Covid
Flat Horses in Training												
2YO	1562	1580	1494	1389	1297	1391	1431	1449	1416	1348	-68 / -4.8%	-41 / -3.0%
3YO	1122	1185	1237	1246	1277	1130	1206	1233	1179	1228	+49 / +4.2%	-18 / -1.4%
4YO	442	536	537	536	536	567	568	583	541	526	-15 / -2.8%	-10 / -1.9%
5YO+	645	641	651	668	671	651	646	702	727	718	-9 / -1.2%	+50 / +7.5%
Subtotal	3771	3942	3919	3839	3781	3739	3851	3967	3863	3820	-43 / -1.1%	-19 / -0.5%
Jump Horses in Training												
3YO	31	19	22	23	21	41	42	46	50	61	+11 / +22.0%	+38 / +165.2%
4-5YO	260	286	330	399	526	460	472	427	423	501	+78 / +18.4%	+102 / +25.6%
6-7YO	334	327	395	411	498	490	496	426	464	473	+9 / +1.9%	+62 / +15.1%
8YO+	322	322	374	366	383	389	347	319	352	375	+23 / +6.5%	+9 / +2.5%
Subtotal	947	954	1121	1199	1428	1380	1357	1218	1289	1410	+121 / +9.4%	+211 / +17.6%
Dual Horses in Training												
3YO	33	25	31	23	15	20	23	24	12	20	+8 / +66.7%	-3 / -13.0%
4YO	39	46	56	43	33	32	36	19	32	30	-2 / -6.2%	-13 / -30.2%
5YO+	86	116	126	82	111	74	60	66	78	82	+4 / +5.1%	0 / 0.0%
Subtotal	158	187	213	148	159	126	119	109	122	132	+10 / +8.2%	-16 / -10.8%
Total Horses in Training												
	4876	5083	5253	5186	5368	5245	5327	5294	5274	5362	+88 / +1.7%	+176 / +3.4%

'vs. Pre-Covid' is comparison between 2025 and 2019

South

AgeCat	2016	2017	2018	2019	2020	2021	2022	2023	2024	2025	vs. Last Year	vs. Pre-Covid
Flat Horses in Training												
2YO	1287	1336	1322	1362	1239	1259	1224	1172	1173	1129	-44 / -3.8%	-233 / -17.1%
3YO	912	915	1047	987	1048	950	854	866	798	887	+89 / +11.2%	-100 / -10.1%
4YO	392	381	423	492	447	444	430	351	382	351	-31 / -8.1%	-141 / -28.7%
5YO+	556	543	551	567	578	556	536	579	547	525	-22 / -4.0%	-42 / -7.4%
Subtotal	3147	3175	3343	3408	3312	3209	3044	2968	2900	2892	-8 / -0.3%	-516 / -15.1%
Jump Horses in Training												
3YO	40	51	43	59	45	64	60	57	72	47	-25 / -34.7%	-12 / -20.3%
4-5YO	491	455	512	576	738	581	708	645	629	561	-68 / -10.8%	-15 / -2.6%
6-7YO	490	461	515	553	708	627	591	481	616	525	-91 / -14.8%	-28 / -5.1%
8YO+	455	412	465	459	555	489	438	403	396	331	-65 / -16.4%	-128 / -27.9%
Subtotal	1476	1379	1535	1647	2046	1761	1797	1586	1713	1464	-249 / -14.5%	-183 / -11.1%
Dual Horses in Training												
3YO	25	34	30	26	26	41	53	43	32	57	+25 / +78.1%	+31 / +119.2%
4YO	25	61	54	34	49	50	50	48	46	54	+8 / +17.4%	+20 / +58.8%
5YO+	127	142	168	102	129	99	117	95	100	110	+10 / +10.0%	+8 / +7.8%
Subtotal	177	237	252	162	204	190	220	186	178	221	+43 / +24.2%	+59 / +36.4%
Total Horses in Training												
	4800	4791	5130	5217	5562	5160	5061	4740	4791	4577	-214 / -4.5%	-640 / -12.3%

'vs. Pre-Covid' is comparison between 2025 and 2019

July 2025 Horses in Training Snapshot by Country versus Previous Years

Type	2016	2017	2018	2019	2020	2021	2022	2023	2024	2025	vs. Last Year	vs. Pre-Covid
England												
Flat	9154	9297	9557	9596	9555	9247	9073	9131	8909	8828	-81 / -0.9%	-768 / -8.0%
Jump	2612	2630	2899	3062	3844	3399	3507	3211	3298	3101	-197 / -6.0%	+39 / +1.3%
Dual	424	523	573	399	472	413	420	393	375	439	+64 / +17.1%	+40 / +10.0%
Overall	12190	12450	13029	13057	13871	13059	13000	12735	12582	12368	-214 / -1.7%	-689 / -5.3%
Scotland												
Flat	181	238	231	219	225	225	236	205	219	213	-6 / -2.7%	-6 / -2.7%
Jump	159	114	175	155	219	132	141	163	212	183	-29 / -13.7%	+28 / +18.1%
Dual	32	36	35	28	32	29	26	23	26	23	-3 / -11.5%	-5 / -17.9%
Overall	372	388	441	402	476	386	403	391	457	419	-38 / -8.3%	+17 / +4.2%
Wales												
Flat	154	163	175	183	157	161	151	161	145	153	+8 / +5.5%	-30 / -16.4%
Jump	278	200	306	293	228	316	197	192	273	288	+15 / +5.5%	-5 / -1.7%
Dual	29	40	34	24	23	24	27	8	16	21	+5 / +31.2%	-3 / -12.5%
Overall	461	403	515	500	408	501	375	361	434	462	+28 / +6.5%	-38 / -7.6%

'vs. Pre-Covid' is comparison between 2025 and 2019

July 2025 Horses in Training Snapshot by Training Centre versus Previous Years

Type	2016	2017	2018	2019	2020	2021	2022	2023	2024	2025	vs. Last Year	vs. Pre-Covid
Cheltenham (GL54)												
Flat	17	17	15	20	19	21	14	13	14	19	+5 / +35.7%	-1 / -5.0%
Jump	202	190	243	211	341	348	284	242	285	306	+21 / +7.4%	+95 / +45.0%
Dual	18	23	27	15	14	13	15	10	17	19	+2 / +11.8%	+4 / +26.7%
Overall	237	230	285	246	374	382	313	265	316	344	+28 / +8.9%	+98 / +39.8%
Lambourn (RG17)												
Flat	882	959	1021	1029	1003	945	876	916	886	950	+64 / +7.2%	-79 / -7.7%
Jump	128	123	126	147	263	151	229	223	225	207	-18 / -8.0%	+60 / +40.8%
Dual	21	22	21	17	33	28	35	23	23	29	+6 / +26.1%	+12 / +70.6%
Overall	1031	1104	1168	1193	1299	1124	1140	1162	1134	1186	+52 / +4.6%	-7 / -0.6%
Malton (YO17)												
Flat	647	661	713	735	802	738	685	738	719	715	-4 / -0.6%	-20 / -2.7%
Jump	88	95	85	75	83	81	75	80	56	49	-7 / -12.5%	-26 / -34.7%
Dual	19	39	38	23	39	39	30	28	26	23	-3 / -11.5%	0 / 0.0%
Overall	754	795	836	833	924	858	790	846	801	787	-14 / -1.7%	-46 / -5.5%
Marlborough (SN8)												
Flat	546	518	535	508	525	495	432	433	439	422	-17 / -3.9%	-86 / -16.9%
Jump	47	50	51	41	66	49	51	37	43	51	+8 / +18.6%	+10 / +24.4%
Dual	3	1	1	6	3	0	1	2	4	2	-2 / -50.0%	-4 / -66.7%
Overall	596	569	587	555	594	544	484	472	486	475	-11 / -2.3%	-80 / -14.4%
Middleham (DL8)												
Flat	570	547	531	598	625	583	522	548	534	502	-32 / -6.0%	-96 / -16.1%
Jump	44	49	70	63	83	84	83	96	87	65	-22 / -25.3%	+2 / +3.2%
Dual	26	27	16	26	31	27	20	17	21	22	+1 / +4.8%	-4 / -15.4%
Overall	640	623	617	687	739	694	625	661	642	589	-53 / -8.3%	-98 / -14.3%
Newbury (RG20)												
Flat	386	390	423	453	416	433	454	440	394	370	-24 / -6.1%	-83 / -18.3%
Jump	14	15	15	14	6	5	5	23	30	49	+19 / +63.3%	+35 / +250.0%
Dual	3	6	12	6	6	5	5	5	2	3	+1 / +50.0%	-3 / -50.0%
Overall	403	411	450	473	428	443	464	468	426	422	-4 / -0.9%	-51 / -10.8%
Newmarket (CB8)												
Flat	2724	2821	2829	2729	2758	2703	2747	2916	2780	2700	-80 / -2.9%	-29 / -1.1%
Jump	29	26	32	29	26	32	19	37	35	31	-4 / -11.4%	+2 / +6.9%
Dual	33	30	26	21	26	26	25	25	35	43	+8 / +22.9%	+22 / +104.8%
Overall	2786	2877	2887	2779	2810	2761	2791	2978	2850	2774	-76 / -2.7%	-5 / -0.2%

'vs. Pre-Covid' is comparison between 2025 and 2019