

Horse Population Report

Updated on 30 June 2025



Introduction

Welcome to the latest update on the Racehorse Population from the British Horseracing Authority.

The aim of this document is to give stakeholders and the wider Public an insight into the current state of the Horse Population in Great Britain. It is hoped that this transparency will ensure that all decision makers have access to the key data required to help British Racing deliver a Competitive and Compelling product to stakeholders, racegoers and the wider public.

If you have any questions regarding the content of this report or suggestions for how it could be improved further, please contact Joe Yates – jyates@britishhorseracing.com

Definitions

This report uses the Horses in Training returns from the Weatherby's Racing Administration System, this is completed by trainers and should be updated whenever a horse enters or leaves training in their care as part of the conditions of their licence.

Horses in Training

Unless otherwise stated, snapshots of Horses in Training will be from the 15th day of the month in question and year to date figures will be up to and including the date titled at the front of the report.

Horses' ratings will be taken from the most recently published ratings by the BHA Handicapping Team, which is currently at 7am each Tuesday morning. For example, if looking at the Horses in a particular rating band for July 2011, the horses in training number will be from Friday 15th July 2011 and ratings, where possible, will be assigned to each horse from the ratings published by the BHA Handicappers on Tuesday 12th July 2011.

The Gender of a horse will be taken from the reporting date in question, regardless of whether this has since changed.

In the case of YTD reporting, where a horse's gender or training type has changed in the year-to-date period, the most recent is taken.

This report does not count any horses that are temporarily racing abroad for GB Trainers at the time of reporting.

Yearlings are not included in total counts of flat and/or dual horses but will be sometimes shown separately for information purposes.

Yearlings and two-year-olds are not included in total counts of jump horses or counts of jump horses that include dual horses but will be sometimes shown separately for information purposes.

Yearlings, two-year-olds and three-year-olds are not included in total counts of Hunter Chasers but will be sometimes shown separately for information purposes.

Yearlings and two-year-olds in training that are recorded as dual horses have been re-coded as flat horses.

Hunter Chasers are not included in any counts of Jump Horses or Total figures but will be sometimes shown separately for information purposes.

Horses' training locations are defined by the trainers' primary training location. Training regions are defined the same as regions for the Fixture List; 'North' is north of latitude 53.42911, 'South' is south of latitude 51.88002 and 'Midlands' is anywhere in between. Training centres are defined by postcodes and surrounding areas.

Runners

Unless otherwise specified, Total Runners and Individual Runners metrics only counts runners that ran in GB races including any voided races. Withdrawn horses are not included.

Hunter Chases are not included in this section but will be sometimes shown separately for information purposes.

Total Runners is a count of all runners in races, whilst individual runners only counts each individual horse once.

Monthly Horses in Training

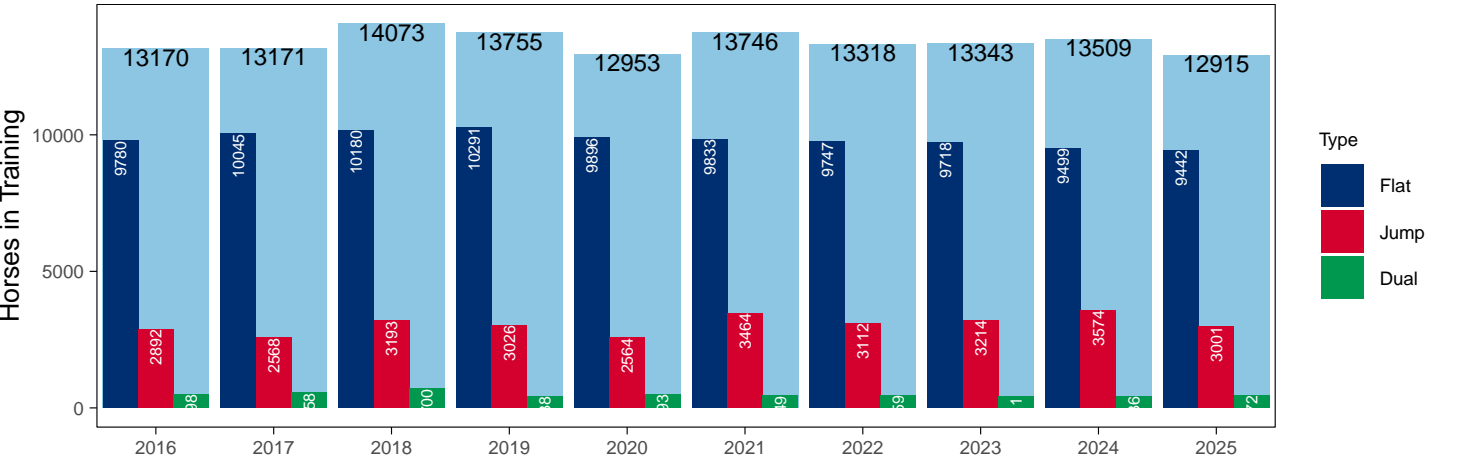
June 2025 Horses in Training Snapshot versus Previous Years

Type	2016	2017	2018	2019	2020	2021	2022	2023	2024	2025	vs. Last Year	vs. Pre-Covid
Flat	9780	10045	10180	10291	9896	9833	9747	9718	9499	9442	-57 / -0.6%	-849 / -8.2%
Jump	2892	2568	3193	3026	2564	3464	3112	3214	3574	3001	-573 / -16.0%	-25 / -0.8%
Dual	498	558	700	438	493	449	459	411	436	472	+36 / +8.3%	+34 / +7.8%
Hunter	1880	1869	1714	1651	1417	1154	1266	1179	1344	1065	-279 / -20.8%	-586 / -35.5%
Total	13170	13171	14073	13755	12953	13746	13318	13343	13509	12915	-594 / -4.4%	-840 / -6.1%

'vs. Pre-Covid' is comparison between 2025 and 2019

Snapshot of Total Horses in Training in June

Horses in Training in June, shown by Training Type



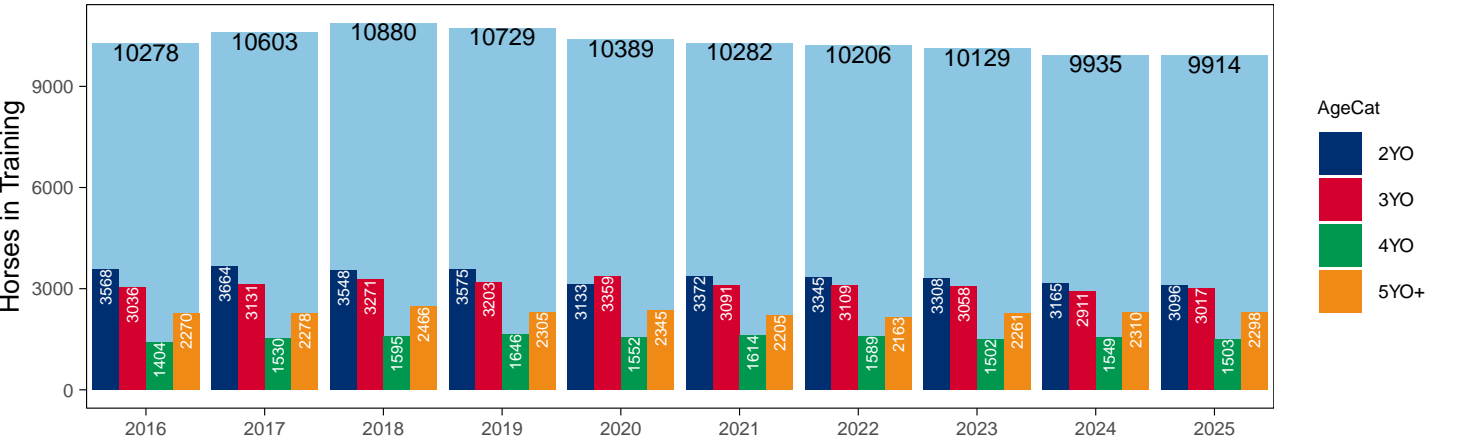
Flat (including Dual)

AgeCat	2016	2017	2018	2019	2020	2021	2022	2023	2024	2025	vs. Last Year	vs. Pre-Covid
2YO	3568	3664	3548	3575	3133	3372	3345	3308	3165	3096	-69 / -2.2%	-479 / -13.4%
3YO	3036	3131	3271	3203	3359	3091	3109	3058	2911	3017	+106 / +3.6%	-186 / -5.8%
4YO	1404	1530	1595	1646	1552	1614	1589	1502	1549	1503	-46 / -3.0%	-143 / -8.7%
5YO+	2270	2278	2466	2305	2345	2205	2163	2261	2310	2298	-12 / -0.5%	-7 / -0.3%
Total	10278	10603	10880	10729	10389	10282	10206	10129	9935	9914	-21 / -0.2%	-815 / -7.6%

'vs. Pre-Covid' is comparison between 2025 and 2019

Snapshot of Flat Horses in Training in June

Flat Horses in Training in June, shown by Age



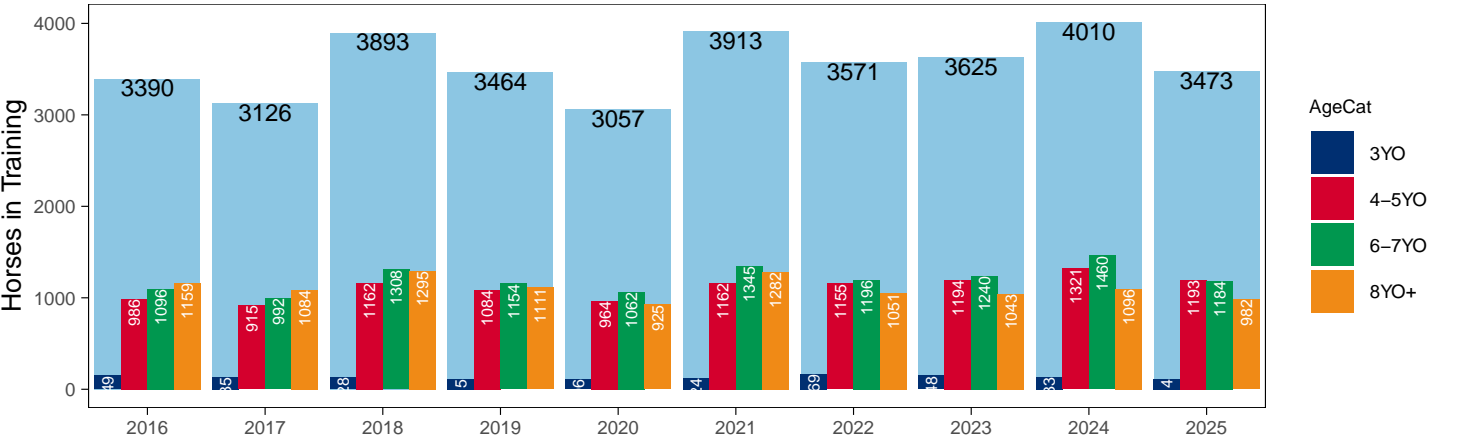
Jump (including Dual)

AgeCat	2016	2017	2018	2019	2020	2021	2022	2023	2024	2025	vs. Last Year	vs. Pre-Covid
3YO	149	135	128	115	106	124	169	148	133	114	-19 / -14.3%	-1 / -0.9%
4-5YO	986	915	1162	1084	964	1162	1155	1194	1321	1193	-128 / -9.7%	+109 / +10.1%
6-7YO	1096	992	1308	1154	1062	1345	1196	1240	1460	1184	-276 / -18.9%	+30 / +2.6%
8YO+	1159	1084	1295	1111	925	1282	1051	1043	1096	982	-114 / -10.4%	-129 / -11.6%
Total	3390	3126	3893	3464	3057	3913	3571	3625	4010	3473	-537 / -13.4%	+9 / +0.3%

'vs. Pre-Covid' is comparison between 2025 and 2019

Snapshot of Jump Horses in Training in June

Jump Horses in Training in June, shown by Age



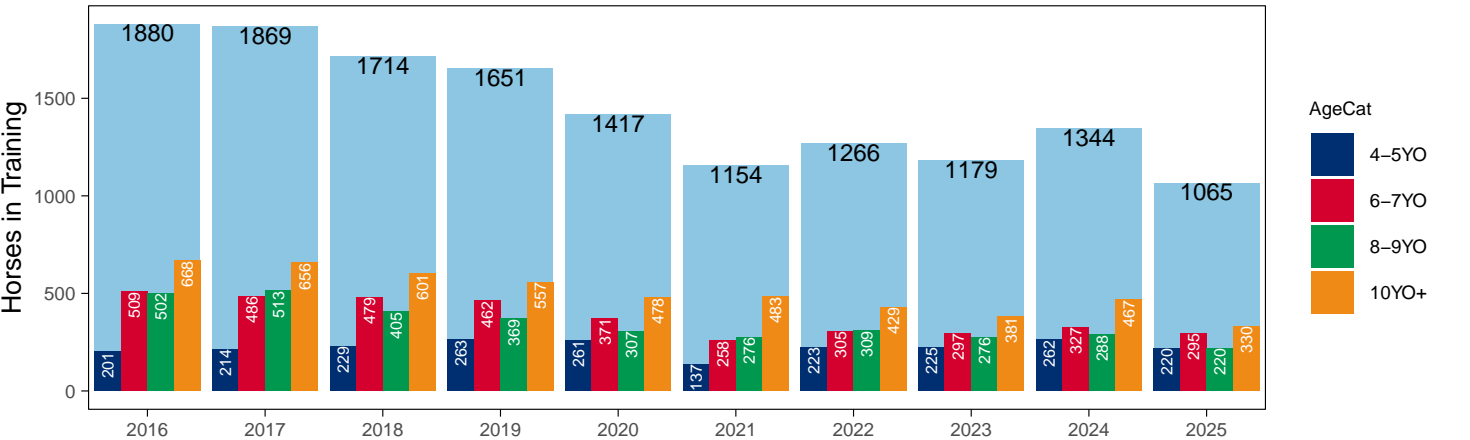
Hunter Chasers

AgeCat	2016	2017	2018	2019	2020	2021	2022	2023	2024	2025	vs. Last Year	vs. Pre-Covid
4-5YO	201	214	229	263	261	137	223	225	262	220	-42 / -16.0%	-43 / -16.3%
6-7YO	509	486	479	462	371	258	305	297	327	295	-32 / -9.8%	-167 / -36.1%
8-9YO	502	513	405	369	307	276	309	276	288	220	-68 / -23.6%	-149 / -40.4%
10YO+	668	656	601	557	478	483	429	381	467	330	-137 / -29.3%	-227 / -40.8%
Total	1880	1869	1714	1651	1417	1154	1266	1179	1344	1065	-279 / -20.8%	-586 / -35.5%

'vs. Pre-Covid' is comparison between 2025 and 2019

Snapshot of Hunter Chasers in Training in June

Hunter Chasers in Training in June, shown by Age



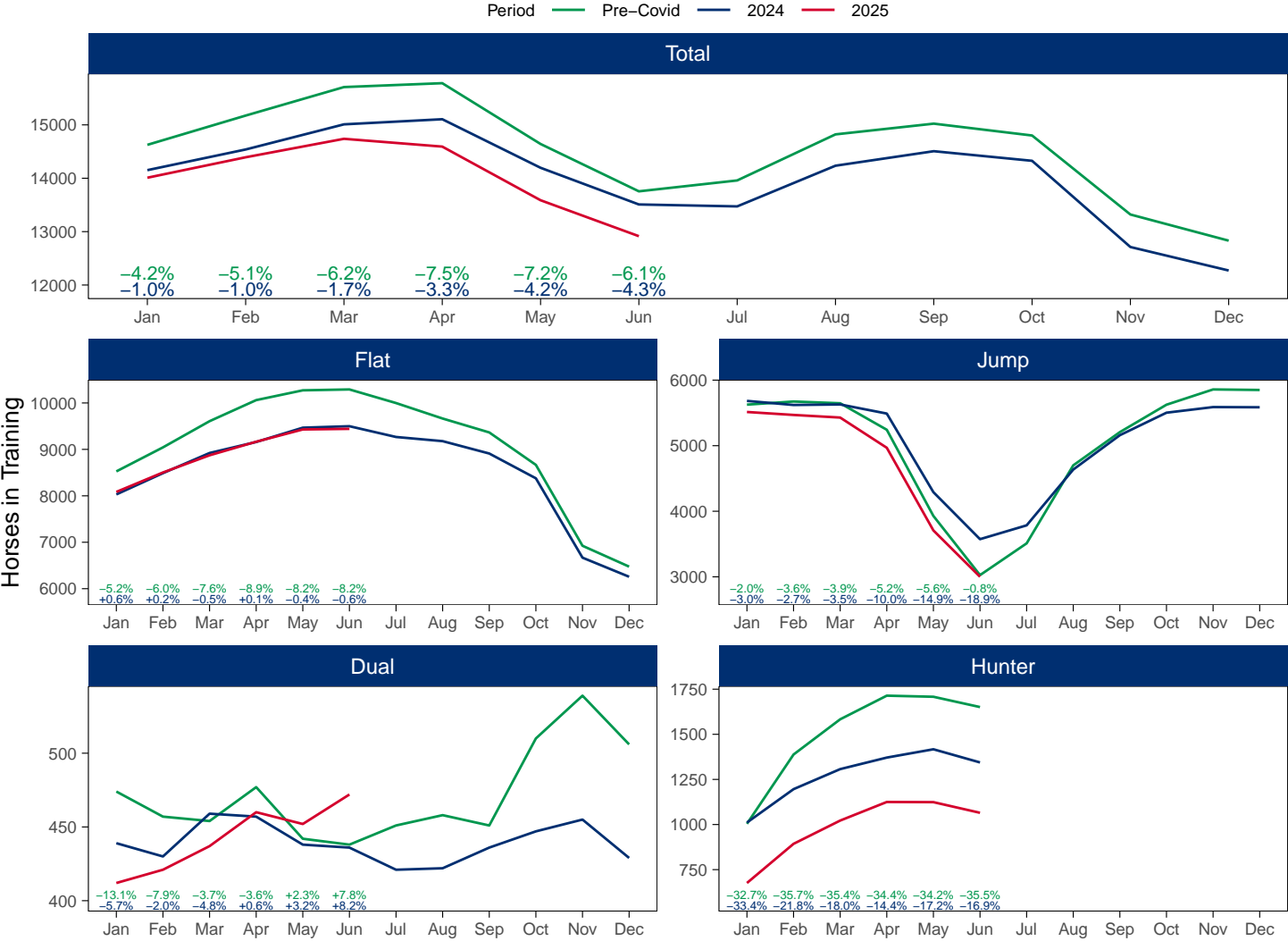
2025 Horses in Training versus Previous Years

Type	Period	Jan	Feb	Mar	Apr	May	Jun	Jul	Aug	Sep	Oct	Nov	Dec
Flat	2025	8084	8503	8873	9165	9429	9442						
	2024	8030	8488	8922	9159	9467	9499	9267	9177	8911	8377	6668	6257
	Pre-Covid	8526	9043	9607	10061	10272	10291	9998	9664	9365	8666	6924	6475
Jump	2025	5514	5469	5429	4968	3707	3001						
	2024	5683	5621	5629	5490	4291	3574	3785	4636	5160	5503	5589	5586
	Pre-Covid	5626	5674	5647	5243	3928	3026	3510	4700	5207	5625	5858	5850
Dual	2025	412	421	437	460	452	472						
	2024	439	430	459	457	438	436	421	422	436	447	455	429
	Pre-Covid	474	457	454	477	442	438	451	458	451	510	539	506
Hunter	2025	676	893	1022	1125	1124	1065						
	2024	1011	1196	1307	1371	1417	1344						
	Pre-Covid	1004	1388	1583	1714	1708	1651						
Total	2025	14010	14393	14739	14593	13588	12915						
	2024	14152	14539	15010	15106	14196	13509	13473	14235	14507	14327	12712	12272
	Pre-Covid	14626	15174	15708	15781	14642	13755	13959	14822	15023	14801	13321	12831

'Pre-Covid' is 2019 values

Monthly Horses in Training

2025 against 2024 and Pre-Covid, shown with % Difference



'Pre-Covid' is 2019 values

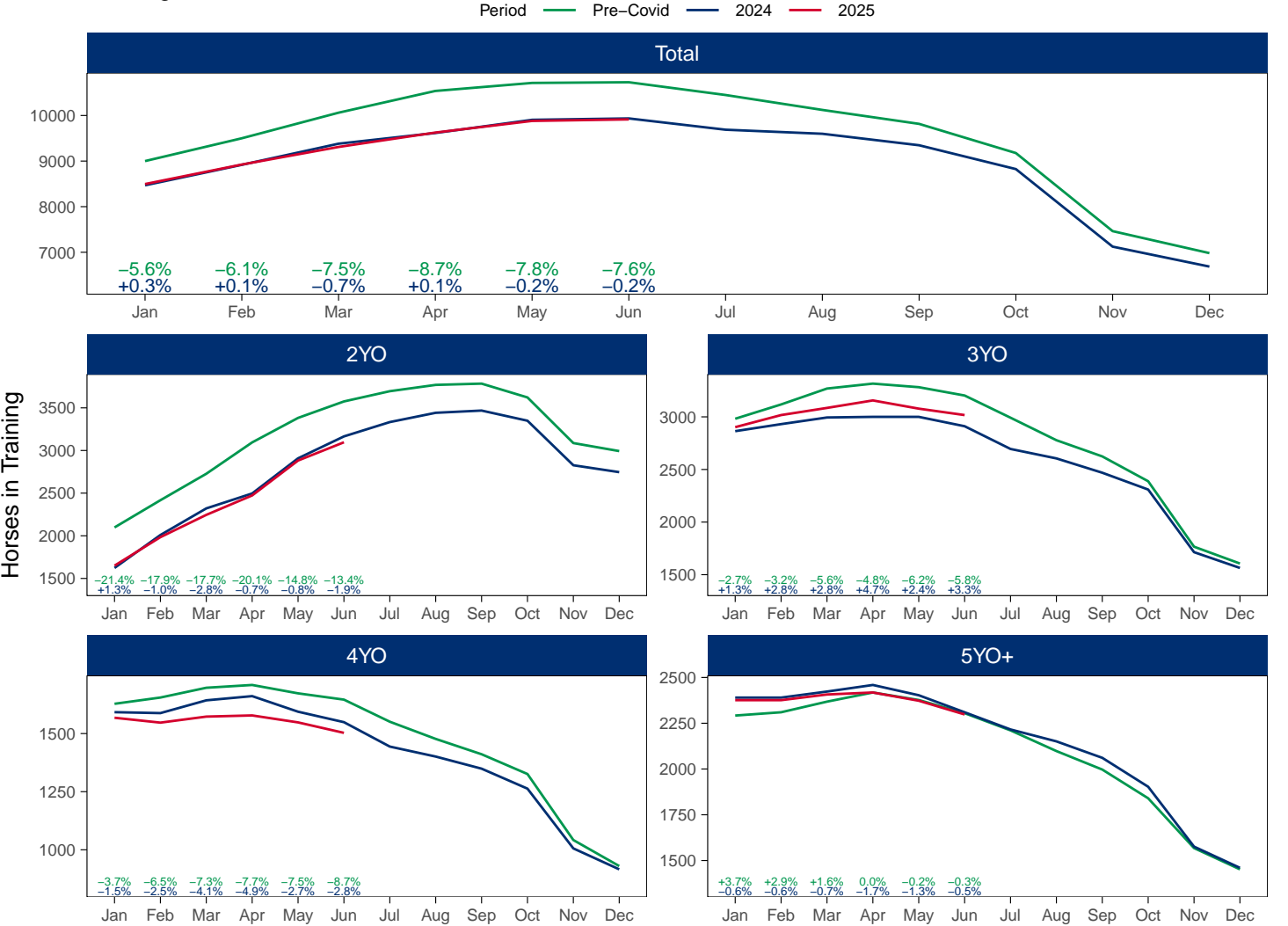
Flat (including Dual)

AgeCat	Period	Jan	Feb	Mar	Apr	May	Jun	Jul	Aug	Sep	Oct	Nov	Dec
2YO	2025	1650	1984	2245	2473	2882	3096						
	2024	1623	2009	2321	2496	2908	3165	3333	3442	3468	3349	2827	2746
	Pre-Covid	2098	2417	2727	3095	3382	3575	3695	3769	3784	3622	3087	2993
3YO	2025	2902	3017	3085	3156	3078	3017						
	2024	2864	2931	2994	3000	3000	2911	2695	2605	2469	2309	1714	1564
	Pre-Covid	2982	3118	3269	3316	3282	3203	2992	2778	2624	2388	1766	1606
4YO	2025	1568	1547	1573	1578	1548	1503						
	2024	1592	1588	1643	1661	1594	1549	1444	1401	1349	1263	1006	916
	Pre-Covid	1628	1655	1697	1709	1673	1646	1551	1477	1411	1326	1042	930
5YO+	2025	2376	2376	2407	2418	2373	2298						
	2024	2390	2390	2423	2459	2403	2310	2216	2151	2061	1903	1576	1460
	Pre-Covid	2292	2310	2368	2418	2377	2305	2211	2098	1997	1840	1568	1452
Total	2025	8496	8924	9310	9625	9881	9914						
	2024	8469	8918	9381	9616	9905	9935	9688	9599	9347	8824	7123	6686
	Pre-Covid	9000	9500	10061	10538	10714	10729	10449	10122	9816	9176	7463	6981

'Pre-Covid' is 2019 values

Monthly Flat Horses in Training

2025 against 2024 and Pre-Covid, shown with % Difference



'Pre-Covid' is 2019 values

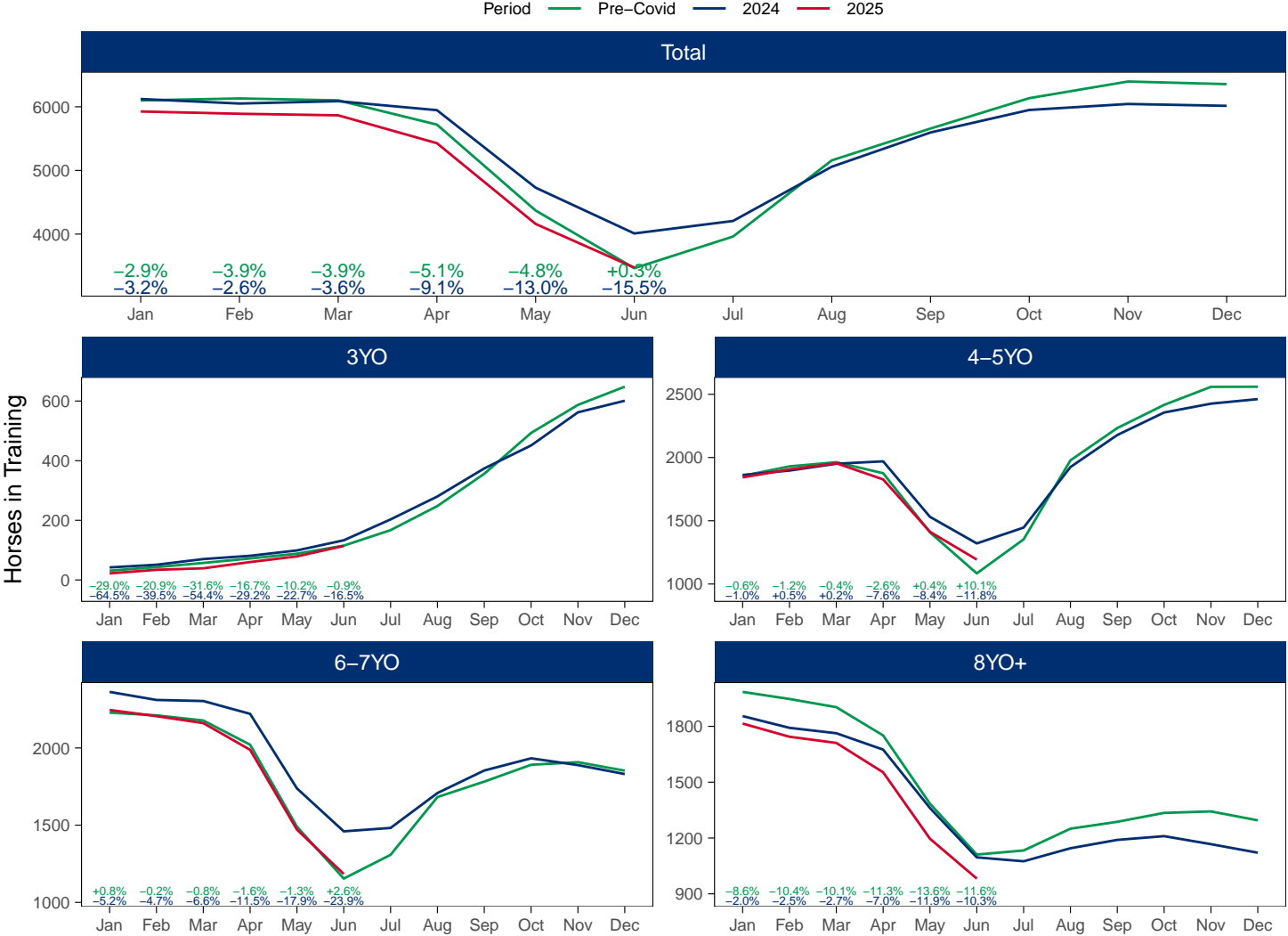
Jump (including Dual)

AgeCat	Period	Jan	Feb	Mar	Apr	May	Jun	Jul	Aug	Sep	Oct	Nov	Dec
3YO	2025	22	34	39	60	79	114						
	2024	42	51	70	81	99	133	203	280	374	451	562	601
	Pre-Covid	31	43	57	72	88	115	167	248	356	493	587	648
4-5YO	2025	1843	1906	1955	1827	1413	1193						
	2024	1862	1897	1951	1970	1531	1321	1446	1925	2178	2356	2426	2462
	Pre-Covid	1855	1930	1963	1876	1408	1084	1353	1978	2233	2416	2559	2560
6-7YO	2025	2246	2206	2161	1988	1471	1184						
	2024	2363	2311	2304	2221	1738	1460	1482	1708	1854	1933	1889	1831
	Pre-Covid	2229	2211	2178	2021	1490	1154	1308	1682	1782	1891	1908	1853
8YO+	2025	1815	1744	1711	1553	1196	982						
	2024	1855	1792	1763	1675	1361	1096	1075	1145	1190	1210	1167	1121
	Pre-Covid	1985	1947	1903	1751	1384	1111	1133	1250	1287	1335	1343	1295
Total	2025	5926	5890	5866	5428	4159	3473						
	2024	6122	6051	6088	5947	4729	4010	4206	5058	5596	5950	6044	6015
	Pre-Covid	6100	6131	6101	5720	4370	3464	3961	5158	5658	6135	6397	6356

'Pre-Covid' is 2019 values

Monthly Jump Horses in Training

2025 against 2024 and Pre-Covid, shown with % Difference



'Pre-Covid' is 2019 values

Hunter Chasers

AgeCat	Period	Jan	Feb	Mar	Apr	May	Jun	Jul	Aug	Sep	Oct	Nov	Dec
4-5YO	2025	94	150	200	243	242	220						
	2024	121	177	228	266	282	262						
	Pre-Covid	92	170	213	267	268	263						
6-7YO	2025	209	262	290	307	310	295						
	2024	260	299	328	342	350	327						
	Pre-Covid	296	402	451	471	472	462						
8-9YO	2025	145	194	214	238	234	220						
	2024	229	267	285	290	302	288						
	Pre-Covid	244	329	369	392	389	369						
10YO+	2025	228	287	318	337	338	330						
	2024	401	453	466	473	483	467						
	Pre-Covid	372	487	550	584	579	557						
Total	2025	676	893	1022	1125	1124	1065						
	2024	1011	1196	1307	1371	1417	1344						
	Pre-Covid	1004	1388	1583	1714	1708	1651						

'Pre-Covid' is 2019 values

Monthly Hunter Chasers in Training

2025 against 2024 and Pre-Covid, shown with % Difference



'Pre-Covid' is 2019 values

June 2025 Horses in Training by Rating Band Snapshot versus Previous Years

Flat (including Dual)

AgeCat	RatBand	2016	2017	2018	2019	2020	2021	2022	2023	2024	2025
2YO	Unrated	3,568 (100.0%)	3,664 (100.0%)	3,548 (100.0%)	3,575 (100.0%)	3,133 (100.0%)	3,372 (100.0%)	3,345 (100.0%)	3,308 (100.0%)	3,165 (100.0%)	3,096 (100.0%)
	Subtotal	3,568 (100.0%)	3,664 (100.0%)	3,548 (100.0%)	3,575 (100.0%)	3,133 (100.0%)	3,372 (100.0%)	3,345 (100.0%)	3,308 (100.0%)	3,165 (100.0%)	3,096 (100.0%)
3YO	Unrated	922 (30.4%)	959 (30.6%)	1,224 (37.4%)	1,089 (34.0%)	1,767 (52.6%)	1,037 (33.5%)	1,016 (32.7%)	1,043 (34.1%)	977 (33.6%)	1,021 (33.8%)
	0-50	160 (5.3%)	178 (5.7%)	153 (4.7%)	223 (7.0%)	118 (3.5%)	182 (5.9%)	205 (6.6%)	179 (5.9%)	165 (5.7%)	164 (5.4%)
	51-60	325 (10.7%)	343 (11.0%)	330 (10.1%)	381 (11.9%)	249 (7.4%)	348 (11.3%)	342 (11.0%)	326 (10.7%)	297 (10.2%)	327 (10.8%)
	61-70	504 (16.6%)	482 (15.4%)	476 (14.6%)	470 (14.7%)	362 (10.8%)	488 (15.8%)	472 (15.2%)	484 (15.8%)	485 (16.7%)	463 (15.3%)
	71-80	555 (18.3%)	587 (18.7%)	520 (15.9%)	462 (14.4%)	467 (13.9%)	503 (16.3%)	524 (16.9%)	466 (15.2%)	479 (16.5%)	495 (16.4%)
	81-90	330 (10.9%)	349 (11.1%)	333 (10.2%)	315 (9.8%)	226 (6.7%)	302 (9.8%)	295 (9.5%)	320 (10.5%)	286 (9.8%)	297 (9.8%)
	91-100	148 (4.9%)	136 (4.3%)	130 (4.0%)	161 (5.0%)	101 (3.0%)	133 (4.3%)	143 (4.6%)	145 (4.7%)	121 (4.2%)	161 (5.3%)
	101+	92 (3.0%)	97 (3.1%)	105 (3.2%)	102 (3.2%)	69 (2.1%)	98 (3.2%)	112 (3.6%)	95 (3.1%)	101 (3.5%)	89 (2.9%)
	Subtotal	3,036 (100.0%)	3,131 (100.0%)	3,271 (100.0%)	3,203 (100.0%)	3,359 (100.0%)	3,091 (100.0%)	3,109 (100.0%)	3,058 (100.0%)	2,911 (100.0%)	3,017 (100.0%)
4YO	Unrated	119 (8.5%)	177 (11.6%)	238 (14.9%)	215 (13.1%)	310 (20.0%)	244 (15.1%)	196 (12.3%)	194 (12.9%)	181 (11.7%)	188 (12.5%)
	0-50	115 (8.2%)	145 (9.5%)	171 (10.7%)	192 (11.7%)	144 (9.3%)	181 (11.2%)	180 (11.3%)	197 (13.1%)	152 (9.8%)	157 (10.4%)
	51-60	209 (14.9%)	202 (13.2%)	168 (10.5%)	224 (13.6%)	189 (12.2%)	231 (14.3%)	225 (14.2%)	199 (13.2%)	260 (16.8%)	214 (14.2%)
	61-70	223 (15.9%)	255 (16.7%)	302 (18.9%)	260 (15.8%)	261 (16.8%)	274 (17.0%)	289 (18.2%)	271 (18.0%)	286 (18.5%)	238 (15.8%)
	71-80	286 (20.4%)	288 (18.8%)	269 (16.9%)	283 (17.2%)	222 (14.3%)	266 (16.5%)	270 (17.0%)	264 (17.6%)	284 (18.3%)	261 (17.4%)
	81-90	218 (15.5%)	220 (14.4%)	216 (13.5%)	209 (12.7%)	197 (12.7%)	192 (11.9%)	204 (12.8%)	170 (11.3%)	191 (12.3%)	196 (13.0%)
	91-100	133 (9.5%)	128 (8.4%)	129 (8.1%)	153 (9.3%)	137 (8.8%)	153 (9.5%)	124 (7.8%)	102 (6.8%)	106 (6.8%)	125 (8.3%)
	101+	101 (7.2%)	115 (7.5%)	102 (6.4%)	110 (6.7%)	92 (5.9%)	73 (4.5%)	101 (6.4%)	105 (7.0%)	89 (5.7%)	124 (8.3%)
	Subtotal	1,404 (100.0%)	1,530 (100.0%)	1,595 (100.0%)	1,646 (100.0%)	1,552 (100.0%)	1,614 (100.0%)	1,589 (100.0%)	1,502 (100.0%)	1,549 (100.0%)	1,503 (100.0%)
5YO+	Unrated	168 (7.4%)	310 (13.6%)	412 (16.7%)	258 (11.2%)	471 (20.1%)	298 (13.5%)	310 (14.3%)	244 (10.8%)	263 (11.4%)	241 (10.5%)
	0-50	210 (9.3%)	220 (9.7%)	301 (12.2%)	358 (15.5%)	244 (10.4%)	288 (13.1%)	271 (12.5%)	295 (13.0%)	296 (12.8%)	322 (14.0%)
	51-60	357 (15.7%)	331 (14.5%)	362 (14.7%)	363 (15.7%)	332 (14.2%)	379 (17.2%)	337 (15.6%)	387 (17.1%)	406 (17.6%)	402 (17.5%)
	61-70	442 (19.5%)	378 (16.6%)	377 (15.3%)	389 (16.9%)	388 (16.5%)	371 (16.8%)	383 (17.7%)	403 (17.8%)	459 (19.9%)	413 (18.0%)
	71-80	388 (17.1%)	358 (15.7%)	365 (14.8%)	345 (15.0%)	344 (14.7%)	320 (14.5%)	311 (14.4%)	373 (16.5%)	363 (15.7%)	373 (16.2%)
	81-90	311 (13.7%)	309 (13.6%)	297 (12.0%)	264 (11.5%)	268 (11.4%)	238 (10.8%)	223 (10.3%)	251 (11.1%)	252 (10.9%)	265 (11.5%)
	91-100	224 (9.9%)	189 (8.3%)	188 (7.6%)	180 (7.8%)	155 (6.6%)	144 (6.5%)	168 (7.8%)	163 (7.2%)	139 (6.0%)	142 (6.2%)
	101+	170 (7.5%)	183 (8.0%)	164 (6.7%)	148 (6.4%)	143 (6.1%)	167 (7.6%)	160 (7.4%)	145 (6.4%)	132 (5.7%)	140 (6.1%)
	Subtotal	2,270 (100.0%)	2,278 (100.0%)	2,466 (100.0%)	2,305 (100.0%)	2,345 (100.0%)	2,205 (100.0%)	2,163 (100.0%)	2,261 (100.0%)	2,310 (100.0%)	2,298 (100.0%)
Overall	Unrated	4,777 (46.5%)	5,110 (48.2%)	5,422 (49.8%)	5,137 (47.9%)	5,681 (54.7%)	4,951 (48.2%)	4,867 (47.7%)	4,789 (47.3%)	4,586 (46.2%)	4,546 (45.9%)
	0-50	485 (4.7%)	543 (5.1%)	625 (5.7%)	773 (7.2%)	506 (4.9%)	651 (6.3%)	656 (6.4%)	671 (6.6%)	613 (6.2%)	643 (6.5%)
	51-60	891 (8.7%)	876 (8.3%)	860 (7.9%)	968 (9.0%)	770 (7.4%)	958 (9.3%)	904 (8.9%)	912 (9.0%)	963 (9.7%)	943 (9.5%)
	61-70	1,169 (11.4%)	1,115 (10.5%)	1,155 (10.6%)	1,119 (10.4%)	1,011 (9.7%)	1,133 (11.0%)	1,144 (11.2%)	1,158 (11.4%)	1,230 (12.4%)	1,114 (11.2%)
	71-80	1,229 (12.0%)	1,233 (11.6%)	1,154 (10.6%)	1,090 (10.2%)	1,033 (9.9%)	1,089 (10.6%)	1,105 (10.8%)	1,103 (10.9%)	1,126 (11.3%)	1,129 (11.4%)
	81-90	859 (8.4%)	878 (8.3%)	846 (7.8%)	788 (7.3%)	691 (6.7%)	732 (7.1%)	722 (7.1%)	741 (7.3%)	729 (7.3%)	758 (7.6%)
	91-100	505 (4.9%)	453 (4.3%)	447 (4.1%)	494 (4.6%)	393 (3.8%)	430 (4.2%)	435 (4.3%)	410 (4.0%)	366 (3.7%)	428 (4.3%)
	101+	363 (3.5%)	395 (3.7%)	371 (3.4%)	360 (3.4%)	304 (2.9%)	338 (3.3%)	373 (3.7%)	345 (3.4%)	322 (3.2%)	353 (3.6%)
Total		10,278 (100.0%)	10,603 (100.0%)	10,880 (100.0%)	10,729 (100.0%)	10,389 (100.0%)	10,282 (100.0%)	10,206 (100.0%)	10,129 (100.0%)	9,935 (100.0%)	9,914 (100.0%)

Where a horse has more than one published rating (published Flat Turf and published Flat AWT mark), the higher of the two is taken.

Jump (including Dual)

AgeCat	RatBand	2016	2017	2018	2019	2020	2021	2022	2023	2024	2025
3YO	Unrated	149 (100.0%)	135 (100.0%)	128 (100.0%)	115 (100.0%)	106 (100.0%)	124 (100.0%)	169 (100.0%)	148 (100.0%)	133 (100.0%)	114 (100.0%)
	Subtotal	149 (100.0%)	135 (100.0%)	128 (100.0%)	115 (100.0%)	106 (100.0%)	124 (100.0%)	169 (100.0%)	148 (100.0%)	133 (100.0%)	114 (100.0%)
4-5YO	Unrated	634 (64.3%)	595 (65.0%)	787 (67.7%)	734 (67.7%)	677 (70.2%)	805 (69.3%)	791 (68.5%)	820 (68.7%)	907 (68.7%)	782 (65.5%)
	0-100	152 (15.4%)	130 (14.2%)	130 (11.2%)	141 (13.0%)	118 (12.2%)	176 (15.1%)	205 (17.7%)	230 (19.3%)	259 (19.6%)	253 (21.2%)
	101-110	87 (8.8%)	73 (8.0%)	100 (8.6%)	75 (6.9%)	58 (6.0%)	72 (6.2%)	83 (7.2%)	78 (6.5%)	84 (6.4%)	81 (6.8%)
	111-120	63 (6.4%)	58 (6.3%)	83 (7.1%)	73 (6.7%)	55 (5.7%)	67 (5.8%)	46 (4.0%)	46 (3.9%)	46 (3.5%)	56 (4.7%)
	121-130	27 (2.7%)	45 (4.9%)	42 (3.6%)	48 (4.4%)	45 (4.7%)	29 (2.5%)	24 (2.1%)	14 (1.2%)	14 (1.1%)	15 (1.3%)
	131-140	20 (2.0%)	9 (1.0%)	18 (1.5%)	7 (0.6%)	7 (0.7%)	10 (0.9%)	5 (0.4%)	5 (0.4%)	7 (0.5%)	1 (0.1%)
	141-150	3 (0.3%)	4 (0.4%)	1 (0.1%)	4 (0.4%)	2 (0.2%)	3 (0.3%)	1 (0.1%)	1 (0.1%)	3 (0.2%)	3 (0.3%)
	151+	NA (-)	1 (0.1%)	1 (0.1%)	2 (0.2%)	2 (0.2%)	NA (-)	NA (-)	NA (-)	1 (0.1%)	2 (0.2%)
Subtotal		986 (100.0%)	915 (100.0%)	1,162 (100.0%)	1,084 (100.0%)	964 (100.0%)	1,162 (100.0%)	1,155 (100.0%)	1,194 (100.0%)	1,321 (100.0%)	1,193 (100.0%)
6-7YO	Unrated	275 (25.1%)	285 (28.7%)	373 (28.5%)	277 (24.0%)	366 (34.5%)	307 (22.8%)	337 (28.2%)	332 (26.8%)	371 (25.4%)	283 (23.9%)
	0-100	311 (28.4%)	270 (27.2%)	355 (27.1%)	337 (29.2%)	248 (23.4%)	463 (34.4%)	422 (35.3%)	470 (37.9%)	581 (39.8%)	452 (38.2%)
	101-110	192 (17.5%)	146 (14.7%)	186 (14.2%)	154 (13.3%)	138 (13.0%)	172 (12.8%)	159 (13.3%)	187 (15.1%)	234 (16.0%)	199 (16.8%)
	111-120	148 (13.5%)	146 (14.7%)	182 (13.9%)	166 (14.4%)	141 (13.3%)	175 (13.0%)	130 (10.9%)	131 (10.6%)	161 (11.0%)	148 (12.5%)
	121-130	101 (9.2%)	82 (8.3%)	131 (10.0%)	127 (11.0%)	98 (9.2%)	148 (11.0%)	84 (7.0%)	73 (5.9%)	73 (5.0%)	55 (4.6%)
	131-140	50 (4.6%)	52 (5.2%)	60 (4.6%)	69 (6.0%)	55 (5.2%)	63 (4.7%)	53 (4.4%)	32 (2.6%)	32 (2.2%)	35 (3.0%)
	141-150	16 (1.5%)	8 (0.8%)	18 (1.4%)	16 (1.4%)	11 (1.0%)	12 (0.9%)	9 (0.8%)	11 (0.9%)	5 (0.3%)	9 (0.8%)
	151+	3 (0.3%)	3 (0.3%)	3 (0.2%)	8 (0.7%)	5 (0.5%)	5 (0.4%)	2 (0.2%)	4 (0.3%)	3 (0.2%)	3 (0.3%)
Subtotal		1,096 (100.0%)	992 (100.0%)	1,308 (100.0%)	1,154 (100.0%)	1,062 (100.0%)	1,345 (100.0%)	1,196 (100.0%)	1,240 (100.0%)	1,460 (100.0%)	1,184 (100.0%)
8YO+	Unrated	102 (8.8%)	167 (15.4%)	203 (15.7%)	161 (14.5%)	259 (28.0%)	157 (12.2%)	190 (18.1%)	193 (18.5%)	204 (18.6%)	148 (15.1%)
	0-100	472 (40.7%)	427 (39.4%)	453 (35.0%)	407 (36.6%)	263 (28.4%)	480 (37.4%)	367 (34.9%)	361 (34.6%)	394 (35.9%)	394 (40.1%)
	101-110	189 (16.3%)	169 (15.6%)	228 (17.6%)	165 (14.9%)	98 (10.6%)	198 (15.4%)	153 (14.6%)	153 (14.7%)	161 (14.7%)	143 (14.6%)
	111-120	173 (14.9%)	131 (12.1%)	135 (10.4%)	146 (13.1%)	102 (11.0%)	187 (14.6%)	138 (13.1%)	142 (13.6%)	153 (14.0%)	126 (12.8%)
	121-130	125 (10.8%)	106 (9.8%)	154 (11.9%)	114 (10.3%)	99 (10.7%)	137 (10.7%)	104 (9.9%)	107 (10.3%)	115 (10.5%)	100 (10.2%)
	131-140	75 (6.5%)	59 (5.4%)	88 (6.8%)	82 (7.4%)	72 (7.8%)	86 (6.7%)	64 (6.1%)	54 (5.2%)	50 (4.6%)	45 (4.6%)
	141-150	18 (1.6%)	19 (1.8%)	29 (2.2%)	26 (2.3%)	23 (2.5%)	27 (2.1%)	28 (2.7%)	24 (2.3%)	12 (1.1%)	18 (1.8%)
	151+	5 (0.4%)	6 (0.6%)	5 (0.4%)	10 (0.9%)	9 (1.0%)	10 (0.8%)	7 (0.7%)	9 (0.9%)	7 (0.6%)	8 (0.8%)
Subtotal		1,159 (100.0%)	1,084 (100.0%)	1,295 (100.0%)	1,111 (100.0%)	925 (100.0%)	1,282 (100.0%)	1,051 (100.0%)	1,043 (100.0%)	1,096 (100.0%)	982 (100.0%)
Overall	Unrated	1,160 (34.2%)	1,182 (37.8%)	1,491 (38.3%)	1,287 (37.2%)	1,408 (46.1%)	1,393 (35.6%)	1,487 (41.6%)	1,493 (41.2%)	1,615 (40.3%)	1,327 (38.2%)
	0-100	935 (27.6%)	827 (26.5%)	938 (24.1%)	885 (25.5%)	629 (20.6%)	1,119 (28.6%)	994 (27.8%)	1,061 (29.3%)	1,234 (30.8%)	1,099 (31.6%)
	101-110	468 (13.8%)	388 (12.4%)	514 (13.2%)	394 (11.4%)	294 (9.6%)	442 (11.3%)	395 (11.1%)	418 (11.5%)	479 (11.9%)	423 (12.2%)
	111-120	384 (11.3%)	335 (10.7%)	400 (10.3%)	385 (11.1%)	298 (9.7%)	429 (11.0%)	314 (8.8%)	319 (8.8%)	360 (9.0%)	330 (9.5%)
	121-130	253 (7.5%)	233 (7.5%)	327 (8.4%)	289 (8.3%)	242 (7.9%)	314 (8.0%)	212 (5.9%)	194 (5.4%)	202 (5.0%)	170 (4.9%)
	131-140	145 (4.3%)	120 (3.8%)	166 (4.3%)	158 (4.6%)	134 (4.4%)	159 (4.1%)	122 (3.4%)	91 (2.5%)	89 (2.2%)	81 (2.3%)
	141-150	37 (1.1%)	31 (1.0%)	48 (1.2%)	46 (1.3%)	36 (1.2%)	42 (1.1%)	38 (1.1%)	36 (1.0%)	20 (0.5%)	30 (0.9%)
Total		3,390 (100.0%)	3,126 (100.0%)	3,893 (100.0%)	3,464 (100.0%)	3,057 (100.0%)	3,913 (100.0%)	3,571 (100.0%)	3,625 (100.0%)	4,010 (100.0%)	3,473 (100.0%)

Where a horse has more than one published rating (published Hurdle and published Chase mark), the higher of the two is taken.

Young Horses Entering Training

Flat Yearlings in Training versus Previous Years

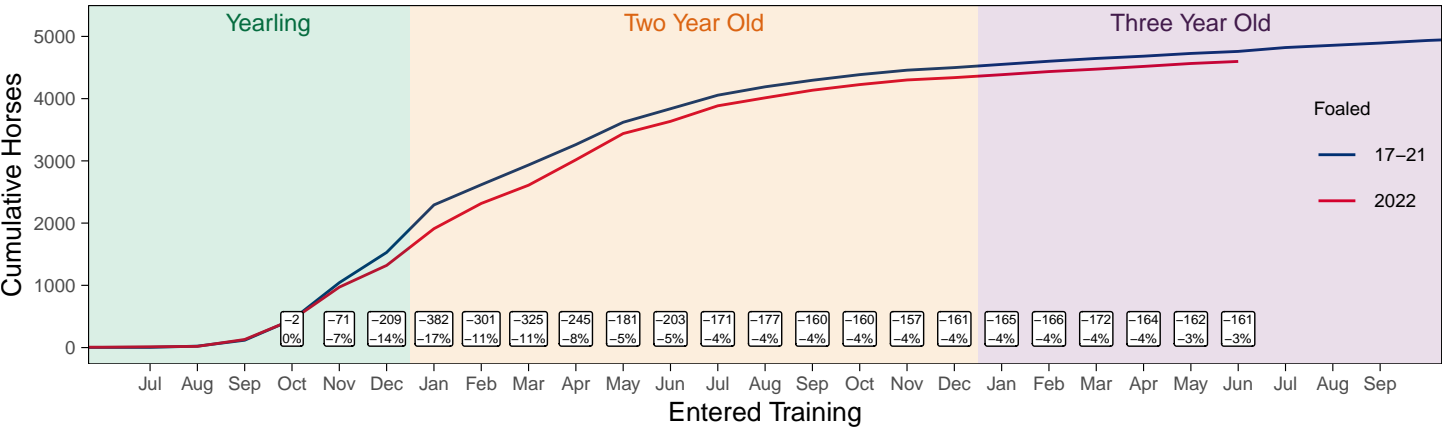
Period	Jan	Feb	Mar	Apr	May	Jun	Jul	Aug	Sep	Oct	Nov	Dec
2025	0	0	0	1	1	1						
2024	0	0	0	0	0	0	2	3	72	186	619	1067
5YrAvg	0	0	0	0	1	1	1	3	58	200	552	936

Foals Entering Training for the First Time

Warning: A numeric 'legend.position' argument in 'theme()' was deprecated in ggplot2 3.5.0.
i Please use the 'legend.position.inside' argument of 'theme()' instead.
This warning is displayed once every 8 hours.
Call 'lifecycle::last_lifecycle_warnings()' to see where this warning was generated.

2022 Foals Entering Training Over Time

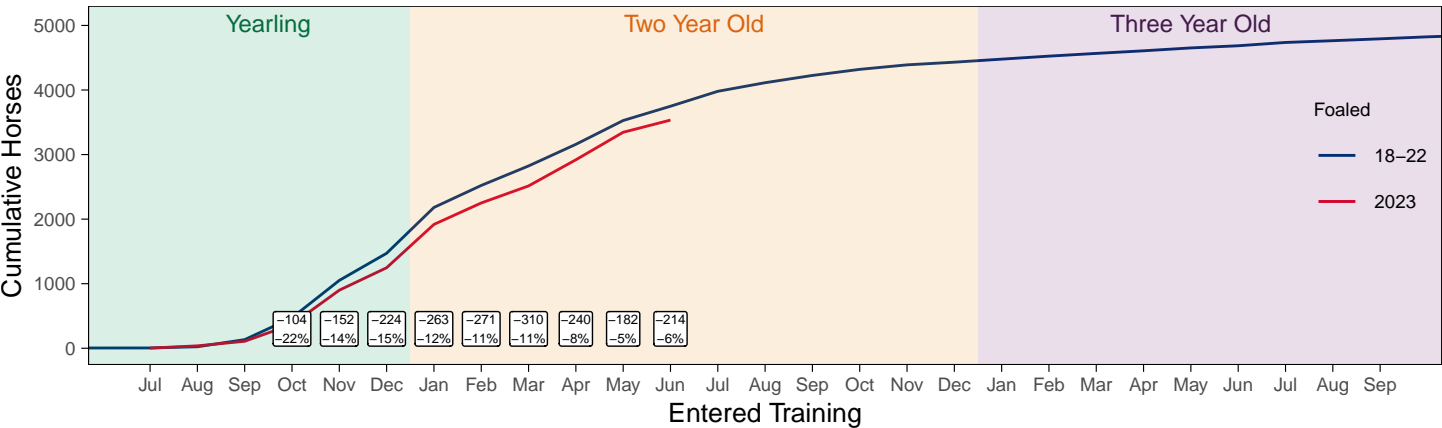
Cumulative Flat Horses foaled in 2022 shown by first in training notification against trend



Cumulative individual horses entering training for the first time by the end of each month.

2023 Foals Entering Training Over Time

Cumulative Flat Horses foaled in 2023 shown by first in training notification against trend



Cumulative individual horses entering training for the first time by the end of each month.

Year to Date Horses in Training

Type	2016	2017	2018	2019	2020	2021	2022	2023	2024	2025	vs. Last Year	vs. Pre-Covid
Flat	12271	12458	12413	12513	12136	12230	12017	11907	11767	11661	-106 / -0.9%	-852 / -6.8%
Jump	7041	6886	6660	7270	6988	7881	7390	7382	7270	6897	-373 / -5.1%	-373 / -5.1%
Dual	742	875	1275	816	804	828	816	718	728	760	+32 / +4.4%	-56 / -6.9%
Hunter	1927	1901	1736	1683	1448	1172	1286	1230	1369	1095	-274 / -20.0%	-588 / -34.9%
Total	20054	20219	20348	20599	19928	20939	20223	20007	19765	19318	-447 / -2.3%	-1281 / -6.2%

'vs. Pre-Covid' is comparison between 2025 and 2019

Flat

AgeCat	2016	2017	2018	2019	2020	2021	2022	2023	2024	2025	vs. Last Year	vs. Pre-Covid
2YO	4103	4107	4037	4040	3608	3851	3736	3725	3585	3499	-86 / -2.4%	-541 / -13.4%
3YO	3785	3854	3995	3922	3977	3833	3789	3692	3609	3700	+91 / +2.5%	-222 / -5.7%
4YO	1820	1898	1843	1960	1911	1998	1988	1904	1918	1828	-90 / -4.7%	-132 / -6.7%
5YO+	2563	2599	2538	2591	2640	2548	2504	2586	2655	2634	-21 / -0.8%	+43 / +1.7%
Total	12271	12458	12413	12513	12136	12230	12017	11907	11767	11661	-106 / -0.9%	-852 / -6.8%

'vs. Pre-Covid' is comparison between 2025 and 2019

Jump

AgeCat	2016	2017	2018	2019	2020	2021	2022	2023	2024	2025	vs. Last Year	vs. Pre-Covid
3YO	122	81	82	93	66	106	121	122	140	116	-24 / -17.1%	+23 / +24.7%
4-5YO	2221	2209	2013	2295	2228	2295	2369	2477	2366	2246	-120 / -5.1%	-49 / -2.1%
6-7YO	2369	2256	2334	2529	2479	2818	2593	2591	2629	2474	-155 / -5.9%	-55 / -2.2%
8YO+	2329	2340	2231	2353	2215	2662	2307	2192	2135	2061	-74 / -3.5%	-292 / -12.4%
Total	7041	6886	6660	7270	6988	7881	7390	7382	7270	6897	-373 / -5.1%	-373 / -5.1%

'vs. Pre-Covid' is comparison between 2025 and 2019

Dual

AgeCat	2016	2017	2018	2019	2020	2021	2022	2023	2024	2025	vs. Last Year	vs. Pre-Covid
3YO	100	119	99	86	103	119	167	119	104	109	+5 / +4.8%	+23 / +26.7%
4YO	170	227	329	222	190	240	200	193	201	206	+5 / +2.5%	-16 / -7.2%
5YO+	472	529	847	508	511	469	449	406	423	445	+22 / +5.2%	-63 / -12.4%
Total	742	875	1275	816	804	828	816	718	728	760	+32 / +4.4%	-56 / -6.9%

'vs. Pre-Covid' is comparison between 2025 and 2019

Hunter Chasers

AgeCat	2016	2017	2018	2019	2020	2021	2022	2023	2024	2025	vs. Last Year	vs. Pre-Covid
4-5YO	205	216	235	272	265	140	232	250	277	229	-48 / -17.3%	-43 / -15.8%
6-7YO	522	504	482	470	382	259	309	303	328	302	-26 / -7.9%	-168 / -35.7%
8-9YO	514	516	409	376	308	284	315	281	289	226	-63 / -21.8%	-150 / -39.9%
10YO+	686	665	610	565	493	489	430	396	475	338	-137 / -28.8%	-227 / -40.2%
Total	1927	1901	1736	1683	1448	1172	1286	1230	1369	1095	-274 / -20.0%	-588 / -34.9%

'vs. Pre-Covid' is comparison between 2025 and 2019

Year to Date Runners

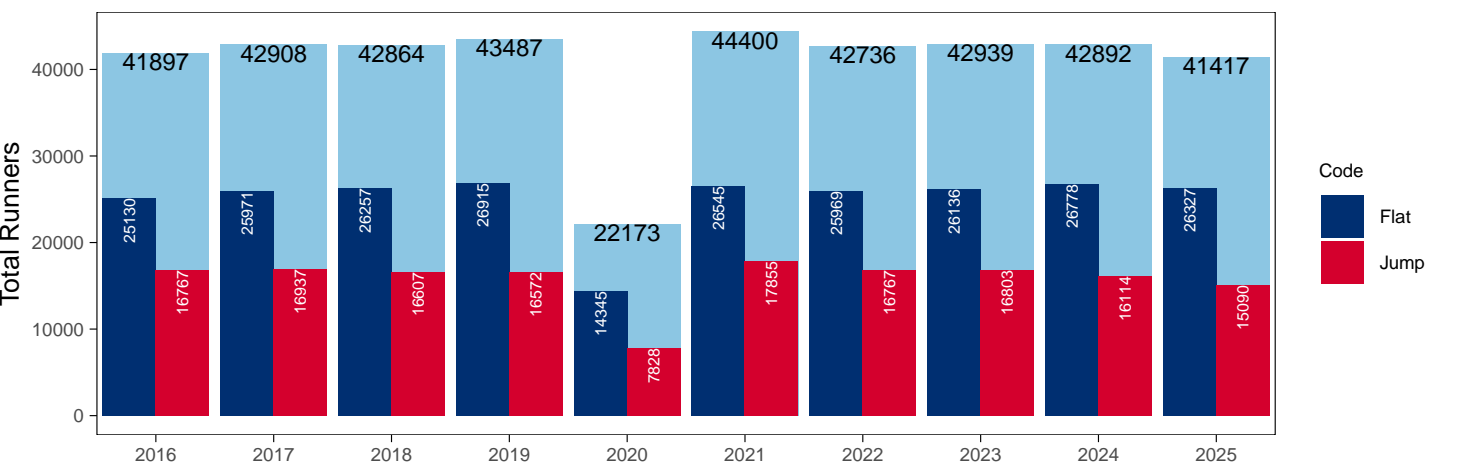
Year to Date Total Runners

Code	2016	2017	2018	2019	2020	2021	2022	2023	2024	2025	vs. Last Year	vs. Pre-Covid
Flat	25130	25971	26257	26915	14345	26545	25969	26136	26778	26327	-451 / -1.7%	-588 / -2.2%
Jump	16767	16937	16607	16572	7828	17855	16767	16803	16114	15090	-1024 / -6.4%	-1482 / -8.9%
Total	41897	42908	42864	43487	22173	44400	42736	42939	42892	41417	-1475 / -3.4%	-2070 / -4.8%

'vs. Pre-Covid' is comparison between 2025 and 2019

YTD Total Runners

Total Runners in GB Races, shown by Code and Total



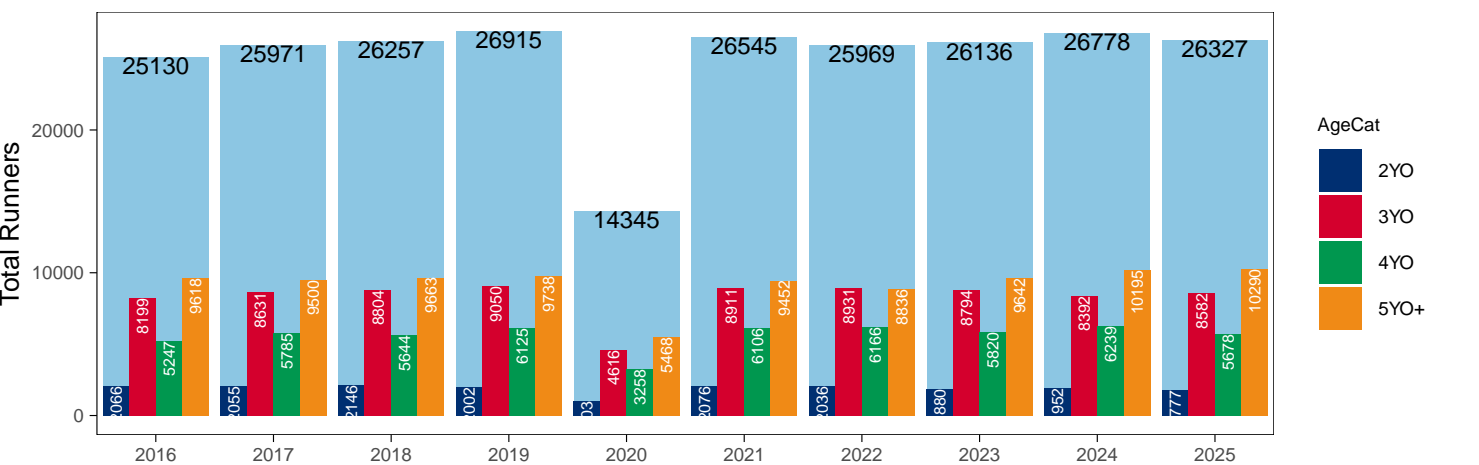
Flat

AgeCat	2016	2017	2018	2019	2020	2021	2022	2023	2024	2025	vs. Last Year	vs. Pre-Covid
2YO	2066	2055	2146	2002	1003	2076	2036	1880	1952	1777	-175 / -9.0%	-225 / -11.2%
3YO	8199	8631	8804	9050	4616	8911	8931	8794	8392	8582	+190 / +2.3%	-468 / -5.2%
4YO	5247	5785	5644	6125	3258	6106	6166	5820	6239	5678	-561 / -9.0%	-447 / -7.3%
5YO+	9618	9500	9663	9738	5468	9452	8836	9642	10195	10290	+95 / +0.9%	+552 / +5.7%
Total	25130	25971	26257	26915	14345	26545	25969	26136	26778	26327	-451 / -1.7%	-588 / -2.2%

'vs. Pre-Covid' is comparison between 2025 and 2019

YTD Total Flat Runners by Age

Total Runners in GB Flat Races, shown by Age Category and Total



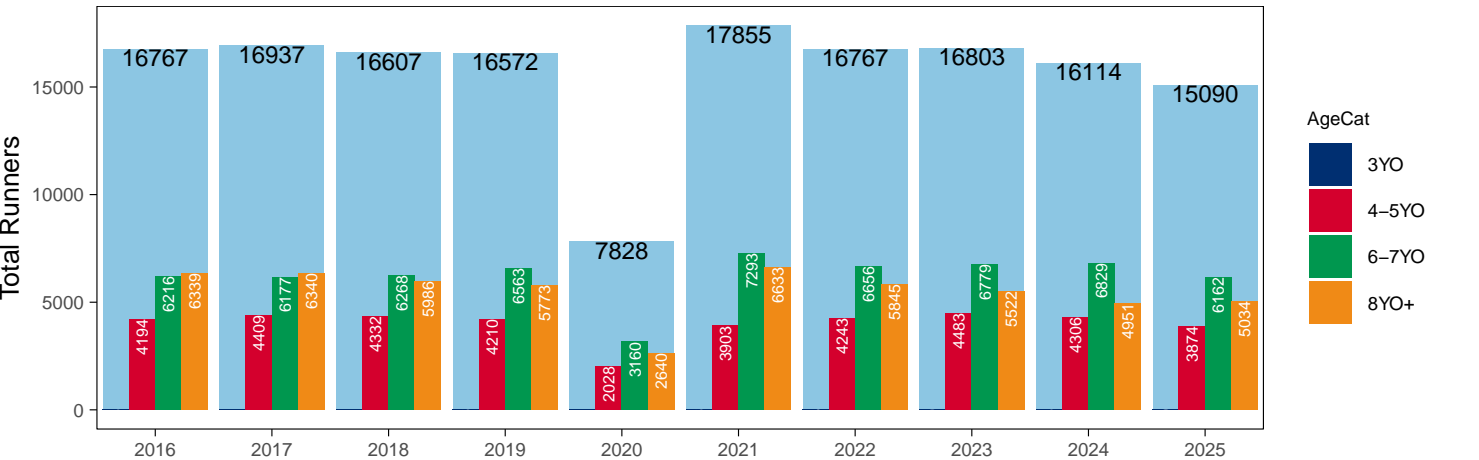
Jump

AgeCat	2016	2017	2018	2019	2020	2021	2022	2023	2024	2025	vs. Last Year	vs. Pre-Covid
3YO	18	11	21	26		26	23	19	28	20	-8 / -28.6%	-6 / -23.1%
4-5YO	4194	4409	4332	4210	2028	3903	4243	4483	4306	3874	-432 / -10.0%	-336 / -8.0%
6-7YO	6216	6177	6268	6563	3160	7293	6656	6779	6829	6162	-667 / -9.8%	-401 / -6.1%
8YO+	6339	6340	5986	5773	2640	6633	5845	5522	4951	5034	+83 / +1.7%	-739 / -12.8%
Total	16767	16937	16607	16572	7828	17855	16767	16803	16114	15090	-1024 / -6.4%	-1482 / -8.9%

'vs. Pre-Covid' is comparison between 2025 and 2019

YTD Total Jump Runners by Age

Total Runners in GB Jump Races, shown by Age Category and Total



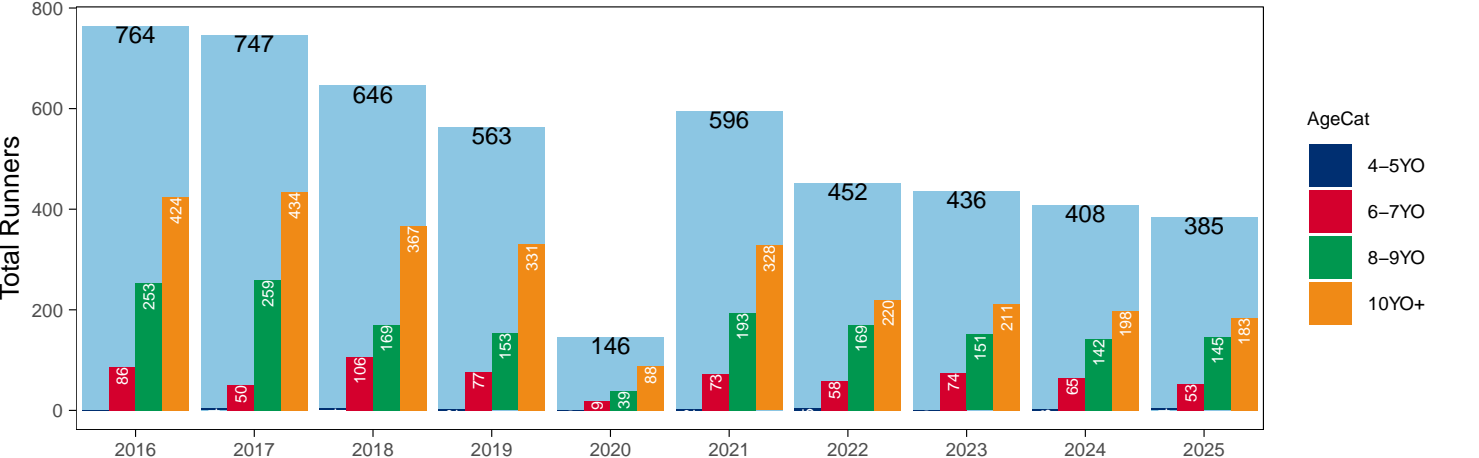
Hunter Chases

AgeCat	2016	2017	2018	2019	2020	2021	2022	2023	2024	2025	vs. Last Year	vs. Pre-Covid
4-5YO	1	4	4	2		2	5		3	4	+1 / +33.3%	+2 / +100.0%
6-7YO	86	50	106	77	19	73	58	74	65	53	-12 / -18.5%	-24 / -31.2%
8-9YO	253	259	169	153	39	193	169	151	142	145	+3 / +2.1%	-8 / -5.2%
10YO+	424	434	367	331	88	328	220	211	198	183	-15 / -7.6%	-148 / -44.7%
Total	764	747	646	563	146	596	452	436	408	385	-23 / -5.6%	-178 / -31.6%

'vs. Pre-Covid' is comparison between 2025 and 2019

YTD Total Hunter Chase Runners by Age

Total Runners in GB Hunter Chases shown by Age Category and Total



Year to Date Total Runners by Country Trained

Code	Country	2016	2017	2018	2019	2020	2021	2022	2023	2024	2025
Flat	GB	24827	25598	25890	26538	14205	26356	25763	25890	26421	26011
	IRE	252	320	321	333	125	169	166	215	304	274
	Other	51	53	46	44	15	20	40	31	53	42
Jump	GB	16186	16417	16224	16057	7561	17512	16186	16155	15538	14437
	IRE	575	508	374	508	257	340	579	645	573	647
	Other	6	12	9	7	10	3	2	3	3	6
Overall	GB	41013	42015	42114	42595	21766	43868	41949	42045	41959	40448
	IRE	827	828	695	841	382	509	745	860	877	921
	Other	57	65	55	51	25	23	42	34	56	48

Year to Date GB Trained Runners Racing Abroad

Code	Country	2016	2017	2018	2019	2020	2021	2022	2023	2024	2025
Flat	IRE	40	43	49	51	3	15	18	18	33	37
	FR	90	127	105	197	38	44	79	95	98	139
	GNV	6	6	9	15	1		5	9	15	6
	UAE	208	278	276	303	281	248	276	272	214	228
	BAH							41	23	50	89
	KSA					15	21	22	15	11	10
	Other	49	52	52	50	26	18	28	48	63	50
	Total	393	506	491	616	364	346	469	480	484	559
Jump	IRE	74	66	44	57	5	19	26	17	43	83
	FR	37	24	7	22	9	71	65	54	32	23
	Other	1	2	1	3		1	8		5	
	Total	112	92	52	82	14	91	99	71	80	106

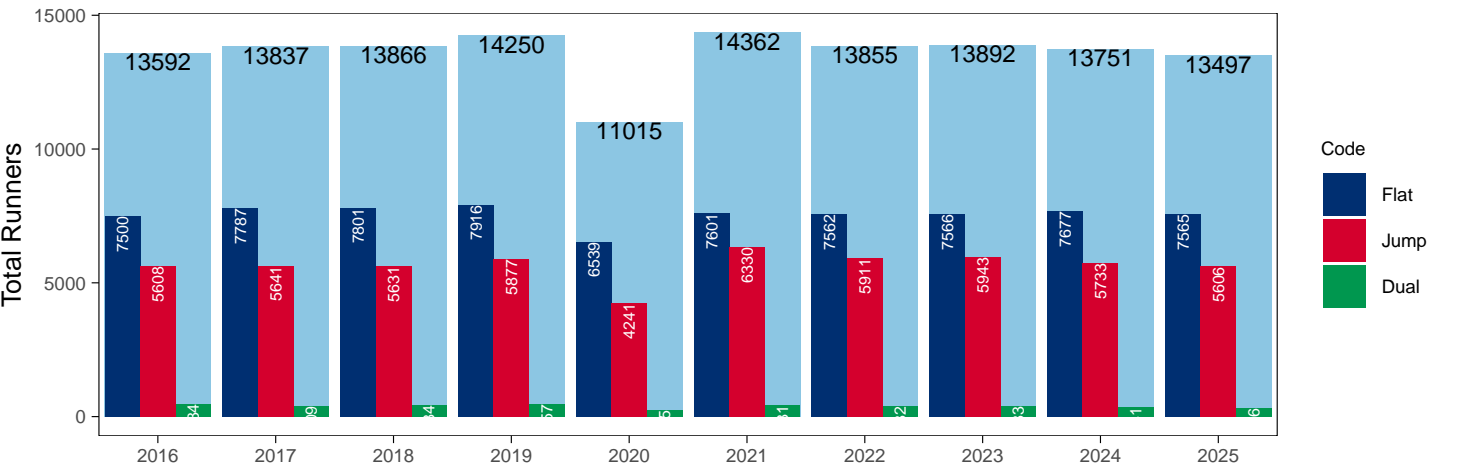
Year to Date Individual Runners

Code	2016	2017	2018	2019	2020	2021	2022	2023	2024	2025	vs. Last Year	vs. Pre-Covid
Flat	7500	7787	7801	7916	6539	7601	7562	7566	7677	7565	-112 / -1.5%	-351 / -4.4%
Jump	5608	5641	5631	5877	4241	6330	5911	5943	5733	5606	-127 / -2.2%	-271 / -4.6%
Dual	484	409	434	457	235	431	382	383	341	326	-15 / -4.4%	-131 / -28.7%
Overall	13592	13837	13866	14250	11015	14362	13855	13892	13751	13497	-254 / -1.8%	-753 / -5.3%

'vs. Pre-Covid' is comparison between 2025 and 2019

YTD Individual Runners

Individual Runners in GB Races, shown by Code and Total



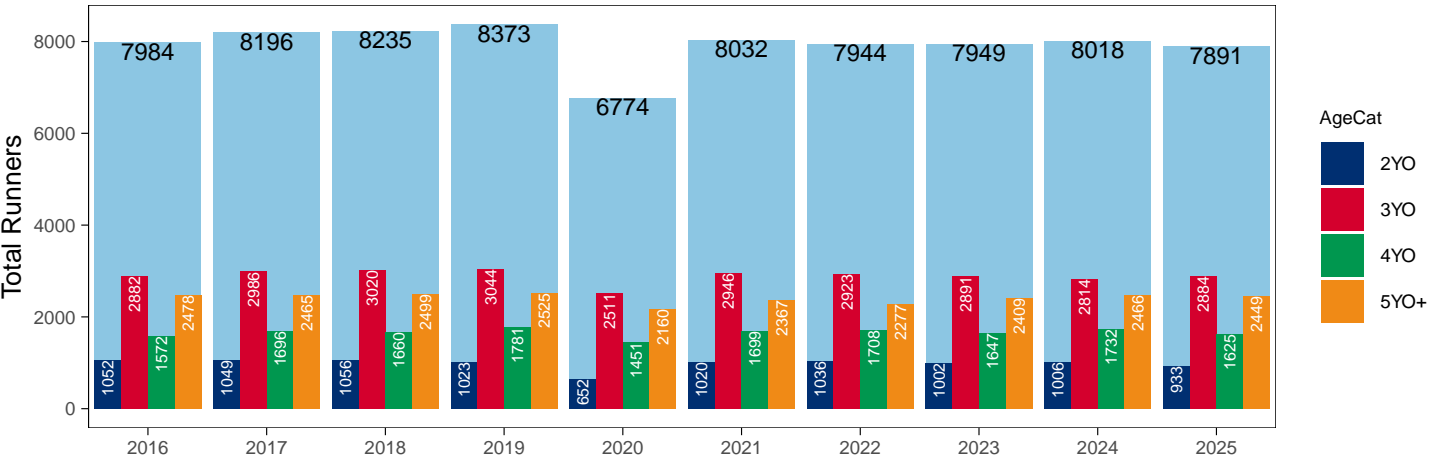
Flat

AgeCat	2016	2017	2018	2019	2020	2021	2022	2023	2024	2025	vs. Last Year	vs. Pre-Covid
2YO	1052	1049	1056	1023	652	1020	1036	1002	1006	933	-73 / -7.3%	-90 / -8.8%
3YO	2882	2986	3020	3044	2511	2946	2923	2891	2814	2884	+70 / +2.5%	-160 / -5.3%
4YO	1572	1696	1660	1781	1451	1699	1708	1647	1732	1625	-107 / -6.2%	-156 / -8.8%
5YO+	2478	2465	2499	2525	2160	2367	2277	2409	2466	2449	-17 / -0.7%	-76 / -3.0%
Total	7984	8196	8235	8373	6774	8032	7944	7949	8018	7891	-127 / -1.6%	-482 / -5.8%

'vs. Pre-Covid' is comparison between 2025 and 2019

YTD Individual Flat Runners by Age

Individual Runners in GB Flat Races, shown by Age Category and Total



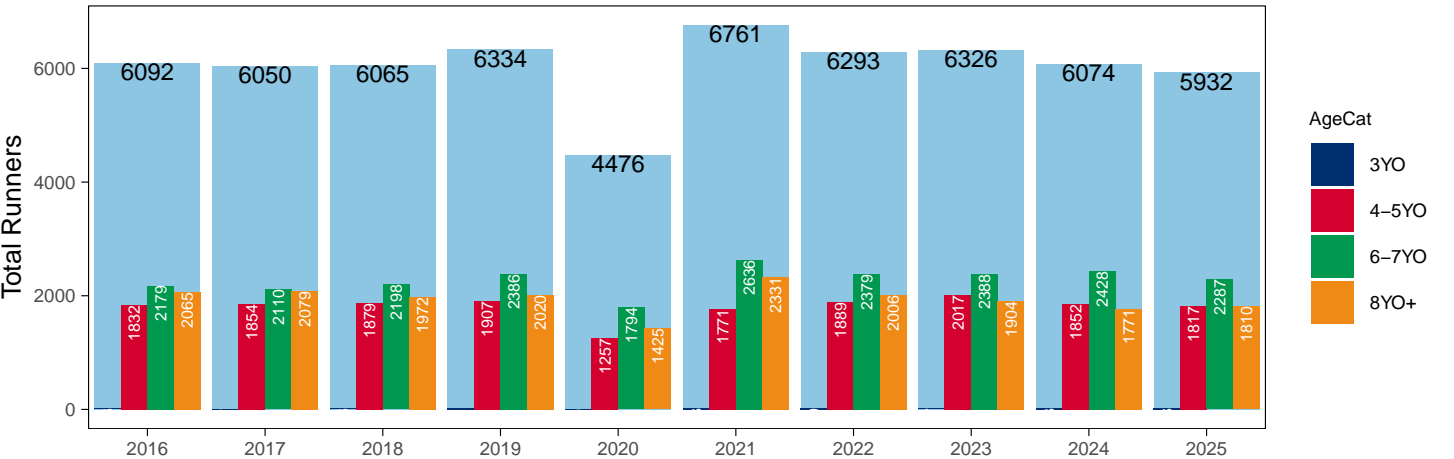
Jump

AgeCat	2016	2017	2018	2019	2020	2021	2022	2023	2024	2025	vs. Last Year	vs. Pre-Covid
3YO	16	7	16	21		23	19	17	23	18	-5 / -21.7%	-3 / -14.3%
4-5YO	1832	1854	1879	1907	1257	1771	1889	2017	1852	1817	-35 / -1.9%	-90 / -4.7%
6-7YO	2179	2110	2198	2386	1794	2636	2379	2388	2428	2287	-141 / -5.8%	-99 / -4.1%
8YO+	2065	2079	1972	2020	1425	2331	2006	1904	1771	1810	+39 / +2.2%	-210 / -10.4%
Total	6092	6050	6065	6334	4476	6761	6293	6326	6074	5932	-142 / -2.3%	-402 / -6.3%

'vs. Pre-Covid' is comparison between 2025 and 2019

YTD Individual Jump Runners by Age

Individual Runners in GB Jump Races, shown by Age Category and Total



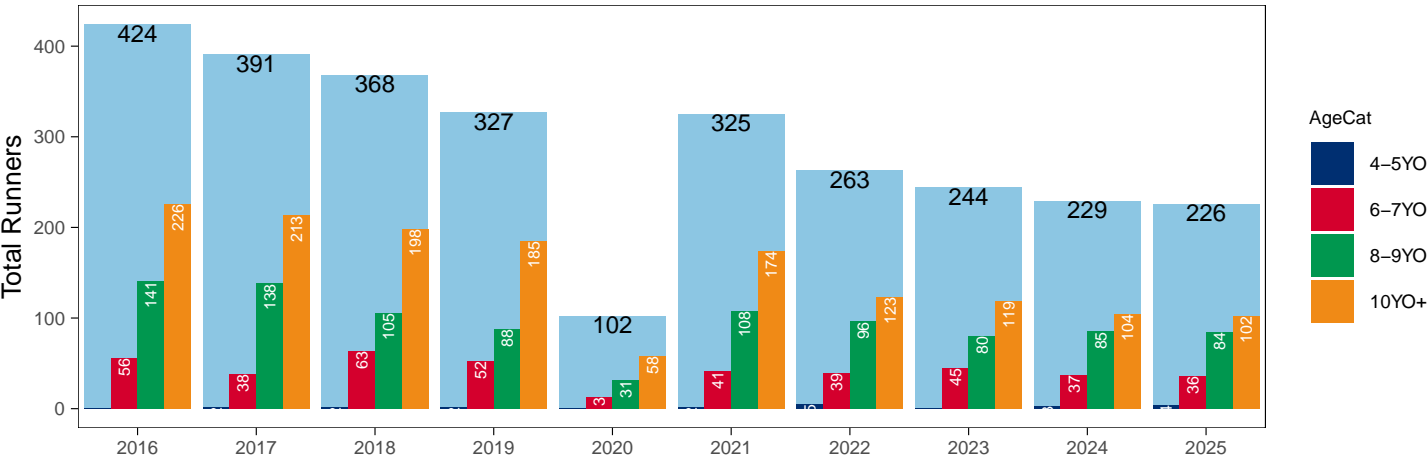
Hunter Chases

AgeCat	2016	2017	2018	2019	2020	2021	2022	2023	2024	2025	vs. Last Year	vs. Pre-Covid
4-5YO	1	2	2	2		2	5		3	4	+1 / +33.3%	+2 / +100.0%
6-7YO	56	38	63	52	13	41	39	45	37	36	-1 / -2.7%	-16 / -30.8%
8-9YO	141	138	105	88	31	108	96	80	85	84	-1 / -1.2%	-4 / -4.5%
10YO+	226	213	198	185	58	174	123	119	104	102	-2 / -1.9%	-83 / -44.9%
Total	424	391	368	327	102	325	263	244	229	226	-3 / -1.3%	-101 / -30.9%

'vs. Pre-Covid' is comparison between 2025 and 2019

YTD Individual Hunter Chase Runners by Age

Individual Runners in GB Hunter Chases shown by Age Category and Total



Year to Date Individual Runners by Country Trained

Code	Country	2016	2017	2018	2019	2020	2021	2022	2023	2024	2025
Flat	GB	7290	7538	7541	7639	6424	7446	7390	7372	7416	7321
	IRE	173	208	225	238	103	135	136	174	220	208
	Other	45	47	43	40	15	20	39	28	44	40
Jump	GB	5250	5294	5339	5510	4001	6051	5476	5468	5314	5128
	IRE	359	345	289	367	232	280	444	481	423	483
	Other	6	8	8	6	10	3	2	2	2	5
Dual	GB	473	403	426	448	233	428	375	372	334	310
	IRE	7	3	7	9	2	3	6	8	7	14
	Other		2								
Overall	GB	13013	13235	13306	13597	10658	13925	13241	13212	13064	12759
	IRE	539	556	521	614	337	418	586	663	650	705
	Other	51	57	51	46	25	23	41	30	46	45

Individual horses may appear under multiple countries.

Year to Date Total Runners by Rating Band

Flat

RatBand	2016	2017	2018	2019	2020	2021	2022	2023	2024	2025
3YO										
Unrated	2,365 (28.8%)	2,570 (29.8%)	2,869 (32.6%)	2,898 (32.0%)	1,852 (40.1%)	2,907 (32.6%)	2,767 (31.0%)	2,708 (30.8%)	2,611 (31.1%)	2,724 (31.7%)
0-50	437 (5.3%)	443 (5.1%)	419 (4.8%)	551 (6.1%)	239 (5.2%)	557 (6.3%)	577 (6.5%)	580 (6.6%)	548 (6.5%)	540 (6.3%)
51-60	1,004 (12.2%)	1,121 (13.0%)	943 (10.7%)	1,319 (14.6%)	537 (11.6%)	1,232 (13.8%)	1,223 (13.7%)	1,271 (14.5%)	1,175 (14.0%)	1,115 (13.0%)
61-70	1,607 (19.6%)	1,578 (18.3%)	1,593 (18.1%)	1,517 (16.8%)	719 (15.6%)	1,608 (18.0%)	1,611 (18.0%)	1,624 (18.5%)	1,542 (18.4%)	1,555 (18.1%)
71-80	1,537 (18.7%)	1,565 (18.1%)	1,556 (17.7%)	1,383 (15.3%)	692 (15.0%)	1,363 (15.3%)	1,511 (16.9%)	1,389 (15.8%)	1,309 (15.6%)	1,433 (16.7%)
81-90	718 (8.8%)	838 (9.7%)	845 (9.6%)	775 (8.6%)	324 (7.0%)	675 (7.6%)	723 (8.1%)	723 (8.2%)	715 (8.5%)	708 (8.2%)
91-100	310 (3.8%)	273 (3.2%)	318 (3.6%)	377 (4.2%)	137 (3.0%)	331 (3.7%)	305 (3.4%)	284 (3.2%)	275 (3.3%)	308 (3.6%)
101+	221 (2.7%)	243 (2.8%)	261 (3.0%)	230 (2.5%)	116 (2.5%)	238 (2.7%)	214 (2.4%)	215 (2.4%)	217 (2.6%)	199 (2.3%)
4YO+										
Unrated	407 (2.7%)	355 (2.3%)	460 (3.0%)	502 (3.2%)	261 (3.0%)	488 (3.1%)	415 (2.8%)	375 (2.4%)	410 (2.5%)	412 (2.6%)
0-50	1,456 (9.8%)	1,714 (11.2%)	1,994 (13.0%)	2,292 (14.4%)	1,314 (15.1%)	2,289 (14.7%)	2,300 (15.3%)	2,485 (16.1%)	2,487 (15.1%)	2,653 (16.6%)
51-60	2,817 (19.0%)	2,872 (18.8%)	2,888 (18.9%)	2,970 (18.7%)	1,857 (21.3%)	3,131 (20.1%)	2,995 (20.0%)	3,379 (21.9%)	3,717 (22.6%)	3,465 (21.7%)
61-70	3,441 (23.1%)	3,306 (21.6%)	3,150 (20.6%)	3,336 (21.0%)	1,876 (21.5%)	3,516 (22.6%)	3,272 (21.8%)	3,322 (21.5%)	3,649 (22.2%)	3,431 (21.5%)
71-80	2,927 (19.7%)	3,135 (20.5%)	2,861 (18.7%)	2,937 (18.5%)	1,526 (17.5%)	2,808 (18.0%)	2,660 (17.7%)	2,849 (18.4%)	2,941 (17.9%)	2,800 (17.5%)
81-90	2,100 (14.1%)	2,120 (13.9%)	2,098 (13.7%)	1,901 (12.0%)	1,014 (11.6%)	1,739 (11.2%)	1,865 (12.4%)	1,650 (10.7%)	1,855 (11.3%)	1,871 (11.7%)
91-100	1,001 (6.7%)	1,055 (6.9%)	1,167 (7.6%)	1,221 (7.7%)	546 (6.3%)	978 (6.3%)	868 (5.8%)	821 (5.3%)	819 (5.0%)	777 (4.9%)
101+	716 (4.8%)	728 (4.8%)	689 (4.5%)	704 (4.4%)	332 (3.8%)	609 (3.9%)	627 (4.2%)	581 (3.8%)	556 (3.4%)	559 (3.5%)

Jump

RatBand	2016	2017	2018	2019	2020	2021	2022	2023	2024	2025
Hurdle										
Unrated	2,554 (25.8%)	2,534 (25.6%)	2,604 (26.6%)	2,641 (26.6%)	1,376 (29.6%)	2,612 (25.8%)	2,412 (24.3%)	2,625 (26.1%)	2,652 (26.8%)	2,111 (23.1%)
0-100	2,453 (24.8%)	2,546 (25.7%)	2,363 (24.2%)	2,424 (24.4%)	966 (20.8%)	3,011 (29.7%)	3,201 (32.3%)	3,219 (32.0%)	3,326 (33.6%)	3,234 (35.5%)
101-110	1,532 (15.5%)	1,498 (15.1%)	1,439 (14.7%)	1,450 (14.6%)	615 (13.2%)	1,372 (13.5%)	1,506 (15.2%)	1,514 (15.0%)	1,438 (14.5%)	1,391 (15.3%)
111-120	1,422 (14.4%)	1,422 (14.4%)	1,386 (14.2%)	1,425 (14.3%)	618 (13.3%)	1,302 (12.8%)	1,298 (13.1%)	1,274 (12.7%)	1,222 (12.3%)	1,191 (13.1%)
121-130	995 (10.1%)	995 (10.1%)	1,037 (10.6%)	1,079 (10.9%)	490 (10.5%)	1,035 (10.2%)	813 (8.2%)	871 (8.7%)	764 (7.7%)	675 (7.4%)
131-140	618 (6.2%)	630 (6.4%)	643 (6.6%)	604 (6.1%)	374 (8.0%)	532 (5.2%)	456 (4.6%)	358 (3.6%)	337 (3.4%)	370 (4.1%)
141-150	236 (2.4%)	197 (2.0%)	235 (2.4%)	220 (2.2%)	141 (3.0%)	196 (1.9%)	178 (1.8%)	146 (1.5%)	121 (1.2%)	109 (1.2%)
151+	86 (0.9%)	74 (0.7%)	73 (0.7%)	91 (0.9%)	73 (1.6%)	79 (0.8%)	52 (0.5%)	60 (0.6%)	51 (0.5%)	40 (0.4%)
Chase										
Unrated	39 (0.7%)	52 (0.9%)	41 (0.8%)	34 (0.7%)	10 (0.4%)	30 (0.5%)	9 (0.2%)	1 (0.0%)	NA (-)	NA (-)
0-100	1,507 (27.9%)	1,484 (26.7%)	1,451 (27.9%)	1,524 (29.3%)	599 (24.9%)	1,697 (31.1%)	1,734 (31.8%)	1,808 (34.5%)	1,780 (36.0%)	1,763 (37.2%)
101-110	795 (14.7%)	880 (15.9%)	763 (14.7%)	797 (15.3%)	351 (14.6%)	814 (14.9%)	827 (15.2%)	887 (16.9%)	844 (17.1%)	780 (16.5%)
111-120	952 (17.6%)	943 (17.0%)	865 (16.6%)	792 (15.2%)	332 (13.8%)	910 (16.7%)	930 (17.1%)	856 (16.4%)	827 (16.7%)	745 (15.7%)
121-130	829 (15.3%)	841 (15.2%)	877 (16.8%)	812 (15.6%)	398 (16.6%)	839 (15.4%)	833 (15.3%)	726 (13.9%)	644 (13.0%)	646 (13.6%)
131-140	706 (13.1%)	785 (14.1%)	675 (13.0%)	692 (13.3%)	362 (15.1%)	635 (11.6%)	623 (11.4%)	531 (10.1%)	449 (9.1%)	401 (8.5%)
141-150	378 (7.0%)	372 (6.7%)	372 (7.1%)	356 (6.8%)	227 (9.5%)	329 (6.0%)	316 (5.8%)	260 (5.0%)	240 (4.9%)	232 (4.9%)
151+	202 (3.7%)	193 (3.5%)	164 (3.1%)	198 (3.8%)	122 (5.1%)	209 (3.8%)	174 (3.2%)	166 (3.2%)	154 (3.1%)	172 (3.6%)

Year to Date Total GB-Trained Runners by Rating Band

Flat

RatBand	2016	2017	2018	2019	2020	2021	2022	2023	2024	2025
3YO										
Unrated	2,349 (29.0%)	2,552 (30.0%)	2,850 (32.9%)	2,884 (32.3%)	1,848 (40.5%)	2,900 (32.9%)	2,758 (31.2%)	2,696 (31.0%)	2,602 (31.5%)	2,712 (32.1%)
0-50	434 (5.4%)	437 (5.1%)	416 (4.8%)	542 (6.1%)	234 (5.1%)	557 (6.3%)	577 (6.5%)	578 (6.6%)	548 (6.6%)	536 (6.3%)
51-60	997 (12.3%)	1,110 (13.0%)	935 (10.8%)	1,313 (14.7%)	529 (11.6%)	1,232 (14.0%)	1,223 (13.8%)	1,270 (14.6%)	1,173 (14.2%)	1,114 (13.2%)
61-70	1,600 (19.8%)	1,578 (18.5%)	1,581 (18.2%)	1,510 (16.9%)	717 (15.7%)	1,607 (18.2%)	1,611 (18.2%)	1,624 (18.6%)	1,540 (18.6%)	1,551 (18.3%)
71-80	1,533 (19.0%)	1,557 (18.3%)	1,551 (17.9%)	1,381 (15.5%)	690 (15.1%)	1,363 (15.5%)	1,509 (17.1%)	1,388 (15.9%)	1,305 (15.8%)	1,432 (16.9%)
81-90	714 (8.8%)	830 (9.8%)	842 (9.7%)	771 (8.6%)	317 (7.0%)	668 (7.6%)	712 (8.0%)	714 (8.2%)	696 (8.4%)	691 (8.2%)
91-100	290 (3.6%)	257 (3.0%)	292 (3.4%)	352 (3.9%)	133 (2.9%)	305 (3.5%)	284 (3.2%)	258 (3.0%)	242 (2.9%)	274 (3.2%)
101+	172 (2.1%)	187 (2.2%)	208 (2.4%)	175 (2.0%)	93 (2.0%)	182 (2.1%)	174 (2.0%)	180 (2.1%)	166 (2.0%)	148 (1.7%)
4YO+										
Unrated	404 (2.7%)	355 (2.4%)	458 (3.0%)	498 (3.2%)	260 (3.0%)	488 (3.2%)	414 (2.8%)	370 (2.4%)	409 (2.5%)	412 (2.6%)
0-50	1,439 (9.8%)	1,670 (11.1%)	1,971 (13.0%)	2,251 (14.4%)	1,301 (15.0%)	2,289 (14.8%)	2,300 (15.4%)	2,469 (16.1%)	2,467 (15.2%)	2,644 (16.7%)
51-60	2,791 (19.0%)	2,833 (18.8%)	2,843 (18.8%)	2,927 (18.7%)	1,831 (21.2%)	3,131 (20.2%)	2,994 (20.1%)	3,369 (22.0%)	3,694 (22.8%)	3,448 (21.8%)
61-70	3,415 (23.2%)	3,274 (21.7%)	3,129 (20.7%)	3,313 (21.2%)	1,870 (21.6%)	3,514 (22.7%)	3,270 (21.9%)	3,317 (21.6%)	3,636 (22.4%)	3,415 (21.6%)
71-80	2,922 (19.9%)	3,116 (20.7%)	2,845 (18.8%)	2,928 (18.7%)	1,519 (17.5%)	2,804 (18.1%)	2,651 (17.8%)	2,837 (18.5%)	2,922 (18.0%)	2,793 (17.7%)
81-90	2,090 (14.2%)	2,112 (14.0%)	2,093 (13.9%)	1,887 (12.1%)	1,014 (11.7%)	1,736 (11.2%)	1,859 (12.5%)	1,641 (10.7%)	1,833 (11.3%)	1,856 (11.7%)
91-100	985 (6.7%)	1,033 (6.9%)	1,144 (7.6%)	1,198 (7.7%)	544 (6.3%)	962 (6.2%)	846 (5.7%)	800 (5.2%)	778 (4.8%)	729 (4.6%)
101+	657 (4.5%)	678 (4.5%)	625 (4.1%)	649 (4.1%)	318 (3.7%)	566 (3.7%)	568 (3.8%)	535 (3.5%)	495 (3.0%)	512 (3.2%)

Jump

RatBand	2016	2017	2018	2019	2020	2021	2022	2023	2024	2025
Hurdle										
Unrated	2,494 (26.0%)	2,482 (25.8%)	2,563 (26.8%)	2,587 (26.9%)	1,353 (30.1%)	2,580 (26.0%)	2,327 (24.3%)	2,547 (26.2%)	2,592 (27.1%)	2,049 (23.4%)
0-100	2,419 (25.2%)	2,504 (26.0%)	2,326 (24.3%)	2,387 (24.8%)	956 (21.3%)	2,993 (30.1%)	3,184 (33.2%)	3,178 (32.7%)	3,300 (34.4%)	3,210 (36.6%)
101-110	1,499 (15.6%)	1,459 (15.2%)	1,422 (14.9%)	1,416 (14.7%)	612 (13.6%)	1,358 (13.7%)	1,485 (15.5%)	1,491 (15.4%)	1,418 (14.8%)	1,369 (15.6%)
111-120	1,401 (14.6%)	1,398 (14.5%)	1,375 (14.4%)	1,388 (14.4%)	614 (13.7%)	1,285 (12.9%)	1,266 (13.2%)	1,241 (12.8%)	1,199 (12.5%)	1,163 (13.3%)
121-130	971 (10.1%)	959 (10.0%)	1,020 (10.7%)	1,050 (10.9%)	478 (10.6%)	1,015 (10.2%)	777 (8.1%)	826 (8.5%)	702 (7.3%)	621 (7.1%)
131-140	566 (5.9%)	591 (6.1%)	607 (6.3%)	552 (5.7%)	333 (7.4%)	492 (4.9%)	388 (4.1%)	303 (3.1%)	273 (2.8%)	279 (3.2%)
141-150	174 (1.8%)	163 (1.7%)	193 (2.0%)	179 (1.9%)	100 (2.2%)	158 (1.6%)	119 (1.2%)	88 (0.9%)	77 (0.8%)	63 (0.7%)
151+	65 (0.7%)	57 (0.6%)	58 (0.6%)	66 (0.7%)	47 (1.0%)	59 (0.6%)	30 (0.3%)	33 (0.3%)	21 (0.2%)	15 (0.2%)
Chase										
Unrated	39 (0.8%)	50 (0.9%)	41 (0.8%)	33 (0.7%)	10 (0.4%)	30 (0.6%)	8 (0.2%)	1 (0.0%)	NA (-)	NA (-)
0-100	1,470 (28.3%)	1,444 (27.0%)	1,438 (28.4%)	1,511 (30.0%)	596 (25.7%)	1,695 (31.7%)	1,729 (32.9%)	1,797 (35.9%)	1,775 (37.5%)	1,754 (39.2%)
101-110	769 (14.8%)	870 (16.2%)	760 (15.0%)	794 (15.7%)	349 (15.0%)	804 (15.0%)	820 (15.6%)	878 (17.5%)	838 (17.7%)	770 (17.2%)
111-120	936 (18.0%)	931 (17.4%)	860 (17.0%)	783 (15.5%)	327 (14.1%)	909 (17.0%)	915 (17.4%)	842 (16.8%)	816 (17.2%)	732 (16.4%)
121-130	817 (15.7%)	815 (15.2%)	856 (16.9%)	795 (15.8%)	396 (17.1%)	833 (15.6%)	810 (15.4%)	707 (14.1%)	623 (13.2%)	617 (13.8%)
131-140	669 (12.9%)	753 (14.1%)	654 (12.9%)	663 (13.1%)	347 (15.0%)	628 (11.7%)	593 (11.3%)	487 (9.7%)	416 (8.8%)	330 (7.4%)
141-150	329 (6.3%)	330 (6.2%)	334 (6.6%)	317 (6.3%)	203 (8.7%)	292 (5.5%)	268 (5.1%)	199 (4.0%)	173 (3.7%)	175 (3.9%)
151+	159 (3.1%)	161 (3.0%)	124 (2.4%)	149 (3.0%)	93 (4.0%)	163 (3.0%)	117 (2.2%)	97 (1.9%)	93 (2.0%)	97 (2.2%)

Frequency of Runs

Year to Date Average Runs per Horse

Code	2016	2017	2018	2019	2020	2021	2022	2023	2024	2025
Flat	3.18	3.20	3.24	3.26	2.13	3.35	3.31	3.33	3.38	3.36
Jump	2.77	2.82	2.77	2.63	1.76	2.65	2.68	2.67	2.68	2.55
Dual Overall	5.17	5.08	4.73	4.81	3.17	4.96	4.85	4.81	4.80	5.23
Dual (Flat)	2.61	2.50	2.34	2.36	1.66	2.49	2.39	2.44	2.54	2.82
Dual (Jump)	2.56	2.58	2.39	2.46	1.51	2.47	2.45	2.37	2.26	2.41
All	3.08	3.10	3.09	3.05	2.01	3.09	3.08	3.09	3.12	3.07

Year to Date Proportion of Horses by Count of Runs

Runs	2016	2017	2018	2019	2020	2021	2022	2023	2024	2025
Flat										
1	1,888 (23.6%)	1,879 (22.9%)	1,927 (23.4%)	1,896 (22.6%)	2,884 (42.6%)	1,695 (21.1%)	1,730 (21.8%)	1,719 (21.6%)	1,716 (21.4%)	1,707 (21.6%)
2	1,794 (22.5%)	1,894 (23.1%)	1,853 (22.5%)	1,820 (21.7%)	2,158 (31.9%)	1,708 (21.3%)	1,753 (22.1%)	1,789 (22.5%)	1,741 (21.7%)	1,716 (21.7%)
3	1,551 (19.4%)	1,665 (20.3%)	1,629 (19.8%)	1,755 (21.0%)	765 (11.3%)	1,689 (21.0%)	1,550 (19.5%)	1,593 (20.0%)	1,563 (19.5%)	1,588 (20.1%)
4	1,138 (14.3%)	1,077 (13.1%)	1,111 (13.5%)	1,126 (13.4%)	441 (6.5%)	1,114 (13.9%)	1,088 (13.7%)	1,053 (13.2%)	1,102 (13.7%)	1,060 (13.4%)
5+	1,613 (20.2%)	1,681 (20.5%)	1,715 (20.8%)	1,776 (21.2%)	526 (7.8%)	1,826 (22.7%)	1,823 (22.9%)	1,795 (22.6%)	1,896 (23.6%)	1,820 (23.1%)
Jump										
1	1,678 (27.5%)	1,622 (26.8%)	1,672 (27.6%)	1,865 (29.4%)	2,108 (47.1%)	1,876 (27.7%)	1,851 (29.4%)	1,828 (28.9%)	1,698 (28.0%)	1,800 (30.3%)
2	1,456 (23.9%)	1,376 (22.7%)	1,376 (22.7%)	1,658 (26.2%)	1,571 (35.1%)	1,761 (26.0%)	1,489 (23.7%)	1,523 (24.1%)	1,486 (24.5%)	1,568 (26.4%)
3	1,219 (20.0%)	1,260 (20.8%)	1,278 (21.1%)	1,204 (19.0%)	638 (14.3%)	1,408 (20.8%)	1,296 (20.6%)	1,323 (20.9%)	1,263 (20.8%)	1,233 (20.8%)
4	855 (14.0%)	887 (14.7%)	899 (14.8%)	850 (13.4%)	135 (3.0%)	896 (13.3%)	863 (13.7%)	851 (13.5%)	917 (15.1%)	675 (11.4%)
5+	884 (14.5%)	905 (15.0%)	840 (13.8%)	757 (12.0%)	24 (0.5%)	820 (12.1%)	794 (12.6%)	801 (12.7%)	710 (11.7%)	656 (11.1%)
All Races										
1	3,226 (23.7%)	3,210 (23.2%)	3,251 (23.4%)	3,430 (24.1%)	4,711 (42.8%)	3,248 (22.6%)	3,294 (23.8%)	3,260 (23.5%)	3,163 (23.0%)	3,276 (24.3%)
2	3,053 (22.5%)	3,115 (22.5%)	3,098 (22.3%)	3,286 (23.1%)	3,678 (33.4%)	3,325 (23.2%)	3,109 (22.4%)	3,181 (22.9%)	3,080 (22.4%)	3,168 (23.5%)
3	2,701 (19.9%)	2,851 (20.6%)	2,812 (20.3%)	2,886 (20.3%)	1,440 (13.1%)	3,018 (21.0%)	2,777 (20.0%)	2,833 (20.4%)	2,765 (20.1%)	2,746 (20.3%)
4	1,983 (14.6%)	1,969 (14.2%)	2,012 (14.5%)	1,961 (13.8%)	618 (5.6%)	1,988 (13.8%)	1,935 (14.0%)	1,893 (13.6%)	2,047 (14.9%)	1,749 (13.0%)
5+	2,629 (19.3%)	2,692 (19.5%)	2,693 (19.4%)	2,687 (18.9%)	568 (5.2%)	2,783 (19.4%)	2,740 (19.8%)	2,725 (19.6%)	2,696 (19.6%)	2,558 (19.0%)

Year to Date Median Days Between Runs

Code/RatBand	2016	2017	2018	2019	2020	2021	2022	2023	2024	2025
All Runners	26	26	26	27	31	27	26	27	27	27
Flat										
Unrated	23	23	25	24	24	24	24	25	24	24
0-50	21	21	21	22	22	21	21	20	19	19
51-60	20	21	20	21	22	20	20	20	20	20
61-70	21	22	21	22	28	22	21	22	21	21
71-80	22	23	22	23	36	23	23	24	24	23
81-90	23	23	23	25	50	25	24	27	26	27
91-100	28	28	28	27	97	29	31	31	33	34
101+	34	35	33	32	154	34	38	36	37	40
All Flat Runners	22	23	23	23	28	23	23	23	23	23
Jump										
Unrated	36	34	37	36	36	38	35	39	39	39
0-100	26	26	27	27	32	29	27	29	30	30
101-110	29	27	29	29	31	30	29	30	32	30
111-120	30	29	31	31	34	32	30	32	32	32
121-130	31	29	31	32	34	33	31	34	35	34
131-140	34	32	34	33	36	35	35	36	35	35
141-150	34	35	38	36	41	40	36	39	36	40
151+	38	34	38	39	42	40	40	42	41	40
All Jump Runners	31	29	31	31	34	33	30	33	34	33

Horses Population by Gender

June 2025 Horses in Training Snapshot by Gender versus Previous Years

All Horses

Sex	2016	2017	2018	2019	2020	2021	2022	2023	2024	2025
Colt/Entire	2,500 (19.0%)	2,563 (19.4%)	2,562 (18.2%)	2,456 (17.8%)	2,305 (17.8%)	2,223 (16.2%)	2,151 (16.1%)	2,191 (16.4%)	2,030 (15.0%)	1,964 (15.2%)
Gelding	6,313 (47.9%)	6,238 (47.3%)	6,908 (49.1%)	6,638 (48.2%)	6,286 (48.5%)	6,978 (50.7%)	6,639 (49.8%)	6,626 (49.6%)	6,940 (51.4%)	6,546 (50.7%)
Filly/Mare	4,359 (33.1%)	4,380 (33.2%)	4,609 (32.7%)	4,667 (33.9%)	4,366 (33.7%)	4,551 (33.1%)	4,538 (34.0%)	4,530 (33.9%)	4,542 (33.6%)	4,412 (34.1%)
Rig	5 (0.0%)	4 (0.0%)	1 (0.0%)	2 (0.0%)	2 (0.0%)	1 (0.0%)	1 (0.0%)	1 (0.0%)	1 (0.0%)	0 (0.0%)
Total	13,177 (100.0%)	13,185 (100.0%)	14,080 (100.0%)	13,763 (100.0%)	12,959 (100.0%)	13,753 (100.0%)	13,329 (100.0%)	13,348 (100.0%)	13,513 (100.0%)	12,922 (100.0%)

Flat (including Dual)

Sex	2016	2017	2018	2019	2020	2021	2022	2023	2024	2025
Colt/Entire	2,484 (24.2%)	2,541 (24.0%)	2,549 (23.4%)	2,443 (22.8%)	2,291 (22.1%)	2,204 (21.4%)	2,136 (20.9%)	2,177 (21.5%)	2,020 (20.3%)	1,951 (19.7%)
Gelding	4,027 (39.2%)	4,220 (39.8%)	4,441 (40.8%)	4,329 (40.3%)	4,342 (41.8%)	4,304 (41.9%)	4,289 (42.0%)	4,225 (41.7%)	4,278 (43.1%)	4,324 (43.6%)
Filly/Mare	3,762 (36.6%)	3,838 (36.2%)	3,889 (35.7%)	3,955 (36.9%)	3,754 (36.1%)	3,773 (36.7%)	3,781 (37.0%)	3,727 (36.8%)	3,636 (36.6%)	3,639 (36.7%)
Rig	5 (0.0%)	4 (0.0%)	1 (0.0%)	2 (0.0%)	2 (0.0%)	1 (0.0%)	0 (0.0%)	0 (0.0%)	1 (0.0%)	0 (0.0%)
Total	10,278 (100.0%)	10,603 (100.0%)	10,880 (100.0%)	10,729 (100.0%)	10,389 (100.0%)	10,282 (100.0%)	10,206 (100.0%)	10,129 (100.0%)	9,935 (100.0%)	9,914 (100.0%)

Jump (including Dual)

Sex	2016	2017	2018	2019	2020	2021	2022	2023	2024	2025
Colt/Entire	24 (0.7%)	22 (0.7%)	20 (0.5%)	20 (0.6%)	17 (0.6%)	22 (0.6%)	23 (0.6%)	15 (0.4%)	15 (0.4%)	21 (0.6%)
Gelding	2,675 (78.9%)	2,451 (78.4%)	3,006 (77.2%)	2,635 (76.1%)	2,320 (75.9%)	3,010 (76.9%)	2,690 (75.3%)	2,711 (74.8%)	2,983 (74.4%)	2,555 (73.6%)
Filly/Mare	691 (20.4%)	653 (20.9%)	867 (22.3%)	809 (23.4%)	720 (23.6%)	881 (22.5%)	857 (24.0%)	898 (24.8%)	1,012 (25.2%)	897 (25.8%)
Rig	0 (0.0%)	0 (0.0%)	0 (0.0%)	0 (0.0%)	0 (0.0%)	0 (0.0%)	1 (0.0%)	1 (0.0%)	0 (0.0%)	0 (0.0%)
Total	3,390 (100.0%)	3,126 (100.0%)	3,893 (100.0%)	3,464 (100.0%)	3,057 (100.0%)	3,913 (100.0%)	3,571 (100.0%)	3,625 (100.0%)	4,010 (100.0%)	3,473 (100.0%)

Hunter Chasers

Sex	2016	2017	2018	2019	2020	2021	2022	2023	2024	2025
Colt/Entire	3 (0.2%)	5 (0.3%)	2 (0.1%)	1 (0.1%)	1 (0.1%)	3 (0.3%)	6 (0.5%)	8 (0.7%)	5 (0.4%)	3 (0.3%)
Gelding	1,547 (82.3%)	1,515 (81.1%)	1,387 (80.9%)	1,310 (79.3%)	1,155 (81.5%)	951 (82.4%)	1,027 (81.1%)	973 (82.5%)	1,108 (82.4%)	860 (80.8%)
Filly/Mare	330 (17.6%)	349 (18.7%)	325 (19.0%)	340 (20.6%)	261 (18.4%)	200 (17.3%)	233 (18.4%)	198 (16.8%)	231 (17.2%)	202 (19.0%)
Rig	0 (0.0%)	0 (0.0%)	0 (0.0%)	0 (0.0%)	0 (0.0%)	0 (0.0%)	0 (0.0%)	0 (0.0%)	0 (0.0%)	0 (0.0%)
Total	1,880 (100.0%)	1,869 (100.0%)	1,714 (100.0%)	1,651 (100.0%)	1,417 (100.0%)	1,154 (100.0%)	1,266 (100.0%)	1,179 (100.0%)	1,344 (100.0%)	1,065 (100.0%)

Year to Date Total Runners by Gender

Sex	2016	2017	2018	2019	2020	2021	2022	2023	2024	2025
All Races										
Colt/Entire	3,557 (8.5%)	3,613 (8.4%)	3,799 (8.9%)	3,606 (8.3%)	1,930 (8.7%)	3,473 (7.8%)	3,153 (7.4%)	2,987 (7.0%)	2,806 (6.5%)	2,718 (6.6%)
Gelding	27,771 (66.3%)	28,443 (66.3%)	27,842 (65.0%)	28,093 (64.6%)	14,221 (64.1%)	28,831 (64.9%)	27,907 (65.3%)	27,957 (65.1%)	28,260 (65.9%)	27,208 (65.7%)
Filly/Mare	10,558 (25.2%)	10,850 (25.3%)	11,217 (26.2%)	11,779 (27.1%)	6,019 (27.1%)	12,089 (27.2%)	11,671 (27.3%)	11,991 (27.9%)	11,826 (27.6%)	11,491 (27.7%)
Rig	11 (0.0%)	2 (0.0%)	6 (0.0%)	9 (0.0%)	3 (0.0%)	7 (0.0%)	5 (0.0%)	4 (0.0%)	0 (0.0%)	0 (0.0%)
Flat										
Colt/Entire	3,530 (14.0%)	3,585 (13.8%)	3,778 (14.4%)	3,578 (13.3%)	1,916 (13.4%)	3,448 (13.0%)	3,133 (12.1%)	2,953 (11.3%)	2,794 (10.4%)	2,705 (10.3%)
Gelding	13,933 (55.4%)	14,536 (56.0%)	14,584 (55.5%)	15,018 (55.8%)	8,049 (56.1%)	14,857 (56.0%)	14,655 (56.4%)	14,872 (56.9%)	15,818 (59.1%)	15,710 (59.7%)
Filly/Mare	7,656 (30.5%)	7,848 (30.2%)	7,889 (30.0%)	8,314 (30.9%)	4,380 (30.5%)	8,237 (31.0%)	8,181 (31.5%)	8,311 (31.8%)	8,166 (30.5%)	7,912 (30.1%)
Rig	11 (0.0%)	2 (0.0%)	6 (0.0%)	5 (0.0%)	0 (0.0%)	3 (0.0%)	0 (0.0%)	0 (0.0%)	0 (0.0%)	0 (0.0%)
All Jump										
Colt/Entire	27 (0.2%)	28 (0.2%)	21 (0.1%)	28 (0.2%)	14 (0.2%)	25 (0.1%)	20 (0.1%)	34 (0.2%)	12 (0.1%)	13 (0.1%)
Gelding	13,838 (82.5%)	13,907 (82.1%)	13,258 (79.8%)	13,075 (78.9%)	6,172 (78.8%)	13,974 (78.3%)	13,252 (79.0%)	13,085 (77.9%)	12,442 (77.2%)	11,498 (76.2%)
Filly/Mare	2,902 (17.3%)	3,002 (17.7%)	3,328 (20.0%)	3,465 (20.9%)	1,639 (20.9%)	3,852 (21.6%)	3,490 (20.8%)	3,680 (21.9%)	3,660 (22.7%)	3,579 (23.7%)
Rig	0 (0.0%)	0 (0.0%)	0 (0.0%)	4 (0.0%)	3 (0.0%)	4 (0.0%)	5 (0.0%)	4 (0.0%)	0 (0.0%)	0 (0.0%)
Chase										
Colt/Entire	1 (0.0%)	0 (0.0%)	0 (0.0%)	0 (0.0%)	0 (0.0%)	0 (0.0%)	0 (0.0%)	0 (0.0%)	0 (0.0%)	0 (0.0%)
Gelding	5,043 (93.3%)	5,154 (92.9%)	4,728 (90.8%)	4,687 (90.0%)	2,169 (90.3%)	4,889 (89.5%)	4,868 (89.4%)	4,677 (89.3%)	4,428 (89.7%)	4,131 (87.2%)
Filly/Mare	364 (6.7%)	396 (7.1%)	480 (9.2%)	516 (9.9%)	229 (9.5%)	570 (10.4%)	573 (10.5%)	555 (10.6%)	510 (10.3%)	608 (12.8%)
Rig	0 (0.0%)	0 (0.0%)	0 (0.0%)	2 (0.0%)	3 (0.1%)	4 (0.1%)	5 (0.1%)	3 (0.1%)	0 (0.0%)	0 (0.0%)
Hurdle										
Colt/Entire	23 (0.2%)	23 (0.2%)	15 (0.2%)	19 (0.2%)	7 (0.2%)	22 (0.2%)	13 (0.1%)	25 (0.2%)	9 (0.1%)	5 (0.1%)
Gelding	7,843 (79.3%)	7,771 (78.5%)	7,499 (76.7%)	7,499 (75.5%)	3,477 (74.7%)	7,527 (74.2%)	7,526 (75.9%)	7,516 (74.7%)	7,219 (72.8%)	6,607 (72.4%)
Filly/Mare	2,030 (20.5%)	2,102 (21.2%)	2,266 (23.2%)	2,414 (24.3%)	1,169 (25.1%)	2,590 (25.5%)	2,377 (24.0%)	2,525 (25.1%)	2,683 (27.1%)	2,509 (27.5%)
Rig	0 (0.0%)	0 (0.0%)	0 (0.0%)	2 (0.0%)	0 (0.0%)	0 (0.0%)	0 (0.0%)	1 (0.0%)	0 (0.0%)	0 (0.0%)
NHF										
Colt/Entire	3 (0.2%)	5 (0.3%)	6 (0.4%)	9 (0.6%)	7 (0.9%)	3 (0.1%)	7 (0.5%)	9 (0.6%)	3 (0.2%)	8 (0.7%)
Gelding	952 (65.1%)	982 (65.9%)	1,031 (63.7%)	889 (62.0%)	526 (68.0%)	1,558 (69.2%)	858 (61.1%)	892 (59.4%)	795 (62.8%)	760 (61.8%)
Filly/Mare	508 (34.7%)	504 (33.8%)	582 (35.9%)	535 (37.3%)	241 (31.1%)	692 (30.7%)	540 (38.4%)	600 (40.0%)	467 (36.9%)	462 (37.6%)
Hunter										
Gelding	720 (94.2%)	709 (94.9%)	603 (93.3%)	522 (92.7%)	142 (97.3%)	557 (93.5%)	429 (94.9%)	408 (93.6%)	379 (92.9%)	354 (91.9%)
Filly/Mare	44 (5.8%)	38 (5.1%)	43 (6.7%)	41 (7.3%)	4 (2.7%)	39 (6.5%)	23 (5.1%)	28 (6.4%)	29 (7.1%)	31 (8.1%)

Year to Date Individual Runners by Gender

Sex	2016	2017	2018	2019	2020	2021	2022	2023	2024	2025
All Races										
Male	9,798 (72.1%)	9,994 (72.2%)	9,920 (71.5%)	10,124 (71.0%)	7,862 (71.4%)	10,215 (71.1%)	9,783 (70.6%)	9,684 (69.7%)	9,649 (70.2%)	9,451 (70.0%)
Female	3,794 (27.9%)	3,843 (27.8%)	3,946 (28.5%)	4,126 (29.0%)	3,153 (28.6%)	4,147 (28.9%)	4,072 (29.4%)	4,208 (30.3%)	4,102 (29.8%)	4,046 (30.0%)
Flat										
Male	5,244 (65.7%)	5,439 (66.4%)	5,477 (66.5%)	5,521 (65.9%)	4,528 (66.8%)	5,275 (65.7%)	5,172 (65.1%)	5,106 (64.2%)	5,263 (65.6%)	5,195 (65.8%)
Female	2,740 (34.3%)	2,757 (33.6%)	2,758 (33.5%)	2,852 (34.1%)	2,246 (33.2%)	2,757 (34.3%)	2,772 (34.9%)	2,843 (35.8%)	2,755 (34.4%)	2,696 (34.2%)
All Jump										
Male	4,948 (81.2%)	4,889 (80.8%)	4,797 (79.1%)	4,971 (78.5%)	3,522 (78.7%)	5,278 (78.1%)	4,908 (78.0%)	4,873 (77.0%)	4,647 (76.5%)	4,497 (75.8%)
Female	1,144 (18.8%)	1,161 (19.2%)	1,268 (20.9%)	1,363 (21.5%)	954 (21.3%)	1,483 (21.9%)	1,385 (22.0%)	1,453 (23.0%)	1,427 (23.5%)	1,435 (24.2%)
Chase										
Male	1,881 (92.8%)	1,905 (92.1%)	1,797 (89.8%)	1,842 (89.6%)	1,269 (90.0%)	1,975 (88.9%)	1,850 (88.6%)	1,779 (88.1%)	1,723 (88.7%)	1,669 (86.7%)
Female	146 (7.2%)	164 (7.9%)	203 (10.2%)	214 (10.4%)	141 (10.0%)	246 (11.1%)	239 (11.4%)	241 (11.9%)	219 (11.3%)	257 (13.3%)
Hurdle										
Male	3,081 (79.9%)	3,002 (78.8%)	2,987 (77.5%)	3,115 (76.6%)	2,054 (75.0%)	3,203 (75.2%)	3,067 (76.7%)	3,032 (75.5%)	2,969 (73.5%)	2,756 (72.9%)
Female	777 (20.1%)	807 (21.2%)	868 (22.5%)	949 (23.4%)	684 (25.0%)	1,054 (24.8%)	931 (23.3%)	983 (24.5%)	1,069 (26.5%)	1,027 (27.1%)
NHF										
Male	673 (66.2%)	674 (67.2%)	743 (66.5%)	647 (64.6%)	440 (68.9%)	1,128 (70.4%)	633 (63.4%)	648 (62.0%)	570 (64.6%)	568 (63.5%)
Female	344 (33.8%)	329 (32.8%)	375 (33.5%)	354 (35.4%)	199 (31.1%)	475 (29.6%)	365 (36.6%)	397 (38.0%)	312 (35.4%)	327 (36.5%)
Hunter										
Male	395 (93.2%)	366 (93.6%)	339 (92.1%)	301 (92.0%)	98 (96.1%)	299 (92.0%)	243 (92.4%)	228 (93.4%)	212 (92.6%)	207 (91.6%)
Female	29 (6.8%)	25 (6.4%)	29 (7.9%)	26 (8.0%)	4 (3.9%)	26 (8.0%)	20 (7.6%)	16 (6.6%)	17 (7.4%)	19 (8.4%)

Horses Population by Breeding

June 2025 Horses in Training Snapshot by Breeding versus Previous Years

Flat (including Dual)

Bred	Sex	2016	2017	2018	2019	2020	2021	2022	2023	2024	2025
GB	Male	3,050 (29.7%)	3,163 (29.8%)	3,298 (30.3%)	3,208 (29.9%)	3,179 (30.6%)	3,079 (29.9%)	3,006 (29.5%)	2,945 (29.1%)	2,865 (28.8%)	2,890 (29.2%)
	Female	2,093 (20.4%)	2,138 (20.2%)	2,168 (19.9%)	2,196 (20.5%)	2,147 (20.7%)	2,108 (20.5%)	2,099 (20.6%)	2,048 (20.2%)	1,989 (20.0%)	2,043 (20.6%)
	Subtotal	5,143 (50.0%)	5,301 (50.0%)	5,466 (50.2%)	5,404 (50.4%)	5,326 (51.3%)	5,187 (50.4%)	5,105 (50.0%)	4,993 (49.3%)	4,854 (48.9%)	4,933 (49.8%)
IRE	Male	2,833 (27.6%)	2,901 (27.4%)	2,977 (27.4%)	2,870 (26.7%)	2,827 (27.2%)	2,869 (27.9%)	2,926 (28.7%)	2,973 (29.4%)	2,928 (29.5%)	2,924 (29.5%)
	Female	1,417 (13.8%)	1,418 (13.4%)	1,426 (13.1%)	1,465 (13.7%)	1,342 (12.9%)	1,456 (14.2%)	1,500 (14.7%)	1,505 (14.9%)	1,468 (14.8%)	1,424 (14.4%)
	Subtotal	4,250 (41.4%)	4,319 (40.7%)	4,403 (40.5%)	4,335 (40.4%)	4,169 (40.1%)	4,325 (42.1%)	4,426 (43.4%)	4,478 (44.2%)	4,396 (44.2%)	4,348 (43.9%)
FR	Male	196 (1.9%)	248 (2.3%)	307 (2.8%)	318 (3.0%)	319 (3.1%)	309 (3.0%)	311 (3.0%)	317 (3.1%)	346 (3.5%)	315 (3.2%)
	Female	86 (0.8%)	104 (1.0%)	123 (1.1%)	128 (1.2%)	137 (1.3%)	117 (1.1%)	119 (1.2%)	117 (1.2%)	123 (1.2%)	112 (1.1%)
	Subtotal	282 (2.7%)	352 (3.3%)	430 (4.0%)	446 (4.2%)	456 (4.4%)	426 (4.1%)	430 (4.2%)	434 (4.3%)	469 (4.7%)	427 (4.3%)
USA	Male	349 (3.4%)	351 (3.3%)	322 (3.0%)	301 (2.8%)	237 (2.3%)	187 (1.8%)	127 (1.2%)	107 (1.1%)	101 (1.0%)	78 (0.8%)
	Female	140 (1.4%)	150 (1.4%)	140 (1.3%)	133 (1.2%)	97 (0.9%)	66 (0.6%)	39 (0.4%)	39 (0.4%)	32 (0.3%)	36 (0.4%)
	Subtotal	489 (4.8%)	501 (4.7%)	462 (4.2%)	434 (4.0%)	334 (3.2%)	253 (2.5%)	166 (1.6%)	146 (1.4%)	133 (1.3%)	114 (1.1%)
GNY	Male	65 (0.6%)	73 (0.7%)	63 (0.6%)	58 (0.5%)	58 (0.6%)	51 (0.5%)	40 (0.4%)	46 (0.5%)	44 (0.4%)	56 (0.6%)
	Female	10 (0.1%)	12 (0.1%)	18 (0.2%)	21 (0.2%)	27 (0.3%)	22 (0.2%)	19 (0.2%)	13 (0.1%)	19 (0.2%)	18 (0.2%)
	Subtotal	75 (0.7%)	85 (0.8%)	81 (0.7%)	79 (0.7%)	85 (0.8%)	73 (0.7%)	59 (0.6%)	59 (0.6%)	63 (0.6%)	74 (0.7%)
Other	Male	23 (0.2%)	29 (0.3%)	24 (0.2%)	19 (0.2%)	15 (0.1%)	14 (0.1%)	15 (0.1%)	14 (0.1%)	15 (0.2%)	12 (0.1%)
	Female	16 (0.2%)	16 (0.2%)	14 (0.1%)	12 (0.1%)	4 (0.0%)	4 (0.0%)	5 (0.0%)	5 (0.0%)	5 (0.1%)	6 (0.1%)
	Subtotal	39 (0.4%)	45 (0.4%)	38 (0.3%)	31 (0.3%)	19 (0.2%)	18 (0.2%)	20 (0.2%)	19 (0.2%)	20 (0.2%)	18 (0.2%)

Jump (including Dual)

Bred	Sex	2016	2017	2018	2019	2020	2021	2022	2023	2024	2025
GB	Male	883 (26.0%)	819 (26.2%)	937 (24.1%)	778 (22.5%)	681 (22.3%)	859 (22.0%)	721 (20.2%)	707 (19.5%)	790 (19.7%)	698 (20.1%)
	Female	427 (12.6%)	362 (11.6%)	466 (12.0%)	390 (11.3%)	336 (11.0%)	451 (11.5%)	415 (11.6%)	434 (12.0%)	428 (10.7%)	392 (11.3%)
	Subtotal	1,310 (38.6%)	1,181 (37.8%)	1,403 (36.0%)	1,168 (33.7%)	1,017 (33.3%)	1,310 (33.5%)	1,136 (31.8%)	1,141 (31.5%)	1,218 (30.4%)	1,090 (31.4%)
IRE	Male	1,454 (42.9%)	1,312 (42.0%)	1,639 (42.1%)	1,463 (42.2%)	1,243 (40.7%)	1,641 (41.9%)	1,446 (40.5%)	1,429 (39.4%)	1,608 (40.1%)	1,338 (38.5%)
	Female	241 (7.1%)	256 (8.2%)	352 (9.0%)	360 (10.4%)	318 (10.4%)	367 (9.4%)	370 (10.4%)	390 (10.8%)	485 (12.1%)	398 (11.5%)
	Subtotal	1,695 (50.0%)	1,568 (50.2%)	1,991 (51.1%)	1,823 (52.6%)	1,561 (51.1%)	2,008 (51.3%)	1,816 (50.9%)	1,819 (50.2%)	2,093 (52.2%)	1,736 (50.0%)
FR	Male	282 (8.3%)	268 (8.6%)	375 (9.6%)	351 (10.1%)	353 (11.5%)	460 (11.8%)	486 (13.6%)	535 (14.8%)	559 (13.9%)	511 (14.7%)
	Female	17 (0.5%)	29 (0.9%)	46 (1.2%)	52 (1.5%)	63 (2.1%)	58 (1.5%)	64 (1.8%)	70 (1.9%)	90 (2.2%)	98 (2.8%)
	Subtotal	299 (8.8%)	297 (9.5%)	421 (10.8%)	403 (11.6%)	416 (13.6%)	518 (13.2%)	550 (15.4%)	605 (16.7%)	649 (16.2%)	609 (17.5%)
USA	Male	37 (1.1%)	33 (1.1%)	36 (0.9%)	27 (0.8%)	25 (0.8%)	29 (0.7%)	25 (0.7%)	15 (0.4%)	8 (0.2%)	6 (0.2%)
	Female	1 (0.0%)	2 (0.1%)	1 (0.0%)	3 (0.1%)	2 (0.1%)	1 (0.0%)	1 (0.0%)	NA (-)	2 (0.0%)	NA (-)
	Subtotal	38 (1.1%)	35 (1.1%)	37 (1.0%)	30 (0.9%)	27 (0.9%)	30 (0.8%)	26 (0.7%)	15 (0.4%)	10 (0.2%)	6 (0.2%)
GNY	Male	38 (1.1%)	34 (1.1%)	35 (0.9%)	32 (0.9%)	33 (1.1%)	40 (1.0%)	34 (1.0%)	39 (1.1%)	31 (0.8%)	21 (0.6%)
	Female	2 (0.1%)	2 (0.1%)	1 (0.0%)	3 (0.1%)	1 (0.0%)	4 (0.1%)	6 (0.2%)	4 (0.1%)	7 (0.2%)	6 (0.2%)
	Subtotal	40 (1.2%)	36 (1.2%)	36 (0.9%)	35 (1.0%)	34 (1.1%)	44 (1.1%)	40 (1.1%)	43 (1.2%)	38 (0.9%)	27 (0.8%)
Other	Male	5 (0.1%)	7 (0.2%)	4 (0.1%)	4 (0.1%)	2 (0.1%)	3 (0.1%)	2 (0.1%)	2 (0.1%)	2 (0.0%)	2 (0.1%)
	Female	3 (0.1%)	2 (0.1%)	1 (0.0%)	1 (0.0%)	NA (-)	NA (-)	1 (0.0%)	NA (-)	NA (-)	3 (0.1%)
	Subtotal	8 (0.2%)	9 (0.3%)	5 (0.1%)	5 (0.1%)	2 (0.1%)	3 (0.1%)	3 (0.1%)	2 (0.1%)	2 (0.0%)	5 (0.1%)

Year to Date Total Runners by Breeding

Flat

Bred	Sex	2016	2017	2018	2019	2020	2021	2022	2023	2024	2025
GB	Male	8,186 (32.6%)	8,498 (32.7%)	8,502 (32.4%)	8,526 (31.7%)	4,655 (32.5%)	8,382 (31.6%)	8,185 (31.5%)	8,013 (30.7%)	8,367 (31.2%)	8,339 (31.7%)
	Female	4,208 (16.7%)	4,245 (16.3%)	4,243 (16.2%)	4,571 (17.0%)	2,409 (16.8%)	4,615 (17.4%)	4,540 (17.5%)	4,492 (17.2%)	4,303 (16.1%)	4,226 (16.1%)
	Subtotal	12,394 (49.3%)	12,743 (49.1%)	12,745 (48.5%)	13,097 (48.7%)	7,064 (49.2%)	12,997 (49.0%)	12,725 (49.0%)	12,505 (47.8%)	12,670 (47.3%)	12,565 (47.7%)
IRE	Male	7,702 (30.6%)	7,961 (30.7%)	8,168 (31.1%)	8,277 (30.8%)	4,366 (30.4%)	8,372 (31.5%)	8,301 (32.0%)	8,527 (32.6%)	8,903 (33.2%)	8,850 (33.6%)
	Female	3,023 (12.0%)	3,166 (12.2%)	3,180 (12.1%)	3,188 (11.8%)	1,724 (12.0%)	3,156 (11.9%)	3,209 (12.4%)	3,381 (12.9%)	3,464 (12.9%)	3,315 (12.6%)
	Subtotal	10,725 (42.7%)	11,127 (42.8%)	11,348 (43.2%)	11,465 (42.6%)	6,090 (42.5%)	11,528 (43.4%)	11,510 (44.3%)	11,908 (45.6%)	12,367 (46.2%)	12,165 (46.2%)
FR	Male	491 (2.0%)	550 (2.1%)	621 (2.4%)	800 (3.0%)	429 (3.0%)	765 (2.9%)	751 (2.9%)	823 (3.1%)	887 (3.3%)	856 (3.3%)
	Female	163 (0.6%)	166 (0.6%)	210 (0.8%)	234 (0.9%)	117 (0.8%)	244 (0.9%)	249 (1.0%)	286 (1.1%)	268 (1.0%)	230 (0.9%)
	Subtotal	654 (2.6%)	716 (2.8%)	831 (3.2%)	1,034 (3.8%)	546 (3.8%)	1,009 (3.8%)	1,000 (3.9%)	1,109 (4.2%)	1,155 (4.3%)	1,086 (4.1%)
USA	Male	867 (3.5%)	867 (3.3%)	835 (3.2%)	775 (2.9%)	404 (2.8%)	548 (2.1%)	432 (1.7%)	327 (1.3%)	311 (1.2%)	214 (0.8%)
	Female	197 (0.8%)	219 (0.8%)	206 (0.8%)	245 (0.9%)	103 (0.7%)	151 (0.6%)	123 (0.5%)	121 (0.5%)	88 (0.3%)	80 (0.3%)
	Subtotal	1,064 (4.2%)	1,086 (4.2%)	1,041 (4.0%)	1,020 (3.8%)	507 (3.5%)	699 (2.6%)	555 (2.1%)	448 (1.7%)	399 (1.5%)	294 (1.1%)
GNY	Male	152 (0.6%)	168 (0.6%)	153 (0.6%)	144 (0.5%)	88 (0.6%)	184 (0.7%)	83 (0.3%)	114 (0.4%)	131 (0.5%)	125 (0.5%)
	Female	40 (0.2%)	23 (0.1%)	38 (0.1%)	45 (0.2%)	24 (0.2%)	60 (0.2%)	47 (0.2%)	23 (0.1%)	24 (0.1%)	47 (0.2%)
	Subtotal	192 (0.8%)	191 (0.7%)	191 (0.7%)	189 (0.7%)	112 (0.8%)	244 (0.9%)	130 (0.5%)	137 (0.5%)	155 (0.6%)	172 (0.7%)
Other	Male	76 (0.3%)	79 (0.3%)	89 (0.3%)	79 (0.3%)	23 (0.2%)	57 (0.2%)	36 (0.1%)	21 (0.1%)	13 (0.0%)	31 (0.1%)
	Female	25 (0.1%)	29 (0.1%)	12 (0.0%)	31 (0.1%)	3 (0.0%)	11 (0.0%)	13 (0.1%)	8 (0.0%)	19 (0.1%)	14 (0.1%)
	Subtotal	101 (0.4%)	108 (0.4%)	101 (0.4%)	110 (0.4%)	26 (0.2%)	68 (0.3%)	49 (0.2%)	29 (0.1%)	32 (0.1%)	45 (0.2%)

Jump

Bred	Sex	2016	2017	2018	2019	2020	2021	2022	2023	2024	2025
GB	Male	3,808 (22.7%)	3,731 (22.0%)	3,492 (21.0%)	3,393 (20.5%)	1,486 (19.0%)	3,374 (18.9%)	2,981 (17.8%)	2,903 (17.3%)	2,901 (18.0%)	2,809 (18.6%)
	Female	1,509 (9.0%)	1,501 (8.9%)	1,604 (9.7%)	1,532 (9.2%)	668 (8.5%)	1,712 (9.6%)	1,550 (9.2%)	1,613 (9.6%)	1,507 (9.4%)	1,367 (9.1%)
	Subtotal	5,317 (31.7%)	5,232 (30.9%)	5,096 (30.7%)	4,925 (29.7%)	2,154 (27.5%)	5,086 (28.5%)	4,531 (27.0%)	4,516 (26.9%)	4,408 (27.4%)	4,176 (27.7%)
IRE	Male	7,701 (45.9%)	7,756 (45.8%)	7,422 (44.7%)	7,269 (43.9%)	3,404 (43.5%)	7,717 (43.2%)	7,179 (42.8%)	7,076 (42.1%)	6,624 (41.1%)	6,074 (40.3%)
	Female	1,214 (7.2%)	1,284 (7.6%)	1,518 (9.1%)	1,628 (9.8%)	784 (10.0%)	1,724 (9.7%)	1,543 (9.2%)	1,643 (9.8%)	1,781 (11.1%)	1,745 (11.6%)
	Subtotal	8,915 (53.2%)	9,040 (53.4%)	8,940 (53.8%)	8,897 (53.7%)	4,188 (53.5%)	9,441 (52.9%)	8,722 (52.0%)	8,719 (51.9%)	8,405 (52.2%)	7,819 (51.8%)
FR	Male	2,004 (12.0%)	2,134 (12.6%)	2,082 (12.5%)	2,146 (12.9%)	1,163 (14.9%)	2,576 (14.4%)	2,824 (16.8%)	2,876 (17.1%)	2,724 (16.9%)	2,484 (16.5%)
	Female	155 (0.9%)	198 (1.2%)	185 (1.1%)	273 (1.6%)	177 (2.3%)	381 (2.1%)	361 (2.2%)	407 (2.4%)	356 (2.2%)	453 (3.0%)
	Subtotal	2,159 (12.9%)	2,332 (13.8%)	2,267 (13.7%)	2,419 (14.6%)	1,340 (17.1%)	2,957 (16.6%)	3,185 (19.0%)	3,283 (19.5%)	3,080 (19.1%)	2,937 (19.5%)
USA	Male	161 (1.0%)	126 (0.7%)	113 (0.7%)	85 (0.5%)	48 (0.6%)	100 (0.6%)	70 (0.4%)	58 (0.3%)	23 (0.1%)	22 (0.1%)
	Female	4 (0.0%)	5 (0.0%)	5 (0.0%)	12 (0.1%)	4 (0.1%)	6 (0.0%)	6 (0.0%)	0 (0.0%)	3 (0.0%)	5 (0.0%)
	Subtotal	165 (1.0%)	131 (0.8%)	118 (0.7%)	97 (0.6%)	52 (0.7%)	106 (0.6%)	76 (0.5%)	58 (0.3%)	26 (0.2%)	27 (0.2%)
GNY	Male	172 (1.0%)	171 (1.0%)	144 (0.9%)	191 (1.2%)	83 (1.1%)	225 (1.3%)	217 (1.3%)	206 (1.2%)	170 (1.1%)	113 (0.7%)
	Female	13 (0.1%)	9 (0.1%)	10 (0.1%)	18 (0.1%)	5 (0.1%)	29 (0.2%)	26 (0.2%)	17 (0.1%)	9 (0.1%)	9 (0.1%)
	Subtotal	185 (1.1%)	180 (1.1%)	154 (0.9%)	209 (1.3%)	88 (1.1%)	254 (1.4%)	243 (1.4%)	223 (1.3%)	179 (1.1%)	122 (0.8%)
Other	Male	19 (0.1%)	17 (0.1%)	26 (0.2%)	23 (0.1%)	5 (0.1%)	11 (0.1%)	6 (0.0%)	4 (0.0%)	12 (0.1%)	9 (0.1%)
	Female	7 (0.0%)	5 (0.0%)	6 (0.0%)	2 (0.0%)	1 (0.0%)	0 (0.0%)	4 (0.0%)	0 (0.0%)	4 (0.0%)	0 (0.0%)
	Subtotal	26 (0.2%)	22 (0.1%)	32 (0.2%)	25 (0.2%)	6 (0.1%)	11 (0.1%)	10 (0.1%)	4 (0.0%)	16 (0.1%)	9 (0.1%)

Year to Date Individual Runners by Breeding

Flat

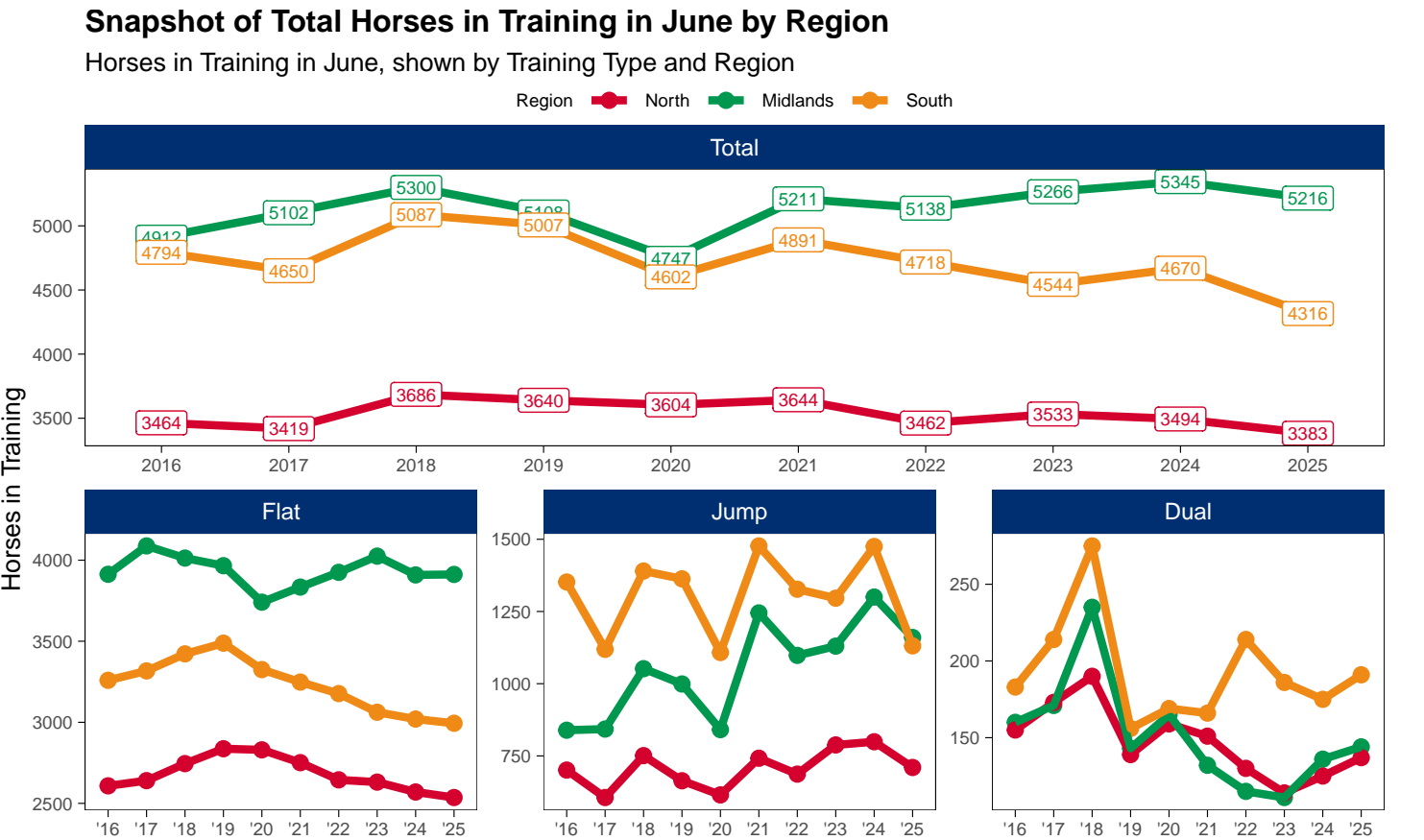
Bred	Sex	2016	2017	2018	2019	2020	2021	2022	2023	2024	2025
GB	Male	2,448 (30.7%)	2,480 (30.3%)	2,507 (30.4%)	2,505 (29.9%)	2,114 (31.2%)	2,397 (29.8%)	2,380 (30.0%)	2,298 (28.9%)	2,324 (29.0%)	2,321 (29.4%)
	Female	1,486 (18.6%)	1,481 (18.1%)	1,458 (17.7%)	1,529 (18.3%)	1,216 (18.0%)	1,502 (18.7%)	1,512 (19.0%)	1,505 (18.9%)	1,427 (17.8%)	1,440 (18.2%)
	Subtotal	3,934 (49.3%)	3,961 (48.3%)	3,965 (48.1%)	4,034 (48.2%)	3,330 (49.2%)	3,899 (48.5%)	3,892 (49.0%)	3,803 (47.8%)	3,751 (46.8%)	3,761 (47.7%)
IRE	Male	2,279 (28.5%)	2,409 (29.4%)	2,406 (29.2%)	2,437 (29.1%)	1,958 (28.9%)	2,391 (29.8%)	2,387 (30.0%)	2,420 (30.4%)	2,514 (31.4%)	2,487 (31.5%)
	Female	1,087 (13.6%)	1,087 (13.3%)	1,106 (13.4%)	1,113 (13.3%)	886 (13.1%)	1,089 (13.6%)	1,108 (13.9%)	1,181 (14.9%)	1,183 (14.8%)	1,123 (14.2%)
	Subtotal	3,366 (42.2%)	3,496 (42.7%)	3,512 (42.6%)	3,550 (42.4%)	2,844 (42.0%)	3,480 (43.3%)	3,495 (44.0%)	3,601 (45.3%)	3,697 (46.1%)	3,610 (45.7%)
FR	Male	160 (2.0%)	178 (2.2%)	232 (2.8%)	255 (3.0%)	217 (3.2%)	252 (3.1%)	240 (3.0%)	241 (3.0%)	285 (3.6%)	271 (3.4%)
	Female	63 (0.8%)	72 (0.9%)	82 (1.0%)	90 (1.1%)	69 (1.0%)	88 (1.1%)	91 (1.1%)	103 (1.3%)	97 (1.2%)	81 (1.0%)
	Subtotal	223 (2.8%)	250 (3.1%)	314 (3.8%)	345 (4.1%)	286 (4.2%)	340 (4.2%)	331 (4.2%)	344 (4.3%)	382 (4.8%)	352 (4.5%)
USA	Male	280 (3.5%)	288 (3.5%)	256 (3.1%)	247 (2.9%)	182 (2.7%)	168 (2.1%)	119 (1.5%)	95 (1.2%)	94 (1.2%)	65 (0.8%)
	Female	81 (1.0%)	91 (1.1%)	89 (1.1%)	94 (1.1%)	56 (0.8%)	54 (0.7%)	39 (0.5%)	39 (0.5%)	31 (0.4%)	27 (0.3%)
	Subtotal	361 (4.5%)	379 (4.6%)	345 (4.2%)	341 (4.1%)	238 (3.5%)	222 (2.8%)	158 (2.0%)	134 (1.7%)	125 (1.6%)	92 (1.2%)
GNY	Male	58 (0.7%)	58 (0.7%)	50 (0.6%)	51 (0.6%)	46 (0.7%)	53 (0.7%)	34 (0.4%)	43 (0.5%)	40 (0.5%)	40 (0.5%)
	Female	13 (0.2%)	10 (0.1%)	16 (0.2%)	15 (0.2%)	16 (0.2%)	20 (0.2%)	19 (0.2%)	10 (0.1%)	12 (0.1%)	18 (0.2%)
	Subtotal	71 (0.9%)	68 (0.8%)	66 (0.8%)	66 (0.8%)	62 (0.9%)	73 (0.9%)	53 (0.7%)	53 (0.7%)	52 (0.6%)	58 (0.7%)
Other	Male	19 (0.2%)	26 (0.3%)	26 (0.3%)	26 (0.3%)	11 (0.2%)	14 (0.2%)	12 (0.2%)	9 (0.1%)	6 (0.1%)	11 (0.1%)
	Female	10 (0.1%)	16 (0.2%)	7 (0.1%)	11 (0.1%)	3 (0.0%)	4 (0.0%)	3 (0.0%)	5 (0.1%)	5 (0.1%)	7 (0.1%)
	Subtotal	29 (0.4%)	42 (0.5%)	33 (0.4%)	37 (0.4%)	14 (0.2%)	18 (0.2%)	15 (0.2%)	14 (0.2%)	11 (0.1%)	18 (0.2%)

Jump

Bred	Sex	2016	2017	2018	2019	2020	2021	2022	2023	2024	2025
GB	Male	1,350 (22.2%)	1,302 (21.5%)	1,249 (20.6%)	1,271 (20.1%)	831 (18.6%)	1,286 (19.0%)	1,144 (18.2%)	1,120 (17.7%)	1,094 (18.0%)	1,065 (18.0%)
	Female	610 (10.0%)	582 (9.6%)	617 (10.2%)	602 (9.5%)	388 (8.7%)	658 (9.7%)	619 (9.8%)	606 (9.6%)	598 (9.8%)	565 (9.5%)
	Subtotal	1,960 (32.2%)	1,884 (31.1%)	1,866 (30.8%)	1,873 (29.6%)	1,219 (27.2%)	1,944 (28.8%)	1,763 (28.0%)	1,726 (27.3%)	1,692 (27.9%)	1,630 (27.5%)
IRE	Male	2,749 (45.1%)	2,701 (44.6%)	2,678 (44.2%)	2,769 (43.7%)	1,958 (43.7%)	2,868 (42.4%)	2,632 (41.8%)	2,615 (41.3%)	2,476 (40.8%)	2,360 (39.8%)
	Female	462 (7.6%)	494 (8.2%)	557 (9.2%)	627 (9.9%)	452 (10.1%)	669 (9.9%)	600 (9.5%)	668 (10.6%)	670 (11.0%)	682 (11.5%)
	Subtotal	3,211 (52.7%)	3,195 (52.8%)	3,235 (53.3%)	3,396 (53.6%)	2,410 (53.8%)	3,537 (52.3%)	3,232 (51.4%)	3,283 (51.9%)	3,146 (51.8%)	3,042 (51.3%)
FR	Male	718 (11.8%)	770 (12.7%)	773 (12.7%)	825 (13.0%)	654 (14.6%)	1,016 (15.0%)	1,030 (16.4%)	1,048 (16.6%)	1,005 (16.5%)	1,014 (17.1%)
	Female	61 (1.0%)	76 (1.3%)	88 (1.5%)	123 (1.9%)	106 (2.4%)	144 (2.1%)	151 (2.4%)	169 (2.7%)	151 (2.5%)	183 (3.1%)
	Subtotal	779 (12.8%)	846 (14.0%)	861 (14.2%)	948 (15.0%)	760 (17.0%)	1,160 (17.2%)	1,181 (18.8%)	1,217 (19.2%)	1,156 (19.0%)	1,197 (20.2%)
USA	Male	58 (1.0%)	48 (0.8%)	41 (0.7%)	34 (0.5%)	25 (0.6%)	35 (0.5%)	29 (0.5%)	21 (0.3%)	12 (0.2%)	7 (0.1%)
	Female	2 (0.0%)	2 (0.0%)	2 (0.0%)	5 (0.1%)	3 (0.1%)	2 (0.0%)	2 (0.0%)	0 (0.0%)	1 (0.0%)	1 (0.0%)
	Subtotal	60 (1.0%)	50 (0.8%)	43 (0.7%)	39 (0.6%)	28 (0.6%)	37 (0.5%)	31 (0.5%)	21 (0.3%)	13 (0.2%)	8 (0.1%)
GNY	Male	67 (1.1%)	62 (1.0%)	49 (0.8%)	63 (1.0%)	49 (1.1%)	70 (1.0%)	71 (1.1%)	66 (1.0%)	56 (0.9%)	47 (0.8%)
	Female	7 (0.1%)	5 (0.1%)	2 (0.0%)	5 (0.1%)	4 (0.1%)	10 (0.1%)	11 (0.2%)	10 (0.2%)	5 (0.1%)	4 (0.1%)
	Subtotal	74 (1.2%)	67 (1.1%)	51 (0.8%)	68 (1.1%)	53 (1.2%)	80 (1.2%)	82 (1.3%)	76 (1.2%)	61 (1.0%)	51 (0.9%)
Other	Male	6 (0.1%)	6 (0.1%)	7 (0.1%)	9 (0.1%)	5 (0.1%)	3 (0.0%)	2 (0.0%)	3 (0.0%)	4 (0.1%)	4 (0.1%)
	Female	2 (0.0%)	2 (0.0%)	2 (0.0%)	1 (0.0%)	1 (0.0%)	0 (0.0%)	2 (0.0%)	0 (0.0%)	2 (0.0%)	0 (0.0%)
	Subtotal	8 (0.1%)	8 (0.1%)	9 (0.1%)	10 (0.2%)	6 (0.1%)	3 (0.0%)	4 (0.1%)	3 (0.0%)	6 (0.1%)	4 (0.1%)

Horse Population by Location

June 2025 Horses in Training Snapshot by Region versus Previous Years



North

AgeCat	2016	2017	2018	2019	2020	2021	2022	2023	2024	2025	vs. Last Year	vs. Pre-Covid
Flat Horses in Training												
2YO	821	804	876	934	823	869	822	812	737	745	+8 / +1.1%	-189 / -20.2%
3YO	690	728	732	744	853	801	746	703	689	655	-34 / -4.9%	-89 / -12.0%
4YO	395	416	405	431	427	409	415	397	432	414	-18 / -4.2%	-17 / -3.9%
5YO+	702	692	732	728	727	672	662	719	712	722	+10 / +1.4%	-6 / -0.8%
Subtotal	2608	2640	2745	2837	2830	2751	2645	2631	2570	2536	-34 / -1.3%	-301 / -10.6%
Jump Horses in Training												
3YO	22	12	13	14	11	13	28	15	12	6	-6 / -50.0%	-8 / -57.1%
4-5YO	181	152	167	165	142	150	167	194	201	160	-41 / -20.4%	-5 / -3.0%
6-7YO	215	180	259	224	229	246	243	291	299	258	-41 / -13.7%	+34 / +15.2%
8YO+	283	262	312	261	233	333	249	288	287	286	-1 / -0.3%	+25 / +9.6%
Subtotal	701	606	751	664	615	742	687	788	799	710	-89 / -11.1%	+46 / +6.9%
Dual Horses in Training												
3YO	24	34	23	13	30	15	23	18	16	12	-4 / -25.0%	-1 / -7.7%
4YO	37	39	41	35	34	38	21	24	26	34	+8 / +30.8%	-1 / -2.9%
5YO+	94	100	126	91	95	98	86	72	83	91	+8 / +9.6%	0 / 0.0%
Subtotal	155	173	190	139	159	151	130	114	125	137	+12 / +9.6%	-2 / -1.4%
Total Horses in Training												
	3464	3419	3686	3640	3604	3644	3462	3533	3494	3383	-111 / -3.2%	-257 / -7.1%

'vs. Pre-Covid' is comparison between 2025 and 2019

Midlands

AgeCat	2016	2017	2018	2019	2020	2021	2022	2023	2024	2025	vs. Last Year	vs. Pre-Covid
Flat Horses in Training												
2YO	1483	1539	1382	1329	1150	1305	1325	1339	1287	1262	-25 / -1.9%	-67 / -5.0%
3YO	1270	1303	1361	1322	1343	1225	1323	1342	1277	1312	+35 / +2.7%	-10 / -0.8%
4YO	495	572	581	593	559	620	599	620	586	592	+6 / +1.0%	-1 / -0.2%
5YO+	665	674	689	722	689	684	678	724	759	746	-13 / -1.7%	+24 / +3.3%
Subtotal	3913	4088	4013	3966	3741	3834	3925	4025	3909	3912	+3 / +0.1%	-54 / -1.4%
Jump Horses in Training												
3YO	16	12	15	17	11	26	18	23	30	19	-11 / -36.7%	+2 / +11.8%
4-5YO	216	209	282	297	278	387	335	348	409	405	-4 / -1.0%	+108 / +36.4%
6-7YO	293	293	370	339	290	448	415	415	487	398	-89 / -18.3%	+59 / +17.4%
8YO+	314	329	385	346	262	384	330	344	374	338	-36 / -9.6%	-8 / -2.3%
Subtotal	839	843	1052	999	841	1245	1098	1130	1300	1160	-140 / -10.8%	+161 / +16.1%
Dual Horses in Training												
3YO	27	22	21	21	13	10	17	21	14	15	+1 / +7.1%	-6 / -28.6%
4YO	41	45	61	43	35	37	33	22	36	32	-4 / -11.1%	-11 / -25.6%
5YO+	92	104	153	79	117	85	65	68	86	97	+11 / +12.8%	+18 / +22.8%
Subtotal	160	171	235	143	165	132	115	111	136	144	+8 / +5.9%	+1 / +0.7%
Total Horses in Training												
	4912	5102	5300	5108	4747	5211	5138	5266	5345	5216	-129 / -2.4%	+108 / +2.1%

'vs. Pre-Covid' is comparison between 2025 and 2019

South

AgeCat	2016	2017	2018	2019	2020	2021	2022	2023	2024	2025	vs. Last Year	vs. Pre-Covid
Flat Horses in Training												
2YO	1264	1321	1290	1312	1160	1198	1198	1157	1141	1089	-52 / -4.6%	-223 / -17.0%
3YO	1003	1012	1110	1085	1098	1014	953	937	891	988	+97 / +10.9%	-97 / -8.9%
4YO	411	412	447	510	464	462	471	390	420	381	-39 / -9.3%	-129 / -25.3%
5YO+	581	572	575	581	603	574	555	578	568	536	-32 / -5.6%	-45 / -7.7%
Subtotal	3259	3317	3422	3488	3325	3248	3177	3062	3020	2994	-26 / -0.9%	-494 / -14.2%
Jump Horses in Training												
3YO	38	23	32	32	19	34	36	34	37	27	-10 / -27.0%	-5 / -15.6%
4-5YO	388	318	406	419	328	417	446	474	515	388	-127 / -24.7%	-31 / -7.4%
6-7YO	457	368	481	473	409	532	437	424	546	411	-135 / -24.7%	-62 / -13.1%
8YO+	469	410	471	439	352	494	408	364	377	305	-72 / -19.1%	-134 / -30.5%
Subtotal	1352	1119	1390	1363	1108	1477	1327	1296	1475	1131	-344 / -23.3%	-232 / -17.0%
Dual Horses in Training												
3YO	22	32	24	18	22	26	47	37	24	35	+11 / +45.8%	+17 / +94.4%
4YO	25	46	60	34	33	48	50	49	49	50	+1 / +2.0%	+16 / +47.1%
5YO+	136	136	191	104	114	92	117	100	102	106	+4 / +3.9%	+2 / +1.9%
Subtotal	183	214	275	156	169	166	214	186	175	191	+16 / +9.1%	+35 / +22.4%
Total Horses in Training												
	4794	4650	5087	5007	4602	4891	4718	4544	4670	4316	-354 / -7.6%	-691 / -13.8%

'vs. Pre-Covid' is comparison between 2025 and 2019

June 2025 Horses in Training Snapshot by Country versus Previous Years

Type	2016	2017	2018	2019	2020	2021	2022	2023	2024	2025	vs. Last Year	vs. Pre-Covid
England												
Flat	9443	9639	9767	9887	9520	9462	9352	9340	9148	9083	-65 / -0.7%	-804 / -8.1%
Jump	2482	2232	2726	2597	2228	2975	2752	2843	3084	2605	-479 / -15.5%	+8 / +0.3%
Dual	433	480	625	383	452	395	406	383	395	435	+40 / +10.1%	+52 / +13.6%
Overall	12358	12351	13118	12867	12200	12832	12510	12566	12627	12123	-504 / -4.0%	-744 / -5.8%
Scotland												
Flat	186	237	243	225	215	217	243	227	210	215	+5 / +2.4%	-10 / -4.4%
Jump	156	121	177	144	155	167	162	171	221	175	-46 / -20.8%	+31 / +21.5%
Dual	35	38	37	30	29	26	27	19	25	20	-5 / -20.0%	-10 / -33.3%
Overall	377	396	457	399	399	410	432	417	456	410	-46 / -10.1%	+11 / +2.8%
Wales												
Flat	151	169	170	179	161	154	152	151	141	144	+3 / +2.1%	-35 / -19.6%
Jump	254	215	290	285	181	322	198	200	269	221	-48 / -17.8%	-64 / -22.5%
Dual	30	40	38	25	12	28	26	9	16	17	+1 / +6.2%	-8 / -32.0%
Overall	435	424	498	489	354	504	376	360	426	382	-44 / -10.3%	-107 / -21.9%

'vs. Pre-Covid' is comparison between 2025 and 2019

June 2025 Horses in Training Snapshot by Training Centre versus Previous Years

Type	2016	2017	2018	2019	2020	2021	2022	2023	2024	2025	vs. Last Year	vs. Pre-Covid
Cheltenham (GL54)												
Flat	18	21	16	22	20	20	16	12	17	20	+3 / +17.6%	-2 / -9.1%
Jump	162	145	191	131	138	249	210	184	277	186	-91 / -32.9%	+55 / +42.0%
Dual	16	20	32	8	16	10	14	13	15	18	+3 / +20.0%	+10 / +125.0%
Overall	196	186	239	161	174	279	240	209	309	224	-85 / -27.5%	+63 / +39.1%
Lambourn (RG17)												
Flat	917	992	1057	1074	995	961	919	966	938	990	+52 / +5.5%	-84 / -7.8%
Jump	103	115	123	172	151	134	188	194	205	194	-11 / -5.4%	+22 / +12.8%
Dual	20	21	22	14	30	22	31	24	25	21	-4 / -16.0%	+7 / +50.0%
Overall	1040	1128	1202	1260	1176	1117	1138	1184	1168	1205	+37 / +3.2%	-55 / -4.4%
Malton (YO17)												
Flat	670	698	732	763	770	761	731	746	730	733	+3 / +0.4%	-30 / -3.9%
Jump	90	70	95	75	75	80	74	70	45	36	-9 / -20.0%	-39 / -52.0%
Dual	20	38	40	23	34	41	30	26	32	31	-1 / -3.1%	+8 / +34.8%
Overall	780	806	867	861	879	882	835	842	807	800	-7 / -0.9%	-61 / -7.1%
Marlborough (SN8)												
Flat	586	558	565	538	533	514	476	466	478	446	-32 / -6.7%	-92 / -17.1%
Jump	48	29	42	33	28	41	38	31	40	38	-2 / -5.0%	+5 / +15.2%
Dual	3	1	0	5	3	0	2	2	4	1	-3 / -75.0%	-4 / -80.0%
Overall	637	588	607	576	564	555	516	499	522	485	-37 / -7.1%	-91 / -15.8%
Middleham (DL8)												
Flat	593	551	558	630	631	608	543	564	568	529	-39 / -6.9%	-101 / -16.0%
Jump	49	52	71	75	61	84	75	101	91	87	-4 / -4.4%	+12 / +16.0%
Dual	23	24	18	27	28	27	18	12	19	24	+5 / +26.3%	-3 / -11.1%
Overall	665	627	647	732	720	719	636	677	678	640	-38 / -5.6%	-92 / -12.6%
Newbury (RG20)												
Flat	401	414	433	454	416	447	489	451	411	386	-25 / -6.1%	-68 / -15.0%
Jump	14	15	15	12	4	5	5	8	18	17	-1 / -5.6%	+5 / +41.7%
Dual	2	8	12	6	7	8	6	4	3	3	0 / 0.0%	-3 / -50.0%
Overall	417	437	460	472	427	460	500	463	432	406	-26 / -6.0%	-66 / -14.0%
Newmarket (CB8)												
Flat	2845	2941	2900	2810	2725	2811	2818	2980	2850	2798	-52 / -1.8%	-12 / -0.4%
Jump	36	27	36	32	21	34	18	41	42	32	-10 / -23.8%	0 / 0.0%
Dual	34	30	29	22	26	29	26	30	35	46	+11 / +31.4%	+24 / +109.1%
Overall	2915	2998	2965	2864	2772	2874	2862	3051	2927	2876	-51 / -1.7%	+12 / +0.4%

'vs. Pre-Covid' is comparison between 2025 and 2019