

Horse Population Report

Updated on 31 May 2025



Introduction

Welcome to the latest update on the Racehorse Population from the British Horseracing Authority.

The aim of this document is to give stakeholders and the wider Public an insight into the current state of the Horse Population in Great Britain. It is hoped that this transparency will ensure that all decision makers have access to the key data required to help British Racing deliver a Competitive and Compelling product to stakeholders, racegoers and the wider public.

If you have any questions regarding the content of this report or suggestions for how it could be improved further, please contact Joe Yates – jyates@britishhorseracing.com

Definitions

This report uses the Horses in Training returns from the Weatherby's Racing Administration System, this is completed by trainers and should be updated whenever a horse enters or leaves training in their care as part of the conditions of their licence.

Horses in Training

Unless otherwise stated, snapshots of Horses in Training will be from the 15th day of the month in question and year to date figures will be up to and including the date titled at the front of the report.

Horses' ratings will be taken from the most recently published ratings by the BHA Handicapping Team, which is currently at 7am each Tuesday morning. For example, if looking at the Horses in a particular rating band for July 2011, the horses in training number will be from Friday 15th July 2011 and ratings, where possible, will be assigned to each horse from the ratings published by the BHA Handicappers on Tuesday 12th July 2011.

The Gender of a horse will be taken from the reporting date in question, regardless of whether this has since changed.

In the case of YTD reporting, where a horse's gender or training type has changed in the year-to-date period, the most recent is taken.

This report does not count any horses that are temporarily racing abroad for GB Trainers at the time of reporting.

Yearlings are not included in total counts of flat and/or dual horses but will be sometimes shown separately for information purposes.

Yearlings and two-year-olds are not included in total counts of jump horses or counts of jump horses that include dual horses but will be sometimes shown separately for information purposes.

Yearlings, two-year-olds and three-year-olds are not included in total counts of Hunter Chasers but will be sometimes shown separately for information purposes.

Yearlings and two-year-olds in training that are recorded as dual horses have been re-coded as flat horses.

Hunter Chasers are not included in any counts of Jump Horses or Total figures but will be sometimes shown separately for information purposes.

Horses' training locations are defined by the trainers' primary training location. Training regions are defined the same as regions for the Fixture List; 'North' is north of latitude 53.42911, 'South' is south of latitude 51.88002 and 'Midlands' is anywhere in between. Training centres are defined by postcodes and surrounding areas.

Runners

Unless otherwise specified, Total Runners and Individual Runners metrics only counts runners that ran in GB races including any voided races. Withdrawn horses are not included.

Hunter Chases are not included in this section but will be sometimes shown separately for information purposes.

Total Runners is a count of all runners in races, whilst individual runners only counts each individual horse once.

Monthly Horses in Training

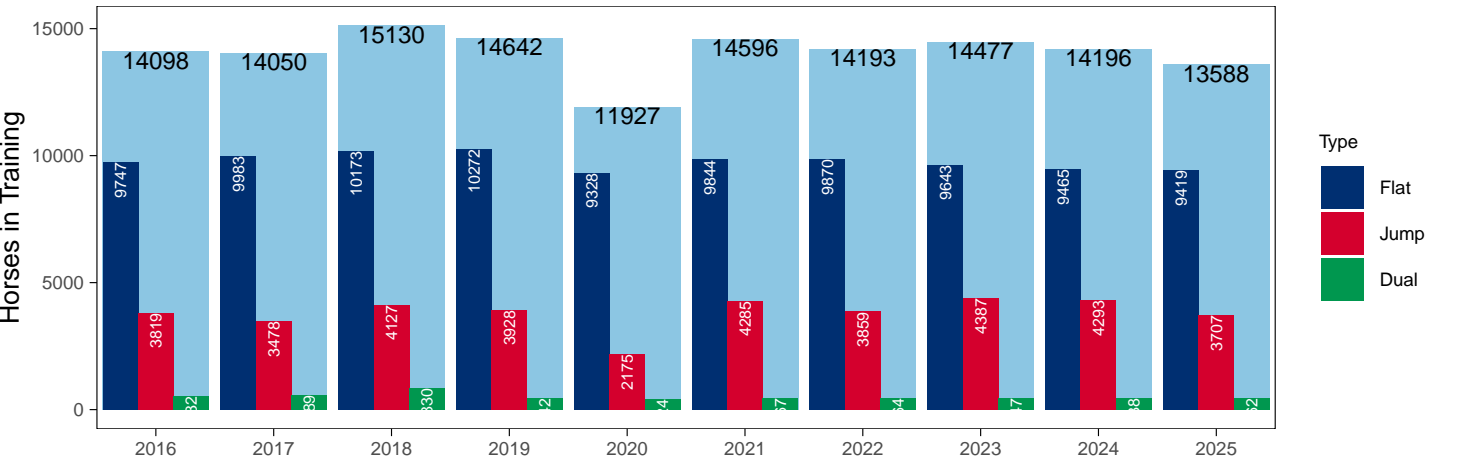
May 2025 Horses in Training Snapshot versus Previous Years

Type	2016	2017	2018	2019	2020	2021	2022	2023	2024	2025	vs. Last Year	vs. Pre-Covid
Flat	9747	9983	10173	10272	9328	9844	9870	9643	9465	9419	-46 / -0.5%	-853 / -8.3%
Jump	3819	3478	4127	3928	2175	4285	3859	4387	4293	3707	-586 / -13.7%	-221 / -5.6%
Dual	532	589	830	442	424	467	464	447	438	462	+24 / +5.5%	+20 / +4.5%
Hunter	1984	1954	1795	1708	1445	1200	1309	1248	1417	1124	-293 / -20.7%	-584 / -34.2%
Total	14098	14050	15130	14642	11927	14596	14193	14477	14196	13588	-608 / -4.3%	-1054 / -7.2%

'vs. Pre-Covid' is comparison between 2025 and 2019

Snapshot of Total Horses in Training in May

Horses in Training in May, shown by Training Type



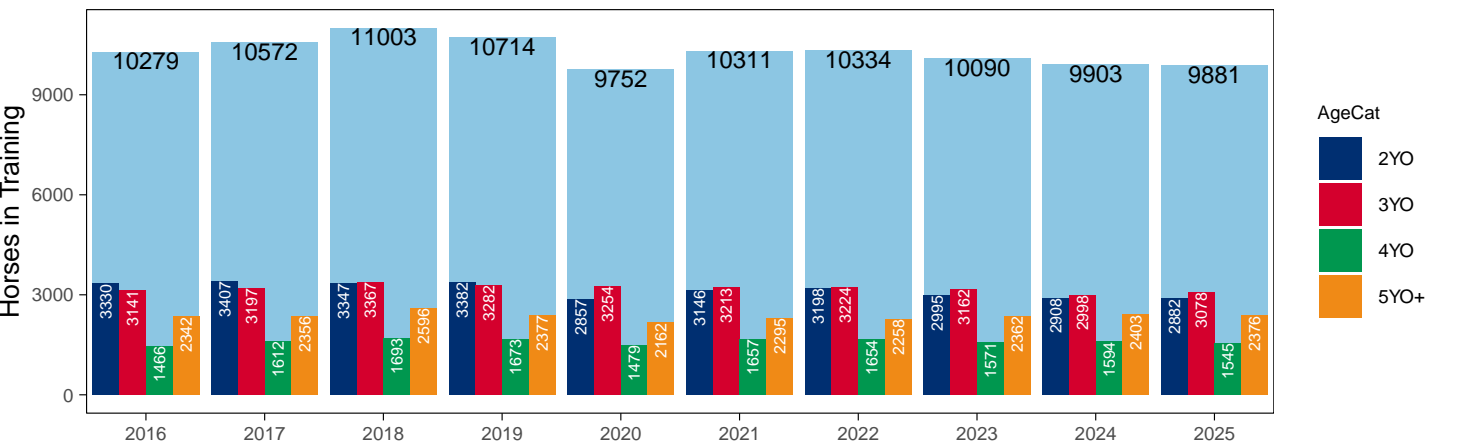
Flat (including Dual)

AgeCat	2016	2017	2018	2019	2020	2021	2022	2023	2024	2025	vs. Last Year	vs. Pre-Covid
2YO	3330	3407	3347	3382	2857	3146	3198	2995	2908	2882	-26 / -0.9%	-500 / -14.8%
3YO	3141	3197	3367	3282	3254	3213	3224	3162	2998	3078	+80 / +2.7%	-204 / -6.2%
4YO	1466	1612	1693	1673	1479	1657	1654	1571	1594	1545	-49 / -3.1%	-128 / -7.7%
5YO+	2342	2356	2596	2377	2162	2295	2258	2362	2403	2376	-27 / -1.1%	-1 / 0.0%
Total	10279	10572	11003	10714	9752	10311	10334	10090	9903	9881	-22 / -0.2%	-833 / -7.8%

'vs. Pre-Covid' is comparison between 2025 and 2019

Snapshot of Flat Horses in Training in May

Flat Horses in Training in May, shown by Age



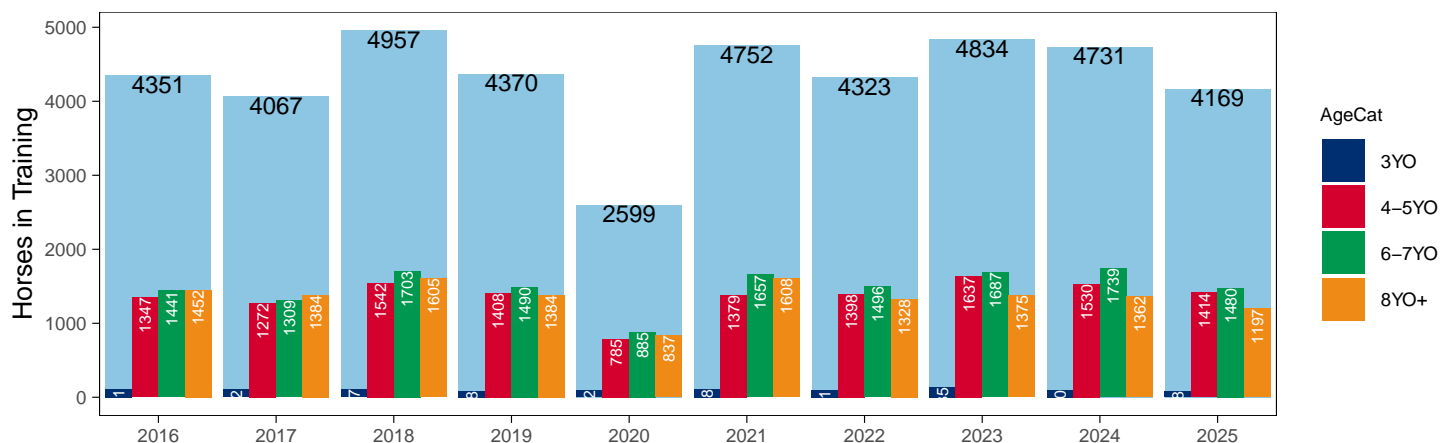
Jump (including Dual)

AgeCat	2016	2017	2018	2019	2020	2021	2022	2023	2024	2025	vs. Last Year	vs. Pre-Covid
3YO	111	102	107	88	92	108	101	135	100	78	-22 / -22.0%	-10 / -11.4%
4-5YO	1347	1272	1542	1408	785	1379	1398	1637	1530	1414	-116 / -7.6%	+6 / +0.4%
6-7YO	1441	1309	1703	1490	885	1657	1496	1687	1739	1480	-259 / -14.9%	-10 / -0.7%
8YO+	1452	1384	1605	1384	837	1608	1328	1375	1362	1197	-165 / -12.1%	-187 / -13.5%
Total	4351	4067	4957	4370	2599	4752	4323	4834	4731	4169	-562 / -11.9%	-201 / -4.6%

'vs. Pre-Covid' is comparison between 2025 and 2019

Snapshot of Jump Horses in Training in May

Jump Horses in Training in May, shown by Age



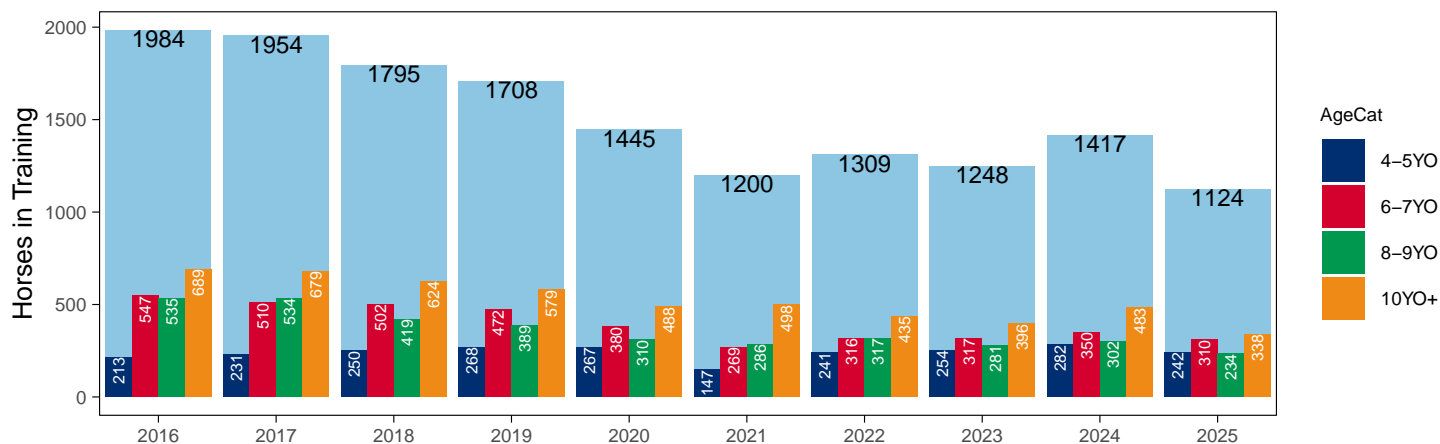
Hunter Chasers

AgeCat	2016	2017	2018	2019	2020	2021	2022	2023	2024	2025	vs. Last Year	vs. Pre-Covid
4-5YO	213	231	250	268	267	147	241	254	282	242	-40 / -14.2%	-26 / -9.7%
6-7YO	547	510	502	472	380	269	316	317	350	310	-40 / -11.4%	-162 / -34.3%
8-9YO	535	534	419	389	310	286	317	281	302	234	-68 / -22.5%	-155 / -39.8%
10YO+	689	679	624	579	488	498	435	396	483	338	-145 / -30.0%	-241 / -41.6%
Total	1984	1954	1795	1708	1445	1200	1309	1248	1417	1124	-293 / -20.7%	-584 / -34.2%

'vs. Pre-Covid' is comparison between 2025 and 2019

Snapshot of Hunter Chasers in Training in May

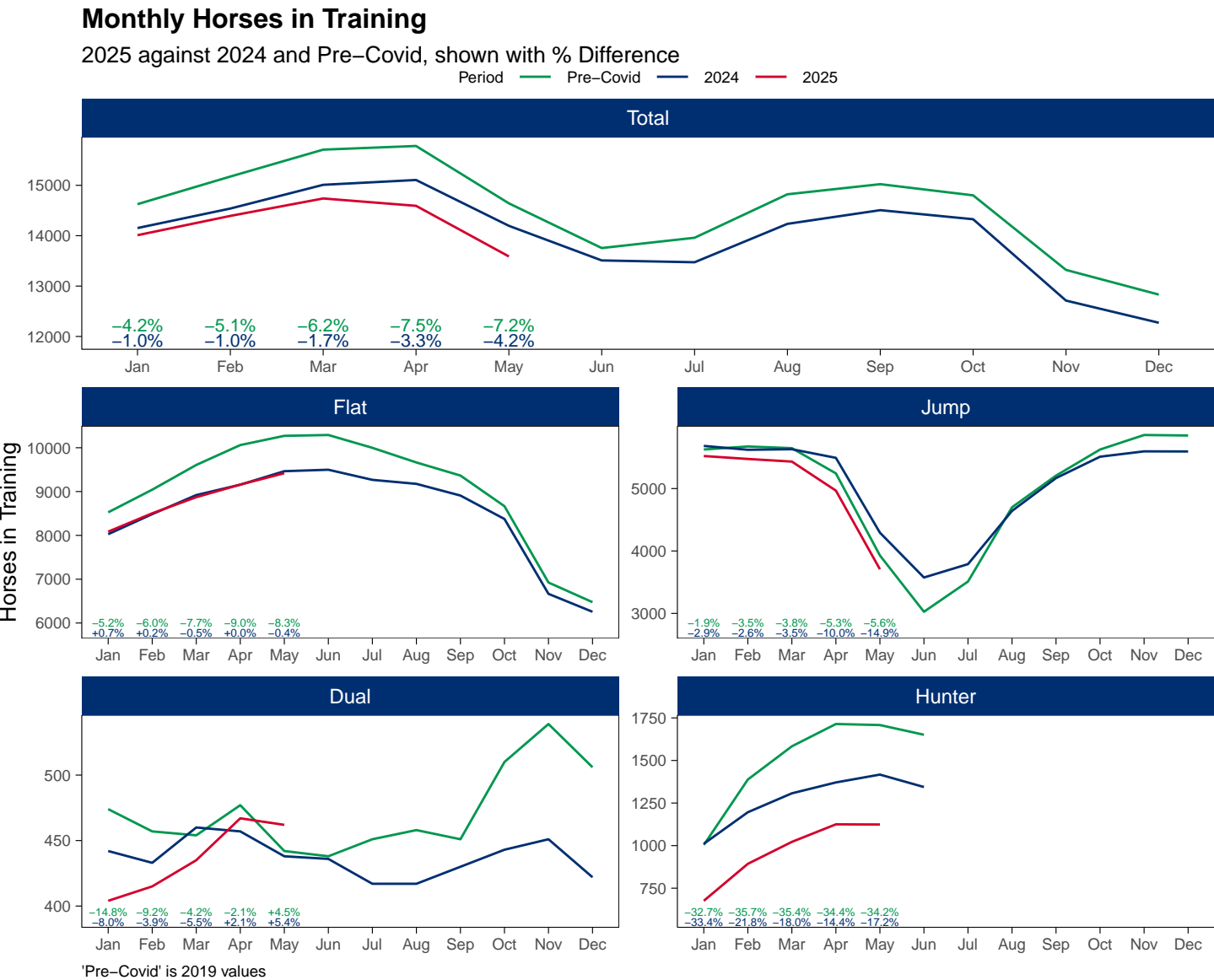
Hunter Chasers in Training in May, shown by Age



2025 Horses in Training versus Previous Years

Type	Period	Jan	Feb	Mar	Apr	May	Jun	Jul	Aug	Sep	Oct	Nov	Dec
Flat	2025	8085	8504	8872	9159	9419							
	2024	8027	8485	8920	9157	9465	9498	9267	9176	8909	8374	6665	6256
	Pre-Covid	8526	9043	9607	10061	10272	10291	9998	9664	9365	8666	6924	6475
Jump	2025	5521	5474	5432	4967	3707							
	2024	5683	5621	5630	5492	4293	3575	3789	4642	5168	5510	5596	5594
	Pre-Covid	5626	5674	5647	5243	3928	3026	3510	4700	5207	5625	5858	5850
Dual	2025	404	415	435	467	462							
	2024	442	433	460	457	438	436	417	417	430	443	451	422
	Pre-Covid	474	457	454	477	442	438	451	458	451	510	539	506
Hunter	2025	676	893	1022	1125	1124							
	2024	1011	1196	1307	1371	1417	1344						
	Pre-Covid	1004	1388	1583	1714	1708	1651						
Total	2025	14010	14393	14739	14593	13588							
	2024	14152	14539	15010	15106	14196	13509	13473	14235	14507	14327	12712	12272
	Pre-Covid	14626	15174	15708	15781	14642	13755	13959	14822	15023	14801	13321	12831

'Pre-Covid' is 2019 values



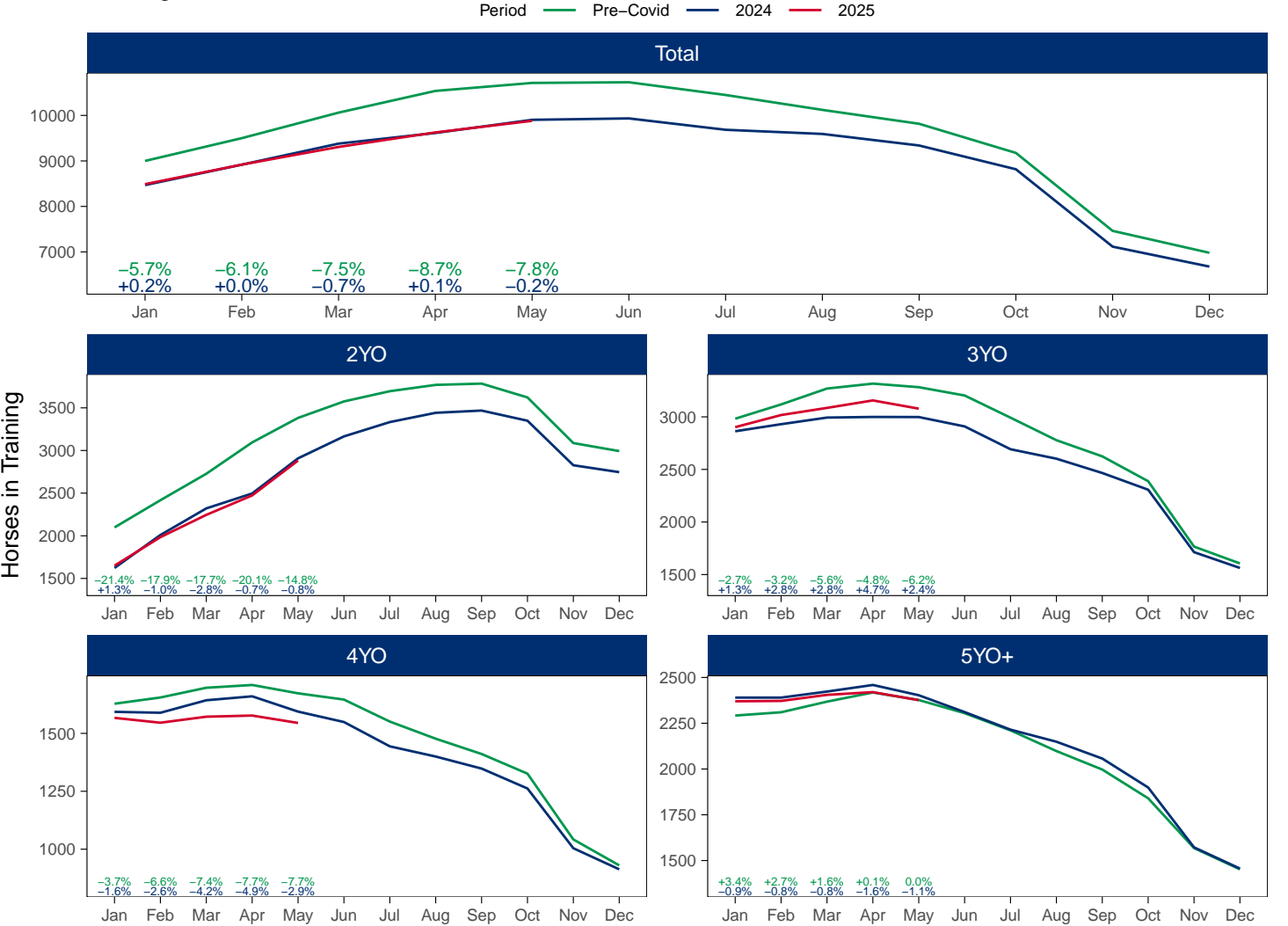
Flat (including Dual)

AgeCat	Period	Jan	Feb	Mar	Apr	May	Jun	Jul	Aug	Sep	Oct	Nov	Dec
2YO	2025	1650	1984	2245	2473	2882							
	2024	1623	2009	2321	2496	2908	3165	3333	3442	3468	3349	2827	2746
	Pre-Covid	2098	2417	2727	3095	3382	3575	3695	3769	3784	3622	3087	2993
3YO	2025	2902	3017	3085	3156	3078							
	2024	2863	2930	2993	2999	2998	2909	2692	2602	2466	2307	1713	1563
	Pre-Covid	2982	3118	3269	3316	3282	3203	2992	2778	2624	2388	1766	1606
4YO	2025	1567	1546	1572	1577	1545							
	2024	1593	1589	1643	1660	1594	1549	1444	1400	1348	1262	1004	913
	Pre-Covid	1628	1655	1697	1709	1673	1646	1551	1477	1411	1326	1042	930
5YO+	2025	2370	2372	2405	2420	2376							
	2024	2390	2390	2423	2459	2403	2311	2215	2149	2057	1899	1572	1456
	Pre-Covid	2292	2310	2368	2418	2377	2305	2211	2098	1997	1840	1568	1452
Total	2025	8489	8919	9307	9626	9881							
	2024	8469	8918	9380	9614	9903	9934	9684	9593	9339	8817	7116	6678
	Pre-Covid	9000	9500	10061	10538	10714	10729	10449	10122	9816	9176	7463	6981

'Pre-Covid' is 2019 values

Monthly Flat Horses in Training

2025 against 2024 and Pre-Covid, shown with % Difference



'Pre-Covid' is 2019 values

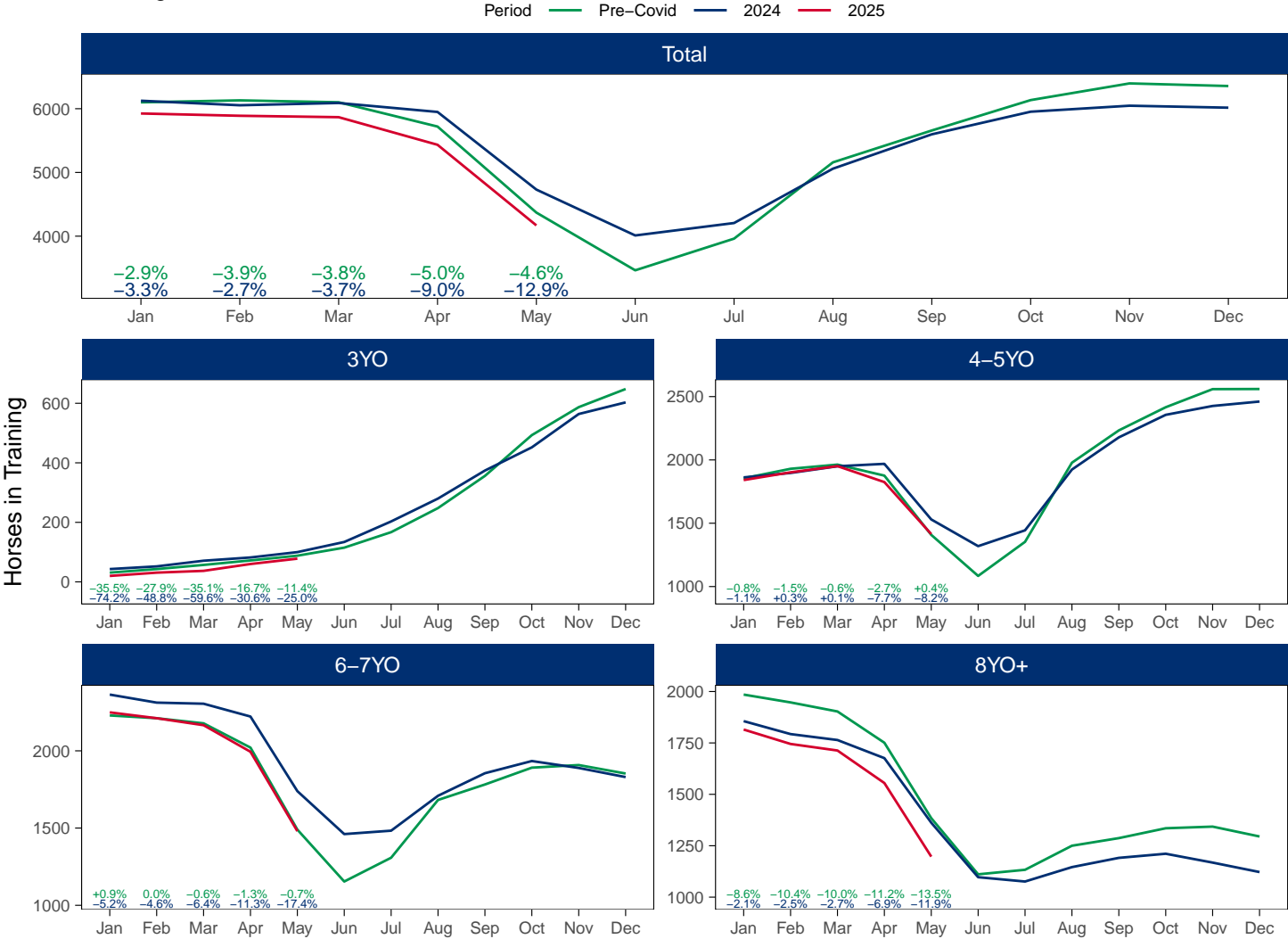
Jump (including Dual)

AgeCat	Period	Jan	Feb	Mar	Apr	May	Jun	Jul	Aug	Sep	Oct	Nov	Dec
3YO	2025	20	31	37	60	78							
	2024	43	52	71	82	100	134	203	280	374	452	564	603
	Pre-Covid	31	43	57	72	88	115	167	248	356	493	587	648
4-5YO	2025	1841	1902	1951	1825	1414							
	2024	1862	1897	1950	1969	1530	1319	1444	1924	2178	2356	2426	2461
	Pre-Covid	1855	1930	1963	1876	1408	1084	1353	1978	2233	2416	2559	2560
6-7YO	2025	2249	2211	2166	1994	1480							
	2024	2364	2312	2305	2222	1739	1461	1483	1709	1855	1934	1889	1830
	Pre-Covid	2229	2211	2178	2021	1490	1154	1308	1682	1782	1891	1908	1853
8YO+	2025	1815	1745	1713	1555	1197							
	2024	1856	1793	1764	1676	1362	1097	1076	1146	1191	1211	1168	1122
	Pre-Covid	1985	1947	1903	1751	1384	1111	1133	1250	1287	1335	1343	1295
Total	2025	5925	5889	5867	5434	4169							
	2024	6125	6054	6090	5949	4731	4011	4206	5059	5598	5953	6047	6016
	Pre-Covid	6100	6131	6101	5720	4370	3464	3961	5158	5658	6135	6397	6356

'Pre-Covid' is 2019 values

Monthly Jump Horses in Training

2025 against 2024 and Pre-Covid, shown with % Difference



'Pre-Covid' is 2019 values

Hunter Chasers

AgeCat	Period	Jan	Feb	Mar	Apr	May	Jun	Jul	Aug	Sep	Oct	Nov	Dec
4-5YO	2025	94	150	200	243	242							
	2024	121	177	228	266	282	262						
	Pre-Covid	92	170	213	267	268	263						
6-7YO	2025	209	262	290	307	310							
	2024	260	299	328	342	350	327						
	Pre-Covid	296	402	451	471	472	462						
8-9YO	2025	145	194	214	238	234							
	2024	229	267	285	290	302	288						
	Pre-Covid	244	329	369	392	389	369						
10YO+	2025	228	287	318	337	338							
	2024	401	453	466	473	483	467						
	Pre-Covid	372	487	550	584	579	557						
Total	2025	676	893	1022	1125	1124							
	2024	1011	1196	1307	1371	1417	1344						
	Pre-Covid	1004	1388	1583	1714	1708	1651						

'Pre-Covid' is 2019 values

Monthly Hunter Chasers in Training

2025 against 2024 and Pre-Covid, shown with % Difference



'Pre-Covid' is 2019 values

May 2025 Horses in Training by Rating Band Snapshot versus Previous Years

Flat (including Dual)

AgeCat	RatBand	2016	2017	2018	2019	2020	2021	2022	2023	2024	2025
2YO	Unrated	3,330 (100.0%)	3,407 (100.0%)	3,347 (100.0%)	3,382 (100.0%)	2,857 (100.0%)	3,146 (100.0%)	3,198 (100.0%)	2,995 (100.0%)	2,908 (100.0%)	2,882 (100.0%)
	Subtotal	3,330 (100.0%)	3,407 (100.0%)	3,347 (100.0%)	3,382 (100.0%)	2,857 (100.0%)	3,146 (100.0%)	3,198 (100.0%)	2,995 (100.0%)	2,908 (100.0%)	2,882 (100.0%)
3YO	Unrated	1,253 (39.9%)	1,234 (38.6%)	1,514 (45.0%)	1,364 (41.6%)	1,929 (59.3%)	1,393 (43.4%)	1,341 (41.6%)	1,350 (42.7%)	1,229 (41.0%)	1,256 (40.8%)
	0-50	127 (4.0%)	146 (4.6%)	131 (3.9%)	178 (5.4%)	108 (3.3%)	154 (4.8%)	161 (5.0%)	165 (5.2%)	147 (4.9%)	144 (4.7%)
	51-60	264 (8.4%)	305 (9.5%)	273 (8.1%)	355 (10.8%)	207 (6.4%)	317 (9.9%)	312 (9.7%)	291 (9.2%)	298 (9.9%)	297 (9.6%)
	61-70	481 (15.3%)	463 (14.5%)	461 (13.7%)	424 (12.9%)	314 (9.6%)	437 (13.6%)	448 (13.9%)	442 (14.0%)	422 (14.1%)	431 (14.0%)
	71-80	522 (16.6%)	520 (16.3%)	491 (14.6%)	462 (14.1%)	345 (10.6%)	461 (14.3%)	496 (15.4%)	446 (14.1%)	434 (14.5%)	464 (15.1%)
	81-90	281 (8.9%)	338 (10.6%)	290 (8.6%)	275 (8.4%)	193 (5.9%)	250 (7.8%)	256 (7.9%)	277 (8.8%)	270 (9.0%)	267 (8.7%)
	91-100	126 (4.0%)	107 (3.3%)	107 (3.2%)	135 (4.1%)	97 (3.0%)	115 (3.6%)	116 (3.6%)	111 (3.5%)	107 (3.6%)	132 (4.3%)
	101+	87 (2.8%)	84 (2.6%)	100 (3.0%)	89 (2.7%)	61 (1.9%)	86 (2.7%)	94 (2.9%)	80 (2.5%)	91 (3.0%)	87 (2.8%)
	Subtotal	3,141 (100.0%)	3,197 (100.0%)	3,367 (100.0%)	3,282 (100.0%)	3,254 (100.0%)	3,213 (100.0%)	3,224 (100.0%)	3,162 (100.0%)	2,998 (100.0%)	3,078 (100.0%)
4YO	Unrated	149 (10.2%)	188 (11.7%)	302 (17.8%)	226 (13.5%)	375 (25.4%)	286 (17.3%)	243 (14.7%)	236 (15.0%)	201 (12.6%)	210 (13.6%)
	0-50	113 (7.7%)	147 (9.1%)	172 (10.2%)	176 (10.5%)	145 (9.8%)	159 (9.6%)	175 (10.6%)	187 (11.9%)	159 (10.0%)	154 (10.0%)
	51-60	181 (12.3%)	202 (12.5%)	183 (10.8%)	241 (14.4%)	165 (11.2%)	227 (13.7%)	227 (13.7%)	214 (13.6%)	270 (16.9%)	221 (14.3%)
	61-70	266 (18.1%)	263 (16.3%)	282 (16.7%)	255 (15.2%)	210 (14.2%)	289 (17.4%)	277 (16.7%)	262 (16.7%)	272 (17.1%)	249 (16.1%)
	71-80	275 (18.8%)	325 (20.2%)	306 (18.1%)	307 (18.4%)	204 (13.8%)	283 (17.1%)	307 (18.6%)	285 (18.1%)	304 (19.1%)	250 (16.2%)
	81-90	248 (16.9%)	242 (15.0%)	218 (12.9%)	208 (12.4%)	175 (11.8%)	193 (11.6%)	211 (12.8%)	192 (12.2%)	189 (11.9%)	227 (14.7%)
	91-100	132 (9.0%)	128 (7.9%)	134 (7.9%)	152 (9.1%)	125 (8.5%)	141 (8.5%)	119 (7.2%)	95 (6.0%)	112 (7.0%)	118 (7.6%)
	101+	102 (7.0%)	117 (7.3%)	96 (5.7%)	108 (6.5%)	80 (5.4%)	79 (4.8%)	95 (5.7%)	100 (6.4%)	87 (5.5%)	116 (7.5%)
	Subtotal	1,466 (100.0%)	1,612 (100.0%)	1,693 (100.0%)	1,673 (100.0%)	1,479 (100.0%)	1,657 (100.0%)	1,654 (100.0%)	1,571 (100.0%)	1,594 (100.0%)	1,545 (100.0%)
5YO+	Unrated	222 (9.5%)	260 (11.0%)	490 (18.9%)	273 (11.5%)	503 (23.3%)	314 (13.7%)	352 (15.6%)	280 (11.9%)	291 (12.1%)	258 (10.9%)
	0-50	192 (8.2%)	238 (10.1%)	283 (10.9%)	341 (14.3%)	227 (10.5%)	299 (13.0%)	291 (12.9%)	301 (12.7%)	309 (12.9%)	321 (13.5%)
	51-60	370 (15.8%)	341 (14.5%)	376 (14.5%)	380 (16.0%)	278 (12.9%)	394 (17.2%)	349 (15.5%)	403 (17.1%)	445 (18.5%)	435 (18.3%)
	61-70	439 (18.7%)	424 (18.0%)	397 (15.3%)	407 (17.1%)	334 (15.4%)	392 (17.1%)	382 (16.9%)	440 (18.6%)	445 (18.5%)	422 (17.8%)
	71-80	405 (17.3%)	386 (16.4%)	369 (14.2%)	360 (15.1%)	307 (14.2%)	316 (13.8%)	309 (13.7%)	365 (15.5%)	358 (14.9%)	378 (15.9%)
	81-90	339 (14.5%)	309 (13.1%)	324 (12.5%)	277 (11.7%)	234 (10.8%)	245 (10.7%)	253 (11.2%)	258 (10.9%)	276 (11.5%)	287 (12.1%)
	91-100	206 (8.8%)	205 (8.7%)	189 (7.3%)	181 (7.6%)	144 (6.7%)	165 (7.2%)	170 (7.5%)	168 (7.1%)	152 (6.3%)	134 (5.6%)
	101+	169 (7.2%)	193 (8.2%)	168 (6.5%)	158 (6.6%)	135 (6.2%)	170 (7.4%)	152 (6.7%)	147 (6.2%)	127 (5.3%)	141 (5.9%)
	Subtotal	2,342 (100.0%)	2,356 (100.0%)	2,596 (100.0%)	2,377 (100.0%)	2,162 (100.0%)	2,295 (100.0%)	2,258 (100.0%)	2,362 (100.0%)	2,403 (100.0%)	2,376 (100.0%)
Overall	Unrated	4,954 (48.2%)	5,089 (48.1%)	5,653 (51.4%)	5,245 (49.0%)	5,664 (58.1%)	5,139 (49.8%)	5,134 (49.7%)	4,861 (48.2%)	4,629 (46.7%)	4,606 (46.6%)
	0-50	432 (4.2%)	531 (5.0%)	586 (5.3%)	695 (6.5%)	480 (4.9%)	612 (5.9%)	627 (6.1%)	653 (6.5%)	615 (6.2%)	619 (6.3%)
	51-60	815 (7.9%)	848 (8.0%)	832 (7.6%)	976 (9.1%)	650 (6.7%)	938 (9.1%)	888 (8.6%)	908 (9.0%)	1,013 (10.2%)	953 (9.6%)
	61-70	1,186 (11.5%)	1,150 (10.9%)	1,140 (10.4%)	1,086 (10.1%)	858 (8.8%)	1,118 (10.8%)	1,107 (10.7%)	1,144 (11.3%)	1,139 (11.5%)	1,102 (11.2%)
	71-80	1,202 (11.7%)	1,231 (11.6%)	1,166 (10.6%)	1,129 (10.5%)	856 (8.8%)	1,060 (10.3%)	1,112 (10.8%)	1,096 (10.9%)	1,096 (11.1%)	1,092 (11.1%)
	81-90	868 (8.4%)	889 (8.4%)	832 (7.6%)	760 (7.1%)	602 (6.2%)	688 (6.7%)	720 (7.0%)	727 (7.2%)	735 (7.4%)	781 (7.9%)
	91-100	464 (4.5%)	440 (4.2%)	430 (3.9%)	468 (4.4%)	366 (3.8%)	421 (4.1%)	405 (3.9%)	374 (3.7%)	371 (3.7%)	384 (3.9%)
Total		10,279 (100.0%)	10,572 (100.0%)	11,003 (100.0%)	10,714 (100.0%)	9,752 (100.0%)	10,311 (100.0%)	10,334 (100.0%)	10,090 (100.0%)	9,903 (100.0%)	9,881 (100.0%)

Where a horse has more than one published rating (published Flat Turf and published Flat AWT mark), the higher of the two is taken.

Jump (including Dual)

AgeCat	RatBand	2016	2017	2018	2019	2020	2021	2022	2023	2024	2025
3YO	Unrated	111 (100.0%)	102 (100.0%)	107 (100.0%)	88 (100.0%)	92 (100.0%)	108 (100.0%)	101 (100.0%)	135 (100.0%)	100 (100.0%)	78 (100.0%)
	Subtotal	111 (100.0%)	102 (100.0%)	107 (100.0%)	88 (100.0%)	92 (100.0%)	108 (100.0%)	101 (100.0%)	135 (100.0%)	100 (100.0%)	78 (100.0%)
4-5YO	Unrated	921 (68.4%)	870 (68.4%)	1,058 (68.6%)	967 (68.7%)	553 (70.4%)	1,002 (72.7%)	978 (70.0%)	1,155 (70.6%)	1,065 (69.6%)	939 (66.4%)
	0-100	156 (11.6%)	150 (11.8%)	159 (10.3%)	151 (10.7%)	102 (13.0%)	190 (13.8%)	241 (17.2%)	286 (17.5%)	282 (18.4%)	273 (19.3%)
	101-110	105 (7.8%)	78 (6.1%)	120 (7.8%)	96 (6.8%)	46 (5.9%)	67 (4.9%)	85 (6.1%)	100 (6.1%)	91 (5.9%)	92 (6.5%)
	111-120	82 (6.1%)	87 (6.8%)	105 (6.8%)	89 (6.3%)	44 (5.6%)	69 (5.0%)	62 (4.4%)	64 (3.9%)	56 (3.7%)	76 (5.4%)
	121-130	54 (4.0%)	52 (4.1%)	61 (4.0%)	69 (4.9%)	32 (4.1%)	36 (2.6%)	26 (1.9%)	25 (1.5%)	23 (1.5%)	24 (1.7%)
	131-140	21 (1.6%)	26 (2.0%)	26 (1.7%)	21 (1.5%)	7 (0.9%)	11 (0.8%)	5 (0.4%)	6 (0.4%)	9 (0.6%)	5 (0.4%)
	141-150	8 (0.6%)	7 (0.6%)	8 (0.5%)	12 (0.9%)	1 (0.1%)	3 (0.2%)	1 (0.1%)	1 (0.1%)	3 (0.2%)	3 (0.2%)
	151+	NA (-)	2 (0.2%)	5 (0.3%)	3 (0.2%)	NA (-)	1 (0.1%)	NA (-)	NA (-)	1 (0.1%)	2 (0.1%)
Subtotal		1,347 (100.0%)	1,272 (100.0%)	1,542 (100.0%)	1,408 (100.0%)	785 (100.0%)	1,379 (100.0%)	1,398 (100.0%)	1,637 (100.0%)	1,530 (100.0%)	1,414 (100.0%)
6-7YO	Unrated	333 (23.1%)	323 (24.7%)	441 (25.9%)	339 (22.8%)	296 (33.4%)	402 (24.3%)	413 (27.6%)	427 (25.3%)	443 (25.5%)	322 (21.8%)
	0-100	399 (27.7%)	351 (26.8%)	418 (24.5%)	399 (26.8%)	217 (24.5%)	538 (32.5%)	508 (34.0%)	604 (35.8%)	676 (38.9%)	559 (37.8%)
	101-110	242 (16.8%)	193 (14.7%)	242 (14.2%)	201 (13.5%)	129 (14.6%)	208 (12.6%)	224 (15.0%)	247 (14.6%)	277 (15.9%)	255 (17.2%)
	111-120	229 (15.9%)	192 (14.7%)	253 (14.9%)	228 (15.3%)	111 (12.5%)	213 (12.9%)	158 (10.6%)	220 (13.0%)	185 (10.6%)	196 (13.2%)
	121-130	139 (9.6%)	131 (10.0%)	201 (11.8%)	174 (11.7%)	74 (8.4%)	183 (11.0%)	114 (7.6%)	123 (7.3%)	101 (5.8%)	74 (5.0%)
	131-140	71 (4.9%)	87 (6.6%)	102 (6.0%)	111 (7.4%)	46 (5.2%)	87 (5.3%)	62 (4.1%)	49 (2.9%)	46 (2.6%)	60 (4.1%)
	141-150	22 (1.5%)	24 (1.8%)	34 (2.0%)	21 (1.4%)	8 (0.9%)	21 (1.3%)	14 (0.9%)	13 (0.8%)	8 (0.5%)	11 (0.7%)
	151+	6 (0.4%)	8 (0.6%)	12 (0.7%)	17 (1.1%)	4 (0.5%)	5 (0.3%)	3 (0.2%)	4 (0.2%)	3 (0.2%)	3 (0.2%)
Subtotal		1,441 (100.0%)	1,309 (100.0%)	1,703 (100.0%)	1,490 (100.0%)	885 (100.0%)	1,657 (100.0%)	1,496 (100.0%)	1,687 (100.0%)	1,739 (100.0%)	1,480 (100.0%)
8YO+	Unrated	121 (8.3%)	156 (11.3%)	217 (13.5%)	179 (12.9%)	202 (24.1%)	182 (11.3%)	239 (18.0%)	223 (16.2%)	231 (17.0%)	171 (14.3%)
	0-100	523 (36.0%)	508 (36.7%)	530 (33.0%)	463 (33.5%)	250 (29.9%)	574 (35.7%)	430 (32.4%)	437 (31.8%)	465 (34.1%)	449 (37.5%)
	101-110	254 (17.5%)	210 (15.2%)	256 (16.0%)	213 (15.4%)	100 (11.9%)	234 (14.6%)	176 (13.3%)	220 (16.0%)	199 (14.6%)	174 (14.5%)
	111-120	233 (16.0%)	194 (14.0%)	198 (12.3%)	214 (15.5%)	98 (11.7%)	231 (14.4%)	196 (14.8%)	190 (13.8%)	203 (14.9%)	175 (14.6%)
	121-130	174 (12.0%)	160 (11.6%)	207 (12.9%)	147 (10.6%)	90 (10.8%)	208 (12.9%)	141 (10.6%)	162 (11.8%)	162 (11.9%)	141 (11.8%)
	131-140	108 (7.4%)	106 (7.7%)	129 (8.0%)	106 (7.7%)	66 (7.9%)	127 (7.9%)	99 (7.5%)	98 (7.1%)	72 (5.3%)	53 (4.4%)
	141-150	27 (1.9%)	35 (2.5%)	55 (3.4%)	44 (3.2%)	21 (2.5%)	40 (2.5%)	36 (2.7%)	34 (2.5%)	21 (1.5%)	25 (2.1%)
	151+	12 (0.8%)	15 (1.1%)	13 (0.8%)	18 (1.3%)	10 (1.2%)	12 (0.7%)	11 (0.8%)	11 (0.8%)	9 (0.7%)	9 (0.8%)
Subtotal		1,452 (100.0%)	1,384 (100.0%)	1,605 (100.0%)	1,384 (100.0%)	837 (100.0%)	1,608 (100.0%)	1,328 (100.0%)	1,375 (100.0%)	1,362 (100.0%)	1,197 (100.0%)
Overall	Unrated	1,486 (34.2%)	1,451 (35.7%)	1,823 (36.8%)	1,573 (36.0%)	1,143 (44.0%)	1,694 (35.6%)	1,731 (40.0%)	1,940 (40.1%)	1,839 (38.9%)	1,510 (36.2%)
	0-100	1,078 (24.8%)	1,009 (24.8%)	1,107 (22.3%)	1,013 (23.2%)	569 (21.9%)	1,302 (27.4%)	1,179 (27.3%)	1,327 (27.5%)	1,423 (30.1%)	1,281 (30.7%)
	101-110	601 (13.8%)	481 (11.8%)	618 (12.5%)	510 (11.7%)	275 (10.6%)	509 (10.7%)	485 (11.2%)	567 (11.7%)	567 (12.0%)	521 (12.5%)
	111-120	544 (12.5%)	473 (11.6%)	556 (11.2%)	531 (12.2%)	253 (9.7%)	513 (10.8%)	416 (9.6%)	474 (9.8%)	444 (9.4%)	447 (10.7%)
	121-130	367 (8.4%)	343 (8.4%)	469 (9.5%)	390 (8.9%)	196 (7.5%)	427 (9.0%)	281 (6.5%)	310 (6.4%)	286 (6.0%)	239 (5.7%)
	131-140	200 (4.6%)	219 (5.4%)	257 (5.2%)	238 (5.4%)	119 (4.6%)	225 (4.7%)	166 (3.8%)	153 (3.2%)	127 (2.7%)	118 (2.8%)
Total		4,351 (100.0%)	4,067 (100.0%)	4,957 (100.0%)	4,370 (100.0%)	2,599 (100.0%)	4,752 (100.0%)	4,323 (100.0%)	4,834 (100.0%)	4,731 (100.0%)	4,169 (100.0%)

Where a horse has more than one published rating (published Hurdle and published Chase mark), the higher of the two is taken.

Young Horses Entering Training

Flat Yearlings in Training versus Previous Years

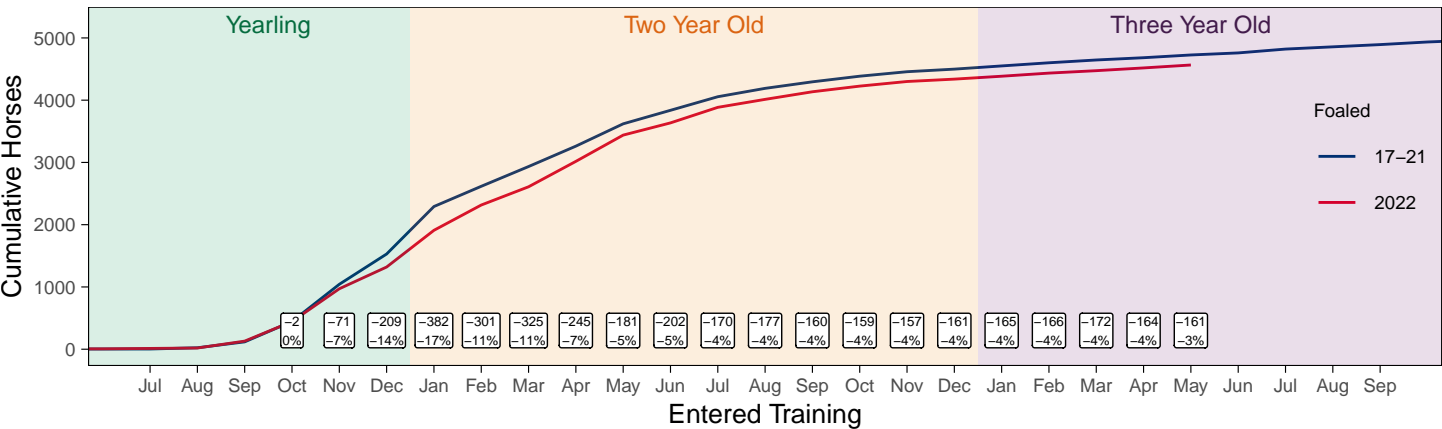
Period	Jan	Feb	Mar	Apr	May	Jun	Jul	Aug	Sep	Oct	Nov	Dec
2025	0	0	0	1	1							
2024	0	0	0	0	0	0	2	3	72	186	619	1067
5YrAvg	0	0	0	0	1	1	1	3	58	200	552	936

Foals Entering Training for the First Time

```
## Warning: A numeric 'legend.position' argument in 'theme()' was deprecated in
## ggplot2 3.5.0.
## i Please use the 'legend.position.inside' argument of 'theme()'
## instead.
## This warning is displayed once every 8 hours.
## Call 'lifecycle::last_lifecycle_warnings()' to see where this warning
## was generated.
```

2022 Foals Entering Training Over Time

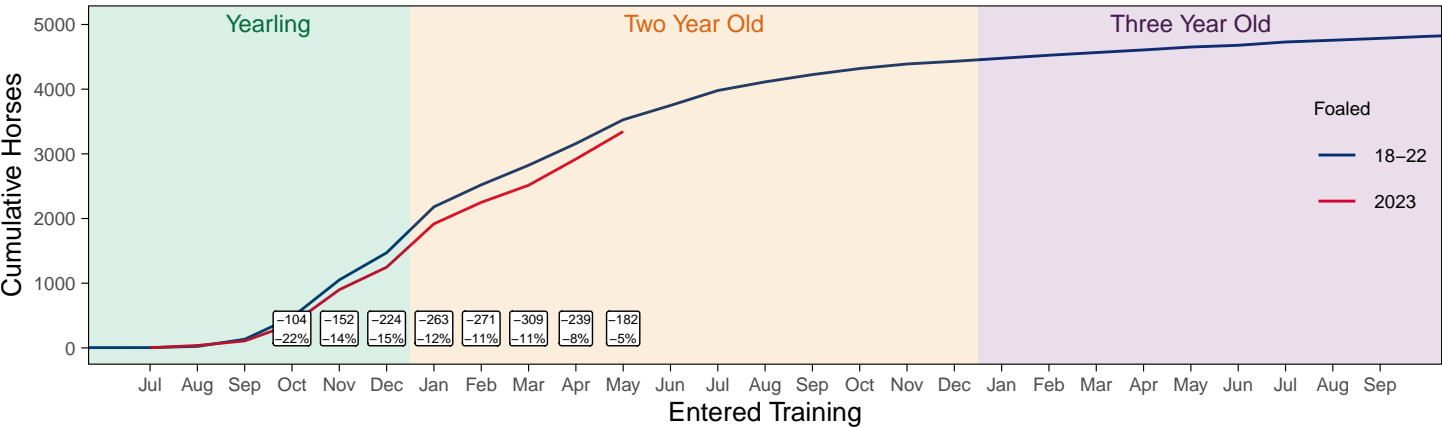
Cumulative Flat Horses foaled in 2022 shown by first in training notification against trend



Cumulative individual horses entering training for the first time by the end of each month.

2023 Foals Entering Training Over Time

Cumulative Flat Horses foaled in 2023 shown by first in training notification against trend



Cumulative individual horses entering training for the first time by the end of each month.

Year to Date Horses in Training

Type	2016	2017	2018	2019	2020	2021	2022	2023	2024	2025	vs. Last Year	vs. Pre-Covid
Flat	12019	12180	12100	12274	11828	11867	11782	11602	11487	11380	-107 / -0.9%	-894 / -7.3%
Jump	6825	6679	6445	7097	6733	7736	7226	7223	7102	6739	-363 / -5.1%	-358 / -5.0%
Dual	727	835	1263	776	783	779	773	666	708	745	+37 / +5.2%	-31 / -4.0%
Hunter	1991	1960	1793	1725	1473	1196	1312	1264	1414	1116	-298 / -21.1%	-609 / -35.3%
Total	19571	19694	19808	20147	19344	20382	19781	19491	19297	18864	-433 / -2.2%	-1283 / -6.4%

'vs. Pre-Covid' is comparison between 2025 and 2019

Flat

AgeCat	2016	2017	2018	2019	2020	2021	2022	2023	2024	2025	vs. Last Year	vs. Pre-Covid
2YO	3927	3900	3826	3866	3380	3581	3569	3491	3384	3304	-80 / -2.4%	-562 / -14.5%
3YO	3752	3817	3948	3884	3931	3791	3767	3667	3573	3662	+89 / +2.5%	-222 / -5.7%
4YO	1811	1889	1827	1944	1893	1972	1964	1886	1901	1814	-87 / -4.6%	-130 / -6.7%
5YO+	2529	2574	2499	2580	2624	2523	2482	2558	2629	2600	-29 / -1.1%	+20 / +0.8%
Total	12019	12180	12100	12274	11828	11867	11782	11602	11487	11380	-107 / -0.9%	-894 / -7.3%

'vs. Pre-Covid' is comparison between 2025 and 2019

Jump

AgeCat	2016	2017	2018	2019	2020	2021	2022	2023	2024	2025	vs. Last Year	vs. Pre-Covid
3YO	91	56	67	68	47	87	89	96	106	71	-35 / -33.0%	+3 / +4.4%
4-5YO	2147	2132	1932	2229	2115	2228	2303	2408	2305	2183	-122 / -5.3%	-46 / -2.1%
6-7YO	2316	2216	2270	2498	2417	2788	2551	2549	2592	2443	-149 / -5.7%	-55 / -2.2%
8YO+	2271	2275	2176	2302	2154	2633	2283	2170	2099	2042	-57 / -2.7%	-260 / -11.3%
Total	6825	6679	6445	7097	6733	7736	7226	7223	7102	6739	-363 / -5.1%	-358 / -5.0%

'vs. Pre-Covid' is comparison between 2025 and 2019

Dual

AgeCat	2016	2017	2018	2019	2020	2021	2022	2023	2024	2025	vs. Last Year	vs. Pre-Covid
3YO	89	107	91	71	92	98	131	91	98	100	+2 / +2.0%	+29 / +40.8%
4YO	169	217	323	213	201	232	198	186	195	201	+6 / +3.1%	-12 / -5.6%
5YO+	469	511	849	492	490	449	444	389	415	444	+29 / +7.0%	-48 / -9.8%
Total	727	835	1263	776	783	779	773	666	708	745	+37 / +5.2%	-31 / -4.0%

'vs. Pre-Covid' is comparison between 2025 and 2019

Hunter Chasers

AgeCat	2016	2017	2018	2019	2020	2021	2022	2023	2024	2025	vs. Last Year	vs. Pre-Covid
4-5YO	212	225	244	281	271	145	242	261	288	236	-52 / -18.1%	-45 / -16.0%
6-7YO	545	519	501	481	391	265	318	318	341	307	-34 / -10.0%	-174 / -36.2%
8-9YO	531	537	419	384	313	290	318	284	301	232	-69 / -22.9%	-152 / -39.6%
10YO+	703	679	629	579	498	496	434	401	484	341	-143 / -29.5%	-238 / -41.1%
Total	1991	1960	1793	1725	1473	1196	1312	1264	1414	1116	-298 / -21.1%	-609 / -35.3%

'vs. Pre-Covid' is comparison between 2025 and 2019

Year to Date Runners

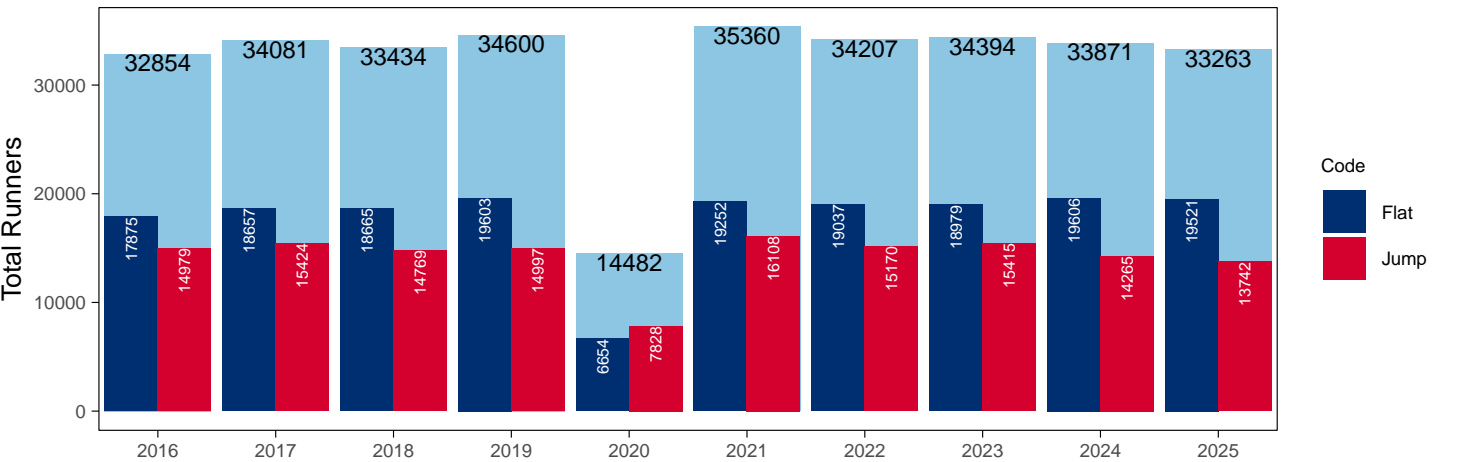
Year to Date Total Runners

Code	2016	2017	2018	2019	2020	2021	2022	2023	2024	2025	vs. Last Year	vs. Pre-Covid
Flat	17875	18657	18665	19603	6654	19252	19037	18979	19606	19521	-85 / -0.4%	-82 / -0.4%
Jump	14979	15424	14769	14997	7828	16108	15170	15415	14265	13742	-523 / -3.7%	-1255 / -8.4%
Total	32854	34081	33434	34600	14482	35360	34207	34394	33871	33263	-608 / -1.8%	-1337 / -3.9%

'vs. Pre-Covid' is comparison between 2025 and 2019

YTD Total Runners

Total Runners in GB Races, shown by Code and Total



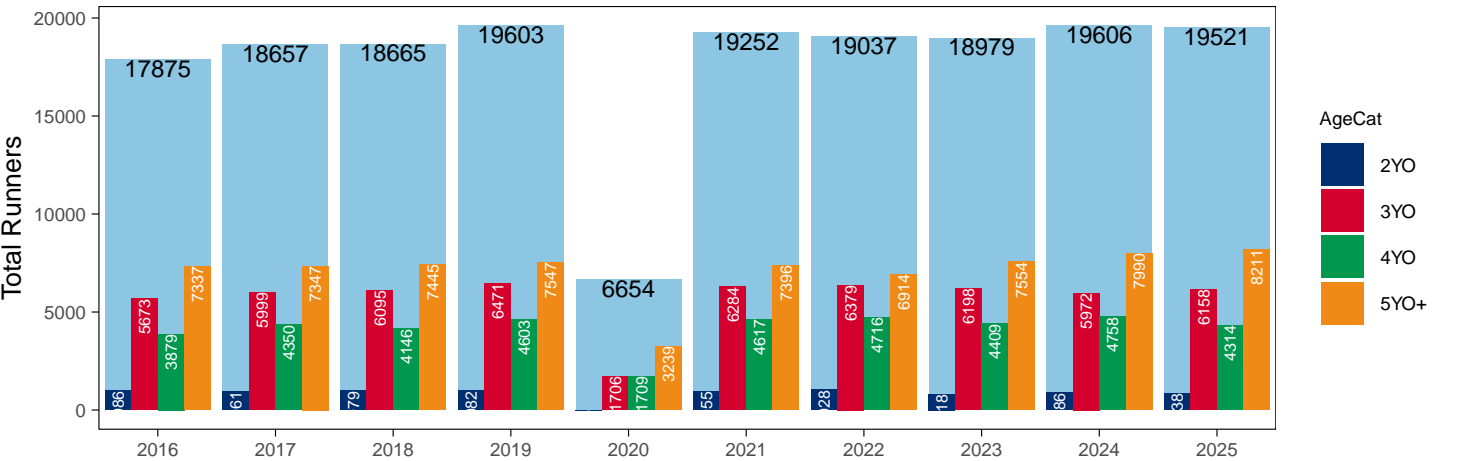
Flat

AgeCat	2016	2017	2018	2019	2020	2021	2022	2023	2024	2025	vs. Last Year	vs. Pre-Covid
2YO	986	961	979	982		955	1028	818	886	838	-48 / -5.4%	-144 / -14.7%
3YO	5673	5999	6095	6471	1706	6284	6379	6198	5972	6158	+186 / +3.1%	-313 / -4.8%
4YO	3879	4350	4146	4603	1709	4617	4716	4409	4758	4314	-444 / -9.3%	-289 / -6.3%
5YO+	7337	7347	7445	7547	3239	7396	6914	7554	7990	8211	+221 / +2.8%	+664 / +8.8%
Total	17875	18657	18665	19603	6654	19252	19037	18979	19606	19521	-85 / -0.4%	-82 / -0.4%

'vs. Pre-Covid' is comparison between 2025 and 2019

YTD Total Flat Runners by Age

Total Runners in GB Flat Races, shown by Age Category and Total

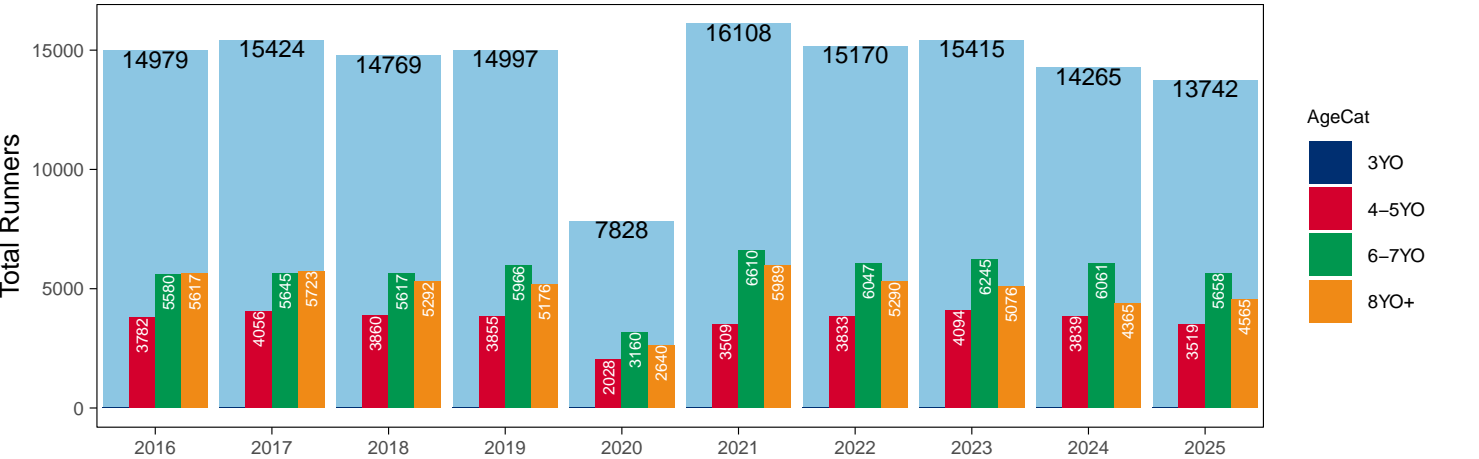


AgeCat	2016	2017	2018	2019	2020	2021	2022	2023	2024	2025	vs. Last Year	vs. Pre-Covid
3YO											NA / NA	0 / NA
4-5YO	3782	4056	3860	3855	2028	3509	3833	4094	3839	3519	-320 / -8.3%	-336 / -8.7%
6-7YO	5580	5645	5617	5966	3160	6610	6047	6245	6061	5658	-403 / -6.6%	-308 / -5.2%
8YO+	5617	5723	5292	5176	2640	5989	5290	5076	4365	4565	+200 / +4.6%	-611 / -11.8%
Total	14979	15424	14769	14997	7828	16108	15170	15415	14265	13742	-523 / -3.7%	-1255 / -8.4%

'vs. Pre-Covid' is comparison between 2025 and 2019

YTD Total Jump Runners by Age

Total Runners in GB Jump Races, shown by Age Category and Total



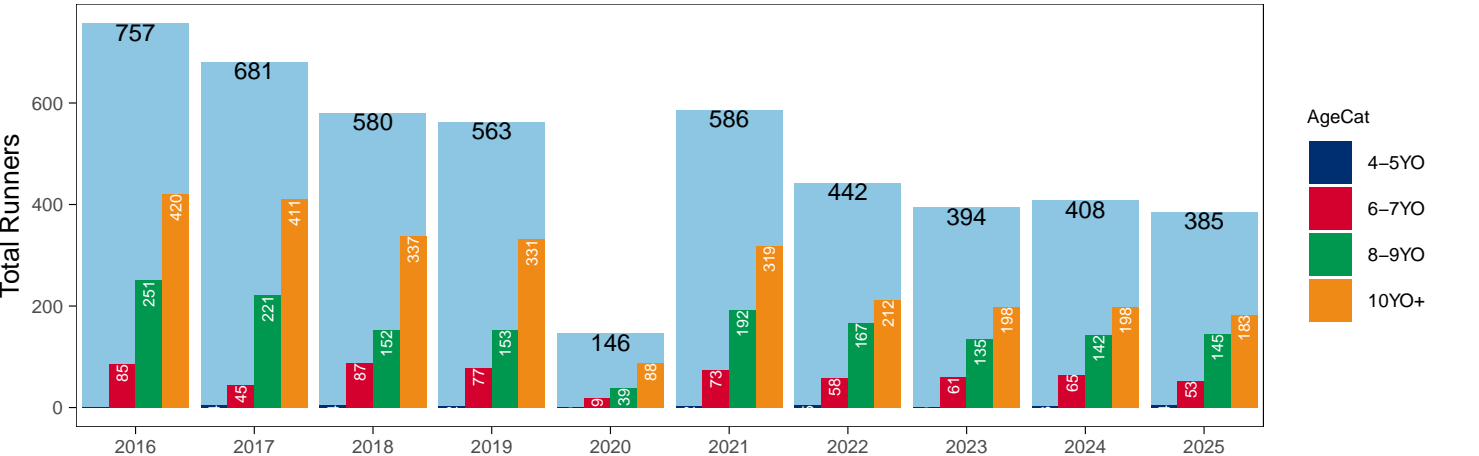
Hunter Chases

AgeCat	2016	2017	2018	2019	2020	2021	2022	2023	2024	2025	vs. Last Year	vs. Pre-Covid
4-5YO	1	4	4	2		2	5		3	4	+1 / +33.3%	+2 / +100.0%
6-7YO	85	45	87	77	19	73	58	61	65	53	-12 / -18.5%	-24 / -31.2%
8-9YO	251	221	152	153	39	192	167	135	142	145	+3 / +2.1%	-8 / -5.2%
10YO+	420	411	337	331	88	319	212	198	198	183	-15 / -7.6%	-148 / -44.7%
Total	757	681	580	563	146	586	442	394	408	385	-23 / -5.6%	-178 / -31.6%

'vs. Pre-Covid' is comparison between 2025 and 2019

YTD Total Hunter Chase Runners by Age

Total Runners in GB Hunter Chases shown by Age Category and Total



Year to Date Total Runners by Country Trained

Code	Country	2016	2017	2018	2019	2020	2021	2022	2023	2024	2025
Flat	GB	17718	18450	18465	19398	6574	19199	18963	18873	19439	19397
	IRE	145	189	187	189	76	49	63	101	152	116
	Other	12	18	13	16	4	4	11	5	15	8
Jump	GB	14468	14962	14411	14549	7561	15805	14656	14829	13732	13140
	IRE	505	450	349	441	257	300	512	583	530	596
	Other	6	12	9	7	10	3	2	3	3	6
Overall	GB	32186	33412	32876	33947	14135	35004	33619	33702	33171	32537
	IRE	650	639	536	630	333	349	575	684	682	712
	Other	18	30	22	23	14	7	13	8	18	14

Year to Date GB Trained Runners Racing Abroad

Code	Country	2016	2017	2018	2019	2020	2021	2022	2023	2024	2025
Flat	IRE	21	33	29	30	2	6	11	16	14	26
	FR	58	86	74	138	27	34	52	62	66	114
	GNV	4	4	8	12			3	7	13	5
	UAE	208	278	276	303	281	248	276	272	214	228
	BAH							41	23	50	89
	KSA					15	21	22	15	11	10
	Other	43	45	45	38	26	7	18	41	40	37
	Total	334	446	432	521	351	316	423	436	408	509
Jump	IRE	73	66	44	57	5	19	25	17	43	82
	FR	29	17	7	15	3	59	55	44	25	18
	Other	1	2	1	1			5		1	
	Total	103	85	52	73	8	78	85	61	69	100

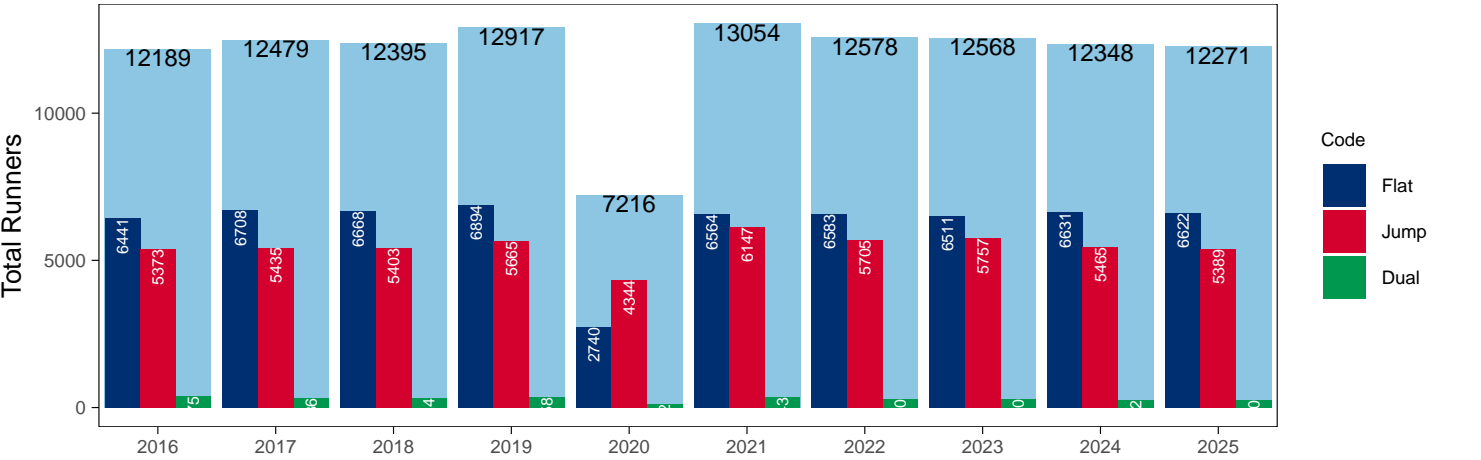
Year to Date Individual Runners

Code	2016	2017	2018	2019	2020	2021	2022	2023	2024	2025	vs. Last Year	vs. Pre-Covid
Flat	6441	6708	6668	6894	2740	6564	6583	6511	6631	6622	-9 / -0.1%	-272 / -3.9%
Jump	5373	5435	5403	5665	4344	6147	5705	5757	5465	5389	-76 / -1.4%	-276 / -4.9%
Dual	375	336	324	358	132	343	290	300	252	260	+8 / +3.2%	-98 / -27.4%
Overall	12189	12479	12395	12917	7216	13054	12578	12568	12348	12271	-77 / -0.6%	-646 / -5.0%

'vs. Pre-Covid' is comparison between 2025 and 2019

YTD Individual Runners

Individual Runners in GB Races, shown by Code and Total



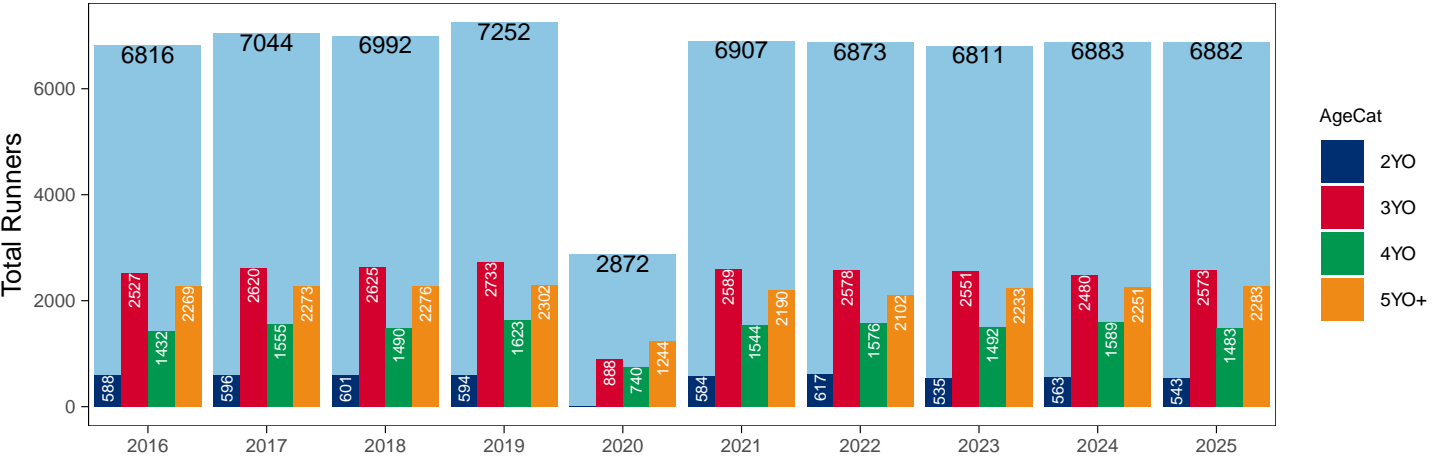
Flat

AgeCat	2016	2017	2018	2019	2020	2021	2022	2023	2024	2025	vs. Last Year	vs. Pre-Covid
2YO	588	596	601	594		584	617	535	563	543	-20 / -3.6%	-51 / -8.6%
3YO	2527	2620	2625	2733	888	2589	2578	2551	2480	2573	+93 / +3.8%	-160 / -5.9%
4YO	1432	1555	1490	1623	740	1544	1576	1492	1589	1483	-106 / -6.7%	-140 / -8.6%
5YO+	2269	2273	2276	2302	1244	2190	2102	2233	2251	2283	+32 / +1.4%	-19 / -0.8%
Total	6816	7044	6992	7252	2872	6907	6873	6811	6883	6882	-1 / 0.0%	-370 / -5.1%

'vs. Pre-Covid' is comparison between 2025 and 2019

YTD Individual Flat Runners by Age

Individual Runners in GB Flat Races, shown by Age Category and Total



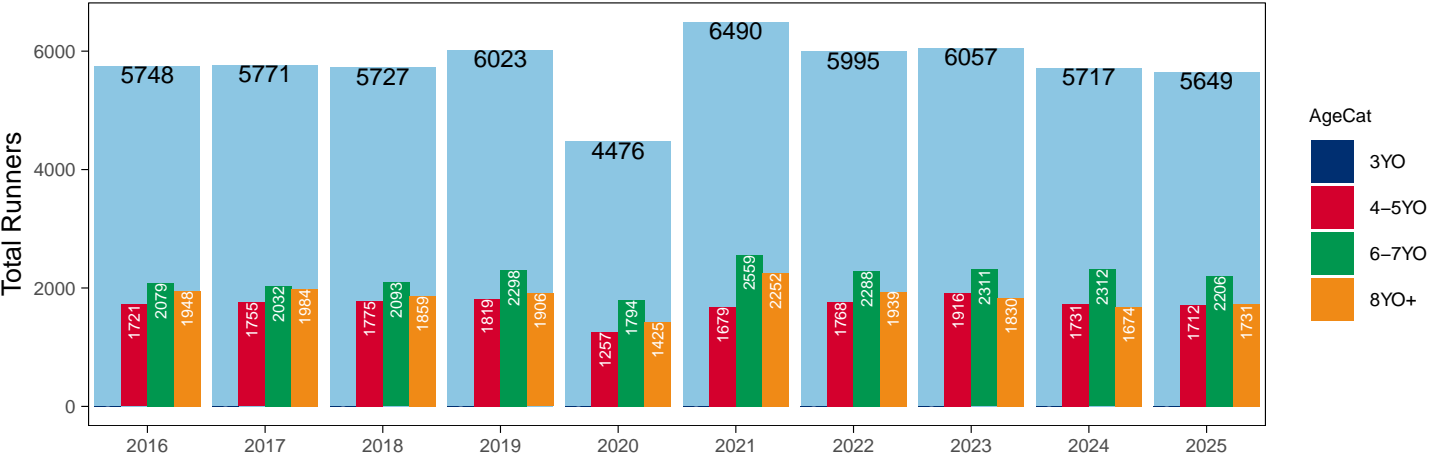
Jump

AgeCat	2016	2017	2018	2019	2020	2021	2022	2023	2024	2025	vs. Last Year	vs. Pre-Covid
3YO											NA / NA	0 / NA
4-5YO	1721	1755	1775	1819	1257	1679	1768	1916	1731	1712	-19 / -1.1%	-107 / -5.9%
6-7YO	2079	2032	2093	2298	1794	2559	2288	2311	2312	2206	-106 / -4.6%	-92 / -4.0%
8YO+	1948	1984	1859	1906	1425	2252	1939	1830	1674	1731	+57 / +3.4%	-175 / -9.2%
Total	5748	5771	5727	6023	4476	6490	5995	6057	5717	5649	-68 / -1.2%	-374 / -6.2%

'vs. Pre-Covid' is comparison between 2025 and 2019

YTD Individual Jump Runners by Age

Individual Runners in GB Jump Races, shown by Age Category and Total



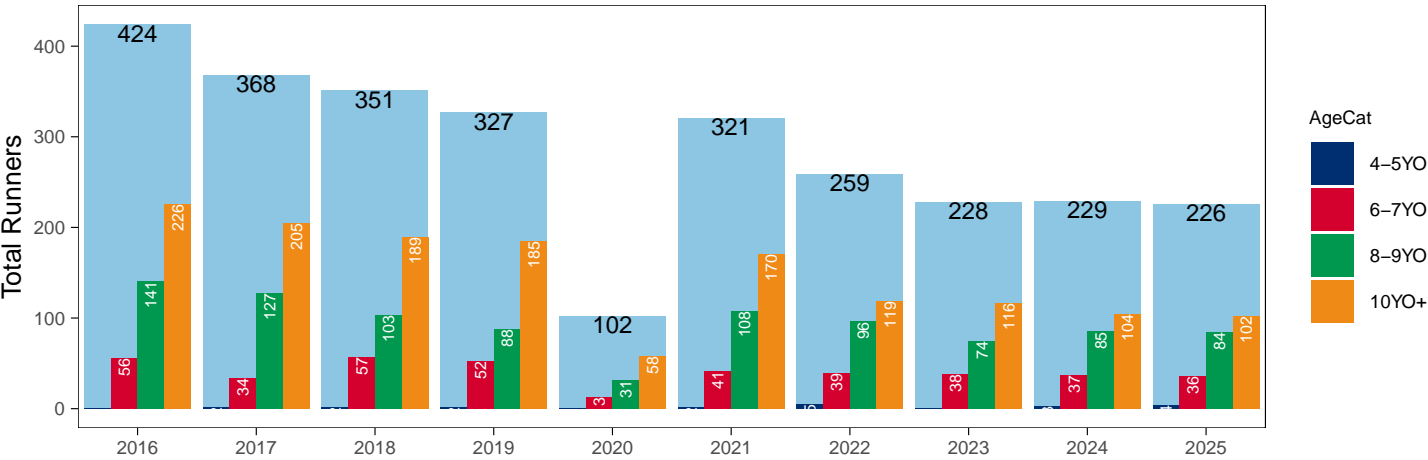
Hunter Chases

AgeCat	2016	2017	2018	2019	2020	2021	2022	2023	2024	2025	vs. Last Year	vs. Pre-Covid
4-5YO	1	2	2	2		2	5		3	4	+1 / +33.3%	+2 / +100.0%
6-7YO	56	34	57	52	13	41	39	38	37	36	-1 / -2.7%	-16 / -30.8%
8-9YO	141	127	103	88	31	108	96	74	85	84	-1 / -1.2%	-4 / -4.5%
10YO+	226	205	189	185	58	170	119	116	104	102	-2 / -1.9%	-83 / -44.9%
Total	424	368	351	327	102	321	259	228	229	226	-3 / -1.3%	-101 / -30.9%

'vs. Pre-Covid' is comparison between 2025 and 2019

YTD Individual Hunter Chase Runners by Age

Individual Runners in GB Hunter Chases shown by Age Category and Total



Year to Date Individual Runners by Country Trained

Code	Country	2016	2017	2018	2019	2020	2021	2022	2023	2024	2025
Flat	GB	6327	6568	6520	6732	2678	6515	6519	6423	6511	6524
	IRE	112	127	143	149	61	45	56	87	108	92
	Other	8	16	11	14	4	4	10	5	15	8
Jump	GB	5043	5105	5124	5326	4104	5888	5301	5319	5070	4934
	IRE	327	326	275	338	232	256	408	440	398	458
	Other	6	8	8	6	10	3	2	2	2	5
Dual	GB	371	332	320	353	130	342	288	295	249	256
	IRE	2	2	3	5	2	1	1	4	2	3
	Other		2								
Overall	GB	11741	12005	11964	12411	6912	12745	12108	12037	11830	11714
	IRE	441	455	421	492	295	302	465	531	508	553
	Other	14	26	19	20	14	7	12	7	17	13

Individual horses may appear under multiple countries.

Year to Date Total Runners by Rating Band

Flat

RatBand	2016	2017	2018	2019	2020	2021	2022	2023	2024	2025
3YO										
Unrated	1,846 (32.5%)	2,065 (34.4%)	2,228 (36.6%)	2,358 (36.4%)	768 (45.0%)	2,334 (37.1%)	2,269 (35.6%)	2,175 (35.1%)	2,138 (35.8%)	2,231 (36.2%)
0-50	322 (5.7%)	305 (5.1%)	272 (4.5%)	401 (6.2%)	154 (9.0%)	385 (6.1%)	402 (6.3%)	393 (6.3%)	399 (6.7%)	364 (5.9%)
51-60	662 (11.7%)	762 (12.7%)	631 (10.4%)	943 (14.6%)	245 (14.4%)	860 (13.7%)	879 (13.8%)	893 (14.4%)	863 (14.5%)	802 (13.0%)
61-70	1,111 (19.6%)	1,091 (18.2%)	1,099 (18.0%)	1,016 (15.7%)	290 (17.0%)	1,107 (17.6%)	1,130 (17.7%)	1,133 (18.3%)	1,029 (17.2%)	1,073 (17.4%)
71-80	975 (17.2%)	973 (16.2%)	1,029 (16.9%)	929 (14.4%)	192 (11.3%)	860 (13.7%)	986 (15.5%)	912 (14.7%)	836 (14.0%)	975 (15.8%)
81-90	450 (7.9%)	521 (8.7%)	501 (8.2%)	468 (7.2%)	44 (2.6%)	414 (6.6%)	440 (6.9%)	422 (6.8%)	438 (7.3%)	449 (7.3%)
91-100	178 (3.1%)	154 (2.6%)	192 (3.2%)	222 (3.4%)	10 (0.6%)	199 (3.2%)	166 (2.6%)	156 (2.5%)	157 (2.6%)	160 (2.6%)
101+	129 (2.3%)	128 (2.1%)	143 (2.3%)	134 (2.1%)	3 (0.2%)	125 (2.0%)	107 (1.7%)	114 (1.8%)	112 (1.9%)	104 (1.7%)
4YO+										
Unrated	343 (3.1%)	298 (2.5%)	375 (3.2%)	410 (3.4%)	183 (3.7%)	399 (3.3%)	352 (3.0%)	317 (2.6%)	345 (2.7%)	350 (2.8%)
0-50	1,185 (10.6%)	1,368 (11.7%)	1,629 (14.1%)	1,854 (15.3%)	973 (19.7%)	1,824 (15.2%)	1,878 (16.1%)	2,005 (16.8%)	2,035 (16.0%)	2,192 (17.5%)
51-60	2,190 (19.5%)	2,246 (19.2%)	2,287 (19.7%)	2,372 (19.5%)	1,209 (24.4%)	2,461 (20.5%)	2,405 (20.7%)	2,699 (22.6%)	3,041 (23.9%)	2,819 (22.5%)
61-70	2,629 (23.4%)	2,557 (21.9%)	2,395 (20.7%)	2,633 (21.7%)	1,127 (22.8%)	2,774 (23.1%)	2,583 (22.2%)	2,549 (21.3%)	2,842 (22.3%)	2,739 (21.9%)
71-80	2,142 (19.1%)	2,393 (20.5%)	2,110 (18.2%)	2,180 (17.9%)	785 (15.9%)	2,138 (17.8%)	2,022 (17.4%)	2,194 (18.3%)	2,185 (17.1%)	2,151 (17.2%)
81-90	1,550 (13.8%)	1,547 (13.2%)	1,539 (13.3%)	1,395 (11.5%)	433 (8.8%)	1,310 (10.9%)	1,396 (12.0%)	1,241 (10.4%)	1,390 (10.9%)	1,406 (11.2%)
91-100	695 (6.2%)	788 (6.7%)	803 (6.9%)	856 (7.0%)	172 (3.5%)	703 (5.9%)	587 (5.0%)	580 (4.8%)	569 (4.5%)	514 (4.1%)
101+	482 (4.3%)	500 (4.3%)	453 (3.9%)	450 (3.7%)	66 (1.3%)	404 (3.4%)	407 (3.5%)	378 (3.2%)	341 (2.7%)	354 (2.8%)

Jump

RatBand	2016	2017	2018	2019	2020	2021	2022	2023	2024	2025
Hurdle										
Unrated	2,322 (26.3%)	2,378 (26.4%)	2,342 (27.0%)	2,400 (26.8%)	1,376 (29.6%)	2,416 (26.6%)	2,207 (24.7%)	2,453 (26.7%)	2,369 (27.2%)	1,938 (23.4%)
0-100	2,071 (23.4%)	2,210 (24.5%)	1,983 (22.8%)	2,085 (23.3%)	966 (20.8%)	2,540 (28.0%)	2,726 (30.5%)	2,789 (30.4%)	2,759 (31.6%)	2,803 (33.9%)
101-110	1,342 (15.2%)	1,339 (14.8%)	1,221 (14.1%)	1,275 (14.2%)	615 (13.2%)	1,208 (13.3%)	1,354 (15.1%)	1,349 (14.7%)	1,255 (14.4%)	1,255 (15.2%)
111-120	1,259 (14.2%)	1,283 (14.2%)	1,242 (14.3%)	1,298 (14.5%)	618 (13.3%)	1,157 (12.7%)	1,200 (13.4%)	1,194 (13.0%)	1,113 (12.8%)	1,103 (13.3%)
121-130	932 (10.5%)	923 (10.2%)	976 (11.2%)	1,010 (11.3%)	490 (10.5%)	978 (10.8%)	780 (8.7%)	831 (9.1%)	722 (8.3%)	653 (7.9%)
131-140	597 (6.8%)	614 (6.8%)	618 (7.1%)	584 (6.5%)	374 (8.0%)	511 (5.6%)	444 (5.0%)	354 (3.9%)	330 (3.8%)	364 (4.4%)
141-150	235 (2.7%)	196 (2.2%)	233 (2.7%)	219 (2.4%)	141 (3.0%)	196 (2.2%)	176 (2.0%)	146 (1.6%)	121 (1.4%)	109 (1.3%)
151+	86 (1.0%)	74 (0.8%)	73 (0.8%)	91 (1.0%)	73 (1.6%)	79 (0.9%)	52 (0.6%)	60 (0.7%)	51 (0.6%)	40 (0.5%)
Chase										
Unrated	22 (0.5%)	47 (0.9%)	33 (0.7%)	28 (0.6%)	10 (0.4%)	26 (0.5%)	9 (0.2%)	1 (0.0%)	NA (-)	NA (-)
0-100	1,264 (26.3%)	1,265 (25.1%)	1,191 (25.9%)	1,315 (28.1%)	599 (24.9%)	1,450 (29.7%)	1,491 (30.3%)	1,593 (33.0%)	1,491 (34.1%)	1,544 (35.7%)
101-110	705 (14.7%)	784 (15.6%)	654 (14.2%)	716 (15.3%)	351 (14.6%)	719 (14.7%)	736 (14.9%)	805 (16.7%)	736 (16.8%)	704 (16.3%)
111-120	834 (17.4%)	867 (17.2%)	757 (16.5%)	707 (15.1%)	332 (13.8%)	815 (16.7%)	845 (17.2%)	782 (16.2%)	748 (17.1%)	688 (15.9%)
121-130	758 (15.8%)	770 (15.3%)	800 (17.4%)	744 (15.9%)	398 (16.6%)	745 (15.3%)	772 (15.7%)	697 (14.5%)	576 (13.2%)	606 (14.0%)
131-140	647 (13.5%)	740 (14.7%)	627 (13.7%)	638 (13.6%)	362 (15.1%)	602 (12.3%)	594 (12.1%)	521 (10.8%)	429 (9.8%)	383 (8.9%)
141-150	369 (7.7%)	369 (7.3%)	364 (7.9%)	343 (7.3%)	227 (9.5%)	315 (6.5%)	305 (6.2%)	257 (5.3%)	235 (5.4%)	232 (5.4%)
151+	199 (4.1%)	192 (3.8%)	164 (3.6%)	197 (4.2%)	122 (5.1%)	208 (4.3%)	174 (3.5%)	166 (3.4%)	153 (3.5%)	170 (3.9%)

Year to Date Total GB-Trained Runners by Rating Band

Flat

RatBand	2016	2017	2018	2019	2020	2021	2022	2023	2024	2025
3YO										
Unrated	1,835 (32.6%)	2,051 (34.5%)	2,211 (36.7%)	2,348 (36.6%)	765 (45.5%)	2,329 (37.2%)	2,260 (35.6%)	2,167 (35.1%)	2,129 (35.9%)	2,220 (36.3%)
0-50	321 (5.7%)	301 (5.1%)	270 (4.5%)	396 (6.2%)	149 (8.9%)	385 (6.2%)	402 (6.3%)	392 (6.4%)	399 (6.7%)	362 (5.9%)
51-60	656 (11.7%)	756 (12.7%)	624 (10.3%)	938 (14.6%)	237 (14.1%)	860 (13.8%)	879 (13.8%)	892 (14.5%)	862 (14.5%)	801 (13.1%)
61-70	1,108 (19.7%)	1,091 (18.4%)	1,092 (18.1%)	1,009 (15.7%)	288 (17.1%)	1,107 (17.7%)	1,130 (17.8%)	1,133 (18.4%)	1,027 (17.3%)	1,073 (17.5%)
71-80	975 (17.3%)	969 (16.3%)	1,024 (17.0%)	927 (14.5%)	190 (11.3%)	860 (13.8%)	984 (15.5%)	912 (14.8%)	834 (14.1%)	974 (15.9%)
81-90	449 (8.0%)	514 (8.7%)	499 (8.3%)	465 (7.3%)	41 (2.4%)	411 (6.6%)	437 (6.9%)	419 (6.8%)	432 (7.3%)	445 (7.3%)
91-100	174 (3.1%)	152 (2.6%)	182 (3.0%)	215 (3.4%)	10 (0.6%)	192 (3.1%)	158 (2.5%)	150 (2.4%)	146 (2.5%)	152 (2.5%)
101+	109 (1.9%)	108 (1.8%)	127 (2.1%)	111 (1.7%)	3 (0.2%)	109 (1.7%)	99 (1.6%)	103 (1.7%)	96 (1.6%)	88 (1.4%)
4YO+										
Unrated	341 (3.1%)	298 (2.6%)	373 (3.3%)	406 (3.4%)	182 (3.7%)	399 (3.3%)	351 (3.0%)	316 (2.7%)	345 (2.7%)	350 (2.8%)
0-50	1,168 (10.5%)	1,334 (11.5%)	1,613 (14.1%)	1,818 (15.1%)	960 (19.6%)	1,824 (15.2%)	1,878 (16.2%)	1,992 (16.8%)	2,019 (16.0%)	2,184 (17.5%)
51-60	2,165 (19.5%)	2,211 (19.1%)	2,246 (19.6%)	2,332 (19.4%)	1,183 (24.2%)	2,461 (20.5%)	2,405 (20.8%)	2,690 (22.6%)	3,022 (23.9%)	2,805 (22.5%)
61-70	2,609 (23.5%)	2,531 (21.9%)	2,381 (20.8%)	2,614 (21.8%)	1,121 (22.9%)	2,774 (23.1%)	2,581 (22.3%)	2,544 (21.4%)	2,830 (22.4%)	2,727 (21.9%)
71-80	2,138 (19.2%)	2,380 (20.6%)	2,096 (18.3%)	2,174 (18.1%)	778 (15.9%)	2,134 (17.8%)	2,016 (17.4%)	2,183 (18.4%)	2,172 (17.2%)	2,144 (17.2%)
81-90	1,543 (13.9%)	1,541 (13.3%)	1,535 (13.4%)	1,388 (11.6%)	433 (8.9%)	1,308 (10.9%)	1,392 (12.0%)	1,234 (10.4%)	1,373 (10.9%)	1,395 (11.2%)
91-100	688 (6.2%)	773 (6.7%)	796 (6.9%)	847 (7.1%)	170 (3.5%)	701 (5.8%)	578 (5.0%)	568 (4.8%)	556 (4.4%)	501 (4.0%)
101+	458 (4.1%)	482 (4.2%)	424 (3.7%)	434 (3.6%)	64 (1.3%)	390 (3.3%)	387 (3.3%)	364 (3.1%)	315 (2.5%)	340 (2.7%)

Jump

RatBand	2016	2017	2018	2019	2020	2021	2022	2023	2024	2025
Hurdle										
Unrated	2,275 (26.5%)	2,332 (26.6%)	2,305 (27.2%)	2,353 (27.1%)	1,353 (30.1%)	2,387 (26.8%)	2,134 (24.7%)	2,387 (27.0%)	2,317 (27.5%)	1,882 (23.7%)
0-100	2,045 (23.8%)	2,178 (24.9%)	1,951 (23.0%)	2,058 (23.7%)	956 (21.3%)	2,526 (28.3%)	2,716 (31.4%)	2,765 (31.2%)	2,740 (32.6%)	2,788 (35.1%)
101-110	1,317 (15.4%)	1,304 (14.9%)	1,206 (14.2%)	1,251 (14.4%)	612 (13.6%)	1,201 (13.5%)	1,340 (15.5%)	1,334 (15.1%)	1,239 (14.7%)	1,241 (15.6%)
111-120	1,249 (14.6%)	1,262 (14.4%)	1,232 (14.5%)	1,270 (14.6%)	614 (13.7%)	1,147 (12.9%)	1,180 (13.7%)	1,163 (13.1%)	1,094 (13.0%)	1,079 (13.6%)
121-130	908 (10.6%)	892 (10.2%)	960 (11.3%)	985 (11.3%)	478 (10.6%)	962 (10.8%)	746 (8.6%)	788 (8.9%)	662 (7.9%)	602 (7.6%)
131-140	545 (6.4%)	575 (6.6%)	582 (6.9%)	534 (6.1%)	333 (7.4%)	472 (5.3%)	376 (4.4%)	299 (3.4%)	266 (3.2%)	275 (3.5%)
141-150	173 (2.0%)	162 (1.8%)	191 (2.3%)	178 (2.0%)	100 (2.2%)	158 (1.8%)	117 (1.4%)	88 (1.0%)	77 (0.9%)	63 (0.8%)
151+	65 (0.8%)	57 (0.7%)	58 (0.7%)	66 (0.8%)	47 (1.0%)	59 (0.7%)	30 (0.3%)	33 (0.4%)	21 (0.2%)	15 (0.2%)
Chase										
Unrated	22 (0.5%)	45 (0.9%)	33 (0.7%)	28 (0.6%)	10 (0.4%)	26 (0.5%)	8 (0.2%)	1 (0.0%)	NA (-)	NA (-)
0-100	1,233 (26.8%)	1,238 (25.5%)	1,183 (26.5%)	1,307 (28.7%)	596 (25.7%)	1,449 (30.3%)	1,487 (31.2%)	1,586 (34.4%)	1,490 (35.7%)	1,537 (37.7%)
101-110	683 (14.9%)	776 (16.0%)	652 (14.6%)	714 (15.7%)	349 (15.0%)	715 (15.0%)	731 (15.4%)	801 (17.4%)	731 (17.5%)	697 (17.1%)
111-120	821 (17.9%)	858 (17.6%)	752 (16.9%)	704 (15.5%)	327 (14.1%)	814 (17.0%)	838 (17.6%)	772 (16.7%)	739 (17.7%)	678 (16.6%)
121-130	748 (16.3%)	749 (15.4%)	781 (17.5%)	730 (16.1%)	396 (17.1%)	742 (15.5%)	753 (15.8%)	681 (14.8%)	556 (13.3%)	580 (14.2%)
131-140	615 (13.4%)	709 (14.6%)	608 (13.6%)	612 (13.5%)	347 (15.0%)	595 (12.4%)	570 (12.0%)	479 (10.4%)	399 (9.6%)	317 (7.8%)
141-150	320 (7.0%)	327 (6.7%)	326 (7.3%)	304 (6.7%)	203 (8.7%)	278 (5.8%)	257 (5.4%)	196 (4.2%)	170 (4.1%)	175 (4.3%)
151+	156 (3.4%)	160 (3.3%)	124 (2.8%)	148 (3.3%)	93 (4.0%)	162 (3.4%)	117 (2.5%)	97 (2.1%)	92 (2.2%)	95 (2.3%)

Frequency of Runs

Year to Date Average Runs per Horse

Code	2016	2017	2018	2019	2020	2021	2022	2023	2024	2025
Flat	2.64	2.67	2.69	2.73	2.35	2.82	2.80	2.82	2.87	2.85
Jump	2.63	2.69	2.60	2.51	1.76	2.49	2.54	2.56	2.52	2.44
Dual Overall	4.56	4.59	4.31	4.35	3.05	4.47	4.36	4.37	4.23	4.69
Dual (Flat)	2.27	2.16	2.16	2.10	1.67	2.16	2.06	2.14	2.21	2.39
Dual (Jump)	2.29	2.43	2.16	2.25	1.38	2.31	2.30	2.23	2.01	2.30
All	2.70	2.73	2.70	2.68	2.01	2.71	2.72	2.74	2.74	2.71

Year to Date Proportion of Horses by Count of Runs

Runs	2016	2017	2018	2019	2020	2021	2022	2023	2024	2025
Flat										
1	2,157 (31.6%)	2,222 (31.5%)	2,232 (31.9%)	2,197 (30.3%)	1,018 (35.4%)	1,988 (28.8%)	1,997 (29.1%)	2,017 (29.6%)	2,018 (29.3%)	2,051 (29.8%)
2	1,890 (27.7%)	1,958 (27.8%)	1,919 (27.4%)	2,011 (27.7%)	787 (27.4%)	1,858 (26.9%)	1,822 (26.5%)	1,832 (26.9%)	1,765 (25.6%)	1,771 (25.7%)
3	1,268 (18.6%)	1,273 (18.1%)	1,198 (17.1%)	1,305 (18.0%)	546 (19.0%)	1,276 (18.5%)	1,257 (18.3%)	1,212 (17.8%)	1,227 (17.8%)	1,252 (18.2%)
4	603 (8.8%)	635 (9.0%)	652 (9.3%)	697 (9.6%)	320 (11.1%)	697 (10.1%)	760 (11.1%)	678 (10.0%)	711 (10.3%)	661 (9.6%)
5+	898 (13.2%)	956 (13.6%)	991 (14.2%)	1,042 (14.4%)	201 (7.0%)	1,088 (15.8%)	1,037 (15.1%)	1,072 (15.7%)	1,162 (16.9%)	1,147 (16.7%)
Jump										
1	1,670 (29.1%)	1,614 (28.0%)	1,713 (29.9%)	1,867 (31.0%)	2,108 (47.1%)	1,926 (29.7%)	1,845 (30.8%)	1,827 (30.2%)	1,723 (30.1%)	1,739 (30.8%)
2	1,445 (25.1%)	1,376 (23.8%)	1,379 (24.1%)	1,596 (26.5%)	1,571 (35.1%)	1,773 (27.3%)	1,486 (24.8%)	1,511 (24.9%)	1,477 (25.8%)	1,580 (28.0%)
3	1,174 (20.4%)	1,231 (21.3%)	1,210 (21.1%)	1,210 (20.1%)	638 (14.3%)	1,378 (21.2%)	1,254 (20.9%)	1,276 (21.1%)	1,205 (21.1%)	1,192 (21.1%)
4	799 (13.9%)	829 (14.4%)	805 (14.1%)	782 (13.0%)	135 (3.0%)	825 (12.7%)	810 (13.5%)	799 (13.2%)	818 (14.3%)	664 (11.8%)
5+	660 (11.5%)	721 (12.5%)	620 (10.8%)	568 (9.4%)	24 (0.5%)	588 (9.1%)	600 (10.0%)	644 (10.6%)	494 (8.6%)	474 (8.4%)
All Races										
1	3,525 (28.9%)	3,569 (28.6%)	3,667 (29.6%)	3,768 (29.2%)	2,961 (41.0%)	3,635 (27.8%)	3,597 (28.6%)	3,604 (28.7%)	3,519 (28.5%)	3,594 (29.3%)
2	3,187 (26.1%)	3,197 (25.6%)	3,184 (25.7%)	3,460 (26.8%)	2,337 (32.4%)	3,513 (26.9%)	3,205 (25.5%)	3,230 (25.7%)	3,148 (25.5%)	3,244 (26.4%)
3	2,412 (19.8%)	2,478 (19.9%)	2,355 (19.0%)	2,480 (19.2%)	1,207 (16.7%)	2,591 (19.8%)	2,467 (19.6%)	2,431 (19.3%)	2,419 (19.6%)	2,397 (19.5%)
4	1,403 (11.5%)	1,453 (11.6%)	1,486 (12.0%)	1,499 (11.6%)	477 (6.6%)	1,534 (11.8%)	1,591 (12.6%)	1,491 (11.9%)	1,541 (12.5%)	1,340 (10.9%)
5+	1,662 (13.6%)	1,782 (14.3%)	1,703 (13.7%)	1,710 (13.2%)	234 (3.2%)	1,781 (13.6%)	1,718 (13.7%)	1,812 (14.4%)	1,721 (13.9%)	1,696 (13.8%)

Year to Date Median Days Between Runs

Code/RatBand	2016	2017	2018	2019	2020	2021	2022	2023	2024	2025
All Runners	27	27	28	28	28	28	27	28	28	28
Flat										
Unrated	25	24	27	27	27	27	25	27	27	27
0-50	21	22	22	23	20	21	21	20	19	19
51-60	21	22	21	22	19	21	21	20	21	20
61-70	23	23	22	23	21	22	22	23	22	22
71-80	24	26	25	23	22	24	24	25	26	25
81-90	25	26	26	27	22	26	26	29	28	28
91-100	28	28	29	28	22	30	33	33	35	35
101+	39	42	38	38	36	37	42	55	61	62
All Flat Runners	24	24	24	24	21	23	23	24	24	23
Jump										
Unrated	37	34	38	37	36	39	35	40	40	40
0-100	27	26	28	27	32	30	28	30	32	30
101-110	30	28	30	30	31	31	29	32	33	31
111-120	30	29	32	32	34	33	30	33	33	32
121-130	32	30	31	32	34	33	32	34	36	34
131-140	34	33	34	33	36	35	35	36	35	35
141-150	34	35	38	37	41	40	36	39	36	40
151+	38	34	38	38	42	40	40	42	42	40
All Jump Runners	31	30	32	32	34	34	31	34	35	33

Horses Population by Gender

May 2025 Horses in Training Snapshot by Gender versus Previous Years

All Horses

Sex	2016	2017	2018	2019	2020	2021	2022	2023	2024	2025
Colt/Entire	2,522 (17.9%)	2,637 (18.8%)	2,653 (17.5%)	2,537 (17.3%)	2,295 (19.2%)	2,260 (15.5%)	2,261 (15.9%)	2,199 (15.2%)	2,079 (14.6%)	2,037 (15.0%)
Gelding	7,056 (50.0%)	6,953 (49.4%)	7,689 (50.8%)	7,290 (49.8%)	5,579 (46.8%)	7,559 (51.8%)	7,197 (50.7%)	7,479 (51.6%)	7,445 (52.4%)	6,979 (51.3%)
Filly/Mare	4,520 (32.0%)	4,468 (31.8%)	4,795 (31.7%)	4,820 (32.9%)	4,057 (34.0%)	4,777 (32.7%)	4,743 (33.4%)	4,804 (33.2%)	4,677 (32.9%)	4,576 (33.7%)
Rig	5 (0.0%)	4 (0.0%)	1 (0.0%)	2 (0.0%)	1 (0.0%)	2 (0.0%)	1 (0.0%)	1 (0.0%)	0 (0.0%)	0 (0.0%)
Total	14,103 (100.0%)	14,062 (100.0%)	15,138 (100.0%)	14,649 (100.0%)	11,932 (100.0%)	14,598 (100.0%)	14,202 (100.0%)	14,483 (100.0%)	14,201 (100.0%)	13,592 (100.0%)

Flat (including Dual)

Sex	2016	2017	2018	2019	2020	2021	2022	2023	2024	2025
Colt/Entire	2,500 (24.3%)	2,616 (24.7%)	2,632 (23.9%)	2,522 (23.5%)	2,284 (23.4%)	2,240 (21.7%)	2,247 (21.7%)	2,175 (21.6%)	2,067 (20.9%)	2,020 (20.4%)
Gelding	4,017 (39.1%)	4,175 (39.5%)	4,469 (40.6%)	4,266 (39.8%)	3,946 (40.5%)	4,280 (41.5%)	4,250 (41.1%)	4,185 (41.5%)	4,233 (42.7%)	4,223 (42.7%)
Filly/Mare	3,757 (36.6%)	3,777 (35.7%)	3,901 (35.5%)	3,924 (36.6%)	3,521 (36.1%)	3,790 (36.8%)	3,837 (37.1%)	3,730 (37.0%)	3,603 (36.4%)	3,638 (36.8%)
Rig	5 (0.0%)	4 (0.0%)	1 (0.0%)	2 (0.0%)	1 (0.0%)	1 (0.0%)	0 (0.0%)	0 (0.0%)	0 (0.0%)	0 (0.0%)
Total	10,279 (100.0%)	10,572 (100.0%)	11,003 (100.0%)	10,714 (100.0%)	9,752 (100.0%)	10,311 (100.0%)	10,334 (100.0%)	10,090 (100.0%)	9,903 (100.0%)	9,881 (100.0%)

Jump (including Dual)

Sex	2016	2017	2018	2019	2020	2021	2022	2023	2024	2025
Colt/Entire	30 (0.7%)	25 (0.6%)	29 (0.6%)	24 (0.5%)	13 (0.5%)	29 (0.6%)	24 (0.6%)	28 (0.6%)	15 (0.3%)	24 (0.6%)
Gelding	3,462 (79.6%)	3,238 (79.6%)	3,869 (78.1%)	3,350 (76.7%)	1,948 (75.0%)	3,627 (76.3%)	3,292 (76.2%)	3,629 (75.1%)	3,532 (74.7%)	3,080 (73.9%)
Filly/Mare	859 (19.7%)	804 (19.8%)	1,059 (21.4%)	996 (22.8%)	638 (24.5%)	1,095 (23.0%)	1,006 (23.3%)	1,176 (24.3%)	1,184 (25.0%)	1,065 (25.5%)
Rig	0 (0.0%)	0 (0.0%)	0 (0.0%)	0 (0.0%)	0 (0.0%)	1 (0.0%)	1 (0.0%)	1 (0.0%)	0 (0.0%)	0 (0.0%)
Total	4,351 (100.0%)	4,067 (100.0%)	4,957 (100.0%)	4,370 (100.0%)	2,599 (100.0%)	4,752 (100.0%)	4,323 (100.0%)	4,834 (100.0%)	4,731 (100.0%)	4,169 (100.0%)

Hunter Chasers

Sex	2016	2017	2018	2019	2020	2021	2022	2023	2024	2025
Colt/Entire	3 (0.2%)	5 (0.3%)	2 (0.1%)	1 (0.1%)	1 (0.1%)	3 (0.2%)	6 (0.5%)	10 (0.8%)	5 (0.4%)	4 (0.4%)
Gelding	1,629 (82.1%)	1,588 (81.3%)	1,453 (80.9%)	1,356 (79.4%)	1,178 (81.5%)	993 (82.8%)	1,060 (81.0%)	1,019 (81.7%)	1,166 (82.3%)	900 (80.1%)
Filly/Mare	352 (17.7%)	361 (18.5%)	340 (18.9%)	351 (20.6%)	266 (18.4%)	204 (17.0%)	243 (18.6%)	219 (17.5%)	246 (17.4%)	220 (19.6%)
Rig	0 (0.0%)	0 (0.0%)	0 (0.0%)	0 (0.0%)	0 (0.0%)	0 (0.0%)	0 (0.0%)	0 (0.0%)	0 (0.0%)	0 (0.0%)
Total	1,984 (100.0%)	1,954 (100.0%)	1,795 (100.0%)	1,708 (100.0%)	1,445 (100.0%)	1,200 (100.0%)	1,309 (100.0%)	1,248 (100.0%)	1,417 (100.0%)	1,124 (100.0%)

Year to Date Total Runners by Gender

Sex	2016	2017	2018	2019	2020	2021	2022	2023	2024	2025
All Races										
Colt/Entire	2,329 (7.1%)	2,396 (7.0%)	2,440 (7.3%)	2,434 (7.0%)	578 (4.0%)	2,365 (6.7%)	2,134 (6.2%)	1,923 (5.6%)	1,808 (5.3%)	1,813 (5.5%)
Gelding	22,621 (68.9%)	23,473 (68.9%)	22,638 (67.7%)	23,095 (66.7%)	10,306 (71.2%)	23,810 (67.3%)	23,034 (67.3%)	23,257 (67.6%)	23,080 (68.1%)	22,578 (67.9%)
Filly/Mare	7,896 (24.0%)	8,211 (24.1%)	8,352 (25.0%)	9,064 (26.2%)	3,595 (24.8%)	9,179 (26.0%)	9,035 (26.4%)	9,211 (26.8%)	8,983 (26.5%)	8,872 (26.7%)
Rig	8 (0.0%)	1 (0.0%)	4 (0.0%)	7 (0.0%)	3 (0.0%)	6 (0.0%)	4 (0.0%)	3 (0.0%)	0 (0.0%)	0 (0.0%)
Flat										
Colt/Entire	2,303 (12.9%)	2,369 (12.7%)	2,420 (13.0%)	2,409 (12.3%)	564 (8.5%)	2,346 (12.2%)	2,116 (11.1%)	1,890 (10.0%)	1,798 (9.2%)	1,800 (9.2%)
Gelding	10,231 (57.2%)	10,785 (57.8%)	10,785 (57.8%)	11,226 (57.3%)	4,134 (62.1%)	11,195 (58.1%)	11,015 (57.9%)	11,220 (59.1%)	12,016 (61.3%)	12,049 (61.7%)
Filly/Mare	5,333 (29.8%)	5,502 (29.5%)	5,456 (29.2%)	5,965 (30.4%)	1,956 (29.4%)	5,709 (29.7%)	5,906 (31.0%)	5,869 (30.9%)	5,792 (29.5%)	5,672 (29.1%)
Rig	8 (0.0%)	1 (0.0%)	4 (0.0%)	3 (0.0%)	0 (0.0%)	2 (0.0%)	0 (0.0%)	0 (0.0%)	0 (0.0%)	0 (0.0%)
All Jump										
Colt/Entire	26 (0.2%)	27 (0.2%)	20 (0.1%)	25 (0.2%)	14 (0.2%)	19 (0.1%)	18 (0.1%)	33 (0.2%)	10 (0.1%)	13 (0.1%)
Gelding	12,390 (82.7%)	12,688 (82.3%)	11,853 (80.3%)	11,869 (79.1%)	6,172 (78.8%)	12,615 (78.3%)	12,019 (79.2%)	12,037 (78.1%)	11,064 (77.6%)	10,529 (76.6%)
Filly/Mare	2,563 (17.1%)	2,709 (17.6%)	2,896 (19.6%)	3,099 (20.7%)	1,639 (20.9%)	3,470 (21.5%)	3,129 (20.6%)	3,342 (21.7%)	3,191 (22.4%)	3,200 (23.3%)
Rig	0 (0.0%)	0 (0.0%)	0 (0.0%)	4 (0.0%)	3 (0.0%)	4 (0.0%)	4 (0.0%)	3 (0.0%)	0 (0.0%)	0 (0.0%)
Chase										
Colt/Entire	1 (0.0%)	0 (0.0%)	0 (0.0%)	0 (0.0%)	0 (0.0%)	0 (0.0%)	0 (0.0%)	0 (0.0%)	0 (0.0%)	0 (0.0%)
Gelding	4,480 (93.4%)	4,673 (92.8%)	4,176 (91.0%)	4,223 (90.1%)	2,169 (90.3%)	4,365 (89.4%)	4,404 (89.4%)	4,306 (89.3%)	3,906 (89.4%)	3,776 (87.3%)
Filly/Mare	317 (6.6%)	361 (7.2%)	414 (9.0%)	463 (9.9%)	229 (9.5%)	511 (10.5%)	518 (10.5%)	514 (10.7%)	462 (10.6%)	551 (12.7%)
Rig	0 (0.0%)	0 (0.0%)	0 (0.0%)	2 (0.0%)	3 (0.1%)	4 (0.1%)	4 (0.1%)	2 (0.0%)	0 (0.0%)	0 (0.0%)
Hurdle										
Colt/Entire	22 (0.2%)	22 (0.2%)	14 (0.2%)	17 (0.2%)	7 (0.2%)	16 (0.2%)	12 (0.1%)	24 (0.3%)	7 (0.1%)	5 (0.1%)
Gelding	7,036 (79.6%)	7,099 (78.7%)	6,706 (77.2%)	6,813 (76.0%)	3,477 (74.7%)	6,757 (74.4%)	6,808 (76.2%)	6,879 (75.0%)	6,408 (73.5%)	6,036 (73.0%)
Filly/Mare	1,786 (20.2%)	1,896 (21.0%)	1,968 (22.7%)	2,130 (23.8%)	1,169 (25.1%)	2,312 (25.4%)	2,119 (23.7%)	2,272 (24.8%)	2,305 (26.4%)	2,224 (26.9%)
Rig	0 (0.0%)	0 (0.0%)	0 (0.0%)	2 (0.0%)	0 (0.0%)	0 (0.0%)	0 (0.0%)	1 (0.0%)	0 (0.0%)	0 (0.0%)
NHF										
Colt/Entire	3 (0.2%)	5 (0.4%)	6 (0.4%)	8 (0.6%)	7 (0.9%)	3 (0.1%)	6 (0.5%)	9 (0.6%)	3 (0.3%)	8 (0.7%)
Gelding	874 (65.4%)	916 (66.7%)	971 (65.1%)	833 (61.8%)	526 (68.0%)	1,493 (69.7%)	807 (61.8%)	852 (60.1%)	750 (63.7%)	717 (62.3%)
Filly/Mare	460 (34.4%)	452 (32.9%)	514 (34.5%)	506 (37.6%)	241 (31.1%)	647 (30.2%)	492 (37.7%)	556 (39.2%)	424 (36.0%)	425 (37.0%)
Hunter										
Gelding	714 (94.3%)	648 (95.2%)	542 (93.4%)	522 (92.7%)	142 (97.3%)	548 (93.5%)	420 (95.0%)	370 (93.9%)	379 (92.9%)	354 (91.9%)
Filly/Mare	43 (5.7%)	33 (4.8%)	38 (6.6%)	41 (7.3%)	4 (2.7%)	38 (6.5%)	22 (5.0%)	24 (6.1%)	29 (7.1%)	31 (8.1%)

Year to Date Individual Runners by Gender

Sex	2016	2017	2018	2019	2020	2021	2022	2023	2024	2025
All Races										
Male	8,911 (73.1%)	9,137 (73.2%)	8,988 (72.5%)	9,250 (71.6%)	5,369 (74.4%)	9,432 (72.3%)	8,998 (71.5%)	8,876 (70.6%)	8,790 (71.2%)	8,721 (71.1%)
Female	3,278 (26.9%)	3,342 (26.8%)	3,407 (27.5%)	3,667 (28.4%)	1,847 (25.6%)	3,622 (27.7%)	3,580 (28.5%)	3,692 (29.4%)	3,558 (28.8%)	3,550 (28.9%)
Flat										
Male	4,545 (66.7%)	4,730 (67.1%)	4,708 (67.3%)	4,809 (66.3%)	1,953 (68.0%)	4,640 (67.2%)	4,514 (65.7%)	4,435 (65.1%)	4,587 (66.6%)	4,602 (66.9%)
Female	2,271 (33.3%)	2,314 (32.9%)	2,284 (32.7%)	2,443 (33.7%)	919 (32.0%)	2,267 (32.8%)	2,359 (34.3%)	2,376 (34.9%)	2,296 (33.4%)	2,280 (33.1%)
All Jump										
Male	4,676 (81.4%)	4,680 (81.1%)	4,546 (79.4%)	4,728 (78.5%)	3,522 (78.7%)	5,066 (78.1%)	4,710 (78.6%)	4,671 (77.1%)	4,392 (76.8%)	4,310 (76.3%)
Female	1,072 (18.6%)	1,091 (18.9%)	1,181 (20.6%)	1,295 (21.5%)	954 (21.3%)	1,424 (21.9%)	1,285 (21.4%)	1,386 (22.9%)	1,325 (23.2%)	1,339 (23.7%)
Chase										
Male	1,744 (93.0%)	1,809 (92.2%)	1,660 (90.2%)	1,717 (89.8%)	1,269 (90.0%)	1,873 (89.3%)	1,756 (88.7%)	1,704 (88.1%)	1,589 (88.7%)	1,588 (86.8%)
Female	132 (7.0%)	154 (7.8%)	180 (9.8%)	194 (10.2%)	141 (10.0%)	225 (10.7%)	224 (11.3%)	231 (11.9%)	202 (11.3%)	241 (13.2%)
Hurdle										
Male	2,887 (79.9%)	2,852 (78.8%)	2,806 (77.7%)	2,935 (76.7%)	2,054 (75.0%)	3,035 (75.1%)	2,906 (77.2%)	2,861 (75.3%)	2,761 (74.0%)	2,610 (73.2%)
Female	725 (20.1%)	766 (21.2%)	805 (22.3%)	893 (23.3%)	684 (25.0%)	1,007 (24.9%)	858 (22.8%)	938 (24.7%)	972 (26.0%)	955 (26.8%)
NHF										
Male	626 (66.5%)	634 (68.1%)	712 (67.2%)	616 (64.5%)	440 (68.9%)	1,100 (70.8%)	601 (64.5%)	626 (62.7%)	539 (65.2%)	541 (64.6%)
Female	315 (33.5%)	297 (31.9%)	347 (32.8%)	339 (35.5%)	199 (31.1%)	453 (29.2%)	331 (35.5%)	373 (37.3%)	288 (34.8%)	297 (35.4%)
Hunter										
Male	395 (93.2%)	346 (94.0%)	323 (92.0%)	301 (92.0%)	98 (96.1%)	295 (91.9%)	240 (92.7%)	212 (93.0%)	212 (92.6%)	207 (91.6%)
Female	29 (6.8%)	22 (6.0%)	28 (8.0%)	26 (8.0%)	4 (3.9%)	26 (8.1%)	19 (7.3%)	16 (7.0%)	17 (7.4%)	19 (8.4%)

Horses Population by Breeding

May 2025 Horses in Training Snapshot by Breeding versus Previous Years

Flat (including Dual)

Bred	Sex	2016	2017	2018	2019	2020	2021	2022	2023	2024	2025
GB	Male	3,083 (30.0%)	3,196 (30.2%)	3,343 (30.4%)	3,228 (30.1%)	2,984 (30.6%)	3,088 (29.9%)	3,059 (29.6%)	2,937 (29.1%)	2,885 (29.1%)	2,861 (29.0%)
	Female	2,083 (20.3%)	2,107 (19.9%)	2,164 (19.7%)	2,195 (20.5%)	1,994 (20.4%)	2,139 (20.7%)	2,147 (20.8%)	2,066 (20.5%)	1,976 (20.0%)	2,044 (20.7%)
	Subtotal	5,166 (50.3%)	5,303 (50.2%)	5,507 (50.0%)	5,423 (50.6%)	4,978 (51.0%)	5,227 (50.7%)	5,206 (50.4%)	5,003 (49.6%)	4,861 (49.1%)	4,905 (49.6%)
IRE	Male	2,832 (27.6%)	2,919 (27.6%)	3,049 (27.7%)	2,878 (26.9%)	2,657 (27.2%)	2,874 (27.9%)	2,954 (28.6%)	2,960 (29.3%)	2,916 (29.4%)	2,920 (29.6%)
	Female	1,415 (13.8%)	1,401 (13.3%)	1,452 (13.2%)	1,440 (13.4%)	1,278 (13.1%)	1,433 (13.9%)	1,510 (14.6%)	1,497 (14.8%)	1,451 (14.7%)	1,429 (14.5%)
	Subtotal	4,247 (41.3%)	4,320 (40.9%)	4,501 (40.9%)	4,318 (40.3%)	3,935 (40.4%)	4,307 (41.8%)	4,464 (43.2%)	4,457 (44.2%)	4,367 (44.1%)	4,349 (44.0%)
FR	Male	171 (1.7%)	242 (2.3%)	305 (2.8%)	313 (2.9%)	301 (3.1%)	300 (2.9%)	311 (3.0%)	302 (3.0%)	347 (3.5%)	318 (3.2%)
	Female	89 (0.9%)	102 (1.0%)	112 (1.0%)	124 (1.2%)	127 (1.3%)	124 (1.2%)	120 (1.2%)	108 (1.1%)	125 (1.3%)	110 (1.1%)
	Subtotal	260 (2.5%)	344 (3.3%)	417 (3.8%)	437 (4.1%)	428 (4.4%)	424 (4.1%)	431 (4.2%)	410 (4.1%)	472 (4.8%)	428 (4.3%)
USA	Male	351 (3.4%)	342 (3.2%)	311 (2.8%)	291 (2.7%)	222 (2.3%)	187 (1.8%)	123 (1.2%)	101 (1.0%)	96 (1.0%)	77 (0.8%)
	Female	144 (1.4%)	141 (1.3%)	143 (1.3%)	134 (1.3%)	89 (0.9%)	67 (0.6%)	37 (0.4%)	38 (0.4%)	28 (0.3%)	31 (0.3%)
	Subtotal	495 (4.8%)	483 (4.6%)	454 (4.1%)	425 (4.0%)	311 (3.2%)	254 (2.5%)	160 (1.5%)	139 (1.4%)	124 (1.3%)	108 (1.1%)
GNY	Male	63 (0.6%)	68 (0.6%)	70 (0.6%)	57 (0.5%)	54 (0.6%)	54 (0.5%)	37 (0.4%)	47 (0.5%)	42 (0.4%)	55 (0.6%)
	Female	11 (0.1%)	11 (0.1%)	17 (0.2%)	19 (0.2%)	28 (0.3%)	23 (0.2%)	19 (0.2%)	16 (0.2%)	18 (0.2%)	18 (0.2%)
	Subtotal	74 (0.7%)	79 (0.7%)	87 (0.8%)	76 (0.7%)	82 (0.8%)	77 (0.7%)	56 (0.5%)	63 (0.6%)	60 (0.6%)	73 (0.7%)
Other	Male	22 (0.2%)	28 (0.3%)	24 (0.2%)	23 (0.2%)	13 (0.1%)	18 (0.2%)	13 (0.1%)	13 (0.1%)	14 (0.1%)	12 (0.1%)
	Female	15 (0.1%)	15 (0.1%)	13 (0.1%)	12 (0.1%)	5 (0.1%)	4 (0.0%)	4 (0.0%)	5 (0.0%)	5 (0.1%)	6 (0.1%)
	Subtotal	37 (0.4%)	43 (0.4%)	37 (0.3%)	35 (0.3%)	18 (0.2%)	22 (0.2%)	17 (0.2%)	18 (0.2%)	19 (0.2%)	18 (0.2%)

Jump (including Dual)

Bred	Sex	2016	2017	2018	2019	2020	2021	2022	2023	2024	2025
GB	Male	1,135 (26.1%)	1,028 (25.3%)	1,171 (23.6%)	929 (21.3%)	591 (22.7%)	1,023 (21.5%)	869 (20.1%)	945 (19.5%)	950 (20.1%)	832 (20.0%)
	Female	519 (11.9%)	445 (10.9%)	570 (11.5%)	487 (11.1%)	302 (11.6%)	548 (11.5%)	492 (11.4%)	571 (11.8%)	537 (11.4%)	470 (11.3%)
	Subtotal	1,654 (38.0%)	1,473 (36.2%)	1,741 (35.1%)	1,416 (32.4%)	893 (34.4%)	1,571 (33.1%)	1,361 (31.5%)	1,516 (31.4%)	1,487 (31.4%)	1,302 (31.2%)
IRE	Male	1,863 (42.8%)	1,745 (42.9%)	2,129 (42.9%)	1,860 (42.6%)	1,058 (40.7%)	1,981 (41.7%)	1,764 (40.8%)	1,911 (39.5%)	1,883 (39.8%)	1,583 (38.0%)
	Female	301 (6.9%)	314 (7.7%)	429 (8.7%)	425 (9.7%)	282 (10.9%)	460 (9.7%)	435 (10.1%)	494 (10.2%)	532 (11.2%)	477 (11.4%)
	Subtotal	2,164 (49.7%)	2,059 (50.6%)	2,558 (51.6%)	2,285 (52.3%)	1,340 (51.6%)	2,441 (51.4%)	2,199 (50.9%)	2,405 (49.8%)	2,415 (51.0%)	2,060 (49.4%)
FR	Male	392 (9.0%)	407 (10.0%)	510 (10.3%)	506 (11.6%)	264 (10.2%)	571 (12.0%)	604 (14.0%)	728 (15.1%)	661 (14.0%)	652 (15.6%)
	Female	30 (0.7%)	41 (1.0%)	56 (1.1%)	76 (1.7%)	49 (1.9%)	81 (1.7%)	70 (1.6%)	106 (2.2%)	107 (2.3%)	111 (2.7%)
	Subtotal	422 (9.7%)	448 (11.0%)	566 (11.4%)	582 (13.3%)	313 (12.0%)	652 (13.7%)	674 (15.6%)	834 (17.3%)	768 (16.2%)	763 (18.3%)
USA	Male	48 (1.1%)	35 (0.9%)	37 (0.7%)	30 (0.7%)	22 (0.8%)	34 (0.7%)	30 (0.7%)	20 (0.4%)	10 (0.2%)	7 (0.2%)
	Female	2 (0.0%)	2 (0.0%)	1 (0.0%)	3 (0.1%)	2 (0.1%)	1 (0.0%)	1 (0.0%)	NA (-)	2 (0.0%)	NA (-)
	Subtotal	50 (1.1%)	37 (0.9%)	38 (0.8%)	33 (0.8%)	24 (0.9%)	35 (0.7%)	31 (0.7%)	20 (0.4%)	12 (0.3%)	7 (0.2%)
GNY	Male	48 (1.1%)	41 (1.0%)	46 (0.9%)	45 (1.0%)	26 (1.0%)	45 (0.9%)	49 (1.1%)	53 (1.1%)	39 (0.8%)	27 (0.6%)
	Female	4 (0.1%)	1 (0.0%)	1 (0.0%)	4 (0.1%)	3 (0.1%)	5 (0.1%)	7 (0.2%)	5 (0.1%)	5 (0.1%)	5 (0.1%)
	Subtotal	52 (1.2%)	42 (1.0%)	47 (0.9%)	49 (1.1%)	29 (1.1%)	50 (1.1%)	56 (1.3%)	58 (1.2%)	44 (0.9%)	32 (0.8%)
Other	Male	6 (0.1%)	7 (0.2%)	5 (0.1%)	4 (0.1%)	NA (-)	3 (0.1%)	1 (0.0%)	1 (0.0%)	4 (0.1%)	3 (0.1%)
	Female	3 (0.1%)	1 (0.0%)	2 (0.0%)	1 (0.0%)	NA (-)	NA (-)	1 (0.0%)	NA (-)	1 (0.0%)	2 (0.0%)
	Subtotal	9 (0.2%)	8 (0.2%)	7 (0.1%)	5 (0.1%)	NA (-)	3 (0.1%)	2 (0.0%)	1 (0.0%)	5 (0.1%)	5 (0.1%)

Year to Date Total Runners by Breeding

Flat

Bred	Sex	2016	2017	2018	2019	2020	2021	2022	2023	2024	2025
GB	Male	5,839 (32.7%)	6,157 (33.0%)	6,132 (32.9%)	6,263 (31.9%)	2,185 (32.8%)	6,192 (32.2%)	6,081 (31.9%)	5,902 (31.1%)	6,245 (31.9%)	6,300 (32.3%)
	Female	2,945 (16.5%)	2,999 (16.1%)	2,923 (15.7%)	3,320 (16.9%)	1,079 (16.2%)	3,246 (16.9%)	3,317 (17.4%)	3,226 (17.0%)	3,060 (15.6%)	3,040 (15.6%)
	Subtotal	8,784 (49.1%)	9,156 (49.1%)	9,055 (48.5%)	9,583 (48.9%)	3,264 (49.1%)	9,438 (49.0%)	9,398 (49.4%)	9,128 (48.1%)	9,305 (47.5%)	9,340 (47.8%)
IRE	Male	5,542 (31.0%)	5,771 (30.9%)	5,840 (31.3%)	6,057 (30.9%)	2,045 (30.7%)	6,175 (32.1%)	6,092 (32.0%)	6,264 (33.0%)	6,576 (33.5%)	6,636 (34.0%)
	Female	2,089 (11.7%)	2,200 (11.8%)	2,206 (11.8%)	2,242 (11.4%)	768 (11.5%)	2,133 (11.1%)	2,277 (12.0%)	2,326 (12.3%)	2,445 (12.5%)	2,352 (12.0%)
	Subtotal	7,631 (42.7%)	7,971 (42.7%)	8,046 (43.1%)	8,299 (42.3%)	2,813 (42.3%)	8,308 (43.2%)	8,369 (44.0%)	8,590 (45.3%)	9,021 (46.0%)	8,988 (46.0%)
FR	Male	348 (1.9%)	405 (2.2%)	437 (2.3%)	570 (2.9%)	203 (3.1%)	556 (2.9%)	540 (2.8%)	617 (3.3%)	655 (3.3%)	632 (3.2%)
	Female	121 (0.7%)	111 (0.6%)	151 (0.8%)	166 (0.8%)	51 (0.8%)	175 (0.9%)	174 (0.9%)	210 (1.1%)	195 (1.0%)	172 (0.9%)
	Subtotal	469 (2.6%)	516 (2.8%)	588 (3.2%)	736 (3.8%)	254 (3.8%)	731 (3.8%)	714 (3.8%)	827 (4.4%)	850 (4.3%)	804 (4.1%)
USA	Male	659 (3.7%)	644 (3.5%)	629 (3.4%)	591 (3.0%)	216 (3.2%)	428 (2.2%)	334 (1.8%)	243 (1.3%)	236 (1.2%)	173 (0.9%)
	Female	129 (0.7%)	150 (0.8%)	142 (0.8%)	180 (0.9%)	52 (0.8%)	102 (0.5%)	90 (0.5%)	85 (0.4%)	64 (0.3%)	66 (0.3%)
	Subtotal	788 (4.4%)	794 (4.3%)	771 (4.1%)	771 (3.9%)	268 (4.0%)	530 (2.8%)	424 (2.2%)	328 (1.7%)	300 (1.5%)	239 (1.2%)
GNY	Male	99 (0.6%)	121 (0.6%)	110 (0.6%)	98 (0.5%)	36 (0.5%)	142 (0.7%)	62 (0.3%)	73 (0.4%)	95 (0.5%)	89 (0.5%)
	Female	34 (0.2%)	22 (0.1%)	27 (0.1%)	35 (0.2%)	5 (0.1%)	45 (0.2%)	38 (0.2%)	18 (0.1%)	18 (0.1%)	33 (0.2%)
	Subtotal	133 (0.7%)	143 (0.8%)	137 (0.7%)	133 (0.7%)	41 (0.6%)	187 (1.0%)	100 (0.5%)	91 (0.5%)	113 (0.6%)	122 (0.6%)
Other	Male	55 (0.3%)	57 (0.3%)	61 (0.3%)	59 (0.3%)	13 (0.2%)	50 (0.3%)	22 (0.1%)	11 (0.1%)	7 (0.0%)	19 (0.1%)
	Female	15 (0.1%)	20 (0.1%)	7 (0.0%)	22 (0.1%)	1 (0.0%)	8 (0.0%)	10 (0.1%)	4 (0.0%)	10 (0.1%)	9 (0.0%)
	Subtotal	70 (0.4%)	77 (0.4%)	68 (0.4%)	81 (0.4%)	14 (0.2%)	58 (0.3%)	32 (0.2%)	15 (0.1%)	17 (0.1%)	28 (0.1%)

Jump

Bred	Sex	2016	2017	2018	2019	2020	2021	2022	2023	2024	2025
GB	Male	3,384 (22.6%)	3,391 (22.0%)	3,073 (20.8%)	3,051 (20.3%)	1,486 (19.0%)	3,019 (18.7%)	2,677 (17.6%)	2,672 (17.3%)	2,560 (17.9%)	2,571 (18.7%)
	Female	1,338 (8.9%)	1,351 (8.8%)	1,381 (9.4%)	1,387 (9.2%)	668 (8.5%)	1,528 (9.5%)	1,390 (9.2%)	1,472 (9.5%)	1,303 (9.1%)	1,218 (8.9%)
	Subtotal	4,722 (31.5%)	4,742 (30.7%)	4,454 (30.2%)	4,438 (29.6%)	2,154 (27.5%)	4,547 (28.2%)	4,067 (26.8%)	4,144 (26.9%)	3,863 (27.1%)	3,789 (27.6%)
IRE	Male	6,880 (45.9%)	7,027 (45.6%)	6,650 (45.0%)	6,566 (43.8%)	3,404 (43.5%)	6,931 (43.0%)	6,502 (42.9%)	6,469 (42.0%)	5,831 (40.9%)	5,525 (40.2%)
	Female	1,057 (7.1%)	1,157 (7.5%)	1,333 (9.0%)	1,444 (9.6%)	784 (10.0%)	1,563 (9.7%)	1,373 (9.1%)	1,466 (9.5%)	1,555 (10.9%)	1,551 (11.3%)
	Subtotal	7,937 (53.0%)	8,184 (53.1%)	7,983 (54.1%)	8,010 (53.4%)	4,188 (53.5%)	8,494 (52.7%)	7,875 (51.9%)	7,935 (51.5%)	7,386 (51.8%)	7,076 (51.5%)
FR	Male	1,849 (12.3%)	2,011 (13.0%)	1,904 (12.9%)	2,014 (13.4%)	1,163 (14.9%)	2,394 (14.9%)	2,597 (17.1%)	2,686 (17.4%)	2,499 (17.5%)	2,316 (16.9%)
	Female	146 (1.0%)	183 (1.2%)	162 (1.1%)	241 (1.6%)	177 (2.3%)	349 (2.2%)	334 (2.2%)	387 (2.5%)	322 (2.3%)	418 (3.0%)
	Subtotal	1,995 (13.3%)	2,194 (14.2%)	2,066 (14.0%)	2,255 (15.0%)	1,340 (17.1%)	2,743 (17.0%)	2,931 (19.3%)	3,073 (19.9%)	2,821 (19.8%)	2,734 (19.9%)
USA	Male	138 (0.9%)	111 (0.7%)	101 (0.7%)	71 (0.5%)	48 (0.6%)	85 (0.5%)	60 (0.4%)	48 (0.3%)	20 (0.1%)	17 (0.1%)
	Female	4 (0.0%)	4 (0.0%)	5 (0.0%)	9 (0.1%)	4 (0.1%)	5 (0.0%)	6 (0.0%)	0 (0.0%)	3 (0.0%)	5 (0.0%)
	Subtotal	142 (0.9%)	115 (0.7%)	106 (0.7%)	80 (0.5%)	52 (0.7%)	90 (0.6%)	66 (0.4%)	48 (0.3%)	23 (0.2%)	22 (0.2%)
GNY	Male	148 (1.0%)	160 (1.0%)	124 (0.8%)	174 (1.2%)	83 (1.1%)	199 (1.2%)	200 (1.3%)	194 (1.3%)	153 (1.1%)	104 (0.8%)
	Female	12 (0.1%)	9 (0.1%)	10 (0.1%)	16 (0.1%)	5 (0.1%)	25 (0.2%)	23 (0.2%)	17 (0.1%)	5 (0.0%)	8 (0.1%)
	Subtotal	160 (1.1%)	169 (1.1%)	134 (0.9%)	190 (1.3%)	88 (1.1%)	224 (1.4%)	223 (1.5%)	211 (1.4%)	158 (1.1%)	112 (0.8%)
Other	Male	17 (0.1%)	15 (0.1%)	21 (0.1%)	22 (0.1%)	5 (0.1%)	10 (0.1%)	5 (0.0%)	4 (0.0%)	11 (0.1%)	9 (0.1%)
	Female	6 (0.0%)	5 (0.0%)	5 (0.0%)	2 (0.0%)	1 (0.0%)	0 (0.0%)	3 (0.0%)	0 (0.0%)	3 (0.0%)	0 (0.0%)
	Subtotal	23 (0.2%)	20 (0.1%)	26 (0.2%)	24 (0.2%)	6 (0.1%)	10 (0.1%)	8 (0.1%)	4 (0.0%)	14 (0.1%)	9 (0.1%)

Year to Date Individual Runners by Breeding

Flat

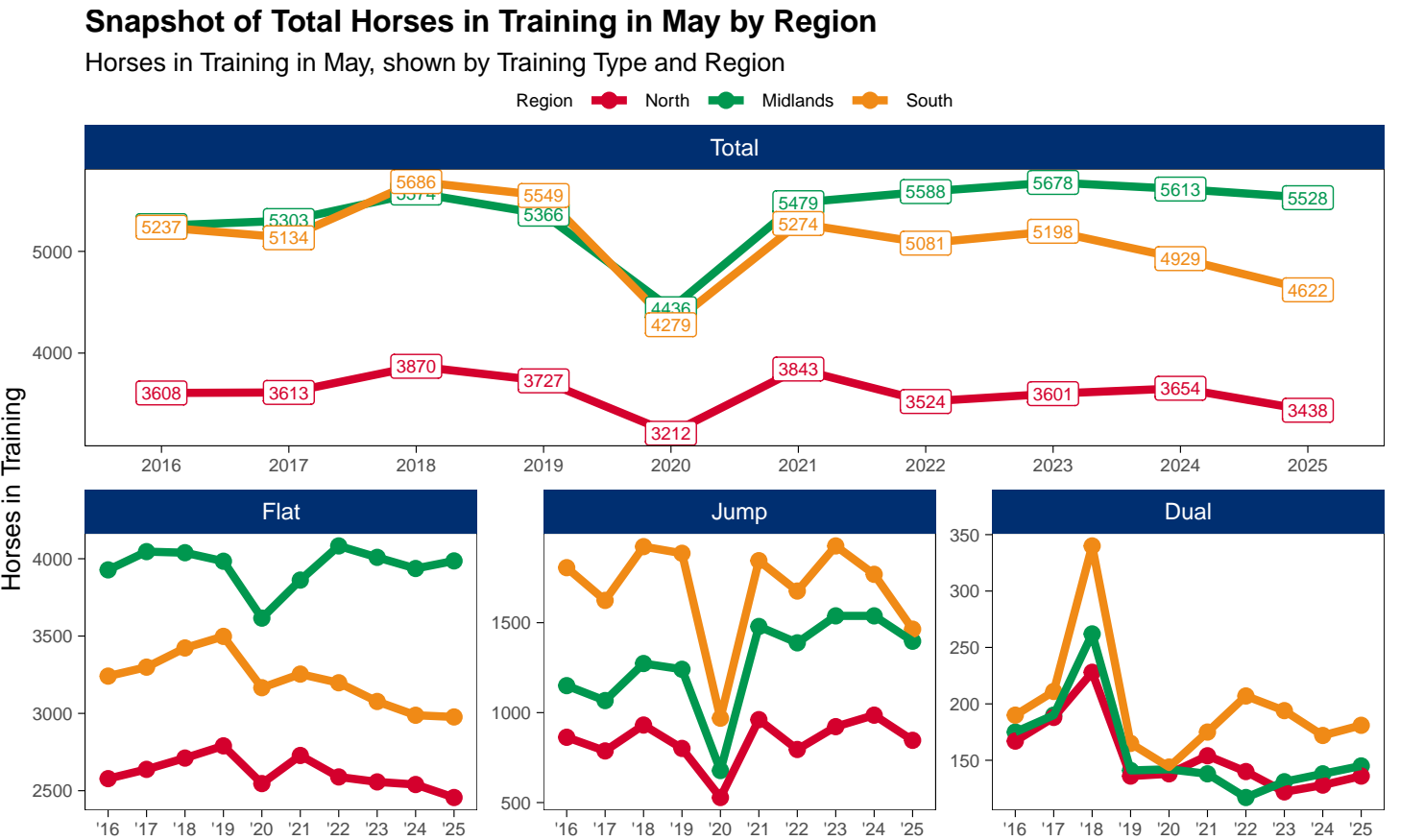
Bred	Sex	2016	2017	2018	2019	2020	2021	2022	2023	2024	2025
GB	Male	2,135 (31.3%)	2,162 (30.7%)	2,177 (31.1%)	2,213 (30.5%)	911 (31.7%)	2,120 (30.7%)	2,105 (30.6%)	2,024 (29.7%)	2,052 (29.8%)	2,069 (30.1%)
	Female	1,242 (18.2%)	1,268 (18.0%)	1,210 (17.3%)	1,336 (18.4%)	502 (17.5%)	1,261 (18.3%)	1,315 (19.1%)	1,275 (18.7%)	1,201 (17.4%)	1,237 (18.0%)
	Subtotal	3,377 (49.5%)	3,430 (48.7%)	3,387 (48.4%)	3,549 (48.9%)	1,413 (49.2%)	3,381 (49.0%)	3,420 (49.8%)	3,299 (48.4%)	3,253 (47.3%)	3,306 (48.0%)
IRE	Male	1,971 (28.9%)	2,102 (29.8%)	2,069 (29.6%)	2,107 (29.1%)	835 (29.1%)	2,095 (30.3%)	2,072 (30.1%)	2,085 (30.6%)	2,188 (31.8%)	2,200 (32.0%)
	Female	896 (13.1%)	896 (12.7%)	930 (13.3%)	931 (12.8%)	360 (12.5%)	875 (12.7%)	918 (13.4%)	969 (14.2%)	975 (14.2%)	936 (13.6%)
	Subtotal	2,867 (42.1%)	2,998 (42.6%)	2,999 (42.9%)	3,038 (41.9%)	1,195 (41.6%)	2,970 (43.0%)	2,990 (43.5%)	3,054 (44.8%)	3,163 (46.0%)	3,136 (45.6%)
FR	Male	135 (2.0%)	150 (2.1%)	186 (2.7%)	212 (2.9%)	94 (3.3%)	220 (3.2%)	200 (2.9%)	212 (3.1%)	236 (3.4%)	231 (3.4%)
	Female	52 (0.8%)	58 (0.8%)	66 (0.9%)	77 (1.1%)	26 (0.9%)	73 (1.1%)	76 (1.1%)	91 (1.3%)	83 (1.2%)	68 (1.0%)
	Subtotal	187 (2.7%)	208 (3.0%)	252 (3.6%)	289 (4.0%)	120 (4.2%)	293 (4.2%)	276 (4.0%)	303 (4.4%)	319 (4.6%)	299 (4.3%)
USA	Male	241 (3.5%)	242 (3.4%)	217 (3.1%)	216 (3.0%)	88 (3.1%)	146 (2.1%)	101 (1.5%)	76 (1.1%)	74 (1.1%)	60 (0.9%)
	Female	62 (0.9%)	70 (1.0%)	62 (0.9%)	79 (1.1%)	27 (0.9%)	40 (0.6%)	32 (0.5%)	29 (0.4%)	22 (0.3%)	20 (0.3%)
	Subtotal	303 (4.4%)	312 (4.4%)	279 (4.0%)	295 (4.1%)	115 (4.0%)	186 (2.7%)	133 (1.9%)	105 (1.5%)	96 (1.4%)	80 (1.2%)
GNY	Male	47 (0.7%)	51 (0.7%)	44 (0.6%)	43 (0.6%)	17 (0.6%)	45 (0.7%)	29 (0.4%)	33 (0.5%)	33 (0.5%)	35 (0.5%)
	Female	10 (0.1%)	10 (0.1%)	12 (0.2%)	12 (0.2%)	3 (0.1%)	15 (0.2%)	16 (0.2%)	9 (0.1%)	11 (0.2%)	15 (0.2%)
	Subtotal	57 (0.8%)	61 (0.9%)	56 (0.8%)	55 (0.8%)	20 (0.7%)	60 (0.9%)	45 (0.7%)	42 (0.6%)	44 (0.6%)	50 (0.7%)
Other	Male	16 (0.2%)	23 (0.3%)	15 (0.2%)	18 (0.2%)	8 (0.3%)	14 (0.2%)	7 (0.1%)	5 (0.1%)	4 (0.1%)	7 (0.1%)
	Female	9 (0.1%)	12 (0.2%)	4 (0.1%)	8 (0.1%)	1 (0.0%)	3 (0.0%)	2 (0.0%)	3 (0.0%)	4 (0.1%)	4 (0.1%)
	Subtotal	25 (0.4%)	35 (0.5%)	19 (0.3%)	26 (0.4%)	9 (0.3%)	17 (0.2%)	9 (0.1%)	8 (0.1%)	8 (0.1%)	11 (0.2%)

Jump

Bred	Sex	2016	2017	2018	2019	2020	2021	2022	2023	2024	2025
GB	Male	1,267 (22.0%)	1,241 (21.5%)	1,177 (20.6%)	1,211 (20.1%)	831 (18.6%)	1,221 (18.8%)	1,079 (18.0%)	1,072 (17.7%)	1,017 (17.8%)	1,021 (18.1%)
	Female	572 (10.0%)	543 (9.4%)	573 (10.0%)	582 (9.7%)	388 (8.7%)	623 (9.6%)	574 (9.6%)	582 (9.6%)	554 (9.7%)	534 (9.5%)
	Subtotal	1,839 (32.0%)	1,784 (30.9%)	1,750 (30.6%)	1,793 (29.8%)	1,219 (27.2%)	1,844 (28.4%)	1,653 (27.6%)	1,654 (27.3%)	1,571 (27.5%)	1,555 (27.5%)
IRE	Male	2,585 (45.0%)	2,576 (44.6%)	2,537 (44.3%)	2,616 (43.4%)	1,958 (43.7%)	2,750 (42.4%)	2,533 (42.3%)	2,493 (41.2%)	2,340 (40.9%)	2,255 (39.9%)
	Female	429 (7.5%)	467 (8.1%)	521 (9.1%)	588 (9.8%)	452 (10.1%)	649 (10.0%)	556 (9.3%)	631 (10.4%)	622 (10.9%)	625 (11.1%)
	Subtotal	3,014 (52.4%)	3,043 (52.7%)	3,058 (53.4%)	3,204 (53.2%)	2,410 (53.8%)	3,399 (52.4%)	3,089 (51.5%)	3,124 (51.6%)	2,962 (51.8%)	2,880 (51.0%)
FR	Male	698 (12.1%)	753 (13.0%)	743 (13.0%)	802 (13.3%)	654 (14.6%)	991 (15.3%)	1,000 (16.7%)	1,021 (16.9%)	967 (16.9%)	979 (17.3%)
	Female	60 (1.0%)	73 (1.3%)	81 (1.4%)	115 (1.9%)	106 (2.4%)	141 (2.2%)	142 (2.4%)	163 (2.7%)	143 (2.5%)	175 (3.1%)
	Subtotal	758 (13.2%)	826 (14.3%)	824 (14.4%)	917 (15.2%)	760 (17.0%)	1,132 (17.4%)	1,142 (19.0%)	1,184 (19.5%)	1,110 (19.4%)	1,154 (20.4%)
USA	Male	54 (0.9%)	45 (0.8%)	39 (0.7%)	31 (0.5%)	25 (0.6%)	34 (0.5%)	27 (0.5%)	18 (0.3%)	10 (0.2%)	7 (0.1%)
	Female	2 (0.0%)	1 (0.0%)	2 (0.0%)	4 (0.1%)	3 (0.1%)	2 (0.0%)	2 (0.0%)	0 (0.0%)	1 (0.0%)	1 (0.0%)
	Subtotal	56 (1.0%)	46 (0.8%)	41 (0.7%)	35 (0.6%)	28 (0.6%)	36 (0.6%)	29 (0.5%)	18 (0.3%)	11 (0.2%)	8 (0.1%)
GNY	Male	66 (1.1%)	59 (1.0%)	44 (0.8%)	59 (1.0%)	49 (1.1%)	67 (1.0%)	69 (1.2%)	64 (1.1%)	55 (1.0%)	44 (0.8%)
	Female	7 (0.1%)	5 (0.1%)	2 (0.0%)	5 (0.1%)	4 (0.1%)	9 (0.1%)	9 (0.2%)	10 (0.2%)	4 (0.1%)	4 (0.1%)
	Subtotal	73 (1.3%)	64 (1.1%)	46 (0.8%)	64 (1.1%)	53 (1.2%)	76 (1.2%)	78 (1.3%)	74 (1.2%)	59 (1.0%)	48 (0.8%)
Other	Male	6 (0.1%)	6 (0.1%)	6 (0.1%)	9 (0.1%)	5 (0.1%)	3 (0.0%)	2 (0.0%)	3 (0.0%)	3 (0.1%)	4 (0.1%)
	Female	2 (0.0%)	2 (0.0%)	2 (0.0%)	1 (0.0%)	1 (0.0%)	0 (0.0%)	2 (0.0%)	0 (0.0%)	1 (0.0%)	0 (0.0%)
	Subtotal	8 (0.1%)	8 (0.1%)	8 (0.1%)	10 (0.2%)	6 (0.1%)	3 (0.0%)	4 (0.1%)	3 (0.0%)	4 (0.1%)	4 (0.1%)

Horse Population by Location

May 2025 Horses in Training Snapshot by Region versus Previous Years



North

AgeCat	2016	2017	2018	2019	2020	2021	2022	2023	2024	2025	vs. Last Year	vs. Pre-Covid
Flat Horses in Training												
2YO	779	755	814	873	719	838	780	731	673	670	-3 / -0.4%	-203 / -23.3%
3YO	705	747	749	757	780	808	740	700	706	650	-56 / -7.9%	-107 / -14.1%
4YO	387	428	417	424	390	388	418	402	427	411	-16 / -3.7%	-13 / -3.1%
5YO+	707	708	731	736	657	694	651	724	734	725	-9 / -1.2%	-11 / -1.5%
Subtotal	2578	2638	2711	2790	2546	2728	2589	2557	2540	2456	-84 / -3.3%	-334 / -12.0%
Jump Horses in Training												
3YO	19	6	9	11	9	7	18	12	5	3	-2 / -40.0%	-8 / -72.7%
4-5YO	214	192	194	197	118	213	193	226	253	193	-60 / -23.7%	-4 / -2.0%
6-7YO	268	242	334	274	192	321	281	345	352	315	-37 / -10.5%	+41 / +15.0%
8YO+	362	347	394	319	209	420	303	339	376	335	-41 / -10.9%	+16 / +5.0%
Subtotal	863	787	931	801	528	961	795	922	986	846	-140 / -14.2%	+45 / +5.6%
Dual Horses in Training												
3YO	22	26	23	11	26	18	23	14	14	10	-4 / -28.6%	-1 / -9.1%
4YO	38	47	57	33	32	39	21	26	28	34	+6 / +21.4%	+1 / +3.0%
5YO+	107	115	148	92	80	97	96	82	86	92	+6 / +7.0%	0 / 0.0%
Subtotal	167	188	228	136	138	154	140	122	128	136	+8 / +6.2%	0 / 0.0%
Total Horses in Training												
	3608	3613	3870	3727	3212	3843	3524	3601	3654	3438	-216 / -5.9%	-289 / -7.8%

'vs. Pre-Covid' is comparison between 2025 and 2019

Midlands

AgeCat	2016	2017	2018	2019	2020	2021	2022	2023	2024	2025	vs. Last Year	vs. Pre-Covid
Flat Horses in Training												
2YO	1356	1395	1310	1249	1073	1197	1295	1193	1169	1196	+27 / +2.3%	-53 / -4.2%
3YO	1344	1364	1418	1367	1332	1299	1416	1412	1332	1360	+28 / +2.1%	-7 / -0.5%
4YO	545	592	608	609	548	651	633	646	632	625	-7 / -1.1%	+16 / +2.6%
5YO+	683	695	703	759	663	715	739	758	804	805	+1 / +0.1%	+46 / +6.1%
Subtotal	3928	4046	4039	3984	3616	3862	4083	4009	3937	3986	+49 / +1.2%	+2 / +0.1%
Jump Horses in Training												
3YO	11	9	16	14	6	19	8	27	21	12	-9 / -42.9%	-2 / -14.3%
4-5YO	335	291	373	368	208	445	439	507	488	468	-20 / -4.1%	+100 / +27.2%
6-7YO	407	372	441	434	235	536	521	554	581	501	-80 / -13.8%	+67 / +15.4%
8YO+	397	395	443	425	229	479	420	450	448	416	-32 / -7.1%	-9 / -2.1%
Subtotal	1150	1067	1273	1241	678	1479	1388	1538	1538	1397	-141 / -9.2%	+156 / +12.6%
Dual Horses in Training												
3YO	25	19	17	15	11	11	10	20	12	8	-4 / -33.3%	-7 / -46.7%
4YO	50	53	68	43	31	39	36	30	36	39	+3 / +8.3%	-4 / -9.3%
5YO+	100	118	177	83	100	88	71	81	90	98	+8 / +8.9%	+15 / +18.1%
Subtotal	175	190	262	141	142	138	117	131	138	145	+7 / +5.1%	+4 / +2.8%
Total Horses in Training												
	5253	5303	5574	5366	4436	5479	5588	5678	5613	5528	-85 / -1.5%	+162 / +3.0%

'vs. Pre-Covid' is comparison between 2025 and 2019

South

AgeCat	2016	2017	2018	2019	2020	2021	2022	2023	2024	2025	vs. Last Year	vs. Pre-Covid
Flat Horses in Training												
2YO	1195	1257	1223	1260	1065	1111	1123	1071	1066	1016	-50 / -4.7%	-244 / -19.4%
3YO	1029	1013	1137	1118	1081	1054	1009	987	918	1028	+110 / +12.0%	-90 / -8.1%
4YO	418	438	470	522	452	491	487	412	421	386	-35 / -8.3%	-136 / -26.1%
5YO+	599	591	593	598	568	598	579	607	583	547	-36 / -6.2%	-51 / -8.5%
Subtotal	3241	3299	3423	3498	3166	3254	3198	3077	2988	2977	-11 / -0.4%	-521 / -14.9%
Jump Horses in Training												
3YO	18	14	19	23	16	30	16	33	32	23	-9 / -28.1%	0 / 0.0%
4-5YO	577	520	581	628	273	504	542	698	586	507	-79 / -13.5%	-121 / -19.3%
6-7YO	626	540	701	663	346	673	581	666	673	539	-134 / -19.9%	-124 / -18.7%
8YO+	585	550	622	572	334	638	537	530	478	395	-83 / -17.4%	-177 / -30.9%
Subtotal	1806	1624	1923	1886	969	1845	1676	1927	1769	1464	-305 / -17.2%	-422 / -22.4%
Dual Horses in Training												
3YO	16	28	23	14	24	23	26	29	16	22	+6 / +37.5%	+8 / +57.1%
4YO	28	54	73	42	26	49	59	55	50	50	0 / 0.0%	+8 / +19.0%
5YO+	146	129	244	109	94	103	122	110	106	109	+3 / +2.8%	0 / 0.0%
Subtotal	190	211	340	165	144	175	207	194	172	181	+9 / +5.2%	+16 / +9.7%
Total Horses in Training												
	5237	5134	5686	5549	4279	5274	5081	5198	4929	4622	-307 / -6.2%	-927 / -16.7%

'vs. Pre-Covid' is comparison between 2025 and 2019

May 2025 Horses in Training Snapshot by Country versus Previous Years

Type	2016	2017	2018	2019	2020	2021	2022	2023	2024	2025	vs. Last Year	vs. Pre-Covid
England												
Flat	9409	9586	9758	9878	8979	9478	9475	9275	9125	9064	-61 / -0.7%	-814 / -8.2%
Jump	3309	3019	3556	3372	1899	3688	3355	3859	3731	3222	-509 / -13.6%	-150 / -4.4%
Dual	464	511	737	390	392	411	417	414	396	421	+25 / +6.3%	+31 / +7.9%
Overall	13182	13116	14051	13640	11270	13577	13247	13548	13252	12707	-545 / -4.1%	-933 / -6.8%
Scotland												
Flat	187	228	245	216	196	213	237	221	204	212	+8 / +3.9%	-4 / -1.9%
Jump	228	213	265	210	115	271	221	255	280	248	-32 / -11.4%	+38 / +18.1%
Dual	38	39	48	30	24	30	24	22	25	26	+1 / +4.0%	-4 / -13.3%
Overall	453	480	558	456	335	514	482	498	509	486	-23 / -4.5%	+30 / +6.6%
Wales												
Flat	151	169	170	178	153	153	158	147	136	143	+7 / +5.1%	-35 / -19.7%
Jump	282	246	306	346	161	326	283	273	282	237	-45 / -16.0%	-109 / -31.5%
Dual	30	39	45	22	8	26	23	11	17	15	-2 / -11.8%	-7 / -31.8%
Overall	463	454	521	546	322	505	464	431	435	395	-40 / -9.2%	-151 / -27.7%

'vs. Pre-Covid' is comparison between 2025 and 2019

May 2025 Horses in Training Snapshot by Training Centre versus Previous Years

Type	2016	2017	2018	2019	2020	2021	2022	2023	2024	2025	vs. Last Year	vs. Pre-Covid
Cheltenham (GL54)												
Flat	17	20	15	16	12	16	14	17	16	16	0 / 0.0%	0 / 0.0%
Jump	264	214	283	211	137	286	289	402	328	251	-77 / -23.5%	+40 / +19.0%
Dual	17	24	39	12	10	12	17	12	16	19	+3 / +18.8%	+7 / +58.3%
Overall	298	258	337	239	159	314	320	431	360	286	-74 / -20.6%	+47 / +19.7%
Lambourn (RG17)												
Flat	919	989	1042	1076	951	941	901	958	946	974	+28 / +3.0%	-102 / -9.5%
Jump	248	232	282	283	84	237	222	260	234	249	+15 / +6.4%	-34 / -12.0%
Dual	23	22	32	17	26	21	24	30	24	26	+2 / +8.3%	+9 / +52.9%
Overall	1190	1243	1356	1376	1061	1199	1147	1248	1204	1249	+45 / +3.7%	-127 / -9.2%
Malton (YO17)												
Flat	687	708	725	767	720	755	738	737	752	717	-35 / -4.7%	-50 / -6.5%
Jump	93	88	121	75	79	89	79	79	60	58	-2 / -3.3%	-17 / -22.7%
Dual	24	42	44	19	34	38	39	26	31	24	-7 / -22.6%	+5 / +26.3%
Overall	804	838	890	861	833	882	856	842	843	799	-44 / -5.2%	-62 / -7.2%
Marlborough (SN8)												
Flat	584	551	569	563	521	524	503	456	475	443	-32 / -6.7%	-120 / -21.3%
Jump	47	42	74	65	16	45	39	54	61	50	-11 / -18.0%	-15 / -23.1%
Dual	2	2	0	4	2	0	2	2	3	2	-1 / -33.3%	-2 / -50.0%
Overall	633	595	643	632	539	569	544	512	539	495	-44 / -8.2%	-137 / -21.7%
Middleham (DL8)												
Flat	585	552	567	633	612	606	530	567	549	545	-4 / -0.7%	-88 / -13.9%
Jump	61	67	78	84	49	86	82	106	96	90	-6 / -6.2%	+6 / +7.1%
Dual	23	30	21	25	20	27	18	14	20	26	+6 / +30.0%	+1 / +4.0%
Overall	669	649	666	742	681	719	630	687	665	661	-4 / -0.6%	-81 / -10.9%
Newbury (RG20)												
Flat	410	412	433	452	410	447	494	450	406	391	-15 / -3.7%	-61 / -13.5%
Jump	19	17	17	16	4	8	5	34	19	65	+46 / +242.1%	+49 / +306.2%
Dual	2	8	12	7	7	8	7	6	2	4	+2 / +100.0%	-3 / -42.9%
Overall	431	437	462	475	421	463	506	490	427	460	+33 / +7.7%	-15 / -3.2%
Newmarket (CB8)												
Flat	2824	2880	2898	2796	2624	2798	2866	2917	2837	2786	-51 / -1.8%	-10 / -0.4%
Jump	45	37	46	52	19	46	31	52	49	55	+6 / +12.2%	+3 / +5.8%
Dual	35	34	35	19	23	28	26	27	31	45	+14 / +45.2%	+26 / +136.8%
Overall	2904	2951	2979	2867	2666	2872	2923	2996	2917	2886	-31 / -1.1%	+19 / +0.7%

'vs. Pre-Covid' is comparison between 2025 and 2019