

Horse Population Report

Updated on 30 April 2025



Introduction

Welcome to the latest update on the Racehorse Population from the British Horseracing Authority.

The aim of this document is to give stakeholders and the wider Public an insight into the current state of the Horse Population in Great Britain. It is hoped that this transparency will ensure that all decision makers have access to the key data required to help British Racing deliver a Competitive and Compelling product to stakeholders, racegoers and the wider public.

If you have any questions regarding the content of this report or suggestions for how it could be improved further, please contact Joe Yates – jyates@britishhorseracing.com

Definitions

This report uses the Horses in Training returns from the Weatherby's Racing Administration System, this is completed by trainers and should be updated whenever a horse enters or leaves training in their care as part of the conditions of their licence.

Horses in Training

Unless otherwise stated, snapshots of Horses in Training will be from the 15th day of the month in question and year to date figures will be up to and including the date titled at the front of the report.

Horses' ratings will be taken from the most recently published ratings by the BHA Handicapping Team, which is currently at 7am each Tuesday morning. For example, if looking at the Horses in a particular rating band for July 2011, the horses in training number will be from Friday 15th July 2011 and ratings, where possible, will be assigned to each horse from the ratings published by the BHA Handicappers on Tuesday 12th July 2011.

The Gender of a horse will be taken from the reporting date in question, regardless of whether this has since changed.

In the case of YTD reporting, where a horse's gender or training type has changed in the year-to-date period, the most recent is taken.

This report does not count any horses that are temporarily racing abroad for GB Trainers at the time of reporting.

Yearlings are not included in total counts of flat and/or dual horses but will be sometimes shown separately for information purposes.

Yearlings and two-year-olds are not included in total counts of jump horses or counts of jump horses that include dual horses but will be sometimes shown separately for information purposes.

Yearlings, two-year-olds and three-year-olds are not included in total counts of Hunter Chasers but will be sometimes shown separately for information purposes.

Yearlings and two-year-olds in training that are recorded as dual horses have been re-coded as flat horses.

Hunter Chasers are not included in any counts of Jump Horses or Total figures but will be sometimes shown separately for information purposes.

Horses' training locations are defined by the trainers' primary training location. Training regions are defined the same as regions for the Fixture List; 'North' is north of latitude 53.42911, 'South' is south of latitude 51.88002 and 'Midlands' is anywhere in between. Training centres are defined by postcodes and surrounding areas.

Runners

Unless otherwise specified, Total Runners and Individual Runners metrics only counts runners that ran in GB races including any voided races. Withdrawn horses are not included.

Hunter Chases are not included in this section but will be sometimes shown separately for information purposes.

Total Runners is a count of all runners in races, whilst individual runners only counts each individual horse once.

Monthly Horses in Training

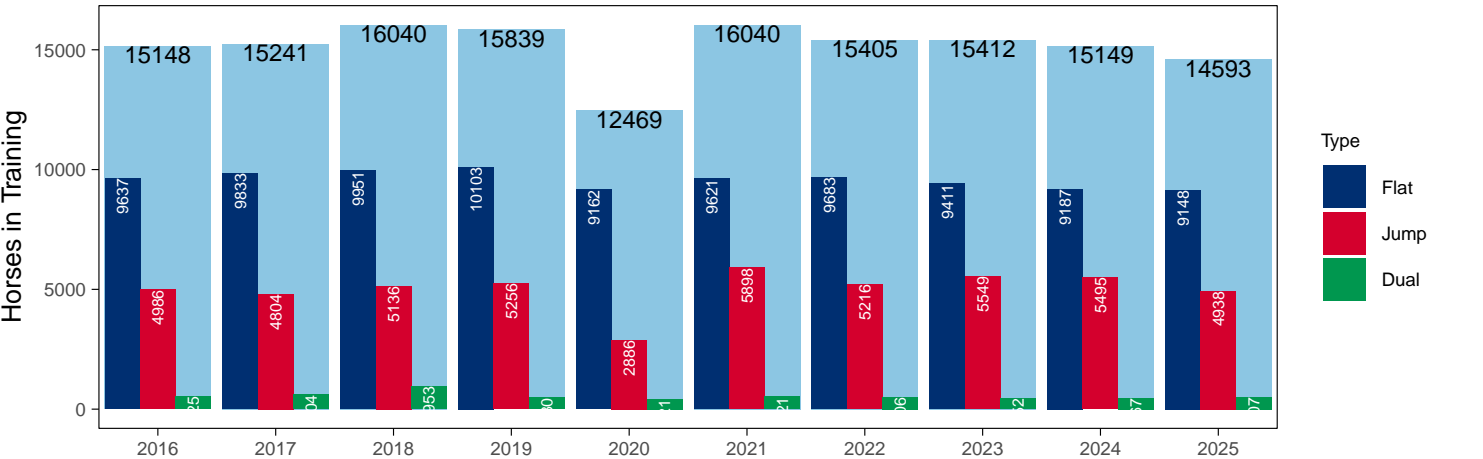
April 2025 Horses in Training Snapshot versus Previous Years

Type	2016	2017	2018	2019	2020	2021	2022	2023	2024	2025	vs. Last Year	vs. Pre-Covid
Flat	9637	9833	9951	10103	9162	9621	9683	9411	9187	9148	-39 / -0.4%	-955 / -9.5%
Jump	4986	4804	5136	5256	2886	5898	5216	5549	5495	4938	-557 / -10.1%	-318 / -6.1%
Dual	525	604	953	480	421	521	506	452	467	507	+40 / +8.6%	+27 / +5.6%
Hunter	1989	1930	1747	1714	1456	1174	1310	1240	1371	1125	-246 / -17.9%	-589 / -34.4%
Total	15148	15241	16040	15839	12469	16040	15405	15412	15149	14593	-556 / -3.7%	-1246 / -7.9%

'vs. Pre-Covid' is comparison between 2025 and 2019

Snapshot of Total Horses in Training in April

Horses in Training in April, shown by Training Type



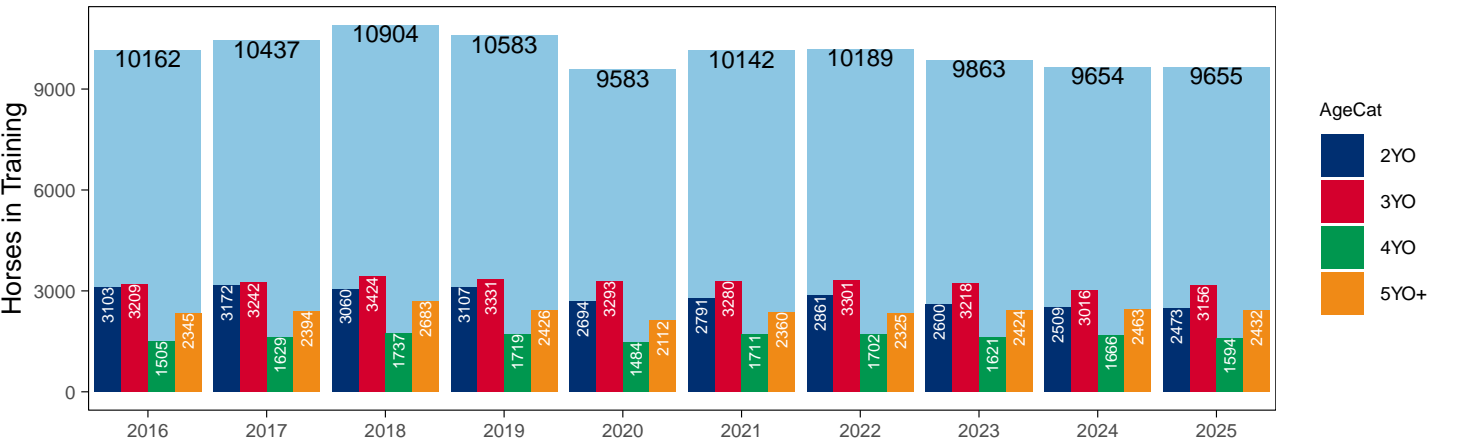
Flat (including Dual)

AgeCat	2016	2017	2018	2019	2020	2021	2022	2023	2024	2025	vs. Last Year	vs. Pre-Covid
2YO	3103	3172	3060	3107	2694	2791	2861	2600	2509	2473	-36 / -1.4%	-634 / -20.4%
3YO	3209	3242	3424	3331	3293	3280	3301	3218	3016	3156	+140 / +4.6%	-175 / -5.3%
4YO	1505	1629	1737	1719	1484	1711	1702	1621	1666	1594	-72 / -4.3%	-125 / -7.3%
5YO+	2345	2394	2683	2426	2112	2360	2325	2424	2463	2432	-31 / -1.3%	+6 / +0.2%
Total	10162	10437	10904	10583	9583	10142	10189	9863	9654	9655	+1 / +0.0%	-928 / -8.8%

'vs. Pre-Covid' is comparison between 2025 and 2019

Snapshot of Flat Horses in Training in April

Flat Horses in Training in April, shown by Age



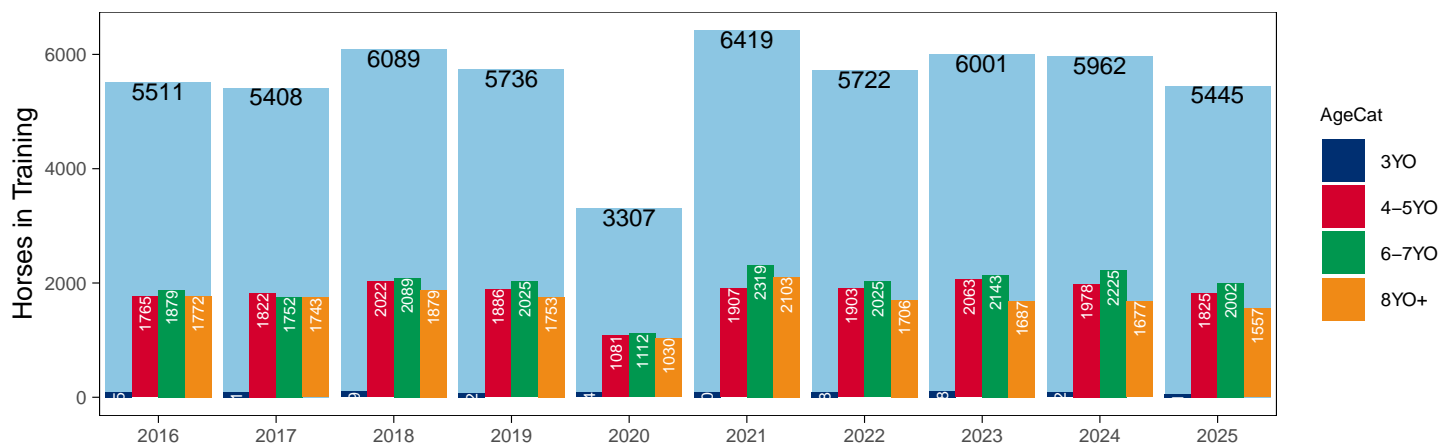
Jump (including Dual)

AgeCat	2016	2017	2018	2019	2020	2021	2022	2023	2024	2025	vs. Last Year	vs. Pre-Covid
3YO	95	91	99	72	84	90	88	108	82	61	-21 / -25.6%	-11 / -15.3%
4-5YO	1765	1822	2022	1886	1081	1907	1903	2063	1978	1825	-153 / -7.7%	-61 / -3.2%
6-7YO	1879	1752	2089	2025	1112	2319	2025	2143	2225	2002	-223 / -10.0%	-23 / -1.1%
8YO+	1772	1743	1879	1753	1030	2103	1706	1687	1677	1557	-120 / -7.2%	-196 / -11.2%
Total	5511	5408	6089	5736	3307	6419	5722	6001	5962	5445	-517 / -8.7%	-291 / -5.1%

'vs. Pre-Covid' is comparison between 2025 and 2019

Snapshot of Jump Horses in Training in April

Jump Horses in Training in April, shown by Age



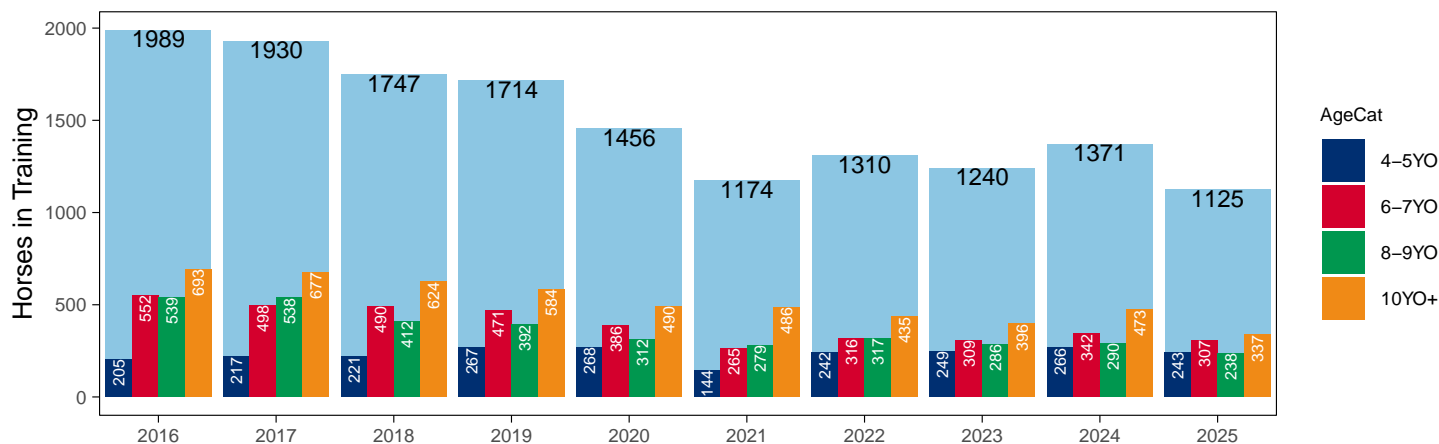
Hunter Chasers

AgeCat	2016	2017	2018	2019	2020	2021	2022	2023	2024	2025	vs. Last Year	vs. Pre-Covid
4-5YO	205	217	221	267	268	144	242	249	266	243	-23 / -8.6%	-24 / -9.0%
6-7YO	552	498	490	471	386	265	316	309	342	307	-35 / -10.2%	-164 / -34.8%
8-9YO	539	538	412	392	312	279	317	286	290	238	-52 / -17.9%	-154 / -39.3%
10YO+	693	677	624	584	490	486	435	396	473	337	-136 / -28.8%	-247 / -42.3%
Total	1989	1930	1747	1714	1456	1174	1310	1240	1371	1125	-246 / -17.9%	-589 / -34.4%

'vs. Pre-Covid' is comparison between 2025 and 2019

Snapshot of Hunter Chasers in Training in April

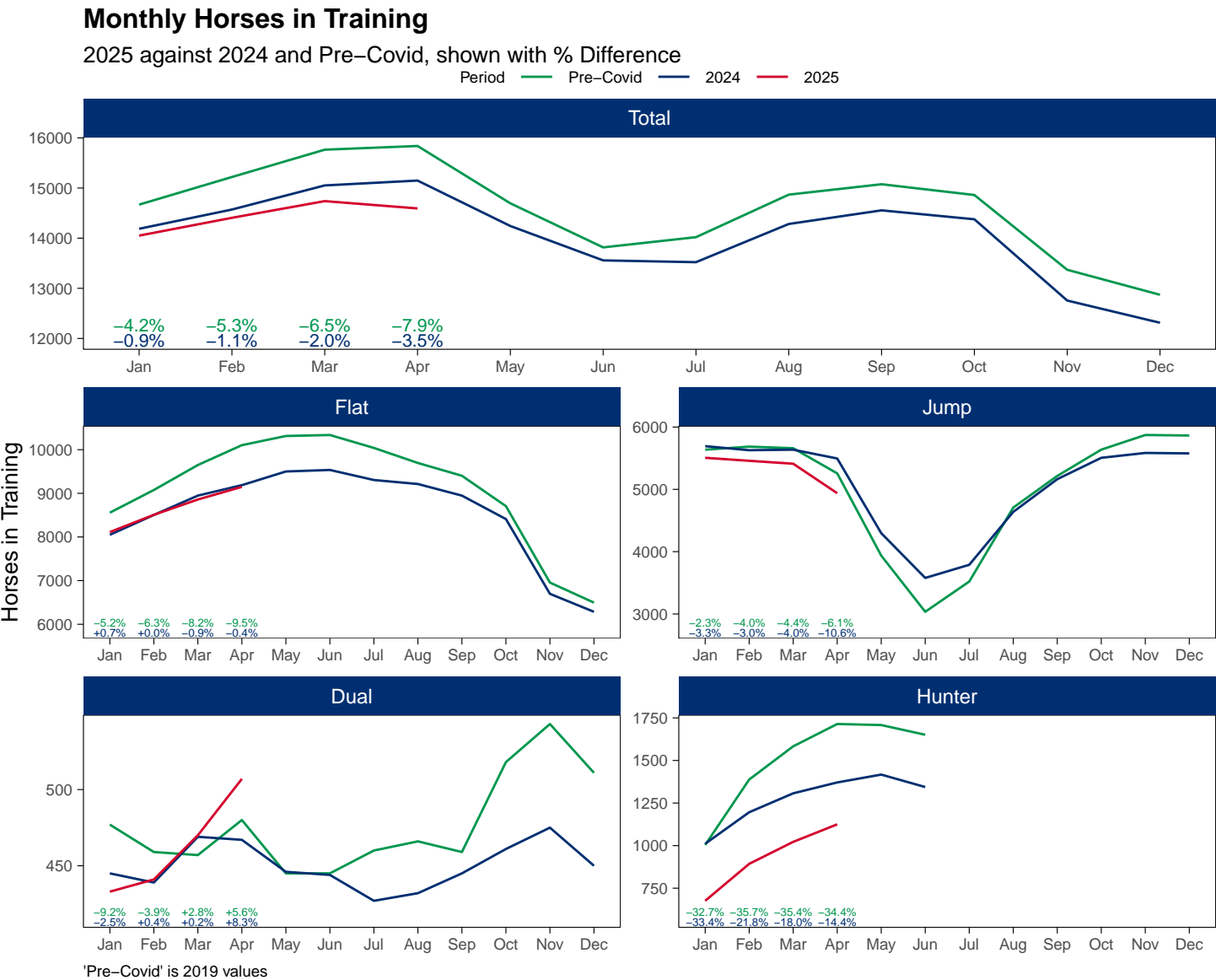
Hunter Chasers in Training in April, shown by Age



2025 Horses in Training versus Previous Years

Type	Period	Jan	Feb	Mar	Apr	May	Jun	Jul	Aug	Sep	Oct	Nov	Dec
Flat	2025	8112	8507	8858	9148								
	2024	8049	8504	8947	9187	9500	9535	9305	9213	8947	8410	6697	6286
	Pre-Covid	8556	9076	9648	10103	10313	10336	10040	9695	9402	8706	6955	6496
Jump	2025	5506	5458	5411	4938								
	2024	5693	5628	5636	5495	4297	3578	3789	4638	5163	5506	5584	5577
	Pre-Covid	5636	5685	5660	5256	3937	3035	3520	4707	5215	5637	5872	5864
Dual	2025	433	441	470	507								
	2024	445	439	469	467	446	444	427	432	445	461	475	450
	Pre-Covid	477	459	457	480	445	445	460	466	459	518	543	511
Hunter	2025	676	893	1022	1125								
	2024	1011	1196	1307	1371	1417	1344						
	Pre-Covid	1004	1388	1583	1714	1708	1651						
Total	2025	14051	14406	14739	14593								
	2024	14187	14571	15052	15149	14243	13557	13521	14283	14555	14377	12756	12313
	Pre-Covid	14669	15220	15765	15839	14695	13816	14020	14868	15076	14861	13370	12871

'Pre-Covid' is 2019 values



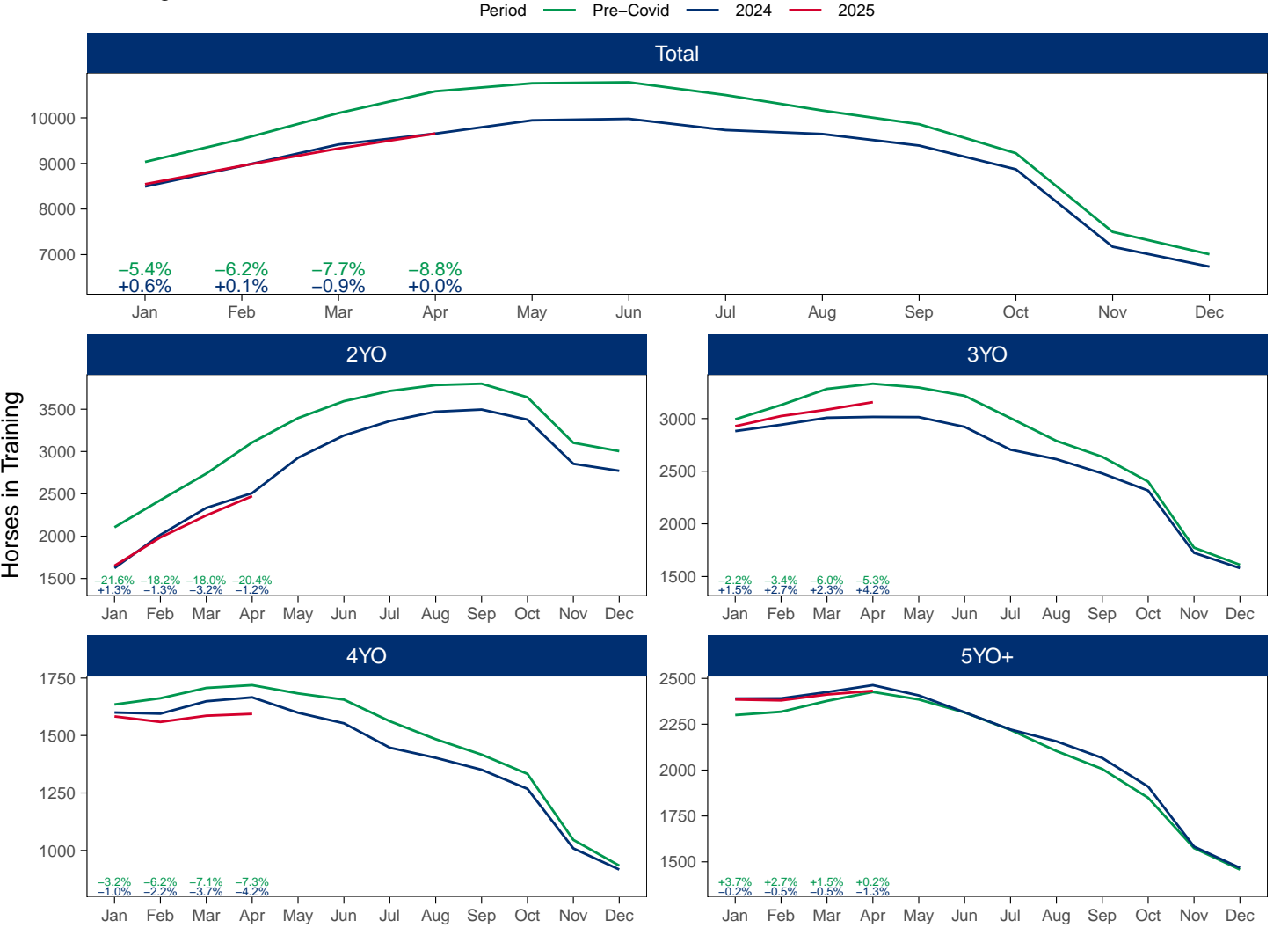
Flat (including Dual)

AgeCat	Period	Jan	Feb	Mar	Apr	May	Jun	Jul	Aug	Sep	Oct	Nov	Dec
2YO	2025	1650	1985	2245	2473								
	2024	1623	2016	2334	2509	2926	3190	3360	3471	3496	3377	2855	2772
	Pre-Covid	2105	2426	2739	3107	3395	3595	3715	3785	3801	3641	3103	3004
3YO	2025	2927	3024	3085	3156								
	2024	2881	2941	3008	3016	3014	2921	2704	2614	2479	2316	1725	1580
	Pre-Covid	2993	3129	3282	3331	3295	3216	3004	2788	2637	2401	1774	1611
4YO	2025	1583	1559	1586	1594								
	2024	1600	1595	1649	1666	1599	1553	1447	1403	1351	1268	1009	917
	Pre-Covid	1635	1662	1707	1719	1683	1656	1562	1484	1417	1333	1046	934
5YO+	2025	2385	2380	2412	2432								
	2024	2390	2391	2425	2463	2407	2315	2221	2157	2066	1910	1583	1467
	Pre-Covid	2300	2318	2377	2426	2385	2314	2219	2104	2006	1849	1575	1458
Total	2025	8545	8948	9328	9655								
	2024	8494	8943	9416	9654	9946	9979	9732	9645	9392	8871	7172	6736
	Pre-Covid	9033	9535	10105	10583	10758	10781	10500	10161	9861	9224	7498	7007

'Pre-Covid' is 2019 values

Monthly Flat Horses in Training

2025 against 2024 and Pre-Covid, shown with % Difference



'Pre-Covid' is 2019 values

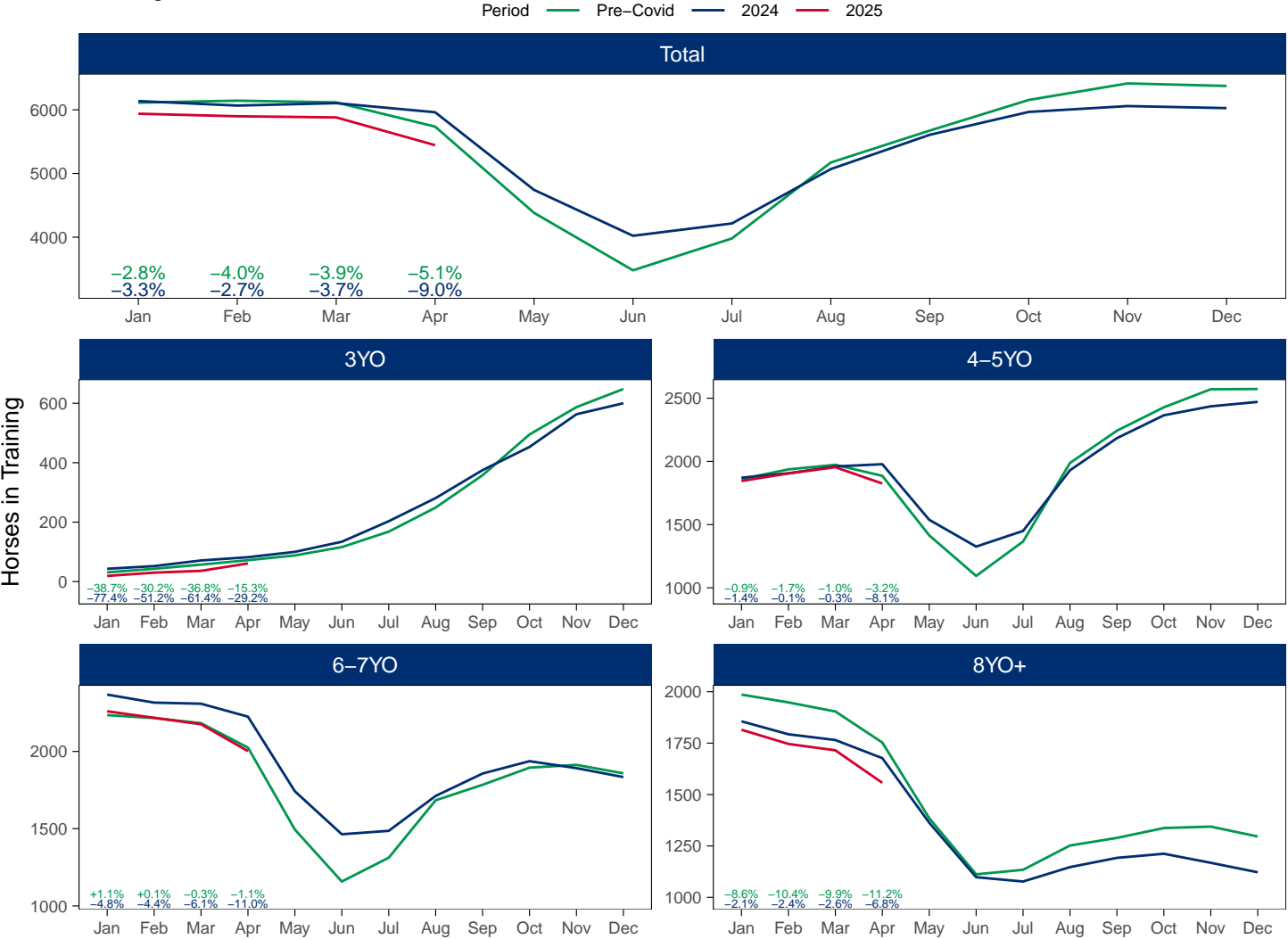
Jump (including Dual)

AgeCat	Period	Jan	Feb	Mar	Apr	May	Jun	Jul	Aug	Sep	Oct	Nov	Dec
3YO	2025	19	30	36	61								
	2024	43	52	71	82	100	134	203	281	375	453	563	600
	Pre-Covid	31	43	57	72	88	116	168	249	358	495	587	648
4-5YO	2025	1845	1905	1954	1825								
	2024	1871	1906	1960	1978	1538	1326	1450	1930	2184	2365	2436	2471
	Pre-Covid	1861	1937	1973	1886	1415	1094	1366	1988	2243	2428	2571	2573
6-7YO	2025	2260	2218	2176	2002								
	2024	2368	2316	2309	2225	1742	1464	1486	1712	1857	1937	1892	1834
	Pre-Covid	2235	2216	2183	2025	1494	1158	1312	1684	1784	1895	1913	1858
8YO+	2025	1815	1746	1715	1557								
	2024	1856	1793	1765	1677	1363	1098	1077	1147	1192	1212	1168	1122
	Pre-Covid	1986	1948	1904	1753	1385	1112	1134	1252	1289	1337	1344	1296
Total	2025	5939	5899	5881	5445								
	2024	6138	6067	6105	5962	4743	4022	4216	5070	5608	5967	6059	6027
	Pre-Covid	6113	6144	6117	5736	4382	3480	3980	5173	5674	6155	6415	6375

'Pre-Covid' is 2019 values

Monthly Jump Horses in Training

2025 against 2024 and Pre-Covid, shown with % Difference



'Pre-Covid' is 2019 values

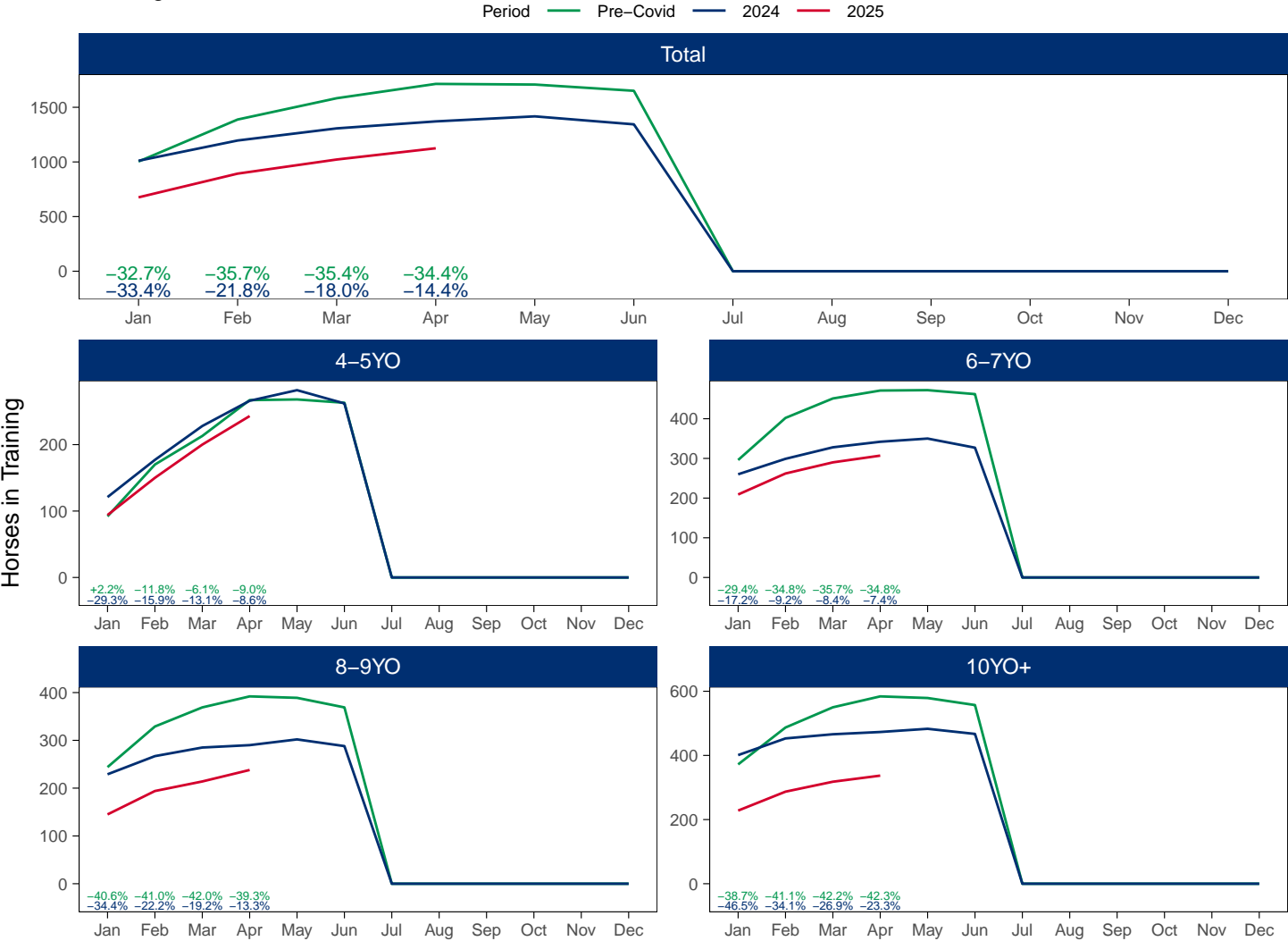
Hunter Chasers

AgeCat	Period	Jan	Feb	Mar	Apr	May	Jun	Jul	Aug	Sep	Oct	Nov	Dec
4-5YO	2025	94	150	200	243								
	2024	121	177	228	266	282	262						
	Pre-Covid	92	170	213	267	268	263						
6-7YO	2025	209	262	290	307								
	2024	260	299	328	342	350	327						
	Pre-Covid	296	402	451	471	472	462						
8-9YO	2025	145	194	214	238								
	2024	229	267	285	290	302	288						
	Pre-Covid	244	329	369	392	389	369						
10YO+	2025	228	287	318	337								
	2024	401	453	466	473	483	467						
	Pre-Covid	372	487	550	584	579	557						
Total	2025	676	893	1022	1125								
	2024	1011	1196	1307	1371	1417	1344						
	Pre-Covid	1004	1388	1583	1714	1708	1651						

'Pre-Covid' is 2019 values

Monthly Hunter Chasers in Training

2025 against 2024 and Pre-Covid, shown with % Difference



'Pre-Covid' is 2019 values

April 2025 Horses in Training by Rating Band Snapshot versus Previous Years

Flat (including Dual)

AgeCat	RatBand	2016	2017	2018	2019	2020	2021	2022	2023	2024	2025
2YO	Unrated	3,103 (100.0%)	3,172 (100.0%)	3,060 (100.0%)	3,107 (100.0%)	2,694 (100.0%)	2,791 (100.0%)	2,861 (100.0%)	2,600 (100.0%)	2,509 (100.0%)	2,473 (100.0%)
	Subtotal	3,103 (100.0%)	3,172 (100.0%)	3,060 (100.0%)	3,107 (100.0%)	2,694 (100.0%)	2,791 (100.0%)	2,861 (100.0%)	2,600 (100.0%)	2,509 (100.0%)	2,473 (100.0%)
3YO	Unrated	1,548 (48.2%)	1,524 (47.0%)	1,856 (54.2%)	1,686 (50.6%)	1,948 (59.2%)	1,694 (51.6%)	1,622 (49.1%)	1,593 (49.5%)	1,482 (49.1%)	1,528 (48.4%)
	0-50	110 (3.4%)	128 (3.9%)	101 (2.9%)	144 (4.3%)	116 (3.5%)	138 (4.2%)	143 (4.3%)	143 (4.4%)	124 (4.1%)	125 (4.0%)
	51-60	225 (7.0%)	265 (8.2%)	222 (6.5%)	306 (9.2%)	215 (6.5%)	279 (8.5%)	296 (9.0%)	250 (7.8%)	262 (8.7%)	273 (8.7%)
	61-70	437 (13.6%)	419 (12.9%)	409 (11.9%)	402 (12.1%)	318 (9.7%)	402 (12.3%)	406 (12.3%)	422 (13.1%)	371 (12.3%)	393 (12.5%)
	71-80	474 (14.8%)	459 (14.2%)	445 (13.0%)	389 (11.7%)	351 (10.7%)	386 (11.8%)	460 (13.9%)	423 (13.1%)	396 (13.1%)	432 (13.7%)
	81-90	247 (7.7%)	292 (9.0%)	230 (6.7%)	240 (7.2%)	191 (5.8%)	217 (6.6%)	219 (6.6%)	236 (7.3%)	224 (7.4%)	232 (7.4%)
	91-100	101 (3.1%)	92 (2.8%)	89 (2.6%)	105 (3.2%)	92 (2.8%)	97 (3.0%)	87 (2.6%)	87 (2.7%)	88 (2.9%)	109 (3.5%)
	101+	67 (2.1%)	63 (1.9%)	72 (2.1%)	59 (1.8%)	62 (1.9%)	67 (2.0%)	68 (2.1%)	64 (2.0%)	69 (2.3%)	64 (2.0%)
	Subtotal	3,209 (100.0%)	3,242 (100.0%)	3,424 (100.0%)	3,331 (100.0%)	3,293 (100.0%)	3,280 (100.0%)	3,301 (100.0%)	3,218 (100.0%)	3,016 (100.0%)	3,156 (100.0%)
4YO	Unrated	196 (13.0%)	259 (15.9%)	373 (21.5%)	305 (17.7%)	316 (21.3%)	327 (19.1%)	295 (17.3%)	275 (17.0%)	265 (15.9%)	264 (16.6%)
	0-50	110 (7.3%)	137 (8.4%)	174 (10.0%)	181 (10.5%)	160 (10.8%)	165 (9.6%)	169 (9.9%)	188 (11.6%)	165 (9.9%)	150 (9.4%)
	51-60	176 (11.7%)	190 (11.7%)	188 (10.8%)	227 (13.2%)	179 (12.1%)	229 (13.4%)	238 (14.0%)	214 (13.2%)	257 (15.4%)	209 (13.1%)
	61-70	261 (17.3%)	265 (16.3%)	277 (15.9%)	273 (15.9%)	226 (15.2%)	285 (16.7%)	286 (16.8%)	269 (16.6%)	299 (17.9%)	263 (16.5%)
	71-80	290 (19.3%)	322 (19.8%)	297 (17.1%)	277 (16.1%)	211 (14.2%)	305 (17.8%)	307 (18.0%)	278 (17.1%)	294 (17.6%)	260 (16.3%)
	81-90	250 (16.6%)	236 (14.5%)	220 (12.7%)	220 (12.8%)	183 (12.3%)	181 (10.6%)	226 (13.3%)	214 (13.2%)	199 (11.9%)	234 (14.7%)
	91-100	123 (8.2%)	118 (7.2%)	131 (7.5%)	150 (8.7%)	127 (8.6%)	146 (8.5%)	110 (6.5%)	90 (5.6%)	112 (6.7%)	108 (6.8%)
	101+	99 (6.6%)	102 (6.3%)	77 (4.4%)	86 (5.0%)	82 (5.5%)	73 (4.3%)	71 (4.2%)	93 (5.7%)	75 (4.5%)	106 (6.6%)
5YO+	Subtotal	1,505 (100.0%)	1,629 (100.0%)	1,737 (100.0%)	1,719 (100.0%)	1,484 (100.0%)	1,711 (100.0%)	1,702 (100.0%)	1,621 (100.0%)	1,666 (100.0%)	1,594 (100.0%)
	Unrated	265 (11.3%)	319 (13.3%)	579 (21.6%)	330 (13.6%)	421 (19.9%)	337 (14.3%)	398 (17.1%)	325 (13.4%)	377 (15.3%)	302 (12.4%)
	0-50	193 (8.2%)	219 (9.1%)	303 (11.3%)	349 (14.4%)	253 (12.0%)	291 (12.3%)	298 (12.8%)	298 (12.3%)	293 (11.9%)	312 (12.8%)
	51-60	366 (15.6%)	337 (14.1%)	373 (13.9%)	382 (15.7%)	293 (13.9%)	409 (17.3%)	353 (15.2%)	408 (16.8%)	452 (18.4%)	452 (18.6%)
	61-70	427 (18.2%)	421 (17.6%)	395 (14.7%)	415 (17.1%)	345 (16.3%)	413 (17.5%)	382 (16.4%)	438 (18.1%)	442 (17.9%)	435 (17.9%)
	71-80	400 (17.1%)	395 (16.5%)	374 (13.9%)	329 (13.6%)	298 (14.1%)	332 (14.1%)	319 (13.7%)	391 (16.1%)	358 (14.5%)	382 (15.7%)
	81-90	331 (14.1%)	321 (13.4%)	320 (11.9%)	285 (11.7%)	238 (11.3%)	251 (10.6%)	261 (11.2%)	263 (10.8%)	274 (11.1%)	286 (11.8%)
	91-100	188 (8.0%)	199 (8.3%)	181 (6.7%)	189 (7.8%)	146 (6.9%)	171 (7.2%)	184 (7.9%)	165 (6.8%)	146 (5.9%)	132 (5.4%)
	101+	175 (7.5%)	183 (7.6%)	158 (5.9%)	147 (6.1%)	118 (5.6%)	156 (6.6%)	130 (5.6%)	136 (5.6%)	121 (4.9%)	131 (5.4%)
	Subtotal	2,345 (100.0%)	2,394 (100.0%)	2,683 (100.0%)	2,426 (100.0%)	2,112 (100.0%)	2,360 (100.0%)	2,325 (100.0%)	2,424 (100.0%)	2,463 (100.0%)	2,432 (100.0%)
Overall	Unrated	5,112 (50.3%)	5,274 (50.5%)	5,868 (53.8%)	5,428 (51.3%)	5,379 (56.1%)	5,149 (50.8%)	5,176 (50.8%)	4,793 (48.6%)	4,633 (48.0%)	4,567 (47.3%)
	0-50	413 (4.1%)	484 (4.6%)	578 (5.3%)	674 (6.4%)	529 (5.5%)	594 (5.9%)	610 (6.0%)	629 (6.4%)	582 (6.0%)	587 (6.1%)
	51-60	767 (7.5%)	792 (7.6%)	783 (7.2%)	915 (8.6%)	687 (7.2%)	917 (9.0%)	887 (8.7%)	872 (8.8%)	971 (10.1%)	934 (9.7%)
	61-70	1,125 (11.1%)	1,105 (10.6%)	1,081 (9.9%)	1,090 (10.3%)	889 (9.3%)	1,100 (10.8%)	1,074 (10.5%)	1,129 (11.4%)	1,112 (11.5%)	1,091 (11.3%)
	71-80	1,164 (11.5%)	1,176 (11.3%)	1,116 (10.2%)	995 (9.4%)	860 (9.0%)	1,023 (10.1%)	1,086 (10.7%)	1,092 (11.1%)	1,048 (10.9%)	1,074 (11.1%)
	81-90	828 (8.1%)	849 (8.1%)	770 (7.1%)	745 (7.0%)	612 (6.4%)	649 (6.4%)	706 (6.9%)	713 (7.2%)	697 (7.2%)	752 (7.8%)
	91-100	412 (4.1%)	409 (3.9%)	401 (3.7%)	444 (4.2%)	365 (3.8%)	414 (4.1%)	381 (3.7%)	342 (3.5%)	346 (3.6%)	349 (3.6%)
	101+	341 (3.4%)	348 (3.3%)	307 (2.8%)	292 (2.8%)	262 (2.7%)	296 (2.9%)	269 (2.6%)	293 (3.0%)	265 (2.7%)	301 (3.1%)
	Total	10,162 (100.0%)	10,437 (100.0%)	10,904 (100.0%)	10,583 (100.0%)	9,583 (100.0%)	10,142 (100.0%)	10,189 (100.0%)	9,863 (100.0%)	9,654 (100.0%)	9,655 (100.0%)

Where a horse has more than one published rating (published Flat Turf and published Flat AWT mark), the higher of the two is taken.

Jump (including Dual)

AgeCat	RatBand	2016	2017	2018	2019	2020	2021	2022	2023	2024	2025
3YO	Unrated	95 (100.0%)	91 (100.0%)	99 (100.0%)	72 (100.0%)	84 (100.0%)	90 (100.0%)	88 (100.0%)	108 (100.0%)	82 (100.0%)	61 (100.0%)
	Subtotal	95 (100.0%)	91 (100.0%)	99 (100.0%)	72 (100.0%)	84 (100.0%)	90 (100.0%)	88 (100.0%)	108 (100.0%)	82 (100.0%)	61 (100.0%)
4-5YO	Unrated	1,239 (70.2%)	1,255 (68.9%)	1,471 (72.7%)	1,350 (71.6%)	787 (72.8%)	1,419 (74.4%)	1,347 (70.8%)	1,472 (71.4%)	1,395 (70.5%)	1,271 (69.6%)
	0-100	148 (8.4%)	175 (9.6%)	139 (6.9%)	135 (7.2%)	120 (11.1%)	206 (10.8%)	258 (13.6%)	286 (13.9%)	303 (15.3%)	282 (15.5%)
	101-110	124 (7.0%)	106 (5.8%)	136 (6.7%)	114 (6.0%)	53 (4.9%)	75 (3.9%)	126 (6.6%)	121 (5.9%)	118 (6.0%)	121 (6.6%)
	111-120	100 (5.7%)	122 (6.7%)	109 (5.4%)	127 (6.7%)	55 (5.1%)	100 (5.2%)	96 (5.0%)	112 (5.4%)	101 (5.1%)	95 (5.2%)
	121-130	78 (4.4%)	87 (4.8%)	94 (4.6%)	90 (4.8%)	42 (3.9%)	64 (3.4%)	49 (2.6%)	55 (2.7%)	41 (2.1%)	42 (2.3%)
	131-140	54 (3.1%)	59 (3.2%)	57 (2.8%)	47 (2.5%)	13 (1.2%)	32 (1.7%)	19 (1.0%)	16 (0.8%)	16 (0.8%)	8 (0.4%)
	141-150	17 (1.0%)	15 (0.8%)	12 (0.6%)	20 (1.1%)	7 (0.6%)	6 (0.3%)	6 (0.3%)	1 (0.0%)	4 (0.2%)	4 (0.2%)
	151+	5 (0.3%)	3 (0.2%)	4 (0.2%)	3 (0.2%)	4 (0.4%)	5 (0.3%)	2 (0.1%)	NA (-)	NA (-)	2 (0.1%)
Subtotal		1,765 (100.0%)	1,822 (100.0%)	2,022 (100.0%)	1,886 (100.0%)	1,081 (100.0%)	1,907 (100.0%)	1,903 (100.0%)	2,063 (100.0%)	1,978 (100.0%)	1,825 (100.0%)
6-7YO	Unrated	467 (24.9%)	394 (22.5%)	589 (28.2%)	472 (23.3%)	334 (30.0%)	560 (24.1%)	506 (25.0%)	534 (24.9%)	576 (25.9%)	424 (21.2%)
	0-100	395 (21.0%)	386 (22.0%)	404 (19.3%)	422 (20.8%)	279 (25.1%)	628 (27.1%)	591 (29.2%)	654 (30.5%)	717 (32.2%)	661 (33.0%)
	101-110	274 (14.6%)	246 (14.0%)	252 (12.1%)	289 (14.3%)	157 (14.1%)	279 (12.0%)	299 (14.8%)	320 (14.9%)	326 (14.7%)	344 (17.2%)
	111-120	291 (15.5%)	260 (14.8%)	310 (14.8%)	292 (14.4%)	142 (12.8%)	306 (13.2%)	252 (12.4%)	300 (14.0%)	285 (12.8%)	279 (13.9%)
	121-130	223 (11.9%)	219 (12.5%)	256 (12.3%)	254 (12.5%)	100 (9.0%)	294 (12.7%)	220 (10.9%)	195 (9.1%)	198 (8.9%)	168 (8.4%)
	131-140	147 (7.8%)	158 (9.0%)	179 (8.6%)	212 (10.5%)	68 (6.1%)	152 (6.6%)	108 (5.3%)	98 (4.6%)	82 (3.7%)	97 (4.8%)
	141-150	61 (3.2%)	62 (3.5%)	69 (3.3%)	53 (2.6%)	21 (1.9%)	74 (3.2%)	34 (1.7%)	30 (1.4%)	32 (1.4%)	20 (1.0%)
	151+	21 (1.1%)	27 (1.5%)	30 (1.4%)	31 (1.5%)	11 (1.0%)	26 (1.1%)	15 (0.7%)	12 (0.6%)	9 (0.4%)	9 (0.4%)
Subtotal		1,879 (100.0%)	1,752 (100.0%)	2,089 (100.0%)	2,025 (100.0%)	1,112 (100.0%)	2,319 (100.0%)	2,025 (100.0%)	2,143 (100.0%)	2,225 (100.0%)	2,002 (100.0%)
8YO+	Unrated	136 (7.7%)	198 (11.4%)	275 (14.6%)	198 (11.3%)	207 (20.1%)	212 (10.1%)	244 (14.3%)	231 (13.7%)	260 (15.5%)	215 (13.8%)
	0-100	535 (30.2%)	531 (30.5%)	509 (27.1%)	525 (29.9%)	320 (31.1%)	672 (32.0%)	484 (28.4%)	474 (28.1%)	513 (30.6%)	517 (33.2%)
	101-110	283 (16.0%)	255 (14.6%)	268 (14.3%)	252 (14.4%)	132 (12.8%)	292 (13.9%)	222 (13.0%)	252 (14.9%)	226 (13.5%)	214 (13.7%)
	111-120	269 (15.2%)	257 (14.7%)	251 (13.4%)	251 (14.3%)	126 (12.2%)	290 (13.8%)	271 (15.9%)	253 (15.0%)	231 (13.8%)	230 (14.8%)
	121-130	257 (14.5%)	207 (11.9%)	245 (13.0%)	215 (12.3%)	111 (10.8%)	274 (13.0%)	213 (12.5%)	228 (13.5%)	218 (13.0%)	198 (12.7%)
	131-140	178 (10.0%)	187 (10.7%)	187 (10.0%)	177 (10.1%)	79 (7.7%)	210 (10.0%)	160 (9.4%)	146 (8.7%)	140 (8.3%)	106 (6.8%)
	141-150	74 (4.2%)	73 (4.2%)	110 (5.9%)	87 (5.0%)	32 (3.1%)	92 (4.4%)	79 (4.6%)	69 (4.1%)	55 (3.3%)	53 (3.4%)
	151+	40 (2.3%)	35 (2.0%)	34 (1.8%)	48 (2.7%)	23 (2.2%)	61 (2.9%)	33 (1.9%)	34 (2.0%)	34 (2.0%)	24 (1.5%)
Subtotal		1,772 (100.0%)	1,743 (100.0%)	1,879 (100.0%)	1,753 (100.0%)	1,030 (100.0%)	2,103 (100.0%)	1,706 (100.0%)	1,687 (100.0%)	1,677 (100.0%)	1,557 (100.0%)
Overall	Unrated	1,937 (35.1%)	1,938 (35.8%)	2,434 (40.0%)	2,092 (36.5%)	1,412 (42.7%)	2,281 (35.5%)	2,185 (38.2%)	2,345 (39.1%)	2,313 (38.8%)	1,971 (36.2%)
	0-100	1,078 (19.6%)	1,092 (20.2%)	1,052 (17.3%)	1,082 (18.9%)	719 (21.7%)	1,506 (23.5%)	1,333 (23.3%)	1,414 (23.6%)	1,533 (25.7%)	1,460 (26.8%)
	101-110	681 (12.4%)	607 (11.2%)	656 (10.8%)	655 (11.4%)	342 (10.3%)	646 (10.1%)	647 (11.3%)	693 (11.5%)	670 (11.2%)	679 (12.5%)
	111-120	660 (12.0%)	639 (11.8%)	670 (11.0%)	670 (11.7%)	323 (9.8%)	696 (10.8%)	619 (10.8%)	665 (11.1%)	617 (10.3%)	604 (11.1%)
	121-130	558 (10.1%)	513 (9.5%)	595 (9.8%)	559 (9.7%)	253 (7.7%)	632 (9.8%)	482 (8.4%)	478 (8.0%)	457 (7.7%)	408 (7.5%)
	131-140	379 (6.9%)	404 (7.5%)	423 (6.9%)	436 (7.6%)	160 (4.8%)	394 (6.1%)	287 (5.0%)	260 (4.3%)	238 (4.0%)	211 (3.9%)
	141-150	152 (2.8%)	150 (2.8%)	191 (3.1%)	160 (2.8%)	60 (1.8%)	172 (2.7%)	119 (2.1%)	100 (1.7%)	91 (1.5%)	77 (1.4%)
Total		5,511 (100.0%)	5,408 (100.0%)	6,089 (100.0%)	5,736 (100.0%)	3,307 (100.0%)	6,419 (100.0%)	5,722 (100.0%)	6,001 (100.0%)	5,962 (100.0%)	5,445 (100.0%)

Where a horse has more than one published rating (published Hurdle and published Chase mark), the higher of the two is taken.

Young Horses Entering Training

Flat Yearlings in Training versus Previous Years

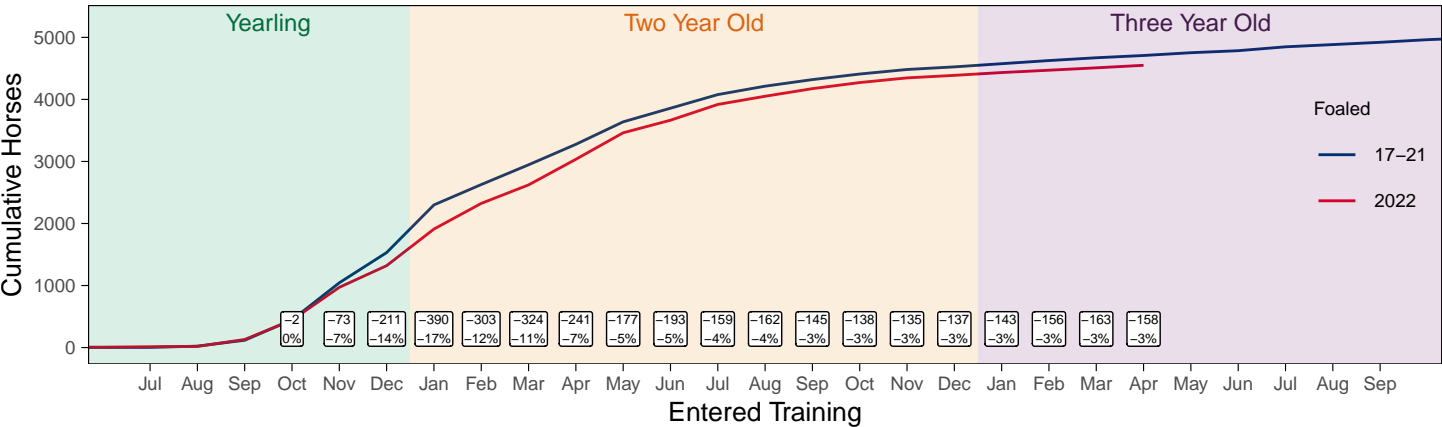
Period	Jan	Feb	Mar	Apr	May	Jun	Jul	Aug	Sep	Oct	Nov	Dec
2025	0	0	0	1								
2024	0	0	0	0	0	0	2	3	72	186	619	1067
5YrAvg	0	0	0	0	1	1	1	3	58	200	552	937

Foals Entering Training for the First Time

Warning: A numeric 'legend.position' argument in 'theme()' was deprecated in ggplot2 3.5.0.
i Please use the 'legend.position.inside' argument of 'theme()' instead.
This warning is displayed once every 8 hours.
Call 'lifecycle::last_lifecycle_warnings()' to see where this warning was generated.

2022 Foals Entering Training Over Time

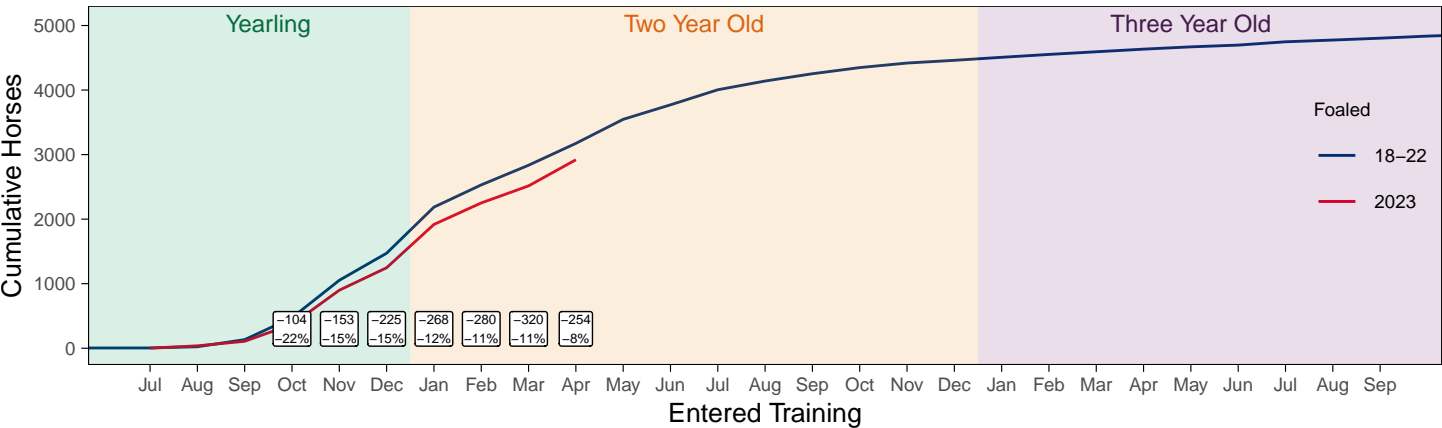
Cumulative Flat Horses foaled in 2022 shown by first in training notification against trend



Cumulative individual horses entering training for the first time by the end of each month.

2023 Foals Entering Training Over Time

Cumulative Flat Horses foaled in 2023 shown by first in training notification against trend



Cumulative individual horses entering training for the first time by the end of each month.

Year to Date Horses in Training

Type	2016	2017	2018	2019	2020	2021	2022	2023	2024	2025	vs. Last Year	vs. Pre-Covid
Flat	11555	11669	11649	11798	11359	11436	11398	11061	10975	10849	-126 / -1.1%	-949 / -8.0%
Jump	6536	6428	6178	6880	6694	7510	6980	6999	6817	6506	-311 / -4.6%	-374 / -5.4%
Dual	668	782	1230	708	761	721	701	627	658	696	+38 / +5.8%	-12 / -1.7%
Hunter	2043	1986	1824	1760	1481	1213	1327	1275	1428	1149	-279 / -19.5%	-611 / -34.7%
Total	18759	18879	19057	19386	18814	19667	19079	18687	18450	18051	-399 / -2.2%	-1335 / -6.9%

'vs. Pre-Covid' is comparison between 2025 and 2019

Flat

AgeCat	2016	2017	2018	2019	2020	2021	2022	2023	2024	2025	vs. Last Year	vs. Pre-Covid
2YO	3607	3558	3498	3505	3082	3275	3286	3031	2985	2879	-106 / -3.6%	-626 / -17.9%
3YO	3696	3747	3904	3826	3865	3730	3721	3618	3529	3623	+94 / +2.7%	-203 / -5.3%
4YO	1763	1852	1798	1924	1853	1944	1942	1875	1876	1792	-84 / -4.5%	-132 / -6.9%
5YO+	2489	2512	2449	2543	2559	2487	2449	2537	2585	2555	-30 / -1.2%	+12 / +0.5%
Total	11555	11669	11649	11798	11359	11436	11398	11061	10975	10849	-126 / -1.1%	-949 / -8.0%

'vs. Pre-Covid' is comparison between 2025 and 2019

Jump

AgeCat	2016	2017	2018	2019	2020	2021	2022	2023	2024	2025	vs. Last Year	vs. Pre-Covid
3YO	60	37	47	49	33	58	51	70	71	42	-29 / -40.8%	-7 / -14.3%
4-5YO	2052	2023	1830	2142	2105	2103	2183	2286	2157	2053	-104 / -4.8%	-89 / -4.2%
6-7YO	2247	2153	2197	2458	2413	2746	2498	2505	2536	2403	-133 / -5.2%	-55 / -2.2%
8YO+	2177	2215	2104	2231	2143	2603	2248	2138	2053	2008	-45 / -2.2%	-223 / -10.0%
Total	6536	6428	6178	6880	6694	7510	6980	6999	6817	6506	-311 / -4.6%	-374 / -5.4%

'vs. Pre-Covid' is comparison between 2025 and 2019

Dual

AgeCat	2016	2017	2018	2019	2020	2021	2022	2023	2024	2025	vs. Last Year	vs. Pre-Covid
3YO	71	77	84	53	83	71	94	78	69	72	+3 / +4.3%	+19 / +35.8%
4YO	156	209	315	201	203	221	184	174	190	199	+9 / +4.7%	-2 / -1.0%
5YO+	441	496	831	454	475	429	423	375	399	425	+26 / +6.5%	-29 / -6.4%
Total	668	782	1230	708	761	721	701	627	658	696	+38 / +5.8%	-12 / -1.7%

'vs. Pre-Covid' is comparison between 2025 and 2019

Hunter Chasers

AgeCat	2016	2017	2018	2019	2020	2021	2022	2023	2024	2025	vs. Last Year	vs. Pre-Covid
4-5YO	221	228	255	278	272	150	243	263	282	252	-30 / -10.6%	-26 / -9.4%
6-7YO	560	522	505	484	394	274	324	320	356	315	-41 / -11.5%	-169 / -34.9%
8-9YO	553	545	422	401	315	291	321	287	302	240	-62 / -20.5%	-161 / -40.1%
10YO+	709	691	642	597	500	498	439	405	488	342	-146 / -29.9%	-255 / -42.7%
Total	2043	1986	1824	1760	1481	1213	1327	1275	1428	1149	-279 / -19.5%	-611 / -34.7%

'vs. Pre-Covid' is comparison between 2025 and 2019

Year to Date Runners

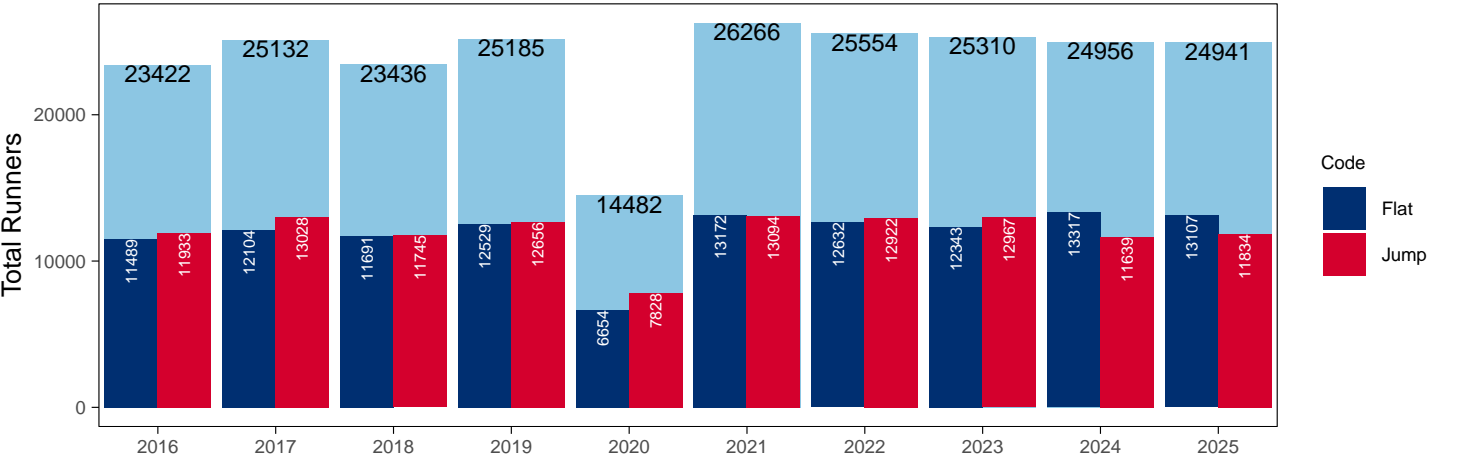
Year to Date Total Runners

Code	2016	2017	2018	2019	2020	2021	2022	2023	2024	2025	vs. Last Year	vs. Pre-Covid
Flat	11489	12104	11691	12529	6654	13172	12632	12343	13317	13107	-210 / -1.6%	+578 / +4.6%
Jump	11933	13028	11745	12656	7828	13094	12922	12967	11639	11834	+195 / +1.7%	-822 / -6.5%
Total	23422	25132	23436	25185	14482	26266	25554	25310	24956	24941	-15 / -0.1%	-244 / -1.0%

'vs. Pre-Covid' is comparison between 2025 and 2019

YTD Total Runners

Total Runners in GB Races, shown by Code and Total



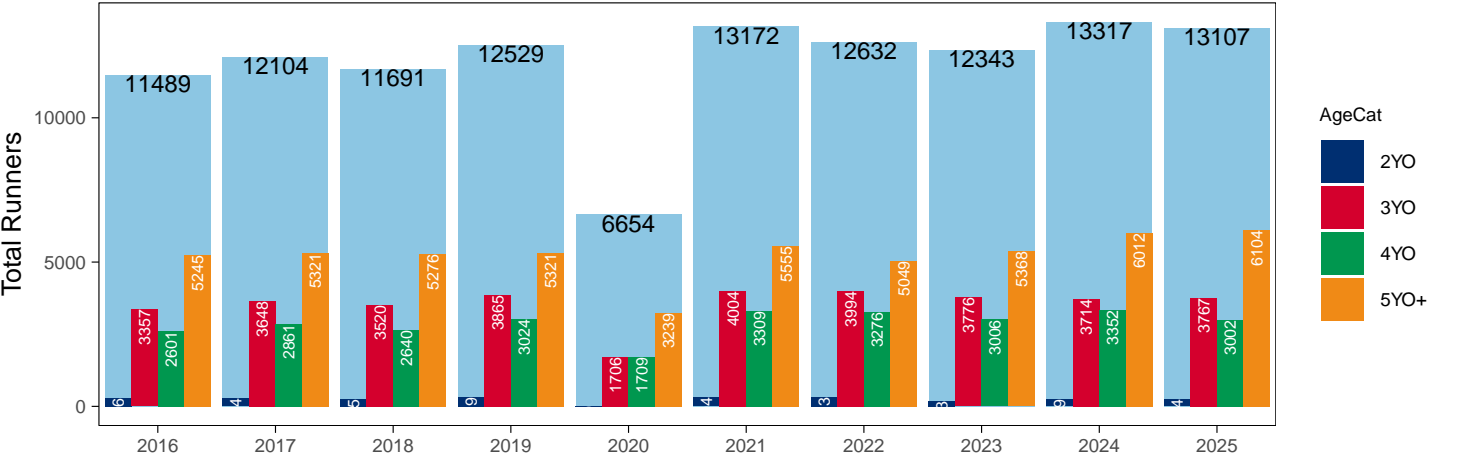
Flat

AgeCat	2016	2017	2018	2019	2020	2021	2022	2023	2024	2025	vs. Last Year	vs. Pre-Covid
2YO	286	274	255	319		304	313	193	239	234	-5 / -2.1%	-85 / -26.6%
3YO	3357	3648	3520	3865	1706	4004	3994	3776	3714	3767	+53 / +1.4%	-98 / -2.5%
4YO	2601	2861	2640	3024	1709	3309	3276	3006	3352	3002	-350 / -10.4%	-22 / -0.7%
5YO+	5245	5321	5276	5321	3239	5555	5049	5368	6012	6104	+92 / +1.5%	+783 / +14.7%
Total	11489	12104	11691	12529	6654	13172	12632	12343	13317	13107	-210 / -1.6%	+578 / +4.6%

'vs. Pre-Covid' is comparison between 2025 and 2019

YTD Total Flat Runners by Age

Total Runners in GB Flat Races, shown by Age Category and Total

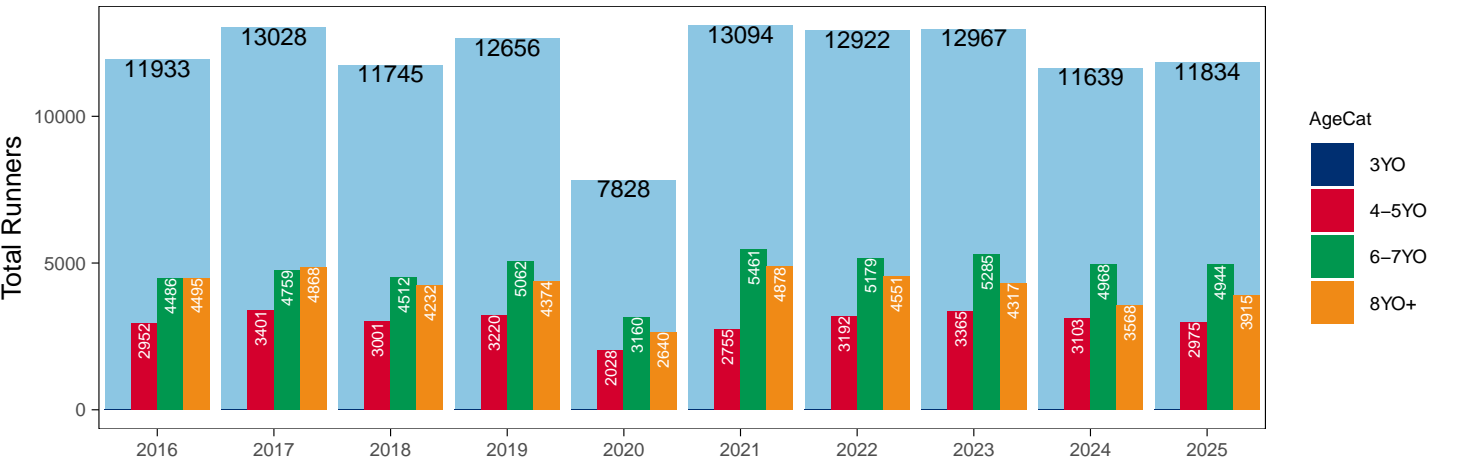


AgeCat	2016	2017	2018	2019	2020	2021	2022	2023	2024	2025	vs. Last Year	vs. Pre-Covid
3YO											NA / NA	0 / NA
4-5YO	2952	3401	3001	3220	2028	2755	3192	3365	3103	2975	-128 / -4.1%	-245 / -7.6%
6-7YO	4486	4759	4512	5062	3160	5461	5179	5285	4968	4944	-24 / -0.5%	-118 / -2.3%
8YO+	4495	4868	4232	4374	2640	4878	4551	4317	3568	3915	+347 / +9.7%	-459 / -10.5%
Total	11933	13028	11745	12656	7828	13094	12922	12967	11639	11834	+195 / +1.7%	-822 / -6.5%

'vs. Pre-Covid' is comparison between 2025 and 2019

YTD Total Jump Runners by Age

Total Runners in GB Jump Races, shown by Age Category and Total



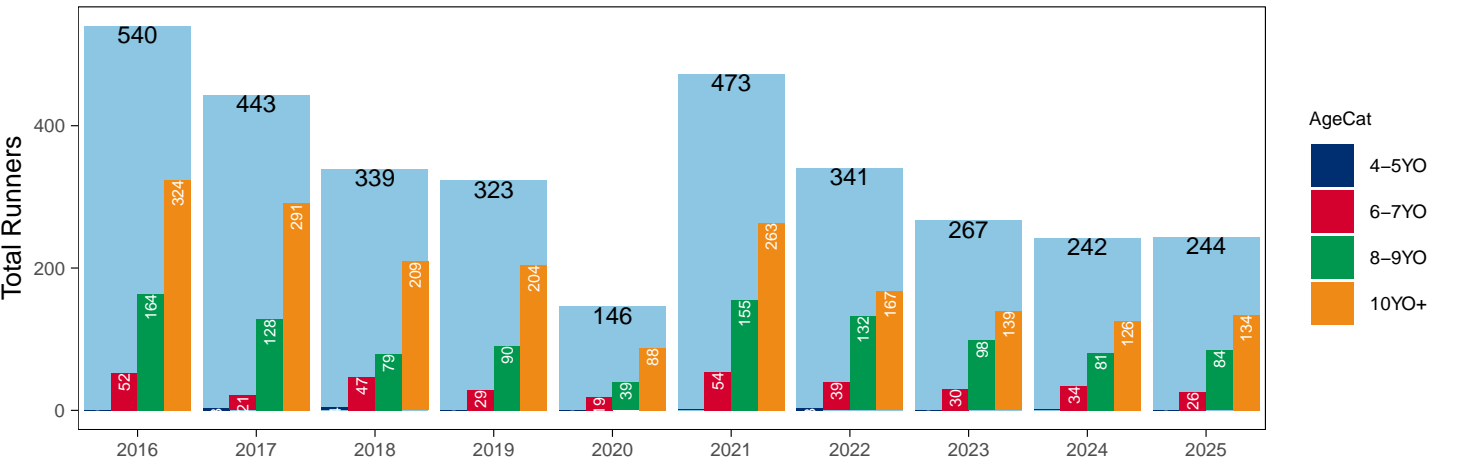
Hunter Chases

AgeCat	2016	2017	2018	2019	2020	2021	2022	2023	2024	2025	vs. Last Year	vs. Pre-Covid
4-5YO		3	4			1	3		1		NA / NA	0 / NA
6-7YO	52	21	47	29	19	54	39	30	34	26	-8 / -23.5%	-3 / -10.3%
8-9YO	164	128	79	90	39	155	132	98	81	84	+3 / +3.7%	-6 / -6.7%
10YO+	324	291	209	204	88	263	167	139	126	134	+8 / +6.3%	-70 / -34.3%
Total	540	443	339	323	146	473	341	267	242	244	+2 / +0.8%	-79 / -24.5%

'vs. Pre-Covid' is comparison between 2025 and 2019

YTD Total Hunter Chase Runners by Age

Total Runners in GB Hunter Chases shown by Age Category and Total



Year to Date Total Runners by Country Trained

Code	Country	2016	2017	2018	2019	2020	2021	2022	2023	2024	2025
Flat	GB	11402	11998	11586	12430	6574	13160	12597	12300	13216	13029
	IRE	77	99	97	88	76	10	27	42	96	74
	Other	10	7	8	11	4	2	8	1	5	4
Jump	GB	11473	12609	11425	12240	7561	12829	12458	12422	11130	11253
	IRE	454	407	311	409	257	262	462	542	506	575
	Other	6	12	9	7	10	3	2	3	3	6
Overall	GB	22875	24607	23011	24670	14135	25989	25055	24722	24346	24282
	IRE	531	506	408	497	333	272	489	584	602	649
	Other	16	19	17	18	14	5	10	4	8	10

Year to Date GB Trained Runners Racing Abroad

Code	Country	2016	2017	2018	2019	2020	2021	2022	2023	2024	2025
Flat	IRE	7	17	15	12	2	2	2	2	2	5
	FR	29	55	40	83	27	22	25	41	40	87
	GNV		2	2	3				1	1	2
	UAE	208	278	276	303	281	248	276	272	214	228
	BAH							41	23	50	89
	KSA					15	21	22	15	11	10
	Other	27	33	25	19	24	6	11	36	23	33
	Total	271	385	358	420	349	299	377	390	341	454
Jump	IRE	73	64	44	16	5	14	25	17	18	38
	FR	14	7	1	5	3	37	33	38	18	5
	Other	1	1	1				1			
	Total	88	72	46	21	8	51	59	55	36	43

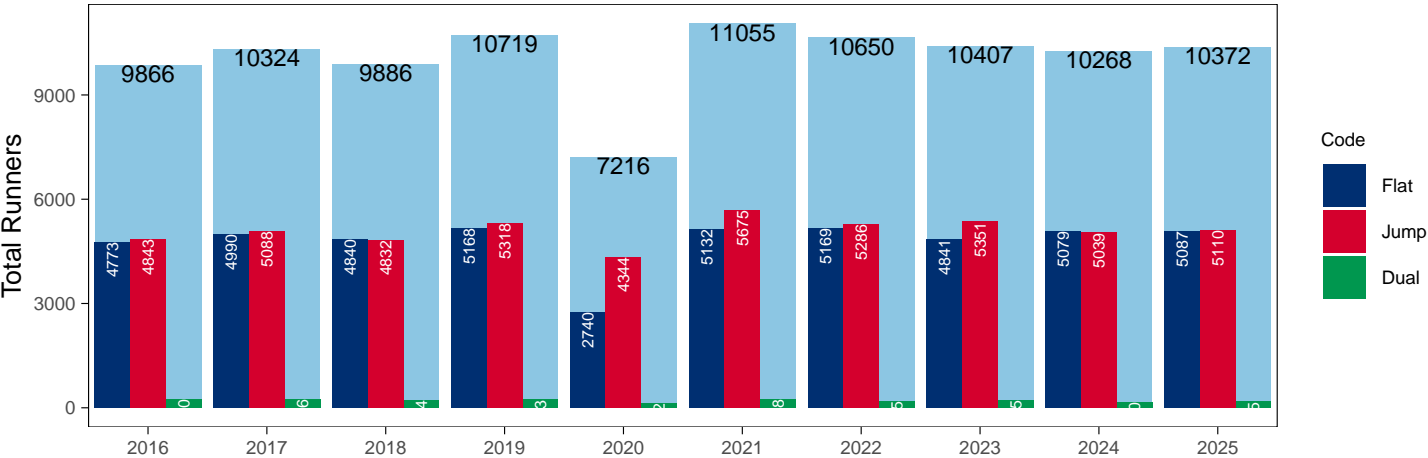
Year to Date Individual Runners

Code	2016	2017	2018	2019	2020	2021	2022	2023	2024	2025	vs. Last Year	vs. Pre-Covid
Flat	4773	4990	4840	5168	2740	5132	5169	4841	5079	5087	+8 / +0.2%	-81 / -1.6%
Jump	4843	5088	4832	5318	4344	5675	5286	5351	5039	5110	+71 / +1.4%	-208 / -3.9%
Dual	250	246	214	233	132	248	195	215	150	175	+25 / +16.7%	-58 / -24.9%
Overall	9866	10324	9886	10719	7216	11055	10650	10407	10268	10372	+104 / +1.0%	-347 / -3.2%

'vs. Pre-Covid' is comparison between 2025 and 2019

YTD Individual Runners

Individual Runners in GB Races, shown by Code and Total



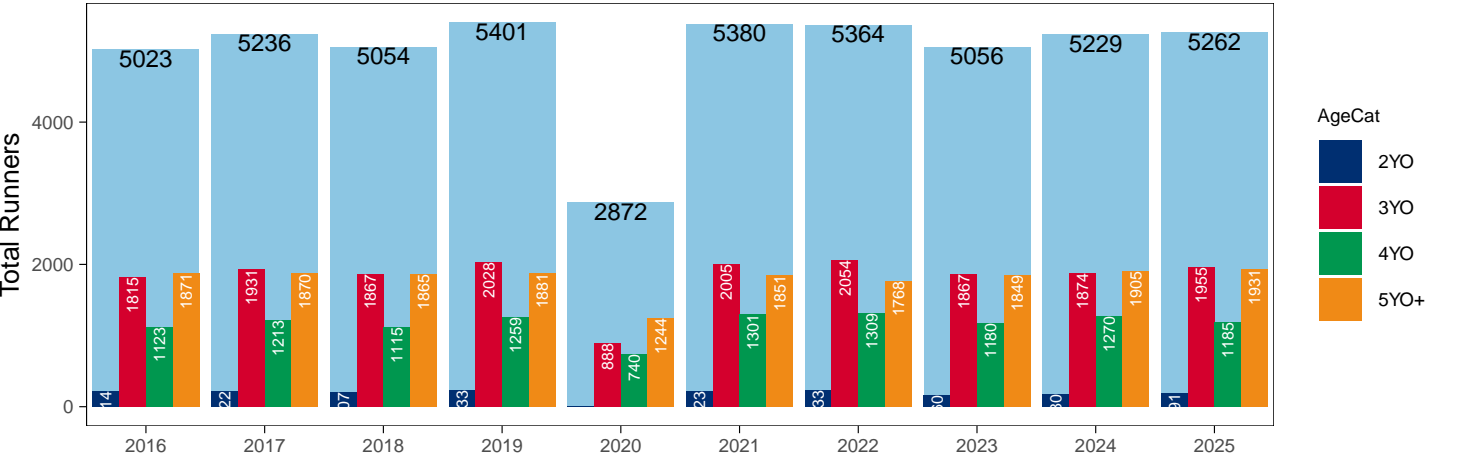
Flat

AgeCat	2016	2017	2018	2019	2020	2021	2022	2023	2024	2025	vs. Last Year	vs. Pre-Covid
2YO	214	222	207	233		223	233	160	180	191	+11 / +6.1%	-42 / -18.0%
3YO	1815	1931	1867	2028	888	2005	2054	1867	1874	1955	+81 / +4.3%	-73 / -3.6%
4YO	1123	1213	1115	1259	740	1301	1309	1180	1270	1185	-85 / -6.7%	-74 / -5.9%
5YO+	1871	1870	1865	1881	1244	1851	1768	1849	1905	1931	+26 / +1.4%	+50 / +2.7%
Total	5023	5236	5054	5401	2872	5380	5364	5056	5229	5262	+33 / +0.6%	-139 / -2.6%

'vs. Pre-Covid' is comparison between 2025 and 2019

YTD Individual Flat Runners by Age

Individual Runners in GB Flat Races, shown by Age Category and Total



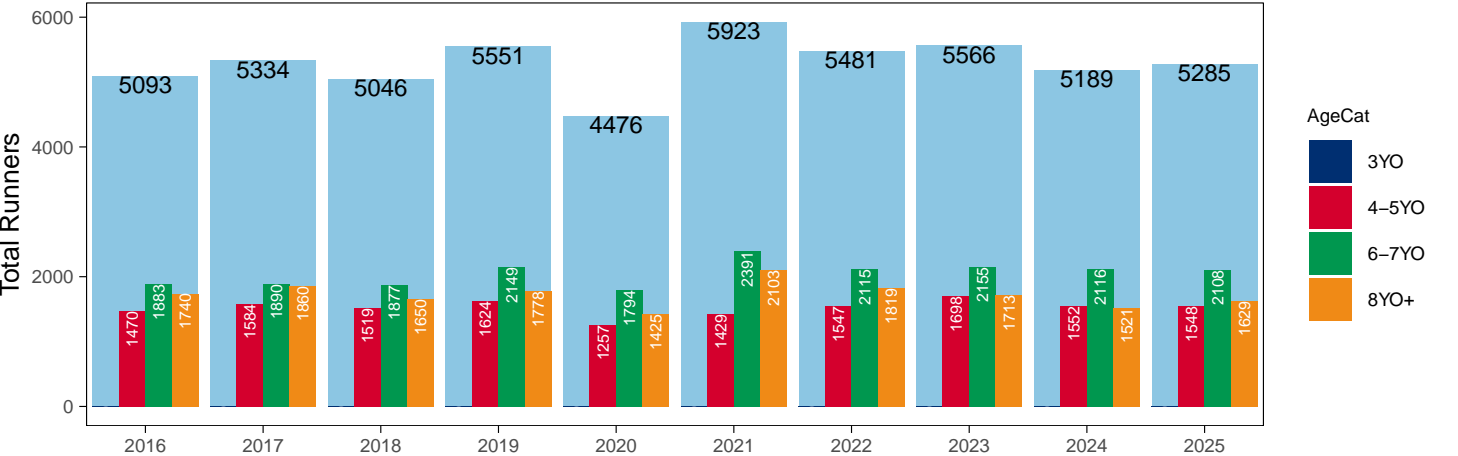
Jump

AgeCat	2016	2017	2018	2019	2020	2021	2022	2023	2024	2025	vs. Last Year	vs. Pre-Covid
3YO											NA / NA	0 / NA
4-5YO	1470	1584	1519	1624	1257	1429	1547	1698	1552	1548	-4 / -0.3%	-76 / -4.7%
6-7YO	1883	1890	1877	2149	1794	2391	2115	2155	2116	2108	-8 / -0.4%	-41 / -1.9%
8YO+	1740	1860	1650	1778	1425	2103	1819	1713	1521	1629	+108 / +7.1%	-149 / -8.4%
Total	5093	5334	5046	5551	4476	5923	5481	5566	5189	5285	+96 / +1.9%	-266 / -4.8%

'vs. Pre-Covid' is comparison between 2025 and 2019

YTD Individual Jump Runners by Age

Individual Runners in GB Jump Races, shown by Age Category and Total



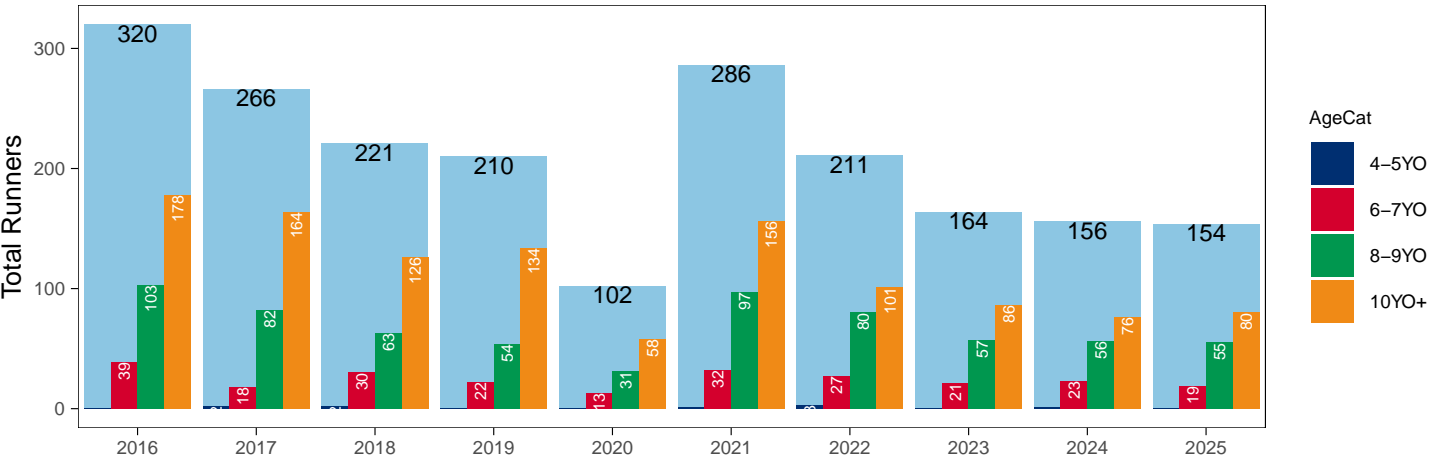
Hunter Chases

AgeCat	2016	2017	2018	2019	2020	2021	2022	2023	2024	2025	vs. Last Year	vs. Pre-Covid
4-5YO		2	2			1	3		1		NA / NA	0 / NA
6-7YO	39	18	30	22	13	32	27	21	23	19	-4 / -17.4%	-3 / -13.6%
8-9YO	103	82	63	54	31	97	80	57	56	55	-1 / -1.8%	+1 / +1.9%
10YO+	178	164	126	134	58	156	101	86	76	80	+4 / +5.3%	-54 / -40.3%
Total	320	266	221	210	102	286	211	164	156	154	-2 / -1.3%	-56 / -26.7%

'vs. Pre-Covid' is comparison between 2025 and 2019

YTD Individual Hunter Chase Runners by Age

Individual Runners in GB Hunter Chases shown by Age Category and Total



Year to Date Individual Runners by Country Trained

Code	Country	2016	2017	2018	2019	2020	2021	2022	2023	2024	2025
Flat	GB	4711	4921	4759	5089	2678	5120	5138	4807	5009	5028
	IRE	58	66	80	71	61	10	25	36	67	55
	Other	6	5	7	9	4	2	7	1	5	4
Jump	GB	4541	4779	4565	4993	4104	5442	4914	4930	4651	4665
	IRE	297	305	264	322	232	230	372	421	387	445
	Other	6	8	8	6	10	3	2	2	2	5
Dual	GB	249	244	212	231	130	248	194	214	150	174
	IRE	1			2	2					1
	Other		2								
Overall	GB	9501	9944	9536	10313	6912	10810	10246	9951	9810	9867
	IRE	356	371	344	395	295	240	397	457	454	501
	Other	12	15	15	15	14	5	9	3	7	9

Individual horses may appear under multiple countries.

Year to Date Total Runners by Rating Band

Flat

RatBand	2016	2017	2018	2019	2020	2021	2022	2023	2024	2025
3YO										
Unrated	1,181 (35.2%)	1,433 (39.3%)	1,438 (40.9%)	1,583 (41.0%)	768 (45.0%)	1,640 (41.0%)	1,619 (40.5%)	1,474 (39.0%)	1,477 (39.8%)	1,548 (41.1%)
0-50	227 (6.8%)	193 (5.3%)	169 (4.8%)	250 (6.5%)	154 (9.0%)	272 (6.8%)	268 (6.7%)	263 (7.0%)	263 (7.1%)	234 (6.2%)
51-60	442 (13.2%)	502 (13.8%)	382 (10.9%)	594 (15.4%)	245 (14.4%)	587 (14.7%)	554 (13.9%)	589 (15.6%)	560 (15.1%)	530 (14.1%)
61-70	654 (19.5%)	631 (17.3%)	618 (17.6%)	603 (15.6%)	290 (17.0%)	706 (17.6%)	653 (16.3%)	674 (17.8%)	630 (17.0%)	647 (17.2%)
71-80	510 (15.2%)	535 (14.7%)	544 (15.5%)	483 (12.5%)	192 (11.3%)	457 (11.4%)	537 (13.4%)	498 (13.2%)	467 (12.6%)	510 (13.5%)
81-90	202 (6.0%)	235 (6.4%)	227 (6.4%)	233 (6.0%)	44 (2.6%)	185 (4.6%)	221 (5.5%)	184 (4.9%)	221 (6.0%)	203 (5.4%)
91-100	79 (2.4%)	72 (2.0%)	93 (2.6%)	82 (2.1%)	10 (0.6%)	103 (2.6%)	79 (2.0%)	62 (1.6%)	66 (1.8%)	56 (1.5%)
101+	62 (1.8%)	47 (1.3%)	49 (1.4%)	37 (1.0%)	3 (0.2%)	54 (1.3%)	63 (1.6%)	32 (0.8%)	30 (0.8%)	39 (1.0%)
4YO+										
Unrated	278 (3.5%)	219 (2.7%)	263 (3.3%)	309 (3.7%)	183 (3.7%)	331 (3.7%)	273 (3.3%)	247 (2.9%)	284 (3.0%)	274 (3.0%)
0-50	967 (12.3%)	1,043 (12.7%)	1,241 (15.7%)	1,398 (16.8%)	973 (19.7%)	1,478 (16.7%)	1,461 (17.5%)	1,580 (18.9%)	1,694 (18.1%)	1,824 (20.0%)
51-60	1,666 (21.2%)	1,710 (20.9%)	1,685 (21.3%)	1,716 (20.6%)	1,209 (24.4%)	1,925 (21.7%)	1,812 (21.8%)	1,973 (23.6%)	2,333 (24.9%)	2,132 (23.4%)
61-70	1,881 (24.0%)	1,859 (22.7%)	1,669 (21.1%)	1,849 (22.2%)	1,127 (22.8%)	2,115 (23.9%)	1,870 (22.5%)	1,851 (22.1%)	2,167 (23.1%)	2,058 (22.6%)
71-80	1,411 (18.0%)	1,607 (19.6%)	1,390 (17.6%)	1,440 (17.3%)	785 (15.9%)	1,532 (17.3%)	1,361 (16.3%)	1,459 (17.4%)	1,516 (16.2%)	1,456 (16.0%)
81-90	944 (12.0%)	1,000 (12.2%)	936 (11.8%)	868 (10.4%)	433 (8.8%)	840 (9.5%)	947 (11.4%)	764 (9.1%)	877 (9.4%)	897 (9.9%)
91-100	428 (5.5%)	480 (5.9%)	492 (6.2%)	523 (6.3%)	172 (3.5%)	416 (4.7%)	370 (4.4%)	331 (4.0%)	330 (3.5%)	300 (3.3%)
101+	271 (3.5%)	264 (3.2%)	240 (3.0%)	242 (2.9%)	66 (1.3%)	227 (2.6%)	231 (2.8%)	169 (2.0%)	163 (1.7%)	165 (1.8%)

Jump

RatBand	2016	2017	2018	2019	2020	2021	2022	2023	2024	2025
Hurdle										
Unrated	1,928 (27.3%)	2,067 (27.3%)	1,906 (27.8%)	2,065 (27.5%)	1,376 (29.6%)	1,984 (27.4%)	1,949 (25.7%)	2,122 (27.8%)	1,992 (28.3%)	1,693 (24.0%)
0-100	1,470 (20.8%)	1,706 (22.5%)	1,383 (20.2%)	1,589 (21.1%)	966 (20.8%)	1,800 (24.8%)	2,146 (28.3%)	2,129 (27.9%)	1,982 (28.2%)	2,240 (31.7%)
101-110	1,025 (14.5%)	1,091 (14.4%)	906 (13.2%)	1,026 (13.6%)	615 (13.2%)	941 (13.0%)	1,126 (14.8%)	1,088 (14.2%)	1,000 (14.2%)	1,065 (15.1%)
111-120	957 (13.6%)	1,058 (14.0%)	965 (14.1%)	1,088 (14.5%)	618 (13.3%)	949 (13.1%)	1,031 (13.6%)	1,008 (13.2%)	936 (13.3%)	967 (13.7%)
121-130	820 (11.6%)	819 (10.8%)	829 (12.1%)	911 (12.1%)	490 (10.5%)	837 (11.5%)	708 (9.3%)	754 (9.9%)	648 (9.2%)	603 (8.5%)
131-140	549 (7.8%)	580 (7.6%)	577 (8.4%)	537 (7.1%)	374 (8.0%)	473 (6.5%)	414 (5.5%)	334 (4.4%)	312 (4.4%)	345 (4.9%)
141-150	225 (3.2%)	187 (2.5%)	221 (3.2%)	211 (2.8%)	141 (3.0%)	190 (2.6%)	170 (2.2%)	144 (1.9%)	118 (1.7%)	109 (1.5%)
151+	86 (1.2%)	74 (1.0%)	72 (1.0%)	90 (1.2%)	73 (1.6%)	79 (1.1%)	52 (0.7%)	60 (0.8%)	51 (0.7%)	40 (0.6%)
Chase										
Unrated	13 (0.3%)	37 (0.9%)	30 (0.8%)	27 (0.7%)	10 (0.4%)	22 (0.6%)	8 (0.2%)	1 (0.0%)	NA (-)	NA (-)
0-100	920 (24.0%)	981 (22.9%)	874 (23.9%)	1,043 (26.1%)	599 (24.9%)	1,098 (27.7%)	1,218 (28.7%)	1,281 (31.1%)	1,126 (31.1%)	1,261 (33.4%)
101-110	527 (13.7%)	653 (15.3%)	477 (13.0%)	597 (14.9%)	351 (14.6%)	558 (14.1%)	590 (13.9%)	655 (15.9%)	590 (16.3%)	609 (16.1%)
111-120	664 (17.3%)	727 (17.0%)	606 (16.5%)	592 (14.8%)	332 (13.8%)	637 (16.1%)	733 (17.3%)	666 (16.2%)	632 (17.5%)	591 (15.7%)
121-130	613 (16.0%)	669 (15.6%)	636 (17.4%)	652 (16.3%)	398 (16.6%)	610 (15.4%)	678 (16.0%)	612 (14.9%)	497 (13.7%)	552 (14.6%)
131-140	557 (14.5%)	671 (15.7%)	541 (14.8%)	564 (14.1%)	362 (15.1%)	544 (13.7%)	547 (12.9%)	482 (11.7%)	393 (10.9%)	364 (9.7%)
141-150	347 (9.0%)	352 (8.2%)	340 (9.3%)	331 (8.3%)	227 (9.5%)	289 (7.3%)	293 (6.9%)	253 (6.1%)	227 (6.3%)	226 (6.0%)
151+	198 (5.2%)	190 (4.4%)	160 (4.4%)	195 (4.9%)	122 (5.1%)	208 (5.2%)	174 (4.1%)	166 (4.0%)	152 (4.2%)	169 (4.5%)

Year to Date Total GB-Trained Runners by Rating Band

Flat

RatBand	2016	2017	2018	2019	2020	2021	2022	2023	2024	2025
3YO										
Unrated	1,175 (35.2%)	1,428 (39.4%)	1,429 (40.9%)	1,577 (41.0%)	765 (45.5%)	1,637 (41.0%)	1,615 (40.5%)	1,473 (39.1%)	1,474 (39.9%)	1,541 (41.1%)
0-50	227 (6.8%)	190 (5.2%)	167 (4.8%)	248 (6.5%)	149 (8.9%)	272 (6.8%)	268 (6.7%)	262 (6.9%)	263 (7.1%)	233 (6.2%)
51-60	441 (13.2%)	499 (13.8%)	376 (10.8%)	591 (15.4%)	237 (14.1%)	587 (14.7%)	554 (13.9%)	589 (15.6%)	559 (15.1%)	529 (14.1%)
61-70	653 (19.6%)	631 (17.4%)	615 (17.6%)	598 (15.6%)	288 (17.1%)	706 (17.7%)	653 (16.4%)	674 (17.9%)	628 (17.0%)	647 (17.3%)
71-80	510 (15.3%)	534 (14.7%)	540 (15.5%)	482 (12.5%)	190 (11.3%)	457 (11.4%)	535 (13.4%)	498 (13.2%)	465 (12.6%)	509 (13.6%)
81-90	202 (6.0%)	232 (6.4%)	227 (6.5%)	232 (6.0%)	41 (2.4%)	185 (4.6%)	221 (5.5%)	182 (4.8%)	220 (6.0%)	201 (5.4%)
91-100	79 (2.4%)	72 (2.0%)	90 (2.6%)	81 (2.1%)	10 (0.6%)	101 (2.5%)	76 (1.9%)	60 (1.6%)	61 (1.7%)	55 (1.5%)
101+	53 (1.6%)	42 (1.2%)	48 (1.4%)	34 (0.9%)	3 (0.2%)	51 (1.3%)	61 (1.5%)	32 (0.8%)	25 (0.7%)	35 (0.9%)
4YO+										
Unrated	277 (3.6%)	219 (2.7%)	261 (3.3%)	306 (3.7%)	182 (3.7%)	331 (3.7%)	273 (3.3%)	247 (3.0%)	284 (3.1%)	274 (3.0%)
0-50	957 (12.3%)	1,019 (12.6%)	1,230 (15.7%)	1,372 (16.6%)	960 (19.6%)	1,478 (16.7%)	1,461 (17.6%)	1,570 (18.8%)	1,678 (18.1%)	1,816 (20.1%)
51-60	1,644 (21.1%)	1,682 (20.8%)	1,656 (21.1%)	1,693 (20.5%)	1,183 (24.2%)	1,925 (21.7%)	1,812 (21.8%)	1,967 (23.6%)	2,318 (25.0%)	2,119 (23.4%)
61-70	1,869 (24.0%)	1,842 (22.8%)	1,661 (21.2%)	1,837 (22.2%)	1,121 (22.9%)	2,115 (23.9%)	1,869 (22.5%)	1,849 (22.2%)	2,157 (23.2%)	2,050 (22.7%)
71-80	1,410 (18.1%)	1,604 (19.8%)	1,385 (17.7%)	1,439 (17.4%)	778 (15.9%)	1,531 (17.3%)	1,357 (16.3%)	1,453 (17.4%)	1,506 (16.2%)	1,450 (16.0%)
81-90	940 (12.1%)	999 (12.3%)	932 (11.9%)	866 (10.5%)	433 (8.9%)	840 (9.5%)	943 (11.4%)	760 (9.1%)	864 (9.3%)	887 (9.8%)
91-100	423 (5.4%)	471 (5.8%)	488 (6.2%)	518 (6.3%)	170 (3.5%)	415 (4.7%)	366 (4.4%)	327 (3.9%)	321 (3.5%)	292 (3.2%)
101+	259 (3.3%)	260 (3.2%)	227 (2.9%)	237 (2.9%)	64 (1.3%)	225 (2.5%)	220 (2.7%)	164 (2.0%)	154 (1.7%)	158 (1.7%)

Jump

RatBand	2016	2017	2018	2019	2020	2021	2022	2023	2024	2025
Hurdle										
Unrated	1,886 (27.7%)	2,029 (27.6%)	1,876 (28.1%)	2,024 (27.8%)	1,353 (30.1%)	1,967 (27.7%)	1,891 (25.8%)	2,066 (28.1%)	1,944 (28.8%)	1,640 (24.3%)
0-100	1,451 (21.3%)	1,680 (22.9%)	1,365 (20.4%)	1,570 (21.6%)	956 (21.3%)	1,795 (25.2%)	2,138 (29.2%)	2,107 (28.7%)	1,965 (29.1%)	2,228 (33.0%)
101-110	1,004 (14.7%)	1,058 (14.4%)	894 (13.4%)	1,007 (13.8%)	612 (13.6%)	935 (13.2%)	1,113 (15.2%)	1,077 (14.7%)	985 (14.6%)	1,052 (15.6%)
111-120	949 (13.9%)	1,040 (14.2%)	958 (14.3%)	1,066 (14.7%)	614 (13.7%)	941 (13.2%)	1,015 (13.9%)	984 (13.4%)	920 (13.6%)	945 (14.0%)
121-130	799 (11.7%)	790 (10.7%)	814 (12.2%)	886 (12.2%)	478 (10.6%)	824 (11.6%)	679 (9.3%)	715 (9.7%)	592 (8.8%)	554 (8.2%)
131-140	497 (7.3%)	542 (7.4%)	543 (8.1%)	487 (6.7%)	333 (7.4%)	436 (6.1%)	347 (4.7%)	280 (3.8%)	249 (3.7%)	256 (3.8%)
141-150	163 (2.4%)	153 (2.1%)	179 (2.7%)	170 (2.3%)	100 (2.2%)	153 (2.2%)	111 (1.5%)	86 (1.2%)	74 (1.1%)	63 (0.9%)
151+	65 (1.0%)	57 (0.8%)	57 (0.9%)	65 (0.9%)	47 (1.0%)	59 (0.8%)	30 (0.4%)	33 (0.4%)	21 (0.3%)	15 (0.2%)
Chase										
Unrated	13 (0.4%)	36 (0.9%)	30 (0.8%)	27 (0.7%)	10 (0.4%)	22 (0.6%)	7 (0.2%)	1 (0.0%)	NA (-)	NA (-)
0-100	897 (24.5%)	961 (23.3%)	868 (24.5%)	1,035 (26.8%)	596 (25.7%)	1,097 (28.4%)	1,214 (29.7%)	1,276 (32.6%)	1,126 (32.8%)	1,257 (35.6%)
101-110	507 (13.9%)	648 (15.7%)	475 (13.4%)	595 (15.4%)	349 (15.0%)	556 (14.4%)	588 (14.4%)	651 (16.6%)	587 (17.1%)	603 (17.1%)
111-120	658 (18.0%)	721 (17.5%)	601 (17.0%)	590 (15.3%)	327 (14.1%)	636 (16.4%)	729 (17.8%)	657 (16.8%)	624 (18.2%)	581 (16.5%)
121-130	605 (16.5%)	650 (15.8%)	620 (17.5%)	639 (16.5%)	396 (17.1%)	607 (15.7%)	663 (16.2%)	598 (15.3%)	477 (13.9%)	526 (14.9%)
131-140	526 (14.4%)	640 (15.5%)	523 (14.8%)	538 (13.9%)	347 (15.0%)	537 (13.9%)	523 (12.8%)	441 (11.3%)	363 (10.6%)	299 (8.5%)
141-150	298 (8.1%)	310 (7.5%)	302 (8.5%)	292 (7.6%)	203 (8.7%)	252 (6.5%)	245 (6.0%)	192 (4.9%)	163 (4.8%)	169 (4.8%)
151+	155 (4.2%)	158 (3.8%)	120 (3.4%)	146 (3.8%)	93 (4.0%)	162 (4.2%)	117 (2.9%)	97 (2.5%)	91 (2.7%)	94 (2.7%)

Frequency of Runs

Year to Date Average Runs per Horse

Code	2016	2017	2018	2019	2020	2021	2022	2023	2024	2025
Flat	2.30	2.33	2.33	2.34	2.35	2.47	2.38	2.47	2.57	2.51
Jump	2.36	2.46	2.35	2.29	1.76	2.22	2.37	2.34	2.25	2.25
Dual Overall	3.90	3.99	3.80	3.80	3.05	4.01	3.76	3.84	3.77	4.01
Dual (Flat)	1.96	1.89	1.91	1.84	1.67	1.94	1.76	1.88	1.92	2.01
Dual (Jump)	1.93	2.10	1.89	1.96	1.38	2.06	2.00	1.96	1.85	2.01
All	2.37	2.43	2.37	2.35	2.01	2.38	2.40	2.43	2.43	2.40

Year to Date Proportion of Horses by Count of Runs

Runs	2016	2017	2018	2019	2020	2021	2022	2023	2024	2025
Flat										
1	2,250 (44.8%)	2,335 (44.6%)	2,268 (44.9%)	2,344 (43.4%)	1,018 (35.4%)	2,222 (41.3%)	2,243 (41.8%)	2,106 (41.7%)	2,103 (40.2%)	2,161 (41.1%)
2	1,248 (24.8%)	1,190 (22.7%)	1,157 (22.9%)	1,323 (24.5%)	787 (27.4%)	1,259 (23.4%)	1,339 (25.0%)	1,168 (23.1%)	1,123 (21.5%)	1,260 (23.9%)
3	563 (11.2%)	699 (13.3%)	661 (13.1%)	680 (12.6%)	546 (19.0%)	726 (13.5%)	697 (13.0%)	680 (13.4%)	774 (14.8%)	676 (12.8%)
4	387 (7.7%)	419 (8.0%)	401 (7.9%)	450 (8.3%)	320 (11.1%)	445 (8.3%)	495 (9.2%)	433 (8.6%)	479 (9.2%)	439 (8.3%)
5+	575 (11.4%)	593 (11.3%)	567 (11.2%)	604 (11.2%)	201 (7.0%)	728 (13.5%)	590 (11.0%)	669 (13.2%)	750 (14.3%)	726 (13.8%)
Jump										
1	1,689 (33.2%)	1,644 (30.8%)	1,752 (34.7%)	1,862 (33.5%)	2,108 (47.1%)	1,986 (33.5%)	1,792 (32.7%)	1,851 (33.3%)	1,804 (34.8%)	1,794 (33.9%)
2	1,415 (27.8%)	1,396 (26.2%)	1,322 (26.2%)	1,625 (29.3%)	1,571 (35.1%)	1,819 (30.7%)	1,436 (26.2%)	1,482 (26.6%)	1,474 (28.4%)	1,549 (29.3%)
3	1,045 (20.5%)	1,168 (21.9%)	1,007 (20.0%)	1,129 (20.3%)	638 (14.3%)	1,287 (21.7%)	1,226 (22.4%)	1,244 (22.3%)	1,068 (20.6%)	1,139 (21.6%)
4	588 (11.5%)	710 (13.3%)	628 (12.4%)	642 (11.6%)	135 (3.0%)	595 (10.0%)	680 (12.4%)	647 (11.6%)	612 (11.8%)	558 (10.6%)
5+	356 (7.0%)	416 (7.8%)	337 (6.7%)	293 (5.3%)	24 (0.5%)	236 (4.0%)	347 (6.3%)	342 (6.1%)	231 (4.5%)	245 (4.6%)
All Races										
1	3,690 (37.4%)	3,756 (36.4%)	3,805 (38.5%)	3,964 (37.0%)	2,961 (41.0%)	3,976 (36.0%)	3,844 (36.1%)	3,758 (36.1%)	3,752 (36.5%)	3,797 (36.6%)
2	2,577 (26.1%)	2,484 (24.1%)	2,407 (24.3%)	2,889 (27.0%)	2,337 (32.4%)	3,004 (27.2%)	2,705 (25.4%)	2,567 (24.7%)	2,569 (25.0%)	2,742 (26.4%)
3	1,624 (16.5%)	1,861 (18.0%)	1,666 (16.9%)	1,802 (16.8%)	1,207 (16.7%)	1,974 (17.9%)	1,923 (18.1%)	1,909 (18.3%)	1,821 (17.7%)	1,806 (17.4%)
4	995 (10.1%)	1,154 (11.2%)	1,068 (10.8%)	1,120 (10.4%)	477 (6.6%)	1,081 (9.8%)	1,199 (11.3%)	1,112 (10.7%)	1,107 (10.8%)	1,010 (9.7%)
5+	980 (9.9%)	1,069 (10.4%)	940 (9.5%)	944 (8.8%)	234 (3.2%)	1,020 (9.2%)	979 (9.2%)	1,061 (10.2%)	1,019 (9.9%)	1,017 (9.8%)

Year to Date Median Days Between Runs

Code/RatBand	2016	2017	2018	2019	2020	2021	2022	2023	2024	2025
All Runners	29	28	30	29	28	29	29	30	29	29
Flat										
Unrated	31	28	35	33	27	31	30	32	30	31
0-50	20	21	21	23	20	20	21	19	18	18
51-60	21	21	21	22	19	20	21	21	20	20
61-70	23	22	23	25	21	22	23	23	22	21
71-80	27	27	27	26	22	24	27	27	27	26
81-90	29	29	29	34	22	28	31	33	30	32
91-100	35	33	36	38	22	42	42	44	44	50
101+	49	50	49	55	36	55	64	67	133	132
All Flat Runners	24	24	25	26	21	24	25	24	24	23
Jump										
Unrated	38	34	39	37	36	39	35	40	41	41
0-100	28	27	29	28	32	31	28	30	32	31
101-110	30	28	31	30	31	31	29	32	33	31
111-120	31	29	32	32	34	34	31	33	33	33
121-130	33	30	31	32	34	34	32	34	36	34
131-140	34	33	35	33	36	35	35	37	35	35
141-150	34	35	39	37	41	41	37	39	37	40
151+	38	34	39	38	42	40	40	42	42	40
All Jump Runners	32	30	33	32	34	35	31	34	35	34

Horses Population by Gender

April 2025 Horses in Training Snapshot by Gender versus Previous Years

All Horses

Sex	2016	2017	2018	2019	2020	2021	2022	2023	2024	2025
Colt/Entire	2,540 (16.8%)	2,593 (17.0%)	2,609 (16.3%)	2,508 (15.8%)	2,302 (18.5%)	2,210 (13.8%)	2,222 (14.4%)	2,068 (13.4%)	1,978 (13.1%)	1,959 (13.4%)
Gelding	7,974 (52.6%)	7,983 (52.3%)	8,509 (53.0%)	8,310 (52.4%)	6,032 (48.4%)	8,785 (54.8%)	8,301 (53.9%)	8,415 (54.6%)	8,334 (55.0%)	7,924 (54.3%)
Filly/Mare	4,634 (30.6%)	4,674 (30.6%)	4,924 (30.7%)	5,026 (31.7%)	4,136 (33.2%)	5,045 (31.4%)	4,887 (31.7%)	4,931 (32.0%)	4,837 (31.9%)	4,715 (32.3%)
Rig	5 (0.0%)	4 (0.0%)	3 (0.0%)	3 (0.0%)	1 (0.0%)	2 (0.0%)	1 (0.0%)	1 (0.0%)	0 (0.0%)	0 (0.0%)
Total	15,153 (100.0%)	15,254 (100.0%)	16,045 (100.0%)	15,847 (100.0%)	12,471 (100.0%)	16,042 (100.0%)	15,411 (100.0%)	15,415 (100.0%)	15,149 (100.0%)	14,598 (100.0%)

Flat (including Dual)

Sex	2016	2017	2018	2019	2020	2021	2022	2023	2024	2025
Colt/Entire	2,516 (24.8%)	2,570 (24.6%)	2,590 (23.8%)	2,497 (23.6%)	2,288 (23.9%)	2,194 (21.6%)	2,198 (21.6%)	2,047 (20.8%)	1,962 (20.3%)	1,936 (20.1%)
Gelding	3,949 (38.9%)	4,120 (39.5%)	4,471 (41.0%)	4,212 (39.8%)	3,830 (40.0%)	4,208 (41.5%)	4,234 (41.6%)	4,165 (42.2%)	4,160 (43.1%)	4,200 (43.5%)
Filly/Mare	3,692 (36.3%)	3,743 (35.9%)	3,840 (35.2%)	3,872 (36.6%)	3,464 (36.1%)	3,739 (36.9%)	3,757 (36.9%)	3,651 (37.0%)	3,532 (36.6%)	3,519 (36.4%)
Rig	5 (0.0%)	4 (0.0%)	3 (0.0%)	2 (0.0%)	1 (0.0%)	1 (0.0%)	0 (0.0%)	0 (0.0%)	0 (0.0%)	0 (0.0%)
Total	10,162 (100.0%)	10,437 (100.0%)	10,904 (100.0%)	10,583 (100.0%)	9,583 (100.0%)	10,142 (100.0%)	10,189 (100.0%)	9,863 (100.0%)	9,654 (100.0%)	9,655 (100.0%)

Jump (including Dual)

Sex	2016	2017	2018	2019	2020	2021	2022	2023	2024	2025
Colt/Entire	34 (0.6%)	27 (0.5%)	29 (0.5%)	20 (0.3%)	20 (0.6%)	26 (0.4%)	37 (0.6%)	26 (0.4%)	17 (0.3%)	32 (0.6%)
Gelding	4,446 (80.7%)	4,337 (80.2%)	4,773 (78.4%)	4,455 (77.7%)	2,516 (76.1%)	4,967 (77.4%)	4,439 (77.6%)	4,591 (76.5%)	4,513 (75.7%)	4,092 (75.2%)
Filly/Mare	1,031 (18.7%)	1,044 (19.3%)	1,287 (21.1%)	1,260 (22.0%)	771 (23.3%)	1,425 (22.2%)	1,245 (21.8%)	1,383 (23.0%)	1,432 (24.0%)	1,321 (24.3%)
Rig	0 (0.0%)	0 (0.0%)	0 (0.0%)	1 (0.0%)	0 (0.0%)	1 (0.0%)	1 (0.0%)	1 (0.0%)	0 (0.0%)	0 (0.0%)
Total	5,511 (100.0%)	5,408 (100.0%)	6,089 (100.0%)	5,736 (100.0%)	3,307 (100.0%)	6,419 (100.0%)	5,722 (100.0%)	6,001 (100.0%)	5,962 (100.0%)	5,445 (100.0%)

Hunter Chasers

Sex	2016	2017	2018	2019	2020	2021	2022	2023	2024	2025
Colt/Entire	4 (0.2%)	5 (0.3%)	3 (0.2%)	1 (0.1%)	1 (0.1%)	4 (0.3%)	7 (0.5%)	10 (0.8%)	8 (0.6%)	5 (0.4%)
Gelding	1,639 (82.4%)	1,573 (81.5%)	1,422 (81.4%)	1,365 (79.6%)	1,188 (81.6%)	975 (83.0%)	1,065 (81.3%)	1,012 (81.6%)	1,123 (81.9%)	896 (79.6%)
Filly/Mare	346 (17.4%)	352 (18.2%)	322 (18.4%)	348 (20.3%)	267 (18.3%)	195 (16.6%)	238 (18.2%)	218 (17.6%)	240 (17.5%)	224 (19.9%)
Rig	0 (0.0%)	0 (0.0%)	0 (0.0%)	0 (0.0%)	0 (0.0%)	0 (0.0%)	0 (0.0%)	0 (0.0%)	0 (0.0%)	0 (0.0%)
Total	1,989 (100.0%)	1,930 (100.0%)	1,747 (100.0%)	1,714 (100.0%)	1,456 (100.0%)	1,174 (100.0%)	1,310 (100.0%)	1,240 (100.0%)	1,371 (100.0%)	1,125 (100.0%)

Year to Date Total Runners by Gender

Sex	2016	2017	2018	2019	2020	2021	2022	2023	2024	2025
All Races										
Colt/Entire	1,269 (5.4%)	1,374 (5.5%)	1,300 (5.5%)	1,408 (5.6%)	578 (4.0%)	1,451 (5.5%)	1,261 (4.9%)	1,044 (4.1%)	995 (4.0%)	1,002 (4.0%)
Gelding	16,823 (71.8%)	18,076 (71.9%)	16,690 (71.2%)	17,559 (69.7%)	10,306 (71.2%)	18,189 (69.2%)	17,931 (70.2%)	17,797 (70.3%)	17,703 (70.9%)	17,684 (70.9%)
Filly/Mare	5,325 (22.7%)	5,681 (22.6%)	5,442 (23.2%)	6,213 (24.7%)	3,595 (24.8%)	6,622 (25.2%)	6,360 (24.9%)	6,468 (25.6%)	6,258 (25.1%)	6,255 (25.1%)
Rig	5 (0.0%)	1 (0.0%)	4 (0.0%)	5 (0.0%)	3 (0.0%)	4 (0.0%)	2 (0.0%)	1 (0.0%)	0 (0.0%)	0 (0.0%)
Flat										
Colt/Entire	1,249 (10.9%)	1,348 (11.1%)	1,283 (11.0%)	1,387 (11.1%)	564 (8.5%)	1,436 (10.9%)	1,248 (9.9%)	1,014 (8.2%)	987 (7.4%)	993 (7.6%)
Gelding	6,892 (60.0%)	7,316 (60.4%)	7,195 (61.5%)	7,508 (59.9%)	4,134 (62.1%)	7,898 (60.0%)	7,627 (60.4%)	7,610 (61.7%)	8,584 (64.5%)	8,507 (64.9%)
Filly/Mare	3,343 (29.1%)	3,439 (28.4%)	3,209 (27.4%)	3,632 (29.0%)	1,956 (29.4%)	3,837 (29.1%)	3,757 (29.7%)	3,719 (30.1%)	3,746 (28.1%)	3,607 (27.5%)
Rig	5 (0.0%)	1 (0.0%)	4 (0.0%)	2 (0.0%)	0 (0.0%)	1 (0.0%)	0 (0.0%)	0 (0.0%)	0 (0.0%)	0 (0.0%)
All Jump										
Colt/Entire	20 (0.2%)	26 (0.2%)	17 (0.1%)	21 (0.2%)	14 (0.2%)	15 (0.1%)	13 (0.1%)	30 (0.2%)	8 (0.1%)	9 (0.1%)
Gelding	9,931 (83.2%)	10,760 (82.6%)	9,495 (80.8%)	10,051 (79.4%)	6,172 (78.8%)	10,291 (78.6%)	10,304 (79.7%)	10,187 (78.6%)	9,119 (78.3%)	9,177 (77.5%)
Filly/Mare	1,982 (16.6%)	2,242 (17.2%)	2,233 (19.0%)	2,581 (20.4%)	1,639 (20.9%)	2,785 (21.3%)	2,603 (20.1%)	2,749 (21.2%)	2,512 (21.6%)	2,648 (22.4%)
Rig	0 (0.0%)	0 (0.0%)	0 (0.0%)	3 (0.0%)	3 (0.0%)	3 (0.0%)	2 (0.0%)	1 (0.0%)	0 (0.0%)	0 (0.0%)
Chase										
Colt/Entire	1 (0.0%)	0 (0.0%)	0 (0.0%)	0 (0.0%)	0 (0.0%)	0 (0.0%)	0 (0.0%)	0 (0.0%)	0 (0.0%)	0 (0.0%)
Gelding	3,593 (93.6%)	3,975 (92.9%)	3,343 (91.2%)	3,609 (90.2%)	2,169 (90.3%)	3,533 (89.1%)	3,782 (89.2%)	3,682 (89.5%)	3,242 (89.6%)	3,308 (87.7%)
Filly/Mare	245 (6.4%)	305 (7.1%)	321 (8.8%)	391 (9.8%)	229 (9.5%)	430 (10.8%)	457 (10.8%)	434 (10.5%)	375 (10.4%)	464 (12.3%)
Rig	0 (0.0%)	0 (0.0%)	0 (0.0%)	1 (0.0%)	3 (0.1%)	3 (0.1%)	2 (0.0%)	0 (0.0%)	0 (0.0%)	0 (0.0%)
Hurdle										
Colt/Entire	17 (0.2%)	22 (0.3%)	13 (0.2%)	15 (0.2%)	7 (0.2%)	13 (0.2%)	10 (0.1%)	21 (0.3%)	7 (0.1%)	4 (0.1%)
Gelding	5,656 (80.1%)	5,996 (79.1%)	5,332 (77.7%)	5,735 (76.3%)	3,477 (74.7%)	5,438 (75.0%)	5,833 (76.8%)	5,760 (75.4%)	5,230 (74.3%)	5,225 (74.0%)
Filly/Mare	1,387 (19.6%)	1,564 (20.6%)	1,514 (22.1%)	1,765 (23.5%)	1,169 (25.1%)	1,802 (24.8%)	1,753 (23.1%)	1,857 (24.3%)	1,802 (25.6%)	1,833 (26.0%)
Rig	0 (0.0%)	0 (0.0%)	0 (0.0%)	2 (0.0%)	0 (0.0%)	0 (0.0%)	0 (0.0%)	1 (0.0%)	0 (0.0%)	0 (0.0%)
NHF										
Colt/Entire	2 (0.2%)	4 (0.3%)	4 (0.3%)	6 (0.5%)	7 (0.9%)	2 (0.1%)	3 (0.3%)	9 (0.7%)	1 (0.1%)	5 (0.5%)
Gelding	682 (66.0%)	789 (67.7%)	820 (67.1%)	707 (62.1%)	526 (68.0%)	1,320 (70.4%)	689 (63.5%)	745 (61.5%)	647 (65.8%)	644 (64.4%)
Filly/Mare	350 (33.8%)	373 (32.0%)	398 (32.6%)	425 (37.3%)	241 (31.1%)	553 (29.5%)	393 (36.2%)	458 (37.8%)	335 (34.1%)	351 (35.1%)
Hunter										
Gelding	513 (95.0%)	431 (97.3%)	328 (96.8%)	305 (94.4%)	142 (97.3%)	440 (93.0%)	324 (95.0%)	255 (95.5%)	223 (92.1%)	226 (92.6%)
Filly/Mare	27 (5.0%)	12 (2.7%)	11 (3.2%)	18 (5.6%)	4 (2.7%)	33 (7.0%)	17 (5.0%)	12 (4.5%)	19 (7.9%)	18 (7.4%)

Year to Date Individual Runners by Gender

Sex	2016	2017	2018	2019	2020	2021	2022	2023	2024	2025
All Races										
Male	7,406 (75.1%)	7,782 (75.4%)	7,384 (74.7%)	7,868 (73.4%)	5,369 (74.4%)	8,159 (73.8%)	7,809 (73.3%)	7,522 (72.3%)	7,472 (72.8%)	7,547 (72.8%)
Female	2,460 (24.9%)	2,542 (24.6%)	2,502 (25.3%)	2,851 (26.6%)	1,847 (25.6%)	2,896 (26.2%)	2,841 (26.7%)	2,885 (27.7%)	2,796 (27.2%)	2,825 (27.2%)
Flat										
Male	3,444 (68.6%)	3,621 (69.2%)	3,519 (69.6%)	3,679 (68.1%)	1,953 (68.0%)	3,694 (68.7%)	3,619 (67.5%)	3,357 (66.4%)	3,562 (68.1%)	3,615 (68.7%)
Female	1,579 (31.4%)	1,615 (30.8%)	1,535 (30.4%)	1,722 (31.9%)	919 (32.0%)	1,686 (31.3%)	1,745 (32.5%)	1,699 (33.6%)	1,667 (31.9%)	1,647 (31.3%)
All Jump										
Male	4,170 (81.9%)	4,359 (81.7%)	4,039 (80.0%)	4,372 (78.8%)	3,522 (78.7%)	4,665 (78.8%)	4,348 (79.3%)	4,332 (77.8%)	4,014 (77.4%)	4,064 (76.9%)
Female	923 (18.1%)	975 (18.3%)	1,007 (20.0%)	1,179 (21.2%)	954 (21.3%)	1,258 (21.2%)	1,133 (20.7%)	1,234 (22.2%)	1,175 (22.6%)	1,221 (23.1%)
Chase										
Male	1,508 (93.4%)	1,630 (92.5%)	1,405 (90.6%)	1,559 (89.7%)	1,269 (90.0%)	1,683 (89.6%)	1,598 (88.6%)	1,534 (88.6%)	1,398 (89.1%)	1,481 (87.6%)
Female	107 (6.6%)	133 (7.5%)	145 (9.4%)	179 (10.3%)	141 (10.0%)	196 (10.4%)	206 (11.4%)	198 (11.4%)	171 (10.9%)	210 (12.4%)
Hurdle										
Male	2,560 (80.4%)	2,634 (79.4%)	2,435 (78.1%)	2,664 (76.8%)	2,054 (75.0%)	2,707 (75.7%)	2,655 (77.9%)	2,600 (75.8%)	2,452 (74.2%)	2,428 (73.7%)
Female	623 (19.6%)	682 (20.6%)	683 (21.9%)	806 (23.2%)	684 (25.0%)	868 (24.3%)	752 (22.1%)	830 (24.2%)	853 (25.8%)	866 (26.3%)
NHF										
Male	506 (66.9%)	555 (69.1%)	616 (69.1%)	537 (65.2%)	440 (68.9%)	991 (71.7%)	511 (65.3%)	553 (63.6%)	481 (66.3%)	489 (66.1%)
Female	250 (33.1%)	248 (30.9%)	276 (30.9%)	286 (34.8%)	199 (31.1%)	392 (28.3%)	271 (34.7%)	317 (36.4%)	244 (33.7%)	251 (33.9%)
Hunter										
Male	303 (94.7%)	255 (95.9%)	211 (95.5%)	197 (93.8%)	98 (96.1%)	263 (92.0%)	195 (92.4%)	155 (94.5%)	143 (91.7%)	142 (92.2%)
Female	17 (5.3%)	11 (4.1%)	10 (4.5%)	13 (6.2%)	4 (3.9%)	23 (8.0%)	16 (7.6%)	9 (5.5%)	13 (8.3%)	12 (7.8%)

Horses Population by Breeding

April 2025 Horses in Training Snapshot by Breeding versus Previous Years

Flat (including Dual)

Bred	Sex	2016	2017	2018	2019	2020	2021	2022	2023	2024	2025
GB	Male	3,054 (30.1%)	3,153 (30.2%)	3,298 (30.2%)	3,196 (30.2%)	2,914 (30.4%)	3,021 (29.8%)	3,043 (29.9%)	2,892 (29.3%)	2,827 (29.3%)	2,851 (29.5%)
	Female	2,046 (20.1%)	2,110 (20.2%)	2,130 (19.5%)	2,163 (20.4%)	1,962 (20.5%)	2,141 (21.1%)	2,113 (20.7%)	2,036 (20.6%)	1,959 (20.3%)	1,995 (20.7%)
	Subtotal	5,100 (50.2%)	5,263 (50.4%)	5,428 (49.8%)	5,359 (50.6%)	4,876 (50.9%)	5,162 (50.9%)	5,156 (50.6%)	4,928 (50.0%)	4,786 (49.6%)	4,846 (50.2%)
IRE	Male	2,797 (27.5%)	2,886 (27.7%)	3,056 (28.0%)	2,858 (27.0%)	2,622 (27.4%)	2,810 (27.7%)	2,901 (28.5%)	2,867 (29.1%)	2,815 (29.2%)	2,848 (29.5%)
	Female	1,390 (13.7%)	1,370 (13.1%)	1,429 (13.1%)	1,429 (13.5%)	1,272 (13.3%)	1,389 (13.7%)	1,464 (14.4%)	1,442 (14.6%)	1,391 (14.4%)	1,352 (14.0%)
	Subtotal	4,187 (41.2%)	4,256 (40.8%)	4,485 (41.1%)	4,287 (40.5%)	3,894 (40.6%)	4,199 (41.4%)	4,365 (42.8%)	4,309 (43.7%)	4,206 (43.6%)	4,200 (43.5%)
FR	Male	174 (1.7%)	236 (2.3%)	318 (2.9%)	307 (2.9%)	301 (3.1%)	308 (3.0%)	311 (3.1%)	294 (3.0%)	339 (3.5%)	314 (3.3%)
	Female	94 (0.9%)	98 (0.9%)	117 (1.1%)	122 (1.2%)	124 (1.3%)	119 (1.2%)	121 (1.2%)	115 (1.2%)	132 (1.4%)	119 (1.2%)
	Subtotal	268 (2.6%)	334 (3.2%)	435 (4.0%)	429 (4.1%)	425 (4.4%)	427 (4.2%)	432 (4.2%)	409 (4.1%)	471 (4.9%)	433 (4.5%)
USA	Male	359 (3.5%)	320 (3.1%)	299 (2.7%)	276 (2.6%)	217 (2.3%)	187 (1.8%)	126 (1.2%)	99 (1.0%)	86 (0.9%)	63 (0.7%)
	Female	137 (1.3%)	137 (1.3%)	136 (1.2%)	128 (1.2%)	75 (0.8%)	64 (0.6%)	37 (0.4%)	38 (0.4%)	25 (0.3%)	29 (0.3%)
	Subtotal	496 (4.9%)	457 (4.4%)	435 (4.0%)	404 (3.8%)	292 (3.0%)	251 (2.5%)	163 (1.6%)	137 (1.4%)	111 (1.1%)	92 (1.0%)
GNY	Male	65 (0.6%)	71 (0.7%)	70 (0.6%)	53 (0.5%)	51 (0.5%)	58 (0.6%)	38 (0.4%)	46 (0.5%)	42 (0.4%)	50 (0.5%)
	Female	10 (0.1%)	11 (0.1%)	16 (0.1%)	18 (0.2%)	26 (0.3%)	22 (0.2%)	19 (0.2%)	15 (0.2%)	18 (0.2%)	19 (0.2%)
	Subtotal	75 (0.7%)	82 (0.8%)	86 (0.8%)	71 (0.7%)	77 (0.8%)	80 (0.8%)	57 (0.6%)	61 (0.6%)	60 (0.6%)	69 (0.7%)
Other	Male	21 (0.2%)	28 (0.3%)	23 (0.2%)	21 (0.2%)	14 (0.1%)	19 (0.2%)	13 (0.1%)	14 (0.1%)	13 (0.1%)	10 (0.1%)
	Female	15 (0.1%)	17 (0.2%)	12 (0.1%)	12 (0.1%)	5 (0.1%)	4 (0.0%)	3 (0.0%)	5 (0.1%)	7 (0.1%)	5 (0.1%)
	Subtotal	36 (0.4%)	45 (0.4%)	35 (0.3%)	33 (0.3%)	19 (0.2%)	23 (0.2%)	16 (0.2%)	19 (0.2%)	20 (0.2%)	15 (0.2%)

Jump (including Dual)

Bred	Sex	2016	2017	2018	2019	2020	2021	2022	2023	2024	2025
GB	Male	1,349 (24.5%)	1,271 (23.5%)	1,373 (22.5%)	1,207 (21.0%)	701 (21.2%)	1,277 (19.9%)	1,138 (19.9%)	1,153 (19.2%)	1,153 (19.3%)	1,070 (19.7%)
	Female	609 (11.1%)	578 (10.7%)	668 (11.0%)	597 (10.4%)	360 (10.9%)	685 (10.7%)	594 (10.4%)	662 (11.0%)	645 (10.8%)	572 (10.5%)
	Subtotal	1,958 (35.5%)	1,849 (34.2%)	2,041 (33.5%)	1,804 (31.5%)	1,061 (32.1%)	1,962 (30.6%)	1,732 (30.3%)	1,815 (30.2%)	1,798 (30.2%)	1,642 (30.2%)
IRE	Male	2,437 (44.2%)	2,365 (43.7%)	2,627 (43.1%)	2,482 (43.3%)	1,404 (42.5%)	2,705 (42.1%)	2,359 (41.2%)	2,408 (40.1%)	2,363 (39.6%)	2,124 (39.0%)
	Female	369 (6.7%)	404 (7.5%)	530 (8.7%)	552 (9.6%)	349 (10.6%)	600 (9.3%)	527 (9.2%)	574 (9.6%)	638 (10.7%)	585 (10.7%)
	Subtotal	2,806 (50.9%)	2,769 (51.2%)	3,157 (51.8%)	3,034 (52.9%)	1,753 (53.0%)	3,305 (51.5%)	2,886 (50.4%)	2,982 (49.7%)	3,001 (50.3%)	2,709 (49.8%)
FR	Male	586 (10.6%)	628 (11.6%)	702 (11.5%)	693 (12.1%)	378 (11.4%)	906 (14.1%)	882 (15.4%)	965 (16.1%)	945 (15.9%)	883 (16.2%)
	Female	44 (0.8%)	58 (1.1%)	81 (1.3%)	99 (1.7%)	57 (1.7%)	129 (2.0%)	114 (2.0%)	142 (2.4%)	140 (2.3%)	154 (2.8%)
	Subtotal	630 (11.4%)	686 (12.7%)	783 (12.9%)	792 (13.8%)	435 (13.2%)	1,035 (16.1%)	996 (17.4%)	1,107 (18.4%)	1,085 (18.2%)	1,037 (19.0%)
USA	Male	48 (0.9%)	38 (0.7%)	41 (0.7%)	35 (0.6%)	24 (0.7%)	35 (0.5%)	34 (0.6%)	22 (0.4%)	14 (0.2%)	6 (0.1%)
	Female	1 (0.0%)	2 (0.0%)	4 (0.1%)	5 (0.1%)	2 (0.1%)	1 (0.0%)	1 (0.0%)	NA (-)	2 (0.0%)	1 (0.0%)
	Subtotal	49 (0.9%)	40 (0.7%)	45 (0.7%)	40 (0.7%)	26 (0.8%)	36 (0.6%)	35 (0.6%)	22 (0.4%)	16 (0.3%)	7 (0.1%)
GNY	Male	54 (1.0%)	55 (1.0%)	51 (0.8%)	53 (0.9%)	29 (0.9%)	67 (1.0%)	62 (1.1%)	69 (1.1%)	51 (0.9%)	37 (0.7%)
	Female	5 (0.1%)	1 (0.0%)	2 (0.0%)	5 (0.1%)	3 (0.1%)	9 (0.1%)	8 (0.1%)	5 (0.1%)	6 (0.1%)	7 (0.1%)
	Subtotal	59 (1.1%)	56 (1.0%)	53 (0.9%)	58 (1.0%)	32 (1.0%)	76 (1.2%)	70 (1.2%)	74 (1.2%)	57 (1.0%)	44 (0.8%)
Other	Male	6 (0.1%)	7 (0.1%)	8 (0.1%)	6 (0.1%)	NA (-)	4 (0.1%)	2 (0.0%)	1 (0.0%)	4 (0.1%)	4 (0.1%)
	Female	3 (0.1%)	1 (0.0%)	2 (0.0%)	2 (0.0%)	NA (-)	1 (0.0%)	1 (0.0%)	NA (-)	1 (0.0%)	2 (0.0%)
	Subtotal	9 (0.2%)	8 (0.1%)	10 (0.2%)	8 (0.1%)	NA (-)	5 (0.1%)	3 (0.1%)	1 (0.0%)	5 (0.1%)	6 (0.1%)

Year to Date Total Runners by Breeding

Flat

Bred	Sex	2016	2017	2018	2019	2020	2021	2022	2023	2024	2025
GB	Male	3,759 (32.7%)	4,036 (33.3%)	3,935 (33.7%)	4,075 (32.5%)	2,185 (32.8%)	4,225 (32.1%)	4,098 (32.4%)	3,863 (31.3%)	4,367 (32.8%)	4,286 (32.7%)
	Female	1,844 (16.1%)	1,863 (15.4%)	1,736 (14.8%)	2,012 (16.1%)	1,079 (16.2%)	2,251 (17.1%)	2,130 (16.9%)	2,070 (16.8%)	1,976 (14.8%)	1,904 (14.5%)
	Subtotal	5,603 (48.8%)	5,899 (48.7%)	5,671 (48.5%)	6,087 (48.6%)	3,264 (49.1%)	6,476 (49.2%)	6,228 (49.3%)	5,933 (48.1%)	6,343 (47.6%)	6,190 (47.2%)
IRE	Male	3,593 (31.3%)	3,799 (31.4%)	3,717 (31.8%)	3,932 (31.4%)	2,045 (30.7%)	4,271 (32.4%)	4,088 (32.4%)	4,114 (33.3%)	4,517 (33.9%)	4,580 (34.9%)
	Female	1,316 (11.5%)	1,381 (11.4%)	1,262 (10.8%)	1,354 (10.8%)	768 (11.5%)	1,360 (10.3%)	1,423 (11.3%)	1,443 (11.7%)	1,577 (11.8%)	1,506 (11.5%)
	Subtotal	4,909 (42.7%)	5,180 (42.8%)	4,979 (42.6%)	5,286 (42.2%)	2,813 (42.3%)	5,631 (42.7%)	5,511 (43.6%)	5,557 (45.0%)	6,094 (45.8%)	6,086 (46.4%)
FR	Male	230 (2.0%)	264 (2.2%)	270 (2.3%)	381 (3.0%)	203 (3.1%)	378 (2.9%)	378 (3.0%)	415 (3.4%)	426 (3.2%)	436 (3.3%)
	Female	71 (0.6%)	68 (0.6%)	99 (0.8%)	106 (0.8%)	51 (0.8%)	113 (0.9%)	106 (0.8%)	130 (1.1%)	128 (1.0%)	120 (0.9%)
	Subtotal	301 (2.6%)	332 (2.7%)	369 (3.2%)	487 (3.9%)	254 (3.8%)	491 (3.7%)	484 (3.8%)	545 (4.4%)	554 (4.2%)	556 (4.2%)
USA	Male	465 (4.0%)	443 (3.7%)	445 (3.8%)	408 (3.3%)	216 (3.2%)	325 (2.5%)	260 (2.1%)	183 (1.5%)	191 (1.4%)	127 (1.0%)
	Female	78 (0.7%)	99 (0.8%)	95 (0.8%)	124 (1.0%)	52 (0.8%)	76 (0.6%)	64 (0.5%)	62 (0.5%)	48 (0.4%)	53 (0.4%)
	Subtotal	543 (4.7%)	542 (4.5%)	540 (4.6%)	532 (4.2%)	268 (4.0%)	401 (3.0%)	324 (2.6%)	245 (2.0%)	239 (1.8%)	180 (1.4%)
GNY	Male	58 (0.5%)	84 (0.7%)	69 (0.6%)	56 (0.4%)	36 (0.5%)	95 (0.7%)	36 (0.3%)	42 (0.3%)	65 (0.5%)	58 (0.4%)
	Female	26 (0.2%)	15 (0.1%)	14 (0.1%)	22 (0.2%)	5 (0.1%)	31 (0.2%)	28 (0.2%)	11 (0.1%)	12 (0.1%)	19 (0.1%)
	Subtotal	84 (0.7%)	99 (0.8%)	83 (0.7%)	78 (0.6%)	41 (0.6%)	126 (1.0%)	64 (0.5%)	53 (0.4%)	77 (0.6%)	77 (0.6%)
Other	Male	41 (0.4%)	39 (0.3%)	46 (0.4%)	45 (0.4%)	13 (0.2%)	41 (0.3%)	15 (0.1%)	7 (0.1%)	5 (0.0%)	13 (0.1%)
	Female	8 (0.1%)	13 (0.1%)	3 (0.0%)	14 (0.1%)	1 (0.0%)	6 (0.0%)	6 (0.0%)	3 (0.0%)	5 (0.0%)	5 (0.0%)
	Subtotal	49 (0.4%)	52 (0.4%)	49 (0.4%)	59 (0.5%)	14 (0.2%)	47 (0.4%)	21 (0.2%)	10 (0.1%)	10 (0.1%)	18 (0.1%)

Jump

Bred	Sex	2016	2017	2018	2019	2020	2021	2022	2023	2024	2025
GB	Male	2,679 (22.5%)	2,847 (21.9%)	2,408 (20.5%)	2,547 (20.1%)	1,486 (19.0%)	2,382 (18.2%)	2,294 (17.8%)	2,234 (17.2%)	2,077 (17.8%)	2,234 (18.9%)
	Female	1,011 (8.5%)	1,107 (8.5%)	1,055 (9.0%)	1,152 (9.1%)	668 (8.5%)	1,217 (9.3%)	1,138 (8.8%)	1,184 (9.1%)	1,012 (8.7%)	986 (8.3%)
	Subtotal	3,690 (30.9%)	3,954 (30.4%)	3,463 (29.5%)	3,699 (29.2%)	2,154 (27.5%)	3,599 (27.5%)	3,432 (26.6%)	3,418 (26.4%)	3,089 (26.5%)	3,220 (27.2%)
IRE	Male	5,483 (45.9%)	5,950 (45.7%)	5,322 (45.3%)	5,558 (43.9%)	3,404 (43.5%)	5,664 (43.3%)	5,540 (42.9%)	5,447 (42.0%)	4,763 (40.9%)	4,758 (40.2%)
	Female	839 (7.0%)	959 (7.4%)	1,028 (8.8%)	1,197 (9.5%)	784 (10.0%)	1,247 (9.5%)	1,139 (8.8%)	1,215 (9.4%)	1,218 (10.5%)	1,293 (10.9%)
	Subtotal	6,322 (53.0%)	6,909 (53.0%)	6,350 (54.1%)	6,755 (53.4%)	4,188 (53.5%)	6,911 (52.8%)	6,679 (51.7%)	6,662 (51.4%)	5,981 (51.4%)	6,051 (51.1%)
FR	Male	1,555 (13.0%)	1,748 (13.4%)	1,590 (13.5%)	1,747 (13.8%)	1,163 (14.9%)	2,031 (15.5%)	2,259 (17.5%)	2,332 (18.0%)	2,142 (18.4%)	2,083 (17.6%)
	Female	114 (1.0%)	159 (1.2%)	134 (1.1%)	209 (1.7%)	177 (2.3%)	297 (2.3%)	297 (2.3%)	335 (2.6%)	272 (2.3%)	359 (3.0%)
	Subtotal	1,669 (14.0%)	1,907 (14.6%)	1,724 (14.7%)	1,956 (15.5%)	1,340 (17.1%)	2,328 (17.8%)	2,556 (19.8%)	2,667 (20.6%)	2,414 (20.7%)	2,442 (20.6%)
USA	Male	106 (0.9%)	96 (0.7%)	76 (0.6%)	52 (0.4%)	48 (0.6%)	58 (0.4%)	43 (0.3%)	39 (0.3%)	12 (0.1%)	11 (0.1%)
	Female	4 (0.0%)	4 (0.0%)	5 (0.0%)	9 (0.1%)	4 (0.1%)	3 (0.0%)	6 (0.0%)	0 (0.0%)	3 (0.0%)	4 (0.0%)
	Subtotal	110 (0.9%)	100 (0.8%)	81 (0.7%)	61 (0.5%)	52 (0.7%)	61 (0.5%)	49 (0.4%)	39 (0.3%)	15 (0.1%)	15 (0.1%)
GNY	Male	117 (1.0%)	136 (1.0%)	98 (0.8%)	152 (1.2%)	83 (1.1%)	165 (1.3%)	180 (1.4%)	165 (1.3%)	124 (1.1%)	92 (0.8%)
	Female	11 (0.1%)	8 (0.1%)	9 (0.1%)	12 (0.1%)	5 (0.1%)	21 (0.2%)	22 (0.2%)	15 (0.1%)	5 (0.0%)	6 (0.1%)
	Subtotal	128 (1.1%)	144 (1.1%)	107 (0.9%)	164 (1.3%)	88 (1.1%)	186 (1.4%)	202 (1.6%)	180 (1.4%)	129 (1.1%)	98 (0.8%)
Other	Male	11 (0.1%)	9 (0.1%)	18 (0.2%)	19 (0.2%)	5 (0.1%)	9 (0.1%)	3 (0.0%)	1 (0.0%)	9 (0.1%)	8 (0.1%)
	Female	3 (0.0%)	5 (0.0%)	2 (0.0%)	2 (0.0%)	1 (0.0%)	0 (0.0%)	1 (0.0%)	0 (0.0%)	2 (0.0%)	0 (0.0%)
	Subtotal	14 (0.1%)	14 (0.1%)	20 (0.2%)	21 (0.2%)	6 (0.1%)	9 (0.1%)	4 (0.0%)	1 (0.0%)	11 (0.1%)	8 (0.1%)

Year to Date Individual Runners by Breeding

Flat

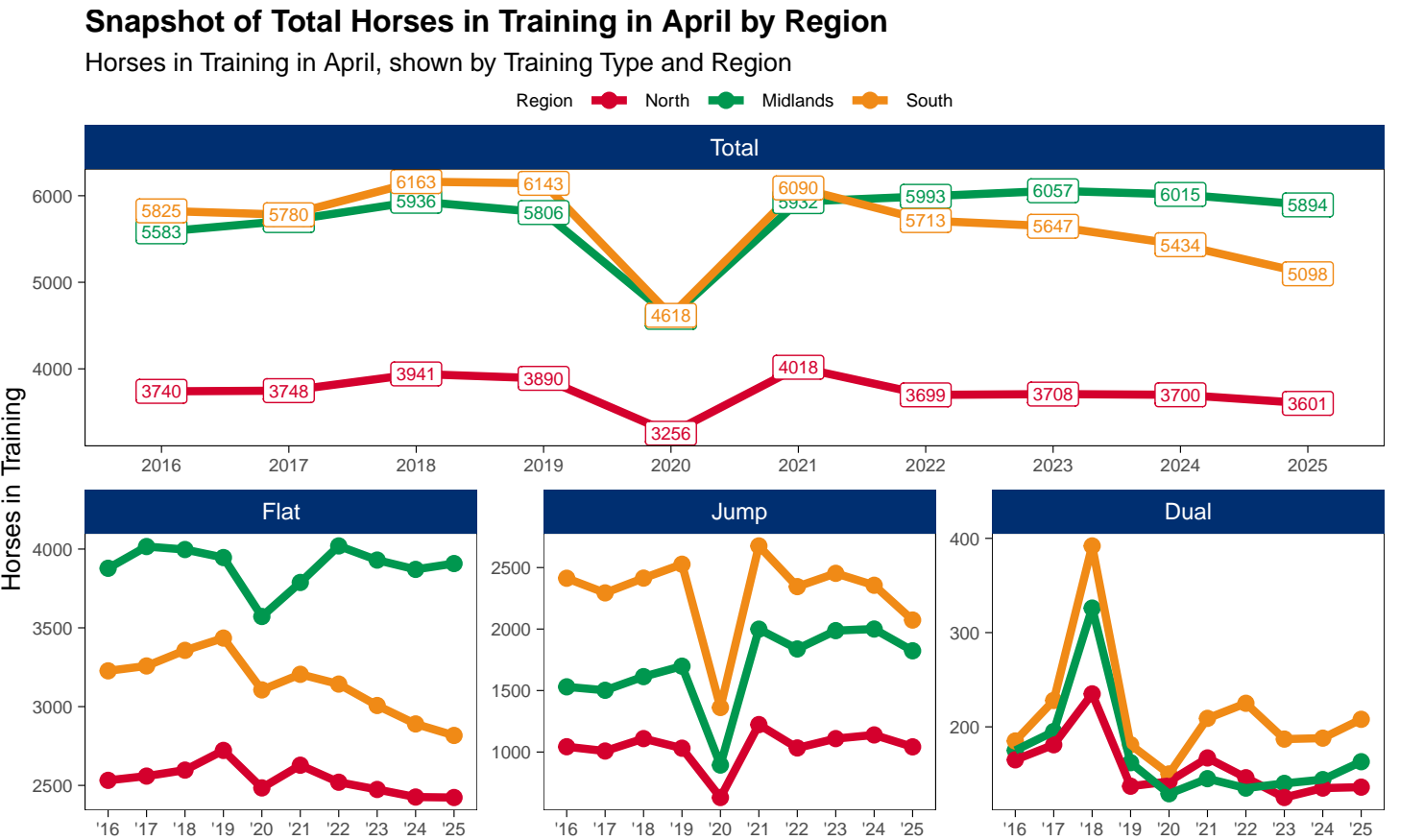
Bred	Sex	2016	2017	2018	2019	2020	2021	2022	2023	2024	2025
GB	Male	1,584 (31.5%)	1,633 (31.2%)	1,623 (32.1%)	1,667 (30.9%)	911 (31.7%)	1,675 (31.1%)	1,676 (31.2%)	1,501 (29.7%)	1,614 (30.9%)	1,613 (30.7%)
	Female	871 (17.3%)	890 (17.0%)	821 (16.2%)	943 (17.5%)	502 (17.5%)	951 (17.7%)	990 (18.5%)	925 (18.3%)	872 (16.7%)	885 (16.8%)
	Subtotal	2,455 (48.9%)	2,523 (48.2%)	2,444 (48.4%)	2,610 (48.3%)	1,413 (49.2%)	2,626 (48.8%)	2,666 (49.7%)	2,426 (48.0%)	2,486 (47.5%)	2,498 (47.5%)
IRE	Male	1,518 (30.2%)	1,622 (31.0%)	1,539 (30.5%)	1,636 (30.3%)	835 (29.1%)	1,672 (31.1%)	1,663 (31.0%)	1,594 (31.5%)	1,673 (32.0%)	1,743 (33.1%)
	Female	621 (12.4%)	620 (11.8%)	615 (12.2%)	649 (12.0%)	360 (12.5%)	635 (11.8%)	660 (12.3%)	679 (13.4%)	708 (13.5%)	678 (12.9%)
	Subtotal	2,139 (42.6%)	2,242 (42.8%)	2,154 (42.6%)	2,285 (42.3%)	1,195 (41.6%)	2,307 (42.9%)	2,323 (43.3%)	2,273 (45.0%)	2,381 (45.5%)	2,421 (46.0%)
FR	Male	106 (2.1%)	118 (2.3%)	137 (2.7%)	165 (3.1%)	94 (3.3%)	172 (3.2%)	164 (3.1%)	169 (3.3%)	183 (3.5%)	181 (3.4%)
	Female	37 (0.7%)	39 (0.7%)	46 (0.9%)	58 (1.1%)	26 (0.9%)	51 (0.9%)	53 (1.0%)	62 (1.2%)	60 (1.1%)	54 (1.0%)
	Subtotal	143 (2.8%)	157 (3.0%)	183 (3.6%)	223 (4.1%)	120 (4.2%)	223 (4.1%)	217 (4.0%)	231 (4.6%)	243 (4.6%)	235 (4.5%)
USA	Male	192 (3.8%)	193 (3.7%)	173 (3.4%)	167 (3.1%)	88 (3.1%)	123 (2.3%)	89 (1.7%)	67 (1.3%)	63 (1.2%)	47 (0.9%)
	Female	35 (0.7%)	50 (1.0%)	44 (0.9%)	58 (1.1%)	27 (0.9%)	34 (0.6%)	25 (0.5%)	24 (0.5%)	17 (0.3%)	19 (0.4%)
	Subtotal	227 (4.5%)	243 (4.6%)	217 (4.3%)	225 (4.2%)	115 (4.0%)	157 (2.9%)	114 (2.1%)	91 (1.8%)	80 (1.5%)	66 (1.3%)
GNY	Male	29 (0.6%)	38 (0.7%)	33 (0.7%)	30 (0.6%)	17 (0.6%)	38 (0.7%)	20 (0.4%)	23 (0.5%)	26 (0.5%)	25 (0.5%)
	Female	8 (0.2%)	7 (0.1%)	7 (0.1%)	9 (0.2%)	3 (0.1%)	13 (0.2%)	15 (0.3%)	6 (0.1%)	8 (0.2%)	9 (0.2%)
	Subtotal	37 (0.7%)	45 (0.9%)	40 (0.8%)	39 (0.7%)	20 (0.7%)	51 (0.9%)	35 (0.7%)	29 (0.6%)	34 (0.7%)	34 (0.6%)
Other	Male	15 (0.3%)	17 (0.3%)	14 (0.3%)	14 (0.3%)	8 (0.3%)	14 (0.3%)	7 (0.1%)	3 (0.1%)	3 (0.1%)	6 (0.1%)
	Female	7 (0.1%)	9 (0.2%)	2 (0.0%)	5 (0.1%)	1 (0.0%)	2 (0.0%)	2 (0.0%)	3 (0.1%)	2 (0.0%)	2 (0.0%)
	Subtotal	22 (0.4%)	26 (0.5%)	16 (0.3%)	19 (0.4%)	9 (0.3%)	16 (0.3%)	9 (0.2%)	6 (0.1%)	5 (0.1%)	8 (0.2%)

Jump

Bred	Sex	2016	2017	2018	2019	2020	2021	2022	2023	2024	2025
GB	Male	1,113 (21.9%)	1,141 (21.4%)	1,009 (20.0%)	1,104 (19.9%)	831 (18.6%)	1,103 (18.6%)	977 (17.8%)	975 (17.5%)	911 (17.6%)	952 (18.0%)
	Female	486 (9.5%)	486 (9.1%)	480 (9.5%)	526 (9.5%)	388 (8.7%)	546 (9.2%)	494 (9.0%)	517 (9.3%)	492 (9.5%)	476 (9.0%)
	Subtotal	1,599 (31.4%)	1,627 (30.5%)	1,489 (29.5%)	1,630 (29.4%)	1,219 (27.2%)	1,649 (27.8%)	1,471 (26.8%)	1,492 (26.8%)	1,403 (27.0%)	1,428 (27.0%)
IRE	Male	2,304 (45.2%)	2,393 (44.9%)	2,260 (44.8%)	2,421 (43.6%)	1,958 (43.7%)	2,538 (42.8%)	2,338 (42.7%)	2,317 (41.6%)	2,126 (41.0%)	2,128 (40.3%)
	Female	375 (7.4%)	414 (7.8%)	449 (8.9%)	534 (9.6%)	452 (10.1%)	575 (9.7%)	497 (9.1%)	557 (10.0%)	545 (10.5%)	576 (10.9%)
	Subtotal	2,679 (52.6%)	2,807 (52.6%)	2,709 (53.7%)	2,955 (53.2%)	2,410 (53.8%)	3,113 (52.6%)	2,835 (51.7%)	2,874 (51.6%)	2,671 (51.5%)	2,704 (51.2%)
FR	Male	641 (12.6%)	726 (13.6%)	692 (13.7%)	755 (13.6%)	654 (14.6%)	933 (15.8%)	945 (17.2%)	962 (17.3%)	918 (17.7%)	934 (17.7%)
	Female	52 (1.0%)	67 (1.3%)	72 (1.4%)	109 (2.0%)	106 (2.4%)	128 (2.2%)	130 (2.4%)	150 (2.7%)	132 (2.5%)	164 (3.1%)
	Subtotal	693 (13.6%)	793 (14.9%)	764 (15.1%)	864 (15.6%)	760 (17.0%)	1,061 (17.9%)	1,075 (19.6%)	1,112 (20.0%)	1,050 (20.2%)	1,098 (20.8%)
USA	Male	47 (0.9%)	42 (0.8%)	36 (0.7%)	26 (0.5%)	25 (0.6%)	26 (0.4%)	21 (0.4%)	17 (0.3%)	6 (0.1%)	6 (0.1%)
	Female	2 (0.0%)	1 (0.0%)	2 (0.0%)	4 (0.1%)	3 (0.1%)	2 (0.0%)	2 (0.0%)	0 (0.0%)	1 (0.0%)	1 (0.0%)
	Subtotal	49 (1.0%)	43 (0.8%)	38 (0.8%)	30 (0.5%)	28 (0.6%)	28 (0.5%)	23 (0.4%)	17 (0.3%)	7 (0.1%)	7 (0.1%)
GNY	Male	59 (1.2%)	52 (1.0%)	36 (0.7%)	57 (1.0%)	49 (1.1%)	62 (1.0%)	65 (1.2%)	60 (1.1%)	50 (1.0%)	40 (0.8%)
	Female	6 (0.1%)	5 (0.1%)	2 (0.0%)	5 (0.1%)	4 (0.1%)	7 (0.1%)	9 (0.2%)	10 (0.2%)	4 (0.1%)	4 (0.1%)
	Subtotal	65 (1.3%)	57 (1.1%)	38 (0.8%)	62 (1.1%)	53 (1.2%)	69 (1.2%)	74 (1.4%)	70 (1.3%)	54 (1.0%)	44 (0.8%)
Other	Male	6 (0.1%)	5 (0.1%)	6 (0.1%)	9 (0.2%)	5 (0.1%)	3 (0.1%)	2 (0.0%)	1 (0.0%)	3 (0.1%)	4 (0.1%)
	Female	2 (0.0%)	2 (0.0%)	2 (0.0%)	1 (0.0%)	1 (0.0%)	0 (0.0%)	1 (0.0%)	0 (0.0%)	1 (0.0%)	0 (0.0%)
	Subtotal	8 (0.2%)	7 (0.1%)	8 (0.2%)	10 (0.2%)	6 (0.1%)	3 (0.1%)	3 (0.1%)	1 (0.0%)	4 (0.1%)	4 (0.1%)

Horse Population by Location

April 2025 Horses in Training Snapshot by Region versus Previous Years



North

AgeCat	2016	2017	2018	2019	2020	2021	2022	2023	2024	2025	vs. Last Year	vs. Pre-Covid
Flat Horses in Training												
2YO	736	713	729	804	698	728	696	628	565	599	+34 / +6.0%	-205 / -25.5%
3YO	710	737	741	754	772	803	760	716	691	661	-30 / -4.3%	-93 / -12.3%
4YO	392	414	410	421	383	391	412	402	430	413	-17 / -4.0%	-8 / -1.9%
5YO+	694	695	717	743	631	706	652	728	740	750	+10 / +1.4%	+7 / +0.9%
Subtotal	2532	2559	2597	2722	2484	2628	2520	2474	2426	2423	-3 / -0.1%	-299 / -11.0%
Jump Horses in Training												
3YO	16	4	6	10	5	7	13	10	1	2	+1 / +100.0%	-8 / -80.0%
4-5YO	270	266	251	255	150	279	260	280	301	240	-61 / -20.3%	-15 / -5.9%
6-7YO	338	310	395	365	223	425	370	418	414	399	-15 / -3.6%	+34 / +9.3%
8YO+	419	428	457	401	252	512	390	401	423	401	-22 / -5.2%	0 / 0.0%
Subtotal	1043	1008	1109	1031	630	1223	1033	1109	1139	1042	-97 / -8.5%	+11 / +1.1%
Dual Horses in Training												
3YO	19	24	22	9	27	17	23	12	14	9	-5 / -35.7%	0 / 0.0%
4YO	38	44	61	34	34	42	22	28	34	38	+4 / +11.8%	+4 / +11.8%
5YO+	108	113	152	94	81	108	101	85	87	89	+2 / +2.3%	-5 / -5.3%
Subtotal	165	181	235	137	142	167	146	125	135	136	+1 / +0.7%	-1 / -0.7%
Total Horses in Training												
	3740	3748	3941	3890	3256	4018	3699	3708	3700	3601	-99 / -2.7%	-289 / -7.4%

'vs. Pre-Covid' is comparison between 2025 and 2019

Midlands

AgeCat	2016	2017	2018	2019	2020	2021	2022	2023	2024	2025	vs. Last Year	vs. Pre-Covid
Flat Horses in Training												
2YO	1218	1273	1184	1128	994	1026	1135	1008	1013	1019	+6 / +0.6%	-109 / -9.7%
3YO	1413	1419	1484	1408	1381	1359	1470	1454	1350	1426	+76 / +5.6%	+18 / +1.3%
4YO	548	613	602	627	549	674	656	670	672	641	-31 / -4.6%	+14 / +2.2%
5YO+	699	711	727	783	648	729	759	798	836	822	-14 / -1.7%	+39 / +5.0%
Subtotal	3878	4016	3997	3946	3572	3788	4020	3930	3871	3908	+37 / +1.0%	-38 / -1.0%
Jump Horses in Training												
3YO	11	11	15	14	5	12	7	26	22	11	-11 / -50.0%	-3 / -21.4%
4-5YO	462	465	493	536	290	613	586	662	623	610	-13 / -2.1%	+74 / +13.8%
6-7YO	550	510	576	608	303	727	695	735	778	672	-106 / -13.6%	+64 / +10.5%
8YO+	507	516	529	540	296	647	550	564	577	530	-47 / -8.1%	-10 / -1.9%
Subtotal	1530	1502	1613	1698	894	1999	1838	1987	2000	1823	-177 / -8.8%	+125 / +7.4%
Dual Horses in Training												
3YO	22	15	17	13	11	11	8	17	9	6	-3 / -33.3%	-7 / -53.8%
4YO	51	56	94	55	32	43	44	34	44	45	+1 / +2.3%	-10 / -18.2%
5YO+	102	124	215	94	86	91	83	89	91	112	+21 / +23.1%	+18 / +19.1%
Subtotal	175	195	326	162	129	145	135	140	144	163	+19 / +13.2%	+1 / +0.6%
Total Horses in Training												
	5583	5713	5936	5806	4595	5932	5993	6057	6015	5894	-121 / -2.0%	+88 / +1.5%

'vs. Pre-Covid' is comparison between 2025 and 2019

South

AgeCat	2016	2017	2018	2019	2020	2021	2022	2023	2024	2025	vs. Last Year	vs. Pre-Covid
Flat Horses in Training												
2YO	1149	1186	1147	1175	1002	1037	1030	964	931	855	-76 / -8.2%	-320 / -27.2%
3YO	1034	1024	1142	1138	1078	1068	1017	999	945	1037	+92 / +9.7%	-101 / -8.9%
4YO	446	439	469	525	452	491	498	432	429	391	-38 / -8.9%	-134 / -25.5%
5YO+	598	609	599	597	574	609	598	612	585	534	-51 / -8.7%	-63 / -10.6%
Subtotal	3227	3258	3357	3435	3106	3205	3143	3007	2890	2817	-73 / -2.5%	-618 / -18.0%
Jump Horses in Training												
3YO	16	14	21	17	12	21	14	23	29	16	-13 / -44.8%	-1 / -5.9%
4-5YO	814	806	779	838	443	768	803	903	820	695	-125 / -15.2%	-143 / -17.1%
6-7YO	844	768	869	929	481	1026	831	861	891	794	-97 / -10.9%	-135 / -14.5%
8YO+	739	706	745	743	426	861	697	666	616	568	-48 / -7.8%	-175 / -23.6%
Subtotal	2413	2294	2414	2527	1362	2676	2345	2453	2356	2073	-283 / -12.0%	-454 / -18.0%
Dual Horses in Training												
3YO	11	23	18	9	24	22	23	20	7	17	+10 / +142.9%	+8 / +88.9%
4YO	30	63	101	57	34	70	70	55	57	66	+9 / +15.8%	+9 / +15.8%
5YO+	144	142	273	115	92	117	132	112	124	125	+1 / +0.8%	+10 / +8.7%
Subtotal	185	228	392	181	150	209	225	187	188	208	+20 / +10.6%	+27 / +14.9%
Total Horses in Training												
	5825	5780	6163	6143	4618	6090	5713	5647	5434	5098	-336 / -6.2%	-1045 / -17.0%

'vs. Pre-Covid' is comparison between 2025 and 2019

April 2025 Horses in Training Snapshot by Country versus Previous Years

Type	2016	2017	2018	2019	2020	2021	2022	2023	2024	2025	vs. Last Year	vs. Pre-Covid
England												
Flat	9297	9438	9576	9727	8835	9285	9305	9042	8856	8811	-45 / -0.5%	-916 / -9.4%
Jump	4301	4180	4458	4597	2552	5120	4606	4902	4788	4291	-497 / -10.4%	-306 / -6.7%
Dual	458	532	849	432	392	467	458	420	418	459	+41 / +9.8%	+27 / +6.2%
Overall	14056	14150	14883	14756	11779	14872	14369	14364	14062	13561	-501 / -3.6%	-1195 / -8.1%
Scotland												
Flat	186	222	222	204	177	197	222	223	194	198	+4 / +2.1%	-6 / -2.9%
Jump	286	296	325	293	154	387	294	357	371	336	-35 / -9.4%	+43 / +14.7%
Dual	38	33	50	28	21	29	23	21	29	26	-3 / -10.3%	-2 / -7.1%
Overall	510	551	597	525	352	613	539	601	594	560	-34 / -5.7%	+35 / +6.7%
Wales												
Flat	154	173	153	172	150	139	156	146	137	139	+2 / +1.5%	-33 / -19.2%
Jump	399	328	353	366	180	391	316	290	336	311	-25 / -7.4%	-55 / -15.0%
Dual	29	39	54	20	8	25	25	11	20	22	+2 / +10.0%	+2 / +10.0%
Overall	582	540	560	558	338	555	497	447	493	472	-21 / -4.3%	-86 / -15.4%

'vs. Pre-Covid' is comparison between 2025 and 2019

April 2025 Horses in Training Snapshot by Training Centre versus Previous Years

Type	2016	2017	2018	2019	2020	2021	2022	2023	2024	2025	vs. Last Year	vs. Pre-Covid
Cheltenham (GL54)												
Flat	19	18	17	15	12	15	14	17	15	15	0 / 0.0%	0 / 0.0%
Jump	398	422	419	442	225	521	482	533	505	497	-8 / -1.6%	+55 / +12.4%
Dual	21	25	79	29	7	13	16	12	15	22	+7 / +46.7%	-7 / -24.1%
Overall	438	465	515	486	244	549	512	562	535	534	-1 / -0.2%	+48 / +9.9%
Lambourn (RG17)												
Flat	905	972	1034	1062	940	930	882	933	896	895	-1 / -0.1%	-167 / -15.7%
Jump	334	339	339	370	170	341	297	305	267	261	-6 / -2.2%	-109 / -29.5%
Dual	26	22	40	15	22	19	26	29	26	24	-2 / -7.7%	+9 / +60.0%
Overall	1265	1333	1413	1447	1132	1290	1205	1267	1189	1180	-9 / -0.8%	-267 / -18.5%
Malton (YO17)												
Flat	670	685	678	756	708	711	693	681	720	695	-25 / -3.5%	-61 / -8.1%
Jump	121	116	136	107	82	109	94	88	72	71	-1 / -1.4%	-36 / -33.6%
Dual	24	40	42	18	32	42	39	24	32	24	-8 / -25.0%	+6 / +33.3%
Overall	815	841	856	881	822	862	826	793	824	790	-34 / -4.1%	-91 / -10.3%
Marlborough (SN8)												
Flat	581	552	559	564	515	521	493	451	452	427	-25 / -5.5%	-137 / -24.3%
Jump	63	68	78	76	9	81	83	82	79	73	-6 / -7.6%	-3 / -3.9%
Dual	2	2	1	4	1	1	2	2	3	5	+2 / +66.7%	+1 / +25.0%
Overall	646	622	638	644	525	603	578	535	534	505	-29 / -5.4%	-139 / -21.6%
Middleham (DL8)												
Flat	574	537	557	620	619	616	531	575	538	536	-2 / -0.4%	-84 / -13.5%
Jump	73	93	95	103	53	107	103	112	108	97	-11 / -10.2%	-6 / -5.8%
Dual	21	30	23	26	19	31	17	22	19	27	+8 / +42.1%	+1 / +3.8%
Overall	668	660	675	749	691	754	651	709	665	660	-5 / -0.8%	-89 / -11.9%
Newbury (RG20)												
Flat	403	396	429	446	408	442	488	435	413	382	-31 / -7.5%	-64 / -14.3%
Jump	23	13	18	22	5	12	9	37	57	71	+14 / +24.6%	+49 / +222.7%
Dual	2	8	12	7	7	8	8	4	5	4	-1 / -20.0%	-3 / -42.9%
Overall	428	417	459	475	420	462	505	476	475	457	-18 / -3.8%	-18 / -3.8%
Newmarket (CB8)												
Flat	2804	2853	2853	2781	2588	2752	2833	2841	2775	2727	-48 / -1.7%	-54 / -1.9%
Jump	51	67	71	71	55	79	67	79	73	58	-15 / -20.5%	-13 / -18.3%
Dual	34	37	45	22	28	31	32	32	39	43	+4 / +10.3%	+21 / +95.5%
Overall	2889	2957	2969	2874	2671	2862	2932	2952	2887	2828	-59 / -2.0%	-46 / -1.6%

'vs. Pre-Covid' is comparison between 2025 and 2019