

Horse Population Report

Updated on 31 March 2025



Introduction

Welcome to the latest update on the Racehorse Population from the British Horseracing Authority.

The aim of this document is to give stakeholders and the wider Public an insight into the current state of the Horse Population in Great Britain. It is hoped that this transparency will ensure that all decision makers have access to the key data required to help British Racing deliver a Competitive and Compelling product to stakeholders, racegoers and the wider public.

If you have any questions regarding the content of this report or suggestions for how it could be improved further, please contact Joe Yates – jyates@britishhorseracing.com

Definitions

This report uses the Horses in Training returns from the Weatherby's Racing Administration System, this is completed by trainers and should be updated whenever a horse enters or leaves training in their care as part of the conditions of their licence.

Horses in Training

Unless otherwise stated, snapshots of Horses in Training will be from the 15th day of the month in question and year to date figures will be up to and including the date titled at the front of the report.

Horses' ratings will be taken from the most recently published ratings by the BHA Handicapping Team, which is currently at 7am each Tuesday morning. For example, if looking at the Horses in a particular rating band for July 2011, the horses in training number will be from Friday 15th July 2011 and ratings, where possible, will be assigned to each horse from the ratings published by the BHA Handicappers on Tuesday 12th July 2011.

The Gender of a horse will be taken from the reporting date in question, regardless of whether this has since changed.

In the case of YTD reporting, where a horse's gender or training type has changed in the year-to-date period, the most recent is taken.

This report does not count any horses that are temporarily racing abroad for GB Trainers at the time of reporting.

Yearlings are not included in total counts of flat and/or dual horses but will be sometimes shown separately for information purposes.

Yearlings and two-year-olds are not included in total counts of jump horses or counts of jump horses that include dual horses but will be sometimes shown separately for information purposes.

Yearlings, two-year-olds and three-year-olds are not included in total counts of Hunter Chasers but will be sometimes shown separately for information purposes.

Yearlings and two-year-olds in training that are recorded as dual horses have been re-coded as flat horses.

Hunter Chasers are not included in any counts of Jump Horses or Total figures but will be sometimes shown separately for information purposes.

Horses' training locations are defined by the trainers' primary training location. Training regions are defined the same as regions for the Fixture List; 'North' is north of latitude 53.42911, 'South' is south of latitude 51.88002 and 'Midlands' is anywhere in between. Training centres are defined by postcodes and surrounding areas.

Runners

Unless otherwise specified, Total Runners and Individual Runners metrics only counts runners that ran in GB races including any voided races. Withdrawn horses are not included.

Hunter Chases are not included in this section but will be sometimes shown separately for information purposes.

Total Runners is a count of all runners in races, whilst individual runners only counts each individual horse once.

Monthly Horses in Training

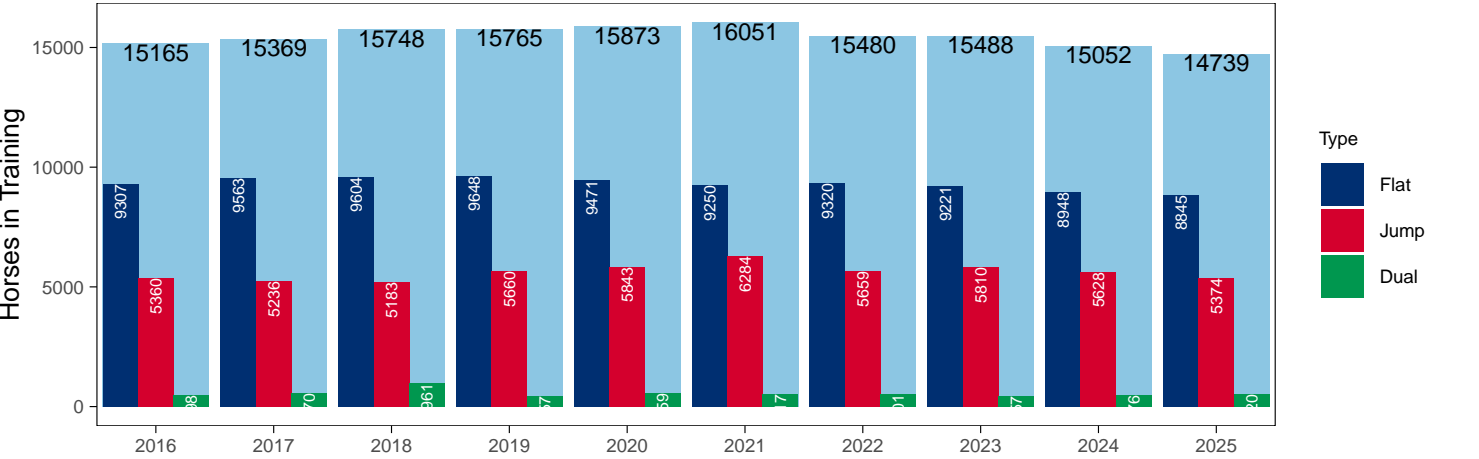
March 2025 Horses in Training Snapshot versus Previous Years

Type	2016	2017	2018	2019	2020	2021	2022	2023	2024	2025	vs. Last Year	vs. Pre-Covid
Flat	9307	9563	9604	9648	9471	9250	9320	9221	8948	8845	-103 / -1.2%	-803 / -8.3%
Jump	5360	5236	5183	5660	5843	6284	5659	5810	5628	5374	-254 / -4.5%	-286 / -5.1%
Dual	498	570	961	457	559	517	501	457	476	520	+44 / +9.2%	+63 / +13.8%
Hunter	1860	1797	1585	1583	1489	875	1214	1146	1305	1021	-284 / -21.8%	-562 / -35.5%
Total	15165	15369	15748	15765	15873	16051	15480	15488	15052	14739	-313 / -2.1%	-1026 / -6.5%

'vs. Pre-Covid' is comparison between 2025 and 2019

Snapshot of Total Horses in Training in March

Horses in Training in March, shown by Training Type



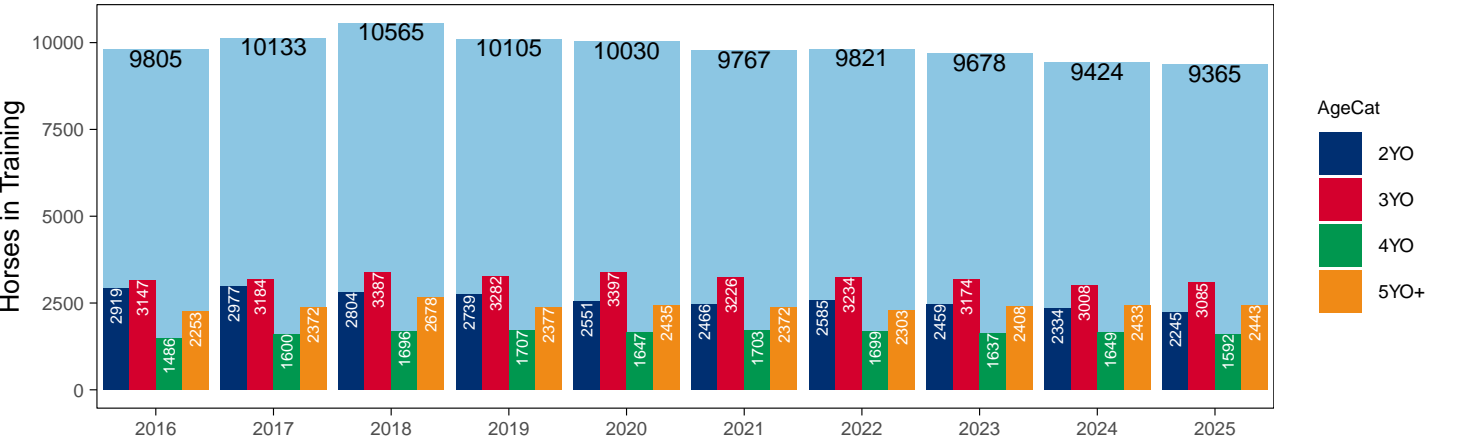
Flat (including Dual)

AgeCat	2016	2017	2018	2019	2020	2021	2022	2023	2024	2025	vs. Last Year	vs. Pre-Covid
2YO	2919	2977	2804	2739	2551	2466	2585	2459	2334	2245	-89 / -3.8%	-494 / -18.0%
3YO	3147	3184	3387	3282	3397	3226	3234	3174	3008	3085	+77 / +2.6%	-197 / -6.0%
4YO	1486	1600	1696	1707	1647	1703	1699	1637	1649	1592	-57 / -3.5%	-115 / -6.7%
5YO+	2253	2372	2678	2377	2435	2372	2303	2408	2433	2443	+10 / +0.4%	+66 / +2.8%
Total	9805	10133	10565	10105	10030	9767	9821	9678	9424	9365	-59 / -0.6%	-740 / -7.3%

'vs. Pre-Covid' is comparison between 2025 and 2019

Snapshot of Flat Horses in Training in March

Flat Horses in Training in March, shown by Age



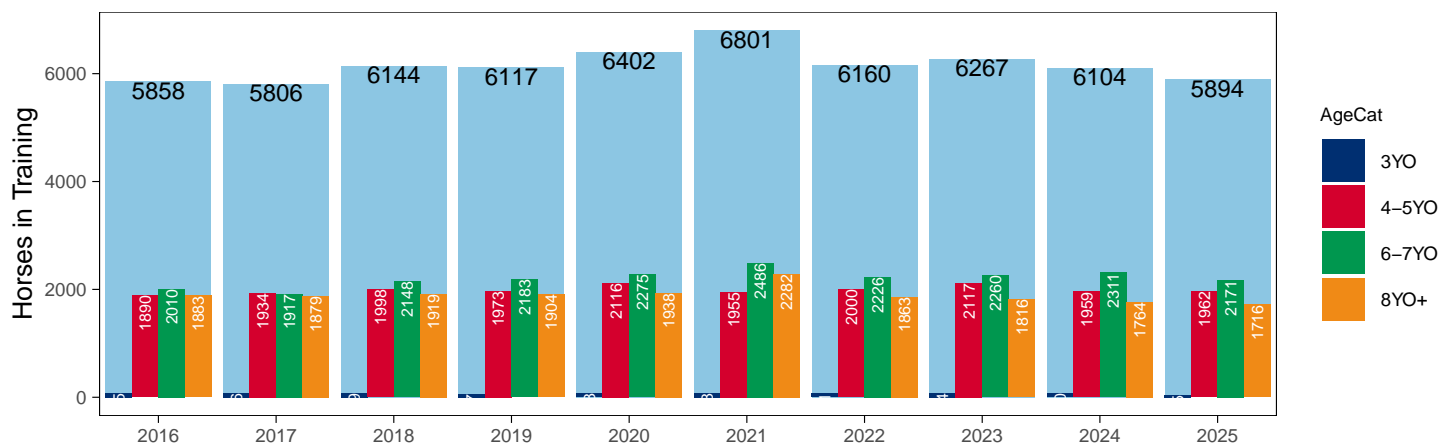
Jump (including Dual)

AgeCat	2016	2017	2018	2019	2020	2021	2022	2023	2024	2025	vs. Last Year	vs. Pre-Covid
3YO	75	76	79	57	73	78	71	74	70	45	-25 / -35.7%	-12 / -21.1%
4-5YO	1890	1934	1998	1973	2116	1955	2000	2117	1959	1962	+3 / +0.2%	-11 / -0.6%
6-7YO	2010	1917	2148	2183	2275	2486	2226	2260	2311	2171	-140 / -6.1%	-12 / -0.5%
8YO+	1883	1879	1919	1904	1938	2282	1863	1816	1764	1716	-48 / -2.7%	-188 / -9.9%
Total	5858	5806	6144	6117	6402	6801	6160	6267	6104	5894	-210 / -3.4%	-223 / -3.6%

'vs. Pre-Covid' is comparison between 2025 and 2019

Snapshot of Jump Horses in Training in March

Jump Horses in Training in March, shown by Age



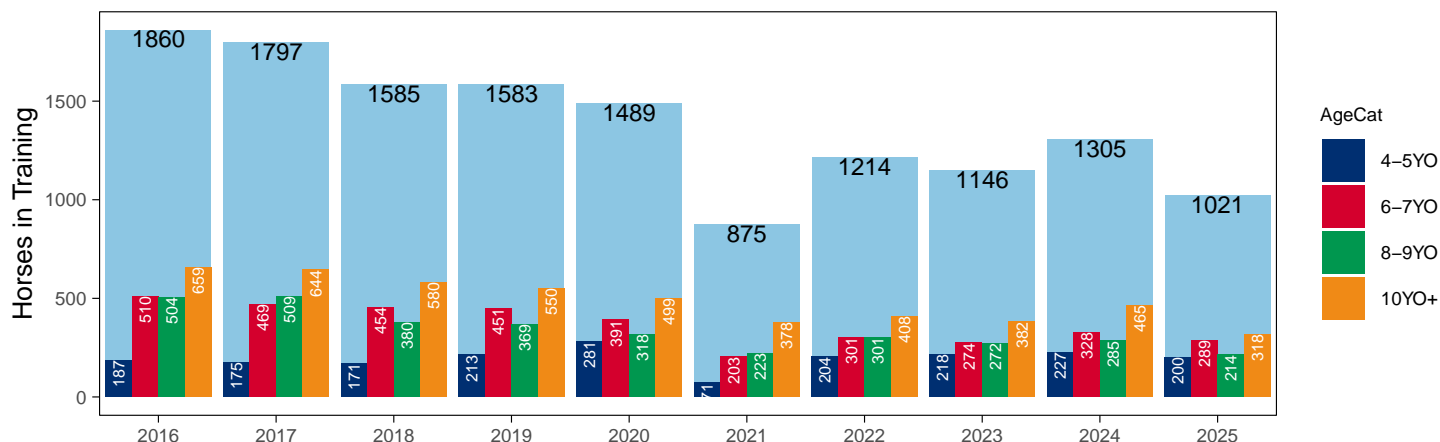
Hunter Chasers

AgeCat	2016	2017	2018	2019	2020	2021	2022	2023	2024	2025	vs. Last Year	vs. Pre-Covid
4-5YO	187	175	171	213	281	71	204	218	227	200	-27 / -11.9%	-13 / -6.1%
6-7YO	510	469	454	451	391	203	301	274	328	289	-39 / -11.9%	-162 / -35.9%
8-9YO	504	509	380	369	318	223	301	272	285	214	-71 / -24.9%	-155 / -42.0%
10YO+	659	644	580	550	499	378	408	382	465	318	-147 / -31.6%	-232 / -42.2%
Total	1860	1797	1585	1583	1489	875	1214	1146	1305	1021	-284 / -21.8%	-562 / -35.5%

'vs. Pre-Covid' is comparison between 2025 and 2019

Snapshot of Hunter Chasers in Training in March

Hunter Chasers in Training in March, shown by Age



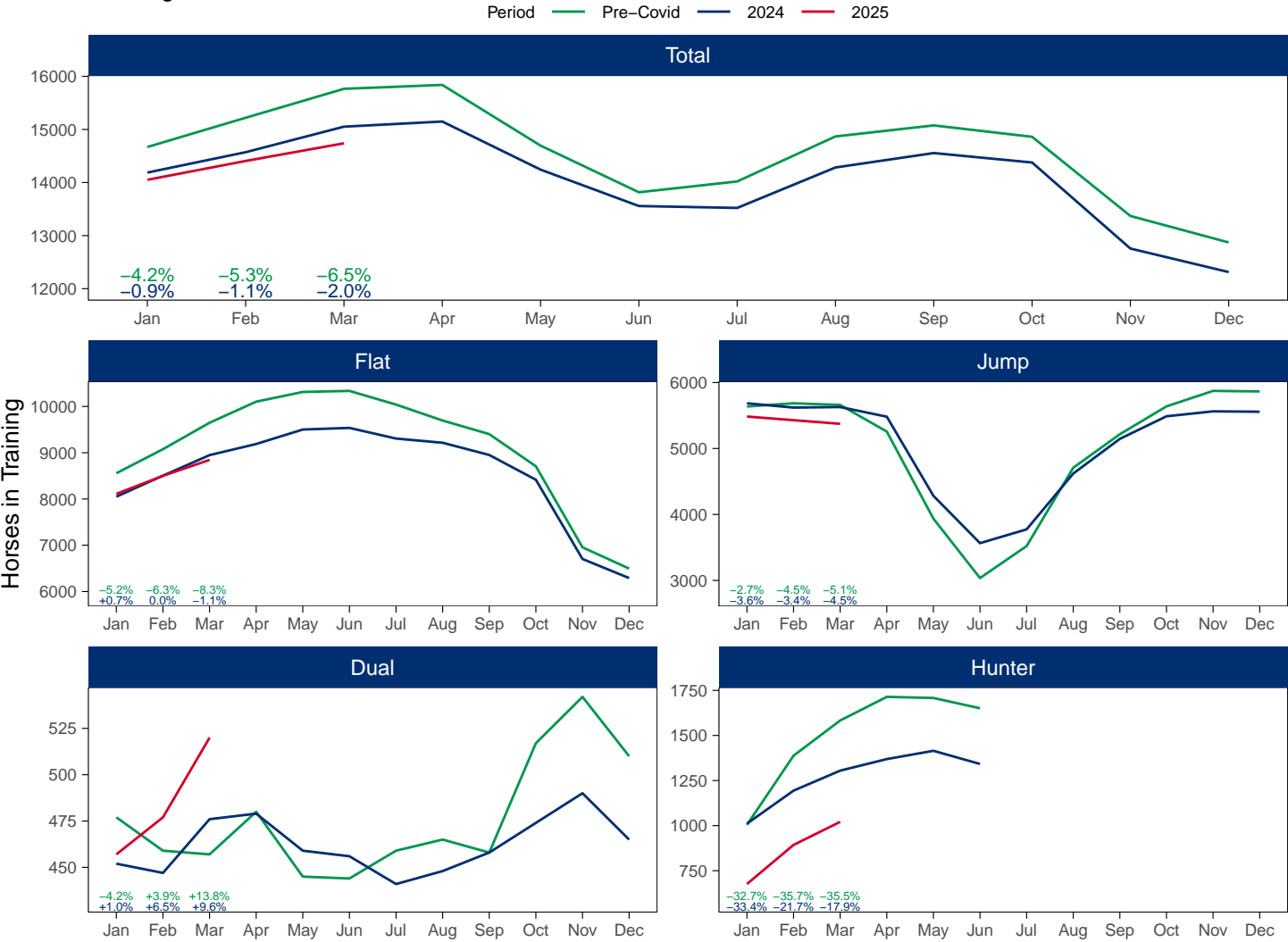
2025 Horses in Training versus Previous Years

Type	Period	Jan	Feb	Mar	Apr	May	Jun	Jul	Aug	Sep	Oct	Nov	Dec
Flat	2025	8110	8500	8845									
	2024	8050	8504	8948	9188	9501	9536	9306	9215	8951	8415	6703	6291
	Pre-Covid	8556	9076	9648	10103	10313	10336	10040	9695	9402	8706	6955	6496
Jump	2025	5484	5429	5374									
	2024	5685	5620	5628	5482	4283	3565	3774	4620	5146	5488	5563	5557
	Pre-Covid	5636	5685	5660	5256	3937	3036	3521	4708	5216	5638	5873	5865
Dual	2025	457	477	520									
	2024	452	447	476	479	459	456	441	448	458	474	490	465
	Pre-Covid	477	459	457	480	445	444	459	465	458	517	542	510
Hunter	2025	676	893	1021									
	2024	1011	1194	1305	1369	1415	1342						
	Pre-Covid	1004	1388	1583	1714	1708	1651						
Total	2025	14051	14406	14739									
	2024	14187	14571	15052	15149	14243	13557	13521	14283	14555	14377	12756	12313
	Pre-Covid	14669	15220	15765	15839	14695	13816	14020	14868	15076	14861	13370	12871

'Pre-Covid' is 2019 values

Monthly Horses in Training

2025 against 2024 and Pre-Covid, shown with % Difference



'Pre-Covid' is 2019 values

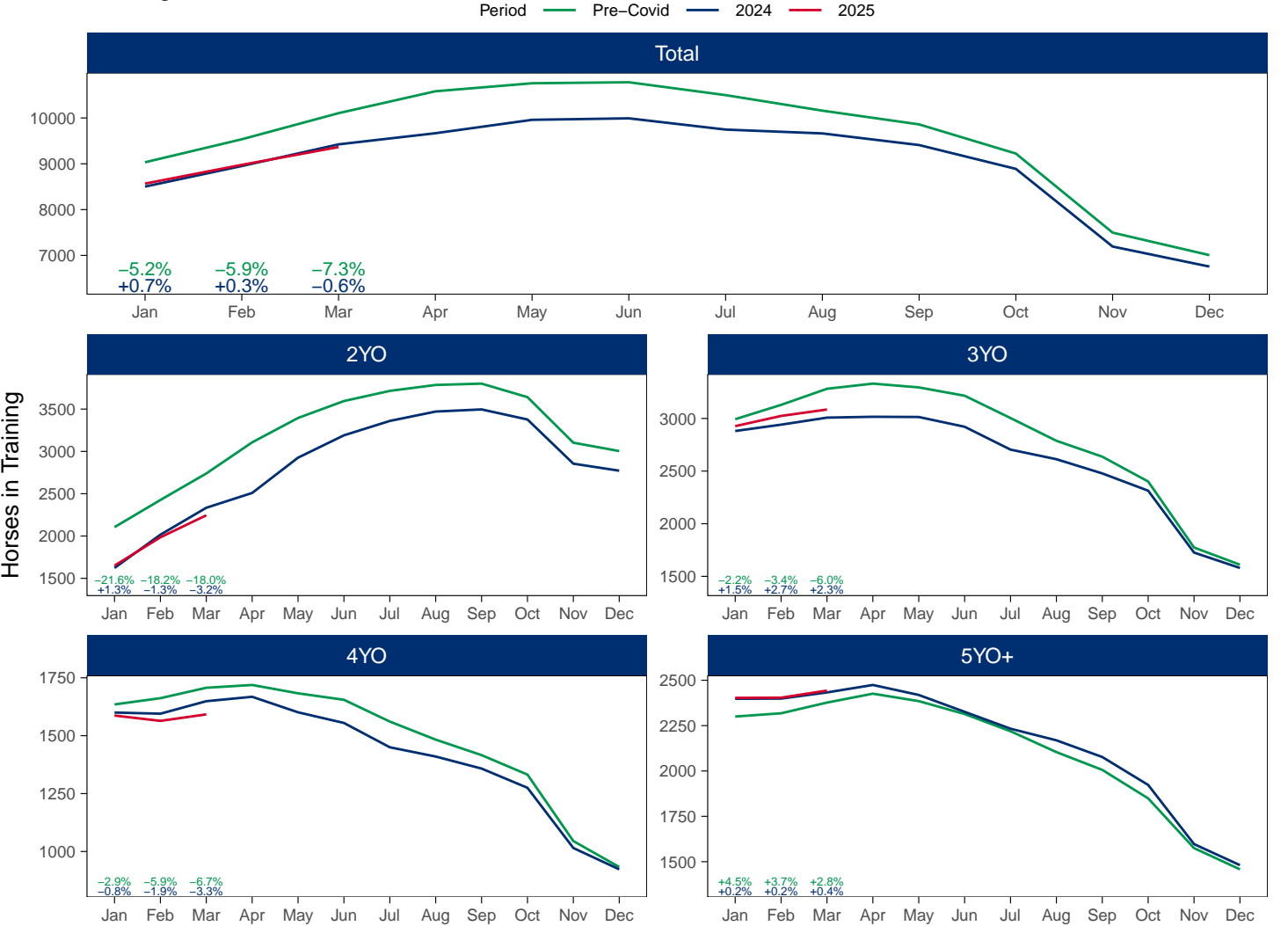
Flat (including Dual)

AgeCat	Period	Jan	Feb	Mar	Apr	May	Jun	Jul	Aug	Sep	Oct	Nov	Dec
2YO	2025	1650	1985	2245									
	2024	1623	2016	2334	2509	2926	3190	3360	3471	3496	3377	2855	2772
	Pre-Covid	2105	2426	2739	3107	3395	3595	3715	3785	3801	3641	3103	3004
3YO	2025	2927	3024	3085									
	2024	2881	2941	3008	3016	3014	2921	2704	2613	2478	2314	1726	1580
	Pre-Covid	2993	3129	3282	3331	3295	3216	3004	2788	2637	2401	1774	1611
4YO	2025	1587	1564	1592									
	2024	1600	1595	1649	1668	1601	1555	1450	1410	1358	1275	1015	923
	Pre-Covid	1635	1662	1707	1719	1683	1655	1561	1483	1416	1332	1045	933
5YO+	2025	2403	2404	2443									
	2024	2398	2399	2433	2474	2419	2326	2233	2169	2077	1923	1597	1481
	Pre-Covid	2300	2318	2377	2426	2385	2314	2219	2104	2006	1849	1575	1458
Total	2025	8567	8977	9365									
	2024	8502	8951	9424	9667	9960	9992	9747	9663	9409	8889	7193	6756
	Pre-Covid	9033	9535	10105	10583	10758	10780	10499	10160	9860	9223	7497	7006

'Pre-Covid' is 2019 values

Monthly Flat Horses in Training

2025 against 2024 and Pre-Covid, shown with % Difference



'Pre-Covid' is 2019 values

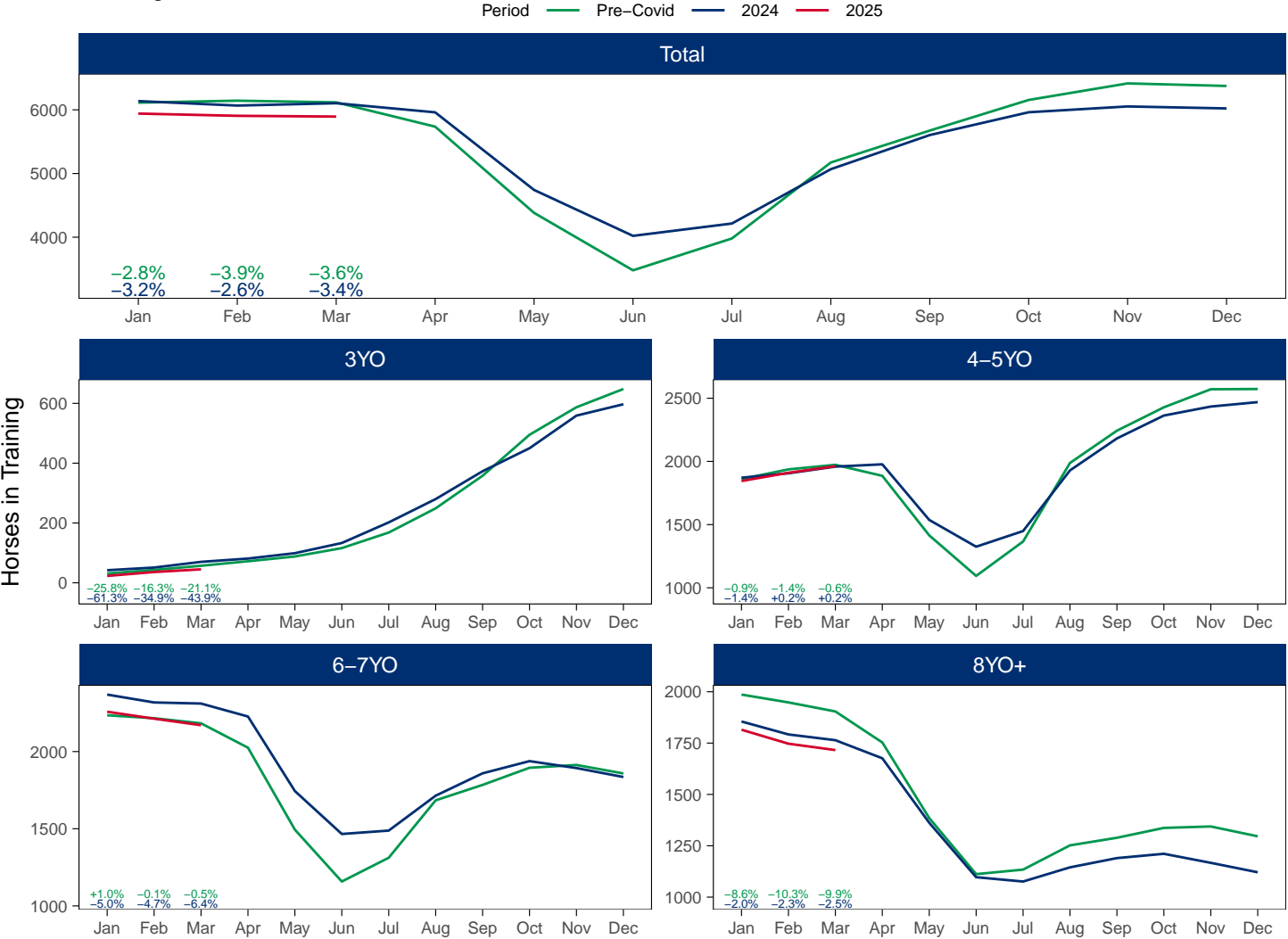
Jump (including Dual)

AgeCat	Period	Jan	Feb	Mar	Apr	May	Jun	Jul	Aug	Sep	Oct	Nov	Dec
3YO	2025	23	36	45									
	2024	42	51	70	81	99	133	202	280	373	450	559	597
	Pre-Covid	31	43	57	72	88	116	168	249	358	495	587	648
4-5YO	2025	1845	1910	1962									
	2024	1871	1906	1959	1977	1537	1325	1449	1929	2182	2363	2434	2469
	Pre-Covid	1861	1937	1973	1886	1415	1094	1366	1988	2243	2428	2571	2573
6-7YO	2025	2258	2213	2171									
	2024	2369	2318	2311	2227	1744	1466	1488	1714	1859	1938	1893	1835
	Pre-Covid	2235	2216	2183	2025	1494	1158	1312	1684	1784	1895	1913	1858
8YO+	2025	1815	1747	1716									
	2024	1855	1792	1764	1676	1362	1097	1076	1145	1190	1211	1167	1121
	Pre-Covid	1986	1948	1904	1753	1385	1112	1134	1252	1289	1337	1344	1296
Total	2025	5941	5906	5894									
	2024	6137	6067	6104	5961	4742	4021	4215	5068	5604	5962	6053	6022
	Pre-Covid	6113	6144	6117	5736	4382	3480	3980	5173	5674	6155	6415	6375

'Pre-Covid' is 2019 values

Monthly Jump Horses in Training

2025 against 2024 and Pre-Covid, shown with % Difference



'Pre-Covid' is 2019 values

Hunter Chasers

AgeCat	Period	Jan	Feb	Mar	Apr	May	Jun	Jul	Aug	Sep	Oct	Nov	Dec
4-5YO	2025	94	150	200									
	2024	121	176	227	265	281	261						
	Pre-Covid	92	170	213	267	268	263						
6-7YO	2025	209	262	289									
	2024	260	299	328	342	350	327						
	Pre-Covid	296	402	451	471	472	462						
8-9YO	2025	145	194	214									
	2024	229	267	285	290	302	288						
	Pre-Covid	244	329	369	392	389	369						
10YO+	2025	228	287	318									
	2024	401	452	465	472	482	466						
	Pre-Covid	372	487	550	584	579	557						
Total	2025	676	893	1021									
	2024	1011	1194	1305	1369	1415	1342						
	Pre-Covid	1004	1388	1583	1714	1708	1651						

'Pre-Covid' is 2019 values

Monthly Hunter Chasers in Training

2025 against 2024 and Pre-Covid, shown with % Difference



'Pre-Covid' is 2019 values

March 2025 Horses in Training by Rating Band Snapshot versus Previous Years

Flat (including Dual)

AgeCat	RatBand	2016	2017	2018	2019	2020	2021	2022	2023	2024	2025
2YO	Unrated	2,919 (100.0%)	2,977 (100.0%)	2,804 (100.0%)	2,739 (100.0%)	2,551 (100.0%)	2,466 (100.0%)	2,585 (100.0%)	2,459 (100.0%)	2,334 (100.0%)	2,245 (100.0%)
	Subtotal	2,919 (100.0%)	2,977 (100.0%)	2,804 (100.0%)	2,739 (100.0%)	2,551 (100.0%)	2,466 (100.0%)	2,585 (100.0%)	2,459 (100.0%)	2,334 (100.0%)	2,245 (100.0%)
3YO	Unrated	1,661 (52.8%)	1,614 (50.7%)	1,963 (58.0%)	1,796 (54.7%)	2,000 (58.9%)	1,827 (56.6%)	1,705 (52.7%)	1,668 (52.6%)	1,600 (53.2%)	1,708 (55.4%)
	0-50	105 (3.3%)	117 (3.7%)	86 (2.5%)	126 (3.8%)	130 (3.8%)	114 (3.5%)	129 (4.0%)	135 (4.3%)	117 (3.9%)	106 (3.4%)
	51-60	204 (6.5%)	241 (7.6%)	198 (5.8%)	274 (8.3%)	224 (6.6%)	225 (7.0%)	267 (8.3%)	236 (7.4%)	248 (8.2%)	214 (6.9%)
	61-70	406 (12.9%)	378 (11.9%)	370 (10.9%)	350 (10.7%)	328 (9.7%)	387 (12.0%)	378 (11.7%)	389 (12.3%)	335 (11.1%)	351 (11.4%)
	71-80	420 (13.3%)	425 (13.3%)	414 (12.2%)	352 (10.7%)	357 (10.5%)	340 (10.5%)	406 (12.6%)	394 (12.4%)	371 (12.3%)	359 (11.6%)
	81-90	208 (6.6%)	264 (8.3%)	209 (6.2%)	223 (6.8%)	202 (5.9%)	181 (5.6%)	205 (6.3%)	213 (6.7%)	193 (6.4%)	197 (6.4%)
	91-100	86 (2.7%)	86 (2.7%)	79 (2.3%)	99 (3.0%)	91 (2.7%)	93 (2.9%)	75 (2.3%)	80 (2.5%)	79 (2.6%)	94 (3.0%)
	101+	57 (1.8%)	59 (1.9%)	68 (2.0%)	62 (1.9%)	65 (1.9%)	59 (1.8%)	69 (2.1%)	59 (1.9%)	65 (2.2%)	56 (1.8%)
	Subtotal	3,147 (100.0%)	3,184 (100.0%)	3,387 (100.0%)	3,282 (100.0%)	3,397 (100.0%)	3,226 (100.0%)	3,234 (100.0%)	3,174 (100.0%)	3,008 (100.0%)	3,085 (100.0%)
4YO	Unrated	224 (15.1%)	261 (16.3%)	363 (21.4%)	330 (19.3%)	331 (20.1%)	361 (21.2%)	299 (17.6%)	283 (17.3%)	271 (16.4%)	289 (18.2%)
	0-50	117 (7.9%)	136 (8.5%)	168 (9.9%)	185 (10.8%)	197 (12.0%)	161 (9.5%)	182 (10.7%)	202 (12.3%)	168 (10.2%)	146 (9.2%)
	51-60	176 (11.8%)	192 (12.0%)	202 (11.9%)	211 (12.4%)	207 (12.6%)	222 (13.0%)	233 (13.7%)	211 (12.9%)	255 (15.5%)	211 (13.3%)
	61-70	249 (16.8%)	268 (16.8%)	257 (15.2%)	273 (16.0%)	263 (16.0%)	285 (16.7%)	288 (17.0%)	275 (16.8%)	305 (18.5%)	254 (16.0%)
	71-80	276 (18.6%)	310 (19.4%)	302 (17.8%)	271 (15.9%)	237 (14.4%)	290 (17.0%)	305 (18.0%)	286 (17.5%)	286 (17.3%)	275 (17.3%)
	81-90	248 (16.7%)	223 (13.9%)	208 (12.3%)	223 (13.1%)	199 (12.1%)	197 (11.6%)	218 (12.8%)	202 (12.3%)	198 (12.0%)	225 (14.1%)
	91-100	107 (7.2%)	118 (7.4%)	125 (7.4%)	131 (7.7%)	130 (7.9%)	123 (7.2%)	106 (6.2%)	90 (5.5%)	94 (5.7%)	98 (6.2%)
	101+	89 (6.0%)	92 (5.8%)	71 (4.2%)	83 (4.9%)	83 (5.0%)	64 (3.8%)	68 (4.0%)	88 (5.4%)	72 (4.4%)	94 (5.9%)
	Subtotal	1,486 (100.0%)	1,600 (100.0%)	1,696 (100.0%)	1,707 (100.0%)	1,647 (100.0%)	1,703 (100.0%)	1,699 (100.0%)	1,637 (100.0%)	1,649 (100.0%)	1,592 (100.0%)
5YO+	Unrated	268 (11.9%)	349 (14.7%)	598 (22.3%)	326 (13.7%)	427 (17.5%)	366 (15.4%)	400 (17.4%)	340 (14.1%)	352 (14.5%)	324 (13.3%)
	0-50	208 (9.2%)	236 (9.9%)	316 (11.8%)	337 (14.2%)	326 (13.4%)	295 (12.4%)	317 (13.8%)	300 (12.5%)	316 (13.0%)	352 (14.4%)
	51-60	341 (15.1%)	334 (14.1%)	373 (13.9%)	369 (15.5%)	361 (14.8%)	397 (16.7%)	358 (15.5%)	406 (16.9%)	443 (18.2%)	428 (17.5%)
	61-70	405 (18.0%)	398 (16.8%)	387 (14.5%)	418 (17.6%)	412 (16.9%)	426 (18.0%)	384 (16.7%)	444 (18.4%)	444 (18.2%)	458 (18.7%)
	71-80	380 (16.9%)	384 (16.2%)	365 (13.6%)	318 (13.4%)	348 (14.3%)	341 (14.4%)	310 (13.5%)	377 (15.7%)	351 (14.4%)	360 (14.7%)
	81-90	316 (14.0%)	315 (13.3%)	308 (11.5%)	289 (12.2%)	277 (11.4%)	253 (10.7%)	254 (11.0%)	264 (11.0%)	270 (11.1%)	272 (11.1%)
	91-100	181 (8.0%)	190 (8.0%)	182 (6.8%)	180 (7.6%)	161 (6.6%)	157 (6.6%)	158 (6.9%)	152 (6.3%)	142 (5.8%)	129 (5.3%)
	101+	154 (6.8%)	166 (7.0%)	149 (5.6%)	140 (5.9%)	123 (5.1%)	137 (5.8%)	122 (5.3%)	125 (5.2%)	115 (4.7%)	120 (4.9%)
	Subtotal	2,253 (100.0%)	2,372 (100.0%)	2,678 (100.0%)	2,377 (100.0%)	2,435 (100.0%)	2,372 (100.0%)	2,303 (100.0%)	2,408 (100.0%)	2,433 (100.0%)	2,443 (100.0%)
Overall	Unrated	5,072 (51.7%)	5,201 (51.3%)	5,728 (54.2%)	5,191 (51.4%)	5,309 (52.9%)	5,020 (51.4%)	4,989 (50.8%)	4,750 (49.1%)	4,557 (48.4%)	4,566 (48.8%)
	0-50	430 (4.4%)	489 (4.8%)	570 (5.4%)	648 (6.4%)	653 (6.5%)	570 (5.8%)	628 (6.4%)	637 (6.6%)	601 (6.4%)	604 (6.4%)
	51-60	721 (7.4%)	767 (7.6%)	773 (7.3%)	854 (8.5%)	792 (7.9%)	844 (8.6%)	858 (8.7%)	853 (8.8%)	946 (10.0%)	853 (9.1%)
	61-70	1,060 (10.8%)	1,044 (10.3%)	1,014 (9.6%)	1,041 (10.3%)	1,003 (10.0%)	1,098 (11.2%)	1,050 (10.7%)	1,108 (11.4%)	1,084 (11.5%)	1,063 (11.4%)
	71-80	1,076 (11.0%)	1,119 (11.0%)	1,081 (10.2%)	941 (9.3%)	942 (9.4%)	971 (9.9%)	1,021 (10.4%)	1,057 (10.9%)	1,008 (10.7%)	994 (10.6%)
	81-90	772 (7.9%)	802 (7.9%)	725 (6.9%)	735 (7.3%)	678 (6.8%)	631 (6.5%)	677 (6.9%)	679 (7.0%)	661 (7.0%)	694 (7.4%)
	91-100	374 (3.8%)	394 (3.9%)	386 (3.7%)	410 (4.1%)	382 (3.8%)	373 (3.8%)	339 (3.5%)	322 (3.3%)	315 (3.3%)	321 (3.4%)
	101+	300 (3.1%)	317 (3.1%)	288 (2.7%)	285 (2.8%)	271 (2.7%)	260 (2.7%)	259 (2.6%)	272 (2.8%)	252 (2.7%)	270 (2.9%)
Total		9,805 (100.0%)	10,133 (100.0%)	10,565 (100.0%)	10,105 (100.0%)	10,030 (100.0%)	9,767 (100.0%)	9,821 (100.0%)	9,678 (100.0%)	9,424 (100.0%)	9,365 (100.0%)

Where a horse has more than one published rating (published Flat Turf and published Flat AWT mark), the higher of the two is taken.

Jump (including Dual)

AgeCat	RatBand	2016	2017	2018	2019	2020	2021	2022	2023	2024	2025
3YO	Unrated	75 (100.0%)	76 (100.0%)	79 (100.0%)	57 (100.0%)	73 (100.0%)	78 (100.0%)	71 (100.0%)	74 (100.0%)	70 (100.0%)	45 (100.0%)
	Subtotal	75 (100.0%)	76 (100.0%)	79 (100.0%)	57 (100.0%)	73 (100.0%)	78 (100.0%)	71 (100.0%)	74 (100.0%)	70 (100.0%)	45 (100.0%)
4-5YO	Unrated	1,375 (72.8%)	1,385 (71.6%)	1,476 (73.9%)	1,446 (73.3%)	1,532 (72.4%)	1,524 (78.0%)	1,434 (71.7%)	1,557 (73.5%)	1,425 (72.7%)	1,419 (72.3%)
	0-100	133 (7.0%)	149 (7.7%)	120 (6.0%)	126 (6.4%)	193 (9.1%)	147 (7.5%)	240 (12.0%)	248 (11.7%)	267 (13.6%)	250 (12.7%)
	101-110	115 (6.1%)	104 (5.4%)	124 (6.2%)	97 (4.9%)	104 (4.9%)	77 (3.9%)	131 (6.6%)	126 (6.0%)	112 (5.7%)	127 (6.5%)
	111-120	88 (4.7%)	122 (6.3%)	114 (5.7%)	124 (6.3%)	112 (5.3%)	93 (4.8%)	106 (5.3%)	113 (5.3%)	89 (4.5%)	98 (5.0%)
	121-130	80 (4.2%)	85 (4.4%)	90 (4.5%)	104 (5.3%)	102 (4.8%)	69 (3.5%)	59 (2.9%)	53 (2.5%)	45 (2.3%)	57 (2.9%)
	131-140	68 (3.6%)	70 (3.6%)	54 (2.7%)	53 (2.7%)	48 (2.3%)	31 (1.6%)	21 (1.0%)	19 (0.9%)	17 (0.9%)	6 (0.3%)
	141-150	24 (1.3%)	16 (0.8%)	15 (0.8%)	20 (1.0%)	19 (0.9%)	10 (0.5%)	8 (0.4%)	1 (0.0%)	4 (0.2%)	3 (0.2%)
	151+	7 (0.4%)	3 (0.2%)	5 (0.3%)	3 (0.2%)	6 (0.3%)	4 (0.2%)	1 (0.0%)	NA (-)	NA (-)	2 (0.1%)
Subtotal		1,890 (100.0%)	1,934 (100.0%)	1,998 (100.0%)	1,973 (100.0%)	2,116 (100.0%)	1,955 (100.0%)	2,000 (100.0%)	2,117 (100.0%)	1,959 (100.0%)	1,962 (100.0%)
6-7YO	Unrated	568 (28.3%)	501 (26.1%)	633 (29.5%)	572 (26.2%)	581 (25.5%)	688 (27.7%)	565 (25.4%)	623 (27.6%)	672 (29.1%)	511 (23.5%)
	0-100	365 (18.2%)	390 (20.3%)	402 (18.7%)	431 (19.7%)	473 (20.8%)	584 (23.5%)	633 (28.4%)	655 (29.0%)	690 (29.9%)	669 (30.8%)
	101-110	281 (14.0%)	248 (12.9%)	264 (12.3%)	297 (13.6%)	321 (14.1%)	314 (12.6%)	318 (14.3%)	331 (14.6%)	337 (14.6%)	353 (16.3%)
	111-120	285 (14.2%)	268 (14.0%)	296 (13.8%)	308 (14.1%)	306 (13.5%)	329 (13.2%)	287 (12.9%)	313 (13.8%)	284 (12.3%)	306 (14.1%)
	121-130	243 (12.1%)	224 (11.7%)	250 (11.6%)	278 (12.7%)	286 (12.6%)	294 (11.8%)	228 (10.2%)	194 (8.6%)	206 (8.9%)	194 (8.9%)
	131-140	167 (8.3%)	182 (9.5%)	188 (8.8%)	193 (8.8%)	207 (9.1%)	175 (7.0%)	132 (5.9%)	102 (4.5%)	82 (3.5%)	104 (4.8%)
	141-150	75 (3.7%)	73 (3.8%)	86 (4.0%)	74 (3.4%)	69 (3.0%)	76 (3.1%)	47 (2.1%)	31 (1.4%)	33 (1.4%)	24 (1.1%)
	151+	26 (1.3%)	31 (1.6%)	29 (1.4%)	30 (1.4%)	32 (1.4%)	26 (1.0%)	16 (0.7%)	11 (0.5%)	7 (0.3%)	10 (0.5%)
Subtotal		2,010 (100.0%)	1,917 (100.0%)	2,148 (100.0%)	2,183 (100.0%)	2,275 (100.0%)	2,486 (100.0%)	2,226 (100.0%)	2,260 (100.0%)	2,311 (100.0%)	2,171 (100.0%)
8YO+	Unrated	156 (8.3%)	241 (12.8%)	282 (14.7%)	219 (11.5%)	271 (14.0%)	254 (11.1%)	251 (13.5%)	227 (12.5%)	294 (16.7%)	240 (14.0%)
	0-100	539 (28.6%)	516 (27.5%)	514 (26.8%)	545 (28.6%)	540 (27.9%)	692 (30.3%)	528 (28.3%)	517 (28.5%)	507 (28.7%)	548 (31.9%)
	101-110	295 (15.7%)	281 (15.0%)	267 (13.9%)	261 (13.7%)	259 (13.4%)	303 (13.3%)	233 (12.5%)	252 (13.9%)	222 (12.6%)	232 (13.5%)
	111-120	273 (14.5%)	267 (14.2%)	269 (14.0%)	285 (15.0%)	259 (13.4%)	316 (13.8%)	298 (16.0%)	271 (14.9%)	266 (15.1%)	253 (14.7%)
	121-130	273 (14.5%)	222 (11.8%)	245 (12.8%)	225 (11.8%)	231 (11.9%)	304 (13.3%)	238 (12.8%)	251 (13.8%)	228 (12.9%)	210 (12.2%)
	131-140	196 (10.4%)	211 (11.2%)	197 (10.3%)	202 (10.6%)	197 (10.2%)	232 (10.2%)	182 (9.8%)	174 (9.6%)	156 (8.8%)	139 (8.1%)
	141-150	92 (4.9%)	90 (4.8%)	102 (5.3%)	105 (5.5%)	118 (6.1%)	110 (4.8%)	94 (5.0%)	80 (4.4%)	58 (3.3%)	65 (3.8%)
	151+	59 (3.1%)	51 (2.7%)	43 (2.2%)	62 (3.3%)	63 (3.3%)	71 (3.1%)	39 (2.1%)	44 (2.4%)	33 (1.9%)	29 (1.7%)
Subtotal		1,883 (100.0%)	1,879 (100.0%)	1,919 (100.0%)	1,904 (100.0%)	1,938 (100.0%)	2,282 (100.0%)	1,863 (100.0%)	1,816 (100.0%)	1,764 (100.0%)	1,716 (100.0%)
Overall	Unrated	2,174 (37.1%)	2,203 (37.9%)	2,470 (40.2%)	2,294 (37.5%)	2,457 (38.4%)	2,544 (37.4%)	2,321 (37.7%)	2,481 (39.6%)	2,461 (40.3%)	2,215 (37.6%)
	0-100	1,037 (17.7%)	1,055 (18.2%)	1,036 (16.9%)	1,102 (18.0%)	1,206 (18.8%)	1,423 (20.9%)	1,401 (22.7%)	1,420 (22.7%)	1,464 (24.0%)	1,467 (24.9%)
	101-110	691 (11.8%)	633 (10.9%)	655 (10.7%)	655 (10.7%)	684 (10.7%)	694 (10.2%)	682 (11.1%)	709 (11.3%)	671 (11.0%)	712 (12.1%)
	111-120	646 (11.0%)	657 (11.3%)	679 (11.1%)	717 (11.7%)	677 (10.6%)	738 (10.9%)	691 (11.2%)	697 (11.1%)	639 (10.5%)	657 (11.1%)
	121-130	596 (10.2%)	531 (9.1%)	585 (9.5%)	607 (9.9%)	619 (9.7%)	667 (9.8%)	525 (8.5%)	498 (7.9%)	479 (7.8%)	461 (7.8%)
	131-140	431 (7.4%)	463 (8.0%)	439 (7.1%)	448 (7.3%)	452 (7.1%)	438 (6.4%)	335 (5.4%)	295 (4.7%)	255 (4.2%)	249 (4.2%)
	141-150	191 (3.3%)	179 (3.1%)	203 (3.3%)	199 (3.3%)	206 (3.2%)	196 (2.9%)	149 (2.4%)	112 (1.8%)	95 (1.6%)	92 (1.6%)
Total		5,858 (100.0%)	5,806 (100.0%)	6,144 (100.0%)	6,117 (100.0%)	6,402 (100.0%)	6,801 (100.0%)	6,160 (100.0%)	6,267 (100.0%)	6,104 (100.0%)	5,894 (100.0%)

Where a horse has more than one published rating (published Hurdle and published Chase mark), the higher of the two is taken.

Young Horses Entering Training

Flat Yearlings in Training versus Previous Years

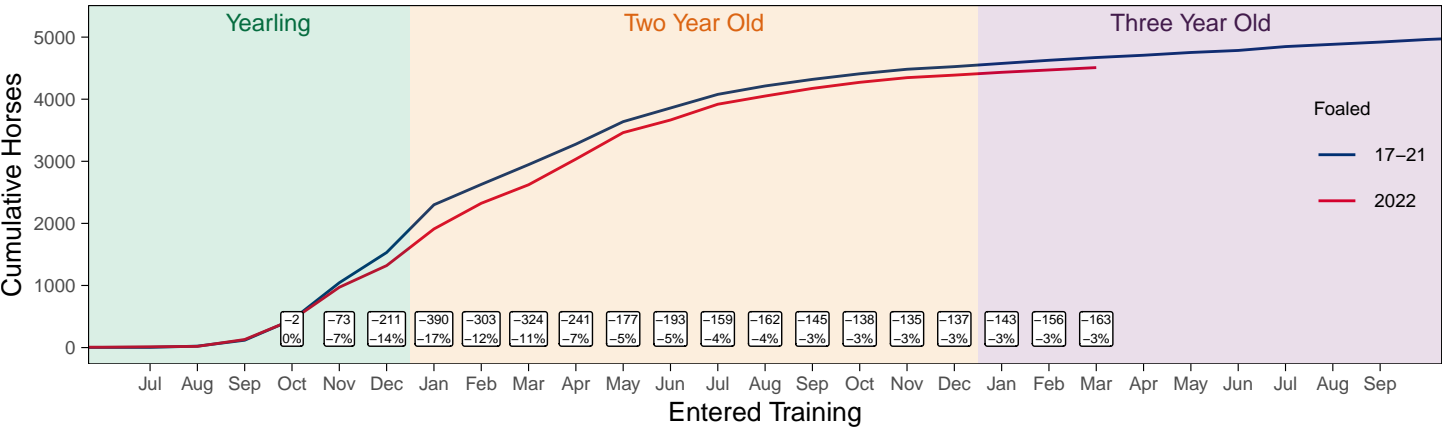
Period	Jan	Feb	Mar	Apr	May	Jun	Jul	Aug	Sep	Oct	Nov	Dec
2025	0	0	0									
2024	0	0	0	0	0	0	2	3	72	186	619	1067
5YrAvg	0	0	0	0	1	1	1	3	58	200	552	937

Foals Entering Training for the First Time

Warning: A numeric 'legend.position' argument in 'theme()' was deprecated in ggplot2 3.5.0.
i Please use the 'legend.position.inside' argument of 'theme()' instead.
This warning is displayed once every 8 hours.
Call 'lifecycle::last_lifecycle_warnings()' to see where this warning was generated.

2022 Foals Entering Training Over Time

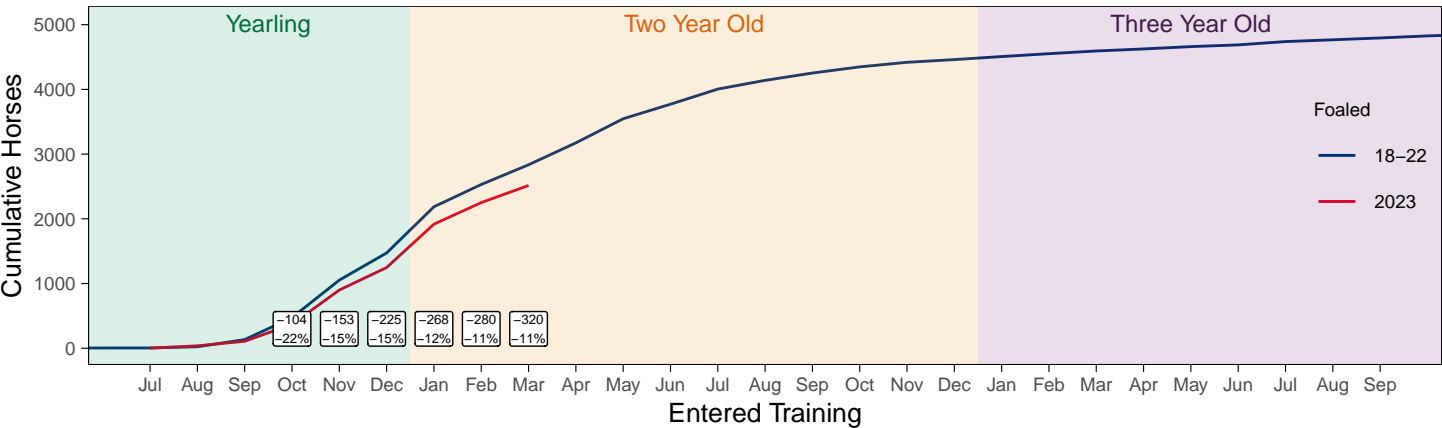
Cumulative Flat Horses foaled in 2022 shown by first in training notification against trend



Cumulative individual horses entering training for the first time by the end of each month.

2023 Foals Entering Training Over Time

Cumulative Flat Horses foaled in 2023 shown by first in training notification against trend



Cumulative individual horses entering training for the first time by the end of each month.

Year to Date Horses in Training

Type	2016	2017	2018	2019	2020	2021	2022	2023	2024	2025	vs. Last Year	vs. Pre-Covid
Flat	10982	11061	10956	11102	11016	10834	10762	10540	10298	10243	-55 / -0.5%	-859 / -7.7%
Jump	6323	6252	5944	6656	6651	7307	6742	6795	6573	6296	-277 / -4.2%	-360 / -5.4%
Dual	627	725	1189	659	733	683	651	597	622	699	+77 / +12.4%	+40 / +6.1%
Hunter	1971	1901	1688	1667	1485	1109	1278	1241	1353	1103	-250 / -18.5%	-564 / -33.8%
Total	17932	18038	18089	18417	18400	18824	18155	17932	17493	17238	-255 / -1.5%	-1179 / -6.4%

'vs. Pre-Covid' is comparison between 2025 and 2019

Flat

AgeCat	2016	2017	2018	2019	2020	2021	2022	2023	2024	2025	vs. Last Year	vs. Pre-Covid
2YO	3277	3223	3076	3124	2909	2883	2881	2711	2569	2469	-100 / -3.9%	-655 / -21.0%
3YO	3599	3642	3778	3694	3803	3632	3624	3542	3430	3530	+100 / +2.9%	-164 / -4.4%
4YO	1718	1780	1728	1849	1815	1895	1894	1820	1806	1745	-61 / -3.4%	-104 / -5.6%
5YO+	2388	2416	2374	2435	2489	2424	2363	2467	2493	2499	+6 / +0.2%	+64 / +2.6%
Total	10982	11061	10956	11102	11016	10834	10762	10540	10298	10243	-55 / -0.5%	-859 / -7.7%

'vs. Pre-Covid' is comparison between 2025 and 2019

Jump

AgeCat	2016	2017	2018	2019	2020	2021	2022	2023	2024	2025	vs. Last Year	vs. Pre-Covid
3YO	47	30	39	41	23	46	39	51	57	22	-35 / -61.4%	-19 / -46.3%
4-5YO	1962	1950	1722	2025	2077	1979	2027	2171	2007	1924	-83 / -4.1%	-101 / -5.0%
6-7YO	2188	2106	2140	2407	2410	2708	2457	2468	2493	2369	-124 / -5.0%	-38 / -1.6%
8YO+	2126	2166	2043	2183	2141	2574	2219	2105	2016	1981	-35 / -1.7%	-202 / -9.3%
Total	6323	6252	5944	6656	6651	7307	6742	6795	6573	6296	-277 / -4.2%	-360 / -5.4%

'vs. Pre-Covid' is comparison between 2025 and 2019

Dual

AgeCat	2016	2017	2018	2019	2020	2021	2022	2023	2024	2025	vs. Last Year	vs. Pre-Covid
3YO	60	63	71	47	76	61	84	60	61	69	+8 / +13.1%	+22 / +46.8%
4YO	148	194	300	194	206	205	179	174	178	198	+20 / +11.2%	+4 / +2.1%
5YO+	419	468	818	418	451	417	388	363	383	432	+49 / +12.8%	+14 / +3.3%
Total	627	725	1189	659	733	683	651	597	622	699	+77 / +12.4%	+40 / +6.1%

'vs. Pre-Covid' is comparison between 2025 and 2019

Hunter Chasers

AgeCat	2016	2017	2018	2019	2020	2021	2022	2023	2024	2025	vs. Last Year	vs. Pre-Covid
4-5YO	193	200	199	247	274	125	232	242	246	233	-13 / -5.3%	-14 / -5.7%
6-7YO	544	494	482	465	395	252	310	316	339	307	-32 / -9.4%	-158 / -34.0%
8-9YO	537	534	398	385	315	274	311	284	292	232	-60 / -20.5%	-153 / -39.7%
10YO+	697	673	609	570	501	458	425	399	476	331	-145 / -30.5%	-239 / -41.9%
Total	1971	1901	1688	1667	1485	1109	1278	1241	1353	1103	-250 / -18.5%	-564 / -33.8%

'vs. Pre-Covid' is comparison between 2025 and 2019

Year to Date Runners

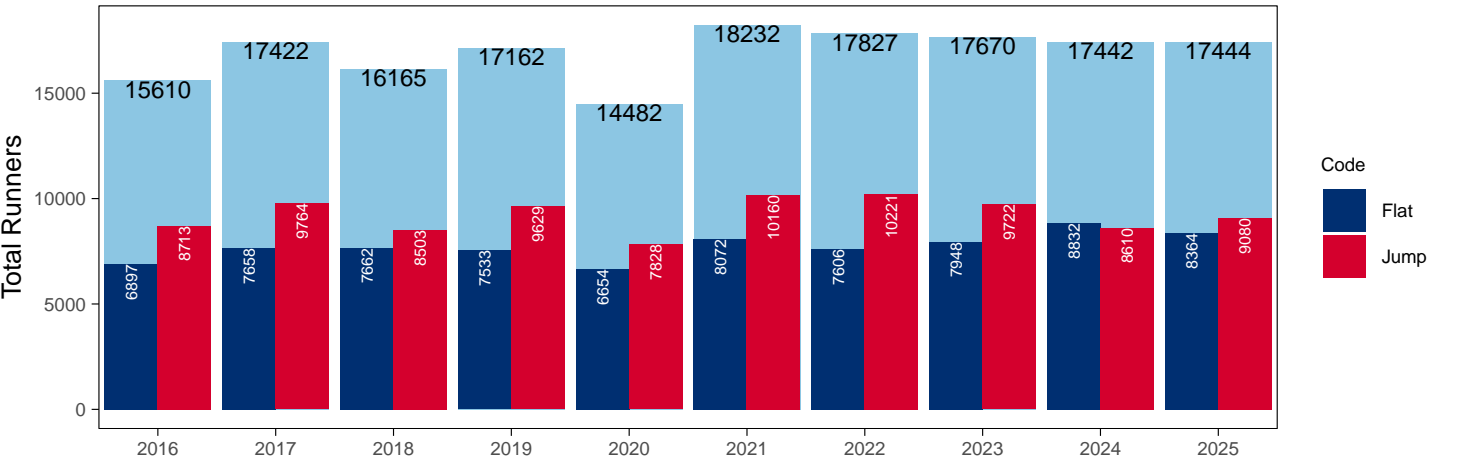
Year to Date Total Runners

Code	2016	2017	2018	2019	2020	2021	2022	2023	2024	2025	vs. Last Year	vs. Pre-Covid
Flat	6897	7658	7662	7533	6654	8072	7606	7948	8832	8364	-468 / -5.3%	+831 / +11.0%
Jump	8713	9764	8503	9629	7828	10160	10221	9722	8610	9080	+470 / +5.5%	-549 / -5.7%
Total	15610	17422	16165	17162	14482	18232	17827	17670	17442	17444	+2 / +0.0%	+282 / +1.6%

'vs. Pre-Covid' is comparison between 2025 and 2019

YTD Total Runners

Total Runners in GB Races, shown by Code and Total



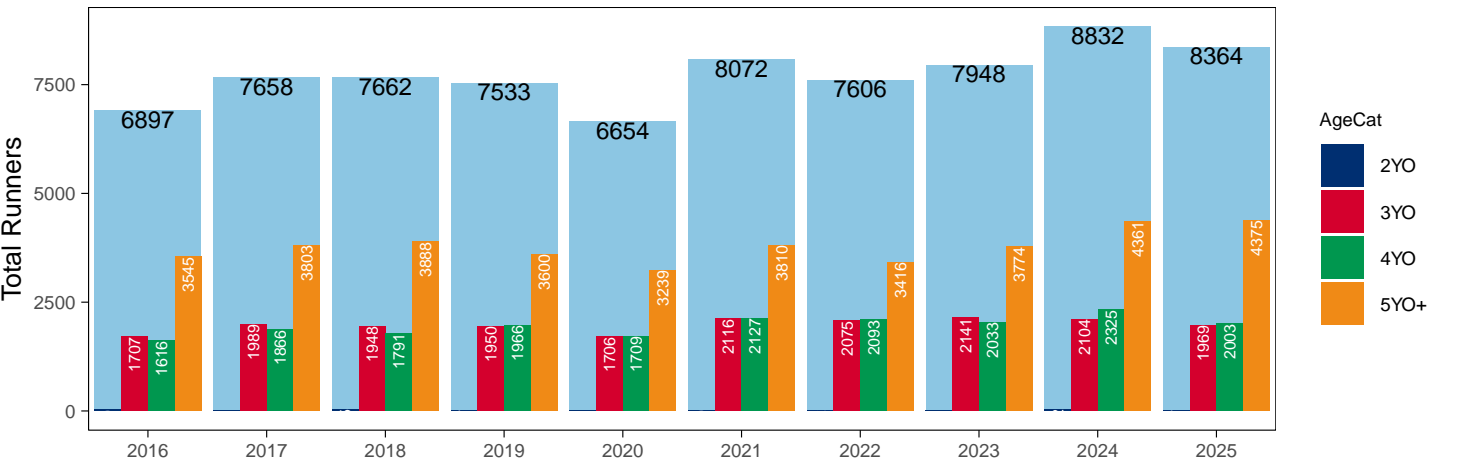
Flat

AgeCat	2016	2017	2018	2019	2020	2021	2022	2023	2024	2025	vs. Last Year	vs. Pre-Covid
2YO	29		35	17		19	22		42	17	-25 / -59.5%	0 / 0.0%
3YO	1707	1989	1948	1950	1706	2116	2075	2141	2104	1969	-135 / -6.4%	+19 / +1.0%
4YO	1616	1866	1791	1966	1709	2127	2093	2033	2325	2003	-322 / -13.8%	+37 / +1.9%
5YO+	3545	3803	3888	3600	3239	3810	3416	3774	4361	4375	+14 / +0.3%	+775 / +21.5%
Total	6897	7658	7662	7533	6654	8072	7606	7948	8832	8364	-468 / -5.3%	+831 / +11.0%

'vs. Pre-Covid' is comparison between 2025 and 2019

YTD Total Flat Runners by Age

Total Runners in GB Flat Races, shown by Age Category and Total



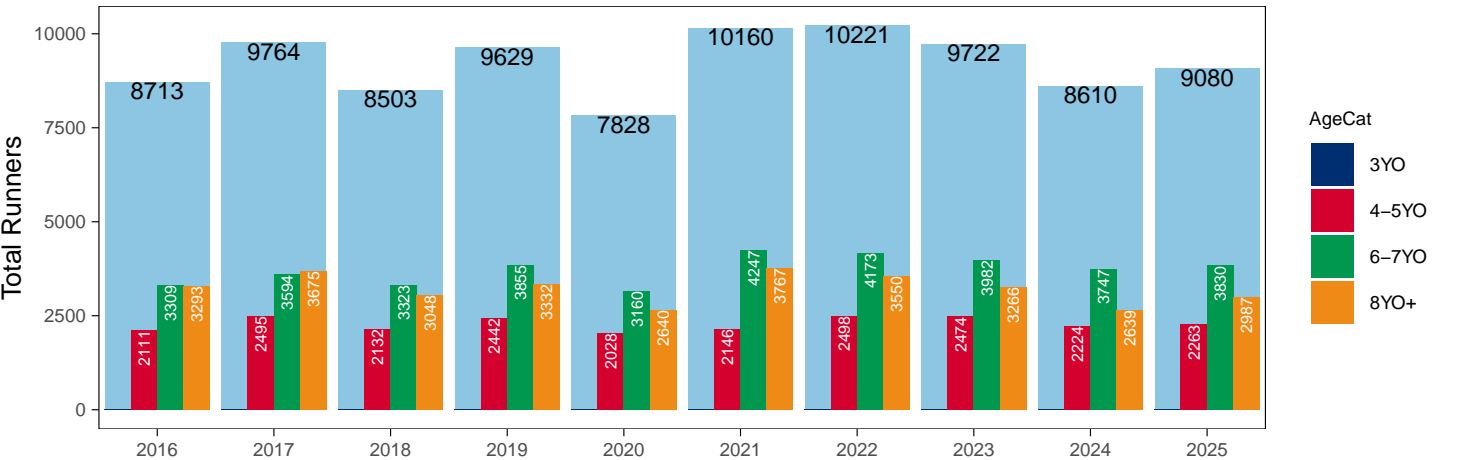
Jump

AgeCat	2016	2017	2018	2019	2020	2021	2022	2023	2024	2025	vs. Last Year	vs. Pre-Covid
3YO											NA / NA	0 / NA
4-5YO	2111	2495	2132	2442	2028	2146	2498	2474	2224	2263	+39 / +1.8%	-179 / -7.3%
6-7YO	3309	3594	3323	3855	3160	4247	4173	3982	3747	3830	+83 / +2.2%	-25 / -0.6%
8YO+	3293	3675	3048	3332	2640	3767	3550	3266	2639	2987	+348 / +13.2%	-345 / -10.4%
Total	8713	9764	8503	9629	7828	10160	10221	9722	8610	9080	+470 / +5.5%	-549 / -5.7%

'vs. Pre-Covid' is comparison between 2025 and 2019

YTD Total Jump Runners by Age

Total Runners in GB Jump Races, shown by Age Category and Total



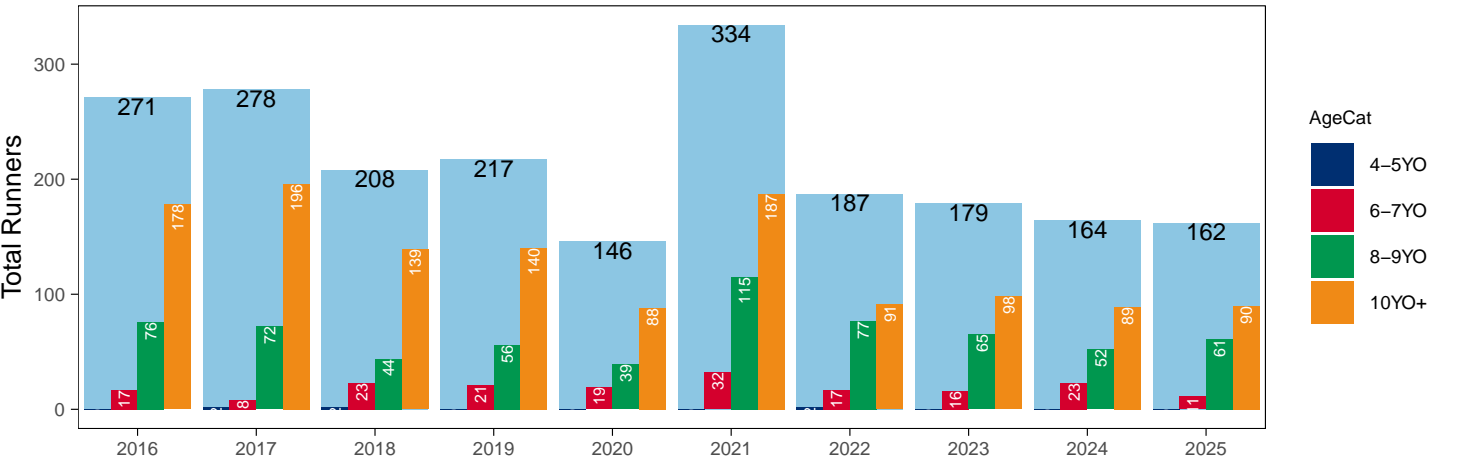
Hunter Chases

AgeCat	2016	2017	2018	2019	2020	2021	2022	2023	2024	2025	vs. Last Year	vs. Pre-Covid
4-5YO		2	2				2				NA / NA	0 / NA
6-7YO	17	8	23	21	19	32	17	16	23	11	-12 / -52.2%	-10 / -47.6%
8-9YO	76	72	44	56	39	115	77	65	52	61	+9 / +17.3%	+5 / +8.9%
10YO+	178	196	139	140	88	187	91	98	89	90	+1 / +1.1%	-50 / -35.7%
Total	271	278	208	217	146	334	187	179	164	162	-2 / -1.2%	-55 / -25.3%

'vs. Pre-Covid' is comparison between 2025 and 2019

YTD Total Hunter Chase Runners by Age

Total Runners in GB Hunter Chases shown by Age Category and Total



Year to Date Total Runners by Country Trained

Code	Country	2016	2017	2018	2019	2020	2021	2022	2023	2024	2025
Flat	GB	6841	7589	7585	7465	6574	8072	7601	7926	8768	8321
	IRE	50	67	71	65	76		4	22	62	43
	Other	6	2	6	3	4		1		2	
Jump	GB	8395	9441	8274	9330	7561	9969	9883	9336	8260	8701
	IRE	313	312	223	292	257	188	337	383	347	373
	Other	5	11	6	7	10	3	1	3	3	6
Overall	GB	15236	17030	15859	16795	14135	18041	17484	17262	17028	17022
	IRE	363	379	294	357	333	188	341	405	409	416
	Other	11	13	12	10	14	3	2	3	5	6

Year to Date GB Trained Runners Racing Abroad

Code	Country	2016	2017	2018	2019	2020	2021	2022	2023	2024	2025
Flat	IRE	6	15	8	9	2	1		2	1	3
	FR	15	38	21	40	27	12	10	19	17	61
	GNV		2								
	UAE	208	278	276	301	281	247	276	272	214	207
	BAH							41	23	50	89
	KSA					15	21	22	15	11	10
	Other	24	24	16	12	22	3	8	31	13	17
	Total	253	357	321	362	347	284	357	362	306	387
Jump	IRE	14	6	11	6	5		2	4	7	5
	FR	7	1		1	3	19	14	28	11	3
	Total	21	7	11	7	8	19	16	32	18	8

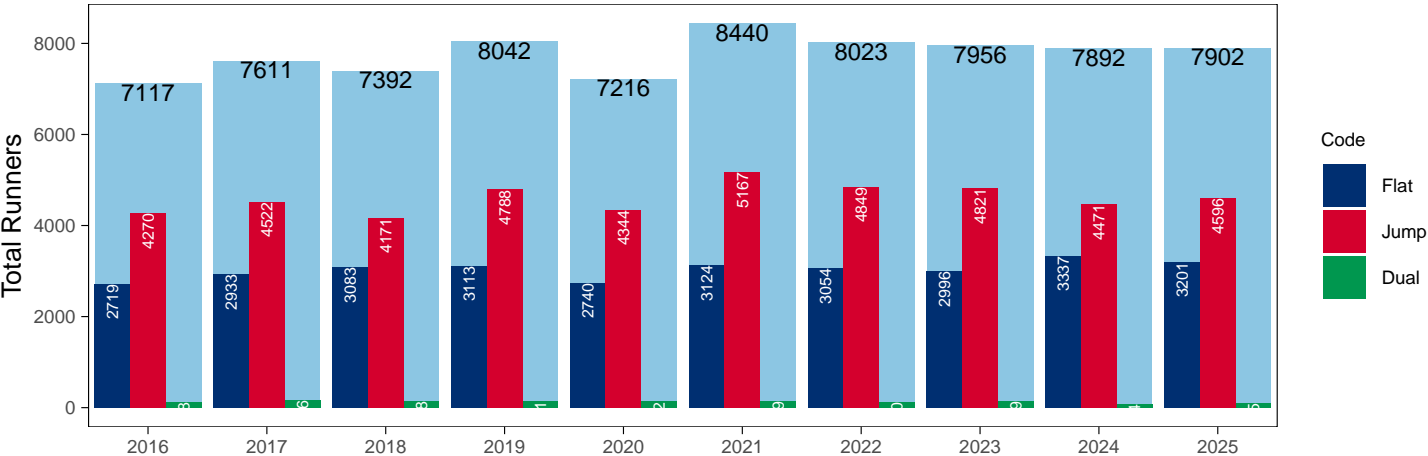
Year to Date Individual Runners

Code	2016	2017	2018	2019	2020	2021	2022	2023	2024	2025	vs. Last Year	vs. Pre-Covid
Flat	2719	2933	3083	3113	2740	3124	3054	2996	3337	3201	-136 / -4.1%	+88 / +2.8%
Jump	4270	4522	4171	4788	4344	5167	4849	4821	4471	4596	+125 / +2.8%	-192 / -4.0%
Dual	128	156	138	141	132	149	120	139	84	105	+21 / +25.0%	-36 / -25.5%
Overall	7117	7611	7392	8042	7216	8440	8023	7956	7892	7902	+10 / +0.1%	-140 / -1.7%

'vs. Pre-Covid' is comparison between 2025 and 2019

YTD Individual Runners

Individual Runners in GB Races, shown by Code and Total



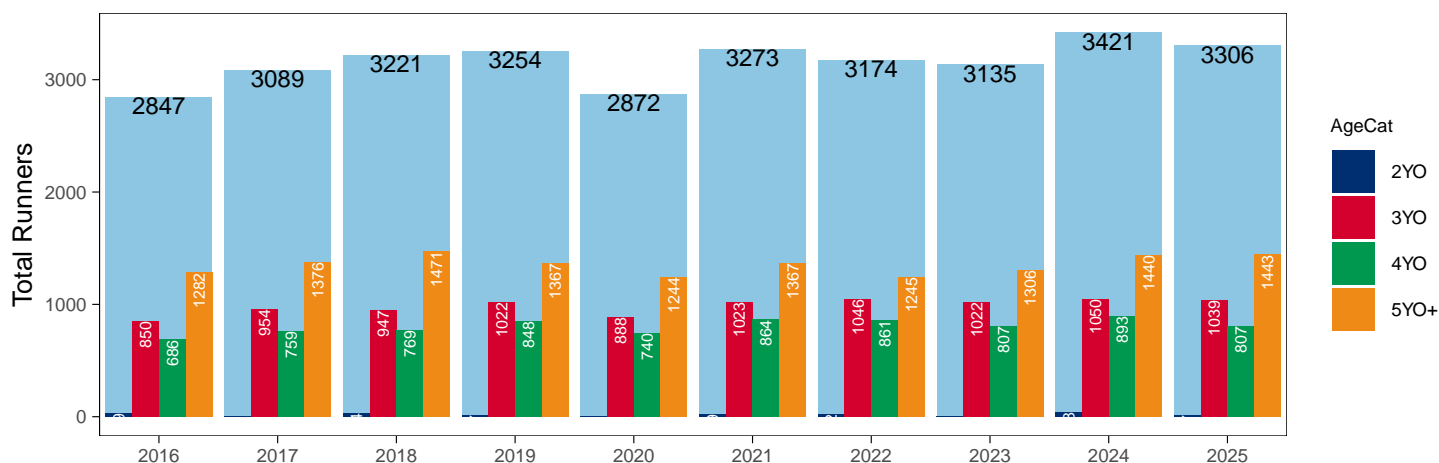
Flat

AgeCat	2016	2017	2018	2019	2020	2021	2022	2023	2024	2025	vs. Last Year	vs. Pre-Covid
2YO	29		34	17		19	22		38	17	-21 / -55.3%	0 / 0.0%
3YO	850	954	947	1022	888	1023	1046	1022	1050	1039	-11 / -1.0%	+17 / +1.7%
4YO	686	759	769	848	740	864	861	807	893	807	-86 / -9.6%	-41 / -4.8%
5YO+	1282	1376	1471	1367	1244	1367	1245	1306	1440	1443	+3 / +0.2%	+76 / +5.6%
Total	2847	3089	3221	3254	2872	3273	3174	3135	3421	3306	-115 / -3.4%	+52 / +1.6%

'vs. Pre-Covid' is comparison between 2025 and 2019

YTD Individual Flat Runners by Age

Individual Runners in GB Flat Races, shown by Age Category and Total



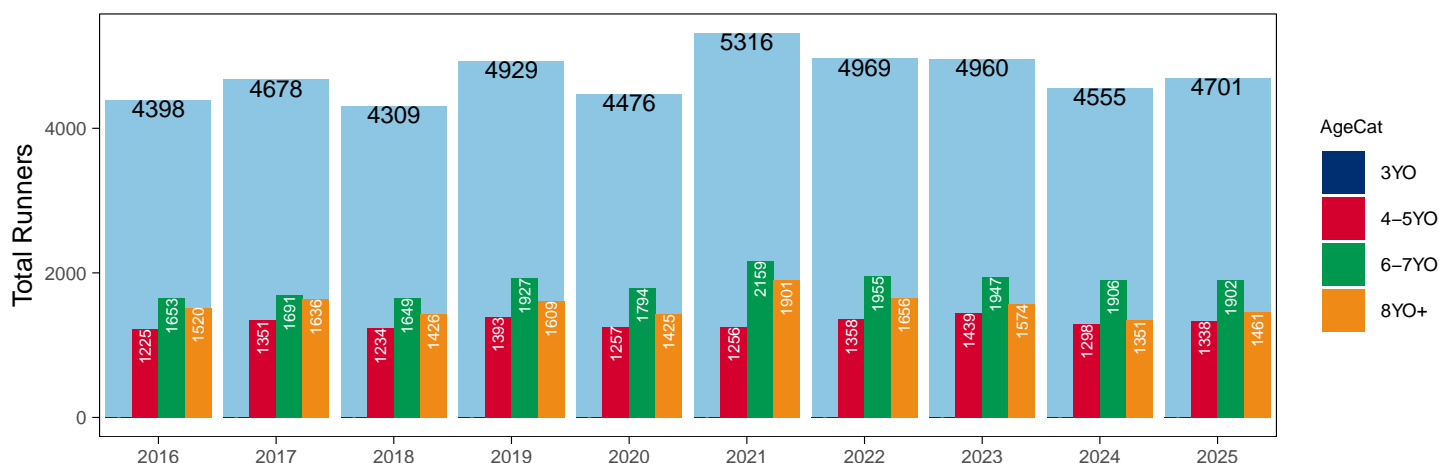
Jump

AgeCat	2016	2017	2018	2019	2020	2021	2022	2023	2024	2025	vs. Last Year	vs. Pre-Covid
3YO											NA / NA	0 / NA
4-5YO	1225	1351	1234	1393	1257	1256	1358	1439	1298	1338	+40 / +3.1%	-55 / -3.9%
6-7YO	1653	1691	1649	1927	1794	2159	1955	1947	1906	1902	-4 / -0.2%	-25 / -1.3%
8YO+	1520	1636	1426	1609	1425	1901	1656	1574	1351	1461	+110 / +8.1%	-148 / -9.2%
Total	4398	4678	4309	4929	4476	5316	4969	4960	4555	4701	+146 / +3.2%	-228 / -4.6%

'vs. Pre-Covid' is comparison between 2025 and 2019

YTD Individual Jump Runners by Age

Individual Runners in GB Jump Races, shown by Age Category and Total



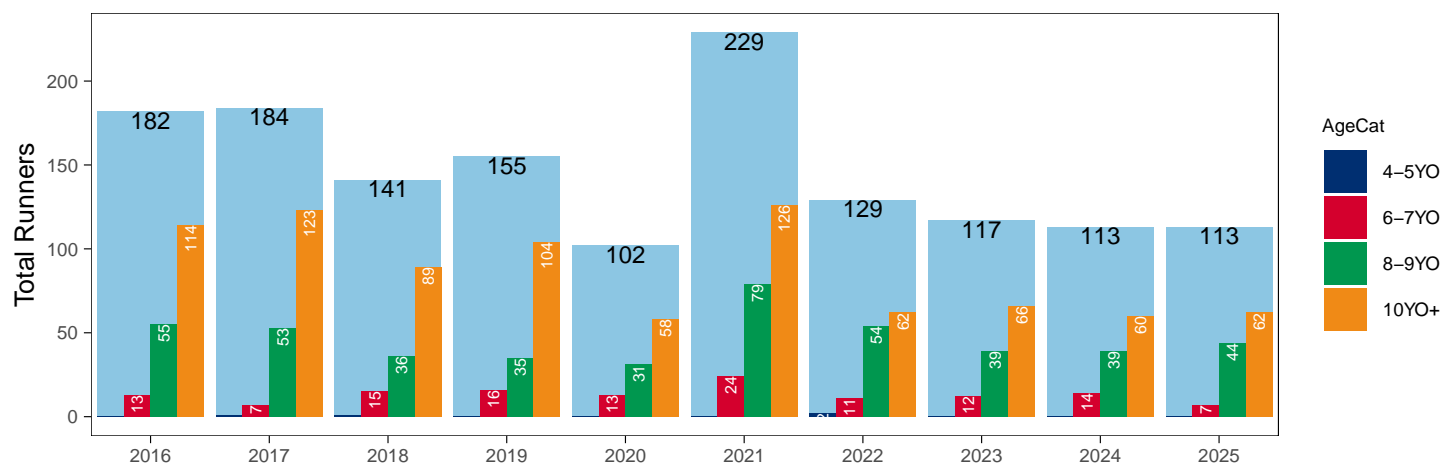
Hunter Chases

AgeCat	2016	2017	2018	2019	2020	2021	2022	2023	2024	2025	vs. Last Year	vs. Pre-Covid
4-5YO		1	1				2				NA / NA	0 / NA
6-7YO	13	7	15	16	13	24	11	12	14	7	-7 / -50.0%	-9 / -56.2%
8-9YO	55	53	36	35	31	79	54	39	39	44	+5 / +12.8%	+9 / +25.7%
10YO+	114	123	89	104	58	126	62	66	60	62	+2 / +3.3%	-42 / -40.4%
Total	182	184	141	155	102	229	129	117	113	113	0 / 0.0%	-42 / -27.1%

'vs. Pre-Covid' is comparison between 2025 and 2019

YTD Individual Hunter Chase Runners by Age

Individual Runners in GB Hunter Chases shown by Age Category and Total



Year to Date Individual Runners by Country Trained

Code	Country	2016	2017	2018	2019	2020	2021	2022	2023	2024	2025
Flat	GB	2684	2894	3019	3061	2678	3124	3050	2979	3289	3168
	IRE	34	41	61	50	61		3	19	47	33
	Other	3		5	2	4		1		2	
Jump	GB	4033	4260	3963	4525	4104	4981	4545	4486	4163	4263
	IRE	232	258	203	258	232	183	303	333	306	332
	Other	5	7	6	6	10	3	1	2	2	5
Dual	GB	128	154	138	139	130	149	120	139	84	105
	IRE				2	2					
	Other		2								
Overall	GB	6845	7308	7120	7725	6912	8254	7715	7604	7536	7536
	IRE	266	299	264	310	295	183	306	352	353	365
	Other	8	9	11	8	14	3	2	2	4	5

Individual horses may appear under multiple countries.

Year to Date Total Runners by Rating Band

Flat

RatBand	2016	2017	2018	2019	2020	2021	2022	2023	2024	2025
3YO										
Unrated	623 (36.5%)	775 (39.0%)	800 (41.1%)	864 (44.3%)	768 (45.0%)	906 (42.8%)	877 (42.3%)	900 (42.0%)	869 (41.3%)	858 (43.6%)
0-50	153 (9.0%)	127 (6.4%)	116 (6.0%)	155 (7.9%)	154 (9.0%)	167 (7.9%)	189 (9.1%)	175 (8.2%)	181 (8.6%)	148 (7.5%)
51-60	270 (15.8%)	330 (16.6%)	227 (11.7%)	352 (18.1%)	245 (14.4%)	348 (16.4%)	323 (15.6%)	379 (17.7%)	336 (16.0%)	317 (16.1%)
61-70	342 (20.0%)	410 (20.6%)	361 (18.5%)	314 (16.1%)	290 (17.0%)	398 (18.8%)	371 (17.9%)	364 (17.0%)	363 (17.3%)	338 (17.2%)
71-80	219 (12.8%)	266 (13.4%)	284 (14.6%)	188 (9.6%)	192 (11.3%)	222 (10.5%)	214 (10.3%)	249 (11.6%)	250 (11.9%)	231 (11.7%)
81-90	59 (3.5%)	60 (3.0%)	105 (5.4%)	56 (2.9%)	44 (2.6%)	43 (2.0%)	76 (3.7%)	59 (2.8%)	83 (3.9%)	61 (3.1%)
91-100	24 (1.4%)	16 (0.8%)	37 (1.9%)	18 (0.9%)	10 (0.6%)	26 (1.2%)	20 (1.0%)	11 (0.5%)	19 (0.9%)	16 (0.8%)
101+	17 (1.0%)	5 (0.3%)	18 (0.9%)	3 (0.2%)	3 (0.2%)	6 (0.3%)	5 (0.2%)	4 (0.2%)	3 (0.1%)	NA (-)
4YO+										
Unrated	189 (3.7%)	164 (2.9%)	176 (3.1%)	227 (4.1%)	183 (3.7%)	224 (3.8%)	207 (3.8%)	184 (3.2%)	209 (3.1%)	203 (3.2%)
0-50	780 (15.1%)	889 (15.7%)	985 (17.3%)	1,059 (19.0%)	973 (19.7%)	1,118 (18.8%)	1,121 (20.3%)	1,352 (23.3%)	1,362 (20.4%)	1,501 (23.5%)
51-60	1,233 (23.9%)	1,307 (23.1%)	1,293 (22.8%)	1,193 (21.4%)	1,209 (24.4%)	1,318 (22.2%)	1,283 (23.3%)	1,422 (24.5%)	1,723 (25.8%)	1,525 (23.9%)
61-70	1,240 (24.0%)	1,317 (23.2%)	1,189 (20.9%)	1,261 (22.7%)	1,127 (22.8%)	1,453 (24.5%)	1,288 (23.4%)	1,291 (22.2%)	1,536 (23.0%)	1,463 (22.9%)
71-80	853 (16.5%)	1,075 (19.0%)	947 (16.7%)	938 (16.9%)	785 (15.9%)	973 (16.4%)	821 (14.9%)	910 (15.7%)	1,029 (15.4%)	916 (14.4%)
81-90	525 (10.2%)	595 (10.5%)	618 (10.9%)	497 (8.9%)	433 (8.8%)	517 (8.7%)	510 (9.3%)	423 (7.3%)	552 (8.3%)	534 (8.4%)
91-100	225 (4.4%)	234 (4.1%)	322 (5.7%)	278 (5.0%)	172 (3.5%)	219 (3.7%)	175 (3.2%)	153 (2.6%)	188 (2.8%)	163 (2.6%)
101+	116 (2.2%)	88 (1.6%)	149 (2.6%)	113 (2.0%)	66 (1.3%)	115 (1.9%)	104 (1.9%)	72 (1.2%)	87 (1.3%)	73 (1.1%)

Jump

RatBand	2016	2017	2018	2019	2020	2021	2022	2023	2024	2025
Hurdle										
Unrated	1,546 (29.7%)	1,714 (29.9%)	1,505 (30.0%)	1,727 (29.9%)	1,376 (29.6%)	1,656 (29.9%)	1,703 (28.0%)	1,764 (30.4%)	1,652 (31.4%)	1,429 (26.2%)
0-100	1,067 (20.5%)	1,228 (21.4%)	975 (19.4%)	1,185 (20.5%)	966 (20.8%)	1,281 (23.1%)	1,664 (27.4%)	1,560 (26.9%)	1,409 (26.8%)	1,686 (30.9%)
101-110	744 (14.3%)	794 (13.9%)	636 (12.7%)	760 (13.1%)	615 (13.2%)	690 (12.5%)	876 (14.4%)	812 (14.0%)	732 (13.9%)	795 (14.6%)
111-120	642 (12.3%)	775 (13.5%)	697 (13.9%)	808 (14.0%)	618 (13.3%)	717 (13.0%)	813 (13.4%)	718 (12.4%)	654 (12.4%)	746 (13.7%)
121-130	580 (11.2%)	596 (10.4%)	594 (11.8%)	687 (11.9%)	490 (10.5%)	619 (11.2%)	535 (8.8%)	544 (9.4%)	473 (9.0%)	448 (8.2%)
131-140	397 (7.6%)	422 (7.4%)	400 (8.0%)	395 (6.8%)	374 (8.0%)	371 (6.7%)	313 (5.1%)	250 (4.3%)	228 (4.3%)	238 (4.4%)
141-150	160 (3.1%)	141 (2.5%)	166 (3.3%)	154 (2.7%)	141 (3.0%)	147 (2.7%)	136 (2.2%)	107 (1.8%)	83 (1.6%)	85 (1.6%)
151+	65 (1.2%)	55 (1.0%)	51 (1.0%)	65 (1.1%)	73 (1.6%)	54 (1.0%)	42 (0.7%)	46 (0.8%)	33 (0.6%)	28 (0.5%)
Chase										
Unrated	11 (0.4%)	35 (1.1%)	22 (0.8%)	26 (0.9%)	10 (0.4%)	21 (0.7%)	8 (0.2%)	1 (0.0%)	NA (-)	NA (-)
0-100	666 (23.9%)	702 (22.1%)	612 (23.3%)	777 (25.8%)	599 (24.9%)	789 (26.4%)	955 (29.0%)	968 (31.5%)	857 (31.9%)	962 (33.4%)
101-110	381 (13.7%)	495 (15.6%)	327 (12.5%)	449 (14.9%)	351 (14.6%)	440 (14.7%)	456 (13.8%)	474 (15.4%)	435 (16.2%)	485 (16.9%)
111-120	500 (17.9%)	563 (17.7%)	459 (17.5%)	465 (15.4%)	332 (13.8%)	490 (16.4%)	603 (18.3%)	515 (16.7%)	490 (18.2%)	476 (16.6%)
121-130	453 (16.2%)	492 (15.5%)	478 (18.2%)	506 (16.8%)	398 (16.6%)	483 (16.1%)	527 (16.0%)	468 (15.2%)	375 (14.0%)	429 (14.9%)
131-140	416 (14.9%)	508 (16.0%)	391 (14.9%)	421 (14.0%)	362 (15.1%)	422 (14.1%)	425 (12.9%)	362 (11.8%)	291 (10.8%)	270 (9.4%)
141-150	236 (8.5%)	249 (7.8%)	221 (8.4%)	242 (8.0%)	227 (9.5%)	204 (6.8%)	202 (6.1%)	175 (5.7%)	151 (5.6%)	158 (5.5%)
151+	127 (4.6%)	135 (4.2%)	114 (4.3%)	128 (4.2%)	122 (5.1%)	145 (4.8%)	117 (3.6%)	114 (3.7%)	88 (3.3%)	96 (3.3%)

Year to Date Total GB-Trained Runners by Rating Band

Flat

RatBand	2016	2017	2018	2019	2020	2021	2022	2023	2024	2025
3YO										
Unrated	623 (36.5%)	775 (39.0%)	797 (41.3%)	862 (44.5%)	765 (45.5%)	906 (42.8%)	876 (42.2%)	900 (42.1%)	867 (41.3%)	856 (43.6%)
0-50	153 (9.0%)	125 (6.3%)	114 (5.9%)	153 (7.9%)	149 (8.9%)	167 (7.9%)	189 (9.1%)	174 (8.1%)	181 (8.6%)	147 (7.5%)
51-60	270 (15.8%)	328 (16.5%)	222 (11.5%)	351 (18.1%)	237 (14.1%)	348 (16.4%)	323 (15.6%)	379 (17.7%)	335 (16.0%)	316 (16.1%)
61-70	341 (20.0%)	410 (20.7%)	358 (18.5%)	309 (15.9%)	288 (17.1%)	398 (18.8%)	371 (17.9%)	364 (17.0%)	363 (17.3%)	338 (17.2%)
71-80	219 (12.8%)	266 (13.4%)	282 (14.6%)	187 (9.6%)	190 (11.3%)	222 (10.5%)	214 (10.3%)	249 (11.6%)	248 (11.8%)	231 (11.8%)
81-90	59 (3.5%)	60 (3.0%)	105 (5.4%)	56 (2.9%)	41 (2.4%)	43 (2.0%)	76 (3.7%)	59 (2.8%)	83 (4.0%)	60 (3.1%)
91-100	24 (1.4%)	16 (0.8%)	36 (1.9%)	18 (0.9%)	10 (0.6%)	26 (1.2%)	20 (1.0%)	11 (0.5%)	18 (0.9%)	15 (0.8%)
101+	17 (1.0%)	5 (0.3%)	18 (0.9%)	3 (0.2%)	3 (0.2%)	6 (0.3%)	5 (0.2%)	4 (0.2%)	3 (0.1%)	NA (-)
4YO+										
Unrated	188 (3.7%)	164 (2.9%)	174 (3.1%)	226 (4.1%)	182 (3.7%)	224 (3.8%)	207 (3.8%)	184 (3.2%)	209 (3.2%)	203 (3.2%)
0-50	770 (15.1%)	867 (15.5%)	975 (17.4%)	1,037 (18.8%)	960 (19.6%)	1,118 (18.8%)	1,121 (20.4%)	1,342 (23.2%)	1,351 (20.4%)	1,495 (23.6%)
51-60	1,215 (23.8%)	1,284 (22.9%)	1,268 (22.6%)	1,174 (21.3%)	1,183 (24.2%)	1,318 (22.2%)	1,283 (23.3%)	1,418 (24.5%)	1,713 (25.8%)	1,514 (23.9%)
61-70	1,230 (24.1%)	1,301 (23.2%)	1,181 (21.0%)	1,252 (22.7%)	1,121 (22.9%)	1,453 (24.5%)	1,288 (23.4%)	1,289 (22.3%)	1,529 (23.1%)	1,459 (23.0%)
71-80	852 (16.7%)	1,073 (19.1%)	943 (16.8%)	937 (17.0%)	778 (15.9%)	973 (16.4%)	819 (14.9%)	908 (15.7%)	1,022 (15.4%)	911 (14.4%)
81-90	523 (10.2%)	595 (10.6%)	616 (11.0%)	496 (9.0%)	433 (8.9%)	517 (8.7%)	509 (9.2%)	423 (7.3%)	543 (8.2%)	528 (8.3%)
91-100	220 (4.3%)	232 (4.1%)	319 (5.7%)	274 (5.0%)	170 (3.5%)	219 (3.7%)	175 (3.2%)	151 (2.6%)	182 (2.7%)	160 (2.5%)
101+	108 (2.1%)	88 (1.6%)	142 (2.5%)	113 (2.1%)	64 (1.3%)	115 (1.9%)	103 (1.9%)	71 (1.2%)	79 (1.2%)	71 (1.1%)

Jump

RatBand	2016	2017	2018	2019	2020	2021	2022	2023	2024	2025
Hurdle										
Unrated	1,515 (30.1%)	1,683 (30.4%)	1,482 (30.3%)	1,689 (30.2%)	1,353 (30.1%)	1,643 (30.3%)	1,659 (28.3%)	1,721 (30.9%)	1,610 (31.9%)	1,384 (26.4%)
0-100	1,056 (21.0%)	1,210 (21.8%)	966 (19.8%)	1,173 (21.0%)	956 (21.3%)	1,279 (23.6%)	1,657 (28.2%)	1,542 (27.6%)	1,393 (27.6%)	1,679 (32.0%)
101-110	725 (14.4%)	771 (13.9%)	628 (12.8%)	753 (13.5%)	612 (13.6%)	688 (12.7%)	868 (14.8%)	802 (14.4%)	718 (14.2%)	789 (15.0%)
111-120	636 (12.6%)	761 (13.7%)	691 (14.1%)	797 (14.2%)	614 (13.7%)	716 (13.2%)	803 (13.7%)	702 (12.6%)	642 (12.7%)	731 (13.9%)
121-130	568 (11.3%)	576 (10.4%)	583 (11.9%)	669 (12.0%)	478 (10.6%)	611 (11.3%)	515 (8.8%)	517 (9.3%)	433 (8.6%)	414 (7.9%)
131-140	360 (7.2%)	387 (7.0%)	373 (7.6%)	351 (6.3%)	333 (7.4%)	337 (6.2%)	258 (4.4%)	206 (3.7%)	182 (3.6%)	186 (3.5%)
141-150	118 (2.3%)	109 (2.0%)	129 (2.6%)	120 (2.1%)	100 (2.2%)	114 (2.1%)	85 (1.4%)	62 (1.1%)	51 (1.0%)	48 (0.9%)
151+	51 (1.0%)	41 (0.7%)	38 (0.8%)	46 (0.8%)	47 (1.0%)	37 (0.7%)	24 (0.4%)	25 (0.4%)	13 (0.3%)	12 (0.2%)
Chase										
Unrated	11 (0.4%)	34 (1.1%)	22 (0.9%)	26 (0.9%)	10 (0.4%)	21 (0.7%)	7 (0.2%)	1 (0.0%)	NA (-)	NA (-)
0-100	649 (24.3%)	687 (22.4%)	608 (23.9%)	770 (26.4%)	596 (25.7%)	788 (26.9%)	952 (29.8%)	963 (32.7%)	857 (33.2%)	959 (35.2%)
101-110	364 (13.6%)	491 (16.0%)	327 (12.9%)	448 (15.3%)	349 (15.0%)	440 (15.0%)	455 (14.2%)	470 (16.0%)	432 (16.7%)	483 (17.7%)
111-120	497 (18.6%)	559 (18.2%)	455 (17.9%)	464 (15.9%)	327 (14.1%)	489 (16.7%)	600 (18.8%)	507 (17.2%)	485 (18.8%)	469 (17.2%)
121-130	446 (16.7%)	479 (15.6%)	468 (18.4%)	500 (17.1%)	396 (17.1%)	482 (16.4%)	519 (16.2%)	459 (15.6%)	359 (13.9%)	410 (15.0%)
131-140	394 (14.8%)	483 (15.8%)	379 (14.9%)	400 (13.7%)	347 (15.0%)	416 (14.2%)	410 (12.8%)	333 (11.3%)	276 (10.7%)	228 (8.4%)
141-150	207 (7.8%)	221 (7.2%)	199 (7.8%)	215 (7.4%)	203 (8.7%)	184 (6.3%)	172 (5.4%)	138 (4.7%)	114 (4.4%)	122 (4.5%)
151+	101 (3.8%)	110 (3.6%)	85 (3.3%)	98 (3.4%)	93 (4.0%)	113 (3.9%)	81 (2.5%)	72 (2.4%)	59 (2.3%)	56 (2.1%)

Frequency of Runs

Year to Date Average Runs per Horse

Code	2016	2017	2018	2019	2020	2021	2022	2023	2024	2025
Flat	2.45	2.52	2.41	2.34	2.35	2.49	2.43	2.58	2.60	2.56
Jump	1.99	2.10	1.98	1.97	1.76	1.92	2.07	1.97	1.90	1.93
Dual Overall	3.37	3.38	3.32	3.18	3.05	3.63	3.22	3.34	3.30	3.46
Dual (Flat)	1.75	1.69	1.68	1.66	1.67	1.89	1.61	1.67	1.74	1.67
Dual (Jump)	1.62	1.69	1.64	1.52	1.38	1.74	1.62	1.67	1.56	1.79
All	2.19	2.29	2.19	2.13	2.01	2.16	2.22	2.22	2.21	2.21

Year to Date Proportion of Horses by Count of Runs

Runs	2016	2017	2018	2019	2020	2021	2022	2023	2024	2025
Flat										
1	1,087 (38.2%)	1,026 (33.2%)	1,250 (38.8%)	1,243 (38.2%)	1,018 (35.4%)	1,183 (36.1%)	1,145 (36.1%)	1,080 (34.4%)	1,193 (34.9%)	1,196 (36.2%)
2	647 (22.7%)	808 (26.2%)	788 (24.5%)	821 (25.2%)	787 (27.4%)	747 (22.8%)	798 (25.1%)	775 (24.7%)	780 (22.8%)	805 (24.3%)
3	485 (17.0%)	587 (19.0%)	525 (16.3%)	591 (18.2%)	546 (19.0%)	611 (18.7%)	608 (19.2%)	545 (17.4%)	609 (17.8%)	554 (16.8%)
4	310 (10.9%)	331 (10.7%)	330 (10.2%)	316 (9.7%)	320 (11.1%)	367 (11.2%)	318 (10.0%)	365 (11.6%)	402 (11.8%)	337 (10.2%)
5+	318 (11.2%)	337 (10.9%)	328 (10.2%)	283 (8.7%)	201 (7.0%)	365 (11.2%)	305 (9.6%)	370 (11.8%)	437 (12.8%)	414 (12.5%)
Jump										
1	1,822 (41.4%)	1,725 (36.9%)	1,796 (41.7%)	1,991 (40.4%)	2,108 (47.1%)	2,166 (40.7%)	1,881 (37.9%)	1,995 (40.2%)	1,980 (43.5%)	1,908 (40.6%)
2	1,368 (31.1%)	1,480 (31.6%)	1,324 (30.7%)	1,652 (33.5%)	1,571 (35.1%)	1,838 (34.6%)	1,531 (30.8%)	1,654 (33.3%)	1,453 (31.9%)	1,568 (33.4%)
3	803 (18.3%)	965 (20.6%)	797 (18.5%)	913 (18.5%)	638 (14.3%)	985 (18.5%)	1,074 (21.6%)	915 (18.4%)	823 (18.1%)	931 (19.8%)
4	298 (6.8%)	382 (8.2%)	310 (7.2%)	297 (6.0%)	135 (3.0%)	278 (5.2%)	381 (7.7%)	317 (6.4%)	253 (5.6%)	237 (5.0%)
5+	107 (2.4%)	126 (2.7%)	82 (1.9%)	76 (1.5%)	24 (0.5%)	49 (0.9%)	102 (2.1%)	79 (1.6%)	46 (1.0%)	57 (1.2%)
All Races										
1	2,761 (38.8%)	2,579 (33.9%)	2,885 (39.0%)	3,062 (38.1%)	2,961 (41.0%)	3,198 (37.9%)	2,888 (36.0%)	2,918 (36.7%)	3,077 (39.0%)	2,992 (37.9%)
2	1,989 (27.9%)	2,233 (29.3%)	2,082 (28.2%)	2,448 (30.4%)	2,337 (32.4%)	2,535 (30.0%)	2,297 (28.6%)	2,399 (30.2%)	2,215 (28.1%)	2,337 (29.6%)
3	1,298 (18.2%)	1,586 (20.8%)	1,332 (18.0%)	1,524 (19.0%)	1,207 (16.7%)	1,596 (18.9%)	1,698 (21.2%)	1,464 (18.4%)	1,435 (18.2%)	1,505 (19.0%)
4	624 (8.8%)	730 (9.6%)	673 (9.1%)	637 (7.9%)	477 (6.6%)	670 (7.9%)	719 (9.0%)	704 (8.8%)	670 (8.5%)	579 (7.3%)
5+	445 (6.3%)	483 (6.3%)	420 (5.7%)	371 (4.6%)	234 (3.2%)	441 (5.2%)	421 (5.2%)	471 (5.9%)	495 (6.3%)	489 (6.2%)

Year to Date Median Days Between Runs

Code/RatBand	2016	2017	2018	2019	2020	2021	2022	2023	2024	2025
All Runners	28	27	28	29	28	29	28	29	28	28
Flat										
Unrated	28	25	29	32	27	28	27	28	28	27
0-50	19	20	20	22	20	19	20	17	17	17
51-60	19	20	20	21	19	19	20	19	19	18
61-70	21	21	21	23	21	20	21	20	20	20
71-80	22	23	23	23	22	22	23	22	24	22
81-90	22	21	24	27	22	24	25	26	27	28
91-100	27	25	31	28	22	28	31	32	31	40
101+	29	35	38	30	36	42	40	40	52	86
All Flat Runners	21	21	22	23	21	21	22	21	21	21
Jump										
Unrated	38	34	37	37	36	41	35	41	40	40
0-100	28	27	27	28	32	34	28	30	32	31
101-110	32	27	31	31	31	33	29	34	34	31
111-120	32	29	31	32	34	36	31	34	33	32
121-130	35	30	31	32	34	35	32	35	36	34
131-140	35	34	35	35	36	37	35	37	35	37
141-150	38	36	40	40	41	42	39	44	39	42
151+	45	42	40	42	42	42	42	46	45	42
All Jump Runners	34	30	33	33	34	37	32	35	35	34

Horses Population by Gender

March 2025 Horses in Training Snapshot by Gender versus Previous Years

All Horses

Sex	2016	2017	2018	2019	2020	2021	2022	2023	2024	2025
Colt/Entire	2,528 (16.7%)	2,557 (16.6%)	2,544 (16.2%)	2,436 (15.4%)	2,307 (14.5%)	2,158 (13.4%)	2,190 (14.1%)	2,067 (13.3%)	2,001 (13.3%)	1,951 (13.2%)
Gelding	8,065 (53.2%)	8,170 (53.1%)	8,411 (53.4%)	8,444 (53.5%)	8,666 (54.6%)	8,943 (55.7%)	8,470 (54.7%)	8,505 (54.9%)	8,319 (55.3%)	8,157 (55.3%)
Filly/Mare	4,571 (30.1%)	4,649 (30.2%)	4,794 (30.4%)	4,890 (31.0%)	4,899 (30.9%)	4,950 (30.8%)	4,825 (31.2%)	4,917 (31.7%)	4,732 (31.4%)	4,634 (31.4%)
Rig	5 (0.0%)	4 (0.0%)	3 (0.0%)	3 (0.0%)	3 (0.0%)	2 (0.0%)	1 (0.0%)	1 (0.0%)	1 (0.0%)	0 (0.0%)
Total	15,169 (100.0%)	15,380 (100.0%)	15,752 (100.0%)	15,773 (100.0%)	15,875 (100.0%)	16,053 (100.0%)	15,486 (100.0%)	15,490 (100.0%)	15,053 (100.0%)	14,742 (100.0%)

Flat (including Dual)

Sex	2016	2017	2018	2019	2020	2021	2022	2023	2024	2025
Colt/Entire	2,496 (25.5%)	2,532 (25.0%)	2,521 (23.9%)	2,420 (23.9%)	2,289 (22.8%)	2,137 (21.9%)	2,164 (22.0%)	2,045 (21.1%)	1,976 (21.0%)	1,922 (20.5%)
Gelding	3,746 (38.2%)	3,947 (39.0%)	4,316 (40.9%)	4,031 (39.9%)	4,121 (41.1%)	4,086 (41.8%)	4,054 (41.3%)	4,051 (41.9%)	4,042 (42.9%)	4,073 (43.5%)
Filly/Mare	3,558 (36.3%)	3,650 (36.0%)	3,725 (35.3%)	3,652 (36.1%)	3,618 (36.1%)	3,543 (36.3%)	3,603 (36.7%)	3,582 (37.0%)	3,406 (36.1%)	3,370 (36.0%)
Rig	5 (0.1%)	4 (0.0%)	3 (0.0%)	2 (0.0%)	2 (0.0%)	1 (0.0%)	0 (0.0%)	0 (0.0%)	0 (0.0%)	0 (0.0%)
Total	9,805 (100.0%)	10,133 (100.0%)	10,565 (100.0%)	10,105 (100.0%)	10,030 (100.0%)	9,767 (100.0%)	9,821 (100.0%)	9,678 (100.0%)	9,424 (100.0%)	9,365 (100.0%)

Jump (including Dual)

Sex	2016	2017	2018	2019	2020	2021	2022	2023	2024	2025
Colt/Entire	40 (0.7%)	30 (0.5%)	33 (0.5%)	24 (0.4%)	27 (0.4%)	32 (0.5%)	40 (0.6%)	28 (0.4%)	27 (0.4%)	43 (0.7%)
Gelding	4,716 (80.5%)	4,667 (80.4%)	4,834 (78.7%)	4,754 (77.7%)	4,967 (77.6%)	5,250 (77.2%)	4,783 (77.6%)	4,792 (76.5%)	4,621 (75.7%)	4,465 (75.8%)
Filly/Mare	1,102 (18.8%)	1,109 (19.1%)	1,277 (20.8%)	1,338 (21.9%)	1,407 (22.0%)	1,518 (22.3%)	1,336 (21.7%)	1,446 (23.1%)	1,455 (23.8%)	1,386 (23.5%)
Rig	0 (0.0%)	0 (0.0%)	0 (0.0%)	1 (0.0%)	1 (0.0%)	1 (0.0%)	1 (0.0%)	1 (0.0%)	1 (0.0%)	0 (0.0%)
Total	5,858 (100.0%)	5,806 (100.0%)	6,144 (100.0%)	6,117 (100.0%)	6,402 (100.0%)	6,801 (100.0%)	6,160 (100.0%)	6,267 (100.0%)	6,104 (100.0%)	5,894 (100.0%)

Hunter Chasers

Sex	2016	2017	2018	2019	2020	2021	2022	2023	2024	2025
Colt/Entire	4 (0.2%)	5 (0.3%)	3 (0.2%)	1 (0.1%)	1 (0.1%)	4 (0.5%)	10 (0.8%)	8 (0.7%)	3 (0.2%)	7 (0.7%)
Gelding	1,553 (83.5%)	1,469 (81.7%)	1,302 (82.1%)	1,274 (80.5%)	1,214 (81.5%)	731 (83.5%)	978 (80.6%)	947 (82.6%)	1,081 (82.8%)	818 (80.1%)
Filly/Mare	303 (16.3%)	323 (18.0%)	280 (17.7%)	308 (19.5%)	274 (18.4%)	140 (16.0%)	226 (18.6%)	191 (16.7%)	221 (16.9%)	196 (19.2%)
Rig	0 (0.0%)	0 (0.0%)	0 (0.0%)	0 (0.0%)	0 (0.0%)	0 (0.0%)	0 (0.0%)	0 (0.0%)	0 (0.0%)	0 (0.0%)
Total	1,860 (100.0%)	1,797 (100.0%)	1,585 (100.0%)	1,583 (100.0%)	1,489 (100.0%)	875 (100.0%)	1,214 (100.0%)	1,146 (100.0%)	1,305 (100.0%)	1,021 (100.0%)

Year to Date Total Runners by Gender

Sex	2016	2017	2018	2019	2020	2021	2022	2023	2024	2025
All Races										
Colt/Entire	560 (3.6%)	631 (3.6%)	692 (4.3%)	664 (3.9%)	578 (4.0%)	726 (4.0%)	559 (3.1%)	553 (3.1%)	549 (3.1%)	468 (2.7%)
Gelding	11,506 (73.7%)	12,878 (73.9%)	11,740 (72.6%)	12,433 (72.4%)	10,306 (71.2%)	12,981 (71.2%)	12,914 (72.4%)	12,683 (71.8%)	12,644 (72.5%)	12,785 (73.3%)
Filly/Mare	3,542 (22.7%)	3,913 (22.5%)	3,731 (23.1%)	4,063 (23.7%)	3,595 (24.8%)	4,522 (24.8%)	4,353 (24.4%)	4,434 (25.1%)	4,249 (24.4%)	4,191 (24.0%)
Rig	2 (0.0%)	0 (0.0%)	2 (0.0%)	2 (0.0%)	3 (0.0%)	3 (0.0%)	1 (0.0%)	0 (0.0%)	0 (0.0%)	0 (0.0%)
Flat										
Colt/Entire	546 (7.9%)	610 (8.0%)	679 (8.9%)	647 (8.6%)	564 (8.5%)	712 (8.8%)	551 (7.2%)	529 (6.7%)	543 (6.1%)	459 (5.5%)
Gelding	4,276 (62.0%)	4,796 (62.6%)	4,880 (63.7%)	4,726 (62.7%)	4,134 (62.1%)	5,004 (62.0%)	4,781 (62.9%)	5,024 (63.2%)	5,893 (66.7%)	5,720 (68.4%)
Filly/Mare	2,073 (30.1%)	2,252 (29.4%)	2,101 (27.4%)	2,160 (28.7%)	1,956 (29.4%)	2,356 (29.2%)	2,274 (29.9%)	2,395 (30.1%)	2,396 (27.1%)	2,185 (26.1%)
Rig	2 (0.0%)	0 (0.0%)	2 (0.0%)	0 (0.0%)	0 (0.0%)	0 (0.0%)	0 (0.0%)	0 (0.0%)	0 (0.0%)	0 (0.0%)
All Jump										
Colt/Entire	14 (0.2%)	21 (0.2%)	13 (0.2%)	17 (0.2%)	14 (0.2%)	14 (0.1%)	8 (0.1%)	24 (0.2%)	6 (0.1%)	9 (0.1%)
Gelding	7,230 (83.0%)	8,082 (82.8%)	6,860 (80.7%)	7,707 (80.0%)	6,172 (78.8%)	7,977 (78.5%)	8,133 (79.6%)	7,659 (78.8%)	6,751 (78.4%)	7,065 (77.8%)
Filly/Mare	1,469 (16.9%)	1,661 (17.0%)	1,630 (19.2%)	1,903 (19.8%)	1,639 (20.9%)	2,166 (21.3%)	2,079 (20.3%)	2,039 (21.0%)	1,853 (21.5%)	2,006 (22.1%)
Rig	0 (0.0%)	0 (0.0%)	0 (0.0%)	2 (0.0%)	3 (0.0%)	3 (0.0%)	1 (0.0%)	0 (0.0%)	0 (0.0%)	0 (0.0%)
Chase										
Colt/Entire	1 (0.0%)	0 (0.0%)	0 (0.0%)	0 (0.0%)	0 (0.0%)	0 (0.0%)	0 (0.0%)	0 (0.0%)	0 (0.0%)	0 (0.0%)
Gelding	2,607 (93.4%)	2,947 (92.7%)	2,382 (90.8%)	2,725 (90.4%)	2,169 (90.3%)	2,663 (88.9%)	2,923 (88.8%)	2,754 (89.5%)	2,414 (89.8%)	2,514 (87.4%)
Filly/Mare	182 (6.5%)	232 (7.3%)	242 (9.2%)	289 (9.6%)	229 (9.5%)	328 (11.0%)	369 (11.2%)	323 (10.5%)	273 (10.2%)	362 (12.6%)
Rig	0 (0.0%)	0 (0.0%)	0 (0.0%)	0 (0.0%)	3 (0.1%)	3 (0.1%)	1 (0.0%)	0 (0.0%)	0 (0.0%)	0 (0.0%)
Hurdle										
Colt/Entire	13 (0.2%)	18 (0.3%)	11 (0.2%)	13 (0.2%)	7 (0.2%)	12 (0.2%)	8 (0.1%)	16 (0.3%)	6 (0.1%)	4 (0.1%)
Gelding	4,148 (79.8%)	4,543 (79.4%)	3,902 (77.7%)	4,450 (77.0%)	3,477 (74.7%)	4,142 (74.8%)	4,663 (76.7%)	4,397 (75.8%)	3,904 (74.2%)	4,063 (74.5%)
Filly/Mare	1,040 (20.0%)	1,164 (20.3%)	1,111 (22.1%)	1,316 (22.8%)	1,169 (25.1%)	1,381 (25.0%)	1,411 (23.2%)	1,388 (23.9%)	1,354 (25.7%)	1,388 (25.4%)
Rig	0 (0.0%)	0 (0.0%)	0 (0.0%)	2 (0.0%)	0 (0.0%)	0 (0.0%)	0 (0.0%)	0 (0.0%)	0 (0.0%)	0 (0.0%)
NHF										
Colt/Entire	0 (0.0%)	3 (0.3%)	2 (0.2%)	4 (0.5%)	7 (0.9%)	2 (0.1%)	0 (0.0%)	8 (0.9%)	0 (0.0%)	5 (0.7%)
Gelding	475 (65.8%)	592 (68.8%)	576 (67.4%)	532 (63.8%)	526 (68.0%)	1,172 (71.9%)	547 (64.7%)	508 (60.2%)	433 (65.7%)	488 (65.2%)
Filly/Mare	247 (34.2%)	265 (30.8%)	277 (32.4%)	298 (35.7%)	241 (31.1%)	457 (28.0%)	299 (35.3%)	328 (38.9%)	226 (34.3%)	256 (34.2%)
Hunter										
Gelding	261 (96.3%)	271 (97.5%)	205 (98.6%)	207 (95.4%)	142 (97.3%)	314 (94.0%)	181 (96.8%)	175 (97.8%)	151 (92.1%)	149 (92.0%)
Filly/Mare	10 (3.7%)	7 (2.5%)	3 (1.4%)	10 (4.6%)	4 (2.7%)	20 (6.0%)	6 (3.2%)	4 (2.2%)	13 (7.9%)	13 (8.0%)

Year to Date Individual Runners by Gender

Sex	2016	2017	2018	2019	2020	2021	2022	2023	2024	2025
All Races										
Male	5,436 (76.4%)	5,832 (76.6%)	5,600 (75.8%)	6,055 (75.3%)	5,369 (74.4%)	6,336 (75.1%)	6,010 (74.9%)	5,861 (73.7%)	5,867 (74.3%)	5,893 (74.6%)
Female	1,681 (23.6%)	1,779 (23.4%)	1,792 (24.2%)	1,987 (24.7%)	1,847 (25.6%)	2,104 (24.9%)	2,013 (25.1%)	2,095 (26.3%)	2,025 (25.7%)	2,009 (25.4%)
Flat										
Male	1,936 (68.0%)	2,119 (68.6%)	2,253 (69.9%)	2,250 (69.1%)	1,953 (68.0%)	2,260 (69.0%)	2,159 (68.0%)	2,093 (66.8%)	2,386 (69.7%)	2,326 (70.4%)
Female	911 (32.0%)	970 (31.4%)	968 (30.1%)	1,004 (30.9%)	919 (32.0%)	1,013 (31.0%)	1,015 (32.0%)	1,042 (33.2%)	1,035 (30.3%)	980 (29.6%)
All Jump										
Male	3,603 (81.9%)	3,835 (82.0%)	3,457 (80.2%)	3,915 (79.4%)	3,522 (78.7%)	4,199 (79.0%)	3,952 (79.5%)	3,875 (78.1%)	3,536 (77.6%)	3,649 (77.6%)
Female	795 (18.1%)	843 (18.0%)	852 (19.8%)	1,014 (20.6%)	954 (21.3%)	1,117 (21.0%)	1,017 (20.5%)	1,085 (21.9%)	1,019 (22.4%)	1,052 (22.4%)
Chase										
Male	1,305 (93.2%)	1,423 (92.2%)	1,195 (90.8%)	1,389 (90.2%)	1,269 (90.0%)	1,486 (89.4%)	1,429 (88.6%)	1,377 (88.7%)	1,237 (89.5%)	1,314 (87.4%)
Female	95 (6.8%)	121 (7.8%)	121 (9.2%)	151 (9.8%)	141 (10.0%)	177 (10.6%)	184 (11.4%)	176 (11.3%)	145 (10.5%)	189 (12.6%)
Hurdle										
Male	2,199 (80.1%)	2,286 (79.7%)	2,072 (78.2%)	2,374 (77.4%)	2,054 (75.0%)	2,377 (75.6%)	2,403 (78.0%)	2,324 (76.0%)	2,152 (74.2%)	2,168 (74.7%)
Female	545 (19.9%)	584 (20.3%)	579 (21.8%)	693 (22.6%)	684 (25.0%)	766 (24.4%)	677 (22.0%)	734 (24.0%)	748 (25.8%)	736 (25.3%)
NHF										
Male	375 (65.8%)	452 (69.4%)	468 (68.9%)	423 (64.9%)	440 (68.9%)	912 (72.9%)	426 (64.9%)	422 (62.2%)	358 (66.1%)	408 (66.9%)
Female	195 (34.2%)	199 (30.6%)	211 (31.1%)	229 (35.1%)	199 (31.1%)	339 (27.1%)	230 (35.1%)	257 (37.8%)	184 (33.9%)	202 (33.1%)
Hunter										
Male	176 (96.7%)	178 (96.7%)	138 (97.9%)	148 (95.5%)	98 (96.1%)	212 (92.6%)	124 (96.1%)	115 (98.3%)	105 (92.9%)	104 (92.0%)
Female	6 (3.3%)	6 (3.3%)	3 (2.1%)	7 (4.5%)	4 (3.9%)	17 (7.4%)	5 (3.9%)	2 (1.7%)	8 (7.1%)	9 (8.0%)

Horses Population by Breeding

March 2025 Horses in Training Snapshot by Breeding versus Previous Years

Flat (including Dual)

Bred	Sex	2016	2017	2018	2019	2020	2021	2022	2023	2024	2025
GB	Male	2,981 (30.4%)	3,069 (30.3%)	3,180 (30.1%)	3,053 (30.2%)	3,013 (30.0%)	2,936 (30.1%)	2,921 (29.7%)	2,836 (29.3%)	2,778 (29.5%)	2,763 (29.5%)
	Female	2,005 (20.4%)	2,086 (20.6%)	2,053 (19.4%)	2,021 (20.0%)	2,036 (20.3%)	2,019 (20.7%)	2,021 (20.6%)	1,985 (20.5%)	1,863 (19.8%)	1,903 (20.3%)
	Subtotal	4,986 (50.9%)	5,155 (50.9%)	5,233 (49.5%)	5,074 (50.2%)	5,049 (50.3%)	4,955 (50.7%)	4,942 (50.3%)	4,821 (49.8%)	4,641 (49.2%)	4,666 (49.8%)
IRE	Male	2,687 (27.4%)	2,779 (27.4%)	2,969 (28.1%)	2,770 (27.4%)	2,771 (27.6%)	2,742 (28.1%)	2,828 (28.8%)	2,825 (29.2%)	2,760 (29.3%)	2,804 (29.9%)
	Female	1,309 (13.4%)	1,319 (13.0%)	1,406 (13.3%)	1,365 (13.5%)	1,350 (13.5%)	1,335 (13.7%)	1,411 (14.4%)	1,420 (14.7%)	1,370 (14.5%)	1,300 (13.9%)
	Subtotal	3,996 (40.8%)	4,098 (40.4%)	4,375 (41.4%)	4,135 (40.9%)	4,121 (41.1%)	4,077 (41.7%)	4,239 (43.2%)	4,245 (43.9%)	4,130 (43.8%)	4,104 (43.8%)
FR	Male	169 (1.7%)	229 (2.3%)	313 (3.0%)	291 (2.9%)	317 (3.2%)	300 (3.1%)	295 (3.0%)	286 (3.0%)	333 (3.5%)	306 (3.3%)
	Female	87 (0.9%)	90 (0.9%)	117 (1.1%)	119 (1.2%)	118 (1.2%)	108 (1.1%)	111 (1.1%)	119 (1.2%)	127 (1.3%)	113 (1.2%)
	Subtotal	256 (2.6%)	319 (3.1%)	430 (4.1%)	410 (4.1%)	435 (4.3%)	408 (4.2%)	406 (4.1%)	405 (4.2%)	460 (4.9%)	419 (4.5%)
USA	Male	329 (3.4%)	312 (3.1%)	287 (2.7%)	268 (2.7%)	237 (2.4%)	171 (1.8%)	125 (1.3%)	97 (1.0%)	89 (0.9%)	61 (0.7%)
	Female	131 (1.3%)	127 (1.3%)	120 (1.1%)	120 (1.2%)	83 (0.8%)	56 (0.6%)	37 (0.4%)	35 (0.4%)	21 (0.2%)	31 (0.3%)
	Subtotal	460 (4.7%)	439 (4.3%)	407 (3.9%)	388 (3.8%)	320 (3.2%)	227 (2.3%)	162 (1.6%)	132 (1.4%)	110 (1.2%)	92 (1.0%)
GNY	Male	61 (0.6%)	69 (0.7%)	71 (0.7%)	52 (0.5%)	55 (0.5%)	56 (0.6%)	40 (0.4%)	42 (0.4%)	48 (0.5%)	52 (0.6%)
	Female	11 (0.1%)	13 (0.1%)	17 (0.2%)	17 (0.2%)	26 (0.3%)	21 (0.2%)	20 (0.2%)	19 (0.2%)	20 (0.2%)	19 (0.2%)
	Subtotal	72 (0.7%)	82 (0.8%)	88 (0.8%)	69 (0.7%)	81 (0.8%)	77 (0.8%)	60 (0.6%)	61 (0.6%)	68 (0.7%)	71 (0.8%)
Other	Male	20 (0.2%)	25 (0.2%)	20 (0.2%)	19 (0.2%)	19 (0.2%)	19 (0.2%)	9 (0.1%)	10 (0.1%)	10 (0.1%)	9 (0.1%)
	Female	15 (0.2%)	15 (0.1%)	12 (0.1%)	10 (0.1%)	5 (0.0%)	4 (0.0%)	3 (0.0%)	4 (0.0%)	5 (0.1%)	4 (0.0%)
	Subtotal	35 (0.4%)	40 (0.4%)	32 (0.3%)	29 (0.3%)	24 (0.2%)	23 (0.2%)	12 (0.1%)	14 (0.1%)	15 (0.2%)	13 (0.1%)

Jump (including Dual)

Bred	Sex	2016	2017	2018	2019	2020	2021	2022	2023	2024	2025
GB	Male	1,415 (24.2%)	1,326 (22.8%)	1,374 (22.4%)	1,286 (21.0%)	1,260 (19.7%)	1,336 (19.6%)	1,199 (19.5%)	1,192 (19.0%)	1,167 (19.1%)	1,153 (19.6%)
	Female	638 (10.9%)	614 (10.6%)	666 (10.8%)	642 (10.5%)	625 (9.8%)	725 (10.7%)	642 (10.4%)	663 (10.6%)	664 (10.9%)	603 (10.2%)
	Subtotal	2,053 (35.0%)	1,940 (33.4%)	2,040 (33.2%)	1,928 (31.5%)	1,885 (29.4%)	2,061 (30.3%)	1,841 (29.9%)	1,855 (29.6%)	1,831 (30.0%)	1,756 (29.8%)
IRE	Male	2,576 (44.0%)	2,559 (44.1%)	2,658 (43.3%)	2,635 (43.1%)	2,788 (43.5%)	2,878 (42.3%)	2,567 (41.7%)	2,517 (40.2%)	2,429 (39.8%)	2,319 (39.3%)
	Female	403 (6.9%)	423 (7.3%)	527 (8.6%)	589 (9.6%)	652 (10.2%)	637 (9.4%)	556 (9.0%)	624 (10.0%)	635 (10.4%)	605 (10.3%)
	Subtotal	2,979 (50.9%)	2,982 (51.4%)	3,185 (51.8%)	3,224 (52.7%)	3,440 (53.7%)	3,515 (51.7%)	3,123 (50.7%)	3,141 (50.1%)	3,064 (50.2%)	2,924 (49.6%)
FR	Male	648 (11.1%)	704 (12.1%)	731 (11.9%)	764 (12.5%)	836 (13.1%)	968 (14.2%)	957 (15.5%)	1,021 (16.3%)	978 (16.0%)	983 (16.7%)
	Female	49 (0.8%)	65 (1.1%)	76 (1.2%)	98 (1.6%)	122 (1.9%)	143 (2.1%)	129 (2.1%)	153 (2.4%)	148 (2.4%)	170 (2.9%)
	Subtotal	697 (11.9%)	769 (13.2%)	807 (13.1%)	862 (14.1%)	958 (15.0%)	1,111 (16.3%)	1,086 (17.6%)	1,174 (18.7%)	1,126 (18.4%)	1,153 (19.6%)
USA	Male	53 (0.9%)	42 (0.7%)	41 (0.7%)	33 (0.5%)	38 (0.6%)	30 (0.4%)	30 (0.5%)	19 (0.3%)	16 (0.3%)	6 (0.1%)
	Female	2 (0.0%)	2 (0.0%)	4 (0.1%)	3 (0.0%)	3 (0.0%)	1 (0.0%)	1 (0.0%)	NA (-)	2 (0.0%)	1 (0.0%)
	Subtotal	55 (0.9%)	44 (0.8%)	45 (0.7%)	36 (0.6%)	41 (0.6%)	31 (0.5%)	31 (0.5%)	19 (0.3%)	18 (0.3%)	7 (0.1%)
GNY	Male	58 (1.0%)	59 (1.0%)	55 (0.9%)	53 (0.9%)	69 (1.1%)	67 (1.0%)	68 (1.1%)	70 (1.1%)	55 (0.9%)	43 (0.7%)
	Female	7 (0.1%)	4 (0.1%)	2 (0.0%)	4 (0.1%)	5 (0.1%)	11 (0.2%)	8 (0.1%)	6 (0.1%)	5 (0.1%)	6 (0.1%)
	Subtotal	65 (1.1%)	63 (1.1%)	57 (0.9%)	57 (0.9%)	74 (1.2%)	78 (1.1%)	76 (1.2%)	76 (1.2%)	60 (1.0%)	49 (0.8%)
Other	Male	6 (0.1%)	7 (0.1%)	8 (0.1%)	8 (0.1%)	4 (0.1%)	4 (0.1%)	3 (0.0%)	2 (0.0%)	4 (0.1%)	4 (0.1%)
	Female	3 (0.1%)	1 (0.0%)	2 (0.0%)	2 (0.0%)	NA (-)	1 (0.0%)	NA (-)	NA (-)	1 (0.0%)	1 (0.0%)
	Subtotal	9 (0.2%)	8 (0.1%)	10 (0.2%)	10 (0.2%)	4 (0.1%)	5 (0.1%)	3 (0.0%)	2 (0.0%)	5 (0.1%)	5 (0.1%)

Year to Date Total Runners by Breeding

Flat

Bred	Sex	2016	2017	2018	2019	2020	2021	2022	2023	2024	2025
GB	Male	2,241 (32.5%)	2,553 (33.3%)	2,618 (34.2%)	2,477 (32.9%)	2,185 (32.8%)	2,607 (32.3%)	2,470 (32.5%)	2,490 (31.3%)	2,947 (33.4%)	2,814 (33.6%)
	Female	1,152 (16.7%)	1,208 (15.8%)	1,129 (14.7%)	1,201 (15.9%)	1,079 (16.2%)	1,398 (17.3%)	1,304 (17.1%)	1,376 (17.3%)	1,267 (14.3%)	1,143 (13.7%)
	Subtotal	3,393 (49.2%)	3,761 (49.1%)	3,747 (48.9%)	3,678 (48.8%)	3,264 (49.1%)	4,005 (49.6%)	3,774 (49.6%)	3,866 (48.6%)	4,214 (47.7%)	3,957 (47.3%)
IRE	Male	2,080 (30.2%)	2,325 (30.4%)	2,387 (31.2%)	2,351 (31.2%)	2,045 (30.7%)	2,599 (32.2%)	2,416 (31.8%)	2,657 (33.4%)	3,023 (34.2%)	2,957 (35.4%)
	Female	805 (11.7%)	916 (12.0%)	826 (10.8%)	788 (10.5%)	768 (11.5%)	817 (10.1%)	845 (11.1%)	892 (11.2%)	1,000 (11.3%)	916 (11.0%)
	Subtotal	2,885 (41.8%)	3,241 (42.3%)	3,213 (41.9%)	3,139 (41.7%)	2,813 (42.3%)	3,416 (42.3%)	3,261 (42.9%)	3,549 (44.7%)	4,023 (45.6%)	3,873 (46.3%)
FR	Male	139 (2.0%)	163 (2.1%)	165 (2.2%)	218 (2.9%)	203 (3.1%)	218 (2.7%)	229 (3.0%)	253 (3.2%)	279 (3.2%)	284 (3.4%)
	Female	40 (0.6%)	46 (0.6%)	74 (1.0%)	62 (0.8%)	51 (0.8%)	73 (0.9%)	62 (0.8%)	78 (1.0%)	81 (0.9%)	71 (0.8%)
	Subtotal	179 (2.6%)	209 (2.7%)	239 (3.1%)	280 (3.7%)	254 (3.8%)	291 (3.6%)	291 (3.8%)	331 (4.2%)	360 (4.1%)	355 (4.2%)
USA	Male	304 (4.4%)	286 (3.7%)	310 (4.0%)	267 (3.5%)	216 (3.2%)	207 (2.6%)	185 (2.4%)	128 (1.6%)	141 (1.6%)	83 (1.0%)
	Female	51 (0.7%)	62 (0.8%)	60 (0.8%)	89 (1.2%)	52 (0.8%)	46 (0.6%)	41 (0.5%)	40 (0.5%)	38 (0.4%)	40 (0.5%)
	Subtotal	355 (5.1%)	348 (4.5%)	370 (4.8%)	356 (4.7%)	268 (4.0%)	253 (3.1%)	226 (3.0%)	168 (2.1%)	179 (2.0%)	123 (1.5%)
GNY	Male	35 (0.5%)	53 (0.7%)	45 (0.6%)	32 (0.4%)	36 (0.5%)	61 (0.8%)	24 (0.3%)	22 (0.3%)	43 (0.5%)	34 (0.4%)
	Female	20 (0.3%)	13 (0.2%)	10 (0.1%)	13 (0.2%)	5 (0.1%)	18 (0.2%)	17 (0.2%)	7 (0.1%)	6 (0.1%)	11 (0.1%)
	Subtotal	55 (0.8%)	66 (0.9%)	55 (0.7%)	45 (0.6%)	41 (0.6%)	79 (1.0%)	41 (0.5%)	29 (0.4%)	49 (0.6%)	45 (0.5%)
Other	Male	25 (0.4%)	26 (0.3%)	36 (0.5%)	28 (0.4%)	13 (0.2%)	24 (0.3%)	8 (0.1%)	3 (0.0%)	3 (0.0%)	7 (0.1%)
	Female	5 (0.1%)	7 (0.1%)	2 (0.0%)	7 (0.1%)	1 (0.0%)	4 (0.0%)	5 (0.1%)	2 (0.0%)	4 (0.0%)	4 (0.0%)
	Subtotal	30 (0.4%)	33 (0.4%)	38 (0.5%)	35 (0.5%)	14 (0.2%)	28 (0.3%)	13 (0.2%)	5 (0.1%)	7 (0.1%)	11 (0.1%)

Jump

Bred	Sex	2016	2017	2018	2019	2020	2021	2022	2023	2024	2025
GB	Male	1,974 (22.7%)	2,135 (21.9%)	1,770 (20.8%)	1,958 (20.3%)	1,486 (19.0%)	1,835 (18.1%)	1,821 (17.8%)	1,710 (17.6%)	1,532 (17.8%)	1,758 (19.4%)
	Female	733 (8.4%)	803 (8.2%)	775 (9.1%)	846 (8.8%)	668 (8.5%)	949 (9.3%)	912 (8.9%)	873 (9.0%)	748 (8.7%)	748 (8.2%)
	Subtotal	2,707 (31.1%)	2,938 (30.1%)	2,545 (29.9%)	2,804 (29.1%)	2,154 (27.5%)	2,784 (27.4%)	2,733 (26.7%)	2,583 (26.6%)	2,280 (26.5%)	2,506 (27.6%)
IRE	Male	3,972 (45.6%)	4,453 (45.6%)	3,826 (45.0%)	4,231 (43.9%)	3,404 (43.5%)	4,394 (43.2%)	4,362 (42.7%)	4,085 (42.0%)	3,541 (41.1%)	3,654 (40.2%)
	Female	638 (7.3%)	718 (7.4%)	735 (8.6%)	890 (9.2%)	784 (10.0%)	962 (9.5%)	900 (8.8%)	906 (9.3%)	894 (10.4%)	978 (10.8%)
	Subtotal	4,610 (52.9%)	5,171 (53.0%)	4,561 (53.6%)	5,121 (53.2%)	4,188 (53.5%)	5,356 (52.7%)	5,262 (51.5%)	4,991 (51.3%)	4,435 (51.5%)	4,632 (51.0%)
FR	Male	1,127 (12.9%)	1,331 (13.6%)	1,139 (13.4%)	1,369 (14.2%)	1,163 (14.9%)	1,594 (15.7%)	1,778 (17.4%)	1,730 (17.8%)	1,574 (18.3%)	1,578 (17.4%)
	Female	84 (1.0%)	123 (1.3%)	106 (1.2%)	152 (1.6%)	177 (2.3%)	237 (2.3%)	241 (2.4%)	248 (2.6%)	203 (2.4%)	273 (3.0%)
	Subtotal	1,211 (13.9%)	1,454 (14.9%)	1,245 (14.6%)	1,521 (15.8%)	1,340 (17.1%)	1,831 (18.0%)	2,019 (19.8%)	1,978 (20.3%)	1,777 (20.6%)	1,851 (20.4%)
USA	Male	84 (1.0%)	73 (0.7%)	55 (0.6%)	38 (0.4%)	48 (0.6%)	41 (0.4%)	35 (0.3%)	32 (0.3%)	9 (0.1%)	7 (0.1%)
	Female	4 (0.0%)	4 (0.0%)	5 (0.1%)	7 (0.1%)	4 (0.1%)	2 (0.0%)	6 (0.1%)	0 (0.0%)	3 (0.0%)	3 (0.0%)
	Subtotal	88 (1.0%)	77 (0.8%)	60 (0.7%)	45 (0.5%)	52 (0.7%)	43 (0.4%)	41 (0.4%)	32 (0.3%)	12 (0.1%)	10 (0.1%)
GNY	Male	80 (0.9%)	104 (1.1%)	73 (0.9%)	116 (1.2%)	83 (1.1%)	126 (1.2%)	145 (1.4%)	125 (1.3%)	95 (1.1%)	71 (0.8%)
	Female	8 (0.1%)	8 (0.1%)	7 (0.1%)	7 (0.1%)	5 (0.1%)	16 (0.2%)	20 (0.2%)	12 (0.1%)	4 (0.0%)	4 (0.0%)
	Subtotal	88 (1.0%)	112 (1.1%)	80 (0.9%)	123 (1.3%)	88 (1.1%)	142 (1.4%)	165 (1.6%)	137 (1.4%)	99 (1.1%)	75 (0.8%)
Other	Male	7 (0.1%)	7 (0.1%)	10 (0.1%)	14 (0.1%)	5 (0.1%)	4 (0.0%)	1 (0.0%)	1 (0.0%)	6 (0.1%)	6 (0.1%)
	Female	2 (0.0%)	5 (0.1%)	2 (0.0%)	1 (0.0%)	1 (0.0%)	0 (0.0%)	0 (0.0%)	0 (0.0%)	1 (0.0%)	0 (0.0%)
	Subtotal	9 (0.1%)	12 (0.1%)	12 (0.1%)	15 (0.2%)	6 (0.1%)	4 (0.0%)	1 (0.0%)	1 (0.0%)	7 (0.1%)	6 (0.1%)

Year to Date Individual Runners by Breeding

Flat

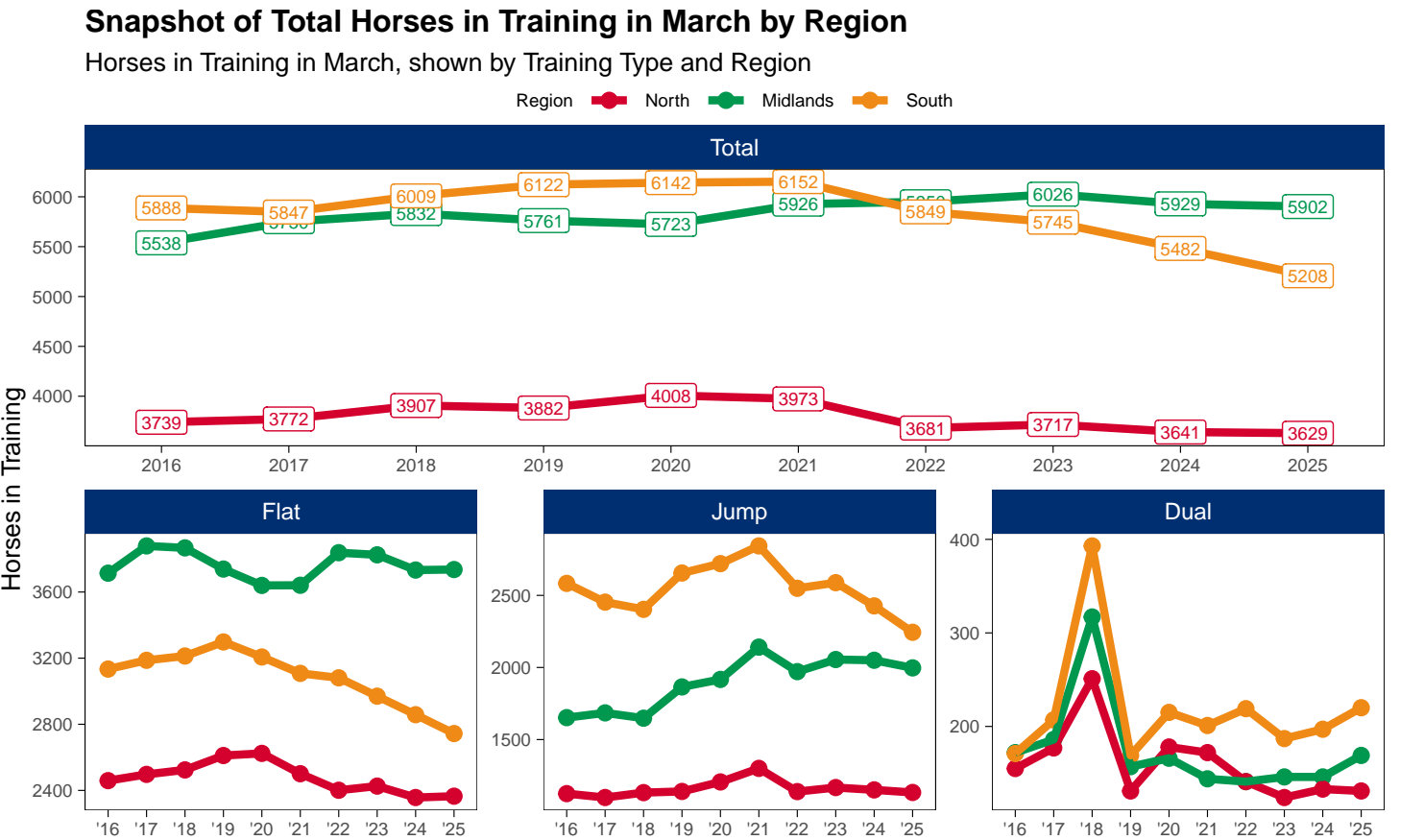
Bred	Sex	2016	2017	2018	2019	2020	2021	2022	2023	2024	2025
GB	Male	916 (32.2%)	971 (31.4%)	1,054 (32.7%)	1,014 (31.2%)	911 (31.7%)	1,035 (31.6%)	990 (31.2%)	941 (30.0%)	1,084 (31.7%)	1,022 (30.9%)
	Female	506 (17.8%)	529 (17.1%)	508 (15.8%)	557 (17.1%)	502 (17.5%)	586 (17.9%)	580 (18.3%)	594 (18.9%)	545 (15.9%)	510 (15.4%)
	Subtotal	1,422 (49.9%)	1,500 (48.6%)	1,562 (48.5%)	1,571 (48.3%)	1,413 (49.2%)	1,621 (49.5%)	1,570 (49.5%)	1,535 (49.0%)	1,629 (47.6%)	1,532 (46.3%)
IRE	Male	817 (28.7%)	928 (30.0%)	959 (29.8%)	1,000 (30.7%)	835 (29.1%)	1,008 (30.8%)	985 (31.0%)	984 (31.4%)	1,105 (32.3%)	1,139 (34.5%)
	Female	356 (12.5%)	378 (12.2%)	394 (12.2%)	362 (11.1%)	360 (12.5%)	358 (10.9%)	374 (11.8%)	392 (12.5%)	430 (12.6%)	410 (12.4%)
	Subtotal	1,173 (41.2%)	1,306 (42.3%)	1,353 (42.0%)	1,362 (41.9%)	1,195 (41.6%)	1,366 (41.7%)	1,359 (42.8%)	1,376 (43.9%)	1,535 (44.9%)	1,549 (46.9%)
FR	Male	53 (1.9%)	73 (2.4%)	81 (2.5%)	97 (3.0%)	94 (3.3%)	100 (3.1%)	98 (3.1%)	108 (3.4%)	124 (3.6%)	113 (3.4%)
	Female	19 (0.7%)	23 (0.7%)	32 (1.0%)	33 (1.0%)	26 (0.9%)	37 (1.1%)	31 (1.0%)	37 (1.2%)	40 (1.2%)	38 (1.1%)
	Subtotal	72 (2.5%)	96 (3.1%)	113 (3.5%)	130 (4.0%)	120 (4.2%)	137 (4.2%)	129 (4.1%)	145 (4.6%)	164 (4.8%)	151 (4.6%)
USA	Male	124 (4.4%)	112 (3.6%)	129 (4.0%)	110 (3.4%)	88 (3.1%)	85 (2.6%)	69 (2.2%)	46 (1.5%)	52 (1.5%)	34 (1.0%)
	Female	20 (0.7%)	29 (0.9%)	29 (0.9%)	41 (1.3%)	27 (0.9%)	24 (0.7%)	18 (0.6%)	14 (0.4%)	14 (0.4%)	16 (0.5%)
	Subtotal	144 (5.1%)	141 (4.6%)	158 (4.9%)	151 (4.6%)	115 (4.0%)	109 (3.3%)	87 (2.7%)	60 (1.9%)	66 (1.9%)	50 (1.5%)
GNY	Male	16 (0.6%)	25 (0.8%)	21 (0.7%)	20 (0.6%)	17 (0.6%)	24 (0.7%)	14 (0.4%)	12 (0.4%)	19 (0.6%)	13 (0.4%)
	Female	6 (0.2%)	6 (0.2%)	4 (0.1%)	8 (0.2%)	3 (0.1%)	7 (0.2%)	10 (0.3%)	3 (0.1%)	4 (0.1%)	4 (0.1%)
	Subtotal	22 (0.8%)	31 (1.0%)	25 (0.8%)	28 (0.9%)	20 (0.7%)	31 (0.9%)	24 (0.8%)	15 (0.5%)	23 (0.7%)	17 (0.5%)
Other	Male	10 (0.4%)	10 (0.3%)	9 (0.3%)	9 (0.3%)	8 (0.3%)	8 (0.2%)	3 (0.1%)	2 (0.1%)	2 (0.1%)	5 (0.2%)
	Female	4 (0.1%)	5 (0.2%)	1 (0.0%)	3 (0.1%)	1 (0.0%)	1 (0.0%)	2 (0.1%)	2 (0.1%)	2 (0.1%)	2 (0.1%)
	Subtotal	14 (0.5%)	15 (0.5%)	10 (0.3%)	12 (0.4%)	9 (0.3%)	9 (0.3%)	5 (0.2%)	4 (0.1%)	4 (0.1%)	7 (0.2%)

Jump

Bred	Sex	2016	2017	2018	2019	2020	2021	2022	2023	2024	2025
GB	Male	959 (21.8%)	992 (21.2%)	870 (20.2%)	978 (19.8%)	831 (18.6%)	967 (18.2%)	871 (17.5%)	877 (17.7%)	793 (17.4%)	872 (18.5%)
	Female	412 (9.4%)	412 (8.8%)	407 (9.4%)	450 (9.1%)	388 (8.7%)	490 (9.2%)	451 (9.1%)	451 (9.1%)	418 (9.2%)	401 (8.5%)
	Subtotal	1,371 (31.2%)	1,404 (30.0%)	1,277 (29.6%)	1,428 (29.0%)	1,219 (27.2%)	1,457 (27.4%)	1,322 (26.6%)	1,328 (26.8%)	1,211 (26.6%)	1,273 (27.1%)
IRE	Male	1,995 (45.4%)	2,103 (45.0%)	1,918 (44.5%)	2,157 (43.8%)	1,958 (43.7%)	2,292 (43.1%)	2,131 (42.9%)	2,062 (41.6%)	1,867 (41.0%)	1,903 (40.5%)
	Female	328 (7.5%)	363 (7.8%)	376 (8.7%)	463 (9.4%)	452 (10.1%)	500 (9.4%)	435 (8.8%)	487 (9.8%)	480 (10.5%)	503 (10.7%)
	Subtotal	2,323 (52.8%)	2,466 (52.7%)	2,294 (53.2%)	2,620 (53.2%)	2,410 (53.8%)	2,792 (52.5%)	2,566 (51.6%)	2,549 (51.4%)	2,347 (51.5%)	2,406 (51.2%)
FR	Male	557 (12.7%)	652 (13.9%)	604 (14.0%)	698 (14.2%)	654 (14.6%)	858 (16.1%)	871 (17.5%)	861 (17.4%)	822 (18.0%)	830 (17.7%)
	Female	46 (1.0%)	60 (1.3%)	63 (1.5%)	93 (1.9%)	106 (2.4%)	118 (2.2%)	120 (2.4%)	138 (2.8%)	115 (2.5%)	145 (3.1%)
	Subtotal	603 (13.7%)	712 (15.2%)	667 (15.5%)	791 (16.0%)	760 (17.0%)	976 (18.4%)	991 (19.9%)	999 (20.1%)	937 (20.6%)	975 (20.7%)
USA	Male	41 (0.9%)	36 (0.8%)	29 (0.7%)	21 (0.4%)	25 (0.6%)	22 (0.4%)	18 (0.4%)	15 (0.3%)	5 (0.1%)	3 (0.1%)
	Female	2 (0.0%)	1 (0.0%)	2 (0.0%)	3 (0.1%)	3 (0.1%)	2 (0.0%)	2 (0.0%)	0 (0.0%)	1 (0.0%)	1 (0.0%)
	Subtotal	43 (1.0%)	37 (0.8%)	31 (0.7%)	24 (0.5%)	28 (0.6%)	24 (0.5%)	20 (0.4%)	15 (0.3%)	6 (0.1%)	4 (0.1%)
GNY	Male	46 (1.0%)	48 (1.0%)	31 (0.7%)	53 (1.1%)	49 (1.1%)	57 (1.1%)	60 (1.2%)	59 (1.2%)	46 (1.0%)	37 (0.8%)
	Female	5 (0.1%)	5 (0.1%)	2 (0.0%)	4 (0.1%)	4 (0.1%)	7 (0.1%)	9 (0.2%)	9 (0.2%)	4 (0.1%)	2 (0.0%)
	Subtotal	51 (1.2%)	53 (1.1%)	33 (0.8%)	57 (1.2%)	53 (1.2%)	64 (1.2%)	69 (1.4%)	68 (1.4%)	50 (1.1%)	39 (0.8%)
Other	Male	5 (0.1%)	4 (0.1%)	5 (0.1%)	8 (0.2%)	5 (0.1%)	3 (0.1%)	1 (0.0%)	1 (0.0%)	3 (0.1%)	4 (0.1%)
	Female	2 (0.0%)	2 (0.0%)	2 (0.0%)	1 (0.0%)	1 (0.0%)	0 (0.0%)	0 (0.0%)	0 (0.0%)	1 (0.0%)	0 (0.0%)
	Subtotal	7 (0.2%)	6 (0.1%)	7 (0.2%)	9 (0.2%)	6 (0.1%)	3 (0.1%)	1 (0.0%)	1 (0.0%)	4 (0.1%)	4 (0.1%)

Horse Population by Location

March 2025 Horses in Training Snapshot by Region versus Previous Years



North

AgeCat	2016	2017	2018	2019	2020	2021	2022	2023	2024	2025	vs. Last Year	vs. Pre-Covid
Flat Horses in Training												
2YO	713	666	674	716	662	593	609	583	529	558	+29 / +5.5%	-158 / -22.1%
3YO	710	740	732	735	812	796	733	721	677	641	-36 / -5.3%	-94 / -12.8%
4YO	385	407	411	429	413	402	416	405	418	413	-5 / -1.2%	-16 / -3.7%
5YO+	651	684	707	731	737	710	643	717	733	753	+20 / +2.7%	+22 / +3.0%
Subtotal	2459	2497	2524	2611	2624	2501	2401	2426	2357	2365	+8 / +0.3%	-246 / -9.4%
Jump Horses in Training												
3YO	9	4	6	9	5	7	10	8	0	1	+1 / +Inf	-8 / -88.9%
4-5YO	298	295	256	299	305	289	271	292	293	265	-28 / -9.6%	-34 / -11.4%
6-7YO	366	341	398	393	421	458	419	445	428	434	+6 / +1.4%	+41 / +10.4%
8YO+	452	458	472	439	475	546	439	422	430	433	+3 / +0.7%	-6 / -1.4%
Subtotal	1125	1098	1132	1140	1206	1300	1139	1167	1151	1133	-18 / -1.6%	-7 / -0.6%
Dual Horses in Training												
3YO	17	21	19	8	26	12	18	10	12	8	-4 / -33.3%	0 / 0.0%
4YO	36	43	61	31	41	42	23	33	36	37	+1 / +2.8%	+6 / +19.4%
5YO+	102	113	171	92	111	118	100	81	85	86	+1 / +1.2%	-6 / -6.5%
Subtotal	155	177	251	131	178	172	141	124	133	131	-2 / -1.5%	0 / 0.0%
Total Horses in Training												
	3739	3772	3907	3882	4008	3973	3681	3717	3641	3629	-12 / -0.3%	-253 / -6.5%

'vs. Pre-Covid' is comparison between 2025 and 2019

Midlands

AgeCat	2016	2017	2018	2019	2020	2021	2022	2023	2024	2025	vs. Last Year	vs. Pre-Covid
Flat Horses in Training												
2YO	1123	1186	1089	961	919	910	1003	954	928	895	-33 / -3.6%	-66 / -6.9%
3YO	1373	1387	1486	1406	1416	1336	1451	1420	1338	1394	+56 / +4.2%	-12 / -0.9%
4YO	529	594	578	621	578	659	641	665	653	626	-27 / -4.1%	+5 / +0.8%
5YO+	689	712	714	751	727	736	743	786	814	821	+7 / +0.9%	+70 / +9.3%
Subtotal	3714	3879	3867	3739	3640	3641	3838	3825	3733	3736	+3 / +0.1%	-3 / -0.1%
Jump Horses in Training												
3YO	9	13	12	9	4	12	9	14	13	4	-9 / -69.2%	-5 / -55.6%
4-5YO	510	545	494	584	662	625	613	674	616	671	+55 / +8.9%	+87 / +14.9%
6-7YO	590	559	606	680	676	789	762	761	802	731	-71 / -8.9%	+51 / +7.5%
8YO+	543	568	536	592	575	715	587	606	619	591	-28 / -4.5%	-1 / -0.2%
Subtotal	1652	1685	1648	1865	1917	2141	1971	2055	2050	1997	-53 / -2.6%	+132 / +7.1%
Dual Horses in Training												
3YO	20	12	15	12	12	9	9	16	9	6	-3 / -33.3%	-6 / -50.0%
4YO	52	56	89	51	47	47	49	43	43	48	+5 / +11.6%	-3 / -5.9%
5YO+	100	118	213	94	107	88	83	87	94	115	+21 / +22.3%	+21 / +22.3%
Subtotal	172	186	317	157	166	144	141	146	146	169	+23 / +15.8%	+12 / +7.6%
Total Horses in Training												
	5538	5750	5832	5761	5723	5926	5950	6026	5929	5902	-27 / -0.5%	+141 / +2.4%

'vs. Pre-Covid' is comparison between 2025 and 2019

South

AgeCat	2016	2017	2018	2019	2020	2021	2022	2023	2024	2025	vs. Last Year	vs. Pre-Covid
Flat Horses in Training												
2YO	1083	1125	1041	1062	970	963	973	922	877	792	-85 / -9.7%	-270 / -25.4%
3YO	1019	1007	1120	1113	1115	1053	1007	994	964	1021	+57 / +5.9%	-92 / -8.3%
4YO	452	442	457	521	493	484	499	432	440	396	-44 / -10.0%	-125 / -24.0%
5YO+	580	613	595	602	629	608	602	622	577	535	-42 / -7.3%	-67 / -11.1%
Subtotal	3134	3187	3213	3298	3207	3108	3081	2970	2858	2744	-114 / -4.0%	-554 / -16.8%
Jump Horses in Training												
3YO	12	9	12	11	10	18	9	13	28	11	-17 / -60.7%	0 / 0.0%
4-5YO	864	823	749	851	852	792	856	920	808	736	-72 / -8.9%	-115 / -13.5%
6-7YO	922	863	882	993	1041	1095	918	923	944	868	-76 / -8.1%	-125 / -12.6%
8YO+	785	758	760	800	817	938	766	732	647	629	-18 / -2.8%	-171 / -21.4%
Subtotal	2583	2453	2403	2655	2720	2843	2549	2588	2427	2244	-183 / -7.5%	-411 / -15.5%
Dual Horses in Training												
3YO	8	17	15	8	16	20	16	13	8	15	+7 / +87.5%	+7 / +87.5%
4YO	32	58	100	54	75	69	71	59	59	72	+13 / +22.0%	+18 / +33.3%
5YO+	131	132	278	107	124	112	132	115	130	133	+3 / +2.3%	+26 / +24.3%
Subtotal	171	207	393	169	215	201	219	187	197	220	+23 / +11.7%	+51 / +30.2%
Total Horses in Training												
	5888	5847	6009	6122	6142	6152	5849	5745	5482	5208	-274 / -5.0%	-914 / -14.9%

'vs. Pre-Covid' is comparison between 2025 and 2019

March 2025 Horses in Training Snapshot by Country versus Previous Years

Type	2016	2017	2018	2019	2020	2021	2022	2023	2024	2025	vs. Last Year	vs. Pre-Covid
England												
Flat	8980	9187	9240	9297	9117	8940	8973	8873	8640	8522	-118 / -1.4%	-775 / -8.3%
Jump	4660	4513	4506	4945	5093	5474	4994	5138	4917	4662	-255 / -5.2%	-283 / -5.7%
Dual	436	508	849	406	517	459	460	424	429	474	+45 / +10.5%	+68 / +16.7%
Overall	14076	14208	14595	14648	14727	14873	14427	14435	13986	13658	-328 / -2.3%	-990 / -6.8%
Scotland												
Flat	178	217	217	190	191	176	208	205	180	185	+5 / +2.8%	-5 / -2.6%
Jump	306	326	339	337	349	411	349	378	373	396	+23 / +6.2%	+59 / +17.5%
Dual	37	30	58	30	31	31	22	21	27	24	-3 / -11.1%	-6 / -20.0%
Overall	521	573	614	557	571	618	579	604	580	605	+25 / +4.3%	+48 / +8.6%
Wales												
Flat	149	159	147	161	163	134	139	143	128	138	+10 / +7.8%	-23 / -14.3%
Jump	394	397	338	378	401	399	316	294	338	316	-22 / -6.5%	-62 / -16.4%
Dual	25	32	54	21	11	27	19	12	20	22	+2 / +10.0%	+1 / +4.8%
Overall	568	588	539	560	575	560	474	449	486	476	-10 / -2.1%	-84 / -15.0%

'vs. Pre-Covid' is comparison between 2025 and 2019

March 2025 Horses in Training Snapshot by Training Centre versus Previous Years

Type	2016	2017	2018	2019	2020	2021	2022	2023	2024	2025	vs. Last Year	vs. Pre-Covid
Cheltenham (GL54)												
Flat	16	15	17	17	13	14	16	17	14	15	+1 / +7.1%	-2 / -11.8%
Jump	446	434	436	448	523	557	528	534	513	521	+8 / +1.6%	+73 / +16.3%
Dual	18	23	76	27	13	11	14	12	15	22	+7 / +46.7%	-5 / -18.5%
Overall	480	472	529	492	549	582	558	563	542	558	+16 / +3.0%	+66 / +13.4%
Lambourn (RG17)												
Flat	875	952	1009	1026	948	904	863	913	898	865	-33 / -3.7%	-161 / -15.7%
Jump	350	340	339	358	363	371	318	313	269	273	+4 / +1.5%	-85 / -23.7%
Dual	22	21	42	13	30	18	29	32	28	29	+1 / +3.6%	+16 / +123.1%
Overall	1247	1313	1390	1397	1341	1293	1210	1258	1195	1167	-28 / -2.3%	-230 / -16.5%
Malton (YO17)												
Flat	662	650	613	681	743	613	656	668	684	672	-12 / -1.8%	-9 / -1.3%
Jump	131	122	134	117	115	115	94	94	75	71	-4 / -5.3%	-46 / -39.3%
Dual	24	34	39	15	38	46	39	26	34	30	-4 / -11.8%	+15 / +100.0%
Overall	817	806	786	813	896	774	789	788	793	773	-20 / -2.5%	-40 / -4.9%
Marlborough (SN8)												
Flat	567	535	548	560	523	501	468	443	461	412	-49 / -10.6%	-148 / -26.4%
Jump	96	70	77	78	75	83	84	82	80	77	-3 / -3.8%	-1 / -1.3%
Dual	3	2	1	4	6	0	2	3	5	4	-1 / -20.0%	0 / 0.0%
Overall	666	607	626	642	604	584	554	528	546	493	-53 / -9.7%	-149 / -23.2%
Middleham (DL8)												
Flat	583	539	582	633	638	615	517	580	539	542	+3 / +0.6%	-91 / -14.4%
Jump	80	91	100	116	112	123	120	121	113	102	-11 / -9.7%	-14 / -12.1%
Dual	19	25	36	23	22	30	16	23	15	25	+10 / +66.7%	+2 / +8.7%
Overall	682	655	718	772	772	768	653	724	667	669	+2 / +0.3%	-103 / -13.3%
Newbury (RG20)												
Flat	388	396	374	437	423	437	493	429	414	376	-38 / -9.2%	-61 / -14.0%
Jump	23	15	15	21	10	12	11	38	56	81	+25 / +44.6%	+60 / +285.7%
Dual	2	9	12	7	8	8	7	4	4	5	+1 / +25.0%	-2 / -28.6%
Overall	413	420	401	465	441	457	511	471	474	462	-12 / -2.5%	-3 / -0.6%
Newmarket (CB8)												
Flat	2702	2769	2766	2621	2626	2618	2656	2724	2666	2616	-50 / -1.9%	-5 / -0.2%
Jump	57	66	63	80	76	88	66	84	76	76	0 / 0.0%	-4 / -5.0%
Dual	30	34	43	23	35	30	30	35	40	39	-1 / -2.5%	+16 / +69.6%
Overall	2789	2869	2872	2724	2737	2736	2752	2843	2782	2731	-51 / -1.8%	+7 / +0.3%

'vs. Pre-Covid' is comparison between 2025 and 2019