



# Horse Population Report

Updated on 28 February 2025



# Introduction

Welcome to the latest update on the Racehorse Population from the British Horseracing Authority.

The aim of this document is to give stakeholders and the wider Public an insight into the current state of the Horse Population in Great Britain. It is hoped that this transparency will ensure that all decision makers have access to the key data required to help British Racing deliver a Competitive and Compelling product to stakeholders, racegoers and the wider public.

If you have any questions regarding the content of this report or suggestions for how it could be improved further, please contact Joe Yates – jyates@britishhorseracing.com

## Definitions

This report uses the Horses in Training returns from the Weatherby's Racing Administration System, this is completed by trainers and should be updated whenever a horse enters or leaves training in their care as part of the conditions of their licence.

## Horses in Training

Unless otherwise stated, snapshots of Horses in Training will be from the 15th day of the month in question and year to date figures will be up to and including the date titled at the front of the report.

Horses' ratings will be taken from the most recently published ratings by the BHA Handicapping Team, which is currently at 7am each Tuesday morning. For example, if looking at the Horses in a particular rating band for July 2011, the horses in training number will be from Friday 15th July 2011 and ratings, where possible, will be assigned to each horse from the ratings published by the BHA Handicappers on Tuesday 12th July 2011.

The Gender of a horse will be taken from the reporting date in question, regardless of whether this has since changed.

In the case of YTD reporting, where a horse's gender or training type has changed in the year-to-date period, the most recent is taken.

This report does not count any horses that are temporarily racing abroad for GB Trainers at the time of reporting.

Yearlings are not included in total counts of flat and/or dual horses but will be sometimes shown separately for information purposes.

Yearlings and two-year-olds are not included in total counts of jump horses or counts of jump horses that include dual horses but will be sometimes shown separately for information purposes.

Yearlings, two-year-olds and three-year-olds are not included in total counts of Hunter Chasers but will be sometimes shown separately for information purposes.

Yearlings and two-year-olds in training that are recorded as dual horses have been re-coded as flat horses.

Hunter Chasers are not included in any counts of Jump Horses or Total figures but will be sometimes shown separately for information purposes.

Horses' training locations are defined by the trainers' primary training location. Training regions are defined the same as regions for the Fixture List; 'North' is north of latitude 53.42911, 'South' is south of latitude 51.88002 and 'Midlands' is anywhere in between. Training centres are defined by postcodes and surrounding areas.

## Runners

Unless otherwise specified, Total Runners and Individual Runners metrics only counts runners that ran in GB races including any voided races. Withdrawn horses are not included.

Hunter Chases are not included in this section but will be sometimes shown separately for information purposes.

Total Runners is a count of all runners in races, whilst individual runners only counts each individual horse once.

# Monthly Horses in Training

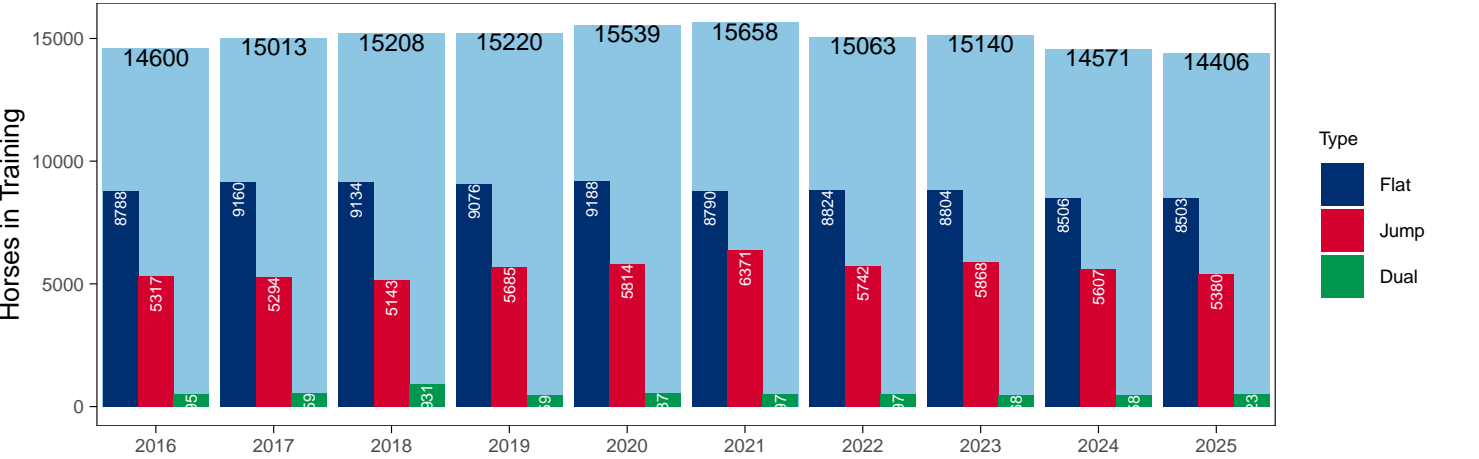
## February 2025 Horses in Training Snapshot versus Previous Years

Type	2016	2017	2018	2019	2020	2021	2022	2023	2024	2025	vs. Last Year	vs. Pre-Covid
Flat	8788	9160	9134	9076	9188	8790	8824	8804	8506	8503	-3 / 0.0%	-573 / -6.3%
Jump	5317	5294	5143	5685	5814	6371	5742	5868	5607	5380	-227 / -4.0%	-305 / -5.4%
Dual	495	559	931	459	537	497	497	468	458	523	+65 / +14.2%	+64 / +13.9%
Hunter	1585	1548	1403	1388	1339	798	1055	958	1194	892	-302 / -25.3%	-496 / -35.7%
Total	14600	15013	15208	15220	15539	15658	15063	15140	14571	14406	-165 / -1.1%	-814 / -5.3%

'vs. Pre-Covid' is comparison between 2025 and 2019

### Snapshot of Total Horses in Training in February

Horses in Training in February, shown by Training Type



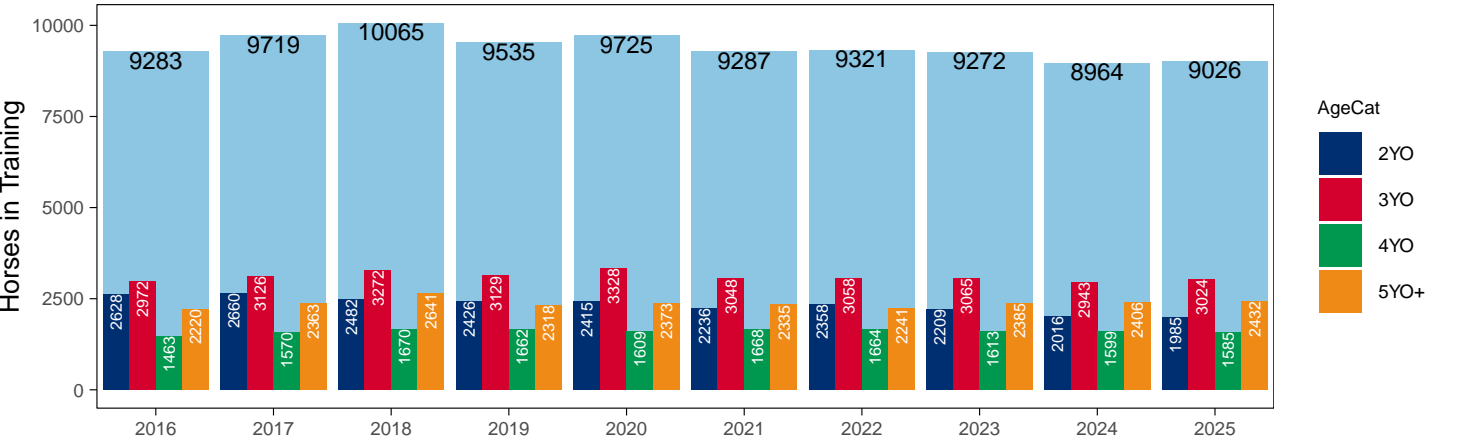
### Flat (including Dual)

AgeCat	2016	2017	2018	2019	2020	2021	2022	2023	2024	2025	vs. Last Year	vs. Pre-Covid
2YO	2628	2660	2482	2426	2415	2236	2358	2209	2016	1985	-31 / -1.5%	-441 / -18.2%
3YO	2972	3126	3272	3129	3328	3048	3058	3065	2943	3024	+81 / +2.8%	-105 / -3.4%
4YO	1463	1570	1670	1662	1609	1668	1664	1613	1599	1585	-14 / -0.9%	-77 / -4.6%
5YO+	2220	2363	2641	2318	2373	2335	2241	2385	2406	2432	+26 / +1.1%	+114 / +4.9%
Total	9283	9719	10065	9535	9725	9287	9321	9272	8964	9026	+62 / +0.7%	-509 / -5.3%

'vs. Pre-Covid' is comparison between 2025 and 2019

### Snapshot of Flat Horses in Training in February

Flat Horses in Training in February, shown by Age



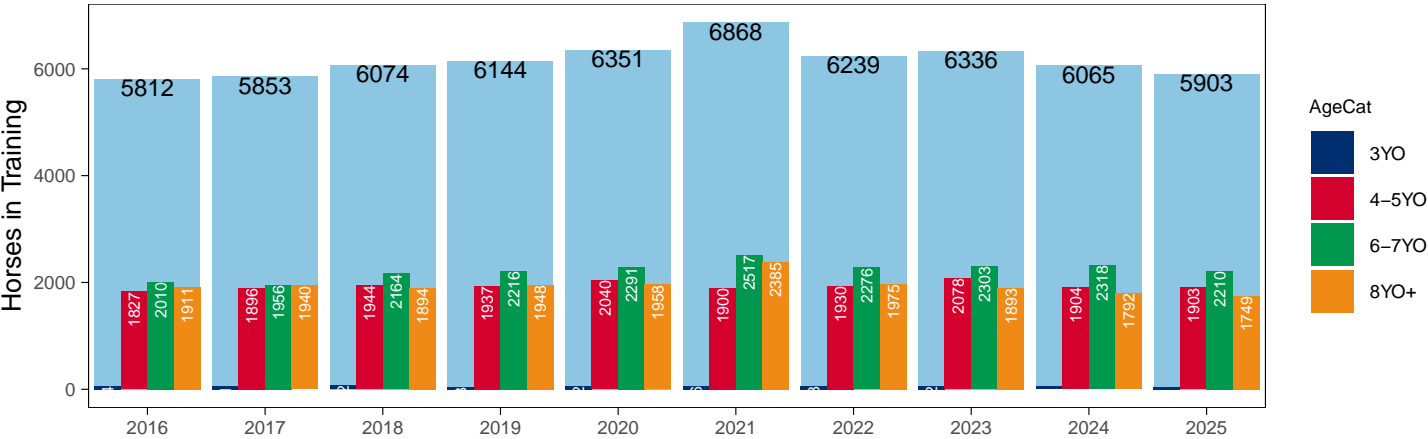
Jump (including Dual)

AgeCat	2016	2017	2018	2019	2020	2021	2022	2023	2024	2025	vs. Last Year	vs. Pre-Covid
3YO	64	61	72	43	62	66	58	62	51	41	-10 / -19.6%	-2 / -4.7%
4-5YO	1827	1896	1944	1937	2040	1900	1930	2078	1904	1903	-1 / -0.1%	-34 / -1.8%
6-7YO	2010	1956	2164	2216	2291	2517	2276	2303	2318	2210	-108 / -4.7%	-6 / -0.3%
8YO+	1911	1940	1894	1948	1958	2385	1975	1893	1792	1749	-43 / -2.4%	-199 / -10.2%
Total	5812	5853	6074	6144	6351	6868	6239	6336	6065	5903	-162 / -2.7%	-241 / -3.9%

'vs. Pre-Covid' is comparison between 2025 and 2019

Snapshot of Jump Horses in Training in February

Jump Horses in Training in February, shown by Age



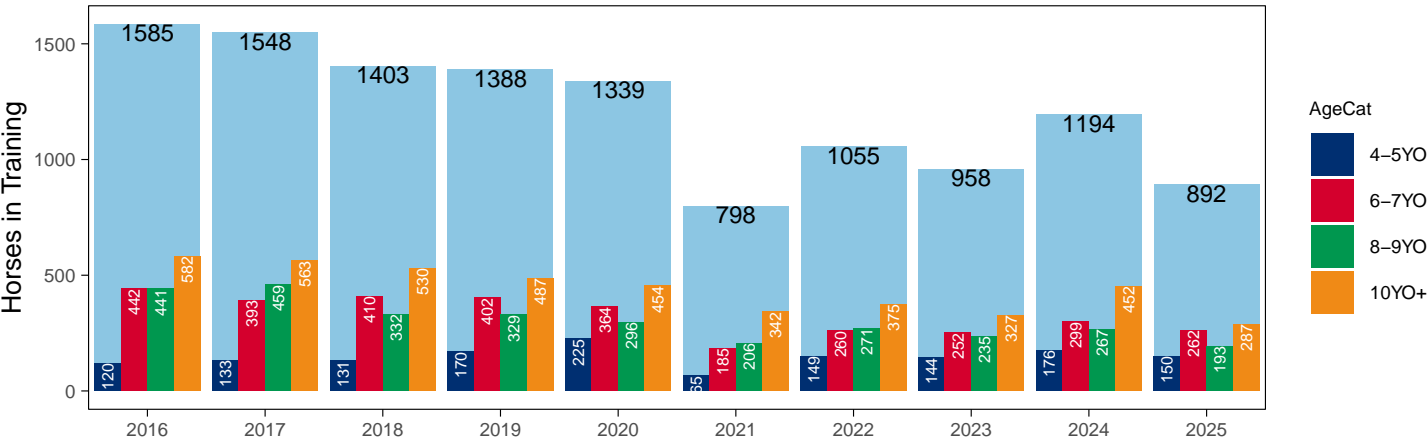
Hunter Chasers

AgeCat	2016	2017	2018	2019	2020	2021	2022	2023	2024	2025	vs. Last Year	vs. Pre-Covid
4-5YO	120	133	131	170	225	65	149	144	176	150	-26 / -14.8%	-20 / -11.8%
6-7YO	442	393	410	402	364	185	260	252	299	262	-37 / -12.4%	-140 / -34.8%
8-9YO	441	459	332	329	296	206	271	235	267	193	-74 / -27.7%	-136 / -41.3%
10YO+	582	563	530	487	454	342	375	327	452	287	-165 / -36.5%	-200 / -41.1%
Total	1585	1548	1403	1388	1339	798	1055	958	1194	892	-302 / -25.3%	-496 / -35.7%

'vs. Pre-Covid' is comparison between 2025 and 2019

Snapshot of Hunter Chasers in Training in February

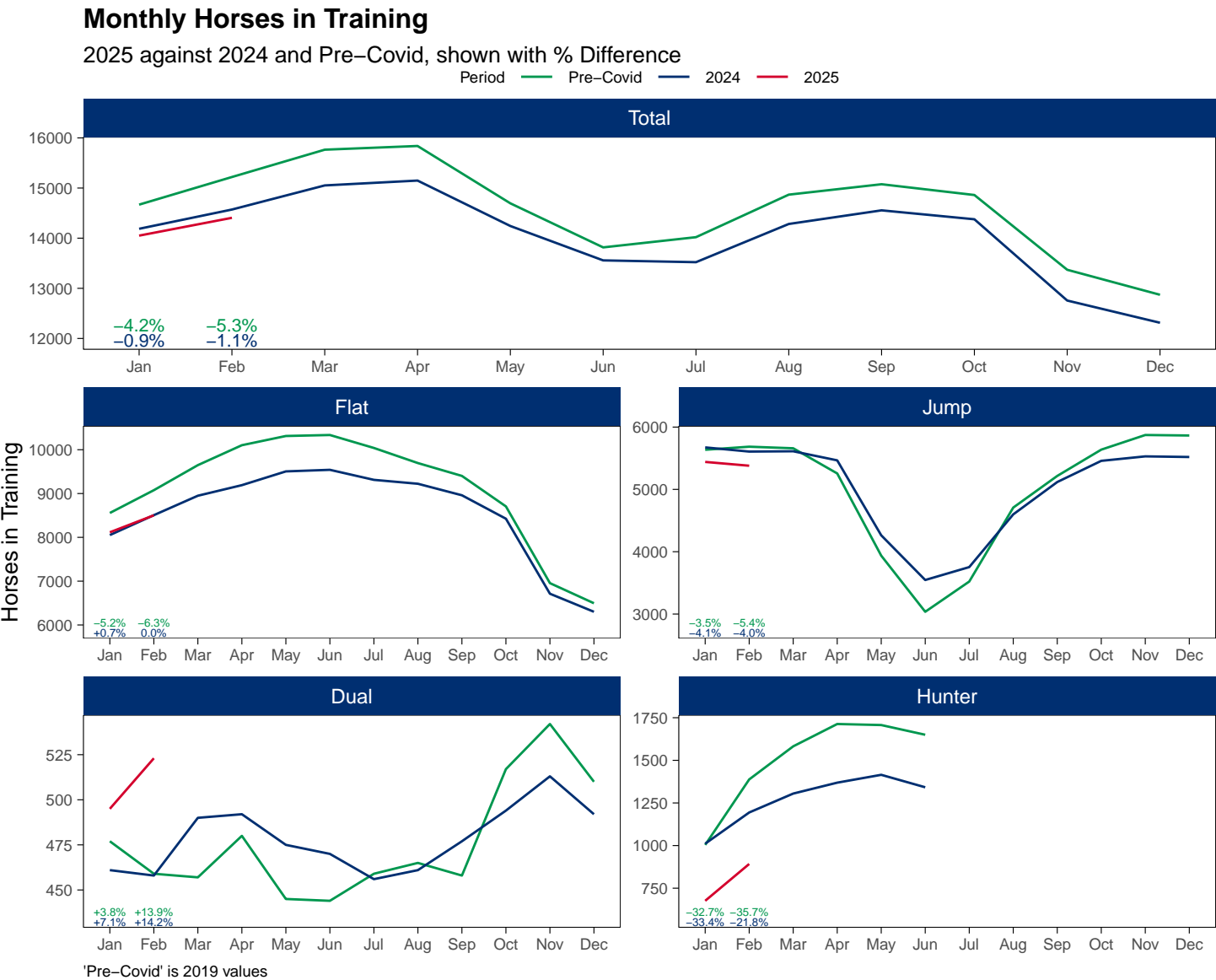
Hunter Chasers in Training in February, shown by Age



2025 Horses in Training versus Previous Years

Type	Period	Jan	Feb	Mar	Apr	May	Jun	Jul	Aug	Sep	Oct	Nov	Dec
Flat	2025	8115	8503										
	2024	8052	8506	8950	9191	9505	9541	9312	9223	8960	8425	6713	6301
	Pre-Covid	8556	9076	9648	10103	10313	10336	10040	9695	9402	8706	6955	6496
Jump	2025	5441	5380										
	2024	5674	5607	5612	5466	4263	3546	3753	4599	5118	5458	5530	5520
	Pre-Covid	5636	5685	5660	5256	3937	3036	3521	4708	5216	5638	5873	5865
Dual	2025	495	523										
	2024	461	458	490	492	475	470	456	461	477	494	513	492
	Pre-Covid	477	459	457	480	445	444	459	465	458	517	542	510
Hunter	2025	676	892										
	2024	1011	1194	1305	1369	1415	1342						
	Pre-Covid	1004	1388	1582	1713	1707	1650						
Total	2025	14051	14406										
	2024	14187	14571	15052	15149	14243	13557	13521	14283	14555	14377	12756	12313
	Pre-Covid	14669	15220	15765	15839	14695	13816	14020	14868	15076	14861	13370	12871

'Pre-Covid' is 2019 values



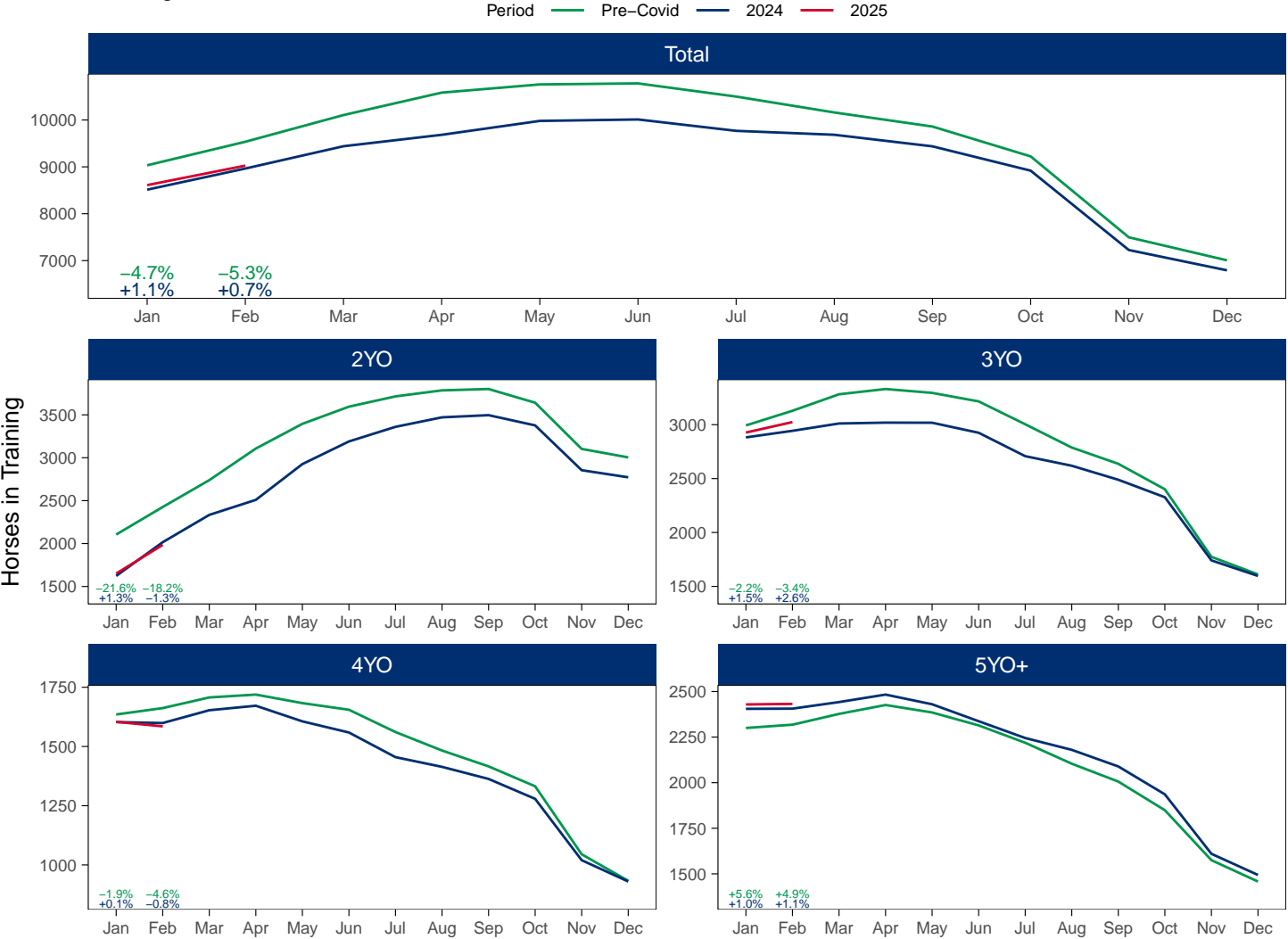
Flat (including Dual)

AgeCat	Period	Jan	Feb	Mar	Apr	May	Jun	Jul	Aug	Sep	Oct	Nov	Dec
2YO	2025	1650	1985										
	2024	1623	2016	2334	2509	2926	3190	3360	3471	3496	3377	2855	2772
	Pre-Covid	2105	2426	2739	3107	3395	3595	3715	3785	3801	3641	3103	3004
3YO	2025	2927	3024										
	2024	2882	2943	3011	3019	3018	2925	2708	2619	2489	2327	1741	1597
	Pre-Covid	2993	3129	3282	3331	3295	3216	3004	2788	2637	2401	1774	1611
4YO	2025	1604	1585										
	2024	1603	1599	1653	1672	1606	1559	1455	1414	1363	1279	1020	930
	Pre-Covid	1635	1662	1707	1719	1683	1655	1561	1483	1416	1332	1045	933
5YO+	2025	2429	2432										
	2024	2405	2406	2442	2483	2430	2337	2245	2180	2089	1936	1610	1494
	Pre-Covid	2300	2318	2377	2426	2385	2314	2219	2104	2006	1849	1575	1458
Total	2025	8610	9026										
	2024	8513	8964	9440	9683	9980	10011	9768	9684	9437	8919	7226	6793
	Pre-Covid	9033	9535	10105	10583	10758	10780	10499	10160	9860	9223	7497	7006

'Pre-Covid' is 2019 values

Monthly Flat Horses in Training

2025 against 2024 and Pre-Covid, shown with % Difference



'Pre-Covid' is 2019 values

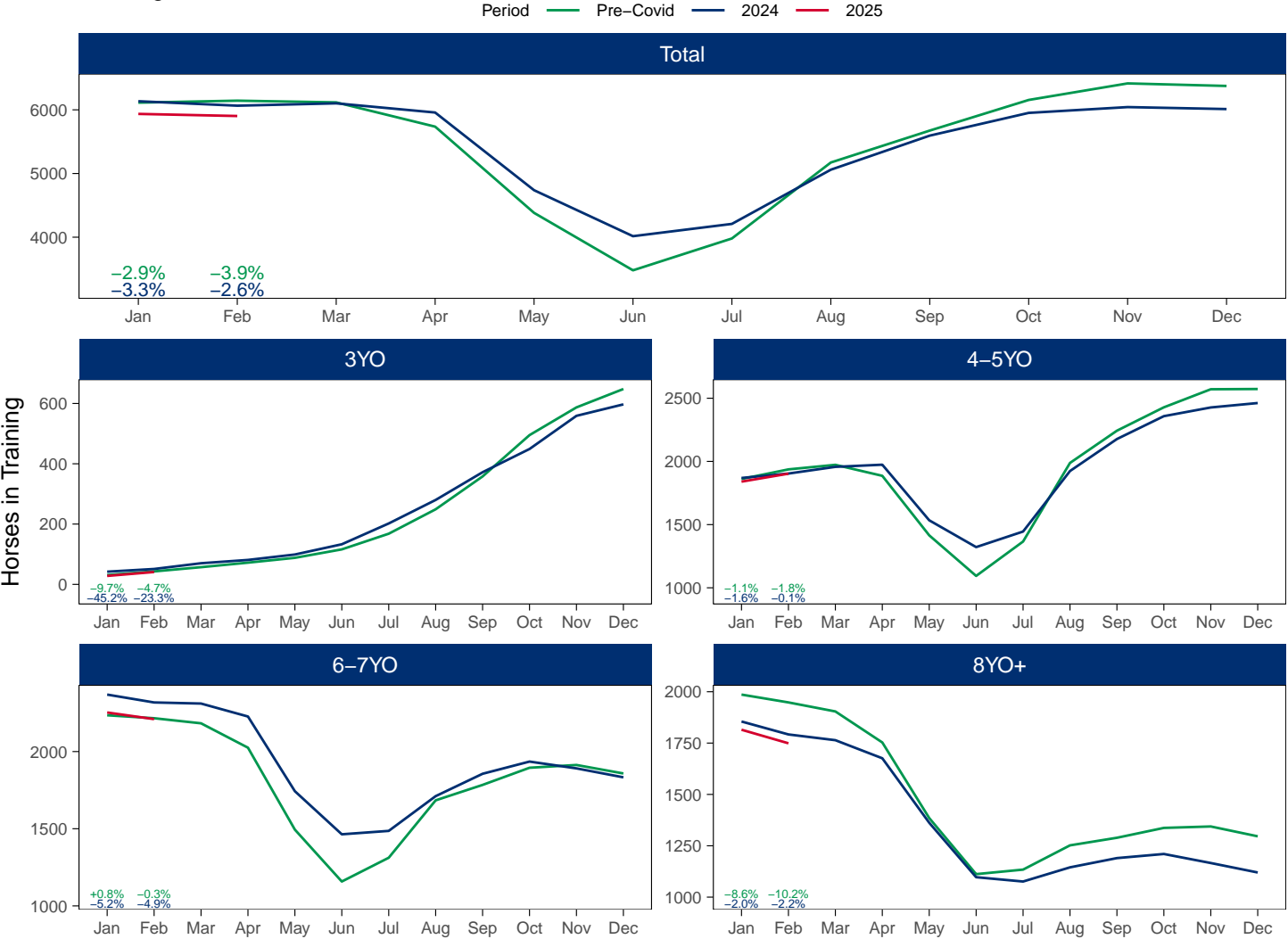
Jump (including Dual)

AgeCat	Period	Jan	Feb	Mar	Apr	May	Jun	Jul	Aug	Sep	Oct	Nov	Dec
3YO	2025	28	41										
	2024	42	51	70	81	99	133	202	280	372	449	559	597
	Pre-Covid	31	43	57	72	88	116	168	249	358	495	587	648
4-5YO	2025	1840	1903										
	2024	1869	1904	1957	1974	1534	1322	1445	1924	2177	2358	2427	2462
	Pre-Covid	1861	1937	1973	1886	1415	1094	1366	1988	2243	2428	2571	2573
6-7YO	2025	2253	2210										
	2024	2369	2318	2311	2227	1743	1464	1486	1711	1856	1935	1891	1833
	Pre-Covid	2235	2216	2183	2025	1494	1158	1312	1684	1784	1895	1913	1858
8YO+	2025	1815	1749										
	2024	1855	1792	1764	1676	1362	1097	1076	1145	1190	1210	1166	1120
	Pre-Covid	1986	1948	1904	1753	1385	1112	1134	1252	1289	1337	1344	1296
Total	2025	5936	5903										
	2024	6135	6065	6102	5958	4738	4016	4209	5060	5595	5952	6043	6012
	Pre-Covid	6113	6144	6117	5736	4382	3480	3980	5173	5674	6155	6415	6375

'Pre-Covid' is 2019 values

Monthly Jump Horses in Training

2025 against 2024 and Pre-Covid, shown with % Difference



'Pre-Covid' is 2019 values

Hunter Chasers

AgeCat	Period	Jan	Feb	Mar	Apr	May	Jun	Jul	Aug	Sep	Oct	Nov	Dec
4-5YO	2025	94	150										
	2024	121	176	227	265	281	261						
	Pre-Covid	92	170	213	267	268	263						
6-7YO	2025	209	262										
	2024	260	299	328	342	350	327						
	Pre-Covid	296	402	451	471	472	462						
8-9YO	2025	145	193										
	2024	229	267	285	290	302	288						
	Pre-Covid	244	329	369	392	389	369						
10YO+	2025	228	287										
	2024	401	452	465	472	482	466						
	Pre-Covid	372	487	549	583	578	556						
Total	2025	676	892										
	2024	1011	1194	1305	1369	1415	1342						
	Pre-Covid	1004	1388	1582	1713	1707	1650						

'Pre-Covid' is 2019 values

Monthly Hunter Chasers in Training

2025 against 2024 and Pre-Covid, shown with % Difference



'Pre-Covid' is 2019 values



February 2025 Horses in Training by Rating Band Snapshot versus Previous Years

Flat (including Dual)

AgeCat	RatBand	2016	2017	2018	2019	2020	2021	2022	2023	2024	2025
2YO	Unrated	2,628 (100.0%)	2,660 (100.0%)	2,482 (100.0%)	2,426 (100.0%)	2,415 (100.0%)	2,236 (100.0%)	2,358 (100.0%)	2,209 (100.0%)	2,016 (100.0%)	1,985 (100.0%)
	Subtotal	2,628 (100.0%)	2,660 (100.0%)	2,482 (100.0%)	2,426 (100.0%)	2,415 (100.0%)	2,236 (100.0%)	2,358 (100.0%)	2,209 (100.0%)	2,016 (100.0%)	1,985 (100.0%)
3YO	Unrated	1,628 (54.8%)	1,643 (52.6%)	1,976 (60.4%)	1,795 (57.4%)	2,016 (60.6%)	1,801 (59.1%)	1,712 (56.0%)	1,759 (57.4%)	1,652 (56.1%)	1,760 (58.2%)
	0-50	94 (3.2%)	103 (3.3%)	86 (2.6%)	103 (3.3%)	127 (3.8%)	100 (3.3%)	123 (4.0%)	104 (3.4%)	103 (3.5%)	91 (3.0%)
	51-60	186 (6.3%)	227 (7.3%)	178 (5.4%)	257 (8.2%)	204 (6.1%)	216 (7.1%)	221 (7.2%)	205 (6.7%)	225 (7.6%)	215 (7.1%)
	61-70	363 (12.2%)	361 (11.5%)	335 (10.2%)	300 (9.6%)	311 (9.3%)	327 (10.7%)	318 (10.4%)	325 (10.6%)	302 (10.3%)	310 (10.3%)
	71-80	368 (12.4%)	393 (12.6%)	373 (11.4%)	325 (10.4%)	340 (10.2%)	309 (10.1%)	360 (11.8%)	343 (11.2%)	338 (11.5%)	326 (10.8%)
	81-90	196 (6.6%)	264 (8.4%)	179 (5.5%)	199 (6.4%)	182 (5.5%)	161 (5.3%)	190 (6.2%)	193 (6.3%)	185 (6.3%)	178 (5.9%)
	91-100	80 (2.7%)	79 (2.5%)	78 (2.4%)	90 (2.9%)	82 (2.5%)	78 (2.6%)	68 (2.2%)	77 (2.5%)	78 (2.7%)	90 (3.0%)
	101+	57 (1.9%)	56 (1.8%)	67 (2.0%)	60 (1.9%)	66 (2.0%)	56 (1.8%)	66 (2.2%)	59 (1.9%)	60 (2.0%)	54 (1.8%)
Subtotal		2,972 (100.0%)	3,126 (100.0%)	3,272 (100.0%)	3,129 (100.0%)	3,328 (100.0%)	3,048 (100.0%)	3,058 (100.0%)	3,065 (100.0%)	2,943 (100.0%)	3,024 (100.0%)
4YO	Unrated	248 (17.0%)	248 (15.8%)	352 (21.1%)	322 (19.4%)	299 (18.6%)	374 (22.4%)	296 (17.8%)	297 (18.4%)	261 (16.3%)	303 (19.1%)
	0-50	128 (8.7%)	133 (8.5%)	163 (9.8%)	186 (11.2%)	190 (11.8%)	178 (10.7%)	186 (11.2%)	184 (11.4%)	165 (10.3%)	158 (10.0%)
	51-60	178 (12.2%)	200 (12.7%)	215 (12.9%)	191 (11.5%)	212 (13.2%)	217 (13.0%)	223 (13.4%)	232 (14.4%)	241 (15.1%)	208 (13.1%)
	61-70	238 (16.3%)	257 (16.4%)	252 (15.1%)	275 (16.5%)	267 (16.6%)	261 (15.6%)	280 (16.8%)	260 (16.1%)	293 (18.3%)	236 (14.9%)
	71-80	249 (17.0%)	315 (20.1%)	288 (17.2%)	256 (15.4%)	221 (13.7%)	277 (16.6%)	291 (17.5%)	270 (16.7%)	283 (17.7%)	273 (17.2%)
	81-90	229 (15.7%)	218 (13.9%)	204 (12.2%)	218 (13.1%)	203 (12.6%)	180 (10.8%)	210 (12.6%)	194 (12.0%)	190 (11.9%)	214 (13.5%)
	91-100	106 (7.2%)	108 (6.9%)	128 (7.7%)	131 (7.9%)	121 (7.5%)	116 (7.0%)	106 (6.4%)	81 (5.0%)	95 (5.9%)	99 (6.2%)
	101+	87 (5.9%)	91 (5.8%)	68 (4.1%)	83 (5.0%)	96 (6.0%)	65 (3.9%)	72 (4.3%)	95 (5.9%)	71 (4.4%)	94 (5.9%)
Subtotal		1,463 (100.0%)	1,570 (100.0%)	1,670 (100.0%)	1,662 (100.0%)	1,609 (100.0%)	1,668 (100.0%)	1,664 (100.0%)	1,613 (100.0%)	1,599 (100.0%)	1,585 (100.0%)
5YO+	Unrated	280 (12.6%)	332 (14.0%)	588 (22.3%)	287 (12.4%)	350 (14.7%)	355 (15.2%)	364 (16.2%)	326 (13.7%)	322 (13.4%)	299 (12.3%)
	0-50	205 (9.2%)	246 (10.4%)	322 (12.2%)	364 (15.7%)	318 (13.4%)	296 (12.7%)	321 (14.3%)	320 (13.4%)	310 (12.9%)	348 (14.3%)
	51-60	344 (15.5%)	331 (14.0%)	354 (13.4%)	343 (14.8%)	375 (15.8%)	386 (16.5%)	360 (16.1%)	391 (16.4%)	444 (18.5%)	435 (17.9%)
	61-70	406 (18.3%)	414 (17.5%)	396 (15.0%)	398 (17.2%)	402 (16.9%)	424 (18.2%)	379 (16.9%)	427 (17.9%)	445 (18.5%)	464 (19.1%)
	71-80	376 (16.9%)	367 (15.5%)	355 (13.4%)	332 (14.3%)	365 (15.4%)	338 (14.5%)	297 (13.3%)	376 (15.8%)	354 (14.7%)	368 (15.1%)
	81-90	296 (13.3%)	325 (13.8%)	306 (11.6%)	276 (11.9%)	280 (11.8%)	240 (10.3%)	237 (10.6%)	250 (10.5%)	261 (10.8%)	272 (11.2%)
	91-100	170 (7.7%)	185 (7.8%)	177 (6.7%)	180 (7.8%)	156 (6.6%)	154 (6.6%)	146 (6.5%)	154 (6.5%)	146 (6.1%)	119 (4.9%)
	101+	143 (6.4%)	163 (6.9%)	143 (5.4%)	138 (6.0%)	127 (5.4%)	142 (6.1%)	137 (6.1%)	141 (5.9%)	124 (5.2%)	127 (5.2%)
Subtotal		2,220 (100.0%)	2,363 (100.0%)	2,641 (100.0%)	2,318 (100.0%)	2,373 (100.0%)	2,335 (100.0%)	2,241 (100.0%)	2,385 (100.0%)	2,406 (100.0%)	2,432 (100.0%)
Overall	Unrated	4,784 (51.5%)	4,883 (50.2%)	5,398 (53.6%)	4,830 (50.7%)	5,080 (52.2%)	4,766 (51.3%)	4,730 (50.7%)	4,591 (49.5%)	4,251 (47.4%)	4,347 (48.2%)
	0-50	427 (4.6%)	482 (5.0%)	571 (5.7%)	653 (6.8%)	635 (6.5%)	574 (6.2%)	630 (6.8%)	608 (6.6%)	578 (6.4%)	597 (6.6%)
	51-60	708 (7.6%)	758 (7.8%)	747 (7.4%)	791 (8.3%)	791 (8.1%)	819 (8.8%)	804 (8.6%)	828 (8.9%)	910 (10.2%)	858 (9.5%)
	61-70	1,007 (10.8%)	1,032 (10.6%)	983 (9.8%)	973 (10.2%)	980 (10.1%)	1,012 (10.9%)	977 (10.5%)	1,012 (10.9%)	1,040 (11.6%)	1,010 (11.2%)
	71-80	993 (10.7%)	1,075 (11.1%)	1,016 (10.1%)	913 (9.6%)	926 (9.5%)	924 (9.9%)	948 (10.2%)	989 (10.7%)	975 (10.9%)	967 (10.7%)
	81-90	721 (7.8%)	807 (8.3%)	689 (6.8%)	693 (7.3%)	665 (6.8%)	581 (6.3%)	637 (6.8%)	637 (6.9%)	636 (7.1%)	664 (7.4%)
	91-100	356 (3.8%)	372 (3.8%)	383 (3.8%)	401 (4.2%)	359 (3.7%)	348 (3.7%)	320 (3.4%)	312 (3.4%)	319 (3.6%)	308 (3.4%)
	101+	287 (3.1%)	310 (3.2%)	278 (2.8%)	281 (2.9%)	289 (3.0%)	263 (2.8%)	275 (3.0%)	295 (3.2%)	255 (2.8%)	275 (3.0%)
Total		9,283 (100.0%)	9,719 (100.0%)	10,065 (100.0%)	9,535 (100.0%)	9,725 (100.0%)	9,287 (100.0%)	9,321 (100.0%)	9,272 (100.0%)	8,964 (100.0%)	9,026 (100.0%)

Where a horse has more than one published rating (published Flat Turf and published Flat AWT mark), the higher of the two is taken.

## Jump (including Dual)

AgeCat	RatBand	2016	2017	2018	2019	2020	2021	2022	2023	2024	2025
3YO	Unrated	64 (100.0%)	61 (100.0%)	72 (100.0%)	43 (100.0%)	62 (100.0%)	66 (100.0%)	58 (100.0%)	62 (100.0%)	51 (100.0%)	41 (100.0%)
	<b>Subtotal</b>	<b>64 (100.0%)</b>	<b>61 (100.0%)</b>	<b>72 (100.0%)</b>	<b>43 (100.0%)</b>	<b>62 (100.0%)</b>	<b>66 (100.0%)</b>	<b>58 (100.0%)</b>	<b>62 (100.0%)</b>	<b>51 (100.0%)</b>	<b>41 (100.0%)</b>
4-5YO	Unrated	1,396 (76.4%)	1,434 (75.6%)	1,482 (76.2%)	1,490 (76.9%)	1,502 (73.6%)	1,536 (80.8%)	1,440 (74.6%)	1,603 (77.1%)	1,445 (75.9%)	1,444 (75.9%)
	0-100	110 (6.0%)	112 (5.9%)	94 (4.8%)	104 (5.4%)	167 (8.2%)	125 (6.6%)	206 (10.7%)	210 (10.1%)	227 (11.9%)	210 (11.0%)
	101-110	91 (5.0%)	87 (4.6%)	113 (5.8%)	82 (4.2%)	100 (4.9%)	64 (3.4%)	117 (6.1%)	108 (5.2%)	97 (5.1%)	105 (5.5%)
	111-120	74 (4.1%)	105 (5.5%)	97 (5.0%)	115 (5.9%)	108 (5.3%)	72 (3.8%)	82 (4.2%)	98 (4.7%)	79 (4.1%)	90 (4.7%)
	121-130	69 (3.8%)	80 (4.2%)	92 (4.7%)	80 (4.1%)	92 (4.5%)	63 (3.3%)	56 (2.9%)	45 (2.2%)	36 (1.9%)	44 (2.3%)
	131-140	61 (3.3%)	61 (3.2%)	46 (2.4%)	50 (2.6%)	53 (2.6%)	23 (1.2%)	20 (1.0%)	13 (0.6%)	16 (0.8%)	5 (0.3%)
	141-150	18 (1.0%)	14 (0.7%)	15 (0.8%)	15 (0.8%)	14 (0.7%)	13 (0.7%)	7 (0.4%)	1 (0.0%)	4 (0.2%)	3 (0.2%)
	151+	8 (0.4%)	3 (0.2%)	5 (0.3%)	1 (0.1%)	4 (0.2%)	4 (0.2%)	2 (0.1%)	NA (-)	NA (-)	2 (0.1%)
<b>Subtotal</b>		<b>1,827 (100.0%)</b>	<b>1,896 (100.0%)</b>	<b>1,944 (100.0%)</b>	<b>1,937 (100.0%)</b>	<b>2,040 (100.0%)</b>	<b>1,900 (100.0%)</b>	<b>1,930 (100.0%)</b>	<b>2,078 (100.0%)</b>	<b>1,904 (100.0%)</b>	<b>1,903 (100.0%)</b>
6-7YO	Unrated	667 (33.2%)	575 (29.4%)	684 (31.6%)	659 (29.7%)	633 (27.6%)	821 (32.6%)	651 (28.6%)	721 (31.3%)	762 (32.9%)	605 (27.4%)
	0-100	347 (17.3%)	367 (18.8%)	378 (17.5%)	403 (18.2%)	458 (20.0%)	525 (20.9%)	610 (26.8%)	633 (27.5%)	656 (28.3%)	660 (29.9%)
	101-110	246 (12.2%)	245 (12.5%)	264 (12.2%)	295 (13.3%)	293 (12.8%)	305 (12.1%)	308 (13.5%)	315 (13.7%)	329 (14.2%)	336 (15.2%)
	111-120	261 (13.0%)	258 (13.2%)	297 (13.7%)	301 (13.6%)	321 (14.0%)	323 (12.8%)	307 (13.5%)	297 (12.9%)	263 (11.3%)	299 (13.5%)
	121-130	234 (11.6%)	235 (12.0%)	244 (11.3%)	282 (12.7%)	279 (12.2%)	276 (11.0%)	211 (9.3%)	200 (8.7%)	191 (8.2%)	183 (8.3%)
	131-140	155 (7.7%)	175 (8.9%)	182 (8.4%)	167 (7.5%)	206 (9.0%)	179 (7.1%)	129 (5.7%)	93 (4.0%)	79 (3.4%)	94 (4.3%)
	141-150	73 (3.6%)	71 (3.6%)	86 (4.0%)	80 (3.6%)	70 (3.1%)	65 (2.6%)	45 (2.0%)	32 (1.4%)	32 (1.4%)	23 (1.0%)
	151+	27 (1.3%)	30 (1.5%)	29 (1.3%)	29 (1.3%)	31 (1.4%)	23 (0.9%)	15 (0.7%)	12 (0.5%)	6 (0.3%)	10 (0.5%)
<b>Subtotal</b>		<b>2,010 (100.0%)</b>	<b>1,956 (100.0%)</b>	<b>2,164 (100.0%)</b>	<b>2,216 (100.0%)</b>	<b>2,291 (100.0%)</b>	<b>2,517 (100.0%)</b>	<b>2,276 (100.0%)</b>	<b>2,303 (100.0%)</b>	<b>2,318 (100.0%)</b>	<b>2,210 (100.0%)</b>
8YO+	Unrated	214 (11.2%)	202 (10.4%)	269 (14.2%)	255 (13.1%)	280 (14.3%)	311 (13.0%)	273 (13.8%)	276 (14.6%)	325 (18.1%)	254 (14.5%)
	0-100	509 (26.6%)	550 (28.4%)	507 (26.8%)	536 (27.5%)	537 (27.4%)	699 (29.3%)	552 (27.9%)	519 (27.4%)	494 (27.6%)	556 (31.8%)
	101-110	282 (14.8%)	280 (14.4%)	268 (14.1%)	259 (13.3%)	257 (13.1%)	311 (13.0%)	239 (12.1%)	253 (13.4%)	223 (12.4%)	239 (13.7%)
	111-120	285 (14.9%)	293 (15.1%)	267 (14.1%)	260 (13.3%)	261 (13.3%)	315 (13.2%)	309 (15.6%)	290 (15.3%)	273 (15.2%)	252 (14.4%)
	121-130	284 (14.9%)	252 (13.0%)	233 (12.3%)	259 (13.3%)	236 (12.1%)	312 (13.1%)	262 (13.3%)	247 (13.0%)	217 (12.1%)	218 (12.5%)
	131-140	182 (9.5%)	215 (11.1%)	200 (10.6%)	212 (10.9%)	195 (10.0%)	243 (10.2%)	189 (9.6%)	180 (9.5%)	161 (9.0%)	136 (7.8%)
	141-150	96 (5.0%)	100 (5.2%)	105 (5.5%)	104 (5.3%)	127 (6.5%)	120 (5.0%)	106 (5.4%)	81 (4.3%)	62 (3.5%)	62 (3.5%)
	151+	59 (3.1%)	48 (2.5%)	45 (2.4%)	63 (3.2%)	65 (3.3%)	74 (3.1%)	45 (2.3%)	47 (2.5%)	37 (2.1%)	32 (1.8%)
<b>Subtotal</b>		<b>1,911 (100.0%)</b>	<b>1,940 (100.0%)</b>	<b>1,894 (100.0%)</b>	<b>1,948 (100.0%)</b>	<b>1,958 (100.0%)</b>	<b>2,385 (100.0%)</b>	<b>1,975 (100.0%)</b>	<b>1,893 (100.0%)</b>	<b>1,792 (100.0%)</b>	<b>1,749 (100.0%)</b>
Overall	Unrated	2,341 (40.3%)	2,272 (38.8%)	2,507 (41.3%)	2,447 (39.8%)	2,477 (39.0%)	2,734 (39.8%)	2,422 (38.8%)	2,662 (42.0%)	2,583 (42.6%)	2,344 (39.7%)
	0-100	966 (16.6%)	1,029 (17.6%)	979 (16.1%)	1,043 (17.0%)	1,162 (18.3%)	1,349 (19.6%)	1,368 (21.9%)	1,362 (21.5%)	1,377 (22.7%)	1,426 (24.2%)
	101-110	619 (10.7%)	612 (10.5%)	645 (10.6%)	636 (10.4%)	650 (10.2%)	680 (9.9%)	664 (10.6%)	676 (10.7%)	649 (10.7%)	680 (11.5%)
	111-120	620 (10.7%)	656 (11.2%)	661 (10.9%)	676 (11.0%)	690 (10.9%)	710 (10.3%)	698 (11.2%)	685 (10.8%)	615 (10.1%)	641 (10.9%)
	121-130	587 (10.1%)	567 (9.7%)	569 (9.4%)	621 (10.1%)	607 (9.6%)	651 (9.5%)	529 (8.5%)	492 (7.8%)	444 (7.3%)	445 (7.5%)
	131-140	398 (6.8%)	451 (7.7%)	428 (7.0%)	429 (7.0%)	454 (7.1%)	445 (6.5%)	338 (5.4%)	286 (4.5%)	256 (4.2%)	235 (4.0%)
	141-150	187 (3.2%)	185 (3.2%)	206 (3.4%)	199 (3.2%)	211 (3.3%)	198 (2.9%)	158 (2.5%)	114 (1.8%)	98 (1.6%)	88 (1.5%)
<b>Total</b>		<b>5,812 (100.0%)</b>	<b>5,853 (100.0%)</b>	<b>6,074 (100.0%)</b>	<b>6,144 (100.0%)</b>	<b>6,351 (100.0%)</b>	<b>6,868 (100.0%)</b>	<b>6,239 (100.0%)</b>	<b>6,336 (100.0%)</b>	<b>6,065 (100.0%)</b>	<b>5,903 (100.0%)</b>

Where a horse has more than one published rating (published Hurdle and published Chase mark), the higher of the two is taken.

# Young Horses Entering Training

## Flat Yearlings in Training versus Previous Years

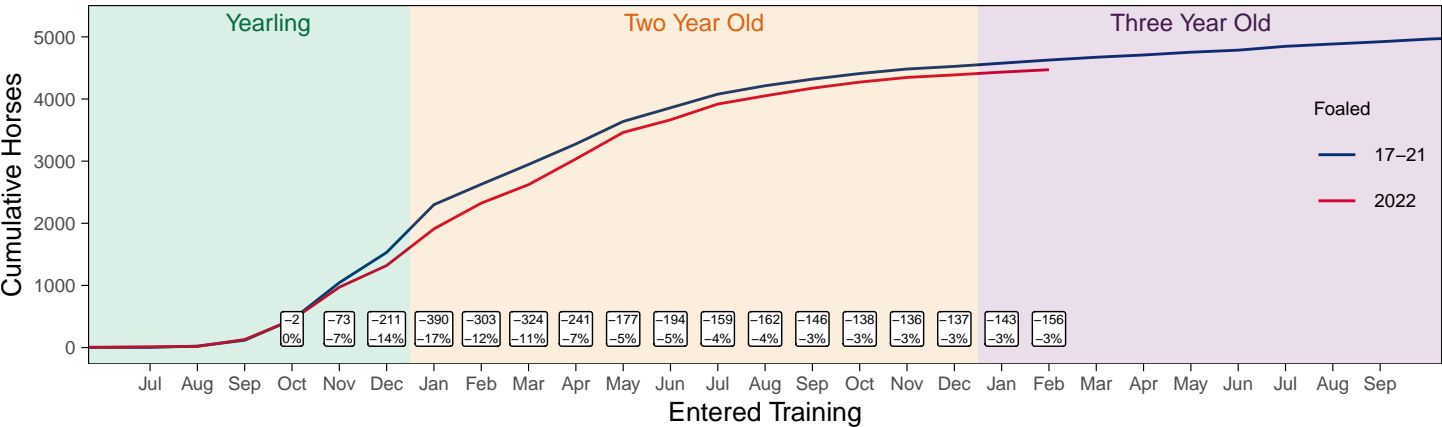
Period	Jan	Feb	Mar	Apr	May	Jun	Jul	Aug	Sep	Oct	Nov	Dec
2025	1	1										
2024	0	0	0	0	0	0	2	3	72	186	619	1067
5YrAvg	0	0	0	0	1	1	1	3	58	200	552	937

## Foals Entering Training for the First Time

## Warning: A numeric 'legend.position' argument in 'theme()' was deprecated in ggplot2 3.5.0.  
## i Please use the 'legend.position.inside' argument of 'theme()' instead.  
## This warning is displayed once every 8 hours.  
## Call 'lifecycle::last\_lifecycle\_warnings()' to see where this warning was generated.

### 2022 Foals Entering Training Over Time

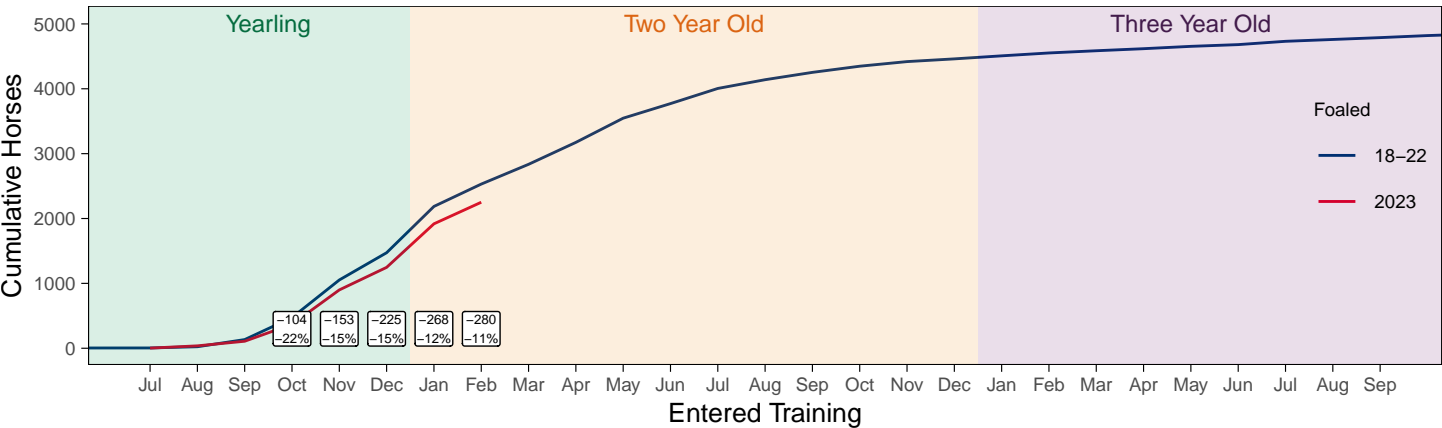
Cumulative Flat Horses foaled in 2022 shown by first in training notification against trend



Cumulative individual horses entering training for the first time by the end of each month.

### 2023 Foals Entering Training Over Time

Cumulative Flat Horses foaled in 2023 shown by first in training notification against trend



Cumulative individual horses entering training for the first time by the end of each month.

## Year to Date Horses in Training

Type	2016	2017	2018	2019	2020	2021	2022	2023	2024	2025	vs. Last Year	vs. Pre-Covid
Flat	10343	10442	10348	10384	10474	9941	10018	9953	9687	9637	-50 / -0.5%	-747 / -7.2%
Jump	6048	6012	5749	6369	6434	7031	6494	6556	6304	6027	-277 / -4.4%	-342 / -5.4%
Dual	588	664	1123	603	678	641	594	571	589	682	+93 / +15.8%	+79 / +13.1%
Hunter	1713	1691	1503	1473	1432	790	1140	1067	1267	969	-298 / -23.5%	-504 / -34.2%
<b>Total</b>	<b>16979</b>	<b>17118</b>	<b>17220</b>	<b>17356</b>	<b>17586</b>	<b>17613</b>	<b>17106</b>	<b>17080</b>	<b>16580</b>	<b>16346</b>	<b>-234 / -1.4%</b>	<b>-1010 / -5.8%</b>

'vs. Pre-Covid' is comparison between 2025 and 2019

### Flat

AgeCat	2016	2017	2018	2019	2020	2021	2022	2023	2024	2025	vs. Last Year	vs. Pre-Covid
2YO	3071	2963	2765	2753	2676	2461	2564	2436	2272	2207	-65 / -2.9%	-546 / -19.8%
3YO	3415	3470	3613	3522	3657	3404	3410	3384	3294	3344	+50 / +1.5%	-178 / -5.1%
4YO	1627	1687	1669	1775	1747	1764	1803	1751	1731	1680	-51 / -2.9%	-95 / -5.4%
5YO+	2230	2322	2301	2334	2394	2312	2241	2382	2390	2406	+16 / +0.7%	+72 / +3.1%
<b>Total</b>	<b>10343</b>	<b>10442</b>	<b>10348</b>	<b>10384</b>	<b>10474</b>	<b>9941</b>	<b>10018</b>	<b>9953</b>	<b>9687</b>	<b>9637</b>	<b>-50 / -0.5%</b>	<b>-747 / -7.2%</b>

'vs. Pre-Covid' is comparison between 2025 and 2019

### Jump

AgeCat	2016	2017	2018	2019	2020	2021	2022	2023	2024	2025	vs. Last Year	vs. Pre-Covid
3YO	34	24	34	25	19	34	26	30	35	10	-25 / -71.4%	-15 / -60.0%
4-5YO	1832	1838	1629	1882	1942	1833	1885	2039	1869	1781	-88 / -4.7%	-101 / -5.4%
6-7YO	2117	2048	2098	2338	2370	2633	2406	2410	2432	2298	-134 / -5.5%	-40 / -1.7%
8YO+	2065	2102	1988	2124	2103	2531	2177	2077	1968	1938	-30 / -1.5%	-186 / -8.8%
<b>Total</b>	<b>6048</b>	<b>6012</b>	<b>5749</b>	<b>6369</b>	<b>6434</b>	<b>7031</b>	<b>6494</b>	<b>6556</b>	<b>6304</b>	<b>6027</b>	<b>-277 / -4.4%</b>	<b>-342 / -5.4%</b>

'vs. Pre-Covid' is comparison between 2025 and 2019

### Dual

AgeCat	2016	2017	2018	2019	2020	2021	2022	2023	2024	2025	vs. Last Year	vs. Pre-Covid
3YO	52	56	59	33	61	51	65	53	55	65	+10 / +18.2%	+32 / +97.0%
4YO	144	176	288	178	193	191	162	165	171	196	+25 / +14.6%	+18 / +10.1%
5YO+	392	432	776	392	424	399	367	353	363	421	+58 / +16.0%	+29 / +7.4%
<b>Total</b>	<b>588</b>	<b>664</b>	<b>1123</b>	<b>603</b>	<b>678</b>	<b>641</b>	<b>594</b>	<b>571</b>	<b>589</b>	<b>682</b>	<b>+93 / +15.8%</b>	<b>+79 / +13.1%</b>

'vs. Pre-Covid' is comparison between 2025 and 2019

### Hunter Chasers

AgeCat	2016	2017	2018	2019	2020	2021	2022	2023	2024	2025	vs. Last Year	vs. Pre-Covid
4-5YO	146	154	149	188	267	58	178	183	212	181	-31 / -14.6%	-7 / -3.7%
6-7YO	468	437	435	425	380	180	288	264	314	281	-33 / -10.5%	-144 / -33.9%
8-9YO	474	487	363	347	309	207	288	256	278	203	-75 / -27.0%	-144 / -41.5%
10YO+	625	613	556	513	476	345	386	364	463	304	-159 / -34.3%	-209 / -40.7%
<b>Total</b>	<b>1713</b>	<b>1691</b>	<b>1503</b>	<b>1473</b>	<b>1432</b>	<b>790</b>	<b>1140</b>	<b>1067</b>	<b>1267</b>	<b>969</b>	<b>-298 / -23.5%</b>	<b>-504 / -34.2%</b>

'vs. Pre-Covid' is comparison between 2025 and 2019

# Year to Date Runners

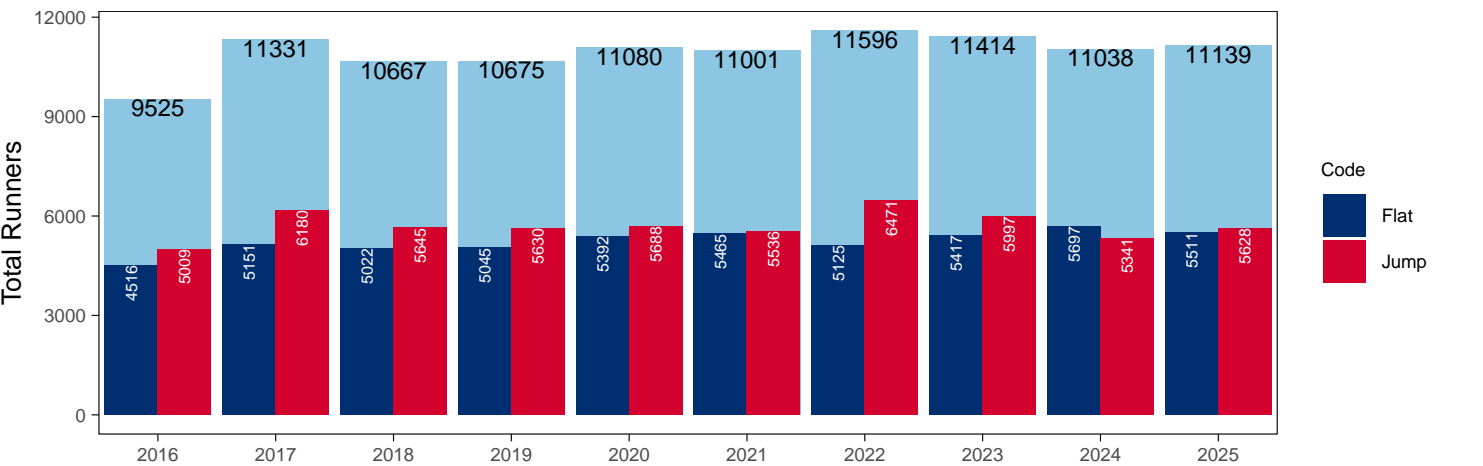
## Year to Date Total Runners

Code	2016	2017	2018	2019	2020	2021	2022	2023	2024	2025	vs. Last Year	vs. Pre-Covid
Flat	4516	5151	5022	5045	5392	5465	5125	5417	5697	5511	-186 / -3.3%	+466 / +9.2%
Jump	5009	6180	5645	5630	5688	5536	6471	5997	5341	5628	+287 / +5.4%	-2 / 0.0%
Total	9525	11331	10667	10675	11080	11001	11596	11414	11038	11139	+101 / +0.9%	+464 / +4.3%

'vs. Pre-Covid' is comparison between 2025 and 2019

### YTD Total Runners

Total Runners in GB Races, shown by Code and Total



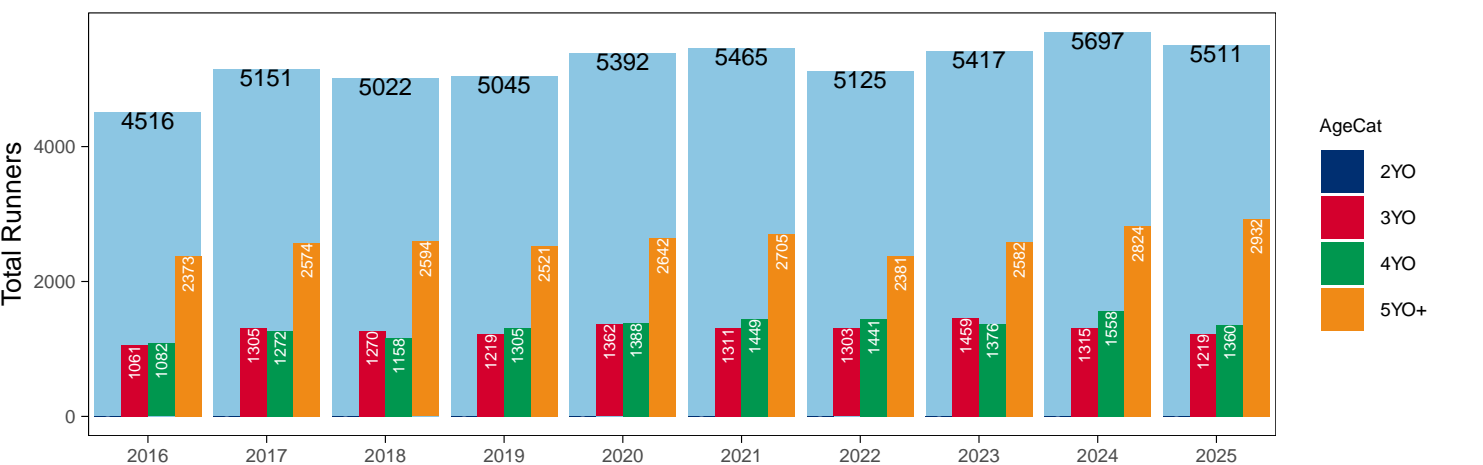
### Flat

AgeCat	2016	2017	2018	2019	2020	2021	2022	2023	2024	2025	vs. Last Year	vs. Pre-Covid
2YO											NA / NA	0 / NA
3YO	1061	1305	1270	1219	1362	1311	1303	1459	1315	1219	-96 / -7.3%	0 / 0.0%
4YO	1082	1272	1158	1305	1388	1449	1441	1376	1558	1360	-198 / -12.7%	+55 / +4.2%
5YO+	2373	2574	2594	2521	2642	2705	2381	2582	2824	2932	+108 / +3.8%	+411 / +16.3%
Total	4516	5151	5022	5045	5392	5465	5125	5417	5697	5511	-186 / -3.3%	+466 / +9.2%

'vs. Pre-Covid' is comparison between 2025 and 2019

### YTD Total Flat Runners by Age

Total Runners in GB Flat Races, shown by Age Category and Total



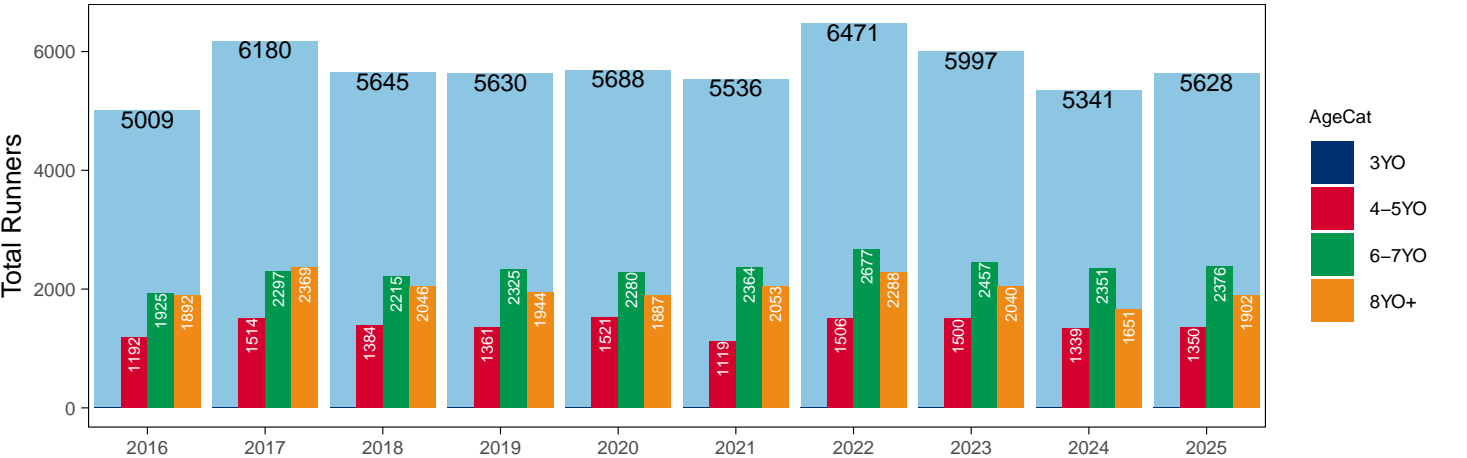
Jump

AgeCat	2016	2017	2018	2019	2020	2021	2022	2023	2024	2025	vs. Last Year		vs. Pre-Covid
3YO											NA / NA		0 / NA
4-5YO	1192	1514	1384	1361	1521	1119	1506	1500	1339	1350	+11	+0.8%	-11 / -0.8%
6-7YO	1925	2297	2215	2325	2280	2364	2677	2457	2351	2376	+25	+1.1%	+51 / +2.2%
8YO+	1892	2369	2046	1944	1887	2053	2288	2040	1651	1902	+251	+15.2%	-42 / -2.2%
Total	5009	6180	5645	5630	5688	5536	6471	5997	5341	5628	+287 / +5.4%		-2 / 0.0%

'vs. Pre-Covid' is comparison between 2025 and 2019

YTD Total Jump Runners by Age

Total Runners in GB Jump Races, shown by Age Category and Total



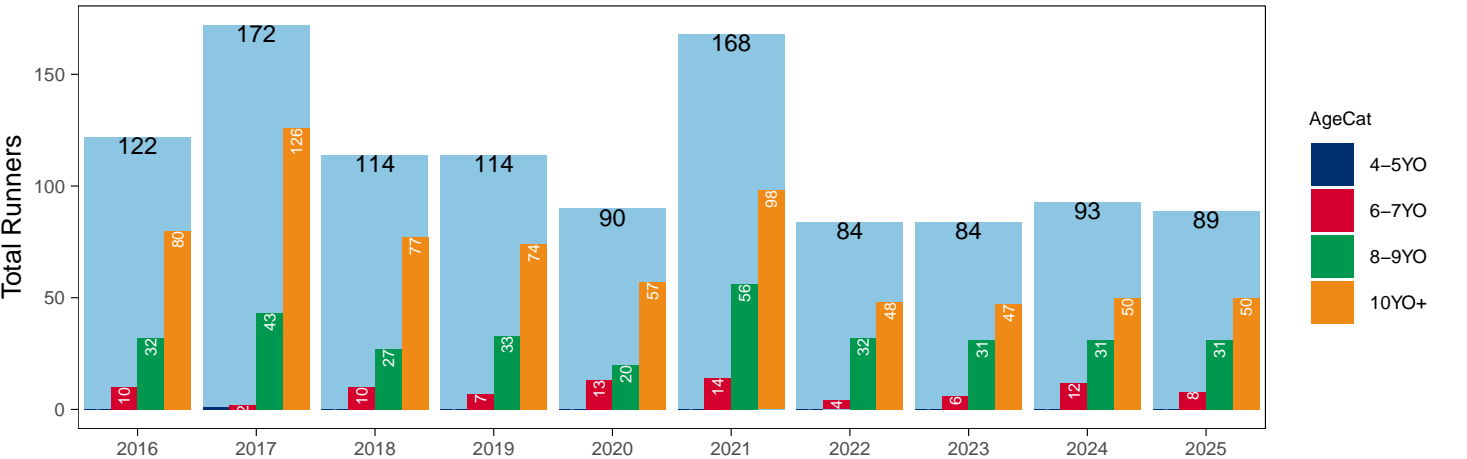
Hunter Chases

AgeCat	2016	2017	2018	2019	2020	2021	2022	2023	2024	2025	vs. Last Year		vs. Pre-Covid
4-5YO		1									NA / NA		0 / NA
6-7YO	10	2	10	7	13	14	4	6	12	8	-4	-33.3%	+1 / +14.3%
8-9YO	32	43	27	33	20	56	32	31	31	31	0	0.0%	-2 / -6.1%
10YO+	80	126	77	74	57	98	48	47	50	50	0	0.0%	-24 / -32.4%
Total	122	172	114	114	90	168	84	84	93	89	-4 / -4.3%		-25 / -21.9%

'vs. Pre-Covid' is comparison between 2025 and 2019

YTD Total Hunter Chase Runners by Age

Total Runners in GB Hunter Chases shown by Age Category and Total



## Year to Date Total Runners by Country Trained

Code	Country	2016	2017	2018	2019	2020	2021	2022	2023	2024	2025
Flat	GB	4479	5109	4969	4991	5317	5465	5122	5408	5669	5486
	IRE	34	40	51	52	72		3	9	28	25
	Other	3	2	2	2	3					
Jump	GB	4894	6067	5593	5550	5613	5525	6379	5884	5233	5520
	IRE	115	105	51	77	70	9	91	112	106	105
	Other		8	1	3	5	2	1	1	2	3
Overall	GB	9373	11176	10562	10541	10930	10990	11501	11292	10902	11006
	IRE	149	145	102	129	142	9	94	121	134	130
	Other	3	10	3	5	8	2	1	1	2	3

## Year to Date GB Trained Runners Racing Abroad

Code	Country	2016	2017	2018	2019	2020	2021	2022	2023	2024	2025
Flat	IRE	2	2	2	4	2					
	FR	5	21	6	14	21	5		3	3	33
	UAE	157	220	186	253	245	186	211	221	148	162
	BAH							41	20	43	66
	KSA						21	22	15	11	10
	Other	24	22	16	11	20	1	8	28	13	15
	<b>Total</b>	<b>188</b>	<b>265</b>	<b>210</b>	<b>282</b>	<b>288</b>	<b>213</b>	<b>282</b>	<b>287</b>	<b>218</b>	<b>286</b>
Jump	IRE	4	4	10	4	4		2	3	4	4
	FR	4			1	1	5	4	19	6	2
	<b>Total</b>	<b>8</b>	<b>4</b>	<b>10</b>	<b>5</b>	<b>5</b>	<b>5</b>	<b>6</b>	<b>22</b>	<b>10</b>	<b>6</b>

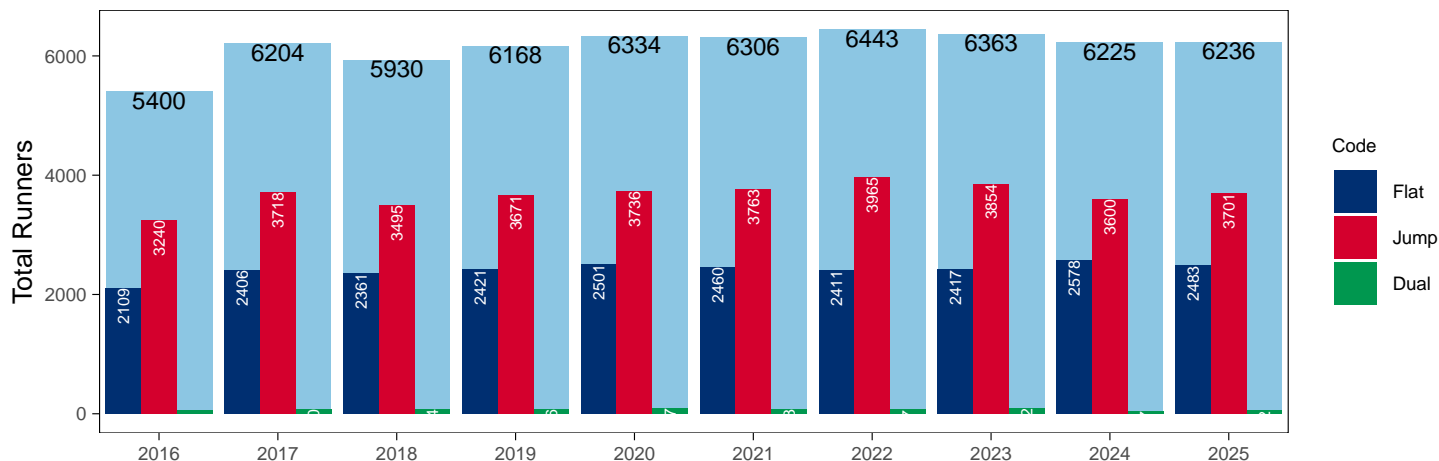
## Year to Date Individual Runners

Code	2016	2017	2018	2019	2020	2021	2022	2023	2024	2025	vs. Last Year	vs. Pre-Covid
Flat	2109	2406	2361	2421	2501	2460	2411	2417	2578	2483	-95 / -3.7%	+62 / +2.6%
Jump	3240	3718	3495	3671	3736	3763	3965	3854	3600	3701	+101 / +2.8%	+30 / +0.8%
Dual	51	80	74	76	97	83	67	92	47	52	+5 / +10.6%	-24 / -31.6%
<b>Overall</b>	<b>5400</b>	<b>6204</b>	<b>5930</b>	<b>6168</b>	<b>6334</b>	<b>6306</b>	<b>6443</b>	<b>6363</b>	<b>6225</b>	<b>6236</b>	<b>+11 / +0.2%</b>	<b>+68 / +1.1%</b>

'vs. Pre-Covid' is comparison between 2025 and 2019

## YTD Individual Runners

Individual Runners in GB Races, shown by Code and Total



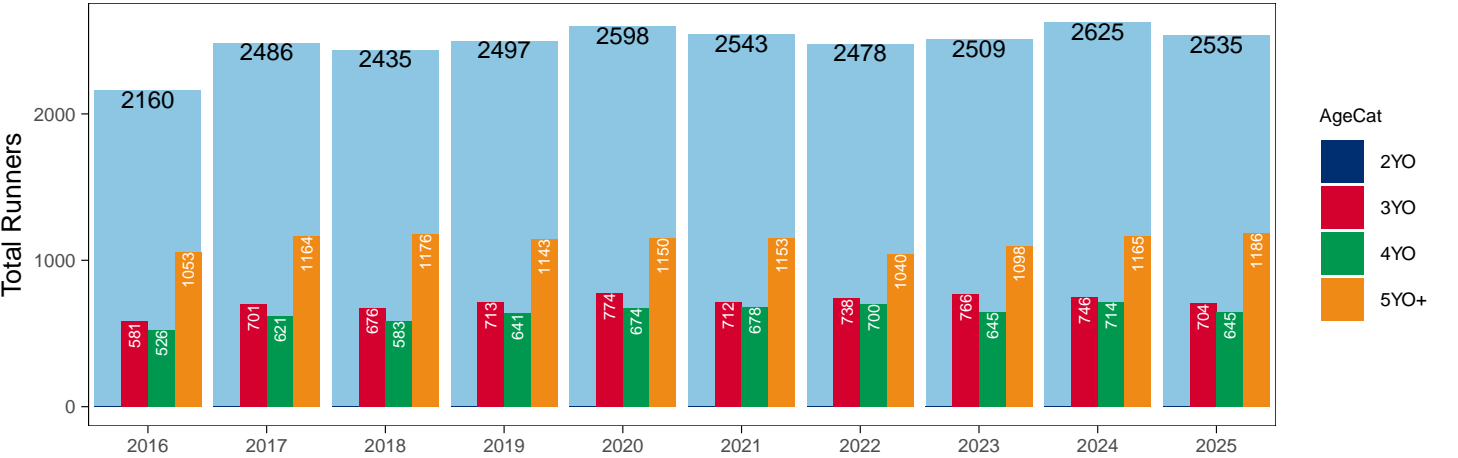
Flat

AgeCat	2016	2017	2018	2019	2020	2021	2022	2023	2024	2025	vs. Last Year	vs. Pre-Covid
2YO											NA / NA	0 / NA
3YO	581	701	676	713	774	712	738	766	746	704	-42 / -5.6%	-9 / -1.3%
4YO	526	621	583	641	674	678	700	645	714	645	-69 / -9.7%	+4 / +0.6%
5YO+	1053	1164	1176	1143	1150	1153	1040	1098	1165	1186	+21 / +1.8%	+43 / +3.8%
Total	2160	2486	2435	2497	2598	2543	2478	2509	2625	2535	-90 / -3.4%	+38 / +1.5%

'vs. Pre-Covid' is comparison between 2025 and 2019

YTD Individual Flat Runners by Age

Individual Runners in GB Flat Races, shown by Age Category and Total



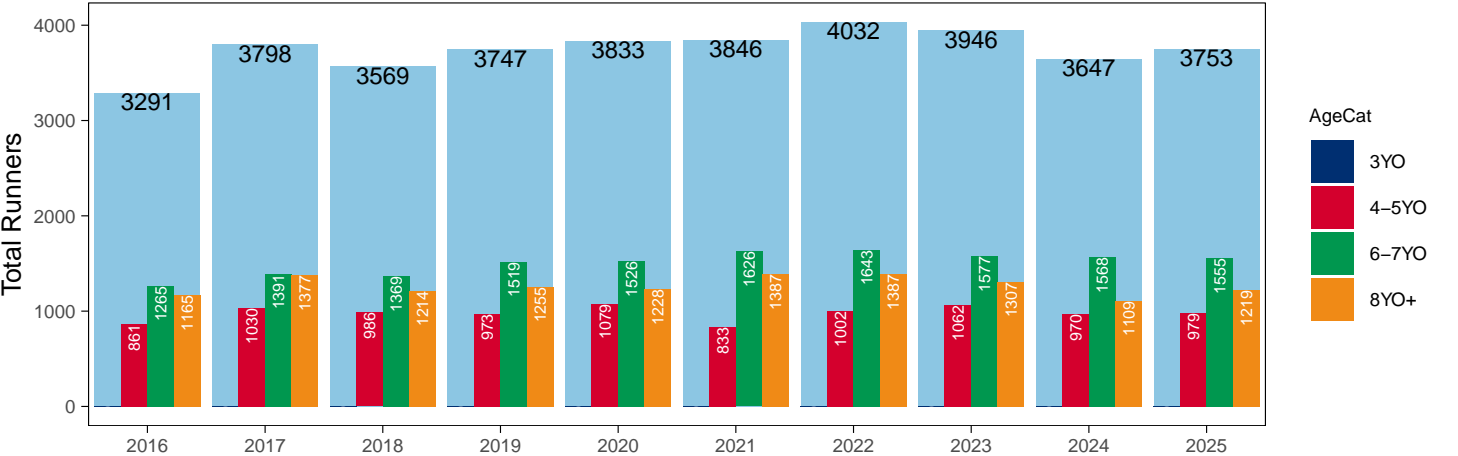
Jump

AgeCat	2016	2017	2018	2019	2020	2021	2022	2023	2024	2025	vs. Last Year	vs. Pre-Covid
3YO											NA / NA	0 / NA
4-5YO	861	1030	986	973	1079	833	1002	1062	970	979	+9 / +0.9%	+6 / +0.6%
6-7YO	1265	1391	1369	1519	1526	1626	1643	1577	1568	1555	-13 / -0.8%	+36 / +2.4%
8YO+	1165	1377	1214	1255	1228	1387	1387	1307	1109	1219	+110 / +9.9%	-36 / -2.9%
Total	3291	3798	3569	3747	3833	3846	4032	3946	3647	3753	+106 / +2.9%	+6 / +0.2%

'vs. Pre-Covid' is comparison between 2025 and 2019

YTD Individual Jump Runners by Age

Individual Runners in GB Jump Races, shown by Age Category and Total





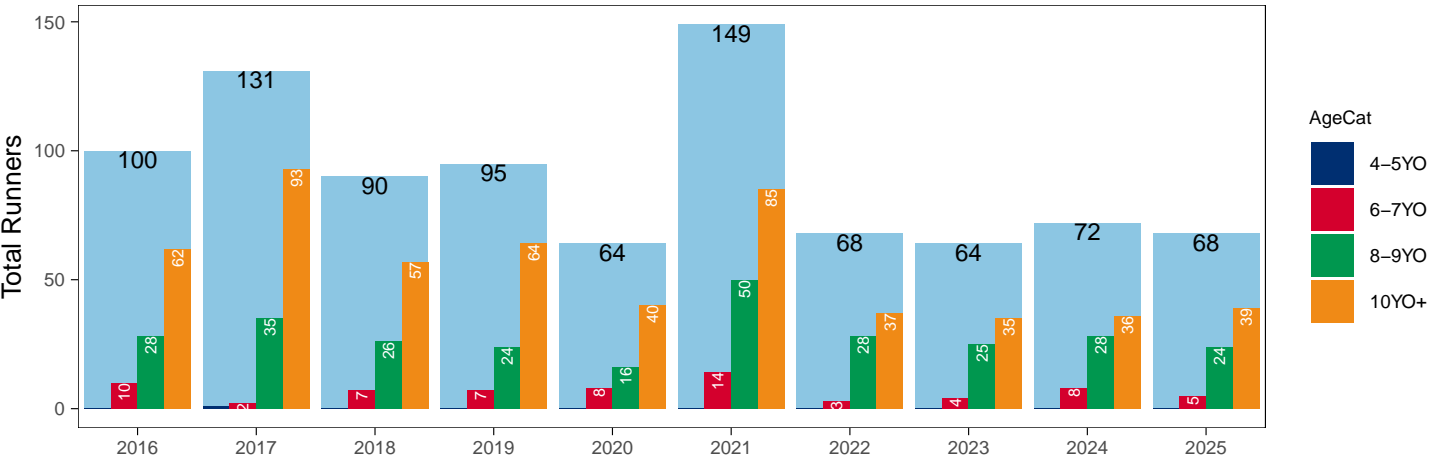
Hunter Chases

AgeCat	2016	2017	2018	2019	2020	2021	2022	2023	2024	2025	vs. Last Year	vs. Pre-Covid
4-5YO		1									NA / NA	0 / NA
6-7YO	10	2	7	7	8	14	3	4	8	5	-3 / -37.5%	-2 / -28.6%
8-9YO	28	35	26	24	16	50	28	25	28	24	-4 / -14.3%	0 / 0.0%
10YO+	62	93	57	64	40	85	37	35	36	39	+3 / +8.3%	-25 / -39.1%
Total	100	131	90	95	64	149	68	64	72	68	-4 / -5.6%	-27 / -28.4%

'vs. Pre-Covid' is comparison between 2025 and 2019

YTD Individual Hunter Chase Runners by Age

Individual Runners in GB Hunter Chases shown by Age Category and Total



Year to Date Individual Runners by Country Trained

Code	Country	2016	2017	2018	2019	2020	2021	2022	2023	2024	2025
Flat	GB	2085	2382	2316	2376	2439	2460	2409	2408	2559	2463
	IRE	23	26	44	43	59		2	9	19	20
	Other	1		2	2	3					
Jump	GB	3148	3630	3447	3605	3670	3752	3883	3758	3501	3602
	IRE	92	85	47	63	61	9	81	95	97	97
	Other		4	1	3	5	2	1	1	2	3
Dual	GB	51	78	74	76	95	83	67	92	47	52
	IRE					2					
	Other		2								
Overall	GB	5284	6090	5837	6057	6204	6295	6359	6258	6107	6117
	IRE	115	111	91	106	122	9	83	104	116	117
	Other	1	6	3	5	8	2	1	1	2	3

Individual horses may appear under multiple countries.

## Year to Date Total Runners by Rating Band

### Flat

RatBand	2016	2017	2018	2019	2020	2021	2022	2023	2024	2025
<b>3YO</b>										
Unrated	386 (36.4%)	499 (38.2%)	539 (42.4%)	526 (43.2%)	611 (44.9%)	578 (44.1%)	573 (44.0%)	627 (43.0%)	608 (46.2%)	524 (43.0%)
0-50	92 (8.7%)	88 (6.7%)	86 (6.8%)	113 (9.3%)	134 (9.8%)	116 (8.8%)	122 (9.4%)	124 (8.5%)	115 (8.7%)	105 (8.6%)
51-60	175 (16.5%)	219 (16.8%)	168 (13.2%)	247 (20.3%)	195 (14.3%)	236 (18.0%)	190 (14.6%)	263 (18.0%)	205 (15.6%)	222 (18.2%)
61-70	227 (21.4%)	276 (21.1%)	242 (19.1%)	197 (16.2%)	239 (17.5%)	220 (16.8%)	247 (19.0%)	253 (17.3%)	221 (16.8%)	191 (15.7%)
71-80	140 (13.2%)	178 (13.6%)	169 (13.3%)	96 (7.9%)	147 (10.8%)	127 (9.7%)	127 (9.7%)	153 (10.5%)	122 (9.3%)	135 (11.1%)
81-90	29 (2.7%)	33 (2.5%)	51 (4.0%)	30 (2.5%)	32 (2.3%)	20 (1.5%)	35 (2.7%)	35 (2.4%)	40 (3.0%)	37 (3.0%)
91-100	6 (0.6%)	9 (0.7%)	9 (0.7%)	8 (0.7%)	3 (0.2%)	12 (0.9%)	8 (0.6%)	3 (0.2%)	4 (0.3%)	5 (0.4%)
101+	6 (0.6%)	3 (0.2%)	6 (0.5%)	2 (0.2%)	1 (0.1%)	2 (0.2%)	1 (0.1%)	1 (0.1%)	NA (-)	NA (-)
<b>4YO+</b>										
Unrated	138 (4.0%)	118 (3.1%)	104 (2.8%)	148 (3.9%)	148 (3.7%)	143 (3.4%)	146 (3.8%)	132 (3.3%)	147 (3.4%)	140 (3.3%)
0-50	560 (16.2%)	596 (15.5%)	706 (18.8%)	768 (20.1%)	833 (20.7%)	849 (20.4%)	823 (21.5%)	950 (24.0%)	980 (22.4%)	1,053 (24.5%)
51-60	843 (24.4%)	919 (23.9%)	868 (23.1%)	873 (22.8%)	974 (24.2%)	947 (22.8%)	928 (24.3%)	974 (24.6%)	1,193 (27.2%)	1,052 (24.5%)
61-70	823 (23.8%)	896 (23.3%)	834 (22.2%)	859 (22.5%)	923 (22.9%)	1,043 (25.1%)	881 (23.1%)	883 (22.3%)	979 (22.3%)	976 (22.7%)
71-80	554 (16.0%)	689 (17.9%)	632 (16.8%)	656 (17.1%)	619 (15.4%)	656 (15.8%)	558 (14.6%)	599 (15.1%)	631 (14.4%)	631 (14.7%)
81-90	340 (9.8%)	416 (10.8%)	373 (9.9%)	314 (8.2%)	349 (8.7%)	326 (7.8%)	324 (8.5%)	264 (6.7%)	322 (7.3%)	314 (7.3%)
91-100	137 (4.0%)	153 (4.0%)	161 (4.3%)	150 (3.9%)	131 (3.3%)	128 (3.1%)	106 (2.8%)	108 (2.7%)	95 (2.2%)	89 (2.1%)
101+	60 (1.7%)	59 (1.5%)	74 (2.0%)	58 (1.5%)	53 (1.3%)	62 (1.5%)	56 (1.5%)	48 (1.2%)	35 (0.8%)	37 (0.9%)

### Jump

RatBand	2016	2017	2018	2019	2020	2021	2022	2023	2024	2025
<b>Hurdle</b>										
Unrated	1,004 (33.4%)	1,240 (34.0%)	1,132 (33.4%)	1,213 (35.0%)	1,120 (32.9%)	972 (35.2%)	1,239 (32.4%)	1,246 (34.7%)	1,186 (36.2%)	1,009 (29.7%)
0-100	585 (19.4%)	752 (20.6%)	645 (19.0%)	693 (20.0%)	696 (20.5%)	529 (19.2%)	996 (26.0%)	958 (26.7%)	879 (26.8%)	1,006 (29.6%)
101-110	384 (12.8%)	477 (13.1%)	436 (12.8%)	437 (12.6%)	449 (13.2%)	294 (10.7%)	510 (13.3%)	472 (13.2%)	421 (12.9%)	488 (14.4%)
111-120	360 (12.0%)	497 (13.6%)	456 (13.4%)	455 (13.1%)	464 (13.6%)	355 (12.9%)	490 (12.8%)	408 (11.4%)	370 (11.3%)	453 (13.4%)
121-130	342 (11.4%)	369 (10.1%)	399 (11.8%)	379 (10.9%)	358 (10.5%)	333 (12.1%)	340 (8.9%)	328 (9.1%)	261 (8.0%)	274 (8.1%)
131-140	225 (7.5%)	221 (6.1%)	225 (6.6%)	193 (5.6%)	218 (6.4%)	185 (6.7%)	173 (4.5%)	118 (3.3%)	111 (3.4%)	117 (3.4%)
141-150	81 (2.7%)	63 (1.7%)	80 (2.4%)	71 (2.0%)	64 (1.9%)	66 (2.4%)	62 (1.6%)	43 (1.2%)	38 (1.2%)	38 (1.1%)
151+	29 (1.0%)	26 (0.7%)	20 (0.6%)	26 (0.7%)	31 (0.9%)	24 (0.9%)	18 (0.5%)	16 (0.4%)	9 (0.3%)	8 (0.2%)
<b>Chase</b>										
Unrated	6 (0.4%)	26 (1.3%)	15 (0.9%)	17 (1.0%)	6 (0.4%)	9 (0.6%)	6 (0.3%)	1 (0.1%)	NA (-)	NA (-)
0-100	373 (23.5%)	406 (20.0%)	397 (22.9%)	452 (26.3%)	429 (25.5%)	376 (24.1%)	592 (27.9%)	604 (31.8%)	545 (32.7%)	613 (34.0%)
101-110	215 (13.5%)	337 (16.6%)	224 (12.9%)	263 (15.3%)	252 (15.0%)	207 (13.3%)	286 (13.5%)	296 (15.6%)	279 (16.7%)	317 (17.6%)
111-120	280 (17.6%)	369 (18.2%)	323 (18.6%)	252 (14.7%)	244 (14.5%)	257 (16.5%)	415 (19.5%)	325 (17.1%)	324 (19.4%)	319 (17.7%)
121-130	264 (16.6%)	337 (16.6%)	312 (18.0%)	326 (19.0%)	314 (18.7%)	281 (18.0%)	359 (16.9%)	302 (15.9%)	231 (13.8%)	272 (15.1%)
131-140	253 (15.9%)	342 (16.9%)	275 (15.9%)	226 (13.1%)	251 (14.9%)	242 (15.5%)	297 (14.0%)	233 (12.3%)	171 (10.2%)	149 (8.3%)
141-150	133 (8.4%)	138 (6.8%)	134 (7.7%)	127 (7.4%)	133 (7.9%)	119 (7.6%)	114 (5.4%)	95 (5.0%)	78 (4.7%)	88 (4.9%)
151+	66 (4.2%)	73 (3.6%)	55 (3.2%)	57 (3.3%)	53 (3.2%)	70 (4.5%)	56 (2.6%)	46 (2.4%)	41 (2.5%)	44 (2.4%)

## Year to Date Total GB-Trained Runners by Rating Band

## Flat

RatBand	2016	2017	2018	2019	2020	2021	2022	2023	2024	2025
3YO										
Unrated	386 (36.4%)	499 (38.3%)	537 (42.8%)	524 (43.4%)	608 (45.4%)	578 (44.1%)	573 (44.0%)	627 (43.0%)	606 (46.2%)	524 (43.1%)
0-50	92 (8.7%)	87 (6.7%)	84 (6.7%)	111 (9.2%)	129 (9.6%)	116 (8.8%)	122 (9.4%)	123 (8.4%)	115 (8.8%)	105 (8.6%)
51-60	175 (16.5%)	219 (16.8%)	163 (13.0%)	246 (20.4%)	187 (14.0%)	236 (18.0%)	190 (14.6%)	263 (18.0%)	204 (15.5%)	221 (18.2%)
61-70	227 (21.4%)	276 (21.2%)	239 (19.0%)	192 (15.9%)	237 (17.7%)	220 (16.8%)	247 (19.0%)	253 (17.4%)	221 (16.8%)	191 (15.7%)
71-80	140 (13.2%)	178 (13.7%)	167 (13.3%)	95 (7.9%)	145 (10.8%)	127 (9.7%)	127 (9.7%)	153 (10.5%)	122 (9.3%)	135 (11.1%)
81-90	29 (2.7%)	33 (2.5%)	51 (4.1%)	30 (2.5%)	30 (2.2%)	20 (1.5%)	35 (2.7%)	35 (2.4%)	40 (3.0%)	36 (3.0%)
91-100	6 (0.6%)	9 (0.7%)	9 (0.7%)	8 (0.7%)	3 (0.2%)	12 (0.9%)	8 (0.6%)	3 (0.2%)	4 (0.3%)	5 (0.4%)
101+	6 (0.6%)	3 (0.2%)	6 (0.5%)	2 (0.2%)	1 (0.1%)	2 (0.2%)	1 (0.1%)	1 (0.1%)	NA (-)	NA (-)
4YO+										
Unrated	138 (4.0%)	118 (3.1%)	102 (2.7%)	148 (3.9%)	147 (3.7%)	143 (3.4%)	146 (3.8%)	132 (3.3%)	147 (3.4%)	140 (3.3%)
0-50	553 (16.2%)	580 (15.2%)	698 (18.8%)	750 (19.8%)	820 (20.6%)	849 (20.4%)	823 (21.6%)	948 (24.0%)	972 (22.3%)	1,051 (24.6%)
51-60	829 (24.3%)	905 (23.8%)	850 (22.9%)	858 (22.7%)	950 (23.9%)	947 (22.8%)	928 (24.3%)	972 (24.6%)	1,185 (27.2%)	1,044 (24.5%)
61-70	814 (23.8%)	888 (23.3%)	829 (22.3%)	853 (22.5%)	917 (23.1%)	1,043 (25.1%)	881 (23.1%)	882 (22.3%)	976 (22.4%)	974 (22.8%)
71-80	553 (16.2%)	687 (18.1%)	629 (16.9%)	655 (17.3%)	614 (15.4%)	656 (15.8%)	556 (14.6%)	597 (15.1%)	628 (14.4%)	626 (14.7%)
81-90	339 (9.9%)	416 (10.9%)	373 (10.0%)	313 (8.3%)	349 (8.8%)	326 (7.8%)	323 (8.5%)	264 (6.7%)	321 (7.4%)	312 (7.3%)
91-100	135 (3.9%)	152 (4.0%)	161 (4.3%)	148 (3.9%)	129 (3.2%)	128 (3.1%)	106 (2.8%)	107 (2.7%)	95 (2.2%)	87 (2.0%)
101+	57 (1.7%)	59 (1.6%)	71 (1.9%)	58 (1.5%)	51 (1.3%)	62 (1.5%)	56 (1.5%)	48 (1.2%)	33 (0.8%)	35 (0.8%)

## Jump

RatBand	2016	2017	2018	2019	2020	2021	2022	2023	2024	2025
Hurdle										
Unrated	981 (33.3%)	1,224 (34.2%)	1,118 (33.3%)	1,192 (34.9%)	1,107 (33.0%)	968 (35.2%)	1,216 (32.3%)	1,226 (34.8%)	1,162 (36.3%)	995 (29.8%)
0-100	580 (19.7%)	739 (20.6%)	640 (19.1%)	685 (20.1%)	689 (20.5%)	529 (19.2%)	991 (26.3%)	948 (26.9%)	870 (27.2%)	1,002 (30.1%)
101-110	375 (12.7%)	466 (13.0%)	432 (12.9%)	434 (12.7%)	446 (13.3%)	294 (10.7%)	506 (13.4%)	466 (13.2%)	414 (12.9%)	483 (14.5%)
111-120	357 (12.1%)	488 (13.6%)	454 (13.5%)	449 (13.1%)	461 (13.7%)	355 (12.9%)	485 (12.9%)	399 (11.3%)	362 (11.3%)	443 (13.3%)
121-130	336 (11.4%)	358 (10.0%)	394 (11.7%)	370 (10.8%)	354 (10.6%)	331 (12.0%)	334 (8.9%)	319 (9.1%)	249 (7.8%)	260 (7.8%)
131-140	216 (7.3%)	218 (6.1%)	223 (6.6%)	191 (5.6%)	211 (6.3%)	184 (6.7%)	162 (4.3%)	111 (3.1%)	104 (3.2%)	111 (3.3%)
141-150	70 (2.4%)	61 (1.7%)	78 (2.3%)	70 (2.0%)	58 (1.7%)	65 (2.4%)	56 (1.5%)	39 (1.1%)	32 (1.0%)	32 (1.0%)
151+	27 (0.9%)	25 (0.7%)	20 (0.6%)	25 (0.7%)	29 (0.9%)	24 (0.9%)	15 (0.4%)	16 (0.5%)	8 (0.2%)	8 (0.2%)
Chase										
Unrated	6 (0.4%)	26 (1.3%)	15 (0.9%)	17 (1.0%)	6 (0.4%)	9 (0.6%)	6 (0.3%)	1 (0.1%)	NA (-)	NA (-)
0-100	363 (23.4%)	399 (20.1%)	395 (23.0%)	448 (26.3%)	427 (25.6%)	376 (24.1%)	591 (28.0%)	599 (32.2%)	545 (33.2%)	611 (34.7%)
101-110	205 (13.2%)	335 (16.9%)	224 (13.0%)	262 (15.4%)	250 (15.0%)	207 (13.3%)	285 (13.5%)	294 (15.8%)	277 (16.9%)	315 (17.9%)
111-120	279 (18.0%)	365 (18.4%)	321 (18.7%)	251 (14.7%)	240 (14.4%)	257 (16.5%)	413 (19.6%)	320 (17.2%)	320 (19.5%)	314 (17.9%)
121-130	260 (16.8%)	326 (16.4%)	307 (17.9%)	323 (19.0%)	312 (18.7%)	281 (18.0%)	354 (16.8%)	297 (16.0%)	220 (13.4%)	262 (14.9%)
131-140	245 (15.8%)	335 (16.9%)	271 (15.8%)	222 (13.0%)	250 (15.0%)	242 (15.5%)	294 (13.9%)	221 (11.9%)	168 (10.2%)	142 (8.1%)
141-150	131 (8.4%)	135 (6.8%)	133 (7.7%)	126 (7.4%)	130 (7.8%)	119 (7.6%)	112 (5.3%)	90 (4.8%)	74 (4.5%)	78 (4.4%)
151+	62 (4.0%)	67 (3.4%)	53 (3.1%)	55 (3.2%)	51 (3.1%)	70 (4.5%)	54 (2.6%)	40 (2.1%)	38 (2.3%)	37 (2.1%)

Frequency of Runs

Year to Date Average Runs per Horse

Code	2016	2017	2018	2019	2020	2021	2022	2023	2024	2025
Flat	2.10	2.09	2.08	2.04	2.10	2.17	2.09	2.18	2.18	2.19
Jump	1.53	1.63	1.59	1.51	1.49	1.44	1.61	1.52	1.47	1.50
Dual Overall	2.86	2.83	2.68	2.53	2.85	2.82	2.67	2.79	2.68	2.85
Dual (Flat)	1.55	1.40	1.35	1.32	1.55	1.43	1.36	1.49	1.38	1.40
Dual (Jump)	1.31	1.43	1.32	1.21	1.30	1.39	1.31	1.30	1.30	1.44
All	1.76	1.83	1.80	1.73	1.75	1.74	1.80	1.79	1.77	1.79

Year to Date Proportion of Horses by Count of Runs

Runs	2016	2017	2018	2019	2020	2021	2022	2023	2024	2025
Flat										
1	827 (38.3%)	942 (37.9%)	969 (39.8%)	997 (39.9%)	1,022 (39.3%)	930 (36.6%)	952 (38.4%)	915 (36.5%)	961 (36.6%)	939 (37.0%)
2	654 (30.3%)	791 (31.8%)	755 (31.0%)	787 (31.5%)	793 (30.5%)	784 (30.8%)	813 (32.8%)	788 (31.4%)	786 (29.9%)	768 (30.3%)
3	423 (19.6%)	488 (19.6%)	429 (17.6%)	477 (19.1%)	499 (19.2%)	510 (20.1%)	431 (17.4%)	477 (19.0%)	530 (20.2%)	483 (19.1%)
4	188 (8.7%)	183 (7.4%)	191 (7.8%)	165 (6.6%)	191 (7.4%)	208 (8.2%)	202 (8.2%)	214 (8.5%)	223 (8.5%)	204 (8.0%)
5+	68 (3.1%)	82 (3.3%)	91 (3.7%)	71 (2.8%)	93 (3.6%)	111 (4.4%)	80 (3.2%)	115 (4.6%)	125 (4.8%)	141 (5.6%)
Jump										
1	1,935 (58.8%)	1,947 (51.3%)	1,924 (53.9%)	2,202 (58.8%)	2,302 (60.1%)	2,403 (62.5%)	2,091 (51.9%)	2,275 (57.7%)	2,208 (60.5%)	2,189 (58.3%)
2	1,041 (31.6%)	1,376 (36.2%)	1,261 (35.3%)	1,253 (33.4%)	1,234 (32.2%)	1,210 (31.5%)	1,496 (37.1%)	1,338 (33.9%)	1,199 (32.9%)	1,280 (34.1%)
3	270 (8.2%)	423 (11.1%)	339 (9.5%)	255 (6.8%)	271 (7.1%)	219 (5.7%)	394 (9.8%)	289 (7.3%)	226 (6.2%)	259 (6.9%)
4	43 (1.3%)	48 (1.3%)	43 (1.2%)	30 (0.8%)	25 (0.7%)	14 (0.4%)	49 (1.2%)	41 (1.0%)	13 (0.4%)	23 (0.6%)
5+	2 (0.1%)	4 (0.1%)	2 (0.1%)	7 (0.2%)	1 (0.0%)	NA (-)	2 (0.0%)	3 (0.1%)	1 (0.0%)	2 (0.1%)
All Races										
1	2,694 (49.9%)	2,784 (44.9%)	2,786 (47.0%)	3,079 (49.9%)	3,194 (50.4%)	3,219 (51.0%)	2,947 (45.7%)	3,062 (48.1%)	3,102 (49.8%)	3,060 (49.1%)
2	1,686 (31.2%)	2,153 (34.7%)	2,019 (34.0%)	2,057 (33.3%)	2,020 (31.9%)	1,995 (31.6%)	2,309 (35.8%)	2,125 (33.4%)	1,986 (31.9%)	2,041 (32.7%)
3	713 (13.2%)	937 (15.1%)	788 (13.3%)	757 (12.3%)	790 (12.5%)	741 (11.8%)	846 (13.1%)	787 (12.4%)	768 (12.3%)	756 (12.1%)
4	235 (4.4%)	241 (3.9%)	244 (4.1%)	195 (3.2%)	233 (3.7%)	236 (3.7%)	258 (4.0%)	269 (4.2%)	242 (3.9%)	233 (3.7%)
5+	72 (1.3%)	89 (1.4%)	93 (1.6%)	80 (1.3%)	97 (1.5%)	115 (1.8%)	83 (1.3%)	120 (1.9%)	127 (2.0%)	146 (2.3%)

Year to Date Median Days Between Runs

Code/RatBand	2016	2017	2018	2019	2020	2021	2022	2023	2024	2025
All Runners	27	26	27	28	27	29	27	28	27	27
Flat										
Unrated	25	24	27	29	28	25	26	26	26	26
0-50	18	20	20	21	20	19	19	17	17	16
51-60	19	19	19	21	19	18	20	19	18	17
61-70	21	21	20	21	21	19	19	20	19	19
71-80	20	21	21	21	22	21	21	21	22	21
81-90	21	20	23	24	23	22	22	24	23	23
91-100	25	26	28	27	24	22	28	34	33	32
101+	30	38	34	28	31	40	40	40	46	51
All Flat Runners	20	21	21	22	21	20	21	21	20	20
Jump										
Unrated	40	33	37	37	35	43	34	41	39	40
0-100	30	27	27	30	28	39	28	32	32	33
101-110	31	27	30	32	30	38	30	35	36	32
111-120	34	29	30	33	32	38	31	35	33	33
121-130	36	31	30	34	32	38	32	35	36	33
131-140	35	32	34	35	34	39	35	37	35	36
141-150	35	35	36	35	36	45	36	43	36	36
151+	35	38	39	37	38	42	42	45	35	42
All Jump Runners	35	29	32	34	32	40	32	36	35	34

# Horses Population by Gender

## February 2025 Horses in Training Snapshot by Gender versus Previous Years

### All Horses

Sex	2016	2017	2018	2019	2020	2021	2022	2023	2024	2025
Colt/Entire	2,467 (16.9%)	2,491 (16.6%)	2,450 (16.1%)	2,311 (15.2%)	2,303 (14.8%)	2,122 (13.6%)	2,126 (14.1%)	2,028 (13.4%)	1,907 (13.1%)	1,909 (13.2%)
Gelding	7,814 (53.5%)	8,078 (53.8%)	8,207 (54.0%)	8,254 (54.2%)	8,490 (54.6%)	8,793 (56.1%)	8,294 (55.0%)	8,359 (55.2%)	8,156 (56.0%)	8,027 (55.7%)
Filly/Mare	4,318 (29.6%)	4,451 (29.6%)	4,552 (29.9%)	4,657 (30.6%)	4,745 (30.5%)	4,743 (30.3%)	4,648 (30.8%)	4,755 (31.4%)	4,508 (30.9%)	4,474 (31.0%)
Rig	5 (0.0%)	4 (0.0%)	3 (0.0%)	3 (0.0%)	3 (0.0%)	2 (0.0%)	1 (0.0%)	1 (0.0%)	0 (0.0%)	0 (0.0%)
Total	14,604 (100.0%)	15,024 (100.0%)	15,212 (100.0%)	15,225 (100.0%)	15,541 (100.0%)	15,660 (100.0%)	15,069 (100.0%)	15,143 (100.0%)	14,571 (100.0%)	14,410 (100.0%)

### Flat (including Dual)

Sex	2016	2017	2018	2019	2020	2021	2022	2023	2024	2025
Colt/Entire	2,435 (26.2%)	2,467 (25.4%)	2,425 (24.1%)	2,293 (24.0%)	2,283 (23.5%)	2,096 (22.6%)	2,106 (22.6%)	2,003 (21.6%)	1,885 (21.0%)	1,881 (20.8%)
Gelding	3,524 (38.0%)	3,806 (39.2%)	4,150 (41.2%)	3,806 (39.9%)	3,957 (40.7%)	3,860 (41.6%)	3,818 (41.0%)	3,862 (41.7%)	3,869 (43.2%)	3,923 (43.5%)
Filly/Mare	3,319 (35.8%)	3,442 (35.4%)	3,487 (34.6%)	3,434 (36.0%)	3,483 (35.8%)	3,330 (35.9%)	3,397 (36.4%)	3,407 (36.7%)	3,210 (35.8%)	3,222 (35.7%)
Rig	5 (0.1%)	4 (0.0%)	3 (0.0%)	2 (0.0%)	2 (0.0%)	1 (0.0%)	0 (0.0%)	0 (0.0%)	0 (0.0%)	0 (0.0%)
Total	9,283 (100.0%)	9,719 (100.0%)	10,065 (100.0%)	9,535 (100.0%)	9,725 (100.0%)	9,287 (100.0%)	9,321 (100.0%)	9,272 (100.0%)	8,964 (100.0%)	9,026 (100.0%)

### Jump (including Dual)

Sex	2016	2017	2018	2019	2020	2021	2022	2023	2024	2025
Colt/Entire	44 (0.8%)	28 (0.5%)	33 (0.5%)	29 (0.5%)	31 (0.5%)	37 (0.5%)	31 (0.5%)	31 (0.5%)	26 (0.4%)	48 (0.8%)
Gelding	4,679 (80.5%)	4,713 (80.5%)	4,774 (78.6%)	4,784 (77.9%)	4,935 (77.7%)	5,313 (77.4%)	4,843 (77.6%)	4,846 (76.5%)	4,618 (76.1%)	4,477 (75.8%)
Filly/Mare	1,089 (18.7%)	1,112 (19.0%)	1,267 (20.9%)	1,330 (21.6%)	1,384 (21.8%)	1,517 (22.1%)	1,364 (21.9%)	1,458 (23.0%)	1,421 (23.4%)	1,378 (23.3%)
Rig	0 (0.0%)	0 (0.0%)	0 (0.0%)	1 (0.0%)	1 (0.0%)	1 (0.0%)	1 (0.0%)	1 (0.0%)	0 (0.0%)	0 (0.0%)
Total	5,812 (100.0%)	5,853 (100.0%)	6,074 (100.0%)	6,144 (100.0%)	6,351 (100.0%)	6,868 (100.0%)	6,239 (100.0%)	6,336 (100.0%)	6,065 (100.0%)	5,903 (100.0%)

### Hunter Chasers

Sex	2016	2017	2018	2019	2020	2021	2022	2023	2024	2025
Colt/Entire	4 (0.3%)	5 (0.3%)	2 (0.1%)	2 (0.1%)	1 (0.1%)	1 (0.1%)	8 (0.8%)	7 (0.7%)	11 (0.9%)	7 (0.8%)
Gelding	1,345 (84.9%)	1,288 (83.2%)	1,160 (82.7%)	1,122 (80.8%)	1,096 (81.9%)	668 (83.7%)	865 (82.0%)	791 (82.6%)	981 (82.2%)	722 (80.9%)
Filly/Mare	236 (14.9%)	255 (16.5%)	241 (17.2%)	264 (19.0%)	242 (18.1%)	129 (16.2%)	182 (17.3%)	160 (16.7%)	202 (16.9%)	163 (18.3%)
Rig	0 (0.0%)	0 (0.0%)	0 (0.0%)	0 (0.0%)	0 (0.0%)	0 (0.0%)	0 (0.0%)	0 (0.0%)	0 (0.0%)	0 (0.0%)
Total	1,585 (100.0%)	1,548 (100.0%)	1,403 (100.0%)	1,388 (100.0%)	1,339 (100.0%)	798 (100.0%)	1,055 (100.0%)	958 (100.0%)	1,194 (100.0%)	892 (100.0%)

Year to Date Total Runners by Gender

Sex	2016	2017	2018	2019	2020	2021	2022	2023	2024	2025
All Races										
Colt/Entire	365 (3.8%)	444 (3.9%)	423 (4.0%)	385 (3.6%)	467 (4.2%)	427 (3.9%)	349 (3.0%)	386 (3.4%)	346 (3.1%)	289 (2.6%)
Gelding	6,939 (72.9%)	8,346 (73.7%)	7,752 (72.7%)	7,661 (71.8%)	7,780 (70.2%)	7,800 (70.9%)	8,330 (71.8%)	8,077 (70.8%)	7,904 (71.6%)	8,138 (73.1%)
Filly/Mare	2,221 (23.3%)	2,541 (22.4%)	2,491 (23.4%)	2,628 (24.6%)	2,830 (25.5%)	2,772 (25.2%)	2,917 (25.2%)	2,951 (25.9%)	2,788 (25.3%)	2,712 (24.3%)
Rig	0 (0.0%)	0 (0.0%)	1 (0.0%)	1 (0.0%)	3 (0.0%)	2 (0.0%)	0 (0.0%)	0 (0.0%)	0 (0.0%)	0 (0.0%)
Flat										
Colt/Entire	357 (7.9%)	431 (8.4%)	416 (8.3%)	374 (7.4%)	458 (8.5%)	421 (7.7%)	345 (6.7%)	372 (6.9%)	344 (6.0%)	283 (5.1%)
Gelding	2,746 (60.8%)	3,188 (61.9%)	3,136 (62.4%)	3,166 (62.8%)	3,324 (61.6%)	3,421 (62.6%)	3,191 (62.3%)	3,344 (61.7%)	3,722 (65.3%)	3,747 (68.0%)
Filly/Mare	1,413 (31.3%)	1,532 (29.7%)	1,469 (29.3%)	1,505 (29.8%)	1,610 (29.9%)	1,623 (29.7%)	1,589 (31.0%)	1,701 (31.4%)	1,631 (28.6%)	1,481 (26.9%)
Rig	0 (0.0%)	0 (0.0%)	1 (0.0%)	0 (0.0%)	0 (0.0%)	0 (0.0%)	0 (0.0%)	0 (0.0%)	0 (0.0%)	0 (0.0%)
All Jump										
Colt/Entire	8 (0.2%)	13 (0.2%)	7 (0.1%)	11 (0.2%)	9 (0.2%)	6 (0.1%)	4 (0.1%)	14 (0.2%)	2 (0.0%)	6 (0.1%)
Gelding	4,193 (83.7%)	5,158 (83.5%)	4,616 (81.8%)	4,495 (79.8%)	4,456 (78.3%)	4,379 (79.1%)	5,139 (79.4%)	4,733 (78.9%)	4,182 (78.3%)	4,391 (78.0%)
Filly/Mare	808 (16.1%)	1,009 (16.3%)	1,022 (18.1%)	1,123 (19.9%)	1,220 (21.4%)	1,149 (20.8%)	1,328 (20.5%)	1,250 (20.8%)	1,157 (21.7%)	1,231 (21.9%)
Rig	0 (0.0%)	0 (0.0%)	0 (0.0%)	1 (0.0%)	3 (0.1%)	2 (0.0%)	0 (0.0%)	0 (0.0%)	0 (0.0%)	0 (0.0%)
Chase										
Gelding	1,486 (93.5%)	1,882 (92.8%)	1,580 (91.1%)	1,552 (90.2%)	1,524 (90.6%)	1,387 (88.9%)	1,878 (88.4%)	1,710 (89.9%)	1,507 (90.3%)	1,565 (86.8%)
Filly/Mare	104 (6.5%)	146 (7.2%)	155 (8.9%)	168 (9.8%)	155 (9.2%)	172 (11.0%)	247 (11.6%)	192 (10.1%)	162 (9.7%)	237 (13.2%)
Rig	0 (0.0%)	0 (0.0%)	0 (0.0%)	0 (0.0%)	3 (0.2%)	2 (0.1%)	0 (0.0%)	0 (0.0%)	0 (0.0%)	0 (0.0%)
Hurdle										
Colt/Entire	8 (0.3%)	12 (0.3%)	6 (0.2%)	9 (0.3%)	5 (0.1%)	4 (0.1%)	4 (0.1%)	9 (0.3%)	2 (0.1%)	3 (0.1%)
Gelding	2,438 (81.0%)	2,928 (80.3%)	2,694 (79.4%)	2,668 (77.0%)	2,521 (74.1%)	2,106 (76.4%)	2,932 (76.6%)	2,738 (76.3%)	2,414 (73.7%)	2,540 (74.9%)
Filly/Mare	564 (18.7%)	705 (19.3%)	693 (20.4%)	789 (22.8%)	874 (25.7%)	648 (23.5%)	892 (23.3%)	842 (23.5%)	859 (26.2%)	850 (25.1%)
Rig	0 (0.0%)	0 (0.0%)	0 (0.0%)	1 (0.0%)	0 (0.0%)	0 (0.0%)	0 (0.0%)	0 (0.0%)	0 (0.0%)	0 (0.0%)
NHF										
Colt/Entire	0 (0.0%)	1 (0.2%)	1 (0.2%)	2 (0.5%)	4 (0.7%)	2 (0.2%)	0 (0.0%)	5 (1.0%)	0 (0.0%)	3 (0.7%)
Gelding	269 (65.8%)	348 (68.6%)	342 (66.2%)	275 (62.1%)	411 (67.8%)	886 (72.8%)	329 (63.5%)	285 (56.3%)	261 (65.7%)	286 (66.1%)
Filly/Mare	140 (34.2%)	158 (31.2%)	174 (33.7%)	166 (37.5%)	191 (31.5%)	329 (27.0%)	189 (36.5%)	216 (42.7%)	136 (34.3%)	144 (33.3%)
Hunter										
Gelding	118 (96.7%)	169 (98.3%)	112 (98.2%)	110 (96.5%)	88 (97.8%)	155 (92.3%)	84 (100.0%)	82 (97.6%)	85 (91.4%)	81 (91.0%)
Filly/Mare	4 (3.3%)	3 (1.7%)	2 (1.8%)	4 (3.5%)	2 (2.2%)	13 (7.7%)	0 (0.0%)	2 (2.4%)	8 (8.6%)	8 (9.0%)

Year to Date Individual Runners by Gender

Sex	2016	2017	2018	2019	2020	2021	2022	2023	2024	2025
All Races										
Male	4,124 (76.4%)	4,793 (77.3%)	4,512 (76.1%)	4,646 (75.3%)	4,692 (74.1%)	4,702 (74.6%)	4,824 (74.9%)	4,695 (73.8%)	4,620 (74.2%)	4,648 (74.5%)
Female	1,276 (23.6%)	1,411 (22.7%)	1,418 (23.9%)	1,522 (24.7%)	1,642 (25.9%)	1,604 (25.4%)	1,619 (25.1%)	1,668 (26.2%)	1,605 (25.8%)	1,588 (25.5%)
Flat										
Male	1,453 (67.3%)	1,711 (68.8%)	1,672 (68.7%)	1,710 (68.5%)	1,764 (67.9%)	1,737 (68.3%)	1,669 (67.4%)	1,674 (66.7%)	1,814 (69.1%)	1,763 (69.5%)
Female	707 (32.7%)	775 (31.2%)	763 (31.3%)	787 (31.5%)	834 (32.1%)	806 (31.7%)	809 (32.6%)	835 (33.3%)	811 (30.9%)	772 (30.5%)
All Jump										
Male	2,710 (82.3%)	3,150 (82.9%)	2,898 (81.2%)	2,996 (80.0%)	3,003 (78.3%)	3,035 (78.9%)	3,213 (79.7%)	3,092 (78.4%)	2,837 (77.8%)	2,927 (78.0%)
Female	581 (17.7%)	648 (17.1%)	671 (18.8%)	751 (20.0%)	830 (21.7%)	811 (21.1%)	819 (20.3%)	854 (21.6%)	810 (22.2%)	826 (22.0%)
Chase										
Male	967 (93.1%)	1,156 (92.3%)	986 (91.1%)	1,041 (90.4%)	1,065 (90.3%)	1,008 (89.3%)	1,167 (88.6%)	1,115 (88.8%)	1,007 (89.8%)	1,052 (87.2%)
Female	72 (6.9%)	97 (7.7%)	96 (8.9%)	111 (9.6%)	115 (9.7%)	121 (10.7%)	150 (11.4%)	140 (11.2%)	114 (10.2%)	155 (12.8%)
Hurdle										
Male	1,637 (80.5%)	1,867 (80.8%)	1,746 (79.4%)	1,841 (77.7%)	1,727 (74.6%)	1,537 (75.9%)	1,920 (77.8%)	1,847 (76.5%)	1,684 (73.7%)	1,732 (74.9%)
Female	396 (19.5%)	443 (19.2%)	454 (20.6%)	527 (22.3%)	589 (25.4%)	487 (24.1%)	549 (22.2%)	568 (23.5%)	601 (26.3%)	581 (25.1%)
NHF										
Male	239 (64.9%)	302 (68.3%)	296 (67.0%)	241 (62.8%)	372 (68.1%)	728 (72.8%)	289 (64.2%)	256 (58.0%)	239 (65.3%)	264 (66.2%)
Female	129 (35.1%)	140 (31.7%)	146 (33.0%)	143 (37.2%)	174 (31.9%)	272 (27.2%)	161 (35.8%)	185 (42.0%)	127 (34.7%)	135 (33.8%)
Hunter										
Male	96 (96.0%)	129 (98.5%)	88 (97.8%)	92 (96.8%)	62 (96.9%)	136 (91.3%)	68 (100.0%)	62 (96.9%)	65 (90.3%)	62 (91.2%)
Female	4 (4.0%)	2 (1.5%)	2 (2.2%)	3 (3.2%)	2 (3.1%)	13 (8.7%)	0 (0.0%)	2 (3.1%)	7 (9.7%)	6 (8.8%)

# Horses Population by Breeding

## February 2025 Horses in Training Snapshot by Breeding versus Previous Years

### Flat (including Dual)

Bred	Sex	2016	2017	2018	2019	2020	2021	2022	2023	2024	2025
GB	Male	2,796 (30.1%)	2,970 (30.6%)	3,041 (30.2%)	2,884 (30.2%)	2,955 (30.4%)	2,781 (29.9%)	2,753 (29.5%)	2,721 (29.3%)	2,637 (29.4%)	2,666 (29.5%)
	Female	1,858 (20.0%)	1,967 (20.2%)	1,901 (18.9%)	1,903 (20.0%)	1,973 (20.3%)	1,900 (20.5%)	1,900 (20.4%)	1,878 (20.3%)	1,736 (19.4%)	1,803 (20.0%)
	Subtotal	4,654 (50.1%)	4,937 (50.8%)	4,942 (49.1%)	4,787 (50.2%)	4,928 (50.7%)	4,681 (50.4%)	4,653 (49.9%)	4,599 (49.6%)	4,373 (48.8%)	4,469 (49.5%)
IRE	Male	2,600 (28.0%)	2,702 (27.8%)	2,853 (28.3%)	2,615 (27.4%)	2,678 (27.5%)	2,644 (28.5%)	2,717 (29.1%)	2,719 (29.3%)	2,635 (29.4%)	2,711 (30.0%)
	Female	1,232 (13.3%)	1,240 (12.8%)	1,334 (13.3%)	1,272 (13.3%)	1,283 (13.2%)	1,256 (13.5%)	1,332 (14.3%)	1,361 (14.7%)	1,300 (14.5%)	1,256 (13.9%)
	Subtotal	3,832 (41.3%)	3,942 (40.6%)	4,187 (41.6%)	3,887 (40.8%)	3,961 (40.7%)	3,900 (42.0%)	4,049 (43.4%)	4,080 (44.0%)	3,935 (43.9%)	3,967 (44.0%)
FR	Male	162 (1.7%)	216 (2.2%)	314 (3.1%)	276 (2.9%)	313 (3.2%)	286 (3.1%)	286 (3.1%)	279 (3.0%)	334 (3.7%)	307 (3.4%)
	Female	77 (0.8%)	87 (0.9%)	115 (1.1%)	115 (1.2%)	116 (1.2%)	100 (1.1%)	105 (1.1%)	114 (1.2%)	130 (1.5%)	106 (1.2%)
	Subtotal	239 (2.6%)	303 (3.1%)	429 (4.3%)	391 (4.1%)	429 (4.4%)	386 (4.2%)	391 (4.2%)	393 (4.2%)	464 (5.2%)	413 (4.6%)
USA	Male	325 (3.5%)	301 (3.1%)	280 (2.8%)	258 (2.7%)	223 (2.3%)	170 (1.8%)	120 (1.3%)	96 (1.0%)	89 (1.0%)	62 (0.7%)
	Female	130 (1.4%)	120 (1.2%)	111 (1.1%)	118 (1.2%)	82 (0.8%)	51 (0.5%)	39 (0.4%)	32 (0.3%)	21 (0.2%)	35 (0.4%)
	Subtotal	455 (4.9%)	421 (4.3%)	391 (3.9%)	376 (3.9%)	305 (3.1%)	221 (2.4%)	159 (1.7%)	128 (1.4%)	110 (1.2%)	97 (1.1%)
GNY	Male	59 (0.6%)	66 (0.7%)	70 (0.7%)	49 (0.5%)	53 (0.5%)	58 (0.6%)	39 (0.4%)	39 (0.4%)	50 (0.6%)	51 (0.6%)
	Female	11 (0.1%)	13 (0.1%)	15 (0.1%)	16 (0.2%)	25 (0.3%)	19 (0.2%)	18 (0.2%)	18 (0.2%)	18 (0.2%)	17 (0.2%)
	Subtotal	70 (0.8%)	79 (0.8%)	85 (0.8%)	65 (0.7%)	78 (0.8%)	77 (0.8%)	57 (0.6%)	57 (0.6%)	68 (0.8%)	68 (0.8%)
Other	Male	22 (0.2%)	22 (0.2%)	20 (0.2%)	19 (0.2%)	20 (0.2%)	18 (0.2%)	9 (0.1%)	11 (0.1%)	9 (0.1%)	7 (0.1%)
	Female	11 (0.1%)	15 (0.2%)	11 (0.1%)	10 (0.1%)	4 (0.0%)	4 (0.0%)	3 (0.0%)	4 (0.0%)	5 (0.1%)	5 (0.1%)
	Subtotal	33 (0.4%)	37 (0.4%)	31 (0.3%)	29 (0.3%)	24 (0.2%)	22 (0.2%)	12 (0.1%)	15 (0.2%)	14 (0.2%)	12 (0.1%)

### Jump (including Dual)

Bred	Sex	2016	2017	2018	2019	2020	2021	2022	2023	2024	2025
GB	Male	1,394 (24.0%)	1,331 (22.7%)	1,352 (22.3%)	1,287 (20.9%)	1,259 (19.8%)	1,326 (19.3%)	1,204 (19.3%)	1,215 (19.2%)	1,169 (19.3%)	1,164 (19.7%)
	Female	635 (10.9%)	610 (10.4%)	666 (11.0%)	635 (10.3%)	617 (9.7%)	725 (10.6%)	653 (10.5%)	686 (10.8%)	658 (10.8%)	587 (9.9%)
	Subtotal	2,029 (34.9%)	1,941 (33.2%)	2,018 (33.2%)	1,922 (31.3%)	1,876 (29.5%)	2,051 (29.9%)	1,857 (29.8%)	1,901 (30.0%)	1,827 (30.1%)	1,751 (29.7%)
IRE	Male	2,559 (44.0%)	2,596 (44.4%)	2,636 (43.4%)	2,663 (43.3%)	2,761 (43.5%)	2,944 (42.9%)	2,596 (41.6%)	2,538 (40.1%)	2,401 (39.6%)	2,320 (39.3%)
	Female	396 (6.8%)	432 (7.4%)	515 (8.5%)	582 (9.5%)	638 (10.0%)	645 (9.4%)	574 (9.2%)	619 (9.8%)	609 (10.0%)	617 (10.5%)
	Subtotal	2,955 (50.8%)	3,028 (51.7%)	3,151 (51.9%)	3,245 (52.8%)	3,399 (53.5%)	3,589 (52.3%)	3,170 (50.8%)	3,157 (49.8%)	3,010 (49.6%)	2,937 (49.8%)
FR	Male	656 (11.3%)	706 (12.1%)	714 (11.8%)	773 (12.6%)	841 (13.2%)	981 (14.3%)	973 (15.6%)	1,033 (16.3%)	997 (16.4%)	986 (16.7%)
	Female	47 (0.8%)	63 (1.1%)	77 (1.3%)	102 (1.7%)	121 (1.9%)	135 (2.0%)	128 (2.1%)	148 (2.3%)	146 (2.4%)	165 (2.8%)
	Subtotal	703 (12.1%)	769 (13.1%)	791 (13.0%)	875 (14.2%)	962 (15.1%)	1,116 (16.2%)	1,101 (17.6%)	1,181 (18.6%)	1,143 (18.8%)	1,151 (19.5%)
USA	Male	54 (0.9%)	43 (0.7%)	41 (0.7%)	30 (0.5%)	34 (0.5%)	28 (0.4%)	29 (0.5%)	19 (0.3%)	13 (0.2%)	8 (0.1%)
	Female	2 (0.0%)	2 (0.0%)	4 (0.1%)	3 (0.0%)	3 (0.0%)	1 (0.0%)	1 (0.0%)	NA (-)	2 (0.0%)	1 (0.0%)
	Subtotal	56 (1.0%)	45 (0.8%)	45 (0.7%)	33 (0.5%)	37 (0.6%)	29 (0.4%)	30 (0.5%)	19 (0.3%)	15 (0.2%)	9 (0.2%)
GNY	Male	54 (0.9%)	58 (1.0%)	57 (0.9%)	54 (0.9%)	68 (1.1%)	68 (1.0%)	70 (1.1%)	71 (1.1%)	60 (1.0%)	43 (0.7%)
	Female	7 (0.1%)	4 (0.1%)	3 (0.0%)	6 (0.1%)	5 (0.1%)	10 (0.1%)	8 (0.1%)	5 (0.1%)	5 (0.1%)	6 (0.1%)
	Subtotal	61 (1.0%)	62 (1.1%)	60 (1.0%)	60 (1.0%)	73 (1.1%)	78 (1.1%)	78 (1.3%)	76 (1.2%)	65 (1.1%)	49 (0.8%)
Other	Male	6 (0.1%)	7 (0.1%)	7 (0.1%)	7 (0.1%)	4 (0.1%)	4 (0.1%)	3 (0.0%)	2 (0.0%)	4 (0.1%)	4 (0.1%)
	Female	2 (0.0%)	2 (0.0%)	2 (0.0%)	2 (0.0%)	NA (-)	1 (0.0%)	NA (-)	NA (-)	1 (0.0%)	2 (0.0%)
	Subtotal	8 (0.1%)	8 (0.1%)	9 (0.1%)	9 (0.1%)	4 (0.1%)	5 (0.1%)	3 (0.0%)	2 (0.0%)	5 (0.1%)	6 (0.1%)

## Year to Date Total Runners by Breeding

### Flat

Bred	Sex	2016	2017	2018	2019	2020	2021	2022	2023	2024	2025
GB	Male	1,444 (32.0%)	1,707 (33.1%)	1,692 (33.7%)	1,625 (32.2%)	1,760 (32.6%)	1,747 (32.0%)	1,650 (32.2%)	1,643 (30.3%)	1,868 (32.8%)	1,851 (33.6%)
	Female	779 (17.2%)	828 (16.1%)	776 (15.5%)	828 (16.4%)	887 (16.5%)	976 (17.9%)	907 (17.7%)	971 (17.9%)	864 (15.2%)	765 (13.9%)
	Subtotal	2,223 (49.2%)	2,535 (49.2%)	2,468 (49.1%)	2,453 (48.6%)	2,647 (49.1%)	2,723 (49.8%)	2,557 (49.9%)	2,614 (48.3%)	2,732 (48.0%)	2,616 (47.5%)
IRE	Male	1,336 (29.6%)	1,564 (30.4%)	1,504 (29.9%)	1,545 (30.6%)	1,655 (30.7%)	1,747 (32.0%)	1,578 (30.8%)	1,809 (33.4%)	1,919 (33.7%)	1,912 (34.7%)
	Female	551 (12.2%)	614 (11.9%)	590 (11.7%)	555 (11.0%)	633 (11.7%)	561 (10.3%)	596 (11.6%)	642 (11.9%)	669 (11.7%)	636 (11.5%)
	Subtotal	1,887 (41.8%)	2,178 (42.3%)	2,094 (41.7%)	2,100 (41.6%)	2,288 (42.4%)	2,308 (42.2%)	2,174 (42.4%)	2,451 (45.2%)	2,588 (45.4%)	2,548 (46.2%)
FR	Male	90 (2.0%)	112 (2.2%)	110 (2.2%)	140 (2.8%)	158 (2.9%)	147 (2.7%)	160 (3.1%)	159 (2.9%)	168 (2.9%)	188 (3.4%)
	Female	27 (0.6%)	29 (0.6%)	53 (1.1%)	43 (0.9%)	43 (0.8%)	42 (0.8%)	42 (0.8%)	56 (1.0%)	58 (1.0%)	46 (0.8%)
	Subtotal	117 (2.6%)	141 (2.7%)	163 (3.2%)	183 (3.6%)	201 (3.7%)	189 (3.5%)	202 (3.9%)	215 (4.0%)	226 (4.0%)	234 (4.2%)
USA	Male	192 (4.3%)	186 (3.6%)	199 (4.0%)	191 (3.8%)	172 (3.2%)	143 (2.6%)	128 (2.5%)	86 (1.6%)	85 (1.5%)	53 (1.0%)
	Female	37 (0.8%)	46 (0.9%)	40 (0.8%)	65 (1.3%)	43 (0.8%)	30 (0.5%)	27 (0.5%)	25 (0.5%)	31 (0.5%)	23 (0.4%)
	Subtotal	229 (5.1%)	232 (4.5%)	239 (4.8%)	256 (5.1%)	215 (4.0%)	173 (3.2%)	155 (3.0%)	111 (2.0%)	116 (2.0%)	76 (1.4%)
GNY	Male	23 (0.5%)	34 (0.7%)	29 (0.6%)	20 (0.4%)	28 (0.5%)	40 (0.7%)	15 (0.3%)	16 (0.3%)	24 (0.4%)	22 (0.4%)
	Female	15 (0.3%)	10 (0.2%)	8 (0.2%)	7 (0.1%)	4 (0.1%)	12 (0.2%)	13 (0.3%)	6 (0.1%)	6 (0.1%)	8 (0.1%)
	Subtotal	38 (0.8%)	44 (0.9%)	37 (0.7%)	27 (0.5%)	32 (0.6%)	52 (1.0%)	28 (0.5%)	22 (0.4%)	30 (0.5%)	30 (0.5%)
Other	Male	18 (0.4%)	16 (0.3%)	19 (0.4%)	19 (0.4%)	9 (0.2%)	18 (0.3%)	5 (0.1%)	3 (0.1%)	2 (0.0%)	4 (0.1%)
	Female	4 (0.1%)	5 (0.1%)	2 (0.0%)	7 (0.1%)	0 (0.0%)	2 (0.0%)	4 (0.1%)	1 (0.0%)	3 (0.1%)	3 (0.1%)
	Subtotal	22 (0.5%)	21 (0.4%)	21 (0.4%)	26 (0.5%)	9 (0.2%)	20 (0.4%)	9 (0.2%)	4 (0.1%)	5 (0.1%)	7 (0.1%)

Jump

Bred	Sex	2016	2017	2018	2019	2020	2021	2022	2023	2024	2025
GB	Male	1,148 (22.9%)	1,381 (22.3%)	1,225 (21.7%)	1,188 (21.1%)	1,105 (19.4%)	1,021 (18.4%)	1,142 (17.6%)	1,096 (18.3%)	970 (18.2%)	1,100 (19.5%)
	Female	411 (8.2%)	495 (8.0%)	491 (8.7%)	510 (9.1%)	512 (9.0%)	502 (9.1%)	584 (9.0%)	541 (9.0%)	477 (8.9%)	462 (8.2%)
	Subtotal	1,559 (31.1%)	1,876 (30.4%)	1,716 (30.4%)	1,698 (30.2%)	1,617 (28.4%)	1,523 (27.5%)	1,726 (26.7%)	1,637 (27.3%)	1,447 (27.1%)	1,562 (27.8%)
IRE	Male	2,280 (45.5%)	2,844 (46.0%)	2,570 (45.5%)	2,465 (43.8%)	2,460 (43.2%)	2,381 (43.0%)	2,759 (42.6%)	2,514 (41.9%)	2,163 (40.5%)	2,261 (40.2%)
	Female	349 (7.0%)	436 (7.1%)	462 (8.2%)	527 (9.4%)	571 (10.0%)	510 (9.2%)	569 (8.8%)	556 (9.3%)	552 (10.3%)	602 (10.7%)
	Subtotal	2,629 (52.5%)	3,280 (53.1%)	3,032 (53.7%)	2,992 (53.1%)	3,031 (53.3%)	2,891 (52.2%)	3,328 (51.4%)	3,070 (51.2%)	2,715 (50.8%)	2,863 (50.9%)
FR	Male	666 (13.3%)	832 (13.5%)	743 (13.2%)	765 (13.6%)	798 (14.0%)	887 (16.0%)	1,131 (17.5%)	1,034 (17.2%)	982 (18.4%)	985 (17.5%)
	Female	41 (0.8%)	66 (1.1%)	61 (1.1%)	76 (1.3%)	128 (2.3%)	128 (2.3%)	159 (2.5%)	147 (2.5%)	121 (2.3%)	163 (2.9%)
	Subtotal	707 (14.1%)	898 (14.5%)	804 (14.2%)	841 (14.9%)	926 (16.3%)	1,015 (18.3%)	1,290 (19.9%)	1,181 (19.7%)	1,103 (20.7%)	1,148 (20.4%)
USA	Male	53 (1.1%)	44 (0.7%)	33 (0.6%)	21 (0.4%)	38 (0.7%)	26 (0.5%)	21 (0.3%)	21 (0.4%)	5 (0.1%)	4 (0.1%)
	Female	2 (0.0%)	3 (0.0%)	2 (0.0%)	4 (0.1%)	3 (0.1%)	1 (0.0%)	2 (0.0%)	0 (0.0%)	2 (0.0%)	1 (0.0%)
	Subtotal	55 (1.1%)	47 (0.8%)	35 (0.6%)	25 (0.4%)	41 (0.7%)	27 (0.5%)	23 (0.4%)	21 (0.4%)	7 (0.1%)	5 (0.1%)
GNY	Male	48 (1.0%)	66 (1.1%)	49 (0.9%)	62 (1.1%)	62 (1.1%)	70 (1.3%)	89 (1.4%)	82 (1.4%)	60 (1.1%)	43 (0.8%)
	Female	4 (0.1%)	5 (0.1%)	4 (0.1%)	6 (0.1%)	5 (0.1%)	8 (0.1%)	14 (0.2%)	6 (0.1%)	4 (0.1%)	3 (0.1%)
	Subtotal	52 (1.0%)	71 (1.1%)	53 (0.9%)	68 (1.2%)	67 (1.2%)	78 (1.4%)	103 (1.6%)	88 (1.5%)	64 (1.2%)	46 (0.8%)
Other	Male	6 (0.1%)	4 (0.1%)	3 (0.1%)	6 (0.1%)	5 (0.1%)	2 (0.0%)	1 (0.0%)	0 (0.0%)	4 (0.1%)	4 (0.1%)
	Female	1 (0.0%)	4 (0.1%)	2 (0.0%)	0 (0.0%)	1 (0.0%)	0 (0.0%)	0 (0.0%)	0 (0.0%)	1 (0.0%)	0 (0.0%)
	Subtotal	7 (0.1%)	8 (0.1%)	5 (0.1%)	6 (0.1%)	6 (0.1%)	2 (0.0%)	1 (0.0%)	NA (-)	5 (0.1%)	4 (0.1%)

Year to Date Individual Runners by Breeding

Flat

Bred	Sex	2016	2017	2018	2019	2020	2021	2022	2023	2024	2025
GB	Male	689 (31.9%)	799 (32.1%)	787 (32.3%)	775 (31.0%)	828 (31.9%)	790 (31.1%)	774 (31.2%)	739 (29.5%)	836 (31.8%)	793 (31.3%)
	Female	386 (17.9%)	429 (17.3%)	400 (16.4%)	439 (17.6%)	454 (17.5%)	482 (19.0%)	463 (18.7%)	478 (19.1%)	436 (16.6%)	398 (15.7%)
	Subtotal	1,075 (49.8%)	1,228 (49.4%)	1,187 (48.7%)	1,214 (48.6%)	1,282 (49.3%)	1,272 (50.0%)	1,237 (49.9%)	1,217 (48.5%)	1,272 (48.5%)	1,191 (47.0%)
IRE	Male	608 (28.1%)	739 (29.7%)	707 (29.0%)	759 (30.4%)	754 (29.0%)	784 (30.8%)	744 (30.0%)	799 (31.8%)	834 (31.8%)	846 (33.4%)
	Female	280 (13.0%)	296 (11.9%)	308 (12.6%)	287 (11.5%)	329 (12.7%)	275 (10.8%)	299 (12.1%)	312 (12.4%)	326 (12.4%)	333 (13.1%)
	Subtotal	888 (41.1%)	1,035 (41.6%)	1,015 (41.7%)	1,046 (41.9%)	1,083 (41.7%)	1,059 (41.6%)	1,043 (42.1%)	1,111 (44.3%)	1,160 (44.2%)	1,179 (46.5%)
FR	Male	41 (1.9%)	59 (2.4%)	55 (2.3%)	66 (2.6%)	83 (3.2%)	74 (2.9%)	73 (2.9%)	84 (3.3%)	88 (3.4%)	88 (3.5%)
	Female	14 (0.6%)	17 (0.7%)	26 (1.1%)	22 (0.9%)	25 (1.0%)	27 (1.1%)	21 (0.8%)	31 (1.2%)	31 (1.2%)	26 (1.0%)
	Subtotal	55 (2.5%)	76 (3.1%)	81 (3.3%)	88 (3.5%)	108 (4.2%)	101 (4.0%)	94 (3.8%)	115 (4.6%)	119 (4.5%)	114 (4.5%)
USA	Male	94 (4.4%)	87 (3.5%)	98 (4.0%)	89 (3.6%)	80 (3.1%)	64 (2.5%)	64 (2.6%)	40 (1.6%)	41 (1.6%)	24 (0.9%)
	Female	17 (0.8%)	24 (1.0%)	24 (1.0%)	32 (1.3%)	23 (0.9%)	16 (0.6%)	15 (0.6%)	10 (0.4%)	12 (0.5%)	9 (0.4%)
	Subtotal	111 (5.1%)	111 (4.5%)	122 (5.0%)	121 (4.8%)	103 (4.0%)	80 (3.1%)	79 (3.2%)	50 (2.0%)	53 (2.0%)	33 (1.3%)
GNY	Male	13 (0.6%)	19 (0.8%)	17 (0.7%)	13 (0.5%)	14 (0.5%)	19 (0.7%)	11 (0.4%)	10 (0.4%)	14 (0.5%)	10 (0.4%)
	Female	6 (0.3%)	6 (0.2%)	4 (0.2%)	4 (0.2%)	3 (0.1%)	5 (0.2%)	10 (0.4%)	3 (0.1%)	4 (0.2%)	4 (0.2%)
	Subtotal	19 (0.9%)	25 (1.0%)	21 (0.9%)	17 (0.7%)	17 (0.7%)	24 (0.9%)	21 (0.8%)	13 (0.5%)	18 (0.7%)	14 (0.6%)
Other	Male	8 (0.4%)	8 (0.3%)	8 (0.3%)	8 (0.3%)	5 (0.2%)	6 (0.2%)	3 (0.1%)	2 (0.1%)	1 (0.0%)	2 (0.1%)
	Female	4 (0.2%)	3 (0.1%)	1 (0.0%)	3 (0.1%)	0 (0.0%)	1 (0.0%)	1 (0.0%)	1 (0.0%)	2 (0.1%)	2 (0.1%)
	Subtotal	12 (0.6%)	11 (0.4%)	9 (0.4%)	11 (0.4%)	5 (0.2%)	7 (0.3%)	4 (0.2%)	3 (0.1%)	3 (0.1%)	4 (0.2%)

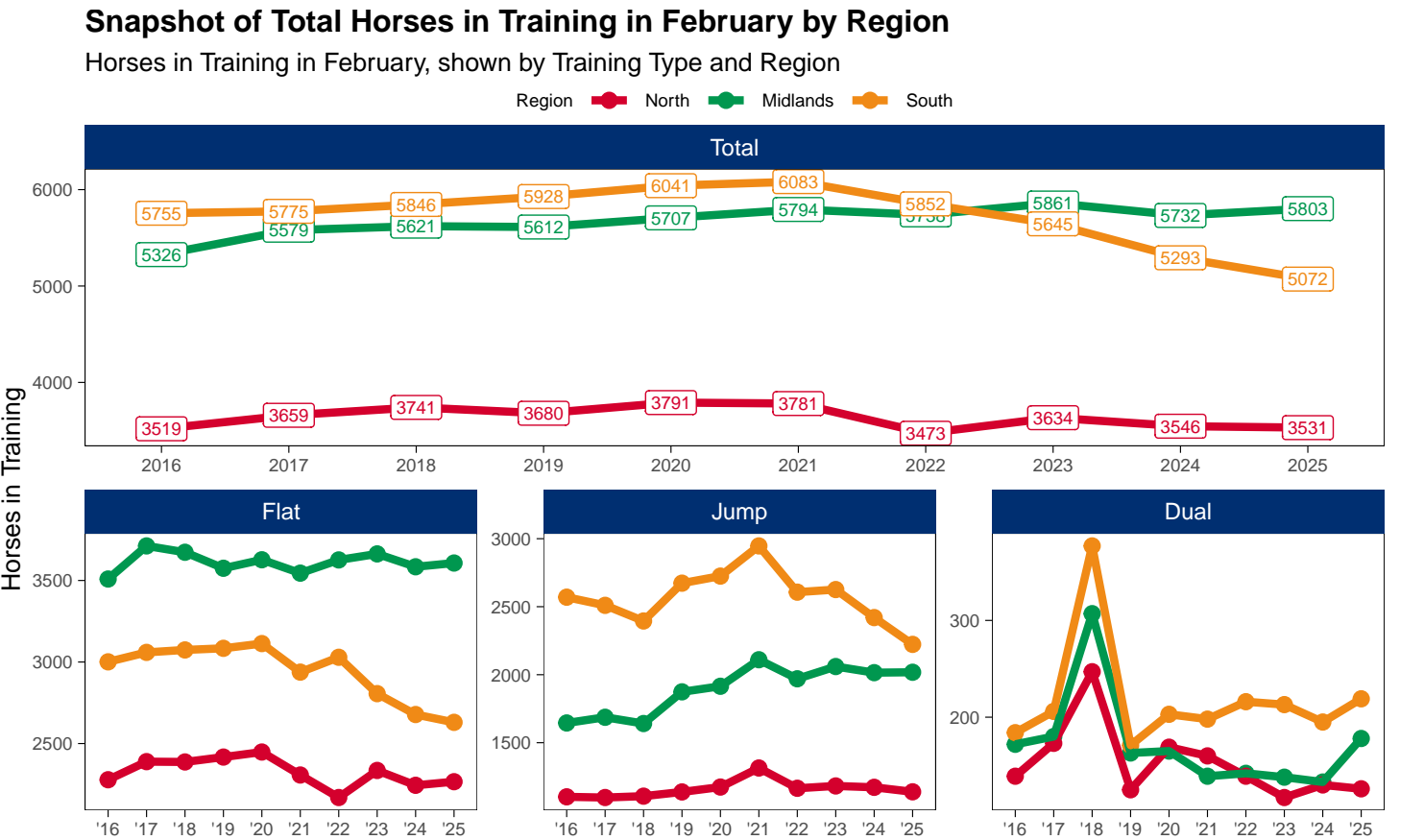
Jump

Bred	Sex	2016	2017	2018	2019	2020	2021	2022	2023	2024	2025
GB	Male	734 (22.3%)	827 (21.8%)	748 (21.0%)	777 (20.7%)	727 (19.0%)	703 (18.3%)	718 (17.8%)	729 (18.5%)	647 (17.7%)	723 (19.3%)
	Female	302 (9.2%)	326 (8.6%)	324 (9.1%)	342 (9.1%)	349 (9.1%)	357 (9.3%)	361 (9.0%)	359 (9.1%)	335 (9.2%)	316 (8.4%)
	Subtotal	1,036 (31.5%)	1,153 (30.4%)	1,072 (30.0%)	1,119 (29.9%)	1,076 (28.1%)	1,060 (27.6%)	1,079 (26.8%)	1,088 (27.6%)	982 (26.9%)	1,039 (27.7%)
IRE	Male	1,488 (45.2%)	1,731 (45.6%)	1,621 (45.4%)	1,659 (44.3%)	1,672 (43.6%)	1,658 (43.1%)	1,731 (42.9%)	1,629 (41.3%)	1,480 (40.6%)	1,499 (39.9%)
	Female	243 (7.4%)	274 (7.2%)	299 (8.4%)	346 (9.2%)	386 (10.1%)	359 (9.3%)	354 (8.8%)	384 (9.7%)	386 (10.6%)	401 (10.7%)
	Subtotal	1,731 (52.6%)	2,005 (52.8%)	1,920 (53.8%)	2,005 (53.5%)	2,058 (53.7%)	2,017 (52.4%)	2,085 (51.7%)	2,013 (51.0%)	1,866 (51.2%)	1,900 (50.6%)
FR	Male	423 (12.9%)	521 (13.7%)	478 (13.4%)	505 (13.5%)	534 (13.9%)	611 (15.9%)	699 (17.3%)	671 (17.0%)	662 (18.2%)	669 (17.8%)
	Female	31 (0.9%)	42 (1.1%)	43 (1.2%)	56 (1.5%)	87 (2.3%)	88 (2.3%)	95 (2.4%)	106 (2.7%)	83 (2.3%)	106 (2.8%)
	Subtotal	454 (13.8%)	563 (14.8%)	521 (14.6%)	561 (15.0%)	621 (16.2%)	699 (18.2%)	794 (19.7%)	777 (19.7%)	745 (20.4%)	775 (20.7%)
USA	Male	29 (0.9%)	30 (0.8%)	23 (0.6%)	15 (0.4%)	23 (0.6%)	18 (0.5%)	12 (0.3%)	14 (0.4%)	4 (0.1%)	3 (0.1%)
	Female	1 (0.0%)	1 (0.0%)	1 (0.0%)	3 (0.1%)	3 (0.1%)	1 (0.0%)	1 (0.0%)	0 (0.0%)	1 (0.0%)	1 (0.0%)
	Subtotal	30 (0.9%)	31 (0.8%)	24 (0.7%)	18 (0.5%)	26 (0.7%)	19 (0.5%)	13 (0.3%)	14 (0.4%)	5 (0.1%)	4 (0.1%)
GNY	Male	31 (0.9%)	38 (1.0%)	26 (0.7%)	36 (1.0%)	42 (1.1%)	43 (1.1%)	52 (1.3%)	49 (1.2%)	41 (1.1%)	30 (0.8%)
	Female	3 (0.1%)	3 (0.1%)	2 (0.1%)	4 (0.1%)	4 (0.1%)	6 (0.2%)	8 (0.2%)	5 (0.1%)	4 (0.1%)	2 (0.1%)
	Subtotal	34 (1.0%)	41 (1.1%)	28 (0.8%)	40 (1.1%)	46 (1.2%)	49 (1.3%)	60 (1.5%)	54 (1.4%)	45 (1.2%)	32 (0.9%)
Other	Male	5 (0.2%)	3 (0.1%)	2 (0.1%)	4 (0.1%)	5 (0.1%)	2 (0.1%)	1 (0.0%)	0 (0.0%)	3 (0.1%)	3 (0.1%)
	Female	1 (0.0%)	2 (0.1%)	2 (0.1%)	0 (0.0%)	1 (0.0%)	0 (0.0%)	0 (0.0%)	0 (0.0%)	1 (0.0%)	0 (0.0%)
	Subtotal	6 (0.2%)	5 (0.1%)	4 (0.1%)	4 (0.1%)	6 (0.2%)	2 (0.1%)	1 (0.0%)	NA (-)	4 (0.1%)	3 (0.1%)



Horse Population by Location

February 2025 Horses in Training Snapshot by Region versus Previous Years



North

AgeCat	2016	2017	2018	2019	2020	2021	2022	2023	2024	2025	vs. Last Year	vs. Pre-Covid
Flat Horses in Training												
2YO	645	600	617	624	627	530	562	550	443	507	+64 / +14.4%	-117 / -18.8%
3YO	643	723	691	694	777	719	648	690	664	618	-46 / -6.9%	-76 / -11.0%
4YO	367	401	404	407	381	367	382	394	405	398	-7 / -1.7%	-9 / -2.2%
5YO+	623	665	675	692	663	691	577	701	732	743	+11 / +1.5%	+51 / +7.4%
Subtotal	2278	2389	2387	2417	2448	2307	2169	2335	2244	2266	+22 / +1.0%	-151 / -6.2%
Jump Horses in Training												
3YO	5	2	5	6	5	4	2	8	0	1	+1 / +Inf	-5 / -83.3%
4-5YO	273	293	238	274	289	271	258	288	288	252	-36 / -12.5%	-22 / -8.0%
6-7YO	370	335	406	406	418	460	431	444	431	438	+7 / +1.6%	+32 / +7.9%
8YO+	454	467	458	452	462	579	474	442	453	448	-5 / -1.1%	-4 / -0.9%
Subtotal	1102	1097	1107	1138	1174	1314	1165	1182	1172	1139	-33 / -2.8%	+1 / +0.1%
Dual Horses in Training												
3YO	14	18	12	6	23	10	17	9	10	6	-4 / -40.0%	0 / 0.0%
4YO	38	44	64	32	38	42	19	29	38	37	-1 / -2.6%	+5 / +15.6%
5YO+	87	111	171	87	108	108	103	79	82	83	+1 / +1.2%	-4 / -4.6%
Subtotal	139	173	247	125	169	160	139	117	130	126	-4 / -3.1%	+1 / +0.8%
Total Horses in Training												
	3519	3659	3741	3680	3791	3781	3473	3634	3546	3531	-15 / -0.4%	-149 / -4.0%

'vs. Pre-Covid' is comparison between 2025 and 2019

## Midlands

AgeCat	2016	2017	2018	2019	2020	2021	2022	2023	2024	2025	vs. Last Year	vs. Pre-Covid
<b>Flat Horses in Training</b>												
2YO	972	1053	959	879	886	823	877	852	799	784	-15 / -1.9%	-95 / -10.8%
3YO	1317	1359	1433	1353	1408	1310	1366	1364	1321	1358	+37 / +2.8%	+5 / +0.4%
4YO	520	579	568	596	590	675	642	657	638	630	-8 / -1.3%	+34 / +5.7%
5YO+	700	721	713	747	743	737	741	790	826	835	+9 / +1.1%	+88 / +11.8%
<b>Subtotal</b>	<b>3509</b>	<b>3712</b>	<b>3673</b>	<b>3575</b>	<b>3627</b>	<b>3545</b>	<b>3626</b>	<b>3663</b>	<b>3584</b>	<b>3607</b>	<b>+23 / +0.6%</b>	<b>+32 / +0.9%</b>
<b>Jump Horses in Training</b>												
3YO	8	9	13	7	4	9	8	7	8	4	-4 / -50.0%	-3 / -42.9%
4-5YO	482	529	483	577	637	604	577	654	582	652	+70 / +12.0%	+75 / +13.0%
6-7YO	590	575	610	688	689	794	777	768	800	760	-40 / -5.0%	+72 / +10.5%
8YO+	565	574	535	602	585	703	608	631	625	602	-23 / -3.7%	0 / 0.0%
<b>Subtotal</b>	<b>1645</b>	<b>1687</b>	<b>1641</b>	<b>1874</b>	<b>1915</b>	<b>2110</b>	<b>1970</b>	<b>2060</b>	<b>2015</b>	<b>2018</b>	<b>+3 / +0.1%</b>	<b>+144 / +7.7%</b>
<b>Dual Horses in Training</b>												
3YO	18	11	14	8	10	7	10	13	7	14	+7 / +100.0%	+6 / +75.0%
4YO	51	53	85	54	43	42	48	38	39	54	+15 / +38.5%	0 / 0.0%
5YO+	103	116	208	101	112	90	84	87	87	110	+23 / +26.4%	+9 / +8.9%
<b>Subtotal</b>	<b>172</b>	<b>180</b>	<b>307</b>	<b>163</b>	<b>165</b>	<b>139</b>	<b>142</b>	<b>138</b>	<b>133</b>	<b>178</b>	<b>+45 / +33.8%</b>	<b>+15 / +9.2%</b>
<b>Total Horses in Training</b>												
	<b>5326</b>	<b>5579</b>	<b>5621</b>	<b>5612</b>	<b>5707</b>	<b>5794</b>	<b>5738</b>	<b>5861</b>	<b>5732</b>	<b>5803</b>	<b>+71 / +1.2%</b>	<b>+191 / +3.4%</b>

'vs. Pre-Covid' is comparison between 2025 and 2019

## South

AgeCat	2016	2017	2018	2019	2020	2021	2022	2023	2024	2025	vs. Last Year	vs. Pre-Covid
<b>Flat Horses in Training</b>												
2YO	1011	1007	906	923	902	883	919	807	774	694	-80 / -10.3%	-229 / -24.8%
3YO	973	1001	1108	1062	1095	986	1004	977	935	1015	+80 / +8.6%	-47 / -4.4%
4YO	452	441	455	515	485	476	501	425	415	393	-22 / -5.3%	-122 / -23.7%
5YO+	565	610	605	584	631	593	605	597	554	528	-26 / -4.7%	-56 / -9.6%
<b>Subtotal</b>	<b>3001</b>	<b>3059</b>	<b>3074</b>	<b>3084</b>	<b>3113</b>	<b>2938</b>	<b>3029</b>	<b>2806</b>	<b>2678</b>	<b>2630</b>	<b>-48 / -1.8%</b>	<b>-454 / -14.7%</b>
<b>Jump Horses in Training</b>												
3YO	12	7	14	10	5	20	8	13	20	3	-17 / -85.0%	-7 / -70.0%
4-5YO	849	810	728	841	829	789	842	896	792	704	-88 / -11.1%	-137 / -16.3%
6-7YO	921	896	896	1001	1051	1121	945	955	955	881	-74 / -7.7%	-120 / -12.0%
8YO+	788	797	757	821	840	1017	812	762	653	635	-18 / -2.8%	-186 / -22.7%
<b>Subtotal</b>	<b>2570</b>	<b>2510</b>	<b>2395</b>	<b>2673</b>	<b>2725</b>	<b>2947</b>	<b>2607</b>	<b>2626</b>	<b>2420</b>	<b>2223</b>	<b>-197 / -8.1%</b>	<b>-450 / -16.8%</b>
<b>Dual Horses in Training</b>												
3YO	7	14	14	6	15	16	13	12	6	13	+7 / +116.7%	+7 / +116.7%
4YO	35	52	94	58	72	66	72	70	64	73	+9 / +14.1%	+15 / +25.9%
5YO+	142	140	269	107	116	116	131	131	125	133	+8 / +6.4%	+26 / +24.3%
<b>Subtotal</b>	<b>184</b>	<b>206</b>	<b>377</b>	<b>171</b>	<b>203</b>	<b>198</b>	<b>216</b>	<b>213</b>	<b>195</b>	<b>219</b>	<b>+24 / +12.3%</b>	<b>+48 / +28.1%</b>
<b>Total Horses in Training</b>												
	<b>5755</b>	<b>5775</b>	<b>5846</b>	<b>5928</b>	<b>6041</b>	<b>6083</b>	<b>5852</b>	<b>5645</b>	<b>5293</b>	<b>5072</b>	<b>-221 / -4.2%</b>	<b>-856 / -14.4%</b>

'vs. Pre-Covid' is comparison between 2025 and 2019

## February 2025 Horses in Training Snapshot by Country versus Previous Years

Type	2016	2017	2018	2019	2020	2021	2022	2023	2024	2025	vs. Last Year	vs. Pre-Covid
<b>England</b>												
Flat	8483	8813	8797	8768	8852	8504	8514	8466	8205	8214	+9 / +0.1%	-554 / -6.3%
Jump	4633	4571	4497	4971	5070	5566	5030	5168	4899	4680	-219 / -4.5%	-291 / -5.9%
Dual	437	491	827	404	495	443	459	440	415	483	+68 / +16.4%	+79 / +19.6%
<b>Overall</b>	<b>13553</b>	<b>13875</b>	<b>14121</b>	<b>14143</b>	<b>14417</b>	<b>14513</b>	<b>14003</b>	<b>14074</b>	<b>13519</b>	<b>13377</b>	<b>-142 / -1.1%</b>	<b>-766 / -5.4%</b>
<b>Scotland</b>												
Flat	161	199	196	161	174	162	179	206	182	184	+2 / +1.1%	+23 / +14.3%
Jump	303	315	326	339	347	409	371	385	385	394	+9 / +2.3%	+55 / +16.2%
Dual	31	33	51	33	33	31	24	16	25	23	-2 / -8.0%	-10 / -30.3%
<b>Overall</b>	<b>495</b>	<b>547</b>	<b>573</b>	<b>533</b>	<b>554</b>	<b>602</b>	<b>574</b>	<b>607</b>	<b>592</b>	<b>601</b>	<b>+9 / +1.5%</b>	<b>+68 / +12.8%</b>
<b>Wales</b>												
Flat	144	148	141	147	162	124	131	132	119	105	-14 / -11.8%	-42 / -28.6%
Jump	381	408	320	375	397	396	341	315	323	306	-17 / -5.3%	-69 / -18.4%
Dual	27	35	53	22	9	23	14	12	18	17	-1 / -5.6%	-5 / -22.7%
<b>Overall</b>	<b>552</b>	<b>591</b>	<b>514</b>	<b>544</b>	<b>568</b>	<b>543</b>	<b>486</b>	<b>459</b>	<b>460</b>	<b>428</b>	<b>-32 / -7.0%</b>	<b>-116 / -21.3%</b>

'vs. Pre-Covid' is comparison between 2025 and 2019

## February 2025 Horses in Training Snapshot by Training Centre versus Previous Years

Type	2016	2017	2018	2019	2020	2021	2022	2023	2024	2025	vs. Last Year	vs. Pre-Covid
<b>Cheltenham (GL54)</b>												
Flat	16	12	16	13	11	11	15	16	13	14	+1 / +7.7%	+1 / +7.7%
Jump	430	429	414	446	513	563	537	529	501	528	+27 / +5.4%	+82 / +18.4%
Dual	19	23	71	26	13	11	13	9	13	19	+6 / +46.2%	-7 / -26.9%
<b>Overall</b>	<b>465</b>	<b>464</b>	<b>501</b>	<b>485</b>	<b>537</b>	<b>585</b>	<b>565</b>	<b>554</b>	<b>527</b>	<b>561</b>	<b>+34 / +6.5%</b>	<b>+76 / +15.7%</b>
<b>Lambourn (RG17)</b>												
Flat	828	914	926	922	891	805	902	847	820	858	+38 / +4.6%	-64 / -6.9%
Jump	343	345	342	345	367	375	315	313	277	282	+5 / +1.8%	-63 / -18.3%
Dual	24	17	39	13	27	19	29	35	28	29	+1 / +3.6%	+16 / +123.1%
<b>Overall</b>	<b>1195</b>	<b>1276</b>	<b>1307</b>	<b>1280</b>	<b>1285</b>	<b>1199</b>	<b>1246</b>	<b>1195</b>	<b>1125</b>	<b>1169</b>	<b>+44 / +3.9%</b>	<b>-111 / -8.7%</b>
<b>Malton (YO17)</b>												
Flat	609	614	583	629	668	534	576	656	605	630	+25 / +4.1%	+1 / +0.2%
Jump	125	126	139	117	115	121	96	95	76	66	-10 / -13.2%	-51 / -43.6%
Dual	25	33	41	14	34	41	36	26	31	29	-2 / -6.5%	+15 / +107.1%
<b>Overall</b>	<b>759</b>	<b>773</b>	<b>763</b>	<b>760</b>	<b>817</b>	<b>696</b>	<b>708</b>	<b>777</b>	<b>712</b>	<b>725</b>	<b>+13 / +1.8%</b>	<b>-35 / -4.6%</b>
<b>Marlborough (SN8)</b>												
Flat	550	535	536	530	518	474	450	400	456	415	-41 / -9.0%	-115 / -21.7%
Jump	98	69	76	76	76	83	85	83	76	63	-13 / -17.1%	-13 / -17.1%
Dual	4	2	1	3	7	0	2	3	5	3	-2 / -40.0%	0 / 0.0%
<b>Overall</b>	<b>652</b>	<b>606</b>	<b>613</b>	<b>609</b>	<b>601</b>	<b>557</b>	<b>537</b>	<b>486</b>	<b>537</b>	<b>481</b>	<b>-56 / -10.4%</b>	<b>-128 / -21.0%</b>
<b>Middleham (DL8)</b>												
Flat	538	528	549	579	603	598	489	575	528	536	+8 / +1.5%	-43 / -7.4%
Jump	79	89	86	106	106	121	120	124	108	106	-2 / -1.9%	0 / 0.0%
Dual	15	25	34	17	21	29	16	23	16	27	+11 / +68.8%	+10 / +58.8%
<b>Overall</b>	<b>632</b>	<b>642</b>	<b>669</b>	<b>702</b>	<b>730</b>	<b>748</b>	<b>625</b>	<b>722</b>	<b>652</b>	<b>669</b>	<b>+17 / +2.6%</b>	<b>-33 / -4.7%</b>
<b>Newbury (RG20)</b>												
Flat	374	360	362	411	426	418	477	405	405	368	-37 / -9.1%	-43 / -10.5%
Jump	23	15	14	21	9	12	10	36	59	85	+26 / +44.1%	+64 / +304.8%
Dual	3	10	17	9	8	8	7	5	5	6	+1 / +20.0%	-3 / -33.3%
<b>Overall</b>	<b>400</b>	<b>385</b>	<b>393</b>	<b>441</b>	<b>443</b>	<b>438</b>	<b>494</b>	<b>446</b>	<b>469</b>	<b>459</b>	<b>-10 / -2.1%</b>	<b>+18 / +4.1%</b>
<b>Newmarket (CB8)</b>												
Flat	2520	2662	2613	2486	2609	2537	2540	2590	2550	2494	-56 / -2.2%	+8 / +0.3%
Jump	57	64	67	84	71	88	66	75	79	80	+1 / +1.3%	-4 / -4.8%
Dual	29	33	39	22	35	30	30	31	29	43	+14 / +48.3%	+21 / +95.5%
<b>Overall</b>	<b>2606</b>	<b>2759</b>	<b>2719</b>	<b>2592</b>	<b>2715</b>	<b>2655</b>	<b>2636</b>	<b>2696</b>	<b>2658</b>	<b>2617</b>	<b>-41 / -1.5%</b>	<b>+25 / +1.0%</b>

'vs. Pre-Covid' is comparison between 2025 and 2019