



# Horse Population Report

Updated on 31 January 2025



# Introduction

Welcome to the latest update on the Racehorse Population from the British Horseracing Authority.

The aim of this document is to give stakeholders and the wider Public an insight into the current state of the Horse Population in Great Britain. It is hoped that this transparency will ensure that all decision makers have access to the key data required to help British Racing deliver a Competitive and Compelling product to stakeholders, racegoers and the wider public.

If you have any questions regarding the content of this report or suggestions for how it could be improved further, please contact Joe Yates – jyates@britishhorseracing.com

## Definitions

This report uses the Horses in Training returns from the Weatherby's Racing Administration System, this is completed by trainers and should be updated whenever a horse enters or leaves training in their care as part of the conditions of their licence.

## Horses in Training

Unless otherwise stated, snapshots of Horses in Training will be from the 15th day of the month in question and year to date figures will be up to and including the date titled at the front of the report.

Horses' ratings will be taken from the most recently published ratings by the BHA Handicapping Team, which is currently at 7am each Tuesday morning. For example, if looking at the Horses in a particular rating band for July 2011, the horses in training number will be from Friday 15th July 2011 and ratings, where possible, will be assigned to each horse from the ratings published by the BHA Handicappers on Tuesday 12th July 2011.

The Gender of a horse will be taken from the reporting date in question, regardless of whether this has since changed.

In the case of YTD reporting, where a horse's gender or training type has changed in the year-to-date period, the most recent is taken.

This report does not count any horses that are temporarily racing abroad for GB Trainers at the time of reporting.

Yearlings are not included in total counts of flat and/or dual horses but will be sometimes shown separately for information purposes.

Yearlings and two-year-olds are not included in total counts of jump horses or counts of jump horses that include dual horses but will be sometimes shown separately for information purposes.

Yearlings, two-year-olds and three-year-olds are not included in total counts of Hunter Chasers but will be sometimes shown separately for information purposes.

Yearlings and two-year-olds in training that are recorded as dual horses have been re-coded as flat horses.

Hunter Chasers are not included in any counts of Jump Horses or Total figures but will be sometimes shown separately for information purposes.

Horses' training locations are defined by the trainers' primary training location. Training regions are defined the same as regions for the Fixture List; 'North' is north of latitude 53.42911, 'South' is south of latitude 51.88002 and 'Midlands' is anywhere in between. Training centres are defined by postcodes and surrounding areas.

## Runners

Unless otherwise specified, Total Runners and Individual Runners metrics only counts runners that ran in GB races including any voided races. Withdrawn horses are not included.

Hunter Chases are not included in this section but will be sometimes shown separately for information purposes.

Total Runners is a count of all runners in races, whilst individual runners only counts each individual horse once.

# Monthly Horses in Training

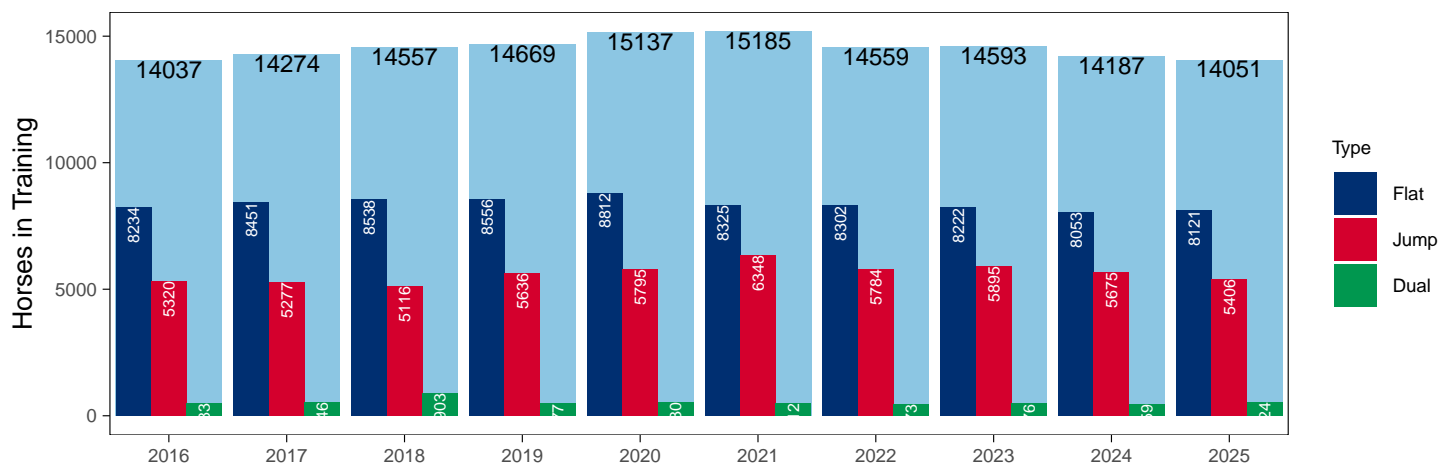
## January 2025 Horses in Training Snapshot versus Previous Years

Type	2016	2017	2018	2019	2020	2021	2022	2023	2024	2025	vs. Last Year	vs. Pre-Covid
Flat	8234	8451	8538	8556	8812	8325	8302	8222	8053	8121	+68 / +0.8%	-435 / -5.1%
Jump	5320	5277	5116	5636	5795	6348	5784	5895	5675	5406	-269 / -4.7%	-230 / -4.1%
Dual	483	546	903	477	530	512	473	476	459	524	+65 / +14.2%	+47 / +9.9%
Hunter	1183	1106	1011	1004	959	802	829	733	1011	676	-335 / -33.1%	-328 / -32.7%
<b>Total</b>	<b>14037</b>	<b>14274</b>	<b>14557</b>	<b>14669</b>	<b>15137</b>	<b>15185</b>	<b>14559</b>	<b>14593</b>	<b>14187</b>	<b>14051</b>	<b>-136 / -1.0%</b>	<b>-618 / -4.2%</b>

'vs. Pre-Covid' is comparison between 2025 and 2019

### Snapshot of Total Horses in Training in January

Horses in Training in January, shown by Training Type



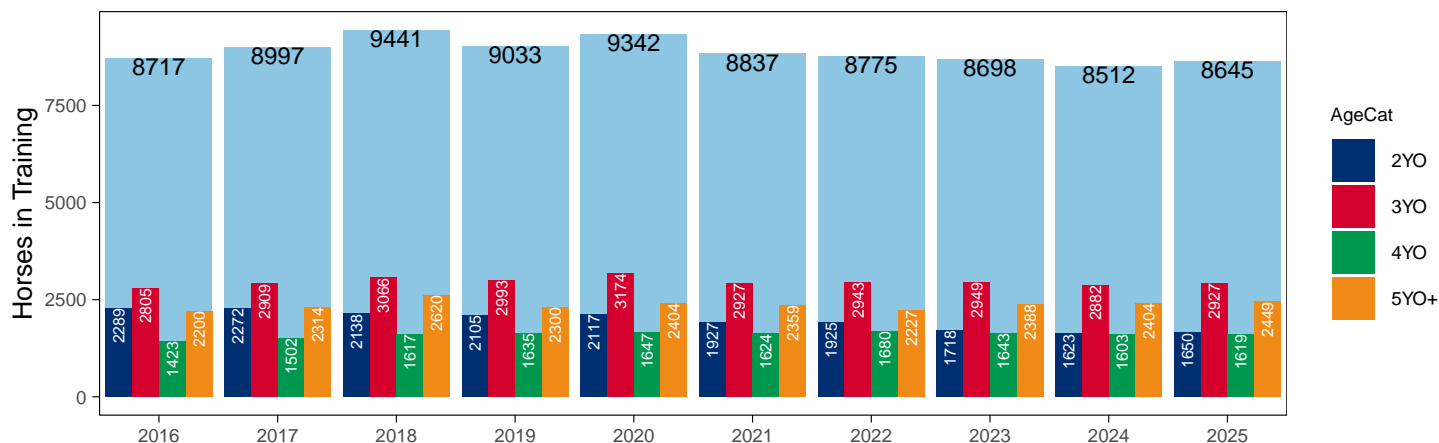
### Flat (including Dual)

AgeCat	2016	2017	2018	2019	2020	2021	2022	2023	2024	2025	vs. Last Year	vs. Pre-Covid
2YO	2289	2272	2138	2105	2117	1927	1925	1718	1623	1650	+27 / +1.7%	-455 / -21.6%
3YO	2805	2909	3066	2993	3174	2927	2943	2949	2882	2927	+45 / +1.6%	-66 / -2.2%
4YO	1423	1502	1617	1635	1647	1624	1680	1643	1603	1619	+16 / +1.0%	-16 / -1.0%
5YO+	2200	2314	2620	2300	2404	2359	2227	2388	2404	2449	+45 / +1.9%	+149 / +6.5%
<b>Total</b>	<b>8717</b>	<b>8997</b>	<b>9441</b>	<b>9033</b>	<b>9342</b>	<b>8837</b>	<b>8775</b>	<b>8698</b>	<b>8512</b>	<b>8645</b>	<b>+133 / +1.6%</b>	<b>-388 / -4.3%</b>

'vs. Pre-Covid' is comparison between 2025 and 2019

### Snapshot of Flat Horses in Training in January

Flat Horses in Training in January, shown by Age



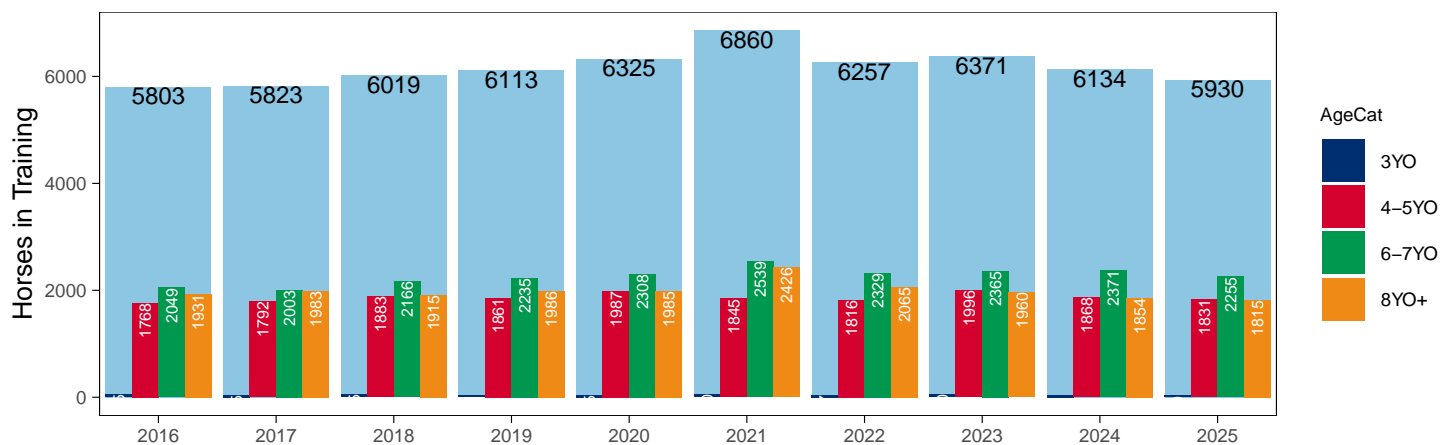
## Jump (including Dual)

AgeCat	2016	2017	2018	2019	2020	2021	2022	2023	2024	2025	vs. Last Year	vs. Pre-Covid
3YO	55	45	55	31	45	50	47	50	41	29	-12 / -29.3%	-2 / -6.5%
4-5YO	1768	1792	1883	1861	1987	1845	1816	1996	1868	1831	-37 / -2.0%	-30 / -1.6%
6-7YO	2049	2003	2166	2235	2308	2539	2329	2365	2371	2255	-116 / -4.9%	+20 / +0.9%
8YO+	1931	1983	1915	1986	1985	2426	2065	1960	1854	1815	-39 / -2.1%	-171 / -8.6%
<b>Total</b>	<b>5803</b>	<b>5823</b>	<b>6019</b>	<b>6113</b>	<b>6325</b>	<b>6860</b>	<b>6257</b>	<b>6371</b>	<b>6134</b>	<b>5930</b>	<b>-204 / -3.3%</b>	<b>-183 / -3.0%</b>

'vs. Pre-Covid' is comparison between 2025 and 2019

### Snapshot of Jump Horses in Training in January

Jump Horses in Training in January, shown by Age



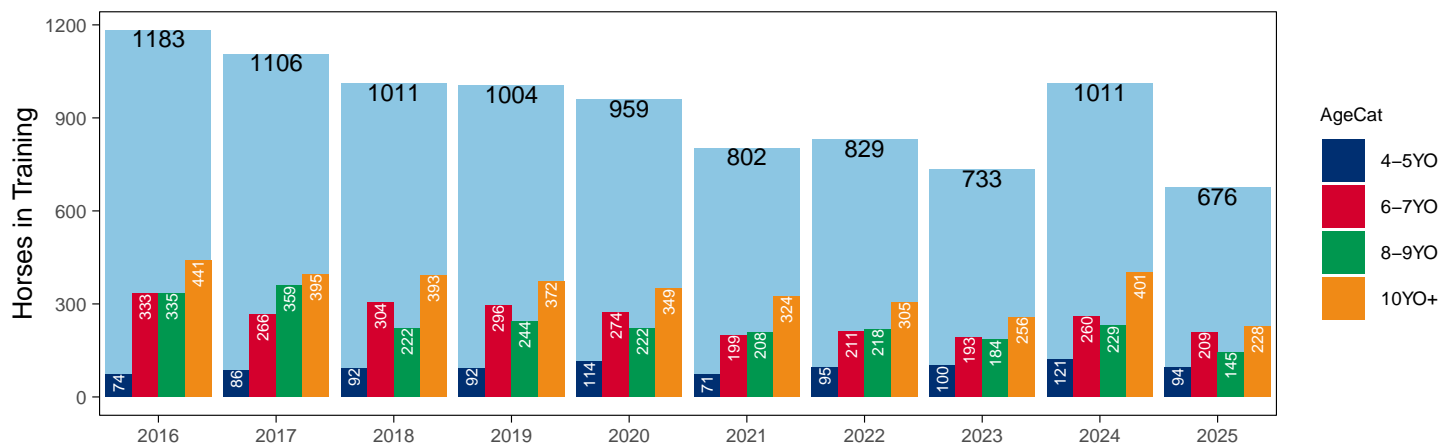
## Hunter Chasers

AgeCat	2016	2017	2018	2019	2020	2021	2022	2023	2024	2025	vs. Last Year	vs. Pre-Covid
4-5YO	74	86	92	92	114	71	95	100	121	94	-27 / -22.3%	+2 / +2.2%
6-7YO	333	266	304	296	274	199	211	193	260	209	-51 / -19.6%	-87 / -29.4%
8-9YO	335	359	222	244	222	208	218	184	229	145	-84 / -36.7%	-99 / -40.6%
10YO+	441	395	393	372	349	324	305	256	401	228	-173 / -43.1%	-144 / -38.7%
<b>Total</b>	<b>1183</b>	<b>1106</b>	<b>1011</b>	<b>1004</b>	<b>959</b>	<b>802</b>	<b>829</b>	<b>733</b>	<b>1011</b>	<b>676</b>	<b>-335 / -33.1%</b>	<b>-328 / -32.7%</b>

'vs. Pre-Covid' is comparison between 2025 and 2019

### Snapshot of Hunter Chasers in Training in January

Hunter Chasers in Training in January, shown by Age



## 2025 Horses in Training versus Previous Years

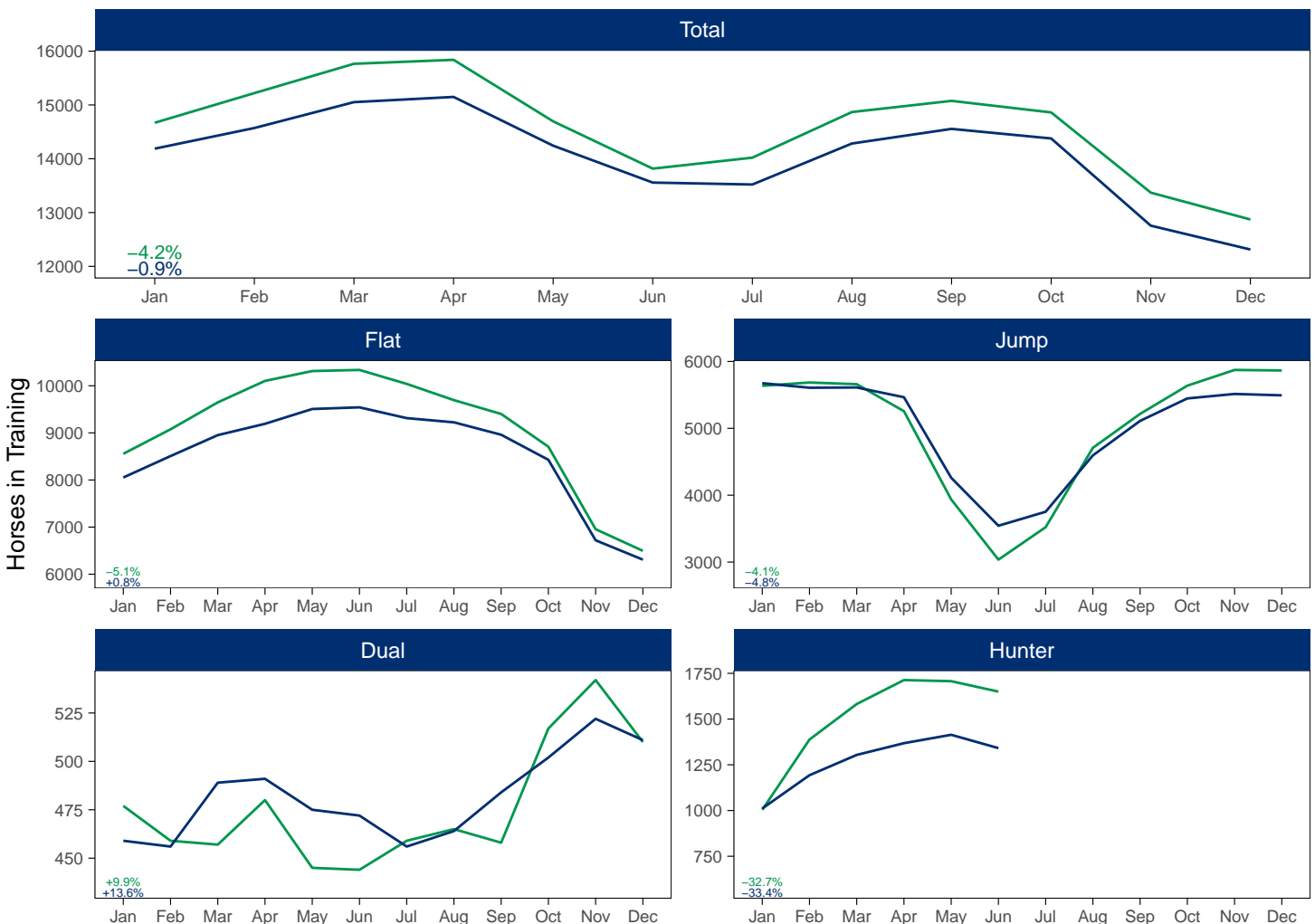
Type	Period	Jan	Feb	Mar	Apr	May	Jun	Jul	Aug	Sep	Oct	Nov	Dec
Flat	2025	8121											
	2024	8053	8508	8952	9193	9507	9542	9313	9224	8960	8428	6720	6309
	Pre-Covid	8556	9076	9648	10103	10313	10336	10040	9695	9402	8706	6955	6496
Jump	2025	5406											
	2024	5675	5607	5611	5465	4261	3543	3752	4595	5111	5447	5514	5493
	Pre-Covid	5636	5685	5660	5256	3937	3036	3521	4708	5216	5638	5873	5865
Dual	2025	524											
	2024	459	456	489	491	475	472	456	464	484	502	522	511
	Pre-Covid	477	459	457	480	445	444	459	465	458	517	542	510
Hunter	2025	676											
	2024	1011	1193	1304	1368	1414	1341						
	Pre-Covid	1004	1388	1582	1713	1707	1650						
<b>Total</b>	<b>2025</b>	<b>14051</b>											
	<b>2024</b>	<b>14187</b>	<b>14571</b>	<b>15052</b>	<b>15149</b>	<b>14243</b>	<b>13557</b>	<b>13521</b>	<b>14283</b>	<b>14555</b>	<b>14377</b>	<b>12756</b>	<b>12313</b>
	<b>Pre-Covid</b>	<b>14669</b>	<b>15220</b>	<b>15765</b>	<b>15839</b>	<b>14695</b>	<b>13816</b>	<b>14020</b>	<b>14868</b>	<b>15076</b>	<b>14861</b>	<b>13370</b>	<b>12871</b>

'Pre-Covid' is 2019 values

### Monthly Horses in Training

2025 against 2024 and Pre-Covid, shown with % Difference

Period — Pre-Covid — 2024 — 2025



'Pre-Covid' is 2019 values

## Flat (including Dual)

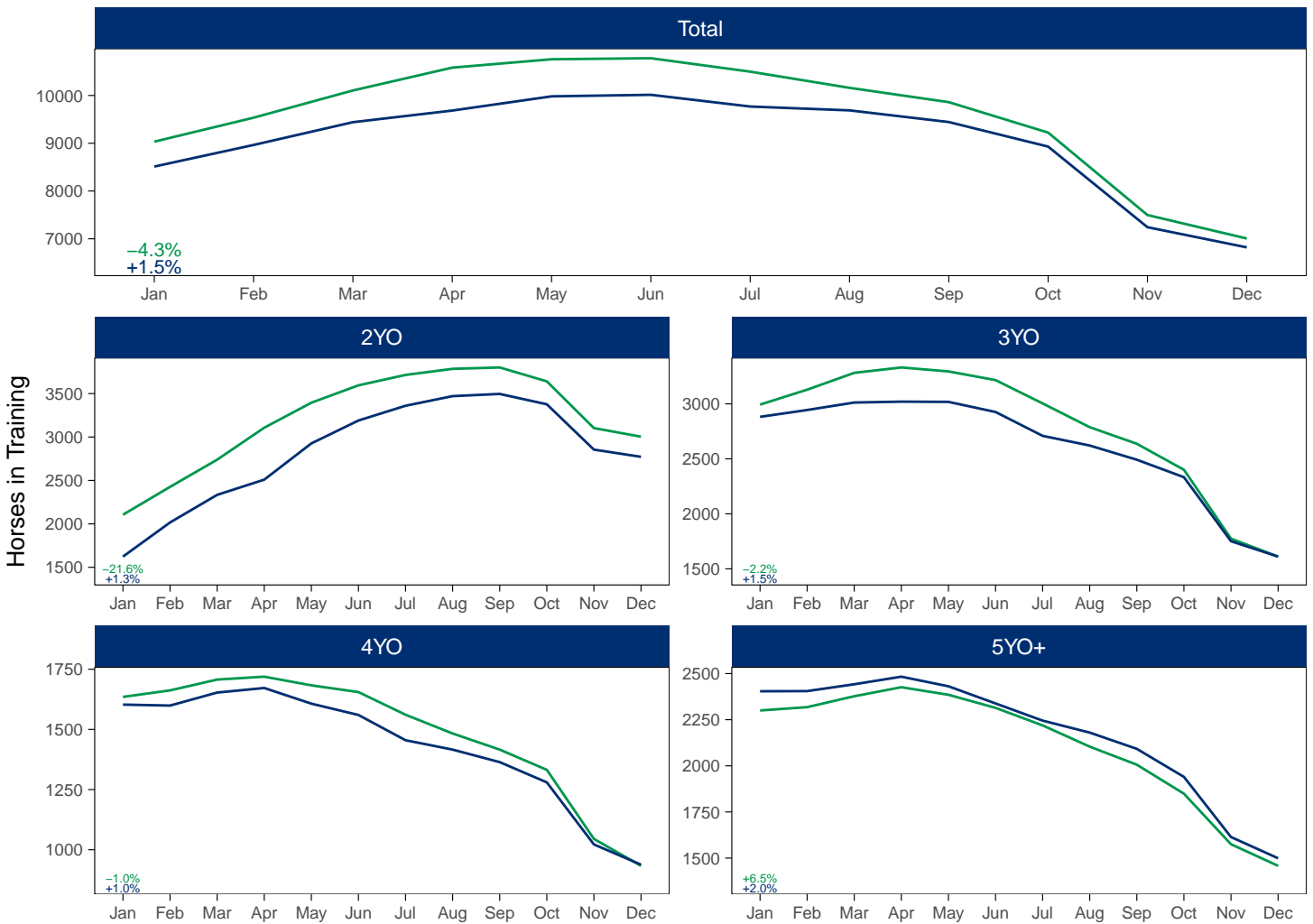
AgeCat	Period	Jan	Feb	Mar	Apr	May	Jun	Jul	Aug	Sep	Oct	Nov	Dec
2YO	2025	1650											
	2024	1623	2016	2334	2509	2926	3190	3360	3471	3496	3377	2855	2772
	Pre-Covid	2105	2426	2739	3107	3395	3595	3715	3785	3801	3641	3103	3004
3YO	2025	2927											
	2024	2882	2944	3012	3020	3018	2926	2709	2621	2492	2333	1751	1611
	Pre-Covid	2993	3129	3282	3331	3295	3216	3004	2788	2637	2401	1774	1611
4YO	2025	1619											
	2024	1603	1599	1653	1672	1607	1560	1455	1416	1364	1280	1022	938
	Pre-Covid	1635	1662	1707	1719	1683	1655	1561	1483	1416	1332	1045	933
5YO+	2025	2449											
	2024	2404	2405	2442	2483	2431	2338	2245	2180	2092	1940	1614	1499
	Pre-Covid	2300	2318	2377	2426	2385	2314	2219	2104	2006	1849	1575	1458
<b>Total</b>	<b>2025</b>	<b>8645</b>											
	<b>2024</b>	<b>8512</b>	<b>8964</b>	<b>9441</b>	<b>9684</b>	<b>9982</b>	<b>10014</b>	<b>9769</b>	<b>9688</b>	<b>9444</b>	<b>8930</b>	<b>7242</b>	<b>6820</b>
	<b>Pre-Covid</b>	<b>9033</b>	<b>9535</b>	<b>10105</b>	<b>10583</b>	<b>10758</b>	<b>10780</b>	<b>10499</b>	<b>10160</b>	<b>9860</b>	<b>9223</b>	<b>7497</b>	<b>7006</b>

'Pre-Covid' is 2019 values

## Monthly Flat Horses in Training

2025 against 2024 and Pre-Covid, shown with % Difference

Period — Pre-Covid — 2024 — 2025



'Pre-Covid' is 2019 values

## Jump (including Dual)

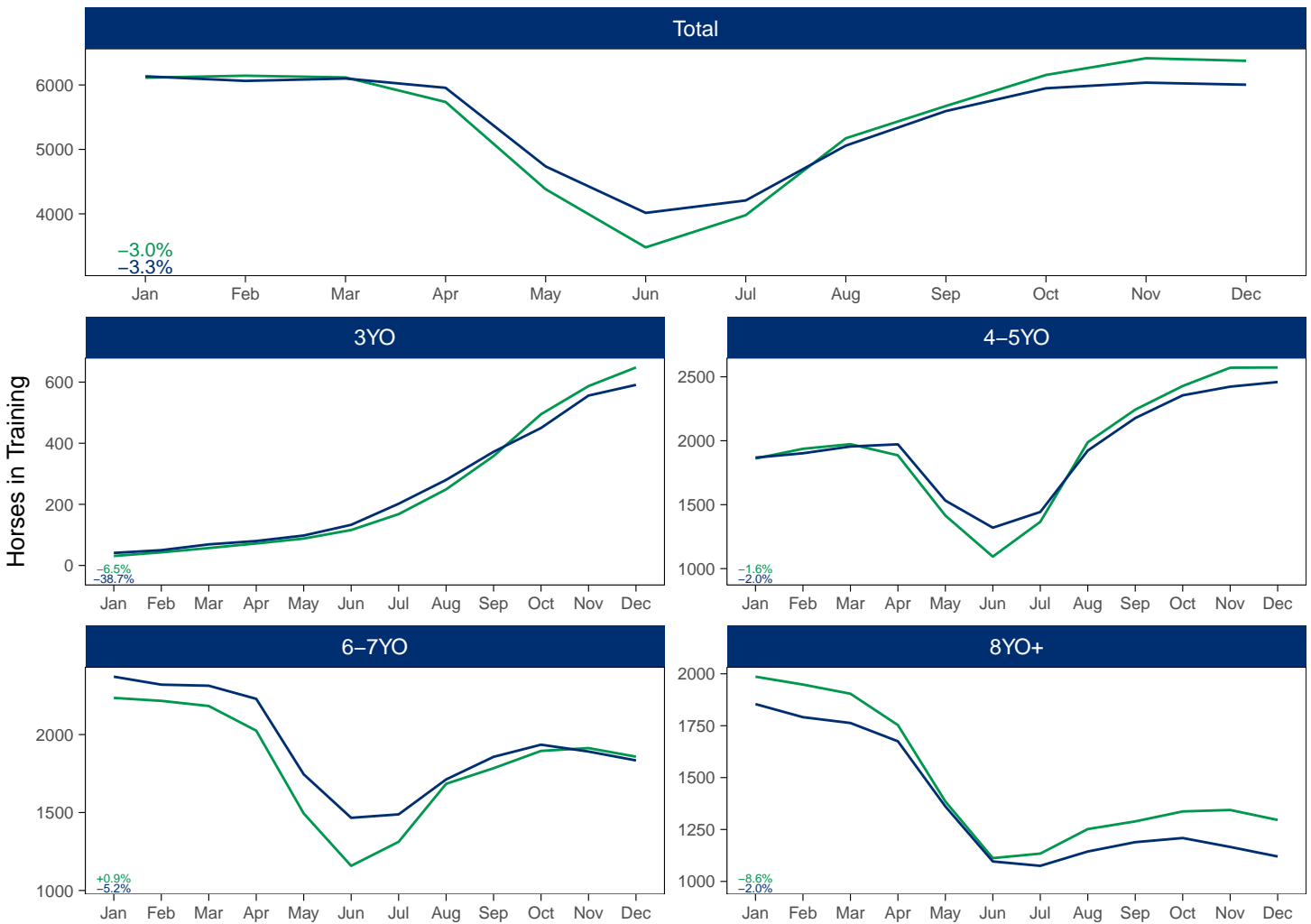
AgeCat	Period	Jan	Feb	Mar	Apr	May	Jun	Jul	Aug	Sep	Oct	Nov	Dec
3YO	2025	29											
	2024	41	50	69	80	98	133	202	280	372	450	556	591
	Pre-Covid	31	43	57	72	88	116	168	249	358	495	587	648
4-5YO	2025	1831											
	2024	1868	1902	1955	1972	1532	1320	1443	1923	2177	2355	2423	2459
	Pre-Covid	1861	1937	1973	1886	1415	1094	1366	1988	2243	2428	2571	2573
6-7YO	2025	2255											
	2024	2371	2320	2313	2229	1745	1466	1488	1712	1857	1935	1891	1834
	Pre-Covid	2235	2216	2183	2025	1494	1158	1312	1684	1784	1895	1913	1858
8YO+	2025	1815											
	2024	1854	1791	1763	1675	1361	1096	1075	1144	1189	1209	1166	1120
	Pre-Covid	1986	1948	1904	1753	1385	1112	1134	1252	1289	1337	1344	1296
<b>Total</b>	<b>2025</b>	<b>5930</b>											
	<b>2024</b>	<b>6134</b>	<b>6063</b>	<b>6100</b>	<b>5956</b>	<b>4736</b>	<b>4015</b>	<b>4208</b>	<b>5059</b>	<b>5595</b>	<b>5949</b>	<b>6036</b>	<b>6004</b>
	<b>Pre-Covid</b>	<b>6113</b>	<b>6144</b>	<b>6117</b>	<b>5736</b>	<b>4382</b>	<b>3480</b>	<b>3980</b>	<b>5173</b>	<b>5674</b>	<b>6155</b>	<b>6415</b>	<b>6375</b>

'Pre-Covid' is 2019 values

## Monthly Jump Horses in Training

2025 against 2024 and Pre-Covid, shown with % Difference

Period — Pre-Covid — 2024 — 2025



'Pre-Covid' is 2019 values

## Hunter Chasers

AgeCat	Period	Jan	Feb	Mar	Apr	May	Jun	Jul	Aug	Sep	Oct	Nov	Dec
4-5YO	2025	94											
	2024	121	175	226	264	280	260						
	Pre-Covid	92	170	213	267	268	263						
6-7YO	2025	209											
	2024	260	299	328	342	350	327						
	Pre-Covid	296	402	451	471	472	462						
8-9YO	2025	145											
	2024	229	267	285	290	302	288						
	Pre-Covid	244	329	369	392	389	369						
10YO+	2025	228											
	2024	401	452	465	472	482	466						
	Pre-Covid	372	487	549	583	578	556						
<b>Total</b>	<b>2025</b>	<b>676</b>											
	<b>2024</b>	<b>1011</b>	<b>1193</b>	<b>1304</b>	<b>1368</b>	<b>1414</b>	<b>1341</b>						
	<b>Pre-Covid</b>	<b>1004</b>	<b>1388</b>	<b>1582</b>	<b>1713</b>	<b>1707</b>	<b>1650</b>						

'Pre-Covid' is 2019 values

## Monthly Hunter Chasers in Training

2025 against 2024 and Pre-Covid, shown with % Difference

Period — Pre-Covid — 2024 — 2025



'Pre-Covid' is 2019 values



# January 2025 Horses in Training by Rating Band Snapshot versus Previous Years

## Flat (including Dual)

AgeCat	RatBand	2016	2017	2018	2019	2020	2021	2022	2023	2024	2025
2YO	Unrated	2,289 (100.0%)	2,272 (100.0%)	2,138 (100.0%)	2,105 (100.0%)	2,117 (100.0%)	1,927 (100.0%)	1,925 (100.0%)	1,718 (100.0%)	1,623 (100.0%)	1,650 (100.0%)
	<b>Subtotal</b>	<b>2,289 (100.0%)</b>	<b>2,272 (100.0%)</b>	<b>2,138 (100.0%)</b>	<b>2,105 (100.0%)</b>	<b>2,117 (100.0%)</b>	<b>1,927 (100.0%)</b>	<b>1,925 (100.0%)</b>	<b>1,718 (100.0%)</b>	<b>1,623 (100.0%)</b>	<b>1,650 (100.0%)</b>
3YO	Unrated	1,578 (56.3%)	1,602 (55.1%)	1,942 (63.3%)	1,773 (59.2%)	2,002 (63.1%)	1,813 (61.9%)	1,756 (59.7%)	1,764 (59.8%)	1,714 (59.5%)	1,758 (60.1%)
	0-50	97 (3.5%)	82 (2.8%)	76 (2.5%)	102 (3.4%)	113 (3.6%)	93 (3.2%)	111 (3.8%)	102 (3.5%)	102 (3.5%)	90 (3.1%)
	51-60	166 (5.9%)	202 (6.9%)	151 (4.9%)	232 (7.8%)	193 (6.1%)	210 (7.2%)	188 (6.4%)	197 (6.7%)	204 (7.1%)	204 (7.0%)
	61-70	327 (11.7%)	318 (10.9%)	304 (9.9%)	284 (9.5%)	274 (8.6%)	264 (9.0%)	301 (10.2%)	290 (9.8%)	264 (9.2%)	286 (9.8%)
	71-80	338 (12.0%)	339 (11.7%)	311 (10.1%)	293 (9.8%)	304 (9.6%)	273 (9.3%)	304 (10.3%)	300 (10.2%)	309 (10.7%)	293 (10.0%)
	81-90	169 (6.0%)	234 (8.0%)	154 (5.0%)	174 (5.8%)	161 (5.1%)	146 (5.0%)	159 (5.4%)	173 (5.9%)	166 (5.8%)	162 (5.5%)
	91-100	74 (2.6%)	78 (2.7%)	70 (2.3%)	81 (2.7%)	70 (2.2%)	71 (2.4%)	61 (2.1%)	71 (2.4%)	68 (2.4%)	82 (2.8%)
	101+	56 (2.0%)	54 (1.9%)	58 (1.9%)	54 (1.8%)	57 (1.8%)	57 (1.9%)	63 (2.1%)	52 (1.8%)	55 (1.9%)	52 (1.8%)
<b>Subtotal</b>	<b>2,805 (100.0%)</b>	<b>2,909 (100.0%)</b>	<b>3,066 (100.0%)</b>	<b>2,993 (100.0%)</b>	<b>3,174 (100.0%)</b>	<b>2,927 (100.0%)</b>	<b>2,943 (100.0%)</b>	<b>2,949 (100.0%)</b>	<b>2,882 (100.0%)</b>	<b>2,927 (100.0%)</b>	
4YO	Unrated	244 (17.1%)	243 (16.2%)	336 (20.8%)	327 (20.0%)	320 (19.4%)	401 (24.7%)	331 (19.7%)	330 (20.1%)	300 (18.7%)	316 (19.5%)
	0-50	137 (9.6%)	134 (8.9%)	145 (9.0%)	190 (11.6%)	204 (12.4%)	178 (11.0%)	193 (11.5%)	191 (11.6%)	173 (10.8%)	181 (11.2%)
	51-60	186 (13.1%)	199 (13.2%)	227 (14.0%)	209 (12.8%)	227 (13.8%)	210 (12.9%)	249 (14.8%)	242 (14.7%)	242 (15.1%)	231 (14.3%)
	61-70	247 (17.4%)	265 (17.6%)	253 (15.6%)	268 (16.4%)	281 (17.1%)	257 (15.8%)	290 (17.3%)	281 (17.1%)	277 (17.3%)	259 (16.0%)
	71-80	219 (15.4%)	293 (19.5%)	273 (16.9%)	250 (15.3%)	222 (13.5%)	265 (16.3%)	269 (16.0%)	246 (15.0%)	286 (17.8%)	248 (15.3%)
	81-90	214 (15.0%)	188 (12.5%)	198 (12.2%)	191 (11.7%)	188 (11.4%)	160 (9.9%)	200 (11.9%)	182 (11.1%)	176 (11.0%)	204 (12.6%)
	91-100	95 (6.7%)	93 (6.2%)	118 (7.3%)	119 (7.3%)	111 (6.7%)	97 (6.0%)	84 (5.0%)	74 (4.5%)	82 (5.1%)	90 (5.6%)
	101+	81 (5.7%)	87 (5.8%)	67 (4.1%)	81 (5.0%)	94 (5.7%)	56 (3.4%)	64 (3.8%)	97 (5.9%)	67 (4.2%)	90 (5.6%)
<b>Subtotal</b>	<b>1,423 (100.0%)</b>	<b>1,502 (100.0%)</b>	<b>1,617 (100.0%)</b>	<b>1,635 (100.0%)</b>	<b>1,647 (100.0%)</b>	<b>1,624 (100.0%)</b>	<b>1,680 (100.0%)</b>	<b>1,643 (100.0%)</b>	<b>1,603 (100.0%)</b>	<b>1,619 (100.0%)</b>	
5YO+	Unrated	276 (12.5%)	355 (15.3%)	578 (22.1%)	293 (12.7%)	341 (14.2%)	378 (16.0%)	360 (16.2%)	357 (14.9%)	344 (14.3%)	296 (12.1%)
	0-50	235 (10.7%)	252 (10.9%)	334 (12.7%)	384 (16.7%)	370 (15.4%)	343 (14.5%)	327 (14.7%)	337 (14.1%)	327 (13.6%)	393 (16.0%)
	51-60	346 (15.7%)	340 (14.7%)	358 (13.7%)	348 (15.1%)	379 (15.8%)	373 (15.8%)	363 (16.3%)	378 (15.8%)	459 (19.1%)	435 (17.8%)
	61-70	425 (19.3%)	393 (17.0%)	388 (14.8%)	397 (17.3%)	406 (16.9%)	445 (18.9%)	379 (17.0%)	416 (17.4%)	424 (17.6%)	456 (18.6%)
	71-80	351 (16.0%)	357 (15.4%)	353 (13.5%)	331 (14.4%)	354 (14.7%)	319 (13.5%)	303 (13.6%)	384 (16.1%)	351 (14.6%)	378 (15.4%)
	81-90	279 (12.7%)	291 (12.6%)	298 (11.4%)	255 (11.1%)	261 (10.9%)	223 (9.5%)	222 (10.0%)	234 (9.8%)	246 (10.2%)	251 (10.2%)
	91-100	152 (6.9%)	177 (7.6%)	159 (6.1%)	168 (7.3%)	161 (6.7%)	143 (6.1%)	146 (6.6%)	147 (6.2%)	133 (5.5%)	113 (4.6%)
	101+	136 (6.2%)	149 (6.4%)	152 (5.8%)	124 (5.4%)	132 (5.5%)	135 (5.7%)	127 (5.7%)	135 (5.7%)	120 (5.0%)	127 (5.2%)
<b>Subtotal</b>	<b>2,200 (100.0%)</b>	<b>2,314 (100.0%)</b>	<b>2,620 (100.0%)</b>	<b>2,300 (100.0%)</b>	<b>2,404 (100.0%)</b>	<b>2,359 (100.0%)</b>	<b>2,227 (100.0%)</b>	<b>2,388 (100.0%)</b>	<b>2,404 (100.0%)</b>	<b>2,449 (100.0%)</b>	
Overall	Unrated	4,387 (50.3%)	4,472 (49.7%)	4,994 (52.9%)	4,498 (49.8%)	4,780 (51.2%)	4,519 (51.1%)	4,372 (49.8%)	4,169 (47.9%)	3,981 (46.8%)	4,020 (46.5%)
	0-50	469 (5.4%)	468 (5.2%)	555 (5.9%)	676 (7.5%)	687 (7.4%)	614 (6.9%)	631 (7.2%)	630 (7.2%)	602 (7.1%)	664 (7.7%)
	51-60	698 (8.0%)	741 (8.2%)	736 (7.8%)	789 (8.7%)	799 (8.6%)	793 (9.0%)	800 (9.1%)	817 (9.4%)	905 (10.6%)	870 (10.1%)
	61-70	999 (11.5%)	976 (10.8%)	945 (10.0%)	949 (10.5%)	961 (10.3%)	966 (10.9%)	970 (11.1%)	987 (11.3%)	965 (11.3%)	1,001 (11.6%)
	71-80	908 (10.4%)	989 (11.0%)	937 (9.9%)	874 (9.7%)	880 (9.4%)	857 (9.7%)	876 (10.0%)	930 (10.7%)	946 (11.1%)	919 (10.6%)
	81-90	662 (7.6%)	713 (7.9%)	650 (6.9%)	620 (6.9%)	610 (6.5%)	529 (6.0%)	581 (6.6%)	589 (6.8%)	588 (6.9%)	617 (7.1%)
	91-100	321 (3.7%)	348 (3.9%)	347 (3.7%)	368 (4.1%)	342 (3.7%)	311 (3.5%)	291 (3.3%)	292 (3.4%)	283 (3.3%)	285 (3.3%)
101+	273 (3.1%)	290 (3.2%)	277 (2.9%)	259 (2.9%)	283 (3.0%)	248 (2.8%)	254 (2.9%)	284 (3.3%)	242 (2.8%)	269 (3.1%)	
<b>Total</b>	<b>8,717 (100.0%)</b>	<b>8,997 (100.0%)</b>	<b>9,441 (100.0%)</b>	<b>9,033 (100.0%)</b>	<b>9,342 (100.0%)</b>	<b>8,837 (100.0%)</b>	<b>8,775 (100.0%)</b>	<b>8,698 (100.0%)</b>	<b>8,512 (100.0%)</b>	<b>8,645 (100.0%)</b>	

Where a horse has more than one published rating (published Flat Turf and published Flat AWT mark), the higher of the two is taken.

Jump (including Dual)

AgeCat	RatBand	2016	2017	2018	2019	2020	2021	2022	2023	2024	2025
3YO	Unrated	55 (100.0%)	45 (100.0%)	55 (100.0%)	31 (100.0%)	45 (100.0%)	50 (100.0%)	47 (100.0%)	50 (100.0%)	41 (100.0%)	29 (100.0%)
	<b>Subtotal</b>	<b>55 (100.0%)</b>	<b>45 (100.0%)</b>	<b>55 (100.0%)</b>	<b>31 (100.0%)</b>	<b>45 (100.0%)</b>	<b>50 (100.0%)</b>	<b>47 (100.0%)</b>	<b>50 (100.0%)</b>	<b>41 (100.0%)</b>	<b>29 (100.0%)</b>
4-5YO	Unrated	1,403 (79.4%)	1,442 (80.5%)	1,539 (81.7%)	1,492 (80.2%)	1,536 (77.3%)	1,506 (81.6%)	1,459 (80.3%)	1,632 (81.8%)	1,526 (81.7%)	1,442 (78.8%)
	0-100	93 (5.3%)	87 (4.9%)	79 (4.2%)	91 (4.9%)	146 (7.3%)	118 (6.4%)	148 (8.1%)	155 (7.8%)	168 (9.0%)	188 (10.3%)
	101-110	78 (4.4%)	62 (3.5%)	79 (4.2%)	73 (3.9%)	73 (3.7%)	57 (3.1%)	66 (3.6%)	86 (4.3%)	73 (3.9%)	85 (4.6%)
	111-120	60 (3.4%)	84 (4.7%)	73 (3.9%)	94 (5.1%)	98 (4.9%)	71 (3.8%)	74 (4.1%)	65 (3.3%)	60 (3.2%)	71 (3.9%)
	121-130	59 (3.3%)	57 (3.2%)	63 (3.3%)	63 (3.4%)	79 (4.0%)	53 (2.9%)	45 (2.5%)	47 (2.4%)	26 (1.4%)	34 (1.9%)
	131-140	54 (3.1%)	42 (2.3%)	36 (1.9%)	35 (1.9%)	39 (2.0%)	25 (1.4%)	17 (0.9%)	9 (0.5%)	13 (0.7%)	7 (0.4%)
	141-150	16 (0.9%)	14 (0.8%)	12 (0.6%)	12 (0.6%)	15 (0.8%)	12 (0.7%)	5 (0.3%)	2 (0.1%)	2 (0.1%)	2 (0.1%)
	151+	5 (0.3%)	4 (0.2%)	2 (0.1%)	1 (0.1%)	1 (0.1%)	3 (0.2%)	2 (0.1%)	NA (-)	NA (-)	2 (0.1%)
<b>Subtotal</b>	<b>1,768 (100.0%)</b>	<b>1,792 (100.0%)</b>	<b>1,883 (100.0%)</b>	<b>1,861 (100.0%)</b>	<b>1,987 (100.0%)</b>	<b>1,845 (100.0%)</b>	<b>1,816 (100.0%)</b>	<b>1,996 (100.0%)</b>	<b>1,868 (100.0%)</b>	<b>1,831 (100.0%)</b>	
6-7YO	Unrated	732 (35.7%)	741 (37.0%)	805 (37.2%)	744 (33.3%)	733 (31.8%)	918 (36.2%)	851 (36.5%)	900 (38.1%)	911 (38.4%)	727 (32.2%)
	0-100	341 (16.6%)	325 (16.2%)	351 (16.2%)	362 (16.2%)	426 (18.5%)	518 (20.4%)	532 (22.8%)	586 (24.8%)	618 (26.1%)	655 (29.0%)
	101-110	241 (11.8%)	223 (11.1%)	236 (10.9%)	297 (13.3%)	283 (12.3%)	283 (11.1%)	276 (11.9%)	296 (12.5%)	308 (13.0%)	305 (13.5%)
	111-120	256 (12.5%)	264 (13.2%)	282 (13.0%)	296 (13.2%)	305 (13.2%)	307 (12.1%)	288 (12.4%)	256 (10.8%)	262 (11.1%)	279 (12.4%)
	121-130	233 (11.4%)	206 (10.3%)	238 (11.0%)	285 (12.8%)	285 (12.3%)	269 (10.6%)	202 (8.7%)	199 (8.4%)	167 (7.0%)	171 (7.6%)
	131-140	154 (7.5%)	159 (7.9%)	154 (7.1%)	146 (6.5%)	186 (8.1%)	165 (6.5%)	126 (5.4%)	89 (3.8%)	69 (2.9%)	87 (3.9%)
	141-150	65 (3.2%)	63 (3.1%)	70 (3.2%)	80 (3.6%)	64 (2.8%)	56 (2.2%)	39 (1.7%)	30 (1.3%)	32 (1.3%)	21 (0.9%)
	151+	27 (1.3%)	22 (1.1%)	30 (1.4%)	25 (1.1%)	26 (1.1%)	23 (0.9%)	15 (0.6%)	9 (0.4%)	4 (0.2%)	10 (0.4%)
<b>Subtotal</b>	<b>2,049 (100.0%)</b>	<b>2,003 (100.0%)</b>	<b>2,166 (100.0%)</b>	<b>2,235 (100.0%)</b>	<b>2,308 (100.0%)</b>	<b>2,539 (100.0%)</b>	<b>2,329 (100.0%)</b>	<b>2,365 (100.0%)</b>	<b>2,371 (100.0%)</b>	<b>2,255 (100.0%)</b>	
8YO+	Unrated	190 (9.8%)	287 (14.5%)	304 (15.9%)	287 (14.5%)	285 (14.4%)	366 (15.1%)	349 (16.9%)	320 (16.3%)	361 (19.5%)	283 (15.6%)
	0-100	519 (26.9%)	527 (26.6%)	486 (25.4%)	535 (26.9%)	539 (27.2%)	690 (28.4%)	555 (26.9%)	540 (27.6%)	507 (27.3%)	546 (30.1%)
	101-110	296 (15.3%)	273 (13.8%)	276 (14.4%)	263 (13.2%)	267 (13.5%)	312 (12.9%)	240 (11.6%)	242 (12.3%)	230 (12.4%)	265 (14.6%)
	111-120	286 (14.8%)	297 (15.0%)	246 (12.8%)	261 (13.1%)	266 (13.4%)	323 (13.3%)	295 (14.3%)	293 (14.9%)	272 (14.7%)	269 (14.8%)
	121-130	291 (15.1%)	235 (11.9%)	246 (12.8%)	266 (13.4%)	250 (12.6%)	312 (12.9%)	276 (13.4%)	253 (12.9%)	224 (12.1%)	216 (11.9%)
	131-140	200 (10.4%)	217 (10.9%)	207 (10.8%)	207 (10.4%)	197 (9.9%)	232 (9.6%)	199 (9.6%)	183 (9.3%)	153 (8.3%)	133 (7.3%)
	141-150	93 (4.8%)	95 (4.8%)	101 (5.3%)	105 (5.3%)	116 (5.8%)	120 (4.9%)	101 (4.9%)	82 (4.2%)	68 (3.7%)	68 (3.7%)
	151+	56 (2.9%)	52 (2.6%)	49 (2.6%)	62 (3.1%)	65 (3.3%)	71 (2.9%)	50 (2.4%)	47 (2.4%)	39 (2.1%)	35 (1.9%)
<b>Subtotal</b>	<b>1,931 (100.0%)</b>	<b>1,983 (100.0%)</b>	<b>1,915 (100.0%)</b>	<b>1,986 (100.0%)</b>	<b>1,985 (100.0%)</b>	<b>2,426 (100.0%)</b>	<b>2,065 (100.0%)</b>	<b>1,960 (100.0%)</b>	<b>1,854 (100.0%)</b>	<b>1,815 (100.0%)</b>	
Overall	Unrated	2,380 (41.0%)	2,515 (43.2%)	2,703 (44.9%)	2,554 (41.8%)	2,599 (41.1%)	2,840 (41.4%)	2,706 (43.2%)	2,902 (45.6%)	2,839 (46.3%)	2,481 (41.8%)
	0-100	953 (16.4%)	939 (16.1%)	916 (15.2%)	988 (16.2%)	1,111 (17.6%)	1,326 (19.3%)	1,235 (19.7%)	1,281 (20.1%)	1,293 (21.1%)	1,389 (23.4%)
	101-110	615 (10.6%)	558 (9.6%)	591 (9.8%)	633 (10.4%)	623 (9.8%)	652 (9.5%)	582 (9.3%)	624 (9.8%)	611 (10.0%)	655 (11.0%)
	111-120	602 (10.4%)	645 (11.1%)	601 (10.0%)	651 (10.6%)	669 (10.6%)	701 (10.2%)	657 (10.5%)	614 (9.6%)	594 (9.7%)	619 (10.4%)
	121-130	583 (10.0%)	498 (8.6%)	547 (9.1%)	614 (10.0%)	614 (9.7%)	634 (9.2%)	523 (8.4%)	499 (7.8%)	417 (6.8%)	421 (7.1%)
	131-140	408 (7.0%)	418 (7.2%)	397 (6.6%)	388 (6.3%)	422 (6.7%)	422 (6.2%)	342 (5.5%)	281 (4.4%)	235 (3.8%)	227 (3.8%)
	141-150	174 (3.0%)	172 (3.0%)	183 (3.0%)	197 (3.2%)	195 (3.1%)	188 (2.7%)	145 (2.3%)	114 (1.8%)	102 (1.7%)	91 (1.5%)
151+	88 (1.5%)	78 (1.3%)	81 (1.3%)	88 (1.4%)	92 (1.5%)	97 (1.4%)	67 (1.1%)	56 (0.9%)	43 (0.7%)	47 (0.8%)	
<b>Total</b>	<b>5,803 (100.0%)</b>	<b>5,823 (100.0%)</b>	<b>6,019 (100.0%)</b>	<b>6,113 (100.0%)</b>	<b>6,325 (100.0%)</b>	<b>6,860 (100.0%)</b>	<b>6,257 (100.0%)</b>	<b>6,371 (100.0%)</b>	<b>6,134 (100.0%)</b>	<b>5,930 (100.0%)</b>	

Where a horse has more than one published rating (published Hurdle and published Chase mark), the higher of the two is taken.

# Young Horses Entering Training

## Flat Yearlings in Training versus Previous Years

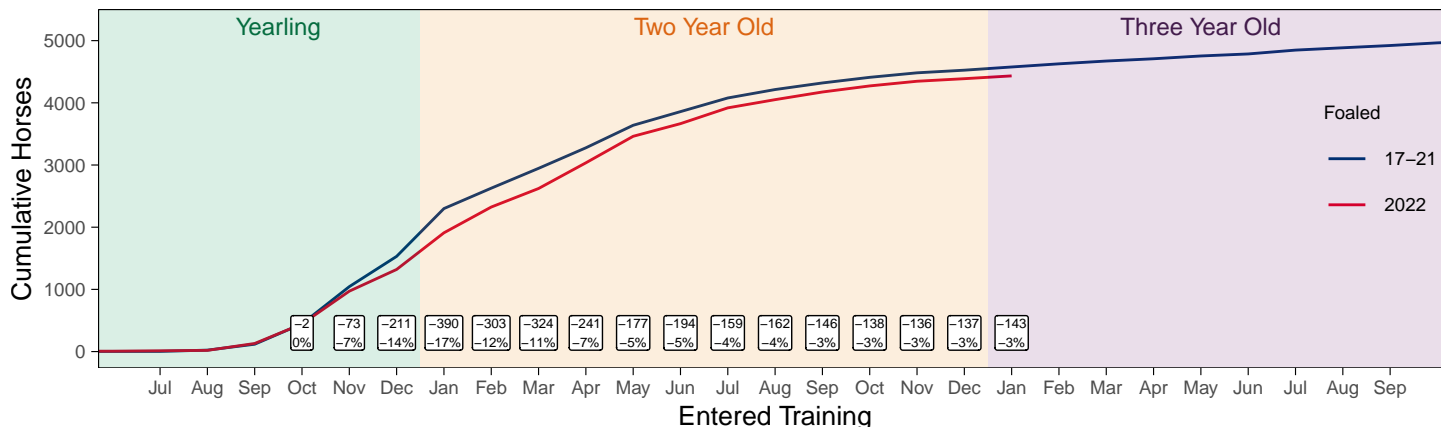
Period	Jan	Feb	Mar	Apr	May	Jun	Jul	Aug	Sep	Oct	Nov	Dec
2025	1											
2024	0	0	0	0	0	0	2	3	72	186	619	1067
5YrAvg	0	0	0	0	1	1	1	3	58	200	552	937

## Foals Entering Training for the First Time

```
## Warning: A numeric 'legend.position' argument in 'theme()' was deprecated in ggplot2 3.5.0.
## i Please use the 'legend.position.inside' argument of 'theme()' instead.
## This warning is displayed once every 8 hours.
## Call 'lifecycle::last_lifecycle_warnings()' to see where this warning was generated.
```

### 2022 Foals Entering Training Over Time

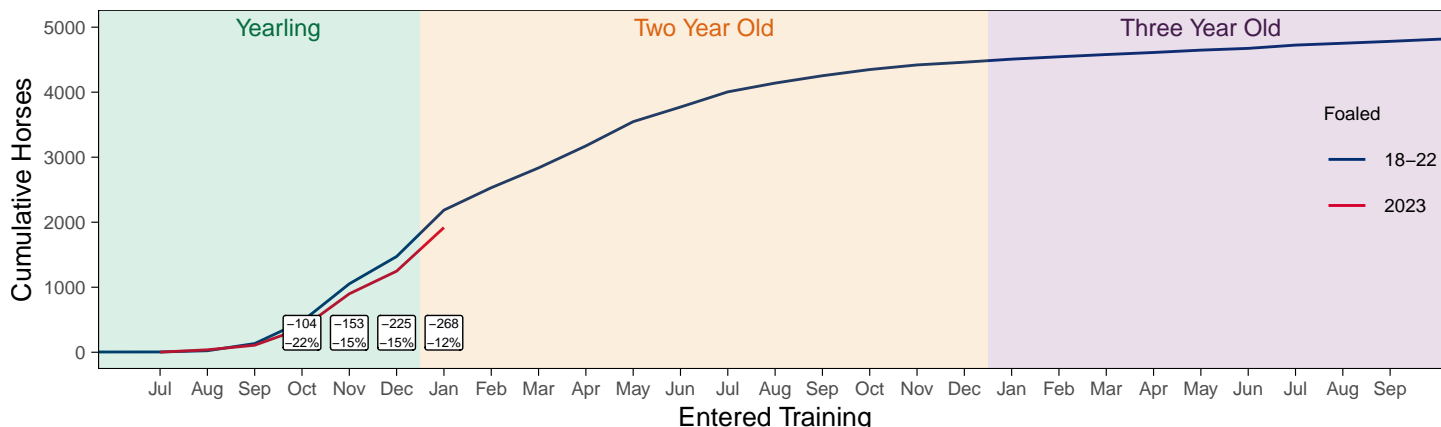
Cumulative Flat Horses foaled in 2022 shown by first in training notification against trend



Cumulative individual horses entering training for the first time by the end of each month.

### 2023 Foals Entering Training Over Time

Cumulative Flat Horses foaled in 2023 shown by first in training notification against trend



Cumulative individual horses entering training for the first time by the end of each month.

## Year to Date Horses in Training

Type	2016	2017	2018	2019	2020	2021	2022	2023	2024	2025	vs. Last Year	vs. Pre-Covid
Flat	9416	9494	9519	9471	9629	9128	9213	8987	8840	8850	+10 / +0.1%	-621 / -6.6%
Jump	5729	5731	5476	6080	6158	6726	6223	6275	6026	5733	-293 / -4.9%	-347 / -5.7%
Dual	554	612	1051	557	635	584	545	532	527	655	+128 / +24.3%	+98 / +17.6%
Hunter	1402	1357	1220	1217	1184	799	936	852	1094	792	-302 / -27.6%	-425 / -34.9%
<b>Total</b>	<b>15699</b>	<b>15837</b>	<b>16046</b>	<b>16108</b>	<b>16422</b>	<b>16438</b>	<b>15981</b>	<b>15794</b>	<b>15393</b>	<b>15238</b>	<b>-155 / -1.0%</b>	<b>-870 / -5.4%</b>

'vs. Pre-Covid' is comparison between 2025 and 2019

### Flat

AgeCat	2016	2017	2018	2019	2020	2021	2022	2023	2024	2025	vs. Last Year	vs. Pre-Covid
2YO	2714	2574	2435	2414	2367	2164	2234	2028	1861	1871	+10 / +0.5%	-543 / -22.5%
3YO	3145	3194	3341	3241	3406	3170	3158	3129	3129	3136	+7 / +0.2%	-105 / -3.2%
4YO	1478	1565	1567	1630	1629	1628	1706	1621	1606	1574	-32 / -2.0%	-56 / -3.4%
5YO+	2079	2161	2176	2186	2227	2166	2115	2209	2244	2269	+25 / +1.1%	+83 / +3.8%
<b>Total</b>	<b>9416</b>	<b>9494</b>	<b>9519</b>	<b>9471</b>	<b>9629</b>	<b>9128</b>	<b>9213</b>	<b>8987</b>	<b>8840</b>	<b>8850</b>	<b>+10 / +0.1%</b>	<b>-621 / -6.6%</b>

'vs. Pre-Covid' is comparison between 2025 and 2019

### Jump

AgeCat	2016	2017	2018	2019	2020	2021	2022	2023	2024	2025	vs. Last Year	vs. Pre-Covid
3YO	25	15	29	18	13	31	19	27	28	6	-22 / -78.6%	-12 / -66.7%
4-5YO	1687	1713	1493	1749	1816	1692	1742	1886	1741	1627	-114 / -6.5%	-122 / -7.0%
6-7YO	2044	1976	2037	2253	2285	2544	2340	2340	2355	2241	-114 / -4.8%	-12 / -0.5%
8YO+	1973	2027	1917	2060	2044	2459	2122	2022	1902	1859	-43 / -2.3%	-201 / -9.8%
<b>Total</b>	<b>5729</b>	<b>5731</b>	<b>5476</b>	<b>6080</b>	<b>6158</b>	<b>6726</b>	<b>6223</b>	<b>6275</b>	<b>6026</b>	<b>5733</b>	<b>-293 / -4.9%</b>	<b>-347 / -5.7%</b>

'vs. Pre-Covid' is comparison between 2025 and 2019

### Dual

AgeCat	2016	2017	2018	2019	2020	2021	2022	2023	2024	2025	vs. Last Year	vs. Pre-Covid
3YO	43	47	51	25	55	41	58	36	37	56	+19 / +51.4%	+31 / +124.0%
4YO	132	159	264	167	177	172	150	152	161	194	+33 / +20.5%	+27 / +16.2%
5YO+	379	406	736	365	403	371	337	344	329	405	+76 / +23.1%	+40 / +11.0%
<b>Total</b>	<b>554</b>	<b>612</b>	<b>1051</b>	<b>557</b>	<b>635</b>	<b>584</b>	<b>545</b>	<b>532</b>	<b>527</b>	<b>655</b>	<b>+128 / +24.3%</b>	<b>+98 / +17.6%</b>

'vs. Pre-Covid' is comparison between 2025 and 2019

### Hunter Chasers

AgeCat	2016	2017	2018	2019	2020	2021	2022	2023	2024	2025	vs. Last Year	vs. Pre-Covid
4-5YO	88	108	109	123	185	67	118	127	139	119	-20 / -14.4%	-4 / -3.3%
6-7YO	393	341	355	361	327	189	238	226	280	238	-42 / -15.0%	-123 / -34.1%
8-9YO	402	415	289	298	262	205	243	212	246	171	-75 / -30.5%	-127 / -42.6%
10YO+	519	493	467	435	410	338	337	287	429	264	-165 / -38.5%	-171 / -39.3%
<b>Total</b>	<b>1402</b>	<b>1357</b>	<b>1220</b>	<b>1217</b>	<b>1184</b>	<b>799</b>	<b>936</b>	<b>852</b>	<b>1094</b>	<b>792</b>	<b>-302 / -27.6%</b>	<b>-425 / -34.9%</b>

'vs. Pre-Covid' is comparison between 2025 and 2019

# Year to Date Runners

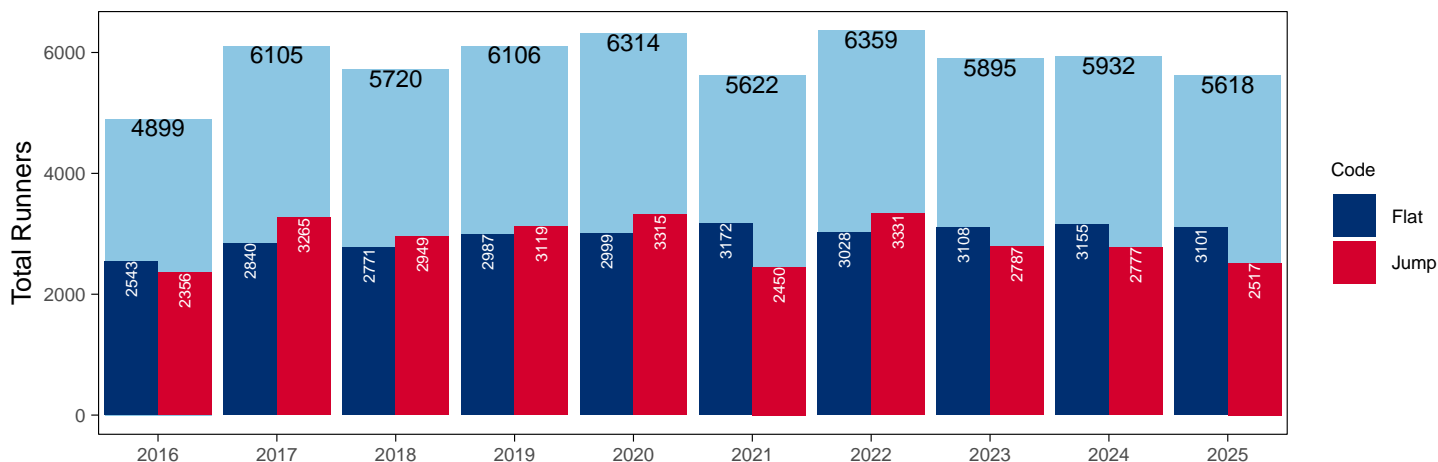
## Year to Date Total Runners

Code	2016	2017	2018	2019	2020	2021	2022	2023	2024	2025	vs. Last Year	vs. Pre-Covid
Flat	2543	2840	2771	2987	2999	3172	3028	3108	3155	3101	-54 / -1.7%	+114 / +3.8%
Jump	2356	3265	2949	3119	3315	2450	3331	2787	2777	2517	-260 / -9.4%	-602 / -19.3%
<b>Total</b>	<b>4899</b>	<b>6105</b>	<b>5720</b>	<b>6106</b>	<b>6314</b>	<b>5622</b>	<b>6359</b>	<b>5895</b>	<b>5932</b>	<b>5618</b>	<b>-314 / -5.3%</b>	<b>-488 / -8.0%</b>

'vs. Pre-Covid' is comparison between 2025 and 2019

## YTD Total Runners

Total Runners in GB Races, shown by Code and Total



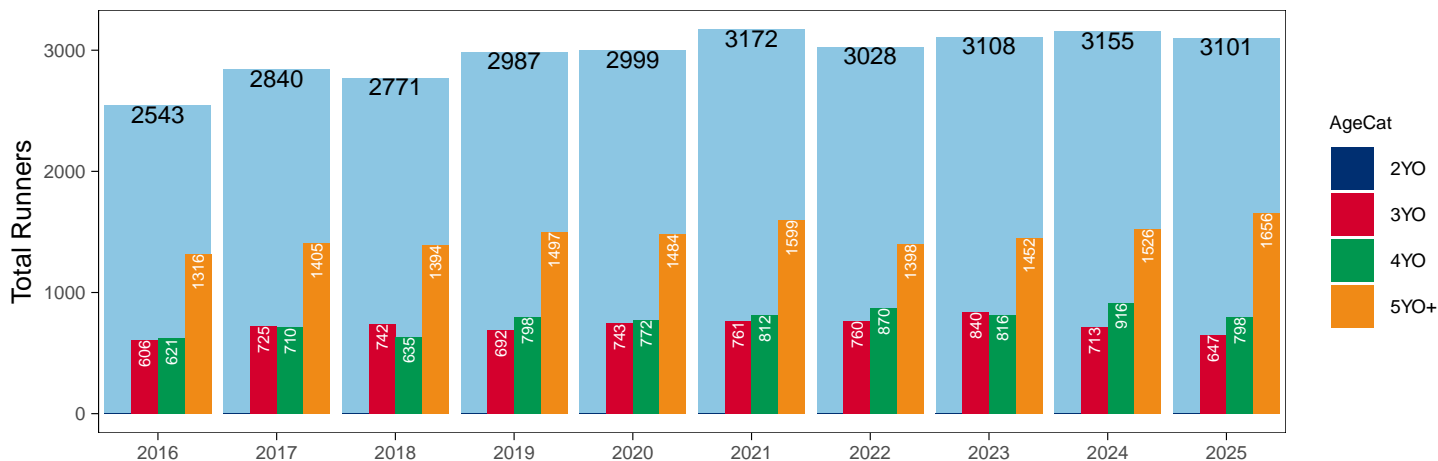
## Flat

AgeCat	2016	2017	2018	2019	2020	2021	2022	2023	2024	2025	vs. Last Year	vs. Pre-Covid
2YO											NA / NA	0 / NA
3YO	606	725	742	692	743	761	760	840	713	647	-66 / -9.3%	-45 / -6.5%
4YO	621	710	635	798	772	812	870	816	916	798	-118 / -12.9%	0 / 0.0%
5YO+	1316	1405	1394	1497	1484	1599	1398	1452	1526	1656	+130 / +8.5%	+159 / +10.6%
<b>Total</b>	<b>2543</b>	<b>2840</b>	<b>2771</b>	<b>2987</b>	<b>2999</b>	<b>3172</b>	<b>3028</b>	<b>3108</b>	<b>3155</b>	<b>3101</b>	<b>-54 / -1.7%</b>	<b>+114 / +3.8%</b>

'vs. Pre-Covid' is comparison between 2025 and 2019

## YTD Total Flat Runners by Age

Total Runners in GB Flat Races, shown by Age Category and Total



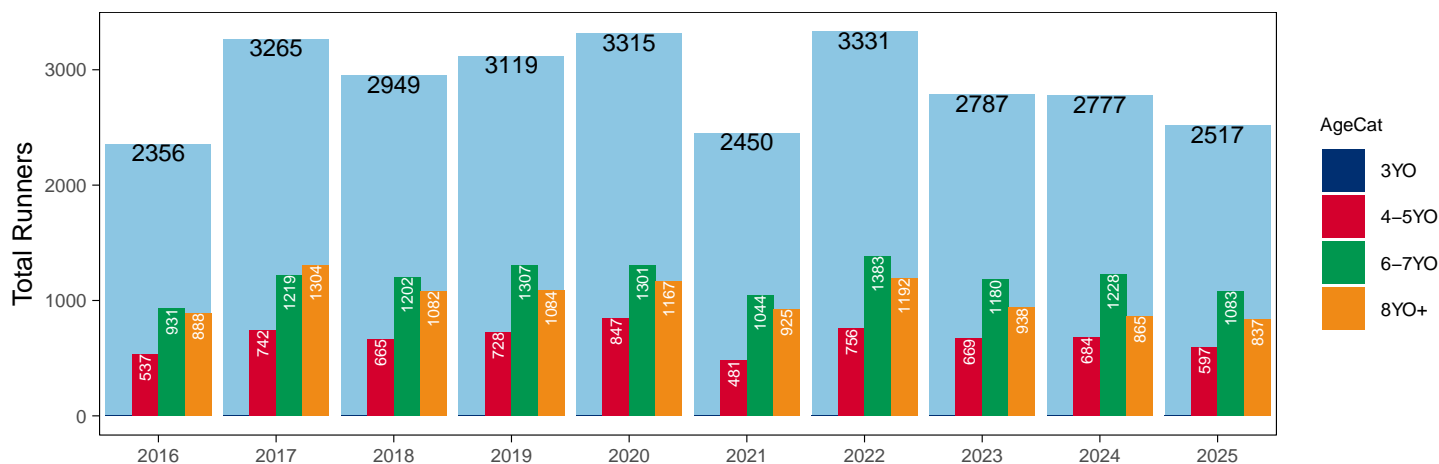
## Jump

AgeCat	2016	2017	2018	2019	2020	2021	2022	2023	2024	2025	vs. Last Year	vs. Pre-Covid
3YO											NA / NA	0 / NA
4-5YO	537	742	665	728	847	481	756	669	684	597	-87 / -12.7%	-131 / -18.0%
6-7YO	931	1219	1202	1307	1301	1044	1383	1180	1228	1083	-145 / -11.8%	-224 / -17.1%
8YO+	888	1304	1082	1084	1167	925	1192	938	865	837	-28 / -3.2%	-247 / -22.8%
<b>Total</b>	<b>2356</b>	<b>3265</b>	<b>2949</b>	<b>3119</b>	<b>3315</b>	<b>2450</b>	<b>3331</b>	<b>2787</b>	<b>2777</b>	<b>2517</b>	<b>-260 / -9.4%</b>	<b>-602 / -19.3%</b>

'vs. Pre-Covid' is comparison between 2025 and 2019

### YTD Total Jump Runners by Age

Total Runners in GB Jump Races, shown by Age Category and Total



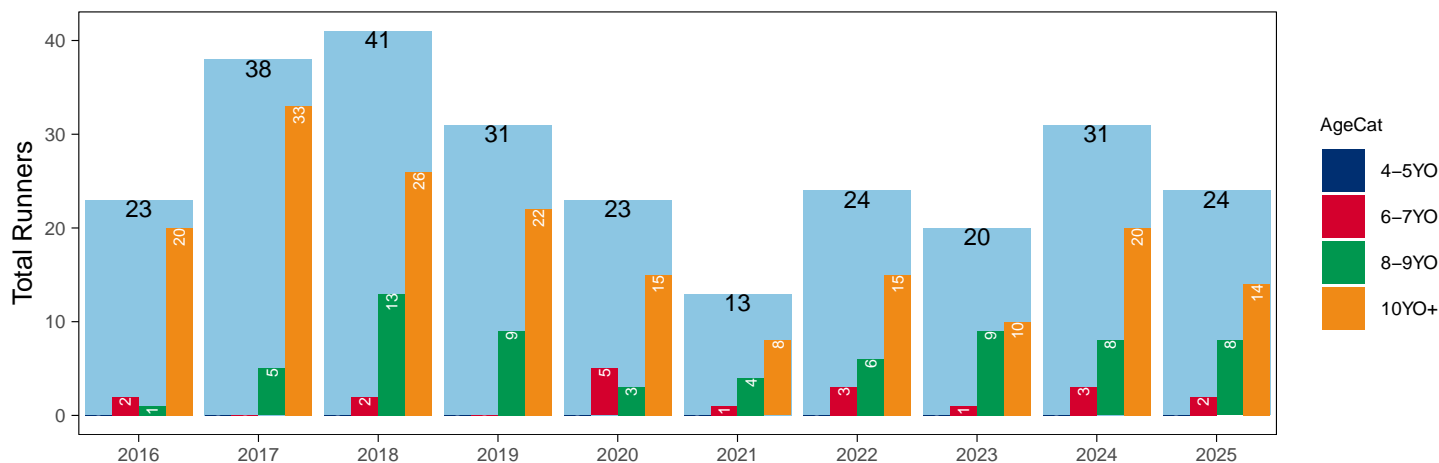
## Hunter Chases

AgeCat	2016	2017	2018	2019	2020	2021	2022	2023	2024	2025	vs. Last Year	vs. Pre-Covid
4-5YO											NA / NA	0 / NA
6-7YO	2		2		5	1	3	1	3	2	-1 / -33.3%	+2 / +Inf
8-9YO	1	5	13	9	3	4	6	9	8	8	0 / 0.0%	-1 / -11.1%
10YO+	20	33	26	22	15	8	15	10	20	14	-6 / -30.0%	-8 / -36.4%
<b>Total</b>	<b>23</b>	<b>38</b>	<b>41</b>	<b>31</b>	<b>23</b>	<b>13</b>	<b>24</b>	<b>20</b>	<b>31</b>	<b>24</b>	<b>-7 / -22.6%</b>	<b>-7 / -22.6%</b>

'vs. Pre-Covid' is comparison between 2025 and 2019

### YTD Total Hunter Chase Runners by Age

Total Runners in GB Hunter Chases shown by Age Category and Total



## Year to Date Total Runners by Country Trained

Code	Country	2016	2017	2018	2019	2020	2021	2022	2023	2024	2025
Flat	GB	2531	2816	2743	2946	2950	3172	3026	3102	3146	3091
	IRE	11	24	27	40	48		2	6	9	10
	Other	1		1	1	1					
Jump	GB	2293	3202	2922	3066	3258	2448	3286	2729	2724	2474
	IRE	63	61	27	52	54	2	44	57	51	41
	Other		2		1	3		1	1	2	2
Overall	GB	4824	6018	5665	6012	6208	5620	6312	5831	5870	5565
	IRE	74	85	54	92	102	2	46	63	60	51
	Other	1	2	1	2	4		1	1	2	2

## Year to Date GB Trained Runners Racing Abroad

Code	Country	2016	2017	2018	2019	2020	2021	2022	2023	2024	2025
Flat	IRE	1	1	2	3	1					
	FR	1	8	2	9	7	4		2	1	4
	UAE	86	87	83	141	133	88	112	113	70	111
	BAH							17	8	9	45
	KSA										1
	Other	1	1	1							
	<b>Total</b>		<b>89</b>	<b>97</b>	<b>88</b>	<b>153</b>	<b>141</b>	<b>92</b>	<b>129</b>	<b>123</b>	<b>80</b>
Jump	IRE	2	1	2		1					
	FR	2					2		6	3	1
	<b>Total</b>	<b>4</b>	<b>1</b>	<b>2</b>		<b>1</b>	<b>2</b>		<b>6</b>	<b>3</b>	<b>1</b>

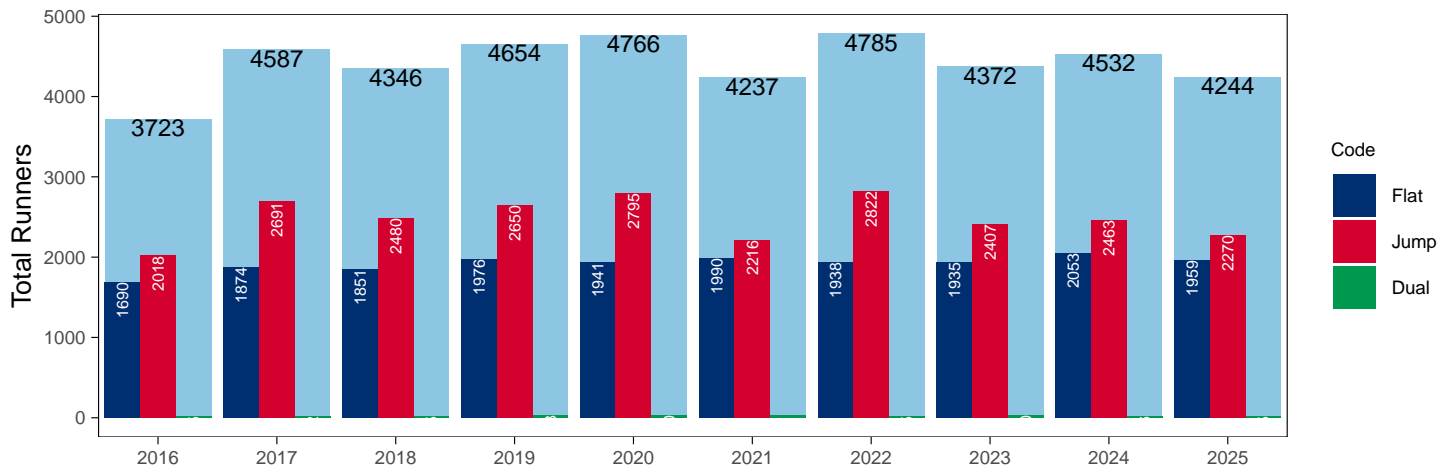
## Year to Date Individual Runners

Code	2016	2017	2018	2019	2020	2021	2022	2023	2024	2025	vs. Last Year	vs. Pre-Covid
Flat	1690	1874	1851	1976	1941	1990	1938	1935	2053	1959	-94 / -4.6%	-17 / -0.9%
Jump	2018	2691	2480	2650	2795	2216	2822	2407	2463	2270	-193 / -7.8%	-380 / -14.3%
Dual	15	22	15	28	30	31	25	30	16	15	-1 / -6.2%	-13 / -46.4%
<b>Overall</b>	<b>3723</b>	<b>4587</b>	<b>4346</b>	<b>4654</b>	<b>4766</b>	<b>4237</b>	<b>4785</b>	<b>4372</b>	<b>4532</b>	<b>4244</b>	<b>-288 / -6.4%</b>	<b>-410 / -8.8%</b>

'vs. Pre-Covid' is comparison between 2025 and 2019

## YTD Individual Runners

Individual Runners in GB Races, shown by Code and Total



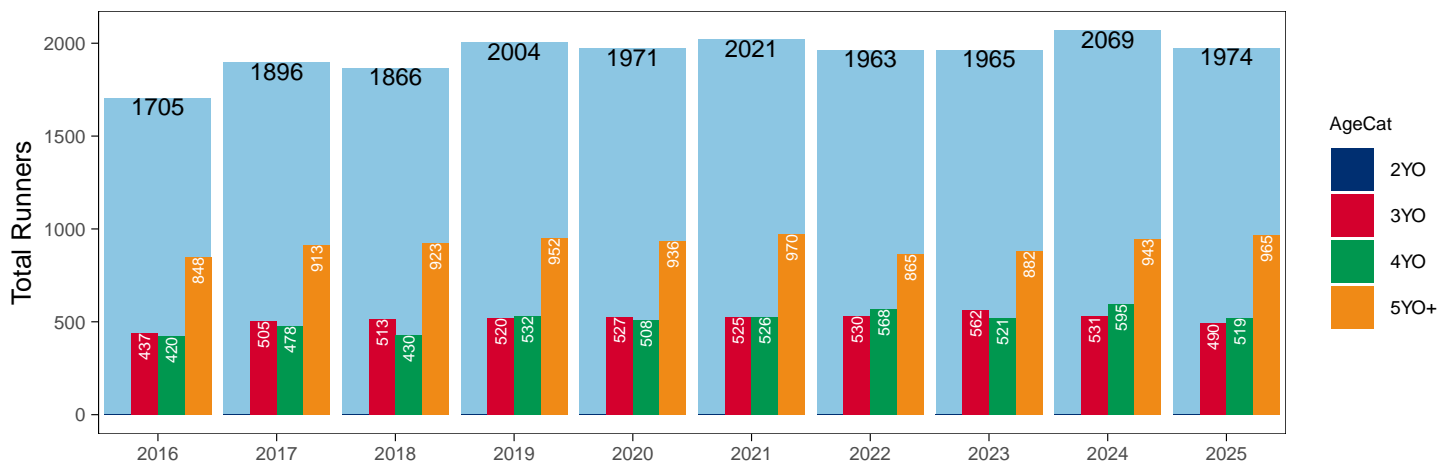
## Flat

AgeCat	2016	2017	2018	2019	2020	2021	2022	2023	2024	2025	vs. Last Year	vs. Pre-Covid
2YO											NA / NA	0 / NA
3YO	437	505	513	520	527	525	530	562	531	490	-41 / -7.7%	-30 / -5.8%
4YO	420	478	430	532	508	526	568	521	595	519	-76 / -12.8%	-13 / -2.4%
5YO+	848	913	923	952	936	970	865	882	943	965	+22 / +2.3%	+13 / +1.4%
<b>Total</b>	<b>1705</b>	<b>1896</b>	<b>1866</b>	<b>2004</b>	<b>1971</b>	<b>2021</b>	<b>1963</b>	<b>1965</b>	<b>2069</b>	<b>1974</b>	<b>-95 / -4.6%</b>	<b>-30 / -1.5%</b>

'vs. Pre-Covid' is comparison between 2025 and 2019

### YTD Individual Flat Runners by Age

Individual Runners in GB Flat Races, shown by Age Category and Total



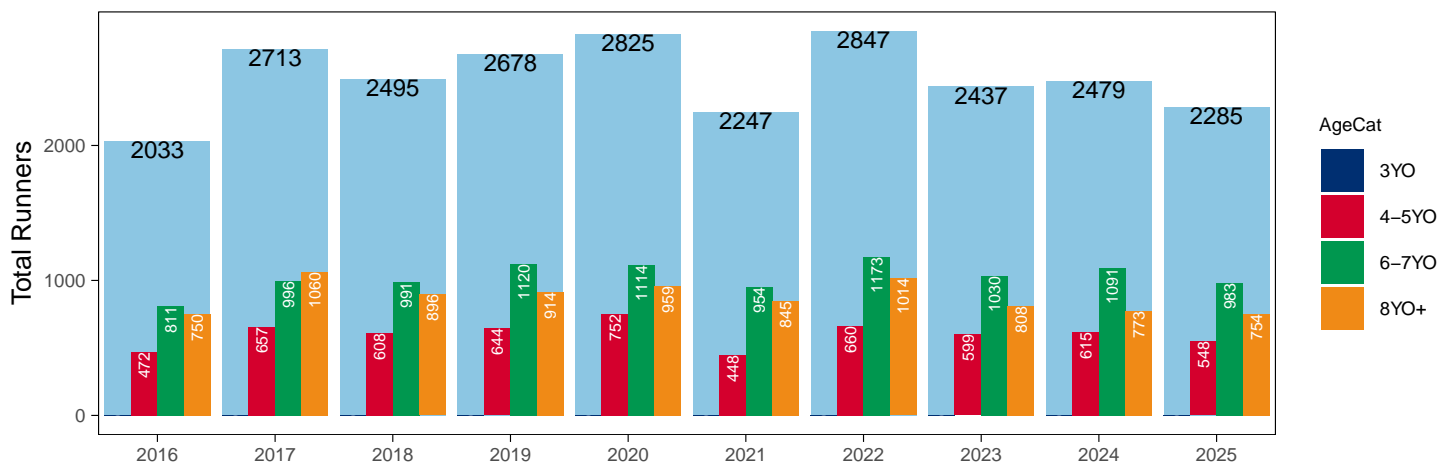
## Jump

AgeCat	2016	2017	2018	2019	2020	2021	2022	2023	2024	2025	vs. Last Year	vs. Pre-Covid
3YO											NA / NA	0 / NA
4-5YO	472	657	608	644	752	448	660	599	615	548	-67 / -10.9%	-96 / -14.9%
6-7YO	811	996	991	1120	1114	954	1173	1030	1091	983	-108 / -9.9%	-137 / -12.2%
8YO+	750	1060	896	914	959	845	1014	808	773	754	-19 / -2.5%	-160 / -17.5%
<b>Total</b>	<b>2033</b>	<b>2713</b>	<b>2495</b>	<b>2678</b>	<b>2825</b>	<b>2247</b>	<b>2847</b>	<b>2437</b>	<b>2479</b>	<b>2285</b>	<b>-194 / -7.8%</b>	<b>-393 / -14.7%</b>

'vs. Pre-Covid' is comparison between 2025 and 2019

### YTD Individual Jump Runners by Age

Individual Runners in GB Jump Races, shown by Age Category and Total





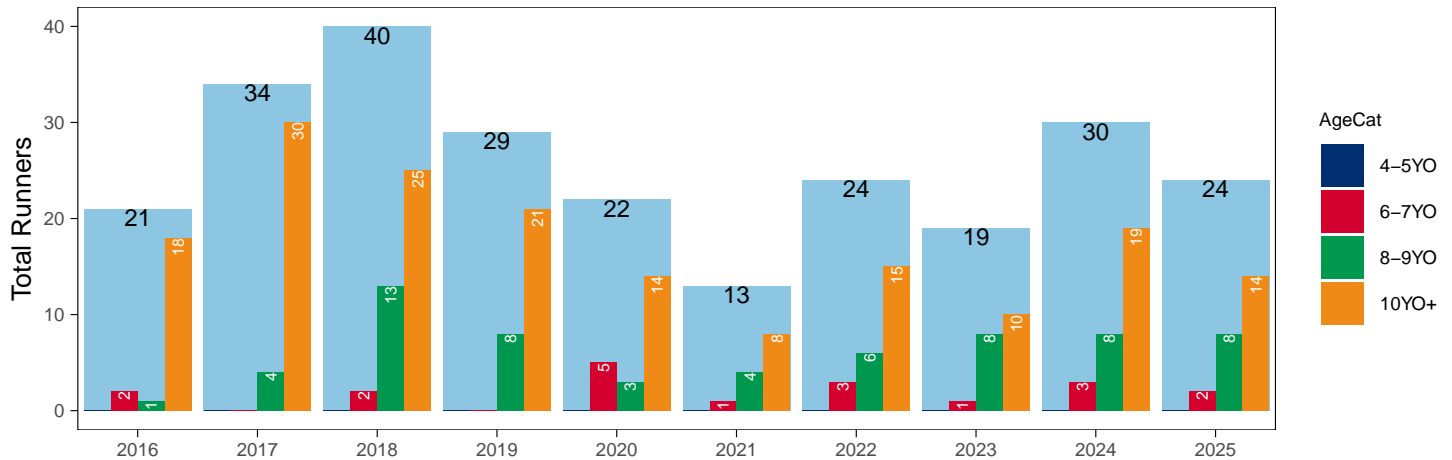
## Hunter Chases

AgeCat	2016	2017	2018	2019	2020	2021	2022	2023	2024	2025	vs. Last Year	vs. Pre-Covid
4-5YO											NA / NA	0 / NA
6-7YO	2		2		5	1	3	1	3	2	-1 / -33.3%	+2 / +Inf
8-9YO	1	4	13	8	3	4	6	8	8	8	0 / 0.0%	0 / 0.0%
10YO+	18	30	25	21	14	8	15	10	19	14	-5 / -26.3%	-7 / -33.3%
<b>Total</b>	<b>21</b>	<b>34</b>	<b>40</b>	<b>29</b>	<b>22</b>	<b>13</b>	<b>24</b>	<b>19</b>	<b>30</b>	<b>24</b>	<b>-6 / -20.0%</b>	<b>-5 / -17.2%</b>

'vs. Pre-Covid' is comparison between 2025 and 2019

## YTD Individual Hunter Chase Runners by Age

Individual Runners in GB Hunter Chases shown by Age Category and Total



## Year to Date Individual Runners by Country Trained

Code	Country	2016	2017	2018	2019	2020	2021	2022	2023	2024	2025
Flat	GB	1679	1858	1825	1940	1899	1990	1936	1929	2046	1952
	IRE	10	17	25	35	41		2	6	7	7
	Other	1		1	1	1					
Jump	GB	1960	2633	2456	2604	2742	2214	2779	2350	2410	2228
	IRE	58	57	24	45	50	2	42	56	51	40
	Other		2		1	3		1	1	2	2
Dual	GB	15	22	15	28	29	31	25	30	16	15
	IRE					1					
<b>Overall</b>	<b>GB</b>	<b>3654</b>	<b>4513</b>	<b>4296</b>	<b>4572</b>	<b>4670</b>	<b>4235</b>	<b>4740</b>	<b>4309</b>	<b>4472</b>	<b>4195</b>
	<b>IRE</b>	<b>68</b>	<b>74</b>	<b>49</b>	<b>80</b>	<b>92</b>	<b>2</b>	<b>44</b>	<b>62</b>	<b>58</b>	<b>47</b>
	<b>Other</b>	<b>1</b>	<b>2</b>	<b>1</b>	<b>2</b>	<b>4</b>		<b>1</b>	<b>1</b>	<b>2</b>	<b>2</b>

Individual horses may appear under multiple countries.

## Year to Date Total Runners by Rating Band

## Flat

RatBand	2016	2017	2018	2019	2020	2021	2022	2023	2024	2025
<b>3YO</b>										
Unrated	223 (36.8%)	273 (37.7%)	317 (42.7%)	303 (43.8%)	341 (45.9%)	345 (45.3%)	329 (43.3%)	347 (41.3%)	339 (47.5%)	298 (46.1%)
0-50	57 (9.4%)	43 (5.9%)	59 (8.0%)	56 (8.1%)	73 (9.8%)	64 (8.4%)	69 (9.1%)	83 (9.9%)	59 (8.3%)	55 (8.5%)
51-60	96 (15.8%)	121 (16.7%)	97 (13.1%)	134 (19.4%)	106 (14.3%)	143 (18.8%)	111 (14.6%)	145 (17.3%)	111 (15.6%)	100 (15.5%)
61-70	135 (22.3%)	167 (23.0%)	141 (19.0%)	118 (17.1%)	131 (17.6%)	121 (15.9%)	154 (20.3%)	149 (17.7%)	121 (17.0%)	101 (15.6%)
71-80	73 (12.0%)	99 (13.7%)	90 (12.1%)	56 (8.1%)	77 (10.4%)	71 (9.3%)	75 (9.9%)	93 (11.1%)	63 (8.8%)	75 (11.6%)
81-90	14 (2.3%)	15 (2.1%)	32 (4.3%)	21 (3.0%)	14 (1.9%)	11 (1.4%)	18 (2.4%)	20 (2.4%)	17 (2.4%)	17 (2.6%)
91-100	4 (0.7%)	6 (0.8%)	3 (0.4%)	3 (0.4%)	1 (0.1%)	4 (0.5%)	4 (0.5%)	2 (0.2%)	3 (0.4%)	1 (0.2%)
101+	4 (0.7%)	1 (0.1%)	3 (0.4%)	1 (0.1%)	NA (-)	2 (0.3%)	NA (-)	1 (0.1%)	NA (-)	NA (-)
<b>4YO+</b>										
Unrated	71 (3.7%)	59 (2.8%)	52 (2.6%)	96 (4.2%)	64 (2.8%)	73 (3.0%)	78 (3.4%)	83 (3.7%)	88 (3.6%)	81 (3.3%)
0-50	335 (17.3%)	315 (14.9%)	348 (17.2%)	465 (20.3%)	481 (21.3%)	541 (22.4%)	506 (22.3%)	560 (24.7%)	576 (23.6%)	645 (26.3%)
51-60	488 (25.2%)	539 (25.5%)	481 (23.7%)	542 (23.6%)	560 (24.8%)	558 (23.1%)	562 (24.8%)	564 (24.9%)	634 (26.0%)	614 (25.0%)
61-70	454 (23.4%)	509 (24.1%)	479 (23.6%)	526 (22.9%)	543 (24.1%)	631 (26.2%)	532 (23.5%)	501 (22.1%)	537 (22.0%)	552 (22.5%)
71-80	304 (15.7%)	366 (17.3%)	348 (17.2%)	394 (17.2%)	353 (15.6%)	340 (14.1%)	340 (15.0%)	356 (15.7%)	362 (14.8%)	343 (14.0%)
81-90	197 (10.2%)	229 (10.8%)	211 (10.4%)	168 (7.3%)	172 (7.6%)	175 (7.3%)	167 (7.4%)	133 (5.9%)	180 (7.4%)	160 (6.5%)
91-100	67 (3.5%)	77 (3.6%)	81 (4.0%)	81 (3.5%)	64 (2.8%)	69 (2.9%)	61 (2.7%)	53 (2.3%)	51 (2.1%)	46 (1.9%)
101+	21 (1.1%)	21 (1.0%)	29 (1.4%)	23 (1.0%)	19 (0.8%)	24 (1.0%)	22 (1.0%)	18 (0.8%)	14 (0.6%)	13 (0.5%)

## Jump

RatBand	2016	2017	2018	2019	2020	2021	2022	2023	2024	2025
<b>Hurdle</b>										
Unrated	529 (35.8%)	734 (37.8%)	659 (36.5%)	742 (38.1%)	710 (35.2%)	456 (34.9%)	695 (35.4%)	673 (40.2%)	690 (40.1%)	490 (31.9%)
0-100	268 (18.1%)	406 (20.9%)	337 (18.6%)	374 (19.2%)	438 (21.7%)	288 (22.0%)	486 (24.7%)	418 (25.0%)	462 (26.9%)	452 (29.4%)
101-110	200 (13.5%)	242 (12.5%)	232 (12.8%)	247 (12.7%)	265 (13.1%)	143 (10.9%)	241 (12.3%)	191 (11.4%)	185 (10.8%)	200 (13.0%)
111-120	167 (11.3%)	265 (13.6%)	235 (13.0%)	257 (13.2%)	248 (12.3%)	162 (12.4%)	231 (11.8%)	145 (8.7%)	182 (10.6%)	204 (13.3%)
121-130	152 (10.3%)	169 (8.7%)	196 (10.8%)	180 (9.3%)	195 (9.7%)	138 (10.6%)	178 (9.1%)	158 (9.4%)	121 (7.0%)	118 (7.7%)
131-140	105 (7.1%)	88 (4.5%)	103 (5.7%)	96 (4.9%)	108 (5.4%)	79 (6.0%)	89 (4.5%)	57 (3.4%)	49 (2.9%)	42 (2.7%)
141-150	41 (2.8%)	22 (1.1%)	32 (1.8%)	33 (1.7%)	36 (1.8%)	31 (2.4%)	35 (1.8%)	22 (1.3%)	23 (1.3%)	24 (1.6%)
151+	15 (1.0%)	17 (0.9%)	13 (0.7%)	16 (0.8%)	18 (0.9%)	11 (0.8%)	10 (0.5%)	9 (0.5%)	7 (0.4%)	6 (0.4%)
<b>Chase</b>										
Unrated	3 (0.4%)	17 (1.5%)	5 (0.6%)	10 (1.1%)	NA (-)	5 (0.8%)	3 (0.3%)	1 (0.1%)	NA (-)	NA (-)
0-100	152 (20.4%)	231 (20.9%)	194 (21.4%)	246 (25.9%)	276 (27.1%)	153 (23.0%)	290 (26.2%)	285 (31.6%)	261 (30.4%)	240 (30.8%)
101-110	81 (10.9%)	192 (17.4%)	122 (13.5%)	155 (16.3%)	157 (15.4%)	75 (11.3%)	143 (12.9%)	141 (15.6%)	138 (16.1%)	149 (19.1%)
111-120	140 (18.8%)	206 (18.7%)	175 (19.3%)	151 (15.9%)	143 (14.0%)	119 (17.9%)	220 (19.9%)	148 (16.4%)	175 (20.4%)	127 (16.3%)
121-130	122 (16.4%)	163 (14.8%)	171 (18.9%)	160 (16.9%)	194 (19.0%)	118 (17.7%)	198 (17.9%)	142 (15.7%)	126 (14.7%)	130 (16.7%)
131-140	139 (18.6%)	172 (15.6%)	139 (15.3%)	113 (11.9%)	156 (15.3%)	105 (15.8%)	165 (14.9%)	108 (12.0%)	90 (10.5%)	66 (8.5%)
141-150	69 (9.2%)	80 (7.3%)	70 (7.7%)	81 (8.5%)	66 (6.5%)	60 (9.0%)	55 (5.0%)	53 (5.9%)	43 (5.0%)	46 (5.9%)
151+	40 (5.4%)	42 (3.8%)	30 (3.3%)	33 (3.5%)	28 (2.7%)	31 (4.7%)	31 (2.8%)	25 (2.8%)	25 (2.9%)	22 (2.8%)

## Year to Date Total GB-Trained Runners by Rating Band

## Flat

RatBand	2016	2017	2018	2019	2020	2021	2022	2023	2024	2025
<b>3YO</b>										
Unrated	223 (36.8%)	273 (37.7%)	315 (42.9%)	302 (44.1%)	338 (46.3%)	345 (45.3%)	329 (43.3%)	347 (41.3%)	338 (47.5%)	298 (46.1%)
0-50	57 (9.4%)	43 (5.9%)	57 (7.8%)	55 (8.0%)	70 (9.6%)	64 (8.4%)	69 (9.1%)	83 (9.9%)	59 (8.3%)	55 (8.5%)
51-60	96 (15.8%)	121 (16.7%)	95 (12.9%)	133 (19.4%)	101 (13.8%)	143 (18.8%)	111 (14.6%)	145 (17.3%)	111 (15.6%)	99 (15.3%)
61-70	135 (22.3%)	167 (23.0%)	141 (19.2%)	115 (16.8%)	131 (17.9%)	121 (15.9%)	154 (20.3%)	149 (17.7%)	121 (17.0%)	101 (15.6%)
71-80	73 (12.0%)	99 (13.7%)	89 (12.1%)	55 (8.0%)	75 (10.3%)	71 (9.3%)	75 (9.9%)	93 (11.1%)	63 (8.8%)	75 (11.6%)
81-90	14 (2.3%)	15 (2.1%)	32 (4.4%)	21 (3.1%)	14 (1.9%)	11 (1.4%)	18 (2.4%)	20 (2.4%)	17 (2.4%)	17 (2.6%)
91-100	4 (0.7%)	6 (0.8%)	3 (0.4%)	3 (0.4%)	1 (0.1%)	4 (0.5%)	4 (0.5%)	2 (0.2%)	3 (0.4%)	1 (0.2%)
101+	4 (0.7%)	1 (0.1%)	3 (0.4%)	1 (0.1%)	NA (-)	2 (0.3%)	NA (-)	1 (0.1%)	NA (-)	NA (-)
<b>4YO+</b>										
Unrated	71 (3.7%)	59 (2.8%)	52 (2.6%)	96 (4.2%)	64 (2.9%)	73 (3.0%)	78 (3.4%)	83 (3.7%)	88 (3.6%)	81 (3.3%)
0-50	334 (17.4%)	307 (14.7%)	343 (17.1%)	451 (19.9%)	474 (21.4%)	541 (22.4%)	506 (22.3%)	559 (24.7%)	573 (23.5%)	644 (26.3%)
51-60	482 (25.0%)	532 (25.4%)	472 (23.5%)	529 (23.4%)	540 (24.3%)	558 (23.1%)	562 (24.8%)	562 (24.8%)	632 (26.0%)	607 (24.8%)
61-70	451 (23.4%)	502 (24.0%)	475 (23.7%)	521 (23.0%)	539 (24.3%)	631 (26.2%)	532 (23.5%)	501 (22.1%)	535 (22.0%)	551 (22.5%)
71-80	304 (15.8%)	365 (17.5%)	346 (17.2%)	394 (17.4%)	350 (15.8%)	340 (14.1%)	338 (14.9%)	354 (15.6%)	361 (14.8%)	343 (14.0%)
81-90	196 (10.2%)	229 (11.0%)	211 (10.5%)	167 (7.4%)	172 (7.7%)	175 (7.3%)	167 (7.4%)	133 (5.9%)	180 (7.4%)	160 (6.5%)
91-100	67 (3.5%)	76 (3.6%)	81 (4.0%)	80 (3.5%)	64 (2.9%)	69 (2.9%)	61 (2.7%)	52 (2.3%)	51 (2.1%)	46 (1.9%)
101+	20 (1.0%)	21 (1.0%)	28 (1.4%)	23 (1.0%)	17 (0.8%)	24 (1.0%)	22 (1.0%)	18 (0.8%)	14 (0.6%)	13 (0.5%)

## Jump

RatBand	2016	2017	2018	2019	2020	2021	2022	2023	2024	2025
<b>Hurdle</b>										
Unrated	516 (35.9%)	727 (38.2%)	652 (36.5%)	726 (38.1%)	700 (35.3%)	456 (34.9%)	681 (35.3%)	658 (40.1%)	677 (40.2%)	484 (32.0%)
0-100	265 (18.4%)	395 (20.7%)	334 (18.7%)	367 (19.2%)	431 (21.7%)	288 (22.0%)	484 (25.1%)	412 (25.1%)	457 (27.1%)	451 (29.8%)
101-110	193 (13.4%)	233 (12.2%)	229 (12.8%)	245 (12.8%)	262 (13.2%)	143 (10.9%)	239 (12.4%)	189 (11.5%)	184 (10.9%)	199 (13.2%)
111-120	167 (11.6%)	259 (13.6%)	234 (13.1%)	253 (13.3%)	246 (12.4%)	162 (12.4%)	228 (11.8%)	143 (8.7%)	179 (10.6%)	198 (13.1%)
121-130	149 (10.4%)	166 (8.7%)	193 (10.8%)	175 (9.2%)	192 (9.7%)	138 (10.6%)	175 (9.1%)	156 (9.5%)	115 (6.8%)	113 (7.5%)
131-140	99 (6.9%)	88 (4.6%)	102 (5.7%)	94 (4.9%)	104 (5.2%)	79 (6.0%)	85 (4.4%)	53 (3.2%)	46 (2.7%)	42 (2.8%)
141-150	36 (2.5%)	21 (1.1%)	31 (1.7%)	32 (1.7%)	31 (1.6%)	30 (2.3%)	30 (1.6%)	21 (1.3%)	20 (1.2%)	20 (1.3%)
151+	14 (1.0%)	16 (0.8%)	13 (0.7%)	15 (0.8%)	16 (0.8%)	11 (0.8%)	8 (0.4%)	9 (0.5%)	6 (0.4%)	6 (0.4%)
<b>Chase</b>										
Unrated	3 (0.4%)	17 (1.6%)	5 (0.6%)	10 (1.1%)	NA (-)	5 (0.8%)	3 (0.3%)	1 (0.1%)	NA (-)	NA (-)
0-100	146 (20.2%)	228 (21.1%)	193 (21.5%)	245 (26.0%)	274 (27.1%)	153 (23.0%)	290 (26.3%)	283 (32.1%)	261 (31.0%)	240 (31.5%)
101-110	78 (10.8%)	191 (17.7%)	122 (13.6%)	154 (16.4%)	157 (15.5%)	75 (11.3%)	143 (13.0%)	139 (15.8%)	138 (16.4%)	149 (19.5%)
111-120	139 (19.2%)	203 (18.8%)	173 (19.2%)	150 (15.9%)	141 (14.0%)	119 (17.9%)	220 (20.0%)	147 (16.7%)	172 (20.4%)	124 (16.3%)
121-130	120 (16.6%)	159 (14.7%)	170 (18.9%)	159 (16.9%)	192 (19.0%)	118 (17.7%)	197 (17.9%)	140 (15.9%)	119 (14.1%)	127 (16.6%)
131-140	133 (18.4%)	167 (15.5%)	138 (15.4%)	112 (11.9%)	155 (15.3%)	105 (15.8%)	164 (14.9%)	101 (11.5%)	90 (10.7%)	61 (8.0%)
141-150	68 (9.4%)	78 (7.2%)	69 (7.7%)	80 (8.5%)	64 (6.3%)	60 (9.0%)	55 (5.0%)	49 (5.6%)	40 (4.8%)	44 (5.8%)
151+	37 (5.1%)	36 (3.3%)	29 (3.2%)	31 (3.3%)	27 (2.7%)	31 (4.7%)	30 (2.7%)	21 (2.4%)	22 (2.6%)	18 (2.4%)

## Frequency of Runs

### Year to Date Average Runs per Horse

Code	2016	2017	2018	2019	2020	2021	2022	2023	2024	2025
Flat	1.49	1.50	1.49	1.50	1.53	1.57	1.55	1.59	1.53	1.57
Jump	1.16	1.20	1.18	1.17	1.17	1.09	1.17	1.14	1.12	1.10
Dual Overall	2.20	2.23	2.20	2.14	2.23	2.29	2.20	2.33	2.25	2.40
Dual (Flat)	1.13	1.14	1.20	1.07	1.17	1.23	1.16	1.23	1.25	1.33
Dual (Jump)	1.07	1.09	1.00	1.07	1.07	1.06	1.04	1.10	1.00	1.07
<b>All</b>	<b>1.32</b>	<b>1.33</b>	<b>1.32</b>	<b>1.31</b>	<b>1.32</b>	<b>1.33</b>	<b>1.33</b>	<b>1.35</b>	<b>1.31</b>	<b>1.32</b>

### Year to Date Proportion of Horses by Count of Runs

Runs	2016	2017	2018	2019	2020	2021	2022	2023	2024	2025
<b>Flat</b>										
1	1,027 (60.2%)	1,141 (60.2%)	1,143 (61.3%)	1,213 (60.5%)	1,174 (59.6%)	1,145 (56.7%)	1,120 (57.1%)	1,104 (56.2%)	1,216 (58.8%)	1,110 (56.2%)
2	539 (31.6%)	590 (31.1%)	561 (30.1%)	629 (31.4%)	610 (30.9%)	652 (32.3%)	646 (32.9%)	631 (32.1%)	650 (31.4%)	637 (32.3%)
3	120 (7.0%)	145 (7.6%)	146 (7.8%)	134 (6.7%)	152 (7.7%)	182 (9.0%)	174 (8.9%)	184 (9.4%)	176 (8.5%)	195 (9.9%)
4	17 (1.0%)	17 (0.9%)	13 (0.7%)	26 (1.3%)	27 (1.4%)	34 (1.7%)	21 (1.1%)	40 (2.0%)	24 (1.2%)	28 (1.4%)
5+	2 (0.1%)	3 (0.2%)	3 (0.2%)	2 (0.1%)	8 (0.4%)	8 (0.4%)	2 (0.1%)	6 (0.3%)	3 (0.1%)	4 (0.2%)
<b>Jump</b>										
1	1,727 (84.9%)	2,184 (80.5%)	2,054 (82.3%)	2,261 (84.4%)	2,356 (83.4%)	2,049 (91.2%)	2,377 (83.5%)	2,098 (86.1%)	2,188 (88.3%)	2,058 (90.1%)
2	289 (14.2%)	506 (18.7%)	428 (17.2%)	393 (14.7%)	448 (15.9%)	193 (8.6%)	456 (16.0%)	328 (13.5%)	284 (11.5%)	222 (9.7%)
3	17 (0.8%)	23 (0.8%)	13 (0.5%)	24 (0.9%)	21 (0.7%)	5 (0.2%)	14 (0.5%)	11 (0.5%)	7 (0.3%)	5 (0.2%)
<b>All Races</b>										
1	2,727 (73.2%)	3,286 (71.6%)	3,170 (72.9%)	3,422 (73.5%)	3,477 (73.0%)	3,140 (74.1%)	3,452 (72.1%)	3,152 (72.1%)	3,376 (74.5%)	3,144 (74.1%)
2	837 (22.5%)	1,108 (24.2%)	998 (23.0%)	1,042 (22.4%)	1,074 (22.5%)	861 (20.3%)	1,117 (23.3%)	969 (22.2%)	942 (20.8%)	862 (20.3%)
3	140 (3.8%)	173 (3.8%)	162 (3.7%)	162 (3.5%)	180 (3.8%)	193 (4.6%)	193 (4.0%)	205 (4.7%)	187 (4.1%)	206 (4.9%)
4	17 (0.5%)	17 (0.4%)	13 (0.3%)	26 (0.6%)	27 (0.6%)	35 (0.8%)	21 (0.4%)	40 (0.9%)	24 (0.5%)	28 (0.7%)
5+	2 (0.1%)	3 (0.1%)	3 (0.1%)	2 (0.0%)	8 (0.2%)	8 (0.2%)	2 (0.0%)	6 (0.1%)	3 (0.1%)	4 (0.1%)

### Year to Date Median Days Between Runs

Code/RatBand	2016	2017	2018	2019	2020	2021	2022	2023	2024	2025
<b>All Runners</b>	<b>27</b>	<b>25</b>	<b>27</b>	<b>25</b>	<b>27</b>	<b>27</b>	<b>26</b>	<b>29</b>	<b>27</b>	<b>27</b>
<b>Flat</b>										
Unrated	25	24	27	29	28	25	27	26	28	26
0-50	17	21	21	21	20	19	20	16	18	17
51-60	18	19	19	20	20	18	20	18	19	17
61-70	20	20	20	20	21	19	20	19	20	18
71-80	20	21	20	20	22	22	20	21	22	22
81-90	20	18	22	21	22	23	22	26	23	23
91-100	27	24	24	22	21	21	30	39	30	27
101+	31	48	38	27	30	44	38	39	35	46
<b>All Flat Runners</b>	<b>20</b>	<b>21</b>	<b>21</b>	<b>21</b>	<b>22</b>	<b>20</b>	<b>21</b>	<b>20</b>	<b>20</b>	<b>19</b>
<b>Jump</b>										
Unrated	37	31	36	31	34	40	33	39	36	38
0-100	31	27	27	26	27	36	28	34	33	34
101-110	31	27	30	27	30	34	29	37	35	32
111-120	32	28	30	27	30	39	31	34	32	33
121-130	34	29	30	28	30	35	31	35	33	33
131-140	34	32	31	28	30	36	32	36	35	36
141-150	34	33	32	31	35	38	34	38	36	34
151+	34	42	35	35	34	35	42	39	36	38
<b>All Jump Runners</b>	<b>33</b>	<b>29</b>	<b>31</b>	<b>28</b>	<b>30</b>	<b>37</b>	<b>30</b>	<b>36</b>	<b>34</b>	<b>34</b>

# Horses Population by Gender

## January 2025 Horses in Training Snapshot by Gender versus Previous Years

### All Horses

Sex	2016	2017	2018	2019	2020	2021	2022	2023	2024	2025
Colt/Entire	2,352 (16.8%)	2,360 (16.5%)	2,395 (16.4%)	2,278 (15.5%)	2,301 (15.2%)	2,058 (13.6%)	1,971 (13.5%)	1,877 (12.9%)	1,837 (12.9%)	1,795 (12.8%)
Gelding	7,573 (53.9%)	7,776 (54.4%)	7,848 (53.9%)	7,995 (54.5%)	8,303 (54.8%)	8,604 (56.7%)	8,079 (55.5%)	8,221 (56.3%)	8,006 (56.4%)	7,952 (56.6%)
Filly/Mare	4,109 (29.3%)	4,141 (29.0%)	4,315 (29.6%)	4,398 (30.0%)	4,532 (29.9%)	4,520 (29.8%)	4,511 (31.0%)	4,496 (30.8%)	4,344 (30.6%)	4,305 (30.6%)
Rig	6 (0.0%)	4 (0.0%)	3 (0.0%)	3 (0.0%)	3 (0.0%)	3 (0.0%)	1 (0.0%)	0 (0.0%)	0 (0.0%)	0 (0.0%)
<b>Total</b>	<b>14,040 (100.0%)</b>	<b>14,281 (100.0%)</b>	<b>14,561 (100.0%)</b>	<b>14,674 (100.0%)</b>	<b>15,139 (100.0%)</b>	<b>15,185 (100.0%)</b>	<b>14,562 (100.0%)</b>	<b>14,594 (100.0%)</b>	<b>14,187 (100.0%)</b>	<b>14,052 (100.0%)</b>

### Flat (including Dual)

Sex	2016	2017	2018	2019	2020	2021	2022	2023	2024	2025
Colt/Entire	2,321 (26.6%)	2,337 (26.0%)	2,373 (25.1%)	2,258 (25.0%)	2,278 (24.4%)	2,037 (23.1%)	1,950 (22.2%)	1,852 (21.3%)	1,813 (21.3%)	1,769 (20.5%)
Gelding	3,294 (37.8%)	3,502 (38.9%)	3,811 (40.4%)	3,576 (39.6%)	3,784 (40.5%)	3,679 (41.6%)	3,578 (40.8%)	3,694 (42.5%)	3,675 (43.2%)	3,845 (44.5%)
Filly/Mare	3,096 (35.5%)	3,154 (35.1%)	3,254 (34.5%)	3,197 (35.4%)	3,278 (35.1%)	3,119 (35.3%)	3,247 (37.0%)	3,152 (36.2%)	3,024 (35.5%)	3,031 (35.1%)
Rig	6 (0.0%)	4 (0.0%)	3 (0.0%)	2 (0.0%)	2 (0.0%)	2 (0.0%)	0 (0.0%)	0 (0.0%)	0 (0.0%)	0 (0.0%)
<b>Total</b>	<b>8,717 (100.0%)</b>	<b>8,997 (100.0%)</b>	<b>9,441 (100.0%)</b>	<b>9,033 (100.0%)</b>	<b>9,342 (100.0%)</b>	<b>8,837 (100.0%)</b>	<b>8,775 (100.0%)</b>	<b>8,698 (100.0%)</b>	<b>8,512 (100.0%)</b>	<b>8,645 (100.0%)</b>

### Jump (including Dual)

Sex	2016	2017	2018	2019	2020	2021	2022	2023	2024	2025
Colt/Entire	44 (0.8%)	27 (0.5%)	31 (0.5%)	29 (0.5%)	35 (0.6%)	33 (0.5%)	34 (0.5%)	32 (0.5%)	29 (0.5%)	45 (0.8%)
Gelding	4,645 (80.0%)	4,708 (80.9%)	4,723 (78.5%)	4,779 (78.2%)	4,929 (77.9%)	5,315 (77.5%)	4,852 (77.5%)	4,877 (76.5%)	4,659 (76.0%)	4,487 (75.7%)
Filly/Mare	1,114 (19.2%)	1,088 (18.7%)	1,265 (21.0%)	1,304 (21.3%)	1,360 (21.5%)	1,511 (22.0%)	1,370 (21.9%)	1,462 (22.9%)	1,446 (23.6%)	1,398 (23.6%)
Rig	0 (0.0%)	0 (0.0%)	0 (0.0%)	1 (0.0%)	1 (0.0%)	1 (0.0%)	1 (0.0%)	0 (0.0%)	0 (0.0%)	0 (0.0%)
<b>Total</b>	<b>5,803 (100.0%)</b>	<b>5,823 (100.0%)</b>	<b>6,019 (100.0%)</b>	<b>6,113 (100.0%)</b>	<b>6,325 (100.0%)</b>	<b>6,860 (100.0%)</b>	<b>6,257 (100.0%)</b>	<b>6,371 (100.0%)</b>	<b>6,134 (100.0%)</b>	<b>5,930 (100.0%)</b>

### Hunter Chasers

Sex	2016	2017	2018	2019	2020	2021	2022	2023	2024	2025
Colt/Entire	2 (0.2%)	2 (0.2%)	2 (0.2%)	1 (0.1%)	1 (0.1%)	1 (0.1%)	2 (0.2%)	6 (0.8%)	10 (1.0%)	6 (0.9%)
Gelding	1,023 (86.5%)	937 (84.7%)	846 (83.7%)	818 (81.5%)	797 (83.1%)	666 (83.0%)	699 (84.3%)	602 (82.1%)	832 (82.3%)	553 (81.8%)
Filly/Mare	158 (13.4%)	167 (15.1%)	163 (16.1%)	185 (18.4%)	161 (16.8%)	135 (16.8%)	128 (15.4%)	125 (17.1%)	169 (16.7%)	117 (17.3%)
Rig	0 (0.0%)	0 (0.0%)	0 (0.0%)	0 (0.0%)	0 (0.0%)	0 (0.0%)	0 (0.0%)	0 (0.0%)	0 (0.0%)	0 (0.0%)
<b>Total</b>	<b>1,183 (100.0%)</b>	<b>1,106 (100.0%)</b>	<b>1,011 (100.0%)</b>	<b>1,004 (100.0%)</b>	<b>959 (100.0%)</b>	<b>802 (100.0%)</b>	<b>829 (100.0%)</b>	<b>733 (100.0%)</b>	<b>1,011 (100.0%)</b>	<b>676 (100.0%)</b>

## Year to Date Total Runners by Gender

Sex	2016	2017	2018	2019	2020	2021	2022	2023	2024	2025
<b>All Races</b>										
Colt/Entire	202 (4.1%)	249 (4.1%)	247 (4.3%)	224 (3.7%)	269 (4.3%)	270 (4.8%)	212 (3.3%)	231 (3.9%)	194 (3.3%)	171 (3.0%)
Gelding	3,526 (72.0%)	4,454 (73.0%)	4,112 (71.9%)	4,363 (71.5%)	4,422 (70.0%)	3,854 (68.6%)	4,505 (70.8%)	4,093 (69.4%)	4,178 (70.4%)	4,032 (71.8%)
Filly/Mare	1,171 (23.9%)	1,402 (23.0%)	1,360 (23.8%)	1,519 (24.9%)	1,622 (25.7%)	1,497 (26.6%)	1,642 (25.8%)	1,571 (26.6%)	1,560 (26.3%)	1,415 (25.2%)
Rig	0 (0.0%)	0 (0.0%)	1 (0.0%)	0 (0.0%)	1 (0.0%)	1 (0.0%)	0 (0.0%)	0 (0.0%)	0 (0.0%)	0 (0.0%)
<b>Flat</b>										
Colt/Entire	198 (7.8%)	245 (8.6%)	243 (8.8%)	216 (7.2%)	264 (8.8%)	268 (8.4%)	209 (6.9%)	223 (7.2%)	192 (6.1%)	167 (5.4%)
Gelding	1,519 (59.7%)	1,724 (60.7%)	1,701 (61.4%)	1,855 (62.1%)	1,808 (60.3%)	1,929 (60.8%)	1,855 (61.3%)	1,859 (59.8%)	2,031 (64.4%)	2,079 (67.0%)
Filly/Mare	826 (32.5%)	871 (30.7%)	826 (29.8%)	916 (30.7%)	927 (30.9%)	975 (30.7%)	964 (31.8%)	1,026 (33.0%)	932 (29.5%)	855 (27.6%)
Rig	0 (0.0%)	0 (0.0%)	1 (0.0%)	0 (0.0%)	0 (0.0%)	0 (0.0%)	0 (0.0%)	0 (0.0%)	0 (0.0%)	0 (0.0%)
<b>All Jump</b>										
Colt/Entire	4 (0.2%)	4 (0.1%)	4 (0.1%)	8 (0.3%)	5 (0.2%)	2 (0.1%)	3 (0.1%)	8 (0.3%)	2 (0.1%)	4 (0.2%)
Gelding	2,007 (85.2%)	2,730 (83.6%)	2,411 (81.8%)	2,508 (80.4%)	2,614 (78.9%)	1,925 (78.6%)	2,650 (79.6%)	2,234 (80.2%)	2,147 (77.3%)	1,953 (77.6%)
Filly/Mare	345 (14.6%)	531 (16.3%)	534 (18.1%)	603 (19.3%)	695 (21.0%)	522 (21.3%)	678 (20.4%)	545 (19.6%)	628 (22.6%)	560 (22.2%)
Rig	0 (0.0%)	0 (0.0%)	0 (0.0%)	0 (0.0%)	1 (0.0%)	1 (0.0%)	0 (0.0%)	0 (0.0%)	0 (0.0%)	0 (0.0%)
<b>Chase</b>										
Gelding	702 (94.1%)	1,025 (92.9%)	833 (91.9%)	843 (88.8%)	930 (91.2%)	599 (89.9%)	969 (87.7%)	821 (90.9%)	781 (91.0%)	682 (87.4%)
Filly/Mare	44 (5.9%)	78 (7.1%)	73 (8.1%)	106 (11.2%)	89 (8.7%)	66 (9.9%)	136 (12.3%)	82 (9.1%)	77 (9.0%)	98 (12.6%)
Rig	0 (0.0%)	0 (0.0%)	0 (0.0%)	0 (0.0%)	1 (0.1%)	1 (0.2%)	0 (0.0%)	0 (0.0%)	0 (0.0%)	0 (0.0%)
<b>Hurdle</b>										
Colt/Entire	4 (0.3%)	4 (0.2%)	3 (0.2%)	6 (0.3%)	3 (0.1%)	1 (0.1%)	3 (0.2%)	5 (0.3%)	2 (0.1%)	2 (0.1%)
Gelding	1,227 (83.1%)	1,557 (80.1%)	1,432 (79.2%)	1,526 (78.5%)	1,511 (74.9%)	1,010 (77.2%)	1,523 (77.5%)	1,290 (77.1%)	1,242 (72.3%)	1,151 (74.9%)
Filly/Mare	246 (16.7%)	382 (19.7%)	372 (20.6%)	413 (21.2%)	504 (25.0%)	297 (22.7%)	439 (22.3%)	378 (22.6%)	475 (27.6%)	383 (24.9%)
<b>NHF</b>										
Colt/Entire	0 (0.0%)	0 (0.0%)	1 (0.4%)	2 (0.9%)	2 (0.7%)	1 (0.2%)	0 (0.0%)	3 (1.4%)	0 (0.0%)	2 (1.0%)
Gelding	78 (58.6%)	148 (67.6%)	146 (61.9%)	139 (61.8%)	173 (62.5%)	316 (66.4%)	158 (60.5%)	123 (58.3%)	124 (62.0%)	120 (59.7%)
Filly/Mare	55 (41.4%)	71 (32.4%)	89 (37.7%)	84 (37.3%)	102 (36.8%)	159 (33.4%)	103 (39.5%)	85 (40.3%)	76 (38.0%)	79 (39.3%)
<b>Hunter</b>										
Gelding	23 (100.0%)	37 (97.4%)	41 (100.0%)	30 (96.8%)	22 (95.7%)	12 (92.3%)	24 (100.0%)	19 (95.0%)	29 (93.5%)	23 (95.8%)
Filly/Mare	0 (0.0%)	1 (2.6%)	0 (0.0%)	1 (3.2%)	1 (4.3%)	1 (7.7%)	0 (0.0%)	1 (5.0%)	2 (6.5%)	1 (4.2%)

## Year to Date Individual Runners by Gender

Sex	2016	2017	2018	2019	2020	2021	2022	2023	2024	2025
<b>All Races</b>										
Male	2,850 (76.6%)	3,543 (77.2%)	3,305 (76.0%)	3,512 (75.5%)	3,535 (74.2%)	3,124 (73.7%)	3,581 (74.8%)	3,214 (73.5%)	3,342 (73.7%)	3,160 (74.5%)
Female	873 (23.4%)	1,044 (22.8%)	1,041 (24.0%)	1,142 (24.5%)	1,231 (25.8%)	1,113 (26.3%)	1,204 (25.2%)	1,158 (26.5%)	1,190 (26.3%)	1,084 (25.5%)
<b>Flat</b>										
Male	1,135 (66.6%)	1,301 (68.6%)	1,287 (69.0%)	1,380 (68.9%)	1,340 (68.0%)	1,388 (68.7%)	1,329 (67.7%)	1,292 (65.8%)	1,438 (69.5%)	1,386 (70.2%)
Female	570 (33.4%)	595 (31.4%)	579 (31.0%)	624 (31.1%)	631 (32.0%)	633 (31.3%)	634 (32.3%)	673 (34.2%)	631 (30.5%)	588 (29.8%)
<b>All Jump</b>										
Male	1,724 (84.8%)	2,259 (83.3%)	2,031 (81.4%)	2,155 (80.5%)	2,222 (78.7%)	1,764 (78.5%)	2,274 (79.9%)	1,943 (79.7%)	1,911 (77.1%)	1,786 (78.2%)
Female	309 (15.2%)	454 (16.7%)	464 (18.6%)	523 (19.5%)	603 (21.3%)	483 (21.5%)	573 (20.1%)	494 (20.3%)	568 (22.9%)	499 (21.8%)
<b>Chase</b>										
Male	607 (93.5%)	861 (92.3%)	706 (91.9%)	727 (89.1%)	800 (91.5%)	566 (90.3%)	828 (88.2%)	711 (90.8%)	699 (90.5%)	627 (87.8%)
Female	42 (6.5%)	72 (7.7%)	62 (8.1%)	89 (10.9%)	74 (8.5%)	61 (9.7%)	111 (11.8%)	72 (9.2%)	73 (9.5%)	87 (12.2%)
<b>Hurdle</b>										
Male	1,062 (82.8%)	1,309 (80.3%)	1,217 (79.1%)	1,323 (78.5%)	1,287 (74.4%)	939 (77.1%)	1,320 (78.1%)	1,139 (76.9%)	1,103 (72.2%)	1,058 (75.7%)
Female	220 (17.2%)	321 (19.7%)	321 (20.9%)	362 (21.5%)	442 (25.6%)	279 (22.9%)	371 (21.9%)	342 (23.1%)	424 (27.8%)	339 (24.3%)
<b>NHF</b>										
Male	78 (60.0%)	143 (67.5%)	142 (62.3%)	137 (63.4%)	171 (63.1%)	296 (66.4%)	157 (61.8%)	122 (59.5%)	122 (62.9%)	118 (61.1%)
Female	52 (40.0%)	69 (32.5%)	86 (37.7%)	79 (36.6%)	100 (36.9%)	150 (33.6%)	97 (38.2%)	83 (40.5%)	72 (37.1%)	75 (38.9%)
<b>Hunter</b>										
Male	21 (100.0%)	33 (97.1%)	40 (100.0%)	28 (96.6%)	21 (95.5%)	12 (92.3%)	24 (100.0%)	18 (94.7%)	28 (93.3%)	23 (95.8%)
Female	0 (0.0%)	1 (2.9%)	0 (0.0%)	1 (3.4%)	1 (4.5%)	1 (7.7%)	0 (0.0%)	1 (5.3%)	2 (6.7%)	1 (4.2%)



# Horses Population by Breeding

## January 2025 Horses in Training Snapshot by Breeding versus Previous Years

### Flat (including Dual)

Bred	Sex	2016	2017	2018	2019	2020	2021	2022	2023	2024	2025
GB	Male	2,627 (30.1%)	2,748 (30.5%)	2,845 (30.1%)	2,728 (30.2%)	2,870 (30.7%)	2,665 (30.2%)	2,545 (29.0%)	2,542 (29.2%)	2,498 (29.3%)	2,558 (29.6%)
	Female	1,707 (19.6%)	1,784 (19.8%)	1,749 (18.5%)	1,760 (19.5%)	1,819 (19.5%)	1,755 (19.9%)	1,812 (20.6%)	1,726 (19.8%)	1,635 (19.2%)	1,667 (19.3%)
	<b>Subtotal</b>	<b>4,334 (49.7%)</b>	<b>4,532 (50.4%)</b>	<b>4,594 (48.7%)</b>	<b>4,488 (49.7%)</b>	<b>4,689 (50.2%)</b>	<b>4,420 (50.0%)</b>	<b>4,357 (49.7%)</b>	<b>4,268 (49.1%)</b>	<b>4,133 (48.6%)</b>	<b>4,225 (48.9%)</b>
IRE	Male	2,444 (28.0%)	2,501 (27.8%)	2,666 (28.2%)	2,514 (27.8%)	2,609 (27.9%)	2,528 (28.6%)	2,546 (29.0%)	2,595 (29.8%)	2,535 (29.8%)	2,624 (30.4%)
	Female	1,171 (13.4%)	1,153 (12.8%)	1,264 (13.4%)	1,181 (13.1%)	1,241 (13.3%)	1,191 (13.5%)	1,273 (14.5%)	1,260 (14.5%)	1,223 (14.4%)	1,203 (13.9%)
	<b>Subtotal</b>	<b>3,615 (41.5%)</b>	<b>3,654 (40.6%)</b>	<b>3,930 (41.6%)</b>	<b>3,695 (40.9%)</b>	<b>3,850 (41.2%)</b>	<b>3,719 (42.1%)</b>	<b>3,819 (43.5%)</b>	<b>3,855 (44.3%)</b>	<b>3,758 (44.1%)</b>	<b>3,827 (44.3%)</b>
FR	Male	159 (1.8%)	205 (2.3%)	303 (3.2%)	265 (2.9%)	292 (3.1%)	279 (3.2%)	269 (3.1%)	262 (3.0%)	317 (3.7%)	307 (3.6%)
	Female	75 (0.9%)	78 (0.9%)	109 (1.2%)	109 (1.2%)	107 (1.1%)	96 (1.1%)	98 (1.1%)	120 (1.4%)	122 (1.4%)	107 (1.2%)
	<b>Subtotal</b>	<b>234 (2.7%)</b>	<b>283 (3.1%)</b>	<b>412 (4.4%)</b>	<b>374 (4.1%)</b>	<b>399 (4.3%)</b>	<b>375 (4.2%)</b>	<b>367 (4.2%)</b>	<b>382 (4.4%)</b>	<b>439 (5.2%)</b>	<b>414 (4.8%)</b>
USA	Male	318 (3.6%)	305 (3.4%)	284 (3.0%)	259 (2.9%)	222 (2.4%)	174 (2.0%)	123 (1.4%)	99 (1.1%)	88 (1.0%)	63 (0.7%)
	Female	122 (1.4%)	114 (1.3%)	109 (1.2%)	125 (1.4%)	85 (0.9%)	55 (0.6%)	42 (0.5%)	29 (0.3%)	20 (0.2%)	34 (0.4%)
	<b>Subtotal</b>	<b>440 (5.0%)</b>	<b>419 (4.7%)</b>	<b>393 (4.2%)</b>	<b>384 (4.3%)</b>	<b>307 (3.3%)</b>	<b>229 (2.6%)</b>	<b>165 (1.9%)</b>	<b>128 (1.5%)</b>	<b>108 (1.3%)</b>	<b>97 (1.1%)</b>
GNY	Male	56 (0.6%)	61 (0.7%)	66 (0.7%)	47 (0.5%)	51 (0.5%)	55 (0.6%)	38 (0.4%)	37 (0.4%)	42 (0.5%)	51 (0.6%)
	Female	9 (0.1%)	14 (0.2%)	13 (0.1%)	14 (0.2%)	22 (0.2%)	18 (0.2%)	19 (0.2%)	13 (0.2%)	16 (0.2%)	15 (0.2%)
	<b>Subtotal</b>	<b>65 (0.7%)</b>	<b>75 (0.8%)</b>	<b>79 (0.8%)</b>	<b>61 (0.7%)</b>	<b>73 (0.8%)</b>	<b>73 (0.8%)</b>	<b>57 (0.6%)</b>	<b>50 (0.6%)</b>	<b>58 (0.7%)</b>	<b>66 (0.8%)</b>
Other	Male	17 (0.2%)	23 (0.3%)	23 (0.2%)	23 (0.2%)	20 (0.2%)	17 (0.2%)	7 (0.1%)	11 (0.1%)	8 (0.1%)	11 (0.1%)
	Female	12 (0.1%)	11 (0.1%)	10 (0.1%)	8 (0.1%)	4 (0.0%)	4 (0.0%)	3 (0.0%)	4 (0.0%)	8 (0.1%)	5 (0.1%)
	<b>Subtotal</b>	<b>29 (0.3%)</b>	<b>34 (0.4%)</b>	<b>33 (0.3%)</b>	<b>31 (0.3%)</b>	<b>24 (0.3%)</b>	<b>21 (0.2%)</b>	<b>10 (0.1%)</b>	<b>15 (0.2%)</b>	<b>16 (0.2%)</b>	<b>16 (0.2%)</b>

### Jump (including Dual)

Bred	Sex	2016	2017	2018	2019	2020	2021	2022	2023	2024	2025
GB	Male	1,391 (24.0%)	1,324 (22.7%)	1,354 (22.5%)	1,293 (21.2%)	1,272 (20.1%)	1,316 (19.2%)	1,205 (19.3%)	1,226 (19.2%)	1,183 (19.3%)	1,167 (19.7%)
	Female	656 (11.3%)	604 (10.4%)	664 (11.0%)	627 (10.3%)	615 (9.7%)	716 (10.4%)	653 (10.4%)	702 (11.0%)	663 (10.8%)	598 (10.1%)
	<b>Subtotal</b>	<b>2,047 (35.3%)</b>	<b>1,928 (33.1%)</b>	<b>2,018 (33.5%)</b>	<b>1,920 (31.4%)</b>	<b>1,887 (29.8%)</b>	<b>2,032 (29.6%)</b>	<b>1,858 (29.7%)</b>	<b>1,928 (30.3%)</b>	<b>1,846 (30.1%)</b>	<b>1,765 (29.8%)</b>
IRE	Male	2,527 (43.5%)	2,598 (44.6%)	2,606 (43.3%)	2,653 (43.4%)	2,760 (43.6%)	2,947 (43.0%)	2,610 (41.7%)	2,567 (40.3%)	2,411 (39.3%)	2,301 (38.8%)
	Female	393 (6.8%)	413 (7.1%)	513 (8.5%)	565 (9.2%)	618 (9.8%)	655 (9.5%)	577 (9.2%)	603 (9.5%)	624 (10.2%)	635 (10.7%)
	<b>Subtotal</b>	<b>2,920 (50.3%)</b>	<b>3,011 (51.7%)</b>	<b>3,119 (51.8%)</b>	<b>3,218 (52.6%)</b>	<b>3,378 (53.4%)</b>	<b>3,602 (52.5%)</b>	<b>3,187 (50.9%)</b>	<b>3,170 (49.8%)</b>	<b>3,035 (49.5%)</b>	<b>2,936 (49.5%)</b>
FR	Male	654 (11.3%)	703 (12.1%)	692 (11.5%)	774 (12.7%)	829 (13.1%)	986 (14.4%)	979 (15.6%)	1,021 (16.0%)	1,017 (16.6%)	1,007 (17.0%)
	Female	53 (0.9%)	63 (1.1%)	79 (1.3%)	102 (1.7%)	120 (1.9%)	128 (1.9%)	131 (2.1%)	150 (2.4%)	152 (2.5%)	157 (2.6%)
	<b>Subtotal</b>	<b>707 (12.2%)</b>	<b>766 (13.2%)</b>	<b>771 (12.8%)</b>	<b>876 (14.3%)</b>	<b>949 (15.0%)</b>	<b>1,114 (16.2%)</b>	<b>1,110 (17.7%)</b>	<b>1,171 (18.4%)</b>	<b>1,169 (19.1%)</b>	<b>1,164 (19.6%)</b>
USA	Male	57 (1.0%)	41 (0.7%)	45 (0.7%)	30 (0.5%)	34 (0.5%)	30 (0.4%)	26 (0.4%)	20 (0.3%)	13 (0.2%)	9 (0.2%)
	Female	2 (0.0%)	2 (0.0%)	4 (0.1%)	3 (0.0%)	2 (0.0%)	1 (0.0%)	1 (0.0%)	NA (-)	1 (0.0%)	1 (0.0%)
	<b>Subtotal</b>	<b>59 (1.0%)</b>	<b>43 (0.7%)</b>	<b>49 (0.8%)</b>	<b>33 (0.5%)</b>	<b>36 (0.6%)</b>	<b>31 (0.5%)</b>	<b>27 (0.4%)</b>	<b>20 (0.3%)</b>	<b>14 (0.2%)</b>	<b>10 (0.2%)</b>
GNY	Male	55 (0.9%)	62 (1.1%)	50 (0.8%)	51 (0.8%)	64 (1.0%)	66 (1.0%)	65 (1.0%)	73 (1.1%)	60 (1.0%)	44 (0.7%)
	Female	8 (0.1%)	4 (0.1%)	3 (0.0%)	6 (0.1%)	5 (0.1%)	10 (0.1%)	8 (0.1%)	7 (0.1%)	5 (0.1%)	5 (0.1%)
	<b>Subtotal</b>	<b>63 (1.1%)</b>	<b>66 (1.1%)</b>	<b>53 (0.9%)</b>	<b>57 (0.9%)</b>	<b>69 (1.1%)</b>	<b>76 (1.1%)</b>	<b>73 (1.2%)</b>	<b>80 (1.3%)</b>	<b>65 (1.1%)</b>	<b>49 (0.8%)</b>
Other	Male	5 (0.1%)	7 (0.1%)	7 (0.1%)	8 (0.1%)	6 (0.1%)	4 (0.1%)	2 (0.0%)	2 (0.0%)	4 (0.1%)	4 (0.1%)
	Female	2 (0.0%)	2 (0.0%)	2 (0.0%)	1 (0.0%)	NA (-)	1 (0.0%)	NA (-)	NA (-)	1 (0.0%)	2 (0.0%)
	<b>Subtotal</b>	<b>7 (0.1%)</b>	<b>9 (0.2%)</b>	<b>9 (0.1%)</b>	<b>9 (0.1%)</b>	<b>6 (0.1%)</b>	<b>5 (0.1%)</b>	<b>2 (0.0%)</b>	<b>2 (0.0%)</b>	<b>5 (0.1%)</b>	<b>6 (0.1%)</b>

## Year to Date Total Runners by Breeding

### Flat

Bred	Sex	2016	2017	2018	2019	2020	2021	2022	2023	2024	2025
GB	Male	814 (32.0%)	921 (32.4%)	924 (33.3%)	934 (31.3%)	984 (32.8%)	997 (31.4%)	982 (32.4%)	905 (29.1%)	1,005 (31.9%)	1,027 (33.1%)
	Female	457 (18.0%)	466 (16.4%)	433 (15.6%)	500 (16.7%)	508 (16.9%)	588 (18.5%)	559 (18.5%)	585 (18.8%)	477 (15.1%)	449 (14.5%)
	<b>Subtotal</b>	<b>1,271 (50.0%)</b>	<b>1,387 (48.8%)</b>	<b>1,357 (49.0%)</b>	<b>1,434 (48.0%)</b>	<b>1,492 (49.7%)</b>	<b>1,585 (50.0%)</b>	<b>1,541 (50.9%)</b>	<b>1,490 (47.9%)</b>	<b>1,482 (47.0%)</b>	<b>1,476 (47.6%)</b>
IRE	Male	727 (28.6%)	858 (30.2%)	825 (29.8%)	916 (30.7%)	900 (30.0%)	992 (31.3%)	907 (30.0%)	1,019 (32.8%)	1,057 (33.5%)	1,069 (34.5%)
	Female	324 (12.7%)	354 (12.5%)	335 (12.1%)	342 (11.4%)	365 (12.2%)	332 (10.5%)	354 (11.7%)	389 (12.5%)	398 (12.6%)	361 (11.6%)
	<b>Subtotal</b>	<b>1,051 (41.3%)</b>	<b>1,212 (42.7%)</b>	<b>1,160 (41.9%)</b>	<b>1,258 (42.1%)</b>	<b>1,265 (42.2%)</b>	<b>1,324 (41.7%)</b>	<b>1,261 (41.6%)</b>	<b>1,408 (45.3%)</b>	<b>1,455 (46.1%)</b>	<b>1,430 (46.1%)</b>
FR	Male	49 (1.9%)	58 (2.0%)	58 (2.1%)	83 (2.8%)	77 (2.6%)	90 (2.8%)	93 (3.1%)	92 (3.0%)	98 (3.1%)	102 (3.3%)
	Female	16 (0.6%)	18 (0.6%)	32 (1.2%)	22 (0.7%)	30 (1.0%)	27 (0.9%)	21 (0.7%)	34 (1.1%)	36 (1.1%)	25 (0.8%)
	<b>Subtotal</b>	<b>65 (2.6%)</b>	<b>76 (2.7%)</b>	<b>90 (3.2%)</b>	<b>105 (3.5%)</b>	<b>107 (3.6%)</b>	<b>117 (3.7%)</b>	<b>114 (3.8%)</b>	<b>126 (4.1%)</b>	<b>134 (4.2%)</b>	<b>127 (4.1%)</b>
USA	Male	102 (4.0%)	109 (3.8%)	112 (4.0%)	116 (3.9%)	95 (3.2%)	87 (2.7%)	72 (2.4%)	53 (1.7%)	48 (1.5%)	32 (1.0%)
	Female	20 (0.8%)	25 (0.9%)	22 (0.8%)	44 (1.5%)	22 (0.7%)	21 (0.7%)	18 (0.6%)	14 (0.5%)	16 (0.5%)	14 (0.5%)
	<b>Subtotal</b>	<b>122 (4.8%)</b>	<b>134 (4.7%)</b>	<b>134 (4.8%)</b>	<b>160 (5.4%)</b>	<b>117 (3.9%)</b>	<b>108 (3.4%)</b>	<b>90 (3.0%)</b>	<b>67 (2.2%)</b>	<b>64 (2.0%)</b>	<b>46 (1.5%)</b>
GNY	Male	14 (0.6%)	14 (0.5%)	17 (0.6%)	11 (0.4%)	13 (0.4%)	21 (0.7%)	8 (0.3%)	10 (0.3%)	13 (0.4%)	12 (0.4%)
	Female	7 (0.3%)	5 (0.2%)	3 (0.1%)	3 (0.1%)	2 (0.1%)	6 (0.2%)	9 (0.3%)	3 (0.1%)	3 (0.1%)	4 (0.1%)
	<b>Subtotal</b>	<b>21 (0.8%)</b>	<b>19 (0.7%)</b>	<b>20 (0.7%)</b>	<b>14 (0.5%)</b>	<b>15 (0.5%)</b>	<b>27 (0.9%)</b>	<b>17 (0.6%)</b>	<b>13 (0.4%)</b>	<b>16 (0.5%)</b>	<b>16 (0.5%)</b>
Other	Male	11 (0.4%)	9 (0.3%)	9 (0.3%)	11 (0.4%)	3 (0.1%)	10 (0.3%)	2 (0.1%)	3 (0.1%)	2 (0.1%)	4 (0.1%)
	Female	2 (0.1%)	3 (0.1%)	1 (0.0%)	5 (0.2%)	0 (0.0%)	1 (0.0%)	3 (0.1%)	1 (0.0%)	2 (0.1%)	2 (0.1%)
	<b>Subtotal</b>	<b>13 (0.5%)</b>	<b>12 (0.4%)</b>	<b>10 (0.4%)</b>	<b>16 (0.5%)</b>	<b>3 (0.1%)</b>	<b>11 (0.3%)</b>	<b>5 (0.2%)</b>	<b>4 (0.1%)</b>	<b>4 (0.1%)</b>	<b>6 (0.2%)</b>

## Jump

Bred	Sex	2016	2017	2018	2019	2020	2021	2022	2023	2024	2025
GB	Male	542 (23.0%)	738 (22.6%)	650 (22.0%)	700 (22.4%)	651 (19.6%)	463 (18.9%)	582 (17.5%)	511 (18.3%)	504 (18.1%)	490 (19.5%)
	Female	172 (7.3%)	264 (8.1%)	247 (8.4%)	275 (8.8%)	300 (9.0%)	232 (9.5%)	285 (8.6%)	236 (8.5%)	260 (9.4%)	209 (8.3%)
	<b>Subtotal</b>	<b>714 (30.3%)</b>	<b>1,002 (30.7%)</b>	<b>897 (30.4%)</b>	<b>975 (31.3%)</b>	<b>951 (28.7%)</b>	<b>695 (28.4%)</b>	<b>867 (26.0%)</b>	<b>747 (26.8%)</b>	<b>764 (27.5%)</b>	<b>699 (27.8%)</b>
IRE	Male	1,094 (46.4%)	1,528 (46.8%)	1,338 (45.4%)	1,356 (43.5%)	1,458 (44.0%)	1,040 (42.4%)	1,434 (43.1%)	1,185 (42.5%)	1,116 (40.2%)	994 (39.5%)
	Female	154 (6.5%)	226 (6.9%)	244 (8.3%)	284 (9.1%)	329 (9.9%)	232 (9.5%)	292 (8.8%)	238 (8.5%)	294 (10.6%)	281 (11.2%)
	<b>Subtotal</b>	<b>1,248 (53.0%)</b>	<b>1,754 (53.7%)</b>	<b>1,582 (53.6%)</b>	<b>1,640 (52.6%)</b>	<b>1,787 (53.9%)</b>	<b>1,272 (51.9%)</b>	<b>1,726 (51.8%)</b>	<b>1,423 (51.1%)</b>	<b>1,410 (50.8%)</b>	<b>1,275 (50.7%)</b>
FR	Male	319 (13.5%)	408 (12.5%)	381 (12.9%)	411 (13.2%)	456 (13.8%)	380 (15.5%)	580 (17.4%)	493 (17.7%)	497 (17.9%)	447 (17.8%)
	Female	16 (0.7%)	35 (1.1%)	37 (1.3%)	39 (1.3%)	62 (1.9%)	55 (2.2%)	92 (2.8%)	68 (2.4%)	71 (2.6%)	69 (2.7%)
	<b>Subtotal</b>	<b>335 (14.2%)</b>	<b>443 (13.6%)</b>	<b>418 (14.2%)</b>	<b>450 (14.4%)</b>	<b>518 (15.6%)</b>	<b>435 (17.8%)</b>	<b>672 (20.2%)</b>	<b>561 (20.1%)</b>	<b>568 (20.5%)</b>	<b>516 (20.5%)</b>
USA	Male	32 (1.4%)	30 (0.9%)	17 (0.6%)	12 (0.4%)	21 (0.6%)	13 (0.5%)	9 (0.3%)	10 (0.4%)	1 (0.0%)	2 (0.1%)
	Female	1 (0.0%)	2 (0.1%)	1 (0.0%)	1 (0.0%)	1 (0.0%)	1 (0.0%)	1 (0.0%)	0 (0.0%)	0 (0.0%)	0 (0.0%)
	<b>Subtotal</b>	<b>33 (1.4%)</b>	<b>32 (1.0%)</b>	<b>18 (0.6%)</b>	<b>13 (0.4%)</b>	<b>22 (0.7%)</b>	<b>14 (0.6%)</b>	<b>10 (0.3%)</b>	<b>10 (0.4%)</b>	<b>1 (0.0%)</b>	<b>2 (0.1%)</b>
GNY	Male	22 (0.9%)	29 (0.9%)	26 (0.9%)	34 (1.1%)	31 (0.9%)	32 (1.3%)	47 (1.4%)	43 (1.5%)	29 (1.0%)	22 (0.9%)
	Female	2 (0.1%)	3 (0.1%)	3 (0.1%)	4 (0.1%)	3 (0.1%)	2 (0.1%)	8 (0.2%)	3 (0.1%)	2 (0.1%)	1 (0.0%)
	<b>Subtotal</b>	<b>24 (1.0%)</b>	<b>32 (1.0%)</b>	<b>29 (1.0%)</b>	<b>38 (1.2%)</b>	<b>34 (1.0%)</b>	<b>34 (1.4%)</b>	<b>55 (1.7%)</b>	<b>46 (1.7%)</b>	<b>31 (1.1%)</b>	<b>23 (0.9%)</b>
Other	Male	2 (0.1%)	1 (0.0%)	3 (0.1%)	3 (0.1%)	3 (0.1%)	0 (0.0%)	1 (0.0%)	0 (0.0%)	2 (0.1%)	2 (0.1%)
	Female	0 (0.0%)	1 (0.0%)	2 (0.1%)	0 (0.0%)	0 (0.0%)	0 (0.0%)	0 (0.0%)	0 (0.0%)	1 (0.0%)	0 (0.0%)
	<b>Subtotal</b>	<b>2 (0.1%)</b>	<b>2 (0.1%)</b>	<b>5 (0.2%)</b>	<b>3 (0.1%)</b>	<b>3 (0.1%)</b>	<b>NA (-)</b>	<b>1 (0.0%)</b>	<b>NA (-)</b>	<b>3 (0.1%)</b>	<b>2 (0.1%)</b>

## Year to Date Individual Runners by Breeding

### Flat

Bred	Sex	2016	2017	2018	2019	2020	2021	2022	2023	2024	2025
GB	Male	547 (32.1%)	607 (32.0%)	607 (32.5%)	622 (31.0%)	650 (33.0%)	619 (30.6%)	631 (32.1%)	558 (28.4%)	663 (32.0%)	623 (31.6%)
	Female	311 (18.2%)	332 (17.5%)	299 (16.0%)	344 (17.2%)	341 (17.3%)	377 (18.7%)	361 (18.4%)	389 (19.8%)	325 (15.7%)	313 (15.9%)
	<b>Subtotal</b>	<b>858 (50.3%)</b>	<b>939 (49.5%)</b>	<b>906 (48.6%)</b>	<b>966 (48.2%)</b>	<b>991 (50.3%)</b>	<b>996 (49.3%)</b>	<b>992 (50.5%)</b>	<b>947 (48.2%)</b>	<b>988 (47.8%)</b>	<b>936 (47.4%)</b>
IRE	Male	467 (27.4%)	566 (29.9%)	549 (29.4%)	613 (30.6%)	571 (29.0%)	640 (31.7%)	586 (29.9%)	626 (31.9%)	666 (32.2%)	666 (33.7%)
	Female	227 (13.3%)	227 (12.0%)	239 (12.8%)	228 (11.4%)	253 (12.8%)	216 (10.7%)	237 (12.1%)	248 (12.6%)	267 (12.9%)	245 (12.4%)
	<b>Subtotal</b>	<b>694 (40.7%)</b>	<b>793 (41.8%)</b>	<b>788 (42.2%)</b>	<b>841 (42.0%)</b>	<b>824 (41.8%)</b>	<b>856 (42.4%)</b>	<b>823 (41.9%)</b>	<b>874 (44.5%)</b>	<b>933 (45.1%)</b>	<b>911 (46.1%)</b>
FR	Male	34 (2.0%)	37 (2.0%)	39 (2.1%)	57 (2.8%)	54 (2.7%)	58 (2.9%)	57 (2.9%)	66 (3.4%)	65 (3.1%)	68 (3.4%)
	Female	12 (0.7%)	14 (0.7%)	22 (1.2%)	18 (0.9%)	19 (1.0%)	22 (1.1%)	15 (0.8%)	23 (1.2%)	24 (1.2%)	17 (0.9%)
	<b>Subtotal</b>	<b>46 (2.7%)</b>	<b>51 (2.7%)</b>	<b>61 (3.3%)</b>	<b>75 (3.7%)</b>	<b>73 (3.7%)</b>	<b>80 (4.0%)</b>	<b>72 (3.7%)</b>	<b>89 (4.5%)</b>	<b>89 (4.3%)</b>	<b>85 (4.3%)</b>
USA	Male	69 (4.0%)	71 (3.7%)	73 (3.9%)	71 (3.5%)	54 (2.7%)	53 (2.6%)	46 (2.3%)	34 (1.7%)	33 (1.6%)	19 (1.0%)
	Female	13 (0.8%)	16 (0.8%)	16 (0.9%)	28 (1.4%)	16 (0.8%)	13 (0.6%)	11 (0.6%)	9 (0.5%)	10 (0.5%)	8 (0.4%)
	<b>Subtotal</b>	<b>82 (4.8%)</b>	<b>87 (4.6%)</b>	<b>89 (4.8%)</b>	<b>99 (4.9%)</b>	<b>70 (3.6%)</b>	<b>66 (3.3%)</b>	<b>57 (2.9%)</b>	<b>43 (2.2%)</b>	<b>43 (2.1%)</b>	<b>27 (1.4%)</b>
GNY	Male	11 (0.6%)	13 (0.7%)	13 (0.7%)	10 (0.5%)	8 (0.4%)	13 (0.6%)	8 (0.4%)	6 (0.3%)	10 (0.5%)	8 (0.4%)
	Female	5 (0.3%)	3 (0.2%)	2 (0.1%)	3 (0.1%)	2 (0.1%)	4 (0.2%)	9 (0.5%)	3 (0.2%)	3 (0.1%)	4 (0.2%)
	<b>Subtotal</b>	<b>16 (0.9%)</b>	<b>16 (0.8%)</b>	<b>15 (0.8%)</b>	<b>13 (0.6%)</b>	<b>10 (0.5%)</b>	<b>17 (0.8%)</b>	<b>17 (0.9%)</b>	<b>9 (0.5%)</b>	<b>13 (0.6%)</b>	<b>12 (0.6%)</b>
Other	Male	7 (0.4%)	7 (0.4%)	6 (0.3%)	7 (0.3%)	3 (0.2%)	5 (0.2%)	1 (0.1%)	2 (0.1%)	1 (0.0%)	2 (0.1%)
	Female	2 (0.1%)	3 (0.2%)	1 (0.1%)	3 (0.1%)	0 (0.0%)	1 (0.0%)	1 (0.1%)	1 (0.1%)	2 (0.1%)	1 (0.1%)
	<b>Subtotal</b>	<b>9 (0.5%)</b>	<b>10 (0.5%)</b>	<b>7 (0.4%)</b>	<b>10 (0.5%)</b>	<b>3 (0.2%)</b>	<b>6 (0.3%)</b>	<b>2 (0.1%)</b>	<b>3 (0.2%)</b>	<b>3 (0.1%)</b>	<b>3 (0.2%)</b>

### Jump

Bred	Sex	2016	2017	2018	2019	2020	2021	2022	2023	2024	2025
GB	Male	471 (23.2%)	605 (22.3%)	536 (21.5%)	590 (22.0%)	554 (19.6%)	421 (18.7%)	505 (17.7%)	446 (18.3%)	441 (17.8%)	451 (19.7%)
	Female	156 (7.7%)	221 (8.1%)	216 (8.7%)	242 (9.0%)	258 (9.1%)	214 (9.5%)	249 (8.7%)	214 (8.8%)	239 (9.6%)	192 (8.4%)
	<b>Subtotal</b>	<b>627 (30.8%)</b>	<b>826 (30.4%)</b>	<b>752 (30.1%)</b>	<b>832 (31.1%)</b>	<b>812 (28.7%)</b>	<b>635 (28.3%)</b>	<b>754 (26.5%)</b>	<b>660 (27.1%)</b>	<b>680 (27.4%)</b>	<b>643 (28.1%)</b>
IRE	Male	937 (46.1%)	1,251 (46.1%)	1,135 (45.5%)	1,173 (43.8%)	1,236 (43.8%)	957 (42.6%)	1,226 (43.1%)	1,019 (41.8%)	989 (39.9%)	902 (39.5%)
	Female	135 (6.6%)	198 (7.3%)	209 (8.4%)	239 (8.9%)	289 (10.2%)	213 (9.5%)	243 (8.5%)	218 (8.9%)	262 (10.6%)	249 (10.9%)
	<b>Subtotal</b>	<b>1,072 (52.7%)</b>	<b>1,449 (53.4%)</b>	<b>1,344 (53.9%)</b>	<b>1,412 (52.7%)</b>	<b>1,525 (54.0%)</b>	<b>1,170 (52.1%)</b>	<b>1,469 (51.6%)</b>	<b>1,237 (50.8%)</b>	<b>1,251 (50.5%)</b>	<b>1,151 (50.4%)</b>
FR	Male	274 (13.5%)	352 (13.0%)	324 (13.0%)	352 (13.1%)	388 (13.7%)	347 (15.4%)	494 (17.4%)	432 (17.7%)	453 (18.3%)	410 (17.9%)
	Female	15 (0.7%)	31 (1.1%)	34 (1.4%)	37 (1.4%)	52 (1.8%)	53 (2.4%)	74 (2.6%)	59 (2.4%)	64 (2.6%)	57 (2.5%)
	<b>Subtotal</b>	<b>289 (14.2%)</b>	<b>383 (14.1%)</b>	<b>358 (14.3%)</b>	<b>389 (14.5%)</b>	<b>440 (15.6%)</b>	<b>400 (17.8%)</b>	<b>568 (20.0%)</b>	<b>491 (20.1%)</b>	<b>517 (20.9%)</b>	<b>467 (20.4%)</b>
USA	Male	21 (1.0%)	26 (1.0%)	15 (0.6%)	11 (0.4%)	15 (0.5%)	12 (0.5%)	9 (0.3%)	8 (0.3%)	1 (0.0%)	1 (0.0%)
	Female	1 (0.0%)	1 (0.0%)	1 (0.0%)	1 (0.0%)	1 (0.0%)	1 (0.0%)	1 (0.0%)	0 (0.0%)	0 (0.0%)	0 (0.0%)
	<b>Subtotal</b>	<b>22 (1.1%)</b>	<b>27 (1.0%)</b>	<b>16 (0.6%)</b>	<b>12 (0.4%)</b>	<b>16 (0.6%)</b>	<b>13 (0.6%)</b>	<b>10 (0.4%)</b>	<b>8 (0.3%)</b>	<b>1 (0.0%)</b>	<b>1 (0.0%)</b>
GNY	Male	19 (0.9%)	24 (0.9%)	19 (0.8%)	26 (1.0%)	26 (0.9%)	27 (1.2%)	39 (1.4%)	38 (1.6%)	25 (1.0%)	20 (0.9%)
	Female	2 (0.1%)	2 (0.1%)	2 (0.1%)	4 (0.1%)	3 (0.1%)	2 (0.1%)	6 (0.2%)	3 (0.1%)	2 (0.1%)	1 (0.0%)
	<b>Subtotal</b>	<b>21 (1.0%)</b>	<b>26 (1.0%)</b>	<b>21 (0.8%)</b>	<b>30 (1.1%)</b>	<b>29 (1.0%)</b>	<b>29 (1.3%)</b>	<b>45 (1.6%)</b>	<b>41 (1.7%)</b>	<b>27 (1.1%)</b>	<b>21 (0.9%)</b>
Other	Male	2 (0.1%)	1 (0.0%)	2 (0.1%)	3 (0.1%)	3 (0.1%)	0 (0.0%)	1 (0.0%)	0 (0.0%)	2 (0.1%)	2 (0.1%)
	Female	0 (0.0%)	1 (0.0%)	2 (0.1%)	0 (0.0%)	0 (0.0%)	0 (0.0%)	0 (0.0%)	0 (0.0%)	1 (0.0%)	0 (0.0%)
	<b>Subtotal</b>	<b>2 (0.1%)</b>	<b>2 (0.1%)</b>	<b>4 (0.2%)</b>	<b>3 (0.1%)</b>	<b>3 (0.1%)</b>	<b>NA (-)</b>	<b>1 (0.0%)</b>	<b>NA (-)</b>	<b>3 (0.1%)</b>	<b>2 (0.1%)</b>

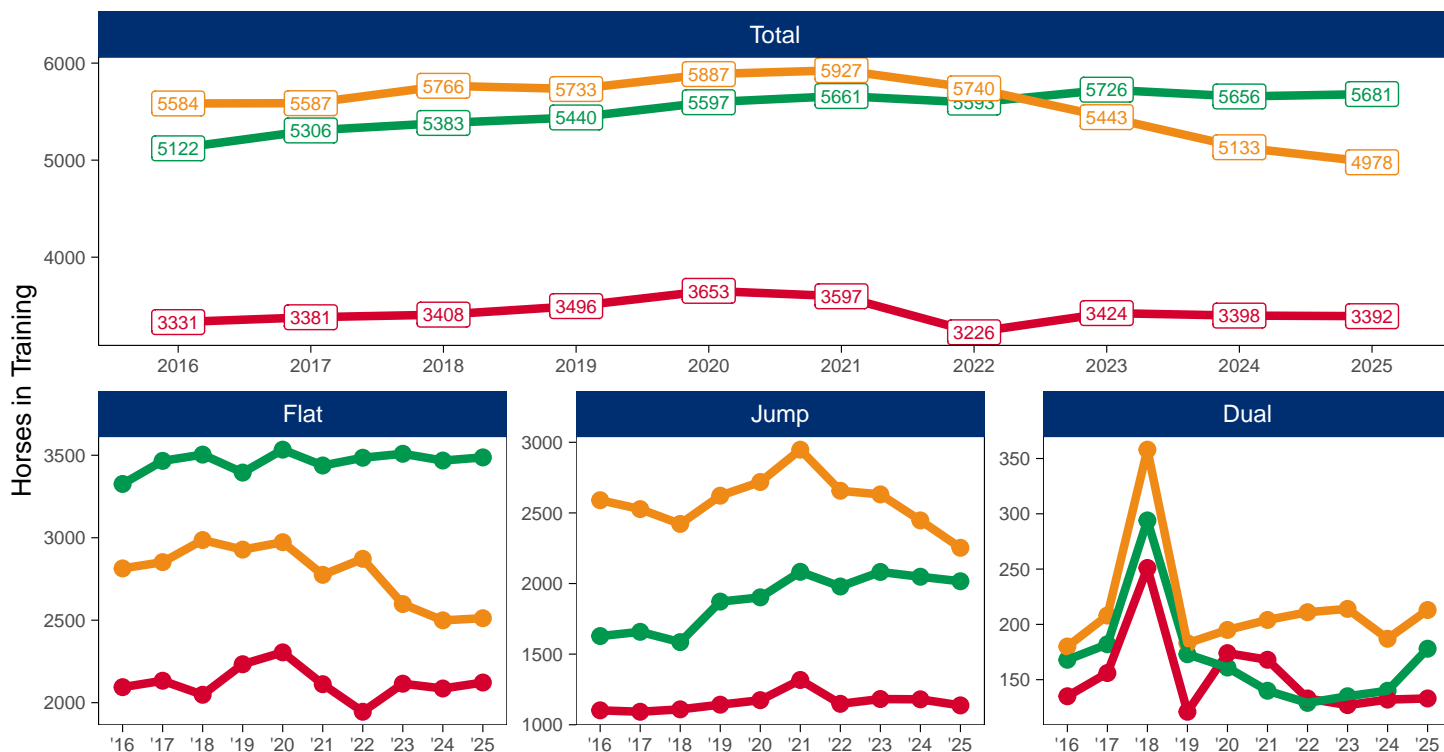
# Horse Population by Location

## January 2025 Horses in Training Snapshot by Region versus Previous Years

### Snapshot of Total Horses in Training in January by Region

Horses in Training in January, shown by Training Type and Region

Region ● North ● Midlands ● South



### North

AgeCat	2016	2017	2018	2019	2020	2021	2022	2023	2024	2025	vs. Last Year	vs. Pre-Covid
<b>Flat Horses in Training</b>												
2YO	558	519	518	570	569	448	447	451	361	441	+80 / +22.2%	-129 / -22.6%
3YO	594	615	575	628	717	655	592	620	638	587	-51 / -8.0%	-41 / -6.5%
4YO	356	380	350	383	372	348	364	372	388	390	+2 / +0.5%	+7 / +1.8%
5YO+	586	619	605	652	647	661	542	672	699	704	+5 / +0.7%	+52 / +8.0%
<b>Subtotal</b>	<b>2094</b>	<b>2133</b>	<b>2048</b>	<b>2233</b>	<b>2305</b>	<b>2112</b>	<b>1945</b>	<b>2115</b>	<b>2086</b>	<b>2122</b>	<b>+36 / +1.7%</b>	<b>-111 / -5.0%</b>
<b>Jump Horses in Training</b>												
3YO	4	2	4	5	5	0	3	8	0	0	0 / NA	-5 / -100.0%
4-5YO	263	287	237	271	279	256	230	277	274	244	-30 / -10.9%	-27 / -10.0%
6-7YO	379	339	411	408	417	472	433	443	440	445	+5 / +1.1%	+37 / +9.1%
8YO+	456	464	457	458	473	589	482	454	466	448	-18 / -3.9%	-10 / -2.2%
<b>Subtotal</b>	<b>1102</b>	<b>1092</b>	<b>1109</b>	<b>1142</b>	<b>1174</b>	<b>1317</b>	<b>1148</b>	<b>1182</b>	<b>1180</b>	<b>1137</b>	<b>-43 / -3.6%</b>	<b>-5 / -0.4%</b>
<b>Dual Horses in Training</b>												
3YO	12	12	9	5	15	11	11	7	8	4	-4 / -50.0%	-1 / -20.0%
4YO	37	33	63	30	44	40	21	32	40	41	+1 / +2.5%	+11 / +36.7%
5YO+	86	111	179	86	115	117	101	88	84	88	+4 / +4.8%	+2 / +2.3%
<b>Subtotal</b>	<b>135</b>	<b>156</b>	<b>251</b>	<b>121</b>	<b>174</b>	<b>168</b>	<b>133</b>	<b>127</b>	<b>132</b>	<b>133</b>	<b>+1 / +0.8%</b>	<b>+12 / +9.9%</b>
<b>Total Horses in Training</b>												
	<b>3331</b>	<b>3381</b>	<b>3408</b>	<b>3496</b>	<b>3653</b>	<b>3597</b>	<b>3226</b>	<b>3424</b>	<b>3398</b>	<b>3392</b>	<b>-6 / -0.2%</b>	<b>-104 / -3.0%</b>

'vs. Pre-Covid' is comparison between 2025 and 2019

## Midlands

AgeCat	2016	2017	2018	2019	2020	2021	2022	2023	2024	2025	vs. Last Year	vs. Pre-Covid
<b>Flat Horses in Training</b>												
2YO	853	887	797	736	751	732	698	660	636	656	+20 / +3.1%	-80 / -10.9%
3YO	1255	1303	1390	1321	1369	1288	1353	1339	1320	1316	-4 / -0.3%	-5 / -0.4%
4YO	512	566	579	594	622	663	674	697	661	639	-22 / -3.3%	+45 / +7.6%
5YO+	706	710	738	744	792	755	760	813	851	876	+25 / +2.9%	+132 / +17.7%
<b>Subtotal</b>	<b>3326</b>	<b>3466</b>	<b>3504</b>	<b>3395</b>	<b>3534</b>	<b>3438</b>	<b>3485</b>	<b>3509</b>	<b>3468</b>	<b>3487</b>	<b>+19 / +0.5%</b>	<b>+92 / +2.7%</b>
<b>Jump Horses in Training</b>												
3YO	8	6	11	5	4	7	7	7	7	3	-4 / -57.1%	-2 / -40.0%
4-5YO	447	474	433	544	599	573	534	616	566	601	+35 / +6.2%	+57 / +10.5%
6-7YO	600	592	599	692	704	791	815	802	828	769	-59 / -7.1%	+77 / +11.1%
8YO+	573	586	542	631	595	712	623	657	647	643	-4 / -0.6%	+12 / +1.9%
<b>Subtotal</b>	<b>1628</b>	<b>1658</b>	<b>1585</b>	<b>1872</b>	<b>1902</b>	<b>2083</b>	<b>1979</b>	<b>2082</b>	<b>2048</b>	<b>2016</b>	<b>-32 / -1.6%</b>	<b>+144 / +7.7%</b>
<b>Dual Horses in Training</b>												
3YO	15	10	12	4	7	6	8	8	5	13	+8 / +160.0%	+9 / +225.0%
4YO	45	50	75	59	43	46	44	37	44	55	+11 / +25.0%	-4 / -6.8%
5YO+	108	122	207	110	111	88	77	90	91	110	+19 / +20.9%	0 / 0.0%
<b>Subtotal</b>	<b>168</b>	<b>182</b>	<b>294</b>	<b>173</b>	<b>161</b>	<b>140</b>	<b>129</b>	<b>135</b>	<b>140</b>	<b>178</b>	<b>+38 / +27.1%</b>	<b>+5 / +2.9%</b>
<b>Total Horses in Training</b>												
	<b>5122</b>	<b>5306</b>	<b>5383</b>	<b>5440</b>	<b>5597</b>	<b>5661</b>	<b>5593</b>	<b>5726</b>	<b>5656</b>	<b>5681</b>	<b>+25 / +0.4%</b>	<b>+241 / +4.4%</b>

'vs. Pre-Covid' is comparison between 2025 and 2019

## South

AgeCat	2016	2017	2018	2019	2020	2021	2022	2023	2024	2025	vs. Last Year	vs. Pre-Covid
<b>Flat Horses in Training</b>												
2YO	878	866	823	799	797	747	780	607	626	553	-73 / -11.7%	-246 / -30.8%
3YO	922	961	1073	1030	1055	956	967	966	907	1000	+93 / +10.3%	-30 / -2.9%
4YO	438	421	457	506	501	464	510	437	405	421	+16 / +4.0%	-85 / -16.8%
5YO+	576	604	633	593	620	608	615	588	561	538	-23 / -4.1%	-55 / -9.3%
<b>Subtotal</b>	<b>2814</b>	<b>2852</b>	<b>2986</b>	<b>2928</b>	<b>2973</b>	<b>2775</b>	<b>2872</b>	<b>2598</b>	<b>2499</b>	<b>2512</b>	<b>+13 / +0.5%</b>	<b>-416 / -14.2%</b>
<b>Jump Horses in Training</b>												
3YO	9	7	12	7	3	15	6	11	17	2	-15 / -88.2%	-5 / -71.4%
4-5YO	841	787	720	779	821	765	812	859	779	685	-94 / -12.1%	-94 / -12.1%
6-7YO	939	909	909	1013	1045	1132	963	974	973	914	-59 / -6.1%	-99 / -9.8%
8YO+	801	824	781	823	850	1036	876	787	678	652	-26 / -3.8%	-171 / -20.8%
<b>Subtotal</b>	<b>2590</b>	<b>2527</b>	<b>2422</b>	<b>2622</b>	<b>2719</b>	<b>2948</b>	<b>2657</b>	<b>2631</b>	<b>2447</b>	<b>2253</b>	<b>-194 / -7.9%</b>	<b>-369 / -14.1%</b>
<b>Dual Horses in Training</b>												
3YO	7	8	7	5	11	11	12	9	4	7	+3 / +75.0%	+2 / +40.0%
4YO	35	52	93	63	65	63	67	68	65	73	+8 / +12.3%	+10 / +15.9%
5YO+	138	148	258	115	119	130	132	137	118	133	+15 / +12.7%	+18 / +15.7%
<b>Subtotal</b>	<b>180</b>	<b>208</b>	<b>358</b>	<b>183</b>	<b>195</b>	<b>204</b>	<b>211</b>	<b>214</b>	<b>187</b>	<b>213</b>	<b>+26 / +13.9%</b>	<b>+30 / +16.4%</b>
<b>Total Horses in Training</b>												
	<b>5584</b>	<b>5587</b>	<b>5766</b>	<b>5733</b>	<b>5887</b>	<b>5927</b>	<b>5740</b>	<b>5443</b>	<b>5133</b>	<b>4978</b>	<b>-155 / -3.0%</b>	<b>-755 / -13.2%</b>

'vs. Pre-Covid' is comparison between 2025 and 2019

## January 2025 Horses in Training Snapshot by Country versus Previous Years

Type	2016	2017	2018	2019	2020	2021	2022	2023	2024	2025	vs. Last Year	vs. Pre-Covid
<b>England</b>												
Flat	7969	8134	8233	8282	8496	8065	8043	7924	7761	7835	+74 / +1.0%	-447 / -5.4%
Jump	4638	4557	4446	4931	5049	5551	5064	5174	4973	4688	-285 / -5.7%	-243 / -4.9%
Dual	432	478	801	424	487	458	434	444	417	483	+66 / +15.8%	+59 / +13.9%
<b>Overall</b>	<b>13039</b>	<b>13169</b>	<b>13480</b>	<b>13637</b>	<b>14032</b>	<b>14074</b>	<b>13541</b>	<b>13542</b>	<b>13151</b>	<b>13006</b>	<b>-145 / -1.1%</b>	<b>-631 / -4.6%</b>
<b>Scotland</b>												
Flat	124	165	164	138	153	145	143	183	180	178	-2 / -1.1%	+40 / +29.0%
Jump	293	315	331	349	355	407	365	389	378	403	+25 / +6.6%	+54 / +15.5%
Dual	24	33	52	30	33	32	24	18	25	26	+1 / +4.0%	-4 / -13.3%
<b>Overall</b>	<b>441</b>	<b>513</b>	<b>547</b>	<b>517</b>	<b>541</b>	<b>584</b>	<b>532</b>	<b>590</b>	<b>583</b>	<b>607</b>	<b>+24 / +4.1%</b>	<b>+90 / +17.4%</b>
<b>Wales</b>												
Flat	141	152	141	136	163	115	116	115	112	108	-4 / -3.6%	-28 / -20.6%
Jump	389	405	339	356	391	390	355	332	324	315	-9 / -2.8%	-41 / -11.5%
Dual	27	35	50	23	10	22	15	14	17	15	-2 / -11.8%	-8 / -34.8%
<b>Overall</b>	<b>557</b>	<b>592</b>	<b>530</b>	<b>515</b>	<b>564</b>	<b>527</b>	<b>486</b>	<b>461</b>	<b>453</b>	<b>438</b>	<b>-15 / -3.3%</b>	<b>-77 / -15.0%</b>

'vs. Pre-Covid' is comparison between 2025 and 2019

## January 2025 Horses in Training Snapshot by Training Centre versus Previous Years

Type	2016	2017	2018	2019	2020	2021	2022	2023	2024	2025	vs. Last Year	vs. Pre-Covid
<b>Cheltenham (GL54)</b>												
Flat	15	12	16	8	10	10	17	11	12	12	0 / 0.0%	+4 / +50.0%
Jump	423	433	434	446	504	566	528	534	491	512	+21 / +4.3%	+66 / +14.8%
Dual	21	23	79	29	17	13	13	10	14	16	+2 / +14.3%	-13 / -44.8%
<b>Overall</b>	<b>459</b>	<b>468</b>	<b>529</b>	<b>483</b>	<b>531</b>	<b>589</b>	<b>558</b>	<b>555</b>	<b>517</b>	<b>540</b>	<b>+23 / +4.4%</b>	<b>+57 / +11.8%</b>
<b>Lambourn (RG17)</b>												
Flat	760	813	910	847	837	764	814	739	740	796	+56 / +7.6%	-51 / -6.0%
Jump	353	344	334	339	361	378	319	324	279	284	+5 / +1.8%	-55 / -16.2%
Dual	25	20	39	18	24	29	26	39	26	27	+1 / +3.8%	+9 / +50.0%
<b>Overall</b>	<b>1138</b>	<b>1177</b>	<b>1283</b>	<b>1204</b>	<b>1222</b>	<b>1171</b>	<b>1159</b>	<b>1102</b>	<b>1045</b>	<b>1107</b>	<b>+62 / +5.9%</b>	<b>-97 / -8.1%</b>
<b>Malton (YO17)</b>												
Flat	529	555	504	607	616	484	509	554	553	575	+22 / +4.0%	-32 / -5.3%
Jump	126	133	142	119	111	113	94	93	87	62	-25 / -28.7%	-57 / -47.9%
Dual	26	28	37	18	32	42	36	31	30	31	+1 / +3.3%	+13 / +72.2%
<b>Overall</b>	<b>681</b>	<b>716</b>	<b>683</b>	<b>744</b>	<b>759</b>	<b>639</b>	<b>639</b>	<b>678</b>	<b>670</b>	<b>668</b>	<b>-2 / -0.3%</b>	<b>-76 / -10.2%</b>
<b>Marlborough (SN8)</b>												
Flat	534	501	536	506	515	452	456	396	428	406	-22 / -5.1%	-100 / -19.8%
Jump	115	70	81	75	77	81	84	84	82	77	-5 / -6.1%	+2 / +2.7%
Dual	5	4	1	2	5	0	2	2	6	3	-3 / -50.0%	+1 / +50.0%
<b>Overall</b>	<b>654</b>	<b>575</b>	<b>618</b>	<b>583</b>	<b>597</b>	<b>533</b>	<b>542</b>	<b>482</b>	<b>516</b>	<b>486</b>	<b>-30 / -5.8%</b>	<b>-97 / -16.6%</b>
<b>Middleham (DL8)</b>												
Flat	500	483	466	550	585	555	425	493	500	462	-38 / -7.6%	-88 / -16.0%
Jump	80	82	71	93	107	128	114	123	113	93	-20 / -17.7%	0 / 0.0%
Dual	17	22	42	13	22	33	21	26	18	20	+2 / +11.1%	+7 / +53.8%
<b>Overall</b>	<b>597</b>	<b>587</b>	<b>579</b>	<b>656</b>	<b>714</b>	<b>716</b>	<b>560</b>	<b>642</b>	<b>631</b>	<b>575</b>	<b>-56 / -8.9%</b>	<b>-81 / -12.3%</b>
<b>Newbury (RG20)</b>												
Flat	351	351	362	412	394	393	446	384	370	341	-29 / -7.8%	-71 / -17.2%
Jump	22	15	16	24	11	15	11	36	62	84	+22 / +35.5%	+60 / +250.0%
Dual	3	7	16	7	9	8	7	4	3	5	+2 / +66.7%	-2 / -28.6%
<b>Overall</b>	<b>376</b>	<b>373</b>	<b>394</b>	<b>443</b>	<b>414</b>	<b>416</b>	<b>464</b>	<b>424</b>	<b>435</b>	<b>430</b>	<b>-5 / -1.1%</b>	<b>-13 / -2.9%</b>
<b>Newmarket (CB8)</b>												
Flat	2342	2477	2503	2357	2495	2425	2447	2435	2435	2387	-48 / -2.0%	+30 / +1.3%
Jump	47	56	58	70	62	77	65	64	77	79	+2 / +2.6%	+9 / +12.9%
Dual	25	34	33	19	31	25	25	33	36	47	+11 / +30.6%	+28 / +147.4%
<b>Overall</b>	<b>2414</b>	<b>2567</b>	<b>2594</b>	<b>2446</b>	<b>2588</b>	<b>2527</b>	<b>2537</b>	<b>2532</b>	<b>2548</b>	<b>2513</b>	<b>-35 / -1.4%</b>	<b>+67 / +2.7%</b>

'vs. Pre-Covid' is comparison between 2025 and 2019