



Horse Population Report

Updated on 30 November 2024



Introduction

Welcome to the latest update on the Racehorse Population from the British Horseracing Authority.

The aim of this document is to give stakeholders and the wider Public an insight into the current state of the Horse Population in Great Britain. It is hoped that this transparency will ensure that all decision makers have access to the key data required to help British Racing deliver a Competitive and Compelling product to stakeholders, racegoers and the wider public.

If you have any questions regarding the content of this report or suggestions for how it could be improved further, please contact Joe Yates – jyates@britishhorseracing.com

Definitions

This report uses the Horses in Training returns from the Weatherby's Racing Administration System, this is completed by trainers and should be updated whenever a horse enters or leaves training in their care as part of the conditions of their licence.

Horses in Training

Unless otherwise stated, snapshots of Horses in Training will be from the 15th day of the month in question and year to date figures will be up to and including the date titled at the front of the report.

Horses' ratings will be taken from the most recently published ratings by the BHA Handicapping Team, which is currently at 7am each Tuesday morning. For example, if looking at the Horses in a particular rating band for July 2011, the horses in training number will be from Friday 15th July 2011 and ratings, where possible, will be assigned to each horse from the ratings published by the BHA Handicappers on Tuesday 12th July 2011.

The Gender of a horse will be taken from the reporting date in question, regardless of whether this has since changed.

In the case of YTD reporting, where a horse's gender or training type has changed in the year-to-date period, the most recent is taken.

This report does not count any horses that are temporarily racing abroad for GB Trainers at the time of reporting.

Yearlings are not included in total counts of flat and/or dual horses but will be sometimes shown separately for information purposes.

Yearlings and two-year-olds are not included in total counts of jump horses or counts of jump horses that include dual horses but will be sometimes shown separately for information purposes.

Yearlings, two-year-olds and three-year-olds are not included in total counts of Hunter Chasers but will be sometimes shown separately for information purposes.

Yearlings and two-year-olds in training that are recorded as dual horses have been re-coded as flat horses.

Hunter Chasers are not included in any counts of Jump Horses or Total figures but will be sometimes shown separately for information purposes.

Horses' training locations are defined by the trainers' primary training location. Training regions are defined the same as regions for the Fixture List; 'North' is north of latitude 53.42911, 'South' is south of latitude 51.88002 and 'Midlands' is anywhere in between. Training centres are defined by postcodes and surrounding areas.

Runners

Unless otherwise specified, Total Runners and Individual Runners metrics only counts runners that ran in GB races including any voided races. Withdrawn horses are not included.

Hunter Chases are not included in this section but will be sometimes shown separately for information purposes.

Total Runners is a count of all runners in races, whilst individual runners only counts each individual horse once.

Monthly Horses in Training

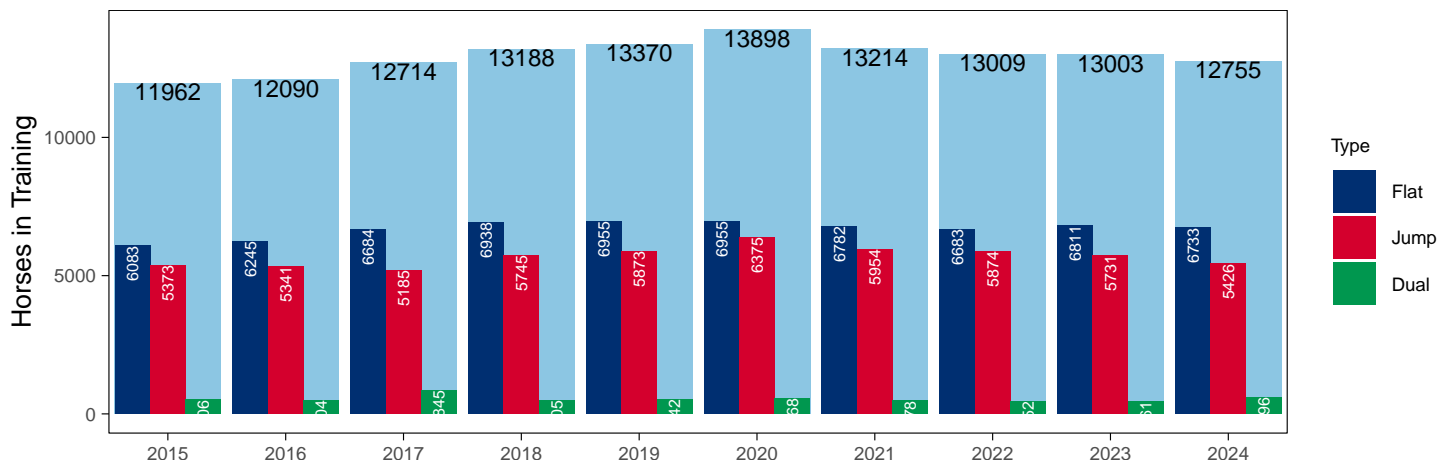
November 2024 Horses in Training Snapshot versus Previous Years

Type	2015	2016	2017	2018	2019	2020	2021	2022	2023	2024	vs. Last Year	vs. Pre-Covid
Flat	6083	6245	6684	6938	6955	6955	6782	6683	6811	6733	-78 / -1.1%	-222 / -3.2%
Jump	5373	5341	5185	5745	5873	6375	5954	5874	5731	5426	-305 / -5.3%	-447 / -7.6%
Dual	506	504	845	505	542	568	478	452	461	596	+135 / +29.3%	+54 / +10.0%
Total	11962	12090	12714	13188	13370	13898	13214	13009	13003	12755	-248 / -1.9%	-615 / -4.6%

'vs. Pre-Covid' is comparison between 2024 and 2019

Snapshot of Total Horses in Training in November

Horses in Training in November, shown by Training Type



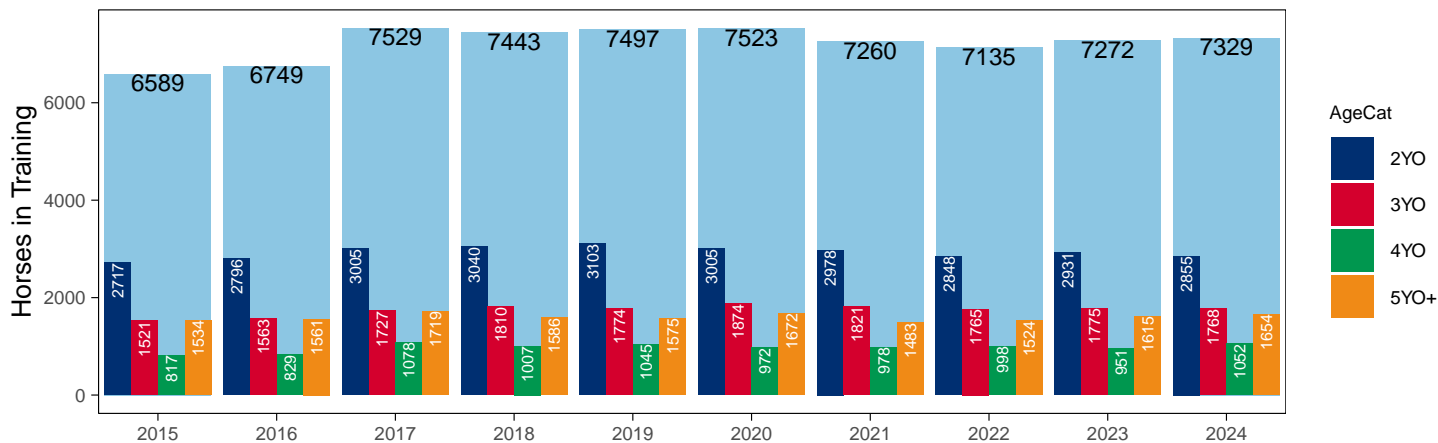
Flat (including Dual)

AgeCat	2015	2016	2017	2018	2019	2020	2021	2022	2023	2024	vs. Last Year	vs. Pre-Covid
2YO	2717	2796	3005	3040	3103	3005	2978	2848	2931	2855	-76 / -2.6%	-248 / -8.0%
3YO	1521	1563	1727	1810	1774	1874	1821	1765	1775	1768	-7 / -0.4%	-6 / -0.3%
4YO	817	829	1078	1007	1045	972	978	998	951	1052	+101 / +10.6%	+7 / +0.7%
5YO+	1534	1561	1719	1586	1575	1672	1483	1524	1615	1654	+39 / +2.4%	+79 / +5.0%
Total	6589	6749	7529	7443	7497	7523	7260	7135	7272	7329	+57 / +0.8%	-168 / -2.2%

'vs. Pre-Covid' is comparison between 2024 and 2019

Snapshot of Flat Horses in Training in November

Flat Horses in Training in November, shown by Age



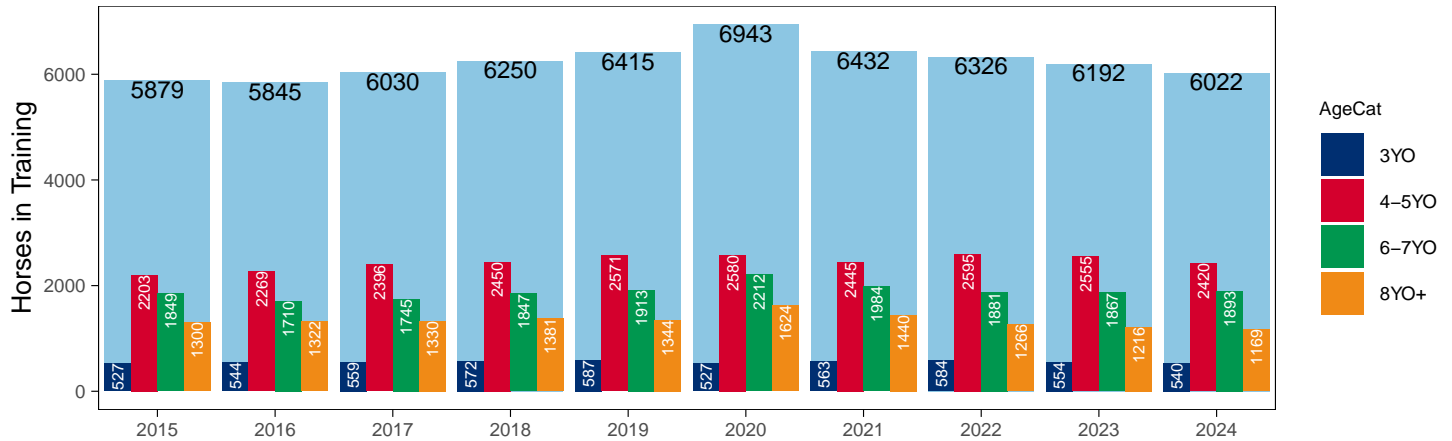
Jump (including Dual)

AgeCat	2015	2016	2017	2018	2019	2020	2021	2022	2023	2024	vs. Last Year	vs. Pre-Covid
3YO	527	544	559	572	587	527	563	584	554	540	-14 / -2.5%	-47 / -8.0%
4-5YO	2203	2269	2396	2450	2571	2580	2445	2595	2555	2420	-135 / -5.3%	-151 / -5.9%
6-7YO	1849	1710	1745	1847	1913	2212	1984	1881	1867	1893	+26 / +1.4%	-20 / -1.0%
8YO+	1300	1322	1330	1381	1344	1624	1440	1266	1216	1169	-47 / -3.9%	-175 / -13.0%
Total	5879	5845	6030	6250	6415	6943	6432	6326	6192	6022	-170 / -2.7%	-393 / -6.1%

'vs. Pre-Covid' is comparison between 2024 and 2019

Snapshot of Jump Horses in Training in November

Jump Horses in Training in November, shown by Age



2024 Horses in Training versus Previous Years

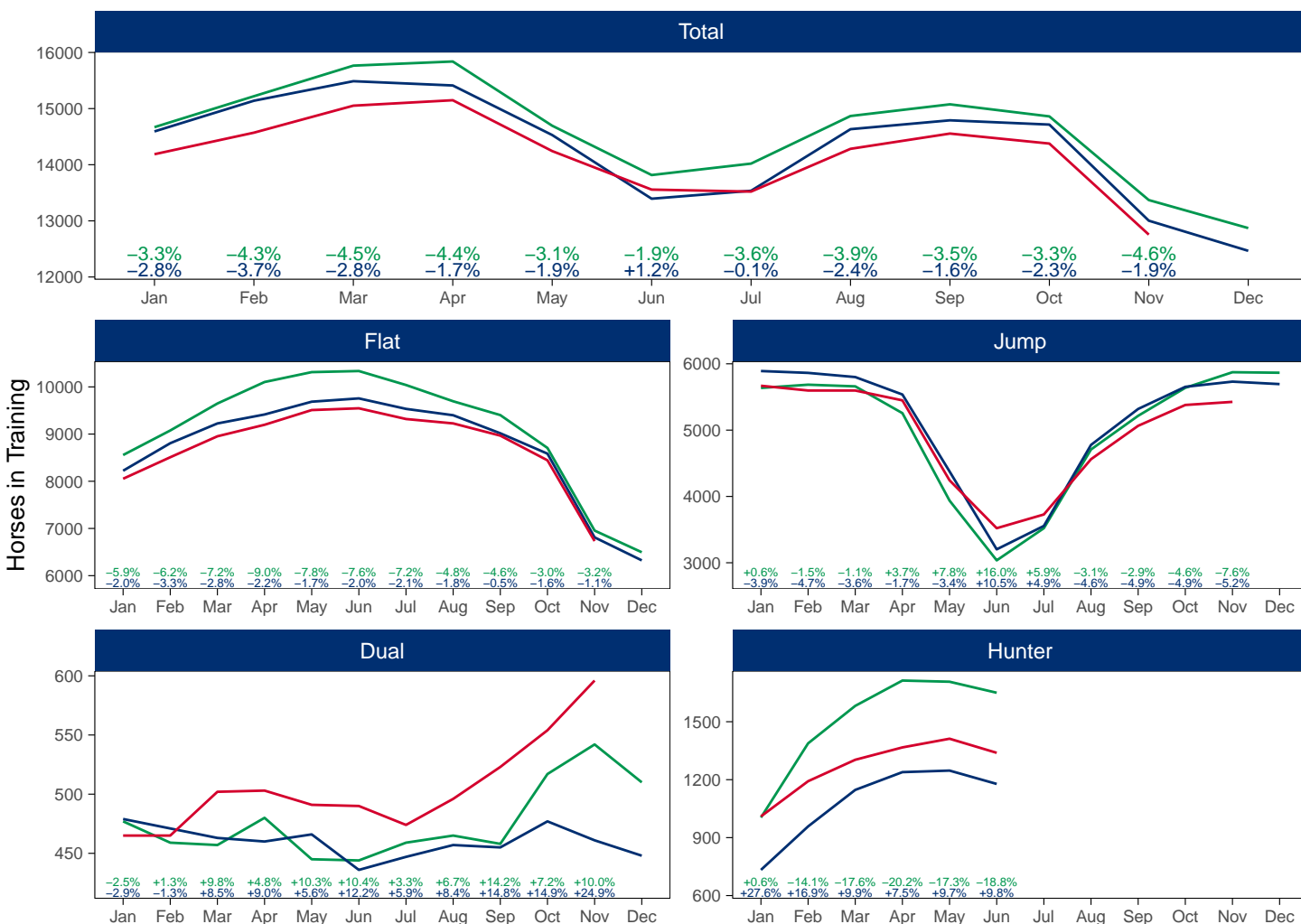
Type	Period	Jan	Feb	Mar	Apr	May	Jun	Jul	Aug	Sep	Oct	Nov	Dec
Flat	2024	8053	8509	8953	9197	9509	9546	9319	9226	8967	8444	6733	
	2023	8223	8806	9225	9415	9686	9756	9534	9399	9017	8585	6811	6324
	Pre-Covid	8556	9076	9648	10103	10313	10336	10040	9695	9402	8706	6955	6496
Jump	2024	5669	5597	5597	5449	4243	3521	3728	4561	5065	5379	5426	
	2023	5891	5863	5800	5537	4377	3202	3555	4777	5319	5653	5731	5694
	Pre-Covid	5636	5685	5660	5256	3937	3036	3521	4708	5216	5638	5873	5865
Dual	2024	465	465	502	503	491	490	474	496	523	554	596	
	2023	479	471	463	460	466	436	447	457	455	477	461	448
	Pre-Covid	477	459	457	480	445	444	459	465	458	517	542	510
Hunter	2024	1010	1192	1303	1367	1412	1339						
	2023	733	958	1147	1239	1247	1178						
	Pre-Covid	1004	1388	1582	1713	1707	1650						
Total	2024	14187	14571	15052	15149	14243	13557	13521	14283	14555	14377	12755	
	2023	14593	15140	15488	15412	14529	13394	13536	14633	14791	14715	13003	12466
	Pre-Covid	14669	15220	15765	15839	14695	13816	14020	14868	15076	14861	13370	12871

'Pre-Covid' is 2019 values

Monthly Horses in Training

2024 against 2023 and Pre-Covid, shown with % Difference

Period — Pre-Covid — 2023 — 2024



'Pre-Covid' is 2019 values

Flat (including Dual)

AgeCat	Period	Jan	Feb	Mar	Apr	May	Jun	Jul	Aug	Sep	Oct	Nov	Dec
2YO	2024	1623	2016	2334	2509	2926	3190	3360	3471	3496	3377	2855	
	2023	1718	2209	2459	2600	3020	3333	3494	3596	3578	3482	2931	2772
	Pre-Covid	2105	2426	2739	3107	3395	3595	3715	3785	3801	3641	3103	3004
3YO	2024	2882	2945	3014	3022	3021	2930	2714	2629	2502	2346	1768	
	2023	2949	3065	3175	3219	3174	3070	2864	2779	2594	2455	1775	1609
	Pre-Covid	2993	3129	3282	3331	3295	3216	3004	2788	2637	2401	1774	1611
4YO	2024	1603	1601	1655	1675	1612	1566	1461	1425	1378	1301	1052	
	2023	1644	1614	1637	1623	1580	1512	1404	1345	1284	1207	951	883
	Pre-Covid	1635	1662	1707	1719	1683	1655	1561	1483	1416	1332	1045	933
5YO+	2024	2410	2412	2452	2494	2441	2350	2258	2197	2114	1974	1654	
	2023	2391	2389	2417	2433	2378	2277	2219	2136	2016	1918	1615	1508
	Pre-Covid	2300	2318	2377	2426	2385	2314	2219	2104	2006	1849	1575	1458
Total	2024	8518	8974	9455	9700	10000	10036	9793	9722	9490	8998	7329	
	2023	8702	9277	9688	9875	10152	10192	9981	9856	9472	9062	7272	6772
	Pre-Covid	9033	9535	10105	10583	10758	10780	10499	10160	9860	9223	7497	7006

'Pre-Covid' is 2019 values

Monthly Flat Horses in Training

2024 against 2023 and Pre-Covid, shown with % Difference

Period — Pre-Covid — 2023 — 2024



'Pre-Covid' is 2019 values

Jump (including Dual)

AgeCat	Period	Jan	Feb	Mar	Apr	May	Jun	Jul	Aug	Sep	Oct	Nov	Dec
3YO	2024	39	49	67	76	94	129	196	272	361	434	540	
	2023	49	61	73	107	135	148	211	300	394	484	554	586
	Pre-Covid	31	43	57	72	88	116	168	249	358	495	587	648
4-5YO	2024	1868	1901	1955	1972	1533	1319	1442	1922	2174	2352	2420	
	2023	1996	2078	2115	2062	1642	1202	1442	2044	2316	2489	2555	2565
	Pre-Covid	1861	1937	1973	1886	1415	1094	1366	1988	2243	2428	2571	2573
6-7YO	2024	2370	2318	2311	2226	1743	1464	1486	1715	1861	1935	1893	
	2023	2365	2302	2259	2141	1690	1244	1308	1704	1834	1898	1867	1825
	Pre-Covid	2235	2216	2183	2025	1494	1158	1312	1684	1784	1895	1913	1858
8YO+	2024	1857	1794	1766	1678	1364	1099	1078	1148	1192	1212	1169	
	2023	1960	1893	1816	1687	1376	1044	1041	1186	1230	1259	1216	1166
	Pre-Covid	1986	1948	1904	1753	1385	1112	1134	1252	1289	1337	1344	1296
Total	2024	6134	6062	6099	5952	4734	4011	4202	5057	5588	5933	6022	
	2023	6370	6334	6263	5997	4843	3638	4002	5234	5774	6130	6192	6142
	Pre-Covid	6113	6144	6117	5736	4382	3480	3980	5173	5674	6155	6415	6375

'Pre-Covid' is 2019 values

Monthly Jump Horses in Training

2024 against 2023 and Pre-Covid, shown with % Difference

Period — Pre-Covid — 2023 — 2024



'Pre-Covid' is 2019 values

November 2024 Horses in Training by Rating Band Snapshot versus Previous Years

Flat (including Dual)

AgeCat	RatBand	2015	2016	2017	2018	2019	2020	2021	2022	2023	2024
2YO	Unrated	1,758 (64.7%)	1,818 (65.0%)	2,069 (68.9%)	2,006 (66.0%)	2,166 (69.8%)	1,977 (65.8%)	2,009 (67.5%)	1,925 (67.6%)	1,971 (67.2%)	1,960 (68.7%)
	0-50	93 (3.4%)	76 (2.7%)	65 (2.2%)	85 (2.8%)	97 (3.1%)	81 (2.7%)	83 (2.8%)	81 (2.8%)	74 (2.4%)	74 (2.6%)
	51-60	124 (4.6%)	149 (5.3%)	144 (4.8%)	183 (6.0%)	153 (4.9%)	169 (5.6%)	150 (5.0%)	157 (5.5%)	158 (5.4%)	139 (4.9%)
	61-70	252 (9.3%)	255 (9.1%)	238 (7.9%)	245 (8.1%)	214 (6.9%)	246 (8.2%)	236 (7.9%)	214 (7.5%)	213 (7.3%)	229 (8.0%)
	71-80	261 (9.6%)	271 (9.7%)	254 (8.5%)	240 (7.9%)	235 (7.6%)	288 (9.6%)	258 (8.7%)	231 (8.1%)	265 (9.0%)	220 (7.7%)
	81-90	129 (4.7%)	142 (5.1%)	113 (3.8%)	166 (5.5%)	126 (4.1%)	128 (4.3%)	129 (4.3%)	139 (4.9%)	138 (4.7%)	123 (4.3%)
	91-100	59 (2.2%)	49 (1.8%)	65 (2.2%)	66 (2.2%)	66 (2.1%)	65 (2.2%)	53 (1.8%)	57 (2.0%)	65 (2.2%)	64 (2.2%)
	101+	41 (1.5%)	36 (1.3%)	57 (1.9%)	49 (1.6%)	46 (1.5%)	51 (1.7%)	60 (2.0%)	44 (1.5%)	50 (1.7%)	46 (1.6%)
Subtotal		2,717 (100.0%)	2,796 (100.0%)	3,005 (100.0%)	3,040 (100.0%)	3,103 (100.0%)	3,005 (100.0%)	2,978 (100.0%)	2,848 (100.0%)	2,931 (100.0%)	2,855 (100.0%)
3YO	Unrated	309 (20.3%)	302 (19.3%)	363 (21.0%)	410 (22.7%)	366 (20.6%)	456 (24.3%)	434 (23.8%)	396 (22.4%)	385 (21.7%)	402 (22.7%)
	0-50	144 (9.5%)	146 (9.3%)	190 (11.0%)	192 (10.6%)	218 (12.3%)	204 (10.9%)	187 (10.3%)	194 (11.0%)	187 (10.5%)	169 (9.6%)
	51-60	207 (13.6%)	217 (13.9%)	238 (13.8%)	227 (12.5%)	258 (14.5%)	256 (13.7%)	257 (14.1%)	256 (14.5%)	256 (14.4%)	246 (13.9%)
	61-70	274 (18.0%)	274 (17.5%)	268 (15.5%)	287 (15.9%)	306 (17.2%)	307 (16.4%)	318 (17.5%)	311 (17.6%)	303 (17.1%)	293 (16.6%)
	71-80	247 (16.2%)	282 (18.0%)	300 (17.4%)	300 (16.6%)	317 (13.4%)	317 (16.9%)	276 (15.2%)	273 (15.2%)	284 (16.0%)	286 (16.2%)
	81-90	175 (11.5%)	164 (10.5%)	178 (10.3%)	204 (11.3%)	187 (10.5%)	175 (9.3%)	201 (11.0%)	174 (9.9%)	186 (10.5%)	217 (12.3%)
	91-100	81 (5.3%)	101 (6.5%)	116 (6.7%)	110 (6.1%)	119 (6.7%)	104 (5.5%)	83 (4.6%)	72 (4.1%)	102 (5.7%)	78 (4.4%)
	101+	84 (5.5%)	77 (4.9%)	74 (4.3%)	80 (4.4%)	83 (4.7%)	55 (2.9%)	65 (3.6%)	89 (5.0%)	72 (4.1%)	77 (4.4%)
Subtotal		1,521 (100.0%)	1,563 (100.0%)	1,727 (100.0%)	1,810 (100.0%)	1,774 (100.0%)	1,874 (100.0%)	1,821 (100.0%)	1,765 (100.0%)	1,775 (100.0%)	1,768 (100.0%)
4YO	Unrated	117 (14.3%)	115 (13.9%)	225 (20.9%)	135 (13.4%)	147 (14.1%)	165 (17.0%)	150 (15.3%)	132 (13.2%)	132 (13.9%)	149 (14.2%)
	0-50	75 (9.2%)	88 (10.6%)	137 (12.7%)	142 (14.1%)	153 (14.6%)	106 (10.9%)	124 (12.7%)	128 (12.8%)	130 (13.7%)	142 (13.5%)
	51-60	122 (14.9%)	125 (15.1%)	138 (12.8%)	145 (14.4%)	168 (16.1%)	158 (16.3%)	166 (17.0%)	156 (15.6%)	168 (17.7%)	179 (17.0%)
	61-70	138 (16.9%)	149 (18.0%)	163 (15.1%)	185 (18.4%)	178 (17.0%)	180 (18.5%)	174 (17.8%)	188 (18.8%)	169 (17.8%)	198 (18.8%)
	71-80	120 (14.7%)	127 (15.3%)	142 (13.2%)	154 (15.3%)	152 (14.5%)	144 (14.8%)	157 (16.1%)	168 (16.8%)	142 (14.9%)	157 (14.9%)
	81-90	117 (14.3%)	95 (11.5%)	131 (12.2%)	108 (10.7%)	105 (10.0%)	100 (10.3%)	99 (10.1%)	102 (10.2%)	89 (9.4%)	113 (10.7%)
	91-100	68 (8.3%)	62 (7.5%)	69 (6.4%)	81 (8.0%)	84 (8.0%)	58 (6.0%)	63 (6.4%)	65 (6.5%)	61 (6.4%)	59 (5.6%)
	101+	60 (7.3%)	68 (8.2%)	73 (6.8%)	57 (5.7%)	58 (5.6%)	61 (6.3%)	45 (4.6%)	59 (5.9%)	60 (6.3%)	55 (5.2%)
Subtotal		817 (100.0%)	829 (100.0%)	1,078 (100.0%)	1,007 (100.0%)	1,045 (100.0%)	972 (100.0%)	978 (100.0%)	998 (100.0%)	951 (100.0%)	1,052 (100.0%)
5YO+	Unrated	197 (12.8%)	204 (13.1%)	338 (19.7%)	221 (13.9%)	222 (14.1%)	301 (18.0%)	216 (14.6%)	227 (14.9%)	194 (12.0%)	203 (12.3%)
	0-50	173 (11.3%)	174 (11.1%)	204 (11.9%)	255 (16.1%)	271 (17.2%)	238 (14.2%)	214 (14.4%)	227 (14.9%)	235 (14.6%)	248 (15.0%)
	51-60	246 (16.0%)	235 (15.1%)	250 (14.5%)	255 (16.1%)	245 (15.6%)	279 (16.7%)	255 (17.2%)	252 (16.5%)	304 (18.8%)	330 (20.0%)
	61-70	319 (20.8%)	294 (18.8%)	294 (17.1%)	253 (16.0%)	274 (17.4%)	312 (18.7%)	261 (17.6%)	273 (17.9%)	300 (18.6%)	326 (19.7%)
	71-80	241 (15.7%)	238 (15.2%)	234 (13.6%)	233 (14.7%)	219 (13.9%)	234 (14.0%)	191 (12.9%)	215 (14.1%)	230 (14.2%)	231 (14.0%)
	81-90	182 (11.9%)	218 (14.0%)	190 (11.1%)	174 (11.0%)	171 (10.9%)	148 (8.9%)	151 (10.2%)	149 (9.8%)	180 (11.1%)	169 (10.2%)
	91-100	102 (6.6%)	106 (6.8%)	108 (6.3%)	101 (6.4%)	105 (6.7%)	86 (5.1%)	107 (7.2%)	102 (6.7%)	90 (5.6%)	73 (4.4%)
	101+	74 (4.8%)	92 (5.9%)	101 (5.9%)	94 (5.9%)	68 (4.3%)	74 (4.4%)	88 (5.9%)	79 (5.2%)	82 (5.1%)	74 (4.5%)
Subtotal		1,534 (100.0%)	1,561 (100.0%)	1,719 (100.0%)	1,586 (100.0%)	1,575 (100.0%)	1,672 (100.0%)	1,483 (100.0%)	1,524 (100.0%)	1,615 (100.0%)	1,654 (100.0%)
Overall	Unrated	2,381 (36.1%)	2,439 (36.1%)	2,995 (39.8%)	2,772 (37.2%)	2,901 (38.7%)	2,899 (38.5%)	2,809 (38.7%)	2,680 (37.6%)	2,682 (36.9%)	2,714 (37.0%)
	0-50	485 (7.4%)	484 (7.2%)	596 (7.9%)	674 (9.1%)	739 (9.9%)	629 (8.4%)	608 (8.4%)	630 (8.8%)	623 (8.6%)	633 (8.6%)
	51-60	699 (10.6%)	726 (10.8%)	770 (10.2%)	810 (10.9%)	824 (11.0%)	862 (11.5%)	828 (11.4%)	821 (11.5%)	886 (12.2%)	894 (12.2%)
	61-70	983 (14.9%)	972 (14.4%)	963 (12.8%)	970 (13.0%)	972 (13.0%)	1,045 (13.9%)	989 (13.6%)	986 (13.8%)	985 (13.5%)	1,046 (14.3%)
	71-80	869 (13.2%)	918 (13.6%)	930 (12.4%)	927 (12.5%)	843 (11.2%)	983 (13.1%)	882 (12.1%)	887 (12.4%)	921 (12.7%)	894 (12.2%)
	81-90	603 (9.2%)	619 (9.2%)	612 (8.1%)	652 (8.8%)	589 (7.9%)	551 (7.3%)	580 (8.0%)	564 (7.9%)	593 (8.2%)	622 (8.5%)
	91-100	310 (4.7%)	318 (4.7%)	358 (4.8%)	358 (4.8%)	374 (5.0%)	313 (4.2%)	306 (4.2%)	296 (4.1%)	318 (4.4%)	274 (3.7%)
	101+	259 (3.9%)	273 (4.0%)	305 (4.1%)	280 (3.8%)	255 (3.4%)	241 (3.2%)	258 (3.6%)	271 (3.8%)	264 (3.6%)	252 (3.4%)
Total		6,589 (100.0%)	6,749 (100.0%)	7,529 (100.0%)	7,443 (100.0%)	7,497 (100.0%)	7,523 (100.0%)	7,260 (100.0%)	7,135 (100.0%)	7,272 (100.0%)	7,329 (100.0%)

Where a horse has more than one published rating (published Flat Turf and published Flat AWT mark), the higher of the two is taken.

Jump (including Dual)

AgeCat	RatBand	2015	2016	2017	2018	2019	2020	2021	2022	2023	2024
3YO	Unrated	496 (94.1%)	520 (95.6%)	533 (95.3%)	543 (94.9%)	551 (93.9%)	496 (94.1%)	522 (92.7%)	556 (95.2%)	528 (95.3%)	518 (95.9%)
	0-100	7 (1.3%)	7 (1.3%)	3 (0.5%)	7 (1.2%)	7 (1.2%)	7 (1.3%)	16 (2.8%)	15 (2.7%)	15 (2.7%)	13 (2.4%)
	101-110	7 (1.3%)	12 (2.2%)	10 (1.8%)	9 (1.6%)	13 (2.2%)	11 (2.1%)	10 (1.8%)	5 (0.9%)	6 (1.1%)	5 (0.9%)
	111-120	4 (0.8%)	1 (0.2%)	7 (1.3%)	6 (1.0%)	10 (1.7%)	6 (1.1%)	10 (1.8%)	7 (1.2%)	5 (0.9%)	2 (0.4%)
	121-130	7 (1.3%)	2 (0.4%)	3 (0.5%)	4 (0.7%)	6 (1.0%)	4 (0.8%)	3 (0.5%)	4 (0.7%)	NA (-)	2 (0.4%)
	131-140	6 (1.1%)	2 (0.4%)	2 (0.4%)	3 (0.5%)	NA (-)	3 (0.6%)	2 (0.4%)	NA (-)	NA (-)	NA (-)
	141-150	NA (-)	NA (-)	1 (0.2%)	NA (-)	NA (-)	NA (-)	NA (-)	NA (-)	NA (-)	NA (-)
	Subtotal	527 (100.0%)	544 (100.0%)	559 (100.0%)	572 (100.0%)	587 (100.0%)	527 (100.0%)	563 (100.0%)	584 (100.0%)	554 (100.0%)	540 (100.0%)
4-5YO	Unrated	1,533 (69.6%)	1,578 (69.5%)	1,699 (70.9%)	1,696 (69.2%)	1,804 (70.2%)	1,805 (70.0%)	1,855 (75.9%)	1,880 (72.4%)	1,871 (73.2%)	1,680 (69.4%)
	0-100	162 (7.4%)	186 (8.2%)	197 (8.2%)	183 (7.5%)	226 (8.8%)	270 (10.5%)	252 (10.3%)	325 (12.5%)	344 (13.5%)	384 (15.9%)
	101-110	132 (6.0%)	134 (5.9%)	132 (5.5%)	164 (6.7%)	143 (5.6%)	146 (5.7%)	115 (4.7%)	164 (6.3%)	151 (5.9%)	153 (6.3%)
	111-120	152 (6.9%)	149 (6.6%)	141 (5.9%)	155 (6.3%)	168 (6.5%)	146 (5.7%)	108 (4.4%)	115 (4.4%)	99 (3.9%)	119 (4.9%)
	121-130	118 (5.4%)	109 (4.8%)	129 (5.4%)	157 (6.4%)	135 (5.3%)	124 (4.8%)	76 (3.1%)	79 (3.0%)	62 (2.4%)	61 (2.5%)
	131-140	69 (3.1%)	81 (3.6%)	69 (2.9%)	65 (2.7%)	68 (2.6%)	59 (2.3%)	28 (1.1%)	20 (0.8%)	23 (0.9%)	21 (0.9%)
	141-150	27 (1.2%)	25 (1.1%)	25 (1.0%)	21 (0.9%)	23 (0.9%)	25 (1.0%)	8 (0.3%)	11 (0.4%)	5 (0.2%)	2 (0.1%)
	151+	10 (0.5%)	7 (0.3%)	4 (0.2%)	9 (0.4%)	4 (0.2%)	5 (0.2%)	3 (0.1%)	1 (0.0%)	NA (-)	NA (-)
Subtotal	2,203 (100.0%)	2,269 (100.0%)	2,396 (100.0%)	2,450 (100.0%)	2,571 (100.0%)	2,580 (100.0%)	2,445 (100.0%)	2,595 (100.0%)	2,555 (100.0%)	2,420 (100.0%)	
6-7YO	Unrated	506 (27.4%)	438 (25.6%)	454 (26.0%)	459 (24.9%)	478 (25.0%)	556 (25.1%)	654 (33.0%)	603 (32.1%)	576 (30.9%)	521 (27.5%)
	0-100	367 (19.8%)	328 (19.2%)	330 (18.9%)	352 (19.1%)	387 (20.2%)	496 (22.4%)	416 (21.0%)	431 (22.9%)	493 (26.4%)	568 (30.0%)
	101-110	230 (12.4%)	217 (12.7%)	244 (14.0%)	225 (12.2%)	217 (11.3%)	305 (13.8%)	212 (10.7%)	229 (12.2%)	245 (13.1%)	278 (14.7%)
	111-120	236 (12.8%)	243 (14.2%)	237 (13.6%)	261 (14.1%)	263 (13.7%)	279 (12.6%)	261 (13.2%)	247 (13.1%)	260 (13.9%)	229 (12.1%)
	121-130	248 (13.4%)	223 (13.0%)	211 (12.1%)	244 (13.2%)	256 (13.4%)	288 (13.0%)	220 (11.1%)	193 (10.3%)	169 (9.1%)	172 (9.1%)
	131-140	153 (8.3%)	167 (9.8%)	162 (9.3%)	194 (10.5%)	202 (10.6%)	181 (8.2%)	135 (6.8%)	112 (6.0%)	81 (4.3%)	84 (4.4%)
	141-150	71 (3.8%)	61 (3.6%)	75 (4.3%)	79 (4.3%)	70 (3.7%)	75 (3.4%)	63 (3.2%)	47 (2.5%)	32 (1.7%)	31 (1.6%)
	151+	38 (2.1%)	33 (1.9%)	32 (1.8%)	33 (1.8%)	40 (2.1%)	32 (1.4%)	23 (1.2%)	19 (1.0%)	11 (0.6%)	10 (0.5%)
Subtotal	1,849 (100.0%)	1,710 (100.0%)	1,745 (100.0%)	1,847 (100.0%)	1,913 (100.0%)	2,212 (100.0%)	1,984 (100.0%)	1,881 (100.0%)	1,867 (100.0%)	1,893 (100.0%)	
8YO+	Unrated	195 (15.0%)	191 (14.4%)	184 (13.8%)	230 (16.7%)	210 (15.6%)	307 (18.9%)	410 (28.5%)	304 (24.0%)	305 (25.1%)	276 (23.6%)
	0-100	344 (26.5%)	363 (27.5%)	348 (26.2%)	351 (25.4%)	369 (27.5%)	427 (26.3%)	313 (21.7%)	303 (23.9%)	308 (25.3%)	299 (25.6%)
	101-110	182 (14.0%)	178 (13.5%)	180 (13.5%)	197 (14.3%)	175 (13.0%)	203 (12.5%)	152 (10.6%)	137 (10.8%)	133 (10.9%)	142 (12.1%)
	111-120	184 (14.2%)	201 (15.2%)	198 (14.9%)	175 (12.7%)	160 (11.9%)	210 (12.9%)	179 (12.4%)	176 (13.9%)	150 (12.3%)	164 (14.0%)
	121-130	177 (13.6%)	148 (11.2%)	186 (14.0%)	173 (12.5%)	159 (11.8%)	193 (11.9%)	166 (11.5%)	146 (11.5%)	141 (11.6%)	135 (11.5%)
	131-140	118 (9.1%)	142 (10.7%)	126 (9.5%)	137 (9.9%)	146 (10.9%)	145 (8.9%)	115 (8.0%)	98 (7.7%)	105 (8.6%)	84 (7.2%)
	141-150	58 (4.5%)	58 (4.4%)	71 (5.3%)	83 (6.0%)	80 (6.0%)	83 (5.1%)	77 (5.3%)	73 (5.8%)	42 (3.5%)	42 (3.6%)
	151+	42 (3.2%)	41 (3.1%)	37 (2.8%)	35 (2.5%)	45 (3.3%)	56 (3.4%)	28 (1.9%)	29 (2.3%)	32 (2.6%)	27 (2.3%)
Subtotal	1,300 (100.0%)	1,322 (100.0%)	1,330 (100.0%)	1,381 (100.0%)	1,344 (100.0%)	1,624 (100.0%)	1,440 (100.0%)	1,266 (100.0%)	1,216 (100.0%)	1,169 (100.0%)	
Overall	Unrated	2,730 (46.4%)	2,727 (46.7%)	2,870 (47.6%)	2,928 (46.8%)	3,043 (47.4%)	3,164 (45.6%)	3,441 (53.5%)	3,343 (52.8%)	3,280 (53.0%)	2,995 (49.7%)
	0-100	880 (15.0%)	884 (15.1%)	878 (14.6%)	893 (14.3%)	989 (15.4%)	1,200 (17.3%)	997 (15.5%)	1,071 (16.9%)	1,160 (18.7%)	1,264 (21.0%)
	101-110	551 (9.4%)	541 (9.3%)	566 (9.4%)	595 (9.5%)	548 (8.5%)	665 (9.6%)	489 (7.6%)	535 (8.5%)	535 (8.6%)	578 (9.6%)
	111-120	576 (9.8%)	594 (10.2%)	583 (9.7%)	597 (9.6%)	601 (9.4%)	641 (9.2%)	558 (8.7%)	545 (8.6%)	514 (8.3%)	514 (8.5%)
	121-130	550 (9.4%)	482 (8.2%)	529 (8.8%)	578 (9.2%)	556 (8.7%)	609 (8.8%)	465 (7.2%)	422 (6.7%)	372 (6.0%)	370 (6.1%)
	131-140	346 (5.9%)	392 (6.7%)	359 (6.0%)	399 (6.4%)	359 (6.5%)	388 (5.6%)	280 (4.4%)	230 (3.6%)	209 (3.4%)	189 (3.1%)
	141-150	156 (2.7%)	144 (2.5%)	172 (2.9%)	183 (2.9%)	173 (2.7%)	183 (2.6%)	148 (2.3%)	131 (2.1%)	79 (1.3%)	75 (1.2%)
	151+	90 (1.5%)	81 (1.4%)	73 (1.2%)	77 (1.2%)	89 (1.4%)	93 (1.3%)	54 (0.8%)	49 (0.8%)	43 (0.7%)	37 (0.6%)
Total	5,879 (100.0%)	5,845 (100.0%)	6,030 (100.0%)	6,250 (100.0%)	6,415 (100.0%)	6,943 (100.0%)	6,432 (100.0%)	6,326 (100.0%)	6,192 (100.0%)	6,022 (100.0%)	

Where a horse has more than one published rating (published Hurdle and published Chase mark), the higher of the two is taken.

Young Horses Entering Training

Flat Yearlings in Training versus Previous Years

Period	Jan	Feb	Mar	Apr	May	Jun	Jul	Aug	Sep	Oct	Nov	Dec
2024	0	0	0	0	0	0	2	3	72	186	619	
2023	1	2	2	2	3	3	4	4	62	225	722	1185
5YrAvg	1	1	1	1	1	1	1	3	64	261	725	1279

Foals Entering Training for the First Time

```
## Warning: A numeric 'legend.position' argument in 'theme()' was deprecated in ggplot2 3.5.0.
## i Please use the 'legend.position.inside' argument of 'theme()' instead.
## This warning is displayed once every 8 hours.
## Call 'lifecycle::last_lifecycle_warnings()' to see where this warning was generated.
```

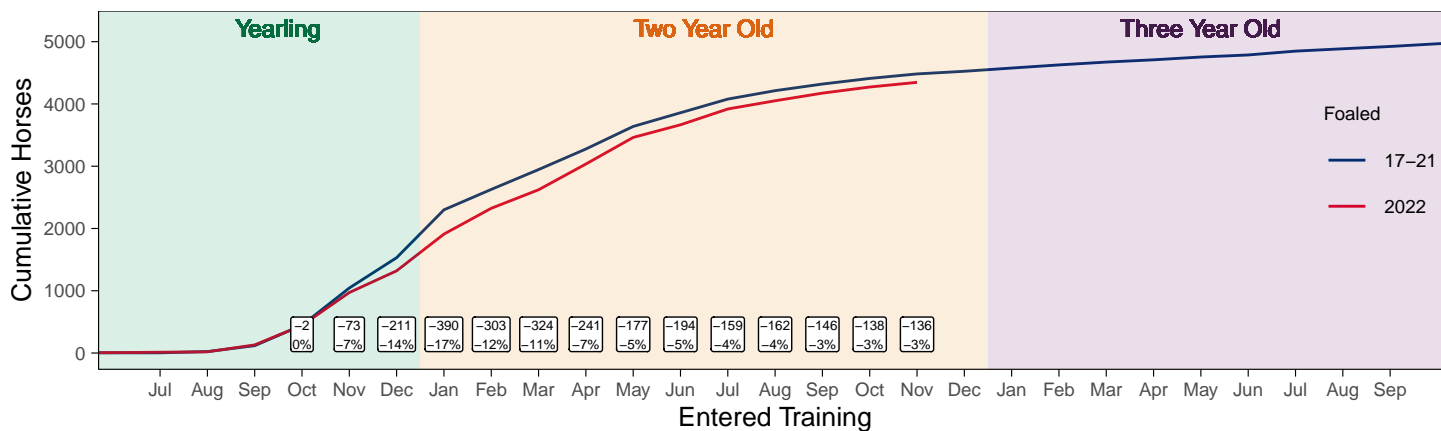
```
## Warning in geom_text(aes(x = 21.5, y = Inf, label = "Yearling"), size = 3, : All aesthetics have length 1, but
## i Please consider using 'annotate()' or provide this layer with data containing a
## single row.
```

```
## Warning in geom_text(aes(x = 30.5, y = Inf, label = "Two Year Old"), size = 3, : All aesthetics have length 1, but
## i Please consider using 'annotate()' or provide this layer with data containing a
## single row.
```

```
## Warning in geom_text(aes(x = 41, y = Inf, label = "Three Year Old"), size = 3, : All aesthetics have length 1, but
## i Please consider using 'annotate()' or provide this layer with data containing a
## single row.
```

2022 Foals Entering Training Over Time

Cumulative Flat Horses foaled in 2022 shown by first in training notification against trend



Cumulative individual horses entering training for the first time by the end of each month.

```
## Warning in geom_text(aes(x = 21.5, y = Inf, label = "Yearling"), size = 3, : All aesthetics have length 1, but
## i Please consider using 'annotate()' or provide this layer with data containing a
## single row.
```

```
## Warning in geom_text(aes(x = 30.5, y = Inf, label = "Two Year Old"), size = 3, : All aesthetics have length 1, but
## i Please consider using 'annotate()' or provide this layer with data containing a
## single row.
```

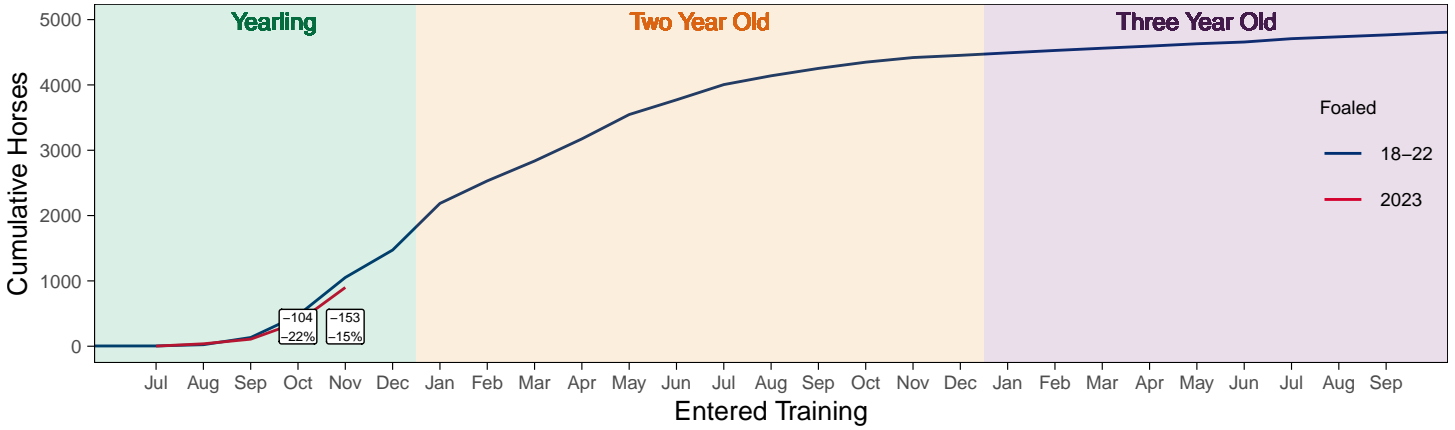
```

## Warning in geom_text(aes(x = 41, y = Inf, label = "Three Year Old"), size = 3, : All aesthetics have length 1
## i Please consider using 'annotate()' or provide this layer with data containing a
## single row.

```

2023 Foals Entering Training Over Time

Cumulative Flat Horses foaled in 2023 shown by first in training notification against trend



Cumulative individual horses entering training for the first time by the end of each month.

Year to Date Horses in Training

Type	2015	2016	2017	2018	2019	2020	2021	2022	2023	2024	vs. Last Year	vs. Pre-Covid
Flat	7198	7168	7941	8040	7887	7873	7595	7535	7655	7704	+49 / +0.6%	-183 / -2.3%
Jump	5830	5769	5539	6171	6238	6811	6312	6260	6068	5714	-354 / -5.8%	-524 / -8.4%
Dual	572	585	996	591	626	664	564	564	543	726	+183 / +33.7%	+100 / +16.0%
Hunter	422	406	460	525	431	621	486	420	709	327	-382 / -53.9%	-104 / -24.1%
Total	13600	13522	14476	14802	14751	15348	14471	14359	14266	14144	-122 / -0.9%	-607 / -4.1%

'vs. Pre-Covid' is comparison between 2024 and 2019

Flat

AgeCat	2015	2016	2017	2018	2019	2020	2021	2022	2023	2024	vs. Last Year	vs. Pre-Covid
2YO	3161	3166	3475	3481	3478	3341	3267	3193	3239	3223	-16 / -0.5%	-255 / -7.3%
3YO	1747	1702	1965	2016	1889	2027	1916	1888	1910	1900	-10 / -0.5%	+11 / +0.6%
4YO	863	850	1005	1042	1052	969	996	1024	952	1027	+75 / +7.9%	-25 / -2.4%
5YO+	1427	1450	1496	1501	1468	1536	1416	1430	1554	1554	0 / 0.0%	+86 / +5.9%
Total	7198	7168	7941	8040	7887	7873	7595	7535	7655	7704	+49 / +0.6%	-183 / -2.3%

'vs. Pre-Covid' is comparison between 2024 and 2019

Jump

AgeCat	2015	2016	2017	2018	2019	2020	2021	2022	2023	2024	vs. Last Year	vs. Pre-Covid
3YO	475	474	397	478	495	434	458	507	460	418	-42 / -9.1%	-77 / -15.6%
4-5YO	2188	2233	2144	2400	2471	2530	2395	2539	2520	2259	-261 / -10.4%	-212 / -8.6%
6-7YO	1829	1712	1661	1875	1894	2192	1982	1903	1843	1855	+12 / +0.7%	-39 / -2.1%
8YO+	1338	1350	1337	1418	1378	1655	1477	1311	1245	1182	-63 / -5.1%	-196 / -14.2%
Total	5830	5769	5539	6171	6238	6811	6312	6260	6068	5714	-354 / -5.8%	-524 / -8.4%

'vs. Pre-Covid' is comparison between 2024 and 2019

Dual

AgeCat	2015	2016	2017	2018	2019	2020	2021	2022	2023	2024	vs. Last Year	vs. Pre-Covid
3YO	149	165	259	178	189	193	185	173	177	209	+32 / +18.1%	+20 / +10.6%
4YO	112	114	275	138	153	140	128	127	119	187	+68 / +57.1%	+34 / +22.2%
5YO+	311	306	462	275	284	331	251	264	247	330	+83 / +33.6%	+46 / +16.2%
Total	572	585	996	591	626	664	564	564	543	726	+183 / +33.7%	+100 / +16.0%

'vs. Pre-Covid' is comparison between 2024 and 2019

Hunter Chasers

Year to Date Runners

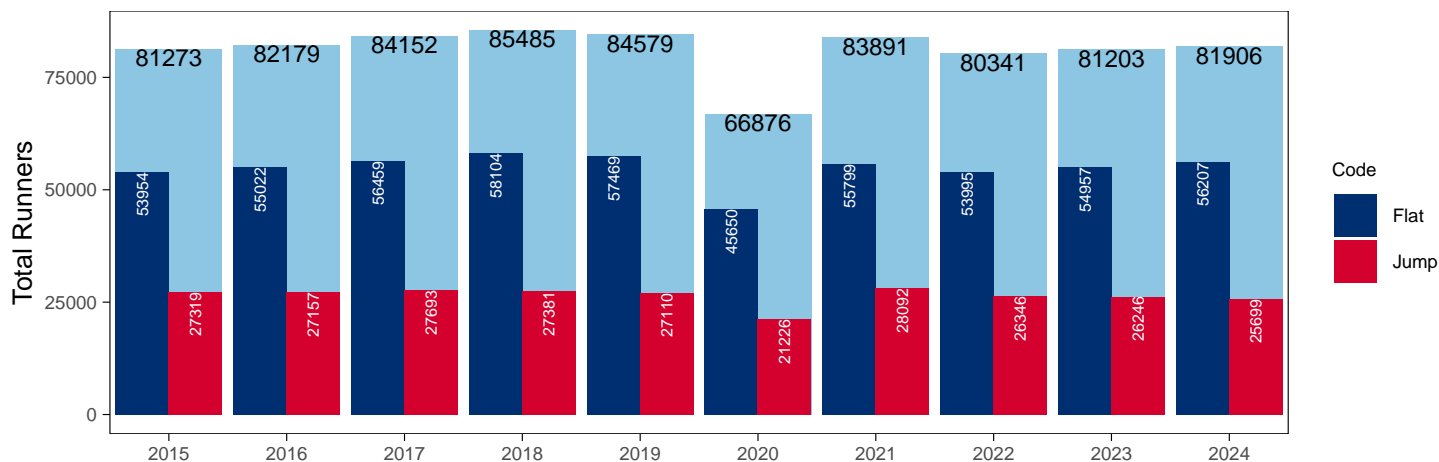
Year to Date Total Runners

Code	2015	2016	2017	2018	2019	2020	2021	2022	2023	2024	vs. Last Year	vs. Pre-Covid
Flat	53954	55022	56459	58104	57469	45650	55799	53995	54957	56207	+1250 / +2.3%	-1262 / -2.2%
Jump	27319	27157	27693	27381	27110	21226	28092	26346	26246	25699	-547 / -2.1%	-1411 / -5.2%
Total	81273	82179	84152	85485	84579	66876	83891	80341	81203	81906	+703 / +0.9%	-2673 / -3.2%

'vs. Pre-Covid' is comparison between 2024 and 2019

YTD Total Runners

Total Runners in GB Races, shown by Code and Total



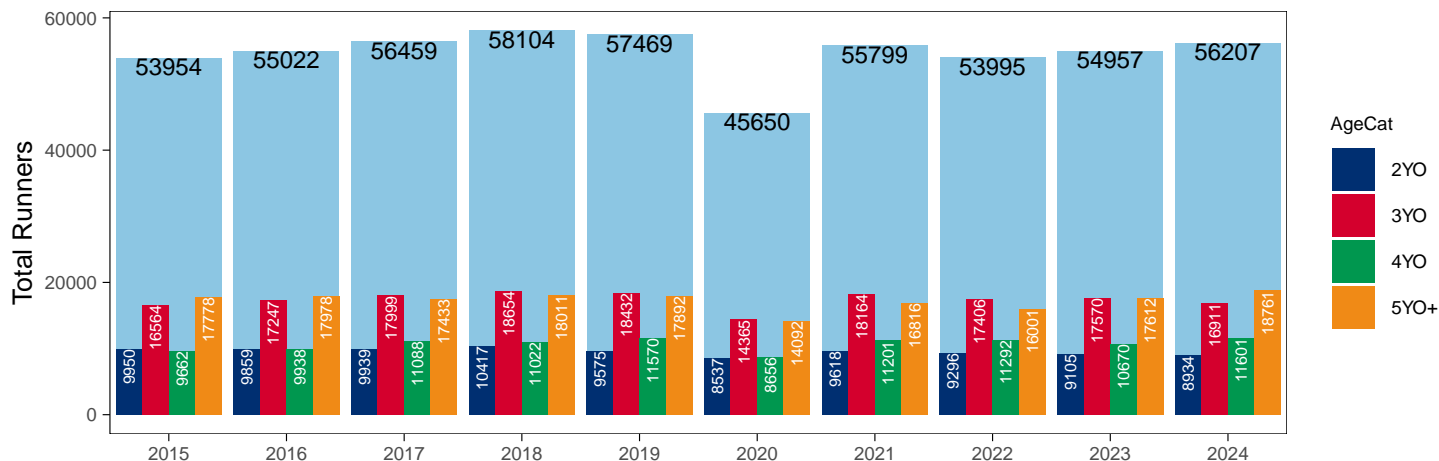
Flat

AgeCat	2015	2016	2017	2018	2019	2020	2021	2022	2023	2024	vs. Last Year	vs. Pre-Covid
2YO	9950	9859	9939	10417	9575	8537	9618	9296	9105	8934	-171 / -1.9%	-641 / -6.7%
3YO	16564	17247	17999	18654	18432	14365	18164	17406	17570	16911	-659 / -3.8%	-1521 / -8.3%
4YO	9662	9938	11088	11022	11570	8656	11201	11292	10670	11601	+931 / +8.7%	+31 / +0.3%
5YO+	17778	17978	17433	18011	17892	14092	16816	16001	17612	18761	+1149 / +6.5%	+869 / +4.9%
Total	53954	55022	56459	58104	57469	45650	55799	53995	54957	56207	+1250 / +2.3%	-1262 / -2.2%

'vs. Pre-Covid' is comparison between 2024 and 2019

YTD Total Flat Runners by Age

Total Runners in GB Flat Races, shown by Age Category and Total



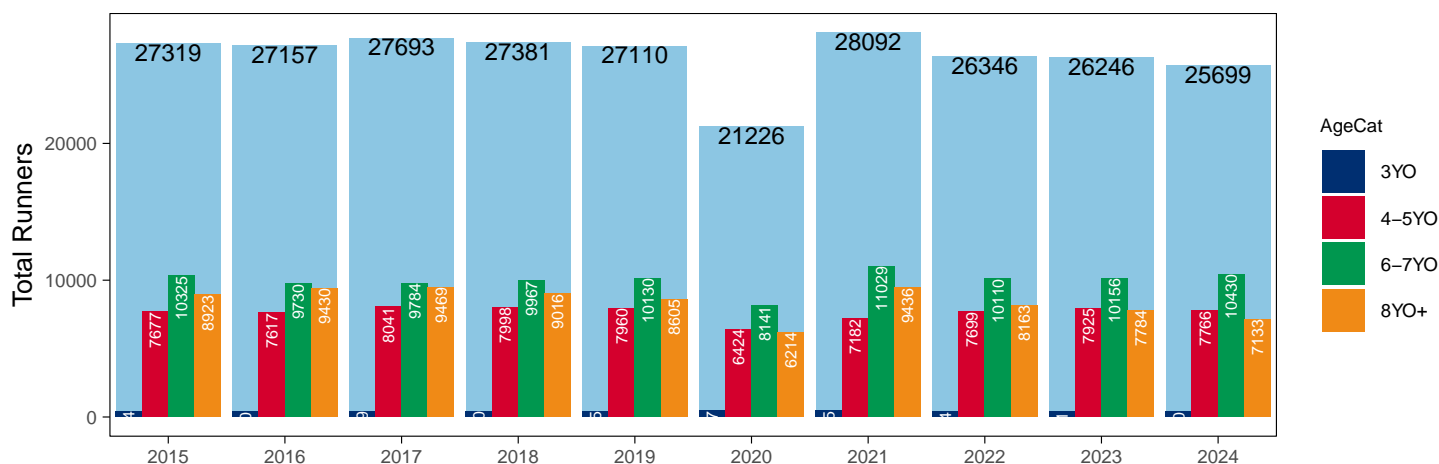
Jump

AgeCat	2015	2016	2017	2018	2019	2020	2021	2022	2023	2024	vs. Last Year	vs. Pre-Covid
3YO	394	380	399	400	415	447	445	374	381	370	-11 / -2.9%	-45 / -10.8%
4-5YO	7677	7617	8041	7998	7960	6424	7182	7699	7925	7766	-159 / -2.0%	-194 / -2.4%
6-7YO	10325	9730	9784	9967	10130	8141	11029	10110	10156	10430	+274 / +2.7%	+300 / +3.0%
8YO+	8923	9430	9469	9016	8605	6214	9436	8163	7784	7133	-651 / -8.4%	-1472 / -17.1%
Total	27319	27157	27693	27381	27110	21226	28092	26346	26246	25699	-547 / -2.1%	-1411 / -5.2%

'vs. Pre-Covid' is comparison between 2024 and 2019

YTD Total Jump Runners by Age

Total Runners in GB Jump Races, shown by Age Category and Total



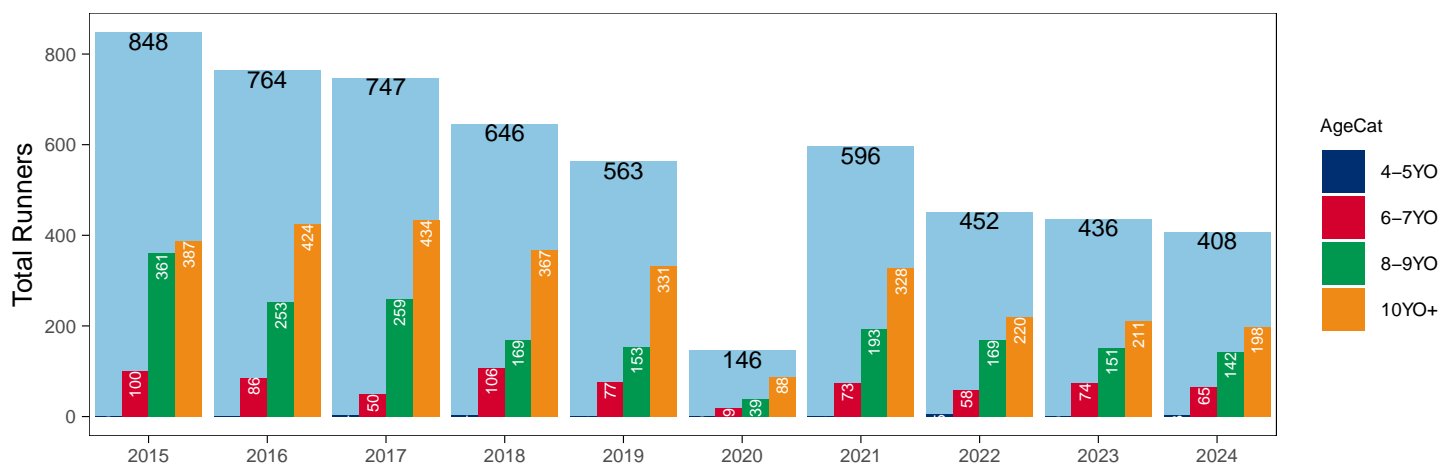
Hunter Chases

AgeCat	2015	2016	2017	2018	2019	2020	2021	2022	2023	2024	vs. Last Year	vs. Pre-Covid
4-5YO		1	4	4	2		2	5		3	NA / NA	+1 / +50.0%
6-7YO	100	86	50	106	77	19	73	58	74	65	-9 / -12.2%	-12 / -15.6%
8-9YO	361	253	259	169	153	39	193	169	151	142	-9 / -6.0%	-11 / -7.2%
10YO+	387	424	434	367	331	88	328	220	211	198	-13 / -6.2%	-133 / -40.2%
Total	848	764	747	646	563	146	596	452	436	408	-28 / -6.4%	-155 / -27.5%

'vs. Pre-Covid' is comparison between 2024 and 2019

YTD Total Hunter Chase Runners by Age

Total Runners in GB Hunter Chases shown by Age Category and Total



Year to Date Total Runners by Country Trained

Code	Country	2015	2016	2017	2018	2019	2020	2021	2022	2023	2024
Flat	GB	53376	54428	55722	57277	56641	45376	55401	53628	54456	55544
	IRE	443	512	653	763	756	247	363	303	449	579
	Other	135	82	84	64	72	27	35	64	52	84
Jump	GB	26540	26277	26891	26716	26401	20910	27546	25501	25299	24875
	IRE	774	869	785	655	699	304	541	843	941	809
	Other	5	11	17	10	10	12	5	2	6	15
Overall	GB	79916	80705	82613	83993	83042	66286	82947	79129	79755	80419
	IRE	1217	1381	1438	1418	1455	551	904	1146	1390	1388
	Other	140	93	101	74	82	39	40	66	58	99

Year to Date GB Trained Runners Racing Abroad

Code	Country	2015	2016	2017	2018	2019	2020	2021	2022	2023	2024
Flat	IRE	184	192	187	156	164	60	57	100	100	130
	FR	362	414	480	517	548	288	230	267	346	369
	GNY	19	25	30	37	50	24	12	19	23	41
	UAE	289	208	290	276	303	281	248	277	279	214
	BAH					6	7	7	44	30	54
	KSA						15	21	22	15	11
	Other	154	139	133	161	143	58	77	91	103	167
	Total	1008	978	1120	1147	1214	733	652	820	896	986
Jump	IRE	97	97	85	59	77	7	24	30	22	63
	FR	36	63	30	20	55	86	132	124	92	43
	Other	8	12	8	7	10		8	14	5	13
Total	141	172	123	86	142	93	164	168	119	119	

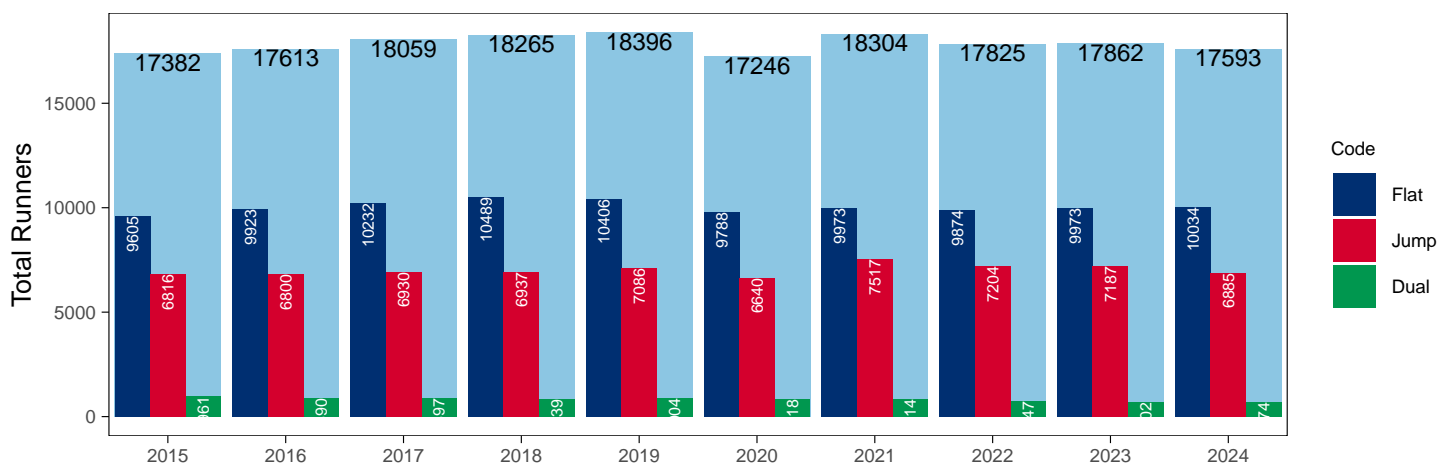
Year to Date Individual Runners

Code	2015	2016	2017	2018	2019	2020	2021	2022	2023	2024	vs. Last Year	vs. Pre-Covid
Flat	9605	9923	10232	10489	10406	9788	9973	9874	9973	10034	+61 / +0.6%	-372 / -3.6%
Jump	6816	6800	6930	6937	7086	6640	7517	7204	7187	6885	-302 / -4.2%	-201 / -2.8%
Dual	961	890	897	839	904	818	814	747	702	674	-28 / -4.0%	-230 / -25.4%
Overall	17382	17613	18059	18265	18396	17246	18304	17825	17862	17593	-269 / -1.5%	-803 / -4.4%

'vs. Pre-Covid' is comparison between 2024 and 2019

YTD Individual Runners

Individual Runners in GB Races, shown by Code and Total



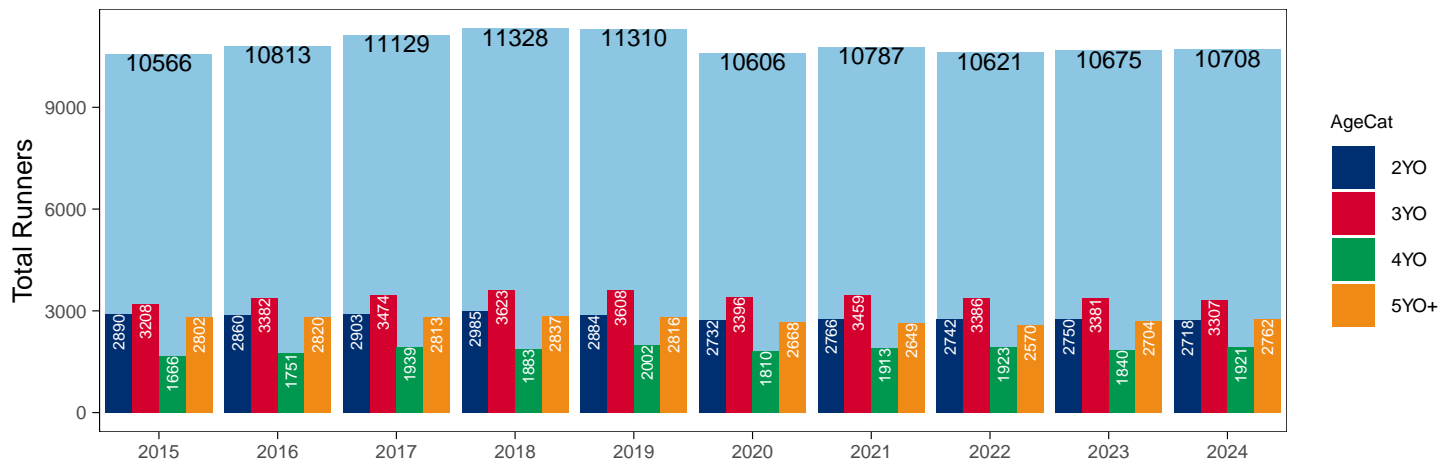
Flat

AgeCat	2015	2016	2017	2018	2019	2020	2021	2022	2023	2024	vs. Last Year	vs. Pre-Covid
2YO	2890	2860	2903	2985	2884	2732	2766	2742	2750	2718	-32 / -1.2%	-166 / -5.8%
3YO	3208	3382	3474	3623	3608	3396	3459	3386	3381	3307	-74 / -2.2%	-301 / -8.3%
4YO	1666	1751	1939	1883	2002	1810	1913	1923	1840	1921	+81 / +4.4%	-81 / -4.0%
5YO+	2802	2820	2813	2837	2816	2668	2649	2570	2704	2762	+58 / +2.1%	-54 / -1.9%
Total	10566	10813	11129	11328	11310	10606	10787	10621	10675	10708	+33 / +0.3%	-602 / -5.3%

'vs. Pre-Covid' is comparison between 2024 and 2019

YTD Individual Flat Runners by Age

Individual Runners in GB Flat Races, shown by Age Category and Total



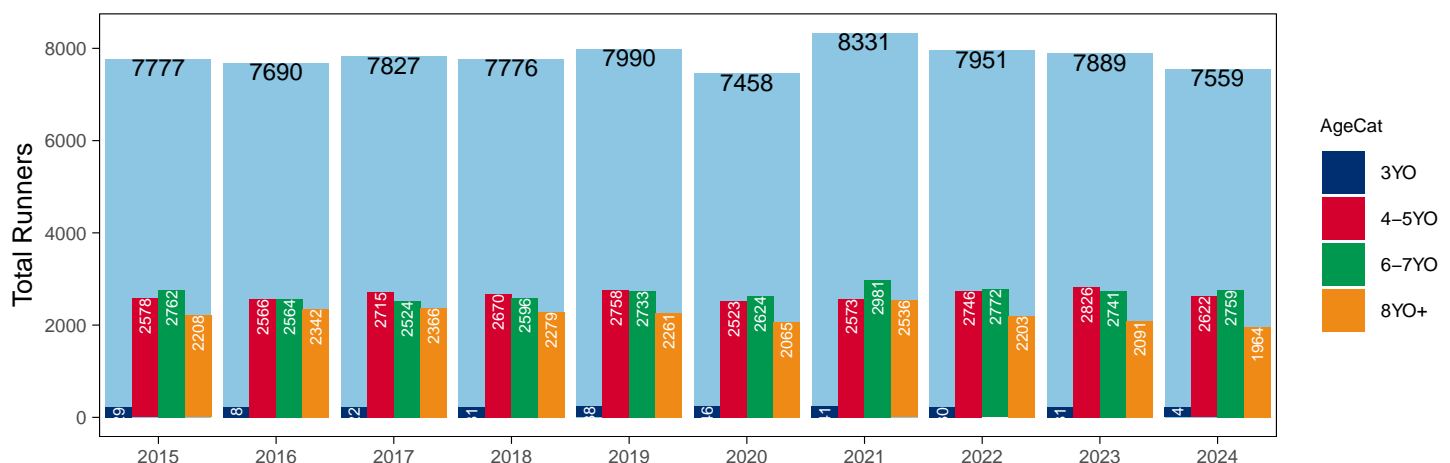
Jump

AgeCat	2015	2016	2017	2018	2019	2020	2021	2022	2023	2024	vs. Last Year	vs. Pre-Covid
3YO	229	218	222	231	238	246	241	230	231	214	-17 / -7.4%	-24 / -10.1%
4-5YO	2578	2566	2715	2670	2758	2523	2573	2746	2826	2622	-204 / -7.2%	-136 / -4.9%
6-7YO	2762	2564	2524	2596	2733	2624	2981	2772	2741	2759	+18 / +0.7%	+26 / +1.0%
8YO+	2208	2342	2366	2279	2261	2065	2536	2203	2091	1964	-127 / -6.1%	-297 / -13.1%
Total	7777	7690	7827	7776	7990	7458	8331	7951	7889	7559	-330 / -4.2%	-431 / -5.4%

'vs. Pre-Covid' is comparison between 2024 and 2019

YTD Individual Jump Runners by Age

Individual Runners in GB Jump Races, shown by Age Category and Total



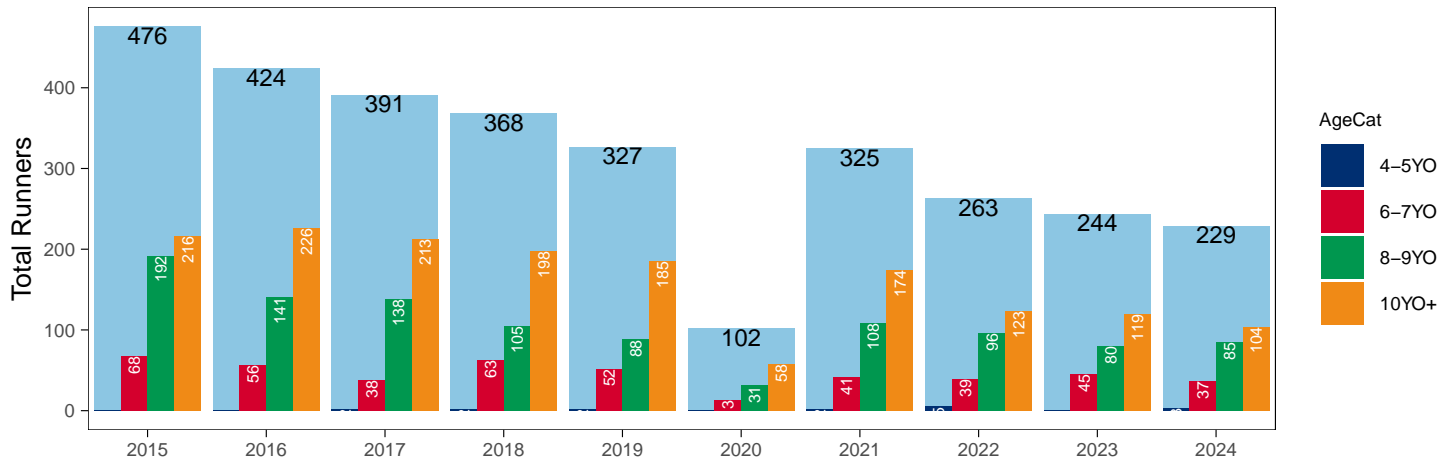
Hunter Chases

AgeCat	2015	2016	2017	2018	2019	2020	2021	2022	2023	2024	vs. Last Year	vs. Pre-Covid
4-5YO		1	2	2	2		2	5		3	NA / NA	+1 / +50.0%
6-7YO	68	56	38	63	52	13	41	39	45	37	-8 / -17.8%	-15 / -28.8%
8-9YO	192	141	138	105	88	31	108	96	80	85	+5 / +6.2%	-3 / -3.4%
10YO+	216	226	213	198	185	58	174	123	119	104	-15 / -12.6%	-81 / -43.8%
Total	476	424	391	368	327	102	325	263	244	229	-15 / -6.1%	-98 / -30.0%

'vs. Pre-Covid' is comparison between 2024 and 2019

YTD Individual Hunter Chase Runners by Age

Individual Runners in GB Hunter Chases shown by Age Category and Total



Year to Date Individual Runners by Country Trained

Code	Country	2015	2016	2017	2018	2019	2020	2021	2022	2023	2024
Flat	GB	9282	9601	9838	10057	9934	9599	9706	9619	9653	9654
	IRE	240	281	349	396	432	175	247	212	298	339
	Other	101	64	67	57	60	23	30	55	41	58
Jump	GB	6392	6337	6483	6521	6640	6381	7127	6649	6581	6365
	IRE	456	495	464	432	467	263	400	584	640	540
	Other	5	11	12	9	8	11	5	2	4	12
Dual	GB	942	875	878	819	888	812	808	734	682	650
	IRE	16	9	13	18	14	5	5	11	15	20
	Other			2							
Overall	GB	16616	16813	17199	17397	17462	16792	17641	17002	16916	16669
	IRE	712	785	826	846	913	443	652	807	953	899
	Other	106	75	81	66	68	34	35	57	45	70

Individual horses may appear under multiple countries.

Year to Date Total Runners by Rating Band

Flat

RatBand	2015	2016	2017	2018	2019	2020	2021	2022	2023	2024
2YO										
Unrated	6,806 (68.4%)	6,629 (67.2%)	6,905 (69.5%)	7,184 (69.0%)	6,731 (70.3%)	5,707 (66.9%)	6,575 (68.4%)	6,429 (69.2%)	6,305 (69.2%)	6,233 (69.8%)
0-50	253 (2.5%)	156 (1.6%)	154 (1.5%)	145 (1.4%)	204 (2.1%)	143 (1.7%)	191 (2.0%)	184 (2.0%)	213 (2.3%)	201 (2.2%)
51-60	481 (4.8%)	504 (5.1%)	486 (4.9%)	569 (5.5%)	512 (5.3%)	488 (5.7%)	438 (4.6%)	463 (5.0%)	480 (5.3%)	457 (5.1%)
61-70	845 (8.5%)	906 (9.2%)	852 (8.6%)	829 (8.0%)	709 (7.4%)	719 (8.4%)	817 (8.5%)	726 (7.8%)	745 (8.2%)	700 (7.8%)
71-80	894 (9.0%)	1,003 (10.2%)	906 (9.1%)	891 (8.6%)	804 (8.4%)	865 (10.1%)	857 (8.9%)	787 (8.5%)	776 (8.5%)	768 (8.6%)
81-90	452 (4.5%)	430 (4.4%)	359 (3.6%)	481 (4.6%)	357 (3.7%)	365 (4.3%)	451 (4.7%)	423 (4.6%)	385 (4.2%)	359 (4.0%)
91-100	137 (1.4%)	158 (1.6%)	166 (1.7%)	212 (2.0%)	172 (1.8%)	165 (1.9%)	186 (1.9%)	203 (2.2%)	129 (1.4%)	143 (1.6%)
101+	82 (0.8%)	73 (0.7%)	111 (1.1%)	106 (1.0%)	86 (0.9%)	85 (1.0%)	103 (1.1%)	81 (0.9%)	72 (0.8%)	73 (0.8%)
3YO+										
Unrated	3,698 (8.4%)	3,923 (8.7%)	4,065 (8.7%)	4,900 (10.3%)	4,661 (9.7%)	3,860 (10.4%)	4,740 (10.3%)	4,337 (9.7%)	4,264 (9.3%)	4,223 (8.9%)
0-50	3,904 (8.9%)	3,728 (8.3%)	4,276 (9.2%)	5,023 (10.5%)	5,891 (12.3%)	4,132 (11.1%)	5,311 (11.5%)	5,185 (11.6%)	5,628 (12.3%)	5,723 (12.1%)
51-60	7,586 (17.2%)	7,553 (16.7%)	7,861 (16.9%)	7,714 (16.2%)	8,553 (17.9%)	6,516 (17.6%)	8,320 (18.0%)	7,967 (17.8%)	8,878 (19.4%)	9,216 (19.5%)
61-70	9,512 (21.6%)	9,769 (21.6%)	9,632 (20.7%)	9,779 (20.5%)	9,591 (20.0%)	7,668 (20.7%)	9,690 (21.0%)	9,470 (21.2%)	9,667 (21.1%)	10,392 (22.0%)
71-80	8,849 (20.1%)	9,191 (20.4%)	9,325 (20.0%)	9,088 (19.1%)	8,586 (17.9%)	6,969 (18.8%)	8,330 (18.0%)	8,290 (18.5%)	8,433 (18.4%)	8,635 (18.3%)
81-90	5,732 (13.0%)	6,007 (13.3%)	6,266 (13.5%)	6,111 (12.8%)	5,632 (11.8%)	4,419 (11.9%)	5,278 (11.4%)	5,163 (11.6%)	4,946 (10.8%)	5,257 (11.1%)
91-100	2,801 (6.4%)	2,999 (6.6%)	3,001 (6.5%)	3,172 (6.7%)	3,168 (6.6%)	2,120 (5.7%)	2,729 (5.9%)	2,508 (5.6%)	2,408 (5.3%)	2,222 (4.7%)
101+	1,922 (4.4%)	1,993 (4.4%)	2,094 (4.5%)	1,900 (4.0%)	1,812 (3.8%)	1,429 (3.9%)	1,783 (3.9%)	1,779 (4.0%)	1,628 (3.6%)	1,605 (3.4%)

Jump

RatBand	2015	2016	2017	2018	2019	2020	2021	2022	2023	2024
Hurdle										
Unrated	4,608 (28.5%)	4,454 (27.6%)	4,633 (28.3%)	4,621 (28.3%)	4,784 (29.4%)	4,026 (31.7%)	4,607 (28.2%)	4,386 (27.9%)	4,544 (28.6%)	4,559 (28.7%)
0-100	4,328 (26.8%)	4,198 (26.0%)	4,245 (25.9%)	4,033 (24.7%)	3,976 (24.4%)	3,019 (23.8%)	4,901 (30.0%)	4,934 (31.4%)	5,165 (32.6%)	5,465 (34.4%)
101-110	2,341 (14.5%)	2,444 (15.2%)	2,454 (15.0%)	2,450 (15.0%)	2,343 (14.4%)	1,816 (14.3%)	2,202 (13.5%)	2,360 (15.0%)	2,342 (14.8%)	2,259 (14.2%)
111-120	2,202 (13.6%)	2,274 (14.1%)	2,305 (14.1%)	2,242 (13.7%)	2,279 (14.0%)	1,577 (12.4%)	2,013 (12.3%)	1,922 (12.2%)	1,874 (11.8%)	1,858 (11.7%)
121-130	1,519 (9.4%)	1,488 (9.2%)	1,535 (9.4%)	1,672 (10.2%)	1,659 (10.2%)	1,242 (9.8%)	1,481 (9.1%)	1,214 (7.7%)	1,222 (7.7%)	1,085 (6.8%)
131-140	806 (5.0%)	869 (5.4%)	852 (5.2%)	913 (5.6%)	850 (5.2%)	675 (5.3%)	751 (4.6%)	608 (3.9%)	479 (3.0%)	451 (2.8%)
141-150	272 (1.7%)	290 (1.8%)	273 (1.7%)	302 (1.9%)	280 (1.7%)	222 (1.8%)	257 (1.6%)	221 (1.4%)	174 (1.1%)	147 (0.9%)
151+	103 (0.6%)	112 (0.7%)	88 (0.5%)	90 (0.6%)	114 (0.7%)	107 (0.8%)	101 (0.6%)	69 (0.4%)	64 (0.4%)	56 (0.4%)
Chase										
Unrated	60 (0.7%)	70 (0.8%)	82 (0.9%)	68 (0.8%)	54 (0.6%)	29 (0.4%)	35 (0.4%)	14 (0.2%)	8 (0.1%)	7 (0.1%)
0-100	2,513 (28.9%)	2,458 (28.0%)	2,357 (26.3%)	2,364 (27.3%)	2,492 (28.9%)	1,922 (28.6%)	2,684 (30.6%)	2,694 (31.9%)	2,897 (35.4%)	2,904 (36.7%)
101-110	1,272 (14.6%)	1,291 (14.7%)	1,418 (15.8%)	1,384 (16.0%)	1,341 (15.6%)	999 (14.9%)	1,327 (15.1%)	1,361 (16.1%)	1,343 (16.4%)	1,388 (17.6%)
111-120	1,600 (18.4%)	1,571 (17.9%)	1,547 (17.3%)	1,445 (16.7%)	1,380 (16.0%)	1,096 (16.3%)	1,530 (17.5%)	1,486 (17.6%)	1,430 (17.5%)	1,323 (16.7%)
121-130	1,426 (16.4%)	1,383 (15.8%)	1,447 (16.2%)	1,475 (17.1%)	1,336 (15.5%)	1,116 (16.6%)	1,383 (15.8%)	1,288 (15.2%)	1,172 (14.3%)	1,063 (13.4%)
131-140	1,059 (12.2%)	1,166 (13.3%)	1,252 (14.0%)	1,126 (13.0%)	1,168 (13.5%)	863 (12.9%)	999 (11.4%)	930 (11.0%)	768 (9.4%)	686 (8.7%)
141-150	512 (5.9%)	544 (6.2%)	563 (6.3%)	560 (6.5%)	565 (6.6%)	483 (7.2%)	530 (6.0%)	450 (5.3%)	341 (4.2%)	334 (4.2%)
151+	265 (3.0%)	281 (3.2%)	283 (3.2%)	226 (2.6%)	285 (3.3%)	205 (3.1%)	279 (3.2%)	224 (2.7%)	215 (2.6%)	202 (2.6%)

Year to Date Total GB-Trained Runners by Rating Band

Flat

RatBand	2015	2016	2017	2018	2019	2020	2021	2022	2023	2024
2YO										
Unrated	6,728 (68.2%)	6,546 (67.0%)	6,829 (69.5%)	7,107 (69.0%)	6,615 (70.3%)	5,660 (66.7%)	6,532 (68.4%)	6,393 (69.2%)	6,231 (69.1%)	6,137 (69.6%)
0-50	253 (2.6%)	156 (1.6%)	154 (1.6%)	145 (1.4%)	203 (2.2%)	143 (1.7%)	191 (2.0%)	184 (2.0%)	213 (2.4%)	201 (2.3%)
51-60	481 (4.9%)	503 (5.1%)	486 (4.9%)	567 (5.5%)	509 (5.4%)	488 (5.8%)	438 (4.6%)	463 (5.0%)	480 (5.3%)	457 (5.2%)
61-70	845 (8.6%)	906 (9.3%)	852 (8.7%)	829 (8.0%)	708 (7.5%)	719 (8.5%)	817 (8.6%)	726 (7.9%)	745 (8.3%)	700 (7.9%)
71-80	893 (9.0%)	1,003 (10.3%)	905 (9.2%)	891 (8.7%)	804 (8.5%)	865 (10.2%)	856 (9.0%)	787 (8.5%)	776 (8.6%)	768 (8.7%)
81-90	452 (4.6%)	430 (4.4%)	353 (3.6%)	477 (4.6%)	355 (3.8%)	364 (4.3%)	448 (4.7%)	421 (4.6%)	383 (4.2%)	358 (4.1%)
91-100	137 (1.4%)	158 (1.6%)	157 (1.6%)	205 (2.0%)	156 (1.7%)	163 (1.9%)	176 (1.8%)	192 (2.1%)	124 (1.4%)	139 (1.6%)
101+	82 (0.8%)	73 (0.7%)	88 (0.9%)	79 (0.8%)	62 (0.7%)	80 (0.9%)	93 (1.0%)	69 (0.7%)	63 (0.7%)	60 (0.7%)
3YO+										
Unrated	3,669 (8.4%)	3,898 (8.7%)	4,037 (8.8%)	4,873 (10.4%)	4,636 (9.8%)	3,851 (10.4%)	4,732 (10.3%)	4,326 (9.7%)	4,246 (9.3%)	4,209 (9.0%)
0-50	3,863 (8.9%)	3,686 (8.3%)	4,202 (9.2%)	4,943 (10.5%)	5,789 (12.3%)	4,114 (11.2%)	5,311 (11.6%)	5,185 (11.7%)	5,598 (12.3%)	5,692 (12.2%)
51-60	7,527 (17.3%)	7,503 (16.8%)	7,763 (16.9%)	7,583 (16.1%)	8,443 (17.9%)	6,482 (17.6%)	8,319 (18.1%)	7,966 (17.9%)	8,849 (19.5%)	9,180 (19.6%)
61-70	9,474 (21.8%)	9,705 (21.7%)	9,569 (20.8%)	9,689 (20.6%)	9,528 (20.2%)	7,660 (20.8%)	9,687 (21.1%)	9,463 (21.3%)	9,651 (21.2%)	10,365 (22.2%)
71-80	8,808 (20.2%)	9,157 (20.5%)	9,261 (20.2%)	9,042 (19.2%)	8,550 (18.1%)	6,958 (18.9%)	8,307 (18.1%)	8,274 (18.6%)	8,399 (18.5%)	8,590 (18.4%)
81-90	5,700 (13.1%)	5,974 (13.4%)	6,233 (13.6%)	6,075 (12.9%)	5,595 (11.8%)	4,409 (12.0%)	5,236 (11.4%)	5,126 (11.5%)	4,909 (10.8%)	5,180 (11.1%)
91-100	2,744 (6.3%)	2,935 (6.6%)	2,934 (6.4%)	3,095 (6.6%)	3,088 (6.5%)	2,105 (5.7%)	2,661 (5.8%)	2,443 (5.5%)	2,324 (5.1%)	2,117 (4.5%)
101+	1,720 (4.0%)	1,795 (4.0%)	1,899 (4.1%)	1,677 (3.6%)	1,600 (3.4%)	1,315 (3.6%)	1,597 (3.5%)	1,610 (3.6%)	1,465 (3.2%)	1,391 (3.0%)

Jump

RatBand	2015	2016	2017	2018	2019	2020	2021	2022	2023	2024
Hurdle										
Unrated	4,513 (28.6%)	4,363 (27.9%)	4,557 (28.6%)	4,552 (28.6%)	4,702 (29.6%)	3,993 (32.0%)	4,554 (28.5%)	4,265 (28.0%)	4,423 (28.9%)	4,457 (29.0%)
0-100	4,266 (27.0%)	4,110 (26.3%)	4,147 (26.0%)	3,956 (24.8%)	3,922 (24.7%)	3,006 (24.1%)	4,873 (30.5%)	4,902 (32.2%)	5,097 (33.3%)	5,409 (35.1%)
101-110	2,294 (14.5%)	2,386 (15.3%)	2,393 (15.0%)	2,404 (15.1%)	2,290 (14.4%)	1,813 (14.5%)	2,159 (13.5%)	2,323 (15.3%)	2,292 (15.0%)	2,227 (14.5%)
111-120	2,161 (13.7%)	2,217 (14.2%)	2,257 (14.1%)	2,197 (13.8%)	2,228 (14.0%)	1,572 (12.6%)	1,979 (12.4%)	1,860 (12.2%)	1,811 (11.8%)	1,809 (11.8%)
121-130	1,480 (9.4%)	1,439 (9.2%)	1,485 (9.3%)	1,626 (10.2%)	1,615 (10.2%)	1,227 (9.8%)	1,437 (9.0%)	1,134 (7.5%)	1,145 (7.5%)	993 (6.5%)
131-140	737 (4.7%)	807 (5.2%)	808 (5.1%)	864 (5.4%)	791 (5.0%)	627 (5.0%)	697 (4.4%)	531 (3.5%)	407 (2.7%)	375 (2.4%)
141-150	238 (1.5%)	225 (1.4%)	236 (1.5%)	257 (1.6%)	232 (1.5%)	178 (1.4%)	213 (1.3%)	158 (1.0%)	112 (0.7%)	97 (0.6%)
151+	87 (0.6%)	89 (0.6%)	70 (0.4%)	75 (0.5%)	89 (0.6%)	81 (0.6%)	80 (0.5%)	47 (0.3%)	37 (0.2%)	25 (0.2%)
Chase										
Unrated	54 (0.6%)	70 (0.8%)	79 (0.9%)	67 (0.8%)	53 (0.6%)	29 (0.4%)	35 (0.4%)	13 (0.2%)	7 (0.1%)	6 (0.1%)
0-100	2,463 (29.3%)	2,402 (28.4%)	2,293 (26.5%)	2,331 (27.6%)	2,468 (29.3%)	1,919 (29.0%)	2,678 (31.2%)	2,687 (32.9%)	2,871 (36.6%)	2,890 (37.9%)
101-110	1,243 (14.8%)	1,255 (14.8%)	1,395 (16.1%)	1,372 (16.3%)	1,334 (15.9%)	996 (15.1%)	1,315 (15.3%)	1,346 (16.5%)	1,324 (16.9%)	1,377 (18.0%)
111-120	1,559 (18.5%)	1,540 (18.2%)	1,519 (17.6%)	1,425 (16.9%)	1,364 (16.2%)	1,087 (16.4%)	1,517 (17.6%)	1,461 (17.9%)	1,392 (17.7%)	1,302 (17.1%)
121-130	1,395 (16.6%)	1,361 (16.1%)	1,401 (16.2%)	1,444 (17.1%)	1,307 (15.5%)	1,111 (16.8%)	1,368 (15.9%)	1,238 (15.1%)	1,133 (14.4%)	1,030 (13.5%)
131-140	995 (11.8%)	1,114 (13.2%)	1,204 (13.9%)	1,095 (13.0%)	1,134 (13.5%)	846 (12.8%)	982 (11.4%)	876 (10.7%)	712 (9.1%)	639 (8.4%)
141-150	473 (5.6%)	487 (5.8%)	512 (5.9%)	520 (6.2%)	515 (6.1%)	456 (6.9%)	477 (5.5%)	391 (4.8%)	272 (3.5%)	256 (3.4%)
151+	230 (2.7%)	234 (2.8%)	248 (2.9%)	184 (2.2%)	234 (2.8%)	172 (2.6%)	224 (2.6%)	165 (2.0%)	138 (1.8%)	132 (1.7%)

Frequency of Runs

Year to Date Average Runs per Horse

Code	2015	2016	2017	2018	2019	2020	2021	2022	2023	2024
Flat	5.18	5.17	5.15	5.21	5.16	4.40	5.27	5.18	5.24	5.31
Jump	3.54	3.55	3.57	3.55	3.43	2.86	3.38	3.33	3.35	3.43
Dual Overall	7.69	7.55	7.43	7.35	7.30	5.96	7.27	6.98	7.03	7.33
Dual (Flat)	4.36	4.15	4.17	4.06	4.19	3.21	3.99	3.85	3.90	4.27
Dual (Jump)	3.33	3.40	3.26	3.29	3.11	2.75	3.28	3.13	3.13	3.07
All	4.68	4.67	4.66	4.68	4.60	3.88	4.58	4.51	4.55	4.66

Year to Date Proportion of Horses by Count of Runs

Runs	2015	2016	2017	2018	2019	2020	2021	2022	2023	2024
Flat										
1	1,531 (14.5%)	1,575 (14.6%)	1,645 (14.8%)	1,679 (14.8%)	1,728 (15.3%)	1,755 (16.5%)	1,485 (13.8%)	1,553 (14.6%)	1,562 (14.6%)	1,543 (14.4%)
2	1,428 (13.5%)	1,421 (13.1%)	1,469 (13.2%)	1,445 (12.8%)	1,566 (13.8%)	1,710 (16.1%)	1,351 (12.5%)	1,339 (12.6%)	1,378 (12.9%)	1,405 (13.1%)
3	1,458 (13.8%)	1,438 (13.3%)	1,522 (13.7%)	1,579 (13.9%)	1,520 (13.4%)	1,658 (15.6%)	1,476 (13.7%)	1,454 (13.7%)	1,396 (13.1%)	1,356 (12.7%)
4	1,209 (11.4%)	1,213 (11.2%)	1,217 (10.9%)	1,270 (11.2%)	1,221 (10.8%)	1,339 (12.6%)	1,216 (11.3%)	1,211 (11.4%)	1,219 (11.4%)	1,229 (11.5%)
5+	4,940 (46.8%)	5,166 (47.8%)	5,276 (47.4%)	5,355 (47.3%)	5,275 (46.6%)	4,144 (39.1%)	5,259 (48.8%)	5,064 (47.7%)	5,120 (48.0%)	5,175 (48.3%)
Jump										
1	1,864 (24.0%)	1,854 (24.1%)	1,975 (25.2%)	1,844 (23.7%)	1,978 (24.8%)	2,003 (26.9%)	2,033 (24.4%)	2,116 (26.6%)	2,101 (26.6%)	1,877 (24.8%)
2	1,473 (18.9%)	1,430 (18.6%)	1,379 (17.6%)	1,383 (17.8%)	1,551 (19.4%)	1,718 (23.0%)	1,613 (19.4%)	1,512 (19.0%)	1,472 (18.7%)	1,423 (18.8%)
3	1,158 (14.9%)	1,162 (15.1%)	1,149 (14.7%)	1,197 (15.4%)	1,302 (16.3%)	1,461 (19.6%)	1,399 (16.8%)	1,222 (15.4%)	1,229 (15.6%)	1,145 (15.1%)
4	1,032 (13.3%)	970 (12.6%)	954 (12.2%)	1,059 (13.6%)	992 (12.4%)	1,030 (13.8%)	1,137 (13.6%)	1,101 (13.8%)	968 (12.3%)	1,016 (13.4%)
5+	2,250 (28.9%)	2,274 (29.6%)	2,370 (30.3%)	2,293 (29.5%)	2,167 (27.1%)	1,246 (16.7%)	2,149 (25.8%)	2,000 (25.2%)	2,119 (26.9%)	2,098 (27.8%)
All Races										
1	2,922 (16.8%)	2,974 (16.9%)	3,123 (17.3%)	3,092 (16.9%)	3,234 (17.6%)	3,256 (18.9%)	3,097 (16.9%)	3,248 (18.2%)	3,243 (18.2%)	3,058 (17.4%)
2	2,591 (14.9%)	2,581 (14.7%)	2,608 (14.4%)	2,570 (14.1%)	2,821 (15.3%)	3,129 (18.1%)	2,694 (14.7%)	2,622 (14.7%)	2,667 (14.9%)	2,620 (14.9%)
3	2,409 (13.9%)	2,402 (13.6%)	2,480 (13.7%)	2,575 (14.1%)	2,623 (14.3%)	2,971 (17.2%)	2,703 (14.8%)	2,536 (14.2%)	2,497 (14.0%)	2,364 (13.4%)
4	2,121 (12.2%)	2,079 (11.8%)	2,078 (11.5%)	2,230 (12.2%)	2,124 (11.5%)	2,297 (13.3%)	2,258 (12.3%)	2,211 (12.4%)	2,105 (11.8%)	2,170 (12.3%)
5+	7,339 (42.2%)	7,577 (43.0%)	7,770 (43.0%)	7,798 (42.7%)	7,594 (41.3%)	5,593 (32.4%)	7,552 (41.3%)	7,208 (40.4%)	7,350 (41.1%)	7,381 (42.0%)

Year to Date Median Days Between Runs

Code/RatBand	2015	2016	2017	2018	2019	2020	2021	2022	2023	2024
All Runners	24	24	24	24	24	25	25	25	25	25
Flat										
Unrated	22	22	22	23	23	22	23	24	23	24
0-50	21	20	21	20	21	20	20	21	19	18
51-60	19	20	20	19	20	20	20	20	19	20
61-70	20	20	21	20	21	21	21	21	21	21
71-80	21	21	22	21	21	22	22	22	22	22
81-90	22	22	22	22	22	23	23	23	24	24
91-100	24	24	25	24	23	24	25	27	27	28
101+	27	28	28	28	28	28	28	31	33	33
All Flat Runners	21	21	22	21	22	22	22	22	22	22
Jump										
Unrated	35	36	33	37	36	36	39	37	40	40
0-100	26	26	26	27	27	31	29	28	30	30
101-110	28	29	28	29	29	31	31	30	32	33
111-120	29	29	29	31	31	34	32	32	33	33
121-130	32	32	30	31	33	35	34	33	35	36
131-140	34	34	34	35	35	38	36	35	38	36
141-150	35	35	36	39	39	43	41	39	44	39
151+	42	40	38	40	42	47	42	42	45	45
All Jump Runners	30	30	30	31	32	34	33	32	34	34

Horses Population by Gender

November 2024 Horses in Training Snapshot by Gender versus Previous Years

All Horses

Sex	2015	2016	2017	2018	2019	2020	2021	2022	2023	2024
Colt/Entire	1,815 (14.1%)	1,824 (14.1%)	1,870 (13.9%)	1,720 (12.5%)	1,824 (12.9%)	1,759 (12.0%)	1,645 (11.8%)	1,551 (11.3%)	1,620 (11.8%)	1,450 (10.8%)
Gelding	7,370 (57.3%)	7,494 (57.9%)	7,680 (57.0%)	7,980 (58.0%)	8,127 (57.4%)	8,554 (58.5%)	8,140 (58.4%)	7,973 (58.0%)	7,879 (57.3%)	7,870 (58.8%)
Filly/Mare	3,673 (28.6%)	3,632 (28.0%)	3,924 (29.1%)	4,047 (29.4%)	4,200 (29.7%)	4,308 (29.5%)	4,156 (29.8%)	4,212 (30.7%)	4,246 (30.9%)	4,056 (30.3%)
Rig	5 (0.0%)	3 (0.0%)	3 (0.0%)	3 (0.0%)	3 (0.0%)	3 (0.0%)	1 (0.0%)	0 (0.0%)	0 (0.0%)	0 (0.0%)
Total	12,863 (100.0%)	12,953 (100.0%)	13,477 (100.0%)	13,750 (100.0%)	14,154 (100.0%)	14,624 (100.0%)	13,942 (100.0%)	13,736 (100.0%)	13,745 (100.0%)	13,376 (100.0%)

Flat (including Dual)

Sex	2015	2016	2017	2018	2019	2020	2021	2022	2023	2024
Colt/Entire	1,270 (19.3%)	1,307 (19.4%)	1,395 (18.5%)	1,385 (18.6%)	1,350 (18.0%)	1,346 (17.9%)	1,224 (16.9%)	1,132 (15.9%)	1,177 (16.2%)	1,060 (14.5%)
Gelding	3,019 (45.8%)	3,126 (46.3%)	3,545 (47.1%)	3,442 (46.2%)	3,509 (46.8%)	3,577 (47.5%)	3,489 (48.1%)	3,425 (48.0%)	3,499 (48.1%)	3,743 (51.1%)
Filly/Mare	2,297 (34.9%)	2,313 (34.3%)	2,586 (34.3%)	2,614 (35.1%)	2,636 (35.2%)	2,598 (34.5%)	2,547 (35.1%)	2,578 (36.1%)	2,596 (35.7%)	2,526 (34.5%)
Rig	3 (0.0%)	3 (0.0%)	3 (0.0%)	2 (0.0%)	2 (0.0%)	2 (0.0%)	0 (0.0%)	0 (0.0%)	0 (0.0%)	0 (0.0%)
Total	6,589 (100.0%)	6,749 (100.0%)	7,529 (100.0%)	7,443 (100.0%)	7,497 (100.0%)	7,523 (100.0%)	7,260 (100.0%)	7,135 (100.0%)	7,272 (100.0%)	7,329 (100.0%)

Jump (including Dual)

Sex	2015	2016	2017	2018	2019	2020	2021	2022	2023	2024
Colt/Entire	44 (0.7%)	26 (0.4%)	30 (0.5%)	30 (0.5%)	26 (0.4%)	30 (0.4%)	40 (0.6%)	35 (0.6%)	32 (0.5%)	33 (0.5%)
Gelding	4,723 (80.3%)	4,753 (81.3%)	4,760 (78.9%)	4,895 (78.3%)	5,008 (78.1%)	5,385 (77.6%)	4,985 (77.5%)	4,848 (76.6%)	4,691 (75.8%)	4,561 (75.7%)
Filly/Mare	1,111 (18.9%)	1,066 (18.2%)	1,240 (20.6%)	1,324 (21.2%)	1,380 (21.5%)	1,527 (22.0%)	1,406 (21.9%)	1,443 (22.8%)	1,469 (23.7%)	1,428 (23.7%)
Rig	1 (0.0%)	0 (0.0%)	0 (0.0%)	1 (0.0%)	1 (0.0%)	1 (0.0%)	1 (0.0%)	0 (0.0%)	0 (0.0%)	0 (0.0%)
Total	5,879 (100.0%)	5,845 (100.0%)	6,030 (100.0%)	6,250 (100.0%)	6,415 (100.0%)	6,943 (100.0%)	6,432 (100.0%)	6,326 (100.0%)	6,192 (100.0%)	6,022 (100.0%)

Year to Date Total Runners by Gender

Sex	2015	2016	2017	2018	2019	2020	2021	2022	2023	2024
All Races										
Colt/Entire	8,875 (10.9%)	8,756 (10.7%)	8,812 (10.5%)	9,291 (10.9%)	8,383 (9.9%)	7,169 (10.7%)	8,037 (9.6%)	7,228 (9.0%)	7,187 (8.9%)	6,559 (8.0%)
Gelding	50,062 (61.6%)	51,015 (62.1%)	52,340 (62.2%)	52,185 (61.0%)	51,780 (61.2%)	40,461 (60.5%)	51,852 (61.8%)	49,837 (62.0%)	50,011 (61.6%)	51,665 (63.1%)
Filly/Mare	22,333 (27.5%)	22,389 (27.2%)	22,987 (27.3%)	23,995 (28.1%)	24,397 (28.8%)	19,240 (28.8%)	23,993 (28.6%)	23,266 (29.0%)	24,001 (29.6%)	23,682 (28.9%)
Rig	3 (0.0%)	19 (0.0%)	13 (0.0%)	14 (0.0%)	19 (0.0%)	6 (0.0%)	9 (0.0%)	10 (0.0%)	4 (0.0%)	0 (0.0%)
Flat										
Colt/Entire	8,802 (16.3%)	8,716 (15.8%)	8,764 (15.5%)	9,249 (15.9%)	8,348 (14.5%)	7,134 (15.6%)	7,961 (14.3%)	7,196 (13.3%)	7,138 (13.0%)	6,536 (11.6%)
Gelding	27,729 (51.4%)	28,632 (52.0%)	29,684 (52.6%)	30,350 (52.2%)	30,396 (52.9%)	23,704 (51.9%)	29,725 (53.3%)	29,059 (53.8%)	29,593 (53.8%)	31,913 (56.8%)
Filly/Mare	17,421 (32.3%)	17,655 (32.1%)	17,998 (31.9%)	18,491 (31.8%)	18,713 (32.6%)	14,811 (32.4%)	18,110 (32.5%)	17,740 (32.9%)	18,226 (33.2%)	17,758 (31.6%)
Rig	2 (0.0%)	19 (0.0%)	13 (0.0%)	14 (0.0%)	12 (0.0%)	1 (0.0%)	3 (0.0%)	0 (0.0%)	0 (0.0%)	0 (0.0%)
All Jump										
Colt/Entire	73 (0.3%)	40 (0.1%)	48 (0.2%)	42 (0.2%)	35 (0.1%)	35 (0.2%)	76 (0.3%)	32 (0.1%)	49 (0.2%)	23 (0.1%)
Gelding	22,333 (81.7%)	22,383 (82.4%)	22,656 (81.8%)	21,835 (79.7%)	21,384 (78.9%)	16,757 (78.9%)	22,127 (78.8%)	20,778 (78.9%)	20,418 (77.8%)	19,752 (76.9%)
Filly/Mare	4,912 (18.0%)	4,734 (17.4%)	4,989 (18.0%)	5,504 (20.1%)	5,684 (21.0%)	4,429 (20.9%)	5,883 (20.9%)	5,526 (21.0%)	5,775 (22.0%)	5,924 (23.1%)
Rig	1 (0.0%)	0 (0.0%)	0 (0.0%)	0 (0.0%)	7 (0.0%)	5 (0.0%)	6 (0.0%)	10 (0.0%)	4 (0.0%)	0 (0.0%)
Chase										
Colt/Entire	0 (0.0%)	1 (0.0%)	0 (0.0%)	1 (0.0%)	0 (0.0%)	0 (0.0%)	0 (0.0%)	0 (0.0%)	0 (0.0%)	0 (0.0%)
Gelding	8,094 (93.0%)	8,136 (92.8%)	8,268 (92.4%)	7,846 (90.7%)	7,769 (90.1%)	6,068 (90.4%)	7,866 (89.7%)	7,555 (89.4%)	7,292 (89.2%)	7,046 (89.1%)
Filly/Mare	613 (7.0%)	627 (7.2%)	681 (7.6%)	801 (9.3%)	847 (9.8%)	640 (9.5%)	895 (10.2%)	882 (10.4%)	879 (10.8%)	861 (10.9%)
Rig	0 (0.0%)	0 (0.0%)	0 (0.0%)	0 (0.0%)	5 (0.1%)	5 (0.1%)	6 (0.1%)	10 (0.1%)	3 (0.0%)	0 (0.0%)
Hurdle										
Colt/Entire	64 (0.4%)	35 (0.2%)	37 (0.2%)	31 (0.2%)	24 (0.1%)	21 (0.2%)	66 (0.4%)	21 (0.1%)	39 (0.2%)	13 (0.1%)
Gelding	12,665 (78.3%)	12,761 (79.1%)	12,868 (78.5%)	12,503 (76.6%)	12,257 (75.3%)	9,484 (74.8%)	12,210 (74.8%)	11,872 (75.6%)	11,781 (74.3%)	11,523 (72.6%)
Filly/Mare	3,450 (21.3%)	3,333 (20.7%)	3,480 (21.2%)	3,789 (23.2%)	4,002 (24.6%)	3,179 (25.1%)	4,037 (24.7%)	3,821 (24.3%)	4,043 (25.5%)	4,344 (27.4%)
Rig	0 (0.0%)	0 (0.0%)	0 (0.0%)	0 (0.0%)	2 (0.0%)	0 (0.0%)	0 (0.0%)	0 (0.0%)	1 (0.0%)	0 (0.0%)
NHF										
Colt/Entire	9 (0.4%)	4 (0.2%)	11 (0.5%)	10 (0.4%)	11 (0.5%)	14 (0.8%)	10 (0.3%)	11 (0.5%)	10 (0.5%)	10 (0.5%)
Gelding	1,574 (64.7%)	1,486 (65.6%)	1,520 (64.4%)	1,486 (61.7%)	1,358 (61.6%)	1,205 (65.9%)	2,051 (68.1%)	1,351 (61.8%)	1,345 (60.9%)	1,183 (61.9%)
Filly/Mare	849 (34.9%)	774 (34.2%)	828 (35.1%)	914 (37.9%)	835 (37.9%)	610 (33.4%)	951 (31.6%)	823 (37.7%)	853 (38.6%)	719 (37.6%)
Rig	1 (0.0%)	0 (0.0%)	0 (0.0%)	0 (0.0%)	0 (0.0%)	0 (0.0%)	0 (0.0%)	0 (0.0%)	0 (0.0%)	0 (0.0%)
Hunter										
Colt/Entire	1 (0.1%)	0 (0.0%)	0 (0.0%)	0 (0.0%)	0 (0.0%)	0 (0.0%)	0 (0.0%)	0 (0.0%)	0 (0.0%)	0 (0.0%)
Gelding	799 (94.2%)	720 (94.2%)	709 (94.9%)	603 (93.3%)	522 (92.7%)	142 (97.3%)	557 (93.5%)	429 (94.9%)	408 (93.6%)	379 (92.9%)
Filly/Mare	48 (5.7%)	44 (5.8%)	38 (5.1%)	43 (6.7%)	41 (7.3%)	4 (2.7%)	39 (6.5%)	23 (5.1%)	28 (6.4%)	29 (7.1%)

Year to Date Individual Runners by Gender

Sex	2015	2016	2017	2018	2019	2020	2021	2022	2023	2024
All Races										
Male	12,246 (70.5%)	12,419 (70.5%)	12,681 (70.2%)	12,706 (69.6%)	12,756 (69.3%)	11,970 (69.4%)	12,727 (69.5%)	12,319 (69.1%)	12,195 (68.3%)	12,067 (68.6%)
Female	5,136 (29.5%)	5,194 (29.5%)	5,378 (29.8%)	5,559 (30.4%)	5,640 (30.7%)	5,276 (30.6%)	5,577 (30.5%)	5,506 (30.9%)	5,667 (31.7%)	5,526 (31.4%)
Flat										
Male	6,744 (63.8%)	6,927 (64.1%)	7,142 (64.2%)	7,294 (64.4%)	7,248 (64.1%)	6,802 (64.1%)	6,892 (63.9%)	6,733 (63.4%)	6,707 (62.8%)	6,851 (64.0%)
Female	3,822 (36.2%)	3,886 (35.9%)	3,987 (35.8%)	4,034 (35.6%)	4,062 (35.9%)	3,804 (35.9%)	3,895 (36.1%)	3,888 (36.6%)	3,968 (37.2%)	3,857 (36.0%)
All Jump										
Male	6,263 (80.5%)	6,218 (80.9%)	6,264 (80.0%)	6,076 (78.1%)	6,228 (77.9%)	5,813 (77.9%)	6,473 (77.7%)	6,171 (77.6%)	6,041 (76.6%)	5,736 (75.9%)
Female	1,514 (19.5%)	1,472 (19.1%)	1,563 (20.0%)	1,700 (21.9%)	1,762 (22.1%)	1,645 (22.1%)	1,858 (22.3%)	1,780 (22.4%)	1,848 (23.4%)	1,823 (24.1%)
Chase										
Male	2,534 (91.9%)	2,499 (92.1%)	2,548 (90.9%)	2,489 (89.7%)	2,507 (89.1%)	2,321 (88.4%)	2,594 (88.1%)	2,461 (88.0%)	2,400 (87.8%)	2,281 (87.0%)
Female	224 (8.1%)	214 (7.9%)	256 (9.1%)	286 (10.3%)	308 (10.9%)	304 (11.6%)	352 (11.9%)	337 (12.0%)	335 (12.2%)	341 (13.0%)
Hurdle										
Male	4,312 (79.5%)	4,301 (80.3%)	4,294 (78.9%)	4,237 (77.4%)	4,340 (76.9%)	3,896 (75.9%)	4,392 (75.8%)	4,303 (76.9%)	4,151 (75.0%)	4,003 (73.5%)
Female	1,111 (20.5%)	1,052 (19.7%)	1,146 (21.1%)	1,239 (22.6%)	1,306 (23.1%)	1,239 (24.1%)	1,399 (24.2%)	1,296 (23.1%)	1,380 (25.0%)	1,446 (26.5%)
NHF										
Male	1,034 (66.8%)	987 (67.1%)	1,019 (66.6%)	1,035 (65.1%)	954 (64.7%)	934 (68.3%)	1,459 (70.3%)	955 (64.4%)	959 (63.8%)	841 (64.3%)
Female	514 (33.2%)	485 (32.9%)	510 (33.4%)	554 (34.9%)	521 (35.3%)	434 (31.7%)	615 (29.7%)	527 (35.6%)	543 (36.2%)	466 (35.7%)
Hunter										
Male	448 (94.1%)	395 (93.2%)	366 (93.6%)	339 (92.1%)	301 (92.0%)	98 (96.1%)	299 (92.0%)	243 (92.4%)	228 (93.4%)	212 (92.6%)
Female	28 (5.9%)	29 (6.8%)	25 (6.4%)	29 (7.9%)	26 (8.0%)	4 (3.9%)	26 (8.0%)	20 (7.6%)	16 (6.6%)	17 (7.4%)

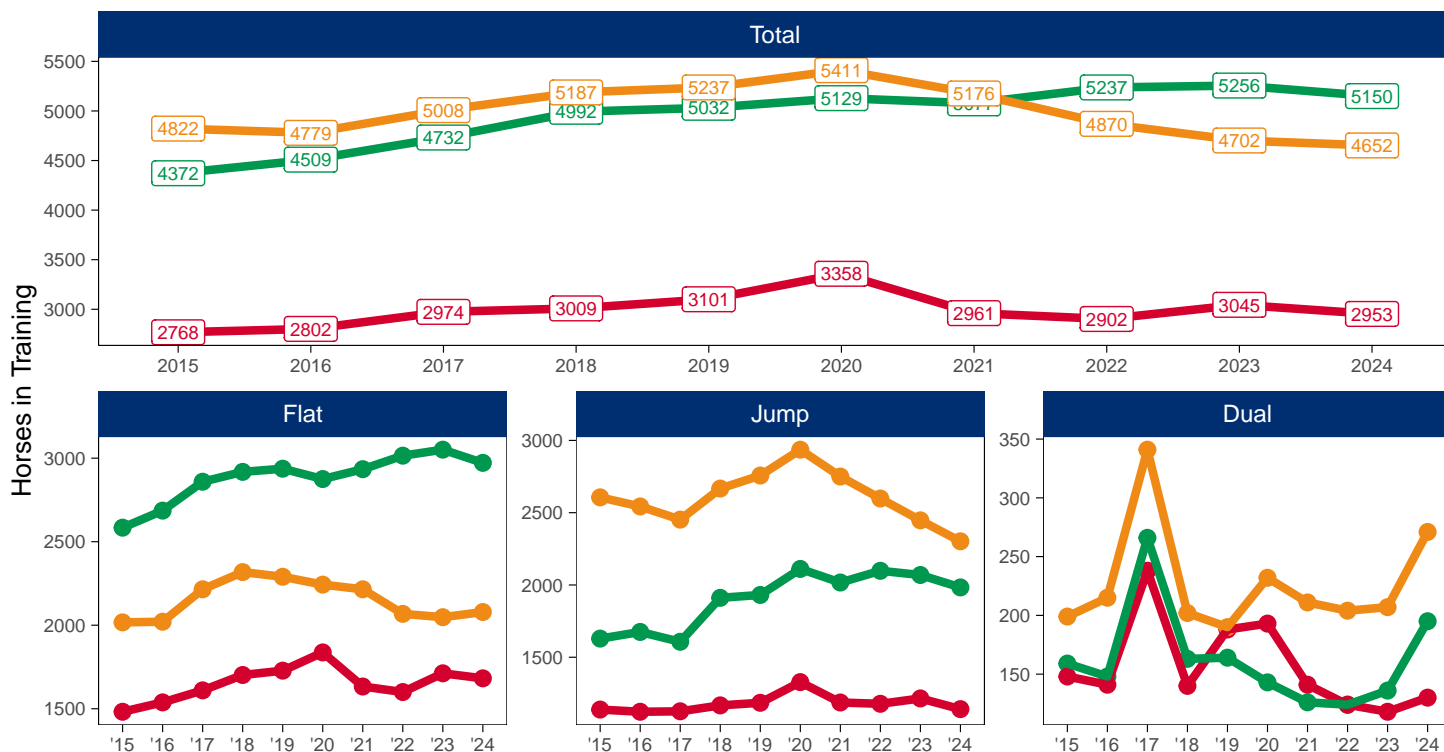
Horse Population by Location

November 2024 Horses in Training Snapshot by Region versus Previous Years

Snapshot of Total Horses in Training in November by Region

Horses in Training in November, shown by Training Type and Region

Region ● North ● Midlands ● South



North

AgeCat	2015	2016	2017	2018	2019	2020	2021	2022	2023	2024	vs. Last Year	vs. Pre-Covid
Flat Horses in Training												
2YO	523	539	566	604	677	681	598	548	613	533	-80 / -13.1%	-144 / -21.3%
3YO	354	377	386	399	370	426	407	369	395	421	+26 / +6.6%	+51 / +13.8%
4YO	202	208	257	261	256	245	220	247	234	267	+33 / +14.1%	+11 / +4.3%
5YO+	403	414	401	438	425	485	408	436	470	461	-9 / -1.9%	+36 / +8.5%
Subtotal	1482	1538	1610	1702	1728	1837	1633	1600	1712	1682	-30 / -1.8%	-46 / -2.7%
Jump Horses in Training												
3YO	65	79	57	72	59	54	60	88	66	57	-9 / -13.6%	-2 / -3.4%
4-5YO	376	374	395	377	421	425	386	400	439	394	-45 / -10.3%	-27 / -6.4%
6-7YO	373	330	334	375	373	441	397	379	402	396	-6 / -1.5%	+23 / +6.2%
8YO+	324	340	340	343	332	408	344	311	308	294	-14 / -4.5%	-38 / -11.4%
Subtotal	1138	1123	1126	1167	1185	1328	1187	1178	1215	1141	-74 / -6.1%	-44 / -3.7%
Dual Horses in Training												
3YO	40	32	56	32	47	47	28	37	33	29	-4 / -12.1%	-18 / -38.3%
4YO	39	29	67	40	46	42	41	26	29	34	+5 / +17.2%	-12 / -26.1%
5YO+	69	80	115	68	95	104	72	61	56	67	+11 / +19.6%	-28 / -29.5%
Subtotal	148	141	238	140	188	193	141	124	118	130	+12 / +10.2%	-58 / -30.9%
Total Horses in Training												
	2768	2802	2974	3009	3101	3358	2961	2902	3045	2953	-92 / -3.0%	-148 / -4.8%

'vs. Pre-Covid' is comparison between 2024 and 2019

Midlands

AgeCat	2015	2016	2017	2018	2019	2020	2021	2022	2023	2024	vs. Last Year	vs. Pre-Covid
Flat Horses in Training												
2YO	1259	1334	1395	1360	1348	1303	1399	1344	1367	1298	-69 / -5.0%	-50 / -3.7%
3YO	579	612	653	701	714	751	712	790	770	731	-39 / -5.1%	+17 / +2.4%
4YO	286	276	324	363	364	327	375	387	377	376	-1 / -0.3%	+12 / +3.3%
5YO+	460	464	487	494	511	494	448	494	537	567	+30 / +5.6%	+56 / +11.0%
Subtotal	2584	2686	2859	2918	2937	2875	2934	3015	3051	2972	-79 / -2.6%	+35 / +1.2%
Jump Horses in Training												
3YO	129	138	100	142	134	122	130	154	128	137	+9 / +7.0%	+3 / +2.2%
4-5YO	587	649	640	737	801	843	812	861	870	799	-71 / -8.2%	-2 / -0.2%
6-7YO	535	511	476	587	580	660	624	664	651	635	-16 / -2.5%	+55 / +9.5%
8YO+	378	377	391	445	416	486	451	419	420	412	-8 / -1.9%	-4 / -1.0%
Subtotal	1629	1675	1607	1911	1931	2111	2017	2098	2069	1983	-86 / -4.2%	+52 / +2.7%
Dual Horses in Training												
3YO	37	43	63	55	46	39	42	32	41	47	+6 / +14.6%	+1 / +2.2%
4YO	34	34	77	39	40	30	28	35	29	56	+27 / +93.1%	+16 / +40.0%
5YO+	88	71	126	69	78	74	56	57	66	92	+26 / +39.4%	+14 / +17.9%
Subtotal	159	148	266	163	164	143	126	124	136	195	+59 / +43.4%	+31 / +18.9%
Total Horses in Training												
	4372	4509	4732	4992	5032	5129	5077	5237	5256	5150	-106 / -2.0%	+118 / +2.3%

'vs. Pre-Covid' is comparison between 2024 and 2019

South

AgeCat	2015	2016	2017	2018	2019	2020	2021	2022	2023	2024	vs. Last Year	vs. Pre-Covid
Flat Horses in Training												
2YO	935	923	1044	1076	1078	1021	981	956	951	1024	+73 / +7.7%	-54 / -5.0%
3YO	472	454	493	563	539	551	563	476	473	465	-8 / -1.7%	-74 / -13.7%
4YO	219	244	254	263	286	277	267	262	234	248	+14 / +6.0%	-38 / -13.3%
5YO+	391	400	424	416	387	394	404	374	390	342	-48 / -12.3%	-45 / -11.6%
Subtotal	2017	2021	2215	2318	2290	2243	2215	2068	2048	2079	+31 / +1.5%	-211 / -9.2%
Jump Horses in Training												
3YO	217	207	207	211	243	205	234	212	223	195	-28 / -12.6%	-48 / -19.8%
4-5YO	1059	1050	978	1123	1115	1079	1055	1139	1061	959	-102 / -9.6%	-156 / -14.0%
6-7YO	802	747	759	790	844	985	870	752	716	733	+17 / +2.4%	-111 / -13.2%
8YO+	528	539	508	543	555	667	591	495	447	415	-32 / -7.2%	-140 / -25.2%
Subtotal	2606	2543	2452	2667	2757	2936	2750	2598	2447	2302	-145 / -5.9%	-455 / -16.5%
Dual Horses in Training												
3YO	39	45	76	60	58	60	69	61	63	75	+12 / +19.0%	+17 / +29.3%
4YO	37	38	99	41	53	51	47	41	48	71	+23 / +47.9%	+18 / +34.0%
5YO+	123	132	166	101	79	121	95	102	96	125	+29 / +30.2%	+46 / +58.2%
Subtotal	199	215	341	202	190	232	211	204	207	271	+64 / +30.9%	+81 / +42.6%
Total Horses in Training												
	4822	4779	5008	5187	5237	5411	5176	4870	4702	4652	-50 / -1.1%	-585 / -11.2%

'vs. Pre-Covid' is comparison between 2024 and 2019

November 2024 Horses in Training Snapshot by Country versus Previous Years

Type	2015	2016	2017	2018	2019	2020	2021	2022	2023	2024	vs. Last Year	vs. Pre-Covid
England												
Flat	5867	5991	6406	6682	6682	6683	6527	6405	6527	6441	-86 / -1.3%	-241 / -3.6%
Jump	4675	4626	4491	5004	5145	5556	5203	5155	4997	4698	-299 / -6.0%	-447 / -8.7%
Dual	454	439	744	447	491	506	425	415	425	543	+118 / +27.8%	+52 / +10.6%
Overall	10996	11056	11641	12133	12318	12745	12155	11975	11949	11682	-267 / -2.2%	-636 / -5.2%
Scotland												
Flat	101	128	164	123	131	148	145	173	170	176	+6 / +3.5%	+45 / +34.4%
Jump	309	312	337	360	355	410	367	384	397	397	0 / 0.0%	+42 / +11.8%
Dual	26	30	50	29	35	36	32	22	19	22	+3 / +15.8%	-13 / -37.1%
Overall	436	470	551	512	521	594	544	579	586	595	+9 / +1.5%	+74 / +14.2%
Wales												
Flat	115	126	114	133	142	124	110	105	114	116	+2 / +1.8%	-26 / -18.3%
Jump	389	403	357	381	373	409	384	335	337	331	-6 / -1.8%	-42 / -11.3%
Dual	26	35	51	29	16	26	21	15	17	31	+14 / +82.4%	+15 / +93.8%
Overall	530	564	522	543	531	559	515	455	468	478	+10 / +2.1%	-53 / -10.0%

'vs. Pre-Covid' is comparison between 2024 and 2019

November 2024 Horses in Training Snapshot by Training Centre versus Previous Years

Type	2015	2016	2017	2018	2019	2020	2021	2022	2023	2024	vs. Last Year	vs. Pre-Covid
Cheltenham (GL54)												
Flat	13	8	14	11	8	10	20	12	10	17	+7 / +70.0%	+9 / +112.5%
Jump	413	428	427	485	483	600	545	522	495	502	+7 / +1.4%	+19 / +3.9%
Dual	18	18	60	24	21	12	12	8	14	18	+4 / +28.6%	-3 / -14.3%
Overall	444	454	501	520	512	622	577	542	519	537	+18 / +3.5%	+25 / +4.9%
Lambourn (RG17)												
Flat	492	531	666	685	657	635	583	592	564	649	+85 / +15.1%	-8 / -1.2%
Jump	363	348	341	381	405	394	328	319	286	286	0 / 0.0%	-119 / -29.4%
Dual	25	17	36	20	26	26	24	32	27	29	+2 / +7.4%	+3 / +11.5%
Overall	880	896	1043	1086	1088	1055	935	943	877	964	+87 / +9.9%	-124 / -11.4%
Malton (YO17)												
Flat	365	385	389	466	503	564	476	429	469	433	-36 / -7.7%	-70 / -13.9%
Jump	125	144	135	110	107	118	98	96	90	58	-32 / -35.6%	-49 / -45.8%
Dual	27	21	35	28	36	50	36	30	27	25	-2 / -7.4%	-11 / -30.6%
Overall	517	550	559	604	646	732	610	555	586	516	-70 / -11.9%	-130 / -20.1%
Marlborough (SN8)												
Flat	310	286	286	311	306	300	260	232	268	273	+5 / +1.9%	-33 / -10.8%
Jump	112	62	80	72	75	78	98	81	80	77	-3 / -3.8%	+2 / +2.7%
Dual	4	2	1	1	5	4	4	1	4	4	0 / 0.0%	-1 / -20.0%
Overall	426	350	367	384	386	382	362	314	352	354	+2 / +0.6%	-32 / -8.3%
Middleham (DL8)												
Flat	346	332	324	351	382	391	323	310	354	324	-30 / -8.5%	-58 / -15.2%
Jump	84	79	87	102	112	136	117	113	114	102	-12 / -10.5%	-10 / -8.9%
Dual	23	21	45	22	33	41	19	20	14	20	+6 / +42.9%	-13 / -39.4%
Overall	453	432	456	475	527	568	459	443	482	446	-36 / -7.5%	-81 / -15.4%
Newbury (RG20)												
Flat	297	270	285	309	299	305	329	303	305	293	-12 / -3.9%	-6 / -2.0%
Jump	20	14	14	23	16	18	10	16	68	83	+15 / +22.1%	+67 / +418.8%
Dual	3	6	10	8	7	7	5	2	3	7	+4 / +133.3%	0 / 0.0%
Overall	320	290	309	340	322	330	344	321	376	383	+7 / +1.9%	+61 / +18.9%
Newmarket (CB8)												
Flat	1736	1830	1878	1937	1963	1931	1976	2004	2092	2000	-92 / -4.4%	+37 / +1.9%
Jump	50	49	49	60	67	79	63	49	81	72	-9 / -11.1%	+5 / +7.5%
Dual	16	25	33	20	21	22	24	21	32	52	+20 / +62.5%	+31 / +147.6%
Overall	1802	1904	1960	2017	2051	2032	2063	2074	2205	2124	-81 / -3.7%	+73 / +3.6%

'vs. Pre-Covid' is comparison between 2024 and 2019