



# Horse Population Report

Updated on 31 August 2024



# Introduction

Welcome to the latest update on the Racehorse Population from the British Horseracing Authority.

The aim of this document is to give stakeholders and the wider Public an insight into the current state of the Horse Population in Great Britain. It is hoped that this transparency will ensure that all decision makers have access to the key data required to help British Racing deliver a Competitive and Compelling product to stakeholders, racegoers and the wider public.

If you have any questions regarding the content of this report or suggestions for how it could be improved further, please contact Joe Yates – jyates@britishhorseracing.com

## Definitions

This report uses the Horses in Training returns from the Weatherby's Racing Administration System, this is completed by trainers and should be updated whenever a horse enters or leaves training in their care as part of the conditions of their licence.

## Horses in Training

Unless otherwise stated, snapshots of Horses in Training will be from the 15th day of the month in question and year to date figures will be up to and including the date titled at the front of the report.

Horses' ratings will be taken from the most recently published ratings by the BHA Handicapping Team, which is currently at 7am each Tuesday morning. For example, if looking at the Horses in a particular rating band for July 2011, the horses in training number will be from Friday 15th July 2011 and ratings, where possible, will be assigned to each horse from the ratings published by the BHA Handicappers on Tuesday 12th July 2011.

The Gender of a horse will be taken from the reporting date in question, regardless of whether this has since changed.

In the case of YTD reporting, where a horse's gender or training type has changed in the year-to-date period, the most recent is taken.

This report does not count any horses that are temporarily racing abroad for GB Trainers at the time of reporting.

Yearlings are not included in total counts of flat and/or dual horses but will be sometimes shown separately for information purposes.

Yearlings and two-year-olds are not included in total counts of jump horses or counts of jump horses that include dual horses but will be sometimes shown separately for information purposes.

Yearlings, two-year-olds and three-year-olds are not included in total counts of Hunter Chasers but will be sometimes shown separately for information purposes.

Yearlings and two-year-olds in training that are recorded as dual horses have been re-coded as flat horses.

Hunter Chasers are not included in any counts of Jump Horses or Total figures but will be sometimes shown separately for information purposes.

Horses' training locations are defined by the trainers' primary training location. Training regions are defined the same as regions for the Fixture List; 'North' is north of latitude 53.42911, 'South' is south of latitude 51.88002 and 'Midlands' is anywhere in between. Training centres are defined by postcodes and surrounding areas.

## Runners

Unless otherwise specified, Total Runners and Individual Runners metrics only counts runners that ran in GB races including any voided races. Withdrawn horses are not included.

Hunter Chases are not included in this section but will be sometimes shown separately for information purposes.

Total Runners is a count of all runners in races, whilst individual runners only counts each individual horse once.

# Monthly Horses in Training

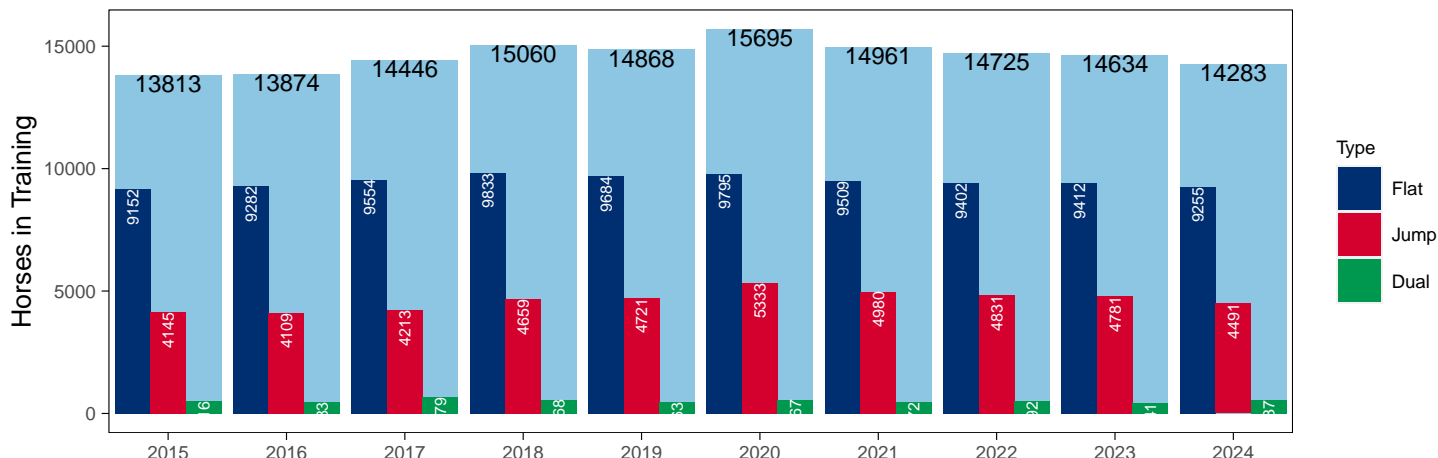
## August 2024 Horses in Training Snapshot versus Previous Years

Type	2015	2016	2017	2018	2019	2020	2021	2022	2023	2024	vs. Last Year	vs. Pre-Covid
Flat	9152	9282	9554	9833	9684	9795	9509	9402	9412	9255	-157 / -1.7%	-429 / -4.4%
Jump	4145	4109	4213	4659	4721	5333	4980	4831	4781	4491	-290 / -6.1%	-230 / -4.9%
Dual	516	483	679	568	463	567	472	492	441	537	+96 / +21.8%	+74 / +16.0%
<b>Total</b>	<b>13813</b>	<b>13874</b>	<b>14446</b>	<b>15060</b>	<b>14868</b>	<b>15695</b>	<b>14961</b>	<b>14725</b>	<b>14634</b>	<b>14283</b>	<b>-351 / -2.4%</b>	<b>-585 / -3.9%</b>

'vs. Pre-Covid' is comparison between 2024 and 2019

### Snapshot of Total Horses in Training in August

Horses in Training in August, shown by Training Type



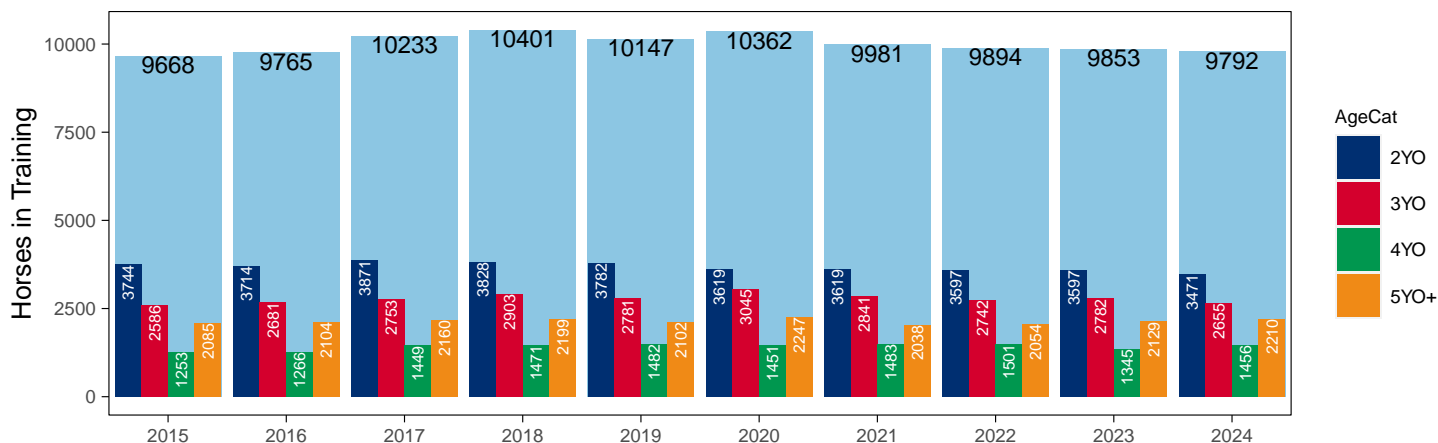
### Flat (including Dual)

AgeCat	2015	2016	2017	2018	2019	2020	2021	2022	2023	2024	vs. Last Year	vs. Pre-Covid
2YO	3744	3714	3871	3828	3782	3619	3619	3597	3597	3471	-126 / -3.5%	-311 / -8.2%
3YO	2586	2681	2753	2903	2781	3045	2841	2742	2782	2655	-127 / -4.6%	-126 / -4.5%
4YO	1253	1266	1449	1471	1482	1451	1483	1501	1345	1456	+111 / +8.3%	-26 / -1.8%
5YO+	2085	2104	2160	2199	2102	2247	2038	2054	2129	2210	+81 / +3.8%	+108 / +5.1%
<b>Total</b>	<b>9668</b>	<b>9765</b>	<b>10233</b>	<b>10401</b>	<b>10147</b>	<b>10362</b>	<b>9981</b>	<b>9894</b>	<b>9853</b>	<b>9792</b>	<b>-61 / -0.6%</b>	<b>-355 / -3.5%</b>

'vs. Pre-Covid' is comparison between 2024 and 2019

### Snapshot of Flat Horses in Training in August

Flat Horses in Training in August, shown by Age



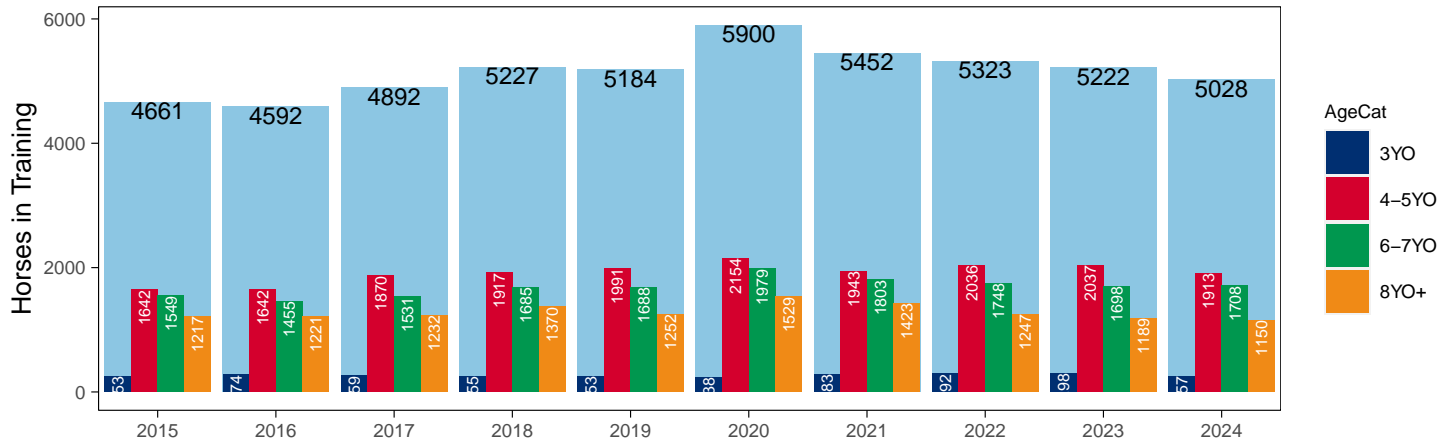
## Jump (including Dual)

AgeCat	2015	2016	2017	2018	2019	2020	2021	2022	2023	2024	vs. Last Year	vs. Pre-Covid
3YO	253	274	259	255	253	238	283	292	298	257	-41 / -13.8%	+4 / +1.6%
4-5YO	1642	1642	1870	1917	1991	2154	1943	2036	2037	1913	-124 / -6.1%	-78 / -3.9%
6-7YO	1549	1455	1531	1685	1688	1979	1803	1748	1698	1708	+10 / +0.6%	+20 / +1.2%
8YO+	1217	1221	1232	1370	1252	1529	1423	1247	1189	1150	-39 / -3.3%	-102 / -8.1%
<b>Total</b>	<b>4661</b>	<b>4592</b>	<b>4892</b>	<b>5227</b>	<b>5184</b>	<b>5900</b>	<b>5452</b>	<b>5323</b>	<b>5222</b>	<b>5028</b>	<b>-194 / -3.7%</b>	<b>-156 / -3.0%</b>

'vs. Pre-Covid' is comparison between 2024 and 2019

## Snapshot of Jump Horses in Training in August

Jump Horses in Training in August, shown by Age



# 2024 Horses in Training versus Previous Years

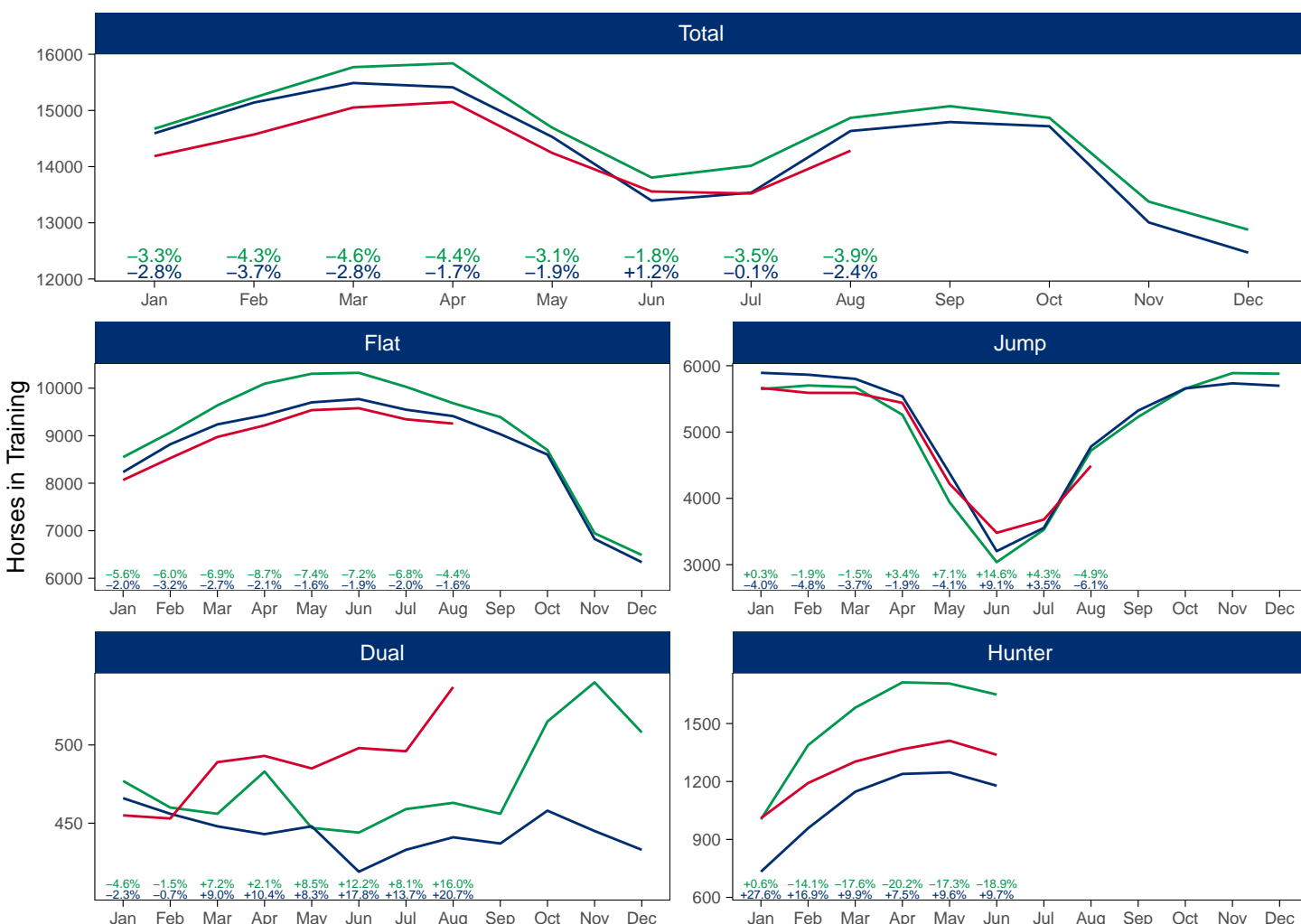
Type	Period	Jan	Feb	Mar	Apr	May	Jun	Jul	Aug	Sep	Oct	Nov	Dec
Flat	2024	8067	8527	8973	9216	9538	9578	9345	9255				
	2023	8234	8819	9238	9430	9701	9771	9547	9412	9032	8602	6826	6338
	Pre-Covid	8549	9067	9638	10095	10304	10323	10029	9684	9392	8698	6947	6489
Jump	2024	5665	5591	5590	5440	4220	3481	3680	4491				
	2023	5893	5865	5802	5539	4380	3204	3556	4781	5324	5658	5735	5698
	Pre-Covid	5648	5702	5677	5261	3942	3038	3527	4721	5228	5655	5889	5880
Dual	2024	455	453	489	493	485	498	496	537				
	2023	466	456	448	443	448	419	433	441	437	458	445	433
	Pre-Covid	477	460	456	483	447	444	459	463	456	515	540	508
Hunter	2024	1010	1192	1303	1367	1411	1338						
	2023	733	958	1147	1239	1247	1178						
	Pre-Covid	1004	1388	1582	1713	1707	1650						
<b>Total</b>	<b>2024</b>	<b>14187</b>	<b>14571</b>	<b>15052</b>	<b>15149</b>	<b>14243</b>	<b>13557</b>	<b>13521</b>	<b>14283</b>				
	<b>2023</b>	<b>14593</b>	<b>15140</b>	<b>15488</b>	<b>15412</b>	<b>14529</b>	<b>13394</b>	<b>13536</b>	<b>14634</b>	<b>14793</b>	<b>14718</b>	<b>13006</b>	<b>12469</b>
	<b>Pre-Covid</b>	<b>14674</b>	<b>15229</b>	<b>15771</b>	<b>15839</b>	<b>14693</b>	<b>13805</b>	<b>14015</b>	<b>14868</b>	<b>15076</b>	<b>14868</b>	<b>13376</b>	<b>12877</b>

'Pre-Covid' is 2019 values

## Monthly Horses in Training

2024 against 2023 and Pre-Covid, shown with % Difference

Period — Pre-Covid — 2023 — 2024



'Pre-Covid' is 2019 values

## Flat (including Dual)

AgeCat	Period	Jan	Feb	Mar	Apr	May	Jun	Jul	Aug	Sep	Oct	Nov	Dec
2YO	2024	1623	2016	2334	2509	2926	3190	3360	3471				
	2023	1718	2209	2459	2600	3020	3333	3494	3597	3580	3485	2934	2775
	Pre-Covid	2104	2425	2739	3107	3395	3594	3714	3782	3798	3637	3099	3000
3YO	2024	2886	2950	3020	3030	3037	2949	2739	2655				
	2023	2951	3067	3177	3221	3176	3072	2866	2782	2597	2458	1780	1615
	Pre-Covid	2992	3126	3276	3329	3293	3211	2998	2781	2631	2397	1770	1608
4YO	2024	1610	1608	1663	1683	1624	1585	1484	1456				
	2023	1644	1614	1637	1623	1579	1511	1404	1345	1283	1206	950	882
	Pre-Covid	1634	1661	1706	1718	1682	1654	1560	1482	1415	1332	1045	933
5YO+	2024	2403	2406	2445	2487	2436	2352	2258	2210				
	2023	2387	2385	2413	2429	2374	2274	2216	2129	2009	1911	1607	1499
	Pre-Covid	2296	2315	2373	2424	2381	2308	2216	2102	2004	1847	1573	1456
<b>Total</b>	<b>2024</b>	<b>8522</b>	<b>8980</b>	<b>9462</b>	<b>9709</b>	<b>10023</b>	<b>10076</b>	<b>9841</b>	<b>9792</b>				
	<b>2023</b>	<b>8700</b>	<b>9275</b>	<b>9686</b>	<b>9873</b>	<b>10149</b>	<b>10190</b>	<b>9980</b>	<b>9853</b>	<b>9469</b>	<b>9060</b>	<b>7271</b>	<b>6771</b>
	<b>Pre-Covid</b>	<b>9026</b>	<b>9527</b>	<b>10094</b>	<b>10578</b>	<b>10751</b>	<b>10767</b>	<b>10488</b>	<b>10147</b>	<b>9848</b>	<b>9213</b>	<b>7487</b>	<b>6997</b>

'Pre-Covid' is 2019 values

## Monthly Flat Horses in Training

2024 against 2023 and Pre-Covid, shown with % Difference

Period — Pre-Covid — 2023 — 2024



'Pre-Covid' is 2019 values

## Jump (including Dual)

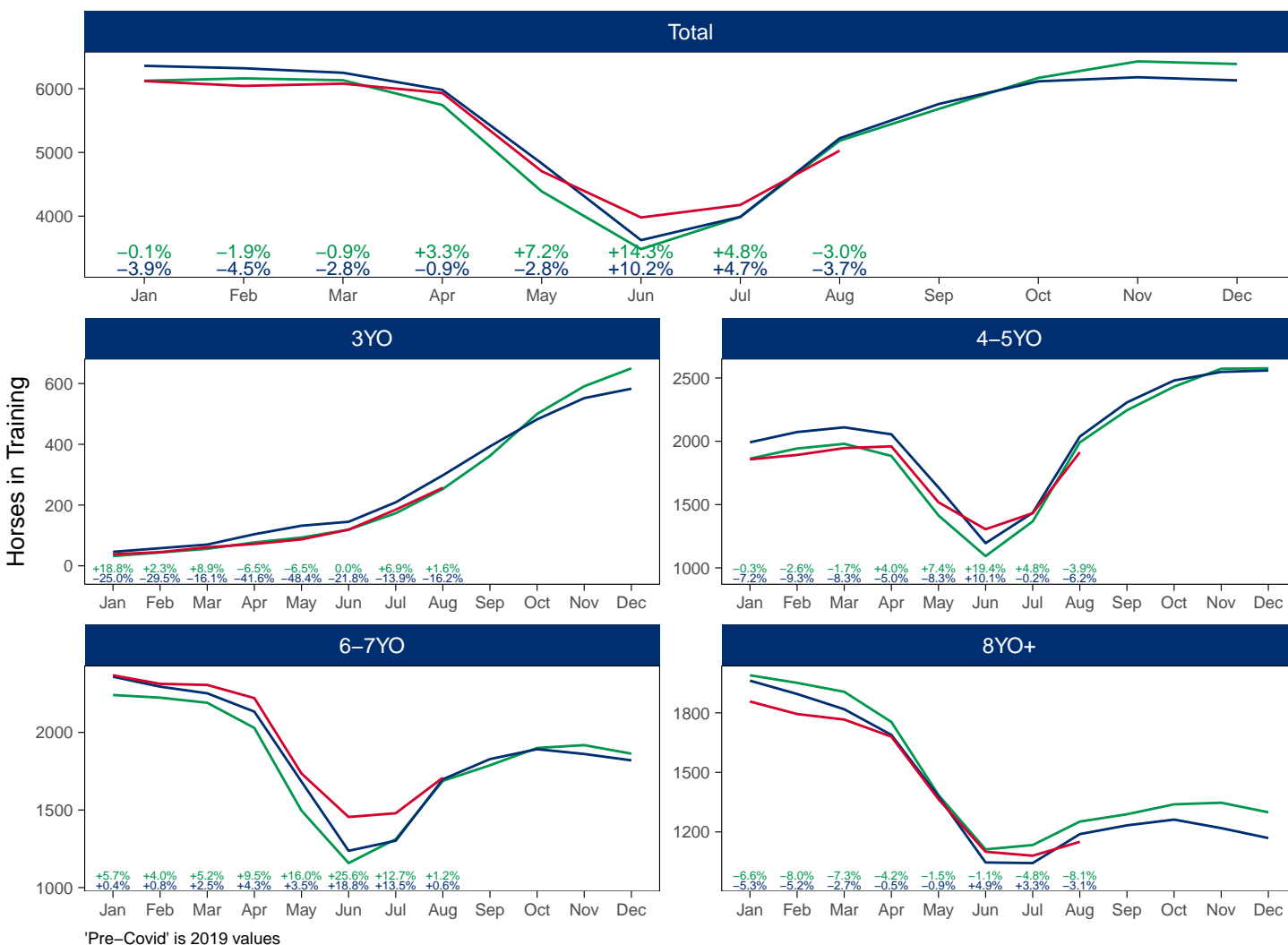
AgeCat	Period	Jan	Feb	Mar	Apr	May	Jun	Jul	Aug	Sep	Oct	Nov	Dec
3YO	2024	38	45	61	72	87	119	185	257				
	2023	46	58	70	104	132	145	209	298	393	482	552	583
	Pre-Covid	32	44	56	77	93	119	173	253	362	500	591	650
4-5YO	2024	1857	1892	1946	1960	1518	1305	1432	1913				
	2023	1992	2073	2110	2055	1635	1195	1435	2037	2307	2480	2548	2559
	Pre-Covid	1863	1943	1980	1884	1414	1093	1367	1991	2245	2431	2573	2576
6-7YO	2024	2368	2313	2306	2221	1735	1455	1479	1708				
	2023	2359	2295	2252	2134	1683	1237	1302	1698	1828	1892	1861	1820
	Pre-Covid	2241	2224	2191	2029	1496	1158	1312	1688	1788	1900	1918	1863
8YO+	2024	1857	1794	1766	1680	1365	1100	1080	1150				
	2023	1962	1895	1818	1689	1378	1046	1043	1189	1233	1262	1219	1169
	Pre-Covid	1989	1951	1906	1754	1386	1112	1134	1252	1289	1339	1347	1299
<b>Total</b>	<b>2024</b>	<b>6120</b>	<b>6044</b>	<b>6079</b>	<b>5933</b>	<b>4705</b>	<b>3979</b>	<b>4176</b>	<b>5028</b>				
	<b>2023</b>	<b>6359</b>	<b>6321</b>	<b>6250</b>	<b>5982</b>	<b>4828</b>	<b>3623</b>	<b>3989</b>	<b>5222</b>	<b>5761</b>	<b>6116</b>	<b>6180</b>	<b>6131</b>
	<b>Pre-Covid</b>	<b>6125</b>	<b>6162</b>	<b>6133</b>	<b>5744</b>	<b>4389</b>	<b>3482</b>	<b>3986</b>	<b>5184</b>	<b>5684</b>	<b>6170</b>	<b>6429</b>	<b>6388</b>

'Pre-Covid' is 2019 values

## Monthly Jump Horses in Training

2024 against 2023 and Pre-Covid, shown with % Difference

Period — Pre-Covid — 2023 — 2024



'Pre-Covid' is 2019 values

# August 2024 Horses in Training by Rating Band Snapshot versus Previous Years

## Flat (including Dual)

AgeCat	Rat Band	2015	2016	2017	2018	2019	2020	2021	2022	2023	2024
2YO	Unrated	3,061 (81.8%)	3,036 (81.7%)	3,175 (82.0%)	3,149 (82.3%)	3,164 (83.7%)	3,055 (84.4%)	2,953 (81.6%)	2,990 (83.1%)	2,944 (81.8%)	2,808 (80.9%)
	0-50	48 (1.3%)	38 (1.0%)	49 (1.3%)	43 (1.1%)	52 (1.4%)	27 (0.7%)	55 (1.5%)	37 (1.0%)	49 (1.4%)	44 (1.3%)
	51-60	93 (2.5%)	93 (2.5%)	114 (2.9%)	107 (2.8%)	100 (2.6%)	70 (1.9%)	79 (2.2%)	90 (2.5%)	84 (2.3%)	91 (2.6%)
	61-70	157 (4.2%)	174 (4.7%)	171 (4.4%)	152 (4.0%)	154 (4.1%)	141 (3.9%)	155 (4.3%)	140 (3.9%)	160 (4.4%)	153 (4.4%)
	71-80	211 (5.6%)	203 (5.5%)	209 (5.4%)	180 (4.7%)	161 (4.3%)	173 (4.8%)	197 (5.4%)	162 (4.5%)	186 (5.2%)	200 (5.8%)
	81-90	116 (3.1%)	110 (3.0%)	83 (2.1%)	113 (3.0%)	82 (2.2%)	90 (2.5%)	109 (3.0%)	103 (2.9%)	113 (3.1%)	97 (2.8%)
	91-100	34 (0.9%)	41 (1.1%)	41 (1.1%)	56 (1.5%)	46 (1.2%)	39 (1.1%)	42 (1.2%)	49 (1.4%)	36 (1.0%)	53 (1.5%)
	101+	24 (0.6%)	19 (0.5%)	29 (0.7%)	28 (0.7%)	23 (0.6%)	24 (0.7%)	29 (0.8%)	26 (0.7%)	25 (0.7%)	25 (0.7%)
	<b>Subtotal</b>	<b>3,744 (100.0%)</b>	<b>3,714 (100.0%)</b>	<b>3,871 (100.0%)</b>	<b>3,828 (100.0%)</b>	<b>3,782 (100.0%)</b>	<b>3,619 (100.0%)</b>	<b>3,619 (100.0%)</b>	<b>3,597 (100.0%)</b>	<b>3,597 (100.0%)</b>	<b>3,471 (100.0%)</b>
3YO	Unrated	551 (21.3%)	609 (22.7%)	587 (21.3%)	775 (26.7%)	701 (25.2%)	979 (32.2%)	755 (26.6%)	681 (24.8%)	677 (24.3%)	684 (25.8%)
	0-50	184 (7.1%)	178 (6.6%)	203 (7.4%)	195 (6.7%)	261 (9.4%)	207 (6.8%)	227 (8.0%)	204 (7.4%)	216 (7.8%)	206 (7.8%)
	51-60	318 (12.3%)	310 (11.6%)	338 (12.3%)	307 (10.6%)	358 (12.9%)	335 (11.0%)	333 (11.7%)	350 (12.8%)	329 (11.8%)	284 (10.7%)
	61-70	406 (15.7%)	483 (18.0%)	438 (15.9%)	459 (15.8%)	443 (15.9%)	468 (15.4%)	467 (16.4%)	452 (16.5%)	488 (17.5%)	458 (17.3%)
	71-80	500 (19.3%)	502 (18.7%)	537 (19.5%)	519 (17.9%)	403 (14.5%)	512 (16.8%)	478 (16.8%)	480 (17.5%)	495 (17.8%)	450 (16.9%)
	81-90	338 (13.1%)	350 (13.1%)	372 (13.5%)	355 (12.2%)	326 (11.7%)	323 (10.6%)	326 (11.5%)	304 (11.1%)	314 (11.3%)	327 (12.3%)
	91-100	168 (6.5%)	142 (5.3%)	180 (6.5%)	178 (6.1%)	179 (6.4%)	137 (4.5%)	144 (5.1%)	158 (5.8%)	158 (5.7%)	138 (5.2%)
	101+	121 (4.7%)	107 (4.0%)	98 (3.6%)	115 (4.0%)	110 (4.0%)	84 (2.8%)	111 (3.9%)	113 (4.1%)	105 (3.8%)	108 (4.1%)
	<b>Subtotal</b>	<b>2,586 (100.0%)</b>	<b>2,681 (100.0%)</b>	<b>2,753 (100.0%)</b>	<b>2,903 (100.0%)</b>	<b>2,781 (100.0%)</b>	<b>3,045 (100.0%)</b>	<b>2,841 (100.0%)</b>	<b>2,742 (100.0%)</b>	<b>2,782 (100.0%)</b>	<b>2,655 (100.0%)</b>
4YO	Unrated	98 (7.8%)	163 (12.9%)	206 (14.2%)	204 (13.9%)	183 (12.3%)	234 (16.1%)	227 (15.3%)	204 (13.6%)	165 (12.3%)	189 (13.0%)
	0-50	94 (7.5%)	110 (8.7%)	144 (9.9%)	175 (11.9%)	199 (13.4%)	135 (9.3%)	180 (12.1%)	182 (12.1%)	186 (13.8%)	163 (11.2%)
	51-60	179 (14.3%)	162 (12.8%)	197 (13.6%)	153 (10.4%)	193 (13.0%)	211 (14.5%)	216 (14.6%)	201 (13.4%)	193 (14.3%)	223 (15.3%)
	61-70	201 (16.0%)	190 (15.0%)	232 (16.0%)	269 (18.3%)	237 (16.0%)	231 (15.9%)	246 (16.6%)	268 (17.9%)	238 (17.7%)	266 (18.3%)
	71-80	243 (19.4%)	225 (17.8%)	241 (16.6%)	237 (16.1%)	247 (16.7%)	234 (16.1%)	239 (16.1%)	250 (16.7%)	230 (17.1%)	242 (16.6%)
	81-90	191 (15.2%)	186 (14.7%)	185 (12.8%)	190 (12.9%)	184 (12.4%)	175 (12.1%)	172 (11.6%)	187 (12.5%)	147 (10.9%)	173 (11.9%)
	91-100	127 (10.1%)	121 (9.6%)	132 (9.1%)	143 (9.7%)	134 (9.0%)	117 (8.1%)	119 (8.0%)	106 (7.1%)	88 (6.5%)	110 (7.6%)
	101+	120 (9.6%)	109 (8.6%)	112 (7.7%)	100 (6.8%)	105 (7.1%)	114 (7.9%)	84 (5.7%)	103 (6.9%)	98 (7.3%)	90 (6.2%)
	<b>Subtotal</b>	<b>1,253 (100.0%)</b>	<b>1,266 (100.0%)</b>	<b>1,449 (100.0%)</b>	<b>1,471 (100.0%)</b>	<b>1,482 (100.0%)</b>	<b>1,451 (100.0%)</b>	<b>1,483 (100.0%)</b>	<b>1,501 (100.0%)</b>	<b>1,345 (100.0%)</b>	<b>1,456 (100.0%)</b>
5YO+	Unrated	147 (7.1%)	269 (12.8%)	315 (14.6%)	292 (13.3%)	247 (11.8%)	353 (15.7%)	268 (13.2%)	305 (14.8%)	244 (11.5%)	252 (11.4%)
	0-50	243 (11.7%)	200 (9.5%)	238 (11.0%)	290 (13.2%)	335 (15.9%)	294 (13.1%)	300 (14.7%)	269 (13.1%)	265 (12.4%)	309 (14.0%)
	51-60	318 (15.3%)	304 (14.4%)	302 (14.0%)	337 (15.3%)	337 (16.0%)	330 (14.7%)	326 (16.0%)	307 (14.9%)	370 (17.4%)	398 (18.0%)
	61-70	419 (20.1%)	355 (16.9%)	373 (17.3%)	362 (16.5%)	372 (17.7%)	386 (17.2%)	357 (17.5%)	376 (18.3%)	400 (18.8%)	432 (19.5%)
	71-80	372 (17.8%)	375 (17.8%)	309 (14.3%)	334 (15.2%)	304 (14.5%)	353 (15.7%)	278 (13.6%)	279 (13.6%)	328 (15.4%)	332 (15.0%)
	81-90	286 (13.7%)	260 (12.4%)	280 (13.0%)	276 (12.6%)	241 (11.5%)	252 (11.2%)	223 (10.9%)	230 (11.2%)	244 (11.5%)	235 (10.6%)
	91-100	155 (7.4%)	195 (9.3%)	184 (8.5%)	163 (7.4%)	136 (6.5%)	140 (6.2%)	144 (7.1%)	148 (7.2%)	144 (6.8%)	134 (6.1%)
	101+	145 (7.0%)	146 (6.9%)	159 (7.4%)	145 (6.6%)	130 (6.2%)	139 (6.2%)	142 (7.0%)	140 (6.8%)	134 (6.3%)	118 (5.3%)
	<b>Subtotal</b>	<b>2,085 (100.0%)</b>	<b>2,104 (100.0%)</b>	<b>2,160 (100.0%)</b>	<b>2,199 (100.0%)</b>	<b>2,102 (100.0%)</b>	<b>2,247 (100.0%)</b>	<b>2,038 (100.0%)</b>	<b>2,054 (100.0%)</b>	<b>2,129 (100.0%)</b>	<b>2,210 (100.0%)</b>
Overall	Unrated	3,857 (39.9%)	4,077 (41.8%)	4,283 (41.9%)	4,420 (42.5%)	4,295 (42.3%)	4,621 (44.6%)	4,203 (42.1%)	4,180 (42.2%)	4,030 (40.9%)	3,933 (40.2%)
	0-50	569 (5.9%)	526 (5.4%)	634 (6.2%)	703 (6.8%)	847 (8.3%)	663 (6.4%)	762 (7.6%)	692 (7.0%)	716 (7.3%)	722 (7.4%)
	51-60	908 (9.4%)	869 (8.9%)	951 (9.3%)	904 (8.7%)	988 (9.7%)	946 (9.1%)	954 (9.6%)	948 (9.6%)	976 (9.9%)	996 (10.2%)
	61-70	1,183 (12.2%)	1,202 (12.3%)	1,214 (11.9%)	1,242 (11.9%)	1,206 (11.9%)	1,226 (11.8%)	1,225 (12.3%)	1,236 (12.5%)	1,286 (13.1%)	1,309 (13.4%)
	71-80	1,326 (13.7%)	1,305 (13.4%)	1,296 (12.7%)	1,270 (12.2%)	1,115 (11.0%)	1,272 (12.3%)	1,192 (11.9%)	1,171 (11.8%)	1,239 (12.6%)	1,224 (12.5%)
	81-90	931 (9.6%)	906 (9.3%)	920 (9.0%)	934 (9.0%)	833 (8.2%)	840 (8.1%)	830 (8.3%)	824 (8.3%)	818 (8.3%)	832 (8.5%)
	91-100	484 (5.0%)	499 (5.1%)	537 (5.2%)	540 (5.2%)	495 (4.9%)	433 (4.2%)	449 (4.5%)	461 (4.7%)	426 (4.3%)	435 (4.4%)
	101+	410 (4.2%)	381 (3.9%)	398 (3.9%)	388 (3.7%)	368 (3.6%)	361 (3.5%)	366 (3.7%)	382 (3.9%)	362 (3.7%)	341 (3.5%)
	<b>Total</b>	<b>9,668 (100.0%)</b>	<b>9,765 (100.0%)</b>	<b>10,233 (100.0%)</b>	<b>10,401 (100.0%)</b>	<b>10,147 (100.0%)</b>	<b>10,362 (100.0%)</b>	<b>9,981 (100.0%)</b>	<b>9,894 (100.0%)</b>	<b>9,853 (100.0%)</b>	<b>9,792 (100.0%)</b>

Where a horse has more than one published rating (published Flat Turf and published Flat AWT mark), the higher of the two is taken.



Jump (including Dual)

AgeCat	RatBand	2015	2016	2017	2018	2019	2020	2021	2022	2023	2024
3YO	Unrated	253 (100.0%)	274 (100.0%)	259 (100.0%)	255 (100.0%)	252 (99.6%)	237 (99.6%)	274 (96.8%)	286 (97.9%)	288 (96.6%)	257 (100.0%)
	0-100	NA (-)	NA (-)	NA (-)	NA (-)	1 (0.4%)	NA (-)	2 (0.7%)	2 (0.7%)	5 (1.7%)	NA (-)
	101-110	NA (-)	NA (-)	NA (-)	NA (-)	NA (-)	NA (-)	4 (1.4%)	3 (1.0%)	5 (1.7%)	NA (-)
	111-120	NA (-)	NA (-)	NA (-)	NA (-)	NA (-)	NA (-)	3 (1.1%)	1 (0.3%)	NA (-)	NA (-)
	121-130	NA (-)	NA (-)	NA (-)	NA (-)	NA (-)	1 (0.4%)	NA (-)	NA (-)	NA (-)	NA (-)
<b>Subtotal</b>	<b>253 (100.0%)</b>	<b>274 (100.0%)</b>	<b>259 (100.0%)</b>	<b>255 (100.0%)</b>	<b>253 (100.0%)</b>	<b>238 (100.0%)</b>	<b>283 (100.0%)</b>	<b>292 (100.0%)</b>	<b>298 (100.0%)</b>	<b>298 (100.0%)</b>	<b>257 (100.0%)</b>
4-5YO	Unrated	1,137 (69.2%)	1,139 (69.4%)	1,341 (71.7%)	1,365 (71.2%)	1,433 (72.0%)	1,591 (73.9%)	1,459 (75.1%)	1,525 (74.9%)	1,490 (73.1%)	1,346 (70.4%)
	0-100	140 (8.5%)	155 (9.4%)	163 (8.7%)	139 (7.3%)	172 (8.6%)	192 (8.9%)	212 (10.9%)	239 (11.7%)	283 (13.9%)	318 (16.6%)
	101-110	97 (5.9%)	98 (6.0%)	110 (5.9%)	125 (6.5%)	107 (5.4%)	112 (5.2%)	81 (4.2%)	124 (6.1%)	119 (5.8%)	104 (5.4%)
	111-120	117 (7.1%)	108 (6.6%)	93 (5.0%)	117 (6.1%)	127 (6.4%)	109 (5.1%)	96 (4.9%)	74 (3.6%)	85 (4.2%)	86 (4.5%)
	121-130	84 (5.1%)	61 (3.7%)	92 (4.9%)	107 (5.6%)	90 (4.5%)	97 (4.5%)	54 (2.8%)	48 (2.4%)	41 (2.0%)	39 (2.0%)
	131-140	44 (2.7%)	56 (3.4%)	49 (2.6%)	51 (2.7%)	42 (2.1%)	35 (1.6%)	34 (1.7%)	18 (0.9%)	17 (0.8%)	14 (0.7%)
	141-150	13 (0.8%)	19 (1.2%)	18 (1.0%)	8 (0.4%)	15 (0.8%)	13 (0.6%)	3 (0.2%)	5 (0.2%)	2 (0.1%)	5 (0.3%)
	151+	10 (0.6%)	6 (0.4%)	4 (0.2%)	5 (0.3%)	5 (0.3%)	5 (0.2%)	4 (0.2%)	3 (0.1%)	NA (-)	1 (0.1%)
	<b>Subtotal</b>	<b>1,642 (100.0%)</b>	<b>1,642 (100.0%)</b>	<b>1,870 (100.0%)</b>	<b>1,917 (100.0%)</b>	<b>1,991 (100.0%)</b>	<b>2,154 (100.0%)</b>	<b>1,943 (100.0%)</b>	<b>2,036 (100.0%)</b>	<b>2,037 (100.0%)</b>	<b>1,913 (100.0%)</b>
6-7YO	Unrated	395 (25.5%)	404 (27.8%)	431 (28.2%)	469 (27.8%)	418 (24.8%)	599 (30.3%)	449 (24.9%)	657 (37.6%)	455 (26.8%)	444 (26.0%)
	0-100	332 (21.4%)	293 (20.1%)	284 (18.5%)	339 (20.1%)	354 (21.0%)	388 (19.6%)	450 (25.0%)	408 (23.3%)	520 (30.6%)	548 (32.1%)
	101-110	199 (12.8%)	196 (13.5%)	211 (13.8%)	204 (12.1%)	204 (12.1%)	255 (12.9%)	214 (11.9%)	198 (11.3%)	228 (13.4%)	266 (15.6%)
	111-120	221 (14.3%)	207 (14.2%)	193 (12.6%)	222 (13.2%)	246 (14.6%)	248 (12.5%)	240 (13.3%)	190 (10.9%)	232 (13.7%)	215 (12.6%)
	121-130	204 (13.2%)	174 (12.0%)	191 (12.5%)	215 (12.8%)	217 (12.9%)	236 (11.9%)	224 (12.4%)	149 (8.5%)	155 (9.1%)	142 (8.3%)
	131-140	110 (7.1%)	112 (7.7%)	138 (9.0%)	158 (9.4%)	168 (10.0%)	162 (8.2%)	137 (7.6%)	102 (5.8%)	71 (4.2%)	64 (3.7%)
	141-150	56 (3.6%)	44 (3.0%)	58 (3.8%)	56 (3.3%)	45 (2.7%)	63 (3.2%)	62 (3.4%)	30 (1.7%)	28 (1.6%)	24 (1.4%)
	151+	32 (2.1%)	25 (1.7%)	25 (1.6%)	22 (1.3%)	36 (2.1%)	28 (1.4%)	27 (1.5%)	14 (0.8%)	9 (0.5%)	5 (0.3%)
	<b>Subtotal</b>	<b>1,549 (100.0%)</b>	<b>1,455 (100.0%)</b>	<b>1,531 (100.0%)</b>	<b>1,685 (100.0%)</b>	<b>1,688 (100.0%)</b>	<b>1,979 (100.0%)</b>	<b>1,803 (100.0%)</b>	<b>1,748 (100.0%)</b>	<b>1,698 (100.0%)</b>	<b>1,708 (100.0%)</b>
8YO+	Unrated	144 (11.8%)	196 (16.1%)	189 (15.3%)	232 (16.9%)	191 (15.3%)	332 (21.7%)	192 (13.5%)	329 (26.4%)	229 (19.3%)	227 (19.7%)
	0-100	385 (31.6%)	387 (31.7%)	360 (29.2%)	390 (28.5%)	378 (30.2%)	404 (26.4%)	430 (30.2%)	317 (25.4%)	342 (28.8%)	346 (30.1%)
	101-110	169 (13.9%)	158 (12.9%)	173 (14.0%)	225 (16.4%)	168 (13.4%)	172 (11.2%)	181 (12.7%)	149 (11.9%)	138 (11.6%)	141 (12.3%)
	111-120	178 (14.6%)	160 (13.1%)	173 (14.0%)	158 (11.5%)	160 (12.8%)	175 (11.4%)	189 (13.3%)	154 (12.3%)	142 (11.9%)	169 (14.7%)
	121-130	153 (12.6%)	143 (11.7%)	133 (10.8%)	164 (12.0%)	132 (10.5%)	186 (12.2%)	192 (13.5%)	121 (9.7%)	155 (13.0%)	133 (11.6%)
	131-140	105 (8.6%)	104 (8.5%)	114 (9.3%)	123 (9.0%)	113 (9.0%)	126 (8.2%)	131 (9.2%)	94 (7.5%)	107 (9.0%)	78 (6.8%)
	141-150	50 (4.1%)	48 (3.9%)	62 (5.0%)	60 (4.4%)	76 (6.1%)	92 (6.0%)	62 (4.4%)	55 (4.4%)	45 (3.8%)	33 (2.9%)
	151+	33 (2.7%)	25 (2.0%)	28 (2.3%)	18 (1.3%)	34 (2.7%)	42 (2.7%)	46 (3.2%)	28 (2.2%)	31 (2.6%)	23 (2.0%)
	<b>Subtotal</b>	<b>1,217 (100.0%)</b>	<b>1,221 (100.0%)</b>	<b>1,232 (100.0%)</b>	<b>1,370 (100.0%)</b>	<b>1,252 (100.0%)</b>	<b>1,529 (100.0%)</b>	<b>1,423 (100.0%)</b>	<b>1,247 (100.0%)</b>	<b>1,189 (100.0%)</b>	<b>1,150 (100.0%)</b>
Overall	Unrated	1,929 (41.4%)	2,013 (43.8%)	2,220 (45.4%)	2,321 (44.4%)	2,294 (44.3%)	2,759 (46.8%)	2,374 (43.5%)	2,797 (52.5%)	2,462 (47.1%)	2,274 (45.2%)
	0-100	857 (18.4%)	835 (18.2%)	807 (16.5%)	868 (16.6%)	905 (17.5%)	984 (16.7%)	1,094 (20.1%)	966 (18.1%)	1,150 (22.0%)	1,212 (24.1%)
	101-110	465 (10.0%)	452 (9.8%)	494 (10.1%)	554 (10.6%)	479 (9.2%)	539 (9.1%)	480 (8.8%)	474 (8.9%)	490 (9.4%)	511 (10.2%)
	111-120	516 (11.1%)	475 (10.3%)	459 (9.4%)	497 (9.5%)	533 (10.3%)	532 (9.0%)	528 (9.7%)	419 (7.9%)	459 (8.8%)	470 (9.3%)
	121-130	441 (9.5%)	378 (8.2%)	416 (8.5%)	486 (9.3%)	439 (8.5%)	520 (8.8%)	470 (8.6%)	318 (6.0%)	351 (6.7%)	314 (6.2%)
	131-140	259 (5.6%)	272 (5.9%)	301 (6.2%)	332 (6.4%)	323 (6.2%)	323 (5.5%)	302 (5.5%)	214 (4.0%)	195 (3.7%)	156 (3.1%)
	141-150	119 (2.6%)	111 (2.4%)	138 (2.8%)	124 (2.4%)	136 (2.6%)	168 (2.8%)	127 (2.3%)	90 (1.7%)	75 (1.4%)	62 (1.2%)
151+	75 (1.6%)	56 (1.2%)	57 (1.2%)	45 (0.9%)	75 (1.4%)	75 (1.3%)	77 (1.4%)	45 (0.8%)	40 (0.8%)	29 (0.6%)	
<b>Total</b>	<b>4,661 (100.0%)</b>	<b>4,592 (100.0%)</b>	<b>4,892 (100.0%)</b>	<b>5,227 (100.0%)</b>	<b>5,184 (100.0%)</b>	<b>5,900 (100.0%)</b>	<b>5,452 (100.0%)</b>	<b>5,323 (100.0%)</b>	<b>5,222 (100.0%)</b>	<b>5,028 (100.0%)</b>	

Where a horse has more than one published rating (published Hurdle and published Chase mark), the higher of the two is taken.

# Young Horses Entering Training

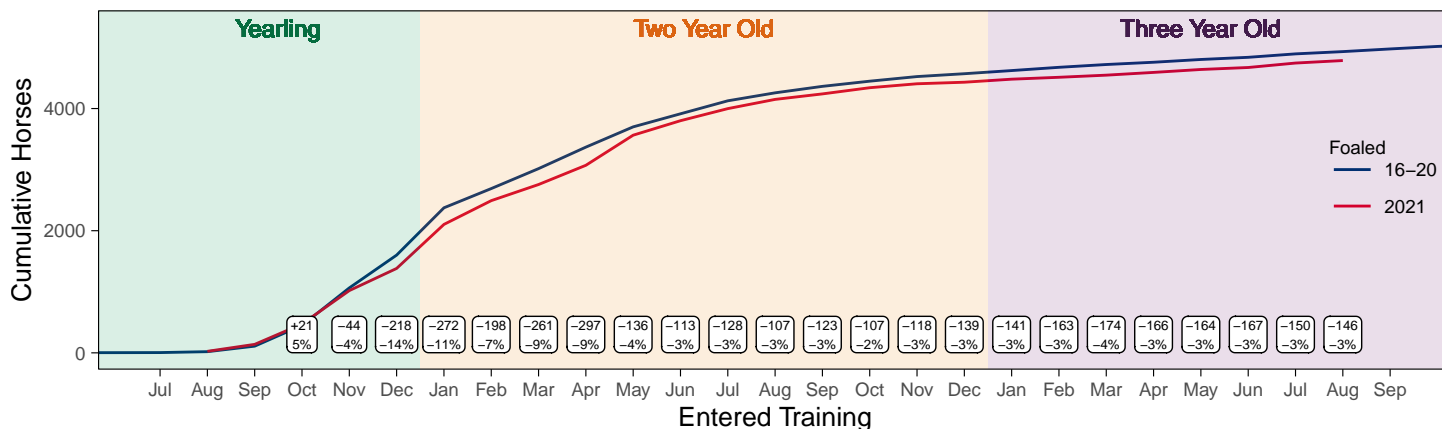
## Flat Yearlings in Training versus Previous Years

Period	Jan	Feb	Mar	Apr	May	Jun	Jul	Aug	Sep	Oct	Nov	Dec
2024	0	0	0	0	0	0	2	3				
2023	1	2	2	2	3	3	4	4	62	225	722	1185
5YrAvg	1	1	1	1	1	1	1	3	64	261	725	1279

## Foals Entering Training for the First Time

### 2021 Foals Entering Training Over Time

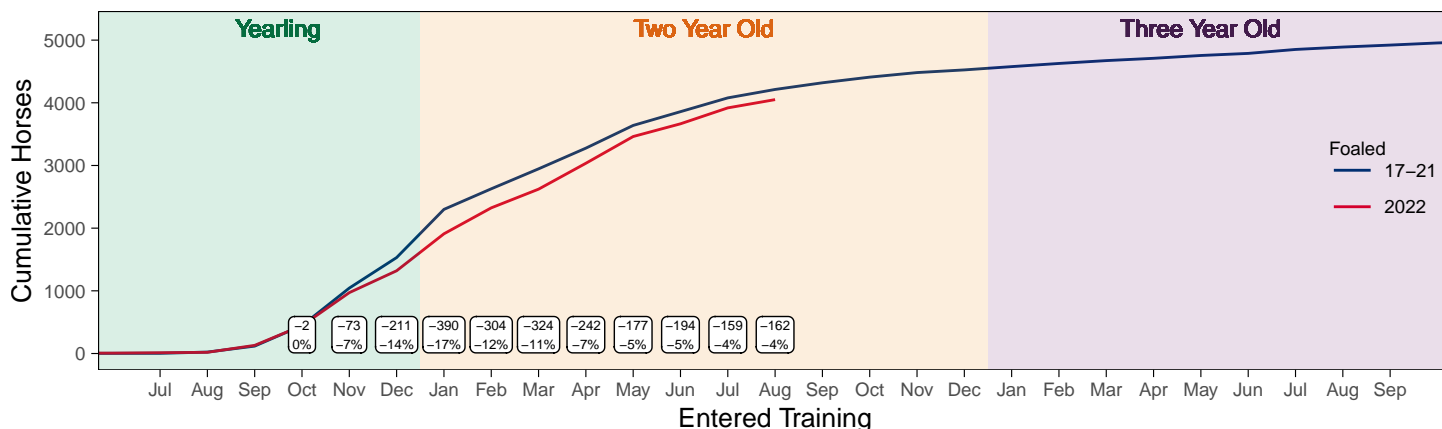
Cumulative Flat Horses foaled in 2021 shown by first in training notification against trend



Cumulative individual horses entering training for the first time by the end of each month.

### 2022 Foals Entering Training Over Time

Cumulative Flat Horses foaled in 2022 shown by first in training notification against trend



Cumulative individual horses entering training for the first time by the end of each month.

## Year to Date Horses in Training

Type	2015	2016	2017	2018	2019	2020	2021	2022	2023	2024	vs. Last Year	vs. Pre-Covid
Flat	9579	9779	9981	10269	10191	10305	9903	9800	9818	9643	-175 / -1.8%	-548 / -5.4%
Jump	4979	4905	4756	5240	5265	5802	5664	5389	5355	4902	-453 / -8.5%	-363 / -6.9%
Dual	579	556	765	664	574	649	564	581	507	644	+137 / +27.0%	+70 / +12.2%
Hunter						1330	1097	1224	1124	1279	+155 / +13.8%	+1279 / +Inf
<b>Total</b>	<b>15137</b>	<b>15240</b>	<b>15502</b>	<b>16173</b>	<b>16030</b>	<b>16756</b>	<b>16131</b>	<b>15770</b>	<b>15680</b>	<b>15189</b>	<b>-491 / -3.1%</b>	<b>-841 / -5.2%</b>

'vs. Pre-Covid' is comparison between 2024 and 2019

### Flat

AgeCat	2015	2016	2017	2018	2019	2020	2021	2022	2023	2024	vs. Last Year	vs. Pre-Covid
2YO	3868	3893	4007	3987	3973	3794	3770	3723	3746	3615	-131 / -3.5%	-358 / -9.0%
3YO	2651	2746	2777	2967	2880	3144	2878	2799	2800	2695	-105 / -3.8%	-185 / -6.4%
4YO	1201	1227	1331	1374	1420	1387	1403	1436	1312	1351	+39 / +3.0%	-69 / -4.9%
5YO+	1859	1913	1866	1941	1918	1980	1852	1842	1960	1982	+22 / +1.1%	+64 / +3.3%
<b>Total</b>	<b>9579</b>	<b>9779</b>	<b>9981</b>	<b>10269</b>	<b>10191</b>	<b>10305</b>	<b>9903</b>	<b>9800</b>	<b>9818</b>	<b>9643</b>	<b>-175 / -1.8%</b>	<b>-548 / -5.4%</b>

'vs. Pre-Covid' is comparison between 2024 and 2019

### Jump

AgeCat	2015	2016	2017	2018	2019	2020	2021	2022	2023	2024	vs. Last Year	vs. Pre-Covid
3YO	231	233	181	191	242	191	253	252	250	192	-58 / -23.2%	-50 / -20.7%
4-5YO	1771	1766	1786	1904	1993	2080	1991	2023	2104	1809	-295 / -14.0%	-184 / -9.2%
6-7YO	1677	1569	1509	1706	1710	1960	1897	1795	1739	1714	-25 / -1.4%	+4 / +0.2%
8YO+	1300	1337	1280	1439	1320	1571	1523	1319	1262	1187	-75 / -5.9%	-133 / -10.1%
<b>Total</b>	<b>4979</b>	<b>4905</b>	<b>4756</b>	<b>5240</b>	<b>5265</b>	<b>5802</b>	<b>5664</b>	<b>5389</b>	<b>5355</b>	<b>4902</b>	<b>-453 / -8.5%</b>	<b>-363 / -6.9%</b>

'vs. Pre-Covid' is comparison between 2024 and 2019

### Dual

AgeCat	2015	2016	2017	2018	2019	2020	2021	2022	2023	2024	vs. Last Year	vs. Pre-Covid
3YO	111	131	140	127	109	131	135	153	133	128	-5 / -3.8%	+19 / +17.4%
4YO	121	109	209	157	147	139	147	133	110	180	+70 / +63.6%	+33 / +22.4%
5YO+	347	316	416	380	318	379	282	295	264	336	+72 / +27.3%	+18 / +5.7%
<b>Total</b>	<b>579</b>	<b>556</b>	<b>765</b>	<b>664</b>	<b>574</b>	<b>649</b>	<b>564</b>	<b>581</b>	<b>507</b>	<b>644</b>	<b>+137 / +27.0%</b>	<b>+70 / +12.2%</b>

'vs. Pre-Covid' is comparison between 2024 and 2019

### Hunter Chasers

# Year to Date Runners

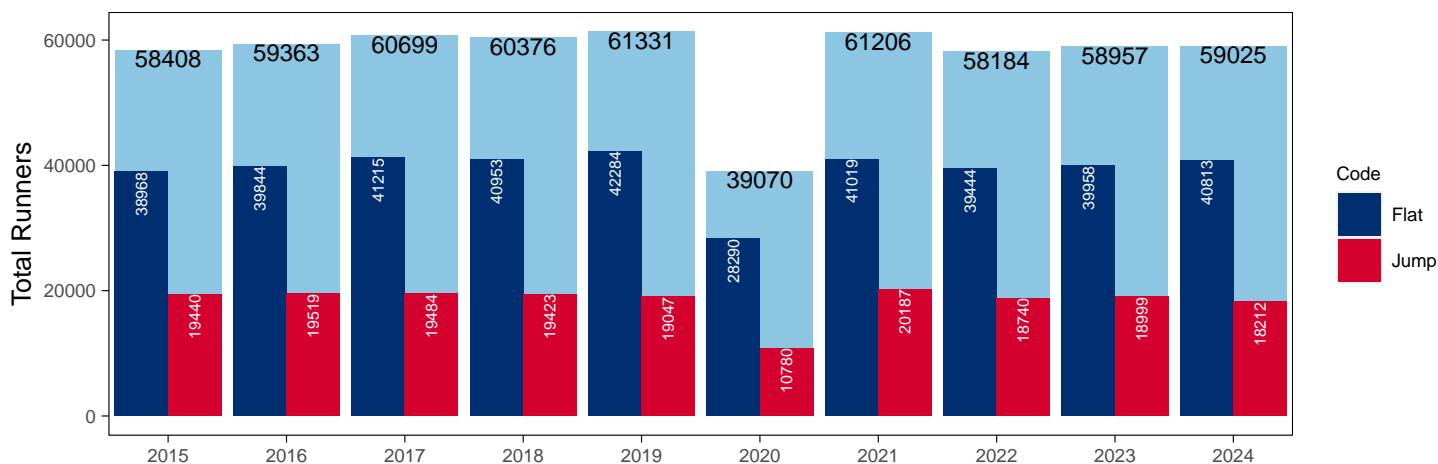
## Year to Date Total Runners

Code	2015	2016	2017	2018	2019	2020	2021	2022	2023	2024	vs. Last Year	vs. Pre-Covid
Flat	38968	39844	41215	40953	42284	28290	41019	39444	39958	40813	+855 / +2.1%	-1471 / -3.5%
Jump	19440	19519	19484	19423	19047	10780	20187	18740	18999	18212	-787 / -4.1%	-835 / -4.4%
<b>Total</b>	<b>58408</b>	<b>59363</b>	<b>60699</b>	<b>60376</b>	<b>61331</b>	<b>39070</b>	<b>61206</b>	<b>58184</b>	<b>58957</b>	<b>59025</b>	<b>+68 / +0.1%</b>	<b>-2306 / -3.8%</b>

'vs. Pre-Covid' is comparison between 2024 and 2019

## YTD Total Runners

Total Runners in GB Races, shown by Code and Total



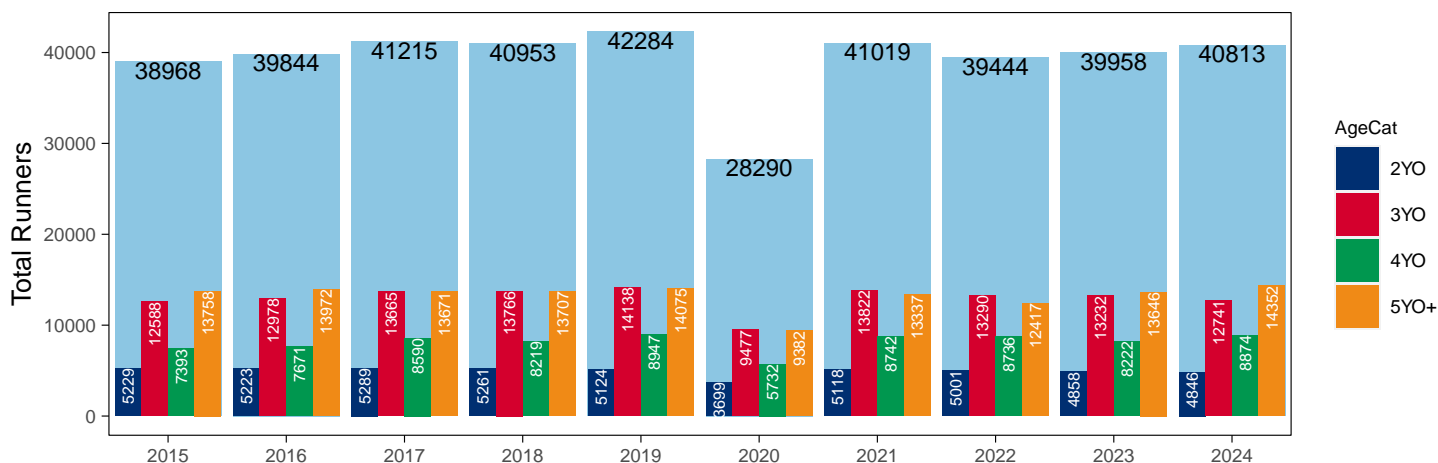
## Flat

AgeCat	2015	2016	2017	2018	2019	2020	2021	2022	2023	2024	vs. Last Year	vs. Pre-Covid
2YO	5229	5223	5289	5261	5124	3699	5118	5001	4858	4846	-12 / -0.2%	-278 / -5.4%
3YO	12588	12978	13665	13766	14138	9477	13822	13290	13232	12741	-491 / -3.7%	-1397 / -9.9%
4YO	7393	7671	8590	8219	8947	5732	8742	8736	8222	8874	+652 / +7.9%	-73 / -0.8%
5YO+	13758	13972	13671	13707	14075	9382	13337	12417	13646	14352	+706 / +5.2%	+277 / +2.0%
<b>Total</b>	<b>38968</b>	<b>39844</b>	<b>41215</b>	<b>40953</b>	<b>42284</b>	<b>28290</b>	<b>41019</b>	<b>39444</b>	<b>39958</b>	<b>40813</b>	<b>+855 / +2.1%</b>	<b>-1471 / -3.5%</b>

'vs. Pre-Covid' is comparison between 2024 and 2019

## YTD Total Flat Runners by Age

Total Runners in GB Flat Races, shown by Age Category and Total



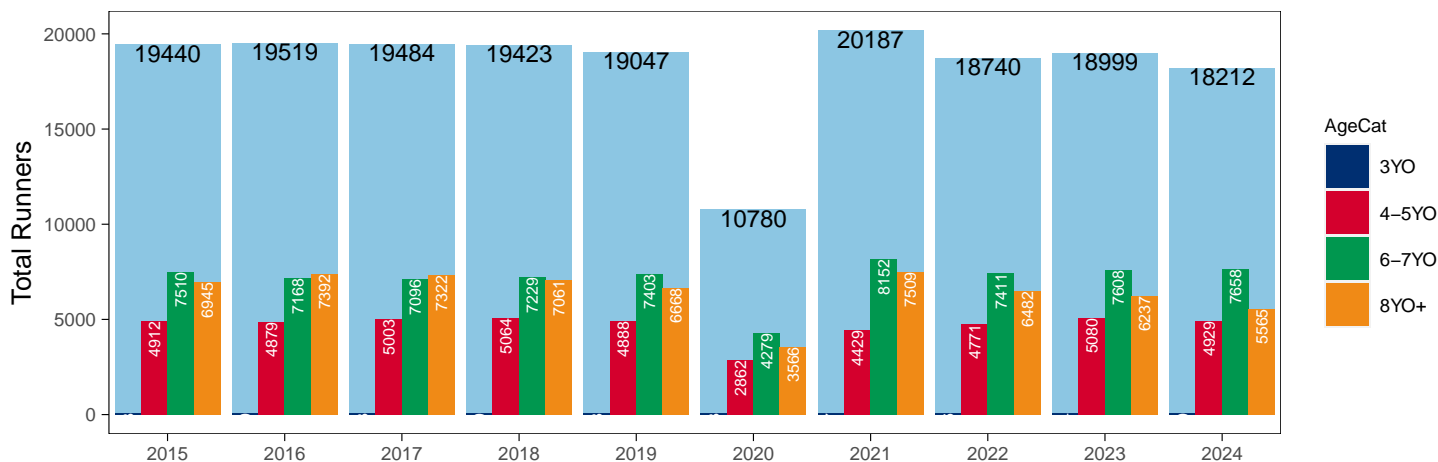
## Jump

AgeCat	2015	2016	2017	2018	2019	2020	2021	2022	2023	2024	vs. Last Year	vs. Pre-Covid
3YO	73	80	63	69	88	73	97	76	74	60	-14 / -18.9%	-28 / -31.8%
4-5YO	4912	4879	5003	5064	4888	2862	4429	4771	5080	4929	-151 / -3.0%	+41 / +0.8%
6-7YO	7510	7168	7096	7229	7403	4279	8152	7411	7608	7658	+50 / +0.7%	+255 / +3.4%
8YO+	6945	7392	7322	7061	6668	3566	7509	6482	6237	5565	-672 / -10.8%	-1103 / -16.5%
<b>Total</b>	<b>19440</b>	<b>19519</b>	<b>19484</b>	<b>19423</b>	<b>19047</b>	<b>10780</b>	<b>20187</b>	<b>18740</b>	<b>18999</b>	<b>18212</b>	<b>-787 / -4.1%</b>	<b>-835 / -4.4%</b>

'vs. Pre-Covid' is comparison between 2024 and 2019

### YTD Total Jump Runners by Age

Total Runners in GB Jump Races, shown by Age Category and Total



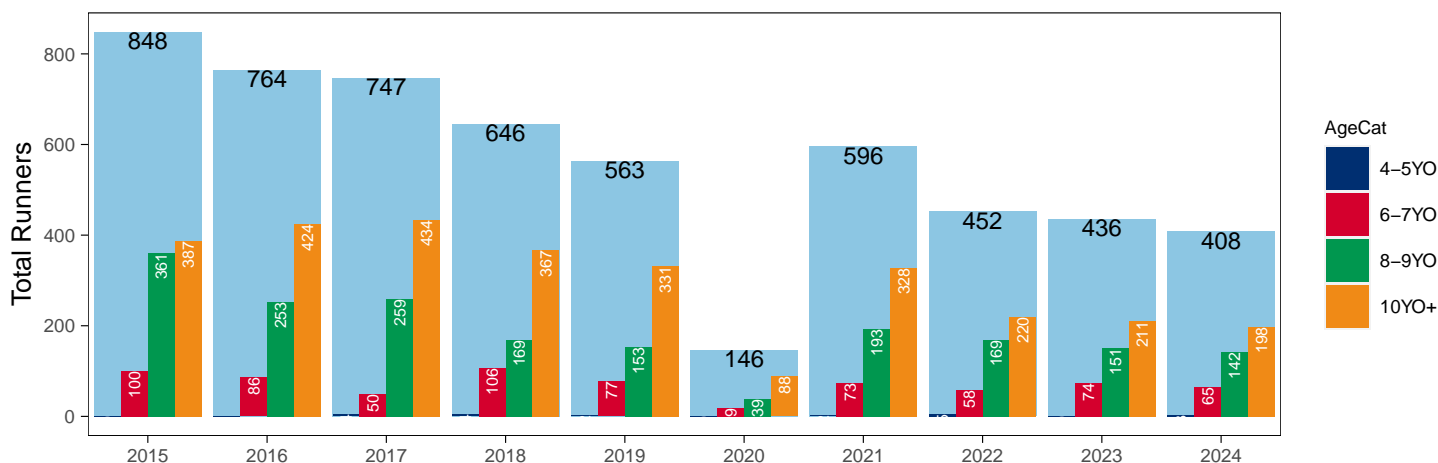
## Hunter Chases

AgeCat	2015	2016	2017	2018	2019	2020	2021	2022	2023	2024	vs. Last Year	vs. Pre-Covid
4-5YO		1	4	4	2		2	5		3	NA / NA	+1 / +50.0%
6-7YO	100	86	50	106	77	19	73	58	74	65	-9 / -12.2%	-12 / -15.6%
8-9YO	361	253	259	169	153	39	193	169	151	142	-9 / -6.0%	-11 / -7.2%
10YO+	387	424	434	367	331	88	328	220	211	198	-13 / -6.2%	-133 / -40.2%
<b>Total</b>	<b>848</b>	<b>764</b>	<b>747</b>	<b>646</b>	<b>563</b>	<b>146</b>	<b>596</b>	<b>452</b>	<b>436</b>	<b>408</b>	<b>-28 / -6.4%</b>	<b>-155 / -27.5%</b>

'vs. Pre-Covid' is comparison between 2024 and 2019

### YTD Total Hunter Chase Runners by Age

Total Runners in GB Hunter Chases shown by Age Category and Total



## Year to Date Total Runners by Country Trained

Code	Country	2015	2016	2017	2018	2019	2020	2021	2022	2023	2024
Flat	GB	38548	39398	40668	40382	41714	28097	40737	39160	39573	40280
	IRE	309	386	481	516	511	170	256	226	342	459
	Other	111	60	66	55	59	23	26	58	43	74
Jump	GB	18855	18824	18847	18969	18451	10513	19785	18091	18262	17580
	IRE	581	689	624	445	589	257	399	647	734	629
	Other	4	6	13	9	7	10	3	2	3	3
Overall	GB	57403	58222	59515	59351	60165	38610	60522	57251	57835	57860
	IRE	890	1075	1105	961	1100	427	655	873	1076	1088
	Other	115	66	79	64	66	33	29	60	46	77

## Year to Date GB Trained Runners Racing Abroad

Code	Country	2015	2016	2017	2018	2019	2020	2021	2022	2023	2024
Flat	IRE	107	92	109	86	96	22	34	47	48	63
	FR	225	219	306	291	372	179	119	148	203	214
	GNY	12	15	17	16	30	8	3	12	13	29
	UAE	289	208	278	276	303	281	248	276	272	214
	BAH								41	23	50
	KSA						15	21	22	15	11
	Other	79	69	65	75	74	30	32	50	55	89
	<b>Total</b>		<b>712</b>	<b>603</b>	<b>775</b>	<b>744</b>	<b>875</b>	<b>535</b>	<b>457</b>	<b>596</b>	<b>629</b>
Jump	IRE	89	87	78	51	69	7	23	29	20	56
	FR	25	43	24	9	33	25	84	81	63	41
	Other	7	7	5	5	8		6	12	3	9
	<b>Total</b>		<b>121</b>	<b>137</b>	<b>107</b>	<b>65</b>	<b>110</b>	<b>32</b>	<b>113</b>	<b>122</b>	<b>86</b>

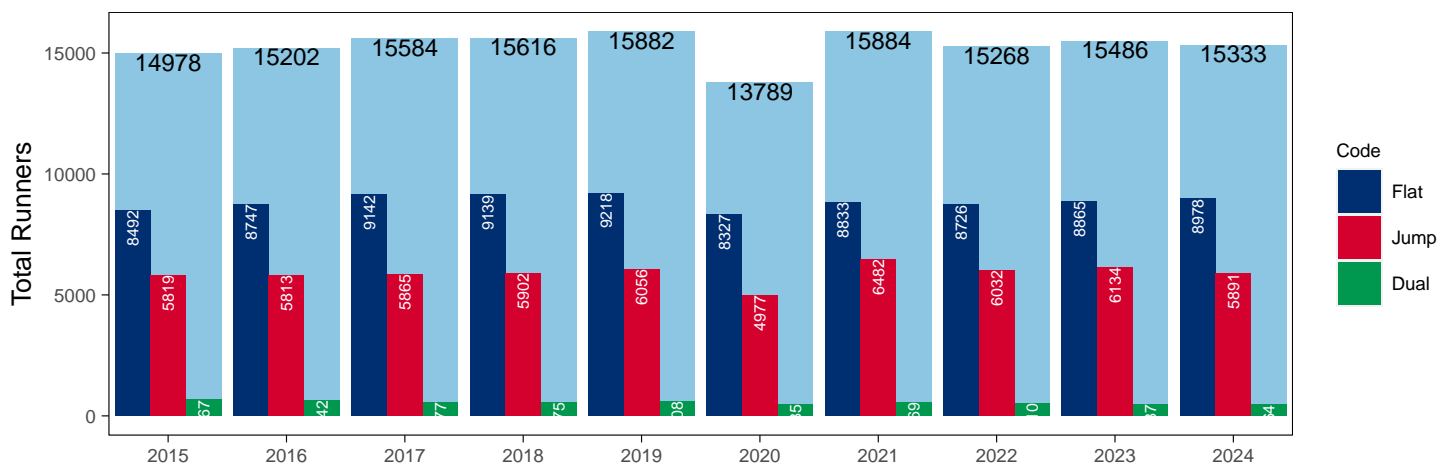
## Year to Date Individual Runners

Code	2015	2016	2017	2018	2019	2020	2021	2022	2023	2024	vs. Last Year	vs. Pre-Covid
Flat	8492	8747	9142	9139	9218	8327	8833	8726	8865	8978	+113 / +1.3%	-240 / -2.6%
Jump	5819	5813	5865	5902	6056	4977	6482	6032	6134	5891	-243 / -4.0%	-165 / -2.7%
Dual	667	642	577	575	608	485	569	510	487	464	-23 / -4.7%	-144 / -23.7%
<b>Overall</b>	<b>14978</b>	<b>15202</b>	<b>15584</b>	<b>15616</b>	<b>15882</b>	<b>13789</b>	<b>15884</b>	<b>15268</b>	<b>15486</b>	<b>15333</b>	<b>-153 / -1.0%</b>	<b>-549 / -3.5%</b>

'vs. Pre-Covid' is comparison between 2024 and 2019

## YTD Individual Runners

Individual Runners in GB Races, shown by Code and Total



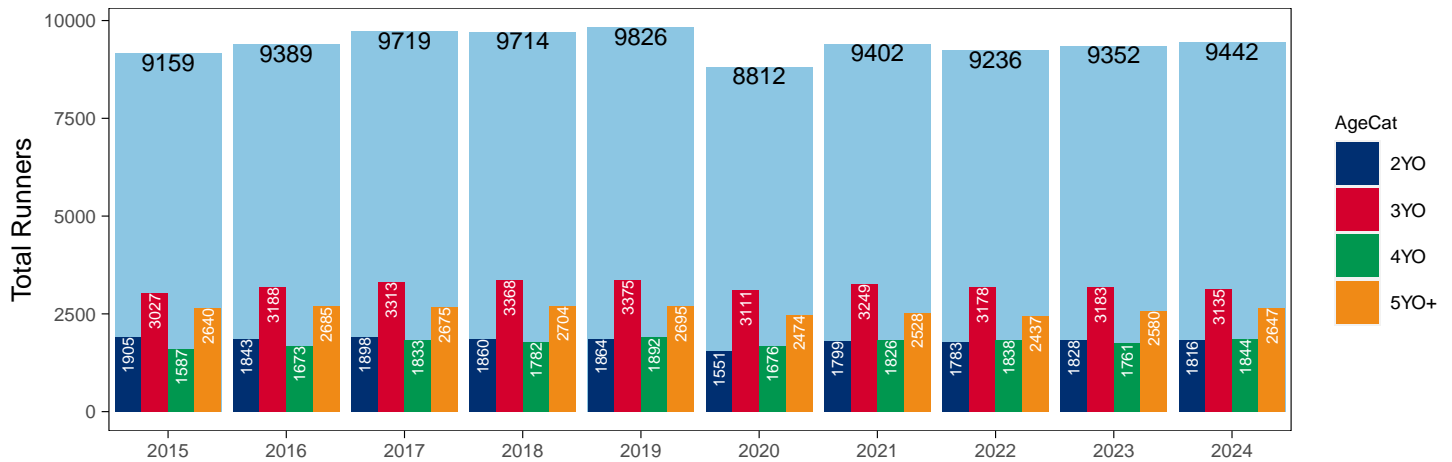
## Flat

AgeCat	2015	2016	2017	2018	2019	2020	2021	2022	2023	2024	vs. Last Year	vs. Pre-Covid
2YO	1905	1843	1898	1860	1864	1551	1799	1783	1828	1816	-12 / -0.7%	-48 / -2.6%
3YO	3027	3188	3313	3368	3375	3111	3249	3178	3183	3135	-48 / -1.5%	-240 / -7.1%
4YO	1587	1673	1833	1782	1892	1676	1826	1838	1761	1844	+83 / +4.7%	-48 / -2.5%
5YO+	2640	2685	2675	2704	2695	2474	2528	2437	2580	2647	+67 / +2.6%	-48 / -1.8%
<b>Total</b>	<b>9159</b>	<b>9389</b>	<b>9719</b>	<b>9714</b>	<b>9826</b>	<b>8812</b>	<b>9402</b>	<b>9236</b>	<b>9352</b>	<b>9442</b>	<b>+90 / +1.0%</b>	<b>-384 / -3.9%</b>

'vs. Pre-Covid' is comparison between 2024 and 2019

### YTD Individual Flat Runners by Age

Individual Runners in GB Flat Races, shown by Age Category and Total



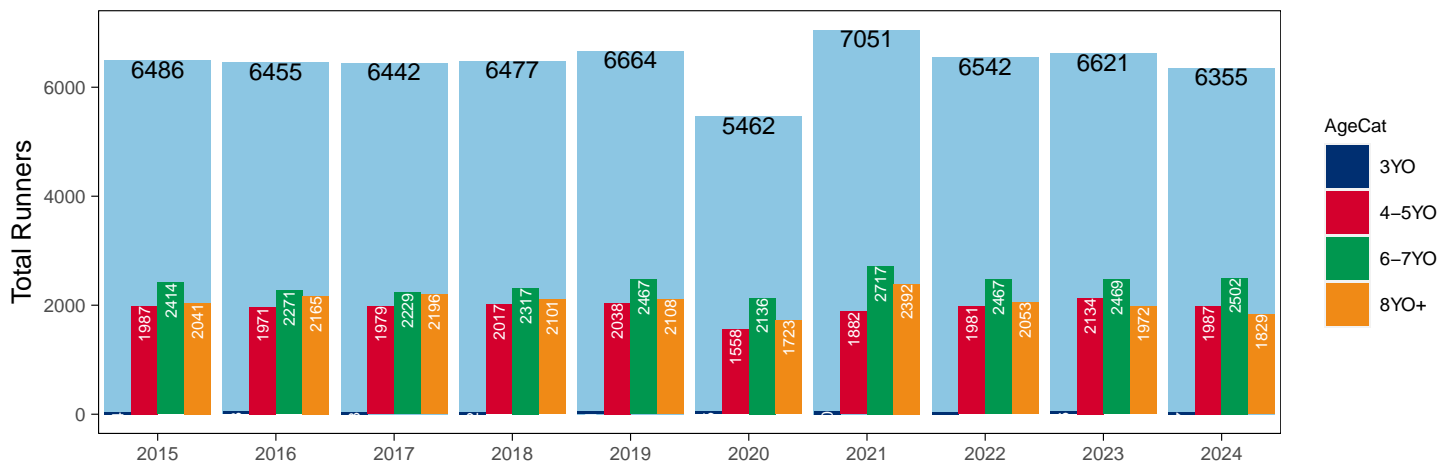
## Jump

AgeCat	2015	2016	2017	2018	2019	2020	2021	2022	2023	2024	vs. Last Year	vs. Pre-Covid
3YO	44	48	38	42	51	45	60	41	46	37	-9 / -19.6%	-14 / -27.5%
4-5YO	1987	1971	1979	2017	2038	1558	1882	1981	2134	1987	-147 / -6.9%	-51 / -2.5%
6-7YO	2414	2271	2229	2317	2467	2136	2717	2467	2469	2502	+33 / +1.3%	+35 / +1.4%
8YO+	2041	2165	2196	2101	2108	1723	2392	2053	1972	1829	-143 / -7.3%	-279 / -13.2%
<b>Total</b>	<b>6486</b>	<b>6455</b>	<b>6442</b>	<b>6477</b>	<b>6664</b>	<b>5462</b>	<b>7051</b>	<b>6542</b>	<b>6621</b>	<b>6355</b>	<b>-266 / -4.0%</b>	<b>-309 / -4.6%</b>

'vs. Pre-Covid' is comparison between 2024 and 2019

### YTD Individual Jump Runners by Age

Individual Runners in GB Jump Races, shown by Age Category and Total



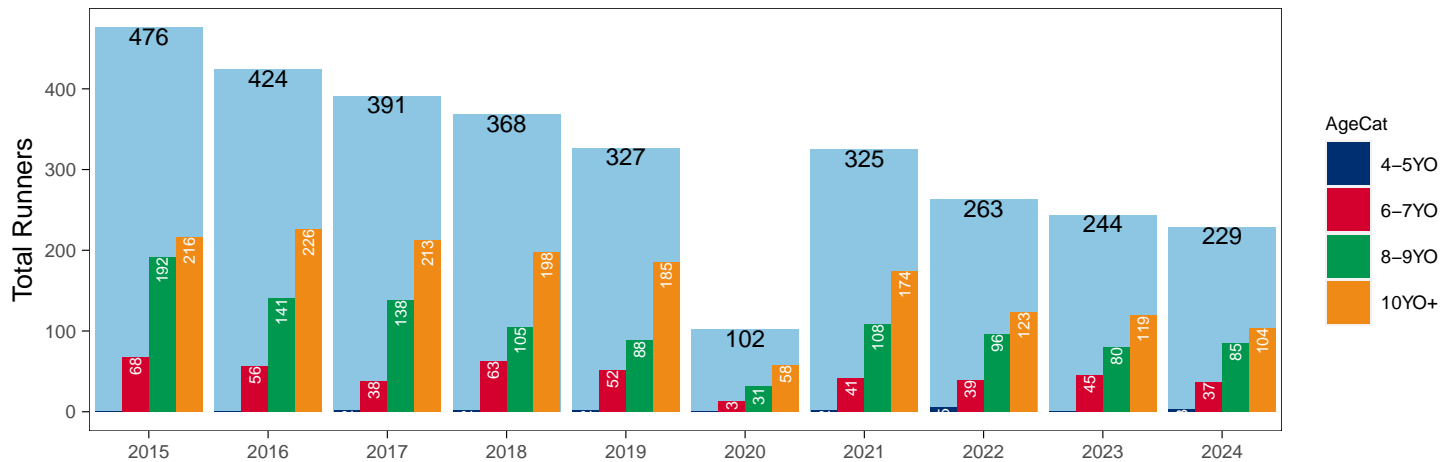
## Hunter Chases

AgeCat	2015	2016	2017	2018	2019	2020	2021	2022	2023	2024	vs. Last Year	vs. Pre-Covid
4-5YO		1	2	2	2		2	5		3	NA / NA	+1 / +50.0%
6-7YO	68	56	38	63	52	13	41	39	45	37	-8 / -17.8%	-15 / -28.8%
8-9YO	192	141	138	105	88	31	108	96	80	85	+5 / +6.2%	-3 / -3.4%
10YO+	216	226	213	198	185	58	174	123	119	104	-15 / -12.6%	-81 / -43.8%
<b>Total</b>	<b>476</b>	<b>424</b>	<b>391</b>	<b>368</b>	<b>327</b>	<b>102</b>	<b>325</b>	<b>263</b>	<b>244</b>	<b>229</b>	<b>-15 / -6.1%</b>	<b>-98 / -30.0%</b>

'vs. Pre-Covid' is comparison between 2024 and 2019

## YTD Individual Hunter Chase Runners by Age

Individual Runners in GB Hunter Chases shown by Age Category and Total



## Year to Date Individual Runners by Country Trained

Code	Country	2015	2016	2017	2018	2019	2020	2021	2022	2023	2024
Flat	GB	8243	8487	8830	8809	8867	8185	8643	8511	8594	8649
	IRE	175	223	272	294	310	125	173	170	249	290
	Other	84	52	54	51	49	20	23	50	35	51
Jump	GB	5463	5413	5479	5581	5661	4738	6172	5569	5632	5453
	IRE	375	408	388	322	405	231	311	476	523	445
	Other	4	6	9	8	6	10	3	2	2	2
Dual	GB	657	627	566	560	597	482	565	502	473	452
	IRE	9	8	7	14	11	3	4	7	10	12
	Other			2							
<b>Overall</b>	<b>GB</b>	<b>14363</b>	<b>14527</b>	<b>14875</b>	<b>14950</b>	<b>15125</b>	<b>13405</b>	<b>15380</b>	<b>14582</b>	<b>14699</b>	<b>14554</b>
	<b>IRE</b>	<b>559</b>	<b>639</b>	<b>667</b>	<b>630</b>	<b>726</b>	<b>359</b>	<b>488</b>	<b>653</b>	<b>782</b>	<b>747</b>
	<b>Other</b>	<b>88</b>	<b>58</b>	<b>65</b>	<b>59</b>	<b>55</b>	<b>30</b>	<b>26</b>	<b>52</b>	<b>37</b>	<b>53</b>

Individual horses may appear under multiple countries.



## Year to Date Total Runners by Rating Band

## Flat

RatBand	2015	2016	2017	2018	2019	2020	2021	2022	2023	2024
<b>2YO</b>										
Unrated	4,122 (78.8%)	4,007 (76.7%)	4,209 (79.6%)	4,147 (78.8%)	4,089 (79.8%)	2,924 (79.0%)	3,978 (77.7%)	3,891 (77.8%)	3,869 (79.6%)	3,869 (79.8%)
0-50	60 (1.1%)	46 (0.9%)	36 (0.7%)	33 (0.6%)	65 (1.3%)	28 (0.8%)	58 (1.1%)	55 (1.1%)	65 (1.3%)	46 (0.9%)
51-60	133 (2.5%)	135 (2.6%)	156 (2.9%)	166 (3.2%)	134 (2.6%)	73 (2.0%)	121 (2.4%)	161 (3.2%)	138 (2.8%)	141 (2.9%)
61-70	249 (4.8%)	329 (6.3%)	287 (5.4%)	250 (4.8%)	295 (5.8%)	197 (5.3%)	311 (6.1%)	276 (5.5%)	273 (5.6%)	234 (4.8%)
71-80	386 (7.4%)	408 (7.8%)	363 (6.9%)	355 (6.7%)	316 (6.2%)	271 (7.3%)	338 (6.6%)	312 (6.2%)	285 (5.9%)	314 (6.5%)
81-90	190 (3.6%)	214 (4.1%)	131 (2.5%)	198 (3.8%)	134 (2.6%)	128 (3.5%)	201 (3.9%)	201 (4.0%)	153 (3.1%)	160 (3.3%)
91-100	60 (1.1%)	63 (1.2%)	72 (1.4%)	85 (1.6%)	72 (1.4%)	61 (1.6%)	79 (1.5%)	82 (1.6%)	51 (1.0%)	57 (1.2%)
101+	29 (0.6%)	21 (0.4%)	35 (0.7%)	27 (0.5%)	19 (0.4%)	17 (0.5%)	32 (0.6%)	23 (0.5%)	24 (0.5%)	25 (0.5%)
<b>3YO+</b>										
Unrated	3,253 (9.6%)	3,449 (10.0%)	3,661 (10.2%)	4,212 (11.8%)	4,137 (11.1%)	3,250 (13.2%)	4,177 (11.6%)	3,814 (11.1%)	3,759 (10.7%)	3,740 (10.4%)
0-50	3,104 (9.2%)	2,904 (8.4%)	3,256 (9.1%)	3,694 (10.3%)	4,448 (12.0%)	2,714 (11.0%)	4,249 (11.8%)	4,152 (12.1%)	4,411 (12.6%)	4,345 (12.1%)
51-60	5,823 (17.3%)	5,778 (16.7%)	5,985 (16.7%)	5,694 (16.0%)	6,511 (17.5%)	4,104 (16.7%)	6,343 (17.7%)	6,109 (17.7%)	6,619 (18.9%)	6,873 (19.1%)
61-70	7,236 (21.4%)	7,510 (21.7%)	7,393 (20.6%)	7,184 (20.1%)	7,323 (19.7%)	4,845 (19.7%)	7,469 (20.8%)	7,100 (20.6%)	7,231 (20.6%)	7,681 (21.4%)
71-80	6,680 (19.8%)	6,931 (20.0%)	7,191 (20.0%)	6,688 (18.7%)	6,554 (17.6%)	4,464 (18.2%)	6,382 (17.8%)	6,153 (17.9%)	6,368 (18.1%)	6,468 (18.0%)
81-90	4,150 (12.3%)	4,402 (12.7%)	4,713 (13.1%)	4,471 (12.5%)	4,305 (11.6%)	2,843 (11.6%)	3,902 (10.9%)	3,910 (11.4%)	3,691 (10.5%)	3,945 (11.0%)
91-100	2,070 (6.1%)	2,150 (6.2%)	2,167 (6.0%)	2,321 (6.5%)	2,455 (6.6%)	1,380 (5.6%)	2,024 (5.6%)	1,855 (5.4%)	1,772 (5.0%)	1,697 (4.7%)
101+	1,423 (4.2%)	1,497 (4.3%)	1,560 (4.3%)	1,428 (4.0%)	1,427 (3.8%)	991 (4.0%)	1,355 (3.8%)	1,350 (3.9%)	1,249 (3.6%)	1,218 (3.4%)

## Jump

RatBand	2015	2016	2017	2018	2019	2020	2021	2022	2023	2024
<b>Hurdle</b>										
Unrated	2,990 (26.0%)	2,913 (25.1%)	2,860 (24.9%)	2,979 (25.8%)	3,002 (26.1%)	1,912 (29.6%)	2,899 (25.0%)	2,668 (23.9%)	2,914 (25.4%)	2,977 (26.4%)
0-100	3,240 (28.1%)	3,122 (26.9%)	3,145 (27.4%)	2,958 (25.7%)	2,977 (25.9%)	1,500 (23.2%)	3,637 (31.4%)	3,713 (33.3%)	3,888 (33.8%)	3,962 (35.1%)
101-110	1,694 (14.7%)	1,837 (15.8%)	1,765 (15.4%)	1,784 (15.5%)	1,730 (15.0%)	899 (13.9%)	1,613 (13.9%)	1,735 (15.6%)	1,767 (15.4%)	1,651 (14.6%)
111-120	1,622 (14.1%)	1,652 (14.2%)	1,673 (14.6%)	1,628 (14.1%)	1,657 (14.4%)	867 (13.4%)	1,489 (12.9%)	1,445 (13.0%)	1,404 (12.2%)	1,371 (12.1%)
121-130	1,079 (9.4%)	1,104 (9.5%)	1,101 (9.6%)	1,179 (10.2%)	1,200 (10.4%)	654 (10.1%)	1,105 (9.5%)	884 (7.9%)	942 (8.2%)	813 (7.2%)
131-140	604 (5.2%)	662 (5.7%)	655 (5.7%)	689 (6.0%)	620 (5.4%)	421 (6.5%)	563 (4.9%)	474 (4.3%)	367 (3.2%)	344 (3.0%)
141-150	219 (1.9%)	239 (2.1%)	201 (1.8%)	239 (2.1%)	224 (1.9%)	144 (2.2%)	197 (1.7%)	178 (1.6%)	146 (1.3%)	121 (1.1%)
151+	74 (0.6%)	86 (0.7%)	74 (0.6%)	73 (0.6%)	91 (0.8%)	73 (1.1%)	79 (0.7%)	52 (0.5%)	60 (0.5%)	51 (0.5%)
<b>Chase</b>										
Unrated	41 (0.7%)	51 (0.8%)	61 (1.0%)	49 (0.8%)	39 (0.7%)	12 (0.4%)	30 (0.5%)	12 (0.2%)	1 (0.0%)	NA (-)
0-100	1,919 (31.2%)	1,866 (29.7%)	1,775 (27.9%)	1,805 (29.4%)	1,840 (30.7%)	979 (29.2%)	2,035 (32.6%)	1,991 (32.8%)	2,143 (36.3%)	2,095 (37.8%)
101-110	883 (14.3%)	942 (15.0%)	1,036 (16.3%)	943 (15.4%)	958 (16.0%)	522 (15.6%)	945 (15.1%)	958 (15.8%)	998 (16.9%)	981 (17.7%)
111-120	1,141 (18.5%)	1,109 (17.6%)	1,091 (17.1%)	1,013 (16.5%)	942 (15.7%)	496 (14.8%)	1,041 (16.7%)	1,035 (17.1%)	974 (16.5%)	909 (16.4%)
121-130	952 (15.5%)	946 (15.0%)	970 (15.2%)	1,021 (16.6%)	899 (15.0%)	529 (15.8%)	959 (15.4%)	920 (15.2%)	795 (13.5%)	695 (12.5%)
131-140	700 (11.4%)	781 (12.4%)	852 (13.4%)	741 (12.1%)	751 (12.5%)	445 (13.3%)	679 (10.9%)	655 (10.8%)	571 (9.7%)	470 (8.5%)
141-150	336 (5.5%)	390 (6.2%)	386 (6.1%)	395 (6.4%)	370 (6.2%)	244 (7.3%)	344 (5.5%)	317 (5.2%)	262 (4.4%)	242 (4.4%)
151+	185 (3.0%)	203 (3.2%)	199 (3.1%)	167 (2.7%)	198 (3.3%)	122 (3.6%)	209 (3.3%)	174 (2.9%)	166 (2.8%)	156 (2.8%)

## Year to Date Total GB-Trained Runners by Rating Band

## Flat

RatBand	2015	2016	2017	2018	2019	2020	2021	2022	2023	2024
<b>2YO</b>										
Unrated	4,081 (78.7%)	3,956 (76.5%)	4,157 (79.4%)	4,092 (78.7%)	4,019 (79.6%)	2,900 (78.9%)	3,951 (77.6%)	3,862 (77.7%)	3,820 (79.5%)	3,807 (79.6%)
0-50	60 (1.2%)	46 (0.9%)	36 (0.7%)	33 (0.6%)	65 (1.3%)	28 (0.8%)	58 (1.1%)	55 (1.1%)	65 (1.4%)	46 (1.0%)
51-60	133 (2.6%)	135 (2.6%)	156 (3.0%)	166 (3.2%)	134 (2.7%)	73 (2.0%)	121 (2.4%)	161 (3.2%)	138 (2.9%)	141 (2.9%)
61-70	249 (4.8%)	329 (6.4%)	287 (5.5%)	250 (4.8%)	295 (5.8%)	197 (5.4%)	311 (6.1%)	276 (5.6%)	273 (5.7%)	234 (4.9%)
71-80	385 (7.4%)	408 (7.9%)	363 (6.9%)	355 (6.8%)	316 (6.3%)	271 (7.4%)	338 (6.6%)	312 (6.3%)	285 (5.9%)	314 (6.6%)
81-90	190 (3.7%)	214 (4.1%)	129 (2.5%)	197 (3.8%)	134 (2.7%)	128 (3.5%)	201 (3.9%)	200 (4.0%)	153 (3.2%)	160 (3.3%)
91-100	60 (1.2%)	63 (1.2%)	72 (1.4%)	83 (1.6%)	69 (1.4%)	61 (1.7%)	78 (1.5%)	80 (1.6%)	49 (1.0%)	56 (1.2%)
101+	29 (0.6%)	21 (0.4%)	34 (0.6%)	22 (0.4%)	18 (0.4%)	16 (0.4%)	32 (0.6%)	22 (0.4%)	24 (0.5%)	24 (0.5%)
<b>3YO+</b>										
Unrated	3,227 (9.7%)	3,427 (10.0%)	3,639 (10.3%)	4,189 (11.9%)	4,116 (11.2%)	3,242 (13.3%)	4,170 (11.7%)	3,803 (11.1%)	3,741 (10.8%)	3,726 (10.5%)
0-50	3,073 (9.2%)	2,874 (8.4%)	3,187 (9.0%)	3,641 (10.3%)	4,370 (11.9%)	2,696 (11.0%)	4,249 (11.9%)	4,152 (12.1%)	4,381 (12.6%)	4,314 (12.2%)
51-60	5,784 (17.3%)	5,733 (16.8%)	5,903 (16.7%)	5,612 (16.0%)	6,435 (17.6%)	4,070 (16.7%)	6,342 (17.8%)	6,108 (17.9%)	6,590 (19.0%)	6,837 (19.3%)
61-70	7,210 (21.6%)	7,461 (21.8%)	7,344 (20.7%)	7,119 (20.2%)	7,275 (19.8%)	4,837 (19.8%)	7,466 (20.9%)	7,096 (20.8%)	7,216 (20.8%)	7,656 (21.6%)
71-80	6,654 (19.9%)	6,909 (20.2%)	7,141 (20.2%)	6,654 (18.9%)	6,529 (17.8%)	4,455 (18.2%)	6,365 (17.9%)	6,138 (18.0%)	6,343 (18.2%)	6,429 (18.1%)
81-90	4,127 (12.4%)	4,382 (12.8%)	4,687 (13.2%)	4,453 (12.7%)	4,279 (11.7%)	2,836 (11.6%)	3,868 (10.9%)	3,885 (11.4%)	3,661 (10.5%)	3,880 (10.9%)
91-100	2,019 (6.1%)	2,100 (6.1%)	2,116 (6.0%)	2,258 (6.4%)	2,394 (6.5%)	1,372 (5.6%)	1,977 (5.5%)	1,799 (5.3%)	1,708 (4.9%)	1,607 (4.5%)
101+	1,267 (3.8%)	1,340 (3.9%)	1,417 (4.0%)	1,258 (3.6%)	1,266 (3.5%)	915 (3.7%)	1,210 (3.4%)	1,211 (3.5%)	1,126 (3.2%)	1,049 (3.0%)

## Jump

RatBand	2015	2016	2017	2018	2019	2020	2021	2022	2023	2024
<b>Hurdle</b>										
Unrated	2,919 (26.0%)	2,833 (25.2%)	2,802 (25.2%)	2,930 (26.0%)	2,934 (26.3%)	1,889 (29.9%)	2,859 (25.2%)	2,575 (23.9%)	2,820 (25.5%)	2,902 (26.6%)
0-100	3,195 (28.5%)	3,063 (27.3%)	3,074 (27.6%)	2,905 (25.8%)	2,929 (26.3%)	1,490 (23.6%)	3,614 (31.8%)	3,687 (34.2%)	3,835 (34.6%)	3,925 (35.9%)
101-110	1,662 (14.8%)	1,795 (16.0%)	1,715 (15.4%)	1,761 (15.6%)	1,686 (15.1%)	896 (14.2%)	1,587 (14.0%)	1,709 (15.9%)	1,737 (15.7%)	1,626 (14.9%)
111-120	1,597 (14.2%)	1,616 (14.4%)	1,641 (14.7%)	1,607 (14.3%)	1,612 (14.5%)	863 (13.7%)	1,465 (12.9%)	1,407 (13.1%)	1,363 (12.3%)	1,341 (12.3%)
121-130	1,060 (9.4%)	1,076 (9.6%)	1,062 (9.5%)	1,155 (10.3%)	1,166 (10.5%)	642 (10.2%)	1,083 (9.5%)	838 (7.8%)	893 (8.1%)	748 (6.8%)
131-140	546 (4.9%)	606 (5.4%)	615 (5.5%)	652 (5.8%)	567 (5.1%)	380 (6.0%)	521 (4.6%)	405 (3.8%)	309 (2.8%)	280 (2.6%)
141-150	186 (1.7%)	177 (1.6%)	167 (1.5%)	197 (1.7%)	180 (1.6%)	103 (1.6%)	159 (1.4%)	119 (1.1%)	88 (0.8%)	77 (0.7%)
151+	60 (0.5%)	65 (0.6%)	57 (0.5%)	58 (0.5%)	66 (0.6%)	47 (0.7%)	59 (0.5%)	30 (0.3%)	33 (0.3%)	21 (0.2%)
<b>Chase</b>										
Unrated	35 (0.6%)	51 (0.8%)	58 (0.9%)	49 (0.8%)	38 (0.7%)	12 (0.4%)	30 (0.5%)	11 (0.2%)	1 (0.0%)	NA (-)
0-100	1,878 (31.7%)	1,825 (30.2%)	1,722 (28.1%)	1,785 (29.9%)	1,818 (31.3%)	976 (29.9%)	2,032 (33.2%)	1,986 (33.9%)	2,123 (37.6%)	2,084 (39.1%)
101-110	864 (14.6%)	910 (15.1%)	1,015 (16.6%)	938 (15.7%)	951 (16.4%)	520 (15.9%)	933 (15.3%)	950 (16.2%)	982 (17.4%)	973 (18.2%)
111-120	1,116 (18.8%)	1,085 (18.0%)	1,071 (17.5%)	1,004 (16.8%)	931 (16.0%)	491 (15.0%)	1,036 (16.9%)	1,017 (17.4%)	952 (16.8%)	898 (16.8%)
121-130	931 (15.7%)	932 (15.4%)	937 (15.3%)	997 (16.7%)	876 (15.1%)	527 (16.1%)	948 (15.5%)	887 (15.2%)	772 (13.7%)	673 (12.6%)
131-140	651 (11.0%)	739 (12.2%)	815 (13.3%)	718 (12.0%)	721 (12.4%)	430 (13.2%)	670 (11.0%)	617 (10.5%)	523 (9.3%)	437 (8.2%)
141-150	305 (5.1%)	341 (5.6%)	343 (5.6%)	357 (6.0%)	331 (5.7%)	220 (6.7%)	305 (5.0%)	269 (4.6%)	200 (3.5%)	175 (3.3%)
151+	152 (2.6%)	160 (2.6%)	167 (2.7%)	127 (2.1%)	149 (2.6%)	93 (2.8%)	163 (2.7%)	117 (2.0%)	97 (1.7%)	95 (1.8%)

## Frequency of Runs

### Year to Date Average Runs per Horse

Code	2015	2016	2017	2018	2019	2020	2021	2022	2023	2024
Flat	4.32	4.32	4.31	4.29	4.38	3.26	4.45	4.35	4.34	4.38
Jump	3.01	3.03	3.04	3.02	2.87	1.97	2.87	2.86	2.88	2.89
Dual Overall	6.27	6.24	6.08	5.82	5.99	4.33	5.86	5.84	5.84	5.75
Dual (Flat)	3.39	3.27	3.19	3.02	3.20	2.33	3.05	2.96	3.13	3.15
Dual (Jump)	2.87	2.97	2.89	2.80	2.79	2.00	2.81	2.87	2.70	2.60
<b>All</b>	<b>3.90</b>	<b>3.90</b>	<b>3.89</b>	<b>3.87</b>	<b>3.86</b>	<b>2.83</b>	<b>3.85</b>	<b>3.81</b>	<b>3.81</b>	<b>3.85</b>

### Year to Date Proportion of Horses by Count of Runs

Runs	2015	2016	2017	2018	2019	2020	2021	2022	2023	2024
<b>Flat</b>										
1	1,542 (16.8%)	1,558 (16.6%)	1,642 (16.9%)	1,684 (17.3%)	1,677 (17.1%)	1,884 (21.4%)	1,501 (16.0%)	1,526 (16.5%)	1,564 (16.7%)	1,589 (16.8%)
2	1,456 (15.9%)	1,413 (15.0%)	1,459 (15.0%)	1,536 (15.8%)	1,482 (15.1%)	1,876 (21.3%)	1,343 (14.3%)	1,416 (15.3%)	1,421 (15.2%)	1,411 (14.9%)
3	1,467 (16.0%)	1,472 (15.7%)	1,558 (16.0%)	1,502 (15.5%)	1,454 (14.8%)	1,757 (19.9%)	1,434 (15.3%)	1,390 (15.0%)	1,399 (15.0%)	1,435 (15.2%)
4	1,215 (13.3%)	1,284 (13.7%)	1,304 (13.4%)	1,258 (13.0%)	1,300 (13.2%)	1,385 (15.7%)	1,320 (14.0%)	1,274 (13.8%)	1,253 (13.4%)	1,258 (13.3%)
5+	3,479 (38.0%)	3,662 (39.0%)	3,756 (38.6%)	3,734 (38.4%)	3,913 (39.8%)	1,910 (21.7%)	3,804 (40.5%)	3,630 (39.3%)	3,715 (39.7%)	3,749 (39.7%)
<b>Jump</b>										
1	1,676 (25.8%)	1,635 (25.3%)	1,657 (25.7%)	1,630 (25.2%)	1,823 (27.4%)	2,193 (40.2%)	1,854 (26.3%)	1,815 (27.7%)	1,813 (27.4%)	1,636 (25.7%)
2	1,452 (22.4%)	1,408 (21.8%)	1,366 (21.2%)	1,354 (20.9%)	1,621 (24.3%)	1,899 (34.8%)	1,703 (24.2%)	1,477 (22.6%)	1,482 (22.4%)	1,445 (22.7%)
3	1,220 (18.8%)	1,231 (19.1%)	1,230 (19.1%)	1,269 (19.6%)	1,220 (18.3%)	904 (16.6%)	1,416 (20.1%)	1,284 (19.6%)	1,306 (19.7%)	1,287 (20.3%)
4	911 (14.0%)	900 (13.9%)	932 (14.5%)	983 (15.2%)	914 (13.7%)	317 (5.8%)	911 (12.9%)	896 (13.7%)	899 (13.6%)	970 (15.3%)
5+	1,227 (18.9%)	1,281 (19.8%)	1,257 (19.5%)	1,241 (19.2%)	1,086 (16.3%)	149 (2.7%)	1,167 (16.6%)	1,070 (16.4%)	1,121 (16.9%)	1,017 (16.0%)
<b>All Races</b>										
1	2,841 (19.0%)	2,826 (18.6%)	2,943 (18.9%)	2,951 (18.9%)	3,132 (19.7%)	3,688 (26.7%)	2,991 (18.8%)	3,024 (19.8%)	3,062 (19.8%)	2,933 (19.1%)
2	2,641 (17.6%)	2,598 (17.1%)	2,641 (16.9%)	2,687 (17.2%)	2,890 (18.2%)	3,556 (25.8%)	2,852 (18.0%)	2,706 (17.7%)	2,764 (17.8%)	2,691 (17.6%)
3	2,554 (17.1%)	2,533 (16.7%)	2,645 (17.0%)	2,654 (17.0%)	2,535 (16.0%)	2,617 (19.0%)	2,726 (17.2%)	2,581 (16.9%)	2,575 (16.6%)	2,622 (17.1%)
4	2,049 (13.7%)	2,131 (14.0%)	2,187 (14.0%)	2,191 (14.0%)	2,165 (13.6%)	1,741 (12.6%)	2,186 (13.8%)	2,132 (14.0%)	2,116 (13.7%)	2,192 (14.3%)
5+	4,893 (32.7%)	5,114 (33.6%)	5,168 (33.2%)	5,133 (32.9%)	5,160 (32.5%)	2,187 (15.9%)	5,129 (32.3%)	4,825 (31.6%)	4,969 (32.1%)	4,895 (31.9%)

### Year to Date Median Days Between Runs

Code/RatBand	2015	2016	2017	2018	2019	2020	2021	2022	2023	2024
<b>All Runners</b>	<b>24</b>	<b>24</b>	<b>24</b>	<b>24</b>	<b>24</b>	<b>26</b>	<b>25</b>	<b>25</b>	<b>25</b>	<b>25</b>
<b>Flat</b>										
Unrated	23	22	22	23	23	22	23	24	23	24
0-50	20	20	20	20	21	20	20	20	19	18
51-60	19	19	20	19	20	20	20	20	19	20
61-70	20	20	21	20	21	22	21	21	21	21
71-80	21	21	22	21	21	23	22	22	22	23
81-90	22	22	22	22	22	23	23	23	25	24
91-100	25	25	25	24	24	25	26	27	28	28
101+	28	28	30	28	28	28	31	32	33	34
<b>All Flat Runners</b>	<b>21</b>	<b>21</b>	<b>21</b>	<b>21</b>	<b>22</b>	<b>22</b>	<b>22</b>	<b>22</b>	<b>22</b>	<b>22</b>
<b>Jump</b>										
Unrated	34	35	32	36	36	36	38	34	39	38
0-100	26	26	26	27	27	33	29	27	29	30
101-110	28	29	27	29	29	31	30	29	30	32
111-120	29	29	29	30	30	34	32	30	32	32
121-130	30	31	29	30	32	34	32	31	33	35
131-140	31	33	33	33	33	36	35	34	36	35
141-150	34	34	35	38	36	41	40	36	39	36
151+	35	38	34	38	39	42	40	40	42	41
<b>All Jump Runners</b>	<b>29</b>	<b>30</b>	<b>29</b>	<b>31</b>	<b>31</b>	<b>35</b>	<b>32</b>	<b>30</b>	<b>32</b>	<b>33</b>

# Horses Population by Gender

## August 2024 Horses in Training Snapshot by Gender versus Previous Years

### All Horses

Sex	2015	2016	2017	2018	2019	2020	2021	2022	2023	2024
Colt/Entire	2,271 (16.4%)	2,250 (16.2%)	2,273 (15.7%)	2,280 (15.1%)	2,135 (14.3%)	2,182 (13.9%)	1,968 (13.1%)	1,930 (13.1%)	1,993 (13.6%)	1,815 (12.7%)
Gelding	7,228 (52.3%)	7,328 (52.8%)	7,673 (53.0%)	8,044 (53.4%)	8,006 (53.8%)	8,614 (54.8%)	8,299 (55.4%)	8,066 (54.7%)	7,933 (54.2%)	7,863 (55.0%)
Filly/Mare	4,323 (31.3%)	4,300 (31.0%)	4,516 (31.2%)	4,748 (31.5%)	4,736 (31.8%)	4,908 (31.2%)	4,707 (31.4%)	4,745 (32.2%)	4,719 (32.2%)	4,616 (32.3%)
Rig	4 (0.0%)	5 (0.0%)	4 (0.0%)	2 (0.0%)	3 (0.0%)	2 (0.0%)	2 (0.0%)	1 (0.0%)	0 (0.0%)	0 (0.0%)
<b>Total</b>	<b>13,826 (100.0%)</b>	<b>13,883 (100.0%)</b>	<b>14,466 (100.0%)</b>	<b>15,074 (100.0%)</b>	<b>14,880 (100.0%)</b>	<b>15,706 (100.0%)</b>	<b>14,976 (100.0%)</b>	<b>14,742 (100.0%)</b>	<b>14,645 (100.0%)</b>	<b>14,294 (100.0%)</b>

### Flat (including Dual)

Sex	2015	2016	2017	2018	2019	2020	2021	2022	2023	2024
Colt/Entire	2,235 (23.1%)	2,228 (22.8%)	2,241 (21.9%)	2,265 (21.8%)	2,115 (20.8%)	2,158 (20.8%)	1,940 (19.4%)	1,907 (19.3%)	1,963 (19.9%)	1,798 (18.4%)
Gelding	3,864 (40.0%)	3,983 (40.8%)	4,287 (41.9%)	4,349 (41.8%)	4,319 (42.6%)	4,459 (43.0%)	4,398 (44.1%)	4,304 (43.5%)	4,272 (43.4%)	4,445 (45.4%)
Filly/Mare	3,567 (36.9%)	3,549 (36.3%)	3,701 (36.2%)	3,785 (36.4%)	3,711 (36.6%)	3,744 (36.1%)	3,642 (36.5%)	3,683 (37.2%)	3,618 (36.7%)	3,549 (36.2%)
Rig	2 (0.0%)	5 (0.1%)	4 (0.0%)	2 (0.0%)	2 (0.0%)	1 (0.0%)	1 (0.0%)	0 (0.0%)	0 (0.0%)	0 (0.0%)
<b>Total</b>	<b>9,668 (100.0%)</b>	<b>9,765 (100.0%)</b>	<b>10,233 (100.0%)</b>	<b>10,401 (100.0%)</b>	<b>10,147 (100.0%)</b>	<b>10,362 (100.0%)</b>	<b>9,981 (100.0%)</b>	<b>9,894 (100.0%)</b>	<b>9,853 (100.0%)</b>	<b>9,792 (100.0%)</b>

### Jump (including Dual)

Sex	2015	2016	2017	2018	2019	2020	2021	2022	2023	2024
Colt/Entire	40 (0.9%)	30 (0.7%)	29 (0.6%)	21 (0.4%)	26 (0.5%)	26 (0.4%)	36 (0.7%)	29 (0.5%)	33 (0.6%)	21 (0.4%)
Gelding	3,757 (80.6%)	3,730 (81.2%)	3,907 (79.9%)	4,116 (78.7%)	4,030 (77.7%)	4,597 (77.9%)	4,243 (77.8%)	4,123 (77.5%)	3,993 (76.5%)	3,816 (75.9%)
Filly/Mare	863 (18.5%)	832 (18.1%)	956 (19.5%)	1,090 (20.9%)	1,127 (21.7%)	1,276 (21.6%)	1,172 (21.5%)	1,170 (22.0%)	1,196 (22.9%)	1,191 (23.7%)
Rig	1 (0.0%)	0 (0.0%)	0 (0.0%)	0 (0.0%)	1 (0.0%)	1 (0.0%)	1 (0.0%)	1 (0.0%)	0 (0.0%)	0 (0.0%)
<b>Total</b>	<b>4,661 (100.0%)</b>	<b>4,592 (100.0%)</b>	<b>4,892 (100.0%)</b>	<b>5,227 (100.0%)</b>	<b>5,184 (100.0%)</b>	<b>5,900 (100.0%)</b>	<b>5,452 (100.0%)</b>	<b>5,323 (100.0%)</b>	<b>5,222 (100.0%)</b>	<b>5,028 (100.0%)</b>

## Year to Date Total Runners by Gender

Sex	2015	2016	2017	2018	2019	2020	2021	2022	2023	2024
<b>All Races</b>										
Colt/Entire	6,205 (10.6%)	6,028 (10.2%)	6,124 (10.1%)	6,232 (10.3%)	5,896 (9.6%)	4,267 (10.9%)	5,645 (9.2%)	5,075 (8.7%)	5,019 (8.5%)	4,669 (7.9%)
Gelding	36,412 (62.3%)	37,277 (62.8%)	38,180 (62.9%)	37,447 (62.0%)	37,812 (61.7%)	23,471 (60.1%)	38,021 (62.1%)	36,345 (62.5%)	36,736 (62.3%)	37,408 (63.4%)
Filly/Mare	15,789 (27.0%)	16,042 (27.0%)	16,389 (27.0%)	16,686 (27.6%)	17,610 (28.7%)	11,328 (29.0%)	17,533 (28.6%)	16,757 (28.8%)	17,198 (29.2%)	16,948 (28.7%)
Rig	2 (0.0%)	16 (0.0%)	6 (0.0%)	11 (0.0%)	13 (0.0%)	4 (0.0%)	7 (0.0%)	7 (0.0%)	4 (0.0%)	0 (0.0%)
<b>Flat</b>										
Colt/Entire	6,162 (15.8%)	5,997 (15.1%)	6,088 (14.8%)	6,207 (15.2%)	5,865 (13.9%)	4,248 (15.0%)	5,608 (13.7%)	5,054 (12.8%)	4,983 (12.5%)	4,654 (11.4%)
Gelding	20,580 (52.8%)	21,239 (53.3%)	22,221 (53.9%)	21,957 (53.6%)	22,846 (54.0%)	15,005 (53.0%)	22,223 (54.2%)	21,604 (54.8%)	21,961 (55.0%)	23,401 (57.3%)
Filly/Mare	12,224 (31.4%)	12,592 (31.6%)	12,900 (31.3%)	12,778 (31.2%)	13,564 (32.1%)	9,036 (31.9%)	13,185 (32.1%)	12,786 (32.4%)	13,014 (32.6%)	12,758 (31.3%)
Rig	2 (0.0%)	16 (0.0%)	6 (0.0%)	11 (0.0%)	9 (0.0%)	1 (0.0%)	3 (0.0%)	0 (0.0%)	0 (0.0%)	0 (0.0%)
<b>All Jump</b>										
Colt/Entire	43 (0.2%)	31 (0.2%)	36 (0.2%)	25 (0.1%)	31 (0.2%)	19 (0.2%)	37 (0.2%)	21 (0.1%)	36 (0.2%)	15 (0.1%)
Gelding	15,832 (81.4%)	16,038 (82.2%)	15,959 (81.9%)	15,490 (79.8%)	14,966 (78.6%)	8,466 (78.5%)	15,798 (78.3%)	14,741 (78.7%)	14,775 (77.8%)	14,007 (76.9%)
Filly/Mare	3,565 (18.3%)	3,450 (17.7%)	3,489 (17.9%)	3,908 (20.1%)	4,046 (21.2%)	2,292 (21.3%)	4,348 (21.5%)	3,971 (21.2%)	4,184 (22.0%)	4,190 (23.0%)
Rig	0 (0.0%)	0 (0.0%)	0 (0.0%)	0 (0.0%)	4 (0.0%)	3 (0.0%)	4 (0.0%)	7 (0.0%)	4 (0.0%)	0 (0.0%)
<b>Chase</b>										
Colt/Entire	0 (0.0%)	1 (0.0%)	0 (0.0%)	0 (0.0%)	0 (0.0%)	0 (0.0%)	0 (0.0%)	0 (0.0%)	0 (0.0%)	0 (0.0%)
Gelding	5,706 (92.7%)	5,845 (93.0%)	5,906 (92.7%)	5,569 (90.8%)	5,398 (90.0%)	3,024 (90.3%)	5,586 (89.5%)	5,415 (89.3%)	5,284 (89.4%)	4,969 (89.6%)
Filly/Mare	451 (7.3%)	442 (7.0%)	464 (7.3%)	565 (9.2%)	597 (10.0%)	322 (9.6%)	652 (10.4%)	640 (10.6%)	623 (10.5%)	579 (10.4%)
Rig	0 (0.0%)	0 (0.0%)	0 (0.0%)	0 (0.0%)	2 (0.0%)	3 (0.1%)	4 (0.1%)	7 (0.1%)	3 (0.1%)	0 (0.0%)
<b>Hurdle</b>										
Colt/Entire	38 (0.3%)	27 (0.2%)	30 (0.3%)	17 (0.1%)	22 (0.2%)	8 (0.1%)	33 (0.3%)	13 (0.1%)	27 (0.2%)	10 (0.1%)
Gelding	9,008 (78.2%)	9,152 (78.8%)	9,005 (78.5%)	8,828 (76.6%)	8,625 (75.0%)	4,823 (74.5%)	8,597 (74.2%)	8,402 (75.4%)	8,540 (74.3%)	8,191 (72.6%)
Filly/Mare	2,476 (21.5%)	2,436 (21.0%)	2,439 (21.3%)	2,684 (23.3%)	2,852 (24.8%)	1,639 (25.3%)	2,952 (25.5%)	2,734 (24.5%)	2,920 (25.4%)	3,089 (27.4%)
Rig	0 (0.0%)	0 (0.0%)	0 (0.0%)	0 (0.0%)	2 (0.0%)	0 (0.0%)	0 (0.0%)	0 (0.0%)	1 (0.0%)	0 (0.0%)
<b>NHF</b>										
Colt/Entire	5 (0.3%)	3 (0.2%)	6 (0.4%)	8 (0.5%)	9 (0.6%)	11 (1.1%)	4 (0.2%)	8 (0.5%)	9 (0.6%)	5 (0.4%)
Gelding	1,118 (63.5%)	1,041 (64.4%)	1,048 (63.9%)	1,093 (62.1%)	943 (60.9%)	619 (64.4%)	1,615 (68.3%)	924 (60.4%)	951 (59.4%)	847 (61.6%)
Filly/Mare	638 (36.2%)	572 (35.4%)	586 (35.7%)	659 (37.4%)	597 (38.5%)	331 (34.4%)	744 (31.5%)	597 (39.0%)	641 (40.0%)	522 (38.0%)
<b>Hunter</b>										
Colt/Entire	1 (0.1%)	0 (0.0%)	0 (0.0%)	0 (0.0%)	0 (0.0%)	0 (0.0%)	0 (0.0%)	0 (0.0%)	0 (0.0%)	0 (0.0%)
Gelding	799 (94.2%)	720 (94.2%)	709 (94.9%)	603 (93.3%)	522 (92.7%)	142 (97.3%)	557 (93.5%)	429 (94.9%)	408 (93.6%)	379 (92.9%)
Filly/Mare	48 (5.7%)	44 (5.8%)	38 (5.1%)	43 (6.7%)	41 (7.3%)	4 (2.7%)	39 (6.5%)	23 (5.1%)	28 (6.4%)	29 (7.1%)

## Year to Date Individual Runners by Gender

Sex	2015	2016	2017	2018	2019	2020	2021	2022	2023	2024
<b>All Races</b>										
Male	10,615 (70.9%)	10,779 (70.9%)	11,022 (70.7%)	11,003 (70.5%)	11,092 (69.8%)	9,609 (69.7%)	11,109 (69.9%)	10,627 (69.6%)	10,644 (68.7%)	10,605 (69.2%)
Female	4,363 (29.1%)	4,423 (29.1%)	4,562 (29.3%)	4,613 (29.5%)	4,790 (30.2%)	4,180 (30.3%)	4,775 (30.1%)	4,641 (30.4%)	4,842 (31.3%)	4,728 (30.8%)
<b>Flat</b>										
Male	5,936 (64.8%)	6,076 (64.7%)	6,312 (64.9%)	6,369 (65.6%)	6,370 (64.8%)	5,729 (65.0%)	6,067 (64.5%)	5,946 (64.4%)	5,937 (63.5%)	6,122 (64.8%)
Female	3,223 (35.2%)	3,313 (35.3%)	3,407 (35.1%)	3,345 (34.4%)	3,456 (35.2%)	3,083 (35.0%)	3,335 (35.5%)	3,290 (35.6%)	3,415 (36.5%)	3,320 (35.2%)
<b>All Jump</b>										
Male	5,212 (80.4%)	5,231 (81.0%)	5,177 (80.4%)	5,106 (78.8%)	5,206 (78.1%)	4,270 (78.2%)	5,489 (77.8%)	5,079 (77.6%)	5,087 (76.8%)	4,845 (76.2%)
Female	1,274 (19.6%)	1,224 (19.0%)	1,265 (19.6%)	1,371 (21.2%)	1,458 (21.9%)	1,192 (21.8%)	1,562 (22.2%)	1,463 (22.4%)	1,534 (23.2%)	1,510 (23.8%)
<b>Chase</b>										
Male	2,007 (92.0%)	2,005 (92.5%)	2,042 (91.7%)	1,959 (90.0%)	1,975 (89.4%)	1,606 (89.4%)	2,071 (88.7%)	1,940 (88.5%)	1,877 (88.1%)	1,813 (88.3%)
Female	175 (8.0%)	163 (7.5%)	184 (8.3%)	218 (10.0%)	234 (10.6%)	190 (10.6%)	265 (11.3%)	252 (11.5%)	253 (11.9%)	241 (11.7%)
<b>Hurdle</b>										
Male	3,293 (79.0%)	3,349 (80.0%)	3,243 (78.7%)	3,268 (77.4%)	3,339 (76.5%)	2,606 (75.3%)	3,403 (75.2%)	3,234 (76.5%)	3,225 (75.2%)	3,138 (73.4%)
Female	875 (21.0%)	836 (20.0%)	880 (21.3%)	956 (22.6%)	1,028 (23.5%)	854 (24.7%)	1,120 (24.8%)	996 (23.5%)	1,064 (24.8%)	1,136 (26.6%)
<b>NHF</b>										
Male	769 (65.4%)	728 (66.0%)	711 (65.7%)	777 (65.6%)	676 (63.8%)	500 (65.5%)	1,163 (69.9%)	662 (62.9%)	688 (62.4%)	601 (63.7%)
Female	406 (34.6%)	375 (34.0%)	372 (34.3%)	407 (34.4%)	383 (36.2%)	263 (34.5%)	501 (30.1%)	391 (37.1%)	415 (37.6%)	343 (36.3%)
<b>Hunter</b>										
Male	448 (94.1%)	395 (93.2%)	366 (93.6%)	339 (92.1%)	301 (92.0%)	98 (96.1%)	299 (92.0%)	243 (92.4%)	228 (93.4%)	212 (92.6%)
Female	28 (5.9%)	29 (6.8%)	25 (6.4%)	29 (7.9%)	26 (8.0%)	4 (3.9%)	26 (8.0%)	20 (7.6%)	16 (6.6%)	17 (7.4%)

# Horses Population by Breeding

## August 2024 Horses in Training Snapshot by Breeding versus Previous Years

### Flat (including Dual)

Bred	Sex	2015	2016	2017	2018	2019	2020	2021	2022	2023	2024
GB	Male	2,910 (30.1%)	2,882 (29.5%)	3,050 (29.8%)	3,104 (29.8%)	3,054 (30.1%)	3,142 (30.3%)	2,974 (29.8%)	2,881 (29.1%)	2,861 (29.0%)	2,844 (29.0%)
	Female	1,976 (20.4%)	1,986 (20.3%)	2,049 (20.0%)	2,098 (20.2%)	2,061 (20.3%)	2,088 (20.2%)	2,017 (20.2%)	2,042 (20.6%)	1,980 (20.1%)	1,931 (19.7%)
<b>Subtotal</b>		<b>4,886 (50.5%)</b>	<b>4,868 (49.9%)</b>	<b>5,099 (49.8%)</b>	<b>5,202 (50.0%)</b>	<b>5,115 (50.4%)</b>	<b>5,230 (50.5%)</b>	<b>4,991 (50.0%)</b>	<b>4,923 (49.8%)</b>	<b>4,841 (49.1%)</b>	<b>4,775 (48.8%)</b>
IRE	Male	2,604 (26.9%)	2,708 (27.7%)	2,774 (27.1%)	2,819 (27.1%)	2,715 (26.8%)	2,835 (27.4%)	2,802 (28.1%)	2,850 (28.8%)	2,895 (29.4%)	2,903 (29.6%)
	Female	1,348 (13.9%)	1,316 (13.5%)	1,383 (13.5%)	1,397 (13.4%)	1,376 (13.6%)	1,403 (13.5%)	1,419 (14.2%)	1,463 (14.8%)	1,460 (14.8%)	1,448 (14.8%)
<b>Subtotal</b>		<b>3,952 (40.9%)</b>	<b>4,024 (41.2%)</b>	<b>4,157 (40.6%)</b>	<b>4,216 (40.5%)</b>	<b>4,091 (40.3%)</b>	<b>4,238 (40.9%)</b>	<b>4,221 (42.3%)</b>	<b>4,313 (43.6%)</b>	<b>4,355 (44.2%)</b>	<b>4,351 (44.4%)</b>
FR	Male	177 (1.8%)	208 (2.1%)	277 (2.7%)	307 (3.0%)	311 (3.1%)	326 (3.1%)	312 (3.1%)	302 (3.1%)	318 (3.2%)	337 (3.4%)
	Female	70 (0.7%)	84 (0.9%)	106 (1.0%)	118 (1.1%)	121 (1.2%)	135 (1.3%)	117 (1.2%)	115 (1.2%)	122 (1.2%)	120 (1.2%)
<b>Subtotal</b>		<b>247 (2.6%)</b>	<b>292 (3.0%)</b>	<b>383 (3.7%)</b>	<b>425 (4.1%)</b>	<b>432 (4.3%)</b>	<b>461 (4.4%)</b>	<b>429 (4.3%)</b>	<b>417 (4.2%)</b>	<b>440 (4.5%)</b>	<b>457 (4.7%)</b>
USA	Male	325 (3.4%)	338 (3.5%)	335 (3.3%)	310 (3.0%)	286 (2.8%)	236 (2.3%)	185 (1.9%)	117 (1.2%)	101 (1.0%)	91 (0.9%)
	Female	142 (1.5%)	136 (1.4%)	134 (1.3%)	145 (1.4%)	116 (1.1%)	88 (0.8%)	65 (0.7%)	42 (0.4%)	36 (0.4%)	29 (0.3%)
<b>Subtotal</b>		<b>467 (4.8%)</b>	<b>474 (4.9%)</b>	<b>469 (4.6%)</b>	<b>455 (4.4%)</b>	<b>402 (4.0%)</b>	<b>324 (3.1%)</b>	<b>250 (2.5%)</b>	<b>159 (1.6%)</b>	<b>137 (1.4%)</b>	<b>120 (1.2%)</b>
GNY	Male	60 (0.6%)	58 (0.6%)	69 (0.7%)	51 (0.5%)	53 (0.5%)	60 (0.6%)	54 (0.5%)	47 (0.5%)	46 (0.5%)	50 (0.5%)
	Female	12 (0.1%)	8 (0.1%)	14 (0.1%)	15 (0.1%)	24 (0.2%)	24 (0.2%)	21 (0.2%)	16 (0.2%)	14 (0.1%)	16 (0.2%)
<b>Subtotal</b>		<b>72 (0.7%)</b>	<b>66 (0.7%)</b>	<b>83 (0.8%)</b>	<b>66 (0.6%)</b>	<b>77 (0.8%)</b>	<b>84 (0.8%)</b>	<b>75 (0.8%)</b>	<b>63 (0.6%)</b>	<b>60 (0.6%)</b>	<b>66 (0.7%)</b>
Other	Male	25 (0.3%)	22 (0.2%)	27 (0.3%)	25 (0.2%)	17 (0.2%)	19 (0.2%)	12 (0.1%)	14 (0.1%)	14 (0.1%)	18 (0.2%)
	Female	19 (0.2%)	19 (0.2%)	15 (0.1%)	12 (0.1%)	13 (0.1%)	6 (0.1%)	3 (0.0%)	5 (0.1%)	6 (0.1%)	5 (0.1%)
<b>Subtotal</b>		<b>44 (0.5%)</b>	<b>41 (0.4%)</b>	<b>42 (0.4%)</b>	<b>37 (0.4%)</b>	<b>30 (0.3%)</b>	<b>25 (0.2%)</b>	<b>15 (0.2%)</b>	<b>19 (0.2%)</b>	<b>20 (0.2%)</b>	<b>23 (0.2%)</b>

### Jump (including Dual)

Bred	Sex	2015	2016	2017	2018	2019	2020	2021	2022	2023	2024
GB	Male	1,174 (25.2%)	1,060 (23.1%)	1,083 (22.1%)	1,122 (21.5%)	1,016 (19.6%)	1,160 (19.7%)	1,044 (19.1%)	1,029 (19.3%)	943 (18.1%)	915 (18.2%)
	Female	510 (10.9%)	472 (10.3%)	499 (10.2%)	529 (10.1%)	491 (9.5%)	554 (9.4%)	545 (10.0%)	551 (10.4%)	561 (10.7%)	501 (10.0%)
<b>Subtotal</b>		<b>1,684 (36.1%)</b>	<b>1,532 (33.4%)</b>	<b>1,582 (32.3%)</b>	<b>1,651 (31.6%)</b>	<b>1,507 (29.1%)</b>	<b>1,714 (29.1%)</b>	<b>1,589 (29.1%)</b>	<b>1,580 (29.7%)</b>	<b>1,504 (28.8%)</b>	<b>1,416 (28.2%)</b>
IRE	Male	2,029 (43.5%)	2,048 (44.6%)	2,182 (44.6%)	2,291 (43.8%)	2,296 (44.3%)	2,573 (43.6%)	2,349 (43.1%)	2,189 (41.1%)	2,124 (40.7%)	2,026 (40.3%)
	Female	301 (6.5%)	318 (6.9%)	387 (7.9%)	481 (9.2%)	538 (10.4%)	595 (10.1%)	515 (9.4%)	503 (9.4%)	516 (9.9%)	560 (11.1%)
<b>Subtotal</b>		<b>2,330 (50.0%)</b>	<b>2,366 (51.5%)</b>	<b>2,569 (52.5%)</b>	<b>2,772 (53.0%)</b>	<b>2,834 (54.7%)</b>	<b>3,168 (53.7%)</b>	<b>2,864 (52.5%)</b>	<b>2,692 (50.6%)</b>	<b>2,640 (50.6%)</b>	<b>2,586 (51.4%)</b>
FR	Male	490 (10.5%)	556 (12.1%)	575 (11.8%)	641 (12.3%)	663 (12.8%)	798 (13.5%)	794 (14.6%)	845 (15.9%)	882 (16.9%)	843 (16.8%)
	Female	45 (1.0%)	36 (0.8%)	63 (1.3%)	77 (1.5%)	91 (1.8%)	121 (2.1%)	102 (1.9%)	107 (2.0%)	115 (2.2%)	123 (2.4%)
<b>Subtotal</b>		<b>535 (11.5%)</b>	<b>592 (12.9%)</b>	<b>638 (13.0%)</b>	<b>718 (13.7%)</b>	<b>754 (14.5%)</b>	<b>919 (15.6%)</b>	<b>896 (16.4%)</b>	<b>952 (17.9%)</b>	<b>997 (19.1%)</b>	<b>966 (19.2%)</b>
USA	Male	56 (1.2%)	44 (1.0%)	44 (0.9%)	37 (0.7%)	31 (0.6%)	28 (0.5%)	31 (0.6%)	26 (0.5%)	17 (0.3%)	6 (0.1%)
	Female	1 (0.0%)	1 (0.0%)	1 (0.0%)	2 (0.0%)	2 (0.0%)	2 (0.0%)	1 (0.0%)	NA (-)	NA (-)	NA (-)
<b>Subtotal</b>		<b>57 (1.2%)</b>	<b>45 (1.0%)</b>	<b>45 (0.9%)</b>	<b>39 (0.7%)</b>	<b>33 (0.6%)</b>	<b>30 (0.5%)</b>	<b>32 (0.6%)</b>	<b>26 (0.5%)</b>	<b>17 (0.3%)</b>	<b>6 (0.1%)</b>
GNY	Male	45 (1.0%)	48 (1.0%)	43 (0.9%)	40 (0.8%)	48 (0.9%)	63 (1.1%)	60 (1.1%)	62 (1.2%)	58 (1.1%)	44 (0.9%)
	Female	5 (0.1%)	3 (0.1%)	3 (0.1%)	NA (-)	5 (0.1%)	4 (0.1%)	7 (0.1%)	7 (0.1%)	3 (0.1%)	6 (0.1%)
<b>Subtotal</b>		<b>50 (1.1%)</b>	<b>51 (1.1%)</b>	<b>46 (0.9%)</b>	<b>40 (0.8%)</b>	<b>53 (1.0%)</b>	<b>67 (1.1%)</b>	<b>67 (1.2%)</b>	<b>69 (1.3%)</b>	<b>61 (1.2%)</b>	<b>50 (1.0%)</b>
Other	Male	4 (0.1%)	4 (0.1%)	9 (0.2%)	6 (0.1%)	3 (0.1%)	2 (0.0%)	2 (0.0%)	2 (0.0%)	2 (0.0%)	3 (0.1%)
	Female	1 (0.0%)	2 (0.0%)	3 (0.1%)	1 (0.0%)	NA (-)	NA (-)	2 (0.0%)	2 (0.0%)	1 (0.0%)	1 (0.0%)
<b>Subtotal</b>		<b>5 (0.1%)</b>	<b>6 (0.1%)</b>	<b>12 (0.2%)</b>	<b>7 (0.1%)</b>	<b>3 (0.1%)</b>	<b>2 (0.0%)</b>	<b>4 (0.1%)</b>	<b>4 (0.1%)</b>	<b>3 (0.1%)</b>	<b>4 (0.1%)</b>

### Year to Date Total Runners by Breeding

#### Flat

Bred	Sex	2015	2016	2017	2018	2019	2020	2021	2022	2023	2024
GB	Male	12,651 (32.5%)	12,776 (32.1%)	13,343 (32.4%)	13,008 (31.8%)	13,119 (31.0%)	9,103 (32.2%)	12,796 (31.2%)	12,203 (30.9%)	12,197 (30.5%)	12,585 (30.8%)
	Female	6,717 (17.2%)	6,937 (17.4%)	6,987 (17.0%)	6,974 (17.0%)	7,430 (17.6%)	4,989 (17.6%)	7,354 (17.9%)	7,000 (17.7%)	7,007 (17.5%)	6,765 (16.6%)
<b>Subtotal</b>		<b>19,368 (49.7%)</b>	<b>19,713 (49.5%)</b>	<b>20,330 (49.3%)</b>	<b>19,982 (48.8%)</b>	<b>20,549 (48.6%)</b>	<b>14,092 (49.8%)</b>	<b>20,150 (49.1%)</b>	<b>19,203 (48.7%)</b>	<b>19,204 (48.1%)</b>	<b>19,350 (47.4%)</b>
IRE	Male	11,711 (30.1%)	12,109 (30.4%)	12,436 (30.2%)	12,609 (30.8%)	12,865 (30.4%)	8,422 (29.8%)	12,763 (31.1%)	12,594 (31.9%)	12,879 (32.2%)	13,481 (33.0%)
	Female	4,780 (12.3%)	4,999 (12.5%)	5,211 (12.6%)	5,069 (12.4%)	5,264 (12.4%)	3,572 (12.6%)	5,117 (12.5%)	5,157 (13.1%)	5,369 (13.4%)	5,428 (13.3%)
<b>Subtotal</b>		<b>16,491 (42.3%)</b>	<b>17,108 (42.9%)</b>	<b>17,647 (42.8%)</b>	<b>17,678 (43.2%)</b>	<b>18,129 (42.9%)</b>	<b>11,994 (42.4%)</b>	<b>17,880 (43.6%)</b>	<b>17,751 (45.0%)</b>	<b>18,248 (45.7%)</b>	<b>18,909 (46.3%)</b>
FR	Male	715 (1.8%)	748 (1.9%)	895 (2.2%)	983 (2.4%)	1,227 (2.9%)	821 (2.9%)	1,146 (2.8%)	1,084 (2.7%)	1,209 (3.0%)	1,335 (3.3%)
	Female	223 (0.6%)	263 (0.7%)	270 (0.7%)	320 (0.8%)	385 (0.9%)	241 (0.9%)	398 (1.0%)	372 (0.9%)	430 (1.1%)	378 (0.9%)
<b>Subtotal</b>		<b>938 (2.4%)</b>	<b>1,011 (2.5%)</b>	<b>1,165 (2.8%)</b>	<b>1,303 (3.2%)</b>	<b>1,612 (3.8%)</b>	<b>1,062 (3.8%)</b>	<b>1,544 (3.8%)</b>	<b>1,456 (3.7%)</b>	<b>1,639 (4.1%)</b>	<b>1,713 (4.2%)</b>
USA	Male	1,332 (3.4%)	1,276 (3.2%)	1,263 (3.1%)	1,237 (3.0%)	1,175 (2.8%)	691 (2.4%)	789 (1.9%)	594 (1.5%)	458 (1.1%)	431 (1.1%)
	Female	366 (0.9%)	299 (0.8%)	352 (0.9%)	326 (0.8%)	362 (0.9%)	173 (0.6%)	213 (0.5%)	171 (0.4%)	161 (0.4%)	128 (0.3%)
<b>Subtotal</b>		<b>1,698 (4.4%)</b>	<b>1,575 (4.0%)</b>	<b>1,615 (3.9%)</b>	<b>1,563 (3.8%)</b>	<b>1,537 (3.6%)</b>	<b>864 (3.1%)</b>	<b>1,002 (2.4%)</b>	<b>765 (1.9%)</b>	<b>619 (1.5%)</b>	<b>559 (1.4%)</b>
GNY	Male	199 (0.5%)	235 (0.6%)	250 (0.6%)	213 (0.5%)	223 (0.5%)	166 (0.6%)	265 (0.6%)	134 (0.3%)	168 (0.4%)	188 (0.5%)
	Female	73 (0.2%)	49 (0.1%)	35 (0.1%)	59 (0.1%)	74 (0.2%)	52 (0.2%)	86 (0.2%)	67 (0.2%)	36 (0.1%)	34 (0.1%)
<b>Subtotal</b>		<b>272 (0.7%)</b>	<b>284 (0.7%)</b>	<b>285 (0.7%)</b>	<b>272 (0.7%)</b>	<b>297 (0.7%)</b>	<b>218 (0.8%)</b>	<b>351 (0.9%)</b>	<b>201 (0.5%)</b>	<b>204 (0.5%)</b>	<b>222 (0.5%)</b>
Other	Male	136 (0.3%)	108 (0.3%)	128 (0.3%)	125 (0.3%)	111 (0.3%)	51 (0.2%)	75 (0.2%)	49 (0.1%)	33 (0.1%)	35 (0.1%)
	Female	65 (0.2%)	45 (0.1%)	45 (0.1%)	30 (0.1%)	49 (0.1%)	9 (0.0%)	17 (0.0%)	19 (0.0%)	11 (0.0%)	25 (0.1%)
<b>Subtotal</b>		<b>201 (0.5%)</b>	<b>153 (0.4%)</b>	<b>173 (0.4%)</b>	<b>155 (0.4%)</b>	<b>160 (0.4%)</b>	<b>60 (0.2%)</b>	<b>92 (0.2%)</b>	<b>68 (0.2%)</b>	<b>44 (0.1%)</b>	<b>60 (0.1%)</b>

## Jump

Bred	Sex	2015	2016	2017	2018	2019	2020	2021	2022	2023	2024
GB	Male	4,665 (24.0%)	4,455 (22.8%)	4,289 (22.0%)	4,102 (21.1%)	3,919 (20.6%)	2,094 (19.4%)	3,848 (19.1%)	3,347 (17.9%)	3,288 (17.3%)	3,267 (17.9%)
	Female	2,044 (10.5%)	1,806 (9.3%)	1,733 (8.9%)	1,889 (9.7%)	1,769 (9.3%)	947 (8.8%)	1,927 (9.5%)	1,746 (9.3%)	1,822 (9.6%)	1,716 (9.4%)
	<b>Subtotal</b>	<b>6,709 (34.5%)</b>	<b>6,261 (32.1%)</b>	<b>6,022 (30.9%)</b>	<b>5,991 (30.8%)</b>	<b>5,688 (29.9%)</b>	<b>3,041 (28.2%)</b>	<b>5,775 (28.6%)</b>	<b>5,093 (27.2%)</b>	<b>5,110 (26.9%)</b>	<b>4,983 (27.4%)</b>
IRE	Male	8,711 (44.8%)	8,962 (45.9%)	8,985 (46.1%)	8,708 (44.8%)	8,364 (43.9%)	4,752 (44.1%)	8,768 (43.4%)	7,991 (42.6%)	8,084 (42.5%)	7,523 (41.3%)
	Female	1,336 (6.9%)	1,446 (7.4%)	1,513 (7.8%)	1,778 (9.2%)	1,924 (10.1%)	1,092 (10.1%)	1,957 (9.7%)	1,780 (9.5%)	1,902 (10.0%)	2,063 (11.3%)
	<b>Subtotal</b>	<b>10,047 (51.7%)</b>	<b>10,408 (53.3%)</b>	<b>10,498 (53.9%)</b>	<b>10,486 (54.0%)</b>	<b>10,288 (54.0%)</b>	<b>5,844 (54.2%)</b>	<b>10,725 (53.1%)</b>	<b>9,771 (52.1%)</b>	<b>9,986 (52.6%)</b>	<b>9,586 (52.6%)</b>
FR	Male	1,935 (10.0%)	2,221 (11.4%)	2,354 (12.1%)	2,353 (12.1%)	2,355 (12.4%)	1,446 (13.4%)	2,826 (14.0%)	3,093 (16.5%)	3,148 (16.6%)	3,005 (16.5%)
	Female	160 (0.8%)	168 (0.9%)	223 (1.1%)	217 (1.1%)	316 (1.7%)	234 (2.2%)	426 (2.1%)	400 (2.1%)	440 (2.3%)	392 (2.2%)
	<b>Subtotal</b>	<b>2,095 (10.8%)</b>	<b>2,389 (12.2%)</b>	<b>2,577 (13.2%)</b>	<b>2,570 (13.2%)</b>	<b>2,671 (14.0%)</b>	<b>1,680 (15.6%)</b>	<b>3,252 (16.1%)</b>	<b>3,493 (18.6%)</b>	<b>3,588 (18.9%)</b>	<b>3,397 (18.7%)</b>
USA	Male	286 (1.5%)	205 (1.1%)	147 (0.8%)	145 (0.7%)	120 (0.6%)	70 (0.6%)	122 (0.6%)	82 (0.4%)	64 (0.3%)	31 (0.2%)
	Female	5 (0.0%)	4 (0.0%)	6 (0.0%)	5 (0.0%)	13 (0.1%)	6 (0.0%)	6 (0.0%)	6 (0.0%)	0 (0.0%)	3 (0.0%)
	<b>Subtotal</b>	<b>291 (1.5%)</b>	<b>209 (1.1%)</b>	<b>153 (0.8%)</b>	<b>150 (0.8%)</b>	<b>133 (0.7%)</b>	<b>82 (0.8%)</b>	<b>128 (0.6%)</b>	<b>88 (0.5%)</b>	<b>64 (0.3%)</b>	<b>34 (0.2%)</b>
GNY	Male	239 (1.2%)	199 (1.0%)	198 (1.0%)	174 (0.9%)	219 (1.1%)	118 (1.1%)	262 (1.3%)	248 (1.3%)	226 (1.2%)	184 (1.0%)
	Female	18 (0.1%)	15 (0.1%)	9 (0.0%)	10 (0.1%)	22 (0.1%)	6 (0.1%)	31 (0.2%)	33 (0.2%)	19 (0.1%)	12 (0.1%)
	<b>Subtotal</b>	<b>257 (1.3%)</b>	<b>214 (1.1%)</b>	<b>207 (1.1%)</b>	<b>184 (0.9%)</b>	<b>241 (1.3%)</b>	<b>124 (1.2%)</b>	<b>293 (1.5%)</b>	<b>281 (1.5%)</b>	<b>245 (1.3%)</b>	<b>196 (1.1%)</b>
Other	Male	39 (0.2%)	27 (0.1%)	22 (0.1%)	33 (0.2%)	24 (0.1%)	8 (0.1%)	13 (0.1%)	8 (0.0%)	5 (0.0%)	12 (0.1%)
	Female	2 (0.0%)	11 (0.1%)	5 (0.0%)	9 (0.0%)	2 (0.0%)	1 (0.0%)	1 (0.0%)	6 (0.0%)	1 (0.0%)	4 (0.0%)
	<b>Subtotal</b>	<b>41 (0.2%)</b>	<b>38 (0.2%)</b>	<b>27 (0.1%)</b>	<b>42 (0.2%)</b>	<b>26 (0.1%)</b>	<b>9 (0.1%)</b>	<b>14 (0.1%)</b>	<b>14 (0.1%)</b>	<b>6 (0.0%)</b>	<b>16 (0.1%)</b>

## Year to Date Individual Runners by Breeding

### Flat

Bred	Sex	2015	2016	2017	2018	2019	2020	2021	2022	2023	2024
GB	Male	2,782 (30.4%)	2,794 (29.8%)	2,871 (29.5%)	2,937 (30.2%)	2,903 (29.5%)	2,689 (30.5%)	2,751 (29.3%)	2,702 (29.3%)	2,647 (28.3%)	2,711 (28.7%)
	Female	1,753 (19.1%)	1,794 (19.1%)	1,842 (19.0%)	1,786 (18.4%)	1,844 (18.8%)	1,674 (19.0%)	1,823 (19.4%)	1,773 (19.2%)	1,775 (19.0%)	1,738 (18.4%)
	<b>Subtotal</b>	<b>4,535 (49.5%)</b>	<b>4,588 (48.9%)</b>	<b>4,713 (48.5%)</b>	<b>4,723 (48.6%)</b>	<b>4,747 (48.3%)</b>	<b>4,363 (49.5%)</b>	<b>4,574 (48.6%)</b>	<b>4,475 (48.5%)</b>	<b>4,422 (47.3%)</b>	<b>4,449 (47.1%)</b>
IRE	Male	2,550 (27.8%)	2,675 (28.5%)	2,776 (28.6%)	2,771 (28.5%)	2,777 (28.3%)	2,473 (28.1%)	2,754 (29.3%)	2,767 (30.0%)	2,840 (30.4%)	2,916 (30.9%)
	Female	1,243 (13.6%)	1,313 (14.0%)	1,323 (13.6%)	1,322 (13.6%)	1,351 (13.7%)	1,213 (13.8%)	1,306 (13.9%)	1,337 (14.5%)	1,450 (15.5%)	1,418 (15.0%)
	<b>Subtotal</b>	<b>3,793 (41.4%)</b>	<b>3,988 (42.5%)</b>	<b>4,099 (42.2%)</b>	<b>4,093 (42.1%)</b>	<b>4,128 (42.0%)</b>	<b>3,686 (41.8%)</b>	<b>4,060 (43.2%)</b>	<b>4,104 (44.4%)</b>	<b>4,290 (45.9%)</b>	<b>4,334 (45.9%)</b>
FR	Male	176 (1.9%)	193 (2.1%)	229 (2.4%)	278 (2.9%)	315 (3.2%)	278 (3.2%)	297 (3.2%)	288 (3.1%)	282 (3.0%)	331 (3.5%)
	Female	61 (0.7%)	77 (0.8%)	94 (1.0%)	100 (1.0%)	116 (1.2%)	97 (1.1%)	114 (1.2%)	108 (1.2%)	125 (1.3%)	110 (1.2%)
	<b>Subtotal</b>	<b>237 (2.6%)</b>	<b>270 (2.9%)</b>	<b>323 (3.3%)</b>	<b>378 (3.9%)</b>	<b>431 (4.4%)</b>	<b>375 (4.3%)</b>	<b>411 (4.4%)</b>	<b>396 (4.3%)</b>	<b>407 (4.4%)</b>	<b>441 (4.7%)</b>
USA	Male	334 (3.6%)	323 (3.4%)	337 (3.5%)	295 (3.0%)	287 (2.9%)	219 (2.5%)	191 (2.0%)	130 (1.4%)	109 (1.2%)	112 (1.2%)
	Female	128 (1.4%)	102 (1.1%)	117 (1.2%)	112 (1.2%)	115 (1.2%)	73 (0.8%)	64 (0.7%)	45 (0.5%)	46 (0.5%)	36 (0.4%)
	<b>Subtotal</b>	<b>462 (5.0%)</b>	<b>425 (4.5%)</b>	<b>454 (4.7%)</b>	<b>407 (4.2%)</b>	<b>402 (4.1%)</b>	<b>292 (3.3%)</b>	<b>255 (2.7%)</b>	<b>175 (1.9%)</b>	<b>155 (1.7%)</b>	<b>148 (1.6%)</b>
GNY	Male	60 (0.7%)	66 (0.7%)	68 (0.7%)	59 (0.6%)	58 (0.6%)	54 (0.6%)	60 (0.6%)	43 (0.5%)	47 (0.5%)	43 (0.5%)
	Female	21 (0.2%)	14 (0.1%)	14 (0.1%)	17 (0.2%)	18 (0.2%)	21 (0.2%)	24 (0.3%)	23 (0.2%)	13 (0.1%)	13 (0.1%)
	<b>Subtotal</b>	<b>81 (0.9%)</b>	<b>80 (0.9%)</b>	<b>82 (0.8%)</b>	<b>76 (0.8%)</b>	<b>76 (0.8%)</b>	<b>75 (0.9%)</b>	<b>84 (0.9%)</b>	<b>66 (0.7%)</b>	<b>60 (0.6%)</b>	<b>56 (0.6%)</b>
Other	Male	34 (0.4%)	25 (0.3%)	31 (0.3%)	29 (0.3%)	30 (0.3%)	16 (0.2%)	14 (0.1%)	16 (0.2%)	12 (0.1%)	9 (0.1%)
	Female	17 (0.2%)	13 (0.1%)	17 (0.2%)	8 (0.1%)	12 (0.1%)	5 (0.1%)	4 (0.0%)	4 (0.0%)	6 (0.1%)	5 (0.1%)
	<b>Subtotal</b>	<b>51 (0.6%)</b>	<b>38 (0.4%)</b>	<b>48 (0.5%)</b>	<b>37 (0.4%)</b>	<b>42 (0.4%)</b>	<b>21 (0.2%)</b>	<b>18 (0.2%)</b>	<b>20 (0.2%)</b>	<b>18 (0.2%)</b>	<b>14 (0.1%)</b>

### Jump

Bred	Sex	2015	2016	2017	2018	2019	2020	2021	2022	2023	2024
GB	Male	1,536 (23.7%)	1,456 (22.6%)	1,376 (21.4%)	1,325 (20.5%)	1,327 (19.9%)	1,054 (19.3%)	1,339 (19.0%)	1,188 (18.2%)	1,180 (17.8%)	1,155 (18.2%)
	Female	720 (11.1%)	654 (10.1%)	633 (9.8%)	663 (10.2%)	644 (9.7%)	493 (9.0%)	701 (9.9%)	650 (9.9%)	641 (9.7%)	632 (9.9%)
	<b>Subtotal</b>	<b>2,256 (34.8%)</b>	<b>2,110 (32.7%)</b>	<b>2,009 (31.2%)</b>	<b>1,988 (30.7%)</b>	<b>1,971 (29.6%)</b>	<b>1,547 (28.3%)</b>	<b>2,040 (28.9%)</b>	<b>1,838 (28.1%)</b>	<b>1,821 (27.5%)</b>	<b>1,787 (28.1%)</b>
IRE	Male	2,846 (43.9%)	2,889 (44.8%)	2,879 (44.7%)	2,865 (44.2%)	2,915 (43.7%)	2,369 (43.4%)	2,997 (42.5%)	2,741 (41.9%)	2,739 (41.4%)	2,576 (40.5%)
	Female	486 (7.5%)	494 (7.7%)	543 (8.4%)	607 (9.4%)	670 (10.1%)	565 (10.3%)	701 (9.9%)	639 (9.8%)	709 (10.7%)	711 (11.2%)
	<b>Subtotal</b>	<b>3,332 (51.4%)</b>	<b>3,383 (52.4%)</b>	<b>3,422 (53.1%)</b>	<b>3,472 (53.6%)</b>	<b>3,585 (53.8%)</b>	<b>2,934 (53.7%)</b>	<b>3,698 (52.4%)</b>	<b>3,380 (51.7%)</b>	<b>3,448 (52.1%)</b>	<b>3,287 (51.7%)</b>
FR	Male	656 (10.1%)	744 (11.5%)	796 (12.4%)	809 (12.5%)	849 (12.7%)	751 (13.7%)	1,040 (14.7%)	1,046 (16.0%)	1,071 (16.2%)	1,038 (16.3%)
	Female	58 (0.9%)	63 (1.0%)	80 (1.2%)	95 (1.5%)	132 (2.0%)	124 (2.3%)	147 (2.1%)	159 (2.4%)	172 (2.6%)	158 (2.5%)
	<b>Subtotal</b>	<b>714 (11.0%)</b>	<b>807 (12.5%)</b>	<b>876 (13.6%)</b>	<b>904 (14.0%)</b>	<b>981 (14.7%)</b>	<b>875 (16.0%)</b>	<b>1,187 (16.8%)</b>	<b>1,205 (18.4%)</b>	<b>1,243 (18.8%)</b>	<b>1,196 (18.8%)</b>
USA	Male	90 (1.4%)	63 (1.0%)	51 (0.8%)	47 (0.7%)	40 (0.6%)	32 (0.6%)	37 (0.5%)	29 (0.4%)	24 (0.4%)	12 (0.2%)
	Female	3 (0.0%)	2 (0.0%)	2 (0.0%)	2 (0.0%)	5 (0.1%)	5 (0.1%)	2 (0.0%)	2 (0.0%)	0 (0.0%)	1 (0.0%)
	<b>Subtotal</b>	<b>93 (1.4%)</b>	<b>65 (1.0%)</b>	<b>53 (0.8%)</b>	<b>49 (0.8%)</b>	<b>45 (0.7%)</b>	<b>37 (0.7%)</b>	<b>39 (0.6%)</b>	<b>31 (0.5%)</b>	<b>24 (0.4%)</b>	<b>13 (0.2%)</b>
GNY	Male	73 (1.1%)	73 (1.1%)	67 (1.0%)	52 (0.8%)	66 (1.0%)	59 (1.1%)	73 (1.0%)	73 (1.1%)	69 (1.0%)	60 (0.9%)
	Female	6 (0.1%)	7 (0.1%)	5 (0.1%)	2 (0.0%)	6 (0.1%)	4 (0.1%)	10 (0.1%)	11 (0.2%)	11 (0.2%)	6 (0.1%)
	<b>Subtotal</b>	<b>79 (1.2%)</b>	<b>80 (1.2%)</b>	<b>72 (1.1%)</b>	<b>54 (0.8%)</b>	<b>72 (1.1%)</b>	<b>63 (1.2%)</b>	<b>83 (1.2%)</b>	<b>84 (1.3%)</b>	<b>80 (1.2%)</b>	<b>66 (1.0%)</b>
Other	Male	11 (0.2%)	6 (0.1%)	8 (0.1%)	8 (0.1%)	9 (0.1%)	5 (0.1%)	3 (0.0%)	2 (0.0%)	4 (0.1%)	4 (0.1%)
	Female	1 (0.0%)	4 (0.1%)	2 (0.0%)	2 (0.0%)	1 (0.0%)	1 (0.0%)	1 (0.0%)	2 (0.0%)	1 (0.0%)	2 (0.0%)
	<b>Subtotal</b>	<b>12 (0.2%)</b>	<b>10 (0.2%)</b>	<b>10 (0.2%)</b>	<b>10 (0.2%)</b>	<b>10 (0.2%)</b>	<b>6 (0.1%)</b>	<b>4 (0.1%)</b>	<b>4 (0.1%)</b>	<b>5 (0.1%)</b>	<b>6 (0.1%)</b>

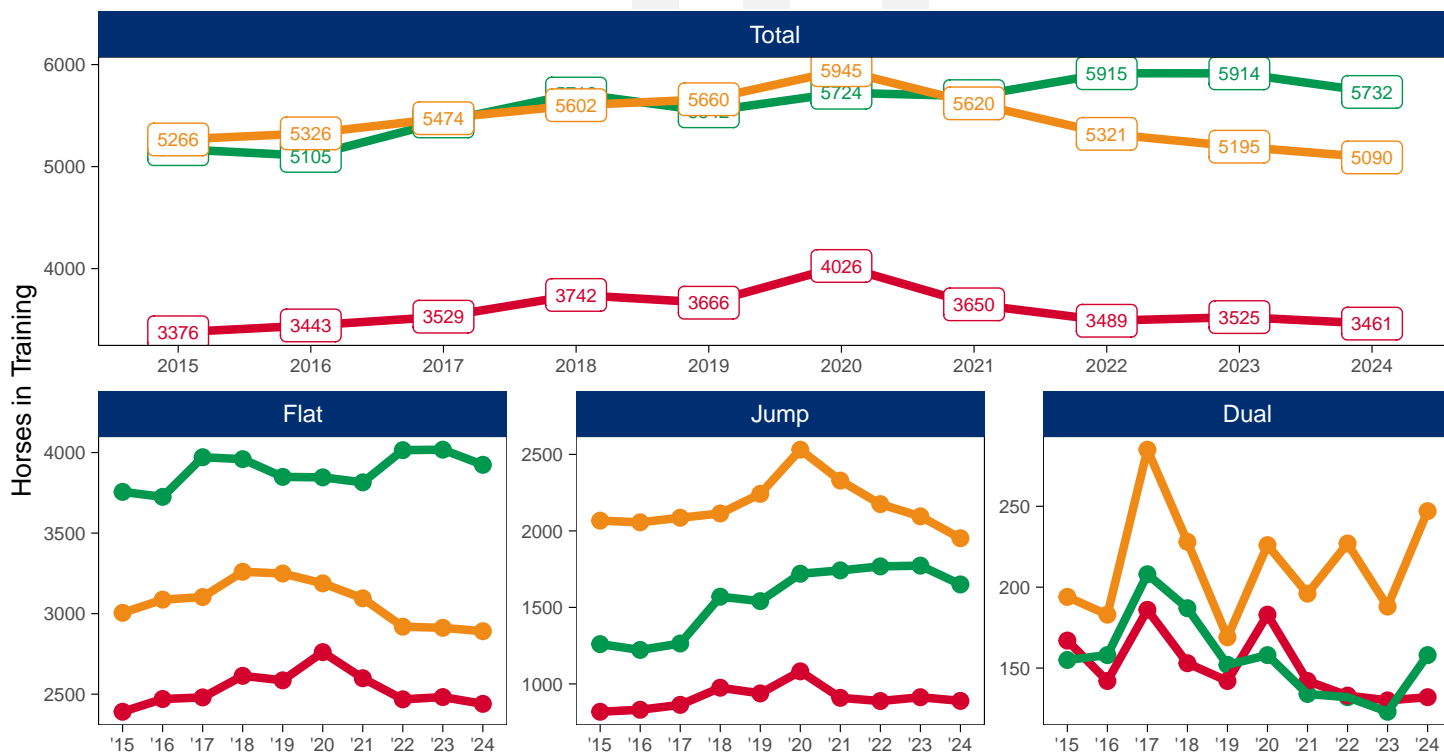
# Horse Population by Location

## August 2024 Horses in Training Snapshot by Region versus Previous Years

### Snapshot of Total Horses in Training in August by Region

Horses in Training in August, shown by Training Type and Region

Region ● North ● Midlands ● South



### North

AgeCat	2015	2016	2017	2018	2019	2020	2021	2022	2023	2024	vs. Last Year	vs. Pre-Covid
<b>Flat Horses in Training</b>												
2YO	851	833	818	882	918	931	898	850	844	747	-97 / -11.5%	-171 / -18.6%
3YO	584	638	634	655	634	758	720	619	635	634	-1 / -0.2%	0 / 0.0%
4YO	327	349	386	384	388	393	366	388	350	389	+39 / +11.1%	+1 / +0.3%
5YO+	629	650	642	693	646	679	615	611	653	670	+17 / +2.6%	+24 / +3.7%
<b>Subtotal</b>	<b>2391</b>	<b>2470</b>	<b>2480</b>	<b>2614</b>	<b>2586</b>	<b>2761</b>	<b>2599</b>	<b>2468</b>	<b>2482</b>	<b>2440</b>	<b>-42 / -1.7%</b>	<b>-146 / -5.6%</b>
<b>Jump Horses in Training</b>												
3YO	32	34	25	30	31	29	20	43	25	25	0 / 0.0%	-6 / -19.4%
4-5YO	229	238	276	275	311	309	254	257	265	266	+1 / +0.4%	-45 / -14.5%
6-7YO	287	274	273	319	313	369	305	310	336	313	-23 / -6.8%	0 / 0.0%
8YO+	270	285	289	351	283	375	330	278	287	285	-2 / -0.7%	+2 / +0.7%
<b>Subtotal</b>	<b>818</b>	<b>831</b>	<b>863</b>	<b>975</b>	<b>938</b>	<b>1082</b>	<b>909</b>	<b>888</b>	<b>913</b>	<b>889</b>	<b>-24 / -2.6%</b>	<b>-49 / -5.2%</b>
<b>Dual Horses in Training</b>												
3YO	30	28	35	28	20	38	22	24	28	13	-15 / -53.6%	-7 / -35.0%
4YO	38	31	47	42	31	36	35	32	28	35	+7 / +25.0%	+4 / +12.9%
5YO+	99	83	104	83	91	109	85	77	74	84	+10 / +13.5%	-7 / -7.7%
<b>Subtotal</b>	<b>167</b>	<b>142</b>	<b>186</b>	<b>153</b>	<b>142</b>	<b>183</b>	<b>142</b>	<b>133</b>	<b>130</b>	<b>132</b>	<b>+2 / +1.5%</b>	<b>-10 / -7.0%</b>
<b>Total Horses in Training</b>												
	<b>3376</b>	<b>3443</b>	<b>3529</b>	<b>3742</b>	<b>3666</b>	<b>4026</b>	<b>3650</b>	<b>3489</b>	<b>3525</b>	<b>3461</b>	<b>-64 / -1.8%</b>	<b>-205 / -5.6%</b>

'vs. Pre-Covid' is comparison between 2024 and 2019



## Midlands

AgeCat	2015	2016	2017	2018	2019	2020	2021	2022	2023	2024	vs. Last Year	vs. Pre-Covid
<b>Flat Horses in Training</b>												
2YO	1619	1595	1688	1591	1499	1433	1450	1557	1563	1506	-57 / -3.6%	+7 / +0.5%
3YO	1059	1065	1147	1193	1174	1226	1133	1220	1199	1160	-39 / -3.3%	-14 / -1.2%
4YO	452	439	512	534	523	512	579	571	558	541	-17 / -3.0%	+18 / +3.4%
5YO+	626	626	624	641	653	675	653	667	698	717	+19 / +2.7%	+64 / +9.8%
<b>Subtotal</b>	<b>3756</b>	<b>3725</b>	<b>3971</b>	<b>3959</b>	<b>3849</b>	<b>3846</b>	<b>3815</b>	<b>4015</b>	<b>4018</b>	<b>3924</b>	<b>-94 / -2.3%</b>	<b>+75 / +1.9%</b>
<b>Jump Horses in Training</b>												
3YO	48	58	27	54	47	37	64	56	65	66	+1 / +1.5%	+19 / +40.4%
4-5YO	421	405	477	568	602	669	628	660	702	614	-88 / -12.5%	+12 / +2.0%
6-7YO	457	409	398	529	502	589	604	618	604	570	-34 / -5.6%	+68 / +13.5%
8YO+	334	350	362	419	390	425	446	434	402	400	-2 / -0.5%	+10 / +2.6%
<b>Subtotal</b>	<b>1260</b>	<b>1222</b>	<b>1264</b>	<b>1570</b>	<b>1541</b>	<b>1720</b>	<b>1742</b>	<b>1768</b>	<b>1773</b>	<b>1650</b>	<b>-123 / -6.9%</b>	<b>+109 / +7.1%</b>
<b>Dual Horses in Training</b>												
3YO	28	37	33	36	24	24	24	27	31	21	-10 / -32.3%	-3 / -12.5%
4YO	32	39	54	52	43	30	39	35	21	43	+22 / +104.8%	0 / 0.0%
5YO+	95	82	121	99	85	104	71	70	71	94	+23 / +32.4%	+9 / +10.6%
<b>Subtotal</b>	<b>155</b>	<b>158</b>	<b>208</b>	<b>187</b>	<b>152</b>	<b>158</b>	<b>134</b>	<b>132</b>	<b>123</b>	<b>158</b>	<b>+35 / +28.5%</b>	<b>+6 / +3.9%</b>
<b>Total Horses in Training</b>												
	<b>5171</b>	<b>5105</b>	<b>5443</b>	<b>5716</b>	<b>5542</b>	<b>5724</b>	<b>5691</b>	<b>5915</b>	<b>5914</b>	<b>5732</b>	<b>-182 / -3.1%</b>	<b>+190 / +3.4%</b>

'vs. Pre-Covid' is comparison between 2024 and 2019

## South

AgeCat	2015	2016	2017	2018	2019	2020	2021	2022	2023	2024	vs. Last Year	vs. Pre-Covid
<b>Flat Horses in Training</b>												
2YO	1274	1286	1365	1355	1365	1255	1271	1190	1190	1218	+28 / +2.4%	-147 / -10.8%
3YO	855	878	858	957	901	966	895	802	844	773	-71 / -8.4%	-128 / -14.2%
4YO	363	382	364	412	451	427	411	424	342	371	+29 / +8.5%	-80 / -17.7%
5YO+	513	541	516	536	532	540	518	503	536	529	-7 / -1.3%	-3 / -0.6%
<b>Subtotal</b>	<b>3005</b>	<b>3087</b>	<b>3103</b>	<b>3260</b>	<b>3249</b>	<b>3188</b>	<b>3095</b>	<b>2919</b>	<b>2912</b>	<b>2891</b>	<b>-21 / -0.7%</b>	<b>-358 / -11.0%</b>
<b>Jump Horses in Training</b>												
3YO	85	82	93	73	103	77	106	92	104	78	-26 / -25.0%	-25 / -24.3%
4-5YO	792	813	806	830	868	928	857	898	898	782	-116 / -12.9%	-86 / -9.9%
6-7YO	672	653	686	693	754	871	783	707	645	689	+44 / +6.8%	-65 / -8.6%
8YO+	518	508	501	518	517	655	583	478	448	403	-45 / -10.0%	-114 / -22.1%
<b>Subtotal</b>	<b>2067</b>	<b>2056</b>	<b>2086</b>	<b>2114</b>	<b>2242</b>	<b>2531</b>	<b>2329</b>	<b>2175</b>	<b>2095</b>	<b>1952</b>	<b>-143 / -6.8%</b>	<b>-290 / -12.9%</b>
<b>Dual Horses in Training</b>												
3YO	30	35	46	34	28	33	47	50	45	54	+9 / +20.0%	+26 / +92.9%
4YO	41	26	86	47	46	53	53	51	46	77	+31 / +67.4%	+31 / +67.4%
5YO+	123	122	153	147	95	140	96	126	97	116	+19 / +19.6%	+21 / +22.1%
<b>Subtotal</b>	<b>194</b>	<b>183</b>	<b>285</b>	<b>228</b>	<b>169</b>	<b>226</b>	<b>196</b>	<b>227</b>	<b>188</b>	<b>247</b>	<b>+59 / +31.4%</b>	<b>+78 / +46.2%</b>
<b>Total Horses in Training</b>												
	<b>5266</b>	<b>5326</b>	<b>5474</b>	<b>5602</b>	<b>5660</b>	<b>5945</b>	<b>5620</b>	<b>5321</b>	<b>5195</b>	<b>5090</b>	<b>-105 / -2.0%</b>	<b>-570 / -10.1%</b>

'vs. Pre-Covid' is comparison between 2024 and 2019

## August 2024 Horses in Training Snapshot by Country versus Previous Years

Type	2015	2016	2017	2018	2019	2020	2021	2022	2023	2024	vs. Last Year	vs. Pre-Covid
<b>England</b>												
Flat	8822	8936	9147	9435	9274	9416	9120	9014	9037	8901	-136 / -1.5%	-373 / -4.0%
Jump	3642	3564	3679	4035	4078	4680	4409	4383	4310	3973	-337 / -7.8%	-105 / -2.6%
Dual	469	422	588	499	412	506	430	439	408	489	+81 / +19.9%	+77 / +18.7%
<b>Overall</b>	<b>12933</b>	<b>12922</b>	<b>13414</b>	<b>13969</b>	<b>13764</b>	<b>14602</b>	<b>13959</b>	<b>13836</b>	<b>13755</b>	<b>13363</b>	<b>-392 / -2.8%</b>	<b>-401 / -2.9%</b>
<b>Scotland</b>												
Flat	175	196	246	230	213	225	226	243	208	214	+6 / +2.9%	+1 / +0.5%
Jump	192	211	194	298	278	334	224	215	224	230	+6 / +2.7%	-48 / -17.3%
Dual	22	34	43	31	31	40	21	26	22	30	+8 / +36.4%	-1 / -3.2%
<b>Overall</b>	<b>389</b>	<b>441</b>	<b>483</b>	<b>559</b>	<b>522</b>	<b>599</b>	<b>471</b>	<b>484</b>	<b>454</b>	<b>474</b>	<b>+20 / +4.4%</b>	<b>-48 / -9.2%</b>
<b>Wales</b>												
Flat	155	150	161	168	197	154	163	145	167	140	-27 / -16.2%	-57 / -28.9%
Jump	311	334	340	326	365	319	347	233	247	288	+41 / +16.6%	-77 / -21.1%
Dual	25	27	48	38	20	21	21	27	11	18	+7 / +63.6%	-2 / -10.0%
<b>Overall</b>	<b>491</b>	<b>511</b>	<b>549</b>	<b>532</b>	<b>582</b>	<b>494</b>	<b>531</b>	<b>405</b>	<b>425</b>	<b>446</b>	<b>+21 / +4.9%</b>	<b>-136 / -23.4%</b>

'vs. Pre-Covid' is comparison between 2024 and 2019

## August 2024 Horses in Training Snapshot by Training Centre versus Previous Years

Type	2015	2016	2017	2018	2019	2020	2021	2022	2023	2024	vs. Last Year	vs. Pre-Covid
<b>Cheltenham (GL54)</b>												
Flat	19	11	19	12	13	10	21	15	10	12	+2 / +20.0%	-1 / -7.7%
Jump	229	273	266	356	296	469	386	355	366	343	-23 / -6.3%	+47 / +15.9%
Dual	17	18	45	18	19	17	13	14	11	18	+7 / +63.6%	-1 / -5.3%
<b>Overall</b>	<b>265</b>	<b>302</b>	<b>330</b>	<b>386</b>	<b>328</b>	<b>496</b>	<b>420</b>	<b>384</b>	<b>387</b>	<b>373</b>	<b>-14 / -3.6%</b>	<b>+45 / +13.7%</b>
<b>Lambourn (RG17)</b>												
Flat	772	900	992	1031	1018	992	948	876	917	922	+5 / +0.5%	-96 / -9.4%
Jump	290	281	222	212	254	321	269	296	251	244	-7 / -2.8%	-10 / -3.9%
Dual	21	17	31	22	20	31	21	36	24	30	+6 / +25.0%	+10 / +50.0%
<b>Overall</b>	<b>1083</b>	<b>1198</b>	<b>1245</b>	<b>1265</b>	<b>1292</b>	<b>1344</b>	<b>1238</b>	<b>1208</b>	<b>1192</b>	<b>1196</b>	<b>+4 / +0.3%</b>	<b>-96 / -7.4%</b>
<b>Malton (YO17)</b>												
Flat	626	645	638	713	721	811	724	686	693	664	-29 / -4.2%	-57 / -7.9%
Jump	114	111	128	92	88	84	83	84	75	50	-25 / -33.3%	-38 / -43.2%
Dual	39	20	39	38	23	45	39	26	26	22	-4 / -15.4%	-1 / -4.3%
<b>Overall</b>	<b>779</b>	<b>776</b>	<b>805</b>	<b>843</b>	<b>832</b>	<b>940</b>	<b>846</b>	<b>796</b>	<b>794</b>	<b>736</b>	<b>-58 / -7.3%</b>	<b>-96 / -11.5%</b>
<b>Marlborough (SN8)</b>												
Flat	582	477	460	481	444	473	458	400	412	393	-19 / -4.6%	-51 / -11.5%
Jump	70	46	73	71	72	79	88	76	79	71	-8 / -10.1%	-1 / -1.4%
Dual	5	1	1	1	5	3	0	0	1	0	-1 / -100.0%	-5 / -100.0%
<b>Overall</b>	<b>657</b>	<b>524</b>	<b>534</b>	<b>553</b>	<b>521</b>	<b>555</b>	<b>546</b>	<b>476</b>	<b>492</b>	<b>464</b>	<b>-28 / -5.7%</b>	<b>-57 / -10.9%</b>
<b>Middleham (DL8)</b>												
Flat	525	528	506	530	585	616	576	506	538	513	-25 / -4.6%	-72 / -12.3%
Jump	47	45	48	72	77	101	88	78	93	87	-6 / -6.5%	+10 / +13.0%
Dual	32	22	28	13	23	29	23	22	15	20	+5 / +33.3%	-3 / -13.0%
<b>Overall</b>	<b>604</b>	<b>595</b>	<b>582</b>	<b>615</b>	<b>685</b>	<b>746</b>	<b>687</b>	<b>606</b>	<b>646</b>	<b>620</b>	<b>-26 / -4.0%</b>	<b>-65 / -9.5%</b>
<b>Newbury (RG20)</b>												
Flat	387	376	373	413	419	401	421	436	420	392	-28 / -6.7%	-27 / -6.4%
Jump	15	12	9	19	11	6	4	10	53	71	+18 / +34.0%	+60 / +545.5%
Dual	5	3	5	9	7	6	7	4	4	4	0 / 0.0%	-3 / -42.9%
<b>Overall</b>	<b>407</b>	<b>391</b>	<b>387</b>	<b>441</b>	<b>437</b>	<b>413</b>	<b>432</b>	<b>450</b>	<b>477</b>	<b>467</b>	<b>-10 / -2.1%</b>	<b>+30 / +6.9%</b>
<b>Newmarket (CB8)</b>												
Flat	2746	2674	2830	2832	2697	2785	2743	2855	2934	2835	-99 / -3.4%	+138 / +5.1%
Jump	84	23	29	39	36	63	53	25	50	61	+11 / +22.0%	+25 / +69.4%
Dual	26	31	29	31	25	26	25	25	26	32	+6 / +23.1%	+7 / +28.0%
<b>Overall</b>	<b>2856</b>	<b>2728</b>	<b>2888</b>	<b>2902</b>	<b>2758</b>	<b>2874</b>	<b>2821</b>	<b>2905</b>	<b>3010</b>	<b>2928</b>	<b>-82 / -2.7%</b>	<b>+170 / +6.2%</b>

'vs. Pre-Covid' is comparison between 2024 and 2019