



# Horse Population Report

Updated on 31 July 2024



# Introduction

Welcome to the latest update on the Racehorse Population from the British Horseracing Authority.

The aim of this document is to give stakeholders and the wider Public an insight into the current state of the Horse Population in Great Britain. It is hoped that this transparency will ensure that all decision makers have access to the key data required to help British Racing deliver a Competitive and Compelling product to stakeholders, racegoers and the wider public.

If you have any questions regarding the content of this report or suggestions for how it could be improved further, please contact Joe Yates – jyates@britishhorseracing.com

## Definitions

This report uses the Horses in Training returns from the Weatherby's Racing Administration System, this is completed by trainers and should be updated whenever a horse enters or leaves training in their care as part of the conditions of their licence.

## Horses in Training

Unless otherwise stated, snapshots of Horses in Training will be from the 15th day of the month in question and year to date figures will be up to and including the date titled at the front of the report.

Horses' ratings will be taken from the most recently published ratings by the BHA Handicapping Team, which is currently at 7am each Tuesday morning. For example, if looking at the Horses in a particular rating band for July 2011, the horses in training number will be from Friday 15th July 2011 and ratings, where possible, will be assigned to each horse from the ratings published by the BHA Handicappers on Tuesday 12th July 2011.

The Gender of a horse will be taken from the reporting date in question, regardless of whether this has since changed.

In the case of YTD reporting, where a horse's gender or training type has changed in the year-to-date period, the most recent is taken.

This report does not count any horses that are temporarily racing abroad for GB Trainers at the time of reporting.

Yearlings are not included in total counts of flat and/or dual horses but will be sometimes shown separately for information purposes.

Yearlings and two-year-olds are not included in total counts of jump horses or counts of jump horses that include dual horses but will be sometimes shown separately for information purposes.

Yearlings, two-year-olds and three-year-olds are not included in total counts of Hunter Chasers but will be sometimes shown separately for information purposes.

Yearlings and two-year-olds in training that are recorded as dual horses have been re-coded as flat horses.

Hunter Chasers are not included in any counts of Jump Horses or Total figures but will be sometimes shown separately for information purposes.

Horses' training locations are defined by the trainers' primary training location. Training regions are defined the same as regions for the Fixture List; 'North' is north of latitude 53.42911, 'South' is south of latitude 51.88002 and 'Midlands' is anywhere in between. Training centres are defined by postcodes and surrounding areas.

## Runners

Unless otherwise specified, Total Runners and Individual Runners metrics only counts runners that ran in GB races including any voided races. Withdrawn horses are not included.

Hunter Chases are not included in this section but will be sometimes shown separately for information purposes.

Total Runners is a count of all runners in races, whilst individual runners only counts each individual horse once.

# Monthly Horses in Training

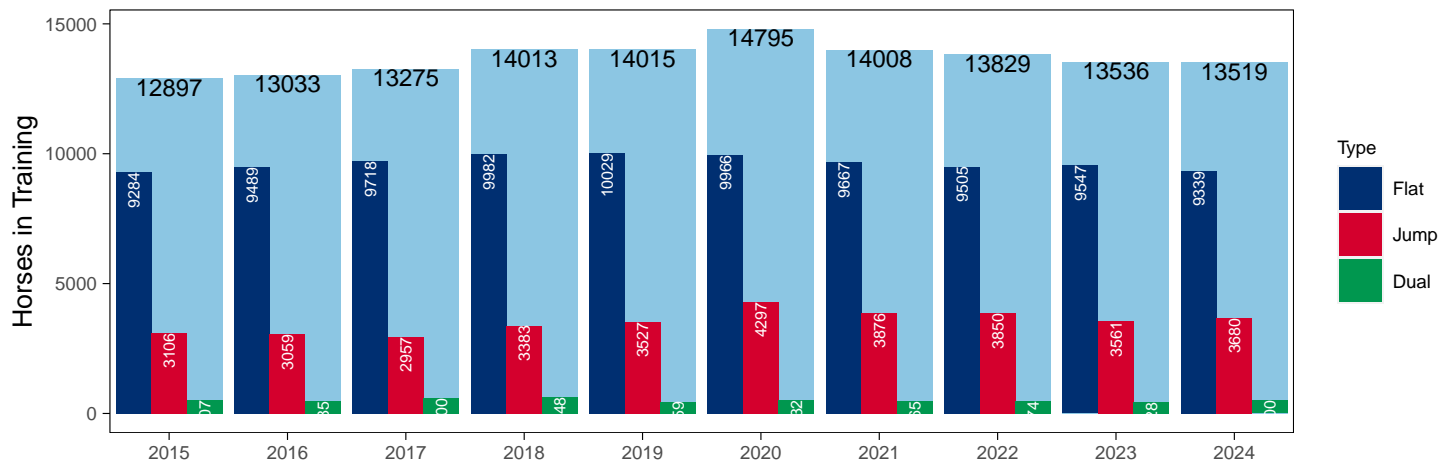
## July 2024 Horses in Training Snapshot versus Previous Years

Type	2015	2016	2017	2018	2019	2020	2021	2022	2023	2024	vs. Last Year	vs. Pre-Covid
Flat	9284	9489	9718	9982	10029	9966	9667	9505	9547	9339	-208 / -2.2%	-690 / -6.9%
Jump	3106	3059	2957	3383	3527	4297	3876	3850	3561	3680	+119 / +3.3%	+153 / +4.3%
Dual	507	485	600	648	459	532	465	474	428	500	+72 / +16.8%	+41 / +8.9%
<b>Total</b>	<b>12897</b>	<b>13033</b>	<b>13275</b>	<b>14013</b>	<b>14015</b>	<b>14795</b>	<b>14008</b>	<b>13829</b>	<b>13536</b>	<b>13519</b>	<b>-17 / -0.1%</b>	<b>-496 / -3.5%</b>

'vs. Pre-Covid' is comparison between 2024 and 2019

### Snapshot of Total Horses in Training in July

Horses in Training in July, shown by Training Type



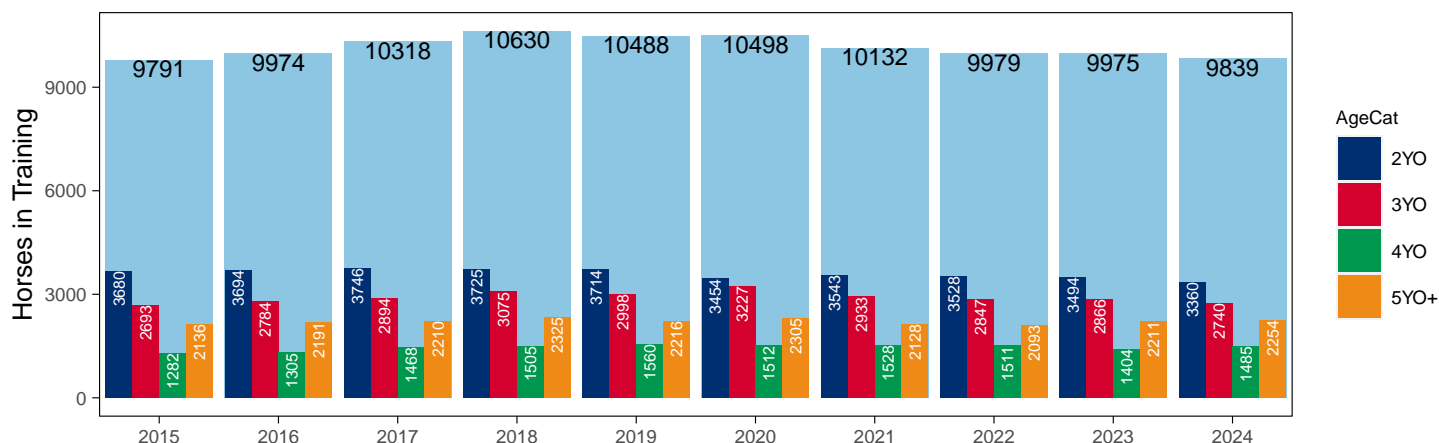
### Flat (including Dual)

AgeCat	2015	2016	2017	2018	2019	2020	2021	2022	2023	2024	vs. Last Year	vs. Pre-Covid
2YO	3680	3694	3746	3725	3714	3454	3543	3528	3494	3360	-134 / -3.8%	-354 / -9.5%
3YO	2693	2784	2894	3075	2998	3227	2933	2847	2866	2740	-126 / -4.4%	-258 / -8.6%
4YO	1282	1305	1468	1505	1560	1512	1528	1511	1404	1485	+81 / +5.8%	-75 / -4.8%
5YO+	2136	2191	2210	2325	2216	2305	2128	2093	2211	2254	+43 / +1.9%	+38 / +1.7%
<b>Total</b>	<b>9791</b>	<b>9974</b>	<b>10318</b>	<b>10630</b>	<b>10488</b>	<b>10498</b>	<b>10132</b>	<b>9979</b>	<b>9975</b>	<b>9839</b>	<b>-136 / -1.4%</b>	<b>-649 / -6.2%</b>

'vs. Pre-Covid' is comparison between 2024 and 2019

### Snapshot of Flat Horses in Training in July

Flat Horses in Training in July, shown by Age



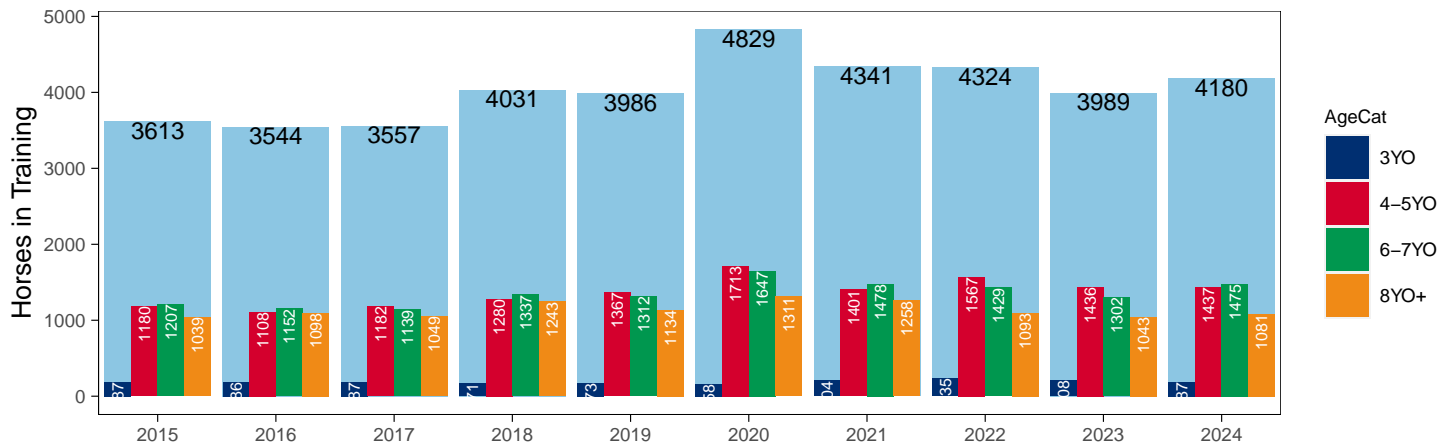
## Jump (including Dual)

AgeCat	2015	2016	2017	2018	2019	2020	2021	2022	2023	2024	vs. Last Year	vs. Pre-Covid
3YO	187	186	187	171	173	158	204	235	208	187	-21 / -10.1%	+14 / +8.1%
4-5YO	1180	1108	1182	1280	1367	1713	1401	1567	1436	1437	+1 / +0.1%	+70 / +5.1%
6-7YO	1207	1152	1139	1337	1312	1647	1478	1429	1302	1475	+173 / +13.3%	+163 / +12.4%
8YO+	1039	1098	1049	1243	1134	1311	1258	1093	1043	1081	+38 / +3.6%	-53 / -4.7%
<b>Total</b>	<b>3613</b>	<b>3544</b>	<b>3557</b>	<b>4031</b>	<b>3986</b>	<b>4829</b>	<b>4341</b>	<b>4324</b>	<b>3989</b>	<b>4180</b>	<b>+191 / +4.8%</b>	<b>+194 / +4.9%</b>

'vs. Pre-Covid' is comparison between 2024 and 2019

### Snapshot of Jump Horses in Training in July

Jump Horses in Training in July, shown by Age



# 2024 Horses in Training versus Previous Years

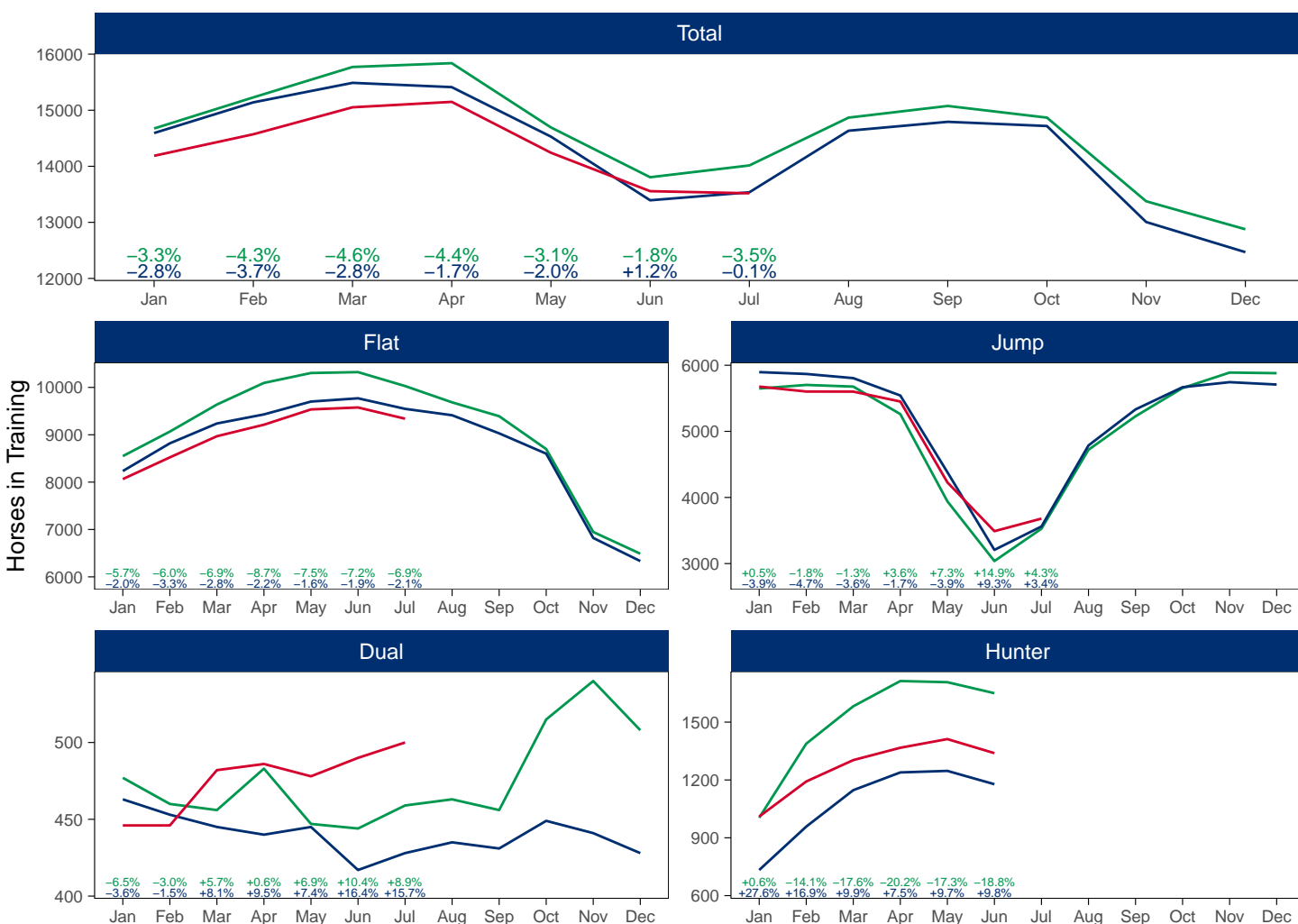
Type	Period	Jan	Feb	Mar	Apr	May	Jun	Jul	Aug	Sep	Oct	Nov	Dec
Flat	2024	8064	8523	8969	9212	9535	9576	9339					
	2023	8234	8819	9238	9430	9701	9770	9547	9412	9030	8601	6821	6333
	Pre-Covid	8549	9067	9638	10095	10304	10323	10029	9684	9392	8698	6947	6489
Jump	2024	5677	5602	5601	5451	4229	3490	3680					
	2023	5896	5868	5805	5542	4383	3207	3561	4787	5332	5668	5744	5708
	Pre-Covid	5648	5702	5677	5261	3942	3038	3527	4721	5228	5655	5889	5880
Dual	2024	446	446	482	486	478	490	500					
	2023	463	453	445	440	445	417	428	435	431	449	441	428
	Pre-Covid	477	460	456	483	447	444	459	463	456	515	540	508
Hunter	2024	1010	1192	1303	1367	1412	1339						
	2023	733	958	1147	1239	1247	1178						
	Pre-Covid	1004	1388	1582	1713	1707	1650						
Total	2024	14187	14571	15052	15149	14242	13556	13519					
	2023	14593	15140	15488	15412	14529	13394	13536	14634	14793	14718	13006	12469
	Pre-Covid	14674	15229	15771	15839	14693	13805	14015	14868	15076	14868	13376	12877

'Pre-Covid' is 2019 values

## Monthly Horses in Training

2024 against 2023 and Pre-Covid, shown with % Difference

Period — Pre-Covid — 2023 — 2024



'Pre-Covid' is 2019 values

## Flat (including Dual)

AgeCat	Period	Jan	Feb	Mar	Apr	May	Jun	Jul	Aug	Sep	Oct	Nov	Dec
2YO	2024	1623	2016	2334	2509	2926	3190	3360					
	2023	1718	2209	2459	2600	3020	3333	3494	3597	3580	3485	2934	2775
	Pre-Covid	2104	2425	2739	3107	3395	3594	3714	3782	3798	3637	3099	3000
3YO	2024	2886	2950	3020	3030	3037	2949	2740					
	2023	2951	3067	3177	3221	3176	3072	2866	2782	2597	2457	1780	1614
	Pre-Covid	2992	3126	3276	3329	3293	3211	2998	2781	2631	2397	1770	1608
4YO	2024	1609	1607	1662	1682	1623	1585	1485					
	2023	1644	1614	1637	1623	1579	1511	1404	1344	1280	1203	947	879
	Pre-Covid	1634	1661	1706	1718	1682	1654	1560	1482	1415	1332	1045	933
5YO+	2024	2392	2396	2435	2477	2427	2342	2254					
	2023	2384	2382	2410	2426	2371	2271	2211	2124	2004	1905	1601	1493
	Pre-Covid	2296	2315	2373	2424	2381	2308	2216	2102	2004	1847	1573	1456
<b>Total</b>	<b>2024</b>	<b>8510</b>	<b>8969</b>	<b>9451</b>	<b>9698</b>	<b>10013</b>	<b>10066</b>	<b>9839</b>					
	<b>2023</b>	<b>8697</b>	<b>9272</b>	<b>9683</b>	<b>9870</b>	<b>10146</b>	<b>10187</b>	<b>9975</b>	<b>9847</b>	<b>9461</b>	<b>9050</b>	<b>7262</b>	<b>6761</b>
	<b>Pre-Covid</b>	<b>9026</b>	<b>9527</b>	<b>10094</b>	<b>10578</b>	<b>10751</b>	<b>10767</b>	<b>10488</b>	<b>10147</b>	<b>9848</b>	<b>9213</b>	<b>7487</b>	<b>6997</b>

'Pre-Covid' is 2019 values

## Monthly Flat Horses in Training

2024 against 2023 and Pre-Covid, shown with % Difference

Period — Pre-Covid — 2023 — 2024



'Pre-Covid' is 2019 values

## Jump (including Dual)

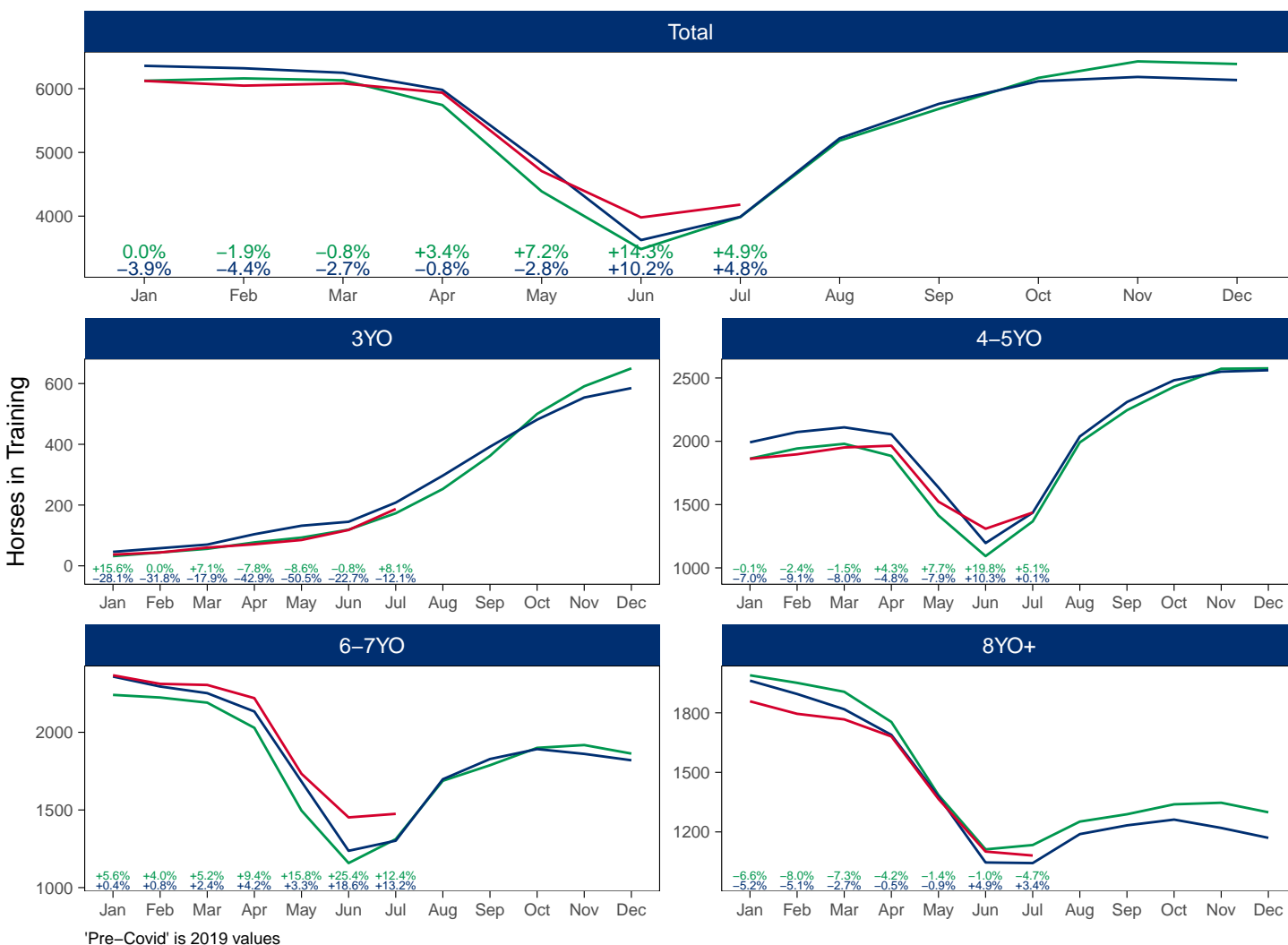
AgeCat	Period	Jan	Feb	Mar	Apr	May	Jun	Jul	Aug	Sep	Oct	Nov	Dec
3YO	2024	37	44	60	71	85	118	187					
	2023	46	58	70	104	132	145	208	297	392	481	554	585
	Pre-Covid	32	44	56	77	93	119	173	253	362	500	591	650
4-5YO	2024	1861	1897	1951	1965	1523	1309	1437					
	2023	1992	2073	2110	2055	1635	1196	1436	2038	2310	2482	2550	2561
	Pre-Covid	1863	1943	1980	1884	1414	1093	1367	1991	2245	2431	2573	2576
6-7YO	2024	2367	2312	2305	2220	1733	1452	1475					
	2023	2359	2295	2252	2134	1683	1237	1302	1698	1828	1892	1861	1820
	Pre-Covid	2241	2224	2191	2029	1496	1158	1312	1688	1788	1900	1918	1863
8YO+	2024	1858	1795	1767	1681	1366	1101	1081					
	2023	1962	1895	1818	1689	1378	1046	1043	1189	1233	1262	1220	1170
	Pre-Covid	1989	1951	1906	1754	1386	1112	1134	1252	1289	1339	1347	1299
<b>Total</b>	<b>2024</b>	<b>6123</b>	<b>6048</b>	<b>6083</b>	<b>5937</b>	<b>4707</b>	<b>3980</b>	<b>4180</b>					
	<b>2023</b>	<b>6359</b>	<b>6321</b>	<b>6250</b>	<b>5982</b>	<b>4828</b>	<b>3624</b>	<b>3989</b>	<b>5222</b>	<b>5763</b>	<b>6117</b>	<b>6185</b>	<b>6136</b>
	<b>Pre-Covid</b>	<b>6125</b>	<b>6162</b>	<b>6133</b>	<b>5744</b>	<b>4389</b>	<b>3482</b>	<b>3986</b>	<b>5184</b>	<b>5684</b>	<b>6170</b>	<b>6429</b>	<b>6388</b>

'Pre-Covid' is 2019 values

## Monthly Jump Horses in Training

2024 against 2023 and Pre-Covid, shown with % Difference

Period — Pre-Covid — 2023 — 2024



# July 2024 Horses in Training by Rating Band Snapshot versus Previous Years

## Flat (including Dual)

AgeCat	RatBand	2015	2016	2017	2018	2019	2020	2021	2022	2023	2024
2YO	Unrated	3,276 (89.0%)	3,300 (89.3%)	3,404 (90.9%)	3,368 (90.4%)	3,390 (91.3%)	3,164 (91.6%)	3,133 (88.4%)	3,162 (89.6%)	3,140 (89.9%)	3,009 (89.6%)
	0-50	23 (0.6%)	18 (0.5%)	18 (0.5%)	20 (0.5%)	18 (0.5%)	6 (0.2%)	27 (0.8%)	26 (0.7%)	29 (0.8%)	18 (0.5%)
	51-60	44 (1.2%)	46 (1.2%)	47 (1.3%)	57 (1.5%)	44 (1.2%)	22 (0.6%)	46 (1.3%)	43 (1.2%)	42 (1.2%)	49 (1.5%)
	61-70	101 (2.7%)	108 (2.9%)	84 (2.2%)	80 (2.1%)	86 (2.3%)	67 (1.9%)	90 (2.5%)	86 (2.4%)	93 (2.7%)	72 (2.1%)
	71-80	136 (3.7%)	114 (3.1%)	111 (3.0%)	103 (2.8%)	99 (2.7%)	100 (2.9%)	123 (3.5%)	107 (3.0%)	99 (2.8%)	113 (3.4%)
	81-90	66 (1.8%)	77 (2.1%)	49 (1.3%)	63 (1.7%)	49 (1.3%)	55 (1.6%)	79 (2.2%)	56 (1.6%)	62 (1.8%)	62 (1.8%)
	91-100	19 (0.5%)	22 (0.6%)	20 (0.5%)	26 (0.7%)	20 (0.5%)	28 (0.8%)	25 (0.7%)	35 (1.0%)	21 (0.6%)	25 (0.7%)
	101+	15 (0.4%)	9 (0.2%)	13 (0.3%)	8 (0.2%)	9 (0.2%)	12 (0.3%)	20 (0.6%)	13 (0.4%)	8 (0.2%)	12 (0.4%)
<b>Subtotal</b>		<b>3,680 (100.0%)</b>	<b>3,694 (100.0%)</b>	<b>3,746 (100.0%)</b>	<b>3,725 (100.0%)</b>	<b>3,714 (100.0%)</b>	<b>3,454 (100.0%)</b>	<b>3,543 (100.0%)</b>	<b>3,528 (100.0%)</b>	<b>3,494 (100.0%)</b>	<b>3,360 (100.0%)</b>
3YO	Unrated	705 (26.2%)	716 (25.7%)	757 (26.2%)	1,027 (33.4%)	896 (29.9%)	1,250 (38.7%)	898 (30.6%)	821 (28.8%)	828 (28.9%)	843 (30.8%)
	0-50	164 (6.1%)	168 (6.0%)	196 (6.8%)	178 (5.8%)	252 (8.4%)	176 (5.5%)	216 (7.4%)	210 (7.4%)	181 (6.3%)	184 (6.7%)
	51-60	321 (11.9%)	331 (11.9%)	335 (11.6%)	298 (9.7%)	374 (12.5%)	307 (9.5%)	315 (10.7%)	341 (12.0%)	317 (11.1%)	280 (10.2%)
	61-70	416 (15.4%)	454 (16.3%)	463 (16.0%)	467 (15.2%)	433 (14.4%)	439 (13.6%)	468 (16.0%)	437 (15.3%)	487 (17.0%)	449 (16.4%)
	71-80	491 (18.2%)	536 (19.3%)	539 (18.6%)	496 (16.1%)	447 (14.9%)	542 (16.8%)	487 (16.6%)	488 (17.1%)	473 (16.5%)	441 (16.1%)
	81-90	329 (12.2%)	330 (11.9%)	364 (12.6%)	335 (10.9%)	329 (11.0%)	303 (9.4%)	312 (10.6%)	300 (10.5%)	324 (11.3%)	316 (11.5%)
	91-100	153 (5.7%)	146 (5.2%)	144 (5.0%)	168 (5.5%)	156 (5.2%)	136 (4.2%)	135 (4.6%)	138 (4.8%)	159 (5.5%)	124 (4.5%)
	101+	114 (4.2%)	103 (3.7%)	96 (3.3%)	106 (3.4%)	111 (3.7%)	74 (2.3%)	102 (3.5%)	112 (3.9%)	97 (3.4%)	103 (3.8%)
<b>Subtotal</b>		<b>2,693 (100.0%)</b>	<b>2,784 (100.0%)</b>	<b>2,894 (100.0%)</b>	<b>3,075 (100.0%)</b>	<b>2,998 (100.0%)</b>	<b>3,227 (100.0%)</b>	<b>2,933 (100.0%)</b>	<b>2,847 (100.0%)</b>	<b>2,866 (100.0%)</b>	<b>2,740 (100.0%)</b>
4YO	Unrated	105 (8.2%)	154 (11.8%)	175 (11.9%)	215 (14.3%)	201 (12.9%)	260 (17.2%)	249 (16.3%)	218 (14.4%)	185 (13.2%)	182 (12.3%)
	0-50	95 (7.4%)	114 (8.7%)	144 (9.8%)	172 (11.4%)	202 (12.9%)	147 (9.7%)	177 (11.6%)	175 (11.6%)	196 (14.0%)	144 (9.7%)
	51-60	183 (14.3%)	177 (13.6%)	205 (14.0%)	156 (10.4%)	215 (13.8%)	201 (13.3%)	218 (14.3%)	216 (14.3%)	189 (13.5%)	267 (18.0%)
	61-70	209 (16.3%)	197 (15.1%)	242 (16.5%)	282 (18.7%)	256 (16.4%)	252 (16.7%)	256 (16.8%)	258 (17.1%)	244 (17.4%)	264 (17.8%)
	71-80	253 (19.7%)	241 (18.5%)	259 (17.6%)	259 (17.2%)	247 (15.8%)	239 (15.8%)	238 (15.6%)	254 (16.8%)	239 (17.0%)	250 (16.8%)
	81-90	187 (14.6%)	203 (15.6%)	199 (13.6%)	187 (12.4%)	197 (12.4%)	181 (12.0%)	178 (11.6%)	181 (12.0%)	152 (10.8%)	182 (12.3%)
	91-100	128 (10.0%)	119 (9.1%)	124 (8.4%)	136 (9.0%)	140 (9.0%)	121 (8.0%)	135 (8.8%)	107 (7.1%)	96 (6.8%)	108 (7.3%)
	101+	122 (9.5%)	100 (7.7%)	120 (8.2%)	98 (6.5%)	105 (6.7%)	111 (7.3%)	77 (5.0%)	102 (6.8%)	103 (7.3%)	88 (5.9%)
<b>Subtotal</b>		<b>1,282 (100.0%)</b>	<b>1,305 (100.0%)</b>	<b>1,468 (100.0%)</b>	<b>1,505 (100.0%)</b>	<b>1,560 (100.0%)</b>	<b>1,512 (100.0%)</b>	<b>1,528 (100.0%)</b>	<b>1,511 (100.0%)</b>	<b>1,404 (100.0%)</b>	<b>1,485 (100.0%)</b>
5YO+	Unrated	159 (7.4%)	244 (11.1%)	308 (13.9%)	378 (16.3%)	266 (12.0%)	392 (17.0%)	287 (13.5%)	322 (15.4%)	234 (10.6%)	258 (11.4%)
	0-50	232 (10.9%)	198 (9.0%)	223 (10.1%)	300 (12.9%)	350 (15.8%)	267 (11.6%)	301 (14.1%)	267 (12.8%)	283 (12.8%)	304 (13.5%)
	51-60	321 (15.0%)	321 (14.7%)	327 (14.8%)	348 (15.0%)	339 (15.3%)	345 (15.0%)	346 (16.3%)	327 (15.6%)	384 (17.4%)	403 (17.9%)
	61-70	443 (20.7%)	412 (18.8%)	362 (16.4%)	372 (16.0%)	378 (17.1%)	390 (16.9%)	369 (17.3%)	375 (17.9%)	409 (18.5%)	452 (20.1%)
	71-80	385 (18.0%)	379 (17.3%)	342 (15.5%)	322 (13.8%)	331 (14.9%)	363 (15.7%)	303 (14.2%)	278 (13.3%)	362 (16.4%)	329 (14.6%)
	81-90	291 (13.6%)	275 (12.6%)	305 (13.8%)	284 (12.2%)	248 (11.2%)	259 (11.2%)	222 (10.4%)	224 (10.7%)	236 (10.7%)	246 (10.9%)
	91-100	159 (7.4%)	212 (9.7%)	170 (7.7%)	177 (7.6%)	159 (7.2%)	143 (6.2%)	149 (7.0%)	156 (7.5%)	160 (7.2%)	134 (5.9%)
	101+	146 (6.8%)	150 (6.8%)	173 (7.8%)	144 (6.2%)	145 (6.5%)	146 (6.3%)	151 (7.1%)	144 (6.9%)	143 (6.5%)	128 (5.7%)
<b>Subtotal</b>		<b>2,136 (100.0%)</b>	<b>2,191 (100.0%)</b>	<b>2,210 (100.0%)</b>	<b>2,325 (100.0%)</b>	<b>2,216 (100.0%)</b>	<b>2,305 (100.0%)</b>	<b>2,128 (100.0%)</b>	<b>2,093 (100.0%)</b>	<b>2,211 (100.0%)</b>	<b>2,254 (100.0%)</b>
Overall	Unrated	4,245 (43.4%)	4,414 (44.3%)	4,644 (45.0%)	4,988 (46.9%)	4,753 (45.3%)	5,066 (48.3%)	4,567 (45.1%)	4,523 (45.3%)	4,387 (44.0%)	4,292 (43.6%)
	0-50	514 (5.2%)	498 (5.0%)	581 (5.6%)	670 (6.3%)	822 (7.8%)	596 (5.7%)	721 (7.1%)	678 (6.8%)	689 (6.9%)	650 (6.6%)
	51-60	869 (8.9%)	875 (8.8%)	914 (8.9%)	859 (8.1%)	972 (9.3%)	875 (8.3%)	925 (9.1%)	927 (9.3%)	932 (9.3%)	999 (10.2%)
	61-70	1,169 (11.9%)	1,171 (11.7%)	1,151 (11.2%)	1,201 (11.3%)	1,153 (11.0%)	1,148 (10.9%)	1,183 (11.7%)	1,156 (11.6%)	1,233 (12.4%)	1,237 (12.6%)
	71-80	1,265 (12.9%)	1,270 (12.7%)	1,251 (12.1%)	1,180 (11.1%)	1,124 (10.7%)	1,244 (11.8%)	1,151 (11.4%)	1,127 (11.3%)	1,173 (11.8%)	1,133 (11.5%)
	81-90	873 (8.9%)	885 (8.9%)	917 (8.9%)	869 (8.2%)	819 (7.8%)	798 (7.6%)	791 (7.8%)	761 (7.6%)	774 (7.8%)	806 (8.2%)
	91-100	459 (4.7%)	499 (5.0%)	458 (4.4%)	507 (4.8%)	475 (4.5%)	428 (4.1%)	444 (4.4%)	436 (4.4%)	436 (4.4%)	391 (4.0%)
	101+	397 (4.1%)	362 (3.6%)	402 (3.9%)	356 (3.3%)	370 (3.5%)	343 (3.3%)	350 (3.5%)	371 (3.7%)	351 (3.5%)	331 (3.4%)
<b>Total</b>		<b>9,791 (100.0%)</b>	<b>9,974 (100.0%)</b>	<b>10,318 (100.0%)</b>	<b>10,630 (100.0%)</b>	<b>10,488 (100.0%)</b>	<b>10,498 (100.0%)</b>	<b>10,132 (100.0%)</b>	<b>9,979 (100.0%)</b>	<b>9,975 (100.0%)</b>	<b>9,839 (100.0%)</b>

Where a horse has more than one published rating (published Flat Turf and published Flat AWT mark), the higher of the two is taken.



Jump (including Dual)

AgeCat	RatBand	2015	2016	2017	2018	2019	2020	2021	2022	2023	2024
3YO	Unrated	187 (100.0%)	186 (100.0%)	187 (100.0%)	171 (100.0%)	173 (100.0%)	158 (100.0%)	204 (100.0%)	235 (100.0%)	208 (100.0%)	187 (100.0%)
	<b>Subtotal</b>	<b>187 (100.0%)</b>	<b>186 (100.0%)</b>	<b>187 (100.0%)</b>	<b>171 (100.0%)</b>	<b>173 (100.0%)</b>	<b>158 (100.0%)</b>	<b>204 (100.0%)</b>	<b>235 (100.0%)</b>	<b>208 (100.0%)</b>	<b>187 (100.0%)</b>
4-5YO	Unrated	788 (66.8%)	736 (66.4%)	804 (68.0%)	869 (67.9%)	939 (68.7%)	1,277 (74.5%)	991 (70.7%)	1,100 (70.2%)	997 (69.4%)	966 (67.2%)
	0-100	127 (10.8%)	142 (12.8%)	143 (12.1%)	130 (10.2%)	154 (11.3%)	146 (8.5%)	189 (13.5%)	225 (14.4%)	246 (17.1%)	273 (19.0%)
	101-110	75 (6.4%)	90 (8.1%)	76 (6.4%)	105 (8.2%)	88 (6.4%)	86 (5.0%)	73 (5.2%)	115 (7.3%)	88 (6.1%)	90 (6.3%)
	111-120	91 (7.7%)	73 (6.6%)	72 (6.1%)	87 (6.8%)	94 (6.9%)	82 (4.8%)	80 (5.7%)	63 (4.0%)	66 (4.6%)	60 (4.2%)
	121-130	59 (5.0%)	36 (3.2%)	53 (4.5%)	57 (4.5%)	64 (4.7%)	83 (4.8%)	39 (2.8%)	45 (2.9%)	27 (1.9%)	31 (2.2%)
	131-140	30 (2.5%)	27 (2.4%)	21 (1.8%)	25 (2.0%)	16 (1.2%)	24 (1.4%)	26 (1.9%)	12 (0.8%)	10 (0.7%)	11 (0.8%)
	141-150	9 (0.8%)	4 (0.4%)	12 (1.0%)	5 (0.4%)	11 (0.8%)	10 (0.6%)	1 (0.1%)	6 (0.4%)	2 (0.1%)	5 (0.3%)
	151+	1 (0.1%)	NA (-)	1 (0.1%)	2 (0.2%)	1 (0.1%)	5 (0.3%)	2 (0.1%)	1 (0.1%)	NA (-)	1 (0.1%)
<b>Subtotal</b>	<b>1,180 (100.0%)</b>	<b>1,108 (100.0%)</b>	<b>1,182 (100.0%)</b>	<b>1,280 (100.0%)</b>	<b>1,367 (100.0%)</b>	<b>1,713 (100.0%)</b>	<b>1,401 (100.0%)</b>	<b>1,567 (100.0%)</b>	<b>1,436 (100.0%)</b>	<b>1,437 (100.0%)</b>	
6-7YO	Unrated	324 (26.8%)	327 (28.4%)	321 (28.2%)	381 (28.5%)	323 (24.6%)	496 (30.1%)	338 (22.9%)	457 (32.0%)	316 (24.3%)	356 (24.1%)
	0-100	305 (25.3%)	276 (24.0%)	264 (23.2%)	335 (25.1%)	325 (24.8%)	335 (20.3%)	443 (30.0%)	404 (28.3%)	480 (36.9%)	549 (37.2%)
	101-110	167 (13.8%)	185 (16.1%)	166 (14.6%)	171 (12.8%)	166 (12.7%)	207 (12.6%)	189 (12.8%)	170 (11.9%)	180 (13.8%)	242 (16.4%)
	111-120	173 (14.3%)	152 (13.2%)	154 (13.5%)	181 (13.5%)	200 (15.2%)	217 (13.2%)	191 (12.9%)	157 (11.0%)	157 (12.1%)	175 (11.9%)
	121-130	125 (10.4%)	116 (10.1%)	116 (10.2%)	148 (11.1%)	148 (11.3%)	191 (11.6%)	160 (10.8%)	122 (8.5%)	102 (7.8%)	91 (6.2%)
	131-140	70 (5.8%)	65 (5.6%)	85 (7.5%)	87 (6.5%)	105 (8.0%)	133 (8.1%)	100 (6.8%)	88 (6.2%)	42 (3.2%)	48 (3.3%)
	141-150	30 (2.5%)	26 (2.3%)	22 (1.9%)	29 (2.2%)	27 (2.1%)	47 (2.9%)	43 (2.9%)	22 (1.5%)	18 (1.4%)	11 (0.7%)
	151+	13 (1.1%)	5 (0.4%)	11 (1.0%)	5 (0.4%)	18 (1.4%)	21 (1.3%)	14 (0.9%)	9 (0.6%)	7 (0.5%)	3 (0.2%)
<b>Subtotal</b>	<b>1,207 (100.0%)</b>	<b>1,152 (100.0%)</b>	<b>1,139 (100.0%)</b>	<b>1,337 (100.0%)</b>	<b>1,312 (100.0%)</b>	<b>1,647 (100.0%)</b>	<b>1,478 (100.0%)</b>	<b>1,429 (100.0%)</b>	<b>1,302 (100.0%)</b>	<b>1,475 (100.0%)</b>	
8YO+	Unrated	139 (13.4%)	169 (15.4%)	172 (16.4%)	204 (16.4%)	167 (14.7%)	293 (22.3%)	165 (13.1%)	226 (20.7%)	182 (17.4%)	208 (19.2%)
	0-100	377 (36.3%)	385 (35.1%)	376 (35.8%)	427 (34.4%)	386 (34.0%)	332 (25.3%)	446 (35.5%)	329 (30.1%)	349 (33.5%)	356 (32.9%)
	101-110	153 (14.7%)	165 (15.0%)	147 (14.0%)	199 (16.0%)	173 (15.3%)	145 (11.1%)	174 (13.8%)	143 (13.1%)	140 (13.4%)	140 (13.0%)
	111-120	139 (13.4%)	143 (13.0%)	138 (13.2%)	133 (10.7%)	145 (12.8%)	161 (12.3%)	167 (13.3%)	137 (12.5%)	133 (12.8%)	160 (14.8%)
	121-130	114 (11.0%)	114 (10.4%)	107 (10.2%)	140 (11.3%)	118 (10.4%)	160 (12.2%)	146 (11.6%)	114 (10.4%)	120 (11.5%)	123 (11.4%)
	131-140	75 (7.2%)	86 (7.8%)	66 (6.3%)	92 (7.4%)	84 (7.4%)	110 (8.4%)	98 (7.8%)	88 (8.1%)	69 (6.6%)	61 (5.6%)
	141-150	29 (2.8%)	24 (2.2%)	31 (3.0%)	37 (3.0%)	44 (3.9%)	75 (5.7%)	32 (2.5%)	36 (3.3%)	29 (2.8%)	20 (1.9%)
	151+	13 (1.3%)	12 (1.1%)	12 (1.1%)	11 (0.9%)	17 (1.5%)	35 (2.7%)	30 (2.4%)	20 (1.8%)	21 (2.0%)	13 (1.2%)
<b>Subtotal</b>	<b>1,039 (100.0%)</b>	<b>1,098 (100.0%)</b>	<b>1,049 (100.0%)</b>	<b>1,243 (100.0%)</b>	<b>1,134 (100.0%)</b>	<b>1,311 (100.0%)</b>	<b>1,258 (100.0%)</b>	<b>1,093 (100.0%)</b>	<b>1,043 (100.0%)</b>	<b>1,081 (100.0%)</b>	
Overall	Unrated	1,438 (39.8%)	1,418 (40.0%)	1,484 (41.7%)	1,625 (40.3%)	1,602 (40.2%)	2,224 (46.1%)	1,698 (39.1%)	2,018 (46.7%)	1,703 (42.7%)	1,717 (41.1%)
	0-100	809 (22.4%)	803 (22.7%)	783 (22.0%)	892 (22.1%)	865 (21.7%)	813 (16.8%)	1,078 (24.8%)	958 (22.2%)	1,075 (26.9%)	1,178 (28.2%)
	101-110	395 (10.9%)	440 (12.4%)	389 (10.9%)	475 (11.8%)	427 (10.7%)	438 (9.1%)	436 (10.0%)	428 (9.9%)	408 (10.2%)	472 (11.3%)
	111-120	403 (11.2%)	368 (10.4%)	364 (10.2%)	401 (9.9%)	439 (11.0%)	460 (9.5%)	438 (10.1%)	357 (8.3%)	356 (8.9%)	395 (9.4%)
	121-130	298 (8.2%)	266 (7.5%)	276 (7.8%)	345 (8.6%)	330 (8.3%)	434 (9.0%)	345 (7.9%)	281 (6.5%)	249 (6.2%)	245 (5.9%)
	131-140	175 (4.8%)	178 (5.0%)	172 (4.8%)	204 (5.1%)	205 (5.1%)	267 (5.5%)	224 (5.2%)	188 (4.3%)	121 (3.0%)	120 (2.9%)
	141-150	68 (1.9%)	54 (1.5%)	65 (1.8%)	71 (1.8%)	82 (2.1%)	132 (2.7%)	76 (1.8%)	64 (1.5%)	49 (1.2%)	36 (0.9%)
151+	27 (0.7%)	17 (0.5%)	24 (0.7%)	18 (0.4%)	36 (0.9%)	61 (1.3%)	46 (1.1%)	30 (0.7%)	28 (0.7%)	17 (0.4%)	
<b>Total</b>	<b>3,613 (100.0%)</b>	<b>3,544 (100.0%)</b>	<b>3,557 (100.0%)</b>	<b>4,031 (100.0%)</b>	<b>3,986 (100.0%)</b>	<b>4,829 (100.0%)</b>	<b>4,341 (100.0%)</b>	<b>4,324 (100.0%)</b>	<b>3,989 (100.0%)</b>	<b>4,180 (100.0%)</b>	

Where a horse has more than one published rating (published Hurdle and published Chase mark), the higher of the two is taken.

# Young Horses Entering Training

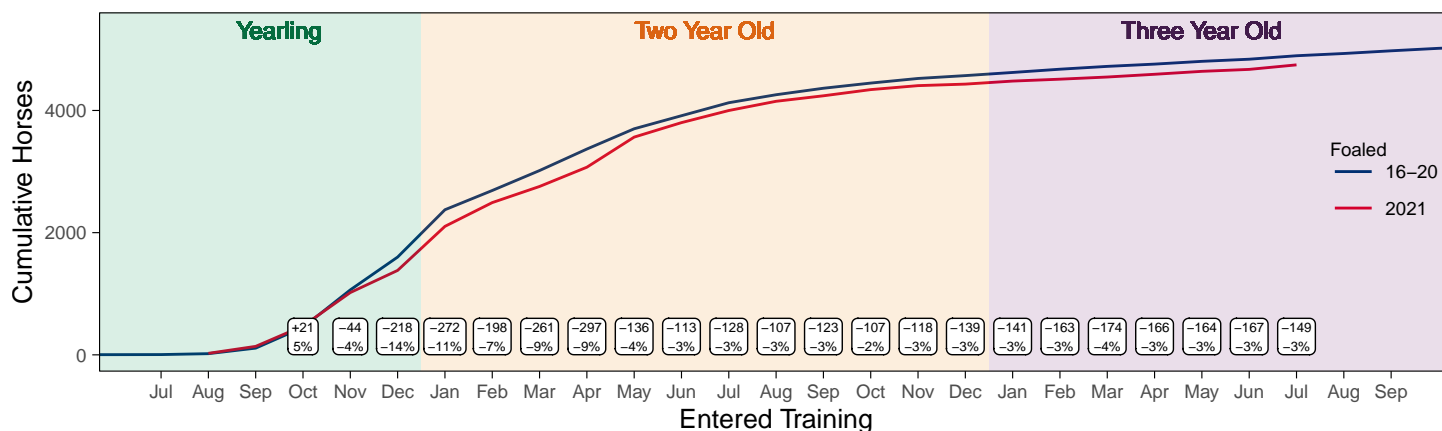
## Flat Yearlings in Training versus Previous Years

Period	Jan	Feb	Mar	Apr	May	Jun	Jul	Aug	Sep	Oct	Nov	Dec
2024	0	0	0	0	0	0	2					
2023	1	2	2	2	3	3	4	4	62	225	722	1185
5YrAvg	1	1	1	1	1	1	1	3	64	261	725	1279

## Foals Entering Training for the First Time

### 2021 Foals Entering Training Over Time

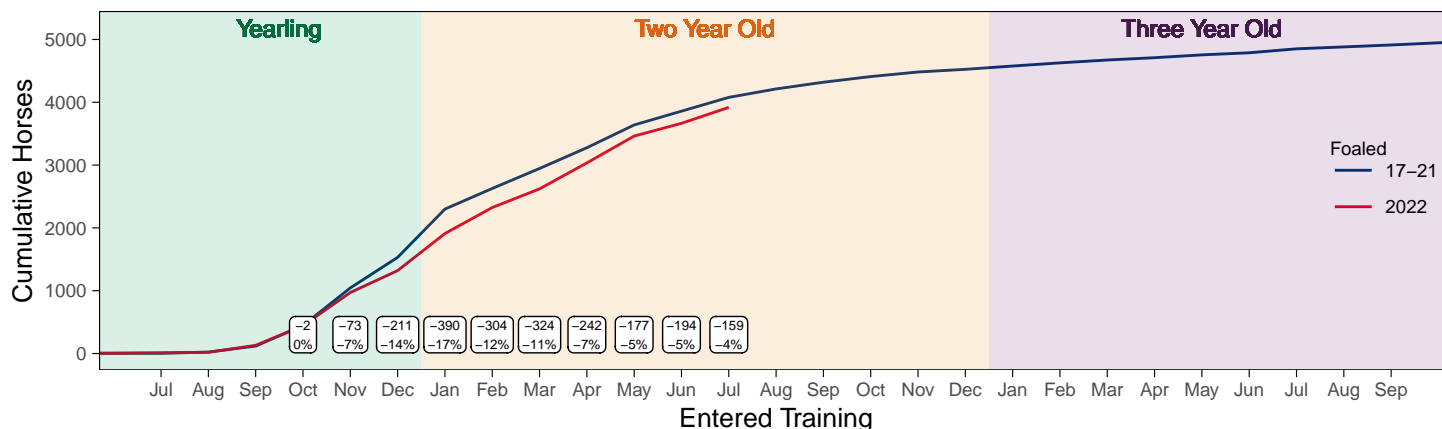
Cumulative Flat Horses foaled in 2021 shown by first in training notification against trend



Cumulative individual horses entering training for the first time by the end of each month.

### 2022 Foals Entering Training Over Time

Cumulative Flat Horses foaled in 2022 shown by first in training notification against trend



Cumulative individual horses entering training for the first time by the end of each month.

## Year to Date Horses in Training

Type	2015	2016	2017	2018	2019	2020	2021	2022	2023	2024	vs. Last Year	vs. Pre-Covid
Flat	9926	10157	10455	10676	10749	10575	10279	10123	10190	10036	-154 / -1.5%	-713 / -6.6%
Jump	4073	4077	4095	4514	4674	5073	4833	4647	4607	4634	+27 / +0.6%	-40 / -0.9%
Dual	580	568	732	772	550	621	569	574	504	658	+154 / +30.6%	+108 / +19.6%
Hunter	1928	1814	1827	1659	1620	1361	1130	1242	1141	1307	+166 / +14.5%	-313 / -19.3%
<b>Total</b>	<b>14579</b>	<b>14802</b>	<b>15282</b>	<b>15962</b>	<b>15973</b>	<b>16269</b>	<b>15681</b>	<b>15344</b>	<b>15301</b>	<b>15328</b>	<b>+27 / +0.2%</b>	<b>-645 / -4.0%</b>

'vs. Pre-Covid' is comparison between 2024 and 2019

### Flat

AgeCat	2015	2016	2017	2018	2019	2020	2021	2022	2023	2024	vs. Last Year	vs. Pre-Covid
2YO	3843	3853	3963	3917	3920	3695	3717	3657	3671	3575	-96 / -2.6%	-345 / -8.8%
3YO	2897	2976	3092	3288	3232	3363	3123	3054	3038	2955	-83 / -2.7%	-277 / -8.6%
4YO	1265	1327	1434	1447	1563	1477	1505	1497	1425	1445	+20 / +1.4%	-118 / -7.5%
5YO+	1921	2001	1966	2024	2034	2040	1934	1915	2056	2061	+5 / +0.2%	+27 / +1.3%
<b>Total</b>	<b>9926</b>	<b>10157</b>	<b>10455</b>	<b>10676</b>	<b>10749</b>	<b>10575</b>	<b>10279</b>	<b>10123</b>	<b>10190</b>	<b>10036</b>	<b>-154 / -1.5%</b>	<b>-713 / -6.6%</b>

'vs. Pre-Covid' is comparison between 2024 and 2019

### Jump

AgeCat	2015	2016	2017	2018	2019	2020	2021	2022	2023	2024	vs. Last Year	vs. Pre-Covid
3YO	173	139	130	131	150	117	158	176	174	157	-17 / -9.8%	+7 / +4.7%
4-5YO	1369	1338	1398	1498	1664	1757	1597	1684	1718	1646	-72 / -4.2%	-18 / -1.1%
6-7YO	1379	1342	1325	1528	1567	1781	1673	1577	1534	1638	+104 / +6.8%	+71 / +4.5%
8YO+	1152	1258	1242	1357	1293	1418	1405	1210	1181	1193	+12 / +1.0%	-100 / -7.7%
<b>Total</b>	<b>4073</b>	<b>4077</b>	<b>4095</b>	<b>4514</b>	<b>4674</b>	<b>5073</b>	<b>4833</b>	<b>4647</b>	<b>4607</b>	<b>4634</b>	<b>+27 / +0.6%</b>	<b>-40 / -0.9%</b>

'vs. Pre-Covid' is comparison between 2024 and 2019

### Dual

AgeCat	2015	2016	2017	2018	2019	2020	2021	2022	2023	2024	vs. Last Year	vs. Pre-Covid
3YO	105	119	128	125	93	110	123	147	126	139	+13 / +10.3%	+46 / +49.5%
4YO	120	107	183	173	132	127	142	133	111	174	+63 / +56.8%	+42 / +31.8%
5YO+	355	342	421	474	325	384	304	294	267	345	+78 / +29.2%	+20 / +6.2%
<b>Total</b>	<b>580</b>	<b>568</b>	<b>732</b>	<b>772</b>	<b>550</b>	<b>621</b>	<b>569</b>	<b>574</b>	<b>504</b>	<b>658</b>	<b>+154 / +30.6%</b>	<b>+108 / +19.6%</b>

'vs. Pre-Covid' is comparison between 2024 and 2019

### Hunter Chasers

AgeCat	2015	2016	2017	2018	2019	2020	2021	2022	2023	2024	vs. Last Year	vs. Pre-Covid
4-5YO	174	186	198	216	253	247	133	211	205	245	+40 / +19.5%	-8 / -3.2%
6-7YO	550	488	476	462	451	352	252	300	284	319	+35 / +12.3%	-132 / -29.3%
8-9YO	586	486	500	394	364	301	271	306	273	280	+7 / +2.6%	-84 / -23.1%
10YO+	618	654	653	587	552	461	474	425	379	463	+84 / +22.2%	-89 / -16.1%
<b>Total</b>	<b>1928</b>	<b>1814</b>	<b>1827</b>	<b>1659</b>	<b>1620</b>	<b>1361</b>	<b>1130</b>	<b>1242</b>	<b>1141</b>	<b>1307</b>	<b>+166 / +14.5%</b>	<b>-313 / -19.3%</b>

'vs. Pre-Covid' is comparison between 2024 and 2019

# Year to Date Runners

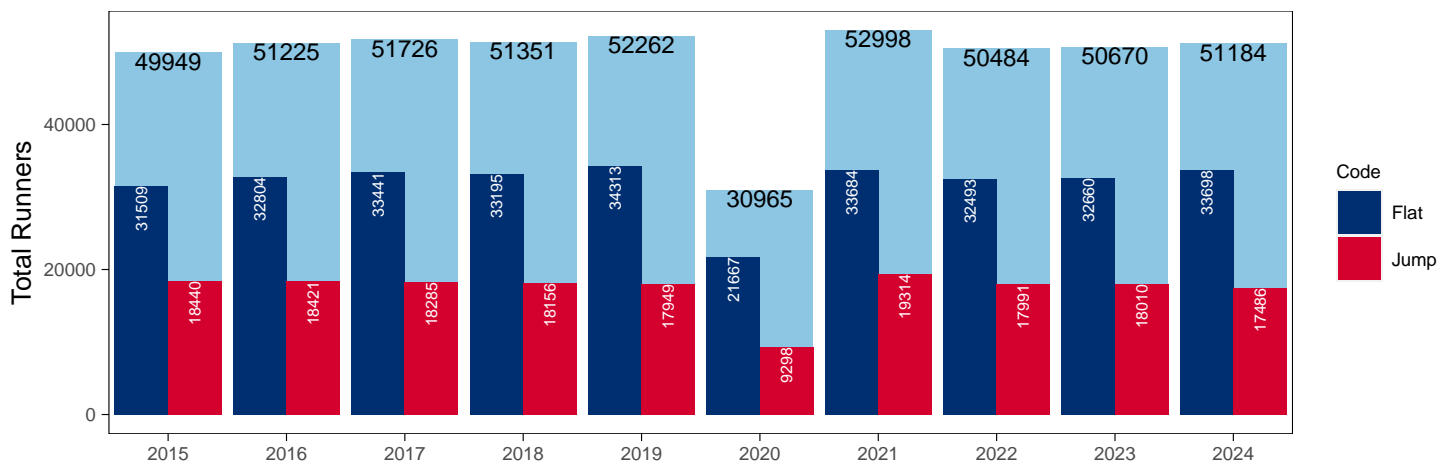
## Year to Date Total Runners

Code	2015	2016	2017	2018	2019	2020	2021	2022	2023	2024	vs. Last Year	vs. Pre-Covid
Flat	31509	32804	33441	33195	34313	21667	33684	32493	32660	33698	+1038 / +3.2%	-615 / -1.8%
Jump	18440	18421	18285	18156	17949	9298	19314	17991	18010	17486	-524 / -2.9%	-463 / -2.6%
<b>Total</b>	<b>49949</b>	<b>51225</b>	<b>51726</b>	<b>51351</b>	<b>52262</b>	<b>30965</b>	<b>52998</b>	<b>50484</b>	<b>50670</b>	<b>51184</b>	<b>+514 / +1.0%</b>	<b>-1078 / -2.1%</b>

'vs. Pre-Covid' is comparison between 2024 and 2019

## YTD Total Runners

Total Runners in GB Races, shown by Code and Total



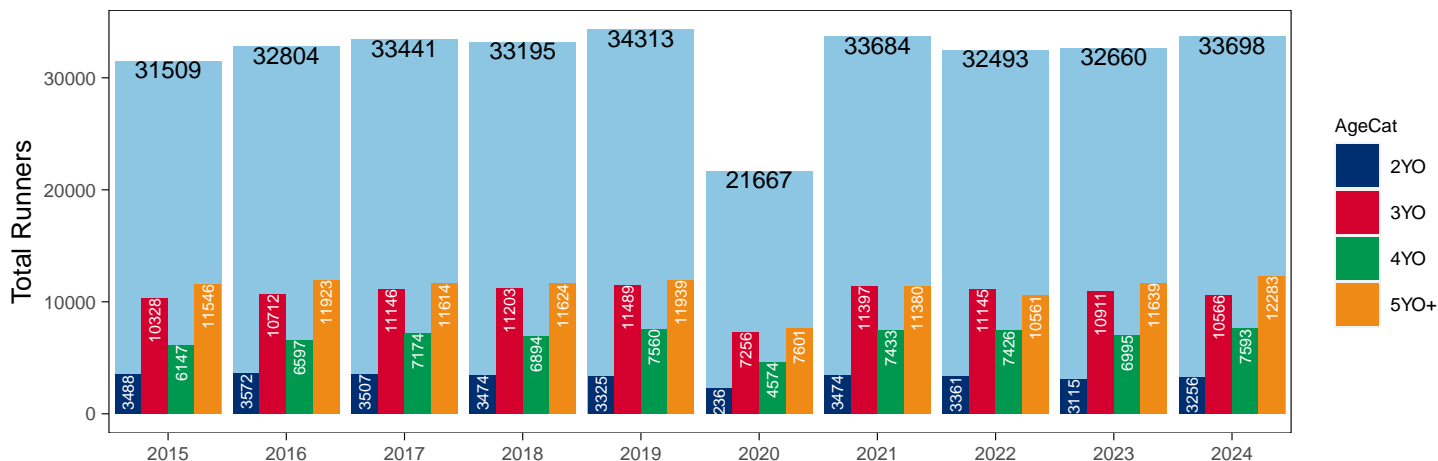
## Flat

AgeCat	2015	2016	2017	2018	2019	2020	2021	2022	2023	2024	vs. Last Year	vs. Pre-Covid
2YO	3488	3572	3507	3474	3325	2236	3474	3361	3115	3256	+141 / +4.5%	-69 / -2.1%
3YO	10328	10712	11146	11203	11489	7256	11397	11145	10911	10566	-345 / -3.2%	-923 / -8.0%
4YO	6147	6597	7174	6894	7560	4574	7433	7426	6995	7593	+598 / +8.5%	+33 / +0.4%
5YO+	11546	11923	11614	11624	11939	7601	11380	10561	11639	12283	+644 / +5.5%	+344 / +2.9%
<b>Total</b>	<b>31509</b>	<b>32804</b>	<b>33441</b>	<b>33195</b>	<b>34313</b>	<b>21667</b>	<b>33684</b>	<b>32493</b>	<b>32660</b>	<b>33698</b>	<b>+1038 / +3.2%</b>	<b>-615 / -1.8%</b>

'vs. Pre-Covid' is comparison between 2024 and 2019

## YTD Total Flat Runners by Age

Total Runners in GB Flat Races, shown by Age Category and Total



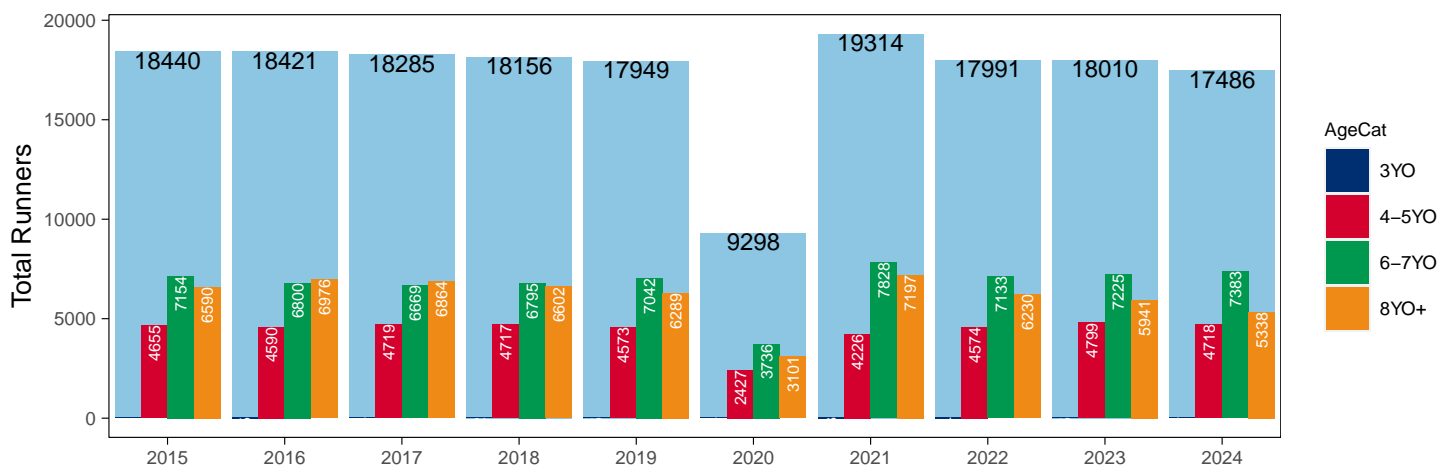
## Jump

AgeCat	2015	2016	2017	2018	2019	2020	2021	2022	2023	2024	vs. Last Year	vs. Pre-Covid
3YO	41	55	33	42	45	34	63	54	45	47	+2 / +4.4%	+2 / +4.4%
4-5YO	4655	4590	4719	4717	4573	2427	4226	4574	4799	4718	-81 / -1.7%	+145 / +3.2%
6-7YO	7154	6800	6669	6795	7042	3736	7828	7133	7225	7383	+158 / +2.2%	+341 / +4.8%
8YO+	6590	6976	6864	6602	6289	3101	7197	6230	5941	5338	-603 / -10.1%	-951 / -15.1%
<b>Total</b>	<b>18440</b>	<b>18421</b>	<b>18285</b>	<b>18156</b>	<b>17949</b>	<b>9298</b>	<b>19314</b>	<b>17991</b>	<b>18010</b>	<b>17486</b>	<b>-524 / -2.9%</b>	<b>-463 / -2.6%</b>

'vs. Pre-Covid' is comparison between 2024 and 2019

### YTD Total Jump Runners by Age

Total Runners in GB Jump Races, shown by Age Category and Total



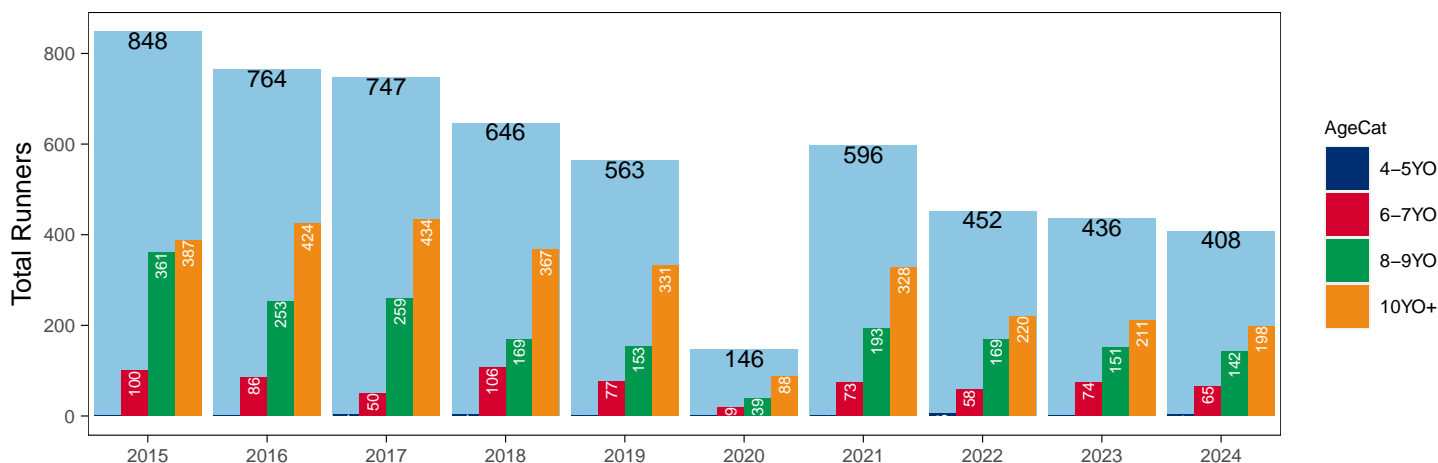
## Hunter Chases

AgeCat	2015	2016	2017	2018	2019	2020	2021	2022	2023	2024	vs. Last Year	vs. Pre-Covid
4-5YO		1	4	4	2		2	5		3	NA / NA	+1 / +50.0%
6-7YO	100	86	50	106	77	19	73	58	74	65	-9 / -12.2%	-12 / -15.6%
8-9YO	361	253	259	169	153	39	193	169	151	142	-9 / -6.0%	-11 / -7.2%
10YO+	387	424	434	367	331	88	328	220	211	198	-13 / -6.2%	-133 / -40.2%
<b>Total</b>	<b>848</b>	<b>764</b>	<b>747</b>	<b>646</b>	<b>563</b>	<b>146</b>	<b>596</b>	<b>452</b>	<b>436</b>	<b>408</b>	<b>-28 / -6.4%</b>	<b>-155 / -27.5%</b>

'vs. Pre-Covid' is comparison between 2024 and 2019

### YTD Total Hunter Chase Runners by Age

Total Runners in GB Hunter Chases shown by Age Category and Total



## Year to Date Total Runners by Country Trained

Code	Country	2015	2016	2017	2018	2019	2020	2021	2022	2023	2024
Flat	GB	31176	32425	32987	32752	33831	21486	33454	32247	32368	33280
	IRE	232	320	396	394	431	160	206	192	258	356
	Other	101	59	58	49	51	21	24	54	34	62
Jump	GB	17891	17769	17704	17737	17370	9031	18932	17373	17319	16876
	IRE	545	646	568	410	572	257	379	616	688	607
	Other	4	6	13	9	7	10	3	2	3	3
Overall	GB	49067	50194	50691	50489	51201	30517	52386	49620	49687	50156
	IRE	777	966	964	804	1003	417	585	808	946	963
	Other	105	65	71	58	58	31	27	56	37	65

## Year to Date GB Trained Runners Racing Abroad

Code	Country	2015	2016	2017	2018	2019	2020	2021	2022	2023	2024
Flat	IRE	87	75	77	70	79	10	21	34	36	50
	FR	131	136	180	168	271	89	59	103	142	150
	GNY	11	9	10	12	21	5		7	11	18
	UAE	289	208	278	276	303	281	248	276	272	214
	BAH								41	23	50
	KSA						15	21	22	15	11
	Other	68	54	57	60	62	29	26	38	53	72
	<b>Total</b>		<b>586</b>	<b>482</b>	<b>602</b>	<b>586</b>	<b>736</b>	<b>429</b>	<b>375</b>	<b>521</b>	<b>552</b>
Jump	IRE	85	82	67	44	63	7	23	29	18	47
	FR	24	39	24	7	24	18	80	75	62	41
	Other	7	4	2	3	4		3	9	3	7
	<b>Total</b>	<b>116</b>	<b>125</b>	<b>93</b>	<b>54</b>	<b>91</b>	<b>25</b>	<b>106</b>	<b>113</b>	<b>83</b>	<b>95</b>

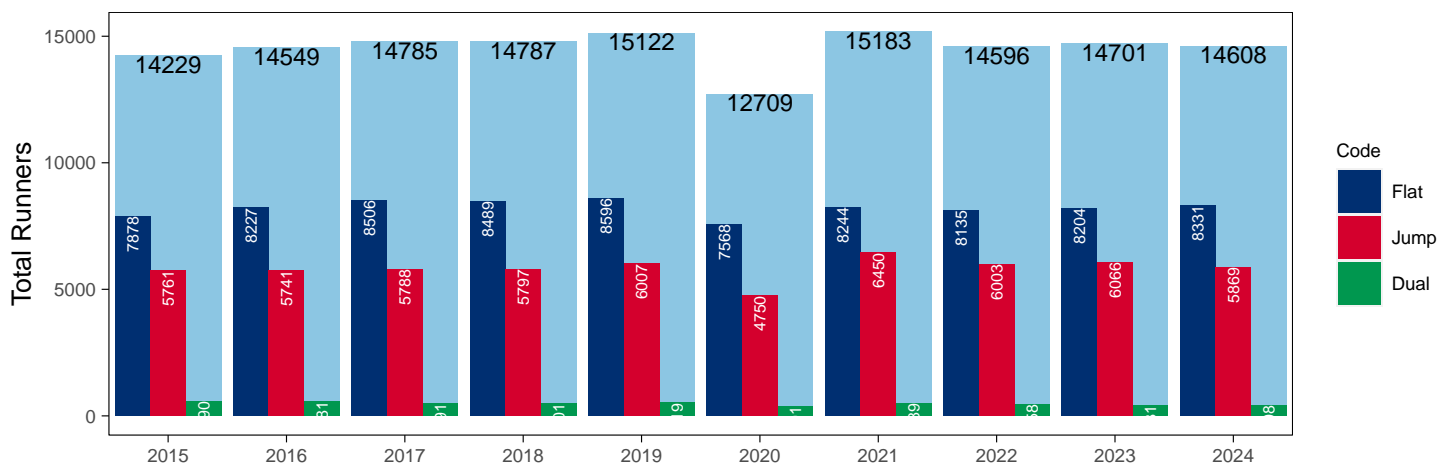
## Year to Date Individual Runners

Code	2015	2016	2017	2018	2019	2020	2021	2022	2023	2024	vs. Last Year	vs. Pre-Covid
Flat	7878	8227	8506	8489	8596	7568	8244	8135	8204	8331	+127 / +1.5%	-265 / -3.1%
Jump	5761	5741	5788	5797	6007	4750	6450	6003	6066	5869	-197 / -3.2%	-138 / -2.3%
Dual	590	581	491	501	519	391	489	458	431	408	-23 / -5.3%	-111 / -21.4%
<b>Overall</b>	<b>14229</b>	<b>14549</b>	<b>14785</b>	<b>14787</b>	<b>15122</b>	<b>12709</b>	<b>15183</b>	<b>14596</b>	<b>14701</b>	<b>14608</b>	<b>-93 / -0.6%</b>	<b>-514 / -3.4%</b>

'vs. Pre-Covid' is comparison between 2024 and 2019

## YTD Individual Runners

Individual Runners in GB Races, shown by Code and Total



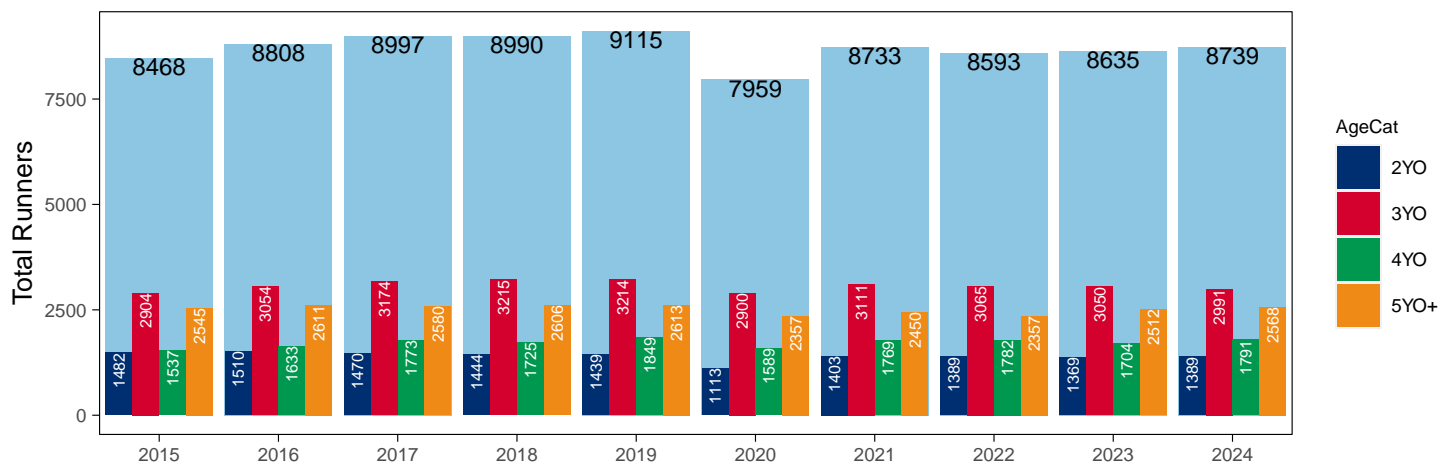
## Flat

AgeCat	2015	2016	2017	2018	2019	2020	2021	2022	2023	2024	vs. Last Year	vs. Pre-Covid
2YO	1482	1510	1470	1444	1439	1113	1403	1389	1369	1389	+20 / +1.5%	-50 / -3.5%
3YO	2904	3054	3174	3215	3214	2900	3111	3065	3050	2991	-59 / -1.9%	-223 / -6.9%
4YO	1537	1633	1773	1725	1849	1589	1769	1782	1704	1791	+87 / +5.1%	-58 / -3.1%
5YO+	2545	2611	2580	2606	2613	2357	2450	2357	2512	2568	+56 / +2.2%	-45 / -1.7%
<b>Total</b>	<b>8468</b>	<b>8808</b>	<b>8997</b>	<b>8990</b>	<b>9115</b>	<b>7959</b>	<b>8733</b>	<b>8593</b>	<b>8635</b>	<b>8739</b>	<b>+104 / +1.2%</b>	<b>-376 / -4.1%</b>

'vs. Pre-Covid' is comparison between 2024 and 2019

### YTD Individual Flat Runners by Age

Individual Runners in GB Flat Races, shown by Age Category and Total



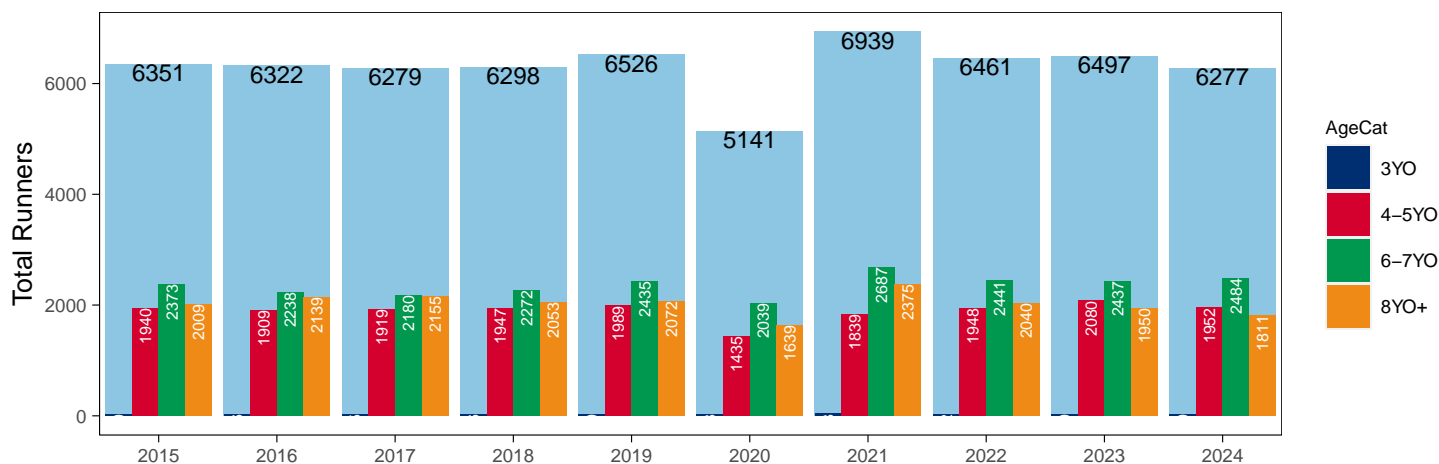
## Jump

AgeCat	2015	2016	2017	2018	2019	2020	2021	2022	2023	2024	vs. Last Year	vs. Pre-Covid
3YO	29	36	25	26	30	28	38	32	30	30	0 / 0.0%	0 / 0.0%
4-5YO	1940	1909	1919	1947	1989	1435	1839	1948	2080	1952	-128 / -6.2%	-37 / -1.9%
6-7YO	2373	2238	2180	2272	2435	2039	2687	2441	2437	2484	+47 / +1.9%	+49 / +2.0%
8YO+	2009	2139	2155	2053	2072	1639	2375	2040	1950	1811	-139 / -7.1%	-261 / -12.6%
<b>Total</b>	<b>6351</b>	<b>6322</b>	<b>6279</b>	<b>6298</b>	<b>6526</b>	<b>5141</b>	<b>6939</b>	<b>6461</b>	<b>6497</b>	<b>6277</b>	<b>-220 / -3.4%</b>	<b>-249 / -3.8%</b>

'vs. Pre-Covid' is comparison between 2024 and 2019

### YTD Individual Jump Runners by Age

Individual Runners in GB Jump Races, shown by Age Category and Total



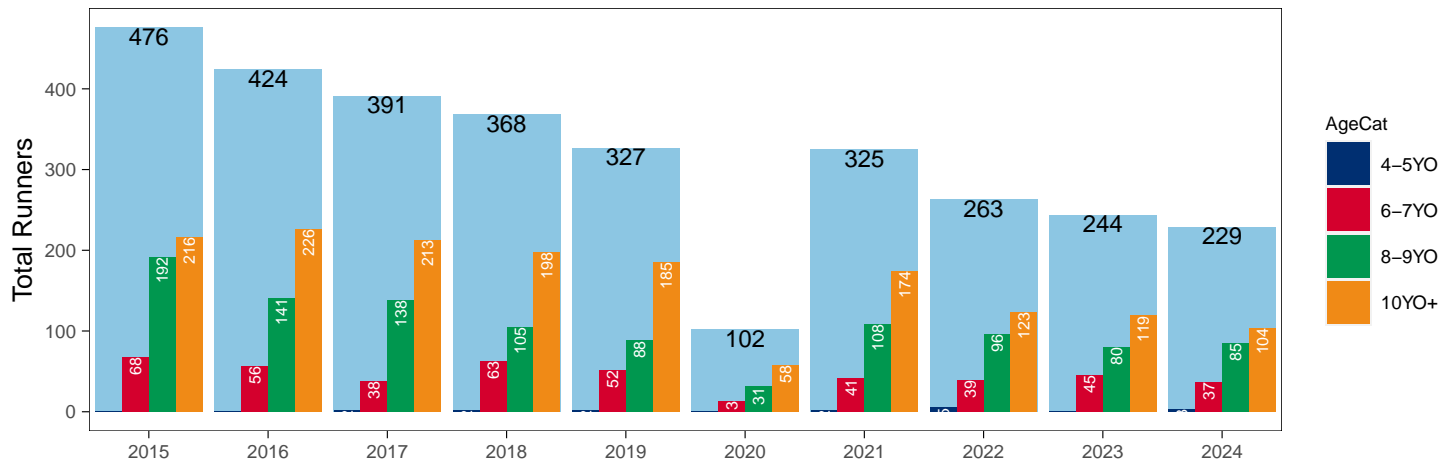
## Hunter Chases

AgeCat	2015	2016	2017	2018	2019	2020	2021	2022	2023	2024	vs. Last Year	vs. Pre-Covid
4-5YO		1	2	2	2		2	5		3	NA / NA	+1 / +50.0%
6-7YO	68	56	38	63	52	13	41	39	45	37	-8 / -17.8%	-15 / -28.8%
8-9YO	192	141	138	105	88	31	108	96	80	85	+5 / +6.2%	-3 / -3.4%
10YO+	216	226	213	198	185	58	174	123	119	104	-15 / -12.6%	-81 / -43.8%
<b>Total</b>	<b>476</b>	<b>424</b>	<b>391</b>	<b>368</b>	<b>327</b>	<b>102</b>	<b>325</b>	<b>263</b>	<b>244</b>	<b>229</b>	<b>-15 / -6.1%</b>	<b>-98 / -30.0%</b>

'vs. Pre-Covid' is comparison between 2024 and 2019

## YTD Individual Hunter Chase Runners by Age

Individual Runners in GB Hunter Chases shown by Age Category and Total



## Year to Date Individual Runners by Country Trained

Code	Country	2015	2016	2017	2018	2019	2020	2021	2022	2023	2024
Flat	GB	7654	7993	8229	8207	8283	7433	8075	7946	7980	8051
	IRE	150	196	239	248	275	119	149	145	204	240
	Other	80	51	50	45	44	19	22	48	29	46
Jump	GB	5412	5354	5417	5484	5613	4510	6149	5550	5578	5434
	IRE	360	389	371	311	397	232	302	464	502	440
	Other	4	6	9	8	6	10	3	2	2	2
Dual	GB	583	568	484	492	509	389	486	451	420	400
	IRE	7	8	3	8	10	2	3	6	8	8
	Other			2							
<b>Overall</b>	<b>GB</b>	<b>13649</b>	<b>13915</b>	<b>14130</b>	<b>14183</b>	<b>14405</b>	<b>12332</b>	<b>14710</b>	<b>13947</b>	<b>13978</b>	<b>13885</b>
	<b>IRE</b>	<b>517</b>	<b>593</b>	<b>613</b>	<b>567</b>	<b>682</b>	<b>353</b>	<b>454</b>	<b>615</b>	<b>714</b>	<b>688</b>
	<b>Other</b>	<b>84</b>	<b>57</b>	<b>61</b>	<b>53</b>	<b>50</b>	<b>29</b>	<b>25</b>	<b>50</b>	<b>31</b>	<b>48</b>

Individual horses may appear under multiple countries.



## Year to Date Total Runners by Rating Band

## Flat

RatBand	2015	2016	2017	2018	2019	2020	2021	2022	2023	2024
<b>2YO</b>										
Unrated	2,988 (85.7%)	3,007 (84.2%)	3,069 (87.5%)	3,047 (87.7%)	2,949 (88.7%)	1,972 (88.2%)	2,940 (84.6%)	2,840 (84.5%)	2,711 (87.0%)	2,845 (87.4%)
0-50	15 (0.4%)	10 (0.3%)	13 (0.4%)	13 (0.4%)	15 (0.5%)	2 (0.1%)	18 (0.5%)	23 (0.7%)	26 (0.8%)	10 (0.3%)
51-60	43 (1.2%)	39 (1.1%)	35 (1.0%)	47 (1.4%)	36 (1.1%)	6 (0.3%)	46 (1.3%)	63 (1.9%)	57 (1.8%)	61 (1.9%)
61-70	118 (3.4%)	142 (4.0%)	126 (3.6%)	88 (2.5%)	105 (3.2%)	63 (2.8%)	136 (3.9%)	114 (3.4%)	113 (3.6%)	104 (3.2%)
71-80	196 (5.6%)	217 (6.1%)	159 (4.5%)	148 (4.3%)	131 (3.9%)	98 (4.4%)	163 (4.7%)	152 (4.5%)	122 (3.9%)	129 (4.0%)
81-90	86 (2.5%)	121 (3.4%)	59 (1.7%)	86 (2.5%)	52 (1.6%)	56 (2.5%)	108 (3.1%)	114 (3.4%)	62 (2.0%)	70 (2.1%)
91-100	25 (0.7%)	28 (0.8%)	36 (1.0%)	37 (1.1%)	28 (0.8%)	31 (1.4%)	46 (1.3%)	45 (1.3%)	17 (0.5%)	26 (0.8%)
101+	17 (0.5%)	8 (0.2%)	10 (0.3%)	8 (0.2%)	9 (0.3%)	8 (0.4%)	17 (0.5%)	10 (0.3%)	7 (0.2%)	11 (0.3%)
<b>3YO+</b>										
Unrated	2,960 (10.6%)	3,159 (10.8%)	3,323 (11.1%)	3,824 (12.9%)	3,758 (12.1%)	2,822 (14.5%)	3,832 (12.7%)	3,529 (12.1%)	3,450 (11.7%)	3,428 (11.3%)
0-50	2,547 (9.1%)	2,390 (8.2%)	2,687 (9.0%)	3,039 (10.2%)	3,673 (11.9%)	2,133 (11.0%)	3,473 (11.5%)	3,418 (11.7%)	3,705 (12.5%)	3,688 (12.1%)
51-60	4,766 (17.0%)	4,780 (16.4%)	4,943 (16.5%)	4,752 (16.0%)	5,418 (17.5%)	3,277 (16.9%)	5,309 (17.6%)	5,104 (17.5%)	5,613 (19.0%)	5,973 (19.6%)
61-70	6,029 (21.5%)	6,288 (21.5%)	6,133 (20.5%)	5,918 (19.9%)	6,079 (19.6%)	3,762 (19.4%)	6,265 (20.7%)	5,912 (20.3%)	6,097 (20.6%)	6,460 (21.2%)
71-80	5,546 (19.8%)	5,810 (19.9%)	6,020 (20.1%)	5,540 (18.6%)	5,421 (17.5%)	3,443 (17.7%)	5,304 (17.6%)	5,156 (17.7%)	5,273 (17.8%)	5,339 (17.5%)
81-90	3,325 (11.9%)	3,738 (12.8%)	3,881 (13.0%)	3,622 (12.2%)	3,480 (11.2%)	2,159 (11.1%)	3,173 (10.5%)	3,304 (11.3%)	3,004 (10.2%)	3,215 (10.6%)
91-100	1,672 (6.0%)	1,784 (6.1%)	1,714 (5.7%)	1,862 (6.3%)	2,009 (6.5%)	1,066 (5.5%)	1,701 (5.6%)	1,552 (5.3%)	1,409 (4.8%)	1,356 (4.5%)
101+	1,176 (4.2%)	1,283 (4.4%)	1,233 (4.1%)	1,164 (3.9%)	1,150 (3.7%)	769 (4.0%)	1,153 (3.8%)	1,157 (4.0%)	994 (3.4%)	983 (3.2%)

## Jump

RatBand	2015	2016	2017	2018	2019	2020	2021	2022	2023	2024
<b>Hurdle</b>										
Unrated	2,862 (26.4%)	2,777 (25.4%)	2,702 (25.2%)	2,806 (26.2%)	2,817 (26.2%)	1,653 (29.8%)	2,791 (25.3%)	2,570 (24.1%)	2,781 (25.7%)	2,876 (26.6%)
0-100	2,987 (27.5%)	2,835 (26.0%)	2,872 (26.8%)	2,681 (25.0%)	2,705 (25.1%)	1,205 (21.7%)	3,411 (30.9%)	3,532 (33.1%)	3,572 (33.0%)	3,751 (34.7%)
101-110	1,568 (14.4%)	1,710 (15.7%)	1,635 (15.2%)	1,620 (15.1%)	1,610 (15.0%)	758 (13.6%)	1,524 (13.8%)	1,645 (15.4%)	1,637 (15.1%)	1,574 (14.5%)
111-120	1,525 (14.0%)	1,561 (14.3%)	1,554 (14.5%)	1,522 (14.2%)	1,550 (14.4%)	742 (13.4%)	1,421 (12.9%)	1,384 (13.0%)	1,351 (12.5%)	1,306 (12.1%)
121-130	1,036 (9.5%)	1,064 (9.7%)	1,052 (9.8%)	1,119 (10.4%)	1,157 (10.7%)	577 (10.4%)	1,077 (9.7%)	854 (8.0%)	921 (8.5%)	802 (7.4%)
131-140	591 (5.4%)	642 (5.9%)	647 (6.0%)	670 (6.2%)	614 (5.7%)	403 (7.3%)	552 (5.0%)	465 (4.4%)	365 (3.4%)	341 (3.2%)
141-150	217 (2.0%)	238 (2.2%)	200 (1.9%)	239 (2.2%)	223 (2.1%)	144 (2.6%)	196 (1.8%)	178 (1.7%)	146 (1.3%)	121 (1.1%)
151+	72 (0.7%)	86 (0.8%)	74 (0.7%)	73 (0.7%)	91 (0.8%)	73 (1.3%)	79 (0.7%)	52 (0.5%)	60 (0.6%)	51 (0.5%)
<b>Chase</b>										
Unrated	39 (0.7%)	45 (0.8%)	56 (0.9%)	47 (0.8%)	37 (0.7%)	12 (0.4%)	30 (0.5%)	12 (0.2%)	1 (0.0%)	NA (-)
0-100	1,790 (30.5%)	1,734 (29.1%)	1,629 (27.3%)	1,648 (28.7%)	1,696 (29.9%)	764 (26.5%)	1,915 (32.2%)	1,882 (32.3%)	1,983 (35.3%)	1,972 (37.0%)
101-110	839 (14.3%)	882 (14.8%)	955 (16.0%)	861 (15.0%)	895 (15.8%)	442 (15.3%)	891 (15.0%)	908 (15.6%)	955 (17.0%)	944 (17.7%)
111-120	1,085 (18.5%)	1,053 (17.7%)	1,022 (17.1%)	941 (16.4%)	888 (15.7%)	430 (14.9%)	984 (16.6%)	998 (17.2%)	924 (16.5%)	878 (16.5%)
121-130	915 (15.6%)	899 (15.1%)	914 (15.3%)	963 (16.8%)	863 (15.2%)	468 (16.2%)	922 (15.5%)	884 (15.2%)	768 (13.7%)	676 (12.7%)
131-140	680 (11.6%)	748 (12.6%)	820 (13.7%)	716 (12.5%)	724 (12.8%)	407 (14.1%)	659 (11.1%)	644 (11.1%)	555 (9.9%)	461 (8.7%)
141-150	332 (5.7%)	387 (6.5%)	381 (6.4%)	392 (6.8%)	366 (6.5%)	236 (8.2%)	335 (5.6%)	317 (5.4%)	261 (4.6%)	240 (4.5%)
151+	184 (3.1%)	203 (3.4%)	196 (3.3%)	166 (2.9%)	198 (3.5%)	122 (4.2%)	209 (3.5%)	174 (3.0%)	166 (3.0%)	155 (2.9%)

## Year to Date Total GB-Trained Runners by Rating Band

## Flat

RatBand	2015	2016	2017	2018	2019	2020	2021	2022	2023	2024
<b>2YO</b>										
Unrated	2,958 (85.6%)	2,965 (84.0%)	3,026 (87.4%)	3,003 (87.7%)	2,896 (88.6%)	1,949 (88.1%)	2,916 (84.5%)	2,813 (84.4%)	2,670 (86.9%)	2,803 (87.3%)
0-50	15 (0.4%)	10 (0.3%)	13 (0.4%)	13 (0.4%)	15 (0.5%)	2 (0.1%)	18 (0.5%)	23 (0.7%)	26 (0.8%)	10 (0.3%)
51-60	43 (1.2%)	39 (1.1%)	35 (1.0%)	47 (1.4%)	36 (1.1%)	6 (0.3%)	46 (1.3%)	63 (1.9%)	57 (1.9%)	61 (1.9%)
61-70	118 (3.4%)	142 (4.0%)	126 (3.6%)	88 (2.6%)	105 (3.2%)	63 (2.8%)	136 (3.9%)	114 (3.4%)	113 (3.7%)	104 (3.2%)
71-80	195 (5.6%)	217 (6.1%)	159 (4.6%)	148 (4.3%)	131 (4.0%)	98 (4.4%)	163 (4.7%)	152 (4.6%)	122 (4.0%)	129 (4.0%)
81-90	86 (2.5%)	121 (3.4%)	59 (1.7%)	86 (2.5%)	52 (1.6%)	56 (2.5%)	108 (3.1%)	114 (3.4%)	62 (2.0%)	70 (2.2%)
91-100	25 (0.7%)	28 (0.8%)	36 (1.0%)	35 (1.0%)	26 (0.8%)	31 (1.4%)	45 (1.3%)	45 (1.4%)	17 (0.6%)	25 (0.8%)
101+	17 (0.5%)	8 (0.2%)	10 (0.3%)	5 (0.1%)	8 (0.2%)	8 (0.4%)	17 (0.5%)	9 (0.3%)	7 (0.2%)	10 (0.3%)
<b>3YO+</b>										
Unrated	2,935 (10.6%)	3,138 (10.9%)	3,303 (11.2%)	3,803 (13.0%)	3,739 (12.2%)	2,814 (14.6%)	3,825 (12.7%)	3,519 (12.2%)	3,433 (11.7%)	3,417 (11.4%)
0-50	2,521 (9.1%)	2,366 (8.2%)	2,627 (8.9%)	3,002 (10.2%)	3,605 (11.8%)	2,115 (11.0%)	3,473 (11.6%)	3,418 (11.8%)	3,679 (12.6%)	3,666 (12.2%)
51-60	4,743 (17.1%)	4,742 (16.4%)	4,874 (16.5%)	4,693 (16.0%)	5,346 (17.5%)	3,243 (16.8%)	5,308 (17.7%)	5,103 (17.6%)	5,597 (19.1%)	5,944 (19.8%)
61-70	6,014 (21.7%)	6,247 (21.6%)	6,091 (20.6%)	5,874 (20.0%)	6,034 (19.7%)	3,754 (19.5%)	6,262 (20.9%)	5,910 (20.4%)	6,090 (20.8%)	6,440 (21.4%)
71-80	5,525 (19.9%)	5,792 (20.0%)	5,981 (20.3%)	5,514 (18.8%)	5,403 (17.7%)	3,434 (17.8%)	5,298 (17.7%)	5,145 (17.8%)	5,257 (17.9%)	5,311 (17.7%)
81-90	3,307 (11.9%)	3,724 (12.9%)	3,860 (13.1%)	3,609 (12.3%)	3,460 (11.3%)	2,152 (11.2%)	3,155 (10.5%)	3,284 (11.4%)	2,981 (10.2%)	3,169 (10.5%)
91-100	1,628 (5.9%)	1,742 (6.0%)	1,673 (5.7%)	1,807 (6.2%)	1,958 (6.4%)	1,059 (5.5%)	1,659 (5.5%)	1,503 (5.2%)	1,358 (4.6%)	1,272 (4.2%)
101+	1,046 (3.8%)	1,144 (4.0%)	1,114 (3.8%)	1,025 (3.5%)	1,017 (3.3%)	702 (3.6%)	1,025 (3.4%)	1,032 (3.6%)	899 (3.1%)	849 (2.8%)

## Jump

RatBand	2015	2016	2017	2018	2019	2020	2021	2022	2023	2024
<b>Hurdle</b>										
Unrated	2,794 (26.4%)	2,704 (25.6%)	2,644 (25.4%)	2,760 (26.3%)	2,751 (26.4%)	1,630 (30.2%)	2,753 (25.4%)	2,481 (24.0%)	2,696 (25.8%)	2,808 (26.8%)
0-100	2,948 (27.9%)	2,789 (26.4%)	2,817 (27.0%)	2,635 (25.1%)	2,662 (25.6%)	1,195 (22.2%)	3,390 (31.3%)	3,512 (34.0%)	3,525 (33.7%)	3,717 (35.5%)
101-110	1,541 (14.6%)	1,669 (15.8%)	1,590 (15.3%)	1,601 (15.3%)	1,568 (15.1%)	755 (14.0%)	1,499 (13.8%)	1,622 (15.7%)	1,612 (15.4%)	1,551 (14.8%)
111-120	1,502 (14.2%)	1,532 (14.5%)	1,525 (14.6%)	1,506 (14.4%)	1,507 (14.5%)	738 (13.7%)	1,399 (12.9%)	1,348 (13.1%)	1,315 (12.6%)	1,280 (12.2%)
121-130	1,019 (9.6%)	1,038 (9.8%)	1,014 (9.7%)	1,098 (10.5%)	1,123 (10.8%)	565 (10.5%)	1,057 (9.8%)	811 (7.9%)	873 (8.4%)	738 (7.0%)
131-140	534 (5.0%)	588 (5.6%)	608 (5.8%)	634 (6.0%)	561 (5.4%)	362 (6.7%)	511 (4.7%)	397 (3.8%)	307 (2.9%)	277 (2.6%)
141-150	184 (1.7%)	176 (1.7%)	166 (1.6%)	197 (1.9%)	180 (1.7%)	103 (1.9%)	158 (1.5%)	119 (1.2%)	88 (0.8%)	77 (0.7%)
151+	58 (0.5%)	65 (0.6%)	57 (0.5%)	58 (0.6%)	66 (0.6%)	47 (0.9%)	59 (0.5%)	30 (0.3%)	33 (0.3%)	21 (0.2%)
<b>Chase</b>										
Unrated	34 (0.6%)	45 (0.8%)	54 (0.9%)	47 (0.8%)	36 (0.7%)	12 (0.4%)	30 (0.5%)	11 (0.2%)	1 (0.0%)	NA (-)
0-100	1,755 (31.0%)	1,694 (29.6%)	1,581 (27.5%)	1,632 (29.2%)	1,675 (30.5%)	761 (27.2%)	1,912 (32.8%)	1,877 (33.4%)	1,970 (36.7%)	1,962 (38.4%)
101-110	821 (14.5%)	851 (14.9%)	941 (16.4%)	857 (15.4%)	889 (16.2%)	440 (15.7%)	880 (15.1%)	901 (16.0%)	943 (17.6%)	936 (18.3%)
111-120	1,064 (18.8%)	1,033 (18.1%)	1,007 (17.5%)	934 (16.7%)	877 (16.0%)	425 (15.2%)	981 (16.8%)	981 (17.5%)	903 (16.8%)	867 (17.0%)
121-130	896 (15.8%)	885 (15.5%)	884 (15.4%)	939 (16.8%)	840 (15.3%)	466 (16.6%)	912 (15.7%)	854 (15.2%)	747 (13.9%)	655 (12.8%)
131-140	632 (11.2%)	708 (12.4%)	786 (13.7%)	693 (12.4%)	695 (12.7%)	392 (14.0%)	652 (11.2%)	610 (10.9%)	507 (9.4%)	428 (8.4%)
141-150	301 (5.3%)	338 (5.9%)	338 (5.9%)	354 (6.3%)	327 (6.0%)	212 (7.6%)	297 (5.1%)	269 (4.8%)	200 (3.7%)	173 (3.4%)
151+	151 (2.7%)	160 (2.8%)	164 (2.8%)	126 (2.3%)	149 (2.7%)	93 (3.3%)	163 (2.8%)	117 (2.1%)	97 (1.8%)	94 (1.8%)

## Frequency of Runs

### Year to Date Average Runs per Horse

Code	2015	2016	2017	2018	2019	2020	2021	2022	2023	2024
Flat	3.78	3.78	3.77	3.75	3.82	2.75	3.92	3.84	3.84	3.90
Jump	2.93	2.93	2.92	2.91	2.76	1.82	2.79	2.79	2.79	2.81
Dual Overall	5.62	5.76	5.64	5.31	5.41	3.79	5.41	5.33	5.31	5.33
Dual (Flat)	2.93	2.96	2.85	2.68	2.82	2.10	2.77	2.67	2.76	2.88
Dual (Jump)	2.68	2.80	2.79	2.62	2.59	1.69	2.64	2.66	2.55	2.45
<b>All</b>	<b>3.51</b>	<b>3.52</b>	<b>3.50</b>	<b>3.47</b>	<b>3.46</b>	<b>2.44</b>	<b>3.49</b>	<b>3.46</b>	<b>3.45</b>	<b>3.50</b>

### Year to Date Proportion of Horses by Count of Runs

Runs	2015	2016	2017	2018	2019	2020	2021	2022	2023	2024
<b>Flat</b>										
1	1,648 (19.5%)	1,679 (19.1%)	1,667 (18.5%)	1,751 (19.5%)	1,719 (18.9%)	2,008 (25.2%)	1,526 (17.5%)	1,557 (18.1%)	1,624 (18.8%)	1,568 (17.9%)
2	1,561 (18.4%)	1,569 (17.8%)	1,678 (18.7%)	1,649 (18.3%)	1,595 (17.5%)	2,192 (27.5%)	1,465 (16.8%)	1,544 (18.0%)	1,491 (17.3%)	1,503 (17.2%)
3	1,488 (17.6%)	1,556 (17.7%)	1,643 (18.3%)	1,674 (18.6%)	1,660 (18.2%)	1,834 (23.0%)	1,541 (17.6%)	1,468 (17.1%)	1,556 (18.0%)	1,553 (17.8%)
4	1,222 (14.4%)	1,267 (14.4%)	1,291 (14.3%)	1,274 (14.2%)	1,304 (14.3%)	945 (11.9%)	1,363 (15.6%)	1,287 (15.0%)	1,264 (14.6%)	1,285 (14.7%)
5+	2,549 (30.1%)	2,737 (31.1%)	2,718 (30.2%)	2,642 (29.4%)	2,837 (31.1%)	980 (12.3%)	2,838 (32.5%)	2,737 (31.9%)	2,700 (31.3%)	2,830 (32.4%)
<b>Jump</b>										
1	1,659 (26.1%)	1,631 (25.8%)	1,650 (26.3%)	1,642 (26.1%)	1,831 (28.1%)	2,348 (45.7%)	1,837 (26.5%)	1,835 (28.4%)	1,806 (27.8%)	1,662 (26.5%)
2	1,482 (23.3%)	1,441 (22.8%)	1,377 (21.9%)	1,355 (21.5%)	1,635 (25.1%)	1,765 (34.3%)	1,729 (24.9%)	1,467 (22.7%)	1,503 (23.1%)	1,468 (23.4%)
3	1,213 (19.1%)	1,250 (19.8%)	1,237 (19.7%)	1,263 (20.1%)	1,228 (18.8%)	763 (14.8%)	1,423 (20.5%)	1,296 (20.1%)	1,337 (20.6%)	1,284 (20.5%)
4	905 (14.2%)	892 (14.1%)	932 (14.8%)	980 (15.6%)	894 (13.7%)	214 (4.2%)	904 (13.0%)	903 (14.0%)	875 (13.5%)	944 (15.0%)
5+	1,092 (17.2%)	1,108 (17.5%)	1,083 (17.2%)	1,058 (16.8%)	938 (14.4%)	51 (1.0%)	1,046 (15.1%)	960 (14.9%)	976 (15.0%)	919 (14.6%)
<b>All Races</b>										
1	2,935 (20.6%)	2,951 (20.3%)	2,996 (20.3%)	3,040 (20.6%)	3,216 (21.3%)	3,972 (31.3%)	3,034 (20.0%)	3,068 (21.0%)	3,143 (21.4%)	2,958 (20.2%)
2	2,808 (19.7%)	2,785 (19.1%)	2,876 (19.5%)	2,834 (19.2%)	3,027 (20.0%)	3,830 (30.1%)	3,018 (19.9%)	2,865 (19.6%)	2,835 (19.3%)	2,815 (19.3%)
3	2,582 (18.1%)	2,681 (18.4%)	2,781 (18.8%)	2,833 (19.2%)	2,780 (18.4%)	2,584 (20.3%)	2,865 (18.9%)	2,680 (18.4%)	2,792 (19.0%)	2,749 (18.8%)
4	2,072 (14.6%)	2,116 (14.5%)	2,204 (14.9%)	2,228 (15.1%)	2,162 (14.3%)	1,215 (9.6%)	2,239 (14.7%)	2,156 (14.8%)	2,124 (14.4%)	2,210 (15.1%)
5+	3,832 (26.9%)	4,016 (27.6%)	3,928 (26.6%)	3,852 (26.0%)	3,937 (26.0%)	1,108 (8.7%)	4,027 (26.5%)	3,827 (26.2%)	3,807 (25.9%)	3,876 (26.5%)

### Year to Date Median Days Between Runs

Code/RatBand	2015	2016	2017	2018	2019	2020	2021	2022	2023	2024
<b>All Runners</b>	<b>24</b>	<b>25</b>	<b>25</b>	<b>25</b>	<b>25</b>	<b>27</b>	<b>26</b>	<b>25</b>	<b>26</b>	<b>26</b>
<b>Flat</b>										
Unrated	23	22	22	24	24	21	24	24	24	24
0-50	21	20	21	21	22	20	20	21	19	19
51-60	19	20	20	20	21	20	20	20	20	20
61-70	20	21	21	21	21	22	21	21	22	21
71-80	22	21	22	21	21	25	22	22	23	24
81-90	23	22	22	22	23	24	24	23	25	25
91-100	27	26	26	26	26	27	27	28	28	30
101+	29	29	31	29	30	31	31	34	34	34
<b>All Flat Runners</b>	<b>21</b>	<b>22</b>	<b>22</b>	<b>22</b>	<b>22</b>	<b>23</b>	<b>22</b>	<b>22</b>	<b>22</b>	<b>22</b>
<b>Jump</b>										
Unrated	34	36	33	36	36	37	38	34	39	38
0-100	25	26	26	27	27	35	28	27	28	30
101-110	28	29	27	29	29	32	30	29	30	32
111-120	29	29	29	30	30	36	32	30	32	32
121-130	30	31	29	30	32	35	32	31	34	35
131-140	31	33	32	33	33	37	35	34	36	35
141-150	34	34	35	38	36	41	40	36	39	36
151+	35	38	34	38	39	42	40	40	42	41
<b>All Jump Runners</b>	<b>29</b>	<b>30</b>	<b>29</b>	<b>31</b>	<b>31</b>	<b>36</b>	<b>32</b>	<b>30</b>	<b>32</b>	<b>33</b>

# Horses Population by Gender

## July 2024 Horses in Training Snapshot by Gender versus Previous Years

### All Horses

Sex	2015	2016	2017	2018	2019	2020	2021	2022	2023	2024
Colt/Entire	2,373 (18.4%)	2,383 (18.3%)	2,427 (18.3%)	2,435 (17.4%)	2,323 (16.6%)	2,288 (15.5%)	2,125 (15.2%)	2,041 (14.7%)	2,106 (15.5%)	1,926 (14.2%)
Gelding	6,273 (48.6%)	6,412 (49.2%)	6,498 (48.9%)	7,018 (50.0%)	7,016 (50.0%)	7,743 (52.3%)	7,363 (52.5%)	7,220 (52.2%)	6,948 (51.3%)	7,156 (52.9%)
Filly/Mare	4,260 (33.0%)	4,240 (32.5%)	4,361 (32.8%)	4,568 (32.6%)	4,682 (33.4%)	4,769 (32.2%)	4,529 (32.3%)	4,577 (33.1%)	4,490 (33.1%)	4,444 (32.9%)
Rig	4 (0.0%)	5 (0.0%)	4 (0.0%)	1 (0.0%)	2 (0.0%)	1 (0.0%)	1 (0.0%)	1 (0.0%)	1 (0.0%)	0 (0.0%)
<b>Total</b>	<b>12,910 (100.0%)</b>	<b>13,040 (100.0%)</b>	<b>13,290 (100.0%)</b>	<b>14,022 (100.0%)</b>	<b>14,023 (100.0%)</b>	<b>14,801 (100.0%)</b>	<b>14,018 (100.0%)</b>	<b>13,839 (100.0%)</b>	<b>13,545 (100.0%)</b>	<b>13,526 (100.0%)</b>

### Flat (including Dual)

Sex	2015	2016	2017	2018	2019	2020	2021	2022	2023	2024
Colt/Entire	2,344 (23.9%)	2,370 (23.8%)	2,403 (23.3%)	2,422 (22.8%)	2,307 (22.0%)	2,268 (21.6%)	2,104 (20.8%)	2,023 (20.3%)	2,088 (20.9%)	1,916 (19.5%)
Gelding	3,791 (38.7%)	3,966 (39.8%)	4,167 (40.4%)	4,362 (41.0%)	4,303 (41.0%)	4,412 (42.0%)	4,339 (42.8%)	4,245 (42.5%)	4,218 (42.3%)	4,335 (44.1%)
Filly/Mare	3,654 (37.3%)	3,633 (36.4%)	3,744 (36.3%)	3,845 (36.2%)	3,876 (37.0%)	3,817 (36.4%)	3,688 (36.4%)	3,711 (37.2%)	3,669 (36.8%)	3,588 (36.5%)
Rig	2 (0.0%)	5 (0.1%)	4 (0.0%)	1 (0.0%)	2 (0.0%)	1 (0.0%)	1 (0.0%)	0 (0.0%)	0 (0.0%)	0 (0.0%)
<b>Total</b>	<b>9,791 (100.0%)</b>	<b>9,974 (100.0%)</b>	<b>10,318 (100.0%)</b>	<b>10,630 (100.0%)</b>	<b>10,488 (100.0%)</b>	<b>10,498 (100.0%)</b>	<b>10,132 (100.0%)</b>	<b>9,979 (100.0%)</b>	<b>9,975 (100.0%)</b>	<b>9,839 (100.0%)</b>

### Jump (including Dual)

Sex	2015	2016	2017	2018	2019	2020	2021	2022	2023	2024
Colt/Entire	32 (0.9%)	22 (0.6%)	21 (0.6%)	24 (0.6%)	23 (0.6%)	23 (0.5%)	30 (0.7%)	26 (0.6%)	20 (0.5%)	16 (0.4%)
Gelding	2,868 (79.4%)	2,833 (79.9%)	2,794 (78.5%)	3,142 (77.9%)	3,055 (76.6%)	3,742 (77.5%)	3,362 (77.4%)	3,318 (76.7%)	3,053 (76.5%)	3,196 (76.5%)
Filly/Mare	712 (19.7%)	689 (19.4%)	742 (20.9%)	865 (21.5%)	908 (22.8%)	1,064 (22.0%)	949 (21.9%)	979 (22.6%)	915 (22.9%)	968 (23.2%)
Rig	1 (0.0%)	0 (0.0%)	0 (0.0%)	0 (0.0%)	0 (0.0%)	0 (0.0%)	0 (0.0%)	1 (0.0%)	1 (0.0%)	0 (0.0%)
<b>Total</b>	<b>3,613 (100.0%)</b>	<b>3,544 (100.0%)</b>	<b>3,557 (100.0%)</b>	<b>4,031 (100.0%)</b>	<b>3,986 (100.0%)</b>	<b>4,829 (100.0%)</b>	<b>4,341 (100.0%)</b>	<b>4,324 (100.0%)</b>	<b>3,989 (100.0%)</b>	<b>4,180 (100.0%)</b>

## Year to Date Total Runners by Gender

Sex	2015	2016	2017	2018	2019	2020	2021	2022	2023	2024
<b>All Races</b>										
Colt/Entire	4,971 (10.0%)	4,945 (9.7%)	4,840 (9.4%)	4,959 (9.7%)	4,682 (9.0%)	3,145 (10.2%)	4,592 (8.7%)	4,151 (8.2%)	3,909 (7.7%)	3,692 (7.2%)
Gelding	31,862 (63.8%)	32,929 (64.3%)	33,334 (64.4%)	32,578 (63.4%)	32,934 (63.0%)	19,039 (61.5%)	33,568 (63.3%)	32,163 (63.7%)	32,314 (63.8%)	32,991 (64.5%)
Filly/Mare	13,115 (26.3%)	13,337 (26.0%)	13,549 (26.2%)	13,806 (26.9%)	14,635 (28.0%)	8,777 (28.3%)	14,831 (28.0%)	14,164 (28.1%)	14,443 (28.5%)	14,501 (28.3%)
Rig	1 (0.0%)	14 (0.0%)	3 (0.0%)	8 (0.0%)	11 (0.0%)	4 (0.0%)	7 (0.0%)	6 (0.0%)	4 (0.0%)	0 (0.0%)
<b>Flat</b>										
Colt/Entire	4,932 (15.7%)	4,916 (15.0%)	4,808 (14.4%)	4,937 (14.9%)	4,654 (13.6%)	3,127 (14.4%)	4,560 (13.5%)	4,131 (12.7%)	3,874 (11.9%)	3,677 (10.9%)
Gelding	16,844 (53.5%)	17,765 (54.2%)	18,329 (54.8%)	18,083 (54.5%)	18,797 (54.8%)	11,732 (54.1%)	18,461 (54.8%)	17,993 (55.4%)	18,287 (56.0%)	19,530 (58.0%)
Filly/Mare	9,732 (30.9%)	10,109 (30.8%)	10,301 (30.8%)	10,167 (30.6%)	10,855 (31.6%)	6,807 (31.4%)	10,660 (31.6%)	10,369 (31.9%)	10,499 (32.1%)	10,491 (31.1%)
Rig	1 (0.0%)	14 (0.0%)	3 (0.0%)	8 (0.0%)	7 (0.0%)	1 (0.0%)	3 (0.0%)	0 (0.0%)	0 (0.0%)	0 (0.0%)
<b>All Jump</b>										
Colt/Entire	39 (0.2%)	29 (0.2%)	32 (0.2%)	22 (0.1%)	28 (0.2%)	18 (0.2%)	32 (0.2%)	20 (0.1%)	35 (0.2%)	15 (0.1%)
Gelding	15,018 (81.4%)	15,164 (82.3%)	15,005 (82.1%)	14,495 (79.8%)	14,137 (78.8%)	7,307 (78.6%)	15,107 (78.2%)	14,170 (78.8%)	14,027 (77.9%)	13,461 (77.0%)
Filly/Mare	3,383 (18.3%)	3,228 (17.5%)	3,248 (17.8%)	3,639 (20.0%)	3,780 (21.1%)	1,970 (21.2%)	4,171 (21.6%)	3,795 (21.1%)	3,944 (21.9%)	4,010 (22.9%)
Rig	0 (0.0%)	0 (0.0%)	0 (0.0%)	0 (0.0%)	4 (0.0%)	3 (0.0%)	4 (0.0%)	6 (0.0%)	4 (0.0%)	0 (0.0%)
<b>Chase</b>										
Colt/Entire	0 (0.0%)	1 (0.0%)	0 (0.0%)	0 (0.0%)	0 (0.0%)	0 (0.0%)	0 (0.0%)	0 (0.0%)	0 (0.0%)	0 (0.0%)
Gelding	5,432 (92.6%)	5,539 (93.1%)	5,544 (92.8%)	5,208 (90.8%)	5,102 (90.0%)	2,600 (90.2%)	5,317 (89.4%)	5,202 (89.4%)	5,013 (89.3%)	4,769 (89.5%)
Filly/Mare	432 (7.4%)	411 (6.9%)	429 (7.2%)	526 (9.2%)	563 (9.9%)	278 (9.6%)	624 (10.5%)	611 (10.5%)	597 (10.6%)	557 (10.5%)
Rig	0 (0.0%)	0 (0.0%)	0 (0.0%)	0 (0.0%)	2 (0.0%)	3 (0.1%)	4 (0.1%)	6 (0.1%)	3 (0.1%)	0 (0.0%)
<b>Hurdle</b>										
Colt/Entire	34 (0.3%)	25 (0.2%)	26 (0.2%)	15 (0.1%)	19 (0.2%)	8 (0.1%)	29 (0.3%)	13 (0.1%)	26 (0.2%)	10 (0.1%)
Gelding	8,493 (78.2%)	8,617 (79.0%)	8,439 (78.6%)	8,226 (76.7%)	8,107 (75.3%)	4,138 (74.5%)	8,200 (74.2%)	8,063 (75.5%)	8,082 (74.6%)	7,861 (72.6%)
Filly/Mare	2,331 (21.5%)	2,271 (20.8%)	2,271 (21.2%)	2,489 (23.2%)	2,639 (24.5%)	1,409 (25.4%)	2,822 (25.5%)	2,604 (24.4%)	2,724 (25.1%)	2,951 (27.3%)
Rig	0 (0.0%)	0 (0.0%)	0 (0.0%)	0 (0.0%)	2 (0.0%)	0 (0.0%)	0 (0.0%)	0 (0.0%)	1 (0.0%)	0 (0.0%)
<b>NHF</b>										
Colt/Entire	5 (0.3%)	3 (0.2%)	6 (0.4%)	7 (0.4%)	9 (0.6%)	10 (1.2%)	3 (0.1%)	7 (0.5%)	9 (0.6%)	5 (0.4%)
Gelding	1,093 (63.6%)	1,008 (64.7%)	1,022 (64.8%)	1,061 (62.7%)	928 (61.3%)	569 (66.0%)	1,590 (68.6%)	905 (60.7%)	932 (59.6%)	831 (62.1%)
Filly/Mare	620 (36.1%)	546 (35.1%)	548 (34.8%)	624 (36.9%)	578 (38.2%)	283 (32.8%)	725 (31.3%)	580 (38.9%)	623 (39.8%)	502 (37.5%)
<b>Hunter</b>										
Colt/Entire	1 (0.1%)	0 (0.0%)	0 (0.0%)	0 (0.0%)	0 (0.0%)	0 (0.0%)	0 (0.0%)	0 (0.0%)	0 (0.0%)	0 (0.0%)
Gelding	799 (94.2%)	720 (94.2%)	709 (94.9%)	603 (93.3%)	522 (92.7%)	142 (97.3%)	557 (93.5%)	429 (94.9%)	408 (93.6%)	379 (92.9%)
Filly/Mare	48 (5.7%)	44 (5.8%)	38 (5.1%)	43 (6.7%)	41 (7.3%)	4 (2.7%)	39 (6.5%)	23 (5.1%)	28 (6.4%)	29 (7.1%)

## Year to Date Individual Runners by Gender

Sex	2015	2016	2017	2018	2019	2020	2021	2022	2023	2024
<b>All Races</b>										
Male	10,155 (71.4%)	10,393 (71.4%)	10,562 (71.4%)	10,503 (71.0%)	10,634 (70.3%)	8,954 (70.5%)	10,685 (70.4%)	10,234 (70.1%)	10,190 (69.3%)	10,161 (69.6%)
Female	4,074 (28.6%)	4,156 (28.6%)	4,223 (28.6%)	4,284 (29.0%)	4,488 (29.7%)	3,755 (29.5%)	4,498 (29.6%)	4,362 (29.9%)	4,511 (30.7%)	4,447 (30.4%)
<b>Flat</b>										
Male	5,516 (65.1%)	5,743 (65.2%)	5,897 (65.5%)	5,940 (66.1%)	5,948 (65.3%)	5,235 (65.8%)	5,669 (64.9%)	5,568 (64.8%)	5,523 (64.0%)	5,687 (65.1%)
Female	2,952 (34.9%)	3,065 (34.8%)	3,100 (34.5%)	3,050 (33.9%)	3,167 (34.7%)	2,724 (34.2%)	3,064 (35.1%)	3,025 (35.2%)	3,112 (36.0%)	3,052 (34.9%)
<b>All Jump</b>										
Male	5,108 (80.4%)	5,129 (81.1%)	5,067 (80.7%)	4,972 (78.9%)	5,101 (78.2%)	4,035 (78.5%)	5,401 (77.8%)	5,022 (77.7%)	5,003 (77.0%)	4,793 (76.4%)
Female	1,243 (19.6%)	1,193 (18.9%)	1,212 (19.3%)	1,326 (21.1%)	1,425 (21.8%)	1,106 (21.5%)	1,538 (22.2%)	1,439 (22.3%)	1,494 (23.0%)	1,484 (23.6%)
<b>Chase</b>										
Male	1,962 (91.9%)	1,967 (92.7%)	1,981 (92.0%)	1,894 (90.0%)	1,920 (89.5%)	1,506 (89.5%)	2,025 (88.6%)	1,910 (88.5%)	1,835 (88.0%)	1,775 (88.4%)
Female	173 (8.1%)	156 (7.3%)	172 (8.0%)	211 (10.0%)	226 (10.5%)	176 (10.5%)	261 (11.4%)	247 (11.5%)	251 (12.0%)	234 (11.6%)
<b>Hurdle</b>										
Male	3,184 (78.9%)	3,259 (80.0%)	3,145 (78.8%)	3,140 (77.4%)	3,231 (76.5%)	2,392 (75.1%)	3,323 (75.2%)	3,171 (76.5%)	3,142 (75.4%)	3,098 (73.6%)
Female	850 (21.1%)	816 (20.0%)	844 (21.2%)	919 (22.6%)	993 (23.5%)	793 (24.9%)	1,097 (24.8%)	975 (23.5%)	1,026 (24.6%)	1,110 (26.4%)
<b>NHF</b>										
Male	757 (65.9%)	703 (66.1%)	698 (66.6%)	761 (66.1%)	668 (63.9%)	478 (67.5%)	1,146 (69.9%)	654 (63.0%)	675 (62.5%)	593 (64.0%)
Female	392 (34.1%)	361 (33.9%)	350 (33.4%)	391 (33.9%)	377 (36.1%)	230 (32.5%)	493 (30.1%)	384 (37.0%)	405 (37.5%)	334 (36.0%)
<b>Hunter</b>										
Male	448 (94.1%)	395 (93.2%)	366 (93.6%)	339 (92.1%)	301 (92.0%)	98 (96.1%)	299 (92.0%)	243 (92.4%)	228 (93.4%)	212 (92.6%)
Female	28 (5.9%)	29 (6.8%)	25 (6.4%)	29 (7.9%)	26 (8.0%)	4 (3.9%)	26 (8.0%)	20 (7.6%)	16 (6.6%)	17 (7.4%)

# Horses Population by Breeding

## July 2024 Horses in Training Snapshot by Breeding versus Previous Years

### Flat (including Dual)

Bred	Sex	2015	2016	2017	2018	2019	2020	2021	2022	2023	2024
GB	Male	2,904 (29.7%)	2,939 (29.5%)	3,071 (29.8%)	3,200 (30.1%)	3,131 (29.9%)	3,190 (30.4%)	3,025 (29.9%)	2,925 (29.3%)	2,918 (29.3%)	2,849 (29.0%)
	Female	2,027 (20.7%)	2,021 (20.3%)	2,076 (20.1%)	2,138 (20.1%)	2,150 (20.5%)	2,148 (20.5%)	2,041 (20.1%)	2,052 (20.6%)	2,004 (20.1%)	1,955 (19.9%)
<b>Subtotal</b>		<b>4,931 (50.4%)</b>	<b>4,960 (49.7%)</b>	<b>5,147 (49.9%)</b>	<b>5,338 (50.2%)</b>	<b>5,281 (50.4%)</b>	<b>5,338 (50.8%)</b>	<b>5,066 (50.0%)</b>	<b>4,977 (49.9%)</b>	<b>4,922 (49.3%)</b>	<b>4,804 (48.8%)</b>
IRE	Male	2,629 (26.9%)	2,785 (27.9%)	2,806 (27.2%)	2,879 (27.1%)	2,794 (26.6%)	2,860 (27.2%)	2,840 (28.0%)	2,847 (28.5%)	2,915 (29.2%)	2,906 (29.5%)
	Female	1,380 (14.1%)	1,358 (13.6%)	1,393 (13.5%)	1,410 (13.3%)	1,439 (13.7%)	1,402 (13.4%)	1,440 (14.2%)	1,473 (14.8%)	1,493 (15.0%)	1,454 (14.8%)
<b>Subtotal</b>		<b>4,009 (40.9%)</b>	<b>4,143 (41.5%)</b>	<b>4,199 (40.7%)</b>	<b>4,289 (40.3%)</b>	<b>4,233 (40.4%)</b>	<b>4,262 (40.6%)</b>	<b>4,280 (42.2%)</b>	<b>4,320 (43.3%)</b>	<b>4,408 (44.2%)</b>	<b>4,360 (44.3%)</b>
FR	Male	176 (1.8%)	194 (1.9%)	261 (2.5%)	310 (2.9%)	319 (3.0%)	316 (3.0%)	318 (3.1%)	312 (3.1%)	300 (3.0%)	336 (3.4%)
	Female	67 (0.7%)	87 (0.9%)	108 (1.0%)	121 (1.1%)	124 (1.2%)	137 (1.3%)	118 (1.2%)	119 (1.2%)	113 (1.1%)	124 (1.3%)
<b>Subtotal</b>		<b>243 (2.5%)</b>	<b>281 (2.8%)</b>	<b>369 (3.6%)</b>	<b>431 (4.1%)</b>	<b>443 (4.2%)</b>	<b>453 (4.3%)</b>	<b>436 (4.3%)</b>	<b>431 (4.3%)</b>	<b>413 (4.1%)</b>	<b>460 (4.7%)</b>
USA	Male	339 (3.5%)	338 (3.4%)	344 (3.3%)	318 (3.0%)	294 (2.8%)	240 (2.3%)	191 (1.9%)	124 (1.2%)	108 (1.1%)	95 (1.0%)
	Female	148 (1.5%)	142 (1.4%)	141 (1.4%)	148 (1.4%)	126 (1.2%)	99 (0.9%)	63 (0.6%)	45 (0.5%)	40 (0.4%)	34 (0.3%)
<b>Subtotal</b>		<b>487 (5.0%)</b>	<b>480 (4.8%)</b>	<b>485 (4.7%)</b>	<b>466 (4.4%)</b>	<b>420 (4.0%)</b>	<b>339 (3.2%)</b>	<b>254 (2.5%)</b>	<b>169 (1.7%)</b>	<b>148 (1.5%)</b>	<b>129 (1.3%)</b>
GNY	Male	63 (0.6%)	63 (0.6%)	69 (0.7%)	52 (0.5%)	53 (0.5%)	58 (0.6%)	55 (0.5%)	47 (0.5%)	50 (0.5%)	49 (0.5%)
	Female	13 (0.1%)	7 (0.1%)	12 (0.1%)	15 (0.1%)	24 (0.2%)	25 (0.2%)	22 (0.2%)	17 (0.2%)	12 (0.1%)	15 (0.2%)
<b>Subtotal</b>		<b>76 (0.8%)</b>	<b>70 (0.7%)</b>	<b>81 (0.8%)</b>	<b>67 (0.6%)</b>	<b>77 (0.7%)</b>	<b>83 (0.8%)</b>	<b>77 (0.8%)</b>	<b>64 (0.6%)</b>	<b>62 (0.6%)</b>	<b>64 (0.7%)</b>
Other	Male	26 (0.3%)	22 (0.2%)	23 (0.2%)	26 (0.2%)	21 (0.2%)	17 (0.2%)	15 (0.1%)	13 (0.1%)	15 (0.2%)	16 (0.2%)
	Female	19 (0.2%)	18 (0.2%)	14 (0.1%)	13 (0.1%)	13 (0.1%)	6 (0.1%)	4 (0.0%)	5 (0.1%)	7 (0.1%)	6 (0.1%)
<b>Subtotal</b>		<b>45 (0.5%)</b>	<b>40 (0.4%)</b>	<b>37 (0.4%)</b>	<b>39 (0.4%)</b>	<b>34 (0.3%)</b>	<b>23 (0.2%)</b>	<b>19 (0.2%)</b>	<b>18 (0.2%)</b>	<b>22 (0.2%)</b>	<b>22 (0.2%)</b>

### Jump (including Dual)

Bred	Sex	2015	2016	2017	2018	2019	2020	2021	2022	2023	2024
GB	Male	921 (25.5%)	903 (25.5%)	849 (23.9%)	946 (23.5%)	843 (21.1%)	964 (20.0%)	874 (20.1%)	829 (19.2%)	750 (18.8%)	808 (19.3%)
	Female	428 (11.8%)	404 (11.4%)	411 (11.6%)	460 (11.4%)	408 (10.2%)	473 (9.8%)	459 (10.6%)	453 (10.5%)	432 (10.8%)	407 (9.7%)
<b>Subtotal</b>		<b>1,349 (37.3%)</b>	<b>1,307 (36.9%)</b>	<b>1,260 (35.4%)</b>	<b>1,406 (34.9%)</b>	<b>1,251 (31.4%)</b>	<b>1,437 (29.8%)</b>	<b>1,333 (30.7%)</b>	<b>1,282 (29.6%)</b>	<b>1,182 (29.6%)</b>	<b>1,215 (29.1%)</b>
IRE	Male	1,563 (43.3%)	1,536 (43.3%)	1,540 (43.3%)	1,730 (42.9%)	1,722 (43.2%)	2,082 (43.1%)	1,827 (42.1%)	1,771 (41.0%)	1,622 (40.7%)	1,695 (40.6%)
	Female	244 (6.8%)	258 (7.3%)	285 (8.0%)	352 (8.7%)	430 (10.8%)	489 (10.1%)	414 (9.5%)	438 (10.1%)	398 (10.0%)	467 (11.2%)
<b>Subtotal</b>		<b>1,807 (50.0%)</b>	<b>1,794 (50.6%)</b>	<b>1,825 (51.3%)</b>	<b>2,082 (51.6%)</b>	<b>2,152 (54.0%)</b>	<b>2,571 (53.2%)</b>	<b>2,241 (51.6%)</b>	<b>2,209 (51.1%)</b>	<b>2,020 (50.6%)</b>	<b>2,162 (51.7%)</b>
FR	Male	309 (8.6%)	338 (9.5%)	347 (9.8%)	418 (10.4%)	445 (11.2%)	639 (13.2%)	607 (14.0%)	667 (15.4%)	634 (15.9%)	662 (15.8%)
	Female	34 (0.9%)	22 (0.6%)	41 (1.2%)	51 (1.3%)	65 (1.6%)	96 (2.0%)	68 (1.6%)	82 (1.9%)	83 (2.1%)	87 (2.1%)
<b>Subtotal</b>		<b>343 (9.5%)</b>	<b>360 (10.2%)</b>	<b>388 (10.9%)</b>	<b>469 (11.6%)</b>	<b>510 (12.8%)</b>	<b>735 (15.2%)</b>	<b>675 (15.5%)</b>	<b>749 (17.3%)</b>	<b>717 (18.0%)</b>	<b>749 (17.9%)</b>
USA	Male	59 (1.6%)	37 (1.0%)	36 (1.0%)	34 (0.8%)	28 (0.7%)	26 (0.5%)	30 (0.7%)	23 (0.5%)	17 (0.4%)	9 (0.2%)
	Female	2 (0.1%)	1 (0.0%)	2 (0.1%)	1 (0.0%)	2 (0.1%)	2 (0.0%)	1 (0.0%)	NA (-)	NA (-)	1 (0.0%)
<b>Subtotal</b>		<b>61 (1.7%)</b>	<b>38 (1.1%)</b>	<b>38 (1.1%)</b>	<b>35 (0.9%)</b>	<b>30 (0.8%)</b>	<b>28 (0.6%)</b>	<b>31 (0.7%)</b>	<b>23 (0.5%)</b>	<b>17 (0.4%)</b>	<b>10 (0.2%)</b>
GNY	Male	43 (1.2%)	38 (1.1%)	36 (1.0%)	33 (0.8%)	36 (0.9%)	53 (1.1%)	52 (1.2%)	53 (1.2%)	49 (1.2%)	36 (0.9%)
	Female	3 (0.1%)	1 (0.0%)	1 (0.0%)	NA (-)	2 (0.1%)	4 (0.1%)	6 (0.1%)	5 (0.1%)	2 (0.1%)	5 (0.1%)
<b>Subtotal</b>		<b>46 (1.3%)</b>	<b>39 (1.1%)</b>	<b>37 (1.0%)</b>	<b>33 (0.8%)</b>	<b>38 (1.0%)</b>	<b>57 (1.2%)</b>	<b>58 (1.3%)</b>	<b>58 (1.3%)</b>	<b>51 (1.3%)</b>	<b>41 (1.0%)</b>
Other	Male	6 (0.2%)	3 (0.1%)	7 (0.2%)	5 (0.1%)	4 (0.1%)	1 (0.0%)	2 (0.0%)	2 (0.0%)	2 (0.0%)	2 (0.0%)
	Female	1 (0.0%)	3 (0.1%)	2 (0.1%)	1 (0.0%)	1 (0.0%)	NA (-)	1 (0.0%)	1 (0.0%)	NA (-)	1 (0.0%)
<b>Subtotal</b>		<b>7 (0.2%)</b>	<b>6 (0.2%)</b>	<b>9 (0.3%)</b>	<b>6 (0.1%)</b>	<b>5 (0.1%)</b>	<b>1 (0.0%)</b>	<b>3 (0.1%)</b>	<b>3 (0.1%)</b>	<b>2 (0.1%)</b>	<b>3 (0.1%)</b>

### Year to Date Total Runners by Breeding

#### Flat

Bred	Sex	2015	2016	2017	2018	2019	2020	2021	2022	2023	2024
GB	Male	10,268 (32.6%)	10,626 (32.4%)	10,883 (32.5%)	10,628 (32.0%)	10,728 (31.3%)	6,975 (32.2%)	10,552 (31.3%)	10,122 (31.2%)	10,011 (30.7%)	10,430 (31.0%)
	Female	5,315 (16.9%)	5,549 (16.9%)	5,588 (16.7%)	5,508 (16.6%)	5,935 (17.3%)	3,756 (17.3%)	5,948 (17.7%)	5,670 (17.4%)	5,682 (17.4%)	5,539 (16.4%)
<b>Subtotal</b>		<b>15,583 (49.5%)</b>	<b>16,175 (49.3%)</b>	<b>16,471 (49.3%)</b>	<b>16,136 (48.6%)</b>	<b>16,663 (48.6%)</b>	<b>10,731 (49.5%)</b>	<b>16,500 (49.0%)</b>	<b>15,792 (48.6%)</b>	<b>15,693 (48.0%)</b>	<b>15,969 (47.4%)</b>
IRE	Male	9,532 (30.3%)	10,051 (30.6%)	10,143 (30.3%)	10,266 (30.9%)	10,487 (30.6%)	6,510 (30.0%)	10,564 (31.4%)	10,412 (32.0%)	10,587 (32.4%)	11,126 (33.0%)
	Female	3,813 (12.1%)	4,021 (12.3%)	4,144 (12.4%)	4,070 (12.3%)	4,226 (12.3%)	2,697 (12.4%)	4,129 (12.3%)	4,173 (12.8%)	4,291 (13.1%)	4,470 (13.3%)
<b>Subtotal</b>		<b>13,345 (42.4%)</b>	<b>14,072 (42.9%)</b>	<b>14,287 (42.7%)</b>	<b>14,336 (43.2%)</b>	<b>14,713 (42.9%)</b>	<b>9,207 (42.5%)</b>	<b>14,693 (43.6%)</b>	<b>14,585 (44.9%)</b>	<b>14,878 (45.6%)</b>	<b>15,596 (46.3%)</b>
FR	Male	581 (1.8%)	635 (1.9%)	728 (2.2%)	800 (2.4%)	994 (2.9%)	637 (2.9%)	950 (2.8%)	920 (2.8%)	1,007 (3.1%)	1,098 (3.3%)
	Female	189 (0.6%)	215 (0.7%)	220 (0.7%)	260 (0.8%)	297 (0.9%)	172 (0.8%)	319 (0.9%)	311 (1.0%)	348 (1.1%)	321 (1.0%)
<b>Subtotal</b>		<b>770 (2.4%)</b>	<b>850 (2.6%)</b>	<b>948 (2.8%)</b>	<b>1,060 (3.2%)</b>	<b>1,291 (3.8%)</b>	<b>809 (3.7%)</b>	<b>1,269 (3.8%)</b>	<b>1,231 (3.8%)</b>	<b>1,355 (4.1%)</b>	<b>1,419 (4.2%)</b>
USA	Male	1,119 (3.6%)	1,093 (3.3%)	1,075 (3.2%)	1,047 (3.2%)	974 (2.8%)	573 (2.6%)	666 (2.0%)	515 (1.6%)	390 (1.2%)	372 (1.1%)
	Female	295 (0.9%)	247 (0.8%)	282 (0.8%)	259 (0.8%)	298 (0.9%)	138 (0.6%)	178 (0.5%)	143 (0.4%)	141 (0.4%)	108 (0.3%)
<b>Subtotal</b>		<b>1,414 (4.5%)</b>	<b>1,340 (4.1%)</b>	<b>1,357 (4.1%)</b>	<b>1,306 (3.9%)</b>	<b>1,272 (3.7%)</b>	<b>711 (3.3%)</b>	<b>844 (2.5%)</b>	<b>658 (2.0%)</b>	<b>531 (1.6%)</b>	<b>480 (1.4%)</b>
GNY	Male	161 (0.5%)	195 (0.6%)	209 (0.6%)	177 (0.5%)	181 (0.5%)	128 (0.6%)	226 (0.7%)	110 (0.3%)	140 (0.4%)	157 (0.5%)
	Female	67 (0.2%)	42 (0.1%)	31 (0.1%)	60 (0.2%)	60 (0.2%)	37 (0.2%)	71 (0.2%)	56 (0.2%)	28 (0.1%)	31 (0.1%)
<b>Subtotal</b>		<b>228 (0.7%)</b>	<b>237 (0.7%)</b>	<b>240 (0.7%)</b>	<b>227 (0.7%)</b>	<b>241 (0.7%)</b>	<b>165 (0.8%)</b>	<b>297 (0.9%)</b>	<b>166 (0.5%)</b>	<b>168 (0.5%)</b>	<b>188 (0.6%)</b>
Other	Male	116 (0.4%)	95 (0.3%)	102 (0.3%)	110 (0.3%)	94 (0.3%)	37 (0.2%)	66 (0.2%)	45 (0.1%)	26 (0.1%)	24 (0.1%)
	Female	53 (0.2%)	35 (0.1%)	36 (0.1%)	20 (0.1%)	39 (0.1%)	7 (0.0%)	15 (0.0%)	16 (0.0%)	9 (0.0%)	22 (0.1%)
<b>Subtotal</b>		<b>169 (0.5%)</b>	<b>130 (0.4%)</b>	<b>138 (0.4%)</b>	<b>130 (0.4%)</b>	<b>133 (0.4%)</b>	<b>44 (0.2%)</b>	<b>81 (0.2%)</b>	<b>61 (0.2%)</b>	<b>35 (0.1%)</b>	<b>46 (0.1%)</b>

# Jump

Bred	Sex	2015	2016	2017	2018	2019	2020	2021	2022	2023	2024
GB	Male	4,389 (23.8%)	4,182 (22.7%)	4,035 (22.1%)	3,825 (21.1%)	3,671 (20.5%)	1,794 (19.3%)	3,663 (19.0%)	3,208 (17.8%)	3,128 (17.4%)	3,139 (18.0%)
	Female	1,950 (10.6%)	1,688 (9.2%)	1,616 (8.8%)	1,758 (9.7%)	1,661 (9.3%)	810 (8.7%)	1,855 (9.6%)	1,673 (9.3%)	1,726 (9.6%)	1,651 (9.4%)
	<b>Subtotal</b>	<b>6,339 (34.4%)</b>	<b>5,870 (31.9%)</b>	<b>5,651 (30.9%)</b>	<b>5,583 (30.8%)</b>	<b>5,332 (29.7%)</b>	<b>2,604 (28.0%)</b>	<b>5,518 (28.6%)</b>	<b>4,881 (27.1%)</b>	<b>4,854 (27.0%)</b>	<b>4,790 (27.4%)</b>
IRE	Male	8,274 (44.9%)	8,457 (45.9%)	8,404 (46.0%)	8,140 (44.8%)	7,908 (44.1%)	4,074 (43.8%)	8,375 (43.4%)	7,671 (42.6%)	7,622 (42.3%)	7,210 (41.2%)
	Female	1,260 (6.8%)	1,351 (7.3%)	1,406 (7.7%)	1,655 (9.1%)	1,792 (10.0%)	937 (10.1%)	1,870 (9.7%)	1,691 (9.4%)	1,778 (9.9%)	1,961 (11.2%)
	<b>Subtotal</b>	<b>9,534 (51.7%)</b>	<b>9,808 (53.2%)</b>	<b>9,810 (53.7%)</b>	<b>9,795 (53.9%)</b>	<b>9,700 (54.0%)</b>	<b>5,011 (53.9%)</b>	<b>10,245 (53.0%)</b>	<b>9,362 (52.0%)</b>	<b>9,400 (52.2%)</b>	<b>9,171 (52.4%)</b>
FR	Male	1,870 (10.1%)	2,151 (11.7%)	2,250 (12.3%)	2,235 (12.3%)	2,260 (12.6%)	1,300 (14.0%)	2,731 (14.1%)	2,993 (16.6%)	3,035 (16.9%)	2,908 (16.6%)
	Female	149 (0.8%)	163 (0.9%)	206 (1.1%)	203 (1.1%)	294 (1.6%)	209 (2.2%)	410 (2.1%)	387 (2.2%)	422 (2.3%)	380 (2.2%)
	<b>Subtotal</b>	<b>2,019 (10.9%)</b>	<b>2,314 (12.6%)</b>	<b>2,456 (13.4%)</b>	<b>2,438 (13.4%)</b>	<b>2,554 (14.2%)</b>	<b>1,509 (16.2%)</b>	<b>3,141 (16.3%)</b>	<b>3,380 (18.8%)</b>	<b>3,457 (19.2%)</b>	<b>3,288 (18.8%)</b>
USA	Male	269 (1.5%)	186 (1.0%)	143 (0.8%)	128 (0.7%)	101 (0.6%)	58 (0.6%)	112 (0.6%)	79 (0.4%)	61 (0.3%)	29 (0.2%)
	Female	5 (0.0%)	4 (0.0%)	6 (0.0%)	5 (0.0%)	12 (0.1%)	8 (0.1%)	6 (0.0%)	6 (0.0%)	0 (0.0%)	3 (0.0%)
	<b>Subtotal</b>	<b>274 (1.5%)</b>	<b>190 (1.0%)</b>	<b>149 (0.8%)</b>	<b>133 (0.7%)</b>	<b>113 (0.6%)</b>	<b>66 (0.7%)</b>	<b>118 (0.6%)</b>	<b>85 (0.5%)</b>	<b>61 (0.3%)</b>	<b>32 (0.2%)</b>
GNY	Male	218 (1.2%)	193 (1.0%)	185 (1.0%)	161 (0.9%)	205 (1.1%)	96 (1.0%)	250 (1.3%)	238 (1.3%)	215 (1.2%)	178 (1.0%)
	Female	17 (0.1%)	14 (0.1%)	9 (0.0%)	10 (0.1%)	19 (0.1%)	5 (0.1%)	30 (0.2%)	32 (0.2%)	18 (0.1%)	11 (0.1%)
	<b>Subtotal</b>	<b>235 (1.3%)</b>	<b>207 (1.1%)</b>	<b>194 (1.1%)</b>	<b>171 (0.9%)</b>	<b>224 (1.2%)</b>	<b>101 (1.1%)</b>	<b>280 (1.4%)</b>	<b>270 (1.5%)</b>	<b>233 (1.3%)</b>	<b>189 (1.1%)</b>
Other	Male	37 (0.2%)	24 (0.1%)	20 (0.1%)	28 (0.2%)	24 (0.1%)	6 (0.1%)	12 (0.1%)	7 (0.0%)	5 (0.0%)	12 (0.1%)
	Female	2 (0.0%)	8 (0.0%)	5 (0.0%)	8 (0.0%)	2 (0.0%)	1 (0.0%)	0 (0.0%)	6 (0.0%)	0 (0.0%)	4 (0.0%)
	<b>Subtotal</b>	<b>39 (0.2%)</b>	<b>32 (0.2%)</b>	<b>25 (0.1%)</b>	<b>36 (0.2%)</b>	<b>26 (0.1%)</b>	<b>7 (0.1%)</b>	<b>12 (0.1%)</b>	<b>13 (0.1%)</b>	<b>5 (0.0%)</b>	<b>16 (0.1%)</b>

# Year to Date Individual Runners by Breeding

## Flat

Bred	Sex	2015	2016	2017	2018	2019	2020	2021	2022	2023	2024
GB	Male	2,586 (30.5%)	2,653 (30.1%)	2,688 (29.9%)	2,734 (30.4%)	2,696 (29.6%)	2,460 (30.9%)	2,572 (29.5%)	2,541 (29.6%)	2,487 (28.8%)	2,517 (28.8%)
	Female	1,609 (19.0%)	1,651 (18.7%)	1,675 (18.6%)	1,621 (18.0%)	1,699 (18.6%)	1,483 (18.6%)	1,673 (19.2%)	1,638 (19.1%)	1,640 (19.0%)	1,597 (18.3%)
	<b>Subtotal</b>	<b>4,195 (49.5%)</b>	<b>4,304 (48.9%)</b>	<b>4,363 (48.5%)</b>	<b>4,355 (48.4%)</b>	<b>4,395 (48.2%)</b>	<b>3,943 (49.5%)</b>	<b>4,245 (48.6%)</b>	<b>4,179 (48.6%)</b>	<b>4,127 (47.8%)</b>	<b>4,114 (47.1%)</b>
IRE	Male	2,378 (28.1%)	2,520 (28.6%)	2,602 (28.9%)	2,598 (28.9%)	2,609 (28.6%)	2,253 (28.3%)	2,570 (29.4%)	2,581 (30.0%)	2,623 (30.4%)	2,716 (31.1%)
	Female	1,135 (13.4%)	1,223 (13.9%)	1,210 (13.4%)	1,217 (13.5%)	1,234 (13.5%)	1,078 (13.5%)	1,207 (13.8%)	1,225 (14.3%)	1,305 (15.1%)	1,305 (14.9%)
	<b>Subtotal</b>	<b>3,513 (41.5%)</b>	<b>3,743 (42.5%)</b>	<b>3,812 (42.4%)</b>	<b>3,815 (42.4%)</b>	<b>3,843 (42.2%)</b>	<b>3,331 (41.9%)</b>	<b>3,777 (43.2%)</b>	<b>3,806 (44.3%)</b>	<b>3,928 (45.5%)</b>	<b>4,021 (46.0%)</b>
FR	Male	158 (1.9%)	180 (2.0%)	210 (2.3%)	254 (2.8%)	286 (3.1%)	252 (3.2%)	280 (3.2%)	265 (3.1%)	257 (3.0%)	304 (3.5%)
	Female	55 (0.6%)	73 (0.8%)	84 (0.9%)	89 (1.0%)	100 (1.1%)	81 (1.0%)	98 (1.1%)	97 (1.1%)	111 (1.3%)	100 (1.1%)
	<b>Subtotal</b>	<b>213 (2.5%)</b>	<b>253 (2.9%)</b>	<b>294 (3.3%)</b>	<b>343 (3.8%)</b>	<b>386 (4.2%)</b>	<b>333 (4.2%)</b>	<b>378 (4.3%)</b>	<b>362 (4.2%)</b>	<b>368 (4.3%)</b>	<b>404 (4.6%)</b>
USA	Male	305 (3.6%)	305 (3.5%)	305 (3.4%)	274 (3.0%)	273 (3.0%)	203 (2.6%)	176 (2.0%)	125 (1.5%)	99 (1.1%)	101 (1.2%)
	Female	116 (1.4%)	92 (1.0%)	104 (1.2%)	99 (1.1%)	105 (1.2%)	61 (0.8%)	60 (0.7%)	42 (0.5%)	41 (0.5%)	32 (0.4%)
	<b>Subtotal</b>	<b>421 (5.0%)</b>	<b>397 (4.5%)</b>	<b>409 (4.5%)</b>	<b>373 (4.1%)</b>	<b>378 (4.1%)</b>	<b>264 (3.3%)</b>	<b>236 (2.7%)</b>	<b>167 (1.9%)</b>	<b>140 (1.6%)</b>	<b>133 (1.5%)</b>
GNY	Male	56 (0.7%)	62 (0.7%)	63 (0.7%)	52 (0.6%)	56 (0.6%)	51 (0.6%)	57 (0.7%)	40 (0.5%)	45 (0.5%)	42 (0.5%)
	Female	20 (0.2%)	13 (0.1%)	11 (0.1%)	16 (0.2%)	17 (0.2%)	16 (0.2%)	22 (0.3%)	20 (0.2%)	10 (0.1%)	13 (0.1%)
	<b>Subtotal</b>	<b>76 (0.9%)</b>	<b>75 (0.9%)</b>	<b>74 (0.8%)</b>	<b>68 (0.8%)</b>	<b>73 (0.8%)</b>	<b>67 (0.8%)</b>	<b>79 (0.9%)</b>	<b>60 (0.7%)</b>	<b>55 (0.6%)</b>	<b>55 (0.6%)</b>
Other	Male	33 (0.4%)	23 (0.3%)	29 (0.3%)	28 (0.3%)	28 (0.3%)	16 (0.2%)	14 (0.2%)	16 (0.2%)	12 (0.1%)	7 (0.1%)
	Female	17 (0.2%)	13 (0.1%)	16 (0.2%)	8 (0.1%)	12 (0.1%)	5 (0.1%)	4 (0.0%)	3 (0.0%)	5 (0.1%)	5 (0.1%)
	<b>Subtotal</b>	<b>50 (0.6%)</b>	<b>36 (0.4%)</b>	<b>45 (0.5%)</b>	<b>36 (0.4%)</b>	<b>40 (0.4%)</b>	<b>21 (0.3%)</b>	<b>18 (0.2%)</b>	<b>19 (0.2%)</b>	<b>17 (0.2%)</b>	<b>12 (0.1%)</b>

## Jump

Bred	Sex	2015	2016	2017	2018	2019	2020	2021	2022	2023	2024
GB	Male	1,498 (23.6%)	1,408 (22.3%)	1,352 (21.5%)	1,294 (20.5%)	1,300 (19.9%)	989 (19.2%)	1,308 (18.8%)	1,177 (18.2%)	1,155 (17.8%)	1,138 (18.1%)
	Female	706 (11.1%)	639 (10.1%)	604 (9.6%)	643 (10.2%)	631 (9.7%)	456 (8.9%)	686 (9.9%)	637 (9.9%)	625 (9.6%)	622 (9.9%)
	<b>Subtotal</b>	<b>2,204 (34.7%)</b>	<b>2,047 (32.4%)</b>	<b>1,956 (31.2%)</b>	<b>1,937 (30.8%)</b>	<b>1,931 (29.6%)</b>	<b>1,445 (28.1%)</b>	<b>1,994 (28.7%)</b>	<b>1,814 (28.1%)</b>	<b>1,780 (27.4%)</b>	<b>1,760 (28.0%)</b>
IRE	Male	2,791 (43.9%)	2,842 (45.0%)	2,806 (44.7%)	2,777 (44.1%)	2,854 (43.7%)	2,241 (43.6%)	2,950 (42.5%)	2,700 (41.8%)	2,691 (41.4%)	2,552 (40.7%)
	Female	472 (7.4%)	480 (7.6%)	523 (8.3%)	585 (9.3%)	656 (10.1%)	520 (10.1%)	694 (10.0%)	630 (9.8%)	688 (10.6%)	699 (11.1%)
	<b>Subtotal</b>	<b>3,263 (51.4%)</b>	<b>3,322 (52.5%)</b>	<b>3,329 (53.0%)</b>	<b>3,362 (53.4%)</b>	<b>3,510 (53.8%)</b>	<b>2,761 (53.7%)</b>	<b>3,644 (52.5%)</b>	<b>3,330 (51.5%)</b>	<b>3,379 (52.0%)</b>	<b>3,251 (51.8%)</b>
FR	Male	651 (10.3%)	738 (11.7%)	787 (12.5%)	800 (12.7%)	839 (12.9%)	717 (13.9%)	1,031 (14.9%)	1,041 (16.1%)	1,064 (16.4%)	1,027 (16.4%)
	Female	55 (0.9%)	62 (1.0%)	76 (1.2%)	92 (1.5%)	127 (1.9%)	121 (2.4%)	146 (2.1%)	157 (2.4%)	171 (2.6%)	155 (2.5%)
	<b>Subtotal</b>	<b>706 (11.1%)</b>	<b>800 (12.7%)</b>	<b>863 (13.7%)</b>	<b>892 (14.2%)</b>	<b>966 (14.8%)</b>	<b>838 (16.3%)</b>	<b>1,177 (17.0%)</b>	<b>1,198 (18.5%)</b>	<b>1,235 (19.0%)</b>	<b>1,182 (18.8%)</b>
USA	Male	87 (1.4%)	63 (1.0%)	50 (0.8%)	43 (0.7%)	35 (0.5%)	30 (0.6%)	37 (0.5%)	29 (0.4%)	22 (0.3%)	12 (0.2%)
	Female	3 (0.0%)	2 (0.0%)	2 (0.0%)	2 (0.0%)	5 (0.1%)	4 (0.1%)	2 (0.0%)	2 (0.0%)	0 (0.0%)	1 (0.0%)
	<b>Subtotal</b>	<b>90 (1.4%)</b>	<b>65 (1.0%)</b>	<b>52 (0.8%)</b>	<b>45 (0.7%)</b>	<b>40 (0.6%)</b>	<b>34 (0.7%)</b>	<b>39 (0.6%)</b>	<b>31 (0.5%)</b>	<b>22 (0.3%)</b>	<b>13 (0.2%)</b>
GNY	Male	70 (1.1%)	72 (1.1%)	64 (1.0%)	51 (0.8%)	64 (1.0%)	53 (1.0%)	72 (1.0%)	73 (1.1%)	67 (1.0%)	60 (1.0%)
	Female	6 (0.1%)	7 (0.1%)	5 (0.1%)	2 (0.0%)	5 (0.1%)	4 (0.1%)	10 (0.1%)	11 (0.2%)	10 (0.2%)	5 (0.1%)
	<b>Subtotal</b>	<b>76 (1.2%)</b>	<b>79 (1.2%)</b>	<b>69 (1.1%)</b>	<b>53 (0.8%)</b>	<b>69 (1.1%)</b>	<b>57 (1.1%)</b>	<b>82 (1.2%)</b>	<b>84 (1.3%)</b>	<b>77 (1.2%)</b>	<b>65 (1.0%)</b>
Other	Male	11 (0.2%)	6 (0.1%)	8 (0.1%)	7 (0.1%)	9 (0.1%)	5 (0.1%)	3 (0.0%)	2 (0.0%)	4 (0.1%)	4 (0.1%)
	Female	1 (0.0%)	3 (0.0%)	2 (0.0%)	2 (0.0%)	1 (0.0%)	1 (0.0%)	0 (0.0%)	2 (0.0%)	0 (0.0%)	2 (0.0%)
	<b>Subtotal</b>	<b>12 (0.2%)</b>	<b>9 (0.1%)</b>	<b>10 (0.2%)</b>	<b>9 (0.1%)</b>	<b>10 (0.2%)</b>	<b>6 (0.1%)</b>	<b>3 (0.0%)</b>	<b>4 (0.1%)</b>	<b>4 (0.1%)</b>	<b>6 (0.1%)</b>

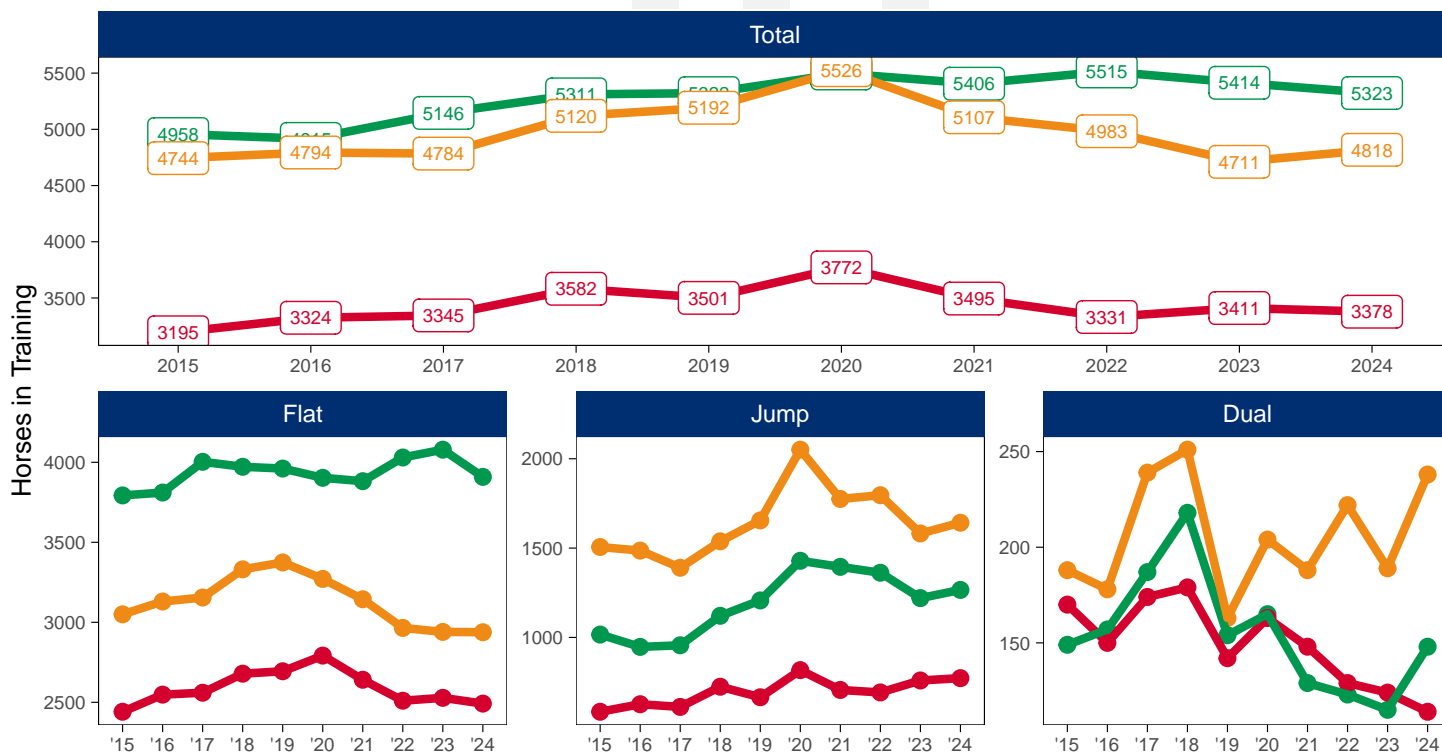
# Horse Population by Location

## July 2024 Horses in Training Snapshot by Region versus Previous Years

### Snapshot of Total Horses in Training in July by Region

Horses in Training in July, shown by Training Type and Region

Region ● North ● Midlands ● South



### North

AgeCat	2015	2016	2017	2018	2019	2020	2021	2022	2023	2024	vs. Last Year	vs. Pre-Covid
<b>Flat Horses in Training</b>												
2YO	845	840	814	884	921	895	865	842	833	737	-96 / -11.5%	-184 / -20.0%
3YO	603	657	690	688	680	794	751	656	661	656	-5 / -0.8%	-24 / -3.5%
4YO	340	367	399	391	405	403	381	386	366	414	+48 / +13.1%	+9 / +2.2%
5YO+	653	684	657	716	688	700	644	626	668	685	+17 / +2.5%	-3 / -0.4%
<b>Subtotal</b>	<b>2441</b>	<b>2548</b>	<b>2560</b>	<b>2679</b>	<b>2694</b>	<b>2792</b>	<b>2641</b>	<b>2510</b>	<b>2528</b>	<b>2492</b>	<b>-36 / -1.4%</b>	<b>-202 / -7.5%</b>
<b>Jump Horses in Training</b>												
3YO	18	24	20	15	22	14	14	33	17	18	+1 / +5.9%	-4 / -18.2%
4-5YO	135	161	177	158	183	210	153	173	190	198	+8 / +4.2%	+15 / +8.2%
6-7YO	199	207	185	253	218	297	232	239	279	279	0 / 0.0%	+61 / +28.0%
8YO+	232	234	229	298	242	296	307	247	273	277	+4 / +1.5%	+35 / +14.5%
<b>Subtotal</b>	<b>584</b>	<b>626</b>	<b>611</b>	<b>724</b>	<b>665</b>	<b>817</b>	<b>706</b>	<b>692</b>	<b>759</b>	<b>772</b>	<b>+13 / +1.7%</b>	<b>+107 / +16.1%</b>
<b>Dual Horses in Training</b>												
3YO	33	28	32	26	14	33	22	22	22	12	-10 / -45.5%	-2 / -14.3%
4YO	38	34	39	38	34	31	34	29	25	28	+3 / +12.0%	-6 / -17.6%
5YO+	99	88	103	115	94	99	92	78	77	74	-3 / -3.9%	-20 / -21.3%
<b>Subtotal</b>	<b>170</b>	<b>150</b>	<b>174</b>	<b>179</b>	<b>142</b>	<b>163</b>	<b>148</b>	<b>129</b>	<b>124</b>	<b>114</b>	<b>-10 / -8.1%</b>	<b>-28 / -19.7%</b>
<b>Total Horses in Training</b>												
	<b>3195</b>	<b>3324</b>	<b>3345</b>	<b>3582</b>	<b>3501</b>	<b>3772</b>	<b>3495</b>	<b>3331</b>	<b>3411</b>	<b>3378</b>	<b>-33 / -1.0%</b>	<b>-123 / -3.5%</b>

'vs. Pre-Covid' is comparison between 2024 and 2019



## Midlands

AgeCat	2015	2016	2017	2018	2019	2020	2021	2022	2023	2024	vs. Last Year	vs. Pre-Covid
<b>Flat Horses in Training</b>												
2YO	1572	1569	1608	1521	1443	1340	1428	1495	1492	1434	-58 / -3.9%	-9 / -0.6%
3YO	1116	1138	1202	1256	1273	1322	1170	1255	1261	1194	-67 / -5.3%	-79 / -6.2%
4YO	459	451	542	543	558	549	602	586	594	549	-45 / -7.6%	-9 / -1.6%
5YO+	646	653	651	652	687	692	682	694	732	732	0 / 0.0%	+45 / +6.6%
<b>Subtotal</b>	<b>3793</b>	<b>3811</b>	<b>4003</b>	<b>3972</b>	<b>3961</b>	<b>3903</b>	<b>3882</b>	<b>4030</b>	<b>4079</b>	<b>3909</b>	<b>-170 / -4.2%</b>	<b>-52 / -1.3%</b>
<b>Jump Horses in Training</b>												
3YO	37	31	19	23	22	22	41	42	45	39	-6 / -13.3%	+17 / +77.3%
4-5YO	326	260	287	330	405	524	467	477	428	416	-12 / -2.8%	+11 / +2.7%
6-7YO	374	334	328	395	413	499	495	497	428	462	+34 / +7.9%	+49 / +11.9%
8YO+	279	322	322	373	367	384	392	346	319	349	+30 / +9.4%	-18 / -4.9%
<b>Subtotal</b>	<b>1016</b>	<b>947</b>	<b>956</b>	<b>1121</b>	<b>1207</b>	<b>1429</b>	<b>1395</b>	<b>1362</b>	<b>1220</b>	<b>1266</b>	<b>+46 / +3.8%</b>	<b>+59 / +4.9%</b>
<b>Dual Horses in Training</b>												
3YO	25	33	26	34	24	17	20	25	25	20	-5 / -20.0%	-4 / -16.7%
4YO	31	39	46	59	47	34	35	35	21	38	+17 / +81.0%	-9 / -19.1%
5YO+	93	85	115	125	83	114	74	63	69	90	+21 / +30.4%	+7 / +8.4%
<b>Subtotal</b>	<b>149</b>	<b>157</b>	<b>187</b>	<b>218</b>	<b>154</b>	<b>165</b>	<b>129</b>	<b>123</b>	<b>115</b>	<b>148</b>	<b>+33 / +28.7%</b>	<b>-6 / -3.9%</b>
<b>Total Horses in Training</b>												
	<b>4958</b>	<b>4915</b>	<b>5146</b>	<b>5311</b>	<b>5322</b>	<b>5497</b>	<b>5406</b>	<b>5515</b>	<b>5414</b>	<b>5323</b>	<b>-91 / -1.7%</b>	<b>+1 / +0.0%</b>

'vs. Pre-Covid' is comparison between 2024 and 2019

## South

AgeCat	2015	2016	2017	2018	2019	2020	2021	2022	2023	2024	vs. Last Year	vs. Pre-Covid
<b>Flat Horses in Training</b>												
2YO	1263	1285	1324	1320	1350	1219	1250	1191	1169	1189	+20 / +1.7%	-161 / -11.9%
3YO	893	903	910	1041	980	1035	930	836	855	812	-43 / -5.0%	-168 / -17.1%
4YO	376	389	380	421	482	446	427	426	349	384	+35 / +10.0%	-98 / -20.3%
5YO+	518	553	541	549	562	571	537	512	567	553	-14 / -2.5%	-9 / -1.6%
<b>Subtotal</b>	<b>3050</b>	<b>3130</b>	<b>3155</b>	<b>3331</b>	<b>3374</b>	<b>3271</b>	<b>3144</b>	<b>2965</b>	<b>2940</b>	<b>2938</b>	<b>-2 / -0.1%</b>	<b>-436 / -12.9%</b>
<b>Jump Horses in Training</b>												
3YO	51	45	56	43	64	46	67	60	57	52	-5 / -8.8%	-12 / -18.8%
4-5YO	518	496	458	511	578	739	586	706	642	594	-48 / -7.5%	+16 / +2.8%
6-7YO	504	490	463	517	554	709	630	590	480	605	+125 / +26.0%	+51 / +9.2%
8YO+	433	455	413	467	459	557	492	440	403	391	-12 / -3.0%	-68 / -14.8%
<b>Subtotal</b>	<b>1506</b>	<b>1486</b>	<b>1390</b>	<b>1538</b>	<b>1655</b>	<b>2051</b>	<b>1775</b>	<b>1796</b>	<b>1582</b>	<b>1642</b>	<b>+60 / +3.8%</b>	<b>-13 / -0.8%</b>
<b>Dual Horses in Training</b>												
3YO	23	25	34	30	27	26	40	53	42	46	+4 / +9.5%	+19 / +70.4%
4YO	38	25	62	53	34	49	49	49	49	72	+23 / +46.9%	+38 / +111.8%
5YO+	127	128	143	168	102	129	99	120	98	120	+22 / +22.4%	+18 / +17.6%
<b>Subtotal</b>	<b>188</b>	<b>178</b>	<b>239</b>	<b>251</b>	<b>163</b>	<b>204</b>	<b>188</b>	<b>222</b>	<b>189</b>	<b>238</b>	<b>+49 / +25.9%</b>	<b>+75 / +46.0%</b>
<b>Total Horses in Training</b>												
	<b>4744</b>	<b>4794</b>	<b>4784</b>	<b>5120</b>	<b>5192</b>	<b>5526</b>	<b>5107</b>	<b>4983</b>	<b>4711</b>	<b>4818</b>	<b>+107 / +2.3%</b>	<b>-374 / -7.2%</b>

'vs. Pre-Covid' is comparison between 2024 and 2019

## July 2024 Horses in Training Snapshot by Country versus Previous Years

Type	2015	2016	2017	2018	2019	2020	2021	2022	2023	2024	vs. Last Year	vs. Pre-Covid
<b>England</b>												
Flat	8960	9154	9317	9576	9627	9584	9281	9117	9179	8968	-211 / -2.3%	-659 / -6.8%
Jump	2690	2622	2643	2902	3079	3850	3428	3512	3207	3208	+1 / +0.0%	+129 / +4.2%
Dual	460	424	524	579	407	477	412	422	398	452	+54 / +13.6%	+45 / +11.1%
<b>Overall</b>	<b>12110</b>	<b>12200</b>	<b>12484</b>	<b>13057</b>	<b>13113</b>	<b>13911</b>	<b>13121</b>	<b>13051</b>	<b>12784</b>	<b>12628</b>	<b>-156 / -1.2%</b>	<b>-485 / -3.7%</b>
<b>Scotland</b>												
Flat	168	181	238	231	219	225	225	237	207	225	+18 / +8.7%	+6 / +2.7%
Jump	137	159	114	175	155	219	132	141	162	203	+41 / +25.3%	+48 / +31.0%
Dual	22	32	36	35	28	32	29	25	22	29	+7 / +31.8%	+1 / +3.6%
<b>Overall</b>	<b>327</b>	<b>372</b>	<b>388</b>	<b>441</b>	<b>402</b>	<b>476</b>	<b>386</b>	<b>403</b>	<b>391</b>	<b>457</b>	<b>+66 / +16.9%</b>	<b>+55 / +13.7%</b>
<b>Wales</b>												
Flat	156	154	163	175	183	157	161	151	161	146	-15 / -9.3%	-37 / -20.2%
Jump	279	278	200	306	293	228	316	197	192	269	+77 / +40.1%	-24 / -8.2%
Dual	25	29	40	34	24	23	24	27	8	19	+11 / +137.5%	-5 / -20.8%
<b>Overall</b>	<b>460</b>	<b>461</b>	<b>403</b>	<b>515</b>	<b>500</b>	<b>408</b>	<b>501</b>	<b>375</b>	<b>361</b>	<b>434</b>	<b>+73 / +20.2%</b>	<b>-66 / -13.2%</b>

'vs. Pre-Covid' is comparison between 2024 and 2019

## July 2024 Horses in Training Snapshot by Training Centre versus Previous Years

Type	2015	2016	2017	2018	2019	2020	2021	2022	2023	2024	vs. Last Year	vs. Pre-Covid
<b>Cheltenham (GL54)</b>												
Flat	21	14	16	11	15	9	18	14	11	11	0 / 0.0%	-4 / -26.7%
Jump	184	202	190	243	210	341	348	284	243	287	+44 / +18.1%	+77 / +36.7%
Dual	15	17	21	27	15	14	13	15	11	18	+7 / +63.6%	+3 / +20.0%
<b>Overall</b>	<b>220</b>	<b>233</b>	<b>227</b>	<b>281</b>	<b>240</b>	<b>364</b>	<b>379</b>	<b>313</b>	<b>265</b>	<b>316</b>	<b>+51 / +19.2%</b>	<b>+76 / +31.7%</b>
<b>Lambourn (RG17)</b>												
Flat	801	927	1006	1060	1057	1033	967	892	934	919	-15 / -1.6%	-138 / -13.1%
Jump	118	128	123	126	147	263	149	229	218	213	-5 / -2.3%	+66 / +44.9%
Dual	20	21	22	21	18	33	25	32	23	30	+7 / +30.4%	+12 / +66.7%
<b>Overall</b>	<b>939</b>	<b>1076</b>	<b>1151</b>	<b>1207</b>	<b>1222</b>	<b>1329</b>	<b>1141</b>	<b>1153</b>	<b>1175</b>	<b>1162</b>	<b>-13 / -1.1%</b>	<b>-60 / -4.9%</b>
<b>Malton (YO17)</b>												
Flat	642	658	669	740	744	816	752	676	703	673	-30 / -4.3%	-71 / -9.5%
Jump	80	88	95	85	75	82	80	74	77	55	-22 / -28.6%	-20 / -26.7%
Dual	42	19	39	41	25	39	38	29	26	18	-8 / -30.8%	-7 / -28.0%
<b>Overall</b>	<b>764</b>	<b>765</b>	<b>803</b>	<b>866</b>	<b>844</b>	<b>937</b>	<b>870</b>	<b>779</b>	<b>806</b>	<b>746</b>	<b>-60 / -7.4%</b>	<b>-98 / -11.6%</b>
<b>Marlborough (SN8)</b>												
Flat	590	501	471	496	480	495	472	412	414	430	+16 / +3.9%	-50 / -10.4%
Jump	67	47	50	51	41	66	49	51	37	44	+7 / +18.9%	+3 / +7.3%
Dual	6	3	1	1	5	3	0	0	0	1	+1 / +Inf	-4 / -80.0%
<b>Overall</b>	<b>663</b>	<b>551</b>	<b>522</b>	<b>548</b>	<b>526</b>	<b>564</b>	<b>521</b>	<b>463</b>	<b>451</b>	<b>475</b>	<b>+24 / +5.3%</b>	<b>-51 / -9.7%</b>
<b>Middleham (DL8)</b>												
Flat	527	570	547	531	598	625	583	521	548	536	-12 / -2.2%	-62 / -10.4%
Jump	39	44	49	70	64	84	85	85	99	86	-13 / -13.1%	+22 / +34.4%
Dual	33	26	27	16	25	30	26	19	14	20	+6 / +42.9%	-5 / -20.0%
<b>Overall</b>	<b>599</b>	<b>640</b>	<b>623</b>	<b>617</b>	<b>687</b>	<b>739</b>	<b>694</b>	<b>625</b>	<b>661</b>	<b>642</b>	<b>-19 / -2.9%</b>	<b>-45 / -6.6%</b>
<b>Newbury (RG20)</b>												
Flat	394	386	389	423	447	403	422	435	433	390	-43 / -9.9%	-57 / -12.8%
Jump	15	14	9	15	14	6	5	5	22	29	+7 / +31.8%	+15 / +107.1%
Dual	5	3	4	12	6	6	4	4	4	2	-2 / -50.0%	-4 / -66.7%
<b>Overall</b>	<b>414</b>	<b>403</b>	<b>402</b>	<b>450</b>	<b>467</b>	<b>415</b>	<b>431</b>	<b>444</b>	<b>459</b>	<b>421</b>	<b>-38 / -8.3%</b>	<b>-46 / -9.9%</b>
<b>Newmarket (CB8)</b>												
Flat	2764	2738	2851	2857	2800	2836	2797	2865	2988	2802	-186 / -6.2%	+2 / +0.1%
Jump	76	21	22	27	34	33	40	18	35	36	+1 / +2.9%	+2 / +5.9%
Dual	24	31	28	31	26	27	22	25	26	32	+6 / +23.1%	+6 / +23.1%
<b>Overall</b>	<b>2864</b>	<b>2790</b>	<b>2901</b>	<b>2915</b>	<b>2860</b>	<b>2896</b>	<b>2859</b>	<b>2908</b>	<b>3049</b>	<b>2870</b>	<b>-179 / -5.9%</b>	<b>+10 / +0.3%</b>

'vs. Pre-Covid' is comparison between 2024 and 2019