



# Horse Population Report

Updated on 31 January 2024



# Introduction

Welcome to the latest update on the Racehorse Population from the British Horseracing Authority.

The aim of this document is to give stakeholders and the wider Public an insight into the current state of the Horse Population in Great Britain. It is hoped that this transparency will ensure that all decision makers have access to the key data required to help British Racing deliver a Competitive and Compelling product to stakeholders, racegoers and the wider public.

If you have any questions regarding the content of this report or suggestions for how it could be improved further, please contact Joe Yates – jyates@britishhorseracing.com

## Definitions

This report uses the Horses in Training returns from the Weatherby's Racing Administration System, this is completed by trainers and should be updated whenever a horse enters or leaves training in their care as part of the conditions of their licence.

## Horses in Training

Unless otherwise stated, snapshots of Horses in Training will be from the 15th day of the month in question and year to date figures will be up to and including the date titled at the front of the report.

Horses' ratings will be taken from the most recently published ratings by the BHA Handicapping Team, which is currently at 7am each Tuesday morning. For example, if looking at the Horses in a particular rating band for July 2011, the horses in training number will be from Friday 15th July 2011 and ratings, where possible, will be assigned to each horse from the ratings published by the BHA Handicappers on Tuesday 12th July 2011.

The Gender of a horse will be taken from the reporting date in question, regardless of whether this has since changed.

In the case of YTD reporting, where a horse's gender or training type has changed in the year-to-date period, the most recent is taken.

This report does not count any horses that are temporarily racing abroad for GB Trainers at the time of reporting.

Yearlings are not included in total counts of flat and/or dual horses but will be sometimes shown separately for information purposes.

Yearlings and two-year-olds are not included in total counts of jump horses or counts of jump horses that include dual horses but will be sometimes shown separately for information purposes.

Yearlings, two-year-olds and three-year-olds are not included in total counts of Hunter Chasers but will be sometimes shown separately for information purposes.

Yearlings and two-year-olds in training that are recorded as dual horses have been re-coded as flat horses.

Hunter Chasers are not included in any counts of Jump Horses or Total figures but will be sometimes shown separately for information purposes.

Horses' training locations are defined by the trainers' primary training location. Training regions are defined the same as regions for the Fixture List; 'North' is north of latitude 53.42911, 'South' is south of latitude 51.88002 and 'Midlands' is anywhere in between. Training centres are defined by postcodes and surrounding areas.

## Runners

Unless otherwise specified, Total Runners and Individual Runners metrics only counts runners that ran in GB races including any voided races. Withdrawn horses are not included.

Hunter Chases are not included in this section but will be sometimes shown separately for information purposes.

Total Runners is a count of all runners in races, whilst individual runners only counts each individual horse once.

# Monthly Horses in Training

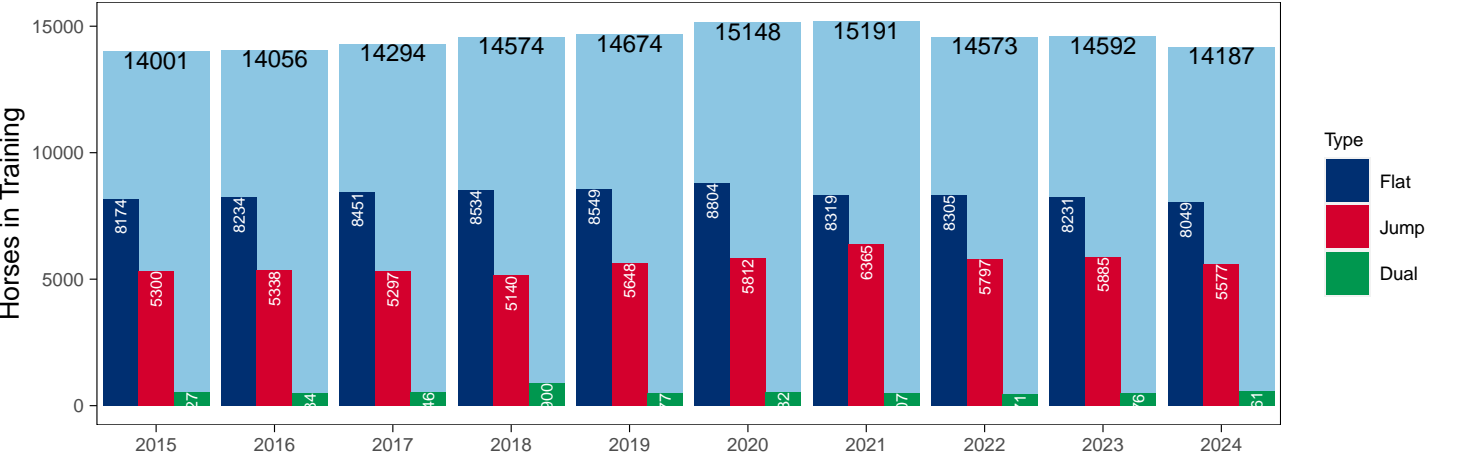
## January 2024 Horses in Training Snapshot versus Previous Years

Type	2015	2016	2017	2018	2019	2020	2021	2022	2023	2024	vs. Last Year	vs. Pre-Covid
Flat	8174	8234	8451	8534	8549	8804	8319	8305	8231	8049	-182 / -2.2%	-500 / -5.8%
Jump	5300	5338	5297	5140	5648	5812	6365	5797	5885	5577	-308 / -5.2%	-71 / -1.3%
Dual	527	484	546	900	477	532	507	471	476	561	+85 / +17.9%	+84 / +17.6%
Hunter	1228	1179	1099	1008	1000	954	797	819	726	1078	+352 / +48.5%	+78 / +7.8%
Total	14001	14056	14294	14574	14674	15148	15191	14573	14592	14187	-405 / -2.8%	-487 / -3.3%

'vs. Pre-Covid' is comparison between 2024 and 2019

### Snapshot of Total Horses in Training in January

Horses in Training in January, shown by Training Type



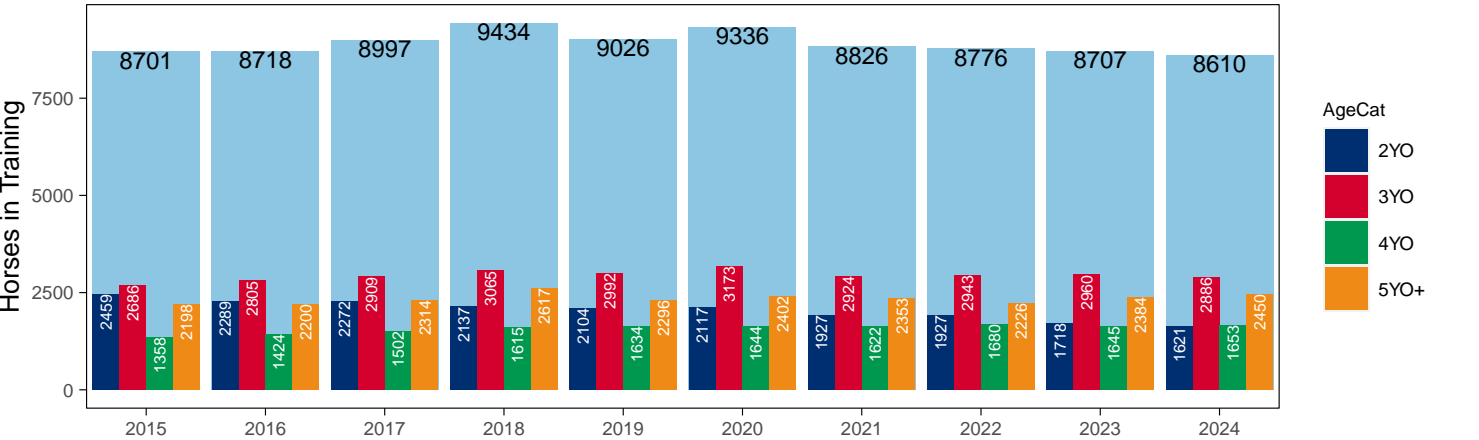
### Flat (including Dual)

AgeCat	2015	2016	2017	2018	2019	2020	2021	2022	2023	2024	vs. Last Year	vs. Pre-Covid
2YO	2459	2289	2272	2137	2104	2117	1927	1927	1718	1621	-97 / -5.6%	-483 / -23.0%
3YO	2686	2805	2909	3065	2992	3173	2924	2943	2960	2886	-74 / -2.5%	-106 / -3.5%
4YO	1358	1424	1502	1615	1634	1644	1622	1680	1645	1653	+8 / +0.5%	+19 / +1.2%
5YO+	2198	2200	2314	2617	2296	2402	2353	2226	2384	2450	+66 / +2.8%	+154 / +6.7%
Total	8701	8718	8997	9434	9026	9336	8826	8776	8707	8610	-97 / -1.1%	-416 / -4.6%

'vs. Pre-Covid' is comparison between 2024 and 2019

### Snapshot of Flat Horses in Training in January

Flat Horses in Training in January, shown by Age



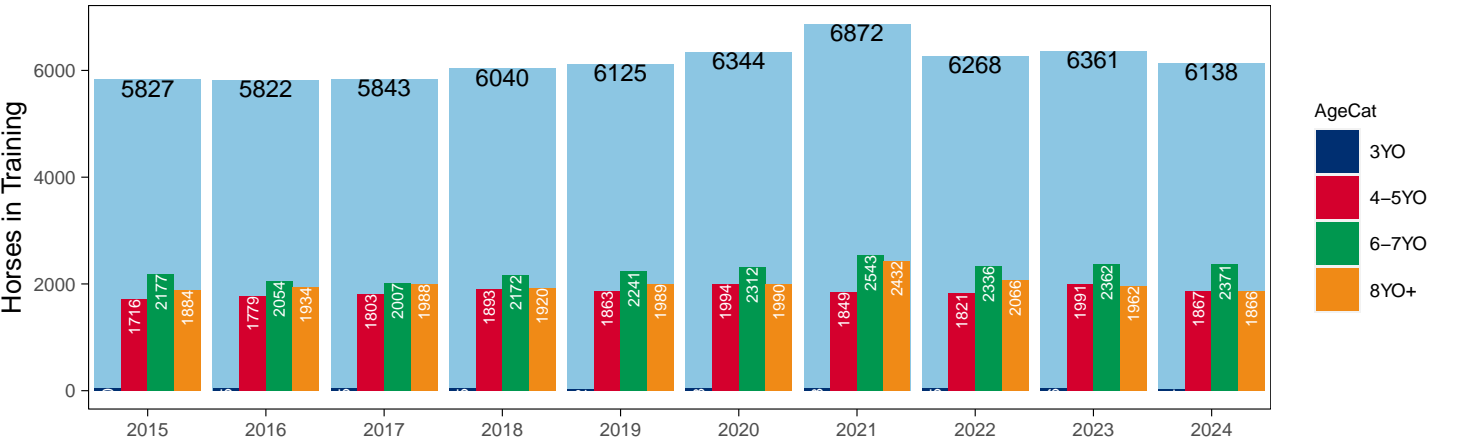
Jump (including Dual)

AgeCat	2015	2016	2017	2018	2019	2020	2021	2022	2023	2024	vs. Last Year	vs. Pre-Covid
3YO	50	55	45	55	32	48	48	45	46	34	-12 / -26.1%	+2 / +6.2%
4-5YO	1716	1779	1803	1893	1863	1994	1849	1821	1991	1867	-124 / -6.2%	+4 / +0.2%
6-7YO	2177	2054	2007	2172	2241	2312	2543	2336	2362	2371	+9 / +0.4%	+130 / +5.8%
8YO+	1884	1934	1988	1920	1989	1990	2432	2066	1962	1866	-96 / -4.9%	-123 / -6.2%
Total	5827	5822	5843	6040	6125	6344	6872	6268	6361	6138	-223 / -3.5%	+13 / +0.2%

'vs. Pre-Covid' is comparison between 2024 and 2019

Snapshot of Jump Horses in Training in January

Jump Horses in Training in January, shown by Age



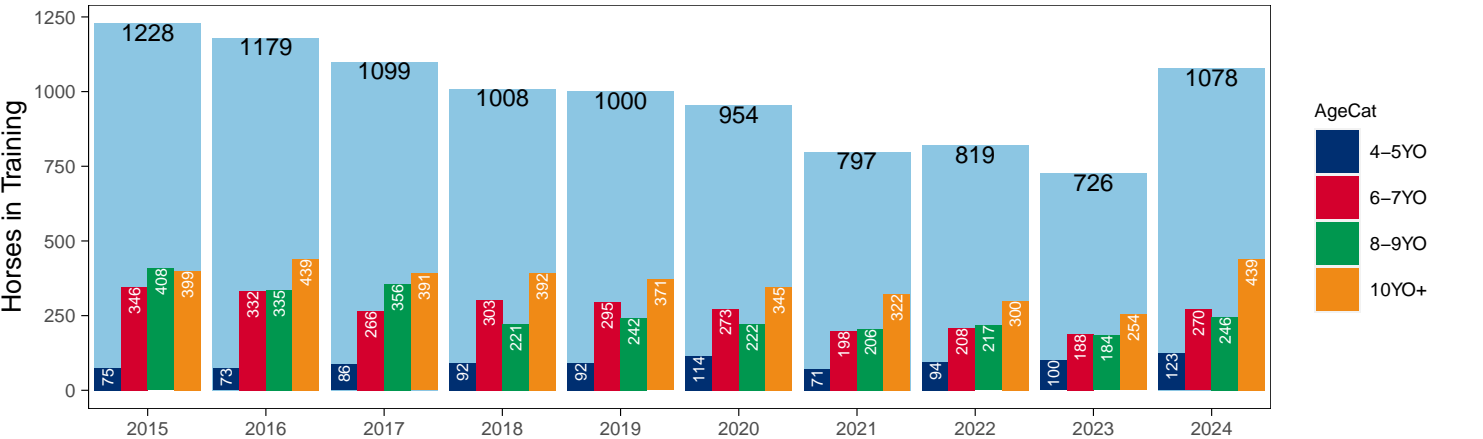
Hunter Chasers

AgeCat	2015	2016	2017	2018	2019	2020	2021	2022	2023	2024	vs. Last Year	vs. Pre-Covid
4-5YO	75	73	86	92	92	114	71	94	100	123	+23 / +23.0%	+31 / +33.7%
6-7YO	346	332	266	303	295	273	198	208	188	270	+82 / +43.6%	-25 / -8.5%
8-9YO	408	335	356	221	242	222	206	217	184	246	+62 / +33.7%	+4 / +1.7%
10YO+	399	439	391	392	371	345	322	300	254	439	+185 / +72.8%	+68 / +18.3%
Total	1228	1179	1099	1008	1000	954	797	819	726	1078	+352 / +48.5%	+78 / +7.8%

'vs. Pre-Covid' is comparison between 2024 and 2019

Snapshot of Hunter Chasers in Training in January

Hunter Chasers in Training in January, shown by Age



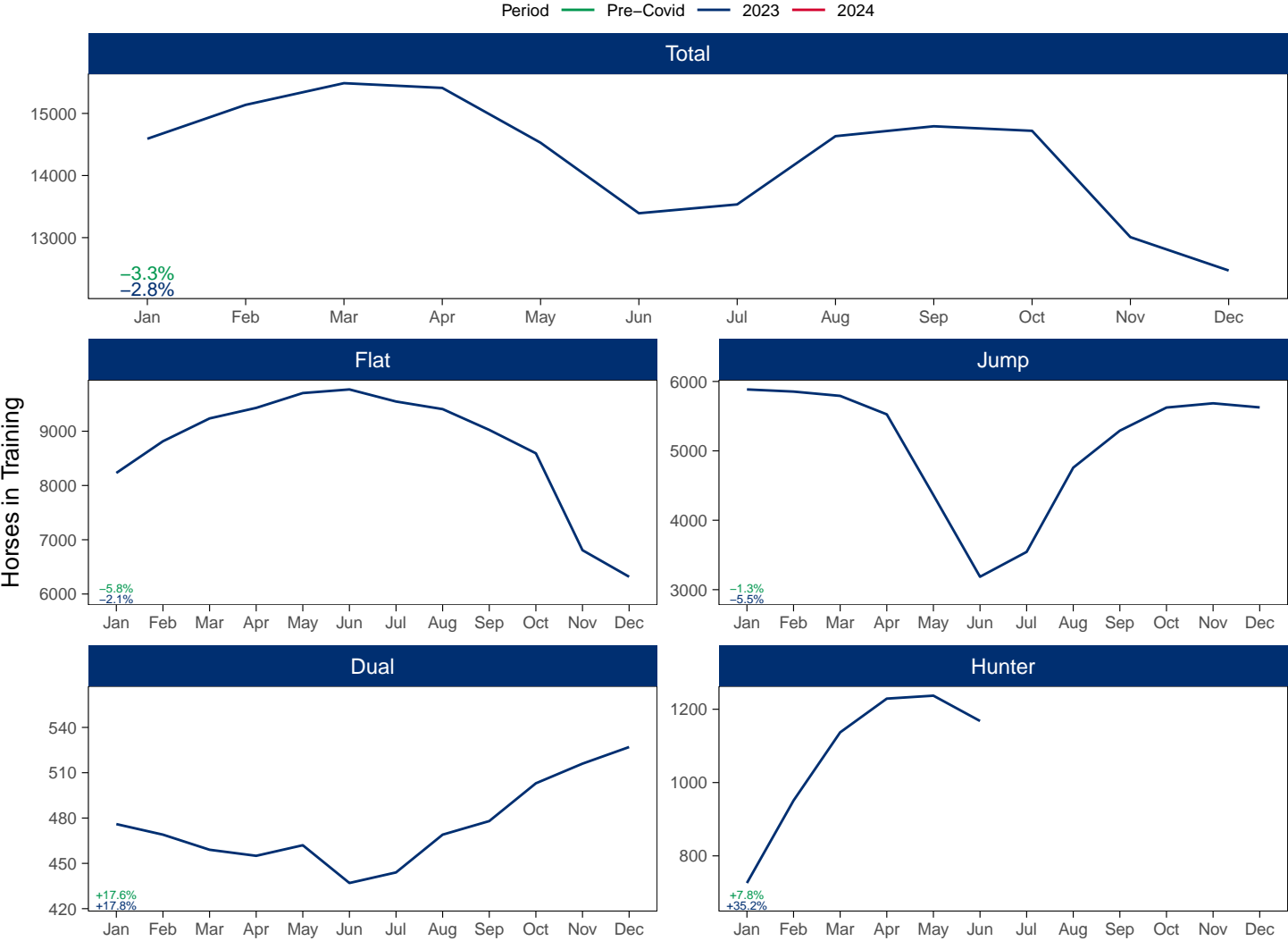
2024 Horses in Training versus Previous Years

Type	Period	Jan	Feb	Mar	Apr	May	Jun	Jul	Aug	Sep	Oct	Nov	Dec
Flat	2024	8049											
	2023	8231	8815	9236	9430	9703	9770	9547	9407	9024	8593	6807	6318
	Pre-Covid	8549											
Jump	2024	5577											
	2023	5885	5854	5792	5526	4363	3186	3544	4758	5291	5624	5685	5626
	Pre-Covid	5648											
Dual	2024	561											
	2023	476	469	459	455	462	437	444	469	478	503	516	527
	Pre-Covid	477											
Hunter	2024	1078											
	2023	726	951	1137	1229	1237	1168						
	Pre-Covid	1000											
Total	2024	14187											
	2023	14592	15138	15487	15411	14528	13393	13535	14634	14793	14720	13008	12471
	Pre-Covid	14674											

'Pre-Covid' is 2019 values

Monthly Horses in Training

2024 against 2023 and Pre-Covid, shown with % Difference



'Pre-Covid' is 2019 values

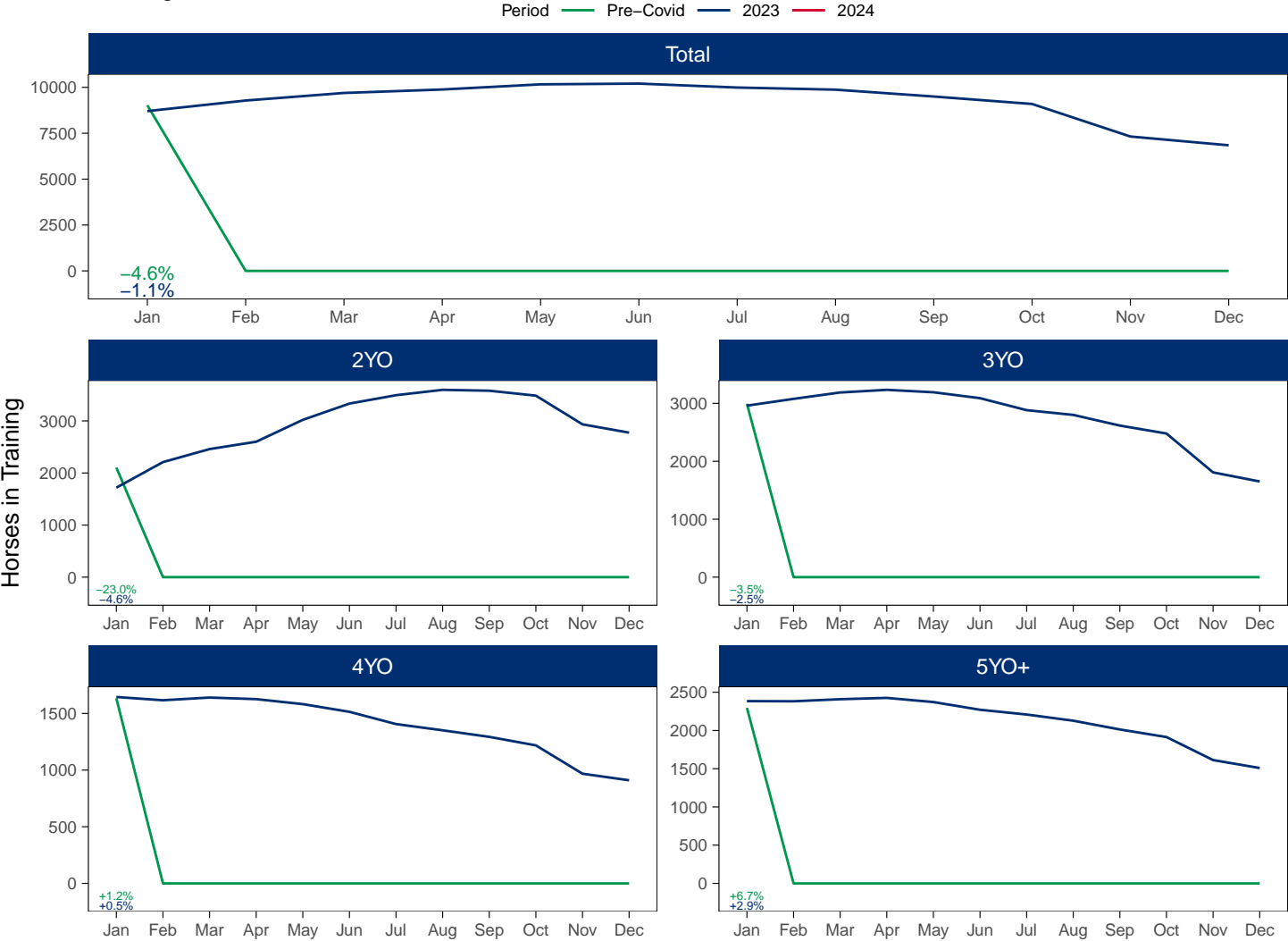
Flat (including Dual)

AgeCat	Period	Jan	Feb	Mar	Apr	May	Jun	Jul	Aug	Sep	Oct	Nov	Dec
2YO	2024	1621											
	2023	1718	2209	2459	2600	3020	3333	3494	3597	3580	3485	2934	2775
	Pre-Covid	2104											
3YO	2024	2886											
	2023	2960	3077	3187	3233	3191	3089	2882	2800	2616	2479	1808	1651
	Pre-Covid	2992											
4YO	2024	1653											
	2023	1645	1616	1640	1626	1582	1514	1406	1351	1293	1218	968	910
	Pre-Covid	1634											
5YO+	2024	2450											
	2023	2384	2382	2409	2426	2372	2271	2209	2128	2013	1914	1613	1509
	Pre-Covid	2296											
Total	2024	8610											
	2023	8707	9284	9695	9885	10165	10207	9991	9876	9502	9096	7323	6845
	Pre-Covid	9026											

'Pre-Covid' is 2019 values

Monthly Flat Horses in Training

2024 against 2023 and Pre-Covid, shown with % Difference



'Pre-Covid' is 2019 values

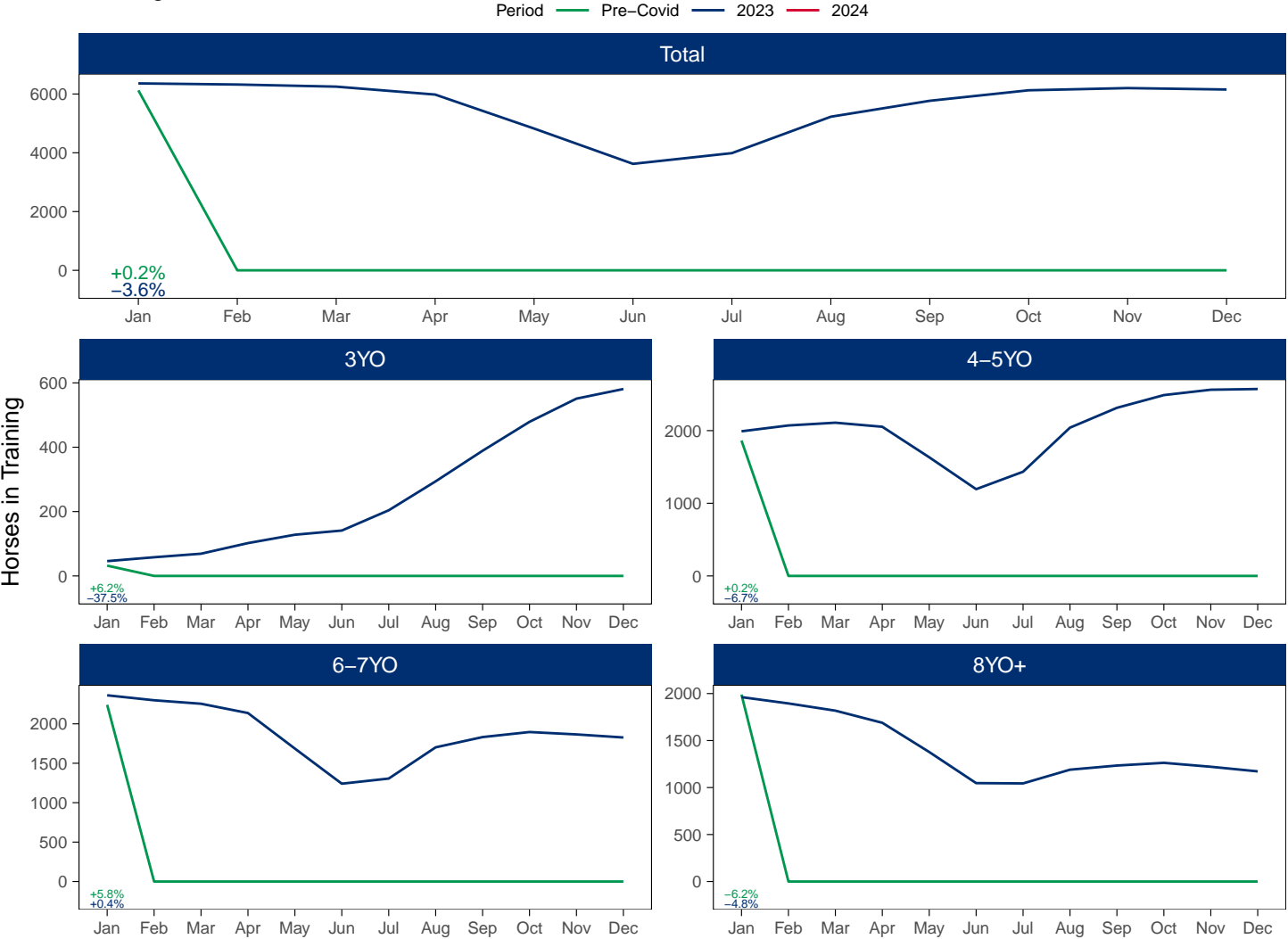
Jump (including Dual)

AgeCat	Period	Jan	Feb	Mar	Apr	May	Jun	Jul	Aug	Sep	Oct	Nov	Dec
3YO	2024	34											
	2023	46	58	69	102	128	141	204	294	389	479	551	581
	Pre-Covid	32											
4-5YO	2024	1867											
	2023	1991	2071	2109	2053	1633	1194	1434	2041	2314	2489	2563	2573
	Pre-Covid	1863											
6-7YO	2024	2371											
	2023	2362	2299	2255	2137	1686	1241	1306	1702	1832	1896	1866	1827
	Pre-Covid	2241											
8YO+	2024	1866											
	2023	1962	1895	1818	1689	1378	1047	1044	1190	1234	1263	1221	1172
	Pre-Covid	1989											
Total	2024	6138											
	2023	6361	6323	6251	5981	4825	3623	3988	5227	5769	6127	6201	6153
	Pre-Covid	6125											

'Pre-Covid' is 2019 values

Monthly Jump Horses in Training

2024 against 2023 and Pre-Covid, shown with % Difference



'Pre-Covid' is 2019 values

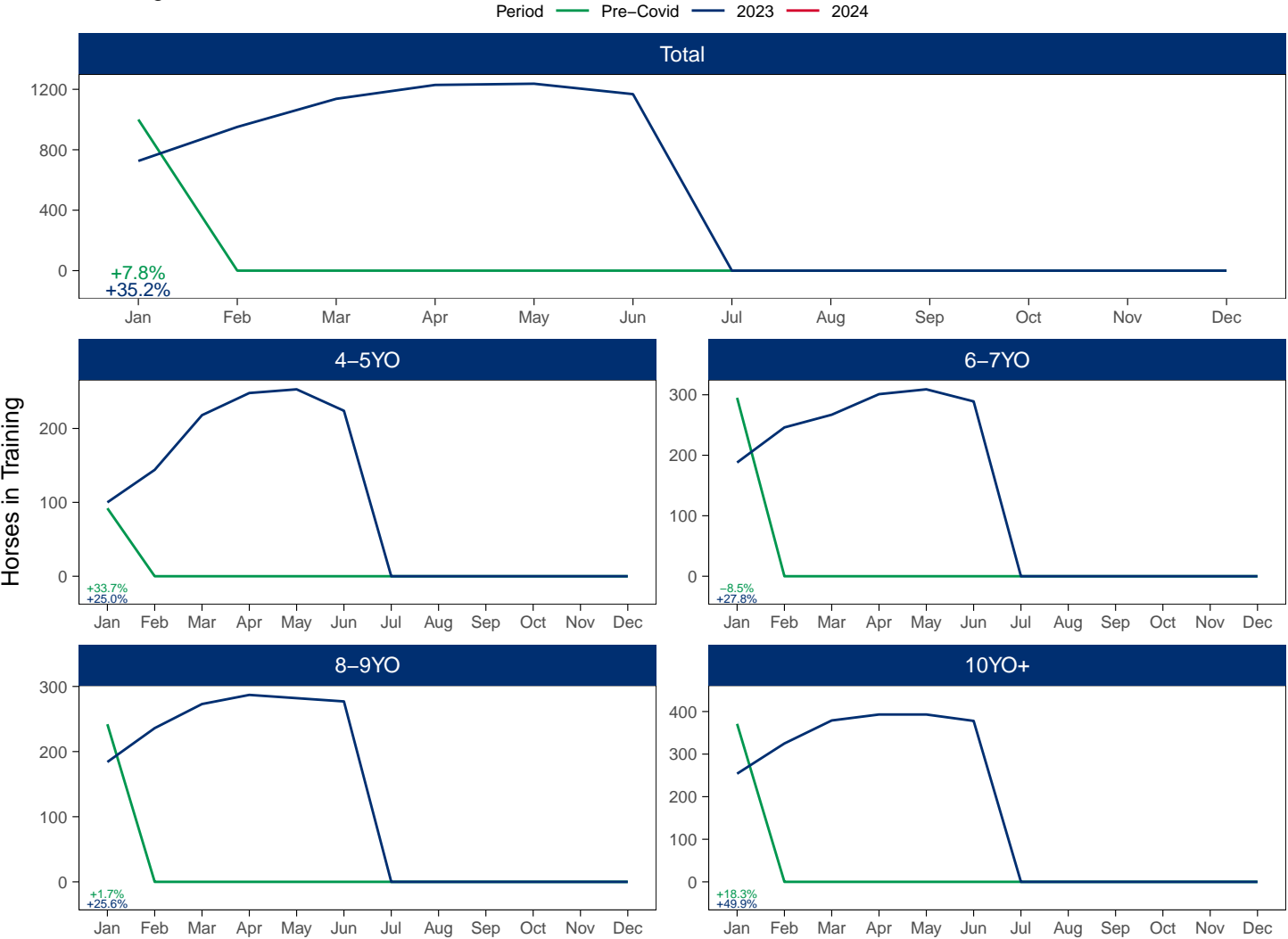
Hunter Chasers

AgeCat	Period	Jan	Feb	Mar	Apr	May	Jun	Jul	Aug	Sep	Oct	Nov	Dec
4-5YO	2024	123											
	2023	100	144	218	248	253	224						
	Pre-Covid	92											
6-7YO	2024	270											
	2023	188	246	267	301	309	289						
	Pre-Covid	295											
8-9YO	2024	246											
	2023	184	236	273	287	282	277						
	Pre-Covid	242											
10YO+	2024	439											
	2023	254	325	379	393	393	378						
	Pre-Covid	371											
Total	2024	1078											
	2023	726	951	1137	1229	1237	1168						
	Pre-Covid	1000											

'Pre-Covid' is 2019 values

Monthly Hunter Chasers in Training

2024 against 2023 and Pre-Covid, shown with % Difference



'Pre-Covid' is 2019 values



January 2024 Horses in Training by Rating Band Snapshot versus Previous Years

Flat (including Dual)

AgeCat	RatBand	2015	2016	2017	2018	2019	2020	2021	2022	2023	2024
2YO	Unrated	2,459 (100.0%)	2,289 (100.0%)	2,272 (100.0%)	2,137 (100.0%)	2,104 (100.0%)	2,117 (100.0%)	1,927 (100.0%)	1,927 (100.0%)	1,718 (100.0%)	1,621 (100.0%)
	Subtotal	2,459 (100.0%)	2,289 (100.0%)	2,272 (100.0%)	2,137 (100.0%)	2,104 (100.0%)	2,117 (100.0%)	1,927 (100.0%)	1,927 (100.0%)	1,718 (100.0%)	1,621 (100.0%)
3YO	Unrated	1,517 (56.5%)	1,578 (56.3%)	1,602 (55.1%)	1,941 (63.3%)	1,773 (59.3%)	2,002 (63.1%)	1,812 (62.0%)	1,756 (59.7%)	1,770 (59.8%)	1,718 (59.5%)
	0-50	101 (3.8%)	97 (3.5%)	82 (2.8%)	76 (2.5%)	102 (3.4%)	113 (3.6%)	93 (3.2%)	111 (3.8%)	102 (3.4%)	102 (3.5%)
	51-60	183 (6.8%)	166 (5.9%)	202 (6.9%)	151 (4.9%)	232 (7.8%)	192 (6.1%)	210 (7.2%)	188 (6.4%)	198 (6.7%)	204 (7.1%)
	61-70	248 (9.2%)	327 (11.7%)	318 (10.9%)	304 (9.9%)	283 (9.5%)	274 (8.6%)	264 (9.0%)	301 (10.2%)	292 (9.9%)	264 (9.1%)
	71-80	310 (11.5%)	338 (12.0%)	339 (11.7%)	311 (10.1%)	293 (9.8%)	304 (9.6%)	271 (9.3%)	304 (10.3%)	302 (10.2%)	309 (10.7%)
	81-90	174 (6.5%)	169 (6.0%)	234 (8.0%)	154 (5.0%)	174 (5.8%)	161 (5.1%)	146 (5.0%)	159 (5.4%)	173 (5.8%)	166 (5.8%)
	91-100	86 (3.2%)	74 (2.6%)	78 (2.7%)	70 (2.3%)	81 (2.7%)	70 (2.2%)	71 (2.4%)	61 (2.1%)	71 (2.4%)	68 (2.4%)
	101+	67 (2.5%)	56 (2.0%)	54 (1.9%)	58 (1.9%)	54 (1.8%)	57 (1.8%)	57 (1.9%)	63 (2.1%)	52 (1.8%)	55 (1.9%)
Subtotal		2,686 (100.0%)	2,805 (100.0%)	2,909 (100.0%)	3,065 (100.0%)	2,992 (100.0%)	3,173 (100.0%)	2,924 (100.0%)	2,943 (100.0%)	2,960 (100.0%)	2,886 (100.0%)
4YO	Unrated	250 (18.4%)	245 (17.2%)	243 (16.2%)	335 (20.7%)	327 (20.0%)	320 (19.5%)	400 (24.7%)	331 (19.7%)	329 (20.0%)	316 (19.1%)
	0-50	132 (9.7%)	137 (9.6%)	134 (8.9%)	145 (9.0%)	190 (11.6%)	204 (12.4%)	178 (11.0%)	193 (11.5%)	192 (11.7%)	177 (10.7%)
	51-60	168 (12.4%)	186 (13.1%)	199 (13.2%)	227 (14.1%)	209 (12.8%)	227 (13.8%)	210 (12.9%)	249 (14.8%)	241 (14.7%)	249 (15.1%)
	61-70	216 (15.9%)	247 (17.3%)	265 (17.6%)	253 (15.7%)	268 (16.4%)	280 (17.0%)	256 (15.8%)	290 (17.3%)	283 (17.2%)	286 (17.3%)
	71-80	237 (17.5%)	219 (15.4%)	293 (19.5%)	272 (16.8%)	249 (15.2%)	220 (13.4%)	265 (16.3%)	269 (16.0%)	246 (15.0%)	298 (18.0%)
	81-90	180 (13.3%)	214 (15.0%)	188 (12.5%)	198 (12.3%)	191 (11.7%)	188 (11.4%)	160 (9.9%)	200 (11.9%)	183 (11.1%)	176 (10.6%)
	91-100	88 (6.5%)	95 (6.7%)	93 (6.2%)	118 (7.3%)	119 (7.3%)	111 (6.8%)	97 (6.0%)	84 (5.0%)	74 (4.5%)	83 (5.0%)
	101+	87 (6.4%)	81 (5.7%)	87 (5.8%)	67 (4.1%)	81 (5.0%)	94 (5.7%)	56 (3.5%)	64 (3.8%)	97 (5.9%)	68 (4.1%)
Subtotal		1,358 (100.0%)	1,424 (100.0%)	1,502 (100.0%)	1,615 (100.0%)	1,634 (100.0%)	1,644 (100.0%)	1,622 (100.0%)	1,680 (100.0%)	1,645 (100.0%)	1,653 (100.0%)
5YO+	Unrated	291 (13.2%)	276 (12.5%)	355 (15.3%)	576 (22.0%)	292 (12.7%)	341 (14.2%)	377 (16.0%)	358 (16.1%)	355 (14.9%)	359 (14.7%)
	0-50	272 (12.4%)	235 (10.7%)	252 (10.9%)	334 (12.8%)	384 (16.7%)	370 (15.4%)	343 (14.6%)	327 (14.7%)	337 (14.1%)	336 (13.7%)
	51-60	332 (15.1%)	346 (15.7%)	340 (14.7%)	358 (13.7%)	348 (15.2%)	379 (15.8%)	373 (15.9%)	363 (16.3%)	378 (15.9%)	466 (19.0%)
	61-70	419 (19.1%)	425 (19.3%)	393 (17.0%)	388 (14.8%)	396 (17.2%)	405 (16.9%)	440 (18.7%)	380 (17.1%)	414 (17.4%)	428 (17.5%)
	71-80	357 (16.2%)	351 (16.0%)	357 (15.4%)	352 (13.5%)	330 (14.4%)	354 (14.7%)	319 (13.6%)	303 (13.6%)	384 (16.1%)	354 (14.4%)
	81-90	246 (11.2%)	279 (12.7%)	291 (12.6%)	298 (11.4%)	255 (11.1%)	261 (10.9%)	223 (9.5%)	222 (10.0%)	234 (9.8%)	254 (10.4%)
	91-100	158 (7.2%)	152 (6.9%)	177 (7.6%)	159 (6.1%)	168 (7.3%)	160 (6.7%)	143 (6.1%)	146 (6.6%)	147 (6.2%)	134 (5.5%)
	101+	123 (5.6%)	136 (6.2%)	149 (6.4%)	152 (5.8%)	123 (5.4%)	132 (5.5%)	135 (5.7%)	127 (5.7%)	135 (5.7%)	119 (4.9%)
Subtotal		2,198 (100.0%)	2,200 (100.0%)	2,314 (100.0%)	2,617 (100.0%)	2,296 (100.0%)	2,402 (100.0%)	2,353 (100.0%)	2,226 (100.0%)	2,384 (100.0%)	2,450 (100.0%)
Overall	Unrated	4,517 (51.9%)	4,388 (50.3%)	4,472 (49.7%)	4,989 (52.9%)	4,496 (49.8%)	4,780 (51.2%)	4,516 (51.2%)	4,372 (49.8%)	4,172 (47.9%)	4,014 (46.6%)
	0-50	505 (5.8%)	469 (5.4%)	468 (5.2%)	555 (5.9%)	676 (7.5%)	687 (7.4%)	614 (7.0%)	631 (7.2%)	631 (7.2%)	615 (7.1%)
	51-60	683 (7.8%)	698 (8.0%)	741 (8.2%)	736 (7.8%)	789 (8.7%)	798 (8.5%)	793 (9.0%)	800 (9.1%)	817 (9.4%)	919 (10.7%)
	61-70	883 (10.1%)	999 (11.5%)	976 (10.8%)	945 (10.0%)	947 (10.5%)	959 (10.3%)	960 (10.9%)	971 (11.1%)	989 (11.4%)	978 (11.4%)
	71-80	904 (10.4%)	908 (10.4%)	989 (11.0%)	935 (9.9%)	872 (9.7%)	878 (9.4%)	855 (9.7%)	876 (10.0%)	932 (10.7%)	961 (11.2%)
	81-90	600 (6.9%)	662 (7.6%)	713 (7.9%)	650 (6.9%)	620 (6.9%)	610 (6.5%)	529 (6.0%)	581 (6.6%)	590 (6.8%)	596 (6.9%)
	91-100	332 (3.8%)	321 (3.7%)	348 (3.9%)	347 (3.7%)	368 (4.1%)	341 (3.7%)	311 (3.5%)	291 (3.3%)	292 (3.4%)	285 (3.3%)
	101+	277 (3.2%)	273 (3.1%)	290 (3.2%)	277 (2.9%)	258 (2.9%)	283 (3.0%)	248 (2.8%)	254 (2.9%)	284 (3.3%)	242 (2.8%)
Total		8,701 (100.0%)	8,718 (100.0%)	8,997 (100.0%)	9,434 (100.0%)	9,026 (100.0%)	9,336 (100.0%)	8,826 (100.0%)	8,776 (100.0%)	8,707 (100.0%)	8,610 (100.0%)

Where a horse has more than one published rating (published Flat Turf and published Flat AWT mark), the higher of the two is taken.

## Jump (including Dual)

AgeCat	RatBand	2015	2016	2017	2018	2019	2020	2021	2022	2023	2024
3YO	Unrated	50 (100.0%)	55 (100.0%)	45 (100.0%)	55 (100.0%)	32 (100.0%)	48 (100.0%)	48 (100.0%)	45 (100.0%)	46 (100.0%)	34 (100.0%)
	<b>Subtotal</b>	<b>50 (100.0%)</b>	<b>55 (100.0%)</b>	<b>45 (100.0%)</b>	<b>55 (100.0%)</b>	<b>32 (100.0%)</b>	<b>48 (100.0%)</b>	<b>48 (100.0%)</b>	<b>45 (100.0%)</b>	<b>46 (100.0%)</b>	<b>34 (100.0%)</b>
4-5YO	Unrated	1,362 (79.4%)	1,407 (79.1%)	1,446 (80.2%)	1,544 (81.6%)	1,494 (80.2%)	1,541 (77.3%)	1,507 (81.5%)	1,460 (80.2%)	1,625 (81.6%)	1,511 (80.9%)
	0-100	94 (5.5%)	94 (5.3%)	87 (4.8%)	78 (4.1%)	91 (4.9%)	146 (7.3%)	120 (6.5%)	148 (8.1%)	156 (7.8%)	177 (9.5%)
	101-110	53 (3.1%)	78 (4.4%)	64 (3.5%)	78 (4.1%)	72 (3.9%)	74 (3.7%)	58 (3.1%)	66 (3.6%)	86 (4.3%)	74 (4.0%)
	111-120	80 (4.7%)	63 (3.5%)	86 (4.8%)	73 (3.9%)	94 (5.0%)	100 (5.0%)	71 (3.8%)	76 (4.2%)	66 (3.3%)	61 (3.3%)
	121-130	64 (3.7%)	60 (3.4%)	59 (3.3%)	66 (3.5%)	64 (3.4%)	79 (4.0%)	53 (2.9%)	46 (2.5%)	47 (2.4%)	29 (1.6%)
	131-140	42 (2.4%)	56 (3.1%)	43 (2.4%)	40 (2.1%)	35 (1.9%)	38 (1.9%)	25 (1.4%)	18 (1.0%)	9 (0.5%)	13 (0.7%)
	141-150	20 (1.2%)	16 (0.9%)	14 (0.8%)	12 (0.6%)	12 (0.6%)	15 (0.8%)	12 (0.6%)	5 (0.3%)	2 (0.1%)	2 (0.1%)
	151+	1 (0.1%)	5 (0.3%)	4 (0.2%)	2 (0.1%)	1 (0.1%)	1 (0.1%)	3 (0.2%)	2 (0.1%)	NA (-)	NA (-)
<b>Subtotal</b>		<b>1,716 (100.0%)</b>	<b>1,779 (100.0%)</b>	<b>1,803 (100.0%)</b>	<b>1,893 (100.0%)</b>	<b>1,863 (100.0%)</b>	<b>1,994 (100.0%)</b>	<b>1,849 (100.0%)</b>	<b>1,821 (100.0%)</b>	<b>1,991 (100.0%)</b>	<b>1,867 (100.0%)</b>
6-7YO	Unrated	798 (36.7%)	732 (35.6%)	741 (36.9%)	805 (37.1%)	743 (33.2%)	732 (31.7%)	919 (36.1%)	852 (36.5%)	894 (37.8%)	896 (37.8%)
	0-100	380 (17.5%)	341 (16.6%)	326 (16.2%)	351 (16.2%)	362 (16.2%)	425 (18.4%)	518 (20.4%)	533 (22.8%)	589 (24.9%)	630 (26.6%)
	101-110	253 (11.6%)	241 (11.7%)	223 (11.1%)	237 (10.9%)	297 (13.3%)	283 (12.2%)	284 (11.2%)	276 (11.8%)	296 (12.5%)	309 (13.0%)
	111-120	270 (12.4%)	257 (12.5%)	264 (13.2%)	284 (13.1%)	298 (13.3%)	306 (13.2%)	306 (12.0%)	289 (12.4%)	256 (10.8%)	264 (11.1%)
	121-130	233 (10.7%)	235 (11.4%)	206 (10.3%)	239 (11.0%)	286 (12.8%)	288 (12.5%)	271 (10.7%)	204 (8.7%)	199 (8.4%)	167 (7.0%)
	131-140	147 (6.8%)	154 (7.5%)	161 (8.0%)	155 (7.1%)	148 (6.6%)	187 (8.1%)	165 (6.5%)	128 (5.5%)	89 (3.8%)	69 (2.9%)
	141-150	57 (2.6%)	66 (3.2%)	63 (3.1%)	70 (3.2%)	82 (3.7%)	65 (2.8%)	57 (2.2%)	39 (1.7%)	30 (1.3%)	32 (1.3%)
	151+	39 (1.8%)	28 (1.4%)	23 (1.1%)	31 (1.4%)	25 (1.1%)	26 (1.1%)	23 (0.9%)	15 (0.6%)	9 (0.4%)	4 (0.2%)
<b>Subtotal</b>		<b>2,177 (100.0%)</b>	<b>2,054 (100.0%)</b>	<b>2,007 (100.0%)</b>	<b>2,172 (100.0%)</b>	<b>2,241 (100.0%)</b>	<b>2,312 (100.0%)</b>	<b>2,543 (100.0%)</b>	<b>2,336 (100.0%)</b>	<b>2,362 (100.0%)</b>	<b>2,371 (100.0%)</b>
8YO+	Unrated	247 (13.1%)	190 (9.8%)	287 (14.4%)	304 (15.8%)	287 (14.4%)	285 (14.3%)	366 (15.0%)	349 (16.9%)	321 (16.4%)	364 (19.5%)
	0-100	524 (27.8%)	519 (26.8%)	527 (26.5%)	486 (25.3%)	535 (26.9%)	539 (27.1%)	690 (28.4%)	555 (26.9%)	540 (27.5%)	510 (27.3%)
	101-110	256 (13.6%)	296 (15.3%)	273 (13.7%)	277 (14.4%)	263 (13.2%)	267 (13.4%)	313 (12.9%)	240 (11.6%)	242 (12.3%)	231 (12.4%)
	111-120	274 (14.5%)	286 (14.8%)	298 (15.0%)	247 (12.9%)	262 (13.2%)	267 (13.4%)	326 (13.4%)	295 (14.3%)	293 (14.9%)	273 (14.6%)
	121-130	267 (14.2%)	293 (15.1%)	236 (11.9%)	246 (12.8%)	266 (13.4%)	251 (12.6%)	312 (12.8%)	276 (13.4%)	253 (12.9%)	226 (12.1%)
	131-140	176 (9.3%)	200 (10.3%)	217 (10.9%)	208 (10.8%)	207 (10.4%)	199 (10.0%)	233 (9.6%)	200 (9.7%)	183 (9.3%)	153 (8.2%)
	141-150	88 (4.7%)	93 (4.8%)	96 (4.8%)	102 (5.3%)	106 (5.3%)	117 (5.9%)	121 (5.0%)	101 (4.9%)	82 (4.2%)	69 (3.7%)
	151+	52 (2.8%)	57 (2.9%)	54 (2.7%)	50 (2.6%)	63 (3.2%)	65 (3.3%)	71 (2.9%)	50 (2.4%)	48 (2.4%)	40 (2.1%)
<b>Subtotal</b>		<b>1,884 (100.0%)</b>	<b>1,934 (100.0%)</b>	<b>1,988 (100.0%)</b>	<b>1,920 (100.0%)</b>	<b>1,989 (100.0%)</b>	<b>1,990 (100.0%)</b>	<b>2,432 (100.0%)</b>	<b>2,066 (100.0%)</b>	<b>1,962 (100.0%)</b>	<b>1,866 (100.0%)</b>
Overall	Unrated	2,457 (42.2%)	2,384 (40.9%)	2,519 (43.1%)	2,708 (44.8%)	2,556 (41.7%)	2,606 (41.1%)	2,840 (41.3%)	2,706 (43.2%)	2,886 (45.4%)	2,805 (45.7%)
	0-100	998 (17.1%)	954 (16.4%)	940 (16.1%)	915 (15.1%)	988 (16.1%)	1,110 (17.5%)	1,328 (19.3%)	1,236 (19.7%)	1,285 (20.2%)	1,317 (21.5%)
	101-110	562 (9.6%)	615 (10.6%)	560 (9.6%)	592 (9.8%)	632 (10.3%)	624 (9.8%)	655 (9.5%)	582 (9.3%)	624 (9.8%)	614 (10.0%)
	111-120	624 (10.7%)	606 (10.4%)	648 (11.1%)	604 (10.0%)	654 (10.7%)	673 (10.6%)	703 (10.2%)	660 (10.5%)	615 (9.7%)	598 (9.7%)
	121-130	564 (9.7%)	588 (10.1%)	501 (8.6%)	551 (9.1%)	616 (10.1%)	618 (9.7%)	636 (9.3%)	526 (8.4%)	499 (7.8%)	422 (6.9%)
	131-140	365 (6.3%)	410 (7.0%)	421 (7.2%)	403 (6.7%)	390 (6.4%)	424 (6.7%)	423 (6.2%)	346 (5.5%)	281 (4.4%)	235 (3.8%)
	141-150	165 (2.8%)	175 (3.0%)	173 (3.0%)	184 (3.0%)	200 (3.3%)	197 (3.1%)	190 (2.8%)	145 (2.3%)	114 (1.8%)	103 (1.7%)
<b>Total</b>		<b>5,827 (100.0%)</b>	<b>5,822 (100.0%)</b>	<b>5,843 (100.0%)</b>	<b>6,040 (100.0%)</b>	<b>6,125 (100.0%)</b>	<b>6,344 (100.0%)</b>	<b>6,872 (100.0%)</b>	<b>6,268 (100.0%)</b>	<b>6,361 (100.0%)</b>	<b>6,138 (100.0%)</b>

Where a horse has more than one published rating (published Hurdle and published Chase mark), the higher of the two is taken.

# Young Horses Entering Training

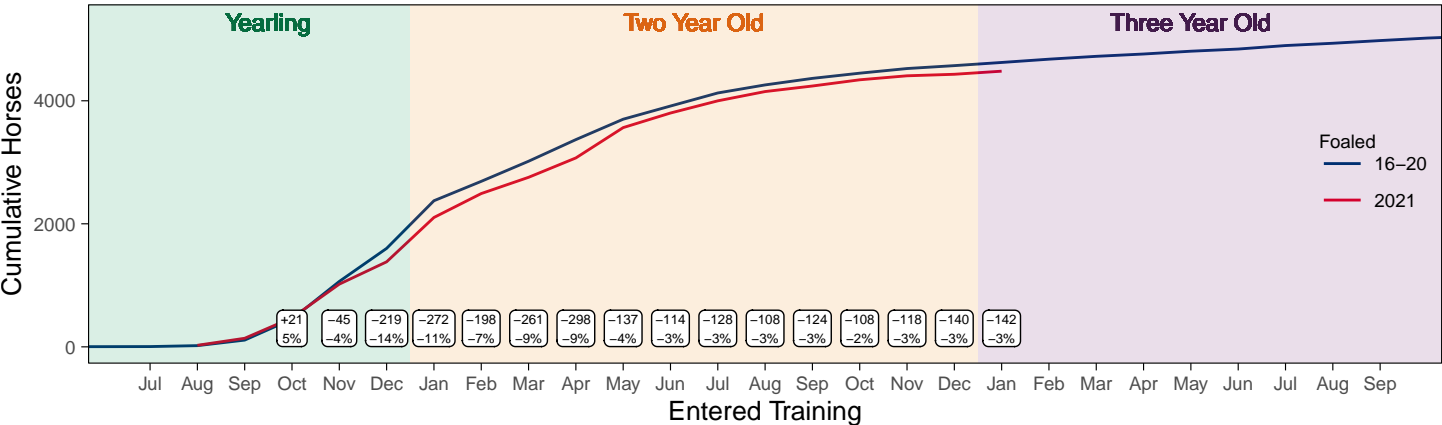
## Flat Yearlings in Training versus Previous Years

Period	Jan	Feb	Mar	Apr	May	Jun	Jul	Aug	Sep	Oct	Nov	Dec
2024	1											
2023	1	2	2	2	3	3	4	4	62	224	721	1184
5YrAvg	1	0	0	0	1	1	1	3	55	210	571	997

## Foals Entering Training for the First Time

### 2021 Foals Entering Training Over Time

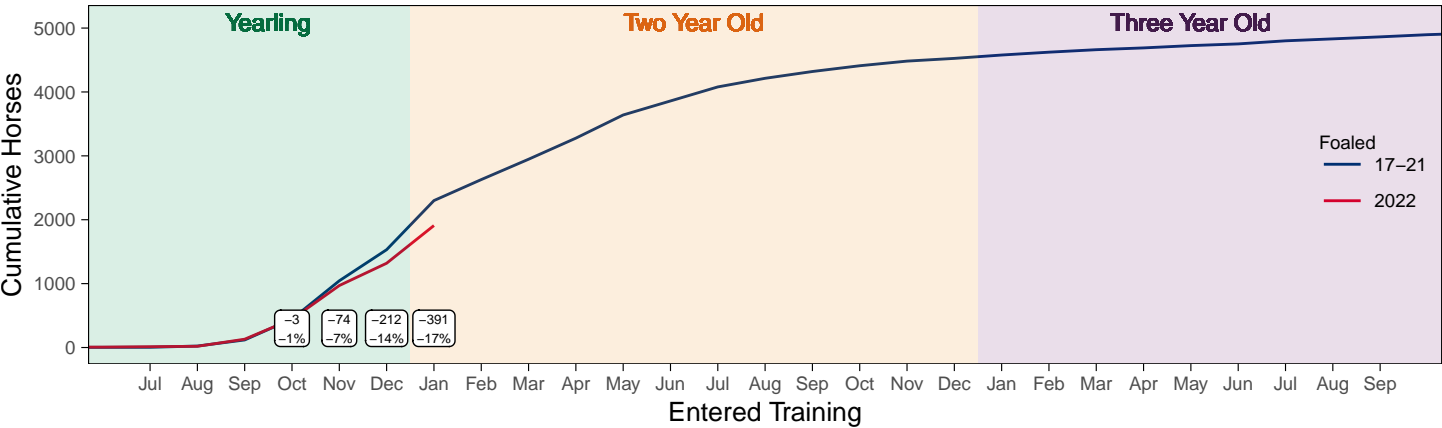
Cumulative Flat Horses foaled in 2021 shown by first in training notification against trend



Cumulative individual horses entering training for the first time by the end of each month.

### 2022 Foals Entering Training Over Time

Cumulative Flat Horses foaled in 2022 shown by first in training notification against trend



Cumulative individual horses entering training for the first time by the end of each month.

## Year to Date Horses in Training

Type	2015	2016	2017	2018	2019	2020	2021	2022	2023	2024	vs. Last Year	vs. Pre-Covid
Flat	9115	9416	9494	9515	9464	9621	9123	9217	8999	8817	-182 / -2.0%	-647 / -6.8%
Jump	5712	5756	5759	5502	6093	6173	6746	6235	6265	5901	-364 / -5.8%	-192 / -3.2%
Dual	586	555	612	1048	557	637	578	542	529	676	+147 / +27.8%	+119 / +21.4%
Hunter	1493	1398	1349	1216	1216	1178	794	926	845	1148	+303 / +35.9%	-68 / -5.6%
<b>Total</b>	<b>15413</b>	<b>15727</b>	<b>15865</b>	<b>16065</b>	<b>16114</b>	<b>16431</b>	<b>16447</b>	<b>15994</b>	<b>15793</b>	<b>15394</b>	<b>-399 / -2.5%</b>	<b>-720 / -4.5%</b>

'vs. Pre-Covid' is comparison between 2024 and 2019

### Flat

AgeCat	2015	2016	2017	2018	2019	2020	2021	2022	2023	2024	vs. Last Year	vs. Pre-Covid
2YO	2743	2714	2574	2434	2413	2368	2164	2235	2030	1858	-172 / -8.5%	-555 / -23.0%
3YO	2943	3145	3194	3340	3239	3402	3170	3160	3133	3129	-4 / -0.1%	-110 / -3.4%
4YO	1402	1478	1565	1567	1629	1626	1629	1707	1624	1602	-22 / -1.4%	-27 / -1.7%
5YO+	2027	2079	2161	2174	2183	2225	2160	2115	2212	2228	+16 / +0.7%	+45 / +2.1%
<b>Total</b>	<b>9115</b>	<b>9416</b>	<b>9494</b>	<b>9515</b>	<b>9464</b>	<b>9621</b>	<b>9123</b>	<b>9217</b>	<b>8999</b>	<b>8817</b>	<b>-182 / -2.0%</b>	<b>-647 / -6.8%</b>

'vs. Pre-Covid' is comparison between 2024 and 2019

### Jump

AgeCat	2015	2016	2017	2018	2019	2020	2021	2022	2023	2024	vs. Last Year	vs. Pre-Covid
3YO	24	29	15	29	18	13	31	19	16	23	+7 / +43.8%	+5 / +27.8%
4-5YO	1626	1702	1730	1507	1754	1822	1702	1746	1882	1649	-233 / -12.4%	-105 / -6.0%
6-7YO	2170	2049	1982	2044	2259	2289	2548	2347	2342	2337	-5 / -0.2%	+78 / +3.5%
8YO+	1892	1976	2032	1922	2062	2049	2465	2123	2025	1892	-133 / -6.6%	-170 / -8.2%
<b>Total</b>	<b>5712</b>	<b>5756</b>	<b>5759</b>	<b>5502</b>	<b>6093</b>	<b>6173</b>	<b>6746</b>	<b>6235</b>	<b>6265</b>	<b>5901</b>	<b>-364 / -5.8%</b>	<b>-192 / -3.2%</b>

'vs. Pre-Covid' is comparison between 2024 and 2019

### Dual

AgeCat	2015	2016	2017	2018	2019	2020	2021	2022	2023	2024	vs. Last Year	vs. Pre-Covid
3YO	51	43	47	51	26	57	39	57	41	44	+3 / +7.3%	+18 / +69.2%
4YO	130	133	159	262	167	177	169	149	151	218	+67 / +44.4%	+51 / +30.5%
5YO+	405	379	406	735	364	403	370	336	337	414	+77 / +22.8%	+50 / +13.7%
<b>Total</b>	<b>586</b>	<b>555</b>	<b>612</b>	<b>1048</b>	<b>557</b>	<b>637</b>	<b>578</b>	<b>542</b>	<b>529</b>	<b>676</b>	<b>+147 / +27.8%</b>	<b>+119 / +21.4%</b>

'vs. Pre-Covid' is comparison between 2024 and 2019

### Hunter Chasers

AgeCat	2015	2016	2017	2018	2019	2020	2021	2022	2023	2024	vs. Last Year	vs. Pre-Covid
4-5YO	104	87	108	109	123	184	67	117	127	140	+13 / +10.2%	+17 / +13.8%
6-7YO	413	392	341	353	362	326	188	235	220	285	+65 / +29.5%	-77 / -21.3%
8-9YO	485	402	412	288	297	262	203	242	213	261	+48 / +22.5%	-36 / -12.1%
10YO+	491	517	488	466	434	406	336	332	285	462	+177 / +62.1%	+28 / +6.5%
<b>Total</b>	<b>1493</b>	<b>1398</b>	<b>1349</b>	<b>1216</b>	<b>1216</b>	<b>1178</b>	<b>794</b>	<b>926</b>	<b>845</b>	<b>1148</b>	<b>+303 / +35.9%</b>	<b>-68 / -5.6%</b>

'vs. Pre-Covid' is comparison between 2024 and 2019

# Year to Date Runners

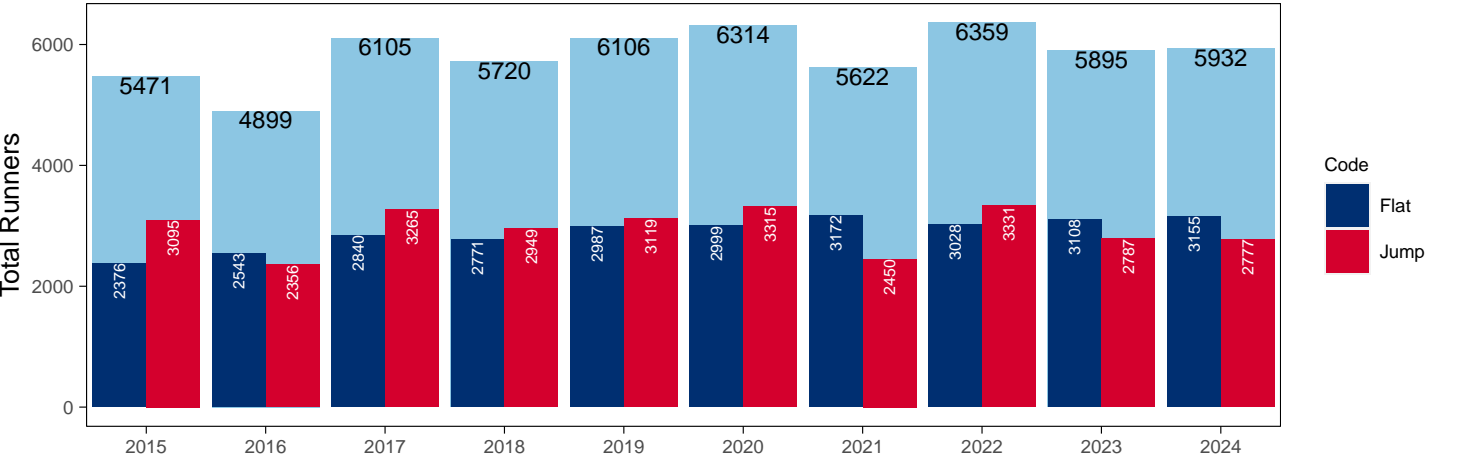
## Year to Date Total Runners

Code	2015	2016	2017	2018	2019	2020	2021	2022	2023	2024	vs. Last Year	vs. Pre-Covid
Flat	2376	2543	2840	2771	2987	2999	3172	3028	3108	3155	+47 / +1.5%	+168 / +5.6%
Jump	3095	2356	3265	2949	3119	3315	2450	3331	2787	2777	-10 / -0.4%	-342 / -11.0%
Total	5471	4899	6105	5720	6106	6314	5622	6359	5895	5932	+37 / +0.6%	-174 / -2.8%

'vs. Pre-Covid' is comparison between 2024 and 2019

### YTD Total Runners

Total Runners in GB Races, shown by Code and Total



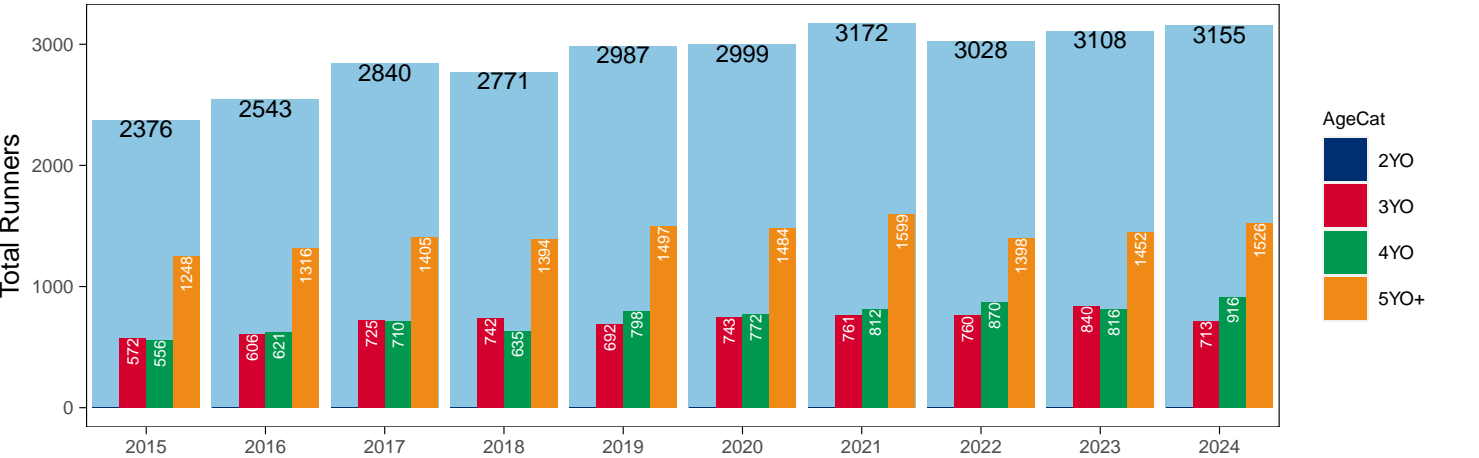
### Flat

AgeCat	2015	2016	2017	2018	2019	2020	2021	2022	2023	2024	vs. Last Year	vs. Pre-Covid
2YO											NA / NA	0 / NA
3YO	572	606	725	742	692	743	761	760	840	713	-127 / -15.1%	+21 / +3.0%
4YO	556	621	710	635	798	772	812	870	816	916	+100 / +12.3%	+118 / +14.8%
5YO+	1248	1316	1405	1394	1497	1484	1599	1398	1452	1526	+74 / +5.1%	+29 / +1.9%
Total	2376	2543	2840	2771	2987	2999	3172	3028	3108	3155	+47 / +1.5%	+168 / +5.6%

'vs. Pre-Covid' is comparison between 2024 and 2019

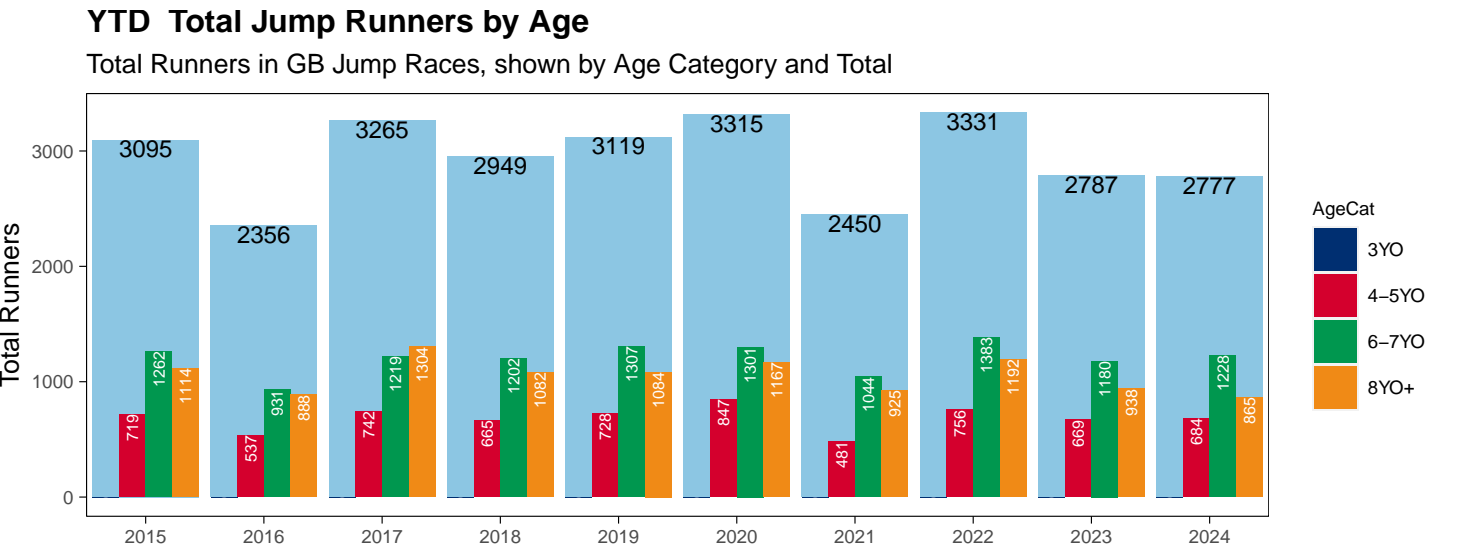
### YTD Total Flat Runners by Age

Total Runners in GB Flat Races, shown by Age Category and Total



AgeCat	2015	2016	2017	2018	2019	2020	2021	2022	2023	2024	vs. Last Year	vs. Pre-Covid
3YO											NA / NA	0 / NA
4-5YO	719	537	742	665	728	847	481	756	669	684	+15 / +2.2%	-44 / -6.0%
6-7YO	1262	931	1219	1202	1307	1301	1044	1383	1180	1228	+48 / +4.1%	-79 / -6.0%
8YO+	1114	888	1304	1082	1084	1167	925	1192	938	865	-73 / -7.8%	-219 / -20.2%
Total	3095	2356	3265	2949	3119	3315	2450	3331	2787	2777	-10 / -0.4%	-342 / -11.0%

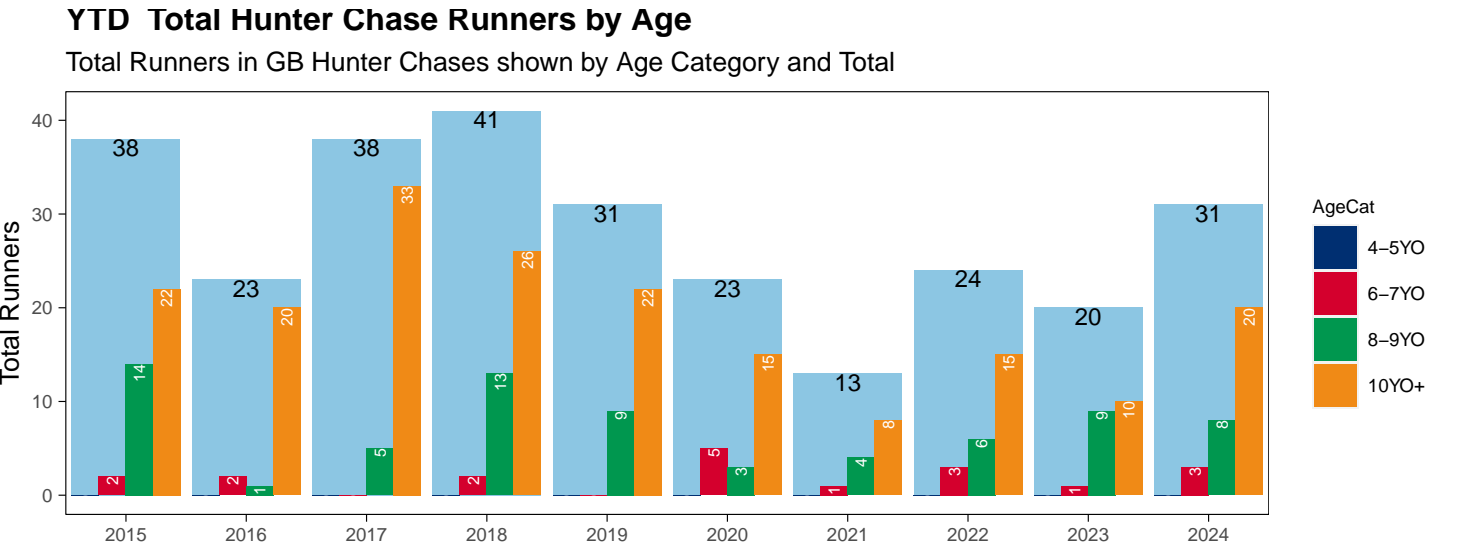
'vs. Pre-Covid' is comparison between 2024 and 2019



Hunter Chases

AgeCat	2015	2016	2017	2018	2019	2020	2021	2022	2023	2024	vs. Last Year	vs. Pre-Covid
4-5YO											NA / NA	0 / NA
6-7YO	2	2		2		5	1	3	1	3	+2 / +200.0%	+3 / +Inf
8-9YO	14	1	5	13	9	3	4	6	9	8	-1 / -11.1%	-1 / -11.1%
10YO+	22	20	33	26	22	15	8	15	10	20	+10 / +100.0%	-2 / -9.1%
Total	38	23	38	41	31	23	13	24	20	31	+11 / +55.0%	0 / 0.0%

'vs. Pre-Covid' is comparison between 2024 and 2019



## Year to Date Total Runners by Country Trained

Code	Country	2015	2016	2017	2018	2019	2020	2021	2022	2023	2024
Flat	GB	2366	2531	2816	2743	2946	2950	3172	3026	3102	3146
	IRE	8	11	24	27	40	48		2	6	9
	Other	2	1		1	1	1				
Jump	GB	3052	2293	3202	2922	3066	3258	2448	3286	2729	2724
	IRE	43	63	61	27	52	54	2	44	57	51
	Other			2		1	3		1	1	2
Overall	GB	5418	4824	6018	5665	6012	6208	5620	6312	5831	5870
	IRE	51	74	85	54	92	102	2	46	63	60
	Other	2	1	2	1	2	4		1	1	2

## Year to Date GB Trained Runners Racing Abroad

Code	Country	2015	2016	2017	2018	2019	2020	2021	2022	2023	2024
Flat	IRE		1	1	2	3	1				
	FR	15	1	8	2	9	7	4		2	2
	UAE	107	86	87	83	141	133	88	112	113	69
	BAH								17	8	9
	Other		1	1	1						
	<b>Total</b>	<b>122</b>	<b>89</b>	<b>97</b>	<b>88</b>	<b>153</b>	<b>141</b>	<b>92</b>	<b>129</b>	<b>123</b>	<b>80</b>
Jump	IRE	2	2	1	2		1				
	FR		2					2		6	3
	<b>Total</b>	<b>2</b>	<b>4</b>	<b>1</b>	<b>2</b>		<b>1</b>	<b>2</b>		<b>6</b>	<b>3</b>

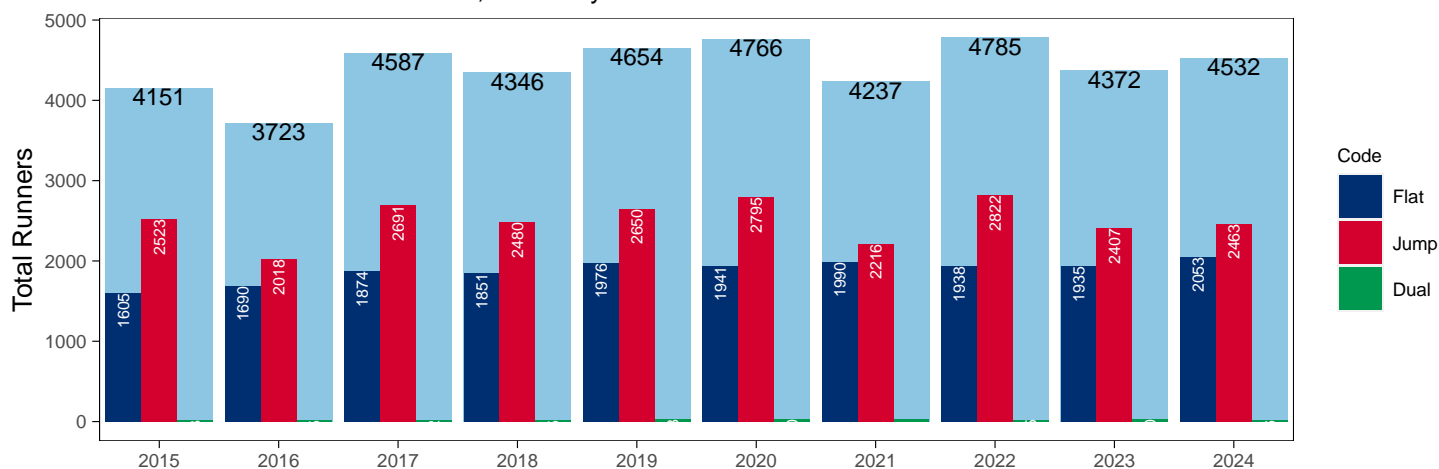
## Year to Date Individual Runners

Code	2015	2016	2017	2018	2019	2020	2021	2022	2023	2024	vs. Last Year	vs. Pre-Covid
Flat	1605	1690	1874	1851	1976	1941	1990	1938	1935	2053	+118 / +6.1%	+77 / +3.9%
Jump	2523	2018	2691	2480	2650	2795	2216	2822	2407	2463	+56 / +2.3%	-187 / -7.1%
Dual	23	15	22	15	28	30	31	25	30	16	-14 / -46.7%	-12 / -42.9%
<b>Overall</b>	<b>4151</b>	<b>3723</b>	<b>4587</b>	<b>4346</b>	<b>4654</b>	<b>4766</b>	<b>4237</b>	<b>4785</b>	<b>4372</b>	<b>4532</b>	<b>+160 / +3.7%</b>	<b>-122 / -2.6%</b>

'vs. Pre-Covid' is comparison between 2024 and 2019

## YTD Individual Runners

Individual Runners in GB Races, shown by Code and Total



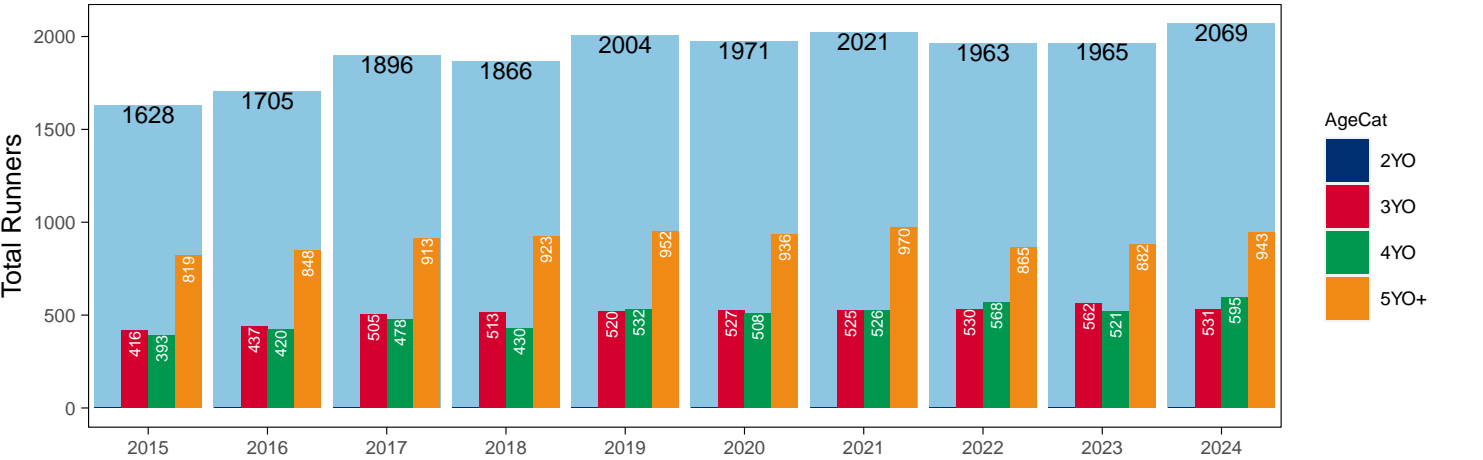
Flat

AgeCat	2015	2016	2017	2018	2019	2020	2021	2022	2023	2024	vs. Last Year	vs. Pre-Covid
2YO	NA / NA										0 / NA	
3YO	416	437	505	513	520	527	525	530	562	531	-31 / -5.5%	+11 / +2.1%
4YO	393	420	478	430	532	508	526	568	521	595	+74 / +14.2%	+63 / +11.8%
5YO+	819	848	913	923	952	936	970	865	882	943	+61 / +6.9%	-9 / -0.9%
Total	1628	1705	1896	1866	2004	1971	2021	1963	1965	2069	+104 / +5.3%	+65 / +3.2%

'vs. Pre-Covid' is comparison between 2024 and 2019

YTD Individual Flat Runners by Age

Individual Runners in GB Flat Races, shown by Age Category and Total



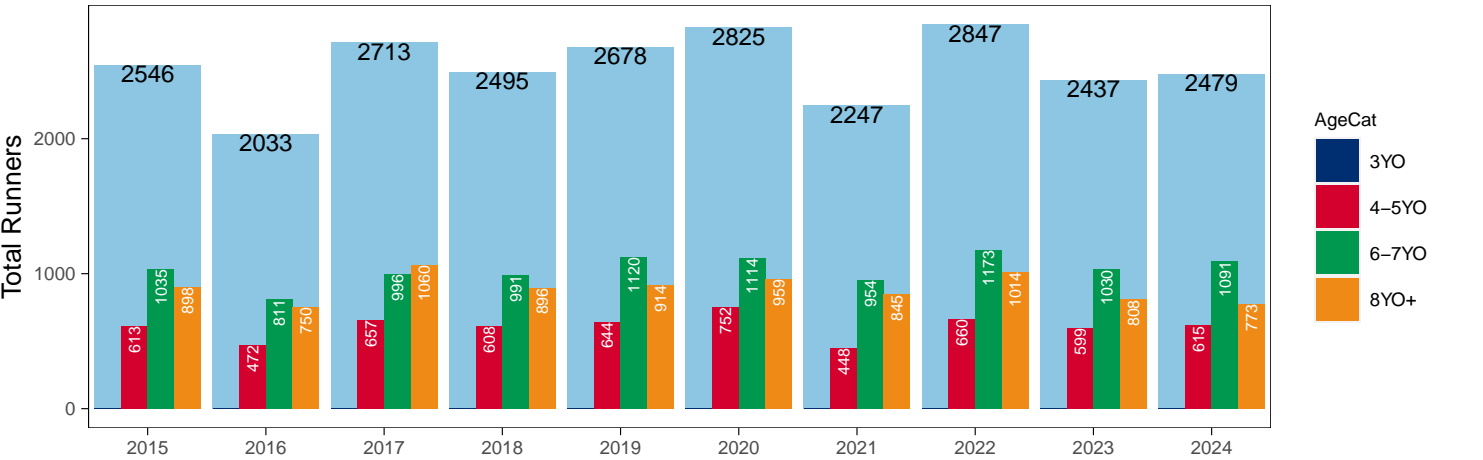
Jump

AgeCat	2015	2016	2017	2018	2019	2020	2021	2022	2023	2024	vs. Last Year	vs. Pre-Covid
3YO	NA / NA										0 / NA	
4-5YO	613	472	657	608	644	752	448	660	599	615	+16 / +2.7%	-29 / -4.5%
6-7YO	1035	811	996	991	1120	1114	954	1173	1030	1091	+61 / +5.9%	-29 / -2.6%
8YO+	898	750	1060	896	914	959	845	1014	808	773	-35 / -4.3%	-141 / -15.4%
Total	2546	2033	2713	2495	2678	2825	2247	2847	2437	2479	+42 / +1.7%	-199 / -7.4%

'vs. Pre-Covid' is comparison between 2024 and 2019

YTD Individual Jump Runners by Age

Individual Runners in GB Jump Races, shown by Age Category and Total



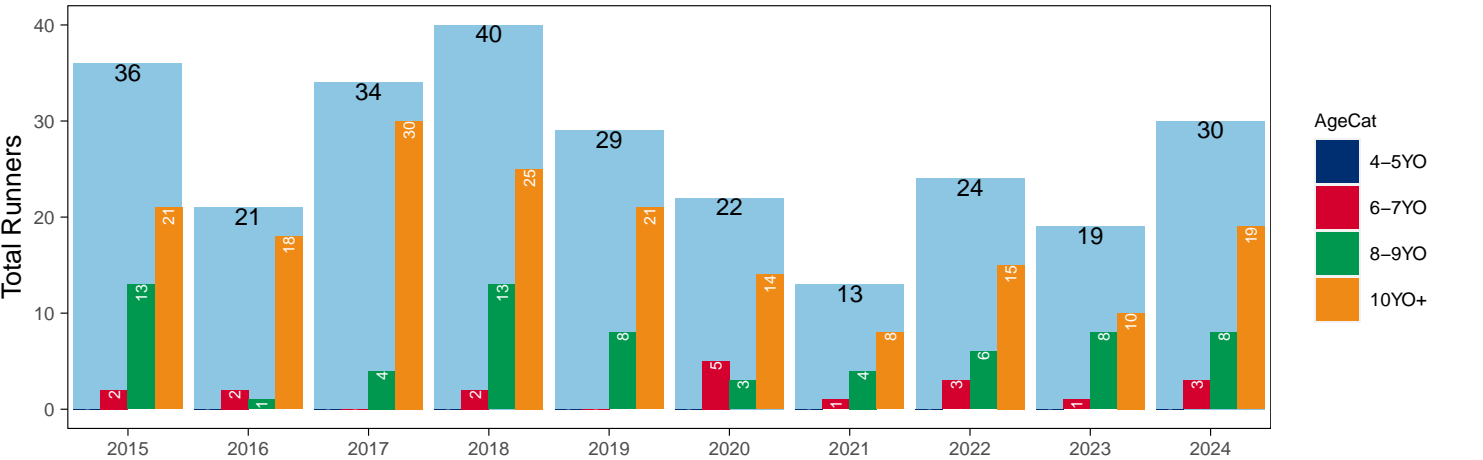


Hunter Chases

AgeCat	2015	2016	2017	2018	2019	2020	2021	2022	2023	2024	vs. Last Year	vs. Pre-Covid
4-5YO											NA / NA	0 / NA
6-7YO	2	2		2		5	1	3	1	3	+2 / +200.0%	+3 / +Inf
8-9YO	13	1	4	13	8	3	4	6	8	8	0 / 0.0%	0 / 0.0%
10YO+	21	18	30	25	21	14	8	15	10	19	+9 / +90.0%	-2 / -9.5%
Total	36	21	34	40	29	22	13	24	19	30	+11 / +57.9%	+1 / +3.4%

'vs. Pre-Covid' is comparison between 2024 and 2019

YTD Individual Hunter Chase Runners by Age  
Individual Runners in GB Hunter Chases shown by Age Category and Total



Year to Date Individual Runners by Country Trained

Code	Country	2015	2016	2017	2018	2019	2020	2021	2022	2023	2024
Flat	GB	1595	1679	1858	1825	1940	1899	1990	1936	1929	2046
	IRE	8	10	17	25	35	41		2	6	7
	Other	2	1		1	1	1				
Jump	GB	2487	1960	2633	2456	2604	2742	2214	2779	2350	2410
	IRE	36	58	57	24	45	50	2	42	56	51
	Other			2		1	3		1	1	2
Dual	GB	23	15	22	15	28	29	31	25	30	16
	IRE						1				
Overall	GB	4105	3654	4513	4296	4572	4670	4235	4740	4309	4472
	IRE	44	68	74	49	80	92	2	44	62	58
	Other	2	1	2	1	2	4		1	1	2

Individual horses may appear under multiple countries.

## Year to Date Total Runners by Rating Band

## Flat

RatBand	2015	2016	2017	2018	2019	2020	2021	2022	2023	2024
<b>3YO</b>										
Unrated	217 (37.9%)	223 (36.8%)	273 (37.7%)	317 (42.7%)	303 (43.8%)	341 (45.9%)	345 (45.3%)	329 (43.3%)	347 (41.3%)	339 (47.5%)
0-50	51 (8.9%)	57 (9.4%)	43 (5.9%)	59 (8.0%)	56 (8.1%)	73 (9.8%)	64 (8.4%)	69 (9.1%)	83 (9.9%)	59 (8.3%)
51-60	135 (23.6%)	96 (15.8%)	121 (16.7%)	97 (13.1%)	134 (19.4%)	106 (14.3%)	143 (18.8%)	111 (14.6%)	145 (17.3%)	111 (15.6%)
61-70	98 (17.1%)	135 (22.3%)	167 (23.0%)	141 (19.0%)	118 (17.1%)	131 (17.6%)	121 (15.9%)	154 (20.3%)	149 (17.7%)	121 (17.0%)
71-80	52 (9.1%)	73 (12.0%)	99 (13.7%)	90 (12.1%)	56 (8.1%)	77 (10.4%)	71 (9.3%)	75 (9.9%)	93 (11.1%)	63 (8.8%)
81-90	12 (2.1%)	14 (2.3%)	15 (2.1%)	32 (4.3%)	21 (3.0%)	14 (1.9%)	11 (1.4%)	18 (2.4%)	20 (2.4%)	17 (2.4%)
91-100	6 (1.0%)	4 (0.7%)	6 (0.8%)	3 (0.4%)	3 (0.4%)	1 (0.1%)	4 (0.5%)	4 (0.5%)	2 (0.2%)	3 (0.4%)
101+	1 (0.2%)	4 (0.7%)	1 (0.1%)	3 (0.4%)	1 (0.1%)	NA (-)	2 (0.3%)	NA (-)	1 (0.1%)	NA (-)
<b>4YO+</b>										
Unrated	57 (3.2%)	71 (3.7%)	59 (2.8%)	52 (2.6%)	96 (4.2%)	64 (2.8%)	73 (3.0%)	78 (3.4%)	83 (3.7%)	88 (3.6%)
0-50	313 (17.4%)	335 (17.3%)	315 (14.9%)	348 (17.2%)	465 (20.3%)	481 (21.3%)	541 (22.4%)	506 (22.3%)	560 (24.7%)	576 (23.6%)
51-60	442 (24.5%)	488 (25.2%)	539 (25.5%)	481 (23.7%)	542 (23.6%)	560 (24.8%)	558 (23.1%)	562 (24.8%)	564 (24.9%)	634 (26.0%)
61-70	478 (26.5%)	454 (23.4%)	509 (24.1%)	479 (23.6%)	526 (22.9%)	543 (24.1%)	631 (26.2%)	532 (23.5%)	501 (22.1%)	537 (22.0%)
71-80	295 (16.4%)	304 (15.7%)	366 (17.3%)	348 (17.2%)	394 (17.2%)	353 (15.6%)	340 (14.1%)	340 (15.0%)	356 (15.7%)	362 (14.8%)
81-90	144 (8.0%)	197 (10.2%)	229 (10.8%)	211 (10.4%)	168 (7.3%)	172 (7.6%)	175 (7.3%)	167 (7.4%)	133 (5.9%)	180 (7.4%)
91-100	63 (3.5%)	67 (3.5%)	77 (3.6%)	81 (4.0%)	81 (3.5%)	64 (2.8%)	69 (2.9%)	61 (2.7%)	53 (2.3%)	51 (2.1%)
101+	12 (0.7%)	21 (1.1%)	21 (1.0%)	29 (1.4%)	23 (1.0%)	19 (0.8%)	24 (1.0%)	22 (1.0%)	18 (0.8%)	14 (0.6%)

## Jump

RatBand	2015	2016	2017	2018	2019	2020	2021	2022	2023	2024
<b>Hurdle</b>										
Unrated	714 (38.1%)	529 (35.8%)	734 (37.8%)	659 (36.5%)	742 (38.1%)	710 (35.2%)	456 (34.9%)	695 (35.4%)	673 (40.2%)	690 (40.1%)
0-100	361 (19.3%)	268 (18.1%)	406 (20.9%)	337 (18.6%)	374 (19.2%)	438 (21.7%)	288 (22.0%)	486 (24.7%)	418 (25.0%)	462 (26.9%)
101-110	242 (12.9%)	200 (13.5%)	242 (12.5%)	232 (12.8%)	247 (12.7%)	265 (13.1%)	143 (10.9%)	241 (12.3%)	191 (11.4%)	185 (10.8%)
111-120	224 (12.0%)	167 (11.3%)	265 (13.6%)	235 (13.0%)	257 (13.2%)	248 (12.3%)	162 (12.4%)	231 (11.8%)	145 (8.7%)	182 (10.6%)
121-130	187 (10.0%)	152 (10.3%)	169 (8.7%)	196 (10.8%)	180 (9.3%)	195 (9.7%)	138 (10.6%)	178 (9.1%)	158 (9.4%)	121 (7.0%)
131-140	98 (5.2%)	105 (7.1%)	88 (4.5%)	103 (5.7%)	96 (4.9%)	108 (5.4%)	79 (6.0%)	89 (4.5%)	57 (3.4%)	49 (2.9%)
141-150	33 (1.8%)	41 (2.8%)	22 (1.1%)	32 (1.8%)	33 (1.7%)	36 (1.8%)	31 (2.4%)	35 (1.8%)	22 (1.3%)	23 (1.3%)
151+	14 (0.7%)	15 (1.0%)	17 (0.9%)	13 (0.7%)	16 (0.8%)	18 (0.9%)	11 (0.8%)	10 (0.5%)	9 (0.5%)	7 (0.4%)
<b>Chase</b>										
Unrated	5 (0.5%)	3 (0.4%)	17 (1.5%)	5 (0.6%)	10 (1.1%)	NA (-)	5 (0.8%)	3 (0.3%)	1 (0.1%)	NA (-)
0-100	209 (21.3%)	152 (20.4%)	231 (20.9%)	194 (21.4%)	246 (25.9%)	276 (27.1%)	153 (23.0%)	290 (26.2%)	285 (31.6%)	261 (30.4%)
101-110	152 (15.5%)	81 (10.9%)	192 (17.4%)	122 (13.5%)	155 (16.3%)	157 (15.4%)	75 (11.3%)	143 (12.9%)	141 (15.6%)	138 (16.1%)
111-120	187 (19.0%)	140 (18.8%)	206 (18.7%)	175 (19.3%)	151 (15.9%)	143 (14.0%)	119 (17.9%)	220 (19.9%)	148 (16.4%)	175 (20.4%)
121-130	181 (18.4%)	122 (16.4%)	163 (14.8%)	171 (18.9%)	160 (16.9%)	194 (19.0%)	118 (17.7%)	198 (17.9%)	142 (15.7%)	126 (14.7%)
131-140	148 (15.1%)	139 (18.6%)	172 (15.6%)	139 (15.3%)	113 (11.9%)	156 (15.3%)	105 (15.8%)	165 (14.9%)	108 (12.0%)	90 (10.5%)
141-150	72 (7.3%)	69 (9.2%)	80 (7.3%)	70 (7.7%)	81 (8.5%)	66 (6.5%)	60 (9.0%)	55 (5.0%)	53 (5.9%)	43 (5.0%)
151+	28 (2.9%)	40 (5.4%)	42 (3.8%)	30 (3.3%)	33 (3.5%)	28 (2.7%)	31 (4.7%)	31 (2.8%)	25 (2.8%)	25 (2.9%)

# Year to Date Total GB-Trained Runners by Rating Band

## Flat

RatBand	2015	2016	2017	2018	2019	2020	2021	2022	2023	2024
<b>3YO</b>										
Unrated	217 (37.9%)	223 (36.8%)	273 (37.7%)	315 (42.9%)	302 (44.1%)	338 (46.3%)	345 (45.3%)	329 (43.3%)	347 (41.3%)	338 (47.5%)
0-50	51 (8.9%)	57 (9.4%)	43 (5.9%)	57 (7.8%)	55 (8.0%)	70 (9.6%)	64 (8.4%)	69 (9.1%)	83 (9.9%)	59 (8.3%)
51-60	135 (23.6%)	96 (15.8%)	121 (16.7%)	95 (12.9%)	133 (19.4%)	101 (13.8%)	143 (18.8%)	111 (14.6%)	145 (17.3%)	111 (15.6%)
61-70	98 (17.1%)	135 (22.3%)	167 (23.0%)	141 (19.2%)	115 (16.8%)	131 (17.9%)	121 (15.9%)	154 (20.3%)	149 (17.7%)	121 (17.0%)
71-80	52 (9.1%)	73 (12.0%)	99 (13.7%)	89 (12.1%)	55 (8.0%)	75 (10.3%)	71 (9.3%)	75 (9.9%)	93 (11.1%)	63 (8.8%)
81-90	12 (2.1%)	14 (2.3%)	15 (2.1%)	32 (4.4%)	21 (3.1%)	14 (1.9%)	11 (1.4%)	18 (2.4%)	20 (2.4%)	17 (2.4%)
91-100	6 (1.0%)	4 (0.7%)	6 (0.8%)	3 (0.4%)	3 (0.4%)	1 (0.1%)	4 (0.5%)	4 (0.5%)	2 (0.2%)	3 (0.4%)
101+	1 (0.2%)	4 (0.7%)	1 (0.1%)	3 (0.4%)	1 (0.1%)	NA (-)	2 (0.3%)	NA (-)	1 (0.1%)	NA (-)
<b>4YO+</b>										
Unrated	56 (3.1%)	71 (3.7%)	59 (2.8%)	52 (2.6%)	96 (4.2%)	64 (2.9%)	73 (3.0%)	78 (3.4%)	83 (3.7%)	88 (3.6%)
0-50	309 (17.2%)	334 (17.4%)	307 (14.7%)	343 (17.1%)	451 (19.9%)	474 (21.4%)	541 (22.4%)	506 (22.3%)	559 (24.7%)	573 (23.5%)
51-60	441 (24.6%)	482 (25.0%)	532 (25.4%)	472 (23.5%)	529 (23.4%)	540 (24.3%)	558 (23.1%)	562 (24.8%)	562 (24.8%)	632 (26.0%)
61-70	478 (26.6%)	451 (23.4%)	502 (24.0%)	475 (23.7%)	521 (23.0%)	539 (24.3%)	631 (26.2%)	532 (23.5%)	501 (22.1%)	535 (22.0%)
71-80	294 (16.4%)	304 (15.8%)	365 (17.5%)	346 (17.2%)	394 (17.4%)	350 (15.8%)	340 (14.1%)	338 (14.9%)	354 (15.6%)	361 (14.8%)
81-90	143 (8.0%)	196 (10.2%)	229 (11.0%)	211 (10.5%)	167 (7.4%)	172 (7.7%)	175 (7.3%)	167 (7.4%)	133 (5.9%)	180 (7.4%)
91-100	62 (3.5%)	67 (3.5%)	76 (3.6%)	81 (4.0%)	80 (3.5%)	64 (2.9%)	69 (2.9%)	61 (2.7%)	52 (2.3%)	51 (2.1%)
101+	11 (0.6%)	20 (1.0%)	21 (1.0%)	28 (1.4%)	23 (1.0%)	17 (0.8%)	24 (1.0%)	22 (1.0%)	18 (0.8%)	14 (0.6%)

## Jump

RatBand	2015	2016	2017	2018	2019	2020	2021	2022	2023	2024
<b>Hurdle</b>										
Unrated	703 (38.0%)	516 (35.9%)	727 (38.2%)	652 (36.5%)	726 (38.1%)	700 (35.3%)	456 (34.9%)	681 (35.3%)	658 (40.1%)	677 (40.2%)
0-100	358 (19.4%)	265 (18.4%)	395 (20.7%)	334 (18.7%)	367 (19.2%)	431 (21.7%)	288 (22.0%)	484 (25.1%)	412 (25.1%)	457 (27.1%)
101-110	239 (12.9%)	193 (13.4%)	233 (12.2%)	229 (12.8%)	245 (12.8%)	262 (13.2%)	143 (10.9%)	239 (12.4%)	189 (11.5%)	184 (10.9%)
111-120	224 (12.1%)	167 (11.6%)	259 (13.6%)	234 (13.1%)	253 (13.3%)	246 (12.4%)	162 (12.4%)	228 (11.8%)	143 (8.7%)	179 (10.6%)
121-130	185 (10.0%)	149 (10.4%)	166 (8.7%)	193 (10.8%)	175 (9.2%)	192 (9.7%)	138 (10.6%)	175 (9.1%)	156 (9.5%)	115 (6.8%)
131-140	96 (5.2%)	99 (6.9%)	88 (4.6%)	102 (5.7%)	94 (4.9%)	104 (5.2%)	79 (6.0%)	85 (4.4%)	53 (3.2%)	46 (2.7%)
141-150	30 (1.6%)	36 (2.5%)	21 (1.1%)	31 (1.7%)	32 (1.7%)	31 (1.6%)	30 (2.3%)	30 (1.6%)	21 (1.3%)	20 (1.2%)
151+	14 (0.8%)	14 (1.0%)	16 (0.8%)	13 (0.7%)	15 (0.8%)	16 (0.8%)	11 (0.8%)	8 (0.4%)	9 (0.5%)	6 (0.4%)
<b>Chase</b>										
Unrated	5 (0.5%)	3 (0.4%)	17 (1.6%)	5 (0.6%)	10 (1.1%)	NA (-)	5 (0.8%)	3 (0.3%)	1 (0.1%)	NA (-)
0-100	206 (21.2%)	146 (20.2%)	228 (21.1%)	193 (21.5%)	245 (26.0%)	274 (27.1%)	153 (23.0%)	290 (26.3%)	283 (32.1%)	261 (31.0%)
101-110	151 (15.6%)	78 (10.8%)	191 (17.7%)	122 (13.6%)	154 (16.4%)	157 (15.5%)	75 (11.3%)	143 (13.0%)	139 (15.8%)	138 (16.4%)
111-120	185 (19.1%)	139 (19.2%)	203 (18.8%)	173 (19.2%)	150 (15.9%)	141 (14.0%)	119 (17.9%)	220 (20.0%)	147 (16.7%)	172 (20.4%)
121-130	180 (18.6%)	120 (16.6%)	159 (14.7%)	170 (18.9%)	159 (16.9%)	192 (19.0%)	118 (17.7%)	197 (17.9%)	140 (15.9%)	119 (14.1%)
131-140	144 (14.8%)	133 (18.4%)	167 (15.5%)	138 (15.4%)	112 (11.9%)	155 (15.3%)	105 (15.8%)	164 (14.9%)	101 (11.5%)	90 (10.7%)
141-150	72 (7.4%)	68 (9.4%)	78 (7.2%)	69 (7.7%)	80 (8.5%)	64 (6.3%)	60 (9.0%)	55 (5.0%)	49 (5.6%)	40 (4.8%)
151+	27 (2.8%)	37 (5.1%)	36 (3.3%)	29 (3.2%)	31 (3.3%)	27 (2.7%)	31 (4.7%)	30 (2.7%)	21 (2.4%)	22 (2.6%)

Frequency of Runs

Year to Date Average Runs per Horse

Code	2015	2016	2017	2018	2019	2020	2021	2022	2023	2024
Flat	1.46	1.49	1.50	1.49	1.50	1.53	1.57	1.55	1.59	1.53
Jump	1.22	1.16	1.20	1.18	1.17	1.17	1.09	1.17	1.14	1.12
Dual Overall	2.17	2.20	2.23	2.20	2.14	2.23	2.29	2.20	2.33	2.25
Dual (Flat)	1.17	1.13	1.14	1.20	1.07	1.17	1.23	1.16	1.23	1.25
Dual (Jump)	1.00	1.07	1.09	1.00	1.07	1.07	1.06	1.04	1.10	1.00
All	1.32	1.32	1.33	1.32	1.31	1.32	1.33	1.33	1.35	1.31

Year to Date Proportion of Horses by Count of Runs

Runs	2015	2016	2017	2018	2019	2020	2021	2022	2023	2024
Flat										
1	1,016 (62.4%)	1,027 (60.2%)	1,141 (60.2%)	1,143 (61.3%)	1,213 (60.5%)	1,174 (59.6%)	1,145 (56.7%)	1,120 (57.1%)	1,104 (56.2%)	1,216 (58.8%)
2	494 (30.3%)	539 (31.6%)	590 (31.1%)	561 (30.1%)	629 (31.4%)	610 (30.9%)	652 (32.3%)	646 (32.9%)	631 (32.1%)	650 (31.4%)
3	102 (6.3%)	120 (7.0%)	145 (7.6%)	146 (7.8%)	134 (6.7%)	152 (7.7%)	182 (9.0%)	174 (8.9%)	184 (9.4%)	176 (8.5%)
4	14 (0.9%)	17 (1.0%)	17 (0.9%)	13 (0.7%)	26 (1.3%)	27 (1.4%)	34 (1.7%)	21 (1.1%)	40 (2.0%)	24 (1.2%)
5+	2 (0.1%)	2 (0.1%)	3 (0.2%)	3 (0.2%)	2 (0.1%)	8 (0.4%)	8 (0.4%)	2 (0.1%)	6 (0.3%)	3 (0.1%)
Jump										
1	2,024 (79.5%)	1,727 (84.9%)	2,184 (80.5%)	2,054 (82.3%)	2,261 (84.4%)	2,356 (83.4%)	2,049 (91.2%)	2,377 (83.5%)	2,098 (86.1%)	2,188 (88.3%)
2	496 (19.5%)	289 (14.2%)	506 (18.7%)	428 (17.2%)	393 (14.7%)	448 (15.9%)	193 (8.6%)	456 (16.0%)	328 (13.5%)	284 (11.5%)
3	25 (1.0%)	17 (0.8%)	23 (0.8%)	13 (0.5%)	24 (0.9%)	21 (0.7%)	5 (0.2%)	14 (0.5%)	11 (0.5%)	7 (0.3%)
4	1 (0.0%)	NA (-)	NA (-)	NA (-)	NA (-)	NA (-)	NA (-)	NA (-)	NA (-)	NA (-)
All Races										
1	2,998 (72.2%)	2,727 (73.2%)	3,286 (71.6%)	3,170 (72.9%)	3,422 (73.5%)	3,477 (73.0%)	3,140 (74.1%)	3,452 (72.1%)	3,152 (72.1%)	3,376 (74.5%)
2	1,005 (24.2%)	837 (22.5%)	1,108 (24.2%)	998 (23.0%)	1,042 (22.4%)	1,074 (22.5%)	861 (20.3%)	1,117 (23.3%)	969 (22.2%)	942 (20.8%)
3	131 (3.2%)	140 (3.8%)	173 (3.8%)	162 (3.7%)	162 (3.5%)	180 (3.8%)	193 (4.6%)	193 (4.0%)	205 (4.7%)	187 (4.1%)
4	15 (0.4%)	17 (0.5%)	17 (0.4%)	13 (0.3%)	26 (0.6%)	27 (0.6%)	35 (0.8%)	21 (0.4%)	40 (0.9%)	24 (0.5%)
5+	2 (0.0%)	2 (0.1%)	3 (0.1%)	3 (0.1%)	2 (0.0%)	8 (0.2%)	8 (0.2%)	2 (0.0%)	6 (0.1%)	3 (0.1%)

Year to Date Median Days Between Runs

Code/RatBand	2015	2016	2017	2018	2019	2020	2021	2022	2023	2024
All Runners	27	27	25	27	25	27	27	26	29	27
Flat										
Unrated	28	25	24	27	29	28	25	27	26	28
0-50	21	17	21	21	21	20	19	20	16	18
51-60	20	18	19	19	20	20	18	20	18	19
61-70	23	20	20	20	20	21	19	20	19	20
71-80	23	20	21	20	20	22	22	20	21	22
81-90	23	20	18	22	21	22	23	22	26	23
91-100	21	27	24	24	22	21	21	30	39	30
101+	30	31	48	38	27	30	44	38	39	35
All Flat Runners	22	20	21	21	21	22	20	21	20	20
Jump										
Unrated	35	37	31	36	31	34	40	33	39	36
0-100	28	31	27	27	26	27	36	28	34	33
101-110	27	31	27	30	27	30	34	29	37	35
111-120	30	32	28	30	27	30	39	31	34	32
121-130	29	34	29	30	28	30	35	31	35	33
131-140	27	34	32	31	28	30	36	32	36	35
141-150	28	34	33	32	31	35	38	34	38	36
151+	32	34	42	35	35	34	35	42	39	36
All Jump Runners	29	33	29	31	28	30	37	30	36	34

# Horses Population by Gender

## January 2024 Horses in Training Snapshot by Gender versus Previous Years

### All Horses

Sex	2015	2016	2017	2018	2019	2020	2021	2022	2023	2024
Colt/Entire	2,484 (17.7%)	2,353 (16.7%)	2,361 (16.5%)	2,398 (16.4%)	2,279 (15.5%)	2,304 (15.2%)	2,062 (13.6%)	1,987 (13.6%)	1,896 (13.0%)	1,841 (13.0%)
Gelding	7,367 (52.6%)	7,589 (54.0%)	7,792 (54.5%)	7,860 (53.9%)	7,998 (54.5%)	8,309 (54.8%)	8,605 (56.6%)	8,073 (55.4%)	8,201 (56.2%)	8,001 (56.4%)
Filly/Mare	4,155 (29.7%)	4,111 (29.2%)	4,144 (29.0%)	4,317 (29.6%)	4,399 (30.0%)	4,534 (29.9%)	4,521 (29.8%)	4,513 (31.0%)	4,496 (30.8%)	4,346 (30.6%)
Rig	1 (0.0%)	6 (0.0%)	4 (0.0%)	3 (0.0%)	3 (0.0%)	3 (0.0%)	3 (0.0%)	1 (0.0%)	0 (0.0%)	0 (0.0%)
Total	14,007 (100.0%)	14,059 (100.0%)	14,301 (100.0%)	14,578 (100.0%)	14,679 (100.0%)	15,150 (100.0%)	15,191 (100.0%)	14,574 (100.0%)	14,593 (100.0%)	14,188 (100.0%)

### Flat (including Dual)

Sex	2015	2016	2017	2018	2019	2020	2021	2022	2023	2024
Colt/Entire	2,446 (28.1%)	2,322 (26.6%)	2,338 (26.0%)	2,376 (25.2%)	2,259 (25.0%)	2,281 (24.4%)	2,041 (23.1%)	1,966 (22.4%)	1,871 (21.5%)	1,816 (21.1%)
Gelding	3,101 (35.6%)	3,294 (37.8%)	3,501 (38.9%)	3,801 (40.3%)	3,568 (39.5%)	3,775 (40.4%)	3,666 (41.5%)	3,563 (40.6%)	3,682 (42.3%)	3,737 (43.4%)
Filly/Mare	3,153 (36.2%)	3,096 (35.5%)	3,154 (35.1%)	3,254 (34.5%)	3,197 (35.4%)	3,278 (35.1%)	3,117 (35.3%)	3,247 (37.0%)	3,154 (36.2%)	3,057 (35.5%)
Rig	1 (0.0%)	6 (0.1%)	4 (0.0%)	3 (0.0%)	2 (0.0%)	2 (0.0%)	2 (0.0%)	0 (0.0%)	0 (0.0%)	0 (0.0%)
Total	8,701 (100.0%)	8,718 (100.0%)	8,997 (100.0%)	9,434 (100.0%)	9,026 (100.0%)	9,336 (100.0%)	8,826 (100.0%)	8,776 (100.0%)	8,707 (100.0%)	8,610 (100.0%)

### Jump (including Dual)

Sex	2015	2016	2017	2018	2019	2020	2021	2022	2023	2024
Colt/Entire	50 (0.9%)	44 (0.8%)	27 (0.5%)	30 (0.5%)	29 (0.5%)	35 (0.6%)	33 (0.5%)	34 (0.5%)	32 (0.5%)	29 (0.5%)
Gelding	4,659 (80.0%)	4,662 (80.1%)	4,725 (80.9%)	4,743 (78.5%)	4,790 (78.2%)	4,946 (78.0%)	5,324 (77.5%)	4,859 (77.5%)	4,869 (76.5%)	4,671 (76.1%)
Filly/Mare	1,118 (19.2%)	1,116 (19.2%)	1,091 (18.7%)	1,267 (21.0%)	1,305 (21.3%)	1,362 (21.5%)	1,514 (22.0%)	1,374 (21.9%)	1,460 (23.0%)	1,438 (23.4%)
Rig	0 (0.0%)	0 (0.0%)	0 (0.0%)	0 (0.0%)	1 (0.0%)	1 (0.0%)	1 (0.0%)	1 (0.0%)	0 (0.0%)	0 (0.0%)
Total	5,827 (100.0%)	5,822 (100.0%)	5,843 (100.0%)	6,040 (100.0%)	6,125 (100.0%)	6,344 (100.0%)	6,872 (100.0%)	6,268 (100.0%)	6,361 (100.0%)	6,138 (100.0%)

### Hunter Chasers

Sex	2015	2016	2017	2018	2019	2020	2021	2022	2023	2024
Colt/Entire	2 (0.2%)	2 (0.2%)	2 (0.2%)	2 (0.2%)	1 (0.1%)	1 (0.1%)	1 (0.1%)	2 (0.2%)	6 (0.8%)	11 (1.0%)
Gelding	1,035 (84.3%)	1,020 (86.5%)	931 (84.7%)	844 (83.7%)	814 (81.4%)	792 (83.0%)	661 (82.9%)	689 (84.1%)	596 (82.1%)	888 (82.4%)
Filly/Mare	191 (15.6%)	157 (13.3%)	166 (15.1%)	162 (16.1%)	185 (18.5%)	161 (16.9%)	135 (16.9%)	128 (15.6%)	124 (17.1%)	179 (16.6%)
Rig	0 (0.0%)	0 (0.0%)	0 (0.0%)	0 (0.0%)	0 (0.0%)	0 (0.0%)	0 (0.0%)	0 (0.0%)	0 (0.0%)	0 (0.0%)
Total	1,228 (100.0%)	1,179 (100.0%)	1,099 (100.0%)	1,008 (100.0%)	1,000 (100.0%)	954 (100.0%)	797 (100.0%)	819 (100.0%)	726 (100.0%)	1,078 (100.0%)

Year to Date Total Runners by Gender

Sex	2015	2016	2017	2018	2019	2020	2021	2022	2023	2024
All Races										
Colt/Entire	236 (4.3%)	202 (4.1%)	249 (4.1%)	247 (4.3%)	224 (3.7%)	269 (4.3%)	270 (4.8%)	212 (3.3%)	231 (3.9%)	194 (3.3%)
Gelding	3,942 (72.1%)	3,526 (72.0%)	4,454 (73.0%)	4,112 (71.9%)	4,363 (71.5%)	4,422 (70.0%)	3,854 (68.6%)	4,505 (70.8%)	4,093 (69.4%)	4,178 (70.4%)
Filly/Mare	1,293 (23.6%)	1,171 (23.9%)	1,402 (23.0%)	1,360 (23.8%)	1,519 (24.9%)	1,622 (25.7%)	1,497 (26.6%)	1,642 (25.8%)	1,571 (26.6%)	1,560 (26.3%)
Rig	0 (0.0%)	0 (0.0%)	0 (0.0%)	1 (0.0%)	0 (0.0%)	1 (0.0%)	1 (0.0%)	0 (0.0%)	0 (0.0%)	0 (0.0%)
Flat										
Colt/Entire	222 (9.3%)	198 (7.8%)	245 (8.6%)	243 (8.8%)	216 (7.2%)	264 (8.8%)	268 (8.4%)	209 (6.9%)	223 (7.2%)	192 (6.1%)
Gelding	1,410 (59.3%)	1,519 (59.7%)	1,724 (60.7%)	1,701 (61.4%)	1,855 (62.1%)	1,808 (60.3%)	1,929 (60.8%)	1,855 (61.3%)	1,859 (59.8%)	2,031 (64.4%)
Filly/Mare	744 (31.3%)	826 (32.5%)	871 (30.7%)	826 (29.8%)	916 (30.7%)	927 (30.9%)	975 (30.7%)	964 (31.8%)	1,026 (33.0%)	932 (29.5%)
Rig	0 (0.0%)	0 (0.0%)	0 (0.0%)	1 (0.0%)	0 (0.0%)	0 (0.0%)	0 (0.0%)	0 (0.0%)	0 (0.0%)	0 (0.0%)
All Jump										
Colt/Entire	14 (0.5%)	4 (0.2%)	4 (0.1%)	4 (0.1%)	8 (0.3%)	5 (0.2%)	2 (0.1%)	3 (0.1%)	8 (0.3%)	2 (0.1%)
Gelding	2,532 (81.8%)	2,007 (85.2%)	2,730 (83.6%)	2,411 (81.8%)	2,508 (80.4%)	2,614 (78.9%)	1,925 (78.6%)	2,650 (79.6%)	2,234 (80.2%)	2,147 (77.3%)
Filly/Mare	549 (17.7%)	345 (14.6%)	531 (16.3%)	534 (18.1%)	603 (19.3%)	695 (21.0%)	522 (21.3%)	678 (20.4%)	545 (19.6%)	628 (22.6%)
Rig	0 (0.0%)	0 (0.0%)	0 (0.0%)	0 (0.0%)	0 (0.0%)	1 (0.0%)	1 (0.0%)	0 (0.0%)	0 (0.0%)	0 (0.0%)
Chase										
Gelding	904 (92.1%)	702 (94.1%)	1,025 (92.9%)	833 (91.9%)	843 (88.8%)	930 (91.2%)	599 (89.9%)	969 (87.7%)	821 (90.9%)	781 (91.0%)
Filly/Mare	78 (7.9%)	44 (5.9%)	78 (7.1%)	73 (8.1%)	106 (11.2%)	89 (8.7%)	66 (9.9%)	136 (12.3%)	82 (9.1%)	77 (9.0%)
Rig	0 (0.0%)	0 (0.0%)	0 (0.0%)	0 (0.0%)	0 (0.0%)	1 (0.1%)	1 (0.2%)	0 (0.0%)	0 (0.0%)	0 (0.0%)
Hurdle										
Colt/Entire	12 (0.6%)	4 (0.3%)	4 (0.2%)	3 (0.2%)	6 (0.3%)	3 (0.1%)	1 (0.1%)	3 (0.2%)	5 (0.3%)	2 (0.1%)
Gelding	1,478 (78.9%)	1,227 (83.1%)	1,557 (80.1%)	1,432 (79.2%)	1,526 (78.5%)	1,511 (74.9%)	1,010 (77.2%)	1,523 (77.5%)	1,290 (77.1%)	1,242 (72.3%)
Filly/Mare	383 (20.4%)	246 (16.7%)	382 (19.7%)	372 (20.6%)	413 (21.2%)	504 (25.0%)	297 (22.7%)	439 (22.3%)	378 (22.6%)	475 (27.6%)
NHF										
Colt/Entire	2 (0.8%)	0 (0.0%)	0 (0.0%)	1 (0.4%)	2 (0.9%)	2 (0.7%)	1 (0.2%)	0 (0.0%)	3 (1.4%)	0 (0.0%)
Gelding	150 (62.5%)	78 (58.6%)	148 (67.6%)	146 (61.9%)	139 (61.8%)	173 (62.5%)	316 (66.4%)	158 (60.5%)	123 (58.3%)	124 (62.0%)
Filly/Mare	88 (36.7%)	55 (41.4%)	71 (32.4%)	89 (37.7%)	84 (37.3%)	102 (36.8%)	159 (33.4%)	103 (39.5%)	85 (40.3%)	76 (38.0%)
Hunter										
Gelding	35 (92.1%)	23 (100.0%)	37 (97.4%)	41 (100.0%)	30 (96.8%)	22 (95.7%)	12 (92.3%)	24 (100.0%)	19 (95.0%)	29 (93.5%)
Filly/Mare	3 (7.9%)	0 (0.0%)	1 (2.6%)	0 (0.0%)	1 (3.2%)	1 (4.3%)	1 (7.7%)	0 (0.0%)	1 (5.0%)	2 (6.5%)

Year to Date Individual Runners by Gender

Sex	2015	2016	2017	2018	2019	2020	2021	2022	2023	2024
All Races										
Male	3,160 (76.1%)	2,850 (76.6%)	3,543 (77.2%)	3,305 (76.0%)	3,512 (75.5%)	3,535 (74.2%)	3,124 (73.7%)	3,581 (74.8%)	3,214 (73.5%)	3,342 (73.7%)
Female	991 (23.9%)	873 (23.4%)	1,044 (22.8%)	1,041 (24.0%)	1,142 (24.5%)	1,231 (25.8%)	1,113 (26.3%)	1,204 (25.2%)	1,158 (26.5%)	1,190 (26.3%)
Flat										
Male	1,103 (67.8%)	1,135 (66.6%)	1,301 (68.6%)	1,287 (69.0%)	1,380 (68.9%)	1,340 (68.0%)	1,388 (68.7%)	1,329 (67.7%)	1,292 (65.8%)	1,438 (69.5%)
Female	525 (32.2%)	570 (33.4%)	595 (31.4%)	579 (31.0%)	624 (31.1%)	631 (32.0%)	633 (31.3%)	634 (32.3%)	673 (34.2%)	631 (30.5%)
All Jump										
Male	2,076 (81.5%)	1,724 (84.8%)	2,259 (83.3%)	2,031 (81.4%)	2,155 (80.5%)	2,222 (78.7%)	1,764 (78.5%)	2,274 (79.9%)	1,943 (79.7%)	1,911 (77.1%)
Female	470 (18.5%)	309 (15.2%)	454 (16.7%)	464 (18.6%)	523 (19.5%)	603 (21.3%)	483 (21.5%)	573 (20.1%)	494 (20.3%)	568 (22.9%)
Chase										
Male	741 (92.4%)	607 (93.5%)	861 (92.3%)	706 (91.9%)	727 (89.1%)	800 (91.5%)	566 (90.3%)	828 (88.2%)	711 (90.8%)	699 (90.5%)
Female	61 (7.6%)	42 (6.5%)	72 (7.7%)	62 (8.1%)	89 (10.9%)	74 (8.5%)	61 (9.7%)	111 (11.8%)	72 (9.2%)	73 (9.5%)
Hurdle										
Male	1,225 (78.6%)	1,062 (82.8%)	1,309 (80.3%)	1,217 (79.1%)	1,323 (78.5%)	1,287 (74.4%)	939 (77.1%)	1,320 (78.1%)	1,139 (76.9%)	1,103 (72.2%)
Female	334 (21.4%)	220 (17.2%)	321 (19.7%)	321 (20.9%)	362 (21.5%)	442 (25.6%)	279 (22.9%)	371 (21.9%)	342 (23.1%)	424 (27.8%)
NHF										
Male	144 (63.2%)	78 (60.0%)	143 (67.5%)	142 (62.3%)	137 (63.4%)	171 (63.1%)	296 (66.4%)	157 (61.8%)	122 (59.5%)	122 (62.9%)
Female	84 (36.8%)	52 (40.0%)	69 (32.5%)	86 (37.7%)	79 (36.6%)	100 (36.9%)	150 (33.6%)	97 (38.2%)	83 (40.5%)	72 (37.1%)
Hunter										
Male	33 (91.7%)	21 (100.0%)	33 (97.1%)	40 (100.0%)	28 (96.6%)	21 (95.5%)	12 (92.3%)	24 (100.0%)	18 (94.7%)	28 (93.3%)
Female	3 (8.3%)	0 (0.0%)	1 (2.9%)	0 (0.0%)	1 (3.4%)	1 (4.5%)	1 (7.7%)	0 (0.0%)	1 (5.3%)	2 (6.7%)



# Horses Population by Breeding

## January 2024 Horses in Training Snapshot by Breeding versus Previous Years

### Flat (including Dual)

Bred	Sex	2015	2016	2017	2018	2019	2020	2021	2022	2023	2024
GB	Male	2,636 (30.3%)	2,627 (30.1%)	2,748 (30.5%)	2,841 (30.1%)	2,721 (30.1%)	2,865 (30.7%)	2,662 (30.2%)	2,546 (29.0%)	2,548 (29.3%)	2,527 (29.3%)
	Female	1,734 (19.9%)	1,707 (19.6%)	1,784 (19.8%)	1,749 (18.5%)	1,759 (19.5%)	1,819 (19.5%)	1,754 (19.9%)	1,812 (20.6%)	1,726 (19.8%)	1,652 (19.2%)
	Subtotal	4,370 (50.2%)	4,334 (49.7%)	4,532 (50.4%)	4,590 (48.7%)	4,480 (49.6%)	4,684 (50.2%)	4,416 (50.0%)	4,358 (49.7%)	4,274 (49.1%)	4,179 (48.5%)
IRE	Male	2,353 (27.0%)	2,444 (28.0%)	2,501 (27.8%)	2,666 (28.3%)	2,513 (27.8%)	2,607 (27.9%)	2,525 (28.6%)	2,547 (29.0%)	2,597 (29.8%)	2,566 (29.8%)
	Female	1,179 (13.6%)	1,171 (13.4%)	1,153 (12.8%)	1,264 (13.4%)	1,181 (13.1%)	1,241 (13.3%)	1,191 (13.5%)	1,273 (14.5%)	1,262 (14.5%)	1,235 (14.3%)
	Subtotal	3,532 (40.6%)	3,615 (41.5%)	3,654 (40.6%)	3,930 (41.7%)	3,694 (40.9%)	3,848 (41.2%)	3,716 (42.1%)	3,820 (43.5%)	3,859 (44.3%)	3,801 (44.1%)
FR	Male	163 (1.9%)	160 (1.8%)	205 (2.3%)	300 (3.2%)	266 (2.9%)	293 (3.1%)	276 (3.1%)	268 (3.1%)	261 (3.0%)	324 (3.8%)
	Female	64 (0.7%)	75 (0.9%)	78 (0.9%)	109 (1.2%)	110 (1.2%)	107 (1.1%)	95 (1.1%)	98 (1.1%)	120 (1.4%)	124 (1.4%)
	Subtotal	227 (2.6%)	235 (2.7%)	283 (3.1%)	409 (4.3%)	376 (4.2%)	400 (4.3%)	371 (4.2%)	366 (4.2%)	381 (4.4%)	448 (5.2%)
USA	Male	325 (3.7%)	318 (3.6%)	305 (3.4%)	284 (3.0%)	259 (2.9%)	222 (2.4%)	174 (2.0%)	123 (1.4%)	99 (1.1%)	87 (1.0%)
	Female	146 (1.7%)	122 (1.4%)	114 (1.3%)	109 (1.2%)	125 (1.4%)	85 (0.9%)	55 (0.6%)	42 (0.5%)	29 (0.3%)	20 (0.2%)
	Subtotal	471 (5.4%)	440 (5.0%)	419 (4.7%)	393 (4.2%)	384 (4.3%)	307 (3.3%)	229 (2.6%)	165 (1.9%)	128 (1.5%)	107 (1.2%)
GNY	Male	49 (0.6%)	56 (0.6%)	61 (0.7%)	66 (0.7%)	47 (0.5%)	51 (0.5%)	55 (0.6%)	38 (0.4%)	37 (0.4%)	41 (0.5%)
	Female	10 (0.1%)	9 (0.1%)	14 (0.2%)	13 (0.1%)	14 (0.2%)	22 (0.2%)	18 (0.2%)	19 (0.2%)	13 (0.1%)	18 (0.2%)
	Subtotal	59 (0.7%)	65 (0.7%)	75 (0.8%)	79 (0.8%)	61 (0.7%)	73 (0.8%)	73 (0.8%)	57 (0.6%)	50 (0.6%)	59 (0.7%)
Other	Male	22 (0.3%)	17 (0.2%)	23 (0.3%)	23 (0.2%)	23 (0.3%)	20 (0.2%)	17 (0.2%)	7 (0.1%)	11 (0.1%)	8 (0.1%)
	Female	20 (0.2%)	12 (0.1%)	11 (0.1%)	10 (0.1%)	8 (0.1%)	4 (0.0%)	4 (0.0%)	3 (0.0%)	4 (0.0%)	8 (0.1%)
	Subtotal	42 (0.5%)	29 (0.3%)	34 (0.4%)	33 (0.3%)	31 (0.3%)	24 (0.3%)	21 (0.2%)	10 (0.1%)	15 (0.2%)	16 (0.2%)

### Jump (including Dual)

Bred	Sex	2015	2016	2017	2018	2019	2020	2021	2022	2023	2024
GB	Male	1,480 (25.4%)	1,394 (23.9%)	1,328 (22.7%)	1,356 (22.5%)	1,292 (21.1%)	1,274 (20.1%)	1,317 (19.2%)	1,207 (19.3%)	1,225 (19.3%)	1,184 (19.3%)
	Female	692 (11.9%)	656 (11.3%)	604 (10.3%)	664 (11.0%)	626 (10.2%)	614 (9.7%)	716 (10.4%)	654 (10.4%)	703 (11.1%)	658 (10.7%)
	Subtotal	2,172 (37.3%)	2,050 (35.2%)	1,932 (33.1%)	2,020 (33.4%)	1,918 (31.3%)	1,888 (29.8%)	2,033 (29.6%)	1,861 (29.7%)	1,928 (30.3%)	1,842 (30.0%)
IRE	Male	2,469 (42.4%)	2,529 (43.4%)	2,601 (44.5%)	2,609 (43.2%)	2,656 (43.4%)	2,761 (43.5%)	2,947 (42.9%)	2,609 (41.6%)	2,564 (40.3%)	2,419 (39.4%)
	Female	370 (6.3%)	394 (6.8%)	413 (7.1%)	513 (8.5%)	565 (9.2%)	618 (9.7%)	655 (9.5%)	578 (9.2%)	600 (9.4%)	620 (10.1%)
	Subtotal	2,839 (48.7%)	2,923 (50.2%)	3,014 (51.6%)	3,122 (51.7%)	3,221 (52.6%)	3,379 (53.3%)	3,602 (52.4%)	3,187 (50.8%)	3,164 (49.7%)	3,039 (49.5%)
FR	Male	612 (10.5%)	666 (11.4%)	713 (12.2%)	706 (11.7%)	783 (12.8%)	843 (13.3%)	994 (14.5%)	985 (15.7%)	1,017 (16.0%)	1,015 (16.5%)
	Female	50 (0.9%)	54 (0.9%)	66 (1.1%)	81 (1.3%)	104 (1.7%)	123 (1.9%)	131 (1.9%)	133 (2.1%)	150 (2.4%)	153 (2.5%)
	Subtotal	662 (11.4%)	720 (12.4%)	779 (13.3%)	787 (13.0%)	887 (14.5%)	966 (15.2%)	1,125 (16.4%)	1,118 (17.8%)	1,167 (18.3%)	1,168 (19.0%)
USA	Male	72 (1.2%)	57 (1.0%)	41 (0.7%)	45 (0.7%)	30 (0.5%)	34 (0.5%)	30 (0.4%)	26 (0.4%)	20 (0.3%)	15 (0.2%)
	Female	2 (0.0%)	2 (0.0%)	2 (0.0%)	4 (0.1%)	3 (0.0%)	2 (0.0%)	1 (0.0%)	1 (0.0%)	NA (-)	1 (0.0%)
	Subtotal	74 (1.3%)	59 (1.0%)	43 (0.7%)	49 (0.8%)	33 (0.5%)	36 (0.6%)	31 (0.5%)	27 (0.4%)	20 (0.3%)	16 (0.3%)
GNY	Male	63 (1.1%)	55 (0.9%)	62 (1.1%)	50 (0.8%)	51 (0.8%)	64 (1.0%)	66 (1.0%)	65 (1.0%)	73 (1.1%)	63 (1.0%)
	Female	3 (0.1%)	8 (0.1%)	4 (0.1%)	3 (0.0%)	6 (0.1%)	5 (0.1%)	10 (0.1%)	8 (0.1%)	7 (0.1%)	5 (0.1%)
	Subtotal	66 (1.1%)	63 (1.1%)	66 (1.1%)	53 (0.9%)	57 (0.9%)	69 (1.1%)	76 (1.1%)	73 (1.2%)	80 (1.3%)	68 (1.1%)
Other	Male	13 (0.2%)	5 (0.1%)	7 (0.1%)	7 (0.1%)	8 (0.1%)	6 (0.1%)	4 (0.1%)	2 (0.0%)	2 (0.0%)	4 (0.1%)
	Female	1 (0.0%)	2 (0.0%)	2 (0.0%)	2 (0.0%)	1 (0.0%)	NA (-)	1 (0.0%)	NA (-)	NA (-)	1 (0.0%)
	Subtotal	14 (0.2%)	7 (0.1%)	9 (0.2%)	9 (0.1%)	9 (0.1%)	6 (0.1%)	5 (0.1%)	2 (0.0%)	2 (0.0%)	5 (0.1%)

## Year to Date Total Runners by Breeding

### Flat

Bred	Sex	2015	2016	2017	2018	2019	2020	2021	2022	2023	2024
GB	Male	767 (32.3%)	814 (32.0%)	921 (32.4%)	924 (33.3%)	934 (31.3%)	984 (32.8%)	997 (31.4%)	982 (32.4%)	905 (29.1%)	1,005 (31.9%)
	Female	453 (19.1%)	457 (18.0%)	466 (16.4%)	433 (15.6%)	500 (16.7%)	508 (16.9%)	588 (18.5%)	559 (18.5%)	585 (18.8%)	477 (15.1%)
	Subtotal	1,220 (51.3%)	1,271 (50.0%)	1,387 (48.8%)	1,357 (49.0%)	1,434 (48.0%)	1,492 (49.7%)	1,585 (50.0%)	1,541 (50.9%)	1,490 (47.9%)	1,482 (47.0%)
IRE	Male	692 (29.1%)	727 (28.6%)	858 (30.2%)	825 (29.8%)	916 (30.7%)	900 (30.0%)	992 (31.3%)	907 (30.0%)	1,019 (32.8%)	1,057 (33.5%)
	Female	243 (10.2%)	324 (12.7%)	354 (12.5%)	335 (12.1%)	342 (11.4%)	365 (12.2%)	332 (10.5%)	354 (11.7%)	389 (12.5%)	398 (12.6%)
	Subtotal	935 (39.4%)	1,051 (41.3%)	1,212 (42.7%)	1,160 (41.9%)	1,258 (42.1%)	1,265 (42.2%)	1,324 (41.7%)	1,261 (41.6%)	1,408 (45.3%)	1,455 (46.1%)
FR	Male	30 (1.3%)	49 (1.9%)	58 (2.0%)	58 (2.1%)	83 (2.8%)	77 (2.6%)	90 (2.8%)	93 (3.1%)	92 (3.0%)	98 (3.1%)
	Female	14 (0.6%)	16 (0.6%)	18 (0.6%)	32 (1.2%)	22 (0.7%)	30 (1.0%)	27 (0.9%)	21 (0.7%)	34 (1.1%)	36 (1.1%)
	Subtotal	44 (1.9%)	65 (2.6%)	76 (2.7%)	90 (3.2%)	105 (3.5%)	107 (3.6%)	117 (3.7%)	114 (3.8%)	126 (4.1%)	134 (4.2%)
USA	Male	127 (5.3%)	102 (4.0%)	109 (3.8%)	112 (4.0%)	116 (3.9%)	95 (3.2%)	87 (2.7%)	72 (2.4%)	53 (1.7%)	48 (1.5%)
	Female	27 (1.1%)	20 (0.8%)	25 (0.9%)	22 (0.8%)	44 (1.5%)	22 (0.7%)	21 (0.7%)	18 (0.6%)	14 (0.5%)	16 (0.5%)
	Subtotal	154 (6.5%)	122 (4.8%)	134 (4.7%)	134 (4.8%)	160 (5.4%)	117 (3.9%)	108 (3.4%)	90 (3.0%)	67 (2.2%)	64 (2.0%)
GNY	Male	5 (0.2%)	14 (0.6%)	14 (0.5%)	17 (0.6%)	11 (0.4%)	13 (0.4%)	21 (0.7%)	8 (0.3%)	10 (0.3%)	13 (0.4%)
	Female	1 (0.0%)	7 (0.3%)	5 (0.2%)	3 (0.1%)	3 (0.1%)	2 (0.1%)	6 (0.2%)	9 (0.3%)	3 (0.1%)	3 (0.1%)
	Subtotal	6 (0.3%)	21 (0.8%)	19 (0.7%)	20 (0.7%)	14 (0.5%)	15 (0.5%)	27 (0.9%)	17 (0.6%)	13 (0.4%)	16 (0.5%)
Other	Male	11 (0.5%)	11 (0.4%)	9 (0.3%)	9 (0.3%)	11 (0.4%)	3 (0.1%)	10 (0.3%)	2 (0.1%)	3 (0.1%)	2 (0.1%)
	Female	6 (0.3%)	2 (0.1%)	3 (0.1%)	1 (0.0%)	5 (0.2%)	0 (0.0%)	1 (0.0%)	3 (0.1%)	1 (0.0%)	2 (0.1%)
	Subtotal	17 (0.7%)	13 (0.5%)	12 (0.4%)	10 (0.4%)	16 (0.5%)	3 (0.1%)	11 (0.3%)	5 (0.2%)	4 (0.1%)	4 (0.1%)

Jump

Bred	Sex	2015	2016	2017	2018	2019	2020	2021	2022	2023	2024
GB	Male	736 (23.8%)	542 (23.0%)	738 (22.6%)	650 (22.0%)	700 (22.4%)	651 (19.6%)	463 (18.9%)	582 (17.5%)	511 (18.3%)	504 (18.1%)
	Female	315 (10.2%)	172 (7.3%)	264 (8.1%)	247 (8.4%)	275 (8.8%)	300 (9.0%)	232 (9.5%)	285 (8.6%)	236 (8.5%)	260 (9.4%)
	Subtotal	1,051 (34.0%)	714 (30.3%)	1,002 (30.7%)	897 (30.4%)	975 (31.3%)	951 (28.7%)	695 (28.4%)	867 (26.0%)	747 (26.8%)	764 (27.5%)
IRE	Male	1,368 (44.2%)	1,094 (46.4%)	1,528 (46.8%)	1,338 (45.4%)	1,356 (43.5%)	1,458 (44.0%)	1,040 (42.4%)	1,434 (43.1%)	1,185 (42.5%)	1,116 (40.2%)
	Female	195 (6.3%)	154 (6.5%)	226 (6.9%)	244 (8.3%)	284 (9.1%)	329 (9.9%)	232 (9.5%)	292 (8.8%)	238 (8.5%)	294 (10.6%)
	Subtotal	1,563 (50.5%)	1,248 (53.0%)	1,754 (53.7%)	1,582 (53.6%)	1,640 (52.6%)	1,787 (53.9%)	1,272 (51.9%)	1,726 (51.8%)	1,423 (51.1%)	1,410 (50.8%)
FR	Male	363 (11.7%)	319 (13.5%)	408 (12.5%)	381 (12.9%)	411 (13.2%)	456 (13.8%)	380 (15.5%)	580 (17.4%)	493 (17.7%)	497 (17.9%)
	Female	34 (1.1%)	16 (0.7%)	35 (1.1%)	37 (1.3%)	39 (1.3%)	62 (1.9%)	55 (2.2%)	92 (2.8%)	68 (2.4%)	71 (2.6%)
	Subtotal	397 (12.8%)	335 (14.2%)	443 (13.6%)	418 (14.2%)	450 (14.4%)	518 (15.6%)	435 (17.8%)	672 (20.2%)	561 (20.1%)	568 (20.5%)
USA	Male	38 (1.2%)	32 (1.4%)	30 (0.9%)	17 (0.6%)	12 (0.4%)	21 (0.6%)	13 (0.5%)	9 (0.3%)	10 (0.4%)	1 (0.0%)
	Female	2 (0.1%)	1 (0.0%)	2 (0.1%)	1 (0.0%)	1 (0.0%)	1 (0.0%)	1 (0.0%)	1 (0.0%)	0 (0.0%)	0 (0.0%)
	Subtotal	40 (1.3%)	33 (1.4%)	32 (1.0%)	18 (0.6%)	13 (0.4%)	22 (0.7%)	14 (0.6%)	10 (0.3%)	10 (0.4%)	1 (0.0%)
GNY	Male	37 (1.2%)	22 (0.9%)	29 (0.9%)	26 (0.9%)	34 (1.1%)	31 (0.9%)	32 (1.3%)	47 (1.4%)	43 (1.5%)	29 (1.0%)
	Female	3 (0.1%)	2 (0.1%)	3 (0.1%)	3 (0.1%)	4 (0.1%)	3 (0.1%)	2 (0.1%)	8 (0.2%)	3 (0.1%)	2 (0.1%)
	Subtotal	40 (1.3%)	24 (1.0%)	32 (1.0%)	29 (1.0%)	38 (1.2%)	34 (1.0%)	34 (1.4%)	55 (1.7%)	46 (1.7%)	31 (1.1%)
Other	Male	4 (0.1%)	2 (0.1%)	1 (0.0%)	3 (0.1%)	3 (0.1%)	3 (0.1%)	0 (0.0%)	1 (0.0%)	0 (0.0%)	2 (0.1%)
	Female	0 (0.0%)	0 (0.0%)	1 (0.0%)	2 (0.1%)	0 (0.0%)	0 (0.0%)	0 (0.0%)	0 (0.0%)	0 (0.0%)	1 (0.0%)
	Subtotal	4 (0.1%)	2 (0.1%)	2 (0.1%)	5 (0.2%)	3 (0.1%)	3 (0.1%)	NA (-)	1 (0.0%)	NA (-)	3 (0.1%)

Year to Date Individual Runners by Breeding

Flat

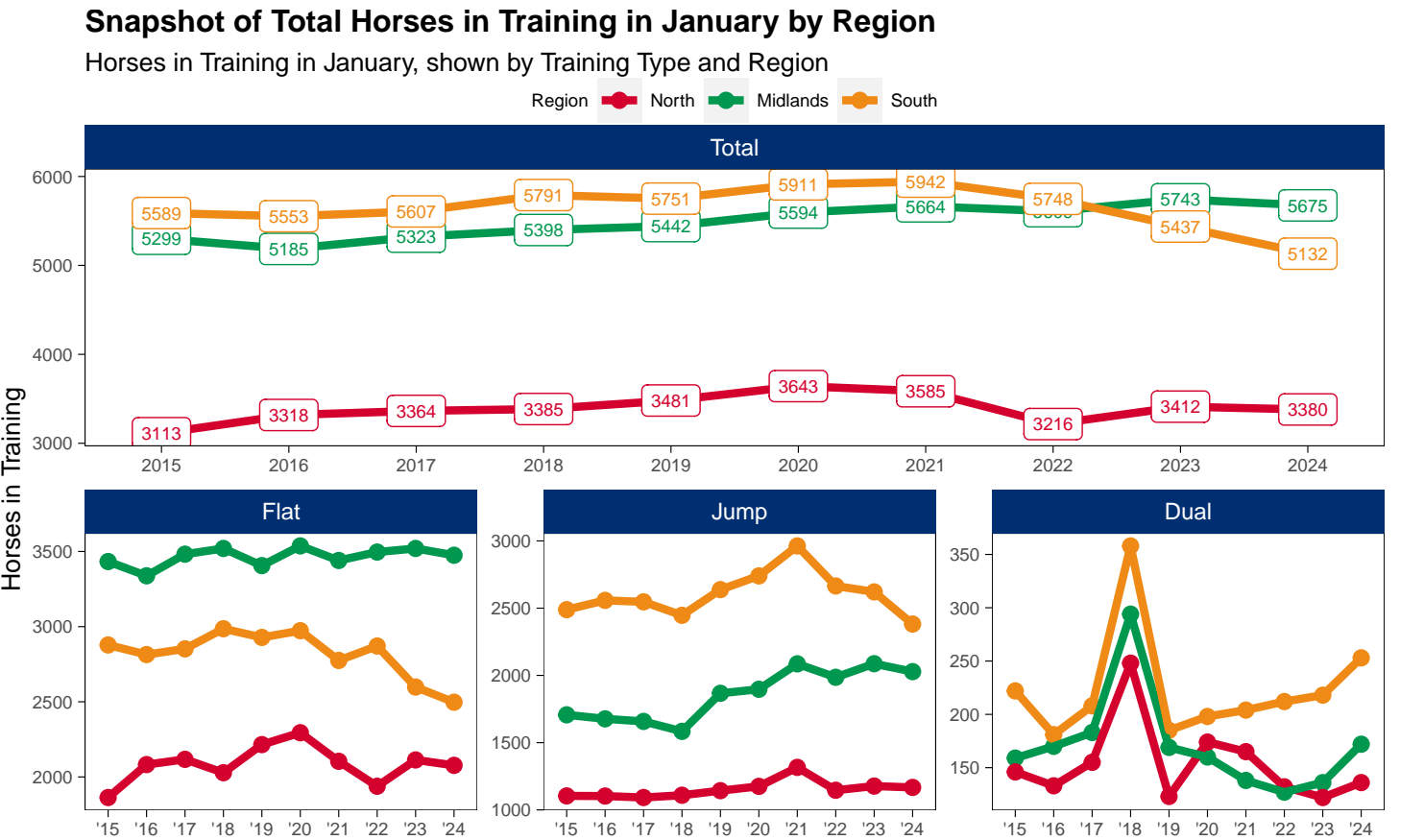
Bred	Sex	2015	2016	2017	2018	2019	2020	2021	2022	2023	2024
GB	Male	524 (32.2%)	547 (32.1%)	607 (32.0%)	607 (32.5%)	622 (31.0%)	650 (33.0%)	619 (30.6%)	631 (32.1%)	558 (28.4%)	663 (32.0%)
	Female	314 (19.3%)	311 (18.2%)	332 (17.5%)	299 (16.0%)	344 (17.2%)	341 (17.3%)	377 (18.7%)	361 (18.4%)	389 (19.8%)	325 (15.7%)
	Subtotal	838 (51.5%)	858 (50.3%)	939 (49.5%)	906 (48.6%)	966 (48.2%)	991 (50.3%)	996 (49.3%)	992 (50.5%)	947 (48.2%)	988 (47.8%)
IRE	Male	460 (28.3%)	467 (27.4%)	566 (29.9%)	549 (29.4%)	613 (30.6%)	571 (29.0%)	640 (31.7%)	586 (29.9%)	626 (31.9%)	666 (32.2%)
	Female	173 (10.6%)	227 (13.3%)	227 (12.0%)	239 (12.8%)	228 (11.4%)	253 (12.8%)	216 (10.7%)	237 (12.1%)	248 (12.6%)	267 (12.9%)
	Subtotal	633 (38.9%)	694 (40.7%)	793 (41.8%)	788 (42.2%)	841 (42.0%)	824 (41.8%)	856 (42.4%)	823 (41.9%)	874 (44.5%)	933 (45.1%)
FR	Male	23 (1.4%)	34 (2.0%)	37 (2.0%)	39 (2.1%)	57 (2.8%)	54 (2.7%)	58 (2.9%)	57 (2.9%)	66 (3.4%)	65 (3.1%)
	Female	10 (0.6%)	12 (0.7%)	14 (0.7%)	22 (1.2%)	18 (0.9%)	19 (1.0%)	22 (1.1%)	15 (0.8%)	23 (1.2%)	24 (1.2%)
	Subtotal	33 (2.0%)	46 (2.7%)	51 (2.7%)	61 (3.3%)	75 (3.7%)	73 (3.7%)	80 (4.0%)	72 (3.7%)	89 (4.5%)	89 (4.3%)
USA	Male	84 (5.2%)	69 (4.0%)	71 (3.7%)	73 (3.9%)	71 (3.5%)	54 (2.7%)	53 (2.6%)	46 (2.3%)	34 (1.7%)	33 (1.6%)
	Female	22 (1.4%)	13 (0.8%)	16 (0.8%)	16 (0.9%)	28 (1.4%)	16 (0.8%)	13 (0.6%)	11 (0.6%)	9 (0.5%)	10 (0.5%)
	Subtotal	106 (6.5%)	82 (4.8%)	87 (4.6%)	89 (4.8%)	99 (4.9%)	70 (3.6%)	66 (3.3%)	57 (2.9%)	43 (2.2%)	43 (2.1%)
GNY	Male	4 (0.2%)	11 (0.6%)	13 (0.7%)	13 (0.7%)	10 (0.5%)	8 (0.4%)	13 (0.6%)	8 (0.4%)	6 (0.3%)	10 (0.5%)
	Female	1 (0.1%)	5 (0.3%)	3 (0.2%)	2 (0.1%)	3 (0.1%)	2 (0.1%)	4 (0.2%)	9 (0.5%)	3 (0.2%)	3 (0.1%)
	Subtotal	5 (0.3%)	16 (0.9%)	16 (0.8%)	15 (0.8%)	13 (0.6%)	10 (0.5%)	17 (0.8%)	17 (0.9%)	9 (0.5%)	13 (0.6%)
Other	Male	8 (0.5%)	7 (0.4%)	7 (0.4%)	6 (0.3%)	7 (0.3%)	3 (0.2%)	5 (0.2%)	1 (0.1%)	2 (0.1%)	1 (0.0%)
	Female	5 (0.3%)	2 (0.1%)	3 (0.2%)	1 (0.1%)	3 (0.1%)	0 (0.0%)	1 (0.0%)	1 (0.1%)	1 (0.1%)	2 (0.1%)
	Subtotal	13 (0.8%)	9 (0.5%)	10 (0.5%)	7 (0.4%)	10 (0.5%)	3 (0.2%)	6 (0.3%)	2 (0.1%)	3 (0.2%)	3 (0.1%)

Jump

Bred	Sex	2015	2016	2017	2018	2019	2020	2021	2022	2023	2024
GB	Male	596 (23.4%)	471 (23.2%)	605 (22.3%)	536 (21.5%)	590 (22.0%)	554 (19.6%)	421 (18.7%)	505 (17.7%)	446 (18.3%)	441 (17.8%)
	Female	274 (10.8%)	156 (7.7%)	221 (8.1%)	216 (8.7%)	242 (9.0%)	258 (9.1%)	214 (9.5%)	249 (8.7%)	214 (8.8%)	239 (9.6%)
	Subtotal	870 (34.2%)	627 (30.8%)	826 (30.4%)	752 (30.1%)	832 (31.1%)	812 (28.7%)	635 (28.3%)	754 (26.5%)	660 (27.1%)	680 (27.4%)
IRE	Male	1,128 (44.3%)	937 (46.1%)	1,251 (46.1%)	1,135 (45.5%)	1,173 (43.8%)	1,236 (43.8%)	957 (42.6%)	1,226 (43.1%)	1,019 (41.8%)	989 (39.9%)
	Female	166 (6.5%)	135 (6.6%)	198 (7.3%)	209 (8.4%)	239 (8.9%)	289 (10.2%)	213 (9.5%)	243 (8.5%)	218 (8.9%)	262 (10.6%)
	Subtotal	1,294 (50.8%)	1,072 (52.7%)	1,449 (53.4%)	1,344 (53.9%)	1,412 (52.7%)	1,525 (54.0%)	1,170 (52.1%)	1,469 (51.6%)	1,237 (50.8%)	1,251 (50.5%)
FR	Male	292 (11.5%)	274 (13.5%)	352 (13.0%)	324 (13.0%)	352 (13.1%)	388 (13.7%)	347 (15.4%)	494 (17.4%)	432 (17.7%)	453 (18.3%)
	Female	27 (1.1%)	15 (0.7%)	31 (1.1%)	34 (1.4%)	37 (1.4%)	52 (1.8%)	53 (2.4%)	74 (2.6%)	59 (2.4%)	64 (2.6%)
	Subtotal	319 (12.5%)	289 (14.2%)	383 (14.1%)	358 (14.3%)	389 (14.5%)	440 (15.6%)	400 (17.8%)	568 (20.0%)	491 (20.1%)	517 (20.9%)
USA	Male	28 (1.1%)	21 (1.0%)	26 (1.0%)	15 (0.6%)	11 (0.4%)	15 (0.5%)	12 (0.5%)	9 (0.3%)	8 (0.3%)	1 (0.0%)
	Female	1 (0.0%)	1 (0.0%)	1 (0.0%)	1 (0.0%)	1 (0.0%)	1 (0.0%)	1 (0.0%)	1 (0.0%)	0 (0.0%)	0 (0.0%)
	Subtotal	29 (1.1%)	22 (1.1%)	27 (1.0%)	16 (0.6%)	12 (0.4%)	16 (0.6%)	13 (0.6%)	10 (0.4%)	8 (0.3%)	1 (0.0%)
GNY	Male	28 (1.1%)	19 (0.9%)	24 (0.9%)	19 (0.8%)	26 (1.0%)	26 (0.9%)	27 (1.2%)	39 (1.4%)	38 (1.6%)	25 (1.0%)
	Female	2 (0.1%)	2 (0.1%)	2 (0.1%)	2 (0.1%)	4 (0.1%)	3 (0.1%)	2 (0.1%)	6 (0.2%)	3 (0.1%)	2 (0.1%)
	Subtotal	30 (1.2%)	21 (1.0%)	26 (1.0%)	21 (0.8%)	30 (1.1%)	29 (1.0%)	29 (1.3%)	45 (1.6%)	41 (1.7%)	27 (1.1%)
Other	Male	4 (0.2%)	2 (0.1%)	1 (0.0%)	2 (0.1%)	3 (0.1%)	3 (0.1%)	0 (0.0%)	1 (0.0%)	0 (0.0%)	2 (0.1%)
	Female	0 (0.0%)	0 (0.0%)	1 (0.0%)	2 (0.1%)	0 (0.0%)	0 (0.0%)	0 (0.0%)	0 (0.0%)	0 (0.0%)	1 (0.0%)
	Subtotal	4 (0.2%)	2 (0.1%)	2 (0.1%)	4 (0.2%)	3 (0.1%)	3 (0.1%)	NA (-)	1 (0.0%)	NA (-)	3 (0.1%)

Horse Population by Location

January 2024 Horses in Training Snapshot by Region versus Previous Years



North

AgeCat	2015	2016	2017	2018	2019	2020	2021	2022	2023	2024	vs. Last Year	vs. Pre-Covid
Flat Horses in Training												
2YO	462	558	518	516	567	569	451	447	450	360	-90 / -20.0%	-207 / -36.5%
3YO	516	588	609	564	619	713	649	592	617	633	+16 / +2.6%	+14 / +2.3%
4YO	301	349	373	346	381	368	345	359	375	384	+9 / +2.4%	+3 / +0.8%
5YO+	584	587	617	602	648	644	659	540	671	700	+29 / +4.3%	+52 / +8.0%
Subtotal	1863	2082	2117	2028	2215	2294	2104	1938	2113	2077	-36 / -1.7%	-138 / -6.2%
Jump Horses in Training												
3YO	5	4	2	4	5	5	0	3	2	0	-2 / -100.0%	-5 / -100.0%
4-5YO	249	263	287	237	272	279	255	229	275	256	-19 / -6.9%	-16 / -5.9%
6-7YO	404	380	339	411	408	417	472	432	445	443	-2 / -0.4%	+35 / +8.6%
8YO+	446	456	464	457	458	474	589	482	455	468	+13 / +2.9%	+10 / +2.2%
Subtotal	1104	1103	1092	1109	1143	1175	1316	1146	1177	1167	-10 / -0.8%	+24 / +2.1%
Dual Horses in Training												
3YO	9	12	12	9	5	15	11	10	10	4	-6 / -60.0%	-1 / -20.0%
4YO	38	36	33	62	31	44	37	22	29	49	+20 / +69.0%	+18 / +58.1%
5YO+	99	85	110	177	87	115	117	100	83	83	0 / 0.0%	-4 / -4.6%
Subtotal	146	133	155	248	123	174	165	132	122	136	+14 / +11.5%	+13 / +10.6%
Total Horses in Training												
	3113	3318	3364	3385	3481	3643	3585	3216	3412	3380	-32 / -0.9%	-101 / -2.9%

'vs. Pre-Covid' is comparison between 2024 and 2019

## Midlands

AgeCat	2015	2016	2017	2018	2019	2020	2021	2022	2023	2024	vs. Last Year	vs. Pre-Covid
<b>Flat Horses in Training</b>												
2YO	1039	853	888	798	738	751	729	699	661	635	-26 / -3.9%	-103 / -14.0%
3YO	1224	1261	1309	1400	1328	1369	1292	1356	1344	1332	-12 / -0.9%	+4 / +0.3%
4YO	491	519	573	583	595	623	667	678	698	666	-32 / -4.6%	+71 / +11.9%
5YO+	679	705	712	739	745	794	752	763	817	842	+25 / +3.1%	+97 / +13.0%
<b>Subtotal</b>	<b>3433</b>	<b>3338</b>	<b>3482</b>	<b>3520</b>	<b>3406</b>	<b>3537</b>	<b>3440</b>	<b>3496</b>	<b>3520</b>	<b>3475</b>	<b>-45 / -1.3%</b>	<b>+69 / +2.0%</b>
<b>Jump Horses in Training</b>												
3YO	5	8	6	11	5	4	7	7	6	6	0 / 0.0%	+1 / +20.0%
4-5YO	455	474	474	432	540	596	573	534	618	552	-66 / -10.7%	+12 / +2.2%
6-7YO	686	615	592	599	691	703	792	821	803	825	+22 / +2.7%	+134 / +19.4%
8YO+	561	580	586	542	631	594	714	624	660	645	-15 / -2.3%	+14 / +2.2%
<b>Subtotal</b>	<b>1707</b>	<b>1677</b>	<b>1658</b>	<b>1584</b>	<b>1867</b>	<b>1897</b>	<b>2086</b>	<b>1986</b>	<b>2087</b>	<b>2028</b>	<b>-59 / -2.8%</b>	<b>+161 / +8.6%</b>
<b>Dual Horses in Training</b>												
3YO	13	15	10	12	4	7	5	6	10	3	-7 / -70.0%	-1 / -25.0%
4YO	37	46	50	74	58	43	46	44	38	52	+14 / +36.8%	-6 / -10.3%
5YO+	109	109	123	208	107	110	87	77	88	117	+29 / +33.0%	+10 / +9.3%
<b>Subtotal</b>	<b>159</b>	<b>170</b>	<b>183</b>	<b>294</b>	<b>169</b>	<b>160</b>	<b>138</b>	<b>127</b>	<b>136</b>	<b>172</b>	<b>+36 / +26.5%</b>	<b>+3 / +1.8%</b>
<b>Total Horses in Training</b>												
	<b>5299</b>	<b>5185</b>	<b>5323</b>	<b>5398</b>	<b>5442</b>	<b>5594</b>	<b>5664</b>	<b>5609</b>	<b>5743</b>	<b>5675</b>	<b>-68 / -1.2%</b>	<b>+233 / +4.3%</b>

'vs. Pre-Covid' is comparison between 2024 and 2019

## South

AgeCat	2015	2016	2017	2018	2019	2020	2021	2022	2023	2024	vs. Last Year	vs. Pre-Covid
<b>Flat Horses in Training</b>												
2YO	958	878	866	823	799	797	747	781	607	626	+19 / +3.1%	-173 / -21.7%
3YO	914	922	961	1073	1030	1055	957	966	968	907	-61 / -6.3%	-123 / -11.9%
4YO	442	438	421	457	506	501	464	511	435	409	-26 / -6.0%	-97 / -19.2%
5YO+	564	576	604	633	593	620	607	613	588	555	-33 / -5.6%	-38 / -6.4%
<b>Subtotal</b>	<b>2878</b>	<b>2814</b>	<b>2852</b>	<b>2986</b>	<b>2928</b>	<b>2973</b>	<b>2775</b>	<b>2871</b>	<b>2598</b>	<b>2497</b>	<b>-101 / -3.9%</b>	<b>-431 / -14.7%</b>
<b>Jump Horses in Training</b>												
3YO	8	9	7	12	7	3	15	6	7	14	+7 / +100.0%	+7 / +100.0%
4-5YO	781	824	798	734	786	831	774	818	855	730	-125 / -14.6%	-56 / -7.1%
6-7YO	939	928	913	915	1020	1051	1134	965	973	965	-8 / -0.8%	-55 / -5.4%
8YO+	761	797	829	786	825	855	1040	876	786	673	-113 / -14.4%	-152 / -18.4%
<b>Subtotal</b>	<b>2489</b>	<b>2558</b>	<b>2547</b>	<b>2447</b>	<b>2638</b>	<b>2740</b>	<b>2963</b>	<b>2665</b>	<b>2621</b>	<b>2382</b>	<b>-239 / -9.1%</b>	<b>-256 / -9.7%</b>
<b>Dual Horses in Training</b>												
3YO	10	7	8	7	6	14	10	13	11	7	-4 / -36.4%	+1 / +16.7%
4YO	49	36	52	93	63	65	63	66	70	93	+23 / +32.9%	+30 / +47.6%
5YO+	163	138	148	258	116	119	131	133	137	153	+16 / +11.7%	+37 / +31.9%
<b>Subtotal</b>	<b>222</b>	<b>181</b>	<b>208</b>	<b>358</b>	<b>185</b>	<b>198</b>	<b>204</b>	<b>212</b>	<b>218</b>	<b>253</b>	<b>+35 / +16.1%</b>	<b>+68 / +36.8%</b>
<b>Total Horses in Training</b>												
	<b>5589</b>	<b>5553</b>	<b>5607</b>	<b>5791</b>	<b>5751</b>	<b>5911</b>	<b>5942</b>	<b>5748</b>	<b>5437</b>	<b>5132</b>	<b>-305 / -5.6%</b>	<b>-619 / -10.8%</b>

'vs. Pre-Covid' is comparison between 2024 and 2019

## January 2024 Horses in Training Snapshot by Country versus Previous Years

Type	2015	2016	2017	2018	2019	2020	2021	2022	2023	2024	vs. Last Year	vs. Pre-Covid
<b>England</b>												
Flat	7927	7969	8134	8229	8275	8488	8059	8049	7938	7759	-179 / -2.3%	-516 / -6.2%
Jump	4635	4656	4577	4470	4943	5066	5568	5085	5172	4900	-272 / -5.3%	-43 / -0.9%
Dual	484	433	478	798	424	489	453	431	445	508	+63 / +14.2%	+84 / +19.8%
<b>Overall</b>	<b>13046</b>	<b>13058</b>	<b>13189</b>	<b>13497</b>	<b>13642</b>	<b>14043</b>	<b>14080</b>	<b>13565</b>	<b>13555</b>	<b>13167</b>	<b>-388 / -2.9%</b>	<b>-475 / -3.5%</b>
<b>Scotland</b>												
Flat	109	124	165	164	138	153	145	142	182	180	-2 / -1.1%	+42 / +30.4%
Jump	303	293	315	331	349	355	407	365	391	375	-16 / -4.1%	+26 / +7.4%
Dual	15	24	33	52	30	33	32	25	19	28	+9 / +47.4%	-2 / -6.7%
<b>Overall</b>	<b>427</b>	<b>441</b>	<b>513</b>	<b>547</b>	<b>517</b>	<b>541</b>	<b>584</b>	<b>532</b>	<b>592</b>	<b>583</b>	<b>-9 / -1.5%</b>	<b>+66 / +12.8%</b>
<b>Wales</b>												
Flat	138	141	152	141	136	163	115	114	111	110	-1 / -0.9%	-26 / -19.1%
Jump	362	389	405	339	356	391	390	347	322	302	-20 / -6.2%	-54 / -15.2%
Dual	28	27	35	50	23	10	22	15	12	25	+13 / +108.3%	+2 / +8.7%
<b>Overall</b>	<b>528</b>	<b>557</b>	<b>592</b>	<b>530</b>	<b>515</b>	<b>564</b>	<b>527</b>	<b>476</b>	<b>445</b>	<b>437</b>	<b>-8 / -1.8%</b>	<b>-78 / -15.1%</b>

'vs. Pre-Covid' is comparison between 2024 and 2019

## January 2024 Horses in Training Snapshot by Training Centre versus Previous Years

Type	2015	2016	2017	2018	2019	2020	2021	2022	2023	2024	vs. Last Year	vs. Pre-Covid
<b>Cheltenham (GL54)</b>												
Flat	9	15	12	16	8	10	10	17	11	10	-1 / -9.1%	+2 / +25.0%
Jump	377	423	433	434	446	504	566	528	534	493	-41 / -7.7%	+47 / +10.5%
Dual	19	21	23	79	29	17	13	13	10	14	+4 / +40.0%	-15 / -51.7%
<b>Overall</b>	<b>405</b>	<b>459</b>	<b>468</b>	<b>529</b>	<b>483</b>	<b>531</b>	<b>589</b>	<b>558</b>	<b>555</b>	<b>517</b>	<b>-38 / -6.8%</b>	<b>+34 / +7.0%</b>
<b>Lambourn (RG17)</b>												
Flat	729	798	853	944	878	873	778	843	756	747	-9 / -1.2%	-131 / -14.9%
Jump	349	353	344	334	339	361	370	310	315	262	-53 / -16.8%	-77 / -22.7%
Dual	20	25	21	39	18	25	27	27	43	38	-5 / -11.6%	+20 / +111.1%
<b>Overall</b>	<b>1098</b>	<b>1176</b>	<b>1218</b>	<b>1317</b>	<b>1235</b>	<b>1259</b>	<b>1175</b>	<b>1180</b>	<b>1114</b>	<b>1047</b>	<b>-67 / -6.0%</b>	<b>-188 / -15.2%</b>
<b>Malton (YO17)</b>												
Flat	493	536	562	509	615	624	498	519	564	563	-1 / -0.2%	-52 / -8.5%
Jump	141	127	133	142	120	112	113	94	91	85	-6 / -6.6%	-35 / -29.2%
Dual	40	26	28	37	20	32	40	34	26	21	-5 / -19.2%	+1 / +5.0%
<b>Overall</b>	<b>674</b>	<b>689</b>	<b>723</b>	<b>688</b>	<b>755</b>	<b>768</b>	<b>651</b>	<b>647</b>	<b>681</b>	<b>669</b>	<b>-12 / -1.8%</b>	<b>-86 / -11.4%</b>
<b>Marlborough (SN8)</b>												
Flat	561	496	461	502	475	478	437	422	373	412	+39 / +10.5%	-63 / -13.3%
Jump	75	62	66	79	72	74	76	76	75	74	-1 / -1.3%	+2 / +2.8%
Dual	4	5	3	1	2	2	0	2	0	4	+4 / +Inf	+2 / +100.0%
<b>Overall</b>	<b>640</b>	<b>563</b>	<b>530</b>	<b>582</b>	<b>549</b>	<b>554</b>	<b>513</b>	<b>500</b>	<b>448</b>	<b>490</b>	<b>+42 / +9.4%</b>	<b>-59 / -10.7%</b>
<b>Middleham (DL8)</b>												
Flat	381	481	460	441	524	566	533	409	480	486	+6 / +1.2%	-38 / -7.3%
Jump	56	80	82	71	93	107	127	112	126	115	-11 / -8.7%	+22 / +23.7%
Dual	22	15	21	39	13	22	32	21	22	13	-9 / -40.9%	0 / 0.0%
<b>Overall</b>	<b>459</b>	<b>576</b>	<b>563</b>	<b>551</b>	<b>630</b>	<b>695</b>	<b>692</b>	<b>542</b>	<b>628</b>	<b>614</b>	<b>-14 / -2.2%</b>	<b>-16 / -2.5%</b>
<b>Newbury (RG20)</b>												
Flat	415	351	351	362	412	394	394	447	385	370	-15 / -3.9%	-42 / -10.2%
Jump	32	22	15	16	24	11	15	11	36	59	+23 / +63.9%	+35 / +145.8%
Dual	5	3	7	16	7	9	7	6	3	6	+3 / +100.0%	-1 / -14.3%
<b>Overall</b>	<b>452</b>	<b>376</b>	<b>373</b>	<b>394</b>	<b>443</b>	<b>414</b>	<b>416</b>	<b>464</b>	<b>424</b>	<b>435</b>	<b>+11 / +2.6%</b>	<b>-8 / -1.8%</b>
<b>Newmarket (CB8)</b>												
Flat	2566	2361	2500	2528	2383	2514	2447	2464	2450	2445	-5 / -0.2%	+62 / +2.6%
Jump	103	97	56	58	70	62	78	67	63	73	+10 / +15.9%	+3 / +4.3%
Dual	28	27	35	36	19	31	26	24	33	46	+13 / +39.4%	+27 / +142.1%
<b>Overall</b>	<b>2697</b>	<b>2485</b>	<b>2591</b>	<b>2622</b>	<b>2472</b>	<b>2607</b>	<b>2551</b>	<b>2555</b>	<b>2546</b>	<b>2564</b>	<b>+18 / +0.7%</b>	<b>+92 / +3.7%</b>

'vs. Pre-Covid' is comparison between 2024 and 2019