

Horse Population Report

Updated on 31 December 2023



Introduction

Welcome to the latest update on the Racehorse Population from the British Horseracing Authority.

The aim of this document is to give stakeholders and the wider Public an insight into the current state of the Horse Population in Great Britain. It is hoped that this transparency will ensure that all decision makers have access to the key data required to help British Racing deliver a Competitive and Compelling product to stakeholders, racegoers and the wider public.

If you have any questions regarding the content of this report or suggestions for how it could be improved further, please contact Joe Yates – jyates@britishhorseracing.com

Definitions

This report uses the Horses in Training returns from the Weatherby's Racing Administration System, this is completed by trainers and should be updated whenever a horse enters or leaves training in their care as part of the conditions of their licence.

Horses in Training

Unless otherwise stated, snapshots of Horses in Training will be from the 15th day of the month in question and year to date figures will be up to and including the date titled at the front of the report.

Horses' ratings will be taken from the most recently published ratings by the BHA Handicapping Team, which is currently at 7am each Tuesday morning. For example, if looking at the Horses in a particular rating band for July 2011, the horses in training number will be from Friday 15th July 2011 and ratings, where possible, will be assigned to each horse from the ratings published by the BHA Handicappers on Tuesday 12th July 2011.

The Gender of a horse will be taken from the reporting date in question, regardless of whether this has since changed.

In the case of YTD reporting, where a horse's gender or training type has changed in the year-to-date period, the most recent is taken.

This report does not count any horses that are temporarily racing abroad for GB Trainers at the time of reporting.

Yearlings are not included in total counts of flat and/or dual horses but will be sometimes shown separately for information purposes.

Yearlings and two-year-olds are not included in total counts of jump horses or counts of jump horses that include dual horses but will be sometimes shown separately for information purposes.

Yearlings, two-year-olds and three-year-olds are not included in total counts of Hunter Chasers but will be sometimes shown separately for information purposes.

Yearlings and two-year-olds in training that are recorded as dual horses have been re-coded as flat horses.

Hunter Chasers are not included in any counts of Jump Horses or Total figures but will be sometimes shown separately for information purposes.

Horses' training locations are defined by the trainers' primary training location. Training regions are defined the same as regions for the Fixture List; 'North' is north of latitude 53.42911, 'South' is south of latitude 51.88002 and 'Midlands' is anywhere in between. Training centres are defined by postcodes and surrounding areas.

Runners

Unless otherwise specified, Total Runners and Individual Runners metrics only counts runners that ran in GB races including any voided races. Withdrawn horses are not included.

Hunter Chases are not included in this section but will be sometimes shown separately for information purposes.

Total Runners is a count of all runners in races, whilst individual runners only counts each individual horse once.

Monthly Horses in Training

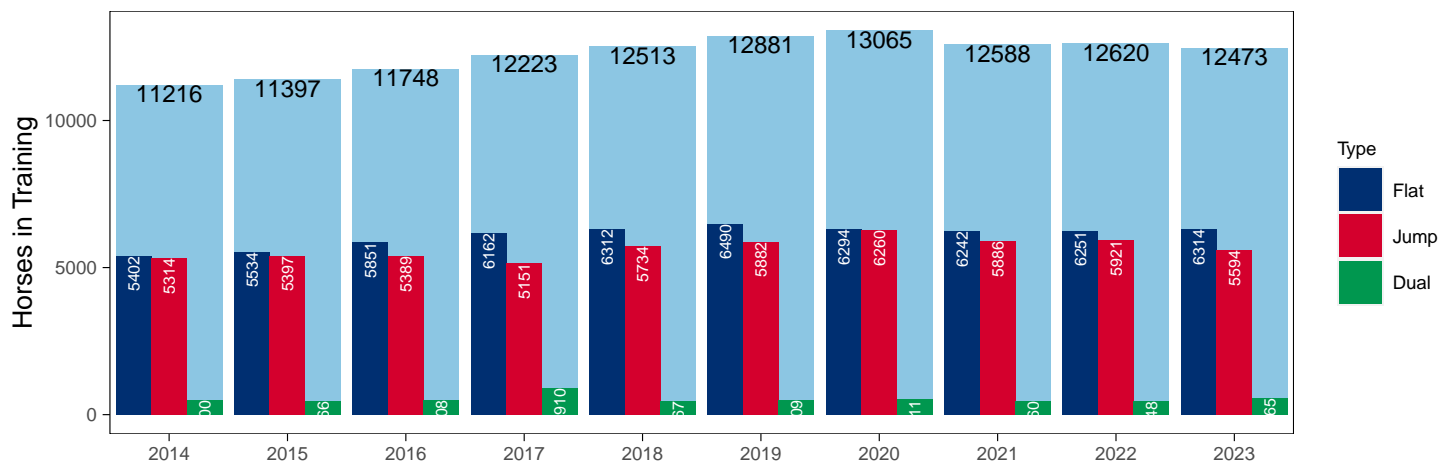
December 2023 Horses in Training Snapshot versus Previous Years

Type	2014	2015	2016	2017	2018	2019	2020	2021	2022	2023	vs. Last Year	vs. Pre-Covid
Flat	5402	5534	5851	6162	6312	6490	6294	6242	6251	6314	+63 / +1.0%	-176 / -2.7%
Jump	5314	5397	5389	5151	5734	5882	6260	5886	5921	5594	-327 / -5.5%	-288 / -4.9%
Dual	500	466	508	910	467	509	511	460	448	565	+117 / +26.1%	+56 / +11.0%
Hunter	705	689	597	642	718	607	799	606	524	1131	+607 / +115.8%	+524 / +86.3%
Total	11216	11397	11748	12223	12513	12881	13065	12588	12620	12473	-147 / -1.2%	-408 / -3.2%

'vs. Pre-Covid' is comparison between 2023 and 2019

Snapshot of Total Horses in Training in December

Horses in Training in December, shown by Training Type



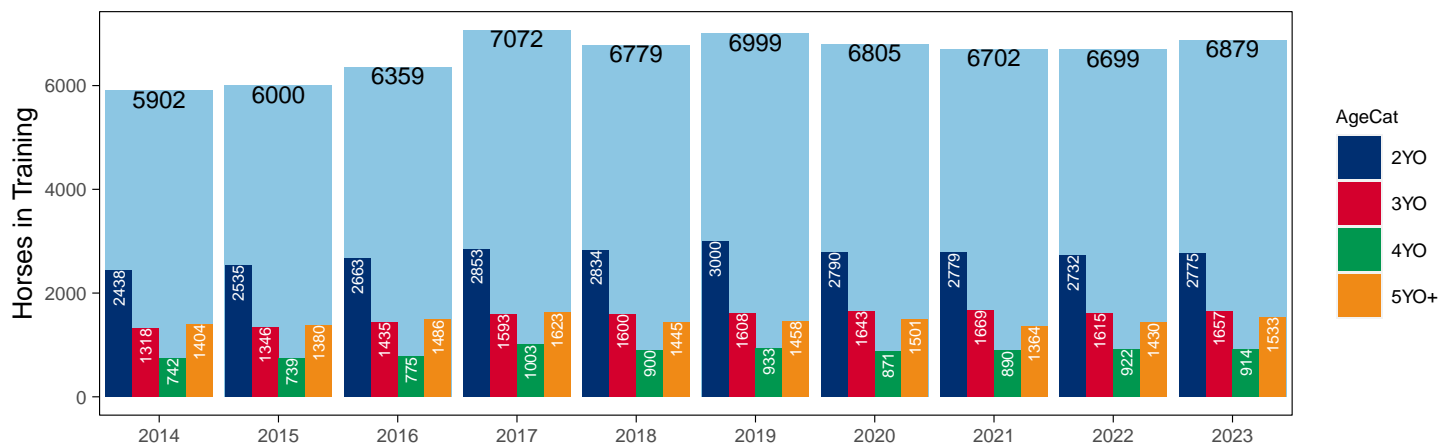
Flat (including Dual)

AgeCat	2014	2015	2016	2017	2018	2019	2020	2021	2022	2023	vs. Last Year	vs. Pre-Covid
2YO	2438	2535	2663	2853	2834	3000	2790	2779	2732	2775	+43 / +1.6%	-225 / -7.5%
3YO	1318	1346	1435	1593	1600	1608	1643	1669	1615	1657	+42 / +2.6%	+49 / +3.0%
4YO	742	739	775	1003	900	933	871	890	922	914	-8 / -0.9%	-19 / -2.0%
5YO+	1404	1380	1486	1623	1445	1458	1501	1364	1430	1533	+103 / +7.2%	+75 / +5.1%
Total	5902	6000	6359	7072	6779	6999	6805	6702	6699	6879	+180 / +2.7%	-120 / -1.7%

'vs. Pre-Covid' is comparison between 2023 and 2019

Snapshot of Flat Horses in Training in December

Flat Horses in Training in December, shown by Age



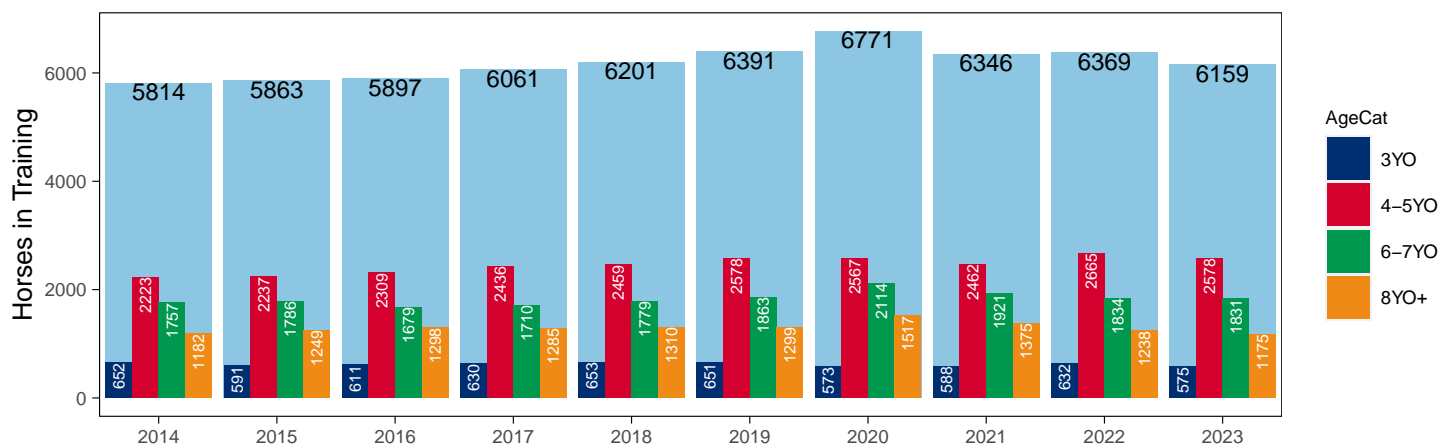
Jump (including Dual)

AgeCat	2014	2015	2016	2017	2018	2019	2020	2021	2022	2023	vs. Last Year	vs. Pre-Covid
3YO	652	591	611	630	653	651	573	588	632	575	-57 / -9.0%	-76 / -11.7%
4-5YO	2223	2237	2309	2436	2459	2578	2567	2462	2665	2578	-87 / -3.3%	0 / 0.0%
6-7YO	1757	1786	1679	1710	1779	1863	2114	1921	1834	1831	-3 / -0.2%	-32 / -1.7%
8YO+	1182	1249	1298	1285	1310	1299	1517	1375	1238	1175	-63 / -5.1%	-124 / -9.5%
Total	5814	5863	5897	6061	6201	6391	6771	6346	6369	6159	-210 / -3.3%	-232 / -3.6%

'vs. Pre-Covid' is comparison between 2023 and 2019

Snapshot of Jump Horses in Training in December

Jump Horses in Training in December, shown by Age



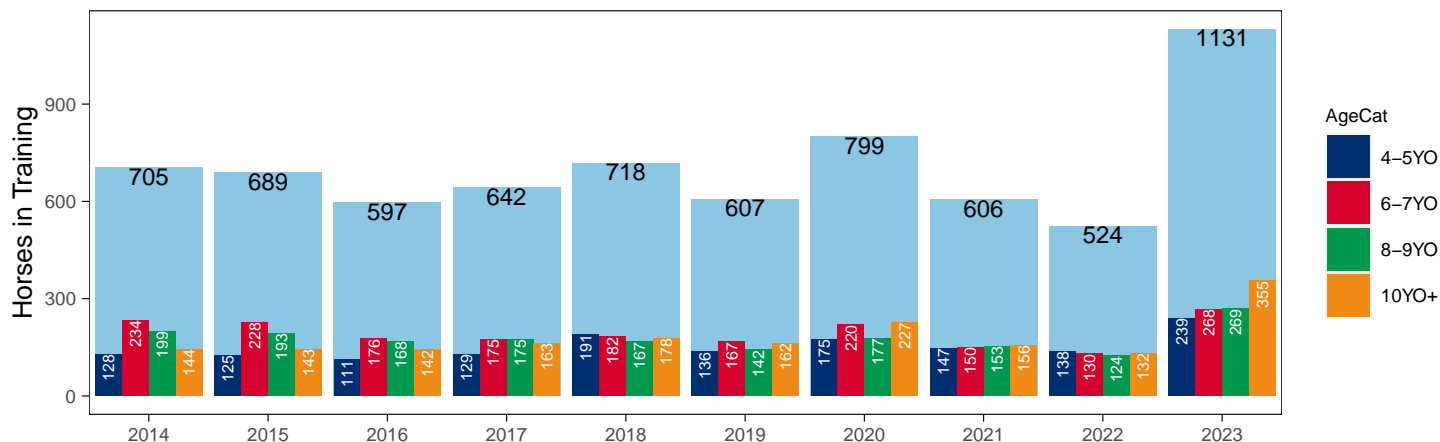
Hunter Chasers

AgeCat	2014	2015	2016	2017	2018	2019	2020	2021	2022	2023	vs. Last Year	vs. Pre-Covid
4-5YO	128	125	111	129	191	136	175	147	138	239	+101 / +73.2%	+103 / +75.7%
6-7YO	234	228	176	175	182	167	220	150	130	268	+138 / +106.2%	+101 / +60.5%
8-9YO	199	193	168	175	167	142	177	153	124	269	+145 / +116.9%	+127 / +89.4%
10YO+	144	143	142	163	178	162	227	156	132	355	+223 / +168.9%	+193 / +119.1%
Total	705	689	597	642	718	607	799	606	524	1131	+607 / +115.8%	+524 / +86.3%

'vs. Pre-Covid' is comparison between 2023 and 2019

Snapshot of Hunter Chasers in Training in December

Hunter Chasers in Training in December, shown by Age



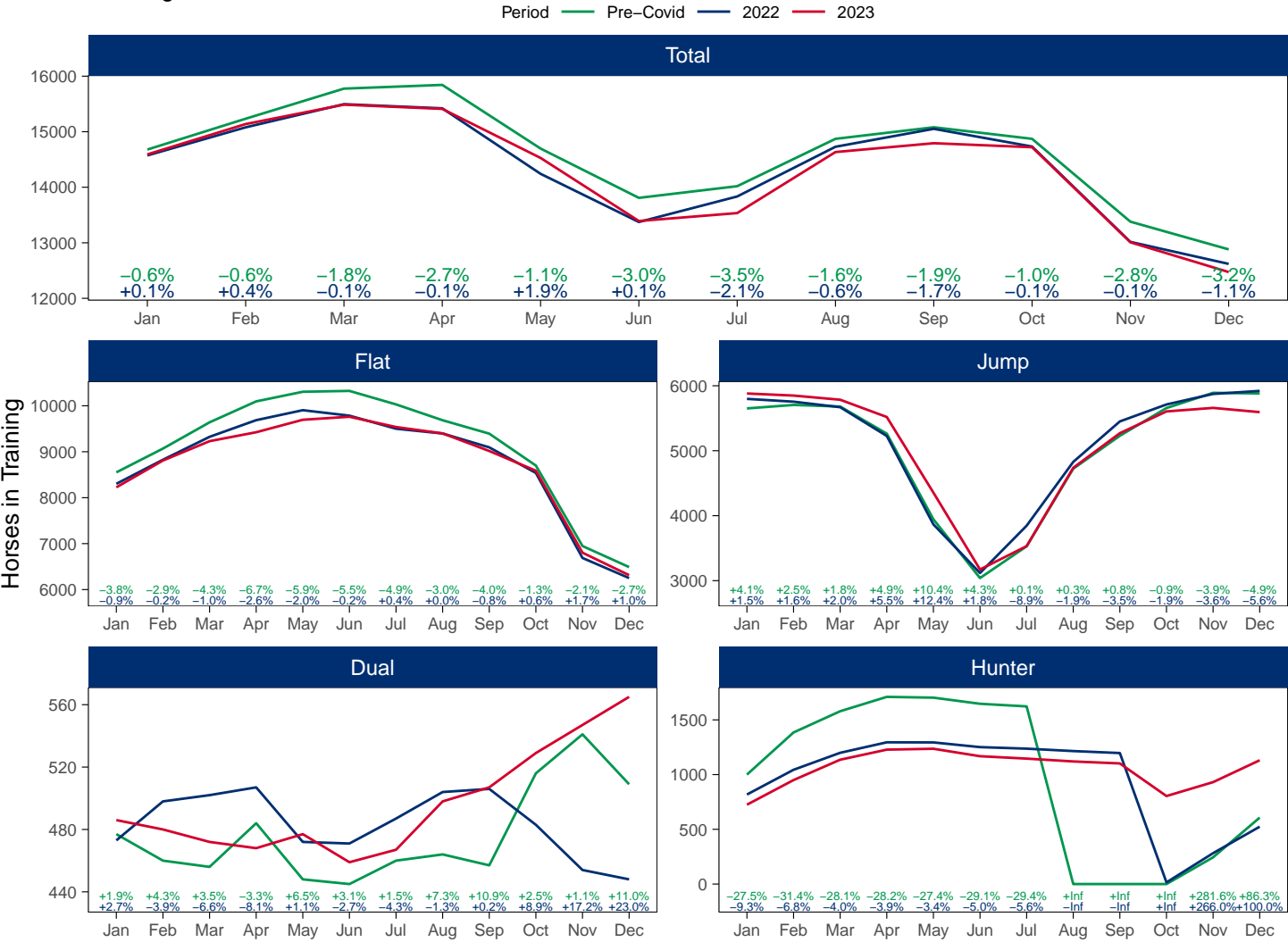
2023 Horses in Training versus Previous Years

Type	Period	Jan	Feb	Mar	Apr	May	Jun	Jul	Aug	Sep	Oct	Nov	Dec
Flat	2023	8225	8809	9230	9424	9696	9761	9537	9399	9016	8587	6803	6314
	2022	8302	8826	9324	9687	9904	9785	9501	9397	9095	8538	6688	6251
	Pre-Covid	8551	9069	9640	10096	10305	10324	10030	9685	9393	8699	6948	6490
Jump	2023	5881	5849	5785	5519	4355	3172	3531	4737	5270	5605	5659	5594
	2022	5798	5755	5670	5227	3866	3118	3846	4828	5451	5712	5874	5921
	Pre-Covid	5651	5705	5680	5263	3944	3040	3529	4723	5230	5657	5891	5882
Dual	2023	486	480	472	468	477	459	467	498	507	529	547	565
	2022	473	498	502	507	472	471	487	504	506	483	454	448
	Pre-Covid	477	460	456	484	448	445	460	464	457	516	541	509
Hunter	2023	725	950	1136	1228	1236	1168	1146	1120	1102	804	931	1131
	2022	818	1044	1199	1295	1294	1251	1237	1215	1197	15	282	524
	Pre-Covid	1000	1385	1579	1710	1703	1647	1623	0	0	0	244	607
Total	2023	14592	15138	15487	15411	14528	13392	13535	14634	14793	14721	13009	12473
	2022	14573	15079	15496	15421	14242	13374	13834	14729	15052	14733	13016	12620
	Pre-Covid	14679	15234	15776	15843	14697	13809	14019	14872	15080	14872	13380	12881

'Pre-Covid' is 2019 values

Monthly Horses in Training

2023 against 2022 and Pre-Covid, shown with % Difference



'Pre-Covid' is 2019 values

Flat (including Dual)

AgeCat	Period	Jan	Feb	Mar	Apr	May	Jun	Jul	Aug	Sep	Oct	Nov	Dec
2YO	2023	1718	2209	2459	2600	3020	3333	3494	3597	3580	3485	2934	2775
	2022	1927	2363	2590	2866	3217	3368	3533	3602	3609	3496	2856	2732
	Pre-Covid	2104	2425	2739	3107	3395	3594	3714	3782	3798	3637	3099	3000
3YO	2023	2960	3077	3187	3233	3192	3090	2883	2805	2620	2482	1813	1657
	2022	2942	3057	3233	3300	3234	3120	2846	2741	2583	2395	1764	1615
	Pre-Covid	2992	3126	3276	3329	3293	3211	2998	2781	2631	2397	1770	1608
4YO	2023	1644	1616	1640	1626	1582	1515	1406	1355	1295	1219	971	914
	2022	1680	1664	1699	1702	1658	1595	1513	1503	1413	1308	1000	922
	Pre-Covid	1634	1661	1706	1718	1682	1654	1560	1482	1415	1332	1045	933
5YO+	2023	2389	2387	2416	2433	2379	2282	2221	2140	2028	1930	1632	1533
	2022	2226	2240	2304	2326	2267	2173	2096	2055	1996	1822	1522	1430
	Pre-Covid	2298	2317	2375	2426	2383	2310	2218	2104	2006	1849	1575	1458
Total	2023	8711	9289	9702	9892	10173	10220	10004	9897	9523	9116	7350	6879
	2022	8775	9324	9826	10194	10376	10256	9988	9901	9601	9021	7142	6699
	Pre-Covid	9028	9529	10096	10580	10753	10769	10490	10149	9850	9215	7489	6999

'Pre-Covid' is 2019 values

Monthly Flat Horses in Training

2023 against 2022 and Pre-Covid, shown with % Difference

Period — Pre-Covid — 2022 — 2023



'Pre-Covid' is 2019 values

Jump (including Dual)

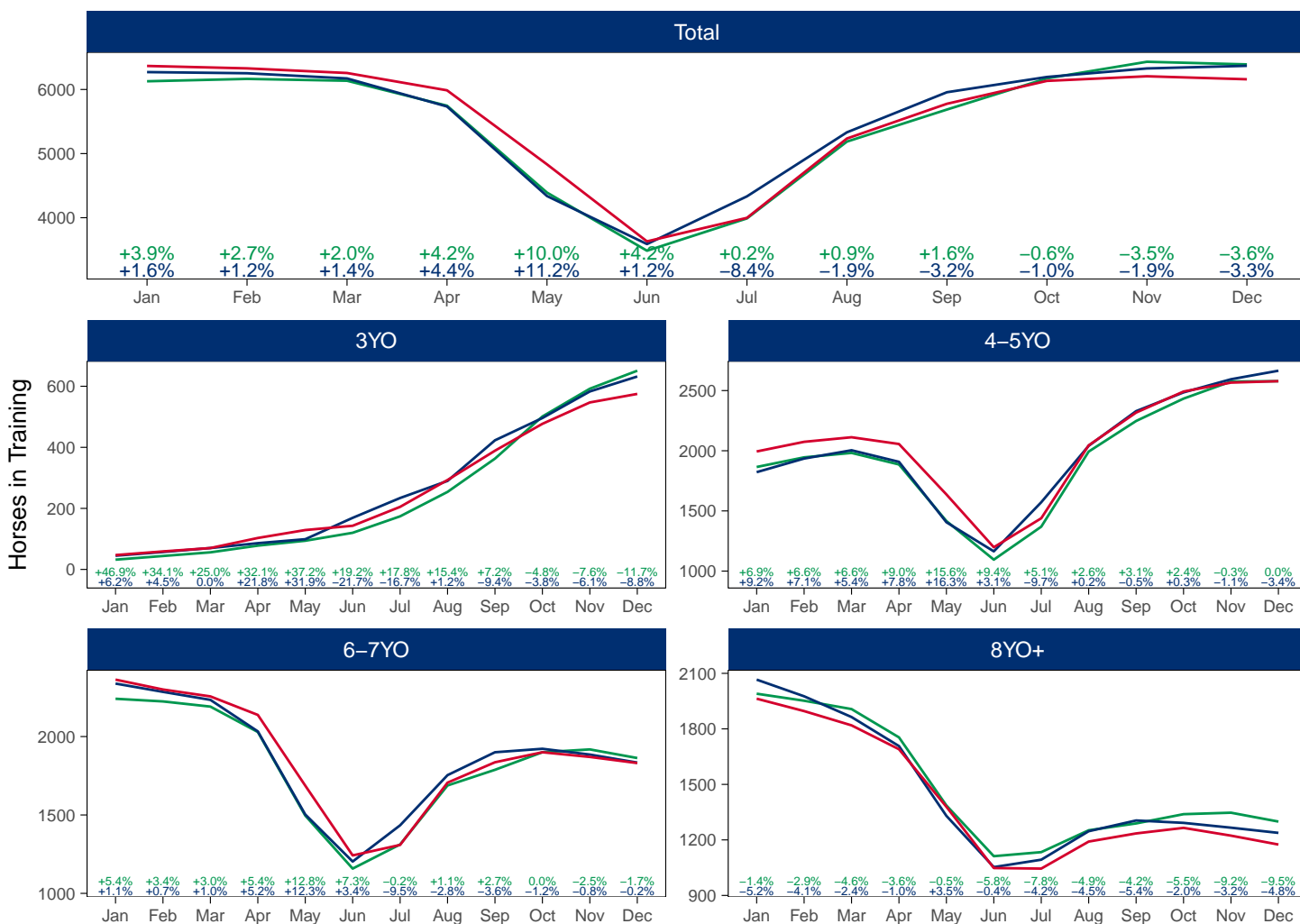
AgeCat	Period	Jan	Feb	Mar	Apr	May	Jun	Jul	Aug	Sep	Oct	Nov	Dec
3YO	2023	47	59	70	103	129	143	205	293	389	477	547	575
	2022	45	57	70	86	99	169	234	290	423	496	583	632
	Pre-Covid	32	44	56	78	94	120	174	254	363	501	592	651
4-5YO	2023	1994	2074	2112	2056	1637	1198	1439	2045	2317	2492	2566	2578
	2022	1822	1935	2004	1908	1406	1164	1572	2041	2329	2485	2594	2665
	Pre-Covid	1865	1945	1982	1886	1416	1095	1369	1993	2247	2433	2575	2578
6-7YO	2023	2363	2300	2256	2138	1687	1242	1309	1706	1836	1900	1870	1831
	2022	2338	2285	2234	2033	1503	1203	1434	1754	1900	1922	1885	1834
	Pre-Covid	2241	2224	2191	2029	1496	1158	1312	1688	1788	1900	1918	1863
8YO+	2023	1963	1896	1819	1690	1379	1048	1045	1191	1235	1265	1223	1175
	2022	2066	1976	1864	1707	1330	1053	1093	1247	1305	1292	1266	1238
	Pre-Covid	1990	1952	1907	1754	1386	1112	1134	1252	1289	1339	1347	1299
Total	2023	6367	6329	6257	5987	4832	3631	3998	5235	5777	6134	6206	6159
	2022	6271	6253	6172	5734	4338	3589	4333	5332	5957	6195	6328	6369
	Pre-Covid	6128	6165	6136	5747	4392	3485	3989	5187	5687	6173	6432	6391

'Pre-Covid' is 2019 values

Monthly Jump Horses in Training

2023 against 2022 and Pre-Covid, shown with % Difference

Period — Pre-Covid — 2022 — 2023



'Pre-Covid' is 2019 values

Hunter Chasers

AgeCat	Period	Jan	Feb	Mar	Apr	May	Jun	Jul	Aug	Sep	Oct	Nov	Dec
4-5YO	2023	100	144	218	248	253	225	215	199	188	117	173	239
	2022	94	148	203	241	240	222	214	198	190	1	72	138
	Pre-Covid	92	170	213	267	268	263	257				32	136
6-7YO	2023	188	246	267	301	309	289	282	275	270	193	220	268
	2022	207	256	296	311	311	300	297	293	287	2	62	130
	Pre-Covid	295	402	451	471	472	462	451				77	167
8-9YO	2023	183	235	272	286	281	276	273	273	273	196	223	269
	2022	217	270	299	315	315	307	306	304	301	4	80	124
	Pre-Covid	242	328	368	391	387	368	364				61	142
10YO+	2023	254	325	379	393	393	378	376	373	371	298	315	355
	2022	300	370	401	428	428	422	420	420	419	8	68	132
	Pre-Covid	371	485	547	581	576	554	551				74	162
Total	2023	725	950	1136	1228	1236	1168	1146	1120	1102	804	931	1131
	2022	818	1044	1199	1295	1294	1251	1237	1215	1197	15	282	524
	Pre-Covid	1000	1385	1579	1710	1703	1647	1623				244	607

'Pre-Covid' is 2019 values

Monthly Hunter Chasers in Training

2023 against 2022 and Pre-Covid, shown with % Difference



'Pre-Covid' is 2019 values

December 2023 Horses in Training by Rating Band Snapshot versus Previous Years

Flat (including Dual)

AgeCat	RatBand	2014	2015	2016	2017	2018	2019	2020	2021	2022	2023
2YO	Unrated	1,522 (62.4%)	1,550 (61.1%)	1,669 (62.7%)	1,891 (66.3%)	1,815 (64.0%)	2,033 (67.8%)	1,694 (60.7%)	1,778 (64.0%)	1,763 (64.5%)	1,788 (64.4%)
	0-50	93 (3.8%)	81 (3.2%)	81 (3.0%)	65 (2.3%)	76 (2.7%)	99 (3.3%)	94 (3.4%)	102 (3.7%)	83 (3.0%)	85 (3.1%)
	51-60	163 (6.7%)	136 (5.4%)	159 (6.0%)	136 (4.8%)	200 (7.1%)	157 (5.2%)	179 (6.4%)	156 (5.6%)	174 (6.4%)	170 (6.1%)
	61-70	210 (8.6%)	273 (10.8%)	245 (9.2%)	251 (8.8%)	237 (8.4%)	225 (7.5%)	257 (9.2%)	263 (9.5%)	235 (8.6%)	219 (7.9%)
	71-80	241 (9.9%)	262 (10.3%)	277 (10.4%)	266 (9.3%)	247 (8.7%)	250 (8.3%)	295 (10.6%)	245 (8.8%)	242 (8.9%)	263 (9.5%)
	81-90	101 (4.1%)	126 (5.0%)	144 (5.4%)	128 (4.5%)	149 (5.3%)	130 (4.3%)	158 (5.7%)	129 (4.6%)	136 (5.0%)	138 (5.0%)
	91-100	58 (2.4%)	57 (2.2%)	46 (1.7%)	61 (2.1%)	65 (2.3%)	61 (2.0%)	58 (2.1%)	51 (1.8%)	54 (2.0%)	62 (2.2%)
	101+	50 (2.1%)	50 (2.0%)	42 (1.6%)	55 (1.9%)	45 (1.6%)	45 (1.5%)	55 (2.0%)	55 (2.0%)	45 (1.6%)	50 (1.8%)
Subtotal		2,438 (100.0%)	2,535 (100.0%)	2,663 (100.0%)	2,853 (100.0%)	2,834 (100.0%)	3,000 (100.0%)	2,790 (100.0%)	2,779 (100.0%)	2,732 (100.0%)	2,775 (100.0%)
3YO	Unrated	269 (20.4%)	259 (19.2%)	280 (19.5%)	350 (22.0%)	347 (21.7%)	337 (21.0%)	398 (24.2%)	350 (21.0%)	350 (21.7%)	359 (21.7%)
	0-50	140 (10.6%)	130 (9.7%)	129 (9.0%)	170 (10.7%)	170 (10.6%)	219 (13.6%)	182 (11.1%)	191 (11.4%)	195 (12.1%)	186 (11.2%)
	51-60	163 (12.4%)	192 (14.3%)	195 (13.6%)	229 (14.4%)	214 (13.4%)	223 (13.9%)	237 (14.4%)	252 (15.1%)	258 (16.0%)	261 (15.8%)
	61-70	223 (16.9%)	234 (17.4%)	263 (18.3%)	252 (15.8%)	269 (16.8%)	281 (17.5%)	280 (17.0%)	306 (18.3%)	294 (18.2%)	273 (16.5%)
	71-80	217 (16.5%)	203 (15.1%)	243 (16.9%)	267 (16.8%)	258 (16.1%)	218 (13.6%)	257 (15.6%)	250 (15.0%)	218 (13.5%)	274 (16.5%)
	81-90	155 (11.8%)	178 (13.2%)	167 (11.6%)	157 (9.9%)	173 (10.8%)	153 (9.5%)	154 (9.4%)	183 (11.0%)	156 (9.7%)	163 (9.8%)
	91-100	79 (6.0%)	81 (6.0%)	81 (5.6%)	101 (6.3%)	96 (6.0%)	94 (5.8%)	86 (5.2%)	76 (4.6%)	62 (3.8%)	78 (4.7%)
	101+	72 (5.5%)	69 (5.1%)	77 (5.4%)	67 (4.2%)	73 (4.6%)	83 (5.2%)	49 (3.0%)	61 (3.7%)	82 (5.1%)	63 (3.8%)
Subtotal		1,318 (100.0%)	1,346 (100.0%)	1,435 (100.0%)	1,593 (100.0%)	1,600 (100.0%)	1,608 (100.0%)	1,643 (100.0%)	1,669 (100.0%)	1,615 (100.0%)	1,657 (100.0%)
4YO	Unrated	125 (16.8%)	110 (14.9%)	133 (17.2%)	237 (23.6%)	117 (13.0%)	130 (13.9%)	147 (16.9%)	141 (15.8%)	129 (14.0%)	151 (16.5%)
	0-50	70 (9.4%)	76 (10.3%)	84 (10.8%)	136 (13.6%)	130 (14.4%)	143 (15.3%)	106 (12.2%)	123 (13.8%)	138 (15.0%)	126 (13.8%)
	51-60	107 (14.4%)	110 (14.9%)	112 (14.5%)	133 (13.3%)	131 (14.6%)	150 (16.1%)	129 (14.8%)	146 (16.4%)	150 (16.3%)	166 (18.2%)
	61-70	136 (18.3%)	119 (16.1%)	131 (16.9%)	143 (14.3%)	175 (19.4%)	169 (18.1%)	160 (18.4%)	159 (17.9%)	162 (17.6%)	150 (16.4%)
	71-80	130 (17.5%)	115 (15.6%)	110 (14.2%)	124 (12.4%)	131 (14.6%)	138 (14.8%)	138 (15.8%)	132 (14.8%)	159 (17.2%)	136 (14.9%)
	81-90	70 (9.4%)	98 (13.3%)	91 (11.7%)	117 (11.7%)	92 (10.2%)	86 (9.2%)	82 (9.4%)	84 (9.4%)	80 (8.7%)	81 (8.9%)
	91-100	65 (8.8%)	57 (7.7%)	52 (6.7%)	56 (5.6%)	76 (8.4%)	77 (8.3%)	55 (6.3%)	59 (6.6%)	52 (5.6%)	50 (5.5%)
	101+	39 (5.3%)	54 (7.3%)	62 (8.0%)	57 (5.7%)	48 (5.3%)	40 (4.3%)	54 (6.2%)	46 (5.2%)	52 (5.6%)	54 (5.9%)
Subtotal		742 (100.0%)	739 (100.0%)	775 (100.0%)	1,003 (100.0%)	900 (100.0%)	933 (100.0%)	871 (100.0%)	890 (100.0%)	922 (100.0%)	914 (100.0%)
5YO+	Unrated	171 (12.2%)	173 (12.5%)	215 (14.5%)	356 (21.9%)	194 (13.4%)	206 (14.1%)	269 (17.9%)	210 (15.4%)	234 (16.4%)	202 (13.2%)
	0-50	205 (14.6%)	164 (11.9%)	169 (11.4%)	199 (12.3%)	240 (16.6%)	248 (17.0%)	222 (14.8%)	211 (15.5%)	208 (14.5%)	233 (15.2%)
	51-60	218 (15.5%)	218 (15.8%)	231 (15.5%)	237 (14.6%)	241 (16.7%)	232 (15.9%)	286 (19.1%)	232 (17.0%)	240 (16.8%)	298 (19.4%)
	61-70	292 (20.8%)	293 (21.2%)	269 (18.1%)	265 (16.3%)	237 (16.4%)	249 (17.1%)	269 (17.9%)	245 (18.0%)	254 (17.8%)	281 (18.3%)
	71-80	231 (16.5%)	218 (15.8%)	234 (15.7%)	221 (13.6%)	215 (14.9%)	209 (14.3%)	191 (12.7%)	161 (11.8%)	199 (13.9%)	215 (14.0%)
	81-90	152 (10.8%)	162 (11.7%)	185 (12.4%)	172 (10.6%)	156 (10.8%)	157 (10.8%)	125 (8.3%)	138 (10.1%)	136 (9.5%)	162 (10.6%)
	91-100	68 (4.8%)	84 (6.1%)	108 (7.3%)	91 (5.6%)	87 (6.0%)	90 (6.2%)	73 (4.9%)	91 (6.7%)	88 (6.2%)	78 (5.1%)
	101+	67 (4.8%)	68 (4.9%)	75 (5.0%)	82 (5.1%)	75 (5.2%)	67 (4.6%)	66 (4.4%)	76 (5.6%)	71 (5.0%)	64 (4.2%)
Subtotal		1,404 (100.0%)	1,380 (100.0%)	1,486 (100.0%)	1,623 (100.0%)	1,445 (100.0%)	1,458 (100.0%)	1,501 (100.0%)	1,364 (100.0%)	1,430 (100.0%)	1,533 (100.0%)
Overall	Unrated	2,087 (35.4%)	2,092 (34.9%)	2,297 (36.1%)	2,834 (40.1%)	2,473 (36.5%)	2,706 (38.7%)	2,508 (36.9%)	2,479 (37.0%)	2,476 (37.0%)	2,500 (36.3%)
	0-50	508 (8.6%)	451 (7.5%)	463 (7.3%)	570 (8.1%)	616 (9.1%)	709 (10.1%)	604 (8.9%)	627 (9.4%)	624 (9.3%)	630 (9.2%)
	51-60	651 (11.0%)	656 (10.9%)	697 (11.0%)	735 (10.4%)	786 (11.6%)	762 (10.9%)	831 (12.2%)	786 (11.7%)	822 (12.3%)	895 (13.0%)
	61-70	861 (14.6%)	919 (15.3%)	908 (14.3%)	911 (12.9%)	918 (13.5%)	924 (13.2%)	966 (14.2%)	973 (14.5%)	945 (14.1%)	923 (13.4%)
	71-80	819 (13.9%)	798 (13.3%)	864 (13.6%)	878 (12.4%)	851 (12.6%)	815 (11.6%)	881 (12.9%)	788 (11.8%)	818 (12.2%)	888 (12.9%)
	81-90	478 (8.1%)	564 (9.4%)	587 (9.2%)	574 (8.1%)	570 (8.4%)	526 (7.5%)	519 (7.6%)	534 (8.0%)	508 (7.6%)	544 (7.9%)
	91-100	270 (4.6%)	279 (4.7%)	287 (4.5%)	309 (4.4%)	324 (4.8%)	322 (4.6%)	272 (4.0%)	277 (4.1%)	256 (3.8%)	268 (3.9%)
	101+	228 (3.9%)	241 (4.0%)	256 (4.0%)	261 (3.7%)	241 (3.6%)	235 (3.4%)	224 (3.3%)	238 (3.6%)	250 (3.7%)	231 (3.4%)
Total		5,902 (100.0%)	6,000 (100.0%)	6,359 (100.0%)	7,072 (100.0%)	6,779 (100.0%)	6,999 (100.0%)	6,805 (100.0%)	6,702 (100.0%)	6,699 (100.0%)	6,879 (100.0%)

Where a horse has more than one published rating (published Flat Turf and published Flat AWT mark), the higher of the two is taken.

Jump (including Dual)

AgeCat	RatBand	2014	2015	2016	2017	2018	2019	2020	2021	2022	2023
3YO	Unrated	601 (92.2%)	541 (91.5%)	567 (92.8%)	595 (94.4%)	605 (92.6%)	600 (92.2%)	517 (90.2%)	524 (89.1%)	592 (93.7%)	531 (92.3%)
	0-100	12 (1.8%)	13 (2.2%)	10 (1.6%)	3 (0.5%)	15 (2.3%)	10 (1.5%)	9 (1.6%)	13 (3.9%)	13 (2.1%)	26 (4.5%)
	101-110	11 (1.7%)	8 (1.4%)	12 (2.0%)	16 (2.5%)	14 (2.1%)	15 (2.3%)	20 (3.5%)	12 (2.0%)	14 (2.2%)	8 (1.4%)
	111-120	14 (2.1%)	9 (1.5%)	6 (1.0%)	7 (1.1%)	4 (0.6%)	12 (1.8%)	11 (1.9%)	14 (2.4%)	8 (1.3%)	5 (0.9%)
	121-130	7 (1.1%)	9 (1.5%)	8 (1.3%)	5 (0.8%)	8 (1.2%)	11 (1.7%)	7 (1.2%)	11 (1.9%)	5 (0.8%)	4 (0.7%)
	131-140	7 (1.1%)	9 (1.5%)	5 (0.8%)	3 (0.5%)	5 (0.8%)	2 (0.3%)	8 (1.4%)	4 (0.7%)	NA (-)	1 (0.2%)
	141-150	NA (-)	2 (0.3%)	3 (0.5%)	1 (0.2%)	2 (0.3%)	1 (0.2%)	1 (0.2%)	NA (-)	NA (-)	NA (-)
	Subtotal	652 (100.0%)	591 (100.0%)	611 (100.0%)	630 (100.0%)	653 (100.0%)	651 (100.0%)	573 (100.0%)	588 (100.0%)	632 (100.0%)	575 (100.0%)
4-5YO	Unrated	1,492 (67.1%)	1,448 (64.7%)	1,518 (65.7%)	1,571 (64.5%)	1,596 (64.9%)	1,677 (65.1%)	1,628 (63.4%)	1,650 (67.0%)	1,797 (67.4%)	1,743 (67.6%)
	0-100	200 (9.0%)	179 (8.0%)	210 (9.1%)	230 (9.4%)	201 (8.2%)	244 (9.5%)	316 (12.3%)	327 (13.3%)	388 (14.6%)	395 (15.3%)
	101-110	142 (6.4%)	155 (6.9%)	151 (6.5%)	161 (6.6%)	188 (7.6%)	178 (6.9%)	175 (6.8%)	157 (6.4%)	192 (7.2%)	196 (7.6%)
	111-120	151 (6.8%)	168 (7.5%)	167 (7.2%)	180 (7.4%)	188 (7.6%)	192 (7.4%)	179 (7.0%)	157 (6.4%)	128 (4.8%)	130 (5.0%)
	121-130	127 (5.7%)	150 (6.7%)	134 (5.8%)	169 (6.9%)	166 (6.8%)	168 (6.5%)	155 (6.0%)	108 (4.4%)	118 (4.4%)	79 (3.1%)
	131-140	70 (3.1%)	88 (3.9%)	90 (3.9%)	87 (3.6%)	89 (3.6%)	79 (3.1%)	78 (3.0%)	47 (1.9%)	29 (1.1%)	26 (1.0%)
	141-150	27 (1.2%)	37 (1.7%)	31 (1.3%)	30 (1.2%)	22 (0.9%)	29 (1.1%)	29 (1.1%)	11 (0.4%)	11 (0.4%)	9 (0.3%)
	151+	14 (0.6%)	12 (0.5%)	8 (0.3%)	8 (0.3%)	9 (0.4%)	11 (0.4%)	7 (0.3%)	5 (0.2%)	2 (0.1%)	NA (-)
	Subtotal	2,223 (100.0%)	2,237 (100.0%)	2,309 (100.0%)	2,436 (100.0%)	2,459 (100.0%)	2,578 (100.0%)	2,567 (100.0%)	2,462 (100.0%)	2,665 (100.0%)	2,578 (100.0%)
6-7YO	Unrated	430 (24.5%)	412 (23.1%)	403 (24.0%)	401 (23.5%)	391 (22.0%)	423 (22.7%)	439 (20.8%)	469 (24.4%)	471 (25.7%)	483 (26.4%)
	0-100	355 (20.2%)	377 (21.1%)	324 (19.3%)	346 (20.2%)	374 (21.0%)	373 (20.0%)	514 (24.3%)	469 (24.4%)	457 (24.9%)	526 (28.7%)
	101-110	226 (12.9%)	233 (13.0%)	222 (13.2%)	240 (14.0%)	228 (12.8%)	235 (12.6%)	285 (13.5%)	232 (12.1%)	256 (14.0%)	252 (13.8%)
	111-120	266 (15.1%)	260 (14.6%)	253 (15.1%)	233 (13.6%)	244 (13.7%)	245 (13.2%)	298 (14.1%)	274 (14.3%)	246 (13.4%)	244 (13.3%)
	121-130	246 (14.0%)	242 (13.5%)	202 (12.0%)	207 (12.1%)	239 (13.4%)	274 (14.7%)	277 (13.1%)	238 (12.4%)	202 (11.0%)	179 (9.8%)
	131-140	130 (7.4%)	155 (8.7%)	173 (10.3%)	169 (9.9%)	169 (9.5%)	200 (10.7%)	189 (8.9%)	154 (8.0%)	129 (7.0%)	89 (4.9%)
	141-150	63 (3.6%)	66 (3.7%)	72 (4.3%)	76 (4.4%)	101 (5.7%)	69 (3.7%)	77 (3.6%)	57 (3.0%)	53 (2.9%)	45 (2.5%)
	151+	41 (2.3%)	41 (2.3%)	30 (1.8%)	38 (2.2%)	33 (1.9%)	44 (2.4%)	35 (1.7%)	28 (1.5%)	20 (1.1%)	13 (0.7%)
	Subtotal	1,757 (100.0%)	1,786 (100.0%)	1,679 (100.0%)	1,710 (100.0%)	1,779 (100.0%)	1,863 (100.0%)	2,114 (100.0%)	1,921 (100.0%)	1,834 (100.0%)	1,831 (100.0%)
8YO+	Unrated	164 (13.9%)	131 (10.5%)	177 (13.6%)	140 (10.9%)	211 (16.1%)	191 (14.7%)	235 (15.5%)	270 (19.6%)	234 (18.9%)	251 (21.4%)
	0-100	351 (29.7%)	348 (27.9%)	370 (28.5%)	352 (27.4%)	338 (25.8%)	357 (27.5%)	441 (29.1%)	345 (25.1%)	333 (26.9%)	297 (25.3%)
	101-110	153 (12.9%)	195 (15.6%)	171 (13.2%)	181 (14.1%)	191 (14.6%)	179 (13.8%)	196 (12.9%)	152 (11.1%)	141 (11.4%)	133 (11.3%)
	111-120	155 (13.1%)	178 (14.3%)	195 (15.0%)	194 (15.1%)	170 (13.0%)	152 (11.7%)	183 (12.1%)	190 (13.8%)	173 (14.0%)	161 (13.7%)
	121-130	140 (11.8%)	172 (13.8%)	148 (11.4%)	175 (13.6%)	152 (11.6%)	156 (12.0%)	176 (11.6%)	175 (12.7%)	167 (13.5%)	141 (12.0%)
	131-140	132 (11.2%)	133 (10.6%)	140 (10.8%)	138 (10.7%)	132 (10.1%)	141 (10.9%)	145 (9.6%)	126 (9.2%)	96 (7.8%)	114 (9.7%)
	141-150	55 (4.7%)	58 (4.6%)	55 (4.2%)	68 (5.3%)	81 (6.2%)	85 (6.5%)	88 (5.8%)	84 (6.1%)	64 (5.2%)	45 (3.8%)
	151+	32 (2.7%)	34 (2.7%)	42 (3.2%)	37 (2.9%)	35 (2.7%)	38 (2.9%)	53 (3.5%)	33 (2.4%)	30 (2.4%)	33 (2.8%)
	Subtotal	1,182 (100.0%)	1,249 (100.0%)	1,298 (100.0%)	1,285 (100.0%)	1,310 (100.0%)	1,299 (100.0%)	1,517 (100.0%)	1,375 (100.0%)	1,238 (100.0%)	1,175 (100.0%)
Overall	Unrated	2,687 (46.2%)	2,532 (43.2%)	2,665 (45.2%)	2,707 (44.7%)	2,803 (45.2%)	2,891 (45.2%)	2,819 (41.6%)	2,913 (45.9%)	3,094 (48.6%)	3,008 (48.8%)
	0-100	918 (15.8%)	917 (15.6%)	914 (15.5%)	931 (15.4%)	928 (15.0%)	984 (15.4%)	1,280 (18.9%)	1,164 (18.3%)	1,191 (18.7%)	1,244 (20.2%)
	101-110	532 (9.2%)	591 (10.1%)	556 (9.4%)	598 (9.9%)	621 (10.0%)	607 (9.5%)	676 (10.0%)	553 (8.7%)	603 (9.5%)	589 (9.6%)
	111-120	586 (10.1%)	615 (10.5%)	621 (10.5%)	614 (10.1%)	606 (9.8%)	601 (9.4%)	671 (9.9%)	635 (10.0%)	555 (8.7%)	540 (8.8%)
	121-130	520 (8.9%)	573 (9.8%)	492 (8.3%)	556 (9.2%)	565 (9.1%)	609 (9.5%)	615 (9.1%)	532 (8.4%)	492 (7.7%)	403 (6.5%)
	131-140	339 (5.8%)	385 (6.6%)	408 (6.9%)	397 (6.6%)	395 (6.4%)	422 (6.6%)	420 (6.2%)	331 (5.2%)	254 (4.0%)	230 (3.7%)
	141-150	145 (2.5%)	163 (2.8%)	161 (2.7%)	175 (2.9%)	206 (3.3%)	184 (2.9%)	195 (2.9%)	152 (2.4%)	128 (2.0%)	99 (1.6%)
	151+	87 (1.5%)	87 (1.5%)	80 (1.4%)	83 (1.4%)	77 (1.2%)	93 (1.5%)	95 (1.4%)	66 (1.0%)	52 (0.8%)	46 (0.7%)
Total		5,814 (100.0%)	5,863 (100.0%)	5,897 (100.0%)	6,061 (100.0%)	6,201 (100.0%)	6,391 (100.0%)	6,771 (100.0%)	6,346 (100.0%)	6,369 (100.0%)	6,159 (100.0%)

Where a horse has more than one published rating (published Hurdle and published Chase mark), the higher of the two is taken.

Young Horses Entering Training

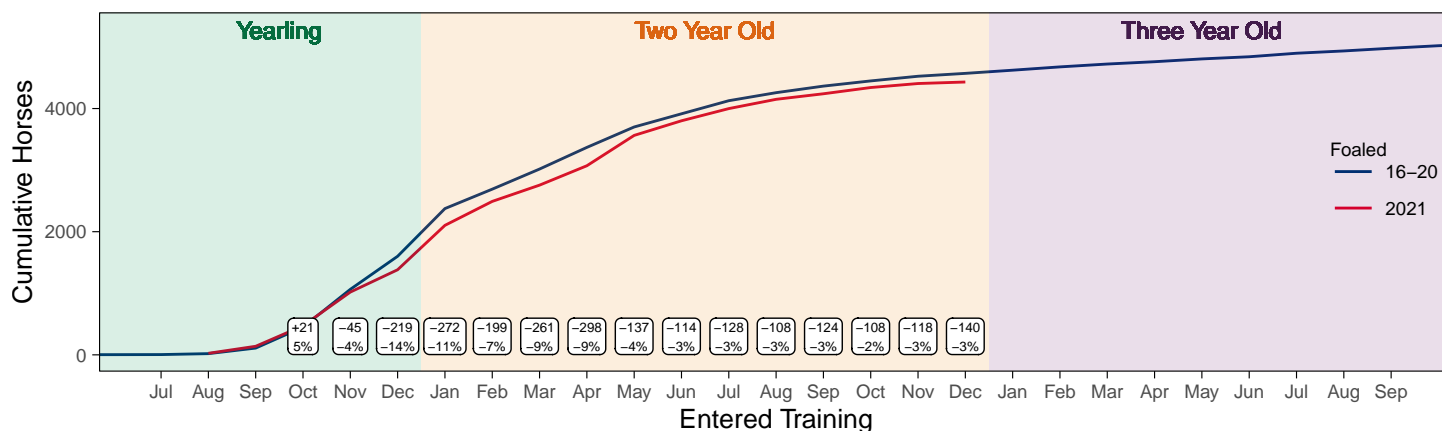
Flat Yearlings in Training versus Previous Years

Period	Jan	Feb	Mar	Apr	May	Jun	Jul	Aug	Sep	Oct	Nov	Dec
2023	1	2	2	2	3	3	4	4	62	224	721	1184
2022	0	0	0	0	0	0	0	2	76	274	705	1149
5YrAvg	1	1	1	1	1	1	1	2	51	216	581	1297

Foals Entering Training for the First Time

2021 Foals Entering Training Over Time

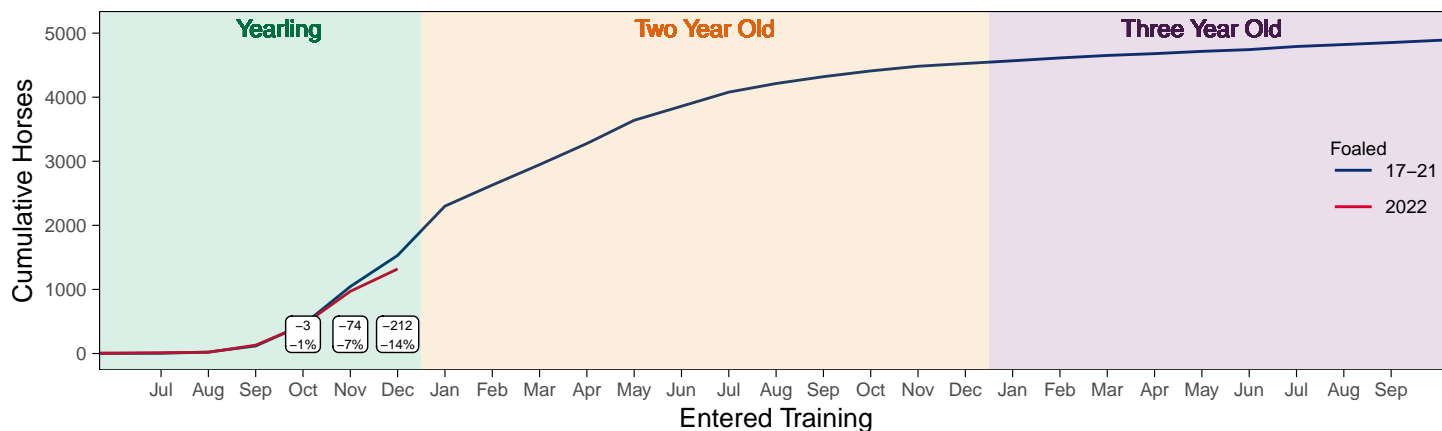
Cumulative Flat Horses foaled in 2021 shown by first in training notification against trend



Cumulative individual horses entering training for the first time by the end of each month.

2022 Foals Entering Training Over Time

Cumulative Flat Horses foaled in 2022 shown by first in training notification against trend



Cumulative individual horses entering training for the first time by the end of each month.

Annual Horses in Training

Type	2014	2015	2016	2017	2018	2019	2020	2021	2022	2023	vs. Last Year	vs. Pre-Covid
Flat	11979	12306	12808	12997	13033	13172	13218	13053	12726	12755	+29 / +0.2%	-417 / -3.2%
Jump	8640	8742	8681	8239	8649	8987	8863	9499	9131	8765	-366 / -4.0%	-222 / -2.5%
Dual	1009	928	948	1450	1249	1089	1049	1030	991	1070	+79 / +8.0%	-19 / -1.7%
Hunter	2496	2311	2150	2107	1974	1898	1564	1455	1473	1371	-102 / -6.9%	-527 / -27.8%
Total	21628	21976	22437	22686	22931	23248	23130	23582	22848	22590	-258 / -1.1%	-658 / -2.8%

'vs. Pre-Covid' is comparison between 2023 and 2019

Flat

AgeCat	2014	2015	2016	2017	2018	2019	2020	2021	2022	2023	vs. Last Year	vs. Pre-Covid
2YO	4190	4488	4536	4597	4618	4661	4489	4504	4327	4385	+58 / +1.3%	-276 / -5.9%
3YO	3456	3565	3805	3857	3977	3937	4065	3921	3843	3806	-37 / -1.0%	-131 / -3.3%
4YO	1694	1691	1828	1886	1867	1968	1951	2036	2011	1948	-63 / -3.1%	-20 / -1.0%
5YO+	2639	2562	2639	2657	2571	2606	2713	2592	2545	2616	+71 / +2.8%	+10 / +0.4%
Total	11979	12306	12808	12997	13033	13172	13218	13053	12726	12755	+29 / +0.2%	-417 / -3.2%

'vs. Pre-Covid' is comparison between 2023 and 2019

Jump

AgeCat	2014	2015	2016	2017	2018	2019	2020	2021	2022	2023	vs. Last Year	vs. Pre-Covid
3YO	660	659	601	480	592	582	527	559	627	506	-121 / -19.3%	-76 / -13.1%
4-5YO	2863	2905	2980	2843	3002	3157	3131	3158	3273	3182	-91 / -2.8%	+25 / +0.8%
6-7YO	2717	2825	2643	2475	2653	2788	2805	3026	2845	2798	-47 / -1.7%	+10 / +0.4%
8YO+	2400	2353	2457	2441	2402	2460	2400	2756	2386	2279	-107 / -4.5%	-181 / -7.4%
Total	8640	8742	8681	8239	8649	8987	8863	9499	9131	8765	-366 / -4.0%	-222 / -2.5%

'vs. Pre-Covid' is comparison between 2023 and 2019

Dual

AgeCat	2014	2015	2016	2017	2018	2019	2020	2021	2022	2023	vs. Last Year	vs. Pre-Covid
3YO	218	193	215	319	244	255	253	262	273	285	+12 / +4.4%	+30 / +11.8%
4YO	234	184	205	382	287	262	236	246	229	257	+28 / +12.2%	-5 / -1.9%
5YO+	557	551	528	749	718	572	560	522	489	528	+39 / +8.0%	-44 / -7.7%
Total	1009	928	948	1450	1249	1089	1049	1030	991	1070	+79 / +8.0%	-19 / -1.7%

'vs. Pre-Covid' is comparison between 2023 and 2019

Hunter Chasers

AgeCat	2014	2015	2016	2017	2018	2019	2020	2021	2022	2023	vs. Last Year	vs. Pre-Covid
4-5YO	274	272	257	267	321	315	278	238	270	286	+16 / +5.9%	-29 / -9.2%
6-7YO	770	659	568	563	535	535	401	343	367	327	-40 / -10.9%	-208 / -38.9%
8-9YO	715	677	593	564	459	428	361	351	364	327	-37 / -10.2%	-101 / -23.6%
10YO+	737	703	732	713	659	620	524	523	472	431	-41 / -8.7%	-189 / -30.5%
Total	2496	2311	2150	2107	1974	1898	1564	1455	1473	1371	-102 / -6.9%	-527 / -27.8%

'vs. Pre-Covid' is comparison between 2023 and 2019

Annual Runners

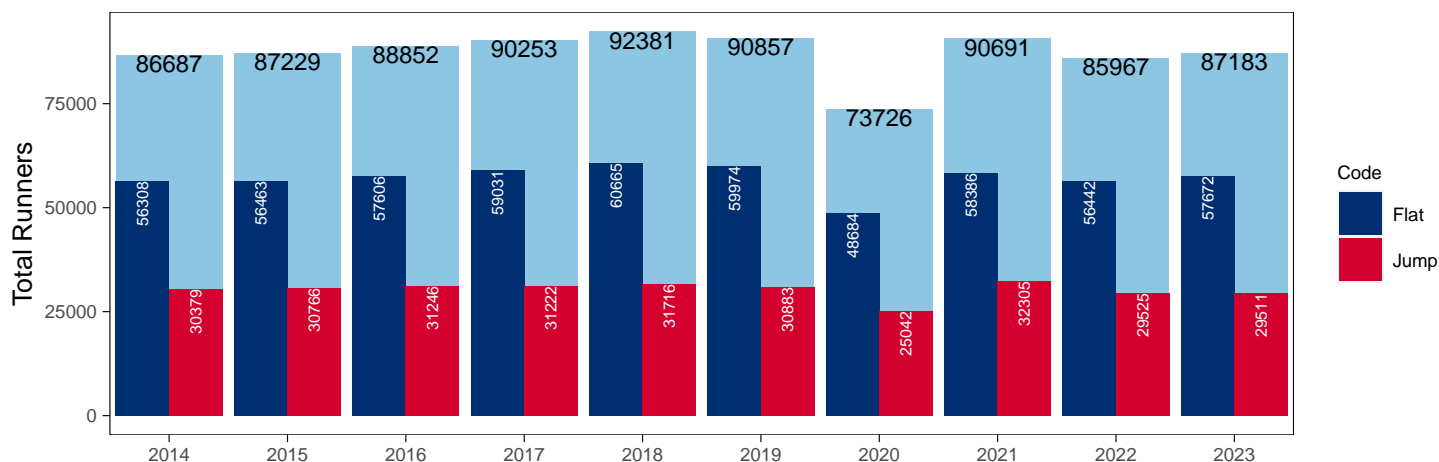
Annual Total Runners

Code	2014	2015	2016	2017	2018	2019	2020	2021	2022	2023	vs. Last Year	vs. Pre-Covid
Flat	56308	56463	57606	59031	60665	59974	48684	58386	56442	57672	+1230 / +2.2%	-2302 / -3.8%
Jump	30379	30766	31246	31222	31716	30883	25042	32305	29525	29511	-14 / 0.0%	-1372 / -4.4%
Total	86687	87229	88852	90253	92381	90857	73726	90691	85967	87183	+1216 / +1.4%	-3674 / -4.0%

'vs. Pre-Covid' is comparison between 2023 and 2019

YTD Total Runners

Total Runners in GB Races, shown by Code and Total



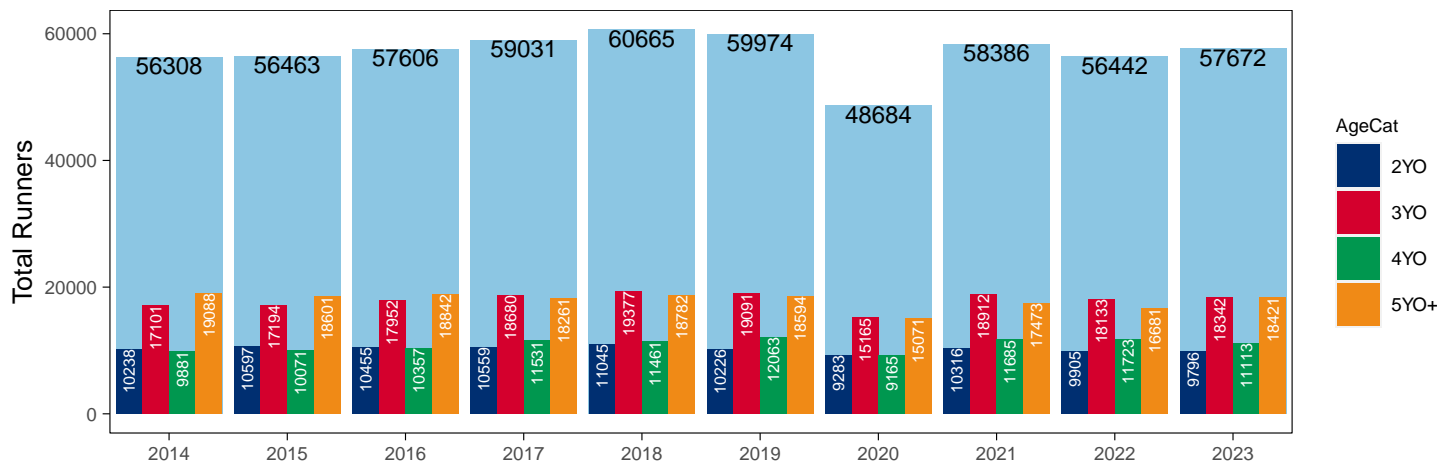
Flat

AgeCat	2014	2015	2016	2017	2018	2019	2020	2021	2022	2023	vs. Last Year	vs. Pre-Covid
2YO	10238	10597	10455	10559	11045	10226	9283	10316	9905	9796	-109 / -1.1%	-430 / -4.2%
3YO	17101	17194	17952	18680	19377	19091	15165	18912	18133	18342	+209 / +1.2%	-749 / -3.9%
4YO	9881	10071	10357	11531	11461	12063	9165	11685	11723	11113	-610 / -5.2%	-950 / -7.9%
5YO+	19088	18601	18842	18261	18782	18594	15071	17473	16681	18421	+1740 / +10.4%	-173 / -0.9%
Total	56308	56463	57606	59031	60665	59974	48684	58386	56442	57672	+1230 / +2.2%	-2302 / -3.8%

'vs. Pre-Covid' is comparison between 2023 and 2019

Annual Total Flat Runners by Age

Total Runners in GB Flat Races, shown by Age Category and Total



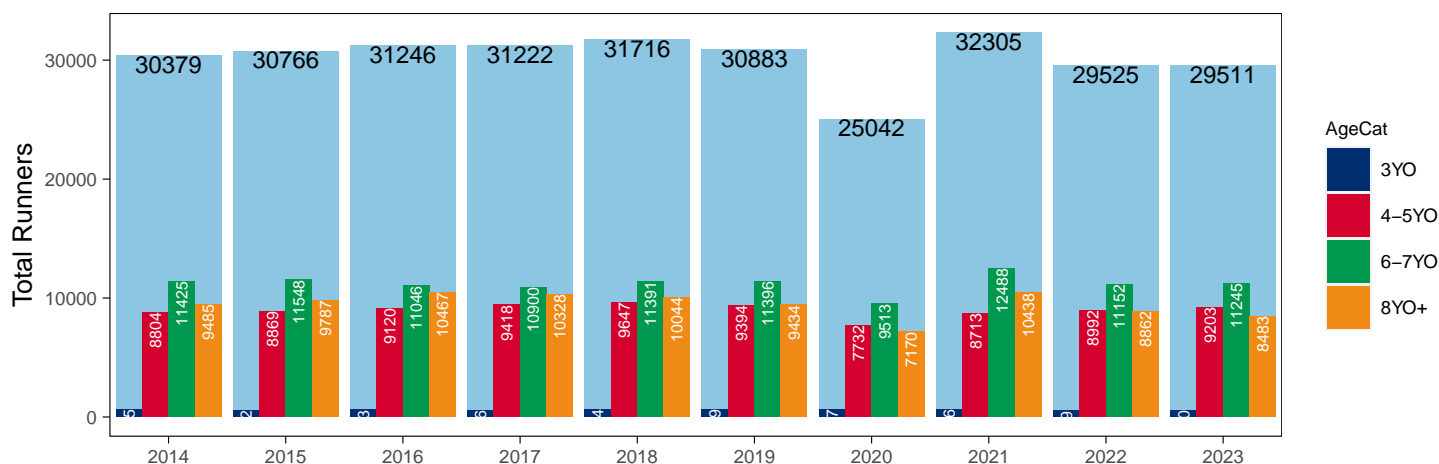
Jump

AgeCat	2014	2015	2016	2017	2018	2019	2020	2021	2022	2023	vs. Last Year	vs. Pre-Covid
3YO	665	562	613	576	634	659	627	666	519	580	+61 / +11.8%	-79 / -12.0%
4-5YO	8804	8869	9120	9418	9647	9394	7732	8713	8992	9203	+211 / +2.3%	-191 / -2.0%
6-7YO	11425	11548	11046	10900	11391	11396	9513	12488	11152	11245	+93 / +0.8%	-151 / -1.3%
8YO+	9485	9787	10467	10328	10044	9434	7170	10438	8862	8483	-379 / -4.3%	-951 / -10.1%
Total	30379	30766	31246	31222	31716	30883	25042	32305	29525	29511	-14 / 0.0%	-1372 / -4.4%

'vs. Pre-Covid' is comparison between 2023 and 2019

Annual Total Jump Runners by Age

Total Runners in GB Jump Races, shown by Age Category and Total



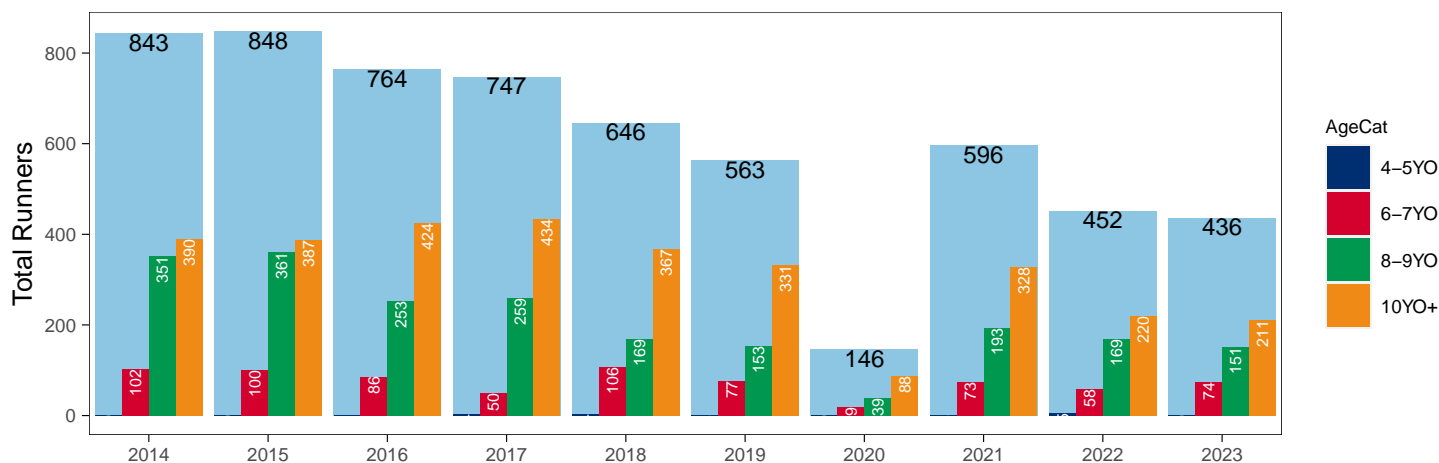
Hunter Chases

AgeCat	2014	2015	2016	2017	2018	2019	2020	2021	2022	2023	vs. Last Year	vs. Pre-Covid
4-5YO			1	4	4	2		2	5		NA / NA	-2 / -100.0%
6-7YO	102	100	86	50	106	77	19	73	58	74	+16 / +27.6%	-3 / -3.9%
8-9YO	351	361	253	259	169	153	39	193	169	151	-18 / -10.7%	-2 / -1.3%
10YO+	390	387	424	434	367	331	88	328	220	211	-9 / -4.1%	-120 / -36.3%
Total	843	848	764	747	646	563	146	596	452	436	-16 / -3.5%	-127 / -22.6%

'vs. Pre-Covid' is comparison between 2023 and 2019

Annual Total Hunter Chase Runners by Age

Total Runners in GB Hunter Chases shown by Age Category and Total



Annual Total Runners by Country Trained

Code	Country	2014	2015	2016	2017	2018	2019	2020	2021	2022	2023
Flat	GB	55855	55862	57006	58268	59820	59109	48405	57987	56074	57166
	IRE	359	463	518	679	780	792	251	364	304	454
	Other	94	138	82	84	65	73	28	35	64	52
Jump	GB	29622	29927	30290	30374	30994	30126	24692	31694	28642	28497
	IRE	753	832	941	830	709	741	338	606	880	1006
	Other	4	7	15	18	13	16	12	5	3	8
Overall	GB	85477	85789	87296	88642	90814	89235	73097	89681	84716	85663
	IRE	1112	1295	1459	1509	1489	1533	589	970	1184	1460
	Other	98	145	97	102	78	89	40	40	67	60

Annual GB Trained Runners Racing Abroad

Code	Country	2014	2015	2016	2017	2018	2019	2020	2021	2022	2023
Flat	IRE	147	184	193	188	156	164	60	57	100	101
	FR	386	373	424	487	534	562	306	236	273	355
	GNV	22	19	25	30	37	50	24	12	19	23
	UAE	331	289	220	298	276	303	286	248	292	310
	BAH						6	7	23	65	64
	KSA							15	21	22	15
	Other	162	162	144	141	172	152	62	84	94	111
Total		1048	1027	1006	1144	1175	1237	760	681	865	979
Jump	IRE	106	99	103	91	61	83	8	24	30	22
	FR	41	36	63	32	20	56	93	139	135	94
	Other	10	8	12	8	7	10		8	14	5
Total		157	143	178	131	88	149	101	171	179	121

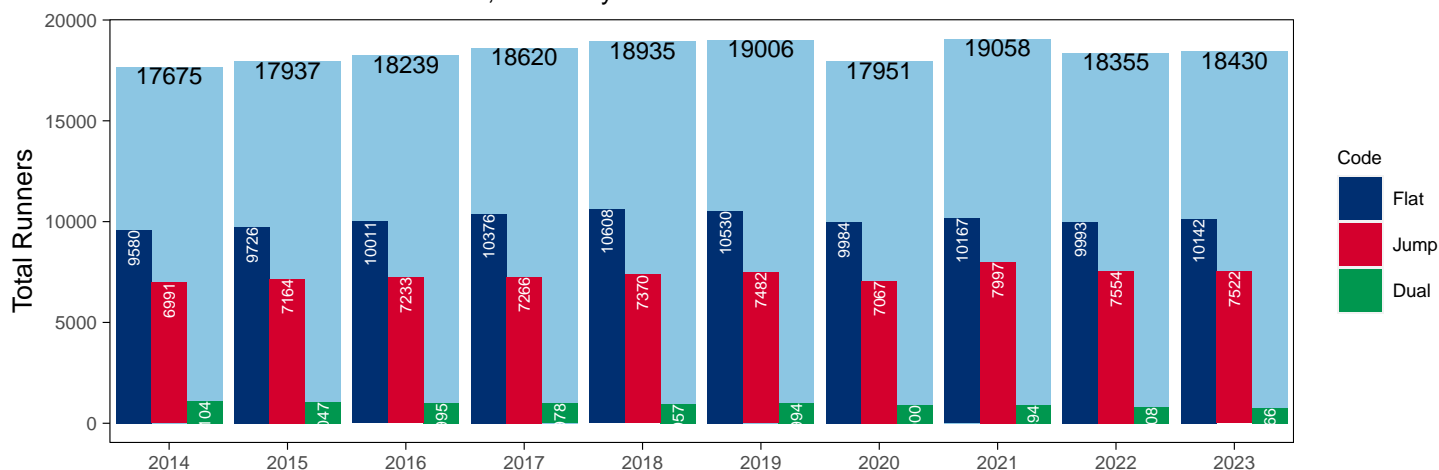
Annual Individual Runners

Code	2014	2015	2016	2017	2018	2019	2020	2021	2022	2023	vs. Last Year	vs. Pre-Covid
Flat	9580	9726	10011	10376	10608	10530	9984	10167	9993	10142	+149 / +1.5%	-388 / -3.7%
Jump	6991	7164	7233	7266	7370	7482	7067	7997	7554	7522	-32 / -0.4%	+40 / +0.5%
Dual	1104	1047	995	978	957	994	900	894	808	766	-42 / -5.2%	-228 / -22.9%
Overall	17675	17937	18239	18620	18935	19006	17951	19058	18355	18430	+75 / +0.4%	-576 / -3.0%

'vs. Pre-Covid' is comparison between 2023 and 2019

Annual Individual Runners

Individual Runners in GB Races, shown by Code and Total



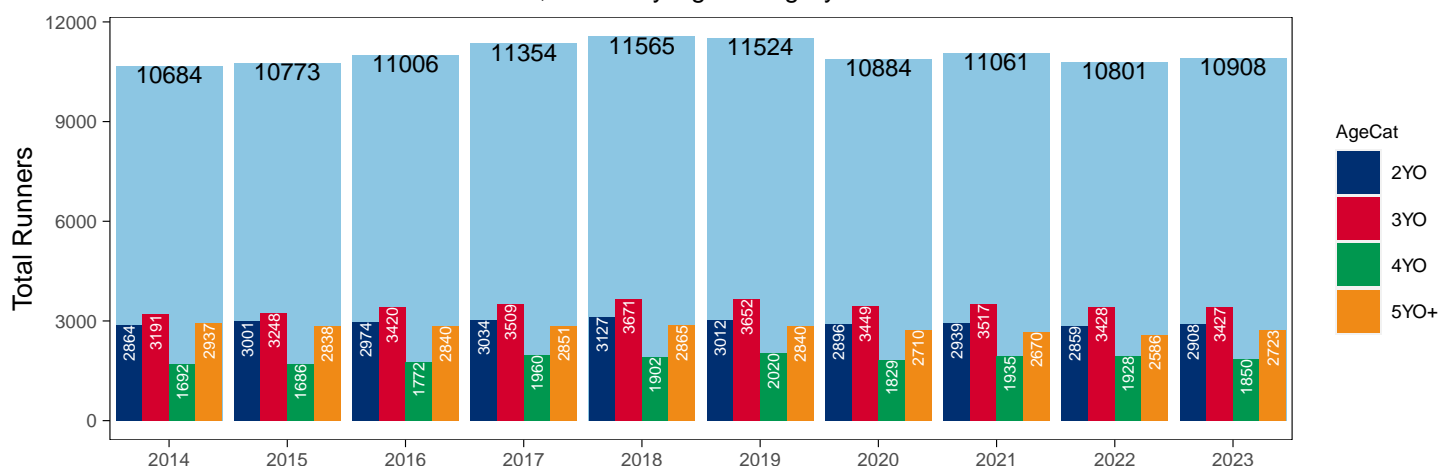
Flat

AgeCat	2014	2015	2016	2017	2018	2019	2020	2021	2022	2023	vs. Last Year	vs. Pre-Covid
2YO	2864	3001	2974	3034	3127	3012	2896	2939	2859	2908	+49 / +1.7%	-104 / -3.5%
3YO	3191	3248	3420	3509	3671	3652	3449	3517	3428	3427	-1 / 0.0%	-225 / -6.2%
4YO	1692	1686	1772	1960	1902	2020	1829	1935	1928	1850	-78 / -4.0%	-170 / -8.4%
5YO+	2937	2838	2840	2851	2865	2840	2710	2670	2586	2723	+137 / +5.3%	-117 / -4.1%
Total	10684	10773	11006	11354	11565	11524	10884	11061	10801	10908	+107 / +1.0%	-616 / -5.3%

'vs. Pre-Covid' is comparison between 2023 and 2019

Annual Individual Flat Runners by Age

Individual Runners in GB Flat Races, shown by Age Category and Total



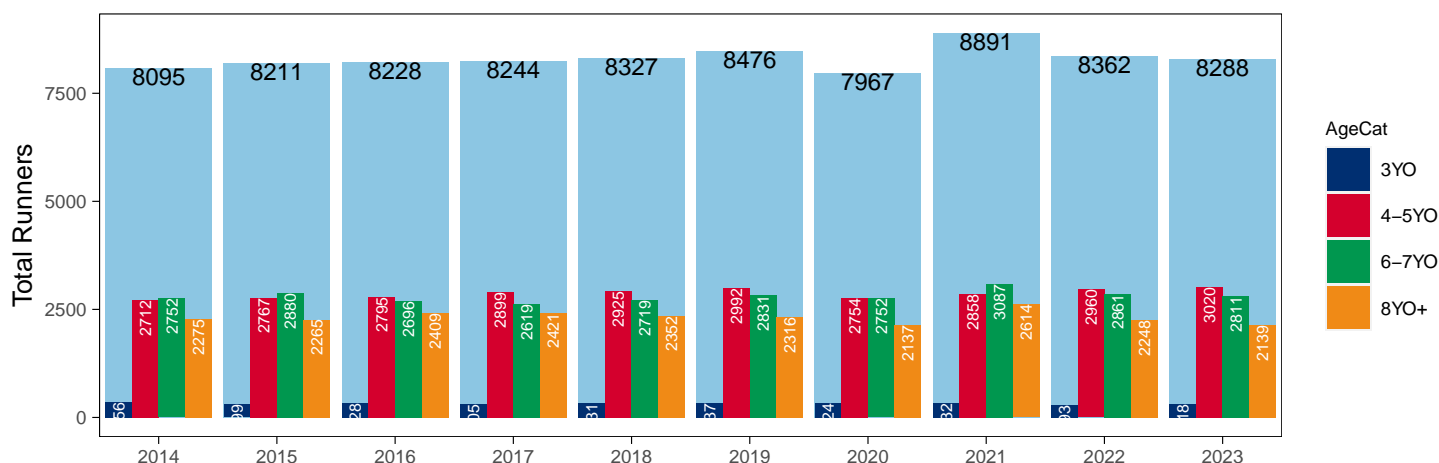
Jump

AgeCat	2014	2015	2016	2017	2018	2019	2020	2021	2022	2023	vs. Last Year	vs. Pre-Covid
3YO	356	299	328	305	331	337	324	332	293	318	+25 / +8.5%	-19 / -5.6%
4-5YO	2712	2767	2795	2899	2925	2992	2754	2858	2960	3020	+60 / +2.0%	+28 / +0.9%
6-7YO	2752	2880	2696	2619	2719	2831	2752	3087	2861	2811	-50 / -1.7%	-20 / -0.7%
8YO+	2275	2265	2409	2421	2352	2316	2137	2614	2248	2139	-109 / -4.8%	-177 / -7.6%
Total	8095	8211	8228	8244	8327	8476	7967	8891	8362	8288	-74 / -0.9%	-188 / -2.2%

'vs. Pre-Covid' is comparison between 2023 and 2019

Annual Individual Jump Runners by Age

Individual Runners in GB Jump Races, shown by Age Category and Total



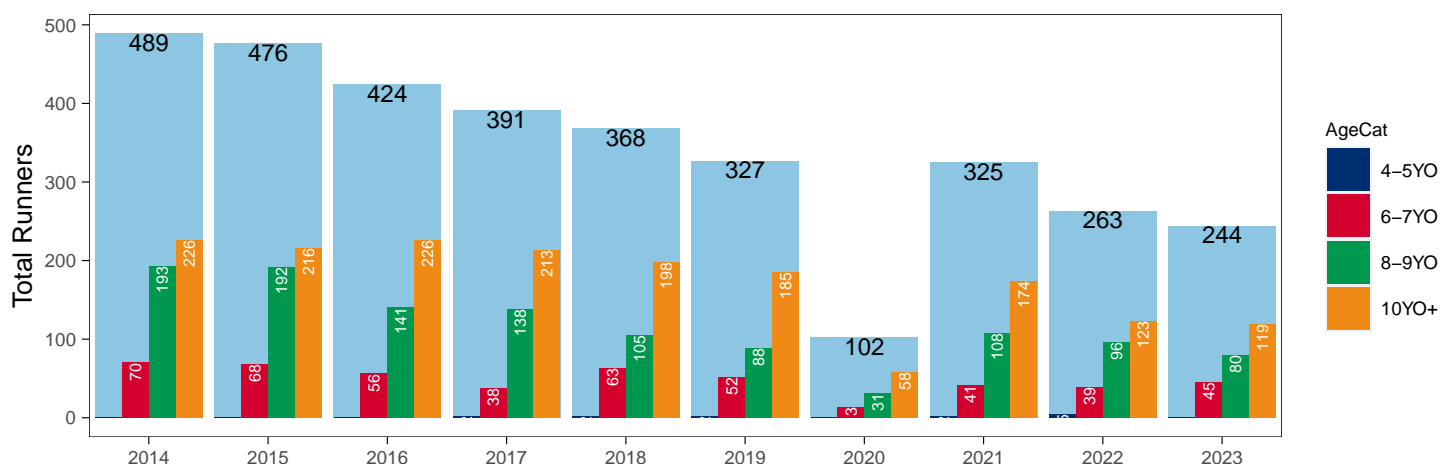
Hunter Chases

AgeCat	2014	2015	2016	2017	2018	2019	2020	2021	2022	2023	vs. Last Year	vs. Pre-Covid
4-5YO			1	2	2	2		2	5		NA / NA	-2 / -100.0%
6-7YO	70	68	56	38	63	52	13	41	39	45	+6 / +15.4%	-7 / -13.5%
8-9YO	193	192	141	138	105	88	31	108	96	80	-16 / -16.7%	-8 / -9.1%
10YO+	226	216	226	213	198	185	58	174	123	119	-4 / -3.3%	-66 / -35.7%
Total	489	476	424	391	368	327	102	325	263	244	-19 / -7.2%	-83 / -25.4%

'vs. Pre-Covid' is comparison between 2023 and 2019

Annual Individual Hunter Chase Runners by Age

Individual Runners in GB Hunter Chases shown by Age Category and Total



Annual Individual Runners by Country Trained

Code	Country	2014	2015	2016	2017	2018	2019	2020	2021	2022	2023
Flat	GB	9299	9386	9696	9973	10172	10044	9791	9905	9738	9822
	IRE	218	256	281	364	400	451	179	246	212	300
	Other	70	103	64	67	58	61	23	30	55	41
Jump	GB	6572	6717	6742	6806	6929	7012	6785	7585	6980	6893
	IRE	448	483	527	480	459	492	287	433	603	670
	Other	4	7	15	13	12	13	11	5	3	6
Dual	GB	1092	1026	972	955	935	977	894	885	795	745
	IRE	10	17	13	15	20	14	5	6	11	15
	Other				2						
Overall	GB	16963	17129	17410	17734	18036	18033	17470	18375	17513	17460
	IRE	676	756	821	859	879	957	471	685	826	985
	Other	74	110	79	82	70	74	34	35	58	47

Individual horses may appear under multiple countries.

Annual Total Runners by Rating Band

Flat

RatBand	2014	2015	2016	2017	2018	2019	2020	2021	2022	2023
2YO										
Unrated	6,812 (66.5%)	7,148 (67.5%)	6,950 (66.5%)	7,265 (68.8%)	7,570 (68.5%)	7,123 (69.7%)	6,123 (66.0%)	6,997 (67.8%)	6,790 (68.6%)	6,728 (68.7%)
0-50	246 (2.4%)	281 (2.7%)	180 (1.7%)	177 (1.7%)	180 (1.6%)	239 (2.3%)	182 (2.0%)	223 (2.2%)	209 (2.1%)	247 (2.5%)
51-60	652 (6.4%)	533 (5.0%)	562 (5.4%)	544 (5.2%)	635 (5.7%)	582 (5.7%)	584 (6.3%)	511 (5.0%)	529 (5.3%)	556 (5.7%)
61-70	919 (9.0%)	972 (9.2%)	1,014 (9.7%)	942 (8.9%)	900 (8.1%)	789 (7.7%)	829 (8.9%)	917 (8.9%)	813 (8.2%)	832 (8.5%)
71-80	910 (8.9%)	974 (9.2%)	1,079 (10.3%)	971 (9.2%)	946 (8.6%)	860 (8.4%)	933 (10.1%)	913 (8.9%)	837 (8.5%)	833 (8.5%)
81-90	440 (4.3%)	466 (4.4%)	437 (4.2%)	378 (3.6%)	493 (4.5%)	373 (3.6%)	377 (4.1%)	464 (4.5%)	442 (4.5%)	399 (4.1%)
91-100	179 (1.7%)	140 (1.3%)	159 (1.5%)	168 (1.6%)	214 (1.9%)	174 (1.7%)	168 (1.8%)	188 (1.8%)	204 (2.1%)	129 (1.3%)
101+	80 (0.8%)	83 (0.8%)	74 (0.7%)	114 (1.1%)	107 (1.0%)	86 (0.8%)	87 (0.9%)	103 (1.0%)	81 (0.8%)	72 (0.7%)
3YO+										
Unrated	3,913 (8.5%)	3,782 (8.2%)	4,019 (8.5%)	4,142 (8.5%)	4,994 (10.1%)	4,752 (9.6%)	3,970 (10.1%)	4,847 (10.1%)	4,424 (9.5%)	4,366 (9.1%)
0-50	4,549 (9.9%)	4,180 (9.1%)	3,977 (8.4%)	4,623 (9.5%)	5,345 (10.8%)	6,227 (12.5%)	4,476 (11.4%)	5,582 (11.6%)	5,465 (11.7%)	5,905 (12.3%)
51-60	7,961 (17.3%)	8,009 (17.5%)	8,005 (17.0%)	8,300 (17.1%)	8,176 (16.5%)	9,035 (18.2%)	7,062 (17.9%)	8,755 (18.2%)	8,456 (18.2%)	9,412 (19.7%)
61-70	10,179 (22.1%)	9,963 (21.7%)	10,265 (21.8%)	10,084 (20.8%)	10,231 (20.6%)	9,979 (20.1%)	8,233 (20.9%)	10,212 (21.2%)	9,949 (21.4%)	10,162 (21.2%)
71-80	9,194 (20.0%)	9,183 (20.0%)	9,561 (20.3%)	9,665 (19.9%)	9,418 (19.0%)	8,879 (17.8%)	7,383 (18.7%)	8,620 (17.9%)	8,617 (18.5%)	8,790 (18.4%)
81-90	5,570 (12.1%)	5,931 (12.9%)	6,220 (13.2%)	6,457 (13.3%)	6,272 (12.6%)	5,794 (11.6%)	4,619 (11.7%)	5,453 (11.3%)	5,277 (11.3%)	5,129 (10.7%)
91-100	2,910 (6.3%)	2,872 (6.3%)	3,086 (6.5%)	3,076 (6.3%)	3,256 (6.6%)	3,244 (6.5%)	2,200 (5.6%)	2,793 (5.8%)	2,553 (5.5%)	2,463 (5.1%)
101+	1,794 (3.9%)	1,946 (4.2%)	2,018 (4.3%)	2,125 (4.4%)	1,928 (3.9%)	1,838 (3.7%)	1,458 (3.7%)	1,808 (3.8%)	1,796 (3.9%)	1,649 (3.4%)

Jump

RatBand	2014	2015	2016	2017	2018	2019	2020	2021	2022	2023
Hurdle										
Unrated	5,250 (30.1%)	5,333 (29.4%)	5,360 (29.0%)	5,369 (29.1%)	5,590 (29.7%)	5,672 (30.7%)	4,805 (32.4%)	5,503 (29.4%)	5,183 (29.5%)	5,349 (30.1%)
0-100	4,808 (27.6%)	4,712 (26.0%)	4,742 (25.6%)	4,628 (25.1%)	4,523 (24.0%)	4,364 (23.6%)	3,491 (23.5%)	5,456 (29.2%)	5,326 (30.3%)	5,533 (31.2%)
101-110	2,277 (13.1%)	2,627 (14.5%)	2,712 (14.7%)	2,710 (14.7%)	2,764 (14.7%)	2,615 (14.1%)	2,094 (14.1%)	2,475 (13.2%)	2,589 (14.7%)	2,582 (14.5%)
111-120	2,412 (13.8%)	2,430 (13.4%)	2,564 (13.9%)	2,562 (13.9%)	2,551 (13.5%)	2,553 (13.8%)	1,837 (12.4%)	2,313 (12.4%)	2,155 (12.3%)	2,104 (11.9%)
121-130	1,566 (9.0%)	1,696 (9.4%)	1,697 (9.2%)	1,748 (9.5%)	1,910 (10.1%)	1,898 (10.3%)	1,473 (9.9%)	1,703 (9.1%)	1,362 (7.7%)	1,377 (7.8%)
131-140	779 (4.5%)	894 (4.9%)	971 (5.3%)	985 (5.3%)	1,048 (5.6%)	955 (5.2%)	778 (5.2%)	852 (4.6%)	667 (3.8%)	539 (3.0%)
141-150	256 (1.5%)	305 (1.7%)	320 (1.7%)	307 (1.7%)	348 (1.8%)	313 (1.7%)	249 (1.7%)	299 (1.6%)	233 (1.3%)	194 (1.1%)
151+	88 (0.5%)	118 (0.7%)	127 (0.7%)	111 (0.6%)	110 (0.6%)	129 (0.7%)	126 (0.8%)	112 (0.6%)	76 (0.4%)	76 (0.4%)
Chase										
Unrated	94 (1.0%)	69 (0.7%)	82 (0.8%)	88 (0.9%)	79 (0.8%)	61 (0.6%)	32 (0.4%)	37 (0.4%)	14 (0.1%)	9 (0.1%)
0-100	3,031 (30.8%)	2,757 (27.7%)	2,742 (27.0%)	2,596 (25.6%)	2,676 (26.4%)	2,745 (27.8%)	2,272 (28.2%)	3,046 (29.8%)	2,945 (31.0%)	3,200 (34.4%)
101-110	1,515 (15.4%)	1,428 (14.4%)	1,505 (14.8%)	1,585 (15.6%)	1,575 (15.6%)	1,536 (15.6%)	1,183 (14.7%)	1,511 (14.8%)	1,517 (15.9%)	1,493 (16.0%)
111-120	1,692 (17.2%)	1,856 (18.7%)	1,826 (18.0%)	1,747 (17.2%)	1,687 (16.7%)	1,562 (15.8%)	1,305 (16.2%)	1,789 (17.5%)	1,683 (17.7%)	1,646 (17.7%)
121-130	1,628 (16.5%)	1,676 (16.8%)	1,602 (15.8%)	1,676 (16.5%)	1,752 (17.3%)	1,586 (16.1%)	1,360 (16.9%)	1,650 (16.2%)	1,512 (15.9%)	1,384 (14.9%)
131-140	1,063 (10.8%)	1,233 (12.4%)	1,418 (13.9%)	1,434 (14.2%)	1,365 (13.5%)	1,365 (13.8%)	1,057 (13.1%)	1,210 (11.9%)	1,062 (11.2%)	904 (9.7%)
141-150	559 (5.7%)	608 (6.1%)	656 (6.5%)	663 (6.5%)	704 (7.0%)	672 (6.8%)	581 (7.2%)	638 (6.3%)	514 (5.4%)	425 (4.6%)
151+	271 (2.8%)	321 (3.2%)	338 (3.3%)	341 (3.4%)	290 (2.9%)	340 (3.4%)	261 (3.2%)	326 (3.2%)	265 (2.8%)	252 (2.7%)

Annual Total GB-Trained Runners by Rating Band

Flat

RatBand	2014	2015	2016	2017	2018	2019	2020	2021	2022	2023
2YO										
Unrated	6,749 (66.3%)	7,069 (67.2%)	6,867 (66.2%)	7,186 (68.8%)	7,492 (68.6%)	7,004 (69.6%)	6,075 (65.8%)	6,954 (67.9%)	6,754 (68.6%)	6,653 (68.6%)
0-50	246 (2.4%)	281 (2.7%)	180 (1.7%)	177 (1.7%)	180 (1.6%)	238 (2.4%)	182 (2.0%)	223 (2.2%)	209 (2.1%)	247 (2.5%)
51-60	652 (6.4%)	533 (5.1%)	561 (5.4%)	544 (5.2%)	633 (5.8%)	579 (5.8%)	584 (6.3%)	511 (5.0%)	529 (5.4%)	556 (5.7%)
61-70	919 (9.0%)	972 (9.2%)	1,014 (9.8%)	942 (9.0%)	900 (8.2%)	787 (7.8%)	829 (9.0%)	917 (8.9%)	813 (8.3%)	832 (8.6%)
71-80	909 (8.9%)	973 (9.3%)	1,079 (10.4%)	970 (9.3%)	946 (8.7%)	860 (8.5%)	933 (10.1%)	912 (8.9%)	837 (8.5%)	833 (8.6%)
81-90	440 (4.3%)	466 (4.4%)	437 (4.2%)	372 (3.6%)	489 (4.5%)	371 (3.7%)	376 (4.1%)	461 (4.5%)	440 (4.5%)	397 (4.1%)
91-100	179 (1.8%)	140 (1.3%)	159 (1.5%)	159 (1.5%)	207 (1.9%)	158 (1.6%)	166 (1.8%)	178 (1.7%)	193 (2.0%)	124 (1.3%)
101+	80 (0.8%)	83 (0.8%)	74 (0.7%)	91 (0.9%)	80 (0.7%)	62 (0.6%)	82 (0.9%)	93 (0.9%)	69 (0.7%)	63 (0.6%)
3YO+										
Unrated	3,887 (8.5%)	3,752 (8.3%)	3,994 (8.6%)	4,114 (8.6%)	4,966 (10.2%)	4,726 (9.6%)	3,961 (10.1%)	4,839 (10.1%)	4,413 (9.5%)	4,347 (9.2%)
0-50	4,511 (9.9%)	4,133 (9.1%)	3,931 (8.4%)	4,545 (9.5%)	5,257 (10.8%)	6,116 (12.5%)	4,458 (11.4%)	5,582 (11.7%)	5,465 (11.8%)	5,875 (12.4%)
51-60	7,929 (17.4%)	7,945 (17.5%)	7,955 (17.1%)	8,193 (17.1%)	8,040 (16.4%)	8,911 (18.2%)	7,028 (17.9%)	8,754 (18.3%)	8,455 (18.3%)	9,383 (19.8%)
61-70	10,154 (22.2%)	9,918 (21.9%)	10,200 (21.9%)	10,016 (20.9%)	10,139 (20.7%)	9,911 (20.2%)	8,224 (21.0%)	10,209 (21.4%)	9,942 (21.5%)	10,146 (21.4%)
71-80	9,172 (20.1%)	9,142 (20.2%)	9,526 (20.4%)	9,596 (20.1%)	9,372 (19.2%)	8,842 (18.0%)	7,372 (18.8%)	8,597 (18.0%)	8,601 (18.6%)	8,755 (18.4%)
81-90	5,551 (12.2%)	5,899 (13.0%)	6,187 (13.3%)	6,424 (13.4%)	6,236 (12.8%)	5,755 (11.7%)	4,608 (11.8%)	5,411 (11.3%)	5,240 (11.3%)	5,092 (10.7%)
91-100	2,855 (6.2%)	2,813 (6.2%)	3,022 (6.5%)	3,009 (6.3%)	3,179 (6.5%)	3,164 (6.5%)	2,184 (5.6%)	2,724 (5.7%)	2,488 (5.4%)	2,379 (5.0%)
101+	1,622 (3.6%)	1,743 (3.8%)	1,820 (3.9%)	1,930 (4.0%)	1,704 (3.5%)	1,625 (3.3%)	1,343 (3.4%)	1,622 (3.4%)	1,626 (3.5%)	1,484 (3.1%)

Jump

RatBand	2014	2015	2016	2017	2018	2019	2020	2021	2022	2023
Hurdle										
Unrated	5,143 (30.2%)	5,233 (29.6%)	5,259 (29.3%)	5,288 (29.4%)	5,514 (29.9%)	5,585 (30.9%)	4,767 (32.5%)	5,439 (29.6%)	5,050 (29.6%)	5,217 (30.4%)
0-100	4,752 (27.9%)	4,649 (26.3%)	4,652 (25.9%)	4,523 (25.2%)	4,439 (24.1%)	4,307 (23.8%)	3,477 (23.7%)	5,425 (29.5%)	5,291 (31.0%)	5,460 (31.8%)
101-110	2,245 (13.2%)	2,580 (14.6%)	2,647 (14.7%)	2,646 (14.7%)	2,715 (14.7%)	2,562 (14.2%)	2,090 (14.3%)	2,430 (13.2%)	2,550 (14.9%)	2,531 (14.7%)
111-120	2,352 (13.8%)	2,386 (13.5%)	2,504 (13.9%)	2,514 (14.0%)	2,504 (13.6%)	2,501 (13.8%)	1,831 (12.5%)	2,278 (12.4%)	2,092 (12.3%)	2,036 (11.8%)
121-130	1,536 (9.0%)	1,656 (9.4%)	1,642 (9.1%)	1,693 (9.4%)	1,860 (10.1%)	1,854 (10.3%)	1,455 (9.9%)	1,657 (9.0%)	1,277 (7.5%)	1,294 (7.5%)
131-140	729 (4.3%)	824 (4.7%)	905 (5.0%)	940 (5.2%)	997 (5.4%)	896 (5.0%)	727 (5.0%)	796 (4.3%)	589 (3.4%)	464 (2.7%)
141-150	220 (1.3%)	266 (1.5%)	253 (1.4%)	269 (1.5%)	303 (1.6%)	262 (1.4%)	205 (1.4%)	250 (1.4%)	170 (1.0%)	132 (0.8%)
151+	69 (0.4%)	100 (0.6%)	104 (0.6%)	92 (0.5%)	94 (0.5%)	104 (0.6%)	100 (0.7%)	90 (0.5%)	54 (0.3%)	49 (0.3%)
Chase										
Unrated	90 (0.9%)	63 (0.7%)	82 (0.8%)	85 (0.9%)	78 (0.8%)	60 (0.6%)	32 (0.4%)	36 (0.4%)	13 (0.1%)	8 (0.1%)
0-100	2,986 (31.2%)	2,707 (28.1%)	2,680 (27.3%)	2,529 (25.8%)	2,641 (26.7%)	2,720 (28.3%)	2,267 (28.5%)	3,040 (30.4%)	2,938 (31.8%)	3,173 (35.4%)
101-110	1,480 (15.5%)	1,395 (14.5%)	1,465 (14.9%)	1,561 (15.9%)	1,563 (15.8%)	1,529 (15.9%)	1,180 (14.9%)	1,499 (15.0%)	1,502 (16.3%)	1,473 (16.4%)
111-120	1,661 (17.3%)	1,814 (18.9%)	1,791 (18.2%)	1,717 (17.5%)	1,664 (16.8%)	1,544 (16.0%)	1,296 (16.3%)	1,772 (17.7%)	1,654 (17.9%)	1,606 (17.9%)
121-130	1,590 (16.6%)	1,642 (17.1%)	1,575 (16.0%)	1,628 (16.6%)	1,714 (17.3%)	1,549 (16.1%)	1,354 (17.0%)	1,631 (16.3%)	1,461 (15.8%)	1,335 (14.9%)
131-140	1,009 (10.5%)	1,162 (12.1%)	1,359 (13.8%)	1,382 (14.1%)	1,328 (13.4%)	1,325 (13.8%)	1,038 (13.1%)	1,185 (11.8%)	1,007 (10.9%)	847 (9.5%)
141-150	525 (5.5%)	557 (5.8%)	593 (6.0%)	607 (6.2%)	657 (6.6%)	617 (6.4%)	551 (6.9%)	578 (5.8%)	452 (4.9%)	348 (3.9%)
151+	238 (2.5%)	280 (2.9%)	288 (2.9%)	301 (3.1%)	243 (2.5%)	283 (2.9%)	225 (2.8%)	262 (2.6%)	202 (2.2%)	166 (1.9%)

Frequency of Runs

Annual Average Runs per Horse

Code	2014	2015	2016	2017	2018	2019	2020	2021	2022	2023
Flat	5.37	5.32	5.32	5.28	5.33	5.28	4.57	5.38	5.32	5.37
Jump	3.80	3.78	3.83	3.84	3.86	3.69	3.17	3.66	3.56	3.60
Dual Overall	7.87	8.04	7.89	7.73	7.76	7.72	6.34	7.58	7.28	7.34
Dual (Flat)	4.42	4.49	4.34	4.31	4.35	4.45	3.44	4.17	4.03	4.15
Dual (Jump)	3.44	3.54	3.55	3.42	3.41	3.26	2.90	3.41	3.25	3.19
All	4.90	4.86	4.87	4.85	4.88	4.78	4.11	4.76	4.68	4.73

Annual Proportion of Horses by Count of Runs

Runs	2014	2015	2016	2017	2018	2019	2020	2021	2022	2023
Flat										
1	1,498 (14.0%)	1,528 (14.2%)	1,579 (14.3%)	1,660 (14.6%)	1,693 (14.6%)	1,700 (14.8%)	1,761 (16.2%)	1,533 (13.9%)	1,530 (14.2%)	1,572 (14.4%)
2	1,480 (13.9%)	1,444 (13.4%)	1,403 (12.7%)	1,485 (13.1%)	1,464 (12.7%)	1,600 (13.9%)	1,718 (15.8%)	1,372 (12.4%)	1,355 (12.5%)	1,375 (12.6%)
3	1,386 (13.0%)	1,464 (13.6%)	1,481 (13.5%)	1,555 (13.7%)	1,613 (13.9%)	1,550 (13.5%)	1,686 (15.5%)	1,501 (13.6%)	1,463 (13.5%)	1,432 (13.1%)
4	1,143 (10.7%)	1,205 (11.2%)	1,202 (10.9%)	1,192 (10.5%)	1,276 (11.0%)	1,249 (10.8%)	1,333 (12.2%)	1,216 (11.0%)	1,233 (11.4%)	1,237 (11.3%)
5+	5,177 (48.5%)	5,132 (47.6%)	5,341 (48.5%)	5,462 (48.1%)	5,519 (47.7%)	5,425 (47.1%)	4,386 (40.3%)	5,439 (49.2%)	5,220 (48.3%)	5,292 (48.5%)
Jump										
1	1,867 (23.1%)	1,870 (22.8%)	1,856 (22.6%)	1,901 (23.1%)	1,820 (21.9%)	1,919 (22.6%)	1,915 (24.0%)	1,973 (22.2%)	2,014 (24.1%)	2,036 (24.6%)
2	1,458 (18.0%)	1,447 (17.6%)	1,448 (17.6%)	1,460 (17.7%)	1,395 (16.8%)	1,577 (18.6%)	1,616 (20.3%)	1,632 (18.4%)	1,553 (18.6%)	1,480 (17.9%)
3	1,118 (13.8%)	1,158 (14.1%)	1,182 (14.4%)	1,124 (13.6%)	1,205 (14.5%)	1,274 (15.0%)	1,421 (17.8%)	1,391 (15.6%)	1,258 (15.0%)	1,227 (14.8%)
4	973 (12.0%)	1,035 (12.6%)	979 (11.9%)	929 (11.3%)	1,072 (12.9%)	1,045 (12.3%)	1,213 (15.2%)	1,134 (12.8%)	1,075 (12.9%)	971 (11.7%)
5+	2,679 (33.1%)	2,701 (32.9%)	2,763 (33.6%)	2,830 (34.3%)	2,835 (34.0%)	2,661 (31.4%)	1,802 (22.6%)	2,761 (31.1%)	2,462 (29.4%)	2,574 (31.1%)
All Races										
1	2,820 (16.0%)	2,895 (16.1%)	2,957 (16.2%)	3,041 (16.3%)	3,045 (16.1%)	3,149 (16.6%)	3,164 (17.6%)	3,071 (16.1%)	3,124 (17.0%)	3,182 (17.3%)
2	2,588 (14.6%)	2,572 (14.3%)	2,560 (14.0%)	2,683 (14.4%)	2,568 (13.6%)	2,863 (15.1%)	3,015 (16.8%)	2,718 (14.3%)	2,645 (14.4%)	2,632 (14.3%)
3	2,304 (13.0%)	2,418 (13.5%)	2,429 (13.3%)	2,471 (13.3%)	2,610 (13.8%)	2,579 (13.6%)	2,924 (16.3%)	2,695 (14.1%)	2,563 (14.0%)	2,518 (13.7%)
4	1,967 (11.1%)	2,083 (11.6%)	2,065 (11.3%)	2,024 (10.9%)	2,207 (11.7%)	2,159 (11.4%)	2,441 (13.6%)	2,234 (11.7%)	2,203 (12.0%)	2,127 (11.5%)
5+	7,996 (45.2%)	7,969 (44.4%)	8,228 (45.1%)	8,401 (45.1%)	8,505 (44.9%)	8,256 (43.4%)	6,407 (35.7%)	8,340 (43.8%)	7,820 (42.6%)	7,971 (43.3%)

Annual Median Days Between Runs

Code/RatBand	2014	2015	2016	2017	2018	2019	2020	2021	2022	2023
All Runners	23	24	24	24	24	25	25	25	25	25
Flat										
Unrated	22	22	22	23	23	23	22	23	24	23
0-50	20	21	21	21	20	21	20	20	21	20
51-60	19	19	20	20	20	20	20	20	20	20
61-70	20	20	20	21	20	21	21	21	21	21
71-80	21	21	21	22	21	21	22	22	22	22
81-90	21	22	22	22	22	22	22	23	23	25
91-100	24	24	24	25	24	24	24	25	27	27
101+	28	27	28	28	28	28	28	29	31	33
All Flat Runners	21	21	21	22	21	22	21	22	22	22
Jump										
Unrated	34	35	35	33	35	35	35	38	36	38
0-100	25	26	26	26	26	27	30	28	28	30
101-110	26	28	29	28	29	29	30	30	30	32
111-120	27	29	29	29	30	31	33	32	32	33
121-130	29	31	31	30	30	32	33	34	33	34
131-140	32	32	33	33	34	35	36	35	35	36
141-150	34	34	34	35	37	37	41	39	39	40
151+	35	35	35	34	39	40	43	42	40	44
All Jump Runners	28	30	30	29	30	31	33	33	32	33

Horses Population by Gender

December 2023 Horses in Training Snapshot by Gender versus Previous Years

All Horses

Sex	2014	2015	2016	2017	2018	2019	2020	2021	2022	2023
Colt/Entire	2,178 (16.8%)	2,185 (16.5%)	2,151 (16.0%)	2,166 (15.7%)	1,918 (13.9%)	2,038 (14.2%)	1,878 (13.0%)	1,773 (12.8%)	1,664 (12.1%)	1,691 (12.4%)
Gelding	7,098 (54.9%)	7,305 (55.3%)	7,584 (56.3%)	7,663 (55.5%)	7,891 (57.2%)	8,091 (56.6%)	8,370 (57.9%)	7,995 (57.6%)	7,981 (57.9%)	7,870 (57.6%)
Filly/Mare	3,657 (28.3%)	3,721 (28.2%)	3,726 (27.7%)	3,965 (28.7%)	3,993 (28.9%)	4,172 (29.2%)	4,200 (29.1%)	4,119 (29.7%)	4,135 (30.0%)	4,114 (30.1%)
Rig	0 (0.0%)	5 (0.0%)	4 (0.0%)	3 (0.0%)	3 (0.0%)	3 (0.0%)	3 (0.0%)	1 (0.0%)	0 (0.0%)	0 (0.0%)
Total	12,933 (100.0%)	13,216 (100.0%)	13,465 (100.0%)	13,797 (100.0%)	13,805 (100.0%)	14,304 (100.0%)	14,451 (100.0%)	13,888 (100.0%)	13,780 (100.0%)	13,675 (100.0%)

Flat (including Dual)

Sex	2014	2015	2016	2017	2018	2019	2020	2021	2022	2023
Colt/Entire	1,149 (19.5%)	1,110 (18.5%)	1,113 (17.5%)	1,215 (17.2%)	1,140 (16.8%)	1,156 (16.5%)	1,113 (16.4%)	1,010 (15.1%)	977 (14.6%)	966 (14.0%)
Gelding	2,792 (47.3%)	2,911 (48.5%)	3,170 (49.9%)	3,540 (50.1%)	3,357 (49.5%)	3,461 (49.4%)	3,439 (50.5%)	3,392 (50.6%)	3,398 (50.7%)	3,553 (51.6%)
Filly/Mare	1,961 (33.2%)	1,976 (32.9%)	2,072 (32.6%)	2,314 (32.7%)	2,280 (33.6%)	2,380 (34.0%)	2,251 (33.1%)	2,300 (34.3%)	2,324 (34.7%)	2,360 (34.3%)
Rig	0 (0.0%)	3 (0.0%)	4 (0.1%)	3 (0.0%)	2 (0.0%)	2 (0.0%)	2 (0.0%)	0 (0.0%)	0 (0.0%)	0 (0.0%)
Total	5,902 (100.0%)	6,000 (100.0%)	6,359 (100.0%)	7,072 (100.0%)	6,779 (100.0%)	6,999 (100.0%)	6,805 (100.0%)	6,702 (100.0%)	6,699 (100.0%)	6,879 (100.0%)

Jump (including Dual)

Sex	2014	2015	2016	2017	2018	2019	2020	2021	2022	2023
Colt/Entire	43 (0.7%)	38 (0.6%)	21 (0.4%)	21 (0.3%)	31 (0.5%)	26 (0.4%)	29 (0.4%)	35 (0.6%)	33 (0.5%)	23 (0.4%)
Gelding	4,633 (79.7%)	4,721 (80.5%)	4,787 (81.2%)	4,772 (78.7%)	4,845 (78.1%)	4,981 (77.9%)	5,264 (77.7%)	4,919 (77.5%)	4,875 (76.5%)	4,706 (76.4%)
Filly/Mare	1,138 (19.6%)	1,104 (18.8%)	1,089 (18.5%)	1,268 (20.9%)	1,324 (21.4%)	1,383 (21.6%)	1,477 (21.8%)	1,391 (21.9%)	1,461 (22.9%)	1,430 (23.2%)
Rig	0 (0.0%)	0 (0.0%)	0 (0.0%)	0 (0.0%)	1 (0.0%)	1 (0.0%)	1 (0.0%)	1 (0.0%)	0 (0.0%)	0 (0.0%)
Total	5,814 (100.0%)	5,863 (100.0%)	5,897 (100.0%)	6,061 (100.0%)	6,201 (100.0%)	6,391 (100.0%)	6,771 (100.0%)	6,346 (100.0%)	6,369 (100.0%)	6,159 (100.0%)

Hunter Chasers

Sex	2014	2015	2016	2017	2018	2019	2020	2021	2022	2023
Colt/Entire	0 (0.0%)	1 (0.1%)	0 (0.0%)	2 (0.3%)	1 (0.1%)	1 (0.2%)	1 (0.1%)	1 (0.2%)	12 (2.3%)	8 (0.7%)
Gelding	598 (84.8%)	592 (85.9%)	514 (86.1%)	550 (85.7%)	586 (81.6%)	503 (82.9%)	656 (82.1%)	511 (84.3%)	428 (81.7%)	932 (82.4%)
Filly/Mare	107 (15.2%)	96 (13.9%)	83 (13.9%)	90 (14.0%)	131 (18.2%)	103 (17.0%)	142 (17.8%)	94 (15.5%)	84 (16.0%)	191 (16.9%)
Rig	0 (0.0%)	0 (0.0%)	0 (0.0%)	0 (0.0%)	0 (0.0%)	0 (0.0%)	0 (0.0%)	0 (0.0%)	0 (0.0%)	0 (0.0%)
Total	705 (100.0%)	689 (100.0%)	597 (100.0%)	642 (100.0%)	718 (100.0%)	607 (100.0%)	799 (100.0%)	606 (100.0%)	524 (100.0%)	1,131 (100.0%)

Annual Total Runners by Gender

Sex	2014	2015	2016	2017	2018	2019	2020	2021	2022	2023
All Races										
Colt/Entire	9,357 (10.8%)	9,149 (10.5%)	9,042 (10.2%)	9,078 (10.1%)	9,560 (10.3%)	8,638 (9.5%)	7,503 (10.2%)	8,280 (9.1%)	7,452 (8.7%)	7,431 (8.5%)
Gelding	53,254 (61.4%)	54,369 (62.3%)	55,935 (63.0%)	56,714 (62.8%)	57,118 (61.8%)	56,142 (61.8%)	45,230 (61.3%)	56,664 (62.5%)	53,829 (62.6%)	54,273 (62.3%)
Filly/Mare	24,075 (27.8%)	23,708 (27.2%)	23,856 (26.8%)	24,448 (27.1%)	25,689 (27.8%)	26,058 (28.7%)	20,987 (28.5%)	25,737 (28.4%)	24,676 (28.7%)	25,475 (29.2%)
Rig	1 (0.0%)	3 (0.0%)	19 (0.0%)	13 (0.0%)	14 (0.0%)	19 (0.0%)	6 (0.0%)	10 (0.0%)	10 (0.0%)	4 (0.0%)
Flat										
Colt/Entire	9,229 (16.4%)	9,068 (16.1%)	8,992 (15.6%)	9,026 (15.3%)	9,505 (15.7%)	8,600 (14.3%)	7,460 (15.3%)	8,195 (14.0%)	7,413 (13.1%)	7,375 (12.8%)
Gelding	28,375 (50.4%)	29,169 (51.7%)	30,194 (52.4%)	31,173 (52.8%)	31,804 (52.4%)	31,815 (53.0%)	25,509 (52.4%)	31,183 (53.4%)	30,499 (54.0%)	31,262 (54.2%)
Filly/Mare	18,704 (33.2%)	18,224 (32.3%)	18,401 (31.9%)	18,819 (31.9%)	19,342 (31.9%)	19,547 (32.6%)	15,714 (32.3%)	19,005 (32.6%)	18,530 (32.8%)	19,035 (33.0%)
Rig	0 (0.0%)	2 (0.0%)	19 (0.0%)	13 (0.0%)	14 (0.0%)	12 (0.0%)	1 (0.0%)	3 (0.0%)	0 (0.0%)	0 (0.0%)
All Jump										
Colt/Entire	128 (0.4%)	81 (0.3%)	50 (0.2%)	52 (0.2%)	55 (0.2%)	38 (0.1%)	43 (0.2%)	85 (0.3%)	39 (0.1%)	56 (0.2%)
Gelding	24,879 (81.9%)	25,200 (81.9%)	25,741 (82.4%)	25,541 (81.8%)	25,314 (79.8%)	24,327 (78.8%)	19,721 (78.8%)	25,481 (78.9%)	23,330 (79.0%)	23,011 (78.0%)
Filly/Mare	5,371 (17.7%)	5,484 (17.8%)	5,455 (17.5%)	5,629 (18.0%)	6,347 (20.0%)	6,511 (21.1%)	5,273 (21.1%)	6,732 (20.8%)	6,146 (20.8%)	6,440 (21.8%)
Rig	1 (0.0%)	1 (0.0%)	0 (0.0%)	0 (0.0%)	0 (0.0%)	7 (0.0%)	5 (0.0%)	7 (0.0%)	10 (0.0%)	4 (0.0%)
Chase										
Colt/Entire	3 (0.0%)	1 (0.0%)	1 (0.0%)	0 (0.0%)	1 (0.0%)	0 (0.0%)	0 (0.0%)	0 (0.0%)	0 (0.0%)	0 (0.0%)
Gelding	9,157 (92.9%)	9,246 (92.9%)	9,420 (92.6%)	9,332 (92.1%)	9,177 (90.6%)	8,896 (90.2%)	7,255 (90.1%)	9,147 (89.6%)	8,514 (89.5%)	8,312 (89.3%)
Filly/Mare	693 (7.0%)	701 (7.0%)	748 (7.4%)	798 (7.9%)	950 (9.4%)	966 (9.8%)	791 (9.8%)	1,053 (10.3%)	988 (10.4%)	998 (10.7%)
Rig	0 (0.0%)	0 (0.0%)	0 (0.0%)	0 (0.0%)	0 (0.0%)	5 (0.1%)	5 (0.1%)	7 (0.1%)	10 (0.1%)	3 (0.0%)
Hurdle										
Colt/Entire	111 (0.6%)	71 (0.4%)	45 (0.2%)	41 (0.2%)	43 (0.2%)	26 (0.1%)	28 (0.2%)	74 (0.4%)	26 (0.1%)	45 (0.3%)
Gelding	13,632 (78.2%)	14,210 (78.4%)	14,622 (79.1%)	14,487 (78.6%)	14,433 (76.6%)	13,867 (75.0%)	11,075 (74.6%)	14,032 (75.0%)	13,315 (75.7%)	13,209 (74.4%)
Filly/Mare	3,693 (21.2%)	3,834 (21.2%)	3,826 (20.7%)	3,892 (21.1%)	4,368 (23.2%)	4,604 (24.9%)	3,750 (25.2%)	4,607 (24.6%)	4,250 (24.2%)	4,499 (25.3%)
Rig	0 (0.0%)	0 (0.0%)	0 (0.0%)	0 (0.0%)	0 (0.0%)	2 (0.0%)	0 (0.0%)	0 (0.0%)	0 (0.0%)	1 (0.0%)
NHF										
Colt/Entire	14 (0.5%)	9 (0.3%)	4 (0.2%)	11 (0.4%)	11 (0.4%)	12 (0.5%)	15 (0.7%)	11 (0.3%)	13 (0.5%)	11 (0.5%)
Gelding	2,090 (67.6%)	1,744 (64.5%)	1,699 (65.8%)	1,722 (64.4%)	1,704 (62.1%)	1,564 (62.1%)	1,391 (65.1%)	2,302 (68.0%)	1,501 (62.0%)	1,490 (61.0%)
Filly/Mare	985 (31.9%)	949 (35.1%)	881 (34.1%)	939 (35.1%)	1,029 (37.5%)	941 (37.4%)	732 (34.2%)	1,072 (31.7%)	908 (37.5%)	943 (38.6%)
Rig	1 (0.0%)	1 (0.0%)	0 (0.0%)	0 (0.0%)	0 (0.0%)	0 (0.0%)	0 (0.0%)	0 (0.0%)	0 (0.0%)	0 (0.0%)
Hunter										
Colt/Entire	0 (0.0%)	1 (0.1%)	0 (0.0%)	0 (0.0%)	0 (0.0%)	0 (0.0%)	0 (0.0%)	0 (0.0%)	0 (0.0%)	0 (0.0%)
Gelding	771 (91.5%)	799 (94.2%)	720 (94.2%)	709 (94.9%)	603 (93.3%)	522 (92.7%)	142 (97.3%)	557 (93.5%)	429 (94.9%)	408 (93.6%)
Filly/Mare	72 (8.5%)	48 (5.7%)	44 (5.8%)	38 (5.1%)	43 (6.7%)	41 (7.3%)	4 (2.7%)	39 (6.5%)	23 (5.1%)	28 (6.4%)

Annual Individual Runners by Gender

Sex	2014	2015	2016	2017	2018	2019	2020	2021	2022	2023
All Races										
Male	12,422 (70.3%)	12,630 (70.4%)	12,871 (70.6%)	13,068 (70.2%)	13,168 (69.5%)	13,162 (69.3%)	12,445 (69.3%)	13,236 (69.5%)	12,669 (69.0%)	12,589 (68.3%)
Female	5,253 (29.7%)	5,307 (29.6%)	5,368 (29.4%)	5,552 (29.8%)	5,767 (30.5%)	5,844 (30.7%)	5,506 (30.7%)	5,822 (30.5%)	5,686 (31.0%)	5,841 (31.7%)
Flat										
Male	6,772 (63.4%)	6,860 (63.7%)	7,047 (64.0%)	7,277 (64.1%)	7,421 (64.2%)	7,377 (64.0%)	6,962 (64.0%)	7,035 (63.6%)	6,824 (63.2%)	6,846 (62.8%)
Female	3,912 (36.6%)	3,913 (36.3%)	3,959 (36.0%)	4,077 (35.9%)	4,144 (35.8%)	4,147 (36.0%)	3,922 (36.0%)	4,026 (36.4%)	3,977 (36.8%)	4,062 (37.2%)
All Jump										
Male	6,513 (80.5%)	6,607 (80.5%)	6,634 (80.6%)	6,587 (79.9%)	6,502 (78.1%)	6,571 (77.5%)	6,187 (77.7%)	6,909 (77.7%)	6,475 (77.4%)	6,341 (76.5%)
Female	1,582 (19.5%)	1,604 (19.5%)	1,594 (19.4%)	1,657 (20.1%)	1,825 (21.9%)	1,905 (22.5%)	1,780 (22.3%)	1,982 (22.3%)	1,887 (22.6%)	1,947 (23.5%)
Chase										
Male	2,600 (92.2%)	2,710 (91.8%)	2,705 (91.4%)	2,665 (90.6%)	2,680 (89.6%)	2,636 (88.9%)	2,482 (88.2%)	2,783 (87.7%)	2,582 (87.9%)	2,542 (87.8%)
Female	221 (7.8%)	243 (8.2%)	253 (8.6%)	276 (9.4%)	311 (10.4%)	329 (11.1%)	332 (11.8%)	391 (12.3%)	356 (12.1%)	353 (12.2%)
Hurdle										
Male	4,479 (79.4%)	4,632 (79.7%)	4,672 (80.0%)	4,588 (79.1%)	4,605 (77.3%)	4,640 (76.3%)	4,217 (75.8%)	4,751 (76.0%)	4,583 (76.7%)	4,455 (75.1%)
Female	1,161 (20.6%)	1,180 (20.3%)	1,169 (20.0%)	1,215 (20.9%)	1,356 (22.7%)	1,441 (23.7%)	1,348 (24.2%)	1,504 (24.0%)	1,394 (23.3%)	1,477 (24.9%)
NHF										
Male	1,372 (69.9%)	1,135 (66.6%)	1,125 (67.9%)	1,136 (67.0%)	1,153 (65.4%)	1,068 (64.8%)	1,043 (67.5%)	1,609 (70.3%)	1,053 (64.4%)	1,037 (63.7%)
Female	590 (30.1%)	569 (33.4%)	532 (32.1%)	560 (33.0%)	609 (34.6%)	581 (35.2%)	502 (32.5%)	681 (29.7%)	581 (35.6%)	591 (36.3%)
Hunter										
Male	447 (91.4%)	448 (94.1%)	395 (93.2%)	366 (93.6%)	339 (92.1%)	301 (92.0%)	98 (96.1%)	299 (92.0%)	243 (92.4%)	228 (93.4%)
Female	42 (8.6%)	28 (5.9%)	29 (6.8%)	25 (6.4%)	29 (7.9%)	26 (8.0%)	4 (3.9%)	26 (8.0%)	20 (7.6%)	16 (6.6%)

Horses Population by Breeding

December 2023 Horses in Training Snapshot by Breeding versus Previous Years

Flat (including Dual)

Bred	Sex	2014	2015	2016	2017	2018	2019	2020	2021	2022	2023
GB	Male	1,886 (32.0%)	1,891 (31.5%)	1,984 (31.2%)	2,221 (31.4%)	2,115 (31.2%)	2,199 (31.4%)	2,090 (30.7%)	2,027 (30.2%)	2,012 (30.0%)	2,051 (29.8%)
	Female	1,110 (18.8%)	1,105 (18.4%)	1,179 (18.5%)	1,288 (18.2%)	1,258 (18.6%)	1,317 (18.8%)	1,265 (18.6%)	1,294 (19.3%)	1,301 (19.4%)	1,291 (18.8%)
	Subtotal	2,996 (50.8%)	2,996 (49.9%)	3,163 (49.7%)	3,509 (49.6%)	3,373 (49.8%)	3,516 (50.2%)	3,355 (49.3%)	3,321 (49.6%)	3,313 (49.5%)	3,342 (48.6%)
IRE	Male	1,619 (27.4%)	1,691 (28.2%)	1,825 (28.7%)	1,989 (28.1%)	1,909 (28.2%)	1,936 (27.7%)	1,979 (29.1%)	1,971 (29.4%)	2,010 (30.0%)	2,069 (30.1%)
	Female	692 (11.7%)	723 (12.0%)	748 (11.8%)	850 (12.0%)	829 (12.2%)	882 (12.6%)	841 (12.4%)	867 (12.9%)	898 (13.4%)	941 (13.7%)
	Subtotal	2,311 (39.2%)	2,414 (40.2%)	2,573 (40.5%)	2,839 (40.1%)	2,738 (40.4%)	2,818 (40.3%)	2,820 (41.4%)	2,838 (42.3%)	2,908 (43.4%)	3,010 (43.8%)
FR	Male	121 (2.1%)	125 (2.1%)	158 (2.5%)	231 (3.3%)	199 (2.9%)	228 (3.3%)	245 (3.6%)	240 (3.6%)	214 (3.2%)	273 (4.0%)
	Female	33 (0.6%)	40 (0.7%)	50 (0.8%)	72 (1.0%)	76 (1.1%)	78 (1.1%)	69 (1.0%)	79 (1.2%)	89 (1.3%)	91 (1.3%)
	Subtotal	154 (2.6%)	165 (2.8%)	208 (3.3%)	303 (4.3%)	275 (4.1%)	306 (4.4%)	314 (4.6%)	319 (4.8%)	303 (4.5%)	364 (5.3%)
USA	Male	248 (4.2%)	257 (4.3%)	257 (4.0%)	241 (3.4%)	219 (3.2%)	198 (2.8%)	176 (2.6%)	126 (1.9%)	92 (1.4%)	86 (1.3%)
	Female	97 (1.6%)	87 (1.5%)	77 (1.2%)	83 (1.2%)	96 (1.4%)	82 (1.2%)	56 (0.8%)	41 (0.6%)	24 (0.4%)	17 (0.2%)
	Subtotal	345 (5.8%)	344 (5.7%)	334 (5.3%)	324 (4.6%)	315 (4.6%)	280 (4.0%)	232 (3.4%)	167 (2.5%)	116 (1.7%)	103 (1.5%)
GNY	Male	45 (0.8%)	42 (0.7%)	45 (0.7%)	55 (0.8%)	36 (0.5%)	41 (0.6%)	48 (0.7%)	32 (0.5%)	35 (0.5%)	33 (0.5%)
	Female	9 (0.2%)	11 (0.2%)	11 (0.2%)	11 (0.2%)	13 (0.2%)	16 (0.2%)	16 (0.2%)	17 (0.3%)	10 (0.1%)	13 (0.2%)
	Subtotal	54 (0.9%)	53 (0.9%)	56 (0.9%)	66 (0.9%)	49 (0.7%)	57 (0.8%)	64 (0.9%)	49 (0.7%)	45 (0.7%)	46 (0.7%)
Other	Male	22 (0.4%)	18 (0.3%)	18 (0.3%)	21 (0.3%)	21 (0.3%)	17 (0.2%)	16 (0.2%)	6 (0.1%)	12 (0.2%)	7 (0.1%)
	Female	20 (0.3%)	10 (0.2%)	7 (0.1%)	10 (0.1%)	8 (0.1%)	5 (0.1%)	4 (0.1%)	2 (0.0%)	2 (0.0%)	7 (0.1%)
	Subtotal	42 (0.7%)	28 (0.5%)	25 (0.4%)	31 (0.4%)	29 (0.4%)	22 (0.3%)	20 (0.3%)	8 (0.1%)	14 (0.2%)	14 (0.2%)

Jump (including Dual)

Bred	Sex	2014	2015	2016	2017	2018	2019	2020	2021	2022	2023
GB	Male	1,458 (25.1%)	1,401 (23.9%)	1,323 (22.4%)	1,347 (22.2%)	1,277 (20.6%)	1,286 (20.1%)	1,310 (19.3%)	1,225 (19.3%)	1,225 (19.2%)	1,190 (19.3%)
	Female	700 (12.0%)	649 (11.1%)	605 (10.3%)	668 (11.0%)	642 (10.4%)	619 (9.7%)	676 (10.0%)	661 (10.4%)	701 (11.0%)	652 (10.6%)
	Subtotal	2,158 (37.1%)	2,050 (35.0%)	1,928 (32.7%)	2,015 (33.2%)	1,919 (30.9%)	1,905 (29.8%)	1,986 (29.3%)	1,886 (29.7%)	1,926 (30.2%)	1,842 (29.9%)
IRE	Male	2,458 (42.3%)	2,570 (43.8%)	2,642 (44.8%)	2,636 (43.5%)	2,732 (44.1%)	2,779 (43.5%)	2,888 (42.7%)	2,632 (41.5%)	2,575 (40.4%)	2,448 (39.7%)
	Female	378 (6.5%)	390 (6.7%)	412 (7.0%)	511 (8.4%)	571 (9.2%)	627 (9.8%)	660 (9.7%)	589 (9.3%)	604 (9.5%)	623 (10.1%)
	Subtotal	2,836 (48.8%)	2,960 (50.5%)	3,054 (51.8%)	3,147 (51.9%)	3,303 (53.3%)	3,406 (53.3%)	3,548 (52.4%)	3,221 (50.8%)	3,179 (49.9%)	3,071 (49.9%)
FR	Male	608 (10.5%)	667 (11.4%)	737 (12.5%)	707 (11.7%)	779 (12.6%)	840 (13.1%)	994 (14.7%)	997 (15.7%)	1,013 (15.9%)	1,007 (16.4%)
	Female	54 (0.9%)	55 (0.9%)	64 (1.1%)	80 (1.3%)	102 (1.6%)	130 (2.0%)	129 (1.9%)	132 (2.1%)	147 (2.3%)	150 (2.4%)
	Subtotal	662 (11.4%)	722 (12.3%)	801 (13.6%)	787 (13.0%)	881 (14.2%)	970 (15.2%)	1,123 (16.6%)	1,129 (17.8%)	1,160 (18.2%)	1,157 (18.8%)
USA	Male	75 (1.3%)	60 (1.0%)	44 (0.7%)	44 (0.7%)	31 (0.5%)	32 (0.5%)	31 (0.5%)	28 (0.4%)	20 (0.3%)	16 (0.3%)
	Female	2 (0.0%)	1 (0.0%)	1 (0.0%)	3 (0.0%)	2 (0.0%)	3 (0.0%)	1 (0.0%)	1 (0.0%)	NA (-)	1 (0.0%)
	Subtotal	77 (1.3%)	61 (1.0%)	45 (0.8%)	47 (0.8%)	33 (0.5%)	35 (0.5%)	32 (0.5%)	29 (0.5%)	20 (0.3%)	17 (0.3%)
GNY	Male	64 (1.1%)	55 (0.9%)	55 (0.9%)	51 (0.8%)	51 (0.8%)	66 (1.0%)	66 (1.0%)	71 (1.1%)	72 (1.1%)	64 (1.0%)
	Female	3 (0.1%)	7 (0.1%)	5 (0.1%)	4 (0.1%)	6 (0.1%)	4 (0.1%)	10 (0.1%)	8 (0.1%)	8 (0.1%)	3 (0.0%)
	Subtotal	67 (1.2%)	62 (1.1%)	60 (1.0%)	55 (0.9%)	57 (0.9%)	70 (1.1%)	76 (1.1%)	79 (1.2%)	80 (1.3%)	67 (1.1%)
Other	Male	13 (0.2%)	6 (0.1%)	7 (0.1%)	8 (0.1%)	7 (0.1%)	5 (0.1%)	5 (0.1%)	2 (0.0%)	3 (0.0%)	4 (0.1%)
	Female	1 (0.0%)	2 (0.0%)	2 (0.0%)	2 (0.0%)	1 (0.0%)	NA (-)	1 (0.0%)	NA (-)	1 (0.0%)	1 (0.0%)
	Subtotal	14 (0.2%)	8 (0.1%)	9 (0.2%)	10 (0.2%)	8 (0.1%)	5 (0.1%)	6 (0.1%)	2 (0.0%)	4 (0.1%)	5 (0.1%)

Annual Total Runners by Breeding

Flat

Bred	Sex	2014	2015	2016	2017	2018	2019	2020	2021	2022	2023
GB	Male	17,614 (31.3%)	18,166 (32.2%)	18,432 (32.0%)	19,021 (32.2%)	19,096 (31.5%)	18,590 (31.0%)	15,549 (31.9%)	18,351 (31.4%)	17,504 (31.0%)	17,601 (30.5%)
	Female	10,305 (18.3%)	10,031 (17.8%)	10,183 (17.7%)	10,254 (17.4%)	10,640 (17.5%)	10,799 (18.0%)	8,747 (18.0%)	10,643 (18.2%)	10,103 (17.9%)	10,227 (17.7%)
	Subtotal	27,919 (49.6%)	28,197 (49.9%)	28,615 (49.7%)	29,275 (49.6%)	29,736 (49.0%)	29,389 (49.0%)	24,296 (49.9%)	28,994 (49.7%)	27,607 (48.9%)	27,828 (48.3%)
IRE	Male	16,401 (29.1%)	16,651 (29.5%)	17,309 (30.0%)	17,542 (29.7%)	18,454 (30.4%)	18,016 (30.0%)	14,466 (29.7%)	17,817 (30.5%)	17,845 (31.6%)	18,324 (31.8%)
	Female	7,286 (12.9%)	7,166 (12.7%)	7,253 (12.6%)	7,522 (12.7%)	7,510 (12.4%)	7,506 (12.5%)	6,103 (12.5%)	7,315 (12.5%)	7,501 (13.3%)	7,890 (13.7%)
	Subtotal	23,687 (42.1%)	23,817 (42.2%)	24,562 (42.6%)	25,064 (42.5%)	25,964 (42.8%)	25,522 (42.6%)	20,569 (42.3%)	25,132 (43.0%)	25,346 (44.9%)	26,214 (45.5%)
FR	Male	818 (1.5%)	1,040 (1.8%)	1,120 (1.9%)	1,302 (2.2%)	1,502 (2.5%)	1,701 (2.8%)	1,425 (2.9%)	1,655 (2.8%)	1,521 (2.7%)	1,762 (3.1%)
	Female	310 (0.6%)	320 (0.6%)	378 (0.7%)	416 (0.7%)	496 (0.8%)	564 (0.9%)	449 (0.9%)	580 (1.0%)	544 (1.0%)	619 (1.1%)
	Subtotal	1,128 (2.0%)	1,360 (2.4%)	1,498 (2.6%)	1,718 (2.9%)	1,998 (3.3%)	2,265 (3.8%)	1,874 (3.8%)	2,235 (3.8%)	2,065 (3.7%)	2,381 (4.1%)
USA	Male	2,202 (3.9%)	1,875 (3.3%)	1,846 (3.2%)	1,820 (3.1%)	1,794 (3.0%)	1,667 (2.8%)	1,175 (2.4%)	1,106 (1.9%)	771 (1.4%)	662 (1.1%)
	Female	670 (1.2%)	531 (0.9%)	454 (0.8%)	516 (0.9%)	568 (0.9%)	497 (0.8%)	297 (0.6%)	324 (0.6%)	253 (0.4%)	225 (0.4%)
	Subtotal	2,872 (5.1%)	2,406 (4.3%)	2,300 (4.0%)	2,336 (4.0%)	2,362 (3.9%)	2,164 (3.6%)	1,472 (3.0%)	1,430 (2.4%)	1,024 (1.8%)	887 (1.5%)
GNY	Male	298 (0.5%)	304 (0.5%)	334 (0.6%)	346 (0.6%)	306 (0.5%)	309 (0.5%)	274 (0.6%)	360 (0.6%)	198 (0.4%)	240 (0.4%)
	Female	67 (0.1%)	99 (0.2%)	63 (0.1%)	45 (0.1%)	81 (0.1%)	117 (0.2%)	98 (0.2%)	121 (0.2%)	103 (0.2%)	59 (0.1%)
	Subtotal	365 (0.6%)	403 (0.7%)	397 (0.7%)	391 (0.7%)	387 (0.6%)	426 (0.7%)	372 (0.8%)	481 (0.8%)	301 (0.5%)	299 (0.5%)
Other	Male	271 (0.5%)	203 (0.4%)	164 (0.3%)	181 (0.3%)	171 (0.3%)	144 (0.2%)	81 (0.2%)	92 (0.2%)	73 (0.1%)	48 (0.1%)
	Female	66 (0.1%)	77 (0.1%)	70 (0.1%)	66 (0.1%)	47 (0.1%)	64 (0.1%)	20 (0.0%)	22 (0.0%)	26 (0.0%)	15 (0.0%)
	Subtotal	337 (0.6%)	280 (0.5%)	234 (0.4%)	247 (0.4%)	218 (0.4%)	208 (0.3%)	101 (0.2%)	114 (0.2%)	99 (0.2%)	63 (0.1%)

Jump

Bred	Sex	2014	2015	2016	2017	2018	2019	2020	2021	2022	2023
GB	Male	7,553 (24.9%)	7,380 (24.0%)	7,008 (22.4%)	6,688 (21.4%)	6,499 (20.5%)	6,148 (19.9%)	4,797 (19.2%)	6,163 (19.1%)	5,358 (18.1%)	5,149 (17.4%)
	Female	3,160 (10.4%)	3,047 (9.9%)	2,833 (9.1%)	2,763 (8.8%)	2,999 (9.5%)	2,759 (8.9%)	2,194 (8.8%)	2,904 (9.0%)	2,639 (8.9%)	2,742 (9.3%)
	Subtotal	10,713 (35.3%)	10,427 (33.9%)	9,841 (31.5%)	9,451 (30.3%)	9,498 (29.9%)	8,907 (28.8%)	6,991 (27.9%)	9,067 (28.1%)	7,997 (27.1%)	7,891 (26.7%)
IRE	Male	13,698 (45.1%)	13,874 (45.1%)	14,501 (46.4%)	14,509 (46.5%)	14,349 (45.2%)	13,710 (44.4%)	11,081 (44.2%)	14,118 (43.7%)	12,674 (42.9%)	12,514 (42.4%)
	Female	1,878 (6.2%)	2,115 (6.9%)	2,295 (7.3%)	2,481 (7.9%)	2,928 (9.2%)	3,167 (10.3%)	2,484 (9.9%)	3,085 (9.5%)	2,783 (9.4%)	2,972 (10.1%)
	Subtotal	15,576 (51.3%)	15,989 (52.0%)	16,796 (53.8%)	16,990 (54.4%)	17,277 (54.5%)	16,877 (54.6%)	13,565 (54.2%)	17,203 (53.3%)	15,457 (52.4%)	15,486 (52.5%)
FR	Male	2,876 (9.5%)	3,212 (10.4%)	3,619 (11.6%)	3,837 (12.3%)	3,961 (12.5%)	3,924 (12.7%)	3,449 (13.8%)	4,693 (14.5%)	4,829 (16.4%)	4,958 (16.8%)
	Female	293 (1.0%)	274 (0.9%)	272 (0.9%)	352 (1.1%)	376 (1.2%)	536 (1.7%)	542 (2.2%)	686 (2.1%)	662 (2.2%)	693 (2.3%)
	Subtotal	3,169 (10.4%)	3,486 (11.3%)	3,891 (12.5%)	4,189 (13.4%)	4,337 (13.7%)	4,460 (14.4%)	3,991 (15.9%)	5,379 (16.7%)	5,491 (18.6%)	5,651 (19.1%)
USA	Male	481 (1.6%)	417 (1.4%)	318 (1.0%)	213 (0.7%)	211 (0.7%)	186 (0.6%)	143 (0.6%)	172 (0.5%)	120 (0.4%)	102 (0.3%)
	Female	13 (0.0%)	11 (0.0%)	6 (0.0%)	10 (0.0%)	13 (0.0%)	20 (0.1%)	27 (0.1%)	6 (0.0%)	6 (0.0%)	1 (0.0%)
	Subtotal	494 (1.6%)	428 (1.4%)	324 (1.0%)	223 (0.7%)	224 (0.7%)	206 (0.7%)	170 (0.7%)	178 (0.6%)	126 (0.4%)	103 (0.3%)
GNY	Male	329 (1.1%)	349 (1.1%)	309 (1.0%)	313 (1.0%)	299 (0.9%)	370 (1.2%)	278 (1.1%)	409 (1.3%)	385 (1.3%)	334 (1.1%)
	Female	26 (0.1%)	32 (0.1%)	28 (0.1%)	12 (0.0%)	21 (0.1%)	27 (0.1%)	24 (0.1%)	48 (0.1%)	47 (0.2%)	27 (0.1%)
	Subtotal	355 (1.2%)	381 (1.2%)	337 (1.1%)	325 (1.0%)	320 (1.0%)	397 (1.3%)	302 (1.2%)	457 (1.4%)	432 (1.5%)	361 (1.2%)
Other	Male	71 (0.2%)	50 (0.2%)	36 (0.1%)	33 (0.1%)	50 (0.2%)	34 (0.1%)	21 (0.1%)	18 (0.1%)	13 (0.0%)	14 (0.0%)
	Female	1 (0.0%)	5 (0.0%)	21 (0.1%)	11 (0.0%)	10 (0.0%)	2 (0.0%)	2 (0.0%)	3 (0.0%)	9 (0.0%)	5 (0.0%)
	Subtotal	72 (0.2%)	55 (0.2%)	57 (0.2%)	44 (0.1%)	60 (0.2%)	36 (0.1%)	23 (0.1%)	21 (0.1%)	22 (0.1%)	19 (0.1%)

Annual Individual Runners by Breeding

Flat

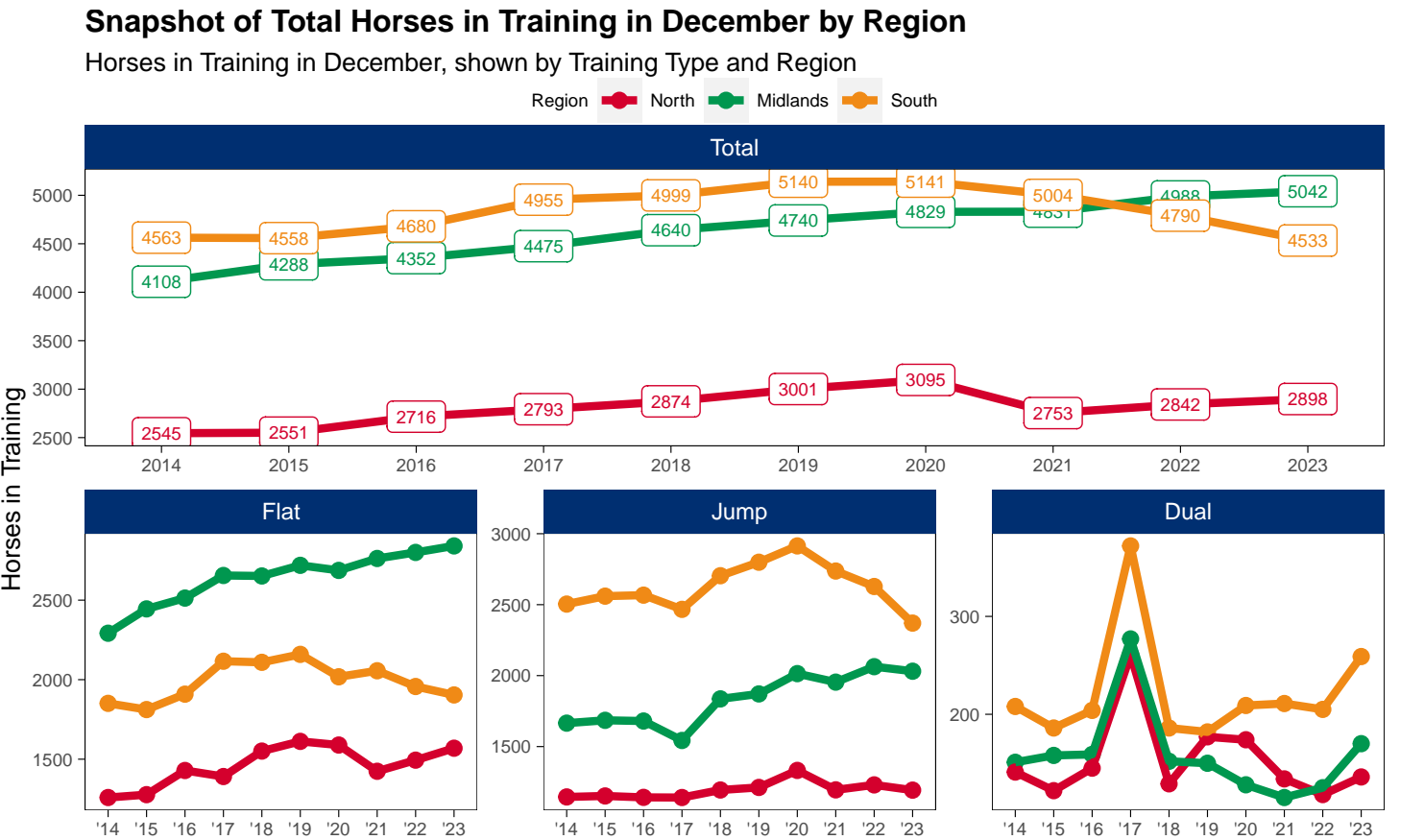
Bred	Sex	2014	2015	2016	2017	2018	2019	2020	2021	2022	2023
GB	Male	3,130 (29.3%)	3,217 (29.9%)	3,208 (29.1%)	3,322 (29.3%)	3,398 (29.4%)	3,384 (29.4%)	3,224 (29.6%)	3,204 (29.0%)	3,094 (28.6%)	3,040 (27.9%)
	Female	2,152 (20.1%)	2,125 (19.7%)	2,155 (19.6%)	2,194 (19.3%)	2,210 (19.1%)	2,223 (19.3%)	2,133 (19.6%)	2,219 (20.1%)	2,160 (20.0%)	2,120 (19.4%)
	Subtotal	5,282 (49.4%)	5,342 (49.6%)	5,363 (48.7%)	5,516 (48.6%)	5,608 (48.5%)	5,607 (48.7%)	5,357 (49.2%)	5,423 (49.0%)	5,254 (48.6%)	5,160 (47.3%)
IRE	Male	2,888 (27.0%)	2,918 (27.1%)	3,090 (28.1%)	3,155 (27.8%)	3,224 (27.9%)	3,179 (27.6%)	3,028 (27.8%)	3,182 (28.8%)	3,179 (29.4%)	3,255 (29.8%)
	Female	1,482 (13.9%)	1,502 (13.9%)	1,546 (14.0%)	1,582 (13.9%)	1,617 (14.0%)	1,611 (14.0%)	1,527 (14.0%)	1,559 (14.1%)	1,595 (14.8%)	1,709 (15.7%)
	Subtotal	4,370 (40.9%)	4,420 (41.0%)	4,636 (42.1%)	4,737 (41.7%)	4,841 (41.9%)	4,790 (41.6%)	4,555 (41.9%)	4,741 (42.9%)	4,774 (44.2%)	4,964 (45.5%)
FR	Male	174 (1.6%)	208 (1.9%)	242 (2.2%)	277 (2.4%)	331 (2.9%)	369 (3.2%)	360 (3.3%)	347 (3.1%)	332 (3.1%)	348 (3.2%)
	Female	80 (0.7%)	83 (0.8%)	96 (0.9%)	114 (1.0%)	132 (1.1%)	143 (1.2%)	131 (1.2%)	138 (1.2%)	138 (1.3%)	155 (1.4%)
	Subtotal	254 (2.4%)	291 (2.7%)	338 (3.1%)	391 (3.4%)	463 (4.0%)	512 (4.4%)	491 (4.5%)	485 (4.4%)	470 (4.4%)	503 (4.6%)
USA	Male	453 (4.2%)	400 (3.7%)	397 (3.6%)	405 (3.6%)	366 (3.2%)	342 (3.0%)	267 (2.5%)	218 (2.0%)	145 (1.3%)	136 (1.2%)
	Female	164 (1.5%)	159 (1.5%)	130 (1.2%)	152 (1.3%)	152 (1.3%)	132 (1.1%)	97 (0.9%)	77 (0.7%)	52 (0.5%)	53 (0.5%)
	Subtotal	617 (5.8%)	559 (5.2%)	527 (4.8%)	557 (4.9%)	518 (4.5%)	474 (4.1%)	364 (3.3%)	295 (2.7%)	197 (1.8%)	189 (1.7%)
GNY	Male	77 (0.7%)	77 (0.7%)	80 (0.7%)	83 (0.7%)	69 (0.6%)	69 (0.6%)	65 (0.6%)	66 (0.6%)	53 (0.5%)	52 (0.5%)
	Female	18 (0.2%)	24 (0.2%)	16 (0.1%)	16 (0.1%)	20 (0.2%)	25 (0.2%)	26 (0.2%)	28 (0.3%)	26 (0.2%)	17 (0.2%)
	Subtotal	95 (0.9%)	101 (0.9%)	96 (0.9%)	99 (0.9%)	89 (0.8%)	94 (0.8%)	91 (0.8%)	94 (0.8%)	79 (0.7%)	69 (0.6%)
Other	Male	50 (0.5%)	40 (0.4%)	30 (0.3%)	35 (0.3%)	33 (0.3%)	34 (0.3%)	18 (0.2%)	18 (0.2%)	21 (0.2%)	15 (0.1%)
	Female	16 (0.1%)	20 (0.2%)	16 (0.1%)	19 (0.2%)	13 (0.1%)	13 (0.1%)	8 (0.1%)	5 (0.0%)	6 (0.1%)	8 (0.1%)
	Subtotal	66 (0.6%)	60 (0.6%)	46 (0.4%)	54 (0.5%)	46 (0.4%)	47 (0.4%)	26 (0.2%)	23 (0.2%)	27 (0.2%)	23 (0.2%)

Jump

Bred	Sex	2014	2015	2016	2017	2018	2019	2020	2021	2022	2023
GB	Male	2,034 (25.1%)	1,944 (23.7%)	1,853 (22.5%)	1,737 (21.1%)	1,687 (20.3%)	1,679 (19.8%)	1,519 (19.1%)	1,714 (19.3%)	1,504 (18.0%)	1,488 (18.0%)
	Female	932 (11.5%)	899 (10.9%)	840 (10.2%)	820 (9.9%)	849 (10.2%)	816 (9.6%)	754 (9.5%)	878 (9.9%)	812 (9.7%)	818 (9.9%)
	Subtotal	2,966 (36.6%)	2,843 (34.6%)	2,693 (32.7%)	2,557 (31.0%)	2,536 (30.5%)	2,495 (29.4%)	2,273 (28.5%)	2,592 (29.2%)	2,316 (27.7%)	2,306 (27.8%)
IRE	Male	3,505 (43.3%)	3,620 (44.1%)	3,665 (44.5%)	3,688 (44.7%)	3,663 (44.0%)	3,680 (43.4%)	3,437 (43.1%)	3,755 (42.2%)	3,528 (42.2%)	3,415 (41.2%)
	Female	569 (7.0%)	619 (7.5%)	649 (7.9%)	715 (8.7%)	826 (9.9%)	900 (10.6%)	823 (10.3%)	900 (10.1%)	853 (10.2%)	902 (10.9%)
	Subtotal	4,074 (50.3%)	4,239 (51.6%)	4,314 (52.4%)	4,403 (53.4%)	4,489 (53.9%)	4,580 (54.0%)	4,260 (53.5%)	4,655 (52.4%)	4,381 (52.4%)	4,317 (52.1%)
FR	Male	751 (9.3%)	834 (10.2%)	936 (11.4%)	1,012 (12.3%)	1,018 (12.2%)	1,062 (12.5%)	1,094 (13.7%)	1,298 (14.6%)	1,309 (15.7%)	1,317 (15.9%)
	Female	71 (0.9%)	73 (0.9%)	88 (1.1%)	109 (1.3%)	137 (1.6%)	174 (2.1%)	186 (2.3%)	189 (2.1%)	203 (2.4%)	211 (2.5%)
	Subtotal	822 (10.2%)	907 (11.0%)	1,024 (12.4%)	1,121 (13.6%)	1,155 (13.9%)	1,236 (14.6%)	1,280 (16.1%)	1,487 (16.7%)	1,512 (18.1%)	1,528 (18.4%)
USA	Male	123 (1.5%)	102 (1.2%)	82 (1.0%)	60 (0.7%)	55 (0.7%)	56 (0.7%)	44 (0.6%)	48 (0.5%)	39 (0.5%)	31 (0.4%)
	Female	4 (0.0%)	4 (0.0%)	3 (0.0%)	3 (0.0%)	5 (0.1%)	7 (0.1%)	6 (0.1%)	2 (0.0%)	2 (0.0%)	1 (0.0%)
	Subtotal	127 (1.6%)	106 (1.3%)	85 (1.0%)	63 (0.8%)	60 (0.7%)	63 (0.7%)	50 (0.6%)	50 (0.6%)	41 (0.5%)	32 (0.4%)
GNY	Male	81 (1.0%)	92 (1.1%)	90 (1.1%)	81 (1.0%)	71 (0.9%)	84 (1.0%)	85 (1.1%)	90 (1.0%)	92 (1.1%)	85 (1.0%)
	Female	5 (0.1%)	7 (0.1%)	9 (0.1%)	6 (0.1%)	5 (0.1%)	7 (0.1%)	9 (0.1%)	12 (0.1%)	15 (0.2%)	14 (0.2%)
	Subtotal	86 (1.1%)	99 (1.2%)	99 (1.2%)	87 (1.1%)	76 (0.9%)	91 (1.1%)	94 (1.2%)	102 (1.1%)	107 (1.3%)	99 (1.2%)
Other	Male	19 (0.2%)	15 (0.2%)	8 (0.1%)	9 (0.1%)	8 (0.1%)	10 (0.1%)	8 (0.1%)	4 (0.0%)	3 (0.0%)	5 (0.1%)
	Female	1 (0.0%)	2 (0.0%)	5 (0.1%)	4 (0.0%)	3 (0.0%)	1 (0.0%)	2 (0.0%)	1 (0.0%)	2 (0.0%)	1 (0.0%)
	Subtotal	20 (0.2%)	17 (0.2%)	13 (0.2%)	13 (0.2%)	11 (0.1%)	11 (0.1%)	10 (0.1%)	5 (0.1%)	5 (0.1%)	6 (0.1%)

Horse Population by Location

December 2023 Horses in Training Snapshot by Region versus Previous Years



North

AgeCat	2014	2015	2016	2017	2018	2019	2020	2021	2022	2023	vs. Last Year	vs. Pre-Covid
Flat Horses in Training												
2YO	458	464	526	493	552	659	587	530	515	563	+48 / +9.3%	-96 / -14.6%
3YO	276	303	337	323	354	340	357	352	349	355	+6 / +1.7%	+15 / +4.4%
4YO	184	180	190	224	240	231	216	192	228	217	-11 / -4.8%	-14 / -6.1%
5YO+	341	330	376	351	405	382	429	350	402	434	+32 / +8.0%	+52 / +13.6%
Subtotal	1259	1277	1429	1391	1551	1612	1589	1424	1494	1569	+75 / +5.0%	-43 / -2.7%
Jump Horses in Training												
3YO	90	77	95	66	84	68	60	67	97	56	-41 / -42.3%	-12 / -17.6%
4-5YO	368	382	392	407	410	433	431	395	431	438	+7 / +1.6%	+5 / +1.2%
6-7YO	378	378	324	328	359	378	439	396	389	393	+4 / +1.0%	+15 / +4.0%
8YO+	309	315	331	340	341	333	402	337	313	306	-7 / -2.2%	-27 / -8.1%
Subtotal	1145	1152	1142	1141	1194	1212	1332	1195	1230	1193	-37 / -3.0%	-19 / -1.6%
Dual Horses in Training												
3YO	37	36	36	65	34	50	45	29	28	50	+22 / +78.6%	0 / 0.0%
4YO	28	33	30	75	33	41	40	35	31	30	-1 / -3.2%	-11 / -26.8%
5YO+	76	53	79	121	62	86	89	70	59	56	-3 / -5.1%	-30 / -34.9%
Subtotal	141	122	145	261	129	177	174	134	118	136	+18 / +15.3%	-41 / -23.2%
Total Horses in Training												
	2545	2551	2716	2793	2874	3001	3095	2753	2842	2898	+56 / +2.0%	-103 / -3.4%

'vs. Pre-Covid' is comparison between 2023 and 2019

Midlands

AgeCat	2014	2015	2016	2017	2018	2019	2020	2021	2022	2023	vs. Last Year	vs. Pre-Covid
Flat Horses in Training												
2YO	1135	1225	1248	1340	1286	1298	1268	1320	1297	1310	+13 / +1.0%	+12 / +0.9%
3YO	484	521	561	587	597	618	665	668	702	680	-22 / -3.1%	+62 / +10.0%
4YO	224	256	250	281	313	320	300	350	344	349	+5 / +1.5%	+29 / +9.1%
5YO+	449	443	454	447	456	483	454	424	457	502	+45 / +9.8%	+19 / +3.9%
Subtotal	2292	2445	2513	2655	2652	2719	2687	2762	2800	2841	+41 / +1.5%	+122 / +4.5%
Jump Horses in Training												
3YO	137	160	149	117	164	143	135	125	165	131	-34 / -20.6%	-12 / -8.4%
4-5YO	667	622	658	610	731	787	829	816	867	868	+1 / +0.1%	+81 / +10.3%
6-7YO	516	533	501	450	542	557	611	596	626	630	+4 / +0.6%	+73 / +13.1%
8YO+	345	370	372	366	399	384	439	417	405	402	-3 / -0.7%	+18 / +4.7%
Subtotal	1665	1685	1680	1543	1836	1871	2014	1954	2063	2031	-32 / -1.6%	+160 / +8.6%
Dual Horses in Training												
3YO	37	41	48	73	55	43	40	43	34	44	+10 / +29.4%	+1 / +2.3%
4YO	35	34	36	76	37	39	24	25	35	47	+12 / +34.3%	+8 / +20.5%
5YO+	79	83	75	128	60	68	64	47	56	79	+23 / +41.1%	+11 / +16.2%
Subtotal	151	158	159	277	152	150	128	115	125	170	+45 / +36.0%	+20 / +13.3%
Total Horses in Training												
	4108	4288	4352	4475	4640	4740	4829	4831	4988	5042	+54 / +1.1%	+302 / +6.4%

'vs. Pre-Covid' is comparison between 2023 and 2019

South

AgeCat	2014	2015	2016	2017	2018	2019	2020	2021	2022	2023	vs. Last Year	vs. Pre-Covid
Flat Horses in Training												
2YO	845	846	889	1020	996	1043	935	929	920	902	-18 / -2.0%	-141 / -13.5%
3YO	435	405	406	453	497	496	472	508	439	443	+4 / +0.9%	-53 / -10.7%
4YO	222	203	230	242	240	249	241	241	242	207	-35 / -14.5%	-42 / -16.9%
5YO+	349	358	384	401	376	371	370	378	356	352	-4 / -1.1%	-19 / -5.1%
Subtotal	1851	1812	1909	2116	2109	2159	2018	2056	1957	1904	-53 / -2.7%	-255 / -11.8%
Jump Horses in Training												
3YO	302	237	236	217	253	286	229	255	245	209	-36 / -14.7%	-77 / -26.9%
4-5YO	989	1065	1063	1006	1130	1145	1105	1070	1165	1037	-128 / -11.0%	-108 / -9.4%
6-7YO	749	759	733	753	792	824	956	837	735	701	-34 / -4.6%	-123 / -14.9%
8YO+	464	499	535	491	529	544	624	575	483	423	-60 / -12.4%	-121 / -22.2%
Subtotal	2504	2560	2567	2467	2704	2799	2914	2737	2628	2370	-258 / -9.8%	-429 / -15.3%
Dual Horses in Training												
3YO	49	40	47	92	63	61	64	69	63	85	+22 / +34.9%	+24 / +39.3%
4YO	49	33	39	105	37	53	50	47	42	64	+22 / +52.4%	+11 / +20.8%
5YO+	110	113	118	175	86	68	95	95	100	110	+10 / +10.0%	+42 / +61.8%
Subtotal	208	186	204	372	186	182	209	211	205	259	+54 / +26.3%	+77 / +42.3%
Total Horses in Training												
	4563	4558	4680	4955	4999	5140	5141	5004	4790	4533	-257 / -5.4%	-607 / -11.8%

'vs. Pre-Covid' is comparison between 2023 and 2019

December 2023 Horses in Training Snapshot by Country versus Previous Years

Type	2014	2015	2016	2017	2018	2019	2020	2021	2022	2023	vs. Last Year	vs. Pre-Covid
England												
Flat	5195	5348	5619	5914	6078	6240	6058	6022	5986	6060	+74 / +1.2%	-180 / -2.9%
Jump	4609	4687	4660	4458	4981	5134	5427	5132	5161	4892	-269 / -5.2%	-242 / -4.7%
Dual	455	417	443	797	410	467	449	408	412	511	+99 / +24.0%	+44 / +9.4%
Overall	10259	10452	10722	11169	11469	11841	11934	11562	11559	11463	-96 / -0.8%	-378 / -3.2%
Scotland												
Flat	86	83	117	138	116	118	133	120	170	157	-13 / -7.6%	+39 / +33.1%
Jump	327	322	331	355	389	376	441	386	433	394	-39 / -9.0%	+18 / +4.8%
Dual	18	21	34	63	32	30	37	32	22	27	+5 / +22.7%	-3 / -10.0%
Overall	431	426	482	556	537	524	611	538	625	578	-47 / -7.5%	+54 / +10.3%
Wales												
Flat	121	103	115	110	118	132	103	100	95	97	+2 / +2.1%	-35 / -26.5%
Jump	378	388	398	338	364	372	392	368	327	308	-19 / -5.8%	-64 / -17.2%
Dual	27	28	31	50	25	12	25	20	14	27	+13 / +92.9%	+15 / +125.0%
Overall	526	519	544	498	507	516	520	488	436	432	-4 / -0.9%	-84 / -16.3%

'vs. Pre-Covid' is comparison between 2023 and 2019

December 2023 Horses in Training Snapshot by Training Centre versus Previous Years

Type	2014	2015	2016	2017	2018	2019	2020	2021	2022	2023	vs. Last Year	vs. Pre-Covid
Cheltenham (GL54)												
Flat	8	14	7	16	8	9	11	17	12	9	-3 / -25.0%	0 / 0.0%
Jump	368	422	450	432	481	506	596	521	523	484	-39 / -7.5%	-22 / -4.3%
Dual	21	19	19	65	28	15	11	12	9	14	+5 / +55.6%	-1 / -6.7%
Overall	397	455	476	513	517	530	618	550	544	507	-37 / -6.8%	-23 / -4.3%
Lambourn (RG17)												
Flat	342	428	503	629	577	606	556	541	577	546	-31 / -5.4%	-60 / -9.9%
Jump	365	363	347	346	372	414	361	331	313	258	-55 / -17.6%	-156 / -37.7%
Dual	19	23	19	38	18	25	26	27	37	38	+1 / +2.7%	+13 / +52.0%
Overall	726	814	869	1013	967	1045	943	899	927	842	-85 / -9.2%	-203 / -19.4%
Malton (YO17)												
Flat	377	348	360	337	416	473	441	372	393	427	+34 / +8.7%	-46 / -9.7%
Jump	150	131	142	138	114	110	110	99	95	84	-11 / -11.6%	-26 / -23.6%
Dual	32	23	21	38	23	31	40	34	25	23	-2 / -8.0%	-8 / -25.8%
Overall	559	502	523	513	553	614	591	505	513	534	+21 / +4.1%	-80 / -13.0%
Marlborough (SN8)												
Flat	313	242	267	282	290	286	265	242	212	235	+23 / +10.8%	-51 / -17.8%
Jump	74	64	69	80	72	71	72	79	73	70	-3 / -4.1%	-1 / -1.4%
Dual	4	4	2	1	2	3	2	2	0	4	+4 / +Inf	+1 / +33.3%
Overall	391	310	338	363	364	360	339	323	285	309	+24 / +8.4%	-51 / -14.2%
Middleham (DL8)												
Flat	181	231	281	252	292	333	334	288	272	310	+38 / +14.0%	-23 / -6.9%
Jump	62	86	84	81	103	112	125	119	124	119	-5 / -4.0%	+7 / +6.2%
Dual	24	15	21	40	16	36	35	18	20	13	-7 / -35.0%	-23 / -63.9%
Overall	267	332	386	373	411	481	494	425	416	442	+26 / +6.2%	-39 / -8.1%
Newbury (RG20)												
Flat	281	251	248	263	285	266	273	303	284	288	+4 / +1.4%	+22 / +8.3%
Jump	31	21	13	16	25	14	16	10	35	62	+27 / +77.1%	+48 / +342.9%
Dual	4	2	6	13	7	8	6	4	1	9	+8 / +800.0%	+1 / +12.5%
Overall	316	274	267	292	317	288	295	317	320	359	+39 / +12.2%	+71 / +24.7%
Newmarket (CB8)												
Flat	1579	1664	1696	1769	1737	1811	1802	1848	1841	1954	+113 / +6.1%	+143 / +7.9%
Jump	97	96	52	49	63	67	80	64	59	77	+18 / +30.5%	+10 / +14.9%
Dual	20	19	31	38	17	26	26	21	28	42	+14 / +50.0%	+16 / +61.5%
Overall	1696	1779	1779	1856	1817	1904	1908	1933	1928	2073	+145 / +7.5%	+169 / +8.9%

'vs. Pre-Covid' is comparison between 2023 and 2019