

Horse Population Report

Updated on 31 October 2023



Introduction

Welcome to the latest update on the Racehorse Population from the British Horseracing Authority.

The aim of this document is to give stakeholders and the wider Public an insight into the current state of the Horse Population in Great Britain. It is hoped that this transparency will ensure that all decision makers have access to the key data required to help British Racing deliver a Competitive and Compelling product to stakeholders, racegoers and the wider public.

If you have any questions regarding the content of this report or suggestions for how it could be improved further, please contact Joe Yates – jyates@britishhorseracing.com

Definitions

This report uses the Horses in Training returns from the Weatherby's Racing Administration System, this is completed by trainers and should be updated whenever a horse enters or leaves training in their care as part of the conditions of their licence.

Horses in Training

Unless otherwise stated, snapshots of Horses in Training will be from the 15th day of the month in question and year to date figures will be up to and including the date titled at the front of the report.

Horses' ratings will be taken from the most recently published ratings by the BHA Handicapping Team, which is currently at 7am each Tuesday morning. For example, if looking at the Horses in a particular rating band for July 2011, the horses in training number will be from Friday 15th July 2011 and ratings, where possible, will be assigned to each horse from the ratings published by the BHA Handicappers on Tuesday 12th July 2011.

The Gender of a horse will be taken from the reporting date in question, regardless of whether this has since changed.

In the case of YTD reporting, where a horse's gender or training type has changed in the year-to-date period, the most recent is taken.

This report does not count any horses that are temporarily racing abroad for GB Trainers at the time of reporting.

Yearlings are not included in total counts of flat and/or dual horses but will be sometimes shown separately for information purposes.

Yearlings and two-year-olds are not included in total counts of jump horses or counts of jump horses that include dual horses but will be sometimes shown separately for information purposes.

Yearlings, two-year-olds and three-year-olds are not included in total counts of Hunter Chasers but will be sometimes shown separately for information purposes.

Yearlings and two-year-olds in training that are recorded as dual horses have been re-coded as flat horses.

Hunter Chasers are not included in any counts of Jump Horses or Total figures but will be sometimes shown separately for information purposes.

Horses' training locations are defined by the trainers' primary training location. Training regions are defined the same as regions for the Fixture List; 'North' is north of latitude 53.42911, 'South' is south of latitude 51.88002 and 'Midlands' is anywhere in between. Training centres are defined by postcodes and surrounding areas.

Runners

Unless otherwise specified, Total Runners and Individual Runners metrics only counts runners that ran in GB races including any voided races. Withdrawn horses are not included.

Hunter Chases are not included in this section but will be sometimes shown separately for information purposes.

Total Runners is a count of all runners in races, whilst individual runners only counts each individual horse once.

Monthly Horses in Training

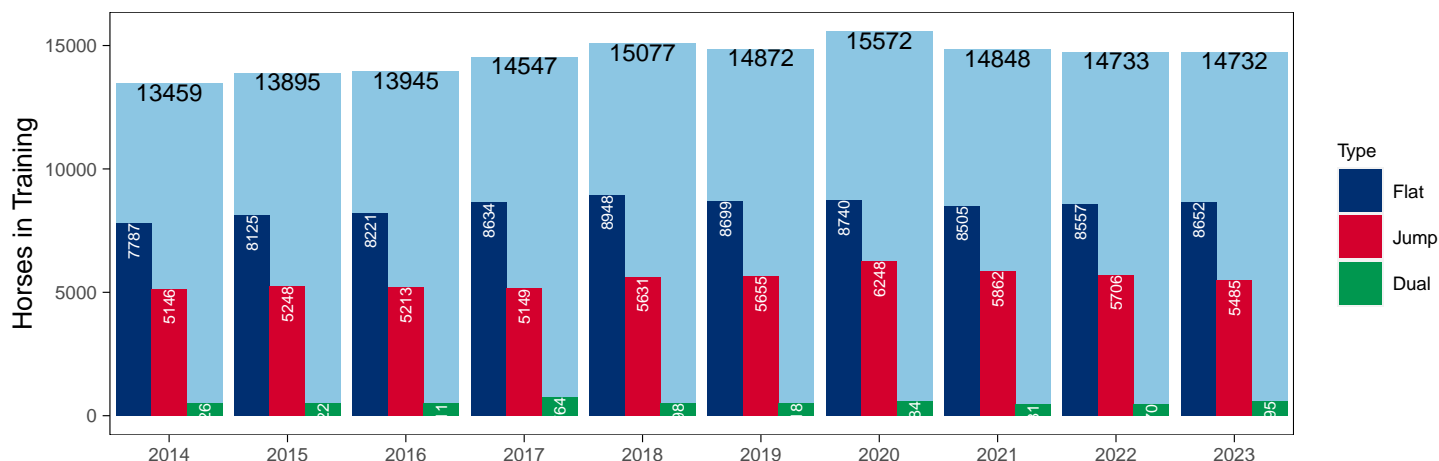
October 2023 Horses in Training Snapshot versus Previous Years

Type	2014	2015	2016	2017	2018	2019	2020	2021	2022	2023	vs. Last Year	vs. Pre-Covid
Flat	7787	8125	8221	8634	8948	8699	8740	8505	8557	8652	+95 / +1.1%	-47 / -0.5%
Jump	5146	5248	5213	5149	5631	5655	6248	5862	5706	5485	-221 / -3.9%	-170 / -3.0%
Dual	526	522	511	764	498	518	584	481	470	595	+125 / +26.6%	+77 / +14.9%
Hunter	0	0	1	0	0	0	232	47	14	1096	+1082 / +7 728.6%	+1096 / +Inf
Total	13459	13895	13945	14547	15077	14872	15572	14848	14733	14732	-1 / 0.0%	-140 / -0.9%

'vs. Pre-Covid' is comparison between 2023 and 2019

Snapshot of Total Horses in Training in October

Horses in Training in October, shown by Training Type



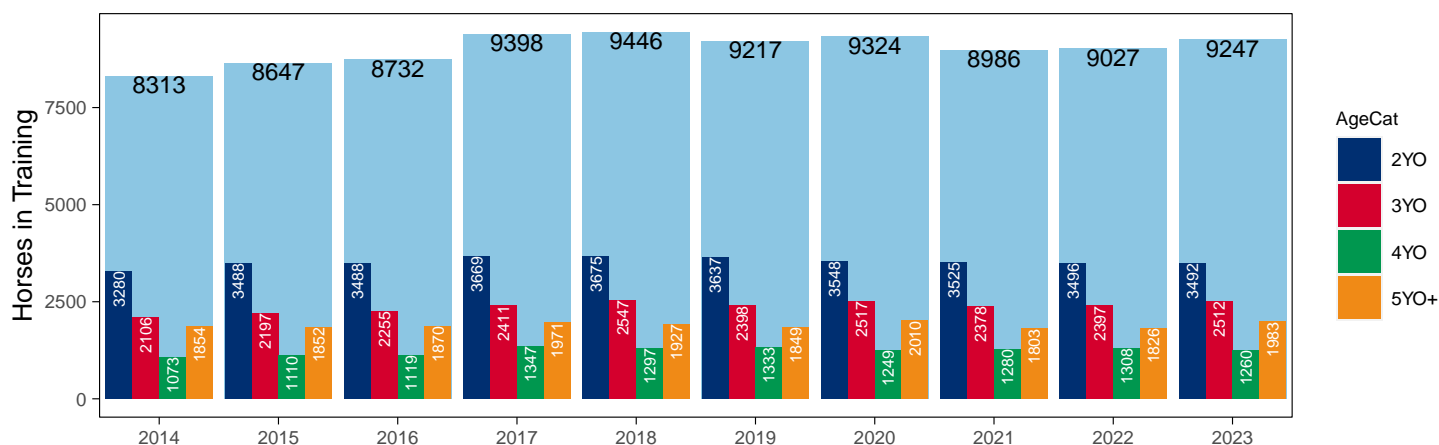
Flat (including Dual)

AgeCat	2014	2015	2016	2017	2018	2019	2020	2021	2022	2023	vs. Last Year	vs. Pre-Covid
2YO	3280	3488	3488	3669	3675	3637	3548	3525	3496	3492	-4 / -0.1%	-145 / -4.0%
3YO	2106	2197	2255	2411	2547	2398	2517	2378	2397	2512	+115 / +4.8%	+114 / +4.8%
4YO	1073	1110	1119	1347	1297	1333	1249	1280	1308	1260	-48 / -3.7%	-73 / -5.5%
5YO+	1854	1852	1870	1971	1927	1849	2010	1803	1826	1983	+157 / +8.6%	+134 / +7.2%
Total	8313	8647	8732	9398	9446	9217	9324	8986	9027	9247	+220 / +2.4%	+30 / +0.3%

'vs. Pre-Covid' is comparison between 2023 and 2019

Snapshot of Flat Horses in Training in October

Flat Horses in Training in October, shown by Age



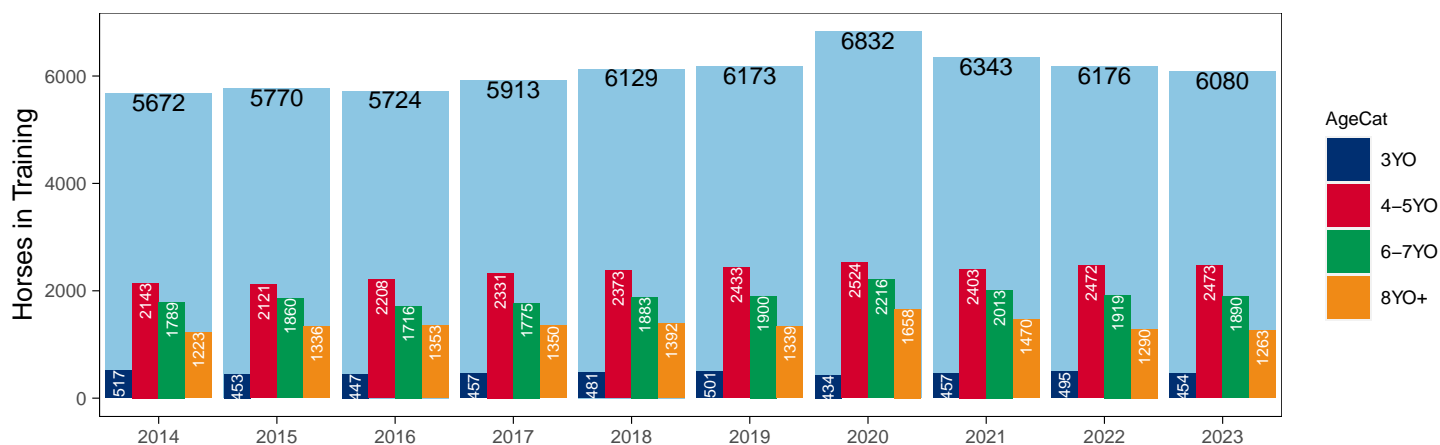
Jump (including Dual)

AgeCat	2014	2015	2016	2017	2018	2019	2020	2021	2022	2023	vs. Last Year	vs. Pre-Covid
3YO	517	453	447	457	481	501	434	457	495	454	-41 / -8.3%	-47 / -9.4%
4-5YO	2143	2121	2208	2331	2373	2433	2524	2403	2472	2473	+1 / +0.0%	+40 / +1.6%
6-7YO	1789	1860	1716	1775	1883	1900	2216	2013	1919	1890	-29 / -1.5%	-10 / -0.5%
8YO+	1223	1336	1353	1350	1392	1339	1658	1470	1290	1263	-27 / -2.1%	-76 / -5.7%
Total	5672	5770	5724	5913	6129	6173	6832	6343	6176	6080	-96 / -1.6%	-93 / -1.5%

'vs. Pre-Covid' is comparison between 2023 and 2019

Snapshot of Jump Horses in Training in October

Jump Horses in Training in October, shown by Age



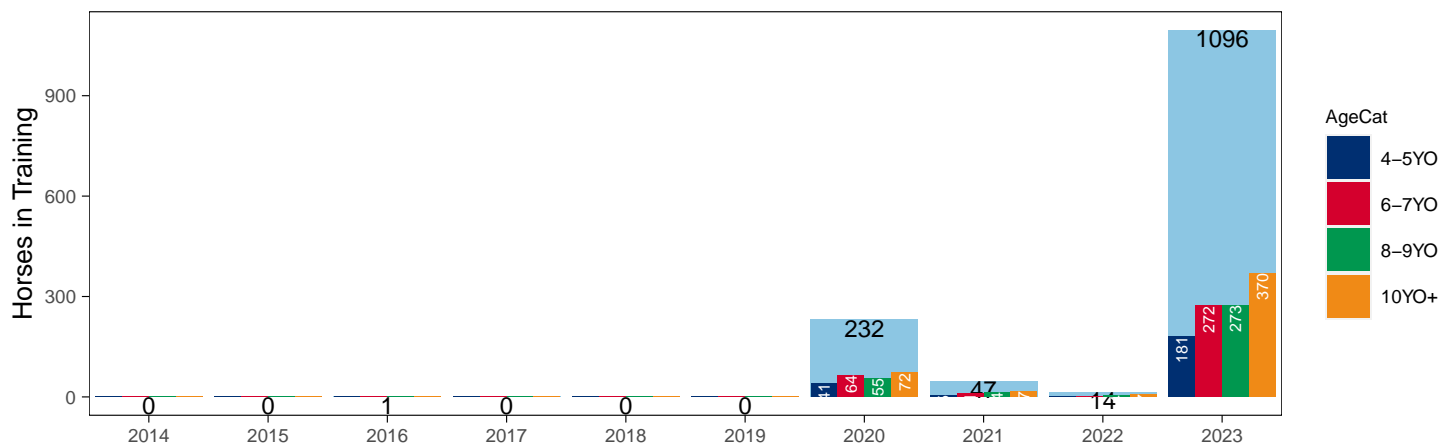
Hunter Chasers

AgeCat	2014	2015	2016	2017	2018	2019	2020	2021	2022	2023	vs. Last Year	vs. Pre-Covid
4-5YO	0	0	0	0	0	0	41	5	1	181	+180 / +18 000.0%	+181 / +Inf
6-7YO	0	0	0	0	0	0	64	11	2	272	+270 / +13 500.0%	+272 / +Inf
8-9YO	0	0	0	0	0	0	55	14	4	273	+269 / +6 725.0%	+273 / +Inf
10YO+	0	0	1	0	0	0	72	17	7	370	+363 / +5 185.7%	+370 / +Inf
Total	0	0	1	0	0	0	232	47	14	1096	+1082 / +7 728.6%	+1096 / +Inf

'vs. Pre-Covid' is comparison between 2023 and 2019

Snapshot of Hunter Chasers in Training in October

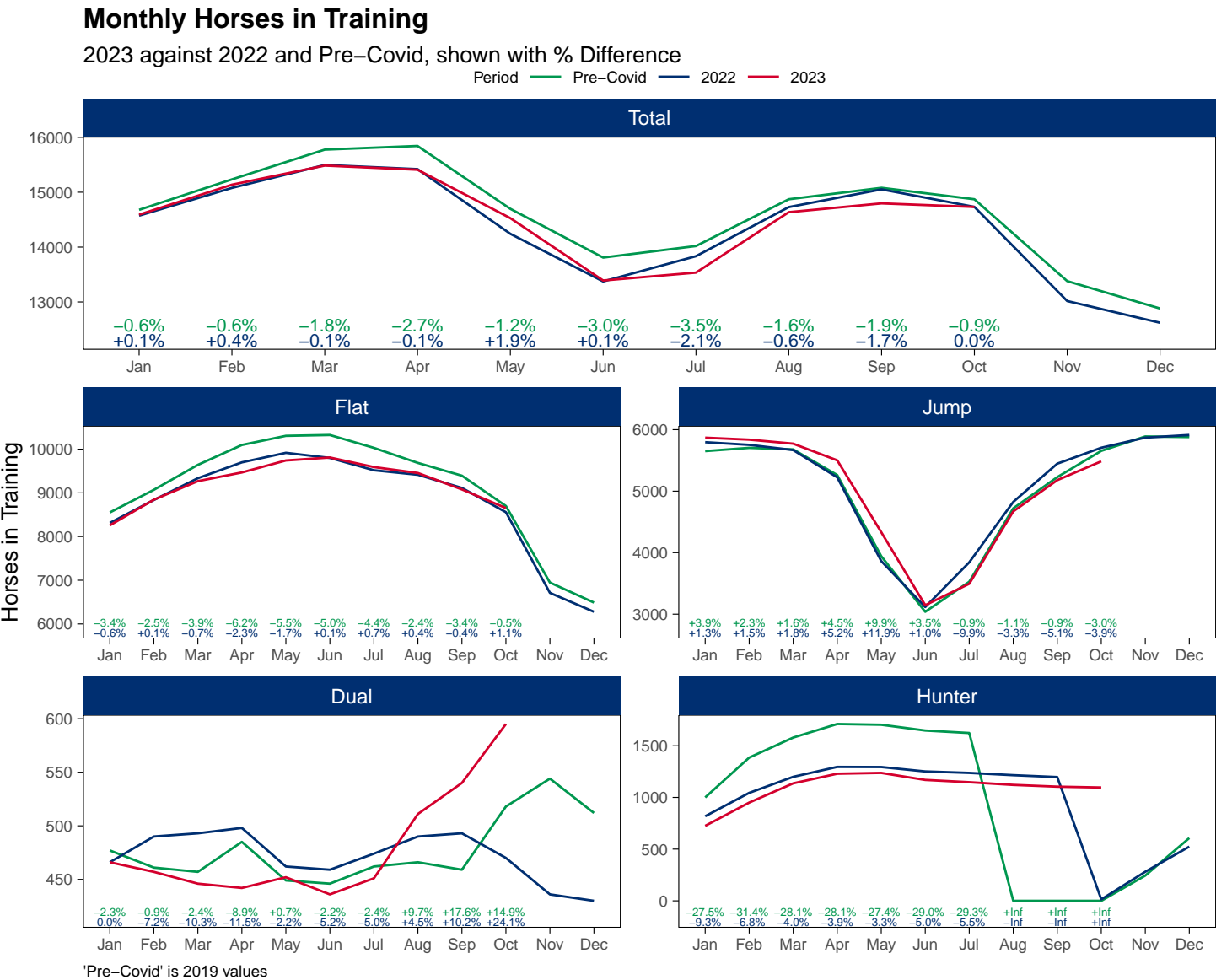
Hunter Chasers in Training in October, shown by Age



2023 Horses in Training versus Previous Years

Type	Period	Jan	Feb	Mar	Apr	May	Jun	Jul	Aug	Sep	Oct	Nov	Dec
Flat	2023	8256	8843	9268	9467	9741	9809	9590	9454	9078	8652	0	0
	2022	8311	8836	9335	9698	9916	9799	9517	9414	9112	8557	6711	6278
	Pre-Covid	8551	9069	9640	10096	10305	10324	10030	9685	9393	8699	6947	6489
Jump	2023	5869	5837	5772	5501	4334	3146	3494	4671	5179	5485	0	0
	2022	5796	5753	5668	5225	3864	3116	3843	4825	5447	5706	5870	5913
	Pre-Covid	5651	5704	5679	5262	3943	3039	3527	4721	5228	5655	5889	5880
Dual	2023	466	457	446	442	452	436	451	511	540	595	0	0
	2022	466	490	493	498	462	459	474	490	493	470	436	430
	Pre-Covid	477	461	457	485	449	446	462	466	459	518	544	512
Hunter	2023	725	950	1136	1229	1237	1169	1147	1121	1104	1096	0	0
	2022	818	1044	1199	1295	1294	1251	1237	1215	1197	14	281	524
	Pre-Covid	1000	1385	1579	1710	1703	1647	1623	0	0	0	244	607
Total	2023	14591	15137	15486	15410	14527	13391	13535	14636	14797	14732	0	0
	2022	14573	15079	15496	15421	14242	13374	13834	14729	15052	14733	13017	12621
	Pre-Covid	14679	15234	15776	15843	14697	13809	14019	14872	15080	14872	13380	12881

'Pre-Covid' is 2019 values



Flat (including Dual)

AgeCat	Period	Jan	Feb	Mar	Apr	May	Jun	Jul	Aug	Sep	Oct	Nov	Dec
2YO	2023	1718	2209	2459	2600	3020	3333	3495	3599	3585	3492		
	2022	1927	2363	2590	2866	3217	3368	3533	3602	3609	3496	2857	2733
	Pre-Covid	2104	2425	2739	3107	3395	3594	3714	3782	3798	3637	3099	3000
3YO	2023	2961	3077	3187	3236	3195	3095	2892	2822	2643	2512		
	2022	2942	3057	3233	3300	3234	3120	2846	2741	2584	2397	1765	1617
	Pre-Covid	2992	3126	3276	3329	3293	3211	2999	2782	2632	2398	1771	1609
4YO	2023	1647	1619	1643	1631	1588	1523	1421	1381	1332	1260		
	2022	1679	1663	1698	1701	1657	1594	1513	1503	1413	1308	1000	923
	Pre-Covid	1634	1662	1707	1719	1683	1655	1561	1483	1416	1333	1046	934
5YO+	2023	2396	2395	2425	2442	2390	2294	2233	2163	2058	1983		
	2022	2229	2243	2307	2329	2270	2176	2099	2058	1999	1826	1525	1435
	Pre-Covid	2298	2317	2375	2426	2383	2310	2218	2104	2006	1849	1575	1458
Total	2023	8722	9300	9714	9909	10193	10245	10041	9965	9618	9247		
	2022	8777	9326	9828	10196	10378	10258	9991	9904	9605	9027	7147	6708
	Pre-Covid	9028	9530	10097	10581	10754	10770	10492	10151	9852	9217	7491	7001

'Pre-Covid' is 2019 values

Monthly Flat Horses in Training

2023 against 2022 and Pre-Covid, shown with % Difference

Period — Pre-Covid — 2022 — 2023



'Pre-Covid' is 2019 values

Jump (including Dual)

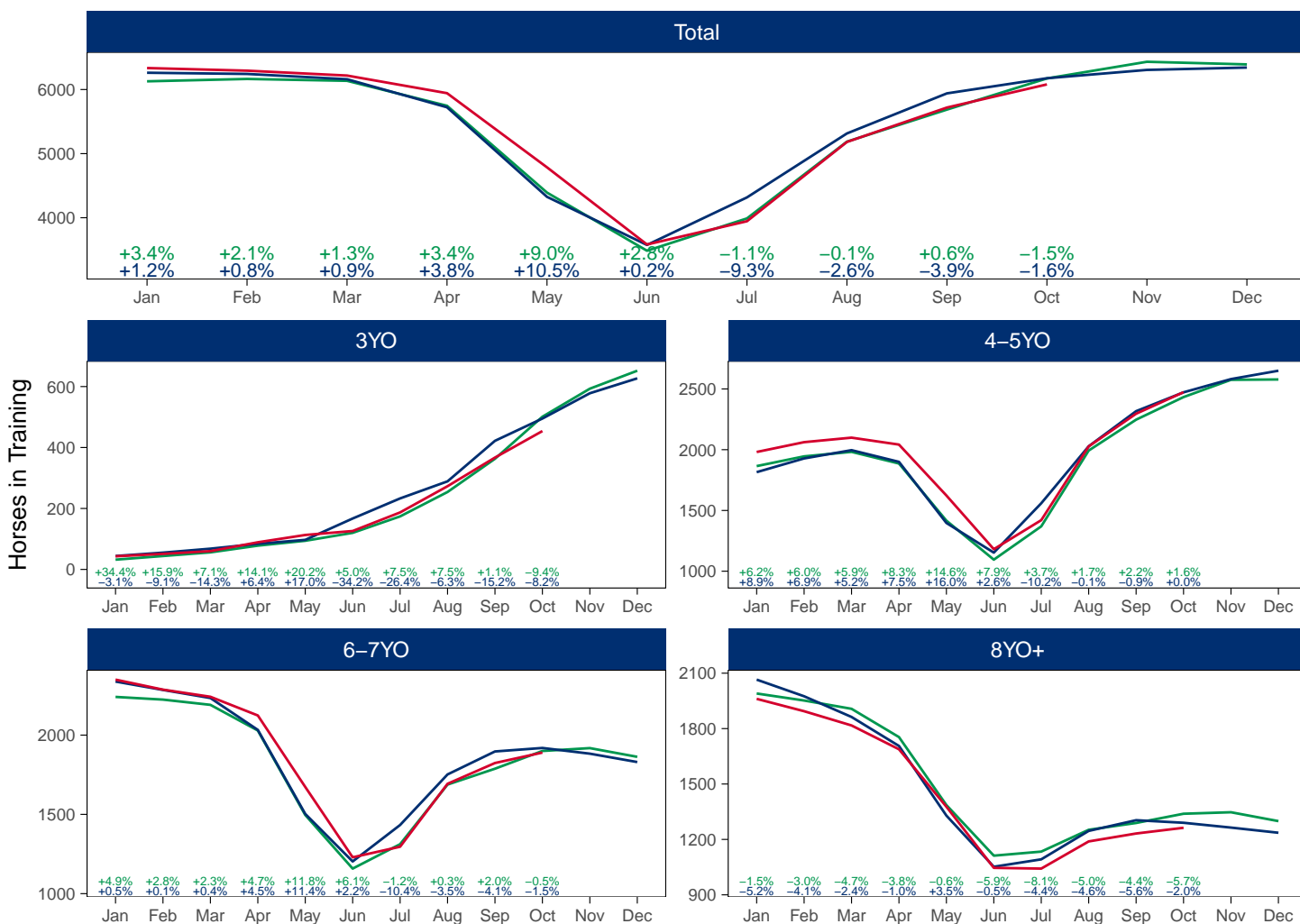
AgeCat	Period	Jan	Feb	Mar	Apr	May	Jun	Jul	Aug	Sep	Oct	Nov	Dec
3YO	2023	43	51	60	89	113	126	187	273	367	454		
	2022	44	55	68	84	97	167	233	289	422	495	578	627
	Pre-Covid	32	44	56	78	94	120	174	254	363	501	593	652
4-5YO	2023	1981	2062	2099	2042	1623	1181	1420	2027	2296	2473		
	2022	1815	1928	1996	1900	1397	1153	1559	2028	2317	2472	2581	2650
	Pre-Covid	1865	1945	1982	1886	1416	1095	1369	1993	2247	2433	2575	2578
6-7YO	2023	2350	2287	2242	2124	1673	1229	1296	1693	1824	1890		
	2022	2338	2285	2234	2033	1503	1203	1433	1752	1897	1919	1883	1830
	Pre-Covid	2241	2224	2191	2029	1496	1158	1312	1688	1788	1900	1918	1863
8YO+	2023	1961	1894	1817	1688	1377	1046	1042	1189	1232	1263		
	2022	2065	1975	1863	1706	1329	1052	1092	1246	1304	1290	1264	1236
	Pre-Covid	1990	1952	1907	1754	1386	1112	1134	1252	1289	1339	1347	1299
Total	2023	6335	6294	6218	5943	4786	3582	3945	5182	5719	6080		
	2022	6262	6243	6161	5723	4326	3575	4317	5315	5940	6176	6306	6343
	Pre-Covid	6128	6165	6136	5747	4392	3485	3989	5187	5687	6173	6433	6392

'Pre-Covid' is 2019 values

Monthly Jump Horses in Training

2023 against 2022 and Pre-Covid, shown with % Difference

Period — Pre-Covid — 2022 — 2023



'Pre-Covid' is 2019 values

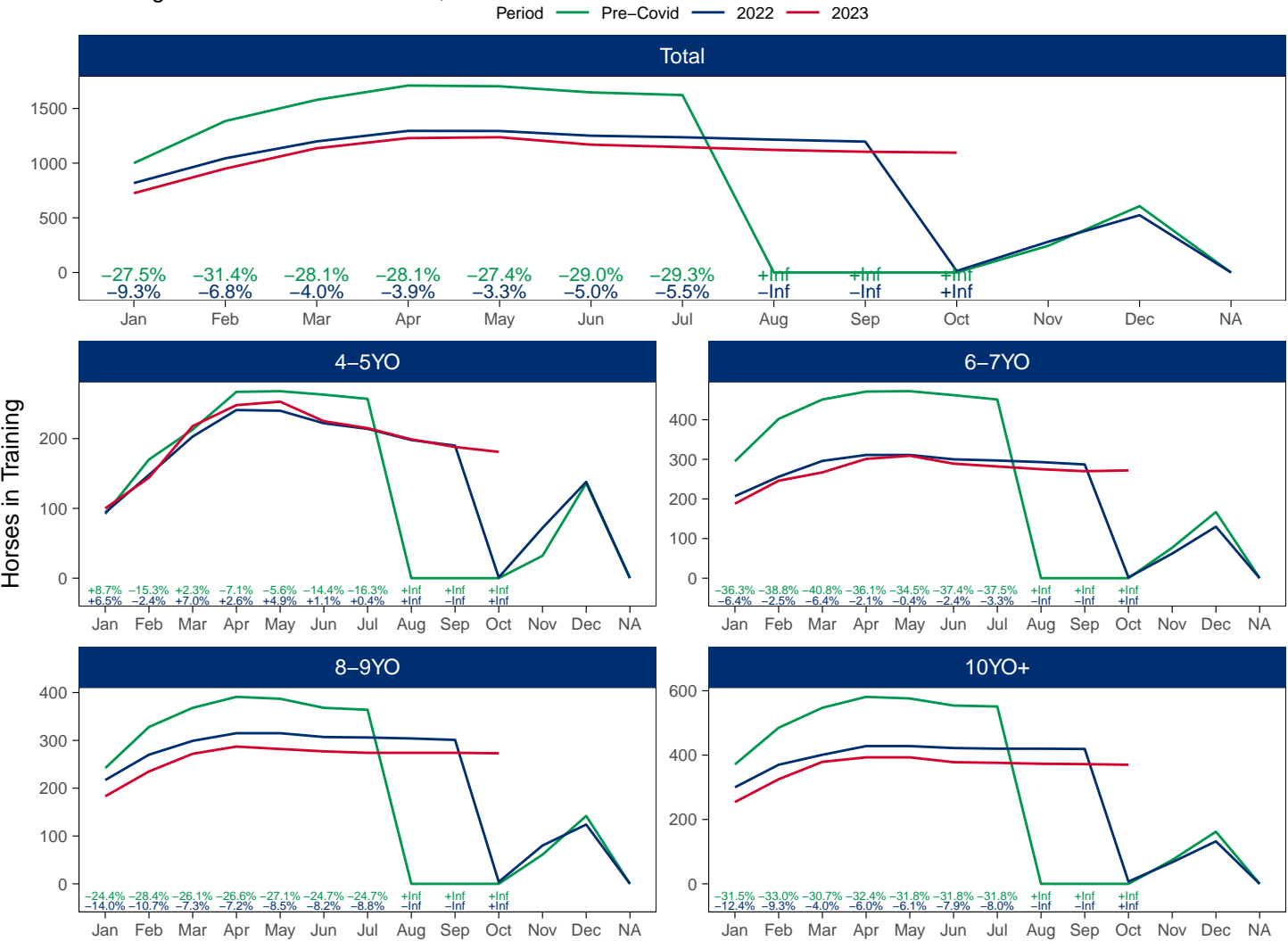
Hunter Chasers

AgeCat	Period	Jan	Feb	Mar	Apr	May	Jun	Jul	Aug	Sep	Oct	Nov	Dec
4-5YO	2023	100	144	218	248	253	225	215	199	188	181		
	2022	94	148	203	241	240	222	214	198	190	1	72	138
	Pre-Covid	92	170	213	267	268	263	257				32	136
6-7YO	2023	188	246	267	301	309	289	282	275	270	272		
	2022	207	256	296	311	311	300	297	293	287	2	62	130
	Pre-Covid	295	402	451	471	472	462	451				77	167
8-9YO	2023	183	235	272	287	282	277	274	274	274	273		
	2022	217	270	299	315	315	307	306	304	301	4	80	124
	Pre-Covid	242	328	368	391	387	368	364				61	142
10YO+	2023	254	325	379	393	393	378	376	373	372	370		
	2022	300	370	401	428	428	422	420	420	419	7	67	132
	Pre-Covid	371	485	547	581	576	554	551				74	162
Total	2023	725	950	1136	1229	1237	1169	1147	1121	1104	1096		
	2022	818	1044	1199	1295	1294	1251	1237	1215	1197	14	281	524
	Pre-Covid	1000	1385	1579	1710	1703	1647	1623				244	607

'Pre-Covid' is 2019 values

Monthly Hunter Chasers in Training

2023 against 2022 and Pre-Covid, shown with % Difference



'Pre-Covid' is 2019 values

October 2023 Horses in Training by Rating Band Snapshot versus Previous Years

Flat (including Dual)

AgeCat	RatBand	2014	2015	2016	2017	2018	2019	2020	2021	2022	2023
2YO	Unrated	2,140 (65.2%)	2,296 (65.8%)	2,386 (68.4%)	2,601 (70.9%)	2,549 (69.4%)	2,544 (69.9%)	2,391 (67.4%)	2,387 (67.7%)	2,431 (69.5%)	2,381 (68.2%)
	0-50	110 (3.4%)	109 (3.1%)	69 (2.0%)	72 (2.0%)	77 (2.1%)	99 (2.7%)	77 (2.2%)	88 (2.5%)	85 (2.4%)	85 (2.4%)
	51-60	187 (5.7%)	171 (4.9%)	167 (4.8%)	172 (4.7%)	190 (5.2%)	175 (4.8%)	186 (5.2%)	167 (4.7%)	157 (4.5%)	175 (5.0%)
	61-70	275 (8.4%)	295 (8.5%)	287 (8.2%)	285 (7.8%)	265 (7.2%)	243 (6.7%)	274 (7.7%)	271 (7.7%)	246 (7.0%)	236 (6.8%)
	71-80	290 (8.8%)	326 (9.3%)	314 (9.0%)	286 (7.8%)	290 (7.9%)	277 (7.6%)	339 (9.6%)	315 (8.9%)	292 (8.4%)	314 (9.0%)
	81-90	145 (4.4%)	171 (4.9%)	151 (4.3%)	132 (3.6%)	162 (4.4%)	159 (4.4%)	148 (4.2%)	167 (4.7%)	156 (4.5%)	182 (5.2%)
	91-100	75 (2.3%)	68 (1.9%)	70 (2.0%)	69 (1.9%)	89 (2.4%)	84 (2.3%)	75 (2.1%)	65 (1.8%)	74 (2.1%)	73 (2.1%)
	101+	58 (1.8%)	52 (1.5%)	44 (1.3%)	52 (1.4%)	53 (1.4%)	56 (1.5%)	58 (1.6%)	65 (1.8%)	55 (1.6%)	46 (1.3%)
Subtotal		3,280 (100.0%)	3,488 (100.0%)	3,488 (100.0%)	3,669 (100.0%)	3,675 (100.0%)	3,637 (100.0%)	3,548 (100.0%)	3,525 (100.0%)	3,496 (100.0%)	3,492 (100.0%)
3YO	Unrated	322 (15.3%)	387 (17.6%)	405 (18.0%)	416 (17.3%)	521 (20.5%)	457 (19.1%)	586 (23.3%)	520 (21.9%)	488 (20.4%)	520 (20.7%)
	0-50	190 (9.0%)	184 (8.4%)	167 (7.4%)	217 (9.0%)	215 (8.4%)	260 (10.8%)	238 (9.5%)	208 (8.7%)	216 (9.0%)	220 (8.8%)
	51-60	251 (11.9%)	264 (12.0%)	281 (12.5%)	293 (12.2%)	284 (11.2%)	318 (13.3%)	293 (11.6%)	326 (13.7%)	342 (14.3%)	335 (13.3%)
	61-70	375 (17.8%)	382 (17.4%)	415 (18.4%)	424 (17.6%)	455 (17.9%)	418 (17.4%)	447 (17.8%)	425 (17.9%)	412 (17.2%)	453 (18.0%)
	71-80	440 (20.9%)	425 (19.3%)	458 (20.3%)	470 (19.5%)	469 (18.4%)	377 (15.7%)	450 (17.9%)	404 (17.0%)	429 (18.9%)	442 (17.6%)
	81-90	294 (14.0%)	315 (14.3%)	278 (12.3%)	324 (13.4%)	325 (12.8%)	274 (11.4%)	280 (11.1%)	277 (11.6%)	270 (11.3%)	290 (11.5%)
	91-100	124 (5.9%)	136 (6.2%)	146 (6.5%)	162 (6.7%)	160 (6.3%)	180 (7.5%)	146 (5.8%)	126 (5.3%)	127 (5.3%)	153 (6.1%)
	101+	110 (5.2%)	104 (4.7%)	105 (4.7%)	105 (4.4%)	118 (4.6%)	114 (4.8%)	77 (3.1%)	92 (3.9%)	113 (4.7%)	99 (3.9%)
Subtotal		2,106 (100.0%)	2,197 (100.0%)	2,255 (100.0%)	2,411 (100.0%)	2,547 (100.0%)	2,398 (100.0%)	2,517 (100.0%)	2,378 (100.0%)	2,397 (100.0%)	2,512 (100.0%)
4YO	Unrated	86 (8.0%)	125 (11.3%)	130 (11.6%)	212 (15.7%)	148 (11.4%)	146 (11.0%)	183 (14.7%)	166 (13.0%)	153 (11.7%)	193 (15.3%)
	0-50	105 (9.8%)	98 (8.8%)	107 (9.6%)	139 (10.3%)	151 (11.6%)	177 (13.3%)	136 (10.9%)	148 (11.6%)	158 (12.1%)	164 (13.0%)
	51-60	144 (13.4%)	145 (13.1%)	143 (12.8%)	181 (13.4%)	171 (13.2%)	195 (14.6%)	172 (13.8%)	203 (15.9%)	186 (14.2%)	191 (15.2%)
	61-70	196 (18.3%)	173 (15.6%)	173 (15.9%)	204 (15.1%)	232 (17.9%)	215 (16.1%)	232 (18.6%)	225 (17.6%)	242 (18.5%)	216 (17.1%)
	71-80	197 (18.4%)	201 (18.1%)	198 (17.7%)	211 (15.7%)	207 (16.0%)	224 (16.8%)	207 (16.6%)	213 (16.6%)	229 (17.5%)	195 (15.5%)
	81-90	141 (13.1%)	171 (15.4%)	156 (13.9%)	194 (14.4%)	152 (11.7%)	168 (12.6%)	131 (10.5%)	153 (12.0%)	154 (11.8%)	121 (9.6%)
	91-100	120 (11.2%)	103 (9.3%)	105 (9.4%)	99 (7.3%)	138 (10.6%)	118 (8.9%)	106 (8.5%)	99 (7.7%)	105 (8.0%)	88 (7.0%)
	101+	84 (7.8%)	94 (8.5%)	102 (9.1%)	107 (7.9%)	98 (7.6%)	90 (6.8%)	82 (6.6%)	73 (5.7%)	81 (6.2%)	92 (7.3%)
Subtotal		1,073 (100.0%)	1,110 (100.0%)	1,119 (100.0%)	1,347 (100.0%)	1,297 (100.0%)	1,333 (100.0%)	1,249 (100.0%)	1,280 (100.0%)	1,308 (100.0%)	1,260 (100.0%)
5YO+	Unrated	134 (7.2%)	233 (12.6%)	208 (11.1%)	289 (14.7%)	234 (12.1%)	213 (11.5%)	309 (15.4%)	235 (13.0%)	240 (13.1%)	232 (11.7%)
	0-50	255 (13.8%)	200 (10.8%)	192 (10.3%)	216 (11.0%)	279 (14.5%)	306 (16.5%)	272 (13.5%)	257 (14.3%)	244 (13.4%)	263 (13.3%)
	51-60	248 (13.4%)	261 (14.1%)	275 (14.7%)	294 (14.9%)	280 (14.5%)	281 (15.2%)	327 (16.3%)	303 (16.8%)	298 (16.3%)	364 (18.4%)
	61-70	386 (20.8%)	364 (19.7%)	342 (18.3%)	357 (18.1%)	329 (17.1%)	340 (18.4%)	370 (18.4%)	305 (16.9%)	334 (18.3%)	358 (18.1%)
	71-80	331 (17.9%)	313 (16.9%)	313 (16.7%)	285 (14.5%)	302 (15.7%)	257 (13.9%)	297 (14.8%)	251 (13.9%)	276 (15.1%)	303 (15.3%)
	81-90	241 (13.0%)	241 (13.0%)	256 (13.7%)	237 (12.0%)	242 (12.6%)	220 (11.9%)	217 (10.8%)	201 (11.1%)	199 (10.9%)	222 (11.2%)
	91-100	131 (7.1%)	135 (7.3%)	157 (8.4%)	155 (7.9%)	126 (6.5%)	119 (6.4%)	111 (5.5%)	130 (7.2%)	124 (6.8%)	130 (6.6%)
	101+	128 (6.9%)	105 (5.7%)	127 (6.8%)	138 (7.0%)	135 (7.0%)	113 (6.1%)	107 (5.3%)	121 (6.7%)	111 (6.1%)	111 (5.6%)
Subtotal		1,854 (100.0%)	1,852 (100.0%)	1,870 (100.0%)	1,971 (100.0%)	1,927 (100.0%)	1,849 (100.0%)	2,010 (100.0%)	1,803 (100.0%)	1,826 (100.0%)	1,983 (100.0%)
Overall	Unrated	2,682 (32.3%)	3,041 (35.2%)	3,129 (35.8%)	3,518 (37.4%)	3,452 (36.5%)	3,360 (36.5%)	3,469 (37.2%)	3,308 (36.8%)	3,312 (36.7%)	3,326 (36.0%)
	0-50	660 (7.9%)	591 (6.8%)	535 (6.1%)	644 (6.9%)	722 (7.6%)	842 (9.1%)	723 (7.8%)	701 (7.8%)	703 (7.8%)	732 (7.9%)
	51-60	830 (10.0%)	841 (9.7%)	866 (9.9%)	940 (10.0%)	925 (9.8%)	969 (10.5%)	978 (10.5%)	999 (11.1%)	983 (10.9%)	1,065 (11.5%)
	61-70	1,232 (14.8%)	1,214 (14.0%)	1,222 (14.0%)	1,270 (13.5%)	1,281 (13.6%)	1,216 (13.2%)	1,323 (14.2%)	1,226 (13.6%)	1,234 (13.7%)	1,263 (13.7%)
	71-80	1,258 (15.1%)	1,265 (14.6%)	1,283 (14.7%)	1,252 (13.3%)	1,268 (13.4%)	1,135 (12.3%)	1,293 (13.9%)	1,183 (13.2%)	1,226 (13.6%)	1,254 (13.6%)
	81-90	821 (9.9%)	898 (10.4%)	841 (9.6%)	887 (9.4%)	881 (9.3%)	821 (8.9%)	776 (8.3%)	798 (8.9%)	779 (8.6%)	815 (8.8%)
	91-100	450 (5.4%)	442 (5.1%)	478 (5.5%)	485 (5.2%)	513 (5.4%)	501 (5.4%)	438 (4.7%)	420 (4.7%)	430 (4.8%)	444 (4.8%)
	101+	380 (4.6%)	355 (4.1%)	378 (4.3%)	402 (4.3%)	404 (4.3%)	373 (4.0%)	324 (3.5%)	351 (3.9%)	360 (4.0%)	348 (3.8%)
Total		8,313 (100.0%)	8,647 (100.0%)	8,732 (100.0%)	9,398 (100.0%)	9,446 (100.0%)	9,217 (100.0%)	9,324 (100.0%)	8,986 (100.0%)	9,027 (100.0%)	9,247 (100.0%)

Where a horse has more than one published rating (published Flat Turf and published Flat AWT mark), the higher of the two is taken.

Jump (including Dual)

AgeCat	RatBand	2014	2015	2016	2017	2018	2019	2020	2021	2022	2023
3YO	Unrated	497 (96.1%)	434 (95.8%)	430 (96.2%)	445 (97.4%)	464 (96.5%)	482 (96.2%)	414 (95.4%)	430 (94.1%)	482 (97.4%)	437 (96.3%)
	0-100	4 (0.8%)	5 (1.1%)	4 (0.9%)	3 (0.7%)	4 (0.8%)	3 (0.6%)	3 (0.7%)	12 (2.6%)	9 (1.8%)	9 (2.0%)
	101-110	7 (1.4%)	4 (0.9%)	5 (1.1%)	4 (0.9%)	6 (1.2%)	9 (1.8%)	10 (2.3%)	12 (2.6%)	3 (0.6%)	6 (1.3%)
	111-120	5 (1.0%)	4 (0.9%)	3 (0.7%)	3 (0.7%)	4 (0.8%)	6 (1.2%)	4 (0.9%)	1 (0.2%)	1 (0.2%)	2 (0.4%)
	121-130	2 (0.4%)	3 (0.7%)	4 (0.9%)	1 (0.2%)	2 (0.4%)	1 (0.2%)	1 (0.2%)	2 (0.4%)	NA (-)	NA (-)
	131-140	2 (0.4%)	3 (0.7%)	1 (0.2%)	1 (0.2%)	1 (0.2%)	NA (-)	2 (0.5%)	NA (-)	NA (-)	NA (-)
Subtotal		517 (100.0%)	453 (100.0%)	447 (100.0%)	457 (100.0%)	481 (100.0%)	501 (100.0%)	434 (100.0%)	457 (100.0%)	495 (100.0%)	454 (100.0%)
4-5YO	Unrated	1,557 (72.7%)	1,510 (71.2%)	1,595 (72.2%)	1,699 (72.9%)	1,699 (71.6%)	1,751 (72.0%)	1,840 (72.9%)	1,901 (79.1%)	1,920 (77.7%)	1,872 (75.7%)
	0-100	178 (8.3%)	149 (7.0%)	178 (8.1%)	183 (7.9%)	161 (6.8%)	200 (8.2%)	248 (9.8%)	220 (9.2%)	259 (10.5%)	308 (12.5%)
	101-110	105 (4.9%)	127 (6.0%)	125 (5.7%)	129 (5.5%)	157 (6.6%)	131 (5.4%)	124 (4.9%)	94 (3.9%)	134 (5.4%)	126 (5.1%)
	111-120	118 (5.5%)	137 (6.5%)	113 (5.1%)	120 (5.1%)	133 (5.6%)	149 (6.1%)	138 (5.5%)	95 (4.0%)	78 (3.2%)	95 (3.8%)
	121-130	95 (4.4%)	100 (4.7%)	94 (4.3%)	108 (4.6%)	141 (5.9%)	126 (5.2%)	106 (4.2%)	58 (2.4%)	55 (2.2%)	49 (2.0%)
	131-140	62 (2.9%)	68 (3.2%)	75 (3.4%)	68 (2.9%)	58 (2.4%)	51 (2.1%)	44 (1.7%)	28 (1.2%)	18 (0.7%)	20 (0.8%)
	141-150	22 (1.0%)	19 (0.9%)	24 (1.1%)	20 (0.9%)	16 (0.7%)	21 (0.9%)	20 (0.8%)	5 (0.2%)	8 (0.3%)	3 (0.1%)
	151+	6 (0.3%)	11 (0.5%)	4 (0.2%)	4 (0.2%)	8 (0.3%)	4 (0.2%)	4 (0.2%)	2 (0.1%)	NA (-)	NA (-)
Subtotal		2,143 (100.0%)	2,121 (100.0%)	2,208 (100.0%)	2,331 (100.0%)	2,373 (100.0%)	2,433 (100.0%)	2,524 (100.0%)	2,403 (100.0%)	2,472 (100.0%)	2,473 (100.0%)
6-7YO	Unrated	476 (26.6%)	572 (30.8%)	489 (28.5%)	505 (28.5%)	532 (28.3%)	514 (27.1%)	630 (28.4%)	913 (45.4%)	813 (42.4%)	611 (32.3%)
	0-100	365 (20.4%)	347 (18.7%)	320 (18.6%)	320 (18.0%)	339 (18.0%)	360 (18.9%)	458 (20.7%)	394 (19.6%)	408 (21.3%)	518 (27.4%)
	101-110	212 (11.9%)	228 (12.3%)	207 (12.1%)	226 (12.7%)	225 (11.9%)	222 (11.7%)	290 (13.1%)	185 (9.2%)	210 (10.9%)	247 (13.1%)
	111-120	276 (15.4%)	220 (11.8%)	236 (13.8%)	229 (12.9%)	253 (13.4%)	253 (13.3%)	272 (12.3%)	202 (10.0%)	198 (10.3%)	247 (13.1%)
	121-130	232 (13.0%)	251 (13.5%)	223 (13.0%)	207 (11.7%)	242 (12.9%)	244 (12.8%)	284 (12.8%)	173 (8.6%)	151 (7.9%)	152 (8.0%)
	131-140	129 (7.2%)	142 (7.6%)	156 (9.1%)	179 (10.1%)	188 (10.0%)	208 (10.9%)	183 (8.3%)	97 (4.8%)	99 (5.2%)	76 (4.0%)
	141-150	64 (3.6%)	65 (3.5%)	54 (3.1%)	75 (4.2%)	76 (4.0%)	58 (3.1%)	67 (3.0%)	39 (1.9%)	28 (1.5%)	30 (1.6%)
	151+	35 (2.0%)	35 (1.9%)	31 (1.8%)	34 (1.9%)	28 (1.5%)	41 (2.2%)	32 (1.4%)	10 (0.5%)	12 (0.6%)	9 (0.5%)
Subtotal		1,789 (100.0%)	1,860 (100.0%)	1,716 (100.0%)	1,775 (100.0%)	1,883 (100.0%)	1,900 (100.0%)	2,216 (100.0%)	2,013 (100.0%)	1,919 (100.0%)	1,890 (100.0%)
8YO+	Unrated	124 (10.1%)	223 (16.7%)	241 (17.8%)	244 (18.1%)	276 (19.8%)	217 (16.2%)	366 (22.1%)	543 (36.9%)	433 (33.6%)	345 (27.3%)
	0-100	381 (31.2%)	351 (26.3%)	370 (27.3%)	347 (25.7%)	343 (24.6%)	371 (27.7%)	429 (25.9%)	317 (21.6%)	263 (20.4%)	308 (24.4%)
	101-110	168 (13.7%)	186 (13.9%)	168 (12.4%)	175 (13.0%)	195 (14.0%)	164 (12.2%)	184 (11.1%)	145 (9.9%)	135 (10.5%)	148 (11.7%)
	111-120	158 (12.9%)	185 (13.8%)	190 (14.0%)	192 (14.2%)	167 (12.0%)	171 (12.8%)	209 (12.6%)	155 (10.5%)	152 (11.8%)	144 (11.4%)
	121-130	163 (13.3%)	171 (12.8%)	160 (11.8%)	155 (11.5%)	174 (12.5%)	149 (11.1%)	189 (11.4%)	142 (9.7%)	121 (9.4%)	150 (11.9%)
	131-140	133 (10.9%)	125 (9.4%)	126 (9.3%)	127 (9.4%)	134 (9.6%)	140 (10.5%)	146 (8.8%)	102 (6.9%)	90 (7.0%)	98 (7.8%)
	141-150	62 (5.1%)	57 (4.3%)	63 (4.7%)	76 (5.6%)	75 (5.4%)	84 (6.3%)	85 (5.1%)	49 (3.3%)	65 (5.0%)	42 (3.3%)
	151+	34 (2.8%)	38 (2.8%)	35 (2.6%)	34 (2.5%)	28 (2.0%)	43 (3.2%)	50 (3.0%)	17 (1.2%)	31 (2.4%)	28 (2.2%)
Subtotal		1,223 (100.0%)	1,336 (100.0%)	1,353 (100.0%)	1,350 (100.0%)	1,392 (100.0%)	1,339 (100.0%)	1,658 (100.0%)	1,470 (100.0%)	1,290 (100.0%)	1,263 (100.0%)
Overall	Unrated	2,654 (46.8%)	2,739 (47.5%)	2,755 (48.1%)	2,893 (48.9%)	2,971 (48.5%)	2,964 (48.0%)	3,250 (47.6%)	3,787 (59.7%)	3,648 (59.1%)	3,265 (53.7%)
	0-100	928 (16.4%)	852 (14.8%)	872 (15.2%)	853 (14.4%)	847 (13.8%)	934 (15.1%)	1,138 (16.7%)	943 (14.9%)	939 (15.2%)	1,143 (18.8%)
	101-110	492 (8.7%)	545 (9.4%)	505 (8.8%)	534 (9.0%)	583 (9.5%)	526 (8.5%)	608 (8.9%)	436 (6.9%)	482 (7.8%)	527 (8.7%)
	111-120	557 (9.8%)	546 (9.5%)	542 (9.5%)	544 (9.2%)	557 (9.1%)	579 (9.4%)	623 (9.1%)	453 (7.1%)	429 (6.9%)	488 (8.0%)
	121-130	492 (8.7%)	525 (9.1%)	481 (8.4%)	471 (8.0%)	559 (9.1%)	520 (8.4%)	580 (8.5%)	375 (5.9%)	327 (5.3%)	351 (5.8%)
	131-140	326 (5.7%)	338 (5.9%)	358 (6.3%)	375 (6.3%)	381 (6.2%)	399 (6.5%)	375 (5.5%)	227 (3.6%)	207 (3.4%)	194 (3.2%)
	141-150	148 (2.6%)	141 (2.4%)	141 (2.5%)	171 (2.9%)	167 (2.7%)	163 (2.6%)	172 (2.5%)	93 (1.5%)	101 (1.6%)	75 (1.2%)
	151+	75 (1.3%)	84 (1.5%)	70 (1.2%)	72 (1.2%)	64 (1.0%)	88 (1.4%)	86 (1.3%)	29 (0.5%)	43 (0.7%)	37 (0.6%)
Total		5,672 (100.0%)	5,770 (100.0%)	5,724 (100.0%)	5,913 (100.0%)	6,129 (100.0%)	6,173 (100.0%)	6,832 (100.0%)	6,343 (100.0%)	6,176 (100.0%)	6,080 (100.0%)

Where a horse has more than one published rating (published Hurdle and published Chase mark), the higher of the two is taken.

Young Horses Entering Training

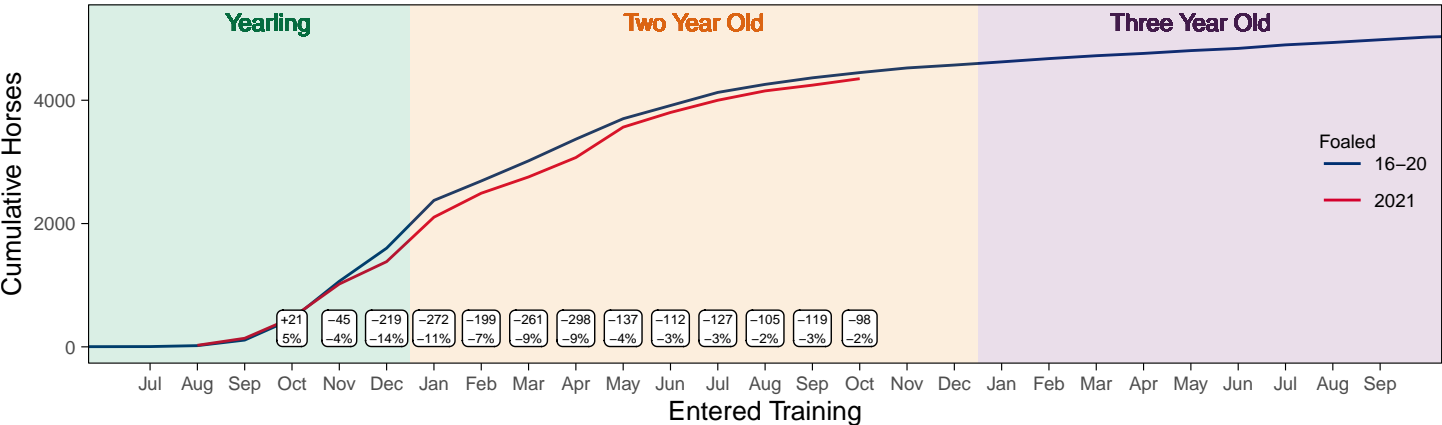
Flat Yearlings in Training versus Previous Years

Period	Jan	Feb	Mar	Apr	May	Jun	Jul	Aug	Sep	Oct	Nov	Dec
2023	1	2	2	2	3	3	4	4	62	224		
2022	0	0	0	0	0	0	0	2	76	274	705	1149
5YrAvg	1	1	1	1	1	1	1	2	51	241	581	1042

Foals Entering Training for the First Time

2021 Foals Entering Training Over Time

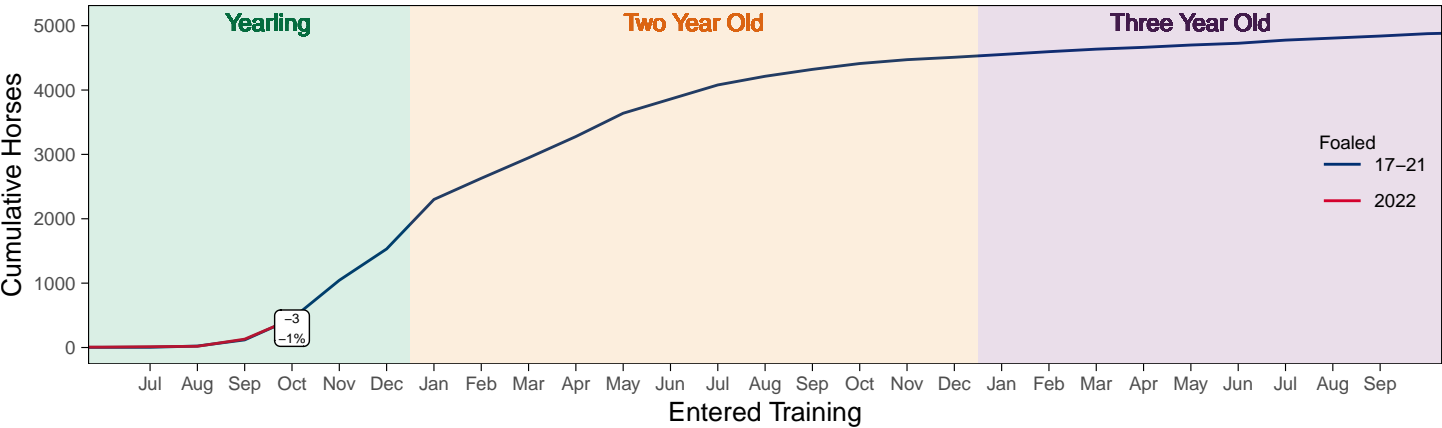
Cumulative Flat Horses foaled in 2021 shown by first in training notification against trend



Cumulative individual horses entering training for the first time by the end of each month.

2022 Foals Entering Training Over Time

Cumulative Flat Horses foaled in 2022 shown by first in training notification against trend



Cumulative individual horses entering training for the first time by the end of each month.

Year to Date Horses in Training

Type	2014	2015	2016	2017	2018	2019	2020	2021	2022	2023	vs. Last Year	vs. Pre-Covid
Flat	11937	12237	12705	12958	12945	13083	13081	12913	12684	12675	-9 / -0.1%	-408 / -3.1%
Jump	8361	8445	8357	8052	8277	8686	8345	9147	8772	8381	-391 / -4.5%	-305 / -3.5%
Dual	947	898	864	1213	1211	1030	987	964	911	1099	+188 / +20.6%	+69 / +6.7%
Hunter	2070	1936	1830	1794	1639	1607	1459	1196	1254	1189	-65 / -5.2%	-418 / -26.0%
Total	21245	21580	21926	22223	22433	22799	22413	23024	22367	22155	-212 / -0.9%	-644 / -2.8%

'vs. Pre-Covid' is comparison between 2023 and 2019

Flat

AgeCat	2014	2015	2016	2017	2018	2019	2020	2021	2022	2023	vs. Last Year	vs. Pre-Covid
2YO	4134	4420	4443	4514	4499	4544	4362	4381	4241	4297	+56 / +1.3%	-247 / -5.4%
3YO	3468	3575	3806	3889	4000	3937	4064	3914	3857	3804	-53 / -1.4%	-133 / -3.4%
4YO	1705	1692	1829	1904	1868	1984	1961	2033	2028	1955	-73 / -3.6%	-29 / -1.5%
5YO+	2630	2550	2627	2651	2578	2618	2694	2585	2558	2619	+61 / +2.4%	+1 / +0.0%
Total	11937	12237	12705	12958	12945	13083	13081	12913	12684	12675	-9 / -0.1%	-408 / -3.1%

'vs. Pre-Covid' is comparison between 2023 and 2019

Jump

AgeCat	2014	2015	2016	2017	2018	2019	2020	2021	2022	2023	vs. Last Year	vs. Pre-Covid
3YO	508	522	438	372	436	468	384	454	510	392	-118 / -23.1%	-76 / -16.2%
4-5YO	2689	2719	2801	2724	2798	2947	2854	2920	3047	2955	-92 / -3.0%	+8 / +0.3%
6-7YO	2704	2804	2602	2467	2614	2765	2733	3005	2813	2753	-60 / -2.1%	-12 / -0.4%
8YO+	2460	2400	2516	2489	2429	2506	2374	2768	2402	2281	-121 / -5.0%	-225 / -9.0%
Total	8361	8445	8357	8052	8277	8686	8345	9147	8772	8381	-391 / -4.5%	-305 / -3.5%

'vs. Pre-Covid' is comparison between 2023 and 2019

Dual

AgeCat	2014	2015	2016	2017	2018	2019	2020	2021	2022	2023	vs. Last Year	vs. Pre-Covid
3YO	182	155	180	217	205	219	208	214	237	273	+36 / +15.2%	+54 / +24.7%
4YO	225	186	185	326	277	243	222	240	207	276	+69 / +33.3%	+33 / +13.6%
5YO+	540	557	499	670	729	568	557	510	467	550	+83 / +17.8%	-18 / -3.2%
Total	947	898	864	1213	1211	1030	987	964	911	1099	+188 / +20.6%	+69 / +6.7%

'vs. Pre-Covid' is comparison between 2023 and 2019

Hunter Chasers

AgeCat	2014	2015	2016	2017	2018	2019	2020	2021	2022	2023	vs. Last Year	vs. Pre-Covid
4-5YO	164	173	168	171	191	228	260	131	200	212	+12 / +6.0%	-16 / -7.0%
6-7YO	645	539	492	477	455	456	373	271	302	292	-10 / -3.3%	-164 / -36.0%
8-9YO	600	594	499	492	394	365	327	303	320	290	-30 / -9.4%	-75 / -20.5%
10YO+	661	630	671	654	599	558	499	491	432	395	-37 / -8.6%	-163 / -29.2%
Total	2070	1936	1830	1794	1639	1607	1459	1196	1254	1189	-65 / -5.2%	-418 / -26.0%

'vs. Pre-Covid' is comparison between 2023 and 2019

Year to Date Runners

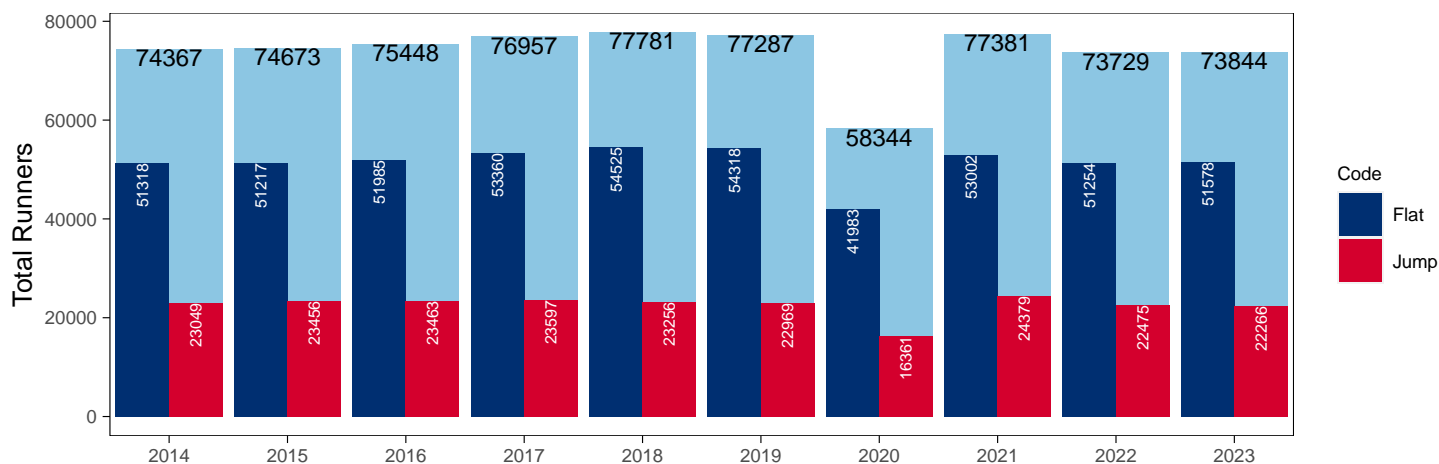
Year to Date Total Runners

Code	2014	2015	2016	2017	2018	2019	2020	2021	2022	2023	vs. Last Year	vs. Pre-Covid
Flat	51318	51217	51985	53360	54525	54318	41983	53002	51254	51578	+324 / +0.6%	-2740 / -5.0%
Jump	23049	23456	23463	23597	23256	22969	16361	24379	22475	22266	-209 / -0.9%	-703 / -3.1%
Total	74367	74673	75448	76957	77781	77287	58344	77381	73729	73844	+115 / +0.2%	-3443 / -4.5%

'vs. Pre-Covid' is comparison between 2023 and 2019

YTD Total Runners

Total Runners in GB Races, shown by Code and Total



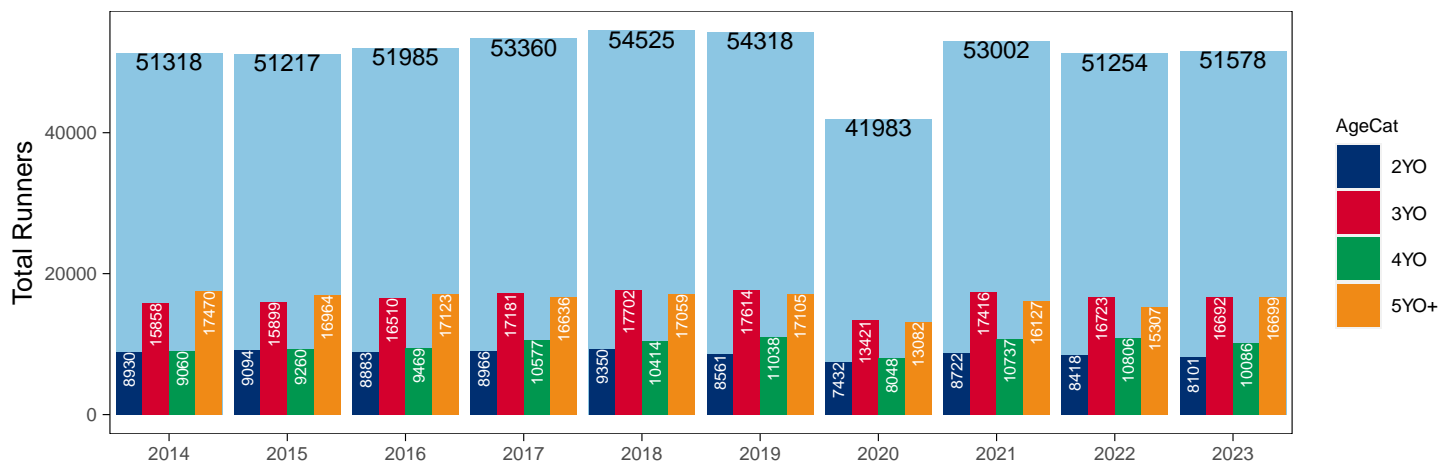
Flat

AgeCat	2014	2015	2016	2017	2018	2019	2020	2021	2022	2023	vs. Last Year	vs. Pre-Covid
2YO	8930	9094	8883	8966	9350	8561	7432	8722	8418	8101	-317 / -3.8%	-460 / -5.4%
3YO	15858	15899	16510	17181	17702	17614	13421	17416	16723	16692	-31 / -0.2%	-922 / -5.2%
4YO	9060	9260	9469	10577	10414	11038	8048	10737	10806	10086	-720 / -6.7%	-952 / -8.6%
5YO+	17470	16964	17123	16636	17059	17105	13082	16127	15307	16699	+1392 / +9.1%	-406 / -2.4%
Total	51318	51217	51985	53360	54525	54318	41983	53002	51254	51578	+324 / +0.6%	-2740 / -5.0%

'vs. Pre-Covid' is comparison between 2023 and 2019

YTD Total Flat Runners by Age

Total Runners in GB Flat Races, shown by Age Category and Total



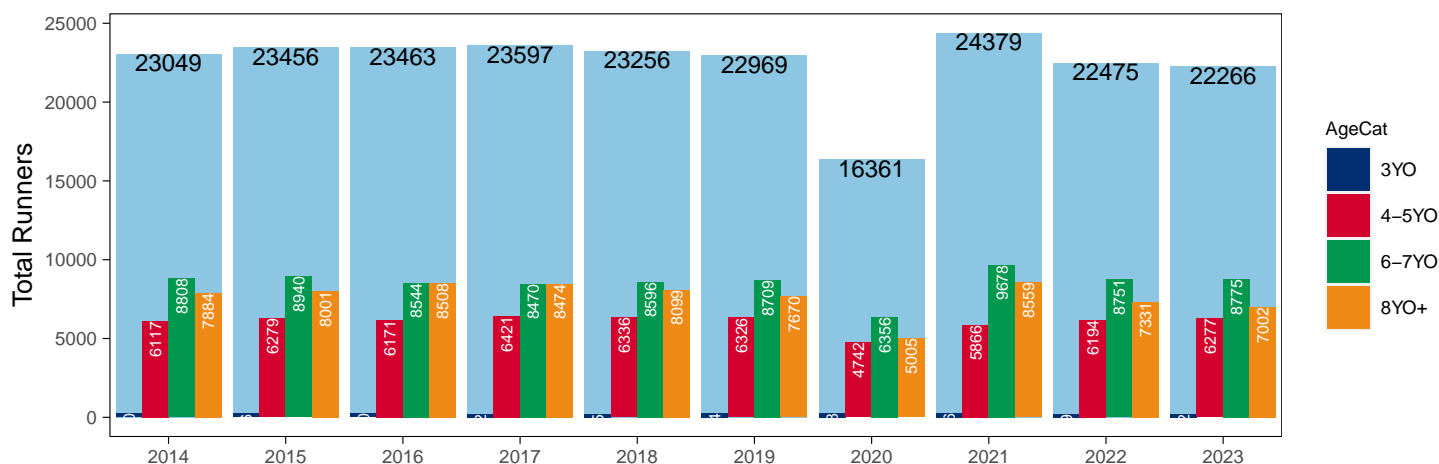
Jump

AgeCat	2014	2015	2016	2017	2018	2019	2020	2021	2022	2023	vs. Last Year	vs. Pre-Covid
3YO	240	236	240	232	225	264	258	276	199	212	+13 / +6.5%	-52 / -19.7%
4-5YO	6117	6279	6171	6421	6336	6326	4742	5866	6194	6277	+83 / +1.3%	-49 / -0.8%
6-7YO	8808	8940	8544	8470	8596	8709	6356	9678	8751	8775	+24 / +0.3%	+66 / +0.8%
8YO+	7884	8001	8508	8474	8099	7670	5005	8559	7331	7002	-329 / -4.5%	-668 / -8.7%
Total	23049	23456	23463	23597	23256	22969	16361	24379	22475	22266	-209 / -0.9%	-703 / -3.1%

'vs. Pre-Covid' is comparison between 2023 and 2019

YTD Total Jump Runners by Age

Total Runners in GB Jump Races, shown by Age Category and Total



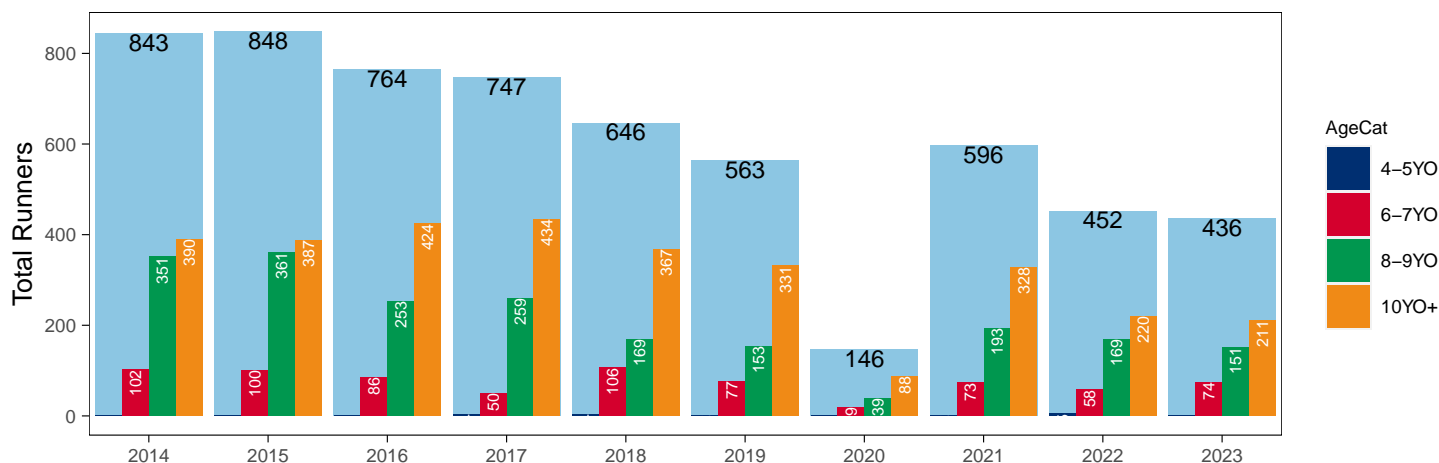
Hunter Chases

AgeCat	2014	2015	2016	2017	2018	2019	2020	2021	2022	2023	vs. Last Year	vs. Pre-Covid
4-5YO			1	4	4	2		2	5		NA / NA	-2 / -100.0%
6-7YO	102	100	86	50	106	77	19	73	58	74	+16 / +27.6%	-3 / -3.9%
8-9YO	351	361	253	259	169	153	39	193	169	151	-18 / -10.7%	-2 / -1.3%
10YO+	390	387	424	434	367	331	88	328	220	211	-9 / -4.1%	-120 / -36.3%
Total	843	848	764	747	646	563	146	596	452	436	-16 / -3.5%	-127 / -22.6%

'vs. Pre-Covid' is comparison between 2023 and 2019

YTD Total Hunter Chase Runners by Age

Total Runners in GB Hunter Chases shown by Age Category and Total



Year to Date Total Runners by Country Trained

Code	Country	2014	2015	2016	2017	2018	2019	2020	2021	2022	2023
Flat	GB	50874	50657	51411	52656	53722	53536	41710	52610	50891	51084
	IRE	353	427	496	624	740	711	246	358	299	442
	Other	91	133	78	80	63	71	27	34	64	52
Jump	GB	22410	22754	22640	22870	22662	22303	16081	23904	21729	21420
	IRE	636	697	814	714	584	659	270	471	744	841
	Other	3	5	9	13	10	7	10	4	2	5
Overall	GB	73284	73411	74051	75526	76384	75839	57791	76514	72620	72504
	IRE	989	1124	1310	1338	1324	1370	516	829	1043	1283
	Other	94	138	87	93	73	78	37	38	66	57

Year to Date GB Trained Runners Racing Abroad

Code	Country	2014	2015	2016	2017	2018	2019	2020	2021	2022	2023
Flat	IRE	141	183	188	187	155	164	56	57	99	98
	FR	350	334	370	448	481	521	265	216	253	317
	GNV	20	19	22	30	33	47	20	10	17	23
	UAE	326	289	208	278	276	303	281	248	276	272
	BAH									41	23
	KSA							15	21	22	15
	Other	139	138	118	105	120	119	42	56	65	82
	Total	976	963	906	1048	1065	1154	679	608	773	830
Jump	IRE	93	93	92	82	56	72	7	24	30	22
	FR	28	29	51	28	12	48	70	115	111	79
	Other	10	8	10	8	7	10		8	14	5
	Total	131	130	153	118	75	130	77	147	155	106

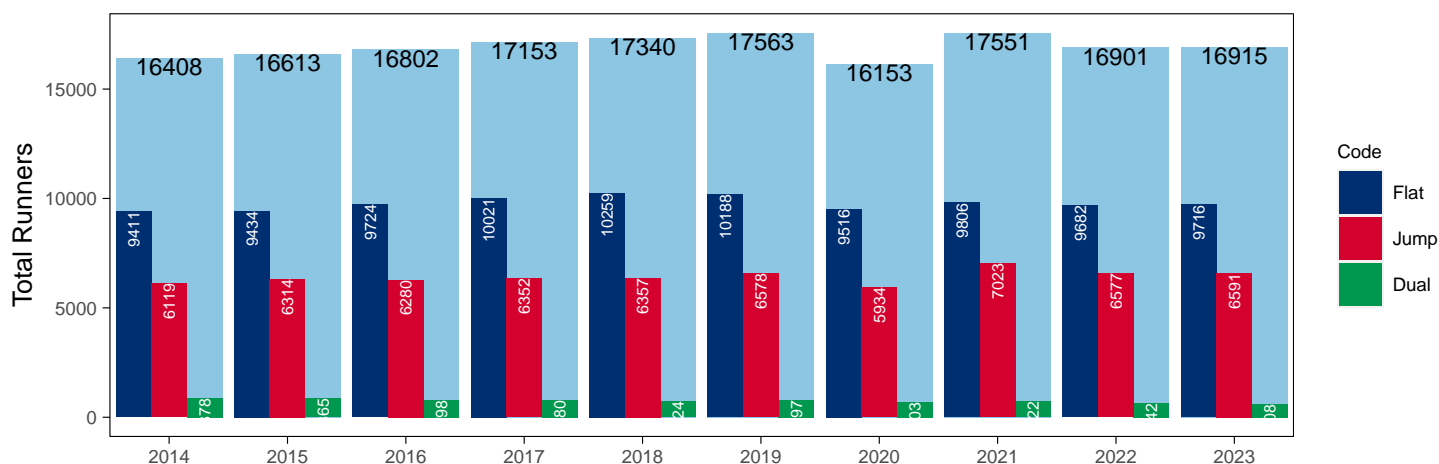
Year to Date Individual Runners

Code	2014	2015	2016	2017	2018	2019	2020	2021	2022	2023	vs. Last Year	vs. Pre-Covid
Flat	9411	9434	9724	10021	10259	10188	9516	9806	9682	9716	+34 / +0.4%	-472 / -4.6%
Jump	6119	6314	6280	6352	6357	6578	5934	7023	6577	6591	+14 / +0.2%	+13 / +0.2%
Dual	878	865	798	780	724	797	703	722	642	608	-34 / -5.3%	-189 / -23.7%
Overall	16408	16613	16802	17153	17340	17563	16153	17551	16901	16915	+14 / +0.1%	-648 / -3.7%

'vs. Pre-Covid' is comparison between 2023 and 2019

YTD Individual Runners

Individual Runners in GB Races, shown by Code and Total



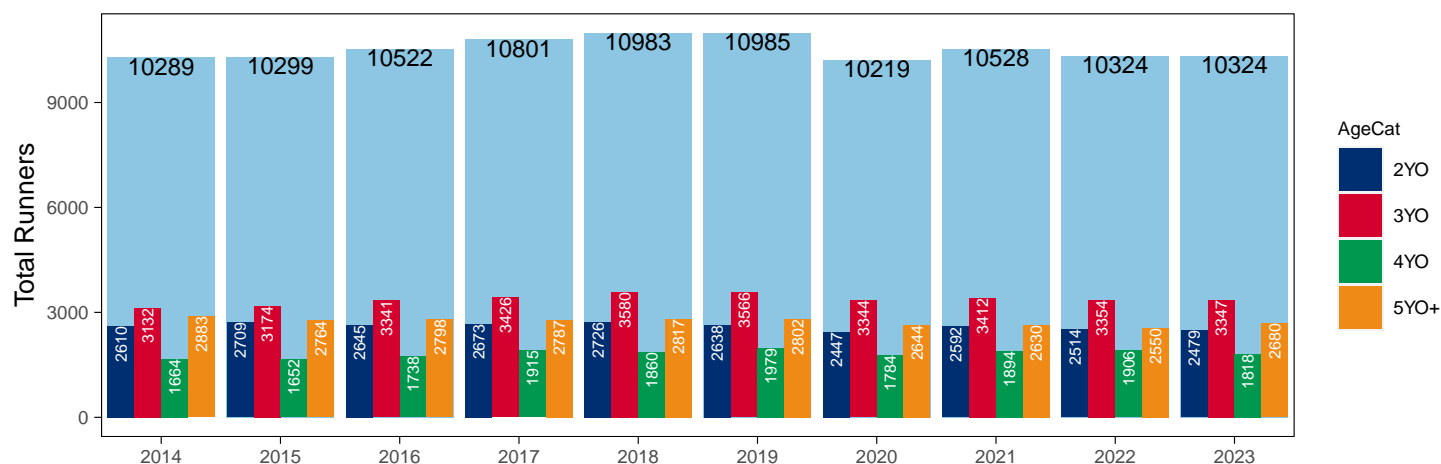
Flat

AgeCat	2014	2015	2016	2017	2018	2019	2020	2021	2022	2023	vs. Last Year	vs. Pre-Covid
2YO	2610	2709	2645	2673	2726	2638	2447	2592	2514	2479	-35 / -1.4%	-159 / -6.0%
3YO	3132	3174	3341	3426	3580	3566	3344	3412	3354	3347	-7 / -0.2%	-219 / -6.1%
4YO	1664	1652	1738	1915	1860	1979	1784	1894	1906	1818	-88 / -4.6%	-161 / -8.1%
5YO+	2883	2764	2798	2787	2817	2802	2644	2630	2550	2680	+130 / +5.1%	-122 / -4.4%
Total	10289	10299	10522	10801	10983	10985	10219	10528	10324	10324	0 / 0.0%	-661 / -6.0%

'vs. Pre-Covid' is comparison between 2023 and 2019

YTD Individual Flat Runners by Age

Individual Runners in GB Flat Races, shown by Age Category and Total



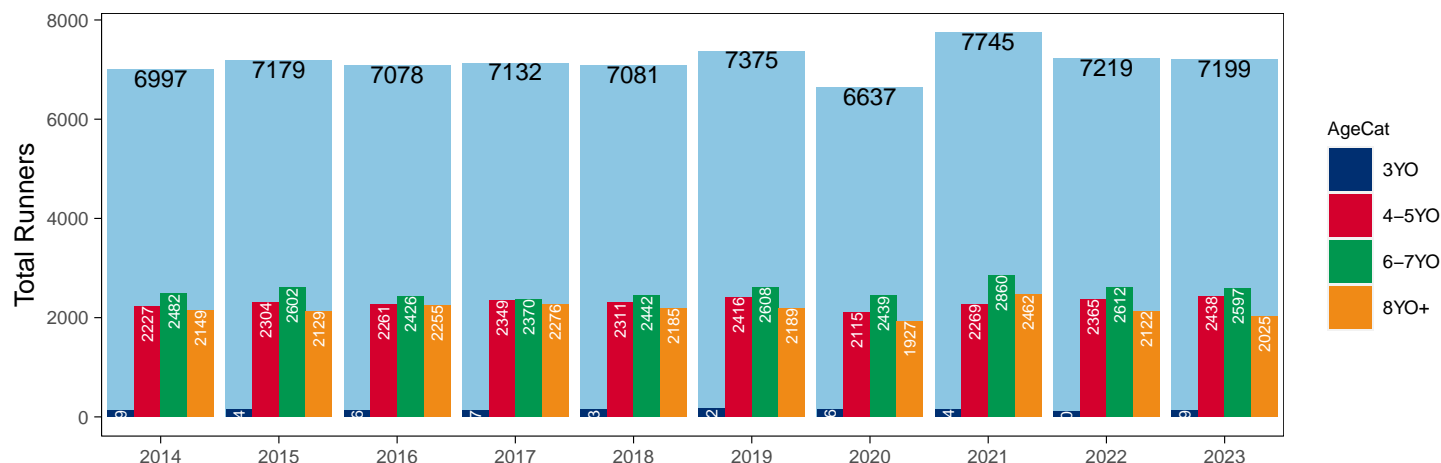
Jump

AgeCat	2014	2015	2016	2017	2018	2019	2020	2021	2022	2023	vs. Last Year	vs. Pre-Covid
3YO	139	144	136	137	143	162	156	154	120	139	+19 / +15.8%	-23 / -14.2%
4-5YO	2227	2304	2261	2349	2311	2416	2115	2269	2365	2438	+73 / +3.1%	+22 / +0.9%
6-7YO	2482	2602	2426	2370	2442	2608	2439	2860	2612	2597	-15 / -0.6%	-11 / -0.4%
8YO+	2149	2129	2255	2276	2185	2189	1927	2462	2122	2025	-97 / -4.6%	-164 / -7.5%
Total	6997	7179	7078	7132	7081	7375	6637	7745	7219	7199	-20 / -0.3%	-176 / -2.4%

'vs. Pre-Covid' is comparison between 2023 and 2019

YTD Individual Jump Runners by Age

Individual Runners in GB Jump Races, shown by Age Category and Total



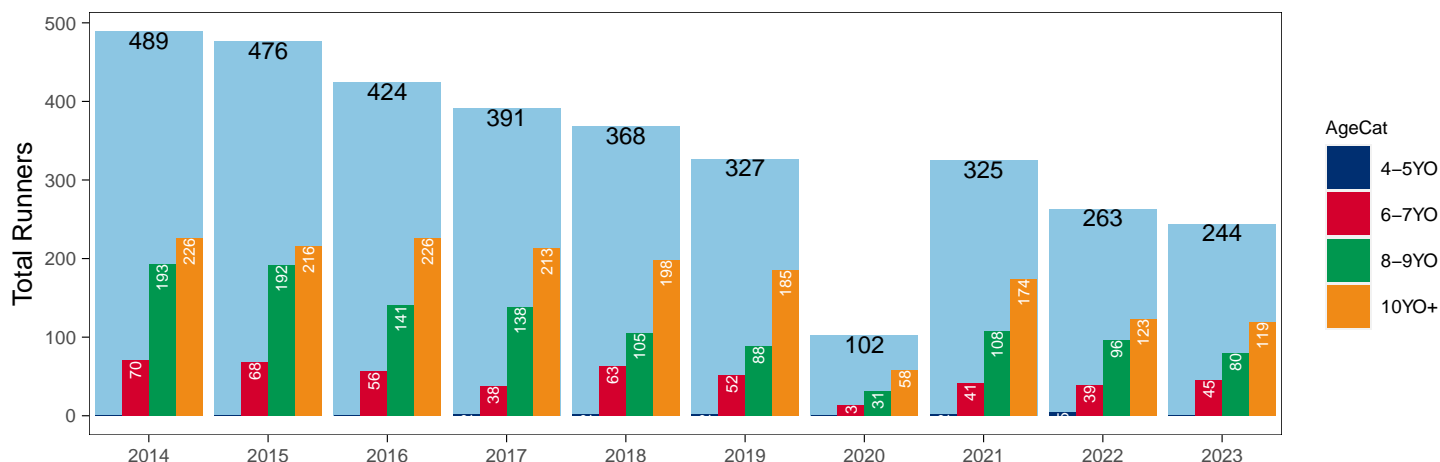
Hunter Chases

AgeCat	2014	2015	2016	2017	2018	2019	2020	2021	2022	2023	vs. Last Year	vs. Pre-Covid
4-5YO			1	2	2	2		2	5		NA / NA	-2 / -100.0%
6-7YO	70	68	56	38	63	52	13	41	39	45	+6 / +15.4%	-7 / -13.5%
8-9YO	193	192	141	138	105	88	31	108	96	80	-16 / -16.7%	-8 / -9.1%
10YO+	226	216	226	213	198	185	58	174	123	119	-4 / -3.3%	-66 / -35.7%
Total	489	476	424	391	368	327	102	325	263	244	-19 / -7.2%	-83 / -25.4%

'vs. Pre-Covid' is comparison between 2023 and 2019

YTD Individual Hunter Chase Runners by Age

Individual Runners in GB Hunter Chases shown by Age Category and Total



Year to Date Individual Runners by Country Trained

Code	Country	2014	2015	2016	2017	2018	2019	2020	2021	2022	2023
Flat	GB	9132	9119	9407	9645	9837	9746	9326	9543	9425	9399
	IRE	217	232	274	332	386	400	174	243	213	295
	Other	67	99	64	63	56	59	23	29	55	41
Jump	GB	5745	5916	5831	5947	5974	6149	5692	6678	6073	6038
	IRE	393	420	466	422	392	444	239	352	527	583
	Other	3	5	9	9	9	6	10	4	2	3
Dual	GB	870	848	783	762	703	782	697	715	632	588
	IRE	7	14	9	12	18	14	5	5	8	14
	Other				2						
Overall	GB	15747	15883	16021	16354	16514	16677	15715	16936	16130	16025
	IRE	617	666	749	766	796	858	418	600	748	892
	Other	70	104	73	74	65	65	33	33	57	44

Individual horses may appear under multiple countries.

Year to Date Total Runners by Rating Band

Flat

RatBand	2014	2015	2016	2017	2018	2019	2020	2021	2022	2023
2YO										
Unrated	6,088 (68.2%)	6,316 (69.5%)	6,050 (68.1%)	6,290 (70.2%)	6,509 (69.6%)	6,078 (71.0%)	5,038 (67.8%)	6,006 (68.9%)	5,857 (69.6%)	5,682 (70.1%)
0-50	171 (1.9%)	172 (1.9%)	123 (1.4%)	121 (1.3%)	111 (1.2%)	162 (1.9%)	100 (1.3%)	157 (1.8%)	155 (1.8%)	168 (2.1%)
51-60	481 (5.4%)	406 (4.5%)	401 (4.5%)	388 (4.3%)	464 (5.0%)	424 (5.0%)	362 (4.9%)	371 (4.3%)	378 (4.5%)	381 (4.7%)
61-70	716 (8.0%)	718 (7.9%)	760 (8.6%)	735 (8.2%)	701 (7.5%)	617 (7.2%)	591 (8.0%)	694 (8.0%)	625 (7.4%)	630 (7.8%)
71-80	802 (9.0%)	831 (9.1%)	915 (10.3%)	820 (9.1%)	810 (8.7%)	719 (8.4%)	744 (10.0%)	776 (8.9%)	717 (8.5%)	689 (8.5%)
81-90	417 (4.7%)	437 (4.8%)	410 (4.6%)	341 (3.8%)	441 (4.7%)	325 (3.8%)	349 (4.7%)	430 (4.9%)	402 (4.8%)	360 (4.4%)
91-100	175 (2.0%)	132 (1.5%)	151 (1.7%)	160 (1.8%)	208 (2.2%)	159 (1.9%)	163 (2.2%)	186 (2.1%)	203 (2.4%)	119 (1.5%)
101+	80 (0.9%)	82 (0.9%)	73 (0.8%)	111 (1.2%)	106 (1.1%)	77 (0.9%)	85 (1.1%)	102 (1.2%)	81 (1.0%)	72 (0.9%)
3YO+										
Unrated	3,742 (8.8%)	3,618 (8.6%)	3,841 (8.9%)	3,955 (8.9%)	4,745 (10.5%)	4,554 (10.0%)	3,767 (10.9%)	4,620 (10.4%)	4,237 (9.9%)	4,151 (9.5%)
0-50	4,047 (9.5%)	3,702 (8.8%)	3,549 (8.2%)	4,014 (9.0%)	4,639 (10.3%)	5,575 (12.2%)	3,810 (11.0%)	5,089 (11.5%)	4,968 (11.6%)	5,362 (12.3%)
51-60	7,167 (16.9%)	7,198 (17.1%)	7,104 (16.5%)	7,431 (16.7%)	7,220 (16.0%)	8,058 (17.6%)	5,908 (17.1%)	7,876 (17.8%)	7,545 (17.6%)	8,318 (19.1%)
61-70	9,200 (21.7%)	9,048 (21.5%)	9,265 (21.5%)	9,145 (20.6%)	9,220 (20.4%)	9,116 (19.9%)	7,067 (20.5%)	9,247 (20.9%)	9,009 (21.0%)	9,118 (21.0%)
71-80	8,591 (20.3%)	8,521 (20.2%)	8,800 (20.4%)	8,959 (20.2%)	8,621 (19.1%)	8,216 (18.0%)	6,455 (18.7%)	8,002 (18.1%)	7,921 (18.5%)	7,978 (18.3%)
81-90	5,210 (12.3%)	5,469 (13.0%)	5,757 (13.4%)	6,014 (13.5%)	5,849 (12.9%)	5,415 (11.8%)	4,168 (12.1%)	5,087 (11.5%)	5,013 (11.7%)	4,665 (10.7%)
91-100	2,719 (6.4%)	2,695 (6.4%)	2,861 (6.6%)	2,858 (6.4%)	3,053 (6.8%)	3,060 (6.7%)	1,993 (5.8%)	2,623 (5.9%)	2,408 (5.6%)	2,304 (5.3%)
101+	1,712 (4.0%)	1,872 (4.4%)	1,925 (4.5%)	2,018 (4.5%)	1,828 (4.0%)	1,763 (3.9%)	1,383 (4.0%)	1,736 (3.9%)	1,735 (4.1%)	1,581 (3.6%)

Jump

RatBand	2014	2015	2016	2017	2018	2019	2020	2021	2022	2023
Hurdle										
Unrated	3,596 (27.1%)	3,761 (26.9%)	3,629 (25.9%)	3,675 (26.3%)	3,640 (26.3%)	3,804 (27.4%)	3,042 (30.9%)	3,729 (26.4%)	3,410 (25.4%)	3,562 (26.4%)
0-100	3,909 (29.4%)	3,875 (27.7%)	3,792 (27.1%)	3,776 (27.0%)	3,560 (25.7%)	3,542 (25.5%)	2,355 (23.9%)	4,395 (31.1%)	4,415 (32.9%)	4,530 (33.6%)
101-110	1,811 (13.6%)	2,076 (14.9%)	2,171 (15.5%)	2,143 (15.3%)	2,132 (15.4%)	2,069 (14.9%)	1,398 (14.2%)	1,942 (13.7%)	2,072 (15.4%)	2,064 (15.3%)
111-120	1,876 (14.1%)	1,945 (13.9%)	1,993 (14.2%)	1,992 (14.3%)	1,947 (14.1%)	1,982 (14.3%)	1,267 (12.9%)	1,791 (12.7%)	1,689 (12.6%)	1,643 (12.2%)
121-130	1,229 (9.3%)	1,298 (9.3%)	1,304 (9.3%)	1,337 (9.6%)	1,419 (10.2%)	1,419 (10.2%)	978 (9.9%)	1,306 (9.2%)	1,056 (7.9%)	1,071 (7.9%)
131-140	611 (4.6%)	704 (5.0%)	761 (5.4%)	745 (5.3%)	814 (5.9%)	713 (5.1%)	553 (5.6%)	662 (4.7%)	542 (4.0%)	415 (3.1%)
141-150	191 (1.4%)	237 (1.7%)	259 (1.8%)	229 (1.6%)	258 (1.9%)	241 (1.7%)	174 (1.8%)	219 (1.6%)	194 (1.4%)	153 (1.1%)
151+	59 (0.4%)	81 (0.6%)	95 (0.7%)	76 (0.5%)	78 (0.6%)	96 (0.7%)	82 (0.8%)	85 (0.6%)	56 (0.4%)	61 (0.5%)
Chase										
Unrated	76 (1.0%)	53 (0.7%)	62 (0.8%)	72 (0.9%)	56 (0.8%)	48 (0.7%)	19 (0.4%)	35 (0.5%)	14 (0.2%)	2 (0.0%)
0-100	2,479 (33.7%)	2,243 (30.3%)	2,200 (29.1%)	2,085 (27.3%)	2,126 (28.9%)	2,185 (30.2%)	1,482 (29.1%)	2,392 (31.8%)	2,368 (33.0%)	2,517 (36.4%)
101-110	1,167 (15.9%)	1,096 (14.8%)	1,143 (15.1%)	1,242 (16.2%)	1,175 (16.0%)	1,152 (15.9%)	799 (15.7%)	1,152 (15.3%)	1,157 (16.1%)	1,146 (16.6%)
111-120	1,253 (17.0%)	1,375 (18.6%)	1,339 (17.7%)	1,334 (17.4%)	1,209 (16.5%)	1,164 (16.1%)	809 (15.9%)	1,290 (17.1%)	1,243 (17.3%)	1,172 (16.9%)
121-130	1,145 (15.6%)	1,166 (15.7%)	1,154 (15.3%)	1,179 (15.4%)	1,235 (16.8%)	1,096 (15.1%)	836 (16.4%)	1,164 (15.5%)	1,065 (14.8%)	959 (13.9%)
131-140	697 (9.5%)	859 (11.6%)	968 (12.8%)	1,051 (13.7%)	910 (12.4%)	938 (13.0%)	646 (12.7%)	836 (11.1%)	775 (10.8%)	651 (9.4%)
141-150	377 (5.1%)	399 (5.4%)	459 (6.1%)	461 (6.0%)	456 (6.2%)	434 (6.0%)	349 (6.9%)	417 (5.5%)	371 (5.2%)	293 (4.2%)
151+	168 (2.3%)	215 (2.9%)	227 (3.0%)	226 (3.0%)	180 (2.4%)	218 (3.0%)	153 (3.0%)	237 (3.2%)	191 (2.7%)	180 (2.6%)

Frequency of Runs

Year to Date Average Runs per Horse

Code	2014	2015	2016	2017	2018	2019	2020	2021	2022	2023
Flat	5.09	5.05	5.02	5.03	5.05	5.03	4.20	5.13	5.06	5.09
Jump	3.31	3.28	3.32	3.33	3.30	3.13	2.46	3.15	3.11	3.10
Dual Overall	7.03	7.26	7.28	6.96	6.88	6.85	5.40	6.80	6.70	6.51
Dual (Flat)	3.86	4.11	3.97	3.83	3.77	3.86	2.91	3.69	3.57	3.53
Dual (Jump)	3.17	3.15	3.31	3.13	3.12	2.99	2.49	3.11	3.13	2.98
All	4.53	4.49	4.49	4.49	4.49	4.40	3.61	4.41	4.36	4.37

Year to Date Proportion of Horses by Count of Runs

Runs	2014	2015	2016	2017	2018	2019	2020	2021	2022	2023
Flat										
1	1,505 (14.6%)	1,520 (14.8%)	1,587 (15.1%)	1,615 (15.0%)	1,683 (15.3%)	1,754 (16.0%)	1,745 (17.1%)	1,518 (14.4%)	1,523 (14.8%)	1,526 (14.8%)
2	1,480 (14.4%)	1,409 (13.7%)	1,372 (13.0%)	1,472 (13.6%)	1,435 (13.1%)	1,506 (13.7%)	1,696 (16.6%)	1,350 (12.8%)	1,346 (13.0%)	1,341 (13.0%)
3	1,332 (12.9%)	1,428 (13.9%)	1,419 (13.5%)	1,448 (13.4%)	1,505 (13.7%)	1,444 (13.1%)	1,631 (16.0%)	1,402 (13.3%)	1,407 (13.6%)	1,385 (13.4%)
4	1,159 (11.3%)	1,200 (11.7%)	1,205 (11.5%)	1,238 (11.5%)	1,275 (11.6%)	1,228 (11.2%)	1,368 (13.4%)	1,209 (11.5%)	1,229 (11.9%)	1,201 (11.6%)
5+	4,813 (46.8%)	4,742 (46.0%)	4,939 (46.9%)	5,028 (46.6%)	5,085 (46.3%)	5,053 (46.0%)	3,779 (37.0%)	5,049 (48.0%)	4,819 (46.7%)	4,871 (47.2%)
Jump										
1	1,801 (25.7%)	1,840 (25.6%)	1,762 (24.9%)	1,848 (25.9%)	1,751 (24.7%)	2,020 (27.4%)	2,136 (32.2%)	1,990 (25.7%)	1,996 (27.6%)	2,027 (28.2%)
2	1,355 (19.4%)	1,431 (19.9%)	1,398 (19.8%)	1,349 (18.9%)	1,328 (18.8%)	1,585 (21.5%)	1,780 (26.8%)	1,646 (21.3%)	1,454 (20.1%)	1,440 (20.0%)
3	1,156 (16.5%)	1,205 (16.8%)	1,178 (16.6%)	1,150 (16.1%)	1,218 (17.2%)	1,222 (16.6%)	1,326 (20.0%)	1,406 (18.2%)	1,269 (17.6%)	1,223 (17.0%)
4	950 (13.6%)	964 (13.4%)	941 (13.3%)	975 (13.7%)	1,024 (14.5%)	933 (12.7%)	746 (11.2%)	1,010 (13.0%)	967 (13.4%)	942 (13.1%)
5+	1,735 (24.8%)	1,739 (24.2%)	1,799 (25.4%)	1,810 (25.4%)	1,760 (24.9%)	1,615 (21.9%)	649 (9.8%)	1,693 (21.9%)	1,533 (21.2%)	1,567 (21.8%)
All Races										
1	2,824 (17.2%)	2,902 (17.5%)	2,936 (17.5%)	3,013 (17.6%)	3,032 (17.5%)	3,325 (18.9%)	3,403 (21.1%)	3,097 (17.6%)	3,157 (18.7%)	3,170 (18.7%)
2	2,555 (15.6%)	2,555 (15.4%)	2,519 (15.0%)	2,602 (15.2%)	2,533 (14.6%)	2,826 (16.1%)	3,210 (19.9%)	2,769 (15.8%)	2,593 (15.3%)	2,622 (15.5%)
3	2,320 (14.1%)	2,449 (14.7%)	2,411 (14.3%)	2,431 (14.2%)	2,566 (14.8%)	2,505 (14.3%)	2,843 (17.6%)	2,663 (15.2%)	2,542 (15.0%)	2,487 (14.7%)
4	1,988 (12.1%)	2,069 (12.5%)	2,056 (12.2%)	2,116 (12.3%)	2,214 (12.8%)	2,090 (11.9%)	2,075 (12.8%)	2,123 (12.1%)	2,119 (12.5%)	2,078 (12.3%)
5+	6,721 (41.0%)	6,638 (40.0%)	6,880 (40.9%)	6,991 (40.8%)	6,995 (40.3%)	6,817 (38.8%)	4,622 (28.6%)	6,899 (39.3%)	6,490 (38.4%)	6,558 (38.8%)

Year to Date Median Days Between Runs

Code/RatBand	2014	2015	2016	2017	2018	2019	2020	2021	2022	2023
All Runners	23	24	24	24	24	24	25	25	25	25
Flat										
Unrated	22	22	22	22	23	23	22	23	23	23
0-50	20	20	20	21	20	21	20	20	21	19
51-60	19	19	19	20	19	20	20	20	20	19
61-70	19	20	20	21	20	21	21	20	21	21
71-80	21	21	21	22	21	21	22	21	22	22
81-90	22	22	22	22	22	22	22	22	23	24
91-100	24	24	24	25	23	23	24	25	27	27
101+	28	27	28	28	28	28	28	28	31	32
All Flat Runners	21	21	21	22	21	21	21	21	22	22
Jump										
Unrated	36	36	37	34	37	38	38	40	37	41
0-100	25	26	26	26	27	27	33	29	28	29
101-110	27	28	29	28	29	29	32	31	30	31
111-120	28	29	30	29	31	31	36	33	31	33
121-130	30	32	32	30	31	33	36	34	32	35
131-140	34	34	35	34	34	35	40	36	35	37
141-150	35	35	35	37	39	38	45	42	39	40
151+	39	42	41	38	39	40	47	42	42	43
All Jump Runners	29	30	30	30	31	32	36	34	31	33

Horses Population by Gender

October 2023 Horses in Training Snapshot by Gender versus Previous Years

All Horses

Sex	2014	2015	2016	2017	2018	2019	2020	2021	2022	2023
Colt/Entire	2,027 (14.8%)	2,050 (14.5%)	2,011 (14.2%)	2,168 (14.5%)	2,007 (13.2%)	1,986 (13.1%)	1,997 (12.6%)	1,839 (12.1%)	1,791 (11.9%)	1,831 (12.2%)
Gelding	7,621 (55.5%)	7,922 (56.0%)	8,048 (56.7%)	8,280 (55.5%)	8,627 (56.7%)	8,517 (56.3%)	9,039 (57.1%)	8,690 (57.3%)	8,526 (56.8%)	8,440 (56.4%)
Filly/Mare	4,073 (29.7%)	4,182 (29.5%)	4,125 (29.1%)	4,469 (30.0%)	4,586 (30.1%)	4,632 (30.6%)	4,781 (30.2%)	4,647 (30.6%)	4,702 (31.3%)	4,690 (31.3%)
Rig	0 (0.0%)	5 (0.0%)	4 (0.0%)	4 (0.0%)	2 (0.0%)	3 (0.0%)	3 (0.0%)	1 (0.0%)	1 (0.0%)	0 (0.0%)
Total	13,721 (100.0%)	14,159 (100.0%)	14,188 (100.0%)	14,921 (100.0%)	15,222 (100.0%)	15,138 (100.0%)	15,820 (100.0%)	15,177 (100.0%)	15,020 (100.0%)	14,961 (100.0%)

Flat (including Dual)

Sex	2014	2015	2016	2017	2018	2019	2020	2021	2022	2023
Colt/Entire	1,839 (22.1%)	1,860 (21.5%)	1,844 (21.1%)	1,917 (20.4%)	1,906 (20.2%)	1,815 (19.7%)	1,829 (19.6%)	1,635 (18.2%)	1,602 (17.7%)	1,683 (18.2%)
Gelding	3,445 (41.4%)	3,651 (42.2%)	3,777 (43.3%)	4,158 (44.2%)	4,165 (44.1%)	4,115 (44.6%)	4,177 (44.8%)	4,095 (45.6%)	4,119 (45.6%)	4,241 (45.9%)
Filly/Mare	3,029 (36.4%)	3,133 (36.2%)	3,107 (35.6%)	3,319 (35.3%)	3,373 (35.7%)	3,285 (35.6%)	3,316 (35.6%)	3,256 (36.2%)	3,306 (36.6%)	3,323 (35.9%)
Rig	0 (0.0%)	3 (0.0%)	4 (0.0%)	4 (0.0%)	2 (0.0%)	2 (0.0%)	2 (0.0%)	0 (0.0%)	0 (0.0%)	0 (0.0%)
Total	8,313 (100.0%)	8,647 (100.0%)	8,732 (100.0%)	9,398 (100.0%)	9,446 (100.0%)	9,217 (100.0%)	9,324 (100.0%)	8,986 (100.0%)	9,027 (100.0%)	9,247 (100.0%)

Jump (including Dual)

Sex	2014	2015	2016	2017	2018	2019	2020	2021	2022	2023
Colt/Entire	49 (0.9%)	43 (0.7%)	23 (0.4%)	24 (0.4%)	29 (0.5%)	26 (0.4%)	33 (0.5%)	38 (0.6%)	34 (0.6%)	33 (0.5%)
Gelding	4,552 (80.3%)	4,663 (80.8%)	4,672 (81.6%)	4,697 (79.4%)	4,824 (78.7%)	4,781 (77.5%)	5,309 (77.7%)	4,936 (77.8%)	4,744 (76.8%)	4,622 (76.0%)
Filly/Mare	1,071 (18.9%)	1,063 (18.4%)	1,029 (18.0%)	1,192 (20.2%)	1,276 (20.8%)	1,365 (22.1%)	1,489 (21.8%)	1,368 (21.6%)	1,397 (22.6%)	1,425 (23.4%)
Rig	0 (0.0%)	1 (0.0%)	0 (0.0%)	0 (0.0%)	0 (0.0%)	1 (0.0%)	1 (0.0%)	1 (0.0%)	1 (0.0%)	0 (0.0%)
Total	5,672 (100.0%)	5,770 (100.0%)	5,724 (100.0%)	5,913 (100.0%)	6,129 (100.0%)	6,173 (100.0%)	6,832 (100.0%)	6,343 (100.0%)	6,176 (100.0%)	6,080 (100.0%)

Hunter Chasers

Sex	2014	2015	2016	2017	2018	2019	2020	2021	2022	2023
Colt/Entire	0 (-)	0 (-)	0 (0.0%)	0 (-)	0 (-)	0 (-)	0 (0.0%)	0 (0.0%)	0 (0.0%)	6 (0.5%)
Gelding	0 (-)	0 (-)	1 (100.0%)	0 (-)	0 (-)	0 (-)	189 (81.5%)	42 (89.4%)	14 (100.0%)	904 (82.5%)
Filly/Mare	0 (-)	0 (-)	0 (0.0%)	0 (-)	0 (-)	0 (-)	43 (18.5%)	5 (10.6%)	0 (0.0%)	186 (17.0%)
Rig	0 (-)	0 (-)	0 (0.0%)	0 (-)	0 (-)	0 (-)	0 (0.0%)	0 (0.0%)	0 (0.0%)	0 (0.0%)
Total	0 (-)	0 (-)	1 (100.0%)	0 (-)	0 (-)	0 (-)	232 (100.0%)	47 (100.0%)	14 (100.0%)	1,096 (100.0%)

Year to Date Total Runners by Gender

Sex	2014	2015	2016	2017	2018	2019	2020	2021	2022	2023
All Races										
Colt/Entire	8,679 (11.7%)	8,481 (11.4%)	8,278 (11.0%)	8,364 (10.9%)	8,777 (11.3%)	7,922 (10.3%)	6,652 (11.4%)	7,632 (9.9%)	6,875 (9.3%)	6,804 (9.2%)
Gelding	44,561 (59.9%)	45,468 (60.9%)	46,370 (61.5%)	47,482 (61.7%)	47,061 (60.5%)	46,896 (60.7%)	34,719 (59.5%)	47,394 (61.2%)	45,307 (61.5%)	45,162 (61.2%)
Filly/Mare	21,126 (28.4%)	20,721 (27.7%)	20,781 (27.5%)	21,099 (27.4%)	21,930 (28.2%)	22,452 (29.1%)	16,968 (29.1%)	22,348 (28.9%)	21,538 (29.2%)	21,874 (29.6%)
Rig	1 (0.0%)	3 (0.0%)	19 (0.0%)	12 (0.0%)	13 (0.0%)	17 (0.0%)	5 (0.0%)	7 (0.0%)	9 (0.0%)	4 (0.0%)
Flat										
Colt/Entire	8,577 (16.7%)	8,420 (16.4%)	8,243 (15.9%)	8,321 (15.6%)	8,744 (16.0%)	7,889 (14.5%)	6,624 (15.8%)	7,571 (14.3%)	6,846 (13.4%)	6,765 (13.1%)
Gelding	25,685 (50.1%)	26,325 (51.4%)	27,062 (52.1%)	28,151 (52.8%)	28,529 (52.3%)	28,835 (53.1%)	21,828 (52.0%)	28,246 (53.3%)	27,609 (53.9%)	27,806 (53.9%)
Filly/Mare	17,056 (33.2%)	16,470 (32.2%)	16,661 (32.0%)	16,876 (31.6%)	17,239 (31.6%)	17,582 (32.4%)	13,530 (32.2%)	17,182 (32.4%)	16,799 (32.8%)	17,007 (33.0%)
Rig	0 (0.0%)	2 (0.0%)	19 (0.0%)	12 (0.0%)	13 (0.0%)	12 (0.0%)	1 (0.0%)	3 (0.0%)	0 (0.0%)	0 (0.0%)
All Jump										
Colt/Entire	102 (0.4%)	61 (0.3%)	35 (0.1%)	43 (0.2%)	33 (0.1%)	33 (0.1%)	28 (0.2%)	61 (0.3%)	29 (0.1%)	39 (0.2%)
Gelding	18,876 (81.9%)	19,143 (81.6%)	19,308 (82.3%)	19,331 (81.9%)	18,532 (79.7%)	18,061 (78.6%)	12,891 (78.8%)	19,148 (78.5%)	17,698 (78.7%)	17,356 (77.9%)
Filly/Mare	4,070 (17.7%)	4,251 (18.1%)	4,120 (17.6%)	4,223 (17.9%)	4,691 (20.2%)	4,870 (21.2%)	3,438 (21.0%)	5,166 (21.2%)	4,739 (21.1%)	4,867 (21.9%)
Rig	1 (0.0%)	1 (0.0%)	0 (0.0%)	0 (0.0%)	0 (0.0%)	5 (0.0%)	4 (0.0%)	4 (0.0%)	9 (0.0%)	4 (0.0%)
Chase										
Colt/Entire	2 (0.0%)	0 (0.0%)	1 (0.0%)	0 (0.0%)	0 (0.0%)	0 (0.0%)	0 (0.0%)	0 (0.0%)	0 (0.0%)	0 (0.0%)
Gelding	6,827 (92.7%)	6,894 (93.1%)	7,012 (92.8%)	7,089 (92.7%)	6,668 (90.8%)	6,515 (90.0%)	4,590 (90.1%)	6,749 (89.7%)	6,426 (89.4%)	6,171 (89.2%)
Filly/Mare	533 (7.2%)	512 (6.9%)	539 (7.1%)	561 (7.3%)	679 (9.2%)	717 (9.9%)	499 (9.8%)	770 (10.2%)	749 (10.4%)	746 (10.8%)
Rig	0 (0.0%)	0 (0.0%)	0 (0.0%)	0 (0.0%)	0 (0.0%)	3 (0.0%)	4 (0.1%)	4 (0.1%)	9 (0.1%)	3 (0.0%)
Hurdle										
Colt/Entire	89 (0.7%)	53 (0.4%)	31 (0.2%)	35 (0.3%)	25 (0.2%)	23 (0.2%)	15 (0.2%)	52 (0.4%)	20 (0.1%)	30 (0.2%)
Gelding	10,412 (78.4%)	10,916 (78.1%)	11,051 (78.9%)	10,972 (78.5%)	10,589 (76.5%)	10,415 (75.1%)	7,375 (74.9%)	10,530 (74.5%)	10,129 (75.4%)	10,062 (74.5%)
Filly/Mare	2,781 (20.9%)	3,008 (21.5%)	2,922 (20.9%)	2,966 (21.2%)	3,234 (23.4%)	3,426 (24.7%)	2,459 (25.0%)	3,547 (25.1%)	3,285 (24.5%)	3,406 (25.2%)
Rig	0 (0.0%)	0 (0.0%)	0 (0.0%)	0 (0.0%)	0 (0.0%)	2 (0.0%)	0 (0.0%)	0 (0.0%)	0 (0.0%)	1 (0.0%)
NHF										
Colt/Entire	11 (0.5%)	8 (0.4%)	3 (0.2%)	8 (0.4%)	8 (0.4%)	10 (0.5%)	13 (0.9%)	9 (0.3%)	9 (0.5%)	9 (0.5%)
Gelding	1,637 (68.1%)	1,333 (64.3%)	1,245 (65.3%)	1,270 (64.3%)	1,275 (61.9%)	1,131 (60.5%)	926 (65.3%)	1,869 (68.5%)	1,143 (61.6%)	1,123 (60.8%)
Filly/Mare	756 (31.4%)	731 (35.3%)	659 (34.6%)	696 (35.3%)	778 (37.7%)	727 (38.9%)	480 (33.8%)	849 (31.1%)	705 (38.0%)	715 (38.7%)
Rig	1 (0.0%)	1 (0.0%)	0 (0.0%)	0 (0.0%)	0 (0.0%)	0 (0.0%)	0 (0.0%)	0 (0.0%)	0 (0.0%)	0 (0.0%)
Hunter										
Colt/Entire	0 (0.0%)	1 (0.1%)	0 (0.0%)	0 (0.0%)	0 (0.0%)	0 (0.0%)	0 (0.0%)	0 (0.0%)	0 (0.0%)	0 (0.0%)
Gelding	771 (91.5%)	799 (94.2%)	720 (94.2%)	709 (94.9%)	603 (93.3%)	522 (92.7%)	142 (97.3%)	557 (93.5%)	429 (94.9%)	408 (93.6%)
Filly/Mare	72 (8.5%)	48 (5.7%)	44 (5.8%)	38 (5.1%)	43 (6.7%)	41 (7.3%)	4 (2.7%)	39 (6.5%)	23 (5.1%)	28 (6.4%)

Year to Date Individual Runners by Gender

Sex	2014	2015	2016	2017	2018	2019	2020	2021	2022	2023
All Races										
Male	11,508 (70.1%)	11,678 (70.3%)	11,839 (70.5%)	12,045 (70.2%)	12,071 (69.6%)	12,187 (69.4%)	11,206 (69.4%)	12,201 (69.5%)	11,689 (69.2%)	11,573 (68.4%)
Female	4,900 (29.9%)	4,935 (29.7%)	4,963 (29.5%)	5,108 (29.8%)	5,269 (30.4%)	5,376 (30.6%)	4,947 (30.6%)	5,350 (30.5%)	5,212 (30.8%)	5,342 (31.6%)
Flat										
Male	6,534 (63.5%)	6,582 (63.9%)	6,761 (64.3%)	6,959 (64.4%)	7,109 (64.7%)	7,077 (64.4%)	6,587 (64.5%)	6,738 (64.0%)	6,573 (63.7%)	6,526 (63.2%)
Female	3,755 (36.5%)	3,717 (36.1%)	3,761 (35.7%)	3,842 (35.6%)	3,874 (35.3%)	3,908 (35.6%)	3,632 (35.5%)	3,790 (36.0%)	3,751 (36.3%)	3,798 (36.8%)
All Jump										
Male	5,663 (80.9%)	5,780 (80.5%)	5,735 (81.0%)	5,727 (80.3%)	5,549 (78.4%)	5,740 (77.8%)	5,177 (78.0%)	6,028 (77.8%)	5,614 (77.8%)	5,526 (76.8%)
Female	1,334 (19.1%)	1,399 (19.5%)	1,343 (19.0%)	1,405 (19.7%)	1,532 (21.6%)	1,635 (22.2%)	1,460 (22.0%)	1,717 (22.2%)	1,605 (22.2%)	1,673 (23.2%)
Chase										
Male	2,200 (92.2%)	2,278 (92.2%)	2,255 (92.3%)	2,301 (91.1%)	2,206 (89.7%)	2,266 (89.3%)	2,028 (88.7%)	2,351 (88.4%)	2,181 (88.2%)	2,119 (87.6%)
Female	185 (7.8%)	193 (7.8%)	187 (7.7%)	224 (8.9%)	252 (10.3%)	271 (10.7%)	259 (11.3%)	309 (11.6%)	291 (11.8%)	301 (12.4%)
Hurdle										
Male	3,695 (79.5%)	3,834 (79.4%)	3,832 (80.1%)	3,794 (79.0%)	3,702 (77.3%)	3,858 (76.6%)	3,382 (76.0%)	3,941 (75.7%)	3,768 (76.8%)	3,658 (75.2%)
Female	951 (20.5%)	997 (20.6%)	950 (19.9%)	1,007 (21.0%)	1,088 (22.7%)	1,176 (23.4%)	1,070 (24.0%)	1,265 (24.3%)	1,138 (23.2%)	1,206 (24.8%)
NHF										
Male	1,113 (70.8%)	903 (66.6%)	852 (67.0%)	861 (66.2%)	901 (65.5%)	803 (63.4%)	736 (67.0%)	1,337 (70.4%)	811 (64.1%)	809 (63.8%)
Female	459 (29.2%)	453 (33.4%)	419 (33.0%)	440 (33.8%)	475 (34.5%)	463 (36.6%)	362 (33.0%)	561 (29.6%)	455 (35.9%)	459 (36.2%)
Hunter										
Male	447 (91.4%)	448 (94.1%)	395 (93.2%)	366 (93.6%)	339 (92.1%)	301 (92.0%)	98 (96.1%)	299 (92.0%)	243 (92.4%)	228 (93.4%)
Female	42 (8.6%)	28 (5.9%)	29 (6.8%)	25 (6.4%)	29 (7.9%)	26 (8.0%)	4 (3.9%)	26 (8.0%)	20 (7.6%)	16 (6.6%)

Horses Population by Breeding

October 2023 Horses in Training Snapshot by Breeding versus Previous Years

Flat (including Dual)

Bred	Sex	2014	2015	2016	2017	2018	2019	2020	2021	2022	2023
GB	Male	2,529 (30.4%)	2,628 (30.4%)	2,635 (30.2%)	2,859 (30.4%)	2,834 (30.0%)	2,810 (30.5%)	2,834 (30.4%)	2,688 (29.9%)	2,683 (29.7%)	2,702 (29.2%)
	Female	1,675 (20.1%)	1,714 (19.8%)	1,750 (20.0%)	1,839 (19.6%)	1,868 (19.8%)	1,838 (19.9%)	1,864 (20.0%)	1,817 (20.2%)	1,803 (20.0%)	1,808 (19.6%)
	Subtotal	4,204 (50.6%)	4,342 (50.2%)	4,385 (50.2%)	4,698 (50.0%)	4,702 (49.8%)	4,648 (50.4%)	4,698 (50.4%)	4,505 (50.1%)	4,486 (49.7%)	4,510 (48.8%)
IRE	Male	2,209 (26.6%)	2,330 (26.9%)	2,413 (27.6%)	2,578 (27.4%)	2,597 (27.5%)	2,504 (27.2%)	2,586 (27.7%)	2,528 (28.1%)	2,613 (28.9%)	2,739 (29.6%)
	Female	1,119 (13.5%)	1,204 (13.9%)	1,151 (13.2%)	1,245 (13.2%)	1,238 (13.1%)	1,207 (13.1%)	1,231 (13.2%)	1,248 (13.9%)	1,334 (14.8%)	1,344 (14.5%)
	Subtotal	3,328 (40.0%)	3,534 (40.9%)	3,564 (40.8%)	3,823 (40.7%)	3,835 (40.6%)	3,711 (40.3%)	3,817 (40.9%)	3,776 (42.0%)	3,947 (43.7%)	4,083 (44.2%)
FR	Male	150 (1.8%)	169 (2.0%)	198 (2.3%)	263 (2.8%)	284 (3.0%)	290 (3.1%)	302 (3.2%)	296 (3.3%)	274 (3.0%)	336 (3.6%)
	Female	55 (0.7%)	67 (0.8%)	76 (0.9%)	96 (1.0%)	107 (1.1%)	109 (1.2%)	112 (1.2%)	113 (1.3%)	111 (1.2%)	120 (1.3%)
	Subtotal	205 (2.5%)	236 (2.7%)	274 (3.1%)	359 (3.8%)	391 (4.1%)	399 (4.3%)	414 (4.4%)	409 (4.6%)	385 (4.3%)	456 (4.9%)
USA	Male	308 (3.7%)	309 (3.6%)	303 (3.5%)	294 (3.1%)	282 (3.0%)	260 (2.8%)	206 (2.2%)	158 (1.8%)	97 (1.1%)	98 (1.1%)
	Female	144 (1.7%)	123 (1.4%)	109 (1.2%)	115 (1.2%)	136 (1.4%)	99 (1.1%)	80 (0.9%)	52 (0.6%)	41 (0.5%)	29 (0.3%)
	Subtotal	452 (5.4%)	432 (5.0%)	412 (4.7%)	409 (4.4%)	418 (4.4%)	359 (3.9%)	286 (3.1%)	210 (2.3%)	138 (1.5%)	127 (1.4%)
GNY	Male	52 (0.6%)	54 (0.6%)	54 (0.6%)	60 (0.6%)	52 (0.6%)	50 (0.5%)	61 (0.7%)	50 (0.6%)	41 (0.5%)	40 (0.4%)
	Female	14 (0.2%)	12 (0.1%)	10 (0.1%)	13 (0.1%)	14 (0.1%)	21 (0.2%)	24 (0.2%)	24 (0.3%)	14 (0.2%)	16 (0.2%)
	Subtotal	66 (0.8%)	66 (0.8%)	64 (0.7%)	73 (0.8%)	66 (0.7%)	71 (0.8%)	83 (0.9%)	74 (0.8%)	55 (0.6%)	56 (0.6%)
Other	Male	36 (0.4%)	24 (0.3%)	22 (0.3%)	25 (0.3%)	24 (0.3%)	18 (0.2%)	19 (0.2%)	10 (0.1%)	13 (0.1%)	9 (0.1%)
	Female	22 (0.3%)	13 (0.2%)	11 (0.1%)	11 (0.1%)	10 (0.1%)	11 (0.1%)	7 (0.1%)	2 (0.0%)	3 (0.0%)	6 (0.1%)
	Subtotal	58 (0.7%)	37 (0.4%)	33 (0.4%)	36 (0.4%)	34 (0.4%)	29 (0.3%)	26 (0.3%)	12 (0.1%)	16 (0.2%)	15 (0.2%)

Jump (including Dual)

Bred	Sex	2014	2015	2016	2017	2018	2019	2020	2021	2022	2023
GB	Male	1,410 (24.9%)	1,407 (24.4%)	1,284 (22.4%)	1,286 (21.7%)	1,269 (20.7%)	1,202 (19.5%)	1,326 (19.4%)	1,213 (19.1%)	1,181 (19.1%)	1,145 (18.8%)
	Female	662 (11.7%)	626 (10.8%)	563 (9.8%)	614 (10.4%)	615 (10.0%)	600 (9.7%)	675 (9.9%)	627 (9.9%)	661 (10.7%)	646 (10.6%)
	Subtotal	2,072 (36.5%)	2,033 (35.2%)	1,847 (32.3%)	1,900 (32.1%)	1,884 (30.7%)	1,802 (29.2%)	2,001 (29.3%)	1,840 (29.0%)	1,842 (29.8%)	1,791 (29.5%)
IRE	Male	2,455 (43.3%)	2,534 (43.9%)	2,594 (45.3%)	2,646 (44.7%)	2,709 (44.2%)	2,703 (43.8%)	2,937 (43.0%)	2,705 (42.6%)	2,536 (41.1%)	2,423 (39.9%)
	Female	340 (6.0%)	376 (6.5%)	402 (7.0%)	494 (8.4%)	550 (9.0%)	631 (10.2%)	659 (9.6%)	607 (9.6%)	587 (9.5%)	630 (10.4%)
	Subtotal	2,795 (49.3%)	2,910 (50.4%)	2,996 (52.3%)	3,140 (53.1%)	3,259 (53.2%)	3,334 (54.0%)	3,596 (52.6%)	3,312 (52.2%)	3,123 (50.6%)	3,053 (50.2%)
FR	Male	576 (10.2%)	650 (11.3%)	709 (12.4%)	687 (11.6%)	787 (12.8%)	807 (13.1%)	968 (14.2%)	955 (15.1%)	971 (15.7%)	1,005 (16.5%)
	Female	59 (1.0%)	52 (0.9%)	57 (1.0%)	77 (1.3%)	101 (1.6%)	126 (2.0%)	145 (2.1%)	127 (2.0%)	139 (2.3%)	145 (2.4%)
	Subtotal	635 (11.2%)	702 (12.2%)	766 (13.4%)	764 (12.9%)	888 (14.5%)	933 (15.1%)	1,113 (16.3%)	1,082 (17.1%)	1,110 (18.0%)	1,150 (18.9%)
USA	Male	79 (1.4%)	61 (1.1%)	42 (0.7%)	41 (0.7%)	37 (0.6%)	32 (0.5%)	35 (0.5%)	34 (0.5%)	24 (0.4%)	15 (0.2%)
	Female	4 (0.1%)	1 (0.0%)	1 (0.0%)	2 (0.0%)	4 (0.1%)	3 (0.0%)	2 (0.0%)	1 (0.0%)	NA (-)	NA (-)
	Subtotal	83 (1.5%)	62 (1.1%)	43 (0.8%)	43 (0.7%)	41 (0.7%)	35 (0.6%)	37 (0.5%)	35 (0.6%)	24 (0.4%)	15 (0.2%)
GNY	Male	70 (1.2%)	51 (0.9%)	59 (1.0%)	53 (0.9%)	46 (0.8%)	59 (1.0%)	70 (1.0%)	64 (1.0%)	64 (1.0%)	63 (1.0%)
	Female	5 (0.1%)	6 (0.1%)	4 (0.1%)	3 (0.1%)	5 (0.1%)	5 (0.1%)	7 (0.1%)	5 (0.1%)	9 (0.1%)	3 (0.0%)
	Subtotal	75 (1.3%)	57 (1.0%)	63 (1.1%)	56 (0.9%)	51 (0.8%)	64 (1.0%)	77 (1.1%)	69 (1.1%)	73 (1.2%)	66 (1.1%)
Other	Male	11 (0.2%)	4 (0.1%)	7 (0.1%)	8 (0.1%)	5 (0.1%)	5 (0.1%)	7 (0.1%)	4 (0.1%)	3 (0.0%)	4 (0.1%)
	Female	1 (0.0%)	2 (0.0%)	2 (0.0%)	2 (0.0%)	1 (0.0%)	NA (-)	1 (0.0%)	1 (0.0%)	1 (0.0%)	1 (0.0%)
	Subtotal	12 (0.2%)	6 (0.1%)	9 (0.2%)	10 (0.2%)	6 (0.1%)	5 (0.1%)	8 (0.1%)	5 (0.1%)	4 (0.1%)	5 (0.1%)

Year to Date Total Runners by Breeding

Flat

Bred	Sex	2014	2015	2016	2017	2018	2019	2020	2021	2022	2023
GB	Male	16,021 (31.2%)	16,504 (32.2%)	16,608 (31.9%)	17,189 (32.2%)	17,261 (31.7%)	16,840 (31.0%)	13,488 (32.1%)	16,572 (31.3%)	15,849 (30.9%)	15,667 (30.4%)
	Female	9,352 (18.2%)	9,060 (17.7%)	9,180 (17.7%)	9,157 (17.2%)	9,454 (17.3%)	9,693 (17.8%)	7,468 (17.8%)	9,577 (18.1%)	9,139 (17.8%)	9,132 (17.7%)
	Subtotal	25,373 (49.4%)	25,564 (49.9%)	25,788 (49.6%)	26,346 (49.4%)	26,715 (49.0%)	26,533 (48.8%)	20,956 (49.9%)	26,149 (49.3%)	24,988 (48.8%)	24,799 (48.1%)
IRE	Male	15,012 (29.3%)	15,178 (29.6%)	15,665 (30.1%)	16,015 (30.0%)	16,665 (30.6%)	16,419 (30.2%)	12,443 (29.6%)	16,306 (30.8%)	16,268 (31.7%)	16,536 (32.1%)
	Female	6,705 (13.1%)	6,472 (12.6%)	6,612 (12.7%)	6,795 (12.7%)	6,756 (12.4%)	6,777 (12.5%)	5,330 (12.7%)	6,684 (12.6%)	6,828 (13.3%)	7,057 (13.7%)
	Subtotal	21,717 (42.3%)	21,650 (42.3%)	22,277 (42.9%)	22,810 (42.7%)	23,421 (43.0%)	23,196 (42.7%)	17,773 (42.3%)	22,990 (43.4%)	23,096 (45.1%)	23,593 (45.7%)
FR	Male	723 (1.4%)	941 (1.8%)	995 (1.9%)	1,178 (2.2%)	1,343 (2.5%)	1,553 (2.9%)	1,217 (2.9%)	1,510 (2.8%)	1,385 (2.7%)	1,547 (3.0%)
	Female	285 (0.6%)	294 (0.6%)	345 (0.7%)	364 (0.7%)	437 (0.8%)	503 (0.9%)	386 (0.9%)	512 (1.0%)	485 (0.9%)	546 (1.1%)
	Subtotal	1,008 (2.0%)	1,235 (2.4%)	1,340 (2.6%)	1,542 (2.9%)	1,780 (3.3%)	2,056 (3.8%)	1,603 (3.8%)	2,022 (3.8%)	1,870 (3.6%)	2,093 (4.1%)
USA	Male	2,001 (3.9%)	1,659 (3.2%)	1,615 (3.1%)	1,624 (3.0%)	1,586 (2.9%)	1,501 (2.8%)	998 (2.4%)	1,004 (1.9%)	705 (1.4%)	574 (1.1%)
	Female	603 (1.2%)	480 (0.9%)	404 (0.8%)	467 (0.9%)	482 (0.9%)	448 (0.8%)	248 (0.6%)	283 (0.5%)	232 (0.5%)	204 (0.4%)
	Subtotal	2,604 (5.1%)	2,139 (4.2%)	2,019 (3.9%)	2,091 (3.9%)	2,068 (3.8%)	1,949 (3.6%)	1,246 (3.0%)	1,287 (2.4%)	937 (1.8%)	778 (1.5%)
GNY	Male	268 (0.5%)	280 (0.5%)	300 (0.6%)	320 (0.6%)	279 (0.5%)	287 (0.5%)	240 (0.6%)	343 (0.6%)	186 (0.4%)	207 (0.4%)
	Female	63 (0.1%)	92 (0.2%)	58 (0.1%)	38 (0.1%)	70 (0.1%)	102 (0.2%)	80 (0.2%)	107 (0.2%)	90 (0.2%)	54 (0.1%)
	Subtotal	331 (0.6%)	372 (0.7%)	358 (0.7%)	358 (0.7%)	349 (0.6%)	389 (0.7%)	320 (0.8%)	450 (0.8%)	276 (0.5%)	261 (0.5%)
Other	Male	237 (0.5%)	185 (0.4%)	141 (0.3%)	158 (0.3%)	152 (0.3%)	136 (0.3%)	67 (0.2%)	85 (0.2%)	62 (0.1%)	40 (0.1%)
	Female	48 (0.1%)	72 (0.1%)	62 (0.1%)	55 (0.1%)	40 (0.1%)	59 (0.1%)	18 (0.0%)	19 (0.0%)	25 (0.0%)	14 (0.0%)
	Subtotal	285 (0.6%)	257 (0.5%)	203 (0.4%)	213 (0.4%)	192 (0.4%)	195 (0.4%)	85 (0.2%)	104 (0.2%)	87 (0.2%)	54 (0.1%)

Jump

Bred	Sex	2014	2015	2016	2017	2018	2019	2020	2021	2022	2023
GB	Male	5,784 (25.1%)	5,664 (24.1%)	5,295 (22.6%)	5,143 (21.8%)	4,866 (20.9%)	4,675 (20.4%)	3,199 (19.6%)	4,698 (19.3%)	4,058 (18.1%)	3,898 (17.5%)
	Female	2,388 (10.4%)	2,398 (10.2%)	2,135 (9.1%)	2,096 (8.9%)	2,236 (9.6%)	2,097 (9.1%)	1,437 (8.8%)	2,263 (9.3%)	2,080 (9.3%)	2,103 (9.4%)
	Subtotal	8,172 (35.5%)	8,062 (34.4%)	7,430 (31.7%)	7,239 (30.7%)	7,102 (30.5%)	6,772 (29.5%)	4,636 (28.3%)	6,961 (28.6%)	6,138 (27.3%)	6,001 (27.0%)
IRE	Male	10,420 (45.2%)	10,599 (45.2%)	10,910 (46.5%)	10,964 (46.5%)	10,483 (45.1%)	10,186 (44.3%)	7,273 (44.5%)	10,624 (43.6%)	9,665 (43.0%)	9,511 (42.7%)
	Female	1,428 (6.2%)	1,628 (6.9%)	1,754 (7.5%)	1,838 (7.8%)	2,163 (9.3%)	2,356 (10.3%)	1,628 (10.0%)	2,349 (9.6%)	2,129 (9.5%)	2,236 (10.0%)
	Subtotal	11,848 (51.4%)	12,227 (52.1%)	12,664 (54.0%)	12,802 (54.3%)	12,646 (54.4%)	12,542 (54.6%)	8,901 (54.4%)	12,973 (53.2%)	11,794 (52.5%)	11,747 (52.8%)
FR	Male	2,083 (9.0%)	2,296 (9.8%)	2,620 (11.2%)	2,827 (12.0%)	2,784 (12.0%)	2,797 (12.2%)	2,152 (13.2%)	3,419 (14.0%)	3,621 (16.1%)	3,641 (16.4%)
	Female	225 (1.0%)	190 (0.8%)	192 (0.8%)	265 (1.1%)	262 (1.1%)	375 (1.6%)	339 (2.1%)	510 (2.1%)	479 (2.1%)	504 (2.3%)
	Subtotal	2,308 (10.0%)	2,486 (10.6%)	2,812 (12.0%)	3,092 (13.1%)	3,046 (13.1%)	3,172 (13.8%)	2,491 (15.2%)	3,929 (16.1%)	4,100 (18.2%)	4,145 (18.6%)
USA	Male	391 (1.7%)	332 (1.4%)	254 (1.1%)	166 (0.7%)	173 (0.7%)	143 (0.6%)	102 (0.6%)	146 (0.6%)	93 (0.4%)	86 (0.4%)
	Female	11 (0.0%)	9 (0.0%)	4 (0.0%)	8 (0.0%)	8 (0.0%)	16 (0.1%)	21 (0.1%)	6 (0.0%)	6 (0.0%)	0 (0.0%)
	Subtotal	402 (1.7%)	341 (1.5%)	258 (1.1%)	174 (0.7%)	181 (0.8%)	159 (0.7%)	123 (0.8%)	152 (0.6%)	99 (0.4%)	86 (0.4%)
GNY	Male	244 (1.1%)	273 (1.2%)	233 (1.0%)	246 (1.0%)	218 (0.9%)	270 (1.2%)	186 (1.1%)	312 (1.3%)	290 (1.3%)	255 (1.1%)
	Female	17 (0.1%)	23 (0.1%)	20 (0.1%)	9 (0.0%)	13 (0.1%)	24 (0.1%)	11 (0.1%)	35 (0.1%)	37 (0.2%)	21 (0.1%)
	Subtotal	261 (1.1%)	296 (1.3%)	253 (1.1%)	255 (1.1%)	231 (1.0%)	294 (1.3%)	197 (1.2%)	347 (1.4%)	327 (1.5%)	276 (1.2%)
Other	Male	57 (0.2%)	41 (0.2%)	31 (0.1%)	28 (0.1%)	41 (0.2%)	28 (0.1%)	11 (0.1%)	14 (0.1%)	9 (0.0%)	8 (0.0%)
	Female	1 (0.0%)	3 (0.0%)	15 (0.1%)	7 (0.0%)	9 (0.0%)	2 (0.0%)	2 (0.0%)	3 (0.0%)	8 (0.0%)	3 (0.0%)
	Subtotal	58 (0.3%)	44 (0.2%)	46 (0.2%)	35 (0.1%)	50 (0.2%)	30 (0.1%)	13 (0.1%)	17 (0.1%)	17 (0.1%)	11 (0.0%)

Year to Date Individual Runners by Breeding

Flat

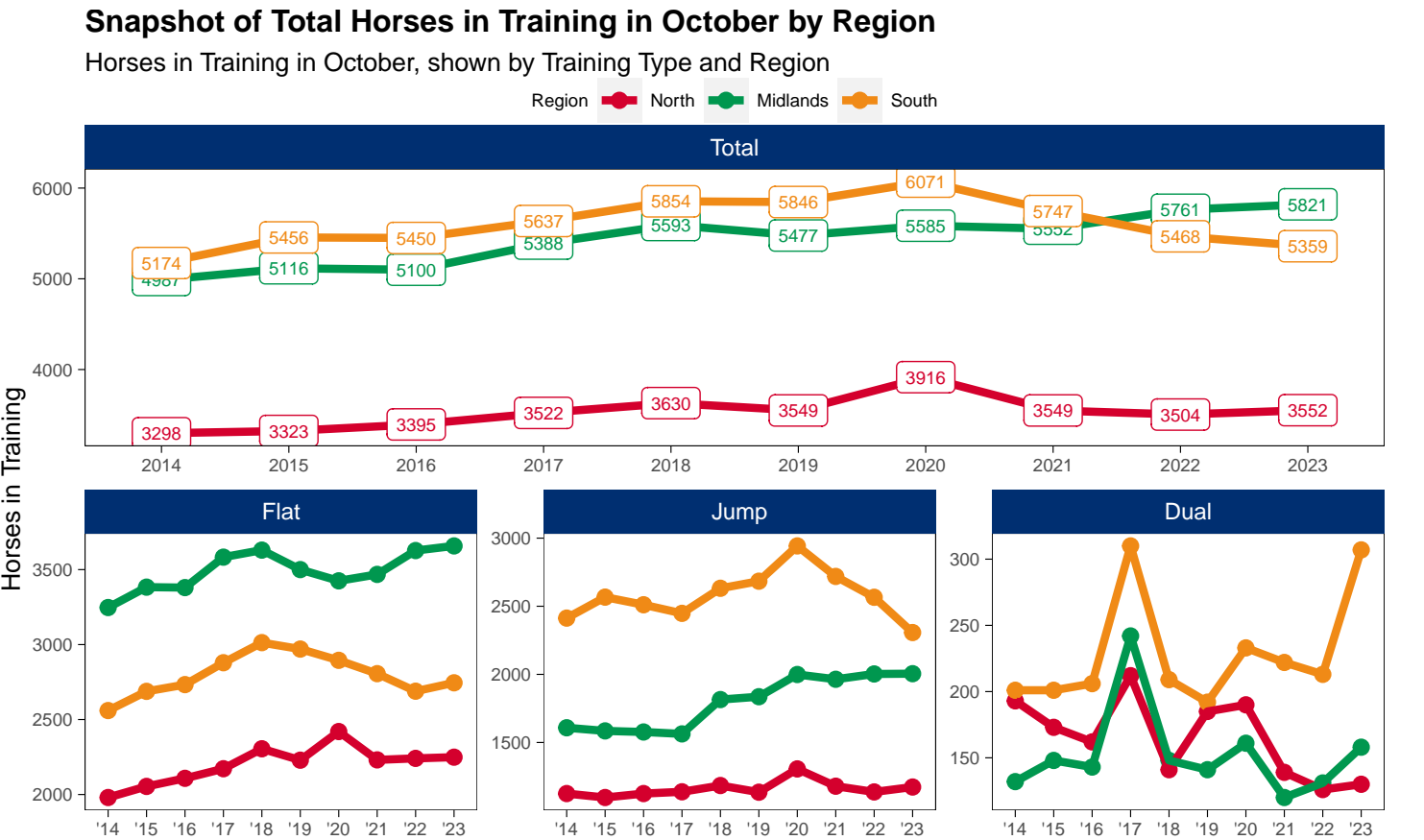
Bred	Sex	2014	2015	2016	2017	2018	2019	2020	2021	2022	2023
GB	Male	3,011 (29.3%)	3,085 (30.0%)	3,092 (29.4%)	3,166 (29.3%)	3,263 (29.7%)	3,239 (29.5%)	3,051 (29.9%)	3,066 (29.1%)	2,979 (28.9%)	2,888 (28.0%)
	Female	2,059 (20.0%)	2,020 (19.6%)	2,043 (19.4%)	2,072 (19.2%)	2,066 (18.8%)	2,088 (19.0%)	1,960 (19.2%)	2,077 (19.7%)	2,025 (19.6%)	1,979 (19.2%)
	Subtotal	5,070 (49.3%)	5,105 (49.6%)	5,135 (48.8%)	5,238 (48.5%)	5,329 (48.5%)	5,327 (48.5%)	5,011 (49.0%)	5,143 (48.9%)	5,004 (48.5%)	4,867 (47.1%)
IRE	Male	2,804 (27.3%)	2,808 (27.3%)	2,965 (28.2%)	3,041 (28.2%)	3,090 (28.1%)	3,062 (27.9%)	2,873 (28.1%)	3,046 (28.9%)	3,061 (29.6%)	3,126 (30.3%)
	Female	1,435 (13.9%)	1,433 (13.9%)	1,476 (14.0%)	1,492 (13.8%)	1,520 (13.8%)	1,519 (13.8%)	1,429 (14.0%)	1,476 (14.0%)	1,519 (14.7%)	1,603 (15.5%)
	Subtotal	4,239 (41.2%)	4,241 (41.2%)	4,441 (42.2%)	4,533 (42.0%)	4,610 (42.0%)	4,581 (41.7%)	4,302 (42.1%)	4,522 (43.0%)	4,580 (44.4%)	4,729 (45.8%)
FR	Male	165 (1.6%)	200 (1.9%)	227 (2.2%)	262 (2.4%)	321 (2.9%)	351 (3.2%)	333 (3.3%)	333 (3.2%)	319 (3.1%)	325 (3.1%)
	Female	77 (0.7%)	73 (0.7%)	93 (0.9%)	106 (1.0%)	120 (1.1%)	136 (1.2%)	121 (1.2%)	133 (1.3%)	125 (1.2%)	143 (1.4%)
	Subtotal	242 (2.4%)	273 (2.7%)	320 (3.0%)	368 (3.4%)	441 (4.0%)	487 (4.4%)	454 (4.4%)	466 (4.4%)	444 (4.3%)	468 (4.5%)
USA	Male	433 (4.2%)	378 (3.7%)	371 (3.5%)	379 (3.5%)	341 (3.1%)	325 (3.0%)	251 (2.5%)	213 (2.0%)	143 (1.4%)	122 (1.2%)
	Female	153 (1.5%)	148 (1.4%)	120 (1.1%)	141 (1.3%)	139 (1.3%)	128 (1.2%)	91 (0.9%)	73 (0.7%)	51 (0.5%)	51 (0.5%)
	Subtotal	586 (5.7%)	526 (5.1%)	491 (4.7%)	520 (4.8%)	480 (4.4%)	453 (4.1%)	342 (3.3%)	286 (2.7%)	194 (1.9%)	173 (1.7%)
GNY	Male	72 (0.7%)	73 (0.7%)	77 (0.7%)	78 (0.7%)	63 (0.6%)	67 (0.6%)	61 (0.6%)	63 (0.6%)	52 (0.5%)	51 (0.5%)
	Female	17 (0.2%)	24 (0.2%)	14 (0.1%)	14 (0.1%)	19 (0.2%)	24 (0.2%)	23 (0.2%)	26 (0.2%)	25 (0.2%)	15 (0.1%)
	Subtotal	89 (0.9%)	97 (0.9%)	91 (0.9%)	92 (0.9%)	82 (0.7%)	91 (0.8%)	84 (0.8%)	89 (0.8%)	77 (0.7%)	66 (0.6%)
Other	Male	49 (0.5%)	38 (0.4%)	29 (0.3%)	33 (0.3%)	31 (0.3%)	33 (0.3%)	18 (0.2%)	17 (0.2%)	19 (0.2%)	14 (0.1%)
	Female	14 (0.1%)	19 (0.2%)	15 (0.1%)	17 (0.2%)	10 (0.1%)	13 (0.1%)	8 (0.1%)	5 (0.0%)	6 (0.1%)	7 (0.1%)
	Subtotal	63 (0.6%)	57 (0.6%)	44 (0.4%)	50 (0.5%)	41 (0.4%)	46 (0.4%)	26 (0.3%)	22 (0.2%)	25 (0.2%)	21 (0.2%)

Jump

Bred	Sex	2014	2015	2016	2017	2018	2019	2020	2021	2022	2023
GB	Male	1,760 (25.2%)	1,687 (23.5%)	1,584 (22.4%)	1,506 (21.1%)	1,438 (20.3%)	1,466 (19.9%)	1,287 (19.4%)	1,482 (19.1%)	1,320 (18.3%)	1,296 (18.0%)
	Female	788 (11.3%)	788 (11.0%)	709 (10.0%)	697 (9.8%)	721 (10.2%)	704 (9.5%)	618 (9.3%)	767 (9.9%)	705 (9.8%)	693 (9.6%)
	Subtotal	2,548 (36.4%)	2,475 (34.5%)	2,293 (32.4%)	2,203 (30.9%)	2,159 (30.5%)	2,170 (29.4%)	1,905 (28.7%)	2,249 (29.0%)	2,025 (28.1%)	1,989 (27.6%)
IRE	Male	3,081 (44.0%)	3,181 (44.3%)	3,192 (45.1%)	3,206 (45.0%)	3,134 (44.3%)	3,226 (43.7%)	2,878 (43.4%)	3,287 (42.4%)	3,049 (42.2%)	2,979 (41.4%)
	Female	476 (6.8%)	534 (7.4%)	553 (7.8%)	608 (8.5%)	690 (9.7%)	777 (10.5%)	678 (10.2%)	775 (10.0%)	709 (9.8%)	783 (10.9%)
	Subtotal	3,557 (50.8%)	3,715 (51.7%)	3,745 (52.9%)	3,814 (53.5%)	3,824 (54.0%)	4,003 (54.3%)	3,556 (53.6%)	4,062 (52.4%)	3,758 (52.1%)	3,762 (52.3%)
FR	Male	626 (8.9%)	723 (10.1%)	800 (11.3%)	875 (12.3%)	864 (12.2%)	921 (12.5%)	890 (13.4%)	1,131 (14.6%)	1,131 (15.7%)	1,143 (15.9%)
	Female	61 (0.9%)	64 (0.9%)	68 (1.0%)	89 (1.2%)	110 (1.6%)	142 (1.9%)	152 (2.3%)	162 (2.1%)	174 (2.4%)	185 (2.6%)
	Subtotal	687 (9.8%)	787 (11.0%)	868 (12.3%)	964 (13.5%)	974 (13.8%)	1,063 (14.4%)	1,042 (15.7%)	1,293 (16.7%)	1,305 (18.1%)	1,328 (18.4%)
USA	Male	110 (1.6%)	98 (1.4%)	72 (1.0%)	54 (0.8%)	50 (0.7%)	45 (0.6%)	38 (0.6%)	41 (0.5%)	31 (0.4%)	30 (0.4%)
	Female	4 (0.1%)	4 (0.1%)	2 (0.0%)	3 (0.0%)	4 (0.1%)	5 (0.1%)	5 (0.1%)	2 (0.0%)	2 (0.0%)	0 (0.0%)
	Subtotal	114 (1.6%)	102 (1.4%)	74 (1.0%)	57 (0.8%)	54 (0.8%)	50 (0.7%)	43 (0.6%)	43 (0.6%)	33 (0.5%)	30 (0.4%)
GNY	Male	68 (1.0%)	79 (1.1%)	81 (1.1%)	78 (1.1%)	55 (0.8%)	72 (1.0%)	78 (1.2%)	83 (1.1%)	81 (1.1%)	73 (1.0%)
	Female	4 (0.1%)	7 (0.1%)	7 (0.1%)	5 (0.1%)	5 (0.1%)	6 (0.1%)	5 (0.1%)	10 (0.1%)	13 (0.2%)	11 (0.2%)
	Subtotal	72 (1.0%)	86 (1.2%)	88 (1.2%)	83 (1.2%)	60 (0.8%)	78 (1.1%)	83 (1.3%)	93 (1.2%)	94 (1.3%)	84 (1.2%)
Other	Male	18 (0.3%)	12 (0.2%)	6 (0.1%)	8 (0.1%)	8 (0.1%)	10 (0.1%)	6 (0.1%)	4 (0.1%)	2 (0.0%)	5 (0.1%)
	Female	1 (0.0%)	2 (0.0%)	4 (0.1%)	3 (0.0%)	2 (0.0%)	1 (0.0%)	2 (0.0%)	1 (0.0%)	2 (0.0%)	1 (0.0%)
	Subtotal	19 (0.3%)	14 (0.2%)	10 (0.1%)	11 (0.2%)	10 (0.1%)	11 (0.1%)	8 (0.1%)	5 (0.1%)	4 (0.1%)	6 (0.1%)

Horse Population by Location

October 2023 Horses in Training Snapshot by Region versus Previous Years



North

AgeCat	2014	2015	2016	2017	2018	2019	2020	2021	2022	2023	vs. Last Year	vs. Pre-Covid
Flat Horses in Training												
2YO	683	739	722	747	808	836	863	806	807	801	-6 / -0.7%	-35 / -4.2%
3YO	454	489	517	536	545	509	617	585	541	537	-4 / -0.7%	+28 / +5.5%
4YO	294	291	311	338	347	338	332	310	347	311	-36 / -10.4%	-27 / -8.0%
5YO+	549	535	558	551	605	546	608	530	546	600	+54 / +9.9%	+54 / +9.9%
Subtotal	1980	2054	2108	2172	2305	2229	2420	2231	2241	2249	+8 / +0.4%	+20 / +0.9%
Jump Horses in Training												
3YO	78	50	61	41	64	47	45	51	70	42	-28 / -40.0%	-5 / -10.6%
4-5YO	376	350	367	399	364	398	402	376	380	405	+25 / +6.6%	+7 / +1.8%
6-7YO	358	378	350	345	392	366	436	395	374	406	+32 / +8.6%	+40 / +10.9%
8YO+	313	318	347	353	364	324	423	357	313	320	+7 / +2.2%	-4 / -1.2%
Subtotal	1125	1096	1125	1138	1184	1135	1306	1179	1137	1173	+36 / +3.2%	+38 / +3.3%
Dual Horses in Training												
3YO	38	36	37	48	33	44	43	21	29	36	+7 / +24.1%	-8 / -18.2%
4YO	50	47	32	56	39	41	39	37	26	27	+1 / +3.8%	-14 / -34.1%
5YO+	105	90	93	108	69	100	108	81	71	67	-4 / -5.6%	-33 / -33.0%
Subtotal	193	173	162	212	141	185	190	139	126	130	+4 / +3.2%	-55 / -29.7%
Total Horses in Training												
	3298	3323	3395	3522	3630	3549	3916	3549	3504	3552	+48 / +1.4%	+3 / +0.1%

'vs. Pre-Covid' is comparison between 2023 and 2019

Midlands

AgeCat	2014	2015	2016	2017	2018	2019	2020	2021	2022	2023	vs. Last Year	vs. Pre-Covid
Flat Horses in Training												
2YO	1444	1551	1584	1621	1543	1471	1443	1517	1520	1521	+1 / +0.1%	+50 / +3.4%
3YO	851	878	894	964	1034	982	983	920	1058	1050	-8 / -0.8%	+68 / +6.9%
4YO	363	395	374	450	472	464	418	484	473	491	+18 / +3.8%	+27 / +5.8%
5YO+	589	559	528	548	581	583	581	547	576	596	+20 / +3.5%	+13 / +2.2%
Subtotal	3247	3383	3380	3583	3630	3500	3425	3468	3627	3658	+31 / +0.9%	+158 / +4.5%
Jump Horses in Training												
3YO	86	104	108	74	109	115	89	104	128	113	-15 / -11.7%	-2 / -1.7%
4-5YO	631	565	606	608	690	741	798	776	797	823	+26 / +3.3%	+82 / +11.1%
6-7YO	541	539	484	483	582	568	643	630	665	653	-12 / -1.8%	+85 / +15.0%
8YO+	350	377	379	398	434	412	469	454	413	416	+3 / +0.7%	+4 / +1.0%
Subtotal	1608	1585	1577	1563	1815	1836	1999	1964	2003	2005	+2 / +0.1%	+169 / +9.2%
Dual Horses in Training												
3YO	27	27	37	46	50	34	35	28	27	34	+7 / +25.9%	0 / 0.0%
4YO	35	30	32	72	34	35	34	35	40	29	-11 / -27.5%	-6 / -17.1%
5YO+	70	91	74	124	64	72	92	57	64	95	+31 / +48.4%	+23 / +31.9%
Subtotal	132	148	143	242	148	141	161	120	131	158	+27 / +20.6%	+17 / +12.1%
Total Horses in Training												
	4987	5116	5100	5388	5593	5477	5585	5552	5761	5821	+60 / +1.0%	+344 / +6.3%

'vs. Pre-Covid' is comparison between 2023 and 2019

South

AgeCat	2014	2015	2016	2017	2018	2019	2020	2021	2022	2023	vs. Last Year	vs. Pre-Covid
Flat Horses in Training												
2YO	1153	1198	1182	1301	1324	1330	1242	1202	1169	1170	+1 / +0.1%	-160 / -12.0%
3YO	692	732	728	756	838	775	791	767	684	773	+89 / +13.0%	-2 / -0.3%
4YO	290	307	334	337	359	403	372	358	370	306	-64 / -17.3%	-97 / -24.1%
5YO+	425	451	489	485	492	462	490	479	466	496	+30 / +6.4%	+34 / +7.4%
Subtotal	2560	2688	2733	2879	3013	2970	2895	2806	2689	2745	+56 / +2.1%	-225 / -7.6%
Jump Horses in Training												
3YO	244	201	162	187	178	207	174	196	183	147	-36 / -19.7%	-60 / -29.0%
4-5YO	922	1010	1036	972	1108	1075	1073	1036	1088	978	-110 / -10.1%	-97 / -9.0%
6-7YO	764	798	758	776	810	850	1000	884	780	721	-59 / -7.6%	-129 / -15.2%
8YO+	483	558	555	513	536	552	696	603	515	461	-54 / -10.5%	-91 / -16.5%
Subtotal	2413	2567	2511	2448	2632	2684	2943	2719	2566	2307	-259 / -10.1%	-377 / -14.0%
Dual Horses in Training												
3YO	44	35	42	61	47	54	48	57	58	82	+24 / +41.4%	+28 / +51.9%
4YO	41	40	36	94	46	52	54	56	52	96	+44 / +84.6%	+44 / +84.6%
5YO+	116	126	128	155	116	86	131	109	103	129	+26 / +25.2%	+43 / +50.0%
Subtotal	201	201	206	310	209	192	233	222	213	307	+94 / +44.1%	+115 / +59.9%
Total Horses in Training												
	5174	5456	5450	5637	5854	5846	6071	5747	5468	5359	-109 / -2.0%	-487 / -8.3%

'vs. Pre-Covid' is comparison between 2023 and 2019

October 2023 Horses in Training Snapshot by Country versus Previous Years

Type	2014	2015	2016	2017	2018	2019	2020	2021	2022	2023	vs. Last Year	vs. Pre-Covid
England												
Flat	7506	7821	7918	8316	8592	8364	8400	8181	8226	8326	+100 / +1.2%	-38 / -0.5%
Jump	4447	4566	4472	4447	4843	4923	5419	5105	5010	4798	-212 / -4.2%	-125 / -2.5%
Dual	467	467	438	663	442	464	524	432	426	556	+130 / +30.5%	+92 / +19.8%
Overall	12420	12854	12828	13426	13877	13751	14343	13718	13662	13680	+18 / +0.1%	-71 / -0.5%
Scotland												
Flat	147	157	174	189	201	174	210	189	215	191	-24 / -11.2%	+17 / +9.8%
Jump	328	303	324	350	391	372	434	386	398	394	-4 / -1.0%	+22 / +5.9%
Dual	30	29	39	47	28	36	37	28	25	17	-8 / -32.0%	-19 / -52.8%
Overall	505	489	537	586	620	582	681	603	638	602	-36 / -5.6%	+20 / +3.4%
Wales												
Flat	134	147	129	129	155	161	130	135	116	135	+19 / +16.4%	-26 / -16.1%
Jump	371	379	417	352	397	360	395	371	298	293	-5 / -1.7%	-67 / -18.6%
Dual	29	26	34	54	28	18	23	21	19	22	+3 / +15.8%	+4 / +22.2%
Overall	534	552	580	535	580	539	548	527	433	450	+17 / +3.9%	-89 / -16.5%

'vs. Pre-Covid' is comparison between 2023 and 2019

October 2023 Horses in Training Snapshot by Training Centre versus Previous Years

Type	2014	2015	2016	2017	2018	2019	2020	2021	2022	2023	vs. Last Year	vs. Pre-Covid
Cheltenham (GL54)												
Flat	13	16	9	17	12	9	10	19	12	10	-2 / -16.7%	+1 / +11.1%
Jump	352	372	417	395	464	464	568	524	491	491	0 / 0.0%	+27 / +5.8%
Dual	13	16	20	63	21	19	17	14	13	22	+9 / +69.2%	+3 / +15.8%
Overall	378	404	446	475	497	492	595	557	516	523	+7 / +1.4%	+31 / +6.3%
Lambourn (RG17)												
Flat	599	691	775	920	963	907	869	812	787	839	+52 / +6.6%	-68 / -7.5%
Jump	336	369	351	334	363	383	407	324	321	255	-66 / -20.6%	-128 / -33.4%
Dual	12	26	19	33	26	22	24	26	38	55	+17 / +44.7%	+33 / +150.0%
Overall	947	1086	1145	1287	1352	1312	1300	1162	1146	1149	+3 / +0.3%	-163 / -12.4%
Malton (YO17)												
Flat	558	526	526	563	624	629	705	612	617	607	-10 / -1.6%	-22 / -3.5%
Jump	138	121	146	136	116	100	105	95	83	84	+1 / +1.2%	-16 / -16.0%
Dual	43	35	21	39	31	38	51	35	23	27	+4 / +17.4%	-11 / -28.9%
Overall	739	682	693	738	771	767	861	742	723	718	-5 / -0.7%	-49 / -6.4%
Marlborough (SN8)												
Flat	493	496	418	403	444	424	420	387	339	354	+15 / +4.4%	-70 / -16.5%
Jump	73	66	50	79	76	70	77	96	75	74	-1 / -1.3%	+4 / +5.7%
Dual	3	4	1	1	0	3	2	3	0	2	+2 / +Inf	-1 / -33.3%
Overall	569	566	469	483	520	497	499	486	414	430	+16 / +3.9%	-67 / -13.5%
Middleham (DL8)												
Flat	369	473	464	439	467	507	542	471	502	516	+14 / +2.8%	+9 / +1.8%
Jump	48	72	71	76	104	93	117	101	94	108	+14 / +14.9%	+15 / +16.1%
Dual	24	31	24	39	16	31	40	22	24	10	-14 / -58.3%	-21 / -67.7%
Overall	441	576	559	554	587	631	699	594	620	634	+14 / +2.3%	+3 / +0.5%
Newbury (RG20)												
Flat	362	362	344	352	381	379	371	390	394	403	+9 / +2.3%	+24 / +6.3%
Jump	27	20	11	16	20	12	16	7	16	66	+50 / +312.5%	+54 / +450.0%
Dual	4	3	5	9	7	7	7	4	1	4	+3 / +300.0%	-3 / -42.9%
Overall	393	385	360	377	408	398	394	401	411	473	+62 / +15.1%	+75 / +18.8%
Newmarket (CB8)												
Flat	2408	2461	2432	2531	2592	2465	2443	2464	2554	2675	+121 / +4.7%	+210 / +8.5%
Jump	100	94	46	50	62	67	78	70	50	74	+24 / +48.0%	+7 / +10.4%
Dual	24	20	32	28	21	21	27	21	22	32	+10 / +45.5%	+11 / +52.4%
Overall	2532	2575	2510	2609	2675	2553	2548	2555	2626	2781	+155 / +5.9%	+228 / +8.9%

'vs. Pre-Covid' is comparison between 2023 and 2019