

Horse Population Report

Updated on 31 August 2023



Introduction

Welcome to the latest update on the Racehorse Population from the British Horseracing Authority.

The aim of this document is to give stakeholders and the wider Public an insight into the current state of the Horse Population in Great Britain. It is hoped that this transparency will ensure that all decision makers have access to the key data required to help British Racing deliver a Competitive and Compelling product to stakeholders, racegoers and the wider public.

If you have any questions regarding the content of this report or suggestions for how it could be improved further, please contact Joe Yates – jyates@britishhorseracing.com

Definitions

This report uses the Horses in Training returns from the Weatherby's Racing Administration System, this is completed by trainers and should be updated whenever a horse enters or leaves training in their care as part of the conditions of their licence.

Horses in Training

Unless otherwise stated, snapshots of Horses in Training will be from the 15th day of the month in question and year to date figures will be up to and including the date titled at the front of the report.

Horses' ratings will be taken from the most recently published ratings by the BHA Handicapping Team, which is currently at 7am each Tuesday morning. For example, if looking at the Horses in a particular rating band for July 2011, the horses in training number will be from Friday 15th July 2011 and ratings, where possible, will be assigned to each horse from the ratings published by the BHA Handicappers on Tuesday 12th July 2011.

The Gender of a horse will be taken from the reporting date in question, regardless of whether this has since changed.

In the case of YTD reporting, where a horse's gender or training type has changed in the year-to-date period, the most recent is taken.

This report does not count any horses that are temporarily racing abroad for GB Trainers at the time of reporting.

Yearlings are not included in total counts of flat and/or dual horses but will be sometimes shown separately for information purposes.

Yearlings and two-year-olds are not included in total counts of jump horses or counts of jump horses that include dual horses but will be sometimes shown separately for information purposes.

Yearlings, two-year-olds and three-year-olds are not included in total counts of Hunter Chasers but will be sometimes shown separately for information purposes.

Yearlings and two-year-olds in training that are recorded as dual horses have been re-coded as flat horses.

Hunter Chasers are not included in any counts of Jump Horses or Total figures but will be sometimes shown separately for information purposes.

Horses' training locations are defined by the trainers' primary training location. Training regions are defined the same as regions for the Fixture List; 'North' is north of latitude 53.42911, 'South' is south of latitude 51.88002 and 'Midlands' is anywhere in between. Training centres are defined by postcodes and surrounding areas.

Runners

Unless otherwise specified, Total Runners and Individual Runners metrics only counts runners that ran in GB races including any voided races. Withdrawn horses are not included.

Hunter Chases are not included in this section but will be sometimes shown separately for information purposes.

Total Runners is a count of all runners in races, whilst individual runners only counts each individual horse once.

Monthly Horses in Training

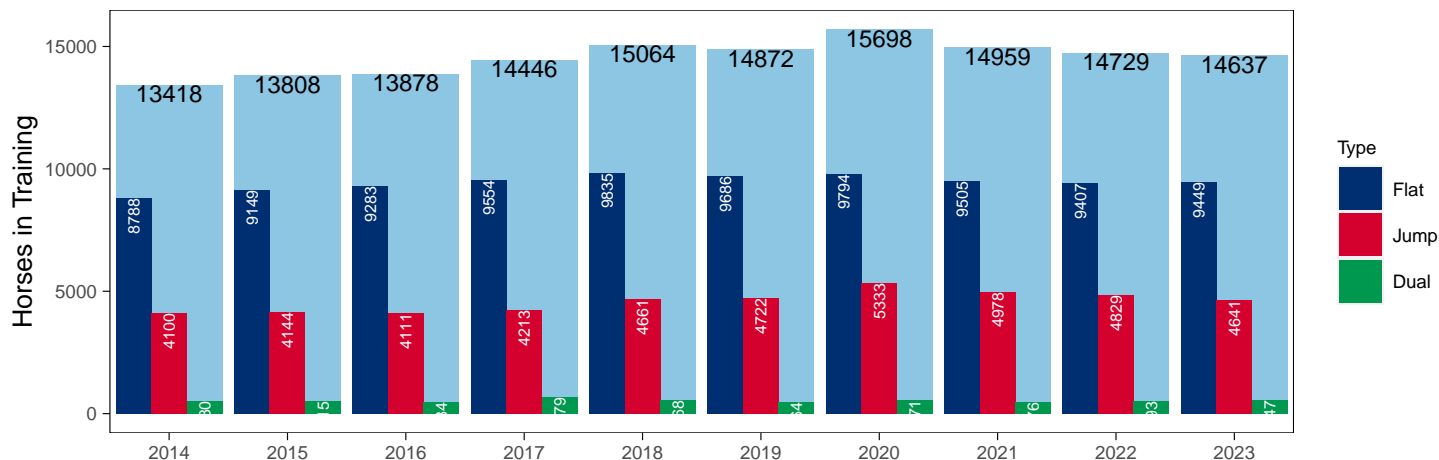
August 2023 Horses in Training Snapshot versus Previous Years

Type	2014	2015	2016	2017	2018	2019	2020	2021	2022	2023	vs. Last Year	vs. Pre-Covid
Flat	8788	9149	9283	9554	9835	9686	9794	9505	9407	9449	+42 / +0.4%	-237 / -2.4%
Jump	4100	4144	4111	4213	4661	4722	5333	4978	4829	4641	-188 / -3.9%	-81 / -1.7%
Dual	530	515	484	679	568	464	571	476	493	547	+54 / +11.0%	+83 / +17.9%
Hunter	0	0	0	0	0	0	1333	1101	1215	1123	-92 / -7.6%	+1123 / +Inf
Total	13418	13808	13878	14446	15064	14872	15698	14959	14729	14637	-92 / -0.6%	-235 / -1.6%

'vs. Pre-Covid' is comparison between 2023 and 2019

Snapshot of Total Horses in Training in August

Horses in Training in August, shown by Training Type



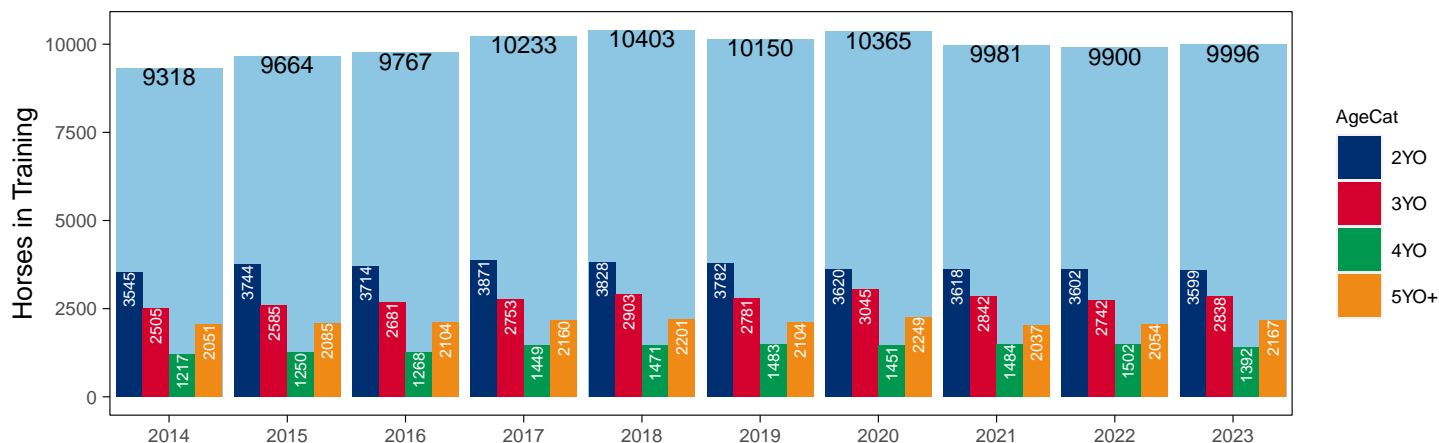
Flat (including Dual)

AgeCat	2014	2015	2016	2017	2018	2019	2020	2021	2022	2023	vs. Last Year	vs. Pre-Covid
2YO	3545	3744	3714	3871	3828	3782	3620	3618	3602	3599	-3 / -0.1%	-183 / -4.8%
3YO	2505	2585	2681	2753	2903	2781	3045	2842	2742	2838	+96 / +3.5%	+57 / +2.0%
4YO	1217	1250	1268	1449	1471	1483	1451	1484	1502	1392	-110 / -7.3%	-91 / -6.1%
5YO+	2051	2085	2104	2160	2201	2104	2249	2037	2054	2167	+113 / +5.5%	+63 / +3.0%
Total	9318	9664	9767	10233	10403	10150	10365	9981	9900	9996	+96 / +1.0%	-154 / -1.5%

'vs. Pre-Covid' is comparison between 2023 and 2019

Snapshot of Flat Horses in Training in August

Flat Horses in Training in August, shown by Age



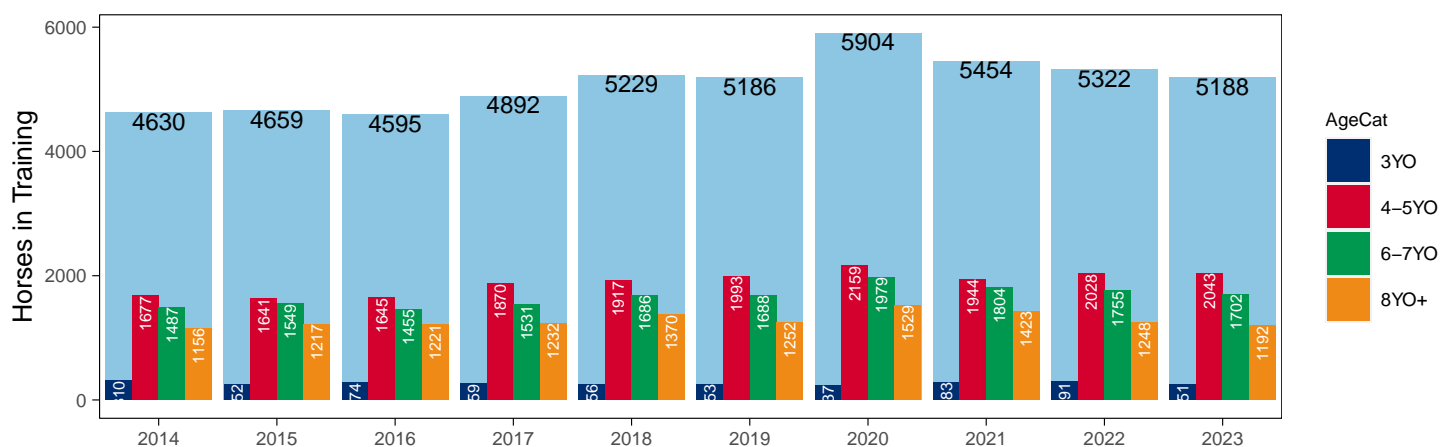
Jump (including Dual)

AgeCat	2014	2015	2016	2017	2018	2019	2020	2021	2022	2023	vs. Last Year	vs. Pre-Covid
3YO	310	252	274	259	256	253	237	283	291	251	-40 / -13.7%	-2 / -0.8%
4-5YO	1677	1641	1645	1870	1917	1993	2159	1944	2028	2043	+15 / +0.7%	+50 / +2.5%
6-7YO	1487	1549	1455	1531	1686	1688	1979	1804	1755	1702	-53 / -3.0%	+14 / +0.8%
8YO+	1156	1217	1221	1232	1370	1252	1529	1423	1248	1192	-56 / -4.5%	-60 / -4.8%
Total	4630	4659	4595	4892	5229	5186	5904	5454	5322	5188	-134 / -2.5%	+2 / +0.0%

'vs. Pre-Covid' is comparison between 2023 and 2019

Snapshot of Jump Horses in Training in August

Jump Horses in Training in August, shown by Age



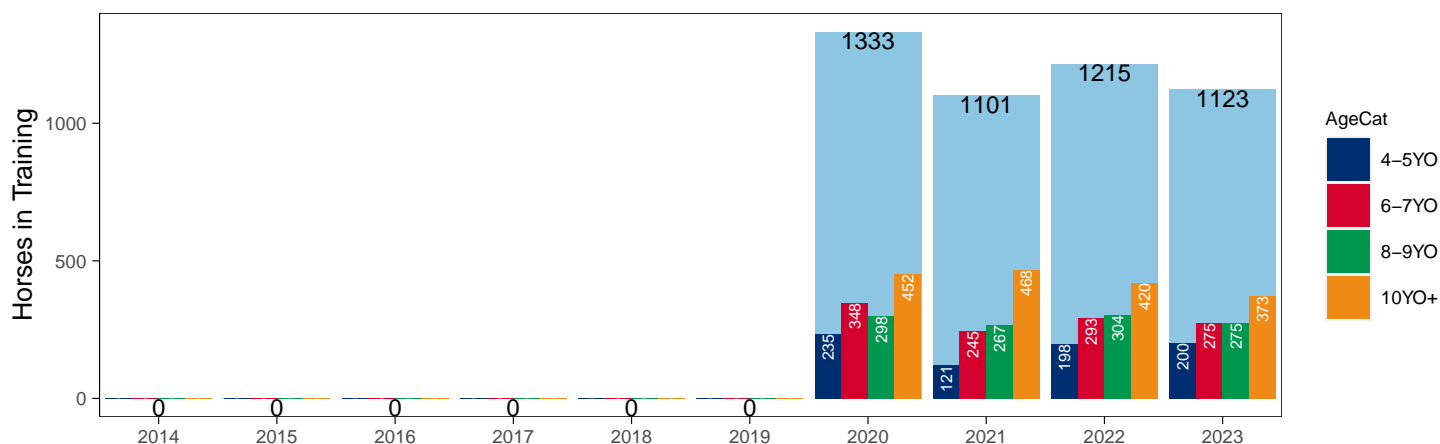
Hunter Chasers

AgeCat	2014	2015	2016	2017	2018	2019	2020	2021	2022	2023	vs. Last Year	vs. Pre-Covid
4-5YO	0	0	0	0	0	0	235	121	198	200	+2 / +1.0%	+200 / +Inf
6-7YO	0	0	0	0	0	0	348	245	293	275	-18 / -6.1%	+275 / +Inf
8-9YO	0	0	0	0	0	0	298	267	304	275	-29 / -9.5%	+275 / +Inf
10YO+	0	0	0	0	0	0	452	468	420	373	-47 / -11.2%	+373 / +Inf
Total	0	0	0	0	0	0	1333	1101	1215	1123	-92 / -7.6%	+1123 / +Inf

'vs. Pre-Covid' is comparison between 2023 and 2019

Snapshot of Hunter Chasers in Training in August

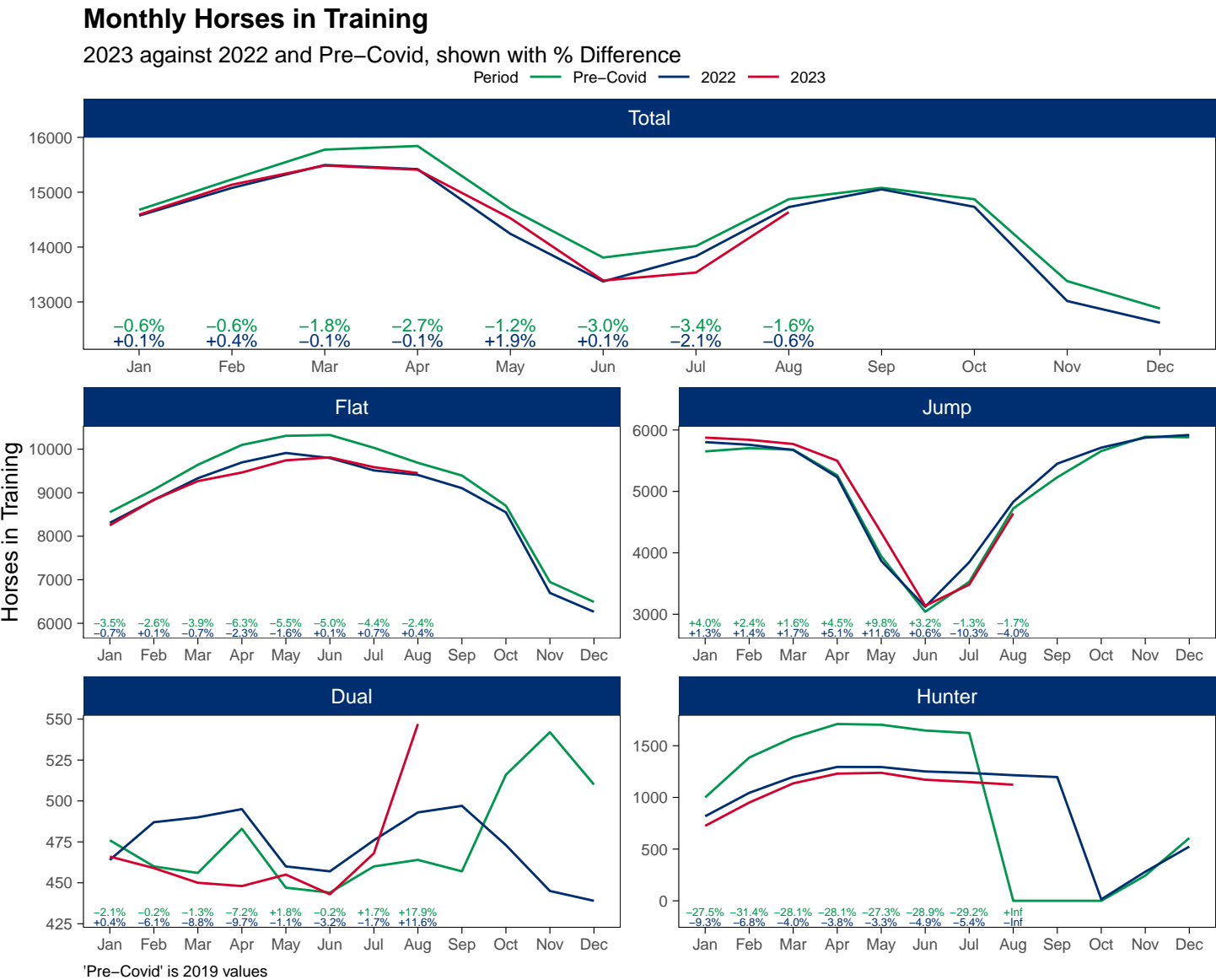
Hunter Chasers in Training in August, shown by Age



2023 Horses in Training versus Previous Years

Type	Period	Jan	Feb	Mar	Apr	May	Jun	Jul	Aug	Sep	Oct	Nov	Dec
Flat	2023	8250	8838	9265	9463	9743	9810	9586	9449	0	0	0	0
	2022	8307	8833	9332	9695	9912	9796	9511	9407	9104	8548	6697	6264
	Pre-Covid	8552	9070	9641	10097	10306	10325	10031	9686	9394	8700	6948	6490
Jump	2023	5875	5840	5771	5499	4329	3138	3482	4641	0	0	0	0
	2022	5802	5759	5674	5231	3870	3121	3847	4829	5451	5712	5875	5918
	Pre-Covid	5651	5704	5679	5263	3944	3040	3528	4722	5229	5656	5890	5881
Dual	2023	466	459	450	448	455	443	468	547	0	0	0	0
	2022	464	487	490	495	460	457	476	493	497	473	445	439
	Pre-Covid	476	460	456	483	447	444	460	464	457	516	542	510
Hunter	2023	725	950	1136	1230	1238	1171	1149	1123	0	0	0	0
	2022	818	1044	1199	1295	1294	1251	1237	1215	1197	14	281	524
	Pre-Covid	1000	1385	1579	1710	1703	1647	1623	0	0	0	244	607
Total	2023	14591	15137	15486	15410	14527	13391	13536	14637	0	0	0	0
	2022	14573	15079	15496	15421	14242	13374	13834	14729	15052	14733	13017	12621
	Pre-Covid	14679	15234	15776	15843	14697	13809	14019	14872	15080	14872	13380	12881

'Pre-Covid' is 2019 values



Flat (including Dual)

AgeCat	Period	Jan	Feb	Mar	Apr	May	Jun	Jul	Aug	Sep	Oct	Nov	Dec
2YO	2023	1718	2209	2459	2600	3020	3333	3495	3599				
	2022	1927	2363	2590	2866	3217	3368	3533	3602	3609	3496	2857	2733
	Pre-Covid	2104	2425	2739	3107	3395	3594	3714	3782	3798	3637	3099	3000
3YO	2023	2960	3076	3187	3237	3196	3099	2900	2838				
	2022	2942	3057	3233	3300	3234	3120	2847	2742	2586	2399	1767	1619
	Pre-Covid	2992	3126	3276	3328	3292	3210	2998	2781	2631	2397	1770	1608
4YO	2023	1649	1621	1647	1635	1594	1528	1426	1392				
	2022	1678	1662	1697	1700	1656	1593	1512	1502	1412	1307	999	922
	Pre-Covid	1634	1662	1707	1719	1683	1655	1561	1483	1416	1333	1046	934
5YO+	2023	2389	2391	2422	2439	2388	2293	2233	2167				
	2022	2224	2238	2302	2324	2265	2172	2095	2054	1994	1819	1519	1429
	Pre-Covid	2298	2317	2375	2426	2383	2310	2218	2104	2006	1849	1575	1458
Total	2023	8716	9297	9715	9911	10198	10253	10054	9996				
	2022	8771	9320	9822	10190	10372	10253	9987	9900	9601	9021	7142	6703
	Pre-Covid	9028	9530	10097	10580	10753	10769	10491	10150	9851	9216	7490	7000

'Pre-Covid' is 2019 values

Monthly Flat Horses in Training

2023 against 2022 and Pre-Covid, shown with % Difference

Period — Pre-Covid — 2022 — 2023



'Pre-Covid' is 2019 values

Jump (including Dual)

AgeCat	Period	Jan	Feb	Mar	Apr	May	Jun	Jul	Aug	Sep	Oct	Nov	Dec
3YO	2023	37	42	50	78	98	110	171	251				
	2022	44	55	68	84	98	168	235	291	424	497	583	632
	Pre-Covid	31	43	55	77	93	119	173	253	362	500	592	651
4-5YO	2023	1986	2069	2105	2050	1629	1189	1435	2043				
	2022	1817	1928	1996	1900	1397	1152	1559	2028	2317	2473	2584	2654
	Pre-Covid	1865	1945	1982	1886	1416	1095	1369	1993	2247	2433	2575	2578
6-7YO	2023	2356	2293	2248	2129	1678	1234	1300	1702				
	2022	2339	2286	2235	2034	1504	1204	1435	1755	1901	1923	1887	1833
	Pre-Covid	2241	2224	2191	2029	1496	1158	1312	1688	1788	1900	1918	1863
8YO+	2023	1962	1895	1818	1690	1379	1048	1044	1192				
	2022	2066	1977	1865	1708	1331	1054	1094	1248	1306	1292	1266	1238
	Pre-Covid	1990	1952	1907	1754	1386	1112	1134	1252	1289	1339	1347	1299
Total	2023	6341	6299	6221	5947	4784	3581	3950	5188				
	2022	6266	6246	6164	5726	4330	3578	4323	5322	5948	6185	6320	6357
	Pre-Covid	6127	6164	6135	5746	4391	3484	3988	5186	5686	6172	6432	6391

'Pre-Covid' is 2019 values

Monthly Jump Horses in Training

2023 against 2022 and Pre-Covid, shown with % Difference

Period — Pre-Covid — 2022 — 2023



'Pre-Covid' is 2019 values

Hunter Chasers

AgeCat	Period	Jan	Feb	Mar	Apr	May	Jun	Jul	Aug	Sep	Oct	Nov	Dec
4-5YO	2023	100	144	218	248	253	226	216	200				
	2022	94	148	203	241	240	222	214	198	190	1	72	138
	Pre-Covid	92	170	213	267	268	263	257			32	136	
6-7YO	2023	188	246	267	301	309	289	282	275				
	2022	207	256	296	311	311	300	297	293	287	2	62	130
	Pre-Covid	295	402	451	471	472	462	451			77	167	
8-9YO	2023	183	235	272	288	283	278	275	275				
	2022	217	270	299	315	315	307	306	304	301	4	80	124
	Pre-Covid	242	328	368	391	387	368	364			61	142	
10YO+	2023	254	325	379	393	393	378	376	373				
	2022	300	370	401	428	428	422	420	420	419	7	67	132
	Pre-Covid	371	485	547	581	576	554	551			74	162	
Total	2023	725	950	1136	1230	1238	1171	1149	1123				
	2022	818	1044	1199	1295	1294	1251	1237	1215	1197	14	281	524
	Pre-Covid	1000	1385	1579	1710	1703	1647	1623			244	607	

'Pre-Covid' is 2019 values

Monthly Hunter Chasers in Training

2023 against 2022 and Pre-Covid, shown with % Difference



'Pre-Covid' is 2019 values

August 2023 Horses in Training by Rating Band Snapshot versus Previous Years

Flat (including Dual)

AgeCat	RatBand	2014	2015	2016	2017	2018	2019	2020	2021	2022	2023
2YO	Unrated	2,868 (80.9%)	3,061 (81.8%)	3,036 (81.7%)	3,175 (82.0%)	3,149 (82.3%)	3,164 (83.7%)	3,055 (84.4%)	2,953 (81.6%)	2,993 (83.1%)	2,946 (81.9%)
	0-50	51 (1.4%)	48 (1.3%)	38 (1.0%)	49 (1.3%)	43 (1.1%)	52 (1.4%)	28 (0.8%)	55 (1.5%)	37 (1.0%)	49 (1.4%)
	51-60	98 (2.8%)	93 (2.5%)	93 (2.5%)	114 (2.9%)	107 (2.8%)	100 (2.6%)	70 (1.9%)	79 (2.2%)	90 (2.5%)	84 (2.3%)
	61-70	157 (4.4%)	157 (4.2%)	174 (4.7%)	171 (4.4%)	152 (4.0%)	154 (4.1%)	141 (3.9%)	155 (4.3%)	141 (3.9%)	160 (4.4%)
	71-80	193 (5.4%)	211 (5.6%)	203 (5.5%)	209 (5.4%)	180 (4.7%)	161 (4.3%)	173 (4.8%)	196 (5.4%)	163 (4.5%)	186 (5.2%)
	81-90	115 (3.2%)	116 (3.1%)	110 (3.0%)	83 (2.1%)	113 (3.0%)	82 (2.2%)	90 (2.5%)	109 (3.0%)	103 (2.9%)	113 (3.1%)
	91-100	36 (1.0%)	34 (0.9%)	41 (1.1%)	41 (1.1%)	56 (1.5%)	46 (1.2%)	39 (1.1%)	42 (1.2%)	49 (1.4%)	36 (1.0%)
	101+	27 (0.8%)	24 (0.6%)	19 (0.5%)	29 (0.7%)	28 (0.7%)	23 (0.6%)	24 (0.7%)	29 (0.8%)	26 (0.7%)	25 (0.7%)
Subtotal		3,545 (100.0%)	3,744 (100.0%)	3,714 (100.0%)	3,871 (100.0%)	3,828 (100.0%)	3,782 (100.0%)	3,620 (100.0%)	3,618 (100.0%)	3,602 (100.0%)	3,599 (100.0%)
3YO	Unrated	548 (21.9%)	551 (21.3%)	609 (22.7%)	587 (21.3%)	775 (26.7%)	701 (25.2%)	979 (32.2%)	757 (26.6%)	682 (24.9%)	717 (25.3%)
	0-50	183 (7.3%)	184 (7.1%)	178 (6.6%)	203 (7.4%)	195 (6.7%)	261 (9.4%)	207 (6.8%)	227 (8.0%)	204 (7.4%)	219 (7.7%)
	51-60	298 (11.9%)	318 (12.3%)	310 (11.6%)	338 (12.3%)	307 (10.6%)	357 (12.8%)	335 (11.0%)	332 (11.7%)	350 (12.8%)	334 (11.8%)
	61-70	396 (15.8%)	405 (15.7%)	483 (18.0%)	438 (15.9%)	459 (15.8%)	444 (16.0%)	468 (15.4%)	467 (16.4%)	451 (16.4%)	492 (17.3%)
	71-80	507 (20.2%)	500 (19.3%)	502 (18.7%)	537 (19.5%)	519 (17.9%)	403 (14.5%)	512 (16.8%)	478 (16.8%)	480 (17.5%)	499 (17.6%)
	81-90	305 (12.2%)	338 (13.1%)	350 (13.1%)	372 (13.5%)	355 (12.2%)	326 (11.7%)	323 (10.6%)	326 (11.5%)	304 (11.1%)	314 (11.1%)
	91-100	155 (6.2%)	168 (6.5%)	142 (5.3%)	180 (6.5%)	178 (6.1%)	179 (6.4%)	137 (4.5%)	144 (5.1%)	158 (5.8%)	158 (5.6%)
	101+	113 (4.5%)	121 (4.7%)	107 (4.0%)	98 (3.6%)	115 (4.0%)	110 (4.0%)	84 (2.8%)	111 (3.9%)	113 (4.1%)	105 (3.7%)
Subtotal		2,505 (100.0%)	2,585 (100.0%)	2,681 (100.0%)	2,753 (100.0%)	2,903 (100.0%)	2,781 (100.0%)	3,045 (100.0%)	2,842 (100.0%)	2,742 (100.0%)	2,838 (100.0%)
4YO	Unrated	116 (9.5%)	98 (7.8%)	163 (12.9%)	206 (14.2%)	204 (13.9%)	183 (12.3%)	234 (16.1%)	227 (15.3%)	202 (13.4%)	208 (14.9%)
	0-50	105 (8.6%)	94 (7.5%)	112 (8.8%)	144 (9.9%)	175 (11.9%)	199 (13.4%)	135 (9.3%)	180 (12.1%)	182 (12.1%)	189 (13.6%)
	51-60	152 (12.5%)	178 (14.2%)	162 (12.8%)	197 (13.6%)	153 (10.4%)	193 (13.0%)	212 (14.6%)	216 (14.6%)	201 (13.4%)	194 (13.9%)
	61-70	217 (17.8%)	199 (15.9%)	190 (15.0%)	232 (16.0%)	269 (18.3%)	238 (16.0%)	230 (15.9%)	247 (16.6%)	270 (18.0%)	240 (17.2%)
	71-80	227 (18.7%)	243 (19.4%)	225 (17.7%)	241 (16.6%)	237 (16.1%)	247 (16.7%)	234 (16.1%)	239 (16.1%)	251 (16.7%)	227 (16.3%)
	81-90	169 (13.9%)	191 (15.3%)	186 (14.7%)	185 (12.8%)	190 (12.9%)	184 (12.4%)	175 (12.1%)	172 (11.6%)	188 (12.5%)	147 (10.6%)
	91-100	135 (11.1%)	127 (10.2%)	121 (9.5%)	132 (9.1%)	143 (9.7%)	134 (9.0%)	117 (8.1%)	119 (8.0%)	105 (7.0%)	89 (6.4%)
	101+	96 (7.9%)	120 (9.6%)	109 (8.6%)	112 (7.7%)	100 (6.8%)	105 (7.1%)	114 (7.9%)	84 (5.7%)	103 (6.9%)	98 (7.0%)
Subtotal		1,217 (100.0%)	1,250 (100.0%)	1,268 (100.0%)	1,449 (100.0%)	1,471 (100.0%)	1,483 (100.0%)	1,451 (100.0%)	1,484 (100.0%)	1,502 (100.0%)	1,392 (100.0%)
5YO+	Unrated	141 (6.9%)	147 (7.1%)	269 (12.8%)	315 (14.6%)	292 (13.3%)	247 (11.7%)	354 (15.7%)	267 (13.1%)	305 (14.8%)	251 (11.6%)
	0-50	248 (12.1%)	243 (11.7%)	200 (9.5%)	238 (11.0%)	292 (13.3%)	337 (16.0%)	295 (13.1%)	301 (14.8%)	269 (13.1%)	274 (12.6%)
	51-60	318 (15.5%)	318 (15.3%)	304 (14.4%)	302 (14.0%)	337 (15.3%)	337 (16.0%)	330 (14.7%)	325 (16.0%)	306 (14.9%)	376 (17.4%)
	61-70	389 (19.0%)	419 (20.1%)	355 (16.9%)	373 (17.3%)	362 (16.4%)	372 (17.7%)	386 (17.2%)	357 (17.5%)	378 (18.4%)	407 (18.8%)
	71-80	380 (18.5%)	372 (17.8%)	375 (17.8%)	309 (14.3%)	334 (15.2%)	304 (14.4%)	353 (15.7%)	278 (13.6%)	278 (13.5%)	333 (15.4%)
	81-90	253 (12.3%)	286 (13.7%)	260 (12.4%)	280 (13.0%)	276 (12.5%)	241 (11.5%)	252 (11.2%)	223 (10.9%)	230 (11.2%)	248 (11.4%)
	91-100	161 (7.8%)	155 (7.4%)	195 (9.3%)	184 (8.5%)	163 (7.4%)	136 (6.5%)	140 (6.2%)	144 (7.1%)	148 (7.2%)	144 (6.6%)
	101+	161 (7.8%)	145 (7.0%)	146 (6.9%)	159 (7.4%)	145 (6.6%)	130 (6.2%)	139 (6.2%)	142 (7.0%)	140 (6.8%)	134 (6.2%)
Subtotal		2,051 (100.0%)	2,085 (100.0%)	2,104 (100.0%)	2,160 (100.0%)	2,201 (100.0%)	2,104 (100.0%)	2,249 (100.0%)	2,037 (100.0%)	2,054 (100.0%)	2,167 (100.0%)
Overall	Unrated	3,673 (39.4%)	3,857 (39.9%)	4,077 (41.7%)	4,283 (41.9%)	4,420 (42.5%)	4,295 (42.3%)	4,622 (44.6%)	4,204 (42.1%)	4,182 (42.2%)	4,122 (41.2%)
	0-50	587 (6.3%)	569 (5.9%)	528 (5.4%)	634 (6.2%)	705 (6.8%)	849 (8.4%)	665 (6.4%)	763 (7.6%)	692 (7.0%)	731 (7.3%)
	51-60	866 (9.3%)	907 (9.4%)	869 (8.9%)	951 (9.3%)	904 (8.7%)	987 (9.7%)	947 (9.1%)	952 (9.5%)	947 (9.6%)	988 (9.9%)
	61-70	1,159 (12.4%)	1,180 (12.2%)	1,202 (12.3%)	1,214 (11.9%)	1,242 (11.9%)	1,208 (11.9%)	1,225 (11.8%)	1,226 (12.3%)	1,240 (12.5%)	1,299 (13.0%)
	71-80	1,307 (14.0%)	1,326 (13.7%)	1,305 (13.4%)	1,296 (12.7%)	1,270 (12.2%)	1,115 (11.0%)	1,272 (12.3%)	1,191 (11.9%)	1,172 (11.8%)	1,245 (12.5%)
	81-90	842 (9.0%)	931 (9.6%)	906 (9.3%)	920 (9.0%)	934 (9.0%)	833 (8.2%)	840 (8.1%)	830 (8.3%)	825 (8.3%)	822 (8.2%)
	91-100	487 (5.2%)	484 (5.0%)	499 (5.1%)	537 (5.2%)	540 (5.2%)	495 (4.9%)	433 (4.2%)	449 (4.5%)	460 (4.6%)	427 (4.3%)
	101+	397 (4.3%)	410 (4.2%)	381 (3.9%)	398 (3.9%)	388 (3.7%)	368 (3.6%)	361 (3.5%)	366 (3.7%)	382 (3.9%)	362 (3.6%)
Total		9,318 (100.0%)	9,664 (100.0%)	9,767 (100.0%)	10,233 (100.0%)	10,403 (100.0%)	10,150 (100.0%)	10,365 (100.0%)	9,981 (100.0%)	9,900 (100.0%)	9,996 (100.0%)

Where a horse has more than one published rating (published Flat Turf and published Flat AWT mark), the higher of the two is taken.

Jump (including Dual)

AgeCat	RatBand	2014	2015	2016	2017	2018	2019	2020	2021	2022	2023
3YO	Unrated	310 (100.0%)	252 (100.0%)	274 (100.0%)	259 (100.0%)	256 (100.0%)	252 (99.6%)	236 (99.6%)	274 (96.8%)	285 (97.9%)	241 (96.0%)
	0-100	NA (-)	NA (-)	NA (-)	NA (-)	NA (-)	1 (0.4%)	NA (-)	2 (0.7%)	2 (0.7%)	5 (2.0%)
	101-110	NA (-)	NA (-)	NA (-)	NA (-)	NA (-)	NA (-)	NA (-)	4 (1.4%)	3 (1.0%)	5 (2.0%)
	111-120	NA (-)	NA (-)	NA (-)	NA (-)	NA (-)	NA (-)	NA (-)	3 (1.1%)	1 (0.3%)	NA (-)
	121-130	NA (-)	NA (-)	NA (-)	NA (-)	NA (-)	NA (-)	1 (0.4%)	NA (-)	NA (-)	NA (-)
Subtotal		310 (100.0%)	252 (100.0%)	274 (100.0%)	259 (100.0%)	256 (100.0%)	253 (100.0%)	237 (100.0%)	283 (100.0%)	291 (100.0%)	251 (100.0%)
4-5YO	Unrated	1,191 (71.0%)	1,136 (69.2%)	1,142 (69.4%)	1,341 (71.7%)	1,365 (71.2%)	1,435 (72.0%)	1,595 (73.9%)	1,458 (75.0%)	1,515 (74.7%)	1,472 (72.1%)
	0-100	152 (9.1%)	140 (8.5%)	155 (9.4%)	163 (8.7%)	139 (7.3%)	172 (8.6%)	194 (9.0%)	214 (11.0%)	238 (11.7%)	298 (14.6%)
	101-110	83 (4.9%)	97 (5.9%)	98 (6.0%)	110 (5.9%)	125 (6.5%)	107 (5.4%)	112 (5.2%)	80 (4.1%)	125 (6.2%)	125 (6.1%)
	111-120	100 (6.0%)	117 (7.1%)	108 (6.6%)	93 (5.0%)	117 (6.1%)	127 (6.4%)	108 (5.0%)	96 (4.9%)	74 (3.6%)	88 (4.3%)
	121-130	81 (4.8%)	84 (5.1%)	61 (3.7%)	92 (4.9%)	107 (5.6%)	90 (4.5%)	97 (4.5%)	54 (2.8%)	50 (2.5%)	41 (2.0%)
	131-140	45 (2.7%)	44 (2.7%)	56 (3.4%)	49 (2.6%)	51 (2.7%)	42 (2.1%)	35 (1.6%)	35 (1.8%)	18 (0.9%)	17 (0.8%)
	141-150	19 (1.1%)	13 (0.8%)	19 (1.2%)	18 (1.0%)	8 (0.4%)	15 (0.8%)	13 (0.6%)	3 (0.2%)	5 (0.2%)	2 (0.1%)
	151+	6 (0.4%)	10 (0.6%)	6 (0.4%)	4 (0.2%)	5 (0.3%)	5 (0.3%)	5 (0.2%)	4 (0.2%)	3 (0.1%)	NA (-)
Subtotal		1,677 (100.0%)	1,641 (100.0%)	1,645 (100.0%)	1,870 (100.0%)	1,917 (100.0%)	1,993 (100.0%)	2,159 (100.0%)	1,944 (100.0%)	2,028 (100.0%)	2,043 (100.0%)
6-7YO	Unrated	391 (26.3%)	395 (25.5%)	404 (27.8%)	431 (28.2%)	470 (27.9%)	418 (24.8%)	599 (30.3%)	448 (24.8%)	660 (37.6%)	444 (26.1%)
	0-100	336 (22.6%)	332 (21.4%)	293 (20.1%)	284 (18.5%)	339 (20.1%)	354 (21.0%)	388 (19.6%)	450 (24.9%)	409 (23.3%)	531 (31.2%)
	101-110	169 (11.4%)	199 (12.8%)	196 (13.5%)	211 (13.8%)	204 (12.1%)	204 (12.1%)	255 (12.9%)	215 (11.9%)	199 (11.3%)	228 (13.4%)
	111-120	229 (15.4%)	221 (14.3%)	207 (14.2%)	193 (12.6%)	222 (13.2%)	246 (14.6%)	248 (12.5%)	240 (13.3%)	191 (10.9%)	232 (13.6%)
	121-130	184 (12.4%)	204 (13.2%)	174 (12.0%)	191 (12.5%)	215 (12.8%)	217 (12.9%)	236 (11.9%)	225 (12.5%)	149 (8.5%)	155 (9.1%)
	131-140	96 (6.5%)	110 (7.1%)	112 (7.7%)	138 (9.0%)	158 (9.4%)	168 (10.0%)	162 (8.2%)	137 (7.6%)	103 (5.9%)	75 (4.4%)
	141-150	52 (3.5%)	56 (3.6%)	44 (3.0%)	58 (3.8%)	56 (3.3%)	45 (2.7%)	63 (3.2%)	62 (3.4%)	30 (1.7%)	28 (1.6%)
	151+	30 (2.0%)	32 (2.1%)	25 (1.7%)	25 (1.6%)	22 (1.3%)	36 (2.1%)	28 (1.4%)	27 (1.5%)	14 (0.8%)	9 (0.5%)
Subtotal		1,487 (100.0%)	1,549 (100.0%)	1,455 (100.0%)	1,531 (100.0%)	1,686 (100.0%)	1,688 (100.0%)	1,979 (100.0%)	1,804 (100.0%)	1,755 (100.0%)	1,702 (100.0%)
8YO+	Unrated	151 (13.1%)	144 (11.8%)	196 (16.1%)	189 (15.3%)	232 (16.9%)	191 (15.3%)	332 (21.7%)	192 (13.5%)	329 (26.4%)	226 (19.0%)
	0-100	406 (35.1%)	385 (31.6%)	387 (31.7%)	360 (29.2%)	390 (28.5%)	378 (30.2%)	404 (26.4%)	430 (30.2%)	318 (25.5%)	345 (28.9%)
	101-110	151 (13.1%)	169 (13.9%)	158 (12.9%)	173 (14.0%)	225 (16.4%)	168 (13.4%)	172 (11.2%)	181 (12.7%)	149 (11.9%)	140 (11.7%)
	111-120	138 (11.9%)	178 (14.6%)	160 (13.1%)	173 (14.0%)	158 (11.5%)	160 (12.8%)	175 (11.4%)	189 (13.3%)	154 (12.3%)	144 (12.1%)
	121-130	134 (11.6%)	153 (12.6%)	143 (11.7%)	133 (10.8%)	164 (12.0%)	132 (10.5%)	186 (12.2%)	192 (13.5%)	121 (9.7%)	154 (12.9%)
	131-140	102 (8.8%)	105 (8.6%)	104 (8.5%)	114 (9.3%)	123 (9.0%)	113 (9.0%)	126 (8.2%)	131 (9.2%)	94 (7.5%)	107 (9.0%)
	141-150	46 (4.0%)	50 (4.1%)	48 (3.9%)	62 (5.0%)	60 (4.4%)	76 (6.1%)	92 (6.0%)	62 (4.4%)	55 (4.4%)	45 (3.8%)
	151+	28 (2.4%)	33 (2.7%)	25 (2.0%)	28 (2.3%)	18 (1.3%)	34 (2.7%)	42 (2.7%)	46 (3.2%)	28 (2.2%)	31 (2.6%)
Subtotal		1,156 (100.0%)	1,217 (100.0%)	1,221 (100.0%)	1,232 (100.0%)	1,370 (100.0%)	1,252 (100.0%)	1,529 (100.0%)	1,423 (100.0%)	1,248 (100.0%)	1,192 (100.0%)
Overall	Unrated	2,043 (44.1%)	1,927 (41.4%)	2,016 (43.9%)	2,220 (45.4%)	2,323 (44.4%)	2,296 (44.3%)	2,762 (46.8%)	2,372 (43.5%)	2,789 (52.4%)	2,383 (45.9%)
	0-100	894 (19.3%)	857 (18.4%)	835 (18.2%)	807 (16.5%)	868 (16.6%)	905 (17.5%)	986 (16.7%)	1,096 (20.1%)	967 (18.2%)	1,179 (22.7%)
	101-110	403 (8.7%)	465 (10.0%)	452 (9.8%)	494 (10.1%)	554 (10.6%)	479 (9.2%)	539 (9.1%)	480 (8.8%)	476 (8.9%)	498 (9.6%)
	111-120	467 (10.1%)	516 (11.1%)	475 (10.3%)	459 (9.4%)	497 (9.5%)	533 (10.3%)	531 (9.0%)	528 (9.7%)	420 (7.9%)	464 (8.9%)
	121-130	399 (8.6%)	441 (9.5%)	378 (8.2%)	416 (8.5%)	486 (9.3%)	439 (8.5%)	520 (8.8%)	471 (8.6%)	320 (6.0%)	350 (6.7%)
	131-140	243 (5.2%)	259 (5.6%)	272 (5.9%)	301 (6.2%)	332 (6.3%)	323 (6.2%)	323 (5.5%)	303 (5.6%)	215 (4.0%)	199 (3.8%)
	141-150	117 (2.5%)	119 (2.6%)	111 (2.4%)	138 (2.8%)	124 (2.4%)	136 (2.6%)	168 (2.8%)	127 (2.3%)	90 (1.7%)	75 (1.4%)
Total		4,630 (100.0%)	4,659 (100.0%)	4,595 (100.0%)	4,892 (100.0%)	5,229 (100.0%)	5,186 (100.0%)	5,904 (100.0%)	5,454 (100.0%)	5,322 (100.0%)	5,188 (100.0%)

Where a horse has more than one published rating (published Hurdle and published Chase mark), the higher of the two is taken.

Young Horses Entering Training

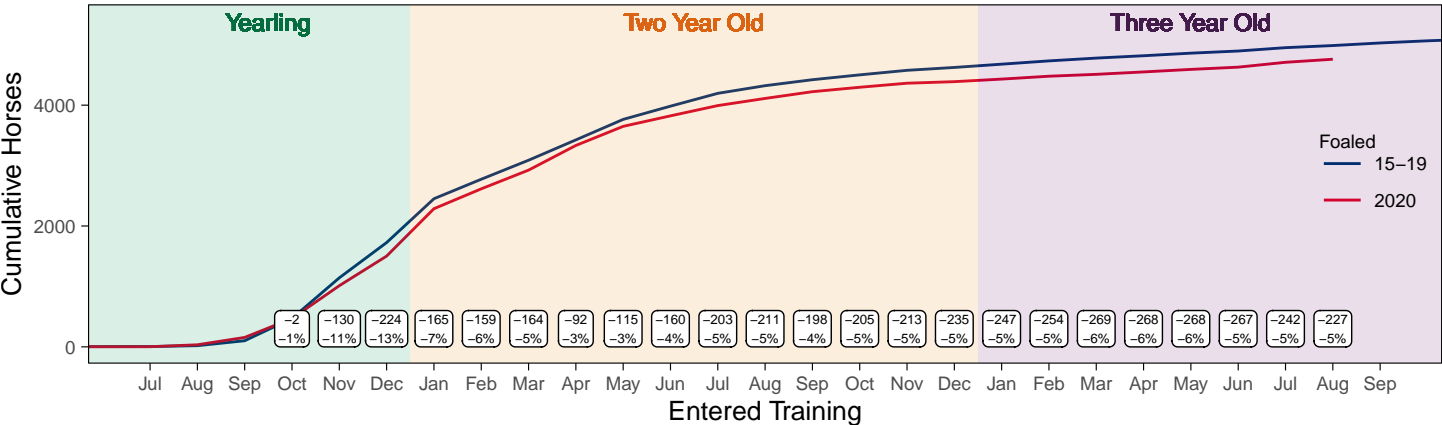
Flat Yearlings in Training versus Previous Years

Period	Jan	Feb	Mar	Apr	May	Jun	Jul	Aug	Sep	Oct	Nov	Dec
2023	1	2	2	2	3	3	4	4				
2022	0	0	0	0	0	0	0	2	76	274	705	1149
5YrAvg	1	1	1	1	1	1	1	2	51	216	581	1042

Foals Entering Training for the First Time

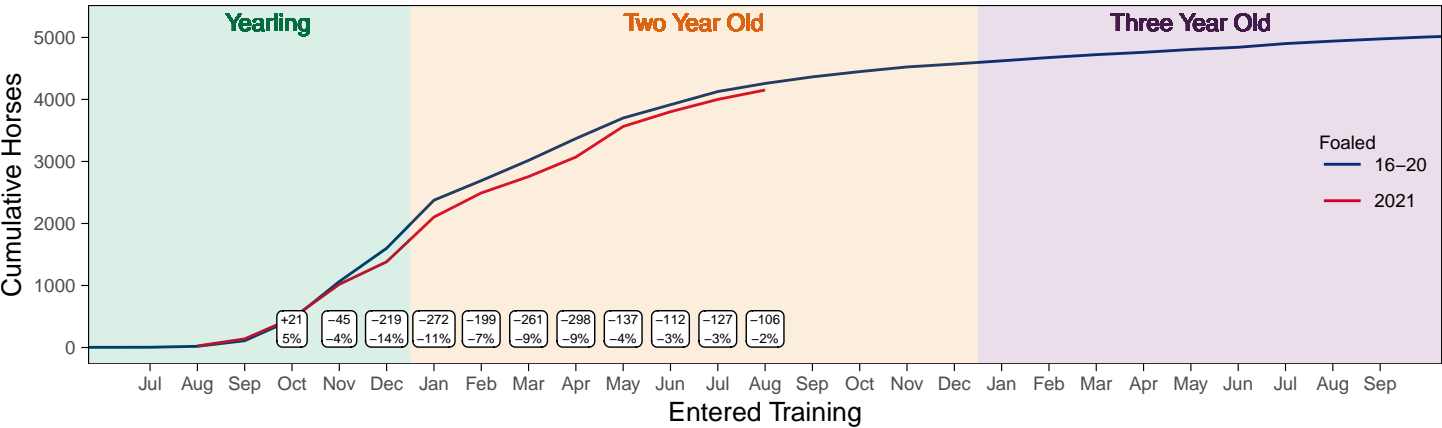
2020 Foals Entering Training Over Time

Cumulative Flat Horses foaled in 2020 shown by first in training notification against trend



2021 Foals Entering Training Over Time

Cumulative Flat Horses foaled in 2021 shown by first in training notification against trend



Year to Date Horses in Training

Type	2014	2015	2016	2017	2018	2019	2020	2021	2022	2023	vs. Last Year	vs. Pre-Covid
Flat	11788	12088	12588	12819	12838	12953	12811	12669	12451	12463	+12 / +0.1%	-490 / -3.8%
Jump	7708	7786	7764	7554	7548	8047	7729	8644	8140	7870	-270 / -3.3%	-177 / -2.2%
Dual	886	845	795	1029	1178	889	897	889	862	943	+81 / +9.4%	+54 / +6.1%
Hunter	2097	1969	1862	1824	1671	1628	1368	1123	1229	1166	-63 / -5.1%	-462 / -28.4%
Total	20382	20719	21147	21402	21564	21889	21437	22202	21453	21276	-177 / -0.8%	-613 / -2.8%

'vs. Pre-Covid' is comparison between 2023 and 2019

Flat

AgeCat	2014	2015	2016	2017	2018	2019	2020	2021	2022	2023	vs. Last Year	vs. Pre-Covid
2YO	4005	4300	4317	4386	4339	4375	4147	4163	4053	4105	+52 / +1.3%	-270 / -6.2%
3YO	3472	3574	3814	3894	4039	3969	4054	3909	3841	3810	-31 / -0.8%	-159 / -4.0%
4YO	1696	1693	1834	1908	1875	1982	1943	2028	2017	1941	-76 / -3.8%	-41 / -2.1%
5YO+	2615	2521	2623	2631	2585	2627	2667	2569	2540	2607	+67 / +2.6%	-20 / -0.8%
Total	11788	12088	12588	12819	12838	12953	12811	12669	12451	12463	+12 / +0.1%	-490 / -3.8%

'vs. Pre-Covid' is comparison between 2023 and 2019

Jump

AgeCat	2014	2015	2016	2017	2018	2019	2020	2021	2022	2023	vs. Last Year	vs. Pre-Covid
3YO	292	294	269	205	211	264	205	272	283	209	-74 / -26.1%	-55 / -20.8%
4-5YO	2430	2460	2556	2518	2499	2679	2580	2690	2748	2727	-21 / -0.8%	+48 / +1.8%
6-7YO	2588	2696	2499	2402	2497	2671	2617	2949	2736	2676	-60 / -2.2%	+5 / +0.2%
8YO+	2398	2336	2440	2429	2341	2433	2327	2733	2373	2258	-115 / -4.8%	-175 / -7.2%
Total	7708	7786	7764	7554	7548	8047	7729	8644	8140	7870	-270 / -3.3%	-177 / -2.2%

'vs. Pre-Covid' is comparison between 2023 and 2019

Dual

AgeCat	2014	2015	2016	2017	2018	2019	2020	2021	2022	2023	vs. Last Year	vs. Pre-Covid
3YO	149	124	144	161	145	128	149	168	203	195	-8 / -3.9%	+67 / +52.3%
4YO	221	176	170	270	267	219	207	231	202	253	+51 / +25.2%	+34 / +15.5%
5YO+	516	545	481	598	766	542	541	490	457	495	+38 / +8.3%	-47 / -8.7%
Total	886	845	795	1029	1178	889	897	889	862	943	+81 / +9.4%	+54 / +6.1%

'vs. Pre-Covid' is comparison between 2023 and 2019

Hunter Chasers

AgeCat	2014	2015	2016	2017	2018	2019	2020	2021	2022	2023	vs. Last Year	vs. Pre-Covid
4-5YO	174	183	182	180	206	240	236	118	201	209	+8 / +4.0%	-31 / -12.9%
6-7YO	656	554	501	485	467	463	362	251	296	286	-10 / -3.4%	-177 / -38.2%
8-9YO	605	598	506	502	396	368	303	276	310	281	-29 / -9.4%	-87 / -23.6%
10YO+	662	634	673	657	602	557	467	478	422	390	-32 / -7.6%	-167 / -30.0%
Total	2097	1969	1862	1824	1671	1628	1368	1123	1229	1166	-63 / -5.1%	-462 / -28.4%

'vs. Pre-Covid' is comparison between 2023 and 2019

Year to Date Runners

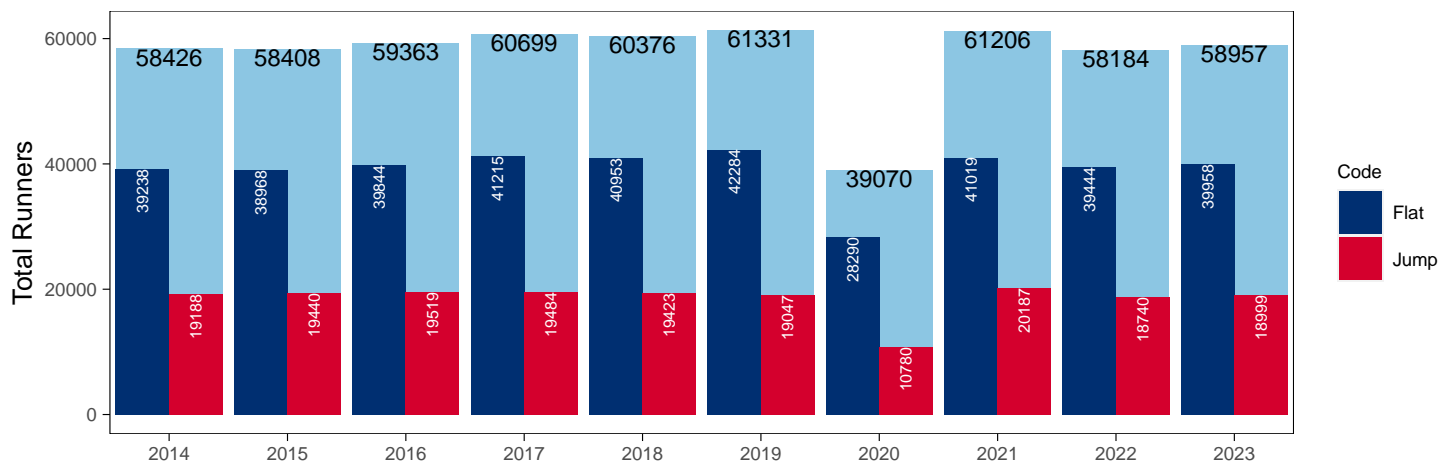
Year to Date Total Runners

Code	2014	2015	2016	2017	2018	2019	2020	2021	2022	2023	vs. Last Year	vs. Pre-Covid
Flat	39238	38968	39844	41215	40953	42284	28290	41019	39444	39958	+514 / +1.3%	-2326 / -5.5%
Jump	19188	19440	19519	19484	19423	19047	10780	20187	18740	18999	+259 / +1.4%	-48 / -0.3%
Total	58426	58408	59363	60699	60376	61331	39070	61206	58184	58957	+773 / +1.3%	-2374 / -3.9%

'vs. Pre-Covid' is comparison between 2023 and 2019

YTD Total Runners

Total Runners in GB Races, shown by Code and Total



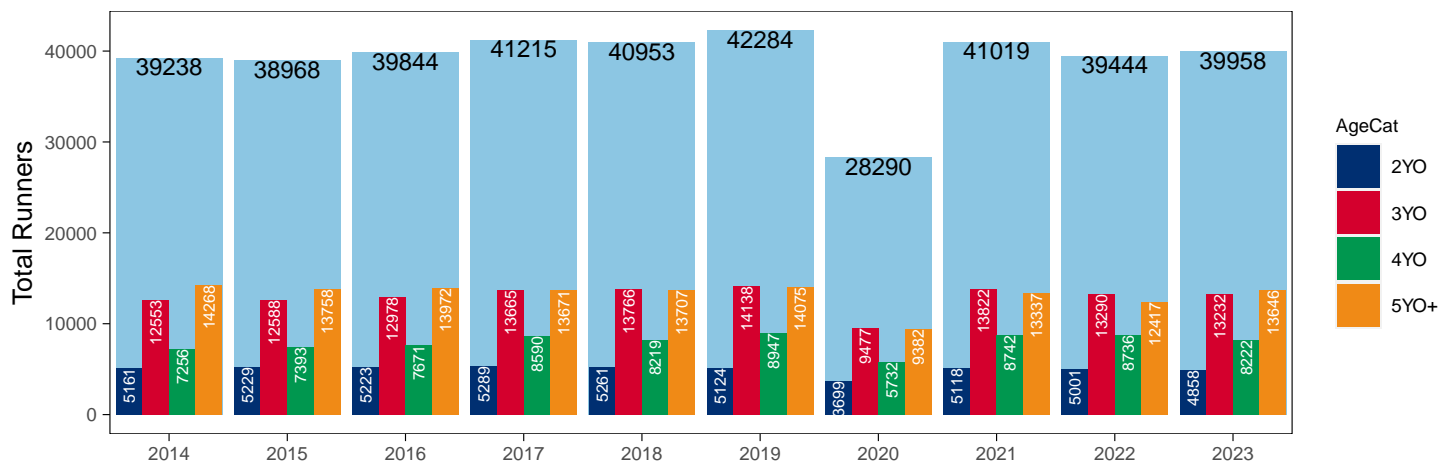
Flat

AgeCat	2014	2015	2016	2017	2018	2019	2020	2021	2022	2023	vs. Last Year	vs. Pre-Covid
2YO	5161	5229	5223	5289	5261	5124	3699	5118	5001	4858	-143 / -2.9%	-266 / -5.2%
3YO	12553	12588	12978	13665	13766	14138	9477	13822	13290	13232	-58 / -0.4%	-906 / -6.4%
4YO	7256	7393	7671	8590	8219	8947	5732	8742	8736	8222	-514 / -5.9%	-725 / -8.1%
5YO+	14268	13758	13972	13671	13707	14075	9382	13337	12417	13646	+1229 / +9.9%	-429 / -3.0%
Total	39238	38968	39844	41215	40953	42284	28290	41019	39444	39958	+514 / +1.3%	-2326 / -5.5%

'vs. Pre-Covid' is comparison between 2023 and 2019

YTD Total Flat Runners by Age

Total Runners in GB Flat Races, shown by Age Category and Total



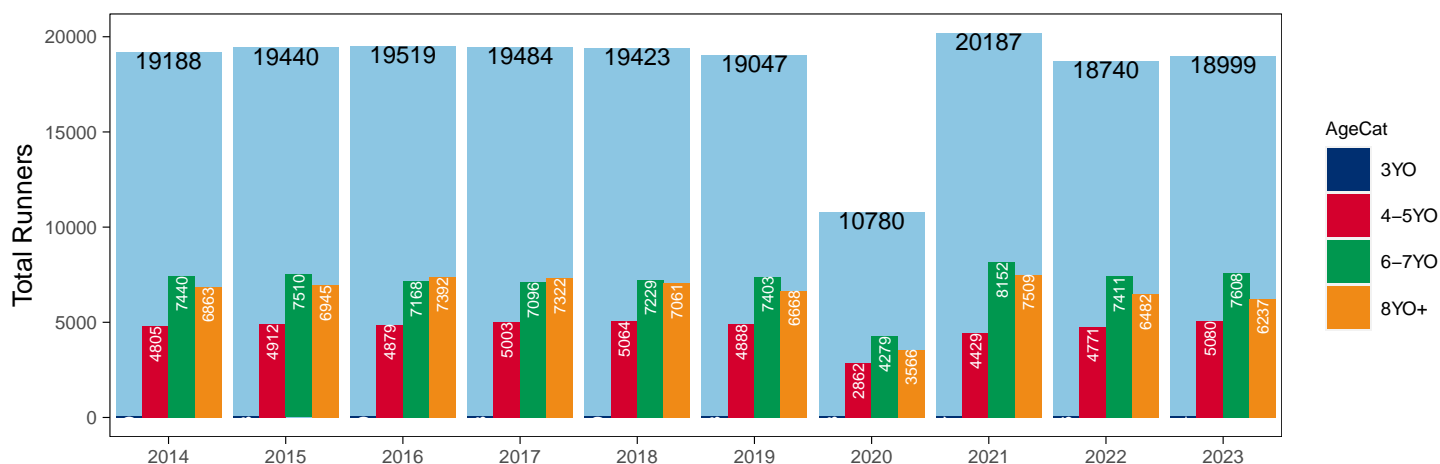
Jump

AgeCat	2014	2015	2016	2017	2018	2019	2020	2021	2022	2023	vs. Last Year	vs. Pre-Covid
3YO	80	73	80	63	69	88	73	97	76	74	-2 / -2.6%	-14 / -15.9%
4-5YO	4805	4912	4879	5003	5064	4888	2862	4429	4771	5080	+309 / +6.5%	+192 / +3.9%
6-7YO	7440	7510	7168	7096	7229	7403	4279	8152	7411	7608	+197 / +2.7%	+205 / +2.8%
8YO+	6863	6945	7392	7322	7061	6668	3566	7509	6482	6237	-245 / -3.8%	-431 / -6.5%
Total	19188	19440	19519	19484	19423	19047	10780	20187	18740	18999	+259 / +1.4%	-48 / -0.3%

'vs. Pre-Covid' is comparison between 2023 and 2019

YTD Total Jump Runners by Age

Total Runners in GB Jump Races, shown by Age Category and Total



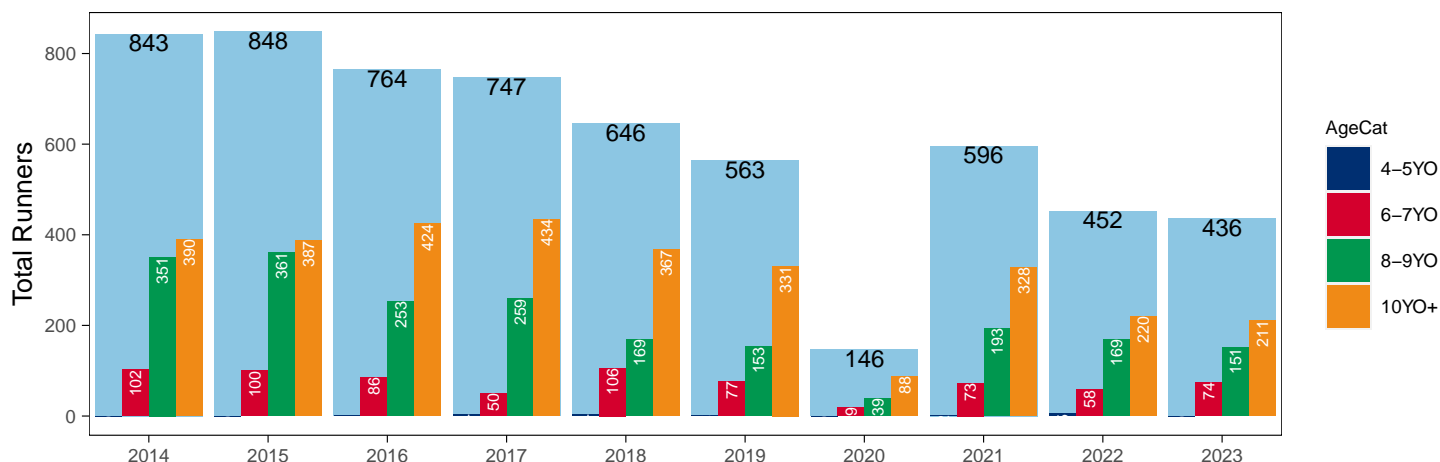
Hunter Chases

AgeCat	2014	2015	2016	2017	2018	2019	2020	2021	2022	2023	vs. Last Year	vs. Pre-Covid
4-5YO			1	4	4	2		2	5		NA / NA	-2 / -100.0%
6-7YO	102	100	86	50	106	77	19	73	58	74	+16 / +27.6%	-3 / -3.9%
8-9YO	351	361	253	259	169	153	39	193	169	151	-18 / -10.7%	-2 / -1.3%
10YO+	390	387	424	434	367	331	88	328	220	211	-9 / -4.1%	-120 / -36.3%
Total	843	848	764	747	646	563	146	596	452	436	-16 / -3.5%	-127 / -22.6%

'vs. Pre-Covid' is comparison between 2023 and 2019

YTD Total Hunter Chase Runners by Age

Total Runners in GB Hunter Chases shown by Age Category and Total



Year to Date Total Runners by Country Trained

Code	Country	2014	2015	2016	2017	2018	2019	2020	2021	2022	2023
Flat	GB	38896	38548	39398	40668	40382	41714	28097	40737	39160	39573
	IRE	276	309	386	481	516	511	170	256	226	342
	Other	66	111	60	66	55	59	23	26	58	43
Jump	GB	18645	18855	18824	18847	18969	18451	10513	19785	18091	18262
	IRE	540	581	689	624	445	589	257	399	647	734
	Other	3	4	6	13	9	7	10	3	2	3
Overall	GB	57541	57403	58222	59515	59351	60165	38610	60522	57251	57835
	IRE	816	890	1075	1105	961	1100	427	655	873	1076
	Other	69	115	66	79	64	66	33	29	60	46

Year to Date GB Trained Runners Racing Abroad

Code	Country	2014	2015	2016	2017	2018	2019	2020	2021	2022	2023
Flat	IRE	73	107	92	109	86	96	22	34	47	49
	FR	254	225	219	306	291	372	179	119	148	204
	GNV	8	12	15	17	16	30	8	3	12	13
	UAE	326	289	208	278	276	303	281	248	276	272
	BAH									41	23
	KSA							15	21	22	15
	Other	91	79	69	65	75	74	30	32	50	55
	Total	752	712	603	775	744	875	535	457	596	631
Jump	IRE	90	89	87	78	51	69	7	23	29	20
	FR	20	25	43	24	9	33	25	84	81	63
	Other	8	7	7	5	5	8		6	12	4
	Total	118	121	137	107	65	110	32	113	122	87

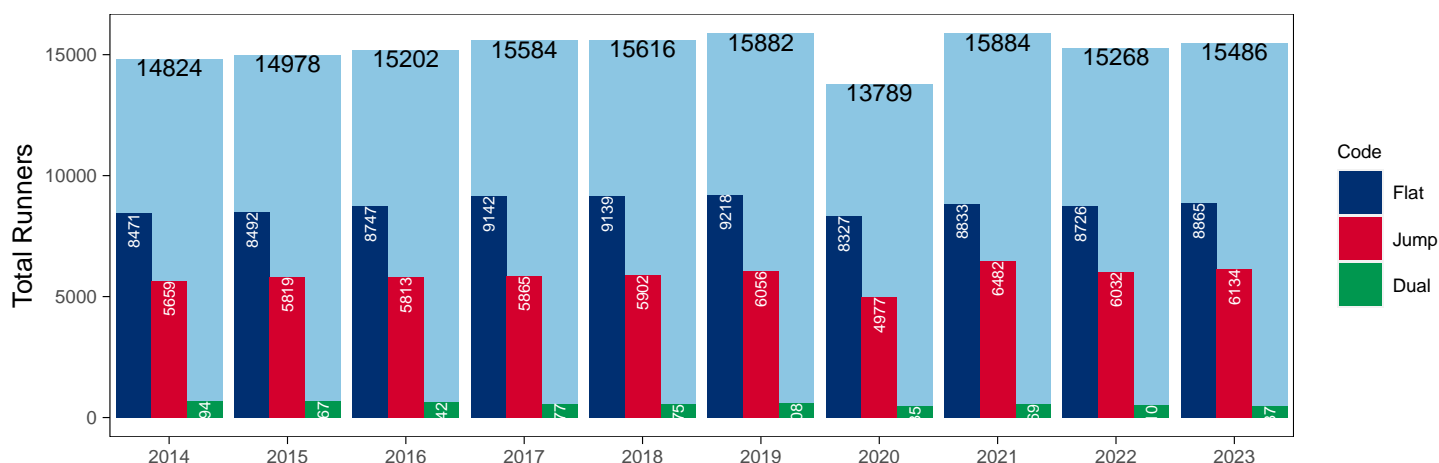
Year to Date Individual Runners

Code	2014	2015	2016	2017	2018	2019	2020	2021	2022	2023	vs. Last Year	vs. Pre-Covid
Flat	8471	8492	8747	9142	9139	9218	8327	8833	8726	8865	+139 / +1.6%	-353 / -3.8%
Jump	5659	5819	5813	5865	5902	6056	4977	6482	6032	6134	+102 / +1.7%	+78 / +1.3%
Dual	694	667	642	577	575	608	485	569	510	487	-23 / -4.5%	-121 / -19.9%
Overall	14824	14978	15202	15584	15616	15882	13789	15884	15268	15486	+218 / +1.4%	-396 / -2.5%

'vs. Pre-Covid' is comparison between 2023 and 2019

YTD Individual Runners

Individual Runners in GB Races, shown by Code and Total



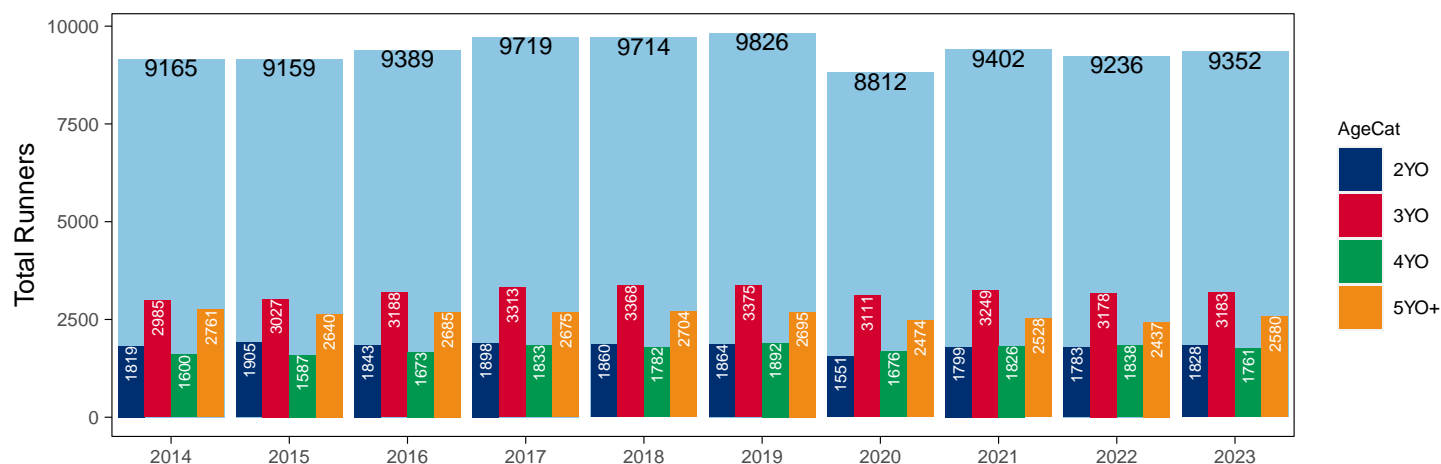
Flat

AgeCat	2014	2015	2016	2017	2018	2019	2020	2021	2022	2023	vs. Last Year	vs. Pre-Covid
2YO	1819	1905	1843	1898	1860	1864	1551	1799	1783	1828	+45 / +2.5%	-36 / -1.9%
3YO	2985	3027	3188	3313	3368	3375	3111	3249	3178	3183	+5 / +0.2%	-192 / -5.7%
4YO	1600	1587	1673	1833	1782	1892	1676	1826	1838	1761	-77 / -4.2%	-131 / -6.9%
5YO+	2761	2640	2685	2675	2704	2695	2474	2528	2437	2580	+143 / +5.9%	-115 / -4.3%
Total	9165	9159	9389	9719	9714	9826	8812	9402	9236	9352	+116 / +1.3%	-474 / -4.8%

'vs. Pre-Covid' is comparison between 2023 and 2019

YTD Individual Flat Runners by Age

Individual Runners in GB Flat Races, shown by Age Category and Total



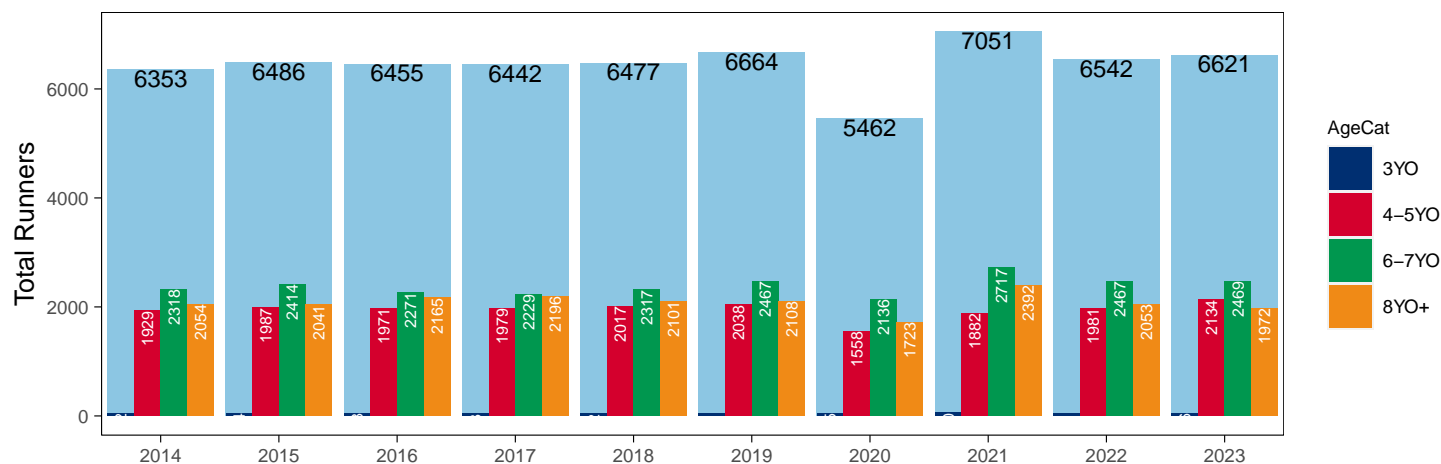
Jump

AgeCat	2014	2015	2016	2017	2018	2019	2020	2021	2022	2023	vs. Last Year	vs. Pre-Covid
3YO	52	44	48	38	42	51	45	60	41	46	+5 / +12.2%	-5 / -9.8%
4-5YO	1929	1987	1971	1979	2017	2038	1558	1882	1981	2134	+153 / +7.7%	+96 / +4.7%
6-7YO	2318	2414	2271	2229	2317	2467	2136	2717	2467	2469	+2 / +0.1%	+2 / +0.1%
8YO+	2054	2041	2165	2196	2101	2108	1723	2392	2053	1972	-81 / -3.9%	-136 / -6.5%
Total	6353	6486	6455	6442	6477	6664	5462	7051	6542	6621	+79 / +1.2%	-43 / -0.6%

'vs. Pre-Covid' is comparison between 2023 and 2019

YTD Individual Jump Runners by Age

Individual Runners in GB Jump Races, shown by Age Category and Total



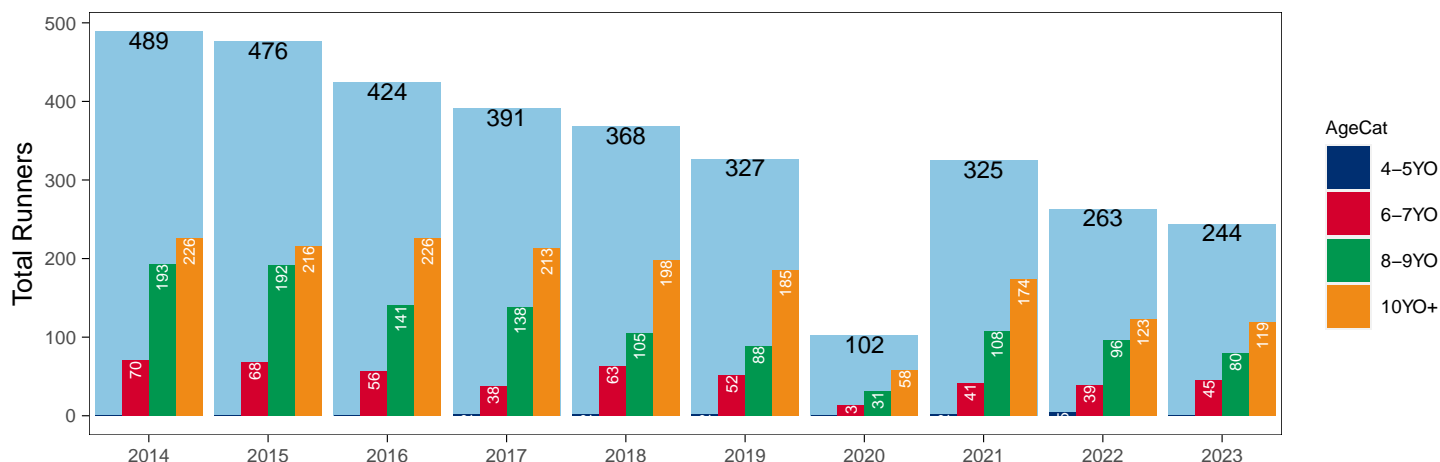
Hunter Chases

AgeCat	2014	2015	2016	2017	2018	2019	2020	2021	2022	2023	vs. Last Year	vs. Pre-Covid
4-5YO			1	2	2	2		2	5		NA / NA	-2 / -100.0%
6-7YO	70	68	56	38	63	52	13	41	39	45	+6 / +15.4%	-7 / -13.5%
8-9YO	193	192	141	138	105	88	31	108	96	80	-16 / -16.7%	-8 / -9.1%
10YO+	226	216	226	213	198	185	58	174	123	119	-4 / -3.3%	-66 / -35.7%
Total	489	476	424	391	368	327	102	325	263	244	-19 / -7.2%	-83 / -25.4%

'vs. Pre-Covid' is comparison between 2023 and 2019

YTD Individual Hunter Chase Runners by Age

Individual Runners in GB Hunter Chases shown by Age Category and Total



Year to Date Individual Runners by Country Trained

Code	Country	2014	2015	2016	2017	2018	2019	2020	2021	2022	2023
Flat	GB	8242	8243	8487	8830	8809	8867	8185	8643	8511	8594
	IRE	176	175	223	272	294	310	125	173	170	249
	Other	57	84	52	54	51	49	20	23	50	35
Jump	GB	5316	5463	5413	5479	5581	5661	4738	6172	5569	5632
	IRE	352	375	408	388	322	405	231	311	476	523
	Other	3	4	6	9	8	6	10	3	2	2
Dual	GB	687	657	627	566	560	597	482	565	502	473
	IRE	6	9	8	7	14	11	3	4	7	10
	Other				2						
Overall	GB	14245	14363	14527	14875	14950	15125	13405	15380	14582	14699
	IRE	534	559	639	667	630	726	359	488	653	782
	Other	60	88	58	65	59	55	30	26	52	37

Individual horses may appear under multiple countries.

Year to Date Total Runners by Rating Band

Flat

RatBand	2014	2015	2016	2017	2018	2019	2020	2021	2022	2023
2YO										
Unrated	3,977 (77.1%)	4,122 (78.8%)	4,007 (76.7%)	4,209 (79.6%)	4,147 (78.8%)	4,089 (79.8%)	2,924 (79.0%)	3,978 (77.7%)	3,891 (77.8%)	3,869 (79.6%)
0-50	52 (1.0%)	60 (1.1%)	46 (0.9%)	36 (0.7%)	33 (0.6%)	65 (1.3%)	28 (0.8%)	58 (1.1%)	55 (1.1%)	65 (1.3%)
51-60	191 (3.7%)	133 (2.5%)	135 (2.6%)	156 (2.9%)	166 (3.2%)	134 (2.6%)	73 (2.0%)	121 (2.4%)	161 (3.2%)	138 (2.8%)
61-70	281 (5.4%)	249 (4.8%)	329 (6.3%)	287 (5.4%)	250 (4.8%)	295 (5.8%)	197 (5.3%)	311 (6.1%)	276 (5.5%)	273 (5.6%)
71-80	365 (7.1%)	386 (7.4%)	408 (7.8%)	363 (6.9%)	355 (6.7%)	316 (6.2%)	271 (7.3%)	338 (6.6%)	312 (6.2%)	285 (5.9%)
81-90	204 (4.0%)	190 (3.6%)	214 (4.1%)	131 (2.5%)	198 (3.8%)	134 (2.6%)	128 (3.5%)	201 (3.9%)	201 (4.0%)	153 (3.1%)
91-100	65 (1.3%)	60 (1.1%)	63 (1.2%)	72 (1.4%)	85 (1.6%)	72 (1.4%)	61 (1.6%)	79 (1.5%)	82 (1.6%)	51 (1.0%)
101+	26 (0.5%)	29 (0.6%)	21 (0.4%)	35 (0.7%)	27 (0.5%)	19 (0.4%)	17 (0.5%)	32 (0.6%)	23 (0.5%)	24 (0.5%)
3YO+										
Unrated	3,382 (9.9%)	3,253 (9.6%)	3,449 (10.0%)	3,661 (10.2%)	4,212 (11.8%)	4,137 (11.1%)	3,250 (13.2%)	4,177 (11.6%)	3,814 (11.1%)	3,759 (10.7%)
0-50	3,382 (9.9%)	3,104 (9.2%)	2,904 (8.4%)	3,256 (9.1%)	3,694 (10.3%)	4,448 (12.0%)	2,714 (11.0%)	4,249 (11.8%)	4,152 (12.1%)	4,411 (12.6%)
51-60	5,855 (17.2%)	5,823 (17.3%)	5,778 (16.7%)	5,985 (16.7%)	5,694 (16.0%)	6,511 (17.5%)	4,104 (16.7%)	6,343 (17.7%)	6,109 (17.7%)	6,619 (18.9%)
61-70	7,408 (21.7%)	7,236 (21.4%)	7,510 (21.7%)	7,393 (20.6%)	7,184 (20.1%)	7,323 (19.7%)	4,845 (19.7%)	7,469 (20.8%)	7,100 (20.6%)	7,231 (20.6%)
71-80	6,722 (19.7%)	6,680 (19.8%)	6,931 (20.0%)	7,191 (20.0%)	6,688 (18.7%)	6,554 (17.6%)	4,464 (18.2%)	6,382 (17.8%)	6,153 (17.9%)	6,368 (18.1%)
81-90	3,954 (11.6%)	4,150 (12.3%)	4,402 (12.7%)	4,713 (13.1%)	4,471 (12.5%)	4,305 (11.6%)	2,843 (11.6%)	3,902 (10.9%)	3,910 (11.4%)	3,691 (10.5%)
91-100	2,070 (6.1%)	2,070 (6.1%)	2,150 (6.2%)	2,167 (6.0%)	2,321 (6.5%)	2,455 (6.6%)	1,380 (5.6%)	2,024 (5.6%)	1,855 (5.4%)	1,772 (5.0%)
101+	1,304 (3.8%)	1,423 (4.2%)	1,497 (4.3%)	1,560 (4.3%)	1,428 (4.0%)	1,427 (3.8%)	991 (4.0%)	1,355 (3.8%)	1,350 (3.9%)	1,249 (3.6%)

Jump

RatBand	2014	2015	2016	2017	2018	2019	2020	2021	2022	2023
Hurdle										
Unrated	2,853 (26.0%)	2,990 (26.0%)	2,913 (25.1%)	2,860 (24.9%)	2,979 (25.8%)	3,002 (26.1%)	1,912 (29.6%)	2,899 (25.0%)	2,668 (23.9%)	2,914 (25.4%)
0-100	3,265 (29.8%)	3,240 (28.1%)	3,122 (26.9%)	3,145 (27.4%)	2,958 (25.7%)	2,977 (25.9%)	1,500 (23.2%)	3,637 (31.4%)	3,713 (33.3%)	3,888 (33.8%)
101-110	1,491 (13.6%)	1,694 (14.7%)	1,837 (15.8%)	1,765 (15.4%)	1,784 (15.5%)	1,730 (15.0%)	899 (13.9%)	1,613 (13.9%)	1,735 (15.6%)	1,767 (15.4%)
111-120	1,542 (14.1%)	1,622 (14.1%)	1,652 (14.2%)	1,673 (14.6%)	1,628 (14.1%)	1,657 (14.4%)	867 (13.4%)	1,489 (12.9%)	1,445 (13.0%)	1,404 (12.2%)
121-130	1,055 (9.6%)	1,079 (9.4%)	1,104 (9.5%)	1,101 (9.6%)	1,179 (10.2%)	1,200 (10.4%)	654 (10.1%)	1,105 (9.5%)	884 (7.9%)	942 (8.2%)
131-140	524 (4.8%)	604 (5.2%)	662 (5.7%)	655 (5.7%)	689 (6.0%)	620 (5.4%)	421 (6.5%)	563 (4.9%)	474 (4.3%)	367 (3.2%)
141-150	178 (1.6%)	219 (1.9%)	239 (2.1%)	201 (1.8%)	239 (2.1%)	224 (1.9%)	144 (2.2%)	197 (1.7%)	178 (1.6%)	146 (1.3%)
151+	57 (0.5%)	74 (0.6%)	86 (0.7%)	74 (0.6%)	73 (0.6%)	91 (0.8%)	73 (1.1%)	79 (0.7%)	52 (0.5%)	60 (0.5%)
Chase										
Unrated	63 (1.0%)	41 (0.7%)	51 (0.8%)	61 (1.0%)	49 (0.8%)	39 (0.7%)	12 (0.4%)	30 (0.5%)	12 (0.2%)	1 (0.0%)
0-100	2,110 (34.2%)	1,919 (31.2%)	1,866 (29.7%)	1,775 (27.9%)	1,805 (29.4%)	1,840 (30.7%)	979 (29.2%)	2,035 (32.6%)	1,991 (32.8%)	2,143 (36.3%)
101-110	953 (15.4%)	883 (14.3%)	942 (15.0%)	1,036 (16.3%)	943 (15.4%)	958 (16.0%)	522 (15.6%)	945 (15.1%)	958 (15.8%)	998 (16.9%)
111-120	1,030 (16.7%)	1,141 (18.5%)	1,109 (17.6%)	1,091 (17.1%)	1,013 (16.5%)	942 (15.7%)	496 (14.8%)	1,041 (16.7%)	1,035 (17.1%)	974 (16.5%)
121-130	951 (15.4%)	952 (15.5%)	946 (15.0%)	970 (15.2%)	1,021 (16.6%)	899 (15.0%)	529 (15.8%)	959 (15.4%)	920 (15.2%)	795 (13.5%)
131-140	595 (9.6%)	700 (11.4%)	781 (12.4%)	852 (13.4%)	741 (12.1%)	751 (12.5%)	445 (13.3%)	679 (10.9%)	655 (10.8%)	571 (9.7%)
141-150	316 (5.1%)	336 (5.5%)	390 (6.2%)	386 (6.1%)	395 (6.4%)	370 (6.2%)	244 (7.3%)	344 (5.5%)	317 (5.2%)	262 (4.4%)
151+	153 (2.5%)	185 (3.0%)	203 (3.2%)	199 (3.1%)	167 (2.7%)	198 (3.3%)	122 (3.6%)	209 (3.3%)	174 (2.9%)	166 (2.8%)

Frequency of Runs

Year to Date Average Runs per Horse

Code	2014	2015	2016	2017	2018	2019	2020	2021	2022	2023
Flat	4.37	4.32	4.32	4.31	4.29	4.38	3.26	4.45	4.35	4.34
Jump	3.04	3.01	3.03	3.04	3.02	2.87	1.97	2.87	2.86	2.88
Dual Overall	6.04	6.27	6.24	6.08	5.82	5.99	4.33	5.86	5.84	5.84
Dual (Flat)	3.15	3.39	3.27	3.19	3.02	3.20	2.33	3.05	2.96	3.13
Dual (Jump)	2.89	2.87	2.97	2.89	2.80	2.79	2.00	2.81	2.87	2.70
All	3.94	3.90	3.90	3.89	3.87	3.86	2.83	3.85	3.81	3.81

Year to Date Proportion of Horses by Count of Runs

Runs	2014	2015	2016	2017	2018	2019	2020	2021	2022	2023
Flat										
1	1,510 (16.5%)	1,542 (16.8%)	1,558 (16.6%)	1,642 (16.9%)	1,684 (17.3%)	1,677 (17.1%)	1,884 (21.4%)	1,501 (16.0%)	1,526 (16.5%)	1,564 (16.7%)
2	1,458 (15.9%)	1,456 (15.9%)	1,413 (15.0%)	1,459 (15.0%)	1,536 (15.8%)	1,482 (15.1%)	1,876 (21.3%)	1,343 (14.3%)	1,416 (15.3%)	1,421 (15.2%)
3	1,412 (15.4%)	1,467 (16.0%)	1,472 (15.7%)	1,558 (16.0%)	1,502 (15.5%)	1,454 (14.8%)	1,757 (19.9%)	1,434 (15.3%)	1,390 (15.0%)	1,399 (15.0%)
4	1,222 (13.3%)	1,215 (13.3%)	1,284 (13.7%)	1,304 (13.4%)	1,258 (13.0%)	1,300 (13.2%)	1,385 (15.7%)	1,320 (14.0%)	1,274 (13.8%)	1,253 (13.4%)
5+	3,563 (38.9%)	3,479 (38.0%)	3,662 (39.0%)	3,756 (38.6%)	3,734 (38.4%)	3,913 (39.8%)	1,910 (21.7%)	3,804 (40.5%)	3,630 (39.3%)	3,715 (39.7%)
Jump										
1	1,666 (26.2%)	1,676 (25.8%)	1,635 (25.3%)	1,657 (25.7%)	1,630 (25.2%)	1,823 (27.4%)	2,193 (40.2%)	1,854 (26.3%)	1,815 (27.7%)	1,813 (27.4%)
2	1,377 (21.7%)	1,452 (22.4%)	1,408 (21.8%)	1,366 (21.2%)	1,354 (20.9%)	1,621 (24.3%)	1,899 (34.8%)	1,703 (24.2%)	1,477 (22.6%)	1,482 (22.4%)
3	1,158 (18.2%)	1,220 (18.8%)	1,231 (19.1%)	1,230 (19.1%)	1,269 (19.6%)	1,220 (18.3%)	904 (16.6%)	1,416 (20.1%)	1,284 (19.6%)	1,306 (19.7%)
4	894 (14.1%)	911 (14.0%)	900 (13.9%)	932 (14.5%)	983 (15.2%)	914 (13.7%)	317 (5.8%)	911 (12.9%)	896 (13.7%)	899 (13.6%)
5+	1,258 (19.8%)	1,227 (18.9%)	1,281 (19.8%)	1,257 (19.5%)	1,241 (19.2%)	1,086 (16.3%)	149 (2.7%)	1,167 (16.6%)	1,070 (16.4%)	1,121 (16.9%)
All Races										
1	2,767 (18.7%)	2,841 (19.0%)	2,826 (18.6%)	2,943 (18.9%)	2,951 (18.9%)	3,132 (19.7%)	3,688 (26.7%)	2,991 (18.8%)	3,024 (19.8%)	3,062 (19.8%)
2	2,561 (17.3%)	2,641 (17.6%)	2,598 (17.1%)	2,641 (16.9%)	2,687 (17.2%)	2,890 (18.2%)	3,556 (25.8%)	2,852 (18.0%)	2,706 (17.7%)	2,764 (17.8%)
3	2,455 (16.6%)	2,554 (17.1%)	2,533 (16.7%)	2,645 (17.0%)	2,654 (17.0%)	2,535 (16.0%)	2,617 (19.0%)	2,726 (17.2%)	2,581 (16.9%)	2,575 (16.6%)
4	2,048 (13.8%)	2,049 (13.7%)	2,131 (14.0%)	2,187 (14.0%)	2,191 (14.0%)	2,165 (13.6%)	1,741 (12.6%)	2,186 (13.8%)	2,132 (14.0%)	2,116 (13.7%)
5+	4,993 (33.7%)	4,893 (32.7%)	5,114 (33.6%)	5,168 (33.2%)	5,133 (32.9%)	5,160 (32.5%)	2,187 (15.9%)	5,129 (32.3%)	4,825 (31.6%)	4,969 (32.1%)

Year to Date Median Days Between Runs

Code/RatBand	2014	2015	2016	2017	2018	2019	2020	2021	2022	2023
All Runners	23	24	24	24	24	24	26	25	25	25
Flat										
Unrated	22	23	22	22	23	23	22	23	24	23
0-50	19	20	20	20	20	21	20	20	20	19
51-60	18	19	19	20	19	20	20	20	20	19
61-70	19	20	20	21	20	21	22	21	21	21
71-80	21	21	21	22	21	21	23	22	22	22
81-90	22	22	22	22	22	22	23	23	23	25
91-100	26	25	25	25	24	24	25	26	27	28
101+	29	28	28	30	28	28	28	31	32	33
All Flat Runners	21	21	21	21	21	22	22	22	22	22
Jump										
Unrated	34	34	35	32	36	36	36	38	34	39
0-100	25	26	26	26	27	27	33	29	27	29
101-110	26	28	29	27	29	29	31	30	29	30
111-120	28	29	29	29	30	30	34	32	30	32
121-130	29	30	31	29	30	32	34	32	31	33
131-140	32	31	33	33	33	33	36	35	34	36
141-150	34	34	34	35	38	36	41	40	36	39
151+	35	35	38	34	38	39	42	40	40	42
All Jump Runners	28	29	30	29	31	31	35	32	30	32

Horses Population by Gender

August 2023 Horses in Training Snapshot by Gender versus Previous Years

All Horses

Sex	2014	2015	2016	2017	2018	2019	2020	2021	2022	2023
Colt/Entire	2,256 (16.8%)	2,273 (16.4%)	2,253 (16.2%)	2,278 (15.7%)	2,287 (15.2%)	2,145 (14.4%)	2,197 (14.0%)	1,987 (13.3%)	1,948 (13.2%)	2,009 (13.7%)
Gelding	6,946 (51.7%)	7,225 (52.3%)	7,327 (52.8%)	7,668 (53.0%)	8,038 (53.3%)	7,996 (53.7%)	8,599 (54.7%)	8,279 (55.3%)	8,047 (54.6%)	7,916 (54.0%)
Filly/Mare	4,227 (31.5%)	4,319 (31.2%)	4,302 (31.0%)	4,516 (31.2%)	4,751 (31.5%)	4,740 (31.8%)	4,911 (31.3%)	4,707 (31.4%)	4,745 (32.2%)	4,721 (32.2%)
Rig	1 (0.0%)	4 (0.0%)	5 (0.0%)	4 (0.0%)	2 (0.0%)	3 (0.0%)	2 (0.0%)	2 (0.0%)	1 (0.0%)	0 (0.0%)
Total	13,430 (100.0%)	13,821 (100.0%)	13,887 (100.0%)	14,466 (100.0%)	15,078 (100.0%)	14,884 (100.0%)	15,709 (100.0%)	14,975 (100.0%)	14,741 (100.0%)	14,646 (100.0%)

Flat (including Dual)

Sex	2014	2015	2016	2017	2018	2019	2020	2021	2022	2023
Colt/Entire	2,209 (23.7%)	2,237 (23.1%)	2,231 (22.8%)	2,246 (21.9%)	2,272 (21.8%)	2,125 (20.9%)	2,173 (21.0%)	1,959 (19.6%)	1,926 (19.5%)	1,981 (19.8%)
Gelding	3,612 (38.8%)	3,862 (40.0%)	3,980 (40.7%)	4,282 (41.8%)	4,342 (41.7%)	4,310 (42.5%)	4,445 (42.9%)	4,377 (43.9%)	4,289 (43.3%)	4,350 (43.5%)
Filly/Mare	3,497 (37.5%)	3,563 (36.9%)	3,551 (36.4%)	3,701 (36.2%)	3,787 (36.4%)	3,713 (36.6%)	3,746 (36.1%)	3,644 (36.5%)	3,685 (37.2%)	3,665 (36.7%)
Rig	0 (0.0%)	2 (0.0%)	5 (0.1%)	4 (0.0%)	2 (0.0%)	2 (0.0%)	1 (0.0%)	1 (0.0%)	0 (0.0%)	0 (0.0%)
Total	9,318 (100.0%)	9,664 (100.0%)	9,767 (100.0%)	10,233 (100.0%)	10,403 (100.0%)	10,150 (100.0%)	10,365 (100.0%)	9,981 (100.0%)	9,900 (100.0%)	9,996 (100.0%)

Jump (including Dual)

Sex	2014	2015	2016	2017	2018	2019	2020	2021	2022	2023
Colt/Entire	54 (1.2%)	40 (0.9%)	30 (0.7%)	29 (0.6%)	21 (0.4%)	26 (0.5%)	26 (0.4%)	36 (0.7%)	30 (0.6%)	33 (0.6%)
Gelding	3,722 (80.4%)	3,756 (80.6%)	3,732 (81.2%)	3,907 (79.9%)	4,117 (78.7%)	4,030 (77.7%)	4,599 (77.9%)	4,244 (77.8%)	4,119 (77.4%)	3,969 (76.5%)
Filly/Mare	853 (18.4%)	862 (18.5%)	833 (18.1%)	956 (19.5%)	1,091 (20.9%)	1,129 (21.8%)	1,278 (21.6%)	1,173 (21.5%)	1,172 (22.0%)	1,186 (22.9%)
Rig	1 (0.0%)	1 (0.0%)	0 (0.0%)	0 (0.0%)	0 (0.0%)	1 (0.0%)	1 (0.0%)	1 (0.0%)	1 (0.0%)	0 (0.0%)
Total	4,630 (100.0%)	4,659 (100.0%)	4,595 (100.0%)	4,892 (100.0%)	5,229 (100.0%)	5,186 (100.0%)	5,904 (100.0%)	5,454 (100.0%)	5,322 (100.0%)	5,188 (100.0%)

Hunter Chasers

Sex	2014	2015	2016	2017	2018	2019	2020	2021	2022	2023
Colt/Entire	0 (-)	0 (-)	0 (-)	0 (-)	0 (-)	0 (-)	1 (0.1%)	3 (0.3%)	5 (0.4%)	6 (0.5%)
Gelding	0 (-)	0 (-)	0 (-)	0 (-)	0 (-)	0 (-)	1,090 (81.8%)	916 (83.2%)	983 (80.9%)	930 (82.8%)
Filly/Mare	0 (-)	0 (-)	0 (-)	0 (-)	0 (-)	0 (-)	242 (18.2%)	182 (16.5%)	227 (18.7%)	187 (16.7%)
Rig	0 (-)	0 (-)	0 (-)	0 (-)	0 (-)	0 (-)	0 (0.0%)	0 (0.0%)	0 (0.0%)	0 (0.0%)
Total	0 (-)	0 (-)	0 (-)	0 (-)	0 (-)	0 (-)	1,333 (100.0%)	1,101 (100.0%)	1,215 (100.0%)	1,123 (100.0%)

Year to Date Total Runners by Gender

Sex	2014	2015	2016	2017	2018	2019	2020	2021	2022	2023
All Races										
Colt/Entire	6,250 (10.7%)	6,205 (10.6%)	6,028 (10.2%)	6,124 (10.1%)	6,232 (10.3%)	5,896 (9.6%)	4,267 (10.9%)	5,645 (9.2%)	5,075 (8.7%)	5,019 (8.5%)
Gelding	35,895 (61.4%)	36,412 (62.3%)	37,277 (62.8%)	38,180 (62.9%)	37,447 (62.0%)	37,812 (61.7%)	23,471 (60.1%)	38,021 (62.1%)	36,345 (62.5%)	36,736 (62.3%)
Filly/Mare	16,280 (27.9%)	15,789 (27.0%)	16,042 (27.0%)	16,389 (27.0%)	16,686 (27.6%)	17,610 (28.7%)	11,328 (29.0%)	17,533 (28.6%)	16,757 (28.8%)	17,198 (29.2%)
Rig	1 (0.0%)	2 (0.0%)	16 (0.0%)	6 (0.0%)	11 (0.0%)	13 (0.0%)	4 (0.0%)	7 (0.0%)	7 (0.0%)	4 (0.0%)
Flat										
Colt/Entire	6,172 (15.7%)	6,162 (15.8%)	5,997 (15.1%)	6,088 (14.8%)	6,207 (15.2%)	5,865 (13.9%)	4,248 (15.0%)	5,608 (13.7%)	5,054 (12.8%)	4,983 (12.5%)
Gelding	20,201 (51.5%)	20,580 (52.8%)	21,239 (53.3%)	22,221 (53.9%)	21,957 (53.6%)	22,846 (54.0%)	15,005 (53.0%)	22,223 (54.2%)	21,604 (54.8%)	21,961 (55.0%)
Filly/Mare	12,865 (32.8%)	12,224 (31.4%)	12,592 (31.6%)	12,900 (31.3%)	12,778 (31.2%)	13,564 (32.1%)	9,036 (31.9%)	13,185 (32.1%)	12,786 (32.4%)	13,014 (32.6%)
Rig	0 (0.0%)	2 (0.0%)	16 (0.0%)	6 (0.0%)	11 (0.0%)	9 (0.0%)	1 (0.0%)	3 (0.0%)	0 (0.0%)	0 (0.0%)
All Jump										
Colt/Entire	78 (0.4%)	43 (0.2%)	31 (0.2%)	36 (0.2%)	25 (0.1%)	31 (0.2%)	19 (0.2%)	37 (0.2%)	21 (0.1%)	36 (0.2%)
Gelding	15,694 (81.8%)	15,832 (81.4%)	16,038 (82.2%)	15,959 (81.9%)	15,490 (79.8%)	14,966 (78.6%)	8,466 (78.5%)	15,798 (78.3%)	14,741 (78.7%)	14,775 (77.8%)
Filly/Mare	3,415 (17.8%)	3,565 (18.3%)	3,450 (17.7%)	3,489 (17.9%)	3,908 (20.1%)	4,046 (21.2%)	2,292 (21.3%)	4,348 (21.5%)	3,971 (21.2%)	4,184 (22.0%)
Rig	1 (0.0%)	0 (0.0%)	0 (0.0%)	0 (0.0%)	0 (0.0%)	4 (0.0%)	3 (0.0%)	4 (0.0%)	7 (0.0%)	4 (0.0%)
Chase										
Colt/Entire	2 (0.0%)	0 (0.0%)	1 (0.0%)	0 (0.0%)	0 (0.0%)	0 (0.0%)	0 (0.0%)	0 (0.0%)	0 (0.0%)	0 (0.0%)
Gelding	5,717 (92.6%)	5,706 (92.7%)	5,845 (93.0%)	5,906 (92.7%)	5,569 (90.8%)	5,398 (90.0%)	3,024 (90.3%)	5,586 (89.5%)	5,415 (89.3%)	5,284 (89.4%)
Filly/Mare	452 (7.3%)	451 (7.3%)	442 (7.0%)	464 (7.3%)	565 (9.2%)	597 (10.0%)	322 (9.6%)	652 (10.4%)	640 (10.6%)	623 (10.5%)
Rig	0 (0.0%)	0 (0.0%)	0 (0.0%)	0 (0.0%)	0 (0.0%)	2 (0.0%)	3 (0.1%)	4 (0.1%)	7 (0.1%)	3 (0.1%)
Hurdle										
Colt/Entire	68 (0.6%)	38 (0.3%)	27 (0.2%)	30 (0.3%)	17 (0.1%)	22 (0.2%)	8 (0.1%)	33 (0.3%)	13 (0.1%)	27 (0.2%)
Gelding	8,591 (78.3%)	9,008 (78.2%)	9,152 (78.8%)	9,005 (78.5%)	8,828 (76.6%)	8,625 (75.0%)	4,823 (74.5%)	8,597 (74.2%)	8,402 (75.4%)	8,540 (74.3%)
Filly/Mare	2,306 (21.0%)	2,476 (21.5%)	2,436 (21.0%)	2,439 (21.3%)	2,684 (23.3%)	2,852 (24.8%)	1,639 (25.3%)	2,952 (25.5%)	2,734 (24.5%)	2,920 (25.4%)
Rig	0 (0.0%)	0 (0.0%)	0 (0.0%)	0 (0.0%)	0 (0.0%)	2 (0.0%)	0 (0.0%)	0 (0.0%)	0 (0.0%)	1 (0.0%)
NHF										
Colt/Entire	8 (0.4%)	5 (0.3%)	3 (0.2%)	6 (0.4%)	8 (0.5%)	9 (0.6%)	11 (1.1%)	4 (0.2%)	8 (0.5%)	9 (0.6%)
Gelding	1,386 (67.5%)	1,118 (63.5%)	1,041 (64.4%)	1,048 (63.9%)	1,093 (62.1%)	943 (60.9%)	619 (64.4%)	1,615 (68.3%)	924 (60.4%)	951 (59.4%)
Filly/Mare	657 (32.0%)	638 (36.2%)	572 (35.4%)	586 (35.7%)	659 (37.4%)	597 (38.5%)	331 (34.4%)	744 (31.5%)	597 (39.0%)	641 (40.0%)
Rig	1 (0.0%)	0 (0.0%)	0 (0.0%)	0 (0.0%)	0 (0.0%)	0 (0.0%)	0 (0.0%)	0 (0.0%)	0 (0.0%)	0 (0.0%)
Hunter										
Colt/Entire	0 (0.0%)	1 (0.1%)	0 (0.0%)	0 (0.0%)	0 (0.0%)	0 (0.0%)	0 (0.0%)	0 (0.0%)	0 (0.0%)	0 (0.0%)
Gelding	771 (91.5%)	799 (94.2%)	720 (94.2%)	709 (94.9%)	603 (93.3%)	522 (92.7%)	142 (97.3%)	557 (93.5%)	429 (94.9%)	408 (93.6%)
Filly/Mare	72 (8.5%)	48 (5.7%)	44 (5.8%)	38 (5.1%)	43 (6.7%)	41 (7.3%)	4 (2.7%)	39 (6.5%)	23 (5.1%)	28 (6.4%)

Year to Date Individual Runners by Gender

Sex	2014	2015	2016	2017	2018	2019	2020	2021	2022	2023
All Races										
Male	10,463 (70.6%)	10,615 (70.9%)	10,779 (70.9%)	11,022 (70.7%)	11,003 (70.5%)	11,092 (69.8%)	9,609 (69.7%)	11,109 (69.9%)	10,627 (69.6%)	10,644 (68.7%)
Female	4,361 (29.4%)	4,363 (29.1%)	4,423 (29.1%)	4,562 (29.3%)	4,613 (29.5%)	4,790 (30.2%)	4,180 (30.3%)	4,775 (30.1%)	4,641 (30.4%)	4,842 (31.3%)
Flat										
Male	5,868 (64.0%)	5,936 (64.8%)	6,076 (64.7%)	6,312 (64.9%)	6,369 (65.6%)	6,370 (64.8%)	5,729 (65.0%)	6,067 (64.5%)	5,946 (64.4%)	5,937 (63.5%)
Female	3,297 (36.0%)	3,223 (35.2%)	3,313 (35.3%)	3,407 (35.1%)	3,345 (34.4%)	3,456 (35.2%)	3,083 (35.0%)	3,335 (35.5%)	3,290 (35.6%)	3,415 (36.5%)
All Jump										
Male	5,140 (80.9%)	5,212 (80.4%)	5,231 (81.0%)	5,177 (80.4%)	5,106 (78.8%)	5,206 (78.1%)	4,270 (78.2%)	5,489 (77.8%)	5,079 (77.6%)	5,087 (76.8%)
Female	1,213 (19.1%)	1,274 (19.6%)	1,224 (19.0%)	1,265 (19.6%)	1,371 (21.2%)	1,458 (21.9%)	1,192 (21.8%)	1,562 (22.2%)	1,463 (22.4%)	1,534 (23.2%)
Chase										
Male	1,960 (92.1%)	2,007 (92.0%)	2,005 (92.5%)	2,042 (91.7%)	1,959 (90.0%)	1,975 (89.4%)	1,606 (89.4%)	2,071 (88.7%)	1,940 (88.5%)	1,877 (88.1%)
Female	167 (7.9%)	175 (8.0%)	163 (7.5%)	184 (8.3%)	218 (10.0%)	234 (10.6%)	190 (10.6%)	265 (11.3%)	252 (11.5%)	253 (11.9%)
Hurdle										
Male	3,189 (79.3%)	3,293 (79.0%)	3,349 (80.0%)	3,243 (78.7%)	3,268 (77.4%)	3,339 (76.5%)	2,606 (75.3%)	3,403 (75.2%)	3,234 (76.5%)	3,225 (75.2%)
Female	834 (20.7%)	875 (21.0%)	836 (20.0%)	880 (21.3%)	956 (22.6%)	1,028 (23.5%)	854 (24.7%)	1,120 (24.8%)	996 (23.5%)	1,064 (24.8%)
NHF										
Male	971 (70.3%)	769 (65.4%)	728 (66.0%)	711 (65.7%)	777 (65.6%)	676 (63.8%)	500 (65.5%)	1,163 (69.9%)	662 (62.9%)	688 (62.4%)
Female	411 (29.7%)	406 (34.6%)	375 (34.0%)	372 (34.3%)	407 (34.4%)	383 (36.2%)	263 (34.5%)	501 (30.1%)	391 (37.1%)	415 (37.6%)
Hunter										
Male	447 (91.4%)	448 (94.1%)	395 (93.2%)	366 (93.6%)	339 (92.1%)	301 (92.0%)	98 (96.1%)	299 (92.0%)	243 (92.4%)	228 (93.4%)
Female	42 (8.6%)	28 (5.9%)	29 (6.8%)	25 (6.4%)	29 (7.9%)	26 (8.0%)	4 (3.9%)	26 (8.0%)	20 (7.6%)	16 (6.6%)

Horses Population by Breeding

August 2023 Horses in Training Snapshot by Breeding versus Previous Years

Flat (including Dual)

Bred	Sex	2014	2015	2016	2017	2018	2019	2020	2021	2022	2023
GB	Male	2,770 (29.7%)	2,910 (30.1%)	2,882 (29.5%)	3,050 (29.8%)	3,104 (29.8%)	3,055 (30.1%)	3,143 (30.3%)	2,974 (29.8%)	2,881 (29.1%)	2,886 (28.9%)
	Female	1,937 (20.8%)	1,972 (20.4%)	1,987 (20.3%)	2,049 (20.0%)	2,098 (20.2%)	2,061 (20.3%)	2,089 (20.2%)	2,017 (20.2%)	2,042 (20.6%)	2,002 (20.0%)
	Subtotal	4,707 (50.5%)	4,882 (50.5%)	4,869 (49.9%)	5,099 (49.8%)	5,202 (50.0%)	5,116 (50.4%)	5,232 (50.5%)	4,991 (50.0%)	4,923 (49.7%)	4,888 (48.9%)
IRE	Male	2,462 (26.4%)	2,604 (26.9%)	2,708 (27.7%)	2,774 (27.1%)	2,819 (27.1%)	2,715 (26.7%)	2,835 (27.4%)	2,801 (28.1%)	2,852 (28.8%)	2,935 (29.4%)
	Female	1,294 (13.9%)	1,348 (13.9%)	1,317 (13.5%)	1,383 (13.5%)	1,399 (13.4%)	1,378 (13.6%)	1,404 (13.5%)	1,421 (14.2%)	1,465 (14.8%)	1,479 (14.8%)
	Subtotal	3,756 (40.3%)	3,952 (40.9%)	4,025 (41.2%)	4,157 (40.6%)	4,218 (40.5%)	4,093 (40.3%)	4,239 (40.9%)	4,222 (42.3%)	4,317 (43.6%)	4,414 (44.2%)
FR	Male	153 (1.6%)	177 (1.8%)	208 (2.1%)	277 (2.7%)	307 (3.0%)	311 (3.1%)	326 (3.1%)	311 (3.1%)	304 (3.1%)	348 (3.5%)
	Female	63 (0.7%)	70 (0.7%)	84 (0.9%)	106 (1.0%)	118 (1.1%)	121 (1.2%)	135 (1.3%)	117 (1.2%)	115 (1.2%)	128 (1.3%)
	Subtotal	216 (2.3%)	247 (2.6%)	292 (3.0%)	383 (3.7%)	425 (4.1%)	432 (4.3%)	461 (4.4%)	428 (4.3%)	419 (4.2%)	476 (4.8%)
USA	Male	344 (3.7%)	325 (3.4%)	338 (3.5%)	335 (3.3%)	310 (3.0%)	286 (2.8%)	236 (2.3%)	185 (1.9%)	117 (1.2%)	101 (1.0%)
	Female	167 (1.8%)	142 (1.5%)	136 (1.4%)	134 (1.3%)	145 (1.4%)	116 (1.1%)	88 (0.8%)	65 (0.7%)	42 (0.4%)	36 (0.4%)
	Subtotal	511 (5.5%)	467 (4.8%)	474 (4.9%)	469 (4.6%)	455 (4.4%)	402 (4.0%)	324 (3.1%)	250 (2.5%)	159 (1.6%)	137 (1.4%)
GNY	Male	53 (0.6%)	60 (0.6%)	58 (0.6%)	69 (0.7%)	51 (0.5%)	53 (0.5%)	60 (0.6%)	54 (0.5%)	47 (0.5%)	46 (0.5%)
	Female	16 (0.2%)	12 (0.1%)	8 (0.1%)	8 (0.1%)	15 (0.1%)	24 (0.2%)	24 (0.2%)	21 (0.2%)	16 (0.2%)	14 (0.1%)
	Subtotal	69 (0.7%)	72 (0.7%)	66 (0.7%)	83 (0.8%)	66 (0.6%)	77 (0.8%)	84 (0.8%)	75 (0.8%)	63 (0.6%)	60 (0.6%)
Other	Male	39 (0.4%)	25 (0.3%)	22 (0.2%)	27 (0.3%)	25 (0.2%)	17 (0.2%)	19 (0.2%)	12 (0.1%)	14 (0.1%)	15 (0.2%)
	Female	20 (0.2%)	19 (0.2%)	19 (0.2%)	15 (0.1%)	12 (0.1%)	13 (0.1%)	6 (0.1%)	3 (0.0%)	5 (0.1%)	6 (0.1%)
	Subtotal	59 (0.6%)	44 (0.5%)	41 (0.4%)	42 (0.4%)	37 (0.4%)	30 (0.3%)	25 (0.2%)	15 (0.2%)	19 (0.2%)	21 (0.2%)

Jump (including Dual)

Bred	Sex	2014	2015	2016	2017	2018	2019	2020	2021	2022	2023
GB	Male	1,192 (25.7%)	1,173 (25.2%)	1,060 (23.1%)	1,083 (22.1%)	1,122 (21.5%)	1,015 (19.6%)	1,159 (19.6%)	1,042 (19.1%)	1,024 (19.2%)	932 (18.0%)
	Female	513 (11.1%)	509 (10.9%)	473 (10.3%)	499 (10.2%)	530 (10.1%)	493 (9.5%)	556 (9.4%)	545 (10.0%)	551 (10.4%)	551 (10.6%)
	Subtotal	1,705 (36.8%)	1,682 (36.1%)	1,533 (33.4%)	1,582 (32.3%)	1,652 (31.6%)	1,508 (29.1%)	1,715 (29.0%)	1,587 (29.1%)	1,575 (29.6%)	1,483 (28.6%)
IRE	Male	1,996 (43.1%)	2,029 (43.6%)	2,049 (44.6%)	2,182 (44.6%)	2,292 (43.8%)	2,297 (44.3%)	2,575 (43.6%)	2,351 (43.1%)	2,190 (41.1%)	2,108 (40.6%)
	Female	288 (6.2%)	301 (6.5%)	318 (6.9%)	387 (7.9%)	481 (9.2%)	538 (10.4%)	595 (10.1%)	515 (9.4%)	504 (9.5%)	515 (9.9%)
	Subtotal	2,284 (49.3%)	2,330 (50.0%)	2,367 (51.5%)	2,569 (52.5%)	2,773 (53.0%)	2,835 (54.7%)	3,170 (53.7%)	2,866 (52.5%)	2,694 (50.6%)	2,623 (50.6%)
FR	Male	450 (9.7%)	490 (10.5%)	557 (12.1%)	575 (11.8%)	641 (12.3%)	663 (12.8%)	798 (13.5%)	794 (14.6%)	845 (15.9%)	881 (17.0%)
	Female	42 (0.9%)	45 (1.0%)	36 (0.8%)	63 (1.3%)	77 (1.5%)	91 (1.8%)	121 (2.0%)	103 (1.9%)	108 (2.0%)	116 (2.2%)
	Subtotal	492 (10.6%)	535 (11.5%)	593 (12.9%)	638 (13.0%)	718 (13.7%)	754 (14.5%)	919 (15.6%)	897 (16.4%)	953 (17.9%)	997 (19.2%)
USA	Male	74 (1.6%)	56 (1.2%)	44 (1.0%)	44 (0.9%)	37 (0.7%)	31 (0.6%)	28 (0.5%)	31 (0.6%)	26 (0.5%)	18 (0.3%)
	Female	4 (0.1%)	1 (0.0%)	1 (0.0%)	1 (0.0%)	2 (0.0%)	2 (0.0%)	2 (0.0%)	1 (0.0%)	NA (-)	NA (-)
	Subtotal	78 (1.7%)	57 (1.2%)	45 (1.0%)	45 (0.9%)	39 (0.7%)	33 (0.6%)	30 (0.5%)	32 (0.6%)	26 (0.5%)	18 (0.3%)
GNY	Male	54 (1.2%)	45 (1.0%)	48 (1.0%)	43 (0.9%)	40 (0.8%)	48 (0.9%)	63 (1.1%)	60 (1.1%)	62 (1.2%)	60 (1.2%)
	Female	5 (0.1%)	5 (0.1%)	3 (0.1%)	3 (0.1%)	NA (-)	5 (0.1%)	4 (0.1%)	7 (0.1%)	7 (0.1%)	3 (0.1%)
	Subtotal	59 (1.3%)	50 (1.1%)	51 (1.1%)	46 (0.9%)	40 (0.8%)	53 (1.0%)	67 (1.1%)	67 (1.2%)	69 (1.3%)	63 (1.2%)
Other	Male	11 (0.2%)	4 (0.1%)	4 (0.1%)	9 (0.2%)	6 (0.1%)	3 (0.1%)	3 (0.1%)	3 (0.1%)	3 (0.1%)	3 (0.1%)
	Female	1 (0.0%)	1 (0.0%)	2 (0.0%)	3 (0.1%)	1 (0.0%)	NA (-)	NA (-)	2 (0.0%)	2 (0.0%)	1 (0.0%)
	Subtotal	12 (0.3%)	5 (0.1%)	6 (0.1%)	12 (0.2%)	7 (0.1%)	3 (0.1%)	3 (0.1%)	5 (0.1%)	5 (0.1%)	4 (0.1%)

Year to Date Total Runners by Breeding

Flat

Bred	Sex	2014	2015	2016	2017	2018	2019	2020	2021	2022	2023
GB	Male	12,279 (31.3%)	12,651 (32.5%)	12,776 (32.1%)	13,343 (32.4%)	13,008 (31.8%)	13,119 (31.0%)	9,103 (32.2%)	12,796 (31.2%)	12,203 (30.9%)	12,197 (30.5%)
	Female	7,023 (17.9%)	6,717 (17.2%)	6,937 (17.4%)	6,987 (17.0%)	6,974 (17.0%)	7,430 (17.6%)	4,989 (17.6%)	7,354 (17.9%)	7,000 (17.7%)	7,007 (17.5%)
	Subtotal	19,302 (49.2%)	19,368 (49.7%)	19,713 (49.5%)	20,330 (49.3%)	19,982 (48.8%)	20,549 (48.6%)	14,092 (49.8%)	20,150 (49.1%)	19,203 (48.7%)	19,204 (48.1%)
IRE	Male	11,569 (29.5%)	11,711 (30.1%)	12,109 (30.4%)	12,436 (30.2%)	12,609 (30.8%)	12,865 (30.4%)	8,422 (29.8%)	12,763 (31.1%)	12,594 (31.9%)	12,879 (32.2%)
	Female	5,077 (12.9%)	4,780 (12.3%)	4,999 (12.5%)	5,211 (12.6%)	5,069 (12.4%)	5,264 (12.4%)	3,572 (12.6%)	5,117 (12.5%)	5,157 (13.1%)	5,369 (13.4%)
	Subtotal	16,646 (42.4%)	16,491 (42.3%)	17,108 (42.9%)	17,647 (42.8%)	17,678 (43.2%)	18,129 (42.9%)	11,994 (42.4%)	17,880 (43.6%)	17,751 (45.0%)	18,248 (45.7%)
FR	Male	552 (1.4%)	715 (1.8%)	748 (1.9%)	895 (2.2%)	983 (2.4%)	1,227 (2.9%)	821 (2.9%)	1,146 (2.8%)	1,084 (2.7%)	1,209 (3.0%)
	Female	223 (0.6%)	223 (0.6%)	263 (0.7%)	270 (0.7%)	320 (0.8%)	385 (0.9%)	241 (0.9%)	398 (1.0%)	372 (0.9%)	430 (1.1%)
	Subtotal	775 (2.0%)	938 (2.4%)	1,011 (2.5%)	1,165 (2.8%)	1,303 (3.2%)	1,612 (3.8%)	1,062 (3.8%)	1,544 (3.8%)	1,456 (3.7%)	1,639 (4.1%)
USA	Male	1,582 (4.0%)	1,332 (3.4%)	1,276 (3.2%)	1,263 (3.1%)	1,237 (3.0%)	1,175 (2.8%)	691 (2.4%)	789 (1.9%)	594 (1.5%)	458 (1.1%)
	Female	464 (1.2%)	366 (0.9%)	299 (0.8%)	352 (0.9%)	326 (0.8%)	362 (0.9%)	173 (0.6%)	213 (0.5%)	171 (0.4%)	161 (0.4%)
	Subtotal	2,046 (5.2%)	1,698 (4.4%)	1,575 (4.0%)	1,615 (3.9%)	1,563 (3.8%)	1,537 (3.6%)	864 (3.1%)	1,002 (2.4%)	765 (1.9%)	619 (1.5%)
GNY	Male	195 (0.5%)	199 (0.5%)	235 (0.6%)	250 (0.6%)	213 (0.5%)	223 (0.5%)	166 (0.6%)	265 (0.6%)	134 (0.3%)	168 (0.4%)
	Female	48 (0.1%)	73 (0.2%)	49 (0.1%)	35 (0.1%)	59 (0.1%)	74 (0.2%)	52 (0.2%)	86 (0.2%)	67 (0.2%)	36 (0.1%)
	Subtotal	243 (0.6%)	272 (0.7%)	284 (0.7%)	285 (0.7%)	272 (0.7%)	297 (0.7%)	218 (0.8%)	351 (0.9%)	201 (0.5%)	204 (0.5%)
Other	Male	196 (0.5%)	136 (0.3%)	108 (0.3%)	128 (0.3%)	125 (0.3%)	111 (0.3%)	51 (0.2%)	75 (0.2%)	49 (0.1%)	33 (0.1%)
	Female	30 (0.1%)	65 (0.2%)	45 (0.1%)	45 (0.1%)	30 (0.1%)	49 (0.1%)	9 (0.0%)	17 (0.0%)	19 (0.0%)	11 (0.0%)
	Subtotal	226 (0.6%)	201 (0.5%)	153 (0.4%)	173 (0.4%)	155 (0.4%)	160 (0.4%)	60 (0.2%)	92 (0.2%)	68 (0.2%)	44 (0.1%)

Jump

Bred	Sex	2014	2015	2016	2017	2018	2019	2020	2021	2022	2023
GB	Male	4,829 (25.2%)	4,665 (24.0%)	4,455 (22.8%)	4,289 (22.0%)	4,102 (21.1%)	3,919 (20.6%)	2,094 (19.4%)	3,848 (19.1%)	3,347 (17.9%)	3,288 (17.3%)
	Female	2,045 (10.7%)	2,044 (10.5%)	1,806 (9.3%)	1,733 (8.9%)	1,889 (9.7%)	1,769 (9.3%)	947 (8.8%)	1,927 (9.5%)	1,746 (9.3%)	1,822 (9.6%)
	Subtotal	6,874 (35.8%)	6,709 (34.5%)	6,261 (32.1%)	6,022 (30.9%)	5,991 (30.8%)	5,688 (29.9%)	3,041 (28.2%)	5,775 (28.6%)	5,093 (27.2%)	5,110 (26.9%)
IRE	Male	8,620 (44.9%)	8,711 (44.8%)	8,962 (45.9%)	8,985 (46.1%)	8,708 (44.8%)	8,364 (43.9%)	4,752 (44.1%)	8,768 (43.4%)	7,991 (42.6%)	8,084 (42.5%)
	Female	1,162 (6.1%)	1,336 (6.9%)	1,446 (7.4%)	1,513 (7.8%)	1,778 (9.2%)	1,924 (10.1%)	1,092 (10.1%)	1,957 (9.7%)	1,780 (9.5%)	1,902 (10.0%)
	Subtotal	9,782 (51.0%)	10,047 (51.7%)	10,408 (53.3%)	10,498 (53.9%)	10,486 (54.0%)	10,288 (54.0%)	5,844 (54.2%)	10,725 (53.1%)	9,771 (52.1%)	9,986 (52.6%)
FR	Male	1,754 (9.1%)	1,935 (10.0%)	2,221 (11.4%)	2,354 (12.1%)	2,353 (12.1%)	2,355 (12.4%)	1,446 (13.4%)	2,826 (14.0%)	3,093 (16.5%)	3,148 (16.6%)
	Female	185 (1.0%)	160 (0.8%)	168 (0.9%)	223 (1.1%)	217 (1.1%)	316 (1.7%)	234 (2.2%)	426 (2.1%)	400 (2.1%)	440 (2.3%)
	Subtotal	1,939 (10.1%)	2,095 (10.8%)	2,389 (12.2%)	2,577 (13.2%)	2,570 (13.2%)	2,671 (14.0%)	1,680 (15.6%)	3,252 (16.1%)	3,493 (18.6%)	3,588 (18.9%)
USA	Male	328 (1.7%)	286 (1.5%)	205 (1.1%)	147 (0.8%)	145 (0.7%)	120 (0.6%)	70 (0.6%)	122 (0.6%)	82 (0.4%)	64 (0.3%)
	Female	6 (0.0%)	5 (0.0%)	4 (0.0%)	6 (0.0%)	5 (0.0%)	13 (0.1%)	12 (0.1%)	6 (0.0%)	6 (0.0%)	0 (0.0%)
	Subtotal	334 (1.7%)	291 (1.5%)	209 (1.1%)	153 (0.8%)	150 (0.8%)	133 (0.7%)	82 (0.8%)	128 (0.6%)	88 (0.5%)	64 (0.3%)
GNY	Male	196 (1.0%)	239 (1.2%)	199 (1.0%)	198 (1.0%)	174 (0.9%)	219 (1.1%)	118 (1.1%)	262 (1.3%)	248 (1.3%)	226 (1.2%)
	Female	16 (0.1%)	18 (0.1%)	15 (0.1%)	9 (0.0%)	10 (0.1%)	22 (0.1%)	6 (0.1%)	31 (0.2%)	33 (0.2%)	19 (0.1%)
	Subtotal	212 (1.1%)	257 (1.3%)	214 (1.1%)	207 (1.1%)	184 (0.9%)	241 (1.3%)	124 (1.2%)	293 (1.5%)	281 (1.5%)	245 (1.3%)
Other	Male	46 (0.2%)	39 (0.2%)	27 (0.1%)	22 (0.1%)	33 (0.2%)	24 (0.1%)	8 (0.1%)	13 (0.1%)	8 (0.0%)	5 (0.0%)
	Female	1 (0.0%)	2 (0.0%)	11 (0.1%)	5 (0.0%)	9 (0.0%)	2 (0.0%)	1 (0.0%)	1 (0.0%)	6 (0.0%)	1 (0.0%)
	Subtotal	47 (0.2%)	41 (0.2%)	38 (0.2%)	27 (0.1%)	42 (0.2%)	26 (0.1%)	9 (0.1%)	14 (0.1%)	14 (0.1%)	6 (0.0%)

Year to Date Individual Runners by Breeding

Flat

Bred	Sex	2014	2015	2016	2017	2018	2019	2020	2021	2022	2023
GB	Male	2,702 (29.5%)	2,782 (30.4%)	2,794 (29.8%)	2,871 (29.5%)	2,937 (30.2%)	2,903 (29.5%)	2,689 (30.5%)	2,751 (29.3%)	2,702 (29.3%)	2,647 (28.3%)
	Female	1,807 (19.7%)	1,753 (19.1%)	1,794 (19.1%)	1,842 (19.0%)	1,786 (18.4%)	1,844 (18.8%)	1,674 (19.0%)	1,823 (19.4%)	1,773 (19.2%)	1,775 (19.0%)
	Subtotal	4,509 (49.2%)	4,535 (49.5%)	4,588 (48.9%)	4,713 (48.5%)	4,723 (48.6%)	4,747 (48.3%)	4,363 (49.5%)	4,574 (48.6%)	4,475 (48.5%)	4,422 (47.3%)
IRE	Male	2,526 (27.6%)	2,550 (27.8%)	2,675 (28.5%)	2,776 (28.6%)	2,771 (28.5%)	2,777 (28.3%)	2,473 (28.1%)	2,754 (29.3%)	2,767 (30.0%)	2,840 (30.4%)
	Female	1,269 (13.8%)	1,243 (13.6%)	1,313 (14.0%)	1,323 (13.6%)	1,322 (13.6%)	1,351 (13.7%)	1,213 (13.8%)	1,306 (13.9%)	1,337 (14.5%)	1,450 (15.5%)
	Subtotal	3,795 (41.4%)	3,793 (41.4%)	3,988 (42.5%)	4,099 (42.2%)	4,093 (42.1%)	4,128 (42.0%)	3,686 (41.8%)	4,060 (43.2%)	4,104 (44.4%)	4,290 (45.9%)
FR	Male	143 (1.6%)	176 (1.9%)	193 (2.1%)	229 (2.4%)	278 (2.9%)	315 (3.2%)	278 (3.2%)	297 (3.2%)	288 (3.1%)	282 (3.0%)
	Female	67 (0.7%)	61 (0.7%)	77 (0.8%)	94 (1.0%)	100 (1.0%)	116 (1.2%)	97 (1.1%)	114 (1.2%)	108 (1.2%)	125 (1.3%)
	Subtotal	210 (2.3%)	237 (2.6%)	270 (2.9%)	323 (3.3%)	378 (3.9%)	431 (4.4%)	375 (4.3%)	411 (4.4%)	396 (4.3%)	407 (4.4%)
USA	Male	388 (4.2%)	334 (3.6%)	323 (3.4%)	337 (3.5%)	295 (3.0%)	287 (2.9%)	219 (2.5%)	191 (2.0%)	130 (1.4%)	109 (1.2%)
	Female	130 (1.4%)	128 (1.4%)	102 (1.1%)	117 (1.2%)	112 (1.2%)	115 (1.2%)	73 (0.8%)	64 (0.7%)	45 (0.5%)	46 (0.5%)
	Subtotal	518 (5.7%)	462 (5.0%)	425 (4.5%)	454 (4.7%)	407 (4.2%)	402 (4.1%)	292 (3.3%)	255 (2.7%)	175 (1.9%)	155 (1.7%)
GNY	Male	62 (0.7%)	60 (0.7%)	66 (0.7%)	68 (0.7%)	59 (0.6%)	58 (0.6%)	54 (0.6%)	60 (0.6%)	43 (0.5%)	47 (0.5%)
	Female	13 (0.1%)	21 (0.2%)	14 (0.1%)	14 (0.1%)	17 (0.2%)	18 (0.2%)	21 (0.2%)	24 (0.3%)	23 (0.2%)	13 (0.1%)
	Subtotal	75 (0.8%)	81 (0.9%)	80 (0.9%)	82 (0.8%)	76 (0.8%)	76 (0.8%)	75 (0.9%)	84 (0.9%)	66 (0.7%)	60 (0.6%)
Other	Male	47 (0.5%)	34 (0.4%)	25 (0.3%)	31 (0.3%)	29 (0.3%)	30 (0.3%)	16 (0.2%)	14 (0.1%)	16 (0.2%)	12 (0.1%)
	Female	11 (0.1%)	17 (0.2%)	13 (0.1%)	17 (0.2%)	8 (0.1%)	12 (0.1%)	5 (0.1%)	4 (0.0%)	4 (0.0%)	6 (0.1%)
	Subtotal	58 (0.6%)	51 (0.6%)	38 (0.4%)	48 (0.5%)	37 (0.4%)	42 (0.4%)	21 (0.2%)	18 (0.2%)	20 (0.2%)	18 (0.2%)

Jump

Bred	Sex	2014	2015	2016	2017	2018	2019	2020	2021	2022	2023
GB	Male	1,612 (25.4%)	1,536 (23.7%)	1,456 (22.6%)	1,376 (21.4%)	1,325 (20.5%)	1,327 (19.9%)	1,054 (19.3%)	1,339 (19.0%)	1,188 (18.2%)	1,180 (17.8%)
	Female	723 (11.4%)	720 (11.1%)	654 (10.1%)	633 (9.8%)	663 (10.2%)	644 (9.7%)	493 (9.0%)	701 (9.9%)	650 (9.9%)	641 (9.7%)
	Subtotal	2,335 (36.8%)	2,256 (34.8%)	2,110 (32.7%)	2,009 (31.2%)	1,988 (30.7%)	1,971 (29.6%)	1,547 (28.3%)	2,040 (28.9%)	1,838 (28.1%)	1,821 (27.5%)
IRE	Male	2,764 (43.5%)	2,846 (43.9%)	2,889 (44.8%)	2,879 (44.7%)	2,865 (44.2%)	2,915 (43.7%)	2,369 (43.4%)	2,997 (42.5%)	2,741 (41.9%)	2,739 (41.4%)
	Female	424 (6.7%)	486 (7.5%)	494 (7.7%)	543 (8.4%)	607 (9.4%)	670 (10.1%)	565 (10.3%)	701 (9.9%)	639 (9.8%)	709 (10.7%)
	Subtotal	3,188 (50.2%)	3,332 (51.4%)	3,383 (52.4%)	3,422 (53.1%)	3,472 (53.6%)	3,585 (53.8%)	2,934 (53.7%)	3,698 (52.4%)	3,380 (51.7%)	3,448 (52.1%)
FR	Male	585 (9.2%)	656 (10.1%)	744 (11.5%)	796 (12.4%)	809 (12.5%)	849 (12.7%)	751 (13.7%)	1,040 (14.7%)	1,046 (16.0%)	1,071 (16.2%)
	Female	57 (0.9%)	58 (0.9%)	63 (1.0%)	80 (1.2%)	95 (1.5%)	132 (2.0%)	124 (2.3%)	147 (2.1%)	159 (2.4%)	172 (2.6%)
	Subtotal	642 (10.1%)	714 (11.0%)	807 (12.5%)	876 (13.6%)	904 (14.0%)	981 (14.7%)	875 (16.0%)	1,187 (16.8%)	1,205 (18.4%)	1,243 (18.8%)
USA	Male	102 (1.6%)	90 (1.4%)	63 (1.0%)	51 (0.8%)	47 (0.7%)	40 (0.6%)	32 (0.6%)	37 (0.5%)	29 (0.4%)	24 (0.4%)
	Female	4 (0.1%)	3 (0.0%)	2 (0.0%)	2 (0.0%)	2 (0.0%)	5 (0.1%)	5 (0.1%)	2 (0.0%)	2 (0.0%)	0 (0.0%)
	Subtotal	106 (1.7%)	93 (1.4%)	65 (1.0%)	53 (0.8%)	49 (0.8%)	45 (0.7%)	37 (0.7%)	39 (0.6%)	31 (0.5%)	24 (0.4%)
GNY	Male	59 (0.9%)	73 (1.1%)	73 (1.1%)	67 (1.0%)	52 (0.8%)	66 (1.0%)	59 (1.1%)	73 (1.0%)	73 (1.1%)	69 (1.0%)
	Female	4 (0.1%)	6 (0.1%)	7 (0.1%)	5 (0.1%)	2 (0.0%)	6 (0.1%)	4 (0.1%)	10 (0.1%)	11 (0.2%)	11 (0.2%)
	Subtotal	63 (1.0%)	79 (1.2%)	80 (1.2%)	72 (1.1%)	54 (0.8%)	72 (1.1%)	63 (1.2%)	83 (1.2%)	84 (1.3%)	80 (1.2%)
Other	Male	18 (0.3%)	11 (0.2%)	6 (0.1%)	8 (0.1%)	8 (0.1%)	9 (0.1%)	5 (0.1%)	3 (0.0%)	2 (0.0%)	4 (0.1%)
	Female	1 (0.0%)	1 (0.0%)	4 (0.1%)	2 (0.0%)	2 (0.0%)	1 (0.0%)	1 (0.0%)	1 (0.0%)	2 (0.0%)	1 (0.0%)
	Subtotal	19 (0.3%)	12 (0.2%)	10 (0.2%)	10 (0.2%)	10 (0.2%)	10 (0.2%)	6 (0.1%)	4 (0.1%)	4 (0.1%)	5 (0.1%)

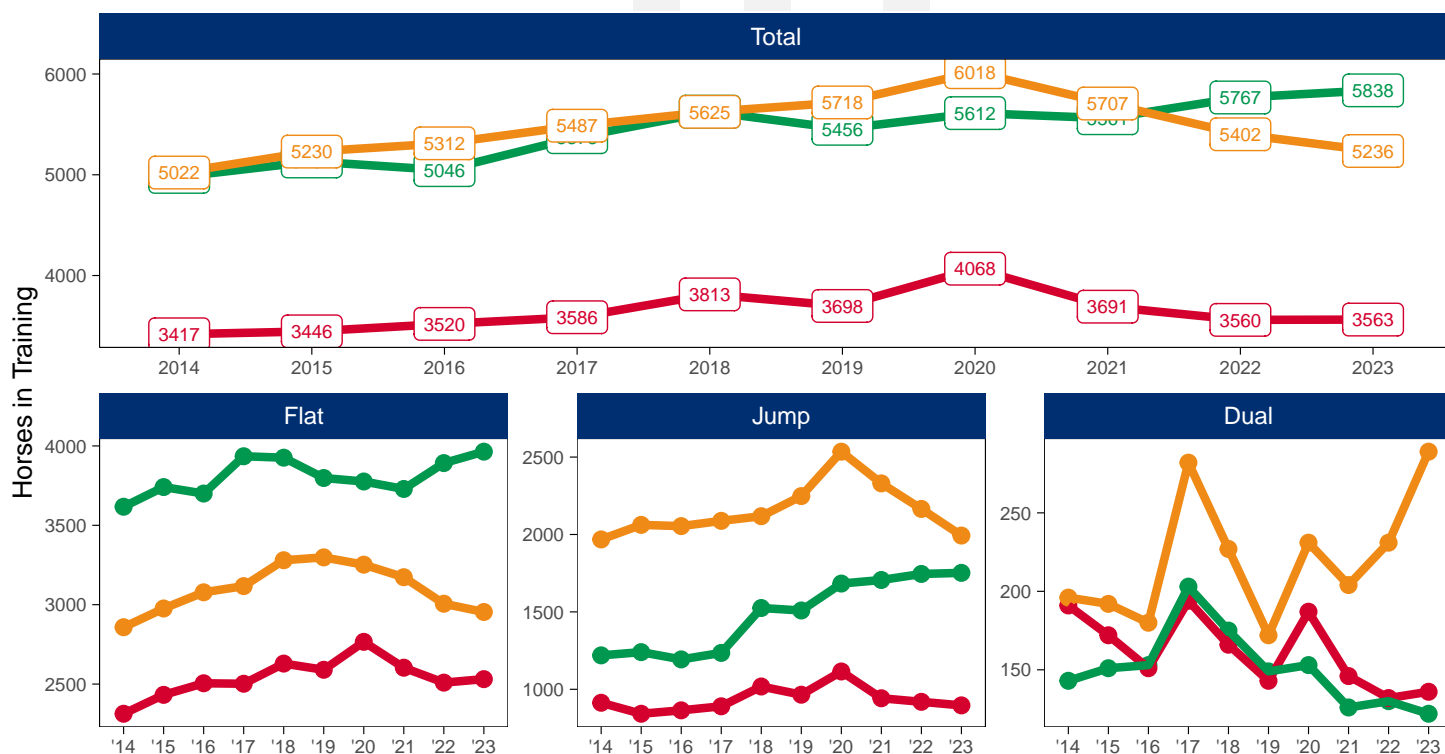
Horse Population by Location

August 2023 Horses in Training Snapshot by Region versus Previous Years

Snapshot of Total Horses in Training in August by Region

Horses in Training in August, shown by Training Type and Region

Region North Midlands South



North

AgeCat	2014	2015	2016	2017	2018	2019	2020	2021	2022	2023	vs. Last Year	vs. Pre-Covid
Flat Horses in Training												
2YO	793	858	837	821	884	918	934	897	876	857	-19 / -2.2%	-61 / -6.6%
3YO	552	594	645	640	659	636	758	723	624	663	+39 / +6.2%	+27 / +4.2%
4YO	329	334	356	388	387	389	393	369	398	358	-40 / -10.1%	-31 / -8.0%
5YO+	639	646	667	653	699	647	681	614	611	653	+42 / +6.9%	+6 / +0.9%
Subtotal	2313	2432	2505	2502	2629	2590	2766	2603	2509	2531	+22 / +0.9%	-59 / -2.3%
Jump Horses in Training												
3YO	33	34	35	25	33	30	31	21	43	16	-27 / -62.8%	-14 / -46.7%
4-5YO	277	237	250	289	290	319	315	266	272	260	-12 / -4.4%	-59 / -18.5%
6-7YO	292	294	286	278	333	326	383	317	317	336	+19 / +6.0%	+10 / +3.1%
8YO+	311	277	293	298	362	290	386	338	287	284	-3 / -1.0%	-6 / -2.1%
Subtotal	913	842	864	890	1018	965	1115	942	919	896	-23 / -2.5%	-69 / -7.2%
Dual Horses in Training												
3YO	34	32	29	36	30	20	38	22	24	23	-1 / -4.2%	+3 / +15.0%
4YO	53	39	34	48	44	31	38	33	28	29	+1 / +3.6%	-2 / -6.5%
5YO+	104	101	88	110	92	92	111	91	80	84	+4 / +5.0%	-8 / -8.7%
Subtotal	191	172	151	194	166	143	187	146	132	136	+4 / +3.0%	-7 / -4.9%
Total Horses in Training												
	3417	3446	3520	3586	3813	3698	4068	3691	3560	3563	+3 / +0.1%	-135 / -3.7%

'vs. Pre-Covid' is comparison between 2023 and 2019

Midlands

AgeCat	2014	2015	2016	2017	2018	2019	2020	2021	2022	2023	vs. Last Year	vs. Pre-Covid
Flat Horses in Training												
2YO	1501	1617	1590	1673	1585	1480	1409	1438	1498	1544	+46 / +3.1%	+64 / +4.3%
3YO	1031	1055	1057	1139	1183	1161	1205	1109	1198	1185	-13 / -1.1%	+24 / +2.1%
4YO	432	449	436	510	524	514	503	555	558	554	-4 / -0.7%	+40 / +7.8%
5YO+	653	620	617	613	634	643	659	627	638	681	+43 / +6.7%	+38 / +5.9%
Subtotal	3617	3741	3700	3935	3926	3798	3776	3729	3892	3964	+72 / +1.8%	+166 / +4.4%
Jump Horses in Training												
3YO	36	46	58	27	52	47	35	62	57	54	-3 / -5.3%	+7 / +14.9%
4-5YO	443	415	396	464	553	592	662	617	643	698	+55 / +8.6%	+106 / +17.9%
6-7YO	433	450	397	393	512	488	573	591	614	598	-16 / -2.6%	+110 / +22.5%
8YO+	307	329	342	351	408	382	413	436	431	402	-29 / -6.7%	+20 / +5.2%
Subtotal	1219	1240	1193	1235	1525	1509	1683	1706	1745	1752	+7 / +0.4%	+243 / +16.1%
Dual Horses in Training												
3YO	28	26	36	33	34	24	23	25	25	28	+3 / +12.0%	+4 / +16.7%
4YO	37	31	38	52	49	42	30	39	34	19	-15 / -44.1%	-23 / -54.8%
5YO+	78	94	79	118	92	83	100	62	71	75	+4 / +5.6%	-8 / -9.6%
Subtotal	143	151	153	203	175	149	153	126	130	122	-8 / -6.2%	-27 / -18.1%
Total Horses in Training												
	4979	5132	5046	5373	5626	5456	5612	5561	5767	5838	+71 / +1.2%	+382 / +7.0%

'vs. Pre-Covid' is comparison between 2023 and 2019

South

AgeCat	2014	2015	2016	2017	2018	2019	2020	2021	2022	2023	vs. Last Year	vs. Pre-Covid
Flat Horses in Training												
2YO	1251	1269	1287	1377	1359	1384	1277	1283	1228	1198	-30 / -2.4%	-186 / -13.4%
3YO	816	848	879	860	963	912	988	916	819	877	+58 / +7.1%	-35 / -3.8%
4YO	325	357	379	364	419	459	433	434	431	337	-94 / -21.8%	-122 / -26.6%
5YO+	466	502	533	516	539	543	554	540	528	542	+14 / +2.7%	-1 / -0.2%
Subtotal	2858	2976	3078	3117	3280	3298	3252	3173	3006	2954	-52 / -1.7%	-344 / -10.4%
Jump Horses in Training												
3YO	135	84	81	93	73	104	77	106	90	68	-22 / -24.4%	-36 / -34.6%
4-5YO	735	790	812	806	830	871	929	857	895	832	-63 / -7.0%	-39 / -4.5%
6-7YO	643	672	653	686	697	755	873	782	707	645	-62 / -8.8%	-110 / -14.6%
8YO+	455	516	508	503	518	518	656	585	473	448	-25 / -5.3%	-70 / -13.5%
Subtotal	1968	2062	2054	2088	2118	2248	2535	2330	2165	1993	-172 / -7.9%	-255 / -11.3%
Dual Horses in Training												
3YO	44	30	35	45	34	28	33	47	52	62	+10 / +19.2%	+34 / +121.4%
4YO	41	40	25	87	48	48	54	54	53	95	+42 / +79.2%	+47 / +97.9%
5YO+	111	122	120	150	145	96	144	103	126	132	+6 / +4.8%	+36 / +37.5%
Subtotal	196	192	180	282	227	172	231	204	231	289	+58 / +25.1%	+117 / +68.0%
Total Horses in Training												
	5022	5230	5312	5487	5625	5718	6018	5707	5402	5236	-166 / -3.1%	-482 / -8.4%

'vs. Pre-Covid' is comparison between 2023 and 2019

August 2023 Horses in Training Snapshot by Country versus Previous Years

Type	2014	2015	2016	2017	2018	2019	2020	2021	2022	2023	vs. Last Year	vs. Pre-Covid
England												
Flat	8459	8809	8933	9143	9433	9273	9409	9117	9020	9077	+57 / +0.6%	-196 / -2.1%
Jump	3487	3626	3542	3655	4003	4051	4646	4375	4360	4172	-188 / -4.3%	+121 / +3.0%
Dual	473	466	420	587	492	412	508	430	441	510	+69 / +15.6%	+98 / +23.8%
Overall	12419	12901	12895	13385	13928	13736	14563	13922	13821	13759	-62 / -0.4%	+23 / +0.2%
Scotland												
Flat	177	185	200	250	234	216	231	230	245	210	-35 / -14.3%	-6 / -2.8%
Jump	275	207	235	218	332	306	368	258	248	231	-17 / -6.9%	-75 / -24.5%
Dual	28	24	37	44	38	32	42	25	28	20	-8 / -28.6%	-12 / -37.5%
Overall	480	416	472	512	604	554	641	513	521	461	-60 / -11.5%	-93 / -16.8%
Wales												
Flat	152	155	150	161	168	197	154	158	142	162	+20 / +14.1%	-35 / -17.8%
Jump	338	311	334	340	326	365	319	345	221	238	+17 / +7.7%	-127 / -34.8%
Dual	29	25	27	48	38	20	21	21	24	17	-7 / -29.2%	-3 / -15.0%
Overall	519	491	511	549	532	582	494	524	387	417	+30 / +7.8%	-165 / -28.4%

'vs. Pre-Covid' is comparison between 2023 and 2019

August 2023 Horses in Training Snapshot by Training Centre versus Previous Years

Type	2014	2015	2016	2017	2018	2019	2020	2021	2022	2023	vs. Last Year	vs. Pre-Covid
Cheltenham (GL54)												
Flat	13	19	11	19	12	13	10	21	16	10	-6 / -37.5%	-3 / -23.1%
Jump	186	229	273	266	356	296	469	385	365	370	+5 / +1.4%	+74 / +25.0%
Dual	13	17	18	45	18	19	17	13	14	10	-4 / -28.6%	-9 / -47.4%
Overall	212	265	302	330	386	328	496	419	395	390	-5 / -1.3%	+62 / +18.9%
Lambourn (RG17)												
Flat	714	772	900	992	1031	1018	992	953	882	925	+43 / +4.9%	-93 / -9.1%
Jump	238	290	281	222	212	254	321	260	290	221	-69 / -23.8%	-33 / -13.0%
Dual	16	21	17	31	22	20	31	21	36	47	+11 / +30.6%	+27 / +135.0%
Overall	968	1083	1198	1245	1265	1292	1344	1234	1208	1193	-15 / -1.2%	-99 / -7.7%
Malton (YO17)												
Flat	625	626	645	638	713	722	811	725	691	702	+11 / +1.6%	-20 / -2.8%
Jump	95	114	111	128	92	88	84	83	84	65	-19 / -22.6%	-23 / -26.1%
Dual	49	39	20	39	38	22	45	37	23	27	+4 / +17.4%	+5 / +22.7%
Overall	769	779	776	805	843	832	940	845	798	794	-4 / -0.5%	-38 / -4.6%
Marlborough (SN8)												
Flat	561	570	466	460	481	442	473	451	393	402	+9 / +2.3%	-40 / -9.0%
Jump	69	66	44	72	69	71	76	80	68	67	-1 / -1.5%	-4 / -5.6%
Dual	2	5	1	1	1	2	2	0	0	5	+5 / +Inf	+3 / +150.0%
Overall	632	641	511	533	551	515	551	531	461	474	+13 / +2.8%	-41 / -8.0%
Middleham (DL8)												
Flat	429	537	539	506	530	585	615	575	538	571	+33 / +6.1%	-14 / -2.4%
Jump	33	47	45	48	72	77	101	88	78	94	+16 / +20.5%	+17 / +22.1%
Dual	26	32	22	28	13	23	30	24	22	13	-9 / -40.9%	-10 / -43.5%
Overall	488	616	606	582	615	685	746	687	638	678	+40 / +6.3%	-7 / -1.0%
Newbury (RG20)												
Flat	374	387	376	373	413	419	401	422	437	422	-15 / -3.4%	+3 / +0.7%
Jump	24	15	12	9	19	11	6	4	10	54	+44 / +440.0%	+43 / +390.9%
Dual	4	5	3	5	9	7	6	6	3	1	-2 / -66.7%	-6 / -85.7%
Overall	402	407	391	387	441	437	413	432	450	477	+27 / +6.0%	+40 / +9.2%
Newmarket (CB8)												
Flat	2755	2758	2658	2807	2816	2660	2729	2673	2770	2907	+137 / +4.9%	+247 / +9.3%
Jump	81	88	23	29	38	36	63	53	26	49	+23 / +88.5%	+13 / +36.1%
Dual	30	25	31	29	30	25	26	24	23	19	-4 / -17.4%	-6 / -24.0%
Overall	2866	2871	2712	2865	2884	2721	2818	2750	2819	2975	+156 / +5.5%	+254 / +9.3%

'vs. Pre-Covid' is comparison between 2023 and 2019