



# Horse Population Report

Updated on 31 July 2023



# Introduction

Welcome to the latest update on the Racehorse Population from the British Horseracing Authority.

The aim of this document is to give stakeholders and the wider Public an insight into the current state of the Horse Population in Great Britain. It is hoped that this transparency will ensure that all decision makers have access to the key data required to help British Racing deliver a Competitive and Compelling product to stakeholders, racegoers and the wider public.

If you have any questions regarding the content of this report or suggestions for how it could be improved further, please contact Joe Yates – jyates@britishhorseracing.com

## Definitions

This report uses the Horses in Training returns from the Weatherby's Racing Administration System, this is completed by trainers and should be updated whenever a horse enters or leaves training in their care as part of the conditions of their licence.

## Horses in Training

Unless otherwise stated, snapshots of Horses in Training will be from the 15th day of the month in question and year to date figures will be up to and including the date titled at the front of the report.

Horses' ratings will be taken from the most recently published ratings by the BHA Handicapping Team, which is currently at 7am each Tuesday morning. For example, if looking at the Horses in a particular rating band for July 2011, the horses in training number will be from Friday 15th July 2011 and ratings, where possible, will be assigned to each horse from the ratings published by the BHA Handicappers on Tuesday 12th July 2011.

The Gender of a horse will be taken from the reporting date in question, regardless of whether this has since changed.

In the case of YTD reporting, where a horse's gender or training type has changed in the year-to-date period, the most recent is taken.

This report does not count any horses that are temporarily racing abroad for GB Trainers at the time of reporting.

Yearlings are not included in total counts of flat and/or dual horses but will be sometimes shown separately for information purposes.

Yearlings and two-year-olds are not included in total counts of jump horses or counts of jump horses that include dual horses but will be sometimes shown separately for information purposes.

Yearlings, two-year-olds and three-year-olds are not included in total counts of Hunter Chasers but will be sometimes shown separately for information purposes.

Yearlings and two-year-olds in training that are recorded as dual horses have been re-coded as flat horses.

Hunter Chasers are not included in any counts of Jump Horses or Total figures but will be sometimes shown separately for information purposes.

Horses' training locations are defined by the trainers' primary training location. Training regions are defined the same as regions for the Fixture List; 'North' is north of latitude 53.42911, 'South' is south of latitude 51.88002 and 'Midlands' is anywhere in between. Training centres are defined by postcodes and surrounding areas.

## Runners

Unless otherwise specified, Total Runners and Individual Runners metrics only counts runners that ran in GB races including any voided races. Withdrawn horses are not included.

Hunter Chases are not included in this section but will be sometimes shown separately for information purposes.

Total Runners is a count of all runners in races, whilst individual runners only counts each individual horse once.

# Monthly Horses in Training

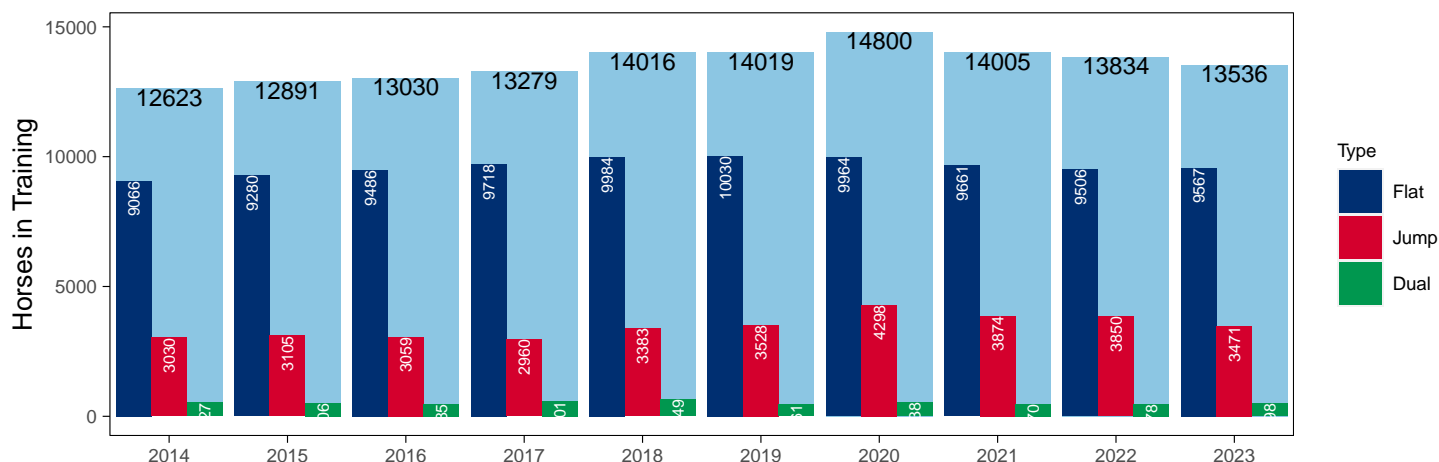
## July 2023 Horses in Training Snapshot versus Previous Years

Type	2014	2015	2016	2017	2018	2019	2020	2021	2022	2023	vs. Last Year	vs. Pre-Covid
Flat	9066	9280	9486	9718	9984	10030	9964	9661	9506	9567	+61 / +0.6%	-463 / -4.6%
Jump	3030	3105	3059	2960	3383	3528	4298	3874	3850	3471	-379 / -9.8%	-57 / -1.6%
Dual	527	506	485	601	649	461	538	470	478	498	+20 / +4.2%	+37 / +8.0%
Hunter	0	0	0	1828	0	1623	1367	1120	1236	1148	-88 / -7.1%	-475 / -29.3%
<b>Total</b>	<b>12623</b>	<b>12891</b>	<b>13030</b>	<b>13279</b>	<b>14016</b>	<b>14019</b>	<b>14800</b>	<b>14005</b>	<b>13834</b>	<b>13536</b>	<b>-298 / -2.2%</b>	<b>-483 / -3.4%</b>

'vs. Pre-Covid' is comparison between 2023 and 2019

### Snapshot of Total Horses in Training in July

Horses in Training in July, shown by Training Type



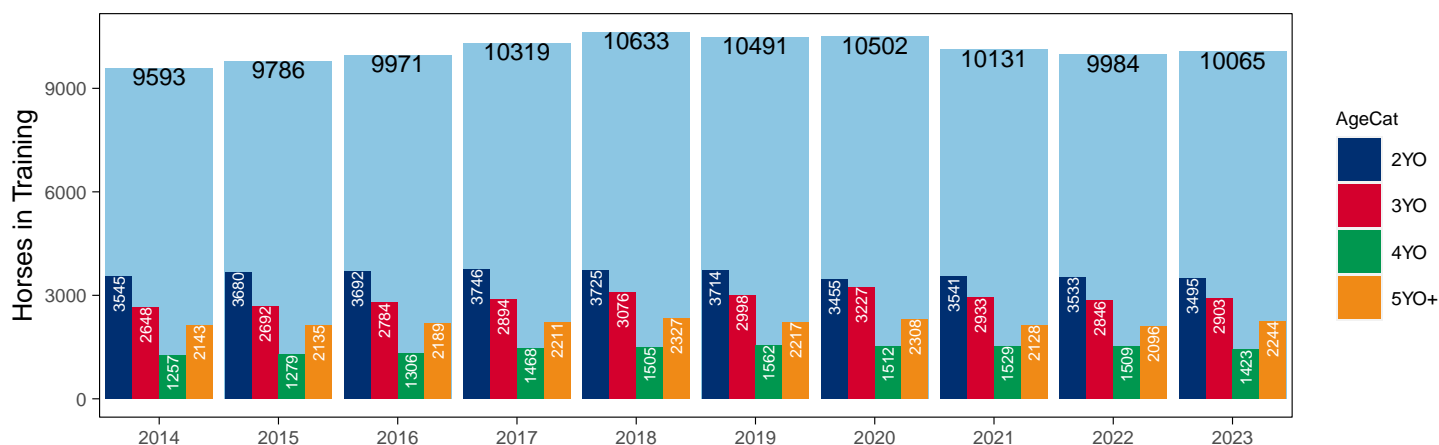
### Flat (including Dual)

AgeCat	2014	2015	2016	2017	2018	2019	2020	2021	2022	2023	vs. Last Year	vs. Pre-Covid
2YO	3545	3680	3692	3746	3725	3714	3455	3541	3533	3495	-38 / -1.1%	-219 / -5.9%
3YO	2648	2692	2784	2894	3076	2998	3227	2933	2846	2903	+57 / +2.0%	-95 / -3.2%
4YO	1257	1279	1306	1468	1505	1562	1512	1529	1509	1423	-86 / -5.7%	-139 / -8.9%
5YO+	2143	2135	2189	2211	2327	2217	2308	2128	2096	2244	+148 / +7.1%	+27 / +1.2%
<b>Total</b>	<b>9593</b>	<b>9786</b>	<b>9971</b>	<b>10319</b>	<b>10633</b>	<b>10491</b>	<b>10502</b>	<b>10131</b>	<b>9984</b>	<b>10065</b>	<b>+81 / +0.8%</b>	<b>-426 / -4.1%</b>

'vs. Pre-Covid' is comparison between 2023 and 2019

### Snapshot of Flat Horses in Training in July

Flat Horses in Training in July, shown by Age



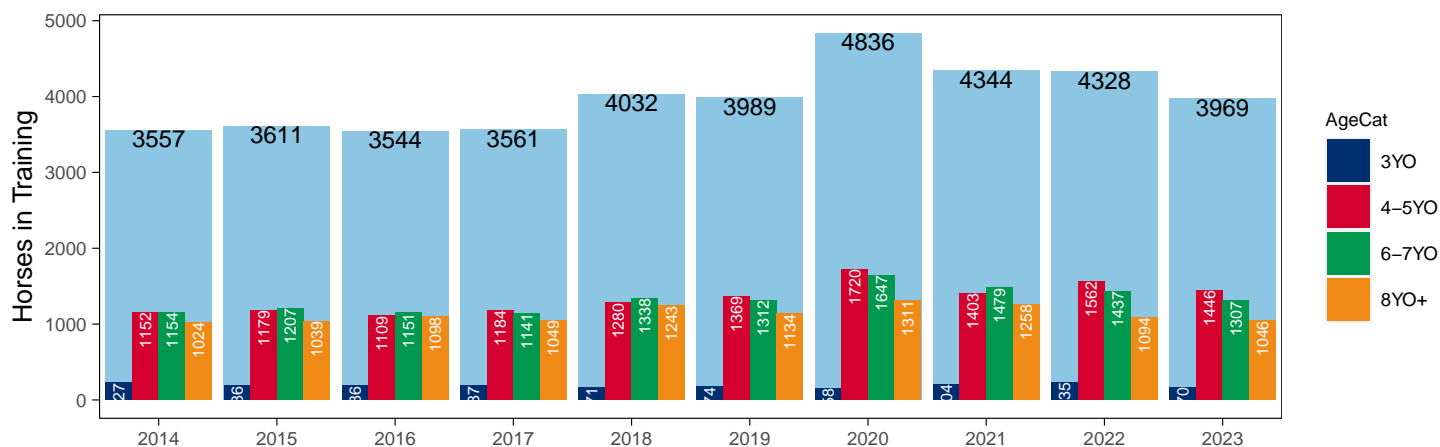
## Jump (including Dual)

AgeCat	2014	2015	2016	2017	2018	2019	2020	2021	2022	2023	vs. Last Year	vs. Pre-Covid
3YO	227	186	186	187	171	174	158	204	235	170	-65 / -27.7%	-4 / -2.3%
4-5YO	1152	1179	1109	1184	1280	1369	1720	1403	1562	1446	-116 / -7.4%	+77 / +5.6%
6-7YO	1154	1207	1151	1141	1338	1312	1647	1479	1437	1307	-130 / -9.0%	-5 / -0.4%
8YO+	1024	1039	1098	1049	1243	1134	1311	1258	1094	1046	-48 / -4.4%	-88 / -7.8%
<b>Total</b>	<b>3557</b>	<b>3611</b>	<b>3544</b>	<b>3561</b>	<b>4032</b>	<b>3989</b>	<b>4836</b>	<b>4344</b>	<b>4328</b>	<b>3969</b>	<b>-359 / -8.3%</b>	<b>-20 / -0.5%</b>

'vs. Pre-Covid' is comparison between 2023 and 2019

### Snapshot of Jump Horses in Training in July

Jump Horses in Training in July, shown by Age



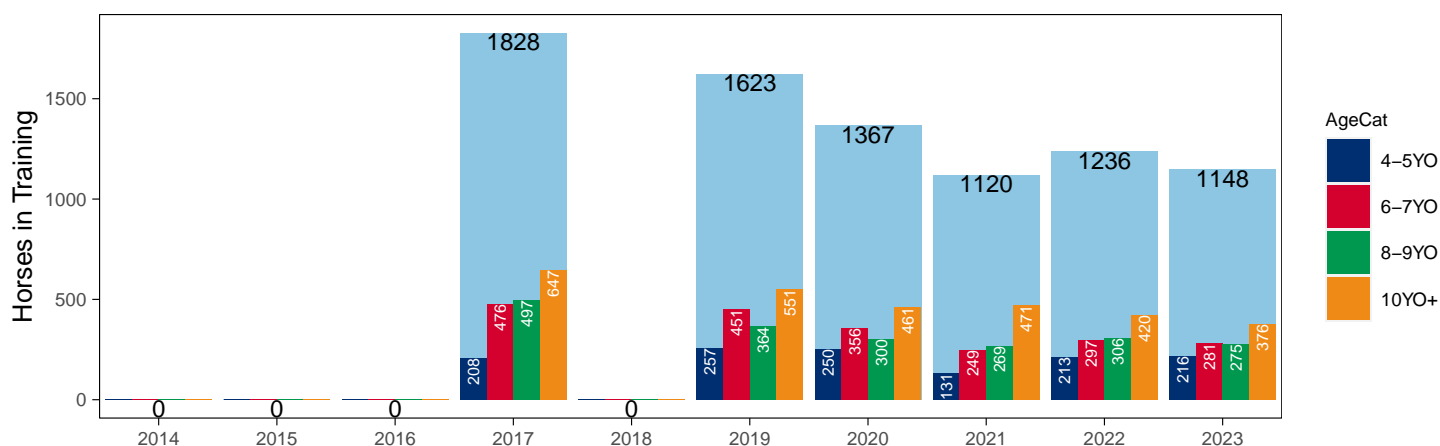
## Hunter Chasers

AgeCat	2014	2015	2016	2017	2018	2019	2020	2021	2022	2023	vs. Last Year	vs. Pre-Covid
4-5YO	0	0	0	208	0	257	250	131	213	216	+3 / +1.4%	-41 / -16.0%
6-7YO	0	0	0	476	0	451	356	249	297	281	-16 / -5.4%	-170 / -37.7%
8-9YO	0	0	0	497	0	364	300	269	306	275	-31 / -10.1%	-89 / -24.5%
10YO+	0	0	0	647	0	551	461	471	420	376	-44 / -10.5%	-175 / -31.8%
<b>Total</b>	<b>0</b>	<b>0</b>	<b>0</b>	<b>1828</b>	<b>0</b>	<b>1623</b>	<b>1367</b>	<b>1120</b>	<b>1236</b>	<b>1148</b>	<b>-88 / -7.1%</b>	<b>-475 / -29.3%</b>

'vs. Pre-Covid' is comparison between 2023 and 2019

### Snapshot of Hunter Chasers in Training in July

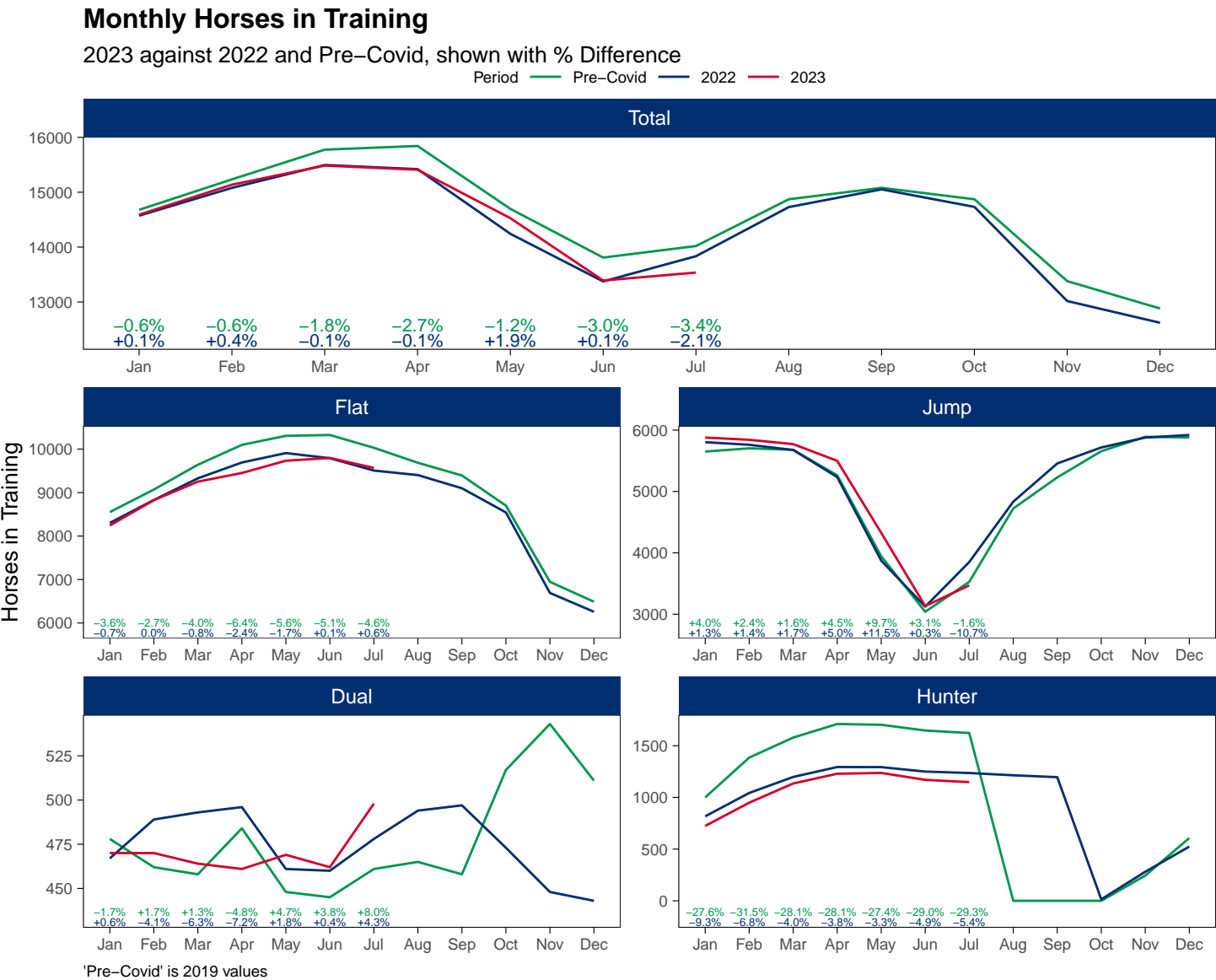
Hunter Chasers in Training in July, shown by Age



2023 Horses in Training versus Previous Years

Type	Period	Jan	Feb	Mar	Apr	May	Jun	Jul	Aug	Sep	Oct	Nov	Dec
Flat	2023	8243	8825	9251	9450	9732	9796	9567	0	0	0	0	0
	2022	8303	8829	9327	9691	9908	9790	9506	9402	9099	8543	6691	6258
	Pre-Covid	8551	9069	9640	10096	10305	10324	10030	9685	9393	8699	6947	6489
Jump	2023	5878	5842	5771	5499	4326	3133	3471	0	0	0	0	0
	2022	5803	5761	5676	5234	3873	3124	3850	4833	5456	5717	5878	5920
	Pre-Covid	5650	5703	5678	5263	3944	3040	3528	4722	5229	5656	5890	5881
Dual	2023	470	470	464	461	469	462	498	0	0	0	0	0
	2022	467	489	493	496	461	460	478	494	497	473	448	443
	Pre-Covid	478	462	458	484	448	445	461	465	458	517	543	511
Hunter	2023	724	949	1135	1229	1237	1170	1148	0	0	0	0	0
	2022	817	1043	1198	1294	1293	1250	1236	1214	1196	14	281	524
	Pre-Covid	1000	1385	1579	1710	1703	1647	1623	0	0	0	244	607
Total	2023	14591	15137	15486	15410	14527	13391	13536	0	0	0	0	0
	2022	14573	15079	15496	15421	14242	13374	13834	14729	15052	14733	13017	12621
	Pre-Covid	14679	15234	15776	15843	14697	13809	14019	14872	15080	14872	13380	12881

'Pre-Covid' is 2019 values



## Flat (including Dual)

AgeCat	Period	Jan	Feb	Mar	Apr	May	Jun	Jul	Aug	Sep	Oct	Nov	Dec
2YO	2023	1718	2209	2459	2600	3020	3333	3495					
	2022	1927	2363	2590	2866	3217	3368	3533	3602	3609	3496	2857	2733
	Pre-Covid	2104	2425	2739	3107	3395	3594	3714	3782	3798	3637	3099	3000
3YO	2023	2960	3076	3187	3238	3198	3102	2903					
	2022	2941	3056	3232	3299	3233	3119	2846	2741	2584	2396	1765	1617
	Pre-Covid	2992	3126	3276	3328	3292	3210	2998	2781	2631	2397	1770	1608
4YO	2023	1647	1620	1645	1633	1591	1524	1423					
	2022	1677	1660	1695	1697	1653	1590	1509	1499	1409	1304	997	921
	Pre-Covid	1635	1663	1708	1720	1684	1656	1562	1484	1417	1334	1047	935
5YO+	2023	2388	2390	2424	2440	2392	2299	2244					
	2022	2225	2239	2303	2325	2266	2173	2096	2054	1994	1820	1520	1430
	Pre-Covid	2298	2317	2375	2425	2382	2309	2217	2103	2005	1848	1574	1457
<b>Total</b>	<b>2023</b>	<b>8713</b>	<b>9295</b>	<b>9715</b>	<b>9911</b>	<b>10201</b>	<b>10258</b>	<b>10065</b>					
	<b>2022</b>	<b>8770</b>	<b>9318</b>	<b>9820</b>	<b>10187</b>	<b>10369</b>	<b>10250</b>	<b>9984</b>	<b>9896</b>	<b>9596</b>	<b>9016</b>	<b>7139</b>	<b>6701</b>
	<b>Pre-Covid</b>	<b>9029</b>	<b>9531</b>	<b>10098</b>	<b>10580</b>	<b>10753</b>	<b>10769</b>	<b>10491</b>	<b>10150</b>	<b>9851</b>	<b>9216</b>	<b>7490</b>	<b>7000</b>

'Pre-Covid' is 2019 values

## Monthly Flat Horses in Training

2023 against 2022 and Pre-Covid, shown with % Difference

Period — Pre-Covid — 2022 — 2023



'Pre-Covid' is 2019 values

## Jump (including Dual)

AgeCat	Period	Jan	Feb	Mar	Apr	May	Jun	Jul	Aug	Sep	Oct	Nov	Dec
3YO	2023	35	42	50	78	98	109	170					
	2022	44	55	68	84	98	168	235	291	424	497	583	632
	Pre-Covid	32	44	56	78	94	120	174	254	363	501	593	652
4-5YO	2023	1991	2076	2112	2056	1634	1197	1446					
	2022	1820	1931	2000	1903	1400	1156	1562	2031	2320	2476	2588	2658
	Pre-Covid	1865	1945	1982	1886	1416	1095	1369	1993	2247	2433	2575	2578
6-7YO	2023	2359	2298	2254	2135	1684	1241	1307					
	2022	2340	2287	2236	2035	1505	1206	1437	1757	1903	1925	1889	1835
	Pre-Covid	2241	2224	2191	2029	1496	1158	1312	1688	1788	1900	1918	1863
8YO+	2023	1963	1896	1819	1691	1379	1048	1046					
	2022	2066	1977	1865	1708	1331	1054	1094	1248	1306	1292	1266	1238
	Pre-Covid	1990	1952	1907	1754	1386	1112	1134	1252	1289	1339	1347	1299
<b>Total</b>	<b>2023</b>	<b>6348</b>	<b>6312</b>	<b>6235</b>	<b>5960</b>	<b>4795</b>	<b>3595</b>	<b>3969</b>					
	<b>2022</b>	<b>6270</b>	<b>6250</b>	<b>6169</b>	<b>5730</b>	<b>4334</b>	<b>3584</b>	<b>4328</b>	<b>5327</b>	<b>5953</b>	<b>6190</b>	<b>6326</b>	<b>6363</b>
	<b>Pre-Covid</b>	<b>6128</b>	<b>6165</b>	<b>6136</b>	<b>5747</b>	<b>4392</b>	<b>3485</b>	<b>3989</b>	<b>5187</b>	<b>5687</b>	<b>6173</b>	<b>6433</b>	<b>6392</b>

'Pre-Covid' is 2019 values

## Monthly Jump Horses in Training

2023 against 2022 and Pre-Covid, shown with % Difference

Period — Pre-Covid — 2022 — 2023



'Pre-Covid' is 2019 values

## Hunter Chasers

AgeCat	Period	Jan	Feb	Mar	Apr	May	Jun	Jul	Aug	Sep	Oct	Nov	Dec
4-5YO	2023	100	144	218	248	253	226	216					
	2022	93	147	202	240	239	221	213	197	189	1	72	138
	Pre-Covid	92	170	213	267	268	263	257			32		136
6-7YO	2023	187	245	266	300	308	288	281					
	2022	207	256	296	311	311	300	297	293	287	2	62	130
	Pre-Covid	295	402	451	471	472	462	451			77		167
8-9YO	2023	183	235	272	288	283	278	275					
	2022	217	270	299	315	315	307	306	304	301	4	80	124
	Pre-Covid	242	328	368	391	387	368	364			61		142
10YO+	2023	254	325	379	393	393	378	376					
	2022	300	370	401	428	428	422	420	420	419	7	67	132
	Pre-Covid	371	485	547	581	576	554	551			74		162
<b>Total</b>	<b>2023</b>	<b>724</b>	<b>949</b>	<b>1135</b>	<b>1229</b>	<b>1237</b>	<b>1170</b>	<b>1148</b>					
	<b>2022</b>	<b>817</b>	<b>1043</b>	<b>1198</b>	<b>1294</b>	<b>1293</b>	<b>1250</b>	<b>1236</b>	<b>1214</b>	<b>1196</b>	<b>14</b>	<b>281</b>	<b>524</b>
	<b>Pre-Covid</b>	<b>1000</b>	<b>1385</b>	<b>1579</b>	<b>1710</b>	<b>1703</b>	<b>1647</b>	<b>1623</b>				<b>244</b>	<b>607</b>

'Pre-Covid' is 2019 values

## Monthly Hunter Chasers in Training

2023 against 2022 and Pre-Covid, shown with % Difference

Period — Pre-Covid — 2022 — 2023



'Pre-Covid' is 2019 values



July 2023 Horses in Training by Rating Band Snapshot versus Previous Years

Flat (including Dual)

AgeCat	RatBand	2014	2015	2016	2017	2018	2019	2020	2021	2022	2023
2YO	Unrated	3,127 (88.2%)	3,276 (89.0%)	3,298 (89.3%)	3,404 (90.9%)	3,368 (90.4%)	3,390 (91.3%)	3,165 (91.6%)	3,131 (88.4%)	3,166 (89.6%)	3,141 (89.9%)
	0-50	21 (0.6%)	23 (0.6%)	18 (0.5%)	18 (0.5%)	20 (0.5%)	18 (0.5%)	6 (0.2%)	27 (0.8%)	26 (0.7%)	29 (0.8%)
	51-60	64 (1.8%)	44 (1.2%)	46 (1.2%)	47 (1.3%)	57 (1.5%)	44 (1.2%)	22 (0.6%)	46 (1.3%)	43 (1.2%)	42 (1.2%)
	61-70	86 (2.4%)	101 (2.7%)	108 (2.9%)	84 (2.2%)	80 (2.1%)	86 (2.3%)	67 (1.9%)	90 (2.5%)	86 (2.4%)	93 (2.7%)
	71-80	129 (3.6%)	136 (3.7%)	114 (3.1%)	111 (3.0%)	103 (2.8%)	99 (2.7%)	100 (2.9%)	123 (3.5%)	108 (3.1%)	99 (2.8%)
	81-90	76 (2.1%)	66 (1.8%)	77 (2.1%)	49 (1.3%)	63 (1.7%)	48 (1.3%)	55 (1.6%)	79 (2.2%)	56 (1.6%)	62 (1.8%)
	91-100	29 (0.8%)	19 (0.5%)	22 (0.6%)	20 (0.5%)	26 (0.7%)	20 (0.5%)	28 (0.8%)	25 (0.7%)	35 (1.0%)	21 (0.6%)
	101+	13 (0.4%)	15 (0.4%)	9 (0.2%)	13 (0.3%)	8 (0.2%)	9 (0.2%)	12 (0.3%)	20 (0.6%)	13 (0.4%)	8 (0.2%)
Subtotal		3,545 (100.0%)	3,680 (100.0%)	3,692 (100.0%)	3,746 (100.0%)	3,725 (100.0%)	3,714 (100.0%)	3,455 (100.0%)	3,541 (100.0%)	3,533 (100.0%)	3,495 (100.0%)
3YO	Unrated	674 (25.5%)	705 (26.2%)	716 (25.7%)	757 (26.2%)	1,028 (33.4%)	896 (29.9%)	1,250 (38.7%)	899 (30.7%)	822 (28.9%)	849 (29.2%)
	0-50	183 (6.9%)	164 (6.1%)	168 (6.0%)	196 (6.8%)	178 (5.8%)	252 (8.4%)	176 (5.5%)	216 (7.4%)	209 (7.3%)	183 (6.3%)
	51-60	283 (10.7%)	320 (11.9%)	331 (11.9%)	335 (11.6%)	298 (9.7%)	373 (12.4%)	307 (9.5%)	314 (10.7%)	341 (12.0%)	323 (11.1%)
	61-70	446 (16.8%)	416 (15.5%)	454 (16.3%)	463 (16.0%)	467 (15.2%)	434 (14.5%)	439 (13.6%)	468 (16.0%)	436 (15.3%)	491 (16.9%)
	71-80	482 (18.2%)	491 (18.2%)	536 (19.3%)	539 (18.6%)	496 (16.1%)	447 (14.9%)	542 (16.8%)	487 (16.6%)	488 (17.1%)	476 (16.4%)
	81-90	330 (12.5%)	329 (12.2%)	330 (11.9%)	364 (13.6%)	335 (10.9%)	329 (11.0%)	303 (9.4%)	312 (10.6%)	300 (10.5%)	325 (11.2%)
	91-100	147 (5.6%)	153 (5.7%)	146 (5.2%)	144 (5.0%)	168 (5.5%)	156 (5.2%)	136 (4.2%)	135 (4.6%)	138 (4.8%)	159 (5.5%)
	101+	103 (3.9%)	114 (4.2%)	103 (3.7%)	96 (3.3%)	106 (3.4%)	111 (3.7%)	74 (2.3%)	102 (3.5%)	112 (3.9%)	97 (3.3%)
Subtotal		2,648 (100.0%)	2,692 (100.0%)	2,784 (100.0%)	2,894 (100.0%)	3,076 (100.0%)	2,998 (100.0%)	3,227 (100.0%)	2,933 (100.0%)	2,846 (100.0%)	2,903 (100.0%)
4YO	Unrated	130 (10.3%)	105 (8.2%)	154 (11.8%)	175 (11.9%)	215 (14.3%)	201 (12.9%)	260 (17.2%)	250 (16.4%)	214 (14.2%)	203 (14.3%)
	0-50	114 (9.1%)	95 (7.4%)	116 (8.9%)	144 (9.8%)	172 (11.4%)	203 (13.0%)	147 (9.7%)	177 (11.6%)	175 (11.6%)	198 (13.9%)
	51-60	162 (12.9%)	182 (14.2%)	177 (13.6%)	205 (14.0%)	156 (10.4%)	215 (13.8%)	201 (13.3%)	218 (14.3%)	216 (14.3%)	190 (13.4%)
	61-70	224 (17.8%)	207 (16.2%)	196 (15.0%)	242 (16.5%)	282 (18.7%)	257 (16.5%)	252 (16.7%)	256 (16.7%)	260 (17.2%)	242 (17.0%)
	71-80	223 (17.7%)	253 (19.8%)	241 (18.5%)	259 (17.6%)	259 (17.2%)	247 (15.8%)	239 (15.8%)	238 (15.6%)	254 (16.8%)	239 (16.8%)
	81-90	176 (14.0%)	187 (14.6%)	203 (15.5%)	199 (13.6%)	187 (12.4%)	194 (12.4%)	181 (12.0%)	178 (11.6%)	182 (12.1%)	151 (10.6%)
	91-100	130 (10.3%)	128 (10.0%)	119 (9.1%)	124 (8.4%)	136 (9.0%)	140 (9.0%)	121 (8.0%)	135 (8.8%)	106 (7.0%)	97 (6.8%)
	101+	98 (7.8%)	122 (9.5%)	100 (7.7%)	120 (8.2%)	98 (6.5%)	105 (6.7%)	111 (7.3%)	77 (5.0%)	102 (6.8%)	103 (7.2%)
Subtotal		1,257 (100.0%)	1,279 (100.0%)	1,306 (100.0%)	1,468 (100.0%)	1,505 (100.0%)	1,562 (100.0%)	1,512 (100.0%)	1,529 (100.0%)	1,509 (100.0%)	1,423 (100.0%)
5YO+	Unrated	146 (6.8%)	159 (7.4%)	244 (11.1%)	308 (13.9%)	378 (16.2%)	266 (12.0%)	393 (17.0%)	288 (13.5%)	324 (15.5%)	241 (10.7%)
	0-50	270 (12.6%)	232 (10.9%)	198 (9.0%)	224 (10.1%)	301 (12.9%)	351 (15.8%)	270 (11.7%)	302 (14.2%)	269 (12.8%)	295 (13.1%)
	51-60	348 (16.2%)	320 (15.0%)	321 (14.7%)	327 (14.8%)	349 (15.0%)	339 (15.3%)	345 (14.9%)	345 (16.2%)	326 (15.6%)	389 (17.3%)
	61-70	399 (18.6%)	443 (20.7%)	411 (18.8%)	362 (16.4%)	372 (16.0%)	378 (17.1%)	389 (16.9%)	369 (17.3%)	376 (17.9%)	416 (18.5%)
	71-80	377 (17.6%)	385 (18.0%)	378 (17.3%)	342 (15.5%)	322 (13.8%)	331 (14.9%)	363 (15.7%)	303 (14.2%)	277 (13.2%)	359 (16.0%)
	81-90	270 (12.6%)	291 (13.6%)	275 (12.6%)	305 (13.8%)	284 (12.2%)	248 (11.2%)	259 (11.2%)	221 (10.4%)	224 (10.7%)	241 (10.7%)
	91-100	174 (8.1%)	159 (7.4%)	212 (9.7%)	170 (7.7%)	177 (7.6%)	159 (7.2%)	143 (6.2%)	149 (7.0%)	156 (7.4%)	160 (7.1%)
	101+	159 (7.4%)	146 (6.8%)	150 (6.9%)	173 (7.8%)	144 (6.2%)	145 (6.5%)	146 (6.3%)	151 (7.1%)	144 (6.9%)	143 (6.4%)
Subtotal		2,143 (100.0%)	2,135 (100.0%)	2,189 (100.0%)	2,211 (100.0%)	2,327 (100.0%)	2,217 (100.0%)	2,308 (100.0%)	2,128 (100.0%)	2,096 (100.0%)	2,244 (100.0%)
Overall	Unrated	4,077 (42.5%)	4,245 (43.4%)	4,412 (44.2%)	4,644 (45.0%)	4,989 (46.9%)	4,753 (45.3%)	5,068 (48.3%)	4,568 (45.1%)	4,526 (45.3%)	4,434 (44.1%)
	0-50	588 (6.1%)	514 (5.3%)	500 (5.0%)	582 (5.6%)	671 (6.3%)	824 (7.9%)	599 (5.7%)	722 (7.1%)	679 (6.8%)	705 (7.0%)
	51-60	857 (8.9%)	866 (8.8%)	875 (8.8%)	914 (8.9%)	860 (8.1%)	971 (9.3%)	875 (8.3%)	923 (9.1%)	926 (9.3%)	944 (9.4%)
	61-70	1,155 (12.0%)	1,167 (11.9%)	1,169 (11.7%)	1,151 (11.2%)	1,201 (11.3%)	1,155 (11.0%)	1,147 (10.9%)	1,183 (11.7%)	1,158 (11.6%)	1,242 (12.3%)
	71-80	1,211 (12.6%)	1,265 (12.9%)	1,269 (12.7%)	1,251 (12.1%)	1,180 (11.1%)	1,124 (10.7%)	1,244 (11.8%)	1,151 (11.4%)	1,127 (11.3%)	1,173 (11.7%)
	81-90	852 (8.9%)	873 (8.9%)	885 (8.9%)	917 (8.9%)	869 (8.2%)	819 (7.8%)	798 (7.6%)	790 (7.8%)	762 (7.6%)	779 (7.7%)
	91-100	480 (5.0%)	459 (4.7%)	499 (5.0%)	458 (4.4%)	507 (4.8%)	475 (4.5%)	428 (4.1%)	444 (4.4%)	435 (4.4%)	437 (4.3%)
	101+	373 (3.9%)	397 (4.1%)	362 (3.6%)	402 (3.9%)	356 (3.3%)	370 (3.5%)	343 (3.3%)	350 (3.5%)	371 (3.7%)	351 (3.5%)
Total		9,593 (100.0%)	9,786 (100.0%)	9,971 (100.0%)	10,319 (100.0%)	10,633 (100.0%)	10,491 (100.0%)	10,502 (100.0%)	10,131 (100.0%)	9,984 (100.0%)	10,065 (100.0%)

Where a horse has more than one published rating (published Flat Turf and published Flat AWT mark), the higher of the two is taken.

## Jump (including Dual)

AgeCat	RatBand	2014	2015	2016	2017	2018	2019	2020	2021	2022	2023
3YO	Unrated	227 (100.0%)	186 (100.0%)	186 (100.0%)	187 (100.0%)	171 (100.0%)	174 (100.0%)	158 (100.0%)	204 (100.0%)	235 (100.0%)	170 (100.0%)
	<b>Subtotal</b>	<b>227 (100.0%)</b>	<b>186 (100.0%)</b>	<b>186 (100.0%)</b>	<b>187 (100.0%)</b>	<b>171 (100.0%)</b>	<b>174 (100.0%)</b>	<b>158 (100.0%)</b>	<b>204 (100.0%)</b>	<b>235 (100.0%)</b>	<b>170 (100.0%)</b>
4-5YO	Unrated	771 (66.9%)	787 (66.8%)	738 (66.5%)	804 (67.9%)	869 (67.9%)	941 (68.7%)	1,282 (74.5%)	990 (70.6%)	1,091 (69.8%)	993 (68.7%)
	0-100	148 (12.8%)	127 (10.8%)	142 (12.8%)	145 (12.2%)	130 (10.2%)	154 (11.2%)	148 (8.6%)	191 (13.6%)	225 (14.4%)	258 (17.8%)
	101-110	68 (5.9%)	75 (6.4%)	90 (8.1%)	76 (6.4%)	105 (8.2%)	88 (6.4%)	86 (5.0%)	73 (5.2%)	117 (7.5%)	90 (6.2%)
	111-120	64 (5.6%)	91 (7.7%)	73 (6.6%)	72 (6.1%)	87 (6.8%)	94 (6.9%)	82 (4.8%)	80 (5.7%)	63 (4.0%)	66 (4.6%)
	121-130	57 (4.9%)	59 (5.0%)	35 (3.2%)	53 (4.5%)	57 (4.5%)	64 (4.7%)	83 (4.8%)	39 (2.8%)	47 (3.0%)	27 (1.9%)
	131-140	28 (2.4%)	30 (2.5%)	27 (2.4%)	21 (1.8%)	25 (2.0%)	16 (1.2%)	24 (1.4%)	27 (1.9%)	12 (0.8%)	10 (0.7%)
	141-150	10 (0.9%)	9 (0.8%)	4 (0.4%)	12 (1.0%)	5 (0.4%)	11 (0.8%)	10 (0.6%)	1 (0.1%)	6 (0.4%)	2 (0.1%)
	151+	6 (0.5%)	1 (0.1%)	NA (-)	1 (0.1%)	2 (0.2%)	1 (0.1%)	5 (0.3%)	2 (0.1%)	1 (0.1%)	NA (-)
<b>Subtotal</b>		<b>1,152 (100.0%)</b>	<b>1,179 (100.0%)</b>	<b>1,109 (100.0%)</b>	<b>1,184 (100.0%)</b>	<b>1,280 (100.0%)</b>	<b>1,369 (100.0%)</b>	<b>1,720 (100.0%)</b>	<b>1,403 (100.0%)</b>	<b>1,562 (100.0%)</b>	<b>1,446 (100.0%)</b>
6-7YO	Unrated	310 (26.9%)	324 (26.8%)	327 (28.4%)	323 (28.3%)	382 (28.6%)	323 (24.6%)	496 (30.1%)	337 (22.8%)	460 (32.0%)	304 (23.3%)
	0-100	296 (25.6%)	305 (25.3%)	275 (23.9%)	264 (23.1%)	335 (25.0%)	325 (24.8%)	335 (20.3%)	443 (30.0%)	406 (28.3%)	491 (37.6%)
	101-110	141 (12.2%)	167 (13.8%)	185 (16.1%)	166 (14.5%)	171 (12.8%)	166 (12.7%)	207 (12.6%)	190 (12.8%)	171 (11.9%)	182 (13.9%)
	111-120	183 (15.9%)	173 (14.3%)	152 (13.2%)	154 (13.5%)	181 (13.5%)	200 (15.2%)	217 (13.2%)	191 (12.9%)	158 (11.0%)	158 (12.1%)
	121-130	119 (10.3%)	125 (10.4%)	116 (10.1%)	116 (10.2%)	148 (11.1%)	148 (11.3%)	191 (11.6%)	161 (10.9%)	122 (8.5%)	103 (7.9%)
	131-140	57 (4.9%)	70 (5.8%)	65 (5.6%)	85 (7.4%)	87 (6.5%)	105 (8.0%)	133 (8.1%)	100 (6.8%)	89 (6.2%)	44 (3.4%)
	141-150	36 (3.1%)	30 (2.5%)	26 (2.3%)	22 (1.9%)	29 (2.2%)	27 (2.1%)	47 (2.9%)	22 (2.9%)	22 (1.5%)	18 (1.4%)
	151+	12 (1.0%)	13 (1.1%)	5 (0.4%)	11 (1.0%)	5 (0.4%)	18 (1.4%)	21 (1.3%)	14 (0.9%)	9 (0.6%)	7 (0.5%)
<b>Subtotal</b>		<b>1,154 (100.0%)</b>	<b>1,207 (100.0%)</b>	<b>1,151 (100.0%)</b>	<b>1,141 (100.0%)</b>	<b>1,338 (100.0%)</b>	<b>1,312 (100.0%)</b>	<b>1,647 (100.0%)</b>	<b>1,479 (100.0%)</b>	<b>1,437 (100.0%)</b>	<b>1,307 (100.0%)</b>
8YO+	Unrated	129 (12.6%)	139 (13.4%)	169 (15.4%)	172 (16.4%)	204 (16.4%)	167 (14.7%)	293 (22.3%)	165 (13.1%)	226 (20.7%)	181 (17.3%)
	0-100	417 (40.7%)	377 (36.3%)	385 (35.1%)	376 (35.8%)	427 (34.4%)	386 (34.0%)	332 (25.3%)	446 (35.5%)	330 (30.2%)	351 (33.6%)
	101-110	156 (15.2%)	153 (14.7%)	165 (15.0%)	147 (14.0%)	199 (16.0%)	173 (15.3%)	145 (11.1%)	174 (13.8%)	143 (13.1%)	142 (13.6%)
	111-120	122 (11.9%)	139 (13.4%)	143 (13.0%)	138 (13.2%)	133 (10.7%)	145 (12.8%)	161 (12.3%)	167 (13.3%)	137 (12.5%)	134 (12.8%)
	121-130	102 (10.0%)	114 (11.0%)	114 (10.4%)	107 (10.2%)	140 (11.3%)	118 (10.4%)	160 (12.2%)	146 (11.6%)	114 (10.4%)	119 (11.4%)
	131-140	58 (5.7%)	75 (7.2%)	86 (7.8%)	66 (6.3%)	92 (7.4%)	84 (7.4%)	110 (8.4%)	98 (7.8%)	88 (8.0%)	69 (6.6%)
	141-150	27 (2.6%)	29 (2.8%)	24 (2.2%)	31 (3.0%)	37 (3.0%)	44 (3.9%)	75 (5.7%)	32 (2.5%)	36 (3.3%)	29 (2.8%)
	151+	13 (1.3%)	13 (1.3%)	12 (1.1%)	12 (1.1%)	11 (0.9%)	17 (1.5%)	35 (2.7%)	30 (2.4%)	20 (1.8%)	21 (2.0%)
<b>Subtotal</b>		<b>1,024 (100.0%)</b>	<b>1,039 (100.0%)</b>	<b>1,098 (100.0%)</b>	<b>1,049 (100.0%)</b>	<b>1,243 (100.0%)</b>	<b>1,134 (100.0%)</b>	<b>1,311 (100.0%)</b>	<b>1,258 (100.0%)</b>	<b>1,094 (100.0%)</b>	<b>1,046 (100.0%)</b>
Overall	Unrated	1,437 (40.4%)	1,436 (39.8%)	1,420 (40.1%)	1,486 (41.7%)	1,626 (40.3%)	1,605 (40.2%)	2,229 (46.1%)	1,696 (39.0%)	2,012 (46.5%)	1,648 (41.5%)
	0-100	861 (24.2%)	809 (22.4%)	802 (22.6%)	785 (22.0%)	892 (22.1%)	865 (21.7%)	815 (16.9%)	1,080 (24.9%)	961 (22.2%)	1,100 (27.7%)
	101-110	365 (10.3%)	395 (10.9%)	440 (12.4%)	389 (10.9%)	475 (11.8%)	427 (10.7%)	438 (9.1%)	437 (10.1%)	431 (10.0%)	414 (10.4%)
	111-120	369 (10.4%)	403 (11.2%)	368 (10.4%)	364 (10.2%)	401 (9.9%)	439 (11.0%)	460 (9.5%)	438 (10.1%)	358 (8.3%)	358 (9.0%)
	121-130	278 (7.8%)	298 (8.3%)	265 (7.5%)	276 (7.8%)	345 (8.6%)	330 (8.3%)	434 (9.0%)	346 (8.0%)	283 (6.5%)	249 (6.3%)
	131-140	143 (4.0%)	175 (4.8%)	178 (5.0%)	172 (4.8%)	204 (5.1%)	205 (5.1%)	267 (5.5%)	225 (5.2%)	189 (4.4%)	123 (3.1%)
	141-150	73 (2.1%)	68 (1.9%)	54 (1.5%)	65 (1.8%)	71 (1.8%)	82 (2.1%)	132 (2.7%)	76 (1.7%)	64 (1.5%)	49 (1.2%)
<b>Total</b>		<b>3,557 (100.0%)</b>	<b>3,611 (100.0%)</b>	<b>3,544 (100.0%)</b>	<b>3,561 (100.0%)</b>	<b>4,032 (100.0%)</b>	<b>3,989 (100.0%)</b>	<b>4,836 (100.0%)</b>	<b>4,344 (100.0%)</b>	<b>4,328 (100.0%)</b>	<b>3,969 (100.0%)</b>

Where a horse has more than one published rating (published Hurdle and published Chase mark), the higher of the two is taken.

# Young Horses Entering Training

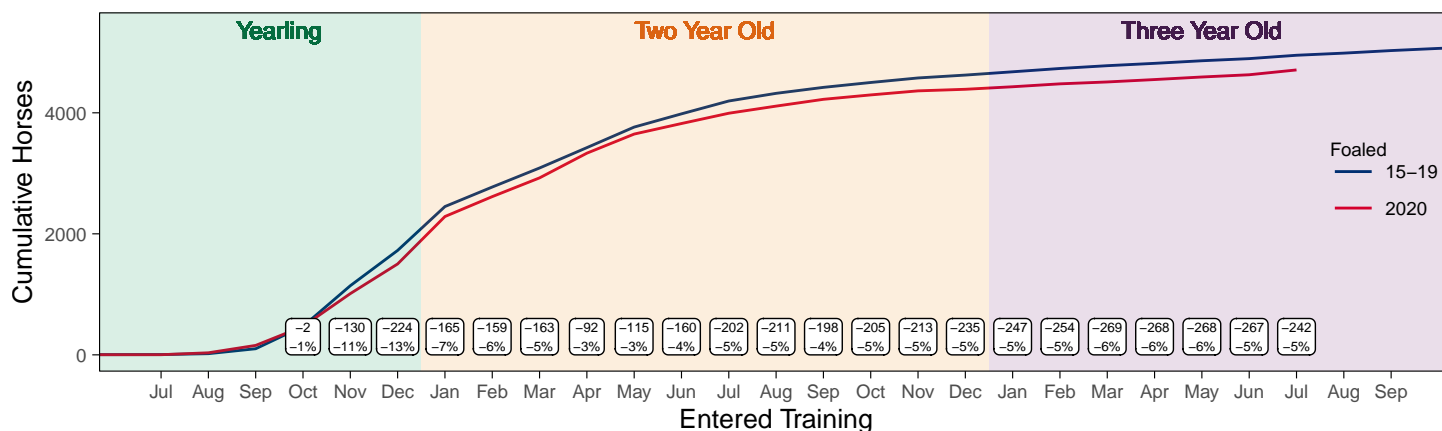
## Flat Yearlings in Training versus Previous Years

Period	Jan	Feb	Mar	Apr	May	Jun	Jul	Aug	Sep	Oct	Nov	Dec
2023	1	2	2	2	3	3	4					
2022	0	0	0	0	0	0	0	2	76	274	705	1149
5YrAvg	1	1	1	1	1	1	1	2	51	216	581	1042

## Foals Entering Training for the First Time

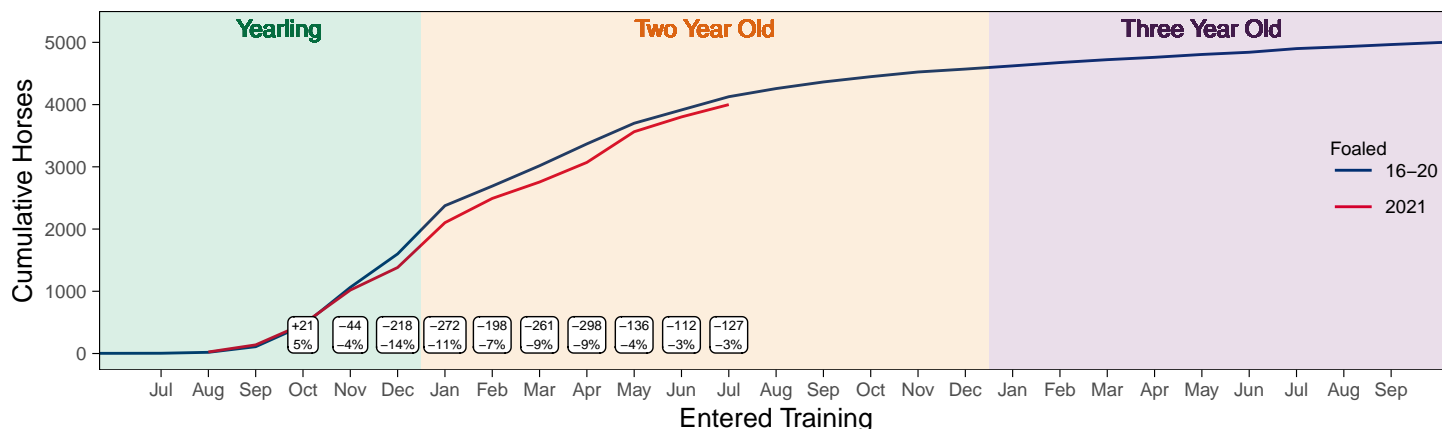
### 2020 Foals Entering Training Over Time

Cumulative Flat Horses foaled in 2020 shown by first in training notification against trend



### 2021 Foals Entering Training Over Time

Cumulative Flat Horses foaled in 2021 shown by first in training notification against trend



## Year to Date Horses in Training

Type	2014	2015	2016	2017	2018	2019	2020	2021	2022	2023	vs. Last Year	vs. Pre-Covid
Flat	11684	11984	12455	12700	12667	12800	12601	12525	12292	12252	-40 / -0.3%	-548 / -4.3%
Jump	7354	7424	7386	7255	7135	7677	7397	8257	7791	7590	-201 / -2.6%	-87 / -1.1%
Dual	879	829	776	961	1229	839	843	871	833	911	+78 / +9.4%	+72 / +8.6%
Hunter	2117	2002	1885	1862	1691	1658	1394	1148	1251	1188	-63 / -5.0%	-470 / -28.3%
<b>Total</b>	<b>19917</b>	<b>20237</b>	<b>20617</b>	<b>20916</b>	<b>21031</b>	<b>21316</b>	<b>20841</b>	<b>21653</b>	<b>20916</b>	<b>20753</b>	<b>-163 / -0.8%</b>	<b>-563 / -2.6%</b>

'vs. Pre-Covid' is comparison between 2023 and 2019

### Flat

AgeCat	2014	2015	2016	2017	2018	2019	2020	2021	2022	2023	vs. Last Year	vs. Pre-Covid
2YO	3915	4217	4224	4287	4208	4241	3989	4052	3934	3955	+21 / +0.5%	-286 / -6.7%
3YO	3475	3568	3793	3887	4030	3959	4026	3894	3829	3789	-40 / -1.0%	-170 / -4.3%
4YO	1694	1694	1830	1903	1863	1980	1929	2020	2006	1922	-84 / -4.2%	-58 / -2.9%
5YO+	2600	2505	2608	2623	2566	2620	2657	2559	2523	2586	+63 / +2.5%	-34 / -1.3%
<b>Total</b>	<b>11684</b>	<b>11984</b>	<b>12455</b>	<b>12700</b>	<b>12667</b>	<b>12800</b>	<b>12601</b>	<b>12525</b>	<b>12292</b>	<b>12252</b>	<b>-40 / -0.3%</b>	<b>-548 / -4.3%</b>

'vs. Pre-Covid' is comparison between 2023 and 2019

### Jump

AgeCat	2014	2015	2016	2017	2018	2019	2020	2021	2022	2023	vs. Last Year	vs. Pre-Covid
3YO	214	215	175	144	145	164	125	175	198	147	-51 / -25.8%	-17 / -10.4%
4-5YO	2273	2315	2375	2371	2275	2506	2410	2492	2568	2595	+27 / +1.1%	+89 / +3.6%
6-7YO	2524	2609	2441	2343	2428	2605	2565	2888	2679	2628	-51 / -1.9%	+23 / +0.9%
8YO+	2343	2285	2395	2397	2287	2402	2297	2702	2346	2220	-126 / -5.4%	-182 / -7.6%
<b>Total</b>	<b>7354</b>	<b>7424</b>	<b>7386</b>	<b>7255</b>	<b>7135</b>	<b>7677</b>	<b>7397</b>	<b>8257</b>	<b>7791</b>	<b>7590</b>	<b>-201 / -2.6%</b>	<b>-87 / -1.1%</b>

'vs. Pre-Covid' is comparison between 2023 and 2019

### Dual

AgeCat	2014	2015	2016	2017	2018	2019	2020	2021	2022	2023	vs. Last Year	vs. Pre-Covid
3YO	138	115	126	137	135	108	124	149	185	162	-23 / -12.4%	+54 / +50.0%
4YO	223	177	169	249	290	207	192	231	196	238	+42 / +21.4%	+31 / +15.0%
5YO+	518	537	481	575	804	524	527	491	452	511	+59 / +13.1%	-13 / -2.5%
<b>Total</b>	<b>879</b>	<b>829</b>	<b>776</b>	<b>961</b>	<b>1229</b>	<b>839</b>	<b>843</b>	<b>871</b>	<b>833</b>	<b>911</b>	<b>+78 / +9.4%</b>	<b>+72 / +8.6%</b>

'vs. Pre-Covid' is comparison between 2023 and 2019

### Hunter Chasers

AgeCat	2014	2015	2016	2017	2018	2019	2020	2021	2022	2023	vs. Last Year	vs. Pre-Covid
4-5YO	182	187	189	199	219	262	253	134	216	227	+11 / +5.1%	-35 / -13.4%
6-7YO	662	572	508	497	471	466	366	256	301	287	-14 / -4.7%	-179 / -38.4%
8-9YO	610	606	508	507	398	371	304	279	312	281	-31 / -9.9%	-90 / -24.3%
10YO+	663	637	680	659	603	559	471	479	422	393	-29 / -6.9%	-166 / -29.7%
<b>Total</b>	<b>2117</b>	<b>2002</b>	<b>1885</b>	<b>1862</b>	<b>1691</b>	<b>1658</b>	<b>1394</b>	<b>1148</b>	<b>1251</b>	<b>1188</b>	<b>-63 / -5.0%</b>	<b>-470 / -28.3%</b>

'vs. Pre-Covid' is comparison between 2023 and 2019

## Year to Date Runners

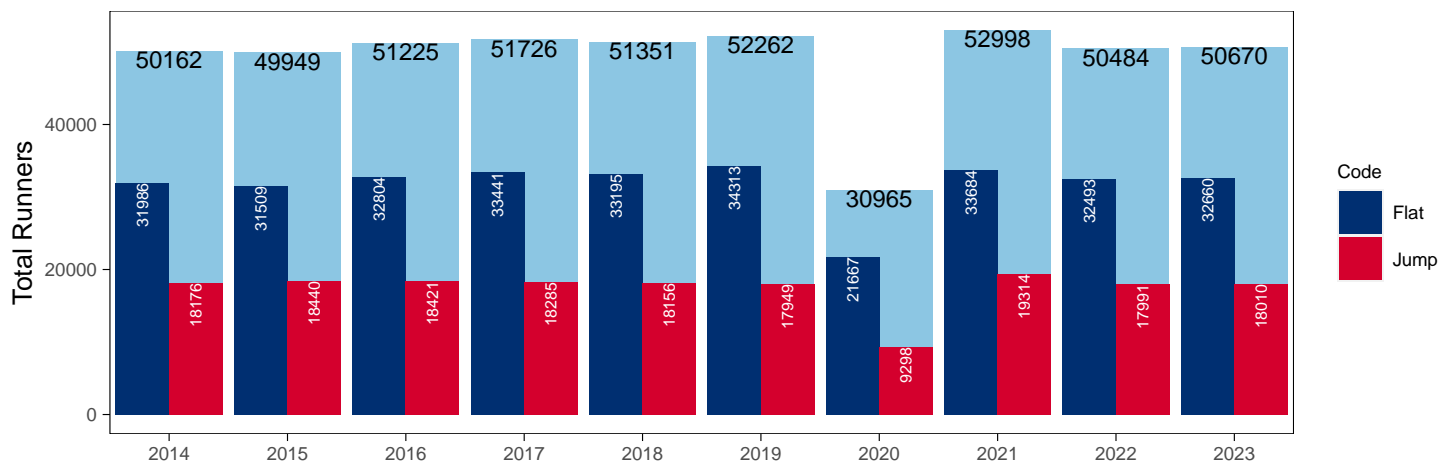
### Year to Date Total Runners

Code	2014	2015	2016	2017	2018	2019	2020	2021	2022	2023	vs. Last Year	vs. Pre-Covid
Flat	31986	31509	32804	33441	33195	34313	21667	33684	32493	32660	+167 / +0.5%	-1653 / -4.8%
Jump	18176	18440	18421	18285	18156	17949	9298	19314	17991	18010	+19 / +0.1%	+61 / +0.3%
<b>Total</b>	<b>50162</b>	<b>49949</b>	<b>51225</b>	<b>51726</b>	<b>51351</b>	<b>52262</b>	<b>30965</b>	<b>52998</b>	<b>50484</b>	<b>50670</b>	<b>+186 / +0.4%</b>	<b>-1592 / -3.0%</b>

'vs. Pre-Covid' is comparison between 2023 and 2019

### YTD Total Runners

Total Runners in GB Races, shown by Code and Total



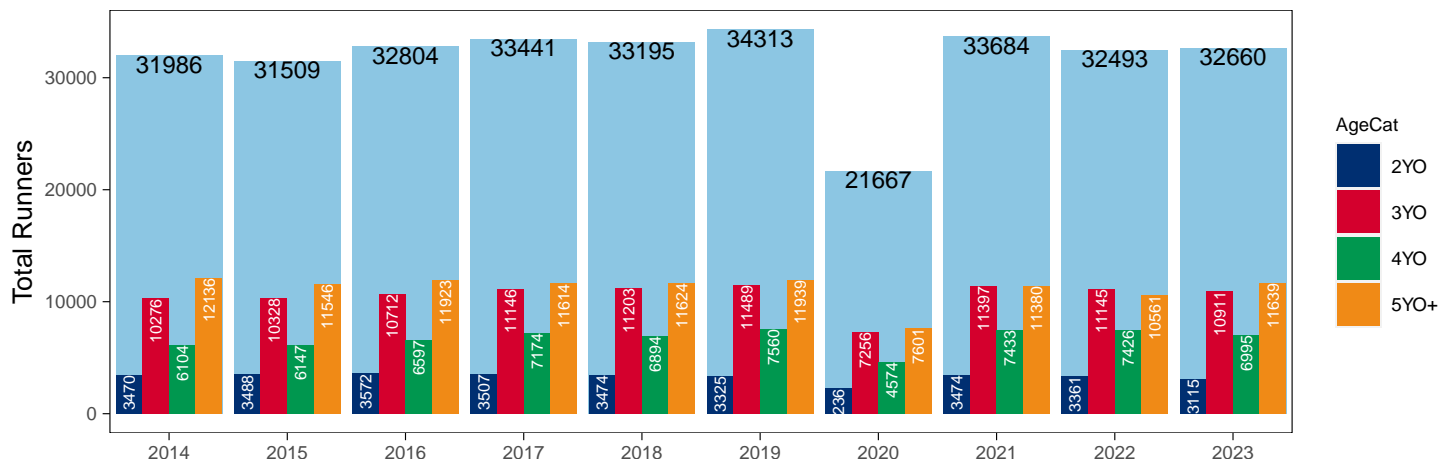
### Flat

AgeCat	2014	2015	2016	2017	2018	2019	2020	2021	2022	2023	vs. Last Year	vs. Pre-Covid
2YO	3470	3488	3572	3507	3474	3325	2236	3474	3361	3115	-246 / -7.3%	-210 / -6.3%
3YO	10276	10328	10712	11146	11203	11489	7256	11397	11145	10911	-234 / -2.1%	-578 / -5.0%
4YO	6104	6147	6597	7174	6894	7560	4574	7433	7426	6995	-431 / -5.8%	-565 / -7.5%
5YO+	12136	11546	11923	11614	11624	11939	7601	11380	10561	11639	+1078 / +10.2%	-300 / -2.5%
<b>Total</b>	<b>31986</b>	<b>31509</b>	<b>32804</b>	<b>33441</b>	<b>33195</b>	<b>34313</b>	<b>21667</b>	<b>33684</b>	<b>32493</b>	<b>32660</b>	<b>+167 / +0.5%</b>	<b>-1653 / -4.8%</b>

'vs. Pre-Covid' is comparison between 2023 and 2019

### YTD Total Flat Runners by Age

Total Runners in GB Flat Races, shown by Age Category and Total



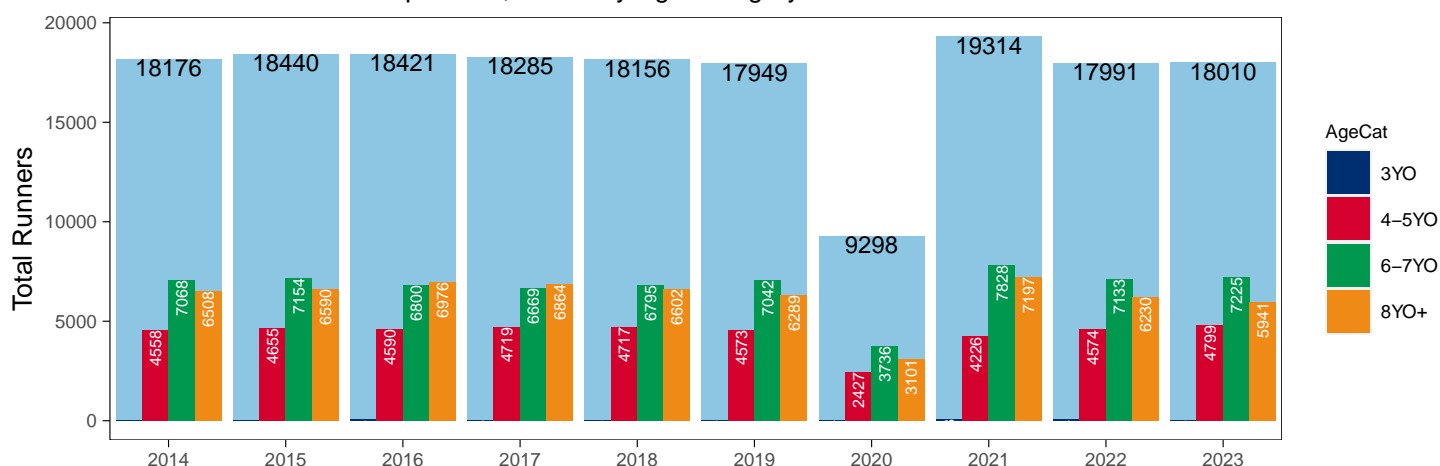
## Jump

AgeCat	2014	2015	2016	2017	2018	2019	2020	2021	2022	2023	vs. Last Year	vs. Pre-Covid
3YO	42	41	55	33	42	45	34	63	54	45	-9 / -16.7%	0 / 0.0%
4-5YO	4558	4655	4590	4719	4717	4573	2427	4226	4574	4799	+225 / +4.9%	+226 / +4.9%
6-7YO	7068	7154	6800	6669	6795	7042	3736	7828	7133	7225	+92 / +1.3%	+183 / +2.6%
8YO+	6508	6590	6976	6864	6602	6289	3101	7197	6230	5941	-289 / -4.6%	-348 / -5.5%
<b>Total</b>	<b>18176</b>	<b>18440</b>	<b>18421</b>	<b>18285</b>	<b>18156</b>	<b>17949</b>	<b>9298</b>	<b>19314</b>	<b>17991</b>	<b>18010</b>	<b>+19 / +0.1%</b>	<b>+61 / +0.3%</b>

'vs. Pre-Covid' is comparison between 2023 and 2019

### YTD Total Jump Runners by Age

Total Runners in GB Jump Races, shown by Age Category and Total



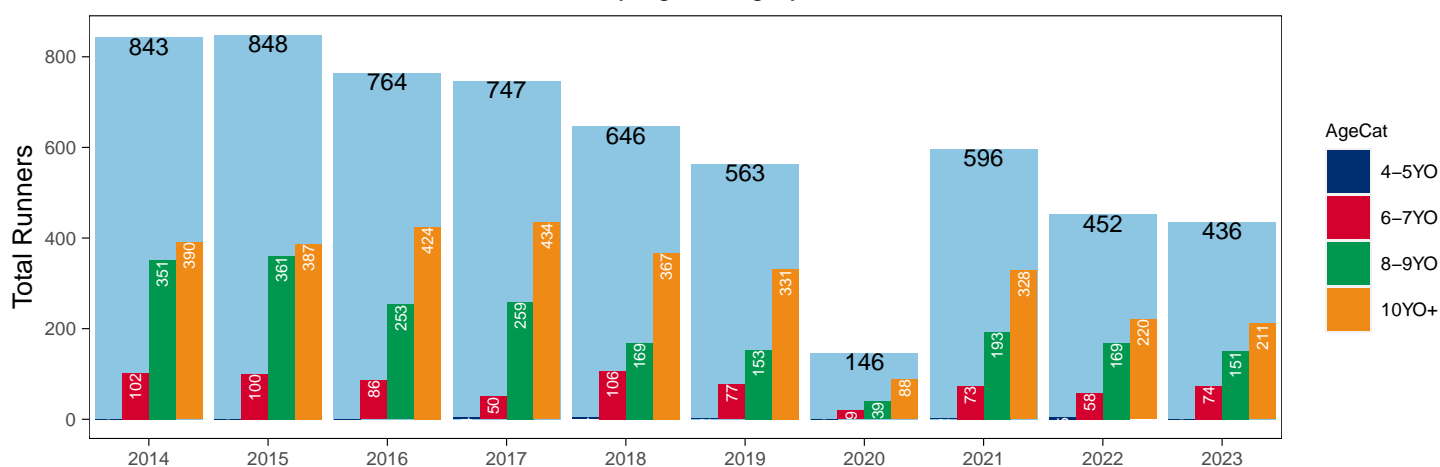
## Hunter Chases

AgeCat	2014	2015	2016	2017	2018	2019	2020	2021	2022	2023	vs. Last Year	vs. Pre-Covid
4-5YO			1	4	4	2		2	5		NA / NA	-2 / -100.0%
6-7YO	102	100	86	50	106	77	19	73	58	74	+16 / +27.6%	-3 / -3.9%
8-9YO	351	361	253	259	169	153	39	193	169	151	-18 / -10.7%	-2 / -1.3%
10YO+	390	387	424	434	367	331	88	328	220	211	-9 / -4.1%	-120 / -36.3%
<b>Total</b>	<b>843</b>	<b>848</b>	<b>764</b>	<b>747</b>	<b>646</b>	<b>563</b>	<b>146</b>	<b>596</b>	<b>452</b>	<b>436</b>	<b>-16 / -3.5%</b>	<b>-127 / -22.6%</b>

'vs. Pre-Covid' is comparison between 2023 and 2019

### YTD Total Hunter Chase Runners by Age

Total Runners in GB Hunter Chases shown by Age Category and Total



## Year to Date Total Runners by Country Trained

Code	Country	2014	2015	2016	2017	2018	2019	2020	2021	2022	2023
Flat	GB	31713	31176	32425	32987	32752	33831	21486	33454	32247	32368
	IRE	220	232	320	396	394	431	160	206	192	258
	Other	53	101	59	58	49	51	21	24	54	34
Jump	GB	17666	17891	17769	17704	17737	17370	9031	18932	17373	17319
	IRE	507	545	646	568	410	572	257	379	616	688
	Other	3	4	6	13	9	7	10	3	2	3
Overall	GB	49379	49067	50194	50691	50489	51201	30517	52386	49620	49687
	IRE	727	777	966	964	804	1003	417	585	808	946
	Other	56	105	65	71	58	58	31	27	56	37

## Year to Date GB Trained Runners Racing Abroad

Code	Country	2014	2015	2016	2017	2018	2019	2020	2021	2022	2023
Flat	IRE	56	87	75	77	70	79	10	21	34	37
	FR	150	131	136	180	168	271	89	59	103	142
	GNV	6	11	9	10	12	21	5		7	11
	UAE	326	289	208	278	276	303	281	248	276	272
	BAH									41	23
	KSA							15	21	22	15
	Other	76	68	54	57	60	62	29	26	38	53
	<b>Total</b>	<b>614</b>	<b>586</b>	<b>482</b>	<b>602</b>	<b>586</b>	<b>736</b>	<b>429</b>	<b>375</b>	<b>521</b>	<b>553</b>
Jump	IRE	84	85	82	67	44	63	7	23	29	18
	FR	18	24	39	24	7	24	18	80	75	61
	Other	7	7	4	2	3	4		3	9	3
	<b>Total</b>	<b>109</b>	<b>116</b>	<b>125</b>	<b>93</b>	<b>54</b>	<b>91</b>	<b>25</b>	<b>106</b>	<b>113</b>	<b>82</b>

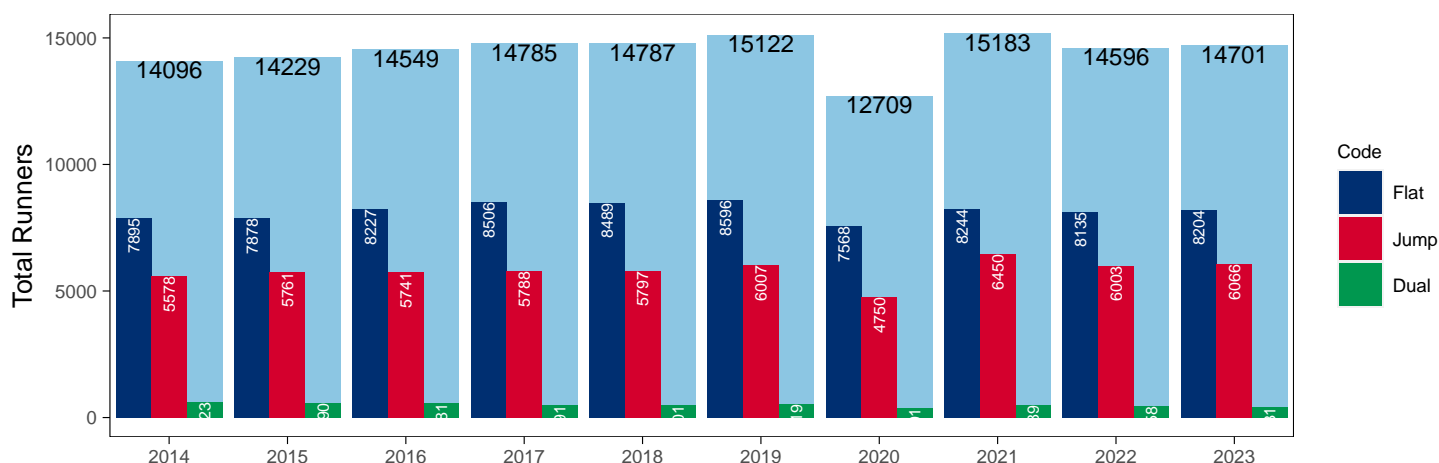
## Year to Date Individual Runners

Code	2014	2015	2016	2017	2018	2019	2020	2021	2022	2023	vs. Last Year	vs. Pre-Covid
Flat	7895	7878	8227	8506	8489	8596	7568	8244	8135	8204	+69 / +0.8%	-392 / -4.6%
Jump	5578	5761	5741	5788	5797	6007	4750	6450	6003	6066	+63 / +1.0%	+59 / +1.0%
Dual	623	590	581	491	501	519	391	489	458	431	-27 / -5.9%	-88 / -17.0%
<b>Overall</b>	<b>14096</b>	<b>14229</b>	<b>14549</b>	<b>14785</b>	<b>14787</b>	<b>15122</b>	<b>12709</b>	<b>15183</b>	<b>14596</b>	<b>14701</b>	<b>+105 / +0.7%</b>	<b>-421 / -2.8%</b>

'vs. Pre-Covid' is comparison between 2023 and 2019

## YTD Individual Runners

Individual Runners in GB Races, shown by Code and Total



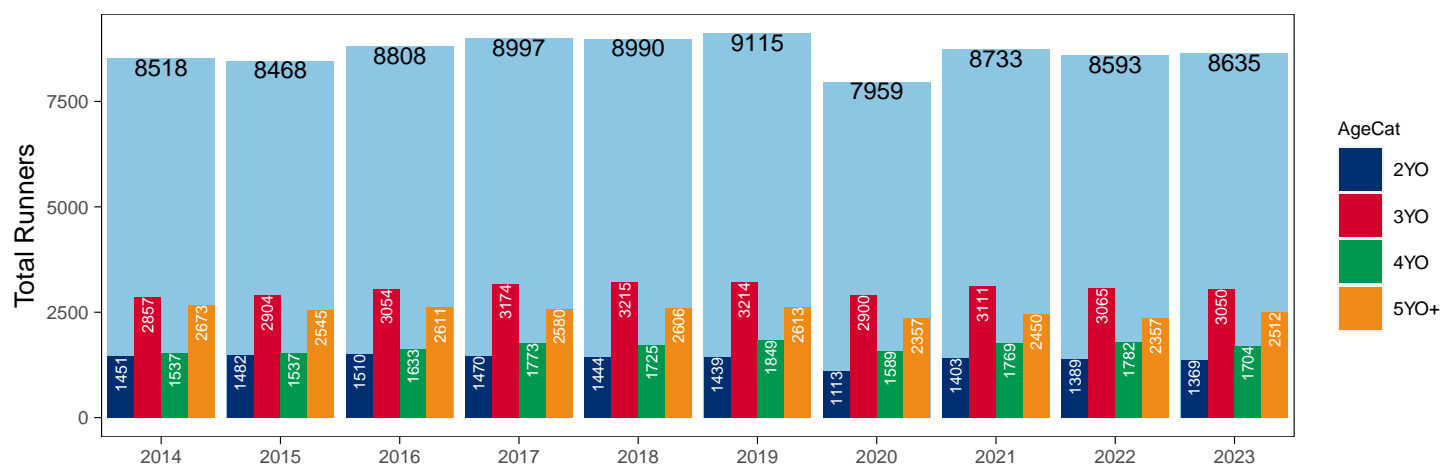
## Flat

AgeCat	2014	2015	2016	2017	2018	2019	2020	2021	2022	2023	vs. Last Year	vs. Pre-Covid
2YO	1451	1482	1510	1470	1444	1439	1113	1403	1389	1369	-20 / -1.4%	-70 / -4.9%
3YO	2857	2904	3054	3174	3215	3214	2900	3111	3065	3050	-15 / -0.5%	-164 / -5.1%
4YO	1537	1537	1633	1773	1725	1849	1589	1769	1782	1704	-78 / -4.4%	-145 / -7.8%
5YO+	2673	2545	2611	2580	2606	2613	2357	2450	2357	2512	+155 / +6.6%	-101 / -3.9%
<b>Total</b>	<b>8518</b>	<b>8468</b>	<b>8808</b>	<b>8997</b>	<b>8990</b>	<b>9115</b>	<b>7959</b>	<b>8733</b>	<b>8593</b>	<b>8635</b>	<b>+42 / +0.5%</b>	<b>-480 / -5.3%</b>

'vs. Pre-Covid' is comparison between 2023 and 2019

### YTD Individual Flat Runners by Age

Individual Runners in GB Flat Races, shown by Age Category and Total



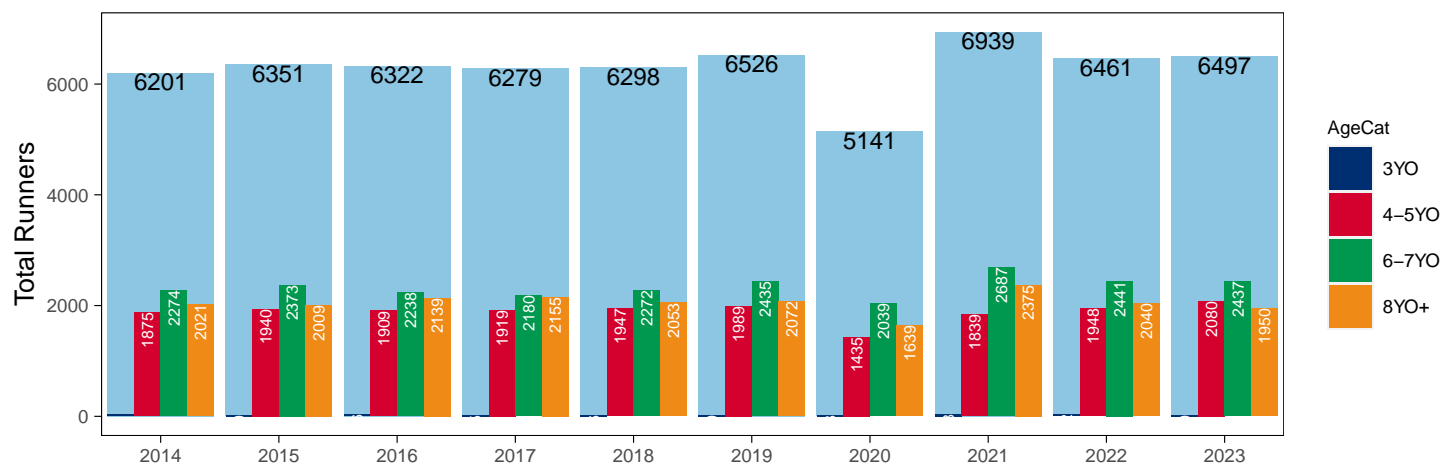
## Jump

AgeCat	2014	2015	2016	2017	2018	2019	2020	2021	2022	2023	vs. Last Year	vs. Pre-Covid
3YO	31	29	36	25	26	30	28	38	32	30	-2 / -6.2%	0 / 0.0%
4-5YO	1875	1940	1909	1919	1947	1989	1435	1839	1948	2080	+132 / +6.8%	+91 / +4.6%
6-7YO	2274	2373	2238	2180	2272	2435	2039	2687	2441	2437	-4 / -0.2%	+2 / +0.1%
8YO+	2021	2009	2139	2155	2053	2072	1639	2375	2040	1950	-90 / -4.4%	-122 / -5.9%
<b>Total</b>	<b>6201</b>	<b>6351</b>	<b>6322</b>	<b>6279</b>	<b>6298</b>	<b>6526</b>	<b>5141</b>	<b>6939</b>	<b>6461</b>	<b>6497</b>	<b>+36 / +0.6%</b>	<b>-29 / -0.4%</b>

'vs. Pre-Covid' is comparison between 2023 and 2019

### YTD Individual Jump Runners by Age

Individual Runners in GB Jump Races, shown by Age Category and Total





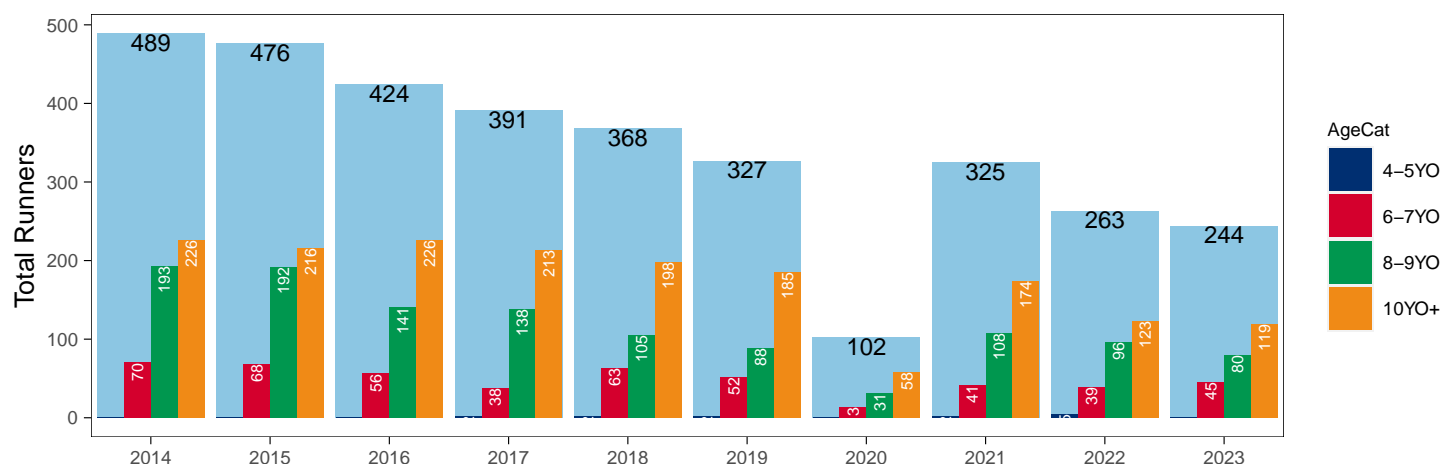
## Hunter Chases

AgeCat	2014	2015	2016	2017	2018	2019	2020	2021	2022	2023	vs. Last Year	vs. Pre-Covid
4-5YO			1	2	2	2		2	5		NA / NA	-2 / -100.0%
6-7YO	70	68	56	38	63	52	13	41	39	45	+6 / +15.4%	-7 / -13.5%
8-9YO	193	192	141	138	105	88	31	108	96	80	-16 / -16.7%	-8 / -9.1%
10YO+	226	216	226	213	198	185	58	174	123	119	-4 / -3.3%	-66 / -35.7%
<b>Total</b>	<b>489</b>	<b>476</b>	<b>424</b>	<b>391</b>	<b>368</b>	<b>327</b>	<b>102</b>	<b>325</b>	<b>263</b>	<b>244</b>	<b>-19 / -7.2%</b>	<b>-83 / -25.4%</b>

'vs. Pre-Covid' is comparison between 2023 and 2019

## YTD Individual Hunter Chase Runners by Age

Individual Runners in GB Hunter Chases shown by Age Category and Total



## Year to Date Individual Runners by Country Trained

Code	Country	2014	2015	2016	2017	2018	2019	2020	2021	2022	2023
Flat	GB	7699	7654	7993	8229	8207	8283	7433	8075	7946	7980
	IRE	150	150	196	239	248	275	119	149	145	204
	Other	49	80	51	50	45	44	19	22	48	29
Jump	GB	5245	5412	5354	5417	5484	5613	4510	6149	5550	5578
	IRE	340	360	389	371	311	397	232	302	464	502
	Other	3	4	6	9	8	6	10	3	2	2
Dual	GB	618	583	568	484	492	509	389	486	451	420
	IRE	4	7	8	3	8	10	2	3	6	8
	Other				2						
<b>Overall</b>	<b>GB</b>	<b>13562</b>	<b>13649</b>	<b>13915</b>	<b>14130</b>	<b>14183</b>	<b>14405</b>	<b>12332</b>	<b>14710</b>	<b>13947</b>	<b>13978</b>
	<b>IRE</b>	<b>494</b>	<b>517</b>	<b>593</b>	<b>613</b>	<b>567</b>	<b>682</b>	<b>353</b>	<b>454</b>	<b>615</b>	<b>714</b>
	<b>Other</b>	<b>52</b>	<b>84</b>	<b>57</b>	<b>61</b>	<b>53</b>	<b>50</b>	<b>29</b>	<b>25</b>	<b>50</b>	<b>31</b>

Individual horses may appear under multiple countries.

## Year to Date Total Runners by Rating Band

### Flat

RatBand	2014	2015	2016	2017	2018	2019	2020	2021	2022	2023
<b>2YO</b>										
Unrated	2,961 (85.3%)	2,988 (85.7%)	3,007 (84.2%)	3,069 (87.5%)	3,047 (87.7%)	2,949 (88.7%)	1,972 (88.2%)	2,940 (84.6%)	2,840 (84.5%)	2,711 (87.0%)
0-50	15 (0.4%)	15 (0.4%)	10 (0.3%)	13 (0.4%)	13 (0.4%)	15 (0.5%)	2 (0.1%)	18 (0.5%)	23 (0.7%)	26 (0.8%)
51-60	75 (2.2%)	43 (1.2%)	39 (1.1%)	35 (1.0%)	47 (1.4%)	36 (1.1%)	6 (0.3%)	46 (1.3%)	63 (1.9%)	57 (1.8%)
61-70	104 (3.0%)	118 (3.4%)	142 (4.0%)	126 (3.6%)	88 (2.5%)	105 (3.2%)	63 (2.8%)	136 (3.9%)	114 (3.4%)	113 (3.6%)
71-80	162 (4.7%)	196 (5.6%)	217 (6.1%)	159 (4.5%)	148 (4.3%)	131 (3.9%)	98 (4.4%)	163 (4.7%)	152 (4.5%)	122 (3.9%)
81-90	107 (3.1%)	86 (2.5%)	121 (3.4%)	59 (1.7%)	86 (2.5%)	52 (1.6%)	56 (2.5%)	108 (3.1%)	114 (3.4%)	62 (2.0%)
91-100	35 (1.0%)	25 (0.7%)	28 (0.8%)	36 (1.0%)	37 (1.1%)	28 (0.8%)	31 (1.4%)	46 (1.3%)	45 (1.3%)	17 (0.5%)
101+	11 (0.3%)	17 (0.5%)	8 (0.2%)	10 (0.3%)	8 (0.2%)	9 (0.3%)	8 (0.4%)	17 (0.5%)	10 (0.3%)	7 (0.2%)
<b>3YO+</b>										
Unrated	3,053 (10.7%)	2,960 (10.6%)	3,159 (10.8%)	3,323 (11.1%)	3,824 (12.9%)	3,758 (12.1%)	2,822 (14.5%)	3,832 (12.7%)	3,529 (12.1%)	3,450 (11.7%)
0-50	2,863 (10.0%)	2,547 (9.1%)	2,390 (8.2%)	2,687 (9.0%)	3,039 (10.2%)	3,673 (11.9%)	2,133 (11.0%)	3,473 (11.5%)	3,418 (11.7%)	3,705 (12.5%)
51-60	4,917 (17.2%)	4,766 (17.0%)	4,780 (16.4%)	4,943 (16.5%)	4,752 (16.0%)	5,418 (17.5%)	3,277 (16.9%)	5,309 (17.6%)	5,104 (17.5%)	5,613 (19.0%)
61-70	6,204 (21.8%)	6,029 (21.5%)	6,288 (21.5%)	6,133 (20.5%)	5,918 (19.9%)	6,079 (19.6%)	3,762 (19.4%)	6,265 (20.7%)	5,912 (20.3%)	6,097 (20.6%)
71-80	5,495 (19.3%)	5,546 (19.8%)	5,810 (19.9%)	6,020 (20.1%)	5,540 (18.6%)	5,421 (17.5%)	3,443 (17.7%)	5,304 (17.6%)	5,156 (17.7%)	5,273 (17.8%)
81-90	3,262 (11.4%)	3,325 (11.9%)	3,738 (12.8%)	3,881 (13.0%)	3,622 (12.2%)	3,480 (11.2%)	2,159 (11.1%)	3,173 (10.5%)	3,304 (11.3%)	3,004 (10.2%)
91-100	1,672 (5.9%)	1,672 (6.0%)	1,784 (6.1%)	1,714 (5.7%)	1,862 (6.3%)	2,009 (6.5%)	1,066 (5.5%)	1,701 (5.6%)	1,552 (5.3%)	1,409 (4.8%)
101+	1,050 (3.7%)	1,176 (4.2%)	1,283 (4.4%)	1,233 (4.1%)	1,164 (3.9%)	1,150 (3.7%)	769 (4.0%)	1,153 (3.8%)	1,157 (4.0%)	994 (3.4%)

### Jump

RatBand	2014	2015	2016	2017	2018	2019	2020	2021	2022	2023
<b>Hurdle</b>										
Unrated	2,710 (26.2%)	2,862 (26.4%)	2,777 (25.4%)	2,702 (25.2%)	2,806 (26.2%)	2,817 (26.2%)	1,653 (29.8%)	2,791 (25.3%)	2,570 (24.1%)	2,781 (25.7%)
0-100	3,033 (29.3%)	2,987 (27.5%)	2,835 (26.0%)	2,872 (26.8%)	2,681 (25.0%)	2,705 (25.1%)	1,205 (21.7%)	3,411 (30.9%)	3,532 (33.1%)	3,572 (33.0%)
101-110	1,387 (13.4%)	1,568 (14.4%)	1,710 (15.7%)	1,635 (15.2%)	1,620 (15.1%)	1,610 (15.0%)	758 (13.6%)	1,524 (13.8%)	1,645 (15.4%)	1,637 (15.1%)
111-120	1,459 (14.1%)	1,525 (14.0%)	1,561 (14.3%)	1,554 (14.5%)	1,522 (14.2%)	1,550 (14.4%)	742 (13.4%)	1,421 (12.9%)	1,384 (13.0%)	1,351 (12.5%)
121-130	1,008 (9.8%)	1,036 (9.5%)	1,064 (9.7%)	1,052 (9.8%)	1,119 (10.4%)	1,157 (10.7%)	577 (10.4%)	1,077 (9.7%)	854 (8.0%)	921 (8.5%)
131-140	506 (4.9%)	591 (5.4%)	642 (5.9%)	647 (6.0%)	670 (6.2%)	614 (5.7%)	403 (7.3%)	552 (5.0%)	465 (4.4%)	365 (3.4%)
141-150	176 (1.7%)	217 (2.0%)	238 (2.2%)	200 (1.9%)	239 (2.2%)	223 (2.1%)	144 (2.6%)	196 (1.8%)	178 (1.7%)	146 (1.3%)
151+	57 (0.6%)	72 (0.7%)	86 (0.8%)	74 (0.7%)	73 (0.7%)	91 (0.8%)	73 (1.3%)	79 (0.7%)	52 (0.5%)	60 (0.6%)
<b>Chase</b>										
Unrated	61 (1.0%)	39 (0.7%)	45 (0.8%)	56 (0.9%)	47 (0.8%)	37 (0.7%)	12 (0.4%)	30 (0.5%)	12 (0.2%)	1 (0.0%)
0-100	1,983 (33.9%)	1,790 (30.5%)	1,734 (29.1%)	1,629 (27.3%)	1,648 (28.7%)	1,696 (29.9%)	764 (26.5%)	1,915 (32.2%)	1,882 (32.3%)	1,983 (35.3%)
101-110	892 (15.3%)	839 (14.3%)	882 (14.8%)	955 (16.0%)	861 (15.0%)	895 (15.8%)	442 (15.3%)	891 (15.0%)	908 (15.6%)	955 (17.0%)
111-120	950 (16.3%)	1,085 (18.5%)	1,053 (17.7%)	1,022 (17.1%)	941 (16.4%)	888 (15.7%)	430 (14.9%)	984 (16.6%)	998 (17.2%)	924 (16.5%)
121-130	914 (15.6%)	915 (15.6%)	899 (15.1%)	914 (15.3%)	963 (16.8%)	863 (15.2%)	468 (16.2%)	922 (15.5%)	884 (15.2%)	768 (13.7%)
131-140	583 (10.0%)	680 (11.6%)	748 (12.6%)	820 (13.7%)	716 (12.5%)	724 (12.8%)	407 (14.1%)	659 (11.1%)	644 (11.1%)	555 (9.9%)
141-150	310 (5.3%)	332 (5.7%)	387 (6.5%)	381 (6.4%)	392 (6.8%)	366 (6.5%)	236 (8.2%)	335 (5.6%)	317 (5.4%)	261 (4.6%)
151+	153 (2.6%)	184 (3.1%)	203 (3.4%)	196 (3.3%)	166 (2.9%)	198 (3.5%)	122 (4.2%)	209 (3.5%)	174 (3.0%)	166 (3.0%)

## Frequency of Runs

### Year to Date Average Runs per Horse

Code	2014	2015	2016	2017	2018	2019	2020	2021	2022	2023
Flat	3.83	3.78	3.78	3.77	3.75	3.82	2.75	3.92	3.84	3.84
Jump	2.95	2.93	2.93	2.92	2.91	2.76	1.82	2.79	2.79	2.79
Dual Overall	5.57	5.62	5.76	5.64	5.31	5.41	3.79	5.41	5.33	5.31
Dual (Flat)	2.82	2.93	2.96	2.85	2.68	2.82	2.10	2.77	2.67	2.76
Dual (Jump)	2.75	2.68	2.80	2.79	2.62	2.59	1.69	2.64	2.66	2.55
All	3.56	3.51	3.52	3.50	3.47	3.46	2.44	3.49	3.46	3.45

### Year to Date Proportion of Horses by Count of Runs

Runs	2014	2015	2016	2017	2018	2019	2020	2021	2022	2023
<b>Flat</b>										
1	1,573 (18.5%)	1,648 (19.5%)	1,679 (19.1%)	1,667 (18.5%)	1,751 (19.5%)	1,719 (18.9%)	2,008 (25.2%)	1,526 (17.5%)	1,557 (18.1%)	1,624 (18.8%)
2	1,624 (19.1%)	1,561 (18.4%)	1,569 (17.8%)	1,678 (18.7%)	1,649 (18.3%)	1,595 (17.5%)	2,192 (27.5%)	1,465 (16.8%)	1,544 (18.0%)	1,491 (17.3%)
3	1,506 (17.7%)	1,488 (17.6%)	1,556 (17.7%)	1,643 (18.3%)	1,674 (18.6%)	1,660 (18.2%)	1,834 (23.0%)	1,541 (17.6%)	1,468 (17.1%)	1,556 (18.0%)
4	1,225 (14.4%)	1,222 (14.4%)	1,267 (14.4%)	1,291 (14.3%)	1,274 (14.2%)	1,304 (14.3%)	945 (11.9%)	1,363 (15.6%)	1,287 (15.0%)	1,264 (14.6%)
5+	2,590 (30.4%)	2,549 (30.1%)	2,737 (31.1%)	2,718 (30.2%)	2,642 (29.4%)	2,837 (31.1%)	980 (12.3%)	2,838 (32.5%)	2,737 (31.9%)	2,700 (31.3%)
<b>Jump</b>										
1	1,633 (26.3%)	1,659 (26.1%)	1,631 (25.8%)	1,650 (26.3%)	1,642 (26.1%)	1,831 (28.1%)	2,348 (45.7%)	1,837 (26.5%)	1,835 (28.4%)	1,806 (27.8%)
2	1,396 (22.5%)	1,482 (23.3%)	1,441 (22.8%)	1,377 (21.9%)	1,355 (21.5%)	1,635 (25.1%)	1,765 (34.3%)	1,729 (24.9%)	1,467 (22.7%)	1,503 (23.1%)
3	1,162 (18.7%)	1,213 (19.1%)	1,250 (19.8%)	1,237 (19.7%)	1,263 (20.1%)	1,228 (18.8%)	763 (14.8%)	1,423 (20.5%)	1,296 (20.1%)	1,337 (20.6%)
4	879 (14.2%)	905 (14.2%)	892 (14.1%)	932 (14.8%)	980 (15.6%)	894 (13.7%)	214 (4.2%)	904 (13.0%)	903 (14.0%)	875 (13.5%)
5+	1,131 (18.2%)	1,092 (17.2%)	1,108 (17.5%)	1,083 (17.2%)	1,058 (16.8%)	938 (14.4%)	51 (1.0%)	1,046 (15.1%)	960 (14.9%)	976 (15.0%)
<b>All Races</b>										
1	2,808 (19.9%)	2,935 (20.6%)	2,951 (20.3%)	2,996 (20.3%)	3,040 (20.6%)	3,216 (21.3%)	3,972 (31.3%)	3,034 (20.0%)	3,068 (21.0%)	3,143 (21.4%)
2	2,783 (19.7%)	2,808 (19.7%)	2,785 (19.1%)	2,876 (19.5%)	2,834 (19.2%)	3,027 (20.0%)	3,830 (30.1%)	3,018 (19.9%)	2,865 (19.6%)	2,835 (19.3%)
3	2,546 (18.1%)	2,582 (18.1%)	2,681 (18.4%)	2,781 (18.8%)	2,833 (19.2%)	2,780 (18.4%)	2,584 (20.3%)	2,865 (18.9%)	2,680 (18.4%)	2,792 (19.0%)
4	2,069 (14.7%)	2,072 (14.6%)	2,116 (14.5%)	2,204 (14.9%)	2,228 (15.1%)	2,162 (14.3%)	1,215 (9.6%)	2,239 (14.7%)	2,156 (14.8%)	2,124 (14.4%)
5+	3,890 (27.6%)	3,832 (26.9%)	4,016 (27.6%)	3,928 (26.6%)	3,852 (26.0%)	3,937 (26.0%)	1,108 (8.7%)	4,027 (26.5%)	3,827 (26.2%)	3,807 (25.9%)

### Year to Date Median Days Between Runs

Code/RatBand	2014	2015	2016	2017	2018	2019	2020	2021	2022	2023
All Runners	24	24	25	25	25	25	27	26	25	26
<b>Flat</b>										
Unrated	23	23	22	22	24	24	21	24	24	24
0-50	20	21	20	21	21	22	20	20	21	19
51-60	19	19	20	20	20	21	20	20	20	20
61-70	20	20	21	21	21	21	22	21	21	22
71-80	21	22	21	22	21	21	25	22	22	23
81-90	22	23	22	22	22	23	24	24	23	25
91-100	27	27	26	26	26	26	27	27	28	28
101+	30	29	29	31	29	30	31	31	34	34
All Flat Runners	21	21	22	22	22	22	23	22	22	22
<b>Jump</b>										
Unrated	34	34	36	33	36	36	37	38	34	39
0-100	25	25	26	26	27	27	35	28	27	28
101-110	26	28	29	27	29	29	32	30	29	30
111-120	28	29	29	29	30	30	36	32	30	32
121-130	29	30	31	29	30	32	35	32	31	34
131-140	32	31	33	32	33	33	37	35	34	36
141-150	33	34	34	35	38	36	41	40	36	39
151+	35	35	38	34	38	39	42	40	40	42
All Jump Runners	28	29	30	29	31	31	36	32	30	32

# Horses Population by Gender

## July 2023 Horses in Training Snapshot by Gender versus Previous Years

### All Horses

Sex	2014	2015	2016	2017	2018	2019	2020	2021	2022	2023
Colt/Entire	2,418 (19.1%)	2,375 (18.4%)	2,386 (18.3%)	2,432 (18.3%)	2,445 (17.4%)	2,335 (16.6%)	2,307 (15.6%)	2,145 (15.3%)	2,065 (14.9%)	2,122 (15.7%)
Gelding	6,006 (47.5%)	6,270 (48.6%)	6,405 (49.1%)	6,496 (48.9%)	7,009 (50.0%)	7,004 (49.9%)	7,724 (52.2%)	7,342 (52.4%)	7,196 (52.0%)	6,929 (51.2%)
Filly/Mare	4,208 (33.3%)	4,255 (33.0%)	4,241 (32.5%)	4,362 (32.8%)	4,570 (32.6%)	4,686 (33.4%)	4,774 (32.2%)	4,529 (32.3%)	4,577 (33.1%)	4,492 (33.2%)
Rig	1 (0.0%)	4 (0.0%)	5 (0.0%)	4 (0.0%)	1 (0.0%)	2 (0.0%)	1 (0.0%)	1 (0.0%)	1 (0.0%)	1 (0.0%)
<b>Total</b>	<b>12,633 (100.0%)</b>	<b>12,904 (100.0%)</b>	<b>13,037 (100.0%)</b>	<b>13,294 (100.0%)</b>	<b>14,025 (100.0%)</b>	<b>14,027 (100.0%)</b>	<b>14,806 (100.0%)</b>	<b>14,017 (100.0%)</b>	<b>13,839 (100.0%)</b>	<b>13,544 (100.0%)</b>

### Flat (including Dual)

Sex	2014	2015	2016	2017	2018	2019	2020	2021	2022	2023
Colt/Entire	2,379 (24.8%)	2,346 (24.0%)	2,373 (23.8%)	2,408 (23.3%)	2,432 (22.9%)	2,319 (22.1%)	2,287 (21.8%)	2,122 (20.9%)	2,049 (20.5%)	2,103 (20.9%)
Gelding	3,580 (37.3%)	3,789 (38.7%)	3,959 (39.7%)	4,162 (40.3%)	4,352 (40.9%)	4,291 (40.9%)	4,393 (41.8%)	4,319 (42.6%)	4,222 (42.3%)	4,262 (42.3%)
Filly/Mare	3,634 (37.9%)	3,649 (37.3%)	3,634 (36.4%)	3,745 (36.3%)	3,848 (36.2%)	3,879 (37.0%)	3,821 (36.4%)	3,689 (36.4%)	3,713 (37.2%)	3,700 (36.8%)
Rig	0 (0.0%)	2 (0.0%)	5 (0.1%)	4 (0.0%)	1 (0.0%)	2 (0.0%)	1 (0.0%)	1 (0.0%)	0 (0.0%)	0 (0.0%)
<b>Total</b>	<b>9,593 (100.0%)</b>	<b>9,786 (100.0%)</b>	<b>9,971 (100.0%)</b>	<b>10,319 (100.0%)</b>	<b>10,633 (100.0%)</b>	<b>10,491 (100.0%)</b>	<b>10,502 (100.0%)</b>	<b>10,131 (100.0%)</b>	<b>9,984 (100.0%)</b>	<b>10,065 (100.0%)</b>

### Jump (including Dual)

Sex	2014	2015	2016	2017	2018	2019	2020	2021	2022	2023
Colt/Entire	44 (1.2%)	32 (0.9%)	22 (0.6%)	21 (0.6%)	24 (0.6%)	23 (0.6%)	23 (0.5%)	30 (0.7%)	27 (0.6%)	22 (0.6%)
Gelding	2,813 (79.1%)	2,867 (79.4%)	2,832 (79.9%)	2,797 (78.5%)	3,143 (78.0%)	3,056 (76.6%)	3,746 (77.5%)	3,365 (77.5%)	3,317 (76.6%)	3,031 (76.4%)
Filly/Mare	699 (19.7%)	711 (19.7%)	690 (19.5%)	743 (20.9%)	865 (21.5%)	910 (22.8%)	1,067 (22.1%)	949 (21.8%)	983 (22.7%)	915 (23.1%)
Rig	1 (0.0%)	1 (0.0%)	0 (0.0%)	0 (0.0%)	0 (0.0%)	0 (0.0%)	0 (0.0%)	0 (0.0%)	1 (0.0%)	1 (0.0%)
<b>Total</b>	<b>3,557 (100.0%)</b>	<b>3,611 (100.0%)</b>	<b>3,544 (100.0%)</b>	<b>3,561 (100.0%)</b>	<b>4,032 (100.0%)</b>	<b>3,989 (100.0%)</b>	<b>4,836 (100.0%)</b>	<b>4,344 (100.0%)</b>	<b>4,328 (100.0%)</b>	<b>3,969 (100.0%)</b>

### Hunter Chasers

Sex	2014	2015	2016	2017	2018	2019	2020	2021	2022	2023
Colt/Entire	0 (-)	0 (-)	0 (-)	5 (0.3%)	0 (-)	1 (0.1%)	1 (0.1%)	3 (0.3%)	5 (0.4%)	7 (0.6%)
Gelding	0 (-)	0 (-)	0 (-)	1,480 (81.0%)	0 (-)	1,287 (79.3%)	1,113 (81.4%)	928 (82.9%)	1,000 (80.9%)	949 (82.7%)
Filly/Mare	0 (-)	0 (-)	0 (-)	343 (18.8%)	0 (-)	335 (20.6%)	253 (18.5%)	189 (16.9%)	231 (18.7%)	192 (16.7%)
Rig	0 (-)	0 (-)	0 (-)	0 (0.0%)	0 (-)	0 (0.0%)	0 (0.0%)	0 (0.0%)	0 (0.0%)	0 (0.0%)
<b>Total</b>	<b>0 (-)</b>	<b>0 (-)</b>	<b>0 (-)</b>	<b>1,828 (100.0%)</b>	<b>0 (-)</b>	<b>1,623 (100.0%)</b>	<b>1,367 (100.0%)</b>	<b>1,120 (100.0%)</b>	<b>1,236 (100.0%)</b>	<b>1,148 (100.0%)</b>

Year to Date Total Runners by Gender

Sex	2014	2015	2016	2017	2018	2019	2020	2021	2022	2023
All Races										
Colt/Entire	4,911 (9.8%)	4,971 (10.0%)	4,945 (9.7%)	4,840 (9.4%)	4,959 (9.7%)	4,682 (9.0%)	3,145 (10.2%)	4,592 (8.7%)	4,151 (8.2%)	3,909 (7.7%)
Gelding	31,656 (63.1%)	31,862 (63.8%)	32,929 (64.3%)	33,334 (64.4%)	32,578 (63.4%)	32,934 (63.0%)	19,039 (61.5%)	33,568 (63.3%)	32,163 (63.7%)	32,314 (63.8%)
Filly/Mare	13,594 (27.1%)	13,115 (26.3%)	13,337 (26.0%)	13,549 (26.2%)	13,806 (26.9%)	14,635 (28.0%)	8,777 (28.3%)	14,831 (28.0%)	14,164 (28.1%)	14,443 (28.5%)
Rig	1 (0.0%)	1 (0.0%)	14 (0.0%)	3 (0.0%)	8 (0.0%)	11 (0.0%)	4 (0.0%)	7 (0.0%)	6 (0.0%)	4 (0.0%)
Flat										
Colt/Entire	4,838 (15.1%)	4,932 (15.7%)	4,916 (15.0%)	4,808 (14.4%)	4,937 (14.9%)	4,654 (13.6%)	3,127 (14.4%)	4,560 (13.5%)	4,131 (12.7%)	3,874 (11.9%)
Gelding	16,786 (52.5%)	16,844 (53.5%)	17,765 (54.2%)	18,329 (54.8%)	18,083 (54.5%)	18,797 (54.8%)	11,732 (54.1%)	18,461 (54.8%)	17,993 (55.4%)	18,287 (56.0%)
Filly/Mare	10,362 (32.4%)	9,732 (30.9%)	10,109 (30.8%)	10,301 (30.8%)	10,167 (30.6%)	10,855 (31.6%)	6,807 (31.4%)	10,660 (31.6%)	10,369 (31.9%)	10,499 (32.1%)
Rig	0 (0.0%)	1 (0.0%)	14 (0.0%)	3 (0.0%)	8 (0.0%)	7 (0.0%)	1 (0.0%)	3 (0.0%)	0 (0.0%)	0 (0.0%)
All Jump										
Colt/Entire	73 (0.4%)	39 (0.2%)	29 (0.2%)	32 (0.2%)	22 (0.1%)	28 (0.2%)	18 (0.2%)	32 (0.2%)	20 (0.1%)	35 (0.2%)
Gelding	14,870 (81.8%)	15,018 (81.4%)	15,164 (82.3%)	15,005 (82.1%)	14,495 (79.8%)	14,137 (78.8%)	7,307 (78.6%)	15,107 (78.2%)	14,170 (78.8%)	14,027 (77.9%)
Filly/Mare	3,232 (17.8%)	3,383 (18.3%)	3,228 (17.5%)	3,248 (17.8%)	3,639 (20.0%)	3,780 (21.1%)	1,970 (21.2%)	4,171 (21.6%)	3,795 (21.1%)	3,944 (21.9%)
Rig	1 (0.0%)	0 (0.0%)	0 (0.0%)	0 (0.0%)	0 (0.0%)	4 (0.0%)	3 (0.0%)	4 (0.0%)	6 (0.0%)	4 (0.0%)
Chase										
Colt/Entire	2 (0.0%)	0 (0.0%)	1 (0.0%)	0 (0.0%)	0 (0.0%)	0 (0.0%)	0 (0.0%)	0 (0.0%)	0 (0.0%)	0 (0.0%)
Gelding	5,414 (92.6%)	5,432 (92.6%)	5,539 (93.1%)	5,544 (92.8%)	5,208 (90.8%)	5,102 (90.0%)	2,600 (90.2%)	5,317 (89.4%)	5,202 (89.4%)	5,013 (89.3%)
Filly/Mare	430 (7.4%)	432 (7.4%)	411 (6.9%)	429 (7.2%)	526 (9.2%)	563 (9.9%)	278 (9.6%)	624 (10.5%)	611 (10.5%)	597 (10.6%)
Rig	0 (0.0%)	0 (0.0%)	0 (0.0%)	0 (0.0%)	0 (0.0%)	2 (0.0%)	3 (0.1%)	4 (0.1%)	6 (0.1%)	3 (0.1%)
Hurdle										
Colt/Entire	64 (0.6%)	34 (0.3%)	25 (0.2%)	26 (0.2%)	15 (0.1%)	19 (0.2%)	8 (0.1%)	29 (0.3%)	13 (0.1%)	26 (0.2%)
Gelding	8,107 (78.4%)	8,493 (78.2%)	8,617 (79.0%)	8,439 (78.6%)	8,226 (76.7%)	8,107 (75.3%)	4,138 (74.5%)	8,200 (74.2%)	8,063 (75.5%)	8,082 (74.6%)
Filly/Mare	2,165 (20.9%)	2,331 (21.5%)	2,271 (20.8%)	2,271 (21.2%)	2,489 (23.2%)	2,639 (24.5%)	1,409 (25.4%)	2,822 (25.5%)	2,604 (24.4%)	2,724 (25.1%)
Rig	0 (0.0%)	0 (0.0%)	0 (0.0%)	0 (0.0%)	0 (0.0%)	2 (0.0%)	0 (0.0%)	0 (0.0%)	0 (0.0%)	1 (0.0%)
NHF										
Colt/Entire	7 (0.4%)	5 (0.3%)	3 (0.2%)	6 (0.4%)	7 (0.4%)	9 (0.6%)	10 (1.2%)	3 (0.1%)	7 (0.5%)	9 (0.6%)
Gelding	1,349 (67.7%)	1,093 (63.6%)	1,008 (64.7%)	1,022 (64.8%)	1,061 (62.7%)	928 (61.3%)	569 (66.0%)	1,590 (68.6%)	905 (60.7%)	932 (59.6%)
Filly/Mare	637 (31.9%)	620 (36.1%)	546 (35.1%)	548 (34.8%)	624 (36.9%)	578 (38.2%)	283 (32.8%)	725 (31.3%)	580 (38.9%)	623 (39.8%)
Rig	1 (0.1%)	0 (0.0%)	0 (0.0%)	0 (0.0%)	0 (0.0%)	0 (0.0%)	0 (0.0%)	0 (0.0%)	0 (0.0%)	0 (0.0%)
Hunter										
Colt/Entire	0 (0.0%)	1 (0.1%)	0 (0.0%)	0 (0.0%)	0 (0.0%)	0 (0.0%)	0 (0.0%)	0 (0.0%)	0 (0.0%)	0 (0.0%)
Gelding	771 (91.5%)	799 (94.2%)	720 (94.2%)	709 (94.9%)	603 (93.3%)	522 (92.7%)	142 (97.3%)	557 (93.5%)	429 (94.9%)	408 (93.6%)
Filly/Mare	72 (8.5%)	48 (5.7%)	44 (5.8%)	38 (5.1%)	43 (6.7%)	41 (7.3%)	4 (2.7%)	39 (6.5%)	23 (5.1%)	28 (6.4%)

Year to Date Individual Runners by Gender

Sex	2014	2015	2016	2017	2018	2019	2020	2021	2022	2023
All Races										
Male	10,002 (71.0%)	10,155 (71.4%)	10,393 (71.4%)	10,562 (71.4%)	10,503 (71.0%)	10,634 (70.3%)	8,954 (70.5%)	10,685 (70.4%)	10,234 (70.1%)	10,190 (69.3%)
Female	4,094 (29.0%)	4,074 (28.6%)	4,156 (28.6%)	4,223 (28.6%)	4,284 (29.0%)	4,488 (29.7%)	3,755 (29.5%)	4,498 (29.6%)	4,362 (29.9%)	4,511 (30.7%)
Flat										
Male	5,469 (64.2%)	5,516 (65.1%)	5,743 (65.2%)	5,897 (65.5%)	5,940 (66.1%)	5,948 (65.3%)	5,235 (65.8%)	5,669 (64.9%)	5,568 (64.8%)	5,523 (64.0%)
Female	3,049 (35.8%)	2,952 (34.9%)	3,065 (34.8%)	3,100 (34.5%)	3,050 (33.9%)	3,167 (34.7%)	2,724 (34.2%)	3,064 (35.1%)	3,025 (35.2%)	3,112 (36.0%)
All Jump										
Male	5,027 (81.1%)	5,108 (80.4%)	5,129 (81.1%)	5,067 (80.7%)	4,972 (78.9%)	5,101 (78.2%)	4,035 (78.5%)	5,401 (77.8%)	5,022 (77.7%)	5,003 (77.0%)
Female	1,174 (18.9%)	1,243 (19.6%)	1,193 (18.9%)	1,212 (19.3%)	1,326 (21.1%)	1,425 (21.8%)	1,106 (21.5%)	1,538 (22.2%)	1,439 (22.3%)	1,494 (23.0%)
Chase										
Male	1,911 (92.1%)	1,962 (91.9%)	1,967 (92.7%)	1,981 (92.0%)	1,894 (90.0%)	1,920 (89.5%)	1,506 (89.5%)	2,025 (88.6%)	1,910 (88.5%)	1,835 (88.0%)
Female	165 (7.9%)	173 (8.1%)	156 (7.3%)	172 (8.0%)	211 (10.0%)	226 (10.5%)	176 (10.5%)	261 (11.4%)	247 (11.5%)	251 (12.0%)
Hurdle										
Male	3,091 (79.4%)	3,184 (78.9%)	3,259 (80.0%)	3,145 (78.8%)	3,140 (77.4%)	3,231 (76.5%)	2,392 (75.1%)	3,323 (75.2%)	3,171 (76.5%)	3,142 (75.4%)
Female	800 (20.6%)	850 (21.1%)	816 (20.0%)	844 (21.2%)	919 (22.6%)	993 (23.5%)	793 (24.9%)	1,097 (24.8%)	975 (23.5%)	1,026 (24.6%)
NHF										
Male	954 (70.6%)	757 (65.9%)	703 (66.1%)	698 (66.6%)	761 (66.1%)	668 (63.9%)	478 (67.5%)	1,146 (69.9%)	654 (63.0%)	675 (62.5%)
Female	398 (29.4%)	392 (34.1%)	361 (33.9%)	350 (33.4%)	391 (33.9%)	377 (36.1%)	230 (32.5%)	493 (30.1%)	384 (37.0%)	405 (37.5%)
Hunter										
Male	447 (91.4%)	448 (94.1%)	395 (93.2%)	366 (93.6%)	339 (92.1%)	301 (92.0%)	98 (96.1%)	299 (92.0%)	243 (92.4%)	228 (93.4%)
Female	42 (8.6%)	28 (5.9%)	29 (6.8%)	25 (6.4%)	29 (7.9%)	26 (8.0%)	4 (3.9%)	26 (8.0%)	20 (7.6%)	16 (6.6%)

# Horses Population by Breeding

## July 2023 Horses in Training Snapshot by Breeding versus Previous Years

### Flat (including Dual)

Bred	Sex	2014	2015	2016	2017	2018	2019	2020	2021	2022	2023
GB	Male	2,844 (29.6%)	2,904 (29.7%)	2,937 (29.5%)	3,071 (29.8%)	3,200 (30.1%)	3,132 (29.9%)	3,191 (30.4%)	3,024 (29.8%)	2,925 (29.3%)	2,931 (29.1%)
	Female	2,007 (20.9%)	2,023 (20.7%)	2,021 (20.3%)	2,077 (20.1%)	2,139 (20.1%)	2,151 (20.5%)	2,150 (20.5%)	2,042 (20.2%)	2,054 (20.6%)	2,022 (20.1%)
	Subtotal	4,851 (50.6%)	4,927 (50.3%)	4,958 (49.7%)	5,148 (49.9%)	5,339 (50.2%)	5,283 (50.4%)	5,341 (50.9%)	5,066 (50.0%)	4,979 (49.9%)	4,953 (49.2%)
IRE	Male	2,507 (26.1%)	2,629 (26.9%)	2,784 (27.9%)	2,806 (27.2%)	2,879 (27.1%)	2,793 (26.6%)	2,859 (27.2%)	2,839 (28.0%)	2,850 (28.5%)	2,948 (29.3%)
	Female	1,357 (14.1%)	1,379 (14.1%)	1,359 (13.6%)	1,393 (13.5%)	1,412 (13.3%)	1,441 (13.7%)	1,404 (13.4%)	1,440 (14.2%)	1,473 (14.8%)	1,503 (14.9%)
	Subtotal	3,864 (40.3%)	4,008 (41.0%)	4,143 (41.6%)	4,199 (40.7%)	4,291 (40.4%)	4,234 (40.4%)	4,263 (40.6%)	4,279 (42.2%)	4,323 (43.3%)	4,451 (44.2%)
FR	Male	151 (1.6%)	176 (1.8%)	194 (1.9%)	261 (2.5%)	310 (2.9%)	319 (3.0%)	316 (3.0%)	318 (3.1%)	312 (3.1%)	312 (3.1%)
	Female	64 (0.7%)	67 (0.7%)	87 (0.9%)	108 (1.0%)	121 (1.1%)	124 (1.2%)	137 (1.3%)	118 (1.2%)	119 (1.2%)	116 (1.2%)
	Subtotal	215 (2.2%)	243 (2.5%)	281 (2.8%)	369 (3.6%)	431 (4.1%)	443 (4.2%)	453 (4.3%)	436 (4.3%)	431 (4.3%)	428 (4.3%)
USA	Male	369 (3.8%)	339 (3.5%)	338 (3.4%)	344 (3.3%)	318 (3.0%)	294 (2.8%)	240 (2.3%)	191 (1.9%)	124 (1.2%)	108 (1.1%)
	Female	170 (1.8%)	148 (1.5%)	142 (1.4%)	141 (1.4%)	148 (1.4%)	126 (1.2%)	99 (0.9%)	63 (0.6%)	45 (0.5%)	40 (0.4%)
	Subtotal	539 (5.6%)	487 (5.0%)	480 (4.8%)	485 (4.7%)	466 (4.4%)	420 (4.0%)	339 (3.2%)	254 (2.5%)	169 (1.7%)	148 (1.5%)
GNY	Male	47 (0.5%)	63 (0.6%)	62 (0.6%)	69 (0.7%)	52 (0.5%)	53 (0.5%)	58 (0.6%)	55 (0.5%)	47 (0.5%)	50 (0.5%)
	Female	16 (0.2%)	13 (0.1%)	7 (0.1%)	12 (0.1%)	15 (0.1%)	24 (0.2%)	25 (0.2%)	22 (0.2%)	17 (0.2%)	12 (0.1%)
	Subtotal	63 (0.7%)	76 (0.8%)	69 (0.7%)	81 (0.8%)	67 (0.6%)	77 (0.7%)	83 (0.8%)	77 (0.8%)	64 (0.6%)	62 (0.6%)
Other	Male	41 (0.4%)	26 (0.3%)	22 (0.2%)	23 (0.2%)	26 (0.2%)	21 (0.2%)	17 (0.2%)	15 (0.1%)	13 (0.1%)	16 (0.2%)
	Female	20 (0.2%)	19 (0.2%)	18 (0.2%)	14 (0.1%)	13 (0.1%)	13 (0.1%)	6 (0.1%)	4 (0.0%)	5 (0.1%)	7 (0.1%)
	Subtotal	61 (0.6%)	45 (0.5%)	40 (0.4%)	37 (0.4%)	39 (0.4%)	34 (0.3%)	23 (0.2%)	19 (0.2%)	18 (0.2%)	23 (0.2%)

### Jump (including Dual)

Bred	Sex	2014	2015	2016	2017	2018	2019	2020	2021	2022	2023
GB	Male	978 (27.5%)	920 (25.5%)	903 (25.5%)	849 (23.8%)	946 (23.5%)	843 (21.1%)	964 (19.9%)	874 (20.1%)	827 (19.1%)	746 (18.8%)
	Female	430 (12.1%)	427 (11.8%)	405 (11.4%)	412 (11.6%)	460 (11.4%)	410 (10.3%)	476 (9.8%)	459 (10.6%)	453 (10.5%)	425 (10.7%)
	Subtotal	1,408 (39.6%)	1,347 (37.3%)	1,308 (36.9%)	1,261 (35.4%)	1,406 (34.9%)	1,253 (31.4%)	1,440 (29.8%)	1,333 (30.7%)	1,280 (29.6%)	1,171 (29.5%)
IRE	Male	1,469 (41.3%)	1,563 (43.3%)	1,534 (43.3%)	1,542 (43.3%)	1,731 (42.9%)	1,723 (43.2%)	2,085 (43.1%)	1,829 (42.1%)	1,773 (41.0%)	1,605 (40.4%)
	Female	234 (6.6%)	244 (6.8%)	258 (7.3%)	285 (8.0%)	352 (8.7%)	430 (10.8%)	489 (10.1%)	414 (9.5%)	441 (10.2%)	400 (10.1%)
	Subtotal	1,703 (47.9%)	1,807 (50.0%)	1,792 (50.6%)	1,827 (51.3%)	2,083 (51.7%)	2,153 (54.0%)	2,574 (53.2%)	2,243 (51.6%)	2,214 (51.2%)	2,005 (50.5%)
FR	Male	298 (8.4%)	309 (8.6%)	339 (9.6%)	348 (9.8%)	418 (10.4%)	445 (11.2%)	639 (13.2%)	607 (14.0%)	666 (15.4%)	631 (15.9%)
	Female	27 (0.8%)	34 (0.9%)	22 (0.6%)	41 (1.2%)	51 (1.3%)	65 (1.6%)	96 (2.0%)	68 (1.6%)	83 (1.9%)	87 (2.2%)
	Subtotal	325 (9.1%)	343 (9.5%)	361 (10.2%)	389 (10.9%)	469 (11.6%)	510 (12.8%)	735 (15.2%)	675 (15.5%)	749 (17.3%)	718 (18.1%)
USA	Male	65 (1.8%)	59 (1.6%)	37 (1.0%)	36 (1.0%)	34 (0.8%)	28 (0.7%)	26 (0.5%)	30 (0.7%)	23 (0.5%)	19 (0.5%)
	Female	4 (0.1%)	2 (0.1%)	1 (0.0%)	2 (0.1%)	1 (0.0%)	2 (0.1%)	2 (0.0%)	1 (0.0%)	NA (-)	1 (0.0%)
	Subtotal	69 (1.9%)	61 (1.7%)	38 (1.1%)	38 (1.1%)	35 (0.9%)	30 (0.8%)	28 (0.6%)	31 (0.7%)	23 (0.5%)	20 (0.5%)
GNY	Male	36 (1.0%)	43 (1.2%)	38 (1.1%)	36 (1.0%)	33 (0.8%)	36 (0.9%)	53 (1.1%)	52 (1.2%)	53 (1.2%)	50 (1.3%)
	Female	4 (0.1%)	3 (0.1%)	1 (0.0%)	1 (0.0%)	NA (-)	2 (0.1%)	4 (0.1%)	6 (0.1%)	5 (0.1%)	2 (0.1%)
	Subtotal	40 (1.1%)	46 (1.3%)	39 (1.1%)	37 (1.0%)	33 (0.8%)	38 (1.0%)	57 (1.2%)	58 (1.3%)	58 (1.3%)	52 (1.3%)
Other	Male	12 (0.3%)	6 (0.2%)	3 (0.1%)	7 (0.2%)	5 (0.1%)	4 (0.1%)	2 (0.0%)	3 (0.1%)	3 (0.1%)	3 (0.1%)
	Female	NA (-)	1 (0.0%)	3 (0.1%)	2 (0.1%)	1 (0.0%)	1 (0.0%)	NA (-)	1 (0.0%)	1 (0.0%)	NA (-)
	Subtotal	12 (0.3%)	7 (0.2%)	6 (0.2%)	9 (0.3%)	6 (0.1%)	5 (0.1%)	2 (0.0%)	4 (0.1%)	4 (0.1%)	3 (0.1%)

## Year to Date Total Runners by Breeding

### Flat

Bred	Sex	2014	2015	2016	2017	2018	2019	2020	2021	2022	2023
GB	Male	10,068 (31.5%)	10,268 (32.6%)	10,626 (32.4%)	10,883 (32.5%)	10,628 (32.0%)	10,728 (31.3%)	6,975 (32.2%)	10,552 (31.3%)	10,122 (31.2%)	10,011 (30.7%)
	Female	5,627 (17.6%)	5,315 (16.9%)	5,549 (16.9%)	5,588 (16.7%)	5,508 (16.6%)	5,935 (17.3%)	3,756 (17.3%)	5,948 (17.7%)	5,670 (17.4%)	5,682 (17.4%)
	Subtotal	15,695 (49.1%)	15,583 (49.5%)	16,175 (49.3%)	16,471 (49.3%)	16,136 (48.6%)	16,663 (48.6%)	10,731 (49.5%)	16,500 (49.0%)	15,792 (48.6%)	15,693 (48.0%)
IRE	Male	9,427 (29.5%)	9,532 (30.3%)	10,051 (30.6%)	10,143 (30.3%)	10,266 (30.9%)	10,487 (30.6%)	6,510 (30.0%)	10,564 (31.4%)	10,412 (32.0%)	10,587 (32.4%)
	Female	4,102 (12.8%)	3,813 (12.1%)	4,021 (12.3%)	4,144 (12.4%)	4,070 (12.3%)	4,226 (12.3%)	2,697 (12.4%)	4,129 (12.3%)	4,173 (12.8%)	4,291 (13.1%)
	Subtotal	13,529 (42.3%)	13,345 (42.4%)	14,072 (42.9%)	14,287 (42.7%)	14,336 (43.2%)	14,713 (42.9%)	9,207 (42.5%)	14,693 (43.6%)	14,585 (44.9%)	14,878 (45.6%)
FR	Male	453 (1.4%)	581 (1.8%)	635 (1.9%)	728 (2.2%)	800 (2.4%)	994 (2.9%)	637 (2.9%)	950 (2.8%)	920 (2.8%)	1,007 (3.1%)
	Female	180 (0.6%)	189 (0.6%)	215 (0.7%)	220 (0.7%)	260 (0.8%)	297 (0.9%)	172 (0.8%)	319 (0.9%)	311 (1.0%)	348 (1.1%)
	Subtotal	633 (2.0%)	770 (2.4%)	850 (2.6%)	948 (2.8%)	1,060 (3.2%)	1,291 (3.8%)	809 (3.7%)	1,269 (3.8%)	1,231 (3.8%)	1,355 (4.1%)
USA	Male	1,356 (4.2%)	1,119 (3.6%)	1,093 (3.3%)	1,075 (3.2%)	1,047 (3.2%)	974 (2.8%)	573 (2.6%)	666 (2.0%)	515 (1.6%)	390 (1.2%)
	Female	386 (1.2%)	295 (0.9%)	247 (0.8%)	282 (0.8%)	259 (0.8%)	298 (0.9%)	138 (0.6%)	178 (0.5%)	143 (0.4%)	141 (0.4%)
	Subtotal	1,742 (5.4%)	1,414 (4.5%)	1,340 (4.1%)	1,357 (4.1%)	1,306 (3.9%)	1,272 (3.7%)	711 (3.3%)	844 (2.5%)	658 (2.0%)	531 (1.6%)
GNY	Male	157 (0.5%)	161 (0.5%)	195 (0.6%)	209 (0.6%)	177 (0.5%)	181 (0.5%)	128 (0.6%)	226 (0.7%)	110 (0.3%)	140 (0.4%)
	Female	40 (0.1%)	67 (0.2%)	42 (0.1%)	31 (0.1%)	50 (0.2%)	60 (0.2%)	37 (0.2%)	71 (0.2%)	56 (0.2%)	28 (0.1%)
	Subtotal	197 (0.6%)	228 (0.7%)	237 (0.7%)	240 (0.7%)	227 (0.7%)	241 (0.7%)	165 (0.8%)	297 (0.9%)	166 (0.5%)	168 (0.5%)
Other	Male	163 (0.5%)	116 (0.4%)	95 (0.3%)	102 (0.3%)	110 (0.3%)	94 (0.3%)	37 (0.2%)	66 (0.2%)	45 (0.1%)	26 (0.1%)
	Female	27 (0.1%)	53 (0.2%)	35 (0.1%)	36 (0.1%)	20 (0.1%)	39 (0.1%)	7 (0.0%)	15 (0.0%)	16 (0.0%)	9 (0.0%)
	Subtotal	190 (0.6%)	169 (0.5%)	130 (0.4%)	138 (0.4%)	130 (0.4%)	133 (0.4%)	44 (0.2%)	81 (0.2%)	61 (0.2%)	35 (0.1%)

Jump

Bred	Sex	2014	2015	2016	2017	2018	2019	2020	2021	2022	2023
GB	Male	4,572 (25.2%)	4,389 (23.8%)	4,182 (22.7%)	4,035 (22.1%)	3,825 (21.1%)	3,671 (20.5%)	1,794 (19.3%)	3,663 (19.0%)	3,208 (17.8%)	3,128 (17.4%)
	Female	1,956 (10.8%)	1,950 (10.6%)	1,688 (9.2%)	1,616 (8.8%)	1,758 (9.7%)	1,661 (9.3%)	810 (8.7%)	1,855 (9.6%)	1,673 (9.3%)	1,726 (9.6%)
	Subtotal	6,528 (35.9%)	6,339 (34.4%)	5,870 (31.9%)	5,651 (30.9%)	5,583 (30.8%)	5,332 (29.7%)	2,604 (28.0%)	5,518 (28.6%)	4,881 (27.1%)	4,854 (27.0%)
IRE	Male	8,167 (44.9%)	8,274 (44.9%)	8,457 (45.9%)	8,404 (46.0%)	8,140 (44.8%)	7,908 (44.1%)	4,074 (43.8%)	8,375 (43.4%)	7,671 (42.6%)	7,622 (42.3%)
	Female	1,081 (5.9%)	1,260 (6.8%)	1,351 (7.3%)	1,406 (7.7%)	1,655 (9.1%)	1,792 (10.0%)	937 (10.1%)	1,870 (9.7%)	1,691 (9.4%)	1,778 (9.9%)
	Subtotal	9,248 (50.9%)	9,534 (51.7%)	9,808 (53.2%)	9,810 (53.7%)	9,795 (53.9%)	9,700 (54.0%)	5,011 (53.9%)	10,245 (53.0%)	9,362 (52.0%)	9,400 (52.2%)
FR	Male	1,689 (9.3%)	1,870 (10.1%)	2,151 (11.7%)	2,250 (12.3%)	2,235 (12.3%)	2,260 (12.6%)	1,300 (14.0%)	2,731 (14.1%)	2,993 (16.6%)	3,035 (16.9%)
	Female	175 (1.0%)	149 (0.8%)	163 (0.9%)	206 (1.1%)	203 (1.1%)	294 (1.6%)	209 (2.2%)	410 (2.1%)	387 (2.2%)	422 (2.3%)
	Subtotal	1,864 (10.3%)	2,019 (10.9%)	2,314 (12.6%)	2,456 (13.4%)	2,438 (13.4%)	2,554 (14.2%)	1,509 (16.2%)	3,141 (16.3%)	3,380 (18.8%)	3,457 (19.2%)
USA	Male	298 (1.6%)	269 (1.5%)	186 (1.0%)	143 (0.8%)	128 (0.7%)	101 (0.6%)	58 (0.6%)	112 (0.6%)	79 (0.4%)	61 (0.3%)
	Female	5 (0.0%)	5 (0.0%)	4 (0.0%)	6 (0.0%)	5 (0.0%)	12 (0.1%)	8 (0.1%)	6 (0.0%)	6 (0.0%)	0 (0.0%)
	Subtotal	303 (1.7%)	274 (1.5%)	190 (1.0%)	149 (0.8%)	133 (0.7%)	113 (0.6%)	66 (0.7%)	118 (0.6%)	85 (0.5%)	61 (0.3%)
GNY	Male	179 (1.0%)	218 (1.2%)	193 (1.0%)	185 (1.0%)	161 (0.9%)	205 (1.1%)	96 (1.0%)	250 (1.3%)	238 (1.3%)	215 (1.2%)
	Female	14 (0.1%)	17 (0.1%)	14 (0.1%)	9 (0.0%)	10 (0.1%)	19 (0.1%)	5 (0.1%)	30 (0.2%)	32 (0.2%)	18 (0.1%)
	Subtotal	193 (1.1%)	235 (1.3%)	207 (1.1%)	194 (1.1%)	171 (0.9%)	224 (1.2%)	101 (1.1%)	280 (1.4%)	270 (1.5%)	233 (1.3%)
Other	Male	39 (0.2%)	37 (0.2%)	24 (0.1%)	20 (0.1%)	28 (0.2%)	24 (0.1%)	6 (0.1%)	12 (0.1%)	7 (0.0%)	5 (0.0%)
	Female	1 (0.0%)	2 (0.0%)	8 (0.0%)	5 (0.0%)	8 (0.0%)	2 (0.0%)	1 (0.0%)	0 (0.0%)	6 (0.0%)	0 (0.0%)
	Subtotal	40 (0.2%)	39 (0.2%)	32 (0.2%)	25 (0.1%)	36 (0.2%)	26 (0.1%)	7 (0.1%)	12 (0.1%)	13 (0.1%)	5 (0.0%)

Year to Date Individual Runners by Breeding

Flat

Bred	Sex	2014	2015	2016	2017	2018	2019	2020	2021	2022	2023
GB	Male	2,509 (29.5%)	2,586 (30.5%)	2,653 (30.1%)	2,688 (29.9%)	2,734 (30.4%)	2,696 (29.6%)	2,460 (30.9%)	2,572 (29.5%)	2,541 (29.6%)	2,487 (28.8%)
	Female	1,667 (19.6%)	1,609 (19.0%)	1,651 (18.7%)	1,675 (18.6%)	1,621 (18.0%)	1,699 (18.6%)	1,483 (18.6%)	1,673 (19.2%)	1,638 (19.1%)	1,640 (19.0%)
	Subtotal	4,176 (49.0%)	4,195 (49.5%)	4,304 (48.9%)	4,363 (48.5%)	4,355 (48.4%)	4,395 (48.2%)	3,943 (49.5%)	4,245 (48.6%)	4,179 (48.6%)	4,127 (47.8%)
IRE	Male	2,363 (27.7%)	2,378 (28.1%)	2,520 (28.6%)	2,602 (28.9%)	2,598 (28.9%)	2,609 (28.6%)	2,253 (28.3%)	2,570 (29.4%)	2,581 (30.0%)	2,623 (30.4%)
	Female	1,178 (13.8%)	1,135 (13.4%)	1,223 (13.9%)	1,210 (13.4%)	1,217 (13.5%)	1,234 (13.5%)	1,078 (13.5%)	1,207 (13.8%)	1,225 (14.3%)	1,305 (15.1%)
	Subtotal	3,541 (41.6%)	3,513 (41.5%)	3,743 (42.5%)	3,812 (42.4%)	3,815 (42.4%)	3,843 (42.2%)	3,331 (41.9%)	3,777 (43.2%)	3,806 (44.3%)	3,928 (45.5%)
FR	Male	133 (1.6%)	158 (1.9%)	180 (2.0%)	210 (2.3%)	254 (2.8%)	286 (3.1%)	252 (3.2%)	280 (3.2%)	265 (3.1%)	257 (3.0%)
	Female	61 (0.7%)	55 (0.6%)	73 (0.8%)	84 (0.9%)	89 (1.0%)	100 (1.1%)	81 (1.0%)	98 (1.1%)	97 (1.1%)	111 (1.3%)
	Subtotal	194 (2.3%)	213 (2.5%)	253 (2.9%)	294 (3.3%)	343 (3.8%)	386 (4.2%)	333 (4.2%)	378 (4.3%)	362 (4.2%)	368 (4.3%)
USA	Male	365 (4.3%)	305 (3.6%)	305 (3.5%)	305 (3.4%)	274 (3.0%)	273 (3.0%)	203 (2.6%)	176 (2.0%)	125 (1.5%)	99 (1.1%)
	Female	123 (1.4%)	116 (1.4%)	92 (1.0%)	104 (1.2%)	99 (1.1%)	105 (1.2%)	61 (0.8%)	60 (0.7%)	42 (0.5%)	41 (0.5%)
	Subtotal	488 (5.7%)	421 (5.0%)	397 (4.5%)	409 (4.5%)	373 (4.1%)	378 (4.1%)	264 (3.3%)	236 (2.7%)	167 (1.9%)	140 (1.6%)
GNY	Male	55 (0.6%)	56 (0.7%)	62 (0.7%)	63 (0.7%)	52 (0.6%)	56 (0.6%)	51 (0.6%)	57 (0.7%)	40 (0.5%)	45 (0.5%)
	Female	11 (0.1%)	20 (0.2%)	13 (0.1%)	11 (0.1%)	16 (0.2%)	17 (0.2%)	16 (0.2%)	22 (0.3%)	20 (0.2%)	10 (0.1%)
	Subtotal	66 (0.8%)	76 (0.9%)	75 (0.9%)	74 (0.8%)	68 (0.8%)	73 (0.8%)	67 (0.8%)	79 (0.9%)	60 (0.7%)	55 (0.6%)
Other	Male	44 (0.5%)	33 (0.4%)	23 (0.3%)	29 (0.3%)	28 (0.3%)	28 (0.3%)	16 (0.2%)	14 (0.2%)	16 (0.2%)	12 (0.1%)
	Female	9 (0.1%)	17 (0.2%)	13 (0.1%)	16 (0.2%)	8 (0.1%)	12 (0.1%)	5 (0.1%)	4 (0.0%)	3 (0.0%)	5 (0.1%)
	Subtotal	53 (0.6%)	50 (0.6%)	36 (0.4%)	45 (0.5%)	36 (0.4%)	40 (0.4%)	21 (0.3%)	18 (0.2%)	19 (0.2%)	17 (0.2%)

Jump

Bred	Sex	2014	2015	2016	2017	2018	2019	2020	2021	2022	2023
GB	Male	1,571 (25.3%)	1,498 (23.6%)	1,408 (22.3%)	1,352 (21.5%)	1,294 (20.5%)	1,300 (19.9%)	989 (19.2%)	1,308 (18.8%)	1,177 (18.2%)	1,155 (17.8%)
	Female	704 (11.4%)	706 (11.1%)	639 (10.1%)	604 (9.6%)	643 (10.2%)	631 (9.7%)	456 (8.9%)	686 (9.9%)	637 (9.9%)	625 (9.6%)
	Subtotal	2,275 (36.7%)	2,204 (34.7%)	2,047 (32.4%)	1,956 (31.2%)	1,937 (30.8%)	1,931 (29.6%)	1,445 (28.1%)	1,994 (28.7%)	1,814 (28.1%)	1,780 (27.4%)
IRE	Male	2,708 (43.7%)	2,791 (43.9%)	2,842 (45.0%)	2,806 (44.7%)	2,777 (44.1%)	2,854 (43.7%)	2,241 (43.6%)	2,950 (42.5%)	2,700 (41.8%)	2,691 (41.4%)
	Female	405 (6.5%)	472 (7.4%)	480 (7.6%)	523 (8.3%)	585 (9.3%)	656 (10.1%)	520 (10.1%)	694 (10.0%)	630 (9.8%)	688 (10.6%)
	Subtotal	3,113 (50.2%)	3,263 (51.4%)	3,322 (52.5%)	3,329 (53.0%)	3,362 (53.4%)	3,510 (53.8%)	2,761 (53.7%)	3,644 (52.5%)	3,330 (51.5%)	3,379 (52.0%)
FR	Male	577 (9.3%)	651 (10.3%)	738 (11.7%)	787 (12.5%)	800 (12.7%)	839 (12.9%)	717 (13.9%)	1,031 (14.9%)	1,041 (16.1%)	1,064 (16.4%)
	Female	56 (0.9%)	55 (0.9%)	62 (1.0%)	76 (1.2%)	92 (1.5%)	127 (1.9%)	121 (2.4%)	146 (2.1%)	157 (2.4%)	171 (2.6%)
	Subtotal	633 (10.2%)	706 (11.1%)	800 (12.7%)	863 (13.7%)	892 (14.2%)	966 (14.8%)	838 (16.3%)	1,177 (17.0%)	1,198 (18.5%)	1,235 (19.0%)
USA	Male	98 (1.6%)	87 (1.4%)	63 (1.0%)	50 (0.8%)	43 (0.7%)	35 (0.5%)	30 (0.6%)	37 (0.5%)	29 (0.4%)	22 (0.3%)
	Female	4 (0.1%)	3 (0.0%)	2 (0.0%)	2 (0.0%)	2 (0.0%)	5 (0.1%)	4 (0.1%)	2 (0.0%)	2 (0.0%)	0 (0.0%)
	Subtotal	102 (1.6%)	90 (1.4%)	65 (1.0%)	52 (0.8%)	45 (0.7%)	40 (0.6%)	34 (0.7%)	39 (0.6%)	31 (0.5%)	22 (0.3%)
GNY	Male	57 (0.9%)	70 (1.1%)	72 (1.1%)	64 (1.0%)	51 (0.8%)	64 (1.0%)	53 (1.0%)	72 (1.0%)	73 (1.1%)	67 (1.0%)
	Female	4 (0.1%)	6 (0.1%)	7 (0.1%)	5 (0.1%)	2 (0.0%)	5 (0.1%)	4 (0.1%)	10 (0.1%)	11 (0.2%)	10 (0.2%)
	Subtotal	61 (1.0%)	76 (1.2%)	79 (1.2%)	69 (1.1%)	53 (0.8%)	69 (1.1%)	57 (1.1%)	82 (1.2%)	84 (1.3%)	77 (1.2%)
Other	Male	16 (0.3%)	11 (0.2%)	6 (0.1%)	8 (0.1%)	7 (0.1%)	9 (0.1%)	5 (0.1%)	3 (0.0%)	2 (0.0%)	4 (0.1%)
	Female	1 (0.0%)	1 (0.0%)	3 (0.0%)	2 (0.0%)	2 (0.0%)	1 (0.0%)	1 (0.0%)	0 (0.0%)	2 (0.0%)	0 (0.0%)
	Subtotal	17 (0.3%)	12 (0.2%)	9 (0.1%)	10 (0.2%)	9 (0.1%)	10 (0.2%)	6 (0.1%)	3 (0.0%)	4 (0.1%)	4 (0.1%)

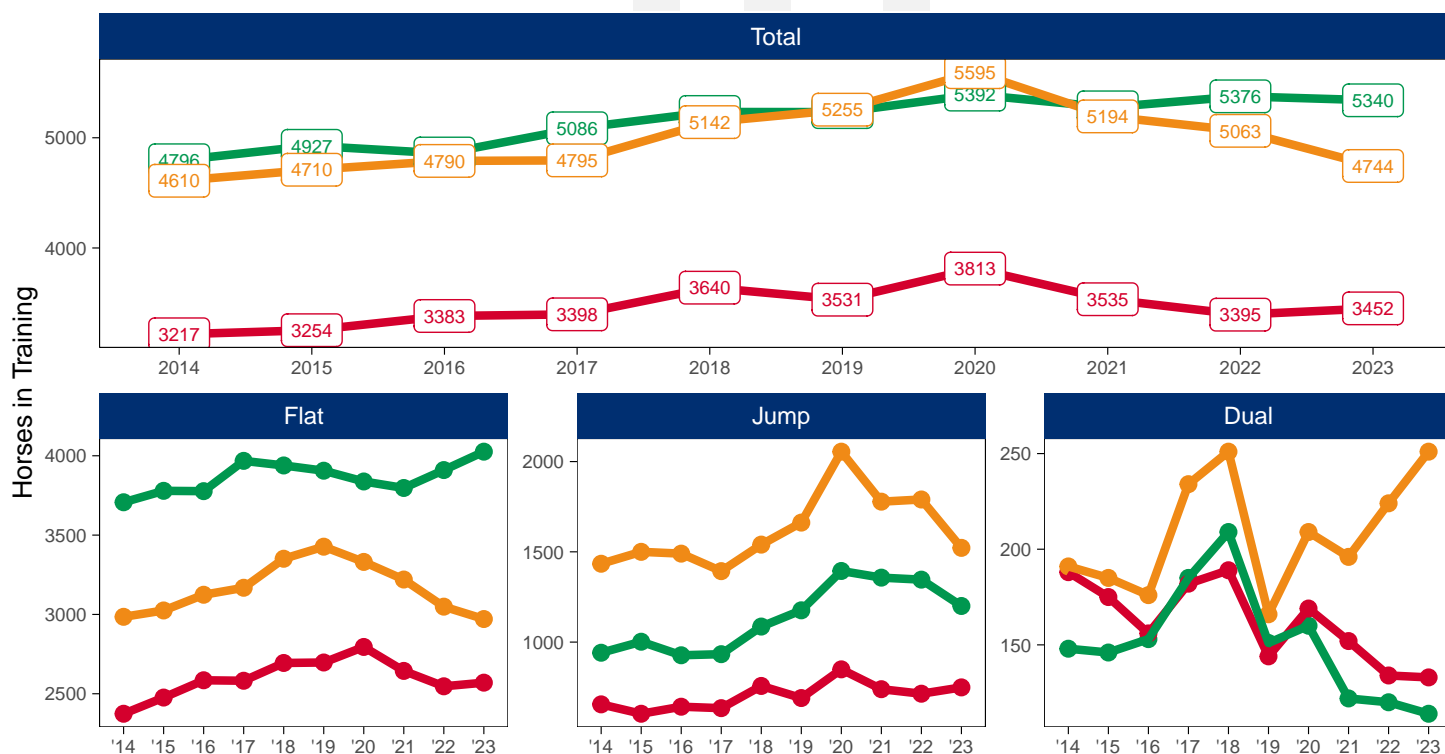
# Horse Population by Location

## July 2023 Horses in Training Snapshot by Region versus Previous Years

### Snapshot of Total Horses in Training in July by Region

Horses in Training in July, shown by Training Type and Region

Region ■ North ■ Midlands ■ South



### North

AgeCat	2014	2015	2016	2017	2018	2019	2020	2021	2022	2023	vs. Last Year	vs. Pre-Covid
<b>Flat Horses in Training</b>												
2YO	795	850	844	817	886	921	897	864	868	846	-22 / -2.5%	-75 / -8.1%
3YO	581	610	665	696	692	681	794	754	661	689	+28 / +4.2%	+8 / +1.2%
4YO	340	346	375	401	394	406	402	384	394	372	-22 / -5.6%	-34 / -8.4%
5YO+	658	670	701	668	722	689	702	642	624	663	+39 / +6.2%	-26 / -3.8%
<b>Subtotal</b>	<b>2374</b>	<b>2476</b>	<b>2585</b>	<b>2582</b>	<b>2694</b>	<b>2697</b>	<b>2795</b>	<b>2644</b>	<b>2547</b>	<b>2570</b>	<b>+23 / +0.9%</b>	<b>-127 / -4.7%</b>
<b>Jump Horses in Training</b>												
3YO	27	19	25	20	15	21	16	14	34	8	-26 / -76.5%	-13 / -61.9%
4-5YO	173	140	165	187	170	191	215	162	182	190	+8 / +4.4%	-1 / -0.5%
6-7YO	195	205	211	189	263	229	311	247	246	279	+33 / +13.4%	+50 / +21.8%
8YO+	260	239	241	238	309	249	307	316	252	272	+20 / +7.9%	+23 / +9.2%
<b>Subtotal</b>	<b>655</b>	<b>603</b>	<b>642</b>	<b>634</b>	<b>757</b>	<b>690</b>	<b>849</b>	<b>739</b>	<b>714</b>	<b>749</b>	<b>+35 / +4.9%</b>	<b>+59 / +8.6%</b>
<b>Dual Horses in Training</b>												
3YO	28	34	29	33	27	15	33	22	22	17	-5 / -22.7%	+2 / +13.3%
4YO	50	39	36	39	39	34	35	32	28	24	-4 / -14.3%	-10 / -29.4%
5YO+	110	102	91	110	123	95	101	98	84	92	+8 / +9.5%	-3 / -3.2%
<b>Subtotal</b>	<b>188</b>	<b>175</b>	<b>156</b>	<b>182</b>	<b>189</b>	<b>144</b>	<b>169</b>	<b>152</b>	<b>134</b>	<b>133</b>	<b>-1 / -0.7%</b>	<b>-11 / -7.6%</b>
<b>Total Horses in Training</b>												
	<b>3217</b>	<b>3254</b>	<b>3383</b>	<b>3398</b>	<b>3640</b>	<b>3531</b>	<b>3813</b>	<b>3535</b>	<b>3395</b>	<b>3452</b>	<b>+57 / +1.7%</b>	<b>-79 / -2.2%</b>

'vs. Pre-Covid' is comparison between 2023 and 2019



## Midlands

AgeCat	2014	2015	2016	2017	2018	2019	2020	2021	2022	2023	vs. Last Year	vs. Pre-Covid
<b>Flat Horses in Training</b>												
2YO	1475	1570	1562	1594	1515	1426	1316	1415	1438	1476	+38 / +2.6%	+50 / +3.5%
3YO	1107	1114	1126	1193	1244	1258	1302	1147	1234	1247	+13 / +1.1%	-11 / -0.9%
4YO	455	456	446	539	535	545	541	578	571	587	+16 / +2.8%	+42 / +7.7%
5YO+	670	639	643	642	645	677	679	657	667	716	+49 / +7.3%	+39 / +5.8%
<b>Subtotal</b>	<b>3707</b>	<b>3779</b>	<b>3777</b>	<b>3968</b>	<b>3939</b>	<b>3906</b>	<b>3838</b>	<b>3797</b>	<b>3910</b>	<b>4026</b>	<b>+116 / +3.0%</b>	<b>+120 / +3.1%</b>
<b>Jump Horses in Training</b>												
3YO	17	36	31	19	22	22	20	40	42	40	-2 / -4.8%	+18 / +81.8%
4-5YO	288	321	256	277	317	394	518	457	465	420	-45 / -9.7%	+26 / +6.6%
6-7YO	357	371	325	326	385	401	484	479	493	422	-71 / -14.4%	+21 / +5.2%
8YO+	279	274	315	311	362	359	372	381	346	318	-28 / -8.1%	-41 / -11.4%
<b>Subtotal</b>	<b>941</b>	<b>1002</b>	<b>927</b>	<b>933</b>	<b>1086</b>	<b>1176</b>	<b>1394</b>	<b>1357</b>	<b>1346</b>	<b>1200</b>	<b>-146 / -10.8%</b>	<b>+24 / +2.0%</b>
<b>Dual Horses in Training</b>												
3YO	26	24	32	26	33	24	17	20	21	18	-3 / -14.3%	-6 / -25.0%
4YO	36	30	38	46	57	47	32	35	34	24	-10 / -29.4%	-23 / -48.9%
5YO+	86	92	83	113	119	80	111	67	65	72	+7 / +10.8%	-8 / -10.0%
<b>Subtotal</b>	<b>148</b>	<b>146</b>	<b>153</b>	<b>185</b>	<b>209</b>	<b>151</b>	<b>160</b>	<b>122</b>	<b>120</b>	<b>114</b>	<b>-6 / -5.0%</b>	<b>-37 / -24.5%</b>
<b>Total Horses in Training</b>												
	<b>4796</b>	<b>4927</b>	<b>4857</b>	<b>5086</b>	<b>5234</b>	<b>5233</b>	<b>5392</b>	<b>5276</b>	<b>5376</b>	<b>5340</b>	<b>-36 / -0.7%</b>	<b>+107 / +2.0%</b>

'vs. Pre-Covid' is comparison between 2023 and 2019

## South

AgeCat	2014	2015	2016	2017	2018	2019	2020	2021	2022	2023	vs. Last Year	vs. Pre-Covid
<b>Flat Horses in Training</b>												
2YO	1275	1260	1286	1335	1324	1367	1242	1262	1227	1173	-54 / -4.4%	-194 / -14.2%
3YO	868	887	907	913	1049	993	1055	950	852	879	+27 / +3.2%	-114 / -11.5%
4YO	334	371	386	381	426	494	451	450	436	345	-91 / -20.9%	-149 / -30.2%
5YO+	508	507	545	539	552	573	583	558	534	574	+40 / +7.5%	+1 / +0.2%
<b>Subtotal</b>	<b>2985</b>	<b>3025</b>	<b>3124</b>	<b>3168</b>	<b>3351</b>	<b>3427</b>	<b>3331</b>	<b>3220</b>	<b>3049</b>	<b>2971</b>	<b>-78 / -2.6%</b>	<b>-456 / -13.3%</b>
<b>Jump Horses in Training</b>												
3YO	91	50	44	56	43	65	46	68	60	34	-26 / -43.3%	-31 / -47.7%
4-5YO	469	518	497	459	512	581	740	586	707	608	-99 / -14.0%	+27 / +4.6%
6-7YO	478	501	494	463	518	556	711	629	587	480	-107 / -18.2%	-76 / -13.7%
8YO+	396	431	455	415	467	460	558	495	436	400	-36 / -8.3%	-60 / -13.0%
<b>Subtotal</b>	<b>1434</b>	<b>1500</b>	<b>1490</b>	<b>1393</b>	<b>1540</b>	<b>1662</b>	<b>2055</b>	<b>1778</b>	<b>1790</b>	<b>1522</b>	<b>-268 / -15.0%</b>	<b>-140 / -8.4%</b>
<b>Dual Horses in Training</b>												
3YO	38	23	25	33	31	27	26	40	56	53	-3 / -5.4%	+26 / +96.3%
4YO	42	37	25	62	54	36	51	50	46	71	+25 / +54.3%	+35 / +97.2%
5YO+	111	125	126	139	166	103	132	106	122	127	+5 / +4.1%	+24 / +23.3%
<b>Subtotal</b>	<b>191</b>	<b>185</b>	<b>176</b>	<b>234</b>	<b>251</b>	<b>166</b>	<b>209</b>	<b>196</b>	<b>224</b>	<b>251</b>	<b>+27 / +12.1%</b>	<b>+85 / +51.2%</b>
<b>Total Horses in Training</b>												
	<b>4610</b>	<b>4710</b>	<b>4790</b>	<b>4795</b>	<b>5142</b>	<b>5255</b>	<b>5595</b>	<b>5194</b>	<b>5063</b>	<b>4744</b>	<b>-319 / -6.3%</b>	<b>-511 / -9.7%</b>

'vs. Pre-Covid' is comparison between 2023 and 2019

## July 2023 Horses in Training Snapshot by Country versus Previous Years

Type	2014	2015	2016	2017	2018	2019	2020	2021	2022	2023	vs. Last Year	vs. Pre-Covid
<b>England</b>												
Flat	8733	8948	9146	9314	9574	9625	9577	9274	9120	9204	+84 / +0.9%	-421 / -4.4%
Jump	2639	2678	2610	2626	2877	3054	3818	3395	3497	3112	-385 / -11.0%	+58 / +1.9%
Dual	476	458	422	525	575	408	480	415	423	462	+39 / +9.2%	+54 / +13.2%
<b>Overall</b>	<b>11848</b>	<b>12084</b>	<b>12178</b>	<b>12465</b>	<b>13026</b>	<b>13087</b>	<b>13875</b>	<b>13084</b>	<b>13040</b>	<b>12778</b>	<b>-262 / -2.0%</b>	<b>-309 / -2.4%</b>
<b>Scotland</b>												
Flat	172	176	186	241	235	222	230	229	239	206	-33 / -13.8%	-16 / -7.2%
Jump	152	148	171	134	200	181	252	165	163	171	+8 / +4.9%	-10 / -5.5%
Dual	25	23	34	36	40	29	35	33	30	25	-5 / -16.7%	-4 / -13.8%
<b>Overall</b>	<b>349</b>	<b>347</b>	<b>391</b>	<b>411</b>	<b>475</b>	<b>432</b>	<b>517</b>	<b>427</b>	<b>432</b>	<b>402</b>	<b>-30 / -6.9%</b>	<b>-30 / -6.9%</b>
<b>Wales</b>												
Flat	161	156	154	163	175	183	157	158	147	157	+10 / +6.8%	-26 / -14.2%
Jump	239	279	278	200	306	293	228	314	190	188	-2 / -1.1%	-105 / -35.8%
Dual	26	25	29	40	34	24	23	22	25	11	-14 / -56.0%	-13 / -54.2%
<b>Overall</b>	<b>426</b>	<b>460</b>	<b>461</b>	<b>403</b>	<b>515</b>	<b>500</b>	<b>408</b>	<b>494</b>	<b>362</b>	<b>356</b>	<b>-6 / -1.7%</b>	<b>-144 / -28.8%</b>

'vs. Pre-Covid' is comparison between 2023 and 2019

## July 2023 Horses in Training Snapshot by Training Centre versus Previous Years

Type	2014	2015	2016	2017	2018	2019	2020	2021	2022	2023	vs. Last Year	vs. Pre-Covid
<b>Cheltenham (GL54)</b>												
Flat	11	21	14	16	11	15	9	18	14	11	-3 / -21.4%	-4 / -26.7%
Jump	169	184	202	190	243	210	341	347	294	244	-50 / -17.0%	+34 / +16.2%
Dual	14	15	17	21	27	15	14	13	15	13	-2 / -13.3%	-2 / -13.3%
<b>Overall</b>	<b>194</b>	<b>220</b>	<b>233</b>	<b>227</b>	<b>281</b>	<b>240</b>	<b>364</b>	<b>378</b>	<b>323</b>	<b>268</b>	<b>-55 / -17.0%</b>	<b>+28 / +11.7%</b>
<b>Lambourn (RG17)</b>												
Flat	758	801	927	1006	1060	1057	1033	971	897	942	+45 / +5.0%	-115 / -10.9%
Jump	76	118	128	123	126	147	263	140	226	198	-28 / -12.4%	+51 / +34.7%
Dual	21	20	21	22	21	18	33	25	32	36	+4 / +12.5%	+18 / +100.0%
<b>Overall</b>	<b>855</b>	<b>939</b>	<b>1076</b>	<b>1151</b>	<b>1207</b>	<b>1222</b>	<b>1329</b>	<b>1136</b>	<b>1155</b>	<b>1176</b>	<b>+21 / +1.8%</b>	<b>-46 / -3.8%</b>
<b>Malton (YO17)</b>												
Flat	630	642	658	669	740	744	815	752	679	709	+30 / +4.4%	-35 / -4.7%
Jump	75	80	88	95	85	75	82	80	74	69	-5 / -6.8%	-6 / -8.0%
Dual	49	42	19	39	41	25	40	37	28	28	0 / 0.0%	+3 / +12.0%
<b>Overall</b>	<b>754</b>	<b>764</b>	<b>765</b>	<b>803</b>	<b>866</b>	<b>844</b>	<b>937</b>	<b>869</b>	<b>781</b>	<b>806</b>	<b>+25 / +3.2%</b>	<b>-38 / -4.5%</b>
<b>Marlborough (SN8)</b>												
Flat	589	580	490	471	496	479	495	466	405	404	-1 / -0.2%	-75 / -15.7%
Jump	72	64	44	49	49	40	63	41	43	28	-15 / -34.9%	-12 / -30.0%
Dual	1	5	3	1	1	2	2	0	0	1	+1 / +Inf	-1 / -50.0%
<b>Overall</b>	<b>662</b>	<b>649</b>	<b>537</b>	<b>521</b>	<b>546</b>	<b>521</b>	<b>560</b>	<b>507</b>	<b>448</b>	<b>433</b>	<b>-15 / -3.3%</b>	<b>-88 / -16.9%</b>
<b>Middleham (DL8)</b>												
Flat	449	536	581	547	531	598	624	582	553	581	+28 / +5.1%	-17 / -2.8%
Jump	33	39	44	49	70	64	84	85	85	97	+12 / +14.1%	+33 / +51.6%
Dual	26	33	26	27	16	25	31	27	19	15	-4 / -21.1%	-10 / -40.0%
<b>Overall</b>	<b>508</b>	<b>608</b>	<b>651</b>	<b>623</b>	<b>617</b>	<b>687</b>	<b>739</b>	<b>694</b>	<b>657</b>	<b>693</b>	<b>+36 / +5.5%</b>	<b>+6 / +0.9%</b>
<b>Newbury (RG20)</b>												
Flat	386	394	386	389	423	447	403	422	435	434	-1 / -0.2%	-13 / -2.9%
Jump	20	15	14	9	15	14	6	5	5	23	+18 / +360.0%	+9 / +64.3%
Dual	5	5	3	4	12	6	6	4	4	2	-2 / -50.0%	-4 / -66.7%
<b>Overall</b>	<b>411</b>	<b>414</b>	<b>403</b>	<b>402</b>	<b>450</b>	<b>467</b>	<b>415</b>	<b>431</b>	<b>444</b>	<b>459</b>	<b>+15 / +3.4%</b>	<b>-8 / -1.7%</b>
<b>Newmarket (CB8)</b>												
Flat	2818	2779	2714	2830	2841	2760	2784	2726	2785	2964	+179 / +6.4%	+204 / +7.4%
Jump	79	77	19	22	26	34	33	40	20	35	+15 / +75.0%	+1 / +2.9%
Dual	28	23	30	28	30	26	27	21	22	18	-4 / -18.2%	-8 / -30.8%
<b>Overall</b>	<b>2925</b>	<b>2879</b>	<b>2763</b>	<b>2880</b>	<b>2897</b>	<b>2820</b>	<b>2844</b>	<b>2787</b>	<b>2827</b>	<b>3017</b>	<b>+190 / +6.7%</b>	<b>+197 / +7.0%</b>

'vs. Pre-Covid' is comparison between 2023 and 2019