

Horse Population Report

Updated on 31 December 2022



Introduction

Welcome to the latest update on the Racehorse Population from the British Horseracing Authority.

The aim of this document is to give stakeholders and the wider Public an insight into the current state of the Horse Population in Great Britain. It is hoped that this transparency will ensure that all decision makers have access to the key data required to help British Racing deliver a Competitive and Compelling product to stakeholders, racegoers and the wider public.

If you have any questions regarding the content of this report or suggestions for how it could be improved further, please contact Joe Yates – jyates@britishhorseracing.com

Definitions

This report uses the Horses in Training returns from the Weatherby's Racing Administration System, this is completed by trainers and should be updated whenever a horse enters or leaves training in their care as part of the conditions of their licence.

Horses in Training

Unless otherwise stated, snapshots of Horses in Training will be from the 15th day of the month in question and year to date figures will be up to and including the date titled at the front of the report.

Horses' ratings will be taken from the most recently published ratings by the BHA Handicapping Team, which is currently at 7am each Tuesday morning. For example, if looking at the Horses in a particular rating band for July 2011, the horses in training number will be from Friday 15th July 2011 and ratings, where possible, will be assigned to each horse from the ratings published by the BHA Handicappers on Tuesday 12th July 2011.

The Gender of a horse will be taken from the reporting date in question, regardless of whether this has since changed. In the case of YTD reporting, where a horse's gender or training type has changed in the year-to-date period, the most recent is taken.

This report does not count any horses that are temporarily racing abroad for GB Trainers at the time of reporting.

Yearlings are not included in total counts of flat and/or dual horses but will be sometimes shown separately for information purposes.

Yearlings and two-year-olds are not included in total counts of jump horses or counts of jump horses that include dual horses but will be sometimes shown separately for information purposes.

Yearlings, two-year-olds and three-year-olds are not included in total counts of Hunter Chasers but will be sometimes shown separately for information purposes.

Hunter Chasers are not included in any counts of Jump Horses or Total figures but will be sometimes shown separately for information purposes.

Runners

Unless otherwise specified, Total Runners and Individual Runners metrics only counts runners that ran in GB races including any voided races. Withdrawn horses are not included.

Hunter Chases are not included in this section but will be sometimes shown separately for information purposes.

Total Runners is a count of all runners in races, whilst individual runners only counts each individual horse once.

Monthly Horses in Training

December 2022 Horses in Training Snapshot versus Previous Years

Type	2013	2014	2015	2016	2017	2018	2019	2020	2021	2022	vs. Last Year	vs. Pre-Covid
Flat	5346	5377	5547	5879	6203	6374	6551	6325	6256	6306	+50 / +0.8%	-245 / -3.7%
Jump	5285	5326	5422	5425	5215	5803	5979	6374	5980	5883	-97 / -1.6%	-96 / -1.6%
Dual	548	526	494	532	943	484	539	542	523	627	+104 / +19.9%	+88 / +16.3%
Hunter	744	705	688	593	638	714	606	794	604	517	-87 / -14.4%	-89 / -14.7%
Total	11179	11229	11463	11836	12361	12661	13069	13241	12759	12816	+57 / +0.4%	-253 / -1.9%

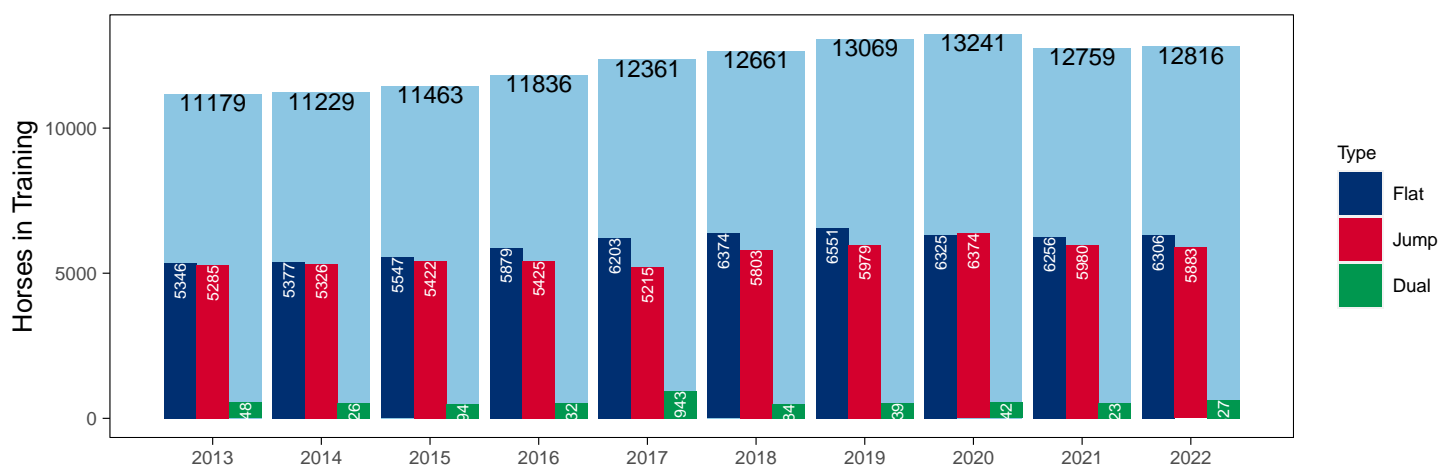
'vs. Pre-Covid' is comparison between 2022 and 2019

Warning: The 'size' argument of 'element_line()' is deprecated as of ggplot2 3.4.0.

i Please use the 'linewidth' argument instead.

Snapshot of Total Horses in Training in December

Horses in Training in December, shown by Training Type



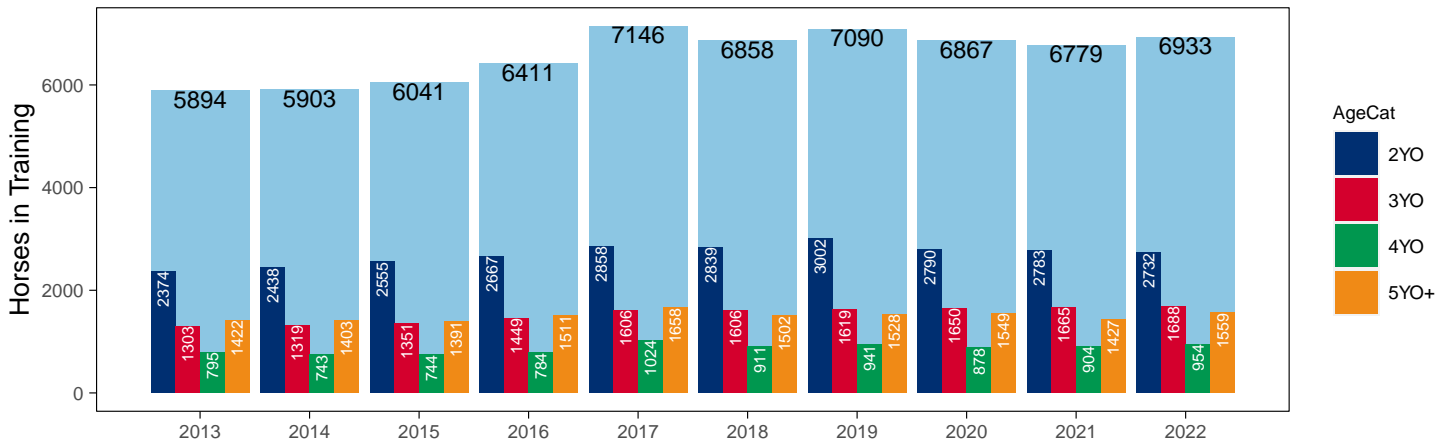
Flat (including Dual)

AgeCat	2013	2014	2015	2016	2017	2018	2019	2020	2021	2022	vs. Last Year	vs. Pre-Covid
2YO	2374	2438	2555	2667	2858	2839	3002	2790	2783	2732	-51 / -1.8%	-270 / -9.0%
3YO	1303	1319	1351	1449	1606	1606	1619	1650	1665	1688	+23 / +1.4%	+69 / +4.3%
4YO	795	743	744	784	1024	911	941	878	904	954	+50 / +5.5%	+13 / +1.4%
5YO+	1422	1403	1391	1511	1658	1502	1528	1549	1427	1559	+132 / +9.3%	+31 / +2.0%
Total	5894	5903	6041	6411	7146	6858	7090	6867	6779	6933	+154 / +2.3%	-157 / -2.2%

'vs. Pre-Covid' is comparison between 2022 and 2019

Snapshot of Flat Horses in Training in December

Flat Horses in Training in December, shown by Age



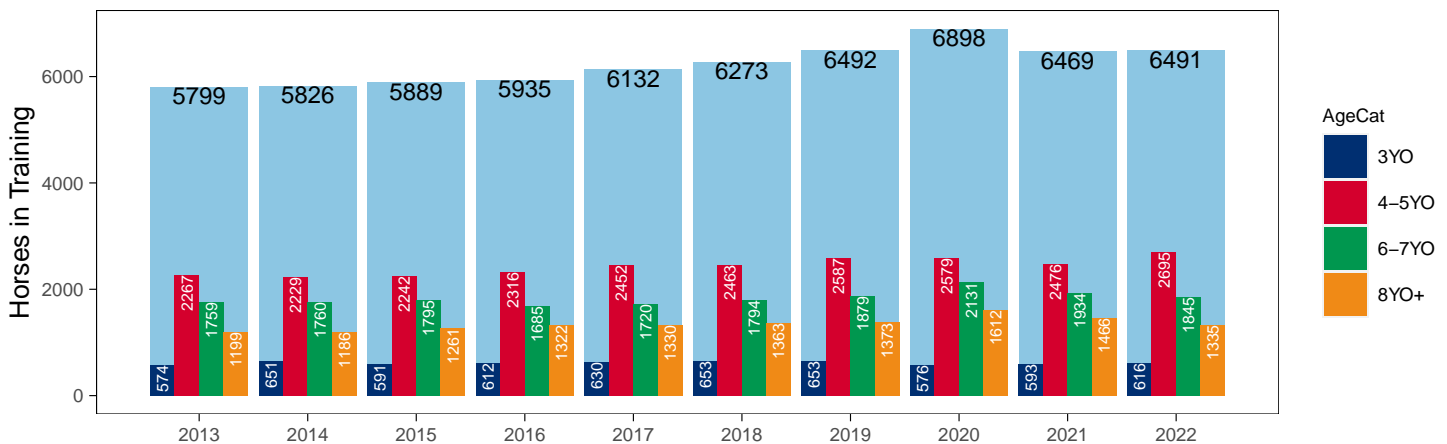
Jump (including Dual)

AgeCat	2013	2014	2015	2016	2017	2018	2019	2020	2021	2022	vs. Last Year	vs. Pre-Covid
3YO	574	651	591	612	630	653	653	576	593	616	+23 / +3.9%	-37 / -5.7%
4-5YO	2267	2229	2242	2316	2452	2463	2587	2579	2476	2695	+219 / +8.8%	+108 / +4.2%
6-7YO	1759	1760	1795	1685	1720	1794	1879	2131	1934	1845	-89 / -4.6%	-34 / -1.8%
8YO+	1199	1186	1261	1322	1330	1363	1373	1612	1466	1335	-131 / -8.9%	-38 / -2.8%
Total	5799	5826	5889	5935	6132	6273	6492	6898	6469	6491	+22 / +0.3%	-1 / 0.0%

'vs. Pre-Covid' is comparison between 2022 and 2019

Snapshot of Jump Horses in Training in December

Jump Horses in Training in December, shown by Age



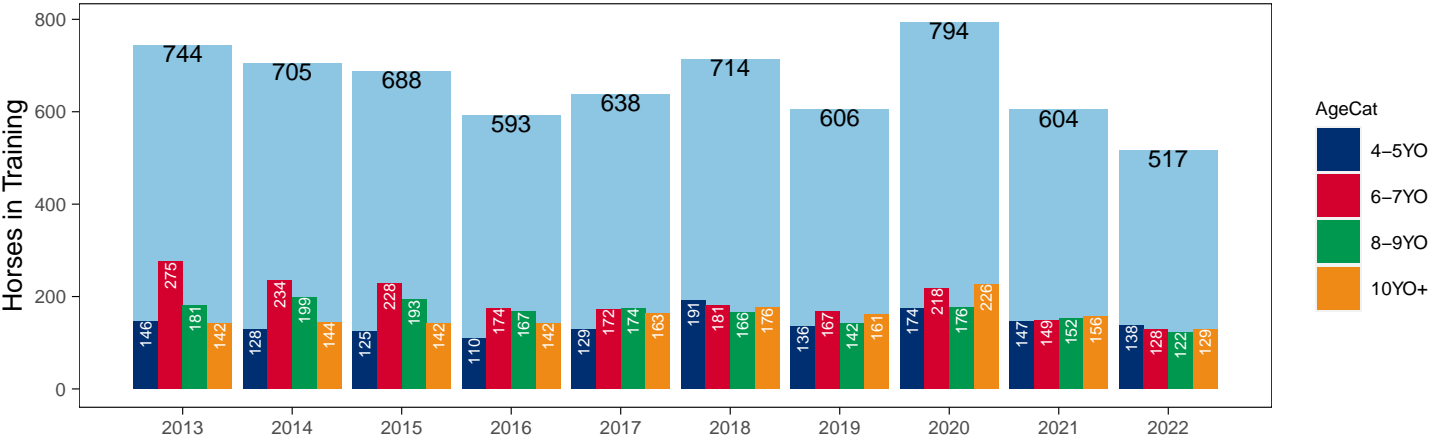
Hunter Chasers

AgeCat	2013	2014	2015	2016	2017	2018	2019	2020	2021	2022	vs. Last Year	vs. Pre-Covid
4-5YO	146	128	125	110	129	191	136	174	147	138	-9 / -6.1%	+2 / +1.5%
6-7YO	275	234	228	174	172	181	167	218	149	128	-21 / -14.1%	-39 / -23.4%
8-9YO	181	199	193	167	174	166	142	176	152	122	-30 / -19.7%	-20 / -14.1%
10YO+	142	144	142	142	163	176	161	226	156	129	-27 / -17.3%	-32 / -19.9%
Total	744	705	688	593	638	714	606	794	604	517	-87 / -14.4%	-89 / -14.7%

'vs. Pre-Covid' is comparison between 2022 and 2019

Snapshot of Hunter Chasers in Training in December

Hunter Chasers in Training in December, shown by Age



2022 Horses in Training versus Previous Years

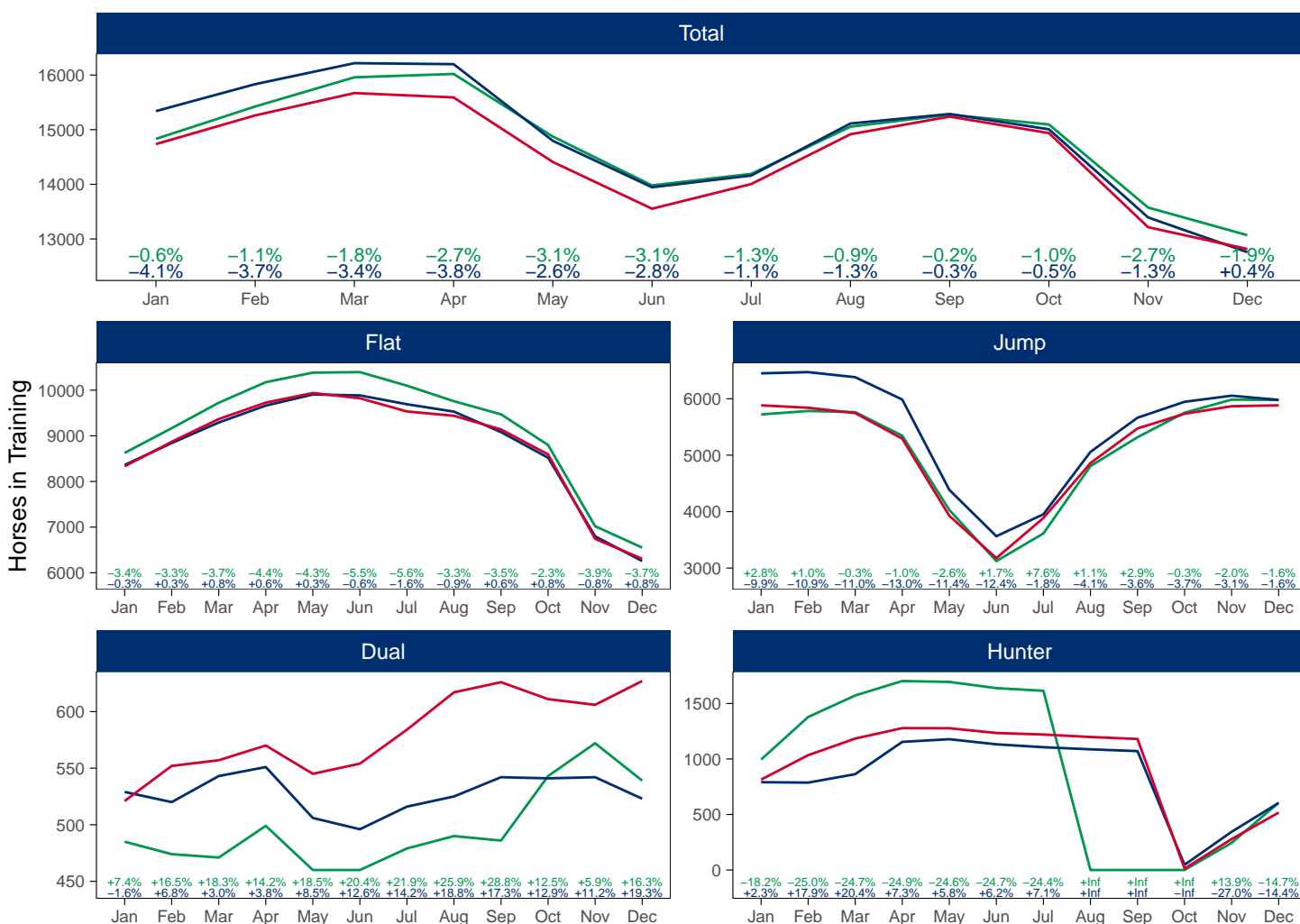
Type	Period	Jan	Feb	Mar	Apr	May	Jun	Jul	Aug	Sep	Oct	Nov	Dec
Flat	2022	8332	8869	9367	9727	9938	9823	9534	9439	9139	8593	6742	6306
	2021	8361	8841	9292	9662	9905	9886	9692	9530	9081	8520	6798	6256
	Pre-Covid	8625	9167	9724	10175	10384	10396	10099	9758	9471	8799	7019	6551
Jump	2022	5883	5840	5746	5293	3926	3176	3887	4860	5474	5734	5867	5883
	2021	6450	6472	6382	5986	4386	3564	3953	5058	5664	5946	6054	5980
	Pre-Covid	5722	5783	5763	5346	4030	3124	3613	4807	5318	5753	5984	5979
Dual	2022	521	552	557	570	545	554	584	617	626	611	606	627
	2021	529	520	543	551	506	496	516	525	542	541	542	523
	Pre-Covid	485	474	471	499	460	460	479	490	486	543	572	539
Hunter	2022	814	1034	1184	1278	1277	1234	1220	1198	1180	13	278	517
	2021	791	787	863	1154	1178	1132	1106	1087	1071	47	344	604
	Pre-Covid	995	1378	1572	1702	1694	1638	1614	0	0	0	244	606
Total	2022	14736	15261	15670	15590	14409	13553	14005	14916	15239	14938	13215	12816
	2021	15340	15833	16217	16199	14797	13946	14161	15113	15287	15007	13394	12759
	Pre-Covid	14832	15424	15958	16020	14874	13980	14191	15055	15275	15095	13575	13069

'Pre-Covid' is 2019 values

Monthly Horses in Training

2022 against 2021 and Pre-Covid, shown with % Difference

Period — Pre-Covid — 2021 — 2022



'Pre-Covid' is 2019 values

Flat (including Dual)

AgeCat	Period	Jan	Feb	Mar	Apr	May	Jun	Jul	Aug	Sep	Oct	Nov	Dec
2YO	2022	1927	2364	2591	2867	3218	3369	3533	3602	3609	3495	2856	2732
	2021	1927	2242	2467	2792	3161	3388	3545	3621	3603	3529	2983	2783
	Pre-Covid	2104	2425	2739	3107	3395	3594	3715	3785	3802	3651	3103	3002
3YO	2022	2946	3065	3242	3310	3243	3136	2873	2774	2621	2440	1823	1688
	2021	2925	3050	3230	3284	3224	3099	2935	2842	2626	2378	1819	1665
	Pre-Covid	2998	3139	3288	3339	3302	3220	3007	2791	2645	2419	1782	1619
4YO	2022	1678	1665	1700	1702	1660	1598	1518	1517	1430	1329	1026	954
	2021	1629	1675	1710	1720	1674	1631	1538	1493	1417	1291	994	904
	Pre-Covid	1640	1672	1715	1726	1690	1661	1567	1490	1423	1345	1054	941
5YO+	2022	2302	2327	2391	2418	2362	2274	2194	2163	2105	1940	1643	1559
	2021	2409	2394	2428	2417	2352	2264	2190	2099	1977	1863	1544	1427
	Pre-Covid	2368	2405	2453	2502	2457	2381	2289	2182	2087	1927	1652	1528
Total	2022	8853	9421	9924	10297	10483	10377	10118	10056	9765	9204	7348	6933
	2021	8890	9361	9835	10213	10411	10382	10208	10055	9623	9061	7340	6779
	Pre-Covid	9110	9641	10195	10674	10844	10856	10578	10248	9957	9342	7591	7090

'Pre-Covid' is 2019 values

Monthly Flat Horses in Training

2022 against 2021 and Pre-Covid, shown with % Difference

Period — Pre-Covid — 2021 — 2022



'Pre-Covid' is 2019 values

Jump (including Dual)

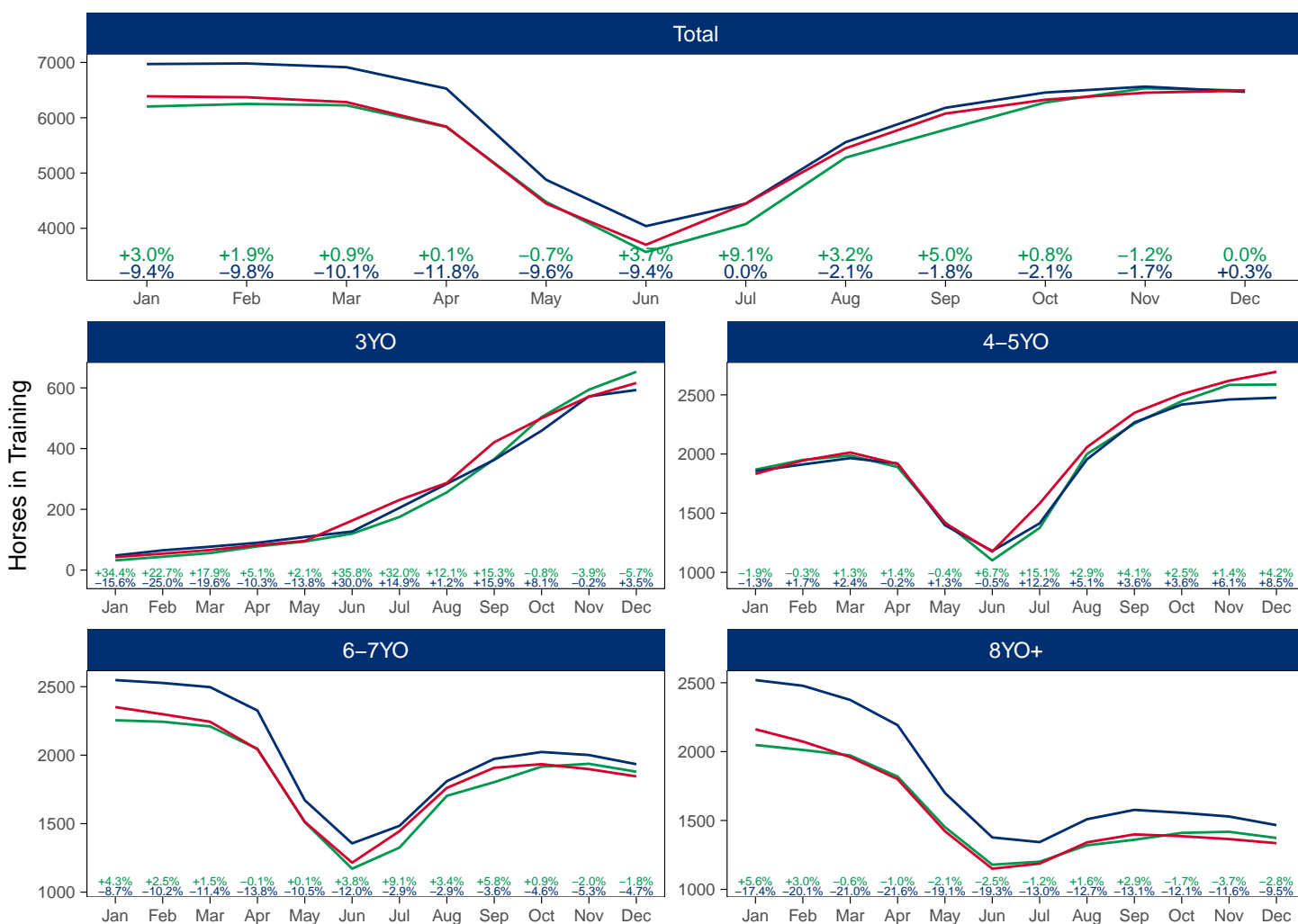
AgeCat	Period	Jan	Feb	Mar	Apr	May	Jun	Jul	Aug	Sep	Oct	Nov	Dec
3YO	2022	43	54	66	82	96	163	231	287	421	500	571	616
	2021	48	65	77	90	109	127	205	284	363	459	572	593
	Pre-Covid	32	44	56	78	94	120	175	256	365	504	594	653
4-5YO	2022	1832	1945	2013	1916	1417	1175	1582	2058	2348	2506	2619	2695
	2021	1856	1912	1965	1920	1398	1180	1414	1955	2267	2418	2461	2476
	Pre-Covid	1868	1950	1987	1890	1422	1101	1375	2000	2256	2446	2584	2587
6-7YO	2022	2351	2299	2244	2043	1513	1215	1445	1761	1908	1934	1898	1845
	2021	2548	2527	2497	2326	1671	1356	1484	1810	1973	2023	2001	1934
	Pre-Covid	2255	2244	2210	2046	1511	1171	1325	1703	1803	1916	1937	1879
8YO+	2022	2162	2073	1960	1800	1422	1150	1187	1341	1399	1386	1365	1335
	2021	2519	2478	2375	2192	1700	1377	1343	1509	1577	1556	1529	1466
	Pre-Covid	2048	2012	1972	1819	1452	1179	1201	1320	1360	1410	1418	1373
Total	2022	6388	6371	6283	5841	4448	3703	4445	5447	6076	6326	6453	6491
	2021	6971	6982	6914	6528	4878	4040	4446	5558	6180	6456	6563	6469
	Pre-Covid	6203	6250	6225	5833	4479	3571	4076	5279	5784	6276	6533	6492

'Pre-Covid' is 2019 values

Monthly Jump Horses in Training

2022 against 2021 and Pre-Covid, shown with % Difference

Period — Pre-Covid — 2021 — 2022



'Pre-Covid' is 2019 values

Hunter Chasers

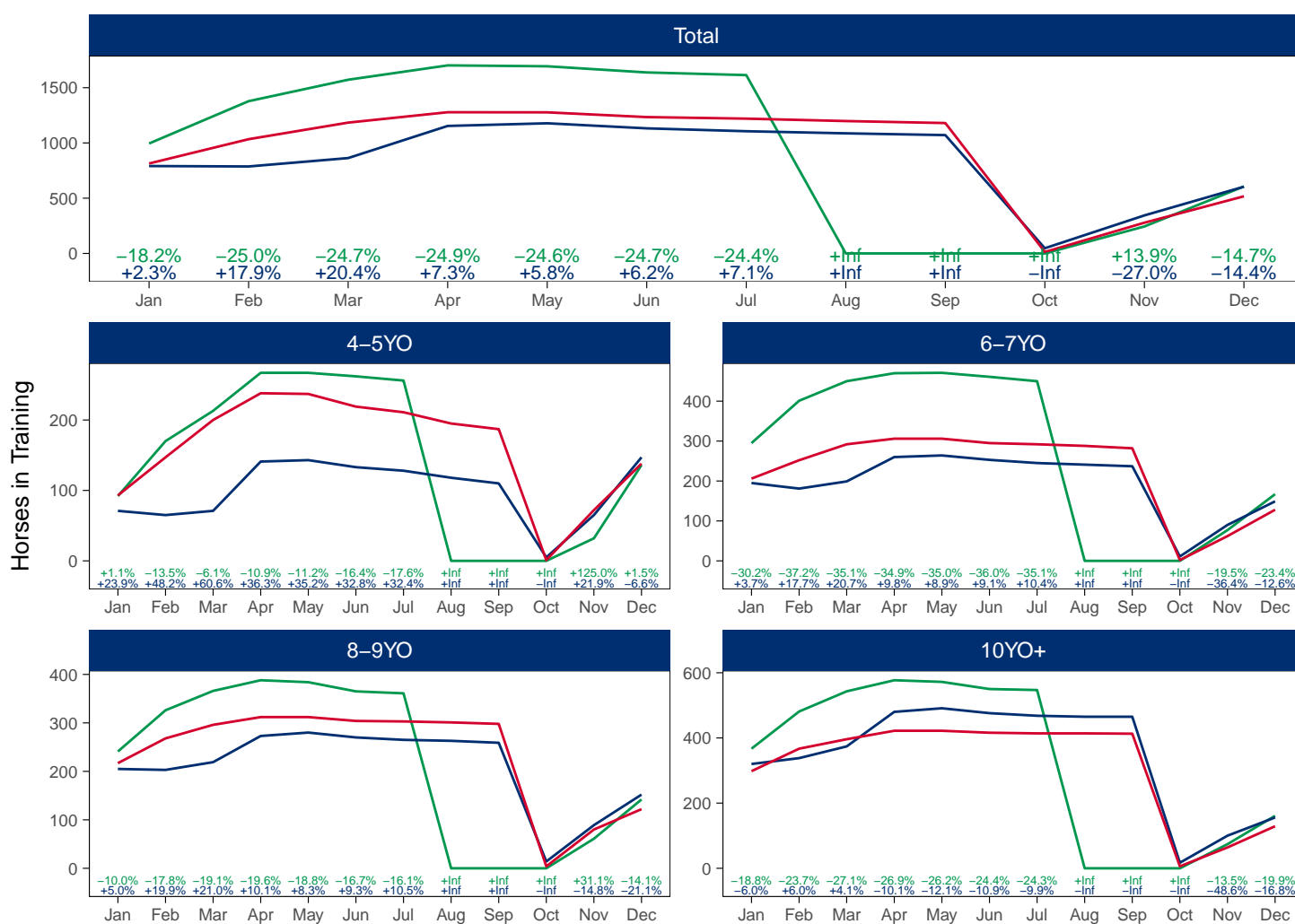
AgeCat	Period	Jan	Feb	Mar	Apr	May	Jun	Jul	Aug	Sep	Oct	Nov	Dec
4-5YO	2022	93	147	200	238	237	219	211	195	187	1	72	138
	2021	71	65	71	141	143	133	128	118	110	5	65	147
	Pre-Covid	92	170	213	267	267	262	256				32	136
6-7YO	2022	206	252	292	306	306	295	292	288	282	2	62	128
	2021	195	181	199	260	264	253	245	241	237	11	90	149
	Pre-Covid	295	401	450	470	471	461	450				77	167
8-9YO	2022	217	268	296	312	312	304	303	301	298	4	80	122
	2021	205	203	219	273	280	270	265	263	259	14	89	152
	Pre-Covid	241	326	366	388	384	365	361				61	142
10YO+	2022	298	367	396	422	422	416	414	414	413	6	64	129
	2021	320	338	374	480	491	476	468	465	465	17	100	156
	Pre-Covid	367	481	543	577	572	550	547				74	161
Total	2022	814	1034	1184	1278	1277	1234	1220	1198	1180	13	278	517
	2021	791	787	863	1154	1178	1132	1106	1087	1071	47	344	604
	Pre-Covid	995	1378	1572	1702	1694	1638	1614				244	606

'Pre-Covid' is 2019 values

Monthly Hunter Chasers in Training

2022 against 2021 and Pre-Covid, shown with % Difference

Period — Pre-Covid — 2021 — 2022



'Pre-Covid' is 2019 values

December 2022 Horses in Training by Rating Band Snapshot versus Previous Years

Flat (including Dual)

AgeCat	RatBand	2013	2014	2015	2016	2017	2018	2019	2020	2021	2022
2YO	0-50	79 (3.3%)	93 (3.8%)	82 (3.2%)	81 (3.0%)	65 (2.3%)	77 (2.7%)	99 (3.3%)	94 (3.4%)	102 (3.7%)	83 (3.0%)
	51-60	156 (6.6%)	163 (6.7%)	136 (5.3%)	159 (6.0%)	136 (4.8%)	200 (7.0%)	157 (5.2%)	179 (6.4%)	157 (5.6%)	174 (6.4%)
	61-70	214 (9.0%)	210 (8.6%)	277 (10.8%)	245 (9.2%)	251 (8.8%)	237 (8.3%)	225 (7.5%)	257 (9.2%)	263 (9.5%)	236 (8.6%)
	71-80	245 (10.3%)	241 (9.9%)	264 (10.3%)	277 (10.4%)	266 (9.3%)	246 (8.7%)	250 (8.3%)	295 (10.6%)	246 (8.8%)	242 (8.9%)
	81-90	121 (5.1%)	101 (4.1%)	126 (4.9%)	144 (5.4%)	128 (4.5%)	149 (5.2%)	130 (4.3%)	158 (5.7%)	129 (4.6%)	136 (5.0%)
	91-100	58 (2.4%)	58 (2.4%)	58 (2.3%)	46 (1.7%)	61 (2.1%)	65 (2.3%)	61 (2.0%)	58 (2.1%)	51 (1.8%)	54 (2.0%)
	101+	27 (1.1%)	50 (2.1%)	50 (2.0%)	42 (1.6%)	55 (1.9%)	45 (1.6%)	45 (1.5%)	55 (2.0%)	55 (2.0%)	45 (1.6%)
	Unrated	1474 (62.1%)	1522 (62.4%)	1562 (61.1%)	1673 (62.7%)	1896 (66.3%)	1820 (64.1%)	2035 (67.8%)	1694 (60.7%)	1780 (64.0%)	1762 (64.5%)
Subtotal		2374 (100.0%)	2438 (100.0%)	2555 (100.0%)	2667 (100.0%)	2858 (100.0%)	2839 (100.0%)	3002 (100.0%)	2790 (100.0%)	2783 (100.0%)	2732 (100.0%)
3YO	0-50	140 (10.7%)	140 (10.6%)	129 (9.5%)	129 (8.9%)	170 (10.6%)	170 (10.6%)	221 (13.7%)	182 (11.0%)	191 (11.5%)	194 (11.5%)
	51-60	175 (13.4%)	162 (12.3%)	192 (14.2%)	195 (13.5%)	229 (14.3%)	214 (13.3%)	222 (13.7%)	237 (14.4%)	250 (15.0%)	264 (15.6%)
	61-70	224 (17.2%)	223 (16.9%)	233 (17.2%)	263 (18.2%)	252 (15.7%)	269 (16.7%)	280 (17.3%)	281 (17.0%)	308 (18.5%)	300 (17.8%)
	71-80	213 (16.3%)	217 (16.5%)	206 (15.2%)	243 (16.8%)	267 (16.6%)	258 (16.1%)	219 (13.5%)	257 (15.6%)	249 (15.0%)	228 (13.5%)
	81-90	155 (11.9%)	155 (11.8%)	178 (13.2%)	167 (11.5%)	157 (9.8%)	173 (10.8%)	153 (9.5%)	154 (9.3%)	183 (11.0%)	160 (9.5%)
	91-100	77 (5.9%)	79 (6.0%)	81 (6.0%)	81 (5.6%)	101 (6.3%)	96 (6.0%)	94 (5.8%)	86 (5.2%)	76 (4.6%)	62 (3.7%)
	101+	48 (3.7%)	72 (5.5%)	69 (5.1%)	77 (5.3%)	67 (4.2%)	73 (4.5%)	83 (5.1%)	49 (3.0%)	61 (3.7%)	82 (4.9%)
	Unrated	271 (20.8%)	271 (20.5%)	263 (19.5%)	294 (20.3%)	363 (22.6%)	353 (22.0%)	347 (21.4%)	404 (24.5%)	347 (20.8%)	398 (23.6%)
Subtotal		1303 (100.0%)	1319 (100.0%)	1351 (100.0%)	1449 (100.0%)	1606 (100.0%)	1606 (100.0%)	1619 (100.0%)	1650 (100.0%)	1665 (100.0%)	1688 (100.0%)
4YO	0-50	99 (12.5%)	70 (9.4%)	75 (10.1%)	84 (10.7%)	136 (13.3%)	130 (14.3%)	144 (15.3%)	107 (12.2%)	123 (13.6%)	137 (14.4%)
	51-60	109 (13.7%)	107 (14.4%)	109 (14.7%)	112 (14.3%)	133 (13.0%)	131 (14.4%)	150 (15.9%)	130 (14.8%)	148 (16.4%)	157 (16.5%)
	61-70	148 (18.6%)	136 (18.3%)	120 (16.1%)	131 (16.7%)	143 (14.0%)	175 (19.2%)	169 (18.0%)	159 (18.1%)	159 (17.6%)	165 (17.3%)
	71-80	122 (15.3%)	130 (17.5%)	115 (15.5%)	110 (14.0%)	125 (12.2%)	131 (14.4%)	138 (14.7%)	138 (15.7%)	132 (14.6%)	161 (16.9%)
	81-90	86 (10.8%)	70 (9.4%)	98 (13.2%)	91 (11.6%)	117 (11.4%)	92 (10.1%)	86 (9.1%)	83 (9.5%)	85 (9.4%)	82 (8.6%)
	91-100	58 (7.3%)	65 (8.7%)	57 (7.7%)	52 (6.6%)	56 (5.5%)	76 (8.3%)	77 (8.2%)	55 (6.3%)	59 (6.5%)	51 (5.3%)
	101+	51 (6.4%)	39 (5.2%)	54 (7.3%)	62 (7.9%)	57 (5.6%)	48 (5.3%)	40 (4.3%)	54 (6.2%)	46 (5.1%)	52 (5.5%)
	Unrated	122 (15.3%)	126 (17.0%)	116 (15.6%)	142 (18.1%)	257 (25.1%)	128 (14.1%)	137 (14.6%)	152 (17.3%)	152 (16.8%)	149 (15.6%)
Subtotal		795 (100.0%)	743 (100.0%)	744 (100.0%)	784 (100.0%)	1024 (100.0%)	911 (100.0%)	941 (100.0%)	878 (100.0%)	904 (100.0%)	954 (100.0%)
5YO+	0-50	209 (14.7%)	205 (14.6%)	164 (11.8%)	169 (11.2%)	199 (12.0%)	240 (16.0%)	249 (16.3%)	223 (14.4%)	210 (14.7%)	225 (14.4%)
	51-60	238 (16.7%)	216 (15.4%)	217 (15.6%)	231 (15.3%)	237 (14.3%)	241 (16.0%)	232 (15.2%)	285 (18.4%)	233 (16.3%)	250 (16.0%)
	61-70	279 (19.6%)	290 (20.7%)	294 (21.1%)	269 (17.8%)	265 (16.0%)	237 (15.8%)	248 (16.2%)	270 (17.4%)	247 (17.3%)	270 (17.3%)
	71-80	212 (14.9%)	231 (16.5%)	219 (15.7%)	234 (15.5%)	221 (13.3%)	215 (14.3%)	208 (13.6%)	191 (12.3%)	163 (11.4%)	206 (13.2%)
	81-90	129 (9.1%)	152 (10.8%)	162 (11.6%)	186 (12.3%)	172 (10.4%)	156 (10.4%)	157 (10.3%)	125 (8.1%)	139 (9.7%)	138 (8.9%)
	91-100	71 (5.0%)	68 (4.8%)	85 (6.1%)	108 (7.1%)	91 (5.5%)	87 (5.8%)	90 (5.9%)	73 (4.7%)	91 (6.4%)	92 (5.9%)
	101+	59 (4.1%)	67 (4.8%)	68 (4.9%)	75 (5.0%)	82 (4.9%)	75 (5.0%)	67 (4.4%)	66 (4.3%)	76 (5.3%)	70 (4.5%)
	Unrated	225 (15.8%)	174 (12.4%)	182 (13.1%)	239 (15.8%)	391 (23.6%)	251 (16.7%)	277 (18.1%)	316 (20.4%)	268 (18.8%)	308 (19.8%)
Subtotal		1422 (100.0%)	1403 (100.0%)	1391 (100.0%)	1511 (100.0%)	1658 (100.0%)	1502 (100.0%)	1528 (100.0%)	1549 (100.0%)	1427 (100.0%)	1559 (100.0%)
Overall	0-50	527 (8.9%)	508 (8.6%)	450 (7.4%)	463 (7.2%)	570 (8.0%)	617 (9.0%)	713 (10.1%)	606 (8.8%)	626 (9.2%)	639 (9.2%)
	51-60	678 (11.5%)	648 (11.0%)	654 (10.8%)	697 (10.9%)	735 (10.3%)	786 (11.5%)	761 (10.7%)	831 (12.1%)	788 (11.6%)	845 (12.2%)
	61-70	865 (14.7%)	859 (14.6%)	924 (15.3%)	908 (14.2%)	911 (12.7%)	918 (13.4%)	922 (13.0%)	967 (14.1%)	977 (14.4%)	971 (14.0%)
	71-80	792 (13.4%)	819 (13.9%)	804 (13.3%)	864 (13.5%)	879 (12.3%)	850 (12.4%)	815 (11.5%)	881 (12.8%)	790 (11.7%)	837 (12.1%)
	81-90	491 (8.3%)	478 (8.1%)	564 (9.3%)	588 (9.2%)	574 (8.0%)	570 (8.3%)	526 (7.4%)	520 (7.6%)	536 (7.9%)	516 (7.4%)
	91-100	264 (4.5%)	270 (4.6%)	281 (4.7%)	287 (4.5%)	309 (4.3%)	324 (4.7%)	322 (4.5%)	272 (4.0%)	277 (4.1%)	259 (3.7%)
	101+	185 (3.1%)	228 (3.9%)	241 (4.0%)	256 (4.0%)	261 (3.7%)	241 (3.5%)	235 (3.3%)	224 (3.3%)	238 (3.5%)	249 (3.6%)
	Unrated	2092 (35.5%)	2093 (35.5%)	2123 (35.1%)	2348 (36.6%)	2907 (40.7%)	2552 (37.2%)	2796 (39.4%)	2566 (37.4%)	2547 (37.6%)	2617 (37.7%)
Total		5894 (100.0%)	5903 (100.0%)	6041 (100.0%)	6411 (100.0%)	7146 (100.0%)	6858 (100.0%)	7090 (100.0%)	6867 (100.0%)	6779 (100.0%)	6933 (100.0%)

Where a horse has more than one published rating (published Flat Turf and published Flat AWT mark), the higher of the two is taken.

Jump (including Dual)

AgeCat	RatBand	2013	2014	2015	2016	2017	2018	2019	2020	2021	2022
3YO	0-100	10 (1.7%)	12 (1.8%)	13 (2.2%)	10 (1.6%)	3 (0.5%)	15 (2.3%)	10 (1.5%)	9 (1.6%)	23 (3.9%)	16 (2.6%)
	101-110	4 (0.7%)	11 (1.7%)	8 (1.4%)	12 (2.0%)	16 (2.5%)	14 (2.1%)	15 (2.3%)	20 (3.5%)	12 (2.0%)	16 (2.6%)
	111-120	20 (3.5%)	14 (2.2%)	9 (1.5%)	6 (1.0%)	7 (1.1%)	4 (0.6%)	12 (1.8%)	11 (1.9%)	14 (2.4%)	8 (1.3%)
	121-130	10 (1.7%)	7 (1.1%)	9 (1.5%)	8 (1.3%)	5 (0.8%)	8 (1.2%)	11 (1.7%)	7 (1.2%)	11 (1.9%)	5 (0.8%)
	131-140	5 (0.9%)	7 (1.1%)	9 (1.5%)	5 (0.8%)	3 (0.5%)	5 (0.8%)	2 (0.3%)	8 (1.4%)	4 (0.7%)	NA (-)
	141-150	1 (0.2%)	NA (-)	2 (0.3%)	3 (0.5%)	1 (0.2%)	2 (0.3%)	1 (0.2%)	1 (0.2%)	NA (-)	NA (-)
	Unrated	524 (91.3%)	600 (92.2%)	541 (91.5%)	568 (92.8%)	595 (94.4%)	605 (92.6%)	602 (92.2%)	520 (90.3%)	529 (89.2%)	571 (92.7%)
	Subtotal	574 (100.0%)	651 (100.0%)	591 (100.0%)	612 (100.0%)	630 (100.0%)	653 (100.0%)	653 (100.0%)	576 (100.0%)	593 (100.0%)	616 (100.0%)
4-5YO	0-100	229 (10.1%)	200 (9.0%)	179 (8.0%)	210 (9.1%)	232 (9.5%)	201 (8.2%)	244 (9.4%)	318 (12.3%)	327 (13.2%)	398 (14.8%)
	101-110	130 (5.7%)	142 (6.4%)	155 (6.9%)	151 (6.5%)	161 (6.6%)	188 (7.6%)	178 (6.9%)	175 (6.8%)	157 (6.3%)	199 (7.4%)
	111-120	159 (7.0%)	151 (6.8%)	168 (7.5%)	167 (7.2%)	180 (7.3%)	188 (7.6%)	192 (7.4%)	179 (6.9%)	159 (6.4%)	131 (4.9%)
	121-130	135 (6.0%)	127 (5.7%)	150 (6.7%)	134 (5.8%)	169 (6.9%)	166 (6.7%)	168 (6.5%)	155 (6.0%)	108 (4.4%)	119 (4.4%)
	131-140	56 (2.5%)	70 (3.1%)	88 (3.9%)	90 (3.9%)	87 (3.5%)	89 (3.6%)	79 (3.1%)	79 (3.1%)	47 (1.9%)	29 (1.1%)
	141-150	34 (1.5%)	27 (1.2%)	37 (1.7%)	31 (1.3%)	30 (1.2%)	22 (0.9%)	29 (1.1%)	29 (1.1%)	11 (0.4%)	11 (0.4%)
	151+	7 (0.3%)	14 (0.6%)	12 (0.5%)	8 (0.3%)	8 (0.3%)	9 (0.4%)	11 (0.4%)	7 (0.3%)	5 (0.2%)	2 (0.1%)
	Unrated	1517 (66.9%)	1498 (67.2%)	1453 (64.8%)	1525 (65.8%)	1585 (64.6%)	1600 (65.0%)	1686 (65.2%)	1637 (63.5%)	1662 (67.1%)	1806 (67.0%)
	Subtotal	2267 (100.0%)	2229 (100.0%)	2242 (100.0%)	2316 (100.0%)	2452 (100.0%)	2463 (100.0%)	2587 (100.0%)	2579 (100.0%)	2476 (100.0%)	2695 (100.0%)
6-7YO	0-100	418 (23.8%)	357 (20.3%)	379 (21.1%)	324 (19.2%)	348 (20.2%)	374 (20.8%)	376 (20.0%)	520 (24.4%)	469 (24.3%)	462 (25.0%)
	101-110	223 (12.7%)	226 (12.8%)	233 (13.0%)	222 (13.2%)	241 (14.0%)	229 (12.8%)	235 (12.5%)	285 (13.4%)	233 (12.0%)	257 (13.9%)
	111-120	226 (12.8%)	266 (15.1%)	261 (14.5%)	253 (15.0%)	233 (13.5%)	244 (13.6%)	245 (13.0%)	299 (14.0%)	274 (14.2%)	250 (13.6%)
	121-130	231 (13.1%)	246 (14.0%)	242 (13.5%)	202 (12.0%)	207 (12.0%)	239 (13.3%)	274 (14.6%)	277 (13.0%)	238 (12.3%)	202 (10.9%)
	131-140	131 (7.4%)	130 (7.4%)	155 (8.6%)	173 (10.3%)	169 (9.8%)	169 (9.4%)	200 (10.6%)	190 (8.9%)	154 (8.0%)	130 (7.0%)
	141-150	62 (3.5%)	63 (3.6%)	66 (3.7%)	72 (4.3%)	76 (4.4%)	101 (5.6%)	69 (3.7%)	77 (3.6%)	57 (2.9%)	53 (2.9%)
	151+	25 (1.4%)	41 (2.3%)	41 (2.3%)	30 (1.8%)	38 (2.2%)	33 (1.8%)	44 (2.3%)	35 (1.6%)	28 (1.4%)	20 (1.1%)
	Unrated	443 (25.2%)	431 (24.5%)	418 (23.3%)	409 (24.3%)	408 (23.7%)	405 (22.6%)	436 (23.2%)	448 (21.0%)	481 (24.9%)	471 (25.5%)
	Subtotal	1759 (100.0%)	1760 (100.0%)	1795 (100.0%)	1685 (100.0%)	1720 (100.0%)	1794 (100.0%)	1879 (100.0%)	2131 (100.0%)	1934 (100.0%)	1845 (100.0%)
8YO+	0-100	385 (32.1%)	352 (29.7%)	350 (27.8%)	376 (28.4%)	355 (26.7%)	343 (25.2%)	362 (26.4%)	445 (27.6%)	346 (23.6%)	338 (25.3%)
	101-110	152 (12.7%)	154 (13.0%)	196 (15.5%)	171 (12.9%)	183 (13.8%)	191 (14.0%)	179 (13.0%)	196 (12.2%)	153 (10.4%)	141 (10.6%)
	111-120	156 (13.0%)	156 (13.2%)	179 (14.2%)	195 (14.8%)	195 (14.7%)	170 (12.5%)	152 (11.1%)	185 (11.5%)	191 (13.0%)	173 (13.0%)
	121-130	161 (13.4%)	141 (11.9%)	172 (13.6%)	148 (11.2%)	175 (13.2%)	153 (11.2%)	156 (11.4%)	176 (10.9%)	176 (12.0%)	168 (12.6%)
	131-140	102 (8.5%)	132 (11.1%)	133 (10.5%)	140 (10.6%)	138 (10.4%)	132 (9.7%)	141 (10.3%)	146 (9.1%)	126 (8.6%)	95 (7.1%)
	141-150	44 (3.7%)	55 (4.6%)	58 (4.6%)	55 (4.2%)	68 (5.1%)	81 (5.9%)	86 (6.3%)	88 (5.5%)	84 (5.7%)	64 (4.8%)
	151+	29 (2.4%)	32 (2.7%)	34 (2.7%)	42 (3.2%)	37 (2.8%)	35 (2.6%)	38 (2.8%)	53 (3.3%)	33 (2.3%)	30 (2.2%)
	Unrated	170 (14.2%)	164 (13.8%)	139 (11.0%)	195 (14.8%)	179 (13.5%)	258 (18.9%)	259 (18.9%)	323 (20.0%)	357 (24.4%)	326 (24.4%)
	Subtotal	1199 (100.0%)	1186 (100.0%)	1261 (100.0%)	1322 (100.0%)	1330 (100.0%)	1363 (100.0%)	1373 (100.0%)	1612 (100.0%)	1466 (100.0%)	1335 (100.0%)
Overall	0-100	1042 (18.0%)	921 (15.8%)	921 (15.6%)	920 (15.5%)	938 (15.3%)	933 (14.9%)	992 (15.3%)	1292 (18.7%)	1165 (18.0%)	1214 (18.7%)
	101-110	509 (8.8%)	533 (9.1%)	592 (10.1%)	556 (9.4%)	601 (9.8%)	622 (9.9%)	607 (9.3%)	676 (9.8%)	555 (8.6%)	613 (9.4%)
	111-120	561 (9.7%)	587 (10.1%)	617 (10.5%)	621 (10.5%)	615 (10.0%)	606 (9.7%)	601 (9.3%)	674 (9.8%)	638 (9.9%)	562 (8.7%)
	121-130	537 (9.3%)	521 (8.9%)	573 (9.7%)	492 (8.3%)	556 (9.1%)	566 (9.0%)	609 (9.4%)	615 (8.9%)	533 (8.2%)	494 (7.6%)
	131-140	294 (5.1%)	339 (5.8%)	385 (6.5%)	408 (6.9%)	397 (6.5%)	395 (6.3%)	422 (6.5%)	423 (6.1%)	331 (5.1%)	254 (3.9%)
	141-150	141 (2.4%)	145 (2.5%)	163 (2.8%)	161 (2.7%)	175 (2.9%)	206 (3.3%)	185 (2.8%)	195 (2.8%)	152 (2.3%)	128 (2.0%)
	151+	61 (1.1%)	87 (1.5%)	87 (1.5%)	80 (1.3%)	83 (1.4%)	77 (1.2%)	93 (1.4%)	95 (1.4%)	66 (1.0%)	52 (0.8%)
	Unrated	2654 (45.8%)	2693 (46.2%)	2551 (43.3%)	2697 (45.4%)	2767 (45.1%)	2868 (45.7%)	2983 (45.9%)	2928 (42.4%)	3029 (46.8%)	3174 (48.9%)
Total		5799 (100.0%)	5826 (100.0%)	5889 (100.0%)	5935 (100.0%)	6132 (100.0%)	6273 (100.0%)	6492 (100.0%)	6898 (100.0%)	6469 (100.0%)	6491 (100.0%)

Where a horse has more than one published rating (published Hurdle and published Chase mark), the higher of the two is taken.

Young Horses Entering Training

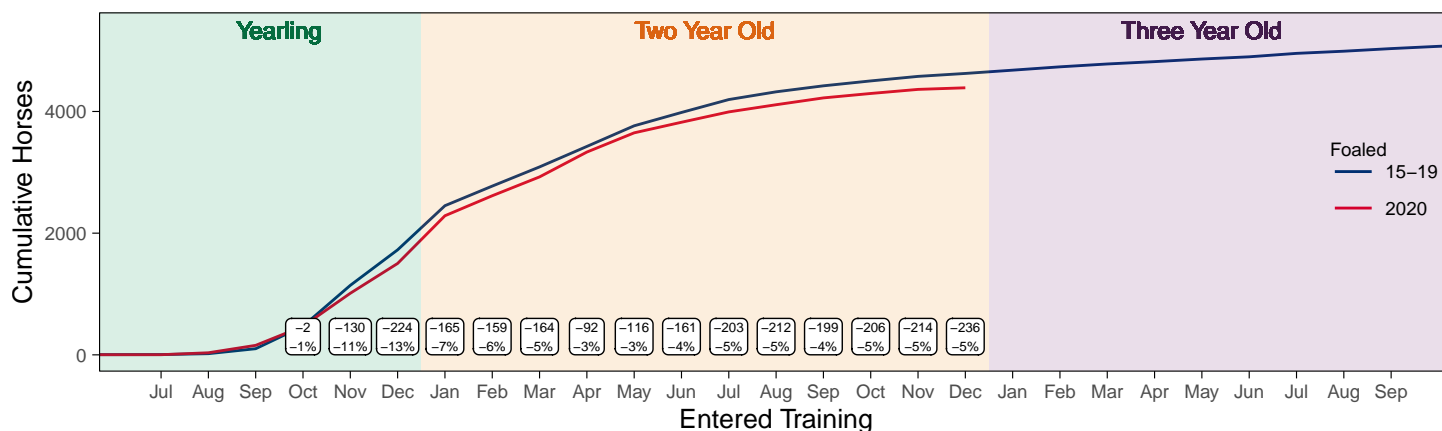
Flat Yearlings in Training versus Previous Years

Period	Jan	Feb	Mar	Apr	May	Jun	Jul	Aug	Sep	Oct	Nov	Dec
2022	0	0	0	0	0	0	0	2	76	274	705	1149
2021	0	0	0	0	0	0	0	5	79	315	716	1287
5YrAvg	1	1	1	1	1	1	1	2	52	257	697	1377

Foals Entering Training for the First Time

2020 Foals Entering Training Over Time

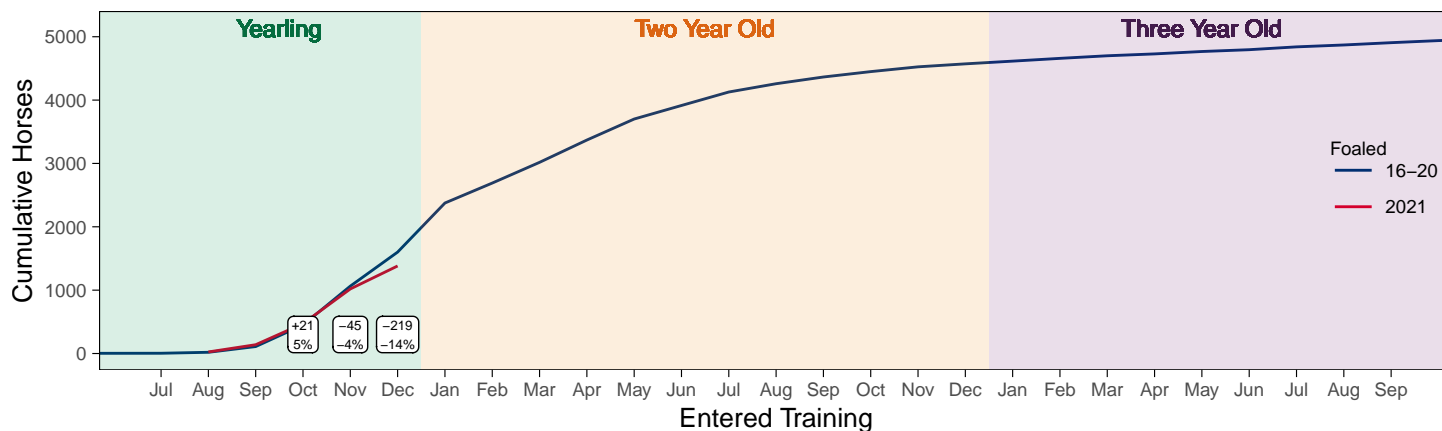
Cumulative Flat Horses foaled in 2020 shown by first in training notification against trend



Cumulative individual horses entering training for the first time by the end of each month.

2021 Foals Entering Training Over Time

Cumulative Flat Horses foaled in 2021 shown by first in training notification against trend



Cumulative individual horses entering training for the first time by the end of each month.

Annual Horses in Training

Type	2013	2014	2015	2016	2017	2018	2019	2020	2021	2022	vs. Last Year	vs. Pre-Covid
Flat	12452	12359	12615	13122	13428	13401	13697	13504	13373	13028	-345 / -2.6%	-669 / -4.9%
Jump	8477	8354	8453	8402	8134	8094	8768	8627	9395	8926	-469 / -5.0%	+158 / +1.8%
Dual	907	932	861	832	1138	1467	850	949	915	1013	+98 / +10.7%	+163 / +19.2%
Hunter	2654	2509	2394	2276	2181	2061	1983	1725	1491	1500	+9 / +0.6%	-483 / -24.4%
Total	21836	21645	21929	22356	22700	22962	23315	23080	23683	22967	-716 / -3.0%	-348 / -1.5%

'vs. Pre-Covid' is comparison between 2022 and 2019

Flat

AgeCat	2013	2014	2015	2016	2017	2018	2019	2020	2021	2022	vs. Last Year	vs. Pre-Covid
2YO	4161	4199	4511	4542	4606	4611	4667	4490	4503	4316	-187 / -4.2%	-351 / -7.5%
3YO	3685	3679	3757	4010	4069	4186	4170	4231	4086	4018	-68 / -1.7%	-152 / -3.6%
4YO	1911	1774	1767	1919	2009	1938	2054	2014	2112	2076	-36 / -1.7%	+22 / +1.1%
5YO+	2695	2707	2580	2651	2744	2666	2806	2769	2672	2618	-54 / -2.0%	-188 / -6.7%
Total	12452	12359	12615	13122	13428	13401	13697	13504	13373	13028	-345 / -2.6%	-669 / -4.9%

'vs. Pre-Covid' is comparison between 2022 and 2019

Jump

AgeCat	2013	2014	2015	2016	2017	2018	2019	2020	2021	2022	vs. Last Year	vs. Pre-Covid
3YO	424	509	528	486	388	457	470	433	474	488	+14 / +3.0%	+18 / +3.8%
4-5YO	2904	2739	2775	2855	2785	2686	2978	2945	3027	3054	+27 / +0.9%	+76 / +2.6%
6-7YO	2753	2683	2806	2597	2484	2563	2811	2781	3037	2851	-186 / -6.1%	+40 / +1.4%
8YO+	2396	2423	2344	2464	2477	2388	2509	2468	2857	2533	-324 / -11.3%	+24 / +1.0%
Total	8477	8354	8453	8402	8134	8094	8768	8627	9395	8926	-469 / -5.0%	+158 / +1.8%

'vs. Pre-Covid' is comparison between 2022 and 2019

Dual

AgeCat	2013	2014	2015	2016	2017	2018	2019	2020	2021	2022	vs. Last Year	vs. Pre-Covid
3YO	125	139	128	130	203	187	142	185	186	253	+67 / +36.0%	+111 / +78.2%
4YO	233	226	190	198	299	367	240	232	248	258	+10 / +4.0%	+18 / +7.5%
5YO+	549	567	543	504	636	913	468	532	481	502	+21 / +4.4%	+34 / +7.3%
Total	907	932	861	832	1138	1467	850	949	915	1013	+98 / +10.7%	+163 / +19.2%

'vs. Pre-Covid' is comparison between 2022 and 2019

Hunter Chasers

AgeCat	2013	2014	2015	2016	2017	2018	2019	2020	2021	2022	vs. Last Year	vs. Pre-Covid
4-5YO	364	291	303	300	323	379	404	388	291	366	+75 / +25.8%	-38 / -9.4%
6-7YO	838	788	692	632	581	560	542	440	349	361	+12 / +3.4%	-181 / -33.4%
8-9YO	662	703	688	600	572	450	419	355	343	330	-13 / -3.8%	-89 / -21.2%
10YO+	790	727	711	744	705	672	618	542	508	443	-65 / -12.8%	-175 / -28.3%
Total	2654	2509	2394	2276	2181	2061	1983	1725	1491	1500	+9 / +0.6%	-483 / -24.4%

'vs. Pre-Covid' is comparison between 2022 and 2019

Annual Runners

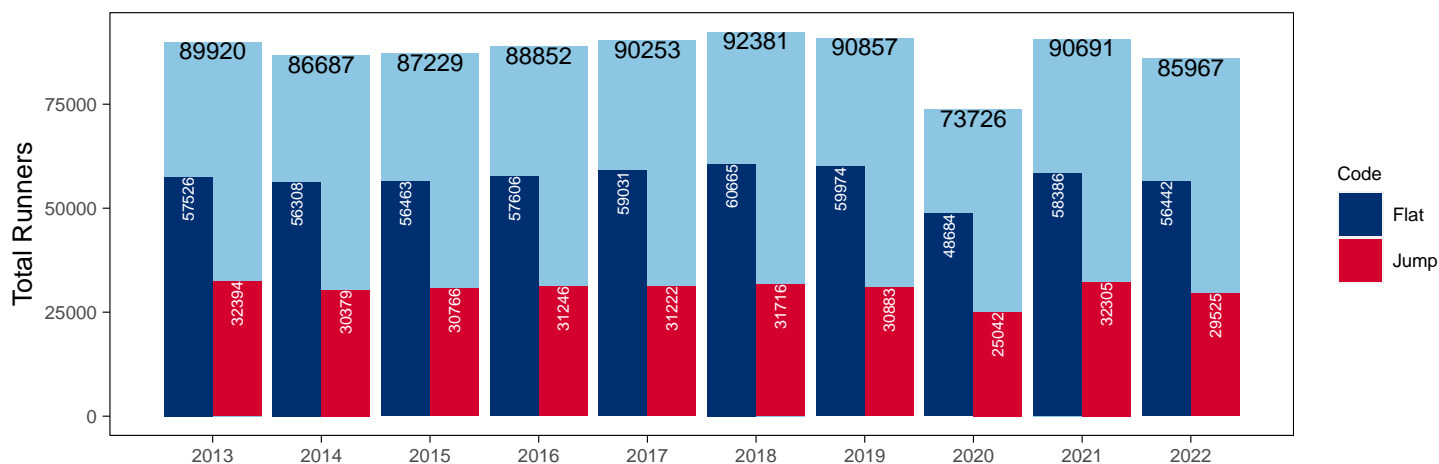
Annual Total Runners

Code	2013	2014	2015	2016	2017	2018	2019	2020	2021	2022	vs. Last Year	vs. Pre-Covid
Flat	57526	56308	56463	57606	59031	60665	59974	48684	58386	56442	-1944 / -3.3%	-3532 / -5.9%
Jump	32394	30379	30766	31246	31222	31716	30883	25042	32305	29525	-2780 / -8.6%	-1358 / -4.4%
Total	89920	86687	87229	88852	90253	92381	90857	73726	90691	85967	-4724 / -5.2%	-4890 / -5.4%

'vs. Pre-Covid' is comparison between 2022 and 2019

YTD Total Runners

Total Runners in GB Races, shown by Code and Total



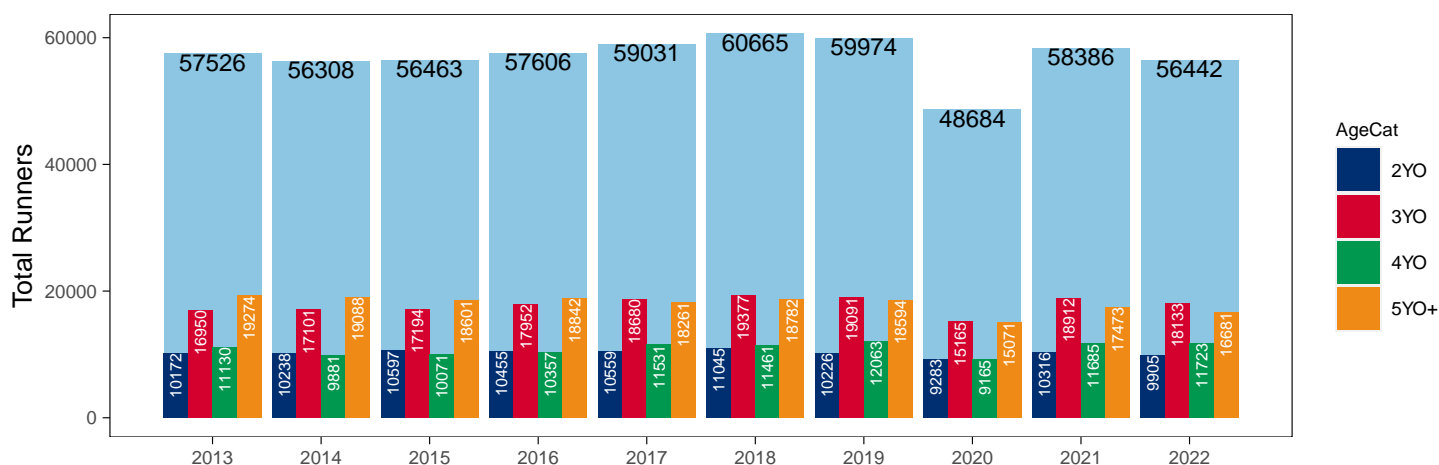
Flat

AgeCat	2013	2014	2015	2016	2017	2018	2019	2020	2021	2022	vs. Last Year	vs. Pre-Covid
2YO	10172	10238	10597	10455	10559	11045	10226	9283	10316	9905	-411 / -4.0%	-321 / -3.1%
3YO	16950	17101	17194	17952	18680	19377	19091	15165	18912	18133	-779 / -4.1%	-958 / -5.0%
4YO	11130	9881	10071	10357	11531	11461	12063	9165	11685	11723	+38 / +0.3%	-340 / -2.8%
5YO+	19274	19088	18601	18842	18261	18782	18594	15071	17473	16681	-792 / -4.5%	-1913 / -10.3%
Total	57526	56308	56463	57606	59031	60665	59974	48684	58386	56442	-1944 / -3.3%	-3532 / -5.9%

'vs. Pre-Covid' is comparison between 2022 and 2019

Annual Total Flat Runners by Age

Total Runners in GB Flat Races, shown by Age Category and Total

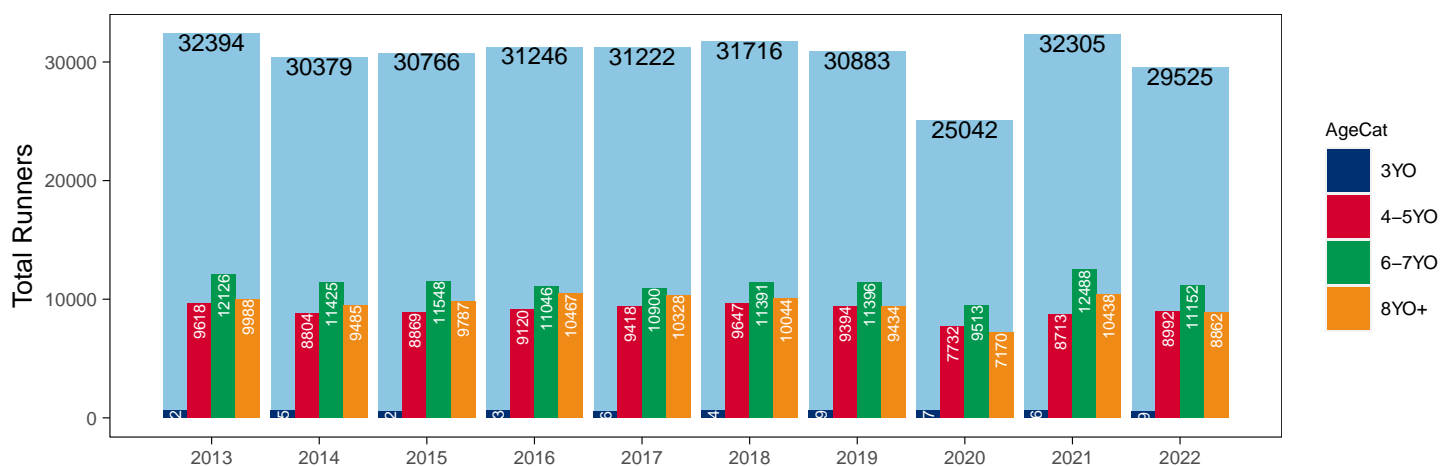


AgeCat	2013	2014	2015	2016	2017	2018	2019	2020	2021	2022	vs. Last Year	vs. Pre-Covid
3YO	662	665	562	613	576	634	659	627	666	519	-147 / -22.1%	-140 / -21.2%
4-5YO	9618	8804	8869	9120	9418	9647	9394	7732	8713	8992	+279 / +3.2%	-402 / -4.3%
6-7YO	12126	11425	11548	11046	10900	11391	11396	9513	12488	11152	-1336 / -10.7%	-244 / -2.1%
8YO+	9988	9485	9787	10467	10328	10044	9434	7170	10438	8862	-1576 / -15.1%	-572 / -6.1%
Total	32394	30379	30766	31246	31222	31716	30883	25042	32305	29525	-2780 / -8.6%	-1358 / -4.4%

'vs. Pre-Covid' is comparison between 2022 and 2019

Annual Total Jump Runners by Age

Total Runners in GB Jump Races, shown by Age Category and Total



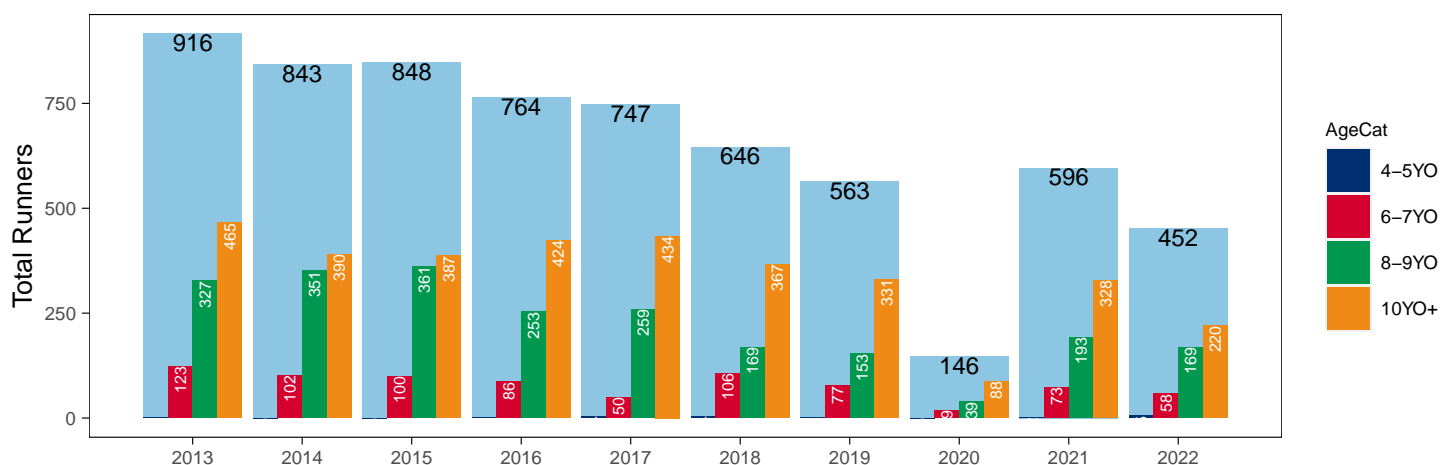
Hunter Chases

AgeCat	2013	2014	2015	2016	2017	2018	2019	2020	2021	2022	vs. Last Year	vs. Pre-Covid
4-5YO	1			1	4	4	2		2	5	+3 / +150.0%	+3 / +150.0%
6-7YO	123	102	100	86	50	106	77	19	73	58	-15 / -20.5%	-19 / -24.7%
8-9YO	327	351	361	253	259	169	153	39	193	169	-24 / -12.4%	+16 / +10.5%
10YO+	465	390	387	424	434	367	331	88	328	220	-108 / -32.9%	-111 / -33.5%
Total	916	843	848	764	747	646	563	146	596	452	-144 / -24.2%	-111 / -19.7%

'vs. Pre-Covid' is comparison between 2022 and 2019

Annual Total Hunter Chase Runners by Age

Total Runners in GB Hunter Chases shown by Age Category and Total



Annual Total Runners by Country Trained

Code	Country	2013	2014	2015	2016	2017	2018	2019	2020	2021	2022
Flat	GB	57005	55855	55862	57006	58268	59820	59109	48405	57987	56074
	IRE	416	359	463	518	679	780	792	251	364	304
	Other	105	94	138	82	84	65	73	28	35	64
Jump	GB	31686	29622	29927	30290	30374	30994	30126	24692	31694	28642
	IRE	696	753	832	941	830	709	741	338	606	880
	Other	12	4	7	15	18	13	16	12	5	3
Overall	GB	88691	85477	85789	87296	88642	90814	89235	73097	89681	84716
	IRE	1112	1112	1295	1459	1509	1489	1533	589	970	1184
	Other	117	98	145	97	102	78	89	40	40	67

Annual GB Trained Runners Racing Abroad

Code	Country	2013	2014	2015	2016	2017	2018	2019	2020	2021	2022
Flat	IRE	135	147	184	193	188	156	164	60	57	100
	FR	331	386	373	424	487	534	562	306	236	273
	GNV	20	22	19	25	30	37	50	24	12	19
	UAE	359	331	289	220	298	276	303	286	248	278
	BAH							6	7	23	65
	KSA								15	21	22
	Other	125	162	162	144	141	172	152	62	84	94
Total		970	1048	1027	1006	1144	1175	1237	760	681	851
Jump	IRE	53	106	99	103	91	61	83	8	24	30
	FR	66	41	36	63	32	20	56	93	139	135
	Other	12	10	8	12	8	7	10		8	14
Total		131	157	143	178	131	88	149	101	171	179

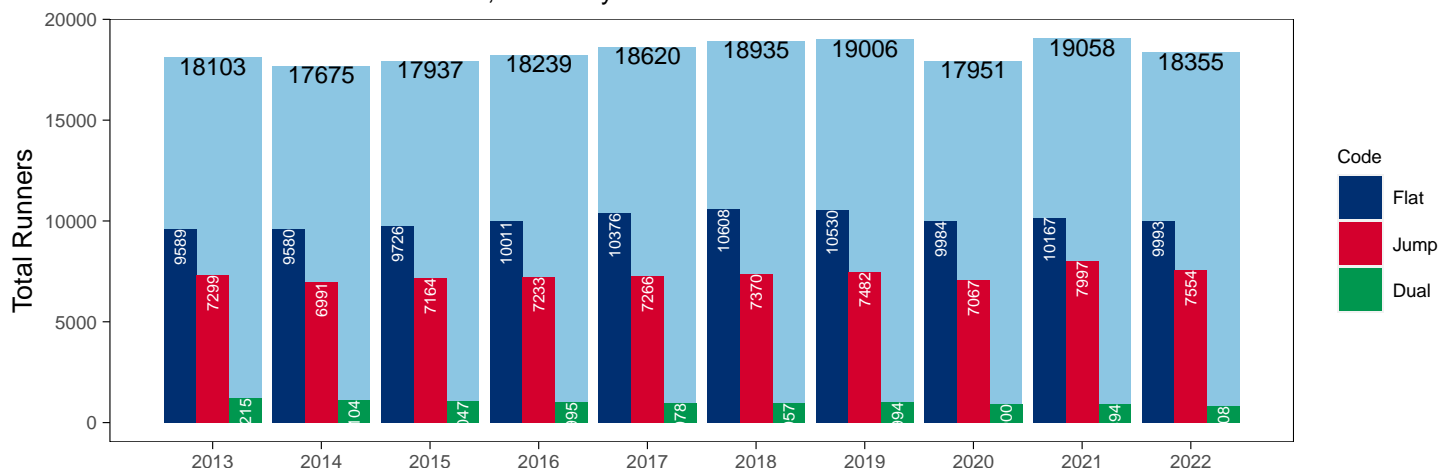
Annual Individual Runners

Code	2013	2014	2015	2016	2017	2018	2019	2020	2021	2022	vs. Last Year	vs. Pre-Covid
Flat	9589	9580	9726	10011	10376	10608	10530	9984	10167	9993	-174 / -1.7%	-537 / -5.1%
Jump	7299	6991	7164	7233	7266	7370	7482	7067	7997	7554	-443 / -5.5%	+72 / +1.0%
Dual	1215	1104	1047	995	978	957	994	900	894	808	-86 / -9.6%	-186 / -18.7%
Overall	18103	17675	17937	18239	18620	18935	19006	17951	19058	18355	-703 / -3.7%	-651 / -3.4%

'vs. Pre-Covid' is comparison between 2022 and 2019

Annual Individual Runners

Individual Runners in GB Races, shown by Code and Total



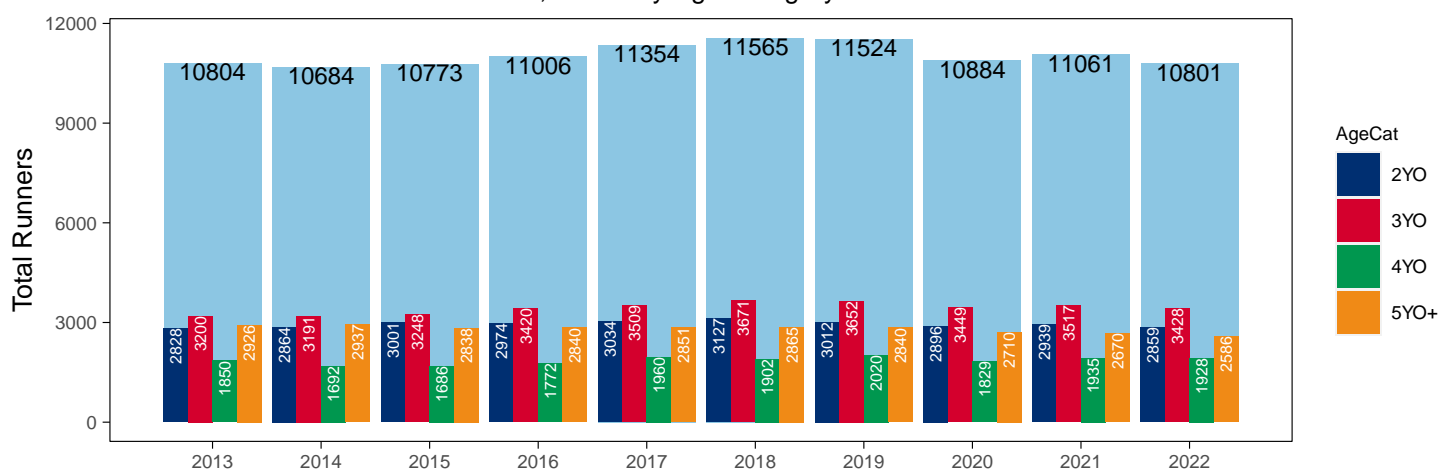
Flat

AgeCat	2013	2014	2015	2016	2017	2018	2019	2020	2021	2022	vs. Last Year	vs. Pre-Covid
2YO	2828	2864	3001	2974	3034	3127	3012	2896	2939	2859	-80 / -2.7%	-153 / -5.1%
3YO	3200	3191	3248	3420	3509	3671	3652	3449	3517	3428	-89 / -2.5%	-224 / -6.1%
4YO	1850	1692	1686	1772	1960	1902	2020	1829	1935	1928	-7 / -0.4%	-92 / -4.6%
5YO+	2926	2937	2838	2840	2851	2865	2840	2710	2670	2586	-84 / -3.1%	-254 / -8.9%
Total	10804	10684	10773	11006	11354	11565	11524	10884	11061	10801	-260 / -2.4%	-723 / -6.3%

'vs. Pre-Covid' is comparison between 2022 and 2019

Annual Individual Flat Runners by Age

Individual Runners in GB Flat Races, shown by Age Category and Total



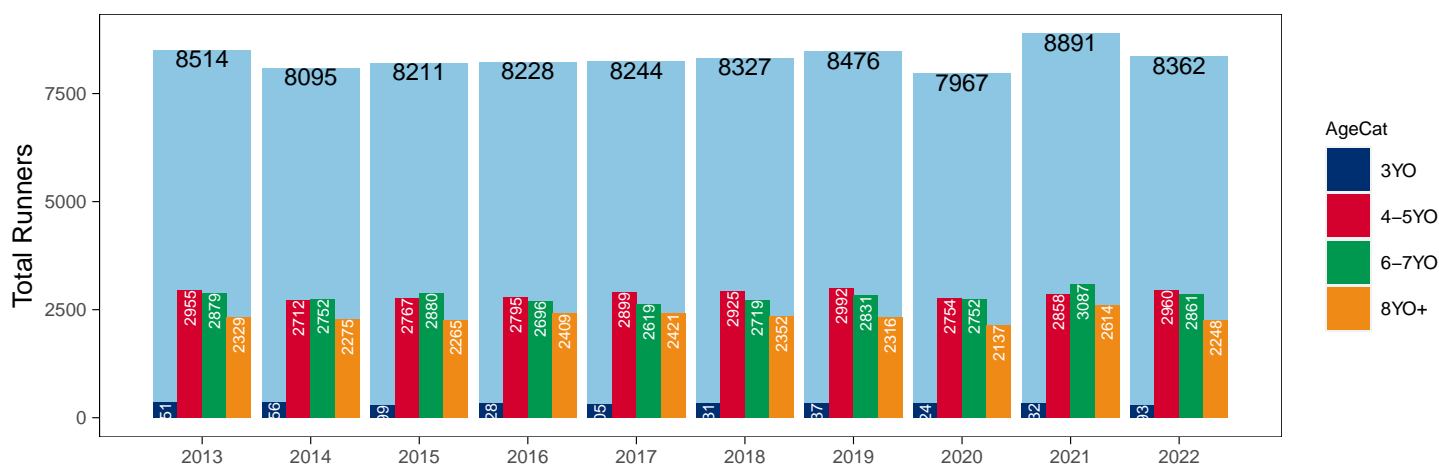
Jump

AgeCat	2013	2014	2015	2016	2017	2018	2019	2020	2021	2022	vs. Last Year	vs. Pre-Covid
3YO	351	356	299	328	305	331	337	324	332	293	-39 / -11.7%	-44 / -13.1%
4-5YO	2955	2712	2767	2795	2899	2925	2992	2754	2858	2960	+102 / +3.6%	-32 / -1.1%
6-7YO	2879	2752	2880	2696	2619	2719	2831	2752	3087	2861	-226 / -7.3%	+30 / +1.1%
8YO+	2329	2275	2265	2409	2421	2352	2316	2137	2614	2248	-366 / -14.0%	-68 / -2.9%
Total	8514	8095	8211	8228	8244	8327	8476	7967	8891	8362	-529 / -5.9%	-114 / -1.3%

'vs. Pre-Covid' is comparison between 2022 and 2019

Annual Individual Jump Runners by Age

Individual Runners in GB Jump Races, shown by Age Category and Total



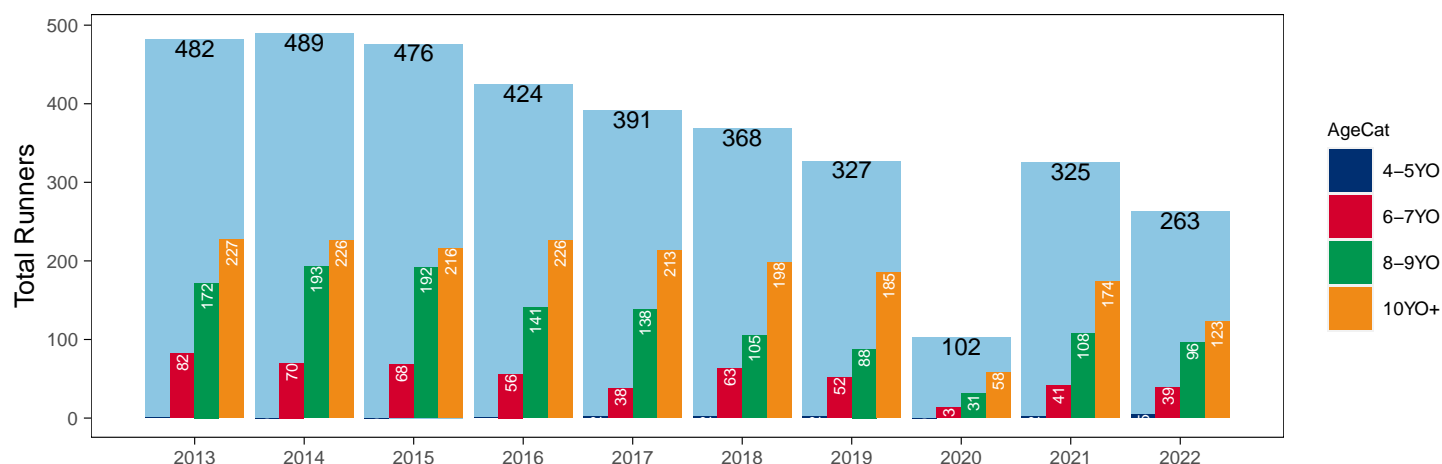
Hunter Chases

AgeCat	2013	2014	2015	2016	2017	2018	2019	2020	2021	2022	vs. Last Year	vs. Pre-Covid
4-5YO	1			1	2	2	2		2	5	+3 / +150.0%	+3 / +150.0%
6-7YO	82	70	68	56	38	63	52	13	41	39	-2 / -4.9%	-13 / -25.0%
8-9YO	172	193	192	141	138	105	88	31	108	96	-12 / -11.1%	+8 / +9.1%
10YO+	227	226	216	226	213	198	185	58	174	123	-51 / -29.3%	-62 / -33.5%
Total	482	489	476	424	391	368	327	102	325	263	-62 / -19.1%	-64 / -19.6%

'vs. Pre-Covid' is comparison between 2022 and 2019

Annual Individual Hunter Chase Runners by Age

Individual Runners in GB Hunter Chases shown by Age Category and Total



Annual Individual Runners by Country Trained

Code	Country	2013	2014	2015	2016	2017	2018	2019	2020	2021	2022
Flat	GB	9290	9299	9386	9696	9973	10172	10044	9791	9905	9738
	IRE	243	218	256	281	364	400	451	179	246	212
	Other	73	70	103	64	67	58	61	23	30	55
Jump	GB	6876	6572	6717	6742	6806	6929	7012	6785	7585	6980
	IRE	446	448	483	527	480	459	492	287	433	603
	Other	11	4	7	15	13	12	13	11	5	3
Dual	GB	1202	1092	1026	972	955	935	977	894	885	795
	IRE	9	10	17	13	15	20	14	5	6	11
	Other					2					
Overall	GB	17368	16963	17129	17410	17734	18036	18033	17470	18375	17513
	IRE	698	676	756	821	859	879	957	471	685	826
	Other	84	74	110	79	82	70	74	34	35	58

Individual horses may appear under multiple countries.

Annual Total Runners by Rating Band

Flat

RatBand	2013	2014	2015	2016	2017	2018	2019	2020	2021	2022
2YO										
Unrated	6674 (65.6%)	6812 (66.5%)	7148 (67.5%)	6950 (66.5%)	7265 (68.8%)	7570 (68.5%)	7123 (69.7%)	6123 (66.0%)	6997 (67.8%)	6790 (68.6%)
0-50	247 (2.4%)	246 (2.4%)	281 (2.7%)	180 (1.7%)	177 (1.7%)	180 (1.6%)	239 (2.3%)	182 (2.0%)	223 (2.2%)	209 (2.1%)
51-60	627 (6.2%)	652 (6.4%)	533 (5.0%)	562 (5.4%)	544 (5.2%)	635 (5.7%)	582 (5.7%)	584 (6.3%)	511 (5.0%)	529 (5.3%)
61-70	920 (9.0%)	919 (9.0%)	972 (9.2%)	1014 (9.7%)	942 (8.9%)	900 (8.1%)	789 (7.7%)	829 (8.9%)	917 (8.9%)	813 (8.2%)
71-80	1022 (10.0%)	910 (8.9%)	974 (9.2%)	1079 (10.3%)	971 (9.2%)	946 (8.6%)	860 (8.4%)	933 (10.1%)	913 (8.9%)	837 (8.5%)
81-90	408 (4.0%)	440 (4.3%)	466 (4.4%)	437 (4.2%)	378 (3.6%)	493 (4.5%)	373 (3.6%)	377 (4.1%)	464 (4.5%)	442 (4.5%)
91-100	191 (1.9%)	179 (1.7%)	140 (1.3%)	159 (1.5%)	168 (1.6%)	214 (1.9%)	174 (1.7%)	168 (1.8%)	188 (1.8%)	204 (2.1%)
101+	83 (0.8%)	80 (0.8%)	83 (0.8%)	74 (0.7%)	114 (1.1%)	107 (1.0%)	86 (0.8%)	87 (0.9%)	103 (1.0%)	81 (0.8%)
3YO+										
Unrated	3925 (8.3%)	3913 (8.5%)	3782 (8.2%)	4019 (8.5%)	4142 (8.5%)	4994 (10.1%)	4752 (9.6%)	3970 (10.1%)	4847 (10.1%)	4424 (9.5%)
0-50	5007 (10.6%)	4549 (9.9%)	4180 (9.1%)	3977 (8.4%)	4623 (9.5%)	5345 (10.8%)	6227 (12.5%)	4476 (11.4%)	5582 (11.6%)	5465 (11.7%)
51-60	8944 (18.9%)	7961 (17.3%)	8009 (17.5%)	8005 (17.0%)	8300 (17.1%)	8176 (16.5%)	9035 (18.2%)	7062 (17.9%)	8755 (18.2%)	8456 (18.2%)
61-70	10621 (22.4%)	10179 (22.1%)	9963 (21.7%)	10265 (21.8%)	10084 (20.8%)	10231 (20.6%)	9979 (20.1%)	8233 (20.9%)	10212 (21.2%)	9949 (21.4%)
71-80	9113 (19.2%)	9194 (20.0%)	9183 (20.0%)	9561 (20.3%)	9665 (19.9%)	9418 (19.0%)	8879 (17.8%)	7383 (18.7%)	8620 (17.9%)	8617 (18.5%)
81-90	5429 (11.5%)	5570 (12.1%)	5931 (12.9%)	6220 (13.2%)	6457 (13.3%)	6272 (12.6%)	5794 (11.6%)	4619 (11.7%)	5453 (11.3%)	5277 (11.3%)
91-100	2679 (5.7%)	2910 (6.3%)	2872 (6.3%)	3086 (6.5%)	3076 (6.3%)	3256 (6.6%)	3244 (6.5%)	2200 (5.6%)	2793 (5.8%)	2553 (5.5%)
101+	1636 (3.5%)	1794 (3.9%)	1946 (4.2%)	2018 (4.3%)	2125 (4.4%)	1928 (3.9%)	1838 (3.7%)	1458 (3.7%)	1808 (3.8%)	1796 (3.9%)

Jump

RatBand	2013	2014	2015	2016	2017	2018	2019	2020	2021	2022
Hurdle										
Unrated	5486 (29.6%)	5250 (30.1%)	5333 (29.4%)	5360 (29.0%)	5369 (29.1%)	5590 (29.7%)	5672 (30.7%)	4805 (32.4%)	5503 (29.4%)	5183 (29.5%)
0-100	5653 (30.5%)	4808 (27.6%)	4712 (26.0%)	4742 (25.6%)	4628 (25.1%)	4523 (24.0%)	4364 (23.6%)	3491 (23.5%)	5456 (29.2%)	5326 (30.3%)
101-110	2364 (12.8%)	2277 (13.1%)	2627 (14.5%)	2712 (14.7%)	2710 (14.7%)	2764 (14.7%)	2615 (14.1%)	2094 (14.1%)	2475 (13.2%)	2589 (14.7%)
111-120	2299 (12.4%)	2412 (13.8%)	2430 (13.4%)	2564 (13.9%)	2562 (13.9%)	2551 (13.5%)	2553 (13.8%)	1837 (12.4%)	2313 (12.4%)	2155 (12.3%)
121-130	1613 (8.7%)	1566 (9.0%)	1696 (9.4%)	1697 (9.2%)	1748 (9.5%)	1910 (10.1%)	1898 (10.3%)	1473 (9.9%)	1703 (9.1%)	1362 (7.7%)
131-140	741 (4.0%)	779 (4.5%)	894 (4.9%)	971 (5.3%)	985 (5.3%)	1048 (5.6%)	955 (5.2%)	778 (5.2%)	852 (4.6%)	667 (3.8%)
141-150	263 (1.4%)	256 (1.5%)	305 (1.7%)	320 (1.7%)	307 (1.7%)	348 (1.8%)	313 (1.7%)	249 (1.7%)	299 (1.6%)	233 (1.3%)
151+	95 (0.5%)	88 (0.5%)	118 (0.7%)	127 (0.7%)	111 (0.6%)	110 (0.6%)	129 (0.7%)	126 (0.8%)	112 (0.6%)	76 (0.4%)
Chase										
Unrated	237 (2.3%)	94 (1.0%)	69 (0.7%)	82 (0.8%)	88 (0.9%)	79 (0.8%)	61 (0.6%)	32 (0.4%)	37 (0.4%)	14 (0.1%)
0-100	3189 (30.5%)	3031 (30.8%)	2757 (27.7%)	2742 (27.0%)	2596 (25.6%)	2676 (26.4%)	2745 (27.8%)	2272 (28.2%)	3046 (29.8%)	2945 (31.0%)
101-110	1744 (16.7%)	1515 (15.4%)	1428 (14.4%)	1505 (14.8%)	1585 (15.6%)	1575 (15.6%)	1536 (15.6%)	1183 (14.7%)	1511 (14.8%)	1517 (15.9%)
111-120	1821 (17.4%)	1692 (17.2%)	1856 (18.7%)	1826 (18.0%)	1747 (17.2%)	1687 (16.7%)	1562 (15.8%)	1305 (16.2%)	1789 (17.5%)	1683 (17.7%)
121-130	1557 (14.9%)	1628 (16.5%)	1676 (16.8%)	1602 (15.8%)	1676 (16.5%)	1752 (17.3%)	1586 (16.1%)	1360 (16.9%)	1650 (16.2%)	1512 (15.9%)
131-140	1152 (11.0%)	1063 (10.8%)	1233 (12.4%)	1418 (13.9%)	1434 (14.2%)	1365 (13.5%)	1365 (13.8%)	1057 (13.1%)	1210 (11.9%)	1062 (11.2%)
141-150	482 (4.6%)	559 (5.7%)	608 (6.1%)	656 (6.5%)	663 (6.5%)	704 (7.0%)	672 (6.8%)	581 (7.2%)	638 (6.3%)	514 (5.4%)
151+	262 (2.5%)	271 (2.8%)	321 (3.2%)	338 (3.3%)	341 (3.4%)	290 (2.9%)	340 (3.4%)	261 (3.2%)	326 (3.2%)	265 (2.8%)

Frequency of Runs

Annual Average Runs per Horse

Code	2013	2014	2015	2016	2017	2018	2019	2020	2021	2022
Flat	5.32	5.27	5.24	5.23	5.20	5.25	5.20	4.47	5.28	5.23
Jump	3.80	3.75	3.75	3.80	3.79	3.81	3.64	3.14	3.63	3.53
Overall	4.97	4.90	4.86	4.87	4.85	4.88	4.78	4.11	4.76	4.68

Annual Proportion of Horses by Count of Runs

Runs	2013	2014	2015	2016	2017	2018	2019	2020	2021	2022
Flat										
1	1544 (14.3%)	1498 (14.0%)	1528 (14.2%)	1579 (14.3%)	1660 (14.6%)	1693 (14.6%)	1700 (14.8%)	1761 (16.2%)	1533 (13.9%)	1530 (14.2%)
2	1415 (13.1%)	1480 (13.9%)	1444 (13.4%)	1403 (12.7%)	1485 (13.1%)	1464 (12.7%)	1600 (13.9%)	1718 (15.8%)	1372 (12.4%)	1355 (12.5%)
3	1470 (13.6%)	1386 (13.0%)	1464 (13.6%)	1481 (13.5%)	1555 (13.7%)	1613 (13.9%)	1550 (13.5%)	1686 (15.5%)	1501 (13.6%)	1463 (13.5%)
4	1169 (10.8%)	1143 (10.7%)	1205 (11.2%)	1202 (10.9%)	1192 (10.5%)	1276 (11.0%)	1249 (10.8%)	1333 (12.2%)	1216 (11.0%)	1233 (11.4%)
5+	5206 (48.2%)	5177 (48.5%)	5132 (47.6%)	5341 (48.5%)	5462 (48.1%)	5519 (47.7%)	5425 (47.1%)	4386 (40.3%)	5439 (49.2%)	5220 (48.3%)
Jump										
1	1937 (22.8%)	1867 (23.1%)	1870 (22.8%)	1856 (22.6%)	1901 (23.1%)	1820 (21.9%)	1919 (22.6%)	1915 (24.0%)	1973 (22.2%)	2014 (24.1%)
2	1527 (17.9%)	1458 (18.0%)	1447 (17.6%)	1448 (17.6%)	1460 (17.7%)	1395 (16.8%)	1577 (18.6%)	1616 (20.3%)	1632 (18.4%)	1553 (18.6%)
3	1176 (13.8%)	1118 (13.8%)	1158 (14.1%)	1182 (14.4%)	1124 (13.6%)	1205 (14.5%)	1274 (15.0%)	1421 (17.8%)	1391 (15.6%)	1258 (15.0%)
4	1015 (11.9%)	973 (12.0%)	1035 (12.6%)	979 (11.9%)	929 (11.3%)	1072 (12.9%)	1045 (12.3%)	1213 (15.2%)	1134 (12.8%)	1075 (12.9%)
5+	2859 (33.6%)	2679 (33.1%)	2701 (32.9%)	2763 (33.6%)	2830 (34.3%)	2835 (34.0%)	2661 (31.4%)	1802 (22.6%)	2761 (31.1%)	2462 (29.4%)
All Races										
1	2865 (15.8%)	2820 (16.0%)	2895 (16.1%)	2957 (16.2%)	3041 (16.3%)	3045 (16.1%)	3149 (16.6%)	3164 (17.6%)	3071 (16.1%)	3124 (17.0%)
2	2560 (14.1%)	2588 (14.6%)	2572 (14.3%)	2560 (14.0%)	2683 (14.4%)	2568 (13.6%)	2863 (15.1%)	3015 (16.8%)	2718 (14.3%)	2645 (14.4%)
3	2390 (13.2%)	2304 (13.0%)	2418 (13.5%)	2429 (13.3%)	2471 (13.3%)	2610 (13.8%)	2579 (13.6%)	2924 (16.3%)	2695 (14.1%)	2563 (14.0%)
4	2076 (11.5%)	1967 (11.1%)	2083 (11.6%)	2065 (11.3%)	2024 (10.9%)	2207 (11.7%)	2159 (11.4%)	2441 (13.6%)	2234 (11.7%)	2203 (12.0%)
5+	8212 (45.4%)	7996 (45.2%)	7969 (44.4%)	8228 (45.1%)	8401 (45.1%)	8505 (44.9%)	8256 (43.4%)	6407 (35.7%)	8340 (43.8%)	7820 (42.6%)

Annual Median Days Between Runs

Code/RatBand	2013	2014	2015	2016	2017	2018	2019	2020	2021	2022
All Runners	23	23	24	24	24	24	25	25	25	25
Flat										
Unrated	21	22	22	22	23	23	23	22	23	24
0-50	20	20	21	21	21	20	21	20	20	21
51-60	18	19	19	20	20	20	20	20	20	20
61-70	19	20	20	20	21	20	21	21	21	21
71-80	21	21	21	21	22	21	21	22	22	22
81-90	21	21	22	22	22	22	22	22	23	23
91-100	22	24	24	24	25	24	24	24	25	27
101+	28	28	27	28	28	28	28	28	29	31
All Flat Runners	20	21	21	21	22	21	22	21	22	22
Jump										
Unrated	34	34	35	35	33	35	35	35	38	36
0-100	26	25	26	26	26	26	27	30	28	28
101-110	27	26	28	29	28	29	29	30	30	30
111-120	28	27	29	29	29	30	31	33	32	32
121-130	29	29	31	31	30	30	32	33	34	33
131-140	30	32	32	33	33	34	35	36	35	35
141-150	35	34	34	34	35	37	37	41	39	39
151+	38	35	35	35	34	39	40	43	42	40
All Jump Runners	29	28	30	30	29	30	31	33	33	32

Horses Population by Gender

December 2022 Horses in Training Snapshot by Gender versus Previous Years

All Horses

Sex	2013	2014	2015	2016	2017	2018	2019	2020	2021	2022
Colt/Entire	2077 (16.1%)	2179 (16.8%)	2205 (16.6%)	2159 (15.9%)	2174 (15.6%)	1930 (13.8%)	2061 (14.2%)	1907 (13.0%)	1793 (12.8%)	1684 (12.1%)
Gelding	7080 (55.0%)	7103 (54.9%)	7333 (55.2%)	7636 (56.3%)	7748 (55.6%)	7981 (57.2%)	8192 (56.5%)	8475 (57.9%)	8096 (57.6%)	8094 (57.9%)
Filly/Mare	3703 (28.8%)	3664 (28.3%)	3739 (28.2%)	3755 (27.7%)	4009 (28.8%)	4039 (28.9%)	4236 (29.2%)	4242 (29.0%)	4165 (29.6%)	4197 (30.0%)
Rig	2 (0.0%)	0 (0.0%)	5 (0.0%)	4 (0.0%)	3 (0.0%)	3 (0.0%)	3 (0.0%)	3 (0.0%)	1 (0.0%)	0 (0.0%)
Total	12862 (100.0%)	12946 (100.0%)	13282 (100.0%)	13554 (100.0%)	13934 (100.0%)	13953 (100.0%)	14492 (100.0%)	14627 (100.0%)	14055 (100.0%)	13975 (100.0%)

Flat (including Dual)

Sex	2013	2014	2015	2016	2017	2018	2019	2020	2021	2022
Colt/Entire	1121 (19.0%)	1150 (19.5%)	1128 (18.7%)	1120 (17.5%)	1221 (17.1%)	1146 (16.7%)	1171 (16.5%)	1133 (16.5%)	1026 (15.1%)	998 (14.4%)
Gelding	2739 (46.5%)	2790 (47.3%)	2924 (48.4%)	3194 (49.8%)	3575 (50.0%)	3397 (49.5%)	3495 (49.3%)	3460 (50.4%)	3428 (50.6%)	3539 (51.0%)
Filly/Mare	2033 (34.5%)	1963 (33.3%)	1986 (32.9%)	2093 (32.6%)	2347 (32.8%)	2313 (33.7%)	2422 (34.2%)	2272 (33.1%)	2325 (34.3%)	2396 (34.6%)
Rig	1 (0.0%)	0 (0.0%)	3 (0.0%)	4 (0.1%)	3 (0.0%)	2 (0.0%)	2 (0.0%)	2 (0.0%)	0 (0.0%)	0 (0.0%)
Total	5894 (100.0%)	5903 (100.0%)	6041 (100.0%)	6411 (100.0%)	7146 (100.0%)	6858 (100.0%)	7090 (100.0%)	6867 (100.0%)	6779 (100.0%)	6933 (100.0%)

Jump (including Dual)

Sex	2013	2014	2015	2016	2017	2018	2019	2020	2021	2022
Colt/Entire	48 (0.8%)	43 (0.7%)	39 (0.7%)	22 (0.4%)	21 (0.3%)	31 (0.5%)	26 (0.4%)	29 (0.4%)	35 (0.5%)	33 (0.5%)
Gelding	4690 (80.9%)	4640 (79.6%)	4738 (80.5%)	4815 (81.1%)	4829 (78.8%)	4901 (78.1%)	5056 (77.9%)	5364 (77.8%)	5011 (77.5%)	4970 (76.6%)
Filly/Mare	1060 (18.3%)	1143 (19.6%)	1112 (18.9%)	1098 (18.5%)	1282 (20.9%)	1340 (21.4%)	1409 (21.7%)	1504 (21.8%)	1422 (22.0%)	1488 (22.9%)
Rig	1 (0.0%)	0 (0.0%)	0 (0.0%)	0 (0.0%)	0 (0.0%)	1 (0.0%)	1 (0.0%)	1 (0.0%)	1 (0.0%)	0 (0.0%)
Total	5799 (100.0%)	5826 (100.0%)	5889 (100.0%)	5935 (100.0%)	6132 (100.0%)	6273 (100.0%)	6492 (100.0%)	6898 (100.0%)	6469 (100.0%)	6491 (100.0%)

Hunter Chasers

Sex	2013	2014	2015	2016	2017	2018	2019	2020	2021	2022
Colt/Entire	1 (0.1%)	0 (0.0%)	1 (0.1%)	0 (0.0%)	2 (0.3%)	1 (0.1%)	1 (0.2%)	1 (0.1%)	1 (0.2%)	12 (2.3%)
Gelding	629 (84.5%)	598 (84.8%)	591 (85.9%)	511 (86.2%)	547 (85.7%)	582 (81.5%)	502 (82.8%)	653 (82.2%)	509 (84.3%)	422 (81.6%)
Filly/Mare	114 (15.3%)	107 (15.2%)	96 (14.0%)	82 (13.8%)	89 (13.9%)	131 (18.3%)	103 (17.0%)	140 (17.6%)	94 (15.6%)	83 (16.1%)
Rig	0 (0.0%)	0 (0.0%)	0 (0.0%)	0 (0.0%)	0 (0.0%)	0 (0.0%)	0 (0.0%)	0 (0.0%)	0 (0.0%)	0 (0.0%)
Total	744 (100.0%)	705 (100.0%)	688 (100.0%)	593 (100.0%)	638 (100.0%)	714 (100.0%)	606 (100.0%)	794 (100.0%)	604 (100.0%)	517 (100.0%)

Annual Total Runners by Gender

Sex	2013	2014	2015	2016	2017	2018	2019	2020	2021	2022
All Races										
Colt/Entire	9334 (10.4%)	9357 (10.8%)	9149 (10.5%)	9042 (10.2%)	9078 (10.1%)	9560 (10.3%)	8638 (9.5%)	7503 (10.2%)	8280 (9.1%)	7452 (8.7%)
Gelding	56239 (62.5%)	53254 (61.4%)	54369 (62.3%)	55935 (63.0%)	56714 (62.8%)	57118 (61.8%)	56142 (61.8%)	45230 (61.3%)	56664 (62.5%)	53829 (62.6%)
Filly/Mare	24347 (27.1%)	24075 (27.8%)	23708 (27.2%)	23856 (26.8%)	24448 (27.1%)	25689 (27.8%)	26058 (28.7%)	20987 (28.5%)	25737 (28.4%)	24676 (28.7%)
Rig	0 (0.0%)	1 (0.0%)	3 (0.0%)	19 (0.0%)	13 (0.0%)	14 (0.0%)	19 (0.0%)	6 (0.0%)	10 (0.0%)	10 (0.0%)
Flat										
Colt/Entire	9209 (16.0%)	9229 (16.4%)	9068 (16.1%)	8992 (15.6%)	9026 (15.3%)	9505 (15.7%)	8600 (14.3%)	7460 (15.3%)	8195 (14.0%)	7413 (13.1%)
Gelding	29319 (51.0%)	28375 (50.4%)	29169 (51.7%)	30194 (52.4%)	31173 (52.8%)	31804 (52.4%)	31815 (53.0%)	25509 (52.4%)	31183 (53.4%)	30499 (54.0%)
Filly/Mare	18998 (33.0%)	18704 (33.2%)	18224 (32.3%)	18401 (31.9%)	18819 (31.9%)	19342 (31.9%)	19547 (32.6%)	15714 (32.3%)	19005 (32.6%)	18530 (32.8%)
Rig	0 (0.0%)	0 (0.0%)	2 (0.0%)	19 (0.0%)	13 (0.0%)	14 (0.0%)	12 (0.0%)	1 (0.0%)	3 (0.0%)	0 (0.0%)
All Jump										
Colt/Entire	125 (0.4%)	128 (0.4%)	81 (0.3%)	50 (0.2%)	52 (0.2%)	55 (0.2%)	38 (0.1%)	43 (0.2%)	85 (0.3%)	39 (0.1%)
Gelding	26920 (83.1%)	24879 (81.9%)	25200 (81.9%)	25741 (82.4%)	25541 (81.8%)	25314 (79.8%)	24327 (78.8%)	19721 (78.8%)	25481 (78.9%)	23330 (79.0%)
Filly/Mare	5349 (16.5%)	5371 (17.7%)	5484 (17.8%)	5455 (17.5%)	5629 (18.0%)	6347 (20.0%)	6511 (21.1%)	5273 (21.1%)	6732 (20.8%)	6146 (20.8%)
Rig	0 (0.0%)	1 (0.0%)	1 (0.0%)	0 (0.0%)	0 (0.0%)	0 (0.0%)	7 (0.0%)	5 (0.0%)	7 (0.0%)	10 (0.0%)
Chase										
Colt/Entire	7 (0.1%)	3 (0.0%)	1 (0.0%)	1 (0.0%)	0 (0.0%)	1 (0.0%)	0 (0.0%)	0 (0.0%)	0 (0.0%)	0 (0.0%)
Gelding	9723 (93.1%)	9157 (92.9%)	9246 (92.9%)	9420 (92.6%)	9332 (92.1%)	9177 (90.6%)	8896 (90.2%)	7255 (90.1%)	9147 (89.6%)	8514 (89.5%)
Filly/Mare	714 (6.8%)	693 (7.0%)	701 (7.0%)	748 (7.4%)	798 (7.9%)	950 (9.4%)	966 (9.8%)	791 (9.8%)	1053 (10.3%)	988 (10.4%)
Rig	0 (0.0%)	0 (0.0%)	0 (0.0%)	0 (0.0%)	0 (0.0%)	0 (0.0%)	5 (0.1%)	5 (0.1%)	7 (0.1%)	10 (0.1%)
Hurdle										
Colt/Entire	96 (0.5%)	111 (0.6%)	71 (0.4%)	45 (0.2%)	41 (0.2%)	43 (0.2%)	26 (0.1%)	28 (0.2%)	74 (0.4%)	26 (0.1%)
Gelding	14895 (80.5%)	13632 (78.2%)	14210 (78.4%)	14622 (79.1%)	14487 (78.6%)	14433 (76.6%)	13867 (75.0%)	11075 (74.6%)	14032 (75.0%)	13315 (75.7%)
Filly/Mare	3523 (19.0%)	3693 (21.2%)	3834 (21.2%)	3826 (20.7%)	3892 (21.1%)	4368 (23.2%)	4604 (24.9%)	3750 (25.2%)	4607 (24.6%)	4250 (24.2%)
Rig	0 (0.0%)	0 (0.0%)	0 (0.0%)	0 (0.0%)	0 (0.0%)	0 (0.0%)	2 (0.0%)	0 (0.0%)	0 (0.0%)	0 (0.0%)
NHF										
Colt/Entire	22 (0.6%)	14 (0.5%)	9 (0.3%)	4 (0.2%)	11 (0.4%)	11 (0.4%)	12 (0.5%)	15 (0.7%)	11 (0.3%)	13 (0.5%)
Gelding	2302 (67.0%)	2090 (67.6%)	1744 (64.5%)	1699 (65.8%)	1722 (64.4%)	1704 (62.1%)	1564 (62.1%)	1391 (65.1%)	2302 (68.0%)	1501 (62.0%)
Filly/Mare	1112 (32.4%)	985 (31.9%)	949 (35.1%)	881 (34.1%)	939 (35.1%)	1029 (37.5%)	941 (37.4%)	732 (34.2%)	1072 (31.7%)	908 (37.5%)
Rig	0 (0.0%)	1 (0.0%)	1 (0.0%)	0 (0.0%)	0 (0.0%)	0 (0.0%)	0 (0.0%)	0 (0.0%)	0 (0.0%)	0 (0.0%)
Hunter										
Colt/Entire	0 (0.0%)	0 (0.0%)	1 (0.1%)	0 (0.0%)	0 (0.0%)	0 (0.0%)	0 (0.0%)	0 (0.0%)	0 (0.0%)	0 (0.0%)
Gelding	844 (92.1%)	771 (91.5%)	799 (94.2%)	720 (94.2%)	709 (94.9%)	603 (93.3%)	522 (92.7%)	142 (97.3%)	557 (93.5%)	429 (94.9%)
Filly/Mare	72 (7.9%)	72 (8.5%)	48 (5.7%)	44 (5.8%)	38 (5.1%)	43 (6.7%)	41 (7.3%)	4 (2.7%)	39 (6.5%)	23 (5.1%)

Annual Individual Runners by Gender

Sex	2013	2014	2015	2016	2017	2018	2019	2020	2021	2022
All Races										
Male	12715 (70.2%)	12422 (70.3%)	12630 (70.4%)	12871 (70.6%)	13068 (70.2%)	13168 (69.5%)	13162 (69.3%)	12445 (69.3%)	13236 (69.5%)	12669 (69.0%)
Female	5388 (29.8%)	5253 (29.7%)	5307 (29.6%)	5368 (29.4%)	5552 (29.8%)	5767 (30.5%)	5844 (30.7%)	5506 (30.7%)	5822 (30.5%)	5686 (31.0%)
Flat										
Male	6829 (63.2%)	6772 (63.4%)	6860 (63.7%)	7047 (64.0%)	7277 (64.1%)	7421 (64.2%)	7377 (64.0%)	6962 (64.0%)	7035 (63.6%)	6824 (63.2%)
Female	3975 (36.8%)	3912 (36.6%)	3913 (36.3%)	3959 (36.0%)	4077 (35.9%)	4144 (35.8%)	4147 (36.0%)	3922 (36.0%)	4026 (36.4%)	3977 (36.8%)
All Jump										
Male	6859 (80.6%)	6513 (80.5%)	6607 (80.5%)	6634 (80.6%)	6587 (79.9%)	6502 (78.1%)	6571 (77.5%)	6187 (77.7%)	6909 (77.7%)	6475 (77.4%)
Female	1655 (19.4%)	1582 (19.5%)	1604 (19.5%)	1594 (19.4%)	1657 (20.1%)	1825 (21.9%)	1905 (22.5%)	1780 (22.3%)	1982 (22.3%)	1887 (22.6%)
Chase										
Male	2709 (91.6%)	2600 (92.2%)	2710 (91.8%)	2705 (91.4%)	2665 (90.6%)	2680 (89.6%)	2636 (88.9%)	2482 (88.2%)	2783 (87.7%)	2582 (87.9%)
Female	247 (8.4%)	221 (7.8%)	243 (8.2%)	253 (8.6%)	276 (9.4%)	311 (10.4%)	329 (11.1%)	332 (11.8%)	391 (12.3%)	356 (12.1%)
Hurdle										
Male	4787 (80.3%)	4479 (79.4%)	4632 (79.7%)	4672 (80.0%)	4588 (79.1%)	4605 (77.3%)	4640 (76.3%)	4217 (75.8%)	4751 (76.0%)	4583 (76.7%)
Female	1177 (19.7%)	1161 (20.6%)	1180 (20.3%)	1169 (20.0%)	1215 (20.9%)	1356 (22.7%)	1441 (23.7%)	1348 (24.2%)	1504 (24.0%)	1394 (23.3%)
NHF										
Male	1510 (69.7%)	1372 (69.9%)	1135 (66.6%)	1125 (67.9%)	1136 (67.0%)	1153 (65.4%)	1068 (64.8%)	1043 (67.5%)	1609 (70.3%)	1053 (64.4%)
Female	655 (30.3%)	590 (30.1%)	569 (33.4%)	532 (32.1%)	560 (33.0%)	609 (34.6%)	581 (35.2%)	502 (32.5%)	681 (29.7%)	581 (35.6%)
Hunter										
Male	433 (89.8%)	447 (91.4%)	448 (94.1%)	395 (93.2%)	366 (93.6%)	339 (92.1%)	301 (92.0%)	98 (96.1%)	299 (92.0%)	243 (92.4%)
Female	49 (10.2%)	42 (8.6%)	28 (5.9%)	29 (6.8%)	25 (6.4%)	29 (7.9%)	26 (8.0%)	4 (3.9%)	26 (8.0%)	20 (7.6%)

Horses Population by Breeding

December 2022 Horses in Training Snapshot by Breeding versus Previous Years

Flat (including Dual)

Bred	Sex	2013	2014	2015	2016	2017	2018	2019	2020	2021	2022
GB	Male	1817 (30.8%)	1886 (31.9%)	1904 (31.5%)	1995 (31.1%)	2235 (31.3%)	2130 (31.1%)	2218 (31.3%)	2109 (30.7%)	2051 (30.3%)	2077 (30.0%)
	Female	1163 (19.7%)	1108 (18.8%)	1108 (18.3%)	1189 (18.5%)	1298 (18.2%)	1267 (18.5%)	1328 (18.7%)	1274 (18.6%)	1307 (19.3%)	1340 (19.3%)
	Subtotal	2980 (50.6%)	2994 (50.7%)	3012 (49.9%)	3184 (49.7%)	3533 (49.4%)	3397 (49.5%)	3546 (50.0%)	3383 (49.3%)	3358 (49.5%)	3417 (49.3%)
IRE	Male	1592 (27.0%)	1619 (27.4%)	1706 (28.2%)	1838 (28.7%)	2011 (28.1%)	1934 (28.2%)	1960 (27.6%)	1991 (29.0%)	1985 (29.3%)	2065 (29.8%)
	Female	719 (12.2%)	696 (11.8%)	728 (12.1%)	759 (11.8%)	871 (12.2%)	852 (12.4%)	912 (12.9%)	852 (12.4%)	878 (13.0%)	927 (13.4%)
	Subtotal	2311 (39.2%)	2315 (39.2%)	2434 (40.3%)	2597 (40.5%)	2882 (40.3%)	2786 (40.6%)	2872 (40.5%)	2843 (41.4%)	2863 (42.2%)	2992 (43.2%)
FR	Male	92 (1.6%)	121 (2.0%)	127 (2.1%)	160 (2.5%)	232 (3.2%)	201 (2.9%)	229 (3.2%)	248 (3.6%)	247 (3.6%)	241 (3.5%)
	Female	28 (0.5%)	33 (0.6%)	40 (0.7%)	50 (0.8%)	73 (1.0%)	76 (1.1%)	78 (1.1%)	70 (1.0%)	80 (1.2%)	92 (1.3%)
	Subtotal	120 (2.0%)	154 (2.6%)	167 (2.8%)	210 (3.3%)	305 (4.3%)	277 (4.0%)	307 (4.3%)	318 (4.6%)	327 (4.8%)	333 (4.8%)
USA	Male	285 (4.8%)	247 (4.2%)	258 (4.3%)	259 (4.0%)	244 (3.4%)	222 (3.2%)	202 (2.8%)	183 (2.7%)	132 (1.9%)	101 (1.5%)
	Female	108 (1.8%)	97 (1.6%)	89 (1.5%)	77 (1.2%)	83 (1.2%)	96 (1.4%)	82 (1.2%)	56 (0.8%)	41 (0.6%)	24 (0.3%)
	Subtotal	393 (6.7%)	344 (5.8%)	347 (5.7%)	336 (5.2%)	327 (4.6%)	318 (4.6%)	284 (4.0%)	239 (3.5%)	173 (2.6%)	125 (1.8%)
GNY	Male	42 (0.7%)	45 (0.8%)	42 (0.7%)	46 (0.7%)	55 (0.8%)	36 (0.5%)	41 (0.6%)	48 (0.7%)	33 (0.5%)	41 (0.6%)
	Female	7 (0.1%)	9 (0.2%)	11 (0.2%)	11 (0.2%)	12 (0.2%)	14 (0.2%)	17 (0.2%)	16 (0.2%)	17 (0.3%)	11 (0.2%)
	Subtotal	49 (0.8%)	54 (0.9%)	53 (0.9%)	57 (0.9%)	67 (0.9%)	50 (0.7%)	58 (0.8%)	64 (0.9%)	50 (0.7%)	52 (0.8%)
Other	Male	33 (0.6%)	22 (0.4%)	18 (0.3%)	20 (0.3%)	22 (0.3%)	22 (0.3%)	18 (0.3%)	16 (0.2%)	6 (0.1%)	12 (0.2%)
	Female	8 (0.1%)	20 (0.3%)	10 (0.2%)	7 (0.1%)	10 (0.1%)	8 (0.1%)	5 (0.1%)	4 (0.1%)	2 (0.0%)	2 (0.0%)
	Subtotal	41 (0.7%)	42 (0.7%)	28 (0.5%)	27 (0.4%)	32 (0.4%)	30 (0.4%)	23 (0.3%)	20 (0.3%)	8 (0.1%)	14 (0.2%)

Jump (including Dual)

Bred	Sex	2013	2014	2015	2016	2017	2018	2019	2020	2021	2022
GB	Male	1538 (26.5%)	1462 (25.1%)	1409 (23.9%)	1335 (22.5%)	1373 (22.4%)	1298 (20.7%)	1318 (20.3%)	1347 (19.5%)	1262 (19.5%)	1266 (19.5%)
	Female	664 (11.5%)	701 (12.0%)	653 (11.1%)	610 (10.3%)	678 (11.1%)	650 (10.4%)	637 (9.8%)	698 (10.1%)	681 (10.5%)	716 (11.0%)
	Subtotal	2202 (38.0%)	2163 (37.1%)	2062 (35.0%)	1945 (32.8%)	2051 (33.4%)	1948 (31.1%)	1955 (30.1%)	2045 (29.6%)	1943 (30.0%)	1982 (30.5%)
IRE	Male	2489 (42.9%)	2460 (42.2%)	2576 (43.7%)	2654 (44.7%)	2664 (43.4%)	2763 (44.0%)	2818 (43.4%)	2943 (42.7%)	2678 (41.4%)	2621 (40.4%)
	Female	331 (5.7%)	382 (6.6%)	394 (6.7%)	416 (7.0%)	514 (8.4%)	578 (9.2%)	634 (9.8%)	664 (9.6%)	598 (9.2%)	613 (9.4%)
	Subtotal	2820 (48.6%)	2842 (48.8%)	2970 (50.4%)	3070 (51.7%)	3178 (51.8%)	3341 (53.3%)	3452 (53.2%)	3607 (52.3%)	3276 (50.6%)	3234 (49.8%)
FR	Male	574 (9.9%)	608 (10.4%)	671 (11.4%)	740 (12.5%)	709 (11.6%)	781 (12.5%)	842 (13.0%)	1000 (14.5%)	1004 (15.5%)	1021 (15.7%)
	Female	51 (0.9%)	54 (0.9%)	55 (0.9%)	64 (1.1%)	81 (1.3%)	103 (1.6%)	131 (2.0%)	130 (1.9%)	134 (2.1%)	150 (2.3%)
	Subtotal	625 (10.8%)	662 (11.4%)	726 (12.3%)	804 (13.5%)	790 (12.9%)	884 (14.1%)	973 (15.0%)	1130 (16.4%)	1138 (17.6%)	1171 (18.0%)
USA	Male	76 (1.3%)	76 (1.3%)	61 (1.0%)	45 (0.8%)	45 (0.7%)	32 (0.5%)	33 (0.5%)	32 (0.5%)	29 (0.4%)	20 (0.3%)
	Female	6 (0.1%)	2 (0.0%)	1 (0.0%)	1 (0.0%)	3 (0.0%)	2 (0.0%)	3 (0.0%)	1 (0.0%)	1 (0.0%)	NA (-)
	Subtotal	82 (1.4%)	78 (1.3%)	62 (1.1%)	46 (0.8%)	48 (0.8%)	34 (0.5%)	36 (0.6%)	33 (0.5%)	30 (0.5%)	20 (0.3%)
GNY	Male	48 (0.8%)	64 (1.1%)	54 (0.9%)	56 (0.9%)	51 (0.8%)	51 (0.8%)	66 (1.0%)	66 (1.0%)	71 (1.1%)	71 (1.1%)
	Female	6 (0.1%)	3 (0.1%)	7 (0.1%)	5 (0.1%)	4 (0.1%)	6 (0.1%)	4 (0.1%)	10 (0.1%)	8 (0.1%)	8 (0.1%)
	Subtotal	54 (0.9%)	67 (1.2%)	61 (1.0%)	61 (1.0%)	55 (0.9%)	57 (0.9%)	70 (1.1%)	76 (1.1%)	79 (1.2%)	79 (1.2%)
Other	Male	14 (0.2%)	13 (0.2%)	6 (0.1%)	7 (0.1%)	8 (0.1%)	8 (0.1%)	6 (0.1%)	6 (0.1%)	3 (0.0%)	4 (0.1%)
	Female	2 (0.0%)	1 (0.0%)	2 (0.0%)	2 (0.0%)	2 (0.0%)	1 (0.0%)	1 (0.0%)	1 (0.0%)	NA (-)	1 (0.0%)
	Subtotal	16 (0.3%)	14 (0.2%)	8 (0.1%)	9 (0.2%)	10 (0.2%)	9 (0.1%)	6 (0.1%)	7 (0.1%)	3 (0.0%)	5 (0.1%)

Annual Total Runners by Breeding

Flat

Bred	Sex	2013	2014	2015	2016	2017	2018	2019	2020	2021	2022
GB	Male	17875 (31.1%)	17614 (31.3%)	18166 (32.2%)	18432 (32.0%)	19021 (32.2%)	19096 (31.5%)	18590 (31.0%)	15549 (31.9%)	18351 (31.4%)	17504 (31.0%)
	Female	10941 (19.0%)	10305 (18.3%)	10031 (17.8%)	10183 (17.7%)	10254 (17.4%)	10640 (17.5%)	10799 (18.0%)	8747 (18.0%)	10643 (18.2%)	10103 (17.9%)
	Subtotal	28816 (50.1%)	27919 (49.6%)	28197 (49.9%)	28615 (49.7%)	29275 (49.6%)	29736 (49.0%)	29389 (49.0%)	24296 (49.9%)	28994 (49.7%)	27607 (48.9%)
IRE	Male	16605 (28.9%)	16401 (29.1%)	16651 (29.5%)	17309 (30.0%)	17542 (29.7%)	18454 (30.4%)	18016 (30.0%)	14466 (29.7%)	17817 (30.5%)	17845 (31.6%)
	Female	7047 (12.3%)	7286 (12.9%)	7166 (12.7%)	7253 (12.6%)	7522 (12.7%)	7510 (12.4%)	7506 (12.5%)	6103 (12.5%)	7315 (12.5%)	7501 (13.3%)
	Subtotal	23652 (41.1%)	23687 (42.1%)	23817 (42.2%)	24562 (42.6%)	25064 (42.5%)	25964 (42.8%)	25522 (42.6%)	20569 (42.3%)	25132 (43.0%)	25346 (44.9%)
FR	Male	655 (1.1%)	818 (1.5%)	1040 (1.8%)	1120 (1.9%)	1302 (2.2%)	1502 (2.5%)	1701 (2.8%)	1425 (2.9%)	1655 (2.8%)	1521 (2.7%)
	Female	191 (0.3%)	310 (0.6%)	320 (0.6%)	378 (0.7%)	416 (0.7%)	496 (0.8%)	564 (0.9%)	449 (0.9%)	580 (1.0%)	544 (1.0%)
	Subtotal	846 (1.5%)	1128 (2.0%)	1360 (2.4%)	1498 (2.6%)	1718 (2.9%)	1998 (3.3%)	2265 (3.8%)	1874 (3.8%)	2235 (3.8%)	2065 (3.7%)
USA	Male	2850 (5.0%)	2202 (3.9%)	1875 (3.3%)	1846 (3.2%)	1820 (3.1%)	1794 (3.0%)	1667 (2.8%)	1175 (2.4%)	1106 (1.9%)	771 (1.4%)
	Female	719 (1.2%)	670 (1.2%)	531 (0.9%)	454 (0.8%)	516 (0.9%)	568 (0.9%)	497 (0.8%)	297 (0.6%)	324 (0.6%)	253 (0.4%)
	Subtotal	3569 (6.2%)	2872 (5.1%)	2406 (4.3%)	2300 (4.0%)	2336 (4.0%)	2362 (3.9%)	2164 (3.6%)	1472 (3.0%)	1430 (2.4%)	1024 (1.8%)
GNY	Male	285 (0.5%)	298 (0.5%)	304 (0.5%)	334 (0.6%)	346 (0.6%)	306 (0.5%)	309 (0.5%)	274 (0.6%)	360 (0.6%)	198 (0.4%)
	Female	65 (0.1%)	67 (0.1%)	99 (0.2%)	63 (0.1%)	45 (0.1%)	81 (0.1%)	117 (0.2%)	98 (0.2%)	121 (0.2%)	103 (0.2%)
	Subtotal	350 (0.6%)	365 (0.6%)	403 (0.7%)	397 (0.7%)	391 (0.7%)	387 (0.6%)	426 (0.7%)	372 (0.8%)	481 (0.8%)	301 (0.5%)
Other	Male	258 (0.4%)	271 (0.5%)	203 (0.4%)	164 (0.3%)	181 (0.3%)	171 (0.3%)	144 (0.2%)	81 (0.2%)	92 (0.2%)	73 (0.1%)
	Female	35 (0.1%)	66 (0.1%)	77 (0.1%)	70 (0.1%)	66 (0.1%)	47 (0.1%)	64 (0.1%)	20 (0.0%)	22 (0.0%)	26 (0.0%)
	Subtotal	293 (0.5%)	337 (0.6%)	280 (0.5%)	234 (0.4%)	247 (0.4%)	218 (0.4%)	208 (0.3%)	101 (0.2%)	114 (0.2%)	99 (0.2%)

Jump

Bred	Sex	2013	2014	2015	2016	2017	2018	2019	2020	2021	2022
GB	Male	8215 (25.4%)	7553 (24.9%)	7380 (24.0%)	7008 (22.4%)	6688 (21.4%)	6499 (20.5%)	6148 (19.9%)	4797 (19.2%)	6163 (19.1%)	5358 (18.1%)
	Female	3132 (9.7%)	3160 (10.4%)	3047 (9.9%)	2833 (9.1%)	2763 (8.8%)	2999 (9.5%)	2759 (8.9%)	2194 (8.8%)	2904 (9.0%)	2639 (8.9%)
	Subtotal	11347 (35.0%)	10713 (35.3%)	10427 (33.9%)	9841 (31.5%)	9451 (30.3%)	9498 (29.9%)	8907 (28.8%)	6991 (27.9%)	9067 (28.1%)	7997 (27.1%)
IRE	Male	14605 (45.1%)	13698 (45.1%)	13874 (45.1%)	14501 (46.4%)	14509 (46.5%)	14349 (45.2%)	13710 (44.4%)	11081 (44.2%)	14118 (43.7%)	12674 (42.9%)
	Female	1839 (5.7%)	1878 (6.2%)	2115 (6.9%)	2295 (7.3%)	2481 (7.9%)	2928 (9.2%)	3167 (10.3%)	2484 (9.9%)	3085 (9.5%)	2783 (9.4%)
	Subtotal	16444 (50.8%)	15576 (51.3%)	15989 (52.0%)	16796 (53.8%)	16990 (54.4%)	17277 (54.5%)	16877 (54.6%)	13565 (54.2%)	17203 (53.3%)	15457 (52.4%)
FR	Male	3129 (9.7%)	2876 (9.5%)	3212 (10.4%)	3619 (11.6%)	3837 (12.3%)	3961 (12.5%)	3924 (12.7%)	3449 (13.8%)	4693 (14.5%)	4829 (16.4%)
	Female	301 (0.9%)	293 (1.0%)	274 (0.9%)	272 (0.9%)	352 (1.1%)	376 (1.2%)	536 (1.7%)	542 (2.2%)	686 (2.1%)	662 (2.2%)
	Subtotal	3430 (10.6%)	3169 (10.4%)	3486 (11.3%)	3891 (12.5%)	4189 (13.4%)	4337 (13.7%)	4460 (14.4%)	3991 (15.9%)	5379 (16.7%)	5491 (18.6%)
USA	Male	610 (1.9%)	481 (1.6%)	417 (1.4%)	318 (1.0%)	213 (0.7%)	211 (0.7%)	186 (0.6%)	143 (0.6%)	172 (0.5%)	120 (0.4%)
	Female	30 (0.1%)	13 (0.0%)	11 (0.0%)	6 (0.0%)	10 (0.0%)	13 (0.0%)	20 (0.1%)	27 (0.1%)	6 (0.0%)	6 (0.0%)
	Subtotal	640 (2.0%)	494 (1.6%)	428 (1.4%)	324 (1.0%)	223 (0.7%)	224 (0.7%)	206 (0.7%)	170 (0.7%)	178 (0.6%)	126 (0.4%)
GNY	Male	357 (1.1%)	329 (1.1%)	349 (1.1%)	309 (1.0%)	313 (1.0%)	299 (0.9%)	370 (1.2%)	278 (1.1%)	409 (1.3%)	385 (1.3%)
	Female	35 (0.1%)	26 (0.1%)	32 (0.1%)	28 (0.1%)	12 (0.0%)	21 (0.1%)	27 (0.1%)	24 (0.1%)	48 (0.1%)	47 (0.2%)
	Subtotal	392 (1.2%)	355 (1.2%)	381 (1.2%)	337 (1.1%)	325 (1.0%)	320 (1.0%)	397 (1.3%)	302 (1.2%)	457 (1.4%)	432 (1.5%)
Other	Male	129 (0.4%)	71 (0.2%)	50 (0.2%)	36 (0.1%)	33 (0.1%)	50 (0.2%)	34 (0.1%)	21 (0.1%)	18 (0.1%)	13 (0.0%)
	Female	12 (0.0%)	1 (0.0%)	5 (0.0%)	21 (0.1%)	11 (0.0%)	10 (0.0%)	2 (0.0%)	2 (0.0%)	3 (0.0%)	9 (0.0%)
	Subtotal	141 (0.4%)	72 (0.2%)	55 (0.2%)	57 (0.2%)	44 (0.1%)	60 (0.2%)	36 (0.1%)	23 (0.1%)	21 (0.1%)	22 (0.1%)

Annual Individual Runners by Breeding

Flat

Bred	Sex	2013	2014	2015	2016	2017	2018	2019	2020	2021	2022
GB	Male	3184 (29.5%)	3130 (29.3%)	3217 (29.9%)	3208 (29.1%)	3322 (29.3%)	3398 (29.4%)	3384 (29.4%)	3224 (29.6%)	3204 (29.0%)	3094 (28.6%)
	Female	2265 (21.0%)	2152 (20.1%)	2125 (19.7%)	2155 (19.6%)	2194 (19.3%)	2210 (19.1%)	2223 (19.3%)	2133 (19.6%)	2219 (20.1%)	2160 (20.0%)
	Subtotal	5449 (50.4%)	5282 (49.4%)	5342 (49.6%)	5363 (48.7%)	5516 (48.6%)	5608 (48.5%)	5607 (48.7%)	5357 (49.2%)	5423 (49.0%)	5254 (48.6%)
IRE	Male	2846 (26.3%)	2888 (27.0%)	2918 (27.1%)	3090 (28.1%)	3155 (27.8%)	3224 (27.9%)	3179 (27.6%)	3028 (27.8%)	3182 (28.8%)	3179 (29.4%)
	Female	1430 (13.2%)	1482 (13.9%)	1502 (13.9%)	1546 (14.0%)	1582 (13.9%)	1617 (14.0%)	1611 (14.0%)	1527 (14.0%)	1559 (14.1%)	1595 (14.8%)
	Subtotal	4276 (39.6%)	4370 (40.9%)	4420 (41.0%)	4636 (42.1%)	4737 (41.7%)	4841 (41.9%)	4790 (41.6%)	4555 (41.9%)	4741 (42.9%)	4774 (44.2%)
FR	Male	157 (1.5%)	174 (1.6%)	208 (1.9%)	242 (2.2%)	277 (2.4%)	331 (2.9%)	369 (3.2%)	360 (3.3%)	347 (3.1%)	332 (3.1%)
	Female	59 (0.5%)	80 (0.7%)	83 (0.8%)	96 (0.9%)	114 (1.0%)	132 (1.1%)	143 (1.2%)	131 (1.2%)	138 (1.2%)	138 (1.3%)
	Subtotal	216 (2.0%)	254 (2.4%)	291 (2.7%)	338 (3.1%)	391 (3.4%)	463 (4.0%)	512 (4.4%)	491 (4.5%)	485 (4.4%)	470 (4.4%)
USA	Male	529 (4.9%)	453 (4.2%)	400 (3.7%)	397 (3.6%)	405 (3.6%)	366 (3.2%)	342 (3.0%)	267 (2.5%)	218 (2.0%)	145 (1.3%)
	Female	187 (1.7%)	164 (1.5%)	159 (1.5%)	130 (1.2%)	152 (1.3%)	152 (1.3%)	132 (1.1%)	97 (0.9%)	77 (0.7%)	52 (0.5%)
	Subtotal	716 (6.6%)	617 (5.8%)	559 (5.2%)	527 (4.8%)	557 (4.9%)	518 (4.5%)	474 (4.1%)	364 (3.3%)	295 (2.7%)	197 (1.8%)
GNY	Male	61 (0.6%)	77 (0.7%)	77 (0.7%)	80 (0.7%)	83 (0.7%)	69 (0.6%)	69 (0.6%)	65 (0.6%)	66 (0.6%)	53 (0.5%)
	Female	20 (0.2%)	18 (0.2%)	24 (0.2%)	16 (0.1%)	16 (0.1%)	20 (0.2%)	25 (0.2%)	26 (0.2%)	28 (0.3%)	26 (0.2%)
	Subtotal	81 (0.7%)	95 (0.9%)	101 (0.9%)	96 (0.9%)	99 (0.9%)	89 (0.8%)	94 (0.8%)	91 (0.8%)	94 (0.8%)	79 (0.7%)
Other	Male	52 (0.5%)	50 (0.5%)	40 (0.4%)	30 (0.3%)	35 (0.3%)	33 (0.3%)	34 (0.3%)	18 (0.2%)	18 (0.2%)	21 (0.2%)
	Female	14 (0.1%)	16 (0.1%)	20 (0.2%)	16 (0.1%)	19 (0.2%)	13 (0.1%)	13 (0.1%)	8 (0.1%)	5 (0.0%)	6 (0.1%)
	Subtotal	66 (0.6%)	66 (0.6%)	60 (0.6%)	46 (0.4%)	54 (0.5%)	46 (0.4%)	47 (0.4%)	26 (0.2%)	23 (0.2%)	27 (0.2%)

Jump

Bred	Sex	2013	2014	2015	2016	2017	2018	2019	2020	2021	2022
GB	Male	2159 (25.4%)	2034 (25.1%)	1944 (23.7%)	1853 (22.5%)	1737 (21.1%)	1687 (20.3%)	1679 (19.8%)	1519 (19.1%)	1714 (19.3%)	1504 (18.0%)
	Female	979 (11.5%)	932 (11.5%)	899 (10.9%)	840 (10.2%)	820 (9.9%)	849 (10.2%)	816 (9.6%)	754 (9.5%)	878 (9.9%)	812 (9.7%)
	Subtotal	3138 (36.9%)	2966 (36.6%)	2843 (34.6%)	2693 (32.7%)	2557 (31.0%)	2536 (30.5%)	2495 (29.4%)	2273 (28.5%)	2592 (29.2%)	2316 (27.7%)
IRE	Male	3642 (42.8%)	3505 (43.3%)	3620 (44.1%)	3665 (44.5%)	3688 (44.7%)	3663 (44.0%)	3680 (43.4%)	3437 (43.1%)	3755 (42.2%)	3528 (42.2%)
	Female	576 (6.8%)	569 (7.0%)	619 (7.5%)	649 (7.9%)	715 (8.7%)	826 (9.9%)	900 (10.6%)	823 (10.3%)	900 (10.1%)	853 (10.2%)
	Subtotal	4218 (49.5%)	4074 (50.3%)	4239 (51.6%)	4314 (52.4%)	4403 (53.4%)	4489 (53.9%)	4580 (54.0%)	4260 (53.5%)	4655 (52.4%)	4381 (52.4%)
FR	Male	776 (9.1%)	751 (9.3%)	834 (10.2%)	936 (11.4%)	1012 (12.3%)	1018 (12.2%)	1062 (12.5%)	1094 (13.7%)	1298 (14.6%)	1309 (15.7%)
	Female	76 (0.9%)	71 (0.9%)	73 (0.9%)	88 (1.1%)	109 (1.3%)	137 (1.6%)	174 (2.1%)	186 (2.3%)	189 (2.1%)	203 (2.4%)
	Subtotal	852 (10.0%)	822 (10.2%)	907 (11.0%)	1024 (12.4%)	1121 (13.6%)	1155 (13.9%)	1236 (14.6%)	1280 (16.1%)	1487 (16.7%)	1512 (18.1%)
USA	Male	165 (1.9%)	123 (1.5%)	102 (1.2%)	82 (1.0%)	60 (0.7%)	55 (0.7%)	56 (0.7%)	44 (0.6%)	48 (0.5%)	39 (0.5%)
	Female	14 (0.2%)	4 (0.0%)	4 (0.0%)	3 (0.0%)	3 (0.0%)	5 (0.1%)	7 (0.1%)	6 (0.1%)	2 (0.0%)	2 (0.0%)
	Subtotal	179 (2.1%)	127 (1.6%)	106 (1.3%)	85 (1.0%)	63 (0.8%)	60 (0.7%)	63 (0.7%)	50 (0.6%)	50 (0.6%)	41 (0.5%)
GNY	Male	82 (1.0%)	81 (1.0%)	92 (1.1%)	90 (1.1%)	81 (1.0%)	71 (0.9%)	84 (1.0%)	85 (1.1%)	90 (1.0%)	92 (1.1%)
	Female	7 (0.1%)	5 (0.1%)	7 (0.1%)	9 (0.1%)	6 (0.1%)	5 (0.1%)	7 (0.1%)	9 (0.1%)	12 (0.1%)	15 (0.2%)
	Subtotal	89 (1.0%)	86 (1.1%)	99 (1.2%)	99 (1.2%)	87 (1.1%)	76 (0.9%)	91 (1.1%)	94 (1.2%)	102 (1.1%)	107 (1.3%)
Other	Male	35 (0.4%)	19 (0.2%)	15 (0.2%)	8 (0.1%)	9 (0.1%)	8 (0.1%)	10 (0.1%)	8 (0.1%)	4 (0.0%)	3 (0.0%)
	Female	3 (0.0%)	1 (0.0%)	2 (0.0%)	5 (0.1%)	4 (0.0%)	3 (0.0%)	1 (0.0%)	2 (0.0%)	1 (0.0%)	2 (0.0%)
	Subtotal	38 (0.4%)	20 (0.2%)	17 (0.2%)	13 (0.2%)	13 (0.2%)	11 (0.1%)	11 (0.1%)	10 (0.1%)	5 (0.1%)	5 (0.1%)