

Horse Population Report

Updated on 30 November 2022



Introduction

Welcome to the latest update on the Racehorse Population from the British Horseracing Authority.

The aim of this document is to give stakeholders and the wider Public an insight into the current state of the Horse Population in Great Britain. It is hoped that this transparency will ensure that all decision makers have access to the key data required to help British Racing deliver a Competitive and Compelling product to stakeholders, racegoers and the wider public.

If you have any questions regarding the content of this report or suggestions for how it could be improved further, please contact Joe Yates – jyates@britishhorseracing.com

Definitions

This report uses the Horses in Training returns from the Weatherby's Racing Administration System, this is completed by trainers and should be updated whenever a horse enters or leaves training in their care as part of the conditions of their licence.

Horses in Training

Unless otherwise stated, snapshots of Horses in Training will be from the 15th day of the month in question and year to date figures will be up to and including the date titled at the front of the report.

Horses' ratings will be taken from the most recently published ratings by the BHA Handicapping Team, which is currently at 7am each Tuesday morning. For example, if looking at the Horses in a particular rating band for July 2011, the horses in training number will be from Friday 15th July 2011 and ratings, where possible, will be assigned to each horse from the ratings published by the BHA Handicappers on Tuesday 12th July 2011.

The Gender of a horse will be taken from the reporting date in question, regardless of whether this has since changed. In the case of YTD reporting, where a horse's gender or training type has changed in the year-to-date period, the most recent is taken.

This report does not count any horses that are temporarily racing abroad for GB Trainers at the time of reporting.

Yearlings are not included in total counts of flat and/or dual horses but will be sometimes shown separately for information purposes.

Yearlings and two-year-olds are not included in total counts of jump horses or counts of jump horses that include dual horses but will be sometimes shown separately for information purposes.

Yearlings, two-year-olds and three-year-olds are not included in total counts of Hunter Chasers but will be sometimes shown separately for information purposes.

Hunter Chasers are not included in any counts of Jump Horses or Total figures but will be sometimes shown separately for information purposes.

Runners

Unless otherwise specified, Total Runners and Individual Runners metrics only counts runners that ran in GB races including any voided races. Withdrawn horses are not included.

Hunter Chases are not included in this section but will be sometimes shown separately for information purposes.

Total Runners is a count of all runners in races, whilst individual runners only counts each individual horse once.

Monthly Horses in Training

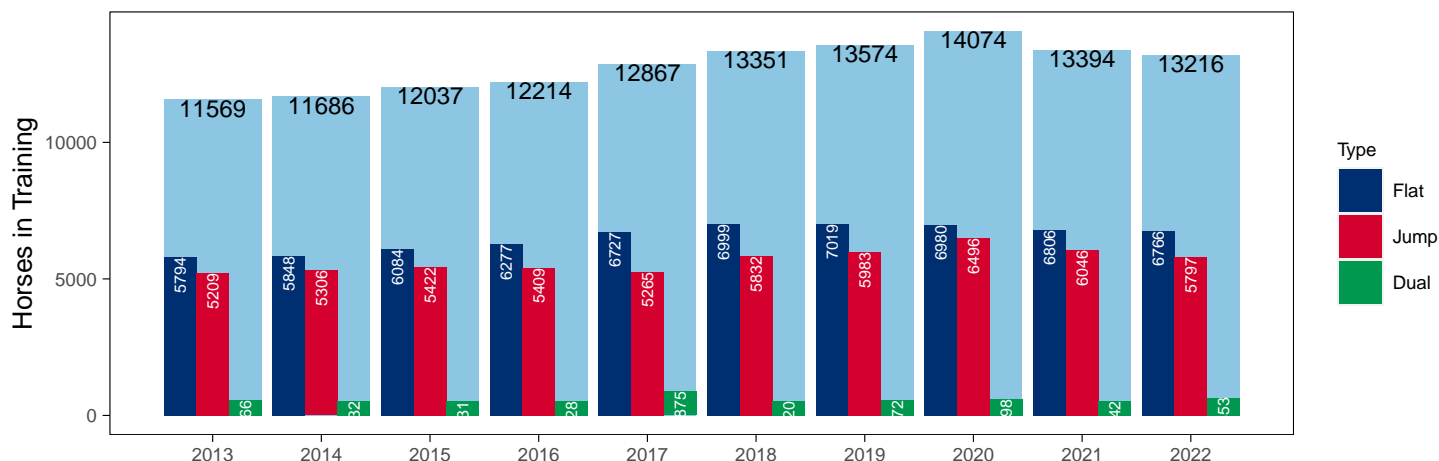
November 2022 Horses in Training Snapshot versus Previous Years

Type	2013	2014	2015	2016	2017	2018	2019	2020	2021	2022	vs. Last Year	vs. Pre-Covid
Flat	5794	5848	6084	6277	6727	6999	7019	6980	6806	6766	-40 / -0.6%	-253 / -3.6%
Jump	5209	5306	5422	5409	5265	5832	5983	6496	6046	5797	-249 / -4.1%	-186 / -3.1%
Dual	566	532	531	528	875	520	572	598	542	653	+111 / +20.5%	+81 / +14.2%
Hunter	138	0	93	155	227	289	244	447	344	278	-66 / -19.2%	+34 / +13.9%
Total	11569	11686	12037	12214	12867	13351	13574	14074	13394	13216	-178 / -1.3%	-358 / -2.6%

'vs. Pre-Covid' is comparison between 2022 and 2019

Snapshot of Total Horses in Training in November

Horses in Training in November, shown by Training Type



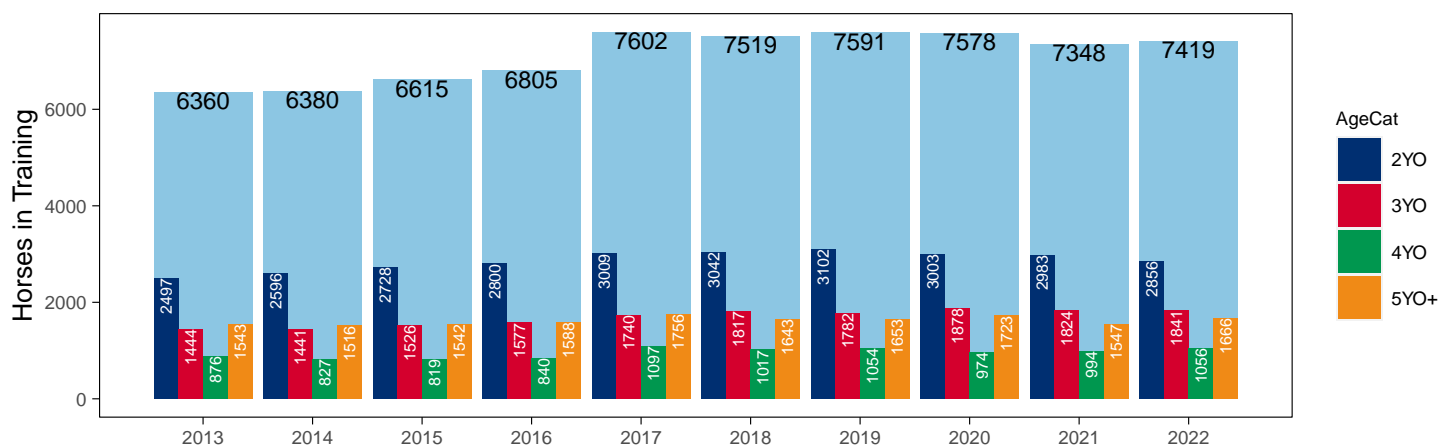
Flat (including Dual)

AgeCat	2013	2014	2015	2016	2017	2018	2019	2020	2021	2022	vs. Last Year	vs. Pre-Covid
2YO	2497	2596	2728	2800	3009	3042	3102	3003	2983	2856	-127 / -4.3%	-246 / -7.9%
3YO	1444	1441	1526	1577	1740	1817	1782	1878	1824	1841	+17 / +0.9%	+59 / +3.3%
4YO	876	827	819	840	1097	1017	1054	974	994	1056	+62 / +6.2%	+2 / +0.2%
5YO+	1543	1516	1542	1588	1756	1643	1653	1723	1547	1666	+119 / +7.7%	+13 / +0.8%
Total	6360	6380	6615	6805	7602	7519	7591	7578	7348	7419	+71 / +1.0%	-172 / -2.3%

'vs. Pre-Covid' is comparison between 2022 and 2019

Snapshot of Flat Horses in Training in November

Flat Horses in Training in November, shown by Age



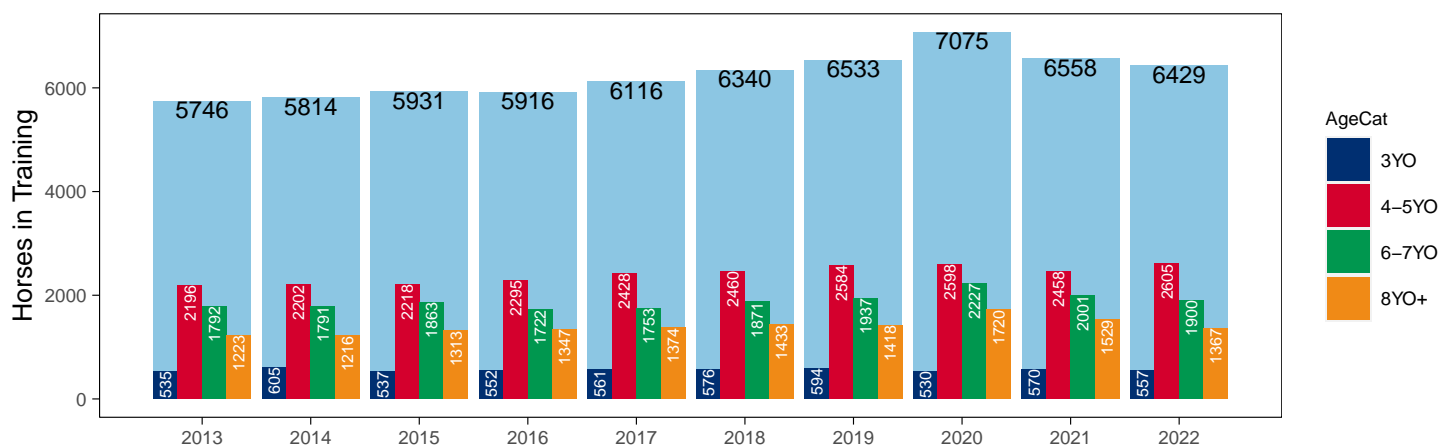
Jump (including Dual)

AgeCat	2013	2014	2015	2016	2017	2018	2019	2020	2021	2022	vs. Last Year	vs. Pre-Covid
3YO	535	605	537	552	561	576	594	530	570	557	-13 / -2.3%	-37 / -6.2%
4-5YO	2196	2202	2218	2295	2428	2460	2584	2598	2458	2605	+147 / +6.0%	+21 / +0.8%
6-7YO	1792	1791	1863	1722	1753	1871	1937	2227	2001	1900	-101 / -5.0%	-37 / -1.9%
8YO+	1223	1216	1313	1347	1374	1433	1418	1720	1529	1367	-162 / -10.6%	-51 / -3.6%
Total	5746	5814	5931	5916	6116	6340	6533	7075	6558	6429	-129 / -2.0%	-104 / -1.6%

'vs. Pre-Covid' is comparison between 2022 and 2019

Snapshot of Jump Horses in Training in November

Jump Horses in Training in November, shown by Age



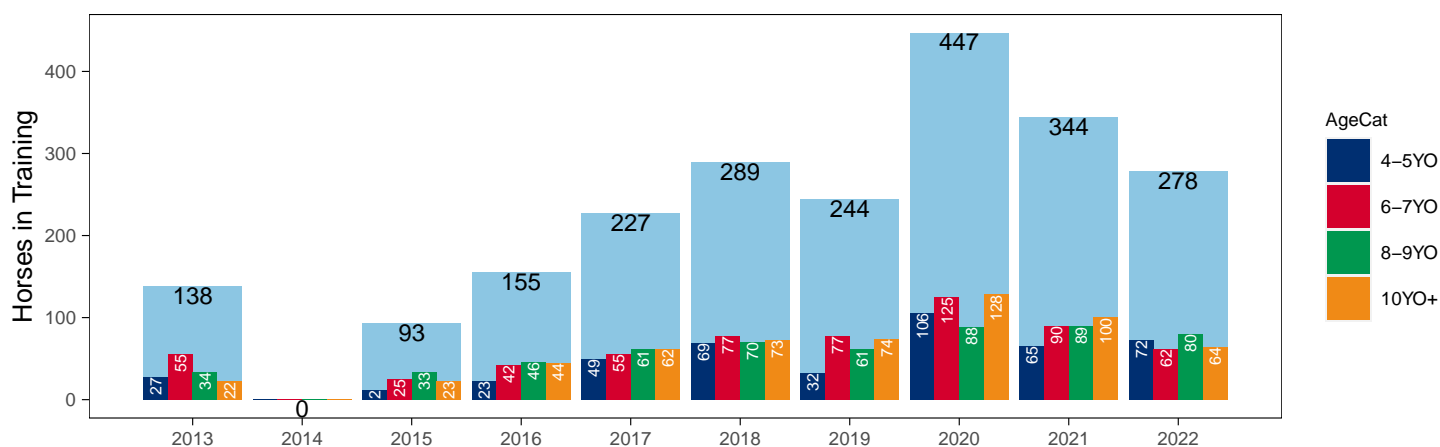
Hunter Chasers

AgeCat	2013	2014	2015	2016	2017	2018	2019	2020	2021	2022	vs. Last Year	vs. Pre-Covid
4-5YO	27	0	12	23	49	69	32	106	65	72	+7 / +10.8%	+40 / +125.0%
6-7YO	55	0	25	42	55	77	77	125	90	62	-28 / -31.1%	-15 / -19.5%
8-9YO	34	0	33	46	61	70	61	88	89	80	-9 / -10.1%	+19 / +31.1%
10YO+	22	0	23	44	62	73	74	128	100	64	-36 / -36.0%	-10 / -13.5%
Total	138	0	93	155	227	289	244	447	344	278	-66 / -19.2%	+34 / +13.9%

'vs. Pre-Covid' is comparison between 2022 and 2019

Snapshot of Hunter Chasers in Training in November

Hunter Chasers in Training in November, shown by Age



2022 Horses in Training versus Previous Years

Type	Period	Jan	Feb	Mar	Apr	May	Jun	Jul	Aug	Sep	Oct	Nov	Dec
Flat	2022	8342	8880	9379	9739	9951	9839	9554	9464	9162	8618	6766	0
	2021	8363	8843	9294	9666	9909	9890	9697	9537	9088	8528	6806	6263
	Pre-Covid	8625	9167	9724	10175	10384	10396	10099	9758	9471	8799	7019	6551
Jump	2022	5874	5828	5734	5281	3913	3159	3865	4828	5436	5684	5797	0
	2021	6449	6471	6381	5985	4385	3562	3950	5055	5660	5940	6046	5970
	Pre-Covid	5721	5782	5762	5345	4029	3123	3612	4806	5317	5752	5983	5978
Dual	2022	520	553	557	570	545	555	586	624	641	636	653	0
	2021	528	519	542	548	503	494	514	521	539	539	542	526
	Pre-Covid	486	474	471	499	460	460	479	490	486	543	572	539
Hunter	2022	814	1034	1184	1278	1277	1234	1220	1198	1180	13	278	0
	2021	791	787	863	1154	1178	1132	1106	1087	1071	47	344	604
	Pre-Covid	995	1378	1572	1702	1694	1638	1614	0	0	0	244	606
Total	2022	14736	15261	15670	15590	14409	13553	14005	14916	15239	14938	13216	0
	2021	15340	15833	16217	16199	14797	13946	14161	15113	15287	15007	13394	12759
	Pre-Covid	14832	15423	15957	16019	14873	13979	14190	15054	15274	15094	13574	13068

'Pre-Covid' is 2019 values

Monthly Horses in Training

2022 against 2021 and Pre-Covid, shown with % Difference

Period — Pre-Covid — 2021 — 2022



'Pre-Covid' is 2019 values

Flat (including Dual)

AgeCat	Period	Jan	Feb	Mar	Apr	May	Jun	Jul	Aug	Sep	Oct	Nov	Dec
2YO	2022	1927	2364	2591	2867	3218	3369	3533	3602	3609	3495	2856	
	2021	1927	2242	2467	2792	3161	3388	3545	3621	3603	3529	2983	2783
	Pre-Covid	2104	2424	2738	3106	3394	3593	3714	3784	3801	3650	3102	3001
3YO	2022	2946	3067	3244	3312	3246	3140	2878	2782	2629	2451	1841	
	2021	2925	3050	3230	3284	3224	3100	2937	2844	2629	2381	1824	1672
	Pre-Covid	2998	3139	3288	3339	3302	3220	3007	2791	2645	2419	1782	1619
4YO	2022	1685	1673	1708	1710	1668	1609	1532	1535	1451	1353	1056	
	2021	1628	1674	1709	1719	1673	1630	1537	1492	1416	1291	994	904
	Pre-Covid	1640	1672	1715	1726	1690	1661	1567	1490	1423	1345	1054	941
5YO+	2022	2304	2329	2393	2420	2364	2276	2197	2169	2114	1955	1666	
	2021	2411	2396	2430	2419	2354	2266	2192	2101	1979	1866	1547	1430
	Pre-Covid	2369	2406	2454	2503	2458	2382	2290	2183	2088	1928	1653	1529
Total	2022	8862	9433	9936	10309	10496	10394	10140	10088	9803	9254	7419	
	2021	8891	9362	9836	10214	10412	10384	10211	10058	9627	9067	7348	6789
	Pre-Covid	9111	9641	10195	10674	10844	10856	10578	10248	9957	9342	7591	7090

'Pre-Covid' is 2019 values

Monthly Flat Horses in Training

2022 against 2021 and Pre-Covid, shown with % Difference

Period — Pre-Covid — 2021 — 2022



'Pre-Covid' is 2019 values

Jump (including Dual)

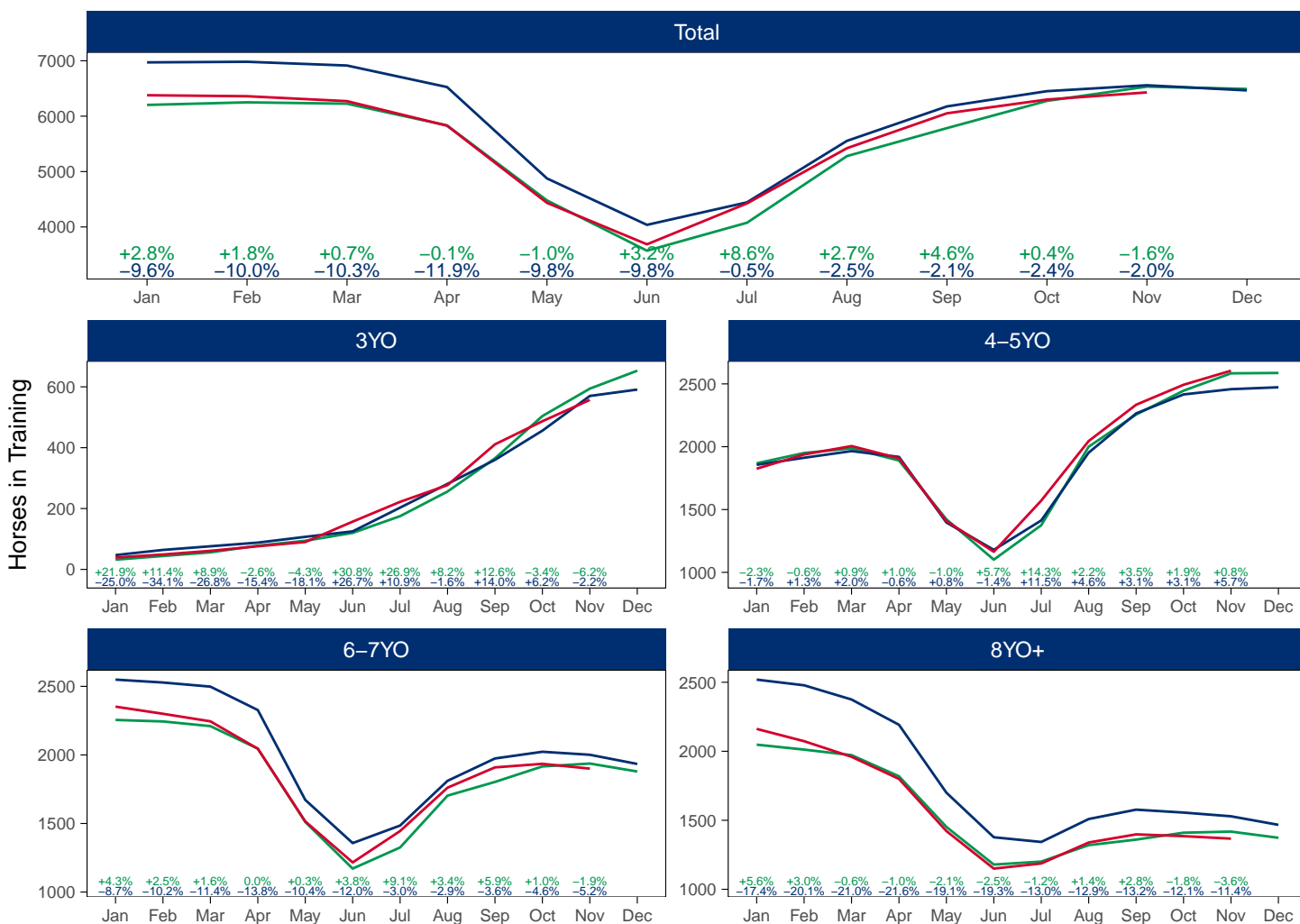
AgeCat	Period	Jan	Feb	Mar	Apr	May	Jun	Jul	Aug	Sep	Oct	Nov	Dec
3YO	2022	39	49	61	76	90	157	222	277	411	487	557	
	2021	47	64	76	88	107	125	203	281	360	456	570	591
	Pre-Covid	32	44	56	78	94	120	175	256	365	504	594	653
4-5YO	2022	1825	1938	2005	1908	1408	1164	1571	2045	2334	2493	2605	
	2021	1856	1912	1965	1919	1397	1179	1413	1953	2265	2416	2458	2473
	Pre-Covid	1868	1950	1987	1890	1422	1101	1375	2000	2256	2446	2584	2587
6-7YO	2022	2352	2300	2245	2045	1515	1216	1445	1761	1909	1935	1900	
	2021	2549	2528	2498	2327	1672	1357	1485	1811	1974	2023	2001	1934
	Pre-Covid	2255	2244	2210	2046	1511	1171	1325	1703	1803	1916	1937	1879
8YO+	2022	2162	2073	1960	1800	1422	1150	1187	1339	1398	1385	1367	
	2021	2519	2478	2375	2192	1700	1377	1343	1509	1577	1556	1529	1467
	Pre-Covid	2048	2012	1972	1819	1452	1179	1201	1320	1360	1410	1418	1373
Total	2022	6378	6360	6271	5829	4435	3687	4425	5422	6052	6300	6429	
	2021	6971	6982	6914	6526	4876	4038	4444	5554	6176	6451	6558	6465
	Pre-Covid	6203	6250	6225	5833	4479	3571	4076	5279	5784	6276	6533	6492

'Pre-Covid' is 2019 values

Monthly Jump Horses in Training

2022 against 2021 and Pre-Covid, shown with % Difference

Period — Pre-Covid — 2021 — 2022



'Pre-Covid' is 2019 values

Hunter Chasers

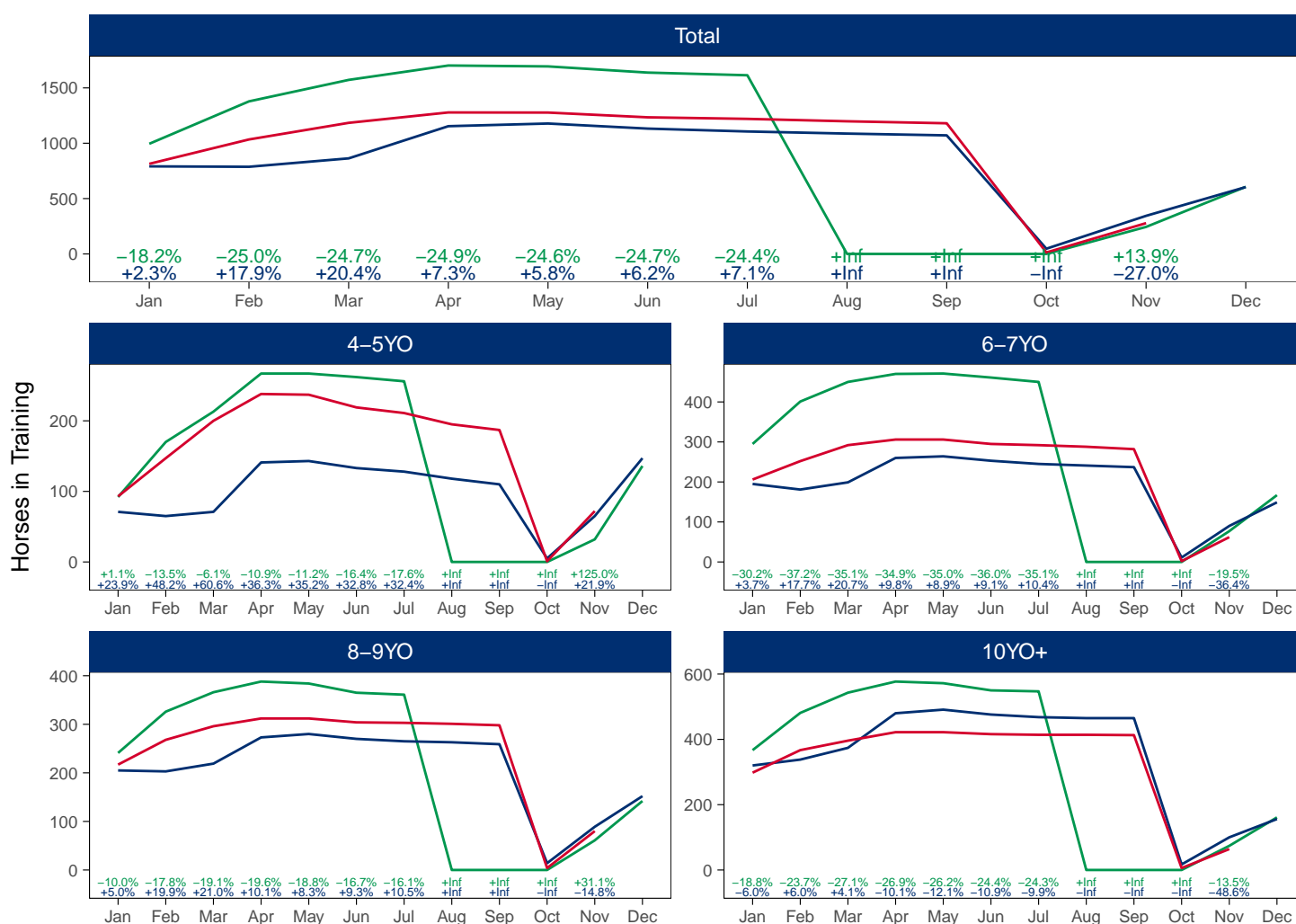
AgeCat	Period	Jan	Feb	Mar	Apr	May	Jun	Jul	Aug	Sep	Oct	Nov	Dec
4-5YO	2022	93	147	200	238	237	219	211	195	187	1	72	
	2021	71	65	71	141	143	133	128	118	110	5	65	147
	Pre-Covid	92	170	213	267	267	262	256				32	136
6-7YO	2022	206	252	292	306	306	295	292	288	282	2	62	
	2021	195	181	199	260	264	253	245	241	237	11	90	149
	Pre-Covid	295	401	450	470	471	461	450				77	167
8-9YO	2022	217	268	296	312	312	304	303	301	298	4	80	
	2021	205	203	219	273	280	270	265	263	259	14	89	152
	Pre-Covid	241	326	366	388	384	365	361				61	142
10YO+	2022	298	367	396	422	422	416	414	414	413	6	64	
	2021	320	338	374	480	491	476	468	465	465	17	100	156
	Pre-Covid	367	481	543	577	572	550	547				74	161
Total	2022	814	1034	1184	1278	1277	1234	1220	1198	1180	13	278	
	2021	791	787	863	1154	1178	1132	1106	1087	1071	47	344	604
	Pre-Covid	995	1378	1572	1702	1694	1638	1614				244	606

'Pre-Covid' is 2019 values

Monthly Hunter Chasers in Training

2022 against 2021 and Pre-Covid, shown with % Difference

Period — Pre-Covid — 2021 — 2022



'Pre-Covid' is 2019 values

November 2022 Horses in Training by Rating Band Snapshot versus Previous Years

Flat (including Dual)

AgeCat	RatBand	2013	2014	2015	2016	2017	2018	2019	2020	2021	2022
2YO	0-50	82 (3.3%)	99 (3.8%)	92 (3.4%)	76 (2.7%)	65 (2.2%)	85 (2.8%)	98 (3.2%)	82 (2.7%)	83 (2.8%)	81 (2.8%)
	51-60	144 (5.8%)	153 (5.9%)	124 (4.5%)	149 (5.3%)	144 (4.8%)	183 (6.0%)	153 (4.9%)	169 (5.6%)	150 (5.0%)	158 (5.5%)
	61-70	203 (8.1%)	226 (8.7%)	256 (9.4%)	255 (9.1%)	238 (7.9%)	244 (8.0%)	214 (6.9%)	246 (8.2%)	237 (7.9%)	216 (7.6%)
	71-80	228 (9.1%)	235 (9.1%)	262 (9.6%)	271 (9.7%)	254 (8.4%)	239 (7.9%)	235 (7.6%)	288 (9.6%)	258 (8.6%)	232 (8.1%)
	81-90	118 (4.7%)	99 (3.8%)	129 (4.7%)	142 (5.1%)	113 (3.8%)	166 (5.5%)	126 (4.1%)	128 (4.3%)	129 (4.3%)	139 (4.9%)
	91-100	69 (2.8%)	62 (2.4%)	60 (2.2%)	49 (1.8%)	65 (2.2%)	66 (2.2%)	66 (2.1%)	65 (2.2%)	53 (1.8%)	57 (2.0%)
	101+	26 (1.0%)	53 (2.0%)	41 (1.5%)	36 (1.3%)	57 (1.9%)	49 (1.6%)	46 (1.5%)	51 (1.7%)	60 (2.0%)	44 (1.5%)
	Unrated	1627 (65.2%)	1669 (64.3%)	1764 (64.7%)	1822 (65.1%)	2073 (68.9%)	2010 (66.1%)	2164 (69.8%)	1974 (65.7%)	2013 (67.5%)	1929 (67.5%)
Subtotal		2497 (100.0%)	2596 (100.0%)	2728 (100.0%)	2800 (100.0%)	3009 (100.0%)	3042 (100.0%)	3102 (100.0%)	3003 (100.0%)	2983 (100.0%)	2856 (100.0%)
3YO	0-50	143 (9.9%)	139 (9.6%)	144 (9.4%)	146 (9.3%)	190 (10.9%)	192 (10.6%)	219 (12.3%)	204 (10.9%)	187 (10.3%)	196 (10.6%)
	51-60	204 (14.1%)	173 (12.0%)	208 (13.6%)	217 (13.8%)	238 (13.7%)	227 (12.5%)	257 (14.4%)	255 (13.6%)	256 (14.0%)	264 (14.3%)
	61-70	252 (17.5%)	268 (18.6%)	273 (17.9%)	274 (17.4%)	269 (15.5%)	287 (15.8%)	304 (17.1%)	308 (16.4%)	322 (17.7%)	319 (17.3%)
	71-80	225 (15.6%)	253 (17.6%)	250 (16.4%)	282 (17.9%)	300 (17.2%)	300 (16.5%)	236 (13.2%)	317 (16.9%)	275 (15.1%)	280 (15.2%)
	81-90	167 (11.6%)	164 (11.4%)	175 (11.5%)	164 (10.4%)	178 (10.2%)	204 (11.2%)	187 (10.5%)	175 (9.3%)	201 (11.0%)	177 (9.6%)
	91-100	84 (5.8%)	85 (5.9%)	80 (5.2%)	101 (6.4%)	116 (6.7%)	110 (6.1%)	119 (6.7%)	104 (5.5%)	83 (4.6%)	72 (3.9%)
	101+	55 (3.8%)	76 (5.3%)	84 (5.5%)	77 (4.9%)	74 (4.3%)	80 (4.4%)	83 (4.7%)	55 (2.9%)	65 (3.6%)	89 (4.8%)
	Unrated	314 (21.7%)	283 (19.6%)	312 (20.4%)	316 (20.0%)	375 (21.6%)	417 (22.9%)	377 (21.2%)	460 (24.5%)	435 (23.8%)	444 (24.1%)
Subtotal		1444 (100.0%)	1441 (100.0%)	1526 (100.0%)	1577 (100.0%)	1740 (100.0%)	1817 (100.0%)	1782 (100.0%)	1878 (100.0%)	1824 (100.0%)	1841 (100.0%)
4YO	0-50	111 (12.7%)	83 (10.0%)	74 (9.0%)	89 (10.6%)	137 (12.5%)	142 (14.0%)	154 (14.6%)	107 (11.0%)	125 (12.6%)	130 (12.3%)
	51-60	107 (12.2%)	117 (14.1%)	121 (14.8%)	125 (14.9%)	138 (12.6%)	145 (14.3%)	169 (16.0%)	157 (16.1%)	169 (17.0%)	162 (15.3%)
	61-70	171 (19.5%)	150 (18.1%)	137 (16.7%)	149 (17.7%)	163 (14.9%)	185 (18.2%)	178 (16.9%)	177 (18.2%)	176 (17.7%)	193 (18.3%)
	71-80	140 (16.0%)	136 (16.4%)	120 (14.7%)	127 (15.1%)	142 (12.9%)	154 (15.1%)	152 (14.4%)	144 (14.8%)	157 (15.8%)	174 (16.5%)
	81-90	99 (11.3%)	93 (11.2%)	116 (14.2%)	95 (11.3%)	131 (11.9%)	108 (10.6%)	105 (10.0%)	100 (10.3%)	100 (10.1%)	106 (10.0%)
	91-100	65 (7.4%)	78 (9.4%)	68 (8.3%)	62 (7.4%)	69 (6.3%)	81 (8.0%)	84 (8.0%)	58 (6.0%)	63 (6.3%)	64 (6.1%)
	101+	50 (5.7%)	41 (5.0%)	60 (7.3%)	68 (8.1%)	73 (6.7%)	57 (5.6%)	58 (5.5%)	61 (6.3%)	45 (4.5%)	59 (5.6%)
	Unrated	133 (15.2%)	129 (15.6%)	123 (15.0%)	125 (14.9%)	244 (22.2%)	145 (14.3%)	154 (14.6%)	170 (17.5%)	159 (16.0%)	168 (15.9%)
Subtotal		876 (100.0%)	827 (100.0%)	819 (100.0%)	840 (100.0%)	1097 (100.0%)	1017 (100.0%)	1054 (100.0%)	974 (100.0%)	994 (100.0%)	1056 (100.0%)
5YO+	0-50	208 (13.5%)	211 (13.9%)	173 (11.2%)	175 (11.0%)	205 (11.7%)	257 (15.6%)	276 (16.7%)	240 (13.9%)	215 (13.9%)	245 (14.7%)
	51-60	254 (16.5%)	228 (15.0%)	245 (15.9%)	235 (14.8%)	250 (14.2%)	255 (15.5%)	246 (14.9%)	277 (16.1%)	256 (16.5%)	266 (16.0%)
	61-70	321 (20.8%)	303 (20.0%)	318 (20.6%)	294 (18.5%)	295 (16.8%)	252 (15.3%)	275 (16.6%)	312 (18.1%)	263 (17.0%)	287 (17.2%)
	71-80	220 (14.3%)	256 (16.9%)	241 (15.6%)	238 (15.0%)	234 (13.3%)	233 (14.2%)	219 (13.2%)	235 (13.6%)	193 (12.5%)	222 (13.3%)
	81-90	147 (9.5%)	170 (11.2%)	182 (11.8%)	218 (13.7%)	190 (10.8%)	174 (10.6%)	171 (10.3%)	148 (8.6%)	151 (9.8%)	151 (9.1%)
	91-100	79 (5.1%)	82 (5.4%)	103 (6.7%)	106 (6.7%)	108 (6.2%)	101 (6.1%)	104 (6.3%)	86 (5.0%)	107 (6.9%)	106 (6.4%)
	101+	67 (4.3%)	75 (4.9%)	74 (4.8%)	92 (5.8%)	101 (5.8%)	94 (5.7%)	68 (4.1%)	74 (4.3%)	88 (5.7%)	79 (4.7%)
	Unrated	247 (16.0%)	191 (12.6%)	206 (13.4%)	230 (14.5%)	373 (21.2%)	277 (16.9%)	294 (17.8%)	351 (20.4%)	274 (17.7%)	310 (18.6%)
Subtotal		1543 (100.0%)	1516 (100.0%)	1542 (100.0%)	1588 (100.0%)	1756 (100.0%)	1643 (100.0%)	1653 (100.0%)	1723 (100.0%)	1547 (100.0%)	1666 (100.0%)
Overall	0-50	544 (8.6%)	532 (8.3%)	483 (7.3%)	486 (7.1%)	597 (7.9%)	676 (9.0%)	747 (9.8%)	633 (8.4%)	610 (8.3%)	652 (8.8%)
	51-60	709 (11.1%)	671 (10.5%)	698 (10.6%)	726 (10.7%)	770 (10.1%)	810 (10.8%)	825 (10.9%)	858 (11.3%)	831 (11.3%)	850 (11.5%)
	61-70	947 (14.9%)	947 (14.8%)	984 (14.9%)	972 (14.3%)	965 (12.7%)	968 (12.9%)	971 (12.8%)	1043 (13.8%)	998 (13.6%)	1015 (13.7%)
	71-80	813 (12.8%)	880 (13.8%)	873 (13.2%)	918 (13.5%)	930 (12.2%)	926 (12.3%)	842 (11.1%)	984 (13.0%)	883 (12.0%)	908 (12.2%)
	81-90	531 (8.3%)	526 (8.2%)	602 (9.1%)	619 (9.1%)	612 (8.1%)	652 (8.7%)	589 (7.8%)	551 (7.3%)	581 (7.9%)	573 (7.7%)
	91-100	297 (4.7%)	307 (4.8%)	311 (4.7%)	318 (4.7%)	358 (4.7%)	358 (4.8%)	373 (4.9%)	313 (4.1%)	306 (4.2%)	299 (4.0%)
	101+	198 (3.1%)	245 (3.8%)	259 (3.9%)	273 (4.0%)	305 (4.0%)	280 (3.7%)	255 (3.4%)	241 (3.2%)	258 (3.5%)	271 (3.7%)
	Unrated	2321 (36.5%)	2272 (35.6%)	2405 (36.4%)	2493 (36.6%)	3065 (40.3%)	2849 (37.9%)	2989 (39.4%)	2955 (39.0%)	2881 (39.2%)	2851 (38.4%)
Total		6360 (100.0%)	6380 (100.0%)	6615 (100.0%)	6805 (100.0%)	7602 (100.0%)	7519 (100.0%)	7591 (100.0%)	7578 (100.0%)	7348 (100.0%)	7419 (100.0%)

Where a horse has more than one published rating (published Flat Turf and published Flat AWT mark), the higher of the two is taken.

Jump (including Dual)

AgeCat	RatBand	2013	2014	2015	2016	2017	2018	2019	2020	2021	2022
3YO	0-100	10 (1.9%)	7 (1.2%)	7 (1.3%)	7 (1.3%)	3 (0.5%)	7 (1.2%)	7 (1.2%)	7 (1.3%)	16 (2.8%)	14 (2.5%)
	101-110	6 (1.1%)	8 (1.3%)	7 (1.3%)	12 (2.2%)	10 (1.8%)	9 (1.6%)	13 (2.2%)	11 (2.1%)	10 (1.8%)	5 (0.9%)
	111-120	15 (2.8%)	10 (1.7%)	4 (0.7%)	1 (0.2%)	7 (1.2%)	6 (1.0%)	10 (1.7%)	6 (1.1%)	10 (1.8%)	7 (1.3%)
	121-130	8 (1.5%)	5 (0.8%)	7 (1.3%)	3 (0.5%)	3 (0.5%)	4 (0.7%)	6 (1.0%)	4 (0.8%)	3 (0.5%)	4 (0.7%)
	131-140	2 (0.4%)	4 (0.7%)	6 (1.1%)	2 (0.4%)	2 (0.4%)	3 (0.5%)	NA (-)	3 (0.6%)	2 (0.4%)	NA (-)
	141-150	1 (0.2%)	NA (-)	NA (-)	NA (-)	1 (0.2%)	NA (-)	NA (-)	NA (-)	NA (-)	NA (-)
	Unrated	493 (92.1%)	571 (94.4%)	506 (94.2%)	527 (95.5%)	535 (95.4%)	547 (95.0%)	558 (93.9%)	499 (94.2%)	529 (92.8%)	527 (94.6%)
Subtotal		535 (100.0%)	605 (100.0%)	537 (100.0%)	552 (100.0%)	561 (100.0%)	576 (100.0%)	594 (100.0%)	530 (100.0%)	570 (100.0%)	557 (100.0%)
4-5YO	0-100	197 (9.0%)	192 (8.7%)	162 (7.3%)	189 (8.2%)	202 (8.3%)	182 (7.4%)	224 (8.7%)	272 (10.5%)	255 (10.4%)	335 (12.9%)
	101-110	117 (5.3%)	106 (4.8%)	133 (6.0%)	137 (6.0%)	134 (5.5%)	164 (6.7%)	144 (5.6%)	146 (5.6%)	115 (4.7%)	167 (6.4%)
	111-120	137 (6.2%)	137 (6.2%)	153 (6.9%)	153 (6.7%)	145 (6.0%)	157 (6.4%)	168 (6.5%)	146 (5.6%)	111 (4.5%)	118 (4.5%)
	121-130	101 (4.6%)	99 (4.5%)	121 (5.5%)	109 (4.7%)	131 (5.4%)	159 (6.5%)	136 (5.3%)	126 (4.8%)	76 (3.1%)	79 (3.0%)
	131-140	48 (2.2%)	56 (2.5%)	69 (3.1%)	83 (3.6%)	72 (3.0%)	66 (2.7%)	68 (2.6%)	60 (2.3%)	30 (1.2%)	20 (0.8%)
	141-150	29 (1.3%)	27 (1.2%)	27 (1.2%)	26 (1.1%)	26 (1.1%)	21 (0.9%)	23 (0.9%)	25 (1.0%)	8 (0.3%)	11 (0.4%)
	151+	5 (0.2%)	7 (0.3%)	10 (0.5%)	7 (0.3%)	4 (0.2%)	9 (0.4%)	4 (0.2%)	5 (0.2%)	3 (0.1%)	1 (0.0%)
	Unrated	1562 (71.1%)	1578 (71.7%)	1543 (69.6%)	1591 (69.3%)	1714 (70.6%)	1702 (69.2%)	1817 (70.3%)	1818 (70.0%)	1860 (75.7%)	1874 (71.9%)
Subtotal		2196 (100.0%)	2202 (100.0%)	2218 (100.0%)	2295 (100.0%)	2428 (100.0%)	2460 (100.0%)	2584 (100.0%)	2598 (100.0%)	2458 (100.0%)	2605 (100.0%)
6-7YO	0-100	386 (21.5%)	373 (20.8%)	369 (19.8%)	328 (19.0%)	331 (18.9%)	353 (18.9%)	389 (20.1%)	497 (22.3%)	416 (20.8%)	445 (23.4%)
	101-110	226 (12.6%)	213 (11.9%)	230 (12.3%)	217 (12.6%)	244 (13.9%)	226 (12.1%)	218 (11.3%)	306 (13.7%)	214 (10.7%)	230 (12.1%)
	111-120	219 (12.2%)	262 (14.6%)	238 (12.8%)	245 (14.2%)	237 (13.5%)	262 (14.0%)	266 (13.7%)	280 (12.6%)	261 (13.0%)	250 (13.2%)
	121-130	225 (12.6%)	240 (13.4%)	249 (13.4%)	224 (13.0%)	211 (12.0%)	245 (13.1%)	258 (13.3%)	289 (13.0%)	223 (11.1%)	193 (10.2%)
	131-140	127 (7.1%)	127 (7.1%)	153 (8.2%)	168 (9.8%)	162 (9.2%)	195 (10.4%)	202 (10.4%)	183 (8.2%)	136 (6.8%)	113 (5.9%)
	141-150	59 (3.3%)	59 (3.3%)	73 (3.9%)	62 (3.6%)	77 (4.4%)	80 (4.3%)	72 (3.7%)	76 (3.4%)	63 (3.1%)	48 (2.5%)
	151+	24 (1.3%)	40 (2.2%)	38 (2.0%)	34 (2.0%)	32 (1.8%)	34 (1.8%)	40 (2.1%)	32 (1.4%)	23 (1.1%)	19 (1.0%)
	Unrated	526 (29.4%)	477 (26.6%)	513 (27.5%)	444 (25.8%)	459 (26.2%)	476 (25.4%)	492 (25.4%)	564 (25.3%)	665 (33.2%)	602 (31.7%)
Subtotal		1792 (100.0%)	1791 (100.0%)	1863 (100.0%)	1722 (100.0%)	1753 (100.0%)	1871 (100.0%)	1937 (100.0%)	2227 (100.0%)	2001 (100.0%)	1900 (100.0%)
8YO+	0-100	394 (32.2%)	339 (27.9%)	344 (26.2%)	367 (27.2%)	349 (25.4%)	354 (24.7%)	373 (26.3%)	428 (24.9%)	314 (20.5%)	308 (22.5%)
	101-110	133 (10.9%)	164 (13.5%)	183 (13.9%)	178 (13.2%)	183 (13.3%)	197 (13.7%)	175 (12.3%)	204 (11.9%)	153 (10.0%)	137 (10.0%)
	111-120	154 (12.6%)	167 (13.7%)	186 (14.2%)	201 (14.9%)	199 (14.5%)	175 (12.2%)	161 (11.4%)	211 (12.3%)	179 (11.7%)	176 (12.9%)
	121-130	160 (13.1%)	154 (12.7%)	177 (13.5%)	150 (11.1%)	186 (13.5%)	174 (12.1%)	159 (11.2%)	194 (11.3%)	167 (10.9%)	147 (10.8%)
	131-140	111 (9.1%)	127 (10.4%)	118 (9.0%)	142 (10.5%)	126 (9.2%)	137 (9.6%)	146 (10.3%)	146 (8.5%)	115 (7.5%)	98 (7.2%)
	141-150	39 (3.2%)	59 (4.9%)	58 (4.4%)	58 (4.3%)	72 (5.2%)	84 (5.9%)	81 (5.7%)	84 (4.9%)	78 (5.1%)	72 (5.3%)
	151+	32 (2.6%)	33 (2.7%)	43 (3.3%)	42 (3.1%)	38 (2.8%)	35 (2.4%)	45 (3.2%)	56 (3.3%)	28 (1.8%)	29 (2.1%)
	Unrated	200 (16.4%)	173 (14.2%)	204 (15.5%)	209 (15.5%)	221 (16.1%)	277 (19.3%)	278 (19.6%)	397 (23.1%)	495 (32.4%)	400 (29.3%)
Subtotal		1223 (100.0%)	1216 (100.0%)	1313 (100.0%)	1347 (100.0%)	1374 (100.0%)	1433 (100.0%)	1418 (100.0%)	1720 (100.0%)	1529 (100.0%)	1367 (100.0%)
Overall	0-100	987 (17.2%)	911 (15.7%)	882 (14.9%)	891 (15.1%)	885 (14.5%)	896 (14.1%)	993 (15.2%)	1204 (17.0%)	1001 (15.3%)	1102 (17.1%)
	101-110	482 (8.4%)	491 (8.4%)	553 (9.3%)	544 (9.2%)	571 (9.3%)	596 (9.4%)	550 (8.4%)	667 (9.4%)	492 (7.5%)	539 (8.4%)
	111-120	525 (9.1%)	576 (9.9%)	581 (9.8%)	600 (10.1%)	588 (9.6%)	600 (9.5%)	605 (9.3%)	643 (9.1%)	561 (8.6%)	551 (8.6%)
	121-130	494 (8.6%)	498 (8.6%)	554 (9.3%)	486 (8.2%)	531 (8.7%)	582 (9.2%)	559 (8.6%)	613 (8.7%)	469 (7.2%)	423 (6.6%)
	131-140	288 (5.0%)	314 (5.4%)	346 (5.8%)	395 (6.7%)	362 (5.9%)	401 (6.3%)	416 (6.4%)	392 (5.5%)	283 (4.3%)	231 (3.6%)
	141-150	128 (2.2%)	145 (2.5%)	158 (2.7%)	146 (2.5%)	176 (2.9%)	185 (2.9%)	176 (2.7%)	185 (2.6%)	149 (2.3%)	131 (2.0%)
	151+	61 (1.1%)	80 (1.4%)	91 (1.5%)	83 (1.4%)	74 (1.2%)	78 (1.2%)	89 (1.4%)	93 (1.3%)	54 (0.8%)	49 (0.8%)
Unrated		2781 (48.4%)	2799 (48.1%)	2766 (46.6%)	2771 (46.8%)	2929 (47.9%)	3002 (47.4%)	3145 (48.1%)	3278 (46.3%)	3549 (54.1%)	3403 (52.9%)
Total		5746 (100.0%)	5814 (100.0%)	5931 (100.0%)	5916 (100.0%)	6116 (100.0%)	6340 (100.0%)	6533 (100.0%)	7075 (100.0%)	6558 (100.0%)	6429 (100.0%)

Where a horse has more than one published rating (published Hurdle and published Chase mark), the higher of the two is taken.

Young Horses Entering Training

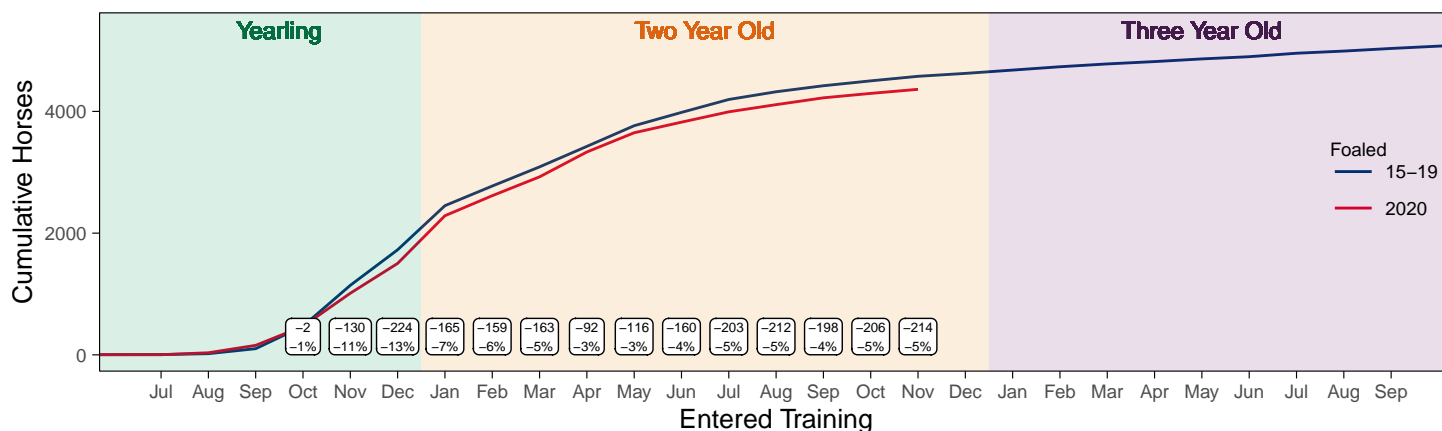
Flat Yearlings in Training versus Previous Years

Period	Jan	Feb	Mar	Apr	May	Jun	Jul	Aug	Sep	Oct	Nov	Dec
2022	0	0	0	0	0	0	0	2	76	274	705	
2021	0	0	0	0	0	0	0	5	79	315	716	1287
5YrAvg	1	1	1	1	1	1	1	2	52	257	697	1377

Foals Entering Training for the First Time

2020 Foals Entering Training Over Time

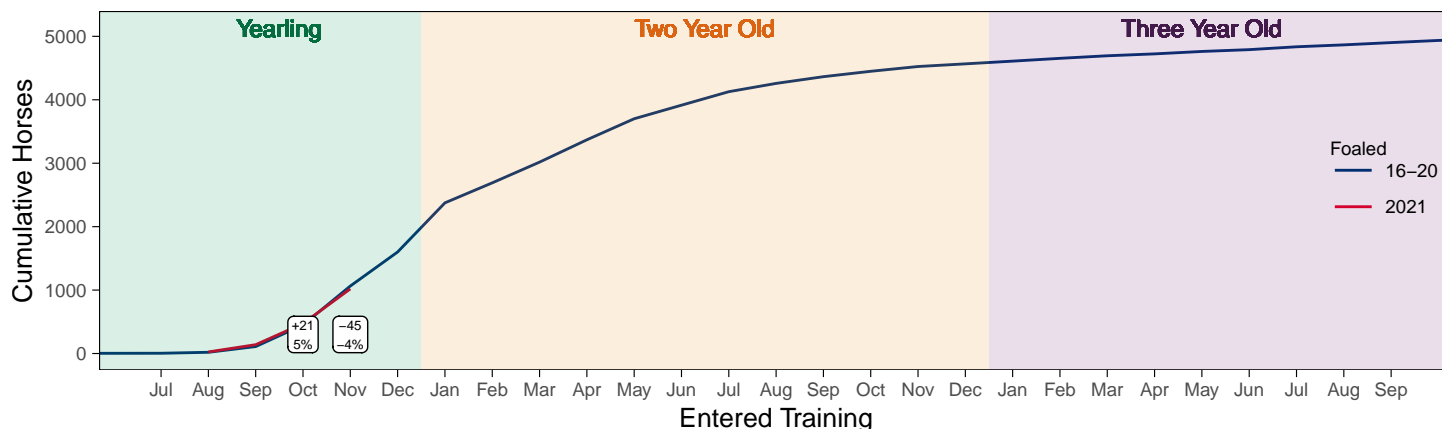
Cumulative Flat Horses foaled in 2020 shown by first in training notification against trend



Cumulative individual horses entering training for the first time by the end of each month.

2021 Foals Entering Training Over Time

Cumulative Flat Horses foaled in 2021 shown by first in training notification against trend



Cumulative individual horses entering training for the first time by the end of each month.

Year to Date Horses in Training

Type	2013	2014	2015	2016	2017	2018	2019	2020	2021	2022	vs. Last Year	vs. Pre-Covid
Flat	12383	12298	12526	13036	13372	13319	13613	13396	13293	13002	-291 / -2.2%	-611 / -4.5%
Jump	8311	8196	8291	8231	8002	7927	8624	8455	9198	8721	-477 / -5.2%	+97 / +1.1%
Dual	896	923	850	817	1093	1448	836	930	903	1007	+104 / +11.5%	+171 / +20.5%
Hunter	2505	2377	2273	2182	2104	1974	1903	1658	1416	1444	+28 / +2.0%	-459 / -24.1%
Total	21590	21417	21667	22084	22467	22694	23073	22781	23394	22730	-664 / -2.8%	-343 / -1.5%

'vs. Pre-Covid' is comparison between 2022 and 2019

Flat

AgeCat	2013	2014	2015	2016	2017	2018	2019	2020	2021	2022	vs. Last Year	vs. Pre-Covid
2YO	4129	4175	4459	4504	4576	4567	4626	4429	4455	4292	-163 / -3.7%	-334 / -7.2%
3YO	3665	3657	3739	3986	4060	4164	4139	4207	4071	4013	-58 / -1.4%	-126 / -3.0%
4YO	1905	1770	1758	1904	2001	1931	2048	2009	2104	2080	-24 / -1.1%	+32 / +1.6%
5YO+	2684	2696	2570	2642	2735	2657	2800	2751	2663	2617	-46 / -1.7%	-183 / -6.5%
Total	12383	12298	12526	13036	13372	13319	13613	13396	13293	13002	-291 / -2.2%	-611 / -4.5%

'vs. Pre-Covid' is comparison between 2022 and 2019

Jump

AgeCat	2013	2014	2015	2016	2017	2018	2019	2020	2021	2022	vs. Last Year	vs. Pre-Covid
3YO	391	467	484	432	356	411	440	390	428	445	+17 / +4.0%	+5 / +1.1%
4-5YO	2808	2662	2690	2783	2717	2599	2895	2840	2910	2938	+28 / +1.0%	+43 / +1.5%
6-7YO	2733	2664	2785	2570	2466	2540	2792	2765	3019	2822	-197 / -6.5%	+30 / +1.1%
8YO+	2379	2403	2332	2446	2463	2377	2497	2460	2841	2516	-325 / -11.4%	+19 / +0.8%
Total	8311	8196	8291	8231	8002	7927	8624	8455	9198	8721	-477 / -5.2%	+97 / +1.1%

'vs. Pre-Covid' is comparison between 2022 and 2019

Dual

AgeCat	2013	2014	2015	2016	2017	2018	2019	2020	2021	2022	vs. Last Year	vs. Pre-Covid
3YO	120	137	119	126	185	175	134	174	176	246	+70 / +39.8%	+112 / +83.6%
4YO	230	226	188	192	290	363	237	229	245	256	+11 / +4.5%	+19 / +8.0%
5YO+	546	560	543	499	618	910	465	527	482	505	+23 / +4.8%	+40 / +8.6%
Total	896	923	850	817	1093	1448	836	930	903	1007	+104 / +11.5%	+171 / +20.5%

'vs. Pre-Covid' is comparison between 2022 and 2019

Hunter Chasers

AgeCat	2013	2014	2015	2016	2017	2018	2019	2020	2021	2022	vs. Last Year	vs. Pre-Covid
4-5YO	310	244	266	266	291	339	359	361	243	339	+96 / +39.5%	-20 / -5.6%
6-7YO	789	744	652	608	559	536	522	427	336	347	+11 / +3.3%	-175 / -33.5%
8-9YO	636	677	665	573	555	440	412	344	335	325	-10 / -3.0%	-87 / -21.1%
10YO+	770	712	690	735	699	659	610	526	502	433	-69 / -13.7%	-177 / -29.0%
Total	2505	2377	2273	2182	2104	1974	1903	1658	1416	1444	+28 / +2.0%	-459 / -24.1%

'vs. Pre-Covid' is comparison between 2022 and 2019

Year to Date Runners

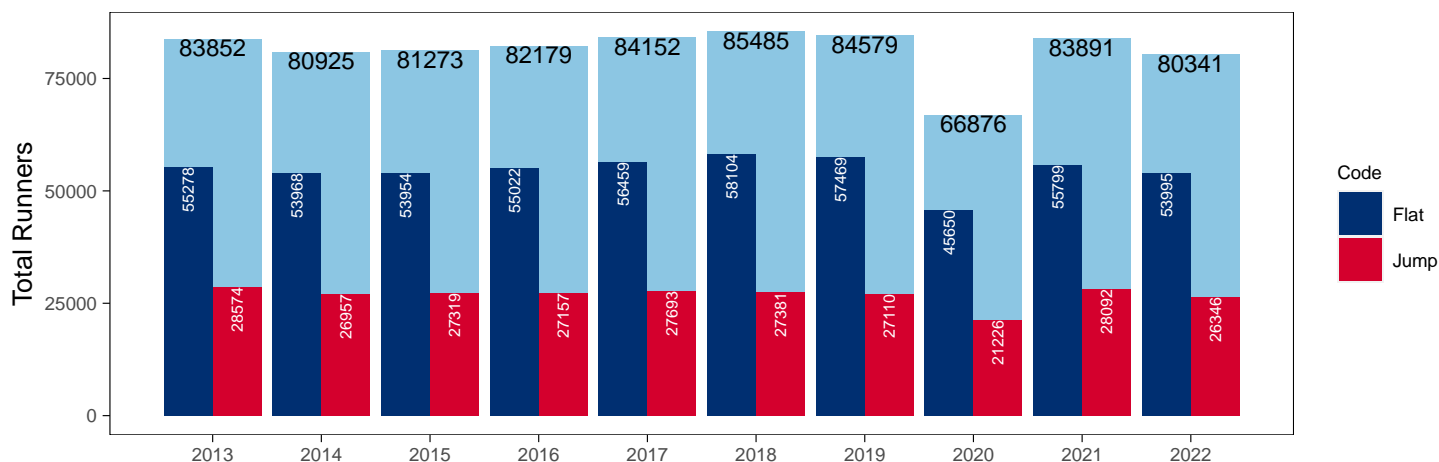
Year to Date Total Runners

Code	2013	2014	2015	2016	2017	2018	2019	2020	2021	2022	vs. Last Year	vs. Pre-Covid
Flat	55278	53968	53954	55022	56459	58104	57469	45650	55799	53995	-1804 / -3.2%	-3474 / -6.0%
Jump	28574	26957	27319	27157	27693	27381	27110	21226	28092	26346	-1746 / -6.2%	-764 / -2.8%
Total	83852	80925	81273	82179	84152	85485	84579	66876	83891	80341	-3550 / -4.2%	-4238 / -5.0%

'vs. Pre-Covid' is comparison between 2022 and 2019

YTD Total Runners

Total Runners in GB Races, shown by Code and Total



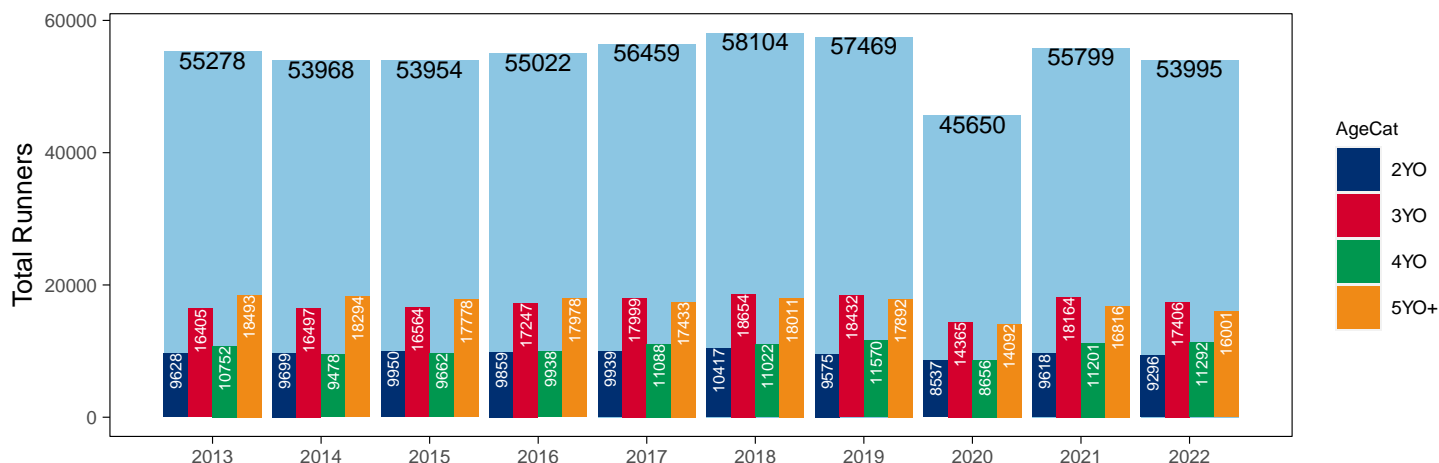
Flat

AgeCat	2013	2014	2015	2016	2017	2018	2019	2020	2021	2022	vs. Last Year	vs. Pre-Covid
2YO	9628	9699	9950	9859	9939	10417	9575	8537	9618	9296	-322 / -3.3%	-279 / -2.9%
3YO	16405	16497	16564	17247	17999	18654	18432	14365	18164	17406	-758 / -4.2%	-1026 / -5.6%
4YO	10752	9478	9662	9938	11088	11022	11570	8656	11201	11292	+91 / +0.8%	-278 / -2.4%
5YO+	18493	18294	17778	17978	17433	18011	17892	14092	16816	16001	-815 / -4.8%	-1891 / -10.6%
Total	55278	53968	53954	55022	56459	58104	57469	45650	55799	53995	-1804 / -3.2%	-3474 / -6.0%

'vs. Pre-Covid' is comparison between 2022 and 2019

YTD Total Flat Runners by Age

Total Runners in GB Flat Races, shown by Age Category and Total



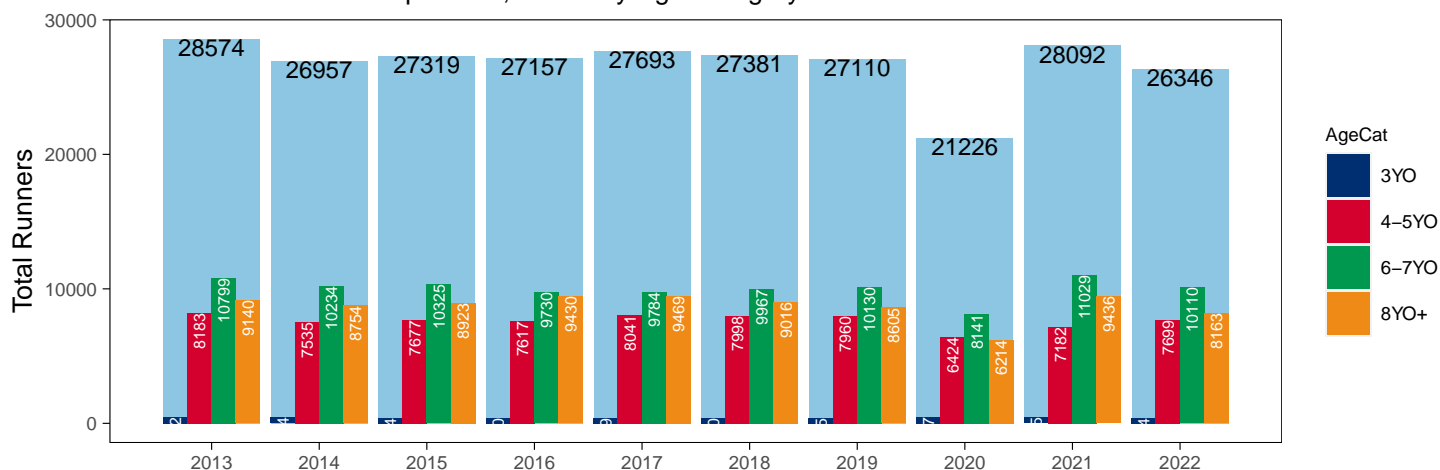
Jump

AgeCat	2013	2014	2015	2016	2017	2018	2019	2020	2021	2022	vs. Last Year	vs. Pre-Covid
3YO	452	434	394	380	399	400	415	447	445	374	-71 / -16.0%	-41 / -9.9%
4-5YO	8183	7535	7677	7617	8041	7998	7960	6424	7182	7699	+517 / +7.2%	-261 / -3.3%
6-7YO	10799	10234	10325	9730	9784	9967	10130	8141	11029	10110	-919 / -8.3%	-20 / -0.2%
8YO+	9140	8754	8923	9430	9469	9016	8605	6214	9436	8163	-1273 / -13.5%	-442 / -5.1%
Total	28574	26957	27319	27157	27693	27381	27110	21226	28092	26346	-1746 / -6.2%	-764 / -2.8%

'vs. Pre-Covid' is comparison between 2022 and 2019

YTD Total Jump Runners by Age

Total Runners in GB Jump Races, shown by Age Category and Total



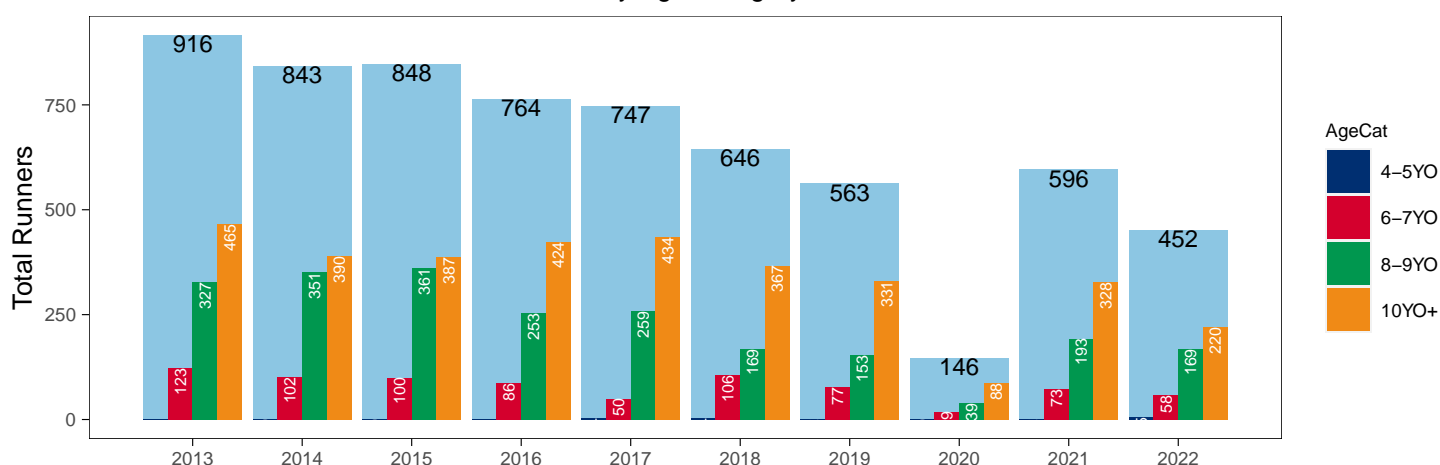
Hunter Chases

AgeCat	2013	2014	2015	2016	2017	2018	2019	2020	2021	2022	vs. Last Year	vs. Pre-Covid
4-5YO	1			1	4	4	2		2	5	+3 / +150.0%	+3 / +150.0%
6-7YO	123	102	100	86	50	106	77	19	73	58	-15 / -20.5%	-19 / -24.7%
8-9YO	327	351	361	253	259	169	153	39	193	169	-24 / -12.4%	+16 / +10.5%
10YO+	465	390	387	424	434	367	331	88	328	220	-108 / -32.9%	-111 / -33.5%
Total	916	843	848	764	747	646	563	146	596	452	-144 / -24.2%	-111 / -19.7%

'vs. Pre-Covid' is comparison between 2022 and 2019

YTD Total Hunter Chase Runners by Age

Total Runners in GB Hunter Chases shown by Age Category and Total



Year to Date Total Runners by Country Trained

Code	Country	2013	2014	2015	2016	2017	2018	2019	2020	2021	2022
Flat	GB	54765	53519	53376	54428	55722	57277	56641	45376	55401	53628
	IRE	408	355	443	512	653	763	756	247	363	303
	Other	105	94	135	82	84	64	72	27	35	64
Jump	GB	27914	26245	26540	26277	26891	26716	26401	20910	27546	25501
	IRE	656	709	774	869	785	655	699	304	541	843
	Other	4	3	5	11	17	10	10	12	5	2
Overall	GB	82679	79764	79916	80705	82613	83993	83042	66286	82947	79129
	IRE	1064	1064	1217	1381	1438	1418	1455	551	904	1146
	Other	109	97	140	93	101	74	82	39	40	66

Year to Date GB Trained Runners Racing Abroad

Code	Country	2013	2014	2015	2016	2017	2018	2019	2020	2021	2022
Flat	IRE	135	147	184	192	187	156	164	60	57	100
	FR	327	374	362	414	480	517	548	288	230	268
	GNV	20	22	19	25	30	37	50	24	12	19
	UAE	355	326	289	208	290	276	303	281	248	277
	BAH							6	7	7	44
	KSA								15	21	22
	Other	117	157	154	139	133	161	143	58	77	91
	Total	954	1026	1008	978	1120	1147	1214	733	652	821
Jump	IRE	50	99	97	97	85	59	77	7	24	30
	FR	66	39	36	63	30	20	55	86	132	120
	Other	12	10	8	12	8	7	10		8	14
	Total	128	148	141	172	123	86	142	93	164	164

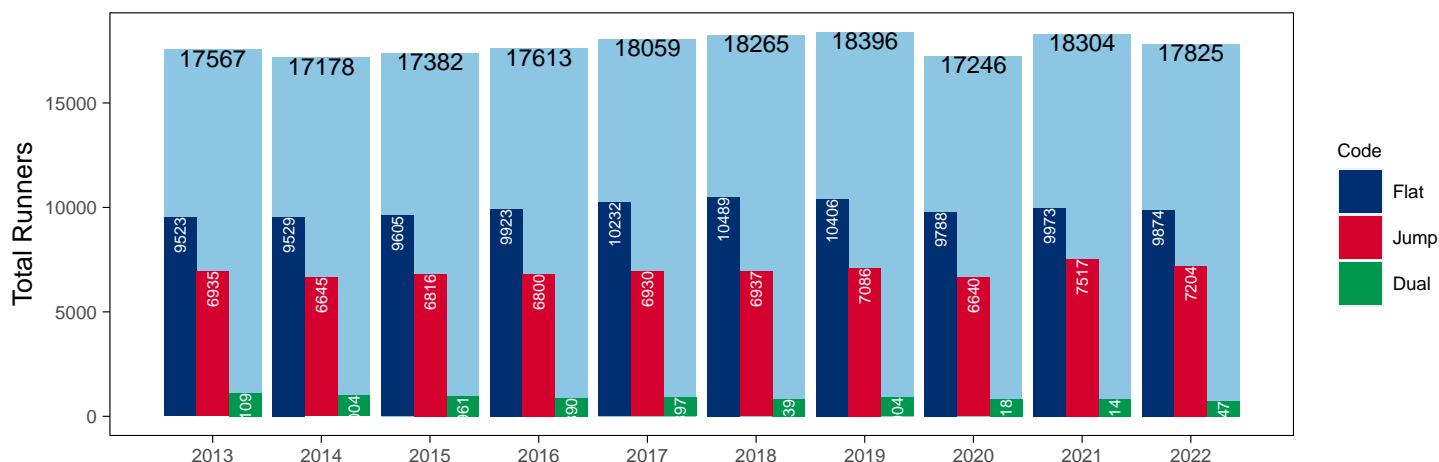
Year to Date Individual Runners

Code	2013	2014	2015	2016	2017	2018	2019	2020	2021	2022	vs. Last Year	vs. Pre-Covid
Flat	9523	9529	9605	9923	10232	10489	10406	9788	9973	9874	-99 / -1.0%	-532 / -5.1%
Jump	6935	6645	6816	6800	6930	6937	7086	6640	7517	7204	-313 / -4.2%	+118 / +1.7%
Dual	1109	1004	961	890	897	839	904	818	814	747	-67 / -8.2%	-157 / -17.4%
Overall	17567	17178	17382	17613	18059	18265	18396	17246	18304	17825	-479 / -2.6%	-571 / -3.1%

'vs. Pre-Covid' is comparison between 2022 and 2019

YTD Individual Runners

Individual Runners in GB Races, shown by Code and Total



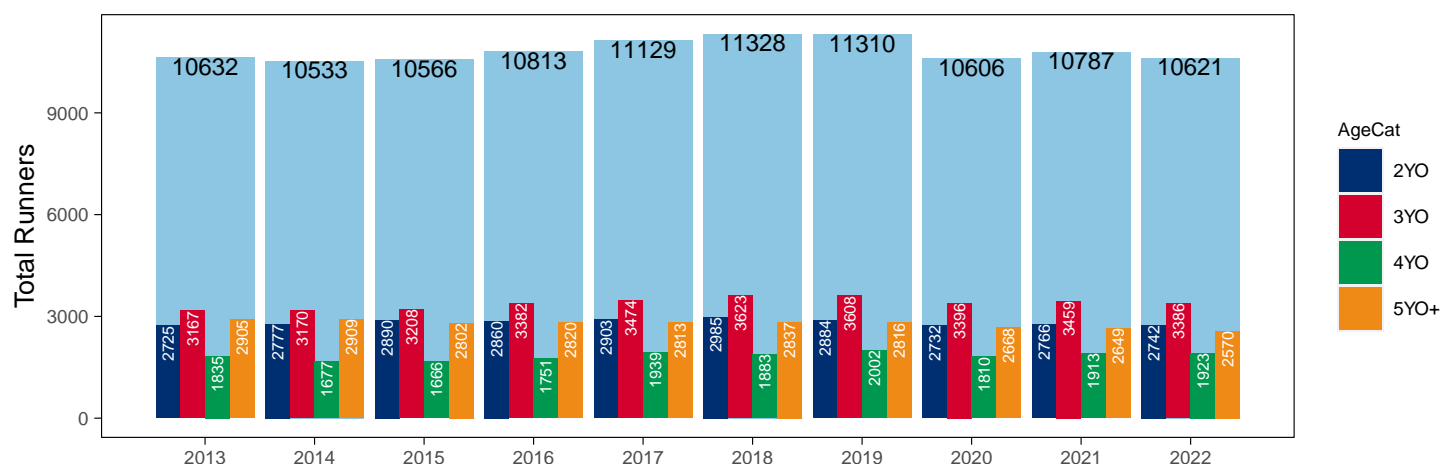
Flat

AgeCat	2013	2014	2015	2016	2017	2018	2019	2020	2021	2022	vs. Last Year	vs. Pre-Covid
2YO	2725	2777	2890	2860	2903	2985	2884	2732	2766	2742	-24 / -0.9%	-142 / -4.9%
3YO	3167	3170	3208	3382	3474	3623	3608	3396	3459	3386	-73 / -2.1%	-222 / -6.2%
4YO	1835	1677	1666	1751	1939	1883	2002	1810	1913	1923	+10 / +0.5%	-79 / -3.9%
5YO+	2905	2909	2802	2820	2813	2837	2816	2668	2649	2570	-79 / -3.0%	-246 / -8.7%
Total	10632	10533	10566	10813	11129	11328	11310	10606	10787	10621	-166 / -1.5%	-689 / -6.1%

'vs. Pre-Covid' is comparison between 2022 and 2019

YTD Individual Flat Runners by Age

Individual Runners in GB Flat Races, shown by Age Category and Total



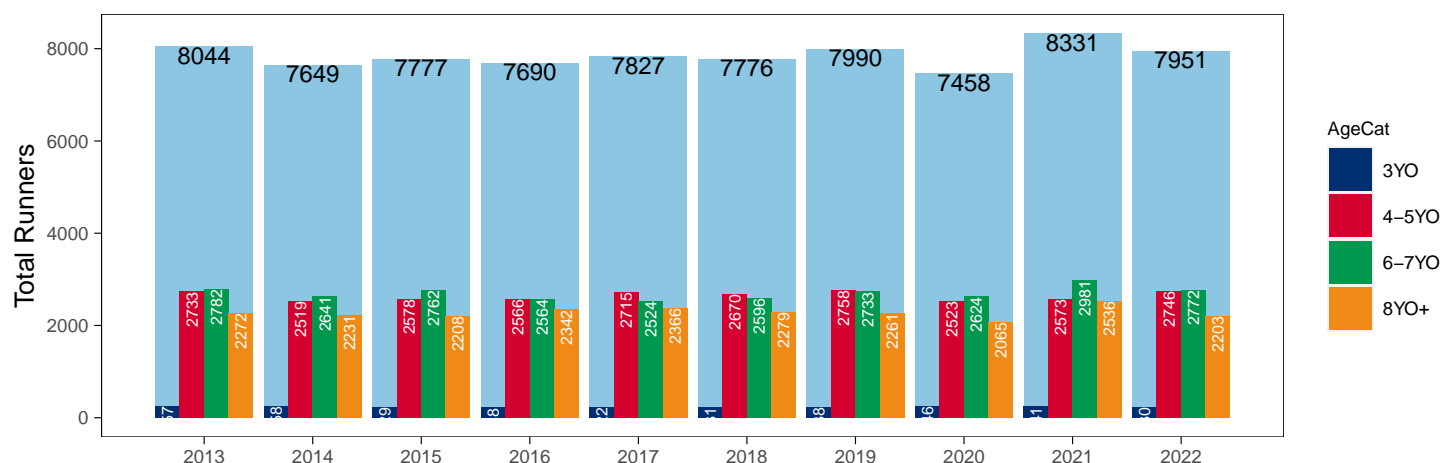
Jump

AgeCat	2013	2014	2015	2016	2017	2018	2019	2020	2021	2022	vs. Last Year	vs. Pre-Covid
3YO	257	258	229	218	222	231	238	246	241	230	-11 / -4.6%	-8 / -3.4%
4-5YO	2733	2519	2578	2566	2715	2670	2758	2523	2573	2746	+173 / +6.7%	-12 / -0.4%
6-7YO	2782	2641	2762	2564	2524	2596	2733	2624	2981	2772	-209 / -7.0%	+39 / +1.4%
8YO+	2272	2231	2208	2342	2366	2279	2261	2065	2536	2203	-333 / -13.1%	-58 / -2.6%
Total	8044	7649	7777	7690	7827	7776	7990	7458	8331	7951	-380 / -4.6%	-39 / -0.5%

'vs. Pre-Covid' is comparison between 2022 and 2019

YTD Individual Jump Runners by Age

Individual Runners in GB Jump Races, shown by Age Category and Total



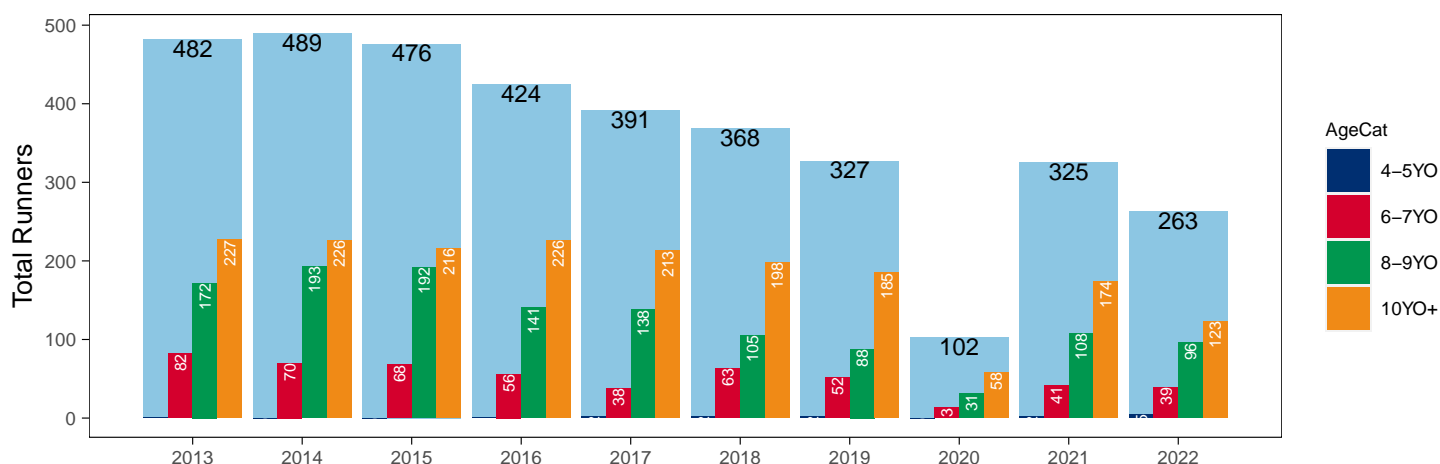
Hunter Chases

AgeCat	2013	2014	2015	2016	2017	2018	2019	2020	2021	2022	vs. Last Year	vs. Pre-Covid
4-5YO	1			1	2	2	2		2	5	+3 / +150.0%	+3 / +150.0%
6-7YO	82	70	68	56	38	63	52	13	41	39	-2 / -4.9%	-13 / -25.0%
8-9YO	172	193	192	141	138	105	88	31	108	96	-12 / -11.1%	+8 / +9.1%
10YO+	227	226	216	226	213	198	185	58	174	123	-51 / -29.3%	-62 / -33.5%
Total	482	489	476	424	391	368	327	102	325	263	-62 / -19.1%	-64 / -19.6%

'vs. Pre-Covid' is comparison between 2022 and 2019

YTD Individual Hunter Chase Runners by Age

Individual Runners in GB Hunter Chases shown by Age Category and Total



Year to Date Individual Runners by Country Trained

Code	Country	2013	2014	2015	2016	2017	2018	2019	2020	2021	2022
Flat	GB	9224	9247	9282	9601	9838	10057	9934	9599	9706	9619
	IRE	240	218	240	281	349	396	432	175	247	212
	Other	73	70	101	64	67	57	60	23	30	55
Jump	GB	6535	6239	6392	6337	6483	6521	6640	6381	7127	6649
	IRE	424	431	456	495	464	432	467	263	400	584
	Other	4	3	5	11	12	9	8	11	5	2
Dual	GB	1096	994	942	875	878	819	888	812	808	734
	IRE	9	8	16	9	13	18	14	5	5	11
	Other					2					
Overall	GB	16855	16480	16616	16813	17199	17397	17462	16792	17641	17002
	IRE	673	657	712	785	826	846	913	443	652	807
	Other	77	73	106	75	81	66	68	34	35	57

Individual horses may appear under multiple countries.

Year to Date Total Runners by Rating Band

Flat

RatBand	2013	2014	2015	2016	2017	2018	2019	2020	2021	2022
2YO										
Unrated	6405 (66.5%)	6546 (67.5%)	6806 (68.4%)	6629 (67.2%)	6905 (69.5%)	7184 (69.0%)	6731 (70.3%)	5707 (66.9%)	6575 (68.4%)	6429 (69.2%)
0-50	215 (2.2%)	217 (2.2%)	253 (2.5%)	156 (1.6%)	154 (1.5%)	145 (1.4%)	204 (2.1%)	143 (1.7%)	191 (2.0%)	184 (2.0%)
51-60	547 (5.7%)	563 (5.8%)	481 (4.8%)	504 (5.1%)	486 (4.9%)	569 (5.5%)	512 (5.3%)	488 (5.7%)	438 (4.6%)	463 (5.0%)
61-70	826 (8.6%)	827 (8.5%)	845 (8.5%)	906 (9.2%)	852 (8.6%)	829 (8.0%)	709 (7.4%)	719 (8.4%)	817 (8.5%)	726 (7.8%)
71-80	965 (10.0%)	857 (8.8%)	894 (9.0%)	1003 (10.2%)	906 (9.1%)	891 (8.6%)	804 (8.4%)	865 (10.1%)	857 (8.9%)	787 (8.5%)
81-90	398 (4.1%)	432 (4.5%)	452 (4.5%)	430 (4.4%)	359 (3.6%)	481 (4.6%)	357 (3.7%)	365 (4.3%)	451 (4.7%)	423 (4.6%)
91-100	189 (2.0%)	177 (1.8%)	137 (1.4%)	158 (1.6%)	166 (1.7%)	212 (2.0%)	172 (1.8%)	165 (1.9%)	186 (1.9%)	203 (2.2%)
101+	83 (0.9%)	80 (0.8%)	82 (0.8%)	73 (0.7%)	111 (1.1%)	106 (1.0%)	86 (0.9%)	85 (1.0%)	103 (1.1%)	81 (0.9%)
3YO+										
Unrated	3852 (8.4%)	3834 (8.7%)	3698 (8.4%)	3923 (8.7%)	4065 (8.7%)	4900 (10.3%)	4661 (9.7%)	3860 (10.4%)	4740 (10.3%)	4337 (9.7%)
0-50	4749 (10.4%)	4274 (9.7%)	3904 (8.9%)	3728 (8.3%)	4276 (9.2%)	5023 (10.5%)	5891 (12.3%)	4132 (11.1%)	5311 (11.5%)	5185 (11.6%)
51-60	8512 (18.6%)	7523 (17.0%)	7586 (17.2%)	7553 (16.7%)	7861 (16.9%)	7714 (16.2%)	8553 (17.9%)	6516 (17.6%)	8320 (18.0%)	7967 (17.8%)
61-70	10188 (22.3%)	9694 (21.9%)	9512 (21.6%)	9769 (21.6%)	9632 (20.7%)	9779 (20.5%)	9591 (20.0%)	7668 (20.7%)	9690 (21.0%)	9470 (21.2%)
71-80	8840 (19.4%)	8901 (20.1%)	8849 (20.1%)	9191 (20.4%)	9325 (20.0%)	9088 (19.1%)	8586 (17.9%)	6969 (18.8%)	8330 (18.0%)	8290 (18.5%)
81-90	5276 (11.6%)	5432 (12.3%)	5732 (13.0%)	6007 (13.3%)	6266 (13.5%)	6111 (12.8%)	5632 (11.8%)	4419 (11.9%)	5278 (11.4%)	5163 (11.6%)
91-100	2611 (5.7%)	2840 (6.4%)	2801 (6.4%)	2999 (6.6%)	3001 (6.5%)	3172 (6.7%)	3168 (6.6%)	2120 (5.7%)	2729 (5.9%)	2508 (5.6%)
101+	1622 (3.6%)	1771 (4.0%)	1922 (4.4%)	1993 (4.4%)	2094 (4.5%)	1900 (4.0%)	1812 (3.8%)	1429 (3.9%)	1783 (3.9%)	1779 (4.0%)

Jump

RatBand	2013	2014	2015	2016	2017	2018	2019	2020	2021	2022
Hurdle										
Unrated	4707 (28.9%)	4505 (29.1%)	4608 (28.5%)	4454 (27.6%)	4633 (28.3%)	4621 (28.3%)	4784 (29.4%)	4026 (31.7%)	4607 (28.2%)	4386 (27.9%)
0-100	5079 (31.2%)	4379 (28.3%)	4328 (26.8%)	4198 (26.0%)	4245 (25.9%)	4033 (24.7%)	3976 (24.4%)	3019 (23.8%)	4901 (30.0%)	4934 (31.4%)
101-110	2094 (12.9%)	2039 (13.2%)	2341 (14.5%)	2444 (15.2%)	2454 (15.0%)	2450 (15.0%)	2343 (14.4%)	1816 (14.3%)	2202 (13.5%)	2360 (15.0%)
111-120	2034 (12.5%)	2159 (13.9%)	2202 (13.6%)	2274 (14.1%)	2305 (14.1%)	2242 (13.7%)	2279 (14.0%)	1577 (12.4%)	2013 (12.3%)	1922 (12.2%)
121-130	1407 (8.6%)	1408 (9.1%)	1519 (9.4%)	1488 (9.2%)	1535 (9.4%)	1672 (10.2%)	1659 (10.2%)	1242 (9.8%)	1481 (9.1%)	1214 (7.7%)
131-140	638 (3.9%)	701 (4.5%)	806 (5.0%)	869 (5.4%)	852 (5.2%)	913 (5.6%)	850 (5.2%)	675 (5.3%)	751 (4.6%)	608 (3.9%)
141-150	238 (1.5%)	235 (1.5%)	272 (1.7%)	290 (1.8%)	273 (1.7%)	302 (1.9%)	280 (1.7%)	222 (1.8%)	257 (1.6%)	221 (1.4%)
151+	83 (0.5%)	74 (0.5%)	103 (0.6%)	112 (0.7%)	88 (0.5%)	90 (0.6%)	114 (0.7%)	107 (0.8%)	101 (0.6%)	69 (0.4%)
Chase										
Unrated	228 (2.5%)	86 (1.0%)	60 (0.7%)	70 (0.8%)	82 (0.9%)	68 (0.8%)	54 (0.6%)	29 (0.4%)	35 (0.4%)	14 (0.2%)
0-100	2894 (31.6%)	2772 (32.0%)	2513 (28.9%)	2458 (28.0%)	2357 (26.3%)	2364 (27.3%)	2492 (28.9%)	1922 (28.6%)	2684 (30.6%)	2694 (31.9%)
101-110	1556 (17.0%)	1350 (15.6%)	1272 (14.6%)	1291 (14.7%)	1418 (15.8%)	1384 (16.0%)	1341 (15.6%)	999 (14.9%)	1327 (15.1%)	1361 (16.1%)
111-120	1583 (17.3%)	1498 (17.3%)	1600 (18.4%)	1571 (17.9%)	1547 (17.3%)	1445 (16.7%)	1380 (16.0%)	1096 (16.3%)	1530 (17.5%)	1486 (17.6%)
121-130	1298 (14.2%)	1389 (16.0%)	1426 (16.4%)	1383 (15.8%)	1447 (16.2%)	1475 (17.1%)	1336 (15.5%)	1116 (16.6%)	1383 (15.8%)	1288 (15.2%)
131-140	991 (10.8%)	882 (10.2%)	1059 (12.2%)	1166 (13.3%)	1252 (14.0%)	1126 (13.0%)	1168 (13.5%)	863 (12.9%)	999 (11.4%)	930 (11.0%)
141-150	399 (4.4%)	477 (5.5%)	512 (5.9%)	544 (6.2%)	563 (6.3%)	560 (6.5%)	565 (6.6%)	483 (7.2%)	530 (6.0%)	450 (5.3%)
151+	213 (2.3%)	222 (2.6%)	265 (3.0%)	281 (3.2%)	283 (3.2%)	226 (2.6%)	285 (3.3%)	205 (3.1%)	279 (3.2%)	224 (2.7%)

Frequency of Runs

Year to Date Average Runs per Horse

Code	2013	2014	2015	2016	2017	2018	2019	2020	2021	2022
Flat	5.20	5.12	5.11	5.09	5.07	5.13	5.08	4.30	5.17	5.08
Jump	3.55	3.52	3.51	3.53	3.54	3.52	3.39	2.85	3.37	3.31
Overall	4.77	4.71	4.68	4.67	4.66	4.68	4.60	3.88	4.58	4.51

Year to Date Proportion of Horses by Count of Runs

Runs	2013	2014	2015	2016	2017	2018	2019	2020	2021	2022
Flat										
1	1543 (14.5%)	1519 (14.4%)	1531 (14.5%)	1575 (14.6%)	1645 (14.8%)	1679 (14.8%)	1728 (15.3%)	1755 (16.5%)	1485 (13.8%)	1553 (14.6%)
2	1395 (13.1%)	1483 (14.1%)	1428 (13.5%)	1421 (13.1%)	1469 (13.2%)	1445 (12.8%)	1566 (13.8%)	1710 (16.1%)	1351 (12.5%)	1339 (12.6%)
3	1475 (13.9%)	1377 (13.1%)	1458 (13.8%)	1438 (13.3%)	1522 (13.7%)	1579 (13.9%)	1520 (13.4%)	1658 (15.6%)	1476 (13.7%)	1454 (13.7%)
4	1175 (11.1%)	1135 (10.8%)	1209 (11.4%)	1213 (11.2%)	1217 (10.9%)	1270 (11.2%)	1221 (10.8%)	1339 (12.6%)	1216 (11.3%)	1211 (11.4%)
5+	5044 (47.4%)	5019 (47.7%)	4940 (46.8%)	5166 (47.8%)	5276 (47.4%)	5355 (47.3%)	5275 (46.6%)	4144 (39.1%)	5259 (48.8%)	5064 (47.7%)
Jump										
1	1950 (24.2%)	1900 (24.8%)	1864 (24.0%)	1854 (24.1%)	1975 (25.2%)	1844 (23.7%)	1978 (24.8%)	2003 (26.9%)	2033 (24.4%)	2116 (26.6%)
2	1506 (18.7%)	1380 (18.0%)	1473 (18.9%)	1430 (18.6%)	1379 (17.6%)	1383 (17.8%)	1551 (19.4%)	1718 (23.0%)	1613 (19.4%)	1512 (19.0%)
3	1191 (14.8%)	1121 (14.7%)	1158 (14.9%)	1162 (15.1%)	1149 (14.7%)	1197 (15.4%)	1302 (16.3%)	1461 (19.6%)	1399 (16.8%)	1222 (15.4%)
4	1004 (12.5%)	1009 (13.2%)	1032 (13.3%)	970 (12.6%)	954 (12.2%)	1059 (13.6%)	992 (12.4%)	1030 (13.8%)	1137 (13.6%)	1101 (13.8%)
5+	2393 (29.7%)	2239 (29.3%)	2250 (28.9%)	2274 (29.6%)	2370 (30.3%)	2293 (29.5%)	2167 (27.1%)	1246 (16.7%)	2149 (25.8%)	2000 (25.2%)
All Races										
1	2901 (16.5%)	2888 (16.8%)	2922 (16.8%)	2974 (16.9%)	3123 (17.3%)	3092 (16.9%)	3234 (17.6%)	3256 (18.9%)	3097 (16.9%)	3248 (18.2%)
2	2537 (14.4%)	2557 (14.9%)	2591 (14.9%)	2581 (14.7%)	2608 (14.4%)	2570 (14.1%)	2821 (15.3%)	3129 (18.1%)	2694 (14.7%)	2622 (14.7%)
3	2441 (13.9%)	2315 (13.5%)	2409 (13.9%)	2402 (13.6%)	2480 (13.7%)	2575 (14.1%)	2623 (14.3%)	2971 (17.2%)	2703 (14.8%)	2536 (14.2%)
4	2082 (11.9%)	2000 (11.6%)	2121 (12.2%)	2079 (11.8%)	2078 (11.5%)	2230 (12.2%)	2124 (11.5%)	2297 (13.3%)	2258 (12.3%)	2211 (12.4%)
5+	7606 (43.3%)	7418 (43.2%)	7339 (42.2%)	7577 (43.0%)	7770 (43.0%)	7798 (42.7%)	7594 (41.3%)	5593 (32.4%)	7552 (41.3%)	7208 (40.4%)

Year to Date Median Days Between Runs

Code/RatBand	2013	2014	2015	2016	2017	2018	2019	2020	2021	2022
All Runners	23	23	24	24	24	24	24	25	25	25
Flat										
Unrated	21	22	22	22	22	23	23	22	23	24
0-50	20	20	21	20	21	20	21	20	20	21
51-60	18	19	19	20	20	19	20	20	20	20
61-70	19	20	20	20	21	20	21	21	21	21
71-80	21	21	21	21	22	21	21	22	22	22
81-90	21	22	22	22	22	22	22	23	23	23
91-100	23	24	24	24	25	24	23	24	25	27
101+	28	28	27	28	28	28	28	28	28	31
All Flat Runners	20	21	21	21	22	21	22	22	22	22
Jump										
Unrated	35	35	35	36	33	37	36	36	39	37
0-100	26	25	26	26	26	27	27	31	29	28
101-110	28	26	28	29	28	29	29	31	31	30
111-120	29	28	29	29	29	31	31	34	32	32
121-130	30	30	32	32	30	31	33	35	34	33
131-140	32	34	34	34	34	35	35	38	36	35
141-150	36	35	35	35	36	39	39	43	41	39
151+	42	42	42	40	38	40	42	47	42	42
All Jump Runners	30	29	30	30	30	31	32	34	33	32

Horses Population by Gender

November 2022 Horses in Training Snapshot by Gender versus Previous Years

All Horses

Sex	2013	2014	2015	2016	2017	2018	2019	2020	2021	2022
Colt/Entire	1867 (14.9%)	1825 (14.6%)	1834 (14.2%)	1833 (14.0%)	1880 (13.8%)	1737 (12.5%)	1847 (12.9%)	1790 (12.1%)	1684 (11.9%)	1580 (11.3%)
Gelding	7051 (56.3%)	7104 (56.8%)	7412 (57.3%)	7571 (57.9%)	7776 (57.1%)	8071 (58.0%)	8235 (57.4%)	8656 (58.5%)	8230 (58.3%)	8083 (58.0%)
Filly/Mare	3614 (28.8%)	3577 (28.6%)	3689 (28.5%)	3670 (28.1%)	3970 (29.1%)	4103 (29.5%)	4274 (29.8%)	4351 (29.4%)	4204 (29.8%)	4271 (30.7%)
Rig	2 (0.0%)	0 (0.0%)	5 (0.0%)	3 (0.0%)	3 (0.0%)	3 (0.0%)	3 (0.0%)	3 (0.0%)	1 (0.0%)	0 (0.0%)
Total	12534 (100.0%)	12506 (100.0%)	12940 (100.0%)	13077 (100.0%)	13629 (100.0%)	13914 (100.0%)	14359 (100.0%)	14800 (100.0%)	14119 (100.0%)	13934 (100.0%)

Flat (including Dual)

Sex	2013	2014	2015	2016	2017	2018	2019	2020	2021	2022
Colt/Entire	1311 (20.6%)	1306 (20.5%)	1289 (19.5%)	1316 (19.3%)	1402 (18.4%)	1397 (18.6%)	1367 (18.0%)	1371 (18.1%)	1252 (17.0%)	1163 (15.7%)
Gelding	2772 (43.6%)	2819 (44.2%)	3022 (45.7%)	3150 (46.3%)	3578 (47.1%)	3472 (46.2%)	3537 (46.6%)	3586 (47.3%)	3517 (47.9%)	3589 (48.4%)
Filly/Mare	2276 (35.8%)	2255 (35.3%)	2301 (34.8%)	2336 (34.3%)	2619 (34.5%)	2648 (35.2%)	2685 (35.4%)	2619 (34.6%)	2579 (35.1%)	2667 (35.9%)
Rig	1 (0.0%)	0 (0.0%)	3 (0.0%)	3 (0.0%)	3 (0.0%)	2 (0.0%)	2 (0.0%)	2 (0.0%)	0 (0.0%)	0 (0.0%)
Total	6360 (100.0%)	6380 (100.0%)	6615 (100.0%)	6805 (100.0%)	7602 (100.0%)	7519 (100.0%)	7591 (100.0%)	7578 (100.0%)	7348 (100.0%)	7419 (100.0%)

Jump (including Dual)

Sex	2013	2014	2015	2016	2017	2018	2019	2020	2021	2022
Colt/Entire	43 (0.7%)	50 (0.9%)	45 (0.8%)	27 (0.5%)	29 (0.5%)	30 (0.5%)	26 (0.4%)	30 (0.4%)	42 (0.6%)	35 (0.5%)
Gelding	4661 (81.1%)	4636 (79.7%)	4761 (80.3%)	4806 (81.2%)	4831 (79.0%)	4962 (78.3%)	5096 (78.0%)	5489 (77.6%)	5081 (77.5%)	4930 (76.7%)
Filly/Mare	1041 (18.1%)	1128 (19.4%)	1124 (19.0%)	1083 (18.3%)	1256 (20.5%)	1347 (21.2%)	1410 (21.6%)	1555 (22.0%)	1434 (21.9%)	1464 (22.8%)
Rig	1 (0.0%)	0 (0.0%)	1 (0.0%)	0 (0.0%)	0 (0.0%)	1 (0.0%)	1 (0.0%)	1 (0.0%)	1 (0.0%)	0 (0.0%)
Total	5746 (100.0%)	5814 (100.0%)	5931 (100.0%)	5916 (100.0%)	6116 (100.0%)	6340 (100.0%)	6533 (100.0%)	7075 (100.0%)	6558 (100.0%)	6429 (100.0%)

Hunter Chasers

Sex	2013	2014	2015	2016	2017	2018	2019	2020	2021	2022
Colt/Entire	1 (0.7%)	0 (-)	0 (0.0%)	0 (0.0%)	0 (0.0%)	0 (0.0%)	0 (0.0%)	0 (0.0%)	0 (0.0%)	5 (1.8%)
Gelding	117 (84.8%)	0 (-)	85 (91.4%)	139 (89.7%)	193 (85.0%)	237 (82.0%)	210 (86.1%)	371 (83.0%)	300 (87.2%)	226 (81.3%)
Filly/Mare	20 (14.5%)	0 (-)	8 (8.6%)	16 (10.3%)	34 (15.0%)	52 (18.0%)	34 (13.9%)	76 (17.0%)	44 (12.8%)	47 (16.9%)
Rig	0 (0.0%)	0 (-)	0 (0.0%)	0 (0.0%)	0 (0.0%)	0 (0.0%)	0 (0.0%)	0 (0.0%)	0 (0.0%)	0 (0.0%)
Total	138 (100.0%)	0 (-)	93 (100.0%)	155 (100.0%)	227 (100.0%)	289 (100.0%)	244 (100.0%)	447 (100.0%)	344 (100.0%)	278 (100.0%)

Year to Date Total Runners by Gender

Sex	2013	2014	2015	2016	2017	2018	2019	2020	2021	2022
All Races										
Colt/Entire	9074 (10.8%)	9087 (11.2%)	8875 (10.9%)	8756 (10.7%)	8812 (10.5%)	9291 (10.9%)	8383 (9.9%)	7169 (10.7%)	8037 (9.6%)	7228 (9.0%)
Gelding	51775 (61.7%)	49118 (60.7%)	50062 (61.6%)	51015 (62.1%)	52340 (62.2%)	52185 (61.0%)	51780 (61.2%)	40461 (60.5%)	51852 (61.8%)	49837 (62.0%)
Filly/Mare	23003 (27.4%)	22719 (28.1%)	22333 (27.5%)	22389 (27.2%)	22987 (27.3%)	23995 (28.1%)	24397 (28.8%)	19240 (28.8%)	23993 (28.6%)	23266 (29.0%)
Rig	0 (0.0%)	1 (0.0%)	3 (0.0%)	19 (0.0%)	13 (0.0%)	14 (0.0%)	19 (0.0%)	6 (0.0%)	9 (0.0%)	10 (0.0%)
Flat										
Colt/Entire	8973 (16.2%)	8974 (16.6%)	8802 (16.3%)	8716 (15.8%)	8764 (15.5%)	9249 (15.9%)	8348 (14.5%)	7134 (15.6%)	7961 (14.3%)	7196 (13.3%)
Gelding	28003 (50.7%)	27020 (50.1%)	27729 (51.4%)	28632 (52.0%)	29684 (52.6%)	30350 (52.2%)	30396 (52.9%)	23704 (51.9%)	29725 (53.3%)	29059 (53.8%)
Filly/Mare	18302 (33.1%)	17974 (33.3%)	17421 (32.3%)	17655 (32.1%)	17998 (31.9%)	18491 (31.8%)	18713 (32.6%)	14811 (32.4%)	18110 (32.5%)	17740 (32.9%)
Rig	0 (0.0%)	0 (0.0%)	2 (0.0%)	19 (0.0%)	13 (0.0%)	14 (0.0%)	12 (0.0%)	1 (0.0%)	3 (0.0%)	0 (0.0%)
All Jump										
Colt/Entire	101 (0.4%)	113 (0.4%)	73 (0.3%)	40 (0.1%)	48 (0.2%)	42 (0.2%)	35 (0.1%)	35 (0.2%)	76 (0.3%)	32 (0.1%)
Gelding	23772 (83.2%)	22098 (82.0%)	22333 (81.7%)	22383 (82.4%)	22656 (81.8%)	21835 (79.7%)	21384 (78.9%)	16757 (78.9%)	22127 (78.8%)	20778 (78.9%)
Filly/Mare	4701 (16.5%)	4745 (17.6%)	4912 (18.0%)	4734 (17.4%)	4989 (18.0%)	5504 (20.1%)	5684 (21.0%)	4429 (20.9%)	5883 (20.9%)	5526 (21.0%)
Rig	0 (0.0%)	1 (0.0%)	1 (0.0%)	0 (0.0%)	0 (0.0%)	0 (0.0%)	7 (0.0%)	5 (0.0%)	6 (0.0%)	10 (0.0%)
Chase										
Colt/Entire	7 (0.1%)	3 (0.0%)	0 (0.0%)	1 (0.0%)	0 (0.0%)	1 (0.0%)	0 (0.0%)	0 (0.0%)	0 (0.0%)	0 (0.0%)
Gelding	8523 (93.0%)	8051 (92.8%)	8094 (93.0%)	8136 (92.8%)	8268 (92.4%)	7846 (90.7%)	7769 (90.1%)	6068 (90.4%)	7866 (89.7%)	7555 (89.4%)
Filly/Mare	632 (6.9%)	622 (7.2%)	613 (7.0%)	627 (7.2%)	681 (7.6%)	801 (9.3%)	847 (9.8%)	640 (9.5%)	895 (10.2%)	882 (10.4%)
Rig	0 (0.0%)	0 (0.0%)	0 (0.0%)	0 (0.0%)	0 (0.0%)	0 (0.0%)	5 (0.1%)	5 (0.1%)	6 (0.1%)	10 (0.1%)
Hurdle										
Colt/Entire	73 (0.4%)	97 (0.6%)	64 (0.4%)	35 (0.2%)	37 (0.2%)	31 (0.2%)	24 (0.1%)	21 (0.2%)	66 (0.4%)	21 (0.1%)
Gelding	13151 (80.8%)	12168 (78.5%)	12665 (78.3%)	12761 (79.1%)	12868 (78.5%)	12503 (76.6%)	12257 (75.3%)	9484 (74.8%)	12210 (74.8%)	11872 (75.6%)
Filly/Mare	3056 (18.8%)	3235 (20.9%)	3450 (21.3%)	3333 (20.7%)	3480 (21.2%)	3789 (23.2%)	4002 (24.6%)	3179 (25.1%)	4037 (24.7%)	3821 (24.3%)
Rig	0 (0.0%)	0 (0.0%)	0 (0.0%)	0 (0.0%)	0 (0.0%)	0 (0.0%)	2 (0.0%)	0 (0.0%)	0 (0.0%)	0 (0.0%)
NHF										
Colt/Entire	21 (0.7%)	13 (0.5%)	9 (0.4%)	4 (0.2%)	11 (0.5%)	10 (0.4%)	11 (0.5%)	14 (0.8%)	10 (0.3%)	11 (0.5%)
Gelding	2098 (67.0%)	1879 (67.6%)	1574 (64.7%)	1486 (65.6%)	1520 (64.4%)	1486 (61.7%)	1358 (61.6%)	1205 (65.9%)	2051 (68.1%)	1351 (61.8%)
Filly/Mare	1013 (32.3%)	888 (31.9%)	849 (34.9%)	774 (34.2%)	828 (35.1%)	914 (37.9%)	835 (37.9%)	610 (33.4%)	951 (31.6%)	823 (37.7%)
Rig	0 (0.0%)	1 (0.0%)	1 (0.0%)	0 (0.0%)	0 (0.0%)	0 (0.0%)	0 (0.0%)	0 (0.0%)	0 (0.0%)	0 (0.0%)
Hunter										
Colt/Entire	0 (0.0%)	0 (0.0%)	1 (0.1%)	0 (0.0%)	0 (0.0%)	0 (0.0%)	0 (0.0%)	0 (0.0%)	0 (0.0%)	0 (0.0%)
Gelding	844 (92.1%)	771 (91.5%)	799 (94.2%)	720 (94.2%)	709 (94.9%)	603 (93.3%)	522 (92.7%)	142 (97.3%)	557 (93.5%)	429 (94.9%)
Filly/Mare	72 (7.9%)	72 (8.5%)	48 (5.7%)	44 (5.8%)	38 (5.1%)	43 (6.7%)	41 (7.3%)	4 (2.7%)	39 (6.5%)	23 (5.1%)

Year to Date Individual Runners by Gender

Sex	2013	2014	2015	2016	2017	2018	2019	2020	2021	2022
All Races										
Male	12340 (70.2%)	12061 (70.2%)	12246 (70.5%)	12419 (70.5%)	12681 (70.2%)	12706 (69.6%)	12756 (69.3%)	11970 (69.4%)	12727 (69.5%)	12319 (69.1%)
Female	5227 (29.8%)	5117 (29.8%)	5136 (29.5%)	5194 (29.5%)	5378 (29.8%)	5559 (30.4%)	5640 (30.7%)	5276 (30.6%)	5577 (30.5%)	5506 (30.9%)
Flat										
Male	6730 (63.3%)	6682 (63.4%)	6744 (63.8%)	6927 (64.1%)	7142 (64.2%)	7294 (64.4%)	7248 (64.1%)	6802 (64.1%)	6892 (63.9%)	6733 (63.4%)
Female	3902 (36.7%)	3851 (36.6%)	3822 (36.2%)	3886 (35.9%)	3987 (35.8%)	4034 (35.6%)	4062 (35.9%)	3804 (35.9%)	3895 (36.1%)	3888 (36.6%)
All Jump										
Male	6493 (80.7%)	6162 (80.6%)	6263 (80.5%)	6218 (80.9%)	6264 (80.0%)	6076 (78.1%)	6228 (77.9%)	5813 (77.9%)	6473 (77.7%)	6171 (77.6%)
Female	1551 (19.3%)	1487 (19.4%)	1514 (19.5%)	1472 (19.1%)	1563 (20.0%)	1700 (21.9%)	1762 (22.1%)	1645 (22.1%)	1858 (22.3%)	1780 (22.4%)
Chase										
Male	2556 (91.8%)	2458 (92.2%)	2534 (91.9%)	2499 (92.1%)	2548 (90.9%)	2489 (89.7%)	2507 (89.1%)	2321 (88.4%)	2594 (88.1%)	2461 (88.0%)
Female	227 (8.2%)	209 (7.8%)	224 (8.1%)	214 (7.9%)	256 (9.1%)	286 (10.3%)	308 (10.9%)	304 (11.6%)	352 (11.9%)	337 (12.0%)
Hurdle										
Male	4455 (80.5%)	4193 (79.7%)	4312 (79.5%)	4301 (80.3%)	4294 (78.9%)	4237 (77.4%)	4340 (76.9%)	3896 (75.9%)	4392 (75.8%)	4303 (76.9%)
Female	1077 (19.5%)	1070 (20.3%)	1111 (20.5%)	1052 (19.7%)	1146 (21.1%)	1239 (22.6%)	1306 (23.1%)	1239 (24.1%)	1399 (24.2%)	1296 (23.1%)
NHF										
Male	1396 (69.9%)	1254 (69.8%)	1034 (66.8%)	987 (67.1%)	1019 (66.6%)	1035 (65.1%)	954 (64.7%)	934 (68.3%)	1459 (70.3%)	955 (64.4%)
Female	602 (30.1%)	543 (30.2%)	514 (33.2%)	485 (32.9%)	510 (33.4%)	554 (34.9%)	521 (35.3%)	434 (31.7%)	615 (29.7%)	527 (35.6%)
Hunter										
Male	433 (89.8%)	447 (91.4%)	448 (94.1%)	395 (93.2%)	366 (93.6%)	339 (92.1%)	301 (92.0%)	98 (96.1%)	299 (92.0%)	243 (92.4%)
Female	49 (10.2%)	42 (8.6%)	28 (5.9%)	29 (6.8%)	25 (6.4%)	29 (7.9%)	26 (8.0%)	4 (3.9%)	26 (8.0%)	20 (7.6%)

Horses Population by Breeding

November 2022 Horses in Training Snapshot by Breeding versus Previous Years

Flat (including Dual)

Bred	Sex	2013	2014	2015	2016	2017	2018	2019	2020	2021	2022
GB	Male	1924 (30.3%)	1986 (31.1%)	2037 (30.8%)	2083 (30.6%)	2353 (31.0%)	2277 (30.3%)	2323 (30.6%)	2299 (30.3%)	2218 (30.2%)	2185 (29.5%)
	Female	1321 (20.8%)	1249 (19.6%)	1275 (19.3%)	1316 (19.3%)	1450 (19.1%)	1458 (19.4%)	1495 (19.7%)	1466 (19.3%)	1455 (19.8%)	1465 (19.7%)
	Subtotal	3245 (51.0%)	3235 (50.7%)	3312 (50.1%)	3399 (49.9%)	3803 (50.0%)	3735 (49.7%)	3818 (50.3%)	3765 (49.7%)	3673 (50.0%)	3650 (49.2%)
IRE	Male	1679 (26.4%)	1698 (26.6%)	1821 (27.5%)	1903 (28.0%)	2081 (27.4%)	2073 (27.6%)	2060 (27.1%)	2139 (28.2%)	2111 (28.7%)	2154 (29.0%)
	Female	788 (12.4%)	816 (12.8%)	853 (12.9%)	854 (12.5%)	977 (12.9%)	975 (13.0%)	993 (13.1%)	985 (13.0%)	972 (13.2%)	1059 (14.3%)
	Subtotal	2467 (38.8%)	2514 (39.4%)	2674 (40.4%)	2757 (40.5%)	3058 (40.2%)	3048 (40.5%)	3053 (40.2%)	3124 (41.2%)	3083 (42.0%)	3213 (43.3%)
FR	Male	94 (1.5%)	116 (1.8%)	123 (1.9%)	158 (2.3%)	228 (3.0%)	223 (3.0%)	242 (3.2%)	268 (3.5%)	262 (3.6%)	256 (3.5%)
	Female	35 (0.6%)	42 (0.7%)	50 (0.8%)	54 (0.8%)	78 (1.0%)	91 (1.2%)	83 (1.1%)	86 (1.1%)	90 (1.2%)	99 (1.3%)
	Subtotal	129 (2.0%)	158 (2.5%)	173 (2.6%)	212 (3.1%)	306 (4.0%)	314 (4.2%)	325 (4.3%)	354 (4.7%)	352 (4.8%)	355 (4.8%)
USA	Male	308 (4.8%)	255 (4.0%)	268 (4.1%)	257 (3.8%)	245 (3.2%)	239 (3.2%)	218 (2.9%)	181 (2.4%)	134 (1.8%)	98 (1.3%)
	Female	113 (1.8%)	114 (1.8%)	101 (1.5%)	91 (1.3%)	90 (1.2%)	104 (1.4%)	89 (1.2%)	64 (0.8%)	40 (0.5%)	32 (0.4%)
	Subtotal	421 (6.6%)	369 (5.8%)	369 (5.6%)	348 (5.1%)	335 (4.4%)	343 (4.6%)	307 (4.0%)	245 (3.2%)	174 (2.4%)	130 (1.8%)
GNY	Male	45 (0.7%)	48 (0.8%)	46 (0.7%)	50 (0.7%)	54 (0.7%)	37 (0.5%)	43 (0.6%)	55 (0.7%)	38 (0.5%)	47 (0.6%)
	Female	11 (0.2%)	13 (0.2%)	11 (0.2%)	12 (0.2%)	14 (0.2%)	12 (0.2%)	19 (0.3%)	15 (0.2%)	21 (0.3%)	10 (0.1%)
	Subtotal	56 (0.9%)	61 (1.0%)	57 (0.9%)	62 (0.9%)	68 (0.9%)	49 (0.7%)	62 (0.8%)	70 (0.9%)	59 (0.8%)	57 (0.8%)
Other	Male	34 (0.5%)	22 (0.3%)	19 (0.3%)	18 (0.3%)	22 (0.3%)	22 (0.3%)	20 (0.3%)	17 (0.2%)	6 (0.1%)	12 (0.2%)
	Female	8 (0.1%)	21 (0.3%)	11 (0.2%)	9 (0.1%)	10 (0.1%)	8 (0.1%)	6 (0.1%)	3 (0.0%)	1 (0.0%)	2 (0.0%)
	Subtotal	42 (0.7%)	43 (0.7%)	30 (0.5%)	27 (0.4%)	32 (0.4%)	30 (0.4%)	26 (0.3%)	20 (0.3%)	7 (0.1%)	14 (0.2%)

Jump (including Dual)

Bred	Sex	2013	2014	2015	2016	2017	2018	2019	2020	2021	2022
GB	Male	1513 (26.3%)	1469 (25.3%)	1446 (24.4%)	1355 (22.9%)	1368 (22.4%)	1334 (21.0%)	1314 (20.1%)	1377 (19.5%)	1283 (19.6%)	1255 (19.5%)
	Female	645 (11.2%)	699 (12.0%)	659 (11.1%)	602 (10.2%)	657 (10.7%)	657 (10.4%)	629 (9.6%)	717 (10.1%)	679 (10.4%)	699 (10.9%)
	Subtotal	2158 (37.6%)	2168 (37.3%)	2105 (35.5%)	1957 (33.1%)	2025 (33.1%)	1991 (31.4%)	1943 (29.7%)	2094 (29.6%)	1962 (29.9%)	1954 (30.4%)
IRE	Male	2482 (43.2%)	2473 (42.5%)	2586 (43.6%)	2645 (44.7%)	2688 (44.0%)	2770 (43.7%)	2865 (43.9%)	3020 (42.7%)	2735 (41.7%)	2614 (40.7%)
	Female	335 (5.8%)	367 (6.3%)	400 (6.7%)	410 (6.9%)	511 (8.4%)	571 (9.0%)	636 (9.7%)	678 (9.6%)	615 (9.4%)	606 (9.4%)
	Subtotal	2817 (49.0%)	2840 (48.8%)	2986 (50.3%)	3055 (51.6%)	3199 (52.3%)	3341 (52.7%)	3501 (53.6%)	3698 (52.3%)	3350 (51.1%)	3220 (50.1%)
FR	Male	566 (9.9%)	589 (10.1%)	658 (11.1%)	723 (12.2%)	702 (11.5%)	802 (12.6%)	844 (12.9%)	1005 (14.2%)	1001 (15.3%)	1001 (15.6%)
	Female	48 (0.8%)	54 (0.9%)	54 (0.9%)	64 (1.1%)	82 (1.3%)	108 (1.7%)	137 (2.1%)	148 (2.1%)	131 (2.0%)	149 (2.3%)
	Subtotal	614 (10.7%)	643 (11.1%)	712 (12.0%)	787 (13.3%)	784 (12.8%)	910 (14.4%)	981 (15.0%)	1153 (16.3%)	1132 (17.3%)	1150 (17.9%)
USA	Male	81 (1.4%)	73 (1.3%)	62 (1.0%)	47 (0.8%)	44 (0.7%)	35 (0.6%)	33 (0.5%)	35 (0.5%)	32 (0.5%)	21 (0.3%)
	Female	5 (0.1%)	3 (0.1%)	2 (0.0%)	1 (0.0%)	1 (0.0%)	4 (0.1%)	3 (0.0%)	2 (0.0%)	1 (0.0%)	NA (-)
	Subtotal	86 (1.5%)	76 (1.3%)	64 (1.1%)	48 (0.8%)	45 (0.7%)	39 (0.6%)	36 (0.6%)	37 (0.5%)	33 (0.5%)	21 (0.3%)
GNY	Male	50 (0.9%)	72 (1.2%)	50 (0.8%)	55 (0.9%)	50 (0.8%)	46 (0.7%)	61 (0.9%)	74 (1.0%)	70 (1.1%)	72 (1.1%)
	Female	6 (0.1%)	4 (0.1%)	7 (0.1%)	4 (0.1%)	4 (0.1%)	6 (0.1%)	5 (0.1%)	9 (0.1%)	7 (0.1%)	9 (0.1%)
	Subtotal	56 (1.0%)	76 (1.3%)	57 (1.0%)	59 (1.0%)	54 (0.9%)	52 (0.8%)	66 (1.0%)	83 (1.2%)	77 (1.2%)	81 (1.3%)
Other	Male	13 (0.2%)	10 (0.2%)	5 (0.1%)	8 (0.1%)	8 (0.1%)	6 (0.1%)	6 (0.1%)	9 (0.1%)	3 (0.0%)	2 (0.0%)
	Female	2 (0.0%)	1 (0.0%)	2 (0.0%)	2 (0.0%)	1 (0.0%)	1 (0.0%)	NA (-)	1 (0.0%)	1 (0.0%)	1 (0.0%)
	Subtotal	15 (0.3%)	11 (0.2%)	7 (0.1%)	10 (0.2%)	9 (0.1%)	7 (0.1%)	6 (0.1%)	10 (0.1%)	4 (0.1%)	3 (0.0%)

Year to Date Total Runners by Breeding

Flat

Bred	Sex	2013	2014	2015	2016	2017	2018	2019	2020	2021	2022
GB	Male	17169 (31.1%)	16842 (31.2%)	17357 (32.2%)	17569 (31.9%)	18179 (32.2%)	18317 (31.5%)	17815 (31.0%)	14593 (32.0%)	17500 (31.4%)	16722 (31.0%)
	Female	10519 (19.0%)	9887 (18.3%)	9588 (17.8%)	9742 (17.7%)	9793 (17.3%)	10162 (17.5%)	10333 (18.0%)	8204 (18.0%)	10122 (18.1%)	9673 (17.9%)
	Subtotal	27688 (50.1%)	26729 (49.5%)	26945 (49.9%)	27311 (49.6%)	27972 (49.5%)	28479 (49.0%)	28148 (49.0%)	22797 (49.9%)	27622 (49.5%)	26395 (48.9%)
IRE	Male	15962 (28.9%)	15739 (29.2%)	15936 (29.5%)	16524 (30.0%)	16818 (29.8%)	17697 (30.5%)	17279 (30.1%)	13497 (29.6%)	17110 (30.7%)	17080 (31.6%)
	Female	6815 (12.3%)	7022 (13.0%)	6849 (12.7%)	6988 (12.7%)	7214 (12.8%)	7203 (12.4%)	7196 (12.5%)	5795 (12.7%)	7005 (12.6%)	7181 (13.3%)
	Subtotal	22777 (41.2%)	22761 (42.2%)	22785 (42.2%)	23512 (42.7%)	24032 (42.6%)	24900 (42.9%)	24475 (42.6%)	19292 (42.3%)	24115 (43.2%)	24261 (44.9%)
FR	Male	615 (1.1%)	775 (1.4%)	996 (1.8%)	1066 (1.9%)	1249 (2.2%)	1435 (2.5%)	1628 (2.8%)	1327 (2.9%)	1582 (2.8%)	1452 (2.7%)
	Female	182 (0.3%)	300 (0.6%)	303 (0.6%)	361 (0.7%)	394 (0.7%)	470 (0.8%)	535 (0.9%)	424 (0.9%)	548 (1.0%)	518 (1.0%)
	Subtotal	797 (1.4%)	1075 (2.0%)	1299 (2.4%)	1427 (2.6%)	1643 (2.9%)	1905 (3.3%)	2163 (3.8%)	1751 (3.8%)	2130 (3.8%)	1970 (3.6%)
USA	Male	2711 (4.9%)	2098 (3.9%)	1761 (3.3%)	1737 (3.2%)	1718 (3.0%)	1707 (2.9%)	1591 (2.8%)	1093 (2.4%)	1057 (1.9%)	739 (1.4%)
	Female	690 (1.2%)	640 (1.2%)	512 (0.9%)	434 (0.8%)	496 (0.9%)	534 (0.9%)	475 (0.8%)	277 (0.6%)	300 (0.5%)	245 (0.5%)
	Subtotal	3401 (6.2%)	2738 (5.1%)	2273 (4.2%)	2171 (3.9%)	2214 (3.9%)	2241 (3.9%)	2066 (3.6%)	1370 (3.0%)	1357 (2.4%)	984 (1.8%)
GNY	Male	274 (0.5%)	285 (0.5%)	290 (0.5%)	318 (0.6%)	330 (0.6%)	294 (0.5%)	301 (0.5%)	256 (0.6%)	352 (0.6%)	193 (0.4%)
	Female	61 (0.1%)	66 (0.1%)	94 (0.2%)	62 (0.1%)	40 (0.1%)	77 (0.1%)	112 (0.2%)	92 (0.2%)	114 (0.2%)	98 (0.2%)
	Subtotal	335 (0.6%)	351 (0.7%)	384 (0.7%)	380 (0.7%)	370 (0.7%)	371 (0.6%)	413 (0.7%)	348 (0.8%)	466 (0.8%)	291 (0.5%)
Other	Male	245 (0.4%)	255 (0.5%)	193 (0.4%)	153 (0.3%)	167 (0.3%)	163 (0.3%)	142 (0.2%)	73 (0.2%)	88 (0.2%)	69 (0.1%)
	Female	35 (0.1%)	59 (0.1%)	75 (0.1%)	68 (0.1%)	61 (0.1%)	45 (0.1%)	62 (0.1%)	19 (0.0%)	21 (0.0%)	25 (0.0%)
	Subtotal	280 (0.5%)	314 (0.6%)	268 (0.5%)	221 (0.4%)	228 (0.4%)	208 (0.4%)	204 (0.4%)	92 (0.2%)	109 (0.2%)	94 (0.2%)

Jump

Bred	Sex	2013	2014	2015	2016	2017	2018	2019	2020	2021	2022
GB	Male	7298 (25.5%)	6717 (24.9%)	6560 (24.0%)	6084 (22.4%)	5963 (21.5%)	5666 (20.7%)	5450 (20.1%)	4126 (19.4%)	5381 (19.2%)	4776 (18.1%)
	Female	2742 (9.6%)	2789 (10.3%)	2742 (10.0%)	2454 (9.0%)	2463 (8.9%)	2600 (9.5%)	2416 (8.9%)	1846 (8.7%)	2549 (9.1%)	2395 (9.1%)
	Subtotal	10040 (35.1%)	9506 (35.3%)	9302 (34.0%)	8538 (31.4%)	8426 (30.4%)	8266 (30.2%)	7866 (29.0%)	5972 (28.1%)	7930 (28.2%)	7171 (27.2%)
IRE	Male	12870 (45.0%)	12194 (45.2%)	12345 (45.2%)	12648 (46.6%)	12868 (46.5%)	12367 (45.2%)	12076 (44.5%)	9436 (44.5%)	12314 (43.8%)	11309 (42.9%)
	Female	1632 (5.7%)	1660 (6.2%)	1899 (7.0%)	2014 (7.4%)	2190 (7.9%)	2556 (9.3%)	2764 (10.2%)	2088 (9.8%)	2694 (9.6%)	2501 (9.5%)
	Subtotal	14502 (50.8%)	13854 (51.4%)	14244 (52.1%)	14662 (54.0%)	15058 (54.4%)	14923 (54.5%)	14840 (54.7%)	11524 (54.3%)	15008 (53.4%)	13810 (52.4%)
FR	Male	2701 (9.5%)	2503 (9.3%)	2770 (10.1%)	3103 (11.4%)	3363 (12.1%)	3346 (12.2%)	3372 (12.4%)	2847 (13.4%)	3978 (14.2%)	4274 (16.2%)
	Female	260 (0.9%)	261 (1.0%)	230 (0.8%)	220 (0.8%)	308 (1.1%)	311 (1.1%)	460 (1.7%)	450 (2.1%)	589 (2.1%)	573 (2.2%)
	Subtotal	2961 (10.4%)	2764 (10.3%)	3000 (11.0%)	3323 (12.2%)	3671 (13.3%)	3657 (13.4%)	3832 (14.1%)	3297 (15.5%)	4567 (16.3%)	4847 (18.4%)
USA	Male	564 (2.0%)	437 (1.6%)	370 (1.4%)	290 (1.1%)	193 (0.7%)	190 (0.7%)	173 (0.6%)	128 (0.6%)	160 (0.6%)	105 (0.4%)
	Female	29 (0.1%)	12 (0.0%)	11 (0.0%)	5 (0.0%)	9 (0.0%)	10 (0.0%)	18 (0.1%)	24 (0.1%)	6 (0.0%)	6 (0.0%)
	Subtotal	593 (2.1%)	449 (1.7%)	381 (1.4%)	295 (1.1%)	202 (0.7%)	200 (0.7%)	191 (0.7%)	152 (0.7%)	166 (0.6%)	111 (0.4%)
GNY	Male	318 (1.1%)	296 (1.1%)	313 (1.1%)	265 (1.0%)	285 (1.0%)	261 (1.0%)	324 (1.2%)	242 (1.1%)	360 (1.3%)	345 (1.3%)
	Female	29 (0.1%)	22 (0.1%)	26 (0.1%)	23 (0.1%)	10 (0.0%)	18 (0.1%)	24 (0.1%)	19 (0.1%)	42 (0.1%)	42 (0.2%)
	Subtotal	347 (1.2%)	318 (1.2%)	339 (1.2%)	288 (1.1%)	295 (1.1%)	279 (1.0%)	348 (1.3%)	261 (1.2%)	402 (1.4%)	387 (1.5%)
Other	Male	122 (0.4%)	65 (0.2%)	49 (0.2%)	33 (0.1%)	32 (0.1%)	47 (0.2%)	31 (0.1%)	18 (0.1%)	16 (0.1%)	11 (0.0%)
	Female	9 (0.0%)	1 (0.0%)	4 (0.0%)	18 (0.1%)	9 (0.0%)	9 (0.0%)	2 (0.0%)	2 (0.0%)	3 (0.0%)	9 (0.0%)
	Subtotal	131 (0.5%)	66 (0.2%)	53 (0.2%)	51 (0.2%)	41 (0.1%)	56 (0.2%)	33 (0.1%)	20 (0.1%)	19 (0.1%)	20 (0.1%)

Year to Date Individual Runners by Breeding

Flat

Bred	Sex	2013	2014	2015	2016	2017	2018	2019	2020	2021	2022
GB	Male	3143 (29.6%)	3081 (29.3%)	3164 (29.9%)	3158 (29.2%)	3255 (29.2%)	3345 (29.5%)	3327 (29.4%)	3147 (29.7%)	3139 (29.1%)	3057 (28.8%)
	Female	2224 (20.9%)	2117 (20.1%)	2078 (19.7%)	2115 (19.6%)	2150 (19.3%)	2150 (19.0%)	2177 (19.2%)	2062 (19.4%)	2141 (19.8%)	2102 (19.8%)
	Subtotal	5367 (50.5%)	5198 (49.3%)	5242 (49.6%)	5273 (48.8%)	5405 (48.6%)	5495 (48.5%)	5504 (48.7%)	5209 (49.1%)	5280 (48.9%)	5159 (48.6%)
IRE	Male	2802 (26.4%)	2860 (27.2%)	2872 (27.2%)	3031 (28.0%)	3105 (27.9%)	3172 (28.0%)	3124 (27.6%)	2969 (28.0%)	3118 (28.9%)	3136 (29.5%)
	Female	1400 (13.2%)	1461 (13.9%)	1471 (13.9%)	1516 (14.0%)	1545 (13.9%)	1580 (13.9%)	1577 (13.9%)	1487 (14.0%)	1510 (14.0%)	1566 (14.7%)
	Subtotal	4202 (39.5%)	4321 (41.0%)	4343 (41.1%)	4547 (42.1%)	4650 (41.8%)	4752 (41.9%)	4701 (41.6%)	4456 (42.0%)	4628 (42.9%)	4702 (44.3%)
FR	Male	149 (1.4%)	171 (1.6%)	206 (1.9%)	239 (2.2%)	271 (2.4%)	325 (2.9%)	361 (3.2%)	345 (3.3%)	339 (3.1%)	324 (3.1%)
	Female	59 (0.6%)	80 (0.8%)	75 (0.7%)	96 (0.9%)	111 (1.0%)	126 (1.1%)	140 (1.2%)	127 (1.2%)	137 (1.3%)	136 (1.3%)
	Subtotal	208 (2.0%)	251 (2.4%)	281 (2.7%)	335 (3.1%)	382 (3.4%)	451 (4.0%)	501 (4.4%)	472 (4.5%)	476 (4.4%)	460 (4.3%)
USA	Male	525 (4.9%)	444 (4.2%)	389 (3.7%)	392 (3.6%)	396 (3.6%)	354 (3.1%)	334 (3.0%)	259 (2.4%)	214 (2.0%)	144 (1.4%)
	Female	185 (1.7%)	159 (1.5%)	154 (1.5%)	128 (1.2%)	146 (1.3%)	145 (1.3%)	130 (1.1%)	94 (0.9%)	76 (0.7%)	52 (0.5%)
	Subtotal	710 (6.7%)	603 (5.7%)	543 (5.1%)	520 (4.8%)	542 (4.9%)	499 (4.4%)	464 (4.1%)	353 (3.3%)	290 (2.7%)	196 (1.8%)
GNY	Male	61 (0.6%)	76 (0.7%)	74 (0.7%)	77 (0.7%)	81 (0.7%)	65 (0.6%)	68 (0.6%)	64 (0.6%)	64 (0.6%)	52 (0.5%)
	Female	20 (0.2%)	18 (0.2%)	24 (0.2%)	15 (0.1%)	16 (0.1%)	20 (0.2%)	25 (0.2%)	26 (0.2%)	26 (0.2%)	26 (0.2%)
	Subtotal	81 (0.8%)	94 (0.9%)	98 (0.9%)	92 (0.9%)	97 (0.9%)	85 (0.8%)	93 (0.8%)	90 (0.8%)	90 (0.8%)	78 (0.7%)
Other	Male	50 (0.5%)	50 (0.5%)	39 (0.4%)	30 (0.3%)	34 (0.3%)	33 (0.3%)	34 (0.3%)	18 (0.2%)	18 (0.2%)	20 (0.2%)
	Female	14 (0.1%)	16 (0.2%)	20 (0.2%)	16 (0.1%)	19 (0.2%)	13 (0.1%)	13 (0.1%)	8 (0.1%)	5 (0.0%)	6 (0.1%)
	Subtotal	64 (0.6%)	66 (0.6%)	59 (0.6%)	46 (0.4%)	53 (0.5%)	46 (0.4%)	47 (0.4%)	26 (0.2%)	23 (0.2%)	26 (0.2%)

Jump

Bred	Sex	2013	2014	2015	2016	2017	2018	2019	2020	2021	2022
GB	Male	2052 (25.5%)	1916 (25.0%)	1827 (23.5%)	1704 (22.2%)	1640 (21.0%)	1575 (20.3%)	1585 (19.8%)	1434 (19.2%)	1579 (19.0%)	1441 (18.1%)
	Female	919 (11.4%)	880 (11.5%)	850 (10.9%)	783 (10.2%)	771 (9.9%)	798 (10.3%)	754 (9.4%)	693 (9.3%)	822 (9.9%)	769 (9.7%)
	Subtotal	2971 (36.9%)	2796 (36.6%)	2677 (34.4%)	2487 (32.3%)	2411 (30.8%)	2373 (30.5%)	2339 (29.3%)	2127 (28.5%)	2401 (28.8%)	2210 (27.8%)
IRE	Male	3447 (42.9%)	3329 (43.5%)	3435 (44.2%)	3464 (45.0%)	3519 (45.0%)	3428 (44.1%)	3501 (43.8%)	3232 (43.3%)	3544 (42.5%)	3359 (42.2%)
	Female	539 (6.7%)	528 (6.9%)	579 (7.4%)	602 (7.8%)	678 (8.7%)	770 (9.9%)	840 (10.5%)	764 (10.2%)	844 (10.1%)	803 (10.1%)
	Subtotal	3986 (49.6%)	3857 (50.4%)	4014 (51.6%)	4066 (52.9%)	4197 (53.6%)	4198 (54.0%)	4341 (54.3%)	3996 (53.6%)	4388 (52.7%)	4162 (52.3%)
FR	Male	725 (9.0%)	704 (9.2%)	799 (10.3%)	880 (11.4%)	958 (12.2%)	950 (12.2%)	999 (12.5%)	1015 (13.6%)	1215 (14.6%)	1244 (15.6%)
	Female	69 (0.9%)	69 (0.9%)	72 (0.9%)	72 (0.9%)	103 (1.3%)	120 (1.5%)	155 (1.9%)	172 (2.3%)	177 (2.1%)	189 (2.4%)
	Subtotal	794 (9.9%)	773 (10.1%)	871 (11.2%)	952 (12.4%)	1061 (13.6%)	1070 (13.8%)	1154 (14.4%)	1187 (15.9%)	1392 (16.7%)	1433 (18.0%)
USA	Male	159 (2.0%)	118 (1.5%)	100 (1.3%)	78 (1.0%)	58 (0.7%)	52 (0.7%)	51 (0.6%)	41 (0.5%)	44 (0.5%)	36 (0.5%)
	Female	14 (0.2%)	4 (0.1%)	4 (0.1%)	3 (0.0%)	3 (0.0%)	5 (0.1%)	6 (0.1%)	6 (0.1%)	2 (0.0%)	2 (0.0%)
	Subtotal	173 (2.2%)	122 (1.6%)	104 (1.3%)	81 (1.1%)	61 (0.8%)	57 (0.7%)	57 (0.7%)	47 (0.6%)	46 (0.6%)	38 (0.5%)
GNY	Male	76 (0.9%)	76 (1.0%)	88 (1.1%)	85 (1.1%)	80 (1.0%)	63 (0.8%)	82 (1.0%)	83 (1.1%)	87 (1.0%)	88 (1.1%)
	Female	7 (0.1%)	5 (0.1%)	7 (0.1%)	7 (0.1%)	5 (0.1%)	5 (0.1%)	6 (0.1%)	8 (0.1%)	12 (0.1%)	15 (0.2%)
	Subtotal	83 (1.0%)	81 (1.1%)	95 (1.2%)	92 (1.2%)	85 (1.1%)	68 (0.9%)	88 (1.1%)	91 (1.2%)	99 (1.2%)	103 (1.3%)
Other	Male	34 (0.4%)	19 (0.2%)	14 (0.2%)	7 (0.1%)	9 (0.1%)	8 (0.1%)	10 (0.1%)	8 (0.1%)	4 (0.0%)	3 (0.0%)
	Female	3 (0.0%)	1 (0.0%)	2 (0.0%)	5 (0.1%)	3 (0.0%)	2 (0.0%)	1 (0.0%)	2 (0.0%)	1 (0.0%)	2 (0.0%)
	Subtotal	37 (0.5%)	20 (0.3%)	16 (0.2%)	12 (0.2%)	12 (0.2%)	10 (0.1%)	11 (0.1%)	10 (0.1%)	5 (0.1%)	5 (0.1%)