

Horse Population Report

Updated on 31 October 2022



Introduction

Welcome to the latest update on the Racehorse Population from the British Horseracing Authority.

The aim of this document is to give stakeholders and the wider Public an insight into the current state of the Horse Population in Great Britain. It is hoped that this transparency will ensure that all decision makers have access to the key data required to help British Racing deliver a Competitive and Compelling product to stakeholders, racegoers and the wider public.

If you have any questions regarding the content of this report or suggestions for how it could be improved further, please contact Joe Yates – jyates@britishhorseracing.com

Definitions

This report uses the Horses in Training returns from the Weatherby's Racing Administration System, this is completed by trainers and should be updated whenever a horse enters or leaves training in their care as part of the conditions of their licence.

Horses in Training

Unless otherwise stated, snapshots of Horses in Training will be from the 15th day of the month in question and year to date figures will be up to and including the date titled at the front of the report.

Horses' ratings will be taken from the most recently published ratings by the BHA Handicapping Team, which is currently at 7am each Tuesday morning. For example, if looking at the Horses in a particular rating band for July 2011, the horses in training number will be from Friday 15th July 2011 and ratings, where possible, will be assigned to each horse from the ratings published by the BHA Handicappers on Tuesday 12th July 2011.

The Gender of a horse will be taken from the reporting date in question, regardless of whether this has since changed. In the case of YTD reporting, where a horse's gender or training type has changed in the year-to-date period, the most recent is taken.

This report does not count any horses that are temporarily racing abroad for GB Trainers at the time of reporting.

Yearlings are not included in total counts of flat and/or dual horses but will be sometimes shown separately for information purposes.

Yearlings and two-year-olds are not included in total counts of jump horses or counts of jump horses that include dual horses but will be sometimes shown separately for information purposes.

Yearlings, two-year-olds and three-year-olds are not included in total counts of Hunter Chasers but will be sometimes shown separately for information purposes.

Hunter Chasers are not included in any counts of Jump Horses or Total figures but will be sometimes shown separately for information purposes.

Runners

Unless otherwise specified, Total Runners and Individual Runners metrics only counts runners that ran in GB races including any voided races. Withdrawn horses are not included.

Hunter Chases are not included in this section but will be sometimes shown separately for information purposes.

Total Runners is a count of all runners in races, whilst individual runners only counts each individual horse once.

Monthly Horses in Training

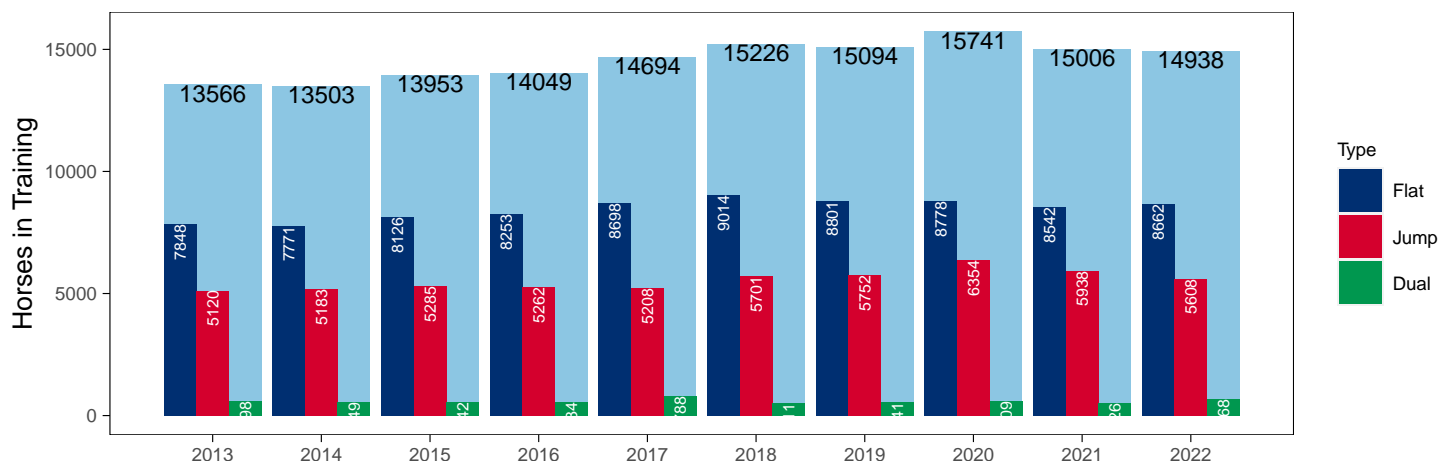
October 2022 Horses in Training Snapshot versus Previous Years

Type	2013	2014	2015	2016	2017	2018	2019	2020	2021	2022	vs. Last Year	vs. Pre-Covid
Flat	7848	7771	8126	8253	8698	9014	8801	8778	8542	8662	+120 / +1.4%	-139 / -1.6%
Jump	5120	5183	5285	5262	5208	5701	5752	6354	5938	5608	-330 / -5.6%	-144 / -2.5%
Dual	598	549	542	534	788	511	541	609	526	668	+142 / +27.0%	+127 / +23.5%
Hunter	0	0	0	1	0	0	0	228	47	13	-34 / -72.3%	+13 / +Inf
Total	13566	13503	13953	14049	14694	15226	15094	15741	15006	14938	-68 / -0.5%	-156 / -1.0%

'vs. Pre-Covid' is comparison between 2022 and 2019

Snapshot of Total Horses in Training in October

Horses in Training in October, shown by Training Type



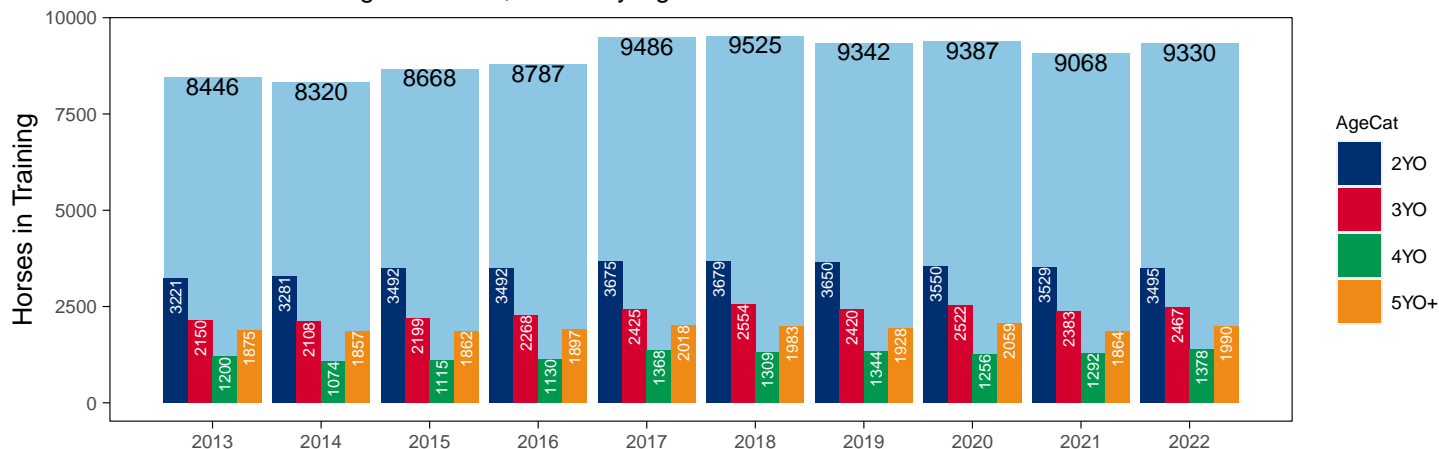
Flat (including Dual)

AgeCat	2013	2014	2015	2016	2017	2018	2019	2020	2021	2022	vs. Last Year	vs. Pre-Covid
2YO	3221	3281	3492	3492	3675	3679	3650	3550	3529	3495	-34 / -1.0%	-155 / -4.2%
3YO	2150	2108	2199	2268	2425	2554	2420	2522	2383	2467	+84 / +3.5%	+47 / +1.9%
4YO	1200	1074	1115	1130	1368	1309	1344	1256	1292	1378	+86 / +6.7%	+34 / +2.5%
5YO+	1875	1857	1862	1897	2018	1983	1928	2059	1864	1990	+126 / +6.8%	+62 / +3.2%
Total	8446	8320	8668	8787	9486	9525	9342	9387	9068	9330	+262 / +2.9%	-12 / -0.1%

'vs. Pre-Covid' is comparison between 2022 and 2019

Snapshot of Flat Horses in Training in October

Flat Horses in Training in October, shown by Age



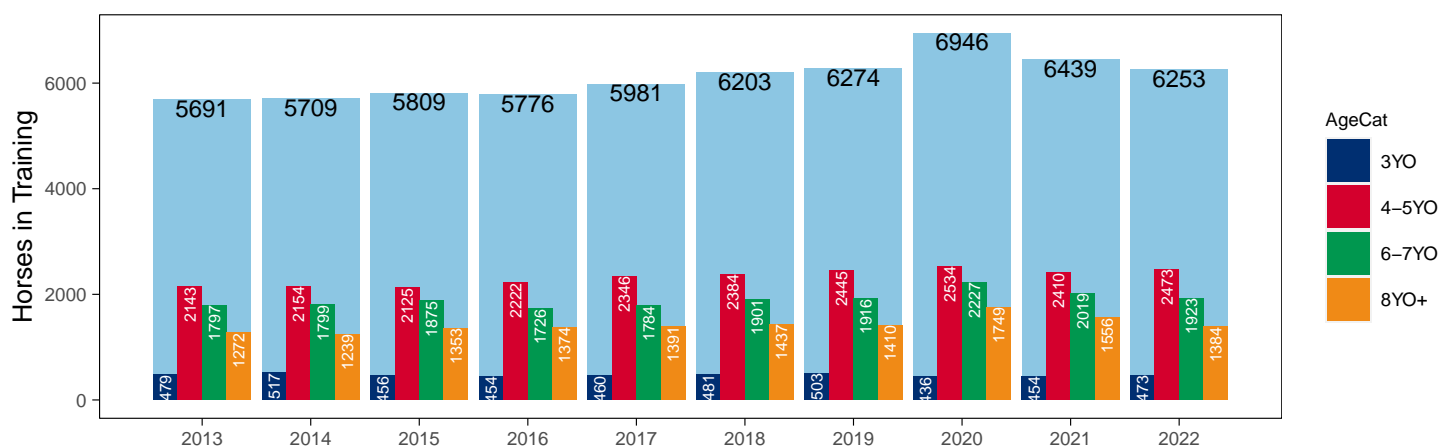
Jump (including Dual)

AgeCat	2013	2014	2015	2016	2017	2018	2019	2020	2021	2022	vs. Last Year	vs. Pre-Covid
3YO	479	517	456	454	460	481	503	436	454	473	+19 / +4.2%	-30 / -6.0%
4-5YO	2143	2154	2125	2222	2346	2384	2445	2534	2410	2473	+63 / +2.6%	+28 / +1.1%
6-7YO	1797	1799	1875	1726	1784	1901	1916	2227	2019	1923	-96 / -4.8%	+7 / +0.4%
8YO+	1272	1239	1353	1374	1391	1437	1410	1749	1556	1384	-172 / -11.1%	-26 / -1.8%
Total	5691	5709	5809	5776	5981	6203	6274	6946	6439	6253	-186 / -2.9%	-21 / -0.3%

'vs. Pre-Covid' is comparison between 2022 and 2019

Snapshot of Jump Horses in Training in October

Jump Horses in Training in October, shown by Age



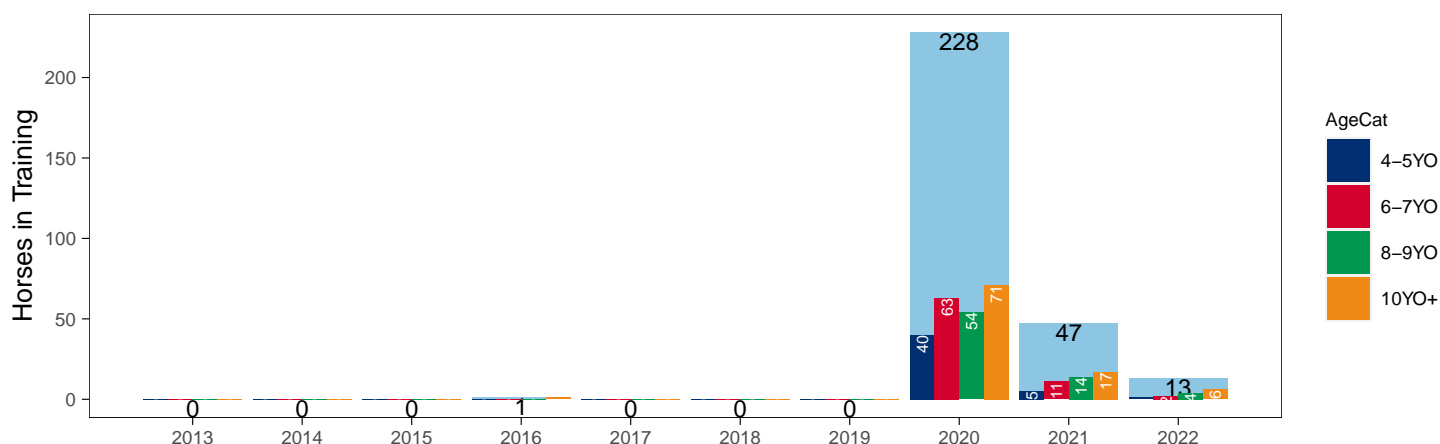
Hunter Chasers

AgeCat	2013	2014	2015	2016	2017	2018	2019	2020	2021	2022	vs. Last Year	vs. Pre-Covid
4-5YO	0	0	0	0	0	0	0	40	5	1	-4 / -80.0%	+1 / +Inf
6-7YO	0	0	0	0	0	0	0	63	11	2	-9 / -81.8%	+2 / +Inf
8-9YO	0	0	0	0	0	0	0	54	14	4	-10 / -71.4%	+4 / +Inf
10YO+	0	0	0	1	0	0	0	71	17	6	-11 / -64.7%	+6 / +Inf
Total	0	0	0	1	0	0	0	228	47	13	-34 / -72.3%	+13 / +Inf

'vs. Pre-Covid' is comparison between 2022 and 2019

Snapshot of Hunter Chasers in Training in October

Hunter Chasers in Training in October, shown by Age



2022 Horses in Training versus Previous Years

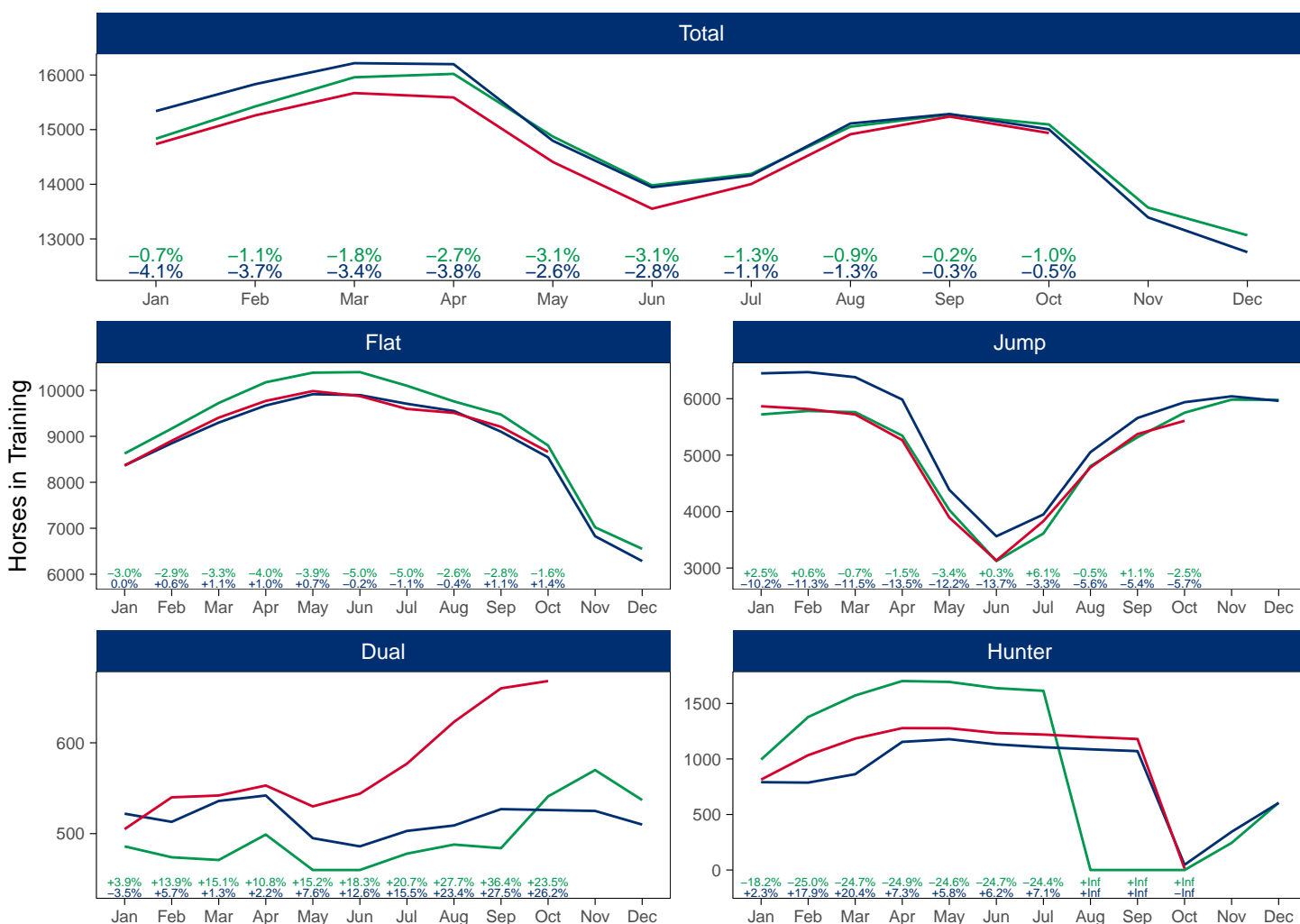
Type	Period	Jan	Feb	Mar	Apr	May	Jun	Jul	Aug	Sep	Oct	Nov	Dec
Flat	2022	8364	8904	9406	9770	9984	9875	9596	9510	9206	8662	0	0
	2021	8368	8848	9299	9671	9916	9897	9708	9550	9101	8542	6826	6286
	Pre-Covid	8626	9168	9725	10176	10385	10397	10100	9760	9473	8801	7020	6552
Jump	2022	5866	5816	5721	5266	3894	3133	3831	4782	5373	5608	0	0
	2021	6449	6471	6381	5985	4385	3562	3949	5053	5658	5938	6042	5962
	Pre-Covid	5721	5782	5762	5345	4029	3123	3612	4806	5317	5752	5983	5978
Dual	2022	505	540	542	553	530	544	577	623	660	668	0	0
	2021	522	513	536	542	495	486	503	509	527	526	525	510
	Pre-Covid	486	474	471	499	460	460	478	488	484	541	570	537
Hunter	2022	814	1034	1184	1278	1277	1234	1220	1198	1180	13	0	0
	2021	791	787	863	1154	1178	1132	1106	1087	1071	47	344	604
	Pre-Covid	995	1378	1572	1702	1694	1638	1614	0	0	0	244	606
Total	2022	14735	15260	15669	15589	14408	13552	14004	14915	15239	14938	0	0
	2021	15339	15832	16216	16198	14796	13945	14160	15112	15286	15006	13393	12758
	Pre-Covid	14833	15424	15958	16020	14874	13980	14190	15054	15274	15094	13573	13067

'Pre-Covid' is 2019 values

Monthly Horses in Training

2022 against 2021 and Pre-Covid, shown with % Difference

Period — Pre-Covid — 2021 — 2022



'Pre-Covid' is 2019 values

Flat (including Dual)

AgeCat	Period	Jan	Feb	Mar	Apr	May	Jun	Jul	Aug	Sep	Oct	Nov	Dec
2YO	2022	1927	2364	2591	2867	3218	3369	3533	3602	3609	3495		
	2021	1927	2242	2467	2792	3161	3388	3545	3621	3603	3529	2983	2783
	Pre-Covid	2104	2424	2738	3106	3394	3593	3714	3784	3801	3650	3102	3001
3YO	2022	2946	3067	3244	3313	3248	3142	2883	2788	2642	2467		
	2021	2926	3051	3231	3285	3225	3101	2939	2846	2631	2383	1828	1678
	Pre-Covid	2999	3140	3289	3340	3303	3221	3008	2792	2646	2420	1782	1619
4YO	2022	1692	1684	1719	1721	1679	1622	1548	1555	1472	1378		
	2021	1628	1674	1709	1719	1673	1630	1537	1493	1417	1292	994	905
	Pre-Covid	1640	1672	1715	1726	1690	1661	1566	1489	1422	1344	1053	940
5YO+	2022	2304	2329	2394	2422	2369	2286	2209	2188	2143	1990		
	2021	2409	2394	2428	2417	2352	2264	2190	2099	1977	1864	1546	1430
	Pre-Covid	2369	2406	2454	2503	2458	2382	2290	2183	2088	1928	1653	1529
Total	2022	8869	9444	9948	10323	10514	10419	10173	10133	9866	9330		
	2021	8890	9361	9835	10213	10411	10383	10211	10059	9628	9068	7351	6796
	Pre-Covid	9112	9642	10196	10675	10845	10857	10578	10248	9957	9342	7590	7089

'Pre-Covid' is 2019 values

Monthly Flat Horses in Training

2022 against 2021 and Pre-Covid, shown with % Difference

Period — Pre-Covid — 2021 — 2022



'Pre-Covid' is 2019 values

Jump (including Dual)

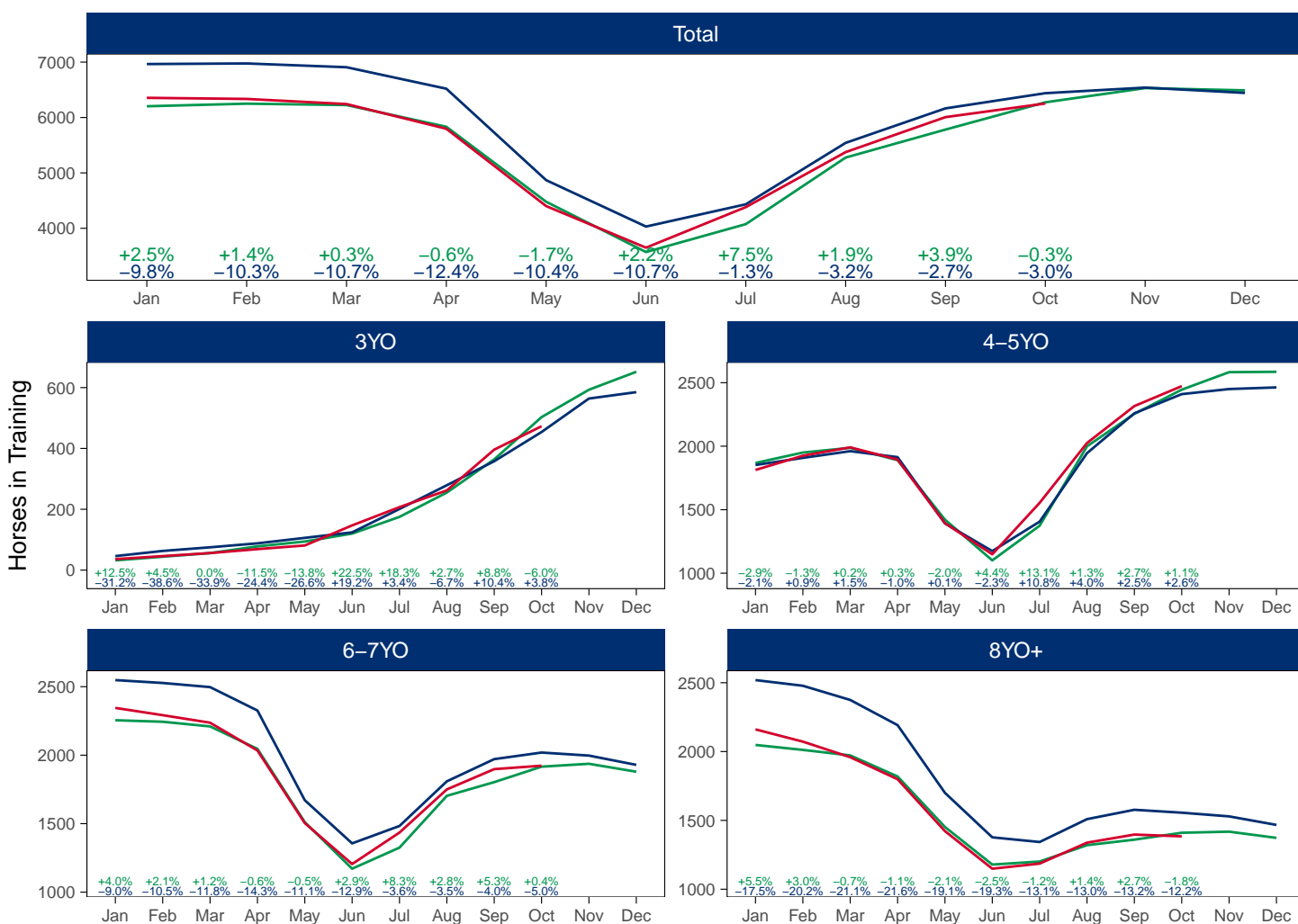
AgeCat	Period	Jan	Feb	Mar	Apr	May	Jun	Jul	Aug	Sep	Oct	Nov	Dec
3YO	2022	36	46	56	69	81	147	207	262	396	473		
	2021	46	63	75	88	106	124	201	279	358	454	564	585
	Pre-Covid	32	44	56	78	94	120	175	255	364	503	593	652
4-5YO	2022	1813	1925	1991	1895	1394	1149	1554	2025	2316	2473		
	2021	1852	1908	1961	1914	1392	1174	1406	1945	2259	2410	2450	2463
	Pre-Covid	1868	1950	1987	1890	1422	1101	1374	1999	2255	2445	2583	2586
6-7YO	2022	2345	2292	2237	2034	1504	1205	1435	1750	1898	1923		
	2021	2548	2527	2497	2326	1671	1356	1483	1809	1971	2019	1997	1929
	Pre-Covid	2255	2244	2210	2046	1511	1171	1325	1703	1803	1916	1937	1879
8YO+	2022	2161	2072	1959	1799	1422	1149	1186	1338	1397	1384		
	2021	2519	2478	2375	2192	1700	1377	1343	1509	1577	1556	1529	1467
	Pre-Covid	2048	2012	1972	1819	1452	1179	1201	1320	1360	1410	1418	1373
Total	2022	6355	6335	6243	5797	4401	3650	4382	5375	6007	6253		
	2021	6965	6976	6908	6520	4869	4031	4433	5542	6165	6439	6540	6444
	Pre-Covid	6203	6250	6225	5833	4479	3571	4075	5277	5782	6274	6531	6490

'Pre-Covid' is 2019 values

Monthly Jump Horses in Training

2022 against 2021 and Pre-Covid, shown with % Difference

Period — Pre-Covid — 2021 — 2022



'Pre-Covid' is 2019 values

Hunter Chasers

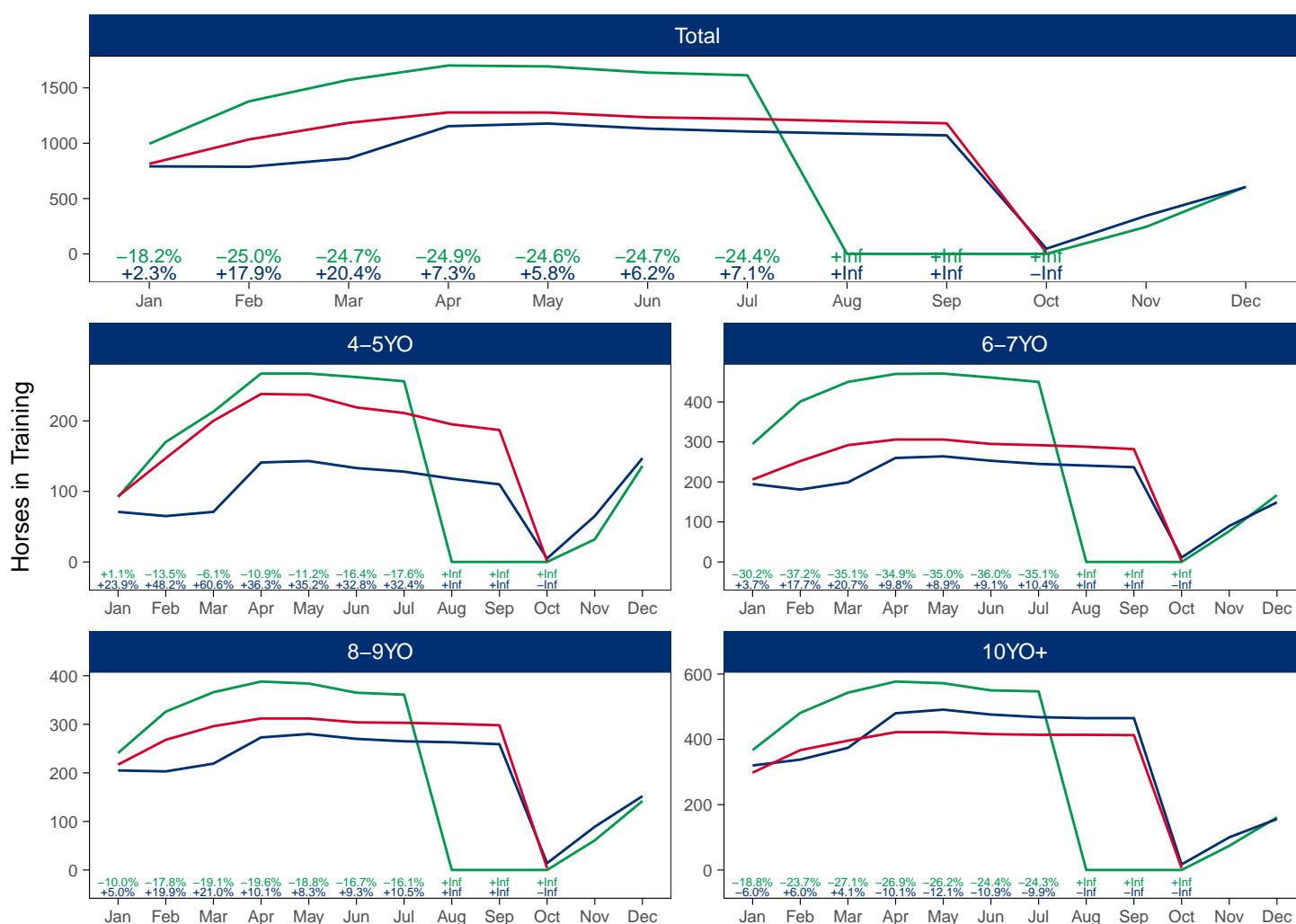
AgeCat	Period	Jan	Feb	Mar	Apr	May	Jun	Jul	Aug	Sep	Oct	Nov	Dec
4-5YO	2022	93	147	200	238	237	219	211	195	187	1		
	2021	71	65	71	141	143	133	128	118	110	5	65	147
	Pre-Covid	92	170	213	267	267	262	256				32	136
6-7YO	2022	206	252	292	306	306	295	292	288	282	2		
	2021	195	181	199	260	264	253	245	241	237	11	90	149
	Pre-Covid	295	401	450	470	471	461	450				77	167
8-9YO	2022	217	268	296	312	312	304	303	301	298	4		
	2021	205	203	219	273	280	270	265	263	259	14	89	152
	Pre-Covid	241	326	366	388	384	365	361				61	142
10YO+	2022	298	367	396	422	422	416	414	414	413	6		
	2021	320	338	374	480	491	476	468	465	465	17	100	156
	Pre-Covid	367	481	543	577	572	550	547				74	161
Total	2022	814	1034	1184	1278	1277	1234	1220	1198	1180	13		
	2021	791	787	863	1154	1178	1132	1106	1087	1071	47	344	604
	Pre-Covid	995	1378	1572	1702	1694	1638	1614				244	606

'Pre-Covid' is 2019 values

Monthly Hunter Chasers in Training

2022 against 2021 and Pre-Covid, shown with % Difference

Period — Pre-Covid — 2021 — 2022



'Pre-Covid' is 2019 values

October 2022 Horses in Training by Rating Band Snapshot versus Previous Years

Flat (including Dual)

AgeCat	RatBand	2013	2014	2015	2016	2017	2018	2019	2020	2021	2022
2YO	0-50	92 (2.9%)	110 (3.4%)	109 (3.1%)	69 (2.0%)	72 (2.0%)	78 (2.1%)	100 (2.7%)	77 (2.2%)	88 (2.5%)	85 (2.4%)
	51-60	196 (6.1%)	187 (5.7%)	171 (4.9%)	167 (4.8%)	172 (4.7%)	190 (5.2%)	175 (4.8%)	186 (5.2%)	167 (4.7%)	157 (4.5%)
	61-70	262 (8.1%)	275 (8.4%)	295 (8.4%)	287 (8.2%)	285 (7.8%)	265 (7.2%)	243 (6.7%)	274 (7.7%)	271 (7.7%)	246 (7.0%)
	71-80	294 (9.1%)	290 (8.8%)	326 (9.3%)	314 (9.0%)	286 (7.8%)	290 (7.9%)	277 (7.6%)	339 (9.5%)	316 (9.0%)	292 (8.4%)
	81-90	164 (5.1%)	145 (4.4%)	171 (4.9%)	151 (4.3%)	132 (3.6%)	162 (4.4%)	159 (4.4%)	148 (4.2%)	167 (4.7%)	156 (4.5%)
	91-100	84 (2.6%)	75 (2.3%)	68 (1.9%)	70 (2.0%)	69 (1.9%)	89 (2.4%)	84 (2.3%)	75 (2.1%)	65 (1.8%)	74 (2.1%)
	101+	41 (1.3%)	58 (1.8%)	52 (1.5%)	44 (1.3%)	52 (1.4%)	53 (1.4%)	56 (1.5%)	58 (1.6%)	65 (1.8%)	55 (1.6%)
	Unrated	2088 (64.8%)	2141 (65.3%)	2300 (65.9%)	2390 (68.4%)	2607 (70.9%)	2552 (69.4%)	2556 (70.0%)	2393 (67.4%)	2390 (67.7%)	2430 (69.5%)
Subtotal		3221 (100.0%)	3281 (100.0%)	3492 (100.0%)	3492 (100.0%)	3675 (100.0%)	3679 (100.0%)	3650 (100.0%)	3550 (100.0%)	3529 (100.0%)	3495 (100.0%)
3YO	0-50	204 (9.5%)	190 (9.0%)	184 (8.4%)	167 (7.4%)	217 (8.9%)	215 (8.4%)	263 (10.9%)	238 (9.4%)	208 (8.7%)	216 (8.8%)
	51-60	275 (12.8%)	251 (11.9%)	264 (12.0%)	281 (12.4%)	293 (12.1%)	284 (11.1%)	317 (13.1%)	293 (11.6%)	325 (13.6%)	349 (14.1%)
	61-70	376 (17.5%)	375 (17.8%)	382 (17.4%)	415 (18.3%)	424 (17.5%)	455 (17.8%)	418 (17.3%)	448 (17.8%)	427 (17.9%)	421 (17.1%)
	71-80	393 (18.3%)	440 (20.9%)	425 (19.3%)	458 (20.2%)	470 (19.4%)	469 (18.4%)	378 (15.6%)	450 (17.8%)	404 (17.0%)	433 (17.6%)
	81-90	265 (12.3%)	294 (13.9%)	315 (14.3%)	278 (12.3%)	324 (13.4%)	325 (12.7%)	276 (11.4%)	280 (11.1%)	277 (11.6%)	271 (11.0%)
	91-100	130 (6.0%)	124 (5.9%)	136 (6.2%)	146 (6.4%)	162 (6.7%)	160 (6.3%)	180 (7.4%)	146 (5.8%)	126 (5.3%)	127 (5.1%)
	101+	84 (3.9%)	110 (5.2%)	104 (4.7%)	105 (4.6%)	105 (4.3%)	118 (4.6%)	114 (4.7%)	77 (3.1%)	92 (3.9%)	113 (4.6%)
	Unrated	423 (19.7%)	324 (15.4%)	389 (17.7%)	418 (18.4%)	430 (17.7%)	528 (20.7%)	474 (19.6%)	590 (23.4%)	524 (22.0%)	537 (21.8%)
Subtotal		2150 (100.0%)	2108 (100.0%)	2199 (100.0%)	2268 (100.0%)	2425 (100.0%)	2554 (100.0%)	2420 (100.0%)	2522 (100.0%)	2383 (100.0%)	2467 (100.0%)
4YO	0-50	146 (12.2%)	105 (9.8%)	98 (8.8%)	108 (9.6%)	139 (10.2%)	151 (11.5%)	178 (13.2%)	137 (10.9%)	148 (11.5%)	160 (11.6%)
	51-60	139 (11.6%)	144 (13.4%)	145 (13.0%)	143 (12.7%)	181 (13.2%)	171 (13.1%)	196 (14.6%)	173 (13.8%)	204 (15.8%)	190 (13.8%)
	61-70	206 (17.2%)	196 (18.2%)	173 (15.5%)	178 (15.8%)	204 (14.9%)	232 (17.7%)	215 (16.0%)	232 (18.5%)	225 (17.4%)	246 (17.9%)
	71-80	208 (17.3%)	197 (18.3%)	201 (18.0%)	198 (17.5%)	211 (15.4%)	208 (15.9%)	224 (16.7%)	207 (16.5%)	213 (16.5%)	235 (17.1%)
	81-90	152 (12.7%)	141 (13.1%)	171 (15.3%)	157 (13.9%)	194 (14.2%)	152 (11.6%)	168 (12.5%)	132 (10.5%)	153 (11.8%)	157 (11.4%)
	91-100	110 (9.2%)	120 (11.2%)	103 (9.2%)	105 (9.3%)	99 (7.2%)	138 (10.5%)	119 (8.9%)	106 (8.4%)	99 (7.7%)	104 (7.5%)
	101+	86 (7.2%)	84 (7.8%)	94 (8.4%)	102 (9.0%)	107 (7.8%)	98 (7.5%)	90 (6.7%)	82 (6.5%)	73 (5.7%)	81 (5.9%)
	Unrated	153 (12.8%)	87 (8.1%)	130 (11.7%)	139 (12.3%)	233 (17.0%)	159 (12.1%)	154 (11.5%)	187 (14.9%)	177 (13.7%)	205 (14.9%)
Subtotal		1200 (100.0%)	1074 (100.0%)	1115 (100.0%)	1130 (100.0%)	1368 (100.0%)	1309 (100.0%)	1344 (100.0%)	1256 (100.0%)	1292 (100.0%)	1378 (100.0%)
5YO+	0-50	238 (12.7%)	255 (13.7%)	200 (10.7%)	193 (10.2%)	216 (10.7%)	279 (14.1%)	309 (16.0%)	272 (13.2%)	255 (13.7%)	264 (13.3%)
	51-60	287 (15.3%)	248 (13.4%)	261 (14.0%)	275 (14.5%)	294 (14.6%)	280 (14.1%)	281 (14.6%)	328 (15.9%)	305 (16.4%)	309 (15.5%)
	61-70	352 (18.8%)	386 (20.8%)	364 (19.5%)	342 (18.0%)	357 (17.7%)	329 (16.6%)	343 (17.8%)	369 (17.9%)	306 (16.4%)	348 (17.5%)
	71-80	323 (17.2%)	331 (17.8%)	313 (16.8%)	313 (16.5%)	285 (14.1%)	302 (15.2%)	258 (13.4%)	298 (14.5%)	252 (13.5%)	279 (14.0%)
	81-90	190 (10.1%)	241 (13.0%)	241 (12.9%)	256 (13.5%)	237 (11.7%)	242 (12.2%)	220 (11.4%)	217 (10.5%)	202 (10.8%)	202 (10.2%)
	91-100	119 (6.3%)	131 (7.1%)	135 (7.3%)	157 (8.3%)	155 (7.7%)	126 (6.4%)	119 (6.2%)	111 (5.4%)	130 (7.0%)	127 (6.4%)
	101+	114 (6.1%)	128 (6.9%)	105 (5.6%)	127 (6.7%)	138 (6.8%)	135 (6.8%)	113 (5.9%)	107 (5.2%)	121 (6.5%)	111 (5.6%)
	Unrated	252 (13.4%)	137 (7.4%)	243 (13.1%)	234 (12.3%)	336 (16.7%)	290 (14.6%)	285 (14.8%)	357 (17.3%)	293 (15.7%)	350 (17.6%)
Subtotal		1875 (100.0%)	1857 (100.0%)	1862 (100.0%)	1897 (100.0%)	2018 (100.0%)	1983 (100.0%)	1928 (100.0%)	2059 (100.0%)	1864 (100.0%)	1990 (100.0%)
Overall	0-50	680 (8.1%)	660 (7.9%)	591 (6.8%)	537 (6.1%)	644 (6.8%)	723 (7.6%)	850 (9.1%)	724 (7.7%)	699 (7.7%)	725 (7.8%)
	51-60	897 (10.6%)	830 (10.0%)	841 (9.7%)	866 (9.9%)	940 (9.9%)	925 (9.7%)	969 (10.4%)	980 (10.4%)	1001 (11.0%)	1005 (10.8%)
	61-70	1196 (14.2%)	1232 (14.8%)	1214 (14.0%)	1222 (13.9%)	1270 (13.4%)	1281 (13.4%)	1219 (13.0%)	1323 (14.1%)	1229 (13.6%)	1261 (13.5%)
	71-80	1218 (14.4%)	1258 (15.1%)	1265 (14.6%)	1283 (14.6%)	1252 (13.2%)	1269 (13.3%)	1137 (12.2%)	1294 (13.8%)	1185 (13.1%)	1239 (13.3%)
	81-90	771 (9.1%)	821 (9.9%)	898 (10.4%)	842 (9.6%)	887 (9.4%)	881 (9.2%)	823 (8.8%)	777 (8.3%)	799 (8.8%)	786 (8.4%)
	91-100	443 (5.2%)	450 (5.4%)	442 (5.1%)	478 (5.4%)	485 (5.1%)	513 (5.4%)	502 (5.4%)	438 (4.7%)	420 (4.6%)	432 (4.6%)
	101+	325 (3.8%)	380 (4.6%)	355 (4.1%)	378 (4.3%)	402 (4.2%)	404 (4.2%)	373 (4.0%)	324 (3.5%)	351 (3.9%)	360 (3.9%)
	Unrated	2916 (34.5%)	2689 (32.3%)	3062 (35.3%)	3181 (36.2%)	3606 (38.0%)	3529 (37.0%)	3469 (37.1%)	3527 (37.6%)	3384 (37.3%)	3522 (37.7%)
Total		8446 (100.0%)	8320 (100.0%)	8668 (100.0%)	8787 (100.0%)	9486 (100.0%)	9525 (100.0%)	9342 (100.0%)	9387 (100.0%)	9068 (100.0%)	9330 (100.0%)

Where a horse has more than one published rating (published Flat Turf and published Flat AWT mark), the higher of the two is taken.

Jump (including Dual)

AgeCat	RatBand	2013	2014	2015	2016	2017	2018	2019	2020	2021	2022
3YO	0-100	5 (1.0%)	4 (0.8%)	5 (1.1%)	4 (0.9%)	3 (0.7%)	4 (0.8%)	3 (0.6%)	3 (0.7%)	12 (2.6%)	9 (1.9%)
	101-110	6 (1.3%)	7 (1.4%)	4 (0.9%)	5 (1.1%)	4 (0.9%)	6 (1.2%)	9 (1.8%)	10 (2.3%)	12 (2.6%)	3 (0.6%)
	111-120	4 (0.8%)	5 (1.0%)	4 (0.9%)	3 (0.7%)	3 (0.7%)	4 (0.8%)	6 (1.2%)	4 (0.9%)	1 (0.2%)	1 (0.2%)
	121-130	5 (1.0%)	2 (0.4%)	3 (0.7%)	4 (0.9%)	1 (0.2%)	2 (0.4%)	1 (0.2%)	1 (0.2%)	2 (0.4%)	NA (-)
	131-140	1 (0.2%)	2 (0.4%)	3 (0.7%)	1 (0.2%)	1 (0.2%)	1 (0.2%)	NA (-)	2 (0.5%)	NA (-)	NA (-)
	Unrated	458 (95.6%)	497 (96.1%)	437 (95.8%)	437 (96.3%)	448 (97.4%)	464 (96.5%)	484 (96.2%)	416 (95.4%)	427 (94.1%)	460 (97.3%)
Subtotal		479 (100.0%)	517 (100.0%)	456 (100.0%)	454 (100.0%)	460 (100.0%)	481 (100.0%)	503 (100.0%)	436 (100.0%)	454 (100.0%)	473 (100.0%)
4-5YO	0-100	194 (9.1%)	179 (8.3%)	149 (7.0%)	179 (8.1%)	186 (7.9%)	161 (6.8%)	200 (8.2%)	248 (9.8%)	222 (9.2%)	267 (10.8%)
	101-110	110 (5.1%)	105 (4.9%)	127 (6.0%)	126 (5.7%)	129 (5.5%)	157 (6.6%)	131 (5.4%)	124 (4.9%)	96 (4.0%)	137 (5.5%)
	111-120	115 (5.4%)	118 (5.5%)	137 (6.4%)	114 (5.1%)	120 (5.1%)	133 (5.6%)	149 (6.1%)	138 (5.4%)	96 (4.0%)	81 (3.3%)
	121-130	99 (4.6%)	95 (4.4%)	100 (4.7%)	94 (4.2%)	108 (4.6%)	141 (5.9%)	127 (5.2%)	107 (4.2%)	57 (2.4%)	55 (2.2%)
	131-140	40 (1.9%)	62 (2.9%)	68 (3.2%)	75 (3.4%)	68 (2.9%)	58 (2.4%)	51 (2.1%)	44 (1.7%)	29 (1.2%)	18 (0.7%)
	141-150	23 (1.1%)	22 (1.0%)	19 (0.9%)	24 (1.1%)	20 (0.9%)	16 (0.7%)	21 (0.9%)	20 (0.8%)	5 (0.2%)	8 (0.3%)
6-7YO	151+	4 (0.2%)	6 (0.3%)	11 (0.5%)	4 (0.2%)	4 (0.2%)	8 (0.3%)	4 (0.2%)	4 (0.2%)	2 (0.1%)	NA (-)
	Unrated	1558 (72.7%)	1567 (72.7%)	1514 (71.2%)	1606 (72.3%)	1711 (72.9%)	1710 (71.7%)	1762 (72.1%)	1849 (73.0%)	1903 (79.0%)	1907 (77.1%)
Subtotal		2143 (100.0%)	2154 (100.0%)	2125 (100.0%)	2222 (100.0%)	2346 (100.0%)	2384 (100.0%)	2445 (100.0%)	2534 (100.0%)	2410 (100.0%)	2473 (100.0%)
8YO+	0-100	389 (21.6%)	368 (20.5%)	350 (18.7%)	320 (18.5%)	321 (18.0%)	339 (17.8%)	362 (18.9%)	460 (20.7%)	396 (19.6%)	414 (21.5%)
	101-110	206 (11.5%)	212 (11.8%)	229 (12.2%)	208 (12.1%)	226 (12.7%)	225 (11.8%)	222 (11.6%)	290 (13.0%)	186 (9.2%)	210 (10.9%)
	111-120	222 (12.4%)	276 (15.3%)	221 (11.8%)	236 (13.7%)	229 (12.8%)	253 (13.3%)	254 (13.3%)	273 (12.3%)	202 (10.0%)	198 (10.3%)
	121-130	211 (11.7%)	232 (12.9%)	251 (13.4%)	224 (13.0%)	207 (11.6%)	242 (12.7%)	245 (12.8%)	285 (12.8%)	173 (8.6%)	151 (7.9%)
	131-140	123 (6.8%)	129 (7.2%)	142 (7.6%)	156 (9.0%)	179 (10.0%)	188 (9.9%)	208 (10.9%)	183 (8.2%)	97 (4.8%)	100 (5.2%)
	141-150	49 (2.7%)	64 (3.6%)	65 (3.5%)	54 (3.1%)	75 (4.2%)	76 (4.0%)	58 (3.0%)	67 (3.0%)	39 (1.9%)	28 (1.5%)
Overall	151+	23 (1.3%)	35 (1.9%)	35 (1.9%)	31 (1.8%)	34 (1.9%)	28 (1.5%)	41 (2.1%)	32 (1.4%)	10 (0.5%)	12 (0.6%)
	Unrated	574 (31.9%)	483 (26.8%)	582 (31.0%)	497 (28.8%)	513 (28.8%)	550 (28.9%)	526 (27.5%)	637 (28.6%)	916 (45.4%)	810 (42.1%)
Subtotal		1797 (100.0%)	1799 (100.0%)	1875 (100.0%)	1726 (100.0%)	1784 (100.0%)	1901 (100.0%)	1916 (100.0%)	2227 (100.0%)	2019 (100.0%)	1923 (100.0%)
Overall	0-100	411 (32.3%)	388 (31.3%)	353 (26.1%)	373 (27.1%)	350 (25.2%)	346 (24.1%)	375 (26.6%)	432 (24.7%)	317 (20.4%)	268 (19.4%)
	101-110	134 (10.5%)	169 (13.6%)	188 (13.9%)	168 (12.2%)	175 (12.6%)	195 (13.6%)	164 (11.6%)	184 (10.5%)	146 (9.4%)	135 (9.8%)
	111-120	147 (11.6%)	160 (12.9%)	185 (13.7%)	190 (13.8%)	192 (13.8%)	167 (11.6%)	171 (12.1%)	209 (11.9%)	155 (10.0%)	152 (11.0%)
	121-130	152 (11.9%)	163 (13.2%)	171 (12.6%)	160 (11.6%)	155 (11.1%)	174 (12.1%)	149 (10.6%)	189 (10.8%)	143 (9.2%)	122 (8.8%)
	131-140	101 (7.9%)	133 (10.7%)	125 (9.2%)	126 (9.2%)	127 (9.1%)	134 (9.3%)	140 (9.9%)	147 (8.4%)	102 (6.6%)	90 (6.5%)
	141-150	47 (3.7%)	62 (5.0%)	57 (4.2%)	63 (4.6%)	76 (5.5%)	75 (5.2%)	84 (6.0%)	85 (4.9%)	49 (3.1%)	65 (4.7%)
Overall	151+	30 (2.4%)	34 (2.7%)	38 (2.8%)	35 (2.5%)	34 (2.4%)	28 (1.9%)	43 (3.0%)	50 (2.9%)	17 (1.1%)	31 (2.2%)
	Unrated	250 (19.7%)	130 (10.5%)	236 (17.4%)	259 (18.9%)	282 (20.3%)	318 (22.1%)	284 (20.1%)	453 (25.9%)	627 (40.3%)	521 (37.6%)
Subtotal		1272 (100.0%)	1239 (100.0%)	1353 (100.0%)	1374 (100.0%)	1391 (100.0%)	1437 (100.0%)	1410 (100.0%)	1749 (100.0%)	1556 (100.0%)	1384 (100.0%)
Overall	0-100	999 (17.6%)	939 (16.4%)	857 (14.8%)	876 (15.2%)	860 (14.4%)	850 (13.7%)	940 (15.0%)	1143 (16.5%)	947 (14.7%)	958 (15.3%)
	101-110	456 (8.0%)	493 (8.6%)	548 (9.4%)	507 (8.8%)	534 (8.9%)	583 (9.4%)	526 (8.4%)	608 (8.8%)	440 (6.8%)	485 (7.8%)
	111-120	488 (8.6%)	559 (9.8%)	547 (9.4%)	543 (9.4%)	544 (9.1%)	557 (9.0%)	580 (9.2%)	624 (9.0%)	454 (7.1%)	432 (6.9%)
	121-130	467 (8.2%)	492 (8.6%)	525 (9.0%)	482 (8.3%)	471 (7.9%)	559 (9.0%)	522 (8.3%)	582 (8.4%)	375 (5.8%)	328 (5.2%)
	131-140	265 (4.7%)	326 (5.7%)	338 (5.8%)	358 (6.2%)	375 (6.3%)	381 (6.1%)	399 (6.4%)	376 (5.4%)	228 (3.5%)	208 (3.3%)
	141-150	119 (2.1%)	148 (2.6%)	141 (2.4%)	141 (2.4%)	171 (2.9%)	167 (2.7%)	163 (2.6%)	172 (2.5%)	93 (1.4%)	101 (1.6%)
Overall	151+	57 (1.0%)	75 (1.3%)	84 (1.4%)	70 (1.2%)	72 (1.2%)	64 (1.0%)	88 (1.4%)	86 (1.2%)	29 (0.5%)	43 (0.7%)
	Unrated	2840 (49.9%)	2677 (46.9%)	2769 (47.7%)	2799 (48.5%)	2954 (49.4%)	3042 (49.0%)	3056 (48.7%)	3355 (48.3%)	3873 (60.1%)	3698 (59.1%)
Total		5691 (100.0%)	5709 (100.0%)	5809 (100.0%)	5776 (100.0%)	5981 (100.0%)	6203 (100.0%)	6274 (100.0%)	6946 (100.0%)	6439 (100.0%)	6253 (100.0%)

Where a horse has more than one published rating (published Hurdle and published Chase mark), the higher of the two is taken.

Young Horses Entering Training

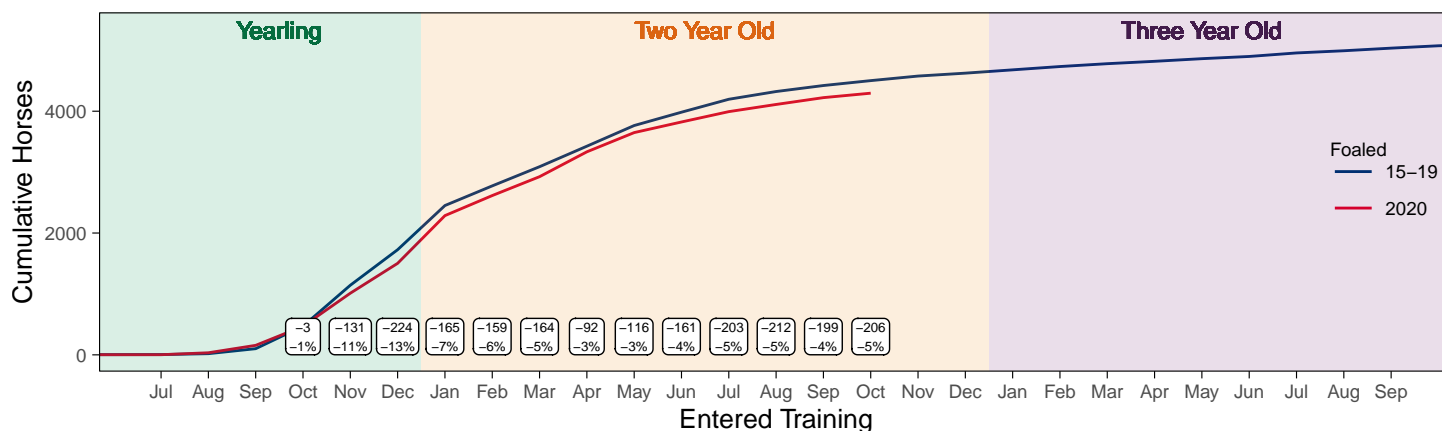
Flat Yearlings in Training versus Previous Years

Period	Jan	Feb	Mar	Apr	May	Jun	Jul	Aug	Sep	Oct	Nov	Dec
2022	0	0	0	0	0	0	0	2	76	269		
2021	0	0	0	0	0	0	0	5	79	315	716	1287
5YrAvg	1	1	1	1	1	1	1	2	52	257	698	1377

Foals Entering Training for the First Time

2020 Foals Entering Training Over Time

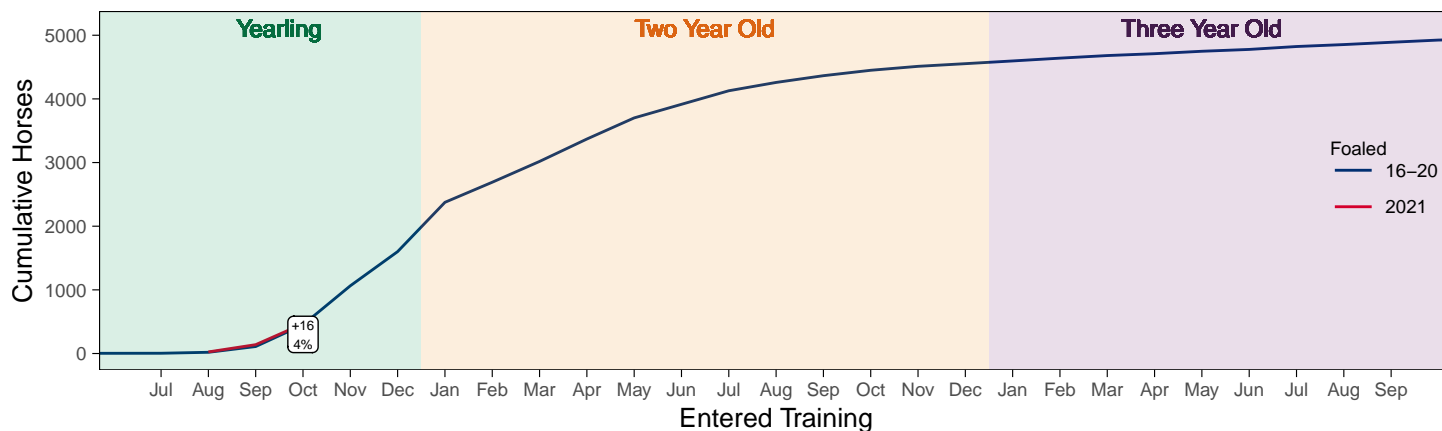
Cumulative Flat Horses foaled in 2020 shown by first in training notification against trend



Cumulative individual horses entering training for the first time by the end of each month.

2021 Foals Entering Training Over Time

Cumulative Flat Horses foaled in 2021 shown by first in training notification against trend



Cumulative individual horses entering training for the first time by the end of each month.

Year to Date Horses in Training

Type	2013	2014	2015	2016	2017	2018	2019	2020	2021	2022	vs. Last Year	vs. Pre-Covid
Flat	12263	12206	12450	12911	13249	13186	13487	13286	13181	12933	-248 / -1.9%	-554 / -4.1%
Jump	8078	7968	8095	7995	7826	7707	8434	8193	8974	8503	-471 / -5.2%	+69 / +0.8%
Dual	876	903	835	799	1024	1432	814	906	870	972	+102 / +11.7%	+158 / +19.4%
Hunter	2401	2275	2179	2109	2007	1863	1820	1609	1333	1358	+25 / +1.9%	-462 / -25.4%
Total	21217	21077	21380	21705	22099	22325	22735	22385	23025	22408	-617 / -2.7%	-327 / -1.4%

'vs. Pre-Covid' is comparison between 2022 and 2019

Flat

AgeCat	2013	2014	2015	2016	2017	2018	2019	2020	2021	2022	vs. Last Year	vs. Pre-Covid
2YO	4080	4138	4430	4450	4514	4491	4541	4362	4387	4226	-161 / -3.7%	-315 / -6.9%
3YO	3630	3632	3717	3952	4026	4133	4121	4185	4044	4001	-43 / -1.1%	-120 / -2.9%
4YO	1887	1756	1750	1888	1993	1917	2038	1999	2092	2079	-13 / -0.6%	+41 / +2.0%
5YO+	2666	2680	2553	2621	2716	2645	2787	2740	2658	2627	-31 / -1.2%	-160 / -5.7%
Total	12263	12206	12450	12911	13249	13186	13487	13286	13181	12933	-248 / -1.9%	-554 / -4.1%

'vs. Pre-Covid' is comparison between 2022 and 2019

Jump

AgeCat	2013	2014	2015	2016	2017	2018	2019	2020	2021	2022	vs. Last Year	vs. Pre-Covid
3YO	348	398	431	361	303	355	392	315	375	399	+24 / +6.4%	+7 / +1.8%
4-5YO	2685	2565	2597	2679	2637	2488	2802	2720	2792	2820	+28 / +1.0%	+18 / +0.6%
6-7YO	2695	2631	2749	2526	2443	2502	2757	2719	2985	2788	-197 / -6.6%	+31 / +1.1%
8YO+	2350	2374	2318	2429	2443	2362	2483	2439	2822	2496	-326 / -11.6%	+13 / +0.5%
Total	8078	7968	8095	7995	7826	7707	8434	8193	8974	8503	-471 / -5.2%	+69 / +0.8%

'vs. Pre-Covid' is comparison between 2022 and 2019

Dual

AgeCat	2013	2014	2015	2016	2017	2018	2019	2020	2021	2022	vs. Last Year	vs. Pre-Covid
3YO	111	128	108	119	163	171	125	162	161	222	+61 / +37.9%	+97 / +77.6%
4YO	225	220	188	188	276	356	229	222	238	253	+15 / +6.3%	+24 / +10.5%
5YO+	540	555	539	492	585	905	460	522	471	497	+26 / +5.5%	+37 / +8.0%
Total	876	903	835	799	1024	1432	814	906	870	972	+102 / +11.7%	+158 / +19.4%

'vs. Pre-Covid' is comparison between 2022 and 2019

Hunter Chasers

AgeCat	2013	2014	2015	2016	2017	2018	2019	2020	2021	2022	vs. Last Year	vs. Pre-Covid
4-5YO	276	215	233	242	255	286	322	346	204	293	+89 / +43.6%	-29 / -9.0%
6-7YO	756	711	620	583	526	515	509	412	313	327	+14 / +4.5%	-182 / -35.8%
8-9YO	618	653	648	560	536	423	396	332	320	315	-5 / -1.6%	-81 / -20.5%
10YO+	751	696	678	724	690	639	593	519	496	423	-73 / -14.7%	-170 / -28.7%
Total	2401	2275	2179	2109	2007	1863	1820	1609	1333	1358	+25 / +1.9%	-462 / -25.4%

'vs. Pre-Covid' is comparison between 2022 and 2019

Year to Date Runners

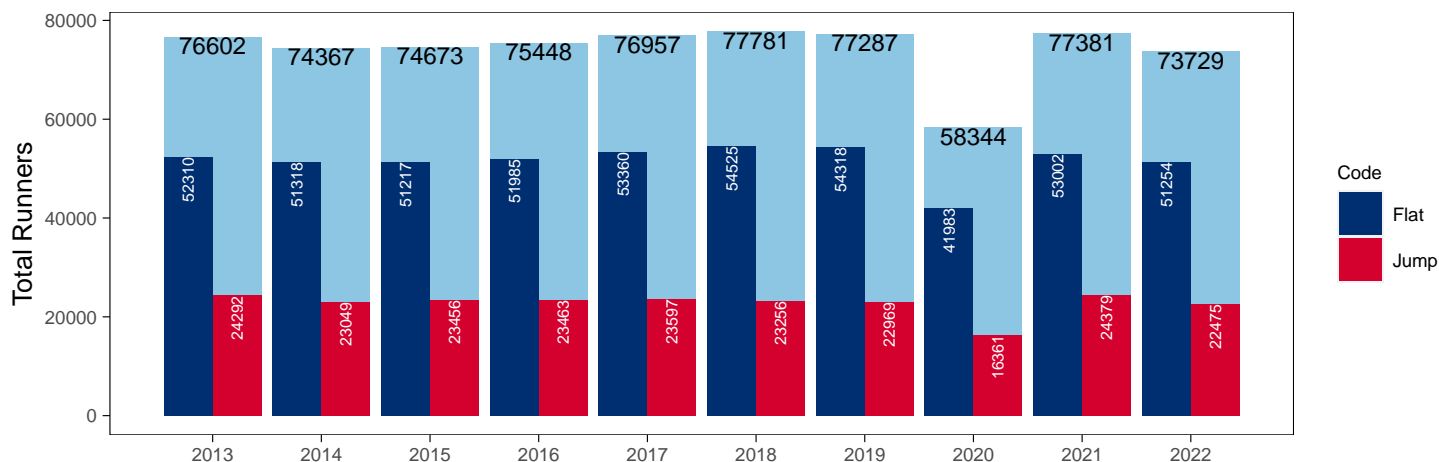
Year to Date Total Runners

Code	2013	2014	2015	2016	2017	2018	2019	2020	2021	2022	vs. Last Year	vs. Pre-Covid
Flat	52310	51318	51217	51985	53360	54525	54318	41983	53002	51254	-1748 / -3.3%	-3064 / -5.6%
Jump	24292	23049	23456	23463	23597	23256	22969	16361	24379	22475	-1904 / -7.8%	-494 / -2.2%
Total	76602	74367	74673	75448	76957	77781	77287	58344	77381	73729	-3652 / -4.7%	-3558 / -4.6%

'vs. Pre-Covid' is comparison between 2022 and 2019

YTD Total Runners

Total Runners in GB Races, shown by Code and Total



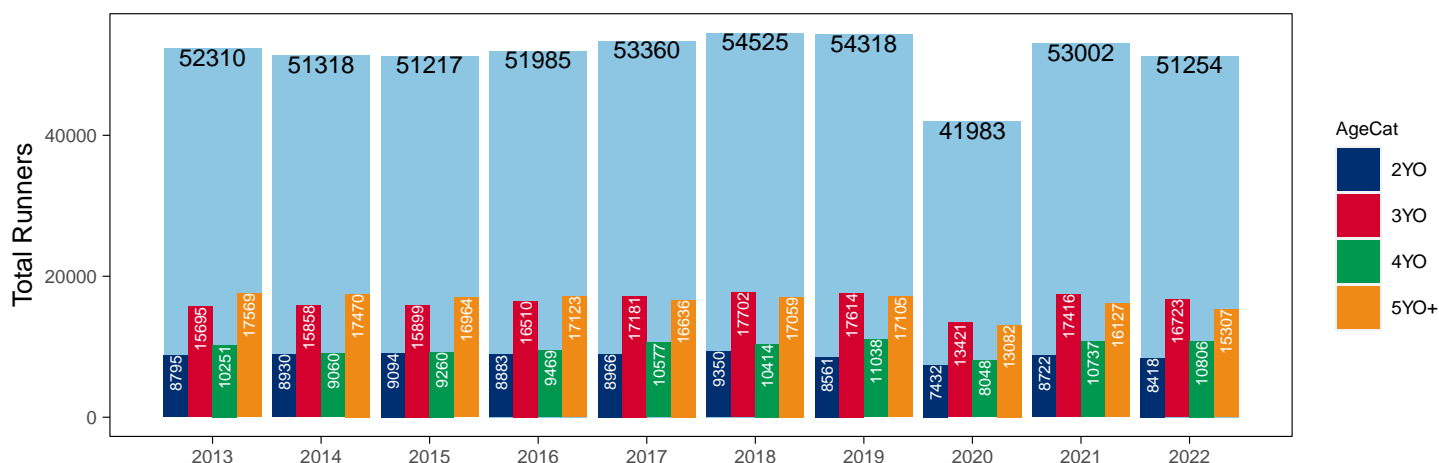
Flat

AgeCat	2013	2014	2015	2016	2017	2018	2019	2020	2021	2022	vs. Last Year	vs. Pre-Covid
2YO	8795	8930	9094	8883	8966	9350	8561	7432	8722	8418	-304 / -3.5%	-143 / -1.7%
3YO	15695	15858	15899	16510	17181	17702	17614	13421	17416	16723	-693 / -4.0%	-891 / -5.1%
4YO	10251	9060	9260	9469	10577	10414	11038	8048	10737	10806	+69 / +0.6%	-232 / -2.1%
5YO+	17569	17470	16964	17123	16636	17059	17105	13082	16127	15307	-820 / -5.1%	-1798 / -10.5%
Total	52310	51318	51217	51985	53360	54525	54318	41983	53002	51254	-1748 / -3.3%	-3064 / -5.6%

'vs. Pre-Covid' is comparison between 2022 and 2019

YTD Total Flat Runners by Age

Total Runners in GB Flat Races, shown by Age Category and Total



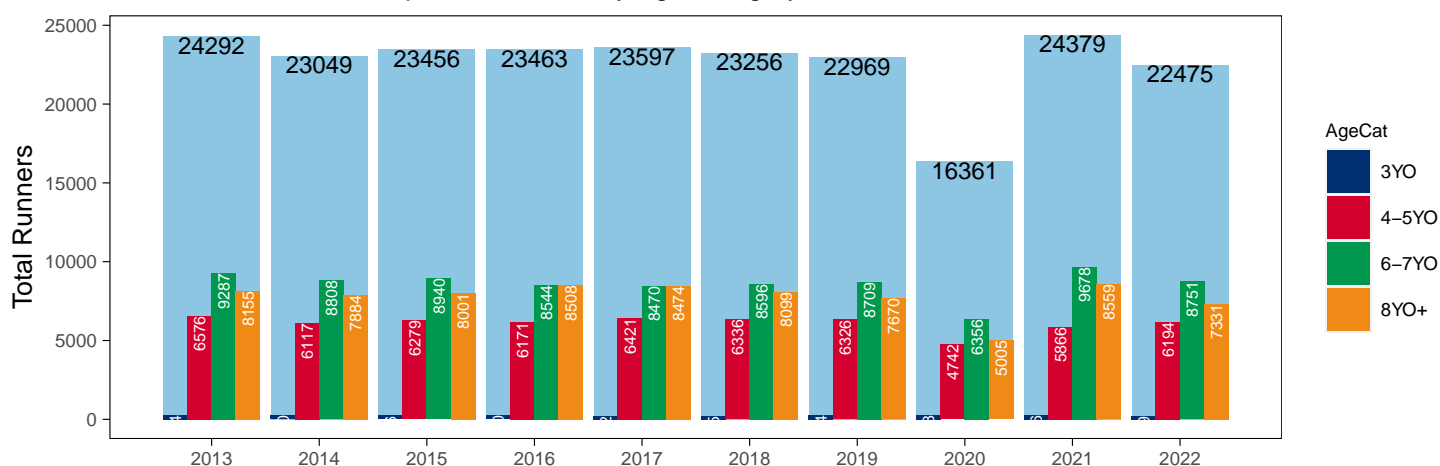
Jump

AgeCat	2013	2014	2015	2016	2017	2018	2019	2020	2021	2022	vs. Last Year	vs. Pre-Covid
3YO	274	240	236	240	232	225	264	258	276	199	-77 / -27.9%	-65 / -24.6%
4-5YO	6576	6117	6279	6171	6421	6336	6326	4742	5866	6194	+328 / +5.6%	-132 / -2.1%
6-7YO	9287	8808	8940	8544	8470	8596	8709	6356	9678	8751	-927 / -9.6%	+42 / +0.5%
8YO+	8155	7884	8001	8508	8474	8099	7670	5005	8559	7331	-1228 / -14.3%	-339 / -4.4%
Total	24292	23049	23456	23463	23597	23256	22969	16361	24379	22475	-1904 / -7.8%	-494 / -2.2%

'vs. Pre-Covid' is comparison between 2022 and 2019

YTD Total Jump Runners by Age

Total Runners in GB Jump Races, shown by Age Category and Total



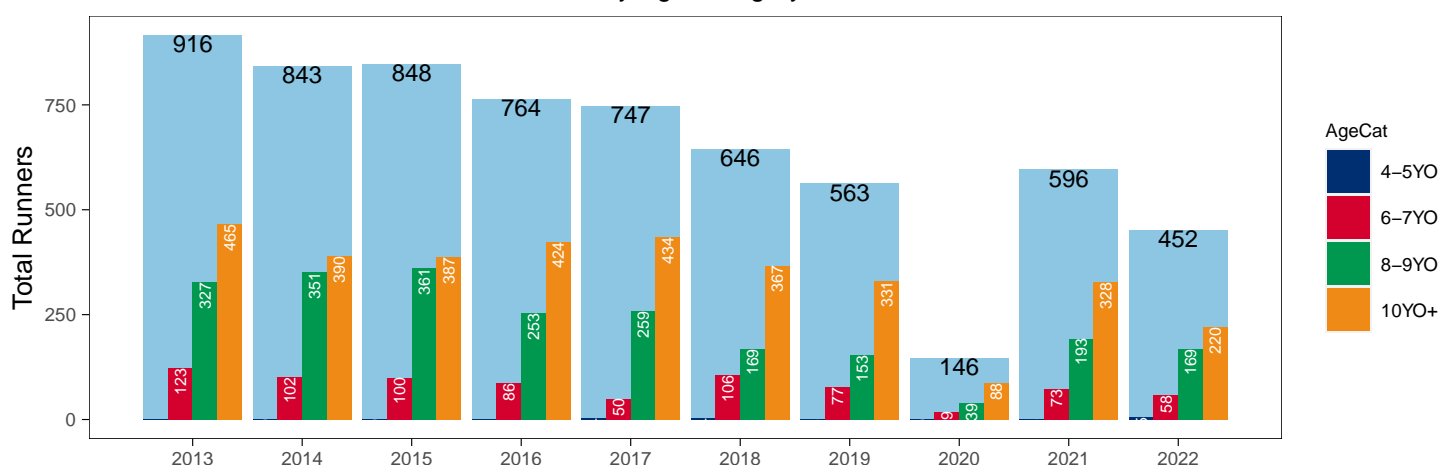
Hunter Chases

AgeCat	2013	2014	2015	2016	2017	2018	2019	2020	2021	2022	vs. Last Year	vs. Pre-Covid
4-5YO	1			1	4	4	2		2	5	+3 / +150.0%	+3 / +150.0%
6-7YO	123	102	100	86	50	106	77	19	73	58	-15 / -20.5%	-19 / -24.7%
8-9YO	327	351	361	253	259	169	153	39	193	169	-24 / -12.4%	+16 / +10.5%
10YO+	465	390	387	424	434	367	331	88	328	220	-108 / -32.9%	-111 / -33.5%
Total	916	843	848	764	747	646	563	146	596	452	-144 / -24.2%	-111 / -19.7%

'vs. Pre-Covid' is comparison between 2022 and 2019

YTD Total Hunter Chase Runners by Age

Total Runners in GB Hunter Chases shown by Age Category and Total



Year to Date Total Runners by Country Trained

Code	Country	2013	2014	2015	2016	2017	2018	2019	2020	2021	2022
Flat	GB	51816	50874	50657	51411	52656	53722	53536	41710	52610	50891
	IRE	393	353	427	496	624	740	711	246	358	299
	Other	101	91	133	78	80	63	71	27	34	64
Jump	GB	23700	22410	22754	22640	22870	22662	22303	16081	23904	21729
	IRE	590	636	697	814	714	584	659	270	471	744
	Other	2	3	5	9	13	10	7	10	4	2
Overall	GB	75516	73284	73411	74051	75526	76384	75839	57791	76514	72620
	IRE	983	989	1124	1310	1338	1324	1370	516	829	1043
	Other	103	94	138	87	93	73	78	37	38	66

Year to Date GB Trained Runners Racing Abroad

Code	Country	2013	2014	2015	2016	2017	2018	2019	2020	2021	2022
Flat	IRE	131	141	183	188	187	155	164	56	57	99
	FR	303	350	334	370	448	481	521	265	216	253
	GNV	20	20	19	22	30	33	47	20	10	17
	UAE	351	326	289	208	278	276	303	281	248	276
	BAH										41
	KSA								15	21	22
	Other	94	139	138	118	105	120	119	42	56	65
	Total	899	976	963	906	1048	1065	1154	679	608	773
Jump	IRE	46	93	93	92	82	56	72	7	24	30
	FR	54	28	29	51	28	12	48	70	115	111
	Other	12	10	8	10	8	7	10		8	14
	Total	112	131	130	153	118	75	130	77	147	155

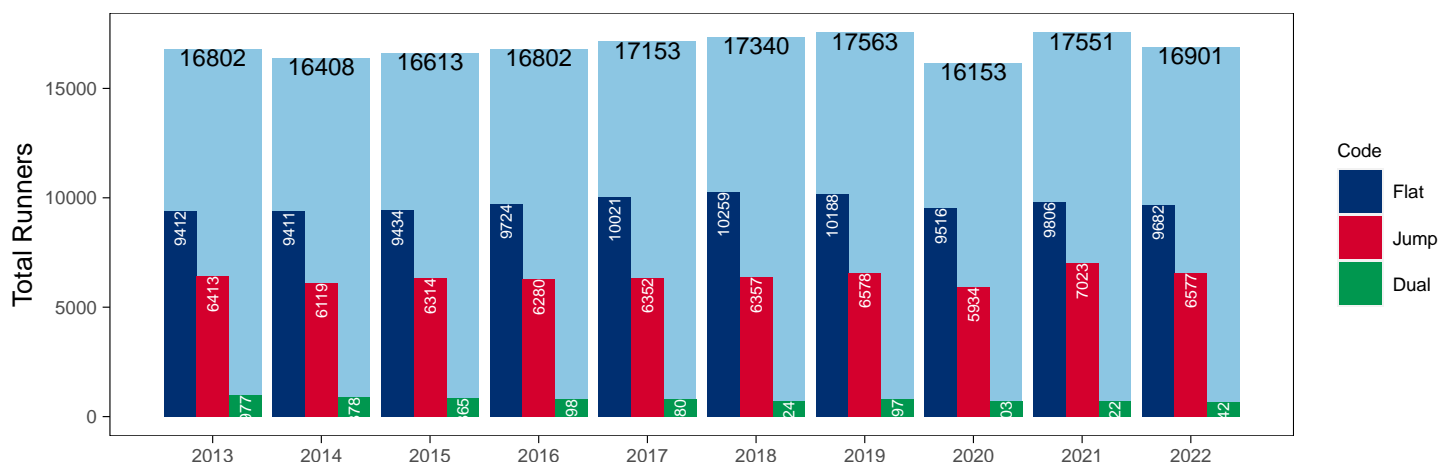
Year to Date Individual Runners

Code	2013	2014	2015	2016	2017	2018	2019	2020	2021	2022	vs. Last Year	vs. Pre-Covid
Flat	9412	9411	9434	9724	10021	10259	10188	9516	9806	9682	-124 / -1.3%	-506 / -5.0%
Jump	6413	6119	6314	6280	6352	6357	6578	5934	7023	6577	-446 / -6.4%	-1 / 0.0%
Dual	977	878	865	798	780	724	797	703	722	642	-80 / -11.1%	-155 / -19.4%
Overall	16802	16408	16613	16802	17153	17340	17563	16153	17551	16901	-650 / -3.7%	-662 / -3.8%

'vs. Pre-Covid' is comparison between 2022 and 2019

YTD Individual Runners

Individual Runners in GB Races, shown by Code and Total



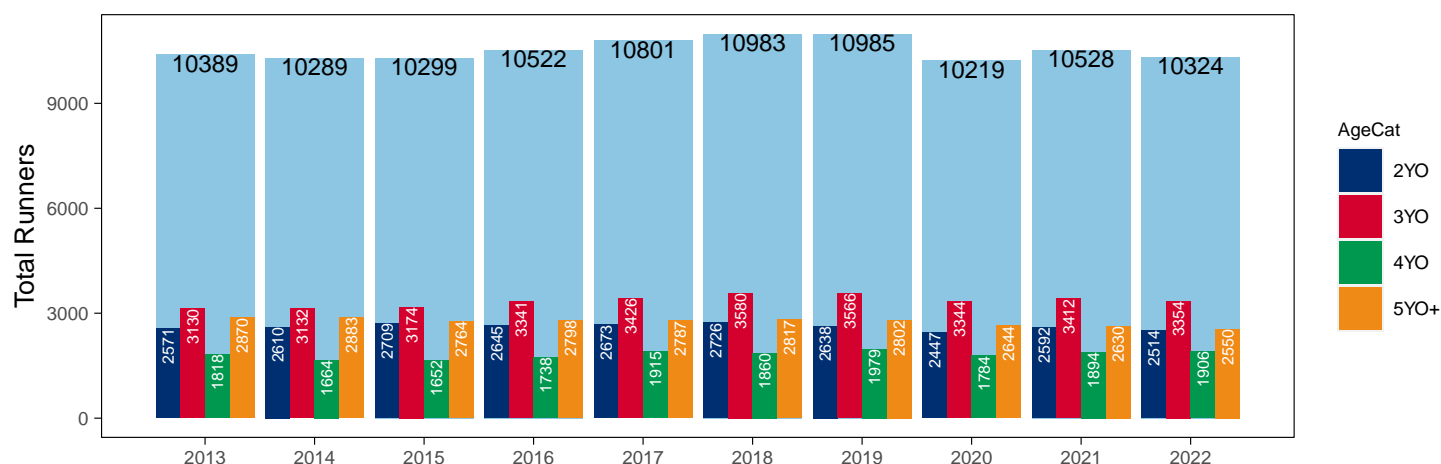
Flat

AgeCat	2013	2014	2015	2016	2017	2018	2019	2020	2021	2022	vs. Last Year	vs. Pre-Covid
2YO	2571	2610	2709	2645	2673	2726	2638	2447	2592	2514	-78 / -3.0%	-124 / -4.7%
3YO	3130	3132	3174	3341	3426	3580	3566	3344	3412	3354	-58 / -1.7%	-212 / -5.9%
4YO	1818	1664	1652	1738	1915	1860	1979	1784	1894	1906	+12 / +0.6%	-73 / -3.7%
5YO+	2870	2883	2764	2798	2787	2817	2802	2644	2630	2550	-80 / -3.0%	-252 / -9.0%
Total	10389	10289	10299	10522	10801	10983	10985	10219	10528	10324	-204 / -1.9%	-661 / -6.0%

'vs. Pre-Covid' is comparison between 2022 and 2019

YTD Individual Flat Runners by Age

Individual Runners in GB Flat Races, shown by Age Category and Total



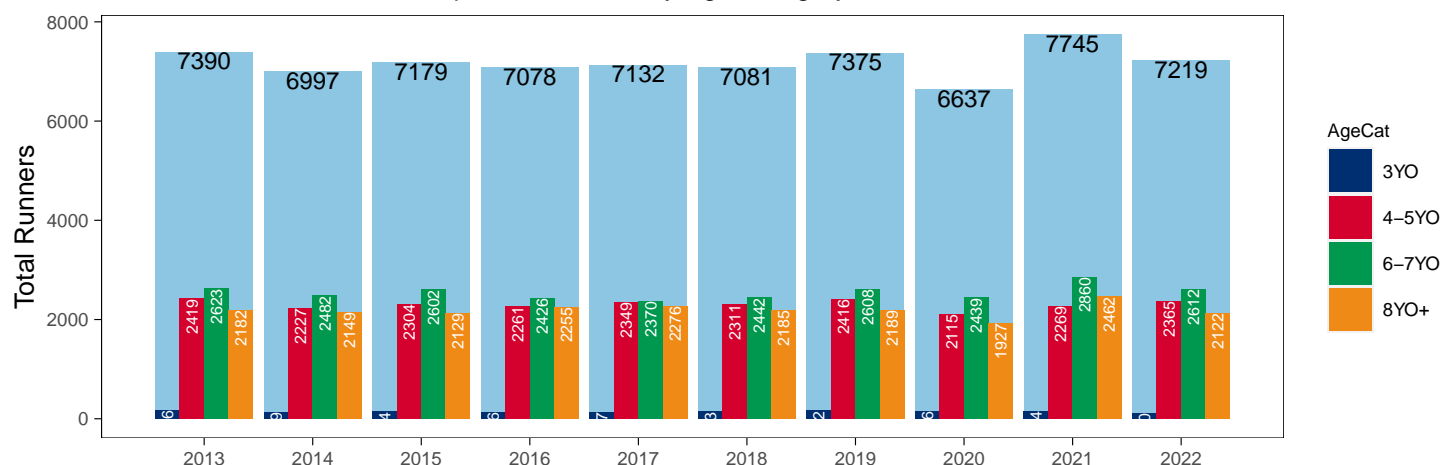
Jump

AgeCat	2013	2014	2015	2016	2017	2018	2019	2020	2021	2022	vs. Last Year	vs. Pre-Covid
3YO	166	139	144	136	137	143	162	156	154	120	-34 / -22.1%	-42 / -25.9%
4-5YO	2419	2227	2304	2261	2349	2311	2416	2115	2269	2365	+96 / +4.2%	-51 / -2.1%
6-7YO	2623	2482	2602	2426	2370	2442	2608	2439	2860	2612	-248 / -8.7%	+4 / +0.2%
8YO+	2182	2149	2129	2255	2276	2185	2189	1927	2462	2122	-340 / -13.8%	-67 / -3.1%
Total	7390	6997	7179	7078	7132	7081	7375	6637	7745	7219	-526 / -6.8%	-156 / -2.1%

'vs. Pre-Covid' is comparison between 2022 and 2019

YTD Individual Jump Runners by Age

Individual Runners in GB Jump Races, shown by Age Category and Total



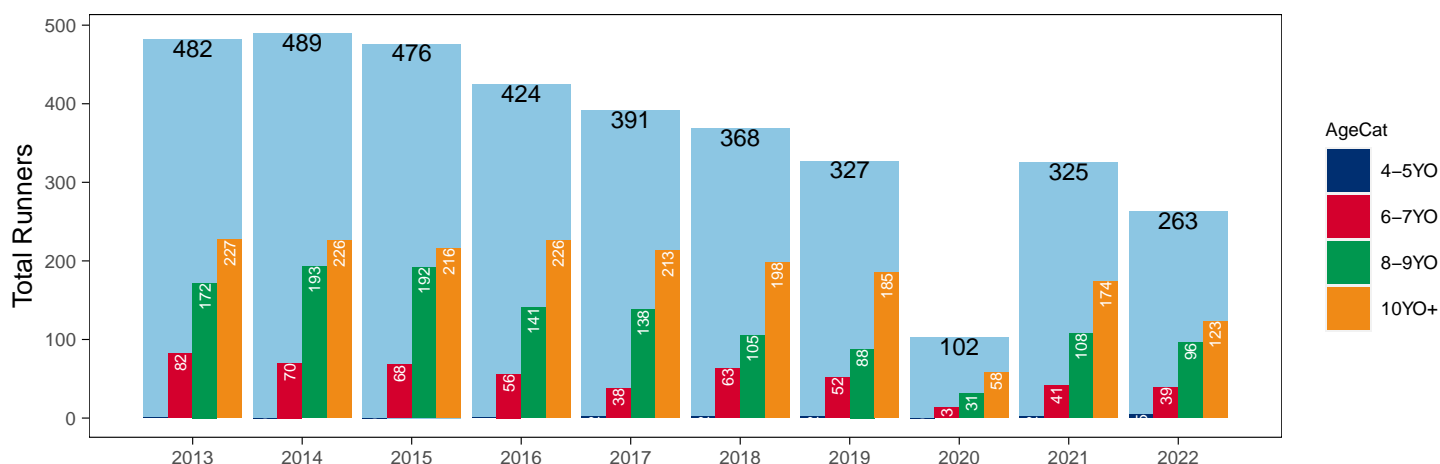
Hunter Chases

AgeCat	2013	2014	2015	2016	2017	2018	2019	2020	2021	2022	vs. Last Year	vs. Pre-Covid
4-5YO	1			1	2	2	2		2	5	+3 / +150.0%	+3 / +150.0%
6-7YO	82	70	68	56	38	63	52	13	41	39	-2 / -4.9%	-13 / -25.0%
8-9YO	172	193	192	141	138	105	88	31	108	96	-12 / -11.1%	+8 / +9.1%
10YO+	227	226	216	226	213	198	185	58	174	123	-51 / -29.3%	-62 / -33.5%
Total	482	489	476	424	391	368	327	102	325	263	-62 / -19.1%	-64 / -19.6%

'vs. Pre-Covid' is comparison between 2022 and 2019

YTD Individual Hunter Chase Runners by Age

Individual Runners in GB Hunter Chases shown by Age Category and Total



Year to Date Individual Runners by Country Trained

Code	Country	2013	2014	2015	2016	2017	2018	2019	2020	2021	2022
Flat	GB	9118	9132	9119	9407	9645	9837	9746	9326	9543	9425
	IRE	234	217	232	274	332	386	400	174	243	213
	Other	70	67	99	64	63	56	59	23	29	55
Jump	GB	6043	5745	5916	5831	5947	5974	6149	5692	6678	6073
	IRE	391	393	420	466	422	392	444	239	352	527
	Other	2	3	5	9	9	9	6	10	4	2
Dual	GB	966	870	848	783	762	703	782	697	715	632
	IRE	8	7	14	9	12	18	14	5	5	8
	Other					2					
Overall	GB	16127	15747	15883	16021	16354	16514	16677	15715	16936	16130
	IRE	633	617	666	749	766	796	858	418	600	748
	Other	72	70	104	73	74	65	65	33	33	57

Individual horses may appear under multiple countries.

Frequency of Runs

Year to Date Average Runs per Horse

Code	2013	2014	2015	2016	2017	2018	2019	2020	2021	2022
Flat	5.04	4.99	4.97	4.94	4.94	4.96	4.94	4.11	5.03	4.96
Jump	3.29	3.29	3.27	3.31	3.31	3.28	3.11	2.47	3.15	3.11
Overall	4.56	4.53	4.49	4.49	4.49	4.49	4.40	3.61	4.41	4.36

Year to Date Proportion of Horses by Count of Runs

Runs	2013	2014	2015	2016	2017	2018	2019	2020	2021	2022
Flat										
1	1566 (15.1%)	1505 (14.6%)	1520 (14.8%)	1587 (15.1%)	1615 (15.0%)	1683 (15.3%)	1754 (16.0%)	1745 (17.1%)	1518 (14.4%)	1523 (14.8%)
2	1427 (13.7%)	1480 (14.4%)	1409 (13.7%)	1372 (13.0%)	1472 (13.6%)	1435 (13.1%)	1506 (13.7%)	1696 (16.6%)	1350 (12.8%)	1346 (13.0%)
3	1396 (13.4%)	1332 (12.9%)	1428 (13.9%)	1419 (13.5%)	1448 (13.4%)	1505 (13.7%)	1444 (13.1%)	1631 (16.0%)	1402 (13.3%)	1407 (13.6%)
4	1184 (11.4%)	1159 (11.3%)	1200 (11.7%)	1205 (11.5%)	1238 (11.5%)	1275 (11.6%)	1228 (11.2%)	1368 (13.4%)	1209 (11.5%)	1229 (11.9%)
5+	4816 (46.4%)	4813 (46.8%)	4742 (46.0%)	4939 (46.9%)	5028 (46.6%)	5085 (46.3%)	5053 (46.0%)	3779 (37.0%)	5049 (48.0%)	4819 (46.7%)
Jump										
1	1912 (25.9%)	1801 (25.7%)	1840 (25.6%)	1762 (24.9%)	1848 (25.9%)	1751 (24.7%)	2020 (27.4%)	2136 (32.2%)	1990 (25.7%)	1996 (27.6%)
2	1471 (19.9%)	1355 (19.4%)	1431 (19.9%)	1398 (19.8%)	1349 (18.9%)	1328 (18.8%)	1585 (21.5%)	1780 (26.8%)	1646 (21.3%)	1454 (20.1%)
3	1222 (16.5%)	1156 (16.5%)	1205 (16.8%)	1178 (16.6%)	1150 (16.1%)	1218 (17.2%)	1222 (16.6%)	1326 (20.0%)	1406 (18.2%)	1269 (17.6%)
4	935 (12.7%)	950 (13.6%)	964 (13.4%)	941 (13.3%)	975 (13.7%)	1024 (14.5%)	933 (12.7%)	746 (11.2%)	1010 (13.0%)	967 (13.4%)
5+	1850 (25.0%)	1735 (24.8%)	1739 (24.2%)	1799 (25.4%)	1810 (25.4%)	1760 (24.9%)	1615 (21.9%)	649 (9.8%)	1693 (21.9%)	1533 (21.2%)
All Races										
1	2926 (17.4%)	2824 (17.2%)	2902 (17.5%)	2936 (17.5%)	3013 (17.6%)	3032 (17.5%)	3325 (18.9%)	3403 (21.1%)	3097 (17.6%)	3157 (18.7%)
2	2572 (15.3%)	2555 (15.6%)	2555 (15.4%)	2519 (15.0%)	2602 (15.2%)	2533 (14.6%)	2826 (16.1%)	3210 (19.9%)	2769 (15.8%)	2593 (15.3%)
3	2416 (14.4%)	2320 (14.1%)	2449 (14.7%)	2411 (14.3%)	2431 (14.2%)	2566 (14.8%)	2505 (14.3%)	2843 (17.6%)	2663 (15.2%)	2542 (15.0%)
4	2037 (12.1%)	1988 (12.1%)	2069 (12.5%)	2056 (12.2%)	2116 (12.3%)	2214 (12.8%)	2090 (11.9%)	2075 (12.8%)	2123 (12.1%)	2119 (12.5%)
5+	6851 (40.8%)	6721 (41.0%)	6638 (40.0%)	6880 (40.9%)	6991 (40.8%)	6995 (40.3%)	6817 (38.8%)	4622 (28.6%)	6899 (39.3%)	6490 (38.4%)

Year to Date Median Days Between Runs

Code	2013	2014	2015	2016	2017	2018	2019	2020	2021	2022
Flat	20	21	21	21	22	21	21	21	21	22
Jump	30	29	30	30	30	31	32	36	34	31
Overall	22	23	24	24	24	24	24	25	25	25

Horses Population by Gender

October 2022 Horses in Training Snapshot by Gender versus Previous Years

All Horses

Sex	2013	2014	2015	2016	2017	2018	2019	2020	2021	2022
Colt/Entire	1993 (14.5%)	2028 (14.7%)	2059 (14.5%)	2019 (14.1%)	2179 (14.5%)	2021 (13.1%)	2018 (13.1%)	2024 (12.7%)	1864 (12.2%)	1811 (11.9%)
Gelding	7670 (55.7%)	7649 (55.6%)	7959 (56.0%)	8105 (56.7%)	8370 (55.6%)	8708 (56.7%)	8625 (56.1%)	9139 (57.2%)	8780 (57.3%)	8643 (56.8%)
Filly/Mare	4113 (29.9%)	4088 (29.7%)	4194 (29.5%)	4164 (29.1%)	4514 (30.0%)	4640 (30.2%)	4715 (30.7%)	4821 (30.2%)	4686 (30.6%)	4765 (31.3%)
Rig	2 (0.0%)	0 (0.0%)	5 (0.0%)	4 (0.0%)	4 (0.0%)	2 (0.0%)	3 (0.0%)	3 (0.0%)	1 (0.0%)	1 (0.0%)
Total	13778 (100.0%)	13765 (100.0%)	14217 (100.0%)	14292 (100.0%)	15067 (100.0%)	15371 (100.0%)	15361 (100.0%)	15987 (100.0%)	15331 (100.0%)	15220 (100.0%)

Flat (including Dual)

Sex	2013	2014	2015	2016	2017	2018	2019	2020	2021	2022
Colt/Entire	1860 (22.0%)	1840 (22.1%)	1869 (21.6%)	1852 (21.1%)	1926 (20.3%)	1918 (20.1%)	1846 (19.8%)	1856 (19.8%)	1660 (18.3%)	1631 (17.5%)
Gelding	3486 (41.3%)	3447 (41.4%)	3657 (42.2%)	3803 (43.3%)	4203 (44.3%)	4198 (44.1%)	4149 (44.4%)	4192 (44.7%)	4125 (45.5%)	4298 (46.1%)
Filly/Mare	3099 (36.7%)	3033 (36.5%)	3139 (36.2%)	3128 (35.6%)	3353 (35.3%)	3407 (35.8%)	3345 (35.8%)	3337 (35.5%)	3283 (36.2%)	3401 (36.5%)
Rig	1 (0.0%)	0 (0.0%)	3 (0.0%)	4 (0.0%)	4 (0.0%)	2 (0.0%)	2 (0.0%)	2 (0.0%)	0 (0.0%)	0 (0.0%)
Total	8446 (100.0%)	8320 (100.0%)	8668 (100.0%)	8787 (100.0%)	9486 (100.0%)	9525 (100.0%)	9342 (100.0%)	9387 (100.0%)	9068 (100.0%)	9330 (100.0%)

Jump (including Dual)

Sex	2013	2014	2015	2016	2017	2018	2019	2020	2021	2022
Colt/Entire	41 (0.7%)	49 (0.9%)	44 (0.8%)	24 (0.4%)	25 (0.4%)	29 (0.5%)	26 (0.4%)	33 (0.5%)	39 (0.6%)	34 (0.5%)
Gelding	4613 (81.1%)	4578 (80.2%)	4695 (80.8%)	4704 (81.4%)	4750 (79.4%)	4875 (78.6%)	4855 (77.4%)	5398 (77.7%)	5014 (77.9%)	4806 (76.9%)
Filly/Mare	1036 (18.2%)	1082 (19.0%)	1069 (18.4%)	1048 (18.1%)	1206 (20.2%)	1299 (20.9%)	1392 (22.2%)	1514 (21.8%)	1385 (21.5%)	1412 (22.6%)
Rig	1 (0.0%)	0 (0.0%)	1 (0.0%)	0 (0.0%)	0 (0.0%)	0 (0.0%)	1 (0.0%)	1 (0.0%)	1 (0.0%)	1 (0.0%)
Total	5691 (100.0%)	5709 (100.0%)	5809 (100.0%)	5776 (100.0%)	5981 (100.0%)	6203 (100.0%)	6274 (100.0%)	6946 (100.0%)	6439 (100.0%)	6253 (100.0%)

Hunter Chasers

Sex	2013	2014	2015	2016	2017	2018	2019	2020	2021	2022
Colt/Entire	0 (-)	0 (-)	0 (-)	0 (0.0%)	0 (-)	0 (-)	0 (-)	0 (0.0%)	0 (0.0%)	0 (0.0%)
Gelding	0 (-)	0 (-)	0 (-)	1 (100.0%)	0 (-)	0 (-)	0 (-)	187 (82.0%)	42 (89.4%)	13 (100.0%)
Filly/Mare	0 (-)	0 (-)	0 (-)	0 (0.0%)	0 (-)	0 (-)	0 (-)	41 (18.0%)	5 (10.6%)	0 (0.0%)
Rig	0 (-)	0 (-)	0 (-)	0 (0.0%)	0 (-)	0 (-)	0 (-)	0 (0.0%)	0 (0.0%)	0 (0.0%)
Total	0 (-)	0 (-)	0 (-)	1 (100.0%)	0 (-)	0 (-)	0 (-)	228 (100.0%)	47 (100.0%)	13 (100.0%)

Year to Date Total Runners by Gender

Sex	2013	2014	2015	2016	2017	2018	2019	2020	2021	2022
All Races										
Colt/Entire	8644 (11.3%)	8679 (11.7%)	8481 (11.4%)	8278 (11.0%)	8364 (10.9%)	8777 (11.3%)	7922 (10.3%)	6652 (11.4%)	7632 (9.9%)	6875 (9.3%)
Gelding	46773 (61.1%)	44561 (59.9%)	45468 (60.9%)	46370 (61.5%)	47482 (61.7%)	47061 (60.5%)	46896 (60.7%)	34719 (59.5%)	47394 (61.2%)	45307 (61.5%)
Filly/Mare	21185 (27.7%)	21126 (28.4%)	20721 (27.7%)	20781 (27.5%)	21099 (27.4%)	21930 (28.2%)	22452 (29.1%)	16968 (29.1%)	22348 (28.9%)	21538 (29.2%)
Rig	0 (0.0%)	1 (0.0%)	3 (0.0%)	19 (0.0%)	12 (0.0%)	13 (0.0%)	17 (0.0%)	5 (0.0%)	7 (0.0%)	9 (0.0%)
Flat										
Colt/Entire	8565 (16.4%)	8577 (16.7%)	8420 (16.4%)	8243 (15.9%)	8321 (15.6%)	8744 (16.0%)	7889 (14.5%)	6624 (15.8%)	7571 (14.3%)	6846 (13.4%)
Gelding	26520 (50.7%)	25685 (50.1%)	26325 (51.4%)	27062 (52.1%)	28151 (52.8%)	28529 (52.3%)	28835 (53.1%)	21828 (52.0%)	28246 (53.3%)	27609 (53.9%)
Filly/Mare	17225 (32.9%)	17056 (33.2%)	16470 (32.2%)	16661 (32.0%)	16876 (31.6%)	17239 (31.6%)	17582 (32.4%)	13530 (32.2%)	17182 (32.4%)	16799 (32.8%)
Rig	0 (0.0%)	0 (0.0%)	2 (0.0%)	19 (0.0%)	12 (0.0%)	13 (0.0%)	12 (0.0%)	1 (0.0%)	3 (0.0%)	0 (0.0%)
All Jump										
Colt/Entire	79 (0.3%)	102 (0.4%)	61 (0.3%)	35 (0.1%)	43 (0.2%)	33 (0.1%)	33 (0.1%)	28 (0.2%)	61 (0.3%)	29 (0.1%)
Gelding	20253 (83.4%)	18876 (81.9%)	19143 (81.6%)	19308 (82.3%)	19331 (81.9%)	18532 (79.7%)	18061 (78.6%)	12891 (78.8%)	19148 (78.5%)	17698 (78.7%)
Filly/Mare	3960 (16.3%)	4070 (17.7%)	4251 (18.1%)	4120 (17.6%)	4223 (17.9%)	4691 (20.2%)	4870 (21.2%)	3438 (21.0%)	5166 (21.2%)	4739 (21.1%)
Rig	0 (0.0%)	1 (0.0%)	1 (0.0%)	0 (0.0%)	0 (0.0%)	0 (0.0%)	5 (0.0%)	4 (0.0%)	4 (0.0%)	9 (0.0%)
Chase										
Colt/Entire	7 (0.1%)	2 (0.0%)	0 (0.0%)	1 (0.0%)	0 (0.0%)	0 (0.0%)	0 (0.0%)	0 (0.0%)	0 (0.0%)	0 (0.0%)
Gelding	7176 (92.9%)	6827 (92.7%)	6894 (93.1%)	7012 (92.8%)	7089 (92.7%)	6668 (90.8%)	6515 (90.0%)	4590 (90.1%)	6749 (89.7%)	6426 (89.4%)
Filly/Mare	539 (7.0%)	533 (7.2%)	512 (6.9%)	539 (7.1%)	561 (7.3%)	679 (9.2%)	717 (9.9%)	499 (9.8%)	770 (10.2%)	749 (10.4%)
Rig	0 (0.0%)	0 (0.0%)	0 (0.0%)	0 (0.0%)	0 (0.0%)	0 (0.0%)	3 (0.0%)	4 (0.1%)	4 (0.1%)	9 (0.1%)
Hurdle										
Colt/Entire	54 (0.4%)	89 (0.7%)	53 (0.4%)	31 (0.2%)	35 (0.3%)	25 (0.2%)	23 (0.2%)	15 (0.2%)	52 (0.4%)	20 (0.1%)
Gelding	11243 (81.2%)	10412 (78.4%)	10916 (78.1%)	11051 (78.9%)	10972 (78.5%)	10589 (76.5%)	10415 (75.1%)	7375 (74.9%)	10530 (74.5%)	10129 (75.4%)
Filly/Mare	2549 (18.4%)	2781 (20.9%)	3008 (21.5%)	2922 (20.9%)	2966 (21.2%)	3234 (23.4%)	3426 (24.7%)	2459 (25.0%)	3547 (25.1%)	3285 (24.5%)
Rig	0 (0.0%)	0 (0.0%)	0 (0.0%)	0 (0.0%)	0 (0.0%)	0 (0.0%)	2 (0.0%)	0 (0.0%)	0 (0.0%)	0 (0.0%)
NHF										
Colt/Entire	18 (0.7%)	11 (0.5%)	8 (0.4%)	3 (0.2%)	8 (0.4%)	8 (0.4%)	10 (0.5%)	13 (0.9%)	9 (0.3%)	9 (0.5%)
Gelding	1834 (67.3%)	1637 (68.1%)	1333 (64.3%)	1245 (65.3%)	1270 (64.3%)	1275 (61.9%)	1131 (60.5%)	926 (65.3%)	1869 (68.5%)	1143 (61.6%)
Filly/Mare	872 (32.0%)	756 (31.4%)	731 (35.3%)	659 (34.6%)	696 (35.3%)	778 (37.7%)	727 (38.9%)	480 (33.8%)	849 (31.1%)	705 (38.0%)
Rig	0 (0.0%)	1 (0.0%)	1 (0.0%)	0 (0.0%)	0 (0.0%)	0 (0.0%)	0 (0.0%)	0 (0.0%)	0 (0.0%)	0 (0.0%)
Hunter										
Colt/Entire	0 (0.0%)	0 (0.0%)	1 (0.1%)	0 (0.0%)	0 (0.0%)	0 (0.0%)	0 (0.0%)	0 (0.0%)	0 (0.0%)	0 (0.0%)
Gelding	844 (92.1%)	771 (91.5%)	799 (94.2%)	720 (94.2%)	709 (94.9%)	603 (93.3%)	522 (92.7%)	142 (97.3%)	557 (93.5%)	429 (94.9%)
Filly/Mare	72 (7.9%)	72 (8.5%)	48 (5.7%)	44 (5.8%)	38 (5.1%)	43 (6.7%)	41 (7.3%)	4 (2.7%)	39 (6.5%)	23 (5.1%)

Year to Date Individual Runners by Gender

Sex	2013	2014	2015	2016	2017	2018	2019	2020	2021	2022
All Races										
Male	11819 (70.3%)	11508 (70.1%)	11678 (70.3%)	11839 (70.5%)	12045 (70.2%)	12071 (69.6%)	12187 (69.4%)	11206 (69.4%)	12201 (69.5%)	11689 (69.2%)
Female	4983 (29.7%)	4900 (29.9%)	4935 (29.7%)	4963 (29.5%)	5108 (29.8%)	5269 (30.4%)	5376 (30.6%)	4947 (30.6%)	5350 (30.5%)	5212 (30.8%)
Flat										
Male	6601 (63.5%)	6534 (63.5%)	6582 (63.9%)	6761 (64.3%)	6959 (64.4%)	7109 (64.7%)	7077 (64.4%)	6587 (64.5%)	6738 (64.0%)	6573 (63.7%)
Female	3788 (36.5%)	3755 (36.5%)	3717 (36.1%)	3761 (35.7%)	3842 (35.6%)	3874 (35.3%)	3908 (35.6%)	3632 (35.5%)	3790 (36.0%)	3751 (36.3%)
All Jump										
Male	6003 (81.2%)	5663 (80.9%)	5780 (80.5%)	5735 (81.0%)	5727 (80.3%)	5549 (78.4%)	5740 (77.8%)	5177 (78.0%)	6028 (77.8%)	5614 (77.8%)
Female	1387 (18.8%)	1334 (19.1%)	1399 (19.5%)	1343 (19.0%)	1405 (19.7%)	1532 (21.6%)	1635 (22.2%)	1460 (22.0%)	1717 (22.2%)	1605 (22.2%)
Chase										
Male	2316 (92.1%)	2200 (92.2%)	2278 (92.2%)	2255 (92.3%)	2301 (91.1%)	2206 (89.7%)	2266 (89.3%)	2028 (88.7%)	2351 (88.4%)	2181 (88.2%)
Female	199 (7.9%)	185 (7.8%)	193 (7.8%)	187 (7.7%)	224 (8.9%)	252 (10.3%)	271 (10.7%)	259 (11.3%)	309 (11.6%)	291 (11.8%)
Hurdle										
Male	3967 (81.0%)	3695 (79.5%)	3834 (79.4%)	3832 (80.1%)	3794 (79.0%)	3702 (77.3%)	3858 (76.6%)	3382 (76.0%)	3941 (75.7%)	3768 (76.8%)
Female	929 (19.0%)	951 (20.5%)	997 (20.6%)	950 (19.9%)	1007 (21.0%)	1088 (22.7%)	1176 (23.4%)	1070 (24.0%)	1265 (24.3%)	1138 (23.2%)
NHF										
Male	1247 (70.3%)	1113 (70.8%)	903 (66.6%)	852 (67.0%)	861 (66.2%)	901 (65.5%)	803 (63.4%)	736 (67.0%)	1337 (70.4%)	811 (64.1%)
Female	526 (29.7%)	459 (29.2%)	453 (33.4%)	419 (33.0%)	440 (33.8%)	475 (34.5%)	463 (36.6%)	362 (33.0%)	561 (29.6%)	455 (35.9%)
Hunter										
Male	433 (89.8%)	447 (91.4%)	448 (94.1%)	395 (93.2%)	366 (93.6%)	339 (92.1%)	301 (92.0%)	98 (96.1%)	299 (92.0%)	243 (92.4%)
Female	49 (10.2%)	42 (8.6%)	28 (5.9%)	29 (6.8%)	25 (6.4%)	29 (7.9%)	26 (8.0%)	4 (3.9%)	26 (8.0%)	20 (7.6%)

Horses Population by Breeding

October 2022 Horses in Training Snapshot by Breeding versus Previous Years

Flat (including Dual)

Bred	Sex	2013	2014	2015	2016	2017	2018	2019	2020	2021	2022
GB	Male	2534 (30.0%)	2530 (30.4%)	2633 (30.4%)	2648 (30.1%)	2876 (30.3%)	2848 (29.9%)	2836 (30.4%)	2854 (30.4%)	2712 (29.9%)	2753 (29.5%)
	Female	1784 (21.1%)	1675 (20.1%)	1716 (19.8%)	1760 (20.0%)	1849 (19.5%)	1878 (19.7%)	1857 (19.9%)	1873 (20.0%)	1831 (20.2%)	1851 (19.8%)
	Subtotal	4318 (51.1%)	4205 (50.5%)	4349 (50.2%)	4408 (50.2%)	4725 (49.8%)	4726 (49.6%)	4693 (50.2%)	4727 (50.4%)	4543 (50.1%)	4604 (49.3%)
IRE	Male	2211 (26.2%)	2211 (26.6%)	2336 (26.9%)	2427 (27.6%)	2608 (27.5%)	2622 (27.5%)	2537 (27.2%)	2598 (27.7%)	2546 (28.1%)	2696 (28.9%)
	Female	1091 (12.9%)	1123 (13.5%)	1208 (13.9%)	1162 (13.2%)	1267 (13.4%)	1260 (13.2%)	1246 (13.3%)	1242 (13.2%)	1259 (13.9%)	1374 (14.7%)
	Subtotal	3302 (39.1%)	3334 (40.1%)	3544 (40.9%)	3589 (40.8%)	3875 (40.8%)	3882 (40.8%)	3783 (40.5%)	3840 (40.9%)	3805 (42.0%)	4070 (43.6%)
FR	Male	117 (1.4%)	150 (1.8%)	171 (2.0%)	200 (2.3%)	264 (2.8%)	286 (3.0%)	291 (3.1%)	305 (3.2%)	302 (3.3%)	319 (3.4%)
	Female	50 (0.6%)	55 (0.7%)	67 (0.8%)	76 (0.9%)	97 (1.0%)	108 (1.1%)	109 (1.2%)	113 (1.2%)	115 (1.3%)	116 (1.2%)
	Subtotal	167 (2.0%)	205 (2.5%)	238 (2.7%)	276 (3.1%)	361 (3.8%)	394 (4.1%)	400 (4.3%)	418 (4.5%)	417 (4.6%)	435 (4.7%)
USA	Male	396 (4.7%)	308 (3.7%)	310 (3.6%)	305 (3.5%)	298 (3.1%)	285 (3.0%)	264 (2.8%)	213 (2.3%)	164 (1.8%)	105 (1.1%)
	Female	155 (1.8%)	144 (1.7%)	123 (1.4%)	109 (1.2%)	115 (1.2%)	136 (1.4%)	100 (1.1%)	80 (0.9%)	52 (0.6%)	41 (0.4%)
	Subtotal	551 (6.5%)	452 (5.4%)	433 (5.0%)	414 (4.7%)	413 (4.4%)	421 (4.4%)	364 (3.9%)	293 (3.1%)	216 (2.4%)	146 (1.6%)
GNY	Male	48 (0.6%)	52 (0.6%)	55 (0.6%)	55 (0.6%)	61 (0.6%)	52 (0.5%)	50 (0.5%)	61 (0.6%)	51 (0.6%)	43 (0.5%)
	Female	11 (0.1%)	14 (0.2%)	12 (0.1%)	10 (0.1%)	14 (0.1%)	15 (0.2%)	22 (0.2%)	22 (0.2%)	24 (0.3%)	16 (0.2%)
	Subtotal	59 (0.7%)	66 (0.8%)	67 (0.8%)	65 (0.7%)	75 (0.8%)	67 (0.7%)	72 (0.8%)	83 (0.9%)	75 (0.8%)	59 (0.6%)
Other	Male	41 (0.5%)	36 (0.4%)	24 (0.3%)	24 (0.3%)	26 (0.3%)	25 (0.3%)	19 (0.2%)	19 (0.2%)	10 (0.1%)	13 (0.1%)
	Female	8 (0.1%)	22 (0.3%)	13 (0.1%)	11 (0.1%)	11 (0.1%)	10 (0.1%)	11 (0.1%)	7 (0.1%)	2 (0.0%)	3 (0.0%)
	Subtotal	49 (0.6%)	58 (0.7%)	37 (0.4%)	35 (0.4%)	37 (0.4%)	35 (0.4%)	30 (0.3%)	26 (0.3%)	12 (0.1%)	16 (0.2%)

Jump (including Dual)

Bred	Sex	2013	2014	2015	2016	2017	2018	2019	2020	2021	2022
GB	Male	1499 (26.3%)	1417 (24.8%)	1421 (24.5%)	1300 (22.5%)	1309 (21.9%)	1286 (20.7%)	1233 (19.7%)	1364 (19.6%)	1250 (19.4%)	1209 (19.3%)
	Female	649 (11.4%)	666 (11.7%)	630 (10.8%)	575 (10.0%)	625 (10.4%)	630 (10.2%)	619 (9.9%)	695 (10.0%)	639 (9.9%)	676 (10.8%)
	Subtotal	2148 (37.7%)	2083 (36.5%)	2051 (35.3%)	1875 (32.5%)	1934 (32.3%)	1916 (30.9%)	1852 (29.5%)	2059 (29.6%)	1889 (29.3%)	1885 (30.1%)
IRE	Male	2452 (43.1%)	2470 (43.3%)	2544 (43.8%)	2605 (45.1%)	2674 (44.7%)	2739 (44.2%)	2742 (43.7%)	2981 (42.9%)	2742 (42.6%)	2564 (41.0%)
	Female	327 (5.7%)	347 (6.1%)	378 (6.5%)	409 (7.1%)	497 (8.3%)	557 (9.0%)	638 (10.2%)	663 (9.5%)	611 (9.5%)	587 (9.4%)
	Subtotal	2779 (48.8%)	2817 (49.3%)	2922 (50.3%)	3014 (52.2%)	3171 (53.0%)	3296 (53.1%)	3380 (53.9%)	3644 (52.5%)	3353 (52.1%)	3151 (50.4%)
FR	Male	558 (9.8%)	579 (10.1%)	658 (11.3%)	714 (12.4%)	689 (11.5%)	789 (12.7%)	809 (12.9%)	973 (14.0%)	959 (14.9%)	976 (15.6%)
	Female	48 (0.8%)	59 (1.0%)	52 (0.9%)	57 (1.0%)	77 (1.3%)	102 (1.6%)	127 (2.0%)	146 (2.1%)	128 (2.0%)	139 (2.2%)
	Subtotal	606 (10.6%)	638 (11.2%)	710 (12.2%)	771 (13.3%)	766 (12.8%)	891 (14.4%)	936 (14.9%)	1119 (16.1%)	1087 (16.9%)	1115 (17.8%)
USA	Male	84 (1.5%)	80 (1.4%)	62 (1.1%)	43 (0.7%)	42 (0.7%)	38 (0.6%)	33 (0.5%)	36 (0.5%)	34 (0.5%)	22 (0.4%)
	Female	7 (0.1%)	4 (0.1%)	1 (0.0%)	1 (0.0%)	2 (0.0%)	4 (0.1%)	3 (0.0%)	2 (0.0%)	1 (0.0%)	NA (-)
	Subtotal	91 (1.6%)	84 (1.5%)	63 (1.1%)	44 (0.8%)	44 (0.7%)	42 (0.7%)	36 (0.6%)	38 (0.5%)	35 (0.5%)	22 (0.4%)
GNY	Male	50 (0.9%)	70 (1.2%)	51 (0.9%)	59 (1.0%)	53 (0.9%)	46 (0.7%)	59 (0.9%)	71 (1.0%)	65 (1.0%)	67 (1.1%)
	Female	3 (0.1%)	5 (0.1%)	6 (0.1%)	4 (0.1%)	3 (0.1%)	5 (0.1%)	5 (0.1%)	7 (0.1%)	5 (0.1%)	9 (0.1%)
	Subtotal	53 (0.9%)	75 (1.3%)	57 (1.0%)	63 (1.1%)	56 (0.9%)	51 (0.8%)	64 (1.0%)	78 (1.1%)	70 (1.1%)	76 (1.2%)
Other	Male	12 (0.2%)	11 (0.2%)	4 (0.1%)	7 (0.1%)	8 (0.1%)	6 (0.1%)	6 (0.1%)	7 (0.1%)	4 (0.1%)	3 (0.0%)
	Female	2 (0.0%)	1 (0.0%)	2 (0.0%)	2 (0.0%)	2 (0.0%)	1 (0.0%)	NA (-)	1 (0.0%)	1 (0.0%)	1 (0.0%)
	Subtotal	14 (0.2%)	12 (0.2%)	6 (0.1%)	9 (0.2%)	10 (0.2%)	7 (0.1%)	6 (0.1%)	8 (0.1%)	5 (0.1%)	4 (0.1%)

Year to Date Total Runners by Breeding

Flat

Bred	Sex	2013	2014	2015	2016	2017	2018	2019	2020	2021	2022
GB	Male	16294 (31.1%)	16021 (31.2%)	16504 (32.2%)	16608 (31.9%)	17189 (32.2%)	17261 (31.7%)	16840 (31.0%)	13488 (32.1%)	16572 (31.3%)	15849 (30.9%)
	Female	9866 (18.9%)	9352 (18.2%)	9060 (17.7%)	9180 (17.7%)	9157 (17.2%)	9454 (17.3%)	9693 (17.8%)	7468 (17.8%)	9577 (18.1%)	9139 (17.8%)
	Subtotal	26160 (50.0%)	25373 (49.4%)	25564 (49.9%)	25788 (49.6%)	26346 (49.4%)	26715 (49.0%)	26533 (48.8%)	20956 (49.9%)	26149 (49.3%)	24988 (48.8%)
IRE	Male	15174 (29.0%)	15012 (29.3%)	15178 (29.6%)	15665 (30.1%)	16015 (30.0%)	16665 (30.6%)	16419 (30.2%)	12443 (29.6%)	16306 (30.8%)	16268 (31.7%)
	Female	6459 (12.3%)	6705 (13.1%)	6472 (12.6%)	6612 (12.7%)	6795 (12.7%)	6756 (12.4%)	6777 (12.5%)	5330 (12.7%)	6684 (12.6%)	6828 (13.3%)
	Subtotal	21633 (41.4%)	21717 (42.3%)	21650 (42.3%)	22277 (42.9%)	22810 (42.7%)	23421 (43.0%)	23196 (42.7%)	17773 (42.3%)	22990 (43.4%)	23096 (45.1%)
FR	Male	586 (1.1%)	723 (1.4%)	941 (1.8%)	995 (1.9%)	1178 (2.2%)	1343 (2.5%)	1553 (2.9%)	1217 (2.9%)	1510 (2.8%)	1385 (2.7%)
	Female	163 (0.3%)	285 (0.6%)	294 (0.6%)	345 (0.7%)	364 (0.7%)	437 (0.8%)	503 (0.9%)	386 (0.9%)	512 (1.0%)	485 (0.9%)
	Subtotal	749 (1.4%)	1008 (2.0%)	1235 (2.4%)	1340 (2.6%)	1542 (2.9%)	1780 (3.3%)	2056 (3.8%)	1603 (3.8%)	2022 (3.8%)	1870 (3.6%)
USA	Male	2545 (4.9%)	2001 (3.9%)	1659 (3.2%)	1615 (3.1%)	1624 (3.0%)	1586 (2.9%)	1501 (2.8%)	998 (2.4%)	1004 (1.9%)	705 (1.4%)
	Female	648 (1.2%)	603 (1.2%)	480 (0.9%)	404 (0.8%)	467 (0.9%)	482 (0.9%)	448 (0.8%)	248 (0.6%)	283 (0.5%)	232 (0.5%)
	Subtotal	3193 (6.1%)	2604 (5.1%)	2139 (4.2%)	2019 (3.9%)	2091 (3.9%)	2068 (3.8%)	1949 (3.6%)	1246 (3.0%)	1287 (2.4%)	937 (1.8%)
GNY	Male	260 (0.5%)	268 (0.5%)	280 (0.5%)	300 (0.6%)	320 (0.6%)	279 (0.5%)	287 (0.5%)	240 (0.6%)	343 (0.6%)	186 (0.4%)
	Female	55 (0.1%)	63 (0.1%)	92 (0.2%)	58 (0.1%)	38 (0.1%)	70 (0.1%)	102 (0.2%)	80 (0.2%)	107 (0.2%)	90 (0.2%)
	Subtotal	315 (0.6%)	331 (0.6%)	372 (0.7%)	358 (0.7%)	358 (0.7%)	349 (0.6%)	389 (0.7%)	320 (0.8%)	450 (0.8%)	276 (0.5%)
Other	Male	226 (0.4%)	237 (0.5%)	185 (0.4%)	141 (0.3%)	158 (0.3%)	152 (0.3%)	136 (0.3%)	67 (0.2%)	85 (0.2%)	62 (0.1%)
	Female	34 (0.1%)	48 (0.1%)	72 (0.1%)	62 (0.1%)	55 (0.1%)	40 (0.1%)	59 (0.1%)	18 (0.0%)	19 (0.0%)	25 (0.0%)
	Subtotal	260 (0.5%)	285 (0.6%)	257 (0.5%)	203 (0.4%)	213 (0.4%)	192 (0.4%)	195 (0.4%)	85 (0.2%)	104 (0.2%)	87 (0.2%)

Jump

Bred	Sex	2013	2014	2015	2016	2017	2018	2019	2020	2021	2022
GB	Male	6292 (25.9%)	5784 (25.1%)	5664 (24.1%)	5295 (22.6%)	5143 (21.8%)	4866 (20.9%)	4675 (20.4%)	3199 (19.6%)	4698 (19.3%)	4058 (18.1%)
	Female	2308 (9.5%)	2388 (10.4%)	2398 (10.2%)	2135 (9.1%)	2096 (8.9%)	2236 (9.6%)	2097 (9.1%)	1437 (8.8%)	2263 (9.3%)	2080 (9.3%)
	Subtotal	8600 (35.4%)	8172 (35.5%)	8062 (34.4%)	7430 (31.7%)	7239 (30.7%)	7102 (30.5%)	6772 (29.5%)	4636 (28.3%)	6961 (28.6%)	6138 (27.3%)
IRE	Male	10880 (44.8%)	10420 (45.2%)	10599 (45.2%)	10910 (46.5%)	10964 (46.5%)	10483 (45.1%)	10186 (44.3%)	7273 (44.5%)	10624 (43.6%)	9665 (43.0%)
	Female	1379 (5.7%)	1428 (6.2%)	1628 (6.9%)	1754 (7.5%)	1838 (7.8%)	2163 (9.3%)	2356 (10.3%)	1628 (10.4%)	2349 (9.6%)	2129 (9.5%)
	Subtotal	12259 (50.5%)	11848 (51.4%)	12227 (52.1%)	12664 (54.0%)	12802 (54.3%)	12646 (54.4%)	12542 (54.6%)	8901 (54.4%)	12973 (53.2%)	11794 (52.5%)
FR	Male	2262 (9.3%)	2083 (9.0%)	2296 (9.8%)	2620 (11.2%)	2827 (12.0%)	2784 (12.0%)	2797 (12.2%)	2152 (13.2%)	3419 (14.0%)	3621 (16.1%)
	Female	215 (0.9%)	225 (1.0%)	190 (0.8%)	192 (0.8%)	265 (1.1%)	262 (1.1%)	375 (1.6%)	339 (2.1%)	510 (2.1%)	479 (2.1%)
	Subtotal	2477 (10.2%)	2308 (10.0%)	2486 (10.6%)	2812 (12.0%)	3092 (13.1%)	3046 (13.1%)	3172 (13.8%)	2491 (15.2%)	3929 (16.1%)	4100 (18.2%)
USA	Male	501 (2.1%)	391 (1.7%)	332 (1.4%)	254 (1.1%)	166 (0.7%)	173 (0.7%)	143 (0.6%)	102 (0.6%)	146 (0.6%)	93 (0.4%)
	Female	24 (0.1%)	11 (0.0%)	9 (0.0%)	4 (0.0%)	8 (0.0%)	8 (0.0%)	16 (0.1%)	21 (0.1%)	6 (0.0%)	6 (0.0%)
	Subtotal	525 (2.2%)	402 (1.7%)	341 (1.5%)	258 (1.1%)	174 (0.7%)	181 (0.8%)	159 (0.7%)	123 (0.8%)	152 (0.6%)	99 (0.4%)
GNY	Male	284 (1.2%)	244 (1.1%)	273 (1.2%)	233 (1.0%)	246 (1.0%)	218 (0.9%)	270 (1.2%)	186 (1.1%)	312 (1.3%)	290 (1.3%)
	Female	26 (0.1%)	17 (0.1%)	23 (0.1%)	20 (0.1%)	9 (0.0%)	13 (0.1%)	24 (0.1%)	11 (0.1%)	35 (0.1%)	37 (0.2%)
	Subtotal	310 (1.3%)	261 (1.1%)	296 (1.3%)	253 (1.1%)	255 (1.1%)	231 (1.0%)	294 (1.3%)	197 (1.2%)	347 (1.4%)	327 (1.5%)
Other	Male	113 (0.5%)	57 (0.2%)	41 (0.2%)	31 (0.1%)	28 (0.1%)	41 (0.2%)	28 (0.1%)	11 (0.1%)	14 (0.1%)	9 (0.0%)
	Female	8 (0.0%)	1 (0.0%)	3 (0.0%)	15 (0.1%)	7 (0.0%)	9 (0.0%)	2 (0.0%)	2 (0.0%)	3 (0.0%)	8 (0.0%)
	Subtotal	121 (0.5%)	58 (0.3%)	44 (0.2%)	46 (0.2%)	35 (0.1%)	50 (0.2%)	30 (0.1%)	13 (0.1%)	17 (0.1%)	17 (0.1%)

Year to Date Individual Runners by Breeding

Flat

Bred	Sex	2013	2014	2015	2016	2017	2018	2019	2020	2021	2022
GB	Male	3083 (29.7%)	3011 (29.3%)	3085 (30.0%)	3092 (29.4%)	3166 (29.3%)	3263 (29.7%)	3239 (29.5%)	3051 (29.9%)	3066 (29.1%)	2979 (28.9%)
	Female	2160 (20.8%)	2059 (20.0%)	2020 (19.6%)	2043 (19.4%)	2072 (19.2%)	2066 (18.8%)	2088 (19.0%)	1960 (19.2%)	2077 (19.7%)	2025 (19.6%)
	Subtotal	5243 (50.5%)	5070 (49.3%)	5105 (49.6%)	5135 (48.8%)	5238 (48.5%)	5329 (48.5%)	5327 (48.5%)	5011 (49.0%)	5143 (48.9%)	5004 (48.5%)
IRE	Male	2754 (26.5%)	2804 (27.3%)	2808 (27.3%)	2965 (28.2%)	3041 (28.2%)	3090 (28.1%)	3062 (27.9%)	2873 (28.1%)	3046 (28.9%)	3061 (29.6%)
	Female	1366 (13.1%)	1435 (13.9%)	1433 (13.9%)	1476 (14.0%)	1492 (13.8%)	1520 (13.8%)	1519 (13.8%)	1429 (14.0%)	1476 (14.0%)	1519 (14.7%)
	Subtotal	4120 (39.7%)	4239 (41.2%)	4241 (41.2%)	4441 (42.2%)	4533 (42.0%)	4610 (42.0%)	4581 (41.7%)	4302 (42.1%)	4522 (43.0%)	4580 (44.4%)
FR	Male	145 (1.4%)	165 (1.6%)	200 (1.9%)	227 (2.2%)	262 (2.4%)	321 (2.9%)	351 (3.2%)	333 (3.3%)	333 (3.2%)	319 (3.1%)
	Female	55 (0.5%)	77 (0.7%)	73 (0.7%)	93 (0.9%)	106 (1.0%)	120 (1.1%)	136 (1.2%)	121 (1.2%)	133 (1.3%)	125 (1.2%)
	Subtotal	200 (1.9%)	242 (2.4%)	273 (2.7%)	320 (3.0%)	368 (3.4%)	441 (4.0%)	487 (4.4%)	454 (4.4%)	466 (4.4%)	444 (4.3%)
USA	Male	510 (4.9%)	433 (4.2%)	378 (3.7%)	371 (3.5%)	379 (3.5%)	341 (3.1%)	325 (3.0%)	251 (2.5%)	213 (2.0%)	143 (1.4%)
	Female	176 (1.7%)	153 (1.5%)	148 (1.4%)	120 (1.1%)	141 (1.3%)	139 (1.3%)	128 (1.2%)	91 (0.9%)	73 (0.7%)	51 (0.5%)
	Subtotal	686 (6.6%)	586 (5.7%)	526 (5.1%)	491 (4.7%)	520 (4.8%)	480 (4.4%)	453 (4.1%)	342 (3.3%)	286 (2.7%)	194 (1.9%)
GNY	Male	59 (0.6%)	72 (0.7%)	73 (0.7%)	77 (0.7%)	78 (0.7%)	63 (0.6%)	67 (0.6%)	61 (0.6%)	63 (0.6%)	52 (0.5%)
	Female	18 (0.2%)	17 (0.2%)	24 (0.2%)	14 (0.1%)	14 (0.1%)	19 (0.2%)	24 (0.2%)	23 (0.2%)	26 (0.2%)	25 (0.2%)
	Subtotal	77 (0.7%)	89 (0.9%)	97 (0.9%)	91 (0.9%)	92 (0.9%)	82 (0.7%)	91 (0.8%)	84 (0.8%)	89 (0.8%)	77 (0.7%)
Other	Male	50 (0.5%)	49 (0.5%)	38 (0.4%)	29 (0.3%)	33 (0.3%)	31 (0.3%)	33 (0.3%)	18 (0.2%)	17 (0.2%)	19 (0.2%)
	Female	13 (0.1%)	14 (0.1%)	19 (0.2%)	15 (0.1%)	17 (0.2%)	10 (0.1%)	13 (0.1%)	8 (0.1%)	5 (0.0%)	6 (0.1%)
	Subtotal	63 (0.6%)	63 (0.6%)	57 (0.6%)	44 (0.4%)	50 (0.5%)	41 (0.4%)	46 (0.4%)	26 (0.3%)	22 (0.2%)	25 (0.2%)

Jump

Bred	Sex	2013	2014	2015	2016	2017	2018	2019	2020	2021	2022
GB	Male	1900 (25.7%)	1760 (25.2%)	1687 (23.5%)	1584 (22.4%)	1506 (21.1%)	1438 (20.3%)	1466 (19.9%)	1287 (19.4%)	1482 (19.1%)	1320 (18.3%)
	Female	822 (11.1%)	788 (11.3%)	788 (11.0%)	709 (10.0%)	697 (9.8%)	721 (10.2%)	704 (9.5%)	618 (9.3%)	767 (9.9%)	705 (9.8%)
	Subtotal	2722 (36.8%)	2548 (36.4%)	2475 (34.5%)	2293 (32.4%)	2203 (30.9%)	2159 (30.5%)	2170 (29.4%)	1905 (28.7%)	2249 (29.0%)	2025 (28.1%)
IRE	Male	3178 (43.0%)	3081 (44.0%)	3181 (44.3%)	3192 (45.1%)	3206 (45.0%)	3134 (44.3%)	3226 (43.7%)	2878 (43.4%)	3287 (42.4%)	3049 (42.2%)
	Female	479 (6.5%)	476 (6.8%)	534 (7.4%)	553 (7.8%)	608 (8.5%)	690 (9.7%)	777 (10.5%)	678 (10.2%)	775 (10.0%)	709 (9.8%)
	Subtotal	3657 (49.5%)	3557 (50.8%)	3715 (51.7%)	3745 (52.9%)	3814 (53.5%)	3824 (54.0%)	4003 (54.3%)	3556 (53.6%)	4062 (52.4%)	3758 (52.1%)
FR	Male	675 (9.1%)	626 (8.9%)	723 (10.1%)	800 (11.3%)	875 (12.3%)	864 (12.2%)	921 (12.5%)	890 (13.4%)	1131 (14.6%)	1131 (15.7%)
	Female	66 (0.9%)	61 (0.9%)	64 (0.9%)	68 (1.0%)	89 (1.2%)	110 (1.6%)	142 (1.9%)	152 (2.3%)	162 (2.1%)	174 (2.4%)
	Subtotal	741 (10.0%)	687 (9.8%)	787 (11.0%)	868 (12.3%)	964 (13.5%)	974 (13.8%)	1063 (14.4%)	1042 (15.7%)	1293 (16.7%)	1305 (18.1%)
USA	Male	147 (2.0%)	110 (1.6%)	98 (1.4%)	72 (1.0%)	54 (0.8%)	50 (0.7%)	45 (0.6%)	38 (0.6%)	41 (0.5%)	31 (0.4%)
	Female	11 (0.1%)	4 (0.1%)	4 (0.1%)	2 (0.0%)	3 (0.0%)	4 (0.1%)	5 (0.1%)	5 (0.1%)	2 (0.0%)	2 (0.0%)
	Subtotal	158 (2.1%)	114 (1.6%)	102 (1.4%)	74 (1.0%)	57 (0.8%)	54 (0.8%)	50 (0.7%)	43 (0.6%)	43 (0.6%)	33 (0.5%)
GNY	Male	70 (0.9%)	68 (1.0%)	79 (1.1%)	81 (1.1%)	78 (1.1%)	55 (0.8%)	72 (1.0%)	78 (1.2%)	83 (1.1%)	81 (1.1%)
	Female	6 (0.1%)	4 (0.1%)	7 (0.1%)	7 (0.1%)	5 (0.1%)	5 (0.1%)	6 (0.1%)	5 (0.1%)	10 (0.1%)	13 (0.2%)
	Subtotal	76 (1.0%)	72 (1.0%)	86 (1.2%)	88 (1.2%)	83 (1.2%)	60 (0.8%)	78 (1.1%)	83 (1.3%)	93 (1.2%)	94 (1.3%)
Other	Male	33 (0.4%)	18 (0.3%)	12 (0.2%)	6 (0.1%)	8 (0.1%)	8 (0.1%)	10 (0.1%)	6 (0.1%)	4 (0.1%)	2 (0.0%)
	Female	3 (0.0%)	1 (0.0%)	2 (0.0%)	4 (0.1%)	3 (0.0%)	2 (0.0%)	1 (0.0%)	2 (0.0%)	1 (0.0%)	2 (0.0%)
	Subtotal	36 (0.5%)	19 (0.3%)	14 (0.2%)	10 (0.1%)	11 (0.2%)	10 (0.1%)	11 (0.1%)	8 (0.1%)	5 (0.1%)	4 (0.1%)