

Horse Population Report

Updated on 30 September 2022



Introduction

Welcome to the latest update on the Racehorse Population from the British Horseracing Authority.

The aim of this document is to give stakeholders and the wider Public an insight into the current state of the Horse Population in Great Britain. It is hoped that this transparency will ensure that all decision makers have access to the key data required to help British Racing deliver a Competitive and Compelling product to stakeholders, racegoers and the wider public.

If you have any questions regarding the content of this report or suggestions for how it could be improved further, please contact Joe Yates – jyates@britishhorseracing.com

Definitions

This report uses the Horses in Training returns from the Weatherby's Racing Administration System, this is completed by trainers and should be updated whenever a horse enters or leaves training in their care as part of the conditions of their licence.

Horses in Training

Unless otherwise stated, snapshots of Horses in Training will be from the 15th day of the month in question and year to date figures will be up to and including the date titled at the front of the report.

Horses' ratings will be taken from the most recently published ratings by the BHA Handicapping Team, which is currently at 7am each Tuesday morning. For example, if looking at the Horses in a particular rating band for July 2011, the horses in training number will be from Friday 15th July 2011 and ratings, where possible, will be assigned to each horse from the ratings published by the BHA Handicappers on Tuesday 12th July 2011.

The Gender of a horse will be taken from the reporting date in question, regardless of whether this has since changed. In the case of YTD reporting, where a horse's gender or training type has changed in the year-to-date period, the most recent is taken.

This report does not count any horses that are temporarily racing abroad for GB Trainers at the time of reporting.

Yearlings are not included in total counts of flat and/or dual horses but will be sometimes shown separately for information purposes.

Yearlings and two-year-olds are not included in total counts of jump horses or counts of jump horses that include dual horses but will be sometimes shown separately for information purposes.

Yearlings, two-year-olds and three-year-olds are not included in total counts of Hunter Chasers but will be sometimes shown separately for information purposes.

Hunter Chasers are not included in any counts of Jump Horses or Total figures but will be sometimes shown separately for information purposes.

Runners

Unless otherwise specified, Total Runners and Individual Runners metrics only counts runners that ran in GB races including any voided races. Withdrawn horses are not included.

Hunter Chases are not included in this section but will be sometimes shown separately for information purposes.

Total Runners is a count of all runners in races, whilst individual runners only counts each individual horse once.

Monthly Horses in Training

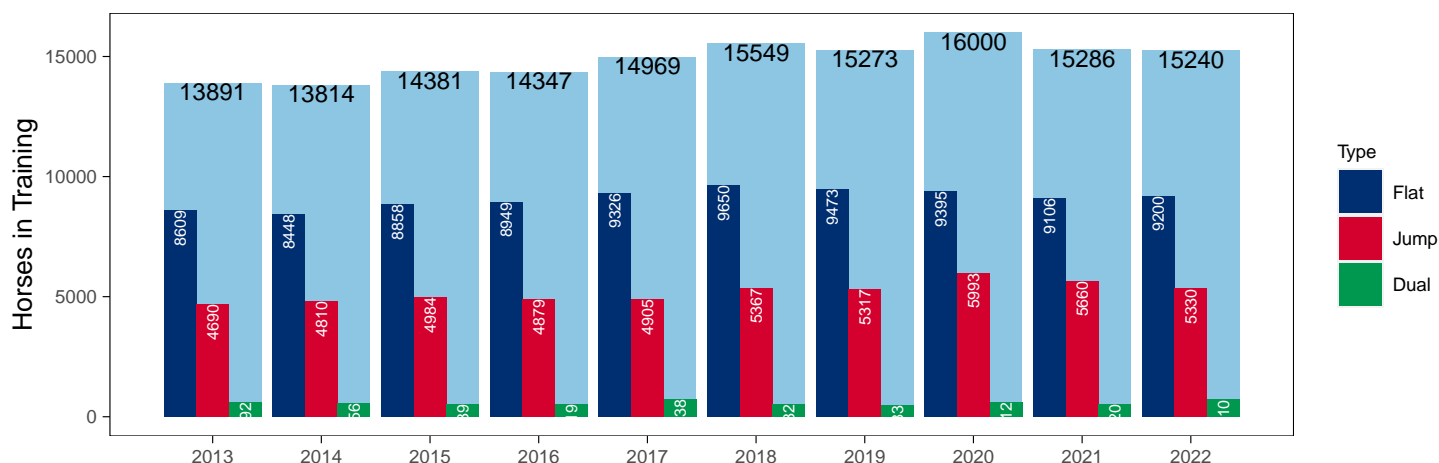
September 2022 Horses in Training Snapshot versus Previous Years

Type	2013	2014	2015	2016	2017	2018	2019	2020	2021	2022	vs. Last Year	vs. Pre-Covid
Flat	8609	8448	8858	8949	9326	9650	9473	9395	9106	9200	+94 / +1.0%	-273 / -2.9%
Jump	4690	4810	4984	4879	4905	5367	5317	5993	5660	5330	-330 / -5.8%	+13 / +0.2%
Dual	592	556	539	519	738	532	483	612	520	710	+190 / +36.5%	+227 / +47.0%
Hunter	1	0	0	0	0	0	0	0	1071	1180	+109 / +10.2%	+1180 / +Inf
Total	13891	13814	14381	14347	14969	15549	15273	16000	15286	15240	-46 / -0.3%	-33 / -0.2%

'vs. Pre-Covid' is comparison between 2022 and 2019

Snapshot of Total Horses in Training in September

Horses in Training in September, shown by Training Type



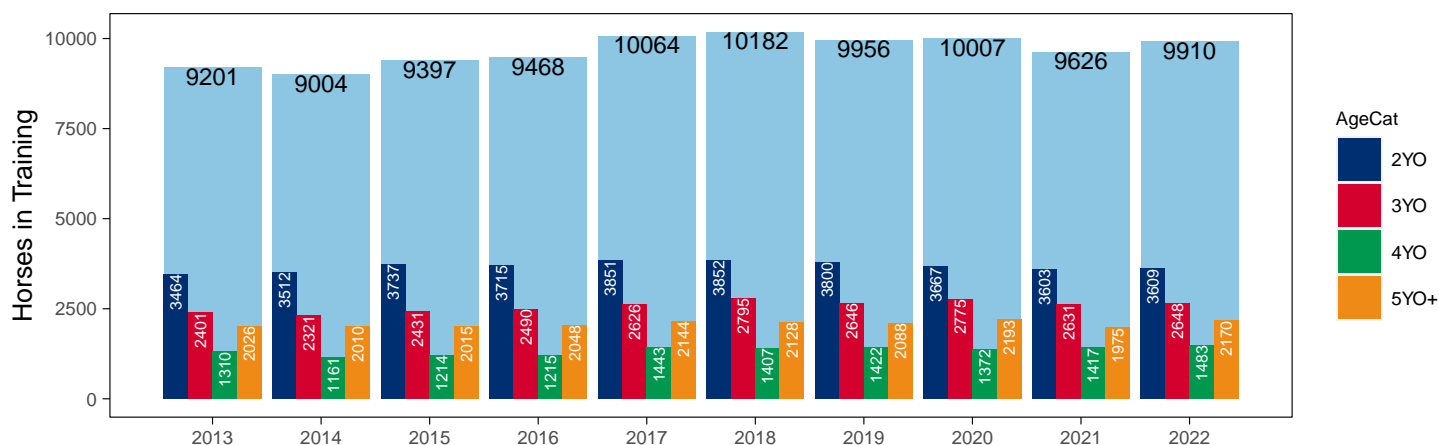
Flat (including Dual)

AgeCat	2013	2014	2015	2016	2017	2018	2019	2020	2021	2022	vs. Last Year	vs. Pre-Covid
2YO	3464	3512	3737	3715	3851	3852	3800	3667	3603	3609	+6 / +0.2%	-191 / -5.0%
3YO	2401	2321	2431	2490	2626	2795	2646	2775	2631	2648	+17 / +0.6%	+2 / +0.1%
4YO	1310	1161	1214	1215	1443	1407	1422	1372	1417	1483	+66 / +4.7%	+61 / +4.3%
5YO+	2026	2010	2015	2048	2144	2128	2088	2193	1975	2170	+195 / +9.9%	+82 / +3.9%
Total	9201	9004	9397	9468	10064	10182	9956	10007	9626	9910	+284 / +3.0%	-46 / -0.5%

'vs. Pre-Covid' is comparison between 2022 and 2019

Snapshot of Flat Horses in Training in September

Flat Horses in Training in September, shown by Age



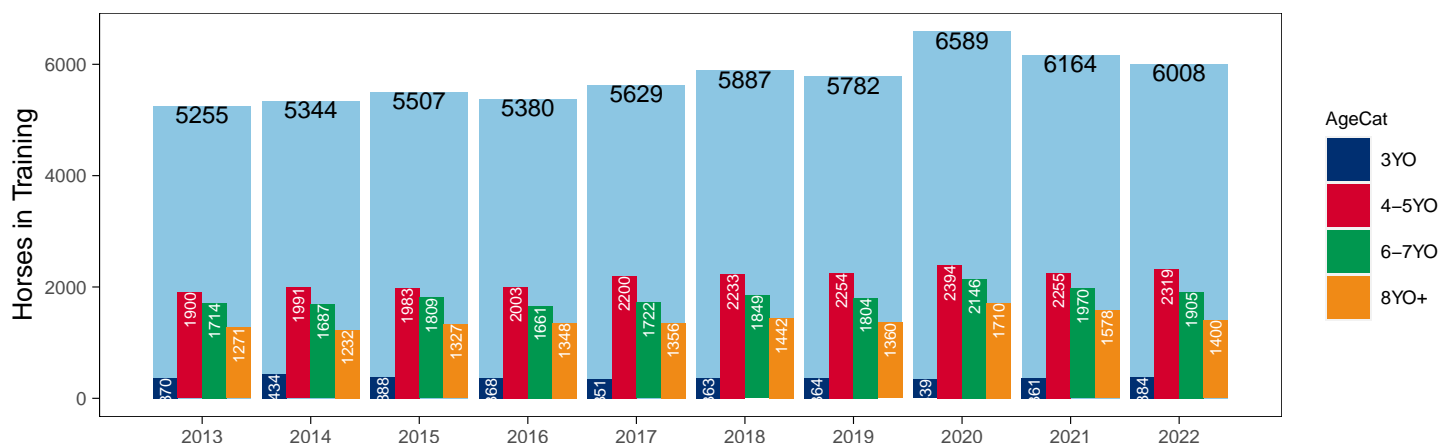
Jump (including Dual)

AgeCat	2013	2014	2015	2016	2017	2018	2019	2020	2021	2022	vs. Last Year	vs. Pre-Covid
3YO	370	434	388	368	351	363	364	339	361	384	+23 / +6.4%	+20 / +5.5%
4-5YO	1900	1991	1983	2003	2200	2233	2254	2394	2255	2319	+64 / +2.8%	+65 / +2.9%
6-7YO	1714	1687	1809	1661	1722	1849	1804	2146	1970	1905	-65 / -3.3%	+101 / +5.6%
8YO+	1271	1232	1327	1348	1356	1442	1360	1710	1578	1400	-178 / -11.3%	+40 / +2.9%
Total	5255	5344	5507	5380	5629	5887	5782	6589	6164	6008	-156 / -2.5%	+226 / +3.9%

'vs. Pre-Covid' is comparison between 2022 and 2019

Snapshot of Jump Horses in Training in September

Jump Horses in Training in September, shown by Age



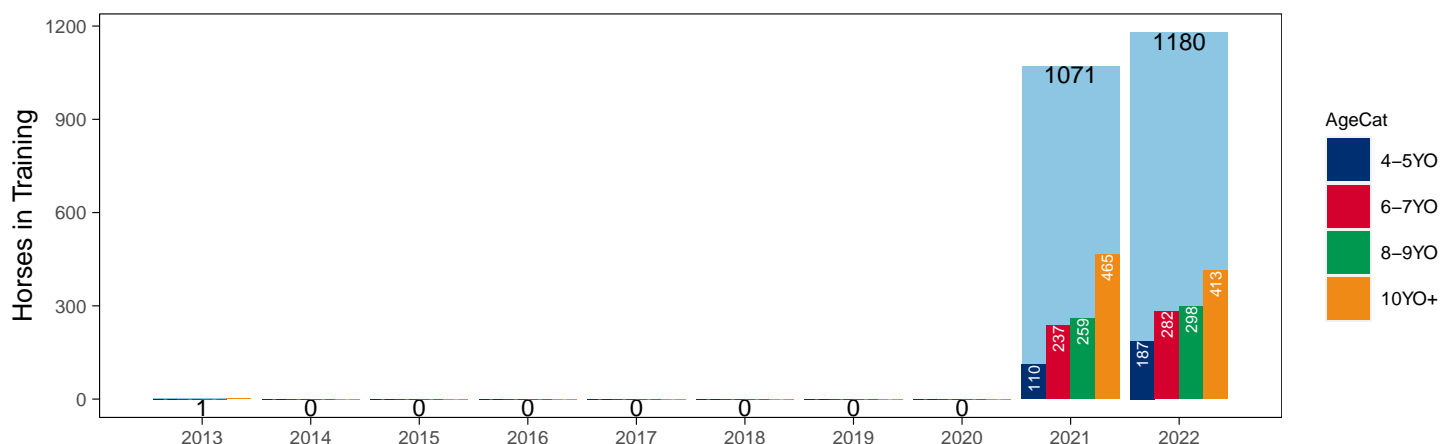
Hunter Chasers

AgeCat	2013	2014	2015	2016	2017	2018	2019	2020	2021	2022	vs. Last Year	vs. Pre-Covid
4-5YO	0	0	0	0	0	0	0	0	110	187	+77 / +70.0%	+187 / +Inf
6-7YO	0	0	0	0	0	0	0	0	237	282	+45 / +19.0%	+282 / +Inf
8-9YO	0	0	0	0	0	0	0	0	259	298	+39 / +15.1%	+298 / +Inf
10YO+	1	0	0	0	0	0	0	0	465	413	-52 / -11.2%	+413 / +Inf
Total	1	0	0	0	0	0	0	0	1071	1180	+109 / +10.2%	+1180 / +Inf

'vs. Pre-Covid' is comparison between 2022 and 2019

Snapshot of Hunter Chasers in Training in September

Hunter Chasers in Training in September, shown by Age



2022 Horses in Training versus Previous Years

Type	Period	Jan	Feb	Mar	Apr	May	Jun	Jul	Aug	Sep	Oct	Nov	Dec
Flat	2022	8367	8908	9406	9771	9990	9874	9591	9503	9200	0	0	0
	2021	8369	8851	9302	9675	9920	9900	9712	9554	9106	8547	6831	6292
	Pre-Covid	8627	9168	9725	10176	10385	10397	10100	9760	9473	8801	7019	6551
Jump	2022	5866	5814	5719	5264	3888	3120	3816	4751	5330	0	0	0
	2021	6452	6474	6384	5988	4388	3565	3951	5055	5660	5939	6043	5963
	Pre-Covid	5721	5782	5762	5345	4029	3123	3612	4806	5317	5752	5983	5978
Dual	2022	502	538	544	554	530	559	598	662	710	0	0	0
	2021	518	507	530	535	488	480	497	503	520	520	519	503
	Pre-Covid	485	473	470	498	459	459	477	487	483	540	570	537
Hunter	2022	814	1034	1184	1278	1277	1234	1220	1198	1180	0	0	0
	2021	791	787	863	1154	1178	1132	1106	1087	1071	47	344	604
	Pre-Covid	995	1378	1572	1702	1694	1638	1614	0	0	0	244	606
Total	2022	14735	15260	15669	15589	14408	13553	14005	14916	15240	0	0	0
	2021	15339	15832	16216	16198	14796	13945	14160	15112	15286	15006	13393	12758
	Pre-Covid	14934	15517	15927	15286	14272	13745	14177	15164	15415	15152	13452	12818

'Pre-Covid' is 2019 values

Monthly Horses in Training

2022 against 2021 and Pre-Covid, shown with % Difference

Period — Pre-Covid — 2021 — 2022



'Pre-Covid' is 2019 values

Flat (including Dual)

AgeCat	Period	Jan	Feb	Mar	Apr	May	Jun	Jul	Aug	Sep	Oct	Nov	Dec
2YO	2022	1927	2364	2591	2867	3218	3369	3533	3602	3609			
	2021	1927	2242	2467	2792	3161	3388	3545	3621	3603	3529	2983	2783
	Pre-Covid	2112	2445	2708	2965	3241	3477	3638	3746	3755	3616	3028	2854
3YO	2022	2946	3067	3244	3314	3249	3143	2882	2790	2648			
	2021	2926	3051	3231	3285	3225	3101	2939	2846	2631	2383	1828	1678
	Pre-Covid	3016	3186	3299	3319	3277	3227	3032	2873	2695	2461	1809	1632
4YO	2022	1693	1686	1721	1722	1680	1625	1553	1564	1483			
	2021	1627	1673	1708	1718	1672	1629	1537	1493	1417	1292	994	905
	Pre-Covid	1614	1647	1680	1666	1639	1604	1525	1478	1412	1314	1027	932
5YO+	2022	2303	2329	2394	2422	2373	2296	2221	2209	2170			
	2021	2407	2392	2426	2415	2350	2262	2188	2097	1975	1863	1545	1429
	Pre-Covid	2459	2478	2504	2452	2419	2383	2296	2209	2106	1970	1663	1533
Total	2022	8869	9446	9950	10325	10520	10433	10189	10165	9910			
	2021	8887	9358	9832	10210	10408	10380	10209	10057	9626	9067	7350	6795
	Pre-Covid	9202	9757	10191	10403	10575	10691	10492	10307	9967	9361	7527	6951

'Pre-Covid' is 2019 values

Monthly Flat Horses in Training

2022 against 2021 and Pre-Covid, shown with % Difference

Period — Pre-Covid — 2021 — 2022



'Pre-Covid' is 2019 values

Jump (including Dual)

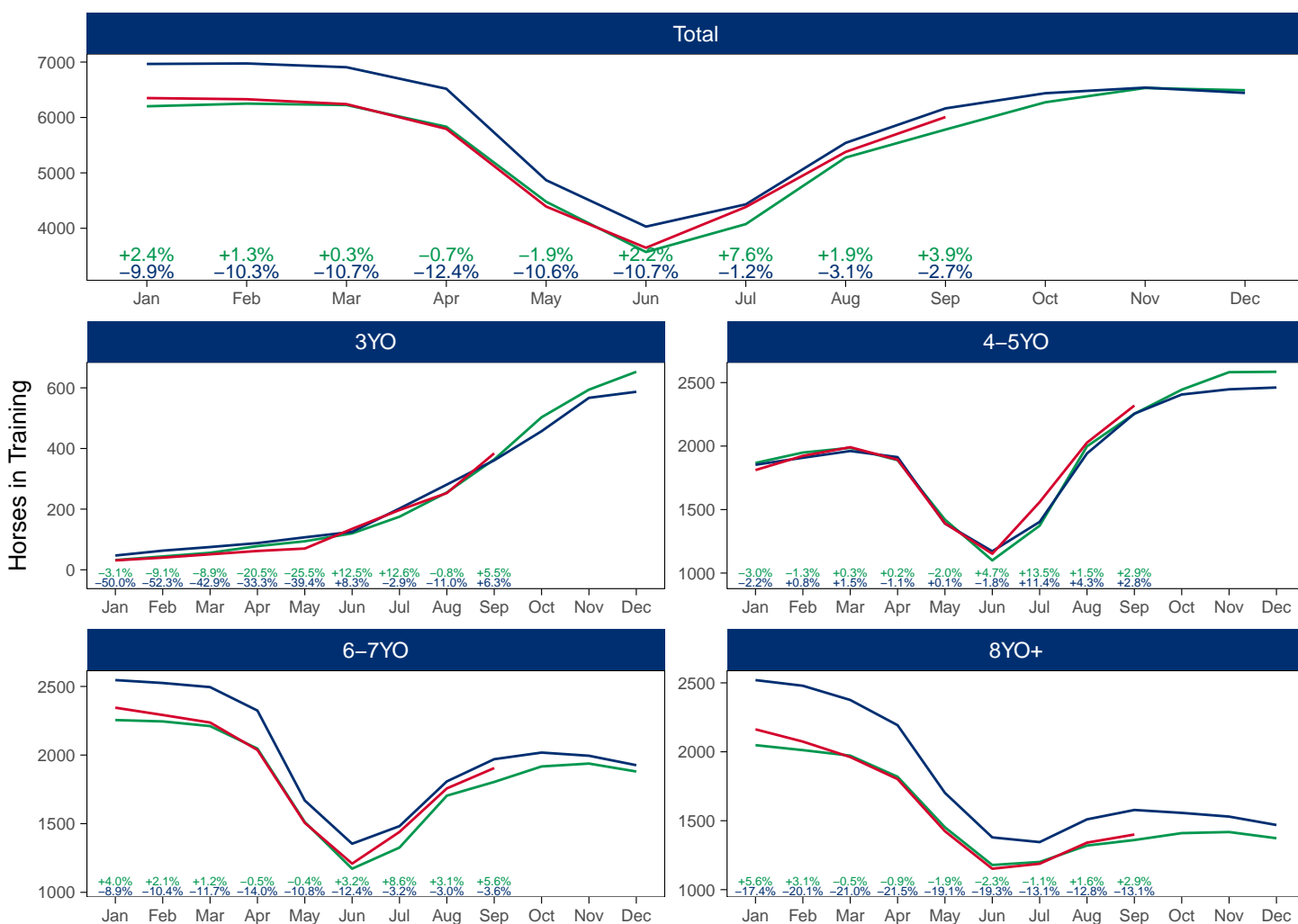
AgeCat	Period	Jan	Feb	Mar	Apr	May	Jun	Jul	Aug	Sep	Oct	Nov	Dec
3YO	2022	31	40	51	62	70	135	197	253	384			
	2021	47	63	75	88	107	125	202	281	361	457	567	587
	Pre-Covid	45	61	73	89	102	125	179	258	356	467	565	619
4-5YO	2022	1811	1923	1991	1893	1392	1152	1559	2027	2319			
	2021	1853	1908	1961	1913	1390	1172	1403	1942	2255	2406	2447	2461
	Pre-Covid	1889	1958	2008	1753	1293	1070	1396	1981	2267	2423	2503	2508
6-7YO	2022	2345	2292	2237	2037	1506	1209	1440	1757	1905			
	2021	2546	2525	2495	2324	1669	1354	1482	1808	1970	2018	1995	1926
	Pre-Covid	2267	2248	2220	1875	1428	1189	1395	1749	1898	1970	1957	1890
8YO+	2022	2163	2074	1962	1802	1424	1152	1188	1341	1400			
	2021	2520	2479	2376	2193	1702	1379	1345	1510	1578	1557	1530	1469
	Pre-Covid	2130	2096	2054	1771	1435	1210	1265	1427	1489	1509	1495	1429
Total	2022	6350	6329	6241	5794	4392	3648	4384	5378	6008			
	2021	6966	6975	6907	6518	4868	4030	4432	5541	6164	6438	6539	6443
	Pre-Covid	6331	6363	6355	5487	4258	3594	4235	5415	6010	6368	6520	6446

'Pre-Covid' is 2019 values

Monthly Jump Horses in Training

2022 against 2021 and Pre-Covid, shown with % Difference

Period — Pre-Covid — 2021 — 2022



'Pre-Covid' is 2019 values

Hunter Chasers

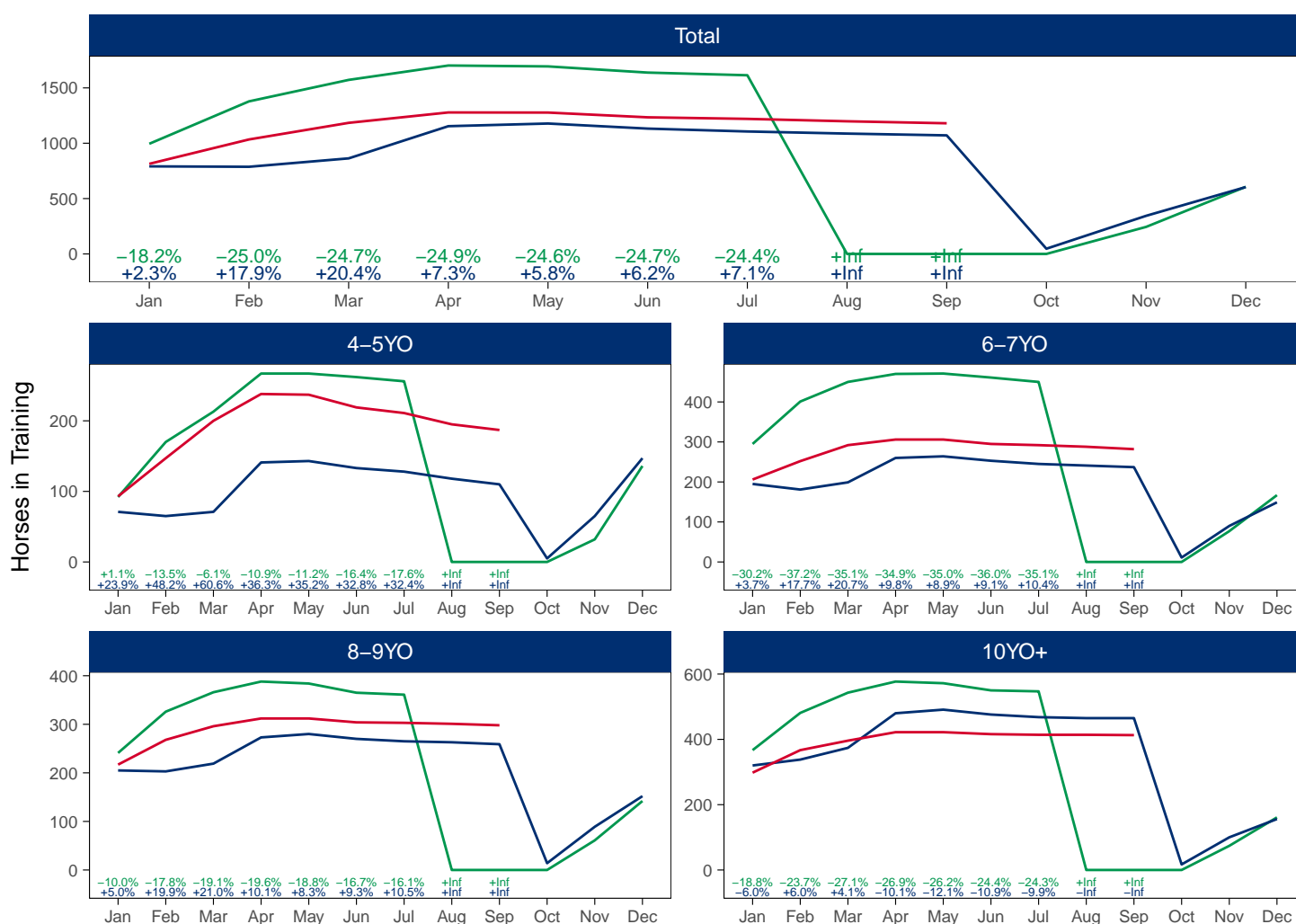
AgeCat	Period	Jan	Feb	Mar	Apr	May	Jun	Jul	Aug	Sep	Oct	Nov	Dec
4-5YO	2022	93	147	200	238	237	219	211	195	187			
	2021	71	65	71	141	143	133	128	118	110	5	65	147
	Pre-Covid	91	144	182	222	231	219	210	176	110	22	64	155
6-7YO	2022	206	252	292	306	306	295	292	288	282			
	2021	195	181	199	260	264	253	245	241	237	11	90	149
	Pre-Covid	266	348	390	418	422	407	380	293	237	37	85	177
8-9YO	2022	217	268	296	312	312	304	303	301	298			
	2021	205	203	219	273	280	270	265	263	259	14	89	152
	Pre-Covid	248	321	355	381	382	369	354	280	259	34	74	162
10YO+	2022	298	367	396	422	422	416	414	414	413			
	2021	320	338	374	480	491	476	468	465	465	17	100	156
	Pre-Covid	362	470	523	565	566	548	530	458	465	44	87	176
Total	2022	814	1034	1184	1278	1277	1234	1220	1198	1180			
	2021	791	787	863	1154	1178	1132	1106	1087	1071	47	344	604
	Pre-Covid	966	1283	1450	1586	1602	1543	1474	1206	1071	138	310	671

'Pre-Covid' is 2019 values

Monthly Hunter Chasers in Training

2022 against 2021 and Pre-Covid, shown with % Difference

Period — Pre-Covid — 2021 — 2022



'Pre-Covid' is 2019 values

September 2022 Horses in Training by Rating Band Snapshot versus Previous Years

Flat (including Dual)

AgeCat	RatBand	2013	2014	2015	2016	2017	2018	2019	2020	2021	2022
2YO	0-50	63 (1.8%)	92 (2.6%)	84 (2.2%)	62 (1.7%)	74 (1.9%)	59 (1.5%)	73 (1.9%)	59 (1.6%)	77 (2.1%)	68 (1.9%)
	51-60	152 (4.4%)	145 (4.1%)	149 (4.0%)	145 (3.9%)	154 (4.0%)	153 (4.0%)	148 (3.9%)	131 (3.6%)	130 (3.6%)	124 (3.4%)
	61-70	215 (6.2%)	214 (6.1%)	252 (6.7%)	255 (6.9%)	242 (6.3%)	204 (5.3%)	179 (4.7%)	211 (5.8%)	224 (6.2%)	230 (6.4%)
	71-80	254 (7.3%)	254 (7.2%)	278 (7.4%)	310 (8.3%)	268 (7.0%)	243 (6.3%)	232 (6.1%)	268 (7.3%)	269 (7.5%)	230 (6.4%)
	81-90	125 (3.6%)	138 (3.9%)	170 (4.5%)	131 (3.5%)	118 (3.1%)	144 (3.7%)	134 (3.5%)	122 (3.3%)	141 (3.9%)	146 (4.0%)
	91-100	63 (1.8%)	61 (1.7%)	56 (1.5%)	62 (1.7%)	64 (1.7%)	77 (2.0%)	56 (1.5%)	65 (1.8%)	71 (2.0%)	71 (2.0%)
	101+	33 (1.0%)	41 (1.2%)	43 (1.2%)	38 (1.0%)	37 (1.0%)	45 (1.2%)	41 (1.1%)	48 (1.3%)	49 (1.4%)	38 (1.1%)
	Unrated	2559 (73.9%)	2567 (73.1%)	2705 (72.4%)	2712 (73.0%)	2894 (75.1%)	2927 (76.0%)	2937 (77.3%)	2763 (75.3%)	2642 (73.3%)	2702 (74.9%)
	Subtotal	3464 (100.0%)	3512 (100.0%)	3737 (100.0%)	3715 (100.0%)	3851 (100.0%)	3852 (100.0%)	3800 (100.0%)	3667 (100.0%)	3603 (100.0%)	3609 (100.0%)
3YO	0-50	196 (8.2%)	183 (7.9%)	173 (7.1%)	162 (6.5%)	218 (8.3%)	208 (7.4%)	259 (9.8%)	211 (7.6%)	221 (8.4%)	217 (8.2%)
	51-60	280 (11.7%)	266 (11.5%)	292 (12.0%)	297 (11.9%)	312 (11.9%)	316 (11.3%)	346 (13.1%)	339 (12.2%)	345 (13.1%)	351 (13.3%)
	61-70	411 (17.1%)	385 (16.6%)	400 (16.5%)	435 (17.5%)	439 (16.7%)	472 (16.9%)	432 (16.3%)	452 (16.3%)	449 (17.1%)	428 (16.2%)
	71-80	417 (17.4%)	483 (20.8%)	470 (19.3%)	488 (19.6%)	505 (19.2%)	494 (17.7%)	428 (16.2%)	484 (17.4%)	447 (17.0%)	460 (17.4%)
	81-90	300 (12.5%)	310 (13.4%)	356 (14.6%)	340 (13.7%)	368 (14.0%)	368 (13.2%)	306 (11.6%)	288 (10.4%)	307 (11.7%)	301 (11.4%)
	91-100	148 (6.2%)	147 (6.3%)	151 (6.2%)	160 (6.4%)	187 (7.1%)	170 (6.1%)	184 (7.0%)	147 (5.3%)	144 (5.5%)	150 (5.7%)
	101+	89 (3.7%)	114 (4.9%)	115 (4.7%)	110 (4.4%)	102 (3.9%)	125 (4.5%)	121 (4.6%)	96 (3.5%)	105 (4.0%)	117 (4.4%)
	Unrated	560 (23.3%)	433 (18.7%)	474 (19.5%)	498 (20.0%)	495 (18.8%)	642 (23.0%)	570 (21.5%)	758 (27.3%)	613 (23.3%)	624 (23.6%)
	Subtotal	2401 (100.0%)	2321 (100.0%)	2431 (100.0%)	2490 (100.0%)	2626 (100.0%)	2795 (100.0%)	2646 (100.0%)	2775 (100.0%)	2631 (100.0%)	2648 (100.0%)
4YO	0-50	142 (10.8%)	113 (9.7%)	96 (7.9%)	107 (8.8%)	141 (9.8%)	167 (11.9%)	183 (12.9%)	149 (10.9%)	165 (11.6%)	167 (11.3%)
	51-60	139 (10.6%)	143 (12.3%)	162 (13.3%)	160 (13.2%)	174 (12.1%)	158 (11.2%)	192 (13.5%)	187 (13.6%)	222 (15.7%)	206 (13.9%)
	61-70	222 (16.9%)	212 (18.3%)	176 (14.5%)	181 (14.9%)	235 (16.3%)	251 (17.8%)	234 (16.5%)	238 (17.3%)	221 (15.6%)	259 (17.5%)
	71-80	215 (16.4%)	209 (18.0%)	222 (18.3%)	223 (18.4%)	224 (15.5%)	221 (15.7%)	228 (16.0%)	226 (16.5%)	230 (16.2%)	238 (16.0%)
	81-90	181 (13.8%)	165 (14.2%)	183 (15.1%)	177 (14.6%)	203 (14.1%)	182 (12.9%)	189 (13.3%)	152 (11.1%)	161 (11.4%)	178 (12.0%)
	91-100	113 (8.6%)	116 (10.0%)	114 (9.4%)	121 (10.0%)	117 (8.1%)	136 (9.7%)	128 (9.0%)	119 (8.7%)	123 (8.7%)	107 (7.2%)
	101+	100 (7.6%)	96 (8.3%)	111 (9.1%)	101 (8.3%)	109 (7.6%)	104 (7.4%)	97 (6.8%)	105 (7.7%)	88 (6.2%)	99 (6.7%)
	Unrated	198 (15.1%)	107 (9.2%)	150 (12.4%)	145 (11.9%)	240 (16.6%)	188 (13.4%)	171 (12.0%)	196 (14.3%)	207 (14.6%)	229 (15.4%)
	Subtotal	1310 (100.0%)	1161 (100.0%)	1214 (100.0%)	1215 (100.0%)	1443 (100.0%)	1407 (100.0%)	1422 (100.0%)	1372 (100.0%)	1417 (100.0%)	1483 (100.0%)
5YO+	0-50	232 (11.5%)	247 (12.3%)	197 (9.8%)	197 (9.6%)	239 (11.1%)	295 (13.9%)	312 (14.9%)	292 (13.3%)	271 (13.7%)	282 (13.0%)
	51-60	289 (14.3%)	297 (14.8%)	293 (14.5%)	304 (14.8%)	299 (13.9%)	304 (14.3%)	315 (15.1%)	353 (16.1%)	319 (16.2%)	318 (14.7%)
	61-70	370 (18.3%)	395 (19.7%)	380 (18.9%)	364 (17.8%)	361 (16.8%)	362 (17.0%)	372 (17.8%)	377 (17.2%)	340 (17.2%)	379 (17.5%)
	71-80	332 (16.4%)	375 (18.7%)	345 (17.1%)	331 (16.2%)	313 (14.6%)	312 (14.7%)	295 (14.1%)	328 (15.0%)	273 (13.8%)	290 (13.4%)
	81-90	226 (11.2%)	246 (12.2%)	257 (12.8%)	277 (13.5%)	260 (12.1%)	265 (12.5%)	228 (10.9%)	236 (10.8%)	209 (10.6%)	231 (10.6%)
	91-100	140 (6.9%)	157 (7.8%)	155 (7.7%)	178 (8.7%)	174 (8.1%)	149 (7.0%)	144 (6.9%)	137 (6.2%)	148 (7.5%)	144 (6.6%)
	101+	121 (6.0%)	149 (7.4%)	129 (6.4%)	149 (7.3%)	155 (7.2%)	137 (6.4%)	124 (5.9%)	126 (5.7%)	129 (6.5%)	139 (6.4%)
	Unrated	316 (15.6%)	144 (7.2%)	259 (12.9%)	248 (12.1%)	343 (16.0%)	304 (14.3%)	298 (14.3%)	344 (15.7%)	286 (14.5%)	387 (17.8%)
	Subtotal	2026 (100.0%)	2010 (100.0%)	2015 (100.0%)	2048 (100.0%)	2144 (100.0%)	2128 (100.0%)	2088 (100.0%)	2193 (100.0%)	1975 (100.0%)	2170 (100.0%)
Overall	0-50	633 (6.9%)	635 (7.1%)	550 (5.9%)	528 (5.6%)	672 (6.7%)	729 (7.2%)	827 (8.3%)	711 (7.1%)	734 (7.6%)	734 (7.4%)
	51-60	860 (9.3%)	851 (9.5%)	896 (9.5%)	906 (9.6%)	939 (9.3%)	931 (9.1%)	1001 (10.1%)	1010 (10.1%)	1016 (10.6%)	999 (10.1%)
	61-70	1218 (13.2%)	1206 (13.4%)	1208 (12.9%)	1235 (13.0%)	1277 (12.7%)	1289 (12.7%)	1217 (12.2%)	1278 (12.8%)	1234 (12.8%)	1296 (13.1%)
	71-80	1218 (13.2%)	1321 (14.7%)	1315 (14.0%)	1352 (14.3%)	1310 (13.0%)	1270 (12.5%)	1183 (11.9%)	1306 (13.1%)	1219 (12.7%)	1218 (12.3%)
	81-90	832 (9.0%)	859 (9.5%)	966 (10.3%)	925 (9.8%)	949 (9.4%)	959 (9.4%)	857 (8.6%)	798 (8.0%)	818 (8.5%)	856 (8.6%)
	91-100	464 (5.0%)	481 (5.3%)	476 (5.1%)	521 (5.5%)	542 (5.4%)	532 (5.2%)	512 (5.1%)	468 (4.7%)	486 (5.0%)	472 (4.8%)
	101+	343 (3.7%)	400 (4.4%)	398 (4.2%)	398 (4.2%)	403 (4.0%)	411 (4.0%)	383 (3.8%)	375 (3.7%)	371 (3.9%)	393 (4.0%)
	Unrated	3633 (39.5%)	3251 (36.1%)	3588 (38.2%)	3603 (38.1%)	3972 (39.5%)	4061 (39.9%)	3976 (39.9%)	4061 (40.6%)	3748 (38.9%)	3942 (39.8%)
Total		9201 (100.0%)	9004 (100.0%)	9397 (100.0%)	9468 (100.0%)	10064 (100.0%)	10182 (100.0%)	9956 (100.0%)	10007 (100.0%)	9626 (100.0%)	9910 (100.0%)

Where a horse has more than one published rating (published Flat Turf and published Flat AWT mark), the higher of the two is taken.

Jump (including Dual)

AgeCat	RatBand	2013	2014	2015	2016	2017	2018	2019	2020	2021	2022
3YO	0-100	1 (0.3%)	NA (-)	3 (0.8%)	3 (0.8%)	NA (-)	2 (0.6%)	4 (1.1%)	4 (1.2%)	6 (1.7%)	5 (1.3%)
	101-110	NA (-)	NA (-)	4 (1.0%)	4 (1.1%)	NA (-)	2 (0.6%)	3 (0.8%)	6 (1.8%)	6 (1.7%)	5 (1.3%)
	111-120	2 (0.5%)	NA (-)	NA (-)	4 (1.1%)	NA (-)	1 (0.3%)	3 (0.8%)	3 (0.9%)	4 (1.1%)	NA (-)
	121-130	NA (-)	NA (-)	4 (1.0%)	NA (-)	NA (-)	1 (0.3%)	NA (-)	1 (0.3%)	NA (-)	NA (-)
	131-140	NA (-)	NA (-)	2 (0.5%)	NA (-)	NA (-)	1 (0.3%)	1 (0.3%)	NA (-)	NA (-)	NA (-)
	Unrated	367 (99.2%)	434 (100.0%)	375 (96.6%)	357 (97.0%)	351 (100.0%)	356 (98.1%)	353 (97.0%)	325 (95.9%)	345 (95.6%)	374 (97.4%)
Subtotal		370 (100.0%)	434 (100.0%)	388 (100.0%)	368 (100.0%)	351 (100.0%)	363 (100.0%)	364 (100.0%)	339 (100.0%)	361 (100.0%)	384 (100.0%)
4-5YO	0-100	168 (8.8%)	157 (7.9%)	141 (7.1%)	160 (8.0%)	185 (8.4%)	157 (7.0%)	182 (8.1%)	235 (9.8%)	235 (10.4%)	279 (12.0%)
	101-110	95 (5.0%)	97 (4.9%)	112 (5.6%)	110 (5.5%)	114 (5.2%)	150 (6.7%)	114 (5.1%)	117 (4.9%)	88 (3.9%)	143 (6.2%)
	111-120	111 (5.8%)	118 (5.9%)	126 (6.4%)	116 (5.8%)	112 (5.1%)	137 (6.1%)	136 (6.0%)	127 (5.3%)	109 (4.8%)	82 (3.5%)
	121-130	83 (4.4%)	84 (4.2%)	96 (4.8%)	76 (3.8%)	110 (5.0%)	113 (5.1%)	105 (4.7%)	97 (4.1%)	59 (2.6%)	52 (2.2%)
	131-140	37 (1.9%)	60 (3.0%)	55 (2.8%)	71 (3.5%)	63 (2.9%)	55 (2.5%)	44 (2.0%)	40 (1.7%)	34 (1.5%)	21 (0.9%)
	141-150	21 (1.1%)	20 (1.0%)	19 (1.0%)	21 (1.0%)	20 (0.9%)	14 (0.6%)	19 (0.8%)	15 (0.6%)	5 (0.2%)	7 (0.3%)
	151+	3 (0.2%)	6 (0.3%)	11 (0.6%)	5 (0.2%)	4 (0.2%)	8 (0.4%)	5 (0.2%)	5 (0.2%)	5 (0.2%)	3 (0.1%)
	Unrated	1382 (72.7%)	1449 (72.8%)	1423 (71.8%)	1444 (72.1%)	1592 (72.4%)	1599 (71.6%)	1649 (73.2%)	1758 (73.4%)	1720 (76.3%)	1732 (74.7%)
Subtotal		1900 (100.0%)	1991 (100.0%)	1983 (100.0%)	2003 (100.0%)	2200 (100.0%)	2233 (100.0%)	2254 (100.0%)	2394 (100.0%)	2255 (100.0%)	2319 (100.0%)
6-7YO	0-100	367 (21.4%)	358 (21.2%)	330 (18.2%)	309 (18.6%)	324 (18.8%)	342 (18.5%)	347 (19.2%)	428 (19.9%)	465 (23.6%)	435 (22.8%)
	101-110	189 (11.0%)	197 (11.7%)	219 (12.1%)	200 (12.0%)	224 (13.0%)	211 (11.4%)	211 (11.7%)	286 (13.3%)	231 (11.7%)	227 (11.9%)
	111-120	201 (11.7%)	260 (15.4%)	220 (12.2%)	252 (15.2%)	218 (12.7%)	246 (13.3%)	246 (13.6%)	253 (11.8%)	260 (13.2%)	213 (11.2%)
	121-130	189 (11.0%)	212 (12.6%)	236 (13.0%)	205 (12.3%)	195 (11.3%)	235 (12.7%)	221 (12.3%)	265 (12.3%)	244 (12.4%)	176 (9.2%)
	131-140	105 (6.1%)	116 (6.9%)	121 (6.7%)	141 (8.5%)	161 (9.3%)	179 (9.7%)	185 (10.3%)	169 (7.9%)	142 (7.2%)	116 (6.1%)
	141-150	42 (2.5%)	56 (3.3%)	65 (3.6%)	53 (3.2%)	71 (4.1%)	66 (3.6%)	50 (2.8%)	61 (2.8%)	72 (3.7%)	33 (1.7%)
	151+	21 (1.2%)	36 (2.1%)	33 (1.8%)	30 (1.8%)	32 (1.9%)	31 (1.7%)	38 (2.1%)	32 (1.5%)	31 (1.6%)	15 (0.8%)
	Unrated	600 (35.0%)	452 (26.8%)	585 (32.3%)	471 (28.4%)	497 (28.9%)	539 (29.2%)	506 (28.0%)	652 (30.4%)	525 (26.6%)	690 (36.2%)
Subtotal		1714 (100.0%)	1687 (100.0%)	1809 (100.0%)	1661 (100.0%)	1722 (100.0%)	1849 (100.0%)	1804 (100.0%)	2146 (100.0%)	1970 (100.0%)	1905 (100.0%)
8YO+	0-100	422 (33.2%)	412 (33.4%)	346 (26.1%)	379 (28.1%)	363 (26.8%)	378 (26.2%)	371 (27.3%)	419 (24.5%)	413 (26.2%)	312 (22.3%)
	101-110	119 (9.4%)	163 (13.2%)	186 (14.0%)	174 (12.9%)	186 (13.7%)	203 (14.1%)	167 (12.3%)	181 (10.6%)	185 (11.7%)	156 (11.1%)
	111-120	145 (11.4%)	152 (12.3%)	172 (13.0%)	181 (13.4%)	179 (13.2%)	165 (11.4%)	154 (11.3%)	188 (11.0%)	205 (13.0%)	171 (12.2%)
	121-130	134 (10.5%)	151 (12.3%)	152 (11.5%)	165 (12.2%)	135 (10.0%)	176 (12.2%)	143 (10.5%)	188 (11.0%)	197 (12.5%)	127 (9.1%)
	131-140	98 (7.7%)	119 (9.7%)	119 (9.0%)	113 (8.4%)	125 (9.2%)	131 (9.1%)	124 (9.1%)	136 (8.0%)	147 (9.3%)	101 (7.2%)
	141-150	43 (3.4%)	55 (4.5%)	55 (4.1%)	58 (4.3%)	72 (5.3%)	74 (5.1%)	82 (6.0%)	82 (4.8%)	71 (4.5%)	65 (4.6%)
	151+	26 (2.0%)	28 (2.3%)	33 (2.5%)	33 (2.4%)	32 (2.4%)	26 (1.8%)	37 (2.7%)	50 (2.9%)	50 (3.2%)	32 (2.3%)
	Unrated	284 (22.3%)	152 (12.3%)	264 (19.9%)	245 (18.2%)	264 (19.5%)	289 (20.0%)	282 (20.7%)	466 (27.3%)	310 (19.6%)	436 (31.1%)
Subtotal		1271 (100.0%)	1232 (100.0%)	1327 (100.0%)	1348 (100.0%)	1356 (100.0%)	1442 (100.0%)	1360 (100.0%)	1710 (100.0%)	1578 (100.0%)	1400 (100.0%)
Overall	0-100	958 (18.2%)	927 (17.3%)	820 (14.9%)	851 (15.8%)	872 (15.5%)	879 (14.9%)	904 (15.6%)	1086 (16.5%)	1119 (18.2%)	1031 (17.2%)
	101-110	403 (7.7%)	457 (8.6%)	521 (9.5%)	488 (9.1%)	524 (9.3%)	566 (9.6%)	495 (8.6%)	590 (9.0%)	510 (8.3%)	531 (8.8%)
	111-120	459 (8.7%)	530 (9.9%)	518 (9.4%)	553 (10.3%)	509 (9.0%)	549 (9.3%)	539 (9.3%)	571 (8.7%)	578 (9.4%)	466 (7.8%)
	121-130	406 (7.7%)	447 (8.4%)	488 (8.9%)	446 (8.3%)	440 (7.8%)	525 (8.9%)	469 (8.1%)	551 (8.4%)	500 (8.1%)	355 (5.9%)
	131-140	240 (4.6%)	295 (5.5%)	297 (5.4%)	325 (6.0%)	349 (6.2%)	366 (6.2%)	354 (6.1%)	345 (5.2%)	323 (5.2%)	238 (4.0%)
	141-150	106 (2.0%)	131 (2.5%)	139 (2.5%)	132 (2.5%)	163 (2.9%)	154 (2.6%)	151 (2.6%)	158 (2.4%)	148 (2.4%)	105 (1.7%)
	151+	50 (1.0%)	70 (1.3%)	77 (1.4%)	68 (1.3%)	68 (1.2%)	65 (1.1%)	80 (1.4%)	87 (1.3%)	86 (1.4%)	50 (0.8%)
	Unrated	2633 (50.1%)	2487 (46.5%)	2647 (48.1%)	2517 (46.8%)	2704 (48.0%)	2783 (47.3%)	2790 (48.3%)	3201 (48.6%)	2900 (47.0%)	3232 (53.8%)
Total		5255 (100.0%)	5344 (100.0%)	5507 (100.0%)	5380 (100.0%)	5629 (100.0%)	5887 (100.0%)	5782 (100.0%)	6589 (100.0%)	6164 (100.0%)	6008 (100.0%)

Where a horse has more than one published rating (published Hurdle and published Chase mark), the higher of the two is taken.

Young Horses Entering Training

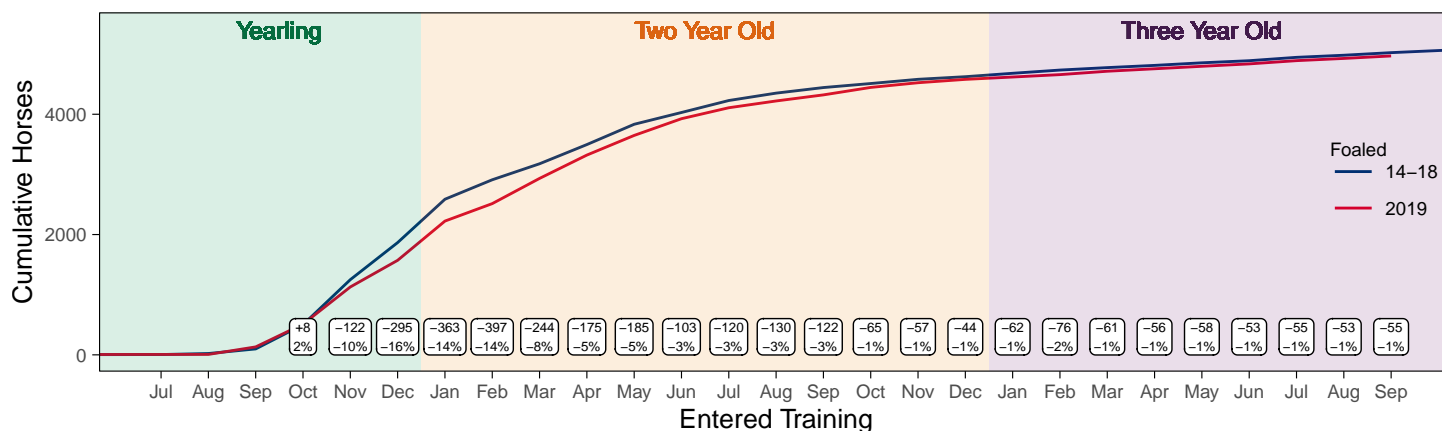
Flat Yearlings in Training versus Previous Years

Period	Jan	Feb	Mar	Apr	May	Jun	Jul	Aug	Sep	Oct	Nov	Dec
2022	0	0	0	0	0	0	0	2	76			
2021	0	0	0	0	0	0	0	5	79	315	716	1287
5YrAvg	1	1	1	1	1	1	1	2	52	257	698	1377

Foals Entering Training for the First Time

2019 Foals Entering Training Over Time

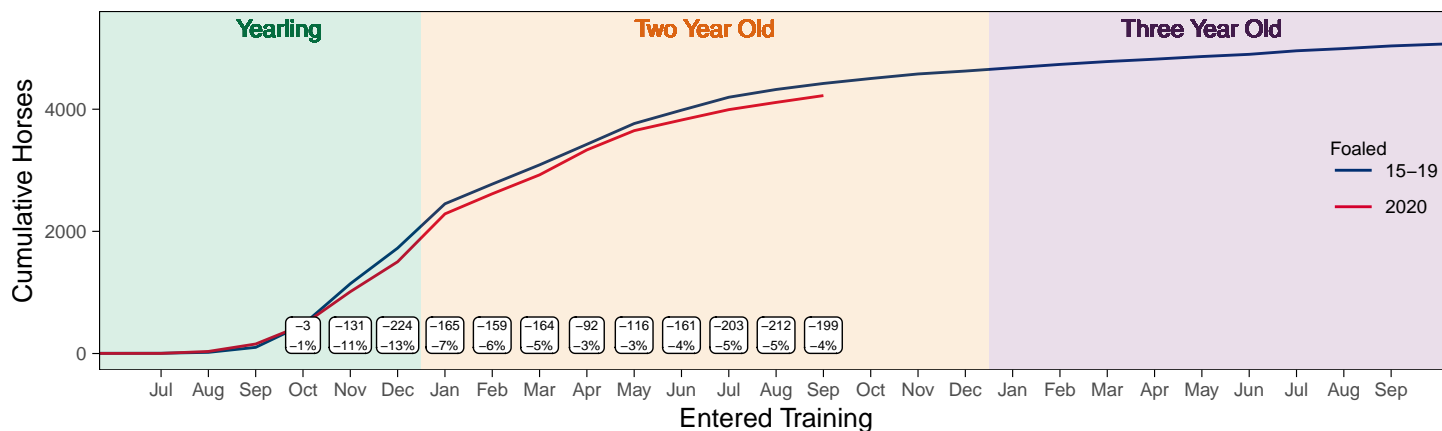
Cumulative Flat Horses foaled in 2019 shown by first in training notification against trend



Cumulative individual horses entering training for the first time by the end of each month.

2020 Foals Entering Training Over Time

Cumulative Flat Horses foaled in 2020 shown by first in training notification against trend



Cumulative individual horses entering training for the first time by the end of each month.

Year to Date Horses in Training

Type	2013	2014	2015	2016	2017	2018	2019	2020	2021	2022	vs. Last Year	vs. Pre-Covid
Flat	12157	12086	12348	12807	13161	13091	13353	13141	13010	12811	-199 / -1.5%	-542 / -4.1%
Jump	7838	7768	7864	7791	7631	7469	8183	7974	8743	8248	-495 / -5.7%	+65 / +0.8%
Dual	851	878	814	778	978	1404	786	876	845	942	+97 / +11.5%	+156 / +19.8%
Hunter	2400	2274	2174	2108	2007	1855	1810	1505	1288	1338	+50 / +3.9%	-472 / -26.1%
Total	20846	20732	21026	21376	21770	21964	22322	21991	22598	22001	-597 / -2.6%	-321 / -1.4%

'vs. Pre-Covid' is comparison between 2022 and 2019

Flat

AgeCat	2013	2014	2015	2016	2017	2018	2019	2020	2021	2022	vs. Last Year	vs. Pre-Covid
2YO	4029	4074	4373	4393	4466	4421	4466	4281	4271	4151	-120 / -2.8%	-315 / -7.1%
3YO	3606	3600	3693	3926	4005	4123	4094	4152	4009	3968	-41 / -1.0%	-126 / -3.1%
4YO	1875	1745	1741	1877	1985	1909	2025	1981	2084	2065	-19 / -0.9%	+40 / +2.0%
5YO+	2647	2667	2541	2611	2705	2638	2768	2727	2646	2627	-19 / -0.7%	-141 / -5.1%
Total	12157	12086	12348	12807	13161	13091	13353	13141	13010	12811	-199 / -1.5%	-542 / -4.1%

'vs. Pre-Covid' is comparison between 2022 and 2019

Jump

AgeCat	2013	2014	2015	2016	2017	2018	2019	2020	2021	2022	vs. Last Year	vs. Pre-Covid
3YO	279	336	360	309	263	287	321	250	302	330	+28 / +9.3%	+9 / +2.8%
4-5YO	2567	2484	2494	2601	2536	2378	2693	2632	2686	2695	+9 / +0.3%	+2 / +0.1%
6-7YO	2663	2592	2716	2484	2418	2467	2717	2682	2960	2748	-212 / -7.2%	+31 / +1.1%
8YO+	2329	2356	2294	2397	2414	2337	2452	2410	2795	2475	-320 / -11.4%	+23 / +0.9%
Total	7838	7768	7864	7791	7631	7469	8183	7974	8743	8248	-495 / -5.7%	+65 / +0.8%

'vs. Pre-Covid' is comparison between 2022 and 2019

Dual

AgeCat	2013	2014	2015	2016	2017	2018	2019	2020	2021	2022	vs. Last Year	vs. Pre-Covid
3YO	102	120	100	110	145	155	112	143	146	202	+56 / +38.4%	+90 / +80.4%
4YO	221	215	182	183	262	349	222	218	233	251	+18 / +7.7%	+29 / +13.1%
5YO+	528	543	532	485	571	900	452	515	466	489	+23 / +4.9%	+37 / +8.2%
Total	851	878	814	778	978	1404	786	876	845	942	+97 / +11.5%	+156 / +19.8%

'vs. Pre-Covid' is comparison between 2022 and 2019

Hunter Chasers

AgeCat	2013	2014	2015	2016	2017	2018	2019	2020	2021	2022	vs. Last Year	vs. Pre-Covid
4-5YO	276	215	233	242	255	285	316	299	188	282	+94 / +50.0%	-34 / -10.8%
6-7YO	756	711	618	583	526	513	508	395	304	323	+19 / +6.2%	-185 / -36.4%
8-9YO	618	653	648	560	536	419	395	318	304	311	+7 / +2.3%	-84 / -21.3%
10YO+	750	695	675	723	690	638	591	493	492	422	-70 / -14.2%	-169 / -28.6%
Total	2400	2274	2174	2108	2007	1855	1810	1505	1288	1338	+50 / +3.9%	-472 / -26.1%

'vs. Pre-Covid' is comparison between 2022 and 2019

Year to Date Runners

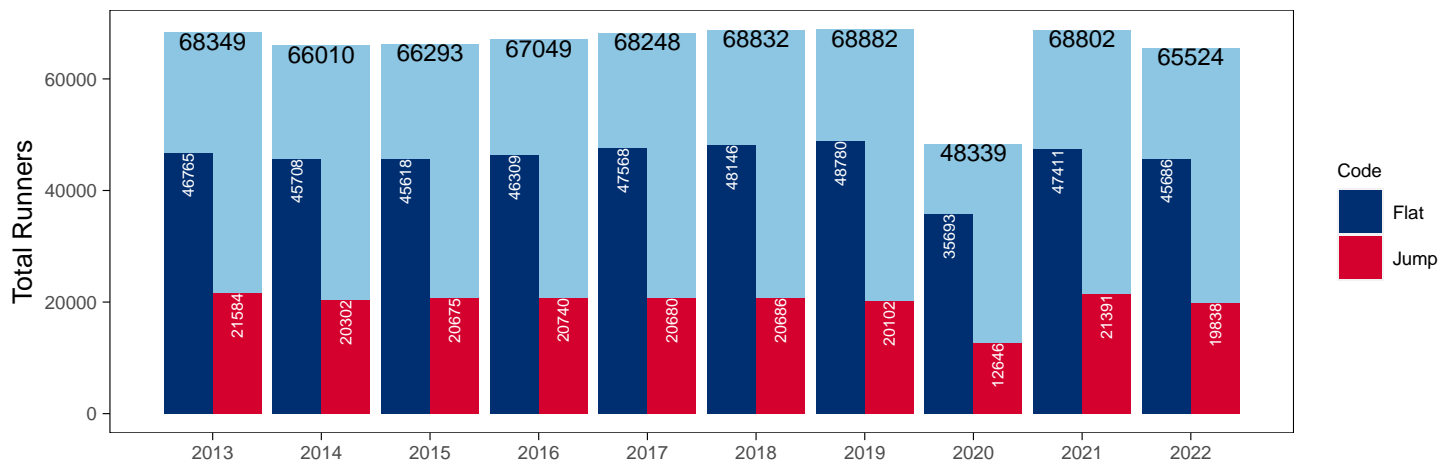
Year to Date Total Runners

Code	2013	2014	2015	2016	2017	2018	2019	2020	2021	2022	vs. Last Year	vs. Pre-Covid
Flat	46765	45708	45618	46309	47568	48146	48780	35693	47411	45686	-1725 / -3.6%	-3094 / -6.3%
Jump	21584	20302	20675	20740	20680	20686	20102	12646	21391	19838	-1553 / -7.3%	-264 / -1.3%
Total	68349	66010	66293	67049	68248	68832	68882	48339	68802	65524	-3278 / -4.8%	-3358 / -4.9%

'vs. Pre-Covid' is comparison between 2022 and 2019

YTD Total Runners

Total Runners in GB Races, shown by Code and Total



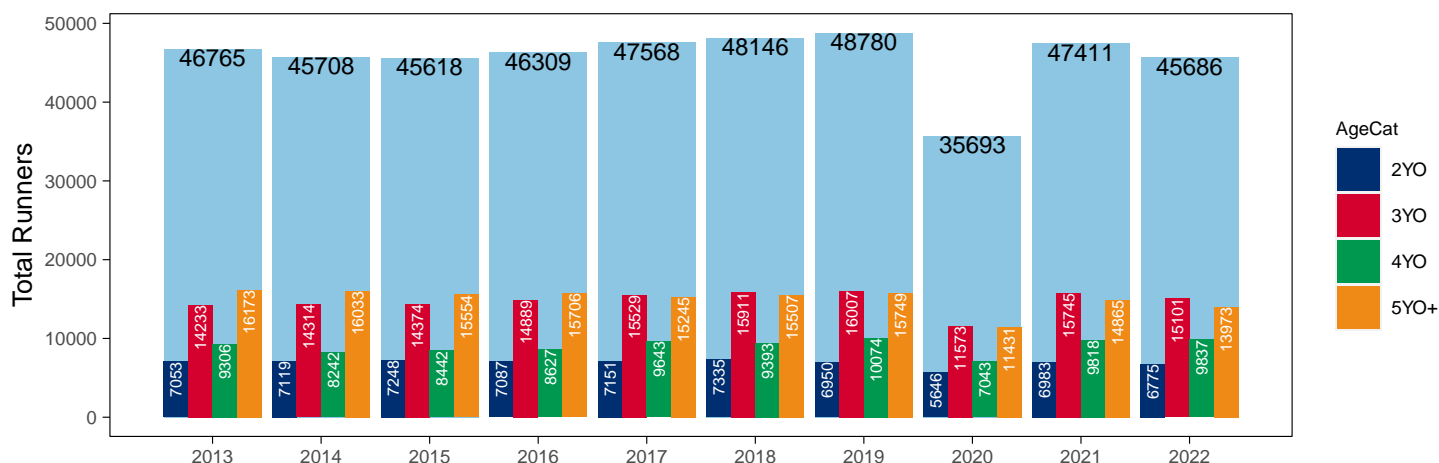
Flat

AgeCat	2013	2014	2015	2016	2017	2018	2019	2020	2021	2022	vs. Last Year	vs. Pre-Covid
2YO	7053	7119	7248	7087	7151	7335	6950	5646	6983	6775	-208 / -3.0%	-175 / -2.5%
3YO	14233	14314	14374	14889	15529	15911	16007	11573	15745	15101	-644 / -4.1%	-906 / -5.7%
4YO	9306	8242	8442	8627	9643	9393	10074	7043	9818	9837	+19 / +0.2%	-237 / -2.4%
5YO+	16173	16033	15554	15706	15245	15507	15749	11431	14865	13973	-892 / -6.0%	-1776 / -11.3%
Total	46765	45708	45618	46309	47568	48146	48780	35693	47411	45686	-1725 / -3.6%	-3094 / -6.3%

'vs. Pre-Covid' is comparison between 2022 and 2019

YTD Total Flat Runners by Age

Total Runners in GB Flat Races, shown by Age Category and Total



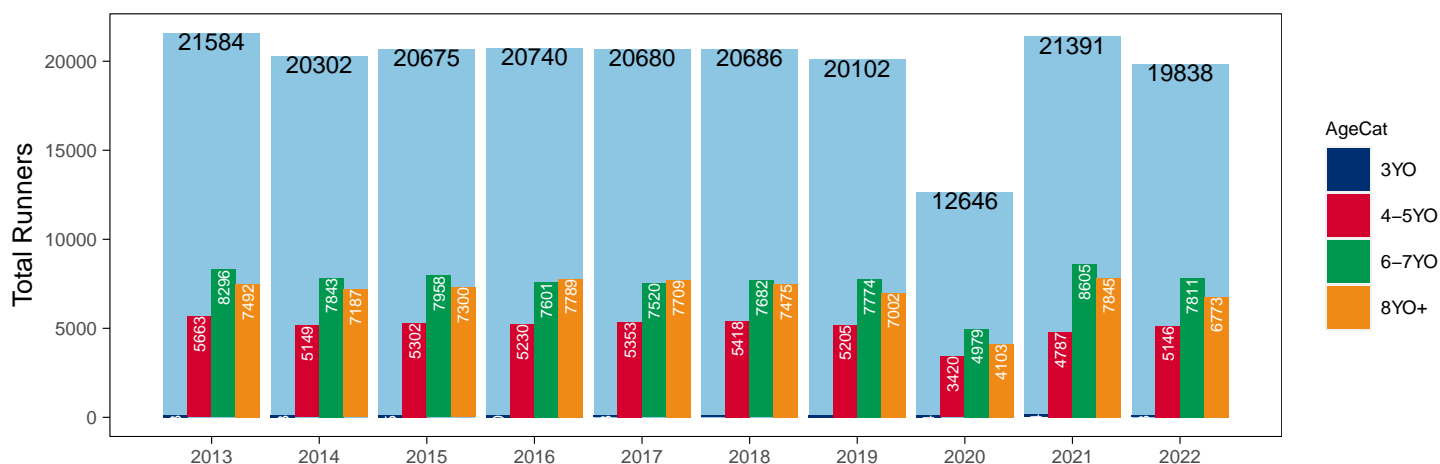
Jump

AgeCat	2013	2014	2015	2016	2017	2018	2019	2020	2021	2022	vs. Last Year	vs. Pre-Covid
3YO	133	123	115	120	98	111	121	144	154	108	-46 / -29.9%	-13 / -10.7%
4-5YO	5663	5149	5302	5230	5353	5418	5205	3420	4787	5146	+359 / +7.5%	-59 / -1.1%
6-7YO	8296	7843	7958	7601	7520	7682	7774	4979	8605	7811	-794 / -9.2%	+37 / +0.5%
8YO+	7492	7187	7300	7789	7709	7475	7002	4103	7845	6773	-1072 / -13.7%	-229 / -3.3%
Total	21584	20302	20675	20740	20680	20686	20102	12646	21391	19838	-1553 / -7.3%	-264 / -1.3%

'vs. Pre-Covid' is comparison between 2022 and 2019

YTD Total Jump Runners by Age

Total Runners in GB Jump Races, shown by Age Category and Total



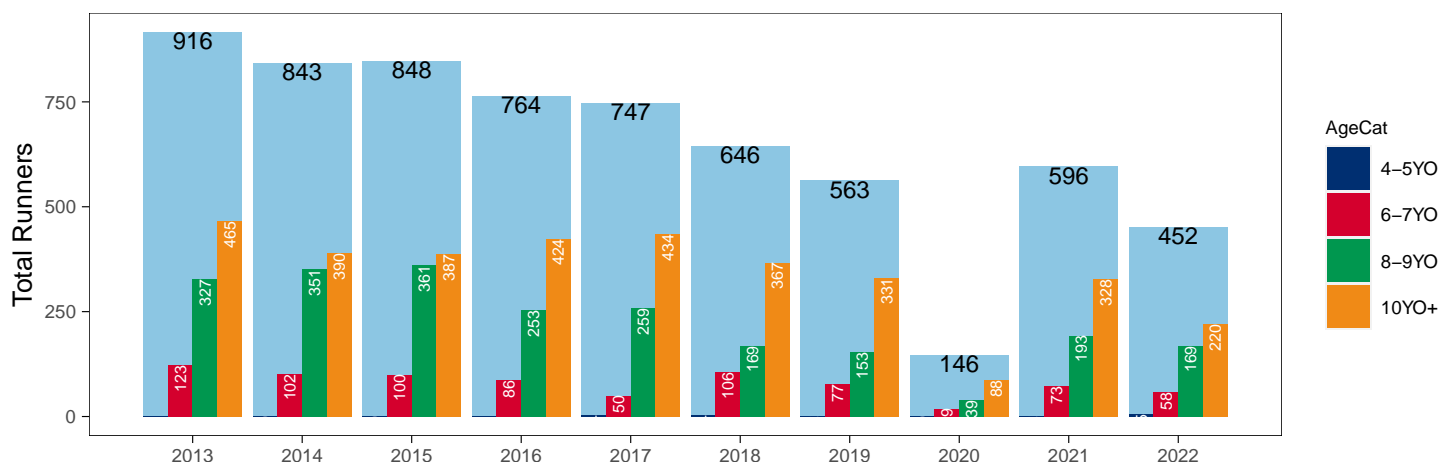
Hunter Chases

AgeCat	2013	2014	2015	2016	2017	2018	2019	2020	2021	2022	vs. Last Year	vs. Pre-Covid
4-5YO	1			1	4	4	2		2	5	+3 / +150.0%	+3 / +150.0%
6-7YO	123	102	100	86	50	106	77	19	73	58	-15 / -20.5%	-19 / -24.7%
8-9YO	327	351	361	253	259	169	153	39	193	169	-24 / -12.4%	+16 / +10.5%
10YO+	465	390	387	424	434	367	331	88	328	220	-108 / -32.9%	-111 / -33.5%
Total	916	843	848	764	747	646	563	146	596	452	-144 / -24.2%	-111 / -19.7%

'vs. Pre-Covid' is comparison between 2022 and 2019

YTD Total Hunter Chase Runners by Age

Total Runners in GB Hunter Chases shown by Age Category and Total



Year to Date Total Runners by Country Trained

Code	Country	2013	2014	2015	2016	2017	2018	2019	2020	2021	2022
Flat	GB	46349	45317	45134	45803	46953	47461	48102	35475	47082	45367
	IRE	332	316	366	442	546	630	615	195	299	260
	Other	84	75	118	64	69	55	63	23	30	59
Jump	GB	21040	19706	20036	19986	20005	20155	19475	12379	20954	19167
	IRE	542	593	635	746	662	522	620	257	434	669
	Other	2	3	4	8	13	9	7	10	3	2
Overall	GB	67389	65023	65170	65789	66958	67616	67577	47854	68036	64534
	IRE	874	909	1001	1188	1208	1152	1235	452	733	929
	Other	86	78	122	72	82	64	70	33	33	61

Year to Date GB Trained Runners Racing Abroad

Code	Country	2013	2014	2015	2016	2017	2018	2019	2020	2021	2022
Flat	IRE	123	127	165	160	175	142	152	53	53	96
	FR	229	280	253	261	372	357	436	212	150	180
	GNV	18	15	17	21	24	28	46	15	7	16
	UAE	351	326	289	208	278	276	303	281	248	276
	BAH										41
	KSA								15	21	22
	Other	86	118	99	93	87	94	94	36	53	61
	Total	807	866	823	743	936	897	1031	612	532	692
Jump	IRE	46	92	90	90	81	55	72	7	23	27
	FR	49	25	26	49	25	10	44	51	100	96
	Other	10	9	7	8	6	5	8		8	13
	Total	105	126	123	147	112	70	124	58	131	136

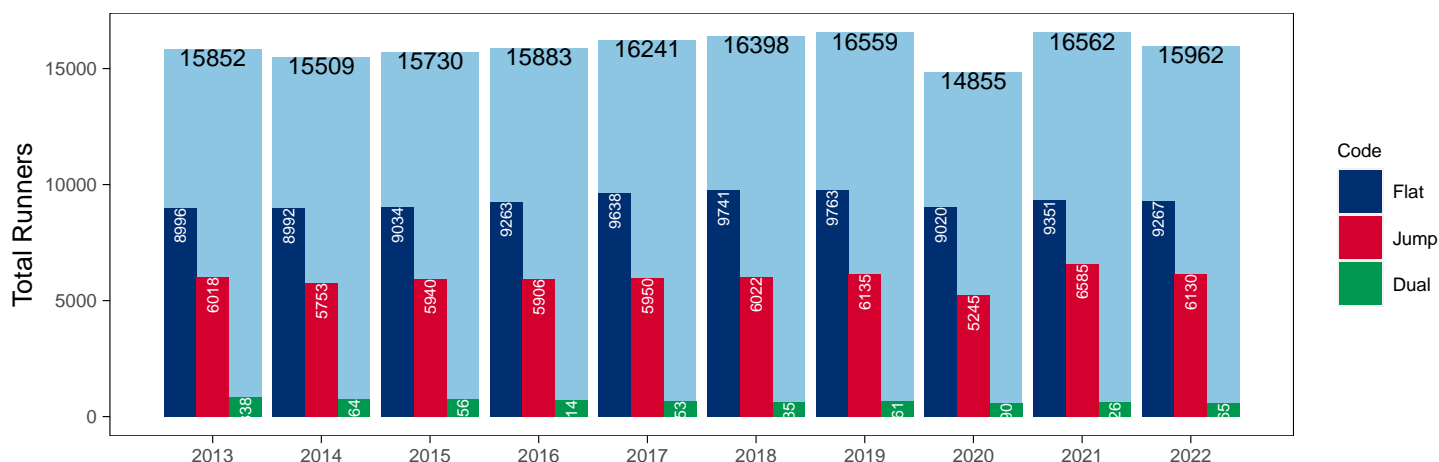
Year to Date Individual Runners

Code	2013	2014	2015	2016	2017	2018	2019	2020	2021	2022	vs. Last Year	vs. Pre-Covid
Flat	8996	8992	9034	9263	9638	9741	9763	9020	9351	9267	-84 / -0.9%	-496 / -5.1%
Jump	6018	5753	5940	5906	5950	6022	6135	5245	6585	6130	-455 / -6.9%	-5 / -0.1%
Dual	838	764	756	714	653	635	661	590	626	565	-61 / -9.7%	-96 / -14.5%
Overall	15852	15509	15730	15883	16241	16398	16559	14855	16562	15962	-600 / -3.6%	-597 / -3.6%

'vs. Pre-Covid' is comparison between 2022 and 2019

YTD Individual Runners

Individual Runners in GB Races, shown by Code and Total



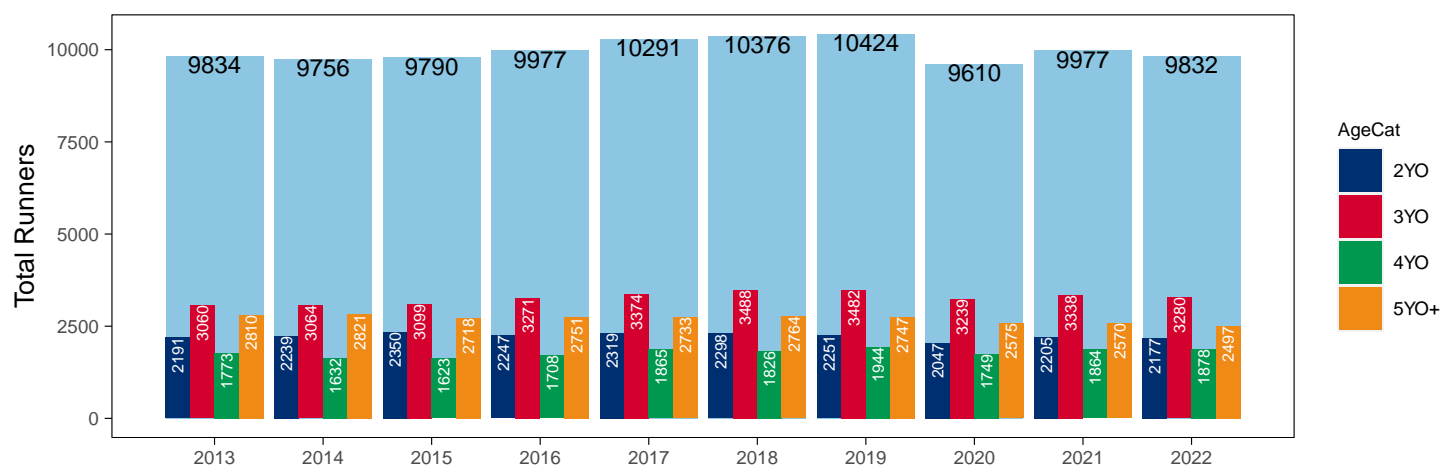
Flat

AgeCat	2013	2014	2015	2016	2017	2018	2019	2020	2021	2022	vs. Last Year	vs. Pre-Covid
2YO	2191	2239	2350	2247	2319	2298	2251	2047	2205	2177	-28 / -1.3%	-74 / -3.3%
3YO	3060	3064	3099	3271	3374	3488	3482	3239	3338	3280	-58 / -1.7%	-202 / -5.8%
4YO	1773	1632	1623	1708	1865	1826	1944	1749	1864	1878	+14 / +0.8%	-66 / -3.4%
5YO+	2810	2821	2718	2751	2733	2764	2747	2575	2570	2497	-73 / -2.8%	-250 / -9.1%
Total	9834	9756	9790	9977	10291	10376	10424	9610	9977	9832	-145 / -1.5%	-592 / -5.7%

'vs. Pre-Covid' is comparison between 2022 and 2019

YTD Individual Flat Runners by Age

Individual Runners in GB Flat Races, shown by Age Category and Total



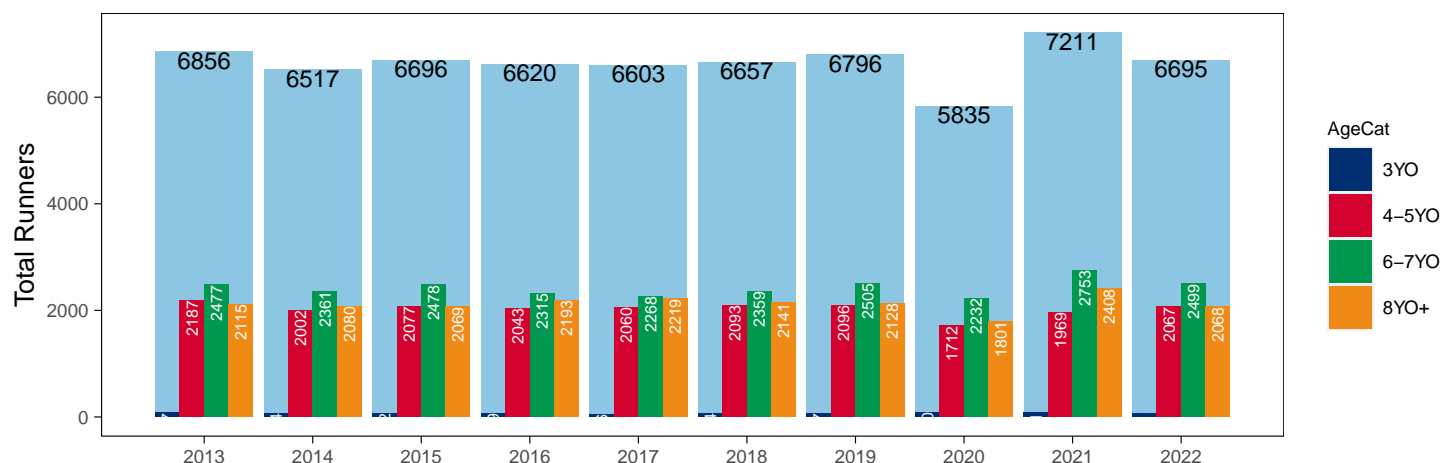
Jump

AgeCat	2013	2014	2015	2016	2017	2018	2019	2020	2021	2022	vs. Last Year	vs. Pre-Covid
3YO	77	74	72	69	56	64	67	90	81	61	-20 / -24.7%	-6 / -9.0%
4-5YO	2187	2002	2077	2043	2060	2093	2096	1712	1969	2067	+98 / +5.0%	-29 / -1.4%
6-7YO	2477	2361	2478	2315	2268	2359	2505	2232	2753	2499	-254 / -9.2%	-6 / -0.2%
8YO+	2115	2080	2069	2193	2219	2141	2128	1801	2408	2068	-340 / -14.1%	-60 / -2.8%
Total	6856	6517	6696	6620	6603	6657	6796	5835	7211	6695	-516 / -7.2%	-101 / -1.5%

'vs. Pre-Covid' is comparison between 2022 and 2019

YTD Individual Jump Runners by Age

Individual Runners in GB Jump Races, shown by Age Category and Total



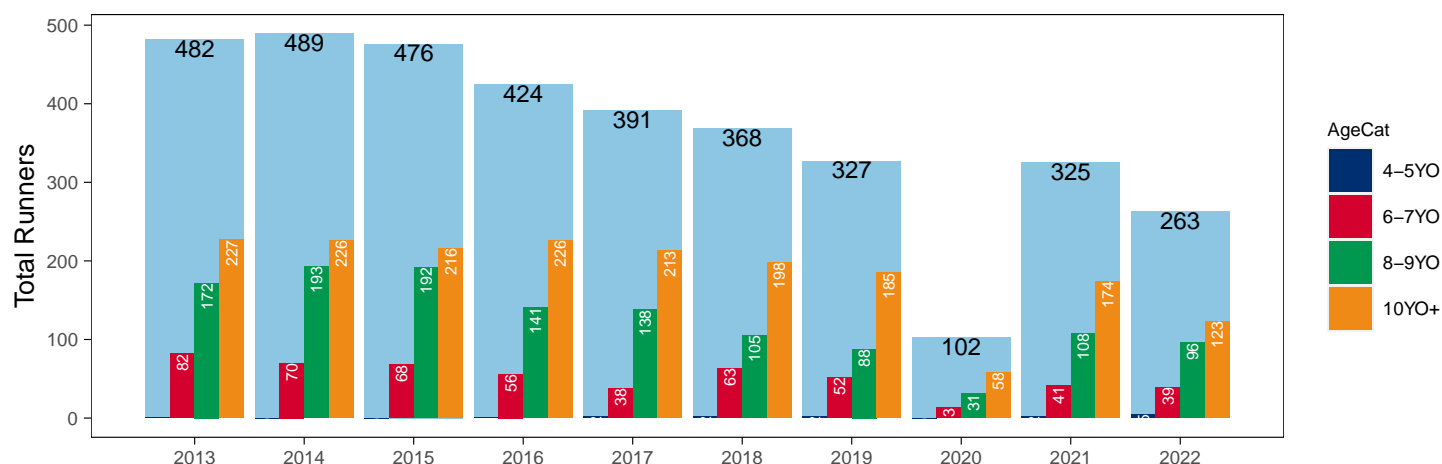
Hunter Chases

AgeCat	2013	2014	2015	2016	2017	2018	2019	2020	2021	2022	vs. Last Year	vs. Pre-Covid
4-5YO	1			1	2	2	2		2	5	+3 / +150.0%	+3 / +150.0%
6-7YO	82	70	68	56	38	63	52	13	41	39	-2 / -4.9%	-13 / -25.0%
8-9YO	172	193	192	141	138	105	88	31	108	96	-12 / -11.1%	+8 / +9.1%
10YO+	227	226	216	226	213	198	185	58	174	123	-51 / -29.3%	-62 / -33.5%
Total	482	489	476	424	391	368	327	102	325	263	-62 / -19.1%	-64 / -19.6%

'vs. Pre-Covid' is comparison between 2022 and 2019

YTD Individual Hunter Chase Runners by Age

Individual Runners in GB Hunter Chases shown by Age Category and Total



Year to Date Individual Runners by Country Trained

Code	Country	2013	2014	2015	2016	2017	2018	2019	2020	2021	2022
Flat	GB	8736	8741	8754	8978	9302	9368	9366	8865	9129	9036
	IRE	205	194	206	248	297	340	356	140	204	189
	Other	63	61	89	55	56	51	52	20	26	50
Jump	GB	5659	5392	5567	5491	5559	5661	5727	5008	6256	5658
	IRE	374	373	394	428	400	364	418	231	333	487
	Other	2	3	4	8	9	8	6	10	3	2
Dual	GB	830	756	740	698	639	618	648	586	620	555
	IRE	5	7	13	8	9	16	13	3	4	8
	Other					2					
Overall	GB	15225	14889	15061	15167	15500	15647	15741	14459	16005	15249
	IRE	584	574	613	684	706	720	787	374	541	684
	Other	65	64	93	63	67	59	58	30	29	52

Individual horses may appear under multiple countries.

Frequency of Runs

Year to Date Average Runs per Horse

Code	2013	2014	2015	2016	2017	2018	2019	2020	2021	2022
Flat	4.76	4.69	4.66	4.64	4.62	4.64	4.68	3.71	4.75	4.65
Jump	3.15	3.12	3.09	3.13	3.13	3.11	2.96	2.17	2.97	2.96
Overall	4.31	4.26	4.21	4.22	4.20	4.20	4.16	3.25	4.15	4.10

Year to Date Proportion of Horses by Count of Runs

Runs	2013	2014	2015	2016	2017	2018	2019	2020	2021	2022
Flat										
1	1540 (15.7%)	1533 (15.7%)	1551 (15.8%)	1564 (15.7%)	1631 (15.8%)	1636 (15.8%)	1682 (16.1%)	1790 (18.6%)	1477 (14.8%)	1566 (15.9%)
2	1406 (14.3%)	1418 (14.5%)	1387 (14.2%)	1389 (13.9%)	1434 (13.9%)	1511 (14.6%)	1507 (14.5%)	1789 (18.6%)	1345 (13.5%)	1348 (13.7%)
3	1425 (14.5%)	1342 (13.8%)	1459 (14.9%)	1367 (13.7%)	1494 (14.5%)	1473 (14.2%)	1395 (13.4%)	1618 (16.8%)	1377 (13.8%)	1363 (13.9%)
4	1144 (11.6%)	1204 (12.3%)	1179 (12.0%)	1239 (12.4%)	1247 (12.1%)	1243 (12.0%)	1255 (12.0%)	1377 (14.3%)	1282 (12.8%)	1266 (12.9%)
5+	4319 (43.9%)	4259 (43.7%)	4214 (43.0%)	4418 (44.3%)	4485 (43.6%)	4513 (43.5%)	4585 (44.0%)	3036 (31.6%)	4496 (45.1%)	4289 (43.6%)
Jump										
1	1734 (25.3%)	1677 (25.7%)	1714 (25.6%)	1650 (24.9%)	1669 (25.3%)	1641 (24.7%)	1835 (27.0%)	2173 (37.2%)	1862 (25.8%)	1837 (27.4%)
2	1475 (21.5%)	1402 (21.5%)	1473 (22.0%)	1411 (21.3%)	1360 (20.6%)	1372 (20.6%)	1605 (23.6%)	1826 (31.3%)	1708 (23.7%)	1483 (22.2%)
3	1215 (17.7%)	1156 (17.7%)	1206 (18.0%)	1205 (18.2%)	1232 (18.7%)	1242 (18.7%)	1211 (17.8%)	1047 (17.9%)	1399 (19.4%)	1259 (18.8%)
4	934 (13.6%)	890 (13.7%)	923 (13.8%)	921 (13.9%)	931 (14.1%)	981 (14.7%)	914 (13.4%)	456 (7.8%)	922 (12.8%)	910 (13.6%)
5+	1498 (21.8%)	1392 (21.4%)	1380 (20.6%)	1433 (21.6%)	1411 (21.4%)	1421 (21.3%)	1231 (18.1%)	333 (5.7%)	1320 (18.3%)	1206 (18.0%)
All Races										
1	2783 (17.6%)	2769 (17.9%)	2848 (18.1%)	2819 (17.7%)	2915 (17.9%)	2909 (17.7%)	3145 (19.0%)	3520 (23.7%)	2962 (17.9%)	3060 (19.2%)
2	2594 (16.4%)	2551 (16.4%)	2581 (16.4%)	2564 (16.1%)	2596 (16.0%)	2658 (16.2%)	2876 (17.4%)	3394 (22.8%)	2861 (17.3%)	2644 (16.6%)
3	2466 (15.6%)	2357 (15.2%)	2517 (16.0%)	2403 (15.1%)	2573 (15.8%)	2578 (15.7%)	2455 (14.8%)	2569 (17.3%)	2629 (15.9%)	2513 (15.7%)
4	2006 (12.7%)	2010 (13.0%)	2017 (12.8%)	2090 (13.2%)	2100 (12.9%)	2160 (13.2%)	2112 (12.8%)	1838 (12.4%)	2129 (12.9%)	2129 (13.3%)
5+	6003 (37.9%)	5822 (37.5%)	5767 (36.7%)	6007 (37.8%)	6057 (37.3%)	6093 (37.2%)	5971 (36.1%)	3534 (23.8%)	5981 (36.1%)	5616 (35.2%)

Year to Date Median Days Between Runs

Code	2013	2014	2015	2016	2017	2018	2019	2020	2021	2022
Flat	20	21	21	21	21	21	21	22	21	22
Jump	29	28	29	30	29	31	30	35	32	30
Overall	22	23	23	24	24	24	24	25	24	25

Horses Population by Gender

September 2022 Horses in Training Snapshot by Gender versus Previous Years

All Horses

Sex	2013	2014	2015	2016	2017	2018	2019	2020	2021	2022
Colt/Entire	2139 (15.3%)	2115 (15.3%)	2180 (15.1%)	2121 (14.7%)	2168 (14.4%)	2146 (13.8%)	2065 (13.5%)	2100 (13.1%)	1897 (12.3%)	1861 (12.1%)
Gelding	7542 (54.1%)	7470 (53.9%)	7861 (54.4%)	7955 (55.3%)	8266 (55.0%)	8606 (55.2%)	8474 (55.3%)	9032 (56.2%)	8731 (56.8%)	8626 (56.3%)
Filly/Mare	4268 (30.6%)	4270 (30.8%)	4398 (30.5%)	4314 (30.0%)	4597 (30.6%)	4842 (31.0%)	4785 (31.2%)	4936 (30.7%)	4745 (30.9%)	4839 (31.6%)
Rig	3 (0.0%)	0 (0.0%)	4 (0.0%)	5 (0.0%)	4 (0.0%)	2 (0.0%)	3 (0.0%)	2 (0.0%)	1 (0.0%)	1 (0.0%)
Total	13952 (100.0%)	13855 (100.0%)	14443 (100.0%)	14395 (100.0%)	15035 (100.0%)	15596 (100.0%)	15327 (100.0%)	16070 (100.0%)	15374 (100.0%)	15327 (100.0%)

Flat (including Dual)

Sex	2013	2014	2015	2016	2017	2018	2019	2020	2021	2022
Colt/Entire	2086 (22.7%)	2058 (22.9%)	2112 (22.5%)	2072 (21.9%)	2109 (21.0%)	2105 (20.7%)	2016 (20.2%)	2039 (20.4%)	1831 (19.0%)	1791 (18.1%)
Gelding	3689 (40.1%)	3580 (39.8%)	3826 (40.7%)	3985 (42.1%)	4337 (43.1%)	4379 (43.0%)	4315 (43.3%)	4377 (43.7%)	4294 (44.6%)	4472 (45.1%)
Filly/Mare	3424 (37.2%)	3366 (37.4%)	3457 (36.8%)	3406 (36.0%)	3614 (35.9%)	3696 (36.3%)	3623 (36.4%)	3590 (35.9%)	3501 (36.4%)	3647 (36.8%)
Rig	2 (0.0%)	0 (0.0%)	2 (0.0%)	5 (0.1%)	4 (0.0%)	2 (0.0%)	2 (0.0%)	1 (0.0%)	0 (0.0%)	0 (0.0%)
Total	9201 (100.0%)	9004 (100.0%)	9397 (100.0%)	9468 (100.0%)	10064 (100.0%)	10182 (100.0%)	9956 (100.0%)	10007 (100.0%)	9626 (100.0%)	9910 (100.0%)

Jump (including Dual)

Sex	2013	2014	2015	2016	2017	2018	2019	2020	2021	2022
Colt/Entire	43 (0.8%)	49 (0.9%)	44 (0.8%)	28 (0.5%)	28 (0.5%)	26 (0.4%)	25 (0.4%)	33 (0.5%)	39 (0.6%)	36 (0.6%)
Gelding	4278 (81.4%)	4283 (80.1%)	4434 (80.5%)	4371 (81.2%)	4466 (79.3%)	4613 (78.4%)	4498 (77.8%)	5115 (77.6%)	4801 (77.9%)	4635 (77.1%)
Filly/Mare	933 (17.8%)	1012 (18.9%)	1028 (18.7%)	981 (18.2%)	1135 (20.2%)	1248 (21.2%)	1258 (21.8%)	1440 (21.9%)	1323 (21.5%)	1336 (22.2%)
Rig	1 (0.0%)	0 (0.0%)	1 (0.0%)	0 (0.0%)	0 (0.0%)	0 (0.0%)	1 (0.0%)	1 (0.0%)	1 (0.0%)	1 (0.0%)
Total	5255 (100.0%)	5344 (100.0%)	5507 (100.0%)	5380 (100.0%)	5629 (100.0%)	5887 (100.0%)	5782 (100.0%)	6589 (100.0%)	6164 (100.0%)	6008 (100.0%)

Hunter Chasers

Sex	2013	2014	2015	2016	2017	2018	2019	2020	2021	2022
Colt/Entire	0 (0.0%)	0 (-)	0 (-)	0 (-)	0 (-)	0 (-)	0 (-)	0 (-)	3 (0.3%)	5 (0.4%)
Gelding	1 (100.0%)	0 (-)	0 (-)	0 (-)	0 (-)	0 (-)	0 (-)	0 (-)	895 (83.6%)	962 (81.5%)
Filly/Mare	0 (0.0%)	0 (-)	0 (-)	0 (-)	0 (-)	0 (-)	0 (-)	0 (-)	173 (16.2%)	213 (18.1%)
Rig	0 (0.0%)	0 (-)	0 (-)	0 (-)	0 (-)	0 (-)	0 (-)	0 (-)	0 (0.0%)	0 (0.0%)
Total	1 (100.0%)	0 (-)	0 (-)	0 (-)	0 (-)	0 (-)	0 (-)	0 (-)	1071 (100.0%)	1180 (100.0%)

Year to Date Total Runners by Gender

Sex	2013	2014	2015	2016	2017	2018	2019	2020	2021	2022
All Races										
Colt/Entire	7535 (11.0%)	7545 (11.4%)	7440 (11.2%)	7208 (10.8%)	7293 (10.7%)	7586 (11.0%)	6978 (10.1%)	5554 (11.5%)	6700 (9.7%)	6016 (9.2%)
Gelding	41870 (61.3%)	39745 (60.2%)	40573 (61.2%)	41395 (61.7%)	42263 (61.9%)	41921 (60.9%)	41849 (60.8%)	28611 (59.2%)	42172 (61.3%)	40374 (61.6%)
Filly/Mare	18944 (27.7%)	18719 (28.4%)	18277 (27.6%)	18428 (27.5%)	18682 (27.4%)	19313 (28.1%)	20039 (29.1%)	14170 (29.3%)	19923 (29.0%)	19126 (29.2%)
Rig	0 (0.0%)	1 (0.0%)	3 (0.0%)	18 (0.0%)	10 (0.0%)	12 (0.0%)	16 (0.0%)	4 (0.0%)	7 (0.0%)	8 (0.0%)
Flat										
Colt/Entire	7467 (16.0%)	7458 (16.3%)	7391 (16.2%)	7175 (15.5%)	7254 (15.2%)	7559 (15.7%)	6947 (14.2%)	5534 (15.5%)	6657 (14.0%)	5993 (13.1%)
Gelding	23946 (51.2%)	23138 (50.6%)	23732 (52.0%)	24373 (52.6%)	25345 (53.3%)	25448 (52.9%)	26068 (53.4%)	18702 (52.4%)	25452 (53.7%)	24796 (54.3%)
Filly/Mare	15352 (32.8%)	15112 (33.1%)	14493 (31.8%)	14743 (31.8%)	14959 (31.4%)	15127 (31.4%)	15754 (32.3%)	11456 (32.1%)	15299 (32.3%)	14897 (32.6%)
Rig	0 (0.0%)	0 (0.0%)	2 (0.0%)	18 (0.0%)	10 (0.0%)	12 (0.0%)	11 (0.0%)	1 (0.0%)	3 (0.0%)	0 (0.0%)
All Jump										
Colt/Entire	68 (0.3%)	87 (0.4%)	49 (0.2%)	33 (0.2%)	39 (0.2%)	27 (0.1%)	31 (0.2%)	20 (0.2%)	43 (0.2%)	23 (0.1%)
Gelding	17924 (83.0%)	16607 (81.8%)	16841 (81.5%)	17022 (82.1%)	16918 (81.8%)	16473 (79.6%)	15781 (78.5%)	9909 (78.4%)	16720 (78.2%)	15578 (78.5%)
Filly/Mare	3592 (16.6%)	3607 (17.8%)	3784 (18.3%)	3685 (17.8%)	3723 (18.0%)	4186 (20.2%)	4285 (21.3%)	2714 (21.5%)	4624 (21.6%)	4229 (21.3%)
Rig	0 (0.0%)	1 (0.0%)	1 (0.0%)	0 (0.0%)	0 (0.0%)	0 (0.0%)	5 (0.0%)	3 (0.0%)	4 (0.0%)	8 (0.0%)
Chase										
Colt/Entire	7 (0.1%)	2 (0.0%)	0 (0.0%)	1 (0.0%)	0 (0.0%)	0 (0.0%)	0 (0.0%)	0 (0.0%)	0 (0.0%)	0 (0.0%)
Gelding	6356 (92.7%)	6000 (92.6%)	6032 (92.7%)	6190 (92.9%)	6244 (92.7%)	5930 (90.7%)	5707 (90.0%)	3521 (90.2%)	5893 (89.4%)	5706 (89.4%)
Filly/Mare	491 (7.2%)	477 (7.4%)	475 (7.3%)	471 (7.1%)	494 (7.3%)	606 (9.3%)	634 (10.0%)	378 (9.7%)	692 (10.5%)	672 (10.5%)
Rig	0 (0.0%)	0 (0.0%)	0 (0.0%)	0 (0.0%)	0 (0.0%)	0 (0.0%)	3 (0.0%)	3 (0.1%)	4 (0.1%)	8 (0.1%)
Hurdle										
Colt/Entire	45 (0.4%)	76 (0.7%)	42 (0.3%)	29 (0.2%)	32 (0.3%)	19 (0.2%)	22 (0.2%)	9 (0.1%)	37 (0.3%)	14 (0.1%)
Gelding	9934 (80.9%)	9159 (78.4%)	9634 (78.2%)	9760 (78.7%)	9579 (78.3%)	9420 (76.4%)	9092 (74.9%)	5685 (74.4%)	9157 (74.1%)	8892 (75.1%)
Filly/Mare	2293 (18.7%)	2443 (20.9%)	2648 (21.5%)	2615 (21.1%)	2624 (21.4%)	2889 (23.4%)	3028 (24.9%)	1952 (25.5%)	3158 (25.6%)	2928 (24.7%)
Rig	0 (0.0%)	0 (0.0%)	0 (0.0%)	0 (0.0%)	0 (0.0%)	0 (0.0%)	2 (0.0%)	0 (0.0%)	0 (0.0%)	0 (0.0%)
NHF										
Colt/Entire	16 (0.7%)	9 (0.4%)	7 (0.4%)	3 (0.2%)	7 (0.4%)	8 (0.4%)	9 (0.6%)	11 (1.0%)	6 (0.2%)	9 (0.6%)
Gelding	1634 (66.5%)	1448 (67.5%)	1175 (63.7%)	1072 (64.0%)	1095 (64.1%)	1123 (61.6%)	982 (60.8%)	703 (64.0%)	1670 (68.2%)	980 (60.6%)
Filly/Mare	808 (32.9%)	687 (32.0%)	661 (35.8%)	599 (35.8%)	605 (35.4%)	691 (37.9%)	623 (38.6%)	384 (35.0%)	774 (31.6%)	629 (38.9%)
Rig	0 (0.0%)	1 (0.0%)	1 (0.1%)	0 (0.0%)	0 (0.0%)	0 (0.0%)	0 (0.0%)	0 (0.0%)	0 (0.0%)	0 (0.0%)
Hunter										
Colt/Entire	0 (0.0%)	0 (0.0%)	1 (0.1%)	0 (0.0%)	0 (0.0%)	0 (0.0%)	0 (0.0%)	0 (0.0%)	0 (0.0%)	0 (0.0%)
Gelding	844 (92.1%)	771 (91.5%)	799 (94.2%)	720 (94.2%)	709 (94.9%)	603 (93.3%)	522 (92.7%)	142 (97.3%)	557 (93.5%)	429 (94.9%)
Filly/Mare	72 (7.9%)	72 (8.5%)	48 (5.7%)	44 (5.8%)	38 (5.1%)	43 (6.7%)	41 (7.3%)	4 (2.7%)	39 (6.5%)	23 (5.1%)

Year to Date Individual Runners by Gender

Sex	2013	2014	2015	2016	2017	2018	2019	2020	2021	2022
All Races										
Male	11147 (70.3%)	10882 (70.2%)	11081 (70.4%)	11203 (70.5%)	11438 (70.4%)	11490 (70.1%)	11516 (69.5%)	10282 (69.2%)	11508 (69.5%)	11032 (69.1%)
Female	4705 (29.7%)	4627 (29.8%)	4649 (29.6%)	4680 (29.5%)	4803 (29.6%)	4908 (29.9%)	5043 (30.5%)	4573 (30.8%)	5054 (30.5%)	4930 (30.9%)
Flat										
Male	6267 (63.7%)	6215 (63.7%)	6297 (64.3%)	6436 (64.5%)	6669 (64.8%)	6770 (65.2%)	6743 (64.7%)	6209 (64.6%)	6399 (64.1%)	6279 (63.9%)
Female	3567 (36.3%)	3541 (36.3%)	3493 (35.7%)	3541 (35.5%)	3622 (35.2%)	3606 (34.8%)	3681 (35.3%)	3401 (35.4%)	3578 (35.9%)	3553 (36.1%)
All Jump										
Male	5554 (81.0%)	5267 (80.8%)	5383 (80.4%)	5353 (80.9%)	5295 (80.2%)	5236 (78.7%)	5299 (78.0%)	4543 (77.9%)	5602 (77.7%)	5190 (77.5%)
Female	1302 (19.0%)	1250 (19.2%)	1313 (19.6%)	1267 (19.1%)	1308 (19.8%)	1421 (21.3%)	1497 (22.0%)	1292 (22.1%)	1609 (22.3%)	1505 (22.5%)
Chase										
Male	2100 (91.9%)	2003 (92.1%)	2074 (92.1%)	2071 (92.5%)	2096 (91.6%)	2021 (89.9%)	2022 (89.1%)	1708 (89.1%)	2133 (88.4%)	1983 (88.4%)
Female	185 (8.1%)	172 (7.9%)	179 (7.9%)	168 (7.5%)	193 (8.4%)	228 (10.1%)	247 (10.9%)	208 (10.9%)	279 (11.6%)	260 (11.6%)
Hurdle										
Male	3558 (80.8%)	3315 (79.3%)	3458 (79.0%)	3484 (79.9%)	3367 (78.4%)	3396 (77.1%)	3423 (76.4%)	2842 (75.2%)	3520 (75.2%)	3331 (76.3%)
Female	844 (19.2%)	866 (20.7%)	917 (21.0%)	874 (20.1%)	928 (21.6%)	1007 (22.9%)	1059 (23.6%)	936 (24.8%)	1160 (24.8%)	1036 (23.7%)
NHF										
Male	1121 (69.4%)	995 (70.1%)	801 (65.7%)	742 (65.5%)	739 (65.9%)	796 (65.2%)	694 (63.4%)	564 (65.8%)	1194 (69.8%)	691 (62.8%)
Female	495 (30.6%)	425 (29.9%)	418 (34.3%)	390 (34.5%)	382 (34.1%)	424 (34.8%)	400 (36.6%)	293 (34.2%)	517 (30.2%)	410 (37.2%)
Hunter										
Male	433 (89.8%)	447 (91.4%)	448 (94.1%)	395 (93.2%)	366 (93.6%)	339 (92.1%)	301 (92.0%)	98 (96.1%)	299 (92.0%)	243 (92.4%)
Female	49 (10.2%)	42 (8.6%)	28 (5.9%)	29 (6.8%)	25 (6.4%)	29 (7.9%)	26 (8.0%)	4 (3.9%)	26 (8.0%)	20 (7.6%)

Horses Population by Breeding

September 2022 Horses in Training Snapshot by Breeding versus Previous Years

Flat (including Dual)

Bred	Sex	2013	2014	2015	2016	2017	2018	2019	2020	2021	2022
GB	Male	2728 (29.6%)	2700 (30.0%)	2820 (30.0%)	2822 (29.8%)	3019 (30.0%)	3032 (29.8%)	3009 (30.2%)	3039 (30.4%)	2867 (29.8%)	2881 (29.1%)
	Female	1969 (21.4%)	1868 (20.7%)	1880 (20.0%)	1912 (20.2%)	1993 (19.8%)	2029 (19.9%)	2005 (20.1%)	2000 (20.0%)	1939 (20.1%)	1992 (20.1%)
	Subtotal	4697 (51.0%)	4568 (50.7%)	4700 (50.0%)	4734 (50.0%)	5012 (49.8%)	5061 (49.7%)	5014 (50.4%)	5039 (50.4%)	4806 (49.9%)	4873 (49.2%)
IRE	Male	2405 (26.1%)	2375 (26.4%)	2533 (27.0%)	2622 (27.7%)	2732 (27.1%)	2763 (27.1%)	2676 (26.9%)	2744 (27.4%)	2700 (28.0%)	2863 (28.9%)
	Female	1211 (13.2%)	1248 (13.9%)	1340 (14.3%)	1262 (13.3%)	1363 (13.5%)	1375 (13.5%)	1356 (13.6%)	1350 (13.5%)	1358 (14.1%)	1470 (14.8%)
	Subtotal	3616 (39.3%)	3623 (40.2%)	3873 (41.2%)	3884 (41.0%)	4095 (40.7%)	4138 (40.6%)	4032 (40.5%)	4094 (40.9%)	4058 (42.2%)	4333 (43.7%)
FR	Male	122 (1.3%)	153 (1.7%)	181 (1.9%)	215 (2.3%)	277 (2.8%)	303 (3.0%)	303 (3.0%)	313 (3.1%)	313 (3.3%)	338 (3.4%)
	Female	50 (0.5%)	57 (0.6%)	68 (0.7%)	81 (0.9%)	105 (1.0%)	120 (1.2%)	117 (1.2%)	122 (1.2%)	117 (1.2%)	119 (1.2%)
	Subtotal	172 (1.9%)	210 (2.3%)	249 (2.6%)	296 (3.1%)	382 (3.8%)	423 (4.2%)	420 (4.2%)	435 (4.3%)	430 (4.5%)	457 (4.6%)
USA	Male	430 (4.7%)	316 (3.5%)	321 (3.4%)	321 (3.4%)	327 (3.2%)	310 (3.0%)	274 (2.8%)	237 (2.4%)	180 (1.9%)	122 (1.2%)
	Female	169 (1.8%)	156 (1.7%)	139 (1.5%)	128 (1.4%)	126 (1.3%)	144 (1.4%)	109 (1.1%)	88 (0.9%)	63 (0.7%)	46 (0.5%)
	Subtotal	599 (6.5%)	472 (5.2%)	460 (4.9%)	449 (4.7%)	453 (4.5%)	454 (4.5%)	383 (3.8%)	325 (3.2%)	243 (2.5%)	168 (1.7%)
GNY	Male	52 (0.6%)	55 (0.6%)	61 (0.6%)	55 (0.6%)	67 (0.7%)	53 (0.5%)	53 (0.5%)	63 (0.6%)	54 (0.6%)	45 (0.5%)
	Female	16 (0.2%)	16 (0.2%)	13 (0.1%)	9 (0.1%)	14 (0.1%)	16 (0.2%)	24 (0.2%)	24 (0.2%)	21 (0.2%)	16 (0.2%)
	Subtotal	68 (0.7%)	71 (0.8%)	74 (0.8%)	64 (0.7%)	81 (0.8%)	69 (0.7%)	77 (0.8%)	87 (0.9%)	75 (0.8%)	61 (0.6%)
Other	Male	40 (0.4%)	39 (0.4%)	24 (0.3%)	27 (0.3%)	28 (0.3%)	25 (0.2%)	18 (0.2%)	21 (0.2%)	11 (0.1%)	14 (0.1%)
	Female	9 (0.1%)	21 (0.2%)	17 (0.2%)	14 (0.1%)	13 (0.1%)	12 (0.1%)	12 (0.1%)	6 (0.1%)	3 (0.0%)	4 (0.0%)
	Subtotal	49 (0.5%)	60 (0.7%)	41 (0.4%)	41 (0.4%)	41 (0.4%)	37 (0.4%)	30 (0.3%)	27 (0.3%)	14 (0.1%)	18 (0.2%)

Jump (including Dual)

Bred	Sex	2013	2014	2015	2016	2017	2018	2019	2020	2021	2022
GB	Male	1358 (25.8%)	1336 (25.0%)	1339 (24.3%)	1213 (22.5%)	1233 (21.9%)	1236 (21.0%)	1127 (19.5%)	1317 (20.0%)	1204 (19.5%)	1168 (19.4%)
	Female	583 (11.1%)	611 (11.4%)	614 (11.1%)	549 (10.2%)	591 (10.5%)	605 (10.3%)	565 (9.8%)	649 (9.8%)	612 (9.9%)	640 (10.7%)
	Subtotal	1941 (36.9%)	1947 (36.4%)	1953 (35.5%)	1762 (32.8%)	1824 (32.4%)	1841 (31.3%)	1692 (29.3%)	1966 (29.8%)	1816 (29.5%)	1808 (30.1%)
IRE	Male	2305 (43.9%)	2304 (43.1%)	2419 (43.9%)	2416 (44.9%)	2505 (44.5%)	2568 (43.6%)	2560 (44.3%)	2824 (42.9%)	2643 (42.9%)	2469 (41.1%)
	Female	294 (5.6%)	339 (6.3%)	355 (6.4%)	382 (7.1%)	464 (8.2%)	539 (9.2%)	575 (9.9%)	650 (9.9%)	583 (9.5%)	558 (9.3%)
	Subtotal	2599 (49.5%)	2643 (49.5%)	2774 (50.4%)	2798 (52.0%)	2969 (52.7%)	3107 (52.8%)	3135 (54.2%)	3474 (52.7%)	3226 (52.3%)	3027 (50.4%)
FR	Male	508 (9.7%)	539 (10.1%)	602 (10.9%)	664 (12.3%)	654 (11.6%)	746 (12.7%)	749 (13.0%)	907 (13.8%)	895 (14.5%)	941 (15.7%)
	Female	46 (0.9%)	52 (1.0%)	50 (0.9%)	43 (0.8%)	72 (1.3%)	98 (1.7%)	111 (1.9%)	134 (2.0%)	120 (1.9%)	129 (2.1%)
	Subtotal	554 (10.5%)	591 (11.1%)	652 (11.8%)	707 (13.1%)	726 (12.9%)	844 (14.3%)	860 (14.9%)	1041 (15.8%)	1015 (16.5%)	1070 (17.8%)
USA	Male	88 (1.7%)	78 (1.5%)	64 (1.2%)	48 (0.9%)	41 (0.7%)	39 (0.7%)	31 (0.5%)	32 (0.5%)	32 (0.5%)	24 (0.4%)
	Female	5 (0.1%)	3 (0.1%)	1 (0.0%)	1 (0.0%)	2 (0.0%)	4 (0.1%)	2 (0.0%)	1 (0.0%)	NA (-)	NA (-)
	Subtotal	93 (1.8%)	81 (1.5%)	65 (1.2%)	49 (0.9%)	43 (0.8%)	43 (0.7%)	33 (0.6%)	33 (0.5%)	32 (0.5%)	24 (0.4%)
GNY	Male	51 (1.0%)	64 (1.2%)	51 (0.9%)	53 (1.0%)	52 (0.9%)	43 (0.7%)	53 (0.9%)	64 (1.0%)	63 (1.0%)	66 (1.1%)
	Female	3 (0.1%)	6 (0.1%)	6 (0.1%)	4 (0.1%)	3 (0.1%)	1 (0.0%)	5 (0.1%)	5 (0.1%)	6 (0.1%)	7 (0.1%)
	Subtotal	54 (1.0%)	70 (1.3%)	57 (1.0%)	57 (1.1%)	55 (1.0%)	44 (0.7%)	58 (1.0%)	69 (1.0%)	69 (1.1%)	73 (1.2%)
Other	Male	12 (0.2%)	11 (0.2%)	4 (0.1%)	5 (0.1%)	9 (0.2%)	7 (0.1%)	4 (0.1%)	5 (0.1%)	4 (0.1%)	4 (0.1%)
	Female	2 (0.0%)	1 (0.0%)	2 (0.0%)	2 (0.0%)	3 (0.1%)	1 (0.0%)	NA (-)	1 (0.0%)	2 (0.0%)	2 (0.0%)
	Subtotal	14 (0.3%)	12 (0.2%)	6 (0.1%)	7 (0.1%)	12 (0.2%)	8 (0.1%)	4 (0.1%)	6 (0.1%)	6 (0.1%)	6 (0.1%)

Year to Date Total Runners by Breeding

Flat

Bred	Sex	2013	2014	2015	2016	2017	2018	2019	2020	2021	2022
GB	Male	14575 (31.2%)	14262 (31.2%)	14765 (32.4%)	14824 (32.0%)	15369 (32.3%)	15285 (31.7%)	15102 (31.0%)	11489 (32.2%)	14806 (31.2%)	14112 (30.9%)
	Female	8767 (18.7%)	8257 (18.1%)	7958 (17.4%)	8110 (17.5%)	8125 (17.1%)	8257 (17.1%)	8623 (17.7%)	6312 (17.7%)	8507 (17.9%)	8134 (17.8%)
	Subtotal	23342 (49.9%)	22519 (49.3%)	22723 (49.8%)	22934 (49.5%)	23494 (49.4%)	23542 (48.9%)	23725 (48.6%)	17801 (49.9%)	23313 (49.2%)	22246 (48.7%)
IRE	Male	13611 (29.1%)	13441 (29.4%)	13610 (29.8%)	14024 (30.3%)	14343 (30.2%)	14747 (30.6%)	14813 (30.4%)	10618 (29.7%)	14689 (31.0%)	14572 (31.9%)
	Female	5790 (12.4%)	5964 (13.0%)	5681 (12.5%)	5859 (12.7%)	6021 (12.7%)	5973 (12.4%)	6139 (12.6%)	4533 (12.7%)	5962 (12.6%)	6032 (13.2%)
	Subtotal	19401 (41.5%)	19405 (42.5%)	19291 (42.3%)	19883 (42.9%)	20364 (42.8%)	20720 (43.0%)	20952 (43.0%)	15151 (42.4%)	20651 (43.6%)	20604 (45.1%)
FR	Male	527 (1.1%)	637 (1.4%)	848 (1.9%)	874 (1.9%)	1031 (2.2%)	1187 (2.5%)	1394 (2.9%)	1008 (2.8%)	1326 (2.8%)	1237 (2.7%)
	Female	137 (0.3%)	262 (0.6%)	266 (0.6%)	307 (0.7%)	318 (0.7%)	384 (0.8%)	440 (0.9%)	321 (0.9%)	457 (1.0%)	429 (0.9%)
	Subtotal	664 (1.4%)	899 (2.0%)	1114 (2.4%)	1181 (2.6%)	1349 (2.8%)	1571 (3.3%)	1834 (3.8%)	1329 (3.7%)	1783 (3.8%)	1666 (3.6%)
USA	Male	2265 (4.8%)	1804 (3.9%)	1501 (3.3%)	1450 (3.1%)	1429 (3.0%)	1413 (2.9%)	1337 (2.7%)	855 (2.4%)	903 (1.9%)	652 (1.4%)
	Female	579 (1.2%)	534 (1.2%)	435 (1.0%)	359 (0.8%)	406 (0.9%)	413 (0.9%)	410 (0.8%)	212 (0.6%)	258 (0.5%)	203 (0.4%)
	Subtotal	2844 (6.1%)	2338 (5.1%)	1936 (4.2%)	1809 (3.9%)	1835 (3.9%)	1826 (3.8%)	1747 (3.6%)	1067 (3.0%)	1161 (2.4%)	855 (1.9%)
GNY	Male	237 (0.5%)	232 (0.5%)	238 (0.5%)	272 (0.6%)	291 (0.6%)	247 (0.5%)	258 (0.5%)	206 (0.6%)	307 (0.6%)	162 (0.4%)
	Female	48 (0.1%)	56 (0.1%)	84 (0.2%)	54 (0.1%)	38 (0.1%)	62 (0.1%)	90 (0.2%)	66 (0.2%)	98 (0.2%)	78 (0.2%)
	Subtotal	285 (0.6%)	288 (0.6%)	322 (0.7%)	326 (0.7%)	329 (0.7%)	309 (0.6%)	348 (0.7%)	272 (0.8%)	405 (0.9%)	240 (0.5%)
Other	Male	198 (0.4%)	220 (0.5%)	163 (0.4%)	122 (0.3%)	146 (0.3%)	140 (0.3%)	122 (0.3%)	61 (0.2%)	81 (0.2%)	54 (0.1%)
	Female	31 (0.1%)	39 (0.1%)	69 (0.2%)	54 (0.1%)	51 (0.1%)	38 (0.1%)	52 (0.1%)	12 (0.0%)	17 (0.0%)	21 (0.0%)
	Subtotal	229 (0.5%)	259 (0.6%)	232 (0.5%)	176 (0.4%)	197 (0.4%)	178 (0.4%)	174 (0.4%)	73 (0.2%)	98 (0.2%)	75 (0.2%)

Jump

Bred	Sex	2013	2014	2015	2016	2017	2018	2019	2020	2021	2022
GB	Male	5602 (26.0%)	5117 (25.2%)	4990 (24.1%)	4723 (22.8%)	4537 (21.9%)	4379 (21.2%)	4148 (20.6%)	2482 (19.6%)	4098 (19.2%)	3537 (17.8%)
	Female	2102 (9.7%)	2132 (10.5%)	2155 (10.4%)	1930 (9.3%)	1850 (8.9%)	2017 (9.8%)	1861 (9.3%)	1125 (8.9%)	2047 (9.6%)	1866 (9.4%)
	Subtotal	7704 (35.7%)	7249 (35.7%)	7145 (34.6%)	6653 (32.1%)	6387 (30.9%)	6396 (30.9%)	6009 (29.9%)	3607 (28.5%)	6145 (28.7%)	5403 (27.2%)
IRE	Male	9579 (44.4%)	9122 (44.9%)	9292 (44.9%)	9575 (46.2%)	9553 (46.2%)	9271 (44.8%)	8837 (44.0%)	5587 (44.2%)	9284 (43.4%)	8477 (42.7%)
	Female	1240 (5.7%)	1253 (6.2%)	1435 (6.9%)	1549 (7.5%)	1617 (7.8%)	1909 (9.2%)	2056 (10.2%)	1297 (10.3%)	2084 (9.7%)	1895 (9.6%)
	Subtotal	10819 (50.1%)	10375 (51.1%)	10727 (51.9%)	11124 (53.6%)	11170 (54.0%)	11180 (54.0%)	10893 (54.2%)	6884 (54.4%)	11368 (53.1%)	10372 (52.3%)
FR	Male	1995 (9.2%)	1838 (9.1%)	2016 (9.8%)	2305 (11.1%)	2477 (12.0%)	2473 (12.0%)	2444 (12.2%)	1632 (12.9%)	2965 (13.9%)	3241 (16.3%)
	Female	196 (0.9%)	197 (1.0%)	167 (0.8%)	173 (0.8%)	235 (1.1%)	235 (1.1%)	330 (1.6%)	266 (2.1%)	453 (2.1%)	421 (2.1%)
	Subtotal	2191 (10.2%)	2035 (10.0%)	2183 (10.6%)	2478 (11.9%)	2712 (13.1%)	2708 (13.1%)	2774 (13.8%)	1898 (15.0%)	3418 (16.0%)	3662 (18.5%)
USA	Male	459 (2.1%)	354 (1.7%)	304 (1.5%)	219 (1.1%)	153 (0.7%)	150 (0.7%)	129 (0.6%)	83 (0.7%)	132 (0.6%)	87 (0.4%)
	Female	22 (0.1%)	8 (0.0%)	6 (0.0%)	4 (0.0%)	6 (0.0%)	6 (0.0%)	14 (0.1%)	18 (0.1%)	6 (0.0%)	6 (0.0%)
	Subtotal	481 (2.2%)	362 (1.8%)	310 (1.5%)	223 (1.1%)	159 (0.8%)	156 (0.8%)	143 (0.7%)	101 (0.8%)	138 (0.6%)	93 (0.5%)
GNY	Male	254 (1.2%)	214 (1.1%)	250 (1.2%)	205 (1.0%)	212 (1.0%)	189 (0.9%)	235 (1.2%)	138 (1.1%)	274 (1.3%)	258 (1.3%)
	Female	25 (0.1%)	16 (0.1%)	19 (0.1%)	17 (0.1%)	9 (0.0%)	10 (0.0%)	22 (0.1%)	7 (0.1%)	32 (0.1%)	33 (0.2%)
	Subtotal	279 (1.3%)	230 (1.1%)	269 (1.3%)	222 (1.1%)	221 (1.1%)	199 (1.0%)	257 (1.3%)	145 (1.1%)	306 (1.4%)	291 (1.5%)
Other	Male	103 (0.5%)	50 (0.2%)	39 (0.2%)	28 (0.1%)	25 (0.1%)	38 (0.2%)	24 (0.1%)	10 (0.1%)	14 (0.1%)	9 (0.0%)
	Female	7 (0.0%)	1 (0.0%)	2 (0.0%)	12 (0.1%)	6 (0.0%)	9 (0.0%)	2 (0.0%)	1 (0.0%)	2 (0.0%)	8 (0.0%)
	Subtotal	110 (0.5%)	51 (0.3%)	41 (0.2%)	40 (0.2%)	31 (0.1%)	47 (0.2%)	26 (0.1%)	11 (0.1%)	16 (0.1%)	17 (0.1%)

Year to Date Individual Runners by Breeding

Flat

Bred	Sex	2013	2014	2015	2016	2017	2018	2019	2020	2021	2022
GB	Male	2931 (29.8%)	2865 (29.4%)	2952 (30.2%)	2952 (29.6%)	3041 (29.6%)	3115 (30.0%)	3075 (29.5%)	2894 (30.1%)	2906 (29.1%)	2846 (28.9%)
	Female	2037 (20.7%)	1935 (19.8%)	1898 (19.4%)	1916 (19.2%)	1954 (19.0%)	1914 (18.4%)	1961 (18.8%)	1841 (19.2%)	1952 (19.6%)	1922 (19.5%)
	Subtotal	4968 (50.5%)	4800 (49.2%)	4850 (49.5%)	4868 (48.8%)	4995 (48.5%)	5029 (48.5%)	5036 (48.3%)	4735 (49.3%)	4858 (48.7%)	4768 (48.5%)
IRE	Male	2620 (26.6%)	2663 (27.3%)	2697 (27.5%)	2834 (28.4%)	2922 (28.4%)	2952 (28.5%)	2939 (28.2%)	2698 (28.1%)	2895 (29.0%)	2925 (29.7%)
	Female	1289 (13.1%)	1359 (13.9%)	1345 (13.7%)	1397 (14.0%)	1410 (13.7%)	1428 (13.8%)	1440 (13.8%)	1331 (13.9%)	1403 (14.1%)	1433 (14.6%)
	Subtotal	3909 (39.7%)	4022 (41.2%)	4042 (41.3%)	4231 (42.4%)	4332 (42.1%)	4380 (42.2%)	4379 (42.0%)	4029 (41.9%)	4298 (43.1%)	4358 (44.3%)
FR	Male	133 (1.4%)	158 (1.6%)	188 (1.9%)	210 (2.1%)	244 (2.4%)	294 (2.8%)	333 (3.2%)	308 (3.2%)	315 (3.2%)	305 (3.1%)
	Female	49 (0.5%)	74 (0.8%)	68 (0.7%)	85 (0.9%)	99 (1.0%)	110 (1.1%)	124 (1.2%)	115 (1.2%)	121 (1.2%)	119 (1.2%)
	Subtotal	182 (1.9%)	232 (2.4%)	256 (2.6%)	295 (3.0%)	343 (3.3%)	404 (3.9%)	457 (4.4%)	423 (4.4%)	436 (4.4%)	424 (4.3%)
USA	Male	479 (4.9%)	415 (4.3%)	355 (3.6%)	344 (3.4%)	355 (3.4%)	320 (3.1%)	305 (2.9%)	236 (2.5%)	206 (2.1%)	137 (1.4%)
	Female	162 (1.6%)	143 (1.5%)	141 (1.4%)	114 (1.1%)	128 (1.2%)	128 (1.2%)	123 (1.2%)	85 (0.9%)	73 (0.7%)	50 (0.5%)
	Subtotal	641 (6.5%)	558 (5.7%)	496 (5.1%)	458 (4.6%)	483 (4.7%)	448 (4.3%)	428 (4.1%)	321 (3.3%)	279 (2.8%)	187 (1.9%)
GNY	Male	55 (0.6%)	67 (0.7%)	68 (0.7%)	69 (0.7%)	75 (0.7%)	60 (0.6%)	59 (0.6%)	56 (0.6%)	61 (0.6%)	48 (0.5%)
	Female	18 (0.2%)	17 (0.2%)	23 (0.2%)	14 (0.1%)	14 (0.1%)	17 (0.2%)	21 (0.2%)	23 (0.2%)	25 (0.3%)	24 (0.2%)
	Subtotal	73 (0.7%)	84 (0.9%)	91 (0.9%)	83 (0.8%)	89 (0.9%)	77 (0.7%)	80 (0.8%)	79 (0.8%)	86 (0.9%)	72 (0.7%)
Other	Male	49 (0.5%)	47 (0.5%)	37 (0.4%)	27 (0.3%)	32 (0.3%)	29 (0.3%)	32 (0.3%)	17 (0.2%)	16 (0.2%)	18 (0.2%)
	Female	12 (0.1%)	13 (0.1%)	18 (0.2%)	15 (0.2%)	17 (0.2%)	9 (0.1%)	12 (0.1%)	6 (0.1%)	4 (0.0%)	5 (0.1%)
	Subtotal	61 (0.6%)	60 (0.6%)	55 (0.6%)	42 (0.4%)	49 (0.5%)	38 (0.4%)	44 (0.4%)	23 (0.2%)	20 (0.2%)	23 (0.2%)

Jump

Bred	Sex	2013	2014	2015	2016	2017	2018	2019	2020	2021	2022
GB	Male	1753 (25.6%)	1660 (25.5%)	1585 (23.7%)	1488 (22.5%)	1406 (21.3%)	1353 (20.3%)	1356 (20.0%)	1138 (19.5%)	1370 (19.0%)	1218 (18.2%)
	Female	777 (11.3%)	742 (11.4%)	741 (11.1%)	674 (10.2%)	653 (9.9%)	681 (10.2%)	658 (9.7%)	543 (9.3%)	725 (10.1%)	671 (10.0%)
	Subtotal	2530 (36.9%)	2402 (36.9%)	2326 (34.7%)	2162 (32.7%)	2059 (31.2%)	2034 (30.6%)	2014 (29.6%)	1681 (28.8%)	2095 (29.1%)	1889 (28.2%)
IRE	Male	2945 (43.0%)	2827 (43.4%)	2955 (44.1%)	2968 (44.8%)	2945 (44.6%)	2957 (44.4%)	2967 (43.7%)	2515 (43.1%)	3066 (42.5%)	2803 (41.9%)
	Female	445 (6.5%)	442 (6.8%)	502 (7.5%)	516 (7.8%)	563 (8.5%)	632 (9.5%)	694 (10.2%)	609 (10.4%)	721 (10.0%)	656 (9.8%)
	Subtotal	3390 (49.4%)	3269 (50.2%)	3457 (51.6%)	3484 (52.6%)	3508 (53.1%)	3589 (53.9%)	3661 (53.9%)	3124 (53.5%)	3787 (52.5%)	3459 (51.7%)
FR	Male	622 (9.1%)	596 (9.1%)	667 (10.0%)	751 (11.3%)	814 (12.3%)	818 (12.3%)	859 (12.6%)	787 (13.5%)	1048 (14.5%)	1063 (15.9%)
	Female	61 (0.9%)	57 (0.9%)	59 (0.9%)	64 (1.0%)	82 (1.2%)	101 (1.5%)	133 (2.0%)	129 (2.2%)	150 (2.1%)	163 (2.4%)
	Subtotal	683 (10.0%)	653 (10.0%)	726 (10.8%)	815 (12.3%)	896 (13.6%)	919 (13.8%)	992 (14.6%)	916 (15.7%)	1198 (16.6%)	1226 (18.3%)
USA	Male	140 (2.0%)	104 (1.6%)	92 (1.4%)	63 (1.0%)	51 (0.8%)	47 (0.7%)	41 (0.6%)	33 (0.6%)	39 (0.5%)	29 (0.4%)
	Female	10 (0.1%)	4 (0.1%)	4 (0.1%)	2 (0.0%)	2 (0.0%)	3 (0.0%)	5 (0.1%)	5 (0.1%)	2 (0.0%)	2 (0.0%)
	Subtotal	150 (2.2%)	108 (1.7%)	96 (1.4%)	65 (1.0%)	53 (0.8%)	50 (0.8%)	46 (0.7%)	38 (0.7%)	41 (0.6%)	31 (0.5%)
GNY	Male	64 (0.9%)	62 (1.0%)	73 (1.1%)	77 (1.2%)	71 (1.1%)	53 (0.8%)	67 (1.0%)	65 (1.1%)	75 (1.0%)	75 (1.1%)
	Female	6 (0.1%)	4 (0.1%)	6 (0.1%)	7 (0.1%)	5 (0.1%)	2 (0.0%)	6 (0.1%)	5 (0.1%)	10 (0.1%)	11 (0.2%)
	Subtotal	70 (1.0%)	66 (1.0%)	79 (1.2%)	84 (1.3%)	76 (1.2%)	55 (0.8%)	73 (1.1%)	70 (1.2%)	85 (1.2%)	86 (1.3%)
Other	Male	30 (0.4%)	18 (0.3%)	11 (0.2%)	6 (0.1%)	8 (0.1%)	8 (0.1%)	9 (0.1%)	5 (0.1%)	4 (0.1%)	2 (0.0%)
	Female	3 (0.0%)	1 (0.0%)	1 (0.0%)	4 (0.1%)	3 (0.0%)	2 (0.0%)	1 (0.0%)	1 (0.0%)	1 (0.0%)	2 (0.0%)
	Subtotal	33 (0.5%)	19 (0.3%)	12 (0.2%)	10 (0.2%)	11 (0.2%)	10 (0.2%)	10 (0.1%)	6 (0.1%)	5 (0.1%)	4 (0.1%)