

Horse Population Report

Updated on 30 June 2022



Introduction

Welcome to the latest update on the Racehorse Population from the British Horseracing Authority.

The aim of this document is to give stakeholders and the wider Public an insight into the current state of the Horse Population in Great Britain. It is hoped that this transparency will ensure that all decision makers have access to the key data required to help British Racing deliver a Competitive and Compelling product to stakeholders, racegoers and the wider public.

If you have any questions regarding the content of this report or suggestions for how it could be improved further, please contact Joe Yates – [jyates@britishhorseracing.com](mailto: jyates@britishhorseracing.com)

Definitions

This report uses the Horses in Training returns from the Weatherby's Racing Administration System, this is completed by trainers and should be updated whenever a horse enters or leaves training in their care as part of the conditions of their licence.

Horses in Training

Unless otherwise stated, snapshots of Horses in Training will be from the 15th day of the month in question and year to date figures will be up to and including the date titled at the front of the report.

Horses' ratings will be taken from the most recently published ratings by the BHA Handicapping Team, which is currently at 7am each Tuesday morning. For example, if looking at the Horses in a particular rating band for July 2011, the horses in training number will be from Friday 15th July 2011 and ratings, where possible, will be assigned to each horse from the ratings published by the BHA Handicappers on Tuesday 12th July 2011.

The Gender of a horse will be taken from the reporting date in question, regardless of whether this has since changed. In the case of YTD reporting, where a horse's gender or training type has changed in the year-to-date period, the most recent is taken.

This report does not count any horses that are temporarily racing abroad for GB Trainers at the time of reporting.

Yearlings are not included in total counts of flat and/or dual horses but will be sometimes shown separately for information purposes.

Yearlings and two-year-olds are not included in total counts of jump horses or counts of jump horses that include dual horses but will be sometimes shown separately for information purposes.

Yearlings, two-year-olds and three-year-olds are not included in total counts of Hunter Chasers but will be sometimes shown separately for information purposes.

Hunter Chasers are not included in any counts of Jump Horses or Total figures but will be sometimes shown separately for information purposes.

Runners

Unless otherwise specified, Total Runners and Individual Runners metrics only counts runners that ran in GB races including any voided races. Withdrawn horses are not included.

Hunter Chases are not included in this section but will be sometimes shown separately for information purposes.

Total Runners is a count of all runners in races, whilst individual runners only counts each individual horse once.

Monthly Horses in Training

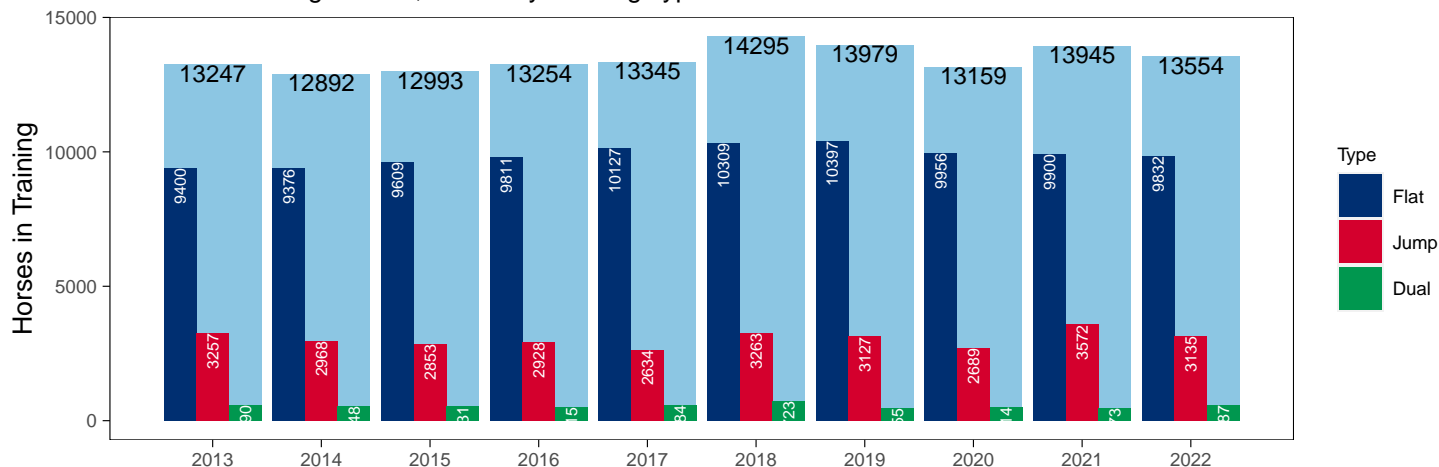
June 2022 Horses in Training Snapshot versus Previous Years

Type	2013	2014	2015	2016	2017	2018	2019	2020	2021	2022	vs. Last Year	vs. Pre-Covid
Flat	9400	9376	9609	9811	10127	10309	10397	9956	9900	9832	-68 / -0.7%	-565 / -5.4%
Jump	3257	2968	2853	2928	2634	3263	3127	2689	3572	3135	-437 / -12.2%	+8 / +0.3%
Dual	590	548	531	515	584	723	455	514	473	587	+114 / +24.1%	+132 / +29.0%
Hunter	2153	2084	1977	1872	1849	1697	1637	1396	1130	1236	+106 / +9.4%	-401 / -24.5%
Total	13247	12892	12993	13254	13345	14295	13979	13159	13945	13554	-391 / -2.8%	-425 / -3.0%

'vs. Pre-Covid' is comparison between 2022 and 2019

Snapshot of Total Horses in Training in June

Horses in Training in June, shown by Training Type



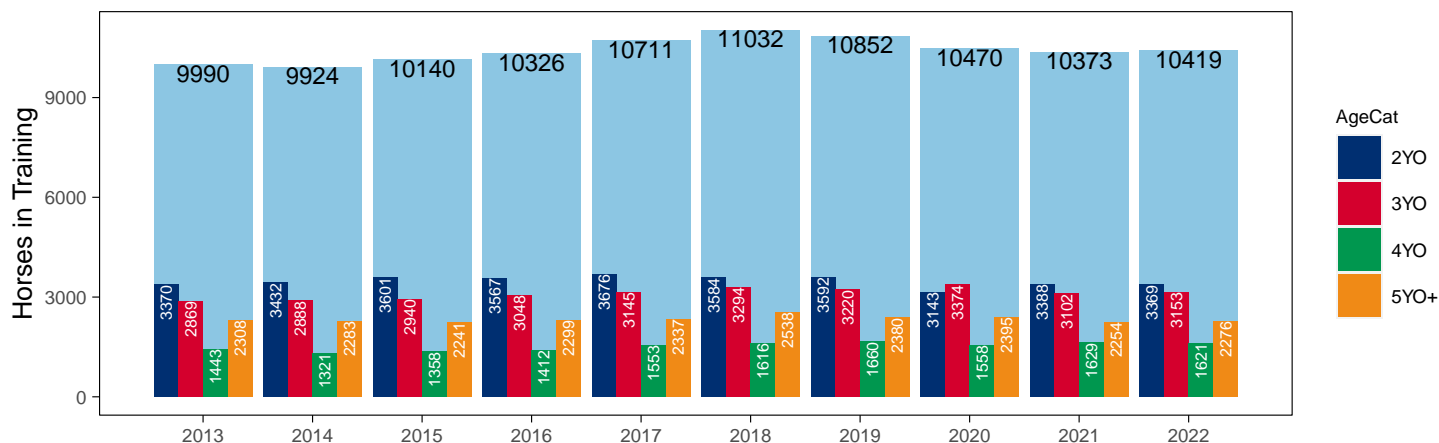
Flat (including Dual)

AgeCat	2013	2014	2015	2016	2017	2018	2019	2020	2021	2022	vs. Last Year	vs. Pre-Covid
2YO	3370	3432	3601	3567	3676	3584	3592	3143	3388	3369	-19 / -0.6%	-223 / -6.2%
3YO	2869	2888	2940	3048	3145	3294	3220	3374	3102	3153	+51 / +1.6%	-67 / -2.1%
4YO	1443	1321	1358	1412	1553	1616	1660	1558	1629	1621	-8 / -0.5%	-39 / -2.3%
5YO+	2308	2283	2241	2299	2337	2538	2380	2395	2254	2276	+22 / +1.0%	-104 / -4.4%
Total	9990	9924	10140	10326	10711	11032	10852	10470	10373	10419	+46 / +0.4%	-433 / -4.0%

'vs. Pre-Covid' is comparison between 2022 and 2019

Snapshot of Flat Horses in Training in June

Flat Horses in Training in June, shown by Age



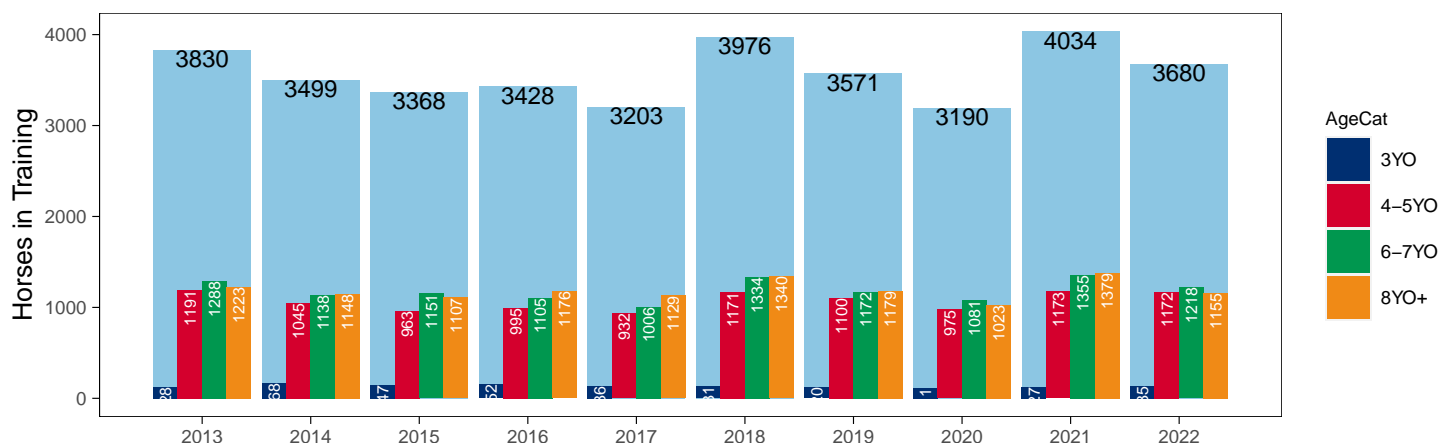
Jump (including Dual)

AgeCat	2013	2014	2015	2016	2017	2018	2019	2020	2021	2022	vs. Last Year	vs. Pre-Covid
3YO	128	168	147	152	136	131	120	111	127	135	+8 / +6.3%	+15 / +12.5%
4-5YO	1191	1045	963	995	932	1171	1100	975	1173	1172	-1 / -0.1%	+72 / +6.5%
6-7YO	1288	1138	1151	1105	1006	1334	1172	1081	1355	1218	-137 / -10.1%	+46 / +3.9%
8YO+	1223	1148	1107	1176	1129	1340	1179	1023	1379	1155	-224 / -16.2%	-24 / -2.0%
Total	3830	3499	3368	3428	3203	3976	3571	3190	4034	3680	-354 / -8.8%	+109 / +3.1%

'vs. Pre-Covid' is comparison between 2022 and 2019

Snapshot of Jump Horses in Training in June

Jump Horses in Training in June, shown by Age



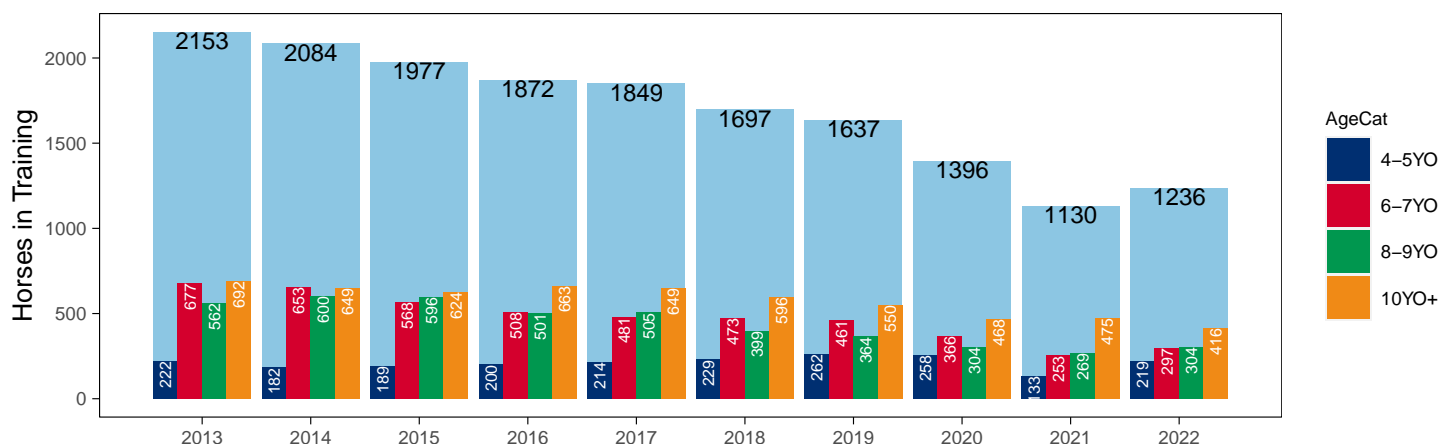
Hunter Chasers

AgeCat	2013	2014	2015	2016	2017	2018	2019	2020	2021	2022	vs. Last Year	vs. Pre-Covid
4-5YO	222	182	189	200	214	229	262	258	133	219	+86 / +64.7%	-43 / -16.4%
6-7YO	677	653	568	508	481	473	461	366	253	297	+44 / +17.4%	-164 / -35.6%
8-9YO	562	600	596	501	505	399	364	304	269	304	+35 / +13.0%	-60 / -16.5%
10YO+	692	649	624	663	649	596	550	468	475	416	-59 / -12.4%	-134 / -24.4%
Total	2153	2084	1977	1872	1849	1697	1637	1396	1130	1236	+106 / +9.4%	-401 / -24.5%

'vs. Pre-Covid' is comparison between 2022 and 2019

Snapshot of Hunter Chasers in Training in June

Hunter Chasers in Training in June, shown by Age



2022 Horses in Training versus Previous Years

Type	Period	Jan	Feb	Mar	Apr	May	Jun	Jul	Aug	Sep	Oct	Nov	Dec
Flat	2022	8349	8886	9380	9746	9958	9832	0	0	0	0	0	0
	2021	8370	8854	9305	9677	9920	9900	9710	9553	9100	8538	6818	6280
	Pre-Covid	8627	9168	9725	10176	10385	10397	10100	9759	9473	8801	7020	6551
Jump	2022	5882	5835	5744	5293	3919	3135	0	0	0	0	0	0
	2021	6459	6482	6392	5997	4395	3572	3963	5064	5672	5950	6059	5977
	Pre-Covid	5724	5785	5765	5348	4032	3127	3616	4810	5321	5755	5986	5981
Dual	2022	504	539	545	550	532	587	0	0	0	0	0	0
	2021	510	496	519	524	481	473	487	495	514	518	516	501
	Pre-Covid	482	470	467	495	456	455	473	484	479	537	566	534
Hunter	2022	815	1034	1185	1280	1279	1236	0	0	0	0	0	0
	2021	791	787	861	1152	1176	1130	1104	1085	1069	47	344	604
	Pre-Covid	995	1378	1571	1701	1693	1637	1613	0	0	0	244	605
Total	2022	14735	15260	15669	15589	14409	13554	0	0	0	0	0	0
	2021	15339	15832	16216	16198	14796	13945	14160	15112	15286	15006	13393	12758
	Pre-Covid	14934	15517	15927	15286	14272	13745	14176	15163	15415	15152	13451	12817

'Pre-Covid' is 2019 values

Monthly Horses in Training

2022 against 2021 and Pre-Covid, shown with % Difference

Period — Pre-Covid — 2021 — 2022



'Pre-Covid' is 2019 values

Flat (including Dual)

AgeCat	Period	Jan	Feb	Mar	Apr	May	Jun	Jul	Aug	Sep	Oct	Nov	Dec
2YO	2022	1927	2364	2591	2867	3218	3369						
	2021	1927	2242	2467	2792	3161	3388	3545	3621	3603	3529	2983	2783
	Pre-Covid	2112	2445	2708	2965	3240	3477	3638	3746	3754	3616	3028	2854
3YO	2022	2946	3067	3244	3314	3249	3153						
	2021	2926	3051	3231	3285	3226	3102	2939	2847	2631	2384	1826	1676
	Pre-Covid	3016	3186	3299	3318	3277	3227	3032	2873	2694	2461	1808	1631
4YO	2022	1691	1682	1717	1719	1676	1621						
	2021	1628	1674	1709	1718	1673	1629	1536	1493	1416	1291	992	903
	Pre-Covid	1614	1647	1679	1666	1638	1603	1524	1478	1411	1312	1025	930
5YO+	2022	2289	2312	2373	2396	2347	2276						
	2021	2399	2383	2417	2406	2341	2254	2177	2087	1964	1852	1533	1419
	Pre-Covid	2456	2476	2501	2450	2416	2381	2293	2206	2103	1967	1660	1530
Total	2022	8853	9425	9925	10296	10490	10419						
	2021	8880	9350	9824	10201	10401	10373	10197	10048	9614	9056	7334	6781
	Pre-Covid	9198	9754	10187	10399	10572	10688	10487	10303	9962	9356	7521	6945

'Pre-Covid' is 2019 values

Monthly Flat Horses in Training

2022 against 2021 and Pre-Covid, shown with % Difference

Period — Pre-Covid — 2021 — 2022



'Pre-Covid' is 2019 values

Jump (including Dual)

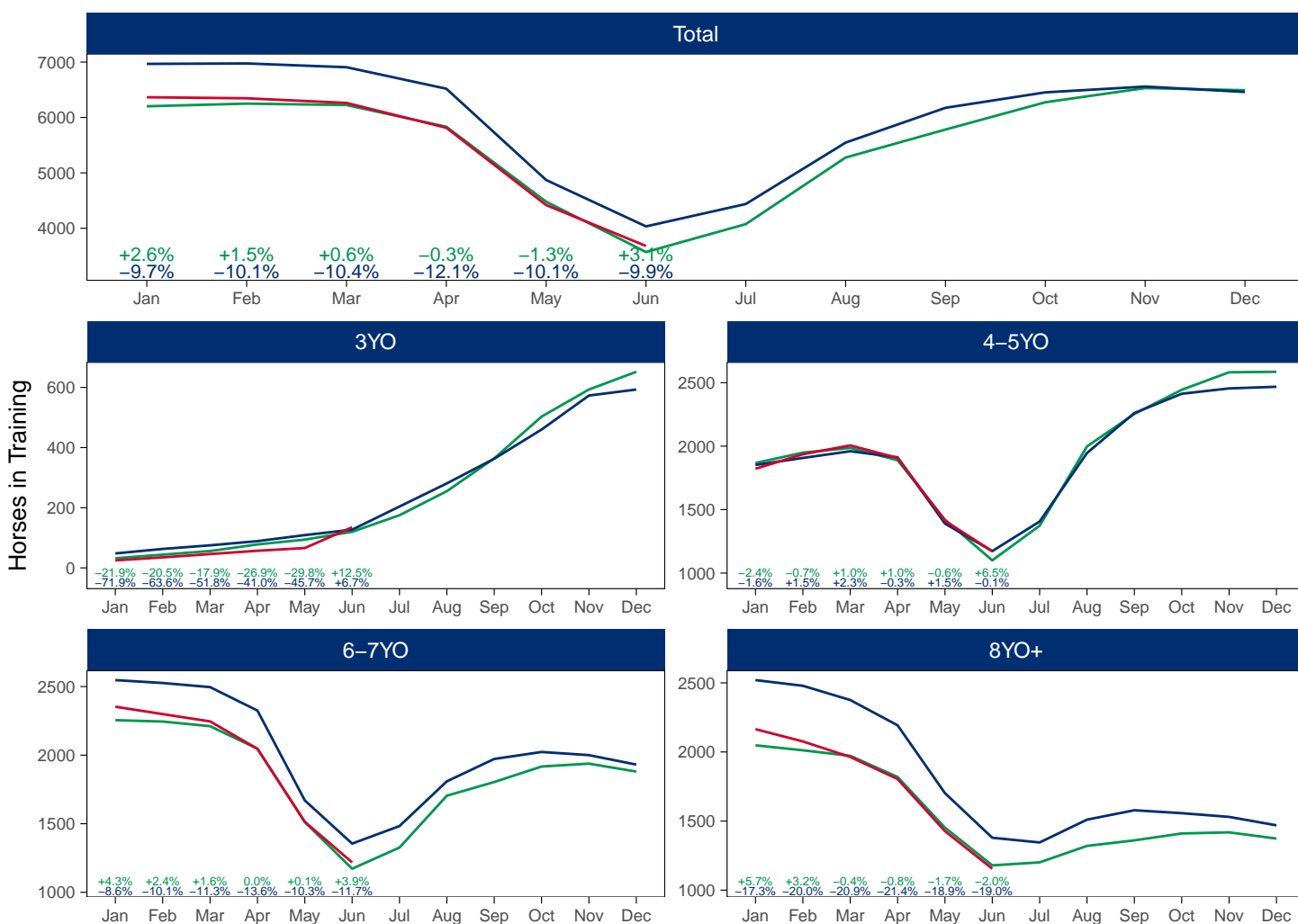
AgeCat	Period	Jan	Feb	Mar	Apr	May	Jun	Jul	Aug	Sep	Oct	Nov	Dec
3YO	2022	25	35	46	57	66	135						
	2021	48	63	75	89	109	127	204	281	363	460	573	593
	Pre-Covid	46	61	73	89	103	125	179	258	356	467	566	620
4-5YO	2022	1822	1936	2006	1907	1412	1172						
	2021	1852	1907	1960	1912	1390	1173	1406	1946	2261	2413	2455	2468
	Pre-Covid	1889	1957	2008	1752	1292	1070	1396	1982	2268	2424	2504	2509
6-7YO	2022	2353	2299	2246	2046	1514	1218						
	2021	2547	2526	2496	2325	1670	1355	1483	1809	1972	2023	2000	1931
	Pre-Covid	2267	2248	2220	1875	1428	1190	1395	1750	1899	1971	1958	1892
8YO+	2022	2165	2076	1964	1804	1427	1155						
	2021	2520	2479	2376	2193	1702	1379	1345	1510	1578	1557	1530	1469
	Pre-Covid	2130	2096	2054	1771	1435	1210	1265	1427	1489	1509	1495	1429
Total	2022	6365	6346	6262	5814	4419	3680						
	2021	6967	6975	6907	6519	4871	4034	4438	5546	6174	6453	6558	6461
	Pre-Covid	6332	6363	6355	5487	4258	3595	4236	5416	6012	6371	6523	6450

'Pre-Covid' is 2019 values

Monthly Jump Horses in Training

2022 against 2021 and Pre-Covid, shown with % Difference

Period — Pre-Covid — 2021 — 2022



'Pre-Covid' is 2019 values

Hunter Chasers

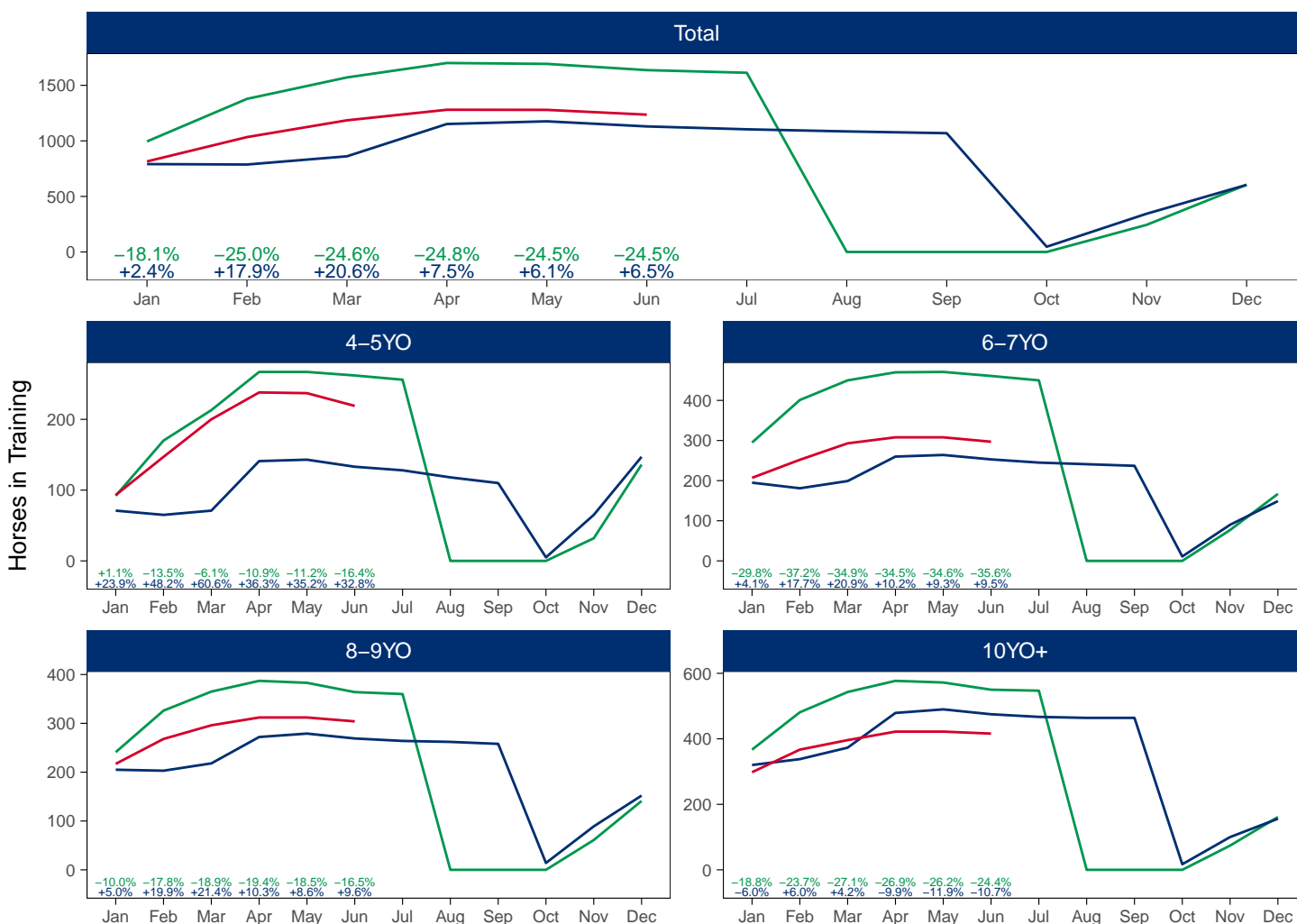
AgeCat	Period	Jan	Feb	Mar	Apr	May	Jun	Jul	Aug	Sep	Oct	Nov	Dec
4-5YO	2022	93	147	200	238	237	219						
	2021	71	65	71	141	143	133	128	118	110	5	65	147
	Pre-Covid	91	144	182	222	231	219	210	176	110	22	64	155
6-7YO	2022	207	252	293	308	308	297						
	2021	195	181	199	260	264	253	245	241	237	11	90	149
	Pre-Covid	266	348	390	418	422	407	380	293	237	37	85	177
8-9YO	2022	217	268	296	312	312	304						
	2021	205	203	218	272	279	269	264	262	258	14	89	152
	Pre-Covid	247	321	355	381	382	368	354	278	258	34	74	162
10YO+	2022	298	367	396	422	422	416						
	2021	320	338	373	479	490	475	467	464	464	17	100	156
	Pre-Covid	362	470	523	565	566	548	530	458	464	44	87	176
Total	2022	815	1034	1185	1280	1279	1236						
	2021	791	787	861	1152	1176	1130	1104	1085	1069	47	344	604
	Pre-Covid	966	1283	1449	1586	1601	1542	1473	1204	1069	138	310	671

'Pre-Covid' is 2019 values

Monthly Hunter Chasers in Training

2022 against 2021 and Pre-Covid, shown with % Difference

Period — Pre-Covid — 2021 — 2022



'Pre-Covid' is 2019 values

June 2022 Horses in Training by Rating Band Snapshot versus Previous Years

Flat (including Dual)

AgeCat	RatBand	2013	2014	2015	2016	2017	2018	2019	2020	2021	2022
2YO	Unrated	3370 (100.0%)	3432 (100.0%)	3601 (100.0%)	3567 (100.0%)	3676 (100.0%)	3584 (100.0%)	3592 (100.0%)	3143 (100.0%)	3388 (100.0%)	3369 (100.0%)
	Subtotal	3370 (100.0%)	3432 (100.0%)	3601 (100.0%)	3567 (100.0%)	3676 (100.0%)	3584 (100.0%)	3592 (100.0%)	3143 (100.0%)	3388 (100.0%)	3369 (100.0%)
3YO	0-50	144 (5.0%)	142 (4.9%)	151 (5.1%)	155 (5.1%)	171 (5.4%)	154 (4.7%)	224 (7.0%)	124 (3.7%)	184 (5.9%)	212 (6.7%)
	51-60	268 (9.3%)	268 (9.3%)	289 (9.8%)	306 (10.0%)	337 (10.7%)	330 (10.0%)	386 (12.0%)	256 (7.6%)	354 (11.4%)	350 (11.1%)
	61-70	437 (15.2%)	404 (14.0%)	398 (13.5%)	468 (15.4%)	459 (14.6%)	478 (14.5%)	472 (14.7%)	372 (11.0%)	491 (15.8%)	481 (15.3%)
	71-80	403 (14.0%)	457 (15.8%)	480 (16.3%)	522 (17.1%)	571 (18.2%)	521 (15.8%)	469 (14.6%)	485 (14.4%)	506 (16.3%)	534 (16.9%)
	81-90	220 (7.7%)	241 (8.3%)	279 (9.5%)	315 (10.3%)	335 (10.7%)	334 (10.1%)	319 (9.9%)	243 (7.2%)	304 (9.8%)	302 (9.6%)
	91-100	99 (3.5%)	119 (4.1%)	124 (4.2%)	143 (4.7%)	134 (4.3%)	130 (3.9%)	162 (5.0%)	111 (3.3%)	134 (4.3%)	143 (4.5%)
	101+	78 (2.7%)	75 (2.6%)	98 (3.3%)	90 (3.0%)	96 (3.1%)	105 (3.2%)	104 (3.2%)	70 (2.1%)	100 (3.2%)	113 (3.6%)
	Unrated	1220 (42.5%)	1182 (40.9%)	1121 (38.1%)	1049 (34.4%)	1042 (33.1%)	1242 (37.7%)	1084 (33.7%)	1713 (50.8%)	1029 (33.2%)	1018 (32.3%)
	Subtotal	2869 (100.0%)	2888 (100.0%)	2940 (100.0%)	3048 (100.0%)	3145 (100.0%)	3294 (100.0%)	3220 (100.0%)	3374 (100.0%)	3102 (100.0%)	3153 (100.0%)
4YO	0-50	119 (8.2%)	102 (7.7%)	99 (7.3%)	109 (7.7%)	141 (9.1%)	171 (10.6%)	199 (12.0%)	153 (9.8%)	184 (11.3%)	184 (11.4%)
	51-60	171 (11.9%)	152 (11.5%)	163 (12.0%)	195 (13.8%)	196 (12.6%)	167 (10.3%)	231 (13.9%)	195 (12.5%)	239 (14.7%)	229 (14.1%)
	61-70	208 (14.4%)	209 (15.8%)	205 (15.1%)	205 (14.5%)	246 (15.8%)	306 (18.9%)	268 (16.1%)	264 (16.9%)	279 (17.1%)	293 (18.1%)
	71-80	218 (15.1%)	206 (15.6%)	244 (18.0%)	272 (19.3%)	278 (17.9%)	270 (16.7%)	287 (17.3%)	229 (14.7%)	275 (16.9%)	279 (17.2%)
	81-90	166 (11.5%)	171 (12.9%)	192 (14.1%)	207 (14.7%)	218 (14.0%)	218 (13.5%)	213 (12.8%)	204 (13.1%)	198 (12.2%)	205 (12.6%)
	91-100	90 (6.2%)	104 (7.9%)	118 (8.7%)	123 (8.7%)	124 (8.0%)	129 (8.0%)	156 (9.4%)	144 (9.2%)	154 (9.5%)	125 (7.7%)
	101+	88 (6.1%)	75 (5.7%)	101 (7.4%)	96 (6.8%)	113 (7.3%)	102 (6.3%)	111 (6.7%)	96 (6.2%)	73 (4.5%)	101 (6.2%)
	Unrated	383 (26.5%)	302 (22.9%)	236 (17.4%)	205 (14.5%)	237 (15.3%)	253 (15.7%)	195 (11.7%)	273 (17.5%)	227 (13.9%)	205 (12.6%)
	Subtotal	1443 (100.0%)	1321 (100.0%)	1358 (100.0%)	1412 (100.0%)	1553 (100.0%)	1616 (100.0%)	1660 (100.0%)	1558 (100.0%)	1629 (100.0%)	1621 (100.0%)
5YO+	0-50	227 (9.8%)	253 (11.1%)	221 (9.9%)	203 (8.8%)	221 (9.5%)	303 (11.9%)	365 (15.3%)	252 (10.5%)	298 (13.2%)	286 (12.6%)
	51-60	327 (14.2%)	292 (12.8%)	291 (13.0%)	329 (14.3%)	320 (13.7%)	366 (14.4%)	365 (15.3%)	341 (14.2%)	382 (16.9%)	346 (15.2%)
	61-70	345 (14.9%)	361 (15.8%)	397 (17.7%)	401 (17.4%)	368 (15.7%)	378 (14.9%)	391 (16.4%)	393 (16.4%)	381 (16.9%)	392 (17.2%)
	71-80	329 (14.3%)	330 (14.5%)	367 (16.4%)	365 (15.9%)	344 (14.7%)	365 (14.4%)	352 (14.8%)	356 (14.9%)	324 (14.4%)	324 (14.2%)
	81-90	217 (9.4%)	234 (10.2%)	262 (11.7%)	285 (12.4%)	298 (12.8%)	296 (11.7%)	273 (11.5%)	275 (11.5%)	242 (10.7%)	230 (10.1%)
	91-100	127 (5.5%)	147 (6.4%)	163 (7.3%)	207 (9.0%)	185 (7.9%)	189 (7.4%)	183 (7.7%)	163 (6.8%)	149 (6.6%)	175 (7.7%)
	101+	114 (4.9%)	123 (5.4%)	133 (5.9%)	152 (6.6%)	175 (7.5%)	164 (6.5%)	149 (6.3%)	148 (6.2%)	172 (7.6%)	161 (7.1%)
	Unrated	622 (26.9%)	543 (23.8%)	407 (18.2%)	357 (15.5%)	426 (18.2%)	477 (18.8%)	302 (12.7%)	467 (19.5%)	306 (13.6%)	362 (15.9%)
	Subtotal	2308 (100.0%)	2283 (100.0%)	2241 (100.0%)	2299 (100.0%)	2337 (100.0%)	2538 (100.0%)	2380 (100.0%)	2395 (100.0%)	2254 (100.0%)	2276 (100.0%)
Overall	0-50	490 (4.9%)	497 (5.0%)	471 (4.6%)	467 (4.5%)	533 (5.0%)	628 (5.7%)	788 (7.3%)	529 (5.1%)	666 (6.4%)	682 (6.5%)
	51-60	766 (7.7%)	712 (7.2%)	743 (7.3%)	830 (8.0%)	853 (8.0%)	863 (7.8%)	982 (9.0%)	792 (7.6%)	975 (9.4%)	925 (8.9%)
	61-70	990 (9.9%)	974 (9.8%)	1000 (9.9%)	1074 (10.4%)	1073 (10.0%)	1162 (10.5%)	1131 (10.4%)	1029 (9.8%)	1151 (11.1%)	1166 (11.2%)
	71-80	950 (9.5%)	993 (10.0%)	1091 (10.8%)	1159 (11.2%)	1193 (11.1%)	1156 (10.5%)	1108 (10.2%)	1070 (10.2%)	1105 (10.7%)	1137 (10.9%)
	81-90	603 (6.0%)	646 (6.5%)	733 (7.2%)	807 (7.8%)	851 (7.9%)	848 (7.7%)	805 (7.4%)	722 (6.9%)	744 (7.2%)	737 (7.1%)
	91-100	316 (3.2%)	370 (3.7%)	405 (4.0%)	473 (4.6%)	443 (4.1%)	448 (4.1%)	501 (4.6%)	418 (4.0%)	437 (4.2%)	443 (4.3%)
	101+	280 (2.8%)	273 (2.8%)	332 (3.3%)	338 (3.3%)	384 (3.6%)	371 (3.4%)	364 (3.4%)	314 (3.0%)	345 (3.3%)	375 (3.6%)
	Unrated	5595 (56.0%)	5459 (55.0%)	5365 (52.9%)	5178 (50.1%)	5381 (50.2%)	5556 (50.4%)	5173 (47.7%)	5596 (53.4%)	4950 (47.7%)	4954 (47.5%)
Total		9990 (100.0%)	9924 (100.0%)	10140 (100.0%)	10326 (100.0%)	10711 (100.0%)	11032 (100.0%)	10852 (100.0%)	10470 (100.0%)	10373 (100.0%)	10419 (100.0%)

Jump (including Dual)

AgeCat	RatBand	2013	2014	2015	2016	2017	2018	2019	2020	2021	2022
3YO	Unrated	128 (100.0%)	168 (100.0%)	147 (100.0%)	152 (100.0%)	136 (100.0%)	131 (100.0%)	120 (100.0%)	111 (100.0%)	127 (100.0%)	135 (100.0%)
	Subtotal	128 (100.0%)	168 (100.0%)	147 (100.0%)	152 (100.0%)	136 (100.0%)	131 (100.0%)	120 (100.0%)	111 (100.0%)	127 (100.0%)	135 (100.0%)
4-5YO	0-100	134 (11.3%)	127 (12.2%)	121 (12.6%)	142 (14.3%)	128 (13.7%)	130 (11.1%)	143 (13.0%)	121 (12.4%)	180 (15.3%)	216 (18.4%)
	101-110	60 (5.0%)	52 (5.0%)	58 (6.0%)	84 (8.4%)	71 (7.6%)	102 (8.7%)	76 (6.9%)	60 (6.2%)	74 (6.3%)	90 (7.7%)
	111-120	56 (4.7%)	53 (5.1%)	75 (7.8%)	57 (5.7%)	55 (5.9%)	83 (7.1%)	73 (6.6%)	56 (5.7%)	68 (5.8%)	50 (4.3%)
	121-130	21 (1.8%)	37 (3.5%)	30 (3.1%)	25 (2.5%)	44 (4.7%)	42 (3.6%)	48 (4.4%)	45 (4.6%)	30 (2.6%)	26 (2.2%)
	131-140	7 (0.6%)	9 (0.9%)	14 (1.5%)	17 (1.7%)	9 (1.0%)	19 (1.6%)	7 (0.6%)	6 (0.6%)	10 (0.9%)	5 (0.4%)
	141-150	3 (0.3%)	4 (0.4%)	3 (0.3%)	3 (0.3%)	4 (0.4%)	1 (0.1%)	4 (0.4%)	2 (0.2%)	3 (0.3%)	1 (0.1%)
	151+	NA (-)	2 (0.2%)	1 (0.1%)	NA (-)	1 (0.1%)	1 (0.1%)	2 (0.2%)	2 (0.2%)	NA (-)	NA (-)
	Unrated	910 (76.4%)	761 (72.8%)	661 (68.6%)	667 (67.0%)	620 (66.5%)	793 (67.7%)	747 (67.9%)	683 (70.1%)	808 (68.9%)	784 (66.9%)
	Subtotal	1191 (100.0%)	1045 (100.0%)	963 (100.0%)	995 (100.0%)	932 (100.0%)	1171 (100.0%)	1100 (100.0%)	975 (100.0%)	1173 (100.0%)	1172 (100.0%)
6-7YO	0-100	287 (22.3%)	266 (23.4%)	295 (25.6%)	284 (25.7%)	257 (25.5%)	356 (26.7%)	341 (29.1%)	261 (24.1%)	471 (34.8%)	440 (36.1%)
	101-110	102 (7.9%)	110 (9.7%)	140 (12.2%)	175 (15.8%)	143 (14.2%)	188 (14.1%)	157 (13.4%)	145 (13.4%)	174 (12.8%)	167 (13.7%)
	111-120	103 (8.0%)	133 (11.7%)	135 (11.7%)	137 (12.4%)	142 (14.1%)	182 (13.6%)	168 (14.3%)	146 (13.5%)	175 (12.9%)	137 (11.2%)
	121-130	74 (5.7%)	80 (7.0%)	82 (7.1%)	89 (8.1%)	77 (7.7%)	132 (9.9%)	127 (10.8%)	100 (9.3%)	151 (11.1%)	90 (7.4%)
	131-140	36 (2.8%)	26 (2.3%)	39 (3.4%)	48 (4.3%)	50 (5.0%)	60 (4.5%)	70 (6.0%)	56 (5.2%)	64 (4.7%)	54 (4.4%)
	141-150	6 (0.5%)	11 (1.0%)	10 (0.9%)	14 (1.3%)	8 (0.8%)	18 (1.3%)	16 (1.4%)	11 (1.0%)	12 (0.9%)	10 (0.8%)
	151+	3 (0.2%)	6 (0.5%)	3 (0.3%)	3 (0.3%)	3 (0.3%)	3 (0.2%)	8 (0.7%)	5 (0.5%)	5 (0.4%)	2 (0.2%)
	Unrated	677 (52.6%)	506 (44.5%)	447 (38.8%)	355 (32.1%)	326 (32.4%)	395 (29.6%)	285 (24.3%)	357 (33.0%)	303 (22.4%)	318 (26.1%)
	Subtotal	1288 (100.0%)	1138 (100.0%)	1151 (100.0%)	1105 (100.0%)	1006 (100.0%)	1334 (100.0%)	1172 (100.0%)	1081 (100.0%)	1355 (100.0%)	1218 (100.0%)
8YO+	0-100	367 (30.0%)	401 (34.9%)	382 (34.5%)	446 (37.9%)	412 (36.5%)	454 (33.9%)	417 (35.4%)	278 (27.2%)	491 (35.6%)	382 (33.1%)
	101-110	113 (9.2%)	141 (12.3%)	138 (12.5%)	170 (14.5%)	161 (14.3%)	228 (17.0%)	166 (14.1%)	105 (10.3%)	200 (14.5%)	157 (13.6%)
	111-120	85 (7.0%)	104 (9.1%)	133 (12.0%)	157 (13.4%)	125 (11.1%)	134 (10.0%)	150 (12.7%)	106 (10.4%)	192 (13.9%)	145 (12.6%)
	121-130	79 (6.5%)	87 (7.6%)	94 (8.5%)	109 (9.3%)	100 (8.9%)	154 (11.5%)	118 (10.0%)	105 (10.3%)	139 (10.1%)	108 (9.4%)
	131-140	35 (2.9%)	37 (3.2%)	53 (4.8%)	70 (6.0%)	53 (4.7%)	89 (6.6%)	82 (7.0%)	77 (7.5%)	88 (6.4%)	67 (5.8%)
	141-150	16 (1.3%)	18 (1.6%)	20 (1.8%)	15 (1.3%)	18 (1.6%)	29 (2.2%)	27 (2.3%)	23 (2.2%)	27 (2.0%)	29 (2.5%)
	151+	7 (0.6%)	8 (0.7%)	8 (0.7%)	4 (0.3%)	5 (0.4%)	6 (0.4%)	10 (0.8%)	10 (1.0%)	11 (0.8%)	7 (0.6%)
	Unrated	521 (42.6%)	352 (30.7%)	279 (25.2%)	205 (17.4%)	255 (22.6%)	246 (18.4%)	209 (17.7%)	319 (31.2%)	231 (16.8%)	260 (22.5%)
	Subtotal	1223 (100.0%)	1148 (100.0%)	1107 (100.0%)	1176 (100.0%)	1129 (100.0%)	1340 (100.0%)	1179 (100.0%)	1023 (100.0%)	1379 (100.0%)	1155 (100.0%)
Overall	0-100	788 (20.6%)	794 (22.7%)	798 (23.7%)	872 (25.4%)	797 (24.9%)	940 (23.6%)	901 (25.2%)	660 (20.7%)	1142 (28.3%)	1038 (28.2%)
	101-110	275 (7.2%)	303 (8.7%)	336 (10.0%)	429 (12.5%)	375 (11.7%)	518 (13.0%)	399 (11.2%)	310 (9.7%)	448 (11.1%)	414 (11.2%)
	111-120	244 (6.4%)	290 (8.3%)	343 (10.2%)	351 (10.2%)	322 (10.1%)	399 (10.0%)	391 (10.9%)	308 (9.7%)	435 (10.8%)	332 (9.0%)
	121-130	174 (4.5%)	204 (5.8%)	206 (6.1%)	223 (6.5%)	221 (6.9%)	328 (8.2%)	293 (8.2%)	250 (7.8%)	320 (7.9%)	224 (6.1%)
	131-140	78 (2.0%)	72 (2.1%)	106 (3.1%)	135 (3.9%)	112 (3.5%)	168 (4.2%)	159 (4.5%)	139 (4.4%)	162 (4.0%)	126 (3.4%)
	141-150	25 (0.7%)	33 (0.9%)	33 (1.0%)	32 (0.9%)	30 (0.9%)	48 (1.2%)	47 (1.3%)	36 (1.1%)	42 (1.0%)	40 (1.1%)
	151+	10 (0.3%)	16 (0.5%)	12 (0.4%)	7 (0.2%)	9 (0.3%)	10 (0.3%)	20 (0.6%)	17 (0.5%)	16 (0.4%)	9 (0.2%)
	Unrated	2236 (58.4%)	1787 (51.1%)	1534 (45.5%)	1379 (40.2%)	1337 (41.7%)	1565 (39.4%)	1361 (38.1%)	1470 (46.1%)	1469 (36.4%)	1497 (40.7%)
	Total	3830 (100.0%)	3499 (100.0%)	3368 (100.0%)	3428 (100.0%)	3203 (100.0%)	3976 (100.0%)	3571 (100.0%)	3190 (100.0%)	4034 (100.0%)	3680 (100.0%)

Young Horses Entering Training

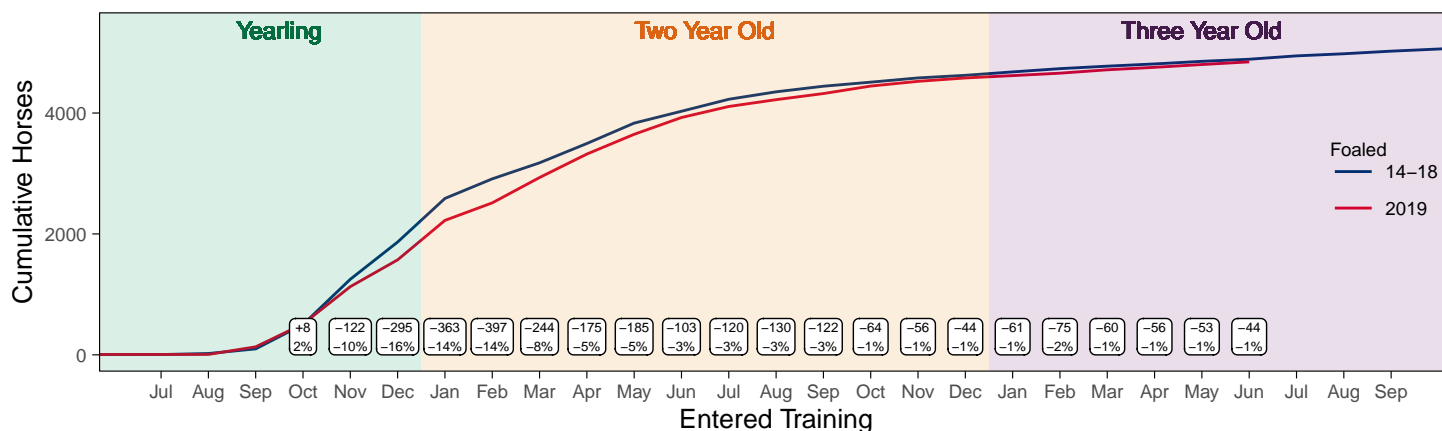
Flat Yearlings in Training versus Previous Years

Period	Jan	Feb	Mar	Apr	May	Jun	Jul	Aug	Sep	Oct	Nov	Dec
2022	0	0	0	0	0	0						
2021	0	0	0	0	0	0	0	5	79	315	716	1287
5YrAvg	1	1	1	1	1	1	1	2	52	257	698	1377

Foals Entering Training for the First Time

2019 Foals Entering Training Over Time

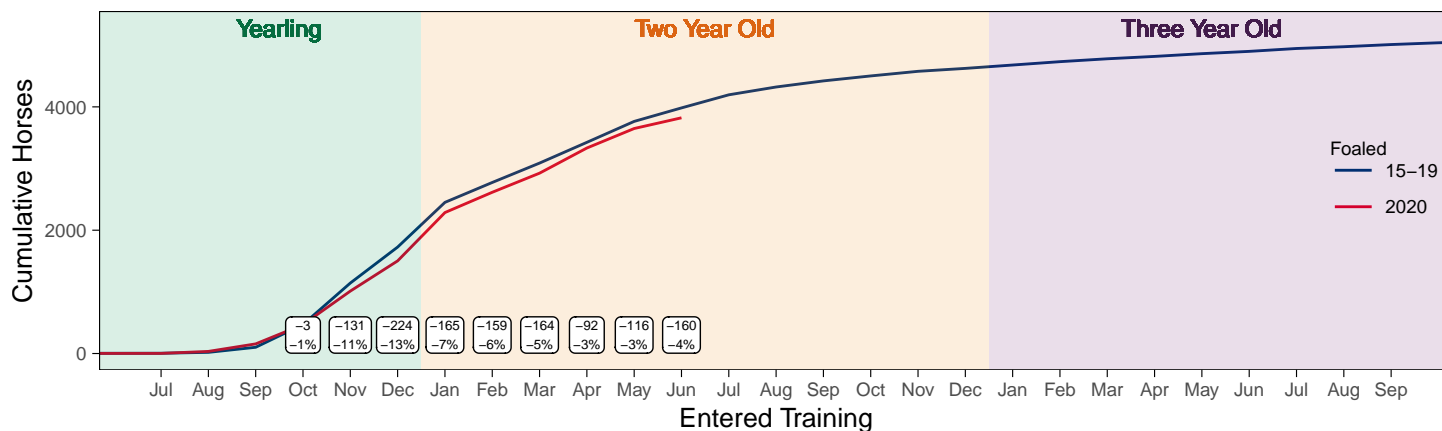
Cumulative Flat Horses foaled in 2019 shown by first in training notification against trend



Cumulative individual horses entering training for the first time by the end of each month.

2020 Foals Entering Training Over Time

Cumulative Flat Horses foaled in 2020 shown by first in training notification against trend



Cumulative individual horses entering training for the first time by the end of each month.

Year to Date Horses in Training

Type	2013	2014	2015	2016	2017	2018	2019	2020	2021	2022	vs. Last Year	vs. Pre-Covid
Flat	11619	11583	11862	12298	12594	12524	12742	12205	12385	12192	-193 / -1.6%	-550 / -4.3%
Jump	6954	6906	6970	6933	6847	6572	7275	7074	7906	7397	-509 / -6.4%	+122 / +1.7%
Dual	766	811	757	718	836	1311	693	779	746	814	+68 / +9.1%	+121 / +17.5%
Hunter	2400	2274	2174	2108	2007	1855	1809	1504	1288	1339	+51 / +4.0%	-470 / -26.0%
Total	19339	19300	19589	19949	20277	20407	20710	20058	21037	20403	-634 / -3.0%	-307 / -1.5%

'vs. Pre-Covid' is comparison between 2022 and 2019

Flat

AgeCat	2013	2014	2015	2016	2017	2018	2019	2020	2021	2022	vs. Last Year	vs. Pre-Covid
2YO	3760	3795	4097	4101	4117	4043	4060	3615	3878	3745	-133 / -3.4%	-315 / -7.8%
3YO	3486	3497	3580	3827	3897	4024	3978	4006	3864	3868	+4 / +0.1%	-110 / -2.8%
4YO	1805	1696	1707	1821	1935	1866	1987	1918	2043	2012	-31 / -1.5%	+25 / +1.3%
5YO+	2568	2595	2478	2549	2645	2591	2717	2666	2600	2567	-33 / -1.3%	-150 / -5.5%
Total	11619	11583	11862	12298	12594	12524	12742	12205	12385	12192	-193 / -1.6%	-550 / -4.3%

'vs. Pre-Covid' is comparison between 2022 and 2019

Jump

AgeCat	2013	2014	2015	2016	2017	2018	2019	2020	2021	2022	vs. Last Year	vs. Pre-Covid
3YO	67	117	119	120	77	76	90	68	100	91	-9 / -9.0%	+1 / +1.1%
4-5YO	2187	2111	2154	2221	2208	1966	2281	2212	2271	2303	+32 / +1.4%	+22 / +1.0%
6-7YO	2485	2424	2518	2325	2246	2312	2544	2504	2812	2597	-215 / -7.6%	+53 / +2.1%
8YO+	2215	2254	2179	2267	2316	2218	2360	2290	2723	2406	-317 / -11.6%	+46 / +1.9%
Total	6954	6906	6970	6933	6847	6572	7275	7074	7906	7397	-509 / -6.4%	+122 / +1.7%

'vs. Pre-Covid' is comparison between 2022 and 2019

Dual

AgeCat	2013	2014	2015	2016	2017	2018	2019	2020	2021	2022	vs. Last Year	vs. Pre-Covid
3YO	76	97	83	78	98	99	61	102	98	156	+58 / +59.2%	+95 / +155.7%
4YO	197	202	168	173	216	332	204	195	210	225	+15 / +7.1%	+21 / +10.3%
5YO+	493	512	506	467	522	880	428	482	438	433	-5 / -1.1%	+5 / +1.2%
Total	766	811	757	718	836	1311	693	779	746	814	+68 / +9.1%	+121 / +17.5%

'vs. Pre-Covid' is comparison between 2022 and 2019

Hunter Chasers

AgeCat	2013	2014	2015	2016	2017	2018	2019	2020	2021	2022	vs. Last Year	vs. Pre-Covid
4-5YO	276	215	233	242	255	285	316	299	188	282	+94 / +50.0%	-34 / -10.8%
6-7YO	756	711	618	583	526	513	508	395	304	324	+20 / +6.6%	-184 / -36.2%
8-9YO	618	653	648	560	536	419	394	317	304	311	+7 / +2.3%	-83 / -21.1%
10YO+	750	695	675	723	690	638	591	493	492	422	-70 / -14.2%	-169 / -28.6%
Total	2400	2274	2174	2108	2007	1855	1809	1504	1288	1339	+51 / +4.0%	-470 / -26.0%

'vs. Pre-Covid' is comparison between 2022 and 2019

Year to Date Runners

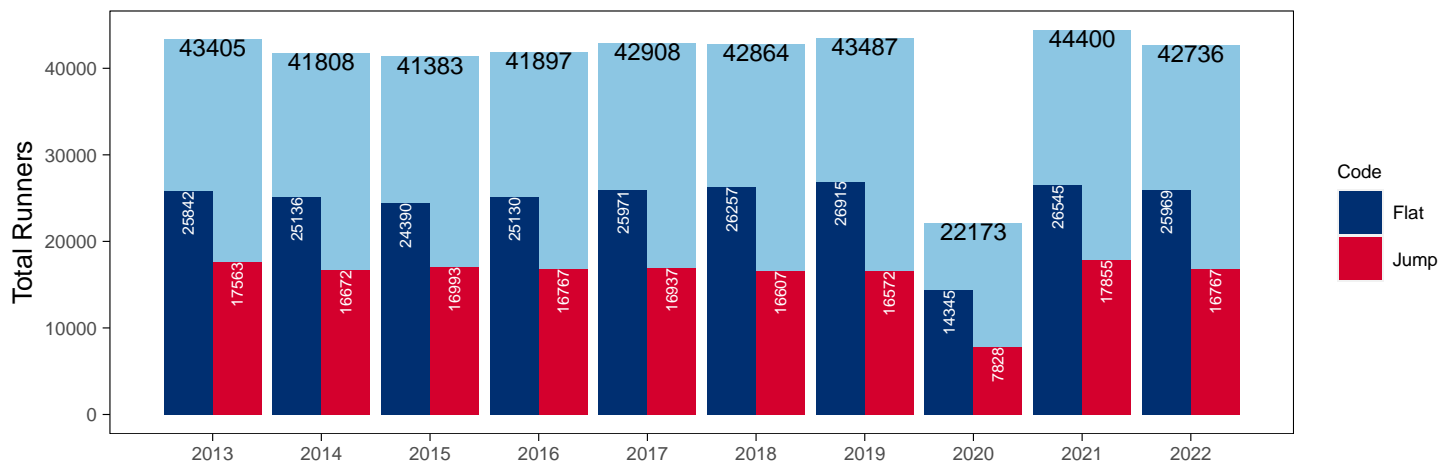
Year to Date Total Runners

Code	2013	2014	2015	2016	2017	2018	2019	2020	2021	2022	vs. Last Year	vs. Pre-Covid
Flat	25842	25136	24390	25130	25971	26257	26915	14345	26545	25969	-576 / -2.2%	-946 / -3.5%
Jump	17563	16672	16993	16767	16937	16607	16572	7828	17855	16767	-1088 / -6.1%	+195 / +1.2%
Total	43405	41808	41383	41897	42908	42864	43487	22173	44400	42736	-1664 / -3.7%	-751 / -1.7%

'vs. Pre-Covid' is comparison between 2022 and 2019

YTD Total Runners

Total Runners in GB Races, shown by Code and Total



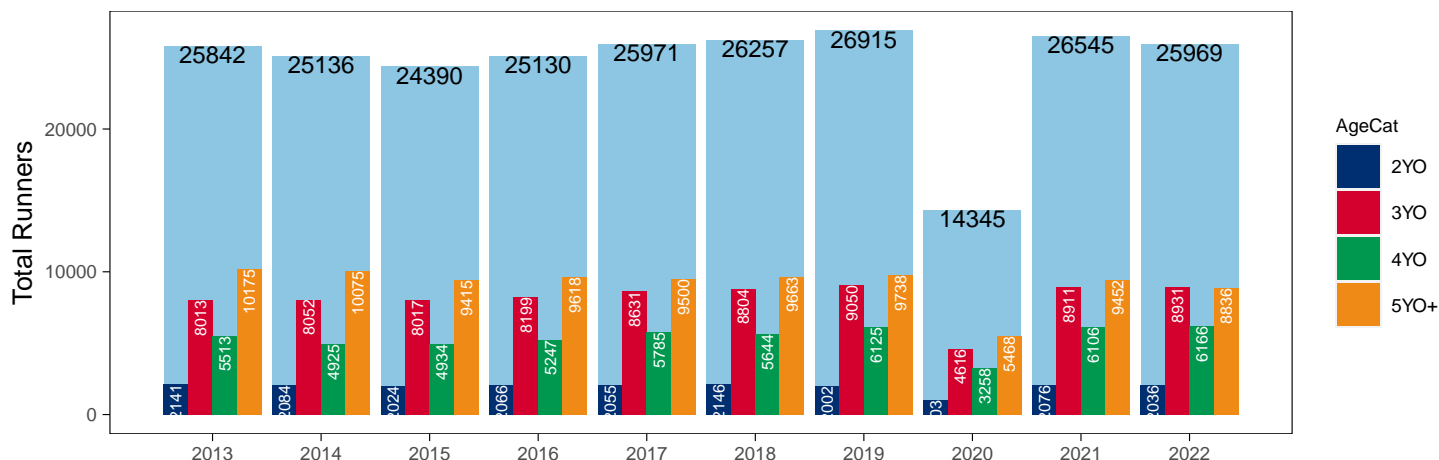
Flat

AgeCat	2013	2014	2015	2016	2017	2018	2019	2020	2021	2022	vs. Last Year	vs. Pre-Covid
2YO	2141	2084	2024	2066	2055	2146	2002	1003	2076	2036	-40 / -1.9%	+34 / +1.7%
3YO	8013	8052	8017	8199	8631	8804	9050	4616	8911	8931	+20 / +0.2%	-119 / -1.3%
4YO	5513	4925	4934	5247	5785	5644	6125	3258	6106	6166	+60 / +1.0%	+41 / +0.7%
5YO+	10175	10075	9415	9618	9500	9663	9738	5468	9452	8836	-616 / -6.5%	-902 / -9.3%
Total	25842	25136	24390	25130	25971	26257	26915	14345	26545	25969	-576 / -2.2%	-946 / -3.5%

'vs. Pre-Covid' is comparison between 2022 and 2019

YTD Total Flat Runners by Age

Total Runners in GB Flat Races, shown by Age Category and Total



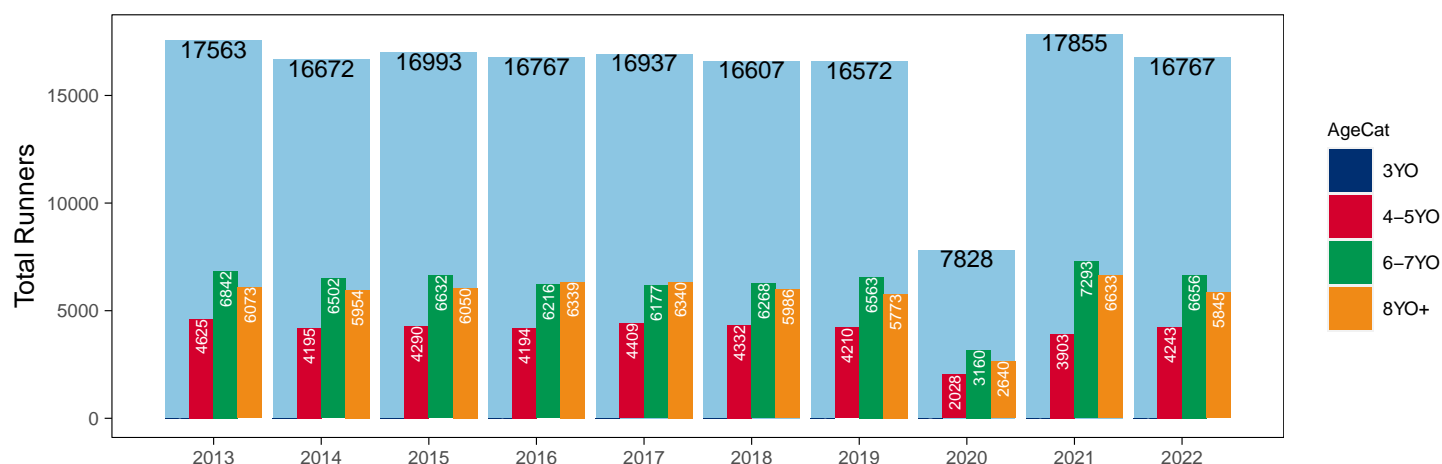
Jump

AgeCat	2013	2014	2015	2016	2017	2018	2019	2020	2021	2022	vs. Last Year	vs. Pre-Covid
3YO	23	21	21	18	11	21	26		26	23	-3 / -11.5%	-3 / -11.5%
4-5YO	4625	4195	4290	4194	4409	4332	4210	2028	3903	4243	+340 / +8.7%	+33 / +0.8%
6-7YO	6842	6502	6632	6216	6177	6268	6563	3160	7293	6656	-637 / -8.7%	+93 / +1.4%
8YO+	6073	5954	6050	6339	6340	5986	5773	2640	6633	5845	-788 / -11.9%	+72 / +1.2%
Total	17563	16672	16993	16767	16937	16607	16572	7828	17855	16767	-1088 / -6.1%	+195 / +1.2%

'vs. Pre-Covid' is comparison between 2022 and 2019

YTD Total Jump Runners by Age

Total Runners in GB Jump Races, shown by Age Category and Total



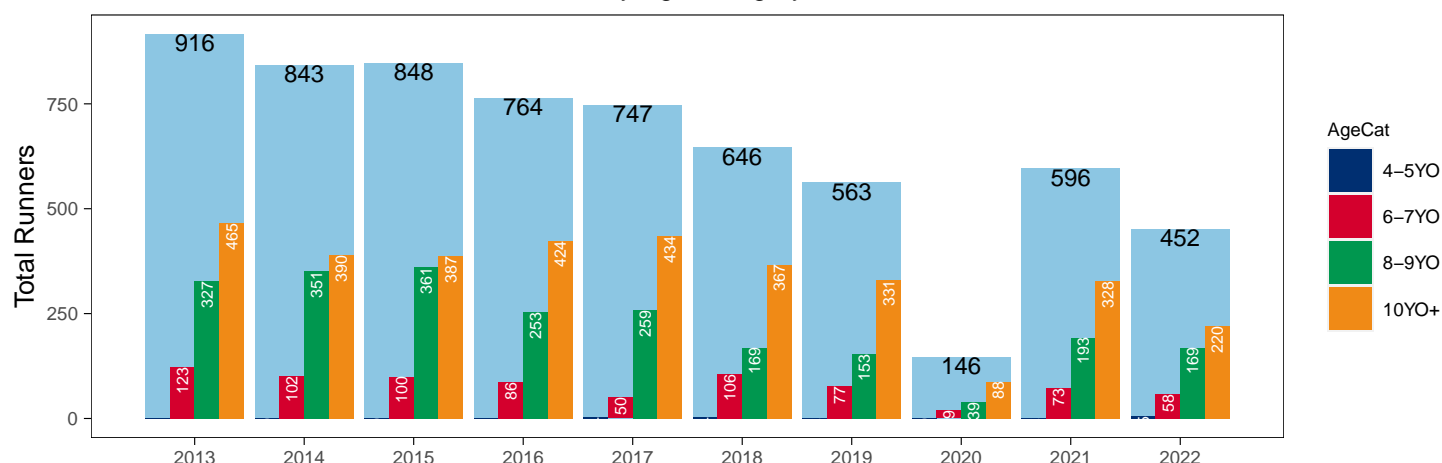
Hunter Chases

AgeCat	2013	2014	2015	2016	2017	2018	2019	2020	2021	2022	vs. Last Year	vs. Pre-Covid
4-5YO	1			1	4	4	2		2	5	+3 / +150.0%	+3 / +150.0%
6-7YO	123	102	100	86	50	106	77	19	73	58	-15 / -20.5%	-19 / -24.7%
8-9YO	327	351	361	253	259	169	153	39	193	169	-24 / -12.4%	+16 / +10.5%
10YO+	465	390	387	424	434	367	331	88	328	220	-108 / -32.9%	-111 / -33.5%
Total	916	843	848	764	747	646	563	146	596	452	-144 / -24.2%	-111 / -19.7%

'vs. Pre-Covid' is comparison between 2022 and 2019

YTD Total Hunter Chase Runners by Age

Total Runners in GB Hunter Chases shown by Age Category and Total



Year to Date Total Runners by Country Trained

Code	Country	2013	2014	2015	2016	2017	2018	2019	2020	2021	2022
Flat	GB	25584	24915	24123	24827	25598	25890	26538	14205	26356	25763
	IRE	211	179	189	252	320	321	333	125	169	166
	Other	47	42	78	51	53	46	44	15	20	40
Jump	GB	17190	16226	16510	16186	16417	16224	16057	7561	17512	16186
	IRE	371	443	479	575	508	374	508	257	340	579
	Other	2	3	4	6	12	9	7	10	3	2
Overall	GB	42774	41141	40633	41013	42015	42114	42595	21766	43868	41949
	IRE	582	622	668	827	828	695	841	382	509	745
	Other	49	45	82	57	65	55	51	25	23	42

Year to Date GB Trained Runners Racing Abroad

Code	Country	2013	2014	2015	2016	2017	2018	2019	2020	2021	2022
Flat	IRE	56	38	59	40	43	49	51	3	15	19
	FR	105	114	106	90	127	105	197	38	44	79
	GNV	10	3	9	6	6	9	15	1		5
	UAE	351	326	289	208	278	276	303	281	248	276
	BAH										41
	KSA								15	21	22
	Other	48	55	61	49	52	52	50	26	18	28
	Total	570	536	524	393	506	491	616	364	346	470
Jump	IRE	35	71	80	74	66	44	57	5	19	25
	FR	39	17	24	37	24	7	22	9	71	65
	Other	3	3	6	1	2	1	3		1	8
	Total	77	91	110	112	92	52	82	14	91	98

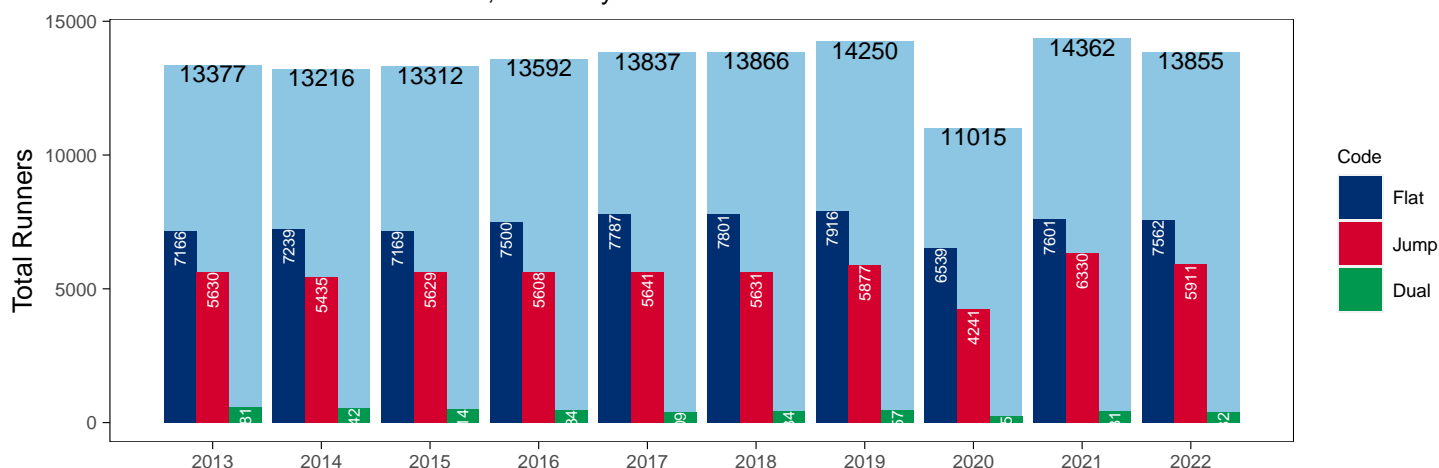
Year to Date Individual Runners

Code	2013	2014	2015	2016	2017	2018	2019	2020	2021	2022	vs. Last Year	vs. Pre-Covid
Flat	7166	7239	7169	7500	7787	7801	7916	6539	7601	7562	-39 / -0.5%	-354 / -4.5%
Jump	5630	5435	5629	5608	5641	5631	5877	4241	6330	5911	-419 / -6.6%	+34 / +0.6%
Dual	581	542	514	484	409	434	457	235	431	382	-49 / -11.4%	-75 / -16.4%
Overall	13377	13216	13312	13592	13837	13866	14250	11015	14362	13855	-507 / -3.5%	-395 / -2.8%

'vs. Pre-Covid' is comparison between 2022 and 2019

YTD Individual Runners

Individual Runners in GB Races, shown by Code and Total



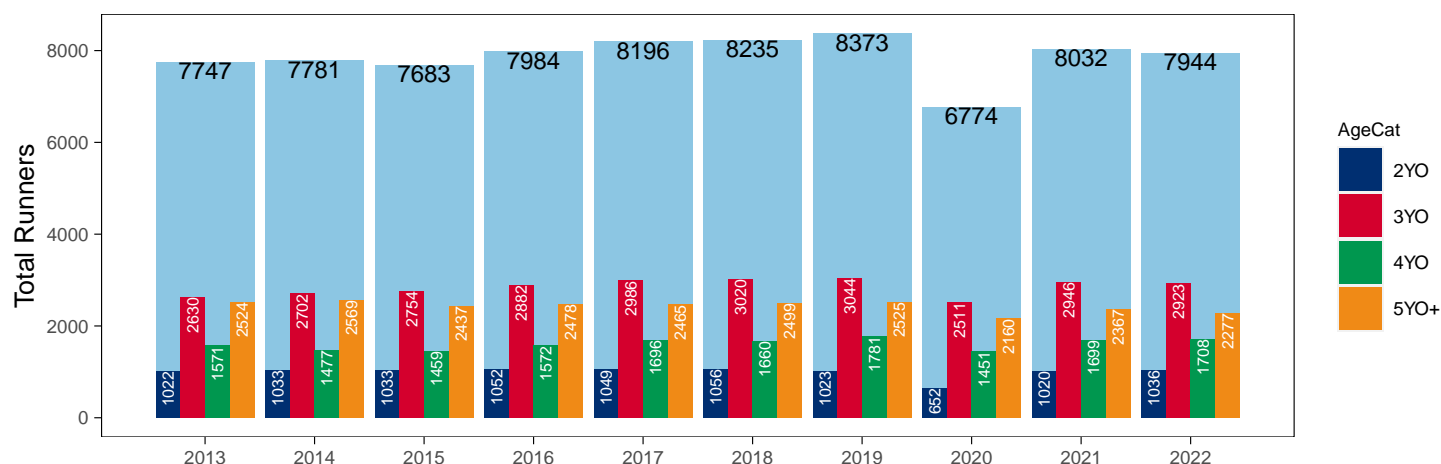
Flat

AgeCat	2013	2014	2015	2016	2017	2018	2019	2020	2021	2022	vs. Last Year	vs. Pre-Covid
2YO	1022	1033	1033	1052	1049	1056	1023	652	1020	1036	+16 / +1.6%	+13 / +1.3%
3YO	2630	2702	2754	2882	2986	3020	3044	2511	2946	2923	-23 / -0.8%	-121 / -4.0%
4YO	1571	1477	1459	1572	1696	1660	1781	1451	1699	1708	+9 / +0.5%	-73 / -4.1%
5YO+	2524	2569	2437	2478	2465	2499	2525	2160	2367	2277	-90 / -3.8%	-248 / -9.8%
Total	7747	7781	7683	7984	8196	8235	8373	6774	8032	7944	-88 / -1.1%	-429 / -5.1%

'vs. Pre-Covid' is comparison between 2022 and 2019

YTD Individual Flat Runners by Age

Individual Runners in GB Flat Races, shown by Age Category and Total



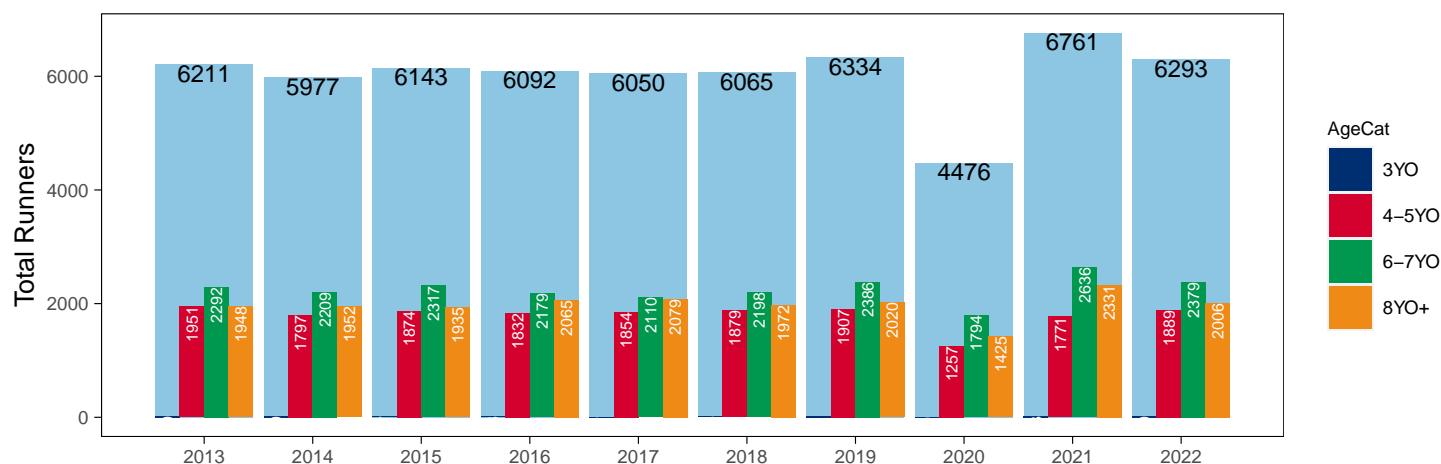
Jump

AgeCat	2013	2014	2015	2016	2017	2018	2019	2020	2021	2022	vs. Last Year	vs. Pre-Covid
3YO	20	19	17	16	7	16	21		23	19	-4 / -17.4%	-2 / -9.5%
4-5YO	1951	1797	1874	1832	1854	1879	1907	1257	1771	1889	+118 / +6.7%	-18 / -0.9%
6-7YO	2292	2209	2317	2179	2110	2198	2386	1794	2636	2379	-257 / -9.7%	-7 / -0.3%
8YO+	1948	1952	1935	2065	2079	1972	2020	1425	2331	2006	-325 / -13.9%	-14 / -0.7%
Total	6211	5977	6143	6092	6050	6065	6334	4476	6761	6293	-468 / -6.9%	-41 / -0.6%

'vs. Pre-Covid' is comparison between 2022 and 2019

YTD Individual Jump Runners by Age

Individual Runners in GB Jump Races, shown by Age Category and Total



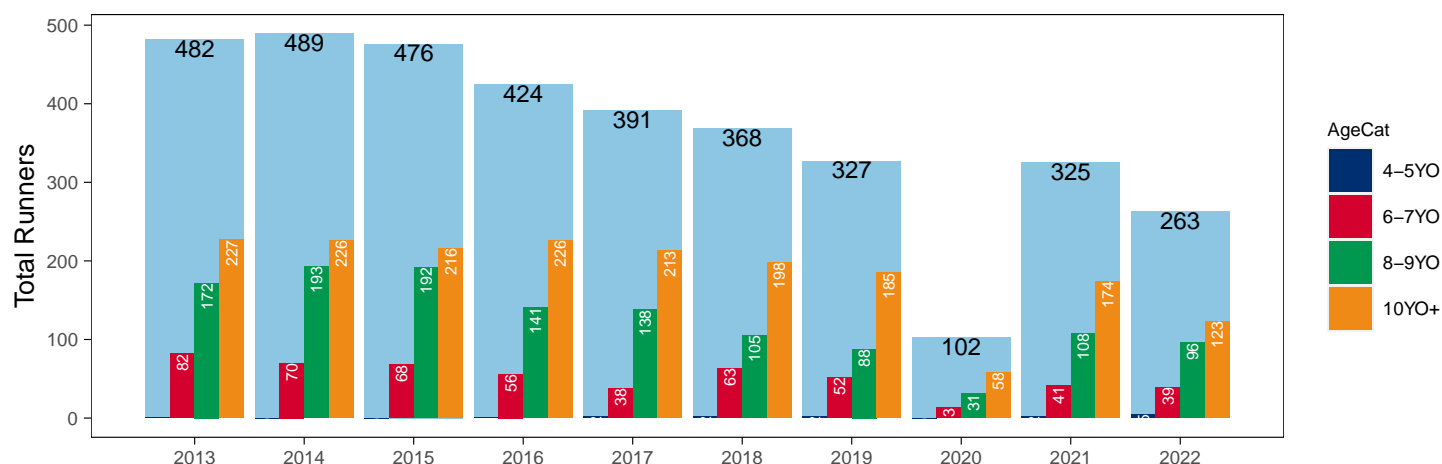
Hunter Chases

AgeCat	2013	2014	2015	2016	2017	2018	2019	2020	2021	2022	vs. Last Year	vs. Pre-Covid
4-5YO	1			1	2	2	2		2	5	+3 / +150.0%	+3 / +150.0%
6-7YO	82	70	68	56	38	63	52	13	41	39	-2 / -4.9%	-13 / -25.0%
8-9YO	172	193	192	141	138	105	88	31	108	96	-12 / -11.1%	+8 / +9.1%
10YO+	227	226	216	226	213	198	185	58	174	123	-51 / -29.3%	-62 / -33.5%
Total	482	489	476	424	391	368	327	102	325	263	-62 / -19.1%	-64 / -19.6%

'vs. Pre-Covid' is comparison between 2022 and 2019

YTD Individual Hunter Chase Runners by Age

Individual Runners in GB Hunter Chases shown by Age Category and Total



Year to Date Individual Runners by Country Trained

Code	Country	2013	2014	2015	2016	2017	2018	2019	2020	2021	2022
Flat	GB	25584	24915	24123	24827	25598	25890	26538	14205	26356	25763
	IRE	211	179	189	252	320	321	333	125	169	166
	Other	47	42	78	51	53	46	44	15	20	40
Jump	GB	17190	16226	16510	16186	16417	16224	16057	7561	17512	16186
	IRE	371	443	479	575	508	374	508	257	340	579
	Other	2	3	4	6	12	9	7	10	3	2
Overall	GB	42774	41141	40633	41013	42015	42114	42595	21766	43868	41949
	IRE	582	622	668	827	828	695	841	382	509	745
	Other	49	45	82	57	65	55	51	25	23	42

Frequency of Runs

Year to Date Average Runs per Horse

Code	2013	2014	2015	2016	2017	2018	2019	2020	2021	2022
Flat	3.34	3.23	3.17	3.15	3.17	3.19	3.21	2.12	3.30	3.27
Jump	2.83	2.79	2.77	2.75	2.80	2.74	2.62	1.75	2.64	2.66
Overall	3.24	3.16	3.11	3.08	3.10	3.09	3.05	2.01	3.09	3.08

Year to Date Proportion of Horses by Count of Runs

Runs	2013	2014	2015	2016	2017	2018	2019	2020	2021	2022
Flat										
1	1716 (22.2%)	1744 (22.4%)	1783 (23.2%)	1888 (23.6%)	1879 (22.9%)	1927 (23.4%)	1896 (22.6%)	2884 (42.6%)	1695 (21.1%)	1730 (21.8%)
2	1730 (22.3%)	1759 (22.6%)	1771 (23.1%)	1794 (22.5%)	1894 (23.1%)	1853 (22.5%)	1820 (21.7%)	2158 (31.9%)	1708 (21.3%)	1753 (22.1%)
3	1494 (19.3%)	1599 (20.6%)	1515 (19.7%)	1551 (19.4%)	1665 (20.3%)	1629 (19.8%)	1755 (21.0%)	765 (11.3%)	1689 (21.0%)	1550 (19.5%)
4	1058 (13.7%)	1052 (13.5%)	1019 (13.3%)	1138 (14.3%)	1077 (13.1%)	1111 (13.5%)	1126 (13.4%)	441 (6.5%)	1114 (13.9%)	1088 (13.7%)
5+	1749 (22.6%)	1627 (20.9%)	1595 (20.8%)	1613 (20.2%)	1681 (20.5%)	1715 (20.8%)	1776 (21.2%)	526 (7.8%)	1826 (22.7%)	1823 (22.9%)
Jump										
1	1660 (26.7%)	1639 (27.4%)	1701 (27.7%)	1678 (27.5%)	1622 (26.8%)	1672 (27.6%)	1865 (29.4%)	2108 (47.1%)	1876 (27.7%)	1851 (29.4%)
2	1482 (23.9%)	1432 (24.0%)	1471 (23.9%)	1456 (23.9%)	1376 (22.7%)	1376 (22.7%)	1658 (26.2%)	1571 (35.1%)	1761 (26.0%)	1489 (23.7%)
3	1210 (19.5%)	1126 (18.8%)	1196 (19.5%)	1219 (20.0%)	1260 (20.8%)	1278 (21.1%)	1204 (19.0%)	638 (14.3%)	1408 (20.8%)	1296 (20.6%)
4	855 (13.8%)	862 (14.4%)	861 (14.0%)	855 (14.0%)	887 (14.7%)	899 (14.8%)	850 (13.4%)	135 (3.0%)	896 (13.3%)	863 (13.7%)
5+	1004 (16.2%)	918 (15.4%)	914 (14.9%)	884 (14.5%)	905 (15.0%)	840 (13.8%)	757 (12.0%)	24 (0.5%)	820 (12.1%)	794 (12.6%)
All Races										
1	2977 (22.3%)	3008 (22.8%)	3134 (23.5%)	3226 (23.7%)	3210 (23.2%)	3251 (23.4%)	3430 (24.1%)	4711 (42.8%)	3248 (22.6%)	3294 (23.8%)
2	2987 (22.3%)	2971 (22.5%)	3022 (22.7%)	3053 (22.5%)	3115 (22.5%)	3098 (22.3%)	3286 (23.1%)	3678 (33.4%)	3325 (23.2%)	3109 (22.4%)
3	2590 (19.4%)	2652 (20.1%)	2612 (19.6%)	2701 (19.9%)	2851 (20.6%)	2812 (20.3%)	2886 (20.3%)	1440 (13.1%)	3018 (21.0%)	2777 (20.0%)
4	1912 (14.3%)	1866 (14.1%)	1876 (14.1%)	1983 (14.6%)	1969 (14.2%)	2012 (14.5%)	1961 (13.8%)	618 (5.6%)	1988 (13.8%)	1935 (14.0%)
5+	2911 (21.8%)	2719 (20.6%)	2668 (20.0%)	2629 (19.3%)	2692 (19.5%)	2693 (19.4%)	2687 (18.9%)	568 (5.2%)	2783 (19.4%)	2740 (19.8%)

Year to Date Median Days Between Runs

Code	2013	2014	2015	2016	2017	2018	2019	2020	2021	2022
Flat	21	22	22	22	23	23	23	28	23	23
Jump	30	29	29	31	29	31	31	34	33	30
Overall	24	25	26	26	26	26	27	31	27	26

Horses Population by Gender

June 2022 Horses in Training Snapshot by Gender versus Previous Years

All Horses

Sex	2013	2014	2015	2016	2017	2018	2019	2020	2021	2022
Colt/Entire	2562 (19.3%)	2538 (19.7%)	2554 (19.6%)	2511 (18.9%)	2585 (19.4%)	2602 (18.2%)	2486 (17.8%)	2353 (17.9%)	2286 (16.4%)	2213 (16.3%)
Gelding	6307 (47.6%)	5986 (46.4%)	6069 (46.7%)	6356 (47.9%)	6339 (47.5%)	7005 (49.0%)	6739 (48.2%)	6372 (48.4%)	7054 (50.6%)	6740 (49.7%)
Filly/Mare	4393 (33.1%)	4374 (33.9%)	4378 (33.7%)	4389 (33.1%)	4431 (33.2%)	4696 (32.8%)	4762 (34.0%)	4437 (33.7%)	4610 (33.0%)	4603 (34.0%)
Rig	1 (0.0%)	1 (0.0%)	4 (0.0%)	5 (0.0%)	4 (0.0%)	1 (0.0%)	2 (0.0%)	2 (0.0%)	1 (0.0%)	1 (0.0%)
Total	13263 (100.0%)	12899 (100.0%)	13005 (100.0%)	13261 (100.0%)	13359 (100.0%)	14304 (100.0%)	13989 (100.0%)	13164 (100.0%)	13951 (100.0%)	13557 (100.0%)

Flat (including Dual)

Sex	2013	2014	2015	2016	2017	2018	2019	2020	2021	2022
Colt/Entire	2537 (25.4%)	2508 (25.3%)	2528 (24.9%)	2495 (24.2%)	2562 (23.9%)	2588 (23.5%)	2473 (22.8%)	2339 (22.3%)	2269 (21.9%)	2204 (21.2%)
Gelding	3680 (36.8%)	3649 (36.8%)	3844 (37.9%)	4043 (39.2%)	4267 (39.8%)	4483 (40.6%)	4354 (40.1%)	4330 (41.4%)	4288 (41.3%)	4367 (41.9%)
Filly/Mare	3772 (37.8%)	3767 (38.0%)	3766 (37.1%)	3783 (36.6%)	3878 (36.2%)	3960 (35.9%)	4023 (37.1%)	3799 (36.3%)	3815 (36.8%)	3848 (36.9%)
Rig	1 (0.0%)	0 (0.0%)	2 (0.0%)	5 (0.0%)	4 (0.0%)	1 (0.0%)	2 (0.0%)	2 (0.0%)	1 (0.0%)	0 (0.0%)
Total	9990 (100.0%)	9924 (100.0%)	10140 (100.0%)	10326 (100.0%)	10711 (100.0%)	11032 (100.0%)	10852 (100.0%)	10470 (100.0%)	10373 (100.0%)	10419 (100.0%)

Jump (including Dual)

Sex	2013	2014	2015	2016	2017	2018	2019	2020	2021	2022
Colt/Entire	35 (0.9%)	34 (1.0%)	29 (0.9%)	25 (0.7%)	23 (0.7%)	19 (0.5%)	20 (0.6%)	17 (0.5%)	21 (0.5%)	19 (0.5%)
Gelding	3060 (79.9%)	2728 (78.0%)	2624 (77.9%)	2701 (78.8%)	2512 (78.4%)	3071 (77.2%)	2711 (75.9%)	2423 (76.0%)	3108 (77.0%)	2765 (75.1%)
Filly/Mare	735 (19.2%)	736 (21.0%)	714 (21.2%)	702 (20.5%)	668 (20.9%)	886 (22.3%)	840 (23.5%)	750 (23.5%)	905 (22.4%)	895 (24.3%)
Rig	0 (0.0%)	1 (0.0%)	1 (0.0%)	0 (0.0%)	0 (0.0%)	0 (0.0%)	0 (0.0%)	0 (0.0%)	0 (0.0%)	1 (0.0%)
Total	3830 (100.0%)	3499 (100.0%)	3368 (100.0%)	3428 (100.0%)	3203 (100.0%)	3976 (100.0%)	3571 (100.0%)	3190 (100.0%)	4034 (100.0%)	3680 (100.0%)

Hunter Chasers

Sex	2013	2014	2015	2016	2017	2018	2019	2020	2021	2022
Colt/Entire	4 (0.2%)	3 (0.1%)	2 (0.1%)	3 (0.2%)	5 (0.3%)	2 (0.1%)	1 (0.1%)	1 (0.1%)	3 (0.3%)	6 (0.5%)
Gelding	1761 (81.8%)	1703 (81.7%)	1632 (82.5%)	1541 (82.3%)	1501 (81.2%)	1376 (81.1%)	1297 (79.2%)	1138 (81.5%)	933 (82.6%)	1003 (81.1%)
Filly/Mare	388 (18.0%)	378 (18.1%)	343 (17.3%)	328 (17.5%)	343 (18.6%)	319 (18.8%)	339 (20.7%)	257 (18.4%)	194 (17.2%)	227 (18.4%)
Rig	0 (0.0%)	0 (0.0%)	0 (0.0%)	0 (0.0%)	0 (0.0%)	0 (0.0%)	0 (0.0%)	0 (0.0%)	0 (0.0%)	0 (0.0%)
Total	2153 (100.0%)	2084 (100.0%)	1977 (100.0%)	1872 (100.0%)	1849 (100.0%)	1697 (100.0%)	1637 (100.0%)	1396 (100.0%)	1130 (100.0%)	1236 (100.0%)

Year to Date Total Runners by Gender

Sex	2013	2014	2015	2016	2017	2018	2019	2020	2021	2022
All Races										
Colt/Entire	3804 (8.8%)	3661 (8.8%)	3685 (8.9%)	3557 (8.5%)	3613 (8.4%)	3799 (8.9%)	3606 (8.3%)	1930 (8.7%)	3473 (7.8%)	3153 (7.4%)
Gelding	28523 (65.7%)	27225 (65.1%)	27224 (65.8%)	27771 (66.3%)	28443 (66.3%)	27842 (65.0%)	28093 (64.6%)	14221 (64.1%)	28831 (64.9%)	27907 (65.3%)
Filly/Mare	11078 (25.5%)	10922 (26.1%)	10474 (25.3%)	10558 (25.2%)	10850 (25.3%)	11217 (26.2%)	11779 (27.1%)	6019 (27.1%)	12089 (27.2%)	11671 (27.3%)
Rig	0 (0.0%)	0 (0.0%)	0 (0.0%)	11 (0.0%)	2 (0.0%)	6 (0.0%)	9 (0.0%)	3 (0.0%)	7 (0.0%)	5 (0.0%)
Flat										
Colt/Entire	3750 (14.5%)	3596 (14.3%)	3650 (15.0%)	3530 (14.0%)	3585 (13.8%)	3778 (14.4%)	3578 (13.3%)	1916 (13.4%)	3448 (13.0%)	3133 (12.1%)
Gelding	13921 (53.9%)	13564 (54.0%)	13368 (54.8%)	13933 (55.4%)	14536 (56.0%)	14584 (55.5%)	15018 (55.8%)	8049 (56.1%)	14857 (56.0%)	14655 (56.4%)
Filly/Mare	8171 (31.6%)	7976 (31.7%)	7372 (30.2%)	7656 (30.5%)	7848 (30.2%)	7889 (30.0%)	8314 (30.9%)	4380 (30.5%)	8237 (31.0%)	8181 (31.5%)
Rig	0 (0.0%)	0 (0.0%)	0 (0.0%)	11 (0.0%)	2 (0.0%)	6 (0.0%)	5 (0.0%)	0 (0.0%)	3 (0.0%)	0 (0.0%)
All Jump										
Colt/Entire	54 (0.3%)	65 (0.4%)	35 (0.2%)	27 (0.2%)	28 (0.2%)	21 (0.1%)	28 (0.2%)	14 (0.2%)	25 (0.1%)	20 (0.1%)
Gelding	14602 (83.1%)	13661 (81.9%)	13856 (81.5%)	13838 (82.5%)	13907 (82.1%)	13258 (79.8%)	13075 (78.9%)	6172 (78.8%)	13974 (78.3%)	13252 (79.0%)
Filly/Mare	2907 (16.6%)	2946 (17.7%)	3102 (18.3%)	2902 (17.3%)	3002 (17.7%)	3328 (20.0%)	3465 (20.9%)	1639 (20.9%)	3852 (21.6%)	3490 (20.8%)
Rig	0 (0.0%)	0 (0.0%)	0 (0.0%)	0 (0.0%)	0 (0.0%)	0 (0.0%)	4 (0.0%)	3 (0.0%)	4 (0.0%)	5 (0.0%)
Chase										
Colt/Entire	6 (0.1%)	2 (0.0%)	0 (0.0%)	1 (0.0%)	0 (0.0%)	0 (0.0%)	0 (0.0%)	0 (0.0%)	0 (0.0%)	0 (0.0%)
Gelding	5159 (92.5%)	4993 (93.0%)	5036 (92.9%)	5043 (93.3%)	5154 (92.9%)	4728 (90.8%)	4687 (90.0%)	2169 (90.3%)	4889 (89.5%)	4868 (89.4%)
Filly/Mare	412 (7.4%)	375 (7.0%)	384 (7.1%)	364 (6.7%)	396 (7.1%)	480 (9.2%)	516 (9.9%)	229 (9.5%)	570 (10.4%)	573 (10.5%)
Rig	0 (0.0%)	0 (0.0%)	0 (0.0%)	0 (0.0%)	0 (0.0%)	0 (0.0%)	2 (0.0%)	3 (0.1%)	4 (0.1%)	5 (0.1%)
Hurdle										
Colt/Entire	35 (0.4%)	58 (0.6%)	30 (0.3%)	23 (0.2%)	23 (0.2%)	15 (0.2%)	19 (0.2%)	7 (0.2%)	22 (0.2%)	13 (0.1%)
Gelding	7970 (81.2%)	7382 (78.5%)	7771 (78.2%)	7843 (79.3%)	7771 (78.5%)	7499 (76.7%)	7499 (75.5%)	3477 (74.7%)	7527 (74.2%)	7526 (75.9%)
Filly/Mare	1807 (18.4%)	1965 (20.9%)	2133 (21.5%)	2030 (20.5%)	2102 (21.2%)	2266 (23.2%)	2414 (24.3%)	1169 (25.1%)	2590 (25.5%)	2377 (24.0%)
Rig	0 (0.0%)	0 (0.0%)	0 (0.0%)	0 (0.0%)	0 (0.0%)	0 (0.0%)	2 (0.0%)	0 (0.0%)	0 (0.0%)	0 (0.0%)
NHF										
Colt/Entire	13 (0.6%)	5 (0.3%)	5 (0.3%)	3 (0.2%)	5 (0.3%)	6 (0.4%)	9 (0.6%)	7 (0.9%)	3 (0.1%)	7 (0.5%)
Gelding	1473 (67.8%)	1286 (67.8%)	1049 (64.0%)	952 (65.1%)	982 (65.9%)	1031 (63.7%)	889 (62.0%)	526 (68.0%)	1558 (69.2%)	858 (61.1%)
Filly/Mare	688 (31.6%)	606 (31.9%)	585 (35.7%)	508 (34.7%)	504 (33.8%)	582 (35.9%)	535 (37.3%)	241 (31.1%)	692 (30.7%)	540 (38.4%)
Hunter										
Colt/Entire	0 (0.0%)	0 (0.0%)	1 (0.1%)	0 (0.0%)	0 (0.0%)	0 (0.0%)	0 (0.0%)	0 (0.0%)	0 (0.0%)	0 (0.0%)
Gelding	844 (92.1%)	771 (91.5%)	799 (94.2%)	720 (94.2%)	709 (94.9%)	603 (93.3%)	522 (92.7%)	142 (97.3%)	557 (93.5%)	429 (94.9%)
Filly/Mare	72 (7.9%)	72 (8.5%)	48 (5.7%)	44 (5.8%)	38 (5.1%)	43 (6.7%)	41 (7.3%)	4 (2.7%)	39 (6.5%)	23 (5.1%)

Year to Date Individual Runners by Gender

Sex	2013	2014	2015	2016	2017	2018	2019	2020	2021	2022
All Races										
Male	9616 (71.9%)	9446 (71.5%)	9604 (72.1%)	9798 (72.1%)	9994 (72.2%)	9920 (71.5%)	10124 (71.0%)	7862 (71.4%)	10215 (71.1%)	9783 (70.6%)
Female	3761 (28.1%)	3770 (28.5%)	3708 (27.9%)	3794 (27.9%)	3843 (27.8%)	3946 (28.5%)	4126 (29.0%)	3153 (28.6%)	4147 (28.9%)	4072 (29.4%)
Flat										
Male	5016 (64.7%)	5027 (64.6%)	5060 (65.9%)	5244 (65.7%)	5439 (66.4%)	5477 (66.5%)	5521 (65.9%)	4528 (66.8%)	5275 (65.7%)	5172 (65.1%)
Female	2731 (35.3%)	2754 (35.4%)	2623 (34.1%)	2740 (34.3%)	2757 (33.6%)	2758 (33.5%)	2852 (34.1%)	2246 (33.2%)	2757 (34.3%)	2772 (34.9%)
All Jump										
Male	5064 (81.5%)	4853 (81.2%)	4950 (80.6%)	4948 (81.2%)	4889 (80.8%)	4797 (79.1%)	4971 (78.5%)	3522 (78.7%)	5278 (78.1%)	4908 (78.0%)
Female	1147 (18.5%)	1124 (18.8%)	1193 (19.4%)	1144 (18.8%)	1161 (19.2%)	1268 (20.9%)	1363 (21.5%)	954 (21.3%)	1483 (21.9%)	1385 (22.0%)
Chase										
Male	1888 (91.9%)	1838 (92.4%)	1877 (92.2%)	1881 (92.8%)	1905 (92.1%)	1797 (89.8%)	1842 (89.6%)	1269 (90.0%)	1975 (88.9%)	1850 (88.6%)
Female	167 (8.1%)	151 (7.6%)	159 (7.8%)	146 (7.2%)	164 (7.9%)	203 (10.2%)	214 (10.4%)	141 (10.0%)	246 (11.1%)	239 (11.4%)
Hurdle										
Male	3141 (81.0%)	2950 (79.6%)	3038 (79.0%)	3081 (79.9%)	3002 (78.8%)	2987 (77.5%)	3115 (76.6%)	2054 (75.0%)	3203 (75.2%)	3067 (76.7%)
Female	739 (19.0%)	758 (20.4%)	810 (21.0%)	777 (20.1%)	807 (21.2%)	868 (22.5%)	949 (23.4%)	684 (25.0%)	1054 (24.8%)	931 (23.3%)
NHF										
Male	1030 (70.5%)	916 (70.5%)	733 (66.1%)	673 (66.2%)	674 (67.2%)	743 (66.5%)	647 (64.6%)	440 (68.9%)	1128 (70.4%)	633 (63.4%)
Female	431 (29.5%)	383 (29.5%)	376 (33.9%)	344 (33.8%)	329 (32.8%)	375 (33.5%)	354 (35.4%)	199 (31.1%)	475 (29.6%)	365 (36.6%)
Hunter										
Male	433 (89.8%)	447 (91.4%)	448 (94.1%)	395 (93.2%)	366 (93.6%)	339 (92.1%)	301 (92.0%)	98 (96.1%)	299 (92.0%)	243 (92.4%)
Female	49 (10.2%)	42 (8.6%)	28 (5.9%)	29 (6.8%)	25 (6.4%)	29 (7.9%)	26 (8.0%)	4 (3.9%)	26 (8.0%)	20 (7.6%)

Horses Population by Breeding

June 2022 Horses in Training Snapshot by Breeding versus Previous Years

Flat (including Dual)

Bred	Sex	2013	2014	2015	2016	2017	2018	2019	2020	2021	2022
GB	Male	2939 (29.4%)	2936 (29.6%)	3038 (30.0%)	3061 (29.6%)	3187 (29.8%)	3332 (30.2%)	3228 (29.7%)	3197 (30.5%)	3101 (29.9%)	3052 (29.3%)
	Female	2146 (21.5%)	2080 (21.0%)	2078 (20.5%)	2103 (20.4%)	2155 (20.1%)	2191 (19.9%)	2220 (20.5%)	2169 (20.7%)	2131 (20.5%)	2139 (20.5%)
	Subtotal	5085 (50.9%)	5016 (50.5%)	5116 (50.5%)	5164 (50.0%)	5342 (49.9%)	5523 (50.1%)	5448 (50.2%)	5366 (51.3%)	5232 (50.4%)	5191 (49.8%)
IRE	Male	2590 (25.9%)	2589 (26.1%)	2723 (26.9%)	2844 (27.5%)	2937 (27.4%)	3018 (27.4%)	2898 (26.7%)	2836 (27.1%)	2890 (27.9%)	2997 (28.8%)
	Female	1348 (13.5%)	1400 (14.1%)	1426 (14.1%)	1428 (13.8%)	1441 (13.5%)	1470 (13.3%)	1504 (13.9%)	1364 (13.0%)	1473 (14.2%)	1524 (14.6%)
	Subtotal	3938 (39.4%)	3989 (40.2%)	4149 (40.9%)	4272 (41.4%)	4378 (40.9%)	4488 (40.7%)	4402 (40.6%)	4200 (40.1%)	4363 (42.1%)	4521 (43.4%)
FR	Male	121 (1.2%)	151 (1.5%)	175 (1.7%)	198 (1.9%)	249 (2.3%)	309 (2.8%)	320 (2.9%)	320 (3.1%)	308 (3.0%)	329 (3.2%)
	Female	48 (0.5%)	72 (0.7%)	74 (0.7%)	86 (0.8%)	104 (1.0%)	125 (1.1%)	130 (1.2%)	138 (1.3%)	118 (1.1%)	122 (1.2%)
	Subtotal	169 (1.7%)	223 (2.2%)	249 (2.5%)	284 (2.8%)	353 (3.3%)	434 (3.9%)	450 (4.1%)	458 (4.4%)	426 (4.1%)	451 (4.3%)
USA	Male	472 (4.7%)	385 (3.9%)	349 (3.4%)	351 (3.4%)	356 (3.3%)	325 (2.9%)	305 (2.8%)	244 (2.3%)	193 (1.9%)	136 (1.3%)
	Female	201 (2.0%)	180 (1.8%)	155 (1.5%)	140 (1.4%)	150 (1.4%)	141 (1.3%)	133 (1.2%)	97 (0.9%)	66 (0.6%)	39 (0.4%)
	Subtotal	673 (6.7%)	565 (5.7%)	504 (5.0%)	491 (4.8%)	506 (4.7%)	466 (4.2%)	438 (4.0%)	341 (3.3%)	259 (2.5%)	175 (1.7%)
GNY	Male	53 (0.5%)	52 (0.5%)	64 (0.6%)	65 (0.6%)	74 (0.7%)	63 (0.6%)	58 (0.5%)	59 (0.6%)	52 (0.5%)	41 (0.4%)
	Female	17 (0.2%)	16 (0.2%)	13 (0.1%)	10 (0.1%)	12 (0.1%)	19 (0.2%)	24 (0.2%)	27 (0.3%)	23 (0.2%)	19 (0.2%)
	Subtotal	70 (0.7%)	68 (0.7%)	77 (0.8%)	75 (0.7%)	86 (0.8%)	82 (0.7%)	82 (0.8%)	86 (0.8%)	75 (0.7%)	60 (0.6%)
Other	Male	43 (0.4%)	44 (0.4%)	25 (0.2%)	24 (0.2%)	30 (0.3%)	25 (0.2%)	20 (0.2%)	15 (0.1%)	14 (0.1%)	16 (0.2%)
	Female	12 (0.1%)	19 (0.2%)	20 (0.2%)	16 (0.2%)	16 (0.1%)	14 (0.1%)	12 (0.1%)	4 (0.0%)	4 (0.0%)	5 (0.0%)
	Subtotal	55 (0.6%)	63 (0.6%)	45 (0.4%)	40 (0.4%)	46 (0.4%)	39 (0.4%)	32 (0.3%)	19 (0.2%)	18 (0.2%)	21 (0.2%)

Jump (including Dual)

Bred	Sex	2013	2014	2015	2016	2017	2018	2019	2020	2021	2022
GB	Male	1085 (28.3%)	977 (27.9%)	904 (26.8%)	893 (26.1%)	840 (26.2%)	960 (24.1%)	807 (22.6%)	718 (22.5%)	894 (22.2%)	739 (20.1%)
	Female	477 (12.5%)	473 (13.5%)	449 (13.3%)	433 (12.6%)	370 (11.6%)	476 (12.0%)	407 (11.4%)	359 (11.3%)	463 (11.5%)	433 (11.8%)
	Subtotal	1562 (40.8%)	1450 (41.4%)	1353 (40.2%)	1326 (38.7%)	1210 (37.8%)	1436 (36.1%)	1214 (34.0%)	1077 (33.8%)	1357 (33.6%)	1172 (31.8%)
IRE	Male	1590 (41.5%)	1437 (41.1%)	1385 (41.1%)	1462 (42.6%)	1343 (41.9%)	1672 (42.1%)	1504 (42.1%)	1296 (40.6%)	1693 (42.0%)	1484 (40.3%)
	Female	221 (5.8%)	232 (6.6%)	236 (7.0%)	246 (7.2%)	262 (8.2%)	359 (9.0%)	372 (10.4%)	323 (10.1%)	375 (9.3%)	386 (10.5%)
	Subtotal	1811 (47.3%)	1669 (47.7%)	1621 (48.1%)	1708 (49.8%)	1605 (50.1%)	2031 (51.1%)	1876 (52.5%)	1619 (50.8%)	2068 (51.3%)	1870 (50.8%)
FR	Male	293 (7.7%)	235 (6.7%)	263 (7.8%)	290 (8.5%)	277 (8.6%)	380 (9.6%)	355 (9.9%)	363 (11.4%)	467 (11.6%)	499 (13.6%)
	Female	27 (0.7%)	22 (0.6%)	24 (0.7%)	17 (0.5%)	30 (0.9%)	48 (1.2%)	54 (1.5%)	65 (2.0%)	61 (1.5%)	68 (1.8%)
	Subtotal	320 (8.4%)	257 (7.3%)	287 (8.5%)	307 (9.0%)	307 (9.6%)	428 (10.8%)	409 (11.5%)	428 (13.4%)	528 (13.1%)	567 (15.4%)
USA	Male	87 (2.3%)	70 (2.0%)	61 (1.8%)	38 (1.1%)	34 (1.1%)	38 (1.0%)	28 (0.8%)	27 (0.8%)	31 (0.8%)	25 (0.7%)
	Female	5 (0.1%)	4 (0.1%)	1 (0.0%)	1 (0.0%)	2 (0.1%)	1 (0.0%)	3 (0.1%)	2 (0.1%)	1 (0.0%)	1 (0.0%)
	Subtotal	92 (2.4%)	74 (2.1%)	62 (1.8%)	39 (1.1%)	36 (1.1%)	39 (1.0%)	31 (0.9%)	29 (0.9%)	32 (0.8%)	26 (0.7%)
GNY	Male	28 (0.7%)	35 (1.0%)	34 (1.0%)	38 (1.1%)	34 (1.1%)	35 (0.9%)	32 (0.9%)	33 (1.0%)	40 (1.0%)	35 (1.0%)
	Female	3 (0.1%)	4 (0.1%)	3 (0.1%)	2 (0.1%)	2 (0.1%)	1 (0.0%)	3 (0.1%)	1 (0.0%)	5 (0.1%)	6 (0.2%)
	Subtotal	31 (0.8%)	39 (1.1%)	37 (1.1%)	40 (1.2%)	36 (1.1%)	36 (0.9%)	35 (1.0%)	34 (1.1%)	45 (1.1%)	41 (1.1%)
Other	Male	12 (0.3%)	9 (0.3%)	7 (0.2%)	5 (0.1%)	7 (0.2%)	5 (0.1%)	5 (0.1%)	3 (0.1%)	4 (0.1%)	3 (0.1%)
	Female	2 (0.1%)	1 (0.0%)	1 (0.0%)	3 (0.1%)	2 (0.1%)	1 (0.0%)	1 (0.0%)	NA (-)	NA (-)	1 (0.0%)
	Subtotal	14 (0.4%)	10 (0.3%)	8 (0.2%)	8 (0.2%)	9 (0.3%)	6 (0.2%)	6 (0.2%)	3 (0.1%)	4 (0.1%)	4 (0.1%)

Year to Date Total Runners by Breeding

Flat

Bred	Sex	2013	2014	2015	2016	2017	2018	2019	2020	2021	2022
GB	Male	8175 (31.6%)	8018 (31.9%)	7986 (32.7%)	8186 (32.6%)	8498 (32.7%)	8502 (32.4%)	8526 (31.7%)	4655 (32.5%)	8382 (31.6%)	8185 (31.5%)
	Female	4758 (18.4%)	4322 (17.2%)	4028 (16.5%)	4208 (16.7%)	4245 (16.3%)	4243 (16.2%)	4571 (17.0%)	2409 (16.8%)	4615 (17.4%)	4540 (17.5%)
	Subtotal	12933 (50.0%)	12340 (49.1%)	12014 (49.3%)	12394 (49.3%)	12743 (49.1%)	12745 (48.5%)	13097 (48.7%)	7064 (49.2%)	12997 (49.0%)	12725 (49.0%)
IRE	Male	7601 (29.4%)	7401 (29.4%)	7436 (30.5%)	7702 (30.6%)	7961 (30.7%)	8168 (31.1%)	8277 (30.8%)	4366 (30.4%)	8372 (31.5%)	8301 (32.0%)
	Female	2998 (11.6%)	3159 (12.6%)	2864 (11.7%)	3023 (12.0%)	3166 (12.2%)	3180 (12.1%)	3188 (11.8%)	1724 (12.0%)	3156 (11.9%)	3209 (12.4%)
	Subtotal	10599 (41.0%)	10560 (42.0%)	10300 (42.2%)	10725 (42.7%)	11127 (42.8%)	11348 (43.2%)	11465 (42.6%)	6090 (42.5%)	11528 (43.4%)	11510 (44.3%)
FR	Male	296 (1.1%)	369 (1.5%)	451 (1.8%)	491 (2.0%)	550 (2.1%)	621 (2.4%)	800 (3.0%)	429 (3.0%)	765 (2.9%)	751 (2.9%)
	Female	64 (0.2%)	142 (0.6%)	155 (0.6%)	163 (0.6%)	166 (0.6%)	210 (0.8%)	234 (0.9%)	117 (0.8%)	244 (0.9%)	249 (1.0%)
	Subtotal	360 (1.4%)	511 (2.0%)	606 (2.5%)	654 (2.6%)	716 (2.8%)	831 (3.2%)	1034 (3.8%)	546 (3.8%)	1009 (3.8%)	1000 (3.9%)
USA	Male	1360 (5.3%)	1105 (4.4%)	925 (3.8%)	867 (3.5%)	867 (3.3%)	835 (3.2%)	775 (2.9%)	404 (2.8%)	548 (2.1%)	432 (1.7%)
	Female	303 (1.2%)	297 (1.2%)	233 (1.0%)	197 (0.8%)	219 (0.8%)	206 (0.8%)	245 (0.9%)	103 (0.7%)	151 (0.6%)	123 (0.5%)
	Subtotal	1663 (6.4%)	1402 (5.6%)	1158 (4.7%)	1064 (4.2%)	1086 (4.2%)	1041 (4.0%)	1020 (3.8%)	507 (3.5%)	699 (2.6%)	555 (2.1%)
GNY	Male	130 (0.5%)	134 (0.5%)	126 (0.5%)	152 (0.6%)	168 (0.6%)	153 (0.6%)	144 (0.5%)	88 (0.6%)	184 (0.7%)	83 (0.3%)
	Female	29 (0.1%)	33 (0.1%)	52 (0.2%)	40 (0.2%)	23 (0.1%)	38 (0.1%)	45 (0.2%)	24 (0.2%)	60 (0.2%)	47 (0.2%)
	Subtotal	159 (0.6%)	167 (0.7%)	178 (0.7%)	192 (0.8%)	191 (0.7%)	191 (0.7%)	189 (0.7%)	112 (0.8%)	244 (0.9%)	130 (0.5%)
Other	Male	109 (0.4%)	133 (0.5%)	94 (0.4%)	76 (0.3%)	79 (0.3%)	89 (0.3%)	79 (0.3%)	23 (0.2%)	57 (0.2%)	36 (0.1%)
	Female	19 (0.1%)	23 (0.1%)	40 (0.2%)	25 (0.1%)	29 (0.1%)	12 (0.0%)	31 (0.1%)	3 (0.0%)	11 (0.0%)	13 (0.1%)
	Subtotal	128 (0.5%)	156 (0.6%)	134 (0.5%)	101 (0.4%)	108 (0.4%)	101 (0.4%)	110 (0.4%)	26 (0.2%)	68 (0.3%)	49 (0.2%)

Jump

Bred	Sex	2013	2014	2015	2016	2017	2018	2019	2020	2021	2022
GB	Male	4557 (25.9%)	4185 (25.1%)	4033 (23.7%)	3808 (22.7%)	3731 (22.0%)	3492 (21.0%)	3393 (20.5%)	1486 (19.0%)	3374 (18.9%)	2981 (17.8%)
	Female	1736 (9.9%)	1792 (10.7%)	1810 (10.7%)	1509 (9.0%)	1501 (8.9%)	1604 (9.7%)	1532 (9.2%)	668 (8.5%)	1712 (9.6%)	1550 (9.2%)
	Subtotal	6293 (35.8%)	5977 (35.9%)	5843 (34.4%)	5317 (31.7%)	5232 (30.9%)	5096 (30.7%)	4925 (29.7%)	2154 (27.5%)	5086 (28.5%)	4531 (27.0%)
IRE	Male	7728 (44.0%)	7485 (44.9%)	7617 (44.8%)	7701 (45.9%)	7756 (45.8%)	7422 (44.7%)	7269 (43.9%)	3404 (43.5%)	7717 (43.2%)	7179 (42.8%)
	Female	966 (5.5%)	980 (5.9%)	1130 (6.6%)	1214 (7.2%)	1284 (7.6%)	1518 (9.1%)	1628 (9.8%)	784 (10.0%)	1724 (9.7%)	1543 (9.2%)
	Subtotal	8694 (49.5%)	8465 (50.8%)	8747 (51.5%)	8915 (53.2%)	9040 (53.4%)	8940 (53.8%)	8897 (53.7%)	4188 (53.5%)	9441 (52.9%)	8722 (52.0%)
FR	Male	1732 (9.9%)	1610 (9.7%)	1772 (10.4%)	2004 (12.0%)	2134 (12.6%)	2082 (12.5%)	2146 (12.9%)	1163 (14.9%)	2576 (14.4%)	2824 (16.8%)
	Female	161 (0.9%)	162 (1.0%)	140 (0.8%)	155 (0.9%)	198 (1.2%)	185 (1.1%)	273 (1.6%)	177 (2.3%)	381 (2.1%)	361 (2.2%)
	Subtotal	1893 (10.8%)	1772 (10.6%)	1912 (11.3%)	2159 (12.9%)	2332 (13.8%)	2267 (13.7%)	2419 (14.6%)	1340 (17.1%)	2957 (16.6%)	3185 (19.0%)
USA	Male	350 (2.0%)	256 (1.5%)	236 (1.4%)	161 (1.0%)	126 (0.7%)	113 (0.7%)	85 (0.5%)	48 (0.6%)	100 (0.6%)	70 (0.4%)
	Female	20 (0.1%)	1 (0.0%)	5 (0.0%)	4 (0.0%)	5 (0.0%)	5 (0.0%)	12 (0.1%)	4 (0.1%)	6 (0.0%)	6 (0.0%)
	Subtotal	370 (2.1%)	257 (1.5%)	241 (1.4%)	165 (1.0%)	131 (0.8%)	118 (0.7%)	97 (0.6%)	52 (0.7%)	106 (0.6%)	76 (0.5%)
GNY	Male	206 (1.2%)	158 (0.9%)	201 (1.2%)	172 (1.0%)	171 (1.0%)	144 (0.9%)	191 (1.2%)	83 (1.1%)	225 (1.3%)	217 (1.3%)
	Female	18 (0.1%)	10 (0.1%)	15 (0.1%)	13 (0.1%)	9 (0.1%)	10 (0.1%)	18 (0.1%)	5 (0.1%)	29 (0.2%)	26 (0.2%)
	Subtotal	224 (1.3%)	168 (1.0%)	216 (1.3%)	185 (1.1%)	180 (1.1%)	154 (0.9%)	209 (1.3%)	88 (1.1%)	254 (1.4%)	243 (1.4%)
Other	Male	83 (0.5%)	32 (0.2%)	32 (0.2%)	19 (0.1%)	17 (0.1%)	26 (0.2%)	23 (0.1%)	5 (0.1%)	11 (0.1%)	6 (0.0%)
	Female	6 (0.0%)	1 (0.0%)	2 (0.0%)	7 (0.0%)	5 (0.0%)	6 (0.0%)	2 (0.0%)	1 (0.0%)	0 (0.0%)	4 (0.0%)
	Subtotal	89 (0.5%)	33 (0.2%)	34 (0.2%)	26 (0.2%)	22 (0.1%)	32 (0.2%)	25 (0.2%)	6 (0.1%)	11 (0.1%)	10 (0.1%)

Year to Date Individual Runners by Breeding

Flat

Bred	Sex	2013	2014	2015	2016	2017	2018	2019	2020	2021	2022
GB	Male	2364 (30.5%)	2312 (29.7%)	2377 (30.9%)	2448 (30.7%)	2480 (30.3%)	2507 (30.4%)	2505 (29.9%)	2114 (31.2%)	2397 (29.8%)	2380 (30.0%)
	Female	1588 (20.5%)	1509 (19.4%)	1424 (18.5%)	1486 (18.6%)	1481 (18.1%)	1458 (17.7%)	1529 (18.3%)	1216 (18.0%)	1502 (18.7%)	1512 (19.0%)
	Subtotal	3952 (51.0%)	3821 (49.1%)	3801 (49.5%)	3934 (49.3%)	3961 (48.3%)	3965 (48.1%)	4034 (48.2%)	3330 (49.2%)	3899 (48.5%)	3892 (49.0%)
IRE	Male	2102 (27.1%)	2175 (28.0%)	2183 (28.4%)	2279 (28.5%)	2409 (29.4%)	2406 (29.2%)	2437 (29.1%)	1958 (28.9%)	2391 (29.8%)	2387 (30.0%)
	Female	984 (12.7%)	1068 (13.7%)	1009 (13.1%)	1087 (13.6%)	1087 (13.3%)	1106 (13.4%)	1113 (13.3%)	886 (13.1%)	1089 (13.6%)	1108 (13.9%)
	Subtotal	3086 (39.8%)	3243 (41.7%)	3192 (41.5%)	3366 (42.2%)	3496 (42.7%)	3512 (42.6%)	3550 (42.4%)	2844 (42.0%)	3480 (43.3%)	3495 (44.0%)
FR	Male	97 (1.3%)	119 (1.5%)	136 (1.8%)	160 (2.0%)	178 (2.2%)	232 (2.8%)	255 (3.0%)	217 (3.2%)	252 (3.1%)	240 (3.0%)
	Female	26 (0.3%)	52 (0.7%)	51 (0.7%)	63 (0.8%)	72 (0.9%)	82 (1.0%)	90 (1.1%)	69 (1.0%)	88 (1.1%)	91 (1.1%)
	Subtotal	123 (1.6%)	171 (2.2%)	187 (2.4%)	223 (2.8%)	250 (3.1%)	314 (3.8%)	345 (4.1%)	286 (4.2%)	340 (4.2%)	331 (4.2%)
USA	Male	383 (4.9%)	331 (4.3%)	284 (3.7%)	280 (3.5%)	288 (3.5%)	256 (3.1%)	247 (2.9%)	182 (2.7%)	168 (2.1%)	119 (1.5%)
	Female	112 (1.4%)	105 (1.3%)	104 (1.4%)	81 (1.0%)	91 (1.1%)	89 (1.1%)	94 (1.1%)	56 (0.8%)	54 (0.7%)	39 (0.5%)
	Subtotal	495 (6.4%)	436 (5.6%)	388 (5.1%)	361 (4.5%)	379 (4.6%)	345 (4.2%)	341 (4.1%)	238 (3.5%)	222 (2.8%)	158 (2.0%)
GNY	Male	36 (0.5%)	50 (0.6%)	48 (0.6%)	58 (0.7%)	58 (0.7%)	50 (0.6%)	51 (0.6%)	46 (0.7%)	53 (0.7%)	34 (0.4%)
	Female	13 (0.2%)	11 (0.1%)	19 (0.2%)	13 (0.2%)	10 (0.1%)	16 (0.2%)	15 (0.2%)	16 (0.2%)	20 (0.2%)	19 (0.2%)
	Subtotal	49 (0.6%)	61 (0.8%)	67 (0.9%)	71 (0.9%)	68 (0.8%)	66 (0.8%)	66 (0.8%)	62 (0.9%)	73 (0.9%)	53 (0.7%)
Other	Male	34 (0.4%)	40 (0.5%)	32 (0.4%)	19 (0.2%)	26 (0.3%)	26 (0.3%)	26 (0.3%)	11 (0.2%)	14 (0.2%)	12 (0.2%)
	Female	8 (0.1%)	9 (0.1%)	16 (0.2%)	10 (0.1%)	16 (0.2%)	7 (0.1%)	11 (0.1%)	3 (0.0%)	4 (0.0%)	3 (0.0%)
	Subtotal	42 (0.5%)	49 (0.6%)	48 (0.6%)	29 (0.4%)	42 (0.5%)	33 (0.4%)	37 (0.4%)	14 (0.2%)	18 (0.2%)	15 (0.2%)

Jump

Bred	Sex	2013	2014	2015	2016	2017	2018	2019	2020	2021	2022
GB	Male	1587 (25.6%)	1505 (25.2%)	1444 (23.5%)	1350 (22.2%)	1302 (21.5%)	1249 (20.6%)	1271 (20.1%)	831 (18.6%)	1286 (19.0%)	1144 (18.2%)
	Female	681 (11.0%)	679 (11.4%)	689 (11.2%)	610 (10.0%)	582 (9.6%)	617 (10.2%)	602 (9.5%)	388 (8.7%)	658 (9.7%)	619 (9.8%)
	Subtotal	2268 (36.5%)	2184 (36.5%)	2133 (34.7%)	1960 (32.2%)	1884 (31.1%)	1866 (30.8%)	1873 (29.6%)	1219 (27.2%)	1944 (28.8%)	1763 (28.0%)
IRE	Male	2680 (43.1%)	2615 (43.8%)	2701 (44.0%)	2749 (45.1%)	2701 (44.6%)	2678 (44.2%)	2769 (43.7%)	1958 (43.7%)	2868 (42.4%)	2632 (41.8%)
	Female	394 (6.3%)	384 (6.4%)	441 (7.2%)	462 (7.6%)	494 (8.2%)	557 (9.2%)	627 (9.9%)	452 (10.1%)	669 (9.9%)	600 (9.5%)
	Subtotal	3074 (49.5%)	2999 (50.2%)	3142 (51.1%)	3211 (52.7%)	3195 (52.8%)	3235 (53.3%)	3396 (53.6%)	2410 (53.8%)	3537 (52.3%)	3232 (51.4%)
FR	Male	585 (9.4%)	572 (9.6%)	643 (10.5%)	718 (11.8%)	770 (12.7%)	773 (12.7%)	825 (13.0%)	654 (14.6%)	1016 (15.0%)	1030 (16.4%)
	Female	56 (0.9%)	55 (0.9%)	54 (0.9%)	61 (1.0%)	76 (1.3%)	88 (1.5%)	123 (1.9%)	106 (2.4%)	144 (2.1%)	151 (2.4%)
	Subtotal	641 (10.3%)	627 (10.5%)	697 (11.3%)	779 (12.8%)	846 (14.0%)	861 (14.2%)	948 (15.0%)	760 (17.0%)	1160 (17.2%)	1181 (18.8%)
USA	Male	123 (2.0%)	95 (1.6%)	82 (1.3%)	58 (1.0%)	48 (0.8%)	41 (0.7%)	34 (0.5%)	25 (0.6%)	35 (0.5%)	29 (0.5%)
	Female	8 (0.1%)	1 (0.0%)	3 (0.0%)	2 (0.0%)	2 (0.0%)	2 (0.0%)	5 (0.1%)	3 (0.1%)	2 (0.0%)	2 (0.0%)
	Subtotal	131 (2.1%)	96 (1.6%)	85 (1.4%)	60 (1.0%)	50 (0.8%)	43 (0.7%)	39 (0.6%)	28 (0.6%)	37 (0.5%)	31 (0.5%)
GNY	Male	60 (1.0%)	53 (0.9%)	69 (1.1%)	67 (1.1%)	62 (1.0%)	49 (0.8%)	63 (1.0%)	49 (1.1%)	70 (1.0%)	71 (1.1%)
	Female	5 (0.1%)	4 (0.1%)	5 (0.1%)	7 (0.1%)	5 (0.1%)	2 (0.0%)	5 (0.1%)	4 (0.1%)	10 (0.1%)	11 (0.2%)
	Subtotal	65 (1.0%)	57 (1.0%)	74 (1.2%)	74 (1.2%)	67 (1.1%)	51 (0.8%)	68 (1.1%)	53 (1.2%)	80 (1.2%)	82 (1.3%)
Other	Male	29 (0.5%)	13 (0.2%)	11 (0.2%)	6 (0.1%)	6 (0.1%)	7 (0.1%)	9 (0.1%)	5 (0.1%)	3 (0.0%)	2 (0.0%)
	Female	3 (0.0%)	1 (0.0%)	1 (0.0%)	2 (0.0%)	2 (0.0%)	2 (0.0%)	1 (0.0%)	1 (0.0%)	0 (0.0%)	2 (0.0%)
	Subtotal	32 (0.5%)	14 (0.2%)	12 (0.2%)	8 (0.1%)	8 (0.1%)	9 (0.1%)	10 (0.2%)	6 (0.1%)	3 (0.0%)	4 (0.1%)