

Horse Population Report

Updated on 31 January 2022



Introduction

Welcome to the latest update on the Racehorse Population from the British Horseracing Authority.

The aim of this document is to give stakeholders and the wider Public an insight into the current state of the Horse Population in Great Britain. It is hoped that this transparency will ensure that all decision makers have access to the key data required to help British Racing deliver a Competitive and Compelling product to stakeholders, racegoers and the wider public.

If you have any questions regarding the content of this report or suggestions for how it could be improved further, please contact Joe Yates – [jyates@britishhorseracing.com](mailto: jyates@britishhorseracing.com)

Definitions

This report uses the Horses in Training returns from the Weatherby's Racing Administration System, this is completed by trainers and should be updated whenever a horse enters or leaves training in their care as part of the conditions of their licence.

Horses in Training

Unless otherwise stated, snapshots of Horses in Training will be from the 15th day of the month in question and year to date figures will be up to and including the date titled at the front of the report.

Horses' ratings will be taken from the most recently published ratings by the BHA Handicapping Team, which is currently at 7am each Tuesday morning. For example, if looking at the Horses in a particular rating band for July 2011, the horses in training number will be from Friday 15th July 2011 and ratings, where possible, will be assigned to each horse from the ratings published by the BHA Handicappers on Tuesday 12th July 2011.

The Gender of a horse will be taken from the reporting date in question, regardless of whether this has since changed. In the case of YTD reporting, where a horse's gender or training type has changed in the year-to-date period, the most recent is taken.

This report does not count any horses that are temporarily racing abroad for GB Trainers at the time of reporting.

Yearlings are not included in total counts of flat and/or dual horses but will be sometimes shown separately for information purposes.

Yearlings and two-year-olds are not included in total counts of jump horses or counts of jump horses that include dual horses but will be sometimes shown separately for information purposes.

Yearlings, two-year-olds and three-year-olds are not included in total counts of Hunter Chasers but will be sometimes shown separately for information purposes.

Hunter Chasers are not included in any counts of Jump Horses or Total figures but will be sometimes shown separately for information purposes.

Runners

Unless otherwise specified, Total Runners and Individual Runners metrics only counts runners that ran in GB races including any voided races. Withdrawn horses are not included.

Hunter Chases are not included in this section but will be sometimes shown separately for information purposes.

Total Runners is a count of all runners in races, whilst individual runners only counts each individual horse once.

Monthly Horses in Training

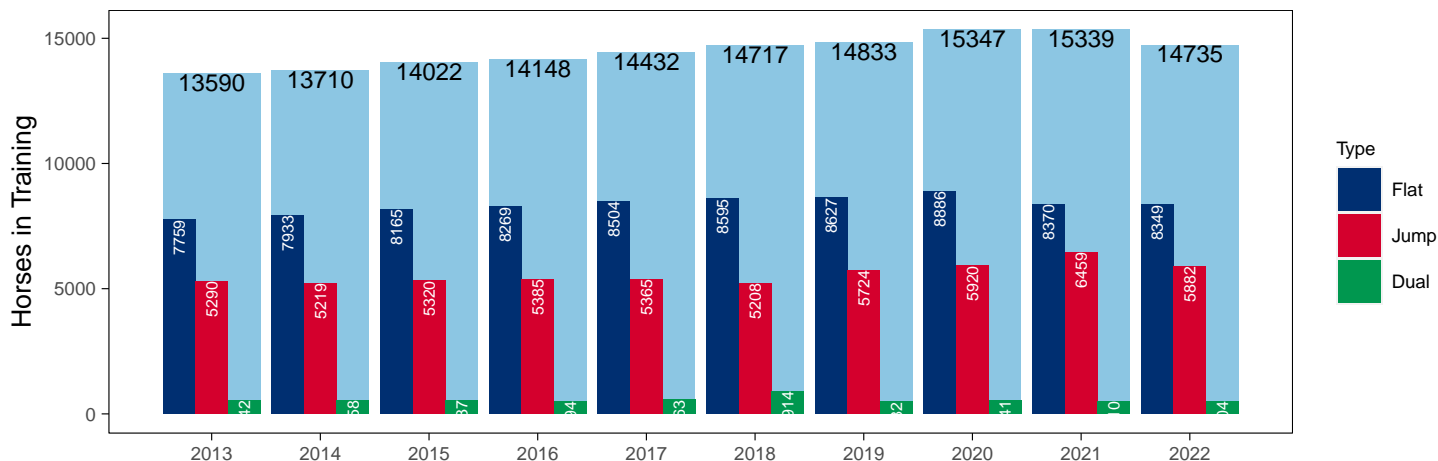
January 2022 Horses in Training Snapshot versus Previous Years

Type	2013	2014	2015	2016	2017	2018	2019	2020	2021	2022	vs. Last Year	vs. Pre-Covid
Flat	7759	7933	8165	8269	8504	8595	8627	8886	8370	8349	-21 / -0.3%	-278 / -3.2%
Jump	5290	5219	5320	5385	5365	5208	5724	5920	6459	5882	-577 / -8.9%	+158 / +2.8%
Dual	542	558	537	494	563	914	482	541	510	504	-6 / -1.2%	+22 / +4.6%
Hunter	1352	1314	1226	1175	1092	1002	995	949	791	815	+24 / +3.0%	-180 / -18.1%
Total	13590	13710	14022	14148	14432	14717	14833	15347	15339	14735	-604 / -3.9%	-98 / -0.7%

'vs. Pre-Covid' is comparison between 2022 and 2019

Snapshot of Total Horses in Training in January

Horses in Training in January, shown by Training Type



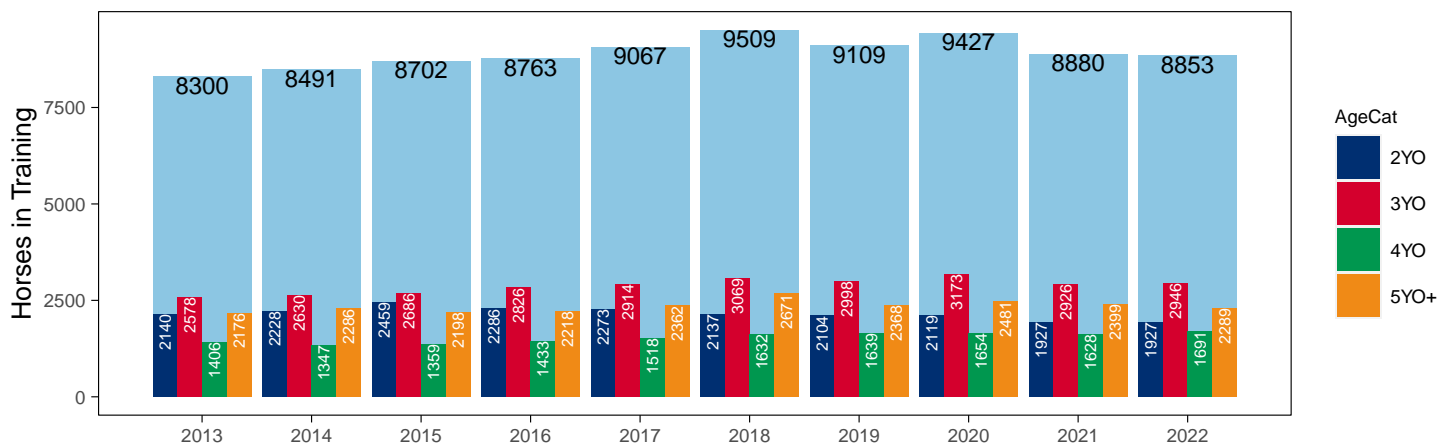
Flat (including Dual)

AgeCat	2013	2014	2015	2016	2017	2018	2019	2020	2021	2022	vs. Last Year	vs. Pre-Covid
2YO	2140	2228	2459	2286	2273	2137	2104	2119	1927	1927	0 / 0.0%	-177 / -8.4%
3YO	2578	2630	2686	2826	2914	3069	2998	3173	2926	2946	+20 / +0.7%	-52 / -1.7%
4YO	1406	1347	1359	1433	1518	1632	1639	1654	1628	1691	+63 / +3.9%	+52 / +3.2%
5YO+	2176	2286	2198	2218	2362	2671	2368	2481	2399	2289	-110 / -4.6%	-79 / -3.3%
Total	8300	8491	8702	8763	9067	9509	9109	9427	8880	8853	-27 / -0.3%	-256 / -2.8%

'vs. Pre-Covid' is comparison between 2022 and 2019

Snapshot of Flat Horses in Training in January

Flat Horses in Training in January, shown by Age



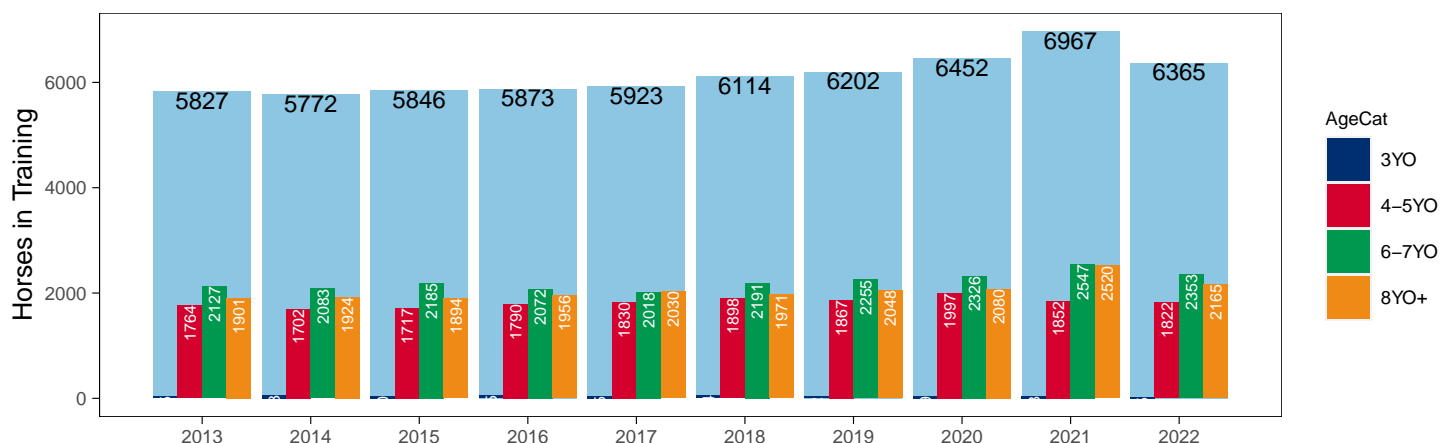
Jump (including Dual)

AgeCat	2013	2014	2015	2016	2017	2018	2019	2020	2021	2022	vs. Last Year	vs. Pre-Covid
3YO	35	63	50	55	45	54	32	49	48	25	-23 / -47.9%	-7 / -21.9%
4-5YO	1764	1702	1717	1790	1830	1898	1867	1997	1852	1822	-30 / -1.6%	-45 / -2.4%
6-7YO	2127	2083	2185	2072	2018	2191	2255	2326	2547	2353	-194 / -7.6%	+98 / +4.3%
8YO+	1901	1924	1894	1956	2030	1971	2048	2080	2520	2165	-355 / -14.1%	+117 / +5.7%
Total	5827	5772	5846	5873	5923	6114	6202	6452	6967	6365	-602 / -8.6%	+163 / +2.6%

'vs. Pre-Covid' is comparison between 2022 and 2019

Snapshot of Jump Horses in Training in January

Jump Horses in Training in January, shown by Age



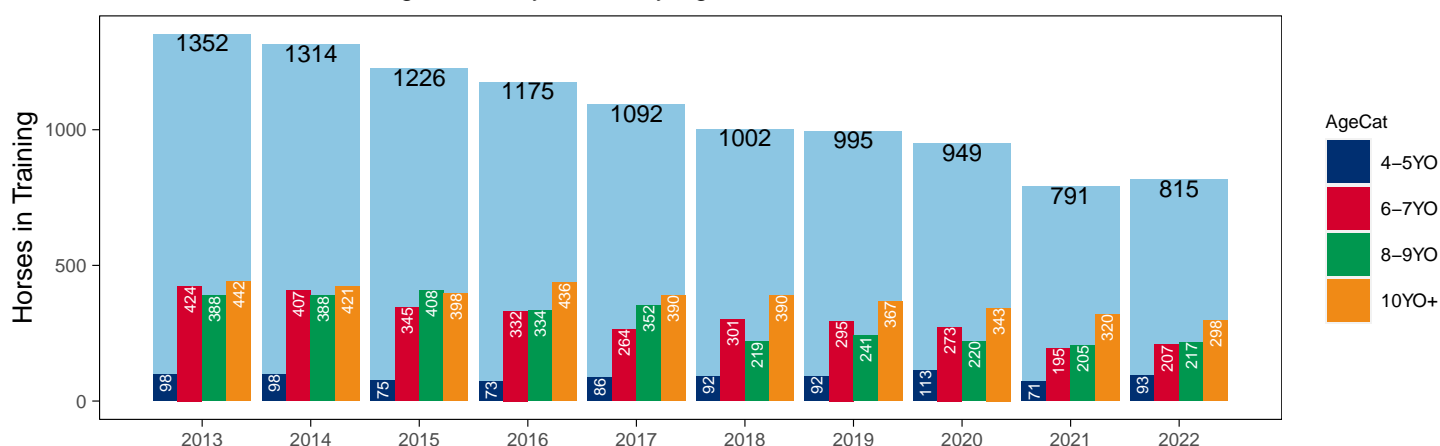
Hunter Chasers

AgeCat	2013	2014	2015	2016	2017	2018	2019	2020	2021	2022	vs. Last Year	vs. Pre-Covid
4-5YO	98	98	75	73	86	92	92	113	71	93	+22 / +31.0%	+1 / +1.1%
6-7YO	424	407	345	332	264	301	295	273	195	207	+12 / +6.2%	-88 / -29.8%
8-9YO	388	388	408	334	352	219	241	220	205	217	+12 / +5.9%	-24 / -10.0%
10YO+	442	421	398	436	390	390	367	343	320	298	-22 / -6.9%	-69 / -18.8%
Total	1352	1314	1226	1175	1092	1002	995	949	791	815	+24 / +3.0%	-180 / -18.1%

'vs. Pre-Covid' is comparison between 2022 and 2019

Snapshot of Hunter Chasers in Training in January

Hunter Chasers in Training in January, shown by Age



2022 Horses in Training versus Previous Years

Type	Period	Jan	Feb	Mar	Apr	May	Jun	Jul	Aug	Sep	Oct	Nov	Dec
Flat	2022	8349	0	0	0	0	0	0	0	0	0	0	0
	2021	8370	8854	9305	9677	9920	9900	9710	9553	9100	8538	6818	6280
	Pre-Covid	8627	9168	9725	10176	10385	10397	10100	9759	9473	8801	7020	6551
Jump	2022	5882	0	0	0	0	0	0	0	0	0	0	0
	2021	6459	6482	6392	5997	4395	3572	3963	5064	5672	5950	6059	5977
	Pre-Covid	5724	5785	5765	5348	4032	3127	3616	4810	5321	5755	5986	5981
Dual	2022	504	0	0	0	0	0	0	0	0	0	0	0
	2021	510	496	519	524	481	473	487	495	514	518	516	501
	Pre-Covid	482	470	467	495	456	455	473	484	479	537	566	534
Hunter	2022	815	0	0	0	0	0	0	0	0	0	0	0
	2021	791	787	861	1152	1176	1130	1104	1085	1069	47	344	604
	Pre-Covid	995	1378	1571	1701	1693	1637	1613	0	0	0	244	605
Total	2022	14735	0	0	0	0	0	0	0	0	0	0	0
	2021	15339	15832	16216	16198	14796	13945	14160	15112	15286	15006	13393	12758
	Pre-Covid	14934	15517	15927	15286	14272	13745	14176	15163	15415	15152	13451	12817

'Pre-Covid' is 2019 values

Monthly Horses in Training

2022 against 2021 and Pre-Covid, shown with % Difference

Period — Pre-Covid — 2021 — 2022



'Pre-Covid' is 2019 values

Flat (including Dual)

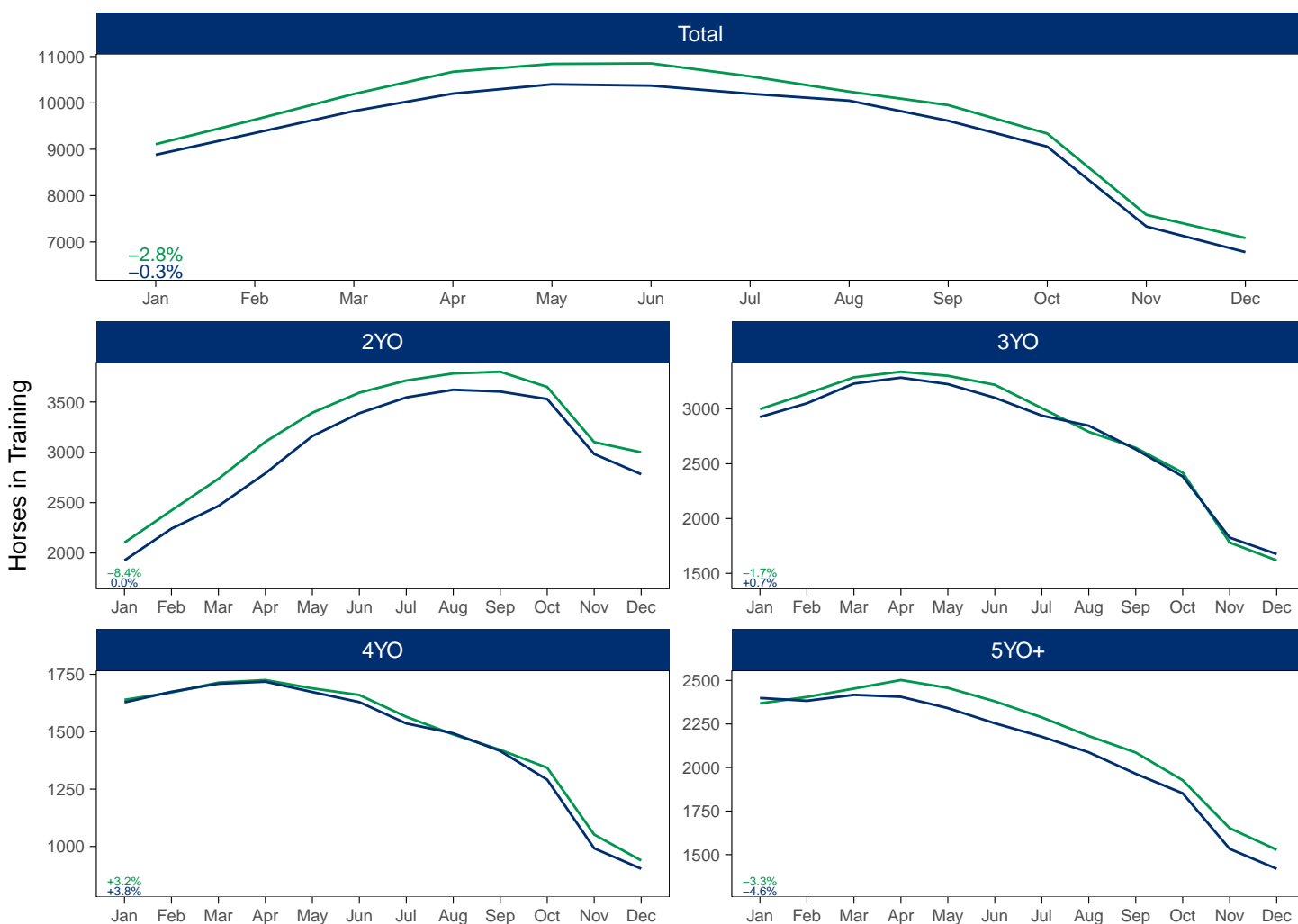
AgeCat	Period	Jan	Feb	Mar	Apr	May	Jun	Jul	Aug	Sep	Oct	Nov	Dec
2YO	2022	1927											
	2021	1927	2242	2467	2792	3161	3388	3545	3621	3603	3529	2983	2783
	Pre-Covid	2112	2445	2708	2965	3240	3477	3638	3746	3754	3616	3028	2854
3YO	2022	2946											
	2021	2926	3051	3231	3285	3226	3102	2939	2847	2631	2384	1826	1676
	Pre-Covid	3016	3186	3299	3318	3277	3227	3032	2873	2694	2461	1808	1631
4YO	2022	1691											
	2021	1628	1674	1709	1718	1673	1629	1536	1493	1416	1291	992	903
	Pre-Covid	1614	1647	1679	1666	1638	1603	1524	1478	1411	1312	1025	930
5YO+	2022	2289											
	2021	2399	2383	2417	2406	2341	2254	2177	2087	1964	1852	1533	1419
	Pre-Covid	2456	2476	2501	2450	2416	2381	2293	2206	2103	1967	1660	1530
Total	2022	8853											
	2021	8880	9350	9824	10201	10401	10373	10197	10048	9614	9056	7334	6781
	Pre-Covid	9198	9754	10187	10399	10572	10688	10487	10303	9962	9356	7521	6945

'Pre-Covid' is 2019 values

Monthly Flat Horses in Training

2022 against 2021 and Pre-Covid, shown with % Difference

Period — Pre-Covid — 2021 — 2022



'Pre-Covid' is 2019 values

Jump (including Dual)

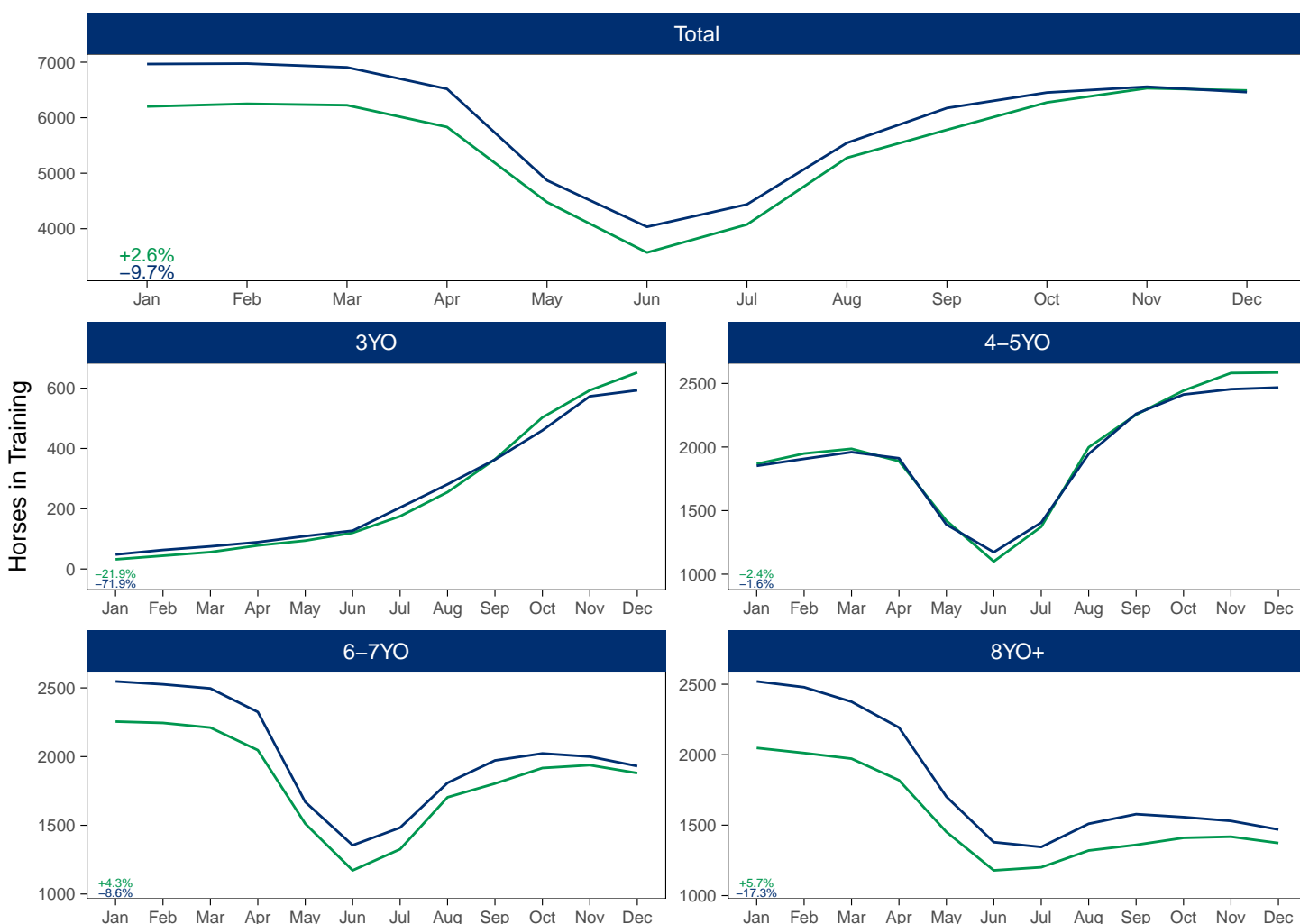
AgeCat	Period	Jan	Feb	Mar	Apr	May	Jun	Jul	Aug	Sep	Oct	Nov	Dec
3YO	2022	25											
	2021	48	63	75	89	109	127	204	281	363	460	573	593
	Pre-Covid	46	61	73	89	103	125	179	258	356	467	566	620
4-5YO	2022	1822											
	2021	1852	1907	1960	1912	1390	1173	1406	1946	2261	2413	2455	2468
	Pre-Covid	1889	1957	2008	1752	1292	1070	1396	1982	2268	2424	2504	2509
6-7YO	2022	2353											
	2021	2547	2526	2496	2325	1670	1355	1483	1809	1972	2023	2000	1931
	Pre-Covid	2267	2248	2220	1875	1428	1190	1395	1750	1899	1971	1958	1892
8YO+	2022	2165											
	2021	2520	2479	2376	2193	1702	1379	1345	1510	1578	1557	1530	1469
	Pre-Covid	2130	2096	2054	1771	1435	1210	1265	1427	1489	1509	1495	1429
Total	2022	6365											
	2021	6967	6975	6907	6519	4871	4034	4438	5546	6174	6453	6558	6461
	Pre-Covid	6332	6363	6355	5487	4258	3595	4236	5416	6012	6371	6523	6450

'Pre-Covid' is 2019 values

Monthly Jump Horses in Training

2022 against 2021 and Pre-Covid, shown with % Difference

Period — Pre-Covid — 2021 — 2022



'Pre-Covid' is 2019 values

Hunter Chasers

AgeCat	Period	Jan	Feb	Mar	Apr	May	Jun	Jul	Aug	Sep	Oct	Nov	Dec
4-5YO	2022	93											
	2021	71	65	71	141	143	133	128	118	110	5	65	147
	Pre-Covid	91	144	182	222	231	219	210	176	110	22	64	155
6-7YO	2022	207											
	2021	195	181	199	260	264	253	245	241	237	11	90	149
	Pre-Covid	266	348	390	418	422	407	380	293	237	37	85	177
8-9YO	2022	217											
	2021	205	203	218	272	279	269	264	262	258	14	89	152
	Pre-Covid	247	321	355	381	382	368	354	278	258	34	74	162
10YO+	2022	298											
	2021	320	338	373	479	490	475	467	464	464	17	100	156
	Pre-Covid	362	470	523	565	566	548	530	458	464	44	87	176
Total	2022	815											
	2021	791	787	861	1152	1176	1130	1104	1085	1069	47	344	604
	Pre-Covid	966	1283	1449	1586	1601	1542	1473	1204	1069	138	310	671

'Pre-Covid' is 2019 values

Monthly Hunter Chasers in Training

2022 against 2021 and Pre-Covid, shown with % Difference

Period — Pre-Covid — 2021 — 2022



'Pre-Covid' is 2019 values

January 2022 Horses in Training by Rating Band Snapshot versus Previous Years

Flat (including Dual)

AgeCat	RatBand	2013	2014	2015	2016	2017	2018	2019	2020	2021	2022
2YO	Unrated	2140 (100.0%)	2228 (100.0%)	2459 (100.0%)	2286 (100.0%)	2273 (100.0%)	2137 (100.0%)	2104 (100.0%)	2119 (100.0%)	1927 (100.0%)	1927 (100.0%)
	Subtotal	2140 (100.0%)	2228 (100.0%)	2459 (100.0%)	2286 (100.0%)	2273 (100.0%)	2137 (100.0%)	2104 (100.0%)	2119 (100.0%)	1927 (100.0%)	1927 (100.0%)
3YO	0-50	87 (3.4%)	82 (3.1%)	95 (3.5%)	92 (3.3%)	78 (2.7%)	74 (2.4%)	102 (3.4%)	113 (3.6%)	93 (3.2%)	111 (3.8%)
	51-60	164 (6.4%)	169 (6.4%)	166 (6.2%)	161 (5.7%)	198 (6.8%)	150 (4.9%)	232 (7.7%)	192 (6.1%)	210 (7.2%)	189 (6.4%)
	61-70	243 (9.4%)	239 (9.1%)	226 (8.4%)	308 (10.9%)	309 (10.6%)	298 (9.7%)	283 (9.4%)	274 (8.6%)	264 (9.0%)	301 (10.2%)
	71-80	277 (10.7%)	275 (10.5%)	289 (10.8%)	327 (11.6%)	325 (11.2%)	308 (10.0%)	293 (9.8%)	304 (9.6%)	271 (9.3%)	304 (10.3%)
	81-90	109 (4.2%)	148 (5.6%)	158 (5.9%)	163 (5.8%)	225 (7.7%)	154 (5.0%)	174 (5.8%)	161 (5.1%)	146 (5.0%)	159 (5.4%)
	91-100	56 (2.2%)	70 (2.7%)	79 (2.9%)	70 (2.5%)	72 (2.5%)	70 (2.3%)	81 (2.7%)	70 (2.2%)	71 (2.4%)	61 (2.1%)
	101+	56 (2.2%)	39 (1.5%)	62 (2.3%)	54 (1.9%)	54 (1.9%)	57 (1.9%)	54 (1.8%)	57 (1.8%)	57 (1.9%)	63 (2.1%)
	Unrated	1586 (61.5%)	1608 (61.1%)	1611 (60.0%)	1651 (58.4%)	1653 (56.7%)	1958 (63.8%)	1779 (59.3%)	2002 (63.1%)	1814 (62.0%)	1758 (59.7%)
Subtotal		2578 (100.0%)	2630 (100.0%)	2686 (100.0%)	2826 (100.0%)	2914 (100.0%)	3069 (100.0%)	2998 (100.0%)	3173 (100.0%)	2926 (100.0%)	2946 (100.0%)
4YO	0-50	140 (10.0%)	121 (9.0%)	127 (9.3%)	130 (9.1%)	128 (8.4%)	145 (8.9%)	192 (11.7%)	207 (12.5%)	178 (10.9%)	194 (11.5%)
	51-60	176 (12.5%)	162 (12.0%)	157 (11.6%)	172 (12.0%)	187 (12.3%)	221 (13.5%)	211 (12.9%)	226 (13.7%)	210 (12.9%)	250 (14.8%)
	61-70	200 (14.2%)	201 (14.9%)	195 (14.3%)	226 (15.8%)	253 (16.7%)	248 (15.2%)	269 (16.4%)	280 (16.9%)	258 (15.8%)	293 (17.3%)
	71-80	174 (12.4%)	196 (14.6%)	213 (15.7%)	207 (14.4%)	280 (18.4%)	268 (16.4%)	251 (15.3%)	221 (13.4%)	266 (16.3%)	272 (16.1%)
	81-90	124 (8.8%)	147 (10.9%)	160 (11.8%)	198 (13.8%)	186 (12.3%)	195 (11.9%)	192 (11.7%)	191 (11.5%)	160 (9.8%)	203 (12.0%)
	91-100	69 (4.9%)	70 (5.2%)	79 (5.8%)	88 (6.1%)	90 (5.9%)	118 (7.2%)	119 (7.3%)	112 (6.8%)	97 (6.0%)	87 (5.1%)
	101+	57 (4.1%)	45 (3.3%)	75 (5.5%)	79 (5.5%)	85 (5.6%)	67 (4.1%)	81 (4.9%)	94 (5.7%)	56 (3.4%)	65 (3.8%)
	Unrated	466 (33.1%)	405 (30.1%)	353 (26.0%)	333 (23.2%)	309 (20.4%)	370 (22.7%)	324 (19.8%)	323 (19.5%)	403 (24.8%)	327 (19.3%)
Subtotal		1406 (100.0%)	1347 (100.0%)	1359 (100.0%)	1433 (100.0%)	1518 (100.0%)	1632 (100.0%)	1639 (100.0%)	1654 (100.0%)	1628 (100.0%)	1691 (100.0%)
5YO+	0-50	246 (11.3%)	244 (10.7%)	249 (11.3%)	219 (9.9%)	236 (10.0%)	328 (12.3%)	392 (16.6%)	381 (15.4%)	343 (14.3%)	325 (14.2%)
	51-60	327 (15.0%)	303 (13.3%)	299 (13.6%)	310 (14.0%)	323 (13.7%)	351 (13.1%)	352 (14.9%)	383 (15.4%)	375 (15.6%)	369 (16.1%)
	61-70	335 (15.4%)	356 (15.6%)	359 (16.3%)	388 (17.5%)	368 (15.6%)	374 (14.0%)	400 (16.9%)	411 (16.6%)	438 (18.3%)	388 (17.0%)
	71-80	256 (11.8%)	284 (12.4%)	317 (14.4%)	322 (14.5%)	345 (14.6%)	348 (13.0%)	331 (14.0%)	357 (14.4%)	319 (13.3%)	308 (13.5%)
	81-90	174 (8.0%)	215 (9.4%)	224 (10.2%)	258 (11.6%)	278 (11.8%)	295 (11.0%)	258 (10.9%)	262 (10.6%)	224 (9.3%)	225 (9.8%)
	91-100	79 (3.6%)	109 (4.8%)	138 (6.3%)	137 (6.2%)	165 (7.0%)	156 (5.8%)	169 (7.1%)	161 (6.5%)	143 (6.0%)	147 (6.4%)
	101+	71 (3.3%)	96 (4.2%)	111 (5.1%)	122 (5.5%)	142 (6.0%)	152 (5.7%)	124 (5.2%)	132 (5.3%)	135 (5.6%)	129 (5.6%)
	Unrated	688 (31.6%)	679 (29.7%)	501 (22.8%)	462 (20.8%)	505 (21.4%)	667 (25.0%)	342 (14.4%)	394 (15.9%)	422 (17.6%)	398 (17.4%)
Subtotal		2176 (100.0%)	2286 (100.0%)	2198 (100.0%)	2218 (100.0%)	2362 (100.0%)	2671 (100.0%)	2368 (100.0%)	2481 (100.0%)	2399 (100.0%)	2289 (100.0%)
Overall	0-50	473 (5.7%)	447 (5.3%)	471 (5.4%)	441 (5.0%)	442 (4.9%)	547 (5.8%)	686 (7.5%)	701 (7.4%)	614 (6.9%)	630 (7.1%)
	51-60	667 (8.0%)	634 (7.5%)	622 (7.1%)	643 (7.3%)	708 (7.8%)	722 (7.6%)	795 (8.7%)	801 (8.5%)	795 (9.0%)	808 (9.1%)
	61-70	778 (9.4%)	796 (9.4%)	780 (9.0%)	922 (10.5%)	930 (10.3%)	920 (9.7%)	952 (10.5%)	965 (10.2%)	960 (10.8%)	982 (11.1%)
	71-80	707 (8.5%)	755 (8.9%)	819 (9.4%)	856 (9.8%)	950 (10.5%)	924 (9.7%)	875 (9.6%)	882 (9.4%)	856 (9.6%)	884 (10.0%)
	81-90	407 (4.9%)	510 (6.0%)	542 (6.2%)	619 (7.1%)	689 (7.6%)	644 (6.8%)	624 (6.9%)	614 (6.5%)	530 (6.0%)	587 (6.6%)
	91-100	204 (2.5%)	249 (2.9%)	296 (3.4%)	295 (3.4%)	327 (3.6%)	344 (3.6%)	369 (4.1%)	343 (3.6%)	311 (3.5%)	295 (3.3%)
	101+	184 (2.2%)	180 (2.1%)	248 (2.8%)	255 (2.9%)	281 (3.1%)	276 (2.9%)	259 (2.8%)	283 (3.0%)	248 (2.8%)	257 (2.9%)
	Unrated	4880 (58.8%)	4920 (57.9%)	4924 (56.6%)	4732 (54.0%)	4740 (52.3%)	5132 (54.0%)	4549 (49.9%)	4838 (51.3%)	4566 (51.4%)	4410 (49.8%)
Total		8300 (100.0%)	8491 (100.0%)	8702 (100.0%)	8763 (100.0%)	9067 (100.0%)	9509 (100.0%)	9109 (100.0%)	9427 (100.0%)	8880 (100.0%)	8853 (100.0%)

Jump (including Dual)

AgeCat	RatBand	2013	2014	2015	2016	2017	2018	2019	2020	2021	2022
3YO	Unrated	35 (100.0%)	63 (100.0%)	50 (100.0%)	55 (100.0%)	45 (100.0%)	54 (100.0%)	32 (100.0%)	49 (100.0%)	48 (100.0%)	25 (100.0%)
	Subtotal	35 (100.0%)	63 (100.0%)	50 (100.0%)	55 (100.0%)	45 (100.0%)	54 (100.0%)	32 (100.0%)	49 (100.0%)	48 (100.0%)	25 (100.0%)
4-5YO	0-100	73 (4.1%)	96 (5.6%)	85 (5.0%)	88 (4.9%)	82 (4.5%)	76 (4.0%)	92 (4.9%)	146 (7.3%)	121 (6.5%)	155 (8.5%)
	101-110	40 (2.3%)	54 (3.2%)	47 (2.7%)	70 (3.9%)	62 (3.4%)	75 (4.0%)	72 (3.9%)	74 (3.7%)	58 (3.1%)	63 (3.5%)
	111-120	50 (2.8%)	64 (3.8%)	72 (4.2%)	57 (3.2%)	80 (4.4%)	72 (3.8%)	95 (5.1%)	100 (5.0%)	70 (3.8%)	78 (4.3%)
	121-130	45 (2.6%)	42 (2.5%)	51 (3.0%)	49 (2.7%)	54 (3.0%)	64 (3.4%)	65 (3.5%)	79 (4.0%)	55 (3.0%)	47 (2.6%)
	131-140	22 (1.2%)	25 (1.5%)	36 (2.1%)	53 (3.0%)	40 (2.2%)	38 (2.0%)	35 (1.9%)	39 (2.0%)	24 (1.3%)	18 (1.0%)
	141-150	12 (0.7%)	9 (0.5%)	16 (0.9%)	13 (0.7%)	13 (0.7%)	12 (0.6%)	12 (0.6%)	15 (0.8%)	12 (0.6%)	5 (0.3%)
	151+	4 (0.2%)	2 (0.1%)	1 (0.1%)	5 (0.3%)	4 (0.2%)	2 (0.1%)	1 (0.1%)	1 (0.1%)	3 (0.2%)	2 (0.1%)
	Unrated	1518 (86.1%)	1410 (82.8%)	1409 (82.1%)	1455 (81.3%)	1495 (81.7%)	1559 (82.1%)	1495 (80.1%)	1543 (77.3%)	1509 (81.5%)	1454 (79.8%)
	Subtotal	1764 (100.0%)	1702 (100.0%)	1717 (100.0%)	1790 (100.0%)	1830 (100.0%)	1898 (100.0%)	1867 (100.0%)	1997 (100.0%)	1852 (100.0%)	1822 (100.0%)
6-7YO	0-100	246 (11.6%)	307 (14.7%)	337 (15.4%)	316 (15.3%)	299 (14.8%)	349 (15.9%)	365 (16.2%)	431 (18.5%)	519 (20.4%)	545 (23.2%)
	101-110	156 (7.3%)	178 (8.5%)	212 (9.7%)	207 (10.0%)	210 (10.4%)	233 (10.6%)	296 (13.1%)	284 (12.2%)	286 (11.2%)	284 (12.1%)
	111-120	170 (8.0%)	198 (9.5%)	228 (10.4%)	232 (11.2%)	251 (12.4%)	277 (12.6%)	302 (13.4%)	310 (13.3%)	307 (12.1%)	291 (12.4%)
	121-130	126 (5.9%)	180 (8.6%)	196 (9.0%)	210 (10.1%)	197 (9.8%)	230 (10.5%)	291 (12.9%)	291 (12.5%)	271 (10.6%)	211 (9.0%)
	131-140	73 (3.4%)	83 (4.0%)	121 (5.5%)	131 (6.3%)	150 (7.4%)	153 (7.0%)	148 (6.6%)	189 (8.1%)	166 (6.5%)	128 (5.4%)
	141-150	36 (1.7%)	37 (1.8%)	49 (2.2%)	59 (2.8%)	60 (3.0%)	69 (3.1%)	84 (3.7%)	66 (2.8%)	57 (2.2%)	39 (1.7%)
	151+	10 (0.5%)	23 (1.1%)	34 (1.6%)	22 (1.1%)	21 (1.0%)	30 (1.4%)	25 (1.1%)	26 (1.1%)	23 (0.9%)	15 (0.6%)
	Unrated	1310 (61.6%)	1077 (51.7%)	1008 (46.1%)	895 (43.2%)	830 (41.1%)	850 (38.8%)	744 (33.0%)	729 (31.3%)	918 (36.0%)	840 (35.7%)
	Subtotal	2127 (100.0%)	2083 (100.0%)	2185 (100.0%)	2072 (100.0%)	2018 (100.0%)	2191 (100.0%)	2255 (100.0%)	2326 (100.0%)	2547 (100.0%)	2353 (100.0%)
8YO+	0-100	356 (18.7%)	462 (24.0%)	460 (24.3%)	476 (24.3%)	497 (24.5%)	474 (24.0%)	544 (26.6%)	555 (26.7%)	693 (27.5%)	575 (26.6%)
	101-110	173 (9.1%)	198 (10.3%)	221 (11.7%)	264 (13.5%)	257 (12.7%)	276 (14.0%)	270 (13.2%)	271 (13.0%)	315 (12.5%)	247 (11.4%)
	111-120	176 (9.3%)	221 (11.5%)	244 (12.9%)	258 (13.2%)	277 (13.6%)	240 (12.2%)	268 (13.1%)	271 (13.0%)	326 (12.9%)	300 (13.9%)
	121-130	147 (7.7%)	203 (10.6%)	231 (12.2%)	263 (13.4%)	211 (10.4%)	241 (12.2%)	274 (13.4%)	253 (12.2%)	315 (12.5%)	282 (13.0%)
	131-140	113 (5.9%)	122 (6.3%)	154 (8.1%)	175 (8.9%)	204 (10.0%)	206 (10.5%)	209 (10.2%)	207 (10.0%)	233 (9.2%)	201 (9.3%)
	141-150	49 (2.6%)	65 (3.4%)	70 (3.7%)	83 (4.2%)	88 (4.3%)	99 (5.0%)	109 (5.3%)	119 (5.7%)	121 (4.8%)	101 (4.7%)
	151+	40 (2.1%)	31 (1.6%)	44 (2.3%)	47 (2.4%)	48 (2.4%)	48 (2.4%)	64 (3.1%)	66 (3.2%)	72 (2.9%)	50 (2.3%)
	Unrated	847 (44.6%)	622 (32.3%)	470 (24.8%)	390 (19.9%)	448 (22.1%)	387 (19.6%)	310 (15.1%)	338 (16.2%)	445 (17.7%)	409 (18.9%)
	Subtotal	1901 (100.0%)	1924 (100.0%)	1894 (100.0%)	1956 (100.0%)	2030 (100.0%)	1971 (100.0%)	2048 (100.0%)	2080 (100.0%)	2520 (100.0%)	2165 (100.0%)
Overall	0-100	675 (11.6%)	865 (15.0%)	882 (15.1%)	880 (15.0%)	878 (14.8%)	899 (14.7%)	1001 (16.1%)	1132 (17.5%)	1333 (19.1%)	1275 (20.0%)
	101-110	369 (6.3%)	430 (7.4%)	480 (8.2%)	541 (9.2%)	529 (8.9%)	584 (9.6%)	638 (10.3%)	629 (9.7%)	659 (9.5%)	594 (9.3%)
	111-120	396 (6.8%)	483 (8.4%)	544 (9.3%)	547 (9.3%)	608 (10.3%)	589 (9.6%)	665 (10.7%)	681 (10.6%)	703 (10.1%)	669 (10.5%)
	121-130	318 (5.5%)	425 (7.4%)	478 (8.2%)	522 (8.9%)	462 (7.8%)	535 (8.8%)	630 (10.2%)	623 (9.7%)	641 (9.2%)	540 (8.5%)
	131-140	208 (3.6%)	230 (4.0%)	311 (5.3%)	359 (6.1%)	394 (6.7%)	397 (6.5%)	392 (6.3%)	435 (6.7%)	423 (6.1%)	347 (5.5%)
	141-150	97 (1.7%)	111 (1.9%)	135 (2.3%)	155 (2.6%)	161 (2.7%)	180 (2.9%)	205 (3.3%)	200 (3.1%)	190 (2.7%)	145 (2.3%)
	151+	54 (0.9%)	56 (1.0%)	79 (1.4%)	74 (1.3%)	73 (1.2%)	80 (1.3%)	90 (1.5%)	93 (1.4%)	98 (1.4%)	67 (1.1%)
	Unrated	3710 (63.7%)	3172 (55.0%)	2937 (50.2%)	2795 (47.6%)	2818 (47.6%)	2850 (46.6%)	2581 (41.6%)	2659 (41.2%)	2920 (41.9%)	2728 (42.9%)
Total		5827 (100.0%)	5772 (100.0%)	5846 (100.0%)	5873 (100.0%)	5923 (100.0%)	6114 (100.0%)	6202 (100.0%)	6452 (100.0%)	6967 (100.0%)	6365 (100.0%)

Young Horses Entering Training

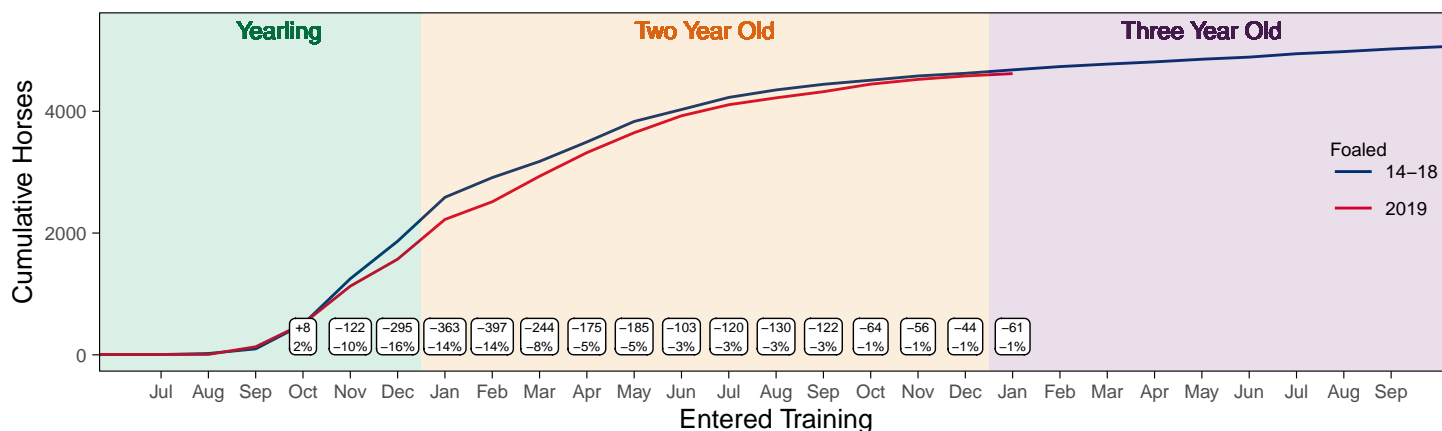
Flat Yearlings in Training versus Previous Years

Period	Jan	Feb	Mar	Apr	May	Jun	Jul	Aug	Sep	Oct	Nov	Dec
2022	0											
2021	0	0	0	0	0	0	0	5	79	315	716	1287
5YrAvg	1	1	1	1	1	1	1	2	52	257	698	1377

Foals Entering Training for the First Time

2019 Foals Entering Training Over Time

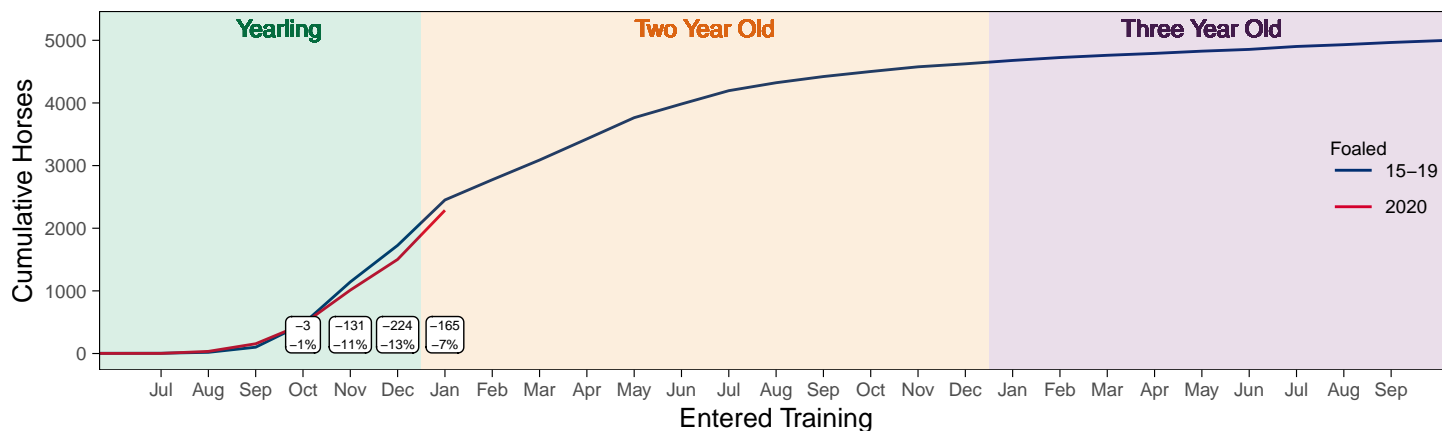
Cumulative Flat Horses foaled in 2019 shown by first in training notification against trend



Cumulative individual horses entering training for the first time by the end of each month.

2020 Foals Entering Training Over Time

Cumulative Flat Horses foaled in 2020 shown by first in training notification against trend



Cumulative individual horses entering training for the first time by the end of each month.

Year to Date Horses in Training

Type	2013	2014	2015	2016	2017	2018	2019	2020	2021	2022	vs. Last Year	vs. Pre-Covid
Flat	8720	8980	9129	9438	9549	9593	9574	9728	9201	9308	+107 / +1.2%	-266 / -2.8%
Jump	5724	5651	5737	5781	5801	5552	6154	6272	6760	6304	-456 / -6.7%	+150 / +2.4%
Dual	589	621	578	558	622	1050	540	615	562	542	-20 / -3.6%	+2 / +0.4%
Hunter	1585	1609	1487	1397	1348	1213	1221	1184	888	939	+51 / +5.7%	-282 / -23.1%
Total	15033	15252	15444	15777	15972	16195	16268	16615	16523	16154	-369 / -2.2%	-114 / -0.7%

'vs. Pre-Covid' is comparison between 2022 and 2019

Flat

AgeCat	2013	2014	2015	2016	2017	2018	2019	2020	2021	2022	vs. Last Year	vs. Pre-Covid
2YO	2400	2536	2743	2711	2575	2433	2411	2368	2171	2231	+60 / +2.8%	-180 / -7.5%
3YO	2841	2927	2954	3152	3198	3343	3246	3407	3172	3187	+15 / +0.5%	-59 / -1.8%
4YO	1441	1377	1404	1482	1583	1583	1641	1647	1645	1715	+70 / +4.3%	+74 / +4.5%
5YO+	2038	2140	2028	2093	2193	2234	2276	2306	2213	2175	-38 / -1.7%	-101 / -4.4%
Total	8720	8980	9129	9438	9549	9593	9574	9728	9201	9308	+107 / +1.2%	-266 / -2.8%

'vs. Pre-Covid' is comparison between 2022 and 2019

Jump

AgeCat	2013	2014	2015	2016	2017	2018	2019	2020	2021	2022	vs. Last Year	vs. Pre-Covid
3YO	17	29	25	29	15	29	19	15	30	14	-16 / -53.3%	-5 / -26.3%
4-5YO	1630	1573	1633	1701	1735	1509	1742	1822	1689	1727	+38 / +2.2%	-15 / -0.9%
6-7YO	2119	2080	2179	2054	1988	2055	2275	2301	2524	2342	-182 / -7.2%	+67 / +2.9%
8YO+	1958	1969	1900	1997	2063	1959	2118	2134	2517	2221	-296 / -11.8%	+103 / +4.9%
Total	5724	5651	5737	5781	5801	5552	6154	6272	6760	6304	-456 / -6.7%	+150 / +2.4%

'vs. Pre-Covid' is comparison between 2022 and 2019

Dual

AgeCat	2013	2014	2015	2016	2017	2018	2019	2020	2021	2022	vs. Last Year	vs. Pre-Covid
3YO	30	52	48	42	48	52	25	56	35	43	+8 / +22.9%	+18 / +72.0%
4YO	163	150	131	136	156	258	167	166	162	160	-2 / -1.2%	-7 / -4.2%
5YO+	396	419	399	380	418	740	348	393	365	339	-26 / -7.1%	-9 / -2.6%
Total	589	621	578	558	622	1050	540	615	562	542	-20 / -3.6%	+2 / +0.4%

'vs. Pre-Covid' is comparison between 2022 and 2019

Hunter Chasers

AgeCat	2013	2014	2015	2016	2017	2018	2019	2020	2021	2022	vs. Last Year	vs. Pre-Covid
4-5YO	136	118	104	89	112	112	129	189	89	123	+34 / +38.2%	-6 / -4.7%
6-7YO	485	490	410	393	339	351	366	328	221	241	+20 / +9.0%	-125 / -34.2%
8-9YO	448	486	484	400	406	286	295	262	227	244	+17 / +7.5%	-51 / -17.3%
10YO+	516	515	489	515	491	464	431	405	351	331	-20 / -5.7%	-100 / -23.2%
Total	1585	1609	1487	1397	1348	1213	1221	1184	888	939	+51 / +5.7%	-282 / -23.1%

'vs. Pre-Covid' is comparison between 2022 and 2019

Year to Date Runners

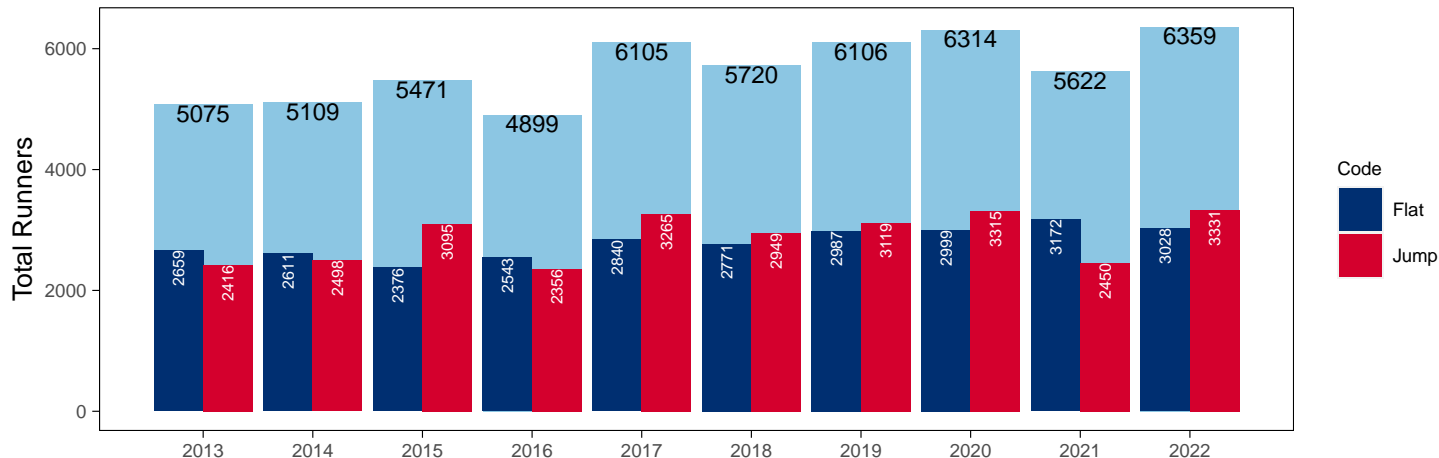
Year to Date Total Runners

Code	2013	2014	2015	2016	2017	2018	2019	2020	2021	2022	vs. Last Year	vs. Pre-Covid
Flat	2659	2611	2376	2543	2840	2771	2987	2999	3172	3028	-144 / -4.5%	+41 / +1.4%
Jump	2416	2498	3095	2356	3265	2949	3119	3315	2450	3331	+881 / +36.0%	+212 / +6.8%
Total	5075	5109	5471	4899	6105	5720	6106	6314	5622	6359	+737 / +13.1%	+253 / +4.1%

'vs. Pre-Covid' is comparison between 2022 and 2019

YTD Total Runners

Total Runners in GB Races, shown by Code and Total



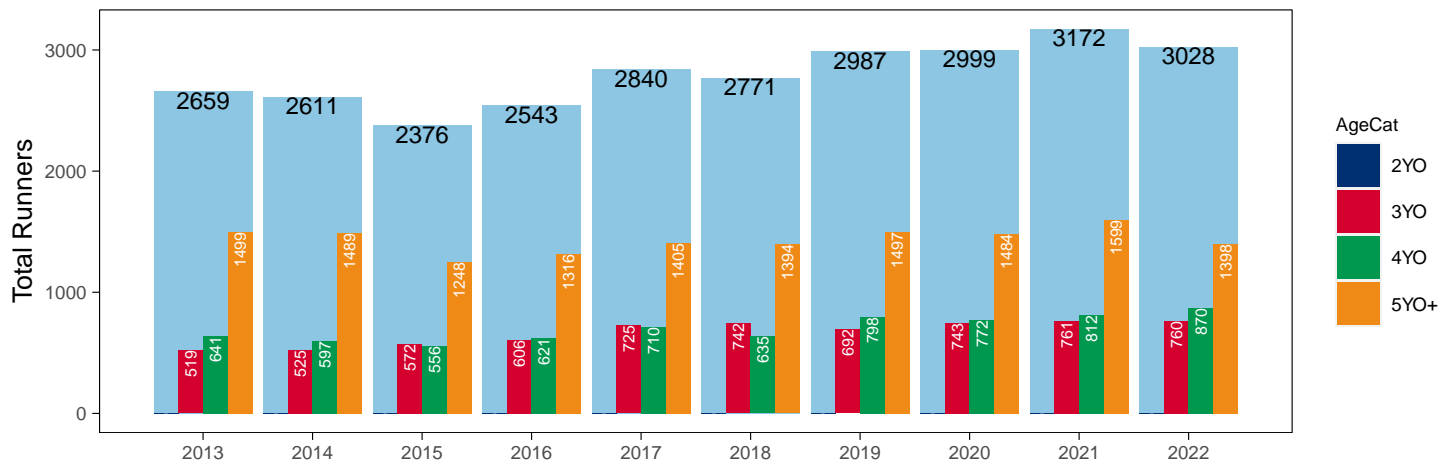
Flat

AgeCat	2013	2014	2015	2016	2017	2018	2019	2020	2021	2022	vs. Last Year	vs. Pre-Covid
2YO											NA / NA	0 / NA
3YO	519	525	572	606	725	742	692	743	761	760	-1 / -0.1%	+68 / +9.8%
4YO	641	597	556	621	710	635	798	772	812	870	+58 / +7.1%	+72 / +9.0%
5YO+	1499	1489	1248	1316	1405	1394	1497	1484	1599	1398	-201 / -12.6%	-99 / -6.6%
Total	2659	2611	2376	2543	2840	2771	2987	2999	3172	3028	-144 / -4.5%	+41 / +1.4%

'vs. Pre-Covid' is comparison between 2022 and 2019

YTD Total Flat Runners by Age

Total Runners in GB Flat Races, shown by Age Category and Total



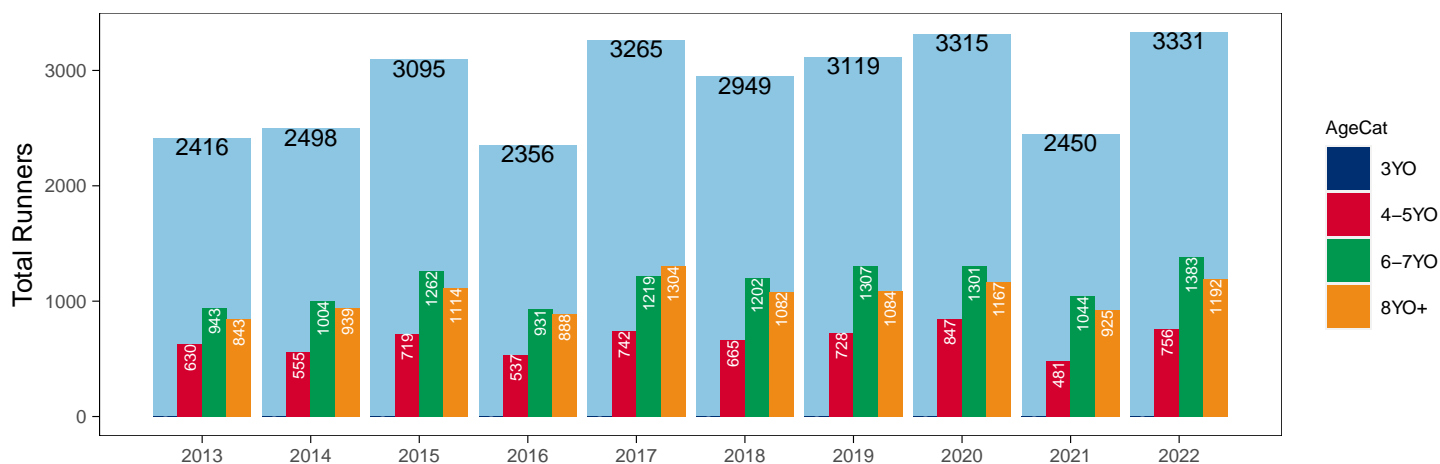
Jump

AgeCat	2013	2014	2015	2016	2017	2018	2019	2020	2021	2022	vs. Last Year	vs. Pre-Covid
3YO											NA / NA	0 / NA
4-5YO	630	555	719	537	742	665	728	847	481	756	+275 / +57.2%	+28 / +3.8%
6-7YO	943	1004	1262	931	1219	1202	1307	1301	1044	1383	+339 / +32.5%	+76 / +5.8%
8YO+	843	939	1114	888	1304	1082	1084	1167	925	1192	+267 / +28.9%	+108 / +10.0%
Total	2416	2498	3095	2356	3265	2949	3119	3315	2450	3331	+881 / +36.0%	+212 / +6.8%

'vs. Pre-Covid' is comparison between 2022 and 2019

YTD Total Jump Runners by Age

Total Runners in GB Jump Races, shown by Age Category and Total



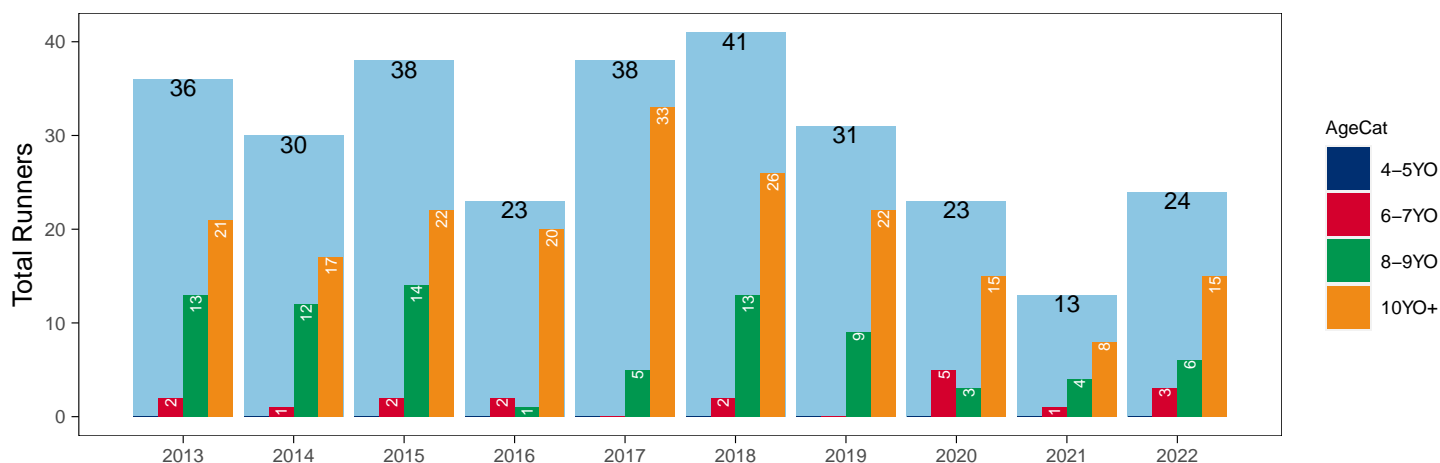
Hunter Chases

AgeCat	2013	2014	2015	2016	2017	2018	2019	2020	2021	2022	vs. Last Year	vs. Pre-Covid
4-5YO											NA / NA	0 / NA
6-7YO	2	1	2	2		2		5	1	3	+2 / +200.0%	+3 / +Inf
8-9YO	13	12	14	1	5	13	9	3	4	6	+2 / +50.0%	-3 / -33.3%
10YO+	21	17	22	20	33	26	22	15	8	15	+7 / +87.5%	-7 / -31.8%
Total	36	30	38	23	38	41	31	23	13	24	+11 / +84.6%	-7 / -22.6%

'vs. Pre-Covid' is comparison between 2022 and 2019

YTD Total Hunter Chase Runners by Age

Total Runners in GB Hunter Chases shown by Age Category and Total



Year to Date Total Runners by Country Trained

Code	Country	2013	2014	2015	2016	2017	2018	2019	2020	2021	2022
Flat	GB	2635	2604	2366	2531	2816	2743	2946	2950	3172	3026
	IRE	24	7	8	11	24	27	40	48		2
	Other			2	1		1	1	1		
Jump	GB	2395	2444	3052	2293	3202	2922	3066	3258	2448	3286
	IRE	21	54	43	63	61	27	52	54	2	44
	Other					2		1	3		1
Overall	GB	5030	5048	5418	4824	6018	5665	6012	6208	5620	6312
	IRE	45	61	51	74	85	54	92	102	2	46
	Other			2	1	2	1	2	4		1

Year to Date GB Trained Runners Racing Abroad

Code	Country	2013	2014	2015	2016	2017	2018	2019	2020	2021	2022
Flat	IRE		1		1	1	2	3	1		
	FR	14	14	15	1	8	2	9	7	4	
	UAE	134	131	107	86	87	83	141	133	88	112
	BAH										17
	Other	2			1	1	1				
	Total	150	146	122	89	97	88	153	141	92	129
Jump	IRE	1	4	2	2	1	2		1		
	FR				2					2	
	Total	1	4	2	4	1	2		1	2	

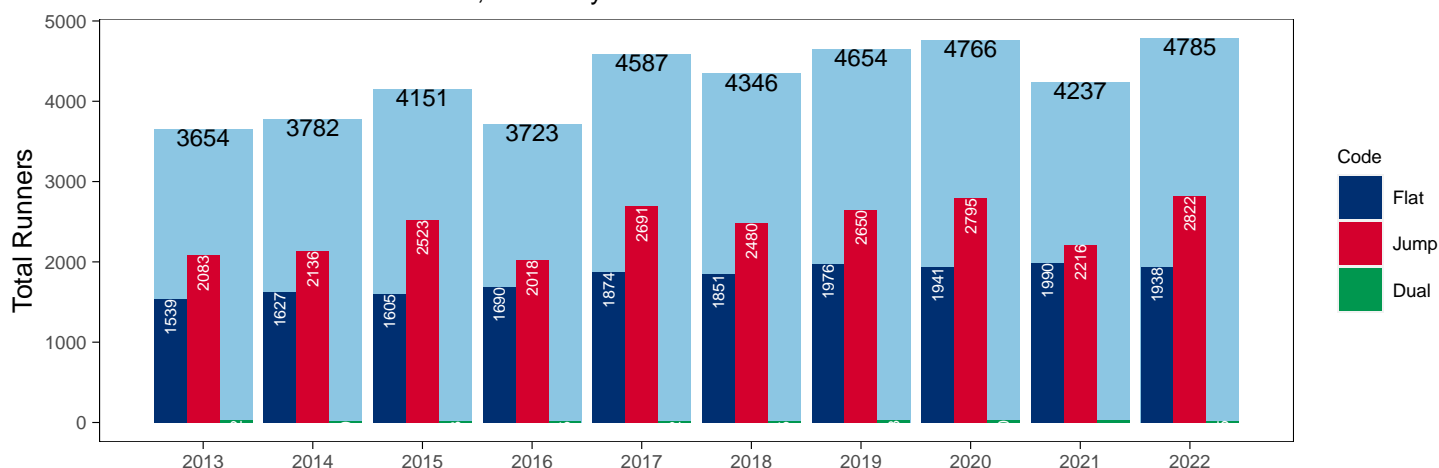
Year to Date Individual Runners

Code	2013	2014	2015	2016	2017	2018	2019	2020	2021	2022	vs. Last Year	vs. Pre-Covid
Flat	1539	1627	1605	1690	1874	1851	1976	1941	1990	1938	-52 / -2.6%	-38 / -1.9%
Jump	2083	2136	2523	2018	2691	2480	2650	2795	2216	2822	+606 / +27.3%	+172 / +6.5%
Dual	32	19	23	15	22	15	28	30	31	25	-6 / -19.4%	-3 / -10.7%
Overall	3654	3782	4151	3723	4587	4346	4654	4766	4237	4785	+548 / +12.9%	+131 / +2.8%

'vs. Pre-Covid' is comparison between 2022 and 2019

YTD Individual Runners

Individual Runners in GB Races, shown by Code and Total



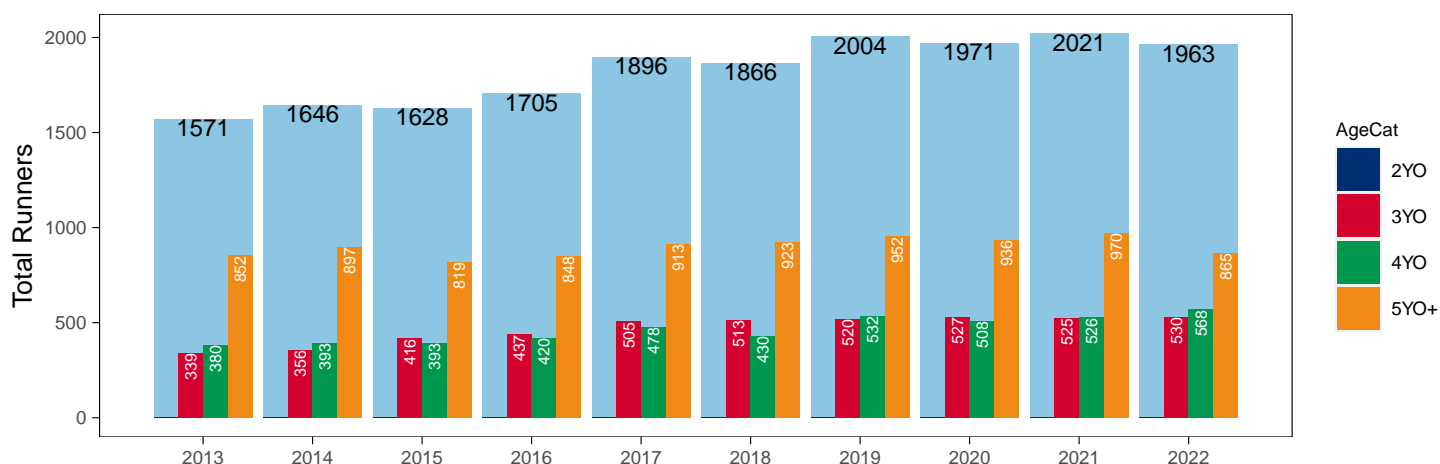
Flat

AgeCat	2013	2014	2015	2016	2017	2018	2019	2020	2021	2022	vs. Last Year	vs. Pre-Covid
2YO											NA / NA	0 / NA
3YO	339	356	416	437	505	513	520	527	525	530	+5 / +1.0%	+10 / +1.9%
4YO	380	393	393	420	478	430	532	508	526	568	+42 / +8.0%	+36 / +6.8%
5YO+	852	897	819	848	913	923	952	936	970	865	-105 / -10.8%	-87 / -9.1%
Total	1571	1646	1628	1705	1896	1866	2004	1971	2021	1963	-58 / -2.9%	-41 / -2.0%

'vs. Pre-Covid' is comparison between 2022 and 2019

YTD Individual Flat Runners by Age

Individual Runners in GB Flat Races, shown by Age Category and Total



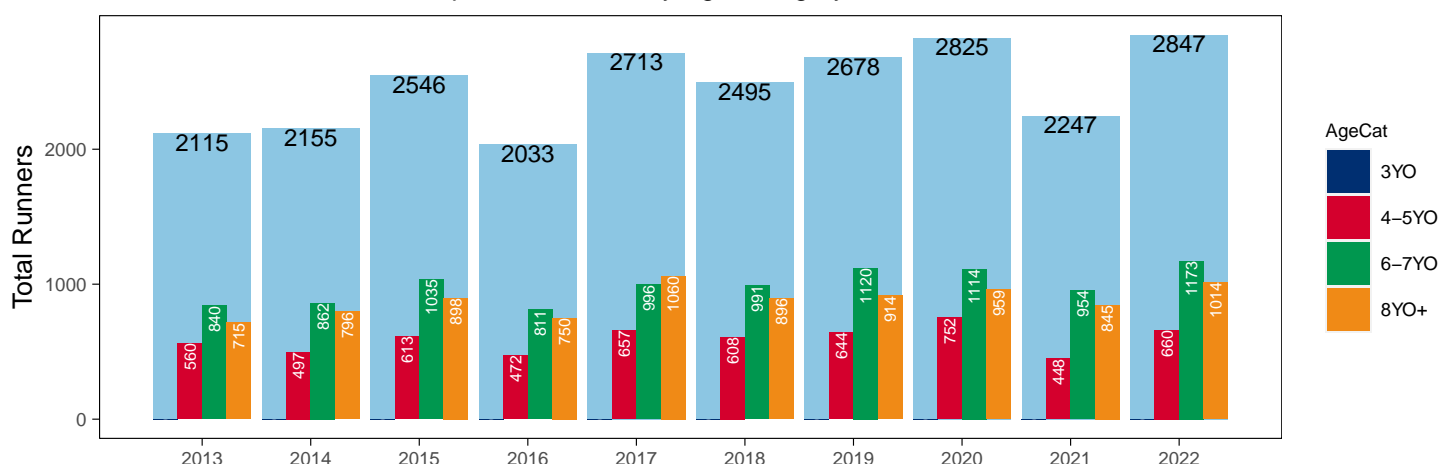
Jump

AgeCat	2013	2014	2015	2016	2017	2018	2019	2020	2021	2022	vs. Last Year	vs. Pre-Covid
3YO											NA / NA	0 / NA
4-5YO	560	497	613	472	657	608	644	752	448	660	+212 / +47.3%	+16 / +2.5%
6-7YO	840	862	1035	811	996	991	1120	1114	954	1173	+219 / +23.0%	+53 / +4.7%
8YO+	715	796	898	750	1060	896	914	959	845	1014	+169 / +20.0%	+100 / +10.9%
Total	2115	2155	2546	2033	2713	2495	2678	2825	2247	2847	+600 / +26.7%	+169 / +6.3%

'vs. Pre-Covid' is comparison between 2022 and 2019

YTD Individual Jump Runners by Age

Individual Runners in GB Jump Races, shown by Age Category and Total



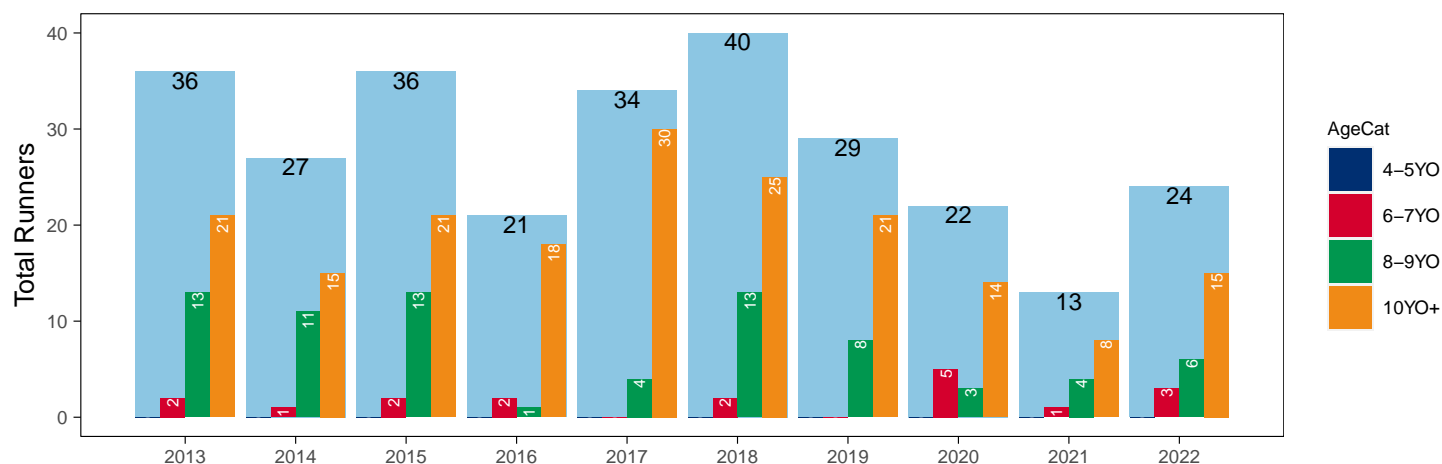
Hunter Chases

AgeCat	2013	2014	2015	2016	2017	2018	2019	2020	2021	2022	vs. Last Year	vs. Pre-Covid
4-5YO											NA / NA	0 / NA
6-7YO	2	1	2	2		2		5	1	3	+2 / +200.0%	+3 / +Inf
8-9YO	13	11	13	1	4	13	8	3	4	6	+2 / +50.0%	-2 / -25.0%
10YO+	21	15	21	18	30	25	21	14	8	15	+7 / +87.5%	-6 / -28.6%
Total	36	27	36	21	34	40	29	22	13	24	+11 / +84.6%	-5 / -17.2%

'vs. Pre-Covid' is comparison between 2022 and 2019

YTD Individual Hunter Chase Runners by Age

Individual Runners in GB Hunter Chases shown by Age Category and Total



Year to Date Individual Runners by Country Trained

Code	Country	2013	2014	2015	2016	2017	2018	2019	2020	2021	2022
Flat	GB	2635	2604	2366	2531	2816	2743	2946	2950	3172	3026
	IRE	24	7	8	11	24	27	40	48		2
	Other			2	1		1	1	1		
Jump	GB	2395	2444	3052	2293	3202	2922	3066	3258	2448	3286
	IRE	21	54	43	63	61	27	52	54	2	44
	Other					2		1	3		1
Overall	GB	5030	5048	5418	4824	6018	5665	6012	6208	5620	6312
	IRE	45	61	51	74	85	54	92	102	2	46
	Other			2	1	2	1	2	4		1

Frequency of Runs

Year to Date Average Runs per Horse

Code	2013	2014	2015	2016	2017	2018	2019	2020	2021	2022
Flat	1.69	1.59	1.46	1.49	1.50	1.48	1.49	1.52	1.57	1.54
Jump	1.14	1.16	1.22	1.16	1.20	1.18	1.16	1.17	1.09	1.17
Overall	1.39	1.35	1.32	1.32	1.33	1.32	1.31	1.32	1.33	1.33

Year to Date Proportion of Horses by Count of Runs

Runs	2013	2014	2015	2016	2017	2018	2019	2020	2021	2022
Flat										
1	811 (51.6%)	918 (55.8%)	1016 (62.4%)	1027 (60.2%)	1141 (60.2%)	1143 (61.3%)	1213 (60.5%)	1174 (59.6%)	1145 (56.7%)	1120 (57.1%)
2	514 (32.7%)	528 (32.1%)	494 (30.3%)	539 (31.6%)	590 (31.1%)	561 (30.1%)	629 (31.4%)	610 (30.9%)	652 (32.3%)	646 (32.9%)
3	181 (11.5%)	169 (10.3%)	102 (6.3%)	120 (7.0%)	145 (7.6%)	146 (7.8%)	134 (6.7%)	152 (7.7%)	182 (9.0%)	174 (8.9%)
4	51 (3.2%)	25 (1.5%)	14 (0.9%)	17 (1.0%)	17 (0.9%)	13 (0.7%)	26 (1.3%)	27 (1.4%)	34 (1.7%)	21 (1.1%)
5+	14 (0.9%)	6 (0.4%)	2 (0.1%)	2 (0.1%)	3 (0.2%)	3 (0.2%)	2 (0.1%)	8 (0.4%)	8 (0.4%)	2 (0.1%)
Jump										
1	1834 (86.7%)	1830 (84.9%)	2024 (79.5%)	1727 (84.9%)	2184 (80.5%)	2054 (82.3%)	2261 (84.4%)	2356 (83.4%)	2049 (91.2%)	2377 (83.5%)
2	264 (12.5%)	308 (14.3%)	496 (19.5%)	289 (14.2%)	506 (18.7%)	428 (17.2%)	393 (14.7%)	448 (15.9%)	193 (8.6%)	456 (16.0%)
3	14 (0.7%)	16 (0.7%)	25 (1.0%)	17 (0.8%)	23 (0.8%)	13 (0.5%)	24 (0.9%)	21 (0.7%)	5 (0.2%)	14 (0.5%)
4	3 (0.1%)	1 (0.0%)	1 (0.0%)	NA (-)	NA (-)	NA (-)	NA (-)	NA (-)	NA (-)	NA (-)
All Races										
1	2588 (70.8%)	2719 (71.9%)	2998 (72.2%)	2727 (73.2%)	3286 (71.6%)	3170 (72.9%)	3422 (73.5%)	3477 (73.0%)	3140 (74.1%)	3452 (72.1%)
2	796 (21.8%)	838 (22.2%)	1005 (24.2%)	837 (22.5%)	1108 (24.2%)	998 (23.0%)	1042 (22.4%)	1074 (22.5%)	861 (20.3%)	1117 (23.3%)
3	202 (5.5%)	192 (5.1%)	131 (3.2%)	140 (3.8%)	173 (3.8%)	162 (3.7%)	162 (3.5%)	180 (3.8%)	193 (4.6%)	193 (4.0%)
4	54 (1.5%)	27 (0.7%)	15 (0.4%)	17 (0.5%)	17 (0.4%)	13 (0.3%)	26 (0.6%)	27 (0.6%)	35 (0.8%)	21 (0.4%)
5+	14 (0.4%)	6 (0.2%)	2 (0.0%)	2 (0.1%)	3 (0.1%)	3 (0.1%)	2 (0.0%)	8 (0.2%)	8 (0.2%)	2 (0.0%)

Year to Date Median Days Between Runs

Code	2013	2014	2015	2016	2017	2018	2019	2020	2021	2022
Flat	17	20	22	20	21	21	21	22	20	21
Jump	30	29	29	33	29	31	28	30	37	30
Overall	23	25	27	27	25	27	25	27	27	26

Horses Population by Gender

January 2022 Horses in Training Snapshot by Gender versus Previous Years

All Horses

Sex	2013	2014	2015	2016	2017	2018	2019	2020	2021	2022
Colt/Entire	2307 (17.0%)	2300 (16.8%)	2486 (17.7%)	2372 (16.8%)	2371 (16.4%)	2414 (16.4%)	2298 (15.5%)	2339 (15.2%)	2106 (13.7%)	2019 (13.7%)
Gelding	7328 (53.9%)	7259 (52.9%)	7379 (52.6%)	7636 (54.0%)	7878 (54.6%)	7940 (53.9%)	8085 (54.5%)	8401 (54.7%)	8673 (56.5%)	8162 (55.4%)
Filly/Mare	3961 (29.1%)	4154 (30.3%)	4162 (29.7%)	4137 (29.2%)	4186 (29.0%)	4364 (29.6%)	4452 (30.0%)	4605 (30.0%)	4557 (29.7%)	4554 (30.9%)
Rig	0 (0.0%)	2 (0.0%)	1 (0.0%)	6 (0.0%)	4 (0.0%)	3 (0.0%)	3 (0.0%)	3 (0.0%)	3 (0.0%)	1 (0.0%)
Total	13596 (100.0%)	13715 (100.0%)	14028 (100.0%)	14151 (100.0%)	14439 (100.0%)	14721 (100.0%)	14838 (100.0%)	15348 (100.0%)	15339 (100.0%)	14736 (100.0%)

Flat (including Dual)

Sex	2013	2014	2015	2016	2017	2018	2019	2020	2021	2022
Colt/Entire	2272 (27.4%)	2259 (26.6%)	2448 (28.1%)	2340 (26.7%)	2348 (25.9%)	2392 (25.2%)	2278 (25.0%)	2316 (24.6%)	2085 (23.5%)	2000 (22.6%)
Gelding	2992 (36.0%)	3031 (35.7%)	3098 (35.6%)	3308 (37.7%)	3536 (39.0%)	3826 (40.2%)	3597 (39.5%)	3789 (40.2%)	3655 (41.2%)	3575 (40.4%)
Filly/Mare	3036 (36.6%)	3200 (37.7%)	3155 (36.3%)	3109 (35.5%)	3179 (35.1%)	3288 (34.6%)	3232 (35.5%)	3320 (35.2%)	3138 (35.3%)	3278 (37.0%)
Rig	0 (0.0%)	1 (0.0%)	1 (0.0%)	6 (0.1%)	4 (0.0%)	3 (0.0%)	2 (0.0%)	2 (0.0%)	2 (0.0%)	0 (0.0%)
Total	8300 (100.0%)	8491 (100.0%)	8702 (100.0%)	8763 (100.0%)	9067 (100.0%)	9509 (100.0%)	9109 (100.0%)	9427 (100.0%)	8880 (100.0%)	8853 (100.0%)

Jump (including Dual)

Sex	2013	2014	2015	2016	2017	2018	2019	2020	2021	2022
Colt/Entire	46 (0.8%)	55 (1.0%)	50 (0.9%)	46 (0.8%)	27 (0.5%)	30 (0.5%)	29 (0.5%)	35 (0.5%)	33 (0.5%)	30 (0.5%)
Gelding	4734 (81.2%)	4628 (80.2%)	4673 (79.9%)	4696 (80.0%)	4785 (80.8%)	4801 (78.5%)	4848 (78.2%)	5023 (77.9%)	5404 (77.6%)	4937 (77.6%)
Filly/Mare	1047 (18.0%)	1088 (18.8%)	1123 (19.2%)	1131 (19.3%)	1111 (18.8%)	1283 (21.0%)	1324 (21.3%)	1393 (21.6%)	1529 (21.9%)	1397 (21.9%)
Rig	0 (0.0%)	1 (0.0%)	0 (0.0%)	0 (0.0%)	0 (0.0%)	0 (0.0%)	1 (0.0%)	1 (0.0%)	1 (0.0%)	1 (0.0%)
Total	5827 (100.0%)	5772 (100.0%)	5846 (100.0%)	5873 (100.0%)	5923 (100.0%)	6114 (100.0%)	6202 (100.0%)	6452 (100.0%)	6967 (100.0%)	6365 (100.0%)

Hunter Chasers

Sex	2013	2014	2015	2016	2017	2018	2019	2020	2021	2022
Colt/Entire	5 (0.4%)	2 (0.2%)	2 (0.2%)	2 (0.2%)	2 (0.2%)	2 (0.2%)	1 (0.1%)	1 (0.1%)	1 (0.1%)	2 (0.2%)
Gelding	1135 (83.9%)	1112 (84.6%)	1033 (84.3%)	1016 (86.5%)	926 (84.8%)	839 (83.7%)	809 (81.3%)	787 (82.9%)	657 (83.1%)	684 (83.9%)
Filly/Mare	212 (15.7%)	200 (15.2%)	191 (15.6%)	157 (13.4%)	164 (15.0%)	161 (16.1%)	185 (18.6%)	161 (17.0%)	133 (16.8%)	129 (15.8%)
Rig	0 (0.0%)	0 (0.0%)	0 (0.0%)	0 (0.0%)	0 (0.0%)	0 (0.0%)	0 (0.0%)	0 (0.0%)	0 (0.0%)	0 (0.0%)
Total	1352 (100.0%)	1314 (100.0%)	1226 (100.0%)	1175 (100.0%)	1092 (100.0%)	1002 (100.0%)	995 (100.0%)	949 (100.0%)	791 (100.0%)	815 (100.0%)

Year to Date Total Runners by Gender

Sex	2013	2014	2015	2016	2017	2018	2019	2020	2021	2022
All Races										
Colt/Entire	220 (4.3%)	216 (4.2%)	236 (4.3%)	202 (4.1%)	249 (4.1%)	247 (4.3%)	224 (3.7%)	269 (4.3%)	270 (4.8%)	212 (3.3%)
Gelding	3667 (72.3%)	3690 (72.2%)	3942 (72.1%)	3526 (72.0%)	4454 (73.0%)	4112 (71.9%)	4363 (71.5%)	4422 (70.0%)	3854 (68.6%)	4505 (70.8%)
Filly/Mare	1188 (23.4%)	1203 (23.5%)	1293 (23.6%)	1171 (23.9%)	1402 (23.0%)	1360 (23.8%)	1519 (24.9%)	1622 (25.7%)	1497 (26.6%)	1642 (25.8%)
Rig	0 (0.0%)	0 (0.0%)	0 (0.0%)	0 (0.0%)	0 (0.0%)	1 (0.0%)	0 (0.0%)	1 (0.0%)	1 (0.0%)	0 (0.0%)
Flat										
Colt/Entire	213 (8.0%)	200 (7.7%)	222 (9.3%)	198 (7.8%)	245 (8.6%)	243 (8.8%)	216 (7.2%)	264 (8.8%)	268 (8.4%)	209 (6.9%)
Gelding	1645 (61.9%)	1635 (62.6%)	1410 (59.3%)	1519 (59.7%)	1724 (60.7%)	1701 (61.4%)	1855 (62.1%)	1808 (60.3%)	1929 (60.8%)	1855 (61.3%)
Filly/Mare	801 (30.1%)	776 (29.7%)	744 (31.3%)	826 (32.5%)	871 (30.7%)	826 (29.8%)	916 (30.7%)	927 (30.9%)	975 (30.7%)	964 (31.8%)
Rig	0 (0.0%)	0 (0.0%)	0 (0.0%)	0 (0.0%)	0 (0.0%)	1 (0.0%)	0 (0.0%)	0 (0.0%)	0 (0.0%)	0 (0.0%)
All Jump										
Colt/Entire	7 (0.3%)	16 (0.6%)	14 (0.5%)	4 (0.2%)	4 (0.1%)	4 (0.1%)	8 (0.3%)	5 (0.2%)	2 (0.1%)	3 (0.1%)
Gelding	2022 (83.7%)	2055 (82.3%)	2532 (81.8%)	2007 (85.2%)	2730 (83.6%)	2411 (81.8%)	2508 (80.4%)	2614 (78.9%)	1925 (78.6%)	2650 (79.6%)
Filly/Mare	387 (16.0%)	427 (17.1%)	549 (17.7%)	345 (14.6%)	531 (16.3%)	534 (18.1%)	603 (19.3%)	695 (21.0%)	522 (21.3%)	678 (20.4%)
Rig	0 (0.0%)	0 (0.0%)	0 (0.0%)	0 (0.0%)	0 (0.0%)	0 (0.0%)	0 (0.0%)	1 (0.0%)	1 (0.0%)	0 (0.0%)
Chase										
Gelding	709 (92.3%)	741 (92.7%)	904 (92.1%)	702 (94.1%)	1025 (92.9%)	833 (91.9%)	843 (88.8%)	930 (91.2%)	599 (89.9%)	969 (87.7%)
Filly/Mare	59 (7.7%)	58 (7.3%)	78 (7.9%)	44 (5.9%)	78 (7.1%)	73 (8.1%)	106 (11.2%)	89 (8.7%)	66 (9.9%)	136 (12.3%)
Rig	0 (0.0%)	0 (0.0%)	0 (0.0%)	0 (0.0%)	0 (0.0%)	0 (0.0%)	0 (0.0%)	1 (0.1%)	1 (0.2%)	0 (0.0%)
Hurdle										
Colt/Entire	6 (0.5%)	15 (1.1%)	12 (0.6%)	4 (0.3%)	4 (0.2%)	3 (0.2%)	6 (0.3%)	3 (0.1%)	1 (0.1%)	3 (0.2%)
Gelding	922 (81.9%)	1117 (79.7%)	1478 (78.9%)	1227 (83.1%)	1557 (80.1%)	1432 (79.2%)	1526 (78.5%)	1511 (74.9%)	1010 (77.2%)	1523 (77.5%)
Filly/Mare	198 (17.6%)	269 (19.2%)	383 (20.4%)	246 (16.7%)	382 (19.7%)	372 (20.6%)	413 (21.2%)	504 (25.0%)	297 (22.7%)	439 (22.3%)
NHF										
Colt/Entire	1 (0.2%)	1 (0.3%)	2 (0.8%)	0 (0.0%)	0 (0.0%)	1 (0.4%)	2 (0.9%)	2 (0.7%)	1 (0.2%)	0 (0.0%)
Gelding	391 (74.9%)	197 (66.1%)	150 (62.5%)	78 (58.6%)	148 (67.6%)	146 (61.9%)	139 (61.8%)	173 (62.5%)	316 (66.4%)	158 (60.5%)
Filly/Mare	130 (24.9%)	100 (33.6%)	88 (36.7%)	55 (41.4%)	71 (32.4%)	89 (37.7%)	84 (37.3%)	102 (36.8%)	159 (33.4%)	103 (39.5%)
Hunter										
Gelding	35 (97.2%)	30 (100.0%)	35 (92.1%)	23 (100.0%)	37 (97.4%)	41 (100.0%)	30 (96.8%)	22 (95.7%)	12 (92.3%)	24 (100.0%)
Filly/Mare	1 (2.8%)	0 (0.0%)	3 (7.9%)	0 (0.0%)	1 (2.6%)	0 (0.0%)	1 (3.2%)	1 (4.3%)	1 (7.7%)	0 (0.0%)

Year to Date Individual Runners by Gender

Sex	2013	2014	2015	2016	2017	2018	2019	2020	2021	2022
All Races										
Male	2822 (77.2%)	2892 (76.5%)	3160 (76.1%)	2850 (76.6%)	3543 (77.2%)	3305 (76.0%)	3512 (75.5%)	3535 (74.2%)	3124 (73.7%)	3581 (74.8%)
Female	832 (22.8%)	890 (23.5%)	991 (23.9%)	873 (23.4%)	1044 (22.8%)	1041 (24.0%)	1142 (24.5%)	1231 (25.8%)	1113 (26.3%)	1204 (25.2%)
Flat										
Male	1075 (68.4%)	1136 (69.0%)	1103 (67.8%)	1135 (66.6%)	1301 (68.6%)	1287 (69.0%)	1380 (68.9%)	1340 (68.0%)	1388 (68.7%)	1329 (67.7%)
Female	496 (31.6%)	510 (31.0%)	525 (32.2%)	570 (33.4%)	595 (31.4%)	579 (31.0%)	624 (31.1%)	631 (32.0%)	633 (31.3%)	634 (32.3%)
All Jump										
Male	1771 (83.7%)	1774 (82.3%)	2076 (81.5%)	1724 (84.8%)	2259 (83.3%)	2031 (81.4%)	2155 (80.5%)	2222 (78.7%)	1764 (78.5%)	2274 (79.9%)
Female	344 (16.3%)	381 (17.7%)	470 (18.5%)	309 (15.2%)	454 (16.7%)	464 (18.6%)	523 (19.5%)	603 (21.3%)	483 (21.5%)	573 (20.1%)
Chase										
Male	614 (92.1%)	635 (92.3%)	741 (92.4%)	607 (93.5%)	861 (92.3%)	706 (91.9%)	727 (89.1%)	800 (91.5%)	566 (90.3%)	828 (88.2%)
Female	53 (7.9%)	53 (7.7%)	61 (7.6%)	42 (6.5%)	72 (7.7%)	62 (8.1%)	89 (10.9%)	74 (8.5%)	61 (9.7%)	111 (11.8%)
Hurdle										
Male	865 (82.5%)	972 (80.4%)	1225 (78.6%)	1062 (82.8%)	1309 (80.3%)	1217 (79.1%)	1323 (78.5%)	1287 (74.4%)	939 (77.1%)	1320 (78.1%)
Female	184 (17.5%)	237 (19.6%)	334 (21.4%)	220 (17.2%)	321 (19.7%)	321 (20.9%)	362 (21.5%)	442 (25.6%)	279 (22.9%)	371 (21.9%)
NHF										
Male	361 (74.7%)	195 (67.5%)	144 (63.2%)	78 (60.0%)	143 (67.5%)	142 (62.3%)	137 (63.4%)	171 (63.1%)	296 (66.4%)	157 (61.8%)
Female	122 (25.3%)	94 (32.5%)	84 (36.8%)	52 (40.0%)	69 (32.5%)	86 (37.7%)	79 (36.6%)	100 (36.9%)	150 (33.6%)	97 (38.2%)
Hunter										
Male	35 (97.2%)	27 (100.0%)	33 (91.7%)	21 (100.0%)	33 (97.1%)	40 (100.0%)	28 (96.6%)	21 (95.5%)	12 (92.3%)	24 (100.0%)
Female	1 (2.8%)	0 (0.0%)	3 (8.3%)	0 (0.0%)	1 (2.9%)	0 (0.0%)	1 (3.4%)	1 (4.5%)	1 (7.7%)	0 (0.0%)

Horses Population by Breeding

January 2022 Horses in Training Snapshot by Breeding versus Previous Years

Flat (including Dual)

Bred	Sex	2013	2014	2015	2016	2017	2018	2019	2020	2021	2022
GB	Male	2481 (29.9%)	2519 (29.7%)	2637 (30.3%)	2638 (30.1%)	2763 (30.5%)	2855 (30.0%)	2737 (30.0%)	2882 (30.6%)	2678 (30.2%)	2566 (29.0%)
	Female	1721 (20.7%)	1765 (20.8%)	1732 (19.9%)	1712 (19.5%)	1795 (19.8%)	1759 (18.5%)	1769 (19.4%)	1830 (19.4%)	1764 (19.9%)	1829 (20.7%)
	Subtotal	4202 (50.6%)	4284 (50.5%)	4369 (50.2%)	4350 (49.6%)	4558 (50.3%)	4614 (48.5%)	4506 (49.5%)	4712 (50.0%)	4442 (50.0%)	4395 (49.6%)
IRE	Male	2211 (26.6%)	2226 (26.2%)	2353 (27.0%)	2461 (28.1%)	2526 (27.9%)	2688 (28.3%)	2539 (27.9%)	2632 (27.9%)	2536 (28.6%)	2564 (29.0%)
	Female	1106 (13.3%)	1194 (14.1%)	1183 (13.6%)	1177 (13.4%)	1166 (12.9%)	1286 (13.5%)	1205 (13.2%)	1271 (13.5%)	1201 (13.5%)	1285 (14.5%)
	Subtotal	3317 (40.0%)	3420 (40.3%)	3536 (40.6%)	3638 (41.5%)	3692 (40.7%)	3974 (41.8%)	3744 (41.1%)	3903 (41.4%)	3737 (42.1%)	3849 (43.5%)
FR	Male	90 (1.1%)	120 (1.4%)	163 (1.9%)	162 (1.8%)	205 (2.3%)	301 (3.2%)	268 (2.9%)	295 (3.1%)	275 (3.1%)	269 (3.0%)
	Female	30 (0.4%)	55 (0.6%)	64 (0.7%)	75 (0.9%)	78 (0.9%)	110 (1.2%)	110 (1.2%)	107 (1.1%)	96 (1.1%)	100 (1.1%)
	Subtotal	120 (1.4%)	175 (2.1%)	227 (2.6%)	237 (2.7%)	283 (3.1%)	411 (4.3%)	378 (4.1%)	402 (4.3%)	371 (4.2%)	369 (4.2%)
USA	Male	402 (4.8%)	339 (4.0%)	324 (3.7%)	319 (3.6%)	308 (3.4%)	287 (3.0%)	262 (2.9%)	226 (2.4%)	180 (2.0%)	130 (1.5%)
	Female	161 (1.9%)	157 (1.8%)	146 (1.7%)	124 (1.4%)	114 (1.3%)	109 (1.1%)	125 (1.4%)	85 (0.9%)	55 (0.6%)	42 (0.5%)
	Subtotal	563 (6.8%)	496 (5.8%)	470 (5.4%)	443 (5.1%)	422 (4.7%)	396 (4.2%)	387 (4.2%)	311 (3.3%)	235 (2.6%)	172 (1.9%)
GNY	Male	50 (0.6%)	51 (0.6%)	48 (0.6%)	57 (0.7%)	62 (0.7%)	66 (0.7%)	47 (0.5%)	51 (0.5%)	56 (0.6%)	39 (0.4%)
	Female	10 (0.1%)	15 (0.2%)	10 (0.1%)	9 (0.1%)	15 (0.2%)	14 (0.1%)	15 (0.2%)	23 (0.2%)	18 (0.2%)	19 (0.2%)
	Subtotal	60 (0.7%)	66 (0.8%)	58 (0.7%)	66 (0.8%)	77 (0.8%)	80 (0.8%)	62 (0.7%)	74 (0.8%)	74 (0.8%)	58 (0.7%)
Other	Male	30 (0.4%)	36 (0.4%)	22 (0.3%)	17 (0.2%)	24 (0.3%)	24 (0.3%)	24 (0.3%)	21 (0.2%)	17 (0.2%)	7 (0.1%)
	Female	8 (0.1%)	14 (0.2%)	20 (0.2%)	12 (0.1%)	11 (0.1%)	10 (0.1%)	8 (0.1%)	4 (0.0%)	4 (0.0%)	3 (0.0%)
	Subtotal	38 (0.5%)	50 (0.6%)	42 (0.5%)	29 (0.3%)	35 (0.4%)	34 (0.4%)	32 (0.4%)	25 (0.3%)	21 (0.2%)	10 (0.1%)

Jump (including Dual)

Bred	Sex	2013	2014	2015	2016	2017	2018	2019	2020	2021	2022
GB	Male	1581 (27.1%)	1533 (26.6%)	1484 (25.4%)	1408 (24.0%)	1351 (22.8%)	1375 (22.5%)	1310 (21.1%)	1305 (20.2%)	1346 (19.3%)	1230 (19.3%)
	Female	664 (11.4%)	688 (11.9%)	694 (11.9%)	667 (11.4%)	616 (10.4%)	673 (11.0%)	635 (10.2%)	632 (9.8%)	726 (10.4%)	665 (10.4%)
	Subtotal	2245 (38.5%)	2221 (38.5%)	2178 (37.3%)	2075 (35.3%)	1967 (33.2%)	2048 (33.5%)	1945 (31.4%)	1937 (30.0%)	2072 (29.7%)	1895 (29.8%)
IRE	Male	2441 (41.9%)	2450 (42.4%)	2478 (42.4%)	2543 (43.3%)	2631 (44.4%)	2644 (43.2%)	2691 (43.4%)	2803 (43.4%)	2991 (42.9%)	2651 (41.6%)
	Female	318 (5.5%)	330 (5.7%)	373 (6.4%)	398 (6.8%)	420 (7.1%)	519 (8.5%)	574 (9.3%)	629 (9.7%)	658 (9.4%)	587 (9.2%)
	Subtotal	2759 (47.3%)	2780 (48.2%)	2851 (48.8%)	2941 (50.1%)	3051 (51.5%)	3163 (51.7%)	3265 (52.6%)	3432 (53.2%)	3649 (52.4%)	3238 (50.9%)
FR	Male	565 (9.7%)	565 (9.8%)	613 (10.5%)	673 (11.5%)	717 (12.1%)	709 (11.6%)	786 (12.7%)	845 (13.1%)	998 (14.3%)	992 (15.6%)
	Female	49 (0.8%)	58 (1.0%)	50 (0.9%)	54 (0.9%)	66 (1.1%)	82 (1.3%)	105 (1.7%)	125 (1.9%)	133 (1.9%)	136 (2.1%)
	Subtotal	614 (10.5%)	623 (10.8%)	663 (11.3%)	727 (12.4%)	783 (13.2%)	791 (12.9%)	891 (14.4%)	970 (15.0%)	1131 (16.2%)	1128 (17.7%)
USA	Male	116 (2.0%)	76 (1.3%)	73 (1.2%)	58 (1.0%)	43 (0.7%)	46 (0.8%)	31 (0.5%)	35 (0.5%)	32 (0.5%)	28 (0.4%)
	Female	9 (0.2%)	5 (0.1%)	2 (0.0%)	2 (0.0%)	2 (0.0%)	4 (0.1%)	3 (0.0%)	2 (0.0%)	1 (0.0%)	1 (0.0%)
	Subtotal	125 (2.1%)	81 (1.4%)	75 (1.3%)	60 (1.0%)	45 (0.8%)	50 (0.8%)	34 (0.5%)	37 (0.6%)	33 (0.5%)	29 (0.5%)
GNY	Male	55 (0.9%)	48 (0.8%)	62 (1.1%)	55 (0.9%)	63 (1.1%)	50 (0.8%)	51 (0.8%)	64 (1.0%)	66 (0.9%)	64 (1.0%)
	Female	5 (0.1%)	5 (0.1%)	3 (0.1%)	8 (0.1%)	5 (0.1%)	3 (0.0%)	6 (0.1%)	5 (0.1%)	10 (0.1%)	8 (0.1%)
	Subtotal	60 (1.0%)	53 (0.9%)	65 (1.1%)	63 (1.1%)	68 (1.1%)	53 (0.9%)	57 (0.9%)	69 (1.1%)	76 (1.1%)	72 (1.1%)
Other	Male	22 (0.4%)	12 (0.2%)	13 (0.2%)	5 (0.1%)	7 (0.1%)	7 (0.1%)	9 (0.1%)	7 (0.1%)	5 (0.1%)	3 (0.0%)
	Female	2 (0.0%)	2 (0.0%)	1 (0.0%)	2 (0.0%)	2 (0.0%)	2 (0.0%)	1 (0.0%)	NA (-)	1 (0.0%)	NA (-)
	Subtotal	24 (0.4%)	14 (0.2%)	14 (0.2%)	7 (0.1%)	9 (0.2%)	9 (0.1%)	10 (0.2%)	7 (0.1%)	6 (0.1%)	3 (0.0%)

Year to Date Total Runners by Breeding

Flat

Bred	Sex	2013	2014	2015	2016	2017	2018	2019	2020	2021	2022
GB	Male	840 (31.6%)	850 (32.6%)	767 (32.3%)	814 (32.0%)	921 (32.4%)	924 (33.3%)	934 (31.3%)	984 (32.8%)	997 (31.4%)	982 (32.4%)
	Female	485 (18.2%)	428 (16.4%)	453 (19.1%)	457 (18.0%)	466 (16.4%)	433 (15.6%)	500 (16.7%)	508 (16.9%)	588 (18.5%)	559 (18.5%)
	Subtotal	1325 (49.8%)	1278 (48.9%)	1220 (51.3%)	1271 (50.0%)	1387 (48.8%)	1357 (49.0%)	1434 (48.0%)	1492 (49.7%)	1585 (50.0%)	1541 (50.9%)
IRE	Male	789 (29.7%)	778 (29.8%)	692 (29.1%)	727 (28.6%)	858 (30.2%)	825 (29.8%)	916 (30.7%)	900 (30.0%)	992 (31.3%)	907 (30.0%)
	Female	281 (10.6%)	308 (11.8%)	243 (10.2%)	324 (12.7%)	354 (12.5%)	335 (12.1%)	342 (11.4%)	365 (12.2%)	332 (10.5%)	354 (11.7%)
	Subtotal	1070 (40.2%)	1086 (41.6%)	935 (39.4%)	1051 (41.3%)	1212 (42.7%)	1160 (41.9%)	1258 (42.1%)	1265 (42.2%)	1324 (41.7%)	1261 (41.6%)
FR	Male	33 (1.2%)	28 (1.1%)	30 (1.3%)	49 (1.9%)	58 (2.0%)	58 (2.1%)	83 (2.8%)	77 (2.6%)	90 (2.8%)	93 (3.1%)
	Female	3 (0.1%)	10 (0.4%)	14 (0.6%)	16 (0.6%)	18 (0.6%)	32 (1.2%)	22 (0.7%)	30 (1.0%)	27 (0.9%)	21 (0.7%)
	Subtotal	36 (1.4%)	38 (1.5%)	44 (1.9%)	65 (2.6%)	76 (2.7%)	90 (3.2%)	105 (3.5%)	107 (3.6%)	117 (3.7%)	114 (3.8%)
USA	Male	166 (6.2%)	147 (5.6%)	127 (5.3%)	102 (4.0%)	109 (3.8%)	112 (4.0%)	116 (3.9%)	95 (3.2%)	87 (2.7%)	72 (2.4%)
	Female	30 (1.1%)	28 (1.1%)	27 (1.1%)	20 (0.8%)	25 (0.9%)	22 (0.8%)	44 (1.5%)	22 (0.7%)	21 (0.7%)	18 (0.6%)
	Subtotal	196 (7.4%)	175 (6.7%)	154 (6.5%)	122 (4.8%)	134 (4.7%)	134 (4.8%)	160 (5.4%)	117 (3.9%)	108 (3.4%)	90 (3.0%)
GNY	Male	16 (0.6%)	16 (0.6%)	5 (0.2%)	14 (0.6%)	14 (0.5%)	17 (0.6%)	11 (0.4%)	13 (0.4%)	21 (0.7%)	8 (0.3%)
	Female	1 (0.0%)	2 (0.1%)	1 (0.0%)	7 (0.3%)	5 (0.2%)	3 (0.1%)	3 (0.1%)	2 (0.1%)	6 (0.2%)	9 (0.3%)
	Subtotal	17 (0.6%)	18 (0.7%)	6 (0.3%)	21 (0.8%)	19 (0.7%)	20 (0.7%)	14 (0.5%)	15 (0.5%)	27 (0.9%)	17 (0.6%)
Other	Male	14 (0.5%)	16 (0.6%)	11 (0.5%)	11 (0.4%)	9 (0.3%)	9 (0.3%)	11 (0.4%)	3 (0.1%)	10 (0.3%)	2 (0.1%)
	Female	1 (0.0%)	0 (0.0%)	6 (0.3%)	2 (0.1%)	3 (0.1%)	1 (0.0%)	5 (0.2%)	0 (0.0%)	1 (0.0%)	3 (0.1%)
	Subtotal	15 (0.6%)	16 (0.6%)	17 (0.7%)	13 (0.5%)	12 (0.4%)	10 (0.4%)	16 (0.5%)	3 (0.1%)	11 (0.3%)	5 (0.2%)

Jump

Bred	Sex	2013	2014	2015	2016	2017	2018	2019	2020	2021	2022
GB	Male	620 (25.7%)	638 (25.5%)	736 (23.8%)	542 (23.0%)	738 (22.6%)	650 (22.0%)	700 (22.4%)	651 (19.6%)	463 (18.9%)	582 (17.5%)
	Female	227 (9.4%)	259 (10.4%)	315 (10.2%)	172 (7.3%)	264 (8.1%)	247 (8.4%)	275 (8.8%)	300 (9.0%)	232 (9.5%)	285 (8.6%)
	Subtotal	847 (35.1%)	897 (35.9%)	1051 (34.0%)	714 (30.3%)	1002 (30.7%)	897 (30.4%)	975 (31.3%)	951 (28.7%)	695 (28.4%)	867 (26.0%)
IRE	Male	1073 (44.4%)	1092 (43.7%)	1368 (44.2%)	1094 (46.4%)	1528 (46.8%)	1338 (45.4%)	1356 (43.5%)	1458 (44.0%)	1040 (42.4%)	1434 (43.1%)
	Female	127 (5.3%)	144 (5.8%)	195 (6.3%)	154 (6.5%)	226 (6.9%)	244 (8.3%)	284 (9.1%)	329 (9.9%)	232 (9.5%)	292 (8.8%)
	Subtotal	1200 (49.7%)	1236 (49.5%)	1563 (50.5%)	1248 (53.0%)	1754 (53.7%)	1582 (53.6%)	1640 (52.6%)	1787 (53.9%)	1272 (51.9%)	1726 (51.8%)
FR	Male	251 (10.4%)	275 (11.0%)	363 (11.7%)	319 (13.5%)	408 (12.5%)	381 (12.9%)	411 (13.2%)	456 (13.8%)	380 (15.5%)	580 (17.4%)
	Female	24 (1.0%)	22 (0.9%)	34 (1.1%)	16 (0.7%)	35 (1.1%)	37 (1.3%)	39 (1.3%)	62 (1.9%)	55 (2.2%)	92 (2.8%)
	Subtotal	275 (11.4%)	297 (11.9%)	397 (12.8%)	335 (14.2%)	443 (13.6%)	418 (14.2%)	450 (14.4%)	518 (15.6%)	435 (17.8%)	672 (20.2%)
USA	Male	39 (1.6%)	31 (1.2%)	38 (1.2%)	32 (1.4%)	30 (0.9%)	17 (0.6%)	12 (0.4%)	21 (0.6%)	13 (0.5%)	9 (0.3%)
	Female	4 (0.2%)	0 (0.0%)	2 (0.1%)	1 (0.0%)	2 (0.1%)	1 (0.0%)	1 (0.0%)	1 (0.0%)	1 (0.0%)	1 (0.0%)
	Subtotal	43 (1.8%)	31 (1.2%)	40 (1.3%)	33 (1.4%)	32 (1.0%)	18 (0.6%)	13 (0.4%)	22 (0.7%)	14 (0.6%)	10 (0.3%)
GNY	Male	32 (1.3%)	29 (1.2%)	37 (1.2%)	22 (0.9%)	29 (0.9%)	26 (0.9%)	34 (1.1%)	31 (0.9%)	32 (1.3%)	47 (1.4%)
	Female	4 (0.2%)	2 (0.1%)	3 (0.1%)	2 (0.1%)	3 (0.1%)	3 (0.1%)	4 (0.1%)	3 (0.1%)	2 (0.1%)	8 (0.2%)
	Subtotal	36 (1.5%)	31 (1.2%)	40 (1.3%)	24 (1.0%)	32 (1.0%)	29 (1.0%)	38 (1.2%)	34 (1.0%)	34 (1.4%)	55 (1.7%)
Other	Male	14 (0.6%)	6 (0.2%)	4 (0.1%)	2 (0.1%)	1 (0.0%)	3 (0.1%)	3 (0.1%)	3 (0.1%)	0 (0.0%)	1 (0.0%)
	Female	1 (0.0%)	0 (0.0%)	0 (0.0%)	0 (0.0%)	1 (0.0%)	2 (0.1%)	0 (0.0%)	0 (0.0%)	0 (0.0%)	0 (0.0%)
	Subtotal	15 (0.6%)	6 (0.2%)	4 (0.1%)	2 (0.1%)	2 (0.1%)	5 (0.2%)	3 (0.1%)	3 (0.1%)	NA (-)	1 (0.0%)

Year to Date Individual Runners by Breeding

Flat

Bred	Sex	2013	2014	2015	2016	2017	2018	2019	2020	2021	2022
GB	Male	490 (31.2%)	525 (31.9%)	524 (32.2%)	547 (32.1%)	607 (32.0%)	607 (32.5%)	622 (31.0%)	650 (33.0%)	619 (30.6%)	631 (32.1%)
	Female	306 (19.5%)	284 (17.3%)	314 (19.3%)	311 (18.2%)	332 (17.5%)	299 (16.0%)	344 (17.2%)	341 (17.3%)	377 (18.7%)	361 (18.4%)
	Subtotal	796 (50.7%)	809 (49.1%)	838 (51.5%)	858 (50.3%)	939 (49.5%)	906 (48.6%)	966 (48.2%)	991 (50.3%)	996 (49.3%)	992 (50.5%)
IRE	Male	445 (28.3%)	484 (29.4%)	460 (28.3%)	467 (27.4%)	566 (29.9%)	549 (29.4%)	613 (30.6%)	571 (29.0%)	640 (31.7%)	586 (29.9%)
	Female	170 (10.8%)	198 (12.0%)	173 (10.6%)	227 (13.3%)	227 (12.0%)	239 (12.8%)	228 (11.4%)	253 (12.8%)	216 (10.7%)	237 (12.1%)
	Subtotal	615 (39.1%)	682 (41.4%)	633 (38.9%)	694 (40.7%)	793 (41.8%)	788 (42.2%)	841 (42.0%)	824 (41.8%)	856 (42.4%)	823 (41.9%)
FR	Male	22 (1.4%)	18 (1.1%)	23 (1.4%)	34 (2.0%)	37 (2.0%)	39 (2.1%)	57 (2.8%)	54 (2.7%)	58 (2.9%)	57 (2.9%)
	Female	1 (0.1%)	7 (0.4%)	10 (0.6%)	12 (0.7%)	14 (0.7%)	22 (1.2%)	18 (0.9%)	19 (1.0%)	22 (1.1%)	15 (0.8%)
	Subtotal	23 (1.5%)	25 (1.5%)	33 (2.0%)	46 (2.7%)	51 (2.7%)	61 (3.3%)	75 (3.7%)	73 (3.7%)	80 (4.0%)	72 (3.7%)
USA	Male	100 (6.4%)	90 (5.5%)	84 (5.2%)	69 (4.0%)	71 (3.7%)	73 (3.9%)	71 (3.5%)	54 (2.7%)	53 (2.6%)	46 (2.3%)
	Female	17 (1.1%)	19 (1.2%)	22 (1.4%)	13 (0.8%)	16 (0.8%)	16 (0.9%)	28 (1.4%)	16 (0.8%)	13 (0.6%)	11 (0.6%)
	Subtotal	117 (7.4%)	109 (6.6%)	106 (6.5%)	82 (4.8%)	87 (4.6%)	89 (4.8%)	99 (4.9%)	70 (3.6%)	66 (3.3%)	57 (2.9%)
GNY	Male	11 (0.7%)	10 (0.6%)	4 (0.2%)	11 (0.6%)	13 (0.7%)	13 (0.7%)	10 (0.5%)	8 (0.4%)	13 (0.6%)	8 (0.4%)
	Female	1 (0.1%)	2 (0.1%)	1 (0.1%)	5 (0.3%)	3 (0.2%)	2 (0.1%)	3 (0.1%)	2 (0.1%)	4 (0.2%)	9 (0.5%)
	Subtotal	12 (0.8%)	12 (0.7%)	5 (0.3%)	16 (0.9%)	16 (0.8%)	15 (0.8%)	13 (0.6%)	10 (0.5%)	17 (0.8%)	17 (0.9%)
Other	Male	7 (0.4%)	9 (0.5%)	8 (0.5%)	7 (0.4%)	7 (0.4%)	6 (0.3%)	7 (0.3%)	3 (0.2%)	5 (0.2%)	1 (0.1%)
	Female	1 (0.1%)	0 (0.0%)	5 (0.3%)	2 (0.1%)	3 (0.2%)	1 (0.1%)	3 (0.1%)	0 (0.0%)	1 (0.0%)	1 (0.1%)
	Subtotal	8 (0.5%)	9 (0.5%)	13 (0.8%)	9 (0.5%)	10 (0.5%)	7 (0.4%)	10 (0.5%)	3 (0.2%)	6 (0.3%)	2 (0.1%)

Jump

Bred	Sex	2013	2014	2015	2016	2017	2018	2019	2020	2021	2022
GB	Male	549 (26.0%)	538 (25.0%)	596 (23.4%)	471 (23.2%)	605 (22.3%)	536 (21.5%)	590 (22.0%)	554 (19.6%)	421 (18.7%)	505 (17.7%)
	Female	204 (9.6%)	232 (10.8%)	274 (10.8%)	156 (7.7%)	221 (8.1%)	216 (8.7%)	242 (9.0%)	258 (9.1%)	214 (9.5%)	249 (8.7%)
	Subtotal	753 (35.6%)	770 (35.7%)	870 (34.2%)	627 (30.8%)	826 (30.4%)	752 (30.1%)	832 (31.1%)	812 (28.7%)	635 (28.3%)	754 (26.5%)
IRE	Male	924 (43.7%)	950 (44.1%)	1128 (44.3%)	937 (46.1%)	1251 (46.1%)	1135 (45.5%)	1173 (43.8%)	1236 (43.8%)	957 (42.6%)	1226 (43.1%)
	Female	112 (5.3%)	130 (6.0%)	166 (6.5%)	135 (6.6%)	198 (7.3%)	209 (8.4%)	239 (8.9%)	289 (10.2%)	213 (9.5%)	243 (8.5%)
	Subtotal	1036 (49.0%)	1080 (50.1%)	1294 (50.8%)	1072 (52.7%)	1449 (53.4%)	1344 (53.9%)	1412 (52.7%)	1525 (54.0%)	1170 (52.1%)	1469 (51.6%)
FR	Male	228 (10.8%)	229 (10.6%)	292 (11.5%)	274 (13.5%)	352 (13.0%)	324 (13.0%)	352 (13.1%)	388 (13.7%)	347 (15.4%)	494 (17.4%)
	Female	20 (0.9%)	17 (0.8%)	27 (1.1%)	15 (0.7%)	31 (1.1%)	34 (1.4%)	37 (1.4%)	52 (1.8%)	53 (2.4%)	74 (2.6%)
	Subtotal	248 (11.7%)	246 (11.4%)	319 (12.5%)	289 (14.2%)	383 (14.1%)	358 (14.3%)	389 (14.5%)	440 (15.6%)	400 (17.8%)	568 (20.0%)
USA	Male	36 (1.7%)	27 (1.3%)	28 (1.1%)	21 (1.0%)	26 (1.0%)	15 (0.6%)	11 (0.4%)	15 (0.5%)	12 (0.5%)	9 (0.3%)
	Female	4 (0.2%)	0 (0.0%)	1 (0.0%)	1 (0.0%)	1 (0.0%)	1 (0.0%)	1 (0.0%)	1 (0.0%)	1 (0.0%)	1 (0.0%)
	Subtotal	40 (1.9%)	27 (1.3%)	29 (1.1%)	22 (1.1%)	27 (1.0%)	16 (0.6%)	12 (0.4%)	16 (0.6%)	13 (0.6%)	10 (0.4%)
GNY	Male	26 (1.2%)	24 (1.1%)	28 (1.1%)	19 (0.9%)	24 (0.9%)	19 (0.8%)	26 (1.0%)	26 (0.9%)	27 (1.2%)	39 (1.4%)
	Female	3 (0.1%)	2 (0.1%)	2 (0.1%)	2 (0.1%)	2 (0.1%)	2 (0.1%)	4 (0.1%)	3 (0.1%)	2 (0.1%)	6 (0.2%)
	Subtotal	29 (1.4%)	26 (1.2%)	30 (1.2%)	21 (1.0%)	26 (1.0%)	21 (0.8%)	30 (1.1%)	29 (1.0%)	29 (1.3%)	45 (1.6%)
Other	Male	8 (0.4%)	6 (0.3%)	4 (0.2%)	2 (0.1%)	1 (0.0%)	2 (0.1%)	3 (0.1%)	3 (0.1%)	0 (0.0%)	1 (0.0%)
	Female	1 (0.0%)	0 (0.0%)	0 (0.0%)	0 (0.0%)	1 (0.0%)	2 (0.1%)	0 (0.0%)	0 (0.0%)	0 (0.0%)	0 (0.0%)
	Subtotal	9 (0.4%)	6 (0.3%)	4 (0.2%)	2 (0.1%)	2 (0.1%)	4 (0.2%)	3 (0.1%)	3 (0.1%)	NA (-)	1 (0.0%)