

# Horse Population Report

Updated on 31 December 2021



# Introduction

Welcome to the latest update on the Racehorse Population from the British Horseracing Authority.

The aim of this document is to give stakeholders and the wider Public an insight into the current state of the Horse Population in Great Britain. It is hoped that this transparency will ensure that all decision makers have access to the key data required to help British Racing deliver a Competitive and Compelling product to stakeholders, racegoers and the wider public.

If you have any questions regarding the content of this report or suggestions for how it could be improved further, please contact Joe Yates – [jyates@britishhorseracing.com](mailto: jyates@britishhorseracing.com)

## Definitions

This report uses the Horses in Training returns from the Weatherby's Racing Administration System, this is completed by trainers and should be updated whenever a horse enters or leaves training in their care as part of the conditions of their licence.

## Horses in Training

Unless otherwise stated, snapshots of Horses in Training will be from the 15th day of the month in question and year to date figures will be up to and including the date titled at the front of the report.

Horses' ratings will be taken from the most recently published ratings by the BHA Handicapping Team, which is currently at 7am each Tuesday morning. For example, if looking at the Horses in a particular rating band for July 2011, the horses in training number will be from Friday 15th July 2011 and ratings, where possible, will be assigned to each horse from the ratings published by the BHA Handicappers on Tuesday 12th July 2011.

The Gender of a horse will be taken from the reporting date in question, regardless of whether this has since changed. In the case of YTD reporting, where a horse's gender or training type has changed in the year-to-date period, the most recent is taken.

This report does not count any horses that are temporarily racing abroad for GB Trainers at the time of reporting.

Yearlings are not included in total counts of flat and/or dual horses but will be sometimes shown separately for information purposes.

Yearlings and two-year-olds are not included in total counts of jump horses or counts of jump horses that include dual horses but will be sometimes shown separately for information purposes.

Yearlings, two-year-olds and three-year-olds are not included in total counts of Hunter Chasers but will be sometimes shown separately for information purposes.

Hunter Chasers are not included in any counts of Jump Horses or Total figures but will be sometimes shown separately for information purposes.

## Runners

Unless otherwise specified, Total Runners and Individual Runners metrics only counts runners that ran in GB races including any voided races. Withdrawn horses are not included.

Hunter Chases are not included in this section but will be sometimes shown separately for information purposes.

Total Runners is a count of all runners in races, whilst individual runners only counts each individual horse once.

# Monthly Horses in Training

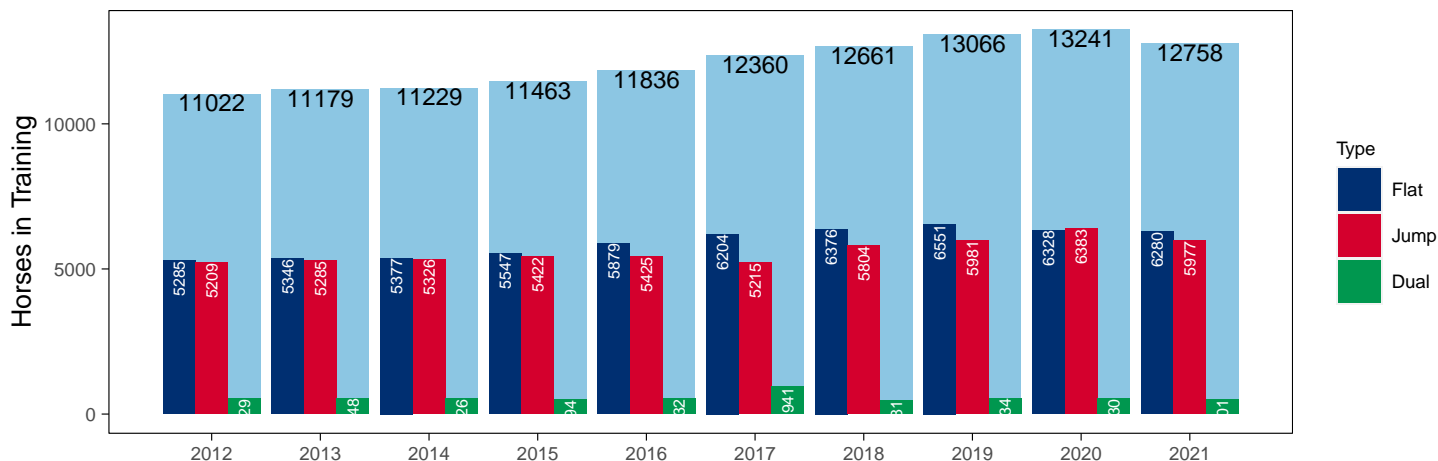
## December 2021 Horses in Training Snapshot versus Previous Years

Type	2012	2013	2014	2015	2016	2017	2018	2019	2020	2021	vs. Last Year	vs. Pre-Covid
Flat	5285	5346	5377	5547	5879	6204	6376	6551	6328	6280	-48 / -0.8%	-271 / -4.1%
Jump	5209	5285	5326	5422	5425	5215	5804	5981	6383	5977	-406 / -6.4%	-4 / -0.1%
Dual	529	548	526	494	532	941	481	534	530	501	-29 / -5.5%	-33 / -6.2%
Hunter	739	744	704	688	593	638	714	605	794	604	-190 / -23.9%	-1 / -0.2%
<b>Total</b>	<b>11022</b>	<b>11179</b>	<b>11229</b>	<b>11463</b>	<b>11836</b>	<b>12360</b>	<b>12661</b>	<b>13066</b>	<b>13241</b>	<b>12758</b>	<b>-483 / -3.6%</b>	<b>-308 / -2.4%</b>

'vs. Pre-Covid' is comparison between 2021 and 2019

### Snapshot of Total Horses in Training in December

Horses in Training in December, shown by Training Type



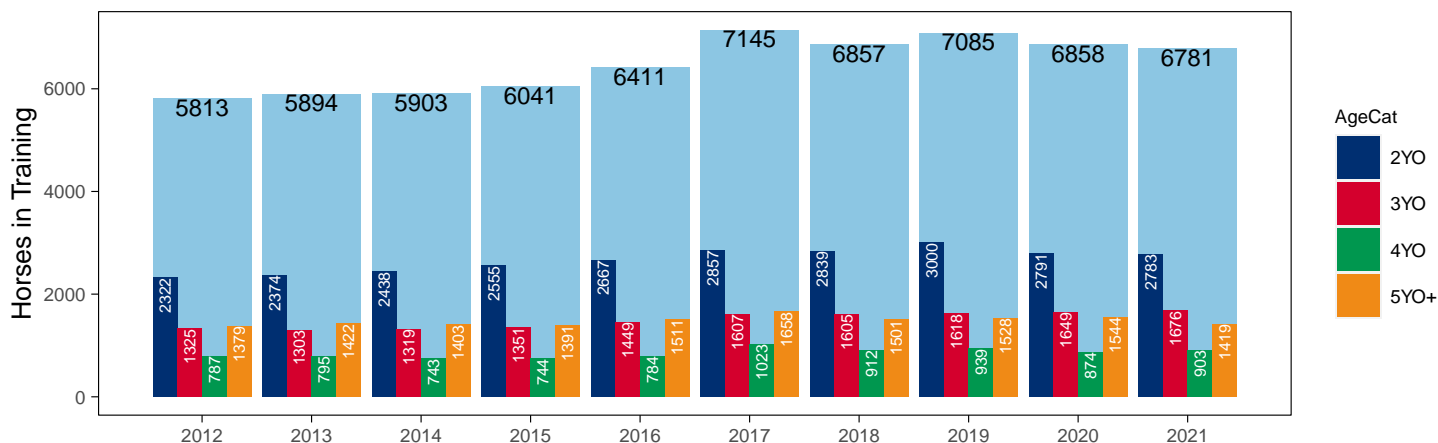
### Flat (including Dual)

AgeCat	2012	2013	2014	2015	2016	2017	2018	2019	2020	2021	vs. Last Year	vs. Pre-Covid
2YO	2322	2374	2438	2555	2667	2857	2839	3000	2791	2783	-8 / -0.3%	-217 / -7.2%
3YO	1325	1303	1319	1351	1449	1607	1605	1618	1649	1676	+27 / +1.6%	+58 / +3.6%
4YO	787	795	743	744	784	1023	912	939	874	903	+29 / +3.3%	-36 / -3.8%
5YO+	1379	1422	1403	1391	1511	1658	1501	1528	1544	1419	-125 / -8.1%	-109 / -7.1%
<b>Total</b>	<b>5813</b>	<b>5894</b>	<b>5903</b>	<b>6041</b>	<b>6411</b>	<b>7145</b>	<b>6857</b>	<b>7085</b>	<b>6858</b>	<b>6781</b>	<b>-77 / -1.1%</b>	<b>-304 / -4.3%</b>

'vs. Pre-Covid' is comparison between 2021 and 2019

### Snapshot of Flat Horses in Training in December

Flat Horses in Training in December, shown by Age



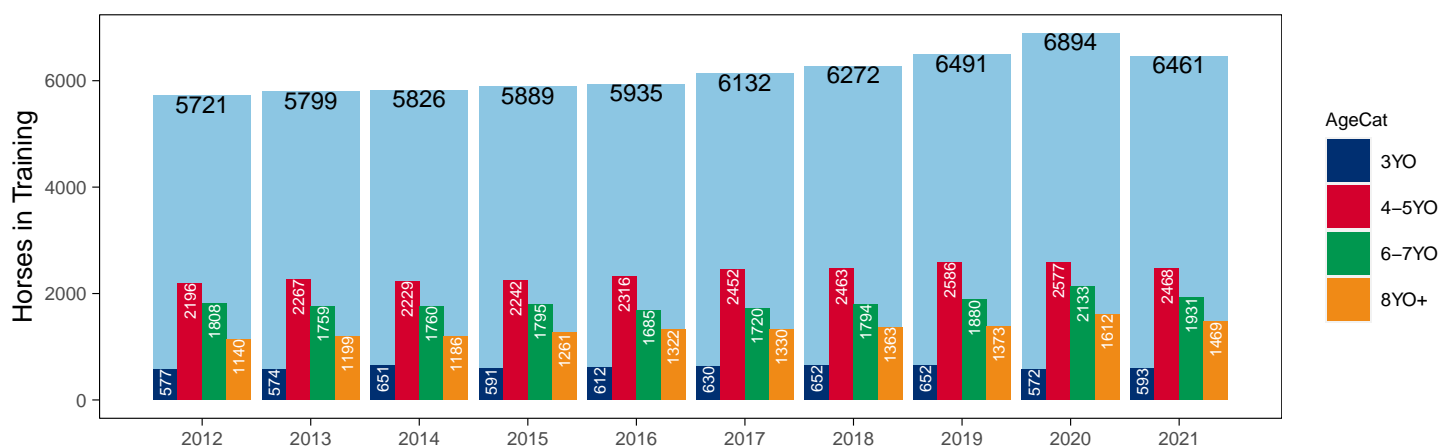
## Jump (including Dual)

AgeCat	2012	2013	2014	2015	2016	2017	2018	2019	2020	2021	vs. Last Year	vs. Pre-Covid
3YO	577	574	651	591	612	630	652	652	572	593	+21 / +3.7%	-59 / -9.0%
4-5YO	2196	2267	2229	2242	2316	2452	2463	2586	2577	2468	-109 / -4.2%	-118 / -4.6%
6-7YO	1808	1759	1760	1795	1685	1720	1794	1880	2133	1931	-202 / -9.5%	+51 / +2.7%
8YO+	1140	1199	1186	1261	1322	1330	1363	1373	1612	1469	-143 / -8.9%	+96 / +7.0%
<b>Total</b>	<b>5721</b>	<b>5799</b>	<b>5826</b>	<b>5889</b>	<b>5935</b>	<b>6132</b>	<b>6272</b>	<b>6491</b>	<b>6894</b>	<b>6461</b>	<b>-433 / -6.3%</b>	<b>-30 / -0.5%</b>

'vs. Pre-Covid' is comparison between 2021 and 2019

### Snapshot of Jump Horses in Training in December

Jump Horses in Training in December, shown by Age



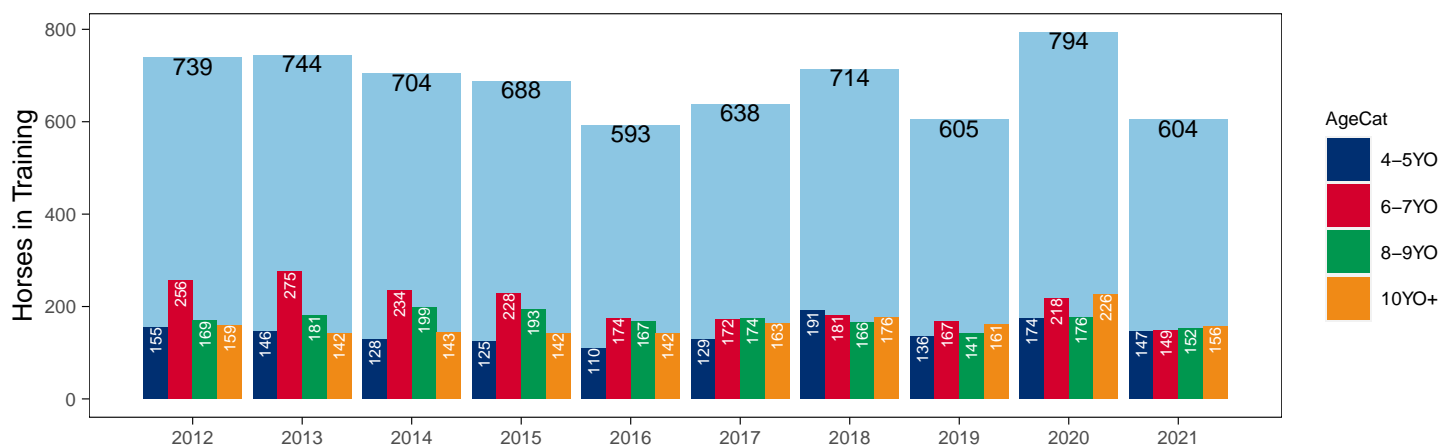
## Hunter Chasers

AgeCat	2012	2013	2014	2015	2016	2017	2018	2019	2020	2021	vs. Last Year	vs. Pre-Covid
4-5YO	155	146	128	125	110	129	191	136	174	147	-27 / -15.5%	+11 / +8.1%
6-7YO	256	275	234	228	174	172	181	167	218	149	-69 / -31.7%	-18 / -10.8%
8-9YO	169	181	199	193	167	174	166	141	176	152	-24 / -13.6%	+11 / +7.8%
10YO+	159	142	143	142	142	163	176	161	226	156	-70 / -31.0%	-5 / -3.1%
<b>Total</b>	<b>739</b>	<b>744</b>	<b>704</b>	<b>688</b>	<b>593</b>	<b>638</b>	<b>714</b>	<b>605</b>	<b>794</b>	<b>604</b>	<b>-190 / -23.9%</b>	<b>-1 / -0.2%</b>

'vs. Pre-Covid' is comparison between 2021 and 2019

### Snapshot of Hunter Chasers in Training in December

Hunter Chasers in Training in December, shown by Age



## 2021 Horses in Training versus Previous Years

Type	Period	Jan	Feb	Mar	Apr	May	Jun	Jul	Aug	Sep	Oct	Nov	Dec
Flat	2021	8370	8854	9305	9677	9920	9900	9710	9553	9100	8538	6818	6280
	2020	8886	9286	9502	9198	9395	9956	9992	9835	9396	8776	6981	6328
	Pre-Covid	8627	9168	9725	10176	10385	10397	10100	9759	9473	8801	7020	6551
Jump	2021	6459	6482	6392	5997	4395	3572	3963	5064	5672	5950	6059	5977
	2020	5920	5933	5956	2992	2314	2689	4416	5446	5995	6362	6508	6383
	Pre-Covid	5724	5785	5765	5348	4032	3127	3616	4810	5321	5755	5986	5981
Dual	2021	510	496	519	524	481	473	487	495	514	518	516	501
	2020	541	552	572	433	439	514	550	587	609	603	585	530
	Pre-Covid	482	470	467	495	456	455	473	484	479	537	566	534
Hunter	2021	791	787	861	1152	1176	1130	1104	1085	1069	47	344	604
	2020	949	1327	1467	1434	1424	1396	1358	1324	0	228	447	794
	Pre-Covid	995	1378	1571	1701	1693	1637	1613	0	0	0	244	605
<b>Total</b>	<b>2021</b>	<b>15339</b>	<b>15832</b>	<b>16216</b>	<b>16198</b>	<b>14796</b>	<b>13945</b>	<b>14160</b>	<b>15112</b>	<b>15286</b>	<b>15006</b>	<b>13393</b>	<b>12758</b>
	<b>2020</b>	<b>15347</b>	<b>15771</b>	<b>16030</b>	<b>12623</b>	<b>12148</b>	<b>13159</b>	<b>14958</b>	<b>15868</b>	<b>16000</b>	<b>15741</b>	<b>14074</b>	<b>13241</b>
	<b>Pre-Covid</b>	<b>14695</b>	<b>15298</b>	<b>15741</b>	<b>15101</b>	<b>14153</b>	<b>13606</b>	<b>13966</b>	<b>14933</b>	<b>15227</b>	<b>14960</b>	<b>13215</b>	<b>12633</b>

'Pre-Covid' is 2019 values

### Monthly Horses in Training

2021 against 2020 and Pre-Covid, shown with % Difference

Period — Pre-Covid — 2020 — 2021



'Pre-Covid' is 2019 values

## Flat (including Dual)

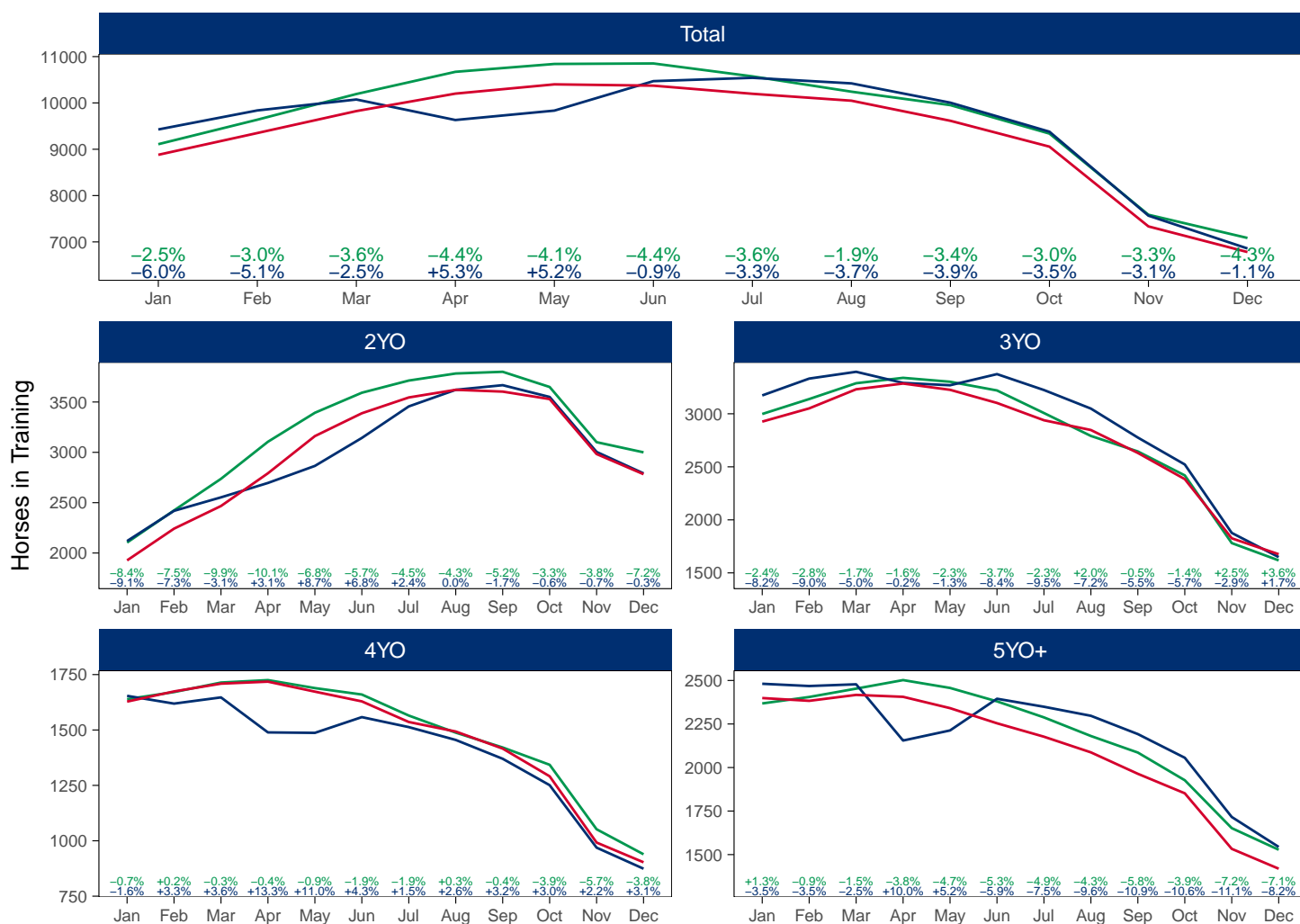
AgeCat	Period	Jan	Feb	Mar	Apr	May	Jun	Jul	Aug	Sep	Oct	Nov	Dec
2YO	2021	1927	2242	2467	2792	3161	3388	3545	3621	3603	3529	2983	2783
	2020	2119	2419	2553	2696	2865	3143	3456	3621	3667	3550	3004	2791
	Pre-Covid	2184	2523	2798	3027	3274	3512	3668	3765	3777	3609	2991	2831
3YO	2021	2926	3051	3231	3285	3226	3102	2939	2847	2631	2384	1826	1676
	2020	3173	3332	3396	3291	3269	3374	3224	3049	2776	2522	1877	1649
	Pre-Covid	2996	3173	3285	3305	3262	3216	3003	2842	2666	2437	1758	1586
4YO	2021	1628	1674	1709	1718	1673	1629	1536	1493	1416	1291	992	903
	2020	1654	1619	1647	1489	1487	1558	1513	1455	1370	1251	969	874
	Pre-Covid	1575	1607	1637	1625	1598	1560	1479	1434	1371	1280	995	906
5YO+	2021	2399	2383	2417	2406	2341	2254	2177	2087	1964	1852	1533	1419
	2020	2481	2468	2478	2155	2213	2395	2349	2297	2192	2056	1716	1544
	Pre-Covid	2420	2454	2478	2447	2423	2390	2301	2215	2119	1976	1671	1548
<b>Total</b>	<b>2021</b>	<b>8880</b>	<b>9350</b>	<b>9824</b>	<b>10201</b>	<b>10401</b>	<b>10373</b>	<b>10197</b>	<b>10048</b>	<b>9614</b>	<b>9056</b>	<b>7334</b>	<b>6781</b>
	<b>2020</b>	<b>9427</b>	<b>9838</b>	<b>10074</b>	<b>9631</b>	<b>9834</b>	<b>10470</b>	<b>10542</b>	<b>10422</b>	<b>10005</b>	<b>9379</b>	<b>7566</b>	<b>6858</b>
	<b>Pre-Covid</b>	<b>9175</b>	<b>9756</b>	<b>10197</b>	<b>10404</b>	<b>10557</b>	<b>10678</b>	<b>10452</b>	<b>10257</b>	<b>9933</b>	<b>9302</b>	<b>7415</b>	<b>6871</b>

'Pre-Covid' is 2019 values

## Monthly Flat Horses in Training

2021 against 2020 and Pre-Covid, shown with % Difference

Period — Pre-Covid — 2020 — 2021



'Pre-Covid' is 2019 values

## Jump (including Dual)

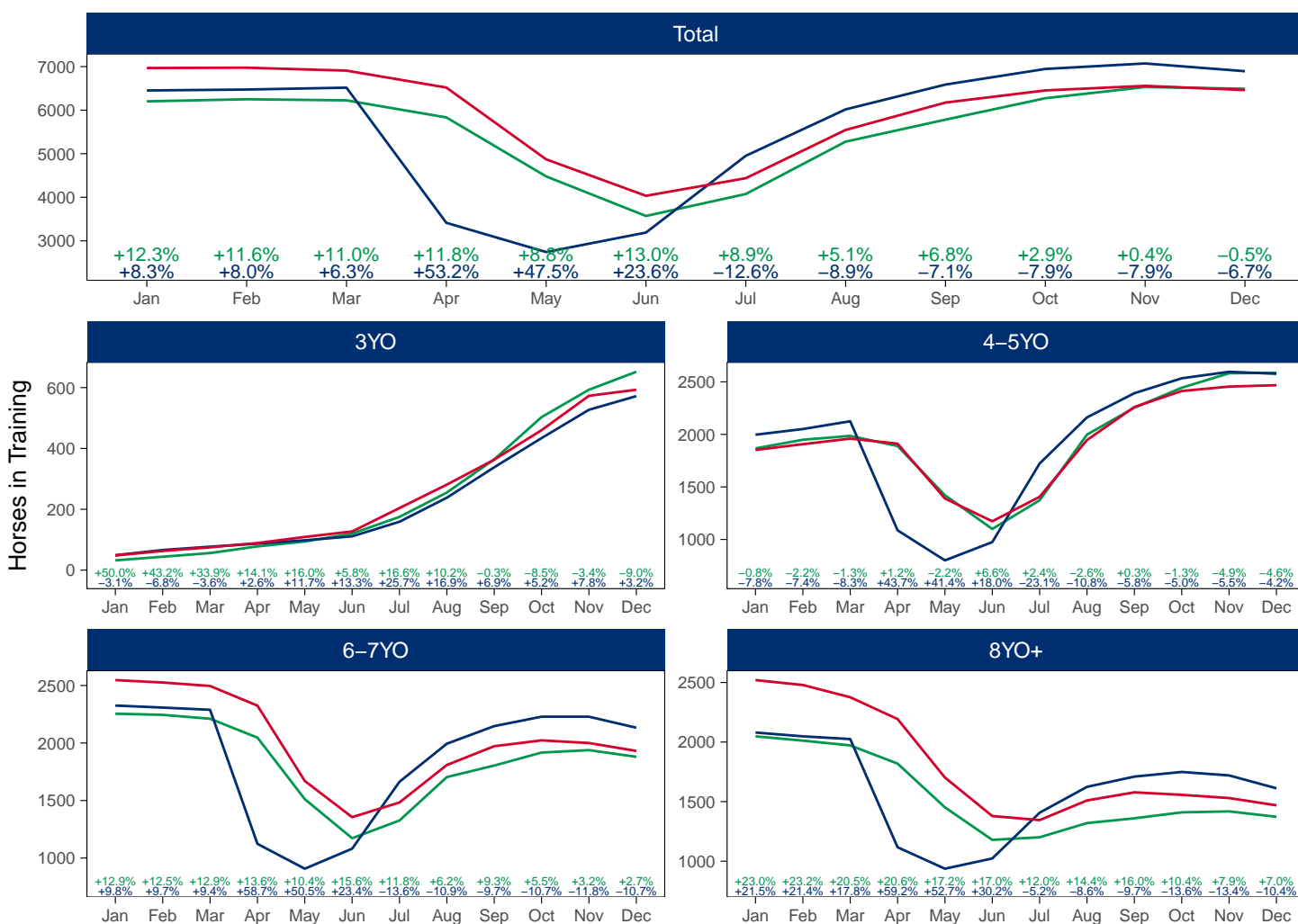
AgeCat	Period	Jan	Feb	Mar	Apr	May	Jun	Jul	Aug	Sep	Oct	Nov	Dec
3YO	2021	48	63	75	89	109	127	204	281	363	460	573	593
	2020	49	66	77	87	98	111	159	238	338	434	527	572
	Pre-Covid	47	61	73	91	104	130	176	256	357	466	562	624
4-5YO	2021	1852	1907	1960	1912	1390	1173	1406	1946	2261	2413	2455	2468
	2020	1997	2051	2125	1087	801	975	1723	2162	2392	2534	2596	2577
	Pre-Covid	1876	1945	1997	1726	1286	1035	1338	1922	2216	2386	2472	2479
6-7YO	2021	2547	2526	2496	2325	1670	1355	1483	1809	1972	2023	2000	1931
	2020	2326	2308	2289	1123	907	1081	1663	1994	2147	2229	2229	2133
	Pre-Covid	2172	2148	2125	1788	1385	1140	1330	1680	1837	1911	1903	1842
8YO+	2021	2520	2479	2376	2193	1702	1379	1345	1510	1578	1557	1530	1469
	2020	2080	2048	2025	1117	937	1023	1407	1624	1710	1749	1720	1612
	Pre-Covid	2017	1989	1962	1694	1390	1169	1219	1373	1443	1472	1458	1400
<b>Total</b>	<b>2021</b>	<b>6967</b>	<b>6975</b>	<b>6907</b>	<b>6519</b>	<b>4871</b>	<b>4034</b>	<b>4438</b>	<b>5546</b>	<b>6174</b>	<b>6453</b>	<b>6558</b>	<b>6461</b>
	<b>2020</b>	<b>6452</b>	<b>6473</b>	<b>6516</b>	<b>3414</b>	<b>2743</b>	<b>3190</b>	<b>4952</b>	<b>6018</b>	<b>6587</b>	<b>6946</b>	<b>7072</b>	<b>6894</b>
	<b>Pre-Covid</b>	<b>6113</b>	<b>6143</b>	<b>6157</b>	<b>5299</b>	<b>4165</b>	<b>3474</b>	<b>4063</b>	<b>5232</b>	<b>5853</b>	<b>6236</b>	<b>6395</b>	<b>6345</b>

'Pre-Covid' is 2019 values

## Monthly Jump Horses in Training

2021 against 2020 and Pre-Covid, shown with % Difference

Period — Pre-Covid — 2020 — 2021



'Pre-Covid' is 2019 values

## Hunter Chasers

AgeCat	Period	Jan	Feb	Mar	Apr	May	Jun	Jul	Aug	Sep	Oct	Nov	Dec
4-5YO	2021	71	65	71	141	143	133	128	118	110	5	65	147
	2020	113	223	278	265	264	258	248	233		40	106	174
	Pre-Covid	91	155	205	235	245	233	237	233		40	56	148
6-7YO	2021	195	181	199	260	264	253	245	241	237	11	90	149
	2020	273	363	386	381	375	366	353	345		63	125	218
	Pre-Covid	293	400	452	476	479	458	425	345		63	75	182
8-9YO	2021	205	203	218	272	279	269	264	262	258	14	89	152
	2020	220	294	315	309	307	304	297	295		54	88	176
	Pre-Covid	273	368	412	434	433	415	383	295		54	65	165
10YO+	2021	320	338	373	479	490	475	467	464	464	17	100	156
	2020	343	447	488	479	478	468	460	451		71	128	226
	Pre-Covid	385	518	580	607	605	585	551	451		36	76	174
<b>Total</b>	<b>2021</b>	<b>791</b>	<b>787</b>	<b>861</b>	<b>1152</b>	<b>1176</b>	<b>1130</b>	<b>1104</b>	<b>1085</b>	<b>1069</b>	<b>47</b>	<b>344</b>	<b>604</b>
	<b>2020</b>	<b>949</b>	<b>1327</b>	<b>1467</b>	<b>1434</b>	<b>1424</b>	<b>1396</b>	<b>1358</b>	<b>1324</b>		<b>228</b>	<b>447</b>	<b>794</b>
	<b>Pre-Covid</b>	<b>1043</b>	<b>1441</b>	<b>1648</b>	<b>1751</b>	<b>1761</b>	<b>1690</b>	<b>1596</b>	<b>1324</b>		<b>114</b>	<b>272</b>	<b>669</b>

'Pre-Covid' is 2019 values

## Monthly Hunter Chasers in Training

2021 against 2020 and Pre-Covid, shown with % Difference

Period — Pre-Covid — 2020 — 2021



'Pre-Covid' is 2019 values



## December 2021 Horses in Training by Rating Band Snapshot versus Previous Years

## Flat (including Dual)

AgeCat	RatBand	2012	2013	2014	2015	2016	2017	2018	2019	2020	2021
2YO	0-50	81 (3.5%)	68 (2.9%)	82 (3.4%)	77 (3.0%)	77 (2.9%)	63 (2.2%)	76 (2.7%)	99 (3.3%)	94 (3.4%)	102 (3.7%)
	51-60	134 (5.8%)	143 (6.0%)	143 (5.9%)	131 (5.1%)	157 (5.9%)	133 (4.7%)	200 (7.0%)	157 (5.2%)	179 (6.4%)	157 (5.6%)
	61-70	194 (8.4%)	189 (8.0%)	175 (7.2%)	255 (10.0%)	235 (8.8%)	245 (8.6%)	237 (8.3%)	225 (7.5%)	257 (9.2%)	263 (9.5%)
	71-80	227 (9.8%)	213 (9.0%)	217 (8.9%)	253 (9.9%)	266 (10.0%)	265 (9.3%)	247 (8.7%)	250 (8.3%)	295 (10.6%)	246 (8.8%)
	81-90	81 (3.5%)	100 (4.2%)	87 (3.6%)	123 (4.8%)	138 (5.2%)	128 (4.5%)	149 (5.2%)	130 (4.3%)	158 (5.7%)	129 (4.6%)
	91-100	39 (1.7%)	48 (2.0%)	49 (2.0%)	54 (2.1%)	42 (1.6%)	61 (2.1%)	65 (2.3%)	61 (2.0%)	58 (2.1%)	51 (1.8%)
	101+	47 (2.0%)	22 (0.9%)	44 (1.8%)	49 (1.9%)	42 (1.6%)	54 (1.9%)	45 (1.6%)	45 (1.5%)	55 (2.0%)	55 (2.0%)
	Unrated	1519 (65.4%)	1591 (67.0%)	1641 (67.3%)	1613 (63.1%)	1710 (64.1%)	1908 (66.8%)	1820 (64.1%)	2033 (67.8%)	1695 (60.7%)	1780 (64.0%)
Subtotal		2322 (100.0%)	2374 (100.0%)	2438 (100.0%)	2555 (100.0%)	2667 (100.0%)	2857 (100.0%)	2839 (100.0%)	3000 (100.0%)	2791 (100.0%)	2783 (100.0%)
3YO	0-50	143 (10.8%)	119 (9.1%)	129 (9.8%)	122 (9.0%)	120 (8.3%)	167 (10.4%)	170 (10.6%)	220 (13.6%)	184 (11.2%)	192 (11.5%)
	51-60	182 (13.7%)	154 (11.8%)	148 (11.2%)	177 (13.1%)	185 (12.8%)	223 (13.9%)	215 (13.4%)	223 (13.8%)	237 (14.4%)	252 (15.0%)
	61-70	207 (15.6%)	194 (14.9%)	189 (14.3%)	218 (16.1%)	251 (17.3%)	245 (15.2%)	269 (16.8%)	282 (17.4%)	283 (17.2%)	309 (18.4%)
	71-80	151 (11.4%)	181 (13.9%)	181 (13.7%)	189 (14.0%)	233 (16.1%)	263 (16.4%)	257 (16.0%)	219 (13.5%)	259 (15.7%)	251 (15.0%)
	81-90	100 (7.5%)	130 (10.0%)	125 (9.5%)	166 (12.3%)	166 (11.5%)	154 (9.6%)	173 (10.8%)	155 (9.6%)	154 (9.3%)	182 (10.9%)
	91-100	60 (4.5%)	61 (4.7%)	67 (5.1%)	75 (5.6%)	76 (5.2%)	101 (6.3%)	96 (6.0%)	94 (5.8%)	87 (5.3%)	76 (4.5%)
	101+	53 (4.0%)	37 (2.8%)	56 (4.2%)	66 (4.9%)	76 (5.2%)	67 (4.2%)	73 (4.5%)	83 (5.1%)	48 (2.9%)	61 (3.6%)
	Unrated	429 (32.4%)	427 (32.8%)	424 (32.1%)	338 (25.0%)	342 (23.6%)	387 (24.1%)	352 (21.9%)	342 (21.1%)	397 (24.1%)	353 (21.1%)
Subtotal		1325 (100.0%)	1303 (100.0%)	1319 (100.0%)	1351 (100.0%)	1449 (100.0%)	1607 (100.0%)	1605 (100.0%)	1618 (100.0%)	1649 (100.0%)	1676 (100.0%)
4YO	0-50	94 (11.9%)	76 (9.6%)	64 (8.6%)	72 (9.7%)	81 (10.3%)	136 (13.3%)	132 (14.5%)	145 (15.4%)	107 (12.2%)	123 (13.6%)
	51-60	113 (14.4%)	92 (11.6%)	89 (12.0%)	99 (13.3%)	104 (13.3%)	131 (12.8%)	131 (14.4%)	131 (14.4%)	132 (15.1%)	146 (16.2%)
	61-70	131 (16.6%)	115 (14.5%)	113 (15.2%)	106 (14.2%)	123 (15.7%)	138 (13.5%)	177 (19.4%)	169 (18.0%)	160 (18.3%)	159 (17.6%)
	71-80	87 (11.1%)	103 (13.0%)	113 (15.2%)	105 (14.1%)	105 (13.4%)	125 (12.2%)	132 (14.5%)	138 (14.7%)	139 (15.9%)	132 (14.6%)
	81-90	57 (7.2%)	71 (8.9%)	61 (8.2%)	91 (12.2%)	89 (11.4%)	115 (11.2%)	92 (10.1%)	86 (9.2%)	83 (9.5%)	84 (9.3%)
	91-100	30 (3.8%)	46 (5.8%)	51 (6.9%)	51 (6.9%)	50 (6.4%)	55 (5.4%)	76 (8.3%)	77 (8.2%)	55 (6.3%)	59 (6.5%)
	101+	31 (3.9%)	40 (5.0%)	32 (4.3%)	46 (6.2%)	58 (7.4%)	57 (5.6%)	50 (5.5%)	40 (4.3%)	55 (6.3%)	46 (5.1%)
	Unrated	244 (31.0%)	252 (31.7%)	220 (29.6%)	174 (23.4%)	174 (22.2%)	266 (26.0%)	122 (13.4%)	133 (14.2%)	143 (16.4%)	154 (17.1%)
Subtotal		787 (100.0%)	795 (100.0%)	743 (100.0%)	744 (100.0%)	784 (100.0%)	1023 (100.0%)	912 (100.0%)	939 (100.0%)	874 (100.0%)	903 (100.0%)
5YO+	0-50	159 (11.5%)	184 (12.9%)	174 (12.4%)	147 (10.6%)	155 (10.3%)	193 (11.6%)	243 (16.2%)	254 (16.6%)	229 (14.8%)	213 (15.0%)
	51-60	213 (15.4%)	197 (13.9%)	183 (13.0%)	197 (14.2%)	217 (14.4%)	228 (13.8%)	242 (16.1%)	235 (15.4%)	290 (18.8%)	234 (16.5%)
	61-70	225 (16.3%)	233 (16.4%)	238 (17.0%)	267 (19.2%)	250 (16.5%)	254 (15.3%)	238 (15.9%)	249 (16.3%)	271 (17.6%)	248 (17.5%)
	71-80	168 (12.2%)	164 (11.5%)	193 (13.8%)	192 (13.8%)	221 (14.6%)	213 (12.8%)	214 (14.3%)	208 (13.6%)	198 (12.8%)	164 (11.6%)
	81-90	106 (7.7%)	109 (7.7%)	122 (8.7%)	147 (10.6%)	172 (11.4%)	171 (10.3%)	156 (10.4%)	157 (10.3%)	129 (8.4%)	142 (10.0%)
	91-100	38 (2.8%)	51 (3.6%)	56 (4.0%)	77 (5.5%)	100 (6.6%)	89 (5.4%)	88 (5.9%)	91 (6.0%)	73 (4.7%)	92 (6.5%)
	101+	44 (3.2%)	45 (3.2%)	53 (3.8%)	63 (4.5%)	71 (4.7%)	82 (4.9%)	75 (5.0%)	67 (4.4%)	67 (4.3%)	78 (5.5%)
	Unrated	426 (30.9%)	439 (30.9%)	384 (27.4%)	301 (21.6%)	325 (21.5%)	428 (25.8%)	245 (16.3%)	267 (17.5%)	287 (18.6%)	248 (17.5%)
Subtotal		1379 (100.0%)	1422 (100.0%)	1403 (100.0%)	1391 (100.0%)	1511 (100.0%)	1658 (100.0%)	1501 (100.0%)	1528 (100.0%)	1544 (100.0%)	1419 (100.0%)
Overall	0-50	477 (8.2%)	447 (7.6%)	449 (7.6%)	418 (6.9%)	433 (6.8%)	559 (7.8%)	621 (9.1%)	718 (10.1%)	614 (9.0%)	630 (9.3%)
	51-60	642 (11.0%)	586 (9.9%)	563 (9.5%)	604 (10.0%)	663 (10.3%)	715 (10.0%)	788 (11.5%)	766 (10.8%)	838 (12.2%)	789 (11.6%)
	61-70	757 (13.0%)	731 (12.4%)	715 (12.1%)	846 (14.0%)	859 (13.4%)	882 (12.3%)	921 (13.4%)	925 (13.1%)	971 (14.2%)	979 (14.4%)
	71-80	633 (10.9%)	661 (11.2%)	704 (11.9%)	739 (12.2%)	825 (12.9%)	866 (12.1%)	850 (12.4%)	815 (11.5%)	891 (13.0%)	793 (11.7%)
	81-90	344 (5.9%)	410 (7.0%)	395 (6.7%)	527 (8.7%)	565 (8.8%)	568 (7.9%)	570 (8.3%)	528 (7.5%)	524 (7.6%)	537 (7.9%)
	91-100	167 (2.9%)	206 (3.5%)	223 (3.8%)	257 (4.3%)	268 (4.2%)	306 (4.3%)	325 (4.7%)	323 (4.6%)	273 (4.0%)	278 (4.1%)
	101+	175 (3.0%)	144 (2.4%)	185 (3.1%)	224 (3.7%)	247 (3.9%)	260 (3.6%)	243 (3.5%)	235 (3.3%)	225 (3.3%)	240 (3.5%)
	Unrated	2618 (45.0%)	2709 (46.0%)	2669 (45.2%)	2426 (40.2%)	2551 (39.8%)	2989 (41.8%)	2539 (37.0%)	2775 (39.2%)	2522 (36.8%)	2535 (37.4%)
Total		5813 (100.0%)	5894 (100.0%)	5903 (100.0%)	6041 (100.0%)	6411 (100.0%)	7145 (100.0%)	6857 (100.0%)	7085 (100.0%)	6858 (100.0%)	6781 (100.0%)

Jump (including Dual)

AgeCat	RatBand	2012	2013	2014	2015	2016	2017	2018	2019	2020	2021
3YO	0-100	9 (1.6%)	8 (1.4%)	10 (1.5%)	13 (2.2%)	9 (1.5%)	3 (0.5%)	15 (2.3%)	10 (1.5%)	9 (1.6%)	24 (4.0%)
	101-110	9 (1.6%)	4 (0.7%)	8 (1.2%)	7 (1.2%)	10 (1.6%)	16 (2.5%)	14 (2.1%)	15 (2.3%)	20 (3.5%)	12 (2.0%)
	111-120	9 (1.6%)	14 (2.4%)	14 (2.2%)	8 (1.4%)	6 (1.0%)	7 (1.1%)	4 (0.6%)	12 (1.8%)	11 (1.9%)	14 (2.4%)
	121-130	3 (0.5%)	9 (1.6%)	5 (0.8%)	9 (1.5%)	8 (1.3%)	4 (0.6%)	8 (1.2%)	11 (1.7%)	7 (1.2%)	12 (2.0%)
	131-140	2 (0.3%)	3 (0.5%)	7 (1.1%)	9 (1.5%)	5 (0.8%)	3 (0.5%)	5 (0.8%)	2 (0.3%)	7 (1.2%)	4 (0.7%)
	141-150	1 (0.2%)	1 (0.2%)	NA (-)	2 (0.3%)	2 (0.3%)	1 (0.2%)	2 (0.3%)	1 (0.2%)	1 (0.2%)	NA (-)
	Unrated	544 (94.3%)	535 (93.2%)	607 (93.2%)	543 (91.9%)	572 (93.5%)	596 (94.6%)	604 (92.6%)	601 (92.2%)	517 (90.4%)	527 (88.9%)
Subtotal		577 (100.0%)	574 (100.0%)	651 (100.0%)	591 (100.0%)	612 (100.0%)	630 (100.0%)	652 (100.0%)	652 (100.0%)	572 (100.0%)	593 (100.0%)
4-5YO	0-100	153 (7.0%)	194 (8.6%)	173 (7.8%)	164 (7.3%)	189 (8.2%)	222 (9.1%)	205 (8.3%)	250 (9.7%)	321 (12.5%)	332 (13.5%)
	101-110	82 (3.7%)	101 (4.5%)	108 (4.8%)	137 (6.1%)	142 (6.1%)	157 (6.4%)	189 (7.7%)	180 (7.0%)	174 (6.8%)	158 (6.4%)
	111-120	108 (4.9%)	129 (5.7%)	120 (5.4%)	154 (6.9%)	153 (6.6%)	177 (7.2%)	188 (7.6%)	195 (7.5%)	184 (7.1%)	161 (6.5%)
	121-130	69 (3.1%)	103 (4.5%)	100 (4.5%)	136 (6.1%)	127 (5.5%)	159 (6.5%)	166 (6.7%)	170 (6.6%)	158 (6.1%)	111 (4.5%)
	131-140	43 (2.0%)	43 (1.9%)	52 (2.3%)	76 (3.4%)	79 (3.4%)	86 (3.5%)	92 (3.7%)	80 (3.1%)	80 (3.1%)	47 (1.9%)
	141-150	23 (1.0%)	24 (1.1%)	20 (0.9%)	33 (1.5%)	29 (1.3%)	30 (1.2%)	22 (0.9%)	31 (1.2%)	29 (1.1%)	11 (0.4%)
	151+	4 (0.2%)	7 (0.3%)	13 (0.6%)	9 (0.4%)	8 (0.3%)	8 (0.3%)	9 (0.4%)	11 (0.4%)	7 (0.3%)	5 (0.2%)
Unrated		1714 (78.1%)	1666 (73.5%)	1643 (73.7%)	1533 (68.4%)	1589 (68.6%)	1613 (65.8%)	1592 (64.6%)	1669 (64.5%)	1624 (63.0%)	1643 (66.6%)
Subtotal		2196 (100.0%)	2267 (100.0%)	2229 (100.0%)	2242 (100.0%)	2316 (100.0%)	2452 (100.0%)	2463 (100.0%)	2586 (100.0%)	2577 (100.0%)	2468 (100.0%)
6-7YO	0-100	241 (13.3%)	330 (18.8%)	286 (16.2%)	345 (19.2%)	298 (17.7%)	337 (19.6%)	377 (21.0%)	385 (20.5%)	525 (24.6%)	482 (25.0%)
	101-110	158 (8.7%)	175 (9.9%)	177 (10.1%)	197 (11.0%)	203 (12.0%)	236 (13.7%)	230 (12.8%)	238 (12.7%)	293 (13.7%)	239 (12.4%)
	111-120	167 (9.2%)	178 (10.1%)	201 (11.4%)	234 (13.0%)	236 (14.0%)	222 (12.9%)	249 (13.9%)	250 (13.3%)	305 (14.3%)	276 (14.3%)
	121-130	139 (7.7%)	178 (10.1%)	197 (11.2%)	210 (11.7%)	180 (10.7%)	205 (11.9%)	241 (13.4%)	279 (14.8%)	282 (13.2%)	238 (12.3%)
	131-140	73 (4.0%)	91 (5.2%)	97 (5.5%)	132 (7.4%)	156 (9.3%)	165 (9.6%)	171 (9.5%)	203 (10.8%)	194 (9.1%)	159 (8.2%)
	141-150	33 (1.8%)	40 (2.3%)	40 (2.3%)	58 (3.2%)	66 (3.9%)	74 (4.3%)	101 (5.6%)	70 (3.7%)	81 (3.8%)	58 (3.0%)
	151+	15 (0.8%)	19 (1.1%)	32 (1.8%)	33 (1.8%)	26 (1.5%)	36 (2.1%)	34 (1.9%)	45 (2.4%)	35 (1.6%)	28 (1.5%)
Unrated		982 (54.3%)	748 (42.5%)	730 (41.5%)	586 (32.6%)	520 (30.9%)	445 (25.9%)	391 (21.8%)	410 (21.8%)	418 (19.6%)	451 (23.4%)
Subtotal		1808 (100.0%)	1759 (100.0%)	1760 (100.0%)	1795 (100.0%)	1685 (100.0%)	1720 (100.0%)	1794 (100.0%)	1880 (100.0%)	2133 (100.0%)	1931 (100.0%)
8YO+	0-100	242 (21.2%)	303 (25.3%)	289 (24.4%)	316 (25.1%)	346 (26.2%)	346 (26.0%)	354 (26.0%)	372 (27.1%)	461 (28.6%)	371 (25.3%)
	101-110	102 (8.9%)	125 (10.4%)	123 (10.4%)	179 (14.2%)	161 (12.2%)	178 (13.4%)	191 (14.0%)	186 (13.5%)	202 (12.5%)	158 (10.8%)
	111-120	98 (8.6%)	135 (11.3%)	133 (11.2%)	158 (12.5%)	176 (13.3%)	186 (14.0%)	174 (12.8%)	157 (11.4%)	187 (11.6%)	197 (13.4%)
	121-130	98 (8.6%)	126 (10.5%)	113 (9.5%)	154 (12.2%)	136 (10.3%)	169 (12.7%)	159 (11.7%)	159 (11.6%)	179 (11.1%)	181 (12.3%)
	131-140	66 (5.8%)	86 (7.2%)	106 (8.9%)	117 (9.3%)	130 (9.8%)	134 (10.1%)	135 (9.9%)	143 (10.4%)	148 (9.2%)	131 (8.9%)
	141-150	38 (3.3%)	33 (2.8%)	40 (3.4%)	53 (4.2%)	52 (3.9%)	67 (5.0%)	81 (5.9%)	87 (6.3%)	91 (5.6%)	84 (5.7%)
	151+	29 (2.5%)	24 (2.0%)	28 (2.4%)	28 (2.2%)	36 (2.7%)	36 (2.7%)	35 (2.6%)	38 (2.8%)	53 (3.3%)	33 (2.2%)
Unrated		467 (41.0%)	367 (30.6%)	354 (29.8%)	256 (20.3%)	285 (21.6%)	214 (16.1%)	234 (17.2%)	231 (16.8%)	291 (18.1%)	314 (21.4%)
Subtotal		1140 (100.0%)	1199 (100.0%)	1186 (100.0%)	1261 (100.0%)	1322 (100.0%)	1330 (100.0%)	1363 (100.0%)	1373 (100.0%)	1612 (100.0%)	1469 (100.0%)
Overall	0-100	645 (11.3%)	835 (14.4%)	758 (13.0%)	838 (14.2%)	842 (14.2%)	908 (14.8%)	951 (15.2%)	1017 (15.7%)	1316 (19.1%)	1209 (18.7%)
	101-110	351 (6.1%)	405 (7.0%)	416 (7.1%)	520 (8.8%)	516 (8.7%)	587 (9.6%)	624 (9.9%)	619 (9.5%)	689 (10.0%)	567 (8.8%)
	111-120	382 (6.7%)	456 (7.9%)	468 (8.0%)	554 (9.4%)	571 (9.6%)	592 (9.7%)	615 (9.8%)	614 (9.5%)	687 (10.0%)	648 (10.0%)
	121-130	309 (5.4%)	416 (7.2%)	415 (7.1%)	509 (8.6%)	451 (7.6%)	537 (8.8%)	574 (9.2%)	619 (9.5%)	626 (9.1%)	542 (8.4%)
	131-140	184 (3.2%)	223 (3.8%)	262 (4.5%)	334 (5.7%)	370 (6.2%)	388 (6.3%)	403 (6.4%)	428 (6.6%)	429 (6.2%)	341 (5.3%)
	141-150	95 (1.7%)	98 (1.7%)	100 (1.7%)	146 (2.5%)	149 (2.5%)	172 (2.8%)	206 (3.3%)	189 (2.9%)	202 (2.9%)	153 (2.4%)
	151+	48 (0.8%)	50 (0.9%)	73 (1.3%)	70 (1.2%)	70 (1.2%)	80 (1.3%)	78 (1.2%)	94 (1.4%)	95 (1.4%)	66 (1.0%)
Unrated		3707 (64.8%)	3316 (57.2%)	3334 (57.2%)	2918 (49.6%)	2966 (50.0%)	2868 (46.8%)	2821 (45.0%)	2911 (44.8%)	2850 (41.3%)	2935 (45.4%)
Total		5721 (100.0%)	5799 (100.0%)	5826 (100.0%)	5889 (100.0%)	5935 (100.0%)	6132 (100.0%)	6272 (100.0%)	6491 (100.0%)	6894 (100.0%)	6461 (100.0%)

# Young Horses Entering Training

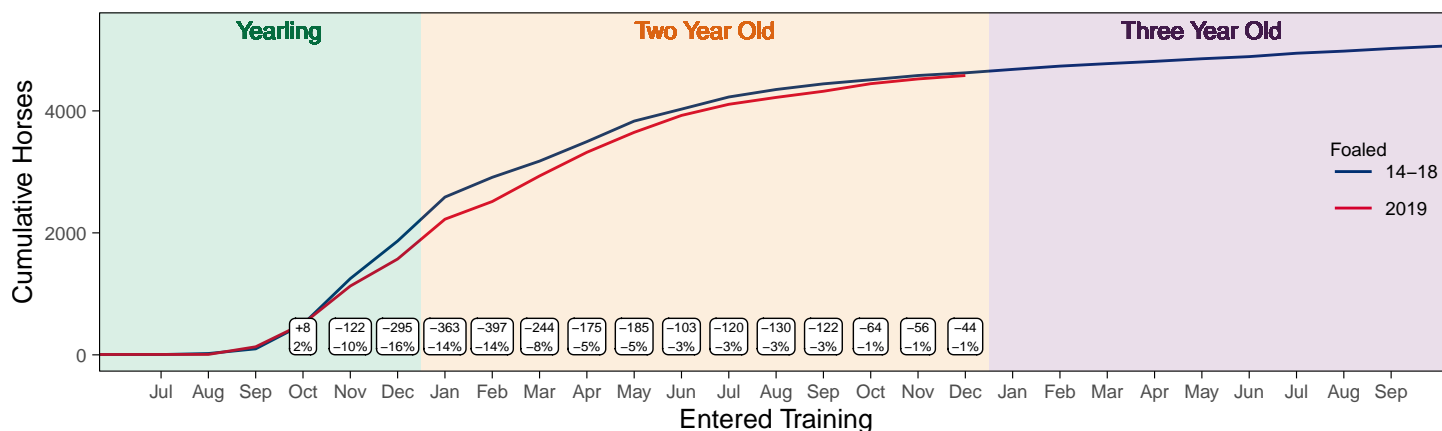
## Flat Yearlings in Training versus Previous Years

Period	Jan	Feb	Mar	Apr	May	Jun	Jul	Aug	Sep	Oct	Nov	Dec
2021	0	0	0	0	0	0	0	5	79	315	716	1287
2020	0	0	0	0	1	2	1	2	60	235	712	1365
5YrAvg	1	1	1	1	1	1	1	2	44	241	724	1460

## Foals Entering Training for the First Time

### 2019 Foals Entering Training Over Time

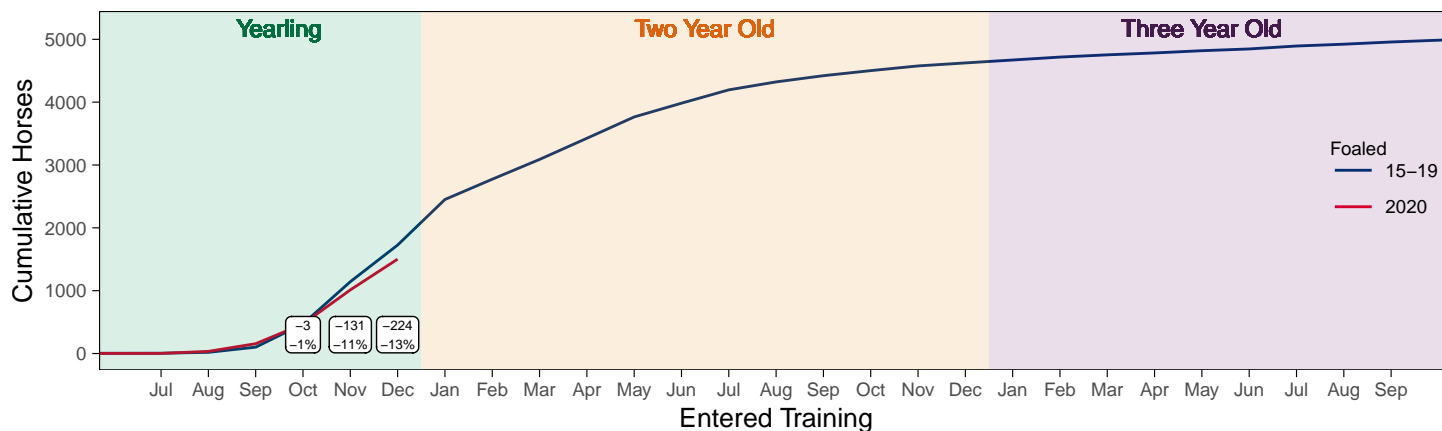
Cumulative Flat Horses foaled in 2019 shown by first in training notification against trend



Cumulative individual horses entering training for the first time by the end of each month.

### 2020 Foals Entering Training Over Time

Cumulative Flat Horses foaled in 2020 shown by first in training notification against trend



Cumulative individual horses entering training for the first time by the end of each month.

# Annual Horses in Training

Type	2012	2013	2014	2015	2016	2017	2018	2019	2020	2021	vs. Last Year	vs. Pre-Covid
Flat	12464	12452	12359	12615	13122	13429	13403	13696	13505	13389	-116 / -0.9%	-307 / -2.2%
Jump	8590	8477	8354	8454	8402	8134	8095	8770	8636	9396	+760 / +8.8%	+626 / +7.1%
Dual	931	907	932	861	832	1136	1464	848	939	897	-42 / -4.5%	+49 / +5.8%
Hunter	2974	2653	2508	2389	2275	2180	2060	1982	1724	1491	-233 / -13.5%	-491 / -24.8%
<b>Total</b>	<b>21985</b>	<b>21836</b>	<b>21645</b>	<b>21930</b>	<b>22356</b>	<b>22699</b>	<b>22962</b>	<b>23314</b>	<b>23080</b>	<b>23682</b>	<b>+602 / +2.6%</b>	<b>+368 / +1.6%</b>

'vs. Pre-Covid' is comparison between 2021 and 2019

## Flat

AgeCat	2012	2013	2014	2015	2016	2017	2018	2019	2020	2021	vs. Last Year	vs. Pre-Covid
2YO	4046	4161	4199	4511	4542	4607	4612	4666	4490	4515	+25 / +0.6%	-151 / -3.2%
3YO	3876	3685	3679	3757	4010	4069	4187	4171	4233	4085	-148 / -3.5%	-86 / -2.1%
4YO	1905	1911	1774	1767	1919	2009	1938	2055	2014	2118	+104 / +5.2%	+63 / +3.1%
5YO+	2637	2695	2707	2580	2651	2744	2666	2804	2768	2671	-97 / -3.5%	-133 / -4.7%
<b>Total</b>	<b>12464</b>	<b>12452</b>	<b>12359</b>	<b>12615</b>	<b>13122</b>	<b>13429</b>	<b>13403</b>	<b>13696</b>	<b>13505</b>	<b>13389</b>	<b>-116 / -0.9%</b>	<b>-307 / -2.2%</b>

'vs. Pre-Covid' is comparison between 2021 and 2019

## Jump

AgeCat	2012	2013	2014	2015	2016	2017	2018	2019	2020	2021	vs. Last Year	vs. Pre-Covid
3YO	399	424	509	528	486	388	458	471	436	467	+31 / +7.1%	-4 / -0.8%
4-5YO	2996	2904	2739	2775	2855	2785	2686	2978	2950	3029	+79 / +2.7%	+51 / +1.7%
6-7YO	2870	2753	2683	2806	2597	2484	2563	2812	2782	3040	+258 / +9.3%	+228 / +8.1%
8YO+	2325	2396	2423	2345	2464	2477	2388	2509	2468	2860	+392 / +15.9%	+351 / +14.0%
<b>Total</b>	<b>8590</b>	<b>8477</b>	<b>8354</b>	<b>8454</b>	<b>8402</b>	<b>8134</b>	<b>8095</b>	<b>8770</b>	<b>8636</b>	<b>9396</b>	<b>+760 / +8.8%</b>	<b>+626 / +7.1%</b>

'vs. Pre-Covid' is comparison between 2021 and 2019

## Dual

AgeCat	2012	2013	2014	2015	2016	2017	2018	2019	2020	2021	vs. Last Year	vs. Pre-Covid
3YO	153	125	139	128	130	201	184	140	181	182	+1 / +0.6%	+42 / +30.0%
4YO	225	233	226	190	198	299	368	238	228	243	+15 / +6.6%	+5 / +2.1%
5YO+	553	549	567	543	504	636	912	470	530	472	-58 / -10.9%	+2 / +0.4%
<b>Total</b>	<b>931</b>	<b>907</b>	<b>932</b>	<b>861</b>	<b>832</b>	<b>1136</b>	<b>1464</b>	<b>848</b>	<b>939</b>	<b>897</b>	<b>-42 / -4.5%</b>	<b>+49 / +5.8%</b>

'vs. Pre-Covid' is comparison between 2021 and 2019

## Hunter Chasers

AgeCat	2012	2013	2014	2015	2016	2017	2018	2019	2020	2021	vs. Last Year	vs. Pre-Covid
4-5YO	427	364	291	303	300	323	379	404	388	291	-97 / -25.0%	-113 / -28.0%
6-7YO	923	838	788	690	632	580	559	542	440	349	-91 / -20.7%	-193 / -35.6%
8-9YO	736	662	703	688	600	572	450	418	354	343	-11 / -3.1%	-75 / -17.9%
10YO+	888	789	726	708	743	705	672	618	542	508	-34 / -6.3%	-110 / -17.8%
<b>Total</b>	<b>2974</b>	<b>2653</b>	<b>2508</b>	<b>2389</b>	<b>2275</b>	<b>2180</b>	<b>2060</b>	<b>1982</b>	<b>1724</b>	<b>1491</b>	<b>-233 / -13.5%</b>	<b>-491 / -24.8%</b>

'vs. Pre-Covid' is comparison between 2021 and 2019

# Annual Runners

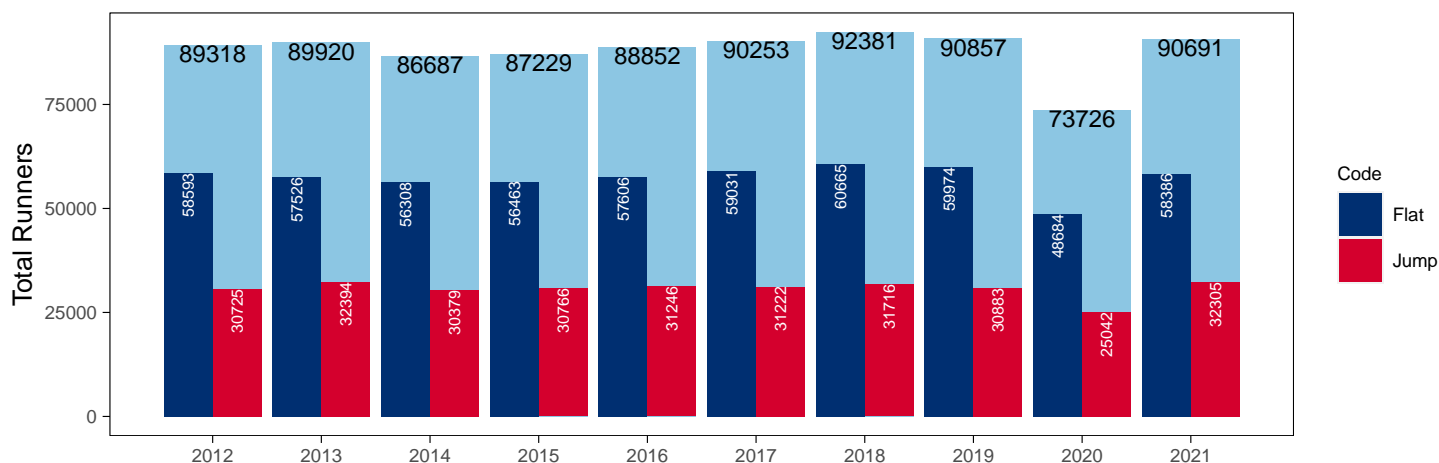
## Annual Total Runners

Code	2012	2013	2014	2015	2016	2017	2018	2019	2020	2021	vs. Last Year	vs. Pre-Covid
Flat	58593	57526	56308	56463	57606	59031	60665	59974	48684	58386	+9702 / +19.9%	-1588 / -2.6%
Jump	30725	32394	30379	30766	31246	31222	31716	30883	25042	32305	+7263 / +29.0%	+1422 / +4.6%
<b>Total</b>	<b>89318</b>	<b>89920</b>	<b>86687</b>	<b>87229</b>	<b>88852</b>	<b>90253</b>	<b>92381</b>	<b>90857</b>	<b>73726</b>	<b>90691</b>	<b>+16965 / +23.0%</b>	<b>-166 / -0.2%</b>

'vs. Pre-Covid' is comparison between 2021 and 2019

## YTD Total Runners

Total Runners in GB Races, shown by Code and Total



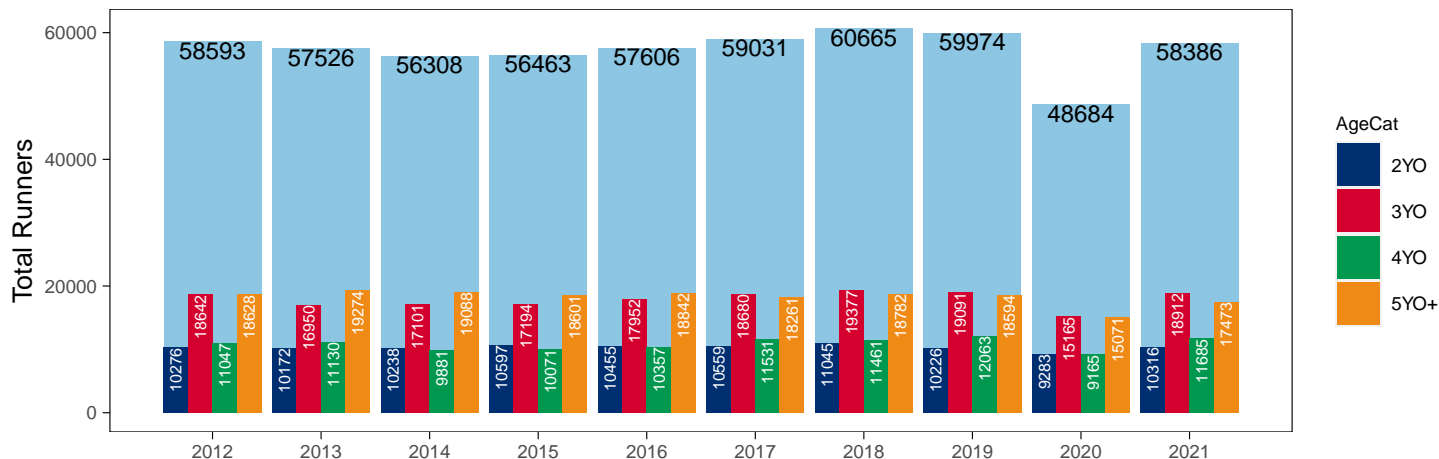
## Flat

AgeCat	2012	2013	2014	2015	2016	2017	2018	2019	2020	2021	vs. Last Year	vs. Pre-Covid
2YO	10276	10172	10238	10597	10455	10559	11045	10226	9283	10316	+1033 / +11.1%	+90 / +0.9%
3YO	18642	16950	17101	17194	17952	18680	19377	19091	15165	18912	+3747 / +24.7%	-179 / -0.9%
4YO	11047	11130	9881	10071	10357	11531	11461	12063	9165	11685	+2520 / +27.5%	-378 / -3.1%
5YO+	18628	19274	19088	18601	18842	18261	18782	18594	15071	17473	+2402 / +15.9%	-1121 / -6.0%
<b>Total</b>	<b>58593</b>	<b>57526</b>	<b>56308</b>	<b>56463</b>	<b>57606</b>	<b>59031</b>	<b>60665</b>	<b>59974</b>	<b>48684</b>	<b>58386</b>	<b>+9702 / +19.9%</b>	<b>-1588 / -2.6%</b>

'vs. Pre-Covid' is comparison between 2021 and 2019

## Annual Total Flat Runners by Age

Total Runners in GB Flat Races, shown by Age Category and Total



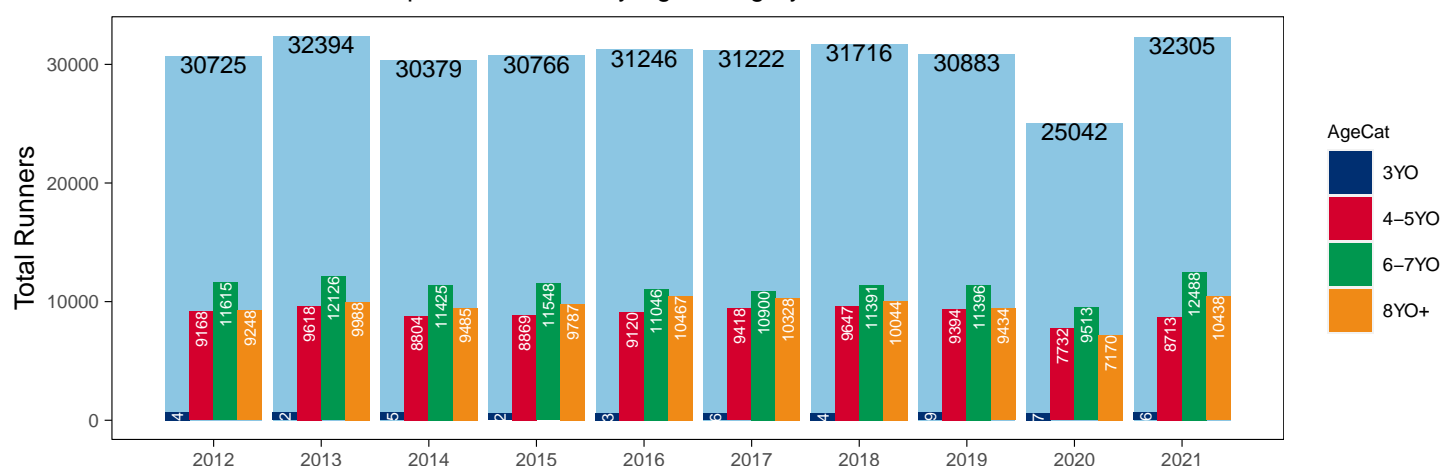
## Jump

AgeCat	2012	2013	2014	2015	2016	2017	2018	2019	2020	2021	vs. Last Year	vs. Pre-Covid
3YO	694	662	665	562	613	576	634	659	627	666	+39 / +6.2%	+7 / +1.1%
4-5YO	9168	9618	8804	8869	9120	9418	9647	9394	7732	8713	+981 / +12.7%	-681 / -7.2%
6-7YO	11615	12126	11425	11548	11046	10900	11391	11396	9513	12488	+2975 / +31.3%	+1092 / +9.6%
8YO+	9248	9988	9485	9787	10467	10328	10044	9434	7170	10438	+3268 / +45.6%	+1004 / +10.6%
<b>Total</b>	<b>30725</b>	<b>32394</b>	<b>30379</b>	<b>30766</b>	<b>31246</b>	<b>31222</b>	<b>31716</b>	<b>30883</b>	<b>25042</b>	<b>32305</b>	<b>+7263 / +29.0%</b>	<b>+1422 / +4.6%</b>

'vs. Pre-Covid' is comparison between 2021 and 2019

### Annual Total Jump Runners by Age

Total Runners in GB Jump Races, shown by Age Category and Total



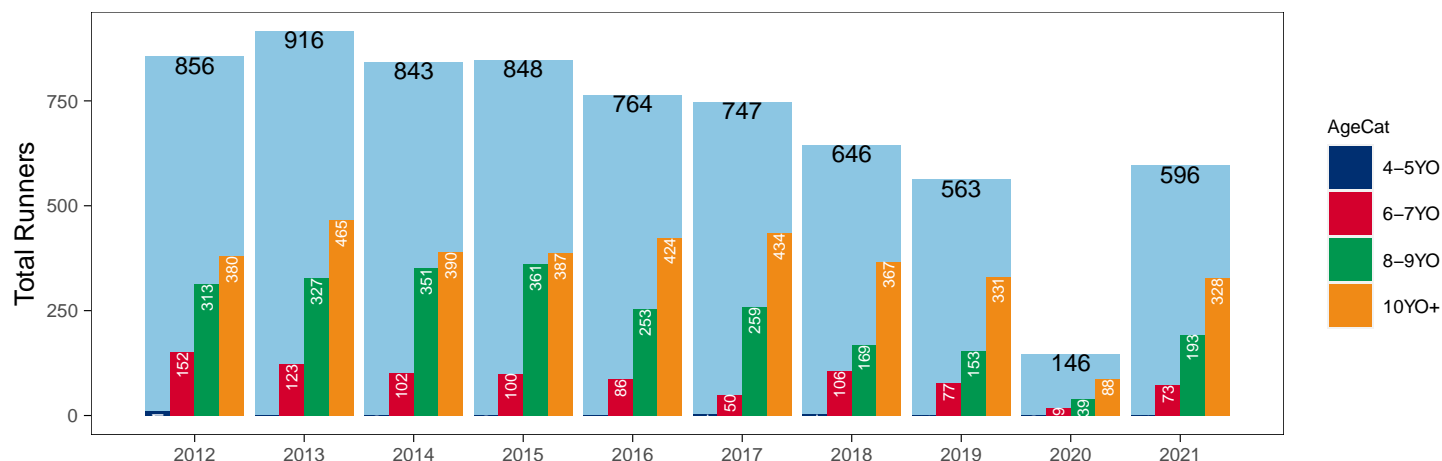
## Hunter Chases

AgeCat	2012	2013	2014	2015	2016	2017	2018	2019	2020	2021	vs. Last Year	vs. Pre-Covid
4-5YO	11	1			1	4	4	2		2	NA / NA	0 / 0.0%
6-7YO	152	123	102	100	86	50	106	77	19	73	+54 / +284.2%	-4 / -5.2%
8-9YO	313	327	351	361	253	259	169	153	39	193	+154 / +394.9%	+40 / +26.1%
10YO+	380	465	390	387	424	434	367	331	88	328	+240 / +272.7%	-3 / -0.9%
<b>Total</b>	<b>856</b>	<b>916</b>	<b>843</b>	<b>848</b>	<b>764</b>	<b>747</b>	<b>646</b>	<b>563</b>	<b>146</b>	<b>596</b>	<b>+450 / +308.2%</b>	<b>+33 / +5.9%</b>

'vs. Pre-Covid' is comparison between 2021 and 2019

### Annual Total Hunter Chase Runners by Age

Total Runners in GB Hunter Chases shown by Age Category and Total



## Annual Total Runners by Country Trained

Code	Country	2012	2013	2014	2015	2016	2017	2018	2019	2020	2021
Flat	GB	58148	57005	55855	55862	57006	58268	59820	59109	48405	57987
	IRE	362	416	359	463	518	679	780	792	251	364
	Other	83	105	94	138	82	84	65	73	28	35
Jump	GB	30045	31686	29622	29927	30290	30374	30994	30126	24692	31694
	IRE	668	696	753	832	941	830	709	741	338	606
	Other	12	12	4	7	15	18	13	16	12	5
Overall	GB	88193	88691	85477	85789	87296	88642	90814	89235	73097	89681
	IRE	1030	1112	1112	1295	1459	1509	1489	1533	589	970
	Other	95	117	98	145	97	102	78	89	40	40

## Annual GB Trained Runners Racing Abroad

Code	Country	2012	2013	2014	2015	2016	2017	2018	2019	2020	2021
Flat	IRE	116	135	147	184	193	188	156	164	60	57
	FR	277	331	386	373	424	487	534	562	306	236
	GNV	24	20	22	19	25	30	37	50	24	12
	UAE	344	359	331	289	220	298	276	303	286	248
	BAH								6	7	23
	KSA									15	21
	Other	147	125	162	162	144	141	172	152	62	84
	<b>Total</b>	<b>908</b>	<b>970</b>	<b>1048</b>	<b>1027</b>	<b>1006</b>	<b>1144</b>	<b>1175</b>	<b>1237</b>	<b>760</b>	<b>681</b>
Jump	IRE	73	53	106	99	103	91	61	83	8	24
	FR	49	66	41	36	63	32	20	56	93	139
	Other	8	12	10	8	12	8	7	10		8
	<b>Total</b>	<b>130</b>	<b>131</b>	<b>157</b>	<b>143</b>	<b>178</b>	<b>131</b>	<b>88</b>	<b>149</b>	<b>101</b>	<b>171</b>

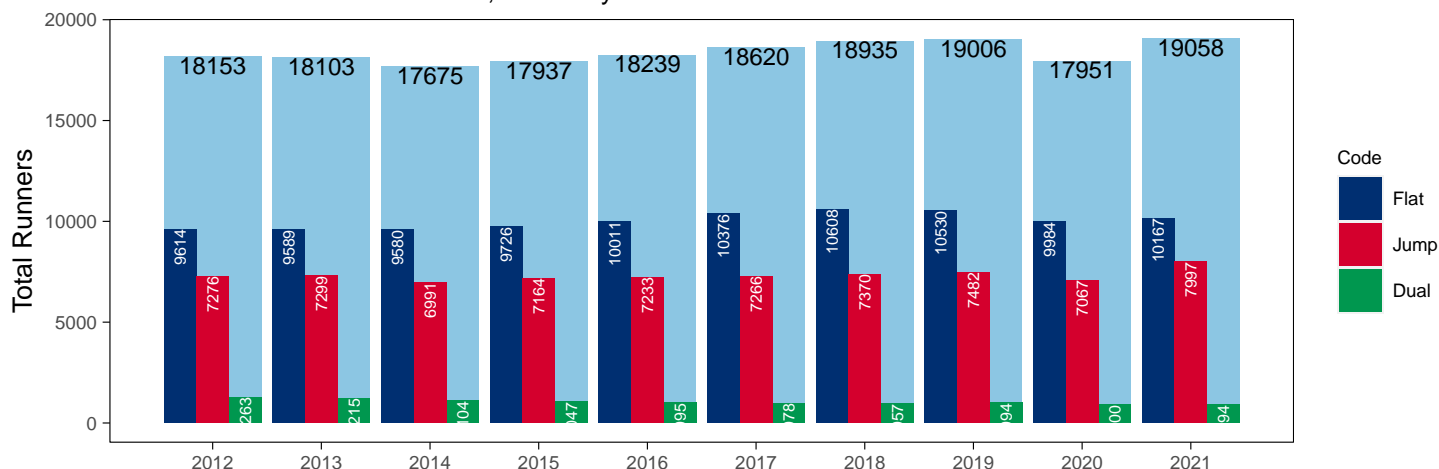
## Annual Individual Runners

Code	2012	2013	2014	2015	2016	2017	2018	2019	2020	2021	vs. Last Year	vs. Pre-Covid
Flat	9614	9589	9580	9726	10011	10376	10608	10530	9984	10167	+183 / +1.8%	-363 / -3.4%
Jump	7276	7299	6991	7164	7233	7266	7370	7482	7067	7997	+930 / +13.2%	+515 / +6.9%
Dual	1263	1215	1104	1047	995	978	957	994	900	894	-6 / -0.7%	-100 / -10.1%
<b>Overall</b>	<b>18153</b>	<b>18103</b>	<b>17675</b>	<b>17937</b>	<b>18239</b>	<b>18620</b>	<b>18935</b>	<b>19006</b>	<b>17951</b>	<b>19058</b>	<b>+1107 / +6.2%</b>	<b>+52 / +0.3%</b>

'vs. Pre-Covid' is comparison between 2021 and 2019

## Annual Individual Runners

Individual Runners in GB Races, shown by Code and Total



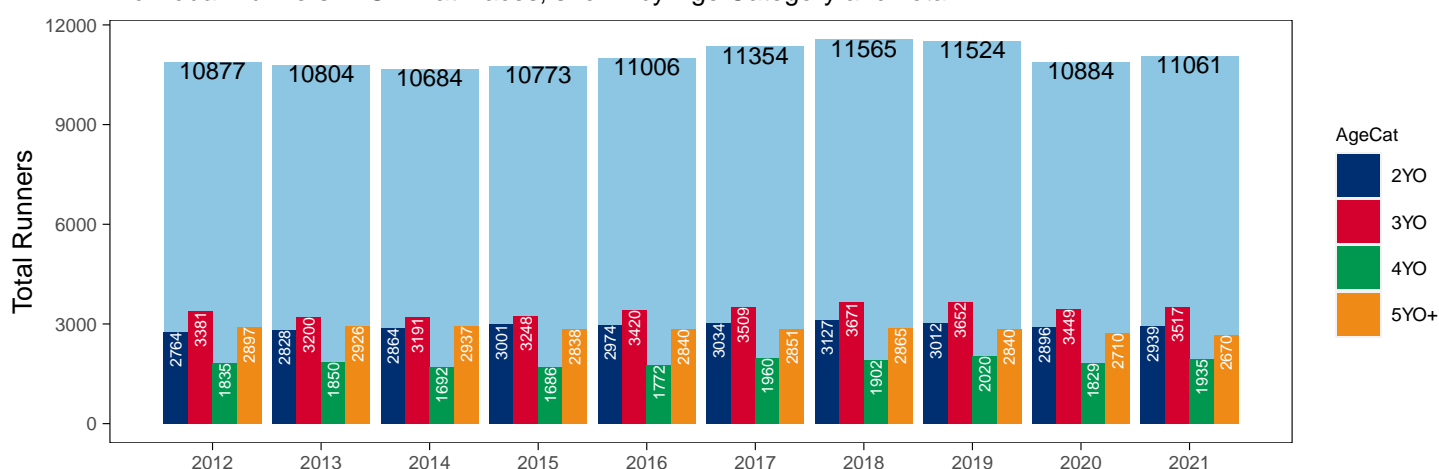
## Flat

AgeCat	2012	2013	2014	2015	2016	2017	2018	2019	2020	2021	vs. Last Year	vs. Pre-Covid
2YO	2764	2828	2864	3001	2974	3034	3127	3012	2896	2939	+43 / +1.5%	-73 / -2.4%
3YO	3381	3200	3191	3248	3420	3509	3671	3652	3449	3517	+68 / +2.0%	-135 / -3.7%
4YO	1835	1850	1692	1686	1772	1960	1902	2020	1829	1935	+106 / +5.8%	-85 / -4.2%
5YO+	2897	2926	2937	2838	2840	2851	2865	2840	2710	2670	-40 / -1.5%	-170 / -6.0%
<b>Total</b>	<b>10877</b>	<b>10804</b>	<b>10684</b>	<b>10773</b>	<b>11006</b>	<b>11354</b>	<b>11565</b>	<b>11524</b>	<b>10884</b>	<b>11061</b>	<b>+177 / +1.6%</b>	<b>-463 / -4.0%</b>

'vs. Pre-Covid' is comparison between 2021 and 2019

### Annual Individual Flat Runners by Age

Individual Runners in GB Flat Races, shown by Age Category and Total



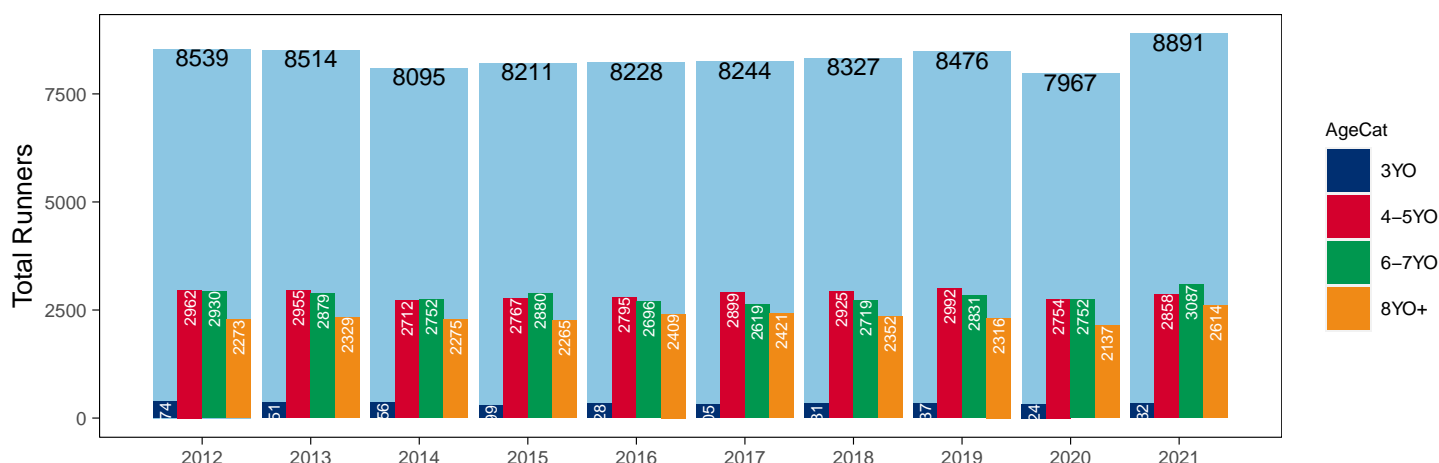
## Jump

AgeCat	2012	2013	2014	2015	2016	2017	2018	2019	2020	2021	vs. Last Year	vs. Pre-Covid
3YO	374	351	356	299	328	305	331	337	324	332	+8 / +2.5%	-5 / -1.5%
4-5YO	2962	2955	2712	2767	2795	2899	2925	2992	2754	2858	+104 / +3.8%	-134 / -4.5%
6-7YO	2930	2879	2752	2880	2696	2619	2719	2831	2752	3087	+335 / +12.2%	+256 / +9.0%
8YO+	2273	2329	2275	2265	2409	2421	2352	2316	2137	2614	+477 / +22.3%	+298 / +12.9%
<b>Total</b>	<b>8539</b>	<b>8514</b>	<b>8095</b>	<b>8211</b>	<b>8228</b>	<b>8244</b>	<b>8327</b>	<b>8476</b>	<b>7967</b>	<b>8891</b>	<b>+924 / +11.6%</b>	<b>+415 / +4.9%</b>

'vs. Pre-Covid' is comparison between 2021 and 2019

### Annual Individual Jump Runners by Age

Individual Runners in GB Jump Races, shown by Age Category and Total





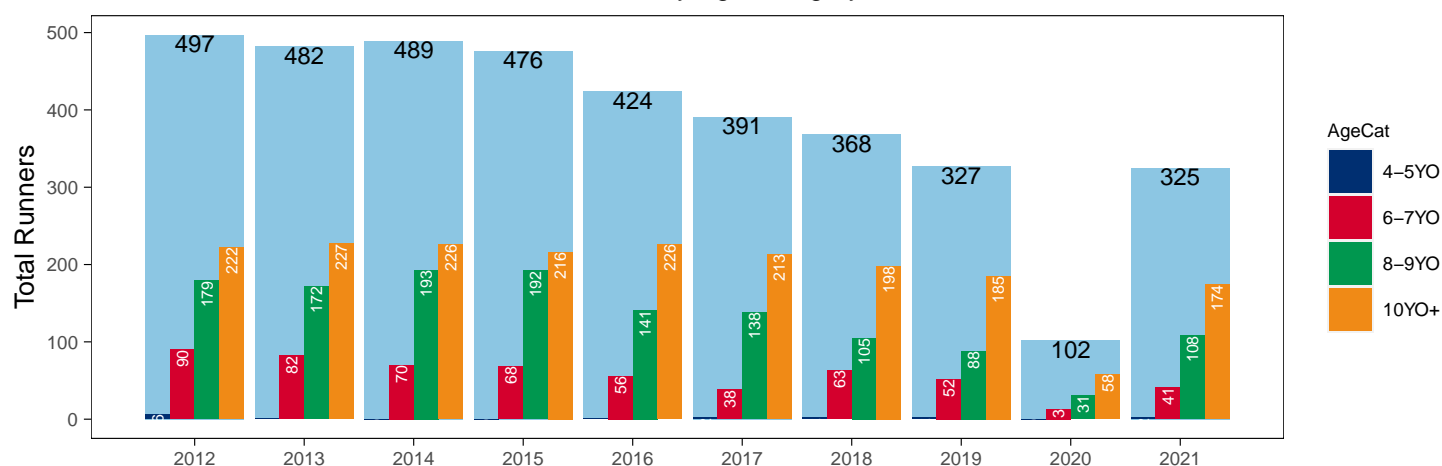
## Hunter Chases

AgeCat	2012	2013	2014	2015	2016	2017	2018	2019	2020	2021	vs. Last Year	vs. Pre-Covid
4-5YO	6	1			1	2	2	2		2	NA / NA	0 / 0.0%
6-7YO	90	82	70	68	56	38	63	52	13	41	+28 / +215.4%	-11 / -21.2%
8-9YO	179	172	193	192	141	138	105	88	31	108	+77 / +248.4%	+20 / +22.7%
10YO+	222	227	226	216	226	213	198	185	58	174	+116 / +200.0%	-11 / -5.9%
<b>Total</b>	<b>497</b>	<b>482</b>	<b>489</b>	<b>476</b>	<b>424</b>	<b>391</b>	<b>368</b>	<b>327</b>	<b>102</b>	<b>325</b>	<b>+223 / +218.6%</b>	<b>-2 / -0.6%</b>

'vs. Pre-Covid' is comparison between 2021 and 2019

## Annual Individual Hunter Chase Runners by Age

Individual Runners in GB Hunter Chases shown by Age Category and Total



## Annual Individual Runners by Country Trained

Code	Country	2012	2013	2014	2015	2016	2017	2018	2019	2020	2021
Flat	GB	58148	57005	55855	55862	57006	58268	59820	59109	48405	57987
	IRE	362	416	359	463	518	679	780	792	251	364
	Other	83	105	94	138	82	84	65	73	28	35
Jump	GB	30045	31686	29622	29927	30290	30374	30994	30126	24692	31694
	IRE	668	696	753	832	941	830	709	741	338	606
	Other	12	12	4	7	15	18	13	16	12	5
<b>Overall</b>	<b>GB</b>	<b>88193</b>	<b>88691</b>	<b>85477</b>	<b>85789</b>	<b>87296</b>	<b>88642</b>	<b>90814</b>	<b>89235</b>	<b>73097</b>	<b>89681</b>
	<b>IRE</b>	<b>1030</b>	<b>1112</b>	<b>1112</b>	<b>1295</b>	<b>1459</b>	<b>1509</b>	<b>1489</b>	<b>1533</b>	<b>589</b>	<b>970</b>
	<b>Other</b>	<b>95</b>	<b>117</b>	<b>98</b>	<b>145</b>	<b>97</b>	<b>102</b>	<b>78</b>	<b>89</b>	<b>40</b>	<b>40</b>

## Frequency of Runs

### Annual Average Runs per Horse

Code	2012	2013	2014	2015	2016	2017	2018	2019	2020	2021
Flat	5.39	5.32	5.27	5.24	5.23	5.20	5.25	5.20	4.47	5.28
Jump	3.60	3.80	3.75	3.75	3.80	3.79	3.81	3.64	3.14	3.63
<b>Overall</b>	<b>4.92</b>	<b>4.97</b>	<b>4.90</b>	<b>4.86</b>	<b>4.87</b>	<b>4.85</b>	<b>4.88</b>	<b>4.78</b>	<b>4.11</b>	<b>4.76</b>

### Annual Proportion of Horses by Count of Runs

Runs	2012	2013	2014	2015	2016	2017	2018	2019	2020	2021
<b>Flat</b>										
1	1520 (14.0%)	1544 (14.3%)	1498 (14.0%)	1528 (14.2%)	1579 (14.3%)	1660 (14.6%)	1693 (14.6%)	1700 (14.8%)	1761 (16.2%)	1533 (13.9%)
2	1324 (12.2%)	1415 (13.1%)	1480 (13.9%)	1444 (13.4%)	1403 (12.7%)	1485 (13.1%)	1464 (12.7%)	1600 (13.9%)	1718 (15.8%)	1372 (12.4%)
3	1419 (13.0%)	1470 (13.6%)	1386 (13.0%)	1464 (13.6%)	1481 (13.5%)	1555 (13.7%)	1613 (13.9%)	1550 (13.5%)	1686 (15.5%)	1501 (13.6%)
4	1237 (11.4%)	1169 (10.8%)	1143 (10.7%)	1205 (11.2%)	1202 (10.9%)	1192 (10.5%)	1276 (11.0%)	1249 (10.8%)	1333 (12.2%)	1216 (11.0%)
5+	5377 (49.4%)	5206 (48.2%)	5177 (48.5%)	5132 (47.6%)	5341 (48.5%)	5462 (48.1%)	5519 (47.7%)	5425 (47.1%)	4386 (40.3%)	5439 (49.2%)
<b>Jump</b>										
1	2076 (24.3%)	1937 (22.8%)	1867 (23.1%)	1870 (22.8%)	1856 (22.6%)	1901 (23.1%)	1820 (21.9%)	1919 (22.6%)	1915 (24.0%)	1973 (22.2%)
2	1618 (18.9%)	1527 (17.9%)	1458 (18.0%)	1447 (17.6%)	1448 (17.6%)	1460 (17.7%)	1395 (16.8%)	1577 (18.6%)	1616 (20.3%)	1632 (18.4%)
3	1272 (14.9%)	1176 (13.8%)	1118 (13.8%)	1158 (14.1%)	1182 (14.4%)	1124 (13.6%)	1205 (14.5%)	1274 (15.0%)	1421 (17.8%)	1391 (15.6%)
4	1016 (11.9%)	1015 (11.9%)	973 (12.0%)	1035 (12.6%)	979 (11.9%)	929 (11.3%)	1072 (12.9%)	1045 (12.3%)	1213 (15.2%)	1134 (12.8%)
5+	2557 (29.9%)	2859 (33.6%)	2679 (33.1%)	2701 (32.9%)	2763 (33.6%)	2830 (34.3%)	2835 (34.0%)	2661 (31.4%)	1802 (22.6%)	2761 (31.1%)
<b>All Races</b>										
1	2938 (16.2%)	2865 (15.8%)	2820 (16.0%)	2895 (16.1%)	2957 (16.2%)	3041 (16.3%)	3045 (16.1%)	3149 (16.6%)	3164 (17.6%)	3071 (16.1%)
2	2595 (14.3%)	2560 (14.1%)	2588 (14.6%)	2572 (14.3%)	2560 (14.0%)	2683 (14.4%)	2568 (13.6%)	2863 (15.1%)	3015 (16.8%)	2718 (14.3%)
3	2442 (13.5%)	2390 (13.2%)	2304 (13.0%)	2418 (13.5%)	2429 (13.3%)	2471 (13.3%)	2610 (13.8%)	2579 (13.6%)	2924 (16.3%)	2695 (14.1%)
4	2056 (11.3%)	2076 (11.5%)	1967 (11.1%)	2083 (11.6%)	2065 (11.3%)	2024 (10.9%)	2207 (11.7%)	2159 (11.4%)	2441 (13.6%)	2234 (11.7%)
5+	8122 (44.7%)	8212 (45.4%)	7996 (45.2%)	7969 (44.4%)	8228 (45.1%)	8401 (45.1%)	8505 (44.9%)	8256 (43.4%)	6407 (35.7%)	8340 (43.8%)

### Annual Median Days Between Runs

Code	2012	2013	2014	2015	2016	2017	2018	2019	2020	2021
Flat	21	20	21	21	21	22	21	22	21	22
Jump	30	29	28	30	30	29	30	31	33	33
<b>Overall</b>	<b>23</b>	<b>23</b>	<b>23</b>	<b>24</b>	<b>24</b>	<b>24</b>	<b>24</b>	<b>25</b>	<b>25</b>	<b>25</b>

# Horses Population by Gender

## December 2021 Horses in Training Snapshot by Gender versus Previous Years

### All Horses

Sex	2012	2013	2014	2015	2016	2017	2018	2019	2020	2021
Colt/Entire	2096 (16.6%)	2077 (16.1%)	2179 (16.8%)	2205 (16.6%)	2160 (15.9%)	2178 (15.6%)	1935 (13.9%)	2068 (14.3%)	1922 (13.1%)	1797 (12.8%)
Gelding	7061 (55.9%)	7080 (55.0%)	7103 (54.9%)	7333 (55.2%)	7635 (56.3%)	7744 (55.6%)	7976 (57.2%)	8185 (56.5%)	8460 (57.8%)	8092 (57.6%)
Filly/Mare	3483 (27.6%)	3703 (28.8%)	3664 (28.3%)	3739 (28.2%)	3755 (27.7%)	4009 (28.8%)	4040 (29.0%)	4235 (29.2%)	4241 (29.0%)	4164 (29.6%)
Rig	0 (0.0%)	2 (0.0%)	0 (0.0%)	5 (0.0%)	4 (0.0%)	3 (0.0%)	3 (0.0%)	3 (0.0%)	3 (0.0%)	1 (0.0%)
<b>Total</b>	<b>12640 (100.0%)</b>	<b>12862 (100.0%)</b>	<b>12946 (100.0%)</b>	<b>13282 (100.0%)</b>	<b>13554 (100.0%)</b>	<b>13934 (100.0%)</b>	<b>13954 (100.0%)</b>	<b>14491 (100.0%)</b>	<b>14626 (100.0%)</b>	<b>14054 (100.0%)</b>

### Flat (including Dual)

Sex	2012	2013	2014	2015	2016	2017	2018	2019	2020	2021
Colt/Entire	1141 (19.6%)	1121 (19.0%)	1150 (19.5%)	1128 (18.7%)	1120 (17.5%)	1222 (17.1%)	1149 (16.8%)	1174 (16.6%)	1140 (16.6%)	1031 (15.2%)
Gelding	2756 (47.4%)	2739 (46.5%)	2790 (47.3%)	2924 (48.4%)	3194 (49.8%)	3573 (50.0%)	3393 (49.5%)	3490 (49.3%)	3446 (50.2%)	3419 (50.4%)
Filly/Mare	1916 (33.0%)	2033 (34.5%)	1963 (33.3%)	1986 (32.9%)	2093 (32.6%)	2347 (32.8%)	2313 (33.7%)	2419 (34.1%)	2270 (33.1%)	2331 (34.4%)
Rig	0 (0.0%)	1 (0.0%)	0 (0.0%)	3 (0.0%)	4 (0.1%)	3 (0.0%)	2 (0.0%)	2 (0.0%)	2 (0.0%)	0 (0.0%)
<b>Total</b>	<b>5813 (100.0%)</b>	<b>5894 (100.0%)</b>	<b>5903 (100.0%)</b>	<b>6041 (100.0%)</b>	<b>6411 (100.0%)</b>	<b>7145 (100.0%)</b>	<b>6857 (100.0%)</b>	<b>7085 (100.0%)</b>	<b>6858 (100.0%)</b>	<b>6781 (100.0%)</b>

### Jump (including Dual)

Sex	2012	2013	2014	2015	2016	2017	2018	2019	2020	2021
Colt/Entire	44 (0.8%)	48 (0.8%)	43 (0.7%)	39 (0.7%)	22 (0.4%)	21 (0.3%)	31 (0.5%)	26 (0.4%)	29 (0.4%)	34 (0.5%)
Gelding	4662 (81.5%)	4690 (80.9%)	4640 (79.6%)	4738 (80.5%)	4815 (81.1%)	4829 (78.8%)	4901 (78.1%)	5056 (77.9%)	5364 (77.8%)	5007 (77.5%)
Filly/Mare	1015 (17.7%)	1060 (18.3%)	1143 (19.6%)	1112 (18.9%)	1098 (18.5%)	1282 (20.9%)	1339 (21.3%)	1408 (21.7%)	1500 (21.8%)	1419 (22.0%)
Rig	0 (0.0%)	1 (0.0%)	0 (0.0%)	0 (0.0%)	0 (0.0%)	0 (0.0%)	1 (0.0%)	1 (0.0%)	1 (0.0%)	1 (0.0%)
<b>Total</b>	<b>5721 (100.0%)</b>	<b>5799 (100.0%)</b>	<b>5826 (100.0%)</b>	<b>5889 (100.0%)</b>	<b>5935 (100.0%)</b>	<b>6132 (100.0%)</b>	<b>6272 (100.0%)</b>	<b>6491 (100.0%)</b>	<b>6894 (100.0%)</b>	<b>6461 (100.0%)</b>

### Hunter Chasers

Sex	2012	2013	2014	2015	2016	2017	2018	2019	2020	2021
Colt/Entire	2 (0.3%)	1 (0.1%)	0 (0.0%)	1 (0.1%)	0 (0.0%)	2 (0.3%)	1 (0.1%)	1 (0.2%)	1 (0.1%)	1 (0.2%)
Gelding	621 (84.0%)	629 (84.5%)	597 (84.8%)	591 (85.9%)	511 (86.2%)	547 (85.7%)	582 (81.5%)	501 (82.8%)	653 (82.2%)	509 (84.3%)
Filly/Mare	116 (15.7%)	114 (15.3%)	107 (15.2%)	96 (14.0%)	82 (13.8%)	89 (13.9%)	131 (18.3%)	103 (17.0%)	140 (17.6%)	94 (15.6%)
Rig	0 (0.0%)	0 (0.0%)	0 (0.0%)	0 (0.0%)	0 (0.0%)	0 (0.0%)	0 (0.0%)	0 (0.0%)	0 (0.0%)	0 (0.0%)
<b>Total</b>	<b>739 (100.0%)</b>	<b>744 (100.0%)</b>	<b>704 (100.0%)</b>	<b>688 (100.0%)</b>	<b>593 (100.0%)</b>	<b>638 (100.0%)</b>	<b>714 (100.0%)</b>	<b>605 (100.0%)</b>	<b>794 (100.0%)</b>	<b>604 (100.0%)</b>

## Annual Total Runners by Gender

Sex	2012	2013	2014	2015	2016	2017	2018	2019	2020	2021
<b>All Races</b>										
Colt/Entire	9222 (10.3%)	9334 (10.4%)	9357 (10.8%)	9149 (10.5%)	9042 (10.2%)	9078 (10.1%)	9560 (10.3%)	8638 (9.5%)	7503 (10.2%)	8280 (9.1%)
Gelding	54958 (61.5%)	56239 (62.5%)	53254 (61.4%)	54369 (62.3%)	55935 (63.0%)	56714 (62.8%)	57118 (61.8%)	56142 (61.8%)	45230 (61.3%)	56664 (62.5%)
Filly/Mare	25138 (28.1%)	24347 (27.1%)	24075 (27.8%)	23708 (27.2%)	23856 (26.8%)	24448 (27.1%)	25689 (27.8%)	26058 (28.7%)	20987 (28.5%)	25737 (28.4%)
Rig	0 (0.0%)	0 (0.0%)	1 (0.0%)	3 (0.0%)	19 (0.0%)	13 (0.0%)	14 (0.0%)	19 (0.0%)	6 (0.0%)	10 (0.0%)
<b>Flat</b>										
Colt/Entire	9112 (15.6%)	9209 (16.0%)	9229 (16.4%)	9068 (16.1%)	8992 (15.6%)	9026 (15.3%)	9505 (15.7%)	8600 (14.3%)	7460 (15.3%)	8195 (14.0%)
Gelding	29564 (50.5%)	29319 (51.0%)	28375 (50.4%)	29169 (51.7%)	30194 (52.4%)	31173 (52.8%)	31804 (52.4%)	31815 (53.0%)	25509 (52.4%)	31183 (53.4%)
Filly/Mare	19917 (34.0%)	18998 (33.0%)	18704 (33.2%)	18224 (32.3%)	18401 (31.9%)	18819 (31.9%)	19342 (31.9%)	19547 (32.6%)	15714 (32.3%)	19005 (32.6%)
Rig	0 (0.0%)	0 (0.0%)	0 (0.0%)	2 (0.0%)	19 (0.0%)	13 (0.0%)	14 (0.0%)	12 (0.0%)	1 (0.0%)	3 (0.0%)
<b>All Jump</b>										
Colt/Entire	110 (0.4%)	125 (0.4%)	128 (0.4%)	81 (0.3%)	50 (0.2%)	52 (0.2%)	55 (0.2%)	38 (0.1%)	43 (0.2%)	85 (0.3%)
Gelding	25394 (82.6%)	26920 (83.1%)	24879 (81.9%)	25200 (81.9%)	25741 (82.4%)	25541 (81.8%)	25314 (79.8%)	24327 (78.8%)	19721 (78.8%)	25481 (78.9%)
Filly/Mare	5221 (17.0%)	5349 (16.5%)	5371 (17.7%)	5484 (17.8%)	5455 (17.5%)	5629 (18.0%)	6347 (20.0%)	6511 (21.1%)	5273 (21.1%)	6732 (20.8%)
Rig	0 (0.0%)	0 (0.0%)	1 (0.0%)	1 (0.0%)	0 (0.0%)	0 (0.0%)	0 (0.0%)	7 (0.0%)	5 (0.0%)	7 (0.0%)
<b>Chase</b>										
Colt/Entire	7 (0.1%)	7 (0.1%)	3 (0.0%)	1 (0.0%)	1 (0.0%)	0 (0.0%)	1 (0.0%)	0 (0.0%)	0 (0.0%)	0 (0.0%)
Gelding	9036 (91.9%)	9723 (93.1%)	9157 (92.9%)	9246 (92.9%)	9420 (92.6%)	9332 (92.1%)	9177 (90.6%)	8896 (90.2%)	7255 (90.1%)	9147 (89.6%)
Filly/Mare	791 (8.0%)	714 (6.8%)	693 (7.0%)	701 (7.0%)	748 (7.4%)	798 (7.9%)	950 (9.4%)	966 (9.8%)	791 (9.8%)	1053 (10.3%)
Rig	0 (0.0%)	0 (0.0%)	0 (0.0%)	0 (0.0%)	0 (0.0%)	0 (0.0%)	0 (0.0%)	5 (0.1%)	5 (0.1%)	7 (0.1%)
<b>Hurdle</b>										
Colt/Entire	90 (0.5%)	96 (0.5%)	111 (0.6%)	71 (0.4%)	45 (0.2%)	41 (0.2%)	43 (0.2%)	26 (0.1%)	28 (0.2%)	74 (0.4%)
Gelding	14220 (79.8%)	14895 (80.5%)	13632 (78.2%)	14210 (78.4%)	14622 (79.1%)	14487 (78.6%)	14433 (76.6%)	13867 (75.0%)	11075 (74.6%)	14032 (75.0%)
Filly/Mare	3504 (19.7%)	3523 (19.0%)	3693 (21.2%)	3834 (21.2%)	3826 (20.7%)	3892 (21.1%)	4368 (23.2%)	4604 (24.9%)	3750 (25.2%)	4607 (24.6%)
Rig	0 (0.0%)	0 (0.0%)	0 (0.0%)	0 (0.0%)	0 (0.0%)	0 (0.0%)	0 (0.0%)	2 (0.0%)	0 (0.0%)	0 (0.0%)
<b>NHF</b>										
Colt/Entire	13 (0.4%)	22 (0.6%)	14 (0.5%)	9 (0.3%)	4 (0.2%)	11 (0.4%)	11 (0.4%)	12 (0.5%)	15 (0.7%)	11 (0.3%)
Gelding	2138 (69.5%)	2302 (67.0%)	2090 (67.6%)	1744 (64.5%)	1699 (65.8%)	1722 (64.4%)	1704 (62.1%)	1564 (62.1%)	1391 (65.1%)	2302 (68.0%)
Filly/Mare	926 (30.1%)	1112 (32.4%)	985 (31.9%)	949 (35.1%)	881 (34.1%)	939 (35.1%)	1029 (37.5%)	941 (37.4%)	732 (34.2%)	1072 (31.7%)
Rig	0 (0.0%)	0 (0.0%)	1 (0.0%)	1 (0.0%)	0 (0.0%)	0 (0.0%)	0 (0.0%)	0 (0.0%)	0 (0.0%)	0 (0.0%)
<b>Hunter</b>										
Colt/Entire	0 (0.0%)	0 (0.0%)	0 (0.0%)	1 (0.1%)	0 (0.0%)	0 (0.0%)	0 (0.0%)	0 (0.0%)	0 (0.0%)	0 (0.0%)
Gelding	771 (90.1%)	844 (92.1%)	771 (91.5%)	799 (94.2%)	720 (94.2%)	709 (94.9%)	603 (93.3%)	522 (92.7%)	142 (97.3%)	557 (93.5%)
Filly/Mare	85 (9.9%)	72 (7.9%)	72 (8.5%)	48 (5.7%)	44 (5.8%)	38 (5.1%)	43 (6.7%)	41 (7.3%)	4 (2.7%)	39 (6.5%)

## Annual Individual Runners by Gender

Sex	2012	2013	2014	2015	2016	2017	2018	2019	2020	2021
<b>All Races</b>										
Male	12751 (70.2%)	12715 (70.2%)	12422 (70.3%)	12630 (70.4%)	12871 (70.6%)	13068 (70.2%)	13168 (69.5%)	13162 (69.3%)	12445 (69.3%)	13236 (69.5%)
Female	5402 (29.8%)	5388 (29.8%)	5253 (29.7%)	5307 (29.6%)	5368 (29.4%)	5552 (29.8%)	5767 (30.5%)	5844 (30.7%)	5506 (30.7%)	5822 (30.5%)
<b>Flat</b>										
Male	6803 (62.5%)	6829 (63.2%)	6772 (63.4%)	6860 (63.7%)	7047 (64.0%)	7277 (64.1%)	7421 (64.2%)	7377 (64.0%)	6962 (64.0%)	7035 (63.6%)
Female	4074 (37.5%)	3975 (36.8%)	3912 (36.6%)	3913 (36.3%)	3959 (36.0%)	4077 (35.9%)	4144 (35.8%)	4147 (36.0%)	3922 (36.0%)	4026 (36.4%)
<b>All Jump</b>										
Male	6947 (81.4%)	6859 (80.6%)	6513 (80.5%)	6607 (80.5%)	6634 (80.6%)	6587 (79.9%)	6502 (78.1%)	6571 (77.5%)	6187 (77.7%)	6909 (77.7%)
Female	1592 (18.6%)	1655 (19.4%)	1582 (19.5%)	1604 (19.5%)	1594 (19.4%)	1657 (20.1%)	1825 (21.9%)	1905 (22.5%)	1780 (22.3%)	1982 (22.3%)
<b>Chase</b>										
Male	2714 (91.2%)	2709 (91.6%)	2600 (92.2%)	2710 (91.8%)	2705 (91.4%)	2665 (90.6%)	2680 (89.6%)	2636 (88.9%)	2482 (88.2%)	2783 (87.7%)
Female	261 (8.8%)	247 (8.4%)	221 (7.8%)	243 (8.2%)	253 (8.6%)	276 (9.4%)	311 (10.4%)	329 (11.1%)	332 (11.8%)	391 (12.3%)
<b>Hurdle</b>										
Male	4792 (81.0%)	4787 (80.3%)	4479 (79.4%)	4632 (79.7%)	4672 (80.0%)	4588 (79.1%)	4605 (77.3%)	4640 (76.3%)	4217 (75.8%)	4751 (76.0%)
Female	1121 (19.0%)	1177 (19.7%)	1161 (20.6%)	1180 (20.3%)	1169 (20.0%)	1215 (20.9%)	1356 (22.7%)	1441 (23.7%)	1348 (24.2%)	1504 (24.0%)
<b>NHF</b>										
Male	1381 (71.2%)	1510 (69.7%)	1372 (69.9%)	1135 (66.6%)	1125 (67.9%)	1136 (67.0%)	1153 (65.4%)	1068 (64.8%)	1043 (67.5%)	1609 (70.3%)
Female	558 (28.8%)	655 (30.3%)	590 (30.1%)	569 (33.4%)	532 (32.1%)	560 (33.0%)	609 (34.6%)	581 (35.2%)	502 (32.5%)	681 (29.7%)
<b>Hunter</b>										
Male	451 (90.7%)	433 (89.8%)	447 (91.4%)	448 (94.1%)	395 (93.2%)	366 (93.6%)	339 (92.1%)	301 (92.0%)	98 (96.1%)	299 (92.0%)
Female	46 (9.3%)	49 (10.2%)	42 (8.6%)	28 (5.9%)	29 (6.8%)	25 (6.4%)	29 (7.9%)	26 (8.0%)	4 (3.9%)	26 (8.0%)

# Horses Population by Breeding

## December 2021 Horses in Training Snapshot by Breeding versus Previous Years

### Flat (including Dual)

Bred	Sex	2012	2013	2014	2015	2016	2017	2018	2019	2020	2021
GB	Male	1854 (31.9%)	1817 (30.8%)	1886 (31.9%)	1904 (31.5%)	1995 (31.1%)	2234 (31.3%)	2129 (31.0%)	2216 (31.3%)	2106 (30.7%)	2050 (30.2%)
	Female	1138 (19.6%)	1163 (19.7%)	1108 (18.8%)	1108 (18.3%)	1189 (18.5%)	1298 (18.2%)	1268 (18.5%)	1327 (18.7%)	1274 (18.6%)	1312 (19.3%)
	Subtotal	2992 (51.5%)	2980 (50.6%)	2994 (50.7%)	3012 (49.9%)	3184 (49.7%)	3532 (49.4%)	3397 (49.5%)	3543 (50.0%)	3380 (49.3%)	3362 (49.6%)
IRE	Male	1561 (26.9%)	1592 (27.0%)	1619 (27.4%)	1706 (28.2%)	1838 (28.7%)	2011 (28.1%)	1934 (28.2%)	1959 (27.6%)	1990 (29.0%)	1988 (29.3%)
	Female	622 (10.7%)	719 (12.2%)	696 (11.8%)	728 (12.1%)	759 (11.8%)	871 (12.2%)	851 (12.4%)	910 (12.8%)	850 (12.4%)	878 (12.9%)
	Subtotal	2183 (37.6%)	2311 (39.2%)	2315 (39.2%)	2434 (40.3%)	2597 (40.5%)	2882 (40.3%)	2785 (40.6%)	2869 (40.5%)	2840 (41.4%)	2866 (42.3%)
FR	Male	78 (1.3%)	92 (1.6%)	121 (2.0%)	127 (2.1%)	160 (2.5%)	232 (3.2%)	201 (2.9%)	230 (3.2%)	246 (3.6%)	241 (3.6%)
	Female	14 (0.2%)	28 (0.5%)	33 (0.6%)	40 (0.7%)	50 (0.8%)	73 (1.0%)	76 (1.1%)	78 (1.1%)	70 (1.0%)	81 (1.2%)
	Subtotal	92 (1.6%)	120 (2.0%)	154 (2.6%)	167 (2.8%)	210 (3.3%)	305 (4.3%)	277 (4.0%)	308 (4.3%)	316 (4.6%)	322 (4.7%)
USA	Male	332 (5.7%)	285 (4.8%)	247 (4.2%)	258 (4.3%)	259 (4.0%)	244 (3.4%)	222 (3.2%)	202 (2.9%)	182 (2.7%)	133 (2.0%)
	Female	126 (2.2%)	108 (1.8%)	97 (1.6%)	89 (1.5%)	77 (1.2%)	83 (1.2%)	96 (1.4%)	82 (1.2%)	56 (0.8%)	41 (0.6%)
	Subtotal	458 (7.9%)	393 (6.7%)	344 (5.8%)	347 (5.7%)	336 (5.2%)	327 (4.6%)	318 (4.6%)	284 (4.0%)	238 (3.5%)	174 (2.6%)
GNY	Male	41 (0.7%)	42 (0.7%)	45 (0.8%)	42 (0.7%)	46 (0.7%)	55 (0.8%)	36 (0.5%)	41 (0.6%)	48 (0.7%)	32 (0.5%)
	Female	8 (0.1%)	7 (0.1%)	9 (0.2%)	11 (0.2%)	11 (0.2%)	12 (0.2%)	14 (0.2%)	17 (0.2%)	16 (0.2%)	17 (0.3%)
	Subtotal	49 (0.8%)	49 (0.8%)	54 (0.9%)	53 (0.9%)	57 (0.9%)	67 (0.9%)	50 (0.7%)	58 (0.8%)	64 (0.9%)	49 (0.7%)
Other	Male	31 (0.5%)	33 (0.6%)	22 (0.4%)	18 (0.3%)	20 (0.3%)	22 (0.3%)	22 (0.3%)	18 (0.3%)	16 (0.2%)	6 (0.1%)
	Female	8 (0.1%)	8 (0.1%)	20 (0.3%)	10 (0.2%)	7 (0.1%)	10 (0.1%)	8 (0.1%)	5 (0.1%)	4 (0.1%)	2 (0.0%)
	Subtotal	39 (0.7%)	41 (0.7%)	42 (0.7%)	28 (0.5%)	27 (0.4%)	32 (0.4%)	30 (0.4%)	23 (0.3%)	20 (0.3%)	8 (0.1%)

### Jump (including Dual)

Bred	Sex	2012	2013	2014	2015	2016	2017	2018	2019	2020	2021
GB	Male	1551 (27.1%)	1538 (26.5%)	1462 (25.1%)	1409 (23.9%)	1335 (22.5%)	1373 (22.4%)	1298 (20.7%)	1320 (20.3%)	1348 (19.6%)	1256 (19.4%)
	Female	633 (11.1%)	664 (11.5%)	701 (12.0%)	653 (11.1%)	610 (10.3%)	678 (11.1%)	649 (10.3%)	635 (9.8%)	693 (10.1%)	678 (10.5%)
	Subtotal	2184 (38.2%)	2202 (38.0%)	2163 (37.1%)	2062 (35.0%)	1945 (32.8%)	2051 (33.4%)	1947 (31.0%)	1955 (30.1%)	2041 (29.6%)	1934 (29.9%)
IRE	Male	2392 (41.8%)	2489 (42.9%)	2460 (42.2%)	2576 (43.7%)	2654 (44.7%)	2664 (43.4%)	2763 (44.1%)	2816 (43.4%)	2941 (42.7%)	2680 (41.5%)
	Female	321 (5.6%)	331 (5.7%)	382 (6.6%)	394 (6.7%)	416 (7.0%)	514 (8.4%)	578 (9.2%)	634 (9.8%)	664 (9.6%)	597 (9.2%)
	Subtotal	2713 (47.4%)	2820 (48.6%)	2842 (48.8%)	2970 (50.4%)	3070 (51.7%)	3178 (51.8%)	3341 (53.3%)	3450 (53.2%)	3605 (52.3%)	3277 (50.7%)
FR	Male	564 (9.9%)	574 (9.9%)	608 (10.4%)	671 (11.4%)	740 (12.5%)	709 (11.6%)	781 (12.5%)	842 (13.0%)	1000 (14.5%)	1003 (15.5%)
	Female	47 (0.8%)	51 (0.9%)	54 (0.9%)	55 (0.9%)	64 (1.1%)	81 (1.3%)	103 (1.6%)	132 (2.0%)	131 (1.9%)	135 (2.1%)
	Subtotal	611 (10.7%)	625 (10.8%)	662 (11.4%)	726 (12.3%)	804 (13.5%)	790 (12.9%)	884 (14.1%)	974 (15.0%)	1131 (16.4%)	1138 (17.6%)
USA	Male	121 (2.1%)	76 (1.3%)	76 (1.3%)	61 (1.0%)	45 (0.8%)	45 (0.7%)	32 (0.5%)	33 (0.5%)	33 (0.5%)	30 (0.5%)
	Female	8 (0.1%)	6 (0.1%)	2 (0.0%)	1 (0.0%)	1 (0.0%)	3 (0.0%)	2 (0.0%)	3 (0.0%)	1 (0.0%)	1 (0.0%)
	Subtotal	129 (2.3%)	82 (1.4%)	78 (1.3%)	62 (1.1%)	46 (0.8%)	48 (0.8%)	34 (0.5%)	36 (0.6%)	34 (0.5%)	31 (0.5%)
GNY	Male	55 (1.0%)	48 (0.8%)	64 (1.1%)	54 (0.9%)	56 (0.9%)	51 (0.8%)	51 (0.8%)	66 (1.0%)	66 (1.0%)	70 (1.1%)
	Female	5 (0.1%)	6 (0.1%)	3 (0.1%)	7 (0.1%)	5 (0.1%)	4 (0.1%)	6 (0.1%)	4 (0.1%)	10 (0.1%)	8 (0.1%)
	Subtotal	60 (1.0%)	54 (0.9%)	67 (1.2%)	61 (1.0%)	61 (1.0%)	55 (0.9%)	57 (0.9%)	70 (1.1%)	76 (1.1%)	78 (1.2%)
Other	Male	23 (0.4%)	14 (0.2%)	13 (0.2%)	6 (0.1%)	7 (0.1%)	8 (0.1%)	8 (0.1%)	6 (0.1%)	6 (0.1%)	3 (0.0%)
	Female	1 (0.0%)	2 (0.0%)	1 (0.0%)	2 (0.0%)	2 (0.0%)	2 (0.0%)	1 (0.0%)	NA (-)	1 (0.0%)	NA (-)
	Subtotal	24 (0.4%)	16 (0.3%)	14 (0.2%)	8 (0.1%)	9 (0.2%)	10 (0.2%)	9 (0.1%)	6 (0.1%)	7 (0.1%)	3 (0.0%)

## Annual Total Runners by Breeding

### Flat

Bred	Sex	2012	2013	2014	2015	2016	2017	2018	2019	2020	2021
GB	Male	18328 (31.3%)	17875 (31.1%)	17614 (31.3%)	18166 (32.2%)	18432 (32.0%)	19021 (32.2%)	19096 (31.5%)	18590 (31.0%)	15549 (31.9%)	18351 (31.4%)
	Female	11400 (19.5%)	10941 (19.0%)	10305 (18.3%)	10031 (17.8%)	10183 (17.7%)	10254 (17.4%)	10640 (17.5%)	10799 (18.0%)	8747 (18.0%)	10643 (18.2%)
	Subtotal	29728 (50.7%)	28816 (50.1%)	27919 (49.6%)	28197 (49.9%)	28615 (49.7%)	29275 (49.6%)	29736 (49.0%)	29389 (49.0%)	24296 (49.9%)	28994 (49.7%)
IRE	Male	16189 (27.6%)	16605 (28.9%)	16401 (29.1%)	16651 (29.5%)	17309 (30.0%)	17542 (29.7%)	18454 (30.4%)	18016 (30.0%)	14466 (29.7%)	17817 (30.5%)
	Female	7445 (12.7%)	7047 (12.3%)	7286 (12.9%)	7166 (12.7%)	7253 (12.6%)	7522 (12.7%)	7510 (12.4%)	7506 (12.5%)	6103 (12.5%)	7315 (12.5%)
	Subtotal	23634 (40.3%)	23652 (41.1%)	23687 (42.1%)	23817 (42.2%)	24562 (42.6%)	25064 (42.5%)	25964 (42.8%)	25522 (42.6%)	20569 (42.3%)	25132 (43.0%)
FR	Male	573 (1.0%)	655 (1.1%)	818 (1.5%)	1040 (1.8%)	1120 (1.9%)	1302 (2.2%)	1502 (2.5%)	1701 (2.8%)	1425 (2.9%)	1655 (2.8%)
	Female	105 (0.2%)	191 (0.3%)	310 (0.6%)	320 (0.6%)	378 (0.7%)	416 (0.7%)	496 (0.8%)	564 (0.9%)	449 (0.9%)	580 (1.0%)
	Subtotal	678 (1.2%)	846 (1.5%)	1128 (2.0%)	1360 (2.4%)	1498 (2.6%)	1718 (2.9%)	1998 (3.3%)	2265 (3.8%)	1874 (3.8%)	2235 (3.8%)
USA	Male	3072 (5.2%)	2850 (5.0%)	2202 (3.9%)	1875 (3.3%)	1846 (3.2%)	1820 (3.1%)	1794 (3.0%)	1667 (2.8%)	1175 (2.4%)	1106 (1.9%)
	Female	822 (1.4%)	719 (1.2%)	670 (1.2%)	531 (0.9%)	454 (0.8%)	516 (0.9%)	568 (0.9%)	497 (0.8%)	297 (0.6%)	324 (0.6%)
	Subtotal	3894 (6.6%)	3569 (6.2%)	2872 (5.1%)	2406 (4.3%)	2300 (4.0%)	2336 (4.0%)	2362 (3.9%)	2164 (3.6%)	1472 (3.0%)	1430 (2.4%)
GNY	Male	275 (0.5%)	285 (0.5%)	298 (0.5%)	304 (0.5%)	334 (0.6%)	346 (0.6%)	306 (0.5%)	309 (0.5%)	274 (0.6%)	360 (0.6%)
	Female	83 (0.1%)	65 (0.1%)	67 (0.1%)	99 (0.2%)	63 (0.1%)	45 (0.1%)	81 (0.1%)	117 (0.2%)	98 (0.2%)	121 (0.2%)
	Subtotal	358 (0.6%)	350 (0.6%)	365 (0.6%)	403 (0.7%)	397 (0.7%)	391 (0.7%)	387 (0.6%)	426 (0.7%)	372 (0.8%)	481 (0.8%)
Other	Male	239 (0.4%)	258 (0.4%)	271 (0.5%)	203 (0.4%)	164 (0.3%)	181 (0.3%)	171 (0.3%)	144 (0.2%)	81 (0.2%)	92 (0.2%)
	Female	62 (0.1%)	35 (0.1%)	66 (0.1%)	77 (0.1%)	70 (0.1%)	66 (0.1%)	47 (0.1%)	64 (0.1%)	20 (0.0%)	22 (0.0%)
	Subtotal	301 (0.5%)	293 (0.5%)	337 (0.6%)	280 (0.5%)	234 (0.4%)	247 (0.4%)	218 (0.4%)	208 (0.3%)	101 (0.2%)	114 (0.2%)

Jump

Bred	Sex	2012	2013	2014	2015	2016	2017	2018	2019	2020	2021
GB	Male	8007 (26.1%)	8215 (25.4%)	7553 (24.9%)	7380 (24.0%)	7008 (22.4%)	6688 (21.4%)	6499 (20.5%)	6148 (19.9%)	4797 (19.2%)	6163 (19.1%)
	Female	2939 (9.6%)	3132 (9.7%)	3160 (10.4%)	3047 (9.9%)	2833 (9.1%)	2763 (8.8%)	2999 (9.5%)	2759 (8.9%)	2194 (8.8%)	2904 (9.0%)
	Subtotal	10946 (35.6%)	11347 (35.0%)	10713 (35.3%)	10427 (33.9%)	9841 (31.5%)	9451 (30.3%)	9498 (29.9%)	8907 (28.8%)	6991 (27.9%)	9067 (28.1%)
IRE	Male	13026 (42.4%)	14605 (45.1%)	13698 (45.1%)	13874 (45.1%)	14501 (46.4%)	14509 (46.5%)	14349 (45.2%)	13710 (44.4%)	11081 (44.2%)	14118 (43.7%)
	Female	1907 (6.2%)	1839 (5.7%)	1878 (6.2%)	2115 (6.9%)	2295 (7.3%)	2481 (7.9%)	2928 (9.2%)	3167 (10.3%)	2484 (9.9%)	3085 (9.5%)
	Subtotal	14933 (48.6%)	16444 (50.8%)	15576 (51.3%)	15989 (52.0%)	16796 (53.8%)	16990 (54.4%)	17277 (54.5%)	16877 (54.6%)	13565 (54.2%)	17203 (53.3%)
FR	Male	3162 (10.3%)	3129 (9.7%)	2876 (9.5%)	3212 (10.4%)	3619 (11.6%)	3837 (12.3%)	3961 (12.5%)	3924 (12.7%)	3449 (13.8%)	4693 (14.5%)
	Female	289 (0.9%)	301 (0.9%)	293 (1.0%)	274 (0.9%)	272 (0.9%)	352 (1.1%)	376 (1.2%)	536 (1.7%)	542 (2.2%)	686 (2.1%)
	Subtotal	3451 (11.2%)	3430 (10.6%)	3169 (10.4%)	3486 (11.3%)	3891 (12.5%)	4189 (13.4%)	4337 (13.7%)	4460 (14.4%)	3991 (15.9%)	5379 (16.7%)
USA	Male	750 (2.4%)	610 (1.9%)	481 (1.6%)	417 (1.4%)	318 (1.0%)	213 (0.7%)	211 (0.7%)	186 (0.6%)	143 (0.6%)	172 (0.5%)
	Female	42 (0.1%)	30 (0.1%)	13 (0.0%)	11 (0.0%)	6 (0.0%)	10 (0.0%)	13 (0.0%)	20 (0.1%)	27 (0.1%)	6 (0.0%)
	Subtotal	792 (2.6%)	640 (2.0%)	494 (1.6%)	428 (1.4%)	324 (1.0%)	223 (0.7%)	224 (0.7%)	206 (0.7%)	170 (0.7%)	178 (0.6%)
GNY	Male	417 (1.4%)	357 (1.1%)	329 (1.1%)	349 (1.1%)	309 (1.0%)	313 (1.0%)	299 (0.9%)	370 (1.2%)	278 (1.1%)	409 (1.3%)
	Female	31 (0.1%)	35 (0.1%)	26 (0.1%)	32 (0.1%)	28 (0.1%)	12 (0.0%)	21 (0.1%)	27 (0.1%)	24 (0.1%)	48 (0.1%)
	Subtotal	448 (1.5%)	392 (1.2%)	355 (1.2%)	381 (1.2%)	337 (1.1%)	325 (1.0%)	320 (1.0%)	397 (1.3%)	302 (1.2%)	457 (1.4%)
Other	Male	142 (0.5%)	129 (0.4%)	71 (0.2%)	50 (0.2%)	36 (0.1%)	33 (0.1%)	50 (0.2%)	34 (0.1%)	21 (0.1%)	18 (0.1%)
	Female	13 (0.0%)	12 (0.0%)	1 (0.0%)	5 (0.0%)	21 (0.1%)	11 (0.0%)	10 (0.0%)	2 (0.0%)	2 (0.0%)	3 (0.0%)
	Subtotal	155 (0.5%)	141 (0.4%)	72 (0.2%)	55 (0.2%)	57 (0.2%)	44 (0.1%)	60 (0.2%)	36 (0.1%)	23 (0.1%)	21 (0.1%)

Annual Individual Runners by Breeding

Flat

Bred	Sex	2012	2013	2014	2015	2016	2017	2018	2019	2020	2021
GB	Male	3223 (29.6%)	3184 (29.5%)	3130 (29.3%)	3217 (29.9%)	3208 (29.1%)	3322 (29.3%)	3398 (29.4%)	3384 (29.4%)	3224 (29.6%)	3204 (29.0%)
	Female	2335 (21.5%)	2265 (21.0%)	2152 (20.1%)	2125 (19.7%)	2155 (19.6%)	2194 (19.3%)	2210 (19.1%)	2223 (19.3%)	2133 (19.6%)	2219 (20.1%)
	Subtotal	5558 (51.1%)	5449 (50.4%)	5282 (49.4%)	5342 (49.6%)	5363 (48.7%)	5516 (48.6%)	5608 (48.5%)	5607 (48.7%)	5357 (49.2%)	5423 (49.0%)
IRE	Male	2723 (25.0%)	2846 (26.3%)	2888 (27.0%)	2918 (27.1%)	3090 (28.1%)	3155 (27.8%)	3224 (27.9%)	3179 (27.6%)	3028 (27.8%)	3182 (28.8%)
	Female	1452 (13.3%)	1430 (13.2%)	1482 (13.9%)	1502 (13.9%)	1546 (14.0%)	1582 (13.9%)	1617 (14.0%)	1611 (14.0%)	1527 (14.0%)	1559 (14.1%)
	Subtotal	4175 (38.4%)	4276 (39.6%)	4370 (40.9%)	4420 (41.0%)	4636 (42.1%)	4737 (41.7%)	4841 (41.9%)	4790 (41.6%)	4555 (41.9%)	4741 (42.9%)
FR	Male	134 (1.2%)	157 (1.5%)	174 (1.6%)	208 (1.9%)	242 (2.2%)	277 (2.4%)	331 (2.9%)	369 (3.2%)	360 (3.3%)	347 (3.1%)
	Female	30 (0.3%)	59 (0.5%)	80 (0.7%)	83 (0.8%)	96 (0.9%)	114 (1.0%)	132 (1.1%)	143 (1.2%)	131 (1.2%)	138 (1.2%)
	Subtotal	164 (1.5%)	216 (2.0%)	254 (2.4%)	291 (2.7%)	338 (3.1%)	391 (3.4%)	463 (4.0%)	512 (4.4%)	491 (4.5%)	485 (4.4%)
USA	Male	606 (5.6%)	529 (4.9%)	453 (4.2%)	400 (3.7%)	397 (3.6%)	405 (3.6%)	366 (3.2%)	342 (3.0%)	267 (2.5%)	218 (2.0%)
	Female	226 (2.1%)	187 (1.7%)	164 (1.5%)	159 (1.5%)	130 (1.2%)	152 (1.3%)	152 (1.3%)	132 (1.1%)	97 (0.9%)	77 (0.7%)
	Subtotal	832 (7.6%)	716 (6.6%)	617 (5.8%)	559 (5.2%)	527 (4.8%)	557 (4.9%)	518 (4.5%)	474 (4.1%)	364 (3.3%)	295 (2.7%)
GNY	Male	68 (0.6%)	61 (0.6%)	77 (0.7%)	77 (0.7%)	80 (0.7%)	83 (0.7%)	69 (0.6%)	69 (0.6%)	65 (0.6%)	66 (0.6%)
	Female	17 (0.2%)	20 (0.2%)	18 (0.2%)	24 (0.2%)	16 (0.1%)	16 (0.1%)	20 (0.2%)	25 (0.2%)	26 (0.2%)	28 (0.3%)
	Subtotal	85 (0.8%)	81 (0.7%)	95 (0.9%)	101 (0.9%)	96 (0.9%)	99 (0.9%)	89 (0.8%)	94 (0.8%)	91 (0.8%)	94 (0.8%)
Other	Male	49 (0.5%)	52 (0.5%)	50 (0.5%)	40 (0.4%)	30 (0.3%)	35 (0.3%)	33 (0.3%)	34 (0.3%)	18 (0.2%)	18 (0.2%)
	Female	14 (0.1%)	14 (0.1%)	16 (0.1%)	20 (0.2%)	16 (0.1%)	19 (0.2%)	13 (0.1%)	13 (0.1%)	8 (0.1%)	5 (0.0%)
	Subtotal	63 (0.6%)	66 (0.6%)	66 (0.6%)	60 (0.6%)	46 (0.4%)	54 (0.5%)	46 (0.4%)	47 (0.4%)	26 (0.2%)	23 (0.2%)

Jump

Bred	Sex	2012	2013	2014	2015	2016	2017	2018	2019	2020	2021
GB	Male	2265 (26.5%)	2159 (25.4%)	2034 (25.1%)	1944 (23.7%)	1853 (22.5%)	1737 (21.1%)	1687 (20.3%)	1679 (19.8%)	1519 (19.1%)	1714 (19.3%)
	Female	932 (10.9%)	979 (11.5%)	932 (11.5%)	899 (10.9%)	840 (10.2%)	820 (9.9%)	849 (10.2%)	816 (9.6%)	754 (9.5%)	878 (9.9%)
	Subtotal	3197 (37.4%)	3138 (36.9%)	2966 (36.6%)	2843 (34.6%)	2693 (32.7%)	2557 (31.0%)	2536 (30.5%)	2495 (29.4%)	2273 (28.5%)	2592 (29.2%)
IRE	Male	3551 (41.6%)	3642 (42.8%)	3505 (43.3%)	3620 (44.1%)	3665 (44.5%)	3688 (44.7%)	3663 (44.0%)	3680 (43.4%)	3437 (43.1%)	3755 (42.2%)
	Female	563 (6.6%)	576 (6.8%)	569 (7.0%)	619 (7.5%)	649 (7.9%)	715 (8.7%)	826 (9.9%)	900 (10.6%)	823 (10.3%)	900 (10.1%)
	Subtotal	4114 (48.2%)	4218 (49.5%)	4074 (50.3%)	4239 (51.6%)	4314 (52.4%)	4403 (53.4%)	4489 (53.9%)	4580 (54.0%)	4260 (53.5%)	4655 (52.4%)
FR	Male	793 (9.3%)	776 (9.1%)	751 (9.3%)	834 (10.2%)	936 (11.4%)	1012 (12.3%)	1018 (12.2%)	1062 (12.5%)	1094 (13.7%)	1298 (14.6%)
	Female	72 (0.8%)	76 (0.9%)	71 (0.9%)	73 (0.9%)	88 (1.1%)	109 (1.3%)	137 (1.6%)	174 (2.1%)	186 (2.3%)	189 (2.1%)
	Subtotal	865 (10.1%)	852 (10.0%)	822 (10.2%)	907 (11.0%)	1024 (12.4%)	1121 (13.6%)	1155 (13.9%)	1236 (14.6%)	1280 (16.1%)	1487 (16.7%)
USA	Male	201 (2.4%)	165 (1.9%)	123 (1.5%)	102 (1.2%)	82 (1.0%)	60 (0.7%)	55 (0.7%)	56 (0.7%)	44 (0.6%)	48 (0.5%)
	Female	15 (0.2%)	14 (0.2%)	4 (0.0%)	4 (0.0%)	3 (0.0%)	3 (0.0%)	5 (0.1%)	7 (0.1%)	6 (0.1%)	2 (0.0%)
	Subtotal	216 (2.5%)	179 (2.1%)	127 (1.6%)	106 (1.3%)	85 (1.0%)	63 (0.8%)	60 (0.7%)	63 (0.7%)	50 (0.6%)	50 (0.6%)
GNY	Male	100 (1.2%)	82 (1.0%)	81 (1.0%)	92 (1.1%)	90 (1.1%)	81 (1.0%)	71 (0.9%)	84 (1.0%)	85 (1.1%)	90 (1.0%)
	Female	7 (0.1%)	7 (0.1%)	5 (0.1%)	7 (0.1%)	9 (0.1%)	6 (0.1%)	5 (0.1%)	7 (0.1%)	9 (0.1%)	12 (0.1%)
	Subtotal	107 (1.3%)	89 (1.0%)	86 (1.1%)	99 (1.2%)	99 (1.2%)	87 (1.1%)	76 (0.9%)	91 (1.1%)	94 (1.2%)	102 (1.1%)
Other	Male	37 (0.4%)	35 (0.4%)	19 (0.2%)	15 (0.2%)	8 (0.1%)	9 (0.1%)	8 (0.1%)	10 (0.1%)	8 (0.1%)	4 (0.0%)
	Female	3 (0.0%)	3 (0.0%)	1 (0.0%)	2 (0.0%)	5 (0.1%)	4 (0.0%)	3 (0.0%)	1 (0.0%)	2 (0.0%)	1 (0.0%)
	Subtotal	40 (0.5%)	38 (0.4%)	20 (0.2%)	17 (0.2%)	13 (0.2%)	13 (0.2%)	11 (0.1%)	11 (0.1%)	10 (0.1%)	5 (0.1%)