

Horse Population Report

Updated on 31 October 2021



Introduction

Welcome to the latest update on the Racehorse Population from the British Horseracing Authority.

The aim of this document is to give stakeholders and the wider Public an insight into the current state of the Horse Population in Great Britain. It is hoped that this transparency will ensure that all decision makers have access to the key data required to help British Racing deliver a Competitive and Compelling product to stakeholders, racegoers and the wider public.

If you have any questions regarding the content of this report or suggestions for how it could be improved further, please contact Joe Yates – jyates@britishhorseracing.com

Definitions

This report uses the Horses in Training returns from the Weatherby's Racing Administration System, this is completed by trainers and should be updated whenever a horse enters or leaves training in their care as part of the conditions of their licence.

Horses in Training

Unless otherwise stated, snapshots of Horses in Training will be from the 15th day of the month in question and year to date figures will be up to and including the date titled at the front of the report.

Horses' ratings will be taken from the most recently published ratings by the BHA Handicapping Team, which is currently at 7am each Tuesday morning. For example, if looking at the Horses in a particular rating band for July 2011, the horses in training number will be from Friday 15th July 2011 and ratings, where possible, will be assigned to each horse from the ratings published by the BHA Handicappers on Tuesday 12th July 2011.

The Gender of a horse will be taken from the reporting date in question, regardless of whether this has since changed. In the case of YTD reporting, where a horse's gender or training type has changed in the year-to-date period, the most recent is taken.

This report does not count any horses that are temporarily racing abroad for GB Trainers at the time of reporting.

Yearlings are not included in total counts of flat and/or dual horses but will be sometimes shown separately for information purposes.

Yearlings and two-year-olds are not included in total counts of jump horses or counts of jump horses that include dual horses but will be sometimes shown separately for information purposes.

Yearlings, two-year-olds and three-year-olds are not included in total counts of Hunter Chasers but will be sometimes shown separately for information purposes.

Hunter Chasers are not included in any counts of Jump Horses or Total figures but will be sometimes shown separately for information purposes.

Runners

Unless otherwise specified, Total Runners and Individual Runners metrics only counts runners that ran in GB races including any voided races. Withdrawn horses are not included.

Hunter Chases are not included in this section but will be sometimes shown separately for information purposes.

Total Runners is a count of all runners in races, whilst individual runners only counts each individual horse once.

Monthly Horses in Training

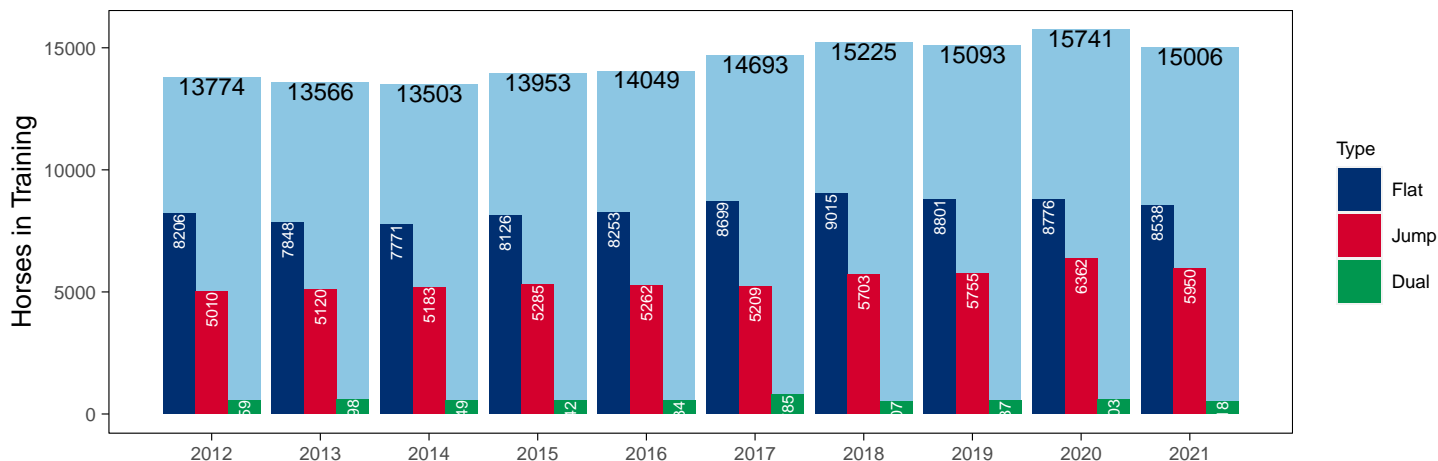
October 2021 Horses in Training Snapshot versus Previous Years

Type	2012	2013	2014	2015	2016	2017	2018	2019	2020	2021	vs. Last Year	vs. Pre-Covid
Flat	8206	7848	7771	8126	8253	8699	9015	8801	8776	8538	-238 / -2.7%	-263 / -3.0%
Jump	5010	5120	5183	5285	5262	5209	5703	5755	6362	5950	-412 / -6.5%	+195 / +3.4%
Dual	559	598	549	542	534	785	507	537	603	518	-85 / -14.1%	-19 / -3.5%
Hunter	1	0	0	0	1	0	0	0	228	47	-181 / -79.4%	+47 / +Inf
Total	13774	13566	13503	13953	14049	14693	15225	15093	15741	15006	-735 / -4.7%	-87 / -0.6%

'vs. Pre-Covid' is comparison between 2021 and 2019

Snapshot of Total Horses in Training in October

Horses in Training in October, shown by Training Type



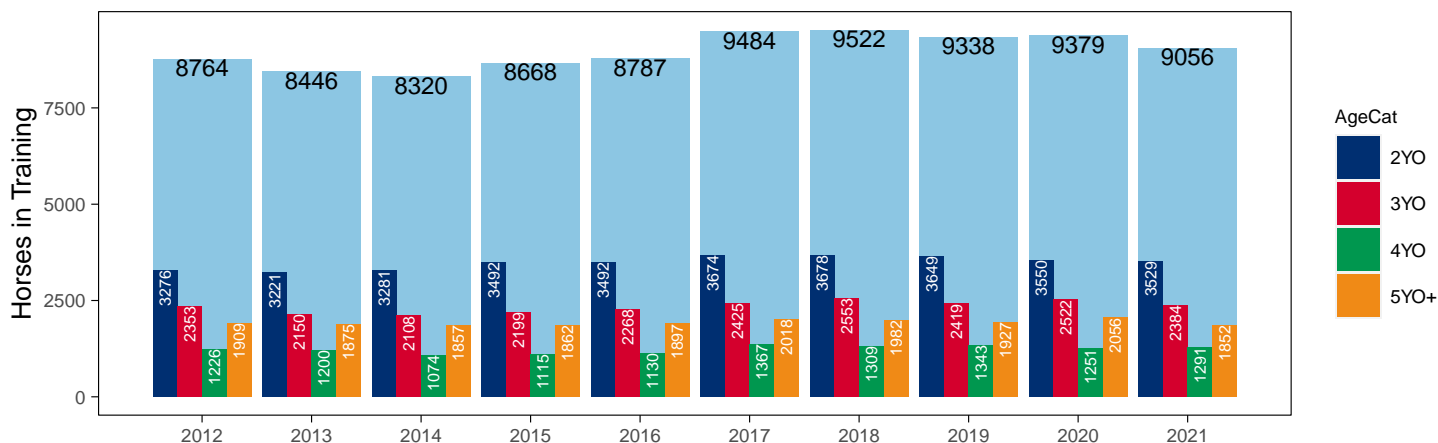
Flat (including Dual)

AgeCat	2012	2013	2014	2015	2016	2017	2018	2019	2020	2021	vs. Last Year	vs. Pre-Covid
2YO	3276	3221	3281	3492	3492	3674	3678	3649	3550	3529	-21 / -0.6%	-120 / -3.3%
3YO	2353	2150	2108	2199	2268	2425	2553	2419	2522	2384	-138 / -5.5%	-35 / -1.4%
4YO	1226	1200	1074	1115	1130	1367	1309	1343	1251	1291	+40 / +3.2%	-52 / -3.9%
5YO+	1909	1875	1857	1862	1897	2018	1982	1927	2056	1852	-204 / -9.9%	-75 / -3.9%
Total	8764	8446	8320	8668	8787	9484	9522	9338	9379	9056	-323 / -3.4%	-282 / -3.0%

'vs. Pre-Covid' is comparison between 2021 and 2019

Snapshot of Flat Horses in Training in October

Flat Horses in Training in October, shown by Age



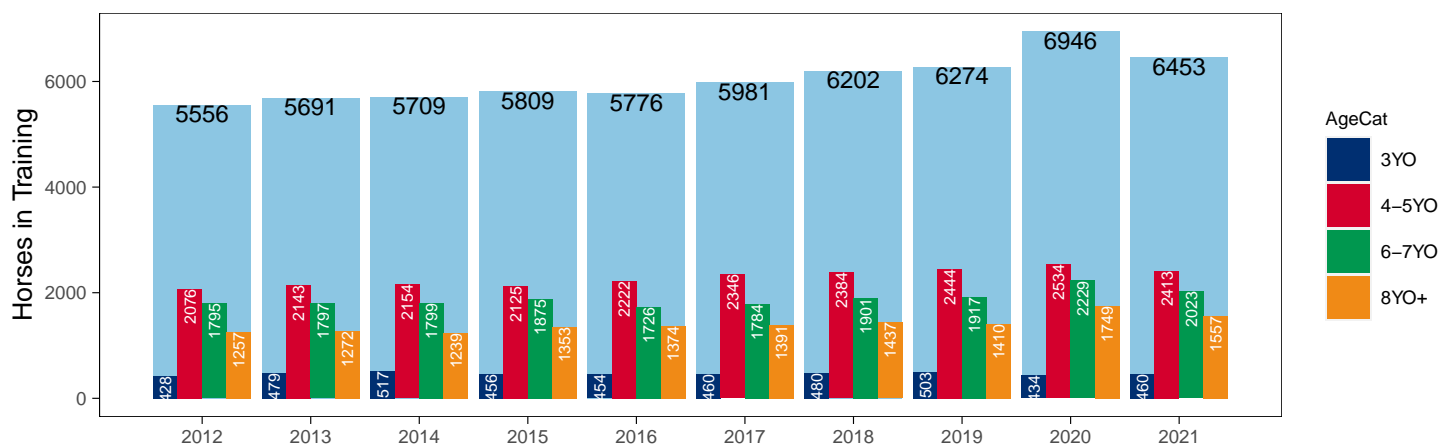
Jump (including Dual)

AgeCat	2012	2013	2014	2015	2016	2017	2018	2019	2020	2021	vs. Last Year	vs. Pre-Covid
3YO	428	479	517	456	454	460	480	503	434	460	+26 / +6.0%	-43 / -8.5%
4-5YO	2076	2143	2154	2125	2222	2346	2384	2444	2534	2413	-121 / -4.8%	-31 / -1.3%
6-7YO	1795	1797	1799	1875	1726	1784	1901	1917	2229	2023	-206 / -9.2%	+106 / +5.5%
8YO+	1257	1272	1239	1353	1374	1391	1437	1410	1749	1557	-192 / -11.0%	+147 / +10.4%
Total	5556	5691	5709	5809	5776	5981	6202	6274	6946	6453	-493 / -7.1%	+179 / +2.9%

'vs. Pre-Covid' is comparison between 2021 and 2019

Snapshot of Jump Horses in Training in October

Jump Horses in Training in October, shown by Age



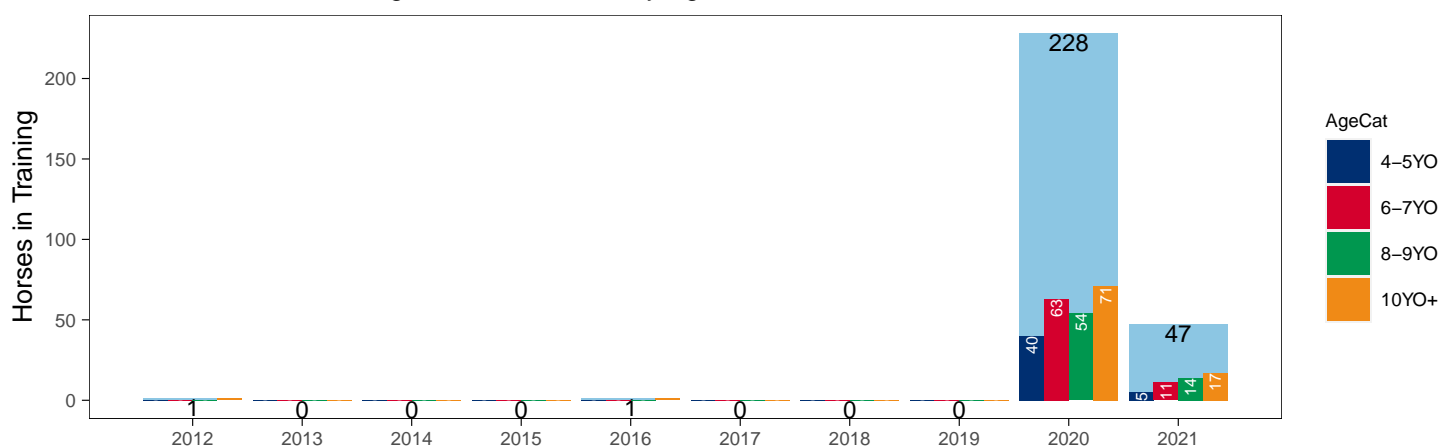
Hunter Chasers

AgeCat	2012	2013	2014	2015	2016	2017	2018	2019	2020	2021	vs. Last Year	vs. Pre-Covid
4-5YO	0	0	0	0	0	0	0	0	40	5	-35 / -87.5%	+5 / +Inf
6-7YO	0	0	0	0	0	0	0	0	63	11	-52 / -82.5%	+11 / +Inf
8-9YO	0	0	0	0	0	0	0	0	54	14	-40 / -74.1%	+14 / +Inf
10YO+	1	0	0	0	1	0	0	0	71	17	-54 / -76.1%	+17 / +Inf
Total	1	0	0	0	1	0	0	0	228	47	-181 / -79.4%	+47 / +Inf

'vs. Pre-Covid' is comparison between 2021 and 2019

Snapshot of Hunter Chasers in Training in October

Hunter Chasers in Training in October, shown by Age



2021 Horses in Training versus Previous Years

Type	Period	Jan	Feb	Mar	Apr	May	Jun	Jul	Aug	Sep	Oct	Nov	Dec
Flat	2021	8370	8854	9305	9677	9920	9900	9710	9553	9100	8538	0	0
	2020	8886	9286	9502	9198	9395	9956	9992	9835	9396	8776	6981	6328
	Pre-Covid	8627	9168	9725	10176	10385	10397	10100	9759	9473	8801	7020	6551
Jump	2021	6459	6482	6392	5997	4395	3572	3963	5064	5672	5950	0	0
	2020	5920	5933	5956	2992	2314	2689	4416	5446	5995	6362	6508	6383
	Pre-Covid	5724	5785	5765	5348	4032	3127	3616	4810	5321	5755	5986	5981
Dual	2021	510	496	519	524	481	473	487	495	514	518	0	0
	2020	541	552	572	433	439	514	550	587	609	603	585	530
	Pre-Covid	482	470	467	495	456	455	473	484	479	537	566	534
Hunter	2021	791	787	861	1152	1176	1130	1104	1085	1069	47	0	0
	2020	949	1327	1467	1434	1424	1396	1358	1324	0	228	447	794
	Pre-Covid	995	1378	1571	1701	1693	1637	1613	0	0	0	244	605
Total	2021	15339	15832	16216	16198	14796	13945	14160	15112	15286	15006	0	0
	2020	15347	15771	16030	12623	12148	13159	14958	15868	16000	15741	14074	13241
	Pre-Covid	14695	15298	15741	15101	14153	13606	13966	14933	15227	14960	13215	12633

'Pre-Covid' is 2019 values

Monthly Horses in Training

2021 against 2020 and Pre-Covid, shown with % Difference

Period — Pre-Covid — 2020 — 2021



'Pre-Covid' is 2019 values

Flat (including Dual)

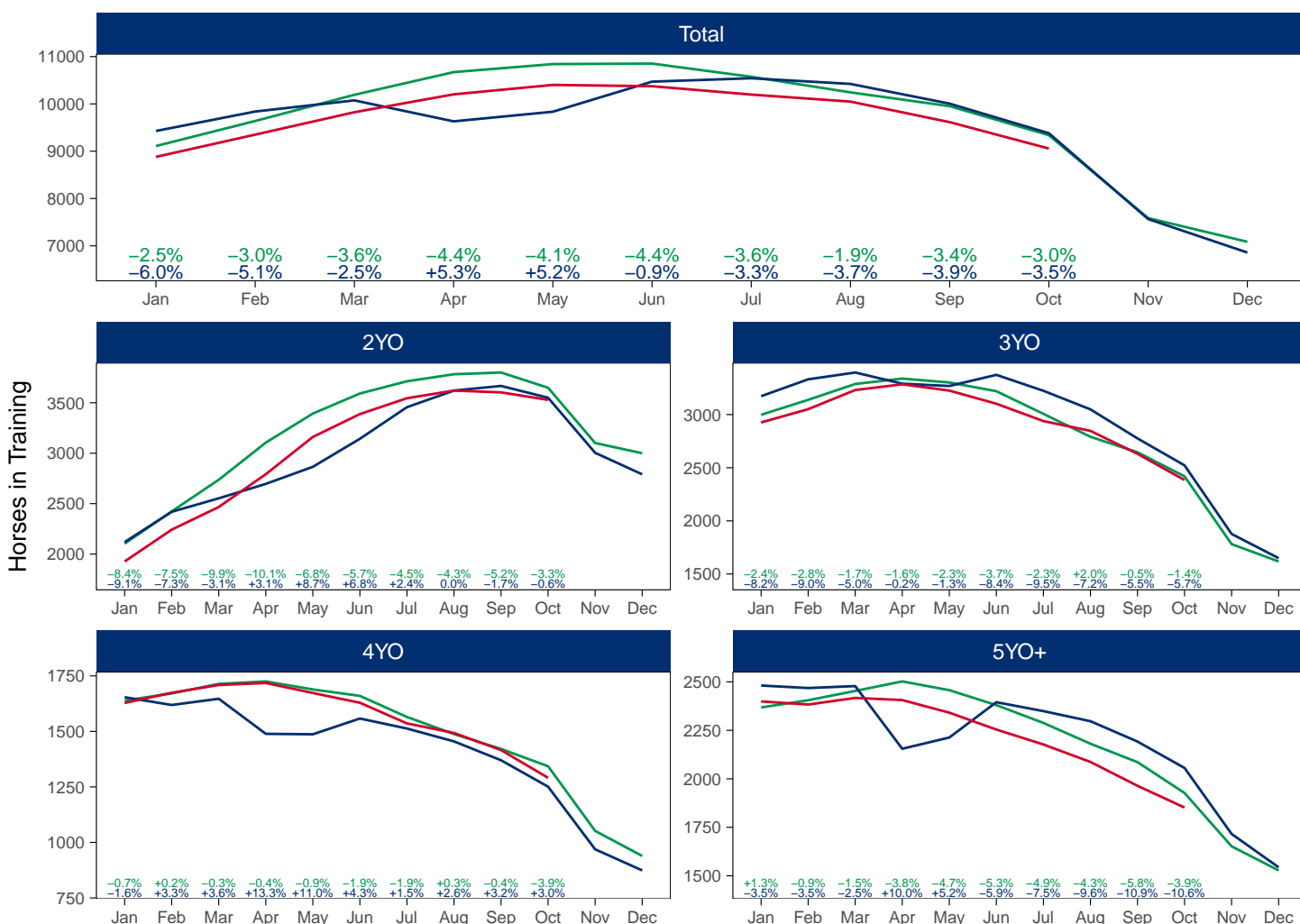
AgeCat	Period	Jan	Feb	Mar	Apr	May	Jun	Jul	Aug	Sep	Oct	Nov	Dec
2YO	2021	1927	2242	2467	2792	3161	3388	3545	3621	3603	3529		
	2020	2119	2419	2553	2696	2865	3143	3456	3621	3667	3550	3004	2791
	Pre-Covid	2184	2523	2798	3027	3274	3512	3668	3765	3777	3609	2991	2831
3YO	2021	2926	3051	3231	3285	3226	3102	2939	2847	2631	2384		
	2020	3173	3332	3396	3291	3269	3374	3224	3049	2776	2522	1877	1649
	Pre-Covid	2996	3173	3285	3305	3262	3216	3003	2842	2666	2437	1758	1586
4YO	2021	1628	1674	1709	1718	1673	1629	1536	1493	1416	1291		
	2020	1654	1619	1647	1489	1487	1558	1513	1455	1370	1251	969	874
	Pre-Covid	1575	1607	1637	1625	1598	1560	1479	1434	1371	1280	995	906
5YO+	2021	2399	2383	2417	2406	2341	2254	2177	2087	1964	1852		
	2020	2481	2468	2478	2155	2213	2395	2349	2297	2192	2056	1716	1544
	Pre-Covid	2420	2454	2478	2447	2423	2390	2301	2215	2119	1976	1671	1548
Total	2021	8880	9350	9824	10201	10401	10373	10197	10048	9614	9056		
	2020	9427	9838	10074	9631	9834	10470	10542	10422	10005	9379	7566	6858
	Pre-Covid	9175	9756	10197	10404	10557	10678	10452	10257	9933	9302	7415	6871

'Pre-Covid' is 2019 values

Monthly Flat Horses in Training

2021 against 2020 and Pre-Covid, shown with % Difference

Period — Pre-Covid — 2020 — 2021



'Pre-Covid' is 2019 values

Jump (including Dual)

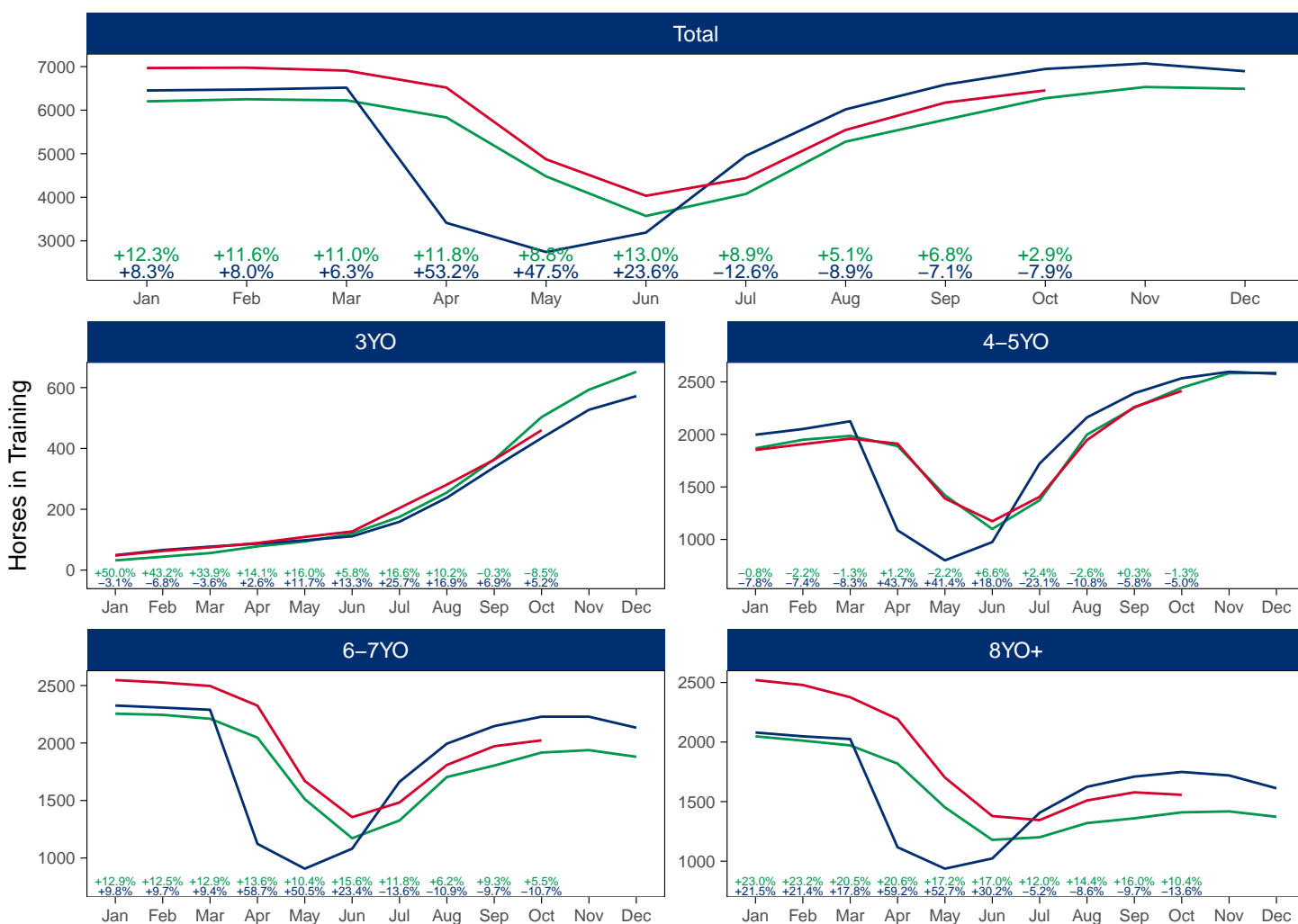
AgeCat	Period	Jan	Feb	Mar	Apr	May	Jun	Jul	Aug	Sep	Oct	Nov	Dec
3YO	2021	48	63	75	89	109	127	204	281	363	460		
	2020	49	66	77	87	98	111	159	238	338	434	527	572
	Pre-Covid	47	61	73	91	104	130	176	256	357	466	562	624
4-5YO	2021	1852	1907	1960	1912	1390	1173	1406	1946	2261	2413		
	2020	1997	2051	2125	1087	801	975	1723	2162	2392	2534	2596	2577
	Pre-Covid	1876	1945	1997	1726	1286	1035	1338	1922	2216	2386	2472	2479
6-7YO	2021	2547	2526	2496	2325	1670	1355	1483	1809	1972	2023		
	2020	2326	2308	2289	1123	907	1081	1663	1994	2147	2229	2229	2133
	Pre-Covid	2172	2148	2125	1788	1385	1140	1330	1680	1837	1911	1903	1842
8YO+	2021	2520	2479	2376	2193	1702	1379	1345	1510	1578	1557		
	2020	2080	2048	2025	1117	937	1023	1407	1624	1710	1749	1720	1612
	Pre-Covid	2017	1989	1962	1694	1390	1169	1219	1373	1443	1472	1458	1400
Total	2021	6967	6975	6907	6519	4871	4034	4438	5546	6174	6453		
	2020	6452	6473	6516	3414	2743	3190	4952	6018	6587	6946	7072	6894
	Pre-Covid	6113	6143	6157	5299	4165	3474	4063	5232	5853	6236	6395	6345

'Pre-Covid' is 2019 values

Monthly Jump Horses in Training

2021 against 2020 and Pre-Covid, shown with % Difference

Period — Pre-Covid — 2020 — 2021



'Pre-Covid' is 2019 values

Hunter Chasers

AgeCat	Period	Jan	Feb	Mar	Apr	May	Jun	Jul	Aug	Sep	Oct	Nov	Dec
4-5YO	2021	71	65	71	141	143	133	128	118	110	5		
	2020	113	223	278	265	264	258	248	233		40	106	174
	Pre-Covid	91	155	205	235	245	233	237	233		40	56	148
6-7YO	2021	195	181	199	260	264	253	245	241	237	11		
	2020	273	363	386	381	375	366	353	345		63	125	218
	Pre-Covid	293	400	452	476	479	458	425	345		63	75	182
8-9YO	2021	205	203	218	272	279	269	264	262	258	14		
	2020	220	294	315	309	307	304	297	295		54	88	176
	Pre-Covid	273	368	412	434	433	415	383	295		54	65	165
10YO+	2021	320	338	373	479	490	475	467	464	464	17		
	2020	343	447	488	479	478	468	460	451		71	128	226
	Pre-Covid	385	518	580	607	605	585	551	451		36	76	174
Total	2021	791	787	861	1152	1176	1130	1104	1085	1069	47		
	2020	949	1327	1467	1434	1424	1396	1358	1324		228	447	794
	Pre-Covid	1043	1441	1648	1751	1761	1690	1596	1324		114	272	669

'Pre-Covid' is 2019 values

Monthly Hunter Chasers in Training

2021 against 2020 and Pre-Covid, shown with % Difference

Period — Pre-Covid — 2020 — 2021



'Pre-Covid' is 2019 values

October 2021 Horses in Training by Rating Band Snapshot versus Previous Years

Flat (including Dual)

AgeCat	RatBand	2012	2013	2014	2015	2016	2017	2018	2019	2020	2021
2YO	0-50	80 (2.4%)	81 (2.5%)	98 (3.0%)	106 (3.0%)	66 (1.9%)	70 (1.9%)	77 (2.1%)	100 (2.7%)	77 (2.2%)	88 (2.5%)
	51-60	169 (5.2%)	179 (5.6%)	169 (5.2%)	165 (4.7%)	160 (4.6%)	164 (4.5%)	190 (5.2%)	175 (4.8%)	186 (5.2%)	167 (4.7%)
	61-70	228 (7.0%)	237 (7.4%)	238 (7.3%)	278 (8.0%)	274 (7.8%)	279 (7.6%)	265 (7.2%)	243 (6.7%)	274 (7.7%)	271 (7.7%)
	71-80	287 (8.8%)	254 (7.9%)	263 (8.0%)	311 (8.9%)	300 (8.6%)	285 (7.8%)	290 (7.9%)	277 (7.6%)	339 (9.5%)	316 (9.0%)
	81-90	124 (3.8%)	142 (4.4%)	123 (3.7%)	166 (4.8%)	144 (4.1%)	132 (3.6%)	162 (4.4%)	159 (4.4%)	148 (4.2%)	167 (4.7%)
	91-100	50 (1.5%)	74 (2.3%)	63 (1.9%)	65 (1.9%)	67 (1.9%)	68 (1.9%)	89 (2.4%)	84 (2.3%)	75 (2.1%)	65 (1.8%)
	101+	47 (1.4%)	34 (1.1%)	50 (1.5%)	51 (1.5%)	44 (1.3%)	51 (1.4%)	53 (1.4%)	56 (1.5%)	58 (1.6%)	65 (1.8%)
	Unrated	2291 (69.9%)	2220 (68.9%)	2277 (69.4%)	2350 (67.3%)	2437 (69.8%)	2625 (71.4%)	2552 (69.4%)	2555 (70.0%)	2393 (67.4%)	2390 (67.7%)
Subtotal		3276 (100.0%)	3221 (100.0%)	3281 (100.0%)	3492 (100.0%)	3492 (100.0%)	3674 (100.0%)	3678 (100.0%)	3649 (100.0%)	3550 (100.0%)	3529 (100.0%)
3YO	0-50	196 (8.3%)	180 (8.4%)	168 (8.0%)	172 (7.8%)	158 (7.0%)	211 (8.7%)	215 (8.4%)	263 (10.9%)	240 (9.5%)	209 (8.8%)
	51-60	297 (12.6%)	247 (11.5%)	230 (10.9%)	247 (11.2%)	263 (11.6%)	286 (11.8%)	285 (11.2%)	319 (13.2%)	297 (11.8%)	325 (13.6%)
	61-70	396 (16.8%)	332 (15.4%)	320 (15.2%)	355 (16.1%)	390 (17.2%)	412 (17.0%)	457 (17.9%)	419 (17.3%)	450 (17.8%)	429 (18.0%)
	71-80	360 (15.3%)	327 (15.2%)	384 (18.2%)	396 (18.0%)	435 (19.2%)	465 (19.2%)	470 (18.4%)	378 (15.6%)	450 (17.8%)	405 (17.0%)
	81-90	230 (9.8%)	232 (10.8%)	249 (11.8%)	290 (13.2%)	272 (12.0%)	317 (13.1%)	326 (12.8%)	278 (11.5%)	280 (11.1%)	277 (11.6%)
	91-100	119 (5.1%)	104 (4.8%)	102 (4.8%)	129 (5.9%)	138 (6.1%)	159 (6.6%)	160 (6.3%)	180 (7.4%)	146 (5.8%)	126 (5.3%)
	101+	79 (3.4%)	69 (3.2%)	92 (4.4%)	96 (4.4%)	104 (4.6%)	105 (4.3%)	118 (4.6%)	115 (4.8%)	77 (3.1%)	92 (3.9%)
	Unrated	676 (28.7%)	659 (30.7%)	563 (26.7%)	514 (23.4%)	508 (22.4%)	470 (19.4%)	522 (20.4%)	467 (19.3%)	582 (23.1%)	521 (21.9%)
Subtotal		2353 (100.0%)	2150 (100.0%)	2108 (100.0%)	2199 (100.0%)	2268 (100.0%)	2425 (100.0%)	2553 (100.0%)	2419 (100.0%)	2522 (100.0%)	2384 (100.0%)
4YO	0-50	124 (10.1%)	118 (9.8%)	97 (9.0%)	90 (8.1%)	101 (8.9%)	139 (10.2%)	151 (11.5%)	179 (13.3%)	141 (11.3%)	147 (11.4%)
	51-60	148 (12.1%)	122 (10.2%)	126 (11.7%)	131 (11.7%)	132 (11.7%)	180 (13.2%)	171 (13.1%)	198 (14.7%)	174 (13.9%)	202 (15.6%)
	61-70	191 (15.6%)	169 (14.1%)	164 (15.3%)	160 (14.3%)	165 (14.6%)	197 (14.4%)	235 (18.0%)	216 (16.1%)	231 (18.5%)	227 (17.6%)
	71-80	171 (13.9%)	170 (14.2%)	171 (15.9%)	185 (16.6%)	188 (16.6%)	206 (15.1%)	208 (15.9%)	226 (16.8%)	207 (16.5%)	213 (16.5%)
	81-90	114 (9.3%)	129 (10.8%)	128 (11.9%)	151 (13.5%)	152 (13.5%)	192 (14.0%)	152 (11.6%)	168 (12.5%)	135 (10.8%)	153 (11.9%)
	91-100	65 (5.3%)	82 (6.8%)	101 (9.4%)	96 (8.6%)	100 (8.8%)	95 (6.9%)	138 (10.5%)	119 (8.9%)	106 (8.5%)	99 (7.7%)
	101+	74 (6.0%)	68 (5.7%)	71 (6.6%)	82 (7.4%)	92 (8.1%)	107 (7.8%)	99 (7.6%)	90 (6.7%)	82 (6.6%)	73 (5.7%)
	Unrated	339 (27.7%)	342 (28.5%)	216 (20.1%)	220 (19.7%)	200 (17.7%)	251 (18.4%)	155 (11.8%)	147 (10.9%)	175 (14.0%)	177 (13.7%)
Subtotal		1226 (100.0%)	1200 (100.0%)	1074 (100.0%)	1115 (100.0%)	1130 (100.0%)	1367 (100.0%)	1309 (100.0%)	1343 (100.0%)	1251 (100.0%)	1291 (100.0%)
5YO+	0-50	198 (10.4%)	210 (11.2%)	215 (11.6%)	183 (9.8%)	177 (9.3%)	210 (10.4%)	283 (14.3%)	316 (16.4%)	278 (13.5%)	256 (13.8%)
	51-60	258 (13.5%)	234 (12.5%)	218 (11.7%)	240 (12.9%)	258 (13.6%)	284 (14.1%)	281 (14.2%)	283 (14.7%)	334 (16.2%)	307 (16.6%)
	61-70	308 (16.1%)	287 (15.3%)	320 (17.2%)	332 (17.8%)	319 (16.8%)	338 (16.7%)	335 (16.9%)	347 (18.0%)	369 (17.9%)	305 (16.5%)
	71-80	236 (12.4%)	265 (14.1%)	275 (14.8%)	285 (15.3%)	291 (15.3%)	276 (13.7%)	303 (15.3%)	258 (13.4%)	300 (14.6%)	253 (13.7%)
	81-90	192 (10.1%)	156 (8.3%)	196 (10.6%)	222 (11.9%)	240 (12.7%)	232 (11.5%)	245 (12.4%)	222 (11.5%)	219 (10.7%)	202 (10.9%)
	91-100	89 (4.7%)	93 (5.0%)	107 (5.8%)	123 (6.6%)	150 (7.9%)	150 (7.4%)	127 (6.4%)	119 (6.2%)	111 (5.4%)	130 (7.0%)
	101+	96 (5.0%)	89 (4.7%)	102 (5.5%)	94 (5.0%)	115 (6.1%)	137 (6.8%)	136 (6.9%)	114 (5.9%)	107 (5.2%)	121 (6.5%)
	Unrated	532 (27.9%)	541 (28.9%)	424 (22.8%)	383 (20.6%)	347 (18.3%)	391 (19.4%)	272 (13.7%)	268 (13.9%)	338 (16.4%)	278 (15.0%)
Subtotal		1909 (100.0%)	1875 (100.0%)	1857 (100.0%)	1862 (100.0%)	1897 (100.0%)	2018 (100.0%)	1982 (100.0%)	1927 (100.0%)	2056 (100.0%)	1852 (100.0%)
Overall	0-50	598 (6.8%)	589 (7.0%)	578 (6.9%)	551 (6.4%)	502 (5.7%)	630 (6.6%)	726 (7.6%)	858 (9.2%)	736 (7.8%)	700 (7.7%)
	51-60	872 (9.9%)	782 (9.3%)	743 (8.9%)	783 (9.0%)	813 (9.3%)	914 (9.6%)	927 (9.7%)	975 (10.4%)	991 (10.6%)	1001 (11.1%)
	61-70	1123 (12.8%)	1025 (12.1%)	1042 (12.5%)	1125 (13.0%)	1148 (13.1%)	1226 (12.9%)	1292 (13.6%)	1225 (13.1%)	1324 (14.1%)	1232 (13.6%)
	71-80	1054 (12.0%)	1016 (12.0%)	1093 (13.1%)	1177 (13.6%)	1214 (13.8%)	1232 (13.0%)	1271 (13.3%)	1139 (12.2%)	1296 (13.8%)	1187 (13.1%)
	81-90	660 (7.5%)	659 (7.8%)	696 (8.4%)	829 (9.6%)	808 (9.2%)	873 (9.2%)	885 (9.3%)	827 (8.9%)	782 (8.3%)	799 (8.8%)
	91-100	323 (3.7%)	353 (4.2%)	373 (4.5%)	413 (4.8%)	455 (5.2%)	472 (5.0%)	514 (5.4%)	502 (5.4%)	438 (4.7%)	420 (4.6%)
	101+	296 (3.4%)	260 (3.1%)	315 (3.8%)	323 (3.7%)	355 (4.0%)	400 (4.2%)	406 (4.3%)	375 (4.0%)	324 (3.5%)	351 (3.9%)
	Unrated	3838 (43.8%)	3762 (44.5%)	3480 (41.8%)	3467 (40.0%)	3492 (39.7%)	3737 (39.4%)	3501 (36.8%)	3437 (36.8%)	3488 (37.2%)	3366 (37.2%)
Total		8764 (100.0%)	8446 (100.0%)	8320 (100.0%)	8668 (100.0%)	8787 (100.0%)	9484 (100.0%)	9522 (100.0%)	9338 (100.0%)	9379 (100.0%)	9056 (100.0%)

Jump (including Dual)

AgeCat	RatBand	2012	2013	2014	2015	2016	2017	2018	2019	2020	2021
3YO	0-100	3 (0.7%)	2 (0.4%)	4 (0.8%)	5 (1.1%)	4 (0.9%)	2 (0.4%)	4 (0.8%)	3 (0.6%)	3 (0.7%)	12 (2.6%)
	101-110	4 (0.9%)	5 (1.0%)	7 (1.4%)	4 (0.9%)	5 (1.1%)	4 (0.9%)	6 (1.2%)	9 (1.8%)	10 (2.3%)	12 (2.6%)
	111-120	5 (1.2%)	2 (0.4%)	5 (1.0%)	3 (0.7%)	3 (0.7%)	2 (0.4%)	4 (0.8%)	6 (1.2%)	4 (0.9%)	1 (0.2%)
	121-130	1 (0.2%)	4 (0.8%)	1 (0.2%)	3 (0.7%)	4 (0.9%)	NA (-)	2 (0.4%)	1 (0.2%)	1 (0.2%)	2 (0.4%)
	131-140	1 (0.2%)	1 (0.2%)	2 (0.4%)	3 (0.7%)	1 (0.2%)	1 (0.2%)	1 (0.2%)	NA (-)	1 (0.2%)	NA (-)
	Unrated	414 (96.7%)	465 (97.1%)	498 (96.3%)	438 (96.1%)	437 (96.3%)	451 (98.0%)	463 (96.5%)	484 (96.2%)	415 (95.6%)	433 (94.1%)
Subtotal		428 (100.0%)	479 (100.0%)	517 (100.0%)	456 (100.0%)	454 (100.0%)	460 (100.0%)	480 (100.0%)	503 (100.0%)	434 (100.0%)	460 (100.0%)
4-5YO	0-100	134 (6.5%)	164 (7.7%)	162 (7.5%)	134 (6.3%)	167 (7.5%)	180 (7.7%)	164 (6.9%)	201 (8.2%)	250 (9.9%)	227 (9.4%)
	101-110	71 (3.4%)	86 (4.0%)	87 (4.0%)	117 (5.5%)	114 (5.1%)	125 (5.3%)	158 (6.6%)	131 (5.4%)	128 (5.1%)	98 (4.1%)
	111-120	75 (3.6%)	90 (4.2%)	93 (4.3%)	121 (5.7%)	108 (4.9%)	116 (4.9%)	135 (5.7%)	151 (6.2%)	144 (5.7%)	97 (4.0%)
	121-130	57 (2.7%)	73 (3.4%)	75 (3.5%)	89 (4.2%)	88 (4.0%)	104 (4.4%)	141 (5.9%)	127 (5.2%)	111 (4.4%)	62 (2.6%)
	131-140	23 (1.1%)	31 (1.4%)	48 (2.2%)	58 (2.7%)	67 (3.0%)	66 (2.8%)	58 (2.4%)	51 (2.1%)	45 (1.8%)	31 (1.3%)
	141-150	14 (0.7%)	16 (0.7%)	16 (0.7%)	19 (0.9%)	23 (1.0%)	20 (0.9%)	16 (0.7%)	21 (0.9%)	22 (0.9%)	5 (0.2%)
	151+	3 (0.1%)	4 (0.2%)	5 (0.2%)	8 (0.4%)	4 (0.2%)	4 (0.2%)	8 (0.3%)	5 (0.2%)	4 (0.2%)	2 (0.1%)
	Unrated	1699 (81.8%)	1679 (78.3%)	1668 (77.4%)	1579 (74.3%)	1651 (74.3%)	1731 (73.8%)	1704 (71.5%)	1757 (71.9%)	1830 (72.2%)	1891 (78.4%)
Subtotal		2076 (100.0%)	2143 (100.0%)	2154 (100.0%)	2125 (100.0%)	2222 (100.0%)	2346 (100.0%)	2384 (100.0%)	2444 (100.0%)	2534 (100.0%)	2413 (100.0%)
6-7YO	0-100	239 (13.3%)	301 (16.8%)	286 (15.9%)	313 (16.7%)	292 (16.9%)	310 (17.4%)	343 (18.0%)	370 (19.3%)	471 (21.1%)	400 (19.8%)
	101-110	150 (8.4%)	163 (9.1%)	162 (9.0%)	196 (10.5%)	191 (11.1%)	221 (12.4%)	233 (12.3%)	225 (11.7%)	301 (13.5%)	195 (9.6%)
	111-120	154 (8.6%)	167 (9.3%)	214 (11.9%)	198 (10.6%)	218 (12.6%)	221 (12.4%)	256 (13.5%)	260 (13.6%)	278 (12.5%)	214 (10.6%)
	121-130	137 (7.6%)	162 (9.0%)	188 (10.5%)	215 (11.5%)	204 (11.8%)	203 (11.4%)	247 (13.0%)	249 (13.0%)	301 (13.5%)	184 (9.1%)
	131-140	72 (4.0%)	90 (5.0%)	96 (5.3%)	120 (6.4%)	139 (8.1%)	172 (9.6%)	193 (10.2%)	212 (11.1%)	194 (8.7%)	106 (5.2%)
	141-150	22 (1.2%)	33 (1.8%)	40 (2.2%)	53 (2.8%)	47 (2.7%)	72 (4.0%)	77 (4.1%)	58 (3.0%)	68 (3.1%)	42 (2.1%)
	151+	16 (0.9%)	18 (1.0%)	28 (1.6%)	32 (1.7%)	28 (1.6%)	34 (1.9%)	31 (1.6%)	41 (2.1%)	32 (1.4%)	13 (0.6%)
	Unrated	1005 (56.0%)	863 (48.0%)	785 (43.6%)	748 (39.9%)	607 (35.2%)	551 (30.9%)	521 (27.4%)	502 (26.2%)	584 (26.2%)	869 (43.0%)
Subtotal		1795 (100.0%)	1797 (100.0%)	1799 (100.0%)	1875 (100.0%)	1726 (100.0%)	1784 (100.0%)	1901 (100.0%)	1917 (100.0%)	2229 (100.0%)	2023 (100.0%)
8YO+	0-100	262 (20.8%)	321 (25.2%)	311 (25.1%)	322 (23.8%)	345 (25.1%)	338 (24.3%)	350 (24.4%)	382 (27.1%)	445 (25.4%)	324 (20.8%)
	101-110	98 (7.8%)	110 (8.6%)	141 (11.4%)	164 (12.1%)	158 (11.5%)	171 (12.3%)	197 (13.7%)	171 (12.1%)	189 (10.8%)	152 (9.8%)
	111-120	97 (7.7%)	119 (9.4%)	128 (10.3%)	171 (12.6%)	171 (12.4%)	181 (13.0%)	169 (11.8%)	174 (12.3%)	218 (12.5%)	161 (10.3%)
	121-130	84 (6.7%)	120 (9.4%)	131 (10.6%)	153 (11.3%)	139 (10.1%)	150 (10.8%)	177 (12.3%)	159 (11.3%)	198 (11.3%)	149 (9.6%)
	131-140	63 (5.0%)	82 (6.4%)	104 (8.4%)	109 (8.1%)	122 (8.9%)	118 (8.5%)	137 (9.5%)	142 (10.1%)	153 (8.7%)	105 (6.7%)
	141-150	46 (3.7%)	38 (3.0%)	49 (4.0%)	49 (3.6%)	59 (4.3%)	75 (5.4%)	77 (5.4%)	85 (6.0%)	89 (5.1%)	53 (3.4%)
	151+	25 (2.0%)	23 (1.8%)	29 (2.3%)	32 (2.4%)	28 (2.0%)	32 (2.3%)	28 (1.9%)	44 (3.1%)	52 (3.0%)	22 (1.4%)
	Unrated	582 (46.3%)	459 (36.1%)	346 (27.9%)	353 (26.1%)	352 (25.6%)	326 (23.4%)	302 (21.0%)	253 (17.9%)	405 (23.2%)	591 (38.0%)
Subtotal		1257 (100.0%)	1272 (100.0%)	1239 (100.0%)	1353 (100.0%)	1374 (100.0%)	1391 (100.0%)	1437 (100.0%)	1410 (100.0%)	1749 (100.0%)	1557 (100.0%)
Overall	0-100	638 (11.5%)	788 (13.8%)	763 (13.4%)	774 (13.3%)	808 (14.0%)	830 (13.9%)	861 (13.9%)	956 (15.2%)	1169 (16.8%)	963 (14.9%)
	101-110	323 (5.8%)	364 (6.4%)	397 (7.0%)	481 (8.3%)	468 (8.1%)	521 (8.7%)	594 (9.6%)	536 (8.5%)	628 (9.0%)	457 (7.1%)
	111-120	331 (6.0%)	378 (6.6%)	440 (7.7%)	493 (8.5%)	500 (8.7%)	520 (8.7%)	564 (9.1%)	591 (9.4%)	644 (9.3%)	473 (7.3%)
	121-130	279 (5.0%)	359 (6.3%)	395 (6.9%)	460 (7.9%)	435 (7.5%)	457 (7.6%)	567 (9.1%)	536 (8.5%)	611 (8.8%)	397 (6.2%)
	131-140	159 (2.9%)	204 (3.6%)	250 (4.4%)	290 (5.0%)	329 (5.7%)	357 (6.0%)	389 (6.3%)	405 (6.5%)	393 (5.7%)	242 (3.8%)
	141-150	82 (1.5%)	87 (1.5%)	105 (1.8%)	121 (2.1%)	129 (2.2%)	167 (2.8%)	170 (2.7%)	164 (2.6%)	179 (2.6%)	100 (1.5%)
	151+	44 (0.8%)	45 (0.8%)	62 (1.1%)	72 (1.2%)	60 (1.0%)	70 (1.2%)	67 (1.1%)	90 (1.4%)	88 (1.3%)	37 (0.6%)
	Unrated	3700 (66.6%)	3466 (60.9%)	3297 (57.8%)	3118 (53.7%)	3047 (52.8%)	3059 (51.1%)	2990 (48.2%)	2996 (47.8%)	3234 (46.6%)	3784 (58.6%)
Total		5556 (100.0%)	5691 (100.0%)	5709 (100.0%)	5809 (100.0%)	5776 (100.0%)	5981 (100.0%)	6202 (100.0%)	6274 (100.0%)	6946 (100.0%)	6453 (100.0%)

Young Horses Entering Training

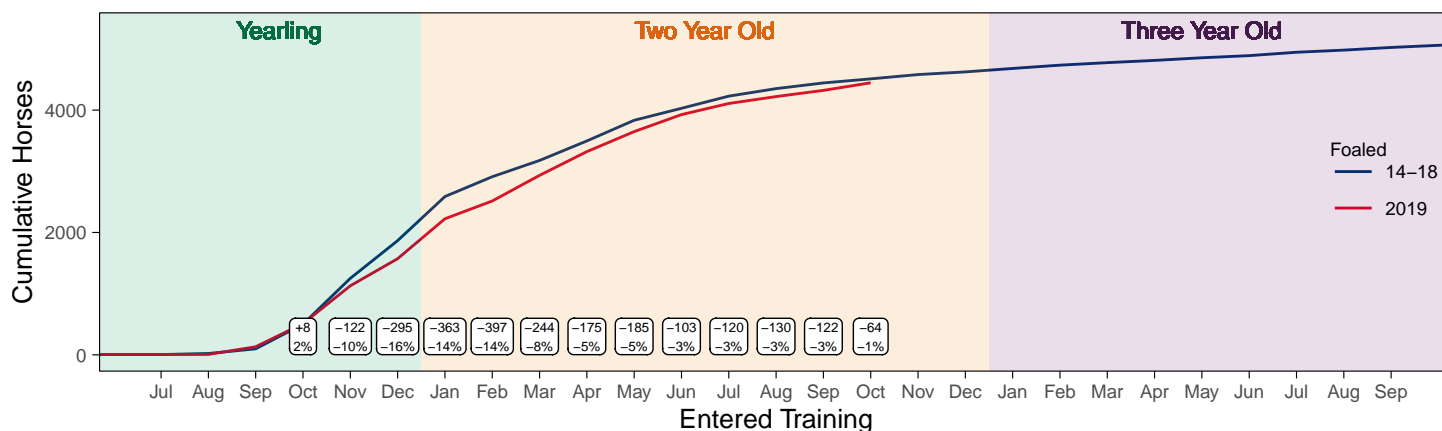
Flat Yearlings in Training versus Previous Years

Period	Jan	Feb	Mar	Apr	May	Jun	Jul	Aug	Sep	Oct	Nov	Dec
2021	0	0	0	0	0	0	0	5	79	315		
2020	0	0	0	0	1	2	1	2	60	235	712	1365
5YrAvg	1	1	1	1	1	1	1	2	44	241	724	1460

Foals Entering Training for the First Time

2019 Foals Entering Training Over Time

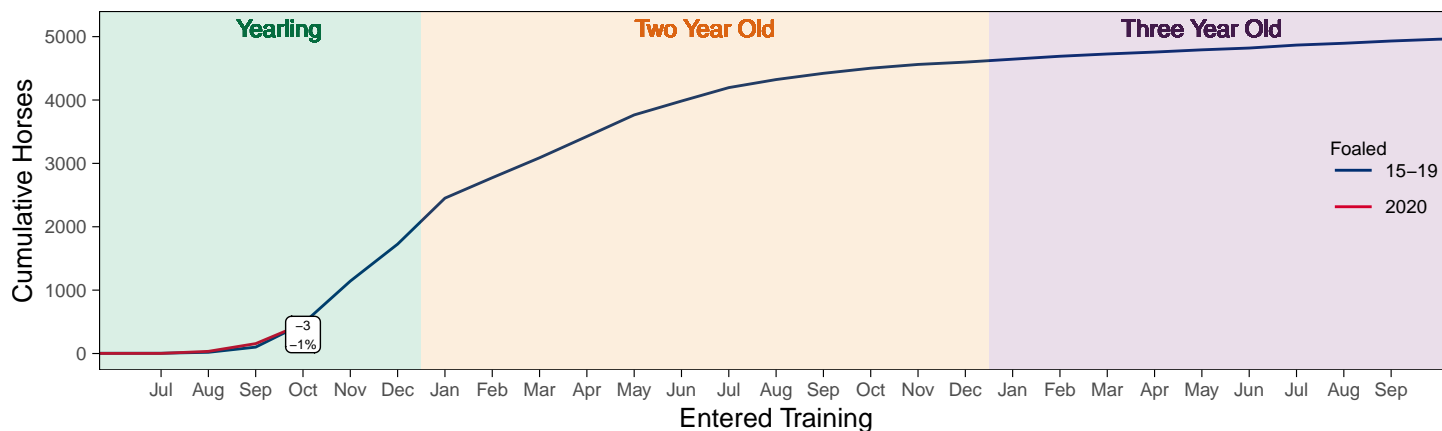
Cumulative Flat Horses foaled in 2019 shown by first in training notification against trend



Cumulative individual horses entering training for the first time by the end of each month.

2020 Foals Entering Training Over Time

Cumulative Flat Horses foaled in 2020 shown by first in training notification against trend



Cumulative individual horses entering training for the first time by the end of each month.

Year to Date Horses in Training

Type	2012	2013	2014	2015	2016	2017	2018	2019	2020	2021	vs. Last Year	vs. Pre-Covid
Flat	12297	12263	12206	12450	12911	13250	13187	13486	13282	13185	-97 / -0.7%	-301 / -2.2%
Jump	8142	8078	7968	8096	7995	7826	7709	8437	8201	8981	+780 / +9.5%	+544 / +6.4%
Dual	901	876	903	835	799	1022	1428	811	902	859	-43 / -4.8%	+48 / +5.9%
Hunter	2728	2400	2274	2174	2108	2007	1863	1819	1608	1333	-275 / -17.1%	-486 / -26.7%
Total	21340	21217	21077	21381	21705	22098	22324	22734	22385	23025	+640 / +2.9%	+291 / +1.3%

'vs. Pre-Covid' is comparison between 2021 and 2019

Flat

AgeCat	2012	2013	2014	2015	2016	2017	2018	2019	2020	2021	vs. Last Year	vs. Pre-Covid
2YO	3977	4080	4138	4430	4450	4515	4491	4540	4360	4394	+34 / +0.8%	-146 / -3.2%
3YO	3833	3630	3632	3717	3952	4026	4134	4121	4186	4040	-146 / -3.5%	-81 / -2.0%
4YO	1882	1887	1756	1750	1888	1993	1917	2039	1997	2095	+98 / +4.9%	+56 / +2.7%
5YO+	2605	2666	2680	2553	2621	2716	2645	2786	2739	2656	-83 / -3.0%	-130 / -4.7%
Total	12297	12263	12206	12450	12911	13250	13187	13486	13282	13185	-97 / -0.7%	-301 / -2.2%

'vs. Pre-Covid' is comparison between 2021 and 2019

Jump

AgeCat	2012	2013	2014	2015	2016	2017	2018	2019	2020	2021	vs. Last Year	vs. Pre-Covid
3YO	302	348	398	431	361	303	356	393	316	375	+59 / +18.7%	-18 / -4.6%
4-5YO	2764	2685	2565	2597	2679	2637	2489	2803	2725	2794	+69 / +2.5%	-9 / -0.3%
6-7YO	2784	2695	2631	2749	2526	2443	2502	2758	2721	2987	+266 / +9.8%	+229 / +8.3%
8YO+	2292	2350	2374	2319	2429	2443	2362	2483	2439	2825	+386 / +15.8%	+342 / +13.8%
Total	8142	8078	7968	8096	7995	7826	7709	8437	8201	8981	+780 / +9.5%	+544 / +6.4%

'vs. Pre-Covid' is comparison between 2021 and 2019

Dual

AgeCat	2012	2013	2014	2015	2016	2017	2018	2019	2020	2021	vs. Last Year	vs. Pre-Covid
3YO	139	111	128	108	119	161	168	124	162	158	-4 / -2.5%	+34 / +27.4%
4YO	217	225	220	188	188	276	356	227	220	237	+17 / +7.7%	+10 / +4.4%
5YO+	545	540	555	539	492	585	904	460	520	464	-56 / -10.8%	+4 / +0.9%
Total	901	876	903	835	799	1022	1428	811	902	859	-43 / -4.8%	+48 / +5.9%

'vs. Pre-Covid' is comparison between 2021 and 2019

Hunter Chasers

AgeCat	2012	2013	2014	2015	2016	2017	2018	2019	2020	2021	vs. Last Year	vs. Pre-Covid
4-5YO	347	276	215	233	242	255	286	322	346	204	-142 / -41.0%	-118 / -36.6%
6-7YO	842	756	711	618	583	526	515	509	412	313	-99 / -24.0%	-196 / -38.5%
8-9YO	681	618	653	648	560	536	423	395	331	320	-11 / -3.3%	-75 / -19.0%
10YO+	858	750	695	675	723	690	639	593	519	496	-23 / -4.4%	-97 / -16.4%
Total	2728	2400	2274	2174	2108	2007	1863	1819	1608	1333	-275 / -17.1%	-486 / -26.7%

'vs. Pre-Covid' is comparison between 2021 and 2019

Year to Date Runners

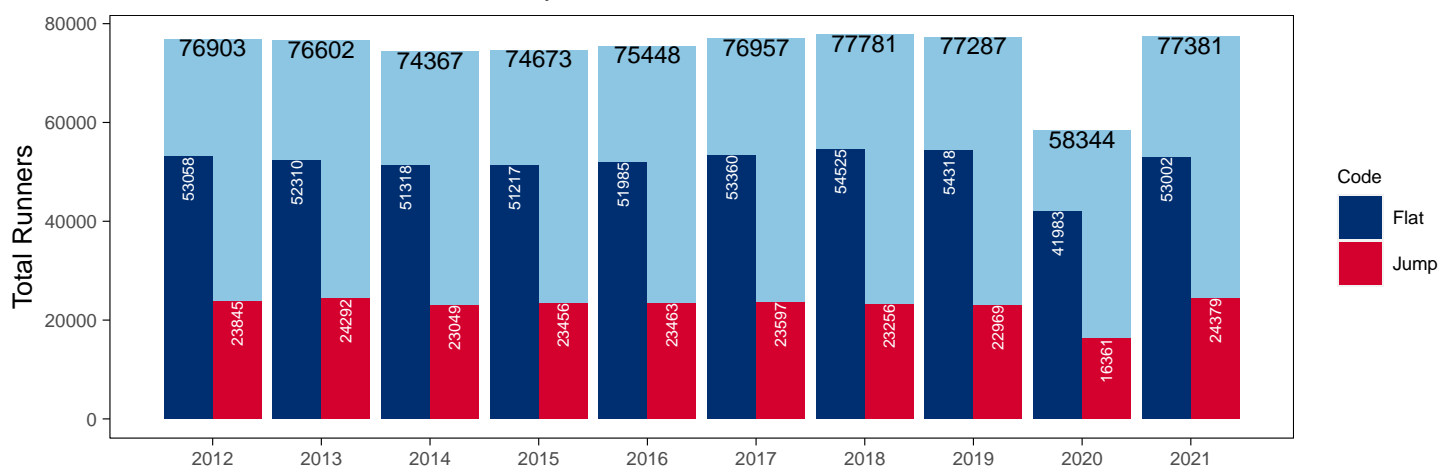
Year to Date Total Runners

Code	2012	2013	2014	2015	2016	2017	2018	2019	2020	2021	vs. Last Year	vs. Pre-Covid
Flat	53058	52310	51318	51217	51985	53360	54525	54318	41983	53002	+11019 / +26.2%	-1316 / -2.4%
Jump	23845	24292	23049	23456	23463	23597	23256	22969	16361	24379	+8018 / +49.0%	+1410 / +6.1%
Total	76903	76602	74367	74673	75448	76957	77781	77287	58344	77381	+19037 / +32.6%	+94 / +0.1%

'vs. Pre-Covid' is comparison between 2021 and 2019

YTD Total Runners

Total Runners in GB Races, shown by Code and Total



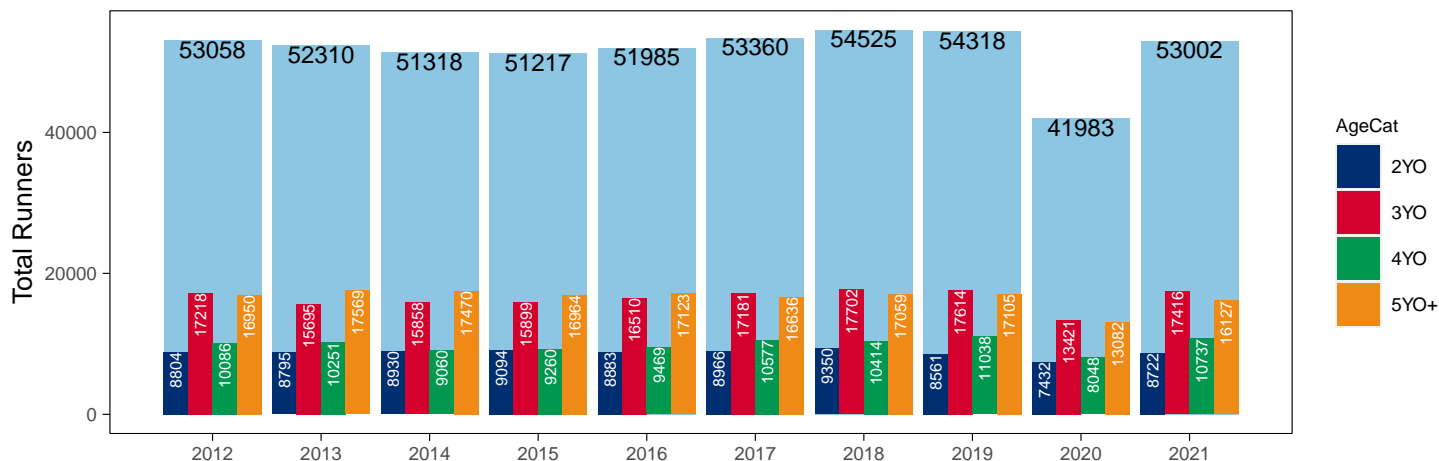
Flat

AgeCat	2012	2013	2014	2015	2016	2017	2018	2019	2020	2021	vs. Last Year	vs. Pre-Covid
2YO	8804	8795	8930	9094	8883	8966	9350	8561	7432	8722	+1290 / +17.4%	+161 / +1.9%
3YO	17218	15695	15858	15899	16510	17181	17702	17614	13421	17416	+3995 / +29.8%	-198 / -1.1%
4YO	10086	10251	9060	9260	9469	10577	10414	11038	8048	10737	+2689 / +33.4%	-301 / -2.7%
5YO+	16950	17569	17470	16964	17123	16636	17059	17105	13082	16127	+3045 / +23.3%	-978 / -5.7%
Total	53058	52310	51318	51217	51985	53360	54525	54318	41983	53002	+11019 / +26.2%	-1316 / -2.4%

'vs. Pre-Covid' is comparison between 2021 and 2019

YTD Total Flat Runners by Age

Total Runners in GB Flat Races, shown by Age Category and Total



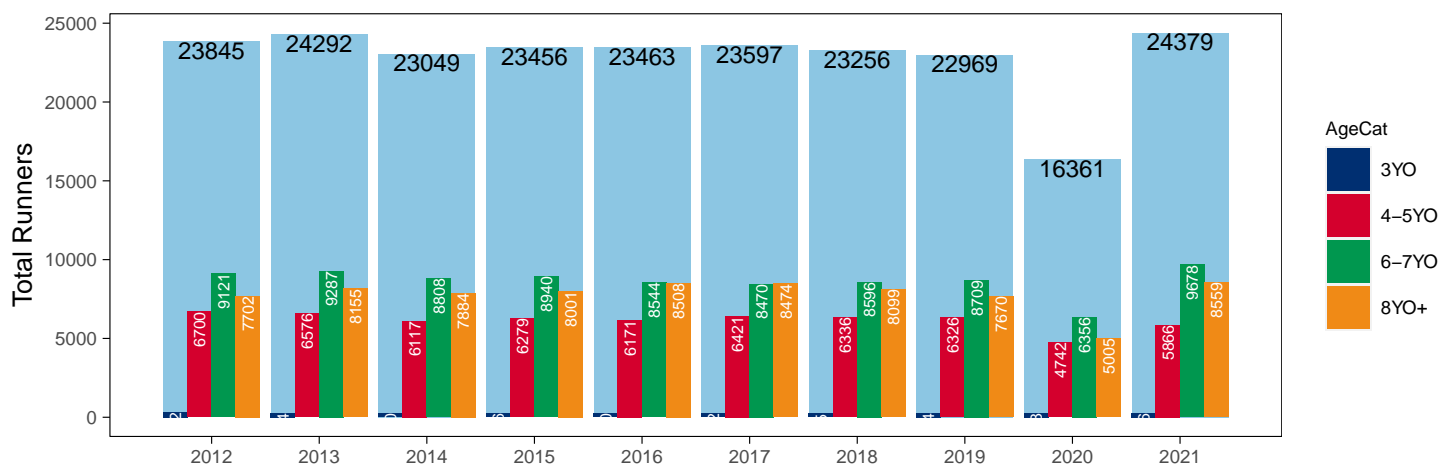
Jump

AgeCat	2012	2013	2014	2015	2016	2017	2018	2019	2020	2021	vs. Last Year	vs. Pre-Covid
3YO	322	274	240	236	240	232	225	264	258	276	+18 / +7.0%	+12 / +4.5%
4-5YO	6700	6576	6117	6279	6171	6421	6336	6326	4742	5866	+1124 / +23.7%	-460 / -7.3%
6-7YO	9121	9287	8808	8940	8544	8470	8596	8709	6356	9678	+3322 / +52.3%	+969 / +11.1%
8YO+	7702	8155	7884	8001	8508	8474	8099	7670	5005	8559	+3554 / +71.0%	+889 / +11.6%
Total	23845	24292	23049	23456	23463	23597	23256	22969	16361	24379	+8018 / +49.0%	+1410 / +6.1%

'vs. Pre-Covid' is comparison between 2021 and 2019

YTD Total Jump Runners by Age

Total Runners in GB Jump Races, shown by Age Category and Total



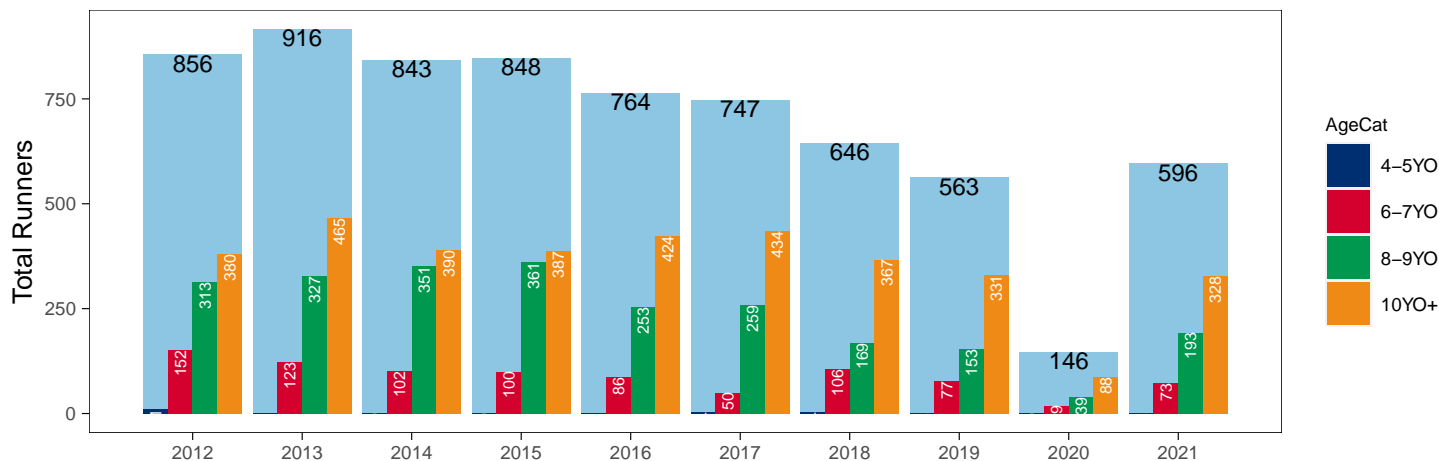
Hunter Chases

AgeCat	2012	2013	2014	2015	2016	2017	2018	2019	2020	2021	vs. Last Year	vs. Pre-Covid
4-5YO	11	1			1	4	4	2		2	NA / NA	0 / 0.0%
6-7YO	152	123	102	100	86	50	106	77	19	73	+54 / +284.2%	-4 / -5.2%
8-9YO	313	327	351	361	253	259	169	153	39	193	+154 / +394.9%	+40 / +26.1%
10YO+	380	465	390	387	424	434	367	331	88	328	+240 / +272.7%	-3 / -0.9%
Total	856	916	843	848	764	747	646	563	146	596	+450 / +308.2%	+33 / +5.9%

'vs. Pre-Covid' is comparison between 2021 and 2019

YTD Total Hunter Chase Runners by Age

Total Runners in GB Hunter Chases shown by Age Category and Total



Year to Date Total Runners by Country Trained

Code	Country	2012	2013	2014	2015	2016	2017	2018	2019	2020	2021
Flat	GB	52655	51816	50874	50657	51411	52656	53722	53536	41710	52610
	IRE	322	393	353	427	496	624	740	711	246	358
	Other	81	101	91	133	78	80	63	71	27	34
Jump	GB	23289	23700	22410	22754	22640	22870	22662	22303	16081	23904
	IRE	554	590	636	697	814	714	584	659	270	471
	Other	2	2	3	5	9	13	10	7	10	4
Overall	GB	75944	75516	73284	73411	74051	75526	76384	75839	57791	76514
	IRE	876	983	989	1124	1310	1338	1324	1370	516	829
	Other	83	103	94	138	87	93	73	78	37	38

Year to Date GB Trained Runners Racing Abroad

Code	Country	2012	2013	2014	2015	2016	2017	2018	2019	2020	2021
Flat	IRE	110	131	141	183	188	187	155	164	56	57
	FR	245	303	350	334	370	448	481	521	265	216
	GNV	22	20	20	19	22	30	33	47	20	10
	UAE	343	351	326	289	208	278	276	303	281	248
	KSA									15	21
	Other	107	94	139	138	118	105	120	119	42	56
	Total	827	899	976	963	906	1048	1065	1154	679	608
Jump	IRE	64	46	93	93	92	82	56	72	7	24
	FR	44	54	28	29	51	28	12	48	70	115
	Other	8	12	10	8	10	8	7	10		8
	Total	116	112	131	130	153	118	75	130	77	147

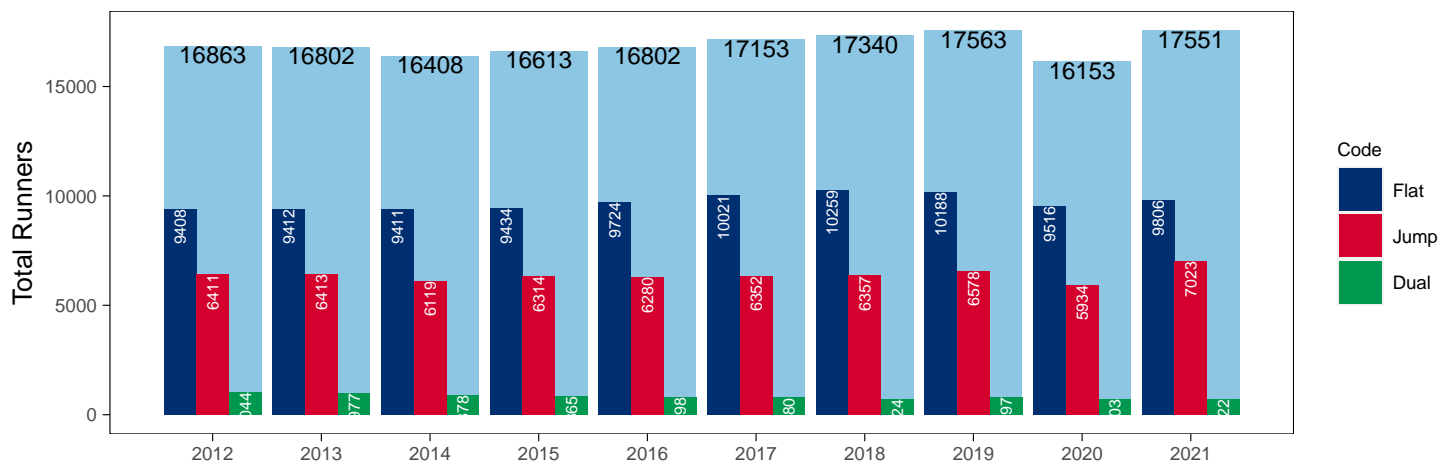
Year to Date Individual Runners

Code	2012	2013	2014	2015	2016	2017	2018	2019	2020	2021	vs. Last Year	vs. Pre-Covid
Flat	9408	9412	9411	9434	9724	10021	10259	10188	9516	9806	+290 / +3.0%	-382 / -3.7%
Jump	6411	6413	6119	6314	6280	6352	6357	6578	5934	7023	+1089 / +18.4%	+445 / +6.8%
Dual	1044	977	878	865	798	780	724	797	703	722	+19 / +2.7%	-75 / -9.4%
Overall	16863	16802	16408	16613	16802	17153	17340	17563	16153	17551	+1398 / +8.7%	-12 / -0.1%

'vs. Pre-Covid' is comparison between 2021 and 2019

YTD Individual Runners

Individual Runners in GB Races, shown by Code and Total



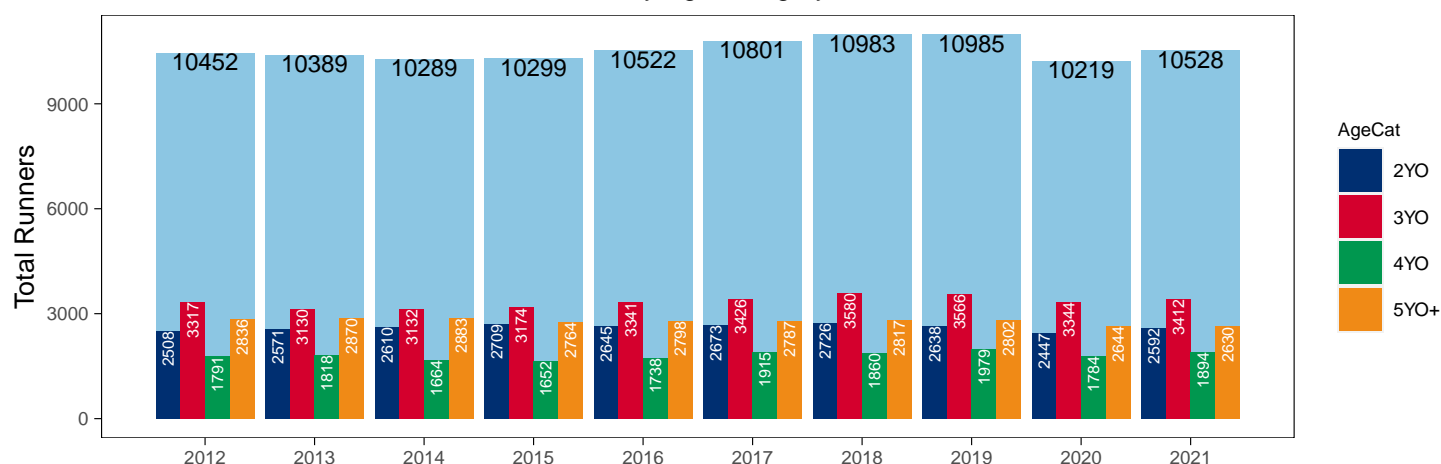
Flat

AgeCat	2012	2013	2014	2015	2016	2017	2018	2019	2020	2021	vs. Last Year	vs. Pre-Covid
2YO	2508	2571	2610	2709	2645	2673	2726	2638	2447	2592	+145 / +5.9%	-46 / -1.7%
3YO	3317	3130	3132	3174	3341	3426	3580	3566	3344	3412	+68 / +2.0%	-154 / -4.3%
4YO	1791	1818	1664	1652	1738	1915	1860	1979	1784	1894	+110 / +6.2%	-85 / -4.3%
5YO+	2836	2870	2883	2764	2798	2787	2817	2802	2644	2630	-14 / -0.5%	-172 / -6.1%
Total	10452	10389	10289	10299	10522	10801	10983	10985	10219	10528	+309 / +3.0%	-457 / -4.2%

'vs. Pre-Covid' is comparison between 2021 and 2019

YTD Individual Flat Runners by Age

Individual Runners in GB Flat Races, shown by Age Category and Total



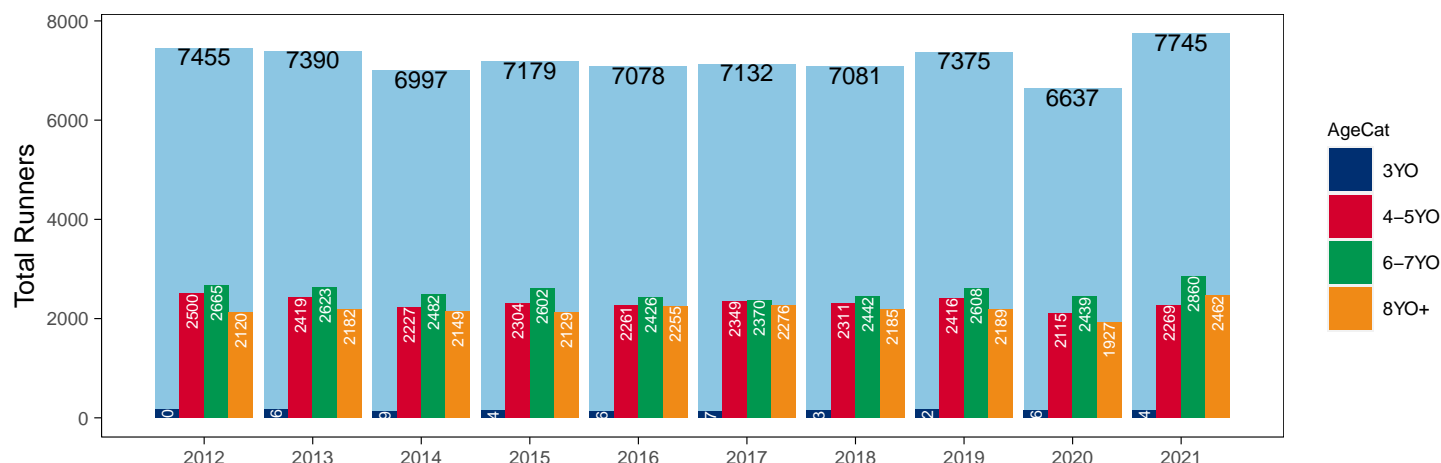
Jump

AgeCat	2012	2013	2014	2015	2016	2017	2018	2019	2020	2021	vs. Last Year	vs. Pre-Covid
3YO	170	166	139	144	136	137	143	162	156	154	-2 / -1.3%	-8 / -4.9%
4-5YO	2500	2419	2227	2304	2261	2349	2311	2416	2115	2269	+154 / +7.3%	-147 / -6.1%
6-7YO	2665	2623	2482	2602	2426	2370	2442	2608	2439	2860	+421 / +17.3%	+252 / +9.7%
8YO+	2120	2182	2149	2129	2255	2276	2185	2189	1927	2462	+535 / +27.8%	+273 / +12.5%
Total	7455	7390	6997	7179	7078	7132	7081	7375	6637	7745	+1108 / +16.7%	+370 / +5.0%

'vs. Pre-Covid' is comparison between 2021 and 2019

YTD Individual Jump Runners by Age

Individual Runners in GB Jump Races, shown by Age Category and Total



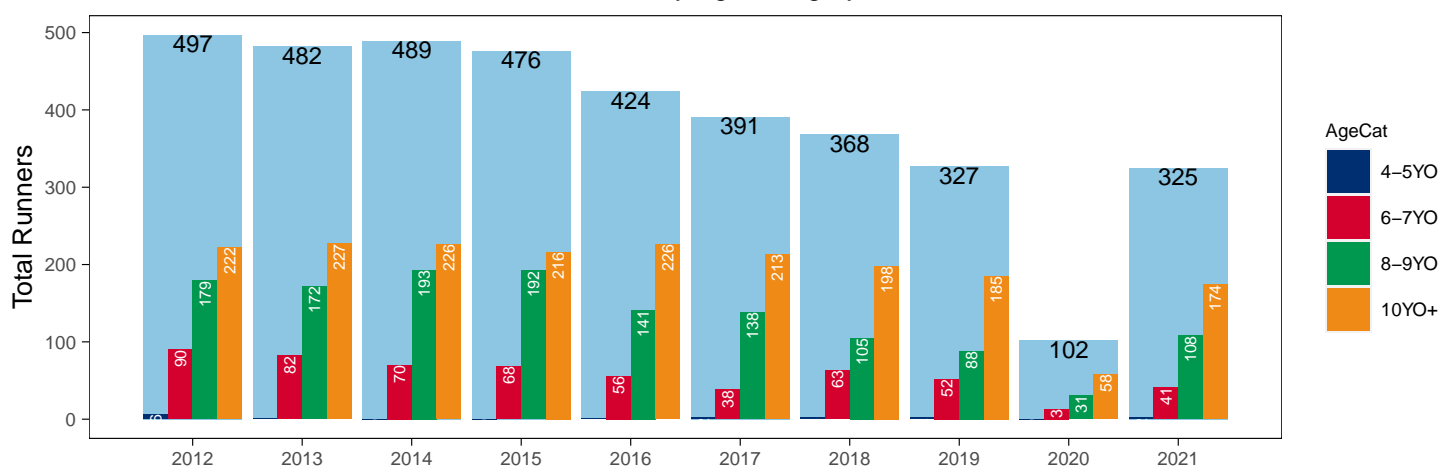
Hunter Chases

AgeCat	2012	2013	2014	2015	2016	2017	2018	2019	2020	2021	vs. Last Year	vs. Pre-Covid
4-5YO	6	1			1	2	2	2		2	NA / NA	0 / 0.0%
6-7YO	90	82	70	68	56	38	63	52	13	41	+28 / +215.4%	-11 / -21.2%
8-9YO	179	172	193	192	141	138	105	88	31	108	+77 / +248.4%	+20 / +22.7%
10YO+	222	227	226	216	226	213	198	185	58	174	+116 / +200.0%	-11 / -5.9%
Total	497	482	489	476	424	391	368	327	102	325	+223 / +218.6%	-2 / -0.6%

'vs. Pre-Covid' is comparison between 2021 and 2019

YTD Individual Hunter Chase Runners by Age

Individual Runners in GB Hunter Chases shown by Age Category and Total



Year to Date Individual Runners by Country Trained

Code	Country	2012	2013	2014	2015	2016	2017	2018	2019	2020	2021
Flat	GB	52655	51816	50874	50657	51411	52656	53722	53536	41710	52610
	IRE	322	393	353	427	496	624	740	711	246	358
	Other	81	101	91	133	78	80	63	71	27	34
Jump	GB	23289	23700	22410	22754	22640	22870	22662	22303	16081	23904
	IRE	554	590	636	697	814	714	584	659	270	471
	Other	2	2	3	5	9	13	10	7	10	4
Overall	GB	75944	75516	73284	73411	74051	75526	76384	75839	57791	76514
	IRE	876	983	989	1124	1310	1338	1324	1370	516	829
	Other	83	103	94	138	87	93	73	78	37	38

Frequency of Runs

Year to Date Average Runs per Horse

Code	2012	2013	2014	2015	2016	2017	2018	2019	2020	2021
Flat	5.08	5.04	4.99	4.97	4.94	4.94	4.96	4.94	4.11	5.03
Jump	3.20	3.29	3.29	3.27	3.31	3.31	3.28	3.11	2.47	3.15
Overall	4.56	4.56	4.53	4.49	4.49	4.49	4.49	4.40	3.61	4.41

Year to Date Proportion of Horses by Count of Runs

Runs	2012	2013	2014	2015	2016	2017	2018	2019	2020	2021
Flat										
1	1550 (14.8%)	1566 (15.1%)	1505 (14.6%)	1520 (14.8%)	1587 (15.1%)	1615 (15.0%)	1683 (15.3%)	1754 (16.0%)	1745 (17.1%)	1518 (14.4%)
2	1313 (12.6%)	1427 (13.7%)	1480 (14.4%)	1409 (13.7%)	1372 (13.0%)	1472 (13.6%)	1435 (13.1%)	1506 (13.7%)	1696 (16.6%)	1350 (12.8%)
3	1387 (13.3%)	1396 (13.4%)	1332 (12.9%)	1428 (13.9%)	1419 (13.5%)	1448 (13.4%)	1505 (13.7%)	1444 (13.1%)	1631 (16.0%)	1402 (13.3%)
4	1236 (11.8%)	1184 (11.4%)	1159 (11.3%)	1200 (11.7%)	1205 (11.5%)	1238 (11.5%)	1275 (11.6%)	1228 (11.2%)	1368 (13.4%)	1209 (11.5%)
5+	4966 (47.5%)	4816 (46.4%)	4813 (46.8%)	4742 (46.0%)	4939 (46.9%)	5028 (46.6%)	5085 (46.3%)	5053 (46.0%)	3779 (37.0%)	5049 (48.0%)
Jump										
1	1993 (26.7%)	1912 (25.9%)	1801 (25.7%)	1840 (25.6%)	1762 (24.9%)	1848 (25.9%)	1751 (24.7%)	2020 (27.4%)	2136 (32.2%)	1990 (25.7%)
2	1533 (20.6%)	1471 (19.9%)	1355 (19.4%)	1431 (19.9%)	1398 (19.8%)	1349 (18.9%)	1328 (18.8%)	1585 (21.5%)	1780 (26.8%)	1646 (21.3%)
3	1259 (16.9%)	1222 (16.5%)	1156 (16.5%)	1205 (16.8%)	1178 (16.6%)	1150 (16.1%)	1218 (17.2%)	1222 (16.6%)	1326 (20.0%)	1406 (18.2%)
4	925 (12.4%)	935 (12.7%)	950 (13.6%)	964 (13.4%)	941 (13.3%)	975 (13.7%)	1024 (14.5%)	933 (12.7%)	746 (11.2%)	1010 (13.0%)
5+	1745 (23.4%)	1850 (25.0%)	1735 (24.8%)	1739 (24.2%)	1799 (25.4%)	1810 (25.4%)	1760 (24.9%)	1615 (21.9%)	649 (9.8%)	1693 (21.9%)
All Races										
1	2948 (17.5%)	2926 (17.4%)	2824 (17.2%)	2902 (17.5%)	2936 (17.5%)	3013 (17.6%)	3032 (17.5%)	3325 (18.9%)	3403 (21.1%)	3097 (17.6%)
2	2538 (15.1%)	2572 (15.3%)	2555 (15.6%)	2555 (15.4%)	2519 (15.0%)	2602 (15.2%)	2533 (14.6%)	2826 (16.1%)	3210 (19.9%)	2769 (15.8%)
3	2422 (14.4%)	2416 (14.4%)	2320 (14.1%)	2449 (14.7%)	2411 (14.3%)	2431 (14.2%)	2566 (14.8%)	2505 (14.3%)	2843 (17.6%)	2663 (15.2%)
4	2052 (12.2%)	2037 (12.1%)	1988 (12.1%)	2069 (12.5%)	2056 (12.2%)	2116 (12.3%)	2214 (12.8%)	2090 (11.9%)	2075 (12.8%)	2123 (12.1%)
5+	6903 (40.9%)	6851 (40.8%)	6721 (41.0%)	6638 (40.0%)	6880 (40.9%)	6991 (40.8%)	6995 (40.3%)	6817 (38.8%)	4622 (28.6%)	6899 (39.3%)

Year to Date Median Days Between Runs

Code	2012	2013	2014	2015	2016	2017	2018	2019	2020	2021
Flat	21	20	21	21	21	22	21	21	21	21
Jump	30	30	29	30	30	30	31	32	36	34
Overall	23	22	23	24	24	24	24	24	25	25

Horses Population by Gender

October 2021 Horses in Training Snapshot by Gender versus Previous Years

All Horses

Sex	2012	2013	2014	2015	2016	2017	2018	2019	2020	2021
Colt/Entire	2091 (15.0%)	1994 (14.5%)	2028 (14.7%)	2059 (14.5%)	2019 (14.1%)	2180 (14.5%)	2025 (13.2%)	2022 (13.2%)	2029 (12.7%)	1872 (12.2%)
Gelding	7702 (55.4%)	7669 (55.7%)	7649 (55.6%)	7959 (56.0%)	8105 (56.7%)	8369 (55.5%)	8704 (56.6%)	8621 (56.1%)	9134 (57.1%)	8772 (57.2%)
Filly/Mare	4120 (29.6%)	4113 (29.9%)	4088 (29.7%)	4194 (29.5%)	4164 (29.1%)	4514 (30.0%)	4640 (30.2%)	4715 (30.7%)	4821 (30.2%)	4686 (30.6%)
Rig	0 (0.0%)	2 (0.0%)	0 (0.0%)	5 (0.0%)	4 (0.0%)	4 (0.0%)	2 (0.0%)	3 (0.0%)	3 (0.0%)	1 (0.0%)
Total	13913 (100.0%)	13778 (100.0%)	13765 (100.0%)	14217 (100.0%)	14292 (100.0%)	15067 (100.0%)	15371 (100.0%)	15361 (100.0%)	15987 (100.0%)	15331 (100.0%)

Flat (including Dual)

Sex	2012	2013	2014	2015	2016	2017	2018	2019	2020	2021
Colt/Entire	1993 (22.7%)	1861 (22.0%)	1840 (22.1%)	1869 (21.6%)	1852 (21.1%)	1927 (20.3%)	1921 (20.2%)	1850 (19.8%)	1861 (19.8%)	1668 (18.4%)
Gelding	3569 (40.7%)	3485 (41.3%)	3447 (41.4%)	3657 (42.2%)	3803 (43.3%)	4200 (44.3%)	4193 (44.0%)	4143 (44.4%)	4181 (44.6%)	4106 (45.3%)
Filly/Mare	3202 (36.5%)	3099 (36.7%)	3033 (36.5%)	3139 (36.2%)	3128 (35.6%)	3353 (35.4%)	3406 (35.8%)	3343 (35.8%)	3335 (35.6%)	3282 (36.2%)
Rig	0 (0.0%)	1 (0.0%)	0 (0.0%)	3 (0.0%)	4 (0.0%)	4 (0.0%)	2 (0.0%)	2 (0.0%)	2 (0.0%)	0 (0.0%)
Total	8764 (100.0%)	8446 (100.0%)	8320 (100.0%)	8668 (100.0%)	8787 (100.0%)	9484 (100.0%)	9522 (100.0%)	9338 (100.0%)	9379 (100.0%)	9056 (100.0%)

Jump (including Dual)

Sex	2012	2013	2014	2015	2016	2017	2018	2019	2020	2021
Colt/Entire	47 (0.8%)	41 (0.7%)	49 (0.9%)	44 (0.8%)	24 (0.4%)	25 (0.4%)	29 (0.5%)	26 (0.4%)	32 (0.5%)	39 (0.6%)
Gelding	4535 (81.6%)	4613 (81.1%)	4578 (80.2%)	4695 (80.8%)	4704 (81.4%)	4750 (79.4%)	4875 (78.6%)	4856 (77.4%)	5401 (77.8%)	5025 (77.9%)
Filly/Mare	974 (17.5%)	1036 (18.2%)	1082 (19.0%)	1069 (18.4%)	1048 (18.1%)	1206 (20.2%)	1298 (20.9%)	1391 (22.2%)	1512 (21.8%)	1388 (21.5%)
Rig	0 (0.0%)	1 (0.0%)	0 (0.0%)	1 (0.0%)	0 (0.0%)	0 (0.0%)	0 (0.0%)	1 (0.0%)	1 (0.0%)	1 (0.0%)
Total	5556 (100.0%)	5691 (100.0%)	5709 (100.0%)	5809 (100.0%)	5776 (100.0%)	5981 (100.0%)	6202 (100.0%)	6274 (100.0%)	6946 (100.0%)	6453 (100.0%)

Hunter Chasers

Sex	2012	2013	2014	2015	2016	2017	2018	2019	2020	2021
Colt/Entire	0 (0.0%)	0 (-)	0 (-)	0 (-)	0 (0.0%)	0 (-)	0 (-)	0 (-)	0 (0.0%)	0 (0.0%)
Gelding	1 (100.0%)	0 (-)	0 (-)	0 (-)	1 (100.0%)	0 (-)	0 (-)	0 (-)	187 (82.0%)	42 (89.4%)
Filly/Mare	0 (0.0%)	0 (-)	0 (-)	0 (-)	0 (0.0%)	0 (-)	0 (-)	0 (-)	41 (18.0%)	5 (10.6%)
Rig	0 (0.0%)	0 (-)	0 (-)	0 (-)	0 (0.0%)	0 (-)	0 (-)	0 (-)	0 (0.0%)	0 (0.0%)
Total	1 (100.0%)	0 (-)	0 (-)	0 (-)	1 (100.0%)	0 (-)	0 (-)	0 (-)	228 (100.0%)	47 (100.0%)

Year to Date Total Runners by Gender

Sex	2012	2013	2014	2015	2016	2017	2018	2019	2020	2021
All Races										
Colt/Entire	8507 (11.1%)	8644 (11.3%)	8679 (11.7%)	8481 (11.4%)	8278 (11.0%)	8364 (10.9%)	8777 (11.3%)	7922 (10.3%)	6652 (11.4%)	7632 (9.9%)
Gelding	46225 (60.1%)	46773 (61.1%)	44561 (59.9%)	45468 (60.9%)	46370 (61.5%)	47482 (61.7%)	47061 (60.5%)	46896 (60.7%)	34719 (59.5%)	47394 (61.2%)
Filly/Mare	22171 (28.8%)	21185 (27.7%)	21126 (28.4%)	20721 (27.7%)	20781 (27.5%)	21099 (27.4%)	21930 (28.2%)	22452 (29.1%)	16968 (29.1%)	22348 (28.9%)
Rig	0 (0.0%)	0 (0.0%)	1 (0.0%)	3 (0.0%)	19 (0.0%)	12 (0.0%)	13 (0.0%)	17 (0.0%)	5 (0.0%)	7 (0.0%)
Flat										
Colt/Entire	8418 (15.9%)	8565 (16.4%)	8577 (16.7%)	8420 (16.4%)	8243 (15.9%)	8321 (15.6%)	8744 (16.0%)	7889 (14.5%)	6624 (15.8%)	7571 (14.3%)
Gelding	26579 (50.1%)	26520 (50.7%)	25685 (50.1%)	26325 (51.4%)	27062 (52.1%)	28151 (52.8%)	28529 (52.3%)	28835 (53.1%)	21828 (52.0%)	28246 (53.3%)
Filly/Mare	18061 (34.0%)	17225 (32.9%)	17056 (33.2%)	16470 (32.2%)	16661 (32.0%)	16876 (31.6%)	17239 (31.6%)	17582 (32.4%)	13530 (32.2%)	17182 (32.4%)
Rig	0 (0.0%)	0 (0.0%)	0 (0.0%)	2 (0.0%)	19 (0.0%)	12 (0.0%)	13 (0.0%)	12 (0.0%)	1 (0.0%)	3 (0.0%)
All Jump										
Colt/Entire	89 (0.4%)	79 (0.3%)	102 (0.4%)	61 (0.3%)	35 (0.1%)	43 (0.2%)	33 (0.1%)	33 (0.1%)	28 (0.2%)	61 (0.3%)
Gelding	19646 (82.4%)	20253 (83.4%)	18876 (81.9%)	19143 (81.6%)	19308 (82.3%)	19331 (81.9%)	18532 (79.7%)	18061 (78.6%)	12891 (78.8%)	19148 (78.5%)
Filly/Mare	4110 (17.2%)	3960 (16.3%)	4070 (17.7%)	4251 (18.1%)	4120 (17.6%)	4223 (17.9%)	4691 (20.2%)	4870 (21.2%)	3438 (21.0%)	5166 (21.2%)
Rig	0 (0.0%)	0 (0.0%)	1 (0.0%)	1 (0.0%)	0 (0.0%)	0 (0.0%)	0 (0.0%)	5 (0.0%)	4 (0.0%)	4 (0.0%)
Chase										
Colt/Entire	5 (0.1%)	7 (0.1%)	2 (0.0%)	0 (0.0%)	1 (0.0%)	0 (0.0%)	0 (0.0%)	0 (0.0%)	0 (0.0%)	0 (0.0%)
Gelding	6889 (91.8%)	7176 (92.9%)	6827 (92.7%)	6894 (93.1%)	7012 (92.8%)	7089 (92.7%)	6668 (90.8%)	6515 (90.0%)	4590 (90.1%)	6749 (89.7%)
Filly/Mare	610 (8.1%)	539 (7.0%)	533 (7.2%)	512 (6.9%)	539 (7.1%)	561 (7.3%)	679 (9.2%)	717 (9.9%)	499 (9.8%)	770 (10.2%)
Rig	0 (0.0%)	0 (0.0%)	0 (0.0%)	0 (0.0%)	0 (0.0%)	0 (0.0%)	0 (0.0%)	3 (0.0%)	4 (0.1%)	4 (0.1%)
Hurdle										
Colt/Entire	76 (0.5%)	54 (0.4%)	89 (0.7%)	53 (0.4%)	31 (0.2%)	35 (0.3%)	25 (0.2%)	23 (0.2%)	15 (0.2%)	52 (0.4%)
Gelding	11088 (79.6%)	11243 (81.2%)	10412 (78.4%)	10916 (78.1%)	11051 (78.9%)	10972 (78.5%)	10589 (76.5%)	10415 (75.1%)	7375 (74.9%)	10530 (74.5%)
Filly/Mare	2766 (19.9%)	2549 (18.4%)	2781 (20.9%)	3008 (21.5%)	2922 (20.9%)	2966 (21.2%)	3234 (23.4%)	3426 (24.7%)	2459 (25.0%)	3547 (25.1%)
Rig	0 (0.0%)	0 (0.0%)	0 (0.0%)	0 (0.0%)	0 (0.0%)	0 (0.0%)	0 (0.0%)	2 (0.0%)	0 (0.0%)	0 (0.0%)
NHF										
Colt/Entire	8 (0.3%)	18 (0.7%)	11 (0.5%)	8 (0.4%)	3 (0.2%)	8 (0.4%)	8 (0.4%)	10 (0.5%)	13 (0.9%)	9 (0.3%)
Gelding	1669 (69.2%)	1834 (67.3%)	1637 (68.1%)	1333 (64.3%)	1245 (65.3%)	1270 (64.3%)	1275 (61.9%)	1131 (60.5%)	926 (65.3%)	1869 (68.5%)
Filly/Mare	734 (30.4%)	872 (32.0%)	756 (31.4%)	731 (35.3%)	659 (34.6%)	696 (35.3%)	778 (37.7%)	727 (38.9%)	480 (33.8%)	849 (31.1%)
Rig	0 (0.0%)	0 (0.0%)	1 (0.0%)	1 (0.0%)	0 (0.0%)	0 (0.0%)	0 (0.0%)	0 (0.0%)	0 (0.0%)	0 (0.0%)
Hunter										
Colt/Entire	0 (0.0%)	0 (0.0%)	0 (0.0%)	1 (0.1%)	0 (0.0%)	0 (0.0%)	0 (0.0%)	0 (0.0%)	0 (0.0%)	0 (0.0%)
Gelding	771 (90.1%)	844 (92.1%)	771 (91.5%)	799 (94.2%)	720 (94.2%)	709 (94.9%)	603 (93.3%)	522 (92.7%)	142 (97.3%)	557 (93.5%)
Filly/Mare	85 (9.9%)	72 (7.9%)	72 (8.5%)	48 (5.7%)	44 (5.8%)	38 (5.1%)	43 (6.7%)	41 (7.3%)	4 (2.7%)	39 (6.5%)

Year to Date Individual Runners by Gender

Sex	2012	2013	2014	2015	2016	2017	2018	2019	2020	2021
All Races										
Male	11821 (70.1%)	11819 (70.3%)	11508 (70.1%)	11678 (70.3%)	11839 (70.5%)	12045 (70.2%)	12071 (69.6%)	12187 (69.4%)	11206 (69.4%)	12201 (69.5%)
Female	5042 (29.9%)	4983 (29.7%)	4900 (29.9%)	4935 (29.7%)	4963 (29.5%)	5108 (29.8%)	5269 (30.4%)	5376 (30.6%)	4947 (30.6%)	5350 (30.5%)
Flat										
Male	6565 (62.8%)	6601 (63.5%)	6534 (63.5%)	6582 (63.9%)	6761 (64.3%)	6959 (64.4%)	7109 (64.7%)	7077 (64.4%)	6587 (64.5%)	6738 (64.0%)
Female	3887 (37.2%)	3788 (36.5%)	3755 (36.5%)	3717 (36.1%)	3761 (35.7%)	3842 (35.6%)	3874 (35.3%)	3908 (35.6%)	3632 (35.5%)	3790 (36.0%)
All Jump										
Male	6085 (81.6%)	6003 (81.2%)	5663 (80.9%)	5780 (80.5%)	5735 (81.0%)	5727 (80.3%)	5549 (78.4%)	5740 (77.8%)	5177 (78.0%)	6028 (77.8%)
Female	1370 (18.4%)	1387 (18.8%)	1334 (19.1%)	1399 (19.5%)	1343 (19.0%)	1405 (19.7%)	1532 (21.6%)	1635 (22.2%)	1460 (22.0%)	1717 (22.2%)
Chase										
Male	2345 (91.4%)	2316 (92.1%)	2200 (92.2%)	2278 (92.2%)	2255 (92.3%)	2301 (91.1%)	2206 (89.7%)	2266 (89.3%)	2028 (88.7%)	2351 (88.4%)
Female	222 (8.6%)	199 (7.9%)	185 (7.8%)	193 (7.8%)	187 (7.7%)	224 (8.9%)	252 (10.3%)	271 (10.7%)	259 (11.3%)	309 (11.6%)
Hurdle										
Male	4028 (80.8%)	3967 (81.0%)	3695 (79.5%)	3834 (79.4%)	3832 (80.1%)	3794 (79.0%)	3702 (77.3%)	3858 (76.6%)	3382 (76.0%)	3941 (75.7%)
Female	956 (19.2%)	929 (19.0%)	951 (20.5%)	997 (20.6%)	950 (19.9%)	1007 (21.0%)	1088 (22.7%)	1176 (23.4%)	1070 (24.0%)	1265 (24.3%)
NHF										
Male	1090 (71.2%)	1247 (70.3%)	1113 (70.8%)	903 (66.6%)	852 (67.0%)	861 (66.2%)	901 (65.5%)	803 (63.4%)	736 (67.0%)	1337 (70.4%)
Female	441 (28.8%)	526 (29.7%)	459 (29.2%)	453 (33.4%)	419 (33.0%)	440 (33.8%)	475 (34.5%)	463 (36.6%)	362 (33.0%)	561 (29.6%)
Hunter										
Male	451 (90.7%)	433 (89.8%)	447 (91.4%)	448 (94.1%)	395 (93.2%)	366 (93.6%)	339 (92.1%)	301 (92.0%)	98 (96.1%)	299 (92.0%)
Female	46 (9.3%)	49 (10.2%)	42 (8.6%)	28 (5.9%)	29 (6.8%)	25 (6.4%)	29 (7.9%)	26 (8.0%)	4 (3.9%)	26 (8.0%)

Horses Population by Breeding

October 2021 Horses in Training Snapshot by Breeding versus Previous Years

Flat (including Dual)

Bred	Sex	2012	2013	2014	2015	2016	2017	2018	2019	2020	2021
GB	Male	2646 (30.2%)	2534 (30.0%)	2530 (30.4%)	2633 (30.4%)	2648 (30.1%)	2875 (30.3%)	2847 (29.9%)	2834 (30.3%)	2851 (30.4%)	2711 (29.9%)
	Female	1862 (21.2%)	1784 (21.1%)	1675 (20.1%)	1716 (19.8%)	1760 (20.0%)	1849 (19.5%)	1878 (19.7%)	1857 (19.9%)	1873 (20.0%)	1833 (20.2%)
	Subtotal	4508 (51.4%)	4318 (51.1%)	4205 (50.5%)	4349 (50.2%)	4408 (50.2%)	4724 (49.8%)	4725 (49.6%)	4691 (50.2%)	4724 (50.4%)	4544 (50.2%)
IRE	Male	2220 (25.3%)	2211 (26.2%)	2211 (26.6%)	2336 (26.9%)	2427 (27.6%)	2607 (27.5%)	2621 (27.5%)	2536 (27.2%)	2596 (27.7%)	2542 (28.1%)
	Female	1084 (12.4%)	1091 (12.9%)	1123 (13.5%)	1208 (13.9%)	1162 (13.2%)	1267 (13.4%)	1259 (13.2%)	1244 (13.3%)	1240 (13.2%)	1256 (13.9%)
	Subtotal	3304 (37.7%)	3302 (39.1%)	3334 (40.1%)	3544 (40.9%)	3589 (40.8%)	3874 (40.8%)	3880 (40.7%)	3780 (40.5%)	3836 (40.9%)	3798 (41.9%)
FR	Male	106 (1.2%)	117 (1.4%)	150 (1.8%)	171 (2.0%)	200 (2.3%)	264 (2.8%)	286 (3.0%)	292 (3.1%)	305 (3.3%)	297 (3.3%)
	Female	20 (0.2%)	50 (0.6%)	55 (0.7%)	67 (0.8%)	76 (0.9%)	97 (1.0%)	108 (1.1%)	109 (1.2%)	113 (1.2%)	115 (1.3%)
	Subtotal	126 (1.4%)	167 (2.0%)	205 (2.5%)	238 (2.7%)	276 (3.1%)	361 (3.8%)	394 (4.1%)	401 (4.3%)	418 (4.5%)	412 (4.5%)
USA	Male	500 (5.7%)	396 (4.7%)	308 (3.7%)	310 (3.6%)	305 (3.5%)	298 (3.1%)	285 (3.0%)	264 (2.8%)	212 (2.3%)	164 (1.8%)
	Female	207 (2.4%)	155 (1.8%)	144 (1.7%)	123 (1.4%)	109 (1.2%)	115 (1.2%)	136 (1.4%)	100 (1.1%)	80 (0.9%)	52 (0.6%)
	Subtotal	707 (8.1%)	551 (6.5%)	452 (5.4%)	433 (5.0%)	414 (4.7%)	413 (4.4%)	421 (4.4%)	364 (3.9%)	292 (3.1%)	216 (2.4%)
GNY	Male	49 (0.6%)	48 (0.6%)	52 (0.6%)	55 (0.6%)	55 (0.6%)	61 (0.6%)	52 (0.5%)	50 (0.5%)	61 (0.7%)	50 (0.6%)
	Female	16 (0.2%)	11 (0.1%)	14 (0.2%)	12 (0.1%)	10 (0.1%)	14 (0.1%)	15 (0.2%)	22 (0.2%)	22 (0.2%)	24 (0.3%)
	Subtotal	65 (0.7%)	59 (0.7%)	66 (0.8%)	67 (0.8%)	65 (0.7%)	75 (0.8%)	67 (0.7%)	72 (0.8%)	83 (0.9%)	74 (0.8%)
Other	Male	41 (0.5%)	41 (0.5%)	36 (0.4%)	24 (0.3%)	24 (0.3%)	26 (0.3%)	25 (0.3%)	19 (0.2%)	19 (0.2%)	10 (0.1%)
	Female	13 (0.1%)	8 (0.1%)	22 (0.3%)	13 (0.1%)	11 (0.1%)	11 (0.1%)	10 (0.1%)	11 (0.1%)	7 (0.1%)	2 (0.0%)
	Subtotal	54 (0.6%)	49 (0.6%)	58 (0.7%)	37 (0.4%)	35 (0.4%)	37 (0.4%)	35 (0.4%)	30 (0.3%)	26 (0.3%)	12 (0.1%)

Jump (including Dual)

Bred	Sex	2012	2013	2014	2015	2016	2017	2018	2019	2020	2021
GB	Male	1500 (27.0%)	1499 (26.3%)	1417 (24.8%)	1421 (24.5%)	1300 (22.5%)	1309 (21.9%)	1286 (20.7%)	1234 (19.7%)	1365 (19.7%)	1248 (19.3%)
	Female	602 (10.8%)	649 (11.4%)	666 (11.7%)	630 (10.8%)	575 (10.0%)	625 (10.4%)	629 (10.1%)	618 (9.9%)	692 (10.0%)	639 (9.9%)
	Subtotal	2102 (37.8%)	2148 (37.7%)	2083 (36.5%)	2051 (35.3%)	1875 (32.5%)	1934 (32.3%)	1915 (30.9%)	1852 (29.5%)	2057 (29.6%)	1887 (29.2%)
IRE	Male	2315 (41.7%)	2452 (43.1%)	2470 (43.3%)	2544 (43.8%)	2605 (45.1%)	2674 (44.7%)	2739 (44.2%)	2742 (43.7%)	2981 (42.9%)	2752 (42.6%)
	Female	310 (5.6%)	327 (5.7%)	347 (6.1%)	378 (6.5%)	409 (7.1%)	497 (8.3%)	557 (9.0%)	638 (10.2%)	663 (9.5%)	613 (9.5%)
	Subtotal	2625 (47.2%)	2779 (48.8%)	2817 (49.3%)	2922 (50.3%)	3014 (52.2%)	3171 (53.0%)	3296 (53.1%)	3380 (53.9%)	3644 (52.5%)	3365 (52.1%)
FR	Male	564 (10.2%)	558 (9.8%)	579 (10.1%)	658 (11.3%)	714 (12.4%)	689 (11.5%)	789 (12.7%)	809 (12.9%)	973 (14.0%)	960 (14.9%)
	Female	48 (0.9%)	48 (0.8%)	59 (1.0%)	52 (0.9%)	57 (1.0%)	77 (1.3%)	102 (1.6%)	127 (2.0%)	147 (2.1%)	129 (2.0%)
	Subtotal	612 (11.0%)	606 (10.6%)	638 (11.2%)	710 (12.2%)	771 (13.3%)	766 (12.8%)	891 (14.4%)	936 (14.9%)	1120 (16.1%)	1089 (16.9%)
USA	Male	121 (2.2%)	84 (1.5%)	80 (1.4%)	62 (1.1%)	43 (0.7%)	42 (0.7%)	38 (0.6%)	33 (0.5%)	37 (0.5%)	36 (0.6%)
	Female	8 (0.1%)	7 (0.1%)	4 (0.1%)	1 (0.0%)	1 (0.0%)	2 (0.0%)	4 (0.1%)	3 (0.0%)	2 (0.0%)	1 (0.0%)
	Subtotal	129 (2.3%)	91 (1.6%)	84 (1.5%)	63 (1.1%)	44 (0.8%)	44 (0.7%)	42 (0.7%)	36 (0.6%)	39 (0.6%)	37 (0.6%)
GNY	Male	56 (1.0%)	50 (0.9%)	70 (1.2%)	51 (0.9%)	59 (1.0%)	53 (0.9%)	46 (0.7%)	59 (0.9%)	71 (1.0%)	65 (1.0%)
	Female	5 (0.1%)	3 (0.1%)	5 (0.1%)	6 (0.1%)	4 (0.1%)	3 (0.1%)	5 (0.1%)	5 (0.1%)	7 (0.1%)	5 (0.1%)
	Subtotal	61 (1.1%)	53 (0.9%)	75 (1.3%)	57 (1.0%)	63 (1.1%)	56 (0.9%)	51 (0.8%)	64 (1.0%)	78 (1.1%)	70 (1.1%)
Other	Male	26 (0.5%)	12 (0.2%)	11 (0.2%)	4 (0.1%)	7 (0.1%)	8 (0.1%)	6 (0.1%)	6 (0.1%)	7 (0.1%)	4 (0.1%)
	Female	1 (0.0%)	2 (0.0%)	1 (0.0%)	2 (0.0%)	2 (0.0%)	2 (0.0%)	1 (0.0%)	NA (-)	1 (0.0%)	1 (0.0%)
	Subtotal	27 (0.5%)	14 (0.2%)	12 (0.2%)	6 (0.1%)	9 (0.2%)	10 (0.2%)	7 (0.1%)	6 (0.1%)	8 (0.1%)	5 (0.1%)

Year to Date Total Runners by Breeding

Flat

Bred	Sex	2012	2013	2014	2015	2016	2017	2018	2019	2020	2021
GB	Male	16574 (31.2%)	16294 (31.1%)	16021 (31.2%)	16504 (32.2%)	16608 (31.9%)	17189 (32.2%)	17261 (31.7%)	16840 (31.0%)	13488 (32.1%)	16572 (31.3%)
	Female	10248 (19.3%)	9866 (18.9%)	9352 (18.2%)	9060 (17.7%)	9180 (17.7%)	9157 (17.2%)	9454 (17.3%)	9693 (17.8%)	7468 (17.8%)	9577 (18.1%)
	Subtotal	26822 (50.6%)	26160 (50.0%)	25373 (49.4%)	25564 (49.9%)	25788 (49.6%)	26346 (49.4%)	26715 (49.0%)	26533 (48.8%)	20956 (49.9%)	26149 (49.3%)
IRE	Male	14720 (27.7%)	15174 (29.0%)	15012 (29.3%)	15178 (29.6%)	15665 (30.1%)	16015 (30.0%)	16665 (30.6%)	16419 (30.2%)	12443 (29.6%)	16306 (30.8%)
	Female	6824 (12.9%)	6459 (12.3%)	6705 (13.1%)	6472 (12.6%)	6612 (12.7%)	6795 (12.7%)	6756 (12.4%)	6777 (12.5%)	5330 (12.7%)	6684 (12.6%)
	Subtotal	21544 (40.6%)	21633 (41.4%)	21717 (42.3%)	21650 (42.3%)	22277 (42.9%)	22810 (42.7%)	23421 (43.0%)	23196 (42.7%)	17773 (42.3%)	22990 (43.4%)
FR	Male	507 (1.0%)	586 (1.1%)	723 (1.4%)	941 (1.8%)	995 (1.9%)	1178 (2.2%)	1343 (2.5%)	1553 (2.9%)	1217 (2.9%)	1510 (2.8%)
	Female	98 (0.2%)	163 (0.3%)	285 (0.6%)	294 (0.6%)	345 (0.7%)	364 (0.7%)	437 (0.8%)	503 (0.9%)	386 (0.9%)	512 (1.0%)
	Subtotal	605 (1.1%)	749 (1.4%)	1008 (2.0%)	1235 (2.4%)	1340 (2.6%)	1542 (2.9%)	1780 (3.3%)	2056 (3.8%)	1603 (3.8%)	2022 (3.8%)
USA	Male	2734 (5.2%)	2545 (4.9%)	2001 (3.9%)	1659 (3.2%)	1615 (3.1%)	1624 (3.0%)	1586 (2.9%)	1501 (2.8%)	998 (2.4%)	1004 (1.9%)
	Female	755 (1.4%)	648 (1.2%)	603 (1.2%)	480 (0.9%)	404 (0.8%)	467 (0.9%)	482 (0.9%)	448 (0.8%)	248 (0.6%)	283 (0.5%)
	Subtotal	3489 (6.6%)	3193 (6.1%)	2604 (5.1%)	2139 (4.2%)	2019 (3.9%)	2091 (3.9%)	2068 (3.8%)	1949 (3.6%)	1246 (3.0%)	1287 (2.4%)
GNY	Male	246 (0.5%)	260 (0.5%)	268 (0.5%)	280 (0.5%)	300 (0.6%)	320 (0.6%)	279 (0.5%)	287 (0.5%)	240 (0.6%)	343 (0.6%)
	Female	80 (0.2%)	55 (0.1%)	63 (0.1%)	92 (0.2%)	58 (0.1%)	38 (0.1%)	70 (0.1%)	102 (0.2%)	80 (0.2%)	107 (0.2%)
	Subtotal	326 (0.6%)	315 (0.6%)	331 (0.6%)	372 (0.7%)	358 (0.7%)	358 (0.7%)	349 (0.6%)	389 (0.7%)	320 (0.8%)	450 (0.8%)
Other	Male	216 (0.4%)	226 (0.4%)	237 (0.5%)	185 (0.4%)	141 (0.3%)	158 (0.3%)	152 (0.3%)	136 (0.3%)	67 (0.2%)	85 (0.2%)
	Female	56 (0.1%)	34 (0.1%)	48 (0.1%)	72 (0.1%)	62 (0.1%)	55 (0.1%)	40 (0.1%)	59 (0.1%)	18 (0.0%)	19 (0.0%)
	Subtotal	272 (0.5%)	260 (0.5%)	285 (0.6%)	257 (0.5%)	203 (0.4%)	213 (0.4%)	192 (0.4%)	195 (0.4%)	85 (0.2%)	104 (0.2%)

Jump

Bred	Sex	2012	2013	2014	2015	2016	2017	2018	2019	2020	2021
GB	Male	6250 (26.2%)	6292 (25.9%)	5784 (25.1%)	5664 (24.1%)	5295 (22.6%)	5143 (21.8%)	4866 (20.9%)	4675 (20.4%)	3199 (19.6%)	4698 (19.3%)
	Female	2303 (9.7%)	2308 (9.5%)	2388 (10.4%)	2398 (10.2%)	2135 (9.1%)	2096 (8.9%)	2236 (9.6%)	2097 (9.1%)	1437 (8.8%)	2263 (9.3%)
	Subtotal	8553 (35.9%)	8600 (35.4%)	8172 (35.5%)	8062 (34.4%)	7430 (31.7%)	7239 (30.7%)	7102 (30.5%)	6772 (29.5%)	4636 (28.3%)	6961 (28.6%)
IRE	Male	10015 (42.0%)	10880 (44.8%)	10420 (45.2%)	10599 (45.2%)	10910 (46.5%)	10964 (46.5%)	10483 (45.1%)	10186 (44.3%)	7273 (44.5%)	10624 (43.6%)
	Female	1514 (6.3%)	1379 (5.7%)	1428 (6.2%)	1628 (6.9%)	1754 (7.5%)	1838 (7.8%)	2163 (9.3%)	2356 (10.3%)	1628 (10.0%)	2349 (9.6%)
	Subtotal	11529 (48.3%)	12259 (50.5%)	11848 (51.4%)	12227 (52.1%)	12664 (54.0%)	12802 (54.3%)	12646 (54.4%)	12542 (54.6%)	8901 (54.4%)	12973 (53.2%)
FR	Male	2417 (10.1%)	2262 (9.3%)	2083 (9.0%)	2296 (9.8%)	2620 (11.2%)	2827 (12.0%)	2784 (12.0%)	2797 (12.2%)	2152 (13.2%)	3419 (14.0%)
	Female	222 (0.9%)	215 (0.9%)	225 (1.0%)	190 (0.8%)	192 (0.8%)	265 (1.1%)	262 (1.1%)	375 (1.6%)	339 (2.1%)	510 (2.1%)
	Subtotal	2639 (11.1%)	2477 (10.2%)	2308 (10.0%)	2486 (10.6%)	2812 (12.0%)	3092 (13.1%)	3046 (13.1%)	3172 (13.8%)	2491 (15.2%)	3929 (16.1%)
USA	Male	621 (2.6%)	501 (2.1%)	391 (1.7%)	332 (1.4%)	254 (1.1%)	166 (0.7%)	173 (0.7%)	143 (0.6%)	102 (0.6%)	146 (0.6%)
	Female	34 (0.1%)	24 (0.1%)	11 (0.0%)	9 (0.0%)	4 (0.0%)	8 (0.0%)	8 (0.0%)	16 (0.1%)	21 (0.1%)	6 (0.0%)
	Subtotal	655 (2.7%)	525 (2.2%)	402 (1.7%)	341 (1.5%)	258 (1.1%)	174 (0.7%)	181 (0.8%)	159 (0.7%)	123 (0.8%)	152 (0.6%)
GNY	Male	317 (1.3%)	284 (1.2%)	244 (1.1%)	273 (1.2%)	233 (1.0%)	246 (1.0%)	218 (0.9%)	270 (1.2%)	186 (1.1%)	312 (1.3%)
	Female	26 (0.1%)	26 (0.1%)	17 (0.1%)	23 (0.1%)	20 (0.1%)	9 (0.0%)	13 (0.1%)	24 (0.1%)	11 (0.1%)	35 (0.1%)
	Subtotal	343 (1.4%)	310 (1.3%)	261 (1.1%)	296 (1.3%)	253 (1.1%)	255 (1.1%)	231 (1.0%)	294 (1.3%)	197 (1.2%)	347 (1.4%)
Other	Male	115 (0.5%)	113 (0.5%)	57 (0.2%)	41 (0.2%)	31 (0.1%)	28 (0.1%)	41 (0.2%)	28 (0.1%)	11 (0.1%)	14 (0.1%)
	Female	11 (0.0%)	8 (0.0%)	1 (0.0%)	3 (0.0%)	15 (0.1%)	7 (0.0%)	9 (0.0%)	2 (0.0%)	2 (0.0%)	3 (0.0%)
	Subtotal	126 (0.5%)	121 (0.5%)	58 (0.3%)	44 (0.2%)	46 (0.2%)	35 (0.1%)	50 (0.2%)	30 (0.1%)	13 (0.1%)	17 (0.1%)

Year to Date Individual Runners by Breeding

Flat

Bred	Sex	2012	2013	2014	2015	2016	2017	2018	2019	2020	2021
GB	Male	3113 (29.8%)	3083 (29.7%)	3011 (29.3%)	3085 (30.0%)	3092 (29.4%)	3166 (29.3%)	3263 (29.7%)	3239 (29.5%)	3051 (29.9%)	3066 (29.1%)
	Female	2217 (21.2%)	2160 (20.8%)	2059 (20.0%)	2020 (19.6%)	2043 (19.4%)	2072 (19.2%)	2066 (18.8%)	2088 (19.0%)	1960 (19.2%)	2077 (19.7%)
	Subtotal	5330 (51.0%)	5243 (50.5%)	5070 (49.3%)	5105 (49.6%)	5135 (48.8%)	5238 (48.5%)	5329 (48.5%)	5327 (48.5%)	5011 (49.0%)	5143 (48.9%)
IRE	Male	2630 (25.2%)	2754 (26.5%)	2804 (27.3%)	2808 (27.3%)	2965 (28.2%)	3041 (28.2%)	3090 (28.1%)	3062 (27.9%)	2873 (28.1%)	3046 (28.9%)
	Female	1395 (13.3%)	1366 (13.1%)	1435 (13.9%)	1433 (13.9%)	1476 (14.0%)	1492 (13.8%)	1520 (13.8%)	1519 (13.8%)	1429 (14.0%)	1476 (14.0%)
	Subtotal	4025 (38.5%)	4120 (39.7%)	4239 (41.2%)	4241 (41.2%)	4441 (42.2%)	4533 (42.0%)	4610 (42.0%)	4581 (41.7%)	4302 (42.1%)	4522 (43.0%)
FR	Male	125 (1.2%)	145 (1.4%)	165 (1.6%)	200 (1.9%)	227 (2.2%)	262 (2.4%)	321 (2.9%)	351 (3.2%)	333 (3.3%)	333 (3.2%)
	Female	29 (0.3%)	55 (0.5%)	77 (0.7%)	73 (0.7%)	93 (0.9%)	106 (1.0%)	120 (1.1%)	136 (1.2%)	121 (1.2%)	133 (1.3%)
	Subtotal	154 (1.5%)	200 (1.9%)	242 (2.4%)	273 (2.7%)	320 (3.0%)	368 (3.4%)	441 (4.0%)	487 (4.4%)	454 (4.4%)	466 (4.4%)
USA	Male	585 (5.6%)	510 (4.9%)	433 (4.2%)	378 (3.7%)	371 (3.5%)	379 (3.5%)	341 (3.1%)	325 (3.0%)	251 (2.5%)	213 (2.0%)
	Female	215 (2.1%)	176 (1.7%)	153 (1.5%)	148 (1.4%)	120 (1.1%)	141 (1.3%)	139 (1.3%)	128 (1.2%)	91 (0.9%)	73 (0.7%)
	Subtotal	800 (7.7%)	686 (6.6%)	586 (5.7%)	526 (5.1%)	491 (4.7%)	520 (4.8%)	480 (4.4%)	453 (4.1%)	342 (3.3%)	286 (2.7%)
GNY	Male	64 (0.6%)	59 (0.6%)	72 (0.7%)	73 (0.7%)	77 (0.7%)	78 (0.7%)	63 (0.6%)	67 (0.6%)	61 (0.6%)	63 (0.6%)
	Female	17 (0.2%)	18 (0.2%)	17 (0.2%)	24 (0.2%)	14 (0.1%)	14 (0.1%)	19 (0.2%)	24 (0.2%)	23 (0.2%)	26 (0.2%)
	Subtotal	81 (0.8%)	77 (0.7%)	89 (0.9%)	97 (0.9%)	91 (0.9%)	92 (0.9%)	82 (0.7%)	91 (0.8%)	84 (0.8%)	89 (0.8%)
Other	Male	48 (0.5%)	50 (0.5%)	49 (0.5%)	38 (0.4%)	29 (0.3%)	33 (0.3%)	31 (0.3%)	33 (0.3%)	18 (0.2%)	17 (0.2%)
	Female	14 (0.1%)	13 (0.1%)	14 (0.1%)	19 (0.2%)	15 (0.1%)	17 (0.2%)	10 (0.1%)	13 (0.1%)	8 (0.1%)	5 (0.0%)
	Subtotal	62 (0.6%)	63 (0.6%)	63 (0.6%)	57 (0.6%)	44 (0.4%)	50 (0.5%)	41 (0.4%)	46 (0.4%)	26 (0.3%)	22 (0.2%)

Jump

Bred	Sex	2012	2013	2014	2015	2016	2017	2018	2019	2020	2021
GB	Male	1977 (26.5%)	1900 (25.7%)	1760 (25.2%)	1687 (23.5%)	1584 (22.4%)	1506 (21.1%)	1438 (20.3%)	1466 (19.9%)	1287 (19.4%)	1482 (19.1%)
	Female	792 (10.6%)	822 (11.1%)	788 (11.3%)	788 (11.0%)	709 (10.0%)	697 (9.8%)	721 (10.2%)	704 (9.5%)	618 (9.3%)	767 (9.9%)
	Subtotal	2769 (37.1%)	2722 (36.8%)	2548 (36.4%)	2475 (34.5%)	2293 (32.4%)	2203 (30.9%)	2159 (30.5%)	2170 (29.4%)	1905 (28.7%)	2249 (29.0%)
IRE	Male	3101 (41.6%)	3178 (43.0%)	3081 (44.0%)	3181 (44.3%)	3192 (45.1%)	3206 (45.0%)	3134 (44.3%)	3226 (43.7%)	2878 (43.4%)	3287 (42.4%)
	Female	495 (6.6%)	479 (6.5%)	476 (6.8%)	534 (7.4%)	553 (7.8%)	608 (8.5%)	690 (9.7%)	777 (10.5%)	678 (10.2%)	775 (10.0%)
	Subtotal	3596 (48.2%)	3657 (49.5%)	3557 (50.8%)	3715 (51.7%)	3745 (52.9%)	3814 (53.5%)	3824 (54.0%)	4003 (54.3%)	3556 (53.6%)	4062 (52.4%)
FR	Male	703 (9.4%)	675 (9.1%)	626 (8.9%)	723 (10.1%)	800 (11.3%)	875 (12.3%)	864 (12.2%)	921 (12.5%)	890 (13.4%)	1131 (14.6%)
	Female	63 (0.8%)	66 (0.9%)	61 (0.9%)	64 (0.9%)	68 (1.0%)	89 (1.2%)	110 (1.6%)	142 (1.9%)	152 (2.3%)	162 (2.1%)
	Subtotal	766 (10.3%)	741 (10.0%)	687 (9.8%)	787 (11.0%)	868 (12.3%)	964 (13.5%)	974 (13.8%)	1063 (14.4%)	1042 (15.7%)	1293 (16.7%)
USA	Male	183 (2.5%)	147 (2.0%)	110 (1.6%)	98 (1.4%)	72 (1.0%)	54 (0.8%)	50 (0.7%)	45 (0.6%)	38 (0.6%)	41 (0.5%)
	Female	13 (0.2%)	11 (0.1%)	4 (0.1%)	4 (0.1%)	2 (0.0%)	3 (0.0%)	4 (0.1%)	5 (0.1%)	5 (0.1%)	2 (0.0%)
	Subtotal	196 (2.6%)	158 (2.1%)	114 (1.6%)	102 (1.4%)	74 (1.0%)	57 (0.8%)	54 (0.8%)	50 (0.7%)	43 (0.6%)	43 (0.6%)
GNY	Male	89 (1.2%)	70 (0.9%)	68 (1.0%)	79 (1.1%)	81 (1.1%)	78 (1.1%)	55 (0.8%)	72 (1.0%)	78 (1.2%)	83 (1.1%)
	Female	5 (0.1%)	6 (0.1%)	4 (0.1%)	7 (0.1%)	7 (0.1%)	5 (0.1%)	5 (0.1%)	6 (0.1%)	5 (0.1%)	10 (0.1%)
	Subtotal	94 (1.3%)	76 (1.0%)	72 (1.0%)	86 (1.2%)	88 (1.2%)	83 (1.2%)	60 (0.8%)	78 (1.1%)	83 (1.3%)	93 (1.2%)
Other	Male	32 (0.4%)	33 (0.4%)	18 (0.3%)	12 (0.2%)	6 (0.1%)	8 (0.1%)	8 (0.1%)	10 (0.1%)	6 (0.1%)	4 (0.1%)
	Female	2 (0.0%)	3 (0.0%)	1 (0.0%)	2 (0.0%)	4 (0.1%)	3 (0.0%)	2 (0.0%)	1 (0.0%)	2 (0.0%)	1 (0.0%)
	Subtotal	34 (0.5%)	36 (0.5%)	19 (0.3%)	14 (0.2%)	10 (0.1%)	11 (0.2%)	10 (0.1%)	11 (0.1%)	8 (0.1%)	5 (0.1%)