

Horse Population Report

Updated on 31 July 2021



Introduction

Welcome to the latest update on the Racehorse Population from the British Horseracing Authority.

The aim of this document is to give stakeholders and the wider Public an insight into the current state of the Horse Population in Great Britain. It is hoped that this transparency will ensure that all decision makers have access to the key data required to help British Racing deliver a Competitive and Compelling product to stakeholders, racegoers and the wider public.

If you have any questions regarding the content of this report or suggestions for how it could be improved further, please contact Joe Yates – jyates@britishhorseracing.com

Definitions

This report uses the Horses in Training returns from the Weatherby's Racing Administration System, this is completed by trainers and should be updated whenever a horse enters or leaves training in their care as part of the conditions of their licence.

Horses in Training

Unless otherwise stated, snapshots of Horses in Training will be from the 15th day of the month in question and year to date figures will be up to and including the date titled at the front of the report.

Horses' ratings will be taken from the most recently published ratings by the BHA Handicapping Team, which is currently at 7am each Tuesday morning. For example, if looking at the Horses in a particular rating band for July 2011, the horses in training number will be from Friday 15th July 2011 and ratings, where possible, will be assigned to each horse from the ratings published by the BHA Handicappers on Tuesday 12th July 2011.

The Gender of a horse will be taken from the reporting date in question, regardless of whether this has since changed. In the case of YTD reporting, where a horse's gender or training type has changed in the year-to-date period, the most recent is taken.

This report does not count any horses that are temporarily racing abroad for GB Trainers at the time of reporting.

Yearlings are not included in total counts of flat and/or dual horses but will be sometimes shown separately for information purposes.

Yearlings and two-year-olds are not included in total counts of jump horses or counts of jump horses that include dual horses but will be sometimes shown separately for information purposes.

Yearlings, two-year-olds and three-year-olds are not included in total counts of Hunter Chasers but will be sometimes shown separately for information purposes.

Hunter Chasers are not included in any counts of Jump Horses or Total figures but will be sometimes shown separately for information purposes.

Runners

Unless otherwise specified, Total Runners and Individual Runners metrics only counts runners that ran in GB races including any voided races. Withdrawn horses are not included.

Hunter Chases are not included in this section but will be sometimes shown separately for information purposes.

Total Runners is a count of all runners in races, whilst individual runners only counts each individual horse once.

Monthly Horses in Training

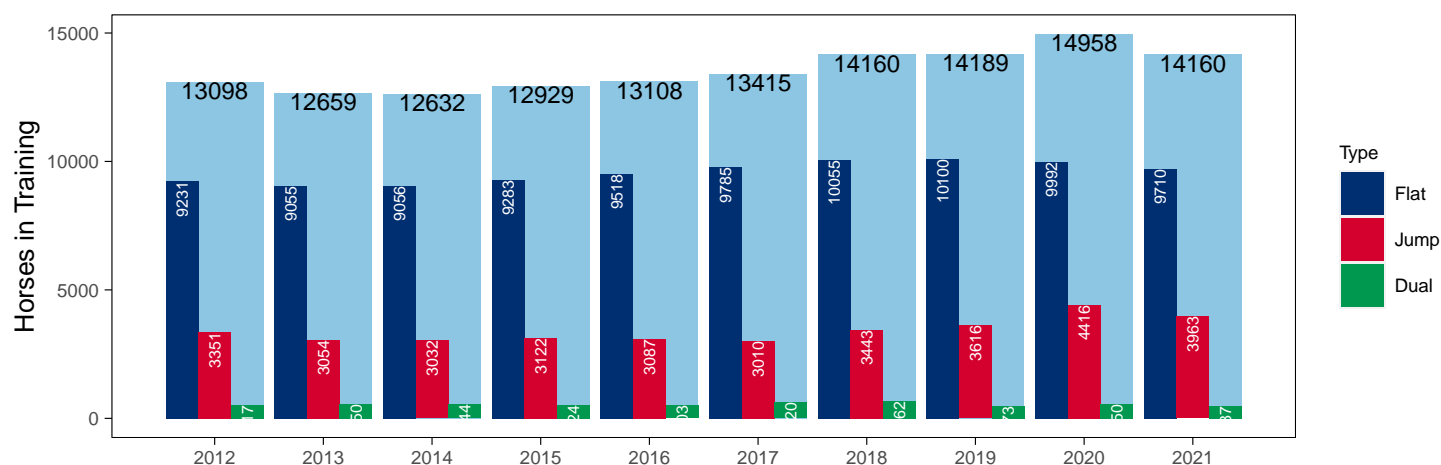
July 2021 Horses in Training Snapshot versus Previous Years

Type	2012	2013	2014	2015	2016	2017	2018	2019	2020	2021	vs. Last Year	vs. Pre-Covid
Flat	9231	9055	9056	9283	9518	9785	10055	10100	9992	9710	-282 / -2.8%	-390 / -3.9%
Jump	3351	3054	3032	3122	3087	3010	3443	3616	4416	3963	-453 / -10.3%	+347 / +9.6%
Dual	517	550	544	524	503	620	662	473	550	487	-63 / -11.5%	+14 / +3.0%
Hunter	1	1	0	0	0	1817	0	1613	1358	1104	-254 / -18.7%	-509 / -31.6%
Total	13098	12659	12632	12929	13108	13415	14160	14189	14958	14160	-798 / -5.3%	-29 / -0.2%

'vs. Pre-Covid' is comparison between 2021 and 2019

Snapshot of Total Horses in Training in July

Horses in Training in July, shown by Training Type



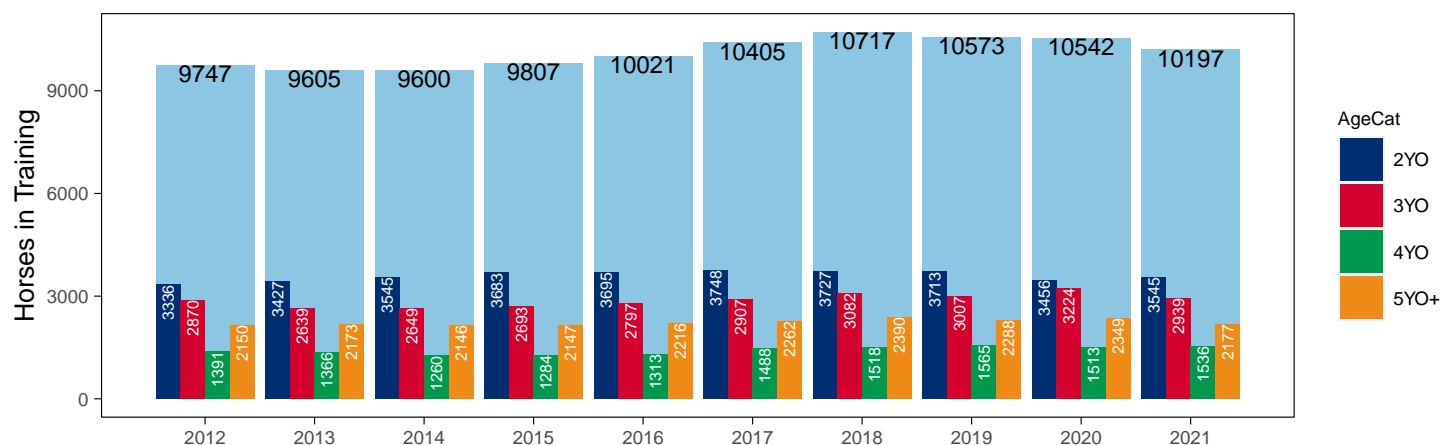
Flat (including Dual)

AgeCat	2012	2013	2014	2015	2016	2017	2018	2019	2020	2021	vs. Last Year	vs. Pre-Covid
2YO	3336	3427	3545	3683	3695	3748	3727	3713	3456	3545	+89 / +2.6%	-168 / -4.5%
3YO	2870	2639	2649	2693	2797	2907	3082	3007	3224	2939	-285 / -8.8%	-68 / -2.3%
4YO	1391	1366	1260	1284	1313	1488	1518	1565	1513	1536	+23 / +1.5%	-29 / -1.9%
5YO+	2150	2173	2146	2147	2216	2262	2390	2288	2349	2177	-172 / -7.3%	-111 / -4.9%
Total	9747	9605	9600	9807	10021	10405	10717	10573	10542	10197	-345 / -3.3%	-376 / -3.6%

'vs. Pre-Covid' is comparison between 2021 and 2019

Snapshot of Flat Horses in Training in July

Flat Horses in Training in July, shown by Age



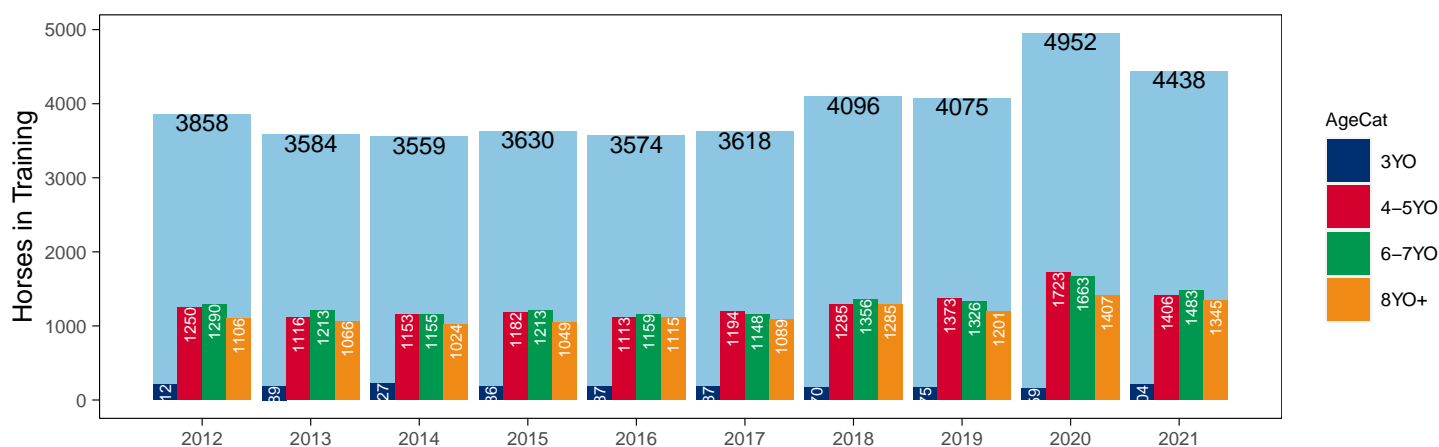
Jump (including Dual)

AgeCat	2012	2013	2014	2015	2016	2017	2018	2019	2020	2021	vs. Last Year	vs. Pre-Covid
3YO	212	189	227	186	187	187	170	175	159	204	+45 / +28.3%	+29 / +16.6%
4-5YO	1250	1116	1153	1182	1113	1194	1285	1373	1723	1406	-317 / -18.4%	+33 / +2.4%
6-7YO	1290	1213	1155	1213	1159	1148	1356	1326	1663	1483	-180 / -10.8%	+157 / +11.8%
8YO+	1106	1066	1024	1049	1115	1089	1285	1201	1407	1345	-62 / -4.4%	+144 / +12.0%
Total	3858	3584	3559	3630	3574	3618	4096	4075	4952	4438	-514 / -10.4%	+363 / +8.9%

'vs. Pre-Covid' is comparison between 2021 and 2019

Snapshot of Jump Horses in Training in July

Jump Horses in Training in July, shown by Age



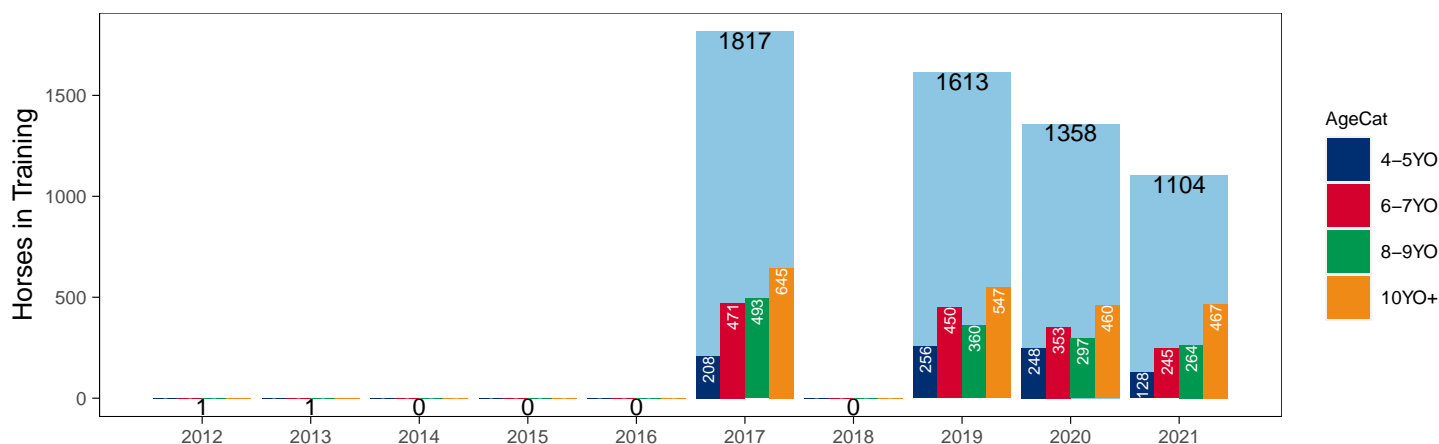
Hunter Chasers

AgeCat	2012	2013	2014	2015	2016	2017	2018	2019	2020	2021	vs. Last Year	vs. Pre-Covid
4-5YO	0	0	0	0	0	208	0	256	248	128	-120 / -48.4%	-128 / -50.0%
6-7YO	0	0	0	0	0	471	0	450	353	245	-108 / -30.6%	-205 / -45.6%
8-9YO	0	0	0	0	0	493	0	360	297	264	-33 / -11.1%	-96 / -26.7%
10YO+	1	1	0	0	0	645	0	547	460	467	+7 / +1.5%	-80 / -14.6%
Total	1	1	0	0	0	1817	0	1613	1358	1104	-254 / -18.7%	-509 / -31.6%

'vs. Pre-Covid' is comparison between 2021 and 2019

Snapshot of Hunter Chasers in Training in July

Hunter Chasers in Training in July, shown by Age



2021 Horses in Training versus Previous Years

Type	Period	Jan	Feb	Mar	Apr	May	Jun	Jul	Aug	Sep	Oct	Nov	Dec
Flat	2021	8370	8854	9305	9677	9920	9900	9710	0	0	0	0	0
	2020	8886	9286	9502	9198	9395	9956	9992	9835	9396	8776	6981	6328
	Pre-Covid	8627	9168	9725	10176	10385	10397	10100	9759	9473	8801	7020	6551
Jump	2021	6459	6482	6392	5997	4395	3572	3963	0	0	0	0	0
	2020	5920	5933	5956	2992	2314	2689	4416	5446	5995	6362	6508	6383
	Pre-Covid	5724	5785	5765	5348	4032	3127	3616	4810	5321	5755	5986	5981
Dual	2021	510	496	519	524	481	473	487	0	0	0	0	0
	2020	541	552	572	433	439	514	550	587	609	603	585	530
	Pre-Covid	482	470	467	495	456	455	473	484	479	537	566	534
Hunter	2021	791	787	861	1152	1176	1130	1104	0	0	0	0	0
	2020	949	1327	1467	1434	1424	1396	1358	1324	0	228	447	794
	Pre-Covid	995	1378	1571	1701	1693	1637	1613	0	0	0	244	605
Total	2021	15339	15832	16216	16198	14796	13945	14160	0	0	0	0	0
	2020	15347	15771	16030	12623	12148	13159	14958	15868	16000	15741	14074	13241
	Pre-Covid	14695	15298	15741	15101	14153	13606	13966	14933	15227	14960	13215	12633

'Pre-Covid' is 2019 values

Monthly Horses in Training

2021 against 2020 and Pre-Covid, shown with % Difference

Period — Pre-Covid — 2020 — 2021



'Pre-Covid' is 2019 values

Flat (including Dual)

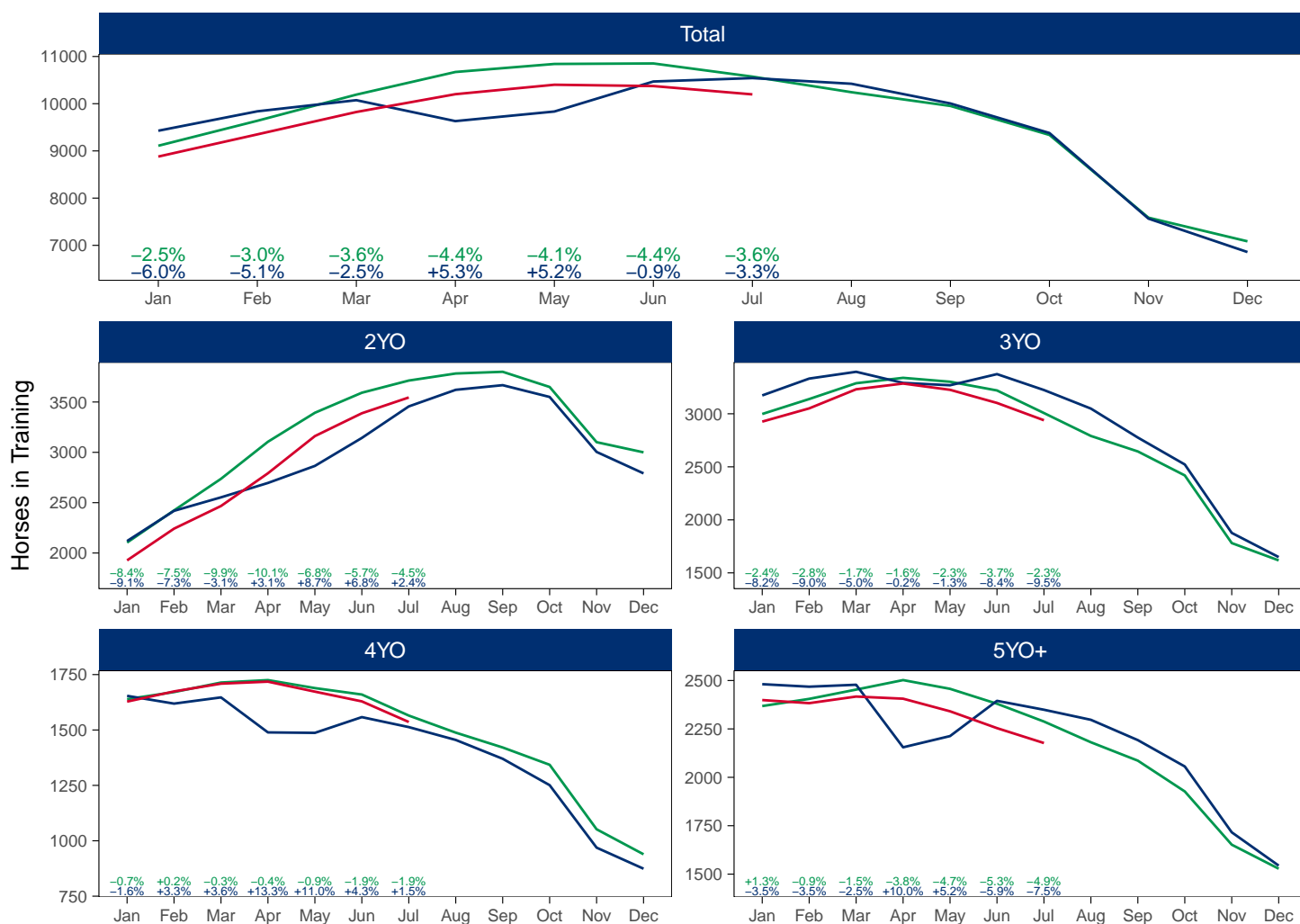
AgeCat	Period	Jan	Feb	Mar	Apr	May	Jun	Jul	Aug	Sep	Oct	Nov	Dec
2YO	2021	1927	2242	2467	2792	3161	3388	3545					
	2020	2119	2419	2553	2696	2865	3143	3456	3621	3667	3550	3004	2791
	Pre-Covid	2184	2523	2798	3027	3274	3512	3668	3765	3777	3609	2991	2831
3YO	2021	2926	3051	3231	3285	3226	3102	2939					
	2020	3173	3332	3396	3291	3269	3374	3224	3049	2776	2522	1877	1649
	Pre-Covid	2996	3173	3285	3305	3262	3216	3003	2842	2666	2437	1758	1586
4YO	2021	1628	1674	1709	1718	1673	1629	1536					
	2020	1654	1619	1647	1489	1487	1558	1513	1455	1370	1251	969	874
	Pre-Covid	1575	1607	1637	1625	1598	1560	1479	1434	1371	1280	995	906
5YO+	2021	2399	2383	2417	2406	2341	2254	2177					
	2020	2481	2468	2478	2155	2213	2395	2349	2297	2192	2056	1716	1544
	Pre-Covid	2420	2454	2478	2447	2423	2390	2301	2215	2119	1976	1671	1548
Total	2021	8880	9350	9824	10201	10401	10373	10197					
	2020	9427	9838	10074	9631	9834	10470	10542	10422	10005	9379	7566	6858
	Pre-Covid	9175	9756	10197	10404	10557	10678	10452	10257	9933	9302	7415	6871

'Pre-Covid' is 2019 values

Monthly Flat Horses in Training

2021 against 2020 and Pre-Covid, shown with % Difference

Period — Pre-Covid — 2020 — 2021



'Pre-Covid' is 2019 values

Jump (including Dual)

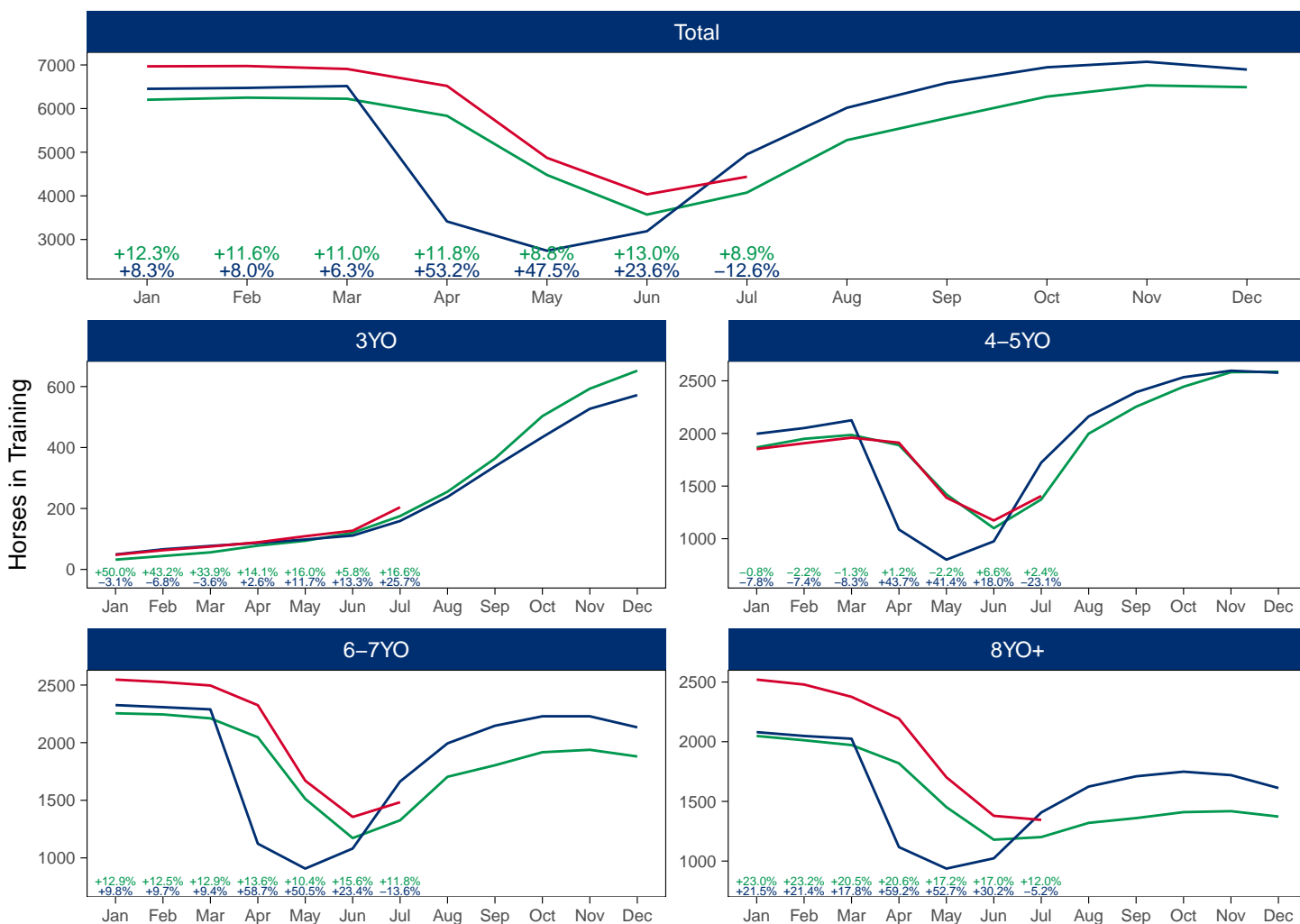
AgeCat	Period	Jan	Feb	Mar	Apr	May	Jun	Jul	Aug	Sep	Oct	Nov	Dec
3YO	2021	48	63	75	89	109	127	204					
	2020	49	66	77	87	98	111	159	238	338	434	527	572
	Pre-Covid	47	61	73	91	104	130	176	256	357	466	562	624
4-5YO	2021	1852	1907	1960	1912	1390	1173	1406					
	2020	1997	2051	2125	1087	801	975	1723	2162	2392	2534	2596	2577
	Pre-Covid	1876	1945	1997	1726	1286	1035	1338	1922	2216	2386	2472	2479
6-7YO	2021	2547	2526	2496	2325	1670	1355	1483					
	2020	2326	2308	2289	1123	907	1081	1663	1994	2147	2229	2229	2133
	Pre-Covid	2172	2148	2125	1788	1385	1140	1330	1680	1837	1911	1903	1842
8YO+	2021	2520	2479	2376	2193	1702	1379	1345					
	2020	2080	2048	2025	1117	937	1023	1407	1624	1710	1749	1720	1612
	Pre-Covid	2017	1989	1962	1694	1390	1169	1219	1373	1443	1472	1458	1400
Total	2021	6967	6975	6907	6519	4871	4034	4438					
	2020	6452	6473	6516	3414	2743	3190	4952	6018	6587	6946	7072	6894
	Pre-Covid	6113	6143	6157	5299	4165	3474	4063	5232	5853	6236	6395	6345

'Pre-Covid' is 2019 values

Monthly Jump Horses in Training

2021 against 2020 and Pre-Covid, shown with % Difference

Period — Pre-Covid — 2020 — 2021



'Pre-Covid' is 2019 values

Hunter Chasers

AgeCat	Period	Jan	Feb	Mar	Apr	May	Jun	Jul	Aug	Oct	Nov	Dec
4-5YO	2021	71	65	71	141	143	133	128				
	2020	113	223	278	265	264	258	248	233	40	106	174
	Pre-Covid	91	155	205	235	245	233	237	233	40	56	148
6-7YO	2021	195	181	199	260	264	253	245				
	2020	273	363	386	381	375	366	353	345	63	125	218
	Pre-Covid	293	400	452	476	479	458	425	345	63	75	182
8-9YO	2021	205	203	218	272	279	269	264				
	2020	220	294	315	309	307	304	297	295	54	88	176
	Pre-Covid	273	368	412	434	433	415	383	295	54	65	165
10YO+	2021	320	338	373	479	490	475	467				
	2020	343	447	488	479	478	468	460	451	71	128	226
	Pre-Covid	385	518	580	607	605	585	551	451	36	76	174
Total	2021	791	787	861	1152	1176	1130	1104				
	2020	949	1327	1467	1434	1424	1396	1358	1324	228	447	794
	Pre-Covid	1043	1441	1648	1751	1761	1690	1596	1324	114	272	669

'Pre-Covid' is 2019 values

Monthly Hunter Chasers in Training

2021 against 2020 and Pre-Covid, shown with % Difference

Period — Pre-Covid — 2020 — 2021



'Pre-Covid' is 2019 values

July 2021 Horses in Training by Rating Band Snapshot versus Previous Years

Flat (including Dual)

AgeCat	RatBand	2012	2013	2014	2015	2016	2017	2018	2019	2020	2021
2YO	0-50	7 (0.2%)	17 (0.5%)	20 (0.6%)	22 (0.6%)	18 (0.5%)	16 (0.4%)	20 (0.5%)	18 (0.5%)	6 (0.2%)	27 (0.8%)
	51-60	43 (1.3%)	44 (1.3%)	61 (1.7%)	43 (1.2%)	44 (1.2%)	47 (1.3%)	57 (1.5%)	44 (1.2%)	22 (0.6%)	46 (1.3%)
	61-70	74 (2.2%)	69 (2.0%)	76 (2.1%)	96 (2.6%)	103 (2.8%)	83 (2.2%)	80 (2.1%)	86 (2.3%)	67 (1.9%)	90 (2.5%)
	71-80	93 (2.8%)	116 (3.4%)	110 (3.1%)	127 (3.4%)	111 (3.0%)	109 (2.9%)	103 (2.8%)	99 (2.7%)	100 (2.9%)	123 (3.5%)
	81-90	49 (1.5%)	44 (1.3%)	64 (1.8%)	61 (1.7%)	72 (1.9%)	49 (1.3%)	63 (1.7%)	48 (1.3%)	55 (1.6%)	79 (2.2%)
	91-100	17 (0.5%)	26 (0.8%)	26 (0.7%)	17 (0.5%)	21 (0.6%)	19 (0.5%)	26 (0.7%)	20 (0.5%)	28 (0.8%)	25 (0.7%)
	101+	6 (0.2%)	7 (0.2%)	10 (0.3%)	13 (0.4%)	9 (0.2%)	12 (0.3%)	8 (0.2%)	9 (0.2%)	12 (0.3%)	20 (0.6%)
	Unrated	3047 (91.3%)	3104 (90.6%)	3178 (89.6%)	3304 (89.7%)	3317 (89.8%)	3413 (91.1%)	3370 (90.4%)	3389 (91.3%)	3166 (91.6%)	3135 (88.4%)
Subtotal		3336 (100.0%)	3427 (100.0%)	3545 (100.0%)	3683 (100.0%)	3695 (100.0%)	3748 (100.0%)	3727 (100.0%)	3713 (100.0%)	3456 (100.0%)	3545 (100.0%)
3YO	0-50	186 (6.5%)	159 (6.0%)	163 (6.2%)	154 (5.7%)	160 (5.7%)	189 (6.5%)	180 (5.8%)	254 (8.4%)	179 (5.6%)	217 (7.4%)
	51-60	333 (11.6%)	267 (10.1%)	257 (9.7%)	299 (11.1%)	315 (11.3%)	329 (11.3%)	303 (9.8%)	376 (12.5%)	311 (9.6%)	317 (10.8%)
	61-70	411 (14.3%)	382 (14.5%)	390 (14.7%)	379 (14.1%)	422 (15.1%)	443 (15.2%)	471 (15.3%)	435 (14.5%)	449 (13.9%)	469 (16.0%)
	71-80	429 (14.9%)	387 (14.7%)	425 (16.0%)	451 (16.7%)	508 (18.2%)	528 (18.2%)	500 (16.2%)	453 (15.1%)	558 (17.3%)	490 (16.7%)
	81-90	259 (9.0%)	226 (8.6%)	269 (10.2%)	307 (11.4%)	320 (11.4%)	350 (12.0%)	336 (10.9%)	337 (11.2%)	308 (9.6%)	315 (10.7%)
	91-100	90 (3.1%)	108 (4.1%)	123 (4.6%)	147 (5.5%)	141 (5.0%)	142 (4.9%)	168 (5.5%)	157 (5.2%)	141 (4.4%)	137 (4.7%)
	101+	86 (3.0%)	77 (2.9%)	86 (3.2%)	104 (3.9%)	101 (3.6%)	95 (3.3%)	108 (3.5%)	113 (3.8%)	75 (2.3%)	106 (3.6%)
	Unrated	1076 (37.5%)	1033 (39.1%)	936 (35.3%)	852 (31.6%)	830 (29.7%)	831 (28.6%)	1016 (33.0%)	882 (29.3%)	1203 (37.3%)	888 (30.2%)
Subtotal		2870 (100.0%)	2639 (100.0%)	2649 (100.0%)	2693 (100.0%)	2797 (100.0%)	2907 (100.0%)	3082 (100.0%)	3007 (100.0%)	3224 (100.0%)	2939 (100.0%)
4YO	0-50	134 (9.6%)	129 (9.4%)	103 (8.2%)	90 (7.0%)	108 (8.2%)	143 (9.6%)	174 (11.5%)	207 (13.2%)	152 (10.0%)	177 (11.5%)
	51-60	163 (11.7%)	149 (10.9%)	142 (11.3%)	166 (12.9%)	167 (12.7%)	200 (13.4%)	159 (10.5%)	217 (13.9%)	205 (13.5%)	220 (14.3%)
	61-70	229 (16.5%)	194 (14.2%)	192 (15.2%)	193 (15.0%)	176 (13.4%)	236 (15.9%)	286 (18.8%)	260 (16.6%)	261 (17.3%)	262 (17.1%)
	71-80	214 (15.4%)	214 (15.7%)	191 (15.2%)	227 (17.7%)	230 (17.5%)	250 (16.8%)	262 (17.3%)	249 (15.9%)	246 (16.3%)	243 (15.8%)
	81-90	149 (10.7%)	150 (11.0%)	152 (12.1%)	170 (13.2%)	191 (14.5%)	196 (13.2%)	191 (12.6%)	199 (12.7%)	189 (12.5%)	181 (11.8%)
	91-100	79 (5.7%)	90 (6.6%)	114 (9.0%)	115 (9.0%)	113 (8.6%)	120 (8.1%)	137 (9.0%)	141 (9.0%)	127 (8.4%)	141 (9.2%)
	101+	75 (5.4%)	87 (6.4%)	77 (6.1%)	108 (8.4%)	93 (7.1%)	118 (7.9%)	98 (6.5%)	107 (6.8%)	114 (7.5%)	78 (5.1%)
	Unrated	348 (25.0%)	353 (25.8%)	289 (22.9%)	215 (16.7%)	235 (17.9%)	225 (15.1%)	211 (13.9%)	185 (11.8%)	219 (14.5%)	234 (15.2%)
Subtotal		1391 (100.0%)	1366 (100.0%)	1260 (100.0%)	1284 (100.0%)	1313 (100.0%)	1488 (100.0%)	1518 (100.0%)	1565 (100.0%)	1513 (100.0%)	1536 (100.0%)
5YO+	0-50	221 (10.3%)	211 (9.7%)	229 (10.7%)	213 (9.9%)	187 (8.4%)	216 (9.5%)	310 (13.0%)	362 (15.8%)	283 (12.0%)	305 (14.0%)
	51-60	256 (11.9%)	318 (14.6%)	302 (14.1%)	293 (13.6%)	299 (13.5%)	319 (14.1%)	359 (15.0%)	349 (15.3%)	355 (15.1%)	347 (15.9%)
	61-70	348 (16.2%)	329 (15.1%)	321 (15.0%)	393 (18.3%)	374 (16.9%)	347 (15.3%)	384 (16.1%)	381 (16.7%)	405 (17.2%)	379 (17.4%)
	71-80	315 (14.7%)	315 (14.5%)	307 (14.3%)	346 (16.1%)	353 (15.9%)	329 (14.5%)	331 (13.8%)	337 (14.7%)	366 (15.6%)	313 (14.4%)
	81-90	211 (9.8%)	221 (10.2%)	225 (10.5%)	260 (12.1%)	256 (11.6%)	295 (13.0%)	287 (12.0%)	254 (11.1%)	264 (11.2%)	224 (10.3%)
	91-100	123 (5.7%)	120 (5.5%)	136 (6.3%)	143 (6.7%)	193 (8.7%)	168 (7.4%)	180 (7.5%)	161 (7.0%)	148 (6.3%)	153 (7.0%)
	101+	125 (5.8%)	105 (4.8%)	122 (5.7%)	129 (6.0%)	134 (6.0%)	166 (7.3%)	147 (6.2%)	148 (6.5%)	154 (6.6%)	151 (6.9%)
	Unrated	551 (25.6%)	554 (25.5%)	504 (23.5%)	370 (17.2%)	420 (19.0%)	422 (18.7%)	392 (16.4%)	296 (12.9%)	374 (15.9%)	305 (14.0%)
Subtotal		2150 (100.0%)	2173 (100.0%)	2146 (100.0%)	2147 (100.0%)	2216 (100.0%)	2262 (100.0%)	2390 (100.0%)	2288 (100.0%)	2349 (100.0%)	2177 (100.0%)
Overall	0-50	548 (5.6%)	516 (5.4%)	515 (5.4%)	479 (4.9%)	473 (4.7%)	564 (5.4%)	684 (6.4%)	841 (8.0%)	620 (5.9%)	726 (7.1%)
	51-60	795 (8.2%)	778 (8.1%)	762 (7.9%)	801 (8.2%)	825 (8.2%)	895 (8.6%)	878 (8.2%)	986 (9.3%)	893 (8.5%)	930 (9.1%)
	61-70	1062 (10.9%)	974 (10.1%)	979 (10.2%)	1061 (10.8%)	1075 (10.7%)	1109 (10.7%)	1221 (11.4%)	1162 (11.0%)	1182 (11.2%)	1200 (11.8%)
	71-80	1051 (10.8%)	1032 (10.7%)	1033 (10.8%)	1151 (11.7%)	1202 (12.0%)	1216 (11.7%)	1196 (11.2%)	1138 (10.8%)	1270 (12.0%)	1169 (11.5%)
	81-90	668 (6.9%)	641 (6.7%)	710 (7.4%)	798 (8.1%)	839 (8.4%)	890 (8.6%)	877 (8.2%)	838 (7.9%)	816 (7.7%)	799 (7.8%)
	91-100	309 (3.2%)	344 (3.6%)	399 (4.2%)	422 (4.3%)	468 (4.7%)	449 (4.3%)	511 (4.8%)	479 (4.5%)	444 (4.2%)	456 (4.5%)
	101+	292 (3.0%)	276 (2.9%)	295 (3.1%)	354 (3.6%)	337 (3.4%)	391 (3.8%)	361 (3.4%)	377 (3.6%)	355 (3.4%)	355 (3.5%)
	Unrated	5022 (51.5%)	5044 (52.5%)	4907 (51.1%)	4741 (48.3%)	4802 (47.9%)	4891 (47.0%)	4989 (46.6%)	4752 (44.9%)	4962 (47.1%)	4562 (44.7%)
Total		9747 (100.0%)	9605 (100.0%)	9600 (100.0%)	9807 (100.0%)	10021 (100.0%)	10405 (100.0%)	10717 (100.0%)	10573 (100.0%)	10542 (100.0%)	10197 (100.0%)

Jump (including Dual)

AgeCat	RatBand	2012	2013	2014	2015	2016	2017	2018	2019	2020	2021
3YO	Unrated	212 (100.0%)	189 (100.0%)	227 (100.0%)	186 (100.0%)	187 (100.0%)	187 (100.0%)	170 (100.0%)	175 (100.0%)	159 (100.0%)	204 (100.0%)
	Subtotal	212 (100.0%)	189 (100.0%)	227 (100.0%)	186 (100.0%)	187 (100.0%)	187 (100.0%)	170 (100.0%)	175 (100.0%)	159 (100.0%)	204 (100.0%)
4-5YO	0-100	102 (8.2%)	116 (10.4%)	133 (11.5%)	116 (9.8%)	133 (11.9%)	138 (11.6%)	131 (10.2%)	155 (11.3%)	156 (9.1%)	192 (13.7%)
	101-110	46 (3.7%)	54 (4.8%)	50 (4.3%)	71 (6.0%)	79 (7.1%)	73 (6.1%)	105 (8.2%)	89 (6.5%)	88 (5.1%)	73 (5.2%)
	111-120	49 (3.9%)	50 (4.5%)	55 (4.8%)	82 (6.9%)	65 (5.8%)	69 (5.8%)	89 (6.9%)	95 (6.9%)	83 (4.8%)	78 (5.5%)
	121-130	30 (2.4%)	28 (2.5%)	46 (4.0%)	50 (4.2%)	32 (2.9%)	52 (4.4%)	59 (4.6%)	64 (4.7%)	86 (5.0%)	40 (2.8%)
	131-140	10 (0.8%)	11 (1.0%)	19 (1.6%)	25 (2.1%)	24 (2.2%)	21 (1.8%)	25 (1.9%)	16 (1.2%)	24 (1.4%)	27 (1.9%)
	141-150	6 (0.5%)	3 (0.3%)	9 (0.8%)	9 (0.8%)	3 (0.3%)	12 (1.0%)	5 (0.4%)	11 (0.8%)	10 (0.6%)	1 (0.1%)
	151+	1 (0.1%)	NA (-)	5 (0.4%)	NA (-)	NA (-)	1 (0.1%)	2 (0.2%)	1 (0.1%)	5 (0.3%)	2 (0.1%)
	Unrated	1006 (80.5%)	854 (76.5%)	836 (72.5%)	829 (70.1%)	777 (69.8%)	828 (69.3%)	869 (67.6%)	942 (68.6%)	1271 (73.8%)	993 (70.6%)
	Subtotal	1250 (100.0%)	1116 (100.0%)	1153 (100.0%)	1182 (100.0%)	1113 (100.0%)	1194 (100.0%)	1285 (100.0%)	1373 (100.0%)	1723 (100.0%)	1406 (100.0%)
6-7YO	0-100	194 (15.0%)	259 (21.4%)	228 (19.7%)	273 (22.5%)	247 (21.3%)	251 (21.9%)	343 (25.3%)	332 (25.0%)	343 (20.6%)	450 (30.3%)
	101-110	115 (8.9%)	95 (7.8%)	113 (9.8%)	145 (12.0%)	170 (14.7%)	160 (13.9%)	177 (13.1%)	167 (12.6%)	213 (12.8%)	191 (12.9%)
	111-120	96 (7.4%)	100 (8.2%)	146 (12.6%)	150 (12.4%)	137 (11.8%)	144 (12.5%)	189 (13.9%)	204 (15.4%)	220 (13.2%)	192 (12.9%)
	121-130	74 (5.7%)	78 (6.4%)	92 (8.0%)	108 (8.9%)	102 (8.8%)	111 (9.7%)	153 (11.3%)	149 (11.2%)	196 (11.8%)	162 (10.9%)
	131-140	32 (2.5%)	31 (2.6%)	43 (3.7%)	61 (5.0%)	56 (4.8%)	82 (7.1%)	87 (6.4%)	105 (7.9%)	134 (8.1%)	100 (6.7%)
	141-150	9 (0.7%)	7 (0.6%)	24 (2.1%)	25 (2.1%)	23 (2.0%)	21 (1.8%)	29 (2.1%)	28 (2.1%)	47 (2.8%)	43 (2.9%)
	151+	3 (0.2%)	4 (0.3%)	10 (0.9%)	11 (0.9%)	5 (0.4%)	10 (0.9%)	5 (0.4%)	18 (1.4%)	21 (1.3%)	14 (0.9%)
	Unrated	767 (59.5%)	639 (52.7%)	499 (43.2%)	440 (36.3%)	419 (36.2%)	369 (32.1%)	373 (27.5%)	323 (24.4%)	489 (29.4%)	331 (22.3%)
	Subtotal	1290 (100.0%)	1213 (100.0%)	1155 (100.0%)	1213 (100.0%)	1159 (100.0%)	1148 (100.0%)	1356 (100.0%)	1326 (100.0%)	1663 (100.0%)	1483 (100.0%)
8YO+	0-100	259 (23.4%)	335 (31.4%)	339 (33.1%)	337 (32.1%)	357 (32.0%)	366 (33.6%)	438 (34.1%)	394 (32.8%)	347 (24.7%)	451 (33.5%)
	101-110	91 (8.2%)	101 (9.5%)	130 (12.7%)	134 (12.8%)	152 (13.6%)	144 (13.2%)	204 (15.9%)	175 (14.6%)	150 (10.7%)	176 (13.1%)
	111-120	78 (7.1%)	79 (7.4%)	97 (9.5%)	128 (12.2%)	131 (11.7%)	132 (12.1%)	136 (10.6%)	146 (12.2%)	165 (11.7%)	171 (12.7%)
	121-130	57 (5.2%)	63 (5.9%)	83 (8.1%)	101 (9.6%)	95 (8.5%)	104 (9.6%)	142 (11.1%)	119 (9.9%)	163 (11.6%)	148 (11.0%)
	131-140	32 (2.9%)	39 (3.7%)	42 (4.1%)	65 (6.2%)	81 (7.3%)	60 (5.5%)	93 (7.2%)	86 (7.2%)	114 (8.1%)	99 (7.4%)
	141-150	16 (1.4%)	16 (1.5%)	20 (2.0%)	23 (2.2%)	21 (1.9%)	30 (2.8%)	37 (2.9%)	44 (3.7%)	76 (5.4%)	33 (2.5%)
	151+	9 (0.8%)	4 (0.4%)	12 (1.2%)	12 (1.1%)	12 (1.1%)	11 (1.0%)	11 (0.9%)	17 (1.4%)	35 (2.5%)	30 (2.2%)
	Unrated	564 (51.0%)	429 (40.2%)	301 (29.4%)	249 (23.7%)	266 (23.9%)	242 (22.2%)	224 (17.4%)	220 (18.3%)	357 (25.4%)	237 (17.6%)
	Subtotal	1106 (100.0%)	1066 (100.0%)	1024 (100.0%)	1049 (100.0%)	1115 (100.0%)	1089 (100.0%)	1285 (100.0%)	1201 (100.0%)	1407 (100.0%)	1345 (100.0%)
Overall	0-100	555 (14.4%)	710 (19.8%)	700 (19.7%)	726 (20.0%)	737 (20.6%)	755 (20.9%)	912 (22.3%)	881 (21.6%)	846 (17.1%)	1093 (24.6%)
	101-110	252 (6.5%)	250 (7.0%)	293 (8.2%)	350 (9.6%)	401 (11.2%)	377 (10.4%)	486 (11.9%)	431 (10.6%)	451 (9.1%)	440 (9.9%)
	111-120	223 (5.8%)	229 (6.4%)	298 (8.4%)	360 (9.9%)	333 (9.3%)	345 (9.5%)	414 (10.1%)	445 (10.9%)	468 (9.5%)	441 (9.9%)
	121-130	161 (4.2%)	169 (4.7%)	221 (6.2%)	259 (7.1%)	229 (6.4%)	267 (7.4%)	354 (8.6%)	332 (8.1%)	445 (9.0%)	350 (7.9%)
	131-140	74 (1.9%)	81 (2.3%)	104 (2.9%)	151 (4.2%)	161 (4.5%)	163 (4.5%)	205 (5.0%)	207 (5.1%)	272 (5.5%)	226 (5.1%)
	141-150	31 (0.8%)	26 (0.7%)	53 (1.5%)	57 (1.6%)	47 (1.3%)	63 (1.7%)	71 (1.7%)	83 (2.0%)	133 (2.7%)	77 (1.7%)
	151+	13 (0.3%)	8 (0.2%)	27 (0.8%)	23 (0.6%)	17 (0.5%)	22 (0.6%)	18 (0.4%)	36 (0.9%)	61 (1.2%)	46 (1.0%)
	Unrated	2549 (66.1%)	2111 (58.9%)	1863 (52.3%)	1704 (46.9%)	1649 (46.1%)	1626 (44.9%)	1636 (39.9%)	1660 (40.7%)	2276 (46.0%)	1765 (39.8%)
	Total	3858 (100.0%)	3584 (100.0%)	3559 (100.0%)	3630 (100.0%)	3574 (100.0%)	3618 (100.0%)	4096 (100.0%)	4075 (100.0%)	4952 (100.0%)	4438 (100.0%)

Young Horses Entering Training

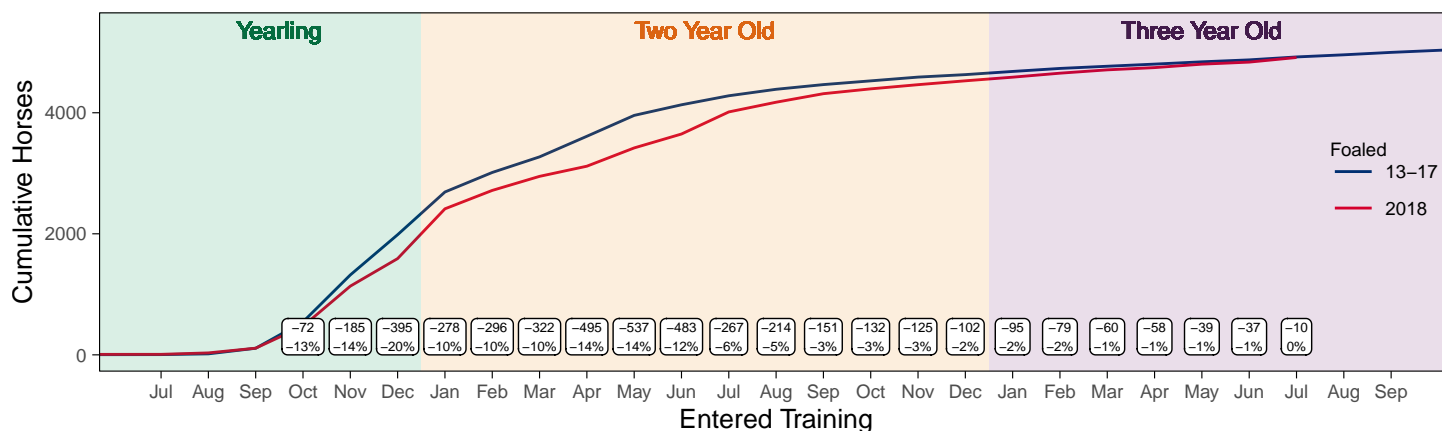
Flat Yearlings in Training versus Previous Years

Period	Jan	Feb	Mar	Apr	May	Jun	Jul	Aug	Sep	Oct	Nov	Dec
2021	0	0	0	0	0	0	0					
2020	0	0	0	0	1	2	1	2	60	235	712	1365
5YrAvg	1	1	1	1	1	1	1	2	44	241	724	1460

Foals Entering Training for the First Time

2018 Foals Entering Training Over Time

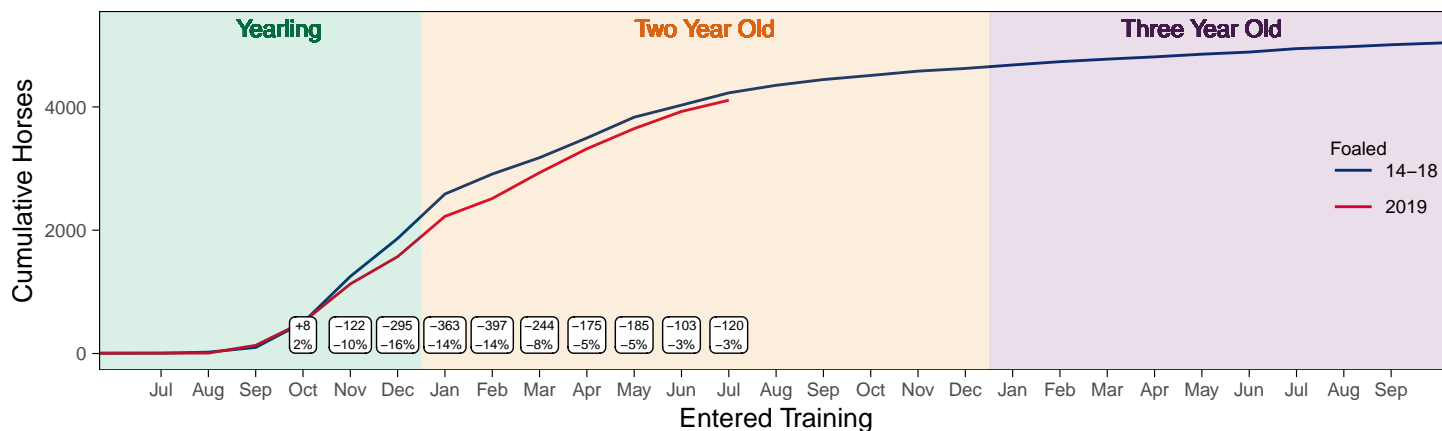
Cumulative Flat Horses foaled in 2018 shown by first in training notification against trend



Cumulative individual horses entering training for the first time by the end of each month.

2019 Foals Entering Training Over Time

Cumulative Flat Horses foaled in 2019 shown by first in training notification against trend



Cumulative individual horses entering training for the first time by the end of each month.

Year to Date Horses in Training

Type	2012	2013	2014	2015	2016	2017	2018	2019	2020	2021	vs. Last Year	vs. Pre-Covid
Flat	11896	11856	11815	12090	12510	12863	12774	13015	12677	12685	+8 / +0.1%	-330 / -2.5%
Jump	7340	7229	7144	7236	7198	7131	6853	7572	7369	8190	+821 / +11.1%	+618 / +8.2%
Dual	821	790	837	775	740	885	1354	726	804	779	-25 / -3.1%	+53 / +7.3%
Hunter	2728	2400	2274	2174	2108	2007	1855	1809	1504	1288	-216 / -14.4%	-521 / -28.8%
Total	20057	19875	19796	20101	20448	20879	20981	21313	20850	21654	+804 / +3.9%	+341 / +1.6%

'vs. Pre-Covid' is comparison between 2021 and 2019

Flat

AgeCat	2012	2013	2014	2015	2016	2017	2018	2019	2020	2021	vs. Last Year	vs. Pre-Covid
2YO	3769	3880	3917	4220	4227	4288	4204	4240	3983	4061	+78 / +2.0%	-179 / -4.2%
3YO	3742	3538	3551	3636	3863	3951	4073	4028	4070	3944	-126 / -3.1%	-84 / -2.1%
4YO	1833	1835	1723	1724	1843	1955	1890	2004	1938	2062	+124 / +6.4%	+58 / +2.9%
5YO+	2552	2603	2624	2510	2577	2669	2607	2743	2686	2618	-68 / -2.5%	-125 / -4.6%
Total	11896	11856	11815	12090	12510	12863	12774	13015	12677	12685	+8 / +0.1%	-330 / -2.5%

'vs. Pre-Covid' is comparison between 2021 and 2019

Jump

AgeCat	2012	2013	2014	2015	2016	2017	2018	2019	2020	2021	vs. Last Year	vs. Pre-Covid
3YO	142	131	170	182	150	122	126	140	102	154	+52 / +51.0%	+14 / +10.0%
4-5YO	2386	2293	2213	2254	2331	2321	2099	2419	2354	2425	+71 / +3.0%	+6 / +0.2%
6-7YO	2629	2551	2479	2581	2388	2323	2371	2613	2568	2865	+297 / +11.6%	+252 / +9.6%
8YO+	2183	2254	2282	2219	2329	2365	2257	2400	2345	2746	+401 / +17.1%	+346 / +14.4%
Total	7340	7229	7144	7236	7198	7131	6853	7572	7369	8190	+821 / +11.1%	+618 / +8.2%

'vs. Pre-Covid' is comparison between 2021 and 2019

Dual

AgeCat	2012	2013	2014	2015	2016	2017	2018	2019	2020	2021	vs. Last Year	vs. Pre-Covid
3YO	109	86	107	88	91	109	123	75	113	114	+1 / +0.9%	+39 / +52.0%
4YO	194	202	207	173	175	228	343	211	200	216	+16 / +8.0%	+5 / +2.4%
5YO+	518	502	523	514	474	548	888	440	491	449	-42 / -8.6%	+9 / +2.0%
Total	821	790	837	775	740	885	1354	726	804	779	-25 / -3.1%	+53 / +7.3%

'vs. Pre-Covid' is comparison between 2021 and 2019

Hunter Chasers

AgeCat	2012	2013	2014	2015	2016	2017	2018	2019	2020	2021	vs. Last Year	vs. Pre-Covid
4-5YO	347	276	215	233	242	255	285	316	299	188	-111 / -37.1%	-128 / -40.5%
6-7YO	842	756	711	618	583	526	513	508	395	304	-91 / -23.0%	-204 / -40.2%
8-9YO	681	618	653	648	560	536	419	394	317	304	-13 / -4.1%	-90 / -22.8%
10YO+	858	750	695	675	723	690	638	591	493	492	-1 / -0.2%	-99 / -16.8%
Total	2728	2400	2274	2174	2108	2007	1855	1809	1504	1288	-216 / -14.4%	-521 / -28.8%

'vs. Pre-Covid' is comparison between 2021 and 2019

Year to Date Runners

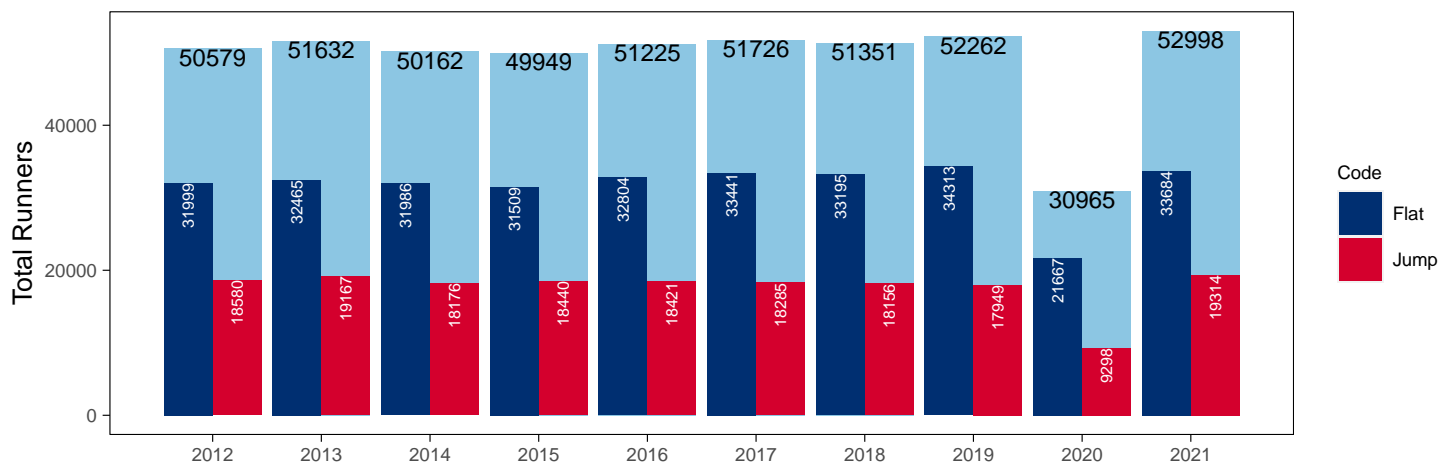
Year to Date Total Runners

Code	2012	2013	2014	2015	2016	2017	2018	2019	2020	2021	vs. Last Year	vs. Pre-Covid
Flat	31999	32465	31986	31509	32804	33441	33195	34313	21667	33684	+12017 / +55.5%	-629 / -1.8%
Jump	18580	19167	18176	18440	18421	18285	18156	17949	9298	19314	+10016 / +107.7%	+1365 / +7.6%
Total	50579	51632	50162	49949	51225	51726	51351	52262	30965	52998	+22033 / +71.2%	+736 / +1.4%

'vs. Pre-Covid' is comparison between 2021 and 2019

YTD Total Runners

Total Runners in GB Races, shown by Code and Total



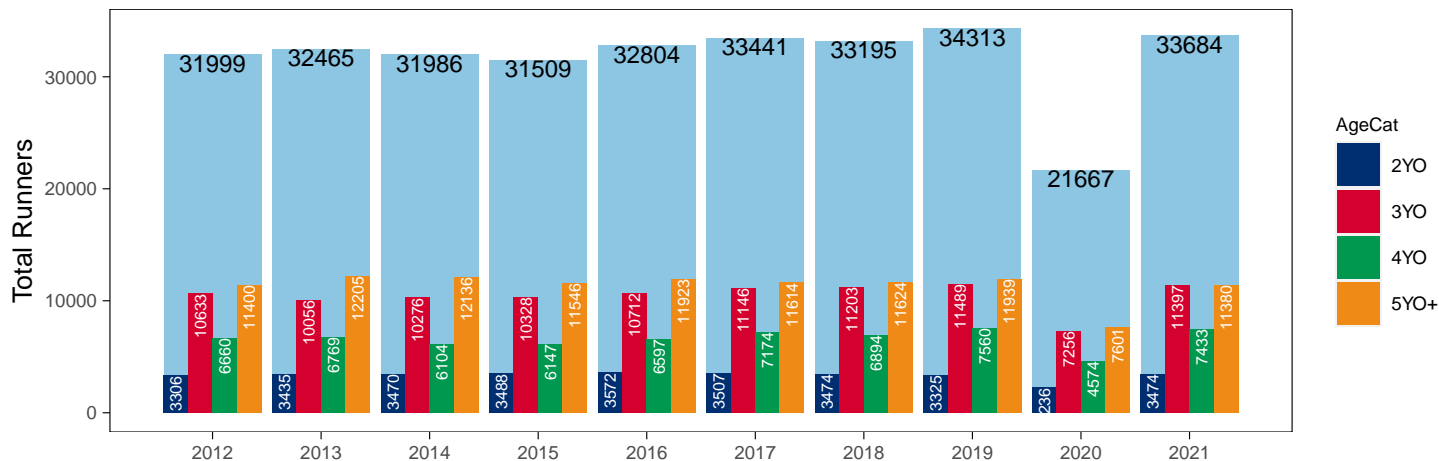
Flat

AgeCat	2012	2013	2014	2015	2016	2017	2018	2019	2020	2021	vs. Last Year	vs. Pre-Covid
2YO	3306	3435	3470	3488	3572	3507	3474	3325	2236	3474	+1238 / +55.4%	+149 / +4.5%
3YO	10633	10056	10276	10328	10712	11146	11203	11489	7256	11397	+4141 / +57.1%	-92 / -0.8%
4YO	6660	6769	6104	6147	6597	7174	6894	7560	4574	7433	+2859 / +62.5%	-127 / -1.7%
5YO+	11400	12205	12136	11546	11923	11614	11624	11939	7601	11380	+3779 / +49.7%	-559 / -4.7%
Total	31999	32465	31986	31509	32804	33441	33195	34313	21667	33684	+12017 / +55.5%	-629 / -1.8%

'vs. Pre-Covid' is comparison between 2021 and 2019

YTD Total Flat Runners by Age

Total Runners in GB Flat Races, shown by Age Category and Total



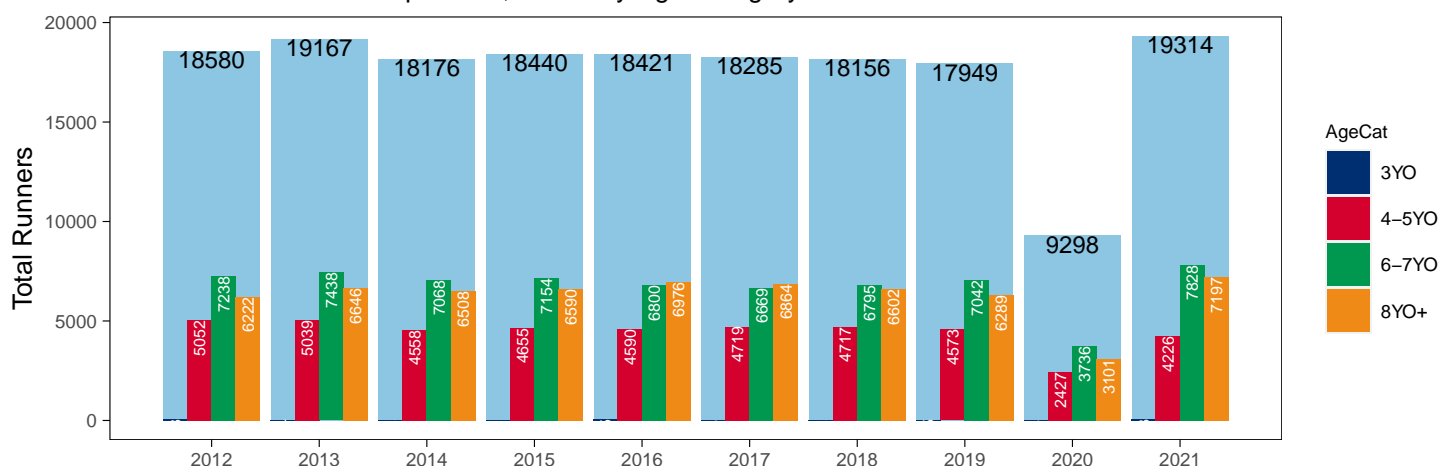
Jump

AgeCat	2012	2013	2014	2015	2016	2017	2018	2019	2020	2021	vs. Last Year	vs. Pre-Covid
3YO	68	44	42	41	55	33	42	45	34	63	+29 / +85.3%	+18 / +40.0%
4-5YO	5052	5039	4558	4655	4590	4719	4717	4573	2427	4226	+1799 / +74.1%	-347 / -7.6%
6-7YO	7238	7438	7068	7154	6800	6669	6795	7042	3736	7828	+4092 / +109.5%	+786 / +11.2%
8YO+	6222	6646	6508	6590	6976	6864	6602	6289	3101	7197	+4096 / +132.1%	+908 / +14.4%
Total	18580	19167	18176	18440	18421	18285	18156	17949	9298	19314	+10016 / +107.7%	+1365 / +7.6%

'vs. Pre-Covid' is comparison between 2021 and 2019

YTD Total Jump Runners by Age

Total Runners in GB Jump Races, shown by Age Category and Total



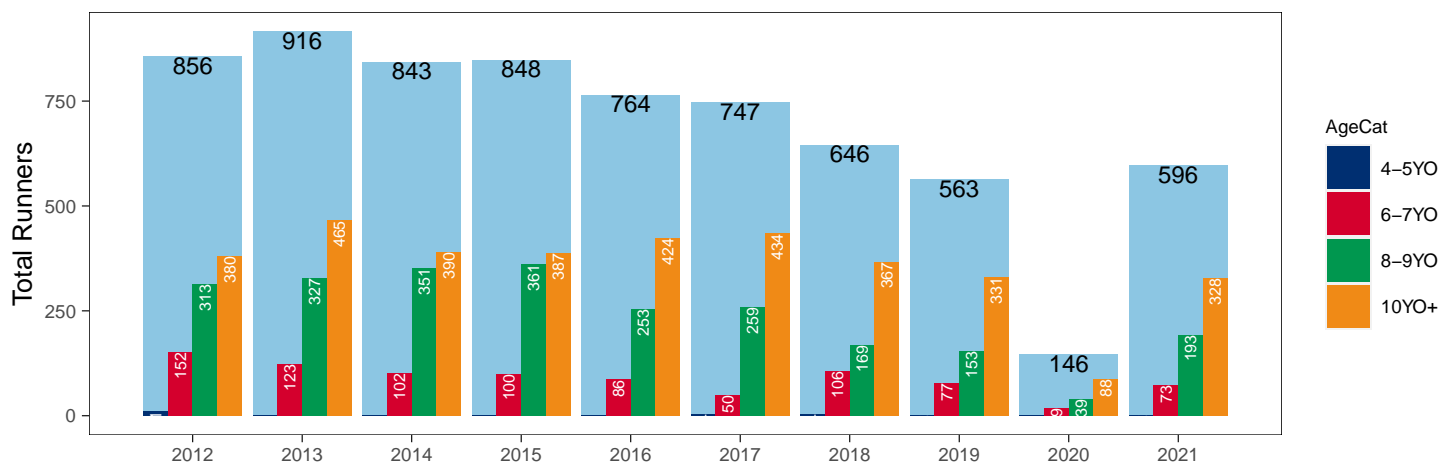
Hunter Chases

AgeCat	2012	2013	2014	2015	2016	2017	2018	2019	2020	2021	vs. Last Year	vs. Pre-Covid
4-5YO	11	1			1	4	4	2		2	NA / NA	0 / 0.0%
6-7YO	152	123	102	100	86	50	106	77	19	73	+54 / +284.2%	-4 / -5.2%
8-9YO	313	327	351	361	253	259	169	153	39	193	+154 / +394.9%	+40 / +26.1%
10YO+	380	465	390	387	424	434	367	331	88	328	+240 / +272.7%	-3 / -0.9%
Total	856	916	843	848	764	747	646	563	146	596	+450 / +308.2%	+33 / +5.9%

'vs. Pre-Covid' is comparison between 2021 and 2019

YTD Total Hunter Chase Runners by Age

Total Runners in GB Hunter Chases shown by Age Category and Total



Year to Date Total Runners by Country Trained

Code	Country	2012	2013	2014	2015	2016	2017	2018	2019	2020	2021
Flat	GB	31771	32151	31713	31176	32425	32987	32752	33831	21486	33454
	IRE	178	251	220	232	320	396	394	431	160	206
	Other	50	63	53	101	59	58	49	51	21	24
Jump	GB	18188	18710	17666	17891	17769	17704	17737	17370	9031	18932
	IRE	391	455	507	545	646	568	410	572	257	379
	Other	1	2	3	4	6	13	9	7	10	3
Overall	GB	49959	50861	49379	49067	50194	50691	50489	51201	30517	52386
	IRE	569	706	727	777	966	964	804	1003	417	585
	Other	51	65	56	105	65	71	58	58	31	27

Year to Date GB Trained Runners Racing Abroad

Code	Country	2012	2013	2014	2015	2016	2017	2018	2019	2020	2021
Flat	IRE	55	75	56	87	75	77	70	79	10	21
	FR	110	132	150	131	136	180	168	271	89	59
	GNV	11	11	6	11	9	10	12	21	5	
	UAE	343	351	326	289	208	278	276	303	281	248
	KSA									15	21
	Other	44	49	76	68	54	57	60	62	29	26
	Total	563	618	614	586	482	602	586	736	429	375
Jump	IRE	53	41	84	85	82	67	44	63	7	23
	FR	30	40	18	24	39	24	7	24	18	80
	Other	2	4	7	7	4	2	3	4		3
	Total	85	85	109	116	125	93	54	91	25	106

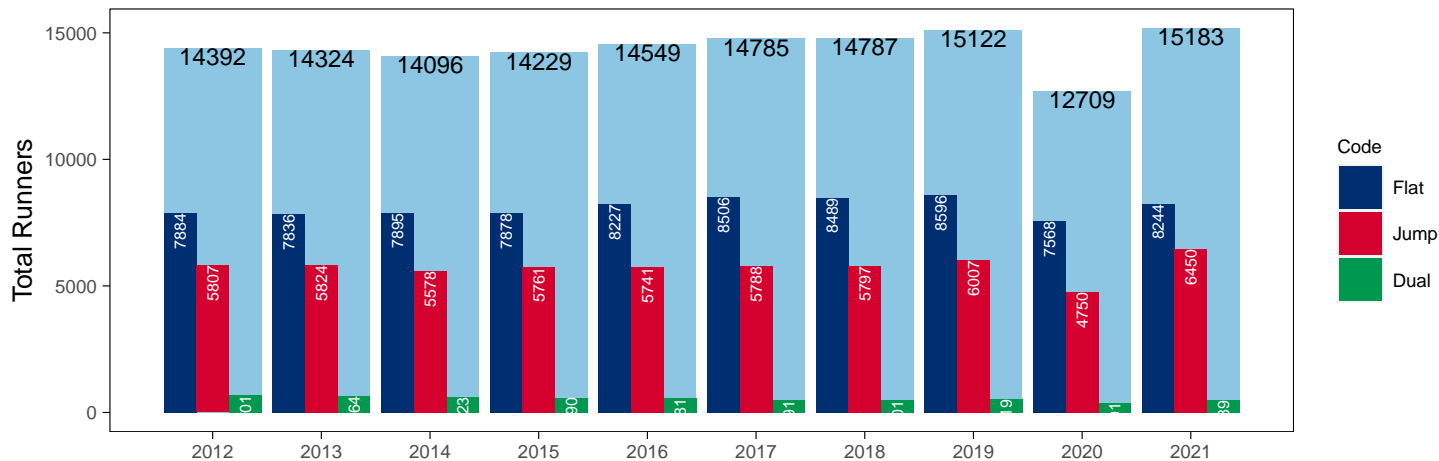
Year to Date Individual Runners

Code	2012	2013	2014	2015	2016	2017	2018	2019	2020	2021	vs. Last Year	vs. Pre-Covid
Flat	7884	7836	7895	7878	8227	8506	8489	8596	7568	8244	+676 / +8.9%	-352 / -4.1%
Jump	5807	5824	5578	5761	5741	5788	5797	6007	4750	6450	+1700 / +35.8%	+443 / +7.4%
Dual	701	664	623	590	581	491	501	519	391	489	+98 / +25.1%	-30 / -5.8%
Overall	14392	14324	14096	14229	14549	14785	14787	15122	12709	15183	+2474 / +19.5%	+61 / +0.4%

'vs. Pre-Covid' is comparison between 2021 and 2019

YTD Individual Runners

Individual Runners in GB Races, shown by Code and Total



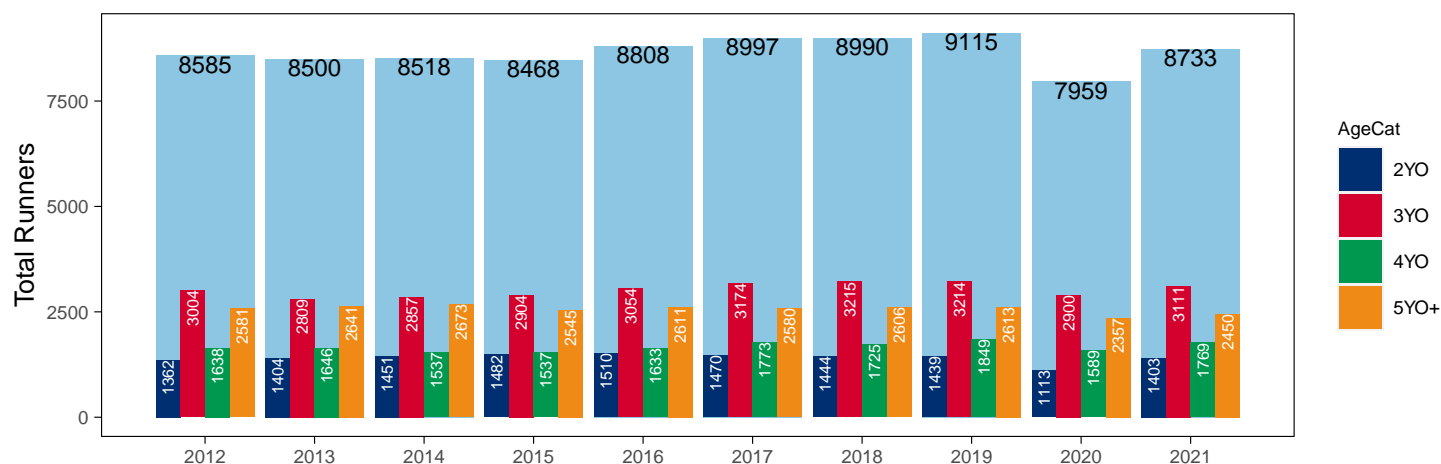
Flat

AgeCat	2012	2013	2014	2015	2016	2017	2018	2019	2020	2021	vs. Last Year	vs. Pre-Covid
2YO	1362	1404	1451	1482	1510	1470	1444	1439	1113	1403	+290 / +26.1%	-36 / -2.5%
3YO	3004	2809	2857	2904	3054	3174	3215	3214	2900	3111	+211 / +7.3%	-103 / -3.2%
4YO	1638	1646	1537	1537	1633	1773	1725	1849	1589	1769	+180 / +11.3%	-80 / -4.3%
5YO+	2581	2641	2673	2545	2611	2580	2606	2613	2357	2450	+93 / +3.9%	-163 / -6.2%
Total	8585	8500	8518	8468	8808	8997	8990	9115	7959	8733	+774 / +9.7%	-382 / -4.2%

'vs. Pre-Covid' is comparison between 2021 and 2019

YTD Individual Flat Runners by Age

Individual Runners in GB Flat Races, shown by Age Category and Total



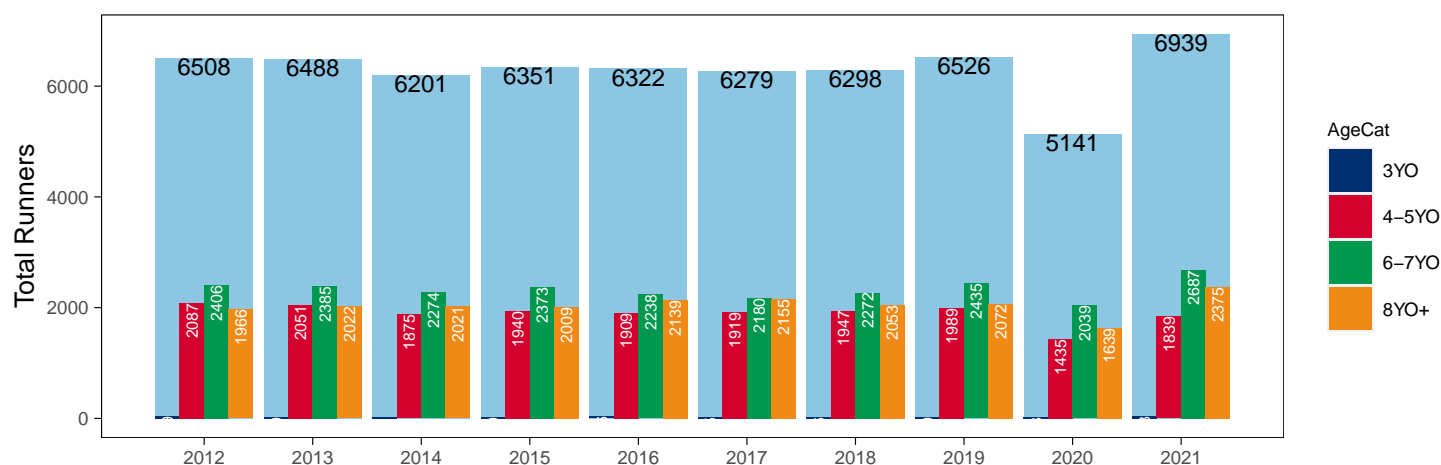
Jump

AgeCat	2012	2013	2014	2015	2016	2017	2018	2019	2020	2021	vs. Last Year	vs. Pre-Covid
3YO	49	30	31	29	36	25	26	30	28	38	+10 / +35.7%	+8 / +26.7%
4-5YO	2087	2051	1875	1940	1909	1919	1947	1989	1435	1839	+404 / +28.2%	-150 / -7.5%
6-7YO	2406	2385	2274	2373	2238	2180	2272	2435	2039	2687	+648 / +31.8%	+252 / +10.3%
8YO+	1966	2022	2021	2009	2139	2155	2053	2072	1639	2375	+736 / +44.9%	+303 / +14.6%
Total	6508	6488	6201	6351	6322	6279	6298	6526	5141	6939	+1798 / +35.0%	+413 / +6.3%

'vs. Pre-Covid' is comparison between 2021 and 2019

YTD Individual Jump Runners by Age

Individual Runners in GB Jump Races, shown by Age Category and Total



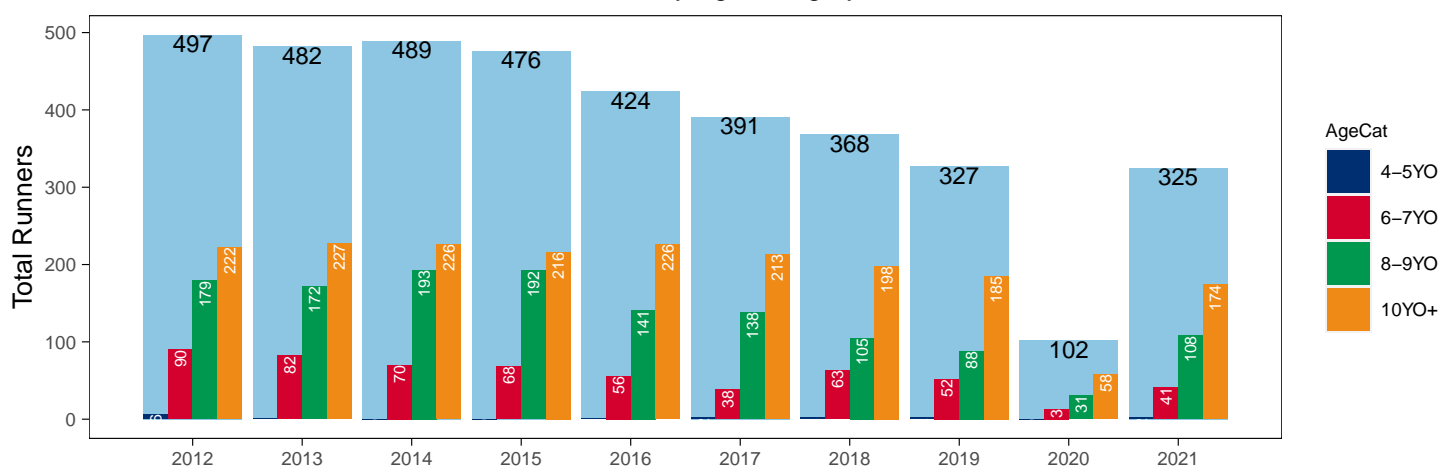
Hunter Chases

AgeCat	2012	2013	2014	2015	2016	2017	2018	2019	2020	2021	vs. Last Year	vs. Pre-Covid
4-5YO	6	1			1	2	2	2		2	NA / NA	0 / 0.0%
6-7YO	90	82	70	68	56	38	63	52	13	41	+28 / +215.4%	-11 / -21.2%
8-9YO	179	172	193	192	141	138	105	88	31	108	+77 / +248.4%	+20 / +22.7%
10YO+	222	227	226	216	226	213	198	185	58	174	+116 / +200.0%	-11 / -5.9%
Total	497	482	489	476	424	391	368	327	102	325	+223 / +218.6%	-2 / -0.6%

'vs. Pre-Covid' is comparison between 2021 and 2019

YTD Individual Hunter Chase Runners by Age

Individual Runners in GB Hunter Chases shown by Age Category and Total



Year to Date Individual Runners by Country Trained

Code	Country	2012	2013	2014	2015	2016	2017	2018	2019	2020	2021
Flat	GB	31771	32151	31713	31176	32425	32987	32752	33831	21486	33454
	IRE	178	251	220	232	320	396	394	431	160	206
	Other	50	63	53	101	59	58	49	51	21	24
Jump	GB	18188	18710	17666	17891	17769	17704	17737	17370	9031	18932
	IRE	391	455	507	545	646	568	410	572	257	379
	Other	1	2	3	4	6	13	9	7	10	3
Overall	GB	49959	50861	49379	49067	50194	50691	50489	51201	30517	52386
	IRE	569	706	727	777	966	964	804	1003	417	585
	Other	51	65	56	105	65	71	58	58	31	27

Frequency of Runs

Year to Date Average Runs per Horse

Code	2012	2013	2014	2015	2016	2017	2018	2019	2020	2021
Flat	3.73	3.82	3.76	3.72	3.72	3.72	3.69	3.76	2.72	3.86
Jump	2.85	2.95	2.93	2.90	2.91	2.91	2.88	2.75	1.81	2.78
Overall	3.51	3.60	3.56	3.51	3.52	3.50	3.47	3.46	2.44	3.49

Year to Date Proportion of Horses by Count of Runs

Runs	2012	2013	2014	2015	2016	2017	2018	2019	2020	2021
Flat										
1	1621 (18.9%)	1642 (19.3%)	1573 (18.5%)	1648 (19.5%)	1679 (19.1%)	1667 (18.5%)	1751 (19.5%)	1719 (18.9%)	2008 (25.2%)	1526 (17.5%)
2	1592 (18.5%)	1557 (18.3%)	1624 (19.1%)	1561 (18.4%)	1569 (17.8%)	1678 (18.7%)	1649 (18.3%)	1595 (17.5%)	2192 (27.5%)	1465 (16.8%)
3	1561 (18.2%)	1468 (17.3%)	1506 (17.7%)	1488 (17.6%)	1556 (17.7%)	1643 (18.3%)	1674 (18.6%)	1660 (18.2%)	1834 (23.0%)	1541 (17.6%)
4	1287 (15.0%)	1181 (13.9%)	1225 (14.4%)	1222 (14.4%)	1267 (14.4%)	1291 (14.3%)	1274 (14.2%)	1304 (14.3%)	945 (11.9%)	1363 (15.6%)
5+	2524 (29.4%)	2652 (31.2%)	2590 (30.4%)	2549 (30.1%)	2737 (31.1%)	2718 (30.2%)	2642 (29.4%)	2837 (31.1%)	980 (12.3%)	2838 (32.5%)
Jump										
1	1778 (27.3%)	1675 (25.8%)	1633 (26.3%)	1659 (26.1%)	1631 (25.8%)	1650 (26.3%)	1642 (26.1%)	1831 (28.1%)	2348 (45.7%)	1837 (26.5%)
2	1501 (23.1%)	1500 (23.1%)	1396 (22.5%)	1482 (23.3%)	1441 (22.8%)	1377 (21.9%)	1355 (21.5%)	1635 (25.1%)	1765 (34.3%)	1729 (24.9%)
3	1281 (19.7%)	1201 (18.5%)	1162 (18.7%)	1213 (19.1%)	1250 (19.8%)	1237 (19.7%)	1263 (20.1%)	1228 (18.8%)	763 (14.8%)	1423 (20.5%)
4	864 (13.3%)	926 (14.3%)	879 (14.2%)	905 (14.2%)	892 (14.1%)	932 (14.8%)	980 (15.6%)	894 (13.7%)	214 (4.2%)	904 (13.0%)
5+	1084 (16.7%)	1186 (18.3%)	1131 (18.2%)	1092 (17.2%)	1108 (17.5%)	1083 (17.2%)	1058 (16.8%)	938 (14.4%)	51 (1.0%)	1046 (15.1%)
All Races										
1	2925 (20.3%)	2896 (20.2%)	2808 (19.9%)	2935 (20.6%)	2951 (20.3%)	2996 (20.3%)	3040 (20.6%)	3216 (21.3%)	3972 (31.3%)	3034 (20.0%)
2	2861 (19.9%)	2799 (19.5%)	2783 (19.7%)	2808 (19.7%)	2785 (19.1%)	2876 (19.5%)	2834 (19.2%)	3027 (20.0%)	3830 (30.1%)	3018 (19.9%)
3	2697 (18.7%)	2536 (17.7%)	2546 (18.1%)	2582 (18.1%)	2681 (18.4%)	2781 (18.8%)	2833 (19.2%)	2780 (18.4%)	2584 (20.3%)	2865 (18.9%)
4	2106 (14.6%)	2078 (14.5%)	2069 (14.7%)	2072 (14.6%)	2116 (14.5%)	2204 (14.9%)	2228 (15.1%)	2162 (14.3%)	1215 (9.6%)	2239 (14.7%)
5+	3803 (26.4%)	4015 (28.0%)	3890 (27.6%)	3832 (26.9%)	4016 (27.6%)	3928 (26.6%)	3852 (26.0%)	3937 (26.0%)	1108 (8.7%)	4027 (26.5%)

Year to Date Median Days Between Runs

Code	2012	2013	2014	2015	2016	2017	2018	2019	2020	2021
Flat	21	20	21	21	22	22	22	22	23	22
Jump	29	29	28	29	30	29	31	31	36	32
Overall	24	23	24	24	25	25	25	25	27	26

Horses Population by Gender

July 2021 Horses in Training Snapshot by Gender versus Previous Years

All Horses

Sex	2012	2013	2014	2015	2016	2017	2018	2019	2020	2021
Colt/Entire	2409 (18.4%)	2403 (19.0%)	2419 (19.1%)	2382 (18.4%)	2395 (18.3%)	2443 (18.2%)	2459 (17.4%)	2351 (16.6%)	2330 (15.6%)	2170 (15.3%)
Gelding	6390 (48.7%)	6087 (48.0%)	6009 (47.5%)	6291 (48.6%)	6447 (49.2%)	6585 (49.0%)	7093 (50.1%)	7102 (50.0%)	7821 (52.3%)	7431 (52.4%)
Filly/Mare	4315 (32.9%)	4184 (33.0%)	4213 (33.3%)	4265 (33.0%)	4268 (32.5%)	4399 (32.8%)	4617 (32.6%)	4744 (33.4%)	4811 (32.2%)	4566 (32.2%)
Rig	0 (0.0%)	3 (0.0%)	1 (0.0%)	4 (0.0%)	5 (0.0%)	4 (0.0%)	1 (0.0%)	2 (0.0%)	1 (0.0%)	1 (0.0%)
Total	13114 (100.0%)	12677 (100.0%)	12642 (100.0%)	12942 (100.0%)	13115 (100.0%)	13431 (100.0%)	14170 (100.0%)	14199 (100.0%)	14963 (100.0%)	14168 (100.0%)

Flat (including Dual)

Sex	2012	2013	2014	2015	2016	2017	2018	2019	2020	2021
Colt/Entire	2380 (24.4%)	2374 (24.7%)	2380 (24.8%)	2353 (24.0%)	2382 (23.8%)	2417 (23.2%)	2445 (22.8%)	2335 (22.1%)	2310 (21.9%)	2151 (21.1%)
Gelding	3680 (37.8%)	3594 (37.4%)	3581 (37.3%)	3797 (38.7%)	3980 (39.7%)	4210 (40.5%)	4390 (41.0%)	4320 (40.9%)	4396 (41.7%)	4332 (42.5%)
Filly/Mare	3687 (37.8%)	3635 (37.8%)	3639 (37.9%)	3655 (37.3%)	3654 (36.5%)	3774 (36.3%)	3881 (36.2%)	3916 (37.0%)	3835 (36.4%)	3713 (36.4%)
Rig	0 (0.0%)	2 (0.0%)	0 (0.0%)	2 (0.0%)	5 (0.0%)	4 (0.0%)	1 (0.0%)	2 (0.0%)	1 (0.0%)	1 (0.0%)
Total	9747 (100.0%)	9605 (100.0%)	9600 (100.0%)	9807 (100.0%)	10021 (100.0%)	10405 (100.0%)	10717 (100.0%)	10573 (100.0%)	10542 (100.0%)	10197 (100.0%)

Jump (including Dual)

Sex	2012	2013	2014	2015	2016	2017	2018	2019	2020	2021
Colt/Entire	33 (0.9%)	41 (1.1%)	44 (1.2%)	33 (0.9%)	23 (0.6%)	22 (0.6%)	24 (0.6%)	23 (0.6%)	23 (0.5%)	29 (0.7%)
Gelding	3084 (79.9%)	2886 (80.5%)	2815 (79.1%)	2881 (79.4%)	2853 (79.8%)	2844 (78.6%)	3193 (78.0%)	3122 (76.6%)	3839 (77.5%)	3444 (77.6%)
Filly/Mare	741 (19.2%)	656 (18.3%)	699 (19.6%)	715 (19.7%)	698 (19.5%)	752 (20.8%)	879 (21.5%)	930 (22.8%)	1090 (22.0%)	965 (21.7%)
Rig	0 (0.0%)	1 (0.0%)	1 (0.0%)	1 (0.0%)	0 (0.0%)	0 (0.0%)	0 (0.0%)	0 (0.0%)	0 (0.0%)	0 (0.0%)
Total	3858 (100.0%)	3584 (100.0%)	3559 (100.0%)	3630 (100.0%)	3574 (100.0%)	3618 (100.0%)	4096 (100.0%)	4075 (100.0%)	4952 (100.0%)	4438 (100.0%)

Hunter Chasers

Sex	2012	2013	2014	2015	2016	2017	2018	2019	2020	2021
Colt/Entire	0 (0.0%)	0 (0.0%)	0 (-)	0 (-)	0 (-)	5 (0.3%)	0 (-)	1 (0.1%)	1 (0.1%)	3 (0.3%)
Gelding	1 (100.0%)	1 (100.0%)	0 (-)	0 (-)	0 (-)	1474 (81.1%)	0 (-)	1278 (79.2%)	1108 (81.6%)	918 (83.2%)
Filly/Mare	0 (0.0%)	0 (0.0%)	0 (-)	0 (-)	0 (-)	338 (18.6%)	0 (-)	334 (20.7%)	249 (18.3%)	183 (16.6%)
Rig	0 (0.0%)	0 (0.0%)	0 (-)	0 (-)	0 (-)	0 (0.0%)	0 (-)	0 (0.0%)	0 (0.0%)	0 (0.0%)
Total	1 (100.0%)	1 (100.0%)	0 (-)	0 (-)	0 (-)	1817 (100.0%)	0 (-)	1613 (100.0%)	1358 (100.0%)	1104 (100.0%)

Year to Date Total Runners by Gender

Sex	2012	2013	2014	2015	2016	2017	2018	2019	2020	2021
All Races										
Colt/Entire	4604 (9.1%)	4951 (9.6%)	4911 (9.8%)	4971 (10.0%)	4945 (9.7%)	4840 (9.4%)	4959 (9.7%)	4682 (9.0%)	3145 (10.2%)	4592 (8.7%)
Gelding	32120 (63.5%)	33024 (64.0%)	31656 (63.1%)	31862 (63.8%)	32929 (64.3%)	33334 (64.4%)	32578 (63.4%)	32934 (63.0%)	19039 (61.5%)	33568 (63.3%)
Filly/Mare	13855 (27.4%)	13657 (26.5%)	13594 (27.1%)	13115 (26.3%)	13337 (26.0%)	13549 (26.2%)	13806 (26.9%)	14635 (28.0%)	8777 (28.3%)	14831 (28.0%)
Rig	0 (0.0%)	0 (0.0%)	1 (0.0%)	1 (0.0%)	14 (0.0%)	3 (0.0%)	8 (0.0%)	11 (0.0%)	4 (0.0%)	7 (0.0%)
Flat										
Colt/Entire	4533 (14.2%)	4893 (15.1%)	4838 (15.1%)	4932 (15.7%)	4916 (15.0%)	4808 (14.4%)	4937 (14.9%)	4654 (13.6%)	3127 (14.4%)	4560 (13.5%)
Gelding	16798 (52.5%)	17083 (52.6%)	16786 (52.5%)	16844 (53.5%)	17765 (54.2%)	18329 (54.8%)	18083 (54.5%)	18797 (54.8%)	11732 (54.1%)	18461 (54.8%)
Filly/Mare	10668 (33.3%)	10489 (32.3%)	10362 (32.4%)	9732 (30.9%)	10109 (30.8%)	10301 (30.8%)	10167 (30.6%)	10855 (31.6%)	6807 (31.4%)	10660 (31.6%)
Rig	0 (0.0%)	0 (0.0%)	0 (0.0%)	1 (0.0%)	14 (0.0%)	3 (0.0%)	8 (0.0%)	7 (0.0%)	1 (0.0%)	3 (0.0%)
All Jump										
Colt/Entire	71 (0.4%)	58 (0.3%)	73 (0.4%)	39 (0.2%)	29 (0.2%)	32 (0.2%)	22 (0.1%)	28 (0.2%)	18 (0.2%)	32 (0.2%)
Gelding	15322 (82.5%)	15941 (83.2%)	14870 (81.8%)	15018 (81.4%)	15164 (82.3%)	15005 (82.1%)	14495 (79.8%)	14137 (78.8%)	7307 (78.6%)	15107 (78.2%)
Filly/Mare	3187 (17.2%)	3168 (16.5%)	3232 (17.8%)	3383 (18.3%)	3228 (17.5%)	3248 (17.8%)	3639 (20.0%)	3780 (21.1%)	1970 (21.2%)	4171 (21.6%)
Rig	0 (0.0%)	0 (0.0%)	1 (0.0%)	0 (0.0%)	0 (0.0%)	0 (0.0%)	0 (0.0%)	4 (0.0%)	3 (0.0%)	4 (0.0%)
Chase										
Colt/Entire	5 (0.1%)	7 (0.1%)	2 (0.0%)	0 (0.0%)	1 (0.0%)	0 (0.0%)	0 (0.0%)	0 (0.0%)	0 (0.0%)	0 (0.0%)
Gelding	5373 (91.9%)	5645 (92.6%)	5414 (92.6%)	5432 (92.6%)	5539 (93.1%)	5544 (92.8%)	5208 (90.8%)	5102 (90.0%)	2600 (90.2%)	5317 (89.4%)
Filly/Mare	471 (8.1%)	444 (7.3%)	430 (7.4%)	432 (7.4%)	411 (6.9%)	429 (7.2%)	526 (9.2%)	563 (9.9%)	278 (9.6%)	624 (10.5%)
Rig	0 (0.0%)	0 (0.0%)	0 (0.0%)	0 (0.0%)	0 (0.0%)	0 (0.0%)	0 (0.0%)	2 (0.0%)	3 (0.1%)	4 (0.1%)
Hurdle										
Colt/Entire	58 (0.5%)	38 (0.4%)	64 (0.6%)	34 (0.3%)	25 (0.2%)	26 (0.2%)	15 (0.1%)	19 (0.2%)	8 (0.1%)	29 (0.3%)
Gelding	8547 (79.8%)	8743 (81.1%)	8107 (78.4%)	8493 (78.2%)	8617 (79.0%)	8439 (78.6%)	8226 (76.7%)	8107 (75.3%)	4138 (74.5%)	8200 (74.2%)
Filly/Mare	2108 (19.7%)	1999 (18.5%)	2165 (20.9%)	2331 (21.5%)	2271 (20.8%)	2271 (21.2%)	2489 (23.2%)	2639 (24.5%)	1409 (25.4%)	2822 (25.5%)
Rig	0 (0.0%)	0 (0.0%)	0 (0.0%)	0 (0.0%)	0 (0.0%)	0 (0.0%)	0 (0.0%)	2 (0.0%)	0 (0.0%)	0 (0.0%)
NHF										
Colt/Entire	8 (0.4%)	13 (0.6%)	7 (0.4%)	5 (0.3%)	3 (0.2%)	6 (0.4%)	7 (0.4%)	9 (0.6%)	10 (1.2%)	3 (0.1%)
Gelding	1402 (69.5%)	1553 (67.8%)	1349 (67.7%)	1093 (63.6%)	1008 (64.7%)	1022 (64.8%)	1061 (62.7%)	928 (61.3%)	569 (66.0%)	1590 (68.6%)
Filly/Mare	608 (30.1%)	725 (31.6%)	637 (31.9%)	620 (36.1%)	546 (35.1%)	548 (34.8%)	624 (36.9%)	578 (38.2%)	283 (32.8%)	725 (31.3%)
Rig	0 (0.0%)	0 (0.0%)	1 (0.1%)	0 (0.0%)	0 (0.0%)	0 (0.0%)	0 (0.0%)	0 (0.0%)	0 (0.0%)	0 (0.0%)
Hunter										
Colt/Entire	0 (0.0%)	0 (0.0%)	0 (0.0%)	1 (0.1%)	0 (0.0%)	0 (0.0%)	0 (0.0%)	0 (0.0%)	0 (0.0%)	0 (0.0%)
Gelding	771 (90.1%)	844 (92.1%)	771 (91.5%)	799 (94.2%)	720 (94.2%)	709 (94.9%)	603 (93.3%)	522 (92.7%)	142 (97.3%)	557 (93.5%)
Filly/Mare	85 (9.9%)	72 (7.9%)	72 (8.5%)	48 (5.7%)	44 (5.8%)	38 (5.1%)	43 (6.7%)	41 (7.3%)	4 (2.7%)	39 (6.5%)

Year to Date Individual Runners by Gender

Sex	2012	2013	2014	2015	2016	2017	2018	2019	2020	2021
All Races										
Male	10226 (71.1%)	10215 (71.3%)	10002 (71.0%)	10155 (71.4%)	10393 (71.4%)	10562 (71.4%)	10503 (71.0%)	10634 (70.3%)	8954 (70.5%)	10685 (70.4%)
Female	4166 (28.9%)	4109 (28.7%)	4094 (29.0%)	4074 (28.6%)	4156 (28.6%)	4223 (28.6%)	4284 (29.0%)	4488 (29.7%)	3755 (29.5%)	4498 (29.6%)
Flat										
Male	5456 (63.6%)	5456 (64.2%)	5469 (64.2%)	5516 (65.1%)	5743 (65.2%)	5897 (65.5%)	5940 (66.1%)	5948 (65.3%)	5235 (65.8%)	5669 (64.9%)
Female	3129 (36.4%)	3044 (35.8%)	3049 (35.8%)	2952 (34.9%)	3065 (34.8%)	3100 (34.5%)	3050 (33.9%)	3167 (34.7%)	2724 (34.2%)	3064 (35.1%)
All Jump										
Male	5331 (81.9%)	5285 (81.5%)	5027 (81.1%)	5108 (80.4%)	5129 (81.1%)	5067 (80.7%)	4972 (78.9%)	5101 (78.2%)	4035 (78.5%)	5401 (77.8%)
Female	1177 (18.1%)	1203 (18.5%)	1174 (18.9%)	1243 (19.6%)	1193 (18.9%)	1212 (19.3%)	1326 (21.1%)	1425 (21.8%)	1106 (21.5%)	1538 (22.2%)
Chase										
Male	1994 (91.6%)	1982 (91.8%)	1911 (92.1%)	1962 (91.9%)	1967 (92.7%)	1981 (92.0%)	1894 (90.0%)	1920 (89.5%)	1506 (89.5%)	2025 (88.6%)
Female	184 (8.4%)	176 (8.2%)	165 (7.9%)	173 (8.1%)	156 (7.3%)	172 (8.0%)	211 (10.0%)	226 (10.5%)	176 (10.5%)	261 (11.4%)
Hurdle										
Male	3345 (80.7%)	3310 (80.9%)	3091 (79.4%)	3184 (78.9%)	3259 (80.0%)	3145 (78.8%)	3140 (77.4%)	3231 (76.5%)	2392 (75.1%)	3323 (75.2%)
Female	800 (19.3%)	783 (19.1%)	800 (20.6%)	850 (21.1%)	816 (20.0%)	844 (21.2%)	919 (22.6%)	993 (23.5%)	793 (24.9%)	1097 (24.8%)
NHF										
Male	934 (70.9%)	1082 (70.6%)	954 (70.6%)	757 (65.9%)	703 (66.1%)	698 (66.6%)	761 (66.1%)	668 (63.9%)	478 (67.5%)	1146 (69.9%)
Female	383 (29.1%)	450 (29.4%)	398 (29.4%)	392 (34.1%)	361 (33.9%)	350 (33.4%)	391 (33.9%)	377 (36.1%)	230 (32.5%)	493 (30.1%)
Hunter										
Male	451 (90.7%)	433 (89.8%)	447 (91.4%)	448 (94.1%)	395 (93.2%)	366 (93.6%)	339 (92.1%)	301 (92.0%)	98 (96.1%)	299 (92.0%)
Female	46 (9.3%)	49 (10.2%)	42 (8.6%)	28 (5.9%)	29 (6.8%)	25 (6.4%)	29 (7.9%)	26 (8.0%)	4 (3.9%)	26 (8.0%)

Horses Population by Breeding

July 2021 Horses in Training Snapshot by Breeding versus Previous Years

Flat (including Dual)

Bred	Sex	2012	2013	2014	2015	2016	2017	2018	2019	2020	2021
GB	Male	2911 (29.9%)	2823 (29.4%)	2844 (29.6%)	2908 (29.7%)	2949 (29.4%)	3090 (29.7%)	3216 (30.0%)	3147 (29.8%)	3201 (30.4%)	3047 (29.9%)
	Female	2133 (21.9%)	2069 (21.5%)	2009 (20.9%)	2025 (20.6%)	2031 (20.3%)	2086 (20.0%)	2148 (20.0%)	2159 (20.4%)	2155 (20.4%)	2054 (20.1%)
	Subtotal	5044 (51.7%)	4892 (50.9%)	4853 (50.6%)	4933 (50.3%)	4980 (49.7%)	5176 (49.7%)	5364 (50.1%)	5306 (50.2%)	5356 (50.8%)	5101 (50.0%)
IRE	Male	2413 (24.8%)	2482 (25.8%)	2508 (26.1%)	2636 (26.9%)	2796 (27.9%)	2836 (27.3%)	2908 (27.1%)	2816 (26.6%)	2867 (27.2%)	2851 (28.0%)
	Female	1259 (12.9%)	1304 (13.6%)	1360 (14.2%)	1383 (14.1%)	1369 (13.7%)	1413 (13.6%)	1434 (13.4%)	1469 (13.9%)	1413 (13.4%)	1450 (14.2%)
	Subtotal	3672 (37.7%)	3786 (39.4%)	3868 (40.3%)	4019 (41.0%)	4165 (41.6%)	4249 (40.8%)	4342 (40.5%)	4285 (40.5%)	4280 (40.6%)	4301 (42.2%)
FR	Male	100 (1.0%)	124 (1.3%)	151 (1.6%)	178 (1.8%)	196 (2.0%)	262 (2.5%)	312 (2.9%)	321 (3.0%)	317 (3.0%)	320 (3.1%)
	Female	25 (0.3%)	49 (0.5%)	64 (0.7%)	67 (0.7%)	87 (0.9%)	108 (1.0%)	122 (1.1%)	124 (1.2%)	137 (1.3%)	120 (1.2%)
	Subtotal	125 (1.3%)	173 (1.8%)	215 (2.2%)	245 (2.5%)	283 (2.8%)	370 (3.6%)	434 (4.0%)	445 (4.2%)	454 (4.3%)	440 (4.3%)
USA	Male	547 (5.6%)	444 (4.6%)	370 (3.9%)	341 (3.5%)	340 (3.4%)	349 (3.4%)	321 (3.0%)	298 (2.8%)	247 (2.3%)	196 (1.9%)
	Female	239 (2.5%)	186 (1.9%)	170 (1.8%)	148 (1.5%)	142 (1.4%)	141 (1.4%)	148 (1.4%)	126 (1.2%)	99 (0.9%)	63 (0.6%)
	Subtotal	786 (8.1%)	630 (6.6%)	540 (5.6%)	489 (5.0%)	482 (4.8%)	490 (4.7%)	469 (4.4%)	424 (4.0%)	346 (3.3%)	259 (2.5%)
GNY	Male	51 (0.5%)	55 (0.6%)	47 (0.5%)	63 (0.6%)	63 (0.6%)	70 (0.7%)	52 (0.5%)	53 (0.5%)	58 (0.6%)	55 (0.5%)
	Female	16 (0.2%)	15 (0.2%)	16 (0.2%)	13 (0.1%)	7 (0.1%)	12 (0.1%)	16 (0.1%)	25 (0.2%)	25 (0.2%)	22 (0.2%)
	Subtotal	67 (0.7%)	70 (0.7%)	63 (0.7%)	76 (0.8%)	70 (0.7%)	82 (0.8%)	68 (0.6%)	78 (0.7%)	83 (0.8%)	77 (0.8%)
Other	Male	38 (0.4%)	42 (0.4%)	41 (0.4%)	26 (0.3%)	23 (0.2%)	24 (0.2%)	27 (0.3%)	22 (0.2%)	17 (0.2%)	15 (0.1%)
	Female	15 (0.2%)	12 (0.1%)	20 (0.2%)	19 (0.2%)	18 (0.2%)	14 (0.1%)	13 (0.1%)	13 (0.1%)	6 (0.1%)	4 (0.0%)
	Subtotal	53 (0.5%)	54 (0.6%)	61 (0.6%)	45 (0.5%)	41 (0.4%)	38 (0.4%)	40 (0.4%)	35 (0.3%)	23 (0.2%)	19 (0.2%)

Jump (including Dual)

Bred	Sex	2012	2013	2014	2015	2016	2017	2018	2019	2020	2021
GB	Male	1100 (28.5%)	991 (27.7%)	979 (27.5%)	930 (25.6%)	912 (25.5%)	869 (24.0%)	964 (23.5%)	870 (21.3%)	999 (20.2%)	905 (20.4%)
	Female	453 (11.7%)	413 (11.5%)	430 (12.1%)	430 (11.8%)	408 (11.4%)	418 (11.6%)	467 (11.4%)	421 (10.3%)	494 (10.0%)	468 (10.5%)
	Subtotal	1553 (40.3%)	1404 (39.2%)	1409 (39.6%)	1360 (37.5%)	1320 (36.9%)	1287 (35.6%)	1431 (34.9%)	1291 (31.7%)	1493 (30.1%)	1373 (30.9%)
IRE	Male	1552 (40.2%)	1541 (43.0%)	1470 (41.3%)	1565 (43.1%)	1543 (43.2%)	1567 (43.3%)	1758 (42.9%)	1758 (43.1%)	2134 (43.1%)	1869 (42.1%)
	Female	239 (6.2%)	210 (5.9%)	234 (6.6%)	245 (6.7%)	263 (7.4%)	288 (8.0%)	358 (8.7%)	438 (10.7%)	492 (9.9%)	419 (9.4%)
	Subtotal	1791 (46.4%)	1751 (48.9%)	1704 (47.9%)	1810 (49.9%)	1806 (50.5%)	1855 (51.3%)	2116 (51.7%)	2196 (53.9%)	2626 (53.0%)	2288 (51.6%)
FR	Male	312 (8.1%)	279 (7.8%)	298 (8.4%)	311 (8.6%)	342 (9.6%)	350 (9.7%)	420 (10.3%)	447 (11.0%)	646 (13.0%)	612 (13.8%)
	Female	32 (0.8%)	23 (0.6%)	27 (0.8%)	34 (0.9%)	22 (0.6%)	41 (1.1%)	52 (1.3%)	66 (1.6%)	98 (2.0%)	70 (1.6%)
	Subtotal	344 (8.9%)	302 (8.4%)	325 (9.1%)	345 (9.5%)	364 (10.2%)	391 (10.8%)	472 (11.5%)	513 (12.6%)	744 (15.0%)	682 (15.4%)
USA	Male	91 (2.4%)	74 (2.1%)	65 (1.8%)	60 (1.7%)	38 (1.1%)	37 (1.0%)	36 (0.9%)	29 (0.7%)	28 (0.6%)	32 (0.7%)
	Female	10 (0.3%)	4 (0.1%)	4 (0.1%)	2 (0.1%)	1 (0.0%)	2 (0.1%)	1 (0.0%)	2 (0.0%)	2 (0.0%)	1 (0.0%)
	Subtotal	101 (2.6%)	78 (2.2%)	69 (1.9%)	62 (1.7%)	39 (1.1%)	39 (1.1%)	37 (0.9%)	31 (0.8%)	30 (0.6%)	33 (0.7%)
GNY	Male	44 (1.1%)	32 (0.9%)	36 (1.0%)	43 (1.2%)	38 (1.1%)	36 (1.0%)	33 (0.8%)	36 (0.9%)	53 (1.1%)	52 (1.2%)
	Female	5 (0.1%)	4 (0.1%)	4 (0.1%)	3 (0.1%)	1 (0.0%)	1 (0.0%)	NA (-)	2 (0.0%)	4 (0.1%)	6 (0.1%)
	Subtotal	49 (1.3%)	36 (1.0%)	40 (1.1%)	46 (1.3%)	39 (1.1%)	37 (1.0%)	33 (0.8%)	38 (0.9%)	57 (1.2%)	58 (1.3%)
Other	Male	18 (0.5%)	11 (0.3%)	12 (0.3%)	6 (0.2%)	3 (0.1%)	7 (0.2%)	6 (0.1%)	5 (0.1%)	2 (0.0%)	3 (0.1%)
	Female	2 (0.1%)	2 (0.1%)	NA (-)	1 (0.0%)	3 (0.1%)	2 (0.1%)	1 (0.0%)	1 (0.0%)	NA (-)	1 (0.0%)
	Subtotal	20 (0.5%)	13 (0.4%)	12 (0.3%)	7 (0.2%)	6 (0.2%)	9 (0.2%)	7 (0.2%)	6 (0.1%)	2 (0.0%)	4 (0.1%)

Year to Date Total Runners by Breeding

Flat

Bred	Sex	2012	2013	2014	2015	2016	2017	2018	2019	2020	2021
GB	Male	10190 (31.8%)	10171 (31.3%)	10068 (31.5%)	10268 (32.6%)	10626 (32.4%)	10883 (32.5%)	10628 (32.0%)	10728 (31.3%)	6975 (32.2%)	10552 (31.3%)
	Female	6017 (18.8%)	6037 (18.6%)	5627 (17.6%)	5315 (16.9%)	5549 (16.9%)	5588 (16.7%)	5508 (16.6%)	5935 (17.3%)	3756 (17.3%)	5948 (17.7%)
	Subtotal	16207 (50.6%)	16208 (49.9%)	15695 (49.1%)	15583 (49.5%)	16175 (49.3%)	16471 (49.3%)	16136 (48.6%)	16663 (48.6%)	10731 (49.5%)	16500 (49.0%)
IRE	Male	8884 (27.8%)	9499 (29.3%)	9427 (29.5%)	9532 (30.3%)	10051 (30.6%)	10143 (30.3%)	10266 (30.9%)	10487 (30.6%)	6510 (30.0%)	10564 (31.4%)
	Female	4094 (12.8%)	3912 (12.0%)	4102 (12.8%)	3813 (12.1%)	4021 (12.3%)	4144 (12.4%)	4070 (12.3%)	4226 (12.3%)	2697 (12.4%)	4129 (12.3%)
	Subtotal	12978 (40.6%)	13411 (41.3%)	13529 (42.3%)	13345 (42.4%)	14072 (42.9%)	14287 (42.7%)	14336 (43.2%)	14713 (42.9%)	9207 (42.5%)	14693 (43.6%)
FR	Male	299 (0.9%)	364 (1.1%)	453 (1.4%)	581 (1.8%)	635 (1.9%)	728 (2.2%)	800 (2.4%)	994 (2.9%)	637 (2.9%)	950 (2.8%)
	Female	55 (0.2%)	82 (0.3%)	180 (0.6%)	189 (0.6%)	215 (0.7%)	220 (0.7%)	260 (0.8%)	297 (0.9%)	172 (0.8%)	319 (0.9%)
	Subtotal	354 (1.1%)	446 (1.4%)	633 (2.0%)	770 (2.4%)	850 (2.6%)	948 (2.8%)	1060 (3.2%)	1291 (3.8%)	809 (3.7%)	1269 (3.8%)
USA	Male	1665 (5.2%)	1644 (5.1%)	1356 (4.2%)	1119 (3.6%)	1093 (3.3%)	1075 (3.2%)	1047 (3.2%)	974 (2.8%)	573 (2.6%)	666 (2.0%)
	Female	419 (1.3%)	402 (1.2%)	386 (1.2%)	295 (0.9%)	247 (0.8%)	282 (0.8%)	259 (0.8%)	298 (0.9%)	138 (0.6%)	178 (0.5%)
	Subtotal	2084 (6.5%)	2046 (6.3%)	1742 (5.4%)	1414 (4.5%)	1340 (4.1%)	1357 (4.1%)	1306 (3.9%)	1272 (3.7%)	711 (3.3%)	844 (2.5%)
GNY	Male	158 (0.5%)	166 (0.5%)	157 (0.5%)	161 (0.5%)	195 (0.6%)	209 (0.6%)	177 (0.5%)	181 (0.5%)	128 (0.6%)	226 (0.7%)
	Female	43 (0.1%)	35 (0.1%)	40 (0.1%)	67 (0.2%)	42 (0.1%)	31 (0.1%)	50 (0.2%)	60 (0.2%)	37 (0.2%)	71 (0.2%)
	Subtotal	201 (0.6%)	201 (0.6%)	197 (0.6%)	228 (0.7%)	237 (0.7%)	240 (0.7%)	227 (0.7%)	241 (0.7%)	165 (0.8%)	297 (0.9%)
Other	Male	135 (0.4%)	132 (0.4%)	163 (0.5%)	116 (0.4%)	95 (0.3%)	102 (0.3%)	110 (0.3%)	94 (0.3%)	37 (0.2%)	66 (0.2%)
	Female	40 (0.1%)	21 (0.1%)	27 (0.1%)	53 (0.2%)	35 (0.1%)	36 (0.1%)	20 (0.1%)	39 (0.1%)	7 (0.0%)	15 (0.0%)
	Subtotal	175 (0.5%)	153 (0.5%)	190 (0.6%)	169 (0.5%)	130 (0.4%)	138 (0.4%)	130 (0.4%)	133 (0.4%)	44 (0.2%)	81 (0.2%)

Jump

Bred	Sex	2012	2013	2014	2015	2016	2017	2018	2019	2020	2021
GB	Male	4910 (26.4%)	4992 (26.0%)	4572 (25.2%)	4389 (23.8%)	4182 (22.7%)	4035 (22.1%)	3825 (21.1%)	3671 (20.5%)	1794 (19.3%)	3663 (19.0%)
	Female	1849 (10.0%)	1875 (9.8%)	1956 (10.8%)	1950 (10.6%)	1688 (9.2%)	1616 (8.8%)	1758 (9.7%)	1661 (9.3%)	810 (8.7%)	1855 (9.6%)
	Subtotal	6759 (36.4%)	6867 (35.8%)	6528 (35.9%)	6339 (34.4%)	5870 (31.9%)	5651 (30.9%)	5583 (30.8%)	5332 (29.7%)	2604 (28.0%)	5518 (28.6%)
IRE	Male	7745 (41.7%)	8468 (44.2%)	8167 (44.9%)	8274 (44.9%)	8457 (45.9%)	8404 (46.0%)	8140 (44.8%)	7908 (44.1%)	4074 (43.8%)	8375 (43.4%)
	Female	1129 (6.1%)	1070 (5.6%)	1081 (5.9%)	1260 (6.8%)	1351 (7.3%)	1406 (7.7%)	1655 (9.1%)	1792 (10.0%)	937 (10.1%)	1870 (9.7%)
	Subtotal	8874 (47.8%)	9538 (49.8%)	9248 (50.9%)	9534 (51.7%)	9808 (53.2%)	9810 (53.7%)	9795 (53.9%)	9700 (54.0%)	5011 (53.9%)	10245 (53.0%)
FR	Male	1958 (10.5%)	1835 (9.6%)	1689 (9.3%)	1870 (10.1%)	2151 (11.7%)	2250 (12.3%)	2235 (12.3%)	2260 (12.6%)	1300 (14.0%)	2731 (14.1%)
	Female	166 (0.9%)	175 (0.9%)	175 (1.0%)	149 (0.8%)	163 (0.9%)	206 (1.1%)	203 (1.1%)	294 (1.6%)	209 (2.2%)	410 (2.1%)
	Subtotal	2124 (11.4%)	2010 (10.5%)	1864 (10.3%)	2019 (10.9%)	2314 (12.6%)	2456 (13.4%)	2438 (13.4%)	2554 (14.2%)	1509 (16.2%)	3141 (16.3%)
USA	Male	464 (2.5%)	395 (2.1%)	298 (1.6%)	269 (1.5%)	186 (1.0%)	143 (0.8%)	128 (0.7%)	101 (0.6%)	58 (0.6%)	112 (0.6%)
	Female	19 (0.1%)	21 (0.1%)	5 (0.0%)	5 (0.0%)	4 (0.0%)	6 (0.0%)	5 (0.0%)	12 (0.1%)	8 (0.1%)	6 (0.0%)
	Subtotal	483 (2.6%)	416 (2.2%)	303 (1.7%)	274 (1.5%)	190 (1.0%)	149 (0.8%)	133 (0.7%)	113 (0.6%)	66 (0.7%)	118 (0.6%)
GNY	Male	233 (1.3%)	220 (1.1%)	179 (1.0%)	218 (1.2%)	193 (1.0%)	185 (1.0%)	161 (0.9%)	205 (1.1%)	96 (1.0%)	250 (1.3%)
	Female	16 (0.1%)	21 (0.1%)	14 (0.1%)	17 (0.1%)	14 (0.1%)	9 (0.0%)	10 (0.1%)	19 (0.1%)	5 (0.1%)	30 (0.2%)
	Subtotal	249 (1.3%)	241 (1.3%)	193 (1.1%)	235 (1.3%)	207 (1.1%)	194 (1.1%)	171 (0.9%)	224 (1.2%)	101 (1.1%)	280 (1.4%)
Other	Male	83 (0.4%)	89 (0.5%)	39 (0.2%)	37 (0.2%)	24 (0.1%)	20 (0.1%)	28 (0.2%)	24 (0.1%)	6 (0.1%)	12 (0.1%)
	Female	8 (0.0%)	6 (0.0%)	1 (0.0%)	2 (0.0%)	8 (0.0%)	5 (0.0%)	8 (0.0%)	2 (0.0%)	1 (0.0%)	0 (0.0%)
	Subtotal	91 (0.5%)	95 (0.5%)	40 (0.2%)	39 (0.2%)	32 (0.2%)	25 (0.1%)	36 (0.2%)	26 (0.1%)	7 (0.1%)	12 (0.1%)

Year to Date Individual Runners by Breeding

Flat

Bred	Sex	2012	2013	2014	2015	2016	2017	2018	2019	2020	2021
GB	Male	2609 (30.4%)	2566 (30.2%)	2509 (29.5%)	2586 (30.5%)	2653 (30.1%)	2688 (29.9%)	2734 (30.4%)	2696 (29.6%)	2460 (30.9%)	2572 (29.5%)
	Female	1800 (21.0%)	1752 (20.6%)	1667 (19.6%)	1609 (19.0%)	1651 (18.7%)	1675 (18.6%)	1621 (18.0%)	1699 (18.6%)	1483 (18.6%)	1673 (19.2%)
	Subtotal	4409 (51.4%)	4318 (50.8%)	4176 (49.0%)	4195 (49.5%)	4304 (48.9%)	4363 (48.5%)	4355 (48.4%)	4395 (48.2%)	3943 (49.5%)	4245 (48.6%)
IRE	Male	2198 (25.6%)	2281 (26.8%)	2363 (27.7%)	2378 (28.1%)	2520 (28.6%)	2602 (28.9%)	2598 (28.9%)	2609 (28.6%)	2253 (28.3%)	2570 (29.4%)
	Female	1125 (13.1%)	1104 (13.0%)	1178 (13.8%)	1135 (13.4%)	1223 (13.9%)	1210 (13.4%)	1217 (13.5%)	1234 (13.5%)	1078 (13.5%)	1207 (13.8%)
	Subtotal	3323 (38.7%)	3385 (39.8%)	3541 (41.6%)	3513 (41.5%)	3743 (42.5%)	3812 (42.4%)	3815 (42.4%)	3843 (42.2%)	3331 (41.9%)	3777 (43.2%)
FR	Male	97 (1.1%)	111 (1.3%)	133 (1.6%)	158 (1.9%)	180 (2.0%)	210 (2.3%)	254 (2.8%)	286 (3.1%)	252 (3.2%)	280 (3.2%)
	Female	23 (0.3%)	35 (0.4%)	61 (0.7%)	55 (0.6%)	73 (0.8%)	84 (0.9%)	89 (1.0%)	100 (1.1%)	81 (1.0%)	98 (1.1%)
	Subtotal	120 (1.4%)	146 (1.7%)	194 (2.3%)	213 (2.5%)	253 (2.9%)	294 (3.3%)	343 (3.8%)	386 (4.2%)	333 (4.2%)	378 (4.3%)
USA	Male	463 (5.4%)	414 (4.9%)	365 (4.3%)	305 (3.6%)	305 (3.5%)	305 (3.4%)	274 (3.0%)	273 (3.0%)	203 (2.6%)	176 (2.0%)
	Female	156 (1.8%)	131 (1.5%)	123 (1.4%)	116 (1.4%)	92 (1.0%)	104 (1.2%)	99 (1.1%)	105 (1.2%)	61 (0.8%)	60 (0.7%)
	Subtotal	619 (7.2%)	545 (6.4%)	488 (5.7%)	421 (5.0%)	397 (4.5%)	409 (4.5%)	373 (4.1%)	378 (4.1%)	264 (3.3%)	236 (2.7%)
GNY	Male	50 (0.6%)	46 (0.5%)	55 (0.6%)	56 (0.7%)	62 (0.7%)	63 (0.7%)	52 (0.6%)	56 (0.6%)	51 (0.6%)	57 (0.7%)
	Female	12 (0.1%)	13 (0.2%)	11 (0.1%)	20 (0.2%)	13 (0.1%)	11 (0.1%)	16 (0.2%)	17 (0.2%)	16 (0.2%)	22 (0.3%)
	Subtotal	62 (0.7%)	59 (0.7%)	66 (0.8%)	76 (0.9%)	75 (0.9%)	74 (0.8%)	68 (0.8%)	73 (0.8%)	67 (0.8%)	79 (0.9%)
Other	Male	39 (0.5%)	38 (0.4%)	44 (0.5%)	33 (0.4%)	23 (0.3%)	29 (0.3%)	28 (0.3%)	28 (0.3%)	16 (0.2%)	14 (0.2%)
	Female	13 (0.2%)	9 (0.1%)	9 (0.1%)	17 (0.2%)	13 (0.1%)	16 (0.2%)	8 (0.1%)	12 (0.1%)	5 (0.1%)	4 (0.0%)
	Subtotal	52 (0.6%)	47 (0.6%)	53 (0.6%)	50 (0.6%)	36 (0.4%)	45 (0.5%)	36 (0.4%)	40 (0.4%)	21 (0.3%)	18 (0.2%)

Jump

Bred	Sex	2012	2013	2014	2015	2016	2017	2018	2019	2020	2021
GB	Male	1716 (26.4%)	1665 (25.7%)	1571 (25.3%)	1498 (23.6%)	1408 (22.3%)	1352 (21.5%)	1294 (20.5%)	1300 (19.9%)	989 (19.2%)	1308 (18.8%)
	Female	693 (10.6%)	714 (11.0%)	704 (11.4%)	706 (11.1%)	639 (10.1%)	604 (9.6%)	643 (10.2%)	631 (9.7%)	456 (8.9%)	686 (9.9%)
	Subtotal	2409 (37.0%)	2379 (36.7%)	2275 (36.7%)	2204 (34.7%)	2047 (32.4%)	1956 (31.2%)	1937 (30.8%)	1931 (29.6%)	1445 (28.1%)	1994 (28.7%)
IRE	Male	2705 (41.6%)	2803 (43.2%)	2708 (43.7%)	2791 (43.9%)	2842 (45.0%)	2806 (44.7%)	2777 (44.1%)	2854 (43.7%)	2241 (43.6%)	2950 (42.5%)
	Female	416 (6.4%)	414 (6.4%)	405 (6.5%)	472 (7.4%)	480 (7.6%)	523 (8.3%)	585 (9.3%)	656 (10.1%)	520 (10.1%)	694 (10.0%)
	Subtotal	3121 (48.0%)	3217 (49.6%)	3113 (50.2%)	3263 (51.4%)	3322 (52.5%)	3329 (53.0%)	3362 (53.4%)	3510 (53.8%)	2761 (53.7%)	3644 (52.5%)
FR	Male	650 (10.0%)	597 (9.2%)	577 (9.3%)	651 (10.3%)	738 (11.7%)	787 (12.5%)	800 (12.7%)	839 (12.9%)	717 (13.9%)	1031 (14.9%)
	Female	55 (0.8%)	57 (0.9%)	56 (0.9%)	55 (0.9%)	62 (1.0%)	76 (1.2%)	92 (1.5%)	127 (1.9%)	121 (2.4%)	146 (2.1%)
	Subtotal	705 (10.8%)	654 (10.1%)	633 (10.2%)	706 (11.1%)	800 (12.7%)	863 (13.7%)	892 (14.2%)	966 (14.8%)	838 (16.3%)	1177 (17.0%)
USA	Male	154 (2.4%)	131 (2.0%)	98 (1.6%)	87 (1.4%)	63 (1.0%)	50 (0.8%)	43 (0.7%)	35 (0.5%)	30 (0.6%)	37 (0.5%)
	Female	8 (0.1%)	9 (0.1%)	4 (0.1%)	3 (0.0%)	2 (0.0%)	2 (0.0%)	2 (0.0%)	5 (0.1%)	4 (0.1%)	2 (0.0%)
	Subtotal	162 (2.5%)	140 (2.2%)	102 (1.6%)	90 (1.4%)	65 (1.0%)	52 (0.8%)	45 (0.7%)	40 (0.6%)	34 (0.7%)	39 (0.6%)
GNY	Male	76 (1.2%)	60 (0.9%)	57 (0.9%)	70 (1.1%)	72 (1.1%)	64 (1.0%)	51 (0.8%)	64 (1.0%)	53 (1.0%)	72 (1.0%)
	Female	3 (0.0%)	6 (0.1%)	4 (0.1%)	6 (0.1%)	7 (0.1%)	5 (0.1%)	2 (0.0%)	5 (0.1%)	4 (0.1%)	10 (0.1%)
	Subtotal	79 (1.2%)	66 (1.0%)	61 (1.0%)	76 (1.2%)	79 (1.2%)	69 (1.1%)	53 (0.8%)	69 (1.1%)	57 (1.1%)	82 (1.2%)
Other	Male	30 (0.5%)	29 (0.4%)	16 (0.3%)	11 (0.2%)	6 (0.1%)	8 (0.1%)	7 (0.1%)	9 (0.1%)	5 (0.1%)	3 (0.0%)
	Female	2 (0.0%)	3 (0.0%)	1 (0.0%)	1 (0.0%)	3 (0.0%)	2 (0.0%)	2 (0.0%)	1 (0.0%)	1 (0.0%)	0 (0.0%)
	Subtotal	32 (0.5%)	32 (0.5%)	17 (0.3%)	12 (0.2%)	9 (0.1%)	10 (0.2%)	9 (0.1%)	10 (0.2%)	6 (0.1%)	3 (0.0%)