

Horse Population Report

Updated on 31 May 2021



Introduction

Welcome to the latest update on the Racehorse Population from the British Horseracing Authority.

The aim of this document is to give stakeholders and the wider Public an insight into the current state of the Horse Population in Great Britain. It is hoped that this transparency will ensure that all decision makers have access to the key data required to help British Racing deliver a Competitive and Compelling product to stakeholders, racegoers and the wider public.

If you have any questions regarding the content of this report or suggestions for how it could be improved further, please contact Joe Yates – jyates@britishhorseracing.com

Definitions

This report uses the Horses in Training returns from the Weatherby's Racing Administration System, this is completed by trainers and should be updated whenever a horse enters or leaves training in their care as part of the conditions of their licence.

Horses in Training

Unless otherwise stated, snapshots of Horses in Training will be from the 15th day of the month in question and year to date figures will be up to and including the date titled at the front of the report.

Horses' ratings will be taken from the most recently published ratings by the BHA Handicapping Team, which is currently at 7am each Tuesday morning. For example, if looking at the Horses in a particular rating band for July 2011, the horses in training number will be from Friday 15th July 2011 and ratings, where possible, will be assigned to each horse from the ratings published by the BHA Handicappers on Tuesday 12th July 2011.

The Gender of a horse will be taken from the reporting date in question, regardless of whether this has since changed. In the case of YTD reporting, where a horse's gender or training type has changed in the year-to-date period, the most recent is taken.

This report does not count any horses that are temporarily racing abroad for GB Trainers at the time of reporting.

Yearlings are not included in total counts of flat and/or dual horses but will be sometimes shown separately for information purposes.

Yearlings and two-year-olds are not included in total counts of jump horses or counts of jump horses that include dual horses but will be sometimes shown separately for information purposes.

Yearlings, two-year-olds and three-year-olds are not included in total counts of Hunter Chasers but will be sometimes shown separately for information purposes.

Hunter Chasers are not included in any counts of Jump Horses or Total figures but will be sometimes shown separately for information purposes.

Runners

Unless otherwise specified, Total Runners and Individual Runners metrics only counts runners that ran in GB races including any voided races. Withdrawn horses are not included.

Hunter Chases are not included in this section but will be sometimes shown separately for information purposes.

Total Runners is a count of all runners in races, whilst individual runners only counts each individual horse once.

Monthly Horses in Training

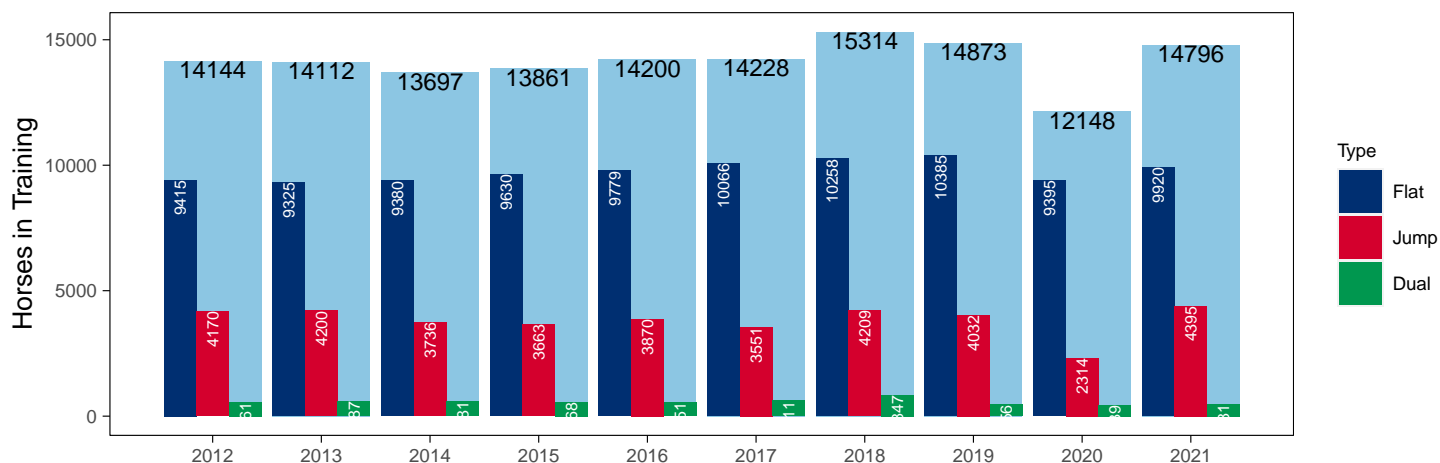
May 2021 Horses in Training Snapshot versus Previous Years

Type	2012	2013	2014	2015	2016	2017	2018	2019	2020	2021	vs. Last Year	vs. Pre-Covid
Flat	9415	9325	9380	9630	9779	10066	10258	10385	9395	9920	+525 / +5.6%	-465 / -4.5%
Jump	4170	4200	3736	3663	3870	3551	4209	4032	2314	4395	+2081 / +89.9%	+363 / +9.0%
Dual	561	587	581	568	551	611	847	456	439	481	+42 / +9.6%	+25 / +5.5%
Hunter	2488	2249	2179	2050	1976	1934	1778	1693	1424	1176	-248 / -17.4%	-517 / -30.5%
Total	14144	14112	13697	13861	14200	14228	15314	14873	12148	14796	+2648 / +21.8%	-77 / -0.5%

'vs. Pre-Covid' is comparison between 2021 and 2019

Snapshot of Total Horses in Training in May

Horses in Training in May, shown by Training Type



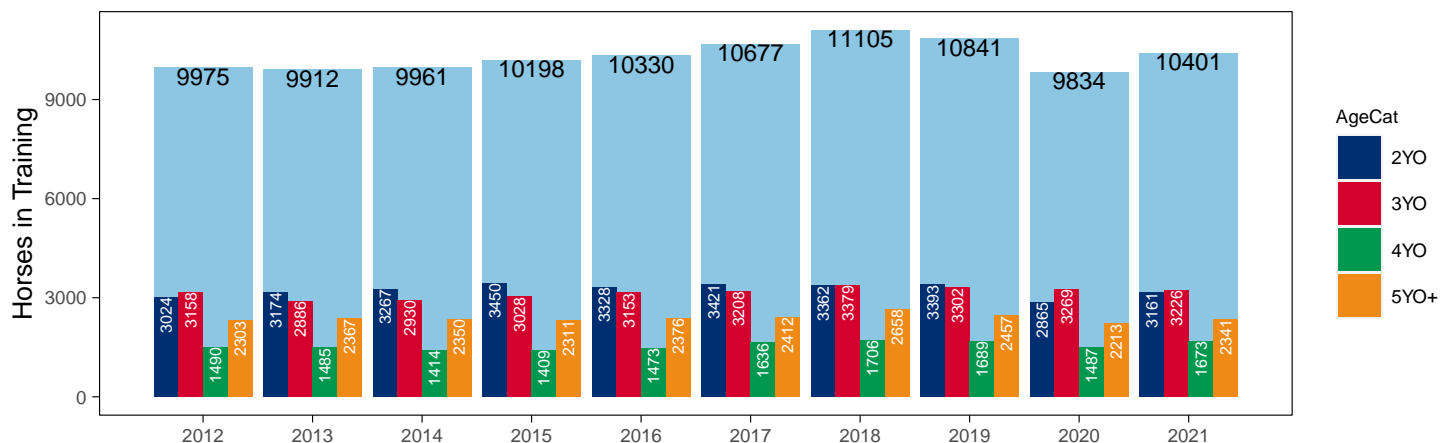
Flat (including Dual)

AgeCat	2012	2013	2014	2015	2016	2017	2018	2019	2020	2021	vs. Last Year	vs. Pre-Covid
2YO	3024	3174	3267	3450	3328	3421	3362	3393	2865	3161	+296 / +10.3%	-232 / -6.8%
3YO	3158	2886	2930	3028	3153	3208	3379	3302	3269	3226	-43 / -1.3%	-76 / -2.3%
4YO	1490	1485	1414	1409	1473	1636	1706	1689	1487	1673	+186 / +12.5%	-16 / -0.9%
5YO+	2303	2367	2350	2311	2376	2412	2658	2457	2213	2341	+128 / +5.8%	-116 / -4.7%
Total	9975	9912	9961	10198	10330	10677	11105	10841	9834	10401	+567 / +5.8%	-440 / -4.1%

'vs. Pre-Covid' is comparison between 2021 and 2019

Snapshot of Flat Horses in Training in May

Flat Horses in Training in May, shown by Age



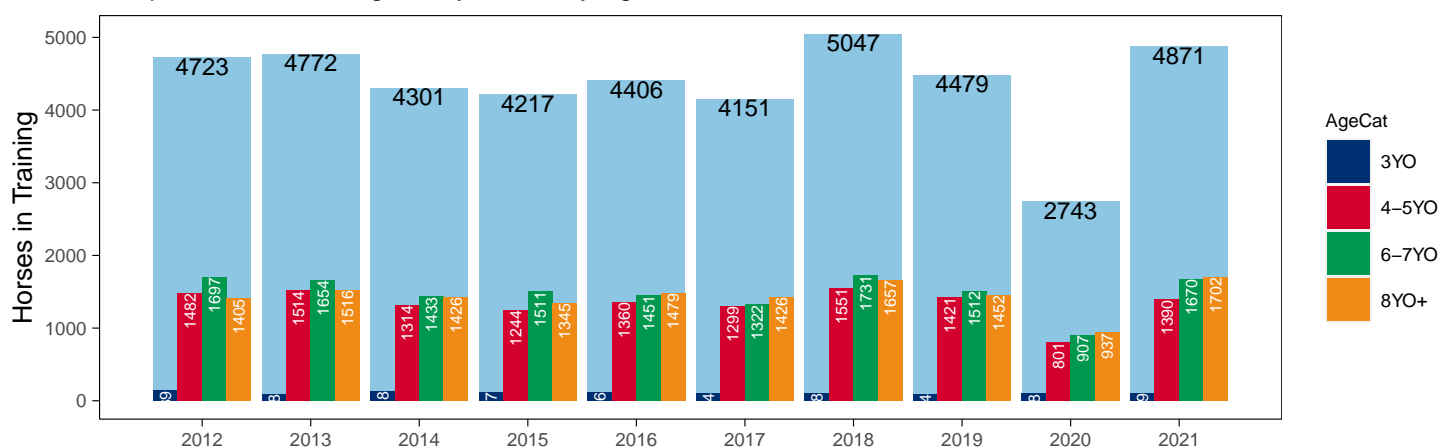
Jump (including Dual)

AgeCat	2012	2013	2014	2015	2016	2017	2018	2019	2020	2021	vs. Last Year	vs. Pre-Covid
3YO	139	88	128	117	116	104	108	94	98	109	+11 / +11.2%	+15 / +16.0%
4-5YO	1482	1514	1314	1244	1360	1299	1551	1421	801	1390	+589 / +73.5%	-31 / -2.2%
6-7YO	1697	1654	1433	1511	1451	1322	1731	1512	907	1670	+763 / +84.1%	+158 / +10.4%
8YO+	1405	1516	1426	1345	1479	1426	1657	1452	937	1702	+765 / +81.6%	+250 / +17.2%
Total	4723	4772	4301	4217	4406	4151	5047	4479	2743	4871	+2128 / +77.6%	+392 / +8.8%

'vs. Pre-Covid' is comparison between 2021 and 2019

Snapshot of Jump Horses in Training in May

Jump Horses in Training in May, shown by Age



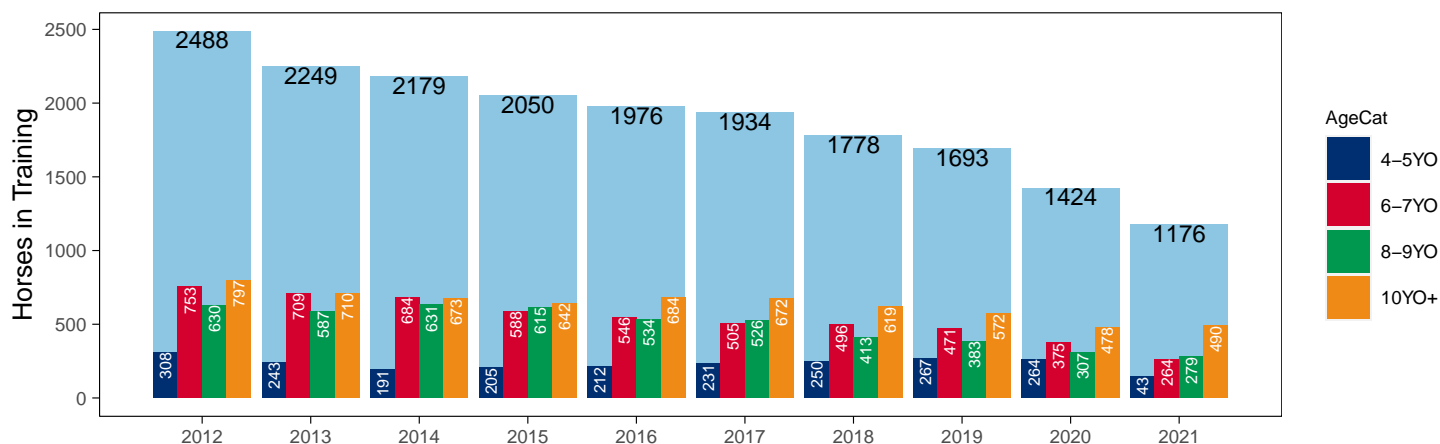
Hunter Chasers

AgeCat	2012	2013	2014	2015	2016	2017	2018	2019	2020	2021	vs. Last Year	vs. Pre-Covid
4-5YO	308	243	191	205	212	231	250	267	264	143	-121 / -45.8%	-124 / -46.4%
6-7YO	753	709	684	588	546	505	496	471	375	264	-111 / -29.6%	-207 / -43.9%
8-9YO	630	587	631	615	534	526	413	383	307	279	-28 / -9.1%	-104 / -27.2%
10YO+	797	710	673	642	684	672	619	572	478	490	+12 / +2.5%	-82 / -14.3%
Total	2488	2249	2179	2050	1976	1934	1778	1693	1424	1176	-248 / -17.4%	-517 / -30.5%

'vs. Pre-Covid' is comparison between 2021 and 2019

Snapshot of Hunter Chasers in Training in May

Hunter Chasers in Training in May, shown by Age



2021 Horses in Training versus Previous Years

Type	Period	Jan	Feb	Mar	Apr	May	Jun	Jul	Aug	Sep	Oct	Nov	Dec
Flat	2021	8370	8854	9305	9677	9920	0	0	0	0	0	0	0
	2020	8886	9286	9502	9198	9395	9956	9992	9835	9396	8776	6981	6328
	Pre-Covid	8627	9168	9725	10176	10385	10397	10100	9759	9473	8801	7020	6551
Jump	2021	6459	6482	6392	5997	4395	0	0	0	0	0	0	0
	2020	5920	5933	5956	2992	2314	2689	4416	5446	5995	6362	6508	6383
	Pre-Covid	5724	5785	5765	5348	4032	3127	3616	4810	5321	5755	5986	5981
Dual	2021	510	496	519	524	481	0	0	0	0	0	0	0
	2020	541	552	572	433	439	514	550	587	609	603	585	530
	Pre-Covid	482	470	467	495	456	455	473	484	479	537	566	534
Hunter	2021	791	787	861	1152	1176	0	0	0	0	0	0	0
	2020	949	1327	1467	1434	1424	1396	1358	1324	0	228	447	794
	Pre-Covid	995	1378	1571	1701	1693	1637	1613	0	0	0	244	605
Total	2021	15339	15832	16216	16198	14796	0	0	0	0	0	0	0
	2020	15347	15771	16030	12623	12148	13159	14958	15868	16000	15741	14074	13241
	Pre-Covid	14695	15298	15741	15101	14153	13606	13966	14933	15227	14960	13215	12633

'Pre-Covid' is 2019 values

Monthly Horses in Training

2021 against 2020 and Pre-Covid, shown with % Difference

Period — Pre-Covid — 2020 — 2021



'Pre-Covid' is 2019 values

Flat (including Dual)

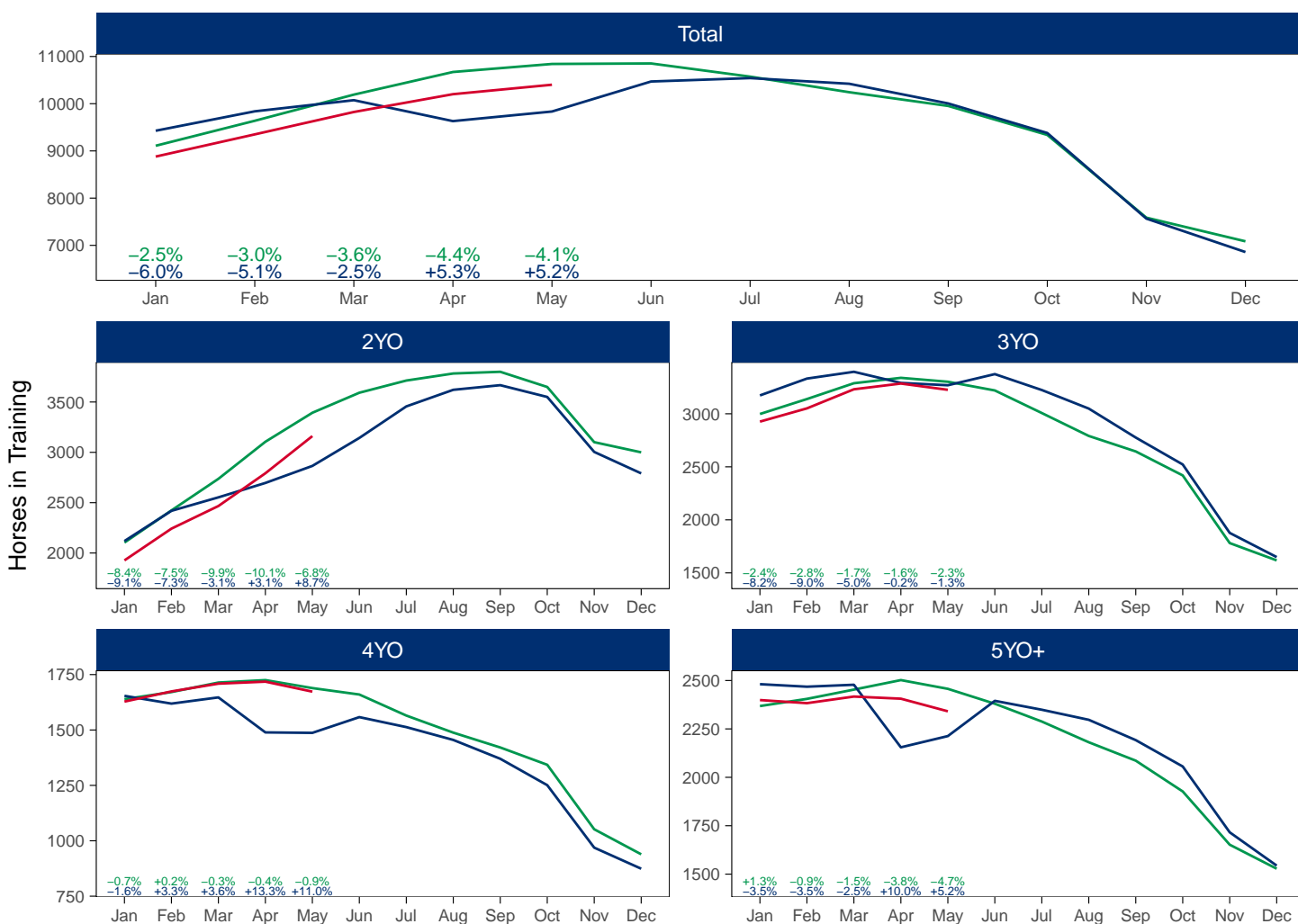
AgeCat	Period	Jan	Feb	Mar	Apr	May	Jun	Jul	Aug	Sep	Oct	Nov	Dec
2YO	2021	1927	2242	2467	2792	3161							
	2020	2119	2419	2553	2696	2865	3143	3456	3621	3667	3550	3004	2791
	Pre-Covid	2184	2523	2798	3027	3274	3512	3668	3765	3777	3609	2991	2831
3YO	2021	2926	3051	3231	3285	3226							
	2020	3173	3332	3396	3291	3269	3374	3224	3049	2776	2522	1877	1649
	Pre-Covid	2996	3173	3285	3305	3262	3216	3003	2842	2666	2437	1758	1586
4YO	2021	1628	1674	1709	1718	1673							
	2020	1654	1619	1647	1489	1487	1558	1513	1455	1370	1251	969	874
	Pre-Covid	1575	1607	1637	1625	1598	1560	1479	1434	1371	1280	995	906
5YO+	2021	2399	2383	2417	2406	2341							
	2020	2481	2468	2478	2155	2213	2395	2349	2297	2192	2056	1716	1544
	Pre-Covid	2420	2454	2478	2447	2423	2390	2301	2215	2119	1976	1671	1548
Total	2021	8880	9350	9824	10201	10401							
	2020	9427	9838	10074	9631	9834	10470	10542	10422	10005	9379	7566	6858
	Pre-Covid	9175	9756	10197	10404	10557	10678	10452	10257	9933	9302	7415	6871

'Pre-Covid' is 2019 values

Monthly Flat Horses in Training

2021 against 2020 and Pre-Covid, shown with % Difference

Period — Pre-Covid — 2020 — 2021



'Pre-Covid' is 2019 values

Jump (including Dual)

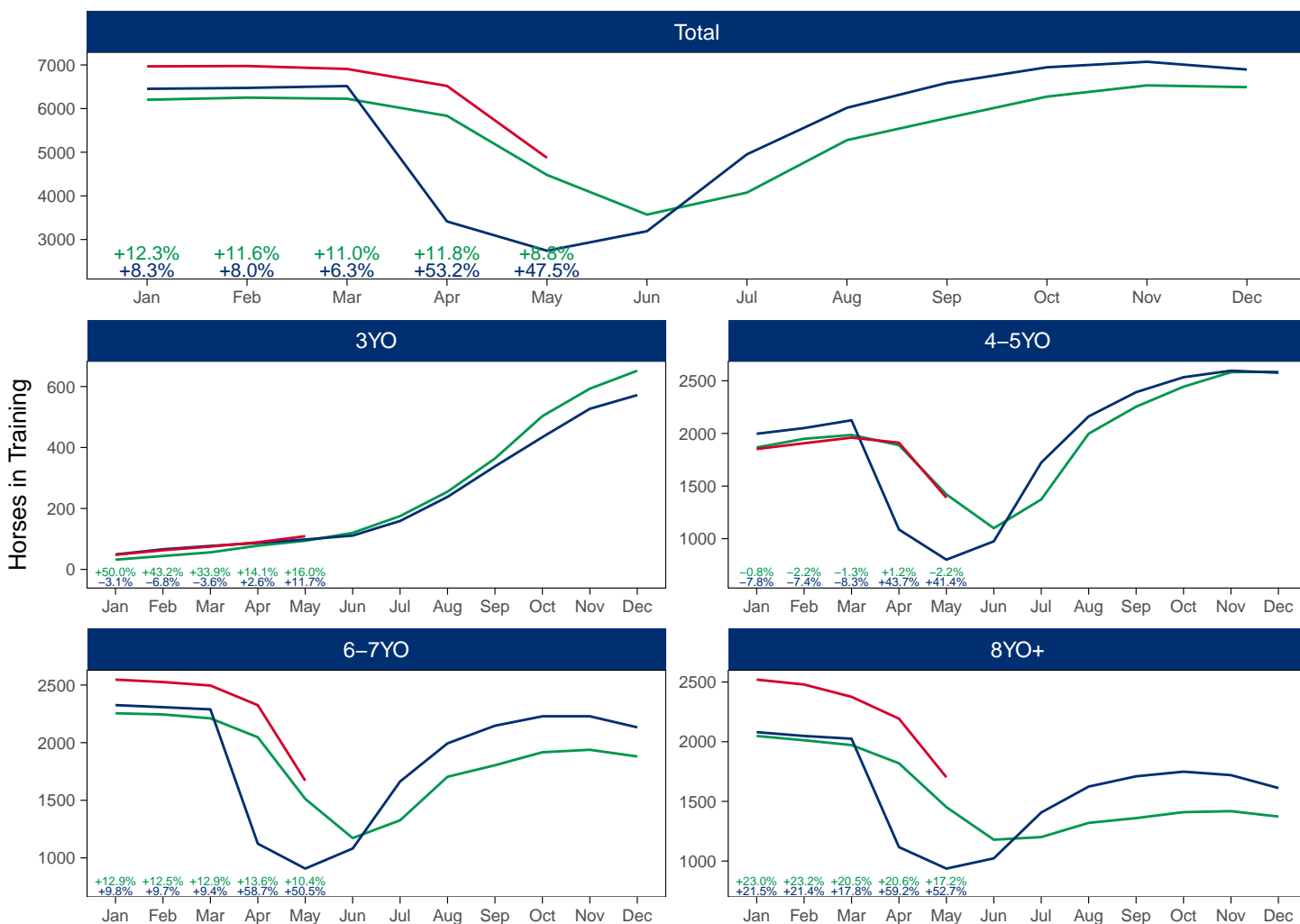
AgeCat	Period	Jan	Feb	Mar	Apr	May	Jun	Jul	Aug	Sep	Oct	Nov	Dec
3YO	2021	48	63	75	89	109							
	2020	49	66	77	87	98	111	159	238	338	434	527	572
	Pre-Covid	47	61	73	91	104	130	176	256	357	466	562	624
4-5YO	2021	1852	1907	1960	1912	1390							
	2020	1997	2051	2125	1087	801	975	1723	2162	2392	2534	2596	2577
	Pre-Covid	1876	1945	1997	1726	1286	1035	1338	1922	2216	2386	2472	2479
6-7YO	2021	2547	2526	2496	2325	1670							
	2020	2326	2308	2289	1123	907	1081	1663	1994	2147	2229	2229	2133
	Pre-Covid	2172	2148	2125	1788	1385	1140	1330	1680	1837	1911	1903	1842
8YO+	2021	2520	2479	2376	2193	1702							
	2020	2080	2048	2025	1117	937	1023	1407	1624	1710	1749	1720	1612
	Pre-Covid	2017	1989	1962	1694	1390	1169	1219	1373	1443	1472	1458	1400
Total	2021	6967	6975	6907	6519	4871							
	2020	6452	6473	6516	3414	2743	3190	4952	6018	6587	6946	7072	6894
	Pre-Covid	6113	6143	6157	5299	4165	3474	4063	5232	5853	6236	6395	6345

'Pre-Covid' is 2019 values

Monthly Jump Horses in Training

2021 against 2020 and Pre-Covid, shown with % Difference

Period — Pre-Covid — 2020 — 2021



'Pre-Covid' is 2019 values

Hunter Chasers

AgeCat	Period	Jan	Feb	Mar	Apr	May	Jun	Jul	Aug	Oct	Nov	Dec
4-5YO	2021	71	65	71	141	143						
	2020	113	223	278	265	264	258	248	233	40	106	174
	Pre-Covid	91	155	205	235	245	233	237	233	40	56	148
6-7YO	2021	195	181	199	260	264						
	2020	273	363	386	381	375	366	353	345	63	125	218
	Pre-Covid	293	400	452	476	479	458	425	345	63	75	182
8-9YO	2021	205	203	218	272	279						
	2020	220	294	315	309	307	304	297	295	54	88	176
	Pre-Covid	273	368	412	434	433	415	383	295	54	65	165
10YO+	2021	320	338	373	479	490						
	2020	343	447	488	479	478	468	460	451	71	128	226
	Pre-Covid	385	518	580	607	605	585	551	451	36	76	174
Total	2021	791	787	861	1152	1176						
	2020	949	1327	1467	1434	1424	1396	1358	1324	228	447	794
	Pre-Covid	1043	1441	1648	1751	1761	1690	1596	1324	114	272	669

'Pre-Covid' is 2019 values

Monthly Hunter Chasers in Training

2021 against 2020 and Pre-Covid, shown with % Difference

Period — Pre-Covid — 2020 — 2021



'Pre-Covid' is 2019 values

May 2021 Horses in Training by Rating Band Snapshot versus Previous Years

Flat (including Dual)

AgeCat	RatBand	2012	2013	2014	2015	2016	2017	2018	2019	2020	2021
2YO	Unrated	3024 (100.0%)	3174 (100.0%)	3267 (100.0%)	3450 (100.0%)	3328 (100.0%)	3421 (100.0%)	3362 (100.0%)	3393 (100.0%)	2865 (100.0%)	3161 (100.0%)
	Subtotal	3024 (100.0%)	3174 (100.0%)	3267 (100.0%)	3450 (100.0%)	3328 (100.0%)	3421 (100.0%)	3362 (100.0%)	3393 (100.0%)	2865 (100.0%)	3161 (100.0%)
3YO	0-50	157 (5.0%)	113 (3.9%)	137 (4.7%)	138 (4.6%)	121 (3.8%)	138 (4.3%)	132 (3.9%)	180 (5.5%)	115 (3.5%)	155 (4.8%)
	51-60	268 (8.5%)	246 (8.5%)	255 (8.7%)	271 (8.9%)	250 (7.9%)	298 (9.3%)	274 (8.1%)	356 (10.8%)	216 (6.6%)	319 (9.9%)
	61-70	373 (11.8%)	394 (13.7%)	362 (12.4%)	370 (12.2%)	450 (14.3%)	447 (13.9%)	461 (13.6%)	429 (13.0%)	324 (9.9%)	439 (13.6%)
	71-80	421 (13.3%)	396 (13.7%)	440 (15.0%)	462 (15.3%)	492 (15.6%)	504 (15.7%)	491 (14.5%)	465 (14.1%)	356 (10.9%)	464 (14.4%)
	81-90	205 (6.5%)	188 (6.5%)	221 (7.5%)	241 (8.0%)	267 (8.5%)	324 (10.1%)	287 (8.5%)	278 (8.4%)	194 (5.9%)	253 (7.8%)
	91-100	90 (2.8%)	92 (3.2%)	103 (3.5%)	114 (3.8%)	120 (3.8%)	104 (3.2%)	107 (3.2%)	135 (4.1%)	102 (3.1%)	117 (3.6%)
	101+	66 (2.1%)	70 (2.4%)	64 (2.2%)	95 (3.1%)	85 (2.7%)	83 (2.6%)	100 (3.0%)	90 (2.7%)	65 (2.0%)	86 (2.7%)
	Unrated	1578 (50.0%)	1387 (48.1%)	1348 (46.0%)	1337 (44.2%)	1368 (43.4%)	1310 (40.8%)	1527 (45.2%)	1369 (41.5%)	1897 (58.0%)	1393 (43.2%)
Subtotal		3158 (100.0%)	2886 (100.0%)	2930 (100.0%)	3028 (100.0%)	3153 (100.0%)	3208 (100.0%)	3379 (100.0%)	3302 (100.0%)	3269 (100.0%)	3226 (100.0%)
4YO	0-50	128 (8.6%)	121 (8.1%)	113 (8.0%)	95 (6.7%)	110 (7.5%)	143 (8.7%)	171 (10.0%)	179 (10.6%)	156 (10.5%)	160 (9.6%)
	51-60	179 (12.0%)	179 (12.1%)	140 (9.9%)	159 (11.3%)	167 (11.3%)	196 (12.0%)	180 (10.6%)	245 (14.5%)	177 (11.9%)	233 (13.9%)
	61-70	234 (15.7%)	193 (13.0%)	222 (15.7%)	214 (15.2%)	246 (16.7%)	256 (15.6%)	280 (16.4%)	265 (15.7%)	225 (15.1%)	292 (17.5%)
	71-80	234 (15.7%)	219 (14.7%)	218 (15.4%)	256 (18.2%)	257 (17.4%)	309 (18.9%)	301 (17.6%)	304 (18.0%)	211 (14.2%)	294 (17.6%)
	81-90	168 (11.3%)	169 (11.4%)	185 (13.1%)	190 (13.5%)	234 (15.9%)	239 (14.6%)	217 (12.7%)	212 (12.6%)	186 (12.5%)	195 (11.7%)
	91-100	79 (5.3%)	95 (6.4%)	103 (7.3%)	117 (8.3%)	120 (8.1%)	124 (7.6%)	133 (7.8%)	154 (9.1%)	138 (9.3%)	144 (8.6%)
	101+	67 (4.5%)	81 (5.5%)	69 (4.9%)	95 (6.7%)	99 (6.7%)	115 (7.0%)	96 (5.6%)	109 (6.5%)	90 (6.1%)	82 (4.9%)
	Unrated	401 (26.9%)	428 (28.8%)	364 (25.7%)	283 (20.1%)	240 (16.3%)	254 (15.5%)	328 (19.2%)	221 (13.1%)	304 (20.4%)	273 (16.3%)
Subtotal		1490 (100.0%)	1485 (100.0%)	1414 (100.0%)	1409 (100.0%)	1473 (100.0%)	1636 (100.0%)	1706 (100.0%)	1689 (100.0%)	1487 (100.0%)	1673 (100.0%)
5YO+	0-50	227 (9.9%)	229 (9.7%)	247 (10.5%)	227 (9.8%)	191 (8.0%)	232 (9.6%)	282 (10.6%)	353 (14.4%)	251 (11.3%)	305 (13.0%)
	51-60	292 (12.7%)	315 (13.3%)	289 (12.3%)	311 (13.5%)	341 (14.4%)	331 (13.7%)	375 (14.1%)	386 (15.7%)	291 (13.1%)	396 (16.9%)
	61-70	343 (14.9%)	370 (15.6%)	350 (14.9%)	391 (16.9%)	399 (16.8%)	409 (17.0%)	395 (14.9%)	411 (16.7%)	353 (16.0%)	397 (17.0%)
	71-80	327 (14.2%)	311 (13.1%)	353 (15.0%)	382 (16.5%)	381 (16.0%)	374 (15.5%)	365 (13.7%)	366 (14.9%)	317 (14.3%)	321 (13.7%)
	81-90	240 (10.4%)	232 (9.8%)	244 (10.4%)	250 (10.8%)	311 (13.1%)	298 (12.4%)	323 (12.2%)	285 (11.6%)	246 (11.1%)	250 (10.7%)
	91-100	137 (5.9%)	124 (5.2%)	160 (6.8%)	181 (7.8%)	192 (8.1%)	195 (8.1%)	189 (7.1%)	184 (7.5%)	150 (6.8%)	168 (7.2%)
	101+	112 (4.9%)	107 (4.5%)	118 (5.0%)	125 (5.4%)	149 (6.3%)	184 (7.6%)	168 (6.3%)	159 (6.5%)	141 (6.4%)	171 (7.3%)
	Unrated	625 (27.1%)	679 (28.7%)	589 (25.1%)	444 (19.2%)	412 (17.3%)	389 (16.1%)	561 (21.1%)	313 (12.7%)	464 (21.0%)	333 (14.2%)
Subtotal		2303 (100.0%)	2367 (100.0%)	2350 (100.0%)	2311 (100.0%)	2376 (100.0%)	2412 (100.0%)	2658 (100.0%)	2457 (100.0%)	2213 (100.0%)	2341 (100.0%)
Overall	0-50	512 (5.1%)	463 (4.7%)	497 (5.0%)	460 (4.5%)	422 (4.1%)	513 (4.8%)	585 (5.3%)	712 (6.6%)	522 (5.3%)	620 (6.0%)
	51-60	739 (7.4%)	740 (7.5%)	684 (6.9%)	741 (7.3%)	758 (7.3%)	825 (7.7%)	829 (7.5%)	987 (9.1%)	684 (7.0%)	948 (9.1%)
	61-70	950 (9.5%)	957 (9.7%)	934 (9.4%)	975 (9.6%)	1095 (10.6%)	1112 (10.4%)	1136 (10.2%)	1105 (10.2%)	902 (9.2%)	1128 (10.8%)
	71-80	982 (9.8%)	926 (9.3%)	1011 (10.1%)	1100 (10.8%)	1130 (10.9%)	1187 (11.1%)	1157 (10.4%)	1135 (10.5%)	884 (9.0%)	1079 (10.4%)
	81-90	613 (6.1%)	589 (5.9%)	650 (6.5%)	681 (6.7%)	812 (7.9%)	861 (8.1%)	827 (7.4%)	775 (7.1%)	626 (6.4%)	698 (6.7%)
	91-100	306 (3.1%)	311 (3.1%)	366 (3.7%)	412 (4.0%)	432 (4.2%)	423 (4.0%)	429 (3.9%)	473 (4.4%)	390 (4.0%)	429 (4.1%)
	101+	245 (2.5%)	258 (2.6%)	251 (2.5%)	315 (3.1%)	333 (3.2%)	382 (3.6%)	364 (3.3%)	358 (3.3%)	296 (3.0%)	339 (3.3%)
Unrated		5628 (56.4%)	5668 (57.2%)	5568 (55.9%)	5514 (54.1%)	5348 (51.8%)	5374 (50.3%)	5778 (52.0%)	5296 (48.9%)	5530 (56.2%)	5160 (49.6%)
Total		9975 (100.0%)	9912 (100.0%)	9961 (100.0%)	10198 (100.0%)	10330 (100.0%)	10677 (100.0%)	11105 (100.0%)	10841 (100.0%)	9834 (100.0%)	10401 (100.0%)

Jump (including Dual)

AgeCat	RatBand	2012	2013	2014	2015	2016	2017	2018	2019	2020	2021
3YO	Unrated	139 (100.0%)	88 (100.0%)	128 (100.0%)	117 (100.0%)	116 (100.0%)	104 (100.0%)	108 (100.0%)	94 (100.0%)	98 (100.0%)	109 (100.0%)
	Subtotal	139 (100.0%)	88 (100.0%)	128 (100.0%)	117 (100.0%)	116 (100.0%)	104 (100.0%)	108 (100.0%)	94 (100.0%)	98 (100.0%)	109 (100.0%)
4-5YO	0-100	121 (8.2%)	147 (9.7%)	135 (10.3%)	128 (10.3%)	143 (10.5%)	143 (11.0%)	157 (10.1%)	153 (10.8%)	106 (13.2%)	193 (13.9%)
	101-110	59 (4.0%)	59 (3.9%)	50 (3.8%)	84 (6.8%)	98 (7.2%)	78 (6.0%)	120 (7.7%)	98 (6.9%)	46 (5.7%)	69 (5.0%)
	111-120	57 (3.8%)	65 (4.3%)	66 (5.0%)	83 (6.7%)	76 (5.6%)	83 (6.4%)	103 (6.6%)	90 (6.3%)	45 (5.6%)	69 (5.0%)
	121-130	30 (2.0%)	38 (2.5%)	45 (3.4%)	42 (3.4%)	47 (3.5%)	52 (4.0%)	62 (4.0%)	70 (4.9%)	32 (4.0%)	37 (2.7%)
	131-140	15 (1.0%)	17 (1.1%)	13 (1.0%)	18 (1.4%)	20 (1.5%)	26 (2.0%)	27 (1.7%)	21 (1.5%)	7 (0.9%)	11 (0.8%)
	141-150	7 (0.5%)	10 (0.7%)	7 (0.5%)	7 (0.6%)	7 (0.5%)	7 (0.5%)	8 (0.5%)	12 (0.8%)	1 (0.1%)	3 (0.2%)
	151+	3 (0.2%)	4 (0.3%)	2 (0.2%)	1 (0.1%)	NA (-)	2 (0.2%)	5 (0.3%)	3 (0.2%)	NA (-)	1 (0.1%)
	Unrated	1190 (80.3%)	1174 (77.5%)	996 (75.8%)	881 (70.8%)	969 (71.2%)	908 (69.9%)	1069 (68.9%)	974 (68.5%)	564 (70.4%)	1007 (72.4%)
	Subtotal	1482 (100.0%)	1514 (100.0%)	1314 (100.0%)	1244 (100.0%)	1360 (100.0%)	1299 (100.0%)	1551 (100.0%)	1421 (100.0%)	801 (100.0%)	1390 (100.0%)
6-7YO	0-100	276 (16.3%)	304 (18.4%)	319 (22.3%)	368 (24.4%)	371 (25.6%)	333 (25.2%)	418 (24.1%)	401 (26.5%)	230 (25.4%)	543 (32.5%)
	101-110	150 (8.8%)	142 (8.6%)	143 (10.0%)	182 (12.0%)	211 (14.5%)	187 (14.1%)	242 (14.0%)	205 (13.6%)	135 (14.9%)	211 (12.6%)
	111-120	134 (7.9%)	142 (8.6%)	162 (11.3%)	175 (11.6%)	206 (14.2%)	189 (14.3%)	252 (14.6%)	229 (15.1%)	116 (12.8%)	214 (12.8%)
	121-130	95 (5.6%)	107 (6.5%)	111 (7.7%)	127 (8.4%)	124 (8.5%)	124 (9.4%)	199 (11.5%)	175 (11.6%)	75 (8.3%)	184 (11.0%)
	131-140	36 (2.1%)	49 (3.0%)	40 (2.8%)	56 (3.7%)	65 (4.5%)	86 (6.5%)	101 (5.8%)	112 (7.4%)	46 (5.1%)	89 (5.3%)
	141-150	15 (0.9%)	17 (1.0%)	14 (1.0%)	16 (1.1%)	21 (1.4%)	23 (1.7%)	34 (2.0%)	21 (1.4%)	8 (0.9%)	21 (1.3%)
	151+	5 (0.3%)	8 (0.5%)	8 (0.6%)	7 (0.5%)	6 (0.4%)	8 (0.6%)	12 (0.7%)	17 (1.1%)	4 (0.4%)	5 (0.3%)
	Unrated	986 (58.1%)	885 (53.5%)	636 (44.4%)	580 (38.4%)	447 (30.8%)	372 (28.1%)	473 (27.3%)	352 (23.3%)	293 (32.3%)	403 (24.1%)
	Subtotal	1697 (100.0%)	1654 (100.0%)	1433 (100.0%)	1511 (100.0%)	1451 (100.0%)	1322 (100.0%)	1731 (100.0%)	1512 (100.0%)	907 (100.0%)	1670 (100.0%)
8YO+	0-100	314 (22.3%)	385 (25.4%)	466 (32.7%)	426 (31.7%)	493 (33.3%)	486 (34.1%)	525 (31.7%)	474 (32.6%)	262 (28.0%)	584 (34.3%)
	101-110	122 (8.7%)	124 (8.2%)	172 (12.1%)	168 (12.5%)	231 (15.6%)	197 (13.8%)	254 (15.3%)	218 (15.0%)	107 (11.4%)	240 (14.1%)
	111-120	108 (7.7%)	114 (7.5%)	146 (10.2%)	168 (12.5%)	208 (14.1%)	185 (13.0%)	195 (11.8%)	220 (15.2%)	103 (11.0%)	233 (13.7%)
	121-130	86 (6.1%)	108 (7.1%)	120 (8.4%)	134 (10.0%)	155 (10.5%)	152 (10.7%)	207 (12.5%)	148 (10.2%)	90 (9.6%)	209 (12.3%)
	131-140	47 (3.3%)	59 (3.9%)	63 (4.4%)	78 (5.8%)	99 (6.7%)	101 (7.1%)	129 (7.8%)	109 (7.5%)	70 (7.5%)	128 (7.5%)
	141-150	21 (1.5%)	23 (1.5%)	27 (1.9%)	26 (1.9%)	25 (1.7%)	32 (2.2%)	55 (3.3%)	45 (3.1%)	21 (2.2%)	40 (2.4%)
	151+	18 (1.3%)	11 (0.7%)	13 (0.9%)	11 (0.8%)	9 (0.6%)	14 (1.0%)	14 (0.8%)	18 (1.2%)	10 (1.1%)	13 (0.8%)
	Unrated	689 (49.0%)	692 (45.6%)	419 (29.4%)	334 (24.8%)	259 (17.5%)	259 (18.2%)	278 (16.8%)	220 (15.2%)	274 (29.2%)	255 (15.0%)
	Subtotal	1405 (100.0%)	1516 (100.0%)	1426 (100.0%)	1345 (100.0%)	1479 (100.0%)	1426 (100.0%)	1657 (100.0%)	1452 (100.0%)	937 (100.0%)	1702 (100.0%)
Overall	0-100	711 (15.1%)	836 (17.5%)	920 (21.4%)	922 (21.9%)	1007 (22.9%)	962 (23.2%)	1100 (21.8%)	1028 (23.0%)	598 (21.8%)	1320 (27.1%)
	101-110	331 (7.0%)	325 (6.8%)	365 (8.5%)	434 (10.3%)	540 (12.3%)	462 (11.1%)	616 (12.2%)	521 (11.6%)	288 (10.5%)	520 (10.7%)
	111-120	299 (6.3%)	321 (6.7%)	374 (8.7%)	426 (10.1%)	490 (11.1%)	457 (11.0%)	550 (10.9%)	539 (12.0%)	264 (9.6%)	516 (10.6%)
	121-130	211 (4.5%)	253 (5.3%)	276 (6.4%)	303 (7.2%)	326 (7.4%)	328 (7.9%)	468 (9.3%)	393 (8.8%)	197 (7.2%)	430 (8.8%)
	131-140	98 (2.1%)	125 (2.6%)	116 (2.7%)	152 (3.6%)	184 (4.2%)	213 (5.1%)	257 (5.1%)	242 (5.4%)	123 (4.5%)	228 (4.7%)
	141-150	43 (0.9%)	50 (1.0%)	48 (1.1%)	49 (1.2%)	53 (1.2%)	62 (1.5%)	97 (1.9%)	78 (1.7%)	30 (1.1%)	64 (1.3%)
	151+	26 (0.6%)	23 (0.5%)	23 (0.5%)	19 (0.5%)	15 (0.3%)	24 (0.6%)	31 (0.6%)	38 (0.8%)	14 (0.5%)	19 (0.4%)
	Unrated	3004 (63.6%)	2839 (59.5%)	2179 (50.7%)	1912 (45.3%)	1791 (40.6%)	1643 (39.6%)	1928 (38.2%)	1640 (36.6%)	1229 (44.8%)	1774 (36.4%)
	Total	4723 (100.0%)	4772 (100.0%)	4301 (100.0%)	4217 (100.0%)	4406 (100.0%)	4151 (100.0%)	5047 (100.0%)	4479 (100.0%)	2743 (100.0%)	4871 (100.0%)

Young Horses Entering Training

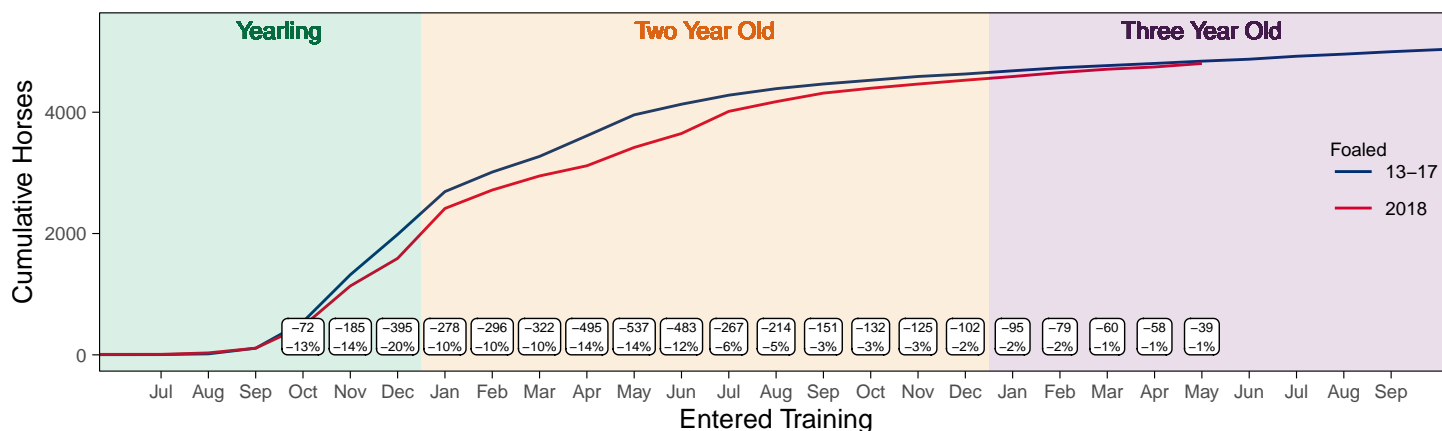
Flat Yearlings in Training versus Previous Years

Period	Jan	Feb	Mar	Apr	May	Jun	Jul	Aug	Sep	Oct	Nov	Dec
2021	0	0	0	0	0							
2020	0	0	0	0	1	2	1	2	60	235	712	1365
5YrAvg	1	1	1	1	1	1	1	2	44	241	724	1460

Foals Entering Training for the First Time

2018 Foals Entering Training Over Time

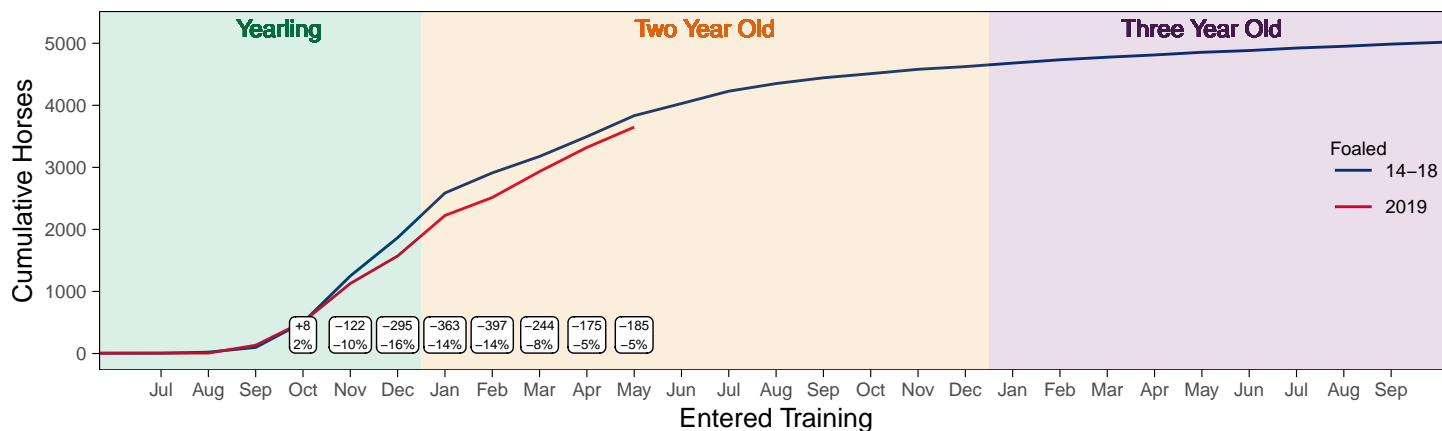
Cumulative Flat Horses foaled in 2018 shown by first in training notification against trend



Cumulative individual horses entering training for the first time by the end of each month.

2019 Foals Entering Training Over Time

Cumulative Flat Horses foaled in 2019 shown by first in training notification against trend



Cumulative individual horses entering training for the first time by the end of each month.

Year to Date Horses in Training

Type	2012	2013	2014	2015	2016	2017	2018	2019	2020	2021	vs. Last Year	vs. Pre-Covid
Flat	11295	11366	11341	11628	12047	12302	12218	12480	11866	12018	+152 / +1.3%	-462 / -3.7%
Jump	6878	6805	6690	6789	6775	6697	6428	7140	6886	7766	+880 / +12.8%	+626 / +8.8%
Dual	760	745	787	744	704	810	1280	673	747	717	-30 / -4.0%	+44 / +6.5%
Hunter	2728	2399	2274	2174	2108	2007	1855	1809	1504	1287	-217 / -14.4%	-522 / -28.9%
Total	18933	18916	18818	19161	19526	19809	19926	20293	19499	20501	+1002 / +5.1%	+208 / +1.0%

'vs. Pre-Covid' is comparison between 2021 and 2019

Flat

AgeCat	2012	2013	2014	2015	2016	2017	2018	2019	2020	2021	vs. Last Year	vs. Pre-Covid
2YO	3392	3618	3657	3967	3925	3912	3835	3880	3384	3606	+222 / +6.6%	-274 / -7.1%
3YO	3655	3434	3448	3528	3783	3854	3972	3930	3954	3811	-143 / -3.6%	-119 / -3.0%
4YO	1770	1781	1669	1685	1813	1919	1851	1966	1898	2023	+125 / +6.6%	+57 / +2.9%
5YO+	2478	2533	2567	2448	2526	2617	2560	2704	2630	2578	-52 / -2.0%	-126 / -4.7%
Total	11295	11366	11341	11628	12047	12302	12218	12480	11866	12018	+152 / +1.3%	-462 / -3.7%

'vs. Pre-Covid' is comparison between 2021 and 2019

Jump

AgeCat	2012	2013	2014	2015	2016	2017	2018	2019	2020	2021	vs. Last Year	vs. Pre-Covid
3YO	58	47	82	80	91	53	63	70	53	81	+28 / +52.8%	+11 / +15.7%
4-5YO	2188	2134	2024	2090	2154	2141	1902	2219	2131	2199	+68 / +3.2%	-20 / -0.9%
6-7YO	2527	2431	2370	2475	2294	2218	2270	2521	2457	2781	+324 / +13.2%	+260 / +10.3%
8YO+	2105	2193	2214	2144	2236	2285	2193	2330	2245	2705	+460 / +20.5%	+375 / +16.1%
Total	6878	6805	6690	6789	6775	6697	6428	7140	6886	7766	+880 / +12.8%	+626 / +8.8%

'vs. Pre-Covid' is comparison between 2021 and 2019

Dual

AgeCat	2012	2013	2014	2015	2016	2017	2018	2019	2020	2021	vs. Last Year	vs. Pre-Covid
3YO	88	68	88	80	72	88	91	52	94	87	-7 / -7.4%	+35 / +67.3%
4YO	177	193	199	163	171	213	321	198	190	202	+12 / +6.3%	+4 / +2.0%
5YO+	495	484	500	501	461	509	868	423	463	428	-35 / -7.6%	+5 / +1.2%
Total	760	745	787	744	704	810	1280	673	747	717	-30 / -4.0%	+44 / +6.5%

'vs. Pre-Covid' is comparison between 2021 and 2019

Hunter Chasers

AgeCat	2012	2013	2014	2015	2016	2017	2018	2019	2020	2021	vs. Last Year	vs. Pre-Covid
4-5YO	347	276	215	233	242	255	285	316	299	188	-111 / -37.1%	-128 / -40.5%
6-7YO	842	755	711	618	583	526	513	508	395	304	-91 / -23.0%	-204 / -40.2%
8-9YO	681	618	653	648	560	536	419	394	317	303	-14 / -4.4%	-91 / -23.1%
10YO+	858	750	695	675	723	690	638	591	493	492	-1 / -0.2%	-99 / -16.8%
Total	2728	2399	2274	2174	2108	2007	1855	1809	1504	1287	-217 / -14.4%	-522 / -28.9%

'vs. Pre-Covid' is comparison between 2021 and 2019

Year to Date Runners

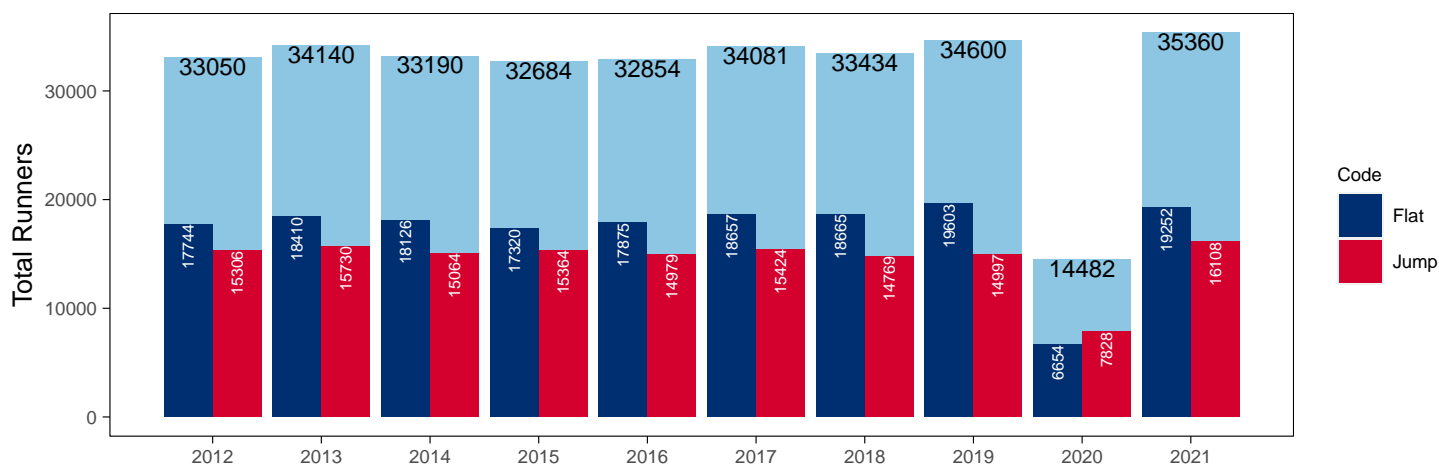
Year to Date Total Runners

Code	2012	2013	2014	2015	2016	2017	2018	2019	2020	2021	vs. Last Year	vs. Pre-Covid
Flat	17744	18410	18126	17320	17875	18657	18665	19603	6654	19252	+12598 / +189.3%	-351 / -1.8%
Jump	15306	15730	15064	15364	14979	15424	14769	14997	7828	16108	+8280 / +105.8%	+1111 / +7.4%
Total	33050	34140	33190	32684	32854	34081	33434	34600	14482	35360	+20878 / +144.2%	+760 / +2.2%

'vs. Pre-Covid' is comparison between 2021 and 2019

YTD Total Runners

Total Runners in GB Races, shown by Code and Total



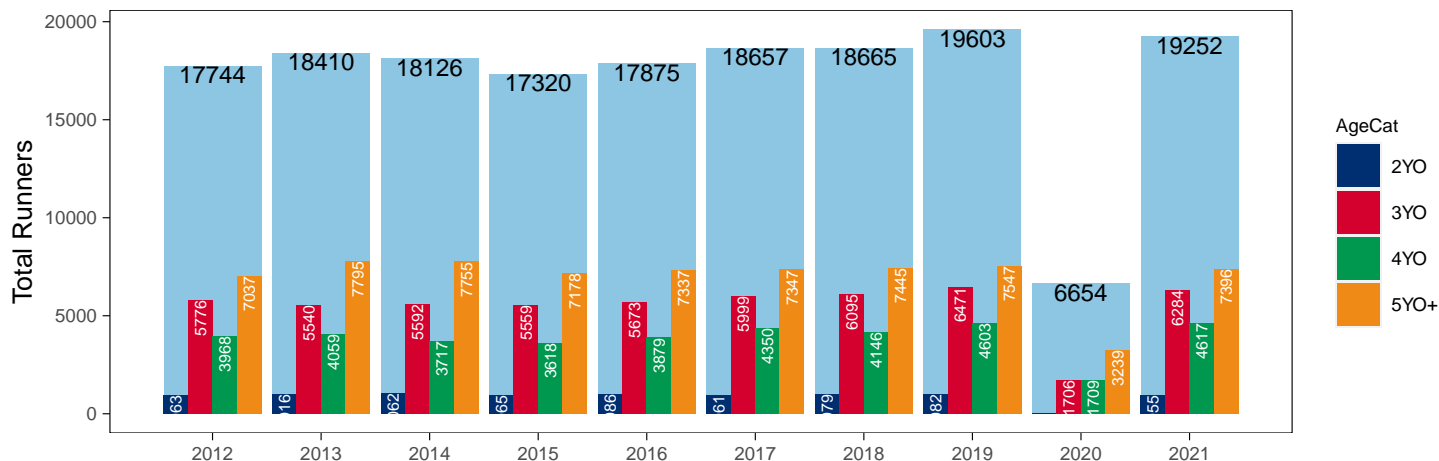
Flat

AgeCat	2012	2013	2014	2015	2016	2017	2018	2019	2020	2021	vs. Last Year	vs. Pre-Covid
2YO	963	1016	1062	965	986	961	979	982		955	NA / NA	-27 / -2.7%
3YO	5776	5540	5592	5559	5673	5999	6095	6471	1706	6284	+4578 / +268.3%	-187 / -2.9%
4YO	3968	4059	3717	3618	3879	4350	4146	4603	1709	4617	+2908 / +170.2%	+14 / +0.3%
5YO+	7037	7795	7755	7178	7337	7347	7445	7547	3239	7396	+4157 / +128.3%	-151 / -2.0%
Total	17744	18410	18126	17320	17875	18657	18665	19603	6654	19252	+12598 / +189.3%	-351 / -1.8%

'vs. Pre-Covid' is comparison between 2021 and 2019

YTD Total Flat Runners by Age

Total Runners in GB Flat Races, shown by Age Category and Total



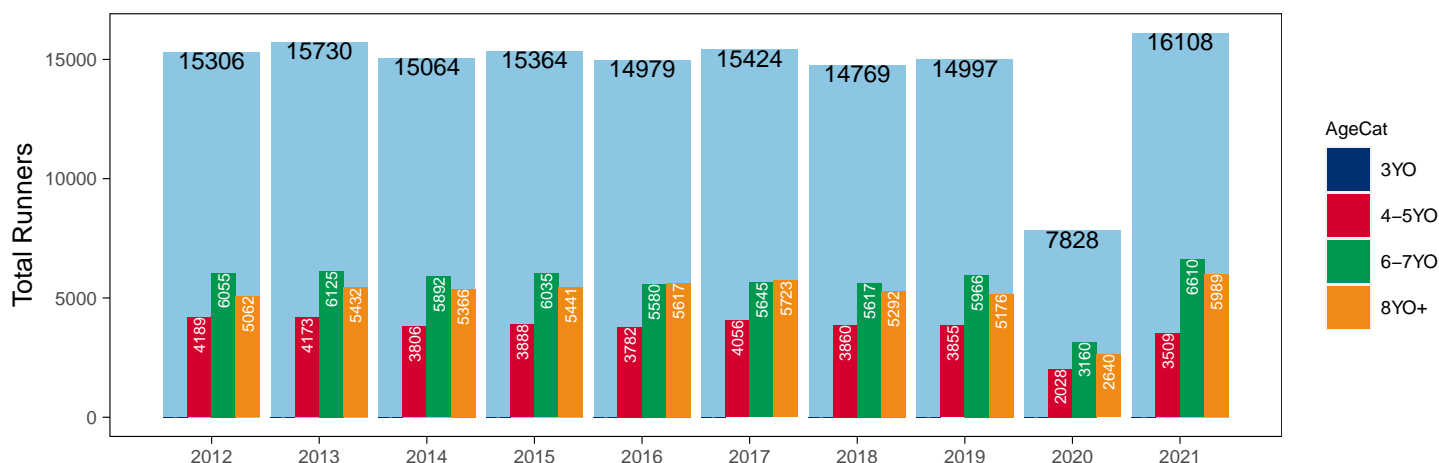
Jump

AgeCat	2012	2013	2014	2015	2016	2017	2018	2019	2020	2021	vs. Last Year	vs. Pre-Covid
3YO											NA / NA	0 / NA
4-5YO	4189	4173	3806	3888	3782	4056	3860	3855	2028	3509	+1481 / +73.0%	-346 / -9.0%
6-7YO	6055	6125	5892	6035	5580	5645	5617	5966	3160	6610	+3450 / +109.2%	+644 / +10.8%
8YO+	5062	5432	5366	5441	5617	5723	5292	5176	2640	5989	+3349 / +126.9%	+813 / +15.7%
Total	15306	15730	15064	15364	14979	15424	14769	14997	7828	16108	+8280 / +105.8%	+1111 / +7.4%

'vs. Pre-Covid' is comparison between 2021 and 2019

YTD Total Jump Runners by Age

Total Runners in GB Jump Races, shown by Age Category and Total



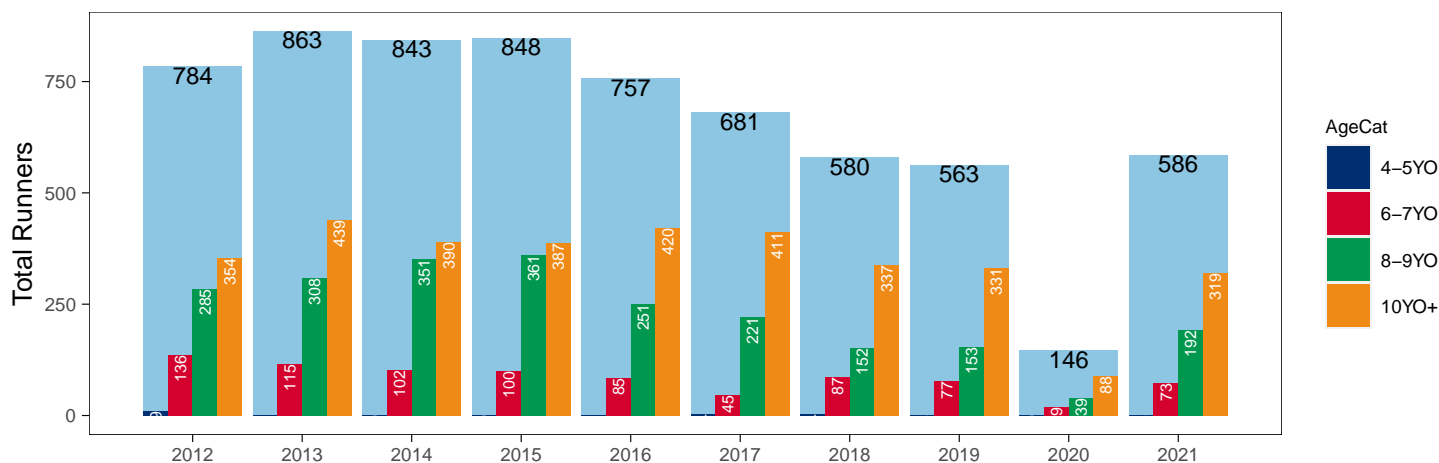
Hunter Chases

AgeCat	2012	2013	2014	2015	2016	2017	2018	2019	2020	2021	vs. Last Year	vs. Pre-Covid
4-5YO	9	1			1	4	4	2		2	NA / NA	0 / 0.0%
6-7YO	136	115	102	100	85	45	87	77	19	73	+54 / +284.2%	-4 / -5.2%
8-9YO	285	308	351	361	251	221	152	153	39	192	+153 / +392.3%	+39 / +25.5%
10YO+	354	439	390	387	420	411	337	331	88	319	+231 / +262.5%	-12 / -3.6%
Total	784	863	843	848	757	681	580	563	146	586	+440 / +301.4%	+23 / +4.1%

'vs. Pre-Covid' is comparison between 2021 and 2019

YTD Total Hunter Chase Runners by Age

Total Runners in GB Hunter Chases shown by Age Category and Total



Year to Date Total Runners by Country Trained

Code	Country	2012	2013	2014	2015	2016	2017	2018	2019	2020	2021
Flat	GB	17643	18265	18019	17202	17718	18450	18465	19398	6574	19199
	IRE	86	135	92	94	145	189	187	189	76	49
	Other	15	10	15	24	12	18	13	16	4	4
Jump	GB	15006	15404	14649	14927	14468	14962	14411	14549	7561	15805
	IRE	299	324	412	433	505	450	349	441	257	300
	Other	1	2	3	4	6	12	9	7	10	3
Overall	GB	32649	33669	32668	32129	32186	33412	32876	33947	14135	35004
	IRE	385	459	504	527	650	639	536	630	333	349
	Other	16	12	18	28	18	30	22	23	14	7

Year to Date GB Trained Runners Racing Abroad

Code	Country	2012	2013	2014	2015	2016	2017	2018	2019	2020	2021
Flat	IRE	26	20	17	33	21	33	29	30	2	6
	FR	54	79	83	90	58	86	74	138	27	34
	GNV	4	7	3	3	4	4	8	12		
	UAE	343	351	326	289	208	278	276	303	281	248
	KSA									15	21
	Other	33	42	50	54	43	45	45	38	26	7
	Total	460	499	479	469	334	446	432	521	351	316
Jump	IRE	53	35	71	80	73	66	44	57	5	19
	FR	20	27	13	19	29	17	7	15	3	59
	Other		3	2	3	1	2	1	1		
	Total	73	65	86	102	103	85	52	73	8	78

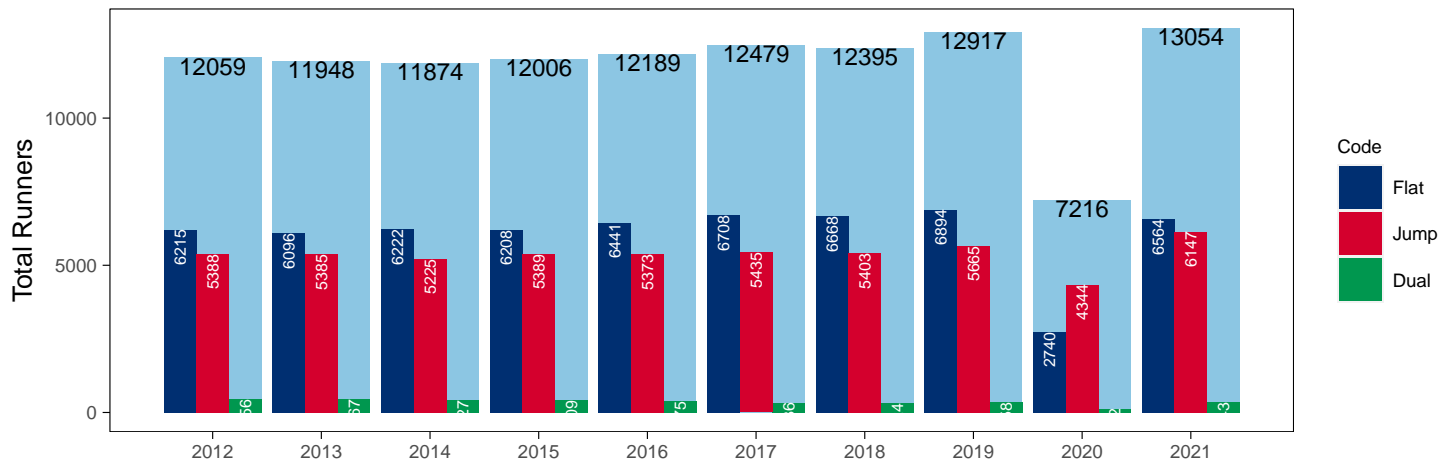
Year to Date Individual Runners

Code	2012	2013	2014	2015	2016	2017	2018	2019	2020	2021	vs. Last Year	vs. Pre-Covid
Flat	6215	6096	6222	6208	6441	6708	6668	6894	2740	6564	+3824 / +139.6%	-330 / -4.8%
Jump	5388	5385	5225	5389	5373	5435	5403	5665	4344	6147	+1803 / +41.5%	+482 / +8.5%
Dual	456	467	427	409	375	336	324	358	132	343	+211 / +159.8%	-15 / -4.2%
Overall	12059	11948	11874	12006	12189	12479	12395	12917	7216	13054	+5838 / +80.9%	+137 / +1.1%

'vs. Pre-Covid' is comparison between 2021 and 2019

YTD Individual Runners

Individual Runners in GB Races, shown by Code and Total



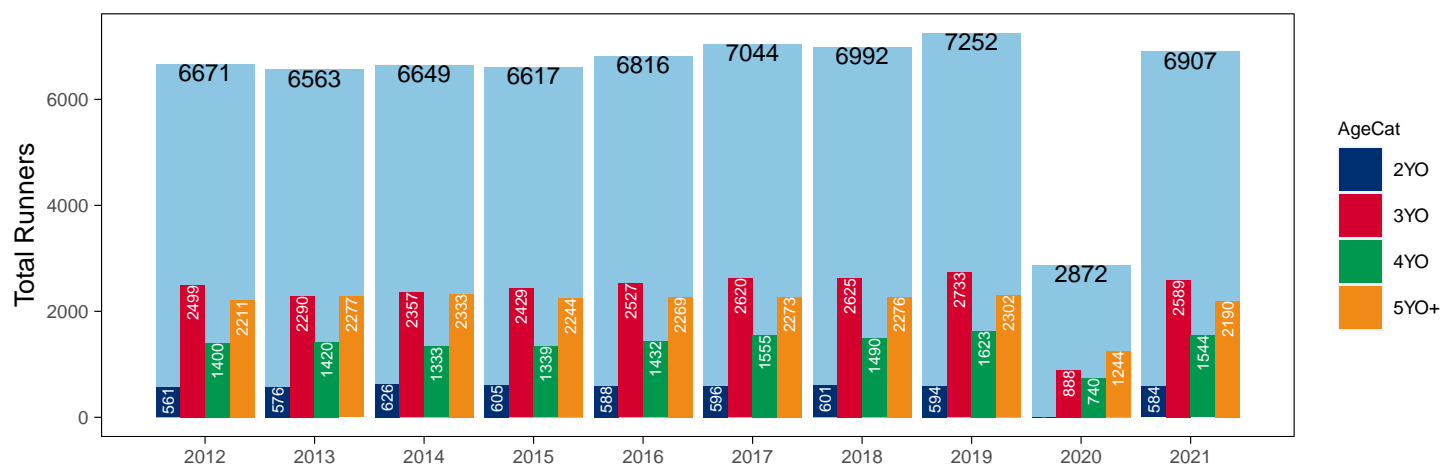
Flat

AgeCat	2012	2013	2014	2015	2016	2017	2018	2019	2020	2021	vs. Last Year	vs. Pre-Covid
2YO	561	576	626	605	588	596	601	594		584	NA / NA	-10 / -1.7%
3YO	2499	2290	2357	2429	2527	2620	2625	2733	888	2589	+1701 / +191.6%	-144 / -5.3%
4YO	1400	1420	1333	1339	1432	1555	1490	1623	740	1544	+804 / +108.6%	-79 / -4.9%
5YO+	2211	2277	2333	2244	2269	2273	2276	2302	1244	2190	+946 / +76.0%	-112 / -4.9%
Total	6671	6563	6649	6617	6816	7044	6992	7252	2872	6907	+4035 / +140.5%	-345 / -4.8%

'vs. Pre-Covid' is comparison between 2021 and 2019

YTD Individual Flat Runners by Age

Individual Runners in GB Flat Races, shown by Age Category and Total



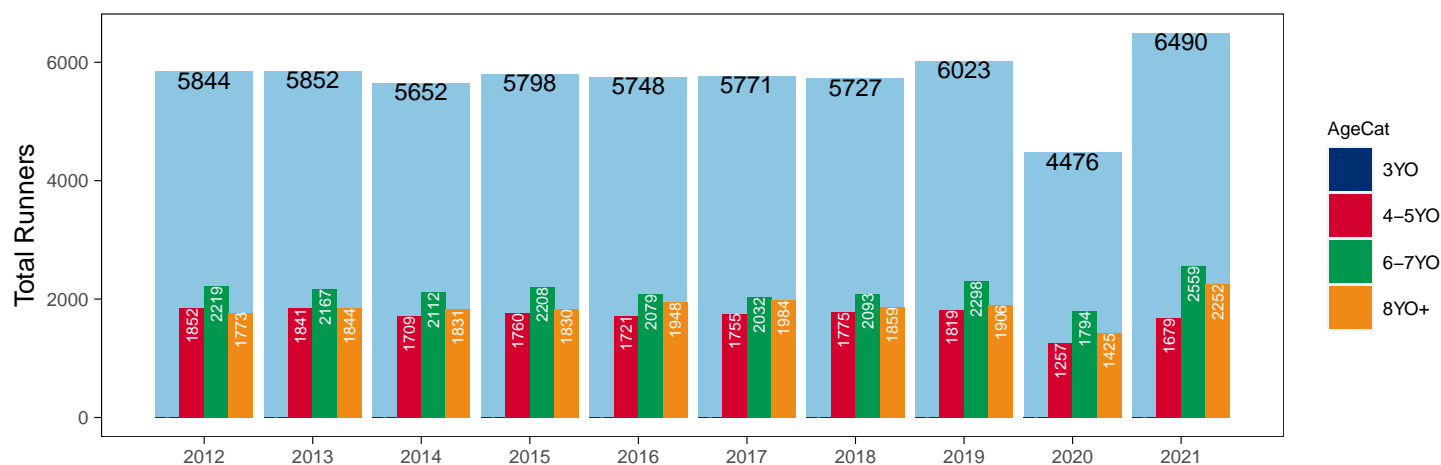
Jump

AgeCat	2012	2013	2014	2015	2016	2017	2018	2019	2020	2021	vs. Last Year	vs. Pre-Covid
3YO											NA / NA	0 / NA
4-5YO	1852	1841	1709	1760	1721	1755	1775	1819	1257	1679	+422 / +33.6%	-140 / -7.7%
6-7YO	2219	2167	2112	2208	2079	2032	2093	2298	1794	2559	+765 / +42.6%	+261 / +11.4%
8YO+	1773	1844	1831	1830	1948	1984	1859	1906	1425	2252	+827 / +58.0%	+346 / +18.2%
Total	5844	5852	5652	5798	5748	5771	5727	6023	4476	6490	+2014 / +45.0%	+467 / +7.8%

'vs. Pre-Covid' is comparison between 2021 and 2019

YTD Individual Jump Runners by Age

Individual Runners in GB Jump Races, shown by Age Category and Total



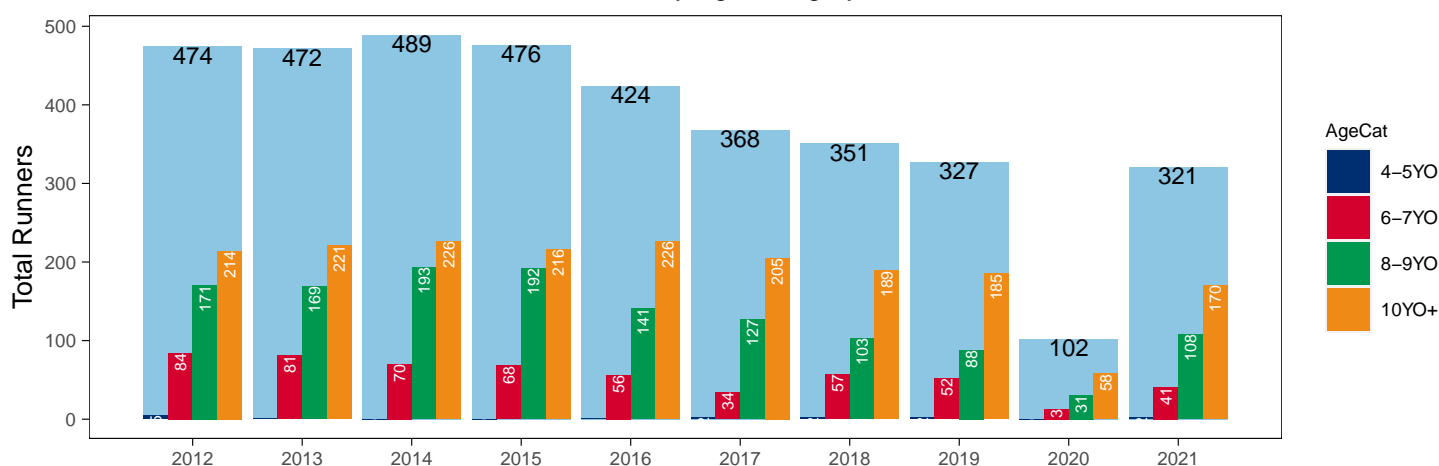
Hunter Chases

AgeCat	2012	2013	2014	2015	2016	2017	2018	2019	2020	2021	vs. Last Year	vs. Pre-Covid
4-5YO	5	1			1	2	2	2		2	NA / NA	0 / 0.0%
6-7YO	84	81	70	68	56	34	57	52	13	41	+28 / +215.4%	-11 / -21.2%
8-9YO	171	169	193	192	141	127	103	88	31	108	+77 / +248.4%	+20 / +22.7%
10YO+	214	221	226	216	226	205	189	185	58	170	+112 / +193.1%	-15 / -8.1%
Total	474	472	489	476	424	368	351	327	102	321	+219 / +214.7%	-6 / -1.8%

'vs. Pre-Covid' is comparison between 2021 and 2019

YTD Individual Hunter Chase Runners by Age

Individual Runners in GB Hunter Chases shown by Age Category and Total



Year to Date Individual Runners by Country Trained

Code	Country	2012	2013	2014	2015	2016	2017	2018	2019	2020	2021
Flat	GB	17643	18265	18019	17202	17718	18450	18465	19398	6574	19199
	IRE	86	135	92	94	145	189	187	189	76	49
	Other	15	10	15	24	12	18	13	16	4	4
Jump	GB	15006	15404	14649	14927	14468	14962	14411	14549	7561	15805
	IRE	299	324	412	433	505	450	349	441	257	300
	Other	1	2	3	4	6	12	9	7	10	3
Overall	GB	32649	33669	32668	32129	32186	33412	32876	33947	14135	35004
	IRE	385	459	504	527	650	639	536	630	333	349
	Other	16	12	18	28	18	30	22	23	14	7

Frequency of Runs

Year to Date Average Runs per Horse

Code	2012	2013	2014	2015	2016	2017	2018	2019	2020	2021
Flat	2.66	2.81	2.73	2.62	2.62	2.65	2.67	2.70	2.32	2.79
Jump	2.62	2.69	2.67	2.65	2.61	2.67	2.58	2.49	1.75	2.48
Overall	2.74	2.86	2.80	2.72	2.70	2.73	2.70	2.68	2.01	2.71

Year to Date Proportion of Horses by Count of Runs

Runs	2012	2013	2014	2015	2016	2017	2018	2019	2020	2021
Flat										
1	2205 (33.1%)	2003 (30.5%)	1998 (30.0%)	2106 (31.8%)	2157 (31.6%)	2222 (31.5%)	2232 (31.9%)	2197 (30.3%)	1018 (35.4%)	1988 (28.8%)
2	1868 (28.0%)	1788 (27.2%)	1876 (28.2%)	1863 (28.2%)	1890 (27.7%)	1958 (27.8%)	1919 (27.4%)	2011 (27.7%)	787 (27.4%)	1858 (26.9%)
3	1092 (16.4%)	1135 (17.3%)	1187 (17.9%)	1165 (17.6%)	1268 (18.6%)	1273 (18.1%)	1198 (17.1%)	1305 (18.0%)	546 (19.0%)	1276 (18.5%)
4	575 (8.6%)	606 (9.2%)	586 (8.8%)	617 (9.3%)	603 (8.8%)	635 (9.0%)	652 (9.3%)	697 (9.6%)	320 (11.1%)	697 (10.1%)
5+	931 (14.0%)	1031 (15.7%)	1002 (15.1%)	866 (13.1%)	898 (13.2%)	956 (13.6%)	991 (14.2%)	1042 (14.4%)	201 (7.0%)	1088 (15.8%)
Jump										
1	1726 (29.5%)	1655 (28.3%)	1633 (28.9%)	1645 (28.4%)	1670 (29.1%)	1614 (28.0%)	1713 (29.9%)	1867 (31.0%)	2108 (47.1%)	1926 (29.7%)
2	1416 (24.2%)	1426 (24.4%)	1397 (24.7%)	1445 (24.9%)	1445 (25.1%)	1376 (23.8%)	1379 (24.1%)	1596 (26.5%)	1571 (35.1%)	1773 (27.3%)
3	1235 (21.1%)	1177 (20.1%)	1087 (19.2%)	1184 (20.4%)	1174 (20.4%)	1231 (21.3%)	1210 (21.1%)	1210 (20.1%)	638 (14.3%)	1378 (21.2%)
4	748 (12.8%)	793 (13.6%)	806 (14.3%)	805 (13.9%)	799 (13.9%)	829 (14.4%)	805 (14.1%)	782 (13.0%)	135 (3.0%)	825 (12.7%)
5+	719 (12.3%)	801 (13.7%)	729 (12.9%)	719 (12.4%)	660 (11.5%)	721 (12.5%)	620 (10.8%)	568 (9.4%)	24 (0.5%)	588 (9.1%)
All Races										
1	3555 (29.5%)	3306 (27.7%)	3307 (27.9%)	3431 (28.6%)	3525 (28.9%)	3569 (28.6%)	3667 (29.6%)	3768 (29.2%)	2961 (41.0%)	3635 (27.8%)
2	3128 (25.9%)	3021 (25.3%)	3092 (26.0%)	3139 (26.1%)	3187 (26.1%)	3197 (25.6%)	3184 (25.7%)	3460 (26.8%)	2337 (32.4%)	3513 (26.9%)
3	2263 (18.8%)	2248 (18.8%)	2226 (18.7%)	2288 (19.1%)	2412 (19.8%)	2478 (19.9%)	2355 (19.0%)	2480 (19.2%)	1207 (16.7%)	2591 (19.8%)
4	1352 (11.2%)	1425 (11.9%)	1386 (11.7%)	1446 (12.0%)	1403 (11.5%)	1453 (11.6%)	1486 (12.0%)	1499 (11.6%)	477 (6.6%)	1534 (11.8%)
5+	1761 (14.6%)	1948 (16.3%)	1863 (15.7%)	1702 (14.2%)	1662 (13.6%)	1782 (14.3%)	1703 (13.7%)	1710 (13.2%)	234 (3.2%)	1781 (13.6%)

Year to Date Median Days Between Runs

Code	2012	2013	2014	2015	2016	2017	2018	2019	2020	2021
Flat	22	21	22	24	24	24	24	24	21	23
Jump	30	30	29	30	31	30	32	32	34	34
Overall	27	25	26	27	27	27	28	28	28	28

Horses Population by Gender

May 2021 Horses in Training Snapshot by Gender versus Previous Years

All Horses

Sex	2012	2013	2014	2015	2016	2017	2018	2019	2020	2021
Colt/Entire	2559 (18.1%)	2607 (18.5%)	2572 (18.8%)	2668 (19.2%)	2531 (17.8%)	2660 (18.7%)	2681 (17.5%)	2572 (17.3%)	2341 (19.3%)	2325 (15.7%)
Gelding	7104 (50.2%)	7029 (49.8%)	6582 (48.0%)	6659 (48.0%)	7115 (50.1%)	7053 (49.5%)	7778 (50.8%)	7397 (49.7%)	5682 (46.8%)	7632 (51.6%)
Filly/Mare	4490 (31.7%)	4487 (31.8%)	4549 (33.2%)	4543 (32.7%)	4554 (32.1%)	4523 (31.8%)	4863 (31.7%)	4911 (33.0%)	4128 (34.0%)	4838 (32.7%)
Rig	1 (0.0%)	1 (0.0%)	1 (0.0%)	4 (0.0%)	5 (0.0%)	4 (0.0%)	1 (0.0%)	2 (0.0%)	1 (0.0%)	2 (0.0%)
Total	14154 (100.0%)	14124 (100.0%)	13704 (100.0%)	13874 (100.0%)	14205 (100.0%)	14240 (100.0%)	15323 (100.0%)	14882 (100.0%)	12152 (100.0%)	14797 (100.0%)

Flat (including Dual)

Sex	2012	2013	2014	2015	2016	2017	2018	2019	2020	2021
Colt/Entire	2526 (25.3%)	2581 (26.0%)	2535 (25.4%)	2634 (25.8%)	2510 (24.3%)	2637 (24.7%)	2659 (23.9%)	2557 (23.6%)	2330 (23.7%)	2306 (22.2%)
Gelding	3712 (37.2%)	3619 (36.5%)	3654 (36.7%)	3806 (37.3%)	4035 (39.1%)	4220 (39.5%)	4493 (40.5%)	4294 (39.6%)	3940 (40.1%)	4263 (41.0%)
Filly/Mare	3736 (37.5%)	3711 (37.4%)	3772 (37.9%)	3756 (36.8%)	3780 (36.6%)	3816 (35.7%)	3952 (35.6%)	3988 (36.8%)	3563 (36.2%)	3831 (36.8%)
Rig	1 (0.0%)	1 (0.0%)	0 (0.0%)	2 (0.0%)	5 (0.0%)	4 (0.0%)	1 (0.0%)	2 (0.0%)	1 (0.0%)	1 (0.0%)
Total	9975 (100.0%)	9912 (100.0%)	9961 (100.0%)	10198 (100.0%)	10330 (100.0%)	10677 (100.0%)	11105 (100.0%)	10841 (100.0%)	9834 (100.0%)	10401 (100.0%)

Jump (including Dual)

Sex	2012	2013	2014	2015	2016	2017	2018	2019	2020	2021
Colt/Entire	39 (0.8%)	37 (0.8%)	43 (1.0%)	39 (0.9%)	30 (0.7%)	27 (0.7%)	28 (0.6%)	24 (0.5%)	13 (0.5%)	28 (0.6%)
Gelding	3812 (80.7%)	3843 (80.5%)	3351 (77.9%)	3278 (77.7%)	3503 (79.5%)	3301 (79.5%)	3938 (78.0%)	3430 (76.6%)	2059 (75.1%)	3722 (76.4%)
Filly/Mare	872 (18.5%)	892 (18.7%)	906 (21.1%)	899 (21.3%)	873 (19.8%)	823 (19.8%)	1081 (21.4%)	1025 (22.9%)	671 (24.5%)	1120 (23.0%)
Rig	0 (0.0%)	0 (0.0%)	1 (0.0%)	1 (0.0%)	0 (0.0%)	0 (0.0%)	0 (0.0%)	0 (0.0%)	0 (0.0%)	1 (0.0%)
Total	4723 (100.0%)	4772 (100.0%)	4301 (100.0%)	4217 (100.0%)	4406 (100.0%)	4151 (100.0%)	5047 (100.0%)	4479 (100.0%)	2743 (100.0%)	4871 (100.0%)

Hunter Chasers

Sex	2012	2013	2014	2015	2016	2017	2018	2019	2020	2021
Colt/Entire	5 (0.2%)	4 (0.2%)	3 (0.1%)	2 (0.1%)	3 (0.2%)	5 (0.3%)	2 (0.1%)	1 (0.1%)	1 (0.1%)	3 (0.3%)
Gelding	2007 (80.7%)	1832 (81.5%)	1785 (81.9%)	1691 (82.5%)	1623 (82.1%)	1574 (81.4%)	1442 (81.1%)	1342 (79.3%)	1161 (81.5%)	975 (82.9%)
Filly/Mare	476 (19.1%)	413 (18.4%)	391 (17.9%)	357 (17.4%)	350 (17.7%)	355 (18.4%)	334 (18.8%)	350 (20.7%)	262 (18.4%)	198 (16.8%)
Rig	0 (0.0%)	0 (0.0%)	0 (0.0%)	0 (0.0%)	0 (0.0%)	0 (0.0%)	0 (0.0%)	0 (0.0%)	0 (0.0%)	0 (0.0%)
Total	2488 (100.0%)	2249 (100.0%)	2179 (100.0%)	2050 (100.0%)	1976 (100.0%)	1934 (100.0%)	1778 (100.0%)	1693 (100.0%)	1424 (100.0%)	1176 (100.0%)

Year to Date Total Runners by Gender

Sex	2012	2013	2014	2015	2016	2017	2018	2019	2020	2021
All Races										
Colt/Entire	2294 (6.9%)	2465 (7.2%)	2447 (7.4%)	2458 (7.5%)	2329 (7.1%)	2396 (7.0%)	2440 (7.3%)	2434 (7.0%)	578 (4.0%)	2365 (6.7%)
Gelding	22509 (68.1%)	23395 (68.5%)	22495 (67.8%)	22381 (68.5%)	22621 (68.9%)	23473 (68.9%)	22638 (67.7%)	23095 (66.7%)	10306 (71.2%)	23810 (67.3%)
Filly/Mare	8247 (25.0%)	8280 (24.3%)	8248 (24.9%)	7845 (24.0%)	7896 (24.0%)	8211 (24.1%)	8352 (25.0%)	9064 (26.2%)	3595 (24.8%)	9179 (26.0%)
Rig	0 (0.0%)	0 (0.0%)	0 (0.0%)	0 (0.0%)	8 (0.0%)	1 (0.0%)	4 (0.0%)	7 (0.0%)	3 (0.0%)	6 (0.0%)
Flat										
Colt/Entire	2234 (12.6%)	2421 (13.2%)	2387 (13.2%)	2425 (14.0%)	2303 (12.9%)	2369 (12.7%)	2420 (13.0%)	2409 (12.3%)	564 (8.5%)	2346 (12.2%)
Gelding	9854 (55.5%)	10286 (55.9%)	10110 (55.8%)	9819 (56.7%)	10231 (57.2%)	10785 (57.8%)	10785 (57.8%)	11226 (57.3%)	4134 (62.1%)	11195 (58.1%)
Filly/Mare	5656 (31.9%)	5703 (31.0%)	5629 (31.1%)	5076 (29.3%)	5333 (29.8%)	5502 (29.5%)	5456 (29.2%)	5965 (30.4%)	1956 (29.4%)	5709 (29.7%)
Rig	0 (0.0%)	0 (0.0%)	0 (0.0%)	0 (0.0%)	8 (0.0%)	1 (0.0%)	4 (0.0%)	3 (0.0%)	0 (0.0%)	2 (0.0%)
All Jump										
Colt/Entire	60 (0.4%)	44 (0.3%)	60 (0.4%)	33 (0.2%)	26 (0.2%)	27 (0.2%)	20 (0.1%)	25 (0.2%)	14 (0.2%)	19 (0.1%)
Gelding	12655 (82.7%)	13109 (83.3%)	12385 (82.2%)	12562 (81.8%)	12390 (82.7%)	12688 (82.3%)	11853 (80.3%)	11869 (79.1%)	6172 (78.8%)	12615 (78.3%)
Filly/Mare	2591 (16.9%)	2577 (16.4%)	2619 (17.4%)	2769 (18.0%)	2563 (17.1%)	2709 (17.6%)	2896 (19.6%)	3099 (20.7%)	1639 (20.9%)	3470 (21.5%)
Rig	0 (0.0%)	0 (0.0%)	0 (0.0%)	0 (0.0%)	0 (0.0%)	0 (0.0%)	0 (0.0%)	4 (0.0%)	3 (0.0%)	4 (0.0%)
Chase										
Colt/Entire	5 (0.1%)	5 (0.1%)	2 (0.0%)	0 (0.0%)	1 (0.0%)	0 (0.0%)	0 (0.0%)	0 (0.0%)	0 (0.0%)	0 (0.0%)
Gelding	4410 (92.0%)	4599 (92.5%)	4494 (93.2%)	4554 (93.1%)	4480 (93.4%)	4673 (92.8%)	4176 (91.0%)	4223 (90.1%)	2169 (90.3%)	4365 (89.4%)
Filly/Mare	381 (7.9%)	369 (7.4%)	328 (6.8%)	336 (6.9%)	317 (6.6%)	361 (7.2%)	414 (9.0%)	463 (9.9%)	229 (9.5%)	511 (10.5%)
Rig	0 (0.0%)	0 (0.0%)	0 (0.0%)	0 (0.0%)	0 (0.0%)	0 (0.0%)	0 (0.0%)	2 (0.0%)	3 (0.1%)	4 (0.1%)
Hurdle										
Colt/Entire	49 (0.6%)	27 (0.3%)	53 (0.6%)	28 (0.3%)	22 (0.2%)	22 (0.2%)	14 (0.2%)	17 (0.2%)	7 (0.2%)	16 (0.2%)
Gelding	7025 (80.2%)	7135 (81.5%)	6680 (78.8%)	7026 (78.5%)	7036 (79.6%)	7099 (78.7%)	6706 (77.2%)	6813 (76.0%)	3477 (74.7%)	6757 (74.4%)
Filly/Mare	1685 (19.2%)	1591 (18.2%)	1739 (20.5%)	1900 (21.2%)	1786 (20.2%)	1896 (21.0%)	1968 (22.7%)	2130 (23.8%)	1169 (25.1%)	2312 (25.4%)
Rig	0 (0.0%)	0 (0.0%)	0 (0.0%)	0 (0.0%)	0 (0.0%)	0 (0.0%)	0 (0.0%)	2 (0.0%)	0 (0.0%)	0 (0.0%)
NHF										
Colt/Entire	6 (0.3%)	12 (0.6%)	5 (0.3%)	5 (0.3%)	3 (0.2%)	5 (0.4%)	6 (0.4%)	8 (0.6%)	7 (0.9%)	3 (0.1%)
Gelding	1220 (69.7%)	1375 (68.6%)	1211 (68.5%)	982 (64.6%)	874 (65.4%)	916 (66.7%)	971 (65.1%)	833 (61.8%)	526 (68.0%)	1493 (69.7%)
Filly/Mare	525 (30.0%)	617 (30.8%)	552 (31.2%)	533 (35.1%)	460 (34.4%)	452 (32.9%)	514 (34.5%)	506 (37.6%)	241 (31.1%)	647 (30.2%)
Hunter										
Colt/Entire	0 (0.0%)	0 (0.0%)	0 (0.0%)	1 (0.1%)	0 (0.0%)	0 (0.0%)	0 (0.0%)	0 (0.0%)	0 (0.0%)	0 (0.0%)
Gelding	706 (90.1%)	796 (92.2%)	771 (91.5%)	799 (94.2%)	714 (94.3%)	648 (95.2%)	542 (93.4%)	522 (92.7%)	142 (97.3%)	548 (93.5%)
Filly/Mare	78 (9.9%)	67 (7.8%)	72 (8.5%)	48 (5.7%)	43 (5.7%)	33 (4.8%)	38 (6.6%)	41 (7.3%)	4 (2.7%)	38 (6.5%)

Year to Date Individual Runners by Gender

Sex	2012	2013	2014	2015	2016	2017	2018	2019	2020	2021
All Races										
Male	8767 (72.7%)	8717 (73.0%)	8605 (72.5%)	8751 (72.9%)	8911 (73.1%)	9137 (73.2%)	8988 (72.5%)	9250 (71.6%)	5369 (74.4%)	9432 (72.3%)
Female	3292 (27.3%)	3231 (27.0%)	3269 (27.5%)	3255 (27.1%)	3278 (26.9%)	3342 (26.8%)	3407 (27.5%)	3667 (28.4%)	1847 (25.6%)	3622 (27.7%)
Flat										
Male	4327 (64.9%)	4313 (65.7%)	4347 (65.4%)	4389 (66.3%)	4545 (66.7%)	4730 (67.1%)	4708 (67.3%)	4809 (66.3%)	1953 (68.0%)	4640 (67.2%)
Female	2344 (35.1%)	2250 (34.3%)	2302 (34.6%)	2228 (33.7%)	2271 (33.3%)	2314 (32.9%)	2284 (32.7%)	2443 (33.7%)	919 (32.0%)	2267 (32.8%)
All Jump										
Male	4809 (82.3%)	4776 (81.6%)	4596 (81.3%)	4682 (80.8%)	4676 (81.4%)	4680 (81.1%)	4546 (79.4%)	4728 (78.5%)	3522 (78.7%)	5066 (78.1%)
Female	1035 (17.7%)	1076 (18.4%)	1056 (18.7%)	1116 (19.2%)	1072 (18.6%)	1091 (18.9%)	1181 (20.6%)	1295 (21.5%)	954 (21.3%)	1424 (21.9%)
Chase										
Male	1768 (91.8%)	1768 (91.9%)	1711 (92.6%)	1763 (92.7%)	1744 (93.0%)	1809 (92.2%)	1660 (90.2%)	1717 (89.8%)	1269 (90.0%)	1873 (89.3%)
Female	157 (8.2%)	155 (8.1%)	136 (7.4%)	139 (7.3%)	132 (7.0%)	154 (7.8%)	180 (9.8%)	194 (10.2%)	141 (10.0%)	225 (10.7%)
Hurdle										
Male	2947 (81.0%)	2916 (81.0%)	2776 (79.7%)	2835 (78.9%)	2887 (79.9%)	2852 (78.8%)	2806 (77.7%)	2935 (76.7%)	2054 (75.0%)	3035 (75.1%)
Female	693 (19.0%)	685 (19.0%)	707 (20.3%)	757 (21.1%)	725 (20.1%)	766 (21.2%)	805 (22.3%)	893 (23.3%)	684 (25.0%)	1007 (24.9%)
NHF										
Male	831 (71.3%)	980 (70.9%)	873 (70.9%)	692 (66.6%)	626 (66.5%)	634 (68.1%)	712 (67.2%)	616 (64.5%)	440 (68.9%)	1100 (70.8%)
Female	335 (28.7%)	402 (29.1%)	359 (29.1%)	347 (33.4%)	315 (33.5%)	297 (31.9%)	347 (32.8%)	339 (35.5%)	199 (31.1%)	453 (29.2%)
Hunter										
Male	429 (90.5%)	426 (90.3%)	447 (91.4%)	448 (94.1%)	395 (93.2%)	346 (94.0%)	323 (92.0%)	301 (92.0%)	98 (96.1%)	295 (91.9%)
Female	45 (9.5%)	46 (9.7%)	42 (8.6%)	28 (5.9%)	29 (6.8%)	22 (6.0%)	28 (8.0%)	26 (8.0%)	4 (3.9%)	26 (8.1%)

Horses Population by Breeding

May 2021 Horses in Training Snapshot by Breeding versus Previous Years

Flat (including Dual)

Bred	Sex	2012	2013	2014	2015	2016	2017	2018	2019	2020	2021
GB	Male	3008 (30.2%)	2949 (29.8%)	2945 (29.6%)	3057 (30.0%)	3097 (30.0%)	3220 (30.2%)	3361 (30.3%)	3251 (30.0%)	3004 (30.5%)	3111 (29.9%)
	Female	2144 (21.5%)	2126 (21.4%)	2088 (21.0%)	2066 (20.3%)	2094 (20.3%)	2124 (19.9%)	2183 (19.7%)	2218 (20.5%)	2013 (20.5%)	2162 (20.8%)
	Subtotal	5152 (51.6%)	5075 (51.2%)	5033 (50.5%)	5123 (50.2%)	5191 (50.3%)	5344 (50.1%)	5544 (49.9%)	5469 (50.4%)	5017 (51.0%)	5273 (50.7%)
IRE	Male	2470 (24.8%)	2570 (25.9%)	2596 (26.1%)	2745 (26.9%)	2841 (27.5%)	2954 (27.7%)	3077 (27.7%)	2907 (26.8%)	2667 (27.1%)	2895 (27.8%)
	Female	1299 (13.0%)	1324 (13.4%)	1403 (14.1%)	1430 (14.0%)	1426 (13.8%)	1423 (13.3%)	1481 (13.3%)	1476 (13.6%)	1300 (13.2%)	1450 (13.9%)
	Subtotal	3769 (37.8%)	3894 (39.3%)	3999 (40.1%)	4175 (40.9%)	4267 (41.3%)	4377 (41.0%)	4558 (41.0%)	4383 (40.4%)	3967 (40.3%)	4345 (41.8%)
FR	Male	107 (1.1%)	123 (1.2%)	153 (1.5%)	186 (1.8%)	173 (1.7%)	242 (2.3%)	306 (2.8%)	319 (2.9%)	304 (3.1%)	299 (2.9%)
	Female	25 (0.3%)	45 (0.5%)	73 (0.7%)	71 (0.7%)	89 (0.9%)	102 (1.0%)	114 (1.0%)	126 (1.2%)	128 (1.3%)	124 (1.2%)
	Subtotal	132 (1.3%)	168 (1.7%)	226 (2.3%)	257 (2.5%)	262 (2.5%)	344 (3.2%)	420 (3.8%)	445 (4.1%)	432 (4.4%)	423 (4.1%)
USA	Male	564 (5.7%)	461 (4.7%)	397 (4.0%)	363 (3.6%)	353 (3.4%)	347 (3.2%)	314 (2.8%)	295 (2.7%)	229 (2.3%)	192 (1.8%)
	Female	241 (2.4%)	188 (1.9%)	177 (1.8%)	156 (1.5%)	145 (1.4%)	141 (1.3%)	143 (1.3%)	134 (1.2%)	89 (0.9%)	67 (0.6%)
	Subtotal	805 (8.1%)	649 (6.5%)	574 (5.8%)	519 (5.1%)	498 (4.8%)	488 (4.6%)	457 (4.1%)	429 (4.0%)	318 (3.2%)	259 (2.5%)
GNY	Male	47 (0.5%)	55 (0.6%)	56 (0.6%)	67 (0.7%)	63 (0.6%)	69 (0.6%)	70 (0.6%)	57 (0.5%)	54 (0.5%)	55 (0.5%)
	Female	13 (0.1%)	17 (0.2%)	15 (0.2%)	15 (0.1%)	11 (0.1%)	11 (0.1%)	18 (0.2%)	22 (0.2%)	28 (0.3%)	24 (0.2%)
	Subtotal	60 (0.6%)	72 (0.7%)	71 (0.7%)	82 (0.8%)	74 (0.7%)	80 (0.7%)	88 (0.8%)	79 (0.7%)	82 (0.8%)	79 (0.8%)
Other	Male	43 (0.4%)	43 (0.4%)	42 (0.4%)	24 (0.2%)	23 (0.2%)	29 (0.3%)	25 (0.2%)	24 (0.2%)	13 (0.1%)	18 (0.2%)
	Female	14 (0.1%)	11 (0.1%)	16 (0.2%)	18 (0.2%)	15 (0.1%)	15 (0.1%)	13 (0.1%)	12 (0.1%)	5 (0.1%)	4 (0.0%)
	Subtotal	57 (0.6%)	54 (0.5%)	58 (0.6%)	42 (0.4%)	38 (0.4%)	44 (0.4%)	38 (0.3%)	36 (0.3%)	18 (0.2%)	22 (0.2%)

Jump (including Dual)

Bred	Sex	2012	2013	2014	2015	2016	2017	2018	2019	2020	2021
GB	Male	1328 (28.1%)	1325 (27.8%)	1197 (27.8%)	1109 (26.3%)	1151 (26.1%)	1051 (25.3%)	1193 (23.6%)	957 (21.4%)	629 (22.9%)	1059 (21.7%)
	Female	540 (11.4%)	572 (12.0%)	595 (13.8%)	564 (13.4%)	527 (12.0%)	454 (10.9%)	582 (11.5%)	502 (11.2%)	324 (11.8%)	560 (11.5%)
	Subtotal	1868 (39.6%)	1897 (39.8%)	1792 (41.7%)	1673 (39.7%)	1678 (38.1%)	1505 (36.3%)	1775 (35.2%)	1459 (32.6%)	953 (34.7%)	1619 (33.2%)
IRE	Male	1899 (40.2%)	1978 (41.5%)	1731 (40.2%)	1738 (41.2%)	1877 (42.6%)	1774 (42.7%)	2166 (42.9%)	1901 (42.4%)	1118 (40.8%)	2028 (41.6%)
	Female	280 (5.9%)	275 (5.8%)	273 (6.3%)	299 (7.1%)	306 (6.9%)	322 (7.8%)	437 (8.7%)	436 (9.7%)	288 (10.5%)	469 (9.6%)
	Subtotal	2179 (46.1%)	2253 (47.2%)	2004 (46.6%)	2037 (48.3%)	2183 (49.5%)	2096 (50.5%)	2603 (51.6%)	2337 (52.2%)	1406 (51.3%)	2497 (51.3%)
FR	Male	439 (9.3%)	423 (8.9%)	342 (8.0%)	350 (8.3%)	402 (9.1%)	419 (10.1%)	517 (10.2%)	515 (11.5%)	275 (10.0%)	579 (11.9%)
	Female	38 (0.8%)	31 (0.6%)	29 (0.7%)	30 (0.7%)	31 (0.7%)	43 (1.0%)	58 (1.1%)	79 (1.8%)	54 (2.0%)	84 (1.7%)
	Subtotal	477 (10.1%)	454 (9.5%)	371 (8.6%)	380 (9.0%)	433 (9.8%)	462 (11.1%)	575 (11.4%)	594 (13.3%)	329 (12.0%)	663 (13.6%)
USA	Male	111 (2.4%)	98 (2.1%)	76 (1.8%)	68 (1.6%)	49 (1.1%)	36 (0.9%)	38 (0.8%)	31 (0.7%)	23 (0.8%)	36 (0.7%)
	Female	7 (0.1%)	7 (0.1%)	4 (0.1%)	2 (0.0%)	2 (0.0%)	2 (0.0%)	1 (0.0%)	3 (0.1%)	2 (0.1%)	1 (0.0%)
	Subtotal	118 (2.5%)	105 (2.2%)	80 (1.9%)	70 (1.7%)	51 (1.2%)	38 (0.9%)	39 (0.8%)	34 (0.8%)	25 (0.9%)	37 (0.8%)
GNY	Male	55 (1.2%)	41 (0.9%)	40 (0.9%)	45 (1.1%)	48 (1.1%)	41 (1.0%)	46 (0.9%)	45 (1.0%)	26 (0.9%)	45 (0.9%)
	Female	5 (0.1%)	4 (0.1%)	4 (0.1%)	3 (0.1%)	4 (0.1%)	1 (0.0%)	1 (0.0%)	4 (0.1%)	3 (0.1%)	6 (0.1%)
	Subtotal	60 (1.3%)	45 (0.9%)	44 (1.0%)	48 (1.1%)	52 (1.2%)	42 (1.0%)	47 (0.9%)	49 (1.1%)	29 (1.1%)	51 (1.0%)
Other	Male	19 (0.4%)	15 (0.3%)	9 (0.2%)	8 (0.2%)	6 (0.1%)	7 (0.2%)	6 (0.1%)	5 (0.1%)	1 (0.0%)	4 (0.1%)
	Female	2 (0.0%)	3 (0.1%)	1 (0.0%)	1 (0.0%)	3 (0.1%)	1 (0.0%)	2 (0.0%)	1 (0.0%)	NA (-)	NA (-)
	Subtotal	21 (0.4%)	18 (0.4%)	10 (0.2%)	9 (0.2%)	9 (0.2%)	8 (0.2%)	8 (0.2%)	6 (0.1%)	1 (0.0%)	4 (0.1%)

Year to Date Total Runners by Breeding

Flat

Bred	Sex	2012	2013	2014	2015	2016	2017	2018	2019	2020	2021
GB	Male	5801 (32.7%)	5836 (31.7%)	5888 (32.5%)	5681 (32.8%)	5839 (32.7%)	6157 (33.0%)	6132 (32.9%)	6263 (31.9%)	2185 (32.8%)	6192 (32.2%)
	Female	3190 (18.0%)	3361 (18.3%)	3052 (16.8%)	2800 (16.2%)	2945 (16.5%)	2999 (16.1%)	2923 (15.7%)	3320 (16.9%)	1079 (16.2%)	3246 (16.9%)
	Subtotal	8991 (50.7%)	9197 (50.0%)	8940 (49.3%)	8481 (49.0%)	8784 (49.1%)	9156 (49.1%)	9055 (48.5%)	9583 (48.9%)	3264 (49.1%)	9438 (49.0%)
IRE	Male	4980 (28.1%)	5485 (29.8%)	5314 (29.3%)	5375 (31.0%)	5542 (31.0%)	5771 (30.9%)	5840 (31.3%)	6057 (30.9%)	2045 (30.7%)	6175 (32.1%)
	Female	2186 (12.3%)	2072 (11.3%)	2225 (12.3%)	1945 (11.2%)	2089 (11.7%)	2200 (11.8%)	2206 (11.8%)	2242 (11.4%)	768 (11.5%)	2133 (11.1%)
	Subtotal	7166 (40.4%)	7557 (41.0%)	7539 (41.6%)	7320 (42.3%)	7631 (42.7%)	7971 (42.7%)	8046 (43.1%)	8299 (42.3%)	2813 (42.3%)	8308 (43.2%)
FR	Male	164 (0.9%)	207 (1.1%)	266 (1.5%)	329 (1.9%)	348 (1.9%)	405 (2.2%)	437 (2.3%)	570 (2.9%)	203 (3.1%)	556 (2.9%)
	Female	25 (0.1%)	40 (0.2%)	100 (0.6%)	110 (0.6%)	121 (0.7%)	111 (0.6%)	151 (0.8%)	166 (0.8%)	51 (0.8%)	175 (0.9%)
	Subtotal	189 (1.1%)	247 (1.3%)	366 (2.0%)	439 (2.5%)	469 (2.6%)	516 (2.8%)	588 (3.2%)	736 (3.8%)	254 (3.8%)	731 (3.8%)
USA	Male	985 (5.6%)	1009 (5.5%)	840 (4.6%)	710 (4.1%)	659 (3.7%)	644 (3.5%)	629 (3.4%)	591 (3.0%)	216 (3.2%)	428 (2.2%)
	Female	215 (1.2%)	193 (1.0%)	209 (1.2%)	155 (0.9%)	129 (0.7%)	150 (0.8%)	142 (0.8%)	180 (0.9%)	52 (0.8%)	102 (0.5%)
	Subtotal	1200 (6.8%)	1202 (6.5%)	1049 (5.8%)	865 (5.0%)	788 (4.4%)	794 (4.3%)	771 (4.1%)	771 (3.9%)	268 (4.0%)	530 (2.8%)
GNY	Male	85 (0.5%)	92 (0.5%)	101 (0.6%)	86 (0.5%)	99 (0.6%)	121 (0.6%)	110 (0.6%)	98 (0.5%)	36 (0.5%)	142 (0.7%)
	Female	17 (0.1%)	22 (0.1%)	27 (0.1%)	37 (0.2%)	34 (0.2%)	22 (0.1%)	27 (0.1%)	35 (0.2%)	5 (0.1%)	45 (0.2%)
	Subtotal	102 (0.6%)	114 (0.6%)	128 (0.7%)	123 (0.7%)	133 (0.7%)	143 (0.8%)	137 (0.7%)	133 (0.7%)	41 (0.6%)	187 (1.0%)
Other	Male	73 (0.4%)	78 (0.4%)	88 (0.5%)	63 (0.4%)	55 (0.3%)	57 (0.3%)	61 (0.3%)	59 (0.3%)	13 (0.2%)	50 (0.3%)
	Female	23 (0.1%)	15 (0.1%)	16 (0.1%)	29 (0.2%)	15 (0.1%)	20 (0.1%)	7 (0.0%)	22 (0.1%)	1 (0.0%)	8 (0.0%)
	Subtotal	96 (0.5%)	93 (0.5%)	104 (0.6%)	92 (0.5%)	70 (0.4%)	77 (0.4%)	68 (0.4%)	81 (0.4%)	14 (0.2%)	58 (0.3%)

Jump

Bred	Sex	2012	2013	2014	2015	2016	2017	2018	2019	2020	2021
GB	Male	4035 (26.4%)	4071 (25.9%)	3770 (25.0%)	3654 (23.8%)	3384 (22.6%)	3391 (22.0%)	3073 (20.8%)	3051 (20.3%)	1486 (19.0%)	3019 (18.7%)
	Female	1517 (9.9%)	1549 (9.8%)	1596 (10.6%)	1617 (10.5%)	1338 (8.9%)	1351 (8.8%)	1381 (9.4%)	1387 (9.2%)	668 (8.5%)	1528 (9.5%)
	Subtotal	5552 (36.3%)	5620 (35.7%)	5366 (35.6%)	5271 (34.3%)	4722 (31.5%)	4742 (30.7%)	4454 (30.2%)	4438 (29.6%)	2154 (27.5%)	4547 (28.2%)
IRE	Male	6346 (41.5%)	6922 (44.0%)	6770 (44.9%)	6879 (44.8%)	6880 (45.9%)	7027 (45.6%)	6650 (45.0%)	6566 (43.8%)	3404 (43.5%)	6931 (43.0%)
	Female	897 (5.9%)	845 (5.4%)	859 (5.7%)	1009 (6.6%)	1057 (7.1%)	1157 (7.5%)	1333 (9.0%)	1444 (9.6%)	784 (10.0%)	1563 (9.7%)
	Subtotal	7243 (47.3%)	7767 (49.4%)	7629 (50.6%)	7888 (51.3%)	7937 (53.0%)	8184 (53.1%)	7983 (54.1%)	8010 (53.4%)	4188 (53.5%)	8494 (52.7%)
FR	Male	1701 (11.1%)	1602 (10.2%)	1517 (10.1%)	1653 (10.8%)	1849 (12.3%)	2011 (13.0%)	1904 (12.9%)	2014 (13.4%)	1163 (14.9%)	2394 (14.9%)
	Female	143 (0.9%)	143 (0.9%)	153 (1.0%)	125 (0.8%)	146 (1.0%)	183 (1.2%)	162 (1.1%)	241 (1.6%)	177 (2.3%)	349 (2.2%)
	Subtotal	1844 (12.0%)	1745 (11.1%)	1670 (11.1%)	1778 (11.6%)	1995 (13.3%)	2194 (14.2%)	2066 (14.0%)	2255 (15.0%)	1340 (17.1%)	2743 (17.0%)
USA	Male	372 (2.4%)	299 (1.9%)	215 (1.4%)	201 (1.3%)	138 (0.9%)	111 (0.7%)	101 (0.7%)	71 (0.5%)	48 (0.6%)	85 (0.5%)
	Female	16 (0.1%)	19 (0.1%)	1 (0.0%)	3 (0.0%)	4 (0.0%)	4 (0.0%)	5 (0.0%)	9 (0.1%)	4 (0.1%)	5 (0.0%)
	Subtotal	388 (2.5%)	318 (2.0%)	216 (1.4%)	204 (1.3%)	142 (0.9%)	115 (0.7%)	106 (0.7%)	80 (0.5%)	52 (0.7%)	90 (0.6%)
GNY	Male	196 (1.3%)	182 (1.2%)	144 (1.0%)	183 (1.2%)	148 (1.0%)	160 (1.0%)	124 (0.8%)	174 (1.2%)	83 (1.1%)	199 (1.2%)
	Female	12 (0.1%)	16 (0.1%)	9 (0.1%)	14 (0.1%)	12 (0.1%)	9 (0.1%)	10 (0.1%)	16 (0.1%)	5 (0.1%)	25 (0.2%)
	Subtotal	208 (1.4%)	198 (1.3%)	153 (1.0%)	197 (1.3%)	160 (1.1%)	169 (1.1%)	134 (0.9%)	190 (1.3%)	88 (1.1%)	224 (1.4%)
Other	Male	65 (0.4%)	77 (0.5%)	29 (0.2%)	25 (0.2%)	17 (0.1%)	15 (0.1%)	21 (0.1%)	22 (0.1%)	5 (0.1%)	10 (0.1%)
	Female	6 (0.0%)	5 (0.0%)	1 (0.0%)	1 (0.0%)	6 (0.0%)	5 (0.0%)	5 (0.0%)	2 (0.0%)	1 (0.0%)	0 (0.0%)
	Subtotal	71 (0.5%)	82 (0.5%)	30 (0.2%)	26 (0.2%)	23 (0.2%)	20 (0.1%)	26 (0.2%)	24 (0.2%)	6 (0.1%)	10 (0.1%)

Year to Date Individual Runners by Breeding

Flat

Bred	Sex	2012	2013	2014	2015	2016	2017	2018	2019	2020	2021
GB	Male	2101 (31.5%)	2044 (31.1%)	2018 (30.4%)	2083 (31.5%)	2135 (31.3%)	2162 (30.7%)	2177 (31.1%)	2213 (30.5%)	911 (31.7%)	2120 (30.7%)
	Female	1364 (20.4%)	1332 (20.3%)	1271 (19.1%)	1222 (18.5%)	1242 (18.2%)	1268 (18.0%)	1210 (17.3%)	1336 (18.4%)	502 (17.5%)	1261 (18.3%)
	Subtotal	3465 (51.9%)	3376 (51.4%)	3289 (49.5%)	3305 (49.9%)	3377 (49.5%)	3430 (48.7%)	3387 (48.4%)	3549 (48.9%)	1413 (49.2%)	3381 (49.0%)
IRE	Male	1740 (26.1%)	1812 (27.6%)	1875 (28.2%)	1890 (28.6%)	1971 (28.9%)	2102 (29.8%)	2069 (29.6%)	2107 (29.1%)	835 (29.1%)	2095 (30.3%)
	Female	853 (12.8%)	805 (12.3%)	891 (13.4%)	855 (12.9%)	896 (13.1%)	896 (12.7%)	930 (13.3%)	931 (12.8%)	360 (12.5%)	875 (12.7%)
	Subtotal	2593 (38.9%)	2617 (39.9%)	2766 (41.6%)	2745 (41.5%)	2867 (42.1%)	2998 (42.6%)	2999 (42.9%)	3038 (41.9%)	1195 (41.6%)	2970 (43.0%)
FR	Male	69 (1.0%)	76 (1.2%)	99 (1.5%)	110 (1.7%)	135 (2.0%)	150 (2.1%)	186 (2.7%)	212 (2.9%)	94 (3.3%)	220 (3.2%)
	Female	15 (0.2%)	18 (0.3%)	41 (0.6%)	43 (0.6%)	52 (0.8%)	58 (0.8%)	66 (0.9%)	77 (1.1%)	26 (0.9%)	73 (1.1%)
	Subtotal	84 (1.3%)	94 (1.4%)	140 (2.1%)	153 (2.3%)	187 (2.7%)	208 (3.0%)	252 (3.6%)	289 (4.0%)	120 (4.2%)	293 (4.2%)
USA	Male	349 (5.2%)	327 (5.0%)	279 (4.2%)	247 (3.7%)	241 (3.5%)	242 (3.4%)	217 (3.1%)	216 (3.0%)	88 (3.1%)	146 (2.1%)
	Female	96 (1.4%)	78 (1.2%)	82 (1.2%)	81 (1.2%)	62 (0.9%)	70 (1.0%)	62 (0.9%)	79 (1.1%)	27 (0.9%)	40 (0.6%)
	Subtotal	445 (6.7%)	405 (6.2%)	361 (5.4%)	328 (5.0%)	303 (4.4%)	312 (4.4%)	279 (4.0%)	295 (4.1%)	115 (4.0%)	186 (2.7%)
GNY	Male	39 (0.6%)	28 (0.4%)	43 (0.6%)	38 (0.6%)	47 (0.7%)	51 (0.7%)	44 (0.6%)	43 (0.6%)	17 (0.6%)	45 (0.7%)
	Female	7 (0.1%)	11 (0.2%)	11 (0.2%)	14 (0.2%)	10 (0.1%)	10 (0.1%)	12 (0.2%)	12 (0.2%)	3 (0.1%)	15 (0.2%)
	Subtotal	46 (0.7%)	39 (0.6%)	54 (0.8%)	52 (0.8%)	57 (0.8%)	61 (0.9%)	56 (0.8%)	55 (0.8%)	20 (0.7%)	60 (0.9%)
Other	Male	29 (0.4%)	26 (0.4%)	33 (0.5%)	21 (0.3%)	16 (0.2%)	23 (0.3%)	15 (0.2%)	18 (0.2%)	8 (0.3%)	14 (0.2%)
	Female	9 (0.1%)	6 (0.1%)	6 (0.1%)	13 (0.2%)	9 (0.1%)	12 (0.2%)	4 (0.1%)	8 (0.1%)	1 (0.0%)	3 (0.0%)
	Subtotal	38 (0.6%)	32 (0.5%)	39 (0.6%)	34 (0.5%)	25 (0.4%)	35 (0.5%)	19 (0.3%)	26 (0.4%)	9 (0.3%)	17 (0.2%)

Jump

Bred	Sex	2012	2013	2014	2015	2016	2017	2018	2019	2020	2021
GB	Male	1541 (26.4%)	1483 (25.3%)	1417 (25.1%)	1366 (23.6%)	1267 (22.0%)	1241 (21.5%)	1177 (20.6%)	1211 (20.1%)	831 (18.6%)	1221 (18.8%)
	Female	615 (10.5%)	640 (10.9%)	643 (11.4%)	650 (11.2%)	572 (10.0%)	543 (9.4%)	573 (10.0%)	582 (9.7%)	388 (8.7%)	623 (9.6%)
	Subtotal	2156 (36.9%)	2123 (36.3%)	2060 (36.4%)	2016 (34.8%)	1839 (32.0%)	1784 (30.9%)	1750 (30.6%)	1793 (29.8%)	1219 (27.2%)	1844 (28.4%)
IRE	Male	2407 (41.2%)	2533 (43.3%)	2476 (43.8%)	2542 (43.8%)	2585 (45.0%)	2576 (44.6%)	2537 (44.3%)	2616 (43.4%)	1958 (43.7%)	2750 (42.4%)
	Female	356 (6.1%)	368 (6.3%)	352 (6.2%)	406 (7.0%)	429 (7.5%)	467 (8.1%)	521 (9.1%)	588 (9.8%)	452 (10.1%)	649 (10.0%)
	Subtotal	2763 (47.3%)	2901 (49.6%)	2828 (50.0%)	2948 (50.8%)	3014 (52.4%)	3043 (52.7%)	3058 (53.4%)	3204 (53.2%)	2410 (53.8%)	3399 (52.4%)
FR	Male	621 (10.6%)	560 (9.6%)	555 (9.8%)	623 (10.7%)	698 (12.1%)	753 (13.0%)	743 (13.0%)	802 (13.3%)	654 (14.6%)	991 (15.3%)
	Female	52 (0.9%)	53 (0.9%)	55 (1.0%)	52 (0.9%)	60 (1.0%)	73 (1.3%)	81 (1.4%)	115 (1.9%)	106 (2.4%)	141 (2.2%)
	Subtotal	673 (11.5%)	613 (10.5%)	610 (10.8%)	675 (11.6%)	758 (13.2%)	826 (14.3%)	824 (14.4%)	917 (15.2%)	760 (17.0%)	1132 (17.4%)
USA	Male	141 (2.4%)	114 (1.9%)	84 (1.5%)	74 (1.3%)	54 (0.9%)	45 (0.8%)	39 (0.7%)	31 (0.5%)	25 (0.6%)	34 (0.5%)
	Female	7 (0.1%)	8 (0.1%)	1 (0.0%)	2 (0.0%)	2 (0.0%)	1 (0.0%)	2 (0.0%)	4 (0.1%)	3 (0.1%)	2 (0.0%)
	Subtotal	148 (2.5%)	122 (2.1%)	85 (1.5%)	76 (1.3%)	56 (1.0%)	46 (0.8%)	41 (0.7%)	35 (0.6%)	28 (0.6%)	36 (0.6%)
GNY	Male	71 (1.2%)	58 (1.0%)	51 (0.9%)	66 (1.1%)	66 (1.1%)	59 (1.0%)	44 (0.8%)	59 (1.0%)	49 (1.1%)	67 (1.0%)
	Female	3 (0.1%)	4 (0.1%)	4 (0.1%)	5 (0.1%)	7 (0.1%)	5 (0.1%)	2 (0.0%)	5 (0.1%)	4 (0.1%)	9 (0.1%)
	Subtotal	74 (1.3%)	62 (1.1%)	55 (1.0%)	71 (1.2%)	73 (1.3%)	64 (1.1%)	46 (0.8%)	64 (1.1%)	53 (1.2%)	76 (1.2%)
Other	Male	28 (0.5%)	28 (0.5%)	13 (0.2%)	11 (0.2%)	6 (0.1%)	6 (0.1%)	6 (0.1%)	9 (0.1%)	5 (0.1%)	3 (0.0%)
	Female	2 (0.0%)	3 (0.1%)	1 (0.0%)	1 (0.0%)	2 (0.0%)	2 (0.0%)	2 (0.0%)	1 (0.0%)	1 (0.0%)	0 (0.0%)
	Subtotal	30 (0.5%)	31 (0.5%)	14 (0.2%)	12 (0.2%)	8 (0.1%)	8 (0.1%)	8 (0.1%)	10 (0.2%)	6 (0.1%)	3 (0.0%)