

Horse Population Report

Updated on 30 April 2021



Introduction

Welcome to the latest update on the Racehorse Population from the British Horseracing Authority.

The aim of this document is to give stakeholders and the wider Public an insight into the current state of the Horse Population in Great Britain. It is hoped that this transparency will ensure that all decision makers have access to the key data required to help British Racing deliver a Competitive and Compelling product to stakeholders, racegoers and the wider public.

If you have any questions regarding the content of this report or suggestions for how it could be improved further, please contact Joe Yates – jyates@britishhorseracing.com

Definitions

This report uses the Horses in Training returns from the Weatherby's Racing Administration System, this is completed by trainers and should be updated whenever a horse enters or leaves training in their care as part of the conditions of their licence.

Horses in Training

Unless otherwise stated, snapshots of Horses in Training will be from the 15th day of the month in question and year to date figures will be up to and including the date titled at the front of the report.

Horses' ratings will be taken from the most recently published ratings by the BHA Handicapping Team, which is currently at 7am each Tuesday morning. For example, if looking at the Horses in a particular rating band for July 2011, the horses in training number will be from Friday 15th July 2011 and ratings, where possible, will be assigned to each horse from the ratings published by the BHA Handicappers on Tuesday 12th July 2011.

The Gender of a horse will be taken from the reporting date in question, regardless of whether this has since changed. In the case of YTD reporting, where a horse's gender or training type has changed in the year-to-date period, the most recent is taken.

This report does not count any horses that are temporarily racing abroad for GB Trainers at the time of reporting.

Yearlings are not included in total counts of flat and/or dual horses but will be sometimes shown separately for information purposes.

Yearlings and two-year-olds are not included in total counts of jump horses or counts of jump horses that include dual horses but will be sometimes shown separately for information purposes.

Yearlings, two-year-olds and three-year-olds are not included in total counts of Hunter Chasers but will be sometimes shown separately for information purposes.

Hunter Chasers are not included in any counts of Jump Horses or Total figures but will be sometimes shown separately for information purposes.

Runners

Unless otherwise specified, Total Runners and Individual Runners metrics only counts runners that ran in GB races including any voided races. Withdrawn horses are not included.

Hunter Chases are not included in this section but will be sometimes shown separately for information purposes.

Total Runners is a count of all runners in races, whilst individual runners only counts each individual horse once.

Monthly Horses in Training

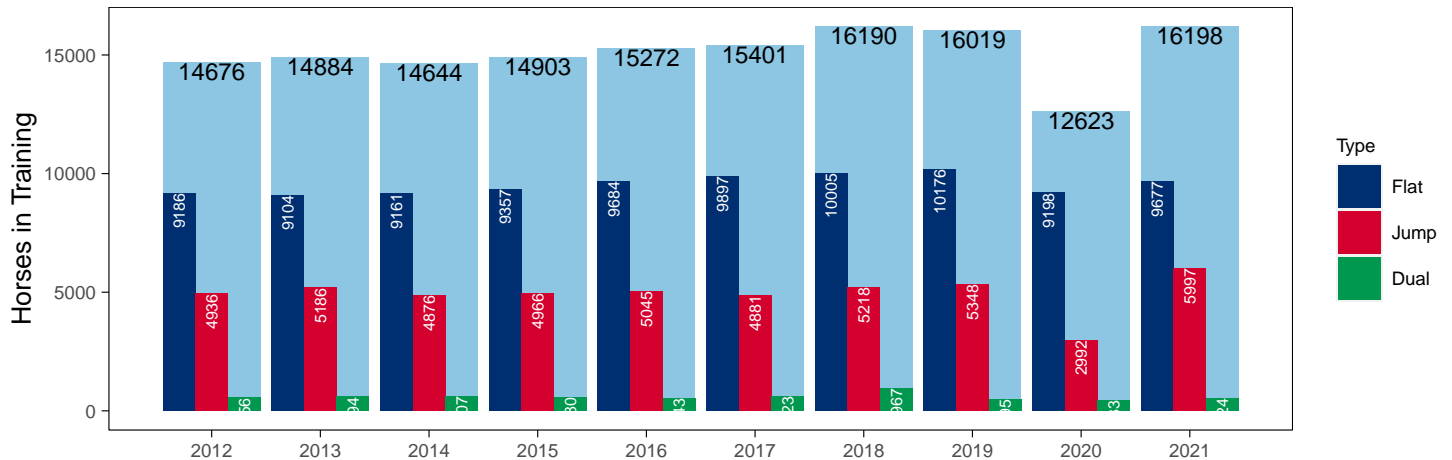
April 2021 Horses in Training Snapshot versus Previous Years

Type	2012	2013	2014	2015	2016	2017	2018	2019	2020	2021	vs. Last Year	vs. Pre-Covid
Flat	9186	9104	9161	9357	9684	9897	10005	10176	9198	9677	+479 / +5.2%	-499 / -4.9%
Jump	4936	5186	4876	4966	5045	4881	5218	5348	2992	5997	+3005 / +100.4%	+649 / +12.1%
Dual	556	594	607	580	543	623	967	495	433	524	+91 / +21.0%	+29 / +5.9%
Hunter	2498	2261	2185	2045	1981	1911	1730	1701	1434	1152	-282 / -19.7%	-549 / -32.3%
Total	14676	14884	14644	14903	15272	15401	16190	16019	12623	16198	+3575 / +28.3%	+179 / +1.1%

'vs. Pre-Covid' is comparison between 2021 and 2019

Snapshot of Total Horses in Training in April

Horses in Training in April, shown by Training Type



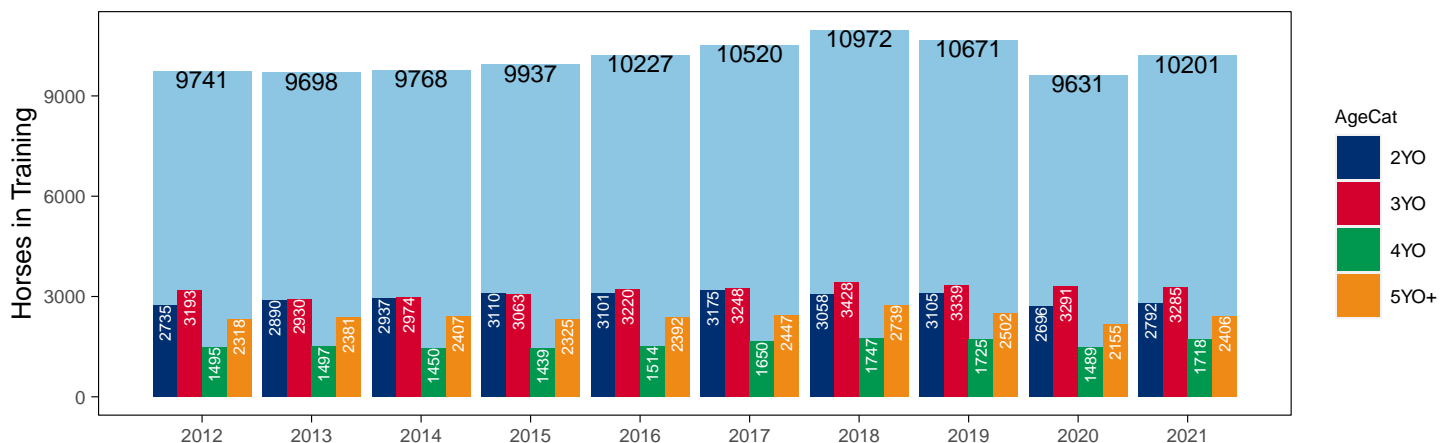
Flat (including Dual)

AgeCat	2012	2013	2014	2015	2016	2017	2018	2019	2020	2021	vs. Last Year	vs. Pre-Covid
2YO	2735	2890	2937	3110	3101	3175	3058	3105	2696	2792	+96 / +3.6%	-313 / -10.1%
3YO	3193	2930	2974	3063	3220	3248	3428	3339	3291	3285	-6 / -0.2%	-54 / -1.6%
4YO	1495	1497	1450	1439	1514	1650	1747	1725	1489	1718	+229 / +15.4%	-7 / -0.4%
5YO+	2318	2381	2407	2325	2392	2447	2739	2502	2155	2406	+251 / +11.6%	-96 / -3.8%
Total	9741	9698	9768	9937	10227	10520	10972	10671	9631	10201	+570 / +5.9%	-470 / -4.4%

'vs. Pre-Covid' is comparison between 2021 and 2019

Snapshot of Flat Horses in Training in April

Flat Horses in Training in April, shown by Age



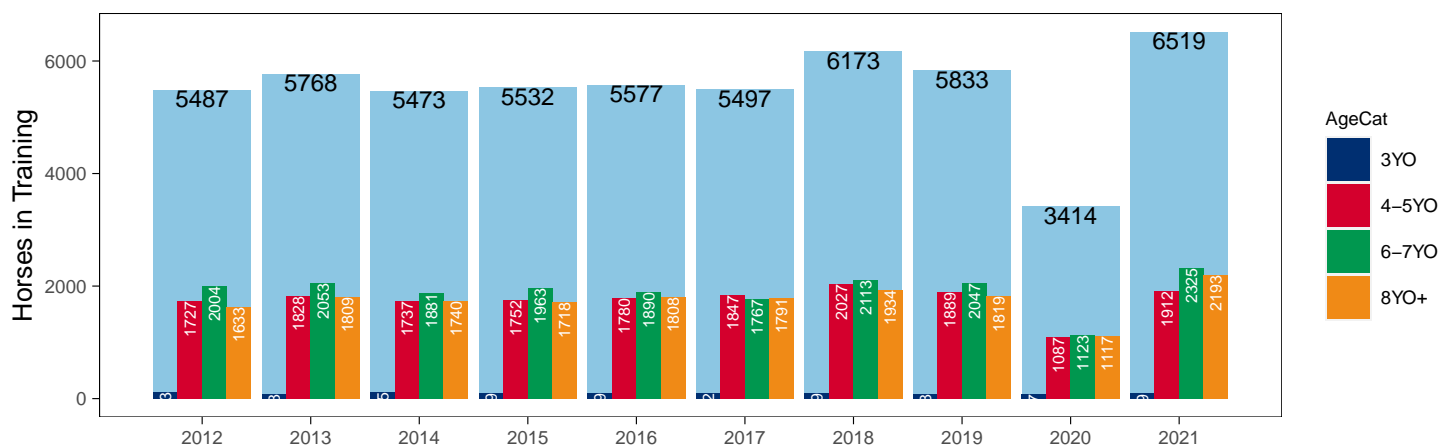
Jump (including Dual)

AgeCat	2012	2013	2014	2015	2016	2017	2018	2019	2020	2021	vs. Last Year	vs. Pre-Covid
3YO	123	78	115	99	99	92	99	78	87	89	+2 / +2.3%	+11 / +14.1%
4-5YO	1727	1828	1737	1752	1780	1847	2027	1889	1087	1912	+825 / +75.9%	+23 / +1.2%
6-7YO	2004	2053	1881	1963	1890	1767	2113	2047	1123	2325	+1202 / +107.0%	+278 / +13.6%
8YO+	1633	1809	1740	1718	1808	1791	1934	1819	1117	2193	+1076 / +96.3%	+374 / +20.6%
Total	5487	5768	5473	5532	5577	5497	6173	5833	3414	6519	+3105 / +90.9%	+686 / +11.8%

'vs. Pre-Covid' is comparison between 2021 and 2019

Snapshot of Jump Horses in Training in April

Jump Horses in Training in April, shown by Age



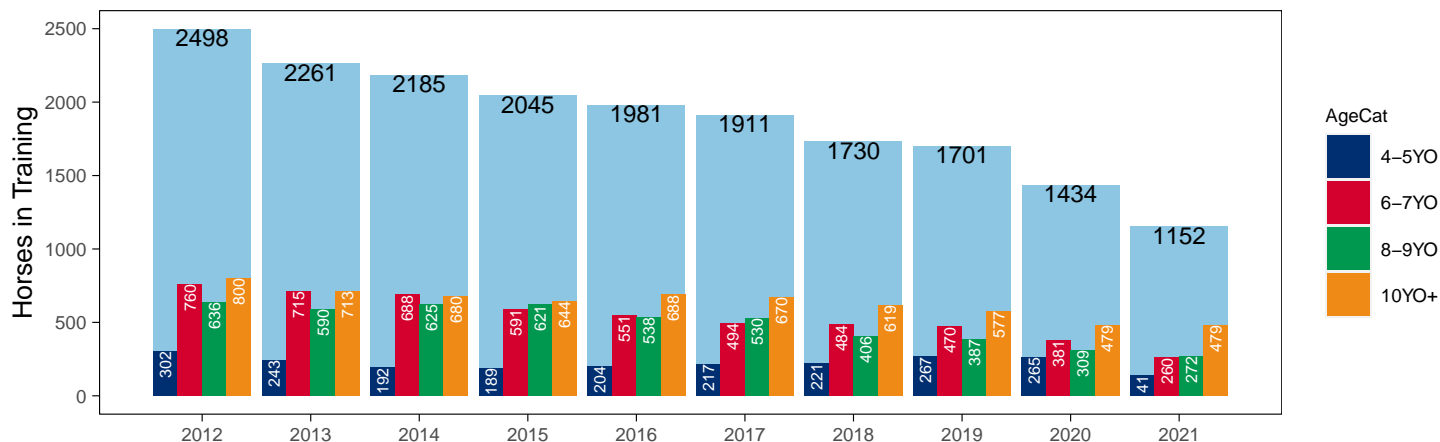
Hunter Chasers

AgeCat	2012	2013	2014	2015	2016	2017	2018	2019	2020	2021	vs. Last Year	vs. Pre-Covid
4-5YO	302	243	192	189	204	217	221	267	265	141	-124 / -46.8%	-126 / -47.2%
6-7YO	760	715	688	591	551	494	484	470	381	260	-121 / -31.8%	-210 / -44.7%
8-9YO	636	590	625	621	538	530	406	387	309	272	-37 / -12.0%	-115 / -29.7%
10YO+	800	713	680	644	688	670	619	577	479	479	0 / 0.0%	-98 / -17.0%
Total	2498	2261	2185	2045	1981	1911	1730	1701	1434	1152	-282 / -19.7%	-549 / -32.3%

'vs. Pre-Covid' is comparison between 2021 and 2019

Snapshot of Hunter Chasers in Training in April

Hunter Chasers in Training in April, shown by Age



2021 Horses in Training versus Previous Years

Type	Period	Jan	Feb	Mar	Apr	May	Jun	Jul	Aug	Sep	Oct	Nov	Dec
Flat	2021	8370	8854	9305	9677	0	0	0	0	0	0	0	0
	2020	8886	9286	9502	9198	9395	9956	9992	9835	9396	8776	6981	6328
	Pre-Covid	8627	9168	9725	10176	10385	10397	10100	9759	9473	8801	7020	6551
Jump	2021	6459	6482	6392	5997	0	0	0	0	0	0	0	0
	2020	5920	5933	5956	2992	2314	2689	4416	5446	5995	6362	6508	6383
	Pre-Covid	5724	5785	5765	5348	4032	3127	3616	4810	5321	5755	5986	5981
Dual	2021	510	496	519	524	0	0	0	0	0	0	0	0
	2020	541	552	572	433	439	514	550	587	609	603	585	530
	Pre-Covid	482	470	467	495	456	455	473	484	479	537	566	534
Hunter	2021	791	787	861	1152	0	0	0	0	0	0	0	0
	2020	949	1327	1467	1434	1424	1396	1358	1324	0	228	447	794
	Pre-Covid	995	1378	1571	1701	1693	1637	1613	0	0	0	244	605
Total	2021	15339	15832	16216	16198	0	0	0	0	0	0	0	0
	2020	15347	15771	16030	12623	12148	13159	14958	15868	16000	15741	14074	13241
	Pre-Covid	14695	15298	15741	15101	14153	13606	13966	14933	15227	14960	13215	12633

'Pre-Covid' is 2019 values

Monthly Horses in Training

2021 against 2020 and Pre-Covid, shown with % Difference

Period — Pre-Covid — 2020 — 2021



'Pre-Covid' is 2019 values

Flat (including Dual)

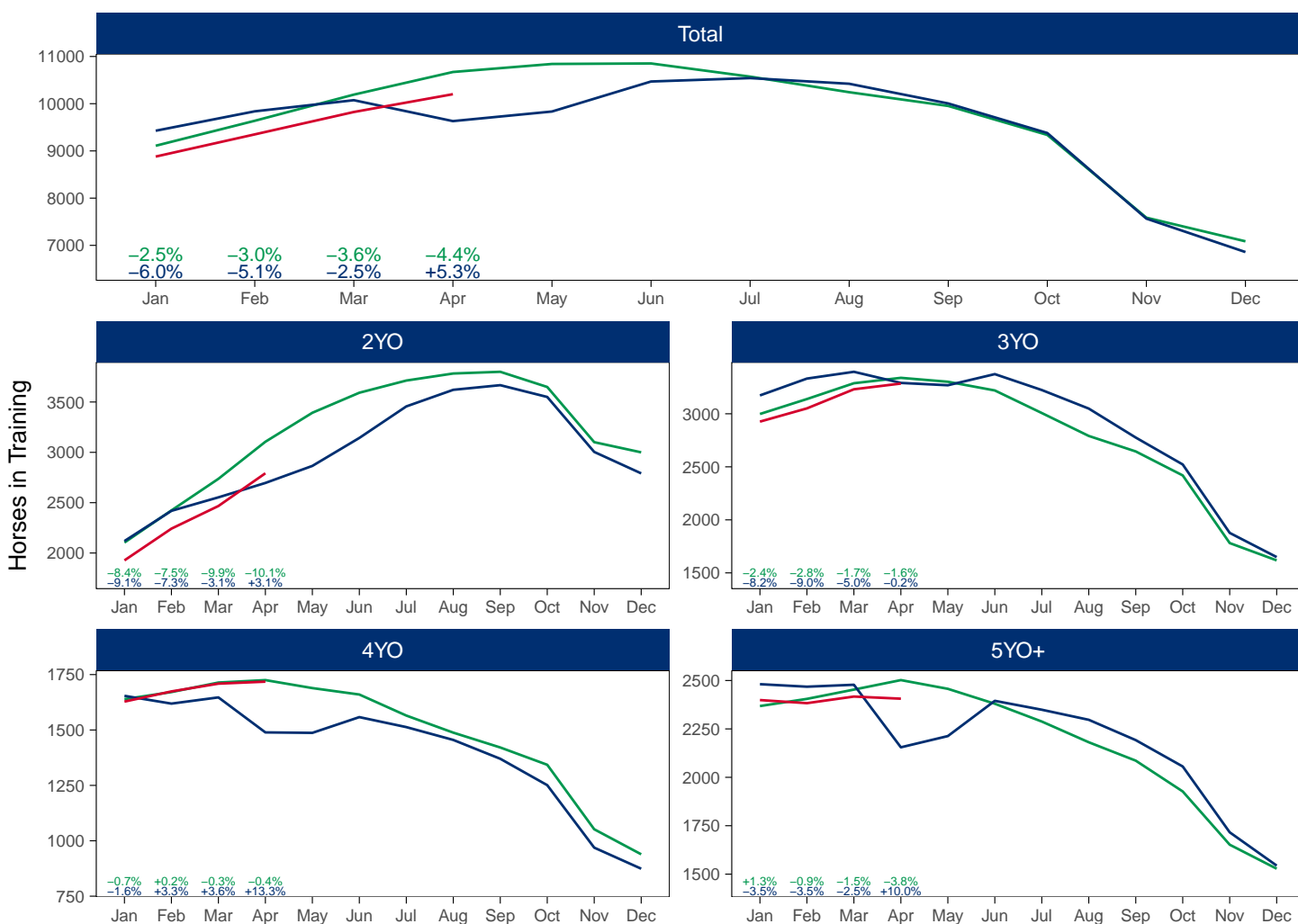
AgeCat	Period	Jan	Feb	Mar	Apr	May	Jun	Jul	Aug	Sep	Oct	Nov	Dec
2YO	2021	1927	2242	2467	2792								
	2020	2119	2419	2553	2696	2865	3143	3456	3621	3667	3550	3004	2791
	Pre-Covid	2184	2523	2798	3027	3274	3512	3668	3765	3777	3609	2991	2831
3YO	2021	2926	3051	3231	3285								
	2020	3173	3332	3396	3291	3269	3374	3224	3049	2776	2522	1877	1649
	Pre-Covid	2996	3173	3285	3305	3262	3216	3003	2842	2666	2437	1758	1586
4YO	2021	1628	1674	1709	1718								
	2020	1654	1619	1647	1489	1487	1558	1513	1455	1370	1251	969	874
	Pre-Covid	1575	1607	1637	1625	1598	1560	1479	1434	1371	1280	995	906
5YO+	2021	2399	2383	2417	2406								
	2020	2481	2468	2478	2155	2213	2395	2349	2297	2192	2056	1716	1544
	Pre-Covid	2420	2454	2478	2447	2423	2390	2301	2215	2119	1976	1671	1548
Total	2021	8880	9350	9824	10201								
	2020	9427	9838	10074	9631	9834	10470	10542	10422	10005	9379	7566	6858
	Pre-Covid	9175	9756	10197	10404	10557	10678	10452	10257	9933	9302	7415	6871

'Pre-Covid' is 2019 values

Monthly Flat Horses in Training

2021 against 2020 and Pre-Covid, shown with % Difference

Period — Pre-Covid — 2020 — 2021



'Pre-Covid' is 2019 values

Jump (including Dual)

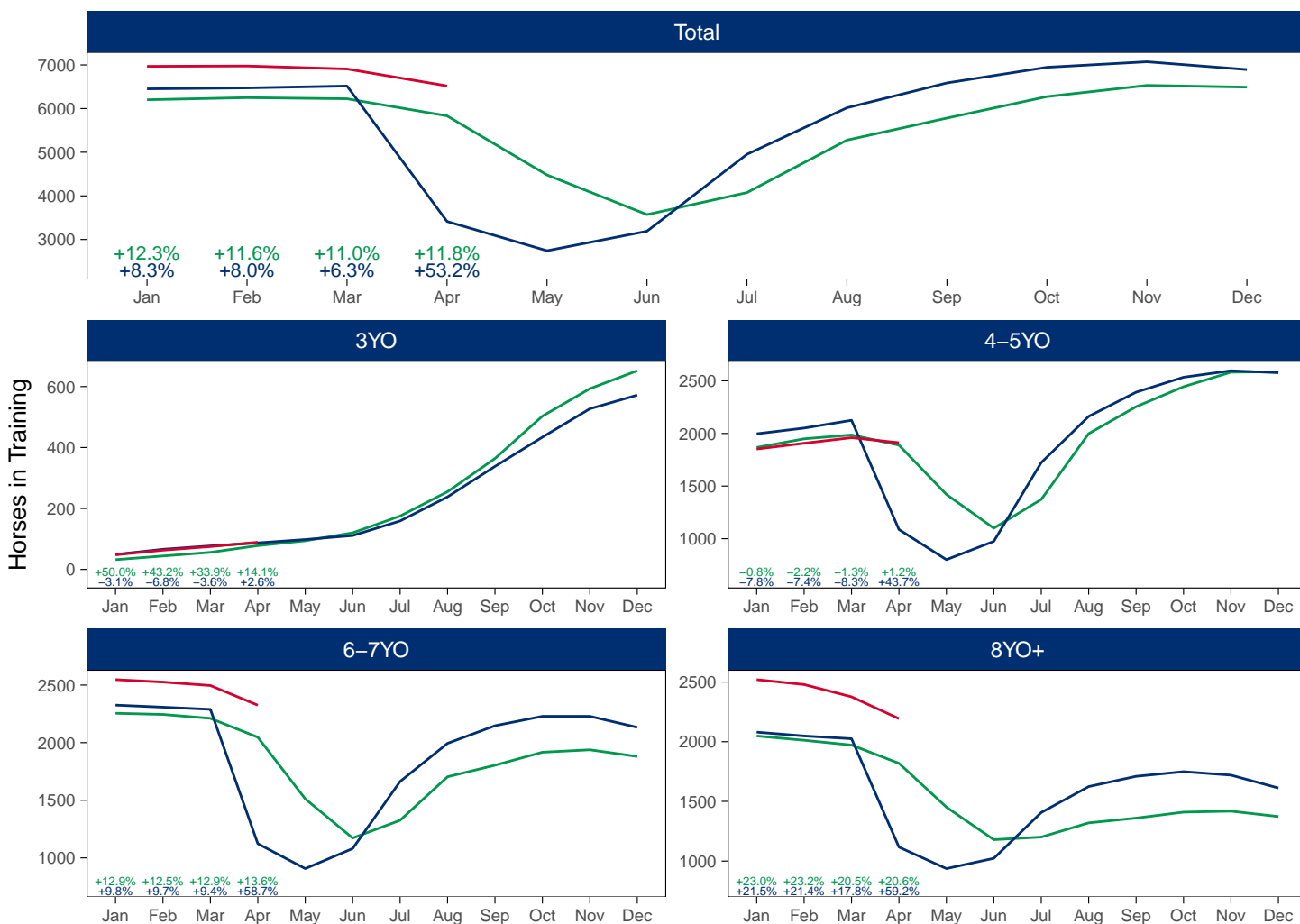
AgeCat	Period	Jan	Feb	Mar	Apr	May	Jun	Jul	Aug	Sep	Oct	Nov	Dec
3YO	2021	48	63	75	89								
	2020	49	66	77	87	98	111	159	238	338	434	527	572
	Pre-Covid	47	61	73	91	104	130	176	256	357	466	562	624
4-5YO	2021	1852	1907	1960	1912								
	2020	1997	2051	2125	1087	801	975	1723	2162	2392	2534	2596	2577
	Pre-Covid	1876	1945	1997	1726	1286	1035	1338	1922	2216	2386	2472	2479
6-7YO	2021	2547	2526	2496	2325								
	2020	2326	2308	2289	1123	907	1081	1663	1994	2147	2229	2229	2133
	Pre-Covid	2172	2148	2125	1788	1385	1140	1330	1680	1837	1911	1903	1842
8YO+	2021	2520	2479	2376	2193								
	2020	2080	2048	2025	1117	937	1023	1407	1624	1710	1749	1720	1612
	Pre-Covid	2017	1989	1962	1694	1390	1169	1219	1373	1443	1472	1458	1400
Total	2021	6967	6975	6907	6519								
	2020	6452	6473	6516	3414	2743	3190	4952	6018	6587	6946	7072	6894
	Pre-Covid	6113	6143	6157	5299	4165	3474	4063	5232	5853	6236	6395	6345

'Pre-Covid' is 2019 values

Monthly Jump Horses in Training

2021 against 2020 and Pre-Covid, shown with % Difference

Period — Pre-Covid — 2020 — 2021



'Pre-Covid' is 2019 values

Hunter Chasers

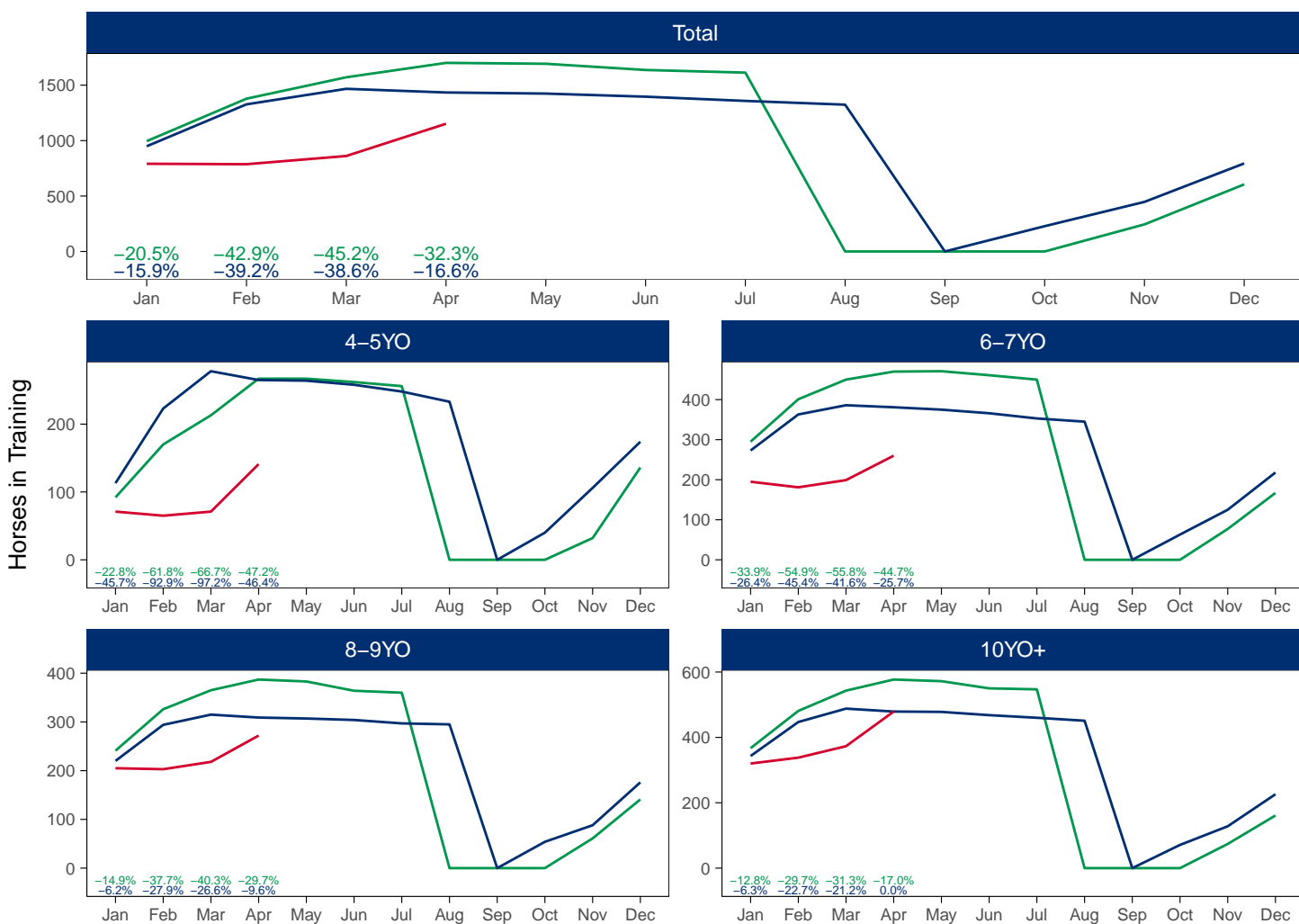
AgeCat	Period	Jan	Feb	Mar	Apr	May	Jun	Jul	Aug	Oct	Nov	Dec
4-5YO	2021	71	65	71	141							
	2020	113	223	278	265	264	258	248	233	40	106	174
	Pre-Covid	91	155	205	235	245	233	237	233	40	56	148
6-7YO	2021	195	181	199	260							
	2020	273	363	386	381	375	366	353	345	63	125	218
	Pre-Covid	293	400	452	476	479	458	425	345	63	75	182
8-9YO	2021	205	203	218	272							
	2020	220	294	315	309	307	304	297	295	54	88	176
	Pre-Covid	273	368	412	434	433	415	383	295	54	65	165
10YO+	2021	320	338	373	479							
	2020	343	447	488	479	478	468	460	451	71	128	226
	Pre-Covid	385	518	580	607	605	585	551	451	36	76	174
Total	2021	791	787	861	1152							
	2020	949	1327	1467	1434	1424	1396	1358	1324	228	447	794
	Pre-Covid	1043	1441	1648	1751	1761	1690	1596	1324	114	272	669

'Pre-Covid' is 2019 values

Monthly Hunter Chasers in Training

2021 against 2020 and Pre-Covid, shown with % Difference

Period — Pre-Covid — 2020 — 2021



'Pre-Covid' is 2019 values

April 2021 Horses in Training by Rating Band Snapshot versus Previous Years

Flat (including Dual)

Age Cat	Rat Band	2012	2013	2014	2015	2016	2017	2018	2019	2020	2021
2YO	Unrated	2735 (100.0%)	2890 (100.0%)	2937 (100.0%)	3110 (100.0%)	3101 (100.0%)	3175 (100.0%)	3058 (100.0%)	3105 (100.0%)	2696 (100.0%)	2792 (100.0%)
	Subtotal	2735 (100.0%)	2890 (100.0%)	2937 (100.0%)	3110 (100.0%)	3101 (100.0%)	3175 (100.0%)	3058 (100.0%)	3105 (100.0%)	2696 (100.0%)	2792 (100.0%)
3YO	0-50	122 (3.8%)	94 (3.2%)	125 (4.2%)	114 (3.7%)	106 (3.3%)	120 (3.7%)	101 (2.9%)	146 (4.4%)	118 (3.6%)	138 (4.2%)
	51-60	221 (6.9%)	227 (7.7%)	220 (7.4%)	227 (7.4%)	216 (6.7%)	258 (7.9%)	222 (6.5%)	305 (9.1%)	217 (6.6%)	279 (8.5%)
	61-70	321 (10.1%)	338 (11.5%)	343 (11.5%)	339 (11.1%)	407 (12.6%)	406 (12.5%)	407 (11.9%)	405 (12.1%)	324 (9.8%)	402 (12.2%)
	71-80	363 (11.4%)	379 (12.9%)	378 (12.7%)	424 (13.8%)	449 (13.9%)	441 (13.6%)	443 (12.9%)	391 (11.7%)	356 (10.8%)	386 (11.8%)
	81-90	174 (5.4%)	142 (4.8%)	198 (6.7%)	201 (6.6%)	237 (7.4%)	278 (8.6%)	229 (6.7%)	241 (7.2%)	195 (5.9%)	219 (6.7%)
	91-100	76 (2.4%)	63 (2.2%)	89 (3.0%)	101 (3.3%)	95 (3.0%)	87 (2.7%)	89 (2.6%)	106 (3.2%)	93 (2.8%)	99 (3.0%)
	101+	48 (1.5%)	59 (2.0%)	48 (1.6%)	76 (2.5%)	64 (2.0%)	63 (1.9%)	72 (2.1%)	59 (1.8%)	64 (1.9%)	67 (2.0%)
	Unrated	1868 (58.5%)	1628 (55.6%)	1573 (52.9%)	1581 (51.6%)	1646 (51.1%)	1595 (49.1%)	1865 (54.4%)	1686 (50.5%)	1924 (58.5%)	1695 (51.6%)
Subtotal		3193 (100.0%)	2930 (100.0%)	2974 (100.0%)	3063 (100.0%)	3220 (100.0%)	3248 (100.0%)	3428 (100.0%)	3339 (100.0%)	3291 (100.0%)	3285 (100.0%)
4YO	0-50	125 (8.4%)	116 (7.7%)	111 (7.7%)	103 (7.2%)	107 (7.1%)	134 (8.1%)	173 (9.9%)	182 (10.6%)	168 (11.3%)	166 (9.7%)
	51-60	166 (11.1%)	168 (11.2%)	148 (10.2%)	159 (11.0%)	160 (10.6%)	185 (11.2%)	184 (10.5%)	230 (13.3%)	184 (12.4%)	229 (13.3%)
	61-70	227 (15.2%)	194 (13.0%)	218 (15.0%)	213 (14.8%)	239 (15.8%)	256 (15.5%)	270 (15.5%)	276 (16.0%)	232 (15.6%)	292 (17.0%)
	71-80	244 (16.3%)	223 (14.9%)	234 (16.1%)	257 (17.9%)	274 (18.1%)	306 (18.5%)	295 (16.9%)	278 (16.1%)	216 (14.5%)	306 (17.8%)
	81-90	163 (10.9%)	162 (10.8%)	181 (12.5%)	187 (13.0%)	232 (15.3%)	233 (14.1%)	216 (12.4%)	223 (12.9%)	195 (13.1%)	186 (10.8%)
	91-100	80 (5.4%)	90 (6.0%)	94 (6.5%)	114 (7.9%)	112 (7.4%)	113 (6.8%)	130 (7.4%)	152 (8.8%)	129 (8.7%)	149 (8.7%)
	101+	52 (3.5%)	65 (4.3%)	61 (4.2%)	88 (6.1%)	66 (3.3%)	100 (6.1%)	77 (4.4%)	87 (5.0%)	86 (5.8%)	73 (4.2%)
	Unrated	438 (29.3%)	479 (32.0%)	403 (27.8%)	318 (22.1%)	294 (19.4%)	323 (19.6%)	402 (23.0%)	297 (17.2%)	279 (18.7%)	317 (18.5%)
Subtotal		1495 (100.0%)	1497 (100.0%)	1450 (100.0%)	1439 (100.0%)	1514 (100.0%)	1650 (100.0%)	1747 (100.0%)	1725 (100.0%)	1489 (100.0%)	1718 (100.0%)
5YO+	0-50	219 (9.4%)	213 (8.9%)	248 (10.3%)	224 (9.6%)	197 (8.2%)	217 (8.9%)	298 (10.9%)	355 (14.2%)	268 (12.4%)	296 (12.3%)
	51-60	289 (12.5%)	301 (12.6%)	304 (12.6%)	318 (13.7%)	341 (14.3%)	325 (13.3%)	374 (13.7%)	387 (15.5%)	303 (14.1%)	412 (17.1%)
	61-70	350 (15.1%)	374 (15.7%)	345 (14.3%)	379 (16.3%)	389 (16.3%)	401 (16.4%)	389 (14.2%)	419 (16.7%)	351 (16.3%)	413 (17.2%)
	71-80	324 (14.0%)	291 (12.2%)	353 (14.7%)	376 (16.2%)	371 (15.5%)	380 (15.5%)	369 (13.5%)	333 (13.3%)	309 (14.3%)	337 (14.0%)
	81-90	243 (10.5%)	230 (9.7%)	253 (10.5%)	269 (11.6%)	306 (12.8%)	304 (12.4%)	318 (11.6%)	287 (11.5%)	249 (11.6%)	255 (10.6%)
	91-100	129 (5.6%)	121 (5.1%)	157 (6.5%)	162 (7.0%)	175 (7.3%)	189 (7.7%)	180 (6.6%)	191 (7.6%)	156 (7.2%)	174 (7.2%)
	101+	94 (4.1%)	87 (3.7%)	107 (4.4%)	113 (4.9%)	155 (6.5%)	174 (7.1%)	158 (5.8%)	150 (6.0%)	123 (5.7%)	159 (6.6%)
	Unrated	670 (28.9%)	764 (32.1%)	640 (26.6%)	484 (20.8%)	458 (19.1%)	457 (18.7%)	653 (23.8%)	380 (15.2%)	396 (18.4%)	360 (15.0%)
Subtotal		2318 (100.0%)	2381 (100.0%)	2407 (100.0%)	2325 (100.0%)	2392 (100.0%)	2447 (100.0%)	2739 (100.0%)	2502 (100.0%)	2155 (100.0%)	2406 (100.0%)
Overall	0-50	466 (4.8%)	423 (4.4%)	484 (5.0%)	441 (4.4%)	410 (4.0%)	471 (4.5%)	572 (5.2%)	683 (6.4%)	554 (5.8%)	600 (5.9%)
	51-60	676 (6.9%)	696 (7.2%)	672 (6.9%)	704 (7.1%)	717 (7.0%)	768 (7.3%)	780 (7.1%)	922 (8.6%)	704 (7.3%)	920 (9.0%)
	61-70	898 (9.2%)	906 (9.3%)	906 (9.3%)	931 (9.4%)	1035 (10.1%)	1063 (10.1%)	1066 (9.7%)	1100 (10.3%)	907 (9.4%)	1107 (10.9%)
	71-80	931 (9.6%)	893 (9.2%)	965 (9.9%)	1057 (10.6%)	1094 (10.7%)	1127 (10.7%)	1107 (10.1%)	1002 (9.4%)	881 (9.1%)	1029 (10.1%)
	81-90	580 (6.0%)	534 (5.5%)	632 (6.5%)	657 (6.6%)	775 (7.6%)	815 (7.7%)	763 (7.0%)	751 (7.0%)	639 (6.6%)	660 (6.5%)
	91-100	285 (2.9%)	274 (2.8%)	340 (3.5%)	377 (3.8%)	382 (3.7%)	389 (3.7%)	399 (3.6%)	449 (4.2%)	378 (3.9%)	422 (4.1%)
	101+	194 (2.0%)	211 (2.2%)	216 (2.2%)	277 (2.8%)	315 (3.1%)	337 (3.2%)	307 (2.8%)	296 (2.8%)	273 (2.8%)	299 (2.9%)
	Unrated	5711 (58.6%)	5761 (59.4%)	5553 (56.8%)	5493 (55.3%)	5499 (53.8%)	5550 (52.8%)	5978 (54.5%)	5468 (51.2%)	5295 (55.0%)	5164 (50.6%)
Total		9741 (100.0%)	9698 (100.0%)	9768 (100.0%)	9937 (100.0%)	10227 (100.0%)	10520 (100.0%)	10972 (100.0%)	10671 (100.0%)	9631 (100.0%)	10201 (100.0%)

Jump (including Dual)

AgeCat	RatBand	2012	2013	2014	2015	2016	2017	2018	2019	2020	2021
3YO	Unrated	123 (100.0%)	78 (100.0%)	115 (100.0%)	99 (100.0%)	99 (100.0%)	92 (100.0%)	99 (100.0%)	78 (100.0%)	87 (100.0%)	89 (100.0%)
	Subtotal	123 (100.0%)	78 (100.0%)	115 (100.0%)	99 (100.0%)	99 (100.0%)	92 (100.0%)	99 (100.0%)	78 (100.0%)	87 (100.0%)	89 (100.0%)
4-5YO	0-100	116 (6.7%)	114 (6.2%)	137 (7.9%)	130 (7.4%)	141 (7.9%)	167 (9.0%)	137 (6.8%)	135 (7.1%)	121 (11.1%)	210 (11.0%)
	101-110	65 (3.8%)	67 (3.7%)	62 (3.6%)	88 (5.0%)	113 (6.3%)	107 (5.8%)	129 (6.4%)	114 (6.0%)	53 (4.9%)	75 (3.9%)
	111-120	73 (4.2%)	71 (3.9%)	89 (5.1%)	101 (5.8%)	95 (5.3%)	114 (6.2%)	107 (5.3%)	129 (6.8%)	55 (5.1%)	99 (5.2%)
	121-130	42 (2.4%)	61 (3.3%)	63 (3.6%)	82 (4.7%)	69 (3.9%)	85 (4.6%)	95 (4.7%)	90 (4.8%)	45 (4.1%)	64 (3.3%)
	131-140	23 (1.3%)	24 (1.3%)	36 (2.1%)	47 (2.7%)	48 (2.7%)	58 (3.1%)	58 (2.9%)	47 (2.5%)	13 (1.2%)	32 (1.7%)
	141-150	13 (0.8%)	14 (0.8%)	16 (0.9%)	21 (1.2%)	15 (0.8%)	15 (0.8%)	12 (0.6%)	20 (1.1%)	7 (0.6%)	6 (0.3%)
	151+	3 (0.2%)	4 (0.2%)	4 (0.2%)	8 (0.5%)	5 (0.3%)	3 (0.2%)	4 (0.2%)	3 (0.2%)	4 (0.4%)	5 (0.3%)
	Unrated	1392 (80.6%)	1473 (80.6%)	1330 (76.6%)	1275 (72.8%)	1294 (72.7%)	1298 (70.3%)	1485 (73.3%)	1351 (71.5%)	789 (72.6%)	1421 (74.3%)
	Subtotal	1727 (100.0%)	1828 (100.0%)	1737 (100.0%)	1752 (100.0%)	1780 (100.0%)	1847 (100.0%)	2027 (100.0%)	1889 (100.0%)	1087 (100.0%)	1912 (100.0%)
6-7YO	0-100	274 (13.7%)	315 (15.3%)	352 (18.7%)	376 (19.2%)	359 (19.0%)	366 (20.7%)	400 (18.9%)	428 (20.9%)	283 (25.2%)	632 (27.2%)
	101-110	163 (8.1%)	157 (7.6%)	186 (9.9%)	218 (11.1%)	242 (12.8%)	236 (13.4%)	250 (11.8%)	291 (14.2%)	160 (14.2%)	279 (12.0%)
	111-120	169 (8.4%)	188 (9.2%)	207 (11.0%)	231 (11.8%)	263 (13.9%)	249 (14.1%)	307 (14.5%)	293 (14.3%)	147 (13.1%)	307 (13.2%)
	121-130	121 (6.0%)	152 (7.4%)	169 (9.0%)	214 (10.9%)	203 (10.7%)	208 (11.8%)	251 (11.9%)	257 (12.6%)	101 (9.0%)	296 (12.7%)
	131-140	69 (3.4%)	70 (3.4%)	83 (4.4%)	113 (5.8%)	129 (6.8%)	154 (8.7%)	178 (8.4%)	214 (10.5%)	70 (6.2%)	152 (6.5%)
	141-150	22 (1.1%)	32 (1.6%)	29 (1.5%)	53 (2.7%)	54 (2.9%)	58 (3.3%)	69 (3.3%)	53 (2.6%)	21 (1.9%)	75 (3.2%)
	151+	18 (0.9%)	15 (0.7%)	26 (1.4%)	30 (1.5%)	18 (1.0%)	26 (1.5%)	30 (1.4%)	31 (1.5%)	11 (1.0%)	26 (1.1%)
	Unrated	1168 (58.3%)	1124 (54.7%)	829 (44.1%)	728 (37.1%)	622 (32.9%)	470 (26.6%)	628 (29.7%)	480 (23.4%)	330 (29.4%)	558 (24.0%)
	Subtotal	2004 (100.0%)	2053 (100.0%)	1881 (100.0%)	1963 (100.0%)	1890 (100.0%)	1767 (100.0%)	2113 (100.0%)	2047 (100.0%)	1123 (100.0%)	2325 (100.0%)
8YO+	0-100	323 (19.8%)	390 (21.6%)	482 (27.7%)	456 (26.5%)	504 (27.9%)	507 (28.3%)	499 (25.8%)	539 (29.6%)	335 (30.0%)	676 (30.8%)
	101-110	138 (8.5%)	158 (8.7%)	197 (11.3%)	198 (11.5%)	259 (14.3%)	237 (13.2%)	265 (13.7%)	257 (14.1%)	141 (12.6%)	296 (13.5%)
	111-120	119 (7.3%)	158 (8.7%)	207 (11.9%)	197 (11.5%)	237 (13.1%)	241 (13.5%)	248 (12.8%)	253 (13.9%)	131 (11.7%)	292 (13.3%)
	121-130	113 (6.9%)	136 (7.5%)	159 (9.1%)	213 (12.4%)	228 (12.6%)	195 (10.9%)	244 (12.6%)	215 (11.8%)	115 (10.3%)	279 (12.7%)
	131-140	72 (4.4%)	108 (6.0%)	114 (6.6%)	152 (8.8%)	162 (9.0%)	175 (9.8%)	187 (9.7%)	179 (9.8%)	83 (7.4%)	214 (9.8%)
	141-150	39 (2.4%)	41 (2.3%)	43 (2.5%)	62 (3.6%)	68 (3.8%)	70 (3.9%)	110 (5.7%)	89 (4.9%)	35 (3.1%)	92 (4.2%)
	151+	30 (1.8%)	29 (1.6%)	29 (1.7%)	33 (1.9%)	35 (1.9%)	33 (1.8%)	34 (1.8%)	48 (2.6%)	23 (2.1%)	61 (2.8%)
	Unrated	799 (48.9%)	789 (43.6%)	509 (29.3%)	407 (23.7%)	315 (17.4%)	333 (18.6%)	347 (17.9%)	239 (13.1%)	254 (22.7%)	283 (12.9%)
	Subtotal	1633 (100.0%)	1809 (100.0%)	1740 (100.0%)	1718 (100.0%)	1808 (100.0%)	1791 (100.0%)	1934 (100.0%)	1819 (100.0%)	1117 (100.0%)	2193 (100.0%)
Overall	0-100	713 (13.0%)	819 (14.2%)	971 (17.7%)	962 (17.4%)	1004 (18.0%)	1040 (18.9%)	1036 (16.8%)	1102 (18.9%)	739 (21.6%)	1518 (23.3%)
	101-110	366 (6.7%)	382 (6.6%)	445 (8.1%)	504 (9.1%)	614 (11.0%)	580 (10.6%)	644 (10.4%)	662 (11.3%)	354 (10.4%)	650 (10.0%)
	111-120	361 (6.6%)	417 (7.2%)	503 (9.2%)	529 (9.6%)	595 (10.7%)	604 (11.0%)	662 (10.7%)	675 (11.6%)	333 (9.8%)	698 (10.7%)
	121-130	276 (5.0%)	349 (6.1%)	391 (7.1%)	509 (9.2%)	500 (9.0%)	488 (8.9%)	590 (9.6%)	562 (9.6%)	261 (7.6%)	639 (9.8%)
	131-140	164 (3.0%)	202 (3.5%)	233 (4.3%)	312 (5.6%)	339 (6.1%)	387 (7.0%)	423 (6.9%)	440 (7.5%)	166 (4.9%)	398 (6.1%)
	141-150	74 (1.3%)	87 (1.5%)	88 (1.6%)	136 (2.5%)	137 (2.5%)	143 (2.6%)	191 (3.1%)	162 (2.8%)	63 (1.8%)	173 (2.7%)
	151+	51 (0.9%)	48 (0.8%)	59 (1.1%)	71 (1.3%)	58 (1.0%)	62 (1.1%)	68 (1.1%)	82 (1.4%)	38 (1.1%)	92 (1.4%)
	Unrated	3482 (63.5%)	3464 (60.1%)	2783 (50.8%)	2509 (45.4%)	2330 (41.8%)	2193 (39.9%)	2559 (41.5%)	2148 (36.8%)	1460 (42.8%)	2351 (36.1%)
	Total	5487 (100.0%)	5768 (100.0%)	5473 (100.0%)	5532 (100.0%)	5577 (100.0%)	5497 (100.0%)	6173 (100.0%)	5833 (100.0%)	3414 (100.0%)	6519 (100.0%)

Young Horses Entering Training

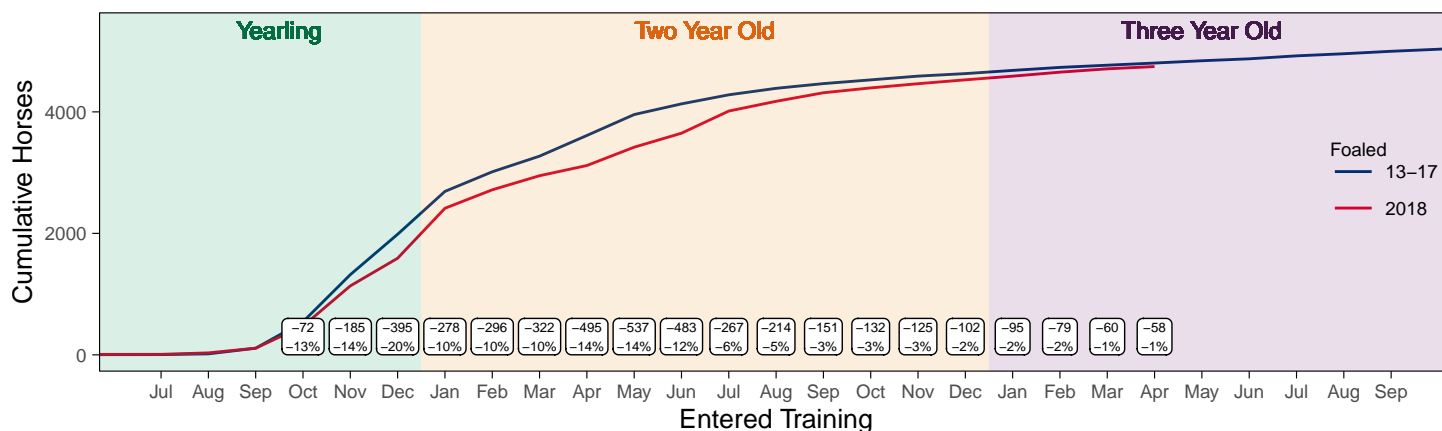
Flat Yearlings in Training versus Previous Years

Period	Jan	Feb	Mar	Apr	May	Jun	Jul	Aug	Sep	Oct	Nov	Dec
2021	0	0	0	0								
2020	0	0	0	0	1	2	1	2	60	235	712	1365
5YrAvg	1	1	1	1	1	1	1	2	44	241	724	1460

Foals Entering Training for the First Time

2018 Foals Entering Training Over Time

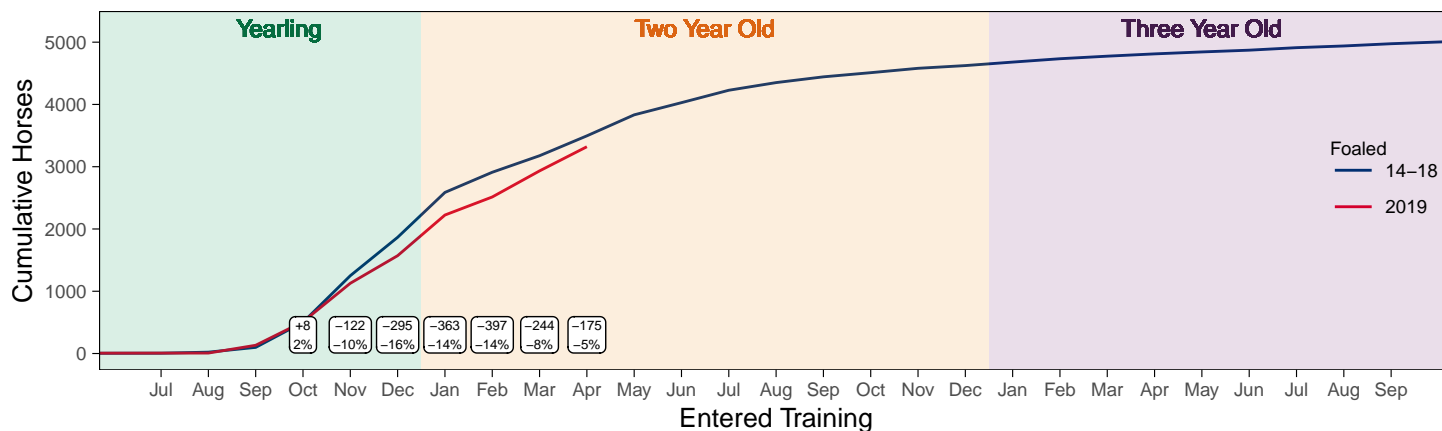
Cumulative Flat Horses foaled in 2018 shown by first in training notification against trend



Cumulative individual horses entering training for the first time by the end of each month.

2019 Foals Entering Training Over Time

Cumulative Flat Horses foaled in 2019 shown by first in training notification against trend



Cumulative individual horses entering training for the first time by the end of each month.

Year to Date Horses in Training

Type	2012	2013	2014	2015	2016	2017	2018	2019	2020	2021	vs. Last Year	vs. Pre-Covid
Flat	10817	10820	10916	11144	11566	11750	11739	11922	11384	11541	+157 / +1.4%	-381 / -3.2%
Jump	6645	6557	6450	6553	6546	6489	6225	6956	6810	7552	+742 / +10.9%	+596 / +8.6%
Dual	732	720	747	706	671	766	1224	645	716	669	-47 / -6.6%	+24 / +3.7%
Hunter	2700	2375	2256	2151	2088	1984	1829	1783	1504	1270	-234 / -15.6%	-513 / -28.8%
Total	18194	18097	18113	18403	18783	19005	19188	19523	18910	19762	+852 / +4.5%	+239 / +1.2%

'vs. Pre-Covid' is comparison between 2021 and 2019

Flat

AgeCat	2012	2013	2014	2015	2016	2017	2018	2019	2020	2021	vs. Last Year	vs. Pre-Covid
2YO	3103	3303	3397	3607	3603	3560	3492	3503	3080	3282	+202 / +6.6%	-221 / -6.3%
3YO	3576	3329	3375	3476	3715	3763	3911	3841	3866	3735	-131 / -3.4%	-106 / -2.8%
4YO	1725	1734	1633	1662	1766	1874	1817	1933	1861	1983	+122 / +6.6%	+50 / +2.6%
5YO+	2413	2454	2511	2399	2482	2553	2519	2645	2577	2541	-36 / -1.4%	-104 / -3.9%
Total	10817	10820	10916	11144	11566	11750	11739	11922	11384	11541	+157 / +1.4%	-381 / -3.2%

'vs. Pre-Covid' is comparison between 2021 and 2019

Jump

AgeCat	2012	2013	2014	2015	2016	2017	2018	2019	2020	2021	vs. Last Year	vs. Pre-Covid
3YO	52	30	56	42	61	35	48	53	37	55	+18 / +48.6%	+2 / +3.8%
4-5YO	2066	2014	1917	2004	2065	2037	1821	2125	2099	2081	-18 / -0.9%	-44 / -2.1%
6-7YO	2464	2369	2313	2408	2241	2168	2207	2482	2440	2736	+296 / +12.1%	+254 / +10.2%
8YO+	2063	2144	2164	2099	2179	2249	2149	2296	2234	2680	+446 / +20.0%	+384 / +16.7%
Total	6645	6557	6450	6553	6546	6489	6225	6956	6810	7552	+742 / +10.9%	+596 / +8.6%

'vs. Pre-Covid' is comparison between 2021 and 2019

Dual

AgeCat	2012	2013	2014	2015	2016	2017	2018	2019	2020	2021	vs. Last Year	vs. Pre-Covid
3YO	84	58	73	71	62	71	84	46	85	63	-22 / -25.9%	+17 / +37.0%
4YO	173	192	188	153	163	204	310	193	187	194	+7 / +3.7%	+1 / +0.5%
5YO+	475	470	486	482	446	491	830	406	444	412	-32 / -7.2%	+6 / +1.5%
Total	732	720	747	706	671	766	1224	645	716	669	-47 / -6.6%	+24 / +3.7%

'vs. Pre-Covid' is comparison between 2021 and 2019

Hunter Chasers

AgeCat	2012	2013	2014	2015	2016	2017	2018	2019	2020	2021	vs. Last Year	vs. Pre-Covid
4-5YO	337	267	212	226	239	247	273	304	299	178	-121 / -40.5%	-126 / -41.4%
6-7YO	836	750	705	611	577	515	505	498	395	303	-92 / -23.3%	-195 / -39.2%
8-9YO	679	614	647	643	554	533	415	393	317	301	-16 / -5.0%	-92 / -23.4%
10YO+	848	744	692	671	718	689	636	588	493	488	-5 / -1.0%	-100 / -17.0%
Total	2700	2375	2256	2151	2088	1984	1829	1783	1504	1270	-234 / -15.6%	-513 / -28.8%

'vs. Pre-Covid' is comparison between 2021 and 2019

Year to Date Runners

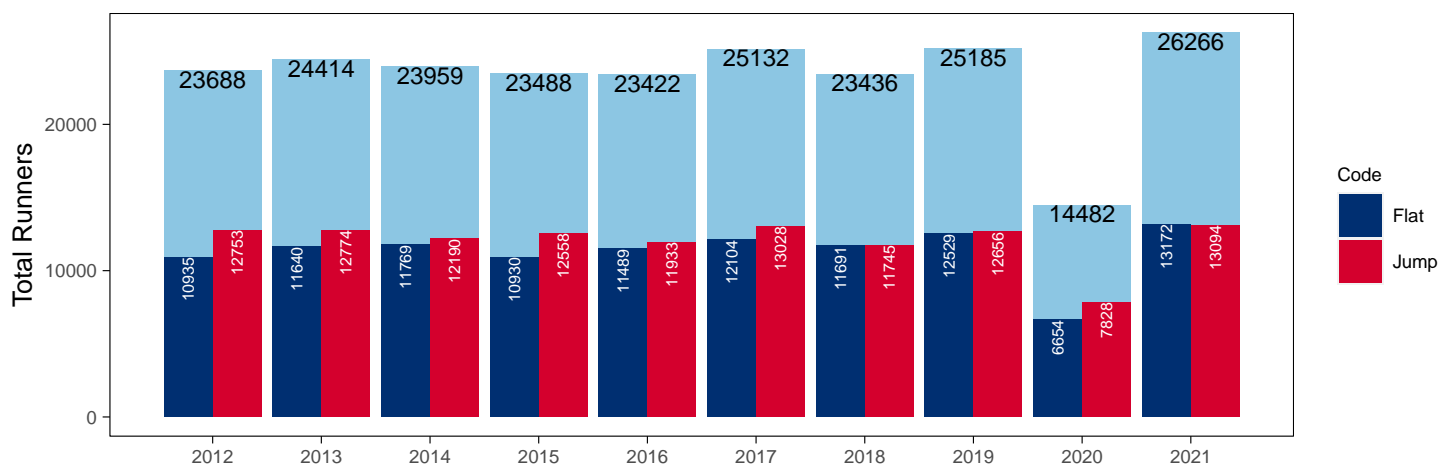
Year to Date Total Runners

Code	2012	2013	2014	2015	2016	2017	2018	2019	2020	2021	vs. Last Year	vs. Pre-Covid
Flat	10935	11640	11769	10930	11489	12104	11691	12529	6654	13172	+6518 / +98.0%	+643 / +5.1%
Jump	12753	12774	12190	12558	11933	13028	11745	12656	7828	13094	+5266 / +67.3%	+438 / +3.5%
Total	23688	24414	23959	23488	23422	25132	23436	25185	14482	26266	+11784 / +81.4%	+1081 / +4.3%

'vs. Pre-Covid' is comparison between 2021 and 2019

YTD Total Runners

Total Runners in GB Races, shown by Code and Total



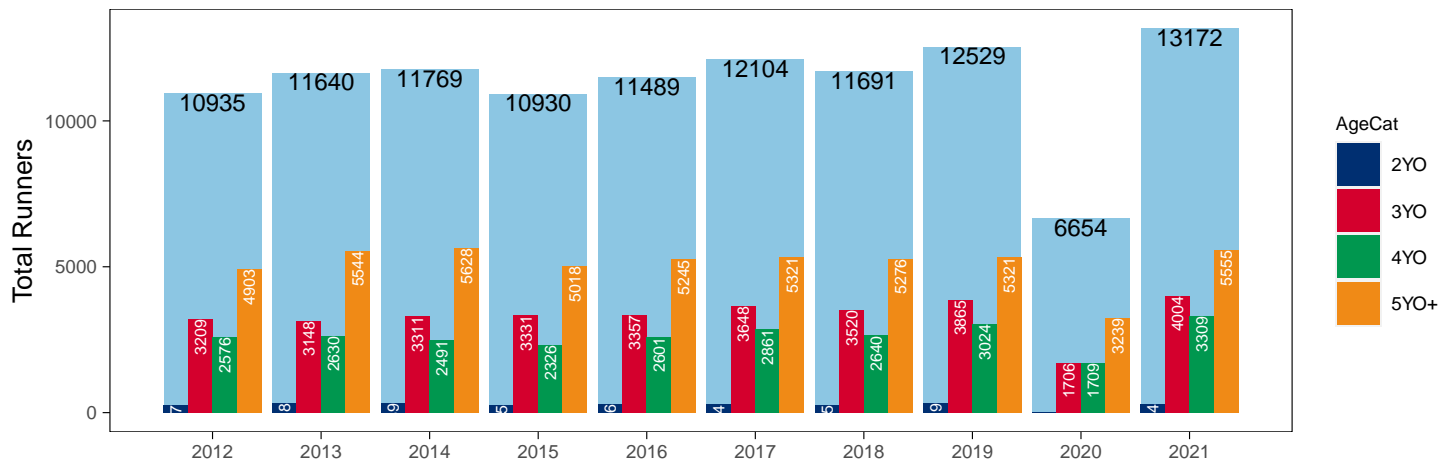
Flat

AgeCat	2012	2013	2014	2015	2016	2017	2018	2019	2020	2021	vs. Last Year	vs. Pre-Covid
2YO	247	318	339	255	286	274	255	319	304	304	NA / NA	-15 / -4.7%
3YO	3209	3148	3311	3331	3357	3648	3520	3865	1706	4004	+2298 / +134.7%	+139 / +3.6%
4YO	2576	2630	2491	2326	2601	2861	2640	3024	1709	3309	+1600 / +93.6%	+285 / +9.4%
5YO+	4903	5544	5628	5018	5245	5321	5276	5321	3239	5555	+2316 / +71.5%	+234 / +4.4%
Total	10935	11640	11769	10930	11489	12104	11691	12529	6654	13172	+6518 / +98.0%	+643 / +5.1%

'vs. Pre-Covid' is comparison between 2021 and 2019

YTD Total Flat Runners by Age

Total Runners in GB Flat Races, shown by Age Category and Total



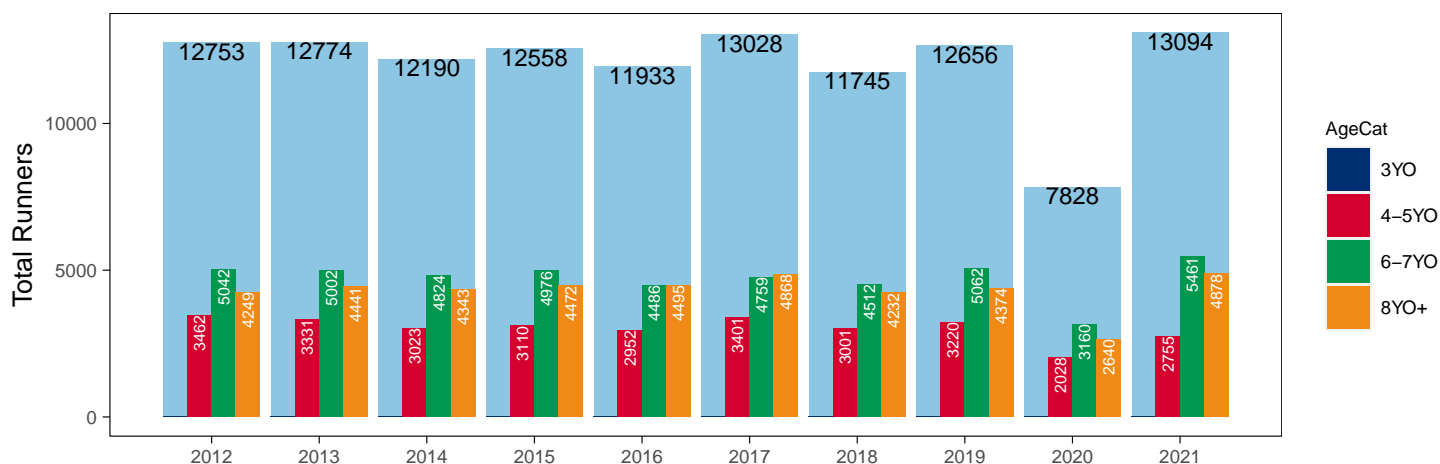
Jump

AgeCat	2012	2013	2014	2015	2016	2017	2018	2019	2020	2021	vs. Last Year	vs. Pre-Covid
3YO											NA / NA	0 / NA
4-5YO	3462	3331	3023	3110	2952	3401	3001	3220	2028	2755	+727 / +35.8%	-465 / -14.4%
6-7YO	5042	5002	4824	4976	4486	4759	4512	5062	3160	5461	+2301 / +72.8%	+399 / +7.9%
8YO+	4249	4441	4343	4472	4495	4868	4232	4374	2640	4878	+2238 / +84.8%	+504 / +11.5%
Total	12753	12774	12190	12558	11933	13028	11745	12656	7828	13094	+5266 / +67.3%	+438 / +3.5%

'vs. Pre-Covid' is comparison between 2021 and 2019

YTD Total Jump Runners by Age

Total Runners in GB Jump Races, shown by Age Category and Total



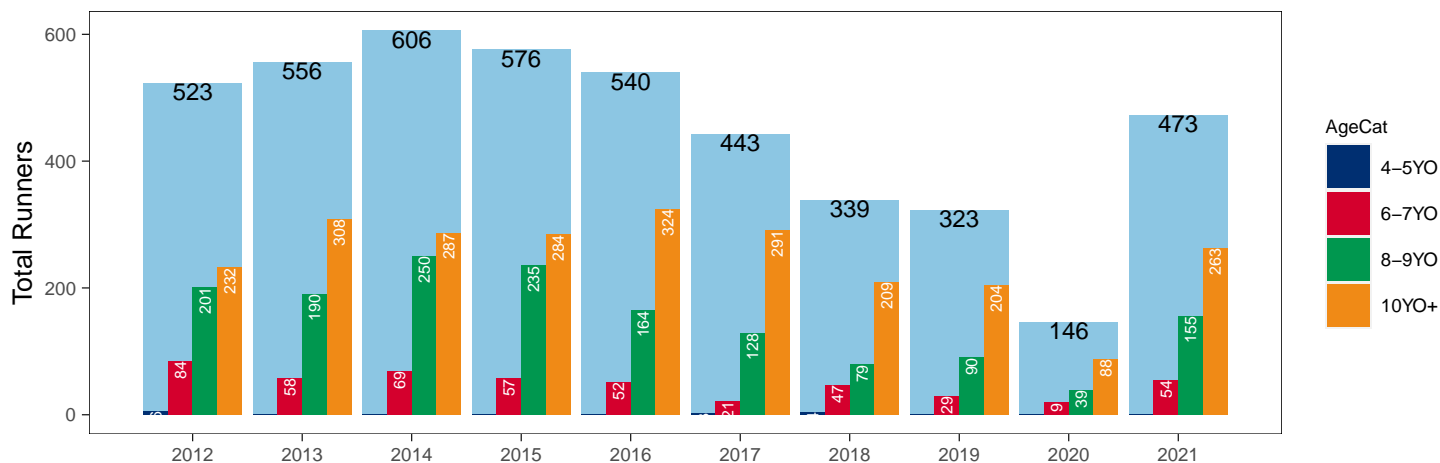
Hunter Chases

AgeCat	2012	2013	2014	2015	2016	2017	2018	2019	2020	2021	vs. Last Year	vs. Pre-Covid
4-5YO	6					3	4			1	NA / NA	+1 / +Inf
6-7YO	84	58	69	57	52	21	47	29	19	54	+35 / +184.2%	+25 / +86.2%
8-9YO	201	190	250	235	164	128	79	90	39	155	+116 / +297.4%	+65 / +72.2%
10YO+	232	308	287	284	324	291	209	204	88	263	+175 / +198.9%	+59 / +28.9%
Total	523	556	606	576	540	443	339	323	146	473	+327 / +224.0%	+150 / +46.4%

'vs. Pre-Covid' is comparison between 2021 and 2019

YTD Total Hunter Chase Runners by Age

Total Runners in GB Hunter Chases shown by Age Category and Total



Year to Date Total Runners by Country Trained

Code	Country	2012	2013	2014	2015	2016	2017	2018	2019	2020	2021
Flat	GB	10872	11560	11714	10882	11402	11998	11586	12430	6574	13160
	IRE	55	79	53	42	77	99	97	88	76	10
	Other	8	1	2	6	10	7	8	11	4	2
Jump	GB	12483	12496	11834	12174	11473	12609	11425	12240	7561	12829
	IRE	269	276	354	381	454	407	311	409	257	262
	Other	1	2	2	3	6	12	9	7	10	3
Overall	GB	23355	24056	23548	23056	22875	24607	23011	24670	14135	25989
	IRE	324	355	407	423	531	506	408	497	333	272
	Other	9	3	4	9	16	19	17	18	14	5

Year to Date GB Trained Runners Racing Abroad

Code	Country	2012	2013	2014	2015	2016	2017	2018	2019	2020	2021
Flat	IRE	14	7	10	17	7	17	15	12	2	2
	FR	44	52	59	63	29	55	40	83	27	22
	GNV	1					2	2	3		
	UAE	343	351	326	289	208	278	276	303	281	248
	KSA									15	21
	Other	14	22	17	31	27	33	25	19	24	6
	Total	416	432	412	400	271	385	358	420	349	299
Jump	IRE	52	35	37	51	73	64	44	16	5	14
	FR	13	15	3	12	14	7	1	5	3	37
	Other		3	1	2	1	1	1			
	Total	65	53	41	65	88	72	46	21	8	51

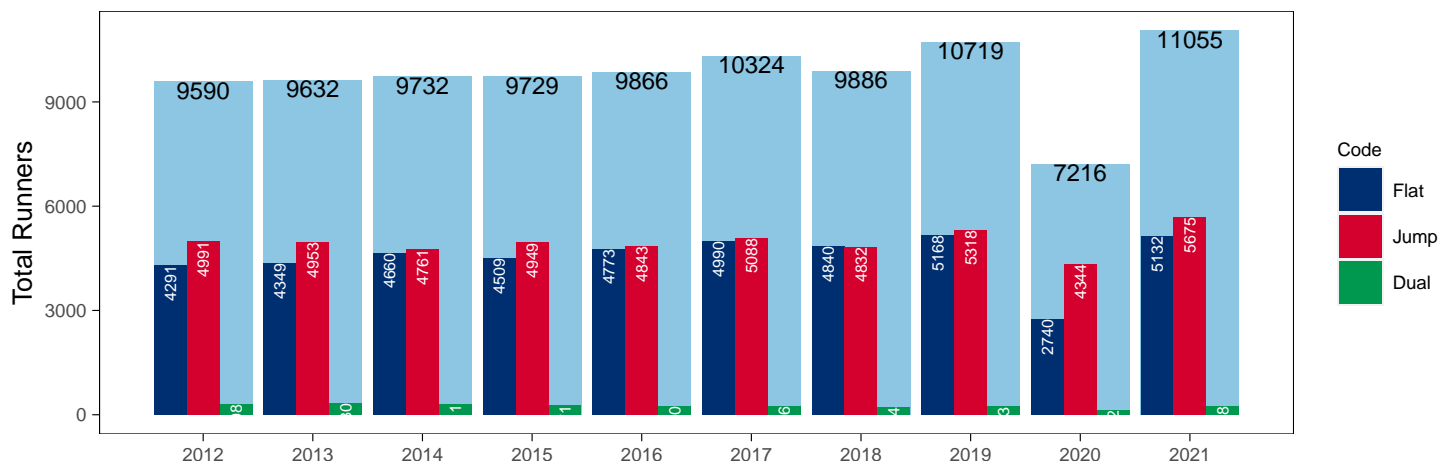
Year to Date Individual Runners

Code	2012	2013	2014	2015	2016	2017	2018	2019	2020	2021	vs. Last Year	vs. Pre-Covid
Flat	4291	4349	4660	4509	4773	4990	4840	5168	2740	5132	+2392 / +87.3%	-36 / -0.7%
Jump	4991	4953	4761	4949	4843	5088	4832	5318	4344	5675	+1331 / +30.6%	+357 / +6.7%
Dual	308	330	311	271	250	246	214	233	132	248	+116 / +87.9%	+15 / +6.4%
Overall	9590	9632	9732	9729	9866	10324	9886	10719	7216	11055	+3839 / +53.2%	+336 / +3.1%

'vs. Pre-Covid' is comparison between 2021 and 2019

YTD Individual Runners

Individual Runners in GB Races, shown by Code and Total



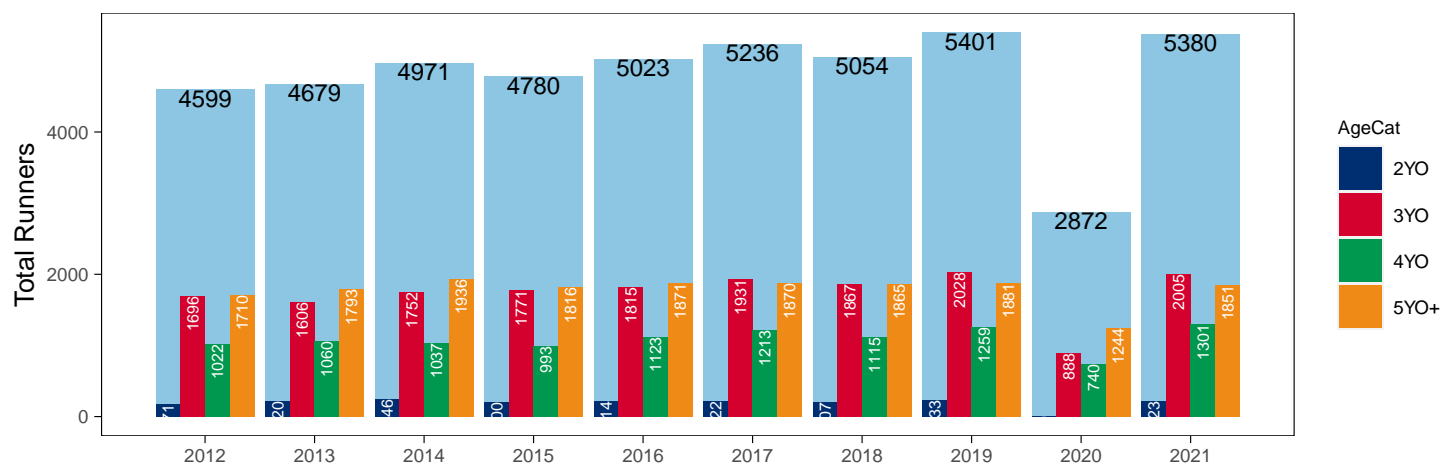
Flat

AgeCat	2012	2013	2014	2015	2016	2017	2018	2019	2020	2021	vs. Last Year	vs. Pre-Covid
2YO	171	220	246	200	214	222	207	233		223	NA / NA	-10 / -4.3%
3YO	1696	1606	1752	1771	1815	1931	1867	2028	888	2005	+1117 / +125.8%	-23 / -1.1%
4YO	1022	1060	1037	993	1123	1213	1115	1259	740	1301	+561 / +75.8%	+42 / +3.3%
5YO+	1710	1793	1936	1816	1871	1870	1865	1881	1244	1851	+607 / +48.8%	-30 / -1.6%
Total	4599	4679	4971	4780	5023	5236	5054	5401	2872	5380	+2508 / +87.3%	-21 / -0.4%

'vs. Pre-Covid' is comparison between 2021 and 2019

YTD Individual Flat Runners by Age

Individual Runners in GB Flat Races, shown by Age Category and Total



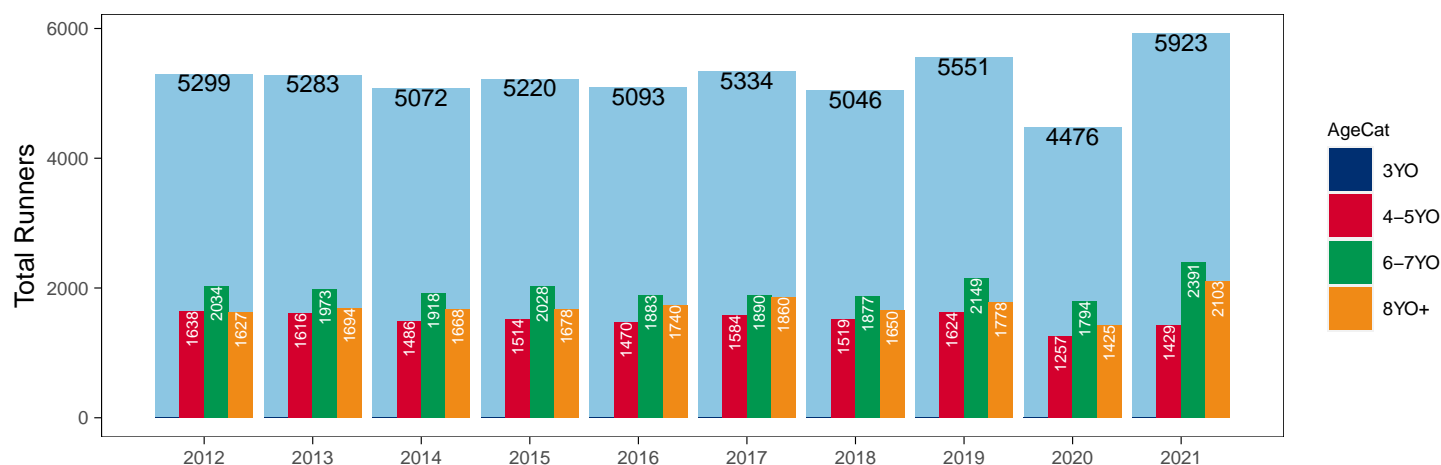
Jump

AgeCat	2012	2013	2014	2015	2016	2017	2018	2019	2020	2021	vs. Last Year	vs. Pre-Covid
3YO											NA / NA	0 / NA
4-5YO	1638	1616	1486	1514	1470	1584	1519	1624	1257	1429	+172 / +13.7%	-195 / -12.0%
6-7YO	2034	1973	1918	2028	1883	1890	1877	2149	1794	2391	+597 / +33.3%	+242 / +11.3%
8YO+	1627	1694	1668	1678	1740	1860	1650	1778	1425	2103	+678 / +47.6%	+325 / +18.3%
Total	5299	5283	5072	5220	5093	5334	5046	5551	4476	5923	+1447 / +32.3%	+372 / +6.7%

'vs. Pre-Covid' is comparison between 2021 and 2019

YTD Individual Jump Runners by Age

Individual Runners in GB Jump Races, shown by Age Category and Total



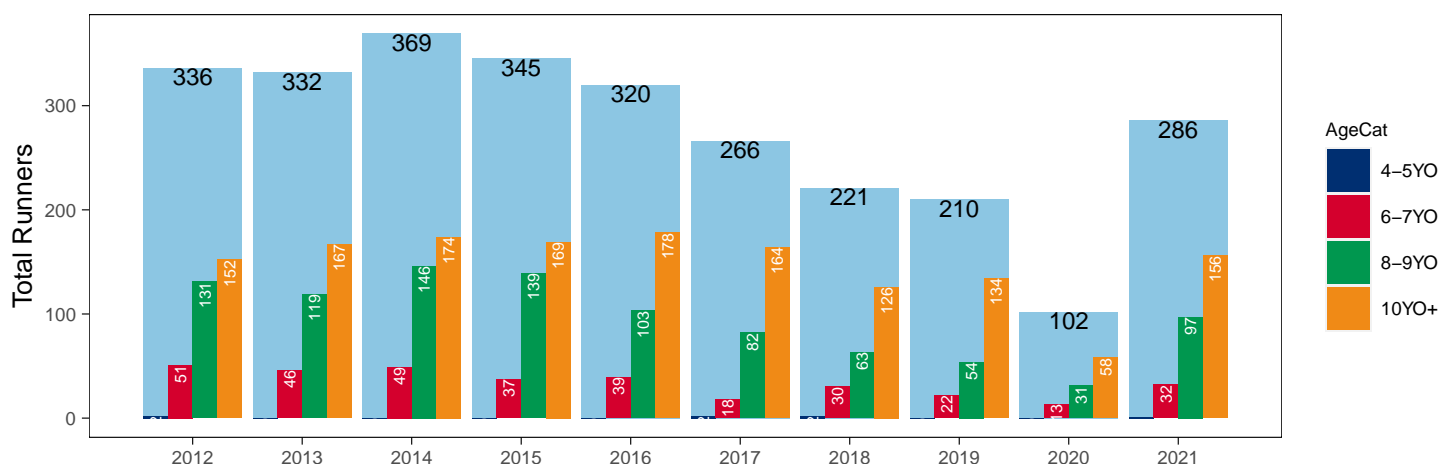
Hunter Chases

AgeCat	2012	2013	2014	2015	2016	2017	2018	2019	2020	2021	vs. Last Year	vs. Pre-Covid
4-5YO	2					2	2			1	NA / NA	+1 / +Inf
6-7YO	51	46	49	37	39	18	30	22	13	32	+19 / +146.2%	+10 / +45.5%
8-9YO	131	119	146	139	103	82	63	54	31	97	+66 / +212.9%	+43 / +79.6%
10YO+	152	167	174	169	178	164	126	134	58	156	+98 / +169.0%	+22 / +16.4%
Total	336	332	369	345	320	266	221	210	102	286	+184 / +180.4%	+76 / +36.2%

'vs. Pre-Covid' is comparison between 2021 and 2019

YTD Individual Hunter Chase Runners by Age

Individual Runners in GB Hunter Chases shown by Age Category and Total



Year to Date Individual Runners by Country Trained

Code	Country	2012	2013	2014	2015	2016	2017	2018	2019	2020	2021
Flat	GB	10872	11560	11714	10882	11402	11998	11586	12430	6574	13160
	IRE	55	79	53	42	77	99	97	88	76	10
	Other	8	1	2	6	10	7	8	11	4	2
Jump	GB	12483	12496	11834	12174	11473	12609	11425	12240	7561	12829
	IRE	269	276	354	381	454	407	311	409	257	262
	Other	1	2	2	3	6	12	9	7	10	3
Overall	GB	23355	24056	23548	23056	22875	24607	23011	24670	14135	25989
	IRE	324	355	407	423	531	506	408	497	333	272
	Other	9	3	4	9	16	19	17	18	14	5

Frequency of Runs

Year to Date Average Runs per Horse

Code	2012	2013	2014	2015	2016	2017	2018	2019	2020	2021
Flat	2.38	2.49	2.37	2.29	2.29	2.31	2.31	2.32	2.32	2.45
Jump	2.41	2.42	2.40	2.41	2.34	2.44	2.33	2.28	1.75	2.21
Overall	2.47	2.53	2.46	2.41	2.37	2.43	2.37	2.35	2.01	2.38

Year to Date Proportion of Horses by Count of Runs

Runs	2012	2013	2014	2015	2016	2017	2018	2019	2020	2021
Flat										
1	2105 (45.8%)	2058 (44.0%)	2185 (44.0%)	2153 (45.0%)	2250 (44.8%)	2335 (44.6%)	2268 (44.9%)	2344 (43.4%)	1018 (35.4%)	2222 (41.3%)
2	1038 (22.6%)	1010 (21.6%)	1183 (23.8%)	1141 (23.9%)	1248 (24.8%)	1190 (22.7%)	1157 (22.9%)	1323 (24.5%)	787 (27.4%)	1259 (23.4%)
3	523 (11.4%)	592 (12.7%)	607 (12.2%)	600 (12.6%)	563 (11.2%)	699 (13.3%)	661 (13.1%)	680 (12.6%)	546 (19.0%)	726 (13.5%)
4	348 (7.6%)	342 (7.3%)	353 (7.1%)	348 (7.3%)	387 (7.7%)	419 (8.0%)	401 (7.9%)	450 (8.3%)	320 (11.1%)	445 (8.3%)
5+	585 (12.7%)	677 (14.5%)	643 (12.9%)	538 (11.3%)	575 (11.4%)	593 (11.3%)	567 (11.2%)	604 (11.2%)	201 (7.0%)	728 (13.5%)
Jump										
1	1651 (31.2%)	1670 (31.6%)	1622 (32.0%)	1619 (31.0%)	1689 (33.2%)	1644 (30.8%)	1752 (34.7%)	1862 (33.5%)	2108 (47.1%)	1986 (33.5%)
2	1466 (27.7%)	1411 (26.7%)	1355 (26.7%)	1432 (27.4%)	1415 (27.8%)	1396 (26.2%)	1322 (26.2%)	1625 (29.3%)	1571 (35.1%)	1819 (30.7%)
3	1142 (21.6%)	1107 (21.0%)	1074 (21.2%)	1132 (21.7%)	1045 (20.5%)	1168 (21.9%)	1007 (20.0%)	1129 (20.3%)	638 (14.3%)	1287 (21.7%)
4	647 (12.2%)	688 (13.0%)	626 (12.3%)	656 (12.6%)	588 (11.5%)	710 (13.3%)	628 (12.4%)	642 (11.6%)	135 (3.0%)	595 (10.0%)
5+	393 (7.4%)	407 (7.7%)	395 (7.8%)	381 (7.3%)	356 (7.0%)	416 (7.8%)	337 (6.7%)	293 (5.3%)	24 (0.5%)	236 (4.0%)
All Races										
1	3483 (36.3%)	3435 (35.7%)	3524 (36.2%)	3514 (36.1%)	3690 (37.4%)	3756 (36.4%)	3805 (38.5%)	3964 (37.0%)	2961 (41.0%)	3976 (36.0%)
2	2395 (25.0%)	2307 (24.0%)	2423 (24.9%)	2481 (25.5%)	2577 (26.1%)	2484 (24.1%)	2407 (24.3%)	2889 (27.0%)	2337 (32.4%)	3004 (27.2%)
3	1637 (17.1%)	1673 (17.4%)	1663 (17.1%)	1718 (17.7%)	1624 (16.5%)	1861 (18.0%)	1666 (16.9%)	1802 (16.8%)	1207 (16.7%)	1974 (17.9%)
4	1029 (10.7%)	1053 (10.9%)	1004 (10.3%)	1038 (10.7%)	995 (10.1%)	1154 (11.2%)	1068 (10.8%)	1120 (10.4%)	477 (6.6%)	1081 (9.8%)
5+	1046 (10.9%)	1164 (12.1%)	1118 (11.5%)	978 (10.1%)	980 (9.9%)	1069 (10.4%)	940 (9.5%)	944 (8.8%)	234 (3.2%)	1020 (9.2%)

Year to Date Median Days Between Runs

Code	2012	2013	2014	2015	2016	2017	2018	2019	2020	2021
Flat	21	21	23	25	24	24	25	26	21	24
Jump	29	32	30	30	32	30	33	32	34	35
Overall	27	27	27	28	29	28	30	29	28	29

Horses Population by Gender

April 2021 Horses in Training Snapshot by Gender versus Previous Years

All Horses

Sex	2012	2013	2014	2015	2016	2017	2018	2019	2020	2021
Colt/Entire	2475 (16.9%)	2541 (17.1%)	2488 (17.0%)	2572 (17.2%)	2549 (16.7%)	2609 (16.9%)	2629 (16.2%)	2537 (15.8%)	2343 (18.6%)	2263 (14.0%)
Gelding	7682 (52.3%)	7808 (52.4%)	7531 (51.4%)	7690 (51.6%)	8052 (52.7%)	8085 (52.5%)	8593 (53.1%)	8406 (52.4%)	6101 (48.3%)	8851 (54.6%)
Filly/Mare	4524 (30.8%)	4544 (30.5%)	4630 (31.6%)	4648 (31.2%)	4671 (30.6%)	4716 (30.6%)	4971 (30.7%)	5083 (31.7%)	4179 (33.1%)	5083 (31.4%)
Rig	1 (0.0%)	1 (0.0%)	1 (0.0%)	4 (0.0%)	5 (0.0%)	4 (0.0%)	3 (0.0%)	3 (0.0%)	1 (0.0%)	2 (0.0%)
Total	14682 (100.0%)	14894 (100.0%)	14650 (100.0%)	14914 (100.0%)	15277 (100.0%)	15414 (100.0%)	16196 (100.0%)	16029 (100.0%)	12624 (100.0%)	16199 (100.0%)

Flat (including Dual)

Sex	2012	2013	2014	2015	2016	2017	2018	2019	2020	2021
Colt/Entire	2443 (25.1%)	2512 (25.9%)	2451 (25.1%)	2539 (25.6%)	2526 (24.7%)	2586 (24.6%)	2609 (23.8%)	2526 (23.7%)	2329 (24.2%)	2248 (22.0%)
Gelding	3634 (37.3%)	3559 (36.7%)	3626 (37.1%)	3725 (37.5%)	3977 (38.9%)	4158 (39.5%)	4487 (40.9%)	4235 (39.7%)	3816 (39.6%)	4190 (41.1%)
Filly/Mare	3663 (37.6%)	3626 (37.4%)	3691 (37.8%)	3671 (36.9%)	3719 (36.4%)	3772 (35.9%)	3873 (35.3%)	3908 (36.6%)	3485 (36.2%)	3762 (36.9%)
Rig	1 (0.0%)	1 (0.0%)	0 (0.0%)	2 (0.0%)	5 (0.0%)	4 (0.0%)	3 (0.0%)	2 (0.0%)	1 (0.0%)	1 (0.0%)
Total	9741 (100.0%)	9698 (100.0%)	9768 (100.0%)	9937 (100.0%)	10227 (100.0%)	10520 (100.0%)	10972 (100.0%)	10671 (100.0%)	9631 (100.0%)	10201 (100.0%)

Jump (including Dual)

Sex	2012	2013	2014	2015	2016	2017	2018	2019	2020	2021
Colt/Entire	43 (0.8%)	39 (0.7%)	45 (0.8%)	38 (0.7%)	34 (0.6%)	27 (0.5%)	28 (0.5%)	20 (0.3%)	20 (0.6%)	25 (0.4%)
Gelding	4466 (81.4%)	4691 (81.3%)	4346 (79.4%)	4402 (79.6%)	4498 (80.7%)	4410 (80.2%)	4842 (78.4%)	4530 (77.7%)	2598 (76.1%)	5051 (77.5%)
Filly/Mare	978 (17.8%)	1038 (18.0%)	1081 (19.8%)	1091 (19.7%)	1045 (18.7%)	1060 (19.3%)	1303 (21.1%)	1282 (22.0%)	796 (23.3%)	1442 (22.1%)
Rig	0 (0.0%)	0 (0.0%)	1 (0.0%)	1 (0.0%)	0 (0.0%)	0 (0.0%)	0 (0.0%)	1 (0.0%)	0 (0.0%)	1 (0.0%)
Total	5487 (100.0%)	5768 (100.0%)	5473 (100.0%)	5532 (100.0%)	5577 (100.0%)	5497 (100.0%)	6173 (100.0%)	5833 (100.0%)	3414 (100.0%)	6519 (100.0%)

Hunter Chasers

Sex	2012	2013	2014	2015	2016	2017	2018	2019	2020	2021
Colt/Entire	4 (0.2%)	5 (0.2%)	3 (0.1%)	4 (0.2%)	4 (0.2%)	5 (0.3%)	3 (0.2%)	1 (0.1%)	1 (0.1%)	3 (0.3%)
Gelding	2016 (80.7%)	1840 (81.4%)	1799 (82.3%)	1693 (82.8%)	1633 (82.4%)	1560 (81.6%)	1411 (81.6%)	1352 (79.5%)	1170 (81.6%)	960 (83.3%)
Filly/Mare	478 (19.1%)	416 (18.4%)	383 (17.5%)	348 (17.0%)	344 (17.4%)	346 (18.1%)	316 (18.3%)	348 (20.5%)	263 (18.3%)	189 (16.4%)
Rig	0 (0.0%)	0 (0.0%)	0 (0.0%)	0 (0.0%)	0 (0.0%)	0 (0.0%)	0 (0.0%)	0 (0.0%)	0 (0.0%)	0 (0.0%)
Total	2498 (100.0%)	2261 (100.0%)	2185 (100.0%)	2045 (100.0%)	1981 (100.0%)	1911 (100.0%)	1730 (100.0%)	1701 (100.0%)	1434 (100.0%)	1152 (100.0%)

Year to Date Total Runners by Gender

Sex	2012	2013	2014	2015	2016	2017	2018	2019	2020	2021
All Races										
Colt/Entire	1152 (4.9%)	1326 (5.4%)	1350 (5.6%)	1397 (5.9%)	1269 (5.4%)	1374 (5.5%)	1300 (5.5%)	1408 (5.6%)	578 (4.0%)	1451 (5.5%)
Gelding	17041 (71.9%)	17605 (72.1%)	17063 (71.2%)	16799 (71.5%)	16823 (71.8%)	18076 (71.9%)	16690 (71.2%)	17559 (69.7%)	10306 (71.2%)	18189 (69.2%)
Filly/Mare	5495 (23.2%)	5483 (22.5%)	5546 (23.1%)	5292 (22.5%)	5325 (22.7%)	5681 (22.6%)	5442 (23.2%)	6213 (24.7%)	3595 (24.8%)	6622 (25.2%)
Rig	0 (0.0%)	0 (0.0%)	0 (0.0%)	0 (0.0%)	5 (0.0%)	1 (0.0%)	4 (0.0%)	5 (0.0%)	3 (0.0%)	4 (0.0%)
Flat										
Colt/Entire	1098 (10.0%)	1288 (11.1%)	1302 (11.1%)	1367 (12.5%)	1249 (10.9%)	1348 (11.1%)	1283 (11.0%)	1387 (11.1%)	564 (8.5%)	1436 (10.9%)
Gelding	6464 (59.1%)	6910 (59.4%)	6956 (59.1%)	6490 (59.4%)	6892 (60.0%)	7316 (60.4%)	7195 (61.5%)	7508 (59.9%)	4134 (62.1%)	7898 (60.0%)
Filly/Mare	3373 (30.8%)	3442 (29.6%)	3511 (29.8%)	3073 (28.1%)	3343 (29.1%)	3439 (28.4%)	3209 (27.4%)	3632 (29.0%)	1956 (29.4%)	3837 (29.1%)
Rig	0 (0.0%)	0 (0.0%)	0 (0.0%)	0 (0.0%)	5 (0.0%)	1 (0.0%)	4 (0.0%)	2 (0.0%)	0 (0.0%)	1 (0.0%)
All Jump										
Colt/Entire	54 (0.4%)	38 (0.3%)	48 (0.4%)	30 (0.2%)	20 (0.2%)	26 (0.2%)	17 (0.1%)	21 (0.2%)	14 (0.2%)	15 (0.1%)
Gelding	10577 (82.9%)	10695 (83.7%)	10107 (82.9%)	10309 (82.1%)	9931 (83.2%)	10760 (82.6%)	9495 (80.8%)	10051 (79.4%)	6172 (78.8%)	10291 (78.6%)
Filly/Mare	2122 (16.6%)	2041 (16.0%)	2035 (16.7%)	2219 (17.7%)	1982 (16.6%)	2242 (17.2%)	2233 (19.0%)	2581 (20.4%)	1639 (20.9%)	2785 (21.3%)
Rig	0 (0.0%)	0 (0.0%)	0 (0.0%)	0 (0.0%)	0 (0.0%)	0 (0.0%)	0 (0.0%)	3 (0.0%)	3 (0.0%)	3 (0.0%)
Chase										
Colt/Entire	5 (0.1%)	4 (0.1%)	1 (0.0%)	0 (0.0%)	1 (0.0%)	0 (0.0%)	0 (0.0%)	0 (0.0%)	0 (0.0%)	0 (0.0%)
Gelding	3743 (91.9%)	3728 (92.4%)	3637 (93.4%)	3737 (93.5%)	3593 (93.6%)	3975 (92.9%)	3343 (91.2%)	3609 (90.2%)	2169 (90.3%)	3533 (89.1%)
Filly/Mare	323 (7.9%)	301 (7.5%)	257 (6.6%)	261 (6.5%)	245 (6.4%)	305 (7.1%)	321 (8.8%)	391 (9.8%)	229 (9.5%)	430 (10.8%)
Rig	0 (0.0%)	0 (0.0%)	0 (0.0%)	0 (0.0%)	0 (0.0%)	0 (0.0%)	0 (0.0%)	1 (0.0%)	3 (0.1%)	3 (0.1%)
Hurdle										
Colt/Entire	45 (0.6%)	25 (0.4%)	44 (0.6%)	25 (0.3%)	17 (0.2%)	22 (0.3%)	13 (0.2%)	15 (0.2%)	7 (0.2%)	13 (0.2%)
Gelding	5805 (80.5%)	5785 (82.1%)	5441 (79.7%)	5800 (78.9%)	5656 (80.1%)	5996 (79.1%)	5332 (77.7%)	5735 (76.3%)	3477 (74.7%)	5438 (75.0%)
Filly/Mare	1362 (18.9%)	1239 (17.6%)	1340 (19.6%)	1527 (20.8%)	1387 (19.6%)	1564 (20.6%)	1514 (22.1%)	1765 (23.5%)	1169 (25.1%)	1802 (24.8%)
Rig	0 (0.0%)	0 (0.0%)	0 (0.0%)	0 (0.0%)	0 (0.0%)	0 (0.0%)	0 (0.0%)	2 (0.0%)	0 (0.0%)	0 (0.0%)
NHF										
Colt/Entire	4 (0.3%)	9 (0.5%)	3 (0.2%)	5 (0.4%)	2 (0.2%)	4 (0.3%)	4 (0.3%)	6 (0.5%)	7 (0.9%)	2 (0.1%)
Gelding	1029 (70.0%)	1182 (69.9%)	1029 (70.0%)	772 (63.9%)	682 (66.0%)	789 (67.7%)	820 (67.1%)	707 (62.1%)	526 (68.0%)	1320 (70.4%)
Filly/Mare	437 (29.7%)	501 (29.6%)	438 (29.8%)	431 (35.7%)	350 (33.8%)	373 (32.0%)	398 (32.6%)	425 (37.3%)	241 (31.1%)	553 (29.5%)
Hunter										
Gelding	469 (89.7%)	523 (94.1%)	558 (92.1%)	545 (94.6%)	513 (95.0%)	431 (97.3%)	328 (96.8%)	305 (94.4%)	142 (97.3%)	440 (93.0%)
Filly/Mare	54 (10.3%)	33 (5.9%)	48 (7.9%)	31 (5.4%)	27 (5.0%)	12 (2.7%)	11 (3.2%)	18 (5.6%)	4 (2.7%)	33 (7.0%)

Year to Date Individual Runners by Gender

Sex	2012	2013	2014	2015	2016	2017	2018	2019	2020	2021
All Races										
Male	7150 (74.6%)	7250 (75.3%)	7246 (74.5%)	7308 (75.1%)	7406 (75.1%)	7782 (75.4%)	7384 (74.7%)	7868 (73.4%)	5369 (74.4%)	8159 (73.8%)
Female	2440 (25.4%)	2382 (24.7%)	2486 (25.5%)	2421 (24.9%)	2460 (24.9%)	2542 (24.6%)	2502 (25.3%)	2851 (26.6%)	1847 (25.6%)	2896 (26.2%)
Flat										
Male	3024 (65.8%)	3168 (67.7%)	3342 (67.2%)	3288 (68.8%)	3444 (68.6%)	3621 (69.2%)	3519 (69.6%)	3679 (68.1%)	1953 (68.0%)	3694 (68.7%)
Female	1575 (34.2%)	1511 (32.3%)	1629 (32.8%)	1492 (31.2%)	1579 (31.4%)	1615 (30.8%)	1535 (30.4%)	1722 (31.9%)	919 (32.0%)	1686 (31.3%)
All Jump										
Male	4378 (82.6%)	4343 (82.2%)	4154 (81.9%)	4234 (81.1%)	4170 (81.9%)	4359 (81.7%)	4039 (80.0%)	4372 (78.8%)	3522 (78.7%)	4665 (78.8%)
Female	921 (17.4%)	940 (17.8%)	918 (18.1%)	986 (18.9%)	923 (18.1%)	975 (18.3%)	1007 (20.0%)	1179 (21.2%)	954 (21.3%)	1258 (21.2%)
Chase										
Male	1571 (92.0%)	1535 (91.7%)	1501 (92.9%)	1556 (93.2%)	1508 (93.4%)	1630 (92.5%)	1405 (90.6%)	1559 (89.7%)	1269 (90.0%)	1683 (89.6%)
Female	136 (8.0%)	139 (8.3%)	115 (7.1%)	114 (6.8%)	107 (6.6%)	133 (7.5%)	145 (9.4%)	179 (10.3%)	141 (10.0%)	196 (10.4%)
Hurdle										
Male	2611 (81.0%)	2602 (81.4%)	2474 (80.4%)	2529 (79.0%)	2560 (80.4%)	2634 (79.4%)	2435 (78.1%)	2664 (76.8%)	2054 (75.0%)	2707 (75.7%)
Female	614 (19.0%)	596 (18.6%)	604 (19.6%)	673 (21.0%)	623 (19.6%)	682 (20.6%)	683 (21.9%)	806 (23.2%)	684 (25.0%)	868 (24.3%)
NHF										
Male	714 (71.5%)	885 (72.4%)	762 (71.6%)	558 (66.3%)	506 (66.9%)	555 (69.1%)	616 (69.1%)	537 (65.2%)	440 (68.9%)	991 (71.7%)
Female	284 (28.5%)	337 (27.6%)	302 (28.4%)	284 (33.7%)	250 (33.1%)	248 (30.9%)	276 (30.9%)	286 (34.8%)	199 (31.1%)	392 (28.3%)
Hunter										
Male	305 (90.8%)	307 (92.5%)	338 (91.6%)	326 (94.5%)	303 (94.7%)	255 (95.9%)	211 (95.5%)	197 (93.8%)	98 (96.1%)	263 (92.0%)
Female	31 (9.2%)	25 (7.5%)	31 (8.4%)	19 (5.5%)	17 (5.3%)	11 (4.1%)	10 (4.5%)	13 (6.2%)	4 (3.9%)	23 (8.0%)

Horses Population by Breeding

April 2021 Horses in Training Snapshot by Breeding versus Previous Years

Flat (including Dual)

Bred	Sex	2012	2013	2014	2015	2016	2017	2018	2019	2020	2021
GB	Male	2943 (30.2%)	2915 (30.1%)	2931 (30.0%)	3005 (30.2%)	3071 (30.0%)	3172 (30.2%)	3308 (30.1%)	3212 (30.1%)	2927 (30.4%)	3039 (29.8%)
	Female	2125 (21.8%)	2101 (21.7%)	2044 (20.9%)	2032 (20.4%)	2061 (20.2%)	2122 (20.2%)	2141 (19.5%)	2174 (20.4%)	1972 (20.5%)	2154 (21.1%)
	Subtotal	5068 (52.0%)	5016 (51.7%)	4975 (50.9%)	5037 (50.7%)	5132 (50.2%)	5294 (50.3%)	5449 (49.7%)	5386 (50.5%)	4899 (50.9%)	5193 (50.9%)
IRE	Male	2434 (25.0%)	2508 (25.9%)	2525 (25.8%)	2657 (26.7%)	2813 (27.5%)	2914 (27.7%)	3077 (28.0%)	2886 (27.0%)	2629 (27.3%)	2823 (27.7%)
	Female	1263 (13.0%)	1273 (13.1%)	1373 (14.1%)	1379 (13.9%)	1401 (13.7%)	1387 (13.2%)	1449 (13.2%)	1453 (13.6%)	1283 (13.3%)	1399 (13.7%)
	Subtotal	3697 (38.0%)	3781 (39.0%)	3898 (39.9%)	4036 (40.6%)	4214 (41.2%)	4301 (40.9%)	4526 (41.3%)	4339 (40.7%)	3912 (40.6%)	4222 (41.4%)
FR	Male	102 (1.0%)	117 (1.2%)	155 (1.6%)	175 (1.8%)	177 (1.7%)	236 (2.2%)	318 (2.9%)	311 (2.9%)	301 (3.1%)	306 (3.0%)
	Female	25 (0.3%)	43 (0.4%)	72 (0.7%)	69 (0.7%)	94 (0.9%)	98 (0.9%)	118 (1.1%)	122 (1.1%)	124 (1.3%)	119 (1.2%)
	Subtotal	127 (1.3%)	160 (1.6%)	227 (2.3%)	244 (2.5%)	271 (2.6%)	334 (3.2%)	436 (4.0%)	433 (4.1%)	425 (4.4%)	425 (4.2%)
USA	Male	512 (5.3%)	437 (4.5%)	369 (3.8%)	337 (3.4%)	361 (3.5%)	325 (3.1%)	302 (2.8%)	279 (2.6%)	224 (2.3%)	193 (1.9%)
	Female	225 (2.3%)	183 (1.9%)	172 (1.8%)	156 (1.6%)	138 (1.3%)	137 (1.3%)	136 (1.2%)	128 (1.2%)	75 (0.8%)	64 (0.6%)
	Subtotal	737 (7.6%)	620 (6.4%)	541 (5.5%)	493 (5.0%)	499 (4.9%)	462 (4.4%)	438 (4.0%)	407 (3.8%)	299 (3.1%)	257 (2.5%)
GNY	Male	44 (0.5%)	55 (0.6%)	60 (0.6%)	68 (0.7%)	65 (0.6%)	72 (0.7%)	70 (0.6%)	53 (0.5%)	51 (0.5%)	59 (0.6%)
	Female	12 (0.1%)	14 (0.1%)	15 (0.2%)	17 (0.2%)	10 (0.1%)	11 (0.1%)	17 (0.2%)	19 (0.2%)	26 (0.3%)	22 (0.2%)
	Subtotal	56 (0.6%)	69 (0.7%)	75 (0.8%)	85 (0.9%)	75 (0.7%)	83 (0.8%)	87 (0.8%)	72 (0.7%)	77 (0.8%)	81 (0.8%)
Other	Male	43 (0.4%)	40 (0.4%)	37 (0.4%)	24 (0.2%)	21 (0.2%)	29 (0.3%)	24 (0.2%)	22 (0.2%)	14 (0.1%)	19 (0.2%)
	Female	13 (0.1%)	12 (0.1%)	15 (0.2%)	18 (0.2%)	15 (0.1%)	17 (0.2%)	12 (0.1%)	12 (0.1%)	5 (0.1%)	4 (0.0%)
	Subtotal	56 (0.6%)	52 (0.5%)	52 (0.5%)	42 (0.4%)	36 (0.4%)	46 (0.4%)	36 (0.3%)	34 (0.3%)	19 (0.2%)	23 (0.2%)

Jump (including Dual)

Bred	Sex	2012	2013	2014	2015	2016	2017	2018	2019	2020	2021
GB	Male	1511 (27.5%)	1585 (27.5%)	1465 (26.8%)	1379 (24.9%)	1365 (24.5%)	1294 (23.5%)	1394 (22.6%)	1233 (21.1%)	736 (21.6%)	1308 (20.1%)
	Female	594 (10.8%)	653 (11.3%)	688 (12.6%)	665 (12.0%)	617 (11.1%)	586 (10.7%)	677 (11.0%)	608 (10.4%)	379 (11.1%)	694 (10.6%)
	Subtotal	2105 (38.4%)	2238 (38.8%)	2153 (39.3%)	2044 (36.9%)	1982 (35.5%)	1880 (34.2%)	2071 (33.5%)	1841 (31.6%)	1115 (32.7%)	2002 (30.7%)
IRE	Male	2239 (40.8%)	2406 (41.7%)	2274 (41.5%)	2360 (42.7%)	2455 (44.0%)	2398 (43.6%)	2664 (43.2%)	2518 (43.2%)	1443 (42.3%)	2744 (42.1%)
	Female	323 (5.9%)	324 (5.6%)	336 (6.1%)	372 (6.7%)	372 (6.7%)	410 (7.5%)	536 (8.7%)	560 (9.6%)	352 (10.3%)	605 (9.3%)
	Subtotal	2562 (46.7%)	2730 (47.3%)	2610 (47.7%)	2732 (49.4%)	2827 (50.7%)	2808 (51.1%)	3200 (51.8%)	3078 (52.8%)	1795 (52.6%)	3349 (51.4%)
FR	Male	551 (10.0%)	544 (9.4%)	517 (9.4%)	560 (10.1%)	603 (10.8%)	644 (11.7%)	709 (11.5%)	704 (12.1%)	384 (11.2%)	916 (14.1%)
	Female	46 (0.8%)	45 (0.8%)	47 (0.9%)	46 (0.8%)	47 (0.8%)	60 (1.1%)	82 (1.3%)	102 (1.7%)	60 (1.8%)	132 (2.0%)
	Subtotal	597 (10.9%)	589 (10.2%)	564 (10.3%)	606 (11.0%)	650 (11.7%)	704 (12.8%)	791 (12.8%)	806 (13.8%)	444 (13.0%)	1048 (16.1%)
USA	Male	125 (2.3%)	117 (2.0%)	81 (1.5%)	74 (1.3%)	49 (0.9%)	39 (0.7%)	43 (0.7%)	36 (0.6%)	25 (0.7%)	37 (0.6%)
	Female	8 (0.1%)	9 (0.2%)	4 (0.1%)	2 (0.0%)	1 (0.0%)	2 (0.0%)	4 (0.1%)	5 (0.1%)	2 (0.1%)	1 (0.0%)
	Subtotal	133 (2.4%)	126 (2.2%)	85 (1.6%)	76 (1.4%)	50 (0.9%)	41 (0.7%)	47 (0.8%)	41 (0.7%)	27 (0.8%)	38 (0.6%)
GNY	Male	64 (1.2%)	56 (1.0%)	46 (0.8%)	58 (1.0%)	54 (1.0%)	55 (1.0%)	51 (0.8%)	53 (0.9%)	29 (0.8%)	67 (1.0%)
	Female	5 (0.1%)	4 (0.1%)	5 (0.1%)	5 (0.1%)	5 (0.1%)	1 (0.0%)	2 (0.0%)	5 (0.1%)	3 (0.1%)	9 (0.1%)
	Subtotal	69 (1.3%)	60 (1.0%)	51 (0.9%)	63 (1.1%)	59 (1.1%)	56 (1.0%)	53 (0.9%)	58 (1.0%)	32 (0.9%)	76 (1.2%)
Other	Male	19 (0.3%)	22 (0.4%)	9 (0.2%)	10 (0.2%)	6 (0.1%)	7 (0.1%)	9 (0.1%)	7 (0.1%)	1 (0.0%)	5 (0.1%)
	Female	2 (0.0%)	3 (0.1%)	1 (0.0%)	1 (0.0%)	3 (0.1%)	1 (0.0%)	2 (0.0%)	2 (0.0%)	NA (-)	1 (0.0%)
	Subtotal	21 (0.4%)	25 (0.4%)	10 (0.2%)	11 (0.2%)	9 (0.2%)	8 (0.1%)	11 (0.2%)	9 (0.2%)	1 (0.0%)	6 (0.1%)

Year to Date Total Runners by Breeding

Flat

Bred	Sex	2012	2013	2014	2015	2016	2017	2018	2019	2020	2021
GB	Male	3617 (33.1%)	3693 (31.7%)	3907 (33.2%)	3596 (32.9%)	3759 (32.7%)	4036 (33.3%)	3935 (33.7%)	4075 (32.5%)	2185 (32.8%)	4225 (32.1%)
	Female	1891 (17.3%)	2060 (17.7%)	1900 (16.1%)	1739 (15.9%)	1844 (16.1%)	1863 (15.4%)	1736 (14.8%)	2012 (16.1%)	1079 (16.2%)	2251 (17.1%)
	Subtotal	5508 (50.4%)	5753 (49.4%)	5807 (49.3%)	5335 (48.8%)	5603 (48.8%)	5899 (48.7%)	5671 (48.5%)	6087 (48.6%)	3264 (49.1%)	6476 (49.2%)
IRE	Male	3091 (28.3%)	3547 (30.5%)	3446 (29.3%)	3441 (31.5%)	3593 (31.3%)	3799 (31.4%)	3717 (31.8%)	3932 (31.4%)	2045 (30.7%)	4271 (32.4%)
	Female	1307 (12.0%)	1216 (10.4%)	1387 (11.8%)	1131 (10.3%)	1316 (11.5%)	1381 (11.4%)	1262 (10.8%)	1354 (10.8%)	768 (11.5%)	1360 (10.3%)
	Subtotal	4398 (40.2%)	4763 (40.9%)	4833 (41.1%)	4572 (41.8%)	4909 (42.7%)	5180 (42.8%)	4979 (42.6%)	5286 (42.2%)	2813 (42.3%)	5631 (42.7%)
FR	Male	99 (0.9%)	139 (1.2%)	162 (1.4%)	212 (1.9%)	230 (2.0%)	264 (2.2%)	270 (2.3%)	381 (3.0%)	203 (3.1%)	378 (2.9%)
	Female	15 (0.1%)	21 (0.2%)	57 (0.5%)	66 (0.6%)	71 (0.6%)	68 (0.6%)	99 (0.8%)	106 (0.8%)	51 (0.8%)	113 (0.9%)
	Subtotal	114 (1.0%)	160 (1.4%)	219 (1.9%)	278 (2.5%)	301 (2.6%)	332 (2.7%)	369 (3.2%)	487 (3.9%)	254 (3.8%)	491 (3.7%)
USA	Male	652 (6.0%)	708 (6.1%)	622 (5.3%)	514 (4.7%)	465 (4.0%)	443 (3.7%)	445 (3.8%)	408 (3.3%)	216 (3.2%)	325 (2.5%)
	Female	139 (1.3%)	124 (1.1%)	141 (1.2%)	99 (0.9%)	78 (0.7%)	99 (0.8%)	95 (0.8%)	124 (1.0%)	52 (0.8%)	76 (0.6%)
	Subtotal	791 (7.2%)	832 (7.1%)	763 (6.5%)	613 (5.6%)	543 (4.7%)	542 (4.5%)	540 (4.6%)	532 (4.2%)	268 (4.0%)	401 (3.0%)
GNY	Male	53 (0.5%)	63 (0.5%)	61 (0.5%)	53 (0.5%)	58 (0.5%)	84 (0.7%)	69 (0.6%)	56 (0.4%)	36 (0.5%)	95 (0.7%)
	Female	8 (0.1%)	11 (0.1%)	15 (0.1%)	23 (0.2%)	26 (0.2%)	15 (0.1%)	14 (0.1%)	22 (0.2%)	5 (0.1%)	31 (0.2%)
	Subtotal	61 (0.6%)	74 (0.6%)	76 (0.6%)	76 (0.7%)	84 (0.7%)	99 (0.8%)	83 (0.7%)	78 (0.6%)	41 (0.6%)	126 (1.0%)
Other	Male	50 (0.5%)	48 (0.4%)	60 (0.5%)	41 (0.4%)	41 (0.4%)	39 (0.3%)	46 (0.4%)	45 (0.4%)	13 (0.2%)	41 (0.3%)
	Female	13 (0.1%)	10 (0.1%)	11 (0.1%)	15 (0.1%)	8 (0.1%)	13 (0.1%)	3 (0.0%)	14 (0.1%)	1 (0.0%)	6 (0.0%)
	Subtotal	63 (0.6%)	58 (0.5%)	71 (0.6%)	56 (0.5%)	49 (0.4%)	52 (0.4%)	49 (0.4%)	59 (0.5%)	14 (0.2%)	47 (0.4%)

Jump

Bred	Sex	2012	2013	2014	2015	2016	2017	2018	2019	2020	2021
GB	Male	3351 (26.3%)	3263 (25.5%)	3043 (25.0%)	2974 (23.7%)	2679 (22.5%)	2847 (21.9%)	2408 (20.5%)	2547 (20.1%)	1486 (19.0%)	2382 (18.2%)
	Female	1246 (9.8%)	1208 (9.5%)	1216 (10.0%)	1303 (10.4%)	1011 (8.5%)	1107 (8.5%)	1055 (9.0%)	1152 (9.1%)	668 (8.5%)	1217 (9.3%)
	Subtotal	4597 (36.0%)	4471 (35.0%)	4259 (34.9%)	4277 (34.1%)	3690 (30.9%)	3954 (30.4%)	3463 (29.5%)	3699 (29.2%)	2154 (27.5%)	3599 (27.5%)
IRE	Male	5274 (41.4%)	5652 (44.2%)	5502 (45.1%)	5627 (44.8%)	5483 (45.9%)	5950 (45.7%)	5322 (45.3%)	5558 (43.9%)	3404 (43.5%)	5664 (43.3%)
	Female	732 (5.7%)	678 (5.3%)	686 (5.6%)	801 (6.4%)	839 (7.0%)	959 (7.4%)	1028 (8.8%)	1197 (9.5%)	784 (10.0%)	1247 (9.5%)
	Subtotal	6006 (47.1%)	6330 (49.6%)	6188 (50.8%)	6428 (51.2%)	6322 (53.0%)	6909 (53.0%)	6350 (54.1%)	6755 (53.4%)	4188 (53.5%)	6911 (52.8%)
FR	Male	1474 (11.6%)	1371 (10.7%)	1297 (10.6%)	1411 (11.2%)	1555 (13.0%)	1748 (13.4%)	1590 (13.5%)	1747 (13.8%)	1163 (14.9%)	2031 (15.5%)
	Female	122 (1.0%)	121 (0.9%)	123 (1.0%)	101 (0.8%)	114 (1.0%)	159 (1.2%)	134 (1.1%)	209 (1.7%)	177 (2.3%)	297 (2.3%)
	Subtotal	1596 (12.5%)	1492 (11.7%)	1420 (11.6%)	1512 (12.0%)	1669 (14.0%)	1907 (14.6%)	1724 (14.7%)	1956 (15.5%)	1340 (17.1%)	2328 (17.8%)
USA	Male	306 (2.4%)	231 (1.8%)	170 (1.4%)	162 (1.3%)	106 (0.9%)	96 (0.7%)	76 (0.6%)	52 (0.4%)	48 (0.6%)	58 (0.4%)
	Female	9 (0.1%)	15 (0.1%)	1 (0.0%)	3 (0.0%)	4 (0.0%)	4 (0.0%)	5 (0.0%)	9 (0.1%)	4 (0.1%)	3 (0.0%)
	Subtotal	315 (2.5%)	246 (1.9%)	171 (1.4%)	165 (1.3%)	110 (0.9%)	100 (0.8%)	81 (0.7%)	61 (0.5%)	52 (0.7%)	61 (0.5%)
GNY	Male	173 (1.4%)	153 (1.2%)	119 (1.0%)	149 (1.2%)	117 (1.0%)	136 (1.0%)	98 (0.8%)	152 (1.2%)	83 (1.1%)	165 (1.3%)
	Female	10 (0.1%)	15 (0.1%)	9 (0.1%)	11 (0.1%)	11 (0.1%)	8 (0.1%)	9 (0.1%)	12 (0.1%)	5 (0.1%)	21 (0.2%)
	Subtotal	183 (1.4%)	168 (1.3%)	128 (1.1%)	160 (1.3%)	128 (1.1%)	144 (1.1%)	107 (0.9%)	164 (1.3%)	88 (1.1%)	186 (1.4%)
Other	Male	53 (0.4%)	63 (0.5%)	24 (0.2%)	16 (0.1%)	11 (0.1%)	9 (0.1%)	18 (0.2%)	19 (0.2%)	5 (0.1%)	9 (0.1%)
	Female	3 (0.0%)	4 (0.0%)	0 (0.0%)	0 (0.0%)	3 (0.0%)	5 (0.0%)	2 (0.0%)	2 (0.0%)	1 (0.0%)	0 (0.0%)
	Subtotal	56 (0.4%)	67 (0.5%)	24 (0.2%)	16 (0.1%)	14 (0.1%)	14 (0.1%)	20 (0.2%)	21 (0.2%)	6 (0.1%)	9 (0.1%)

Year to Date Individual Runners by Breeding

Flat

Bred	Sex	2012	2013	2014	2015	2016	2017	2018	2019	2020	2021
GB	Male	1449 (31.5%)	1476 (31.5%)	1565 (31.5%)	1536 (32.1%)	1584 (31.5%)	1633 (31.2%)	1623 (32.1%)	1667 (30.9%)	911 (31.7%)	1675 (31.1%)
	Female	919 (20.0%)	896 (19.1%)	918 (18.5%)	836 (17.5%)	871 (17.3%)	890 (17.0%)	821 (16.2%)	943 (17.5%)	502 (17.5%)	951 (17.7%)
	Subtotal	2368 (51.5%)	2372 (50.7%)	2483 (49.9%)	2372 (49.6%)	2455 (48.9%)	2523 (48.2%)	2444 (48.4%)	2610 (48.3%)	1413 (49.2%)	2626 (48.8%)
IRE	Male	1238 (26.9%)	1361 (29.1%)	1427 (28.7%)	1421 (29.7%)	1518 (30.2%)	1622 (31.0%)	1539 (30.5%)	1636 (30.3%)	835 (29.1%)	1672 (31.1%)
	Female	570 (12.4%)	546 (11.7%)	618 (12.4%)	550 (11.5%)	621 (12.4%)	620 (11.8%)	615 (12.2%)	649 (12.0%)	360 (12.5%)	635 (11.8%)
	Subtotal	1808 (39.3%)	1907 (40.8%)	2045 (41.1%)	1971 (41.2%)	2139 (42.6%)	2242 (42.8%)	2154 (42.6%)	2285 (42.3%)	1195 (41.6%)	2307 (42.9%)
FR	Male	42 (0.9%)	56 (1.2%)	77 (1.5%)	86 (1.8%)	106 (2.1%)	118 (2.3%)	137 (2.7%)	165 (3.1%)	94 (3.3%)	172 (3.2%)
	Female	9 (0.2%)	12 (0.3%)	29 (0.6%)	35 (0.7%)	37 (0.7%)	39 (0.7%)	46 (0.9%)	58 (1.1%)	26 (0.9%)	51 (0.9%)
	Subtotal	51 (1.1%)	68 (1.5%)	106 (2.1%)	121 (2.5%)	143 (2.8%)	157 (3.0%)	183 (3.6%)	223 (4.1%)	120 (4.2%)	223 (4.1%)
USA	Male	247 (5.4%)	238 (5.1%)	222 (4.5%)	198 (4.1%)	192 (3.8%)	193 (3.7%)	173 (3.4%)	167 (3.1%)	88 (3.1%)	123 (2.3%)
	Female	67 (1.5%)	49 (1.0%)	55 (1.1%)	54 (1.1%)	35 (0.7%)	50 (1.0%)	44 (0.9%)	58 (1.1%)	27 (0.9%)	34 (0.6%)
	Subtotal	314 (6.8%)	287 (6.1%)	277 (5.6%)	252 (5.3%)	227 (4.5%)	243 (4.6%)	217 (4.3%)	225 (4.2%)	115 (4.0%)	157 (2.9%)
GNY	Male	27 (0.6%)	22 (0.5%)	31 (0.6%)	29 (0.6%)	29 (0.6%)	38 (0.7%)	33 (0.7%)	30 (0.6%)	17 (0.6%)	38 (0.7%)
	Female	4 (0.1%)	4 (0.1%)	5 (0.1%)	8 (0.2%)	8 (0.2%)	7 (0.1%)	7 (0.1%)	9 (0.2%)	3 (0.1%)	13 (0.2%)
	Subtotal	31 (0.7%)	26 (0.6%)	36 (0.7%)	37 (0.8%)	37 (0.7%)	45 (0.9%)	40 (0.8%)	39 (0.7%)	20 (0.7%)	51 (0.9%)
Other	Male	21 (0.5%)	15 (0.3%)	20 (0.4%)	18 (0.4%)	15 (0.3%)	17 (0.3%)	14 (0.3%)	14 (0.3%)	8 (0.3%)	14 (0.3%)
	Female	6 (0.1%)	4 (0.1%)	4 (0.1%)	9 (0.2%)	7 (0.1%)	9 (0.2%)	2 (0.0%)	5 (0.1%)	1 (0.0%)	2 (0.0%)
	Subtotal	27 (0.6%)	19 (0.4%)	24 (0.5%)	27 (0.6%)	22 (0.4%)	26 (0.5%)	16 (0.3%)	19 (0.4%)	9 (0.3%)	16 (0.3%)

Jump

Bred	Sex	2012	2013	2014	2015	2016	2017	2018	2019	2020	2021
GB	Male	1377 (26.0%)	1336 (25.3%)	1255 (24.7%)	1203 (23.0%)	1113 (21.9%)	1141 (21.4%)	1009 (20.0%)	1104 (19.9%)	831 (18.6%)	1103 (18.6%)
	Female	546 (10.3%)	556 (10.5%)	554 (10.9%)	580 (11.1%)	486 (9.5%)	486 (9.1%)	480 (9.5%)	526 (9.5%)	388 (8.7%)	546 (9.2%)
	Subtotal	1923 (36.3%)	1892 (35.8%)	1809 (35.7%)	1783 (34.2%)	1599 (31.4%)	1627 (30.5%)	1489 (29.5%)	1630 (29.4%)	1219 (27.2%)	1649 (27.8%)
IRE	Male	2197 (41.5%)	2294 (43.4%)	2256 (44.5%)	2315 (44.3%)	2304 (45.2%)	2393 (44.9%)	2260 (44.8%)	2421 (43.6%)	1958 (43.7%)	2538 (42.8%)
	Female	320 (6.0%)	321 (6.1%)	309 (6.1%)	351 (6.7%)	375 (7.4%)	414 (7.8%)	449 (8.9%)	534 (9.6%)	452 (10.1%)	575 (9.7%)
	Subtotal	2517 (47.5%)	2615 (49.5%)	2565 (50.6%)	2666 (51.1%)	2679 (52.6%)	2807 (52.6%)	2709 (53.7%)	2955 (53.2%)	2410 (53.8%)	3113 (52.6%)
FR	Male	587 (11.1%)	533 (10.1%)	513 (10.1%)	579 (11.1%)	641 (12.6%)	726 (13.6%)	692 (13.7%)	755 (13.6%)	654 (14.6%)	933 (15.8%)
	Female	48 (0.9%)	50 (0.9%)	50 (1.0%)	49 (0.9%)	52 (1.0%)	67 (1.3%)	72 (1.4%)	109 (2.0%)	106 (2.4%)	128 (2.2%)
	Subtotal	635 (12.0%)	583 (11.0%)	563 (11.1%)	628 (12.0%)	693 (13.6%)	793 (14.9%)	764 (15.1%)	864 (15.6%)	760 (17.0%)	1061 (17.9%)
USA	Male	126 (2.4%)	100 (1.9%)	74 (1.5%)	68 (1.3%)	47 (0.9%)	42 (0.8%)	36 (0.7%)	26 (0.5%)	25 (0.6%)	26 (0.4%)
	Female	4 (0.1%)	6 (0.1%)	1 (0.0%)	2 (0.0%)	2 (0.0%)	1 (0.0%)	2 (0.0%)	4 (0.1%)	3 (0.1%)	2 (0.0%)
	Subtotal	130 (2.5%)	106 (2.0%)	75 (1.5%)	70 (1.3%)	49 (1.0%)	43 (0.8%)	38 (0.8%)	30 (0.5%)	28 (0.6%)	28 (0.5%)
GNY	Male	69 (1.3%)	56 (1.1%)	44 (0.9%)	60 (1.1%)	59 (1.2%)	52 (1.0%)	36 (0.7%)	57 (1.0%)	49 (1.1%)	62 (1.0%)
	Female	2 (0.0%)	4 (0.1%)	4 (0.1%)	4 (0.1%)	6 (0.1%)	5 (0.1%)	2 (0.0%)	5 (0.1%)	4 (0.1%)	7 (0.1%)
	Subtotal	71 (1.3%)	60 (1.1%)	48 (0.9%)	64 (1.2%)	65 (1.3%)	57 (1.1%)	38 (0.8%)	62 (1.1%)	53 (1.2%)	69 (1.2%)
Other	Male	22 (0.4%)	24 (0.5%)	12 (0.2%)	9 (0.2%)	6 (0.1%)	5 (0.1%)	6 (0.1%)	9 (0.2%)	5 (0.1%)	3 (0.1%)
	Female	1 (0.0%)	3 (0.1%)	0 (0.0%)	0 (0.0%)	2 (0.0%)	2 (0.0%)	2 (0.0%)	1 (0.0%)	1 (0.0%)	0 (0.0%)
	Subtotal	23 (0.4%)	27 (0.5%)	12 (0.2%)	9 (0.2%)	8 (0.2%)	7 (0.1%)	8 (0.2%)	10 (0.2%)	6 (0.1%)	3 (0.1%)