

Horse Population Report

Updated on 31 March 2021



Introduction

Welcome to the latest update on the Racehorse Population from the British Horseracing Authority.

The aim of this document is to give stakeholders and the wider Public an insight into the current state of the Horse Population in Great Britain. It is hoped that this transparency will ensure that all decision makers have access to the key data required to help British Racing deliver a Competitive and Compelling product to stakeholders, racegoers and the wider public.

If you have any questions regarding the content of this report or suggestions for how it could be improved further, please contact Joe Yates – [jyates@britishhorseracing.com](mailto: jyates@britishhorseracing.com)

Definitions

This report uses the Horses in Training returns from the Weatherby's Racing Administration System, this is completed by trainers and should be updated whenever a horse enters or leaves training in their care as part of the conditions of their licence.

Horses in Training

Unless otherwise stated, snapshots of Horses in Training will be from the 15th day of the month in question and year to date figures will be up to and including the date titled at the front of the report.

Horses' ratings will be taken from the most recently published ratings by the BHA Handicapping Team, which is currently at 7am each Tuesday morning. For example, if looking at the Horses in a particular rating band for July 2011, the horses in training number will be from Friday 15th July 2011 and ratings, where possible, will be assigned to each horse from the ratings published by the BHA Handicappers on Tuesday 12th July 2011.

The Gender of a horse will be taken from the reporting date in question, regardless of whether this has since changed. In the case of YTD reporting, where a horse's gender or training type has changed in the year-to-date period, the most recent is taken.

This report does not count any horses that are temporarily racing abroad for GB Trainers at the time of reporting.

Yearlings are not included in total counts of flat and/or dual horses but will be sometimes shown separately for information purposes.

Yearlings and two-year-olds are not included in total counts of jump horses or counts of jump horses that include dual horses but will be sometimes shown separately for information purposes.

Yearlings, two-year-olds and three-year-olds are not included in total counts of Hunter Chasers but will be sometimes shown separately for information purposes.

Hunter Chasers are not included in any counts of Jump Horses or Total figures but will be sometimes shown separately for information purposes.

Runners

Unless otherwise specified, Total Runners and Individual Runners metrics only counts runners that ran in GB races including any voided races. Withdrawn horses are not included.

Hunter Chases are not included in this section but will be sometimes shown separately for information purposes.

Total Runners is a count of all runners in races, whilst individual runners only counts each individual horse once.

Monthly Horses in Training

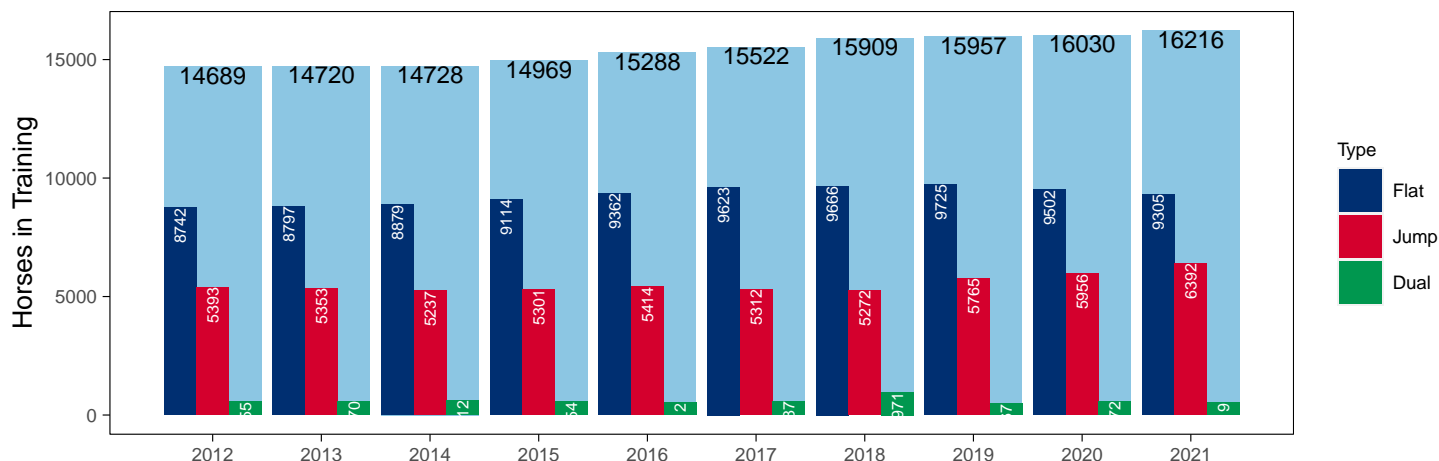
March 2021 Horses in Training Snapshot versus Previous Years

Type	2012	2013	2014	2015	2016	2017	2018	2019	2020	2021	vs. Last Year	vs. Pre-Covid
Flat	8742	8797	8879	9114	9362	9623	9666	9725	9502	9305	-197 / -2.1%	-420 / -4.3%
Jump	5393	5353	5237	5301	5414	5312	5272	5765	5956	6392	+436 / +7.3%	+627 / +10.9%
Dual	555	570	612	554	512	587	971	467	572	519	-53 / -9.3%	+52 / +11.1%
Hunter	2360	2148	2020	1913	1853	1780	1568	1571	1467	861	-606 / -41.3%	-710 / -45.2%
Total	14689	14720	14728	14969	15288	15522	15909	15957	16030	16216	+186 / +1.2%	+259 / +1.6%

'vs. Pre-Covid' is comparison between 2021 and 2019

Snapshot of Total Horses in Training in March

Horses in Training in March, shown by Training Type



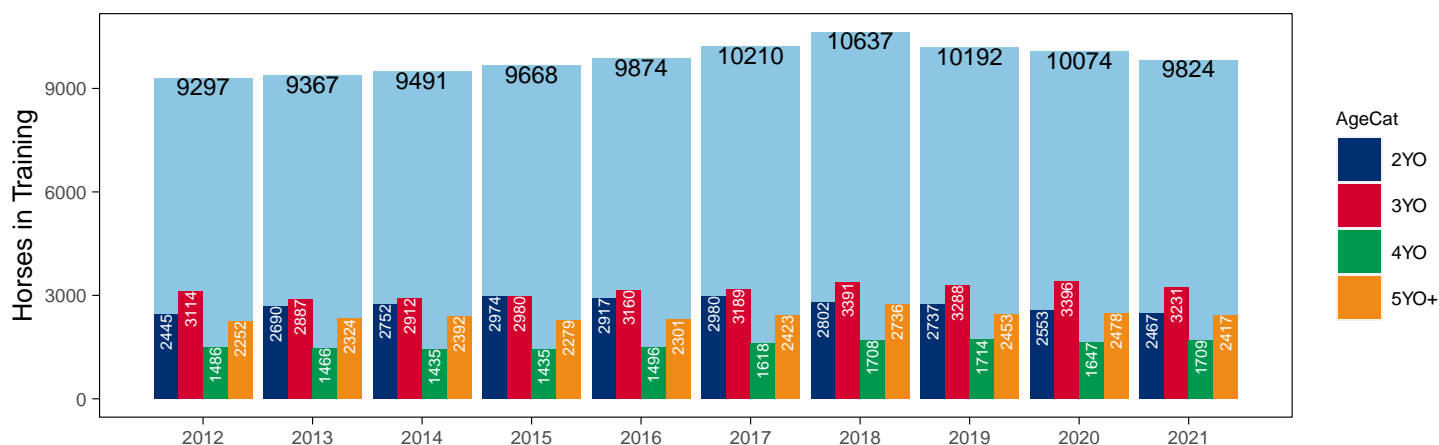
Flat (including Dual)

AgeCat	2012	2013	2014	2015	2016	2017	2018	2019	2020	2021	vs. Last Year	vs. Pre-Covid
2YO	2445	2690	2752	2974	2917	2980	2802	2737	2553	2467	-86 / -3.4%	-270 / -9.9%
3YO	3114	2887	2912	2980	3160	3189	3391	3288	3396	3231	-165 / -4.9%	-57 / -1.7%
4YO	1486	1466	1435	1435	1496	1618	1708	1714	1647	1709	+62 / +3.8%	-5 / -0.3%
5YO+	2252	2324	2392	2279	2301	2423	2736	2453	2478	2417	-61 / -2.5%	-36 / -1.5%
Total	9297	9367	9491	9668	9874	10210	10637	10192	10074	9824	-250 / -2.5%	-368 / -3.6%

'vs. Pre-Covid' is comparison between 2021 and 2019

Snapshot of Flat Horses in Training in March

Flat Horses in Training in March, shown by Age



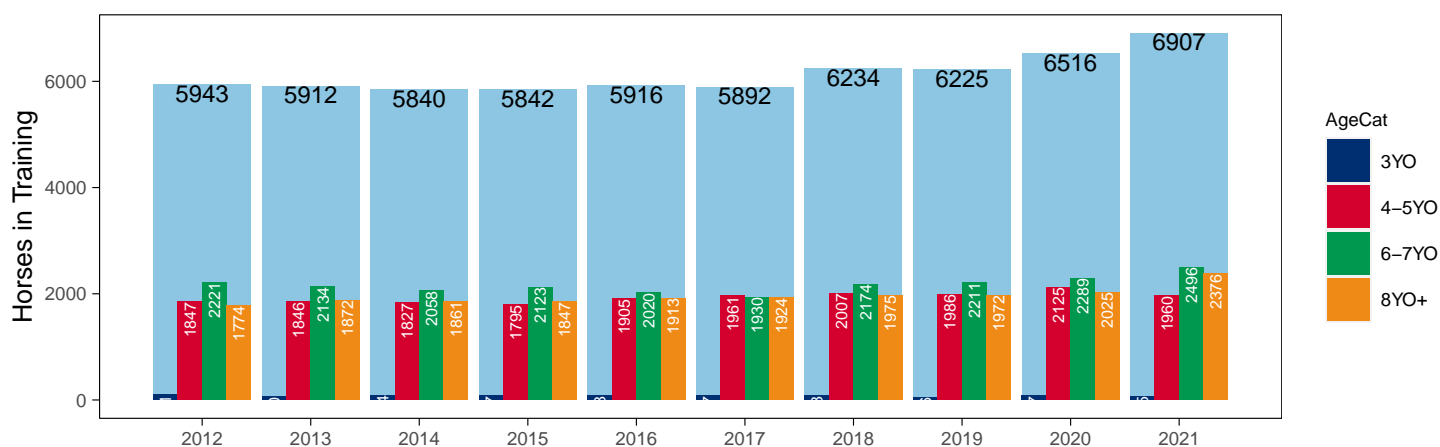
Jump (including Dual)

AgeCat	2012	2013	2014	2015	2016	2017	2018	2019	2020	2021	vs. Last Year	vs. Pre-Covid
3YO	101	60	94	77	78	77	78	56	77	75	-2 / -2.6%	+19 / +33.9%
4-5YO	1847	1846	1827	1795	1905	1961	2007	1986	2125	1960	-165 / -7.8%	-26 / -1.3%
6-7YO	2221	2134	2058	2123	2020	1930	2174	2211	2289	2496	+207 / +9.0%	+285 / +12.9%
8YO+	1774	1872	1861	1847	1913	1924	1975	1972	2025	2376	+351 / +17.3%	+404 / +20.5%
Total	5943	5912	5840	5842	5916	5892	6234	6225	6516	6907	+391 / +6.0%	+682 / +11.0%

'vs. Pre-Covid' is comparison between 2021 and 2019

Snapshot of Jump Horses in Training in March

Jump Horses in Training in March, shown by Age



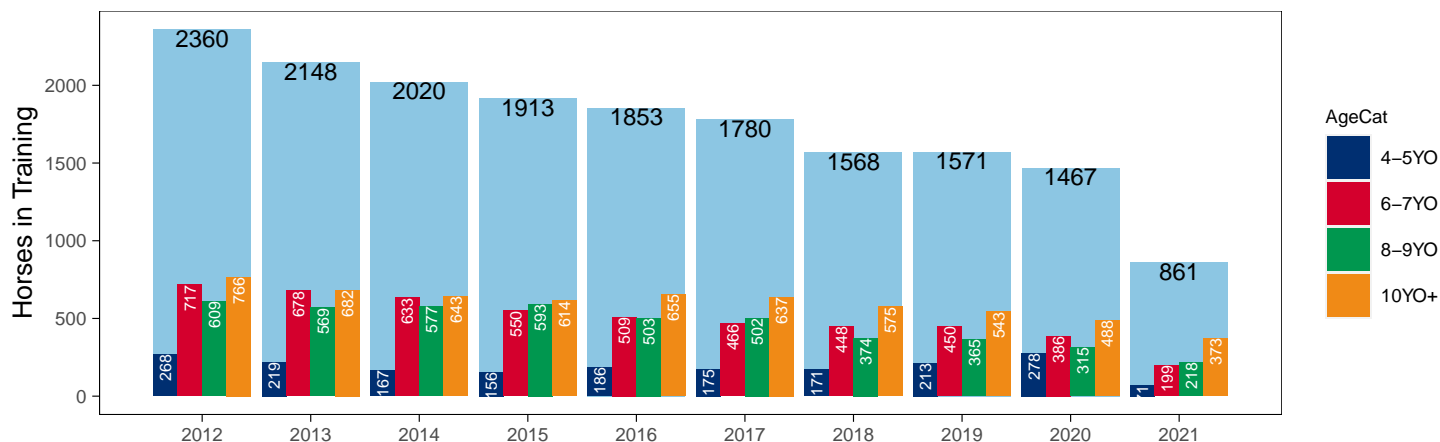
Hunter Chasers

AgeCat	2012	2013	2014	2015	2016	2017	2018	2019	2020	2021	vs. Last Year	vs. Pre-Covid
4-5YO	268	219	167	156	186	175	171	213	278	71	-207 / -74.5%	-142 / -66.7%
6-7YO	717	678	633	550	509	466	448	450	386	199	-187 / -48.4%	-251 / -55.8%
8-9YO	609	569	577	593	503	502	374	365	315	218	-97 / -30.8%	-147 / -40.3%
10YO+	766	682	643	614	655	637	575	543	488	373	-115 / -23.6%	-170 / -31.3%
Total	2360	2148	2020	1913	1853	1780	1568	1571	1467	861	-606 / -41.3%	-710 / -45.2%

'vs. Pre-Covid' is comparison between 2021 and 2019

Snapshot of Hunter Chasers in Training in March

Hunter Chasers in Training in March, shown by Age



2021 Horses in Training versus Previous Years

Type	Period	Jan	Feb	Mar	Apr	May	Jun	Jul	Aug	Sep	Oct	Nov	Dec
Flat	2021	8370	8854	9305	0	0	0	0	0	0	0	0	0
	2020	8886	9286	9502	9198	9395	9956	9992	9835	9396	8776	6981	6328
	Pre-Covid	8627	9168	9725	10176	10385	10397	10100	9759	9473	8801	7020	6551
Jump	2021	6459	6482	6392	0	0	0	0	0	0	0	0	0
	2020	5920	5933	5956	2992	2314	2689	4416	5446	5995	6362	6508	6383
	Pre-Covid	5724	5785	5765	5348	4032	3127	3616	4810	5321	5755	5986	5981
Dual	2021	510	496	519	0	0	0	0	0	0	0	0	0
	2020	541	552	572	433	439	514	550	587	609	603	585	530
	Pre-Covid	482	470	467	495	456	455	473	484	479	537	566	534
Hunter	2021	791	787	861	0	0	0	0	0	0	0	0	0
	2020	949	1327	1467	1434	1424	1396	1358	1324	0	228	447	794
	Pre-Covid	995	1378	1571	1701	1693	1637	1613	0	0	0	244	605
Total	2021	15339	15832	16216	0	0	0	0	0	0	0	0	0
	2020	15347	15771	16030	12623	12148	13159	14958	15868	16000	15741	14074	13241
	Pre-Covid	14695	15298	15741	15101	14153	13606	13966	14933	15227	14960	13215	12633

'Pre-Covid' is 2019 values

Monthly Horses in Training

2021 against 2020 and Pre-Covid, shown with % Difference

Period — Pre-Covid — 2020 — 2021



'Pre-Covid' is 2019 values

Flat (including Dual)

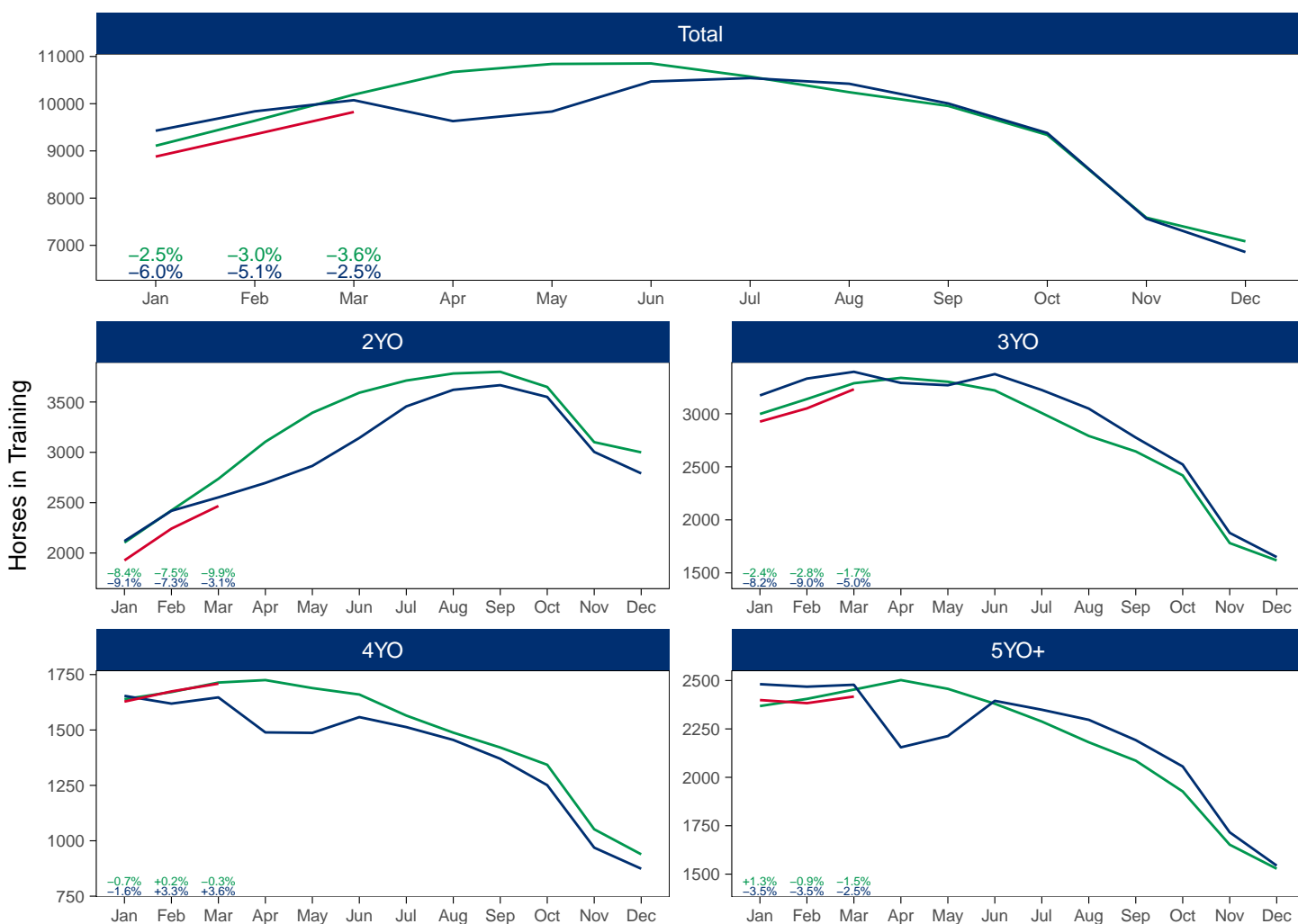
AgeCat	Period	Jan	Feb	Mar	Apr	May	Jun	Jul	Aug	Sep	Oct	Nov	Dec
2YO	2021	1927	2242	2467									
	2020	2119	2419	2553	2696	2865	3143	3456	3621	3667	3550	3004	2791
	Pre-Covid	2184	2523	2798	3027	3274	3512	3668	3765	3777	3609	2991	2831
3YO	2021	2926	3051	3231									
	2020	3173	3332	3396	3291	3269	3374	3224	3049	2776	2522	1877	1649
	Pre-Covid	2996	3173	3285	3305	3262	3216	3003	2842	2666	2437	1758	1586
4YO	2021	1628	1674	1709									
	2020	1654	1619	1647	1489	1487	1558	1513	1455	1370	1251	969	874
	Pre-Covid	1575	1607	1637	1625	1598	1560	1479	1434	1371	1280	995	906
5YO+	2021	2399	2383	2417									
	2020	2481	2468	2478	2155	2213	2395	2349	2297	2192	2056	1716	1544
	Pre-Covid	2420	2454	2478	2447	2423	2390	2301	2215	2119	1976	1671	1548
Total	2021	8880	9350	9824									
	2020	9427	9838	10074	9631	9834	10470	10542	10422	10005	9379	7566	6858
	Pre-Covid	9175	9756	10197	10404	10557	10678	10452	10257	9933	9302	7415	6871

'Pre-Covid' is 2019 values

Monthly Flat Horses in Training

2021 against 2020 and Pre-Covid, shown with % Difference

Period — Pre-Covid — 2020 — 2021



'Pre-Covid' is 2019 values

Jump (including Dual)

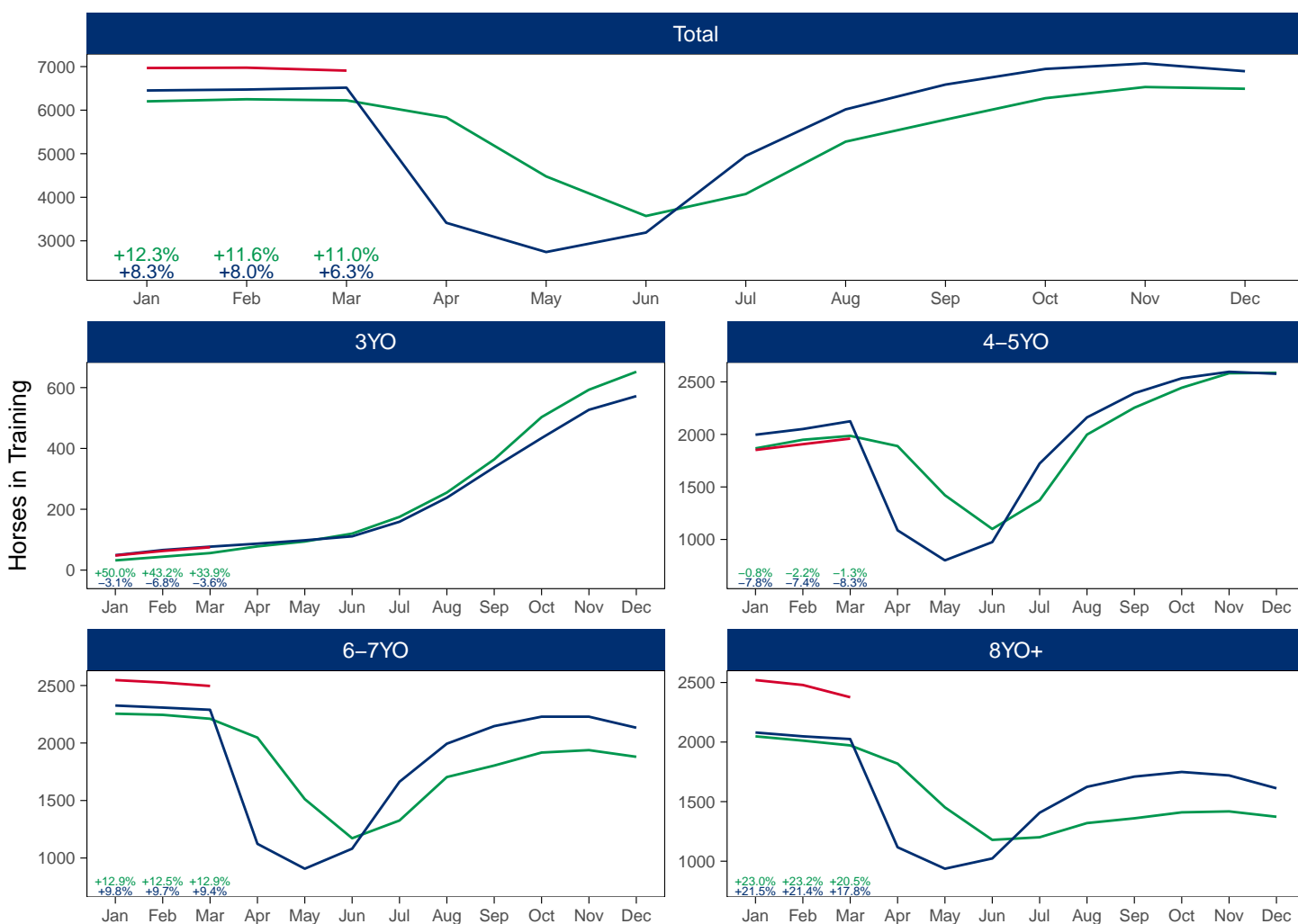
AgeCat	Period	Jan	Feb	Mar	Apr	May	Jun	Jul	Aug	Sep	Oct	Nov	Dec
3YO	2021	48	63	75									
	2020	49	66	77	87	98	111	159	238	338	434	527	572
	Pre-Covid	47	61	73	91	104	130	176	256	357	466	562	624
4-5YO	2021	1852	1907	1960									
	2020	1997	2051	2125	1087	801	975	1723	2162	2392	2534	2596	2577
	Pre-Covid	1876	1945	1997	1726	1286	1035	1338	1922	2216	2386	2472	2479
6-7YO	2021	2547	2526	2496									
	2020	2326	2308	2289	1123	907	1081	1663	1994	2147	2229	2229	2133
	Pre-Covid	2172	2148	2125	1788	1385	1140	1330	1680	1837	1911	1903	1842
8YO+	2021	2520	2479	2376									
	2020	2080	2048	2025	1117	937	1023	1407	1624	1710	1749	1720	1612
	Pre-Covid	2017	1989	1962	1694	1390	1169	1219	1373	1443	1472	1458	1400
Total	2021	6967	6975	6907									
	2020	6452	6473	6516	3414	2743	3190	4952	6018	6587	6946	7072	6894
	Pre-Covid	6113	6143	6157	5299	4165	3474	4063	5232	5853	6236	6395	6345

'Pre-Covid' is 2019 values

Monthly Jump Horses in Training

2021 against 2020 and Pre-Covid, shown with % Difference

Period — Pre-Covid — 2020 — 2021



'Pre-Covid' is 2019 values

Hunter Chasers

AgeCat	Period	Jan	Feb	Mar	Apr	May	Jun	Jul	Aug	Oct	Nov	Dec
4-5YO	2021	71	65	71								
	2020	113	223	278	265	264	258	248	233	40	106	174
	Pre-Covid	91	155	205	235	245	233	237	233	40	56	148
6-7YO	2021	195	181	199								
	2020	273	363	386	381	375	366	353	345	63	125	218
	Pre-Covid	293	400	452	476	479	458	425	345	63	75	182
8-9YO	2021	205	203	218								
	2020	220	294	315	309	307	304	297	295	54	88	176
	Pre-Covid	273	368	412	434	433	415	383	295	54	65	165
10YO+	2021	320	338	373								
	2020	343	447	488	479	478	468	460	451	71	128	226
	Pre-Covid	385	518	580	607	605	585	551	451	36	76	174
Total	2021	791	787	861								
	2020	949	1327	1467	1434	1424	1396	1358	1324	228	447	794
	Pre-Covid	1043	1441	1648	1751	1761	1690	1596	1324	114	272	669

'Pre-Covid' is 2019 values

Monthly Hunter Chasers in Training

2021 against 2020 and Pre-Covid, shown with % Difference

Period — Pre-Covid — 2020 — 2021



'Pre-Covid' is 2019 values

March 2021 Horses in Training by Rating Band Snapshot versus Previous Years

Flat (including Dual)

AgeCat	RatBand	2012	2013	2014	2015	2016	2017	2018	2019	2020	2021
2YO	Unrated	2445 (100.0%)	2690 (100.0%)	2752 (100.0%)	2974 (100.0%)	2917 (100.0%)	2980 (100.0%)	2802 (100.0%)	2737 (100.0%)	2553 (100.0%)	2467 (100.0%)
	Subtotal	2445 (100.0%)	2690 (100.0%)	2752 (100.0%)	2974 (100.0%)	2917 (100.0%)	2980 (100.0%)	2802 (100.0%)	2737 (100.0%)	2553 (100.0%)	2467 (100.0%)
3YO	0-50	113 (3.6%)	91 (3.2%)	108 (3.7%)	99 (3.3%)	100 (3.2%)	111 (3.5%)	85 (2.5%)	127 (3.9%)	130 (3.8%)	114 (3.5%)
	51-60	202 (6.5%)	197 (6.8%)	190 (6.5%)	202 (6.8%)	200 (6.3%)	234 (7.3%)	197 (5.8%)	275 (8.4%)	224 (6.6%)	225 (7.0%)
	61-70	299 (9.6%)	321 (11.1%)	316 (10.9%)	294 (9.9%)	380 (12.0%)	366 (11.5%)	366 (10.8%)	351 (10.7%)	329 (9.7%)	387 (12.0%)
	71-80	343 (11.0%)	339 (11.7%)	332 (11.4%)	368 (12.3%)	397 (12.6%)	407 (12.8%)	410 (12.1%)	352 (10.7%)	360 (10.6%)	340 (10.5%)
	81-90	172 (5.5%)	139 (4.8%)	166 (5.7%)	183 (6.1%)	200 (6.3%)	253 (7.9%)	209 (6.2%)	223 (6.8%)	202 (5.9%)	182 (5.6%)
	91-100	64 (2.1%)	61 (2.1%)	88 (3.0%)	95 (3.2%)	81 (2.6%)	80 (2.5%)	79 (2.3%)	100 (3.0%)	91 (2.7%)	93 (2.9%)
	101+	51 (1.6%)	58 (2.0%)	43 (1.5%)	72 (2.4%)	54 (1.7%)	59 (1.9%)	68 (2.0%)	62 (1.9%)	66 (1.9%)	59 (1.8%)
	Unrated	1870 (60.1%)	1681 (58.2%)	1669 (57.3%)	1667 (55.9%)	1748 (55.3%)	1679 (52.6%)	1977 (58.3%)	1798 (54.7%)	1994 (58.7%)	1831 (56.7%)
Subtotal		3114 (100.0%)	2887 (100.0%)	2912 (100.0%)	2980 (100.0%)	3160 (100.0%)	3189 (100.0%)	3391 (100.0%)	3288 (100.0%)	3396 (100.0%)	3231 (100.0%)
4YO	0-50	131 (8.8%)	102 (7.0%)	110 (7.7%)	107 (7.5%)	116 (7.8%)	129 (8.0%)	167 (9.8%)	185 (10.8%)	206 (12.5%)	164 (9.6%)
	51-60	177 (11.9%)	156 (10.6%)	157 (10.9%)	156 (10.9%)	162 (10.8%)	185 (11.4%)	197 (11.5%)	214 (12.5%)	212 (12.9%)	222 (13.0%)
	61-70	223 (15.0%)	193 (13.2%)	209 (14.6%)	214 (14.9%)	230 (15.4%)	256 (15.8%)	250 (14.6%)	274 (16.0%)	265 (16.1%)	288 (16.9%)
	71-80	234 (15.7%)	217 (14.8%)	224 (15.6%)	247 (17.2%)	258 (17.2%)	294 (18.2%)	301 (17.6%)	276 (16.1%)	242 (14.7%)	294 (17.2%)
	81-90	164 (11.0%)	156 (10.6%)	172 (12.0%)	184 (12.8%)	230 (15.4%)	219 (13.5%)	203 (11.9%)	231 (13.5%)	202 (12.3%)	198 (11.6%)
	91-100	70 (4.7%)	79 (5.4%)	83 (5.8%)	97 (6.8%)	97 (6.5%)	113 (7.0%)	124 (7.3%)	137 (8.0%)	135 (8.2%)	126 (7.4%)
	101+	51 (3.4%)	60 (4.1%)	49 (3.4%)	86 (6.0%)	87 (5.8%)	90 (5.6%)	71 (4.2%)	86 (5.0%)	90 (5.5%)	66 (3.9%)
	Unrated	436 (29.3%)	503 (34.3%)	431 (30.0%)	344 (24.0%)	316 (21.1%)	332 (20.5%)	395 (23.1%)	311 (18.1%)	295 (17.9%)	351 (20.5%)
Subtotal		1486 (100.0%)	1466 (100.0%)	1435 (100.0%)	1435 (100.0%)	1496 (100.0%)	1618 (100.0%)	1708 (100.0%)	1714 (100.0%)	1647 (100.0%)	1709 (100.0%)
5YO+	0-50	218 (9.7%)	214 (9.2%)	244 (10.2%)	232 (10.2%)	205 (8.9%)	227 (9.4%)	313 (11.4%)	353 (14.4%)	339 (13.7%)	297 (12.3%)
	51-60	296 (13.1%)	307 (13.2%)	308 (12.9%)	308 (13.5%)	318 (13.8%)	318 (13.1%)	371 (13.6%)	375 (15.3%)	371 (15.0%)	400 (16.5%)
	61-70	338 (15.0%)	360 (15.5%)	362 (15.1%)	381 (16.7%)	368 (16.0%)	377 (15.6%)	381 (13.9%)	427 (17.4%)	422 (17.0%)	426 (17.6%)
	71-80	314 (13.9%)	277 (11.9%)	327 (13.7%)	349 (15.3%)	355 (15.4%)	366 (15.1%)	360 (13.2%)	328 (13.4%)	356 (14.4%)	347 (14.4%)
	81-90	220 (9.8%)	212 (9.1%)	242 (10.1%)	258 (11.3%)	290 (12.6%)	299 (12.3%)	306 (11.2%)	302 (12.3%)	287 (11.6%)	259 (10.7%)
	91-100	115 (5.1%)	113 (4.9%)	142 (5.9%)	151 (6.6%)	169 (7.3%)	182 (7.5%)	181 (6.6%)	182 (7.4%)	165 (6.7%)	161 (6.7%)
	101+	83 (3.7%)	76 (3.3%)	94 (3.9%)	105 (4.6%)	135 (5.9%)	156 (6.4%)	149 (5.4%)	143 (5.8%)	129 (5.2%)	141 (5.8%)
	Unrated	668 (29.7%)	765 (32.9%)	673 (28.1%)	495 (21.7%)	461 (20.0%)	498 (20.6%)	675 (24.7%)	343 (14.0%)	409 (16.5%)	386 (16.0%)
Subtotal		2252 (100.0%)	2324 (100.0%)	2392 (100.0%)	2279 (100.0%)	2301 (100.0%)	2423 (100.0%)	2736 (100.0%)	2453 (100.0%)	2478 (100.0%)	2417 (100.0%)
Overall	0-50	462 (5.0%)	407 (4.3%)	462 (4.9%)	438 (4.5%)	421 (4.3%)	467 (4.6%)	565 (5.3%)	665 (6.5%)	675 (6.7%)	575 (5.9%)
	51-60	675 (7.3%)	660 (7.0%)	655 (6.9%)	666 (6.9%)	680 (6.9%)	737 (7.2%)	765 (7.2%)	864 (8.5%)	807 (8.0%)	847 (8.6%)
	61-70	860 (9.3%)	874 (9.3%)	887 (9.3%)	889 (9.2%)	978 (9.9%)	999 (9.8%)	997 (9.4%)	1052 (10.3%)	1016 (10.1%)	1101 (11.2%)
	71-80	891 (9.6%)	833 (8.9%)	883 (9.3%)	964 (10.0%)	1010 (10.2%)	1067 (10.5%)	1071 (10.1%)	956 (9.4%)	958 (9.5%)	981 (10.0%)
	81-90	556 (6.0%)	507 (5.4%)	580 (6.1%)	625 (6.5%)	720 (7.3%)	771 (7.6%)	718 (6.8%)	756 (7.4%)	691 (6.9%)	639 (6.5%)
	91-100	249 (2.7%)	253 (2.7%)	313 (3.3%)	343 (3.5%)	347 (3.5%)	375 (3.7%)	384 (3.6%)	419 (4.1%)	391 (3.9%)	380 (3.9%)
	101+	185 (2.0%)	194 (2.1%)	186 (2.0%)	263 (2.7%)	276 (2.8%)	305 (3.0%)	288 (2.7%)	291 (2.9%)	285 (2.8%)	266 (2.7%)
Unrated		5419 (58.3%)	5639 (60.2%)	5525 (58.2%)	5480 (56.7%)	5442 (55.1%)	5489 (53.8%)	5849 (55.0%)	5189 (50.9%)	5251 (52.1%)	5035 (51.3%)
Total		9297 (100.0%)	9367 (100.0%)	9491 (100.0%)	9668 (100.0%)	9874 (100.0%)	10210 (100.0%)	10637 (100.0%)	10192 (100.0%)	10074 (100.0%)	9824 (100.0%)

Jump (including Dual)

AgeCat	RatBand	2012	2013	2014	2015	2016	2017	2018	2019	2020	2021
3YO	Unrated	101 (100.0%)	60 (100.0%)	94 (100.0%)	77 (100.0%)	78 (100.0%)	77 (100.0%)	78 (100.0%)	56 (100.0%)	77 (100.0%)	75 (100.0%)
	Subtotal	101 (100.0%)	60 (100.0%)	94 (100.0%)	77 (100.0%)	78 (100.0%)	77 (100.0%)	78 (100.0%)	56 (100.0%)	77 (100.0%)	75 (100.0%)
4-5YO	0-100	106 (5.7%)	97 (5.3%)	127 (7.0%)	125 (7.0%)	124 (6.5%)	143 (7.3%)	116 (5.8%)	127 (6.4%)	194 (9.1%)	150 (7.7%)
	101-110	66 (3.6%)	68 (3.7%)	64 (3.5%)	66 (3.7%)	105 (5.5%)	104 (5.3%)	117 (5.8%)	97 (4.9%)	108 (5.1%)	77 (3.9%)
	111-120	68 (3.7%)	68 (3.7%)	74 (4.1%)	99 (5.5%)	83 (4.4%)	114 (5.8%)	111 (5.5%)	128 (6.4%)	113 (5.3%)	93 (4.7%)
	121-130	45 (2.4%)	64 (3.5%)	71 (3.9%)	77 (4.3%)	69 (3.6%)	82 (4.2%)	91 (4.5%)	104 (5.2%)	102 (4.8%)	68 (3.5%)
	131-140	29 (1.6%)	31 (1.7%)	37 (2.0%)	38 (2.1%)	63 (3.3%)	69 (3.5%)	57 (2.8%)	54 (2.7%)	50 (2.4%)	33 (1.7%)
	141-150	14 (0.8%)	11 (0.6%)	12 (0.7%)	27 (1.5%)	22 (1.2%)	15 (0.8%)	15 (0.7%)	20 (1.0%)	19 (0.9%)	10 (0.5%)
	151+	3 (0.2%)	5 (0.3%)	4 (0.2%)	3 (0.2%)	7 (0.4%)	3 (0.2%)	5 (0.2%)	3 (0.2%)	6 (0.3%)	4 (0.2%)
	Unrated	1516 (82.1%)	1502 (81.4%)	1438 (78.7%)	1360 (75.8%)	1432 (75.2%)	1431 (73.0%)	1495 (74.5%)	1453 (73.2%)	1533 (72.1%)	1525 (77.8%)
	Subtotal	1847 (100.0%)	1846 (100.0%)	1827 (100.0%)	1795 (100.0%)	1905 (100.0%)	1961 (100.0%)	2007 (100.0%)	1986 (100.0%)	2125 (100.0%)	1960 (100.0%)
	0-100	289 (13.0%)	308 (14.4%)	324 (15.7%)	375 (17.7%)	337 (16.7%)	362 (18.8%)	400 (18.4%)	440 (19.9%)	476 (20.8%)	585 (23.4%)
6-7YO	101-110	193 (8.7%)	164 (7.7%)	183 (8.9%)	225 (10.6%)	241 (11.9%)	236 (12.2%)	261 (12.0%)	302 (13.7%)	325 (14.2%)	315 (12.6%)
	111-120	178 (8.0%)	183 (8.6%)	210 (10.2%)	254 (12.0%)	260 (12.9%)	256 (13.3%)	290 (13.3%)	310 (14.0%)	313 (13.7%)	329 (13.2%)
	121-130	146 (6.6%)	154 (7.2%)	196 (9.5%)	208 (9.8%)	218 (10.8%)	215 (11.1%)	248 (11.4%)	281 (12.7%)	287 (12.5%)	297 (11.9%)
	131-140	77 (3.5%)	85 (4.0%)	93 (4.5%)	134 (6.3%)	143 (7.1%)	171 (8.9%)	185 (8.5%)	197 (8.9%)	208 (9.1%)	176 (7.1%)
	141-150	29 (1.3%)	35 (1.6%)	40 (1.9%)	49 (2.3%)	66 (3.3%)	69 (3.6%)	85 (3.9%)	77 (3.5%)	72 (3.1%)	76 (3.0%)
	151+	16 (0.7%)	17 (0.8%)	21 (1.0%)	38 (1.8%)	22 (1.1%)	30 (1.6%)	29 (1.3%)	30 (1.4%)	32 (1.4%)	26 (1.0%)
	Unrated	1293 (58.2%)	1188 (55.7%)	991 (48.2%)	840 (39.6%)	733 (36.3%)	591 (30.6%)	676 (31.1%)	574 (26.0%)	576 (25.2%)	692 (27.7%)
	Subtotal	2221 (100.0%)	2134 (100.0%)	2058 (100.0%)	2123 (100.0%)	2020 (100.0%)	1930 (100.0%)	2174 (100.0%)	2211 (100.0%)	2289 (100.0%)	2496 (100.0%)
8YO+	0-100	365 (20.6%)	383 (20.5%)	479 (25.7%)	479 (25.9%)	500 (26.1%)	487 (25.3%)	503 (25.5%)	557 (28.2%)	558 (27.6%)	694 (29.2%)
	101-110	164 (9.2%)	179 (9.6%)	181 (9.7%)	232 (12.6%)	269 (14.1%)	261 (13.6%)	263 (13.3%)	271 (13.7%)	263 (13.0%)	306 (12.9%)
	111-120	132 (7.4%)	162 (8.7%)	219 (11.8%)	229 (12.4%)	243 (12.7%)	247 (12.8%)	265 (13.4%)	288 (14.6%)	263 (13.0%)	318 (13.4%)
	121-130	138 (7.8%)	137 (7.3%)	171 (9.2%)	218 (11.8%)	241 (12.6%)	211 (11.0%)	243 (12.3%)	227 (11.5%)	235 (11.6%)	305 (12.8%)
	131-140	94 (5.3%)	116 (6.2%)	133 (7.1%)	172 (9.3%)	176 (9.2%)	196 (10.2%)	196 (9.9%)	204 (10.3%)	200 (9.9%)	233 (9.8%)
	141-150	41 (2.3%)	50 (2.7%)	57 (3.1%)	75 (4.1%)	80 (4.2%)	86 (4.5%)	102 (5.2%)	105 (5.3%)	121 (6.0%)	111 (4.7%)
	151+	40 (2.3%)	37 (2.0%)	32 (1.7%)	37 (2.0%)	50 (2.6%)	47 (2.4%)	43 (2.2%)	63 (3.2%)	63 (3.1%)	71 (3.0%)
	Unrated	800 (45.1%)	808 (43.2%)	589 (31.6%)	405 (21.9%)	354 (18.5%)	389 (20.2%)	360 (18.2%)	257 (13.0%)	322 (15.9%)	338 (14.2%)
	Subtotal	1774 (100.0%)	1872 (100.0%)	1861 (100.0%)	1847 (100.0%)	1913 (100.0%)	1924 (100.0%)	1975 (100.0%)	1972 (100.0%)	2025 (100.0%)	2376 (100.0%)
Overall	0-100	760 (12.8%)	788 (13.3%)	930 (15.9%)	979 (16.8%)	961 (16.2%)	992 (16.8%)	1019 (16.3%)	1124 (18.1%)	1228 (18.8%)	1429 (20.7%)
	101-110	423 (7.1%)	411 (7.0%)	428 (7.3%)	523 (9.0%)	615 (10.4%)	601 (10.2%)	641 (10.3%)	670 (10.8%)	696 (10.7%)	698 (10.1%)
	111-120	378 (6.4%)	413 (7.0%)	503 (8.6%)	582 (10.0%)	586 (9.9%)	617 (10.5%)	666 (10.7%)	726 (11.7%)	689 (10.6%)	740 (10.7%)
	121-130	329 (5.5%)	355 (6.0%)	438 (7.5%)	503 (8.6%)	528 (8.9%)	508 (8.6%)	582 (9.3%)	612 (9.8%)	624 (9.6%)	670 (9.7%)
	131-140	200 (3.4%)	232 (3.9%)	263 (4.5%)	344 (5.9%)	382 (6.5%)	436 (7.4%)	438 (7.0%)	455 (7.3%)	458 (7.0%)	442 (6.4%)
	141-150	84 (1.4%)	96 (1.6%)	109 (1.9%)	151 (2.6%)	168 (2.8%)	170 (2.9%)	202 (3.2%)	202 (3.2%)	212 (3.3%)	197 (2.9%)
	151+	59 (1.0%)	59 (1.0%)	57 (1.0%)	78 (1.3%)	79 (1.3%)	80 (1.4%)	77 (1.2%)	96 (1.5%)	101 (1.6%)	101 (1.5%)
	Unrated	3710 (62.4%)	3558 (60.2%)	3112 (53.3%)	2682 (45.9%)	2597 (43.9%)	2488 (42.2%)	2609 (41.9%)	2340 (37.6%)	2508 (38.5%)	2630 (38.1%)
Total		5943 (100.0%)	5912 (100.0%)	5840 (100.0%)	5842 (100.0%)	5916 (100.0%)	5892 (100.0%)	6234 (100.0%)	6225 (100.0%)	6516 (100.0%)	6907 (100.0%)

Young Horses Entering Training

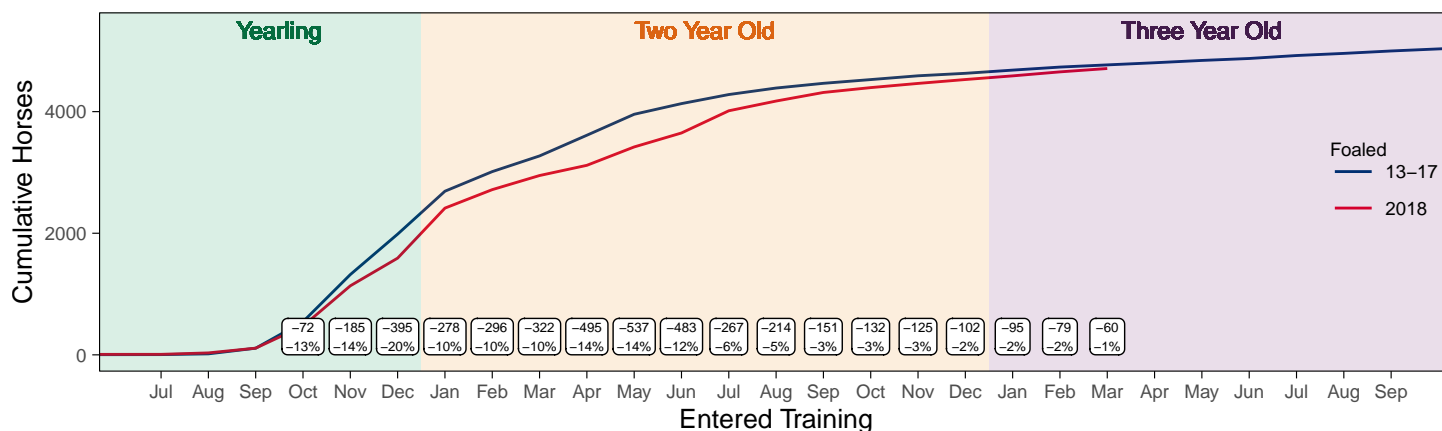
Flat Yearlings in Training versus Previous Years

Period	Jan	Feb	Mar	Apr	May	Jun	Jul	Aug	Sep	Oct	Nov	Dec
2021	0	0	0									
2020	0	0	0	0	1	2	1	2	60	235	712	1365
5YrAvg	1	1	1	1	1	1	1	2	44	241	724	1460

Foals Entering Training for the First Time

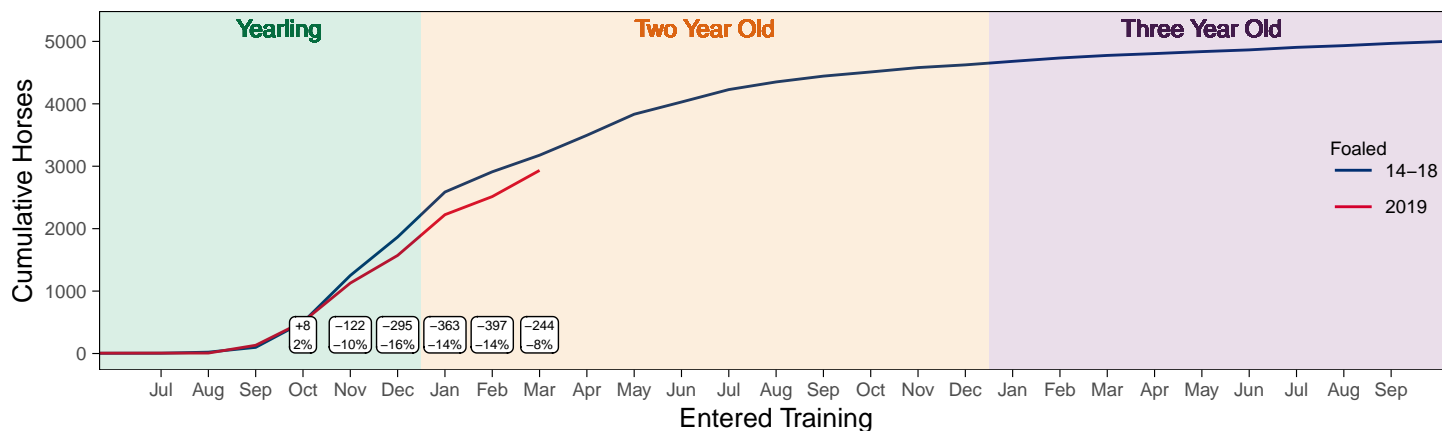
2018 Foals Entering Training Over Time

Cumulative Flat Horses foaled in 2018 shown by first in training notification against trend



2019 Foals Entering Training Over Time

Cumulative Flat Horses foaled in 2019 shown by first in training notification against trend



Year to Date Horses in Training

Type	2012	2013	2014	2015	2016	2017	2018	2019	2020	2021	vs. Last Year	vs. Pre-Covid
Flat	10122	10230	10304	10634	11003	11134	11049	11233	11061	10933	-128 / -1.2%	-300 / -2.7%
Jump	6397	6290	6202	6306	6334	6330	6016	6721	6747	7328	+581 / +8.6%	+607 / +9.0%
Dual	696	681	711	672	641	717	1164	610	692	643	-49 / -7.1%	+33 / +5.4%
Hunter	2608	2284	2158	2054	1990	1882	1688	1678	1504	1189	-315 / -20.9%	-489 / -29.1%
Total	17215	17201	17217	17612	17978	18181	18229	18564	18500	18904	+404 / +2.2%	+340 / +1.8%

'vs. Pre-Covid' is comparison between 2021 and 2019

Flat

AgeCat	2012	2013	2014	2015	2016	2017	2018	2019	2020	2021	vs. Last Year	vs. Pre-Covid
2YO	2707	3002	3039	3314	3273	3225	3071	3122	2908	2889	-19 / -0.7%	-233 / -7.5%
3YO	3471	3241	3282	3380	3614	3649	3785	3703	3802	3637	-165 / -4.3%	-66 / -1.8%
4YO	1656	1660	1570	1617	1722	1801	1748	1863	1829	1929	+100 / +5.5%	+66 / +3.5%
5YO+	2288	2327	2413	2323	2394	2459	2445	2545	2522	2478	-44 / -1.7%	-67 / -2.6%
Total	10122	10230	10304	10634	11003	11134	11049	11233	11061	10933	-128 / -1.2%	-300 / -2.7%

'vs. Pre-Covid' is comparison between 2021 and 2019

Jump

AgeCat	2012	2013	2014	2015	2016	2017	2018	2019	2020	2021	vs. Last Year	vs. Pre-Covid
3YO	39	25	43	35	47	30	40	45	28	44	+16 / +57.1%	-1 / -2.2%
4-5YO	1951	1881	1814	1876	1959	1969	1729	2011	2068	1960	-108 / -5.2%	-51 / -2.5%
6-7YO	2406	2293	2246	2346	2189	2123	2157	2424	2426	2683	+257 / +10.6%	+259 / +10.7%
8YO+	2001	2091	2099	2049	2139	2208	2090	2241	2225	2641	+416 / +18.7%	+400 / +17.8%
Total	6397	6290	6202	6306	6334	6330	6016	6721	6747	7328	+581 / +8.6%	+607 / +9.0%

'vs. Pre-Covid' is comparison between 2021 and 2019

Dual

AgeCat	2012	2013	2014	2015	2016	2017	2018	2019	2020	2021	vs. Last Year	vs. Pre-Covid
3YO	72	48	66	65	54	63	70	40	78	53	-25 / -32.1%	+13 / +32.5%
4YO	164	183	178	147	158	187	291	187	185	184	-1 / -0.5%	-3 / -1.6%
5YO+	460	450	467	460	429	467	803	383	429	406	-23 / -5.4%	+23 / +6.0%
Total	696	681	711	672	641	717	1164	610	692	643	-49 / -7.1%	+33 / +5.4%

'vs. Pre-Covid' is comparison between 2021 and 2019

Hunter Chasers

AgeCat	2012	2013	2014	2015	2016	2017	2018	2019	2020	2021	vs. Last Year	vs. Pre-Covid
4-5YO	309	240	189	198	206	214	214	263	299	151	-148 / -49.5%	-112 / -42.6%
6-7YO	808	724	674	580	551	484	478	475	395	288	-107 / -27.1%	-187 / -39.4%
8-9YO	669	596	623	627	536	519	393	378	317	291	-26 / -8.2%	-87 / -23.0%
10YO+	822	724	672	649	697	665	603	562	493	459	-34 / -6.9%	-103 / -18.3%
Total	2608	2284	2158	2054	1990	1882	1688	1678	1504	1189	-315 / -20.9%	-489 / -29.1%

'vs. Pre-Covid' is comparison between 2021 and 2019

Year to Date Runners

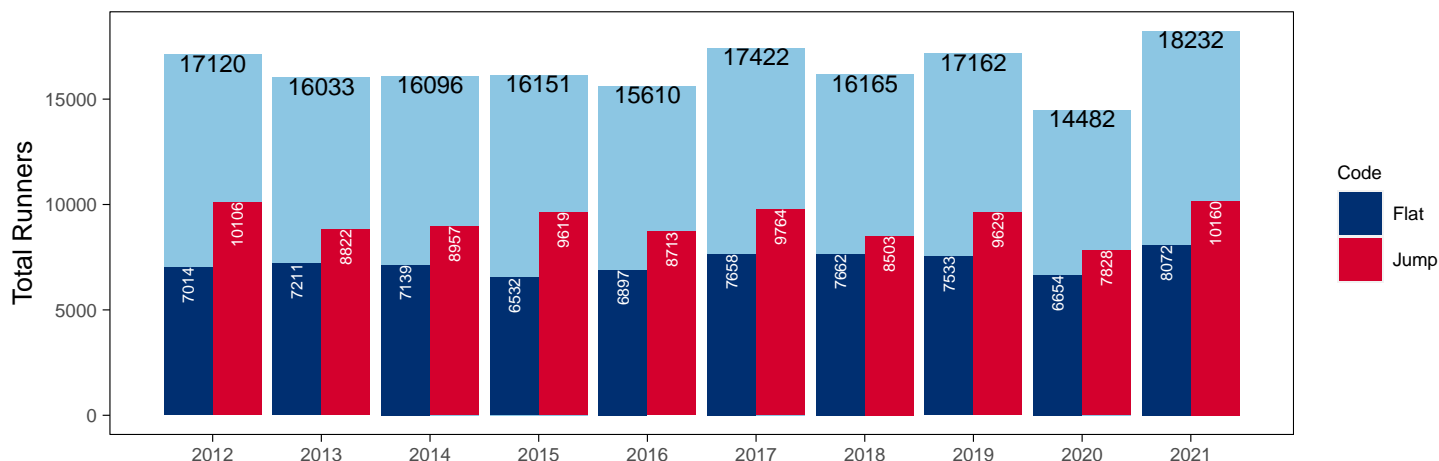
Year to Date Total Runners

Code	2012	2013	2014	2015	2016	2017	2018	2019	2020	2021	vs. Last Year	vs. Pre-Covid
Flat	7014	7211	7139	6532	6897	7658	7662	7533	6654	8072	+1418 / +21.3%	+539 / +7.2%
Jump	10106	8822	8957	9619	8713	9764	8503	9629	7828	10160	+2332 / +29.8%	+531 / +5.5%
Total	17120	16033	16096	16151	15610	17422	16165	17162	14482	18232	+3750 / +25.9%	+1070 / +6.2%

'vs. Pre-Covid' is comparison between 2021 and 2019

YTD Total Runners

Total Runners in GB Races, shown by Code and Total



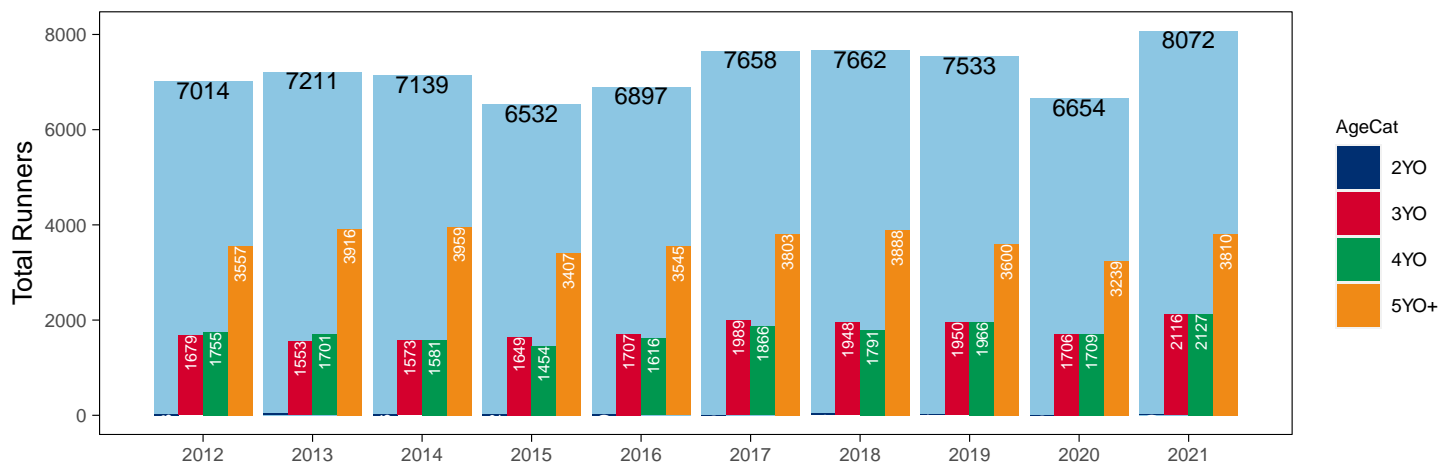
Flat

AgeCat	2012	2013	2014	2015	2016	2017	2018	2019	2020	2021	vs. Last Year	vs. Pre-Covid
2YO	23	41	26	22	29	35	35	17	19	19	NA / NA	+2 / +11.8%
3YO	1679	1553	1573	1649	1707	1989	1948	1950	1706	2116	+410 / +24.0%	+166 / +8.5%
4YO	1755	1701	1581	1454	1616	1866	1791	1966	1709	2127	+418 / +24.5%	+161 / +8.2%
5YO+	3557	3916	3959	3407	3545	3803	3888	3600	3239	3810	+571 / +17.6%	+210 / +5.8%
Total	7014	7211	7139	6532	6897	7658	7662	7533	6654	8072	+1418 / +21.3%	+539 / +7.2%

'vs. Pre-Covid' is comparison between 2021 and 2019

YTD Total Flat Runners by Age

Total Runners in GB Flat Races, shown by Age Category and Total



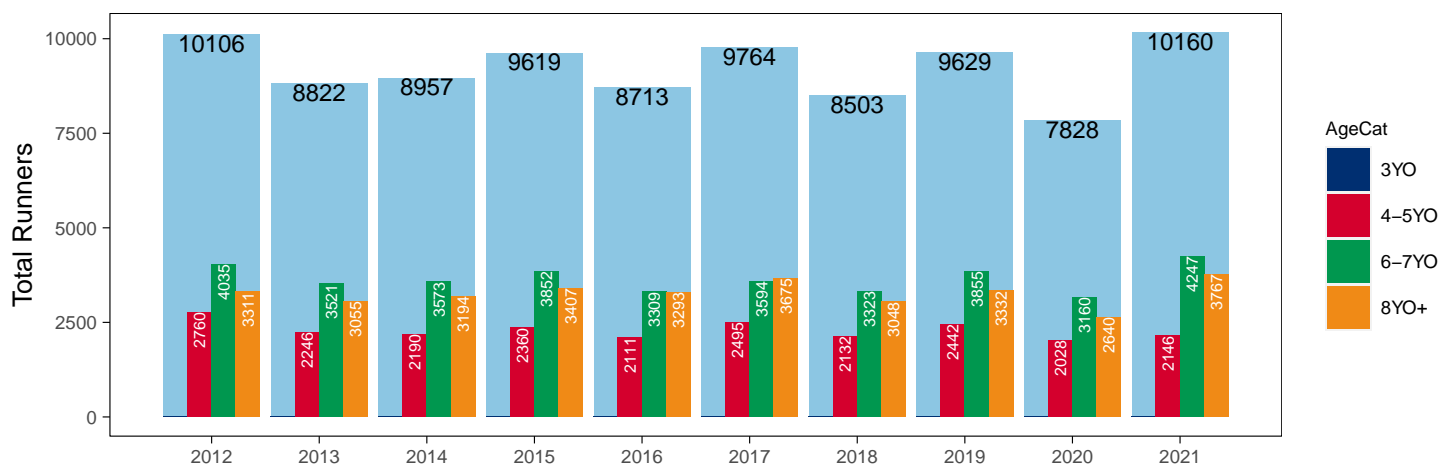
Jump

AgeCat	2012	2013	2014	2015	2016	2017	2018	2019	2020	2021	vs. Last Year	vs. Pre-Covid
3YO											NA / NA	0 / NA
4-5YO	2760	2246	2190	2360	2111	2495	2132	2442	2028	2146	+118 / +5.8%	-296 / -12.1%
6-7YO	4035	3521	3573	3852	3309	3594	3323	3855	3160	4247	+1087 / +34.4%	+392 / +10.2%
8YO+	3311	3055	3194	3407	3293	3675	3048	3332	2640	3767	+1127 / +42.7%	+435 / +13.1%
Total	10106	8822	8957	9619	8713	9764	8503	9629	7828	10160	+2332 / +29.8%	+531 / +5.5%

'vs. Pre-Covid' is comparison between 2021 and 2019

YTD Total Jump Runners by Age

Total Runners in GB Jump Races, shown by Age Category and Total



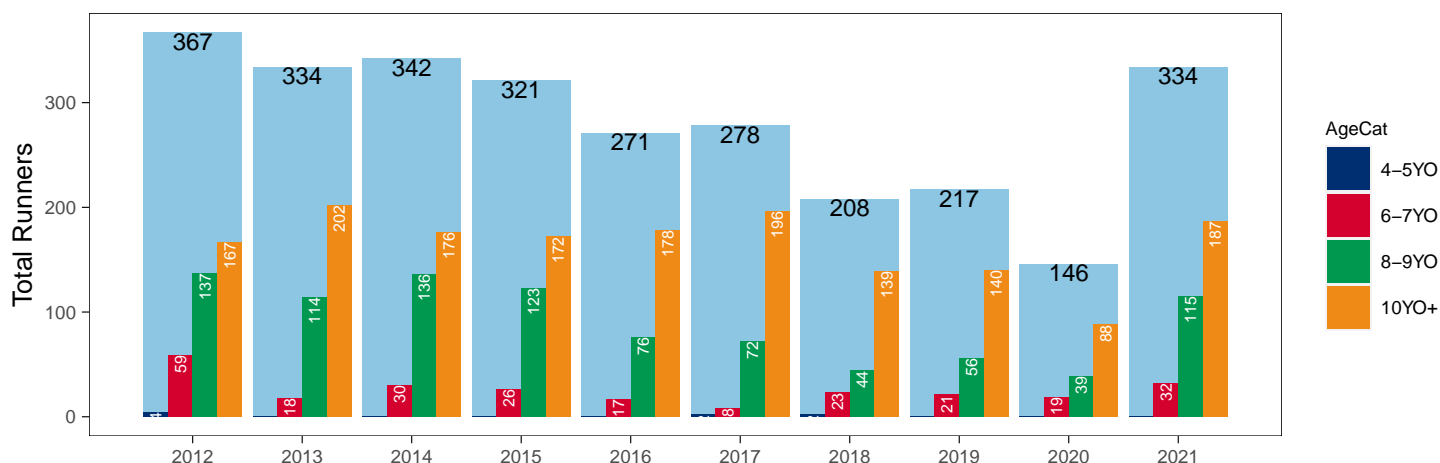
Hunter Chases

AgeCat	2012	2013	2014	2015	2016	2017	2018	2019	2020	2021	vs. Last Year	vs. Pre-Covid
4-5YO	4					2	2				NA / NA	0 / NA
6-7YO	59	18	30	26	17	8	23	21	19	32	+13 / +68.4%	+11 / +52.4%
8-9YO	137	114	136	123	76	72	44	56	39	115	+76 / +194.9%	+59 / +105.4%
10YO+	167	202	176	172	178	196	139	140	88	187	+99 / +112.5%	+47 / +33.6%
Total	367	334	342	321	271	278	208	217	146	334	+188 / +128.8%	+117 / +53.9%

'vs. Pre-Covid' is comparison between 2021 and 2019

YTD Total Hunter Chase Runners by Age

Total Runners in GB Hunter Chases shown by Age Category and Total



Year to Date Total Runners by Country Trained

Code	Country	2012	2013	2014	2015	2016	2017	2018	2019	2020	2021
Flat	GB	6960	7141	7099	6509	6841	7589	7585	7465	6574	8072
	IRE	46	70	38	20	50	67	71	65	76	
	Other	8		2	3	6	2	6	3	4	
Jump	GB	9907	8645	8709	9356	8395	9441	8274	9330	7561	9969
	IRE	198	175	246	261	313	312	223	292	257	188
	Other	1	2	2	2	5	11	6	7	10	3
Overall	GB	16867	15786	15808	15865	15236	17030	15859	16795	14135	18041
	IRE	244	245	284	281	363	379	294	357	333	188
	Other	9	2	4	5	11	13	12	10	14	3

Year to Date GB Trained Runners Racing Abroad

Code	Country	2012	2013	2014	2015	2016	2017	2018	2019	2020	2021
Flat	IRE	12	5	8	9	6	15	8	9	2	1
	FR	35	41	52	50	15	38	21	40	27	12
	GNV						2				
	UAE	343	351	326	289	208	278	276	301	281	247
	KSA									15	21
	Other	10	14	8	18	24	24	16	12	22	3
	Total	400	411	394	366	253	357	321	362	347	284
Jump	IRE	6	5	6	3	14	6	11	6	5	
	FR	2	1		4	7	1		1	3	19
	Total	8	6	6	7	21	7	11	7	8	19

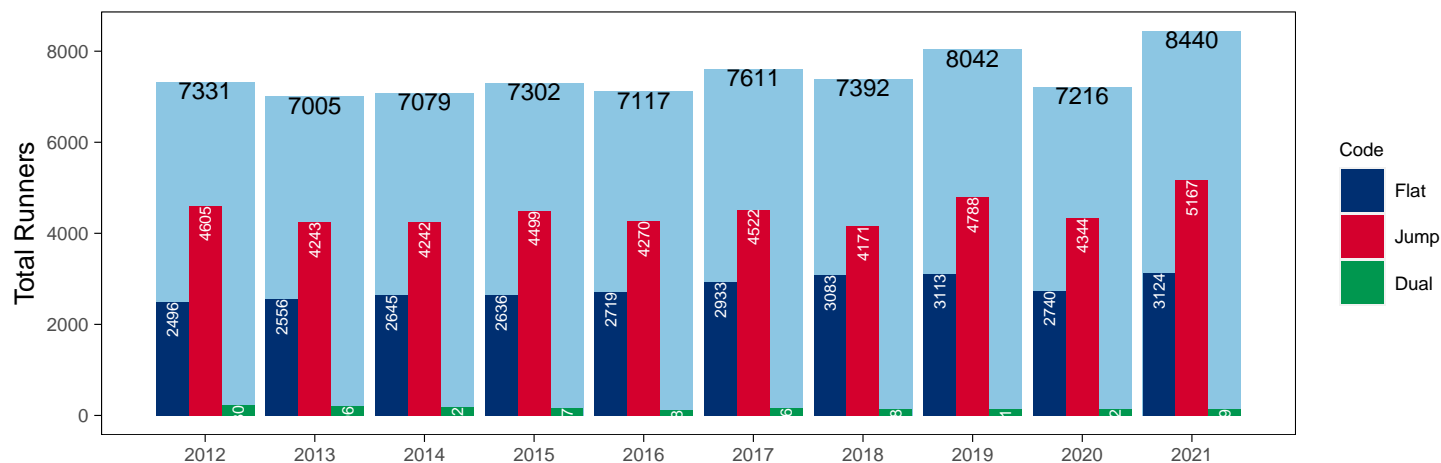
Year to Date Individual Runners

Code	2012	2013	2014	2015	2016	2017	2018	2019	2020	2021	vs. Last Year	vs. Pre-Covid
Flat	2496	2556	2645	2636	2719	2933	3083	3113	2740	3124	+384 / +14.0%	+11 / +0.4%
Jump	4605	4243	4242	4499	4270	4522	4171	4788	4344	5167	+823 / +18.9%	+379 / +7.9%
Dual	230	206	192	167	128	156	138	141	132	149	+17 / +12.9%	+8 / +5.7%
Overall	7331	7005	7079	7302	7117	7611	7392	8042	7216	8440	+1224 / +17.0%	+398 / +4.9%

'vs. Pre-Covid' is comparison between 2021 and 2019

YTD Individual Runners

Individual Runners in GB Races, shown by Code and Total



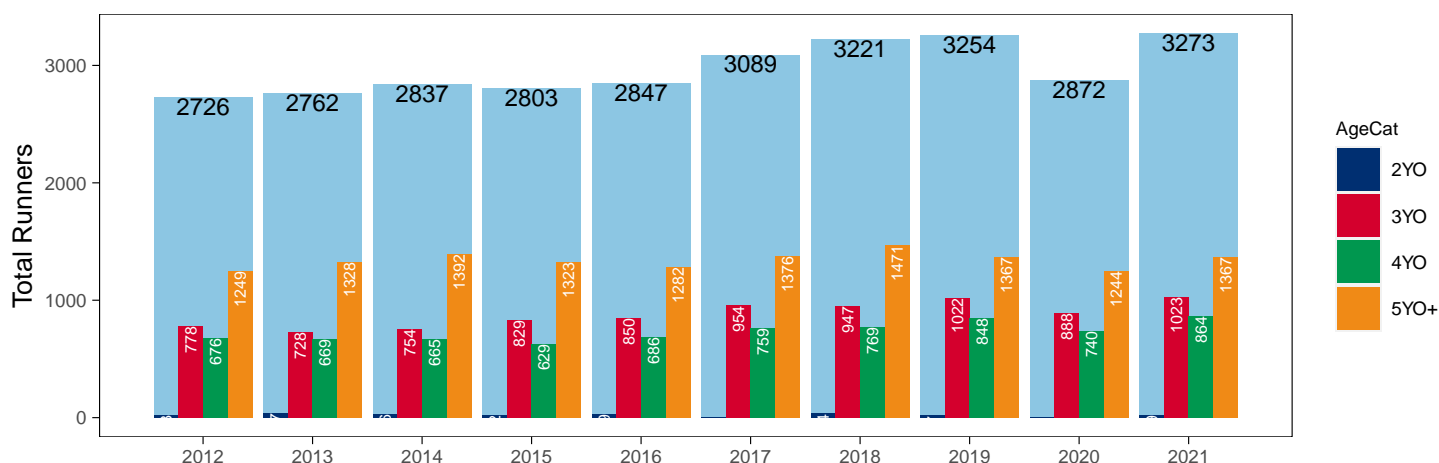
Flat

AgeCat	2012	2013	2014	2015	2016	2017	2018	2019	2020	2021	vs. Last Year	vs. Pre-Covid
2YO	23	37	26	22	29		34	17		19	NA / NA	+2 / +11.8%
3YO	778	728	754	829	850	954	947	1022	888	1023	+135 / +15.2%	+1 / +0.1%
4YO	676	669	665	629	686	759	769	848	740	864	+124 / +16.8%	+16 / +1.9%
5YO+	1249	1328	1392	1323	1282	1376	1471	1367	1244	1367	+123 / +9.9%	0 / 0.0%
Total	2726	2762	2837	2803	2847	3089	3221	3254	2872	3273	+401 / +14.0%	+19 / +0.6%

'vs. Pre-Covid' is comparison between 2021 and 2019

YTD Individual Flat Runners by Age

Individual Runners in GB Flat Races, shown by Age Category and Total



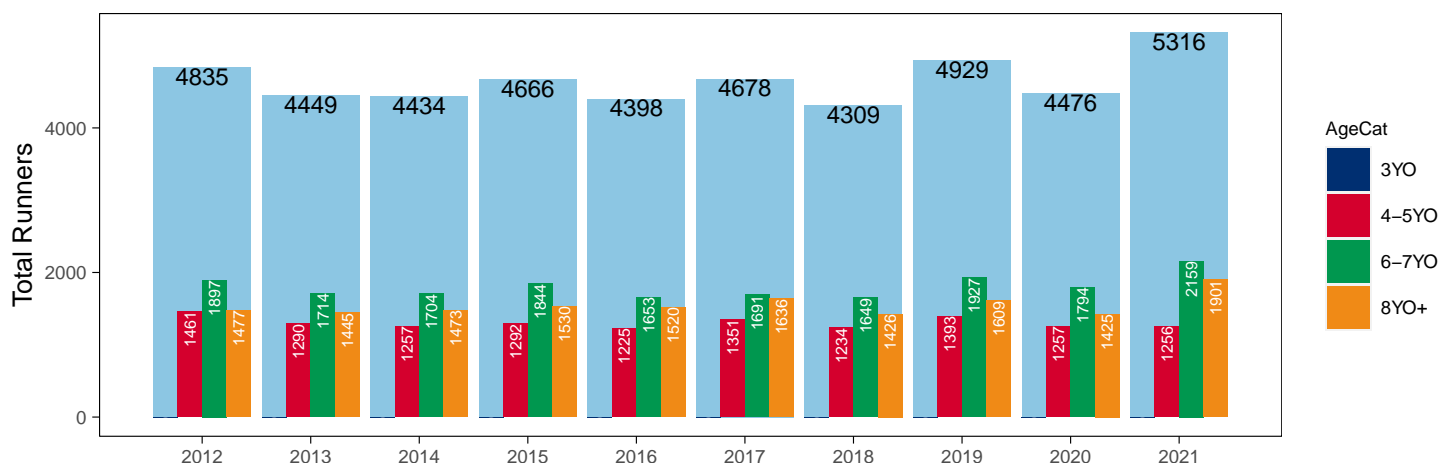
Jump

AgeCat	2012	2013	2014	2015	2016	2017	2018	2019	2020	2021	vs. Last Year	vs. Pre-Covid
3YO											NA / NA	0 / NA
4-5YO	1461	1290	1257	1292	1225	1351	1234	1393	1257	1256	-1 / -0.1%	-137 / -9.8%
6-7YO	1897	1714	1704	1844	1653	1691	1649	1927	1794	2159	+365 / +20.3%	+232 / +12.0%
8YO+	1477	1445	1473	1530	1520	1636	1426	1609	1425	1901	+476 / +33.4%	+292 / +18.1%
Total	4835	4449	4434	4666	4398	4678	4309	4929	4476	5316	+840 / +18.8%	+387 / +7.9%

'vs. Pre-Covid' is comparison between 2021 and 2019

YTD Individual Jump Runners by Age

Individual Runners in GB Jump Races, shown by Age Category and Total



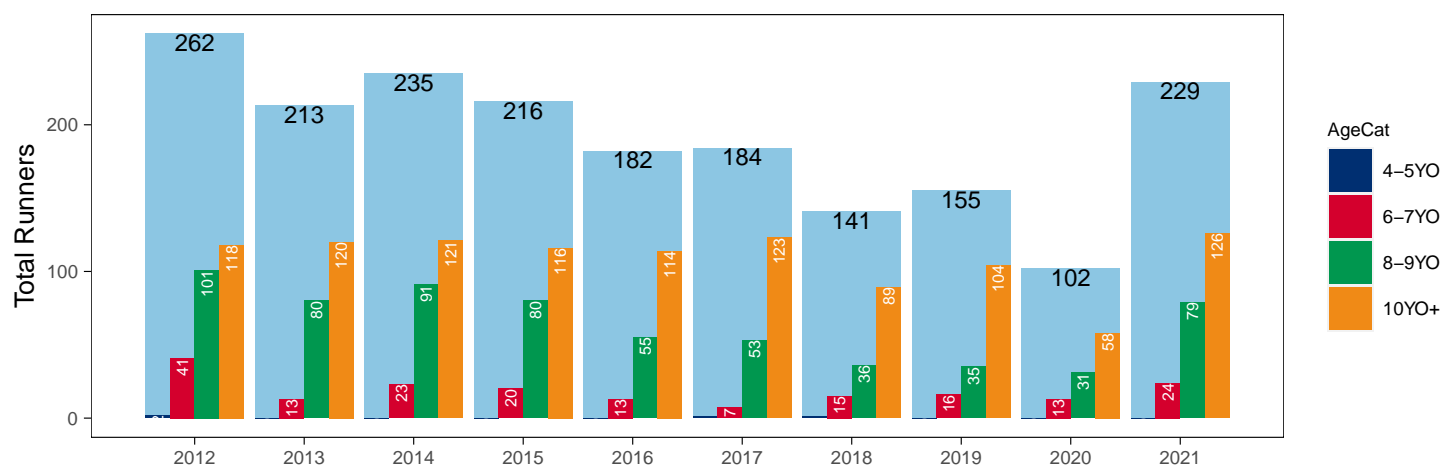
Hunter Chases

AgeCat	2012	2013	2014	2015	2016	2017	2018	2019	2020	2021	vs. Last Year	vs. Pre-Covid
4-5YO	2					1	1				NA / NA	0 / NA
6-7YO	41	13	23	20	13	7	15	16	13	24	+11 / +84.6%	+8 / +50.0%
8-9YO	101	80	91	80	55	53	36	35	31	79	+48 / +154.8%	+44 / +125.7%
10YO+	118	120	121	116	114	123	89	104	58	126	+68 / +117.2%	+22 / +21.2%
Total	262	213	235	216	182	184	141	155	102	229	+127 / +124.5%	+74 / +47.7%

'vs. Pre-Covid' is comparison between 2021 and 2019

YTD Individual Hunter Chase Runners by Age

Individual Runners in GB Hunter Chases shown by Age Category and Total



Year to Date Individual Runners by Country Trained

Code	Country	2012	2013	2014	2015	2016	2017	2018	2019	2020	2021
Flat	GB	6960	7141	7099	6509	6841	7589	7585	7465	6574	8072
	IRE	46	70	38	20	50	67	71	65	76	
	Other	8		2	3	6	2	6	3	4	
Jump	GB	9907	8645	8709	9356	8395	9441	8274	9330	7561	9969
	IRE	198	175	246	261	313	312	223	292	257	188
	Other	1	2	2	2	5	11	6	7	10	3
Overall	GB	16867	15786	15808	15865	15236	17030	15859	16795	14135	18041
	IRE	244	245	284	281	363	379	294	357	333	188
	Other	9	2	4	5	11	13	12	10	14	3

Frequency of Runs

Year to Date Average Runs per Horse

Code	2012	2013	2014	2015	2016	2017	2018	2019	2020	2021
Flat	2.57	2.61	2.52	2.33	2.42	2.48	2.38	2.31	2.32	2.47
Jump	2.09	1.98	2.02	2.06	1.98	2.09	1.97	1.95	1.75	1.91
Overall	2.34	2.29	2.27	2.21	2.19	2.29	2.19	2.13	2.01	2.16

Year to Date Proportion of Horses by Count of Runs

Runs	2012	2013	2014	2015	2016	2017	2018	2019	2020	2021
Flat										
1	1013 (37.2%)	1035 (37.5%)	1019 (35.9%)	1129 (40.3%)	1087 (38.2%)	1026 (33.2%)	1250 (38.8%)	1243 (38.2%)	1018 (35.4%)	1183 (36.1%)
2	617 (22.6%)	602 (21.8%)	672 (23.7%)	638 (22.8%)	647 (22.7%)	808 (26.2%)	788 (24.5%)	821 (25.2%)	787 (27.4%)	747 (22.8%)
3	426 (15.6%)	428 (15.5%)	490 (17.3%)	498 (17.8%)	485 (17.0%)	587 (19.0%)	525 (16.3%)	591 (18.2%)	546 (19.0%)	611 (18.7%)
4	274 (10.1%)	264 (9.6%)	283 (10.0%)	268 (9.6%)	310 (10.9%)	331 (10.7%)	330 (10.2%)	316 (9.7%)	320 (11.1%)	367 (11.2%)
5+	396 (14.5%)	433 (15.7%)	373 (13.1%)	270 (9.6%)	318 (11.2%)	337 (10.9%)	328 (10.2%)	283 (8.7%)	201 (7.0%)	365 (11.2%)
Jump										
1	1785 (36.9%)	1746 (39.2%)	1782 (40.2%)	1802 (38.6%)	1822 (41.4%)	1725 (36.9%)	1796 (41.7%)	1991 (40.4%)	2108 (47.1%)	2166 (40.7%)
2	1532 (31.7%)	1524 (34.3%)	1364 (30.8%)	1426 (30.6%)	1368 (31.1%)	1480 (31.6%)	1324 (30.7%)	1652 (33.5%)	1571 (35.1%)	1838 (34.6%)
3	1004 (20.8%)	790 (17.8%)	849 (19.1%)	915 (19.6%)	803 (18.3%)	965 (20.6%)	797 (18.5%)	913 (18.5%)	638 (14.3%)	985 (18.5%)
4	375 (7.8%)	307 (6.9%)	324 (7.3%)	415 (8.9%)	298 (6.8%)	382 (8.2%)	310 (7.2%)	297 (6.0%)	135 (3.0%)	278 (5.2%)
5+	139 (2.9%)	82 (1.8%)	115 (2.6%)	108 (2.3%)	107 (2.4%)	126 (2.7%)	82 (1.9%)	76 (1.5%)	24 (0.5%)	49 (0.9%)
All Races										
1	2564 (35.0%)	2569 (36.7%)	2598 (36.7%)	2752 (37.7%)	2761 (38.8%)	2579 (33.9%)	2885 (39.0%)	3062 (38.1%)	2961 (41.0%)	3198 (37.9%)
2	2087 (28.5%)	2063 (29.5%)	1976 (27.9%)	2013 (27.6%)	1989 (27.9%)	2233 (29.3%)	2082 (28.2%)	2448 (30.4%)	2337 (32.4%)	2535 (30.0%)
3	1418 (19.3%)	1221 (17.4%)	1348 (19.0%)	1426 (19.5%)	1298 (18.2%)	1586 (20.8%)	1332 (18.0%)	1524 (19.0%)	1207 (16.7%)	1596 (18.9%)
4	690 (9.4%)	604 (8.6%)	637 (9.0%)	711 (9.7%)	624 (8.8%)	730 (9.6%)	673 (9.1%)	637 (7.9%)	477 (6.6%)	670 (7.9%)
5+	572 (7.8%)	548 (7.8%)	520 (7.3%)	400 (5.5%)	445 (6.3%)	483 (6.3%)	420 (5.7%)	371 (4.6%)	234 (3.2%)	441 (5.2%)

Year to Date Median Days Between Runs

Code	2012	2013	2014	2015	2016	2017	2018	2019	2020	2021
Flat	20	18	20	22	21	21	22	23	21	21
Jump	29	32	31	31	34	30	33	33	34	37
Overall	25	25	26	28	28	27	28	29	28	29

Horses Population by Gender

March 2021 Horses in Training Snapshot by Gender versus Previous Years

All Horses

Sex	2012	2013	2014	2015	2016	2017	2018	2019	2020	2021
Colt/Entire	2377 (16.2%)	2481 (16.8%)	2454 (16.7%)	2590 (17.3%)	2537 (16.6%)	2571 (16.6%)	2562 (16.1%)	2465 (15.4%)	2347 (14.6%)	2210 (13.6%)
Gelding	7901 (53.8%)	7800 (53.0%)	7724 (52.4%)	7800 (52.1%)	8140 (53.2%)	8271 (53.2%)	8506 (53.4%)	8550 (53.5%)	8738 (54.5%)	9017 (55.6%)
Filly/Mare	4415 (30.0%)	4447 (30.2%)	4556 (30.9%)	4585 (30.6%)	4610 (30.1%)	4687 (30.2%)	4844 (30.4%)	4949 (31.0%)	4943 (30.8%)	4988 (30.8%)
Rig	1 (0.0%)	1 (0.0%)	1 (0.0%)	3 (0.0%)	5 (0.0%)	4 (0.0%)	3 (0.0%)	3 (0.0%)	3 (0.0%)	2 (0.0%)
Total	14694 (100.0%)	14729 (100.0%)	14735 (100.0%)	14978 (100.0%)	15292 (100.0%)	15533 (100.0%)	15915 (100.0%)	15967 (100.0%)	16031 (100.0%)	16217 (100.0%)

Flat (including Dual)

Sex	2012	2013	2014	2015	2016	2017	2018	2019	2020	2021
Colt/Entire	2343 (25.2%)	2445 (26.1%)	2409 (25.4%)	2555 (26.4%)	2506 (25.4%)	2546 (24.9%)	2539 (23.9%)	2449 (24.0%)	2329 (23.1%)	2190 (22.3%)
Gelding	3502 (37.7%)	3414 (36.4%)	3497 (36.8%)	3561 (36.8%)	3775 (38.2%)	3984 (39.0%)	4336 (40.8%)	4054 (39.8%)	4105 (40.7%)	4069 (41.4%)
Filly/Mare	3451 (37.1%)	3507 (37.4%)	3585 (37.8%)	3551 (36.7%)	3588 (36.3%)	3676 (36.0%)	3759 (35.3%)	3687 (36.2%)	3638 (36.1%)	3564 (36.3%)
Rig	1 (0.0%)	1 (0.0%)	0 (0.0%)	1 (0.0%)	5 (0.1%)	4 (0.0%)	3 (0.0%)	2 (0.0%)	2 (0.0%)	1 (0.0%)
Total	9297 (100.0%)	9367 (100.0%)	9491 (100.0%)	9668 (100.0%)	9874 (100.0%)	10210 (100.0%)	10637 (100.0%)	10192 (100.0%)	10074 (100.0%)	9824 (100.0%)

Jump (including Dual)

Sex	2012	2013	2014	2015	2016	2017	2018	2019	2020	2021
Colt/Entire	50 (0.8%)	46 (0.8%)	54 (0.9%)	42 (0.7%)	40 (0.7%)	30 (0.5%)	31 (0.5%)	25 (0.4%)	27 (0.4%)	31 (0.4%)
Gelding	4815 (81.0%)	4800 (81.2%)	4678 (80.1%)	4655 (79.7%)	4763 (80.5%)	4739 (80.4%)	4908 (78.7%)	4836 (77.7%)	5055 (77.6%)	5340 (77.3%)
Filly/Mare	1078 (18.1%)	1066 (18.0%)	1107 (19.0%)	1144 (19.6%)	1113 (18.8%)	1123 (19.1%)	1295 (20.8%)	1363 (21.9%)	1433 (22.0%)	1535 (22.2%)
Rig	0 (0.0%)	0 (0.0%)	1 (0.0%)	1 (0.0%)	0 (0.0%)	0 (0.0%)	0 (0.0%)	1 (0.0%)	1 (0.0%)	1 (0.0%)
Total	5943 (100.0%)	5912 (100.0%)	5840 (100.0%)	5842 (100.0%)	5916 (100.0%)	5892 (100.0%)	6234 (100.0%)	6225 (100.0%)	6516 (100.0%)	6907 (100.0%)

Hunter Chasers

Sex	2012	2013	2014	2015	2016	2017	2018	2019	2020	2021
Colt/Entire	3 (0.1%)	5 (0.2%)	3 (0.1%)	4 (0.2%)	4 (0.2%)	5 (0.3%)	3 (0.2%)	1 (0.1%)	1 (0.1%)	4 (0.5%)
Gelding	1918 (81.3%)	1752 (81.6%)	1677 (83.0%)	1596 (83.4%)	1548 (83.5%)	1457 (81.9%)	1291 (82.3%)	1262 (80.3%)	1196 (81.5%)	720 (83.6%)
Filly/Mare	439 (18.6%)	391 (18.2%)	340 (16.8%)	313 (16.4%)	301 (16.2%)	318 (17.9%)	274 (17.5%)	308 (19.6%)	270 (18.4%)	137 (15.9%)
Rig	0 (0.0%)	0 (0.0%)	0 (0.0%)	0 (0.0%)	0 (0.0%)	0 (0.0%)	0 (0.0%)	0 (0.0%)	0 (0.0%)	0 (0.0%)
Total	2360 (100.0%)	2148 (100.0%)	2020 (100.0%)	1913 (100.0%)	1853 (100.0%)	1780 (100.0%)	1568 (100.0%)	1571 (100.0%)	1467 (100.0%)	861 (100.0%)

Year to Date Total Runners by Gender

Sex	2012	2013	2014	2015	2016	2017	2018	2019	2020	2021
All Races										
Colt/Entire	556 (3.2%)	635 (4.0%)	614 (3.8%)	652 (4.0%)	560 (3.6%)	631 (3.6%)	692 (4.3%)	664 (3.9%)	578 (4.0%)	726 (4.0%)
Gelding	12763 (74.6%)	11952 (74.5%)	11977 (74.4%)	11977 (74.2%)	11506 (73.7%)	12878 (73.9%)	11740 (72.6%)	12433 (72.4%)	10306 (71.2%)	12981 (71.2%)
Filly/Mare	3801 (22.2%)	3446 (21.5%)	3505 (21.8%)	3522 (21.8%)	3542 (22.7%)	3913 (22.5%)	3731 (23.1%)	4063 (23.7%)	3595 (24.8%)	4522 (24.8%)
Rig	0 (0.0%)	0 (0.0%)	0 (0.0%)	0 (0.0%)	2 (0.0%)	0 (0.0%)	2 (0.0%)	2 (0.0%)	3 (0.0%)	3 (0.0%)
Flat										
Colt/Entire	510 (7.3%)	604 (8.4%)	572 (8.0%)	627 (9.6%)	546 (7.9%)	610 (8.0%)	679 (8.9%)	647 (8.6%)	564 (8.5%)	712 (8.8%)
Gelding	4420 (63.0%)	4518 (62.7%)	4528 (63.4%)	4058 (62.1%)	4276 (62.0%)	4796 (62.6%)	4880 (63.7%)	4726 (62.7%)	4134 (62.1%)	5004 (62.0%)
Filly/Mare	2084 (29.7%)	2089 (29.0%)	2039 (28.6%)	1847 (28.3%)	2073 (30.1%)	2252 (29.4%)	2101 (27.4%)	2160 (28.7%)	1956 (29.4%)	2356 (29.2%)
Rig	0 (0.0%)	0 (0.0%)	0 (0.0%)	0 (0.0%)	2 (0.0%)	0 (0.0%)	2 (0.0%)	0 (0.0%)	0 (0.0%)	0 (0.0%)
All Jump										
Colt/Entire	46 (0.5%)	31 (0.4%)	42 (0.5%)	25 (0.3%)	14 (0.2%)	21 (0.2%)	13 (0.2%)	17 (0.2%)	14 (0.2%)	14 (0.1%)
Gelding	8343 (82.6%)	7434 (84.3%)	7449 (83.2%)	7919 (82.3%)	7230 (83.0%)	8082 (82.8%)	6860 (80.7%)	7707 (80.0%)	6172 (78.8%)	7977 (78.5%)
Filly/Mare	1717 (17.0%)	1357 (15.4%)	1466 (16.4%)	1675 (17.4%)	1469 (16.9%)	1661 (17.0%)	1630 (19.2%)	1903 (19.8%)	1639 (20.9%)	2166 (21.3%)
Rig	0 (0.0%)	0 (0.0%)	0 (0.0%)	0 (0.0%)	0 (0.0%)	0 (0.0%)	0 (0.0%)	2 (0.0%)	3 (0.0%)	3 (0.0%)
Chase										
Colt/Entire	3 (0.1%)	1 (0.0%)	0 (0.0%)	0 (0.0%)	1 (0.0%)	0 (0.0%)	0 (0.0%)	0 (0.0%)	0 (0.0%)	0 (0.0%)
Gelding	2923 (91.6%)	2583 (92.8%)	2621 (93.7%)	2798 (93.5%)	2607 (93.4%)	2947 (92.7%)	2382 (90.8%)	2725 (90.4%)	2169 (90.3%)	2663 (88.9%)
Filly/Mare	265 (8.3%)	199 (7.2%)	177 (6.3%)	194 (6.5%)	182 (6.5%)	232 (7.3%)	242 (9.2%)	289 (9.6%)	229 (9.5%)	328 (11.0%)
Rig	0 (0.0%)	0 (0.0%)	0 (0.0%)	0 (0.0%)	0 (0.0%)	0 (0.0%)	0 (0.0%)	0 (0.0%)	3 (0.1%)	3 (0.1%)
Hurdle										
Colt/Entire	41 (0.7%)	23 (0.5%)	39 (0.8%)	22 (0.4%)	13 (0.2%)	18 (0.3%)	11 (0.2%)	13 (0.2%)	7 (0.2%)	12 (0.2%)
Gelding	4601 (80.1%)	3974 (82.5%)	4021 (79.9%)	4552 (79.4%)	4148 (79.8%)	4543 (79.4%)	3902 (77.7%)	4450 (77.0%)	3477 (74.7%)	4142 (74.8%)
Filly/Mare	1099 (19.1%)	818 (17.0%)	974 (19.3%)	1162 (20.3%)	1040 (20.0%)	1164 (20.3%)	1111 (22.1%)	1316 (22.8%)	1169 (25.1%)	1381 (25.0%)
Rig	0 (0.0%)	0 (0.0%)	0 (0.0%)	0 (0.0%)	0 (0.0%)	0 (0.0%)	0 (0.0%)	2 (0.0%)	0 (0.0%)	0 (0.0%)
NHF										
Colt/Entire	2 (0.2%)	7 (0.6%)	3 (0.3%)	3 (0.3%)	0 (0.0%)	3 (0.3%)	2 (0.2%)	4 (0.5%)	7 (0.9%)	2 (0.1%)
Gelding	819 (69.8%)	877 (71.7%)	807 (71.7%)	569 (63.9%)	475 (65.8%)	592 (68.8%)	576 (67.4%)	532 (63.8%)	526 (68.0%)	1172 (71.9%)
Filly/Mare	353 (30.1%)	340 (27.8%)	315 (28.0%)	319 (35.8%)	247 (34.2%)	265 (30.8%)	277 (32.4%)	298 (35.7%)	241 (31.1%)	457 (28.0%)
Hunter										
Gelding	328 (89.4%)	322 (96.4%)	320 (93.6%)	308 (96.0%)	261 (96.3%)	271 (97.5%)	205 (98.6%)	207 (95.4%)	142 (97.3%)	314 (94.0%)
Filly/Mare	39 (10.6%)	12 (3.6%)	22 (6.4%)	13 (4.0%)	10 (3.7%)	7 (2.5%)	3 (1.4%)	10 (4.6%)	4 (2.7%)	20 (6.0%)

Year to Date Individual Runners by Gender

Sex	2012	2013	2014	2015	2016	2017	2018	2019	2020	2021
All Races										
Male	5652 (77.1%)	5457 (77.9%)	5505 (77.8%)	5625 (77.0%)	5436 (76.4%)	5832 (76.6%)	5600 (75.8%)	6055 (75.3%)	5369 (74.4%)	6336 (75.1%)
Female	1679 (22.9%)	1548 (22.1%)	1574 (22.2%)	1677 (23.0%)	1681 (23.6%)	1779 (23.4%)	1792 (24.2%)	1987 (24.7%)	1847 (25.6%)	2104 (24.9%)
Flat										
Male	1846 (67.7%)	1911 (69.2%)	2000 (70.5%)	1962 (70.0%)	1936 (68.0%)	2119 (68.6%)	2253 (69.9%)	2250 (69.1%)	1953 (68.0%)	2260 (69.0%)
Female	880 (32.3%)	851 (30.8%)	837 (29.5%)	841 (30.0%)	911 (32.0%)	970 (31.4%)	968 (30.1%)	1004 (30.9%)	919 (32.0%)	1013 (31.0%)
All Jump										
Male	3998 (82.7%)	3709 (83.4%)	3665 (82.7%)	3802 (81.5%)	3603 (81.9%)	3835 (82.0%)	3457 (80.2%)	3915 (79.4%)	3522 (78.7%)	4199 (79.0%)
Female	837 (17.3%)	740 (16.6%)	769 (17.3%)	864 (18.5%)	795 (18.1%)	843 (18.0%)	852 (19.8%)	1014 (20.6%)	954 (21.3%)	1117 (21.0%)
Chase										
Male	1428 (91.7%)	1277 (92.2%)	1310 (93.0%)	1378 (93.3%)	1305 (93.2%)	1423 (92.2%)	1195 (90.8%)	1389 (90.2%)	1269 (90.0%)	1486 (89.4%)
Female	129 (8.3%)	108 (7.8%)	98 (7.0%)	99 (6.7%)	95 (6.8%)	121 (7.8%)	121 (9.2%)	151 (9.8%)	141 (10.0%)	177 (10.6%)
Hurdle										
Male	2369 (81.0%)	2167 (82.7%)	2137 (80.7%)	2276 (79.4%)	2199 (80.1%)	2286 (79.7%)	2072 (78.2%)	2374 (77.4%)	2054 (75.0%)	2377 (75.6%)
Female	554 (19.0%)	454 (17.3%)	511 (19.3%)	589 (20.6%)	545 (19.9%)	584 (20.3%)	579 (21.8%)	693 (22.6%)	684 (25.0%)	766 (24.4%)
NHF										
Male	610 (71.1%)	717 (73.4%)	653 (73.3%)	443 (65.4%)	375 (65.8%)	452 (69.4%)	468 (68.9%)	423 (64.9%)	440 (68.9%)	912 (72.9%)
Female	248 (28.9%)	260 (26.6%)	238 (26.7%)	234 (34.6%)	195 (34.2%)	199 (30.6%)	211 (31.1%)	229 (35.1%)	199 (31.1%)	339 (27.1%)
Hunter										
Male	238 (90.8%)	202 (94.8%)	216 (91.9%)	208 (96.3%)	176 (96.7%)	178 (96.7%)	138 (97.9%)	148 (95.5%)	98 (96.1%)	212 (92.6%)
Female	24 (9.2%)	11 (5.2%)	19 (8.1%)	8 (3.7%)	6 (3.3%)	6 (3.3%)	3 (2.1%)	7 (4.5%)	4 (3.9%)	17 (7.4%)

Horses Population by Breeding

March 2021 Horses in Training Snapshot by Breeding versus Previous Years

Flat (including Dual)

Bred	Sex	2012	2013	2014	2015	2016	2017	2018	2019	2020	2021
GB	Male	2862 (30.8%)	2802 (29.9%)	2853 (30.1%)	2923 (30.2%)	2998 (30.4%)	3085 (30.2%)	3192 (30.0%)	3071 (30.1%)	3023 (30.0%)	2953 (30.1%)
	Female	2011 (21.6%)	2033 (21.7%)	1990 (21.0%)	1965 (20.3%)	2022 (20.5%)	2098 (20.5%)	2065 (19.4%)	2031 (19.9%)	2045 (20.3%)	2031 (20.7%)
	Subtotal	4873 (52.4%)	4835 (51.6%)	4843 (51.0%)	4888 (50.6%)	5020 (50.8%)	5183 (50.8%)	5257 (49.4%)	5102 (50.1%)	5068 (50.3%)	4984 (50.7%)
IRE	Male	2343 (25.2%)	2439 (26.0%)	2475 (26.1%)	2596 (26.9%)	2702 (27.4%)	2807 (27.5%)	2992 (28.1%)	2798 (27.5%)	2776 (27.6%)	2754 (28.0%)
	Female	1202 (12.9%)	1231 (13.1%)	1338 (14.1%)	1334 (13.8%)	1321 (13.4%)	1333 (13.1%)	1426 (13.4%)	1389 (13.6%)	1361 (13.5%)	1344 (13.7%)
	Subtotal	3545 (38.1%)	3670 (39.2%)	3813 (40.2%)	3930 (40.6%)	4023 (40.7%)	4140 (40.5%)	4418 (41.5%)	4187 (41.1%)	4137 (41.1%)	4098 (41.7%)
FR	Male	101 (1.1%)	114 (1.2%)	142 (1.5%)	174 (1.8%)	172 (1.7%)	229 (2.2%)	312 (2.9%)	293 (2.9%)	319 (3.2%)	300 (3.1%)
	Female	25 (0.3%)	42 (0.4%)	64 (0.7%)	69 (0.7%)	87 (0.9%)	90 (0.9%)	118 (1.1%)	119 (1.2%)	118 (1.2%)	108 (1.1%)
	Subtotal	126 (1.4%)	156 (1.7%)	206 (2.2%)	243 (2.5%)	259 (2.6%)	319 (3.1%)	430 (4.0%)	412 (4.0%)	437 (4.3%)	408 (4.2%)
USA	Male	460 (4.9%)	418 (4.5%)	345 (3.6%)	341 (3.5%)	331 (3.4%)	317 (3.1%)	290 (2.7%)	271 (2.7%)	244 (2.4%)	177 (1.8%)
	Female	191 (2.1%)	176 (1.9%)	165 (1.7%)	148 (1.5%)	131 (1.3%)	127 (1.2%)	120 (1.1%)	120 (1.2%)	83 (0.8%)	56 (0.6%)
	Subtotal	651 (7.0%)	594 (6.3%)	510 (5.4%)	489 (5.1%)	462 (4.7%)	444 (4.3%)	410 (3.9%)	391 (3.8%)	327 (3.2%)	233 (2.4%)
GNY	Male	44 (0.5%)	53 (0.6%)	55 (0.6%)	59 (0.6%)	62 (0.6%)	70 (0.7%)	71 (0.7%)	52 (0.5%)	55 (0.5%)	57 (0.6%)
	Female	12 (0.1%)	14 (0.1%)	15 (0.2%)	17 (0.2%)	11 (0.1%)	13 (0.1%)	18 (0.2%)	18 (0.2%)	26 (0.3%)	21 (0.2%)
	Subtotal	56 (0.6%)	67 (0.7%)	70 (0.7%)	76 (0.8%)	73 (0.7%)	83 (0.8%)	89 (0.8%)	70 (0.7%)	81 (0.8%)	78 (0.8%)
Other	Male	36 (0.4%)	34 (0.4%)	36 (0.4%)	24 (0.2%)	21 (0.2%)	26 (0.3%)	21 (0.2%)	20 (0.2%)	19 (0.2%)	19 (0.2%)
	Female	10 (0.1%)	11 (0.1%)	13 (0.1%)	18 (0.2%)	16 (0.2%)	15 (0.1%)	12 (0.1%)	10 (0.1%)	5 (0.0%)	4 (0.0%)
	Subtotal	46 (0.5%)	45 (0.5%)	49 (0.5%)	42 (0.4%)	37 (0.4%)	41 (0.4%)	33 (0.3%)	30 (0.3%)	24 (0.2%)	23 (0.2%)

Jump (including Dual)

Bred	Sex	2012	2013	2014	2015	2016	2017	2018	2019	2020	2021
GB	Male	1623 (27.3%)	1605 (27.1%)	1578 (27.0%)	1456 (24.9%)	1428 (24.1%)	1349 (22.9%)	1397 (22.4%)	1315 (21.1%)	1296 (19.9%)	1370 (19.8%)
	Female	656 (11.0%)	673 (11.4%)	703 (12.0%)	704 (12.1%)	645 (10.9%)	622 (10.6%)	677 (10.9%)	655 (10.5%)	642 (9.9%)	734 (10.6%)
	Subtotal	2279 (38.3%)	2278 (38.5%)	2281 (39.1%)	2160 (37.0%)	2073 (35.0%)	1971 (33.5%)	2074 (33.3%)	1970 (31.6%)	1938 (29.7%)	2104 (30.5%)
IRE	Male	2391 (40.2%)	2466 (41.7%)	2474 (42.4%)	2501 (42.8%)	2591 (43.8%)	2590 (44.0%)	2693 (43.2%)	2674 (43.0%)	2825 (43.4%)	2919 (42.3%)
	Female	354 (6.0%)	328 (5.5%)	343 (5.9%)	388 (6.6%)	404 (6.8%)	427 (7.2%)	532 (8.5%)	597 (9.6%)	656 (10.1%)	642 (9.3%)
	Subtotal	2745 (46.2%)	2794 (47.3%)	2817 (48.2%)	2889 (49.5%)	2995 (50.6%)	3017 (51.2%)	3225 (51.7%)	3271 (52.5%)	3481 (53.4%)	3561 (51.6%)
FR	Male	615 (10.3%)	577 (9.8%)	543 (9.3%)	595 (10.2%)	666 (11.3%)	721 (12.2%)	742 (11.9%)	777 (12.5%)	849 (13.0%)	979 (14.2%)
	Female	52 (0.9%)	49 (0.8%)	51 (0.9%)	44 (0.8%)	52 (0.9%)	67 (1.1%)	78 (1.3%)	102 (1.6%)	127 (1.9%)	146 (2.1%)
	Subtotal	667 (11.2%)	626 (10.6%)	594 (10.2%)	639 (10.9%)	718 (12.1%)	788 (13.4%)	820 (13.2%)	879 (14.1%)	976 (15.0%)	1125 (16.3%)
USA	Male	134 (2.3%)	117 (2.0%)	81 (1.4%)	74 (1.3%)	54 (0.9%)	43 (0.7%)	43 (0.7%)	34 (0.5%)	39 (0.6%)	32 (0.5%)
	Female	9 (0.2%)	9 (0.2%)	4 (0.1%)	2 (0.0%)	2 (0.0%)	2 (0.0%)	4 (0.1%)	3 (0.0%)	3 (0.0%)	1 (0.0%)
	Subtotal	143 (2.4%)	126 (2.1%)	85 (1.5%)	76 (1.3%)	56 (0.9%)	45 (0.8%)	47 (0.8%)	37 (0.6%)	42 (0.6%)	33 (0.5%)
GNY	Male	75 (1.3%)	58 (1.0%)	49 (0.8%)	61 (1.0%)	58 (1.0%)	59 (1.0%)	55 (0.9%)	53 (0.9%)	69 (1.1%)	67 (1.0%)
	Female	5 (0.1%)	4 (0.1%)	5 (0.1%)	5 (0.1%)	7 (0.1%)	4 (0.1%)	2 (0.0%)	4 (0.1%)	5 (0.1%)	11 (0.2%)
	Subtotal	80 (1.3%)	62 (1.0%)	54 (0.9%)	66 (1.1%)	65 (1.1%)	63 (1.1%)	57 (0.9%)	57 (0.9%)	74 (1.1%)	78 (1.1%)
Other	Male	27 (0.5%)	23 (0.4%)	8 (0.1%)	11 (0.2%)	6 (0.1%)	7 (0.1%)	9 (0.1%)	9 (0.1%)	5 (0.1%)	5 (0.1%)
	Female	2 (0.0%)	3 (0.1%)	1 (0.0%)	1 (0.0%)	3 (0.1%)	1 (0.0%)	2 (0.0%)	2 (0.0%)	NA (-)	1 (0.0%)
	Subtotal	29 (0.5%)	26 (0.4%)	9 (0.2%)	12 (0.2%)	9 (0.2%)	8 (0.1%)	11 (0.2%)	11 (0.2%)	5 (0.1%)	6 (0.1%)

Year to Date Total Runners by Breeding

Flat

Bred	Sex	2012	2013	2014	2015	2016	2017	2018	2019	2020	2021
GB	Male	2358 (33.6%)	2271 (31.5%)	2413 (33.8%)	2168 (33.2%)	2241 (32.5%)	2553 (33.3%)	2618 (34.2%)	2477 (32.9%)	2185 (32.8%)	2607 (32.3%)
	Female	1156 (16.5%)	1303 (18.1%)	1097 (15.4%)	1070 (16.4%)	1152 (16.7%)	1208 (15.8%)	1129 (14.7%)	1201 (15.9%)	1079 (16.2%)	1398 (17.3%)
	Subtotal	3514 (50.1%)	3574 (49.6%)	3510 (49.2%)	3238 (49.6%)	3393 (49.2%)	3761 (49.1%)	3747 (48.9%)	3678 (48.8%)	3264 (49.1%)	4005 (49.6%)
IRE	Male	1958 (27.9%)	2198 (30.5%)	2102 (29.4%)	2002 (30.6%)	2080 (30.2%)	2325 (30.4%)	2387 (31.2%)	2351 (31.2%)	2045 (30.7%)	2599 (32.2%)
	Female	816 (11.6%)	690 (9.6%)	810 (11.3%)	646 (9.9%)	805 (11.7%)	916 (12.0%)	826 (10.8%)	788 (10.5%)	768 (11.5%)	817 (10.1%)
	Subtotal	2774 (39.5%)	2888 (40.0%)	2912 (40.8%)	2648 (40.5%)	2885 (41.8%)	3241 (42.3%)	3213 (41.9%)	3139 (41.7%)	2813 (42.3%)	3416 (42.3%)
FR	Male	64 (0.9%)	83 (1.2%)	92 (1.3%)	119 (1.8%)	139 (2.0%)	163 (2.1%)	165 (2.2%)	218 (2.9%)	203 (3.1%)	218 (2.7%)
	Female	5 (0.1%)	10 (0.1%)	30 (0.4%)	38 (0.6%)	40 (0.6%)	46 (0.6%)	74 (1.0%)	62 (0.8%)	51 (0.8%)	73 (0.9%)
	Subtotal	69 (1.0%)	93 (1.3%)	122 (1.7%)	157 (2.4%)	179 (2.6%)	209 (2.7%)	239 (3.1%)	280 (3.7%)	254 (3.8%)	291 (3.6%)
USA	Male	479 (6.8%)	491 (6.8%)	415 (5.8%)	352 (5.4%)	304 (4.4%)	286 (3.7%)	310 (4.0%)	267 (3.5%)	216 (3.2%)	207 (2.6%)
	Female	94 (1.3%)	73 (1.0%)	87 (1.2%)	71 (1.1%)	51 (0.7%)	62 (0.8%)	60 (0.8%)	89 (1.2%)	52 (0.8%)	46 (0.6%)
	Subtotal	573 (8.2%)	564 (7.8%)	502 (7.0%)	423 (6.5%)	355 (5.1%)	348 (4.5%)	370 (4.8%)	356 (4.7%)	268 (4.0%)	253 (3.1%)
GNY	Male	39 (0.6%)	45 (0.6%)	36 (0.5%)	20 (0.3%)	35 (0.5%)	53 (0.7%)	45 (0.6%)	32 (0.4%)	36 (0.5%)	61 (0.8%)
	Female	5 (0.1%)	9 (0.1%)	8 (0.1%)	12 (0.2%)	20 (0.3%)	13 (0.2%)	10 (0.1%)	13 (0.2%)	5 (0.1%)	18 (0.2%)
	Subtotal	44 (0.6%)	54 (0.7%)	44 (0.6%)	32 (0.5%)	55 (0.8%)	66 (0.9%)	55 (0.7%)	45 (0.6%)	41 (0.6%)	79 (1.0%)
Other	Male	32 (0.5%)	34 (0.5%)	42 (0.6%)	24 (0.4%)	25 (0.4%)	26 (0.3%)	36 (0.5%)	28 (0.4%)	13 (0.2%)	24 (0.3%)
	Female	8 (0.1%)	4 (0.1%)	7 (0.1%)	10 (0.2%)	5 (0.1%)	7 (0.1%)	2 (0.0%)	7 (0.1%)	1 (0.0%)	4 (0.0%)
	Subtotal	40 (0.6%)	38 (0.5%)	49 (0.7%)	34 (0.5%)	30 (0.4%)	33 (0.4%)	38 (0.5%)	35 (0.5%)	14 (0.2%)	28 (0.3%)

Jump

Bred	Sex	2012	2013	2014	2015	2016	2017	2018	2019	2020	2021
GB	Male	2686 (26.6%)	2250 (25.5%)	2264 (25.3%)	2308 (24.0%)	1974 (22.7%)	2135 (21.9%)	1770 (20.8%)	1958 (20.3%)	1486 (19.0%)	1835 (18.1%)
	Female	1017 (10.1%)	796 (9.0%)	897 (10.0%)	985 (10.2%)	733 (8.4%)	803 (8.2%)	775 (9.1%)	846 (8.8%)	668 (8.5%)	949 (9.3%)
	Subtotal	3703 (36.6%)	3046 (34.5%)	3161 (35.3%)	3293 (34.2%)	2707 (31.1%)	2938 (30.1%)	2545 (29.9%)	2804 (29.1%)	2154 (27.5%)	2784 (27.4%)
IRE	Male	4142 (41.0%)	3946 (44.7%)	4048 (45.2%)	4294 (44.6%)	3972 (45.6%)	4453 (45.6%)	3826 (45.0%)	4231 (43.9%)	3404 (43.5%)	4394 (43.2%)
	Female	583 (5.8%)	452 (5.1%)	474 (5.3%)	599 (6.2%)	638 (7.3%)	718 (7.4%)	735 (8.6%)	890 (9.2%)	784 (10.0%)	962 (9.5%)
	Subtotal	4725 (46.8%)	4398 (49.9%)	4522 (50.5%)	4893 (50.9%)	4610 (52.9%)	5171 (53.0%)	4561 (53.6%)	5121 (53.2%)	4188 (53.5%)	5356 (52.7%)
FR	Male	1134 (11.2%)	952 (10.8%)	942 (10.5%)	1077 (11.2%)	1127 (12.9%)	1331 (13.6%)	1139 (13.4%)	1369 (14.2%)	1163 (14.9%)	1594 (15.7%)
	Female	100 (1.0%)	88 (1.0%)	90 (1.0%)	79 (0.8%)	84 (1.0%)	123 (1.3%)	106 (1.2%)	152 (1.6%)	177 (2.3%)	237 (2.3%)
	Subtotal	1234 (12.2%)	1040 (11.8%)	1032 (11.5%)	1156 (12.0%)	1211 (13.9%)	1454 (14.9%)	1245 (14.6%)	1521 (15.8%)	1340 (17.1%)	1831 (18.0%)
USA	Male	249 (2.5%)	156 (1.8%)	127 (1.4%)	132 (1.4%)	84 (1.0%)	73 (0.7%)	55 (0.6%)	38 (0.4%)	48 (0.6%)	41 (0.4%)
	Female	7 (0.1%)	10 (0.1%)	0 (0.0%)	3 (0.0%)	4 (0.0%)	4 (0.0%)	5 (0.1%)	7 (0.1%)	4 (0.1%)	2 (0.0%)
	Subtotal	256 (2.5%)	166 (1.9%)	127 (1.4%)	135 (1.4%)	88 (1.0%)	77 (0.8%)	60 (0.7%)	45 (0.5%)	52 (0.7%)	43 (0.4%)
GNY	Male	135 (1.3%)	114 (1.3%)	91 (1.0%)	123 (1.3%)	80 (0.9%)	104 (1.1%)	73 (0.9%)	116 (1.2%)	83 (1.1%)	126 (1.2%)
	Female	7 (0.1%)	9 (0.1%)	5 (0.1%)	9 (0.1%)	8 (0.1%)	8 (0.1%)	7 (0.1%)	7 (0.1%)	5 (0.1%)	16 (0.2%)
	Subtotal	142 (1.4%)	123 (1.4%)	96 (1.1%)	132 (1.4%)	88 (1.0%)	112 (1.1%)	80 (0.9%)	123 (1.3%)	88 (1.1%)	142 (1.4%)
Other	Male	43 (0.4%)	47 (0.5%)	19 (0.2%)	10 (0.1%)	7 (0.1%)	7 (0.1%)	10 (0.1%)	14 (0.1%)	5 (0.1%)	4 (0.0%)
	Female	3 (0.0%)	2 (0.0%)	0 (0.0%)	0 (0.0%)	2 (0.0%)	5 (0.1%)	2 (0.0%)	1 (0.0%)	1 (0.0%)	0 (0.0%)
	Subtotal	46 (0.5%)	49 (0.6%)	19 (0.2%)	10 (0.1%)	9 (0.1%)	12 (0.1%)	12 (0.1%)	15 (0.2%)	6 (0.1%)	4 (0.0%)

Year to Date Individual Runners by Breeding

Flat

Bred	Sex	2012	2013	2014	2015	2016	2017	2018	2019	2020	2021
GB	Male	894 (32.8%)	871 (31.5%)	954 (33.6%)	920 (32.8%)	916 (32.2%)	971 (31.4%)	1054 (32.7%)	1014 (31.2%)	911 (31.7%)	1035 (31.6%)
	Female	508 (18.6%)	533 (19.3%)	474 (16.7%)	483 (17.2%)	506 (17.8%)	529 (17.1%)	508 (15.8%)	557 (17.1%)	502 (17.5%)	586 (17.9%)
	Subtotal	1402 (51.4%)	1404 (50.8%)	1428 (50.3%)	1403 (50.1%)	1422 (49.9%)	1500 (48.6%)	1562 (48.5%)	1571 (48.3%)	1413 (49.2%)	1621 (49.5%)
IRE	Male	721 (26.4%)	815 (29.5%)	815 (28.7%)	821 (29.3%)	817 (28.7%)	928 (30.0%)	959 (29.8%)	1000 (30.7%)	835 (29.1%)	1008 (30.8%)
	Female	323 (11.8%)	281 (10.2%)	313 (11.0%)	291 (10.4%)	356 (12.5%)	378 (12.2%)	394 (12.2%)	362 (11.1%)	360 (12.5%)	358 (10.9%)
	Subtotal	1044 (38.3%)	1096 (39.7%)	1128 (39.8%)	1112 (39.7%)	1173 (41.2%)	1306 (42.3%)	1353 (42.0%)	1362 (41.9%)	1195 (41.6%)	1366 (41.7%)
FR	Male	25 (0.9%)	34 (1.2%)	44 (1.6%)	55 (2.0%)	53 (1.9%)	73 (2.4%)	81 (2.5%)	97 (3.0%)	94 (3.3%)	100 (3.1%)
	Female	4 (0.1%)	5 (0.2%)	13 (0.5%)	18 (0.6%)	19 (0.7%)	23 (0.7%)	32 (1.0%)	33 (1.0%)	26 (0.9%)	37 (1.1%)
	Subtotal	29 (1.1%)	39 (1.4%)	57 (2.0%)	73 (2.6%)	72 (2.5%)	96 (3.1%)	113 (3.5%)	130 (4.0%)	120 (4.2%)	137 (4.2%)
USA	Male	174 (6.4%)	163 (5.9%)	153 (5.4%)	142 (5.1%)	124 (4.4%)	112 (3.6%)	129 (4.0%)	110 (3.4%)	88 (3.1%)	85 (2.6%)
	Female	40 (1.5%)	26 (0.9%)	31 (1.1%)	38 (1.4%)	20 (0.7%)	29 (0.9%)	29 (0.9%)	41 (1.3%)	27 (0.9%)	24 (0.7%)
	Subtotal	214 (7.9%)	189 (6.8%)	184 (6.5%)	180 (6.4%)	144 (5.1%)	141 (4.6%)	158 (4.9%)	151 (4.6%)	115 (4.0%)	109 (3.3%)
GNY	Male	19 (0.7%)	16 (0.6%)	18 (0.6%)	12 (0.4%)	16 (0.6%)	25 (0.8%)	21 (0.7%)	20 (0.6%)	17 (0.6%)	24 (0.7%)
	Female	1 (0.0%)	3 (0.1%)	2 (0.1%)	4 (0.1%)	6 (0.2%)	6 (0.2%)	4 (0.1%)	8 (0.2%)	3 (0.1%)	7 (0.2%)
	Subtotal	20 (0.7%)	19 (0.7%)	20 (0.7%)	16 (0.6%)	22 (0.8%)	31 (1.0%)	25 (0.8%)	28 (0.9%)	20 (0.7%)	31 (0.9%)
Other	Male	13 (0.5%)	12 (0.4%)	16 (0.6%)	12 (0.4%)	10 (0.4%)	10 (0.3%)	9 (0.3%)	9 (0.3%)	8 (0.3%)	8 (0.2%)
	Female	4 (0.1%)	3 (0.1%)	4 (0.1%)	7 (0.2%)	4 (0.1%)	5 (0.2%)	1 (0.0%)	3 (0.1%)	1 (0.0%)	1 (0.0%)
	Subtotal	17 (0.6%)	15 (0.5%)	20 (0.7%)	19 (0.7%)	14 (0.5%)	15 (0.5%)	10 (0.3%)	12 (0.4%)	9 (0.3%)	9 (0.3%)

Jump

Bred	Sex	2012	2013	2014	2015	2016	2017	2018	2019	2020	2021
GB	Male	1254 (25.9%)	1135 (25.5%)	1095 (24.7%)	1096 (23.5%)	959 (21.8%)	992 (21.2%)	870 (20.2%)	978 (19.8%)	831 (18.6%)	967 (18.2%)
	Female	497 (10.3%)	434 (9.8%)	472 (10.6%)	512 (11.0%)	412 (9.4%)	412 (8.8%)	407 (9.4%)	450 (9.1%)	388 (8.7%)	490 (9.2%)
	Subtotal	1751 (36.2%)	1569 (35.3%)	1567 (35.3%)	1608 (34.5%)	1371 (31.2%)	1404 (30.0%)	1277 (29.6%)	1428 (29.0%)	1219 (27.2%)	1457 (27.4%)
IRE	Male	1999 (41.3%)	1954 (43.9%)	2002 (45.2%)	2064 (44.2%)	1995 (45.4%)	2103 (45.0%)	1918 (44.5%)	2157 (43.8%)	1958 (43.7%)	2292 (43.1%)
	Female	289 (6.0%)	252 (5.7%)	248 (5.6%)	306 (6.6%)	328 (7.5%)	363 (7.8%)	376 (8.7%)	463 (9.4%)	452 (10.1%)	500 (9.4%)
	Subtotal	2288 (47.3%)	2206 (49.6%)	2250 (50.7%)	2370 (50.8%)	2323 (52.8%)	2466 (52.7%)	2294 (53.2%)	2620 (53.2%)	2410 (53.8%)	2792 (52.5%)
FR	Male	546 (11.3%)	471 (10.6%)	455 (10.3%)	521 (11.2%)	557 (12.7%)	652 (13.9%)	604 (14.0%)	698 (14.2%)	654 (14.6%)	858 (16.1%)
	Female	44 (0.9%)	44 (1.0%)	46 (1.0%)	40 (0.9%)	46 (1.0%)	60 (1.3%)	63 (1.5%)	93 (1.9%)	106 (2.4%)	118 (2.2%)
	Subtotal	590 (12.2%)	515 (11.6%)	501 (11.3%)	561 (12.0%)	603 (13.7%)	712 (15.2%)	667 (15.5%)	791 (16.0%)	760 (17.0%)	976 (18.4%)
USA	Male	115 (2.4%)	78 (1.8%)	63 (1.4%)	61 (1.3%)	41 (0.9%)	36 (0.8%)	29 (0.7%)	21 (0.4%)	25 (0.6%)	22 (0.4%)
	Female	4 (0.1%)	5 (0.1%)	0 (0.0%)	2 (0.0%)	2 (0.0%)	1 (0.0%)	2 (0.0%)	3 (0.1%)	3 (0.1%)	2 (0.0%)
	Subtotal	119 (2.5%)	83 (1.9%)	63 (1.4%)	63 (1.4%)	43 (1.0%)	37 (0.8%)	31 (0.7%)	24 (0.5%)	28 (0.6%)	24 (0.5%)
GNY	Male	64 (1.3%)	50 (1.1%)	40 (0.9%)	54 (1.2%)	46 (1.0%)	48 (1.0%)	31 (0.7%)	53 (1.1%)	49 (1.1%)	57 (1.1%)
	Female	2 (0.0%)	3 (0.1%)	3 (0.1%)	4 (0.1%)	5 (0.1%)	5 (0.1%)	2 (0.0%)	4 (0.1%)	4 (0.1%)	7 (0.1%)
	Subtotal	66 (1.4%)	53 (1.2%)	43 (1.0%)	58 (1.2%)	51 (1.2%)	53 (1.1%)	33 (0.8%)	57 (1.2%)	53 (1.2%)	64 (1.2%)
Other	Male	20 (0.4%)	21 (0.5%)	10 (0.2%)	6 (0.1%)	5 (0.1%)	4 (0.1%)	5 (0.1%)	8 (0.2%)	5 (0.1%)	3 (0.1%)
	Female	1 (0.0%)	2 (0.0%)	0 (0.0%)	0 (0.0%)	2 (0.0%)	2 (0.0%)	2 (0.0%)	1 (0.0%)	1 (0.0%)	0 (0.0%)
	Subtotal	21 (0.4%)	23 (0.5%)	10 (0.2%)	6 (0.1%)	7 (0.2%)	6 (0.1%)	7 (0.2%)	9 (0.2%)	6 (0.1%)	3 (0.1%)